

## Statistics of Education:

# Outcome Indicators for Looked after Children

*Twelve months to 30 September 2004*

*England*



© Crown copyright 2005. Published with the permission of the DfES on behalf of the Controller of Her Majesty's Stationery Office.

Applications for reproduction should be made in writing to The Copyright Unit, Her Majesty's Stationery Office, St Clements House, 2-16 Colegate, Norwich NR3 1BQ.

ISBN 0 11 271177 4

# Contents

	<i>Page</i>
<b>SUMMARY</b>	<b>4</b>
<b>COMMENTARY</b>	<b>5</b>
<b>ENGLAND TABLES</b>	
List	14
Tables	15
<b>LOCAL COUNCIL TABLES</b>	
List	21
Local authority tables	22
<b>TECHNICAL NOTES</b>	<b>62</b>
<b>APPENDIX</b>	
List of local authority social services publications	<b>64</b>

## Summary

The main findings are as follows:

**1** At 30 September 2004 there were 45,000 children who had been looked after continuously for at least twelve months by English local authorities. This compares to 44,900 at 30 September 2003.

**2** 35,300 of these children were of school age and of these 27% had SEN statements, 12% missed at least 25 days of school, and 1% received a permanent exclusion. These percentages were similar to last year.

**3** On average 55% of those looked after children in the appropriate age group achieved level 2 at Key Stage 1, 43% level 4 at Key Stage 2 and 23% level 5 at Key Stage 3. The comparable percentages for all children were 86%, 79% and 70% respectively.

**4** The proportion of children continuously looked after for at least 12 months aged 11 and achieving at least level 4 at KS2 English and Maths was 51% of the proportion of all children. This compares with 49% and 46% in 2003 and 2002 respectively.

**5** In school year 11, 56% of looked after children obtained at least one GCSE or GNVQ compared with 96% of all school children. These figures were similar to last year. 41% did not sit an examination of this type in 2004 compared with 43% in 2003.

**6** 9% obtained at least 5 GCSE's (or equivalent) at grades A\*-C compared with 54% of all children. This compares to 9% and 53% in 2003. 19% of councils had at least 15% of their children achieving this level in 2004. This compares with 15% in 2003.

**7** At the end of school year 11, 59% remained in full-time education compared to 73% of all school-leavers. 22% were unemployed the September after leaving school compared to 6% of all school-leavers. In 2003, 57% remained in full-time education compared to 72% for all school-leavers and 22% of children looked after were unemployed compared to 7% of all school-leavers.

**8** 9% of these looked after children aged 10 or over, were cautioned or convicted for an offence during the year, 3 times the rate for all children of this age. This rate has stayed very similar over the past 3 years.

**9** For 73% of these looked after children immunisations were up to date, 79% had a dental check, and 77% had an annual health assessment. In 2003 these figures were 72%, 75% and 75% respectively.

## 1. INTRODUCTION

### The OC2 statistical collection

**1.1** In September 1999 the Government established 11 objectives for children's social services in England. One of these is 'to ensure that children looked after gain the maximum life chance benefits from educational opportunities, health care and social care'.

**1.2** In order to collect the data needed to monitor progress towards this objective three new statistical collections were introduced. One of these (OC2) covers a range of outcome indicators for looked-after children in England. This publication presents the results of this collection for the twelve months ending 30 September 2004. The figures presented include the Personal Social Services Performance Assessment Framework (PAF) indicators C18, C19 and C24.

### Data Quality

**1.3** This is the fifth time that social services departments have been asked to supply this information. Data quality and response rates have again improved on last year and are significantly better than in the first year of the collection, when many councils experienced difficulties in obtaining the required information.

**1.4** In some councils the number of looked-after children in some of the categories on the OC2 return is relatively small; caution is required when considering these figures as they are more susceptible to chance variation than figures based on larger numbers of children.

### Rounding and suppression of very small numbers to preserve confidentiality

**1.5** We have again applied rounding and suppression conventions to all data in this publication, in order to conceal very small numbers. This is to prevent the possibility of individual children being identified in the statistical tables. The conventions used are now applied to all personal social services statistics publications, and closely follow the established guidelines which the Department uses to protect the identity of all children.

**1.6** A result of applying this procedure is that columns of data at individual councils level which largely consist of very small numbers, now contain many dashes (-) to replace actual numbers in the range 1-5.

### Coverage of OC2

**1.7** The OC2 collection covers all children and young people in England who had been looked after continuously for at least twelve months at 30 September.

These figures exclude children looked after under an agreed series of short-term placements (sometimes called 'Family Link Placements', 'Short Breaks' or 'respite care') during that period. These figures include asylum-seeking children.

**1.8** From the overall group of children who had been looked after for at least twelve months at 30 September, smaller subsets are defined by the scope of some of the data items. These subsets are listed in Table 1.1 in the Technical Notes section at the back of this publication.

**1.9** Where a child has 'slipped' a year or more (e.g. is taking key stage tests or GCSEs later than expected from their date of birth) their results are not included.

### Duration in Care

**1.10** Figures collected separately on the SSDA 903 statistical return (which represents care histories of individual looked-after children) show that the average duration for which a child is looked after continues to increase over time, and the figures from successive OC2 returns appear to support this trend.

**1.11** The 2004 OC2 collection shows that 45,000 children had been continuously looked after for at least twelve months at 30 September 2004, compared to 44,900 at 30 September 2003. This represented approximately 75% of all children who were looked after on 30 September.

**1.12** The figure of 45,000 from the OC2 returns closely approximates an estimate for children at 31 March 2004 who had been looked after for twelve months or more which can be derived from the SSDA 903 return.

## 2 COMPARABILITY OF FIGURES FROM OC2 WITH FIGURES FOR ALL CHILDREN

**2.1** Several tables include comparative figures for all children in England alongside data collected from OC2. The figures for 'all children' are collected on various slightly different bases, which are explained below. Figure 2.2 at the end of this section summarises the differences.

### Comparability of educational results (Tables A, B, C, 1, 2, 3 and 4)

**2.2** The figures for educational attainment in Tables A, B, C, 1, 2, 3, and 4 are collated according to the Local Educational Authority (LEA) to which each school belongs. Although LEAs have the same boundaries as social services departments, many looked-after children are placed out-of-council (Figure 2.1). This is particularly the case in the Greater London area, where

typically just less than 40% of children who have been looked after for 12 months or more are placed out-of-council and may well attend a school belonging to a different LEA to the council which is looking after them. Caution must therefore be used when comparing educational data collected on OC2, with that for all children.

**2.3** Figure 2.1 is derived from the SSDA 903 statistical collection and is derived from foster and residential placement data relating to children who had been looked after for at least twelve months on 31 March 2004. It is derived from SSDA 903 placement codes F1–F6 and H1–H4, which distinguish foster and residential placements inside or outside the council area<sup>1</sup>. As there are further placement types for which the distinction between in and out of council is not made, these data should be regarded as probably slightly under-estimating the frequency of out-of-council placements. As it is known that there is little seasonal variation in this dataset, this can be taken as a reasonable proxy for the position at 30 September.

**2.4** There are a number of reasons why a child can be placed outside the council’s boundary. Many councils, particularly new unitary authorities, cover relatively

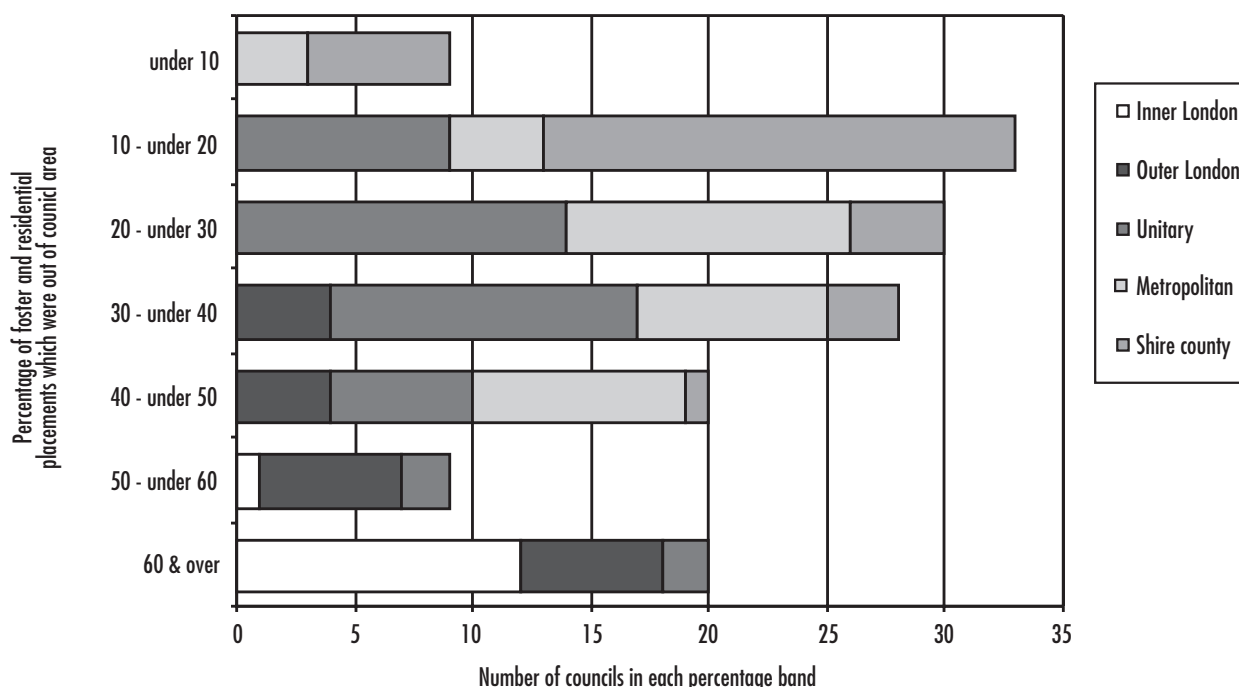
small geographical areas and if a wide range of placement options is to be available it is inevitable that some of these will be located outside the council’s boundary. The inclusion of Figure 2.1 here is not intended as a comment on any council’s placing policy, but to help the reader assess the usefulness of the comparator data for all children which are collected from LEAs, rather than social services departments.

**2.5** Figures at local council level include maintained schools, including mainstream and maintained special schools, City Technology Colleges and Academies. Figures for “all children” include maintained schools as above plus all independent schools including independent special schools and non maintained special schools, all hospitals and pupil referral units.

**2.6** Comparability between educational attainment data for looked after children and all children at local level has to be viewed with these caveats in mind.

**2.7** The national SEN figures are based on the January school census. All other figures are based on a school year running from 1 September to the following 31 August.

**FIGURE 2.1:** Children who had been looked after for at least twelve months on 31 March 2004: Number of councils banded according to proportion of foster and residential placements which were known to be out-of-area



Source: SSDA 903

<sup>1</sup> SSDA 903 Guidance notes are available at: [http://www.dfes.gov.uk/datastats1/guidelines/children/pdf/CLA\\_GN2005%20v1\\_3.pdf](http://www.dfes.gov.uk/datastats1/guidelines/children/pdf/CLA_GN2005%20v1_3.pdf)

### Comparability of education, employment and training status (Tables D and 5)

**2.8** The comparative figures in Tables D and 5 were provided by the Connexions Service and are based on a survey of all year 11 pupils in maintained schools in England in the school year which ended in August 2004. They exclude data from a small number of independent schools.

### Comparability of offending data (Table 6)

**2.9** The figures for all children cited in Table 6 are for Police Force areas, which do not necessarily follow the same boundaries as individual councils, and in many instances include the areas of a number of councils. These figures must therefore be treated with caution. At present the 'all children' data collected on this basis are the only figures available to provide a comparison with looked-after children.

### FIGURE 2.2:

Comparability between reference periods of OC2 data for 30 September 2004 and the data for all children obtained from other sources.

Relevant Tables And data item	OC2 data item and time period	'all children' data definition, time period, and source
Table A: Children with a statement of SEN	All children looked after continuously for twelve months or more on 30 September 2004, and who had a statement of SEN on that date	All children in the school population at January 2004 with a statement of SEN. Data from Pupil-level Annual School Census, 'PLASC'. Published September 2004 as DfES Statistical Volume: Statistics of Education, schools in England 2004 edition.
Table A: Numbers of permanent exclusions from schools	All children looked after continuously for twelve months or more on 30 September 2004, and who became permanently excluded from school at any time during the twelve-month period. Where a child was permanently excluded twice during the period, both exclusions are counted.	All children in the school population who became permanently excluded during the school year ending August 2004. Where a child was permanently excluded twice during the period, both exclusions are counted. Published November 2004 as Statistical First Release SFR 42/2004.
Tables B, 2, 3: Key Stage results	Of all children looked after continuously for twelve months or more on 30 September 2004, those who were eligible to sit relevant Key Stage tasks and tests according to their date of birth.	All children in the LEA maintained school population eligible to sit relevant Key Stage tasks and tests according to their date of birth. Refers to the school year ending August 2004. Published January 2004 as SFR. Published January 2005 as SFR 'GCSE/GNVQ Examination results and KS3 to GCSE/GNVQ value added measures 2003/2004 (revised)'.
Tables C, 4: GCSE performance	Of all children looked after continuously for twelve months or more on 30 September 2004, those who belonged to Year 11 according to their date of birth.	All children in the school population who were eligible to sit relevant GCSE or GNVQ exams according to their date of birth. Refers to the school year ending August 2004.
Tables D, 5: Activity following year 11	Of all children looked after continuously for twelve months or more on 30 September 2004, those who belonged to Year 11 according to their date of birth.	All pupils in the LEA maintained school population in England who were in year 11 which ended in August 2004. (Connexions/Careers Service Annual Activity Survey, carried out in October 2004).
Tables E, 6: Offending behaviour	Of all children looked after continuously for twelve months or more on 30 September 2004, those aged 10 or over on that date.	Number of people aged 10 to 17 who were cautioned or convicted for any offence. Refers to calendar year ending 31 December 2003. (Supplied by Crime and Criminal Justice Unit, RDS, Home Office; published on DfES website at <a href="http://www.dfes.gov.uk/datatats1/guidelines/children/xls/Home%20office%20figures%202003.xls">http://www.dfes.gov.uk/datatats1/guidelines/children/xls/Home%20office%20figures%202003.xls</a> )

### 3. EDUCATIONAL ATTAINMENT

#### Children who have statements of Special Educational Needs (SEN) (Tables A and 1)

**3.1** Children have special educational needs if they have a learning difficulty which calls for special educational provision to be made for them. Further definitional and background information is provided in the *Special Educational Needs Code of Practice* which was published in November 2001<sup>2</sup>. Chapter 10 of the *Code of Practice* discusses the responsibility of social services departments to work closely with schools and LEAs on behalf of these children.

**3.2** 35,300 of the children looked after continuously for a least twelve months were of school age at 30 September 2004. It is estimated that of these, 9,700 (27%) during the 2003/2004 school year held statements

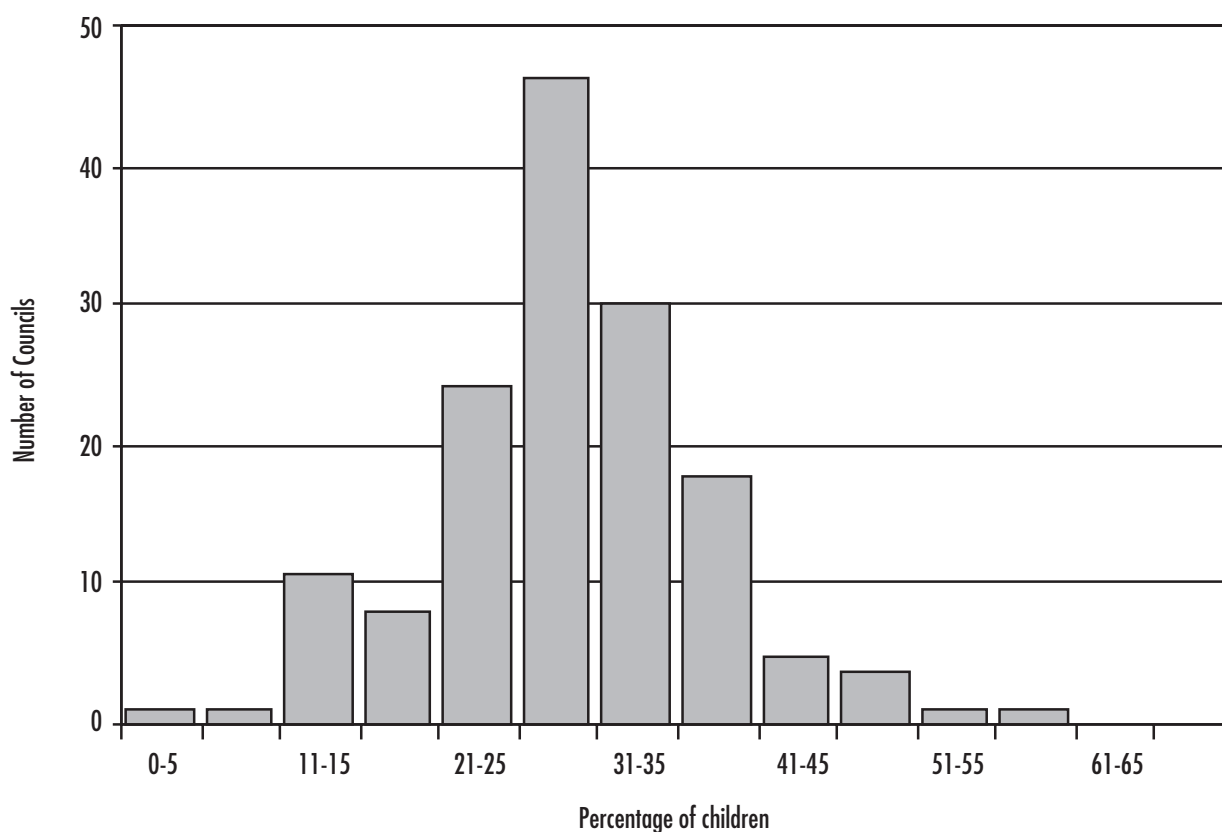
of special educational needs (stage 5 in the *Code of Practice*). This percentage is very similar to that for the twelve months ending 30 September 2003 (27%).

**3.3** Compared to national figures for all children in England, looked-after children are almost nine times more likely to hold a statement of special educational needs. 3% of all school children in England held a statement of SEN at January 2004.

**3.4** The comparator figures in Table A for all children in England represent the position at January 2002 to January 2004<sup>3</sup>.

**3.5** Figure 3.1 shows the variation between councils in the percentage of their children looked after for twelve months who had statements of SEN on 30 September. As can be seen, in two-thirds of councils the incidence of looked-after children with special educational needs lies between 21% and 35% inclusive.

**FIGURE 3.1:**  
Councils ranked according to percentage of children looked after for at least twelve months at 30 September 2004 who held a statement of SEN



<sup>2</sup> available at <http://www.teachernet.gov.uk/teachinginengland/detail.cfm?id=390>

<sup>3</sup> First Release figures at <http://www.dfes.gov.uk/rsgateway/DB/SFR/s000537/index.shtml>



### Exclusions from school Tables A and 1)

**3.6** Looked-after children also appear more likely to receive a permanent exclusion from school. Out of the 35,300 looked-after children of school age, there were 320 permanent exclusions during the 2003/2004 school year. Fixed-term exclusions are not included. Although this is a count of exclusions rather than children excluded, it is uncommon for the same child to receive more than one permanent exclusion during the school year.

**3.7** The number of exclusions expressed as a percentage of children who had been looked after for at least twelve months and who were eligible for schooling is 0.9% compared to 1.1% for the twelve months ending 30 September 2003.

**3.8** This compares with 0.1% of all children in England in the 2004 school year. The comparator figures of exclusions are for all children<sup>4</sup>.

**3.9** Small numbers have been suppressed in Table 1. For further details see the section on 'Rounding and Suppression' at the end of the Technical Notes.

### Children who missed at least 25 days of school for any reason (Tables A and 1)

**3.10** For the 2003/2004 school year, 12% of children looked after continuously throughout the year missed 25 days or more of school for any reason, the same as the previous school year. This represents Performance Assessment Framework indicator C24.

### Target on attainment

**3.11** There are several indicators underpinning the target<sup>5</sup> to improve the life chances for children in care by narrowing the gap between the educational attainment and participation of children in care and that of their peers. The Government revised these indicators, as part of the 2004 spending review. The target is underpinned by the following indicators.

- *Percentage of children aged 11, looked after for at least 12 months, who obtain level 4 in Key Stage 2 English and Maths;*
- *Percentage of young people, looked after for at least 12 months, who reach school leaving age without having sat a GCSE equivalent exam;*
- *Percentage of young people, looked after for at least 12 months and in year 11, who achieve five or more GCSEs graded A\*-C or equivalent*

**3.12** The target relates to children who were in care on 30 September and had been continuously looked after for at least 12 months. Data presented later in this section show that for the twelve months ending 30 September 2004:

- The proportion of children continuously looked after for at least 12 months aged 11 and achieving at least level 4 at KS2 English and Maths was 51% of the proportion for all children. The corresponding percentage for 2003 was 49%.
- Of the children looked after continuously for at least 12 months who were in year 11, 41% did not sit a GCSE or equivalent examination (see paragraph 3.17). The corresponding percentage for 2003 was 43%.
- 9% of children continuously looked after for at least 12 months in year 11 attained 5 GCSE or equivalent passes at grades A\*-C (see paragraph 3.19). The same percentage as in 2003.
- 19% of councils had at least 15% of their children achieving 5 GCSEs (or equivalent) A\* to C. In 2003, 15% of councils had at least 15% of their children achieving 5 GCSEs (or equivalent).

### Key Stage and GCSE or equivalent results (Tables B&C, and Tables 2, 3, & 4)

**3.13** The performance of those children looked after continuously for a year in the tasks and tests at the end of the three Key Stages is shown in Table B. Overall 55% reached the target level 2 at Key Stage 1, 43% reached level 4 at Key Stage 2 and 23% reached level 5 at Key Stage 3. (The comparable figures for school year ending August 2003 were 53%, 42%, and 23% respectively.) It can be seen that the academic performance of looked-after children worsens for older children. This lower performance with age is also apparent in the national school population, with equivalent figures for Key Stages 1, 2 and 3 for the school year ending August 2004 being 86%, 79% and 70% respectively.

**3.14** Considering Maths and English only, 39% reached level 4 at Key Stage 2 compared with 36% in August 2003 and 34% in August 2002. Figure 3.2 illustrates these figures more clearly and compares them against the equivalent figures for all children. Combining these figures in 2003/04 shows the proportion of children continuously looked after for at least 12 months aged 11

<sup>4</sup> First release published April 2004 (provisional) at <http://www.dfes.gov.uk/rsgateway/DB/SFR/s000577/index.shtml>

<sup>5</sup> [http://www.hm-treasury.gov.uk/media/12D/57/sr04\\_psa\\_ch2.pdf](http://www.hm-treasury.gov.uk/media/12D/57/sr04_psa_ch2.pdf)

and achieving at least level 4 at KS2 English and Maths to be 51% of the proportion for all children. This compares to 49% in 2002/03 and 46% in 2001/2002.

**3.15** Figure 3.3 shows the percentage of looked-after children attaining the target level at each Key Stage test, as a proportion of the percentage of all children attaining the target level for the 2003/2004 school year<sup>6</sup>.

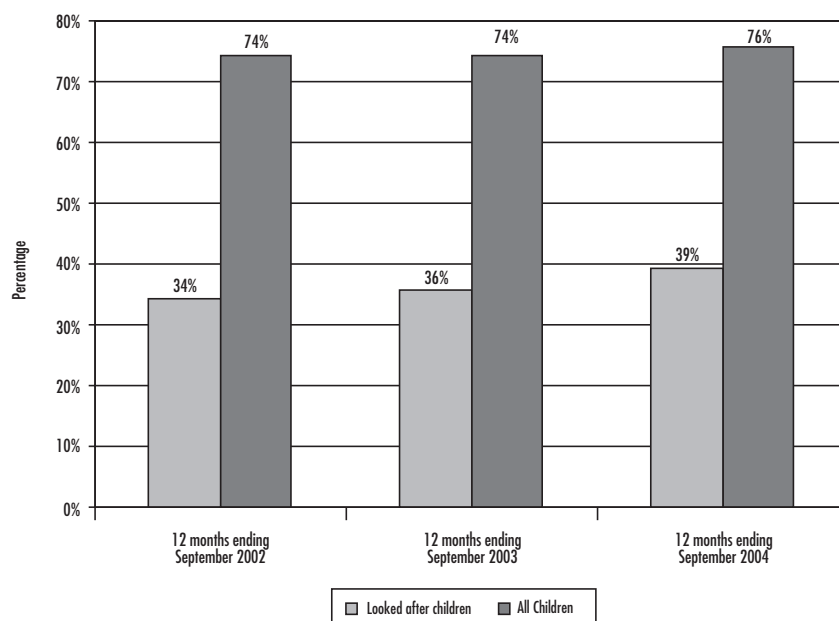
**3.16** Using the data from Figure 3.3 shows that the performance of looked-after children achieving the

target level for Key Stage 1 is between 59% and 70% of that of all children. For Key Stage 2, the performance of looked-after children drops to between 50% and 62% of that of all children, and at Key Stage 3, the attainment of looked-after children drops again to between 31% and 35% of that of the total school population at Key Stage 3.

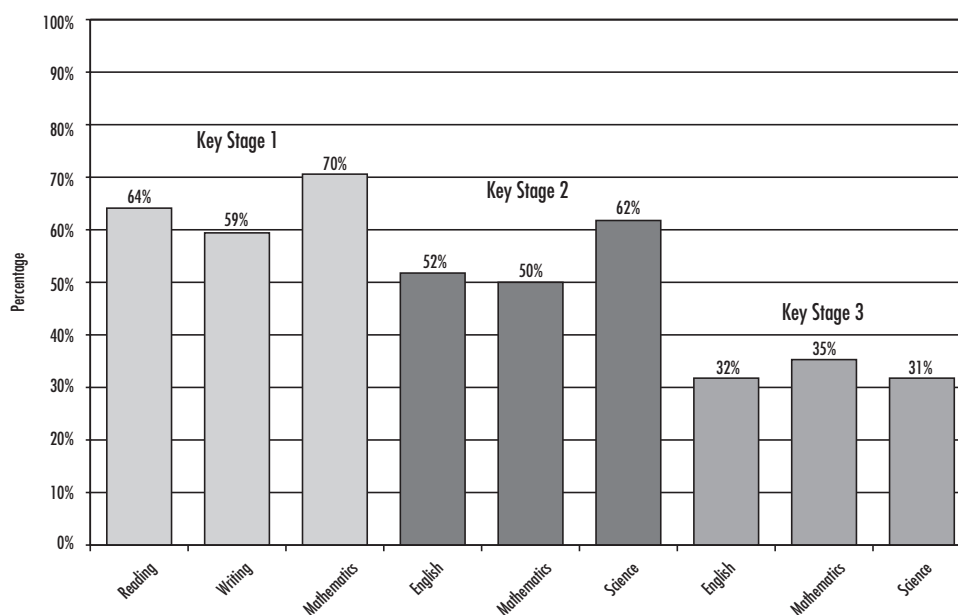
**Year 11: GCSEs and GNVQs (Tables C and 4)**

**3.17** Of the children looked after continuously throughout Year 11 (Tables C and 5), 41% did not sit a GCSE or equivalent exam, compared with 43% in

**FIGURE 3.2:** Percentage of children looked after for at least 12 months at 30 September 2004 reaching level 4 in Maths and English, compared with all children



**FIGURE 3.3:** The proportion of looked-after children attaining the target level of each of the Key Stage tasks and tests, shown as a percentage of the proportion of all children attaining the target level. Twelve months to 30 September 2004



<sup>6</sup> First release figures for all children at LEA level were published in October 2004 and are available at <http://www.dfes.gov.uk/rsgateway/DB/SFR/s000564/index.shtml>

2003 and 42% in 2002. 56% obtained at least one GCSE at grade A\*–G or a GNVQ. This compares to 53% for the school years ending 30 September 2003 and 2002.

**3.18** The provisional equivalent figure for all children in England in year 11 who obtained at least one grade A\*–G or a GNVQ during the school year ending August 2004 is 96%. 39% of children looked after during the year achieved 5 or more GCSE or equivalent passes at grades A\*–G, compared to 89% of all children.

**3.19** Only 9% of looked-after children attained 5 GCSE or equivalent passes at grades A\*–C, compared with 54% of all children. This figure for looked after children is similar to previous years (9% in 2003 and 8% in 2002) The OC2 excludes the results of young people who left care after completing year 11 but before 30 September 2004.

**3.20** Figure 3.4 compares GCSE or equivalent attainments of looked-after children in year 11 to the attainments of all children.

**3.21** Although there is a large difference between the performance of looked-after children and all children at each set of Key Stage tasks and tests and in general GCSE or equivalent attainment, this difference is at its greatest when considering those children obtaining the higher grades at GCSE or equivalent; five passes between grades A\*–C.

## Education and employment at age 16 (Tables D and 5)

**3.22** The OC2 return collects information on the position of those looked-after children who finished compulsory schooling during the 2003/2004 school year on completing year 11. The reader should bear in mind that these data do not represent outcomes for care leavers, as all of these young people were still looked after on 30 September.

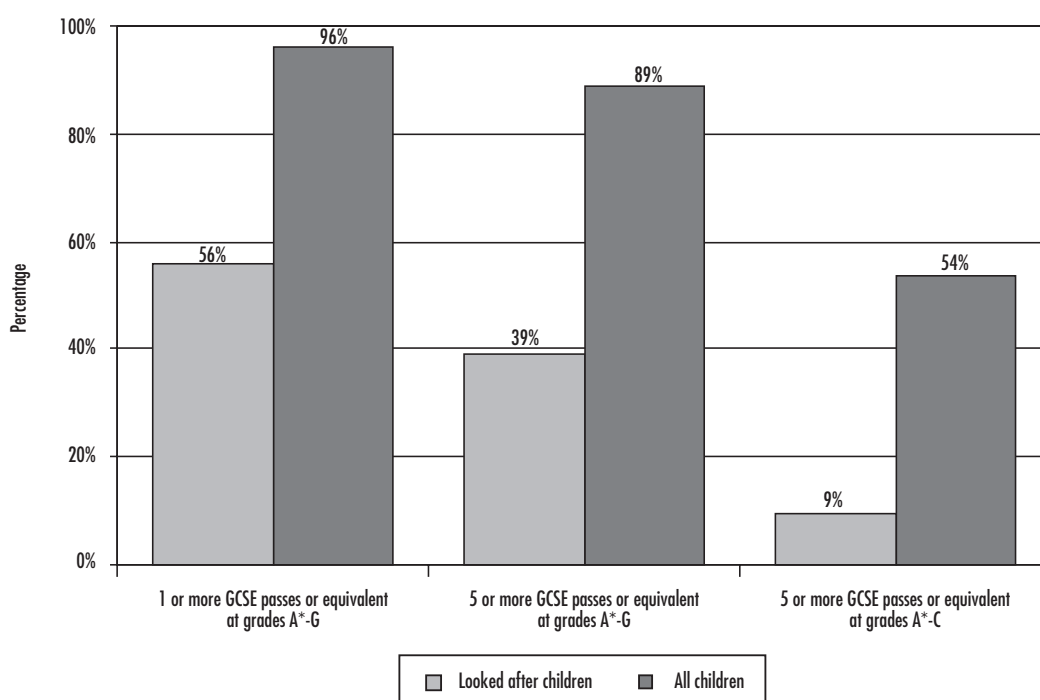
**3.23** At 30 September 2004, 59% of these young people were in or about to start full-time education. 8% were in full-time training, 5% in full-time employment and 6% in part-time employment, education, or training. 22% of these young people were unemployed at 30 September; for 1% this was due to ill-health or disability. These percentages are similar to those which were reported for the position at 30 September 2003 (57% were in full-time education, 8% in full-time training, 6% in full-time employment, 6% in part-time employment, education or training and 22% were unemployed).

**3.24** Figure 3.5 and Tables D and 6 compare these outcomes with data for all children who completed year 11. The comparative information for all children is from the 'Connexions/ Careers Service Annual Activity Survey 2004'. This survey was carried out in October 2004, covering all young people who were in year 11 during the 2003/2004 school year.

**3.25** The comparison shows that, at a national level, fewer looked-after children remained in full-time education than in the comparator population, whereas

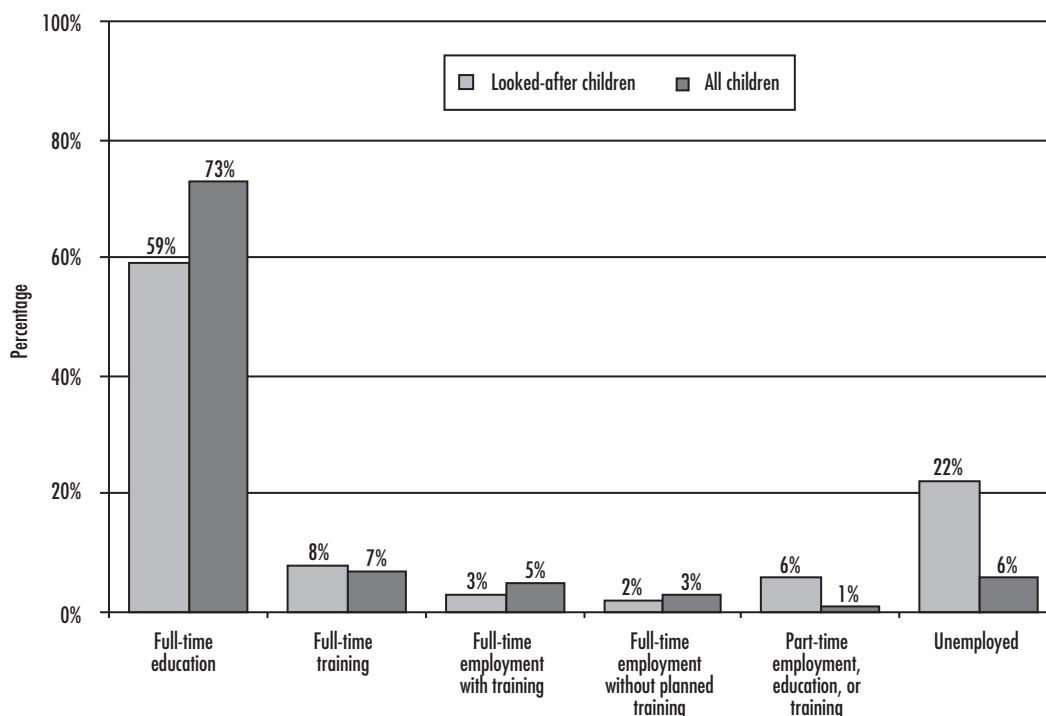
**FIGURE 3.4:**

Percentage of children looked after for at least twelve months at 30 September 2004 obtaining GCSE or equivalent passes, compared with all children



**FIGURE 3.5:**

The position of looked-after children at 30 September 2004 following the completion of year 11, compared with all children of same age



more looked-after children were unemployed, or in part-time education, employment or training.

#### 4. CAUTIONS AND CONVICTIONS

##### Cautions and convictions (Tables E and 6)

**4.1** As can be seen from Table E and figure 4.1, looked-after children of the age of criminal responsibility are three times more likely to be cautioned or convicted of an offence than others. 9.3% of children looked after for a year or more who were aged 10 or over had been convicted or subject to a final warning or reprimand during the year.

**4.2** This compares with a figure of 3.3% for all children. The ratio of these two percentages represents PAF indicator C18. This figure is slightly lower than that for the twelve months ending 30 September 2003 (2.8% in 2004 compared to 2.9% in 2003).

**4.3** Table 6 shows these figures at local council level. As explained above, the comparable figures for all

children are for Police force areas, which do not necessarily follow the same boundaries as individual councils and in many instances cover the areas of several councils.

**4.4** There was a Public Service Agreement target from the 2002 spending review to improve the life chances for children in care by narrowing the gap between the proportions of children in care and their peers who receive a final warning or conviction. The target was to reduce the proportions of children in care who were cautioned or convicted in the year to 30 September by a third from 10.8% to 7.2% by 2004 and maintained until 2006. Clearly this has not been met.

#### 5. HEALTH OUTCOMES

##### Health Assessments (Table F and Tables 7 & 8)

**5.1** Of the 45,000 children who had been looked after continuously for twelve months, 34,700 (77%) had their annual health assessment and 35,400 (79%) had their teeth checked by a dentist during that period.

#### Children aged 10 or over convicted or subject to a final warning or reprimand during the years ending 30 September 2001 to 2004

England	percentages			
	2001	2002	2003	2004
Looked after children	10.3	9.7	9.5	9.3
All children <sup>1</sup>	3.5	3.6	3.3	3.3
PAF Indicator C18 <sup>2</sup>	3.0	2.7	2.9	2.8

<sup>1</sup> Data for all children are from the Home Office and are for calendar years 31 December 2000 to 2003, expressed as a percentage of all children aged 10–17.

<sup>2</sup> For definitions of PAF C18, see table E and table 7.

**5.2** It must be borne in mind when considering these figures that children have a right to refuse a health assessment or dental check. As the OC2 return is for children looked after for a year all babies will have teeth and so they should be checked.

**5.3** Nearly three quarters (73%) of children looked after continually throughout the year were up-to-date for their routine immunisations. This figure should also be interpreted with some caution. Children may enter care with their immunisations behind schedule, or unknown as in the case of unaccompanied asylum seekers, and it is not always possible for a local authority to 'catch up' with immunisations.

**5.4** The combination of the percentages for dental checks and health assessments make up PAF C19. Immunisations used to be included in this calculation but has now been taken out. Previous years PAF C19 has been recalculated without immunisations for England only so a comparison can be made. The PAF C19 figure for the twelve months ending September 2004 is 78%. This compares with a figure of 75% last year.

**5.5** In addition, 5,700 (82%) of children under age 5 who had been looked after for at least a year had their development assessments up to date. This compares to 5,700 (81%) in 2003.

## *England Tables*

- A Number of children looked after at 30 September 2002 to 2004 who had been looked after for at least twelve months, and general information on education (numbers and percentages)
- B Eligibility and performance of looked-after children in Key Stage tasks and tests, compared with all children, school years ending 30 September 2002 to 2004 (numbers and percentages)
- C GCSE or equivalents performance of looked-after children in Year 11 compared with all children, school years ending 30 September 2002 to 2004 (numbers and percentages)
- D Education and employment status at 30 September of looked-after children in Year 11 in 2003/2004 school year, compared with all children (numbers and percentages)
- E Offending by looked-after children, twelve months ending 30 September 2002 to 2004 (numbers and percentages)
- F Health care of looked-after children, twelve months ending 30 September 2002 to 2004 (numbers and percentages)

# A

## Number of children looked after at 30 September 2002 to 2004 who had been looked after for at least twelve months, and general information about education

England

numbers and percentages

	looked-after children						all children		
	number			percentages <sup>1</sup>			percentages <sup>2</sup>		
	2002	2003	2004	2002	2003	2004	2002	2003	2004
Number of children looked after at 30 Sept. who had been looked after for at least twelve months	44,100	44,900	45,000	.	.	.	.	.	.
<b>and of these:</b> Number eligible for full-time schooling	34,500	35,100	35,300	.	.	.	.	.	.
<b>and of these:</b> Number with a statement of special educational needs	9,200	9,400	9,700	26.8	26.8	27.4	3.0	3.0	3.0
Number of permanent exclusions from school <sup>3</sup>	420	380	320	1.2	1.1	0.9	0.1	0.1	0.1
Number who missed at least 25 days of school <sup>4,5</sup>	4,100	4,400	4,300	12.0	12.4	12.3	..	..	..

1 expressed as a percentage of the number eligible for full-time schooling

2 source: DFES statistical bulletins: 'Statistics of Education: Special Educational Needs in England: January 2004 (provisional)', and 'Permanent Exclusions from Schools in England 2003/2004 (provisional estimates)'

3 If a child was permanently excluded more than once in the previous school year, each occasion has been counted.

4 Performance Assessment Framework Indicator C24: The percentage of children who had been looked after continuously for at least 12 months and were of school age, who missed a total of at least 25 days during the previous school year of schooling for any reason.

5 Figures on this basis are not collected by DFES for all children

# B

## Eligibility and performance of looked-after children in Key Stage tasks and tests, compared with all children, school years ending 30 September 2002 to 2004

England

numbers and percentages

	looked-after children						all children <sup>1</sup>		
	number			percentages			percentages		
	2002	2003	2004	2002	2003	2004	2002	2003	2004
<b>YEAR 2</b>									
Number eligible to sit Key Stage 1 tasks and tests	2,000	1,900	1,900	.	.	.	.	.	.
Number who attained at least Level 2 <sup>2</sup> in the following:									
Reading task/test <sup>3</sup>	935	970	1,100	46.2	50.8	54.4	84	84	85
Writing task	1,100	930	940	52.4	48.5	48.3	86	81	82
Spelling test <sup>4</sup>	905	..	..	44.8	..	..	78	..	..
Mathematics test	1,200	1,200	1,200	57.9	61.0	63.5	90	90	90
<b>YEAR 6</b>									
Number eligible to sit Key Stage 2 tasks and tests	2,900	3,000	2,900	.	.	.	.	.	.
Number who attained at least Level 4 <sup>2</sup> in the following:									
English	1,000	1,100	1,200	34.6	37.1	39.9	75	75	77
Mathematics	1,000	1,000	1,100	34.2	34.8	37.2	73	73	74
Science	1,500	1,600	1,600	51.7	52.9	53.0	86	87	86
<b>YEAR 9</b>									
Number eligible to sit Key Stage 3 tasks and tests	3,800	3,800	4,000	.	.	.	.	.	.
Number who attained at least Level 5 <sup>2</sup> in the following:									
English	835	850	900	22.1	22.3	22.5	67	69	71
Mathematics	810	890	1,000	21.4	23.3	25.8	67	71	73
Science	825	890	830	21.8	23.2	20.8	67	68	66

1 source: DfES statistical first release 20/2003 'National curriculum assessments of 7, 11 and 14 year olds in England – 2004 (Provisional)' Includes all schools  
For Key stage 1, these figures are a result of combining task/test for non trial schools and teacher assessment for trial schools

2 target level for age group

3 the 'all children' Key stage 1 Reading task/test is derived by adding the pupils achieving level 2 in the reading task and level 3 in the reading comprehensive test

4 From September 2003, the spelling test contributed to the writing task and was therefore not reported as a separate item.



C

GCSE performance or equivalents of looked-after children in Year 11 compared with all children, school years ending 30 September 2002 to 2004

England

numbers and percentages

	looked-after children						all children <sup>1</sup>		
	number			percentages <sup>2</sup>			percentages		
	2002	2003	2004	2002	2003	2004	2002	2003	2004
Number in Year 11	4,300	4,600	4,800	.	.	.	.	.	.
Number who sat at least one GCSE or GNVQ	2,500	2,600	2,900	57.9	56.8	59.1	96	96	97
Number who obtained at least:									
1 GCSE at grade A* to G or a GNVQ	2,300	2,400	2,700	53.2	52.9	56.1	95	95	96
5 GCSE's (or equivalent) at grade A* to G	1,500	1,700	1,900	36.3	36.8	39.4	89	89	89
5 GCSE's (or equivalent) at grade A* to C	320	400	450	7.5	8.7	9.4	52	53	54

1 source: DFES statistical bulletin: GCSE/GNVQ and GCE A/AS/VCE/Advanced GNVQ Examination Results 2003/2004 – England. Issued January 2004. Includes all schools.

2 expressed as a percentage of all looked after children in Year 11

# D

## Education and employment status at 30 September 2004 of looked-after children in Year 11 in 2003/2004 school year, compared with all children

Government Office Region		total number of children in Year 11 in 2003/2004 school year	position at 30 September 2004, shown as a percentage of the total						unemployed	
			full-time education	full-time training	full-time employment with planned training	full-time employment with no planned training	part-time employment, education, or training	a result of ill-health or disability	other reason	
<b>ENGLAND</b>	<b>looked after</b>	<b>4,800</b>	<b>59</b>	<b>8</b>	<b>3</b>	<b>2</b>	<b>6</b>	<b>1</b>	<b>21</b>	
	<b>all children<sup>1,2</sup></b>	<b>625,600</b>	<b>73</b>	<b>7</b>	<b>5</b>	<b>3</b>	<b>1</b>	<b>6</b>		
<b>NORTH EAST</b>	looked after	230	59	16	3	-	3	4	14	
	all children <sup>1,2</sup>	34,800	68	11	3	3	1	8		
<b>NORTH WEST</b>	looked after	690	49	12	4	4	8	1	22	
	all children <sup>1,2</sup>	94,800	71	9	6	3	1	6		
<b>YORKS &amp; THE HUMBER</b>	looked after	470	50	10	3	3	7	1	26	
	all children <sup>1,2</sup>	65,100	68	9	6	4	1	7		
<b>EAST MIDLANDS</b>	looked after	280	54	6	5	-	10	-	21	
	all children <sup>1,2</sup>	54,800	72	7	7	4	1	6		
<b>WEST MIDLANDS</b>	looked after	480	64	8	3	3	4	1	18	
	all children <sup>1,2</sup>	71,300	71	9	4	4	1	7		
<b>EAST</b>	looked after	420	62	3	3	5	7	-	19	
	all children <sup>1,2</sup>	68,800	76	5	7	2	1	5		
<b>LONDON</b>	looked after	1,200	64	6	2	1	5	1	22	
	all children <sup>1,2</sup>	78,400	80	3	2	2	1	6		
<b>SOUTH EAST</b>	looked after	670	61	5	2	2	5	2	23	
	all children <sup>1,2</sup>	96,400	76	4	5	3	0	5		
<b>SOUTH WEST</b>	looked after	390	60	6	5	3	9	-	17	
	all children <sup>1,2</sup>	61,500	75	7	4	5	1	4		

1 Source: The 'Connexions/Careers Service Annual Activity Survey 2004'. Covers all young people who were in year 11 during the school year ending August 2004, and is based on a survey carried out during October 2004.

2 Percentages for 'all children' do not sum to 100 because the Connexions/Career Service Survey included an additional category of moved away 'no response' and 'refused to participate', which is not relevant to looked-after children.

# E

## Offending by looked-after children, twelve months ending 30 September 2002 to 2004

England

numbers and percentages

	looked after						all children <sup>1</sup>			PAF Indicator C18 <sup>2</sup>		
	number			percentage			percentages					
	2002	2003	2004	2002	2003	2004	2002	2003	2004	2002	2003	2004
Number of children looked after for at least twelve months	44,100	44,900	45,000	.	.	.	.	.	.	.	.	.
Number of children aged 10 or older at 30 September	28,200	29,100	29,800	.	.	.	.	.	.	.	.	.
Number convicted or subject to a final warning or reprimand during the year	2,700	2,800	2,800	9.7	9.5	9.3	3.6	3.3	3.3	2.7	2.9	2.8

1 Data for all children are from Home Office, and are for calendar years ending 31 December 2001 to 2003, expressed as a percentage of all children aged 10–17

2 the proportion of children (aged 10 or over) who had been looked after continuously for at least 12 months, who were convicted or subject to a final warning or reprimand during the year for an offence committed whilst they were looked after, expressed as a ratio of the proportion of all children and young people convicted or subject to a final warning or reprimand for an offence in the police force area.

# F

## Health care of looked-after children, twelve months ending 30 September 2002 to 2004

England

numbers and percentages

	number			percentage			PAF Indicator C19 <sup>1</sup>		
	2002	2003	2004	2002	2003	2004	2002	2003	2004
number of children looked after for at least one year	44,100	44,900	45,000	.	.	.	.	.	.
of these:									
number whose immunisations were up to date	32,400	32,300	33,000	73.4	71.9	73.3			
number who had their teeth checked by a dentist	31,800	33,800	35,400	72.2	75.3	78.8	} 71.6	75.2	77.9
number who had their annual health assessment	31,300	33,700	34,700	71.0	75.0	77.1			
number of children looked after for at least one year, and aged 5 or younger at 30 September:	7,400	7,100	7,000	.	.	.	.	.	.
of these:									
number whose development assessments were up to date	5,500	5,700	5,700	74.5	80.7	81.5	.	.	.

<sup>1</sup> The average of the percentages of children looked after at 30 September who had been looked after continuously for at least 12 months, who had their teeth checked by a dentist during the previous 12 months, and had an annual health assessment during the previous 12 months. In previous years this indicator also included immunisations. The figures shown here reflect the revised definition.

## *Local Authority Tables*

- 1 Numbers of children looked after for at least twelve months, and general information on education, twelve months ending 30 September 2004 (numbers and percentages)
- 2 Eligibility and performance of looked-after children in Key Stage 2 tasks and tests, compared with all children, twelve months ending 30 September 2004 (numbers and percentages)
- 3 Eligibility and performance of looked-after children in Key Stage 3 tasks and tests, compared with all children, twelve months ending 30 September 2004 (percentages)
- 4 GCSE or equivalents performance of looked-after children in Year 11 compared with all children, twelve months ending 30 September 2004 (percentages)
- 5 Education and employment status at 30 September of looked-after children in Year 11 in 2003/2004 school year compared with all children (numbers and percentages)
- 6 Offending by looked-after children, twelve months ending 30 September 2004 (numbers and percentages)
- 7 Development assessments of pre-school looked-after children, twelve months ending 30 September 2004 (numbers)
- 8 Health care of looked-after children, twelve months ending 30 September 2004 (numbers and percentages)

### **NOTES:**

The table detailing KS1 results for looked after children has been omitted for this year's publication. This is due to the KS1 trial that took place. A direct comparison could not be made at Local Authority level between those LAs which took part in the trial and which provided teacher assessments figures, with the LAs that did not take part in the trial and that provided the usual task/test results.

Local Authority	number looked after for at least twelve months	of these, number of school age	Of these: - children with a statement of SEN		- permanent exclusions from school <sup>1</sup>		- children who missed at least 25 days school <sup>2</sup>	
			number	%	number	%	number	%
<b>ENGLAND</b>	<b>45,000</b>	<b>35,300</b>	<b>9,700</b>	<b>27.4</b>	<b>320</b>	<b>0.9</b>	<b>4,300</b>	<b>12.3</b>
<b>NORTH EAST</b>	<b>2,360</b>	<b>1,845</b>	<b>505</b>	<b>27</b>	<b>10</b>	<b>1</b>	<b>240</b>	<b>13</b>
Shire Counties								
Durham	340	250	45	18	-	-	35	15
Northumberland	235	185	70	37	-	-	25	14
Unitary Authorities								
Darlington	125	95	15	14	0	0	-	-
Hartlepool	65	55	5	13	0	0	0	0
Middlesbrough	180	145	35	26	0	0	10	7
Redcar & Cleveland	100	80	30	40	-	-	15	22
Stockton On Tees	135	100	30	32	0	0	5	6
Metropolitan Districts								
Gateshead	190	150	40	28	-	-	10	6
Newcastle Upon Tyne	315	255	55	22	-	-	35	15
North Tyneside	160	125	45	36	-	-	25	22
South Tyneside	195	150	45	29	-	-	30	20
Sunderland	320	260	80	32	0	0	35	14
<b>NORTH WEST</b>	<b>7,745</b>	<b>6,175</b>	<b>1,475</b>	<b>24</b>	<b>55</b>	<b>1</b>	<b>855</b>	<b>14</b>
Shire Counties								
Cheshire	380	305	115	37	0	0	35	11
Cumbria	440	350	90	25	-	-	65	18
Lancashire	965	770	235	31	20	2	85	11
Unitary Authorities								
Blackburn With Darwen	215	175	45	26	-	-	25	16
Blackpool	180	135	40	30	-	-	15	12
Halton	130	110	35	33	0	0	20	18
Warrington	155	115	35	30	0	0	5	6
Metropolitan Districts								
Bolton	225	170	50	29	-	-	30	17
Bury	190	150	20	14	0	0	5	5
Knowsley	180	140	35	25	0	0	20	13
Liverpool	800	665	100	15	-	-	105	16
Manchester	1,035	830	125	15	-	-	100	12
Oldham	250	180	20	10	-	-	10	6
Rochdale	230	180	35	21	-	-	30	17
Salford	450	375	85	22	-	-	85	23
Sefton	245	200	30	16	-	-	20	10
St Helens	170	120	35	28	0	0	20	18
Stockport	295	235	60	26	-	-	30	12
Tameside	245	190	70	36	0	0	25	13
Trafford	150	120	30	26	-	-	15	13
Wigan	325	260	65	24	-	-	40	15
Wirral	495	400	120	30	10	3	65	16

## CONTINUED

Numbers of children looked after for at least twelve months, and general information about their education: twelve months ending 30 September 2004

numbers and percentages

Local Authority	number looked after for at least twelve months	of these, number of school age	Of these: -children with a statement of SEN		-permanent exclusions from school <sup>1</sup>		-children who missed at least 25 days school <sup>2</sup>	
			number	%	number	%	number	%
<b>YORKSHIRE &amp; THE HUMBER</b>	<b>5,035</b>	<b>3,935</b>	<b>1,080</b>	<b>27</b>	<b>25</b>	<b>1</b>	<b>600</b>	<b>15</b>
Shire Counties								
North Yorkshire	290	240	60	24	-	-	25	11
Unitary Authorities								
East Riding Of Yorkshire	195	160	50	31	-	-	15	10
Kingston Upon Hull	445	345	70	20	-	-	65	19
North East Lincolnshire	165	135	40	30	-	-	20	16
North Lincolnshire	130	110	50	45	-	-	10	9
York	95	80	25	29	0	0	10	15
Metropolitan Districts								
Barnsley	195	160	40	26	0	0	5	4
Bradford	665	515	130	25	-	-	70	13
Calderdale	145	115	35	28	0	0	10	10
Doncaster	300	235	65	28	-	-	50	21
Kirklees	200	145	40	27	0	0	30	20
Leeds	1,110	855	235	27	-	-	135	16
Rotherham	295	210	60	29	-	-	40	18
Sheffield	475	385	120	31	-	-	55	15
Wakefield	325	250	70	28	-	-	50	20
<b>EAST MIDLANDS</b>	<b>2,845</b>	<b>2,260</b>	<b>625</b>	<b>28</b>	<b>25</b>	<b>1</b>	<b>220</b>	<b>10</b>
Shire Counties								
Derbyshire	370	305	85	29	-	-	40	13
Leicestershire	235	190	65	33	-	-	25	13
Lincolnshire	425	315	115	37	-	-	0	0
Northamptonshire	420	355	105	30	5	2	40	11
Nottinghamshire	350	280	55	19	0	0	30	11
Unitary Authorities								
Derby	295	235	75	31	-	-	30	14
Leicester	375	300	85	28	-	-	50	16
Nottingham	365	275	40	15	-	-	5	3
Rutland	10	10	-	-	0	0	0	0

## CONTINUED

Numbers of children looked after for at least twelve months, and general information about their education: twelve months ending 30 September 2004

numbers and percentages

Local Authority	number looked after for at least twelve months	of these, number of school age	Of these: -children with a statement of SEN		-permanent exclusions from school <sup>1</sup>		-children who missed at least 25 days school <sup>2</sup>	
			number	%	number	%	number	%
<b>WEST MIDLANDS</b>	<b>5,175</b>	<b>4,065</b>	<b>1,155</b>	<b>28</b>	<b>30</b>	<b>1</b>	<b>405</b>	<b>10</b>
Shire Counties								
Shropshire	120	105	40	36	-	-	15	12
Staffordshire	430	340	145	43	-	-	40	12
Warwickshire	305	235	65	28	-	-	15	7
Worcestershire	360	285	105	38	0	0	25	8
Unitary Authorities								
Herefordshire	130	110	35	33	-	-	15	13
Stoke-On-Trent	280	230	50	22	0	0	20	8
Telford & Wrekin	140	105	30	27	-	-	-	-
Metropolitan Districts								
Birmingham	1,475	1,160	270	23	10	1	75	6
Coventry	380	290	105	36	0	0	55	19
Dudley	325	250	70	28	-	-	45	18
Sandwell	410	310	55	19	-	-	25	8
Solihull	145	110	30	29	0	0	15	13
Walsall	380	295	85	29	-	-	25	9
Wolverhampton	295	230	65	28	-	-	35	15
<b>EAST OF ENGLAND</b>	<b>4,275</b>	<b>3,435</b>	<b>925</b>	<b>27</b>	<b>35</b>	<b>1</b>	<b>430</b>	<b>12</b>
Shire Counties								
Bedfordshire	345	280	95	33	-	-	35	12
Cambridgeshire	250	185	65	34	0	0	10	5
Essex	915	750	170	23	10	1	90	12
Hertfordshire	770	600	140	24	-	-	75	13
Norfolk	570	460	155	34	-	-	70	15
Suffolk	510	405	100	25	10	2	50	13
Unitary Authorities								
Luton	300	245	60	24	-	-	25	11
Peterborough	250	210	65	32	-	-	25	12
Southend	230	180	45	26	0	0	30	15
Thurrock	140	120	25	23	-	-	20	15



## CONTINUED

Numbers of children looked after for at least twelve months, and general information about their education: twelve months ending 30 September 2004

numbers and percentages

Local Authority	number looked after for at least twelve months	of these, number of school age	Of these: -children with a statement of SEN		-permanent exclusions from school <sup>1</sup>		-children who missed at least 25 days school <sup>2</sup>	
			number	%	number	%	number	%
<b>LONDON</b>	<b>8,620</b>	<b>6,310</b>	<b>1,550</b>	<b>25</b>	<b>60</b>	<b>1</b>	<b>795</b>	<b>13</b>
Inner London								
Camden	260	170	45	28	-	-	20	11
City of London	-	0	0	0	0	0	0	0
Greenwich	370	270	105	39	-	-	30	11
Hackney	340	235	55	23	-	-	25	11
Hammersmith & Fulham	270	210	20	11	-	-	20	10
Islington	350	275	35	12	0	0	50	18
Kensington & Chelsea	165	120	25	22	-	-	15	12
Lambeth	470	360	50	13	-	-	40	12
Lewisham	420	295	85	29	-	-	60	20
Southwark	490	385	100	26	-	-	40	10
Tower Hamlets	270	200	40	21	-	-	10	5
Wandsworth	265	210	65	31	-	-	25	12
Westminster	220	150	35	25	-	-	30	19
Outer London								
Barking & Dagenham	265	195	45	24	-	-	20	11
Barnet	310	245	55	22	-	-	30	11
Bexley	150	130	50	37	-	-	15	11
Brent	265	105	15	12	-	-	-	-
Bromley	235	190	70	37	-	-	35	20
Croydon	470	320	50	15	5	2	35	12
Ealing	300	220	60	28	-	-	25	12
Enfield	245	170	35	21	-	-	15	9
Haringey	400	285	60	20	0	0	40	15
Harrow	110	80	20	24	-	-	15	20
Havering	120	100	35	35	-	-	10	9
Hillingdon	335	250	65	25	-	-	10	5
Hounslow	235	175	60	34	-	-	20	11
Kingston Upon Thames	50	35	20	51	0	0	-	-
Merton	110	90	25	28	-	-	10	10
Newham	535	400	80	20	0	0	80	20
Redbridge	110	85	25	27	0	0	10	11
Richmond Upon Thames	80	65	25	36	0	0	15	22
Sutton	110	100	40	40	-	-	15	15
Waltham Forest	285	205	65	32	-	-	25	13

## CONTINUED

## Numbers of children looked after for at least twelve months, and general information about their education: twelve months ending 30 September 2004

numbers and percentages

Local Authority	number looked after for at least twelve months	of these, number of school age	Of these:		-permanent exclusions from school <sup>1</sup>		-children who missed at least 25 days school <sup>2</sup>	
			-children with a statement of SEN		number	%	number	%
			number	%	number	%	number	%
<b>SOUTH EAST</b>	<b>5,560</b>	<b>4,485</b>	<b>1,365</b>	<b>30</b>	<b>45</b>	<b>1</b>	<b>530</b>	<b>12</b>
Shire Counties								
Buckinghamshire	225	185	60	34	0	0	15	8
East Sussex	340	275	70	26	0	0	25	9
Hampshire	785	645	175	27	5	1	80	12
Kent	1,045	805	235	29	15	2	130	16
Oxfordshire	360	290	80	27	-	-	45	15
Surrey	580	470	145	30	10	3	50	10
West Sussex	505	415	145	35	-	-	60	14
Unitary Authorities								
Bracknell Forest	45	35	15	50	-	-	10	24
Brighton & Hove	285	240	85	36	-	-	15	7
Isle Of Wight	135	110	35	33	0	0	-	-
Medway Towns	260	205	65	31	-	-	0	0
Milton Keynes	145	115	40	33	-	-	15	13
Portsmouth	205	155	40	27	0	0	20	12
Reading	145	105	40	38	-	-	15	14
Slough	100	80	25	33	0	0	5	9
Southampton	235	200	30	16	0	0	30	14
West Berkshire	80	75	35	49	0	0	5	9
Windsor & Maidenhead	45	35	15	44	0	0	-	-
Wokingham	40	40	25	59	0	0	-	-
<b>SOUTH WEST</b>	<b>3,375</b>	<b>2,735</b>	<b>970</b>	<b>35</b>	<b>30</b>	<b>1</b>	<b>275</b>	<b>10</b>
Shire Counties								
Cornwall	360	305	145	48	5	2	10	3
Devon	485	385	160	41	10	2	50	13
Dorset	185	150	55	37	-	-	15	11
Gloucestershire	355	285	95	33	-	-	30	10
Isle of Scilly	-	-	-	-	0	0	-	-
Somerset	185	155	55	35	-	-	20	14
Wiltshire	195	155	45	29	-	-	20	13
Unitary Authorities								
Bath & North East Somerset	95	80	30	40	0	0	5	9
Bournemouth	130	110	35	33	-	-	10	10
Bristol	385	310	100	32	-	-	60	19
North Somerset	110	85	25	30	0	0	-	-
Plymouth	375	280	85	31	-	-	15	5
Poole	95	80	25	32	0	0	10	12
South Gloucestershire	100	90	35	41	-	-	5	8
Swindon	155	140	35	26	0	0	-	-
Torbay	160	125	35	30	-	-	10	10

1 Where a child was permanently excluded more than once in the previous school year, each occasion has been counted.

2 PAF Indicator C24: The percentage of children who had been looked after continuously for at least 12 months and were of school age, who missed a total of at least 25 days of schooling for any reason during the previous school year

Local Authority	number looked after in year 6 old enough to sit Key Stage 2 tasks and tests	percentage attaining level 4 <sup>1</sup> or above in each task or test					
		English		Mathematics		Science	
		looked after	all children <sup>2</sup>	looked after	all children <sup>2</sup>	looked after	all children <sup>2</sup>
<b>ENGLAND</b>	<b>2,900</b>	<b>39.9</b>	<b>77</b>	<b>37.2</b>	<b>74</b>	<b>53.0</b>	<b>86</b>
<b>NORTH EAST</b>	<b>165</b>	<b>39</b>	<b>77</b>	<b>38</b>	<b>75</b>	<b>52</b>	<b>87</b>
Shire Counties							
Durham	15	-	77	-	76	40	87
Northumberland	20	30	78	-	74	35	87
Unitary Authorities							
Darlington	5	-	78	-	75	-	86
Hartlepool	5	-	78	-	78	-	86
Middlesbrough	5	-	73	-	72	-	85
Redcar & Cleveland	5	0	78	0	76	0	86
Stockton On Tees	15	-	77	-	77	-	87
Metropolitan Districts							
Gateshead	10	58	78	75	78	100	89
Newcastle Upon Tyne	20	55	73	64	70	86	84
North Tyneside	10	-	81	-	79	-	88
South Tyneside	20	42	78	53	76	53	87
Sunderland	30	45	76	28	75	59	86
<b>NORTH WEST</b>	<b>545</b>	<b>45</b>	<b>78</b>	<b>40</b>	<b>75</b>	<b>56</b>	<b>86</b>
Shire Counties							
Cheshire	35	32	81	44	78	44	88
Cumbria	20	45	80	32	75	59	88
Lancashire	55	48	79	39	77	54	87
Unitary Authorities							
Blackburn With Darwen	15	54	71	-	70	54	80
Blackpool	15	-	74	-	72	-	84
Halton	10	-	76	-	72	-	84
Warrington	10	-	83	-	80	50	89
Metropolitan Districts							
Bolton	15	40	77	40	75	53	86
Bury	15	-	82	-	82	44	88
Knowsley	10	-	75	-	74	-	85
Liverpool	55	40	74	36	69	45	83
Manchester	80	43	71	37	68	59	80
Oldham	15	54	75	54	73	54	83
Rochdale	20	61	72	50	68	56	81
Salford	35	54	75	38	73	62	82
Sefton	25	56	82	60	80	68	89
St Helens	10	-	79	-	79	55	88
Stockport	20	48	82	52	80	67	89
Tameside	15	47	77	41	73	59	86
Trafford	10	-	84	-	80	-	90
Wigan	20	55	77	55	77	80	87
Wirral	40	51	82	39	76	66	88

## CONTINUED

Eligibility and performance of looked-after children in Key Stage 2 tasks and tests, compared with all children, twelve months ending 30 September 2004

Local Authority	number looked after in year 6 old enough to sit Key Stage 2 tasks and tests	percentage attaining level 4 <sup>1</sup> or above in each task or test					
		English		Mathematics		Science	
		looked after	all children <sup>2</sup>	looked after	all children <sup>2</sup>	looked after	all children <sup>2</sup>
<b>YORKS &amp; THE HUMBER</b>	<b>370</b>	<b>41</b>	<b>76</b>	<b>41</b>	<b>73</b>	<b>57</b>	<b>85</b>
Shire Counties							
North Yorkshire	25	50	81	58	79	63	89
Unitary Authorities							
East Riding Of Yorkshire	20	50	80	50	76	83	89
Kingston Upon Hull	35	66	72	66	72	80	84
North East Lincolnshire	15	44	77	-	72	50	85
North Lincolnshire	-	-	76	-	72	-	84
York	-	-	81	-	79	-	87
Metropolitan Districts							
Barnsley	20	32	71	-	68	37	82
Bradford	50	47	71	43	66	59	78
Calderdale	-	-	81	-	77	-	87
Doncaster	25	33	74	29	71	58	85
Kirklees	10	-	73	-	72	-	84
Leeds	75	31	78	36	75	51	85
Rotherham	15	-	73	-	71	35	84
Sheffield	40	43	72	36	68	55	82
Wakefield	20	36	76	50	72	55	85
<b>EAST MIDLANDS</b>	<b>175</b>	<b>41</b>	<b>77</b>	<b>46</b>	<b>74</b>	<b>59</b>	<b>86</b>
Shire Counties							
Derbyshire	10	-	78	50	77	83	88
Leicestershire	15	-	80	-	76	-	89
Lincolnshire	30	38	78	63	74	69	86
Northamptonshire	25	44	78	36	72	56	87
Nottinghamshire	25	56	78	56	76	63	88
Unitary Authorities							
Derby	20	37	73	32	70	53	81
Leicester	15	-	69	44	65	44	78
Nottingham	25	58	70	46	67	69	81
Rutland	-	-	81	-	81	-	87

## CONTINUED

Eligibility and performance of looked-after children in Key Stage 2 tasks and tests, compared with all children, twelve months ending 30 September 2004

Local Authority	number looked after in year 6 old enough to sit Key Stage 2 tasks and tests	percentage attaining level 4 <sup>1</sup> or above in each task or test					
		English		Mathematics		Science	
		looked after	all children <sup>2</sup>	looked after	all children <sup>2</sup>	looked after	all children <sup>2</sup>
<b>WEST MIDLANDS</b>	<b>335</b>	<b>36</b>	<b>76</b>	<b>35</b>	<b>72</b>	<b>51</b>	<b>85</b>
Shire Counties							
Shropshire	10	-	81	-	78	-	90
Staffordshire	25	30	79	43	75	52	88
Warwickshire	20	42	80	47	77	53	88
Worcestershire	20	32	77	-	72	36	86
Unitary Authorities							
Herefordshire	10	-	81	-	76	-	88
Stoke-On-Trent	15	-	70	44	67	50	82
Telford & Wrekin	10	-	74	-	67	-	85
Metropolitan Districts							
Birmingham	90	33	74	29	70	49	83
Coventry	30	54	76	46	71	64	84
Dudley	30	31	77	28	72	38	86
Sandwell	25	44	71	36	64	56	79
Solihull	5	-	82	-	77	-	90
Walsall	25	28	74	32	69	48	81
Wolverhampton	15	44	71	56	67	56	82
<b>EAST OF ENGLAND</b>	<b>305</b>	<b>37</b>	<b>78</b>	<b>32</b>	<b>74</b>	<b>49</b>	<b>86</b>
Shire Counties							
Bedfordshire	25	33	79	29	72	46	86
Cambridgeshire	20	61	80	50	77	61	88
Essex	70	47	77	28	74	61	86
Hertfordshire	45	40	83	44	78	51	89
Norfolk	40	26	74	37	72	34	84
Suffolk	40	-	77	14	71	36	85
Unitary Authorities							
Luton	20	42	73	32	65	58	82
Peterborough	20	45	73	35	70	55	84
Southend	10	-	76	-	73	-	86
Thurrock	15	35	72	-	66	35	84

## CONTINUED

Eligibility and performance of looked-after children in Key Stage 2 tasks and tests, compared with all children, twelve months ending 30 September 2004

Local Authority	number looked after in year 6 old enough to sit Key Stage 2 tasks and tests	percentage attaining level 4 <sup>1</sup> or above in each task or test					
		English		Mathematics		Science	
		looked after	all children <sup>2</sup>	looked after	all children <sup>2</sup>	looked after	all children <sup>2</sup>
<b>LONDON</b>	<b>450</b>	<b>41</b>	<b>77</b>	<b>38</b>	<b>73</b>	<b>51</b>	<b>84</b>
Inner London							
Camden	15	-	77	-	73	43	86
City of London	0	0	80	0	73	0	97
Greenwich	15	50	70	-	68	44	79
Hackney	15	67	70	67	65	67	75
Hammersmith & Fulham	15	-	77	-	73	44	86
Islington	20	36	71	41	68	41	79
Kensington & Chelsea	10	-	86	-	82	-	92
Lambeth	20	50	76	32	70	45	80
Lewisham	15	38	73	38	70	56	82
Southwark	25	26	69	30	64	37	77
Tower Hamlets	10	-	77	-	75	-	85
Wandsworth	15	-	75	-	71	-	83
Westminster	10	67	82	67	77	100	85
Outer London							
Barking & Dagenham	15	-	73	-	71	53	86
Barnet	15	46	84	54	81	54	90
Bexley	5	-	79	-	71	-	81
Brent	15	53	78	47	74	65	83
Bromley	10	67	83	58	78	58	89
Croydon	20	-	79	-	74	32	84
Ealing	15	50	78	64	73	57	83
Enfield	10	-	77	-	73	50	84
Haringey	20	59	70	45	67	59	77
Harrow	10	-	84	-	80	-	89
Havering	5	-	81	0	78	-	88
Hillingdon	15	-	79	-	77	40	88
Hounslow	10	58	77	50	73	75	85
Kingston Upon Thames	0	0	85	0	80	0	89
Merton	5	-	75	-	72	-	84
Newham	40	31	71	26	70	41	82
Redbridge	5	-	79	-	77	-	87
Richmond Upon Thames	5	-	87	-	83	-	92
Sutton	10	-	80	-	76	-	88
Waltham Forest	15	63	73	50	69	69	80

## CONTINUED

Eligibility and performance of looked-after children in Key Stage 2 tasks and tests, compared with all children, twelve months ending 30 September 2004

Local Authority	number looked after in year 6 old enough to sit Key Stage 2 tasks and tests	percentage attaining level 4 <sup>1</sup> or above in each task or test					
		English		Mathematics		Science	
		looked after	all children <sup>2</sup>	looked after	all children <sup>2</sup>	looked after	all children <sup>2</sup>
<b>SOUTH EAST</b>	<b>365</b>	<b>37</b>	<b>78</b>	<b>32</b>	<b>74</b>	<b>50</b>	<b>86</b>
Shire Counties							
Buckinghamshire	15	47	82	53	78	67	87
East Sussex	25	44	78	30	74	59	87
Hampshire	45	28	80	30	76	52	89
Kent	65	25	74	23	70	41	82
Oxfordshire	25	52	78	33	74	41	86
Surrey	45	45	85	36	79	49	91
West Sussex	30	25	78	25	75	50	88
Unitary Authorities							
Bracknell Forest	-	-	83	-	76	-	90
Brighton & Hove	15	-	77	35	72	47	85
Isle Of Wight	15	-	75	-	70	50	87
Medway Towns	15	43	72	43	68	50	78
Milton Keynes	5	-	72	-	70	-	85
Portsmouth	15	50	75	-	69	57	84
Reading	5	-	74	-	70	-	83
Slough	-	-	75	-	69	-	79
Southampton	15	50	73	-	71	71	87
West Berkshire	10	-	80	-	74	-	88
Windsor & Maidenhead	-	-	84	0	79	0	91
Wokingham	-	-	86	-	82	-	92
<b>SOUTH WEST</b>	<b>220</b>	<b>39</b>	<b>78</b>	<b>34</b>	<b>74</b>	<b>53</b>	<b>87</b>
Shire Counties							
Cornwall	30	36	76	36	74	54	86
Devon	35	29	78	20	75	43	88
Dorset	10	-	81	-	75	55	90
Gloucestershire	25	48	80	39	77	61	90
Isle of Scilly	0	0	85	0	85	0	85
Somerset	25	29	78	29	73	46	88
Wiltshire	10	64	76	-	71	64	86
Unitary Authorities							
Bath & North East Somerset	10	-	82	-	80	-	89
Bournemouth	10	-	76	-	70	-	84
Bristol	20	32	69	32	66	55	80
North Somerset	-	-	79	-	77	-	89
Plymouth	20	50	75	45	72	60	85
Poole	5	-	80	-	74	-	89
South Gloucestershire	5	-	82	-	78	-	90
Swindon	10	-	77	-	76	-	87
Torbay	5	-	78	-	74	-	84

<sup>1</sup> target level for age group

<sup>2</sup> source: DFES statistical first release 30/2004 'National curriculum assessments of 11 year olds in England, 2004 (Provisional)'. Includes all schools.

Local Authority	number looked after in year 9 old enough to sit Key Stage 3 tasks and tests	percentage attaining level 5 <sup>1</sup> or above in each task or test					
		English		Mathematics		Science	
		looked after	all children <sup>2</sup>	looked after	all children <sup>2</sup>	looked after	all children <sup>2</sup>
<b>ENGLAND</b>	<b>4,000</b>	<b>22.5</b>	<b>71</b>	<b>25.8</b>	<b>73</b>	<b>20.8</b>	<b>66</b>
<b>NORTH EAST</b>	<b>200</b>	<b>21</b>	<b>67</b>	<b>25</b>	<b>71</b>	<b>20</b>	<b>63</b>
Shire Counties							
Durham	25	30	71	26	71	-	65
Northumberland	20	-	74	-	77	-	71
Unitary Authorities							
Darlington	10	-	71	-	73	-	66
Hartlepool	10	-	67	-	69	0	64
Middlesbrough	15	-	58	43	63	-	54
Redcar & Cleveland	15	-	68	-	70	-	64
Stockton On Tees	5	-	65	-	70	-	64
Metropolitan Districts							
Gateshead	15	-	71	-	73	-	67
Newcastle Upon Tyne	35	-	58	19	62	16	56
North Tyneside	20	-	72	-	75	-	66
South Tyneside	20	-	66	-	70	-	60
Sunderland	15	50	64	57	69	-	60
<b>NORTH WEST</b>	<b>685</b>	<b>24</b>	<b>70</b>	<b>25</b>	<b>72</b>	<b>19</b>	<b>65</b>
Shire Counties							
Cheshire	35	17	76	29	78	17	73
Cumbria	40	22	73	22	75	20	71
Lancashire	90	22	72	26	75	22	68
Unitary Authorities							
Blackburn With Darwen	20	-	66	32	69	-	56
Blackpool	15	-	64	-	70	-	59
Halton	10	-	63	-	67	-	62
Warrington	15	-	77	-	80	-	76
Metropolitan Districts							
Bolton	20	-	66	-	71	-	62
Bury	15	-	76	-	76	-	68
Knowsley	15	-	61	-	61	-	49
Liverpool	65	21	65	16	65	16	56
Manchester	110	20	53	20	58	16	46
Oldham	15	43	68	-	66	-	58
Rochdale	15	-	64	-	69	-	58
Salford	50	30	62	34	66	22	55
Sefton	15	-	73	-	76	-	69
St Helens	20	30	70	-	72	-	65
Stockport	25	50	75	46	76	25	70
Tameside	25	-	65	26	71	-	61
Trafford	10	-	79	-	79	-	74
Wigan	20	-	69	-	74	27	65
Wirral	45	23	75	28	74	17	67



## CONTINUED

Eligibility and performance of looked after children in Key Stage 3 tasks and tests, compared with all children, twelve months ending 30 September 2004

Local Authority	number looked after in year 9 old enough to sit Key Stage 3 tasks and tests	percentage attaining level 5 <sup>1</sup> or above in each task or test					
		English		Mathematics		Science	
		looked after	all children <sup>2</sup>	looked after	all children <sup>2</sup>	looked after	all children <sup>2</sup>
<b>YORKS &amp; THE HUMBER</b>	<b>445</b>	<b>19</b>	<b>67</b>	<b>26</b>	<b>71</b>	<b>19</b>	<b>63</b>
Shire Counties							
North Yorkshire	25	24	77	32	81	28	77
Unitary Authorities							
East Riding Of Yorkshire	25	24	77	-	79	-	75
Kingston Upon Hull	30	25	55	31	60	19	50
North East Lincolnshire	10	-	62	-	67	-	56
North Lincolnshire	10	-	69	-	72	-	67
York	10	-	75	-	77	-	73
Metropolitan Districts							
Barnsley	15	0	59	-	63	0	56
Bradford	65	19	63	24	65	21	53
Calderdale	15	-	69	-	74	-	68
Doncaster	20	-	61	-	68	-	61
Kirklees	20	-	68	-	70	-	63
Leeds	95	15	66	22	70	14	62
Rotherham	30	27	62	43	69	27	62
Sheffield	55	21	63	30	68	21	60
Wakefield	25	-	66	-	70	-	63
<b>EAST MIDLANDS</b>	<b>245</b>	<b>28</b>	<b>71</b>	<b>34</b>	<b>74</b>	<b>29</b>	<b>68</b>
Shire Counties							
Derbyshire	30	27	73	37	76	20	70
Leicestershire	15	-	80	-	81	-	78
Lincolnshire	30	32	73	39	76	32	70
Northamptonshire	45	26	70	49	75	43	69
Nottinghamshire	30	39	68	42	71	39	65
Unitary Authorities							
Derby	30	25	68	25	71	-	62
Leicester	30	23	63	20	63	-	54
Nottingham	35	24	55	27	58	30	49
Rutland	0	0	83	0	83	0	81

## CONTINUED

Eligibility and performance of looked after children in Key Stage 3 tasks and tests, compared with all children, twelve months ending 30 September 2004

Local Authority	number looked after in year 9 old enough to sit Key Stage 3 tasks and tests	percentage attaining level 5 <sup>1</sup> or above in each task or test					
		English		Mathematics		Science	
		looked after	all children <sup>2</sup>	looked after	all children <sup>2</sup>	looked after	all children <sup>2</sup>
<b>WEST MIDLANDS</b>	<b>425</b>	<b>19</b>	<b>69</b>	<b>21</b>	<b>71</b>	<b>19</b>	<b>65</b>
Shire Counties							
Shropshire	20	-	76	33	78	-	75
Staffordshire	45	13	73	-	75	-	70
Warwickshire	20	-	76	-	76	-	72
Worcestershire	30	-	73	-	75	-	69
Unitary Authorities							
Herefordshire	10	-	76	50	79	58	72
Stoke-On-Trent	20	-	63	-	65	-	59
Telford & Wrekin	10	50	72	-	72	-	65
Metropolitan Districts							
Birmingham	110	22	65	22	66	18	57
Coventry	35	17	68	22	69	17	63
Dudley	20	-	69	-	72	-	66
Sandwell	25	-	57	-	59	-	52
Solihull	15	-	75	38	78	-	71
Walsall	30	-	65	-	65	-	58
Wolverhampton	30	25	64	25	64	29	58
<b>EAST OF ENGLAND</b>	<b>385</b>	<b>22</b>	<b>73</b>	<b>27</b>	<b>76</b>	<b>20</b>	<b>70</b>
Shire Counties							
Bedfordshire	35	25	72	28	76	22	69
Cambridgeshire	25	26	74	33	77	26	73
Essex	85	20	73	26	75	15	68
Hertfordshire	70	24	77	24	80	24	75
Norfolk	45	18	72	32	76	25	68
Suffolk	40	18	74	25	75	20	71
Unitary Authorities							
Luton	30	29	61	35	66	19	58
Peterborough	25	-	66	29	69	25	61
Southend	15	-	74	-	76	-	70
Thurrock	10	-	68	-	71	-	61

## CONTINUED

Eligibility and performance of looked after children in Key Stage 3 tasks and tests, compared with all children, twelve months ending 30 September 2004

Local Authority	number looked after in year 9 old enough to sit Key Stage 3 tasks and tests	percentage attaining level 5 <sup>1</sup> or above in each task or test					
		English		Mathematics		Science	
		looked after	all children <sup>2</sup>	looked after	all children <sup>2</sup>	looked after	all children <sup>2</sup>
<b>LONDON</b>	<b>705</b>	<b>24</b>	<b>70</b>	<b>24</b>	<b>70</b>	<b>20</b>	<b>62</b>
<b>Inner London</b>							
Camden	20	27	73	-	70	-	63
City of London	0	0	0	0	0	0	0
Greenwich	30	19	63	-	60	-	49
Hackney	30	22	59	19	56	22	46
Hammersmith & Fulham	20	32	64	-	67	-	60
Islington	35	-	55	-	59	-	46
Kensington & Chelsea	10	-	80	-	76	-	71
Lambeth	40	22	69	20	66	17	56
Lewisham	35	19	64	22	64	-	54
Southwark	35	19	63	22	58	19	49
Tower Hamlets	20	-	57	-	58	-	49
Wandsworth	20	-	68	30	67	-	58
Westminster	15	47	68	53	68	53	59
<b>Outer London</b>							
Barking & Dagenham	20	-	65	-	65	-	56
Barnet	30	36	78	29	78	32	70
Bexley	10	-	75	-	77	-	67
Brent	25	27	70	31	72	27	61
Bromley	20	-	80	-	77	-	72
Croydon	30	-	70	27	72	-	64
Ealing	20	32	73	36	72	41	64
Enfield	25	29	70	29	71	-	62
Haringey	30	38	59	28	58	19	51
Harrow	10	-	76	-	77	-	69
Havering	10	-	81	-	79	-	71
Hillingdon	20	-	71	-	74	-	67
Hounslow	20	-	70	-	71	-	64
Kingston Upon Thames	5	0	79	0	83	0	77
Merton	10	-	66	55	68	-	58
Newham	35	24	63	24	62	21	53
Redbridge	15	-	78	-	79	-	70
Richmond Upon Thames	5	-	77	-	75	-	68
Sutton	10	-	83	-	82	-	78
Waltham Forest	20	29	67	-	65	-	57

## CONTINUED

Eligibility and performance of looked after children in Key Stage 3 tasks and tests, compared with all children, twelve months ending 30 September 2004

Local Authority	number looked after in year 9 old enough to sit Key Stage 3 tasks and tests	percentage attaining level 5 <sup>1</sup> or above in each task or test					
		English		Mathematics		Science	
		looked after	all children <sup>2</sup>	looked after	all children <sup>2</sup>	looked after	all children <sup>2</sup>
<b>SOUTH EAST</b>	<b>525</b>	<b>23</b>	<b>74</b>	<b>27</b>	<b>76</b>	<b>23</b>	<b>69</b>
Shire Counties							
Buckinghamshire	15	-	80	-	81	-	77
East Sussex	25	29	72	33	76	29	68
Hampshire	75	18	76	26	78	16	72
Kent	85	22	73	24	73	17	68
Oxfordshire	40	15	73	25	76	-	70
Surrey	60	20	79	29	79	32	74
West Sussex	60	34	76	33	76	33	70
Unitary Authorities							
Bracknell Forest	5	-	77	-	77	-	70
Brighton & Hove	30	27	70	30	69	30	61
Isle Of Wight	10	0	65	-	70	-	64
Medway Towns	25	27	70	35	72	27	63
Milton Keynes	-	0	65	-	70	-	62
Portsmouth	20	-	64	-	67	-	54
Reading	5	-	61	-	67	-	60
Slough	15	-	76	-	77	-	68
Southampton	30	25	64	-	66	22	59
West Berkshire	5	-	79	-	81	-	73
Windsor & Maidenhead	-	0	77	0	80	0	74
Wokingham	5	0	81	0	82	0	78
<b>SOUTH WEST</b>	<b>365</b>	<b>22</b>	<b>73</b>	<b>27</b>	<b>75</b>	<b>23</b>	<b>70</b>
Shire Counties							
Cornwall	45	23	74	26	75	16	71
Devon	55	22	73	28	76	15	70
Dorset	15	-	75	-	78	-	72
Gloucestershire	40	30	77	43	79	48	74
Isle of Scilly	0	0	96	0	91	0	91
Somerset	20	-	73	-	75	-	70
Wiltshire	20	-	75	32	77	-	72
Unitary Authorities							
Bath & North East Somerset	15	0	78	-	79	-	76
Bournemouth	15	-	72	-	74	-	69
Bristol	40	18	55	15	60	-	50
North Somerset	15	-	75	35	78	35	73
Plymouth	30	26	72	23	73	23	66
Poole	5	-	72	-	77	-	73
South Gloucestershire	15	35	76	41	76	35	70
Swindon	15	-	65	-	69	-	63
Torbay	15	-	71	-	74	-	68

1 target level for age group

2 source: DfES statistical first release 31/2004 'National curriculum assessments of 14 year olds in England, 2004 (Provisional)'. Includes all schools.

## 4

## GCSE (or equivalent) performance of looked-after children in year 11 compared with all children, twelve months ending 30 September 2004

Local Authority	number looked after in year 11 old enough to sit GCSE or GNVQ exams	% who sat one of these exams	percentage obtaining at least:					
			1 GCSE at grade A* to G or a GNVQ		5 GCSE's (or equivalent) at grade A* to G		5 GCSE's (or equivalent) at grade A* to C	
			looked after	all children <sup>1</sup>	looked after	all children <sup>1</sup>	looked after	all children <sup>1</sup>
<b>ENGLAND</b>	<b>4,800</b>	<b>59.1</b>	<b>56.1</b>	<b>96</b>	<b>39.4</b>	<b>89</b>	<b>9.4</b>	<b>54</b>
<b>NORTH EAST</b>	<b>230</b>	<b>68</b>	<b>61</b>	<b>95</b>	<b>42</b>	<b>88</b>	<b>9</b>	<b>49</b>
Shire Counties								
Durham	45	74	51	96	47	87	-	47
Northumberland	20	50	50	96	32	92	-	56
Unitary Authorities								
Darlington	5	-	-	96	-	89	-	49
Hartlepool	-	-	-	95	-	88	0	49
Middlesbrough	15	46	46	92	-	83	0	41
Redcar & Cleveland	5	-	-	96	-	90	0	49
Stockton On Tees	15	60	60	96	40	89	0	46
Metropolitan Districts								
Gateshead	15	87	87	96	80	89	-	62
Newcastle Upon Tyne	35	76	70	92	42	82	-	46
North Tyneside	15	69	69	96	54	91	-	52
South Tyneside	20	85	85	95	30	87	-	45
Sunderland	35	64	58	96	42	89	17	44
<b>NORTH WEST</b>	<b>695</b>	<b>61</b>	<b>57</b>	<b>96</b>	<b>40</b>	<b>89</b>	<b>9</b>	<b>51</b>
Shire Counties								
Cheshire	45	64	62	97	51	93	16	60
Cumbria	35	62	59	96	47	91	18	55
Lancashire	110	54	54	96	33	91	7	54
Unitary Authorities								
Blackburn With Darwen	15	64	64	97	50	89	0	43
Blackpool	10	-	-	97	-	87	-	37
Halton	15	77	77	94	46	87	0	44
Warrington	10	-	-	97	-	93	-	59
Metropolitan Districts								
Bolton	15	44	38	96	-	89	-	46
Bury	20	62	62	98	48	95	-	54
Knowsley	10	-	-	90	-	76	-	38
Liverpool	75	60	58	93	36	83	12	45
Manchester	105	55	49	92	37	80	6	40
Oldham	25	70	70	96	52	89	-	45
Rochdale	15	82	71	96	47	88	0	47
Salford	40	68	68	95	44	85	-	38
Salford	20	71	38	97	-	91	-	55
St Helens	10	82	82	95	55	87	0	48
Stockport	20	67	67	96	57	90	-	53
Tameside	20	65	30	96	-	90	-	45
Trafford	10	50	50	98	-	94	-	64
Wigan	30	71	68	97	54	91	-	51
Wirral	40	53	53	96	35	90	15	54

Local Authority	number looked after in year 11 old enough to sit GCSE or GNVQ exams	% who sat one of these exams	percentage obtaining at least:					
			1 GCSE at grade A* to G or a GNVQ		5 GCSE's (or equivalent) at grade A* to G		5 GCSE's (or equivalent) at grade A* to C	
			looked after	all children <sup>1</sup>	looked after	all children <sup>1</sup>	looked after	all children <sup>1</sup>
<b>YORKS &amp; THE HUMBER</b>	<b>465</b>	<b>61</b>	<b>56</b>	<b>95</b>	<b>39</b>	<b>88</b>	<b>8</b>	<b>47</b>
Shire Counties								
North Yorkshire	25	69	54	98	31	92	-	61
Unitary Authorities								
East Riding Of Yorkshire	10	58	58	98	58	94	-	56
Kingston Upon Hull	45	79	74	91	56	78	-	34
North East Lincolnshire	15	69	69	95	69	87	-	39
North Lincolnshire	15	69	46	97	-	91	-	49
York	10	64	64	98	-	92	-	57
Metropolitan Districts								
Barnsley	20	50	50	95	35	87	-	41
Bradford	55	57	55	93	43	85	-	40
Calderdale	15	57	57	96	-	89	-	53
Doncaster	35	58	48	95	36	86	-	41
Kirklees	20	42	37	96	-	90	-	47
Leeds	100	67	65	94	44	86	-	45
Rotherham	25	40	40	95	28	88	-	46
Sheffield	50	46	40	93	18	86	-	45
Wakefield	35	71	62	97	44	91	-	50
<b>EAST MIDLANDS</b>	<b>275</b>	<b>61</b>	<b>59</b>	<b>96</b>	<b>41</b>	<b>89</b>	<b>9</b>	<b>51</b>
Shire Counties								
Derbyshire	45	84	84	97	60	92	16	54
Leicestershire	20	58	53	97	42	92	-	55
Lincolnshire	25	60	56	97	36	92	-	57
Northamptonshire	50	41	41	97	29	90	-	51
Nottinghamshire	45	63	61	96	35	89	-	47
Unitary Authorities								
Derby	35	59	59	96	44	88	-	49
Leicester	40	54	54	94	41	83	-	43
Nottingham	20	70	70	90	45	77	-	38
Rutland	-	-	-	99	-	95	-	58

## CONTINUED

GCSE (or equivalent) performance of looked-after children in year 11 compared with all children, twelve months ending 30 September 2004

Local Authority	number looked after in year 11 old enough to sit GCSE or GNVQ exams	% who sat one of these exams	percentage obtaining at least:					
			1 GCSE at grade A* to G or a GNVQ		5 GCSE's (or equivalent) at grade A* to G		5 GCSE's (or equivalent) at grade A* to C	
			looked after	all children <sup>1</sup>	looked after	all children <sup>1</sup>	looked after	all children <sup>1</sup>
<b>WEST MIDLANDS</b>	<b>480</b>	<b>58</b>	<b>56</b>	<b>96</b>	<b>40</b>	<b>89</b>	<b>9</b>	<b>51</b>
Shire Counties								
Shropshire	20	75	70	98	-	92	-	60
Staffordshire	45	48	48	97	41	92	-	51
Warwickshire	35	64	61	97	48	92	-	54
Worcestershire	20	59	59	97	50	91	-	55
Unitary Authorities								
Herefordshire	10	-	-	96	-	90	-	58
Stoke-On-Trent	35	54	51	96	37	88	-	44
Telford & Wrekin	15	87	80	97	67	90	-	50
Metropolitan Districts								
Birmingham	140	55	52	96	40	89	13	51
Coventry	40	63	60	95	38	87	-	45
Dudley	15	53	53	97	47	91	0	51
Sandwell	30	43	43	94	29	84	-	38
Solihull	20	37	37	97	-	91	0	60
Walsall	25	60	52	94	24	85	-	44
Wolverhampton	35	71	71	96	47	86	0	48
<b>EAST OF ENGLAND</b>	<b>415</b>	<b>64</b>	<b>62</b>	<b>97</b>	<b>41</b>	<b>91</b>	<b>11</b>	<b>54</b>
Shire Counties								
Bedfordshire	25	58	54	97	38	90	-	51
Cambridgeshire	30	55	55	97	28	92	-	56
Essex	80	62	60	97	41	91	10	55
Hertfordshire	80	66	64	97	44	91	15	58
Norfolk	55	62	62	97	38	90	-	51
Suffolk	50	71	71	97	57	91	-	57
Unitary Authorities								
Luton	25	71	71	97	50	90	-	44
Peterborough	25	48	44	94	32	85	-	48
Southend	25	70	67	95	37	89	-	57
Thurrock	20	70	60	97	35	89	-	45

## CONTINUED

GCSE (or equivalent) performance of looked-after children in year 11 compared with all children, twelve months ending 30 September 2004

Local Authority	number looked after in year 11 old enough to sit GCSE or GNVQ exams	% who sat one of these exams	percentage obtaining at least:					
			1 GCSE at grade A* to G or a GNVQ		5 GCSE's (or equivalent) at grade A* to G		5 GCSE's (or equivalent) at grade A* to C	
			looked after	all children <sup>1</sup>	looked after	all children <sup>1</sup>	looked after	all children <sup>1</sup>
<b>LONDON</b>	<b>1,210</b>	<b>53</b>	<b>51</b>	<b>96</b>	<b>37</b>	<b>90</b>	<b>10</b>	<b>53</b>
Inner London								
Camden	30	56	56	96	38	89	-	54
City of London	0	0	0	0	0	0	0	0
Greenwich	45	44	44	95	27	87	-	40
Hackney	40	46	46	98	46	90	18	45
Hammersmith & Fulham	35	62	59	97	44	90	-	50
Islington	50	62	62	96	34	85	12	46
Kensington & Chelsea	30	90	83	95	45	90	-	56
Lambeth	75	52	48	98	34	90	-	48
Lewisham	75	56	49	96	38	88	8	46
Southwark	65	39	38	95	27	87	-	42
Tower Hamlets	25	65	58	97	50	91	-	48
Wandsworth	25	65	61	95	30	86	-	49
Westminster	30	76	72	96	55	88	21	44
Outer London								
Barking & Dagenham	40	44	44	96	34	88	-	46
Barnet	35	68	65	96	54	90	-	61
Bexley	15	47	47	97	-	92	0	57
Brent	40	41	38	97	33	92	-	55
Bromley	30	60	57	97	40	92	-	62
Croydon	95	47	47	97	29	91	6	52
Ealing	35	57	57	98	35	92	-	53
Enfield	30	52	52	97	29	90	-	52
Haringey	55	49	49	93	43	83	13	43
Harrow	20	55	55	97	55	93	-	61
Havering	20	53	42	98	32	94	-	63
Hillingdon	65	66	63	94	57	87	15	48
Hounslow	20	52	52	96	38	90	-	52
Kingston Upon Thames	10	-	-	97	-	91	-	64
Merton	20	60	60	94	35	86	35	46
Newham	65	34	34	98	22	94	-	49
Redbridge	25	67	63	98	38	95	-	68
Richmond Upon Thames	10	-	-	97	-	91	-	55
Sutton	10	-	-	97	-	91	-	66
Waltham Forest	50	42	40	94	25	88	-	47



## CONTINUED

GCSE (or equivalent) performance of looked-after children in year 11 compared with all children, twelve months ending 30 September 2004

Local Authority	number looked after in year 11 old enough to sit GCSE or GNVQ exams	% who sat one of these exams	percentage obtaining at least:					
			1 GCSE at grade A* to G or a GNVQ		5 GCSE's (or equivalent) at grade A* to G		5 GCSE's (or equivalent) at grade A* to C	
			looked after	all children <sup>1</sup>	looked after	all children <sup>1</sup>	looked after	all children <sup>1</sup>
<b>SOUTH EAST</b>	<b>670</b>	<b>58</b>	<b>55</b>	<b>97</b>	<b>37</b>	<b>91</b>	<b>9</b>	<b>55</b>
Shire Counties								
Buckinghamshire	35	97	91	98	50	94	18	66
East Sussex	25	81	81	96	48	89	-	54
Hampshire	85	57	57	98	45	93	10	58
Kent	135	58	54	97	32	92	10	56
Oxfordshire	45	51	44	97	33	90	-	51
Surrey	70	42	42	97	25	91	-	59
West Sussex	70	59	54	97	47	91	-	54
Unitary Authorities								
Bracknell Forest	5	-	-	98	-	94	-	52
Brighton & Hove	30	50	46	96	39	87	-	49
Isle Of Wight	15	64	64	96	43	85	-	44
Medway Towns	30	50	46	98	25	94	0	50
Milton Keynes	25	35	31	97	27	91	-	48
Portsmouth	15	80	73	94	40	83	-	42
Reading	15	50	50	94	-	82	-	45
Slough	15	50	50	96	-	89	-	57
Southampton	30	65	65	96	48	88	-	44
West Berkshire	10	-	-	98	-	94	-	61
Windsor & Maidenhead	10	-	-	96	-	92	-	60
Wokingham	10	-	-	97	-	94	0	62
<b>SOUTH WEST</b>	<b>395</b>	<b>64</b>	<b>60</b>	<b>97</b>	<b>43</b>	<b>90</b>	<b>11</b>	<b>55</b>
Shire Counties								
Cornwall	45	68	60	97	40	92	15	55
Devon	60	52	45	97	31	91	-	55
Dorset	35	67	64	98	52	92	27	59
Gloucestershire	40	71	66	98	39	92	-	61
Isle of Scilly	0	0	0	96	0	96	0	93
Somerset	25	78	70	96	48	90	-	56
Wiltshire	25	54	54	97	31	91	-	57
Unitary Authorities								
Bath & North East Somerset	10	75	67	97	-	92	0	60
Bournemouth	10	-	-	94	-	86	0	54
Bristol	35	43	43	91	30	80	0	35
North Somerset	5	-	-	97	-	90	0	55
Plymouth	45	86	86	96	67	90	19	52
Poole	15	77	69	98	46	93	-	62
South Gloucestershire	15	40	40	96	-	90	0	50
Swindon	10	-	-	96	-	88	-	46
Torbay	20	75	70	98	60	91	-	53

<sup>1</sup> source: DFES Statistical First Release January 2005 <http://www.dfes.gov.uk/rsgateway/DB/SFR/s000577/index.shtml>  
2003/2004 – England. Issued January 2005. National figures include all schools

Local authority	Total number of looked after children in year 11 in 2003/2004 school year	Total number of all children in year 11 in 2003/2004 school year <sup>1</sup>	Position of children at 30 September 2004, shown as a percentage of total					
			In full-time education		In full/part time training or employment		Unemployment	
			looked after	All children <sup>1,2</sup>	looked after	All children <sup>1,2</sup>	looked after	All children <sup>1,2</sup>
<b>ENGLAND</b>	<b>4,800</b>	<b>626,600</b>	<b>58.6</b>	<b>73.3</b>	<b>19.1</b>	<b>15.1</b>	<b>22.2</b>	<b>5.8</b>
<b>NORTH EAST</b>	<b>230</b>	<b>34,830</b>	<b>59</b>	<b>67.9</b>	<b>24</b>	<b>15.6</b>	<b>17</b>	<b>8.0</b>
Shire Counties								
Durham	45	6,475	56	67.0	30	20.4	14	9.4
Northumberland	20	4,085	55	73.2	32	14.7	-	4.5
Unitary Authorities								
Darlington	5	1,340	-	69.7	-	12.5	-	3.7
Hartlepool	-	1,355	-	66.5	0	15.1	0	6.4
Middlesbrough	15	2,075	62	64.6	-	9.4	-	6.8
Redcar & Cleveland	5	2,155	-	65.4	-	11.6	-	8.2
Stockton On Tees	15	2,785	73	69.5	-	12.1	-	6.3
Metropolitan Districts								
Gateshead	15	2,415	67	67.9	-	13.1	-	8.5
Newcastle Upon Tyne	35	3,515	58	70.8	30	11.5	-	10.5
North Tyneside	15	2,400	62	68.7	-	14.6	-	8.0
South Tyneside	20	2,140	40	62.9	30	20.7	30	7.5
Sunderland	35	4,090	64	65.1	19	20.6	17	10.9
<b>NORTH WEST</b>	<b>695</b>	<b>94,780</b>	<b>49</b>	<b>70.8</b>	<b>28</b>	<b>18.1</b>	<b>23</b>	<b>6.3</b>
Shire Counties								
Cheshire	45	9,240	60	75.6	22	14.4	18	3.1
Cumbria	35	6,590	56	71.9	29	20.1	-	4.6
Lancashire	110	15,990	49	69.8	33	20.6	18	5.6
Unitary Authorities								
Blackburn With Darwen	15	2,125	57	67.9	-	19.5	-	6.1
Blackpool	10	1,930	-	66.1	-	20.8	-	5.0
Halton	15	1,735	46	73.7	-	14.8	-	5.4
Warrington	10	2,560	-	73.9	-	16.3	0	4.6
Metropolitan Districts								
Bolton	15	4,070	50	67.7	-	17.4	-	7.4
Bury	20	2,645	81	72.1	-	14.8	0	6.6
Knowsley	10	2,085	0	65.1	-	22.9	-	10.5
Liverpool	75	6,320	30	68.8	34	18.4	36	9.9
Manchester	105	5,045	60	70.1	25	12.0	15	8.7
Oldham	25	3,425	48	71.4	26	20.5	26	6.9
Rochdale	15	2,885	-	69.5	47	21.0	-	6.3
Salford	40	2,650	44	63.8	32	22.2	24	8.6
Sefton	20	3,910	52	75.0	38	19.1	-	5.1
St Helens	10	2,365	55	69.2	-	21.6	-	5.4
Stockport	20	3,805	38	72.7	-	15.4	38	5.4
Tameside	20	3,195	65	67.3	-	16.8	-	8.5
Trafford	10	3,285	58	77.4	-	14.0	-	8.3
Wigan	30	4,225	29	67.1	32	20.8	39	8.9
Wirral	40	4,695	53	73.1	-	15.2	40	5.7

## CONTINUED

Education and employment status at 30 September 2004 of looked-after children in Year 11 in 2003/2004 school year, compared with all children

Local authority	Total number of looked after children in year 11 in 2003/2004 school year	Total number of all children in year 11 in 2003/2004 school year <sup>1</sup>	Position of children at 30 September 2004, shown as a percentage of total					
			In full-time education		In full/part time training or employment		Unemployment	
			looked after	All children <sup>1,2</sup>	looked after	All children <sup>1,2</sup>	looked after	All children <sup>1,2</sup>
<b>YORKS &amp; THE HUMBER</b>	<b>465</b>	<b>65,105</b>	<b>50</b>	<b>68.2</b>	<b>23</b>	<b>19.2</b>	<b>27</b>	<b>7.2</b>
Shire Counties								
North Yorkshire	25	1,970	77	69.6	-	17.8	-	4.7
Unitary Authorities								
East Riding Of Yorkshire	10	4,220	58	74.6	-	15.4	-	3.6
Kingston Upon Hull	45	3,250	58	62.7	19	21.4	23	11.4
North East Lincolnshire	15	2,430	56	72.8	-	18.7	-	6.2
North Lincolnshire	15	2,210	54	73.0	-	15.4	-	5.8
York	10	6,985	-	74.8	-	16.9	-	3.4
Metropolitan Districts								
Barnsley	20	2,800	45	63.1	-	23.5	40	9.2
Bradford	55	6,335	53	64.8	21	15.3	26	9.2
Calderdale	15	2,855	57	72.5	-	19.9	-	6.0
Doncaster	35	3,975	45	63.3	36	21.3	18	8.7
Kirklees	20	5,105	47	68.8	32	21.4	-	6.5
Leeds	100	8,750	53	68.6	14	19.8	33	7.7
Rotherham	25	3,770	32	67.3	32	19.8	36	7.7
Sheffield	50	6,090	28	66.0	26	20.4	46	8.5
Wakefield	35	4,370	47	63.0	29	21.8	24	8.5
<b>EAST MIDLANDS</b>	<b>275</b>	<b>54,770</b>	<b>54</b>	<b>71.7</b>	<b>23</b>	<b>17.3</b>	<b>22</b>	<b>5.5</b>
Shire Counties								
Derbyshire	45	9,120	58	69.4	30	20.0	-	6.0
Leicestershire	20	7,315	68	73.2	-	15.2	-	4.7
Lincolnshire	25	8,870	52	73.5	28	18.6	-	4.2
Northamptonshire	50	8,670	55	74.2	14	14.2	31	5.7
Nottinghamshire	45	9,845	39	71.2	35	20.5	26	4.0
Unitary Authorities								
Derby	35	3,020	62	66.3	-	18.0	24	7.5
Leicester	40	4,400	54	75.4	21	10.7	26	9.3
Nottingham	20	3,060	55	64.1	30	18.4	-	7.4
Rutland	-	470	-	74.4	0	16.8	0	1.9

Local authority	Total number of looked after children in year 11 in 2003/2004 school year	Total number of all children in year 11 in 2003/2004 school year <sup>1</sup>	Position of children at 30 September 2004, shown as a percentage of total					
			In full-time education		In full/part time training or employment		Unemployment	
			looked after	All children <sup>1,2</sup>	looked after	All children <sup>1,2</sup>	looked after	All children <sup>1,2</sup>
<b>WEST MIDLANDS</b>	<b>480</b>	<b>71,335</b>	<b>64</b>	<b>70.6</b>	<b>17</b>	<b>17.4</b>	<b>19</b>	<b>6.7</b>
Shire Counties								
Shropshire	20	3,495	95	74.1	0	19.8	-	2.7
Staffordshire	45	11,055	57	72.9	23	20.2	20	5.1
Warwickshire	35	6,565	76	75.8	-	19.6	-	4.2
Worcestershire	20	6,400	59	77.5	-	14.9	-	4.2
Unitary Authorities								
Herefordshire	10	1,995	-	71.7	-	18.5	-	4.4
Stoke-On-Trent	35	3,135	40	65.7	31	22.2	29	8.1
Telford & Wrekin	15	2,280	73	71.9	-	21.0	-	3.6
Metropolitan Districts								
Birmingham	140	13,970	64	65.2	14	11.4	22	10.0
Coventry	40	4,110	78	75.0	-	20.6	-	5.0
Dudley	15	4,165	67	68.5	-	19.6	-	6.6
Sandwell	30	3,860	39	65.1	36	21.2	25	8.4
Solihull	20	3,280	89	71.6	-	15.1	-	9.1
Walsall	25	3,815	56	64.9	-	16.5	24	5.5
Wolverhampton	35	3,220	53	71.7	-	13.4	32	8.8
<b>EAST OF ENGLAND</b>	<b>415</b>	<b>68,840</b>	<b>62</b>	<b>75.5</b>	<b>18</b>	<b>14.9</b>	<b>20</b>	<b>5.4</b>
Shire Counties								
Bedfordshire	25	5,475	58	80.9	-	12.6	23	5.1
Cambridgeshire	30	6,035	69	78.4	-	15.6	-	4.2
Essex	80	16,980	67	73.3	15	16.4	18	6.1
Hertfordshire	80	13,395	59	77.1	21	12.4	20	3.6
Norfolk	55	9,440	51	72.0	23	16.7	26	6.3
Suffolk	50	8,550	73	75.5	-	15.5	16	6.1
Unitary Authorities								
Luton	25	2,545	63	81.8	-	10.0	-	6.2
Peterborough	25	2,550	64	71.1	-	17.8	-	7.0
Southend	25	2,140	48	77.0	26	13.4	26	7.0
Thurrock	20	1,725	60	71.2	-	14.6	-	4.3

## CONTINUED

Education and employment status at 30 September 2004 of looked-after children in Year 11 in 2003/2004 school year, compared with all children

Local authority	Total number of looked after children in year 11 in 2003/2004 school year	Total number of all children in year 11 in 2003/2004 school year <sup>1</sup>	Position of children at 30 September 2004, shown as a percentage of total					
			In full-time education		In full/part time training or employment		Unemployment	
			looked after	All children <sup>1,2</sup>	looked after	All children <sup>1,2</sup>	looked after	All children <sup>1,2</sup>
<b>LONDON</b>	<b>1,210</b>	<b>78,440</b>	<b>64</b>	<b>79.7</b>	<b>13</b>	<b>6.9</b>	<b>23</b>	<b>5.6</b>
Inner London								
Camden	30	1,550	59	79.7	-	5.6	28	6.6
City of London	0	220	0	93.1	0	0.0	0	0.0
Greenwich	45	2,825	33	75.4	33	9.4	33	6.5
Hackney	40	1,620	67	81.7	0	3.9	33	6.1
Hammersmith & Fulham	35	1,185	68	85.8	-	3.5	21	5.6
Islington	50	1,570	72	74.9	14	7.8	14	11.5
Kensington & Chelsea	30	620	83	80.8	-	5.2	-	5.8
Lambeth	75	1,580	59	81.2	21	3.8	21	4.7
Lewisham	75	2,675	56	82.9	21	5.8	23	4.2
Southwark	65	2,600	59	79.4	17	7.7	24	7.0
Tower Hamlets	25	2,560	85	79.4	-	4.9	-	4.7
Wandsworth	25	2,090	65	85.5	-	5.3	-	4.3
Westminster	30	1,440	72	81.6	-	4.6	-	5.8
Outer London								
Barking & Dagenham	40	2,230	59	62.0	17	11.5	24	10.5
Barnet	35	3,645	59	85.4	-	5.8	27	5.3
Bexley	15	3,165	40	75.4	-	9.9	-	5.1
Brent	40	2,565	74	85.0	-	3.0	21	3.7
Bromley	30	3,695	70	82.3	-	10.4	27	4.3
Croydon	95	3,765	68	78.8	-	9.1	27	6.5
Ealing	35	2,895	65	84.1	-	4.1	22	5.7
Enfield	30	3,400	65	84.3	-	5.4	29	6.3
Haringey	55	2,175	64	73.3	15	3.1	21	6.0
Harrow	20	2,325	55	88.1	-	5.4	-	2.8
Havering	20	3,200	58	71.4	37	11.1	-	5.1
Hillingdon	65	3,055	78	75.7	-	10.3	17	8.2
Hounslow	20	2,710	52	81.7	-	6.8	29	4.7
Kingston Upon Thames	10	1,530	-	85.6	0	6.9	-	2.2
Merton	20	1,675	50	75.8	-	10.4	40	6.0
Newham	65	3,670	64	77.3	0	5.2	36	6.1
Redbridge	25	3,195	75	82.1	-	4.2	-	3.3
Richmond Upon Thames	10	1,495	-	79.1	0	6.1	67	5.7
Sutton	10	2,735	-	82.1	-	7.8	0	5.1
Waltham Forest	50	2,775	56	74.1	29	8.1	15	4.4

## CONTINUED

Education and employment status at 30 September 2004 of looked-after children in Year 11 in 2003/2004 school year, compared with all children

Local authority	Total number of looked after children in year 11 in 2003/2004 school year	Total number of all children in year 11 in 2003/2004 school year <sup>1</sup>	Position of children at 30 September 2004, shown as a percentage of total					
			In full-time education		In full/part time training or employment		Unemployment	
			looked after	All children <sup>1,2</sup>	looked after	All children <sup>1,2</sup>	looked after	All children <sup>1,2</sup>
<b>SOUTH EAST</b>	<b>670</b>	<b>96,420</b>	<b>61</b>	<b>76.3</b>	<b>14</b>	<b>12.4</b>	<b>25</b>	<b>4.5</b>
Shire Counties								
Buckinghamshire	35	5,725	62	83.5	-	10.6	32	2.8
East Sussex	25	5,245	74	81.0	-	11.6	-	4.6
Hampshire	85	14,895	69	77.6	13	12.8	18	4.0
Kent	135	17,980	66	71.3	12	11.2	22	4.5
Oxfordshire	45	7,405	64	71.7	-	19.9	31	3.7
Surrey	70	10,845	41	80.0	20	11.9	39	3.4
West Sussex	70	8,795	69	78.7	9	9.3	22	3.2
Unitary Authorities								
Bracknell Forest	5	1,170	-	78.6	-	14.0	-	4.3
Brighton & Hove	30	2,510	64	73.9	-	13.8	-	7.9
Isle Of Wight	15	1,765	43	79.4	-	13.1	-	4.5
Medway Towns	30	3,920	43	76.0	25	14.1	32	5.9
Milton Keynes	25	2,705	58	73.9	23	12.6	-	7.2
Portsmouth	15	2,345	73	73.5	-	12.0	-	6.0
Reading	15	1,185	-	66.1	43	10.6	-	8.7
Slough	15	1,520	50	79.2	-	9.4	44	5.7
Southampton	30	2,670	61	69.9	19	15.3	19	9.8
West Berkshire	10	2,135	-	75.3	0	14.2	-	0.0
Windsor & Maidenhead	10	1,710	-	84.3	-	9.7	-	2.1
Wokingham	10	1,890	-	78.0	-	11.1	-	4.2
<b>SOUTH WEST</b>	<b>395</b>	<b>61,475</b>	<b>60</b>	<b>75.2</b>	<b>23</b>	<b>16.4</b>	<b>17</b>	<b>4.4</b>
Shire Counties								
Cornwall	45	6,925	72	77.8	17	12.5	-	4.1
Devon	60	8,785	31	74.6	50	17.0	19	4.3
Dorset	35	4,695	52	74.2	33	15.8	-	4.3
Gloucestershire	40	6,705	68	76.0	-	16.3	24	4.1
Isle of Scilly	0	30	0	85.7	0	6.7	0	3.6
Somerset	25	6,390	65	75.5	-	20.4	-	4.1
Wiltshire	25	5,060	54	75.5	23	15.3	23	3.1
Unitary Authorities								
Bath & North East Somerset	10	2,205	67	77.3	-	14.7	-	3.7
Bournemouth	10	1,855	-	72.5	0	16.5	-	6.6
Bristol	35	3,855	49	70.0	41	19.1	-	6.8
North Somerset	5	2,340	-	81.3	0	13.5	-	2.9
Plymouth	45	3,560	77	75.3	-	15.9	14	6.0
Poole	15	1,745	85	74.4	-	17.4	-	3.5
South Gloucestershire	15	3,150	80	73.5	0	18.6	-	4.4
Swindon	10	2,425	-	72.2	-	16.3	-	5.6
Torbay	20	1,750	50	76.0	-	16.5	-	4.7

1 Source: 'The Connexions/Careers Service Annual Activity Survey 2004'. Covers all young people who were in year 11 during the school year ending August 2004, and is based on a survey carried out during October 2004.

2 Percentages for 'all children' do not sum to 100 because the Connexions/Career service Survey included an additional category of 'moved away', 'no response', and 'refused to participate', which is not relevant to looked-after children.

## 6

## Offending by looked-after children, twelve months ending 30 September 2004

Local Authority	looked-after children			all children aged 10–17 in police force area <sup>1</sup>	
	number aged 10 years or older during the year	number convicted or subject to a final warning/reprimand during the year	percentage convicted or subject to a final warning/reprimand during the year	percentage convicted or subject to a final warning/reprimand	PAF indicator C18 <sup>2</sup>
<b>ENGLAND</b>	<b>29,800</b>	<b>2,800</b>	<b>9.3</b>	<b>3.3</b>	<b>2.8</b>
<b>NORTH EAST</b>	<b>1,505</b>	<b>195</b>	<b>13</b>	<b>4</b>	<b>3.1</b>
Shire Counties					
Durham	180	15	8	4	1.9
Northumberland	150	15	11	7	1.7
Unitary Authorities					
Darlington	75	15	21	4	5.1
Hartlepool	50	10	23	4	5.3
Middlesbrough	125	-	-	4	-
Redcar & Cleveland	70	10	13	4	3.0
Stockton On Tees	85	5	7	4	1.6
Metropolitan Districts					
Gateshead	125	15	11	7	1.7
Newcastle Upon Tyne	200	25	13	7	1.9
North Tyneside	100	20	19	7	2.8
South Tyneside	130	15	11	7	1.6
Sunderland	215	45	22	7	3.3
<b>NORTH WEST</b>	<b>4,870</b>	<b>515</b>	<b>11</b>	<b>4</b>	<b>2.7</b>
Shire Counties					
Cheshire	255	50	20	3	7.6
Cumbria	265	25	10	4	2.4
Lancashire	630	50	8	4	2.2
Unitary Authorities					
Blackburn With Darwen	125	15	12	4	3.3
Blackpool	100	20	18	4	4.8
Halton	90	10	10	3	3.9
Warrington	85	-	-	3	-
Metropolitan Districts					
Bolton	125	10	9	4	2.2
Bury	100	5	6	4	1.5
Knowsley	110	10	11	4	3.0
Liverpool	515	50	9	4	2.6
Manchester	700	75	11	4	2.6
Oldham	150	20	13	4	3.2
Rochdale	125	10	10	4	2.4
Salford	285	35	13	4	3.2
Sefton	160	15	9	4	2.4
St Helens	110	10	10	4	2.7
Stockport	180	20	10	4	2.6
Tameside	150	15	9	4	2.2
Trafford	105	20	20	4	5.0
Wigan	205	15	6	4	1.6
Wirral	305	30	9	4	2.5

Local Authority	looked-after children			all children aged 10–17 in police force area <sup>1</sup>	PAF indicator C18 <sup>2</sup>
	number aged 10 years or older during the year	number convicted or subject to a final warning/reprimand during the year	percentage convicted or subject to a final warning/reprimand during the year	percentage convicted or subject to a final warning/reprimand	
<b>YORKS &amp; THE HUMBER</b>	<b>3,230</b>	<b>340</b>	<b>11</b>	<b>4</b>	<b>2.8</b>
Shire Counties					
North Yorkshire	190	10	5	3	1.6
Unitary Authorities					
East Riding Of Yorkshire	120	10	10	3	3.0
Kingston Upon Hull	300	30	11	3	3.2
North East Lincolnshire	105	10	11	3	3.2
North Lincolnshire	80	20	22	3	6.6
York	60	10	13	3	4.5
Metropolitan Districts					
Barnsley	120	-	-	4	-
Bradford	390	50	13	4	3.4
Calderdale	85	10	13	4	3.2
Doncaster	205	15	8	4	2.1
Kirklees	125	20	17	4	4.3
Leeds	705	55	8	4	2.0
Rotherham	180	15	9	4	2.5
Sheffield	345	45	13	4	3.4
Wakefield	215	30	14	4	3.5
<b>EAST MIDLANDS</b>	<b>1,770</b>	<b>210</b>	<b>12</b>	<b>3</b>	<b>3.6</b>
Shire Counties					
Derbyshire	235	30	12	3	4.5
Leicestershire	165	15	9	3	2.8
Lincolnshire	215	20	9	3	3.2
Northamptonshire	285	25	10	2	5.3
Nottinghamshire	225	20	10	4	2.2
Unitary Authorities					
Derby	195	20	10	3	3.6
Leicester	235	45	18	3	5.6
Nottingham	210	35	17	4	3.8
Rutland	5	0	0	3	0.0



## 6

*CONTINUED*  
 Offending by looked-after children, twelve months ending 30 September 2004

Local Authority	looked-after children			all children aged 10–17 in police force area <sup>1</sup>	PAF indicator C18 <sup>2</sup>
	number aged 10 years or older during the year	number convicted or subject to a final warning/reprimand during the year	percentage convicted or subject to a final warning/reprimand during the year	percentage convicted or subject to a final warning/reprimand	
<b>WEST MIDLANDS</b>	<b>3,275</b>	<b>290</b>	<b>9</b>	<b>4</b>	<b>2.2</b>
Shire Counties					
Shropshire	100	10	12	3	3.7
Staffordshire	285	20	7	4	2.0
Warwickshire	190	10	5	2	2.2
Worcestershire	230	15	7	3	2.3
Unitary Authorities					
Herefordshire	95	5	8	3	2.3
Stoke-On-Trent	185	25	13	4	3.6
Telford & Wrekin	80	-	-	3	-
Metropolitan Districts					
Birmingham	930	110	12	4	2.8
Coventry	255	15	7	4	1.6
Dudley	190	15	8	4	2.0
Sandwell	220	15	6	4	1.4
Solihull	95	-	-	4	-
Walsall	230	25	10	4	2.4
Wolverhampton	195	15	7	4	1.6
<b>EAST OF ENGLAND</b>	<b>2,785</b>	<b>245</b>	<b>9</b>	<b>3</b>	<b>3.3</b>
Shire Counties					
Bedfordshire	225	20	8	3	2.9
Cambridgeshire	175	20	13	3	4.7
Essex	605	50	8	2	3.2
Hertfordshire	505	45	9	3	3.5
Norfolk	355	40	11	3	4.0
Suffolk	305	30	10	4	2.3
Unitary Authorities					
Luton	185	10	5	3	2.0
Peterborough	175	15	9	3	3.2
Southend	145	10	6	2	2.5
Thurrock	105	10	8	2	3.2

Local Authority	looked-after children			all children aged 10–17 in police force area <sup>1</sup>	PAF indicator C18 <sup>2</sup>
	number aged 10 years or older during the year	number convicted or subject to a final warning/reprimand during the year	percentage convicted or subject to a final warning/reprimand during the year	percentage convicted or subject to a final warning/reprimand	
<b>LONDON</b>	<b>6,135</b>	<b>395</b>	<b>6</b>	<b>3</b>	<b>2.1</b>
Inner London					
Camden	195	10	5	3	1.5
City of London	-	-	-	3	-
Greenwich	275	25	9	3	3.0
Hackney	195	15	7	3	2.2
Hammersmith & Fulham	195	10	6	3	1.9
Islington	255	15	6	3	1.9
Kensington & Chelsea	130	10	7	3	2.3
Lambeth	345	30	8	3	2.7
Lewisham	320	10	4	3	1.3
Southwark	350	20	6	3	2.0
Tower Hamlets	160	5	4	3	1.4
Wandsworth	160	10	7	3	2.5
Westminster	140	10	6	3	2.1
Outer London					
Barking & Dagenham	200	-	-	3	-
Barnet	205	15	6	3	2.1
Bexley	110	5	6	3	2.1
Brent	185	20	11	3	3.7
Bromley	150	20	14	3	4.6
Croydon	390	15	3	3	1.1
Ealing	205	5	3	3	1.0
Enfield	165	10	7	3	2.2
Haringey	300	25	9	3	2.9
Harrow	80	10	12	3	3.8
Havering	80	-	-	3	-
Hillingdon	265	5	2	3	0.7
Hounslow	145	-	-	3	-
Kingston Upon Thames	35	-	-	3	-
Merton	85	-	-	3	-
Newham	370	20	5	3	1.6
Redbridge	80	-	-	3	-
Richmond Upon Thames	60	5	10	3	3.2
Sutton	90	10	12	3	4.1
Waltham Forest	200	35	16	3	5.4

Local Authority	looked-after children			all children aged 10–17 in police force area <sup>1</sup>	PAF indicator C18 <sup>2</sup>
	number aged 10 years or older during the year	number convicted or subject to a final warning/reprimand during the year	percentage convicted or subject to a final warning/reprimand during the year	percentage convicted or subject to a final warning/reprimand	
<b>SOUTH EAST</b>	<b>3,845</b>	<b>380</b>	<b>10</b>	<b>3</b>	<b>3.6</b>
Shire Counties					
Buckinghamshire	155	5	4	2	1.8
East Sussex	210	20	10	3	3.5
Hampshire	510	35	7	4	1.8
Kent	735	80	11	3	3.1
Oxfordshire	270	30	11	2	5.2
Surrey	440	30	7	2	2.9
West Sussex	380	40	11	3	3.8
Unitary Authorities					
Bracknell Forest	35	-	-	2	-
Brighton & Hove	200	15	7	3	2.3
Isle Of Wight	90	5	8	4	2.1
Medway Towns	165	25	17	3	4.8
Milton Keynes	105	10	10	2	4.7
Portsmouth	130	20	16	4	4.5
Reading	80	10	15	2	6.6
Slough	65	5	9	2	4.1
Southampton	160	25	14	4	4.0
West Berkshire	55	-	-	2	-
Windsor & Maidenhead	30	-	-	2	-
Wokingham	35	-	-	2	-
<b>SOUTH WEST</b>	<b>2,410</b>	<b>220</b>	<b>9</b>	<b>3</b>	<b>3.4</b>
Shire Counties					
Cornwall	275	20	7	3	2.1
Devon	360	30	9	3	2.9
Dorset	145	25	16	2	7.5
Gloucestershire	260	20	8	3	3.0
Isle of Scilly	-	0	0	3	0.0
Somerset	150	15	9	2	3.9
Wiltshire	140	10	9	3	2.8
Unitary Authorities					
Bath & North East Somerset	70	5	10	2	4.5
Bournemouth	100	5	6	2	2.9
Bristol	275	25	9	2	4.2
North Somerset	75	5	8	2	3.6
Plymouth	210	20	10	3	3.3
Poole	65	10	12	2	5.7
South Gloucestershire	85	5	8	2	3.7
Swindon	100	10	9	3	3.0
Torbay	105	10	8	3	2.7

<sup>1</sup> Home Office source, figures for calendar year 2003

<sup>2</sup> the proportion of children (aged 10 or over) who had been looked after continuously for at least 12 months, who were convicted or given a final warning/reprimand during the year for an offence committed whilst they were looked after, expressed as a ratio of the proportion of all children and young people convicted or given a final warning/reprimand for an offence in the police force area

Local Authority	number aged 5 years old or younger	number whose development assessments were up-to-date	% whose development assessments were up-to-date
<b>ENGLAND</b>	<b>7,000</b>	<b>5,700</b>	<b>81.5</b>
<b>NORTH EAST</b>	<b>410</b>	<b>340</b>	<b>83</b>
Shire Counties			
Durham	85	60	67
Northumberland	40	35	95
Unitary Authorities			
Darlington	20	20	100
Hartlepool	10	10	-
Middlesbrough	30	30	100
Redcar & Cleveland	15	10	71
Stockton On Tees	30	25	96
Metropolitan Districts			
Gateshead	30	30	94
Newcastle Upon Tyne	50	35	73
North Tyneside	30	30	100
South Tyneside	30	25	74
Sunderland	45	35	73
<b>NORTH WEST</b>	<b>1,315</b>	<b>1,035</b>	<b>79</b>
Shire Counties			
Cheshire	45	40	95
Cumbria	75	65	85
Lancashire	160	125	78
Unitary Authorities			
Blackburn With Darwen	45	40	95
Blackpool	45	40	95
Halton	15	15	100
Warrington	35	35	100
Metropolitan Districts			
Bolton	55	50	96
Bury	30	25	87
Knowsley	30	0	0
Liverpool	105	90	85
Manchester	150	95	63
Oldham	60	30	53
Rochdale	50	50	94
Salford	70	65	96
Sefton	40	15	45
St Helens	35	35	100
Stockport	50	50	98
Tameside	60	50	86
Trafford	25	25	100
Wigan	55	55	96
Wirral	85	30	38

Local Authority	number aged 5 years old or younger	number whose development assessments were up-to-date	% whose development assessments were up-to-date
<b>YORKS &amp; THE HUMBER</b>	<b>900</b>	<b>700</b>	<b>78</b>
Shire Counties			
North Yorkshire	50	35	77
Unitary Authorities			
East Riding Of Yorkshire	30	25	84
Kingston Upon Hull	70	60	84
North East Lincolnshire	25	20	83
North Lincolnshire	20	20	100
York	15	10	56
Metropolitan Districts			
Barnsley	30	25	86
Bradford	150	110	73
Calderdale	30	25	87
Doncaster	55	45	87
Kirklees	50	50	100
Leeds	205	120	58
Rotherham	45	45	98
Sheffield	75	55	75
Wakefield	55	50	94
<b>EAST MIDLANDS</b>	<b>505</b>	<b>395</b>	<b>78</b>
Shire Counties			
Derbyshire	55	50	91
Leicestershire	35	30	88
Lincolnshire	105	95	92
Northamptonshire	65	50	76
Nottinghamshire	45	35	82
Unitary Authorities			
Derby	40	40	100
Leicester	75	75	96
Nottingham	85	20	23
Rutland	-	-	-

Local Authority	number aged 5 years old or younger	number whose development assessments were up-to-date	% whose development assessments were up-to-date
<b>WEST MIDLANDS</b>	<b>920</b>	<b>740</b>	<b>80</b>
Shire Counties			
Shropshire	5	5	-
Staffordshire	65	60	94
Warwickshire	50	50	98
Worcestershire	60	55	90
Unitary Authorities			
Herefordshire	15	15	93
Stoke-On-Trent	35	30	97
Telford & Wrekin	30	25	89
Metropolitan Districts			
Birmingham	260	155	58
Coventry	70	60	88
Dudley	65	50	76
Sandwell	105	75	74
Solihull	25	20	83
Walsall	85	85	100
Wolverhampton	55	55	96
<b>EAST OF ENGLAND</b>	<b>675</b>	<b>520</b>	<b>77</b>
Shire Counties			
Bedfordshire	45	40	93
Cambridgeshire	40	15	38
Essex	155	90	59
Hertfordshire	125	85	67
Norfolk	95	90	96
Suffolk	100	90	93
Unitary Authorities			
Luton	45	45	100
Peterborough	25	15	65
Southend	25	25	96
Thurrock	15	15	94

Local Authority	number aged 5 years old or younger	number whose development assessments were up-to-date	% whose development assessments were up-to-date
<b>LONDON</b>	<b>1,155</b>	<b>995</b>	<b>86</b>
Inner London			
Camden	30	25	77
City of London	0	0	0
Greenwich	50	10	23
Hackney	75	65	89
Hammersmith & Fulham	40	35	95
Islington	45	45	100
Kensington & Chelsea	20	20	100
Lambeth	60	55	95
Lewisham	40	35	88
Southwark	60	45	74
Tower Hamlets	55	55	96
Wandsworth	50	50	100
Westminster	40	40	100
Outer London			
Barking & Dagenham	30	15	61
Barnet	45	35	80
Bexley	15	15	100
Brent	30	25	72
Bromley	35	35	100
Croydon	35	35	97
Ealing	50	45	86
Enfield	45	40	93
Haringey	45	40	87
Harrow	15	15	94
Havering	5	5	-
Hillingdon	20	20	100
Hounslow	55	50	89
Kingston Upon Thames	10	5	-
Merton	5	-	-
Newham	75	60	75
Redbridge	15	15	100
Richmond Upon Thames	5	5	-
Sutton	-	-	-
Waltham Forest	50	50	96

Local Authority	number aged 5 years old or younger	number whose development assessments were up-to-date	% whose development assessments were up-to-date
<b>SOUTH EAST</b>	<b>755</b>	<b>650</b>	<b>86</b>
Shire Counties			
Buckinghamshire	25	25	89
East Sussex	55	55	100
Hampshire	120	55	48
Kent	150	140	93
Oxfordshire	40	40	100
Surrey	65	60	94
West Sussex	50	50	94
Unitary Authorities			
Bracknell Forest	10	10	-
Brighton & Hove	35	35	100
Isle Of Wight	20	20	90
Medway Towns	40	30	75
Milton Keynes	20	20	100
Portsmouth	35	35	92
Reading	35	30	86
Slough	15	15	100
Southampton	30	30	100
West Berkshire	5	5	-
Windsor & Maidenhead	-	-	-
Wokingham	0	0	0
<b>SOUTH WEST</b>	<b>405</b>	<b>355</b>	<b>88</b>
Shire Counties			
Cornwall	35	25	74
Devon	50	45	92
Dorset	15	15	100
Gloucestershire	40	40	100
Isle of Scilly	0	0	0
Somerset	15	15	94
Wiltshire	25	20	91
Unitary Authorities			
Bath & North East Somerset	10	5	-
Bournemouth	20	15	94
Bristol	50	45	88
North Somerset	15	15	100
Plymouth	60	55	89
Poole	10	10	-
South Gloucestershire	5	5	-
Swindon	20	15	77
Torbay	30	20	69





Local Authority	numbers				percentages			PAF Indicator CI9' (average percentage)
	number looked after for at least one year	children whose immunisations were up to date	children who had their teeth checked by a dentist	children who had their annual health assessment	children whose immunisations were up to date	children who had their teeth checked by a dentist	children who had their annual health assessment	
<b>YORKS &amp; THE HUMBER</b>	<b>5,035</b>	<b>3,320</b>	<b>3,675</b>	<b>3,835</b>	<b>66</b>	<b>73</b>	<b>76</b>	<b>74.5</b>
Shire Counties								
North Yorkshire	290	215	235	205	74	82	71	76.3
Unitary Authorities								
East Riding Of Yorkshire	195	125	165	170	63	83	86	84.4
Kingston Upon Hull	445	265	350	375	59	79	84	81.2
North East Lincolnshire	165	150	135	160	91	81	96	88.7
North Lincolnshire	130	105	90	120	80	69	92	80.4
York	95	85	70	70	90	74	72	73.2
Metropolitan Districts								
Barnsley	195	180	185	145	92	93	74	83.2
Bradford	665	510	570	520	77	86	78	81.8
Calderdale	145	110	110	115	74	73	78	75.9
Doncaster	300	190	225	225	64	76	76	75.8
Kirklees	200	170	160	175	85	81	87	83.6
Leeds	1,110	525	710	860	47	64	77	70.5
Rotherham	295	235	185	175	80	63	59	61.1
Sheffield	475	205	240	300	43	51	63	56.9
Wakefield	325	250	245	230	77	76	70	73.0
<b>EAST MIDLANDS</b>	<b>2,845</b>	<b>2,060</b>	<b>2,120</b>	<b>2,100</b>	<b>73</b>	<b>74</b>	<b>74</b>	<b>74.1</b>
Shire Counties								
Derbyshire	370	340	330	295	92	89	80	84.5
Leicestershire	235	165	195	195	72	83	83	83.0
Lincolnshire	425	195	360	390	46	85	92	88.3
Northamptonshire	420	345	330	220	83	79	53	66.1
Nottinghamshire	350	285	290	240	81	82	68	75.0
Unitary Authorities								
Derby	295	265	255	225	90	87	77	81.8
Leicester	375	295	235	265	78	63	70	66.6
Nottingham	365	170	110	265	46	30	73	51.5
Rutland	10	-	5	-	-	-	-	-

Local Authority	numbers				percentages			
	number looked after for at least one year	children whose immunisations were up to date	children who had their teeth checked by a dentist	children who had their annual health assessment	children whose immunisations were up to date	children who had their teeth checked by a dentist	children who had their annual health assessment	PAF Indicator C19' (average percentage)
<b>WEST MIDLANDS</b>	<b>5,175</b>	<b>4,080</b>	<b>4,310</b>	<b>3,855</b>	<b>79</b>	<b>83</b>	<b>75</b>	<b>78.9</b>
Shire Counties								
Shropshire	120	65	105	90	55	89	73	81.3
Staffordshire	430	295	325	295	68	75	69	72.0
Warwickshire	305	285	275	235	95	91	77	84.0
Worcestershire	360	340	315	270	95	88	75	81.5
Unitary Authorities								
Herefordshire	130	120	125	100	91	96	77	86.5
Stoke-On-Trent	280	260	260	260	93	93	93	92.5
Telford & Wrekin	140	120	120	110	87	88	78	82.7
Metropolitan Districts								
Birmingham	1,475	995	1,340	1,000	67	91	68	79.2
Coventry	380	340	325	300	89	85	79	82.1
Dudley	325	220	230	225	67	72	69	70.3
Sandwell	410	270	200	290	66	49	71	60.1
Solihull	145	135	120	135	93	83	93	88.3
Walsall	380	355	330	320	94	87	85	86.0
Wolverhampton	295	275	230	230	94	79	78	78.5
<b>EAST OF ENGLAND</b>	<b>4,275</b>	<b>3,520</b>	<b>3,320</b>	<b>3,075</b>	<b>82</b>	<b>78</b>	<b>72</b>	<b>74.8</b>
Shire Counties								
Bedfordshire	345	270	285	255	79	82	74	78.2
Cambridgeshire	250	175	160	170	71	64	69	66.5
Essex	915	850	645	675	93	70	74	72.1
Hertfordshire	770	605	480	460	78	62	60	60.9
Norfolk	570	530	515	390	93	90	68	79.2
Suffolk	510	350	455	420	69	89	83	86.0
Unitary Authorities								
Luton	300	260	270	245	88	91	82	86.7
Peterborough	250	145	180	150	59	71	61	65.7
Southend	230	215	210	175	95	91	76	83.6
Thurrock	140	110	130	130	80	94	94	93.9

Local Authority	numbers				percentages			PAF Indicator CI9 <sup>1</sup> (average percentage)
	number looked after for at least one year	children whose immunisations were up to date	children who had their teeth checked by a dentist	children who had their annual health assessment	children whose immunisations were up to date	children who had their teeth checked by a dentist	children who had their annual health assessment	
<b>LONDON</b>	<b>8,620</b>	<b>5,495</b>	<b>6,530</b>	<b>6,900</b>	<b>64</b>	<b>76</b>	<b>80</b>	<b>77.9</b>
Inner London								
Camden	260	230	210	220	88	81	86	83.4
City of London	-	-	-	0	-	-	0	-
Greenwich	370	60	225	255	17	62	69	65.4
Hackney	340	235	290	280	69	85	82	83.7
Hammersmith & Fulham	270	135	225	210	50	83	78	80.6
Islington	350	245	305	325	70	87	94	90.4
Kensington & Chelsea	165	135	145	150	82	89	92	90.6
Lambeth	470	310	300	260	67	64	56	60.0
Lewisham	420	270	350	320	65	83	77	80.0
Southwark	490	475	390	435	97	79	89	84.3
Tower Hamlets	270	135	205	235	50	75	86	80.3
Wandsworth	265	205	215	240	77	80	90	84.8
Westminster	220	180	175	180	81	80	81	80.7
Outer London								
Barking & Dagenham	265	55	240	245	20	89	93	90.8
Barnet	310	125	110	200	40	35	65	50.0
Bexley	150	140	140	140	92	93	92	92.4
Brent	265	195	185	190	75	70	72	71.2
Bromley	235	190	175	175	80	75	74	74.3
Croydon	470	375	370	380	80	79	82	80.4
Ealing	300	125	225	225	41	75	74	74.7
Enfield	245	160	170	220	65	70	89	79.6
Haringey	400	295	305	310	73	77	78	77.2
Harrow	110	30	35	85	28	33	78	55.9
Havering	120	115	115	105	97	96	88	91.9
Hillingdon	335	310	245	250	93	73	75	74.4
Hounslow	235	205	205	205	86	87	86	86.7
Kingston Upon Thames	50	40	45	50	78	88	96	92.0
Merton	110	75	85	85	68	80	79	79.4
Newham	535	135	365	435	26	68	81	74.4
Redbridge	110	95	100	100	86	91	89	90.0
Richmond Upon Thames	80	70	75	70	88	91	85	88.1
Sutton	110	90	100	100	82	93	93	92.7
Waltham Forest	285	60	190	215	21	67	75	70.9

Local Authority	numbers				percentages			
	number looked after for at least one year	children whose immunisations were up to date	children who had their teeth checked by a dentist	children who had their annual health assessment	children whose immunisations were up to date	children who had their teeth checked by a dentist	children who had their annual health assessment	PAF Indicator C19 <sup>1</sup> (average percentage)
<b>SOUTH EAST Shire Counties</b>	<b>5,560</b>	<b>4,410</b>	<b>4,675</b>	<b>4,375</b>	<b>79</b>	<b>84</b>	<b>79</b>	<b>81.4</b>
Buckinghamshire	225	195	185	160	86	83	71	77.0
East Sussex	340	320	315	300	95	93	89	91.0
Hampshire	785	355	665	630	45	85	80	82.7
Kent	1,045	730	855	755	70	82	72	76.9
Oxfordshire	360	345	330	320	95	91	89	90.1
Surrey	580	525	475	440	91	82	76	78.9
West Sussex	505	460	455	380	91	90	75	82.4
Unitary Authorities								
Bracknell Forest	45	25	30	40	57	67	91	79.3
Brighton & Hove	285	265	215	190	93	77	67	71.9
Isle Of Wight	135	120	120	110	89	89	82	85.3
Medway Towns	260	215	200	195	81	77	74	75.6
Milton Keynes	145	135	125	125	94	88	86	86.9
Portsmouth	205	165	155	180	80	74	87	80.4
Reading	145	135	120	115	94	83	79	80.7
Slough	100	90	85	80	92	84	83	83.3
Southampton	235	200	195	205	85	83	87	85.0
West Berkshire	80	70	75	70	86	91	85	88.1
Windsor & Maidenhead	45	30	40	40	65	93	98	95.3
Wokingham	40	30	35	35	73	85	88	86.3
<b>SOUTH WEST Shire Counties</b>	<b>3,375</b>	<b>2,625</b>	<b>2,485</b>	<b>2,460</b>	<b>78</b>	<b>74</b>	<b>73</b>	<b>73.3</b>
Cornwall	360	165	250	240	45	70	66	67.9
Devon	485	370	240	290	77	49	60	54.5
Dorset	185	165	155	115	89	83	61	72.0
Gloucestershire	355	290	230	285	82	65	80	72.7
Isle of Scilly	-	-	-	0	-	-	0	-
Somerset	185	125	155	170	67	82	91	86.8
Wiltshire	195	150	135	120	78	70	62	66.1
Unitary Authorities								
Bath & North East Somerset	95	90	85	80	95	90	84	87.0
Bournemouth	130	90	90	105	70	69	79	74.2
Bristol	385	345	280	240	89	73	62	67.4
North Somerset	110	90	100	95	80	88	83	85.7
Plymouth	375	335	310	280	89	82	74	77.7
Poole	95	75	75	95	79	80	98	89.1
South Gloucestershire	100	45	90	85	45	90	82	86.3
Swindon	155	135	140	145	87	92	95	93.2
Torbay	160	145	145	130	93	93	82	87.3

<sup>1</sup> The average of the percentages of children looked after at 30 September who had been looked after continuously for at least 12 months, who had their teeth checked by a dentist during the previous 12 months, and had an annual health assessment during the previous 12 months. In previous years this indicator also included immunisations. The figures shown here reflect the revised definition.

## TECHNICAL NOTES

### Coverage of OC2

The Table below specifies the subset of children captured by each of the OC2's data items.

### Twelve month data period

The data collected cover young people looked after at 30 September 2004 in England who had been looked after continuously for at least twelve months, defined as the period from 1 October to the following 30 September inclusive. This departs from the Departments other collections of children's personal social services data, which use a 'year' based on the period ending 31 March. The data period used for the OC2 was designed to accommodate the school year.

### Boundaries of authorities

As explained in section 2 of this Commentary, some young people covered by the OC2 will have attended schools outside the boundaries of their home local authority social services department. Hence caution must be used when comparing educational data collected on OC2, with that for all children collected.

**TABLE 1.1:**  
Coverage of each OC2 Data Item, period ending 30 September 2004

Data item On OC2	Definition	Which children were included?
1	Scope of OC2	All children who were looked after on 30 September and on that date had been looked after continuously for at least a year.
<i>Items 2 - 8 are subsets of item 1:</i>		
2	Total eligible for schooling	Children whose date of birth in range 1/9/87 to 31/8/99
3	Key stage 1	Children eligible for school year 2, i.e. whose date of birth in range 1/9/96 to 31/8/97
4	Key stage 2	Children eligible for school year 6, i.e. whose date of birth in range 1/9/92 to 31/8/93
5	Key stage 3	Children eligible for school year 9, i.e. whose date of birth in range 1/9/89 to 31/8/90
6	GCSEs and GNVQs	Children eligible for school year 11, i.e. whose date of birth in range 1/9/87 to 31/8/88
7	Offending	Children aged 10 or over at 30 September, i.e. whose date of birth is 30/9/94 or earlier
8	Development Assessments	Children aged 5 years or younger at 30 September, i.e. whose date of birth is 01/10/98 or greater
9	Immunisations	All children covered by OC2 return, i.e. all children who were looked after on 30 September and had been looked after continuously for at least a year. (This is the same as item 1).
10	Dental checks	
11	Health Assessments	
12	Employment/ school status at 30 Sept 2004	Children eligible for school year 11, i.e. whose date of birth in range 1/9/87 to 31/8/88. (This is the same as Item 6).

## ROUNDING AND SUPPRESSION OF VERY SMALL NUMBERS

To ensure that no individual can be identified from statistical Tables, similar conventions from last year have again been used in this publication for the rounding and suppression of very small numbers.

### National Tables A–F

For this reason, all **numbers** which appear in the national summary Tables (Tables A to F) have been rounded to the nearest 100 if they exceed 1,000, and to the nearest 10 otherwise. Numbers from 1 to 5 inclusive have been suppressed, being replaced in the Table by a hyphen. Where any number is shown as zero (0) the original figure submitted was also zero.

All **percentages** at national level have been rounded to 1 decimal place. Wherever the numerator is 5 or less or the denominator is 10 or less of the underlying numbers from which a percentage has been calculated, the percentage has been suppressed and replaced by a hyphen. Where any percentage is shown as zero (0) either both the original figures from which it has been calculated were zero or the numerator was zero and the denominator is over 10.

### Local Tables 1–8

At local council level (Tables 1–8) the England total numbers at the head of each Table have been rounded either to the nearest 10 or 100, following the rule outlined above.

All other numbers at local council level have been rounded to the nearest five, and numbers from 1 to 5 inclusive have been suppressed, being replaced in the published Tables by a hyphen. Where any number is shown as zero (0), the original figure submitted was also zero.

In local council Tables the England total percentages at the head of each Table have been rounded to 1 decimal place, following the rule outlined above.

Ratios and PAF indicators have been expressed to one decimal place. Where percentage figures from other sources (e.g. DfES) have been quoted, they have been left in the form in which they were originally published.

In Tables which include time series, this rounding convention has been applied to data for previous years for the sake of consistency.

### Suppression of other numbers

It has also been necessary to suppress other figures whenever it would be possible to calculate the value of a suppressed number by means of simple arithmetic. The rule applied in these circumstances has been to suppress the next smallest data item.

## Symbols used

The following symbols have been used in the Tables:

- 0 zero
- Small number suppressed to preserve confidentiality. Normally this will be a number between 1 and 5 inclusive, or a percentage where either the numerator is between 1 and 5 or the denominator is between 1 and 10 inclusive.
- .. Not available
- . Not applicable

**TABLE 1.2:**

Examples of the rounding conventions used in this publication:

Actual Number	Numbers at England level, as shown in tables	Numbers at local council level, as shown in tables
0	0	0
1	-	-
2	-	-
3	-	-
4	-	-
5	-	-
6	10	5
7	10	5
8	10	10
9	10	10
10	10	10
11	10	10
12	10	10
13	10	15
14	10	15
15	20	15
16	20	15
17	20	15
18	20	20
19	20	20
20	20	20
120	120	120
124	120	125
125	130	125
126	130	125
994	990	995
995	1,000	995
999	1,000	1,000
1,949	1,900	1,950
1,950	2,000	1,950
1,955	2,000	1,955
1,956	2,000	1,955
1,957	2,000	1,955
1,958	2,000	1,960

### Figures on the Internet

The department of Education and Skills' website contains a copy of this publication with all the tables in a suitable format for downloading. They can be found at the web address below.

<http://www.dfes.gov.uk/rsgateway/DB/VOL/v000580/index.shtml>

### Further enquiries

Further enquiries concerning the statistics contained in this report should be addressed to:

Martin Hill  
Department of Education and skills  
DSG S1, Area 6P  
Sanctuary Buildings  
Great Smith Street  
London SW1P 3BT

Telephone 020 7925 3806

[child.stats@dfes.gsi.gov.uk](mailto:child.stats@dfes.gsi.gov.uk)

© Crown copyright 2005.

### CHILDREN'S SOCIAL SERVICES

#### **Statistical First Release: Children Looked After in England (including adoptions and care leavers), 2003–04**

<http://www.dfes.gov.uk/rsgateway/DB/SFR/s000533/index.shtml>

#### **Statistical Bulletin: Children Looked After in England (including adoptions and care leavers), 2003–04**

<http://www.dfes.gov.uk/rsgateway/DB/SBU/b000552/index.shtml>

#### **Referrals, Assessments and Children and Young People on Child Protection Registers: Year Ending 31 March 2004**

<http://www.dfes.gov.uk/rsgateway/DB/VOL/v000553/index.shtml>

#### **Children Accommodated in Secure Children's Homes (formerly Secure Units), year ending 31 March 2003: England and Wales**

<http://www.dfes.gov.uk/rsgateway/DB/SFR/s000490/index.shtml>

#### **Outcome Indicators for Looked-after Children, Twelve months to 30 September 2004: England**

<http://www.dfes.gov.uk/rsgateway/DB/VOL/v000580/index.shtml>

#### **Children in Need in England: Results of a survey of activity and expenditure as reported by Local Authority Social Services' Children and Families Teams for a survey week in February 2003: Local Authority tables and further national analysis**

<http://www.dfes.gov.uk/rsgateway/DB/VOL/v000451/index.shtml>

#### **Social Services Performance Assessment Framework Indicators 2003–2004**

<http://www.dfes.gov.uk/rsgateway/DB/STA/t000541/index.shtml>

#### **The Children Act Report 2003**

<http://www.dfes.gov.uk/publications/childrenactreport/#2003>