

STATISTICS
OF **E**DUCATION
*Outcome Indicators for
Looked after Children
Twelve months to
30 September 2005
England*

© Crown copyright 2006. Published with the permission of the DfES on behalf of the Controller of Her Majesty's Stationery Office.

Applications for reproduction should be made in writing to The Copyright Unit, Her Majesty's Stationery Office, St Clements House, 2-16 Colegate, Norwich NR3 1BQ.

ISBN 0 11 271186 3

Contents

	<i>Page</i>
SUMMARY	4
COMMENTARY	5
ENGLAND TABLES	
List	13
Tables	14
LOCAL AUTHORITY TABLES	
List	20
Local authority tables	21
TECHNICAL NOTES	66
APPENDIX	
List of local authority social services publications	69

Summary

The main findings are as follows:

- 1** At 30 September 2005 there were 44,700 children who had been looked after continuously for at least twelve months by English local authorities. This compares to 45,000 at 30 September 2004.
- 2** 34,800 of these children were of school age and of these 27% had SEN statements, 13% missed at least 25 days of school, and 1% received a permanent exclusion. These percentages were similar to last year.
- 3** On average 58% of those looked after children in the appropriate age group achieved level 2 at Key Stage 1, 44% level 4 at Key Stage 2 and 27% level 5 at Key Stage 3. The comparable percentages for all children were 86%, 80% and 73% respectively.
- 4** The proportion of children continuously looked after for at least 12 months aged 11 and achieving at least level 4 at KS2 English and Maths was 52% of the proportion of all children. This compares with 51% and 49% in 2004 and 2003 respectively.
- 5** In school year 11, about 60% of looked after children obtained at least one GCSE or GNVQ compared with 96% of all school children. These figures are an improvement on 2004 and 2003 when the corresponding figures for looked after children were 56% and 53% respectively. 36% of looked after children did not sit an examination of this type in 2005 compared with 41% in 2004 and 43% in 2003.
- 6** 11% obtained at least 5 GCSE's (or equivalent) at grades A*-C compared with 56% of all children. This compares to 9% and 54% in 2004. 25% of authorities had at least 15% of their children achieving this level in 2005. This compares with 19% in 2004.
- 7** At the end of school year 11, 61% remained in full-time education compared to 75% of all school-leavers. 20% were unemployed the September after leaving school compared to 6% of all school-leavers. In 2004, 59% remained in full-time education compared to 73% for all school-leavers and 22% of children looked after were unemployed compared to 6% of all school-leavers.
- 8** 9% of these looked after children aged 10 or over, were cautioned or convicted for an offence during the year, almost 3 times the rate for all children of this age. This rate has stayed similar over the past 3 years.
- 9** For 77% of these looked after children immunisations were up to date, 82% had a dental check, and 80% had an annual health assessment. In 2004 these figures were 73%, 79% and 77% respectively.

1 INTRODUCTION

The OC2 statistical collection

1.1 In September 1999 the Government established 11 objectives for children's social services in England. One of these is 'to ensure that children looked after gain the maximum life chance benefits from educational opportunities, health care and social care'.

1.2 In order to collect the data needed to monitor progress towards this objective three new statistical collections were introduced. One of these (OC2) covers a range of outcome indicators for looked after children in England. This publication presents the results of this collection for the twelve months ending 30 September 2005. The figures presented include the Personal Social Services Performance Assessment Framework (PAF) indicators C18, C19 and C24.

Data Quality

1.3 This is the sixth time that social services departments have been asked to supply this information. Data quality and response rates have again been 100% and are significantly better than in the early years of the collection, when many authorities experienced difficulties in obtaining the required information.

1.4 In some authorities the number of looked after children in some of the categories on the OC2 return is relatively small; caution is required when considering these figures as they are more susceptible to chance variation than figures based on larger numbers of children.

Rounding and suppression of very small numbers to preserve confidentiality

1.5 We have again applied rounding and suppression conventions to all data in this publication, in order to conceal very small numbers. This is to prevent the possibility of individual children being identified in the statistical tables. The conventions used are now applied to all personal social services statistics publications, and closely follow the established guidelines to protect the identity of all looked after children.

1.6 A result of applying this procedure is that columns of data at individual authorities level which largely consist of very small numbers, contain many dashes (-) to replace actual numbers in the range 1-5.

Coverage of OC2

1.7 The OC2 collection covers all children and young people in England who had been looked after continuously for at least twelve months at 30 September. These figures exclude children looked after under an

agreed series of short-term placements (sometimes called 'Family Link Placements', 'Short Breaks' or 'respite care') during that period. These figures include asylum-seeking children.

1.8 From the overall group of children who had been looked after for at least twelve months at 30 September, smaller subsets are defined by the scope of some of the data items. These subsets are listed in Table 1.1 in the Technical Notes section at the back of this publication.

1.9 Where a child has 'slipped' a year or more (e.g. is taking key stage tests or GCSEs later than expected from their date of birth) their results are not included.

Duration in Care

1.10 The 2005 OC2 collection shows that 44,700 children had been continuously looked after for at least twelve months at 30 September 2005, compared to 45,000 at 30 September 2004. This represented approximately 75% of all children who were looked after on 30 September.

1.11 The figure of 44,700 from the OC2 returns closely approximates an estimate for children at 31 March 2005 who had been looked after for twelve months or more which can be derived from the SSDA 903 return.

2 COMPARABILITY OF FIGURES FROM OC2 WITH FIGURES FOR ALL CHILDREN

2.1 Several tables include comparative figures for all children in England alongside data collected from OC2. The figures for 'all children' are collected on various slightly different bases, which are explained below. Figure 2.2 at the end of this section summarises the differences.

Comparability of educational results (Tables A, B, C, 1,2,3,4,5)

2.2 The figures for educational attainment in Tables A, B, C, 1, 2, 3, 4, and 5 are collated according to the Local Authority (LA) to which each school belongs. Many looked after children are placed out-of-council (Figure 2.1) and this is particularly the case in the Greater London area, where typically more than 60% of all foster placements are placed out-of-council and may well attend a school belonging to a different LA to the council which is looking after them. Caution must therefore be used when comparing educational data collected on OC2, with that for all children.

2.3 Figure 2.1 is derived from the SSDA 903 statistical collection and is derived from foster and residential placement data relating to children who had

been looked after for at least twelve months on 31 March 2005. It is derived from SSDA 903 placement codes F1–F6 and H1–H4, which distinguish foster and residential placements inside or outside the council area¹. As there are further placement types for which the distinction between in and out of council is not made, these data should be regarded as probably slightly under-estimating the frequency of out-of-council placements. As it is known that there is little seasonal variation in this dataset, this can be taken as a reasonable proxy for the position at 30 September.

2.4 There are a number of reasons why a child can be placed outside the council’s boundary. Many authorities, particularly new unitary authorities, cover relatively small geographical areas and if a wide range of placement options is to be available it is inevitable that some of these will be located outside the council’s boundary. The inclusion of Figure 2.1 here is not intended as a comment on any council’s placing policy, but to help the reader assess the usefulness of the comparator data for all children.

2.5 Figures for looked after children at local authority level include maintained schools, including mainstream

and maintained special schools, City Technology Colleges and Academies. Figures for “all children” include maintained schools as above plus all independent schools including independent special schools and non maintained special schools, all hospitals and pupil referral units.

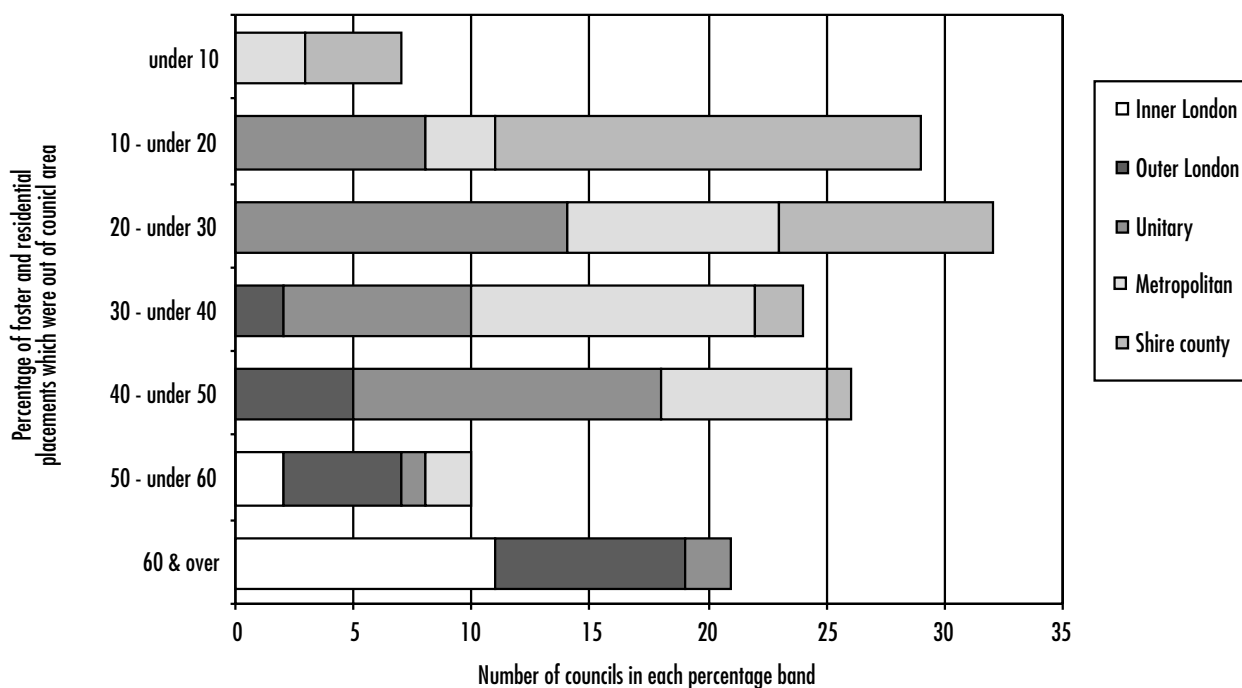
2.6 Comparability between educational attainment data for looked after children and all children at local level have to be viewed with these caveats in mind.

2.7 The national SEN figures are based on the January school census. All other figures are based on a school year running from 1 September to the following 31 August.

Comparability of education, employment and training status (Tables D and 6)

2.8 The comparative figures in Tables D and 6 were provided by the Connexions Service and are based on a survey of all year 11 pupils in maintained schools in England in the school year which ended in August 2005. They exclude data from a small number of independent schools.

FIGURE 2.1: Children who had been looked after for at least twelve months on 31 March 2005: Number of authorities banded according to proportion of foster and residential placements which were known to be out-of-area



Source: SSDA 903

¹ SSDA 903 Guidance notes are available at: <http://www.dfes.gov.uk/datastats1/guidelines/children>

Comparability of offending data (Table 7)

2.9 The figures for all children cited in Table 7 are for Police Force areas, which do not necessarily follow the same boundaries as individual authorities, and in many instances include the areas of a number of authorities. These figures must therefore be treated with caution. At present the ‘all children’ data collected on this basis are the only figures available to provide a comparison with looked after children.

3. EDUCATIONAL ATTAINMENT

Children who have statements of Special Educational Needs (SEN) (Tables A and 1)

3.1 Children have special educational needs if they have a learning difficulty which calls for special educational provision to be made for them. Further

definitional and background information is provided in the *Special Educational Needs Code of Practice* which was published in November 2001².

3.2 34,800 of the children looked after continuously for at least twelve months were of school age at 30 September 2005. It is estimated that of these, 9,500 (27%) during the 2004–05 school year held statements of special educational needs. This percentage is very similar to that for the twelve months ending 30 September 2004 (27%).

3.3 Compared to national figures for all children in England, looked after children are almost nine times more likely to hold a statement of special educational needs. Just under 3% of all school children in England held a statement of SEN at January 2005.

FIGURE 2.2:

Comparability between reference periods of OC2 data for 30 September 2005 and the data for all children obtained from other sources.

Relevant Tables And data item	OC2 data item and time period	‘all children’ data definition, time period, and source
Table A: Children with a statement of SEN	All children looked after continuously for twelve months or more on 30 September 2005, and who had a statement of SEN on that date	All children in the school population at January 2005 with a statement of SEN. Data from Pupil-level Annual School Census, ‘PLASC’. Published September 2005 as DfES Statistical Volume: Statistics of Education, schools in England 2005 edition.
Table A: Numbers of permanent exclusions from schools	All children looked after continuously for twelve months or more on 30 September 2005, and who became permanently excluded from school at any time during the twelve-month period. Where a child was permanently excluded twice during the period, both exclusions are counted.	All children in the school population who became permanently excluded during the school year ending August 2005. Where a child was permanently excluded twice during the period, both exclusions are counted. Published June 2005 as Statistical First Release SFR 23/2005.
Tables B, 2*, 3, 4: Key Stage results	Of all children looked after continuously for twelve months or more on 30 September 2005, those who were eligible to sit relevant Key Stage tasks and tests according to their date of birth.	All children in the LA maintained school population eligible to sit relevant Key Stage tasks and tests according to their date of birth. Refers to the school year ending August 2005. Published January 2005 as SFR ‘GCSE/GNVQ Examination results to GCSE/GNVQ value added measures 2004/2005 (revised).
Tables C, 5: GCSE performance	Of all children looked after continuously for twelve months or more on 30 September 2005, those who belonged in Year 11 according to their date of birth.	All children in the school population who were eligible to sit relevant GCSE or GNVQ exams according to their date of birth. Refers to the school year ending August 2005.
Tables D, 6 : Activity following year 11	Of all children looked after continuously for twelve months or more on 30 September 2005, those who belonged in Year 11 according to their date of birth.	All pupils in the LEA maintained school population in England who were in year 11 which ended in August 2005. (Connexions/Careers Service Annual Activity Survey, carried out in October 2005).
Tables E, 7: Offending behaviour	Of all children looked after continuously for twelve months or more on 30 September 2005, those aged 10 or over on that date.	Number of people aged 10 to 17 who were cautioned or convicted for any offence. Refers to calendar year ending 31 December 2004. (Supplied by Crime and Criminal Justice Unit, RDS, Home Office; published on DfES website at http://www.dfes.gov.uk/datastats1/guidelines/children/xls/Home%20Office%20figures%20Dec%202004.xls)

*Key stage 1 was based on teacher assessments

² available at: www.teachernet.gov.uk/teachinginengland/detail.cfm?id=390

3.4 The comparator figures in Table A for all children in England represent the position at January 2003 to January 2005³.

3.5 Figure 3.1 shows the variation between authorities in the percentage of their children looked after for twelve months who had statements of SEN on 30 September. As can be seen, in nearly two-thirds of authorities the incidence of looked after children with special educational needs lies between 21% and 35% inclusive.

**Exclusions from school
(Tables A and 1)**

3.6 Looked after children also appear more likely to receive a permanent exclusion from school. Out of the 34,800 looked after children of school age, there were 310 permanent exclusions during the 2004–05 school year. Fixed-term exclusions are not included. Although this is a count of exclusions rather than children excluded, it is uncommon for the same child to receive more than one permanent exclusion during the school year.

3.7 The number of exclusions expressed as a percentage of children who had been looked after for at least twelve months and who were eligible for schooling is 0.9%. This percentage is very similar to last year.

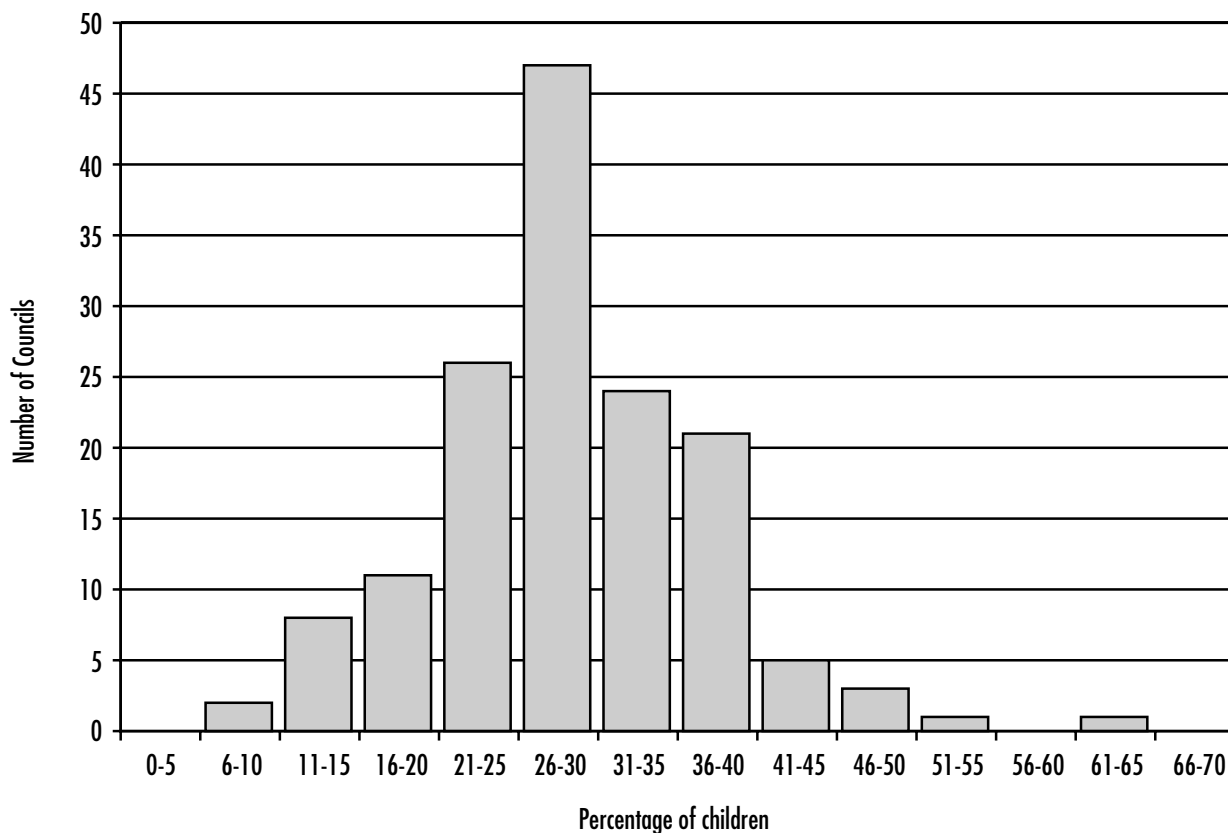
3.8 This compares with 0.1% of all children in England in the 2005 school year. The comparator figures of exclusions are for all children⁴.

3.9 Small numbers have been suppressed in Table 1. For further details see the section on ‘Rounding and Suppression’ at the end of the Technical Notes.

**Children who missed at least 25 days of school for any reason
(Tables A and 1)**

3.10 For the 2004–05 school year, 13% of children looked after continuously throughout the year missed 25 days or more of school for any reason. This represents Performance Assessment Framework indicator C24. There is no comparator data available for all children.

FIGURE 3.1:
Councils ranked according to percentage of children looked after for at least twelve months at 30 September 2005 who held a statement of SEN



³ First Release figures at <http://www.dfes.gov.uk/rsgateway/DB/SFR/s000584/index.shtml>

⁴ First release published 23rd June 2005 at <http://www.dfes.gov.uk/rsgateway/DB/SFR/s000582/index.shtml>

Target on attainment

3.11 There are several indicators underpinning the target⁵ to improve the life chances for children in care by narrowing the gap between the educational attainment and participation of children in care and that of their peers. The Government revised these indicators, as part of the 2004 spending review. The target is underpinned by the following indicators.

- Percentage of children aged 11, looked after for at least 12 months, who obtain level 4 in Key Stage 2 English and Maths;
- Percentage of young people, looked after for at least 12 months, who reach school leaving age without having sat a GCSE equivalent exam;
- Percentage of young people, looked after for at least 12 months and in year 11, who achieve five or more GCSEs graded A*–C or equivalent

3.12 The target relates to children who were in care on 30 September and had been continuously looked after for at least 12 months. Data presented later in this section show that for the twelve months ending 30 September 2005:

- The proportion of children continuously looked after for at least 12 months aged 11 and achieving at least level 4 at KS2 English and Maths was 52% of the proportion for all children (see paragraph 3.14). The corresponding percentage for 2004 was 51%.
- Of the children looked after continuously for at least 12 months who were in year 11, 36% did not

sit a GCSE or equivalent examination (see paragraph 3.17). The corresponding percentage for 2004 was 41%.

- 11% of children continuously looked after for at least 12 months in year 11 attained 5 GCSE or equivalent passes at grades A*–C (see paragraph 3.19). This figure compares to 9% in 2004.
- 25% of authorities had at least 15% of their children achieving 5 GCSEs (or equivalent) A* to C. In 2004, 19% of authorities had at least 15% of their children achieving 5 GCSEs (or equivalent).

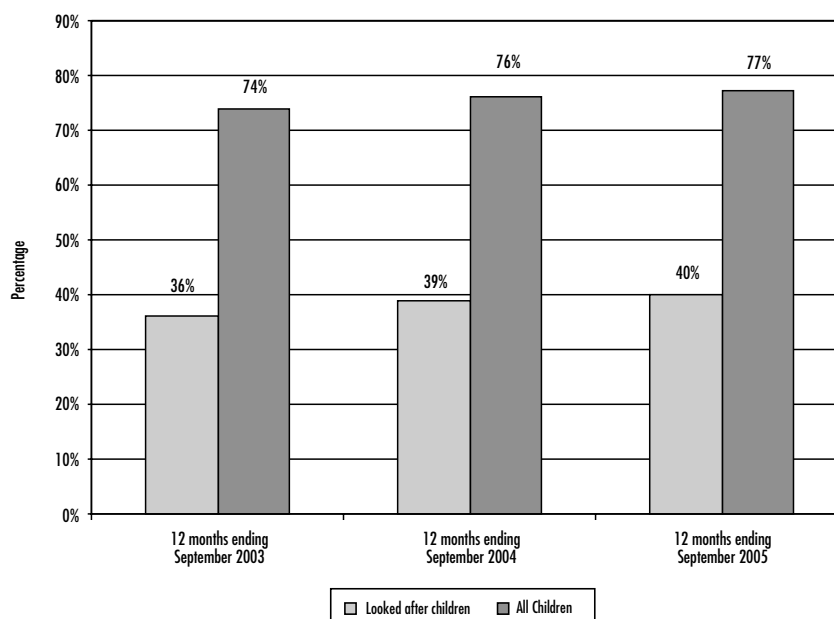
Key Stage and GCSE or equivalent results (Tables B&C, and Tables 2, 3, 4 & 5)

3.13 The performance of those children looked after continuously for a year at the end of the three Key Stages is shown in Table B. Overall on average, 58% reached the target level 2 at Key Stage 1, 44% reached level 4 at Key Stage 2 and 27% reached level 5 at Key Stage 3. (The comparable figures for school year ending August 2004 were 55%, 43%, and 23% respectively.) It can be seen that the lower academic performance of looked after children with age mirrors that of the national school population. The equivalent national figures for key stages 1, 2 and 3 for the school year ending August 2005 being 86%, 80% and 73% respectively. However the dip in performance for looked after children is steeper.

3.14 Considering Maths and English only, on average, 40% reached level 4 at Key Stage 2 compared with 39% in August 2004 and 36% in August 2003. Figure 3.2 illustrates these figures more clearly and compares

FIGURE 3.2:

Percentage of children looked after for at least 12 months at 30 September 2003–2005 reaching level 4 in Maths and English, compared with all children



⁵ http://www.dfes.gov.uk/SR2004/PSA/SR04_Technical%20Notes_Online_29-Jul-04.doc

them against the equivalent figures for all children. Combining these figures in 2004–05 shows the proportion of children continuously looked after for at least 12 months aged 11 and achieving at least level 4 at KS2 English and Maths to be 52% of the proportion for all children. This compares to 51% in 2003–04 and 49% in 2002–03.

3.15 Figure 3.3 shows the percentage of looked after children attaining the target level at each Key Stage test, as a proportion of the percentage of all children attaining the target level for the 2004–05 school year.

3.16 Using the data from Figure 3.3 shows that the performance of looked after children achieving the target level for Key Stage 1 is between 63% and 71% of that of all children. For Key Stage 2, the performance of looked after children drops to between 50% and 62% of that of all children, and at Key Stage 3, the attainment of looked after children is only around 37% of that of the total school population at Key Stage 3.

Year 11: GCSEs and GNVQs (Tables C and 5)

3.17 Of the children looked after continuously throughout Year 11 (Tables C and 5), 36% did not sit a GCSE or equivalent exam, compared with 41% in 2004 and 43% in 2003. 60% obtained at least one GCSE at grade A*–G or a GNVQ. This compares to 56% and 53% for the school years ending 30 August 2004 and 2003.

3.18 The equivalent figure for all children in England in year 11 who obtained at least one grade A*–G or a

GNVQ during the school year ending August 2005 is 96%. 41% of children looked after during the year achieved 5 or more GCSE or equivalent passes at grades A*–G, compared to 89% of all children.

3.19 Only 11% of looked after children attained 5 GCSE or equivalent passes at grades A*–C, compared with 56% of all children. This figure for looked after children shows a slight increase compared to previous years (9% in 2004 and 2003) The OC2 excludes the results of young people who left care after completing year 11 but before 30 September 2005.

3.20 Figure 3.4 compares GCSE or equivalent attainments of looked after children in year 11 to the attainments of all children.

Education and employment at age 16 (Tables D and 6)

3.21 The OC2 return collects information on the position of those looked after children who finished compulsory schooling during the 2004–05 school year on completing year 11. The reader should bear in mind that these data do not represent outcomes for care leavers, as all of these young people were still looked after on 30 September.

3.22 At 30 September 2005, 61% of these young people were in or about to start full-time education. 8% were in full-time training, 4% in full-time employment and 7% in part-time employment, education, or training. 20% of these young people were unemployed at 30 September; for 1% this was due to ill-health or disability. These percentages are similar to those which were reported for

FIGURE 3.3:

The proportion of looked after children attaining the target level of each of the Key Stage tasks and tests, shown as a percentage of the proportion of all children attaining the target level. Twelve months to 30 September 2005

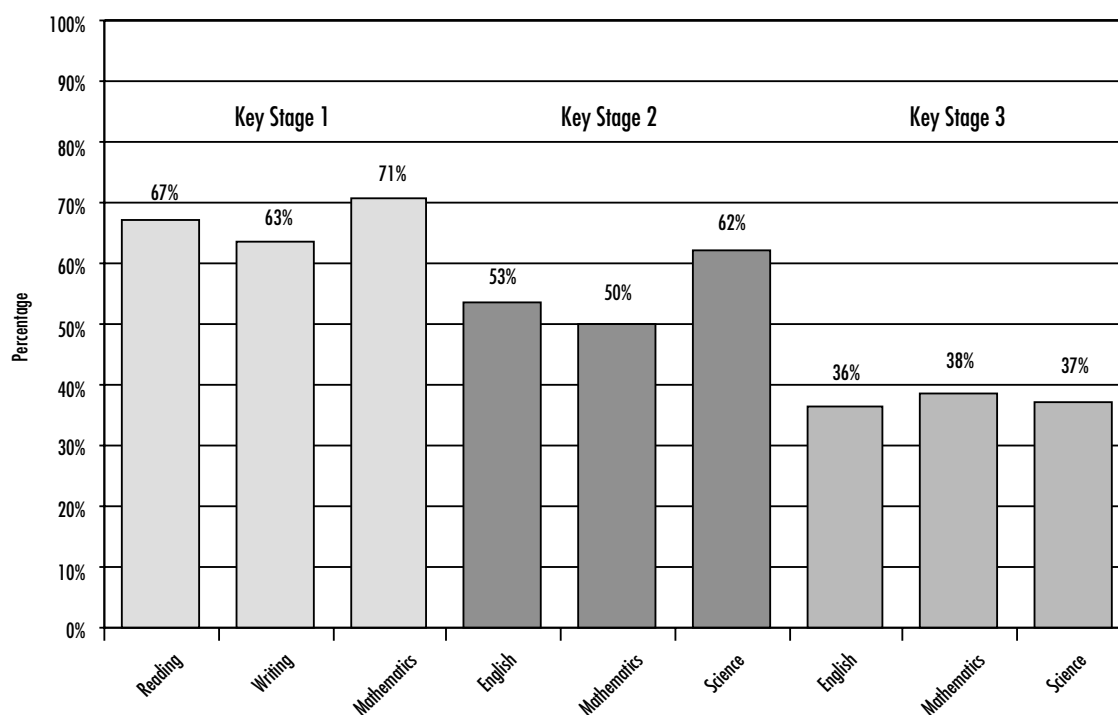
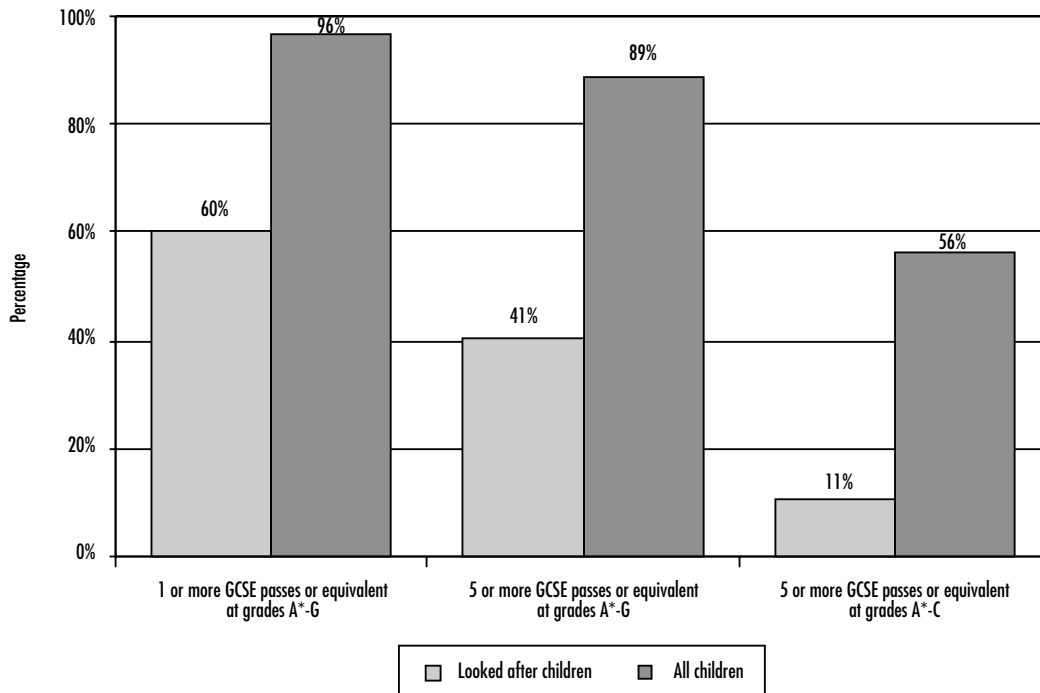


FIGURE 3.4:

Percentage of children looked after for at least twelve months at 30 September 2005 obtaining GCSE or equivalent passes, compared with all children



the position at 30 September 2004 (59% were in full-time education, 8% in full-time training, 5% in full-time employment, 6% in part-time employment, education or training and 22% were unemployed).

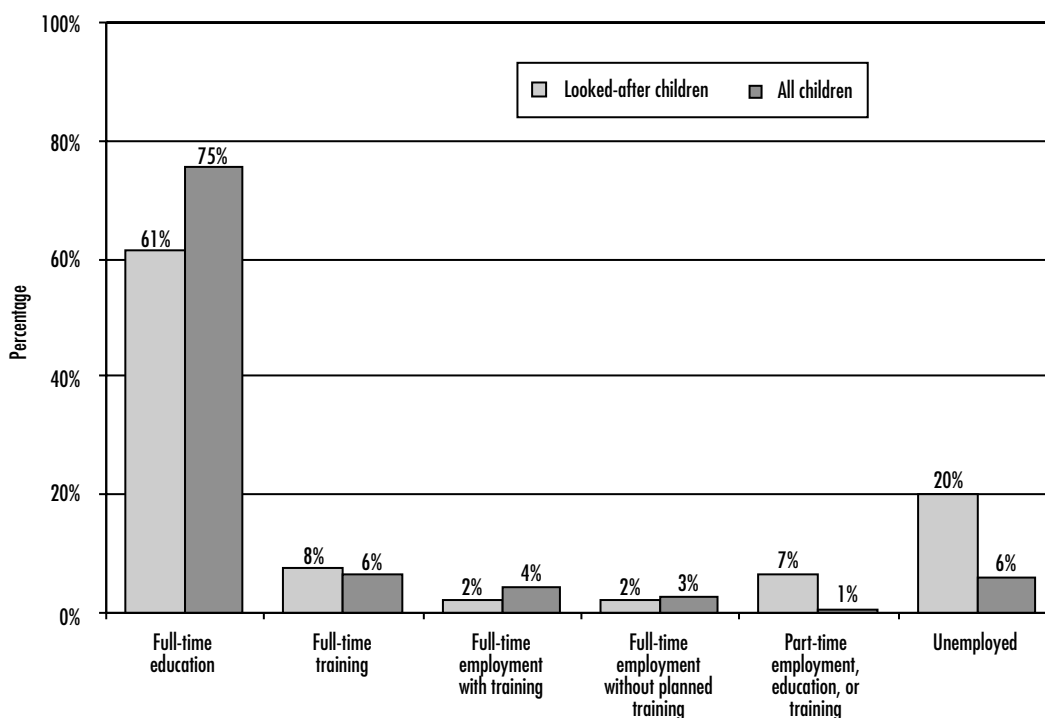
3.23 Figure 3.5 and Tables D and 6 compare these outcomes with data for all children who completed year 11. The comparative information for all children is from the ‘Connexions/ Careers Service Annual Activity

Survey 2005’. This survey was carried out in October 2005, covering all young people who were in year 11 during the 2004–05 school year.

3.24 The comparison shows that, at a national level, fewer looked after children remained in full-time education than in the comparator population, whereas more looked after children were unemployed, or in part-time education, employment or training.

FIGURE 3.5:

The position of looked after children at 30 September 2005 following the completion of year 11, compared with all children of same age



4 CAUTIONS AND CONVICTIONS

Cautions and convictions (Tables E and 7)

4.1 As can be seen from Table E and figure 4.1, looked after children of the age of criminal responsibility are almost three times more likely to be cautioned or convicted of an offence than others. 9.3% of children looked after for a year or more who were aged 10 or over had been convicted or subject to a final warning or reprimand during the year.

4.2 This compares with a figure of 3.7% for all children. The ratio of these two percentages represents PAF indicator C18. This figure is lower than that for the twelve months ending 30 September 2004 (2.5% in 2005 compared to 2.8% in 2004).

4.3 Table 7 shows these figures at local council level. As explained above, the comparable figures for all children are for Police force areas, which do not necessarily follow the same boundaries as individual authorities and in many instances cover the areas of several authorities.

4.4 There was a Public Service Agreement target from the 2002 spending review to improve the life chances for children in care by narrowing the gap between the proportions of children in care and their peers who receive a final warning or conviction. The target was to reduce the proportions of children in care who were cautioned or convicted in the year to 30 September by a third from 10.8% to 7.2% by 2004 and maintained until 2006. Clearly this has not been met.

FIGURE 4.1:

Children aged 10 or over convicted or subject to a final warning or reprimand during the years ending 30 September 2001 to 2005

England	percentages				
	2001	2002	2003	2004	2005
Looked after children	10.3	9.7	9.5	9.3	9.3
All children ⁶	3.5	3.6	3.3	3.3	3.7
PAF Indicator C18 ⁷	3.0	2.7	2.9	2.8	2.5

⁶ Data for all children are from the Home Office and are for calendar years 31 December 2000 to 2004, expressed as a percentage of all children aged 10–17.

⁷ For definitions of PAF C18, see table E and table 7.

5. HEALTH OUTCOMES

Health Assessments (Table F and Tables 8 & 9)

5.1 Of the 44,700 children who had been looked after continuously for twelve months, 35,900 (80%) had their annual health assessment and 36,800 (82%) had their teeth checked by a dentist during that period.

5.2 It must be borne in mind when considering these figures that children have a right to refuse a health assessment or dental check. As the OC2 return is for children looked after for a year all babies will have teeth and so they should be checked.

5.3 Just over three quarters (76%) of children looked after continually throughout the year were up-to-date for their routine immunisations. This figure should also be interpreted with some caution. Children may enter

care with their immunisations behind schedule, or unknown as in the case of unaccompanied asylum seekers, and it is not always possible for a local authority to 'catch up' with immunisations.

5.4 The combination of the percentages for dental checks and health assessments make up PAF C19. Immunisations used to be included in this calculation but have now been taken out. Previous years PAF C19 has been recalculated without immunisations for England only so a comparison can be made. The PAF C19 figure for the twelve months ending September 2005 is 81%. This compares with a figure of 78% last year.

5.5 In addition, 5,800 (86%) of children under age 5 who had been looked after for at least a year had their development assessments up to date. This compares to 5,700 (82%) in 2004.

England Tables

- A Number of children looked after at 30 September 2003 to 2005 who had been looked after continuously for at least twelve months, and general information on education (numbers and percentages)
- B Eligibility and performance of looked after children in Key Stages 1–3, compared with all children, twelve months ending 30 September 2003 to 2005 (numbers and percentages)
- C GCSE or equivalent performance of looked after children in Year 11 compared with all children, twelve months ending 30 September 2003 to 2005 (numbers and percentages)
- D Education and employment status at 30 September of looked after children in Year 11 in 2004–05 school year, compared with all children (numbers and percentages)
- E Offending by looked after children, twelve months ending 30 September 2003 to 2005 (numbers and percentages)
- F Health care of looked after children, twelve months ending 30 September 2003 to 2005 (numbers and percentages)

A

Number of children looked after at 30 September 2003 to 2005 who had been looked after continuously for at least twelve months, and general information about education

England

numbers and percentages

	looked after children						all children		
	number			percentages ¹			percentages ²		
	2003	2004	2005	2003	2004	2005	2003	2004	2005
Number of children looked after at 30 Sept. who had been looked after for at least twelve months	44,900	45,000	44,700
and of these:									
Number eligible for full-time schooling	35,100	35,300	34,800
and of these:									
Number with a statement of special educational needs	9,400	9,700	9,500	26.8	27.4	27.3	3.0	3.0	2.9
Number of permanent exclusions from school ³	380	320	310	1.1	0.9	0.9	0.1	0.1	0.1
Number who missed at least 25 days of school ^{4,5}	4,400	4,300	4,400	12.4	12.3	12.6

1 Expressed as a percentage of the number eligible for full-time schooling.

2 Source: DFES statistical bulletins: 'Statistics of Education: Special Educational Needs in England: January 2005 (provisional)', and 'Permanent Exclusions from Schools in England 2004–05 (provisional estimates)'.

3 If a child was permanently excluded more than once in the previous school year, each occasion has been counted.

4 Performance Assessment Framework Indicator C24: The percentage of children who had been looked after continuously for at least 12 months and were of school age, who missed a total of at least 25 days during the previous school year of schooling for any reason.

5 Figures on this basis are not collected by DFES for all children.

B

Eligibility and performance of looked after children in Key Stages 1–3, compared with all children, twelve months ending 30 September 2003 to 2005

England

numbers and percentages

	looked after children						all children ¹		
	number			percentages			percentages		
	2003	2004	2005	2003	2004	2005	2003	2004	2005
YEAR 2									
Number eligible to sit Key Stage 1 tasks and tests ¹	1,900	1,900	1,700
Numbers achieving at least Level 2 ² in the following:									
Reading ³	970	1,100	980	50.8	54.4	57.2	84	85	85
Writing	930	940	890	48.5	48.3	51.8	81	82	82
Mathematics	1,200	1,200	1,100	61.0	63.5	64.4	90	90	91
YEAR 6									
Number eligible to sit Key Stage 2 tasks and tests	3,000	2,900	2,900
Number who attained at least Level 4 ² in the following:									
English	1,100	1,200	1,200	37.1	39.9	42.1	75	77	79
Mathematics	1,000	1,100	1,100	34.8	37.2	37.6	73	74	75
Science	1,600	1,600	1,600	52.9	53.0	53.4	87	86	86
YEAR 9									
Number eligible to sit Key Stage 3 tasks and tests	3,800	4,000	4,000
Number who attained at least Level 5 ² in the following:									
English	850	900	1,100	22.3	22.5	26.7	69	71	74
Mathematics	890	1,000	1,100	23.3	25.8	28.3	71	73	74
Science	890	830	1,000	23.2	20.8	25.9	68	66	70

1 Source: DfES statistical first release 'National curriculum assessments of 7, 11 and 14 year olds in England – 2005 (Provisional)' Includes all schools.

For looked after children and all children, figures for KS1 in 2003 are based on task/test results.

In 2004, KS1 figures are a result of combining task/test for non trial schools and teacher assessment for trial schools.

In 2005, All KS1 figures are based on teacher assessments.

2 Target level for age group.

3 The 'all children' Key stage 1 Reading task/test is derived by adding the pupils achieving level 2 in the reading task and level 3 in the reading comprehensive test.



GCSE performance or equivalents of looked after children in Year 11 compared with all children, twelve months ending 30 September 2003 to 2005

England

numbers and percentages

	looked after children						all children ¹		
	number			percentages ²			percentages		
	2003	2004	2005	2003	2004	2005	2003	2004	2005 ³
Number in Year 11	4,600	4,800	4,700
Number who sat at least one GCSE or GNVQ	2,600	2,900	3,000	56.8	59.1	64.0	96	97	98
Number who obtained at least:									
1 GCSE at grade A* to G or a GNVQ	2,400	2,700	2,900	52.9	56.1	60.2	95	96	96
5 GCSEs (or equivalent) at grade A* to G	1,700	1,900	1,900	36.8	39.4	40.7	89	89	89
5 GCSEs (or equivalent) at grade A* to C	400	450	510	8.7	9.4	10.8	53	54	56

1 Source: DFES statistical bulletin: GCSE/GNVQ and GCE A/AS/VCE/Advanced GNVQ Examination Results 2004-05 – England. Issued January 2006 (Provisional). Includes all schools.

2 Expressed as a percentage of all looked after children in Year 11.

3 For 2005, "all children" results include level 1 and level 2 equivalencies.

D

Education and employment status at 30 September 2005 of looked after children in Year 11 in 2004–05 school year, compared with all children

Government Office Region		total number of children in Year 11 in 2004–05 school year	position at 30 September 2005, shown as a percentage of the total						unemployed	
			full-time education	full-time training	full-time employment with planned training	full-time employment with no planned training	part-time employment, education, or training	a result of ill-health or disability	other reason	
ENGLAND	looked after	4,700	61	8	2	2	7	1	19	
	all children ^{1,2}	619,200	75	6	4	3	1	6	6	
NORTH EAST	looked after	200	52	12	-	3	6	-	23	
	all children ^{1,2}	33,000	71	11	3	2	1	8	8	
NORTH WEST	looked after	680	54	11	3	3	8	-	20	
	all children ^{1,2}	93,200	73	9	5	2	1	6	6	
YORKS & THE HUMBER	looked after	450	51	12	3	3	7	-	22	
	all children ^{1,2}	64,400	71	8	6	3	1	7	7	
EAST MIDLANDS	looked after	290	56	6	2	2	6	-	27	
	all children ^{1,2}	54,200	75	6	5	3	1	5	5	
WEST MIDLANDS	looked after	520	59	9	4	-	5	-	22	
	all children ^{1,2}	69,400	74	8	3	3	1	7	7	
EAST	looked after	400	62	8	4	-	5	3	17	
	all children ^{1,2}	68,800	77	4	6	2	1	6	6	
LONDON	looked after	1,210	71	4	1	1	6	1	15	
	all children ^{1,2}	79,400	80	3	1	2	1	5	5	
SOUTH EAST	looked after	660	67	5	1	2	5	1	18	
	all children ^{1,2}	95,000	78	4	4	2	1	5	5	
SOUTH WEST	looked after	350	59	9	2	2	11	-	16	
	all children ^{1,2}	61,700	76	6	4	4	1	4	4	

1 Source: 'The Connexions/Careers Service Annual Activity Survey 2005'. Covers all young people who were in year 11 during the school year ending August 2005, and is based on a survey carried out during October 2005.

2 Percentages for 'all children' do not sum to 100 because the Connexions/Career Service Survey included an additional category of 'moved away' 'no response' and 'refused to participate', which is not relevant to looked after children.

E

Offending by looked after children, twelve months ending 30 September 2003 to 2005

England

numbers and percentages

	looked after						all children ¹			PAF Indicator C18 ²		
	number			percentage			percentages					
	2003	2004	2005	2003	2004	2005	2003	2004	2005	2003	2004	2005
Number of children looked after for at least twelve months	44,900	45,000	44,700
Number of children aged 10 or older at 30 September	29,100	29,800	30,400
Number convicted or subject to a final warning or reprimand during the year	2,800	2,800	2,800	9.5	9.3	9.3	3.3	3.3	3.7	2.9	2.8	2.5

1 Data for all children are from Home Office, and are for calendar years ending 31 December 2002 to 2004, expressed as a percentage of all children aged 10–17.

2 The proportion of children (aged 10 or over) who had been looked after continuously for at least 12 months, who were convicted or subject to a final warning or reprimand during the year for an offence committed whilst they were looked after, expressed as a ratio of the proportion of all children and young people convicted or subject to a final warning or reprimand for an offence in the police force area.

F

Health care of looked after children, twelve months ending 30 September 2003 to 2005

England

numbers and percentages

	number			percentage			PAF Indicator C19 ¹		
	2003	2004	2005	2003	2004	2005	2003	2004	2005
number of children looked after for at least one year	44,900	45,000	44,700
of these:									
number whose immunisations were up to date	32,300	33,000	34,200	71.9	73.3	76.5			
number who had their teeth checked by a dentist	33,800	35,400	36,800	75.3	78.8	82.3	} 75.2	77.9	81.3
number who had their annual health assessment	33,700	34,700	35,900	75.0	77.1	80.2			
number of children looked after for at least one year, and aged 5 or younger at 30 September:	7,100	7,000	6,700
of these:									
number whose development assessments were up to date	5,700	5,700	5,800	80.7	81.5	86.2	.	.	.

¹ The average of the percentages of children looked after at 30 September who had been looked after continuously for at least 12 months, who had their teeth checked by a dentist during the previous 12 months, and had an annual health assessment during the previous 12 months. In previous years this indicator also included immunisations. The figures shown here reflect the revised definition.

Local Authority Tables

- 1 Numbers of children looked after at 30 September 2003 to 2005 who had been looked after continuously for at least twelve months, and general information on education (numbers and percentages)
- 2 Eligibility and performance of looked after children in Key Stage 1 teacher assessments, compared with all children, twelve months ending 30 September 2005 (numbers and percentages)
- 3 Eligibility and performance of looked after children in Key Stage 2 tasks and tests, compared with all children, twelve months ending 30 September 2005 (numbers and percentages)
- 4 Eligibility and performance of looked after children in Key Stage 3 tasks and tests, compared with all children, twelve months ending 30 September 2005 (numbers and percentages)
- 5 GCSE or equivalents performance of looked after children in Year 11 compared with all children, twelve months ending 30 September 2005 (numbers and percentages)
- 6 Education and employment status at 30 September of looked after children in Year 11 in 2004-05 school year compared with all children (numbers and percentages)
- 7 Offending by looked after children, twelve months ending 30 September 2005 (numbers and percentages)
- 8 Development assessments of pre-school looked after children, twelve months ending 30 September 2005 (numbers and percentages)
- 9 Health care of looked after children, twelve months to 30 September 2005 (numbers and percentages)

Numbers of children looked after at 30 September 2003 to 2005 who had been looked after continuously for at least twelve months, and general information on education

numbers and percentages

Local Authority	number looked after for at least twelve months	of these, number of school age	Of these: - children with a statement of SEN		- permanent exclusions from school ¹		- children who missed at least 25 days school ²	
			number	%	number	%	number	%
ENGLAND	44,700	34,800	9,500	27.3	310	0.9	4,400	12.6
NORTH EAST	2,320	1,830	520	29	10	1	260	14
Shire Counties								
Durham	330	235	70	29	-	-	30	13
Northumberland	245	200	70	35	-	-	30	15
Unitary Authorities								
Darlington	115	85	20	25	0	0	10	14
Hartlepool	85	75	20	29	-	-	15	17
Middlesbrough	165	140	25	20	-	-	25	17
Redcar & Cleveland	90	75	25	34	0	0	15	20
Stockton On Tees	130	100	30	30	-	-	15	14
Metropolitan Districts								
Gateshead	175	145	45	29	-	-	10	5
Newcastle Upon Tyne	315	260	60	23	-	-	35	14
North Tyneside	145	120	45	38	0	0	20	18
South Tyneside	185	140	40	29	-	-	25	16
Sunderland	335	260	70	27	-	-	35	14
NORTH WEST	7,820	6,160	1,440	23	30	0	860	14
Shire Counties								
Cheshire	360	285	115	40	-	-	25	9
Cumbria	410	325	110	33	-	-	55	17
Lancashire	945	735	150	21	10	1	45	6
Unitary Authorities								
Blackburn With Darwen	220	180	40	23	-	-	25	15
Blackpool	190	135	45	35	0	0	20	16
Halton	125	110	65	61	0	0	20	17
Warrington	155	120	40	33	0	0	10	9
Metropolitan Districts								
Bolton	290	210	60	29	0	0	30	15
Bury	225	160	25	14	0	0	25	15
Knawsley	195	160	50	32	-	-	25	16
Liverpool	730	605	100	16	0	0	120	20
Manchester	1,065	850	130	15	-	-	100	12
Oldham	275	200	35	17	0	0	35	19
Rochdale	250	190	35	18	0	0	25	12
Salford	455	360	60	16	-	-	85	24
Sefton	210	175	35	19	0	0	20	11
St Helens	175	145	20	15	0	0	20	15
Stockport	260	210	65	30	0	0	30	13
Tameside	280	215	45	20	-	-	20	10
Trafford	150	120	25	23	0	0	25	20
Wigan	320	245	70	28	-	-	35	15
Wirral	535	425	120	29	-	-	60	14

CONTINUED

Numbers of children looked after at 30 September 2003 to 2005 who had been looked after continuously for at least twelve months, and general information on education

numbers and percentages

Local Authority	number looked after for at least twelve months	of these, number of school age	Of these: - children with a statement of SEN		- permanent exclusions from school ¹		- children who missed at least 25 days school ²	
			number	%	number	%	number	%
YORKSHIRE & THE HUMBER	4,880	3,840	1,030	27	30	1	580	15
Shire Counties								
North Yorkshire	300	245	65	27	0	0	15	7
Unitary Authorities								
East Riding Of Yorkshire	215	165	45	28	-	-	20	12
Kingston Upon Hull	400	310	60	20	5	2	60	19
North East Lincolnshire	125	105	35	31	-	-	15	12
North Lincolnshire	135	110	45	40	0	0	15	12
York	105	80	25	33	-	-	10	12
Metropolitan Districts								
Barnsley	190	150	15	10	0	0	25	15
Bradford	650	520	115	22	-	-	90	17
Calderdale	165	130	35	25	0	0	15	10
Doncaster	295	230	65	28	-	-	50	23
Kirklees	215	155	40	27	0	0	25	15
Leeds	1,060	825	260	31	5	1	120	15
Rotherham	270	220	65	29	0	0	40	18
Sheffield	450	350	105	30	-	-	45	13
Wakefield	305	235	55	24	-	-	40	16
EAST MIDLANDS	2,820	2,200	610	28	20	1	250	11
Shire Counties								
Derbyshire	390	315	105	34	-	-	50	16
Leicestershire	250	205	75	36	-	-	40	19
Lincolnshire	440	335	130	38	10	4	15	4
Northamptonshire	410	310	100	33	-	-	50	16
Nottinghamshire	335	255	40	16	0	0	15	7
Unitary Authorities								
Derby	285	230	65	27	-	-	30	12
Leicester	370	275	70	26	-	-	45	17
Nottingham	330	265	20	8	0	0	-	-
Rutland	10	10	-	-	0	0	0	0

CONTINUED

Numbers of children looked after at 30 September 2003 to 2005 who had been looked after continuously for at least twelve months, and general information on education

numbers and percentages

Local Authority	number looked after for at least twelve months	of these, number of school age	Of these: - children with a statement of SEN		- permanent exclusions from school ¹		- children who missed at least 25 days school ²	
			number	%	number	%	number	%
WEST MIDLANDS	5,200	4,100	1,100	27	30	1	450	11
Shire Counties								
Shropshire	125	105	35	35	0	0	10	11
Staffordshire	440	355	85	24	-	-	40	12
Warwickshire	325	245	70	29	-	-	30	12
Worcestershire	350	295	90	31	0	0	25	9
Unitary Authorities								
Herefordshire	135	120	40	34	-	-	10	9
Stoke-On-Trent	305	230	60	26	0	0	15	7
Telford & Wrekin	145	125	40	30	-	-	10	9
Metropolitan Districts								
Birmingham	1,430	1,125	285	26	10	1	145	13
Coventry	370	290	75	27	0	0	55	18
Dudley	345	270	70	25	-	-	35	13
Sandwell	420	305	60	20	0	0	25	8
Solihull	175	135	35	26	-	-	5	4
Walsall	350	290	80	28	-	-	25	8
Wolverhampton	290	215	65	30	10	4	20	10
EAST OF ENGLAND	4,340	3,460	990	29	30	1	490	14
Shire Counties								
Bedfordshire	315	260	90	34	0	0	50	19
Cambridgeshire	255	200	100	49	0	0	-	-
Essex	965	785	170	22	15	2	115	15
Hertfordshire	770	585	195	33	-	-	90	15
Norfolk	575	470	120	26	-	-	50	11
Suffolk	500	375	110	30	10	2	55	15
Unitary Authorities								
Luton	305	255	60	24	0	0	45	18
Peterborough	280	220	85	38	0	0	25	10
Southend	245	190	20	11	-	-	40	20
Thurrock	130	110	35	30	-	-	15	13

CONTINUED

Numbers of children looked after at 30 September 2003 to 2005 who had been looked after continuously for at least twelve months, and general information on education

numbers and percentages

Local Authority	number looked after for at least twelve months	of these, number of school age	Of these: - children with a statement of SEN		- permanent exclusions from school ¹		- children who missed at least 25 days school ²	
			number	%	number	%	number	%
LONDON	8,520	6,140	1,640	27	70	1	660	11
Inner London								
Camden	255	155	45	29	-	-	20	13
City of London	5	-	-	-	0	0	0	0
Greenwich	370	285	130	45	-	-	30	11
Hackney	355	250	60	25	-	-	45	18
Hammersmith & Fulham	285	200	60	29	0	0	15	8
Islington	340	270	65	24	-	-	35	14
Kensington & Chelsea	170	120	25	21	-	-	15	11
Lambeth	450	330	40	12	-	-	30	9
Lewisham	405	280	70	24	-	-	55	20
Southwark	495	375	95	25	10	2	30	8
Tower Hamlets	260	170	45	25	-	-	10	6
Wandsworth	245	195	60	31	-	-	25	12
Westminster	215	145	40	28	0	0	25	16
Outer London								
Barking & Dagenham	260	180	50	27	-	-	15	8
Barnet	285	230	50	23	5	3	15	6
Bexley	145	125	45	38	-	-	15	12
Brent	280	80	20	28	-	-	-	-
Bromley	235	180	65	37	0	0	25	15
Croydon	455	335	45	14	-	-	25	8
Ealing	285	205	55	27	0	0	30	14
Enfield	225	160	40	25	-	-	15	11
Haringey	355	265	70	26	0	0	35	14
Harrow	125	90	35	38	0	0	15	17
Havering	145	115	45	39	-	-	10	9
Hillingdon	375	290	55	19	-	-	10	3
Hounslow	215	160	45	29	-	-	15	9
Kingston Upon Thames	65	45	20	39	0	0	0	0
Merton	100	75	25	31	0	0	10	12
Newham	525	400	110	27	10	2	35	9
Redbridge	125	85	20	22	-	-	5	8
Richmond Upon Thames	75	60	30	45	0	0	10	15
Sutton	110	95	20	23	-	-	20	23
Waltham Forest	290	190	60	32	-	-	20	10

CONTINUED

Numbers of children looked after at 30 September 2003 to 2005 who had been looked after continuously for at least twelve months, and general information on education

numbers and percentages

Local Authority	number looked after for at least twelve months	of these, number of school age	Of these: - children with a statement of SEN		- permanent exclusions from school ¹		- children who missed at least 25 days school ²	
			number	%	number	%	number	%
SOUTH EAST	5,430	4,350	1,280	29	60	1	520	12
Shire Counties								
Buckinghamshire	205	160	60	39	-	-	10	6
East Sussex	345	285	80	28	-	-	25	9
Hampshire	755	620	155	25	5	1	75	12
Kent	970	740	180	24	20	3	135	18
Oxfordshire	325	265	65	25	-	-	35	13
Surrey	570	460	135	30	10	2	35	8
West Sussex	495	400	160	41	15	3	60	15
Unitary Authorities								
Bracknell Forest	45	35	20	50	-	-	5	17
Brighton & Hove	285	230	90	39	-	-	15	7
Isle Of Wight	125	105	25	26	0	0	15	16
Medway Towns	265	205	60	29	0	0	10	6
Milton Keynes	165	120	35	30	-	-	15	11
Portsmouth	220	170	55	31	0	0	30	17
Reading	145	105	40	37	0	0	10	8
Slough	90	75	30	38	0	0	5	8
Southampton	250	225	30	13	-	-	20	8
West Berkshire	90	75	30	39	-	-	10	15
Windsor & Maidenhead	45	35	10	35	-	-	-	-
Wokingham	45	35	20	51	0	0	5	17
SOUTH WEST	3,360	2,710	900	33	20	1	300	11
Shire Counties								
Cornwall	385	300	105	35	-	-	10	3
Devon	425	360	145	40	5	2	50	14
Dorset	195	150	55	38	-	-	25	15
Gloucestershire	315	260	75	29	-	-	15	7
Isle of Scilly	-	-	-	-	0	0	0	0
Somerset	230	190	45	25	0	0	20	10
Wiltshire	195	155	45	31	0	0	20	14
Unitary Authorities								
Bath & North East Somerset	85	70	30	41	0	0	5	10
Bournemouth	125	115	40	37	-	-	10	10
Bristol	430	350	105	29	-	-	70	20
North Somerset	105	80	25	31	0	0	10	10
Plymouth	355	275	80	29	-	-	15	6
Poole	100	85	30	38	0	0	10	9
South Gloucestershire	105	85	35	43	-	-	15	18
Swindon	165	125	35	27	0	0	10	6
Torbay	145	110	40	37	-	-	15	13

1 Where a child was permanently excluded more than once in the previous school year, each occasion has been counted.

2 PAF Indicator C24: The percentage of children who had been looked after continuously for at least 12 months and were of school age, who missed a total of at least 25 days of schooling for any reason during the previous school year.

Local Authority	number looked after in year 2 old enough to sit Key Stage 1 teacher assessments	percentage attaining level 2 ¹ or above in teacher assessments					
		reading assessment		writing assessment		mathematics assessment	
		looked after	all children ²	looked after	all children ²	looked after	all children ²
ENGLAND	1,700	57.2	85	51.8	82	64.4	91
NORTH EAST	100	55	85	50	83	62	91
Shire Counties							
Durham	25	62	85	54	83	62	91
Northumberland	5	-	89	-	88	-	94
Unitary Authorities							
Darlington	10	-	86	-	83	-	91
Hartlepool	-	-	83	-	80	-	89
Middlesbrough	10	-	80	-	79	-	87
Redcar & Cleveland	-	-	85	-	82	-	90
Stockton On Tees	10	-	87	-	86	-	92
Metropolitan Districts							
Gateshead	-	-	85	0	82	0	91
Newcastle Upon Tyne	15	62	83	54	79	69	89
North Tyneside	10	-	86	-	83	-	91
South Tyneside	-	-	85	-	83	-	92
Sunderland	10	64	83	55	79	73	89
NORTH WEST	290	57	85	53	82	66	91
Shire Counties							
Cheshire	10	73	87	55	86	73	93
Cumbria	20	39	86	-	84	50	92
Lancashire	25	58	87	58	84	85	92
Unitary Authorities							
Blackburn With Darwen	5	-	83	-	79	-	89
Blackpool	5	-	84	-	80	-	89
Halton	-	-	82	-	80	-	88
Warrington	10	-	87	-	86	-	93
Metropolitan Districts							
Bolton	15	62	85	54	83	85	90
Bury	10	-	87	-	81	-	93
Knowsley	15	40	79	-	75	53	88
Liverpool	25	54	83	42	79	58	90
Manchester	35	61	77	61	73	58	84
Oldham	10	-	81	-	79	-	88
Rochdale	15	69	83	63	79	75	89
Salford	15	69	85	69	83	75	91
Sefton	-	-	86	-	83	-	92
St Helens	5	-	87	-	85	-	92
Stockport	10	-	86	-	83	-	92
Tameside	10	-	84	-	81	-	89
Trafford	-	-	89	-	87	-	93
Wigan	15	47	88	35	84	59	93
Wirral	20	67	88	67	86	71	93

CONTINUED

Eligibility and performance of looked after children in Key Stage 1 teacher assessments compared with all children, twelve months ending 30 September 2005

Local Authority	number looked after in year 2 old enough to sit Key Stage 1 teacher assessments	percentage attaining level 2 ¹ or above in teacher assessments					
		reading assessment		writing assessment		mathematics assessment	
		looked after	all children ²	looked after	all children ²	looked after	all children ²
YORKSHIRE & THE HUMBER	190	62	84	57	82	71	90
Shire Counties							
North Yorkshire	15	-	88	40	86	-	92
Unitary Authorities							
East Riding Of Yorkshire	10	-	88	-	84	-	92
Kingston Upon Hull	15	81	81	81	77	94	88
North East Lincolnshire	5	-	86	-	83	-	91
North Lincolnshire	-	-	85	-	82	-	90
York	-	-	87	-	82	-	91
Metropolitan Districts							
Barnsley	10	-	81	-	79	-	89
Bradford	30	67	82	60	80	80	88
Calderdale	10	-	86	-	83	-	92
Doncaster	10	-	85	-	83	-	92
Kirklees	10	-	86	-	84	-	92
Leeds	35	65	84	62	81	74	88
Rotherham	10	75	82	67	81	83	89
Sheffield	15	-	79	-	78	-	88
Wakefield	10	-	86	-	83	-	90
EAST MIDLANDS	110	52	86	45	84	55	92
Shire Counties							
Derbyshire	15	71	90	35	88	53	94
Leicestershire	-	-	88	-	86	-	93
Lincolnshire	20	47	87	42	84	53	92
Northamptonshire	15	64	88	57	87	64	93
Nottinghamshire	15	56	86	63	84	69	93
Unitary Authorities							
Derby	10	-	85	-	81	-	89
Leicester	15	79	79	79	75	86	87
Nottingham	15	-	76	-	72	-	85
Rutland	0	0	90	0	86	0	96

CONTINUED

Eligibility and performance of looked after children in Key Stage 1 teacher assessments compared with all children, twelve months ending 30 September 2005

Local Authority	number looked after in year 2 old enough to sit Key Stage 1 teacher assessments	percentage attaining level 2 ¹ or above in teacher assessments					
		reading assessment		writing assessment		mathematics assessment	
		looked after	all children ²	looked after	all children ²	looked after	all children ²
WEST MIDLANDS	210	57	84	55	81	67	90
Shire Counties							
Shropshire	-	-	88	-	86	-	92
Staffordshire	15	63	88	63	86	63	92
Warwickshire	10	-	88	-	86	-	92
Worcestershire	15	79	87	79	85	86	92
Unitary Authorities							
Herefordshire	10	-	87	-	82	-	92
Stoke-On-Trent	10	-	80	55	77	64	86
Telford & Wrekin	-	-	86	-	84	-	92
Metropolitan Districts							
Birmingham	65	67	79	58	76	72	87
Coventry	10	-	82	-	79	-	88
Dudley	20	42	83	47	80	58	89
Sandwell	20	38	78	43	72	52	84
Solihull	5	-	90	-	87	-	94
Walsall	10	50	82	58	80	83	89
Wolverhampton	10	-	83	-	78	-	87
EAST OF ENGLAND	180	57	87	51	84	60	92
Shire Counties							
Bedfordshire	15	71	90	64	88	64	94
Cambridgeshire	5	-	87	-	85	-	92
Essex	30	52	86	48	83	65	92
Hertfordshire	25	56	89	44	86	52	93
Norfolk	25	59	87	56	84	70	92
Suffolk	25	57	88	48	86	61	93
Unitary Authorities							
Luton	10	75	84	67	79	75	90
Peterborough	15	53	77	47	73	53	86
Southend	20	50	87	50	85	50	92
Thurrock	-	-	82	-	78	-	89

CONTINUED

Eligibility and performance of looked after children in Key Stage 1 teacher assessments compared with all children, twelve months ending 30 September 2005

Local Authority	number looked after in year 2 old enough to sit Key Stage 1 teacher assessments	percentage attaining level 2 ¹ or above in teacher assessments					
		reading assessment		writing assessment		mathematics assessment	
		looked after	all children ²	looked after	all children ²	looked after	all children ²
LONDON	300	54	83	49	79	61	89
Inner London							
Camden	10	-	81	-	78	-	88
City of London	0	0	85	0	81	0	100
Greenwich	10	-	77	-	73	-	86
Hackney	10	67	76	58	70	67	85
Hammersmith & Fulham	5	-	81	-	79	-	84
Islington	-	-	77	-	72	-	83
Kensington & Chelsea	5	-	80	-	79	-	89
Lambeth	10	55	78	55	73	73	84
Lewisham	15	44	79	38	76	50	86
Southwark	10	55	80	-	76	73	87
Tower Hamlets	15	53	81	53	78	47	87
Wandsworth	15	47	82	47	79	53	88
Westminster	10	50	82	50	83	50	91
Outer London							
Barking & Dagenham	10	-	84	-	83	-	92
Barnet	15	-	86	-	84	56	91
Bexley	5	-	86	-	84	-	92
Brent	5	-	81	-	78	-	87
Bromley	10	-	88	-	85	-	93
Croydon	10	-	85	-	82	-	91
Ealing	15	63	80	56	74	69	87
Enfield	10	50	81	-	77	58	88
Haringey	15	77	79	62	75	77	87
Harrow	-	-	87	-	84	-	93
Havering	10	-	92	-	89	-	95
Hillingdon	5	-	85	-	82	-	92
Hounslow	10	67	84	67	81	58	91
Kingston Upon Thames	-	-	88	-	87	-	95
Merton	-	-	82	-	77	-	90
Newham	15	47	75	35	72	59	86
Redbridge	-	-	86	-	85	-	90
Richmond Upon Thames	-	-	91	0	90	-	95
Sutton	-	-	88	-	85	-	93
Waltham Forest	10	-	82	-	79	-	88

CONTINUED

Eligibility and performance of looked after children in Key Stage 1 teacher assessments compared with all children, twelve months ending 30 September 2005

Local Authority	number looked after in year 2 old enough to sit Key Stage 1 teacher assessments	percentage attaining level 2 ¹ or above in teacher assessments					
		reading assessment		writing assessment		mathematics assessment	
		looked after	all children ²	looked after	all children ²	looked after	all children ²
SOUTH EAST	200	61	86	55	83	68	92
Shire Counties							
Buckinghamshire	10	-	89	-	87	-	93
East Sussex	20	63	84	37	81	63	91
Hampshire	35	62	88	57	86	70	93
Kent	35	50	83	36	79	67	90
Oxfordshire	-	-	84	-	82	-	91
Surrey	20	56	90	61	88	67	94
West Sussex	15	71	86	65	85	76	92
Unitary Authorities							
Bracknell Forest	-	-	87	-	86	-	93
Brighton & Hove	15	53	84	47	81	53	92
Isle Of Wight	-	-	89	-	87	-	95
Medway Towns	10	-	83	-	79	-	90
Milton Keynes	5	-	86	-	82	-	91
Portsmouth	10	-	83	-	82	-	93
Reading	10	-	80	-	76	-	89
Slough	-	-	86	-	84	-	92
Southampton	5	-	83	-	82	-	91
West Berkshire	-	-	86	-	83	-	92
Windsor & Maidenhead	-	-	87	-	85	-	93
Wokingham	-	0	91	0	88	0	94
SOUTH WEST	130	57	86	47	83	65	92
Shire Counties							
Cornwall	10	-	84	-	80	73	91
Devon	20	33	85	-	83	56	92
Dorset	5	-	88	-	86	-	93
Gloucestershire	10	73	89	55	87	64	94
Isle of Scilly	0	0	90	0	90	0	95
Somerset	5	-	84	-	83	-	91
Wiltshire	10	-	85	-	81	-	91
Unitary Authorities							
Bath & North East Somerset	-	-	90	-	89	-	94
Bournemouth	5	-	88	-	85	-	94
Bristol	15	69	80	63	77	69	87
North Somerset	5	-	86	-	83	-	92
Plymouth	15	79	83	64	82	71	91
Poole	-	-	85	-	86	-	93
South Gloucestershire	-	-	89	-	86	-	93
Swindon	5	-	86	-	83	-	91
Torbay	10	-	87	-	84	-	93

1 Target level for age group.

2 Source: DfES statistical first release 30/2005: 'National curriculum assessments of 7 year olds in England, 2005 (provisional)'. Includes all schools.

3

Eligibility and performance of looked after children in Key Stage 2 tasks and tests, compared with all children, twelve months ending 30 September 2005

Local Authority	number looked after in year 6 old enough to sit Key Stage 2 tasks and tests	percentage attaining level 4 ¹ or above in each task or test					
		English		Mathematics		Science	
		looked after	all children ²	looked after	all children ²	looked after	all children ²
ENGLAND	2,900	42.1	79	37.6	75	53.4	86
NORTH EAST	150	43	78	41	75	57	86
Shire Counties							
Durham	20	44	79	50	77	61	87
Northumberland	15	62	77	62	74	62	86
Unitary Authorities							
Darlington	10	-	79	-	77	-	87
Hartlepool	-	-	79	-	78	-	86
Middlesbrough	20	44	76	33	71	61	83
Redcar & Cleveland	-	-	78	-	76	-	86
Stockton On Tees	10	-	81	-	80	-	89
Metropolitan Districts							
Gateshead	10	-	78	-	77	-	88
Newcastle Upon Tyne	15	-	72	-	69	38	81
North Tyneside	10	-	81	-	77	-	88
South Tyneside	15	47	77	60	76	80	88
Sunderland	25	36	78	40	73	56	86
NORTH WEST	540	48	80	43	77	61	87
Shire Counties							
Cheshire	20	38	83	-	79	38	89
Cumbria	25	48	82	43	78	65	90
Lancashire	60	58	81	57	77	72	87
Unitary Authorities							
Blackburn With Darwen	25	57	73	35	72	74	82
Blackpool	15	-	73	43	74	50	86
Halton	15	54	78	62	73	62	87
Warrington	10	55	84	-	82	64	91
Metropolitan Districts							
Bolton	20	60	79	60	76	70	86
Bury	15	46	84	54	81	85	90
Knowsley	20	45	77	40	73	60	85
Liverpool	50	47	76	53	72	63	84
Manchester	70	51	72	39	70	58	82
Oldham	20	39	76	-	75	56	85
Rochdale	15	50	75	50	73	50	83
Salford	40	48	79	40	75	63	85
Sefton	15	47	84	47	81	60	91
St Helens	5	-	83	-	79	-	90
Stockport	20	40	83	35	80	50	89
Tameside	15	44	81	38	77	69	88
Trafford	10	-	87	-	83	58	92
Wigan	20	40	79	45	77	60	88
Wirral	35	49	81	32	76	54	87

CONTINUED

Eligibility and performance of looked after children in Key Stage 2 tasks and tests, compared with all children, twelve months ending 30 September 2005

Local Authority	number looked after in year 6 old enough to sit Key Stage 2 tasks and tests	percentage attaining level 4 ¹ or above in each task or test					
		English		Mathematics		Science	
		looked after	all children ²	looked after	all children ²	looked after	all children ²
YORKSHIRE & THE HUMBER	340	42	77	42	74	53	85
Shire Counties							
North Yorkshire	15	47	83	47	79	53	89
Unitary Authorities							
East Riding Of Yorkshire	10	-	83	-	78	-	89
Kingston Upon Hull	30	40	71	47	72	57	85
North East Lincolnshire	5	-	79	-	75	-	88
North Lincolnshire	15	-	79	-	75	54	86
York	10	-	81	-	78	-	88
Metropolitan Districts							
Barnsley	15	46	73	54	70	54	81
Bradford	40	37	73	39	68	54	79
Calderdale	15	-	81	46	77	46	88
Doncaster	20	-	78	-	74	44	87
Kirklees	15	-	77	-	73	44	85
Leeds	80	42	79	41	76	54	85
Rotherham	15	62	77	62	73	69	86
Sheffield	35	53	73	47	69	53	82
Wakefield	20	37	75	32	77	47	87
EAST MIDLANDS	210	34	78	28	75	45	86
Shire Counties							
Derbyshire	35	35	80	29	77	44	88
Leicestershire	20	33	80	-	75	29	87
Lincolnshire	25	26	80	30	75	37	87
Northamptonshire	25	35	81	30	75	39	87
Nottinghamshire	20	57	79	43	77	57	88
Unitary Authorities							
Derby	20	42	76	32	73	58	83
Leicester	35	26	68	21	67	53	80
Nottingham	30	28	66	28	67	45	79
Rutland	-	0	85	0	82	0	90

CONTINUED

Eligibility and performance of looked after children in Key Stage 2 tasks and tests, compared with all children, twelve months ending 30 September 2005

Local Authority	number looked after in year 6 old enough to sit Key Stage 2 tasks and tests	percentage attaining level 4 ¹ or above in each task or test					
		English		Mathematics		Science	
		looked after	all children ²	looked after	all children ²	looked after	all children ²
WEST MIDLANDS	350	37	77	30	73	48	86
Shire Counties							
Shropshire	10	-	81	-	77	-	90
Staffordshire	30	33	79	23	77	40	88
Warwickshire	15	-	82	-	78	47	89
Worcestershire	25	30	79	35	74	48	88
Unitary Authorities							
Herefordshire	10	-	81	-	75	55	88
Stoke-On-Trent	25	54	71	54	67	54	82
Telford & Wrekin	10	-	76	-	73	-	86
Metropolitan Districts							
Birmingham	95	37	74	29	70	52	83
Coventry	25	40	76	52	73	56	86
Dudley	25	42	79	38	73	50	85
Sandwell	20	41	72	-	66	59	80
Solihull	10	-	84	0	80	-	91
Walsall	40	37	77	24	70	42	83
Wolverhampton	15	-	74	-	68	-	82
EAST OF ENGLAND	310	43	80	38	75	55	87
Shire Counties							
Bedfordshire	15	46	80	-	74	54	86
Cambridgeshire	15	44	82	-	78	38	90
Essex	70	42	80	42	76	61	87
Hertfordshire	45	50	84	43	80	59	90
Norfolk	50	43	78	43	73	63	86
Suffolk	35	47	78	32	71	44	85
Unitary Authorities							
Luton	20	-	71	-	67	39	82
Peterborough	25	35	76	31	74	54	87
Southend	25	52	77	48	76	61	87
Thurrock	5	-	73	-	69	-	83

CONTINUED

Eligibility and performance of looked after children in Key Stage 2 tasks and tests, compared with all children, twelve months ending 30 September 2005

Local Authority	number looked after in year 6 old enough to sit Key Stage 2 tasks and tests	percentage attaining level 4 ¹ or above in each task or test					
		English		Mathematics		Science	
		looked after	all children ²	looked after	all children ²	looked after	all children ²
LONDON	470	47	79	40	74	55	85
Inner London							
Camden	15	-	79	-	73	46	86
City of London	0	0	83	0	74	0	96
Greenwich	25	52	73	39	68	48	81
Hackney	20	55	69	36	64	50	77
Hammersmith & Fulham	20	39	79	-	74	50	85
Islington	20	48	74	43	68	62	80
Kensington & Chelsea	10	82	84	-	81	64	90
Lambeth	15	41	76	41	68	53	82
Lewisham	20	33	77	33	72	48	84
Southwark	25	44	72	30	67	59	78
Tower Hamlets	15	-	77	-	76	54	85
Wandsworth	15	47	80	-	72	67	84
Westminster	10	-	81	-	76	50	85
Outer London							
Barking & Dagenham	10	58	75	50	70	58	85
Barnet	15	53	84	-	81	73	88
Bexley	15	35	80	41	74	65	85
Brent	15	67	78	53	73	73	79
Bromley	10	82	84	64	77	64	88
Croydon	20	39	78	-	72	56	82
Ealing	15	63	79	44	75	56	84
Enfield	15	57	77	43	73	64	85
Haringey	20	65	73	40	68	65	78
Harrow	10	-	82	-	78	-	87
Havering	10	-	85	-	81	-	90
Hillingdon	15	-	80	41	77	-	88
Hounslow	10	-	79	-	75	50	87
Kingston Upon Thames	0	0	86	0	82	0	89
Merton	-	-	78	-	74	-	85
Newham	40	32	75	37	72	34	84
Redbridge	5	-	83	-	79	-	88
Richmond Upon Thames	-	-	88	-	85	-	94
Sutton	10	64	83	64	78	91	89
Waltham Forest	15	-	73	-	69	46	81

CONTINUED

Eligibility and performance of looked after children in Key Stage 2 tasks and tests, compared with all children, twelve months ending 30 September 2005

Local Authority	number looked after in year 6 old enough to sit Key Stage 2 tasks and tests	percentage attaining level 4 ¹ or above in each task or test					
		English		Mathematics		Science	
		looked after	all children ²	looked after	all children ²	looked after	all children ²
SOUTH EAST	350	37	79	35	75	48	87
Shire Counties							
Buckinghamshire	10	58	84	50	79	50	89
East Sussex	30	47	78	43	75	50	86
Hampshire	50	42	82	31	78	46	90
Kent	55	25	76	27	71	44	84
Oxfordshire	20	47	80	37	74	58	87
Surrey	35	46	85	40	79	49	90
West Sussex	25	35	79	31	75	54	88
Unitary Authorities							
Bracknell Forest	-	-	82	-	77	-	89
Brighton & Hove	20	33	77	29	72	43	85
Isle Of Wight	10	-	76	-	69	-	86
Medway Towns	20	33	76	38	69	52	84
Milton Keynes	15	-	72	-	69	-	84
Portsmouth	15	-	75	38	68	44	83
Reading	10	-	76	-	72	-	85
Slough	-	-	76	-	69	-	81
Southampton	15	-	74	43	71	57	86
West Berkshire	-	0	81	-	75	-	87
Windsor & Maidenhead	-	-	85	-	79	-	90
Wokingham	-	-	85	-	82	-	90
SOUTH WEST	220	39	79	35	75	54	87
Shire Counties							
Cornwall	20	38	78	29	74	43	86
Devon	25	52	80	44	76	56	88
Dorset	10	-	82	-	78	-	90
Gloucestershire	35	53	83	41	78	85	91
Isle of Scilly	0	0	77	0	86	0	86
Somerset	10	-	77	-	74	-	87
Wiltshire	10	-	78	-	74	50	85
Unitary Authorities							
Bath & North East Somerset	5	-	84	-	80	-	89
Bournemouth	10	-	78	-	74	-	86
Bristol	30	23	70	30	67	40	80
North Somerset	5	-	85	-	79	-	91
Plymouth	20	45	77	50	75	65	87
Poole	-	-	79	-	76	-	89
South Gloucestershire	5	-	83	-	77	-	89
Swindon	10	-	76	-	75	73	87
Torbay	10	-	77	-	73	-	84

1 Target level for age group.

2 Source: DFES statistical first release 31/2005 'National curriculum assessments of 11 year olds in England, 2005 (Provisional)'. Includes all schools.

4

Eligibility and performance of looked after children in Key Stage 3 tasks and tests, compared with all children, twelve months ending 30 September 2005

Local Authority	number looked after in year 9 old enough to sit Key Stage 3 tasks and tests	percentage attaining level 5 ¹ or above in each task or test					
		English		Mathematics		Science	
		looked after	all children ²	looked after	all children ²	looked after	all children ²
ENGLAND	4,000	26.7	74	28.3	74	25.9	70
NORTH EAST	230	19	69	28	72	25	67
Shire Counties							
Durham	20	-	70	36	73	36	69
Northumberland	30	-	73	30	77	23	72
Unitary Authorities							
Darlington	10	-	73	-	73	-	67
Hartlepool	10	-	71	-	74	-	68
Middlesbrough	20	-	63	-	65	-	57
Redcar & Cleveland	15	-	66	-	70	-	67
Stockton On Tees	15	46	72	54	73	46	70
Metropolitan Districts							
Gateshead	25	-	70	35	73	-	70
Newcastle Upon Tyne	30	-	59	-	64	-	61
North Tyneside	10	0	73	-	76	0	69
South Tyneside	15	-	69	46	73	46	68
Sunderland	35	21	69	26	70	18	65
NORTH WEST	660	28	73	30	73	26	68
Shire Counties							
Cheshire	25	26	78	22	78	26	76
Cumbria	35	29	77	38	75	35	73
Lancashire	80	24	75	24	76	16	72
Unitary Authorities							
Blackburn With Darwen	20	-	67	-	69	-	63
Blackpool	15	-	65	-	66	-	61
Halton	10	-	72	-	71	-	67
Warrington	-	-	77	-	80	-	75
Metropolitan Districts							
Bolton	20	-	68	36	70	27	65
Bury	10	-	76	-	78	-	73
Knowsley	20	-	60	-	62	-	52
Liverpool	80	29	71	24	66	24	61
Manchester	95	23	58	37	60	25	49
Oldham	20	-	69	-	69	33	64
Rochdale	15	-	69	-	69	-	64
Salford	30	31	66	41	69	28	61
Sefton	20	-	78	-	76	-	72
St Helens	15	50	72	50	74	43	70
Stockport	25	-	76	33	78	-	72
Tameside	25	46	71	42	72	46	65
Trafford	25	-	81	26	81	-	77
Wigan	30	26	74	19	75	23	71
Wirral	40	56	77	51	74	44	70

CONTINUED

Eligibility and performance of looked after children in Key Stage 3 tasks and tests, compared with all children, twelve months ending 30 September 2005

Local Authority	number looked after in year 9 old enough to sit Key Stage 3 tasks and tests	percentage attaining level 5 ¹ or above in each task or test					
		English		Mathematics		Science	
		looked after	all children ²	looked after	all children ²	looked after	all children ²
YORKSHIRE & THE HUMBER	420	27	70	26	72	23	67
Shire Counties							
North Yorkshire	35	36	78	39	82	36	80
Unitary Authorities							
East Riding Of Yorkshire	20	-	79	-	78	-	75
Kingston Upon Hull	45	37	56	26	59	22	54
North East Lincolnshire	15	-	69	-	69	-	65
North Lincolnshire	10	-	70	-	74	-	71
York	5	-	79	-	80	-	76
Metropolitan Districts							
Barnsley	15	-	65	-	67	-	63
Bradford	50	22	63	26	65	22	59
Calderdale	5	-	76	-	74	-	71
Doncaster	30	21	69	21	70	21	66
Kirklees	20	-	71	-	71	-	66
Leeds	85	25	70	24	70	20	65
Rotherham	15	-	70	35	70	35	65
Sheffield	35	33	66	36	69	24	64
Wakefield	30	22	72	22	73	22	67
EAST MIDLANDS	250	28	74	28	74	31	71
Shire Counties							
Derbyshire	35	31	76	34	76	40	74
Leicestershire	25	35	83	35	81	26	80
Lincolnshire	30	28	78	-	78	25	76
Northamptonshire	35	-	73	18	75	-	71
Nottinghamshire	40	47	73	45	72	55	69
Unitary Authorities							
Derby	30	-	71	24	71	21	65
Leicester	30	19	65	19	65	-	58
Nottingham	30	28	57	28	60	45	53
Rutland	-	-	83	-	83	-	83

CONTINUED

Eligibility and performance of looked after children in Key Stage 3 tasks and tests, compared with all children, twelve months ending 30 September 2005

Local Authority	number looked after in year 9 old enough to sit Key Stage 3 tasks and tests	percentage attaining level 5 ¹ or above in each task or test					
		English		Mathematics		Science	
		looked after	all children ²	looked after	all children ²	looked after	all children ²
WEST MIDLANDS	490	25	73	25	72	21	68
Shire Counties							
Shropshire	10	-	80	-	81	-	80
Staffordshire	40	14	76	26	77	29	73
Warwickshire	25	26	77	26	77	22	74
Worcestershire	45	31	75	24	76	22	72
Unitary Authorities							
Herefordshire	20	37	79	37	77	47	73
Stoke-On-Trent	30	-	67	21	65	-	61
Telford & Wrekin	15	41	75	35	72	-	67
Metropolitan Districts							
Birmingham	125	33	69	28	67	22	61
Coventry	30	19	71	-	71	-	65
Dudley	30	32	74	32	73	21	69
Sandwell	30	-	63	22	61	19	55
Solihull	15	-	82	-	79	0	77
Walsall	35	24	69	21	67	24	61
Wolverhampton	30	23	67	20	68	-	59
EAST OF ENGLAND	380	28	77	32	76	30	73
Shire Counties							
Bedfordshire	30	28	74	45	76	41	71
Cambridgeshire	25	36	80	32	78	24	76
Essex	95	26	77	31	75	27	72
Hertfordshire	65	27	81	27	80	27	77
Norfolk	45	22	74	40	75	38	71
Suffolk	35	32	77	24	75	26	75
Unitary Authorities							
Luton	35	44	70	32	67	32	61
Peterborough	25	29	71	38	71	46	67
Southend	15	-	76	-	77	-	75
Thurrock	20	-	69	-	68	-	63

CONTINUED

Eligibility and performance of looked after children in Key Stage 3 tasks and tests, compared with all children, twelve months ending 30 September 2005

Local Authority	number looked after in year 9 old enough to sit Key Stage 3 tasks and tests	percentage attaining level 5 ¹ or above in each task or test					
		English		Mathematics		Science	
		looked after	all children ²	looked after	all children ²	looked after	all children ²
LONDON	730	27	73	28	71	24	65
Inner London							
Camden	20	35	75	45	71	45	66
City of London	0	0	0	0	0	0	0
Greenwich	45	-	65	-	64	-	56
Hackney	25	30	59	52	58	35	52
Hammersmith & Fulham	30	-	74	-	73	-	69
Islington	35	22	63	28	61	25	50
Kensington & Chelsea	10	-	81	-	77	-	72
Lambeth	40	26	71	29	65	26	60
Lewisham	40	38	63	33	64	24	59
Southwark	45	15	65	23	56	15	53
Tower Hamlets	20	-	65	-	61	-	51
Wandsworth	25	35	72	35	70	35	62
Westminster	15	-	73	-	69	-	65
Outer London							
Barking & Dagenham	25	42	66	46	66	54	61
Barnet	25	35	82	30	80	26	74
Bexley	20	-	76	-	74	-	69
Brent	20	42	72	42	72	-	63
Bromley	15	-	79	-	79	-	74
Croydon	35	19	74	33	71	33	66
Ealing	20	27	76	-	72	32	65
Enfield	15	-	71	-	72	-	64
Haringey	25	30	64	30	61	-	51
Harrow	10	-	81	-	78	-	73
Havering	10	-	80	-	81	-	76
Hillingdon	25	22	74	22	73	-	66
Hounslow	15	-	75	-	71	-	66
Kingston Upon Thames	5	-	79	-	82	-	79
Merton	10	-	74	-	71	-	62
Newham	50	16	66	16	65	18	55
Redbridge	5	-	82	-	80	-	76
Richmond Upon Thames	10	-	75	-	73	-	70
Sutton	15	-	85	-	83	-	81
Waltham Forest	25	27	73	-	67	-	59

Local Authority	number looked after in year 9 old enough to sit Key Stage 3 tasks and tests	percentage attaining level 5 ¹ or above in each task or test					
		English		Mathematics		Science	
		looked after	all children ²	looked after	all children ²	looked after	all children ²
SOUTH EAST	520	26	76	28	76	29	73
Shire Counties							
Buckinghamshire	20	-	82	-	81	-	79
East Sussex	30	28	74	31	74	-	68
Hampshire	70	25	77	31	78	31	76
Kent	95	26	74	26	75	26	72
Oxfordshire	35	24	76	24	77	24	74
Surrey	60	42	81	40	80	44	77
West Sussex	50	17	76	21	76	29	74
Unitary Authorities							
Bracknell Forest	-	-	81	-	79	-	77
Brighton & Hove	25	-	71	28	71	-	66
Isle Of Wight	15	-	65	-	72	-	68
Medway Towns	25	50	75	42	74	46	69
Milton Keynes	20	30	72	-	72	35	67
Portsmouth	15	-	68	-	65	-	59
Reading	10	-	71	-	69	-	62
Slough	10	-	81	-	79	-	72
Southampton	20	-	67	29	69	-	64
West Berkshire	10	-	79	-	82	-	79
Windsor & Maidenhead	-	-	82	-	82	-	78
Wokingham	-	0	85	-	83	0	78
SOUTH WEST	350	31	75	28	75	27	73
Shire Counties							
Cornwall	40	38	74	31	75	38	73
Devon	45	27	75	31	76	31	73
Dorset	20	-	78	-	78	-	78
Gloucestershire	25	29	79	-	79	33	77
Isle of Scilly	-	-	94	-	88	-	94
Somerset	30	31	75	31	76	31	74
Wiltshire	20	30	76	-	78	-	76
Unitary Authorities							
Bath & North East Somerset	10	-	79	-	81	-	79
Bournemouth	20	42	74	37	75	32	74
Bristol	50	20	60	24	58	18	52
North Somerset	10	-	78	-	77	-	73
Plymouth	30	30	69	30	72	27	70
Poole	15	-	81	-	79	-	80
South Gloucestershire	15	-	79	-	76	0	73
Swindon	10	-	70	-	70	-	69
Torbay	20	32	76	-	76	-	73

¹ Target level for age group.

² Source: DFES statistical first release 32/2005 'National curriculum assessments of 14 year olds in England, 2005'. Includes all schools.

5

GCSE (or equivalent) performance of looked after children in year 11 compared with all children, twelve months ending 30 September 2005

Local Authority	number looked after in year 11 old enough to sit GCSE or GNVQ exams	% who sat one of these exams	percentage obtaining at least:					
			1 GCSE at grade A* to G or a GNVQ		5 GCSE's (or equivalent) at grade A* to G		5 GCSE's (or equivalent) at grade A* to C	
			looked after	all children ¹	looked after	all children ¹	looked after	all children ¹
ENGLAND	4,700	64	60.2	96	40.7	89	10.8	56
NORTH EAST	200	68	67	96	45	88	11	54
Shire Counties								
Durham	30	77	73	97	43	88	-	51
Northumberland	15	57	57	96	43	91	0	59
Unitary Authorities								
Darlington	10	-	-	96	-	87	-	57
Hartlepool	5	-	-	95	-	90	-	52
Middlesbrough	15	47	47	93	-	83	-	45
Redcar & Cleveland	10	73	73	95	-	89	0	48
Stockton On Tees	10	73	73	96	-	88	-	55
Metropolitan Districts								
Gateshead	15	59	59	95	35	89	-	65
Newcastle Upon Tyne	20	68	68	94	45	83	-	52
North Tyneside	15	94	94	97	56	91	-	54
South Tyneside	10	91	91	95	73	86	-	52
Sunderland	30	66	66	97	50	89	-	52
NORTH WEST	680	64	60	96	39	89	11	54
Shire Counties								
Cheshire	30	78	75	97	63	92	-	60
Cumbria	45	63	59	96	39	90	13	57
Lancashire	85	67	51	97	38	91	8	56
Unitary Authorities								
Blackburn With Darwen	10	-	-	96	-	89	0	47
Blackpool	15	65	65	96	35	84	-	41
Halton	15	62	62	96	-	90	-	49
Warrington	10	73	73	97	55	93	-	61
Metropolitan Districts								
Bolton	20	56	44	96	39	90	-	49
Bury	15	56	56	98	44	95	-	58
Knowsley	15	67	67	92	40	81	-	44
Liverpool	60	54	54	93	38	83	11	49
Manchester	100	66	62	94	37	80	-	44
Oldham	20	55	50	96	41	89	-	52
Rochdale	20	82	82	96	64	88	-	49
Salford	40	56	54	94	34	85	22	45
Sefton	30	75	64	97	-	91	-	57
St Helens	15	43	-	95	-	88	-	56
Stockport	20	84	84	96	58	90	-	54
Tameside	15	67	67	97	-	91	-	52
Trafford	15	50	50	99	-	94	-	70
Wigan	35	59	56	98	44	92	18	52
Wirral	45	70	65	96	33	90	-	57

CONTINUED

GCSE (or equivalent) performance of looked after children in year 11 compared with all children, twelve months ending 30 September 2005

Local Authority	number looked after in year 11 old enough to sit GCSE or GNVQ exams	% who sat one of these exams	percentage obtaining at least:					
			1 GCSE at grade A* to G or a GNVQ		5 GCSE's (or equivalent) at grade A* to G		5 GCSE's (or equivalent) at grade A* to C	
			looked after	all children ¹	looked after	all children ¹	looked after	all children ¹
YORKSHIRE & THE HUMBER	450	63	60	96	41	88	10	51
Shire Counties								
North Yorkshire	25	88	72	98	52	92	-	62
Unitary Authorities								
East Riding Of Yorkshire	25	67	63	98	58	94	-	61
Kingston Upon Hull	25	56	52	93	44	79	-	44
North East Lincolnshire	15	54	54	94	46	86	-	42
North Lincolnshire	10	75	58	98	-	92	0	51
York	10	-	-	97	-	92	-	60
Metropolitan Districts								
Barnsley	15	62	62	97	-	88	-	45
Bradford	50	70	64	93	48	85	14	46
Calderdale	15	82	82	98	53	90	-	55
Doncaster	30	39	39	95	-	86	-	45
Kirklees	15	41	41	97	35	90	-	51
Leeds	100	64	64	95	39	86	14	49
Rotherham	30	68	65	95	29	87	-	49
Sheffield	45	63	57	94	37	86	-	47
Wakefield	35	55	55	97	45	90	-	56
EAST MIDLANDS	290	58	56	96	36	89	10	53
Shire Counties								
Derbyshire	40	51	49	98	37	93	-	55
Leicestershire	30	63	63	97	53	91	-	57
Lincolnshire	50	63	58	98	33	91	-	59
Northamptonshire	45	51	47	97	30	89	14	52
Nottinghamshire	45	57	57	96	39	89	-	47
Unitary Authorities								
Derby	30	62	62	97	45	90	-	54
Leicester	30	75	75	94	34	83	-	45
Nottingham	25	46	33	92	-	79	-	42
Rutland	0	0	0	99	0	95	0	66

Local Authority	number looked after in year 11 old enough to sit GCSE or GNVQ exams	% who sat one of these exams	percentage obtaining at least:					
			1 GCSE at grade A* to G or a GNVQ		5 GCSE's (or equivalent) at grade A* to G		5 GCSE's (or equivalent) at grade A* to C	
			looked after	all children ¹	looked after	all children ¹	looked after	all children ¹
WEST MIDLANDS	520	61	58	97	40	90	12	54
Shire Counties								
Shropshire	20	83	83	98	56	93	-	63
Staffordshire	45	55	55	97	30	91	-	54
Warwickshire	30	80	73	97	50	92	-	57
Worcestershire	35	50	47	98	44	91	24	56
Unitary Authorities								
Herefordshire	15	82	82	98	65	92	-	57
Stoke-On-Trent	25	63	58	97	38	89	25	48
Telford & Wrekin	10	-	-	96	-	89	0	54
Metropolitan Districts								
Birmingham	160	58	54	97	38	89	10	56
Coventry	30	62	59	96	38	87	-	46
Dudley	30	53	53	98	44	93	-	53
Sandwell	30	68	68	95	45	85	-	43
Solihull	25	52	48	97	32	92	-	64
Walsall	30	57	53	95	37	85	-	46
Wolverhampton	35	62	59	96	35	87	-	55
EAST OF ENGLAND	400	68	63	97	44	91	9	57
Shire Counties								
Bedfordshire	30	68	58	96	39	90	0	53
Cambridgeshire	25	52	52	97	44	93	-	59
Essex	100	60	59	96	40	90	8	56
Hertfordshire	80	83	72	97	49	92	11	61
Norfolk	40	64	56	97	36	91	-	52
Suffolk	40	69	67	98	44	92	21	58
Unitary Authorities								
Luton	25	69	65	97	54	89	-	50
Peterborough	25	70	70	96	43	88	0	54
Southend	20	68	68	95	63	89	-	61
Thurrock	20	65	60	98	40	91	-	49

CONTINUED

GCSE (or equivalent) performance of looked after children in year 11 compared with all children, twelve months ending 30 September 2005

Local Authority	number looked after in year 11 old enough to sit GCSE or GNVQ exams	% who sat one of these exams	percentage obtaining at least:					
			1 GCSE at grade A* to G or a GNVQ		5 GCSE's (or equivalent) at grade A* to G		5 GCSE's (or equivalent) at grade A* to C	
			looked after	all children ¹	looked after	all children ¹	looked after	all children ¹
LONDON	1,210	65	60	97	42	91	13	55
Inner London								
Camden	50	63	63	97	39	87	14	51
City of London	0	0	0	0	0	0	0	0
Greenwich	60	62	57	95	43	87	10	45
Hackney	35	68	62	96	47	87	18	47
Hammersmith & Fulham	40	58	55	97	38	91	15	59
Islington	50	76	70	96	48	85	14	44
Kensington & Chelsea	25	83	83	97	58	89	-	61
Lambeth	70	69	68	97	44	89	17	52
Lewisham	55	50	46	97	39	89	-	49
Southwark	70	59	59	96	41	88	14	47
Tower Hamlets	30	68	65	96	42	90	23	51
Wandsworth	30	69	69	96	45	87	-	54
Westminster	30	80	67	96	43	87	-	46
Outer London								
Barking & Dagenham	35	47	44	96	32	90	-	50
Barnet	35	69	69	97	51	91	20	63
Bexley	15	64	57	98	43	93	0	57
Brent	40	59	54	98	51	92	21	57
Bromley	30	53	53	98	31	92	-	64
Croydon	95	67	60	98	36	91	19	54
Ealing	45	53	53	98	42	93	-	59
Enfield	20	84	84	97	68	90	-	52
Haringey	55	60	58	95	40	85	12	48
Harrow	10	-	-	97	-	92	-	61
Havering	15	53	53	98	41	94	0	61
Hillingdon	75	61	58	96	36	88	-	51
Hounslow	25	67	67	97	41	92	0	58
Kingston Upon Thames	5	-	-	97	-	90	-	66
Merton	10	83	75	95	58	86	-	47
Newham	70	87	50	99	37	94	17	51
Redbridge	10	75	75	98	58	95	-	70
Richmond Upon Thames	15	73	73	96	40	90	-	55
Sutton	20	50	50	97	-	93	-	68
Waltham Forest	35	63	60	95	57	91	-	49

Local Authority	number looked after in year 11 old enough to sit GCSE or GNVQ exams	% who sat one of these exams	percentage obtaining at least:					
			1 GCSE at grade A* to G or a GNVQ		5 GCSE's (or equivalent) at grade A* to G		5 GCSE's (or equivalent) at grade A* to C	
			looked after	all children ¹	looked after	all children ¹	looked after	all children ¹
SOUTH EAST	660	63	61	97	39	91	8	58
Shire Counties								
Buckinghamshire	30	59	59	98	34	94	-	67
East Sussex	35	74	65	97	47	89	-	55
Hampshire	85	67	67	98	41	93	8	61
Kent	120	56	56	97	46	92	12	60
Oxfordshire	40	79	79	96	54	90	-	54
Surrey	65	69	62	97	31	91	14	61
West Sussex	80	60	58	97	35	91	-	56
Unitary Authorities								
Bracknell Forest	5	-	-	98	-	95	0	54
Brighton & Hove	35	65	65	97	32	88	-	55
Isle Of Wight	10	82	82	96	64	89	-	45
Medway Towns	25	74	56	98	41	92	-	52
Milton Keynes	15	35	35	98	-	92	-	52
Portsmouth	20	73	73	94	32	83	0	46
Reading	15	35	35	94	-	81	-	46
Slough	15	69	69	98	54	94	-	56
Southampton	20	65	60	96	30	86	0	47
West Berkshire	20	38	38	97	-	93	-	61
Windsor & Maidenhead	10	-	-	98	-	93	0	59
Wokingham	10	-	-	98	-	93	0	61
SOUTH WEST	350	66	61	97	41	91	12	56
Shire Counties								
Cornwall	30	68	68	97	45	91	-	56
Devon	50	78	73	98	45	91	-	56
Dorset	25	73	65	97	42	92	-	61
Gloucestershire	35	61	61	98	42	93	18	62
Isle of Scilly	-	-	-	96	-	96	0	79
Somerset	25	42	29	97	25	91	-	57
Wiltshire	20	61	39	97	33	92	-	58
Unitary Authorities								
Bath & North East Somerset	10	-	-	97	-	92	-	63
Bournemouth	15	82	76	96	47	88	-	52
Bristol	50	52	52	92	35	81	-	36
North Somerset	10	-	-	98	-	93	-	57
Plymouth	30	72	72	97	47	91	-	55
Poole	5	-	-	98	-	94	0	64
South Gloucestershire	15	73	73	97	47	93	-	55
Swindon	15	73	73	97	73	86	-	50
Torbay	15	69	46	98	-	89	-	53

¹ Source: DFES statistical bulletin: GCSE/GNVQ and GCE A/AS/VCE/Advanced GNVQ Examination Results 2004-05 - England. Issued January 2006 (Provisional). Includes all schools.

6

Education and employment status at 30 September 2005 of looked after children in Year 11 in 2004–05 school year, compared with all children

Local authority	Total number of looked after children in year 11 in 2004–05 school year	Total number of all children in year 11 in 2004–05 school year ¹	Position of children at 30 September 2005, shown as a percentage of total					
			In full-time education		In full/part time training or employment		Unemployment	
			looked after	All children ^{1,2}	looked after	All children ^{1,2}	looked after	All children ^{1,2}
ENGLAND	4,700	619,200	61.4	75.3	18.5	13.9	20.0	5.9
NORTH EAST	200	32,970	52	71	24	16	24	8
Shire Counties								
Durham	30	6,070	40	69	33	18	27	10
Northumberland	15	3,870	-	73	-	16	43	6
Unitary Authorities								
Darlington	10	1,275	-	75	-	15	-	6
Hartlepool	5	1,315	-	73	-	17	-	7
Middlesbrough	15	1,850	65	69	-	15	-	9
Redcar & Cleveland	10	2,040	-	71	-	19	-	7
Stockton On Tees	10	2,590	55	73	-	18	-	6
Metropolitan Districts								
Gateshead	15	2,400	-	70	-	15	47	10
Newcastle Upon Tyne	20	3,265	68	73	-	9	-	11
North Tyneside	15	2,350	75	73	-	15	0	8
South Tyneside	10	2,025	73	65	-	24	-	8
Sunderland	30	3,920	56	70	-	18	28	10
NORTH WEST	680	93,220	54	73	26	16	20	6
Shire Counties								
Cheshire	30	9,345	53	77	25	15	22	4
Cumbria	45	6,475	59	72	20	19	22	5
Lancashire	85	15,255	50	72	26	19	24	6
Unitary Authorities								
Blackburn With Darwen	10	2,095	-	72	-	18	-	6
Blackpool	15	1,880	65	66	35	21	0	6
Halton	15	1,670	77	74	-	17	-	5
Warrington	10	2,625	82	75	-	17	-	6
Metropolitan Districts								
Bolton	20	4,055	50	70	-	17	-	8
Bury	15	2,600	75	73	-	18	-	6
Knowsley	15	2,045	-	71	-	19	40	7
Liverpool	60	6,200	36	72	48	17	16	9
Manchester	100	5,210	61	71	24	12	15	8
Oldham	20	3,500	45	75	-	15	36	6
Rochdale	20	2,770	68	70	-	17	-	7
Salford	40	2,605	54	63	22	23	24	10
Sefton	30	3,985	75	76	-	16	-	6
St Helens	15	2,290	57	73	-	17	-	5
Stockport	20	3,685	37	73	47	18	-	6
Tameside	15	3,140	87	72	-	16	0	8
Trafford	15	2,985	69	81	-	10	-	6
Wigan	35	4,255	-	69	56	18	35	10
Wirral	45	4,550	56	75	14	17	30	5

Local authority	Total number of looked after children in year 11 in 2004–05 school year	Total number of all children in year 11 in 2004–05 school year ¹	Position of children at 30 September 2005, shown as a percentage of total					
			In full-time education		In full/part time training or employment		Unemployment	
			looked after	All children ^{1,2}	looked after	All children ^{1,2}	looked after	All children ^{1,2}
YORKSHIRE & THE HUMBER	450	64,450	51	71	25	17	23	7
Shire Counties								
North Yorkshire	25	7,535	40	78	48	15	-	3
Unitary Authorities								
East Riding Of Yorkshire	25	3,945	38	78	42	14	-	3
Kingston Upon Hull	25	3,285	59	65	22	18	-	11
North East Lincolnshire	15	2,265	46	75	-	13	-	6
North Lincolnshire	10	2,105	67	75	-	13	-	5
York	10	2,050	-	75	-	17	-	4
Metropolitan Districts								
Barnsley	15	2,615	69	63	-	20	-	12
Bradford	50	6,300	34	70	30	16	36	8
Calderdale	15	2,765	65	74	-	19	-	5
Doncaster	30	3,965	29	65	29	18	43	13
Kirklees	15	4,805	59	70	-	20	-	7
Leeds	100	8,860	51	69	26	18	23	7
Rotherham	30	3,705	65	68	29	18	-	10
Sheffield	45	6,015	57	68	17	20	26	8
Wakefield	35	4,230	73	66	-	21	-	9
EAST MIDLANDS	290	54,240	56	75	17	15	28	5
Shire Counties								
Derbyshire	40	8,965	59	74	-	19	32	4
Leicestershire	30	7,785	53	77	-	15	31	5
Lincolnshire	50	8,765	58	77	-	17	33	4
Northamptonshire	45	8,515	70	75	14	14	16	8
Nottinghamshire	45	9,840	52	73	34	17	14	5
Unitary Authorities								
Derby	30	3,110	59	72	28	20	-	4
Leicester	30	3,790	66	77	-	10	22	10
Nottingham	25	3,020	-	69	-	14	75	8
Rutland	0	455	0	84	0	14	0	1

Local authority	Total number of looked after children in year 11 in 2004–05 school year	Total number of all children in year 11 in 2004–05 school year ¹	Position of children at 30 September 2005, shown as a percentage of total					
			In full-time education		In full/part time training or employment		Unemployment	
			looked after	All children ^{1,2}	looked after	All children ^{1,2}	looked after	All children ^{1,2}
WEST MIDLANDS	520	69,400	59	74	18	14	23	7
Shire Counties								
Shropshire	20	3,500	50	75	-	19	-	4
Staffordshire	45	10,625	59	75	18	18	23	5
Warwickshire	30	6,550	60	78	-	16	23	4
Worcestershire	35	6,385	82	79	-	14	-	5
Unitary Authorities								
Herefordshire	15	2,025	82	73	-	20	0	5
Stoke-On-Trent	25	3,045	54	67	-	18	29	10
Telford & Wrekin	10	2,285	-	73	-	17	-	7
Metropolitan Districts								
Birmingham	160	12,050	43	69	23	10	35	9
Coventry	30	4,155	72	77	21	15	-	5
Dudley	30	4,240	66	74	22	16	-	7
Sandwell	30	3,770	68	70	-	16	19	10
Solihull	25	3,740	88	76	-	9	-	6
Walsall	30	3,840	70	71	-	15	-	9
Wolverhampton	35	3,190	47	75	24	13	29	8
EAST OF ENGLAND	400	68,790	62	77	18	12	20	6
Shire Counties								
Bedfordshire	30	4,820	42	83	26	10	32	5
Cambridgeshire	25	6,235	37	80	30	13	33	4
Essex	100	17,395	70	76	18	15	11	6
Hertfordshire	80	13,760	60	80	18	11	22	4
Norfolk	40	9,380	62	75	-	14	26	6
Suffolk	40	8,560	72	77	-	13	23	6
Unitary Authorities								
Luton	25	2,405	65	84	-	6	-	5
Peterborough	25	2,500	78	71	-	16	-	7
Southend	20	1,995	63	76	-	13	-	8
Thurrock	20	1,735	55	73	-	13	-	10

Local authority	Total number of looked after children in year 11 in 2004–05 school year	Total number of all children in year 11 in 2004–05 school year ¹	Position of children at 30 September 2005, shown as a percentage of total					
			In full-time education		In full/part time training or employment		Unemployment	
			looked after	All children ^{1,2}	looked after	All children ^{1,2}	looked after	All children ^{1,2}
LONDON	1,210	79,380	71	80	13	6	16	5
Inner London								
Camden	50	1,555	69	83	14	6	16	6
City of London	0	0	0	0	0	0	0	0
Greenwich	60	2,740	72	76	-	6	20	7
Hackney	35	1,925	53	73	38	6	-	5
Hammersmith & Fulham	40	1,200	65	77	-	5	25	10
Islington	50	1,475	62	72	20	9	18	9
Kensington & Chelsea	25	650	88	81	-	6	-	5
Lambeth	70	1,780	72	83	-	5	22	6
Lewisham	55	2,635	65	77	13	6	22	4
Southwark	70	2,615	70	85	17	6	13	5
Tower Hamlets	30	2,925	81	75	-	5	-	6
Wandsworth	30	2,075	76	86	-	5	-	4
Westminster	30	1,500	73	82	-	4	20	7
Outer London								
Barking & Dagenham	35	2,205	62	70	18	10	21	9
Barnet	35	3,335	74	89	-	4	-	3
Bexley	15	3,490	50	73	-	12	-	3
Brent	40	2,390	92	89	0	2	-	3
Bromley	30	3,665	53	81	31	8	-	4
Croydon	95	4,000	87	81	7	8	-	6
Ealing	45	2,760	60	86	-	3	30	5
Enfield	20	3,680	68	81	-	7	-	6
Haringey	55	2,115	70	82	-	5	25	7
Harrow	10	2,290	67	88	0	5	-	3
Havering	15	3,175	65	77	-	10	-	6
Hillingdon	75	3,050	78	78	-	9	18	9
Hounslow	25	2,800	70	84	-	6	26	5
Kingston Upon Thames	5	1,525	-	86	0	7	0	3
Merton	10	1,590	83	78	-	11	-	4
Newham	70	4,020	64	74	17	6	19	6
Redbridge	10	3,265	83	82	-	4	-	4
Richmond Upon Thames	15	1,595	73	85	-	7	-	5
Sutton	20	2,585	65	83	-	9	-	4
Waltham Forest	35	2,760	57	77	26	9	17	5

CONTINUED

Education and employment status at 30 September 2005 of looked after children in Year 11 in 2004–05 school year, compared with all children

Local authority	Total number of looked after children in year 11 in 2004–05 school year	Total number of all children in year 11 in 2004–05 school year ¹	Position of children at 30 September 2005, shown as a percentage of total					
			In full-time education		In full/part time training or employment		Unemployment	
			looked after	All children ^{1,2}	looked after	All children ^{1,2}	looked after	All children ^{1,2}
SOUTH EAST	660	94,960	67	78	14	10	19	5
Shire Counties								
Buckinghamshire	30	6,160	45	84	38	10	-	3
East Sussex	35	5,340	76	80	-	11	-	5
Hampshire	85	15,065	78	79	13	12	8	5
Kent	120	17,350	61	76	7	11	31	5
Oxfordshire	40	7,130	72	76	15	16	-	5
Surrey	65	10,705	62	81	15	12	23	4
West Sussex	80	8,570	81	82	8	9	12	3
Unitary Authorities								
Bracknell Forest	5	1,055	-	79	0	11	-	4
Brighton & Hove	35	2,420	62	77	18	12	21	7
Isle Of Wight	10	1,670	73	79	-	13	-	5
Medway Towns	25	3,575	70	70	-	13	-	7
Milton Keynes	15	2,790	41	76	41	14	-	7
Portsmouth	20	2,165	55	75	-	11	27	8
Reading	15	1,125	59	72	-	10	35	11
Slough	15	1,510	54	83	-	8	-	6
Southampton	20	2,620	60	72	-	13	30	10
West Berkshire	20	2,115	81	79	-	12	-	5
Windsor & Maidenhead	10	1,680	-	83	0	9	0	4
Wokingham	10	1,925	-	78	-	12	-	5
SOUTH WEST	350	61,740	59	76	24	14	17	4
Shire Counties								
Cornwall	30	6,655	52	79	-	12	35	4
Devon	50	8,635	71	75	12	17	18	4
Dorset	25	4,615	58	75	23	13	-	5
Gloucestershire	35	7,350	64	78	18	13	18	5
Isle of Scilly	-	25	-	100	0	0	0	0
Somerset	25	6,475	67	73	25	16	-	4
Wiltshire	20	5,270	78	78	-	13	-	4
Unitary Authorities								
Bath & North East Somerset	10	2,260	-	79	-	15	0	4
Bournemouth	15	1,935	71	72	-	13	-	7
Bristol	50	3,740	50	72	31	17	19	6
North Somerset	10	2,355	-	82	-	12	-	3
Plymouth	30	3,470	34	74	50	16	-	6
Poole	5	1,740	-	77	-	13	-	5
South Gloucestershire	15	3,180	60	75	-	17	-	5
Swindon	15	2,335	-	75	60	14	-	4
Torbay	15	1,695	54	79	-	11	-	4

1 Source: 'The Connexions/Careers Service Annual Activity Survey 2005'. Covers all young people who were in year 11 during the school year ending August 2005, and is based on a survey carried out during October 2005.

2 Percentages for 'all children' do not sum to 100 because the Connexions/Career service Survey included an additional category of 'moved away', 'no response', and 'refused to participate', which is not relevant to looked after children.

7

Offending by looked after children, twelve months ending 30 September 2005

Local Authority	looked after children			all children aged 10–17 in police force area ¹	PAF indicator C18 ²
	number aged 10 years or older during the year	number convicted or subject to a final warning/reprimand during the year	percentage convicted or subject to a final warning/reprimand during the year	percentage convicted or subject to a final warning/reprimand	
ENGLAND	30,400	2,800	9.3	3.7	2.5
NORTH EAST	1,500	180	12	6	2.0
Shire Counties					
Durham	185	20	12	4	3.2
Northumberland	165	25	15	7	2.3
Unitary Authorities					
Darlington	60	5	10	4	2.7
Hartlepool	50	5	13	5	3.0
Middlesbrough	105	-	-	5	-
Redcar & Cleveland	75	10	12	5	2.6
Stockton On Tees	90	5	8	5	1.8
Metropolitan Districts					
Gateshead	130	10	8	7	1.2
Newcastle Upon Tyne	205	20	10	7	1.5
North Tyneside	95	10	13	7	1.9
South Tyneside	120	20	18	7	2.7
Sunderland	215	40	18	7	2.6
NORTH WEST	5,040	500	10	5	2.2
Shire Counties					
Cheshire	250	30	12	3	4.2
Cumbria	270	40	14	5	3.1
Lancashire	630	70	11	4	2.6
Unitary Authorities					
Blackburn With Darwen	140	15	12	4	3.0
Blackpool	110	15	12	4	2.9
Halton	90	10	13	3	4.4
Warrington	80	10	10	3	3.3
Metropolitan Districts					
Bolton	155	10	8	5	1.6
Bury	130	5	5	5	1.1
Knowsley	125	20	15	4	3.3
Liverpool	490	30	6	4	1.3
Manchester	745	80	11	5	2.3
Oldham	165	15	10	5	2.1
Rochdale	130	5	5	5	1.1
Salford	315	40	12	5	2.6
Sefton	150	10	5	4	1.2
St Helens	105	10	10	4	2.3
Stockport	165	10	5	5	1.0
Tameside	155	10	7	5	1.5
Trafford	105	20	18	5	3.9
Wigan	205	25	11	5	2.3
Wirral	325	20	7	4	1.5

Local Authority	looked after children			all children aged 10–17 in police force area ¹	PAF indicator C18 ²
	number aged 10 years or older during the year	number convicted or subject to a final warning/reprimand during the year	percentage convicted or subject to a final warning/reprimand during the year	percentage convicted or subject to a final warning/reprimand	
YORKSHIRE & THE HUMBER	3,250	390	12	4	2.7
Shire Counties					
North Yorkshire	200	-	-	3	-
Unitary Authorities					
East Riding Of Yorkshire	135	10	8	4	1.9
Kingston Upon Hull	275	30	11	4	2.6
North East Lincolnshire	90	10	11	4	2.6
North Lincolnshire	90	10	12	4	2.8
York	75	-	-	3	-
Metropolitan Districts					
Barnsley	125	10	9	4	2.6
Bradford	405	55	14	5	2.8
Calderdale	100	25	23	5	4.6
Doncaster	215	20	9	4	2.4
Kirklees	130	20	15	5	3.1
Leeds	690	85	12	5	2.5
Rotherham	175	20	12	4	3.2
Sheffield	335	50	15	4	4.2
Wakefield	205	25	13	5	2.6
EAST MIDLANDS	1,870	200	10	3	3.1
Shire Counties					
Derbyshire	260	25	10	3	3.3
Leicestershire	185	30	16	4	4.2
Lincolnshire	260	20	7	3	2.5
Northamptonshire	290	25	8	2	5.4
Nottinghamshire	225	25	10	4	2.4
Unitary Authorities					
Derby	200	15	9	3	2.8
Leicester	235	30	12	4	3.2
Nottingham	210	30	14	4	3.4
Rutland	5	0	0	4	0.0

Local Authority	looked after children			all children aged 10–17 in police force area ¹	PAF indicator C18 ²
	number aged 10 years or older during the year	number convicted or subject to a final warning/reprimand during the year	percentage convicted or subject to a final warning/reprimand during the year	percentage convicted or subject to a final warning/reprimand	
WEST MIDLANDS	3,360	340	10	4	2.5
Shire Counties					
Shropshire	105	10	12	4	3.0
Staffordshire	300	35	11	4	3.1
Warwickshire	200	10	5	3	1.9
Worcestershire	230	20	8	4	2.1
Unitary Authorities					
Herefordshire	100	10	10	4	2.6
Stoke-On-Trent	200	25	13	4	3.7
Telford & Wrekin	100	15	16	4	4.3
Metropolitan Districts					
Birmingham	915	105	12	4	2.8
Coventry	240	30	13	4	3.0
Dudley	205	20	9	4	2.1
Sandwell	225	10	5	4	1.2
Solihull	130	5	5	4	1.1
Walsall	215	25	12	4	2.9
Wolverhampton	190	10	5	4	1.3
EAST OF ENGLAND	2,860	230	8	3	2.7
Shire Counties					
Bedfordshire	215	20	8	3	2.5
Cambridgeshire	185	10	7	3	2.4
Essex	650	40	6	3	2.1
Hertfordshire	515	55	10	3	3.6
Norfolk	365	35	9	3	3.1
Suffolk	300	35	12	5	2.6
Unitary Authorities					
Luton	215	15	7	3	1.9
Peterborough	180	10	7	3	2.4
Southend	145	5	5	3	1.7
Thurrock	90	-	-	3	-

Local Authority	looked after children			all children aged 10–17 in police force area ¹	PAF indicator C18 ²
	number aged 10 years or older during the year	number convicted or subject to a final warning/reprimand during the year	percentage convicted or subject to a final warning/reprimand during the year	percentage convicted or subject to a final warning/reprimand	
LONDON	6,210	350	6	3	1.7
Inner London					
Camden	195	15	7	3	2.1
City of London	5	0	0	3	0.0
Greenwich	285	15	5	3	1.5
Hackney	220	15	7	3	2.2
Hammersmith & Fulham	215	10	4	3	1.3
Islington	260	15	5	3	1.6
Kensington & Chelsea	125	10	9	3	2.7
Lambeth	335	15	5	3	1.6
Lewisham	305	10	3	3	1.0
Southwark	370	25	7	3	2.2
Tower Hamlets	165	5	4	3	1.3
Wandsworth	150	15	9	3	2.7
Westminster	145	5	5	3	1.5
Outer London					
Barking & Dagenham	200	10	4	3	1.2
Barnet	195	15	7	3	2.0
Bexley	110	10	8	3	2.5
Brent	200	10	4	3	1.2
Bromley	170	15	8	3	2.6
Croydon	360	10	3	3	1.0
Ealing	205	0	0	3	0.0
Enfield	150	-	-	3	-
Haringey	270	15	6	3	1.8
Harrow	95	5	7	3	2.3
Havering	95	10	11	3	3.3
Hillingdon	305	10	3	3	1.0
Hounslow	135	10	6	3	1.8
Kingston Upon Thames	45	-	-	3	-
Merton	70	5	10	3	3.0
Newham	370	20	6	3	1.8
Redbridge	90	10	10	3	3.1
Richmond Upon Thames	60	-	-	3	-
Sutton	95	10	9	3	2.9
Waltham Forest	210	20	10	3	3.1

Local Authority	looked after children			all children aged 10–17 in police force area ¹	PAF indicator C18 ²
	number aged 10 years or older during the year	number convicted or subject to a final warning/reprimand during the year	percentage convicted or subject to a final warning/reprimand during the year	percentage convicted or subject to a final warning/reprimand	
SOUTH EAST	3,890	390	10	3	3.2
Shire Counties					
Buckinghamshire	150	20	13	2	5.2
East Sussex	225	20	9	3	2.5
Hampshire	515	45	9	4	2.0
Kent	700	70	10	4	2.5
Oxfordshire	255	15	6	2	2.4
Surrey	430	35	8	3	2.8
West Sussex	370	40	11	3	3.1
Unitary Authorities					
Bracknell Forest	40	5	17	2	7.0
Brighton & Hove	200	15	8	3	2.3
Isle Of Wight	95	25	25	4	5.6
Medway Towns	180	15	8	4	2.2
Milton Keynes	115	10	7	2	2.8
Portsmouth	135	20	14	4	3.1
Reading	85	10	10	2	3.9
Slough	70	5	10	2	4.1
Southampton	175	25	15	4	3.3
West Berkshire	70	10	11	2	4.5
Windsor & Maidenhead	35	-	-	2	-
Wokingham	40	10	23	2	9.2
SOUTH WEST	2,400	250	10	3	3.7
Shire Counties					
Cornwall	275	25	9	3	2.8
Devon	320	35	10	3	3.3
Dorset	155	25	15	3	4.7
Gloucestershire	235	25	11	3	3.9
Isle of Scilly	-	0	0	3	0.0
Somerset	165	20	13	2	5.6
Wiltshire	130	15	10	3	3.3
Unitary Authorities					
Bath & North East Somerset	65	10	13	2	5.3
Bournemouth	95	10	8	3	2.6
Bristol	295	35	12	2	5.3
North Somerset	60	-	-	2	-
Plymouth	225	10	4	3	1.3
Poole	70	-	-	3	-
South Gloucestershire	90	10	9	2	3.8
Swindon	115	15	13	3	4.4
Torbay	95	15	13	3	4.2

1 Home Office source, figures for calendar year 2004.

2 The proportion of children (aged 10 or over) who had been looked after continuously for at least 12 months, who were convicted or given a final warning/reprimand during the year for an offence committed whilst they were looked after, expressed as a ratio of the proportion of all children and young people convicted or given a final warning/reprimand for an offence in the police force area.

Local Authority	number aged 5 years old or younger	number whose development assessments were up-to-date	% whose development assessments were up-to-date
ENGLAND	6,700	5,800	86.2
NORTH EAST	380	350	94
Shire Counties			
Durham	70	65	89
Northumberland	35	35	100
Unitary Authorities			
Darlington	25	25	100
Hartlepool	10	10	100
Middlesbrough	20	20	95
Redcar & Cleveland	5	-	-
Stockton On Tees	20	20	95
Metropolitan Districts			
Gateshead	20	20	100
Newcastle Upon Tyne	40	40	95
North Tyneside	25	25	100
South Tyneside	35	30	82
Sunderland	65	65	95
NORTH WEST	1,310	1,140	87
Shire Counties			
Cheshire	45	45	98
Cumbria	60	60	97
Lancashire	155	145	95
Unitary Authorities			
Blackburn With Darwen	35	35	92
Blackpool	50	45	96
Halton	10	10	100
Warrington	45	45	100
Metropolitan Districts			
Bolton	75	75	99
Bury	50	45	86
Knowsley	30	0	0
Liverpool	90	90	100
Manchester	150	100	65
Oldham	60	25	44
Rochdale	60	40	70
Salford	65	65	99
Sefton	25	20	84
St Helens	30	30	100
Stockport	25	25	96
Tameside	60	60	95
Trafford	25	25	100
Wigan	55	55	100
Wirral	95	90	94

Local Authority	number aged 5 years old or younger	number whose development assessments were up-to-date	% whose development assessments were up-to-date
YORKSHIRE & THE HUMBER	790	720	91
Shire Counties			
North Yorkshire	45	35	77
Unitary Authorities			
East Riding Of Yorkshire	45	45	100
Kingston Upon Hull	65	60	97
North East Lincolnshire	10	10	-
North Lincolnshire	20	20	100
York	15	15	100
Metropolitan Districts			
Barnsley	30	30	100
Bradford	110	105	96
Calderdale	30	30	91
Doncaster	40	40	100
Kirklees	45	40	95
Leeds	190	165	88
Rotherham	40	30	79
Sheffield	60	45	72
Wakefield	50	50	96
EAST MIDLANDS	480	390	81
Shire Counties			
Derbyshire	55	55	96
Leicestershire	35	30	88
Lincolnshire	100	75	74
Northamptonshire	60	30	48
Nottinghamshire	55	45	81
Unitary Authorities			
Derby	35	35	97
Leicester	75	70	97
Nottingham	65	55	83
Rutland	-	-	-

Local Authority	number aged 5 years old or younger	number whose development assessments were up-to-date	% whose development assessments were up-to-date
WEST MIDLANDS	900	690	77
Shire Counties			
Shropshire	5	-	-
Staffordshire	65	30	48
Warwickshire	65	65	97
Worcestershire	50	50	100
Unitary Authorities			
Herefordshire	10	10	-
Stoke-On-Trent	55	45	81
Telford & Wrekin	20	15	72
Metropolitan Districts			
Birmingham	250	180	71
Coventry	65	60	95
Dudley	70	50	72
Sandwell	110	55	49
Solihull	20	15	85
Walsall	65	65	100
Wolverhampton	55	55	96
EAST OF ENGLAND	670	560	84
Shire Counties			
Bedfordshire	40	35	88
Cambridgeshire	35	30	78
Essex	145	100	68
Hertfordshire	120	110	91
Norfolk	80	80	96
Suffolk	100	80	78
Unitary Authorities			
Luton	35	35	100
Peterborough	45	35	79
Southend	45	45	96
Thurrock	15	15	100

Local Authority	number aged 5 years old or younger	number whose development assessments were up-to-date	% whose development assessments were up-to-date
LONDON	1,070	960	90
Inner London			
Camden	30	25	82
City of London	0	0	0
Greenwich	35	15	42
Hackney	70	70	96
Hammersmith & Fulham	40	40	100
Islington	35	35	97
Kensington & Chelsea	25	25	100
Lambeth	55	45	81
Lewisham	45	35	74
Southwark	50	50	96
Tower Hamlets	40	40	98
Wandsworth	30	30	100
Westminster	30	30	97
Outer London			
Barking & Dagenham	30	30	100
Barnet	25	25	85
Bexley	10	10	-
Brent	30	25	78
Bromley	30	25	86
Croydon	45	45	100
Ealing	40	30	69
Enfield	40	40	100
Haringey	35	35	92
Harrow	20	10	67
Havering	20	20	100
Hillingdon	35	35	100
Hounslow	45	35	80
Kingston Upon Thames	10	10	-
Merton	10	10	-
Newham	75	65	91
Redbridge	25	25	96
Richmond Upon Thames	5	5	-
Sutton	5	5	-
Waltham Forest	45	45	100

Local Authority	number aged 5 years old or younger	number whose development assessments were up-to-date	% whose development assessments were up-to-date
SOUTH EAST	670	580	87
Shire Counties			
Buckinghamshire	20	20	82
East Sussex	40	40	98
Hampshire	100	60	57
Kent	140	125	89
Oxfordshire	30	30	90
Surrey	60	60	95
West Sussex	45	45	100
Unitary Authorities			
Bracknell Forest	-	-	-
Brighton & Hove	30	30	100
Isle Of Wight	10	10	100
Medway Towns	45	35	84
Milton Keynes	25	20	79
Portsmouth	45	45	100
Reading	20	20	86
Slough	10	10	-
Southampton	30	30	100
West Berkshire	-	-	-
Windsor & Maidenhead	5	5	-
Wokingham	0	0	0
SOUTH WEST	410	360	88
Shire Counties			
Cornwall	55	50	94
Devon	45	45	96
Dorset	15	15	100
Gloucestershire	35	30	94
Isle of Scilly	0	0	0
Somerset	35	30	83
Wiltshire	20	15	65
Unitary Authorities			
Bath & North East Somerset	5	5	-
Bournemouth	10	10	100
Bristol	60	45	78
North Somerset	20	20	100
Plymouth	60	45	77
Poole	5	5	-
South Gloucestershire	5	5	-
Swindon	20	20	100
Torbay	20	15	78

Local Authority	numbers				percentages			PAF Indicator C19' (average percentage)
	number looked after for at least one year	children whose immunisations were up to date	children who had their teeth checked by a dentist	children who had their annual health assessment	children whose immunisations were up to date	children who had their teeth checked by a dentist	children who had their annual health assessment	
ENGLAND	44,700	34,200	36,800	35,900	76	82	80	81.3
NORTH EAST Shire Counties	2,320	1,970	2,040	1,960	85	88	85	86.2
Durham	330	240	285	245	73	87	74	80.5
Northumberland	245	225	240	235	92	98	95	96.3
Unitary Authorities								
Darlington	115	95	100	105	85	87	94	90.3
Hartlepool	85	85	85	80	95	97	93	94.8
Middlesbrough	165	155	145	115	96	88	71	79.4
Redcar & Cleveland	90	65	55	55	74	64	63	63.1
Stockton On Tees	130	105	115	115	79	89	88	88.5
Metropolitan Districts								
Gateshead	175	150	160	170	86	92	98	94.9
Newcastle Upon Tyne	315	270	255	255	85	81	81	80.8
North Tyneside	145	130	120	135	89	81	91	86.0
South Tyneside	185	145	165	150	77	88	82	84.7
Sunderland	335	310	315	300	91	94	88	91.1
NORTH WEST Shire Counties	7,820	6,100	6,470	6,410	78	83	82	82.4
Cheshire	360	350	335	320	97	93	88	90.4
Cumbria	410	300	315	350	74	77	86	81.9
Lancashire	945	795	805	805	84	85	85	85.4
Unitary Authorities								
Blackburn With Darwen	220	205	175	180	94	79	82	80.5
Blackpool	190	160	155	135	83	81	70	75.5
Halton	125	115	120	110	92	96	90	92.7
Warrington	155	130	155	140	82	99	89	93.6
Metropolitan Districts								
Bolton	290	240	245	240	82	85	83	83.8
Bury	225	135	185	195	60	83	88	85.2
Knowsley	195	185	190	190	96	98	98	97.9
Liverpool	730	580	690	645	80	94	89	91.5
Manchester	1,065	540	825	725	51	77	68	72.5
Oldham	275	145	150	170	53	55	63	59.0
Rochdale	250	215	160	195	85	63	77	70.0
Salford	455	340	400	395	75	87	86	86.7
Sefton	210	200	170	185	94	80	88	84.2
St Helens	175	170	150	155	99	86	90	87.9
Stockport	260	240	235	240	92	89	92	90.5
Tameside	280	225	260	260	80	93	92	92.3
Trafford	150	145	145	150	96	97	100	98.4
Wigan	320	300	280	165	94	88	52	70.1
Wirral	535	385	335	455	72	63	86	74.3

Local Authority	numbers				percentages			PAF Indicator C19 ¹ (average percentage)
	number looked after for at least one year	children whose immunisations were up to date	children who had their teeth checked by a dentist	children who had their annual health assessment	children whose immunisations were up to date	children who had their teeth checked by a dentist	children who had their annual health assessment	
YORKSHIRE & THE HUMBER	4,880	3,570	3,670	3,880	73	75	80	77.3
Shire Counties								
North Yorkshire	300	280	250	245	92	83	81	82.3
Unitary Authorities								
East Riding Of Yorkshire	215	145	180	205	68	85	95	90.0
Kingston Upon Hull	400	215	285	355	54	72	89	80.0
North East Lincolnshire	125	110	120	120	88	97	98	97.2
North Lincolnshire	135	105	110	120	77	81	89	85.3
York	105	95	90	80	87	86	76	80.8
Metropolitan Districts								
Barnsley	190	160	175	150	84	92	80	86.1
Bradford	650	580	480	600	89	74	92	83.3
Calderdale	165	115	145	145	69	86	87	86.5
Doncaster	295	210	200	215	71	68	72	70.4
Kirklees	215	190	190	195	88	89	91	90.0
Leeds	1,060	685	740	810	65	70	76	73.0
Rotherham	270	155	160	170	57	58	62	60.1
Sheffield	450	240	285	230	53	63	51	56.9
Wakefield	305	285	255	245	95	83	81	82.2
EAST MIDLANDS	2,820	2,050	2,220	2,360	73	79	84	81.3
Shire Counties								
Derbyshire	390	325	320	320	83	82	82	82.1
Leicestershire	250	200	210	200	80	84	79	81.5
Lincolnshire	440	370	365	385	85	83	88	85.3
Northamptonshire	410	235	270	340	57	66	84	74.7
Nottinghamshire	335	275	270	270	83	82	82	81.7
Unitary Authorities								
Derby	285	255	250	255	89	87	89	88.1
Leicester	370	350	305	285	95	82	77	79.6
Nottingham	330	30	225	295	9	68	89	78.5
Rutland	10	10	10	10	-	-	-	-

Local Authority	numbers				percentages			PAF Indicator C19' (average percentage)
	number looked after for at least one year	children whose immunisations were up to date	children who had their teeth checked by a dentist	children who had their annual health assessment	children whose immunisations were up to date	children who had their teeth checked by a dentist	children who had their annual health assessment	
WEST MIDLANDS	5,200	3,990	4,230	3,800	77	81	73	77.2
Shire Counties								
Shropshire	125	105	110	110	86	86	90	88.0
Staffordshire	440	255	330	335	58	75	77	75.6
Warwickshire	325	310	300	240	95	91	74	82.5
Worcestershire	350	345	305	270	99	87	77	81.7
Unitary Authorities								
Herefordshire	135	120	130	115	90	96	85	90.7
Stoke-On-Trent	305	275	255	235	90	83	77	80.2
Telford & Wrekin	145	90	130	110	64	90	76	83.2
Metropolitan Districts								
Birmingham	1,430	975	1,265	970	68	88	68	78.2
Coventry	370	320	315	315	86	85	84	84.7
Dudley	345	250	240	255	72	70	73	71.6
Sandwell	420	265	190	200	63	46	48	47.0
Solihull	175	75	155	125	44	89	72	80.2
Walsall	350	330	315	310	94	89	89	88.8
Wolverhampton	290	265	205	205	92	71	72	71.1
EAST OF ENGLAND	4,340	3,520	3,460	3,340	81	80	77	78.5
Shire Counties								
Bedfordshire	315	275	255	250	88	82	80	81.0
Cambridgeshire	255	100	145	190	39	57	75	65.6
Essex	965	725	670	670	75	69	69	69.2
Hertfordshire	770	670	630	590	87	82	77	79.3
Norfolk	575	525	490	450	92	85	78	81.7
Suffolk	500	410	440	435	82	88	87	87.5
Unitary Authorities								
Luton	305	255	285	245	84	94	79	86.6
Peterborough	280	245	225	235	89	82	85	83.5
Southend	245	180	195	150	73	81	61	71.0
Thurrock	130	130	125	130	100	95	97	96.2

Local Authority	numbers				percentages			PAF Indicator C19 ¹ (average percentage)
	number looked after for at least one year	children whose immunisations were up to date	children who had their teeth checked by a dentist	children who had their annual health assessment	children whose immunisations were up to date	children who had their teeth checked by a dentist	children who had their annual health assessment	
LONDON	8,520	6,180	7,190	7,170	73	84	84	84.3
Inner London								
Camden	255	220	220	210	87	86	83	84.4
City of London	5	-	5	5	-	-	-	-
Greenwich	370	175	340	330	47	92	89	90.2
Hackney	355	285	300	285	80	86	81	83.1
Hammersmith & Fulham	285	105	225	265	37	79	93	85.9
Islington	340	320	315	320	93	92	94	92.7
Kensington & Chelsea	170	145	155	150	84	90	88	88.8
Lambeth	450	200	360	370	45	80	82	81.1
Lewisham	405	255	335	315	63	82	78	80.2
Southwark	495	485	395	405	98	80	82	81.2
Tower Hamlets	260	140	210	225	53	81	85	83.0
Wandsworth	245	175	190	240	71	78	97	87.8
Westminster	215	145	175	170	68	82	80	80.8
Outer London								
Barking & Dagenham	260	150	245	255	58	96	99	97.3
Barnet	285	265	175	150	93	61	52	56.3
Bexley	145	135	135	130	94	92	92	92.0
Brent	280	185	205	215	67	73	77	75.4
Bromley	235	175	175	170	74	74	72	73.1
Croydon	455	415	420	385	91	92	84	88.1
Ealing	285	165	240	240	58	84	85	84.2
Enfield	225	165	170	180	75	77	82	79.1
Haringey	355	260	285	285	73	80	80	80.2
Harrow	125	70	105	100	59	87	82	84.6
Havering	145	140	135	125	98	95	86	90.6
Hillingdon	375	340	335	315	90	89	83	86.1
Hounslow	215	185	185	180	86	85	84	84.4
Kingston Upon Thames	65	60	60	50	95	94	83	88.1
Merton	100	70	85	60	70	87	61	74.0
Newham	525	325	500	500	62	96	95	95.5
Redbridge	125	105	105	110	84	85	88	86.4
Richmond Upon Thames	75	70	70	70	90	91	90	90.3
Sutton	110	90	95	105	82	90	97	93.5
Waltham Forest	290	155	230	250	54	80	86	82.9

Local Authority	numbers				percentages			PAF Indicator C19 ¹ (average percentage)
	number looked after for at least one year	children whose immunisations were up to date	children who had their teeth checked by a dentist	children who had their annual health assessment	children whose immunisations were up to date	children who had their teeth checked by a dentist	children who had their annual health assessment	
SOUTH EAST Shire Counties	5,430	4,100	4,680	4,200	75	86	77	81.8
Buckinghamshire	205	165	180	150	79	86	72	79.2
East Sussex	345	330	320	290	96	93	85	89.2
Hampshire	755	265	670	650	35	89	86	87.3
Kent	970	565	790	605	58	82	62	72.1
Oxfordshire	325	290	250	235	89	77	72	74.7
Surrey	570	485	500	440	85	88	77	82.3
West Sussex	495	470	470	360	96	96	73	84.2
Unitary Authorities								
Bracknell Forest	45	30	40	40	66	87	85	86.2
Brighton & Hove	285	270	225	235	96	79	84	81.4
Isle Of Wight	125	110	100	105	90	80	84	82.1
Medway Towns	265	225	225	205	84	85	78	81.2
Milton Keynes	165	150	135	130	92	82	79	80.9
Portsmouth	220	150	195	195	69	89	90	89.3
Reading	145	135	120	125	93	83	87	84.6
Slough	90	90	80	80	97	86	88	86.8
Southampton	250	210	220	220	85	89	88	88.3
West Berkshire	90	80	85	60	88	93	68	80.6
Windsor & Maidenhead	45	45	45	45	100	94	96	94.7
Wokingham	45	30	35	30	68	80	68	73.9
SOUTH WEST Shire Counties	3,360	2,720	2,820	2,740	81	84	81	82.6
Cornwall	385	245	315	315	63	82	82	82.0
Devon	425	325	335	335	77	78	78	78.2
Dorset	195	190	165	140	96	85	72	78.4
Gloucestershire	315	215	255	255	68	80	81	80.5
Isle of Scilly	-	0	-	-	0	-	-	-
Somerset	230	180	195	195	77	84	83	83.6
Wiltshire	195	155	150	140	78	77	72	74.1
Unitary Authorities								
Bath & North East Somerset	85	60	70	65	73	81	79	79.8
Bournemouth	125	115	115	120	92	89	93	90.9
Bristol	430	390	360	345	90	84	80	81.9
North Somerset	105	85	100	100	83	94	96	95.2
Plymouth	355	335	305	290	94	86	81	83.8
Poole	100	90	90	95	90	90	95	92.3
South Gloucestershire	105	60	95	100	56	93	96	94.7
Swindon	165	140	150	145	86	93	88	90.5
Torbay	145	140	125	100	99	87	69	78.0

1 The average of the percentages of children looked after at 30 September who had been looked after continuously for at least 12 months, who had their teeth checked by a dentist during the previous 12 months, and had an annual health assessment during the previous 12 months.

TECHNICAL NOTES

Coverage of OC2

The Table below specifies the subset of children captured by each of the OC2's data items.

Twelve month data period

The data collected cover young people looked after at 30 September 2005 in England who had been looked after continuously for at least twelve months, defined as the period from 1 October to the following 30 September inclusive. This departs from the Department's other collections of children's personal social services data, which use a 'year' based on the period ending 31 March. The data period used for the OC2 was designed to accommodate the school year.

Boundaries of authorities

As explained in section 2 of this Commentary, some young people covered by the OC2 will have attended

schools outside the boundaries of their home local authority social services department. Hence caution must be used when comparing educational data collected on OC2, with that for all children collected.

ROUNDING AND SUPPRESSION OF VERY SMALL NUMBERS

To ensure that no individual can be identified from statistical Tables, similar conventions from last year have again been used in this publication for the rounding and suppression of very small numbers.

National Tables A-F

For this reason, all **numbers** which appear in the national summary Tables (Tables A to F) have been rounded to the nearest 100 if they exceed 1,000, and to the nearest 10 otherwise. Numbers from 1 to 5 inclusive have been suppressed, being replaced in the Table by a hyphen. Where any number is shown as zero (0) the original figure submitted was also zero.

TABLE 1.1:
Coverage of each OC2 Data Item, period ending 30 September 2005

Data item On OC2	Definition	Which children were included?
1	Scope of OC2	All children who were looked after on 30 September and on that date had been looked after continuously for at least a year.
<i>Items 2 - 8 are subsets of item 1:</i>		
2	Total eligible for schooling	Children whose date of birth in range 1/9/88 to 31/8/00
3	Key stage 1	Children eligible for school year 2, i.e. whose date of birth in range 1/9/97 to 31/8/98
4	Key stage 2	Children eligible for school year 6, i.e. whose date of birth in range 1/9/93 to 31/8/94
5	Key stage 3	Children eligible for school year 9, i.e. whose date of birth in range 1/9/90 to 31/8/91
6	GCSEs and GNVQs	Children eligible for school year 11, i.e. whose date of birth in range 1/9/88 to 31/8/89
7	Offending	Children aged 10 or over at 30 September, i.e. whose date of birth is 30/9/95 or earlier
8	Development Assessments	Children aged 5 years or younger at 30 September, i.e. whose date of birth is 01/10/99 or greater
9	Immunisations	All children covered by OC2 return, i.e. all children who were looked after on 30 September and had been looked after continuously for at least a year. (This is the same as item 1).
10	Dental checks	
11	Health Assessments	
12	Employment/ school status at 30 Sept 2005	Children eligible for school year 11, i.e. whose date of birth in range 1/9/88 to 31/8/89. (This is the same as Item 6).

All **percentages** at national level have been rounded to 1 decimal place. Wherever the numerator is 5 or less or the denominator is 10 or less of the underlying numbers from which a percentage has been calculated, the percentage has been suppressed and replaced by a hyphen. Where any percentage is shown as zero (0) either both the original figures from which it has been calculated were zero or the numerator was zero and the denominator is over 10.

Local Tables 1–9

At local authority level (Tables 1 - 9) the England total **numbers** at the head of each Table have been rounded either to the nearest 10 or 100, following the rule outlined above.

All other numbers at local authority level have been rounded to the nearest five, and numbers from 1 to 5 inclusive have been suppressed, being replaced in the published Tables by a hyphen. Where any number is shown as zero (0), the original figure submitted was also zero.

In local authority tables the England total **percentages** at the head of each Table have been rounded to 1 decimal place, following the rule outlined above.

Ratios and PAF indicators have been expressed to one decimal place. Where percentage figures from other sources (e.g. DfES) have been quoted, they have been left in the form in which they were originally published.

In tables which include time series, this rounding convention has been applied to data for previous years for the sake of consistency.

Suppression of other numbers

It has also been necessary to suppress other figures whenever it would be possible to calculate the value of a suppressed number by means of simple arithmetic. The rule applied in these circumstances has been to suppress the next smallest data item.

Symbols used

The following symbols have been used in the Tables:

0 zero

- Small number suppressed to preserve confidentiality. Normally this will be a number between 1 and 5 inclusive, or a percentage where either the numerator is between 1 and 5 or the denominator is between 1 and 10 inclusive.

.. Not available

. Not applicable

TABLE 1.2:
Examples of the rounding conventions used in this publication:

Actual Number	Numbers at England level, as shown in tables	Numbers at local council level, as shown in tables
0	0	0
1	-	-
2	-	-
3	-	-
4	-	-
5	-	-
6	10	5
7	10	5
8	10	10
9	10	10
10	10	10
11	10	10
12	10	10
13	10	15
14	10	15
15	20	15
16	20	15
17	20	15
18	20	20
19	20	20
20	20	20
120	120	120
124	120	125
125	130	125
126	130	125
994	990	995
995	1,000	995
999	1,000	1,000
1,949	1,900	1,950
1,950	2,000	1,950
1,955	2,000	1,955
1,956	2,000	1,955
1,957	2,000	1,955
1,958	2,000	1,960

Figures on the Internet

The department of Education and Skills's website contains a copy of this publication with all the tables in a suitable format for downloading. They can be found at the web address below.

http://www.dfes.gov.uk/cgi-bin/rsgateway/search.pl?cat=3&subcat=3_1&q1=search

Further enquiries

Further enquiries concerning the statistics contained in this report should be addressed to:

Natalie Corke
Department of Education and skills
DSG S1, Area 6P
Sanctuary Buildings
Great Smith Street
London SW1 3BT

Telephone 020 7925 7482

child.stats@dfes.gsi.gov.uk

© Crown copyright 2006.

Appendix

CHILDREN'S SOCIAL SERVICES

Statistical First Release: Children Looked After in England (including adoptions and care leavers), 2004–05

<http://www.dfes.gov.uk/rsgateway/DB/SFR/s000615/index.shtml>

Statistical Volume: Children Looked After by Local Authorities, Year Ending 31 March 2005.

<http://www.dfes.gov.uk/rsgateway/DB/VOL/v000646/index.shtml>

Referrals, Assessments and Children and Young People on Child Protection Registers: Year Ending 31 March 2005

<http://www.dfes.gov.uk/rsgateway/DB/VOL/v000632/index.shtml>

Children Accommodated in Secure Children's Homes (formerly Secure Units), year ending 31 March 2005: England and Wales

<http://www.dfes.gov.uk/rsgateway/DB/SFR/s000593/index.shtml>

Children in Need in England: Results of a survey of activity and expenditure as reported by Local Authority Social Services' Children and Families Teams for a survey week in February 2005: Local Authority tables and further national analysis

<http://www.dfes.gov.uk/rsgateway/DB/VOL/v000647/index.shtml>

Social Services Performance Assessment Framework Indicators 2004–2005

http://www.csci.org.uk/council_performance/paf/paf_reports.htm

