



Scottish Funding Council

Promoting further and higher education

## **An Official Statistics Publication for Scotland**

### **Participation Rates for Entrants to Scottish Higher Education**

Statistics Theme and Subtheme: Education and Training

29 March 2012

Photo redacted due to third party rights or other legal issues

### **Contact information**

For further information please contact:

Helen Storkey or Natalie Nicholls

Tel: 0131 313 6616, email: [hstorkey@sfc.ac.uk](mailto:hstorkey@sfc.ac.uk)

Tel: 0131 313 6615, email: [nnicholls@sfc.ac.uk](mailto:nnicholls@sfc.ac.uk)

Scottish Funding Council

Donaldson House

97 Haymarket Terrace

Edinburgh

EH12 5HD

This report is published electronically and can be downloaded from the reports and publications section of the Scottish Funding Council's website: [http://www.sfc.ac.uk/reports\\_publications.aspx](http://www.sfc.ac.uk/reports_publications.aspx).

## Contents:

Key points.....	4
1. Introduction and background .....	6
2. Methodological notes .....	6
Data sources, coverage and definition of ‘entrants’ .....	6
Scottish YPR .....	7
Scottish Higher Education Initial Participation Rate (HEIPR) .....	8
Analysis by local authority .....	9
Entrants from deprived areas of Scotland .....	9
Level of study .....	9
3. Higher Education Initial Participation Rate (HEIPR).....	11
HEIPR in Scotland compared to HEIPR in England .....	16
4. Young Participation Rate (YPR).....	19
5. Differences in trends between YPR and API .....	23

## Tables Index:

<b>Table 1.</b> Higher Education Initial Participation Rate (HEIPR) by gender and mode of study 2006-07 to 2010-11 .....	11
<b>Table 2.</b> HEIPR calculation, 2009-10 and 2010-11 .....	12
<b>Table 3.</b> HEIPR by level of study: 2006-07 to 2010-11 .....	12
<b>Table 4.</b> HEIPR by institution type: 2006-07 to 2010-11 .....	13
<b>Table 5.</b> HEIPR by deprivation <sup>1</sup> : 2006-07 to 2010-11 .....	13
<b>Table 6.</b> Local Authority <sup>1</sup> total HEIPR and by institution type: 2010-11 ....	15
<b>Table 7.</b> Higher Education Initial Participation Rate (HEIPR) for <b>English domiciled</b> first time participants in Higher Education Courses at UK higher education institutions and English, Welsh and Scottish further education colleges: 2006/07 to 2009/10 .....	16
<b>Table 8.</b> YPR by gender: 2006 to 2010 Cohort .....	19
<b>Table 9.</b> YPR by mode of study: 2006 to 2010 Cohort.....	19
<b>Table 10.</b> YPR by level of study: 2006 to 2010 Cohort .....	20
<b>Table 11.</b> YPR by institution type: 2006 to 2010 Cohort .....	20
<b>Table 12.</b> YPR by institution type: 2010 cohort by Local Authority .....	21

## Figures Index:

<b>Figure 1.</b> Scotland level API, HEIPR and YPR, four year trends.....	5
<b>Figure 2.</b> HEIPR: England and Scotland 2006-07 to 2009-10.....	17
<b>Figure 3.</b> HEIPR by gender: England and Scotland 2006-07 to 2009-10...	17
<b>Figure 4.</b> HEIPR by mode of study: England and Scotland 2006-07 to 2009-10.....	18
<b>Figure 5a.</b> API by gender, four year trend.....	24
<b>Figure 5b.</b> YPR by gender, four year trend.....	24

## **Key points**

This is a new publication replacing the Age Participation Index (API) previously published by the Scottish Government. The reason for changing from the API is to produce results which are more comparable to other countries, make more accurate measurements, and include part-time study and OU. It covers two measures of participation of entrants, the Higher Education Initial Participation Rate (HEIPR) and the Young Participation Rate (YPR). Both these measures include full-time and part-time initial entrants to higher education level study at UK higher education institutions and Scottish further education colleges.

### **HEIPR (2006-07 to 2010-11)**

The Scottish HEIPR is a measure of participation of all initial entrants aged between 16 and 30 (inclusive). It measures wider population access to higher education, and is suitable for comparison with measures in other countries.

- the Scottish HEIPR has increased from 53.2 per cent to 55.6 per cent over the last five years;
- the Scottish HEIPR is consistently higher than the English counterpart, although the trends over time are similar;
- nine per cent of the HEIPR is made up of part-time students;
- Scottish higher education institutions contribute the greatest part of the HEIPR, although there has been an increase in HE provision by further education colleges; and
- HEIPRs are lower in the most deprived areas of Scotland; however there is a slight narrowing in the gap in participation between the most deprived and least deprived areas (a pattern seen in other published participation measures).

### **YPR (2006 cohort to 2010 cohort)**

This is similar to the discontinued API, and represents the 16 to 19 year old participation of a birth cohort. The YPR is a measure of access to higher education by young people up to (and including) age 19. It is a true cohort measure, and may be compared with similar measures from other parts of the UK.

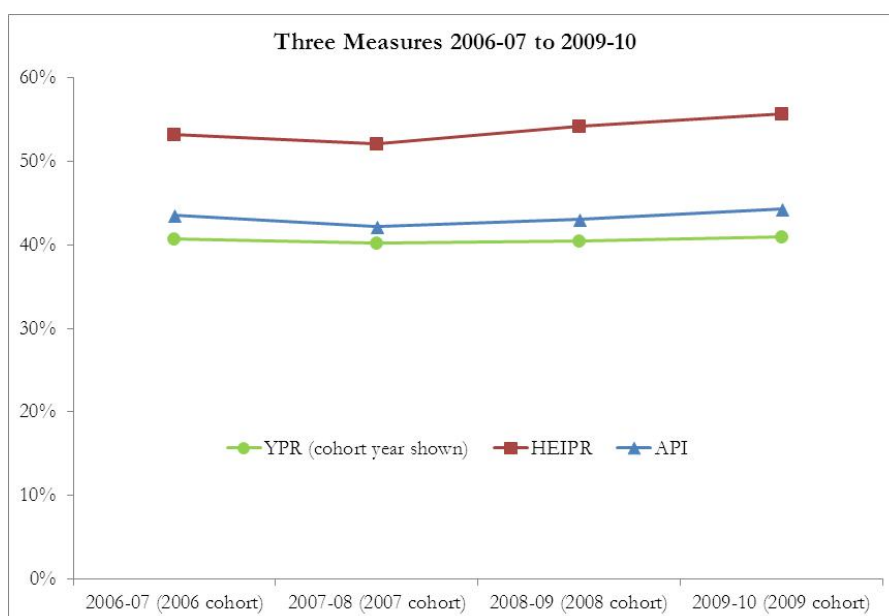
- the Scottish YPR has increased from 40.7 per cent to 42.3 per cent over the last five years;

- for the most recent cohort the male YPR is 38.4 per cent compared to 46.4 per cent for females; and
- there has been an increase in rate of students studying at further education colleges, but the YPR for those studying at higher education institutions has remained fairly constant.

## Comparison to API

- both the HEIPR and the YPR show a similar trend in participation rates to the discontinued API as demonstrated in Figure 1;

**Figure 1.** Scotland level API, HEIPR and YPR, four year trends.



- the HEIPR is higher than the API as it relates to ages 16 to 30 while the API covered under 21s only. Also the HEIPR includes part-time study and Open University (OU) which were not included in the API; and
- the YPR is not directly comparable as each year's value is based on a different group of entrants as it follows a birth cohort through time. Although the YPR includes part-time study and OU it is lower than the API as it does not include 20 year olds.

## 1. Introduction and background

Following the consultation<sup>1</sup> in mid-2011, two new measures have been produced to replace the previously published Age Participation Index (API): the Scottish Young Participation Rate (YPR) and Higher Education Initial Participation Rate (HEIPR). This report presents the new measures as a five-year trend (where appropriate) as well as a section showing how the trends from the YPR compare to the previously published API.

## 2. Methodological notes

### Data sources, coverage and definition of 'entrants'

This publication contains information on Scottish domiciled students in both further education colleges (FECs) and higher education institutions (HEIs) who are attending higher education courses in the UK. Students at the OU are now included (they were not included in the API). These statistics are collected by the Higher Education Statistics Agency (HESA<sup>2</sup>) from HEIs and by the SFC<sup>3</sup> from Scottish FECs. However, information is not routinely available for Scottish domiciled students at further education colleges in England, Wales and Northern Ireland and those at institutions outside the UK; hence these students are not included in the analyses. The National Records of Scotland (NRS<sup>4</sup> formerly General Register Office) produces mid-year population estimates, which are adjusted for use as the denominators in the calculations of the HEIPR and YPR.

Both measures, the HEIPR and YPR, are based on initial entrants to HEIs and Scottish FECs providing the student is on a course designated as National Vocational Qualification Level 4 or above, or listed as higher education.

An initial entrant is defined as any student who participates for at least six months on a course expected to last for at least six months, who has not participated in HE previously for a period of at least six months (whether at a FEC or an HEI).

---

<sup>1</sup> <http://www.sfc.ac.uk/participation>  
[http://www.sfc.ac.uk/web/FILES/Statistics/Participation\\_Measures\\_Consultation.pdf](http://www.sfc.ac.uk/web/FILES/Statistics/Participation_Measures_Consultation.pdf)  
[http://www.sfc.ac.uk/web/FILES/Statistics/Report\\_and\\_Participation\\_Consultation\\_Responses\\_%7B228218939%7D.pdf](http://www.sfc.ac.uk/web/FILES/Statistics/Report_and_Participation_Consultation_Responses_%7B228218939%7D.pdf)

<sup>2</sup> Higher Education Statistics Agency (HESA) website: <http://www.hesa.ac.uk>

<sup>3</sup> Scottish Funding Council (SFC) website: <http://www.sfc.ac.uk>

<sup>4</sup> National Records of Scotland (NRS) website: <http://gro-scotland.gov.uk>

In order to ensure that only new participants are counted in the given year, student record data for that year was compared with student data sources dating back to 1998 to identify repeat records across prior academic years. If a match for an individual entrant is found in records from previous academic years then the individual has previously participated in higher education and the record for that individual is removed from the analysis. Student records were matched using algorithms based on those developed by the Higher Education Funding Council for England (HEFCE). These algorithms employ fuzzy matching, which attempts to match two or more records without requiring an exact match. Exact matches between student records cannot always be expected due to factors such as inconsistencies in spelling, missing information in one or more records or changes to surnames or forenames. The fuzzy matching process identifies matches based on date of birth, forename or initial, surname and gender. Further information is given in the technical report, which can be obtained from the contacts on the front page.

The same student may be recorded more than once but with different modes of study (part-time and full-time). If a student was found to have two instances of HE in the same year, one at full-time and the other at part-time, the full-time instance was taken as the initial entry.

## **Scottish YPR**

The YPR is a True Cohort Participation Rate<sup>5</sup> which measures the participation of a particular age group from a particular year. The YPR will measure each cohort of 16 year olds and track them through time, and is calculated as follows:

$$\text{YPR} = (\text{Young entrants in each cohort}) / (\text{base year population})$$

---

<sup>5</sup>An explanation of True Cohort Participation Rates can be found in the 'Measurements of Participation in Scottish Higher Education Report' at the following address: <http://www.scotland.gov.uk/Publications/2010/08/17120618/0>

For example, the YPR of the 2010 cohort is:

$$\text{YPR}_{2010} = \frac{(\text{16 year old HE entrants in 2007-08} + \text{17 year old HE entrants in 2008-09} + \text{18 year old HE entrants in 2009-10} + \text{19 year old HE entrants in 2010-11})}{\text{16 yr old 2007-08 population}}$$

The denominator of the YPR is based on National Records of Scotland (NRS) population estimates of the number of 16 year olds in Scotland in the base year (in the example 2007-08) age-adjusted to 31 August, as this is the standard age used in the HESA student record and in the English participation measures.

The resulting statistic is a True Cohort Rate of participation of 16 year olds in 2007-08, and the cohort itself is named after the last year of inclusion in the YPR. As shown in the above example, the cohort is based on those who were 16 in 2007-08. These students' last possible year of inclusion in the YPR would be 2010-11 when they were 19; hence they are referred to as the 2010 cohort.

### **Scottish Higher Education Initial Participation Rate (HEIPR)**

The Scottish HEIPR is a measure of participation of new entrants aged between 16 and 30. These will be presented as initial participation (or net entry) rates for each age band, and an overall sum of these initial participation rates.

The initial participation rate for each age band is calculated as:

$$\text{Initial participation rate} = \frac{\text{Number of entrants}}{\text{Population}}$$

So for example if 150 of 1,000 17 year olds went into HE then the initial participation rate for 17 year olds would be 15 per cent. The net entry rates are then summed to give an HEIPR: see Table 2 for the detailed calculation.

This measure is similar to the official measure of HE participation in England<sup>6</sup>; however the English HEIPR is a net entry rate for those aged 17 to 30. We have included 16 to 30 year olds in the Scottish measure as the differences in structure in the Scottish education system means there are over a thousand HE entrants aged 16.

---

<sup>6</sup>For further information see: <http://www.bis.gov.uk/analysis/statistics/higher-education/national-statistics-releases/participation-rates-in-higher-education/heipr-2006-to-2010>



## **Analysis by local authority**

In order to determine the local authority an entrant resided in prior to starting their course, postcodes of the home location of students (taken from student records) are matched to the most recent postcode file at the beginning of each academic year. However, not all postcodes can be matched to records in the postcode files for reasons such as incompleteness or ‘newness’ of postcodes that came into effect after the compilation of the postcode file. For analysis by local authority, entrants are only included if their postcode provided a match to the relevant postcode file. In 2010-11, 99 per cent of postcodes for the entrant population were successfully matched to the postcode file.

## **Entrants from deprived areas of Scotland**

Areas are defined as deprived using the Scottish Index of Multiple Deprivation (SIMD)<sup>7</sup>. In this report SIMD 2009 version 2 is used for all years presented. The SIMD ranks the 6,505 data zones across Scotland. Data zones are the key small area statistical geography in Scotland and have, on average, populations of between 500 and 1,000 household residents. The data zones are ranked 1 (most deprived data zone) to 6,505 (least deprived data zone). The ranking is based on 38 indicators across seven domains, namely: income, employment, health, education, skills and training, housing, geographic access and crime. The overall index is a weighted sum of the seven domain scores. Data zones ranked 1 to 1,301 have been designated the “most deprived” 20 per cent and those ranked 5,205-6,505 the “least deprived” 20 per cent. Entrants were matched to one of the deprivation quintiles using their pre-study location postcode.

## **Level of study**

An analysis by level of study is presented in this report. The levels of study are defined as follows:

**First Degree:** First degrees, first degrees with qualified teacher status, enhanced first degrees, first degrees obtained concurrently with a diploma and intercalated first degrees.

**HNCs/HNDs:** HNC and HND.

---

<sup>7</sup>More information on the Scottish Index of Multiple Deprivation can be found at the following web address: <http://www.scotland.gov.uk/Topics/Statistics/SIMD>

**Other HE:** Diploma of Higher Education (DipHE), Certificate of Higher Education (CertHE), professional qualification at undergraduate level, foundation courses at HE level, NVQ/SVQ levels 5 and 4, diplomas and certificates at undergraduate level and other formal HE qualifications of less than degree standard.

### 3. Higher Education Initial Participation Rate (HEIPR)

**Table 1.** Higher Education Initial Participation Rate (HEIPR) by gender and mode of study 2006-07 to 2010-11

Academic Year	2006-07	2007-08	2008-09	2009-10	2010-11
<b>HEIPR (All) %</b>	<b>53.2%</b>	<b>52.0%</b>	<b>54.2%</b>	<b>55.6%</b>	<b>55.6%</b>
Initial entrants	34,880	34,173	36,085	37,379	37,274
HEIPR (male) %	46.9%	44.7%	47.6%	49.3%	49.8%
Initial entrants	15,775	15,059	16,214	16,958	17,075
HEIPR (female) %	59.8%	59.7%	61.2%	62.2%	61.7%
Initial entrants	19,105	19,113	19,871	20,421	20,199
HEIPR (full-time) %	44.2%	43.5%	44.8%	46.7%	47.0%
Initial entrants	29,067	28,522	29,715	31,310	31,383
HEIPR (part-time) %	9.0%	8.6%	9.5%	9.0%	8.7%
Initial entrants	5,813	5,651	6,370	6,069	5,891

The HEIPR at Scotland level and HEIPR for males and females have increased since 2006-07, with a small fall in 2007-08. The participation rate for females continues to be higher than that for males, but the gap between them has narrowed slightly.

The participation rate for full-time students has increased overall during the five-year period presented, whereas that for part-time has fluctuated between 8.6 per cent and 9.5 per cent, without a clear increase or decrease in trend.

**Table 2.** HEIPR calculation, 2009-10 and 2010-11

Age	2009-10			2010-11		
	Initial Entrants	Population	Initial Participation Rate (%)	Initial Entrants	Population	Initial Participation Rate (%)
16	1,332	63,303	2.1%	1,212	61,555	2.0%
17	10,176	65,632	15.5%	9,671	63,635	15.2%
18	13,012	67,102	19.4%	13,087	66,689	19.6%
19	3,912	67,172	5.8%	3,952	69,665	5.7%
20	1,768	68,510	2.6%	1,801	69,644	2.6%
21	1,214	71,466	1.7%	1,284	70,733	1.8%
22	1,018	72,417	1.4%	1,060	73,348	1.4%
23	833	72,691	1.1%	919	73,599	1.2%
24	701	72,783	1.0%	748	73,326	1.0%
25	618	69,458	0.9%	715	73,888	1.0%
26	594	67,923	0.9%	636	70,372	0.9%
27	568	67,821	0.8%	583	68,760	0.8%
28	618	69,231	0.9%	537	68,563	0.8%
29	504	68,524	0.7%	528	69,686	0.8%
30	511	65,174	0.8%	541	69,059	0.8%
16-30 (overall)	37,379	1,029,208	<b>55.6%</b>	37,274	1,042,522	<b>55.6%</b>

Table 2 presents the Scottish HEIPR for 2009-10 and 2010-11 broken down by age. The distribution of ages is similar for the two years, and indicates that the majority of new entrants are less than 20 years of age.

**Table 3.** HEIPR by level of study: 2006-07 to 2010-11

	Number of Entrants	HEIPR	First Degree	HNC/HND	Other HE
2006-07	34,880	53.2%	26.8%	17.1%	9.4%
2007-08	34,173	52.0%	26.7%	18.3%	7.1%
2008-09	36,085	54.2%	28.1%	19.1%	7.1%
2009-10	37,379	55.6%	28.8%	20.4%	6.4%
2010-11	37,274	55.6%	27.4%	21.9%	6.3%

Sources: Higher Education Statistics Agency (HESA), Scottish Funding Council (SFC) and the National Records of Scotland (NRS)

In Scotland the majority of participation in HE is at 'First degree' level. While the HEIPRs of those taking 'First Degrees' and 'HNC/HND' level

degrees have increased, there has been an decrease of those entering ‘Other HE’ level study since 2006-07.

**Table 4.** HEIPR by institution type: 2006-07 to 2010-11

	<b>Number of Entrants</b>	<b>HEIPR</b>	<b>Scottish higher education institutions (%)</b>	<b>Scottish further education colleges (%)</b>	<b>Higher education institutions in the rest of the UK (%)</b>
2006-07	34,880	53.2%	32.9%	18.3%	2.0%
2007-08	34,173	52.0%	32.4%	17.6%	2.0%
2008-09	36,085	54.2%	33.8%	18.4%	2.1%
2009-10	37,379	55.6%	33.7%	19.8%	2.1%
2010-11	37,274	55.6%	31.9%	21.6%	2.2%

Sources: Higher Education Statistics Agency (HESA), Scottish Funding Council (SFC) and the National Records of Scotland (NRS).

The majority of initial higher education participation is at Scottish HEIs, although this proportion has decreased slightly between 2006-07 and 2010-11. In contrast there has been an increase in participation at FECs, due to a rebalancing of curriculum to provide more HE level courses.

**Table 5.** HEIPR by deprivation<sup>1</sup>: 2006-07 to 2010-11

	<b>Number of Entrants</b>	<b>HEIPR</b>	<b>Least Deprived</b>	<b>Most Deprived</b>
2006-07	34,594	52.8%	57.9%	34.9%
2007-08	33,797	51.5%	56.1%	34.7%
2008-09	35,625	53.6%	58.2%	36.3%
2009-10	37,050	55.1%	59.5%	38.6%
2010-11	36,960	55.2%	59.1%	39.7%

Sources: Higher Education Statistics Agency (HESA), Scottish Funding Council (SFC) and the National Records of Scotland (NRS).

<sup>1</sup> Based on student’s pre-study location postcode

Participation is greater in the least deprived areas in Scotland, and HEIPR has increased for both groups. This increase is slightly greater in the most deprived group, narrowing the gap in participation.

Table 6 shows the HEIPR by Local Authority of residence. The area with the highest HEIPR is East Renfrewshire (79.7 per cent) and the lowest is Stirling (45.0 per cent).

The HEI part of the HEIPR was highest in the Highlands (56.4 per cent), which can be explained by UHI offering the majority of HND/HNC provision in the Highlands, with this provision classed as HEI not FEC.

The regions with the highest HEIPR for Scottish FECs were Angus and Inverclyde (31.4 per cent).

The region with highest HEIPR for HEIs elsewhere in the UK was Scottish Borders (5.3 per cent), with a number of entrants from this area attending HEIs in the north of England including Newcastle, Durham, Northumbria and Cumbria.

**Table 6.** Local Authority<sup>1</sup>total HEIPR and by institution type: 2010-11

	Number of Entrants	TOTAL	Scottish higher education institutions (%)	Scottish further education colleges (%)	Higher education institutions in the rest of the UK (%)
<b>Scotland</b>	<b>37,274</b>	<b>55.6%</b>	<b>31.9%</b>	<b>21.6%</b>	<b>2.2%</b>
Aberdeen City	1,523	53.9%	30.0%	21.6%	2.4%
Aberdeenshire	1,839	62.8%	36.5%	23.3%	2.9%
Angus	864	67.3%	33.8%	31.4%	2.2%
Argyll & Bute	575	55.4%	34.6%	17.9%	2.9%
Clackmannanshire	355	54.6%	29.7%	23.6%	1.3%
Dumfries & Galloway	908	54.8%	33.8%	17.1%	3.9%
Dundee City	1,062	47.5%	25.5%	21.0%	1.0%
East Ayrshire	770	49.6%	25.0%	23.9%	0.7%
East Dunbartonshire	1,039	75.7%	46.0%	27.3%	2.4%
East Lothian	663	53.1%	32.7%	16.2%	4.2%
East Renfrewshire	943	79.7%	55.8%	21.4%	2.5%
Edinburgh, City of	3,254	48.2%	28.7%	15.1%	4.5%
Eilean Siar	198	70.6%	57.4%	12.1%	1.1%
Falkirk	950	48.7%	25.2%	22.6%	0.9%
Fife	2,306	49.0%	23.4%	24.0%	1.7%
Glasgow City	4,357	52.0%	23.8%	26.9%	1.3%
Highland	1,594	64.6%	56.4%	4.8%	3.4%
Inverclyde	637	63.8%	30.3%	31.4%	2.2%
Midlothian	515	49.5%	29.2%	18.6%	1.7%
Moray	619	56.3%	46.5%	6.4%	3.4%
North Ayrshire	930	55.2%	25.1%	29.2%	1.0%
North Lanarkshire	2,217	53.2%	27.2%	25.2%	0.8%
Orkney Islands	148	66.4%	60.1%	5.3%	1.0%
Perth & Kinross	1,060	59.3%	46.8%	7.6%	4.9%
Renfrewshire	1,242	58.2%	29.3%	27.7%	1.3%
Scottish Borders	685	54.1%	34.1%	14.7%	5.3%
Shetland Islands	182	66.4%	59.4%	5.9%	1.1%
South Ayrshire	778	59.4%	36.0%	21.7%	1.7%
South Lanarkshire	2,270	57.9%	32.9%	23.7%	1.3%
Stirling	657	45.0%	29.9%	13.3%	1.8%
West Dunbartonshire	641	54.0%	23.4%	30.2%	0.4%
West Lothian	1,179	53.8%	26.9%	26.0%	0.8%

Sources: Higher Education Statistics Agency (HESA), Scottish Funding Council (SFC) and the National Records of Scotland (NRS).

<sup>1</sup> Based on student's pre-study location postcode

## HEIPR in Scotland compared to HEIPR in England

Development of the methodology for the Scottish HEIPR was similar to England's to allow cross-country comparison. The Scottish HEIPR is consistently higher than the English HEIPR over the period 2006-07 to 2009-10. This is illustrated in Figure 2, Figure 3 and Figure 4 overleaf.

Table 7 is reproduced from published statistics for England and is the most recent HEIPR data available at the time of going to print.

**Table 7.** Higher Education Initial Participation Rate (HEIPR) for **English domiciled** first time participants in Higher Education Courses at UK higher education institutions and English, Welsh and Scottish further education colleges: 2006/07 to 2009/10

Academic Year	2006/07	2007/08	2008/09	2009/10 (Provisional) <sup>(1)</sup>
HEIPR (male and female) %	42 (42.0)	43 (43.4)	46 (45.5)	47 (46.5)
Initial entrants (thousands)	285	296	313	324
HEIPR (male) %	37 (36.5)	38 (37.9)	40 (40.1)	41 (41.1)
Initial entrants (thousands)	127	133	141	147
HEIPR (female) %	48 (47.8)	49 (49.1)	51 (51.2)	52 (52.2)
Initial entrants (thousands)	158	163	172	177
HEIPR (full-time) %	35 (35.3)	37 (36.9)	39 (39.0)	40 (40.3)
Initial entrants (thousands)	240	252	268	280
HEIPR (part-time) %	7 (6.8)	6 (6.4)	6 (6.5)	6 (6.2)
Initial entrants (thousands)	45	44	45	44

Reproduced from

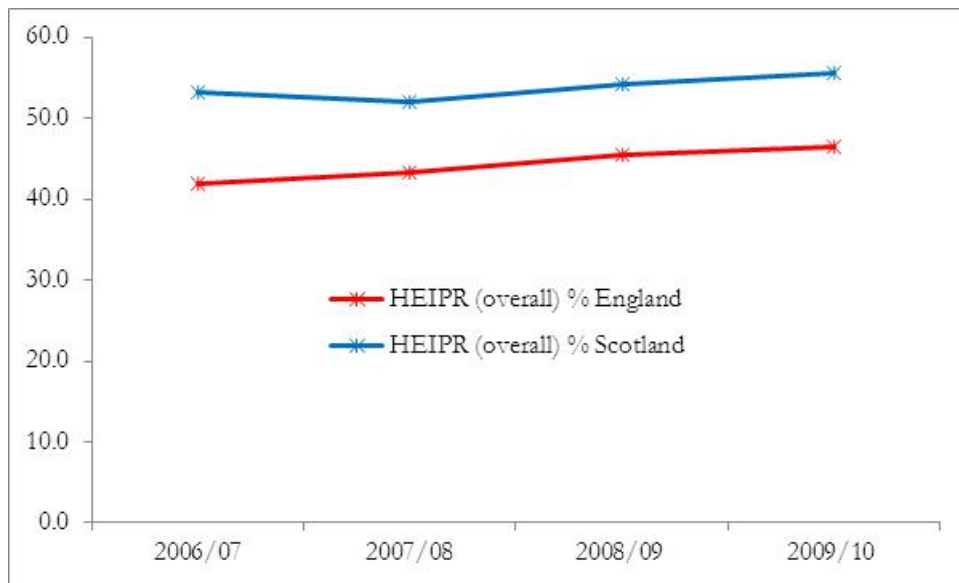
[http://www.bis.gov.uk/assets/biscore/statistics/docs/p/participation\\_rates\\_in\\_he\\_2009-10.pdf](http://www.bis.gov.uk/assets/biscore/statistics/docs/p/participation_rates_in_he_2009-10.pdf)

Figures for the HEIPR are rounded to the nearest whole number to reflect the degree of accuracy inherent in the data. As this can conceal changes or trends, figures rounded to the nearest decimal place are also provided to inform comparisons over time. Figures rounded to the nearest decimal place are shown in parentheses. Figures for the counts of initial entrants are rounded to the nearest thousand. Rounding may result in apparent inconsistencies between totals and sums of constituent parts.

<sup>(1)</sup>Provisional figures for 2009/10 exclude students studying in Welsh Further education colleges.

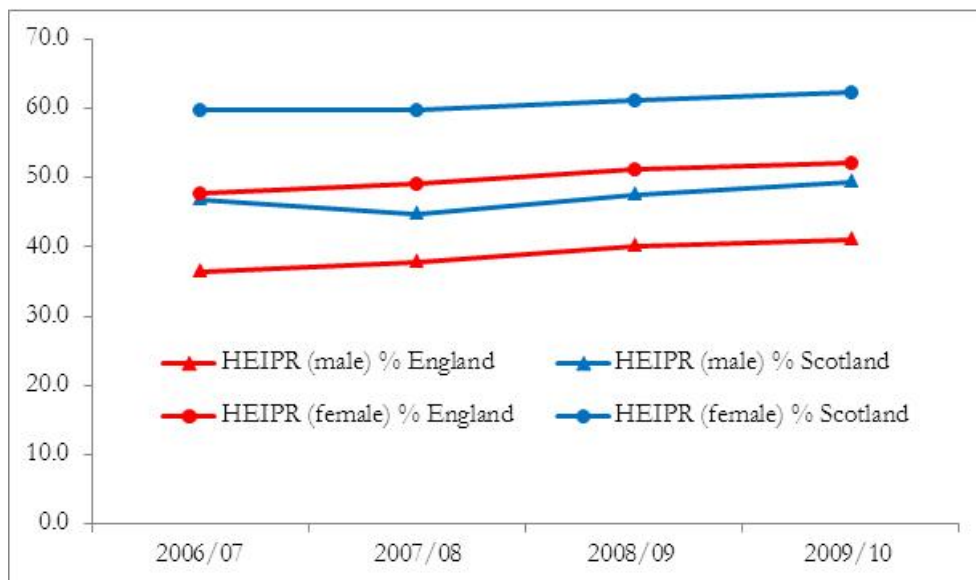


**Figure 2.** HEIPR: England and Scotland 2006-07 to 2009-10



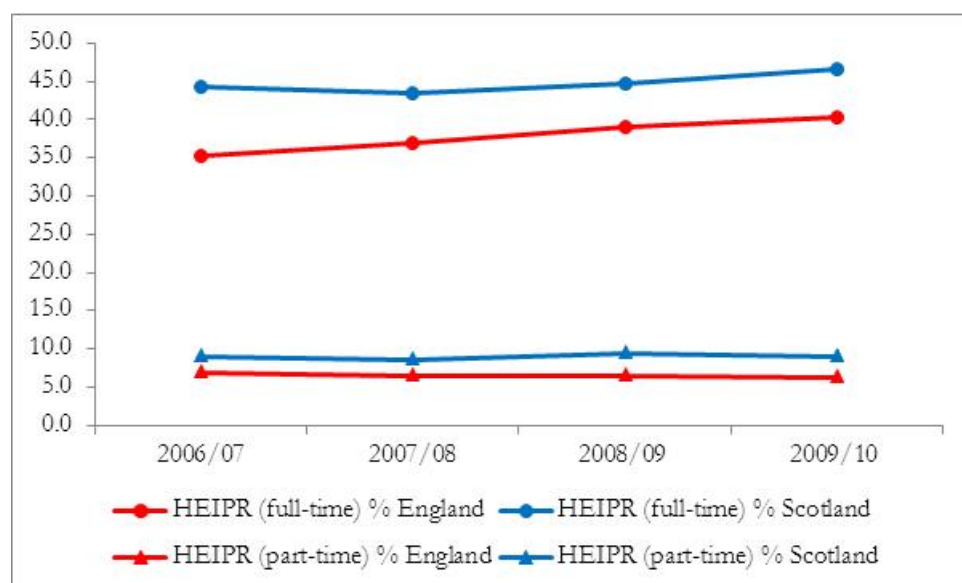
Sources: Higher Education Statistics Agency (HESA), Scottish Funding Council (SFC), Skills Funding Agency (SFA), Welsh Assembly Government, Office for National Statistics (ONS), Department for Education (DfE) and the National Records of Scotland (NRS).

**Figure 3.** HEIPR by gender: England and Scotland 2006-07 to 2009-10



Sources: Higher Education Statistics Agency (HESA), Scottish Funding Council (SFC), Skills Funding Agency (SFA), Welsh Assembly Government, Office for National Statistics (ONS), Department for Education (DfE) and the National Records of Scotland (NRS).

**Figure 4.** HEIPR by mode of study: England and Scotland 2006-07 to 2009-10



Sources: Higher Education Statistics Agency (HESA), Scottish Funding Council (SFC), Skills Funding Agency (SFA), Welsh Assembly Government, Office for National Statistics (ONS), Department for Education (DfE) and the National Records of Scotland (NRS).

The Scottish HEIPR includes 16-30 year olds (see page 8) and the English HEIPR includes 17-30 year olds. However the broader Scottish age range does not account for the differences shown in the charts above. If a different 2009-10 Scottish HEIPR is calculated as the sum of initial entry rates for 16-29 year olds it is 54.8 per cent, compared to 55.6 per cent for Scottish 16-30 years olds and 46.5 per cent for English 17-30 year olds.

Further information on the English HEIPR can be found at <http://www.bis.gov.uk/analysis/statistics/higher-education/national-statistics-releases/participation-rates-in-higher-education> and the 2010-11 figures are due to be published on 28 March 2012.

## 4. Young Participation Rate (YPR)

**Table 8.** YPR by gender: 2006 to 2010 Cohort

	Number of Entrants	YPR	Male	Female
2006 Cohort	26,489	40.7%	36.1%	45.6%
2007 Cohort	26,327	40.2%	35.8%	45.0%
2008 Cohort	25,836	40.4%	36.2%	45.0%
2009 Cohort	26,363	40.9%	36.4%	45.7%
2010 Cohort	27,892	42.3%	38.4%	46.4%

Sources: Higher Education Statistics Agency (HESA), Scottish Funding Council (SFC) and the National Records of Scotland (NRS).

The YPR at Scotland level, and for males and females, has increased for each cohort represented. The YPR is greater for females than for males, although the gap between the genders appears to be narrowing.

**Table 9.** YPR by mode of study: 2006 to 2010 Cohort

	Number of Entrants	YPR	Full-time	Part-time
2006 Cohort	26,489	40.7%	38.4%	2.4%
2007 Cohort	26,327	40.2%	37.7%	2.5%
2008 Cohort	25,836	40.4%	37.3%	3.1%
2009 Cohort	26,363	40.9%	37.7%	3.2%
2010 Cohort	27,892	42.3%	38.9%	3.4%

Sources: Higher Education Statistics Agency (HESA), Scottish Funding Council (SFC) and the National Records of Scotland (NRS).

In contrast to the trends shown in the HEIPR (Table 1), the YPR for part-time study has increased for each birth cohort, which shows there is an increase in part-time study for 16-19 year olds. The YPR for full-time study had declined, but is now increasing again.

**Table 10.** YPR by level of study: 2006 to 2010 Cohort

	<b>Number of Entrants</b>	<b>YPR</b>	<b>First Degree</b>	<b>HNC/HND</b>	<b>Other HE</b>
2006 Cohort	26,489	40.7%	25.3%	11.6%	3.8%
2007 Cohort	26,327	40.2%	24.5%	11.9%	3.8%
2008 Cohort	25,836	40.4%	24.6%	12.3%	3.6%
2009 Cohort	26,363	40.9%	24.8%	13.1%	3.0%
2010 Cohort	27,892	42.3%	25.4%	14.2%	2.6%

Sources: Higher Education Statistics Agency (HESA), Scottish Funding Council (SFC) and the National Records of Scotland (NRS).

In each cohort, students taking a ‘First Degree’ contribute most to the YPR. The YPR of students taking a ‘First Degree’ has increased each year from the 2007 cohort. The YPR of ‘HNC/HND’ level degrees has increased for all five cohorts, while that of students taking ‘Other HE’ level degrees has decreased.

**Table 11.** YPR by institution type: 2006 to 2010 Cohort

	<b>Number of Entrants</b>	<b>YPR</b>	<b>Scottish higher education institutions (%)</b>	<b>Scottish further education colleges (%)</b>	<b>Higher education institutions in the rest of the UK (%)</b>
2006 Cohort	26,489	40.7%	27.2%	11.8%	1.7%
2007 Cohort	26,327	40.2%	26.6%	11.9%	1.7%
2008 Cohort	25,836	40.4%	26.7%	12.0%	1.7%
2009 Cohort	26,363	40.9%	26.9%	12.4%	1.6%
2010 Cohort	27,892	42.3%	27.3%	13.4%	1.6%

Sources: Higher Education Statistics Agency (HESA), Scottish Funding Council (SFC) and the National Records of Scotland (NRS).

Scottish HEIs account for the largest component of the national YPR, which has remained around 27 per cent for all five of the cohorts presented. The Scottish FECs component has increased from 12.8 per cent to 13.4 per cent, whereas the rest of UK component remains at 1.6 per cent to 1.7 per cent.

**Table 12.** YPR by institution type: 2010 cohort by Local Authority

	<b>Number of Entrants</b>	<b>TOTAL</b>	<b>Scottish HEIs</b>	<b>Scottish FECs</b>	<b>Rest of UK HEIs</b>
<b>Scotland</b>	<b>27,892</b>	<b>42.3%</b>	<b>27.3%</b>	<b>13.4%</b>	<b>1.6%</b>
Aberdeen City	1,115	47.7%	30.4%	15.5%	1.8%
Aberdeenshire	1,657	49.9%	33.1%	15.0%	1.8%
Angus	668	46.0%	27.4%	17.6%	0.9%
Argyll & Bute	458	39.6%	26.9%	11.2%	1.6%
Clackmannanshire	264	38.5%	22.7%	14.0%	1.7%
Dumfries & Galloway	735	38.3%	27.5%	8.1%	2.7%
Dundee City	698	40.0%	24.7%	14.4%	0.9%
East Ayrshire	637	38.0%	21.2%	16.2%	0.6%
East Dunbartonshire	907	59.4%	42.4%	15.5%	1.4%
East Lothian	532	40.8%	28.5%	8.5%	3.8%
East Renfrewshire	759	60.9%	46.0%	13.3%	1.6%
Edinburgh, City of	2,223	45.9%	30.3%	10.0%	5.5%
Eilean Siar	180	51.4%	45.2%	6.0%	0.3%
Falkirk	710	34.9%	20.1%	14.1%	0.8%
Fife	1,727	37.3%	20.4%	15.9%	1.0%
Glasgow City	2,644	38.6%	20.0%	17.9%	0.7%
Highland	1,191	41.7%	37.5%	2.6%	1.5%
Inverclyde	445	41.0%	20.1%	19.6%	1.3%
Midlothian	387	33.2%	22.0%	9.9%	1.2%
Moray	492	41.1%	36.9%	3.4%	0.8%
North Ayrshire	758	39.4%	20.9%	18.2%	0.3%
North Lanarkshire	1,615	36.8%	21.5%	15.1%	0.2%
Orkney Islands	138	48.1%	42.5%	4.5%	1.0%
Perth & Kinross	791	42.6%	34.1%	4.6%	3.9%
Renfrewshire	1,036	46.6%	28.8%	17.4%	0.4%
Scottish Borders	578	40.5%	28.8%	7.6%	4.1%
Shetland Islands	147	45.4%	39.2%	4.9%	1.2%
South Ayrshire	615	44.4%	28.2%	15.2%	1.0%
South Lanarkshire	1,781	43.7%	28.8%	14.1%	0.8%
Stirling	503	42.5%	30.6%	9.5%	2.4%
West Dunbartonshire	436	36.1%	20.0%	15.6%	0.5%
West Lothian	897	39.0%	23.4%	14.6%	1.0%

Sources: Higher Education Statistics Agency (HESA), Scottish Funding Council (SFC) and the National Records of Scotland (NRS).

Note: The calculation of participation rates for local authorities relies on a process of matching postcodes contained in student records to those in postcode directories.

Student records containing incomplete/invalid postcodes are excluded from this calculation.

In 2010-11 99 per cent of entrant records were successfully matched to postcode directories used for analysis by local authority.

The area with the highest YPR is East Renfrewshire (60.9 per cent) and Midlothian the lowest (33.2 per cent).

Local Authorities with the highest YPRs by institution type were East Renfrewshire (Scottish HEIs, 46.0 per cent), North Ayrshire (Scottish FECs, 18.2 per cent) and Edinburgh City (rest of UK HEIs, 5.5 per cent).

## **5. Differences in trends between YPR and API**

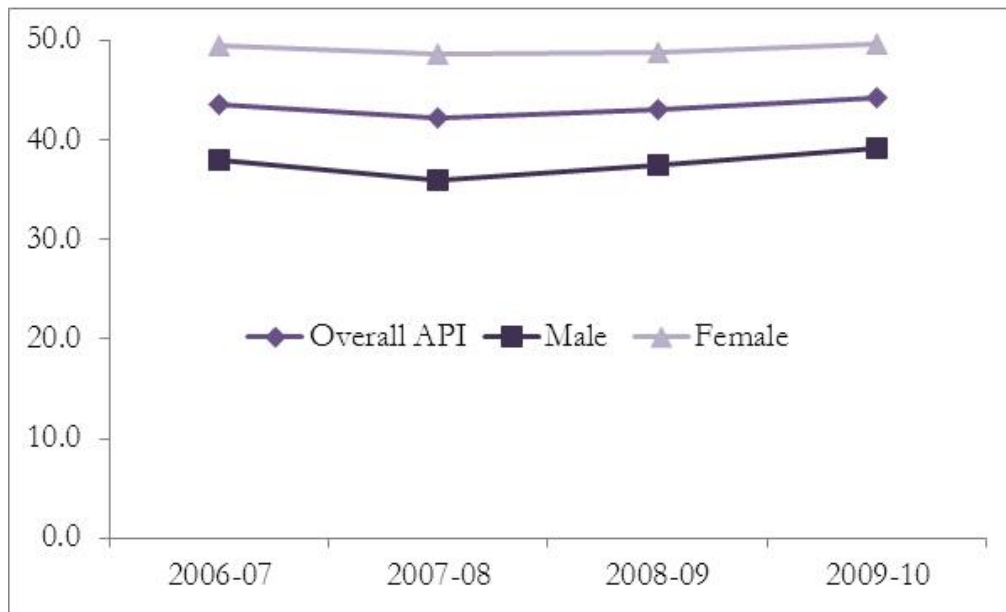
The previously published API attempted to forecast the proportion of 17 year olds who would enter full-time higher education for the first time before their 21st birthday based on the current first time participation rates of Scots under the age of 21.

Of the two measures presented in this publication the YPR is closer in nature to the discontinued API. In this year's report only, the graphs of these two measures are presented for an indication of how the two measures compare.

It should be noted that these figures are not directly comparable and the cohort from the YPR would contain students represented across several years in the API.

Figures 5a and b present overall YPR and API, as well as YPR and API by gender, and shows that the general trends are similar, but the YPR is lower as it does not include 20 year olds.

**Figure 5a.** API by gender, four year trend



**Figure 5b.** YPR by gender, four year trend

