

# Statistical Release

## Higher Level Qualifications Quarterly: October – December 2013

### Contents

Introduction.....	1
Key statistics .....	2
Tables of key statistics .....	3
Analysis .....	5
Background notes.....	20
Your feedback .....	26
Appendix .....	27

**Published:**  
27th February 2014

**Statistician:**  
Alison Fisher  
Head of Statistics

024 7671 6809  
statistics@ofqual.gov.uk

### Key points

This release provides information on the range and volume of, and certificates issued for, regulated qualifications at Level 4 and above (equivalent to post A level) from October –December 2013 as well as their trends over the past 5 years.

The key findings for this release are:

- In this quarter, 22,600 certificates were issued for higher level qualifications, a decrease of 16 per cent compared with the same quarter of 2012. We have seen a decline in the number of certificates issued since 2011.
- The number of available higher level qualifications has declined for the first time, from 2,647 in quarter 3 of 2013 to 2,598 this quarter (2 per cent decrease).
- The number of certificates awarded in Level 4 diplomas in financial planning and advice declined by 76 per cent, from 2,950 to 700 certificates this quarter.
- The number of certificates awarded in Level 5 diplomas increased by 59 per cent this quarter, mainly in leadership for health and social care and children and young people's services qualifications, following changes in *the Health and Social Care Act 2008*.

## Introduction

We regulate qualifications, exams and assessments in England, and vocational qualifications in Northern Ireland. Under the *Apprenticeships, Skills, Children and Learning Act 2009*, one of our objectives is to improve public confidence in regulated qualifications and assessments by raising awareness and understanding of the qualifications we regulate.

In this release, we present data on available regulated qualifications and the number of awards of these qualifications. When a qualification is approved for accreditation, it is classified as one of 18 qualification types. Here we present figures on seven<sup>1</sup> of these qualification types that cover qualifications at Level 4 and above, known as higher level qualifications (equivalent to post A level), in England, Wales and Northern Ireland. This release does not include qualifications such as university degrees, which are regulated by the Quality Assurance Agency for Higher Education.

The figures represent both the quarter October – December 2013 and the 12-month period to the end of December 2013.

To help you interpret the content, a glossary of terms is available towards the end of this release, followed by the data tables in the appendix.

---

<sup>1</sup> English for speakers of other languages, higher level, key skills, national vocational qualifications (NVQs), occupational qualifications, qualifications and credit framework (QCF), vocationally related qualifications.

## Key statistics

In the quarter October – December 2013, 22,600 certificates were issued for higher level qualifications, a decline of 16 per cent compared with 27,050 in October – December 2012.

The number of available qualifications declined, from 2,647 qualifications in July – September 2013 to 2,598 this quarter (a 2 per cent decrease). The decline was in all types of qualifications except those in the Qualifications and Credit Framework (QCF) and vocationally related qualifications.

Over the past 5 years, the number of awarding organisations offering and awarding higher level qualifications has grown continually, but this quarter only two more awarding organisations offered qualifications compared with quarter 3 of 2012 (136 awarding organisations compared with 134) (see page 6).

The number of certificates awarded in Level 4 qualifications decreased by 29 per cent this quarter compared with the same quarter of 2012 (11,650 compared with 16,400). The majority of the decline was in diploma qualifications in the business, administration, finance and law sector subject area, particularly in financial planning and financial advisers qualifications (see page 16 onwards).

The number of certificates awarded in Level 5 qualifications increased by 11 per cent this quarter compared with the same quarter of 2012 (7,200 compared with 6,500). The majority of the increase was in diploma qualifications in the health, public services and care sector subject area. This is because the Level 4 NVQ in Leadership and Management for Care Services and the Level 4 NVQ in Health and Social Care have been replaced by the Level 5 Diploma in Leadership for Health and Social Care and Children and Young People's Services. This replacement is required by the Care Quality Commission inspectors to show evidence of compliance with the continuing professional development requirement in the regulations<sup>2</sup> (see page 16 onwards).

---

<sup>2</sup> Regulation 7(2) (*Health and Social Care Act 2008 (Regulated Activities) Regulations 2010*) and outcome 25 of the essential standards about training for registered managers.

## Tables of key statistics

### Number of awarding organisations

	July - September 2013	October- December 2013	Change on previous quarter (%)	
<b>Number of awarding organisations with</b>				
available qualifications	134	136	1	
available qualifications that have been certified in the quarter	104	88	-15	
<b>Number of available qualifications</b>				
	2,647	2,598	-2	
<b>Number of available qualifications by type</b>				
English for speakers of other languages	4	3	-25	
Higher level	405	355	-12	
Key skills	72	42	-42	
National vocational qualification	212	179	-16	
Occupational qualification	29	29	0	
QCF	1,923	1,987	3	
Vocationally related qualification	2	3	50	
<b>Number of available qualifications by level</b>				
Level 4	1,482	1,445	-2	
Level 5	709	691	-3	
Level 6	252	257	2	
Level 7	198	199	1	
Level 8	6	6	0	
<b>Number of available qualifications by sector subject area</b>				
01 - Health, public services and care	314	315	0	
02 - Science and mathematics	29	29	0	
03 - Agriculture, horticulture and animal care	66	66	0	
04 - Engineering and manufacturing technologies	205	209	2	
05 - Construction, planning and the built environment	87	85	-2	
06 - Information and communication technology	57	59	4	
07 - Retail and commercial enterprise	153	158	3	
08 - Leisure, travel and tourism	75	76	1	
09 - Arts, media and publishing	200	185	-8	
10 - History, philosophy and theology	1	1	0	
11 - Social sciences	0	0		
12 - Languages, literature and culture	80	61	-24	
13 - Education and training	486	505	4	
14 - Preparation for life and work	94	64	-32	
15 - Business, administration, finance and law	800	785	-2	

Statistics Release  
Higher Level Qualifications Quarterly: October – December 2013

<b>Number of certificates awarded</b>						
	October- December 2012	October- December 2013	Change on previous quarter (%)	January- December 2012	January- December 2013	Change on previous 12 months (%)
<b>Overall number of certificates awarded</b>	27,050	22,600	-16	129,900	121,400	-7
<b>Number of certificates by type of qualification</b>						
QCF	23,950	20,400	-15	108,150	111,700	3
Higher level	2,000	1,650	-18	14,800	7,250	-51
National vocational qualification	1,000	400	-60	6,350	2,200	-65
Vocationally related qualification	-	150	-	-	150	-
Occupational qualification	50	0	-100	550	100	-82
Key skills	-	-	-	0	0	-
English for speakers of other languages	0	-	-	0	0	-
<b>Number of certificates by qualification level</b>						
Level 4	16,400	11,650	-29	76,250	66,150	-13
Level 5	6,500	7,200	11	34,500	37,150	8
Level 6	2,400	1,950	-19	10,400	10,450	0
Level 7	1,700	1,750	3	8,500	7,200	-15
Level 8	50	100	100	250	450	80
<b>Number of certificates by sector subject area</b>						
01 - Health, public services and care	2,350	2,400	2	11,350	11,600	2
02 - Science and mathematics	0	50	-	200	300	50
03 - Agriculture, horticulture and animal care	200	200	0	850	700	-18
04 - Engineering and manufacturing technologies	600	550	-8	4,800	4,400	-8
05 - Construction, planning and the built environment	700	750	7	4,000	4,050	1
06 - Information and communication technology	150	100	-33	1,200	1,200	0
07 - Retail and commercial enterprise	450	400	-11	2,250	2,050	-9
08 - Leisure, travel and tourism	200	200	0	1,250	1,300	4
09 - Arts, media and publishing	1,300	900	-31	8,850	7,850	-11
10 - History, philosophy and theology	-	-	-	0	0	-
11 - Social sciences	-	-	-	0	-	-
12 - Languages, literature and culture	200	300	50	750	750	0
13 - Education and training	6,050	5,800	-4	31,050	33,850	9
14 - Preparation for life and work	0	0	-	50	50	0
15 - Business, administration, finance and law	14,700	10,950	-26	63,250	53,300	-16

## Analysis

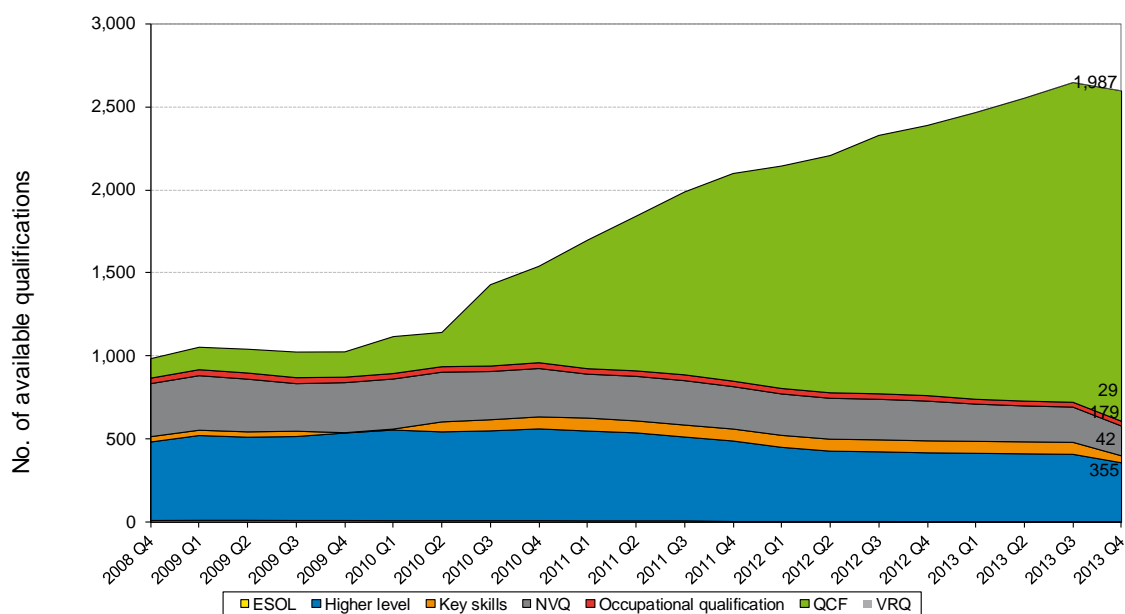
In this release we consider all higher level regulated qualifications that are available in England, Wales and Northern Ireland. When a qualification is accredited, it is classified as one of 18 qualification types. Here we present figures on seven of these types, as they are qualifications at Level 4 and above: English for speakers of other languages, higher level, key skills, national vocational qualifications (NVQs), occupational qualifications, the QCF, and vocationally related qualifications.

### Qualifications available

This quarter, the number of available regulated higher level qualifications declined for the first time in 5 years. In October – December 2013, there were 2,598 qualifications available, a decline of 2 per cent from July – September 2013 (see figure 1).

The number of available qualifications this quarter, compared with July – September 2013, decreased in all types of qualifications except the QCF (1,923 QCF qualifications in July – September 2013 compared with 1,987 this quarter) and vocationally related qualifications (two qualifications in July - September 2013 compared with three qualifications this quarter). The number of qualifications on the QCF now appears to be stabilising after growing since 2008.

**Figure 1:** Number of available regulated higher level qualifications per quarter by qualification type, October - December 2008 (2008 Q4) to October - December 2013 (2013 Q4)



**Key:** QCF: Qualifications and credit framework; NVQ: National vocational qualification; ESOL: English for speakers of other languages.

For more detailed information on the number of available qualifications, see table 1 in the appendix.

During this quarter, 62 new QCF qualifications and one new vocationally related qualification were added to the list of available regulated higher level qualifications. Around 60 per cent of the new QCF qualifications were at Level 4. We also saw that ten QCF, 50 higher level, 30 key skills and 33 NVQ qualifications and one English for speakers of other languages qualification were no longer available to be awarded.

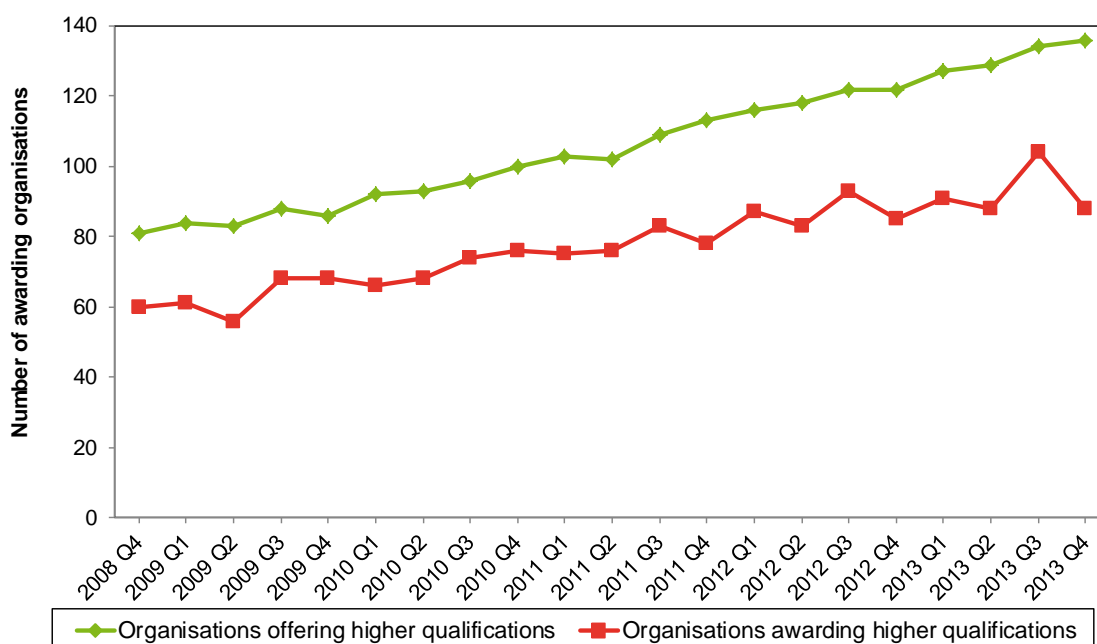
### Awarding organisations

This quarter, 136 recognised awarding organisations offered regulated higher level qualifications. This is two more awarding organisations compared with July – September 2013. Eighty-eight of these awarding organisations issued certificates in higher level qualifications.

There were 12 awarding organisations with certifications for the first time in higher level qualifications this quarter compared with the same quarter of 2012. These included: Open College Network Yorkshire and Humber Region (two qualifications first taught in December 2012 and one in June 2013), and SFJ Awards (one qualification first taught in November 2012 and three in March 2013).

Figure 2 shows there is a trend, evident since quarter 2 of 2011, for a greater number of awarding organisations to award higher level qualifications in quarters 1 and 3 of each year. This may be simply because this pattern fits the academic year’s calendar, which dictates the activity of many of the providers of courses leading to these qualifications.

**Figure 2:** Total number of awarding organisations with at least one available higher level qualification per quarter, and awarding organisations that have awarded at least one certificate, October - December 2008 (2008 Q4) to October - December 2013 (2013 Q4)



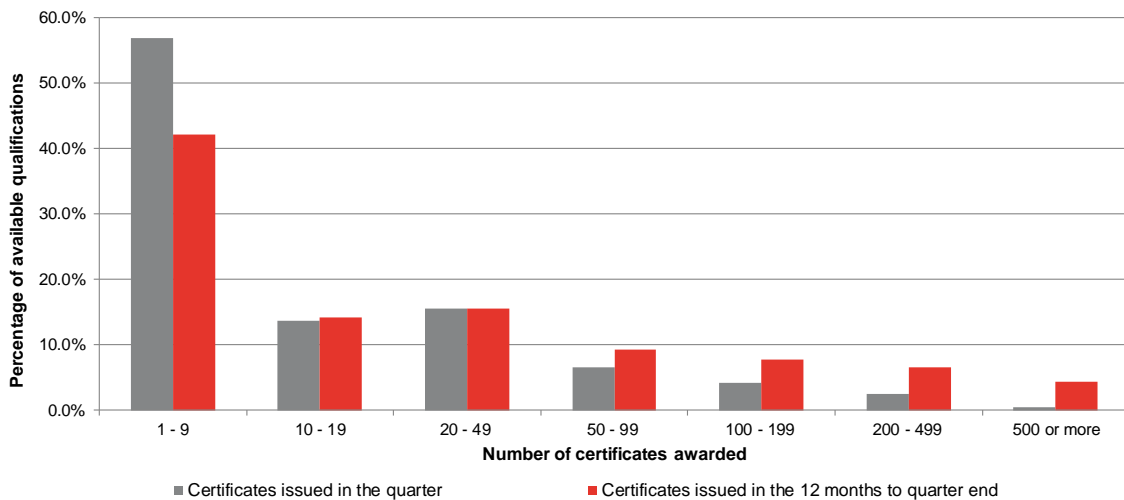


### Qualifications available and qualifications awarded

Higher level qualifications generally have low numbers of certificates issued compared with those below Level 4. This can be seen in figure 3, which shows the number of awarding qualifications by how many certificates were issued in October – December 2013.

More than half of the qualifications had fewer than ten certificates awarded this quarter, and over the 12-month period to the end of December 2013 more than half of the available qualifications had fewer than 20 certificates issued.

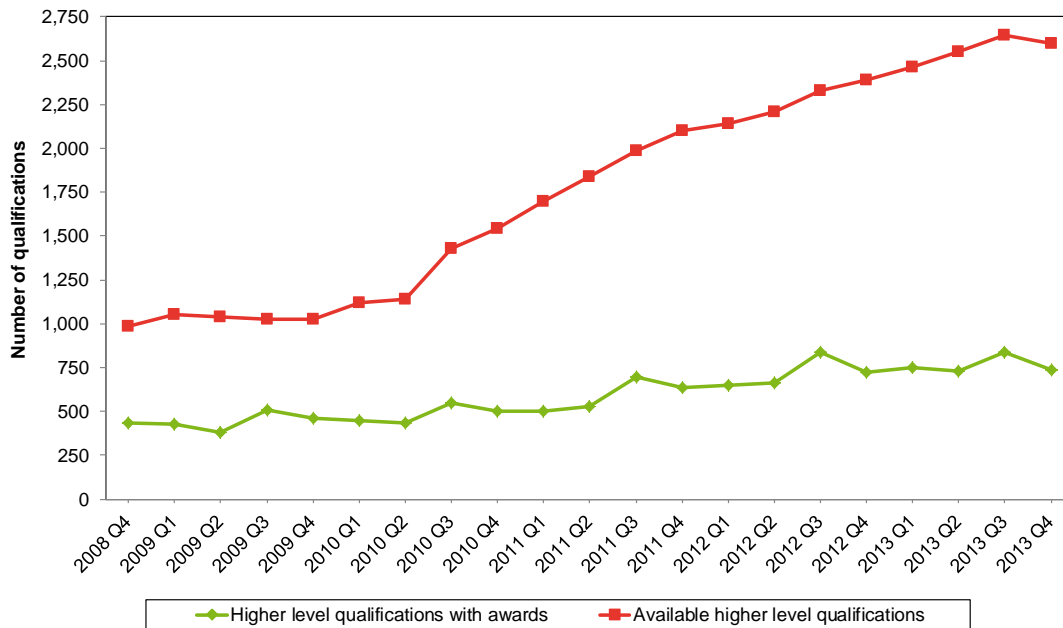
**Figure 3:** Available higher level qualifications, with awards issued in October - December 2013 and 12 months to end December 2013



Of the qualifications available this quarter, 1,860 had no achievements this quarter (72 per cent) and 1,406 had no achievements in the 12 months to the end of December 2013 (54 per cent).

There were more qualifications with no awards in this quarter compared with the same quarter in 2012 (72 per cent compared with 70 per cent) (see figure 4).

**Figure 4:** Total number of available higher qualifications per quarter, and total number of higher qualifications with awards, October - December 2008 (2008 Q4) to October - December 2013 (2013 Q4)



The qualifications that make up the difference in numbers between the available higher level qualifications and the higher level qualifications with awards are the inactive qualifications (qualifications with no certificates issued in the last 12 months).

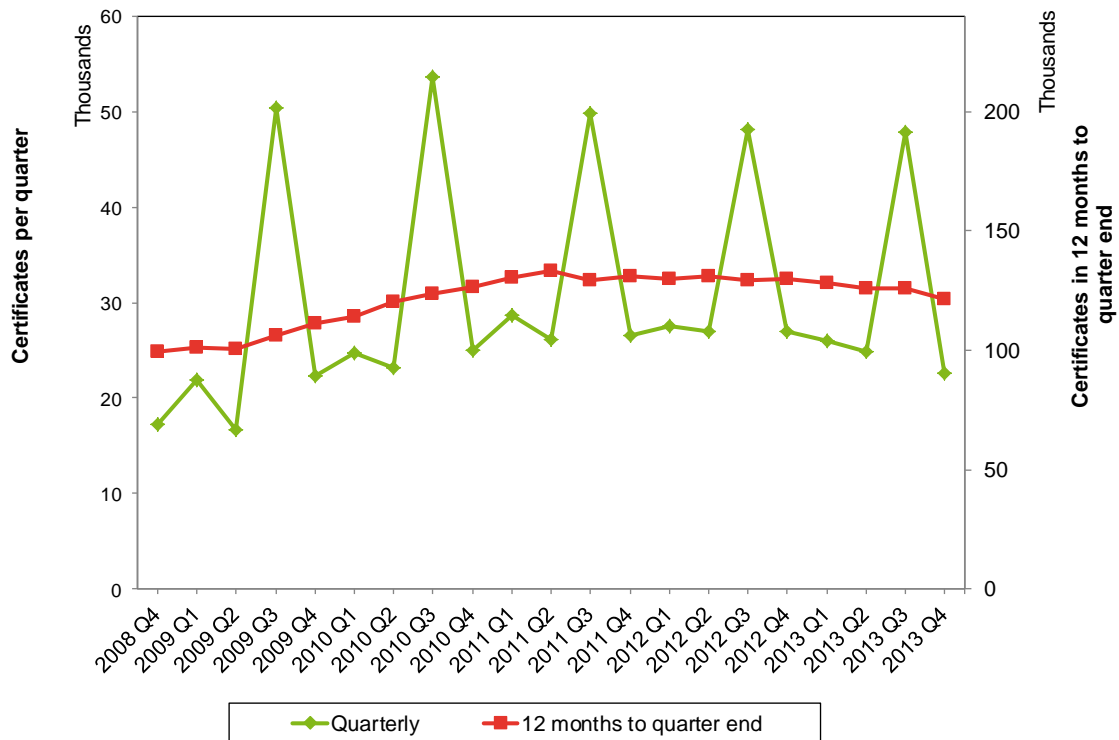
We analysed inactive qualifications in the last twelve months by sector subject area using a simple regression model. This showed three sector subject areas had more inactive qualifications than we would expect given the number of available qualifications: engineering and manufacturing technologies; languages, literature and culture; and preparation for life and work. The majority of the qualifications in these sector subject areas were 3 or more years old (148 qualifications out of 266 in engineering and manufacturing technologies (61 were still available), 78 out of 90 in languages, literature and culture (40 still available), 165 out of 169 in preparation for life and work (36 still available)).

### Certificates issued by awarding organisations

This quarter, 22,600 certificates were issued for higher level qualifications (see table 2 in the appendix), a decrease of 16 per cent on the same quarter of 2012 (see figure 5). This is the lowest number of certificates issued in quarter 4 since October – December 2009.

The majority of the certificates issued were for QCF qualifications (20,400 certificates, 90 per cent). Only vocationally related qualifications saw an increase in the number of certificates issued this quarter compared with October – December 2012 (150 certificates compared with fewer than 25). Certificate numbers in all other types of qualifications have declined or been stable, see table 6 in the appendix.

**Figure 5:** Total number of certificates issued per quarter and in the 12 months to the end of each quarter, October - December 2008 (2008 Q4) to October - December 2013 (2013 Q4)



### Certificates by awarding organisation

The ten awarding organisations that issued the highest number of certificates accounted for 73 per cent of all certificates issued in October - December 2013 (figure 6).

**Figure 6:** The ten awarding organisations with the most certificates in higher level qualifications, October - December 2013 (October - December 2012 figures shown for comparison)

Awarding organisation	Number of certificates		% share of total certificates	% change in certificates
	October - December 2012	October - December 2013		
Pearson Education Ltd <sup>1</sup>	4,350	4,400	19	1
City and Guilds of London Institute	3,000	2,750	12	-8
Chartered Management Institute	2,000	2,200	10	10
Institute of Leadership & Management	1,800	1,800	8	0
Association of Accounting Technicians	1,250	1,400	6	12
OCR	1,100	1,150	5	5
Chartered Insurance Institute	2,700	900	4	-67
Cambridge English Language Assessment	900	900	4	0
Chartered Institute of Purchasing and Supply	100	550	2	450
CFA Society of UK	550	400	2	-27

<sup>1</sup> Pearson Education Ltd includes awards from Edexcel and EDI

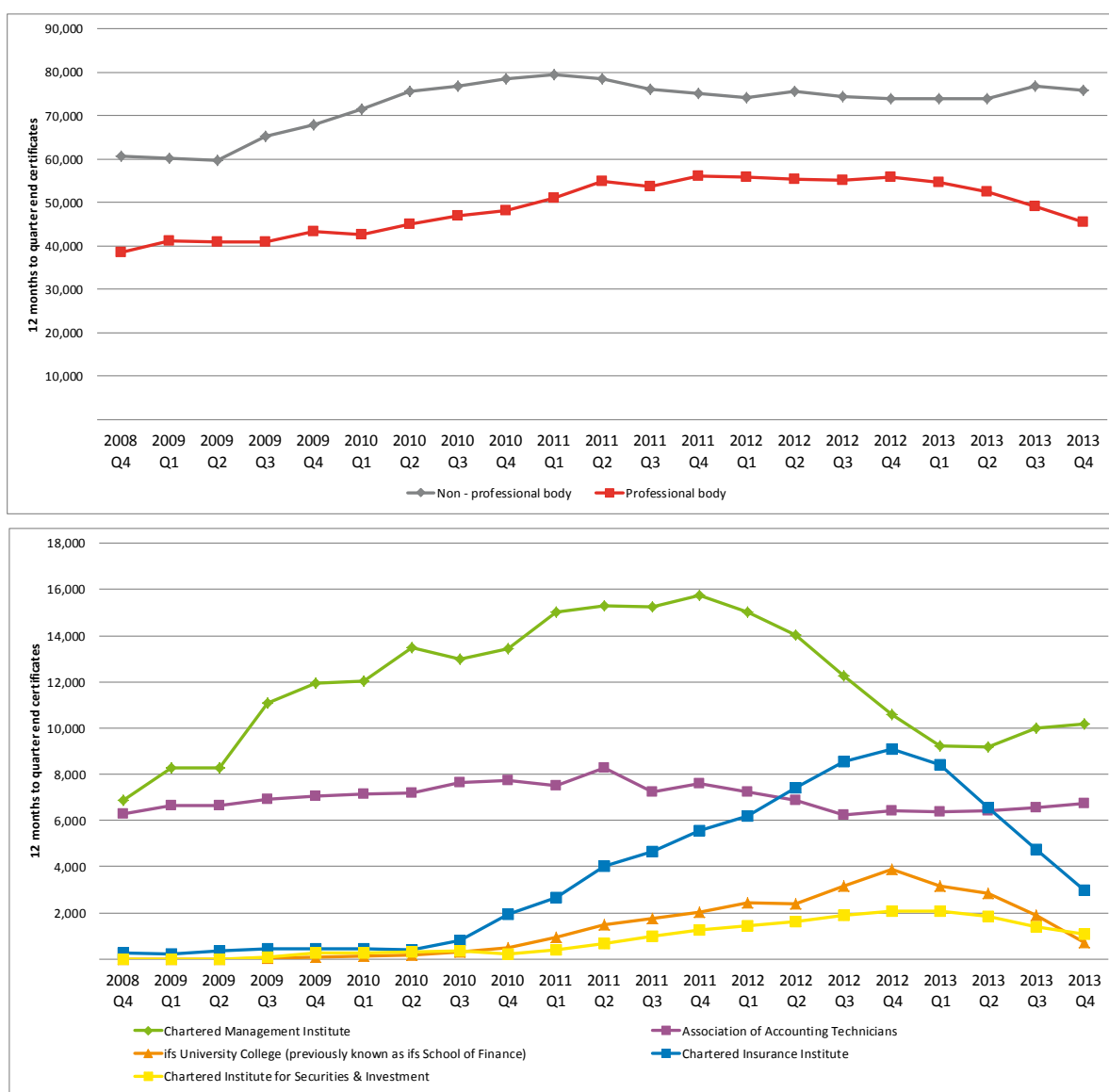
The Chartered Institute of Purchasing and Supply issued a higher number of certificates this quarter compared with October – December 2012.

The 50 awarding organisations that awarded the most certificates this quarter are listed in table 4 in the appendix.

## Professional bodies

Professional bodies are awarding organisations that offer mainly professional qualifications or are membership bodies. A list of the awarding organisations that we have classified as professional bodies can be found in table 8 of the appendix. Our analysis found a general decline in the number of certificates awarded by professional bodies during 2013. Figure 7 shows the number of certificates issued per 12-month period starting to decline from October – December 2012. However, the number of certificates issued each 12-month period by Chartered Management Institute has been declining since October – December 2011.

**Figure 7:** The 12 months to quarter end trend in the number of certificates from 12 months to quarter end December 2008 to 12 months to quarter end December 2013 for professional bodies



## Certificates by qualification

The five qualifications with the highest number of certificates issued during October – December 2013 made up 16 per cent of all certificates issued in this quarter.

**Figure 8:** The five higher level qualifications with the most certificates, October - December 2013 (October - December 2012 figures shown for comparison)

Qualification	Number of certificates		% change in certificates
	October - December 2012	October - December 2013	
AAT Level 4 Diploma in Accounting (QCF)	1,100	1,050	-5
Cambridge English Level 5 Certificate in Teaching English to Speakers of Other Languages (CELTA) (QCF)	800	850	6
City & Guilds Level 4 Award in Preparing to Teach in the Lifelong Learning Sector (QCF)	1,000	650	-35
Pearson BTEC Level 4 Certificate in Teaching in the Lifelong Learning Sector (QCF)	650	600	-8
CMI Level 5 Certificate in Management and Leadership (QCF)	500	500	0

Qualifications in preparing to teach in the lifelong learning sector saw a decline in the number of certificates issued this quarter, whereas, previously, there had been an increase. This is probably due to the recommendations of the Lord Lingfield review<sup>3</sup> and the fact that the legislative regulations covering qualification requirements for further education teachers were removed from September 2013.<sup>4</sup> These qualifications were required by those who wanted to teach in further education colleges, and adult and community settings, and were the minimum requirement for gaining qualified teacher status in the lifelong learning sector.<sup>5, 6</sup> so they had been increasing in the number of certificates issued. Examining all these qualifications at Level 4, we saw a 14 per cent decline this quarter compared with October – December 2012. Eight of the 50 qualifications with the highest number of certificates issued, shown in table 3 in the appendix, were in preparing to teach in the lifelong learning sector.

<sup>3</sup> [www.bis.gov.uk/assets/biscore/further-education-skills/docs/p12-1198-professionalism-in-further-education-final](http://www.bis.gov.uk/assets/biscore/further-education-skills/docs/p12-1198-professionalism-in-further-education-final)

<sup>4</sup> [www.feadvice.org.uk/what-do-i-need/fe-teaching-qualifications-september-2013](http://www.feadvice.org.uk/what-do-i-need/fe-teaching-qualifications-september-2013)

<sup>5</sup> Preparing to Teach in the Lifelong Learning Sector, University of Cambridge: [www.cambridgeenglish.org/exams-and-qualifications/celta/ptlls](http://www.cambridgeenglish.org/exams-and-qualifications/celta/ptlls) (accessed 26th November 2013).

<sup>6</sup> Preparing to Teach in the Lifelong Learning Sector, University of Cambridge: [www.cambridgeenglish.org/exams-and-qualifications/celta/ptlls](http://www.cambridgeenglish.org/exams-and-qualifications/celta/ptlls) (accessed 26th November 2013).

### Certificates by sector subject area of qualification

Regulated higher level qualifications are allocated to one of 15 sector subject area codes (see our *Statistical Publications Glossary*<sup>7</sup> for further details).

Figure 9 shows that the health, public services and care sector subject area saw an increase of 2 per cent in the number of certificates issued this quarter, compared with the same quarter of 2012. This is explained largely by certificates awarded in qualifications for leadership for health and social care and children and young people's services (see page 19).

Qualifications awarded in the arts, media and publishing sector subject area decreased this quarter, following an increase last quarter. This is partly due to the decrease in the number of certificates issued by Trinity College London (750 certificates issued in October – December 2012 compared with 200 this quarter). These qualifications are approaching their teaching end date of December 2014 so teaching of them might be slowing down, which may be the reason for the decline. A decline was also seen in the number of certificates issued by the Royal Academy of Dance (100 certificates awarded in October – December 2012 to fewer than ten certificates this quarter). These are Level 4 QCF qualifications in performing arts.

The business, administration, finance and law sector subject area continued to see the highest number of certificates issued this quarter. Although this sector subject area has seen growth in the number of certificates issued in higher level vocational qualifications since 2008, it has been declining since 2012. This could be a result of the Retail Distribution Review, carried out by the Financial Services Authority, which required financial advisers to have at least one qualification at Level 4 by the end of 2012, where previously it was at Level 3, a pressure that has now worked through the market.

---

<sup>7</sup> [www.ofqual.gov.uk/files/2010-11-26-statistics-glossary.pdf](http://www.ofqual.gov.uk/files/2010-11-26-statistics-glossary.pdf)

**Figure 9:** Number of higher level qualification certificates by sector subject area for October - December 2013 (2013 Q4) and the growth and decline between October - December 2012 and October - December 2013

Sector subject area	Number of certificates		% change in certificates
	October - December 2012	October - December 2013	
Health, public services and care	2,350	2,400	2
Science and mathematics	0	50	-
Agriculture, horticulture and animal care	200	200	0
Engineering and manufacturing technologies	600	550	-8
Construction, planning and the built environment	700	750	7
Information and communication technology	150	100	-33
Retail and commercial enterprise	450	400	-11
Leisure, travel and tourism	200	200	0
Arts, media and publishing	1,300	900	-31
History, philosophy and theology	-	-	-
Social sciences	-	-	-
Languages, literature and culture	200	300	50
Education and training	6,050	5,800	-4
Preparation for life and work	0	0	-
Business, administration, finance and law	14,700	10,950	-26

Further details of certificates issued by sector subject area in the last 5 years are listed in table 5 in the appendix.



### Certificates by level of qualification

All regulated qualifications are assigned a level, ranging from entry, then 1 to 8 (see our *Statistical Publications Glossary*<sup>8</sup> for full details). Higher level qualifications are those at Levels 4 to 8.

Figure 10 shows the 12 months to quarter end trend in the number of certificates issued at Levels 4 to 8 from 2008 until quarter end December 2013.

Level 4 qualification numbers have been declining, and continued to decline this quarter. The number of certificates awarded in Level 5 qualifications increased this quarter by 11 per cent. This is analysed further on.

The number of certificates issued for Level 6 qualifications declined this quarter, mainly in the arts, media and publishing sector subject area (700 certificates awarded in October – December 2012 compared with 150 this quarter). The three main qualifications that contributed to this were offered by Trinity College London in performing arts, and will be taught until December 2014. The business, administration, finance and law sector subject area also declined (950 certificates issued in October – December 2012 compared with 750 certificates this quarter). Professional bodies such as the Chartered Management Institute (CMI), the Chartered Institute for Securities and Investments (CISI), the Institute of Administrative Management (IAM) and the Chartered Insurance Institute (CII) offer qualifications with a diminishing number of awards, contributing to the decline.

The number of certificates awarded in Level 8 qualifications is increasing, even though the numbers are small. The majority of the growth this quarter is explained by an increase in the number of certificates issued in CMI Level 8 Certificate in Strategy Direction and Leadership (fewer than ten certificates awarded in October – December 2012 compared with 100 this quarter).

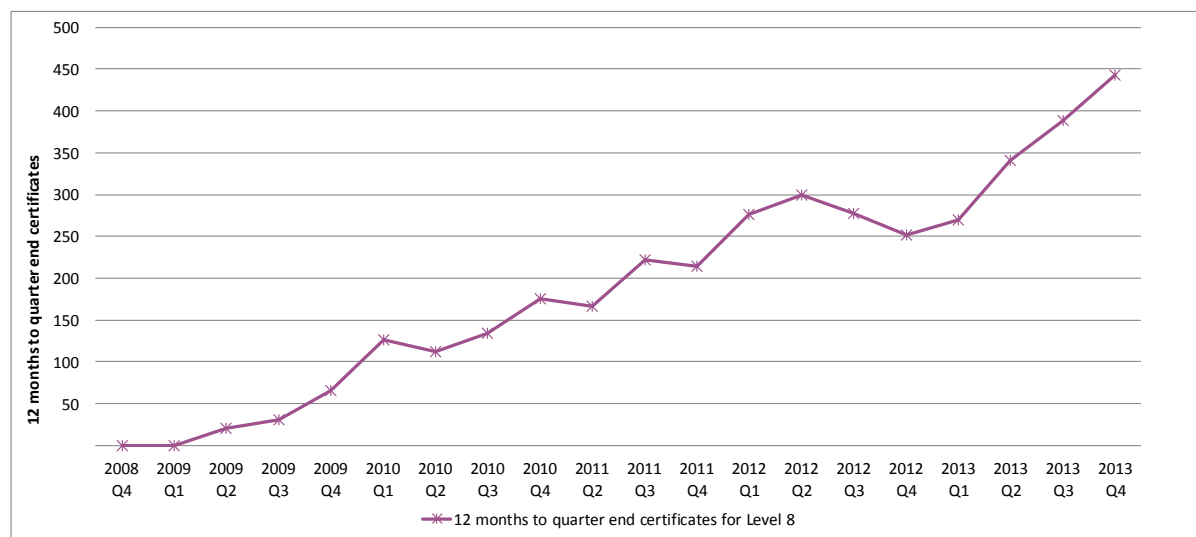
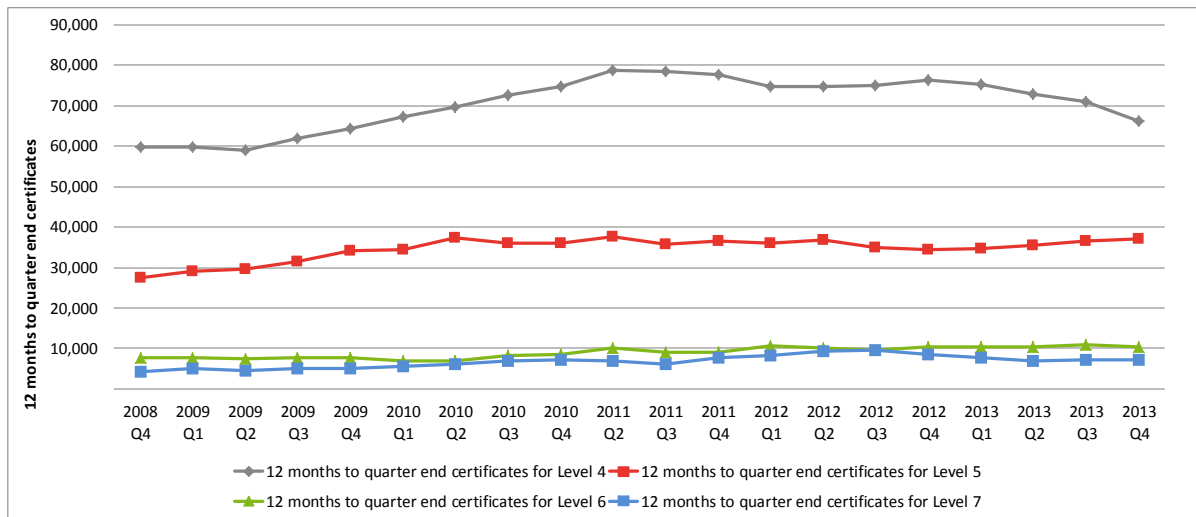
---

<sup>8</sup> [www.ofqual.gov.uk/files/2010-11-26-statistics-glossary.pdf](http://www.ofqual.gov.uk/files/2010-11-26-statistics-glossary.pdf)

Higher Level Qualifications Quarterly: October – December 2013

**Figure 10:** The growth and decline in higher level qualification certificates between October - December 2012 and October - December 2013 by level and the 12 months to quarter end trend in the number of certificates from 12 months to quarter end December 2008 to 12 months to quarter end December 2013.

Level	Number of certificates		% change in certificates
	October - December 2012	October - December 2013	
Level 4	16,400	11,650	-29
Level 5	6,500	7,200	11
Level 6	2,400	1,950	-19
Level 7	1,700	1,750	3
Level 8	50	100	100



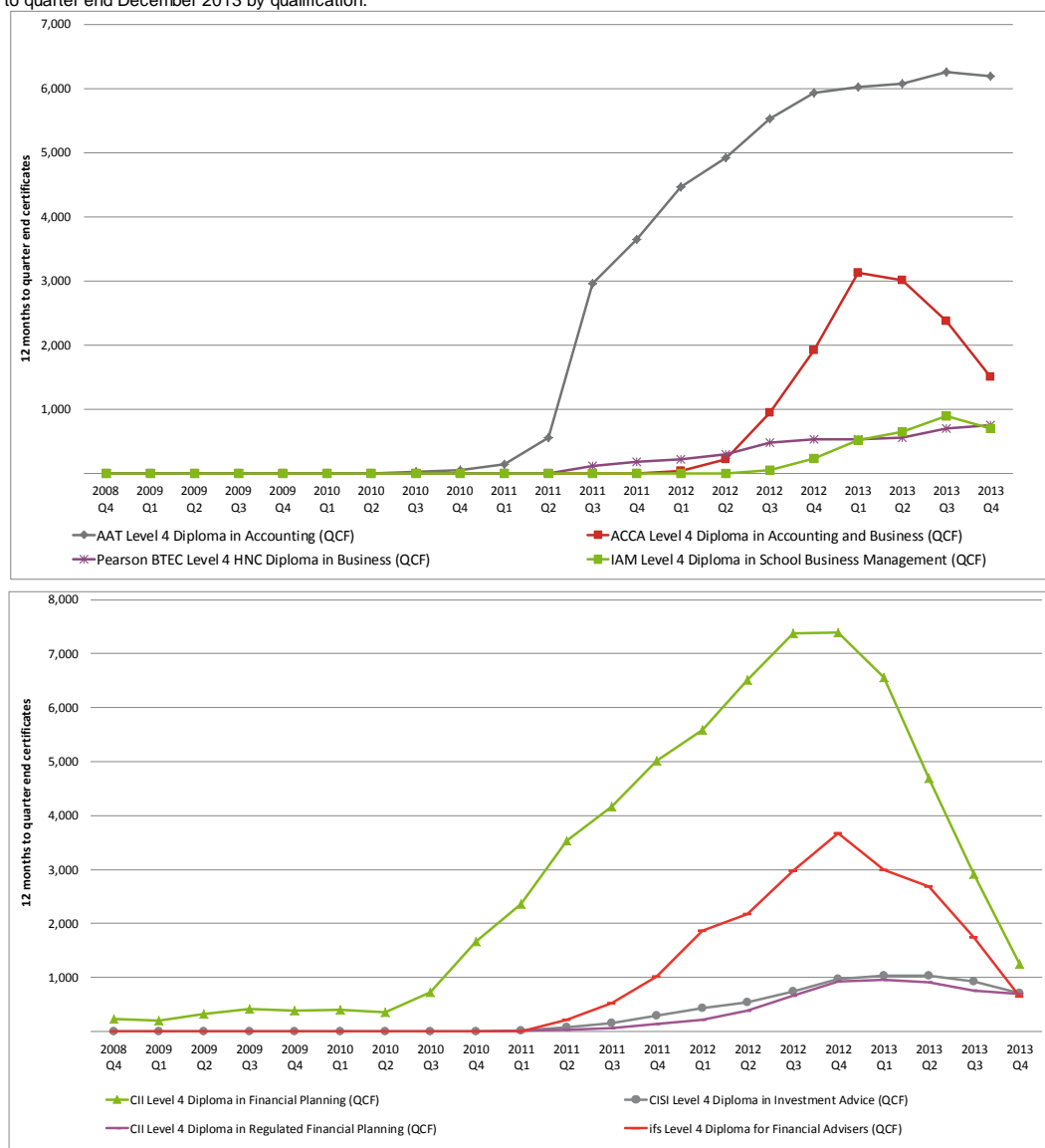
Further details of certificates issued in the last 5 years by level of qualification are listed in table 6 in the appendix.

### Level 4 diploma qualifications

There was a decline in the number of certificates awarded for Level 4 diploma qualifications since 2011 (see figure 10). This decline was primarily in the business, administration, finance and law sector subject area (6,900 certificates issued in October – December 2012 compared with 2,800 certificates this quarter, and 25,050 certificates in January – December 2012 compared with 15,400 in January – December 2013). The decline is likely to be due to the Retail Distribution Review. The 5-year trend for some of these qualifications can be seen in figure 11.

Interestingly, the Pearson BTEC Level 4 HNC Diploma in Business (QCF) saw an increase in the number of certificates issued this quarter. However, the number of certificates awarded in financial planning and advice qualifications continues to decline whereas, previously, we saw an increase.

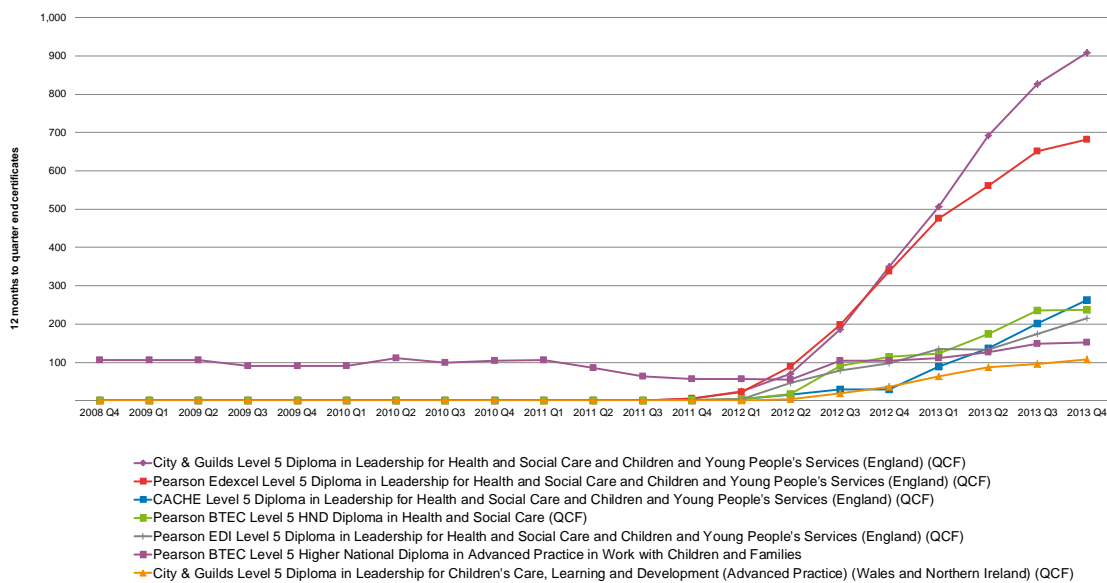
**Figure 11:** The 12 months to quarter end trend in the number of certificates from 12 months to quarter end December 2008 to 12 months to quarter end December 2013 by qualification.



## Level 5 diploma qualifications

Level 5 diploma qualifications have seen an increase in the number of certificates issued (18,450 in January – December 2012 compared with 21,100 in January – December 2013). Most of the increase was in the Level 5 Diploma in Leadership for Health and Social Care and Children and Young People's Services (see figure 13). This is due to the fact that it now forms part of the continuing professional development evidence within the sector, as explained earlier. This qualification replaces the Level 4 NVQ in Leadership and Management for Care Services and the Level 4 NVQ in Health and Social Care.<sup>9</sup>

**Figure 12:** The 12 months to quarter end trend in the number of certificates from 12 months to quarter end December 2008 to 12 months to quarter end December 2013 by qualification.



<sup>9</sup> [www.altoncollege.ac.uk/adult-education](http://www.altoncollege.ac.uk/adult-education)

## Background notes

In this release we present data on available regulated qualifications at Level 4 and above and the number of certificates issued for these qualifications. The data cover England, Wales and Northern Ireland, and the figures represent both the quarter October – December 2013 and the 12-month period to the end of December 2013.

### Data source

Information on qualifications is taken from our Register of Regulated Qualifications. The Register is used by awarding organisations to submit qualifications for accreditation and maintain details of their qualifications. We use the Register for regulatory activity. Data on qualifications, covering title, type, awarding organisation, sector subject area and level, are regarded as administrative data.

Each quarter, all recognised awarding organisations submit data to us about the number of qualifications they have awarded in England, Wales and Northern Ireland, regardless of the age of the student and the type of school or college. Awards are counted in the quarter when the qualification was awarded. This release shows the number of awards broken down by awarding organisation, sector subject area, type of qualification and level of qualification.

### Limitations of data

Data are collected at the earliest point available, which is the first day of the next reporting period. This reduces the time between the activity and reporting on the activity.

We cannot guarantee the number of certificates sent to us is correct, although we expect awarding organisations to send us the correct data. We do send summary data to awarding organisations for checking and confirmation. The figures reported in this release are reflective of the certificates issued by awarding organisations at the time of data collection.

We carry out quality assurance procedures to ensure the accuracy of the data and challenge/question it, where necessary. We may also defer publication if the statistics are not considered fit for purpose.

Comparisons in this release are only made with data from the same quarter of the previous year and the 12-month period up to the end of the same quarter of the previous year. This is because of seasonal changes in the number of certificates issued over the year.

At the point of accreditation, regulated qualifications are classified as one of 18 qualification types (including GCSEs and A levels). We recognise that the

classification system is not ideal, as very similar qualifications may appear under different qualification types, for example NVQs and the QCF. This release presents figures on seven of these qualification types: English for speakers of other languages, higher level, key skills, NVQs, occupational qualifications, QCF, and vocationally related qualifications.

### **Geographical coverage**

In this release we present data on certificates issued for regulated qualifications at Level 4 and above in England, Wales and Northern Ireland during the October – December 2013 quarter.

Statistics for Scotland are on the Scottish Qualifications Authority website.<sup>10</sup>

### **Revisions**

Once published, data on the number of certificates issued for any qualification are not usually subject to revision, although subsequent releases may be revised to insert late data or correct an error. Qualifications may also be re-categorised to a different type, level, sector subject area or awarding organisation. In some cases, data may be amended to reflect the new categorisation.

The awarding organisations Edexcel and EDI merged to form Pearson Education Ltd, so qualifications by EDI no longer appear separately.

The number of available qualifications has been revised since the last release of this publication. Table 1 in the appendix has been revised accordingly.

In this release, figures from three awarding organisations have been revised; the City and Guilds of London Institute have been revised since the July – September 2010 release affecting quarter 3 of 2010 onwards; the International Dance Teachers Association and the Royal Horticultural Society figures have also been revised affecting the quarter July – September 2013.

In addition, three qualifications from the Association of Accounting Technicians moved sector subject area from health, public services and care to business, administration, finance and law. From this quarter onwards, the certificates issued for these qualifications will be reported on in the latter.

---

<sup>10</sup> The Scottish Qualifications Authority is the national accreditation and awarding organisation in Scotland: Its website is available at: [www.sqa.org.uk/sqa/42397.html](http://www.sqa.org.uk/sqa/42397.html).

### Completeness of the data

Awarding organisations send us data each quarter. We contact any awarding organisation that does not return a complete set of data within the collection period, to make sure the data are as complete as possible. For this quarter, we received data from all the awarding organisations that were in a position to award qualifications.

### Confidentiality

To make sure the statistics in this release protect confidentiality, all figures are rounded to the nearest 50 and values less than 25 appear as '0'. A value of zero appears as '-'. Numbers of qualifications are exact.

### Rounding

Figures in the commentary and tables for the number of certificates issued are rounded to the nearest 50. This reflects the inaccuracies inherent in any large-scale data collection and makes reading the figures easier. As a result of rounded figures, the percentages shown in pie charts may not necessarily add up to 100 per cent.

### Users of these statistics

These statistics are of particular interest to recognised awarding organisations and the Department for Business, Innovation & Skills to include in their statistical first releases. Awarding organisations use these statistics for product development, business development strategies and gaining insight into market share. Other users include the Institute of the Motor Industry, sector skills councils, teachers, examiners, academics, researchers, members of the public, other government departments in Wales and other interested parties and individuals.

### Related statistics and publications

This release is one of a suite of two publications that present quarterly statistics on certificates issued for regulated qualifications. The other release is called *Vocational and Other Qualifications Quarterly*,<sup>11</sup> which covers certificates awarded in NVQs, vocationally related qualifications, QCF qualifications and occupational qualifications at all levels. There will be some overlap between the figures in this release and those in the *Vocational and Other Qualifications Quarterly*, because the qualifications covered in this release are a subset of the qualifications covered in the other release.

A number of other statistical releases and publications relate to this one, including:

---

<sup>11</sup> [www.ofqual.gov.uk/standards/statistics/vocational-and-other-qualifications](http://www.ofqual.gov.uk/standards/statistics/vocational-and-other-qualifications)

- The *Quarterly Statistics Report* published by the Scottish Qualifications Authority – <http://www.sqa.org.uk/sqa/42397.3041.html> – covers registration and certifications for qualifications taken in Scotland. This can be compared against certificates issued in England, Wales and Northern Ireland.
- The quarterly *Statistical First Release* published by the Department for Business, Innovation & Skills – [www.thedataservice.org.uk/NR/rdonlyres](http://www.thedataservice.org.uk/NR/rdonlyres) – reports on apprenticeship volumes that cover statistics on adult (19+) government-funded participation, achievement and success rates for further education, and apprenticeships participation and achievements for all ages (16+) in England. It also shows figures on certificates issued for vocational qualifications in the UK, as collected by us and through the National Vocational Qualifications Database.

### Useful information

The raw data behind these statistics are available on our website.<sup>12</sup>

A glossary of terms is available in the next section to help you interpret this release.

You can find our publication schedule for the next releases on our website.<sup>13</sup> Our *Statistical Publications Glossary* provides further details on sector subject area classifications and qualification types and levels, and is available on our website.<sup>14</sup>

A detailed guidance document and further information on data collection are also available on our website.<sup>15</sup>

The Register gives information on regulated qualifications and recognised awarding organisations in England, Wales and Northern Ireland.<sup>16</sup>

This release presents a new design aimed at making it easier for you to use. Please note that we will continue to make changes that reflect your needs, and future releases may have revised titles and content.

---

<sup>12</sup> [www.ofqual.gov.uk/standards/statistics/vocational-data](http://www.ofqual.gov.uk/standards/statistics/vocational-data)

<sup>13</sup> [www.ofqual.gov.uk/standards/statistics](http://www.ofqual.gov.uk/standards/statistics)

<sup>14</sup> [www.ofqual.gov.uk/files/2010-11-26-statistics-glossary.pdf](http://www.ofqual.gov.uk/files/2010-11-26-statistics-glossary.pdf)

<sup>15</sup> [www.ofqual.gov.uk/standards/statistics/vocational-data](http://www.ofqual.gov.uk/standards/statistics/vocational-data)

<sup>16</sup> [www.register.ofqual.gov.uk](http://www.register.ofqual.gov.uk)



## Glossary of terms

**A levels** – also known as General Certificates of Education, are available as advanced level qualifications (A levels) and advanced subsidiary (AS). They are the main qualifications that young people use to gain entry to university.

**Accreditation** – a process that reviews and confirms certification to specific criteria and standards.

**Accredited qualification** – one that has met the relevant criteria as set by the regulators of qualifications in England, Wales and Northern Ireland. Once approved for accreditation, a qualification will be awarded with a Qualification Accreditation Number, and specific dates set for the period for which the qualification will be accredited. The qualification is then said to be regulated.

**Active qualification** – a qualification where a certificate has been awarded.

**Available qualification** – a qualification eligible for an award or a qualification that has made an award even if it is no longer eligible (no longer available for students to enrol on). For the purpose of this release, a qualification is available until the certification end date or if an award has been certified during the reporting period.

**Awarding organisation** – an organisation recognised to develop, deliver and award descriptions of qualifications.

**Certificate/certification** – a formal acknowledgement of a student's achievement. This will be any award that is not graded as U, absent, or X (fail).

**Certification end date** – the last date on which a student may be issued with a certificate of achievement for the qualification.

**GCSEs** – General Certificates of Secondary Education are the main school-leaving qualification in England. They are available in a range of subjects and can be studied alongside other qualifications. They are generally sat by 15 to 18 year olds in schools and colleges but are open to anyone who wants to gain a qualification.

**Level** – qualifications are assigned a level from entry, then Level 1 through to Level 8. Descriptions of the levels are available in the *Statistical Publications Glossary* on our website.

**NVQs** – work-related, competence-based qualifications that cover a broad range of industry sectors and occupations, and are delivered in a workplace setting.

**Other general** – qualifications that assess a particular subject area, such as music or art, other than GCSEs, the AS, A levels and GNVQs. These qualifications are not

directly work-related but may support career development. They are often structured against graded exams. The category also includes qualifications at Level 1/Level 2, also known as IGCSEs.

**The QCF** – provides students, learning providers and employers with an inclusive and flexible regulated qualifications framework, containing units and qualifications that recognise the widest possible range of quality-assured student certificates. There are three sizes: award (1 to 12 credits), certificate (13 to 36 credits) and diploma (37 or more credits).

**Quarter** – refers to calendar quarters. So quarter 1 (Q1) refers to January – March, quarter 2 (Q2) to April – June, quarter 3 (Q3) to July – September, and quarter 4 (Q4) to October – December.

**Recognition** – the formal process, which we operate, whereby applicants who wish to offer regulated qualifications can demonstrate they meet the Recognition Criteria. It is a robust gateway into the regulated market place. Only applicants who meet the criteria in full will be recognised.

**Register** – the Register of Regulated Qualifications – [www.register.ofqual.gov.uk](http://www.register.ofqual.gov.uk) – contains details of recognised awarding organisations and regulated qualifications.

**Regulated** – an accredited qualification is one that has met the relevant criteria as set by the regulators of qualifications in England, Wales and Northern Ireland. On accreditation, a qualification will be issued with a Qualification Accreditation Number, and specific dates set for the period for which the qualification will be accredited. The qualification is then said to be regulated.

**Vocationally related qualifications** – work-related, competence-based qualifications designed to give students the skills and knowledge they need to do a job. They are related to employment but, unlike NVQs, do not necessarily require a work placement.

## Your feedback

We are conducting a rolling series of online surveys to help our statistical releases meet your needs.

We would especially like to invite you to take part in the online survey for this release. It will take about 10 minutes to complete. Your responses will remain entirely confidential in any reports we publish about the survey.

If you would like to take part in the survey, have any questions or would prefer a paper or large-type copy, please contact us at: [statistics@ofqual.gov.uk](mailto:statistics@ofqual.gov.uk) .

## Appendix

<a href="#">Table 1</a>	Number of available higher level qualifications by type of qualification, 2007/8 to October – December 2013
<a href="#">Table 2</a>	Total number of certificates issued for higher level qualifications, 2007/8 to October – December 2013
<a href="#">Table 3</a>	The 50 higher level qualifications with the highest number of certificates issued, October – December 2013 (October – December 2012 shown for comparison)
<a href="#">Table 4</a>	The 50 awarding organisations with the highest number of certificates issued in higher level qualifications, October – December 2013 (October – December 2012 shown for comparison)
<a href="#">Table 5</a>	Total number of certificates issued in higher level qualifications by sector subject area, 2007/8 to October – December 2013
<a href="#">Table 6</a>	Total number of certificates issued in higher level qualifications by type, 2007/8 to October – December 2013
<a href="#">Table 7</a>	Total number of certificates issued in higher level qualifications by level, 2007/8 to October – December 2013
<a href="#">Table 8</a>	List of awarding organisations that are professional bodies

**Table 1: Number of available higher level qualifications by type of qualification, 2007/8 to October – December 2013**

England, Wales & Northern Ireland

Period	English for speakers of other languages	Higher level	Key skills	NVQ	Occupational qualification	QCF	Vocationally related qualification	Total number of qualifications
08-09	12	545	32	365	37	160		<b>1,151</b>
09-10	11	577	68	315	35	496		<b>1,502</b>
10-11	10	554	72	291	35	1,116		<b>2,078</b>
11-12	5	491	72	256	33	1,562		<b>2,419</b>
12-13	4	421	72	239	33	1,942	2	<b>2,713</b>
13-14	3	355	42	179	29	1,987	3	<b>2,598</b>
Oct-Dec 2008	11	472	32	319	33	117		<b>984</b>
Jan-Mar 2009	12	510	32	328	36	135		<b>1,053</b>
Apr-Jun 2009	12	500	32	317	37	143		<b>1,041</b>
Jul-Sep 2009	11	505	32	286	36	154		<b>1,024</b>
Oct-Dec 2009	11	526	2	301	33	152		<b>1,025</b>
Jan-Mar 2010	10	545	6	301	33	222		<b>1,117</b>
Apr-Jun 2010	10	534	60	299	33	206		<b>1,142</b>
Jul-Sep 2010	10	540	67	290	33	489		<b>1,429</b>
Oct-Dec 2010	10	552	72	291	35	580		<b>1,540</b>
Jan-Mar 2011	9	540	72	264	33	772		<b>1,690</b>
Apr-Jun 2011	9	529	72	268	33	930		<b>1,841</b>
Jul-Sep 2011	9	504	72	267	35	1,100		<b>1,987</b>
Oct-Dec 2011	5	484	72	255	33	1,249		<b>2,098</b>
Jan-Mar 2012	5	446	72	249	33	1,338		<b>2,143</b>
Apr-Jun 2012	5	423	72	246	33	1,427		<b>2,206</b>
Jul-Sep 2012	5	419	72	244	33	1,554		<b>2,327</b>
Oct-Dec 2012	4	414	72	239	33	1,625		<b>2,387</b>
Jan-Mar 2013	4	411	72	224	29	1,725	1	<b>2,466</b>
Apr-Jun 2013	4	408	72	216	29	1,822	1	<b>2,552</b>
Jul-Sep 2013	4	405	72	212	29	1,923	2	<b>2,647</b>
Oct-Dec 2013	3	355	42	179	29	1,987	3	<b>2,598</b>

Source: Regulated Qualifications Activity Database

Notes:

1. Data are supplied by awarding organisations
  2. Annual data are for academic years, that is October to September
- Blank cells indicate that there were no available qualifications

**Table 2: Total number of certificates issued for higher level qualifications, 2007/8 to October – December 2013**

England, Wales & Northern Ireland

Period	Total number of certificates
08-09	106,200
09-10	123,900
10-11	129,650
11-12	129,350
12-13	125,800
13-14	22,600
Oct-Dec 2008	17,200
Jan-Mar 2009	21,900
Apr-Jun 2009	16,750
Jul-Sep 2009	50,350
Oct-Dec 2009	22,350
Jan-Mar 2010	24,700
Apr-Jun 2010	23,200
Jul-Sep 2010	53,650
Oct-Dec 2010	25,050
Jan-Mar 2011	28,600
Apr-Jun 2011	26,100
Jul-Sep 2011	49,850
Oct-Dec 2011	26,500
Jan-Mar 2012	27,600
Apr-Jun 2012	27,050
Jul-Sep 2012	48,200
Oct-Dec 2012	27,050
Jan-Mar 2013	26,050
Apr-Jun 2013	24,900
Jul-Sep 2013	47,850
Oct-Dec 2013	22,600

*Source: Regulated Qualifications Activity Database*

Notes:

1. Data are supplied by awarding organisations
2. Annual data are for academic years, that is October to September

Rounding: All figures are rounded to the nearest 50

**Table 3: The 50 higher level qualifications with the highest number of certificates issued, October – December 2013 (October – December 2012 shown for comparison)**

England, Wales & Northern Ireland

Qualification	Total number of certificates	
	October - December 2012	October - December 2013
AAT Level 4 Diploma in Accounting (QCF)	1,100	1,050
Cambridge English Level 5 Certificate in Teaching English to Speakers of Other Languages (CELTA) (QCF)	800	850
City & Guilds Level 4 Award in Preparing to Teach in the Lifelong Learning Sector (QCF)	1,000	650
Pearson BTEC Level 4 Certificate in Teaching in the Lifelong Learning Sector (QCF)	650	600
CMI Level 5 Certificate in Management and Leadership (QCF)	500	500
Pearson BTEC Level 5 HND Diploma in Business (QCF)	400	450
CFA UK Level 4 Certificate in Investment Management (QCF)	550	400
Pearson BTEC Level 7 Extended Diploma in Strategic Management and Leadership (QCF)	400	350
CMI Level 5 Diploma in Management and Leadership (QCF)	350	350
CIPD Level 7 Postgraduate Diploma in Personnel and Development	50	300
CII Level 4 Diploma in Regulated Financial Planning (QCF)	350	300
ILM Level 5 Award in Leadership and Management (QCF)	0	250
City & Guilds Level 5 Diploma in Leadership for Health and Social Care and Children and Young People's Services (England) (QCF)	150	250
AAT Level 4 Award in Tax (HMRC) (QCF)	50	250
CII Level 4 Diploma in Financial Planning (QCF)	1,900	250
OCR Level 4 Award in Preparing to Teach in the Lifelong Learning Sector (QCF)	0	250
CII Level 6 Advanced Diploma in Financial Planning (QCF)	250	250
ILM Level 5 Certificate in Leadership and Management (QCF)	0	250
HABC Level 4 Award in Preparing to Teach in the Lifelong Learning Sector (QCF)	0	200
IoLET Level 6 Diploma in Public Service Interpreting (QCF)	-	200
Pearson BTEC Level 5 Diploma in Management and Leadership (QCF)	150	200
Cskills Awards Level 6 NVQ Diploma in Controlling Lifting Operations - Planning Lifts (Construction)(QCF)	100	200
City & Guilds Level 4 Award in the Internal Quality Assurance of Assessment Processes and Practice (QCF)	200	200
CIM Level 4 Professional Certificate in Marketing (HL)	200	200
CMI Level 5 Award in Management and Leadership (QCF)	200	200
CMI Level 7 Certificate in Strategic Management and Leadership (QCF)	100	200
Pearson Edexcel Level 5 Diploma in Leadership for Health and Social Care and Children and Young People's Services (England) (QCF)	150	150
CIPS Level 4 Diploma in Procurement and Supply	-	150
Pearson Edexcel Level 4 Award In Preparing to Teach in the Lifelong Learning Sector (QCF)	250	150
CISI Level 4 Diploma in Investment Advice (QCF)	400	150
Ascentis Level 4 Award in Preparing to Teach in the Lifelong Learning Sector (QCF)	100	150
ILM Level 5 Award in Leadership (QCF)	100	150
Pearson BTEC Level 4 HNC Diploma in Business (QCF)	100	150
CPCAB Level 4 Diploma in Therapeutic Counselling (QCF)	150	150
NCFE Level 4 Award in Preparing to Teach in the Lifelong Learning Sector (QCF)	100	150
CMI Level 6 Award in Management and Leadership (QCF)	50	150
CIPS Level 5 Advanced Diploma in Procurement and Supply	-	150
ILM Level 5 Certificate in Coaching and Mentoring (QCF)	-	150
UWLQ Level 4 Diploma in Music Performance (QCF)	50	150
City & Guilds Level 5 Diploma in Teaching in the Lifelong Learning Sector (QCF)	150	100
CII Level 4 Certificate in Discretionary Investment Management (QCF)	200	100
Pearson Edexcel Level 4 NVQ in Supply Chain Management	100	100
TCL Level 4 Award in Preparing to Teach in the Lifelong Learning Sector (QCF)	-	100
CMI Level 7 Diploma in Strategic Management and Leadership (QCF)	300	100
OCR Level 4 Award in the Internal Quality Assurance of Assessment Processes and Practice (QCF)	100	100
CIPS Level 4 Foundation Diploma in Purchasing and Supply	50	100
Pearson EDI Level 5 NVQ Diploma in Management (QCF)	50	100
ACCA Level 4 Diploma in Accounting and Business (QCF)	-	100
City & Guilds Level 4 Award in Work with Parents (Intense support for families with multiple and complex needs) (QCF)	50	100
City & Guilds Level 5 Award for Professional Recognition	-	100

Source: Regulated Qualifications Activity Database

Notes:

1. Data are supplied by awarding organisations
  2. Annual data are for academic years, that is October to December
- Rounding: All figures are rounded to the nearest 50, values less than 25 will appear as '0', value of 0 will appear as '-'

**Table 4: The 50 awarding organisations with the highest number of certificates issued in higher level qualifications, October – December 2013 (October – December 2012 shown for comparison)**

Awarding organisation	Total number of certificates	
	October - December 2012	October - December 2013
Pearson Education Ltd	4,350	4,400
City and Guilds of London Institute	3,000	2,750
Chartered Management Institute	2,000	2,200
Institute of Leadership & Management	1,800	1,800
Association of Accounting Technicians	1,250	1,400
OCR	1,100	1,150
Chartered Insurance Institute	2,700	900
Cambridge English Language Assessment	900	900
Chartered Institute of Purchasing and Supply	100	550
CFA Society of UK	550	400
Cskills Awards	400	400
Chartered Institute of Personnel and Development	150	350
Highfield Awarding Body for Compliance	150	350
Trinity College London	1,000	350
Ascentis	200	250
IoL Educational Trust	150	200
NCFE	150	200
Imperial Society of Teachers of Dancing	200	200
Chartered Institute of Marketing	350	200
Chartered Institute for Securities & Investment	550	200
Counselling and Psychotherapy Central Awarding Body	250	200
University of West London	100	150
ATHE Ltd	150	150
Chartered Institute of Housing	100	150
Active IQ	100	150
Equestrian Qualifications Limited	150	150
Chartered Institute of Environmental Health	100	150
Council for Awards in Care, Health and Education	50	150
Awarding Body for Vocational Achievement Ltd	50	100
Association of Chartered Certified Accountants	1,000	100
The Confederation of Tourism and Hospitality	150	100
Signature	100	100
ifs University College (previously known as ifs School of Finance)	1,250	100
Association of Business Executives	150	100
British Institute of Facilities Management	50	100
NOCN	200	100
Agored Cymru	0	100
VTCT	100	100
Excellence, Achievement & Learning Limited	100	100
International Dance Teachers Association	-	100
WAMITAB	100	50
Institute of Commercial Management	50	50
Chartered Institute of Building	50	50
Royal Society for Public Health	100	50
Open College Network Yorkshire and Humber Region	-	50
Worshipful Company of Spectacle Makers	0	50
ABC Awards	100	50
SFJ Awards	-	50
Graded Qualifications Alliance	50	50
Mineral Products Qualifications Council	50	50

Source: Regulated Qualifications Activity Database

Notes:

1. Data are supplied by awarding organisations
  2. Annual data are for academic years, that is October to September
- Rounding: All figures are rounded to the nearest 50, values less than 25 will appear as '0', value of 0 will appear as '-'



**Table 5: Total number of certificates issued in higher level qualifications by sector subject area, 2007/8 to October – December 2013**

England, Wales & Northern Ireland

Period	Health, public services and care	Science and mathematics	Agriculture, horticulture and animal care	Engineering and manufacturing technologies	Construction, planning and the built environment	Information and communication technology	Retail and commercial enterprise	Leisure, travel and tourism	Arts, media and publishing	History, philosophy and theology	Social sciences	Languages, literature and culture	Education and training	Preparation for life and work	Business, administration, finance and law	Total number of certificates
08-09	20,550	800	1,150	3,300	4,750	2,050	1,500	450	9,750	-	0	500	17,500	200	43,650	<b>106,200</b>
09-10	22,350	650	950	3,600	5,150	1,500	2,100	900	10,300	0	-	500	24,050	100	51,750	<b>123,900</b>
10-11	19,900	300	700	3,350	3,450	1,450	1,500	1,100	10,900	0	0	400	28,150	50	58,400	<b>129,650</b>
11-12	12,350	200	750	4,700	4,000	1,400	2,200	1,300	8,850	0	0	650	30,850	100	62,000	<b>129,350</b>
12-13	11,900	300	700	4,500	4,000	1,250	2,100	1,250	8,250	0	-	650	34,100	50	56,700	<b>125,800</b>
13-14	2,400	50	200	550	750	100	400	200	900	-	-	300	5,800	0	10,950	<b>22,600</b>
Oct-Dec 2008	5,100	100	250	450	550	200	350	50	450	-	-	300	3,000	0	6,300	<b>17,200</b>
Jan-Mar 2009	4,400	250	250	350	550	450	200	50	1,200	-	-	50	2,650	0	11,500	<b>21,900</b>
Apr-Jun 2009	4,750	0	200	250	950	100	350	50	1,150	-	-	50	2,850	50	6,000	<b>16,750</b>
Jul-Sep 2009	6,250	400	450	2,300	2,650	1,300	600	300	6,950	-	0	100	9,000	150	19,800	<b>50,350</b>
Oct-Dec 2009	5,400	50	200	500	950	400	550	100	350	-	-	350	4,750	0	8,800	<b>22,350</b>
Jan-Mar 2010	5,200	200	250	300	850	200	600	200	800	0	-	50	4,900	50	11,100	<b>24,700</b>
Apr-Jun 2010	5,250	50	150	200	1,000	50	300	150	1,100	-	-	50	5,850	0	9,000	<b>23,200</b>
Jul-Sep 2010	6,500	350	350	2,650	2,400	850	600	450	8,100	-	-	50	8,550	50	22,850	<b>53,650</b>
Oct-Dec 2010	5,150	50	150	400	600	400	500	200	950	0	0	300	5,700	0	10,650	<b>25,050</b>
Jan-Mar 2011	4,650	50	100	250	550	150	350	250	1,300	-	-	50	6,050	0	14,800	<b>28,600</b>
Apr-Jun 2011	4,450	50	200	350	550	50	250	100	1,050	-	-	50	6,600	0	12,450	<b>26,100</b>
Jul-Sep 2011	5,700	200	200	2,300	1,800	850	450	500	7,600	-	-	50	9,800	0	20,450	<b>49,850</b>
Oct-Dec 2011	3,050	50	150	500	700	350	400	200	1,250	0	-	150	5,900	0	13,800	<b>26,500</b>
Jan-Mar 2012	3,050	50	150	500	500	200	500	250	950	-	0	100	7,250	0	14,100	<b>27,600</b>
Apr-Jun 2012	2,350	50	250	500	700	150	450	300	2,800	0	-	150	6,850	0	12,500	<b>27,050</b>
Jul-Sep 2012	3,900	100	250	3,200	2,100	750	850	500	3,800	-	-	250	10,850	50	21,600	<b>48,200</b>
Oct-Dec 2012	2,500	0	200	600	700	150	450	200	1,300	-	-	200	6,050	0	14,550	<b>27,050</b>
Jan-Mar 2013	2,600	50	50	400	650	150	350	250	900	0	-	100	7,400	0	13,150	<b>26,050</b>
Apr-Jun 2013	2,500	50	200	800	950	200	350	300	1,500	-	-	50	7,550	0	10,450	<b>24,900</b>
Jul-Sep 2013	4,300	150	250	2,700	1,650	800	950	550	4,550	-	-	250	13,050	0	18,550	<b>47,850</b>
Oct-Dec 2013	2,400	50	200	550	750	100	400	200	900	-	-	300	5,800	0	10,950	<b>22,600</b>

Notes:

1. Data are supplied by awarding organisations

2. Annual data are for academic years, that is October to September

Rounding: All figures are rounded to the nearest 50, values less than 25 will appear as '0', value of 0 will appear as '-'

Figures have been rounded independently so may not sum to the total

**Table 6: Total number of certificates issued in higher level qualifications by type, 2007/8 to October – December 2013**

England, Wales & Northern Ireland

Period	English for speakers of other languages	Higher level	Key skills	NVQ	Occupational qualification	QCF	Vocationally related qualification	Total number of certificates
08-09	1,450	44,650	200	31,650	4,300	23,900	-	<b>106,200</b>
09-10	700	46,600	100	34,450	4,250	37,800	-	<b>123,900</b>
10-11	0	30,300	50	25,800	3,250	70,250	-	<b>129,650</b>
11-12	-	16,850	0	8,600	900	103,000	-	<b>129,350</b>
12-13	50	7,600	0	2,800	150	115,250	-	<b>125,800</b>
13-14	-	1,650	-	400	0	20,400	150	<b>22,600</b>
Oct-Dec 2008	200	7,100	0	6,450	1,000	2,450	-	<b>17,200</b>
Jan-Mar 2009	250	8,900	0	7,600	1,000	4,150	-	<b>21,900</b>
Apr-Jun 2009	400	4,600	50	6,100	1,000	4,550	-	<b>16,750</b>
Jul-Sep 2009	600	24,050	150	11,550	1,250	12,750	-	<b>50,350</b>
Oct-Dec 2009	300	7,900	0	7,250	1,050	5,850	-	<b>22,350</b>
Jan-Mar 2010	350	8,250	50	8,650	1,000	6,400	-	<b>24,700</b>
Apr-Jun 2010	0	6,850	0	7,150	950	8,250	-	<b>23,200</b>
Jul-Sep 2010	50	23,650	50	11,400	1,250	17,350	-	<b>53,650</b>
Oct-Dec 2010	0	6,800	0	6,800	950	10,500	-	<b>25,050</b>
Jan-Mar 2011	0	7,500	0	7,500	800	12,800	-	<b>28,650</b>
Apr-Jun 2011	-	3,900	0	6,100	750	15,300	-	<b>26,100</b>
Jul-Sep 2011	-	12,100	0	5,400	750	31,600	-	<b>49,850</b>
Oct-Dec 2011	-	4,000	0	3,250	400	18,800	-	<b>26,500</b>
Jan-Mar 2012	-	3,600	-	2,300	250	21,400	-	<b>27,600</b>
Apr-Jun 2012	-	2,500	-	1,650	100	22,800	-	<b>27,050</b>
Jul-Sep 2012	-	6,700	0	1,400	100	40,000	-	<b>48,200</b>
Oct-Dec 2012	0	2,000	-	1,000	50	23,950	-	<b>27,050</b>
Jan-Mar 2013	0	2,050	-	750	50	23,200	-	<b>26,050</b>
Apr-Jun 2013	-	1,350	-	550	50	22,950	-	<b>24,900</b>
Jul-Sep 2013	-	2,150	0	500	0	45,200	-	<b>47,850</b>
Oct-Dec 2013	-	1,650	-	400	0	20,400	150	<b>22,600</b>

*Source: Regulated Qualifications Activity Database*

Notes:

1. Data are supplied by awarding organisations

2. Annual data are for academic years, that is October to September

Rounding: All figures are rounded to the nearest 50, values less than 25 will appear as '0', value of 0 will appear as '-'

Figures have been rounded independently so may not sum to the total

**Table 7: Total number of certificates issued in higher level qualifications by level, 2007/8 to October – December 2013**

England, Wales & Northern Ireland

Period	Level 4	Level 5	Level 6	Level 7	Level 8	Total number of certificates
08-09	62,000	31,500	7,650	5,000	50	<b>106,200</b>
09-10	72,450	35,950	8,300	7,000	150	<b>123,900</b>
10-11	78,350	35,650	9,150	6,250	200	<b>129,650</b>
11-12	74,950	34,950	9,550	9,600	300	<b>129,350</b>
12-13	70,900	36,450	10,900	7,150	400	<b>125,800</b>
13-14	11,650	7,200	1,950	1,750	100	<b>22,600</b>
Oct-Dec 2008	11,250	3,750	1,150	1,100	-	<b>17,200</b>
Jan-Mar 2009	13,500	5,300	2,000	1,100	-	<b>21,900</b>
Apr-Jun 2009	11,800	3,500	550	850	-	<b>16,750</b>
Jul-Sep 2009	25,450	19,050	3,900	1,950	-	<b>50,350</b>
Oct-Dec 2009	13,450	6,250	1,350	1,250	50	<b>22,350</b>
Jan-Mar 2010	16,400	5,700	1,000	1,550	50	<b>24,700</b>
Apr-Jun 2010	14,450	6,500	800	1,500	-	<b>23,200</b>
Jul-Sep 2010	28,150	17,500	5,200	2,750	50	<b>53,650</b>
Oct-Dec 2010	15,700	6,200	1,650	1,450	100	<b>25,050</b>
Jan-Mar 2011	18,150	7,450	1,450	1,550	50	<b>28,600</b>
Apr-Jun 2011	16,750	6,350	1,850	1,150	-	<b>26,100</b>
Jul-Sep 2011	27,750	15,700	4,200	2,100	100	<b>49,850</b>
Oct-Dec 2011	15,100	6,950	1,550	2,850	50	<b>26,500</b>
Jan-Mar 2012	15,200	7,100	2,950	2,250	100	<b>27,600</b>
Apr-Jun 2012	16,500	6,950	1,500	2,050	50	<b>27,050</b>
Jul-Sep 2012	28,150	13,950	3,550	2,500	50	<b>48,200</b>
Oct-Dec 2012	16,400	6,500	2,400	1,700	50	<b>27,050</b>
Jan-Mar 2013	14,300	7,350	2,800	1,450	100	<b>26,050</b>
Apr-Jun 2013	14,050	7,750	1,650	1,250	100	<b>24,900</b>
Jul-Sep 2013	26,150	14,850	4,050	2,700	100	<b>47,850</b>
Oct-Dec 2013	11,650	7,200	1,950	1,750	100	<b>22,600</b>

*Source: Regulated Qualifications Activity Database*

Notes:

1. Data are supplied by awarding organisations

2. Annual data are for academic years, that is October to September

Rounding: All figures are rounded to the nearest 50, values less than 25 will appear as '0', value of 0 will appear as '-'

Figures have been rounded independently so may not sum to the total

**Table 8: List of awarding organisations that are professional bodies**

Amateur Swimming Association
Association of Accounting Technicians
Association of British Dispensing Opticians
Association of Business Executives
Association of Chartered Certified Accountants
Association of International Accountants
BCS, The Chartered Institute for IT
BIAB
British Institute of Facilities Management
British Safety Council
CFA Society of UK
Chartered Institute for Securities & Investment
Chartered Institute of Building
Chartered Institute of Environmental Health
Chartered Institute of Housing
Chartered Institute of Legal Executives
Chartered Institute of Marketing
Chartered Institute of Personnel and Development
Chartered Institute of Purchasing and Supply
Chartered Insurance Institute
Chartered Management Institute
Chartered Quality Institute
Confederation of International Beauty Therapy and Cosmetology
FPSB UK Ltd
ifs University College (previously known as ifs School of Finance)
Institute of Administrative Management
Institute of Commercial Management
Institute of Credit Management
Institute of Export
Institute of Hospitality
Institute of Leadership & Management
Institute of Operations Management
Institute of Sales and Marketing Management
International Association of Book-Keepers
International Dance Teachers Association
IoL Educational Trust
National Association of Licensed Paralegals
Recruitment & Employment Confederation
Royal Institute of Public Health
Royal Society for Public Health
The Confederation of Tourism and Hospitality
The Gemmological Association of Great Britain
The Institute of Financial Accountants
The Institute of Operations Management
The Institution of Fire Engineers
The Market Research Society
The Pensions Management Institute
Worshipful Company of Spectacle Makers

We wish to make our publications widely accessible. Please contact us if you have any specific accessibility requirements.

First published by the Office of Qualifications and Examinations Regulation in 2014

© Crown copyright 2014

You may re-use this publication (not including logos) free of charge in any format or medium, under the terms of the [Open Government Licence](#). To view this licence, visit [The National Archives](#); or write to the Information Policy Team, The National Archives, Kew, Richmond, Surrey, TW9 4DU; or email: [psi@nationalarchives.gsi.gov.uk](mailto:psi@nationalarchives.gsi.gov.uk)

This publication is also available on our website at [www.ofqual.gov.uk](http://www.ofqual.gov.uk)

Any enquiries regarding this publication should be sent to us at:

Office of Qualifications and Examinations Regulation	
Spring Place	2nd Floor
Coventry Business Park	Glendinning House
Herald Avenue	6 Murray Street
Coventry CV5 6UB	Belfast BT1 6DN

Telephone 0300 303 3344

Textphone 0300 303 3345

Helpline 0300 303 3346