



Department
for Education

Attainment of English and maths between 16 and 19

Impact Indicator 4: Proportion of young people attaining Level 2 in English and maths (of those who did not achieve this by age 16)

About the indicator

The indicator measures the proportion of young people who have not attained a Level 2 qualification in English and Maths at age 16, who go on to attain Level 2 or higher qualification in both by the end of the academic year in which they turn 19

Why we measure it

Ensuring young people are prepared for adult life through the reform of the school and qualifications system is a key priority of the government. This indicator will be relevant to assessing the impact of these reforms as attainment of Level 2 in English and Maths is seen as the minimum level for employability and progression to further study at higher levels.

The data

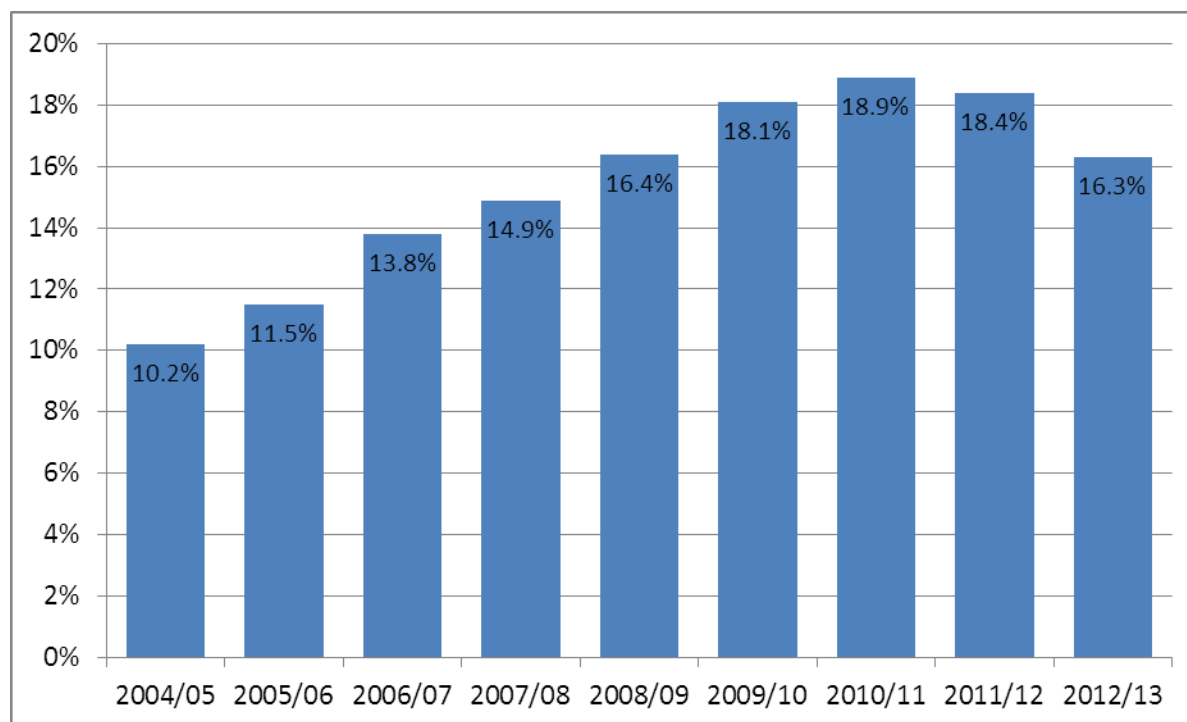


Figure 1 – Percentage attaining Level 2 English and maths at 19, of those not attaining this by age 16

Source: Young Person's Matched Administrative Dataset

Percentage progressing to Level 2 English and maths between ages 16 and 19

Age 19 in....	2004/ 2005	2005/ 2006	2006/ 2007	2007/ 2008	2008/ 2009	2009/ 2010	2010/ 2011	2011/ 2012	2012/ 2013
% progressing to Level 2 in English and maths between 16 and 19	10.2%	11.5%	13.8%	14.9%	16.4%	18.1%	18.9%	18.4%	16.3%

Further information

Further information on this indicator and associated data can be found within our statistical first release:

www.gov.uk/government/publications/level-2-and-3-attainment-by-young-people-aged-19-in-2013

© Crown copyright 2014