

SDR 111/2014

24 July 2014

School census results, 2014

This Statistical First Release is based upon information collected by the Schools' Census in January 2014. It reports information for the number of pupils by age, gender, free school meal eligibility, ethnicity and special educational needs, together with information on the number of schools, teachers and support staff.

The tables provide all Wales information for each category listed, plus a breakdown to local authority (LA) level for schools, pupils, teachers and support staff.

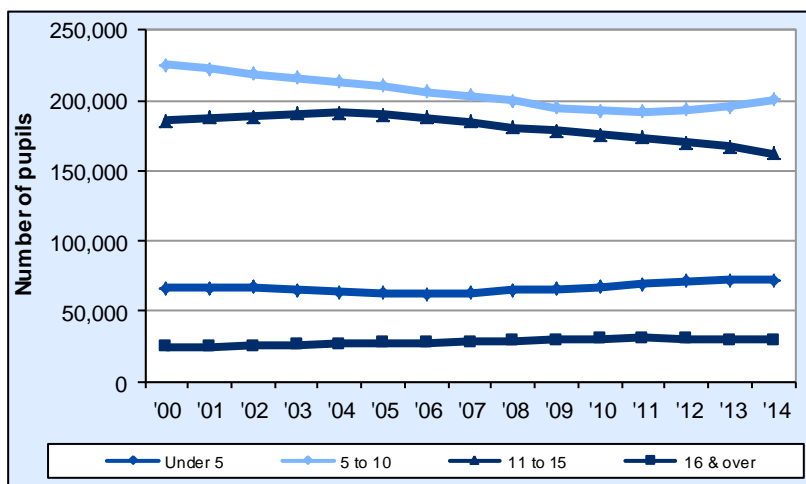
Information on sickness absence of teachers has been incorporated into this release for the first time this year (see table 19). These figures are not included in the School Census; they are collected directly from local authorities. They were previously published as part of the 'Teachers in service, vacancies and sickness absence' release, which has now been discontinued following our consultation on the [publication of official statistics](#).

Key results from the January 2014 school census

Schools and pupils (Tables 1-6)

- In January 2014 there were 17 nursery, 1,357 primary, 4 middle schools, 213 secondary schools and 42 special schools. Of these, 444 primary, 2 middle and 52 secondary schools were classified as Welsh medium. There were 70 independent schools, 2 more than in January 2013. Overall, there were 23 fewer LA maintained schools than at January 2013.
- The total number of pupils (headcount) in LA maintained nursery, primary, middle, secondary and special schools was 465,081, a rise of 213 pupils since January 2013.

Chart 1: Number of pupils, by age group, in maintained schools



- The numbers of pupils aged 11 to 15 increased from 2000 to 2004 and have decreased year on year since then.
- The numbers of pupils aged 5 to 10 have increased to 200,580 in 2014 compared to 195,604 in 2013. Prior to 2011, they had been decreasing year on year since 2000.
- The numbers of pupils aged under 5 have been increasing since 2006.

Statistician: Stephen Hughes
Next update: July 2015 (provisional)

Tel: 029 2082 5060
Twitter: www.twitter.com/statisticswales | www.twitter.com/ystadegaucymru

Email: school.stats@wales.gsi.gov.uk

Cyhoeddwyd gan Y Gwasanaethau Gwybodaeth a Dadansoddi
Llywodraeth Cymru, Parc Cathays, Caerdydd, CF10 3NQ
Ffôn – Swyddfa'r Wasg **029 2089 8099**, Ymholiadau Cyhoeddus **029 2082 3332**
www.cymru.gov.uk/ystadegau

Issued by Knowledge and Analytical Services
Welsh Government, Cathays Park, Cardiff, CF10 3NQ
Telephone – Press Office **029 2089 8099**, Public Enquiries **029 2082 5050**
www.wales.gov.uk/statistics



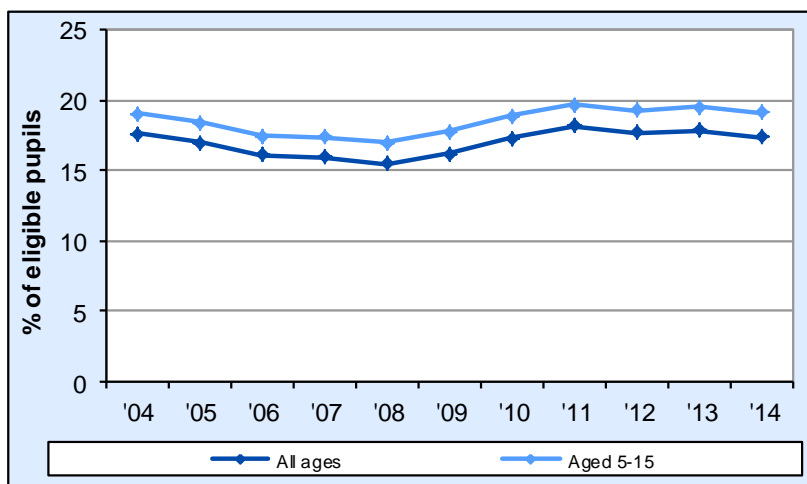
Llywodraeth Cymru
Welsh Government

Teachers and support staff (Tables 7-10)

- There were 24,822.5 full-time equivalent (FTE) qualified teachers in LA maintained schools, an increase of 51.9 over the year.
- The pupil teacher ratio for all LA maintained schools was 18.2, unchanged from 2013.
- There were 24,354.5 support staff (FTE) in LA maintained schools, an increase of 807.7 staff in the last year and continuing the trend of recent years. The introduction of the Foundation Phase and the Teacher Workload Agreement are the two main drivers behind the increase in support staff.

Free school meals (Table 11)

Chart 2: Percentage of pupils known to be eligible for free school meals



- The percentage of pupils known to be eligible for free school meals in primary, middle, secondary and special schools has fluctuated over the last decade, generally decreasing from 2004 to 2008 and then increasing year on year to 2011. There was a slight decrease between 2013 and 2014.

- The percentage of pupils of compulsory school age in LA maintained schools known to be eligible for free school meals in 2014 was 19.1 per cent – down from 19.5 per cent in 2013.

Ethnicity (Table 12)

- In LA maintained schools 90.5 per cent of pupils (aged 5 and over) were classified as White British, 8.9 per cent were of minority ethnic origin and 0.6 per cent were unknown or not stated.

Pupils with Special Educational Needs (SEN) (Tables 13-16)

- In January 2014 12,530 pupils in maintained schools had statements of SEN, 208 more pupils than in January 2013.
- In primary, maintained schools, 2.7 per cent of pupils had statements of SEN and a further 19.9 per cent of pupils had special educational needs but no statement.
- In the **Independent** sector 4.5 per cent of pupils had statements of SEN and a further 12.7 per cent of pupils had special needs but no statement.

Class size (Tables 17 & 18)

- 6.9 per cent of pupils (7,301) were in infant classes of over 30 pupils, up from 6.6 per cent in January 2013.

Sickness Absence of Teachers (Table 19)

- 60 per cent of teachers took sickness absence during 2013, compared with 62 per cent during 2012.

Contents

	Page
<u>Schools and Pupils</u>	
Table 1	Number of schools, by local authority, January 2014 4
Table 2	Welsh medium schools and pupils, by local authority, January 2014 5
Table 3	Number of pupils, by age group, in maintained schools 5
Table 4	Number of pupils, full-time and part-time, by age and sex, in maintained schools, January 2014 6
Table 5	Pupil numbers, by local authority, January 2014 7
Table 6	Full-time equivalent pupils, by local authority, January 2014 7
<u>Teachers and support staff</u>	
Table 7	Number of qualified teachers, by local authority, January 2014 8
Table 8	Full-time equivalent qualified teachers, by local authority, January 2014 9
Table 9	Pupil teacher ratios within schools, by local authority, January 2014 10
Table 10	Full-time equivalent support staff, by local authority, January 2014 10
<u>Free school meals</u>	
Table 11	Pupils known to be eligible for free meals in maintained schools 11
<u>Ethnicity</u>	
Table 12	Number of pupils aged 5 or over, by ethnic background, January 2014 12
<u>Pupils with Special Educational Needs (SEN)</u>	
Table 13	Pupils with special educational needs in independent schools, by major need, January 2014 13
Table 14	Pupils with a statement of special educational needs in maintained schools, by type of school and major need, January 2010-2014 14
Table 15	Pupils with a special educational need but no statement, in maintained schools, by type of school and major need, January 2010-2014 15
Table 16	All pupils with special educational needs in maintained schools, by type of school and major need, January 2010-2014 16
<u>Class Size</u>	
Table 17	Infant class sizes in primary and middle schools 18
Table 18	Junior class sizes in primary and middle schools 19
<u>Sickness Absence of Teachers</u>	
Table 19	Sickness absence of teachers in maintained schools, 1 January - 31 December 20
Key Quality Information	21

Schools and Pupils

- The local authority with the most **schools** was Cardiff with 136, and the local authority with the fewest was Blaenau Gwent and Merthyr Tydfil, both with 29 schools. ([Table 1](#))
- Gwynedd had the most **Welsh medium primary schools** with 96, and the local authority with the fewest was Blaenau Gwent with 1 school. Gwynedd had the most **Welsh medium secondary schools** with 13, and there were 4 local authorities with no Welsh medium secondary schools: Merthyr Tydfil, Blaenau Gwent, Monmouthshire and Newport. ([Table 2](#))
- Of the **pupils aged under 5** in maintained schools in Wales, the majority of them were attending school on a full time basis. ([Table 4](#))
- In the ten years to 2010, the total **number of pupils in primary schools** in Wales had decreased year-on-year, but there have been increases each year from January 2011, representing the first increase in the sector since 1998. ([Table 3](#))
- The **number of pupils** in each local authority ranged between 8,850 in Merthyr Tydfil, to 54,701 in Cardiff. ([Table 5](#))
- The number of **full-time equivalent pupils in schools** was highest in Cardiff at 52,417.5 pupils and lowest in Merthyr Tydfil at 8,761.0 pupils. ([Table 6](#))
- The numbers of pupils aged 5 and under have been increasing since 2006 while those of pupils aged 5-10 have been increasing since 2011. The increase in pupil numbers of these two age groups explain the recent increase of overall pupil numbers in Wales, reversing the long term downward trend.

Table 1: Number of schools, by local authority, January 2014

	Maintained schools						Independent	All schools
	Nursery	Primary	Middle	Secondary	Special	Total		
Isle of Anglesey	0	48	0	5	1	54	2	56
Gwynedd	0	97	0	14	2	113	3	116
Conwy	0	59	0	7	1	67	2	69
Denbighshire	0	47	1	7	2	57	3	60
Flintshire	1	68	0	12	2	83	3	86
Wrexham	1	60	0	9	1	71	3	74
Powys	0	86	0	13	3	102	7	109
Ceredigion	0	51	1	6	0	58	1	59
Pembrokeshire	0	61	0	8	1	70	5	75
Carmarthenshire	1	103	0	12	2	118	8	126
Swansea	0	80	0	14	2	96	5	101
Neath Port Talbot	0	66	0	11	3	80	0	80
Bridgend	1	49	0	9	2	61	4	65
The Vale of Glamorgan	3	48	0	8	3	62	3	65
Rhondda Cynon Taf	1	110	1	18	4	134	1	135
Merthyr Tydfil	1	23	0	4	1	29	0	29
Caerphilly	0	75	0	14	1	90	1	91
Blaenau Gwent	0	24	1	3	1	29	0	29
Torfaen	2	29	0	7	1	39	0	39
Monmouthshire	0	31	0	4	1	36	6	42
Newport	3	47	0	8	1	59	2	61
Cardiff	3	95	0	20	7	125	11	136
Wales	17	1,357	4	213	42	1,633	70	1,703
Wales – January 2013	20	1,374	4	216	42	1,656	68	1,724
Wales – January 2012	22	1,412	.	221	43	1,698	66	1,764
Wales – January 2011	23	1,435	.	222	43	1,723	66	1,789
Wales – January 2010	25	1,462	.	223	43	1,753	64	1,817

Source: School Census

Table 2: Welsh medium schools and pupils, by local authority, January 2014

	Primary (a)		Middle (b)		Secondary (b)	
	Schools	Pupils	Schools	Pupils	Schools	Pupils
Isle of Anglesey	47	5,363	0	0	4	3,107
Gwynedd	96	9,719	0	0	13	5,812
Conwy	25	2,305	0	0	2	1,381
Denbighshire	18	2,270	0	0	3	3,035
Flintshire	5	872	0	0	1	489
Wrexham	8	1,534	0	0	1	757
Powys	21	2,770	0	0	4	2,286
Ceredigion	45	3,652	1	1,086	5	2,477
Pembrokeshire	19	2,919	0	0	1	1,018
Carmarthenshire	73	9,530	0	0	5	5,699
Swansea	11	3,033	0	0	2	1,490
Neath Port Talbot	11	2,175	0	0	1	1,026
Bridgend	4	1,133	0	0	1	556
The Vale of Glamorgan	7	1,720	0	0	1	806
Rhondda Cynon Taf	16	4,830	1	491	3	2,577
Merthyr Tydfil	2	620	0	0	0	0
Caerphilly	11	2,817	0	0	1	1,439
Blaenau Gwent	1	296	0	0	0	0
Torfaen	3	831	0	0	1	989
Monmouthshire	2	342	0	0	0	0
Newport	3	624	0	0	0	0
Cardiff	16	5,011	0	0	3	2,456
Wales	444	64,366	2	1,577	52	37,400
Wales – January 2013	452	63,192	2	1,634	53	37,692
Wales – January 2012	461	62,446	.	.	56	41,262
Wales – January 2011	467	61,073	.	.	56	41,764
Wales – January 2010	476	60,318	.	.	58	43,432

Source: School Census

(a) Primary schools include Welsh Medium, Dual stream and Transitional schools.

(b) Include Welsh medium and Bilingual schools.

Table 3: Number of pupils, by age group, in maintained schools (a)

		2010	2011	2012	2013	2014
Nursery	Under 5	1,672	1,572	1,530	1,434	1,353
	5 and over	0	0	0	0	0
	All ages	1,672	1,572	1,530	1,434	1,353
Primary	Under 5	65,421	67,721	69,766	70,262	70,655
	5 to 10	191,907	191,359	192,293	193,878	198,726
	11 to 15	107	101	76	44	39
	16 and over	10	8	9	2	1
	All ages	257,445	259,189	262,144	264,186	269,421
Middle	Under 5	.	.	.	238	268
	5 to 10	.	.	.	621	660
	11 to 15	.	.	.	2,343	2,278
	16 and over	.	.	.	446	336
	All ages	.	.	.	3,648	3,542
Secondary	5 to 10	6	5	19	2	9
	11 to 15	173,914	171,142	168,204	162,843	157,831
	16 and over	29,987	30,083	29,792	28,434	28,587
	All ages	203,907	201,230	198,015	191,279	186,427
Special	Under 5	198	217	213	224	238
	5 to 10	1,032	1,008	1,062	1,103	1,185
	11 to 15	2,116	2,117	2,111	2,070	1,933
	16 and over	771	839	868	924	982
	All ages	4,117	4,181	4,254	4,321	4,338
Total	Under 5	67,291	69,510	71,509	72,158	72,514
	5 to 10	192,945	192,372	193,374	195,604	200,580
	11 to 15	176,137	173,360	170,391	167,300	162,081
	16 and over	30,768	30,930	30,669	29,806	29,906
	All ages	467,141	466,172	465,943	464,868	465,081

Source: School Census

(a) At January each year. Age as at 31 August in the previous year.

Table 4: Number of pupils, full-time and part-time, by age and sex, in maintained schools, January 2014 (a)

		2 and under	3	4	5	6	7	8	9	10	11	12	13	14	15	16	17	18	19+	All ages
Nursery:																				
Full-time	Boys	18	92	3	0	0	0	0	0	0	0	0	0	0	0	0	0	0	0	113
	Girls	20	82	2	0	0	0	0	0	0	0	0	0	0	0	0	0	0	0	104
Part-time	Boys	145	456	0	0	0	0	0	0	0	0	0	0	0	0	0	0	0	0	601
	Girls	135	399	1	0	0	0	0	0	0	0	0	0	0	0	0	0	0	0	535
	Total	318	1,029	6	0	0	0	0	0	0	0	0	0	0	0	0	0	0	0	1,353
Primary:																				
Full-time	Boys	430	4,087	17,575	18,077	17,339	16,948	16,797	16,420	16,074	17	0	0	0	1	0	0	0	0	123,765
	Girls	436	3,956	16,713	17,341	16,597	16,217	16,039	15,482	15,394	21	0	0	0	0	0	1	0	0	118,197
Part-time	Boys	2,586	11,521	31	0	0	0	0	0	0	0	0	0	0	0	0	0	0	0	14,138
	Girls	2,425	10,874	21	1	0	0	0	0	0	0	0	0	0	0	0	0	0	0	13,321
	Total	5,877	30,438	34,340	35,419	33,936	33,165	32,836	31,902	31,468	38	0	0	0	1	0	1	0	0	269,421
Middle:																				
Full-time	Boys	2	12	67	56	44	49	63	48	67	213	219	230	198	209	52	57	6		1,592
	Girls	4	26	66	52	55	62	40	79	45	222	228	242	253	264	101	115	4	1	1,859
Part-time	Boys	17	31	0	0	0	0	0	0	0	0	0	0	0	0	0	0	0	0	48
	Girls	10	33	0	0	0	0	0	0	0	0	0	0	0	0	0	0	0	0	43
	Total	33	102	133	108	99	111	103	127	112	435	447	472	451	473	153	172	10	1	3,542
Secondary:																				
Full-time	Boys	0	0	0	0	0	0	0	0	1	15,406	15,866	16,044	16,577	16,856	7,247	5,442	683	29	94,151
	Girls	0	0	0	0	0	0	0	0	8	14,580	15,111	15,360	15,849	16,181	8,156	6,338	582	110	92,275
Part-time	Boys	0	0	0	0	0	0	0	0	0	0	0	0	0	1	0	0	0	0	1
	Girls	0	0	0	0	0	0	0	0	0	0	0	0	0	0	0	0	0	0	0
	Total	0	0	0	0	0	0	0	0	9	29,986	30,977	31,404	32,426	33,038	15,403	11,780	1,265	139	186,427
Special:																				
Full-time	Boys	3	29	107	122	112	138	133	172	154	238	246	299	299	322	276	222	162	0	3,034
	Girls	2	9	36	53	39	58	56	68	80	105	94	99	123	108	119	116	86	0	1,251
Part-time	Boys	12	24	2	0	0	0	0	0	0	0	0	0	0	0	0	0	0	0	38
	Girls	4	9	1	0	0	0	0	0	0	0	0	0	0	0	0	1	0	0	15
	Total	21	71	146	175	151	196	189	240	234	343	340	398	422	430	395	339	248	0	4,338
Total		6,249	31,640	34,625	35,702	34,186	33,472	33,128	32,269	31,823	30,802	31,764	32,274	33,299	33,942	15,951	12,292	1,523	140	465,081

Source: School Census
(a) Age as at 31 August 2013

Table 5: Pupil numbers, by local authority, January 2014

	Nursery	Primary	Middle	Secondary	Special	Total	Independent	All schools
Isle of Anglesey	0	5,550	0	3,963	75	9,588	121	9,709
Gwynedd	0	9,833	0	7,066	135	17,034	348	17,382
Conwy	0	8,810	0	6,956	184	15,950	605	16,555
Denbighshire	0	8,315	477	6,639	249	15,680	368	16,048
Flintshire	58	13,661	0	9,786	226	23,731	29	23,760
Wrexham	47	12,618	0	6,395	284	19,344	28	19,372
Powys	0	10,362	0	7,992	293	18,647	451	19,098
Ceredigion	0	4,782	1086	3,756	0	9,624	0	9,624
Pembrokeshire	0	10,569	0	7,504	135	18,208	227	18,435
Carmarthenshire	72	15,333	0	11,482	106	26,993	768	27,761
Swansea	0	21,505	0	13,639	167	35,311	409	35,720
Neath Port Talbot	0	12,450	0	7,928	205	20,583	0	20,583
Bridgend	30	12,675	0	9,612	347	22,664	391	23,055
The Vale of Glamorgan	268	12,272	0	9,117	250	21,907	221	22,128
Rhondda Cynon Taf	33	22,161	491	15,789	483	38,957	0	38,957
Merthyr Tydfil	93	5,454	0	3,151	152	8,850	0	8,850
Caerphilly	0	17,064	0	11,515	131	28,710	128	28,838
Blaenau Gwent	0	5,863	1488	2,107	101	9,559	0	9,559
Torfaen	132	8,203	0	6,884	95	15,314	0	15,314
Monmouthshire	0	6,670	0	4,831	43	11,544	1,457	13,001
Newport	280	13,811	0	10,379	143	24,613	621	25,234
Cardiff	340	31,460	0	19,936	534	52,270	2,431	54,701
Wales	1,353	269,421	3,542	186,427	4,338	465,081	8,603	473,684
Wales – January 2013	1,434	264,186	3,648	191,279	4,321	464,868	8,862	473,730
Wales – January 2012	1,530	262,144	.	198,015	4,254	465,943	8,929	474,872
Wales – January 2011	1,572	259,189	.	201,230	4,181	466,172	9,088	475,260
Wales – January 2010	1,672	257,445	.	203,907	4,117	467,141	9,222	476,363

Source: School Census

0.00046

Table 6: Full-time equivalent pupils, by local authority, January 2014

	Nursery	Primary	Middle	Secondary	Special	Total	Independent	All schools	FTE
Isle of Anglesey	0.0	5,240.5	0.0	3,963.0	74.5	9,278.0	121.0	9,399.0	
Gwynedd	0.0	9,224.5	0.0	7,066.0	134.5	16,425.0	348.0	16,773.0	
Conwy	0.0	8,237.5	0.0	6,956.0	183.5	15,377.0	605.0	15,982.0	
Denbighshire	0.0	7,771.0	473.0	6,639.0	247.0	15,130.0	368.0	15,498.0	
Flintshire	29.0	12,812.5	0.0	9,786.0	220.5	22,848.0	29.0	22,877.0	
Wrexham	23.5	11,781.0	0.0	6,395.0	284.0	18,483.5	28.0	18,511.5	
Powys	0.0	10,141.5	0.0	7,992.0	291.5	18,425.0	451.0	18,876.0	
Ceredigion	0.0	4,633.0	1,067.0	3,756.0		9,456.0	0.0	9,456.0	
Pembrokeshire	0.0	10,042.5	0.0	7,504.0	135.0	17,681.5	227.0	17,908.5	
Carmarthenshire	72.0	15,110.5	0.0	11,482.0	106.0	26,770.5	768.0	27,538.5	
Swansea	0.0	19,756.5	0.0	13,639.0	163.0	33,558.5	379.5	33,938.0	
Neath Port Talbot	0.0	11,431.0	0.0	7,928.0	205.0	19,564.0	0.0	19,564.0	
Bridgend	25.0	12,539.0	0.0	9,612.0	345.5	22,521.5	387.0	22,908.5	
The Vale of Glamorgan	134.0	11,512.5	0.0	9,117.0	247.5	21,011.0	216.0	21,227.0	
Rhondda Cynon Taf	33.0	22,131.5	490.0	15,789.0	483.0	38,926.5	0.0	38,926.5	
Merthyr Tydfil	84.0	5,374.0	0.0	3,151.0	152.0	8,761.0	0.0	8,761.0	
Caerphilly	0.0	15,893.0	0.0	11,515.0	131.0	27,539.0	128.0	27,667.0	
Blaenau Gwent	0.0	5,428.5	1,466.5	2,107.0	100.5	9,102.5	0.0	9,102.5	
Torfaen	72.5	7,745.0	0.0	6,884.0	94.0	14,795.5	0.0	14,795.5	
Monmouthshire	0.0	6,435.0	0.0	4,831.0	43.0	11,309.0	1,438.0	12,747.0	
Newport	142.0	13,089.0	0.0	10,378.5	141.5	23,751.0	610.0	24,361.0	
Cardiff	170.0	29,362.0	0.0	19,936.0	529.0	49,997.0	2,420.5	52,417.5	
Wales	785.0	255,691.5	3,496.5	186,426.5	4,311.5	450,711.0	8,524.0	459,235.0	
Wales – January 2013	877.5	250,828.5	3,603.0	191,279.0	4,295.0	450,883.0	8,755.5	459,638.5	
Wales – January 2012	965.5	248,587.5	.	198,015.0	4,222.0	451,790.0	8,828.5	460,618.5	
Wales – January 2011	987.0	246,195.5	.	201,230.0	4,156.5	452,569.0	8,989.5	461,558.5	
Wales – January 2010	1,033.5	245,155.0	.	203,907.0	4,092.5	454,188.0	9,082.5	463,270.5	

Source: School Census

Teachers and support staff

- The **number of teachers** in maintained schools in each local authority ranged between 3,030 in Cardiff, to 505 in Merthyr Tydfil. ([Table 7](#))
- The number of **full-time equivalent qualified teachers in maintained schools** was highest in Cardiff at 2,735.7 teachers and lowest in Merthyr Tydfil at 485.9 teachers. ([Table 8](#))
- Ceredigion had the lowest primary **pupil teacher ratio** at 17.1, and Torfaen had the highest at 23.6. The lowest secondary pupil teacher ratio was also in Ceredigion at 14.1, and the highest was in Newport at 17.2. ([Table 9](#))
- The **pupil teacher ratio** is highest in primary schools at 20.8 and lowest in special schools at 6.5. ([Table 9](#))
- The number of **full-time equivalent support staff in maintained schools** was highest in Cardiff at 2,542.8 support staff, and lowest in Merthyr Tydfil at 450.9 support staff. ([Table 10](#))
- The introduction of the Foundation Phase and the Teacher Workload Agreement are the two main drivers behind the increase in support staff. ([Table 10](#))

Table 7: Number of qualified teachers, by local authority, January 2014

	Nursery	Maintained schools				Total
		Primary	Middle	Secondary	Special	
Isle of Anglesey	0	289	0	262	12	563
Gwynedd	0	536	0	520	21	1,077
Conwy	0	486	0	480	30	996
Denbighshire	0	442	34	433	37	946
Flintshire	2	690	0	666	35	1,393
Wrexham	3	666	0	422	30	1,121
Powys	0	614	0	562	53	1,229
Ceredigion	0	313	75	289	0	677
Pembrokeshire	0	559	0	473	22	1,054
Carmarthenshire	4	859	0	768	24	1,655
Swansea	0	1041	0	876	31	1,948
Neath Port Talbot	0	611	0	522	38	1,171
Bridgend	3	594	0	656	51	1,304
The Vale of Glamorgan	10	647	0	599	56	1,312
Rhondda Cynon Taf	4	1033	36	1029	66	2,168
Merthyr Tydfil	4	287	0	196	18	505
Caerphilly	0	758	0	755	24	1,537
Blaenau Gwent	0	300	91	131	14	536
Torfaen	4	351	0	431	14	800
Monmouthshire	0	334	0	334	13	681
Newport	6	675	0	653	27	1,361
Cardiff	19	1585	0	1321	105	3,030
Wales	59	13,670	236	12,378	721	27,064
Wales – January 2013	67	13,533	239	12,519	698	27,056
Wales – January 2012	73	13,451	.	12,651	694	26,869
Wales – January 2011	72	13,399	.	12,935	702	27,108
Wales – January 2010	78	13,582	.	13,102	673	27,435

Source: School Census

Table 8: Full-time equivalent qualified teachers, by local authority, January 2014

	Maintained schools					FTE
	Nursery	Primary	Middle	Secondary	Special	Total
Isle of Anglesey	0.0	262.8	0.0	243.9	12.0	518.7
Gwynedd	0.0	469.6	0.0	484.7	19.7	974.0
Conwy	0.0	429.0	0.0	449.5	26.1	904.7
Denbighshire	0.0	390.1	30.5	389.9	33.2	843.6
Flintshire	1.0	617.2	0.0	611.6	31.5	1,261.3
Wrexham	3.0	585.6	0.0	396.9	28.7	1,014.3
Powys	0.0	529.4	0.0	518.1	45.8	1,093.3
Ceredigion	0.0	271.1	69.5	266.1	0.0	606.7
Pembrokeshire	0.0	489.9	0.0	441.1	20.7	951.7
Carmarthenshire	4.0	774.6	0.0	728.4	23.2	1,530.1
Swansea	0.0	923.8	0.0	812.9	29.4	1,766.2
Neath Port Talbot	0.0	544.7	0.0	499.0	34.7	1,078.3
Bridgend	2.0	549.5	0.0	617.0	49.2	1,217.8
The Vale of Glamorgan	9.1	580.1	0.0	572.6	47.6	1,209.4
Rhondda Cynon Taf	4.0	981.6	33.8	979.6	60.7	2,059.7
Merthyr Tydfil	4.0	273.1	0.0	190.9	18.0	485.9
Caerphilly	0.0	710.5	0.0	697.7	22.0	1,430.2
Blaenau Gwent	0.0	280.4	87.9	124.7	14.0	507.0
Torfaen	4.0	328.7	0.0	402.3	12.8	747.8
Monmouthshire	0.0	297.8	0.0	317.6	11.9	627.4
Newport	6.0	625.1	0.0	603.9	23.6	1,258.6
Cardiff	15.6	1,393.5	0.0	1,230.6	96.0	2,735.7
Wales	52.8	12,308.2	221.7	11,578.8	660.9	24,822.5
Wales – January 2013	58.3	12,144.6	222.7	11,707.2	637.7	24,770.6
Wales – January 2012	63.6	12,026.2	.	11,868.3	642.6	24,600.7
Wales – January 2011	62.7	11,998.7	.	12,144.7	648.2	24,854.4
Wales – January 2010	68.6	12,206.6	.	12,379.0	632.3	25,286.6

Source: School Census

Table 9: Pupil teacher ratios within schools, by local authority, January 2014

	Maintained schools					
	Nursery	Primary	Middle	Secondary	Special	Total
Isle of Anglesey	.	19.9	.	16.3	6.2	17.9
Gwynedd	.	19.6	.	14.6	6.8	16.9
Conwy	.	19.2	.	15.5	7.0	17.0
Denbighshire	.	19.9	15.5	17.0	7.5	17.9
Flintshire	29.5	20.8	.	16.0	7.0	18.1
Wrexham	7.8	20.1	.	16.1	9.9	18.2
Powys	.	19.2	.	15.4	6.4	16.9
Ceredigion	.	17.1	15.3	14.1	.	15.6
Pembrokeshire	.	20.5	.	17.0	6.5	18.6
Carmarthenshire	18.0	19.5	.	15.8	4.6	17.5
Swansea	.	21.4	.	16.8	5.5	19.0
Neath Port Talbot	.	21.0	.	15.9	5.9	18.1
Bridgend	12.4	22.8	.	15.6	7.0	18.5
The Vale of Glamorgan	14.7	19.8	.	15.9	5.2	17.4
Rhondda Cynon Taf	8.3	22.5	14.5	16.1	8.0	18.9
Merthyr Tydfil	21.0	19.7	.	16.5	8.4	18.0
Caerphilly	.	22.4	.	16.5	6.0	19.3
Blaenau Gwent	.	19.4	16.7	16.9	7.2	18.0
Torfaen	18.1	23.6	.	17.1	7.3	19.8
Monmouthshire	.	21.6	.	15.2	3.6	18.0
Newport	23.7	20.9	.	17.2	6.0	18.9
Cardiff	10.9	21.1	.	16.2	5.5	18.3
Wales	14.9	20.8	15.8	16.1	6.5	18.2
Wales – January 2013	15.1	20.7	16.2	16.3	6.7	18.2
Wales – January 2012	15.2	20.7	.	16.7	6.6	18.4
Wales – January 2011	15.7	20.5	.	16.6	6.4	18.2
Wales – January 2010	15.1	20.1	.	16.5	6.5	18.0

Source: School Census

Table 10: Full-time equivalent support staff, by local authority, January 2014

	FTE					
	Nursery	Primary	Middle	Secondary	Special	Total
Isle of Anglesey	0.0	268.0	0.0	189.6	28.4	486.1
Gwynedd	0.0	504.6	0.0	245.6	48.2	798.4
Conwy	0.0	397.4	0.0	241.6	73.6	712.6
Denbighshire	0.0	495.1	18.5	281.0	100.2	894.8
Flintshire	3.5	764.0	0.0	328.9	79.2	1,175.5
Wrexham	7.4	781.9	0.0	258.8	140.6	1,188.6
Powys	0.0	555.6	0.0	278.9	118.5	953.0
Ceredigion	0.0	311.1	55.0	204.9	0.0	571.0
Pembrokeshire	0.0	822.5	0.0	334.5	84.6	1,241.6
Carmarthenshire	7.0	991.1	0.0	562.5	46.5	1,607.1
Swansea	0.0	1,278.8	0.0	616.9	96.4	1,992.2
Neath Port Talbot	0.0	653.1	0.0	253.6	92.5	999.2
Bridgend	4.0	716.4	0.0	297.0	277.9	1,295.2
The Vale of Glamorgan	19.4	555.7	0.0	297.1	149.0	1,021.2
Rhondda Cynon Taf	6.0	1,213.9	19.5	494.4	155.0	1,888.7
Merthyr Tydfil	7.0	294.6	0.0	89.2	60.1	450.9
Caerphilly	0.0	874.8	0.0	403.7	68.8	1,347.3
Blaenau Gwent	0.0	354.9	60.4	70.4	66.8	552.6
Torfaen	8.5	483.1	0.0	258.1	55.0	804.7
Monmouthshire	0.0	390.7	0.0	170.1	36.4	597.2
Newport	18.3	757.7	0.0	391.0	66.6	1,233.6
Cardiff	22.9	1,630.1	0.0	713.0	176.8	2,542.8
Wales	104.0	15,095.2	153.4	6,980.8	2,021.1	24,354.5
Wales – January 2013	115.2	14,675.2	144.6	6,767.6	1,844.2	23,546.8
Wales – January 2012	123.4	13,703.7	.	6,714.0	1,753.4	22,294.5
Wales – January 2011	125.1	12,850.2	.	6,653.2	1,692.0	21,320.5
Wales – January 2010	119.6	12,263.7	.	6,525.8	1,500.6	20,409.7

Source: School Census

Free school meals (FSM)

- The **number of pupils eligible for free meals** has decreased from 83,498 pupils in January 2013 to 81,538 pupils in January 2014.
- Between 2008 and 2011, the **percentage of compulsory aged school pupils known to be eligible for free meals** has increased year on year but has fluctuated slightly since 2011. The overall increasing trend may be related to that seen in the number of claimants of Jobseeker's Allowance in Wales, which is one of the criteria for eligibility for free meals (more information can be seen in the Key Quality Information at the back of this release).
- The percentage of pupils known to be eligible for free meals was highest in special schools at 42.3 per cent. ([Table 11](#))

Table 11: Pupils known to be eligible for free meals in maintained schools (a)

	Nursery schools		Primary Schools		Middle schools		Secondary Schools		Special Schools		All Schools	
	Number	Per Cent	Number	Per Cent	Number	Per Cent	Number	Per Cent	Number	Per Cent	Number	Per Cent
All pupils:												
2010	159	9.5	47,212	18.3	.	.	31,737	15.6	1,641	39.9	80,749	17.3
2011	143	9.1	50,560	19.5	.	.	32,314	16.1	1,789	42.8	84,806	18.2
2012	133	8.7	49,391	18.8	.	.	31,276	15.8	1,743	41.0	82,543	17.7
2013	106	7.4	50,056	18.9	557	15.3	30,962	16.2	1,817	42.1	83,498	18.0
2014	81	6.0	49,315	18.3	577	16.3	29,730	15.9	1,835	42.3	81,538	17.5
Aged 5-15:												
2010	.	.	38,665	20.1	.	.	29,805	17.1	1,321	42.0	69,791	18.9
2011	.	.	40,422	21.1	.	.	30,247	17.7	1,404	44.9	72,073	19.7
2012	.	.	39,656	20.6	.	.	29,252	17.4	1,357	42.8	70,265	19.3
2013	.	.	40,135	20.7	508	17.1	28,835	17.7	1,415	44.6	70,893	19.5
2014	.	.	39,881	20.1	534	18.2	27,589	17.5	1,414	45.3	69,418	19.1

Source: School Census

(a) At January each year.

Ethnicity

- Of the **total number of pupils aged 5 or over** at primary, middle, secondary and special schools in Wales, over 9 in 10 pupils were classed as White British.
- The **percentage of pupils** whose ethnic background was classified as minority ethnic origin was slightly higher in primary schools than in middle, secondary or special schools.
- Of the **pupils whose ethnic background was classified as Black**, 81.6 per cent of them were classified as Black African.
- Of the **pupils whose ethnic background was classified as Asian**, 21.0 per cent of them were classified as Indian, 33.0 per cent as Pakistani, and 35.2 per cent as Bangladeshi. ([Table 12](#))

Table 12: Number of pupils aged 5 or over, by ethnic background, January 2014

Ethnic background	2010		2011		2012		2013		2014	
	Number	Per cent (a)	Number	Per cent (a)	Number	Per cent (a)	Number	Per cent (a)	Number	Per cent (a)
White	373,478	93.4	369,760	93.2	367,176	93.1	365,356	93.0	364,260	92.8
White British	367,242	91.8	362,845	91.5	359,629	91.2	357,156	90.9	355,085	90.5
Traveller	254	0.1	288	0.1	323	0.1	345	0.1	346	0.1
Gypsy/ Roma	416	0.1	451	0.1	496	0.1	516	0.1	545	0.1
Any other White background	5,566	1.4	6,176	1.6	6,728	1.7	7,339	1.9	8,284	2.1
Mixed	7,570	1.9	8,025	2.0	8,420	2.1	8,808	2.2	9,337	2.4
White and Black Caribbean	1,952	0.5	2,019	0.5	2,046	0.5	2,082	0.5	2,172	0.6
White and Black African	837	0.2	909	0.2	979	0.2	1,052	0.3	1,120	0.3
White and Asian	1,777	0.4	1,857	0.5	1,958	0.5	2,016	0.5	2,115	0.5
Any other mixed background	3,004	0.8	3,240	0.8	3,437	0.9	3,658	0.9	3,930	1.0
Asian	7,225	1.8	7,573	1.9	7,971	2.0	8,276	2.1	8,696	2.2
Indian	1,495	0.4	1,543	0.4	1,634	0.4	1,731	0.4	1,830	0.5
Pakistani	2,376	0.6	2,472	0.6	2,630	0.7	2,704	0.7	2,866	0.7
Bangladeshi	2,569	0.6	2,703	0.7	2,816	0.7	2,933	0.7	3,064	0.8
Any other Asian background	785	0.2	855	0.2	891	0.2	908	0.2	936	0.2
Black	2,381	0.6	2,575	0.6	2,778	0.7	2,875	0.7	3,005	0.8
Black Caribbean	203	0.1	206	0.1	208	0.1	201	0.1	194	0.0
Black African	1,848	0.5	2,028	0.5	2,225	0.6	2,308	0.6	2,452	0.6
Any other Black background	330	0.1	341	0.1	345	0.1	366	0.1	359	0.1
Chinese	668	0.2	660	0.2	659	0.2	667	0.2	680	0.2
Any other ethnic group	3,250	0.8	3,567	0.9	3,863	1.0	3,951	1.0	4,145	1.1
Total with valid category	394,572	98.7	392,164	98.9	390,867	99.1	389,933	99.3	390,123	99.4
Unknown or not stated	5,278	1.3	4,502	1.1	3,567	0.9	2,777	0.7	2,444	0.6
All pupils	399,850	100.0	396,662	100.0	394,434	100.0	392,710	100.0	392,567	100.0

Source: School Census

(a) Of all pupils aged 5 or over.

Special educational needs (SEN)

- 17.2 per cent of **pupils at independent schools** have some form of special educational need; 26.2 per cent of these pupils with SEN have statements of SEN. Of the pupils with statements of special educational needs, 38.4 per cent had behavioural, emotional and social difficulties as their major need, 18.6 per cent of pupils had autistic spectrum disorders and 14.7 per cent of pupils had dyslexia as their major need. ([Table 13](#))
- 22.6 per cent of **all pupils at maintained schools** in Wales have some form of special educational need; 11.9 per cent of the pupils with special educational needs have statements of SEN. ([Table 14](#))
- Of the pupils with special educational needs, the most common major need was general learning difficulties, representing 23.6 per cent of pupils with some form of SEN. ([Table 14 & Table 15](#))

Table 13: Pupils with special educational needs in independent schools, by major need, January 2014

	Independent schools	
	Number	Incidence % (a)
Pupils with a statement of special educational need:		
Moderate learning difficulties	16	0.2
General learning difficulties	7	0.1
Severe learning difficulties	9	0.1
Profound & multiple learning difficulties	45	0.5
Dyslexia	57	0.7
Dyscalculia	4	-
Dyspraxia	4	-
Attention Deficit Hyperactivity Disorder	8	0.1
Autistic Spectrum Disorders	72	0.8
Physical and medical difficulties	3	-
Hearing, Visual & Multiple Sensory Impairment	3	-
Speech, language & communication difficulties	11	0.1
Behavioural, emotional and social difficulties	149	1.7
Total	388	4.5
Pupils with special educational needs but no statement	1,092	12.7
Total pupils on roll in independent schools (headcount)	8,603	100.0

Source: School Census

(a) Incidence of pupils - the number of pupils expressed as a proportion of the total number of pupils on roll in Independent schools.

Table 14: Pupils with a statement of special educational needs in maintained schools, by major need, January 2010 - 2014

Major need	2010			2011			2012			2013			2014		
	Number	Percentage		Number	Percentage		Number	Percentage		Number	Percentage		Number	Percentage	
		Incid- ence (a)	Place- ment (b)		Incid- ence (a)	Place- ment (b)		Incid- ence (a)	Place- ment (b)		Incid- ence (a)	Place- ment (b)		Incid- ence (a)	Place- ment (b)
Moderate learning difficulties	2,592	0.6	18.8	2322	0.5	17.3	2,098	0.5	16.0	1,911	0.4	15.0	1,731	0.4	13.8
General learning difficulties	162	-	1.2	179	-	1.4	220	-	1.8
Severe learning difficulties	1,820	0.4	13.2	1797	0.4	13.4	1,831	0.4	14.0	1,809	0.4	14.2	1,790	0.4	14.3
Profound & multiple learning difficulties	690	0.1	5.0	636	0.1	4.7	620	0.1	4.7	625	0.1	4.9	623	0.1	5.0
Dyslexia	494	0.1	3.8	423	0.1	3.3	369	0.1	2.9
Dyscalculia	6	-	-	6	-	-	7	-	0.1
Dyspraxia	38	-	0.3	31	-	0.2	28	-	0.2
Attention Deficit Hyperactivity Disorder	113	-	0.9	128	-	1.0	147	-	1.2
Autistic Spectrum Disorders	2,167	0.5	15.7	2330	0.5	17.4	2,532	0.5	19.3	2,651	0.6	20.8	2,778	0.6	22.2
Physical and medical difficulties	1,162	0.2	8.4	1202	0.3	9.0	1,179	0.3	9.0	1,132	0.2	8.9	1,157	0.2	9.2
Hearing impairment	342	0.1	2.5	333	0.1	2.5	344	0.1	2.6	343	0.1	2.7	344	0.1	2.7
Visual impairment	202	-	1.5	198	-	1.5	202	-	1.5	216	-	1.7	213	-	1.7
Multiple sensory impairment	32	-	0.2	24	-	0.2	29	-	0.2	26	-	0.2	22	-	0.2
Speech, language & communication difficulties	1,950	0.4	14.2	1964	0.4	14.6	1,936	0.4	14.8	1,929	0.4	15.1	1,853	0.4	14.8
Behavioural, emotional and social difficulties	1,741	0.4	12.6	1635	0.4	12.2	1,514	0.3	11.6	1,329	0.3	10.4	1,248	0.3	10.0
Specific learning difficulties	1,069	0.2	7.8	966	0.2	7.2
Total	13,767	2.9	100.0	13,407	2.9	100.0	13,098	2.8	100.0	12,738	2.7	100.0	12,530	2.7	100.0

Source: School Census

(a) Incidence - the number of pupils expressed as a proportion of the total number of pupils on roll in maintained schools.

(b) Placement - the number of pupils expressed as a proportion of the total number of pupils within each SEN grouping in maintained schools.

e.g. Number of pupils with a statement of SEN of moderate learning difficulties divided by the total number of pupils with a statement of SEN in maintained schools.

Table 15: Pupils with a special educational need but no statement, in maintained schools, by major need, January 2010-2014

Major need	2010			2011			2012			2013			2014		
	Number	Percentage		Number	Percentage		Number	Percentage		Number	Percentage		Number	Percentage	
		Incid- ence (a)	Place- ment (b)		Incid- ence (a)	Place- ment (b)		Incid- ence (a)	Place- ment (b)		Incid- ence (a)	Place- ment (b)		Incid- ence (a)	Place- ment (b)
Moderate learning difficulties	41,943	9.0	49.2	42179	9.0	48.7	31,999	6.9	35.6	27,338	5.9	30.0	23,077	5.0	24.9
General learning difficulties	16,706	3.6	18.6	20,855	4.5	22.9	24,670	5.3	26.6
Severe learning difficulties	622	0.1	0.7	622	0.1	0.7	625	0.1	0.7	654	0.1	0.7	549	0.1	0.6
Profound & multiple learning difficulties	83	-	0.1	68	-	0.1	109	-	0.1	150	-	0.2	152	-	0.2
Dyslexia	8,810	1.9	9.8	8,738	1.9	9.6	8,609	1.9	9.3
Dyscalculia	414	0.1	0.5	476	0.1	0.5	616	0.1	0.7
Dyspraxia	459	0.1	0.5	506	0.1	0.6	546	0.1	0.6
Attention Deficit Hyperactivity Disorder	688	0.1	0.8	858	0.2	0.9	1,020	0.2	1.1
Autistic Spectrum Disorders	955	0.2	1.1	1121	0.2	1.3	1,436	0.3	1.6	1,576	0.3	1.7	1,814	0.4	2.0
Physical and medical difficulties	2,864	0.6	3.4	2900	0.6	3.4	3,088	0.7	3.4	3,200	0.7	3.5	3,280	0.7	3.5
Hearing impairment	1,305	0.3	1.5	1380	0.3	1.6	1,588	0.3	1.8	1,738	0.4	1.9	1,805	0.4	1.9
Visual impairment	571	0.1	0.7	614	0.1	0.7	621	0.1	0.7	629	0.1	0.7	649	0.1	0.7
Multiple sensory impairment	42	-	-	40	-	-	35	-	-	40	-	-	35	-	-
Speech, language & communication difficulties	9,800	2.1	11.5	10300	2.2	11.9	11,308	2.4	12.6	12,011	2.6	13.2	12,827	2.8	13.8
Behavioural, emotional and social difficulties	11,308	2.4	13.3	11611	2.5	13.4	12,054	2.6	13.4	12,284	2.6	13.5	13,124	2.8	14.1
Specific learning difficulties	15,744	3.4	18.5	15688	3.4	18.1
Total	85,237	18.2	100.0	86,523	18.6	100.0	89,940	19.3	100.0	91,053	19.6	100.0	92,773	19.9	100.0

Source: School Census

(a) Incidence - the number of pupils expressed as a proportion of the total number of pupils on roll in maintained schools.

(b) Placement - the number of pupils expressed as a proportion of the total number of pupils within each SEN grouping in maintained schools.

e.g. Number of pupils with a statement of SEN of moderate learning difficulties divided by the total number of pupils with a statement of SEN in maintained schools.

Table 16: All pupils with special educational needs in maintained schools, by major need, January 2010-2014

Major need	2010			2011			2012			2013			2014		
	Number	Percentage		Number	Percentage		Number	Percentage		Number	Percentage		Number	Percentage	
		Incid- ence (a)	Place- ment (b)		Incid- ence (a)	Place- ment (b)		Incid- ence (a)	Place- ment (b)		Incid- ence (a)	Place- ment (b)		Incid- ence (a)	Place- ment (b)
Moderate learning difficulties	44,535	9.5	42.3	44,501	9.5	44.5	34,097	7.3	33.1	29,249	6.3	28.2	24,808	5.3	23.6
General learning difficulties	16,868	3.6	16.4	21,034	4.5	20.3	24,890	5.4	23.6
Severe learning difficulties	2,442	0.5	2.3	2,419	0.5	2.4	2,456	0.5	2.4	2,463	0.5	2.4	2,339	0.5	2.2
Profound & multiple learning difficulties	773	0.2	0.7	704	0.2	0.7	729	0.2	0.7	775	0.2	0.7	775	0.2	0.7
Dyslexia	9,304	2.0	9.0	9,161	2.0	8.8	8,978	1.9	8.5
Dyscalculia	420	0.1	0.4	482	0.1	0.5	623	0.1	0.6
Dyspraxia	497	0.1	0.5	537	0.1	0.5	574	0.1	0.5
Attention Deficit Hyperactivity Disorder	801	0.2	0.8	986	0.2	0.9	1,167	0.3	1.1
Autistic Spectrum Disorders	3,122	0.7	3.0	3,451	0.7	3.5	3,968	0.9	3.9	4,227	0.9	4.1	4,592	1.0	4.4
Physical and medical difficulties	4,026	0.9	3.8	4,102	0.9	4.1	4,267	0.9	4.1	4,332	0.9	4.2	4,437	1.0	4.2
Hearing impairment	1,647	0.4	1.6	1,713	0.4	1.7	1,932	0.4	1.9	2,081	0.4	2.0	2,149	0.5	2.0
Visual impairment	773	0.2	0.7	812	0.2	0.8	823	0.2	0.8	845	0.2	0.8	862	0.2	0.8
Multiple sensory impairment	74	-	0.1	64	-	0.1	64	-	0.1	66	-	0.1	57	-	0.1
Speech, language & communication difficulties	11,750	2.5	11.2	12,264	2.6	12.3	13,244	2.8	12.9	13,940	3.0	13.4	14,680	3.2	13.9
Behavioural, emotional and social difficulties	13,049	2.8	12.4	13,246	2.8	13.3	13,568	2.9	13.2	13,613	2.9	13.1	14,372	3.1	13.6
Specific learning difficulties	16,813	3.6	16.0	16,654	3.6	16.7
Total	99,004	21.2	100.0	99,930	21.4	100.0	103,038	22.1	100.0	103,791	22.3	100.0	105,303	22.6	100.0
Total number of pupils on roll	467,141			466,172			465,943			464,868			465,081		

Source: School Census

(a) Incidence - the number of pupils expressed as a proportion of the total number of pupils on roll in maintained schools.

(b) Placement - the number of pupils expressed as a proportion of the total number of pupils within each SEN grouping in maintained schools.

e.g. Number of pupils with a statement of SEN of moderate learning difficulties divided by the total number of pupils with a statement of SEN in maintained schools.

Class sizes

- The January 2013 PLASC count was the first time class size data has been collected from schools, replacing the annual local authority collection in September. The timing of these different collections is significant here as the January pupil cohort would be greater than the September one. Care should be taken when comparing data from these two collections.
- 6.9 per cent of pupils (7,301) were in infant classes of over 30 pupils, up from 6.6 per cent in January 2013. ([Table 17](#))
- 226 infant classes (5.4 per cent) in Wales had more than 30 pupils, with 202 of these classes having permissible exceptions. This is more than at January 2013 when 218 classes (5.2 per cent) had over 30 pupils, of which 193 had permissible exceptions. ([Table 17](#))
- 7.1 per cent of Key Stage 2 classes (373) were regarded as large classes and had a total of 11,884 pupils (9.1 per cent of all pupils). This is more than at January 2013 when 308 classes (5.9 per cent) were considered large and they had a total of 9,770 pupils (7.7 percent of all pupils). ([Table 18](#))
- Unlawfully large infant classes decreased from 25 in the January PLASC 2013 collection to 24 in the 2014 collection. These classes had 834 and 853 pupils respectively. ([Table 17](#))

Table 17: Infant class sizes in primary and middle schools (a)

	2010	2011	2012 (b)	2013	2014
Average class size	24.4	25.0	..	25.1	25.2
All classes	4,065	4,055	..	4,203	4,186
All pupils	99,070	101,313	..	105,398	105,320
Classes with up to 31 pupils (c)					
Number of classes	3,968	3,933	..	3,985	3,960
Percentage of all classes	97.6	97.0	..	94.8	94.6
Number of pupils	95,993	97,431	..	98,429	98,019
Percentage of all pupils	96.9	96.2	..	93.4	93.1
Large Infant Classes (Classes of 31 or more pupils) (d)					
Number of classes	97	122	..	218	226
Percentage of all classes	2.4	3.0	..	5.2	5.4
of which:					
Lawfully large classes with 'excepted' pupils (e)					
Number of classes	85	105	..	193	202
Percentage of all classes	2.1	2.6	..	4.6	4.8
Unlawfully large classes (f)					
Number of classes	12	17	..	25	24
Percentage of all classes	0.3	0.4	..	0.6	0.6
Number of pupils in large classes (g)	3,077	3,882	..	6,969	7,301
Percentage of all pupils	3.1	3.8	..	6.6	6.9
of which:					
Lawfully large classes with 'excepted' pupils (e)					
Number of pupils	2,677	3,335	..	6,135	6,448
Percentage of all pupils	2.7	3.3	..	5.8	6.1
Unlawfully large classes (f)					
Number of pupils	400	547	..	834	853
Percentage of all pupils	0.4	0.5	..	0.8	0.8

Source: School Census

- (a) At January each year. At September each year prior to 2013. Class sizes prior to 2012 relate to Key Stage 1 whereas those after 2012 relate to Foundation Phase. Includes Middle schools from 2013.
- (b) No data collection in September 2012.
- (c) The Schools Standards and Framework Act 1998 and associated regulations placed a statutory duty on local authorities and governing bodies to limit the size of Reception classes to 30 from 1999; Reception and Year 1 classes from 2000 and Reception, Year 1 and Year 2 from 2001. Mixed year or mixed Key Stage classes are subject to the limit, where the majority of the class is made up of pupils in the appropriate year groups; this includes mixed nursery/reception classes. In this table, where a class has more than one teacher the number of pupils divided by the number of teachers determines if the size is over 30.
- (d) Both infant and junior classes with one teacher are allowed to have more than 30 children in very specific circumstances. These are called exceptions. Exception categories for infant classes are defined in the Schedule to the Education (Infant Class Sizes) (Wales) Regulations 1998, as amended by the Education (Infant Class Sizes) (Wales) (Amendment) Regulations 2009. Exception categories for junior classes are not set out in regulations but are enforced as part of the data collection.
- (e) Includes only those classes where there are pupils who have been admitted as exceptions making the class size within the legal limit of 30 pupils or less.
- (f) Classes of 31 or more, excluding those large classes engaged in an excepted activity.
- (g) Includes all pupils in large classes, including those with excepted activity.

Table 18: Junior class sizes in primary and middle schools (a)

	2010	2011	2012 (b)	2013	2014
Average class size	24.7	24.9	..	24.5	24.8
All classes	5,038	4,994	..	5,208	5,269
All pupils	124,533	124,491	..	127,560	130,624
Classes with up to 30 pupils					
Number of classes	4,802	4,737	..	4,900	4,896
Percentage of all classes	95.3	94.9	..	94.1	92.9
Number of pupils	117,059	116,316	..	117,790	118,740
Percentage of all pupils	94.0	93.4	..	92.3	90.9
Large Junior Classes (Classes of 31 or more pupils) (c)					
Number of classes	236	257	..	308	373
Percentage of all classes	4.7	5.1	..	5.9	7.1
of which:					
Large classes with 'excepted' pupils (d)					
Number of classes	135	153	..	255	329
Percentage of all classes	2.7	3.1	..	4.9	6.2
Large classes without 'excepted' pupils (e)					
Number of classes	101	104	..	53	44
Percentage of all classes	2.0	2.1	..	1.0	0.8
Number of pupils in large classes (f)	7,474	8,175	..	9,770	11,884
Percentage of all pupils	6.0	6.6	..	7.7	9.1
of which:					
Large classes with 'excepted' pupils (d)					
Number of pupils	4,257	4,845	..	8,082	10,458
Percentage of all pupils	3.4	3.9	..	6.3	8.0
Large classes without 'excepted' pupils (e)					
Number of pupils	3,217	3,330	..	1,688	1,426
Percentage of all pupils	2.6	2.7	..	1.3	1.1

Source: School Census

(a) At January each year. At September each year prior to 2013. Includes Middle schools from 2013.

(b) No data collection in September 2012.

(c) Both infant and junior classes with one teacher are allowed to have more than 30 children in very specific circumstances. These are called exceptions. Exception categories for infant classes are defined in the Schedule to the Education (Infant Class Sizes) (Wales) Regulations 1998, as amended by the Education (Infant Class Sizes) (Wales) (Amendment) Regulations 2009. Exception categories for junior classes are not set out in regulations but are enforced as part of the data collection. In this table, where a class has more than one teacher the number of pupils divided by the number of teachers determines if the size is over 30.

(d) Includes only those classes where there are pupils who have been admitted as exceptions making the class size within the legal limit of 30 pupils or less.

(e) Classes of 31 or more, excluding those large classes engaged in an excepted activity.

(f) Includes all pupils in large classes, including those with excepted activity.

Sickness absence of teachers

- 60 per cent of teachers took sickness absence during 2013, compared with 62 per cent during 2012.
- The average annual number of sick-days per teacher taking sickness absence was 10 days.
- The total number of sick-days taken by teachers during 2013 was 177,334 – over 10,000 days less than during 2012.

Table 19: Sickness absence of teachers in maintained schools, 1 January - 31 December (a) (b)

	2009	2010	2011	2012	2013
Teachers taking a period of sickness absence (c):					
Full-time teachers:					
Number	15,932	15,647	14,229	14,343	13,779
Percentage	69	70	65	65	62
Part-time teachers:					
Number	2,298	2,762	2,720	2,861	2,955
Percentage	44	50	48	51	53
Total teachers:					
Number	18,230	18,409	16,949	17,204	16,734
Percentage	65	66	61	62	60
Average number of days lost due to sickness:					
per full-time teacher taking a period of sick leave	13	11	13	11	10
per teacher (all full-time teachers)	9	8	8	7	6
Average number of days lost due to sickness:					
per part time teacher taking a period of sick leave	15	14	12	11	12
per teacher (all part-time teachers)	7	7	6	6	6
Average number of days lost due to sickness:					
per teacher taking a period of sick leave	13	12	13	11	11
per teacher (all teachers)	8	8	8	7	6
Sickness absences by duration (in days):					
Full-time teachers:					
5 days or less	62,140	58,363	50,083	52,020	44,666
6 to 20 days	43,953	29,067	36,635	28,719	23,692
more than 20 days	95,946	91,075	94,032	75,447	72,960
Total (full-time)	202,038	178,505	180,750	156,186	141,318
Part-time teachers:					
5 days or less	8,186	10,058	8,498	8,731	8,962
6 to 20 days	7,833	6,537	8,409	5,772	5,634
more than 20 days	18,116	23,251	15,660	16,688	21,420
Total (part-time)	34,136	39,846	32,567	31,191	36,016
Total	236,174	218,350	213,317	187,377	177,334

Source: Local Authorities

- (a) Sickness absence (including unpaid absence) of qualified and unqualified teachers with permanent contracts or contracts of more than 1 month.
- (b) 2014 was the first year teacher numbers were not collected from the STATS3 return. The percentage of teachers taking a period of sickness absence has been calculated using PLASC data. Previous years have also been recalculated. Link to previous data is attached [Teachers in service, vacancies and sickness absence](#).
- (c) Headcount, not full time equivalents.

Key Quality Information

Coverage

The census data in this release relates to all maintained and independent schools in Wales. The teacher sickness absence data relates to all maintained schools only.

Status

Schools' data are derived from the Pupil Level Annual School Census (PLASC) returns and STATS 1 returns supplied by schools open on Census day in January each year. The returns are authorised by headteachers and validated by Local Authorities. The teacher sickness absence data is collected directly from the local authorities in January each year.

Timeliness

The census data in this release relate to the position on Tuesday 14 January 2014. The teacher sickness absence data relates to the preceding calendar year.

Source of data

Pupil Level Annual School Census (PLASC) / School Census (STATS1 Return)

PLASC is an electronic collection of pupil and school level data provided by all maintained schools in January each year. Schools record data on pupils and the school throughout the year in their Management Information System (MIS) software. This data is collated into an electronic PLASC return and submitted to the Welsh Government through DEWI, a secure online data transfer system developed by the Welsh Government. Various stages of automated validation and sense-checking are built into the process to ensure a high quality of data to inform policy making and funding.

From January 1994 independent schools in Wales complete a STATS1 return which replaced Form 101A (school census return for independent schools prior to January 1994).

Teacher sickness absence data collection

This information is collected directly from the local authorities in January each year. The data covers the sickness absence (including unpaid absence) of qualified and unqualified teachers with permanent contracts or contracts of more than 1 month, during the previous calendar year. The data used to be published as part of the release on Teachers in service, vacancies and sickness absence'. This release has now been discontinued following our consultation on the [publication of official statistics](#).

Class Size Data: The January 2013 PLASC count was the first time class size data had been collected from schools, replacing the annual local authority collection in September. Care should be taken when comparing data from these two collections. The following are points to bear in mind when comparing the most recent data with earlier years.

- Pupils are leaving and joining part way through the academic year
- Data is now collected through the management information system of a school rather than a spreadsheet completed by a local authority
- Any intake in January may affect class sizes

The final September primary class size data can be found here:

[Class Sizes in Primary Schools, September 2011](#)

Definitions

Full-time equivalent (FTE):

- FTE pupil numbers count part-time pupils as 0.5.
- FTE of part-time teachers expresses the teachers' service in hours as a proportion of a school week: 32.5 hours for maintained schools and 26 hours for independent schools.

Pupil Teacher Ratio (PTR): calculated by dividing the FTE number of pupils by the FTE number of qualified teachers (head teachers, acting head teachers, assistant head teachers, deputy heads and other qualified teachers).

Free School Meals: Pupils are eligible for free school meals if their families receive Income Support or Income Based Jobseeker's Allowance or Support under Part VI of the Immigration and Asylum Act 1999 or the guarantee element of State Pension Credit. They are also eligible if their parents are in receipt of Income Related Employment and Support Allowance (IR). Employment and Support Allowance is an integrated contributory and income related allowance and replaced, for new claimants, Incapacity and Income Support, where it is paid on the grounds of incapacity and sickness. Children who receive Income Support or Income Based Jobseeker's Allowance in their own right are also eligible to receive free school meals. Children whose families are in receipt of Child Tax Credit, providing they are not entitled to Working Tax Credit, and have an annual income, as assessed by HM Revenue & Customs that does not exceed £16,190 are also eligible for free school meals.

Special educational needs: for further information please see these [guidance notes](#).

Ethnic background: please see these [guidance notes](#) for further information on categories and data collection methods.

Welsh medium schools: for further information please see these [guidance notes](#).

Rounding: In tables where figures have been rounded to the nearest final digit there may be an apparent discrepancy between the sum of the constituent items and the total as shown.

Symbols: The following symbols have been used throughout the publication:

- .. not available
- . not applicable
- the data item is not exactly zero but less than 0.05

Comparability: Other countries' releases

Attached is the latest available data for England:

[Schools, Pupils and their Characteristics, January 2014](#)

[School workforce in England: November 2013](#)

Scotland publishes some data on pupils as part of a larger publication on schools. Their latest release was published on 11 December 2013:

[Summary Statistics for Schools in Scotland, No. 4 2013 Edition](#)

Scotland also publishes some data on school meals as part of a different publication. Their latest release was published on 25 June 2013:

[Summary statistics for attainment, leaver destinations and healthy living, No. 3: 2013 Edition](#)

The latest available release for Northern Ireland, published on 20 March 2014, can be found here:

[Enrolments at schools and in funded pre-school education in Northern Ireland 2013/14 \(revised\)](#)

Related data for Wales

This release shows final data at Wales level for 2010 - 2014.

The previous census data published were for 2013, in the form of a Statistical First Release:

[Schools Census Results, 2013](#), published on 11 July 2013.

Claimant Count: data on the latest claimant count can be obtained by following this link:

[Claimant count in Wales by age, year, measure and duration \(not seasonally adjusted\)](#)

Who are the key users of this data?

These statistics are used both within and outside the Welsh Government. Some of the key users are:

- Ministers and the Members Research Service in the National Assembly for Wales;
- The Department for Education and Skills in the Welsh Government;
- Other areas of the Welsh Government;
- The research community;
- Students, academics and universities;
- Individual citizens and private companies.

What are the data used for?

These statistics are used in a variety of ways. Some examples of these are:

- resource allocation in the Welsh Local Government Finance Settlement and the Pupil Deprivation Grant;
- advice to Ministers;
- the all-Wales education core data packs (the replacement for the National Pupil Database);
- local authority and school comparisons and benchmarks;
- to inform the education policy decision-making process in Wales including school reorganisation;
- to inform ESTYN during school inspections;
- the education domain of the Welsh Index of Multiple Deprivation;
- as a basis for School Banding;
- to assist in research in educational attainment.

Comments on the coverage or presentation of this release are welcomed. Contact details are on the front page.