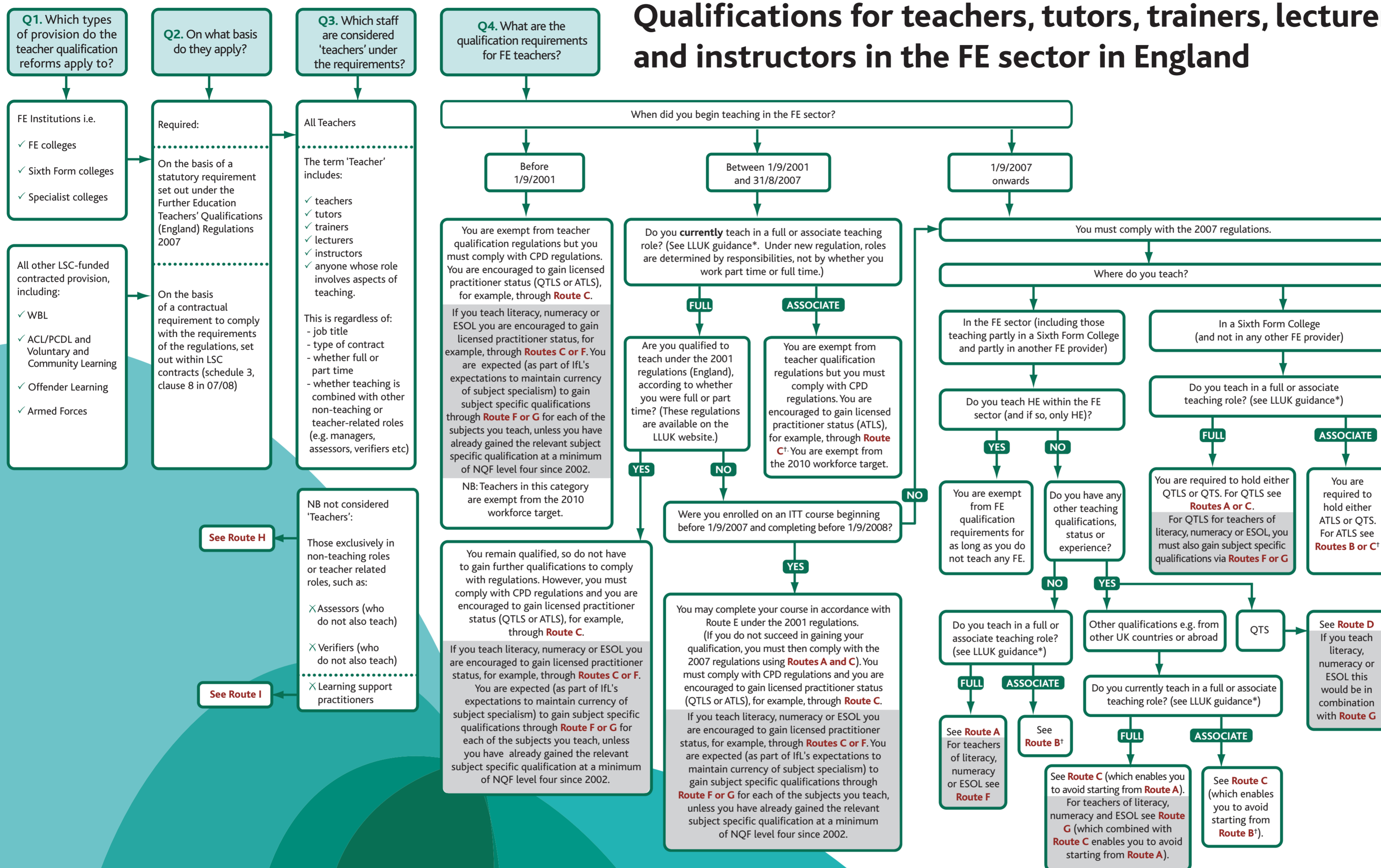




Qualifications for teachers, tutors, trainers, lecturers and instructors in the FE sector in England



The difference between 'qualifications' and 'licensed practitioner status' (QTLS, ATLS)

Qualifications are one part of gaining licensed practitioner status (i.e. QTLS or ATLS). You can only be awarded QTLS or ATLS once you have:

- gained appropriate qualifications, (or alternative recognition), which for teachers of literacy, ESOL or numeracy must also include subject specific qualifications, and;
- completed a process of professional formation according to Institute for Learning (IfL) criteria, to demonstrate that you are in good professional standing and can apply the skills learnt in initial teacher training (ITT) to practical teaching.

Another distinction is that qualifications, once awarded, cannot be taken away, whereas a licence to practise must be maintained throughout ongoing CPD.

Please note:

Skills for Life teachers are advised to pay close attention to the areas shaded in grey in this chart.

All teachers must register with IfL and comply with the CPD requirements, regardless of how the ITT regulations apply to them. IfL guidance clarifies where ITT and professional formation can count towards the CPD requirement.

Timescales within the routes below are applicable only where gaining qualifications/QTLS/ATLS is a requirement.

PTLLS may be integrated in some DTLLS and CTLLS qualifications rather than taken as a separate award.

Where PTLLS, CTLLS and DTLLS are mentioned, HEI equivalent qualifications by different titles are also valid.

Your start date in the sector refers to the first time you taught in FE, regardless of whether or not you have been teaching continuously since then.

† The associate teacher role does not apply to teachers of literacy, numeracy and ESOL. These teachers are deemed to be in a full teacher role.

* See LLUK's 'Guidance for awarding institutions on teacher roles and initial teacher training qualifications' available online at www.lluk.org/feworkforcereforms

ROUTE A

Qualifications requirements: PTLLS & DTLLS

Status required: QTLS following professional formation

Timescale: within 5 years

ROUTE B

Qualifications requirements: PTLLS & CTLLS

Status required: ATLS, following professional formation.

Timescale: within 5 years

ROUTE C

Qualifications requirements: Gaining recognition of prior experience and qualifications as equivalent to being part or fully qualified, i.e. through APL, Tariff database of Legacy Qualifications (TLQ), Professional Recognition Schemes, or through EU APL and recognition in conjunction with EU directive 2005/36/EC. Supplemented by top-up CPD, if required, to gain equivalence to being fully qualified.

Status required: QTLS or ATLS, following professional formation

Timescale: within 5 years

ROUTE D

Qualifications requirements: No further qualification requirements on top of QTS, but mandatory CPD module around orientation to the FE sector required.

Status required: QTLS or ATLS, following professional formation (which applies unless NQT induction has been completed in the FE sector)

Timescale: within 2 years

ROUTE E

Qualifications requirements: Completion of pre-Sept 2007 Stage 3 Qualification or HEI equivalent. This may be a qualification that integrates an approved subject specialist teaching certificate for literacy numeracy or ESOL

Status required: Not required (although QTLS encouraged, which would also require professional formation)

Timescale: course and assessment completed by 31st August 2008

ROUTE F

Qualifications requirements: PTLLS & Diploma in Teaching in the Lifelong Learning Sector combined with a literacy, numeracy or ESOL subject specific qualification through the shorter integrated routes or by the longer additional route (using the separate Routes G and A) if you teach more than one of these subjects you will be required to take the additional Route G for each of the additional subjects taught

Status required: QTLS (following professional formation)

Timescale: within 5 years

ROUTE G

Qualifications requirements: Subject specific literacy, numeracy and/or ESOL teaching qualifications through an 'additional' qualification route

Status required: QTLS (if not already gained). Professional formation required only in relation to gaining QTLS, i.e. those already with QTLS are exempt from further professional formation

Timescale: within 5 years

ROUTE H

Qualifications requirements: Assessor and Verifier awards continue until LLUK notification of alignment to new Teacher Qualifications Framework and any subsequent introduction of new qualifications from 2008.

Status required: n/a

Timescale: n/a

ROUTE I

Qualifications requirements: New qualifications planned for September 2008 based on UK National Occupational Standards for Learning Support.

Status required: n/a

Timescale: n/a

For information and advice visit www.lluk.org/ias or call **020 7936 5798** between 9am and 5.30 pm, Monday – Friday. Additional copies of this summary sheet can be obtained from LLUK publications on **01787 884087** ref: FEWCART1007010.