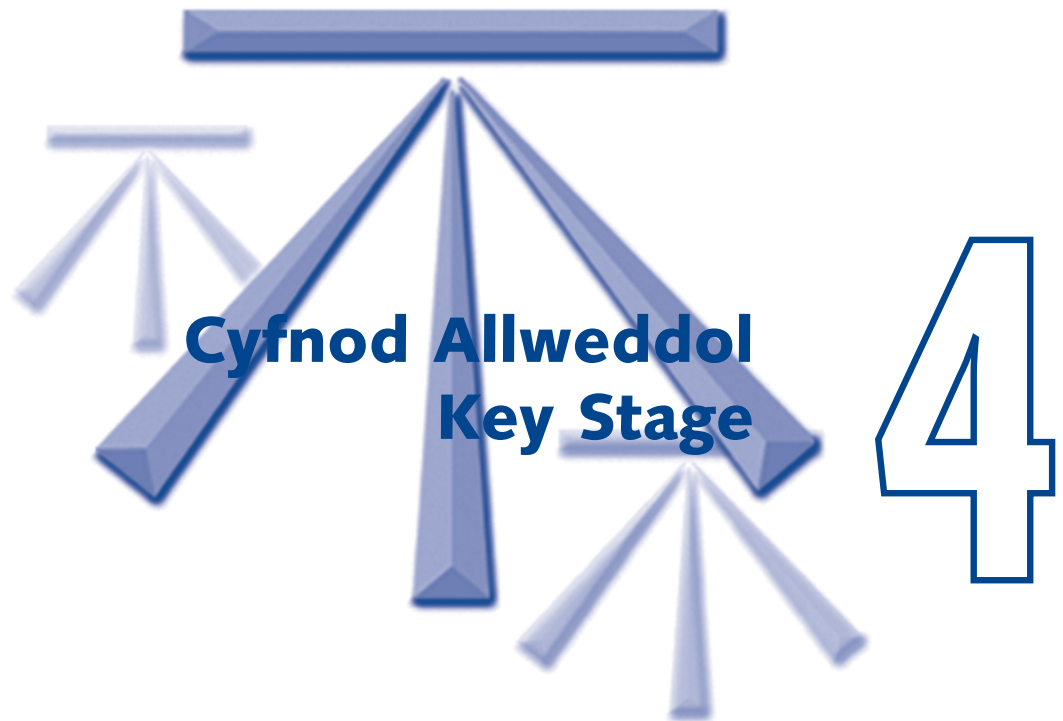


Dogfen Wybodaeth AHA rhif:
DFTE Information Document No: 049-03

Dyddiad Argraffu: Mawrth 2004
Date of Issue: March 2004

Gwybodaeth Feincnodi



2003

Benchmark Information

Benchmark Information for Key Stage 4: 2003

Audience: Headteachers, Governing Bodies and Directors of Education

Further copies of this booklet and those listed below may be obtained from:

**Parents and Information Branch (SPD4)
Department for Training and Education
Welsh Assembly Government
Cathays Park
CARDIFF CF10 3NQ**

**(029) 2082 6010 Fax (029) 2082 6016
email - education.training@wales.gsi.gov.uk
or visit our website - www.learning.wales.gov.uk**

Also available from the Welsh Assembly Government

**National Curriculum Assessment and Public Examination Results (for each LEA area) 2002 and 2003
National Curriculum Assessment Results in Wales: Key Stage 1 for 1997 to 2001
National Curriculum Assessment Results in Wales: Key Stage 2 for 1997 to 2001
National Curriculum Assessment Results in Wales: Key Stage 3 for 1997 to 2001
National Curriculum Assessment Results in Wales: Key Stage 3 non-core subjects for 2001
GCSE/GNVQ Results in Wales: 1997 – 2001
A/AS level and GNVQ results in Wales: 2001
Benchmark Information for Key Stage 1: 1997 – 2002
Benchmark Information for Key Stage 2: 1997-2003
Benchmark Information for Key Stages 3 & 4: 1997 - 2002
Benchmark Information for Key Stage 3: 2003
Benchmark Information for Key Stage 4: 2003**

Gwybodaeth Feincodi ar gyfer Cyfnod Allweddol 4: 2003

Y Gynulleidfa: Prifathrawon, Cyrff Llywodraethol a Chyfarwyddwyr Addysg

Gellir cael ragor o gopiau o'r llyfryn yma ac y rhai sydd wedi ei rhestru isod wrth:

**Y Gangen Rhieni A Gwybodaeth (SPD4)
Adran Hyfforddiant ac Addysg
Llywodraeth Cynulliad Cymru
Parc Cathays
CAERDYDD CF10 3NQ**

**(029) 2082 6010 Ffacs (029) 2082 6016
e-bost : education.training@wales.gsi.gov.uk
neu ymweld ein wefan – www.dysgu.cymru.gov.uk**

Hefyd a'r gael o Llywodraeth Cynulliad Cymru

Canlyniadau'r Asesiad Cwricwlwm Cenedlaethol a Arholiadau Cyhoeddus (am bob ardal AAII) 2002 a 2003
Canlyniadau Asesiadau'r Cwricwlwm Cenedlaethol yng Nghymru: Cyfnod Allweddol 1 ar gyfer 1997 i 2001
Canlyniadau Asesiadau'r Cwricwlwm Cenedlaethol yng Nghymru: Cyfnod Allweddol 2 ar gyfer 1997 i 2001
Canlyniadau Asesiadau'r Cwricwlwm Cenedlaethol yng Nghymru: Cyfnod Allweddol 3 ar gyfer 1997 i 2001
Canlyniadau Asesiadau'r Cwricwlwm Cenedlaethol yng Nghymru: Cyfnod Allweddol 3 pynciau di-graidd ar gyfer 1997 i 2001
Canlyniadau TGAU/CGCC yng Nghymru: 1997 – 2001
Canlyniadau Safon U/UG a CGCC yng Nghymru: 2001
Gwybodaeth Feincodi ar gyfer Cyfnod Allweddol 1: 1997-2002
Gwybodaeth Feincodi ar gyfer Cyfnod Allweddol 2: 1997-2003
Gwybodaeth Feincodi ar gyfer Cyfnodau Allweddol 3 & 4: 1997-2002
Gwybodaeth Feincodi ar gyfer Cyfnodau Allweddol 3: 2003
Gwybodaeth Feincodi ar gyfer Cyfnodau Allweddol 4: 2003

Contents

	Page
Introduction	4
How to use the Benchmark Tables	6
Table 1: Schools with up to and including 10 per cent free school meals	8
Table 2: Schools with 11-15 per cent free school meals	8
Table 3: Schools with 16-20 per cent free school meal	9
Table 4: Schools with 21-30per cent free school meals	9
Table 5: Schools with 31 per cent or more free school meals	10
Table 6: Welsh-speaking Schools	10
Table 7: English-speaking Schools	11
Table 8: All secondary schools	11
Table 9: Welsh speaking schools - Summary table	12
Table 10: English speaking schools - Summary table	12
Table 11: All secondary schools - Summary table	13
Table 12: Pupils not achieving at least one Entry Level Qualification, GCSE or GCSE short course	14
Table 13: Pupils not achieving at least one Entry Level Qualification, GCSE or GCSE short course - Summary Table	15
Performance Bands	
5 or more GCSE grades A* - C or equivalent	16
5 or more GCSE grades A* - G or equivalent	16
Core Subject Indicator	17
English	
18	
Welsh	19
Mathematics	19
Science	19

Cynnwys

	Tudalen
Cyflwyniad	5
Sut i ddefnyddio'r Tablau Meincnodi	6
Tabl 1: Ysgolion â hyd at, 10% yn gymwys i gael Prydau ysgol Di-Dâl (PYD)	8
Tabl 2: Ysgolion ag 11-15% yn gymwys i gael PYD	8
Tabl 3: Ysgolion ag 16-20% yn gymwys i gael PYD	9
Tabl 4: Ysgolion ag 21-30% yn gymwys i gael PYD	9
Tabl 5: Ysgolion ag 31% neu ragor yn gymwys i gael PYD	10
Tabl 6: Ysgolion Cymraeg	10
Tabl 7: Ysgolion Saesneg	11
Tabl 8: Pob ysgol a gynhelir	11
Tabl 9: Ysgolion Cymraeg - Tabl crynodeb	12
Tabl 10: Ysgolion Saesneg - Tabl crynodeb	12
Tabl 11: Pob ysgol uwchradd - Tabl crynodeb	13
Tabl 12: Disgyblion heb ennill o leiaf un TCA, TGAU neu TGAU cwrs byr	14
Tabl 13: Disgyblion heb ennill o leiaf un TCA, TGAU neu TGAU cwrs byr - Tabl Crynodeb	15
Bandiau Perfformiad	
5 neu ragor o raddau TGAU A* - C neu gymhwyster cyfatebol	16
5 neu ragor o raddau TGAU A* - G neu gymhwyster cyfatebol	16
Dangosydd Pynciau Craidd	17
Saesneg	18
Cymraeg	18
Mathemateg	19
Gwyddoniaeth	19

Introduction

This is the seventh year for which benchmark information has been published and it is hoped that schools and LEAs will use it to support their target setting processes. The tables displayed in this booklet are based on the results derived from the 2003 National Curriculum assessments.

The purpose of providing benchmark information is to show how well schools can do, whatever their circumstances. Benchmark Information brings together the results of similar schools into simple tables, which are ordered according to the proportion of children known to be eligible for free school meals (FSM). By looking at the tables, which have been extended for English-medium schools, schools can find out how well their results compare with similar schools.

The presentation of the benchmark information illustrates clearly the range of performance in each group of schools. Blank columns allow schools to enter their own results for different indicators i.e. the percentage of pupils achieving 5 or more GCSE grades A*-C, or those achieving the core subject indicator (CSI). The tables are based on the results from maintained schools.

The charts towards the back of the book show the number of schools in a range of performance bands for each subject and the Core Subject Indicator. The charts are based on the number of schools with more than five pupils eligible for assessment.

Cyflwyniad

Dyma'r seithfed flwyddyn y mae'r wybodaeth feincnodi wedi'i chyhoeddi, a'r gobaith yw y bydd ysgolion ac AALLau yn ei defnyddio i'w helpu gyda'u prosesau gosod targedau. Mae'r tablau sydd yn y llyfr hwn wedi'u seilio ar y canlyniadau sy'n deillio o asesiadau athrawon o dan y Cwricwlwm Cenedlaethol yn 2003.

Diben rhoi gwybodaeth feincnodi yw dangos cystal gwaith y gall ysgolion ei gyflawni, beth bynnag y bo'u hamgylchiadau. Mae Gwybodaeth Feincnodi yn dwyn ynghyd ganlyniadau ysgolion tebyg ac yn eu rhoi mewn tablau syml sydd wedi'u trefnu yn ôl nifer y plant y gwyddys eu bod yn gymwys i gael pryd ysgol am ddim (PYD). Drwy edrych ar y tablau, sydd bellach yn cynnwys ysgolion cyfrwng-Saesneg, gall ysgolion weld sut mae eu canlyniadau'n cymharu ag ysgolion tebyg.

Mae'r ffordd y mae'r wybodaeth feincnodi wedi'i chyflwyno yn dangos yn glir sut mae perfformiad pob grŵp o ysgolion yn amrywio. Mae'r colofnau gwag yn caniatâu i ysgolion gofnodi eu canlyniadau eu hunain ar gyfer y gwahanol ddangosyddion h.y. Mae'r canlyniadau wedi'u seilio ar ganlyniadau ysgolion a gynhelir.

Mae'r siartiau tua cefn y llyfr yn dangos nifer yr ysgolion sydd mewn ystod o fandiau perfformiad ar gyfer pob pwnc ac ar gyfer y Dangosydd Pynciau Craidd. Mae'r siartiau wedi'u seilio ar nifer yr ysgolion lle mae mwy na phum disgybl sy'n gymwys i'w hasesu.

How to use the Benchmark Tables

Sut i ddefnyddio'r tablau

Table 1: Schools with up to 10 per cent eligible for FSM

Tabl 1: Ysgolion â hyd at 8 y cant yn gymwys i gael PYD

Percentage of pupils achieving level 5 or above

Canran y disgyblion yn cyrraedd lefel 4 neu uwch

	Lower Quartile Chwartzel Isaf	Median Canolrif	Upper Quartile Chwartzel Uchaf
English/Saesneg			
Teacher Assessment Aseiad Athro	72	76	78
Test Prawf	60	69	77
Mathematics/Mathemateg			
Teacher Assessment Aseiad Athro	75	80	83
Test Prawf	73	76	80
Science/Gwyddoniaeth			
Teacher Assessment Aseiad Athro	70	79	88
Test Prawf	76	82	87
Core Subject Indicator/Dangosydd Pynciau Craidd			
Teacher Assessment Aseiad Athro	60	67	73
Test Prawf	60	64	71

Number of schools/Nifer yr ysgolion = 54

School performance is in the bottom 25% (the lower quartile) of schools in the table.

Perfformiad Ysgol yn y 25% isaf (y chwartzel isaf) o ysgolion yn y tabl.

School performance is in the top 50% (above the median) and below the best performing 25% (the upper quartile).

Perfformiad ysgol yn y 50% uchaf (uwchlaw'r canolrif ac islaw'r 25% sy'n perfformio orau (y chwartzel uchaf)

School performance is in the bottom 50% (below the median) of schools but above the lowest performing 25% (the lower quartile).

Perfformiad ysgol yn y 50% isaf (islaw'r canolrif) o ysgolion ond uwchlaw'r 25% isaf eu perfformiad (chwartzel isaf)

School is performing in the top 25% (the upper quartile).

Ysgol yn perfformio yn y 25% uchaf (y chwartzel uchaf)

Terms used in the tables

FSM:	The percentage of pupils who are known to be eligible for free school meals is based on the January 2003 School Census Returns.
Lower Quartile:	The performance below which 25 per cent of schools fall.
Median:	The performance exceeded by 50 per cent of schools.
Upper Quartile:	The performance exceeded by 25 per cent of schools.
Number of schools:	The number of schools with results used in this table.
Core Subject Indicator:	Key Stage 4: The percentage of pupils attaining at least GCSE grade C in each of English or Welsh (first language), mathematics and science in combination.
5 or more GCSEs A*-C:	These descriptions are used in the tables for brevity.
5 or more GCSEs A*-G:	The figures actually reflect the percentages achieving these grades at GCSE or their vocational equivalent .



Termau a ddefnyddir yn y tablau

PYD:	Canran y disgyblion y gwyddys eu bod yn gymwys i gael prydau ysgol am ddim wedi ei seilio ar Ffurflenni Cyfrifiad Ysgolion Ionawr 2003.
Chwartzel Isaf:	Y perfformiad y mae 25 y cant o ysgolion yn cwmpo'n is nag ef.
Canolrif:	Y perfformiad y mae 50 y cant o ysgolion yn gwneud yn well nag ef.
Chwartzel Uchaf:	Y perfformiad y mae 25 y cant o ysgolion yn ei guro.
Nifer yr ysgolion	Nifer yr ysgolion â chanlyniadau wedi'u defnyddio yn y tabl.
Dangosydd Pynciau	Cyfnod Allweddol 4: Canran y disgyblion yn cyrraedd o leiaf lefel C TGAU mewn Cymraeg (iaith gyntaf) neu Saesneg, mathemateg a gwyddoniaeth mewn cyfuniad.
5 TGAU graddau A*-C neu ragor:	Defnyddir y disgrifiadau hyn yn y tablau er mwyn bod yn gryno.
5 TGAU graddau A*-G neu ragor:	Mae'r ffigurau mewn gwirionedd yn adlewyrchu'r canrannau'n ennill y graddau TGAU hyn neu'r cymwyrterau galwedigaethol cyfatebol .

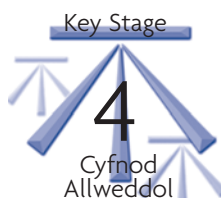


Table 1: Schools with up to 10 per cent eligible for FSM

Tabl 1: Ysgolion â hyd at 10 y cant yn gymwys i gael PYD

	Lower Quartile Chwartzel Isaf	Median Canolrif	Upper Quartile Chwartzel uchaf
5 or more GCSE grades A*-C 5 TGAU graddau A*-C neu ragor	61	65	71
5 or more GCSE grades A*-G 5 TGAU graddau A*-G neu ragor	89	93	96
1 or more GCSE grades A*-G 1 TGAU graddau A*-G neu ragor	95	98	99
Average GCSE/GNVQ point score Sgor pwyntiau TGAU/CGCC cyfartalog	43	47	51
A*-C in English A*-C mewn Saesneg	62	71	76
A*-C in Mathematics A*-C mewn Mathemateg	50	56	66
A*-C in Science A*-C mewn Gwyddoniaeth	55	62	72
Core Subject Indicator Dangosydd Pynciau	42	49	59

Number of schools/Nifer yr ysgolion = 60

Table 2: Schools with up to 11-15 per cent eligible for FSM

Tabl 2: Ysgolion â hyd at 11-15 y cant yn gymwys i gael PYD

	Lower Quartile Chwartzel Isaf	Median Canolrif	Upper Quartile Chwartzel uchaf
5 or more GCSE grades A*-C 5 TGAU graddau A*-C neu ragor	50	57	62
5 or more GCSE grades A*-G 5 TGAU graddau A*-G neu ragor	87	90	94
1 or more GCSE grades A*-G 1 TGAU graddau A*-G neu ragor	93	96	98
Average GCSE/GNVQ point score Sgor pwyntiau TGAU/CGCC cyfartalog	39	43	47
A*-C in English A*-C mewn Saesneg	54	59	64
A*-C in Mathematics A*-C mewn Mathemateg	42	47	54
A*-C in Science A*-C mewn Gwyddoniaeth	44	53	59
Core Subject Indicator Dangosydd Pynciau	34	41	46

Number of schools/Nifer yr ysgolion = 56

Table 3: Schools with up to 16-20 per cent eligible for FSM
Tabl 3: Ysgolion â hyd at 16-20 y cant yn gymwys i gael PYD



	Lower Quartile Chwartzel Isaf	Median Canolrif	Upper Quartile Chwartzel uchaf
5 or more GCSE grades A*-C 5 TGAU graddau A*-C neu ragor	40	49	55
5 or more GCSE grades A*-G 5 TGAU graddau A*-G neu ragor	82	86	91
1 or more GCSE grades A*-G 1 TGAU graddau A*-G neu ragor	91	95	97
Average GCSE/GNVQ point score Sgor pwyntiau TGAU/CGCC cyfartalog	34	38	42
A*-C in English A*-C mewn Saesneg	47	54	59
A*-C in Mathematics A*-C mewn Mathemateg	35	43	48
A*-C in Science A*-C mewn Gwyddoniaeth	35	46	52
Core Subject Indicator Dangosydd Pynciau	27	35	41

Number of schools/Nifer yr ysgolion = 45

Table 4: Schools with up to 21-30 per cent eligible for FSM
Tabl 4: Ysgolion â hyd at 21-30 y cant yn gymwys i gael PYD

	Lower Quartile Chwartzel Isaf	Median Canolrif	Upper Quartile Chwartzel uchaf
5 or more GCSE grades A*-C 5 TGAU graddau A*-C neu ragor	32	38	45
5 or more GCSE grades A*-G 5 TGAU graddau A*-G neu ragor	77	82	87
1 or more GCSE grades A*-G 1 TGAU graddau A*-G neu ragor	89	91	95
Average GCSE/GNVQ point score Sgor pwyntiau TGAU/CGCC cyfartalog	30	33	35
A*-C in English A*-C mewn Saesneg	39	47	52
A*-C in Mathematics A*-C mewn Mathemateg	27	34	41
A*-C in Science A*-C mewn Gwyddoniaeth	26	35	42
Core Subject Indicator Dangosydd Pynciau	21	24	34

Number of schools/Nifer yr ysgolion = 41



Table 5: Schools with 31 per cent or more eligible for FSM

Tabl 5: Ysgolion â 31 y cant yn gymwys i gael PYD

	Lower Quartile Chwartzel Isaf	Median Canolrif	Upper Quartile Chwartzel uchaf
5 or more GCSE grades A*-C 5 TGAU graddau A*-C neu ragor	22	30	39
5 or more GCSE grades A*-G 5 TGAU graddau A*-G neu ragor	67	73	80
1 or more GCSE grades A*-G 1 TGAU graddau A*-G neu ragor	80	88	92
Average GCSE/GNVQ point score Sgor pwyntiau TGAU/CGCC cyfartalog	25	28	30
A*-C in English A*-C mewn Saesneg	30	37	47
A*-C in Mathematics A*-C mewn Mathemateg	14	23	30
A*-C in Science A*-C mewn Gwyddoniaeth	22	28	33
Core Subject Indicator Dangosydd Pynciau	10	16	24

Number of schools/Nifer yr ysgolion = 24

Table 6: Welsh-speaking schools*

Tabl 6: Ysgolion Cymraeg*

	Lower Quartile Chwartzel Isaf	Median Canolrif	Upper Quartile Chwartzel uchaf
5 or more GCSE grades A*-C 5 TGAU graddau A*-C neu ragor	57	62	67
5 or more GCSE grades A*-G 5 TGAU graddau A*-G neu ragor	88	92	95
1 or more GCSE grades A*-G 1 TGAU graddau A*-G neu ragor	95	97	99
Average GCSE/GNVQ point score Sgor pwyntiau TGAU/CGCC cyfartalog	43	47	49
A*-C in English A*-C mewn Saesneg	57	63	72
A*-C in Welsh (1st language) A*-C mewn Cymraeg (laith Gyntaf)	37	64	73
A*-C in Mathematics A*-C mewn Mathemateg	44	52	58
A*-C in Science A*-C mewn Gwyddoniaeth	50	57	67
Core Subject Indicator Dangosydd Pynciau	40	47	55

Number of schools/Nifer yr ysgolion = 52

***As defined by Section 354(8) of the Education Act 1996**

***Fel a ddiffinir gan Adran 354(8) O Ddeddf Addysg 1996**

Table 7: English speaking schools

Tabl 7: Ysgolion Saesneg



	Lower Quartile Chwartzel Isaf	Median Canolrif	Upper Quartile Chwartzel uchaf
5 or more GCSE grades A*-C 5 TGAU graddau A*-C neu ragor	36	48	59
5 or more GCSE grades A*-G 5 TGAU graddau A*-G neu ragor	80	85	92
1 or more GCSE grades A*-G 1 TGAU graddau A*-G neu ragor	90	94	97
Average GCSE/GNVQ point score Sgor pwyntiau TGAU/CGCC cyfartalog	31	37	43
A*-C in English A*-C mewn Saesneg	45	53	62
A*-C in Mathematics A*-C mewn Mathemateg	31	42	52
A*-C in Science A*-C mewn Gwyddoniaeth	33	45	57
Core Subject Indicator Dangosydd Pynciau	24	34	43

Number of schools/Nifer yr ysgolion = 174

Table 8: All secondary schools

Tabl 8: Pob ysgol uwchradd

	Lower Quartile Chwartzel Isaf	Median Canolrif	Upper Quartile Chwartzel uchaf
5 or more GCSE grades A*-C 5 TGAU graddau A*-C neu ragor	40	53	62
5 or more GCSE grades A*-G 5 TGAU graddau A*-G neu ragor	82	88	93
1 or more GCSE grades A*-G 1 TGAU graddau A*-G neu ragor	91	95	98
Average GCSE/GNVQ point score Sgor pwyntiau TGAU/CGCC cyfartalog	33	40	46
A*-C in English A*-C mewn Saesneg	48	56	65
A*-C in Welsh (1st language) A*-C mewn Cymraeg (laith Gyntaf)	9	47	69
A*-C in Mathematics A*-C mewn Mathemateg	34	45	54
A*-C in Science A*-C mewn Gwyddoniaeth	35	49	59
Core Subject Indicator Dangosydd Pynciau	26	37	47

Number of schools/Nifer yr ysgolion = 226



Table 9: Welsh-speaking schools* - Summary table

Tabl 9: Ysgolion Cymraeg* - Tabl crynodeb

Percentage of pupils achieving/Canran y disgyblion yn ennill

	FSM band/Band PYD				
	Up to 10 per cent Hyd at 10 y cant	11-15	16-30	33 per cent or more 33 y cant neu ragor	All Schools Pob Ysgol
5 or more GCSE grades A*-C 5 TGAU graddau A*-C neu ragor	68	59	54	-	62
5 or more GCSE grades A*-G 5 TGAU graddau A*-G neu ragor	92	91	89	-	91
1 or more GCSE grades A*-G 1 TGAU graddau A*-G neu ragor	97	96	96	-	97
Average GCSE/GNVQ point score Sgor pwyntiau TGAU/CGCC cyfartalog	50	45	41	-	47
A*-C in English A*-C mewn Saesneg	69	61	54	-	64
A*-C in Welsh (1st language) A*-C mewn Cymraeg (iaith Gyntaf)	56	58	49	-	55
A*-C in Mathematics A*-C mewn Mathemateg	58	49	47	-	52
A*-C in Science A*-C mewn Gwyddoniaeth	65	52	48	-	57
Core Subject Indicator Dangosydd Pynciau Craidd	53	42	39	-	47
Number of pupils Nifer yr disgyblion	2,866	2,424	1,162	-	6,452

***As defined by Section 354(8) of the Education Act 1996/Fel a ddifinir gan Adran 354(8) o Ddeddf Addysg 1996**

Table 10: English-speaking schools - Summary table

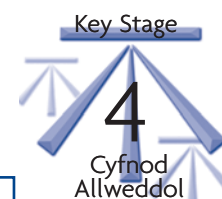
Tabl 10: Ysgolion Saesneg - Tabl crynodeb

Percentage of pupils achieving/Canran y disgyblion yn ennill

	FSM band/Band PYD					
	Up to 10 per cent Hyd at 10 y cant	11-15	16-20	21-30	33 per cent or more 33 y cant neu ragor	All Schools Pob Ysgol
5 or more GCSE grades A*-C 5 TGAU graddau A*-C neu ragor	64	54	47	39	30	49
5 or more GCSE grades A*-G 5 TGAU graddau A*-G neu ragor	92	88	85	82	72	85
1 or more GCSE grades A*-G 1 TGAU graddau A*-G neu ragor	97	95	93	91	86	93
Average GCSE/GNVQ point score Sgor pwyntiau TGAU/CGCC cyfartalog	46	41	37	33	28	38
A*-C in English A*-C mewn Saesneg	69	58	53	46	37	54
A*-C in Mathematics A*-C mewn Mathemateg	58	47	41	35	24	43
A*-C in Science A*-C mewn Gwyddoniaeth	61	52	45	35	28	46
Core Subject Indicator Dangosydd Pynciau Craidd	50	39	34	26	19	35
Number of pupils Nifer yr disgyblion	6,943	6,033	6,613	7,315	3,200	30,104

Table 11: All secondary schools**Tabl 11: Pob ysgol uwchradd**

Percentage of pupils achieving/Canran y disgyblion yn ennill



	FSM band/Band PYD					
	Up to 10 per cent Hyd at 10 y cant	11-15	16-20	21-30	33 per cent or more 33 y cant neu ragor	All Schools Pob Ysgol
5 or more GCSE grades A*-C 5 TGAU graddau A*-C neu ragor	65	56	48	40	30	51
5 or more GCSE grades A*-G 5 TGAU graddau A*-G neu ragor	92	89	85	82	72	86
1 or more GCSE grades A*-G 1 TGAU graddau A*-G neu ragor	97	95	93	92	86	94
Average GCSE/GNVQ point score Sgor pwyntiau TGAU/CGCC cyfartalog	47	42	37	33	28	39
A*-C in English A*-C mewn Saesneg	69	59	53	47	37	56
A*-C in Welsh (1st language) A*-C mewn Cymraeg (iaith Gyntaf)	43	40	38	22	-	40
A*-C in Mathematics A*-C mewn Mathemateg	58	47	42	35	24	45
A*-C in Science A*-C mewn Gwyddoniaeth	63	52	45	35	28	48
Core Subject Indicator Dangosydd Pynciau Craidd	51	40	35	27	19	37
Number of pupils Nifer yr disgyblion	9,809	8,457	7,656	7,434	3,200	36,556

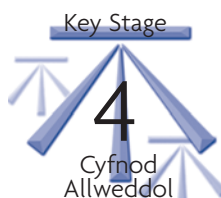


Table 12: Pupils not achieving at least one Entry Level qualification, GCSE or GCSE short course

Tabl 12: Disgyblion heb gyflawni o leiaf un TCA, TGAU, neu TGAU cwrs byr - Table crynodeb

	Upper Quartile Chwartzel Uchaf		Median Canolrif	Lower Quartile Chwartzel Isaf	
FSM: up to 10% (60 schools) PYD: hyd at 10% (60 ysgolion)		-	2		4
FSM: 11 to 15% (56 schools) PYD: 11% i 15% (56 ysgolion)		1	3		4
FSM: 16 to 20% (45 schools) PYD: 16% i 20% (45 ysgolion)		1	3		7
FSM: 21 to 30% (41 schools) PYD: 21% i 30% (41 ysgolion)		2	7		8
FSM: 31% or more (24 schools) PYD: 31% neu ragor (24 ysgolion)		5	8		14
Welsh-speaking schools (52 schools) Ysgolion Saesneg (52 ysgolion)		1	2		3
English speaking schools (174 schools) Ysgolion saesneg (174 ysgolion)		2	4		8
All schools (226 schools) Pob ysgol (226 ysgolion)		1	3		7

How to use the table

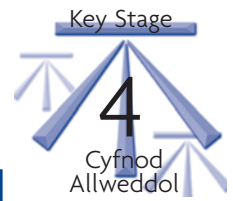
The blank spaces in the tables allow you to insert the appropriate results from your school. For example, if your school has more than 17 per cent of pupils eligible for free school meals and 5 per cent of pupils are not achieving at least one CoEA, GCSE or GCSE short course, this places the school in the bottom 50 per cent of all schools in the tables (below the median), and above the worst performing 25 per cent (the lower quartile).

Sut i ddefnyddio'r tabl

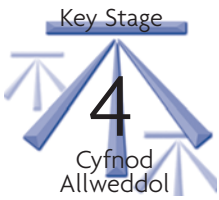
Mae'r lleoedd gwag yn y tablau yn caniatáu i chi nodi'r canlyniadau priodol o'ch ysgol chi. Er enghraifft, os oes gan eich ysgol fwy na 17 y cant o ddisgyblion sy'n gymwys am brydau ysgol am ddim a 5 y cant o ddisgyblion heb gyflawni o leiaf yn TCA, TGAU neu TGAU cwrs byr, mae hyn yn rhoi eich ysgol yn y 50 y cant isaf o'r holl ysgolion yn y tablau (islaw'r canolrif) ac uwchlaw'r 25% sy'n perfformio waethaf (y chwartzel isaf).

Table 13: Pupils not achieving at least one Entry Level Qualification, GCSE or GCSE short course - Summary table

Tabl 13: Disgyblion heb gyflawni o leiaf un TCA, TGAU, neu TGAU cwrs byr - Tabl crynodeb



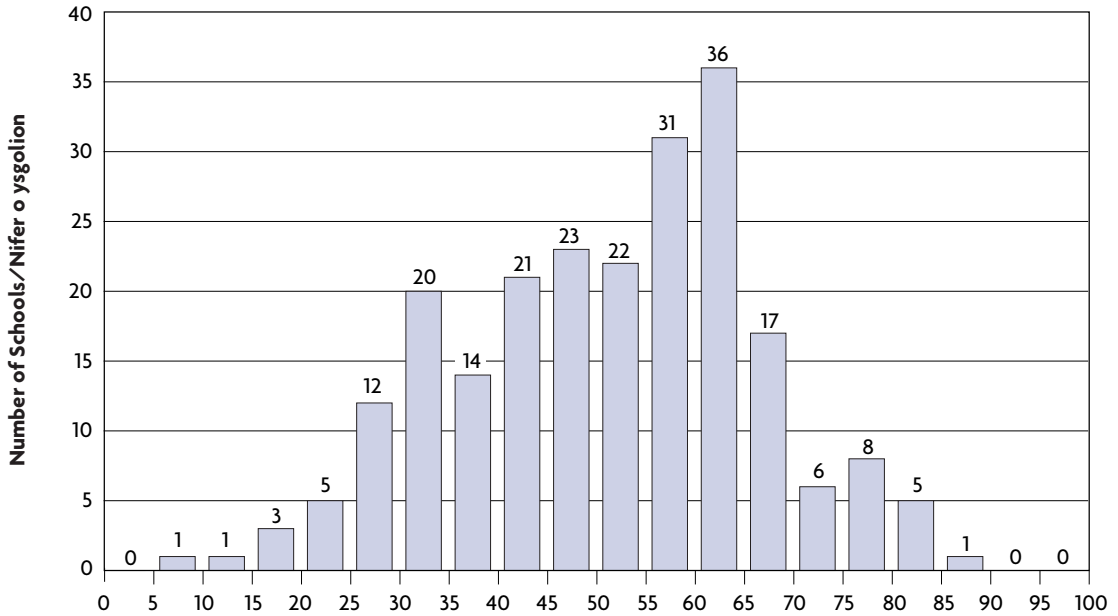
	FSM band/Band PYD					
	Up to 10 per cent Hyd at 10 y cant	11-15	16-20	21-30	33 per cent or more 33 y cant neu ragor	All Schools Pob Ysgol
Welsh-speaking schools* Ysgolion Cymraeg*	2	2	2	-	-	2
English-speaking schools Ysgolion Saesneg	2	4	5	6	8	5
All secondary schools Pob ysgol uwchradd	2	3	4	6	8	4



Performance Bands/Bandiau Perfformiad

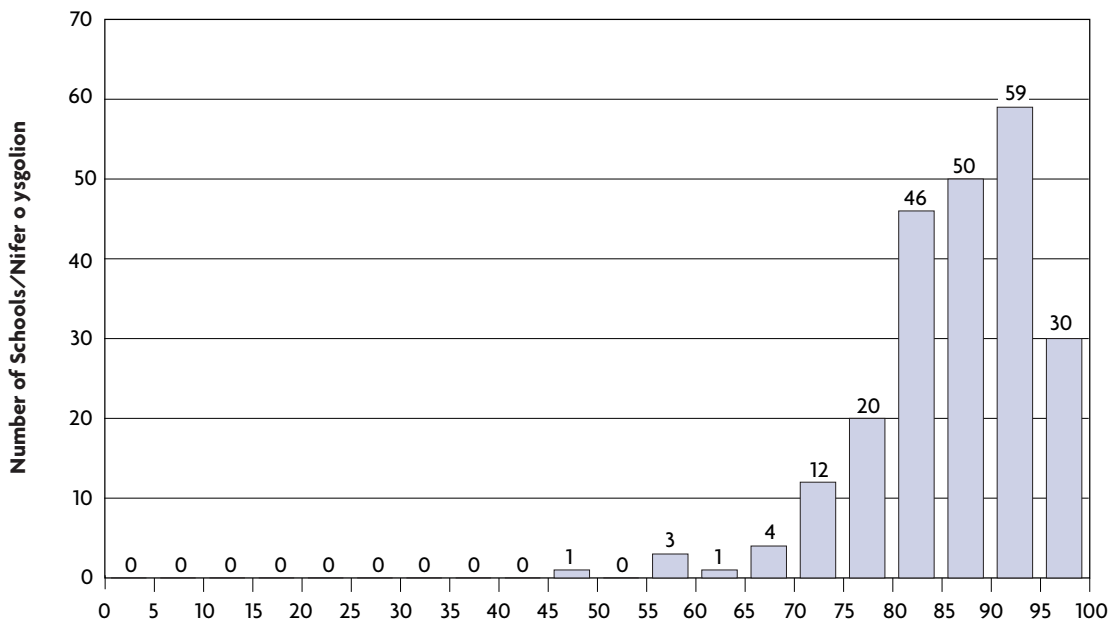
Distribution of schools based on percentage of 15 year olds achieving 5 or more GCSE at grades A*-C or equivalent

Dosbarthiad ysgolion ar sail y ganran o ddisgyblion 15 oed yn ennill 5 TGAU neu ragor graddau A*-C neu gymhwyster cyfatebol



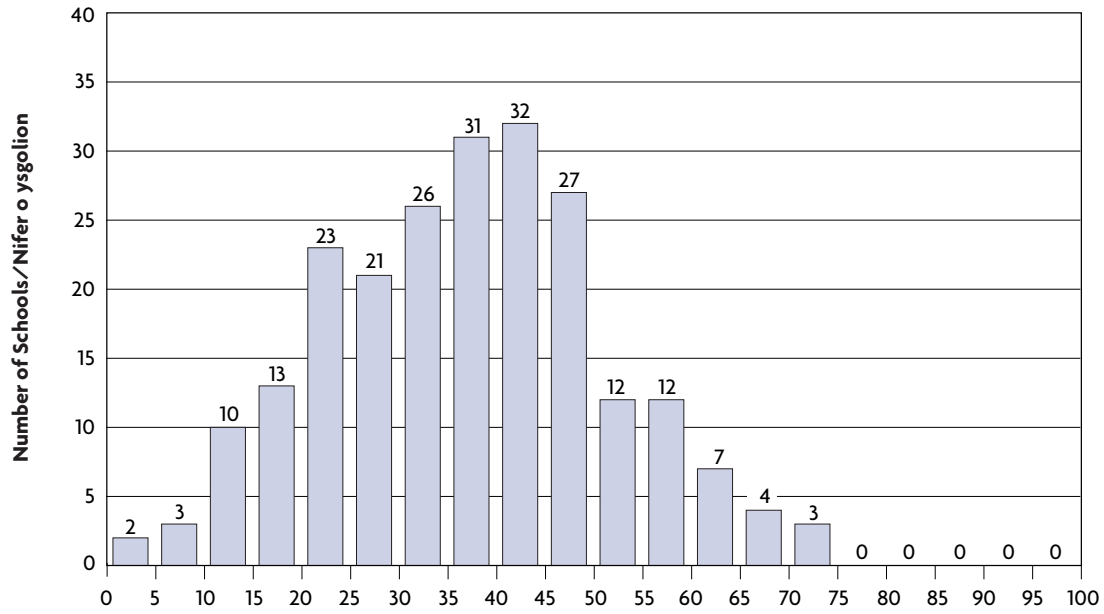
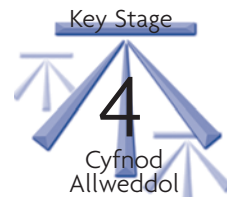
Distribution of schools based on percentage of 15 year olds achieving 5 or more GCSE at grades A*-G or equivalent

Dosbarthiad ysgolion ar sail y ganran o ddisgyblion 15 oed yn ennill 5 TGAU neu ragor graddau A*-G neu gymhwyster cyfatebol



Distribution of schools based on percentage of 15 year olds achieving the Core Subject Indicator

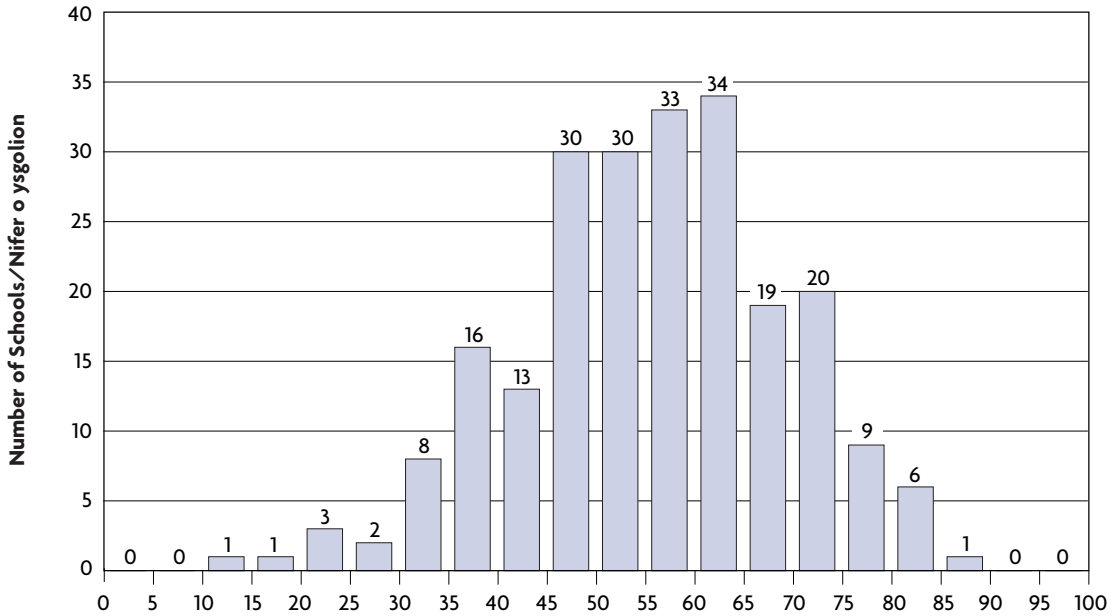
Dosbarthiad ysgolion ar sail y ganran o ddisgyblion 15 oed yn ennill y Dangosydd Pynciau Craidd





English/Saesneg

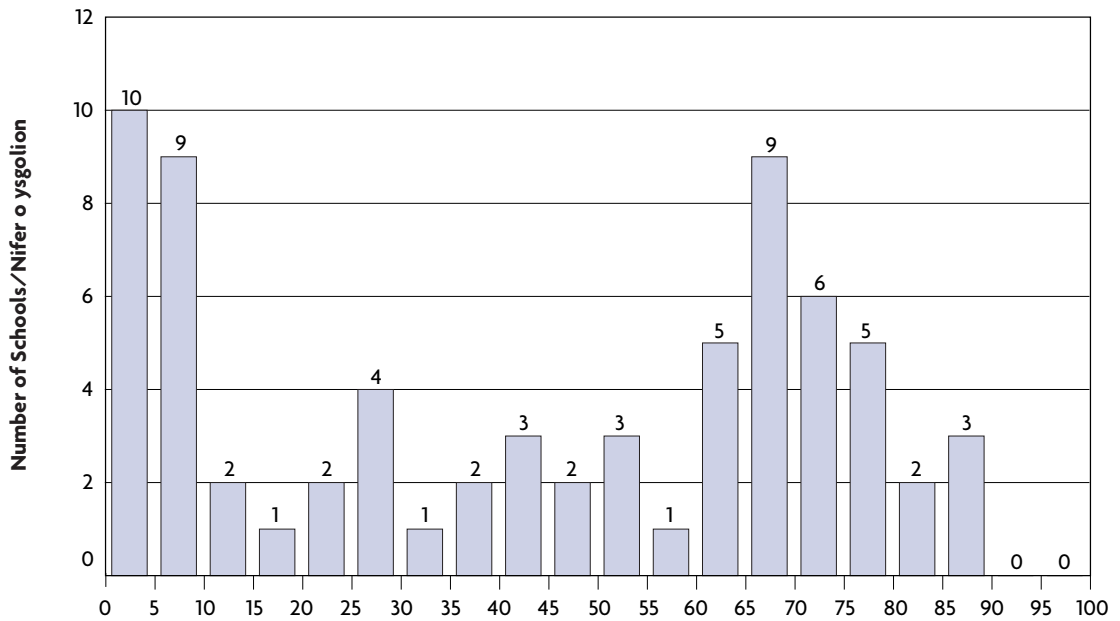
Distribution of schools based on percentage of 15 year olds achieving GCSE grades A*-C
 Dosbarthiad ysgolion ar sail y ganran o ddisgyblion 15 oed yn ennill TGAU graddau A*-C



Welsh (First Language)/Cymraeg (Iaith Gyntaf)

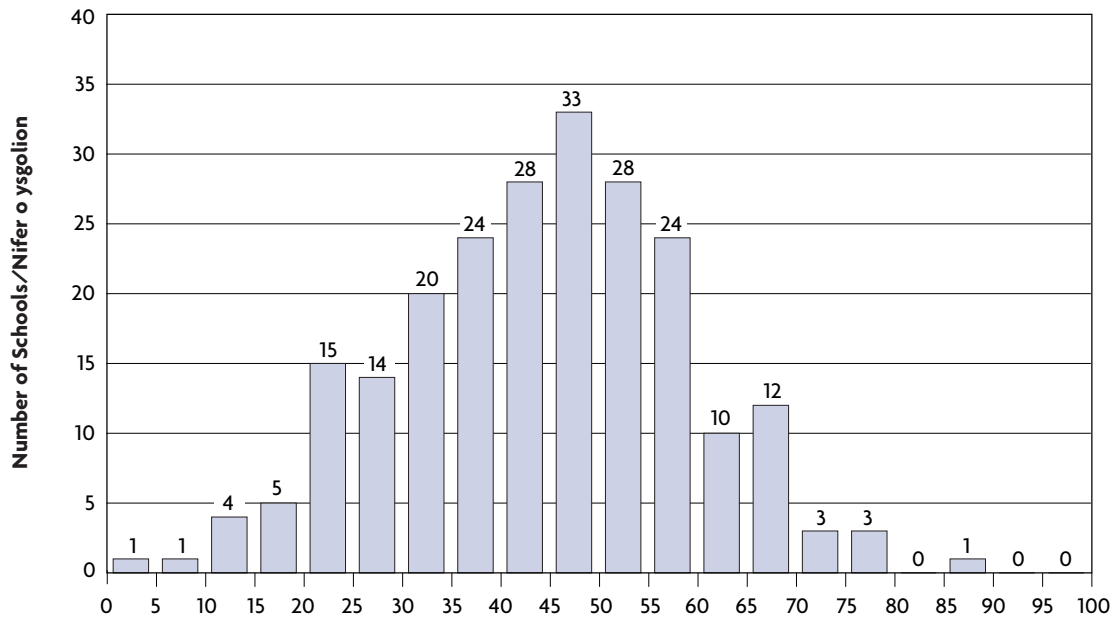
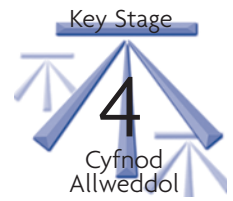
Distribution of schools entering pupils for Welsh First Language based on percentage of 15 year olds gaining GCSE grades A*-C

Dosbarthiad ysgolion yn cofrestru ddisgyblion ar gyfer Cymraeg Iaith Gyntaf ar sail y ganran o ddisgyblion 15 oed yn ennill TGAU graddau A*-C



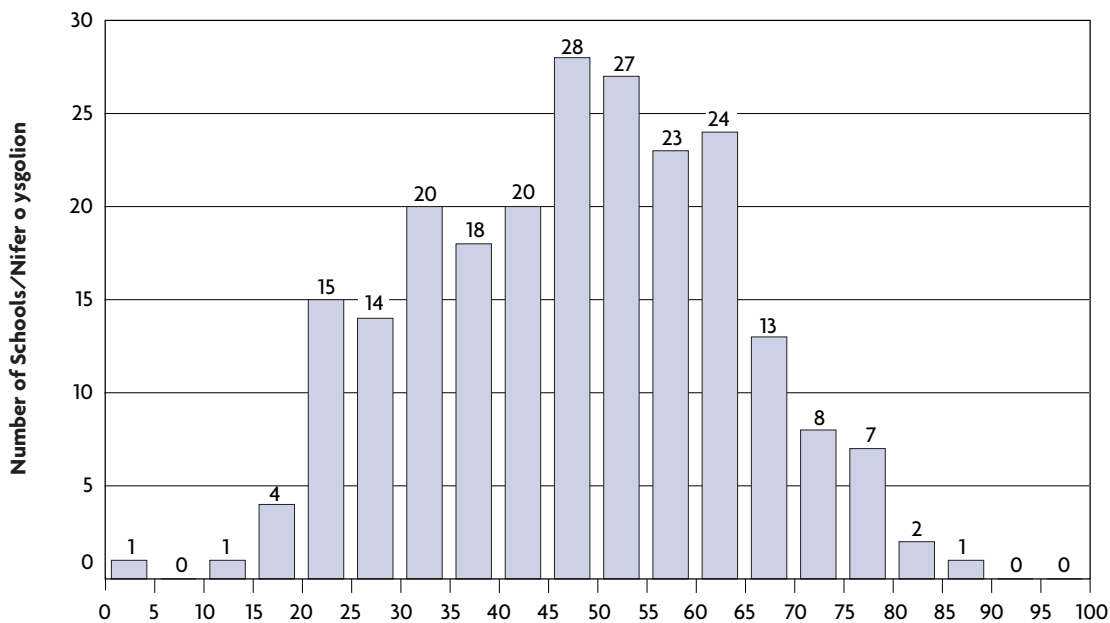
Mathematics/Mathemateg

Distribution of schools based on percentage of 15 year olds achieving GCSE grades A*-C
 Dosbarthiad ysgolion ar sail y ganran o ddisgyblion 15 oed yn ennill TGAU graddau A*-C



Science/Gwyddoniaeth

Distribution of schools based on percentage of 15 year olds achieving GCSE grades A*-C
 Dosbarthiad ysgolion ar sail y ganran o ddisgyblion 15 oed yn ennill TGAU graddau A*-C



Notes

Nodiau

