



Standards
& Testing
Agency

Key stage 2 teacher assessment 2017

Technical specification

February 2017

Contents

Introduction	3
Audience and purpose	3
Scope	3
Business rationale	4
Changes for 2017	4
Assumptions	4
Coverage and important dates	4
Structure and guidance	5
Outline data content	5
Process	5
Entry of results and levels into school MIS	6
MIS data entry checks	7
Creation of CTF KS2 file by school/setting for transmission to LA or NCA tools	7
Loading KS2 results into the LA's central management system	8
Creation of XML export file by the school or LA for transmission to DfE	8
Additional LA software facilities	11
Reports for schools and parents	11
Data return formats	12
Special notes for XML returns	12
Example file structure for XML returns	12
Data validation rules	14
Header validation	14
Establishment level validation	15
Pupil level validation	15
Resubmission guidance	22
Valid values	23
LEA codes	23
Assessment parameters	23
P scale parameters	23

Introduction

Audience and purpose

This specification describes the key stage 2 (KS2) 2017 teacher assessment (TA) data collection. It has been produced by the Standards and Testing Agency (STA) and is for schools, local authorities (LAs) and others, such as software suppliers working on their behalf, as well as educational establishments outside of LA control. It enables them to prepare and return all the required, compliant, data on all KS2 assessments during the 2016 to 2017 assessment cycle.

The legislation which underpins the provision and publication of this information is

- [the Education Act 1996 s29\(3\)](#)
- [the Education \(School Performance Information\)\(England\) Regulations 2007](#)
- [regulations 5 and 8 School Information \(England\) Regulations 2008](#)

The specification covers the expected teacher assessment return to the Department for Education (DfE) and the validation rules which will be applied. It should be read in conjunction with the [Common Basic Dataset](#) (CBDS) definitions.

Scope

This data collection applies to cover all schools in England that are expected to provide data on all KS2 assessments, and LAs who might be submitting data on behalf of schools. Academies wishing to be included in a different LA's results, outside of their geographical area, are not included and must submit their own data. All data consists of pupil-level information.

The following diagram outlines the overall scope of the collection:

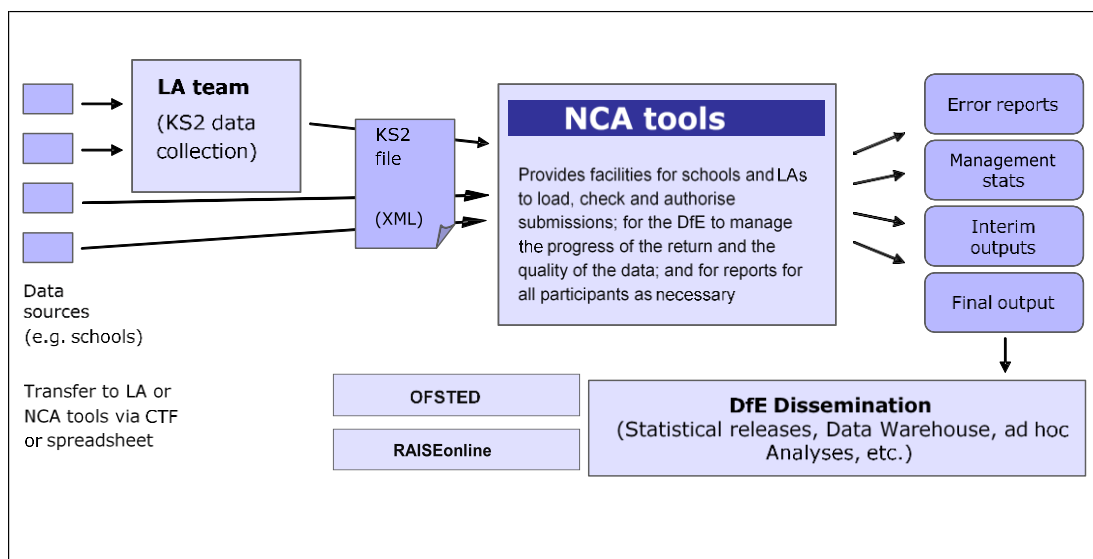


Figure 1: High-level data collection process

This technical requirements specification consists of one document containing a narrative, sample XML messages, and validation. Schools, LAs and suppliers should read this specification in conjunction with the CBDS.

Business rationale

The following factors are the business drivers behind this approach:

- it is consistent with the overall vision behind the data sharing protocol of collecting data once and using it many times
- it is based on the principle that LAs and schools are expected to hold/manage data for their own purposes, or have data held on their behalf so that they can access and extract it

Changes for 2017

Dates have been updated for 2017 and the common transfer file (CTF) version has been updated to CTF 16. Links have been updated, where appropriate.

Assumptions

Assumptions made in creating this specification:

- A1: where appropriate the data specification has used e-Gif data standards
- A2: the return will use [NCA tools](#) as the data collection mechanism
- A3: DfE will only accept submissions in XML format, or using the appropriate key stage 2 excel template which is provided on NCA tools

Coverage and important dates

All schools will be required to capture the data specified for the 2017 KS2 assessments. The data will then be collected via NCA tools between 22 May and 29 June 2017, either directly from schools or via LAs submitting on their behalf. Schools and LAs will be able to correct errors and re-submit until the TA module closes in the autumn term.

Data submitted by 29 June 2017 will be included in the first release of unvalidated data on RAISEonline. However, all TA data received between this date and the closure of the module will be included in the subsequent, updated release on RAISEonline in December, and will be shown on the performance tables website as 'late results'.

Structure and guidance

Outline data content

Each return from a school or LA will consist of a header and 1 or more school modules, each of which will contain a pupil module with a number of pupil records.

Each pupil record will include identifiers and a series of assessment records, which, where appropriate, will include P scale assessments.

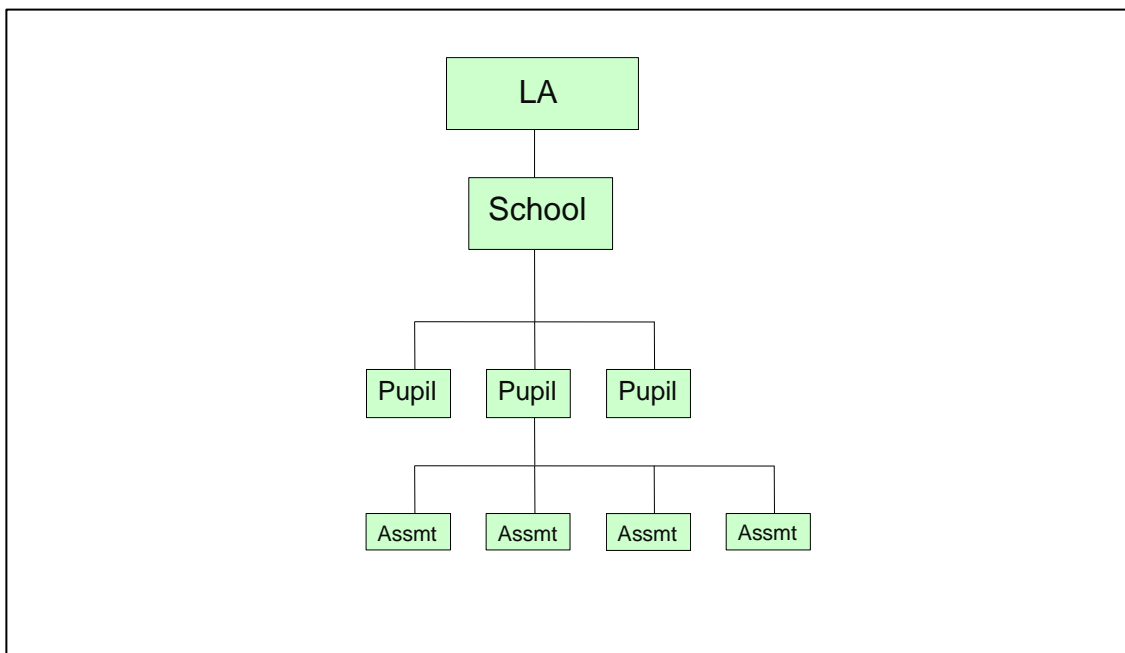


Figure 2 - Outline structure of data

Process

At the end of KS2, teachers have to summarise their judgements for each eligible pupil, taking into account the pupil's progress and performance throughout the key stage. They need to determine whether:

- a pupil is at the expected standard for each subject - English reading, mathematics and science
- a pupil is working towards the expected standard, working at the expected standard, or working at a greater depth within the expected standard, for writing
- where applicable, a pupil is working at pre-key stage standards, or whether they are working above the pre-key stage standards but they have not met the expected standard

- whether a pupil is working below defined standards and is working at P scales or equivalent

National curriculum tests must be administered to all eligible pupils who are working at the overall standard of the tests in English reading, English grammar, punctuation and spelling, and mathematics.

There are 2 or 4 stages to the capture of pupil assessments at each key stage, once teachers have made judgements.

1. Entry by schools of individual pupils' key stage teacher assessment results (including P scale results if applicable) into their respective MIS tools.
2. Creation of a CTF for loading into NCA tools, or if arrangements have been made locally, submission to the LA by secure means.

In addition, for schools submitting via their LA:

3. Loading of results (in all formats) into the LA central database/processing system.
4. Creation of school XML export files by LA software for loading into NCA tools.

The process above does not include moderation of results. All maintained primary schools must have their results moderated by their LA at least once every 4 years. Where independent schools choose to submit a KS2 return they also have to undergo the same level of moderation as maintained schools.

Entry of results and levels into school MIS

Assessment results have to be entered into the MIS for each subject, for each pupil, based on teacher assessments of the standard each pupil has attained. The following subjects will need to be assessed:

- English reading (ENG REA)
- English writing (ENG WRI)
- mathematics (MAT MAT)
- science (SCI SCI)

P scales

Where a pupil is assessed to be working below the defined standards in the pre-key stage TA framework (BLW), assessments must be made and recorded against all appropriate P scale attainment targets for that subject (see the 'Data validation section' for validation checks).

Assessments should not be made against the P scale where a pupil is recorded as not having met the standard because they have English as an additional language, unless

they also have an identified special educational need. Schools should submit NOTSEN in place of P scales for these pupils. P scales are not required against individual attainment targets when the overall performance of the pupil for the subject is above BLW, but they will be accepted if they are provided.

The full list of valid assessment values for all of the above is as shown in [CBDS](#).

Interim pre-key stage standards

The Rochford Review recommends the use of additional defined standards where a pupil has not achieved all the required elements of the standards defined in the TA framework. The use of these additional standards is aimed at pupils and subjects where another measure of accountability, such as a test result, is not available.

For English reading and mathematics, the pre-key stage standards should be used where a pupil has not been entered for the tests, and has not achieved the expected standard defined in the TA framework. For pupils that have been entered into the test, the HNM code should be used.

For English writing, the interim pre-key stage standards should be used for pupils that have not met the statements defined for WTS but are working above P scales.

No additional standards have been defined for science. Any pupils that have not met the expected standard should be marked as HNM, with P scales also submitted as appropriate.

MIS data entry checks

The school MIS software should check that a valid level has been entered for each teacher assessment and P scale subject where appropriate. Any invalid or missing entries should be reported to the school when the data is entered and/or when the CTF is to be created.

Creation of CTF KS2 file by school/setting for transmission to LA or NCA tools

The name of the CTF created by schools will be:

xxxnnnn_KS2_NAALLLL_yyy.XML

xxx represents the LA number, nnnn is the school number and yyy is an incremented version number starting at 001

Loading KS2 results into the LA's central management system

Where an LA is collecting and submitting TA data on behalf of schools, the LA's central management system should do the following:

- The software should allow the LA to import into its central database the CTF created by schools and validate in accordance with the 'Data validation rules' section.
- Any missing or invalid TA results and P scale should be reported. The software should also warn if any UPNs are missing or invalid, or if any dates of birth are missing or incomplete.
- In addition, the software should allow the LA to load into its central database a comma separated values (CSV) file created by independent schools from a KS2 excel independent spreadsheet (to be supplied to LAs by the DfE for distribution if necessary) with the export filename 'KS2_yyyxxxx_17.CSV', where yyy is the LA no and xxxx is the school Estab number (this number will always start with a 6). A copy of the spreadsheet can be provided when available, if required.
- Where any pupil's identifying or contextual data is already present in the LA central database there should be a prompt to ask if the existing data should be overwritten by the CTF or CSV import.
- Where a CTF contains any pupil's previous assessment data, for example an earlier year's end of key stage results, there should be a prompt to ask if the existing assessment data should be overwritten.

The LA should also have facilities to:

- remove and to add pupils
- amend a pupil's identifying data or result outcomes that have been loaded, and for the new data to be re-validated in accordance with the rules in the 'Data validation rules' section
- re-import a corrected CTF with an option for the operator to either replace all existing data or add as new data, and be validated in accordance with the 'Data validation rules' section

Creation of XML export file by the school or LA for transmission to DfE

Once loaded into the LA's central management system, the software should allow the LA to create separate XML files of individual pupil data, for each school as specified in the example XML file, even if still containing errors, for loading into the DfE data collection system (NCA tools).

If the school is submitting the data to DfE directly, the software should allow them to create an XML file of individual pupil data as specified in the example XML file for loading into the DfE data collection system (NCA tools). The XML file should be validated in

accordance with the rules in the 'Data validation rules' section. Any data failing the validation checks should be reported using the error codes and messages specified.

In addition to LA and school number, the file will contain the following identifying data items for each pupil:

Identifier	CBDS module	Data item name
100001	Pupil Identifiers	Unique Pupil Number (UPN)
100003	Pupil Identifiers	Pupil/Child Surname
100004	Pupil Identifiers	Pupil/Child Forename
100007	Pupil Identifiers	Pupil Date of Birth
100008	Pupil Identifiers	Pupil Gender

Each pupil will have a number of stage assessments containing:

- each KS2 TA result as recorded
- each P scale result as recorded

Task/test results are not to be included in the XML file.

Additional data items should also be included where available to assist STA in manual resolution of exceptions, such as where TA is uploaded for a pupil that cannot be matched to an existing registered pupil based on the pupil identifiers listed above. These data items are as follows:

Identifier	CBDS module	Data item name
100002	Pupil Identifiers	Pupil's Former UPN
100006	Pupil Identifiers	Pupil/Child Middle Names
100009	Pupil Identifiers	Pupil's Former Surname
100010	Pupil Identifiers	Pupil Preferred Forename
100011	Pupil Identifiers	Pupil/Child Preferred Surname
100061	Pupil Status	Other School LA number
100063	Pupil Status	Pupil Date of entry
100239	Previous School History	Previous School LA number

Identifier	CBDS module	Data item name
100495	Pupil Status	Other School DfE Establishment Number
100496	Previous School History	Previous School DfE Establishment Number

Please note – an approved supplier ID will not be issued. NCA tools will use the supplier ID tag value specified by suppliers for this purpose.

The name of the XML file will be DfENumber_KS2_NAALLL_yyy.XML where yyy is an incremented version number starting at 001.

The LA should be provided with options to include in the export XML:

- all schools' individual pupil results, even if these contain errors or have previously been exported (the software should inform the operator if a school is in error or has previously been exported)
- selected schools' individual pupil results, even if these contain errors or have previously been exported (the software should inform the operator if a school is in error or has previously been exported)

The school should be provided with options to include in the export XML:

- all individual pupil results, even if these contain errors or have previously been exported (the software should inform the operator if a pupil is in error)
- selected individual pupil results, even if these contain errors or have previously been exported (the software should inform the operator if a pupil is in error)

Please note: whichever option above is chosen, all individual pupil results within the school are to be exported.

Where a CTF contains any pupil's previous assessment data (for example earlier year's KS2 results) there should be a prompt to ask if the existing assessment data should be overwritten.

Additional LA software facilities

The software should provide the following additional facilities to allow the LA to:

- produce a list of schools to check that all expected schools returns have been processed
- produce a report for each school, or for all schools, to show the number of boys and the number of girls and the total number of pupils included in each school's CTF submission
- include in the DfE XML file any independent schools from within its own LA area whose results it has agreed to process
- create separate DfE XML files for any independent schools from outside its own area whose results it has agreed to process
- exclude independent schools from its own LA analysis
- transmit results in batches without the need to resubmit results already transmitted

Reports for schools and parents

The software should produce 2017 pupil result and 2017 school result reports.

NOTE: where the P scale entry for a subject is NOTSEN, no P scale is to be shown in the pupil's report for that subject.

Data return formats

A submission file from an LA /agent should be provided in a XML file structure as described in the example file structure. Where an optional item is not included then the associated tag should also be omitted. Where a mandatory item is omitted then an error will be generated.

Special notes for XML returns

The standard XML entity references should be used for the following special characters:

Character	Entity reference
Ampersand (&)	&
Left angle bracket (<)	<
Right angle bracket (>)	>
Single quote / apostrophe (')	'
Double quotes (")	"

For special characters such as é use a character reference such as é. This produces a generic XML file which can be viewed as such in a suitable browser. Details of all such characters are found within the XML standard documentation, see for example [W3C, section 2.2.1](#)

Example file structure for XML returns

CBDS Ref	XMLFormatLayout	Notes
	<?xmlversion="1.0" encoding="UTF-8"?>	
	<CTfile>	
	<Header>	
800001	<DocumentName>Common Transfer File</DocumentName>	
800009	<CTFversion>16.0</CTFversion>	
800010	<DateTime>2017-07-23T15:30:47</DateTime>	
800020	<DocumentQualifier>partial</DocumentQualifier>	
800006	<SupplierID>SIMS</SupplierID>	
	<SourceSchool>	
200001	<LEA>302</LEA>	D00004
200002	<Estab>2071</Estab>	D00036
100241	<SchoolName>West School</SchoolName>	
900060	<AcademicYear>2016</AcademicYear>	Fixed value of 2016
	</SourceSchool>	
	<DestSchool>	
200001	<LEA>NAA</LEA>	D00004
200002	<Estab>LLLL</Estab>	D00036
	</DestSchool>	
	</Header>	
	<CTFpupilData>	A repeatable group of 1 or more
	<Pupil>	
100001	<UPN>A123456789012</UPN>	
100003	<Surname>Smith</Surname>	
100004	<Forename>John</Forename>	
100007	<DOB>2006-03-21</DOB>	
100008	<Gender>M</Gender>	

	<StageAssessments>	
	<KeyStage> ¹	
100465	<Stage>KS2</Stage>	D00182
	<StageAssessment>	<StageAssessment>: A repeatable group of 1 or more depending on the combination of <Subject>, <Method>, <Component> and <ResultQualifier> required. See A_Comp 2017
100267	<Locale>ENG</Locale>	
100266	<Year>2017</Year>	
100466	<Subject>ENG</Subject>	
100273	<Method>TA</Method>	
100274	<Component>REA</Component>	
100270	<ResultStatus>R</ResultStatus>	
100275	<ResultQualifier>NC</ResultQualifier>	
100276	<Result>EXS</Result>	
100332	<ResultDate>2017-06-25</ResultDate>	
	</StageAssessment>	
	</KeyStage>	
	</StageAssessments>	
	</Pupil>	
	</CTFpupilData>	
	</CTfile>	

¹ <http://www.w3.org/TR/xml/>

Data validation rules

This section specifies validation rules that are applied to the data by DfE, using NCA tools. They should also be applied, as far as possible, by schools prior to exporting the file and passing to the LA or loading the data directly onto the NCA tools system, and by LAs prior to loading the data onto the NCA tools system, and any issues resolved.

Those data items included in the specification but not appearing in the validation rules - that is, those not shown in the validation rules as 'must be present' - should be supplied where available (for example, pupil's UPN). The rules also show which validations are errors and which ones are queries. An error is a failed validation check that must be corrected. A query is one which must be investigated, and potentially corrected, as it identifies data that would usually be invalid.

Any file that is exported with errors or queries and is uploaded on to NCA tools without being corrected first, will be uploaded with warnings or errors, or may fail to upload and will require a new file to be created and uploaded in order to correct it.

Syntax:

- Validation checks are expressed as conditions that must be true (errors) or that should be true (queries). The error message shows what is displayed if the condition fails.
- Data items are indicated using the XML tag with the CBDS number in parentheses, for example <UPN> (100001).
- Data groups are indicated using the XML tag only, for example <Assessments>.
- Single dates or date ranges are sometimes defined in relation to <ReferenceDate>, which is from the XML header.

Header validation

Seq number	Error/query	Validation check	Error message
001	Error	<DocumentName> (800001) must be present with a value of "Common Transfer File"	Document name missing or invalid. The file must be recreated
101	Error	<SupplierID> (800006) must be present	Supplier ID is missing

Establishment level validation

Seq number	Error/query	Validation check	Error message
301	Error	<LEA> (200001) must be provided and must be a valid value	LA number missing or invalid
302	Error	<Estab> (200002) must be present with a valid value	Establishment number is missing

Pupil level validation

Seq number	Error/query	Validation check	Error message
1600	Error	<DOB> (100007) must be present	Pupil's date of birth is missing
1601Q	Query	DOB> (100007) should be between 1/9/2005 and 31/8/2006 for KS2.	Pupil's date of birth is outside expected date range
1610	Error	<Gender> (100008) must be present and a valid value	Pupil gender missing or invalid
1500	Error	Error All schools except Independent schools <UPN> (100001) (Unique Pupil Number) must be present.	UPN is missing

Seq number	Error/query	Validation check	Error message
1510	Error	<p>If <UPN> (100001) is present must contain the correct check letter</p> <p>To calculate the check letter:</p> <ol style="list-style-type: none"> 1. Multiply the individual digits by their weights as follows: digit 2 by weight 2; digit 3 by weight 3; digit 4 by weight 4; digit 5 by weight 5; digit 6 by weight 6; digit 7 by weight 7; digit 8 by weight 8; digit 9 by weight 9; digit 10 by weight 10; digit 11 by weight 11; digit 12 by weight 12; digit 13 by weight 13. 2. Sum the individual results, divide the total by 23, and take the remainder. 3. Calculate the check letter from the result as follows: 0 = A; 1 = B; 2 = C; 3 = D; 4 = E; 5 = F; 6 = G; 7 = H; 8 = J; 9 = K; 10 = L; 11 = M; 12 = N; 13 = P; 14 = Q; 15 = R; 16 = T; 17 = U; 18 = V; 19 = W; 20 = X; 21 = Y; 22 = Z. <p>For calculating the check letter (see above) any alphabetical character at digit 13 is accorded the same numerical value as listed in paragraph 3 above, i.e. A=0, B=1, C=2 etc.</p>	UPN invalid (wrong check letter at character 1)
1520	Error	Each pupil <UPN> (100001) must be unique across all pupils in the school	More than 1 pupil record with same UPN
1530	Error	<p>If <UPN> (100001) is present Characters 2-4 of <UPN> (100001) must be a valid post April 1999 LA code or a recognised "pseudo LA" code (001-005, 201-213, 301-320, 330-336, 340-344, 350-359, 370-373, 380-384, 390-394, 420, 660-681, 701-708, 800-803, 805-808, 810-813, 815, 816, 820-823, 825, 826, 830, 831, 835-837, 840, 841, 845, 846, 850-852, 855-857, 860, 861, 865-896, 908, 909, 916, 919, 921, 925, 926, 928, 929, 931, 933, 935-38)</p>	UPN invalid (characters 2-4 not a recognised LA code)

Seq number	Error/query	Validation check	Error message
1540	Error	If <UPN> (100001) is present Characters 5-12 of <UPN> (100001) must be numeric	UPN invalid (characters 5-12 not all numeric)
1550	Error	If <UPN> (100001) is present Character 13 of <UPN> (100001) must be numeric or A-Z omitting I, O and S	UPN invalid (character 13 not a recognised value)
1580	Error	<Surname> (100003) must be present	Pupil with last name missing
1590	Error	<Forename> (100004) must be present	Pupil with forename missing
113	Error	Each <StageAssessment> should only appear once for each <Pupil> for the same combination of <Subject><Component><ResultQualifier>	Assessments are either missing or invalid
223	Error	Where <Subject> = ENG and <Component> = REA and <ResultQualifier> = NC there should be a Stage Assessment <Result>	READING result is missing
224	Error	Where <Subject> = ENG and <Component> = WRI and <ResultQualifier> = NC there should be a Stage Assessment <Result>	WRITING result is missing
231	Error	Where <Subject> = MAT and <Component> = MAT and <ResultQualifier> = NC there should be a Stage Assessment <Result>	MATHS result is missing
232	Error	Where <Subject> = SCI and <Component> = SCI and <ResultQualifier> = NC there should be a Stage Assessment <Result>	SCIENCE result is missing
233	Error	If <Subject> concatenated with <Component> and <ResultQualifier> equals 'ENGREANC' or 'MATMATNC' then <Result> must be A, D, L, F, P, BLW, PKF, PKE, PKG, HNM or EXS	Result is invalid

Seq number	Error/query	Validation check	Error message
234	Error	If <Subject> concatenated with <Component> and <ResultQualifier> equals 'SCISCINC' then <Result> must be A, D, L, F, P, HNM or EXS	Result is invalid
235	Error	If <Subject> concatenated with <Component> and <ResultQualifier> equals 'ENGWRINC' then <Result> must be A, D, L, F, P, BLW, PKF, PKE, PKG, WTS, EXS or GDS	Result is invalid
236	Error	<p>All schools except Independent schools</p> <p>If <Subject> is ENG and <Component> is REA and <ResultQualifier> is NC and <Result> is BLW</p> <p>then there must be an Assessment for that pupil where</p> <p><Subject> is ENG and <Component> is ENG and <ResultQualifier> is NP and <Result> in P1i, P1ii, P2i, P2ii, P3i, P3ii, NOTSEN</p> <p>or at least one Assessment where</p> <p><Subject> is ENG and <Component> is SPE, LIS, REA or WRI and <ResultQualifier> is NP and <Result> in P4 - P8, NOTSEN, and one of these must be for REA</p>	KS2 READING is BLW - P scale required
237	Error	<p>All schools except Independent schools</p> <p>If <Subject> is ENG and <Component> is WRI and <ResultQualifier> is NC and <Result> is BLW</p> <p>then there must be an Assessment for that pupil where</p> <p><Subject> is ENG and <Component> is ENG and <ResultQualifier> is NP and <Result> in P1i, P1ii, P2i, P2ii, P3i, P3ii, NOTSEN</p> <p>or at least one Assessment where</p> <p><Subject> is ENG and <Component> is SPE, LIS, REA or WRI and <ResultQualifier> is NP and <Result> in P4 - P8, NOTSEN, and one of these must be for WRI</p>	KS2 WRITING is BLW - P scale required

Seq number	Error/query	Validation check	Error message
238	Error	<p>All schools except Independent schools</p> <p>If <Subject> is MAT and <Component> is MAT and <ResultQualifier> is NC and <Result> is BLW</p> <p>then there must be at least one Assessment for that pupil where</p> <p><Subject> is MAT and <Component> is MAT and <ResultQualifier> is NP and <Result> in P1i, P1ii, P2i, P2ii, P3i, P3ii, NOTSEN</p> <p>or <Subject> is MAT and <Component> is NUM, USE or SSM and <ResultQualifier> is NP and <Result> in P4 - P8, NOTSEN</p>	KS2 MATHS is BLW - P scale required
239	Error	<p>If <Subject> concatenated with <Component> and <ResultQualifier> equals 'ENGNGNP' or 'MATMATNP' then</p> <p>a) for all independent schools if <Result> is present, then <Result> must be P1i, P1ii, P2i, P2ii, P3i, P3ii or NOTSEN</p> <p>b) otherwise, for all other schools, <Result> must be present and must be P1i, P1ii, P2i, P2ii, P3i, P3ii or NOTSEN</p>	P scale result is invalid
240	Error	<p>If <Subject> concatenated with <Component> and <ResultQualifier> equals 'SCISCINP' then</p> <p>a) for all independent schools if <Result> is present, <Result> must be P1i, P1ii, P2i, P2ii, P3i, P3ii, P4, P5, P6, P7, P8 or NOTSEN</p> <p>b) otherwise, for all other schools, <Result> must be present and must be P1i, P1ii, P2i, P2ii, P3i, P3ii, P4, P5, P6, P7, P8 or NOTSEN</p>	P scale result is invalid

Seq number	Error/query	Validation check	Error message
241	Error	<p>If <Subject> concatenated with <Component> and <ResultQualifier> equals 'ENGSPENP', 'ENGLISNP', 'ENGREANP', 'ENGWRINP', 'MATNUMNP', 'MATUSENP' or 'MATSSMNP' then</p> <p>a) for all independent schools if <Result> is present, <Result> must be P4, P5, P6, P7, P8 or NOTSEN</p> <p>b) otherwise, for all other schools, <Result> must be present and must be P4, P5, P6, P7, P8 or NOTSEN</p>	P scale result is invalid
242	Error	<p>All schools except Independent schools</p> <p>If <Subject> is ENG and <Component> is ENG and <ResultQualifier> is NP and <Result> is P1i, P1ii, P2i, P2ii, P3i, P3ii or NOTSEN</p> <p>then there must be Assessments for that pupil where</p> <p><Subject> is ENG and <Component> is REA and <ResultQualifier> is NC and <Result> BLW, and <Subject> is ENG and <Component> is WRI and <ResultQualifier> is NC and <Result> BLW</p>	English overall P scale level recorded - Appropriate KS2 results must be BLW
243	Error	<p>All schools except Independent schools</p> <p>If <Subject> is ENG and <Component> is REA and <ResultQualifier> is NP and <Result> in (P4 - P8 or NOTSEN)</p> <p>then there must be one assessment where <Subject> is ENG and <Component> is REA and <Result> is BLW</p>	P scale level recorded – KS2 Reading must be BLW
244	Error	<p>All schools except Independent schools</p> <p>If <Subject> is ENG and <Component> is WRI and <ResultQualifier> is NP and <Result> in (P4 - P8 or NOTSEN)</p> <p>then there must be one assessment where <Subject> is ENG and <Component> is WRI and <Result> is BLW</p>	P scale level recorded – KS2 Writing must be BLW

Seq number	Error/query	Validation check	Error message
245	Error	All schools except Independent schools If <Subject> is MAT and <Component> is MAT and <ResultQualifier> is NP and <Result> is P1i, P1ii, P2i, P2ii, P3i, P3ii or NOTSEN then there must be an Assessment for that pupil where <Subject> is MAT and <Component> is MAT and <ResultQualifier> is NC and <Result> BLW	Maths overall P scale level recorded - Appropriate KS2 results must be BLW
246	Error	All schools except Independent schools If <Subject> is SCI and <Component> is SCI and <ResultQualifier> is NP and <Result> is P1i, P1ii, P2i, P2ii, P3i, P3ii, P4, P5, P6, P7, P8 or NOTSEN then there must be an Assessment for that pupil where <Subject> is SCI and <Component> is SCI and <ResultQualifier> is NC and <Result> HNM	Science P scale level recorded - Appropriate KS2 results must be HNM
119	Error	Each of the combinations of parameters at Section 6.2 must be present once and once only and where the assessment is at BLW, the appropriate P scale parameter(s) from section 6.3 must be present. No other parameters should be present	Assessments are either missing or invalid
285	Error	P scale parameters for an assessment cannot be present for both overall subject and for subject component, unless all parameters are recorded as NOTSEN	Assessments are invalid

Notes:

Where NOTSEN is indicated as a valid result for a P scale that signifies a pupil who is not on the SEN register but not yet working at PKF – pupils with English as a second language are the most common instance of this.

P scales will be accepted by NCA tools without a corresponding BLW and will not create an error message (as per 242-245 above). However, best practice will be that all P scales should be submitted with corresponding BLW, and vice versa.

Resubmission guidance

When resubmissions are required the Serial No in the header must be incremented by the provider's software. Note that a resubmission will overwrite the data contained in the previous submission, but will not remove existing data that is not included in the resubmission.

Valid values

Valid item values must be in the list or range specified in [CBDS, the Common Basic Dataset](#),² subject to the exceptions and restrictions below.

LEA codes

LEA codes (CBDS number 200001, codeset D00004) for this collection only covers English LAs. Coverage also excludes LEA codes:

001, 003, 167

codes starting with 6 and 7 except 702 (Service Children's Education, which is valid)

XXX, MMM and NA

Assessment parameters

The following combinations of subject, component, assessment method and result type are required for key stage 2:

KS2-2017-ENG-REA-TA-NC	KS2-2017-ENG-WRI-TA-NC
KS2-2017-MAT-MAT-TA-NC	KS2-2017-SCI-SCI-TA-NC

P scale parameters

In addition to the required parameters above, where the assessment result is BLW then one or more (as appropriate) of the following corresponding P scale combinations are required:

SEN-2017-ENG-ENG-TA-NP	SEN-2017-ENG-REA-TA-NP
SEN-2017-ENG-WRI-TA-NP	SEN-2017-ENG-SPE-TA-NP
SEN-2017-ENG-LIS-TA-NP	SEN-2017-MAT-MAT-TA-NP
SEN-2017-MAT-NUM-TA-NP	SEN-2017-MAT-USE-TA-NP
SEN-2017-MAT-SSM-TA-NP	SEN-2017-SCI-SCI-TA-NP

² <https://www.gov.uk/government/collections/common-basic-data-set>



Standards
& Testing
Agency

© Crown copyright 2017

This publication (not including logos) is licensed under the terms of the Open Government Licence v3.0 except where otherwise stated. Where we have identified any third party copyright information you will need to obtain permission from the copyright holders concerned.

To view this licence:

visit www.nationalarchives.gov.uk/doc/open-government-licence/version/3

email psi@nationalarchives.gsi.gov.uk

write to Information Policy Team, The National Archives, Kew, London, TW9 4DU

About this publication:

enquiries www.education.gov.uk/contactus

download www.gov.uk/government/publications

Reference: ISBN 978-1-78644-344-1 STA/17/7920/e



Follow us on Twitter:
[@educationgovuk](https://twitter.com/educationgovuk)



Like us on Facebook:
facebook.com/educationgovuk