

24th November 2011

Coverage: England

Theme: Children,
Education and Skills

OSR 25/2011

Issued by
Department for Education
Sanctuary Buildings
Great Smith Street
London SW1P 3BT

Telephone:
Press Office
020 7925 6789
Public Enquiries
0870 000 2288

Statistician
Emily Uttley
0114 274 2442

Email
info@education.gsi.gov.uk

Internet
<http://www.education.gov.uk/rsgateway/DB/STR/d001040/index.shtml>

NEET Statistics - Quarterly Brief November 2011

Introduction

This note sets out the available statistics on young people not in education, employment or training (NEET) and young people not in education or training (NET) from three data sources:

i) Statistical First Release (SFR)¹

These are the authoritative national estimates of NEET and NET rates. They are published annually in the 'Participation in Education, Training and Employment by 16-18 Year Olds in England' SFR. These data are only available annually and cannot be disaggregated to sub-national levels.

ii) Quarterly Labour Force Survey (LFS)

Analysis of the LFS allows in-year estimates to be made of NEET and NET trends as well as estimates for other age groups, including 16-24, 18-24 and 19-24. The quarterly LFS estimates cannot be directly compared with the headline SFR series which is based on more detailed but less timely data.

Table: NEET rates for different age cohorts

| | Quarter 3 2009 | Quarter 3 2010 | Quarter 3 2011 | % point change from Q3 2010 to Q3 2011 ² |
|-----------|-------------------|-------------------|-------------------|--|
| Age 16 | 8.8% | 6.7% | 8.7% | 2.0% |
| Age 17 | 14.6% | 14.9% | 15.1% | 0.2% |
| Age 18 | 16.7% | 19.5% | 18.1% | -1.5% |
| Age 16-18 | 13.4% | 13.8% | 14.0% | 0.2% |
| Age 19-24 | 20.2% | 18.6% | 21.5% | *2.9% |
| Age 16-24 | 18.0% | 17.1% | 19.2% | *2.1% |

Source: Labour Force Survey Quarter 3

* changes are statistically significant at the 95% confidence level.

iii) Local Authorities' Client Caseload Information System (CCIS) data.

CCIS data allows measurement of NEET at a local level. CCIS is not directly comparable with LFS or SFR measures as it uses different definitions.

The data from all three sources cover England; LFS and SFR data are based on academic age whereas CCIS regional data are based on actual age.

Section 1- Trends. Focuses on the key trends in the NEET and NET data series for 16-18 year olds.

Section 2- Methodology and Notes. Explains the methodology used to derive the different series, and gives guidance on their usage.

Section 3- Tables. Contains four tables showing numbers and percentages for the key data series on NET and NEET.

¹ The figures relating to the SFR series for NEET and NET have been updated and revised as per statistics originally published here: <http://www.education.gov.uk/rsgateway/DB/SFR/s001011/index.shtml>

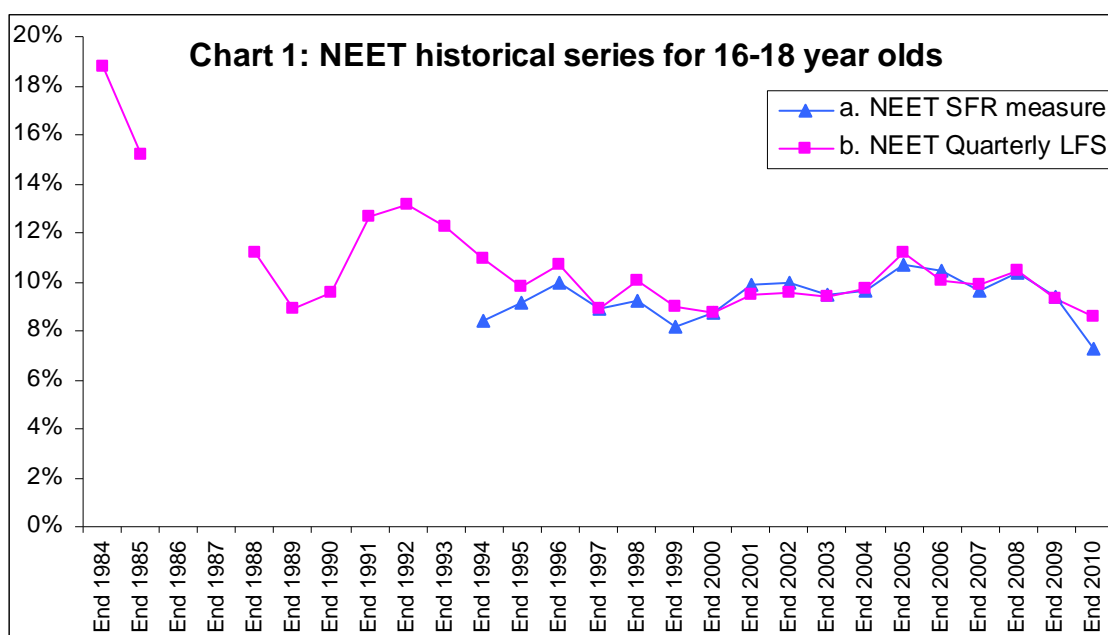
² Year-on-year changes are calculated from unrounded data; data in the table are rounded to 1 decimal place.

1. Trends

Historical Context

Understanding the historical trends in NEET rates is an important part of placing current performance in perspective. In order to do so, we have to use historical LFS data that is not directly comparable with any other series in this note, and so should be used as context only. Unfortunately, due to data issues, estimates for 1986 and 1987 are unavailable. The chart below also shows the NEET SFR measure for comparison.

The current proportion of young people aged 16-18 who are NEET is much lower than in the 1980s, and has declined since a recent peak in 2005.



Source: Statistical First Release (SFR) 'Participation in Education, Training and Employment by 16-18 Year Olds in England' and analysis of Labour Force Survey (LFS).

Note on LFS estimates:

Annual data sets are used for 1984 to 1991.

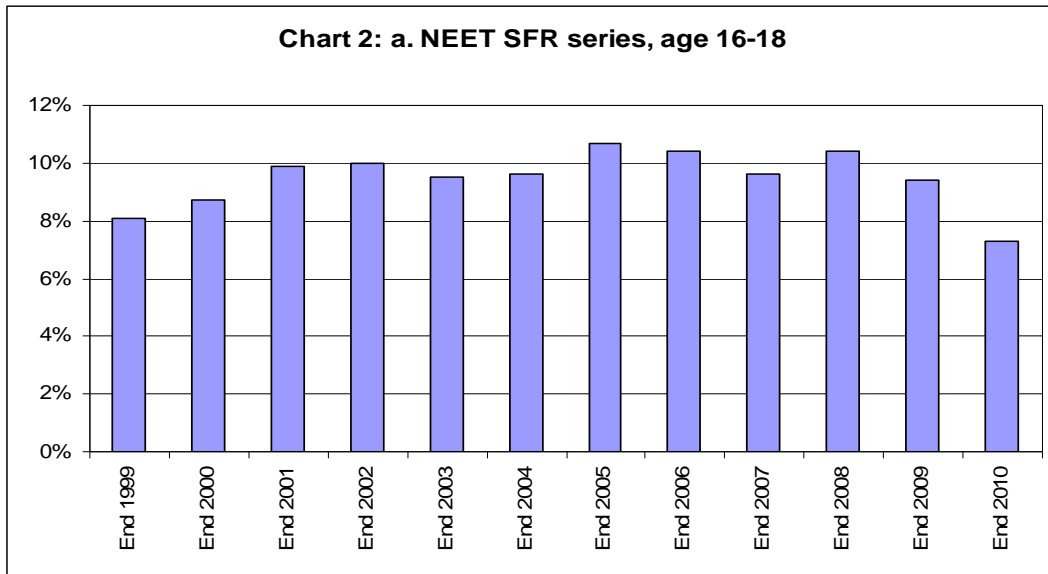
Quarter 4 data is used from 1992 onwards.

Between 1992 and 1994 the data does not exclude individuals answering yes to the qulnow variable, and between 1995 and 1999 individuals sampled in December were not asked the qulnow variable. This may mean that between 1992 and 1999 the proportion NEET is very slightly over-estimated.

a. NEET SFR series (last updated June 2011)

The Department's Statistical First Release (SFR) 'Participation in Education, Training and Employment by 16-18 Year Olds in England' is the primary source of national data on 16-18 year olds NEET.

The latest SFR NEET rate for 16-18 year olds, at end 2010, was 7.3 percent; the lowest level since consistent records began in 1994. This was partially due to the first year-on-year increase in the employment rate for 16-18 year olds not in education or training since 2007. Participation in education and training continued to rise: between 2002 and 2010 participation in education and training amongst 16-18 year olds rose every year, causing the size of the NET group to fall from 25.0% to 15.6%. Previously, the proportion of the cohort which was NEET had remained broadly stable (at around 10%). This was because the increase in the proportion of 16-18 year olds in education and training was counter-balanced by a fall in the proportion of 16-18 year olds in employment.

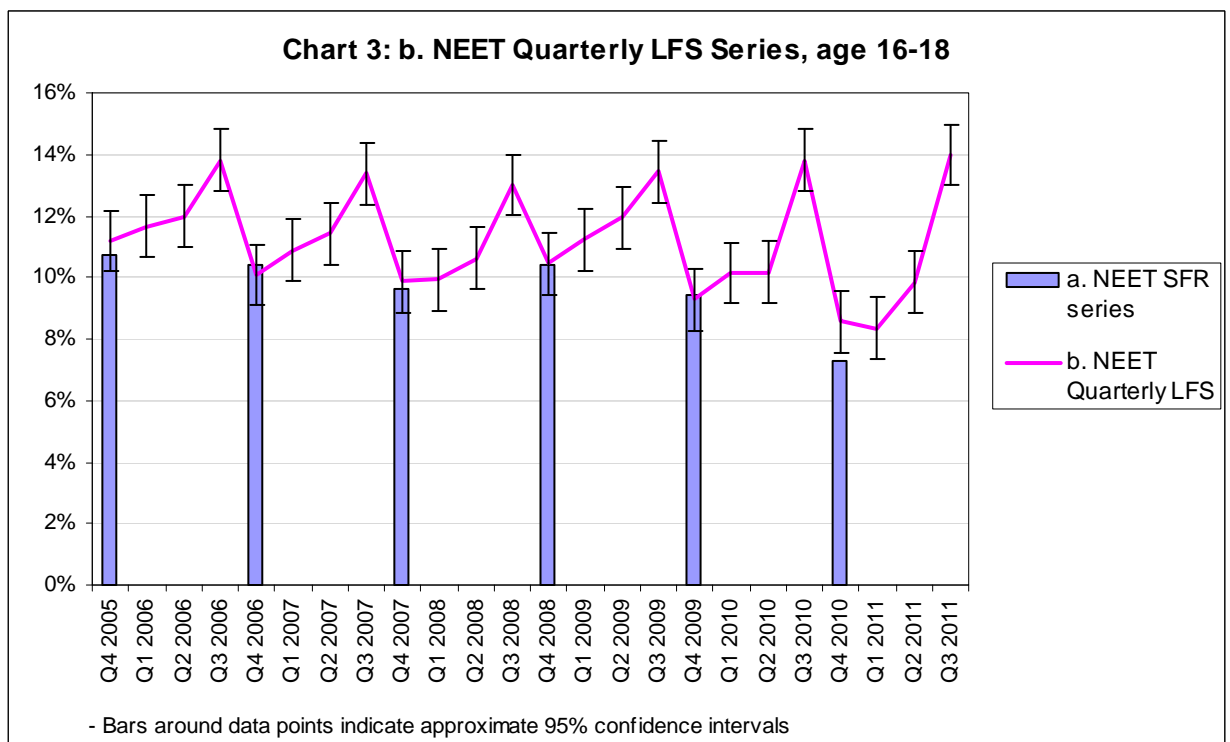


Source Statistical First Release (SFR) 'Participation in Education, Training and Employment by 16-18 Year Olds in England'

b. NEET quarterly LFS series (last updated November 2011)

We can monitor trends in NEET rates between the publications of the SFR series using quarterly LFS data.

The trend data for 16-18 year olds shows seasonal patterns that reflect the academic year: lower rates in autumn (Quarter 4, October to December) followed by a gradual rise in spring and early summer (Quarters 1 & 2, January to June) with a peak in late summer (Quarter 3, July to September).



Source: Quarterly Labour Force Survey

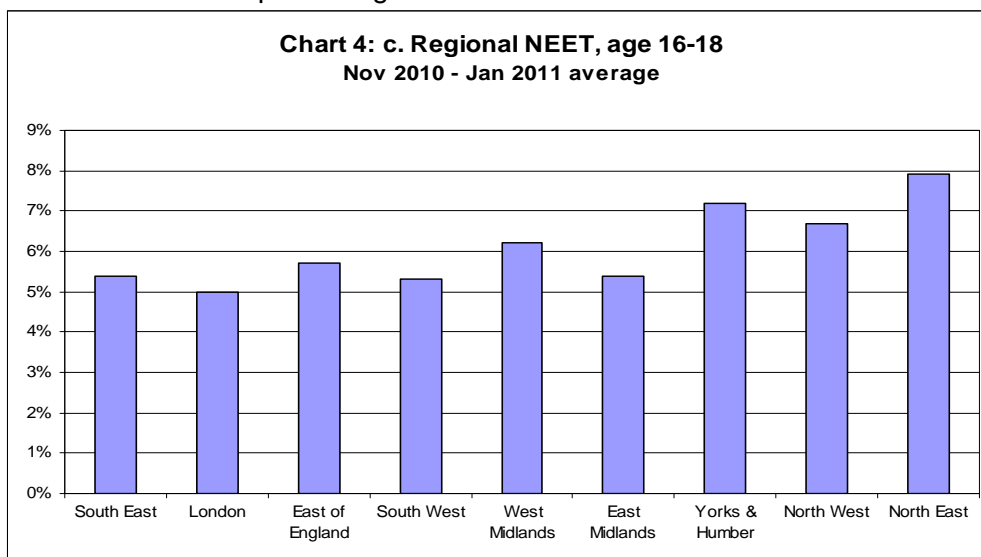
The latest data show that the proportion of 16-18 year olds NEET increased slightly, by 0.2 percentage points, to 14.0% in the third quarter of 2011, compared to the third quarter of 2010. This is not statistically significant.

There is some evidence for an increasing seasonality in the NEET data. Comparing Q4 troughs to the following Q3 peak, the difference averaged 3.0 percentage points from 2001 to 2009, with a range of 2.5-3.5 percentage points. From Q4 2009 to Q3 2010 the difference was 4.5 percentage points, increasing further from Q4 2010 to Q3 2011 to 5.4 percentage points.

c. Regional NEET (last updated May 2011)

The regional picture on 16-18 NEET is taken from Local Authorities' Client Caseload Information System (CCIS). CCIS data enable measurement at local level and more detailed breakdowns of the NEET group. However, CCIS relates only to those young people whose status is known and uses a number of different definitions, so is not directly comparable with LFS or SFR measures. For example, CCIS is based on calendar age, and young people taking a formal gap year or in custody are not counted as NEET.

CCIS data show a lower percentage NEET than either the SFR or LFS.

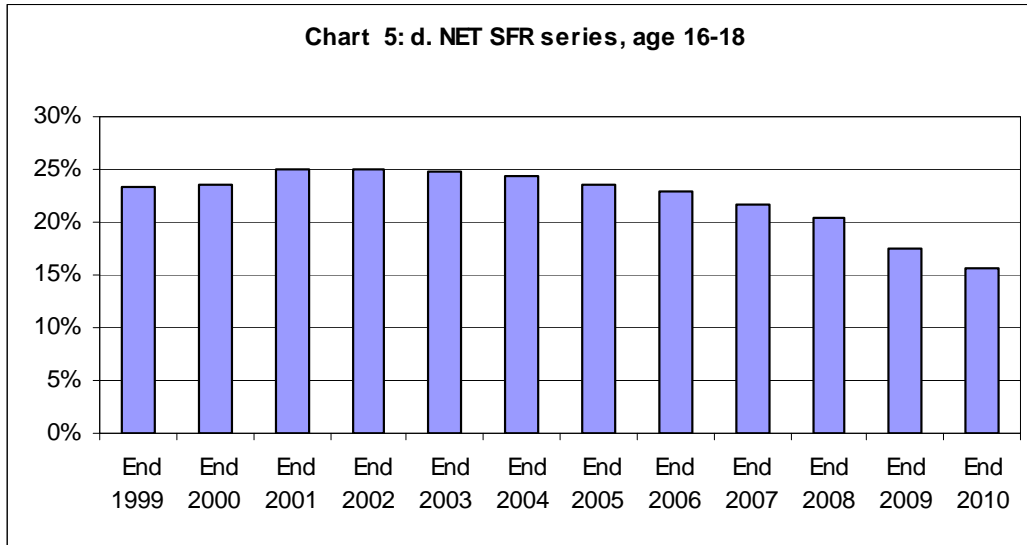


Source: Client Caseload Information System

Note: Local Authority CCIS data are published annually on the DfE website: [Link Here](#); regional NEET estimates for 16-24 year olds based on the LFS are now published as supplementary tables alongside this Quarterly Brief: [Link Here](#).

d. NET SFR series (last updated June 2011)

When looking at NEET data, it is also important to contextualise it with data on the proportion of young people not in education or training (NET). These data are also taken from the SFR 'Participation in Education, Training and Employment by 16-18 Year Olds in England'.



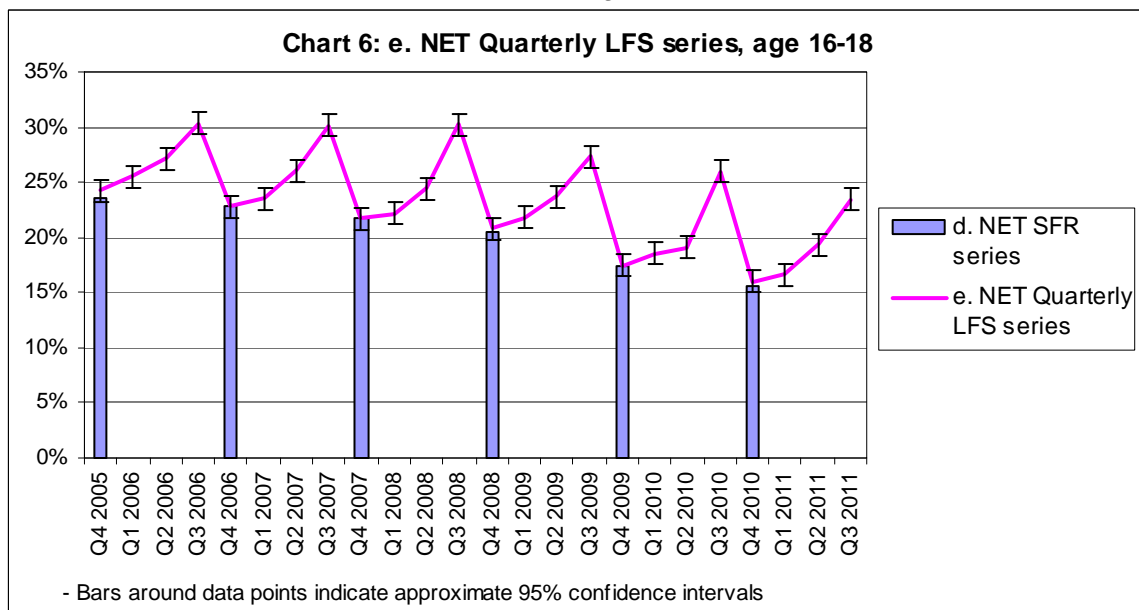
Source: Statistical First Release (SFR) 'Participation in Education, Training and Employment by 16-18 Year Olds in England'

The latest data, for end 2010, showed the lowest level of the SFR NET rate for 16-18 year olds since consistent records began in 1994, and the eighth successive annual fall since 2002.

e. NET quarterly LFS series (last updated November 2011)

As with the NEET data, we can look at the in-year NET trend data using the quarterly LFS. The same seasonal pattern to the NET figures exists as in the NEET series.

The proportion of 16-18 year olds NET decreased by 2.6 percentage points to 23.4% in the third quarter of 2011, compared to the third quarter of 2010. This is a statistically significant decrease and is the lowest rate in Quarter 3 since consistent records began in 2000.



Source: Quarterly Labour Force Survey

2. Methodology and Notes

a. NEET and NET SFR series

| | |
|-----------------------|--|
| Description | These data give the definitive measures for 16-18 NEET and NET rates in England. |
| Uses | These series should be used as the national time series for 16-18 year olds NEET and NET in England. The NET series should be used as context for any NEET data. |
| Geographical Coverage | England |
| Age coverage | Academic age 16 to 18 |
| Published source | Statistical First Release (SFR) 'Participation in Education, Training and Employment by 16-18 Year Olds in England' |
| Primary sources | The Schools' Census Pupil Level Annual Schools' Census The Individualised Learner Record (ILR) Higher Education Statistics Agency (HESA). Higher Education Students Early Statistics (HESES) Labour Force Survey Mid-year estimates and projections of population from the Office for National Statistics (ONS) and the Government Actuary's Department (GAD). |
| Last period covered | End 2010 |
| Last published | June 2011 |
| Next published | June 2012 |

b. NEET and NET quarterly LFS series

| | |
|-----------------------|--|
| Description | These series are quarterly estimates of NEET and NET amongst young people from the LFS. It is not directly comparable with the SFR measure. |
| Uses | These series provide more timely data on the recent trends in NEET and NET since the last SFR. Trends should be assessed by comparing the current quarter with the same quarter in the previous year to account for seasonal effects. Quarter on quarter changes, i.e. Quarter 4 to Quarter 1, should not be quoted. The NET series should be used as context for any NEET data. |
| Geographical coverage | England |
| Age coverage | Academic age 16 to 24 |
| Published source | Quarterly Labour Force Survey |
| Primary sources | Quarterly Labour Force Survey |
| Last Period Covered | Quarter 3 2011 |
| Last published | November 2011 |
| Next published | February 2012 |

c. Regional NEET

| | |
|-----------------------|--|
| Description | This series is a 3 month average snapshot estimate of the regional NEET rate taken from the Local Authority CCIS information system. It is not directly comparable with the LFS or SFR series due to differences in definitions: age is based on actual age rather than academic age as per the LFS and SFR series; CCIS excludes from the NEET measure young people taking a formal gap year or in custody, but these are recorded as NEET in the LFS and SFR data. |
| Uses | This series shows the data, aggregated in regions, used by Local Authorities to inform local activity and target setting. |
| Geographical Coverage | England |
| Age coverage | Calendar age 16 to 18 |
| Published source | Unpublished CCIS data |
| Primary sources | CCIS |
| Last Period Covered | November 2010 – January 2011 average. |
| Last published | N/A |
| Next published | N/A |

3. Tables

| Table 1(a to c): Not in Employment, Education, or Training (NEET) | | | | | | Numbers | | |
|---|---------------------|---------------------|---|------------------------|------------------------|------------------------|------------------------|------------------------|
| a. NEET SFR series | 16 year olds | 17 year olds | 18 year olds | 16-17 year olds | 16-18 year olds | 16-24 year olds | 18-24 year olds | 19-24 year olds |
| End 1999 | 40,600 | 42,500 | 62,400 | 83,100 | 145,500 | | | |
| End 2000 | 40,700 | 44,200 | 71,300 | 84,800 | 156,100 | | | |
| End 2001 | 48,500 | 58,900 | 75,000 | 107,400 | 182,400 | | | |
| End 2002 | 49,100 | 57,800 | 81,500 | 106,900 | 188,400 | | | |
| End 2003 | 49,800 | 49,400 | 85,000 | 99,100 | 184,200 | | | |
| End 2004 | 48,700 | 60,600 | 80,800 | 109,300 | 190,100 | | | |
| End 2005 | 50,400 | 70,100 | 93,100 | 120,500 | 213,600 | | | |
| End 2006 | 44,700 | 64,900 | 100,300 | 109,600 | 209,800 | | | |
| End 2007 | 36,700 | 61,700 | 94,400 | 98,400 | 192,800 | | | |
| End 2008 | 33,100 | 60,800 | 116,300 | 93,900 | 210,200 | | | |
| End 2009 | 24,500 | 47,900 | 114,600 | 72,300 | 186,900 | | | |
| End 2010 | 14,200 | 43,500 | 84,100 | 57,700 | 141,800 | | | |
| <i>Source: Labour Force Survey and Admin Data</i> | | | <i>Period: End 1999 to End 2010</i> | | | | | |
| b. NEET Quarterly LFS series | 16 year olds | 17 year olds | 18 year olds | 16-17 year olds | 16-18 year olds | 16-24 year olds | 18-24 year olds | 19-24 year olds |
| Q3 2006 | 71,000 | 95,000 | 103,000 | 166,000 | 268,000 | 972,000 | 806,000 | 704,000 |
| Q4 2006 | 56,000 | 53,000 | 88,000 | 109,000 | 197,000 | 810,000 | 700,000 | 612,000 |
| Q1 2007 | 55,000 | 62,000 | 95,000 | 117,000 | 212,000 | 829,000 | 712,000 | 617,000 |
| Q2 2007 | 56,000 | 67,000 | 99,000 | 123,000 | 222,000 | 835,000 | 712,000 | 613,000 |
| Q3 2007 | 60,000 | 98,000 | 103,000 | 158,000 | 262,000 | 911,000 | 753,000 | 649,000 |
| Q4 2007 | 45,000 | 59,000 | 88,000 | 104,000 | 192,000 | 783,000 | 679,000 | 591,000 |
| Q1 2008 | 42,000 | 63,000 | 89,000 | 104,000 | 193,000 | 811,000 | 707,000 | 618,000 |
| Q2 2008 | 45,000 | 65,000 | 99,000 | 110,000 | 209,000 | 840,000 | 730,000 | 631,000 |
| Q3 2008 | 53,000 | 100,000 | 102,000 | 153,000 | 256,000 | 971,000 | 818,000 | 716,000 |
| Q4 2008 | 47,000 | 55,000 | 104,000 | 102,000 | 206,000 | 853,000 | 751,000 | 647,000 |
| Q1 2009 | 42,000 | 66,000 | 112,000 | 108,000 | 220,000 | 929,000 | 821,000 | 709,000 |
| Q2 2009 | 52,000 | 74,000 | 109,000 | 125,000 | 234,000 | 954,000 | 829,000 | 719,000 |
| Q3 2009 | 56,000 | 93,000 | 113,000 | 150,000 | 262,000 | 1,074,000 | 925,000 | 812,000 |
| Q4 2009 | 34,000 | 49,000 | 94,000 | 84,000 | 178,000 | 896,000 | 812,000 | 718,000 |
| Q1 2010 | 31,000 | 59,000 | 104,000 | 91,000 | 195,000 | 928,000 | 837,000 | 733,000 |
| Q2 2010 | 30,000 | 68,000 | 98,000 | 98,000 | 197,000 | 872,000 | 774,000 | 675,000 |
| Q3 2010 | 41,000 | 100,000 | 124,000 | 141,000 | 265,000 | 1,026,000 | 884,000 | 761,000 |
| Q4 2010 | 32,000 | 41,000 | 90,000 | 73,000 | 162,000 | 939,000 | 867,000 | 777,000 |
| Q1 2011 | 32,000 | 50,000 | 77,000 | 82,000 | 159,000 | 925,000 | 844,000 | 766,000 |
| Q2 2011 | 40,000 | 54,000 | 91,000 | 95,000 | 186,000 | 979,000 | 885,000 | 794,000 |
| Q3 2011 | 55,000 | 95,000 | 117,000 | 150,000 | 267,000 | 1,163,000 | 1,013,000 | 896,000 |
| <i>Source: Labour Force Survey</i> | | | <i>Period: Q3 2006 to Q3 2011 time series</i> | | | | | |
| c. Regional NEET | 16 year olds | 17 year olds | 18 year olds | 16-17 year olds | 16-18 year olds | 16-24 year olds | 18-24 year olds | 19-24 year olds |
| South East | | | | | | | | |
| London | | | | | | | | |
| East of England | | | | | | | | |
| South West | | | | | | | | |
| West Midlands | | | | | | | | |
| East Midlands | | | | | | | | |
| Yorks & Humber | | | | | | | | |
| North West | | | | | | | | |
| North East | | | | | | | | |
| <i>Source: Client Caseload Information System</i> | | | <i>Period: Nov 2009 - Jan 2010 average</i> | | | | | |

| Table 2 (d to e): Not in Education and Training (NET) | | | | | | Numbers | | |
|--|---------------------|---------------------|---------------------|------------------------|------------------------|---|------------------------|------------------------|
| d. NET SFR series | 16 year olds | 17 year olds | 18 year olds | 16-17 year olds | 16-18 year olds | 16-24 year olds | 18-24 year olds | 19-24 year olds |
| End 1999 | 77,500 | 111,600 | 226,200 | 189,200 | 415,400 | | | |
| End 2000 | 82,700 | 116,300 | 222,400 | 198,900 | 421,300 | | | |
| End 2001 | 90,500 | 132,600 | 236,100 | 223,100 | 459,200 | | | |
| End 2002 | 85,300 | 139,900 | 247,700 | 225,200 | 472,900 | | | |
| End 2003 | 85,300 | 133,200 | 261,300 | 218,500 | 479,800 | | | |
| End 2004 | 84,300 | 136,700 | 259,100 | 220,900 | 480,100 | | | |
| End 2005 | 76,000 | 134,500 | 258,900 | 210,400 | 469,300 | | | |
| End 2006 | 71,300 | 126,400 | 264,200 | 197,700 | 461,900 | | | |
| End 2007 | 63,100 | 119,600 | 254,700 | 182,700 | 437,400 | | | |
| End 2008 | 46,800 | 110,300 | 258,000 | 157,100 | 415,100 | | | |
| End 2009 | 30,800 | 79,600 | 238,600 | 110,400 | 348,900 | | | |
| End 2010 | 18,400 | 65,100 | 219,600 | 83,500 | 303,100 | | | |
| Source: Labour Force Survey and Admin Data | | | | | | Period: End 1999 to End 2010 | | |
| e. NET Quarterly LFS series | 16 year olds | 17 year olds | 18 year olds | 16-17 year olds | 16-18 year olds | 16-24 year olds | 18-24 year olds | 19-24 year olds |
| Q3 2006 | 104,000 | 213,000 | 271,000 | 317,000 | 589,000 | 3,140,000 | 2,823,000 | 2,552,000 |
| Q4 2006 | 78,000 | 112,000 | 256,000 | 191,000 | 447,000 | 2,756,000 | 2,565,000 | 2,309,000 |
| Q1 2007 | 87,000 | 121,000 | 250,000 | 208,000 | 458,000 | 2,785,000 | 2,577,000 | 2,327,000 |
| Q2 2007 | 100,000 | 135,000 | 271,000 | 235,000 | 506,000 | 2,892,000 | 2,657,000 | 2,386,000 |
| Q3 2007 | 96,000 | 214,000 | 279,000 | 310,000 | 589,000 | 3,115,000 | 2,806,000 | 2,527,000 |
| Q4 2007 | 70,000 | 117,000 | 236,000 | 187,000 | 424,000 | 2,797,000 | 2,610,000 | 2,374,000 |
| Q1 2008 | 71,000 | 121,000 | 240,000 | 192,000 | 432,000 | 2,796,000 | 2,604,000 | 2,364,000 |
| Q2 2008 | 77,000 | 141,000 | 262,000 | 218,000 | 480,000 | 2,920,000 | 2,702,000 | 2,440,000 |
| Q3 2008 | 87,000 | 216,000 | 291,000 | 303,000 | 594,000 | 3,230,000 | 2,927,000 | 2,635,000 |
| Q4 2008 | 62,000 | 102,000 | 246,000 | 164,000 | 410,000 | 2,807,000 | 2,643,000 | 2,397,000 |
| Q1 2009 | 59,000 | 120,000 | 247,000 | 179,000 | 427,000 | 2,822,000 | 2,643,000 | 2,395,000 |
| Q2 2009 | 71,000 | 135,000 | 259,000 | 206,000 | 466,000 | 2,884,000 | 2,678,000 | 2,418,000 |
| Q3 2009 | 79,000 | 174,000 | 281,000 | 252,000 | 534,000 | 3,120,000 | 2,868,000 | 2,586,000 |
| Q4 2009 | 42,000 | 82,000 | 209,000 | 124,000 | 333,000 | 2,725,000 | 2,601,000 | 2,392,000 |
| Q1 2010 | 39,000 | 99,000 | 218,000 | 138,000 | 356,000 | 2,748,000 | 2,610,000 | 2,392,000 |
| Q2 2010 | 41,000 | 109,000 | 219,000 | 150,000 | 369,000 | 2,765,000 | 2,615,000 | 2,396,000 |
| Q3 2010 | 57,000 | 180,000 | 263,000 | 236,000 | 499,000 | 3,129,000 | 2,892,000 | 2,630,000 |
| Q4 2010 | 40,000 | 62,000 | 202,000 | 102,000 | 304,000 | 2,786,000 | 2,684,000 | 2,482,000 |
| Q1 2011 | 42,000 | 74,000 | 202,000 | 116,000 | 318,000 | 2,777,000 | 2,661,000 | 2,459,000 |
| Q2 2011 | 53,000 | 98,000 | 215,000 | 151,000 | 366,000 | 2,971,000 | 2,821,000 | 2,605,000 |
| Q3 2011 | 74,000 | 149,000 | 224,000 | 223,000 | 447,000 | 3,149,000 | 2,927,000 | 2,702,000 |
| Source: Labour Force Survey | | | | | | Period: Q3 2006 to Q3 2011 time series | | |

| Table 3 (a to c): Not in Employment, Education, or Training (NEET) | | | | | | Percentage | | |
|---|---------------------|---------------------|---|------------------------|------------------------|------------------------|------------------------|------------------------|
| a. NEET SFR series | 16 year olds | 17 year olds | 18 year olds | 16-17 year olds | 16-18 year olds | 16-24 year olds | 18-24 year olds | 19-24 year olds |
| End 1999 | 6.8% | 7.2% | 10.4% | 7.0% | 8.1% | | | |
| End 2000 | 6.7% | 7.4% | 12.2% | 7.0% | 8.7% | | | |
| End 2001 | 7.7% | 9.6% | 12.5% | 8.6% | 9.9% | | | |
| End 2002 | 7.8% | 9.0% | 13.1% | 8.4% | 10.0% | | | |
| End 2003 | 7.7% | 7.7% | 13.0% | 7.7% | 9.5% | | | |
| End 2004 | 7.3% | 9.3% | 12.4% | 8.3% | 9.6% | | | |
| End 2005 | 7.7% | 10.4% | 14.0% | 9.1% | 10.7% | | | |
| End 2006 | 6.7% | 9.8% | 14.7% | 8.2% | 10.4% | | | |
| End 2007 | 5.5% | 9.2% | 14.0% | 7.3% | 9.6% | | | |
| End 2008 | 5.0% | 9.0% | 17.0% | 7.0% | 10.4% | | | |
| End 2009 | 3.8% | 7.2% | 16.7% | 5.5% | 9.4% | | | |
| End 2010 | 2.3% | 6.8% | 12.4% | 4.5% | 7.3% | | | |
| <i>Source: Labour Force Survey and Admin Data</i> | | | <i>Period: End 1999 to End 2010</i> | | | | | |
| b. NEET Quarterly LFS series | 16 year olds | 17 year olds | 18 year olds | 16-17 year olds | 16-18 year olds | 16-24 year olds | 18-24 year olds | 19-24 year olds |
| Q3 2006 | 10.8% | 14.4% | 16.3% | 12.6% | 13.8% | 16.7% | 17.8% | 18.1% |
| Q4 2006 | 8.5% | 8.4% | 13.3% | 8.4% | 10.1% | 13.8% | 15.4% | 15.7% |
| Q1 2007 | 8.2% | 9.8% | 14.6% | 9.0% | 10.9% | 14.1% | 15.6% | 15.7% |
| Q2 2007 | 8.7% | 10.5% | 14.9% | 9.6% | 11.4% | 14.2% | 15.5% | 15.6% |
| Q3 2007 | 9.2% | 14.6% | 16.3% | 12.0% | 13.4% | 15.4% | 16.4% | 16.4% |
| Q4 2007 | 6.9% | 9.0% | 13.7% | 8.0% | 9.9% | 13.2% | 14.6% | 14.8% |
| Q1 2008 | 6.3% | 9.6% | 14.0% | 8.0% | 9.9% | 13.6% | 15.2% | 15.4% |
| Q2 2008 | 7.0% | 9.7% | 15.1% | 8.4% | 10.6% | 14.0% | 15.5% | 15.6% |
| Q3 2008 | 8.5% | 14.8% | 15.5% | 11.8% | 13.0% | 16.2% | 17.4% | 17.7% |
| Q4 2008 | 7.4% | 8.3% | 15.4% | 7.9% | 10.5% | 14.2% | 15.9% | 16.0% |
| Q1 2009 | 6.5% | 10.0% | 17.1% | 8.3% | 11.2% | 15.5% | 17.6% | 17.6% |
| Q2 2009 | 8.0% | 11.2% | 16.5% | 9.6% | 11.9% | 15.9% | 17.6% | 17.8% |
| Q3 2009 | 8.8% | 14.6% | 16.7% | 11.7% | 13.4% | 18.0% | 19.7% | 20.2% |
| Q4 2009 | 5.6% | 7.4% | 14.8% | 6.5% | 9.3% | 14.9% | 17.2% | 17.5% |
| Q1 2010 | 5.0% | 8.8% | 16.6% | 7.0% | 10.1% | 15.4% | 17.6% | 17.8% |
| Q2 2010 | 4.9% | 10.2% | 15.0% | 7.7% | 10.2% | 14.4% | 16.3% | 16.5% |
| Q3 2010 | 6.7% | 14.9% | 19.5% | 11.0% | 13.8% | 17.1% | 18.7% | 18.6% |
| Q4 2010 | 5.0% | 6.6% | 13.9% | 5.8% | 8.6% | 15.6% | 18.2% | 18.8% |
| Q1 2011 | 5.0% | 8.0% | 12.0% | 6.5% | 8.3% | 15.3% | 17.7% | 18.5% |
| Q2 2011 | 6.3% | 8.8% | 14.3% | 7.6% | 9.8% | 16.2% | 18.4% | 19.1% |
| Q3 2011 | 8.7% | 15.1% | 18.1% | 11.9% | 14.0% | 19.2% | 21.1% | 21.5% |
| <i>Source: Labour Force Survey</i> | | | <i>Period: Q3 2006 to Q3 2011 time series</i> | | | | | |
| c. Regional NEET | 16 year olds | 17 year olds | 18 year olds | 16-17 year olds | 16-18 year olds | 16-24 year olds | 18-24 year olds | 19-24 year olds |
| South East | 3.8% | 5.2% | 6.8% | 4.6% | 5.4% | | | |
| London | 3.4% | 4.7% | 6.3% | 4.2% | 5.0% | | | |
| East of England | 3.6% | 5.3% | 7.5% | 4.6% | 5.7% | | | |
| South West | 3.6% | 5.1% | 6.6% | 4.5% | 5.3% | | | |
| West Midlands | 4.0% | 5.9% | 7.8% | 5.2% | 6.2% | | | |
| East Midlands | 3.5% | 5.0% | 7.0% | 4.4% | 5.4% | | | |
| Yorks & Humber | 4.9% | 7.0% | 8.8% | 6.2% | 7.2% | | | |
| North West | 4.4% | 6.3% | 8.4% | 5.6% | 6.7% | | | |
| North East | 4.6% | 6.9% | 11.1% | 6.0% | 7.9% | | | |
| <i>Source: Client Caseload Information System</i> | | | <i>Period: Nov 2010 - Jan 2011 average</i> | | | | | |

| Table 4 (d to e): Not in Education and Training (NET) | | | | | | Percentage | | |
|--|---------------------|---------------------|---|------------------------|------------------------|------------------------|------------------------|------------------------|
| d. NET SFR series | 16 year olds | 17 year olds | 18 year olds | 16-17 year olds | 16-18 year olds | 16-24 year olds | 18-24 year olds | 19-24 year olds |
| End 1999 | 12.9% | 18.9% | 37.9% | 15.9% | 23.3% | | | |
| End 2000 | 13.6% | 19.4% | 38.0% | 16.5% | 23.5% | | | |
| End 2001 | 14.3% | 21.6% | 39.2% | 17.9% | 24.9% | | | |
| End 2002 | 13.5% | 21.9% | 39.8% | 17.7% | 25.0% | | | |
| End 2003 | 13.2% | 20.8% | 40.1% | 17.0% | 24.8% | | | |
| End 2004 | 12.7% | 20.9% | 39.8% | 16.7% | 24.4% | | | |
| End 2005 | 11.6% | 20.0% | 38.9% | 15.8% | 23.5% | | | |
| End 2006 | 10.7% | 19.0% | 38.7% | 14.9% | 22.9% | | | |
| End 2007 | 9.4% | 17.8% | 37.8% | 13.6% | 21.7% | | | |
| End 2008 | 7.1% | 16.3% | 37.7% | 11.7% | 20.5% | | | |
| End 2009 | 4.8% | 11.9% | 34.7% | 8.5% | 17.5% | | | |
| End 2010 | 2.9% | 10.1% | 32.5% | 6.6% | 15.6% | | | |
| Source: Labour Force Survey and Admin Data | | | Period: End 1999 to End 2010 | | | | | |
| e. NET Quarterly LFS series | 16 year olds | 17 year olds | 18 year olds | 16-17 year olds | 16-18 year olds | 16-24 year olds | 18-24 year olds | 19-24 year olds |
| Q3 2006 | 15.9% | 32.4% | 43.0% | 24.2% | 30.3% | 53.8% | 62.4% | 65.5% |
| Q4 2006 | 11.9% | 17.6% | 38.7% | 14.7% | 22.8% | 47.0% | 56.2% | 59.2% |
| Q1 2007 | 13.1% | 19.1% | 38.6% | 16.0% | 23.5% | 47.4% | 56.4% | 59.3% |
| Q2 2007 | 15.5% | 21.3% | 40.8% | 18.4% | 26.0% | 49.3% | 57.9% | 60.8% |
| Q3 2007 | 14.8% | 31.7% | 43.9% | 23.5% | 30.1% | 52.7% | 61.0% | 63.8% |
| Q4 2007 | 10.8% | 17.9% | 36.7% | 14.3% | 21.7% | 47.0% | 56.1% | 59.3% |
| Q1 2008 | 10.7% | 18.7% | 37.6% | 14.7% | 22.2% | 47.0% | 56.1% | 59.0% |
| Q2 2008 | 12.0% | 21.1% | 40.1% | 16.6% | 24.4% | 48.6% | 57.5% | 60.4% |
| Q3 2008 | 13.9% | 32.0% | 44.1% | 23.3% | 30.3% | 53.8% | 62.2% | 65.2% |
| Q4 2008 | 9.7% | 15.4% | 36.6% | 12.6% | 20.8% | 46.7% | 56.1% | 59.4% |
| Q1 2009 | 9.2% | 18.2% | 37.9% | 13.7% | 21.8% | 47.2% | 56.5% | 59.5% |
| Q2 2009 | 11.1% | 20.4% | 39.2% | 15.8% | 23.7% | 48.1% | 57.0% | 59.9% |
| Q3 2009 | 12.3% | 27.1% | 41.8% | 19.7% | 27.4% | 52.2% | 61.0% | 64.3% |
| Q4 2009 | 6.8% | 12.4% | 32.9% | 9.7% | 17.4% | 45.3% | 55.0% | 58.4% |
| Q1 2010 | 6.4% | 14.6% | 34.7% | 10.7% | 18.5% | 45.5% | 55.0% | 58.1% |
| Q2 2010 | 6.7% | 16.3% | 33.5% | 11.7% | 19.1% | 45.8% | 54.9% | 58.4% |
| Q3 2010 | 9.2% | 26.8% | 41.4% | 18.4% | 26.0% | 52.1% | 61.3% | 64.4% |
| Q4 2010 | 6.3% | 10.1% | 31.3% | 8.1% | 16.0% | 46.3% | 56.3% | 60.2% |
| Q1 2011 | 6.5% | 11.9% | 31.4% | 9.1% | 16.6% | 45.9% | 55.7% | 59.5% |
| Q2 2011 | 8.3% | 15.9% | 33.7% | 12.0% | 19.3% | 49.1% | 58.8% | 62.6% |
| Q3 2011 | 11.7% | 23.5% | 34.7% | 17.6% | 23.4% | 51.8% | 60.8% | 64.9% |
| Source: Labour Force Survey | | | Period: Q3 2006 to Q3 2011 time series | | | | | |

Additional tables are published with this brief. Please see DfE website. This quarter contains an extra table showing the national NEET rates from 2000 to 2011.