



# Quarterly Statistical First Release

**Publication date:**31<sup>st</sup> January 2012(Updated 29<sup>th</sup> February 2012 – Vocational Qualifications only)**Next Updated:**

March 2012

**Reference:** DS/SFR13**Coverage:** England**Theme:** Children, Education and Skills**For further information contact:****Data Service: Service Desk**[servicedesk@thedata-service.org.uk](mailto:servicedesk@thedata-service.org.uk)

0870 267 0001

**Or view our web site at:**<http://www.thedata-service.org.uk/statistics>**Lead Statistician:**

Jessie Evans

[Jessie.Evans@bis.gsi.gov.uk](mailto:Jessie.Evans@bis.gsi.gov.uk)

020 7215 1868

Department for Business, Innovation and Skills,  
Level 2,  
1 Victoria Street,  
London,  
SW1H 0ET

© Data Service 2012

Publication reference number

Skills Funding Agency-P-120011

## Post-16 Education & Skills: Learner Participation, Outcomes and Level of Highest Qualification Held

1. This is a Department for Business, Innovation and Skills (BIS) Statistical First Release (SFR), and updates information published on 27<sup>th</sup> October 2011. It includes information on government-funded<sup>1</sup> participation, achievement and success rates for post-16 education<sup>2</sup> (excluding schools and Higher Education) in England, between 2006/07 and 2010/11.
2. This SFR includes final data for the 2010/11 academic year and provisional data for the first quarter of the 2011/12 academic year. In the March 2012 SFR revised data for the first half of the 2011/12 academic year will be presented.
3. This SFR shows key statistics on the highest level of qualification held by adults in England from 2006 to 2009, calculated from Labour Force Survey (LFS) data. These include attainment rates for specific priority groups of adult learners in the population that are of key interest within BIS and the Skills Funding Agency. Provisional estimates from the Labour Force Survey on the level of highest qualification held by adults in England in 2010 are also included in the release.
4. This SFR also shows the number of vocational qualifications awarded in the United Kingdom, as collected by the Office of Qualifications and Examinations Regulation (Ofqual) and through the National Vocational Qualifications Database.

<sup>1</sup> Covering the Skills Funding Agency and the Young People's Learning Agency.

<sup>2</sup> Post-16 education includes provision delivered in FE organisations, sixth form colleges, independent training organisations, local authorities and other providers. This includes programmes such as Apprenticeships. For more information on the scope of this release, please see paragraphs 45 to 48.

# CONTENTS

## Statistical Commentary

Summary of Further Education Statistics for England, 2010/11	3
Glossary of Key Terms	4
Learner Participation and Achievement in Further Education	5
Apprenticeships	7
Workplace Learning	8
Skills for Life	8
Community Learning	10
Success Rates	10
Headlines for Provisional 2011/12 Data	12
National Statistics	14
Changes Included in this SFR	14
Changes Included in the Next SFR	14

## Supporting Data

Scope	15
Data Sources	16
Issues with Using Provisional Data	16
Issues with Comparing Data Across Academic Years	17
Data Definitions	18
Publication Cycle Across the Year	18
Supplementary Tables	19
Related National Statistics Releases	19
Other Related Statistics	20
Further Education Statistics for Other Countries in the UK	20

<b>Table Guide</b>	21
--------------------	----

<b>Table Footnotes</b>	22
------------------------	----

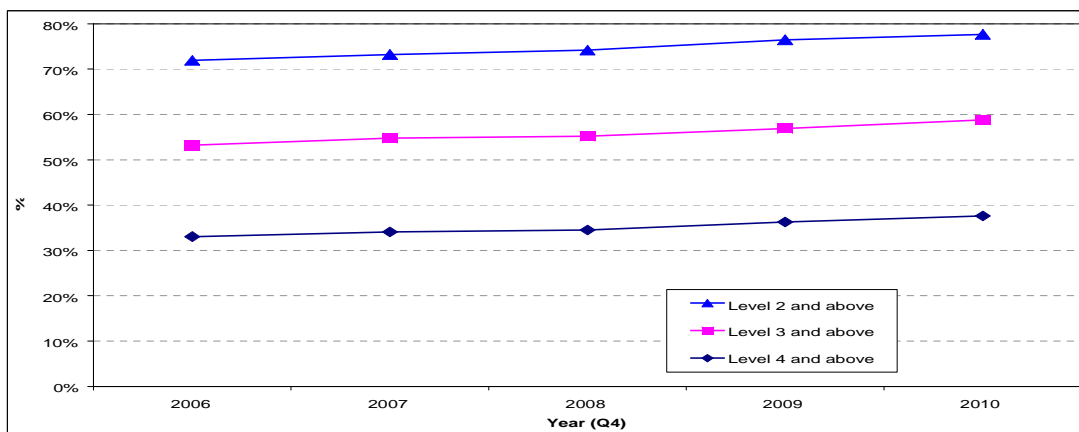
<b>Tables</b>	24
---------------	----

# SUMMARY OF FURTHER EDUCATION STATISTICS FOR ENGLAND, 2010/11

## Adult Attainment in the Population in 2010

5. The Labour Force Survey is used to measure the level of adult educational attainment in the population. Provisional data for 2010 show that of men aged 19 to 64 and women aged 19 to 59 [Table 12.1]:
- 77.7 per cent were qualified to at least Level 2;
  - 58.8 per cent were qualified to at least Level 3;
  - 37.6 per cent were qualified to Level 4 and above.

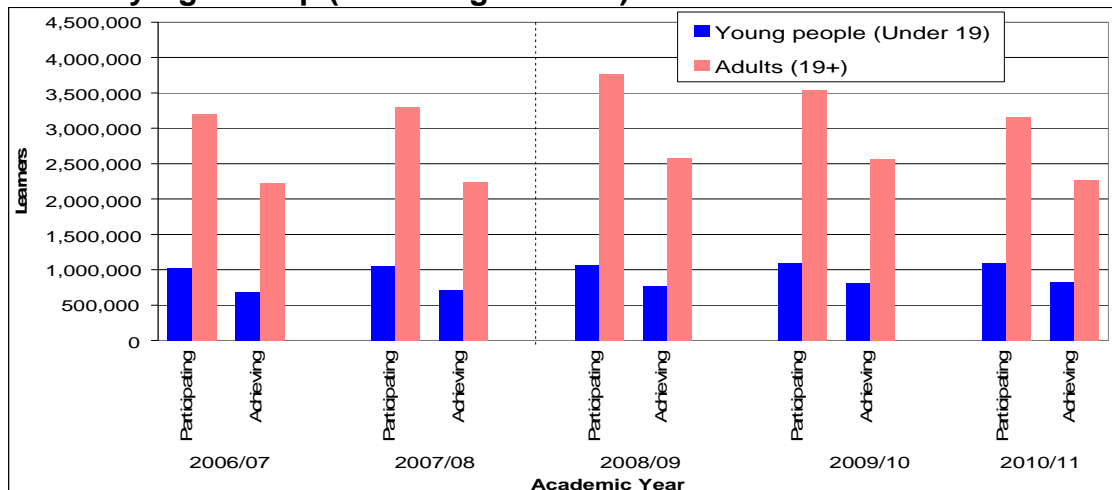
**Chart 1: Highest Level of Qualification Held by Adults of Working Age**



## Learner Participation and Achievement in Government-funded Further Education

6. The total number of learners participating in government-funded further education (excluding schools) fell by 8.0 per cent to 4,264,900 in 2010/11. This was due to a 10.7 per cent fall in adult (aged 19 and over) learners participating [Table 7.1].
7. The total number of learners achieving a government-funded further education qualification (excluding schools) fell by 8.5 per cent to 3,091,300 in 2010/11 [Table 7.2].

**Chart 2: Learner Participation and Achievement in Government-funded Further Education by Age Group (excluding schools)**



## GLOSSARY OF KEY TERMS

**Further Education and Skills** includes learners who are studying on a course at a further education college or training provider, learners who are studying a course within their local community, employees undertaking an Apprenticeship, and employees undertaking other qualifications in the workplace.

**Apprenticeships** are paid jobs that incorporate on- and off-the-job training leading to nationally recognised qualifications. As an employee, Apprentices earn as they learn and gain practical skills in the workplace.

An Apprenticeship framework typically contains the following separately certified elements:

- A knowledge-based element (the theoretical knowledge underpinning a job in a certain occupation and industry, typically certified via a Technical Certificate).
- A competence-based element (the ability to discharge the functions of a certain occupation, typically certified via work-based assessed national vocational qualifications – NVQs).
- Transferable skills (literacy and numeracy) – key skills / functional skills.
- A module on employment rights and responsibilities.

See <http://www.apprenticeships.org.uk/> for further information on Apprenticeships.

**Education and Training** covers further education learning delivered mainly in a classroom, workshop, or through distance or e-learning (previously Learner Responsive). For further information on Education and Training, please see <http://skillsfundingagency.bis.gov.uk/providers/programmes/alr/>.

**Workplace Learning** covers a broad range of training – from basic skills to Level 2, Level 3 and other higher-level skills such as Leadership and Management. This training is mainly delivered through the workplace (but excludes Apprenticeships). Between 2005/06 and 2007/08 this included the Train to Gain programme and Standalone NVQs. Between 2008/09 and 2010/11 this included the Train to Gain programme, Employability Skills Pilot and other programmes such as Programmes for the Unemployed. In 2011/12 this includes all training mainly delivered through the workplace (excluding Apprenticeships). For further information on Workplace Learning, please see <http://skillsfundingagency.bis.gov.uk/providers/programmes/ttg/>

**Skills for Life** qualifications are designed to give people the reading, writing, maths and communication skills they need in everyday life, to operate effectively in work and to help them succeed on other training courses. For further information on Skills for Life, please see <http://skillsfundingagency.bis.gov.uk/providers/programmes/skillsforlife/>

**Community Learning** funds a wide range of informal courses, ranging from personal development through to older people's learning, IT courses, employability skills, family learning and activities to promote civic engagement and community development. Courses may be offered by local authorities, colleges, and voluntary and community groups, and include activity specifically targeted at deprived areas and disadvantaged groups. More information on Community Learning and the different programmes can be found at: [http://www.thedataservice.org.uk/datadictionary/businessdefinitions/Adult+Safeguarded+Learning+\(ASL\).htm](http://www.thedataservice.org.uk/datadictionary/businessdefinitions/Adult+Safeguarded+Learning+(ASL).htm)

**Full Level 2** is equivalent to an NVQ at Level 2, or 5 GCSEs. The widths of all of a learner's Level 2 aims are summed to establish whether a learner is taking a full Level 2 programme.

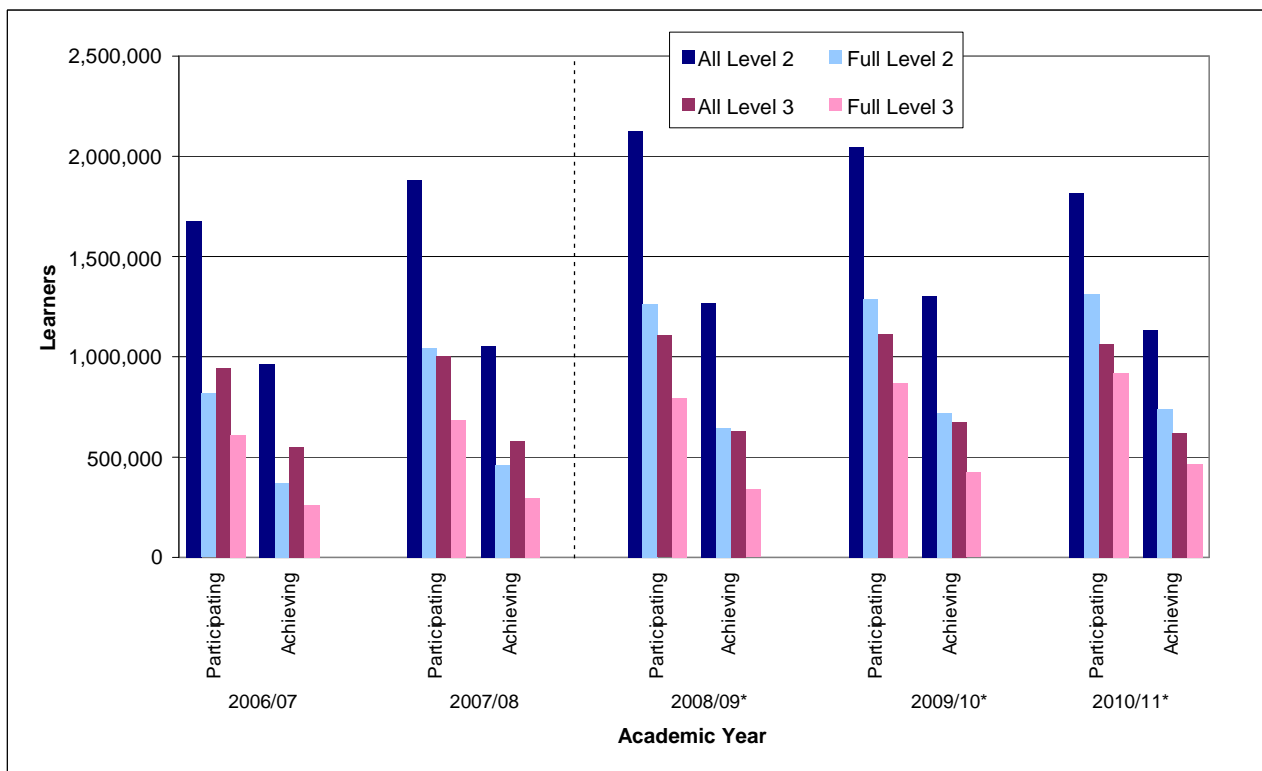
**Full Level 3** is equivalent to an NVQ at Level 3, or 2 A-Levels. The widths of all a learner's Level 3 aims are summed to establish whether a learner is taking a full Level 3 programme.

**Academic year** runs from 1st August to 31st July (except for Ofqual figures in Table 14 which run from 1<sup>st</sup> October to 30<sup>th</sup> September).

# LEARNER PARTICIPATION AND ACHIEVEMENT IN FURTHER EDUCATION

- This section reports on 2010/11 learner participation and achievement in further education (excluding schools). 2010/11 is the latest academic year for which we have final, full-year data which we can use to accurately report learner participation and achievement. Provisional data for the first quarter of the 2011/12 academic year (August 2011 to October 2011) are presented separately, starting from page 12 of this release.
- Chart 3 shows the number of learners participating in and achieving a Level 2 (equivalent to GCSE level) or Level 3 (equivalent to A-Level) qualification in government-funded further education (excluding schools) between the 2006/07 and 2010/11 academic years. Chart 3 shows that the number of learners participating in and achieving Level 2 and Level 3 courses followed a similar trend between 2006/07 and 2010/11. There was a gradual increase in learners between 2006/07 and 2008/09, followed by a two year decline. The number of learners participating in and achieving full Level 2 and full Level 3 courses increased in every year shown.

**Chart 3: Total Learner Participation and Achievement in Government-funded Further Education by Level (excluding schools)**



**\*Note: Learner Numbers for 2008/09 onwards are not directly comparable with earlier years. See paragraph 57 onwards for more information.**

- Some 4,264,900 learners participated in some form of government-funded further education (excluding schools) in the 2010/11 academic year [Table 7.1]. This includes learners across all of the learning routes outlined in the Glossary on Page 4 of this release. This was a decrease in learner participation of 8.0 per cent compared to 2009/10.

11. Of all learners in 2010/11:

- 1,817,100 learners participated on a Level 2 course, a decrease of 11.2 per cent compared to 2009/10. Of these, 1,312,600 learners were studying a full Level 2 qualification, an increase of 2.0 per cent [Table 7.1];
- 1,063,700 learners participated on a Level 3 course, a decrease of 4.6 per cent compared to 2009/10. Of these, 919,800 learners were studying a full Level 3 qualification, an increase of 6.1 per cent [Table 7.1].
- 1,101,700 were aged under 19, an increase of 0.6 per cent compared to 2009/10 [Table 10.1].
- 3,163,200 were aged 19 or over, a decrease of 10.7 per cent compared to 2009/10 [Table 2.1].

12. Some 3,091,300 learners achieved a government-funded further education qualification (excluding schools) in the 2010/11 academic year [Table 7.2]. This was a decrease of 8.5 per cent compared to 2009/10. Of these:

- 1,135,400 learners achieved a Level 2 qualification, a decrease of 12.8 per cent compared to 2009/10. Of these, 740,700 learners achieved a full Level 2 qualification, an increase of 2.7 per cent;
- 620,900 learners achieved a Level 3 qualification, a decrease of 8.0 per cent compared to 2009/10. Of these, 464,400 learners achieved a full Level 3 qualification, an increase of 10.2 per cent;
- 826,300 were aged under 19, an increase of 2.1 per cent compared to 2009/10 [Table 10.2].
- 2,265,100 were aged 19 or over, a decrease of 11.8 per cent compared to 2009/10 [Table 2.2].

13. Of the 4,264,900 learners participating in further education (excluding schools) in 2010/11 [Table 1]:

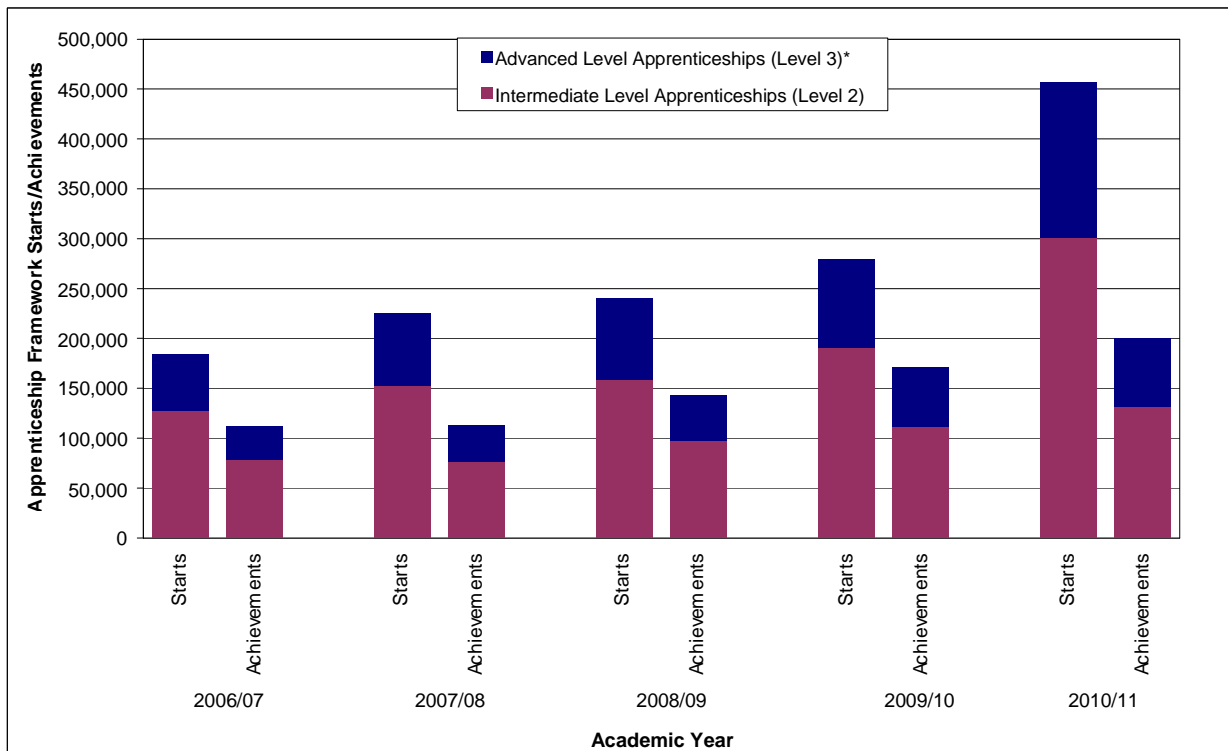
- 54.5 per cent were female, 45.5 per cent were male;
- 12.8 per cent of learners declared a learning difficulty and/or disability;
- 18.4 per cent of learners were from a Black or Minority Ethnic background (including Mixed, Asian, Black and Chinese or Other Ethnic Group learners);
- 25.8 per cent of learners were aged under 19; 74.2 per cent were aged 19 or over.

## Apprenticeships

14. Chart 4 shows there was a steady increase Apprenticeship starts between 2006/07 and 2009/10, followed by a large increase between 2009/10 and 2010/11.

Apprenticeship framework achievements have increased steadily since 2006/07, both for Intermediate Level Apprenticeships and Advanced Level Apprenticeships.

**Chart 4: Total Government-funded Apprenticeship Starts and Framework Achievements by Level**



**\*Note: Advanced Level Apprenticeship figures include a small number of Higher Apprenticeships**

15. The length of an Apprenticeship is typically more than a year. Because of this, the number of achievements is below the number of starts in Chart 4, as a large volume of learners that have started an Apprenticeship framework have not yet completed it.

### Starts

16. The total volume of Apprenticeship starts in 2010/11 was 457,200 [Table 8.1]. This was an increase of 63.5 per cent compared to 2009/10. Of these there were:

- 301,100 Intermediate Level Apprenticeship starts, a 58.1 per cent increase on 2009/10;
- 153,900 Advanced Level Apprenticeship starts, a 75.5 per cent increase on 2009/10.
- 2,200 Higher Apprenticeship starts, a 47.8 per cent increase on 2009/10;
- Learners under the age of 19 started 131,700 Apprenticeship frameworks, a 12.8 per cent increase on 2009/10 [Table 8.1];
- Learners aged 19–24 started 143,400 Apprenticeship frameworks, a 26.1 per cent increase on 2009/10 [Table 8.1];

- Learners aged 25 and over started 182,100 Apprenticeship frameworks, more than three times the volume compared to 2009/10 [Table 8.1].

### **Framework Achievements**

17. The total volume of Apprenticeship framework achievements in 2010/11 was 200,300 [Table 8.2]. This was an increase of 16.8 per cent compared to 2009/10. Of these there were:

- 131,700 Intermediate Level Apprenticeship framework achievements, a 17.8 per cent increase on 2009/10;
- 67,500 Advanced Level Apprenticeship framework achievements, a 13.6 per cent increase on 2009/10.
- 1,000 Higher Apprenticeship framework achievements, up from 200 in 2009/10;
- Learners aged under 19 achieved 83,300 Apprenticeship frameworks, a 14.1 per cent increase on 2009/10 [Table 8.2];
- Learners aged 19–24 achieved 77,000 Apprenticeship frameworks, a 20.0 per cent increase on 2009/10 [Table 8.2];
- Learners aged 25 and over achieved 39,900 Apprenticeship frameworks, a 16.6 per cent increase on 2009/10 [Table 8.2].

18. In May 2010, the Department for Business, Innovation and Skills announced that it would fund 50,000 new adult (aged 19 and over) Apprenticeship starts in the 2010-11 financial year (running from April 2010 to March 2011). The Statistical First Release presents academic year statistics, but the underlying data can be used to calculate financial year statistics. In the October SFR the provisional data for Apprenticeships showed that the department had achieved the ambition of 50,000 additional adult Apprenticeship starts over the 2010-11 financial year (or 203,200 in total), by delivering 256,100 adult Apprenticeship starts. Final data re-affirm that the department met the ambition; 255,600 adult Apprenticeships starts were delivered during the 2010-11 financial year.

### **Workplace Learning**

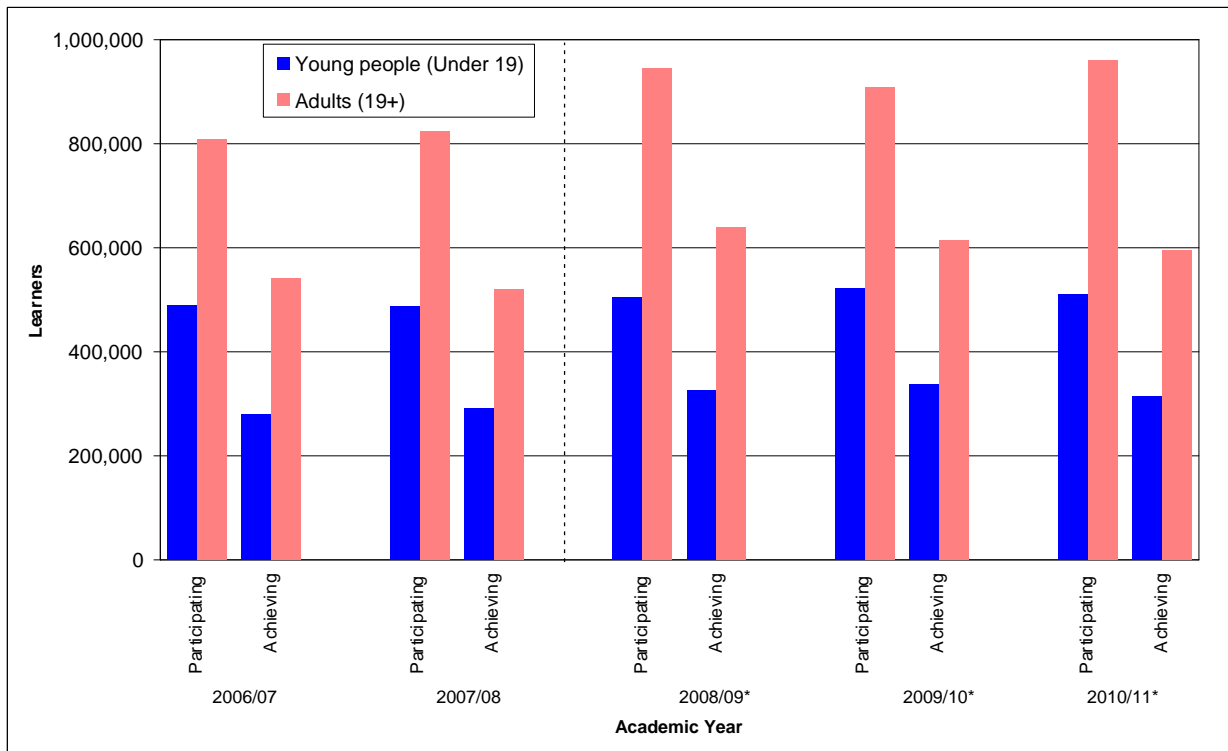
19. In 2010/11 there were 599,300 Workplace Learning starts [Table 5.1]. Over half of Workplace Learning starts in 2010/11 were at Level 2, with nearly a fifth at Below Level 2.
20. In 2010/11, learners achieved 584,900 Workplace Learning qualifications [Table 5.2]. In line with starts, over half of Workplace Learning achievements were at Level 2 in 2009/10.

### **Skills for Life**

21. Chart 6 shows that learner participation on Skills for Life courses (excluding schools) has fluctuated since 2006/07, particularly for learners aged 19 and over. Since 2009/10 participation figures have risen slightly for learners over the age of 19, while figures for learners aged under 19 have fallen slightly.



**Chart 6: Learner Participation and Achievement on Skills for Life Courses by Age Group (excluding schools)**



**\*Note: Learner Numbers for 2008/09 onwards are not directly comparable with earlier years. See paragraph 57 onwards for more information.**

22. In 2010/11, 1,471,300 learners of all ages participated on a Skills for Life course (excluding schools) [Table 7.1]. This was an increase of 2.8 per cent compared to 2009/10. Of these:

- 509,500 were aged under 19 [Table 10.2];
- 961,800 were aged 19 or over [Table 2.2].
- 1,033,400 learners participated on a Literacy course [Table 9];
- 998,200 learners participated on a Numeracy course [Table 9];
- 185,200 learners participated on an English for Speakers of Other Languages (ESOL) course [Table 9].

Note that some learners undertake more than one type of Skills for Life qualification within an academic year, and hence the sum of Literacy, Numeracy and ESOL participation is greater than the total number of learners participating.

23. In 2010/11, 910,200 learners achieved a Skills for Life qualification (excluding schools) [Table 7.1]. This was a decrease of 4.4 per cent compared to 2009/10. Of these:

- 314,600 were aged under 19 [Table 10.2];
- 595,600 were aged 19 or over [Table 2.2].
- 543,800 learners achieved a Literacy qualification [Table 9];
- 534,000 learners achieved a Numeracy qualification [Table 9];
- 137,700 learners achieved an ESOL qualification [Table 9].

Note that some learners achieve more than one type of Skills for Life qualification within an academic year, and hence the sum of Literacy, Numeracy and ESOL achievements is greater than the total number of learners achieving.

## Community Learning

24. In 2010/11, 699,400 learners participated on a Community Learning course, and there were 608,200 achievements [Table 6]. Of these:

- 534,100 learners took a Personal and Community Development Learning course, and 458,600 learners achieved;
- 46,600 learners took a Neighbourhood Learning in Deprived Communities course, and 41,300 learners achieved;
- 65,400 learners took a Family Literacy, Language and Numeracy course, and 57,000 learners achieved;
- 75,400 learners took a Wider Family Learning course, and 70,100 learners achieved.

Note that these figures include learners participating on more than one type of Community Learning course.

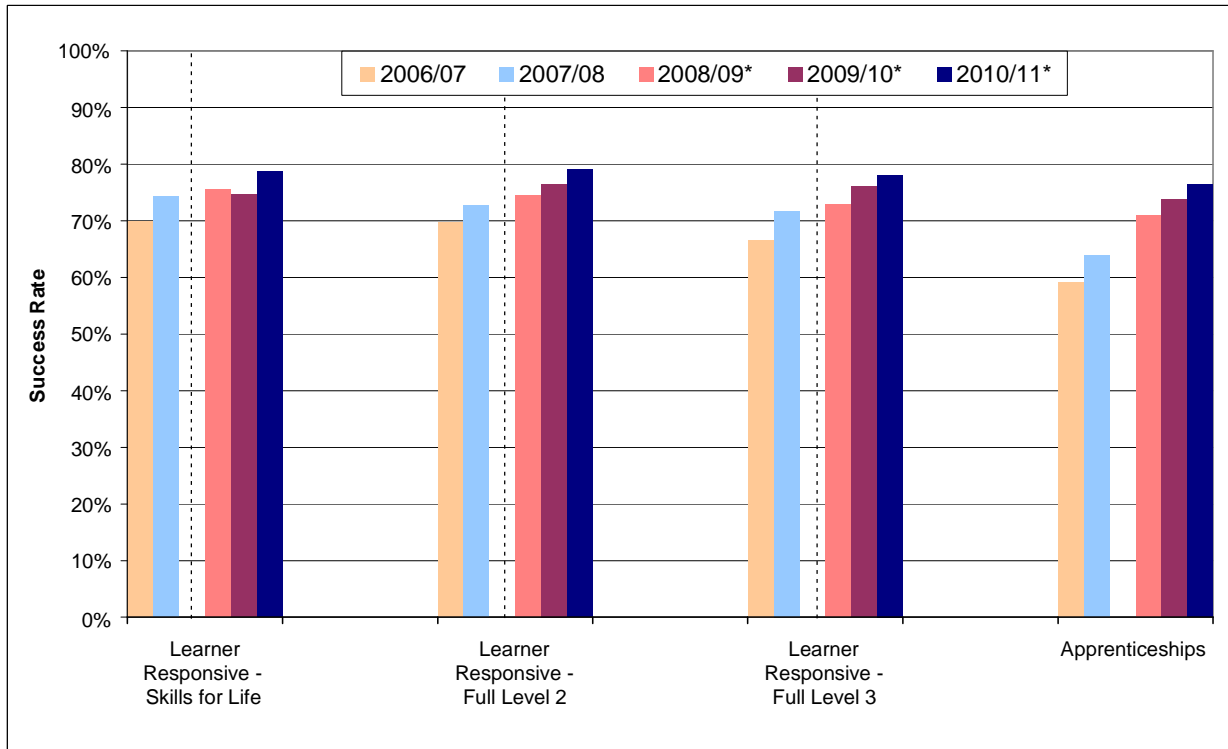
## Success Rates

25. Success rates are calculated for individual qualifications. They show how many learners that started a qualification went on to successfully complete it. Success rates are typically calculated at a qualification level, but can be aggregated across different types of course, or for particular colleges or providers. Education and Training, and Apprenticeship success rates are calculated on a slightly different basis. For more information please see:

<http://www.thedataservice.org.uk/datadictionary/technicaldefinitions/>

26. Chart 7 shows that all age Education and Training success rates (excluding schools) have risen steadily between 2006/07 and 2010/11, across all qualification levels except for Skills for Life. Success rates for Apprenticeship frameworks have risen dramatically since 2006/07, increasing by over 17.4 percentage points to 76.4 per cent in 2010/11.

**Chart 7: Government-funded Further Education Success Rates (excluding schools)**



**\*Note: Education and Training Success Rates for 2008/09 onwards are not directly comparable with earlier years. See paragraph 57 onwards for more information.**

27. In 2010/11, success rates [Table 7.3] were:

- 78.7 per cent for Education and Training Skills for Life qualifications, a increase of 4.0 percentage points compared to 2009/10;
- 81.5 per cent for Education and Training Level 2 qualifications, an increase of 1.5 percentage points compared to 2009/10 (79.1 per cent for full Level 2, an increase of 2.6 percentage points);
- 81.1 per cent for Education and Training Level 3 qualifications, an increase of 0.2 percentage points compared to 2009/10 (78.1 per cent for full Level 3, an increase of 2.1 percentage points);
- 76.4 per cent for all Apprenticeships, an increase of 2.6 percentage points compared to 2009/10;
- 75.3 per cent for Intermediate Level Apprenticeships, an increase of 1.9 percentage points compared to 2009/10;
- 78.6 per cent for Advanced Level Apprenticeships, an increase of 3.8 percentage points compared to 2009/10;
- 84.6 per cent for Higher Apprenticeships.

## HEADLINES FOR PROVISIONAL 2011/12 DATA

28. Data for 2011/12 provides a very early view of performance for the first quarter of the academic year (August 2011 to October 2011). Data are provisional because providers may not have reported all their information relating to this period. It is not possible to determine how incomplete the information behind the in-year data is, so the data cannot be compared against provisional or final data from earlier academic years. Comparisons can only be made once final returns for the academic year are made by providers (as published each January).

### Learner Participation

29. Provisional data show that between August 2011 and October 2011 there were 2,453,600 learners participating in government-funded further education (excluding schools) [Table 17]. Of these:
- 891,000 were aged under 19 [Table 15];
  - 1,562,700 were aged 19 and over [Table 16].
- 
- 945,900 learners participated on a Skills for Life course [Table 17];
  - 1,063,900 learners participated on a Level 2 course, of which 785,100 were on a full Level 2 course [Table 17];
  - 858,500 learners participated on a Level 3 course, of which 737,600 were on a full Level 3 course [Table 17].
- 
- 71,300 learners benefitted from support for the unemployed (those nearest the workforce).

### Apprenticeships

30. Provisional data show that there were 151,700 Apprenticeship starts in the first quarter of the 2011/12 academic year (August 2011 to October 2011) [Table 18.1]. Of these there were:
- 96,500 Intermediate Level Apprenticeship starts;
  - 53,900 Advanced Level Apprenticeship starts; and
  - 1,300 Higher Apprenticeship starts.
- 
- Learners aged under 19 started 53,700 Apprenticeship frameworks;
  - Learners aged 19–24 started 44,700 Apprenticeship frameworks; and
  - Learners aged 25 and over started 53,300 Apprenticeship frameworks.
31. Provisional data show that there were 46,200 Apprenticeship framework achievements in the first quarter of the 2011/12 academic year (August 2011 to October 2011) [Table 18.2]. Of these there were:
- 30,600 Intermediate Level Apprenticeship achievements;
  - 15,300 Advanced Level Apprenticeship achievements; and
  - 400 Higher Apprenticeship achievements.
- 
- Learners aged under 19 achieved 16,100 Apprenticeship frameworks;
  - Learners aged 19–24 achieved 17,000 Apprenticeship frameworks;
  - Learners aged 25 and over achieved 13,100 Apprenticeship frameworks.

## Workplace Learning

32. Provisional data show that there were 57,100 Workplace Learning starts in the first quarter of the 2011/12 academic year (August 2011 to October 2011) [Table 19.1].
33. Provisional data show that there were 52,300 Workplace Learning achievements in the first quarter of the 2011/12 academic year (August 2011 to October 2011) [Table 19.2].

## Skills for Life

34. Provisional data show that 945,900 learners of all ages participated on a Skills for Life course (excluding schools) in the first quarter of the 2011/12 academic year (August 2011 to October 2011) [Table 22]. Of these:
- 347,900 were aged under 19 [Table 20];
  - 598,000 were aged 19 or over [Table 21].
- 
- 671,800 learners participated on a Literacy course [Table 22];
  - 656,500 learners participated on a Numeracy course [Table 22];
  - 93,600 learners participated on an English for Speakers of Other Languages (ESOL) course [Table 22].

## Community Learning

35. Provisional data show that 237,900 learners participated on a Community Learning course in the first quarter of the 2011/12 academic year (August 2011 to October 2011) [Table 24]. Of these:
- 199,900 learners took a Personal and Community Development Learning course;
  - 8,100 learners took a Neighbourhood Learning in Deprived Communities course;
  - 15,600 learners took a Family Literacy, Language and Numeracy course;
  - 16,300 learners took a Wider Family Learning course.

## NATIONAL STATISTICS

36. The United Kingdom Statistics Authority has designated these statistics as National Statistics, in accordance with the Statistics and Registration Service Act 2007 and signifying compliance with the Code of Practice for Official Statistics.
37. Designation can be broadly interpreted to mean that the statistics:
- meet identified user needs;
  - are well explained and readily accessible;
  - are produced according to sound methods, and
  - are managed impartially and objectively in the public interest.
38. Once statistics have been designated as National Statistics it is a statutory requirement that the Code of Practice shall continue to be observed. More information regarding compliance with the Code of Practice is available on our website:  
<http://www.thedataservice.org.uk/statistics/statisticalfirstrelease/compliance/>

## CHANGES INCLUDED IN THIS SFR

39. From the 2011/12 academic year a Single Individualised Learner Record (ILR) data collection system has been introduced. This has replaced the multiple separate data collections from previous years and has led to small technical changes in the way learners from more than one funding stream are counted. A paper will soon be made available on our website to explain the Single ILR and the small effects it has on the SFR. Further information on the Single ILR is available on the Information Authority's website at: <http://www.theia.org.uk/ilr/singleilr/>
40. To reflect the changes in programmes and policy published in the *Skills Investment Statement 2011-2014* (SIS, published December 2011) the following categories have been re-named. Learner Responsive is referred to as Education and Training, Adult Safeguarded Learning is referred to as Community Learning and Train to Gain has become part of the broader category of Workplace Learning.
41. Following a review of the content of the Supplementary Tables, we have included three new supplementary tables showing economic activity by level of highest qualification held and data on the mean hourly wage of full-time employees by level of highest qualification held. This information is sourced from the Labour Force Survey.

## CHANGES IN THE NEXT SFR

42. The March SFR will include provisional data for the first half of 2011/12.
43. Ofqual Vocational Qualification data shown in Table 14 of this release, and accompanying supplementary tables, were updated on the 29<sup>th</sup> February 2012 as part of a formal cascade of this release. These tables were updated to include data for the first quarter of 2011/12 (October 2011 to December 2011) which will allow Ofqual to update their detailed bulletins that include these data.

44. Changes to the next release will be pre-announced on the Data Service website at least a month prior to coming into effect, at:

[http://www.thedataservice.org.uk/statistics/statisticalfirstrelease/sfr\\_next/](http://www.thedataservice.org.uk/statistics/statisticalfirstrelease/sfr_next/)

## SUPPORTING DATA

### Scope

45. Should we need to make an unplanned revision to the statistics contained in this release, we will follow the procedures outlined in the Revisions Policy for this Statistical First Release. This includes action to understand the impact that any revisions will have, as well as ensuring that they are clearly communicated to the reader. The Revisions Policy can be found at:

<http://www.thedataservice.org.uk/statistics/statisticalfirstrelease/compliance/>

46. Information from the different post-16 learning options have been drawn together to give a coherent and comprehensive picture of the participation and achievement of young people and adults after the age of 16. These options include:

- Further education organisations
- Sixth form colleges
- Local Authorities
- Independent training organisations.

47. These organisations deliver a wide variety of government programmes, including:

- College-based Learning
- Apprenticeships
- Workplace Learning
- University for Industry
- Community Learning.

48. This SFR does not contain information regarding:

- **Delivery in School Sixth Forms**, including maintained, independent and academy schools. We are hoping to include this in future editions of the SFR, once more work has been done to reconcile the different data sources. Figures taken from the Department for Education (DfE) Participation in Education, Training and Employment by 16–18 Year Olds in England, Statistical Release show there were 520,000 students studying in School Sixth Forms in 2009/10, based on a snapshot of January 2010 census data.
- **Higher education in Higher Education Institutions**. The publication referenced in paragraph 72 shows that the total number of HE enrolments at English Higher Education Institutions stood at 2,097,215 in 2010/11.
- **Privately-funded training at FE organisations/ independent training organisations**. There is no single coherent source that provides a measure of privately-funded training. BIS will investigate whether it is possible to develop a measure to support this, as part of our wider Dissemination Plan. More detail on the Dissemination Plan can be found at: [http://www.thedataservice.org.uk/statistics/dissemination\\_plan/](http://www.thedataservice.org.uk/statistics/dissemination_plan/). There are no sources currently available that fully capture privately-funded academic activity, particularly for older learners. However, in Table 15 of this release we do show the total number of Vocational Qualifications awarded in the UK. This includes

both public and privately-funded qualifications, and gives some sense of scale of total vocationally-related activity in the sector.

## Data Sources

49. The data used to produce this SFR are Individualised Learner Record (ILR) collections that are returned to the Data Service by further education colleges and providers. The Data Service and the *information authority* introduced a Single ILR collection in 2011/12 to replace the multiple ILR collection types that were collected in previous years. There are no longer separate collections for different funding streams (e.g. Employer Responsive and Learner Responsive) and providers return all of their learners in a single file. The following ILR collections have been used to populate this release:

Year	Data Source
2010/11	LR ILR LR05 – final
	ER ILR ER13 – final
	ASL ILR SL05 – final
2011/12	ALL SILR R04 – final
	Apprenticeships Employer Outcomes Pilot
	R04 - final

50. For 2011/12, R04 is used to provide provisional data on learning in all further education and skills providers for the period 1<sup>st</sup> August 2011 to 31<sup>st</sup> October 2011.

51. The data sources for earlier years, including 2010/11, are the final collections of each funding stream and include information on provision for the full academic year. More information on these data sources is available in a definitions document, which can be found at:

[http://www.thedataservice.org.uk/statistics/statisticalfirstrelease/sfr\\_current/](http://www.thedataservice.org.uk/statistics/statisticalfirstrelease/sfr_current/).

52. The Labour Force Survey is the other data source used for the SFR (Tables 12 and 13). The latest LFS data used in this release relate to Quarter 4 (October – December) 2010.

## Issues with Using Provisional Data

53. It is important to provide the earliest picture of further education performance once it becomes available so that users may assess the impact of government-funded provision and hold the system to account. However, provisional data are taken from an operational information system which is designed to support the funding of providers and there are some important limitations users should take into consideration.

54. In-year information is subject to data lag, which is when a provider submits information after the period it related to. This information is subsequently attributed to the correct time period. Data remain provisional until final returns for the academic year are made by providers, after the end of the academic year. Final data are published in the following January. The size of revision to individual estimates that arise from data lag can vary greatly. They tend to be around 2 to 3 per cent but have been as much as 15 per cent. Revisions are typically moderated



upward though it should be noted that on occasions small downward revisions are possible.

55. Data lag from one year to the next is not predictable, as provider behaviour changes over time and there is no source of information that would enable us to provide a robust estimate of completeness of data that have been returned. Provisional data cannot, therefore, be compared with provisional or final data from earlier academic years. We generally recommend using the final data for the last complete academic year.

56. If as part of our quality assessment of the volume of providers that have made their returns we consider estimates to be particularly weak, be that from the impact of data lag or any other factor, we may defer publication of those estimates. In recent years we have encouraged more timely reporting of data ahead of the final return. This is set out in our quality statement, which can be found at:  
<http://www.thedataservice.org.uk/statistics/statisticalfirstrelease/compliance/>.

## Issues with Comparing Data Across Academic Years

57. In January 2007, BIS consulted on a new funding approach for learners. This included three new demand led funding (DLF) models and a new funding formula, all of which were introduced in the 2008/09 academic year. To support this, it was necessary to bring in some technical changes from 2008/09 on how and where some activities are counted.

58. Overall the new funding methodology had a small impact of just over 1 per cent on total learner participation, and minimal effect on overall achievements. However, individual series (excluding Apprenticeship starts and achievements) were more significantly affected, and should not be compared with those in earlier years. The level of provision at which a learner was studying was unaffected. More information on these changes can be found at:  
<http://www.thedataservice.org.uk/NR/rdonlyres/5DC702AA-5117-40E1-A15E-01F95F2AF32B/0/TheeffectsofDemandLedFundingonthecountof2008v2.doc>

## Data Definitions

59. High-level definitions of some of the key terms used in this release can be found in the Glossary on page 4. A more detailed definitions document to accompany this release is available on the Data Service website at:

[http://www.thedataservice.org.uk/statistics/statisticalfirstrelease/sfr\\_current/](http://www.thedataservice.org.uk/statistics/statisticalfirstrelease/sfr_current/)

60. The 'Level of Highest Qualification Held by Adults' statistics are produced using data on the highest qualification held by individuals from the Labour Force Survey in each year. The LFS is conducted by the Office for National Statistics and the estimates provided are the best measure of attainment within the population at Quarter 4 (October – December) each calendar year. Further details of how this information is used to calculate the estimates can be found at:

<http://www.thedataservice.org.uk/statistics/statisticalfirstrelease/methodogy/>

61. From 2004 onwards, statistics relating to changes in attainment of 19 year olds at Level 2 and monitoring progress towards young people's attainment targets are based on a new administrative data source published by the Department for Education. For more information, see the release listed in paragraph 71.

## Publication Cycle Across the Year

62. Further information on future editions of the SFR can be found on the Data Service statistics website at:

[http://www.thedataservice.org.uk/statistics/statisticalfirstrelease/sfr\\_next/](http://www.thedataservice.org.uk/statistics/statisticalfirstrelease/sfr_next/)

63. Table A below shows provisional and final data included for each quarterly release.

**Table A: Publication Cycle**

Release	Data Included
<b>January 2012</b>	- <b>Final</b> Learner and Employer Responsive participation and achievement data for 2010/11
	- Further Education and Apprenticeship success rates for 2010/11
	- Provisional Apprenticeship, Workplace Learning and overall FE and Skills participation data for the first three months of 2011/12
	- Provisional Apprenticeship and Workplace Learning achievement data for the first three months of 2011/12
<b>March 2012</b>	- Provisional Apprenticeship, Workplace Learning and overall FE and Skills participation data for the first six months of 2011/12
	- Provisional Apprenticeship and Workplace Learning achievement data for the first six months of 2011/12
	- <b>Final</b> data on the level of highest qualification held for adults in the population in 2011
<b>June 2012</b>	- Provisional Apprenticeship, Workplace Learning and overall FE and Skills participation data for the first nine months of 2011/12
	- Provisional Apprenticeship and Workplace Learning achievement data for the first nine months of 2011/12
<b>October 2012</b>	- Provisional Apprenticeship, Workplace Learning and overall FE and Skills participation data for the full 2011/12 academic year
	- Provisional Apprenticeship and Workplace Learning achievement data for the full 2011/12 academic year

64. The Statistical First Release is an evolving product, and we welcome feedback. If you have comments or feedback on the SFR, these can be sent to: [servicedesk@thedata-service.org.uk](mailto:servicedesk@thedata-service.org.uk), or alternatively, you can call 0870 267 0001.
65. If you have a statistical question around the content or presentation of National Statistics in the release, please contact Jessie Evans at: [jessie.evans@bis.gsi.gov.uk](mailto:jessie.evans@bis.gsi.gov.uk)
66. If you would like to sign up for Web alerts, so that you are automatically sent an alert when new information is put on the website, please subscribe at: [http://www.thedata-service.org.uk/News/ds\\_alerts/](http://www.thedata-service.org.uk/News/ds_alerts/)

## Supplementary Tables

67. A full list of Supplementary Tables relating to this SFR can be found on the Data Service website at: [http://www.thedata-service.org.uk/statistics/statisticalfirstrelease/sfr\\_supplementary\\_tables/](http://www.thedata-service.org.uk/statistics/statisticalfirstrelease/sfr_supplementary_tables/). These tables include breakdowns by age, gender, ethnicity, learners with learning difficulties and/or disabilities and/or health problems, region, local authority, parliamentary constituency, sector subject area and funding stream. For more information on exactly what data will be released, and on which date, please see the supplementary tables list on the website.
68. The Data Service has published an updated related research report on Science, Technology, Engineering and Mathematics (STEM) in the further education sector (July 2011). This research report is available on the Data Service website at: [http://www.thedata-service.org.uk/statistics/other\\_statistics\\_and\\_research/](http://www.thedata-service.org.uk/statistics/other_statistics_and_research/).

## Related National Statistics Releases

69. There are a number of other National Statistics publications available that can be used to provide contextual information to this SFR. Some of those most relevant to this release are discussed below.
70. [\*Participation in Education, Training and Employment by 16-18 Year Olds in England\*](#) published on 30th June 2011 by the Department for Education. This shows that the proportion of 16–18 year olds in education and training was 84.4 per cent at end 2010 – the highest rate ever recorded and an increase of 2.0 percentage points from 82.5 per cent at end 2009. The total number of 16–18 year olds in education and training increased by 1,600 to 1.64 million at end 2010.
71. [\*Level 2 and 3 Attainment by Young People in England Measured Using Matched Administrative Data: Attainment by Age 19 in 2010\*](#) published on 31st March 2011 by the Department for Education. This shows that in 2010, 81.5 per cent of people aged 19 were qualified to at least Level 2, and 54.2 per cent were qualified to Level 3. These were increases of 2.4 percentage points and 2.5 percentage points respectively, since 2009.
72. [\*Higher Education Student Enrolments and Qualifications Obtained at Higher Education Institutions in the United Kingdom for the Academic Year\*](#) published on 12th January 2012 by the Higher Education Statistics Agency. This release shows that the total number of HE enrolments at English Higher Education Institutions stood at 2,097,215 in 2010/11, showing no percentage change from 2009/10. In

terms of qualifications, in 2010/11 there were 308,340 first degree graduates compared to 292,410 in 2009/10, an increase of 5%.

73. [Education and Training Statistics for the United Kingdom](#) published on 31st March 2011 by the Department for Education. This release provides statistics relating to education and training in the UK and includes chapters relating to post-compulsory education & training and qualifications. Information includes participation of learners in further education by country of study, participation in job-related training and the highest level of qualification held by adults in the population (UK).

## Other Related Statistics

74. In January 2012 the Government launched FE Choices. The prime purpose of FE Choices is to provide clear, comparable information to learners and employers so they can make informed choices about post-16 education and training. FE Choices enables users to search and compare provider ratings for four performance indicators: Success Rates; Learner Destinations (including Employment Rate and Learning Rate); Learner Satisfaction; and Employer Satisfaction. These indicators are published on the FE Choices website at: <http://fechoices.skillsfundingagency.bis.gov.uk/>. Results at National level and by type of provider for each performance indicator can be found at: [http://www.thedataservice.org.uk/statistics/statistics\\_fechoices/](http://www.thedataservice.org.uk/statistics/statistics_fechoices/)
75. In December 2010, Local Authority reports were published on the Data Service website (and updated in June 2011). Local Authorities are shown based on the postcodes of delivery locations and also on the home postcodes of learners. The reports cover enrolments, starts and achievements by sector, and enrolments and achievements by provider, for 2008/09 and 2009/10. These tables can be found at: [http://mireportslibrary.thedataservice.org.uk/demographics/geography\\_reports/local\\_authority.htm](http://mireportslibrary.thedataservice.org.uk/demographics/geography_reports/local_authority.htm)

## Further Education Statistics for Other Countries in the UK

76. The focus of this SFR is on government-funded further education provision in England. Similar information is available for other countries in the UK, and provides useful contextual background to these statistics.
77. Statistics on Further Education and Work-based learning in **Wales** can be found at: <http://wales.gov.uk/topics/statistics/headlines/post16education2011/1105121/?lang=en>
78. Statistics on Professional and Technical Enrolments in the **Northern Ireland** Further Education Sector for 2010/11 can be found at: <http://www.delni.gov.uk/index/statsandresearch/further-education-stats/further-education-enrolments-2/prof-and-tech-enrolments-in-the-ni-fe-sector-10-11.htm>
79. Facts and figures on learners in further education in **Scotland** can be found at: [http://www.sfc.ac.uk/web/FILES/ReportsandPublications/Facts\\_and\\_Figures\\_2010.pdf](http://www.sfc.ac.uk/web/FILES/ReportsandPublications/Facts_and_Figures_2010.pdf) Additionally, user-defined tables on further education learners and courses can be produced at: <https://stats.sfc.ac.uk/infact/>

## TABLE GUIDE

80. This section provides a brief summary of what is included in each table of this release. Tables 1 to 11 focus on the 2010/11 academic year; Tables 15 to 23 show provisional data for the first quarter of the 2011/12 academic year (August 2011 – October 2011).

- **Table 1** shows a demographic breakdown of all government-funded learners in further education.
- **Tables 2, 7 and 10** show respectively, adult (aged 19 and over), all ages, and young people (aged under 19) participation and achievement in further education by level.
- **Tables 3 and 8** show Apprenticeship starts and achievements by level for adult (aged 19 and over) and all ages, respectively.
- **Tables 4, 9 and 11** show Skills for Life participation and achievement for adult (aged 19 and over), all ages, and young people (aged under 19) respectively.
- **Table 5** shows starts and achievements for Workplace Learning.
- **Table 6** shows participation and achievements in Community Learning.
- **Tables 12 and 13** show level of attainment in the population (working age and economically active respectively) from the Labour Force Survey.
- **Table 14** shows a quarterly time series of information on Vocational Qualifications awarded.
- **Tables 15 to 23** repeat earlier tables; showing provisional in-year participation for the first quarter of the academic year (August 2011 to October 2011).

### Supplementary Tables

81. A full list of Supplementary Tables relating to this SFR can be found on the Data Service website at:

[http://www.thedataservice.org.uk/statistics/statisticalfirstrelease/sfr\\_supplementary\\_tables/](http://www.thedataservice.org.uk/statistics/statisticalfirstrelease/sfr_supplementary_tables/). These tables include breakdowns by age, gender, ethnicity, learners with learning difficulties and/or disabilities and/or health problems, region, Local Authority, parliamentary constituency, sector subject area and funding stream.

## Table Footnotes

### General Footnotes Relevant to All Tables

- 1) Volumes are rounded to the nearest hundred; percentages are calculated on pre-rounded data.
- 2) '-' Indicates a base value of less than 50 or a percentage of less than 0.5%.
- 3) These tables (except 12-14) include learners that were funded by the Learning and Skills Council and/or are now funded by the Skills Funding Agency or Young People's Learning Agency.
- 4) For definitions of variables used in the tables please see the data dictionary - <http://www.thedataservice.org.uk/datadictionary/>
- 5) Except for Tables 3, 5, 8, 18 and 19, age is reported as at 31 August of the academic year for all provision. Where under 19 year olds are reported, these include a small number of under 16 year olds.
- 6) In tables reporting full-year numbers, except for Tables 3, 5 and 8 full-year numbers are a count of the number of learners that participated/achieved at any point during the year. Learners undertaking/achieving more than one course will appear only once in the 'total learners' category for each data collection. However, learners that are included in different data collections, whether that relates to different years or different funding streams, will be counted more than once. All learners undertaking/achieving a full Level 2 or full Level 3 qualification will also appear in the Level 2 or Level 3 category, respectively.
- 7) The data source for all tables is the Individualised Learner Record, except where stated.
- 8) Further breakdowns of the data are available at the Data Service website: [http://www.thedataservice.org.uk/statistics/statisticalfirstrelease/sfr\\_supplementary\\_tables/](http://www.thedataservice.org.uk/statistics/statisticalfirstrelease/sfr_supplementary_tables/)

### Table 1 – FE and Skills Demographics

- 9) Total Education and Training (previously learner Responsive) also includes learners on courses with 'No Level Assigned'. Learners undertaking courses at more than one level will be counted once for each applicable level, but once only in Total Education and Training. Learners studying a Level 2 Skills for Life qualification will be counted in both the Level 2 and Skills for Life categories, but only once in totals.
- 10) Age, gender, learners with learning difficulties and/or disabilities and ethnicity is based upon self-declaration by the learner.
- 11) Education and Training includes those learners studying under the University for Industry programme.

### Tables 2, 7, 10 and 15-17 – FE and Skills

- 12) Success rates are calculated as the number of learning aims achieved divided by the number of learning aims expected to complete, excluding any learners who transferred on to another learning aim within the same institution.
- 13) Apprenticeship success rates are based on the number of learners who meet all of the requirements of their Apprenticeship framework, divided by the number of learners who have left training or successfully completed their training in the academic year.
- 14) Apprenticeship success rates are not affected by demand led funding.
- 15) Tables 2.2, 7.2 and 10.2 report on the actual number of achievements within the academic year without reference to those that were expected to complete. Table 2.3, 7.3 and 10.3 report on success rates which are based on the reported achievement of individual aims that were expected to complete in the academic year.
- 16) FE and Skills participation figures for 2011/12 are available in Tables 15-17 of this release.
- 17) Tables that show provisional estimates for 2011/12 are not directly comparable with figures for previous years.

### Tables 3, 8 and 18 – Apprenticeships

- 18) Unlike learner figures in earlier tables, figures for 2008/09 onwards are comparable with earlier years as demand led funding rules are not applied to starts and achievements.
- 19) Age is calculated based on age at start of the programme rather than based on 31 August.
- 20) In Tables 3.1 and 8.1 full-year numbers are a count of the number of starts at any point during the year. Learners starting more than one framework will appear more than once.
- 21) In Tables 3.2 and 8.2 full-year numbers are a count of the number of framework achievements at any point during the year. Learners achieving more than one framework will appear more than once.
- 22) Programme-Led Apprenticeships recorded in ILR returns are included in the above figures.
- 23) In order to be counted as a successful achievement, all elements of the framework must have been achieved.
- 24) Quarter 1 is 1 August to 31 October; Quarter 2 is 1 November to 31 January; Quarter 3 is 1 February to 30 April; Quarter 4 is 1 May to 31 July.

### Tables 5 and 19 – Workplace Learning

- 25) This is a new series covering a broad range of training – from basic skills to Level 2, Level 3 and other higher-level skills such as Leadership and Management. This training is mainly delivered through the workplace (but excludes Apprenticeships). Between 2005/06 and 2007/08 this included the Train to Gain programme and Standalone NVQs. Between 2008/09 and 2010/11 this included the Train to Gain programme, Employability Skills

Pilot and other programmes such as Programmes for the Unemployed. In 2011/12 this includes all training mainly delivered through the workplace (excluding Apprenticeships). Figures for 2008/09 and 2009/10 are not comparable with earlier years as in 2008/09 and 2009/10 NVQs delivered in the workplace changed from being funded by FE to be funded by Train to Gain. There were 181,000 starts and 132,000 achievements in NVQs delivered in the workplace in 2007/08 (Source - FE 2007/08 F05 Final).

**26)** In Tables 5.1 and 19.1 full-year numbers are a count of the number of starts at any point during the year. Learners starting more than one course will appear more than once.

**27)** In Tables 5.2 and 19.2 full-year numbers are a count of the number of achievements at any point during the year. Learners achieving more than one course will appear more than once.

**28)** Quarter 1 is 1 August to 31 October; Quarter 2 is 1 November to 31 January; Quarter 3 is 1 February to 30 April; Quarter 4 is 1 May to 31 July.

#### **Tables 6 and 23 – Community Learning**

**29)** Total Learners includes learners participating in Community Learning (previously Adult Safeguarded Learning) provision in the Community Learning and FE funding streams for 2005/06 to 2007/08. For 2008/09 to 2010/11, only Community Learning provision recorded in the Community Learning collection is included in totals except for 2009/10 where Community Learning provision recorded in the Education and Training collection for five Specially Designated colleges is also included. No Formal First Step learners are included except for 2006/07, where Formal First Step provision cannot be accurately separated from other Community Learning provision. These learners are therefore included in Total Learners. This means the Total Learners for 2006/07 are not directly comparable to 2005/06 or 2007/08.

**30)** Provision type figures are only shown for years where provision type can be accurately determined for all learners. Community Learning learners in 2005/06 cannot be accurately categorised.

**31)** There are a number of learners with Community Learning aims that are recorded in the Education and Training funding stream and are not included in the figures in Table 6. In 2008/09 there were 7,900 participating and 6,400 achieving learners; in 2009/10 there were 7,700 participating and 6,300 achieving learners; and in 2010/11 there were 8,300 participating and 6,900 achieving learners. The only Community Learning provision included for Table 6 for 2008/09 and 2010/11 is recorded in the Community Learning funding stream.

**32)** Community Learning participation figures for 2011/12 are available in Table 23 of this release.

#### **Table 14 – Vocational Qualifications**

**33)** This table covers all levels of vocational qualifications reported through Ofqual. Data are supplied by awarding organisations.

**34)** Academic year is October to September. For example, the 2005/06 academic year is 1 October 2005 to 30 September 2006.

**35)** Key Skills data was not collected prior to October 2009.

**36)** 'Other Vocational Qualifications' include Basic Skills, Entry Level, English for Speakers Other Languages, Functional Skills, Free-Standing Mathematics Qualification, Key Skills, National Qualifications Framework and Other General types.

Table 1: All Age Demographic Summary of FE and Skills Participation (2010/11) – Learner Volumes

	Funded Learners																		
	Apprenticeships					Education and Training							Workplace Learning		Community Learning		Total		
	Intermediate Level Apprenticeship	Advanced Level Apprenticeship	Higher Apprenticeship	Total Apprenticeships	%	Below Level 2 (excluding SFL)	Skills For Life (SFL)	Level 2	Level 3	Level 4+	Total Education and Training	%	Total Workplace Learning	%	Total Community Learning	%			
<b>Total Learners</b>	<b>415,200</b>	<b>247,200</b>	<b>3,500</b>	<b>665,900</b>	<b>100.0%</b>	<b>676,000</b>	<b>887,400</b>	<b>898,500</b>	<b>674,300</b>	<b>28,400</b>	<b>2,100,000</b>	<b>100.0%</b>	<b>761,400</b>	<b>100.0%</b>	<b>737,500</b>	<b>100.0%</b>	<b>4,264,900</b>	<b>100.0%</b>	
<b>Age</b>																			
Under 19	150,000	32,900	300	203,100	30.5%	348,000	397,200	392,600	468,000	1,700	886,600	42.2%	8,100	1.1%	3,800	0.5%	1,101,700	25.8%	
19-24	141,300	108,100	2,400	251,900	37.8%	84,800	127,700	133,900	89,300	4,600	303,900	14.5%	134,100	17.6%	54,300	7.4%	744,200	17.5%	
25-49	103,300	77,100	800	181,200	27.2%	178,400	312,700	305,400	99,900	18,300	722,000	34.4%	493,100	64.8%	376,200	51.0%	1,772,500	41.6%	
50+	20,700	9,000	-	29,700	4.5%	64,600	49,700	66,500	17,100	3,800	187,100	8.9%	126,000	16.5%	293,500	39.8%	636,300	14.9%	
Unknown	-	-	-	-	-	200	100	100	-	-	400	-	-	-	9,700	1.3%	10,200	-	
<b>Gender</b>																			
Female	210,600	122,800	2,200	335,500	50.4%	305,600	461,000	473,300	371,900	18,400	1,108,500	52.8%	330,600	43.4%	549,100	74.4%	2,323,700	54.5%	
Male	204,600	124,400	1,400	330,400	49.6%	370,400	426,400	425,200	302,400	10,000	991,600	47.2%	430,700	56.6%	188,500	25.6%	1,941,100	45.5%	
<b>Learners with Learning Difficulties and/or Disabilities</b>																			
Learning Difficulty/Disability	38,100	17,700	100	56,000	8.4%	165,300	176,500	130,900	87,600	2,100	354,500	16.9%	46,000	6.0%	90,200	12.2%	546,700	12.8%	
No Learning Difficulty/Disability	373,800	227,600	3,400	604,800	90.8%	472,600	660,100	711,900	563,800	25,100	1,621,500	77.2%	699,600	91.9%	569,600	77.2%	3,495,500	82.0%	
Not Known	3,300	1,800	-	5,200	0.8%	38,100	50,800	55,700	22,900	1,200	124,100	5.9%	15,800	2.1%	77,700	10.5%	222,700	5.2%	
<b>Ethnicity</b>																			
Asian or Asian British	16,100	7,800	100	24,000	3.6%	52,700	108,100	68,500	53,100	1,500	192,100	9.1%	61,000	8.0%	55,100	7.5%	332,200	7.8%	
Black or Black British	11,600	6,300	-	18,000	2.7%	50,200	88,100	67,000	42,700	1,200	163,600	7.8%	42,900	5.6%	33,600	4.6%	258,100	6.1%	
Mixed	7,500	3,800	100	11,400	1.7%	21,500	28,500	26,200	21,800	500	62,600	3.0%	10,800	1.4%	10,600	1.4%	95,400	2.2%	
White	373,600	225,500	3,300	602,400	90.5%	521,800	608,200	701,800	536,900	24,200	1,578,400	75.2%	621,300	81.6%	590,800	80.1%	3,393,000	79.6%	
Chinese or Other Ethnic Group	3,000	1,600	-	4,700	0.7%	14,500	38,800	18,400	11,400	500	60,400	2.9%	13,800	1.8%	20,100	2.7%	99,100	2.3%	
Not Known/Not Provided	3,400	2,100	-	5,500	0.8%	15,300	15,600	16,500	8,400	500	42,800	2.0%	11,500	1.5%	27,300	3.7%	87,100	2.0%	

**Notes**  
 1) These tables include Apprenticeships, Workplace Learning, Community Learning and Education and Training provision taken at General Further Education Colleges (including Tertiary), Sixth Form Colleges, Special Colleges (Agricultural and Horticultural Colleges and Art and Design Colleges), Specialist Colleges and External Institutions.

2) Please see the general footnotes and the FE and Skills Demographics footnotes sections for further information on these tables.



Table 2.1: Adult (19+) FE and Skills Participation by Level (2006/07 to 2010/11) – Learner Volumes

		Funded Learners								
		2006/07		2007/08	2008/09		2009/10	2010/11		
		Full Year		Full Year	Full Year		Full Year	Full Year		
Level				% change 06/07 to 07/08			% change 08/09 to 09/10	% change 09/10 to 10/11		
<b>Total Learners</b>		<b>3,205,700</b>	<b>3,304,400</b>	<b>3.1%</b>	<b>3,771,200</b>	<b>3,540,500</b>	<b>-6.1%</b>	<b>3,163,200</b>	<b>-10.7%</b>	
<b>Participation</b>	<b>of which...</b>									
	Below Level 2 (excluding Skills for Life)	589,500	532,500	-9.7%	496,800	435,300	-12.4%	370,900	-14.8%	
	Skills for Life	809,300	824,800	1.9%	945,100	909,100	-3.8%	961,800	5.8%	
	Full Level 2	516,300	740,000	43.3%	968,600	971,000	-	982,600	1.2%	
	Full Level 3	267,600	328,100	22.6%	423,900	469,100	10.6%	494,000	5.3%	
	Level 2	1,118,400	1,319,400	18.0%	1,549,000	1,451,200	-6.3%	1,273,300	-12.3%	
	Level 3	485,800	528,200	8.7%	619,700	604,800	-2.4%	542,900	-10.2%	
	Level 4+	59,900	53,200	-11.1%	58,200	49,500	-14.9%	36,600	-26.0%	
No Level Assigned	842,300	803,600	-4.6%	910,500	951,100	4.5%	888,300	-6.6%		

Table 2.2: Adult (19+) FE and Skills Achievement by Level (2006/07 to 2010/11) – Learner Volumes

		Funded Learners								
		2006/07		2007/08	2008/09		2009/10	2010/11		
		Full Year		Full Year	Full Year		Full Year	Full Year		
Level				% change 06/07 to 07/08			% change 08/09 to 09/10	% change 09/10 to 10/11		
<b>Total Learners</b>		<b>2,233,100</b>	<b>2,243,600</b>	<b>-</b>	<b>2,584,000</b>	<b>2,567,700</b>	<b>-0.6%</b>	<b>2,265,100</b>	<b>-11.8%</b>	
<b>Achievement</b>	<b>of which...</b>									
	Below Level 2 (excluding Skills for Life)	430,200	406,500	-5.5%	367,000	336,800	-8.2%	298,500	-11.4%	
	Skills for Life	540,900	520,700	-3.7%	639,100	614,600	-3.8%	595,600	-3.1%	
	Full Level 2	235,600	320,300	35.9%	493,900	556,000	12.6%	561,800	1.0%	
	Full Level 3	115,000	134,400	16.9%	170,200	237,800	39.7%	242,700	2.1%	
	Level 2	660,600	734,700	11.2%	910,800	926,000	1.7%	788,900	-14.8%	
	Level 3	271,400	285,600	5.2%	317,000	344,400	8.7%	282,600	-17.9%	
	Level 4+	30,300	25,800	-14.9%	27,600	26,900	-2.3%	20,400	-24.4%	
No Level Assigned	689,700	682,800	-1.0%	756,400	814,600	7.7%	764,100	-6.2%		

Table 2.3: Adult (19+) FE and Apprenticeship Success Rates by Level (2006/07 to 2010/11) – Percentages

Level		2006/07	2007/08	2008/09	2009/10	2010/11
		Full Year	Full Year	Full Year	Full Year	Full Year
<b>Total Further Education/ Education and Training Provision</b>		<b>76.5%</b>	<b>80.5%</b>	<b>80.6%</b>	<b>80.3%</b>	<b>81.4%</b>
<b>of which...</b>	Skills for Life	67.9%	73.1%	75.1%	74.3%	78.6%
	Full Level 2	69.4%	71.4%	72.1%	74.8%	78.5%
	Full Level 3	65.5%	70.6%	70.1%	75.1%	77.7%
	Level 2	75.6%	79.6%	80.5%	80.3%	80.2%
	Level 3	72.0%	77.1%	78.4%	78.7%	78.8%
<b>Apprenticeships</b>						
<b>of which...</b>	Intermediate Level Apprenticeship	60.1%	64.8%	72.8%	75.6%	78.0%
	Advanced Level Apprenticeship	56.0%	64.5%	71.2%	74.0%	78.4%
	Higher Apprenticeship					84.8%
	All Apprenticeships	<b>58.5%</b>	<b>64.7%</b>	<b>72.2%</b>	<b>75.0%</b>	<b>78.2%</b>

**Notes**

1) These tables include Apprenticeships, Workplace Learning, Community Learning and Education and Training provision taken at General Further Education Colleges (including Tertiary), Sixth Form Colleges, Special Colleges (Agricultural and Horticultural Colleges and Art and Design Colleges), Specialist Colleges and External Institutions.

2) Figures for 2008/09 onwards are not directly comparable to earlier years as the introduction of demand led funding has changed how data is collected and how funded learners are defined from 2008/09 onwards. Apprenticeship success rates are not affected by demand led funding. More information on demand led funding is available at:

<http://www.thedataservice.org.uk/datadictionary/businessdefinitions/Demand+Led+Funding.htm>

3) Data for earlier years are available in the Further Education and Skills Supplementary Tables:

[http://www.thedataservice.org.uk/statistics/statisticalfirstrelease/sfr\\_supplementary\\_tables/further\\_education\\_skills/](http://www.thedataservice.org.uk/statistics/statisticalfirstrelease/sfr_supplementary_tables/further_education_skills/)

4) Please see the general footnotes and the FE and Skills footnotes sections for further information on these tables.

Table 3.1: Adult (19+) Apprenticeship Programme Starts by Level and Age (2006/07 to 2010/11)

	Age	2006/07	2007/08	2008/09	2009/10	2010/11	2009/10				2010/11			
		Full Year	Full Year	Full Year	Full Year	Full Year	Quarter 1	Quarter 2	Quarter 3	Quarter 4	Quarter 1	Quarter 2	Quarter 3	Quarter 4
Intermediate Level Apprenticeship	19-24	46,500	55,200	52,600	72,800	90,400	20,100	16,200	17,200	19,300	21,000	20,000	23,300	26,100
	25+	100	14,600	31,700	28,400	113,400	7,600	5,400	8,100	7,200	16,400	26,800	31,700	38,400
	<b>Total</b>	<b>46,600</b>	<b>69,800</b>	<b>84,300</b>	<b>101,100</b>	<b>203,800</b>	<b>27,700</b>	<b>21,600</b>	<b>25,300</b>	<b>26,500</b>	<b>37,400</b>	<b>46,800</b>	<b>55,000</b>	<b>64,500</b>
Advanced Level Apprenticeship	19-24	32,000	34,800	32,000	39,800	51,600	14,900	7,000	8,700	9,200	16,000	10,100	12,400	13,300
	25+	100	12,600	24,200	20,600	68,000	5,800	3,300	6,100	5,500	10,800	13,300	20,200	23,700
	<b>Total</b>	<b>32,100</b>	<b>47,400</b>	<b>56,100</b>	<b>60,400</b>	<b>119,700</b>	<b>20,600</b>	<b>10,300</b>	<b>14,800</b>	<b>14,700</b>	<b>26,800</b>	<b>23,400</b>	<b>32,600</b>	<b>36,900</b>
Higher Apprenticeship	19-24	100	-	100	1,200	1,300	600	200	300	100	700	200	200	200
	25+	-	-	-	100	700	100	-	-	-	400	100	100	100
	<b>Total</b>	<b>100</b>	<b>-</b>	<b>100</b>	<b>1,400</b>	<b>2,000</b>	<b>700</b>	<b>300</b>	<b>300</b>	<b>100</b>	<b>1,100</b>	<b>300</b>	<b>300</b>	<b>300</b>
All Apprenticeships	19-24	78,600	90,100	84,700	113,800	143,400	35,600	23,400	26,100	28,600	37,700	30,300	35,900	39,600
	25+	300	27,200	55,900	49,100	182,100	13,400	8,700	14,200	12,800	27,600	40,200	52,000	62,200
	<b>Total</b>	<b>78,900</b>	<b>117,200</b>	<b>140,600</b>	<b>162,900</b>	<b>325,500</b>	<b>49,000</b>	<b>32,100</b>	<b>40,400</b>	<b>41,400</b>	<b>65,300</b>	<b>70,500</b>	<b>87,900</b>	<b>101,800</b>

Table 3.2: Adult (19+) Apprenticeship Framework Achievements by Level and Age (2006/07 to 2010/11)

	Age	2006/07	2007/08	2008/09	2009/10	2010/11	2009/10				2010/11			
		Full Year	Full Year	Full Year	Full Year	Full Year	Quarter 1	Quarter 2	Quarter 3	Quarter 4	Quarter 1	Quarter 2	Quarter 3	Quarter 4
Intermediate Level Apprenticeship	19-24	28,200	28,400	35,500	38,600	48,400	9,100	7,200	8,900	13,400	10,700	10,800	11,400	15,500
	25+	100	900	12,500	20,300	23,900	5,300	4,400	4,800	5,900	4,600	4,500	5,600	9,200
	<b>Total</b>	<b>28,300</b>	<b>29,300</b>	<b>48,000</b>	<b>59,000</b>	<b>72,400</b>	<b>14,300</b>	<b>11,600</b>	<b>13,700</b>	<b>19,300</b>	<b>15,300</b>	<b>15,300</b>	<b>17,000</b>	<b>24,800</b>
Advanced Level Apprenticeship	19-24	17,800	19,700	22,400	25,400	27,700	6,200	4,700	5,700	8,800	6,500	5,300	6,100	9,900
	25+	100	300	5,400	13,900	15,900	2,900	3,000	3,600	4,400	3,300	2,900	3,900	5,900
	<b>Total</b>	<b>17,900</b>	<b>20,000</b>	<b>27,700</b>	<b>39,300</b>	<b>43,600</b>	<b>9,100</b>	<b>7,700</b>	<b>9,300</b>	<b>13,200</b>	<b>9,800</b>	<b>8,200</b>	<b>9,900</b>	<b>15,700</b>
Higher Apprenticeship	19-24	-	-	-	100	800	-	-	-	100	300	100	200	300
	25+	-	-	-	-	100	-	-	-	-	-	-	-	-
	<b>Total</b>	<b>-</b>	<b>-</b>	<b>-</b>	<b>200</b>	<b>900</b>	<b>-</b>	<b>-</b>	<b>-</b>	<b>100</b>	<b>400</b>	<b>100</b>	<b>200</b>	<b>300</b>
All Apprenticeships	19-24	46,000	48,100	57,800	64,200	77,000	15,300	12,000	14,600	22,300	17,500	16,100	17,600	25,700
	25+	200	1,200	17,900	34,300	39,900	8,200	7,400	8,400	10,300	7,900	7,400	9,500	15,100
	<b>Total</b>	<b>46,200</b>	<b>49,300</b>	<b>75,700</b>	<b>98,400</b>	<b>116,900</b>	<b>23,500</b>	<b>19,400</b>	<b>23,000</b>	<b>32,600</b>	<b>25,400</b>	<b>23,600</b>	<b>27,100</b>	<b>40,800</b>

**Notes**

1) Data for earlier years are available in the Apprenticeship Supplementary Tables:

[http://www.thedataservice.org.uk/statistics/statisticalfirstrelease/sfr\\_supplementary\\_tables/Apprenticeship\\_sfr\\_supplementary\\_tables/](http://www.thedataservice.org.uk/statistics/statisticalfirstrelease/sfr_supplementary_tables/Apprenticeship_sfr_supplementary_tables/)

2) Please see the general footnotes and the Apprenticeships footnotes section for all information on these tables.

**Table 4: Adult (19+) FE and Skills – Skills for Life Participation and Achievement by Level (2006/07 to 2010/11) – Learner Volumes**

Measure	Level	Funded Learners							
		2006/07	2007/08		2008/09	2009/10		2010/11	
		Full Year	Full Year	% change 06/07 to 07/08	Full Year	Full Year	% change 08/09 to 09/10	Full Year	% change 09/10 to 10/11
Participation	<b>Total Learners</b>	<b>809,300</b>	<b>824,800</b>	<b>1.9%</b>	<b>945,100</b>	<b>909,100</b>	<b>-3.8%</b>	<b>961,800</b>	<b>5.8%</b>
	of which literacy	492,700	539,000	9.4%	629,700	565,200	-10.2%	643,100	13.8%
	of which entry level	133,100	135,200	1.6%	140,200	114,900	-18.0%	105,700	-8.0%
	of which level 1	205,200	233,400	13.7%	276,200	228,300	-17.3%	285,900	25.2%
	of which level 2	206,500	221,000	7.0%	267,300	254,500	-4.8%	286,800	12.7%
	of which numeracy	369,600	438,900	18.8%	568,300	534,200	-6.0%	633,800	18.7%
	of which entry level	71,900	84,500	17.5%	115,900	103,800	-10.4%	100,000	-3.7%
	of which level 1	172,600	208,200	20.7%	265,100	238,800	-9.9%	314,800	31.8%
	of which level 2	164,500	192,500	17.0%	242,800	231,500	-4.6%	265,700	14.8%
	of which ESOL (English for Speakers of Other Languages)	230,200	203,200	-11.7%	197,100	187,000	-5.1%	172,400	-7.8%
	of which entry level	190,700	173,600	-8.9%	168,700	157,900	-6.4%	143,100	-9.3%
	of which level 1	31,800	24,400	-23.3%	24,100	24,100	-	24,200	-
	of which level 2	11,900	9,400	-20.8%	9,300	9,700	3.5%	9,600	-0.6%
Achievement	<b>Total Learners</b>	<b>540,900</b>	<b>520,700</b>	<b>-3.7%</b>	<b>639,100</b>	<b>614,600</b>	<b>-3.8%</b>	<b>595,600</b>	<b>-3.1%</b>
	of which literacy	321,300	320,200	-	383,600	342,200	-10.8%	332,300	-2.9%
	of which entry level	97,500	94,600	-3.0%	93,800	80,600	-14.1%	75,500	-6.2%
	of which level 1	125,200	132,200	5.6%	169,000	131,300	-22.3%	134,100	2.1%
	of which level 2	123,300	118,300	-4.1%	148,200	146,200	-1.3%	139,900	-4.3%
	of which numeracy	226,000	246,600	9.1%	338,300	317,000	-6.3%	326,600	3.1%
	of which entry level	52,000	54,700	5.1%	74,000	70,000	-5.4%	71,900	2.7%
	of which level 1	104,900	115,100	9.7%	160,200	139,700	-12.8%	151,300	8.3%
	of which level 2	88,500	100,500	13.6%	132,800	127,900	-3.6%	128,500	-
	of which ESOL (English for Speakers of Other Languages)	156,000	144,900	-7.1%	140,900	133,300	-5.4%	127,800	-4.2%
	of which entry level	130,100	125,100	-3.8%	121,500	112,900	-7.0%	106,600	-5.6%
	of which level 1	20,500	15,700	-23.7%	15,600	15,900	1.6%	16,400	3.6%
	of which level 2	7,500	6,200	-16.5%	6,100	6,600	8.0%	6,500	-1.7%

**Notes**

1) Figures for 2008/09 onwards are not directly comparable to earlier years as the introduction of demand led funding has changed how data is collected and how funded learners are defined from 2008/09 onwards.

More information on demand led funding is available at:

<http://www.thedataservice.org.uk/datadictionary/businessdefinitions/Demand+Led+Funding.htm>

2) Total Participation in this table will not match Skills for Life participation in Table 1 as here Skills for Life courses on all funding streams are covered. Table 1 records Skills for Life for Education and Training only.

3) Data for earlier years are available in the Further Education and Skills Supplementary Tables:

[http://www.thedataservice.org.uk/statistics/statisticalfirstrelease/sfr\\_supplementary\\_tables/further\\_education\\_skills/](http://www.thedataservice.org.uk/statistics/statisticalfirstrelease/sfr_supplementary_tables/further_education_skills/)

4) Please see the general footnotes section for further information on this table.

Table 5.1: Workplace Learning Starts by Level (2006/07 to 2010/11)

Level		2006/07	2007/08	2008/09	2009/10	2010/11	2009/10				2010/11			
		Full Year	Full Year	Full Year	Full Year	Full Year	Quarter 1	Quarter 2	Quarter 3	Quarter 4	Quarter 1	Quarter 2	Quarter 3	Quarter 4
<b>Total Starts</b>		<b>207,400</b>	<b>347,300</b>	<b>906,100</b>	<b>774,500</b>	<b>599,300</b>	<b>194,900</b>	<b>148,900</b>	<b>235,300</b>	<b>195,300</b>	<b>179,800</b>	<b>172,500</b>	<b>143,300</b>	<b>103,700</b>
<b>of which...</b>	Below Level 2	15,500	28,700	155,300	147,100	114,300	40,500	29,400	43,400	33,900	37,700	37,700	21,900	17,000
	Level 2	176,200	274,300	579,900	430,500	331,900	107,300	83,000	132,300	107,900	89,600	88,400	85,500	68,400
	Level 3	14,600	43,100	135,800	100,200	81,800	30,000	16,900	28,500	24,800	26,300	21,100	17,300	17,100
	Level 4+	1,000	1,100	11,900	4,300	3,000	1,700	700	1,100	800	900	800	700	600
	No Level Assigned	100	-	23,200	92,400	68,300	15,500	18,900	30,100	27,900	25,200	24,500	18,000	600
	Below Level 2 (excluding Skills for Life)	-	-	22,100	27,900	11,200	7,000	6,000	8,600	6,400	4,900	3,900	1,700	700
	Skills for Life	19,300	39,200	191,700	127,000	108,300	35,300	25,000	37,000	29,700	34,900	36,300	20,800	16,300
	Full Level 2	172,400	263,900	520,100	415,100	315,400	104,900	79,900	127,400	102,900	83,700	82,200	81,800	67,600
	Full Level 3	14,600	43,100	136,100	98,200	80,600	29,700	16,400	27,700	24,400	25,800	20,700	17,000	16,900

Table 5.2: Workplace Learning Achievements by Level (2006/07 to 2010/11)

Level		2006/07	2007/08	2008/09	2009/10	2010/11	2009/10				2010/11			
		Full Year	Full Year	Full Year	Full Year	Full Year	Quarter 1	Quarter 2	Quarter 3	Quarter 4	Quarter 1	Quarter 2	Quarter 3	Quarter 4
<b>Total Achievements</b>		<b>91,100</b>	<b>187,500</b>	<b>583,700</b>	<b>676,000</b>	<b>584,900</b>	<b>151,200</b>	<b>143,600</b>	<b>183,300</b>	<b>198,000</b>	<b>144,600</b>	<b>142,500</b>	<b>155,300</b>	<b>142,400</b>
<b>of which...</b>	Below Level 2	6,500	14,200	88,700	105,900	95,100	25,600	25,400	25,900	29,000	22,200	26,300	28,400	18,200
	Level 2	78,400	158,200	399,300	389,700	332,500	91,100	80,600	106,300	111,700	80,000	76,500	79,600	96,400
	Level 3	3,200	14,200	68,800	95,500	81,100	22,400	21,500	24,300	27,300	17,800	17,300	19,900	26,200
	Level 4+	900	800	7,400	7,200	3,600	1,800	1,700	1,800	1,800	1,100	800	900	900
	No Level Assigned	300	100	19,600	77,600	72,600	10,200	14,300	25,000	28,100	23,700	21,700	26,500	700
	Below Level 2 (excluding Skills for Life)	-	-	9,300	15,900	10,900	3,300	3,800	4,300	4,500	3,700	3,400	3,000	700
	Skills for Life	9,600	19,000	118,900	94,900	88,500	23,300	22,700	23,000	26,000	19,700	24,300	27,000	17,500
	Full Level 2	77,100	153,400	359,000	378,900	318,700	89,400	78,700	102,800	108,000	75,800	72,100	74,900	95,900
	Full Level 3	3,200	14,200	69,100	93,700	80,200	22,000	21,100	23,700	26,800	17,500	17,100	19,600	26,100

**Notes**

- 1) Figures for 2008/09 onwards are not comparable with earlier years as from 2008/09 onwards NVQs delivered in the workplace changed from being funded by FE to be funded by Train to Gain.
- 2) Workplace Learning includes Train to Gain and other Employer Responsive provision (except Apprenticeships).
- 3) Data for 2005/06 are available in the Workplace Learning Supplementary Tables:  
[http://www.thedataservice.org.uk/statistics/statisticalfirstrelease/sfr\\_supplementary\\_tables/train\\_to\\_gain\\_supplementary\\_tables/](http://www.thedataservice.org.uk/statistics/statisticalfirstrelease/sfr_supplementary_tables/train_to_gain_supplementary_tables/)
- 4) Please see the general footnotes and the Workplace Learning footnotes section for further information on these tables.
- 5) Skills for Life starts and achievements can be at Level 2 or Below Level 2.
- 6) Achievement figures for 2006/07 include 1,800 Skills for Life achievements with an unidentifiable level. These are included in the total achievements but not in the Below Level 2 or Level 2 categories.
- 7) These tables include some learners aged under 19 who are eligible for funding on certain Workplace Learning programmes (such as Programmes for the Unemployed).

**Table 6: Community Learning Participation and Achievement by Type (2006/07 to 2010/11) – Learner Volumes**

Measure	Provision Type	Funded Learners						
		2006/07	2007/08	2008/09	2009/10	2010/11	% change 08/09 to 09/10	% change 09/10 to 10/11
		Full Year	Full Year	Full Year	Full Year		Full Year	
<b>Participation</b>	<b>Total Learners</b>	<b>796,700</b>	<b>709,200</b>	<b>755,000</b>	<b>752,800</b>	-	<b>699,400</b>	<b>-7.1%</b>
	of which Personal and Community Development Learning	546,800	557,900	584,400	579,200	-0.9%	534,100	-7.8%
	of which Neighbourhood Learning in Deprived Communities	23,900	32,200	40,300	43,700	8.4%	46,600	6.5%
	of which Family Literacy, Language and Numeracy	68,800	67,100	71,000	71,300	-	65,400	-8.3%
	of which Wider Family Learning	70,000	75,300	80,500	79,600	-1.1%	75,400	-5.3%
<b>Achievement</b>	<b>Total Learners</b>	<b>653,800</b>	<b>610,500</b>	<b>638,900</b>	<b>663,000</b>	<b>3.8%</b>	<b>608,200</b>	<b>-8.3%</b>
	of which Personal and Community Development Learning	449,800	477,000	489,000	505,900	3.5%	458,600	-9.3%
	of which Neighbourhood Learning in Deprived Communities	20,800	28,400	34,400	39,800	15.6%	41,300	3.7%
	of which Family Literacy, Language and Numeracy	57,500	57,200	61,000	62,700	2.7%	57,000	-9.0%
	of which Wider Family Learning	57,800	67,300	71,400	72,600	1.6%	70,100	-3.4%

**Notes**

1) Figures for 2008/09 onwards are not directly comparable to earlier years as the introduction of demand led funding has changed how data is collected and how funded learners are defined from 2008/09 onwards. More information on demand led funding is available at:

<http://www.thedataservice.org.uk/datadictionary/businessdefinitions/Demand+Led+Funding.htm>

2) Total participation in this table will not match Community Learning participation in Table 1 as here Formal First Step provision in the Education and Training funding stream is not included. Table 1 includes Formal First Step provision.

3) Data for earlier years is available in the Further Education and Skills Supplementary Tables:

[http://www.thedataservice.org.uk/statistics/statisticalfirstrelease/sfr\\_supplementary\\_tables/further\\_education\\_skills/](http://www.thedataservice.org.uk/statistics/statisticalfirstrelease/sfr_supplementary_tables/further_education_skills/)

4) Please see the general footnotes and the Community Learning footnotes sections for all information on these tables.

Table 7.1: All Age FE and Skills Participation by Level (2006/07 to 2010/11) – Learner Volumes

		Funded Learners							
		2006/07		2007/08	2008/09		2009/10	2010/11	
				% change			% change	% change	
Level		Full Year	Full Year	06/07 to	Full Year	Full Year	08/09 to	Full Year	09/10 to
				07/08			09/10		10/11
<b>Total Learners</b>		<b>4,231,900</b>	<b>4,360,700</b>	<b>3.0%</b>	<b>4,837,100</b>	<b>4,635,500</b>	<b>-4.2%</b>	<b>4,264,900</b>	<b>-8.0%</b>
<b>Participation</b>	<b>of which...</b>								
	Below Level 2 (excluding Skills for Life)	905,200	864,700	-4.5%	788,400	745,800	-5.4%	720,000	-3.5%
	Skills for Life	1,297,800	1,312,100	1.1%	1,449,800	1,430,600	-1.3%	1,471,300	2.8%
	Full Level 2	817,200	1,042,300	27.5%	1,263,900	1,286,500	1.8%	1,312,600	2.0%
	Full Level 3	611,400	685,900	12.2%	795,300	867,000	9.0%	919,800	6.1%
	Level 2	1,676,100	1,882,100	12.3%	2,125,400	2,045,200	-3.8%	1,817,100	-11.2%
	Level 3	944,700	1,001,800	6.0%	1,105,600	1,115,000	0.9%	1,063,700	-4.6%
	Level 4+	60,900	54,600	-10.4%	59,300	50,800	-14.4%	38,600	-24.0%
	No Level Assigned	1,276,700	1,268,600	-0.6%	1,492,800	1,558,300	4.4%	1,502,100	-3.6%

Table 7.2: All Age FE and Skills Achievement by Level (2006/07 to 2010/11) – Learner Volumes

		Funded Learners							
		2006/07		2007/08	2008/09		2009/10	2010/11	
				% change			% change	% change	
Level		Full Year	Full Year	06/07 to	Full Year	Full Year	08/09 to	Full Year	09/10 to
				07/08			09/10		10/11
<b>Total Learners</b>		<b>2,912,700</b>	<b>2,960,900</b>	<b>1.7%</b>	<b>3,359,700</b>	<b>3,377,400</b>	<b>0.5%</b>	<b>3,091,300</b>	<b>-8.5%</b>
<b>Achievement</b>	<b>of which...</b>								
	Below Level 2 (excluding Skills for Life)	626,800	625,100	-	592,200	581,400	-1.8%	578,800	-
	Skills for Life	821,100	812,600	-1.0%	965,900	952,400	-1.4%	910,200	-4.4%
	Full Level 2	369,500	458,800	24.2%	644,500	721,100	11.9%	740,700	2.7%
	Full Level 3	263,200	294,300	11.8%	338,100	421,500	24.7%	464,400	10.2%
	Level 2	962,300	1,055,200	9.7%	1,268,300	1,302,500	2.7%	1,135,400	-12.8%
	Level 3	549,700	579,100	5.4%	628,100	674,600	7.4%	620,900	-8.0%
	Level 4+	30,600	26,400	-13.6%	28,000	27,500	-2.1%	21,500	-21.6%
	No Level Assigned	990,000	1,010,500	2.1%	1,146,100	1,219,100	6.4%	1,185,700	-2.7%

Table 7.3: All Age FE and Apprenticeship Success Rates by Level (2006/07 to 2010/11) – Percentages

		2006/07	2007/08	2008/09	2009/10	2010/11
Level		Full Year	Full Year	Full Year	Full Year	Full Year
<b>Total Further Education/Education and Training Provision</b>		<b>76.8%</b>	<b>80.2%</b>	<b>80.6%</b>	<b>80.7%</b>	<b>81.8%</b>
<b>of which...</b>	Skills for Life	69.8%	74.2%	75.5%	74.7%	78.7%
	Full Level 2	69.7%	72.7%	74.4%	76.5%	79.1%
	Full Level 3	66.6%	71.6%	72.9%	76.0%	78.1%
	Level 2	74.8%	78.6%	79.6%	80.0%	81.5%
	Level 3	77.2%	79.9%	80.9%	80.9%	81.1%
<b>Apprenticeships</b>						
<b>of which...</b>	Intermediate Level Apprenticeship	60.2%	64.4%	70.4%	73.4%	75.3%
	Advanced Level Apprenticeship	56.4%	62.8%	72.1%	74.8%	78.6%
	Higher Apprenticeship					84.6%
	All Apprenticeships	<b>59.0%</b>	<b>63.9%</b>	<b>70.9%</b>	<b>73.8%</b>	<b>76.4%</b>

**Notes**

1) These tables include Apprenticeships, Workplace Learning, Community Learning and Education and Training provision taken at General Further Education Colleges (including Tertiary), Sixth Form Colleges, Special Colleges (Agricultural and Horticultural Colleges and Art and Design Colleges), Specialist Colleges and External Institutions.

2) Figures for 2008/09 onwards are not directly comparable to earlier years as the introduction of demand led funding has changed how data is collected and how funded learners are defined from 2008/09 onwards. Apprenticeship success rates are not affected by demand led funding. More information on demand led funding is available at:

<http://www.thedataservice.org.uk/datadictionary/businessdefinitions/Demand+Led+Funding.htm>

3) Data for earlier years are available in the Further Education and Skills Supplementary Tables:  
[http://www.thedataservice.org.uk/statistics/statisticalfirstrelease/sfr\\_supplementary\\_tables/further\\_education\\_skills/](http://www.thedataservice.org.uk/statistics/statisticalfirstrelease/sfr_supplementary_tables/further_education_skills/)

4) Please see the general footnotes and the FE and Skills footnotes sections for further information on these tables.

Table 8.1: All Age Apprenticeship Programme Starts by Level and Age (2006/07 to 2010/11)

Age	2006/07	2007/08	2008/09	2009/10	2010/11	2009/10				2010/11				
	Full Year	Full Year	Full Year	Full Year	Full Year	Quarter 1	Quarter 2	Quarter 3	Quarter 4	Quarter 1	Quarter 2	Quarter 3	Quarter 4	
Intermediate Level Apprenticeship														
Under 19	80,800	82,000	74,200	89,400	97,300	35,700	15,500	19,500	18,800	38,100	18,300	18,900	22,000	
19-24	46,500	55,200	52,600	72,800	90,400	20,100	16,200	17,200	19,300	21,000	20,000	23,300	26,100	
25+	100	14,600	31,700	28,400	113,400	7,600	5,400	8,100	7,200	16,400	26,800	31,700	38,400	
<b>Total</b>	<b>127,400</b>	<b>151,800</b>	<b>158,500</b>	<b>190,500</b>	<b>301,100</b>	<b>63,400</b>	<b>37,100</b>	<b>44,800</b>	<b>45,300</b>	<b>75,500</b>	<b>65,200</b>	<b>73,900</b>	<b>86,500</b>	
Advanced Level Apprenticeship														
Under 19	24,800	25,500	25,100	27,200	34,200	14,600	3,400	5,000	4,300	17,100	4,700	6,400	6,000	
19-24	32,000	34,800	32,000	39,800	51,600	14,900	7,000	8,700	9,200	16,000	10,100	12,400	13,300	
25+	100	12,600	24,200	20,600	68,000	5,800	3,300	6,100	5,500	10,800	13,300	20,200	23,700	
<b>Total</b>	<b>56,900</b>	<b>72,900</b>	<b>81,300</b>	<b>87,700</b>	<b>153,900</b>	<b>35,200</b>	<b>13,600</b>	<b>19,700</b>	<b>19,100</b>	<b>43,800</b>	<b>28,100</b>	<b>39,000</b>	<b>42,900</b>	
Higher Apprenticeship														
Under 19	-	-	-	100	200	100	-	-	-	100	-	-	-	
19-24	100	-	100	1,200	1,300	600	200	300	100	700	200	200	200	
25+	-	-	-	100	700	100	-	-	-	400	100	100	100	
<b>Total</b>	<b>100</b>	<b>100</b>	<b>200</b>	<b>1,500</b>	<b>2,200</b>	<b>700</b>	<b>300</b>	<b>300</b>	<b>200</b>	<b>1,200</b>	<b>300</b>	<b>300</b>	<b>400</b>	
All Apprenticeships														
Under 19	105,600	107,600	99,400	116,800	131,700	50,300	18,900	24,500	23,100	55,200	23,100	25,400	28,000	
19-24	78,600	90,100	84,700	113,800	143,400	35,600	23,400	26,100	28,600	37,700	30,300	35,900	39,600	
25+	300	27,200	55,900	49,100	182,100	13,400	8,700	14,200	12,800	27,600	40,200	52,000	62,200	
<b>Total</b>	<b>184,400</b>	<b>224,800</b>	<b>239,900</b>	<b>279,700</b>	<b>457,200</b>	<b>99,300</b>	<b>51,000</b>	<b>64,800</b>	<b>64,500</b>	<b>120,600</b>	<b>93,600</b>	<b>113,300</b>	<b>129,800</b>	

Table 8.2: All Age Apprenticeship Framework Achievements by Level and Age (2006/07 to 2010/11)

Age	2006/07	2007/08	2008/09	2009/10	2010/11	2009/10				2010/11			
	Full Year	Full Year	Full Year	Full Year	Full Year	Quarter 1	Quarter 2	Quarter 3	Quarter 4	Quarter 1	Quarter 2	Quarter 3	Quarter 4
Intermediate Level Apprenticeship													
Under 19	50,100	47,100	50,200	52,900	59,400	12,200	8,700	9,800	22,300	13,700	11,000	13,000	21,700
19-24	28,200	28,400	35,500	38,600	48,400	9,100	7,200	8,900	13,400	10,700	10,800	11,400	15,500
25+	100	900	12,500	20,300	23,900	5,300	4,400	4,800	5,900	4,600	4,500	5,600	9,200
<b>Total</b>	<b>78,400</b>	<b>76,300</b>	<b>98,100</b>	<b>111,900</b>	<b>131,700</b>	<b>26,500</b>	<b>20,300</b>	<b>23,500</b>	<b>41,600</b>	<b>29,000</b>	<b>26,300</b>	<b>30,000</b>	<b>46,400</b>
Advanced Level Apprenticeship													
Under 19	15,600	16,200	17,500	20,100	23,900	4,500	3,700	3,800	8,100	5,100	3,600	5,800	9,400
19-24	17,800	19,700	22,400	25,400	27,700	6,200	4,700	5,700	8,800	6,500	5,300	6,100	9,900
25+	100	300	5,400	13,900	15,900	2,900	3,000	3,600	4,400	3,300	2,900	3,900	5,900
<b>Total</b>	<b>33,400</b>	<b>36,200</b>	<b>45,200</b>	<b>59,400</b>	<b>67,500</b>	<b>13,600</b>	<b>11,500</b>	<b>13,100</b>	<b>21,300</b>	<b>14,900</b>	<b>11,800</b>	<b>15,700</b>	<b>25,100</b>
Higher Apprenticeship													
Under 19	-	-	-	-	100	-	-	-	-	-	-	-	-
19-24	-	-	-	100	800	-	-	-	100	300	100	200	300
25+	-	-	-	-	100	-	-	-	-	-	-	-	-
<b>Total</b>	<b>-</b>	<b>-</b>	<b>-</b>	<b>200</b>	<b>1,000</b>	<b>100</b>	<b>-</b>	<b>-</b>	<b>100</b>	<b>400</b>	<b>100</b>	<b>200</b>	<b>300</b>
All Apprenticeships													
Under 19	65,700	63,300	67,700	73,100	83,300	16,700	12,400	13,600	30,400	18,800	14,600	18,800	31,100
19-24	46,000	48,100	57,800	64,200	77,000	15,300	12,000	14,600	22,300	17,500	16,100	17,600	25,700
25+	200	1,200	17,900	34,300	39,900	8,200	7,400	8,400	10,300	7,900	7,400	9,500	15,100
<b>Total</b>	<b>111,800</b>	<b>112,600</b>	<b>143,400</b>	<b>171,500</b>	<b>200,300</b>	<b>40,200</b>	<b>31,800</b>	<b>36,600</b>	<b>63,000</b>	<b>44,300</b>	<b>38,100</b>	<b>46,000</b>	<b>71,900</b>

**Notes**

1) Data for earlier years are available in the Apprenticeship Supplementary Tables:

[http://www.thedata.service.org.uk/statistics/statisticalfirstrelease/sfr\\_supplementary\\_tables/Apprenticeship\\_sfr\\_supplementary\\_tables/](http://www.thedata.service.org.uk/statistics/statisticalfirstrelease/sfr_supplementary_tables/Apprenticeship_sfr_supplementary_tables/)

2) Please see the general footnotes and the Apprenticeships footnotes section for all information on these tables.

Table 9: All Age FE and Skills – Skills for Life Participation and Achievement by Level (2006/07 to 2010/11) – Learner Volumes

Measure	Level	Funded Learners							
		2006/07	2007/08		2008/09	2009/10		2010/11	
		Full Year	Full Year	% change 06/07 to 07/08	Full Year	Full Year	% change 08/09 to 09/10	Full Year	% change 09/10 to 10/11
Participation	<b>Total Learners</b>	<b>1,297,800</b>	<b>1,312,100</b>	<b>1.1%</b>	<b>1,449,800</b>	<b>1,430,600</b>	<b>-1.3%</b>	<b>1,471,300</b>	<b>2.8%</b>
	of which literacy	881,200	917,200	4.1%	1,017,900	961,600	-5.5%	1,033,400	7.5%
	of which entry level	161,100	164,200	1.9%	169,600	153,300	-9.6%	205,000	33.8%
	of which level 1	388,100	414,700	6.9%	463,400	422,300	-8.9%	476,600	12.9%
	of which level 2	400,800	403,100	0.6%	457,300	439,400	-3.9%	409,200	-6.9%
	of which numeracy	715,000	768,000	7.4%	901,700	882,800	-2.1%	998,200	13.1%
	of which entry level	105,000	118,600	12.9%	153,600	151,300	-1.5%	200,600	32.5%
	of which level 1	357,000	385,000	7.9%	441,400	422,300	-4.3%	493,200	16.8%
	of which level 2	308,900	324,000	4.9%	378,600	367,300	-3.0%	370,000	0.7%
	of which ESOL (English for Speakers of Other Languages)	244,200	218,100	-10.7%	211,800	201,500	-4.9%	185,200	-8.1%
	of which entry level	202,800	186,500	-8.0%	181,000	170,000	-6.1%	153,600	-9.6%
	of which level 1	33,600	26,400	-21.6%	26,200	26,300	-	26,300	-
	of which level 2	12,400	10,000	-19.2%	10,100	10,400	3.1%	10,300	-0.6%
Achievement	<b>Total Learners</b>	<b>821,100</b>	<b>812,600</b>	<b>-1.0%</b>	<b>965,900</b>	<b>952,400</b>	<b>-1.4%</b>	<b>910,200</b>	<b>-4.4%</b>
	of which literacy	525,800	529,500	0.7%	615,700	577,200	-6.3%	543,800	-5.8%
	of which entry level	115,500	113,600	-1.6%	112,600	105,600	-6.1%	138,800	31.4%
	of which level 1	226,300	235,300	4.0%	282,700	243,300	-14.0%	231,400	-4.9%
	of which level 2	216,100	211,300	-2.2%	253,900	250,300	-1.4%	195,100	-22.1%
	of which numeracy	403,100	425,200	5.5%	535,900	521,600	-2.7%	534,000	2.4%
	of which entry level	74,200	78,000	5.0%	99,400	101,800	2.5%	141,800	39.2%
	of which level 1	208,100	216,700	4.1%	272,100	251,000	-7.7%	248,100	-1.2%
	of which level 2	147,200	159,600	8.4%	199,600	195,400	-2.1%	174,500	-10.7%
	of which ESOL (English for Speakers of Other Languages)	166,200	156,200	-6.1%	152,000	144,300	-5.1%	137,700	-4.5%
	of which entry level	139,000	134,900	-2.9%	130,900	122,100	-6.7%	114,800	-6.0%
	of which level 1	21,800	17,000	-21.9%	17,000	17,400	1.9%	17,900	3.3%
	of which level 2	7,700	6,600	-14.6%	6,700	7,200	7.7%	7,000	-1.7%

**Notes**

1) Figures for 2008/09 onwards are not directly comparable to earlier years as the introduction of demand led funding has changed how data is collected and how funded learners are defined from 2008/09 onwards. More information on demand led funding is available at:

<http://www.thedataservice.org.uk/datadictionary/businessdefinitions/Demand+Led+Funding.htm>

2) Total Participation in this table will not match Skills for Life participation in Table 1 as here Skills for Life courses on all funding streams are covered. Table 1 records Skills for Life for Education and Training only.

3) Data for earlier years are available in the Further Education and Skills Supplementary Tables:

[http://www.thedataservice.org.uk/statistics/statisticalfirstrelease/sfr\\_supplementary\\_tables/further\\_education\\_skills/](http://www.thedataservice.org.uk/statistics/statisticalfirstrelease/sfr_supplementary_tables/further_education_skills/)

4) Please see the general footnotes section for further information on this table.



Table 10.1: Young People (Under 19) FE and Apprenticeship Participation by Level (2006/07 to 2010/11) – Learner Volumes

			Funded Learners							
			2006/07	2007/08	2008/09		2009/10		2010/11	
			Full Year	Full Year	% change 06/07 to 07/08	Full Year	Full Year	% change 08/09 to 09/10	Full Year	% change 09/10 to 10/11
Level										
<b>Total Learners</b>			<b>1,026,200</b>	<b>1,056,400</b>	<b>2.9%</b>	<b>1,065,900</b>	<b>1,095,000</b>	<b>2.7%</b>	<b>1,101,700</b>	<b>0.6%</b>
<b>Participation</b>	of which...	Below Level 2 (excluding Skills for Life)	315,700	332,200	5.2%	291,600	310,500	6.5%	349,100	12.4%
		Skills for Life	488,500	487,200	-	504,700	521,500	3.3%	509,500	-2.3%
		Full Level 2	300,900	302,200	-	295,400	315,500	6.8%	330,100	4.6%
		Full Level 3	343,800	357,800	4.1%	371,300	397,900	7.2%	425,800	7.0%
		Level 2	557,700	562,700	0.9%	576,400	594,000	3.1%	543,800	-8.5%
		Level 3	458,900	473,600	3.2%	485,900	510,300	5.0%	520,900	2.1%
		Level 4+	1,000	1,300	34.0%	1,100	1,300	12.2%	2,000	57.9%
		No Level Assigned	434,400	464,900	7.0%	582,200	607,200	4.3%	613,800	1.1%

Table 10.2: Young People (Under 19) FE and Apprenticeship Achievement by Level (2006/07 to 2010/11) – Learner Volumes

			Funded Learners							
			2006/07	2007/08	2008/09		2009/10		2010/11	
			Full Year	Full Year	% change 06/07 to 07/08	Full Year	Full Year	% change 08/09 to 09/10	Full Year	% change 09/10 to 10/11
Level										
<b>Total Learners</b>			<b>679,600</b>	<b>717,300</b>	<b>5.5%</b>	<b>775,800</b>	<b>809,600</b>	<b>4.4%</b>	<b>826,300</b>	<b>2.1%</b>
<b>Achievement</b>	of which...	Below Level 2 (excluding Skills for Life)	196,600	218,600	11.2%	225,200	244,600	8.6%	280,300	14.6%
		Skills for Life	280,200	291,900	4.2%	326,800	337,800	3.4%	314,600	-6.9%
		Full Level 2	133,900	138,600	3.5%	150,600	165,100	9.6%	178,900	8.4%
		Full Level 3	148,200	159,800	7.8%	167,900	183,700	9.4%	221,700	20.7%
		Level 2	301,700	320,500	6.2%	357,500	376,500	5.3%	346,500	-8.0%
		Level 3	278,300	293,500	5.5%	311,200	330,200	6.1%	338,300	2.5%
		Level 4+	200	600	142.5%	500	500	9.8%	1,200	128.8%
		No Level Assigned	300,400	327,700	9.1%	389,600	404,500	3.8%	421,600	4.2%

Table 10.3: Young People (Under 19) FE and Apprenticeship Success Rates by Level (2006/07 to 2010/11) – Percentages

			2006/07	2007/08	2008/09	2009/10	2010/11
Level			Full Year	Full Year	Full Year	Full Year	Full Year
<b>Total Further Education/Education and Training Provision</b>			<b>77.4%</b>	<b>79.9%</b>	<b>80.6%</b>	<b>81.1%</b>	<b>82.0%</b>
of which...	Skills for Life		72.8%	76.0%	76.0%	75.5%	79.4%
	Full Level 2		70.1%	74.1%	75.9%	77.8%	79.8%
	Full Level 3		67.7%	72.6%	74.5%	76.6%	78.3%
	Level 2		73.3%	77.0%	78.3%	79.6%	82.9%
	Level 3		79.3%	81.0%	81.6%	81.5%	81.6%
<b>Apprenticeships</b>							
of which...	Intermediate Level Apprenticeship		60.3%	64.2%	68.3%	71.1%	72.2%
	Advanced Level Apprenticeship		56.9%	60.7%	73.6%	76.2%	79.0%
	Higher Apprenticeship						83.2%
	All Apprenticeships		<b>59.5%</b>	<b>63.3%</b>	<b>69.6%</b>	<b>72.4%</b>	<b>74.0%</b>

**Notes**

1) These tables include Apprenticeships, Workplace Learning, Community Learning and Education and Training provision taken at General Further Education Colleges (including Tertiary), Sixth Form Colleges, Special Colleges (Agricultural and Horticultural Colleges and Art and Design Colleges), Specialist Colleges and External Institutions.

2) Figures for 2008/09 onwards are not directly comparable to earlier years as the introduction of demand led funding has changed how data is collected and how funded learners are defined from 2008/09 onwards. Apprenticeship success rates are not affected by demand led funding. More information on demand led funding is available at:

<http://www.thedataservice.org.uk/datadictionary/businessdefinitions/Demand+Led+Funding.htm>

3) Data for earlier years are available in the Further Education and Skills Supplementary Tables:

[http://www.thedataservice.org.uk/statistics/statisticalfirstrelease/sfr\\_supplementary\\_tables/further\\_education\\_skills/](http://www.thedataservice.org.uk/statistics/statisticalfirstrelease/sfr_supplementary_tables/further_education_skills/)

4) Please see the general footnotes and the FE and Skills footnotes sections for further information on these tables.

Table 11: Young People (Under 19) FE and Apprenticeship – Skills for Life Participation and Achievement by Level (2006/07 to 2010/11) – Learner Volumes

Measure	Level	Funded Learners							
		2006/07	2007/08		2008/09	2009/10		2010/11	
		Full Year	Full Year	% change 06/07 to 07/08	Full Year	Full Year	% change 08/09 to 09/10	Full Year	% change 09/10 to 10/11
Participation	<b>Total Learners</b>	<b>488,500</b>	<b>487,200</b>	<b>-</b>	<b>504,700</b>	<b>521,500</b>	<b>3.3%</b>	<b>509,500</b>	<b>-2.3%</b>
	of which literacy	388,500	378,200	-2.7%	388,200	396,300	2.1%	390,400	-1.5%
	of which entry level	28,000	29,000	3.5%	29,400	38,400	30.5%	99,300	158.8%
	of which level 1	182,800	181,300	-0.8%	187,200	194,000	3.6%	190,800	-1.7%
	of which level 2	194,200	182,100	-6.2%	190,000	184,900	-2.7%	122,400	-33.8%
	of which numeracy	345,400	329,100	-4.7%	333,400	348,600	4.6%	364,300	4.5%
	of which entry level	33,100	34,000	3.0%	37,700	47,500	25.9%	100,600	111.8%
	of which level 1	184,400	176,800	-4.1%	176,300	183,400	4.0%	178,400	-2.8%
	of which level 2	144,400	131,500	-8.9%	135,900	135,800	-	104,300	-23.2%
	of which ESOL (English for Speakers of Other Languages)	13,900	14,900	6.9%	14,700	14,500	-1.3%	12,800	-11.5%
	of which entry level	12,100	12,900	6.6%	12,400	12,200	-1.5%	10,500	-13.7%
	of which level 1	1,800	1,900	8.8%	2,100	2,100	0.8%	2,100	-2.3%
	of which level 2	500	600	23.6%	700	700	-3.1%	700	-
Achievement	<b>Total Learners</b>	<b>280,200</b>	<b>291,900</b>	<b>4.2%</b>	<b>326,800</b>	<b>337,800</b>	<b>3.4%</b>	<b>314,600</b>	<b>-6.9%</b>
	of which literacy	204,500	209,200	2.3%	232,200	235,000	1.2%	211,400	-10.0%
	of which entry level	18,000	19,100	5.8%	18,800	25,100	33.4%	63,300	152.4%
	of which level 1	101,100	103,100	1.9%	113,800	111,900	-1.6%	97,200	-13.1%
	of which level 2	92,800	93,000	-	105,800	104,100	-1.6%	55,200	-47.0%
	of which numeracy	177,100	178,600	0.8%	197,600	204,600	3.5%	207,400	1.4%
	of which entry level	22,200	23,300	5.0%	25,300	31,900	25.7%	69,900	119.4%
	of which level 1	103,200	101,600	-1.5%	111,900	111,300	-0.5%	96,800	-13.0%
	of which level 2	58,700	59,100	0.7%	66,900	67,500	1.0%	46,000	-31.9%
	of which ESOL (English for Speakers of Other Languages)	10,300	11,300	10.0%	11,100	10,900	-1.7%	10,000	-8.8%
	of which entry level	8,900	9,800	10.1%	9,500	9,200	-3.1%	8,200	-10.5%
	of which level 1	1,300	1,300	7.0%	1,400	1,500	5.3%	1,500	-
	of which level 2	300	400	34.4%	500	500	3.9%	500	-1.1%

**Notes**

1) Figures for 2008/09 onwards are not directly comparable to earlier years as the introduction of demand led funding has changed how data is collected and how funded learners are defined from 2008/09 onwards. More information on demand led funding is available at:

<http://www.thedataservice.org.uk/datadictionary/businessdefinitions/Demand+Led+Funding.htm>

2) Total Participation in this table will not match Skills for Life participation in Table 1 as here Skills for Life courses on all funding streams are covered. Table 1 records Skills for Life for Education and Training only.

3) Data for earlier years are available in the Further Education and Skills Supplementary Tables:

[http://www.thedataservice.org.uk/statistics/statisticalfirstrelease/sfr\\_supplementary\\_tables/further\\_education\\_skills/](http://www.thedataservice.org.uk/statistics/statisticalfirstrelease/sfr_supplementary_tables/further_education_skills/)

4) Please see the general footnotes section for further information on this table.

**Table 12.1: Level of Highest Qualification Held by People aged 19-59/64 in England (Quarter 4)<sup>1</sup> - percentages**

Year	All people aged 19-59/64 <sup>2</sup> (thousands)	Level 4 and above	Level 3	Level 3 and above	Level 2	Level 2 and above	Below Level 2 (incl no qualifications)
2006	29,427	33.1	20.2	53.2	18.7	71.9	28.1
2007	29,584	34.1	20.7	54.8	18.5	73.2	26.8
2008	29,737	34.5	20.7	55.2	19.0	74.2	25.8
2009	29,911	36.3	20.7	56.9	19.6	76.5	23.5
2010	30,127	37.6 <sup>P</sup>	21.1 <sup>P</sup>	58.8 <sup>P</sup>	18.9 <sup>P</sup>	77.7 <sup>P</sup>	22.3 <sup>P</sup>
2010 95% CI (+/-)		0.39		0.40		0.33	0.33

**Table 12.2: Level of Highest Qualification Held by People aged 19-59/64 in England (Quarter 4)<sup>1</sup> - volumes (thousands)**

Year	All people aged 19-59/64 <sup>2</sup>	Level 4 and above	Level 3	Level 3 and above	Level 2	Level 2 and above	Below Level 2 (incl no qualifications)
2006	29,427	9,727	5,935	15,661	5,499	21,160	8,267
2007	29,584	10,091	6,112	16,203	5,461	21,664	7,920
2008	29,737	10,260	6,149	16,409	5,654	22,063	7,674
2009	29,911	10,850	6,178	17,028	5,848	22,876	7,035
2010	30,127	11,340 <sup>P</sup>	6,372 <sup>P</sup>	17,711 <sup>P</sup>	5,689 <sup>P</sup>	23,400 <sup>P</sup>	6,726 <sup>P</sup>
2010 95% CI (+/-)		117		119		101	101

**Notes**

1) Estimates were revised in March 2011 as a result of an improved methodology being adopted - see methodological note for further details.

2) Males aged 19 - 64 and females aged 19 - 59.

P) Provisional estimate - these estimates will be finalised in March 2012.

**Table 13.1: Level Of Highest Qualification Held By Economically Active Adults In England (Quarter 4)<sup>1,2</sup> - percentages**

Year	Economically active adults <sup>3</sup> (thousands)	Level 4 and above	Level 3	Level 3 and above	Level 2	Level 2 and above	Below Level 2 (incl no qualifications)
2006	24,238	35.8	20.8	56.6	19.6	76.2	23.8
2007	24,397	36.8	21.1	57.9	19.4	77.3	22.7
2008	24,672	36.9	21.1	58.0	20.0	78.0	22.0
2009	24,684	38.9	20.9	59.8	20.5	80.2	19.8
2010	24,819	40.5 <sup>P</sup>	21.3 <sup>P</sup>	61.8 <sup>P</sup>	19.7 <sup>P</sup>	81.5 <sup>P</sup>	18.5 <sup>P</sup>
2010 95% CI (+/-)		0.42		0.42		0.33	0.33

**Table 13.2: Level Of Highest Qualification Held By Economically Active Adults In England (Quarter 4)<sup>1,2</sup> - volumes (thousands)**

Year	Economically active adults <sup>3</sup>	Level 4 and above	Level 3	Level 3 and above	Level 2	Level 2 and above	Below Level 2 (incl no qualifications)
2006	24,238	8,681	5,046	13,727	4,744	18,471	5,767
2007	24,397	8,975	5,151	14,126	4,731	18,857	5,540
2008	24,672	9,098	5,217	14,314	4,933	19,247	5,425
2009	24,684	9,590	5,162	14,752	5,050	19,802	4,882
2010	24,819	10,044 <sup>P</sup>	5,292 <sup>P</sup>	15,336 <sup>P</sup>	4,881 <sup>P</sup>	20,217 <sup>P</sup>	4,602 <sup>P</sup>
2010 95% CI (+/-)		104		103		83	83

**Notes**

- 1) Estimates for 2006 onwards were revised in March 2011 as a result of an improved methodology being adopted - see methodological note for further details.
- 2) 2010 estimates are provisional as 2011 LFS data and matched LFS-ILR data are not yet available; uplift to final results is estimated based on 2006 to 2009 data.
- 3) Economically active adults are defined as men aged 18 to 64 and women aged 18 to 59 either in employment or International Labour Organisation unemployed.
- P) Provisional estimate - these estimates will be finalised in March 2012.

**Table 14: Vocational Qualification Achievements in the UK by Qualification Type, 2006 (October) to 2011 (December) [Updated 29th February 2012]**

Quarter	National Vocational Qualification	Occupational Qualification	Qualifications and Credit Framework Qualification	Vocationally Related Qualification	Other Vocational Qualifications	Total
October 2006 to December 2006	121,300	7,100	-	411,400	382,600	<b>922,400</b>
January 2007 to March 2007	126,600	5,700	-	406,800	393,800	<b>932,900</b>
April 2007 to June 2007	129,600	6,000	400	507,900	678,200	<b>1,322,100</b>
July 2007 to September 2007	252,900	8,000	500	920,500	1,151,500	<b>2,333,400</b>
<b>Total 2006/07 Academic Year</b>	<b>630,400</b>	<b>26,800</b>	<b>900</b>	<b>2,246,600</b>	<b>2,606,200</b>	<b>5,510,900</b>
October 2007 to December 2007	128,700	4,900	1,300	408,500	423,500	<b>966,900</b>
January 2008 to March 2008	140,700	4,900	4,600	426,000	500,900	<b>1,077,200</b>
April 2008 to June 2008	170,600	6,400	8,600	643,100	755,700	<b>1,584,400</b>
July 2008 to September 2008	287,900	8,300	19,200	983,800	1,416,700	<b>2,715,800</b>
<b>Total 2007/08 Academic Year</b>	<b>727,900</b>	<b>24,500</b>	<b>33,700</b>	<b>2,461,400</b>	<b>3,096,800</b>	<b>6,344,300</b>
October 2008 to December 2008	164,100	5,800	19,400	416,200	474,500	<b>1,079,900</b>
January 2009 to March 2009	169,600	5,300	42,200	409,900	590,400	<b>1,217,500</b>
April 2009 to June 2009	216,400	6,300	65,000	715,900	829,300	<b>1,832,900</b>
July 2009 to September 2009	372,600	9,100	102,000	1,064,800	1,591,600	<b>3,140,200</b>
<b>Total 2008/09 Academic Year</b>	<b>922,900</b>	<b>26,500</b>	<b>228,600</b>	<b>2,606,800</b>	<b>3,485,800</b>	<b>7,270,500</b>
October 2009 to December 2009	212,000	6,000	85,000	414,700	457,500	<b>1,175,200</b>
January 2010 to March 2010	204,000	5,100	135,000	388,000	552,700	<b>1,284,800</b>
April 2010 to June 2010	213,500	5,700	202,700	726,100	831,100	<b>1,979,000</b>
July 2010 to September 2010	349,500	6,400	348,500	1,078,700	1,727,400	<b>3,510,600</b>
<b>Total 2009/10 Academic Year</b>	<b>979,000</b>	<b>23,200</b>	<b>771,100</b>	<b>2,607,500</b>	<b>3,568,600</b>	<b>7,949,400</b>
October 2010 to December 2010	179,600	6,200	274,700	285,700	422,900	<b>1,169,200</b>
January 2011 to March 2011	154,900	4,100	455,400	165,100	486,200	<b>1,265,800</b>
April 2011 to June 2011	128,500	3,600	721,300	385,000	670,900	<b>1,909,200</b>
July 2011 to September 2011	124,200	3,600	1,377,300	561,300	1,473,600	<b>3,540,000</b>
<b>Total 2010/11 Academic Year</b>	<b>587,300</b>	<b>17,500</b>	<b>2,828,700</b>	<b>1,397,200</b>	<b>3,053,600</b>	<b>7,884,200</b>
October 2011 to December 2011	50,900	2,000	803,500	55,600	355,100	<b>1,267,100</b>
<b>Total 2011/12 Academic Year</b>	<b>50,900</b>	<b>2,000</b>	<b>803,500</b>	<b>55,600</b>	<b>355,100</b>	<b>1,267,100</b>

**Notes**

- 1) This table covers all levels of vocational qualifications reported through Ofqual. Data are supplied by awarding organisations.
- 2) For data relating to Vocational Qualifications, the Academic year runs from October to September. For example, the 2006/07 academic year runs from October 2006 to September 2007.
- 3) The data in this table has been subjected to revisions. These changes are due to updates from two awarding organisations.
- 4) Please see general notes and Vocational Qualifications footnotes section for all information on these tables.

Table 15: Young People (Under 19) FE and Apprenticeship Participation by Level (2011/12 – early estimates) – Learner Volumes

		<b>Funded Learners</b>	
		<b>2011/12</b>	
		<b>August to October</b>	
		<b>(provisional)</b>	
<b>Level</b>			
<b>Total Learners</b>		<b>891,000</b>	
<b>Participation</b>	<b>of which...</b>	Below Level 2 (excluding Skills for Life)	270,300
		Skills for Life	347,900
		Full Level 2	255,300
		Full Level 3	392,400
		Level 2	410,200
		Level 3	490,600
		Level 4+	1,800
		No Level Assigned	539,500

Table 16: Adult (19+) FE and Skills Participation by Level (2011/12 – early estimates) – Learner Volumes

		<b>Funded Learners</b>	
		<b>2011/12</b>	
		<b>August to October</b>	
		<b>(provisional)</b>	
<b>Level</b>			
<b>Total Learners</b>		<b>1,562,700</b>	
<b>Participation</b>	<b>of which...</b>	Below Level 2 (excluding Skills for Life)	202,300
		Skills for Life	598,000
		Full Level 2	529,800
		Full Level 3	345,200
		Level 2	653,700
		Level 3	367,900
		Level 4+	21,300
		No Level Assigned	323,200

Table 17: All Age FE and Skills Participation by Level (2011/12 – early estimates) – Learner Volumes

		<b>Funded Learners</b>	
		<b>2011/12</b>	
		<b>August to October</b>	
		<b>(provisional)</b>	
<b>Level</b>			
<b>Total Learners</b>		<b>2,453,600</b>	
<b>Participation</b>	<b>of which...</b>	Below Level 2 (excluding Skills for Life)	472,500
		Skills for Life	945,900
		Full Level 2	785,100
		Full Level 3	737,600
		Level 2	1,063,900
		Level 3	858,500
		Level 4+	23,100
		No Level Assigned	862,700

**Notes**

1) These tables include Apprenticeships, Workplace Learning, Community Learning and Education and Training provision taken at General Further Education Colleges (including Tertiary), Sixth Form Colleges, Special Colleges (Agricultural and Horticultural Colleges and Art and Design Colleges), Specialist Colleges and External Institutions.

2) These tables show early estimates for 2011/12. Tables 2, 7 and 10 show full year volumes for previous years. It is not possible to directly compare provisional 2011/12 estimates with figures for previous years.

3) 71,300 learners benefitted from support for the unemployed (those nearest the workforce). These are defined as those learners reporting that they were in receipt of Employment and Support Allowance or Jobseeker's Allowance.

4) Please see the general footnotes and FE and Skills footnotes section for further information on these tables.

**Table 18.1: All Age Apprenticeship Programme Starts by Level and Age (2011/12 – early estimates)**

	Age	2011/12 Quarter 1 (provisional)
Intermediate Level Apprenticeship	Under 19	36,600
	19-24	27,200
	25+	32,700
	<b>Total</b>	<b>96,500</b>
Advanced Level Apprenticeship	Under 19	16,900
	19-24	16,800
	25+	20,100
	<b>Total</b>	<b>53,900</b>
Higher Apprenticeship	Under 19	100
	19-24	700
	25+	500
	<b>Total</b>	<b>1,300</b>
All Apprenticeships	Under 19	53,700
	19-24	44,700
	25+	53,300
	<b>Total</b>	<b>151,700</b>

**Table 18.2: All Age Apprenticeship Framework Achievements by Level and Age (2011/12 – early estimates)**

	Age	2011/12 Quarter 1 (provisional)
Intermediate Level Apprenticeship	Under 19	11,400
	19-24	10,500
	25+	8,600
	<b>Total</b>	<b>30,600</b>
Advanced Level Apprenticeship	Under 19	4,700
	19-24	6,200
	25+	4,300
	<b>Total</b>	<b>15,300</b>
Higher Apprenticeship	Under 19	-
	19-24	300
	25+	100
	<b>Total</b>	<b>400</b>
All Apprenticeships	Under 19	16,100
	19-24	17,000
	25+	13,100
	<b>Total</b>	<b>46,200</b>

**Notes**

1) This table shows early estimates for 2011/12. Apprenticeship starts and achievements figures for earlier years are available in Table 8 of this release. It is not possible to directly compare provisional 2011/12 estimates with figures for previous years.

2) Table 18.1 includes 200 Apprenticeship starts that were previously on the Access to Apprenticeship programme.

3) Please see the general footnotes and the Apprenticeships footnotes section for further information on these tables.

**Table 19.1: Workplace Learning Starts by Level (2011/12 – early estimates)**

Level	2011/12 Quarter 1 (provisional)
<b>Total</b>	<b>57,100</b>
<b>of which</b> Below Level 2	7,000
Level 2	43,300
Level 3	6,500
Level 4+	200
No Level Assigned	-
Below Level 2 (excluding Skills for Life)	600
Skills for Life	10,500
Full Level 2	39,000
Full Level 3	6,500

**Table 19.2: Workplace Learning Achievements by Level (2011/12 – early estimates)**

Level	2011/12 Quarter 1 (provisional)
<b>Total</b>	<b>52,300</b>
<b>of which</b> Below Level 2	3,900
Level 2	38,800
Level 3	9,200
Level 4+	300
No Level Assigned	-
Below Level 2 (excluding Skills for Life)	200
Skills for Life	6,600
Full Level 2	35,900
Full Level 3	9,200

**Notes**

1) These tables show provisional estimates for 2011/12. Table 19.2 includes achievements for Workplace Learning qualifications which were started prior to 2010/11. Figures for earlier years are available in Table 5 of this release. It is not possible to directly compare provisional 2011/12 estimates with figures for previous years.

2) Skills for Life starts and achievements can be at Level 2 or Below Level 2.

3) These tables include some learners aged under 19 who are eligible for funding on certain Workplace Learning programmes.

4) Table 19.1 includes 1,100 starts on the Access to Apprenticeship programme.

5) Please see the general footnotes and the Workplace Learning footnotes section for further information on these tables.



Table 20: Young People (Under 19) FE and Apprenticeship – Skills for Life Participation by Level (2011/12 – early estimates) – Learner Volumes

Measure	Level	Funded Learners
		2011/12 August to October (provisional)
Participation	<b>Total Learners</b>	<b>347,900</b>
	of which literacy	249,200
	of which entry level	62,900
	of which level 1	113,800
	of which level 2	77,800
	of which numeracy	236,100
	of which entry level	65,500
	of which level 1	106,000
	of which level 2	69,600
	of which ESOL (English for Speakers of Other Languages)	9,100
	of which entry level	7,500
	of which level 1	1,400
	of which level 2	400

Table 21: Adult (19+) FE and Skills – Skills for Life Participation by Level (2011/12 – early estimates) – Learner Volumes

Measure	Level	Funded Learners
		2011/12 August to October (provisional)
Participation	<b>Total Learners</b>	<b>598,000</b>
	of which literacy	422,600
	of which entry level	54,200
	of which level 1	198,500
	of which level 2	176,100
	of which numeracy	420,400
	of which entry level	48,500
	of which level 1	213,300
	of which level 2	167,400
	of which ESOL (English for Speakers of Other Languages)	84,400
	of which entry level	69,200
	of which level 1	11,600
	of which level 2	4,300

Table 22: All Age FE and Skills – Skills for Life Participation by Level (2011/12 – early estimates) – Learner Volumes

Measure	Level	Funded Learners
		2011/12 August to October (provisional)
Participation	<b>Total Learners</b>	<b>945,900</b>
	of which literacy	671,800
	of which entry level	117,100
	of which level 1	312,300
	of which level 2	254,000
	of which numeracy	656,500
	of which entry level	114,000
	of which level 1	319,300
	of which level 2	237,000
	of which ESOL (English for Speakers of Other Languages)	93,600
	of which entry level	76,700
	of which level 1	12,900
	of which level 2	4,600

**Notes**

1) These tables show early estimates for 2011/12. Skills for Life participation and achievement figures for earlier years are available in Tables 4, 9 and 11 of this release. It is not possible to directly compare provisional 2011/12 estimates with figures for previous years.

2) Please see the general footnotes section for further information on this table.

**Table 23: Community Learning Participation by Type (2011/12 – early estimates) – Learner Volumes**

Measure	Provision Type	Funded Learners
		2011/12 August to October (provisional)
	<b>Total Learners</b>	<b>237,900</b>
<b>Participation</b>	of which Personal and Community Development Learning	199,900
	of which Neighbourhood Learning in Deprived Communities	8,100
	of which Family Literacy, Language and Numeracy	15,600
	of which Wider Family Learning	16,300

**Notes**

1) These tables show early estimates for 2011/12. Community Learning participation and achievement figures for earlier years are available in Table 6 of this release. It is not possible to directly compare provisional 2011/12 estimates with figures for previous years.

2) Please see the general footnotes and the Community Learning footnotes section for further information on these tables.