



24th May 2012

Coverage: England

Theme: Children,
Education and Skills

OSR 09/2012

Issued by
Department for Education
Sanctuary Buildings
Great Smith Street
London SW1P 3BT

Telephone:
Press Office
020 7925 6789
Public Enquiries
0870 000 2288

Statistician
Emily Uttley
0114 274 2442
Email
info@education.gsi.gov.uk

Internet
<http://www.education.gov.uk/rsgateway/DB/STR/d001064/index.shtml>

NEET Statistics - Quarterly Brief – Quarter 1 2012 May 2012

Introduction

This note sets out the available statistics on young people not in education, employment or training (NEET) and young people not in education or training (NET) from three data sources:

i) Statistical First Release (SFR)

These are the authoritative national estimates of NEET and NET rates. They are published annually in the 'Participation in Education, Training and Employment by 16-18 Year Olds in England' SFR. These data are only available annually and cannot be disaggregated to sub-national levels.

ii) Quarterly Labour Force Survey (LFS)

Analysis of the LFS allows in-year estimates to be made of NEET and NET trends as well as estimates for other age groups, including 16-24, 18-24 and 19-24. The quarterly LFS estimates cannot be directly compared with the headline SFR series which is based on more detailed but less timely data.

The most recent LFS based estimates for NEET are from Quarter 1 2012 which are shown in following table.

Table: NEET rates for different age cohorts

	Quarter 1 2010	Quarter 1 2011	Quarter 1 2012	% point change from Q1 2011 to Q1 2012
Age 16	5.0%	5.0%	6.1%	+1.1
Age 17	8.8%	8.0%	9.0%	+1.0
Age 18	16.6%	12.0%	14.3%	+2.3
Age 16-18	10.1%	8.3%	9.8%	+1.5
Age 19-24	17.8%	18.5%	18.5%	0.0
Age 16-24	15.4%	15.3%	15.8%	+0.5

Source: Labour Force Survey Quarter 1

iii) Local Authorities' Client Caseload Information System (CCIS).

CCIS is the management information data that results from the duty for all Local Authorities to track the activity of young people aged 16-19 years old resident in their area. Data can be aggregated to provide estimates for regions within England.

The data from all three sources cover England.

Section 1- Trends. Focuses on the key trends in the NEET and NET data series for 16-18 year olds.

Section 2- Methodology and Notes. Explains the methodology used to derive the different series, and gives guidance on their usage.

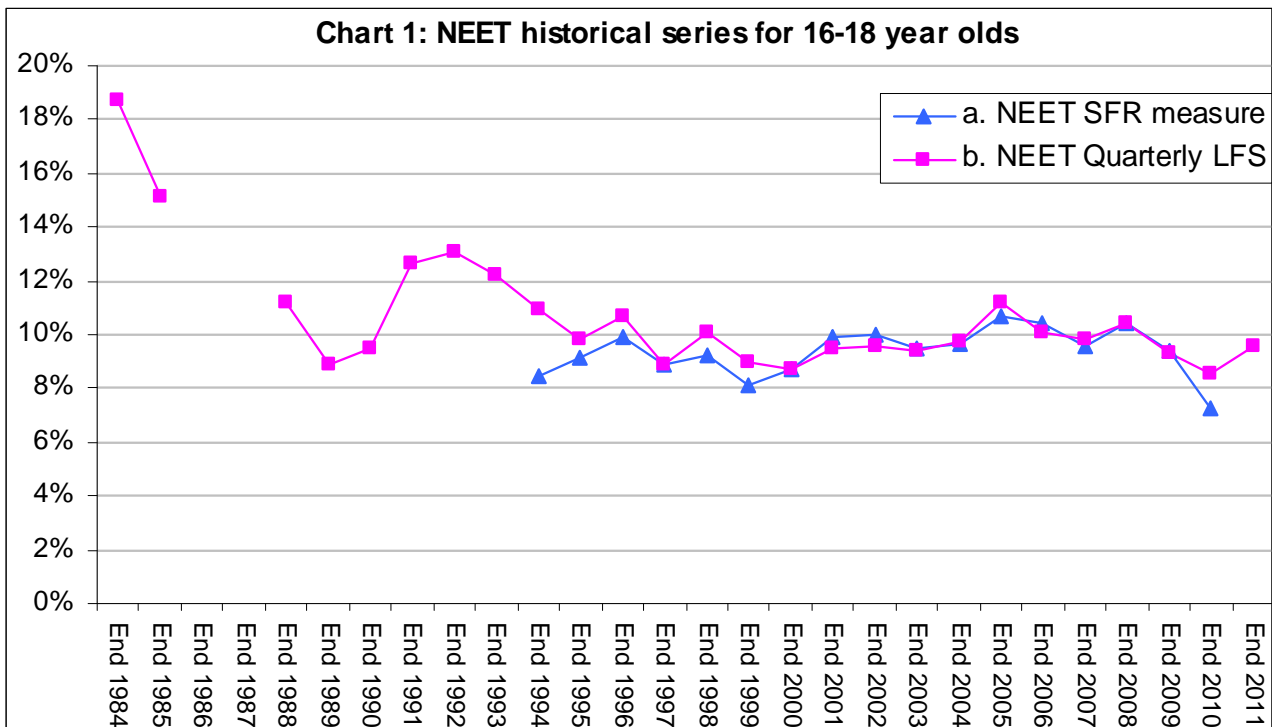
Section 3- Tables. Contains four tables showing numbers and percentages for the key data series on NET and NEET.

1. Trends

Historical Context

Understanding the historical trends in NEET rates is an important part of placing current performance in perspective. In order to do so, we have to use historical LFS data that is not directly comparable with any other series in this note, and so should be used as context only. Unfortunately, due to data issues, estimates for 1986 and 1987 are unavailable. The chart below also shows the NEET SFR measure for comparison.

The current proportion of young people aged 16-18 who are NEET is much lower than in the 1980s, and has declined since a recent peak in 2005.



Source: Statistical First Release (SFR) 'Participation in Education, Training and Employment by 16-18 Year Olds in England' and analysis of Labour Force Survey (LFS).

Note on LFS estimates:

Annual data sets are used for 1984 to 1991.

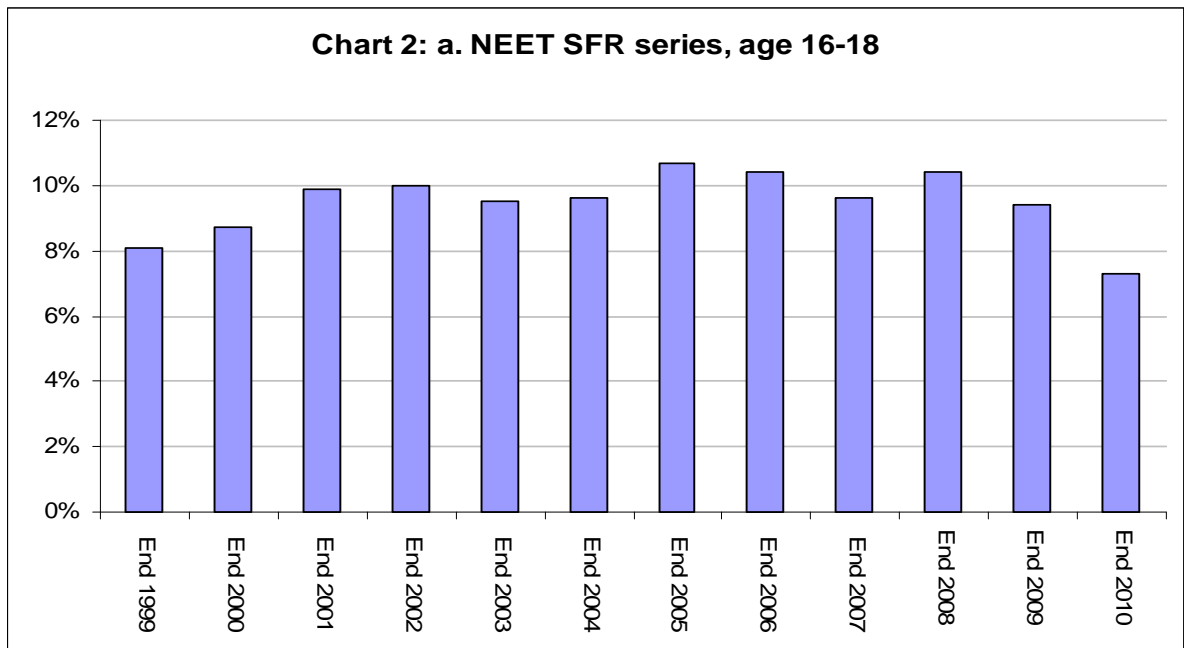
Quarter 4 data is used from 1992 onwards.

Between 1992 and 1994 the data does not exclude individuals answering yes to the qulnow variable, and between 1995 and 1999 individuals sampled in December were not asked the qulnow variable. This may mean that between 1992 and 1999 the proportion NEET is very slightly over-estimated.

a. NEET SFR series (last updated June 2011)

The Department's Statistical First Release (SFR) 'Participation in Education, Training and Employment by 16-18 Year Olds in England' is the primary source of national data on 16-18 year olds NEET.

The latest SFR NEET rate for 16-18 year olds, at end 2010, was 7.3 percent; the lowest level since consistent records began in 1994. This was partially due to the first year-on-year increase in the employment rate for 16-18 year olds not in education or training since 2007. Participation in education and training continued to rise: between 2002 and 2010 participation in education and training amongst 16-18 year olds rose every year, causing the size of the NET group to fall from 25.0% to 15.6%. Previously, the proportion of the cohort which was NEET had remained broadly stable (at around 10%). This was because the increase in the proportion of 16-18 year olds in education and training was counter-balanced by a fall in the proportion of 16-18 year olds in employment.

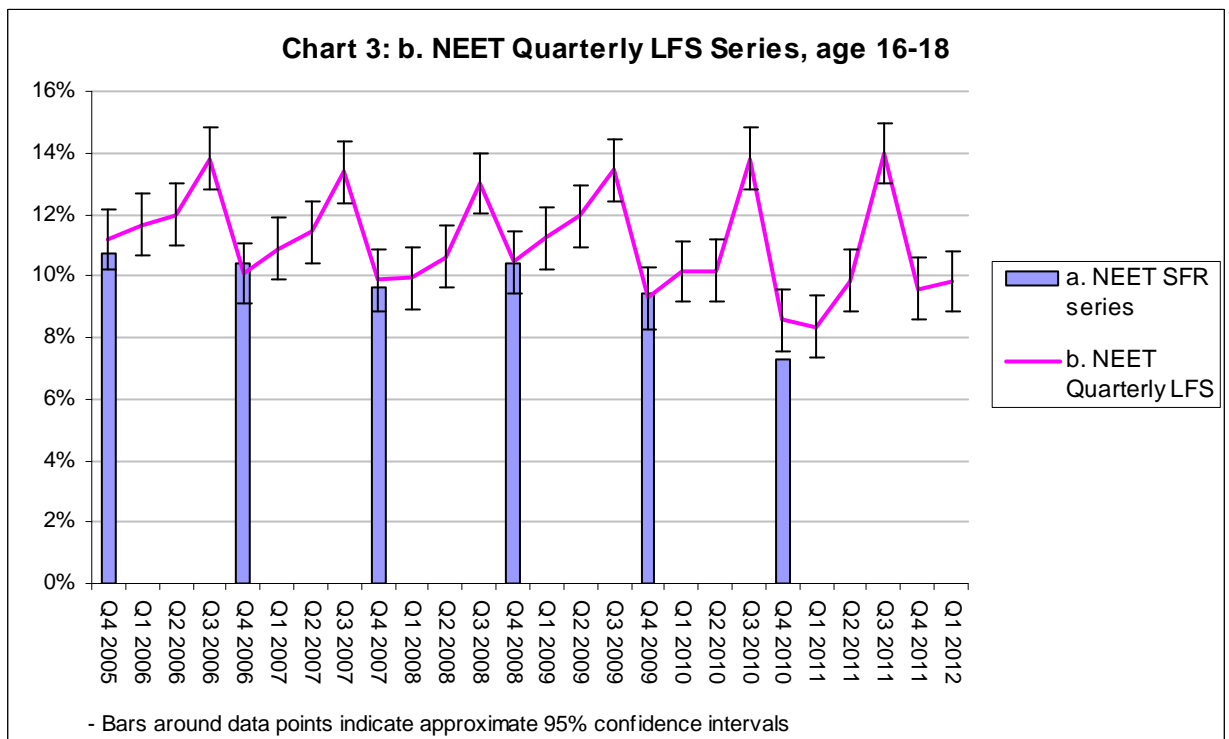


Source Statistical First Release (SFR) 'Participation in Education, Training and Employment by 16-18 Year Olds in England'

b. NEET quarterly LFS series (last updated May 2012)

We can monitor trends in NEET rates between the publications of the SFR series using quarterly LFS data.

The trend data for 16-18 year olds shows seasonal patterns that reflect the academic year: lower rates in autumn (Quarter 4, October to December) followed by a gradual rise in spring and early summer (Quarters 1 & 2, January to June) with a peak in late summer (Quarter 3, July to September).



Source: Quarterly Labour Force Survey

The latest data show that the proportion of 16-18 year olds NEET increased by 1.5 percentage points, to 9.8% in the first quarter of 2012, compared to the first quarter of 2011. This increase is statistically significant.

The proportion of 16-18 year olds NET was stable between Quarter 1 2011 and Quarter 1 2012 (see section 1.e.). As such we can explain the increase in the proportion of 16-18 year olds NEET by a falling employment rate for young people not in education and training over that period – it fell from 50% to 41%, a decrease that is statistically significant.

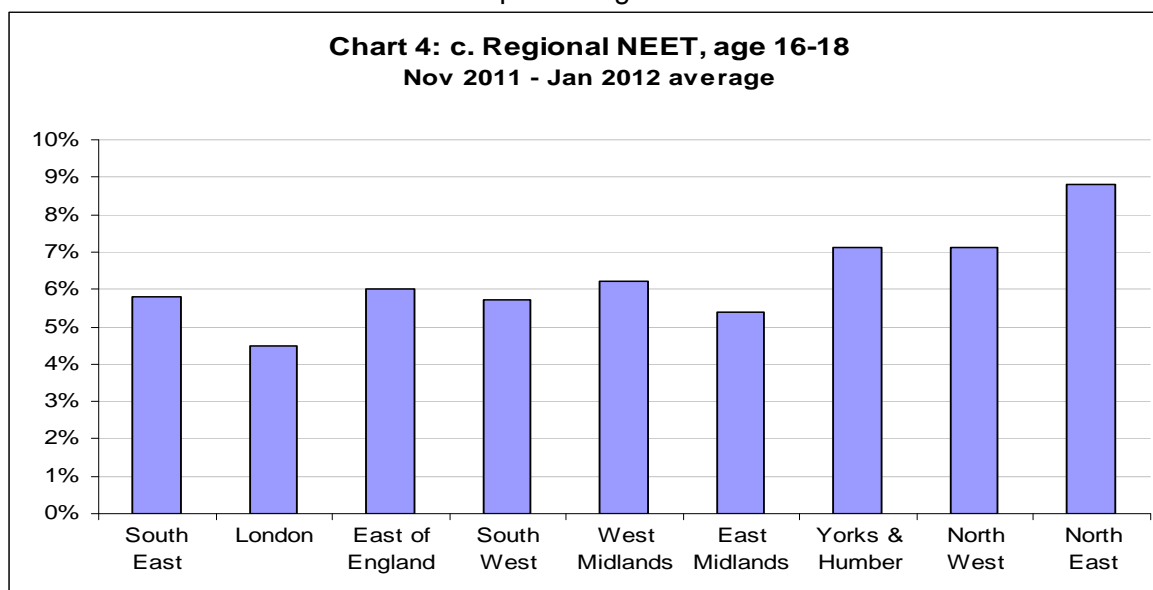
There is some evidence for an increasing seasonality in the NEET data. Comparing Q4 troughs to the following Q3 peak (and so, roughly, the same cohort of young people), the difference averaged 3.0 percentage points from 2001 to 2009, with a range of 2.5-3.5 percentage points. From Q4 2009 to Q3 2010 the difference was 4.5 percentage points, increasing further from Q4 2010 to Q3 2011 to 5.4 percentage points.

c. Regional NEET (last updated April 2012)

The regional picture on 16-18 NEET is taken from Local Authorities' Client Caseload Information System (CCIS).

CCIS data indicates that the northern regions have higher NEET rates, i.e. Yorkshire and Humberside, North West and North East, within England. In comparison, London and East Midlands have the lowest NEET rates.

Note that CCIS data tend to show a lower percentage NEET than either the SFR or LFS data sources.

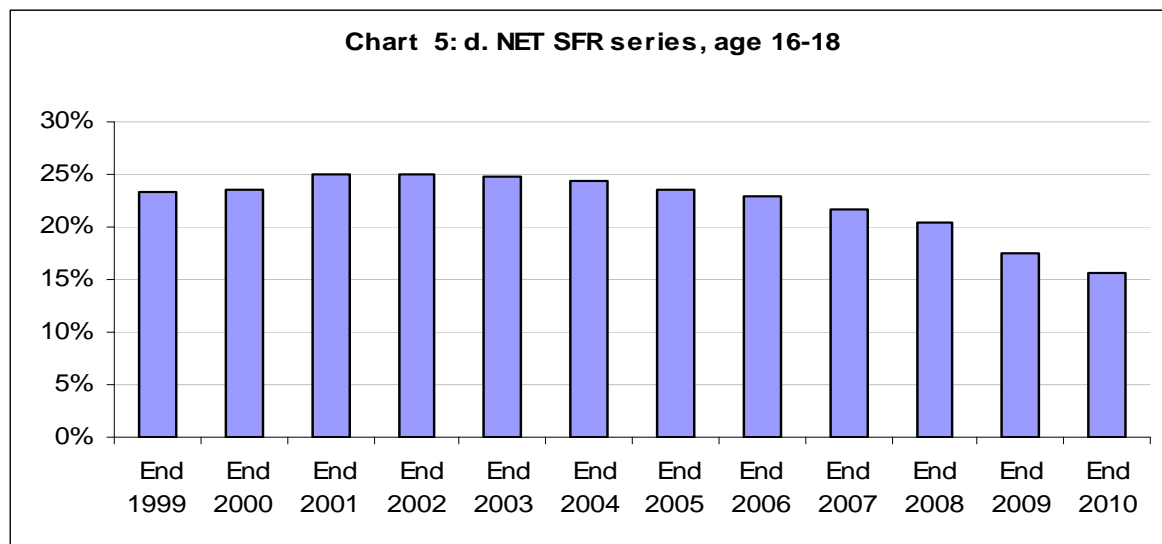


Source: Client Caseload Information System

Note: Local Authority CCIS data are published annually on the DfE website: [Link Here](#); regional NEET estimates for 16-24 year olds based on the LFS are now published as supplementary tables alongside this Quarterly Brief: [Link Here](#).

d. NET SFR series (last updated June 2011)

When looking at NEET data, it is also important to contextualise it with data on the proportion of young people not in education or training (NET). These data are also taken from the SFR 'Participation in Education, Training and Employment by 16-18 Year Olds in England'.



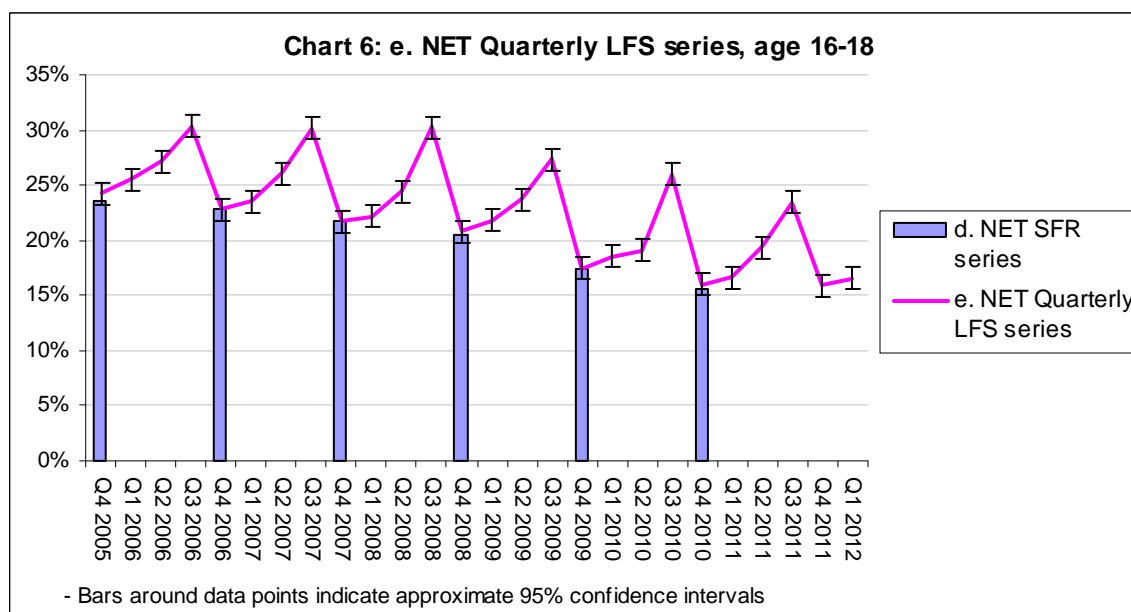
Source: Statistical First Release (SFR) 'Participation in Education, Training and Employment by 16-18 Year Olds in England'

The latest data, for end 2010, showed the lowest level of the SFR NET rate for 16-18 year olds since consistent records began in 1994, and the eighth successive annual fall since 2002.

e. NET quarterly LFS series (last updated May 2012)

As with the NEET data, we can look at the in-year NET trend data using the quarterly LFS. The same seasonal pattern to the NET figures exists as in the NEET series.

The proportion of 16-18 year olds NET remained stable at 16.6% in the first quarter of 2012; it decreased by less than 0.1 percentage points, compared to the first quarter of 2011.



Source: Quarterly Labour Force Survey

2. Methodology and Notes

a. NEET and NET SFR series

Description	These data give the definitive measures for 16-18 NEET and NET rates in England.
Uses	These series should be used as the national time series for 16-18 year olds NEET and NET in England. The NET series should be used as context for any NEET data.
Geographical Coverage	England
Age coverage	Academic age 16 to 18
Published source	Statistical First Release (SFR) 'Participation in Education, Training and Employment by 16-18 Year Olds in England'
Primary sources	The Schools' Census Pupil Level Annual Schools' Census The Individualised Learner Record (ILR) Higher Education Statistics Agency (HESA). Higher Education Students Early Statistics (HESES) Labour Force Survey Mid-year estimates and projections of population from the Office for National Statistics (ONS) and the Government Actuary's Department (GAD).
Last period covered	End 2010
Last published	June 2011
Next published	June 2012

b. NEET and NET quarterly LFS series

Description	These series are quarterly estimates of NEET and NET amongst young people from the LFS. It is not directly comparable with the SFR measure.
Uses	These series provide more timely data on the recent trends in NEET and NET since the last SFR. Trends should be assessed by comparing the current quarter with the same quarter in the previous year to account for seasonal effects. Quarter on quarter changes, i.e. Quarter 4 to Quarter 1, should not be quoted. The NET series should be used as context for any NEET data.
Geographical coverage	England
Age coverage	Academic age 16 to 24
Published source	Quarterly Labour Force Survey
Primary sources	Quarterly Labour Force Survey
Last Period Covered	Quarter 1 2012
Last published	May 2012
Next published	August 2012

c. Regional NEET

Description	<p>This series is a 3 month average snapshot estimate of the regional NEET rate taken from the Local Authority Client Caseload Information System (CCIS) data. It is neither directly comparable with the LFS nor the SFR series due to the use of 'currency' rules. The activity status of young people in education or employment is not actively checked every month, but has a shelf life depending on the type of educational course or the nature of the employment. For young people whose currency is lapsed a historical assumption is made on the proportion NEET, taking into account their previously reported activity.</p> <p>Full details are published in a technical specification available here: NCCIS management information requirement</p> <p>The combination of both factors leads to estimates of NEET in the CCIS data that tend to be lower than those estimated from the LFS or those reported in the annual Statistical First Release (SFR).</p>
Uses	This series shows the data, aggregated in regions, used by Local Authorities to inform local activity and target setting.
Geographical Coverage	England
Age coverage	Academic age 16 to 18 (previously calendar age)
Published source	Management information published on the DfE website as policy data: 16- to 18-year-olds NEET
Primary sources	Client Caseload Information System (CCIS)
Last Period Covered	November 2011 – January 2012 average.
Last published	April 2012
Next published	TBA

d. Equivalent statistics from the Welsh Assembly Government, Scottish Government and the Office for National Statistics (ONS)

	Welsh Assembly Government (WG)	Scottish Government (SG)	Office for National Statistics (ONS)
Description	1. Annual SFR statistics produced in a method analogous to the DfE annual SFR.	1. Statistics based on the Annual Population Survey (APS).	Monthly Labour Force Survey (LFS) statistics for young people not in full-time education and not in employment -Table 14 from the Labour Market Statistics bulletin.
	2. Statistics based on the Annual Population Survey (APS). Definition of NEET corresponds to that used in the DfE NEET Quarterly Brief	2. Annual school leaver statistics	
	3. Pupil destinations based on Careers Wales Survey.	3. Combination of DWP benefits data and school leaver destinations	
Uses	1. Regarded as the definitive measure of headline NEET estimates in Wales.	1. National estimates of NEET.	Part of wider labour market statistics; rolling 3-month average both seasonally-adjusted and not seasonally-adjusted; roughly equivalent to NEET but will include some young people in part-time education.
	2. Timely data; regional or single-age estimates based on averaging 3 years of data.	2. Proportion of young people in 'positive destinations'. The complement is roughly equivalent to NEET, but will include some young people in part-time education.	
	3. Local area estimates of NEET.	3. Local area estimates of NEET.	
Geographical Coverage	Wales	Scotland	United Kingdom (UK)
Age coverage	Academic age 16-18, 19-24 (SFR); academic age 16-18, 19-24 (APS); interviews in October following Year 11 (Careers Wales)	Actual age 16-19.	Actual age 16-17 and 18-24.
Published source	1. Welsh Government Participation of Young People in Education and the Labour Market, 2009 and 2010 (provisional)	1. Local Area Labour Markets in Scotland: Statistics from the Annual Population Survey 2009	Labour Market Statistics - May 2012
	2. Young People Not in Education, Employment or Training (NEET), Year to 30 September 2011	2. Summary statistics for attainment, leaver destinations and school meals, No. 1: 2011 Edition	
	3. Pupil Destinations from Schools in Wales, 2011	3. More Choices More Chances	

3. Tables

Table 1(a to c): Not in Employment, Education, or Training (NEET)						Numbers		
a. NEET SFR series	16 year olds	17 year olds	18 year olds	16-17 year olds	16-18 year olds	16-24 year olds	18-24 year olds	19-24 year olds
End 1999	40,600	42,500	62,400	83,100	145,500			
End 2000	40,700	44,200	71,300	84,800	156,100			
End 2001	48,500	58,900	75,000	107,400	182,400			
End 2002	49,100	57,800	81,500	106,900	188,400			
End 2003	49,800	49,400	85,000	99,100	184,200			
End 2004	48,700	60,600	80,800	109,300	190,100			
End 2005	50,400	70,100	93,100	120,500	213,600			
End 2006	44,700	64,900	100,300	109,600	209,800			
End 2007	36,700	61,700	94,400	98,400	192,800			
End 2008	33,100	60,800	116,300	93,900	210,200			
End 2009	24,500	47,900	114,600	72,300	186,900			
End 2010	14,200	43,500	84,100	57,700	141,800			
<i>Source: Labour Force Survey and Admin Data</i>			<i>Period: End 1999 to End 2010</i>					
b. NEET Quarterly LFS series	16 year olds	17 year olds	18 year olds	16-17 year olds	16-18 year olds	16-24 year olds	18-24 year olds	19-24 year olds
Q1 2007	55,000	62,000	95,000	117,000	212,000	829,000	712,000	617,000
Q2 2007	56,000	67,000	99,000	123,000	222,000	835,000	712,000	613,000
Q3 2007	60,000	98,000	103,000	158,000	262,000	911,000	753,000	649,000
Q4 2007	45,000	59,000	88,000	104,000	192,000	783,000	679,000	591,000
Q1 2008	42,000	63,000	89,000	104,000	193,000	811,000	707,000	618,000
Q2 2008	45,000	65,000	99,000	110,000	209,000	840,000	730,000	631,000
Q3 2008	53,000	100,000	102,000	153,000	256,000	971,000	818,000	716,000
Q4 2008	47,000	55,000	104,000	102,000	206,000	853,000	751,000	647,000
Q1 2009	42,000	66,000	112,000	108,000	220,000	929,000	821,000	709,000
Q2 2009	52,000	74,000	109,000	125,000	234,000	954,000	829,000	719,000
Q3 2009	56,000	93,000	113,000	150,000	262,000	1,074,000	925,000	812,000
Q4 2009	34,000	49,000	94,000	84,000	178,000	896,000	812,000	718,000
Q1 2010	31,000	59,000	104,000	91,000	195,000	928,000	837,000	733,000
Q2 2010	30,000	68,000	98,000	98,000	197,000	872,000	774,000	675,000
Q3 2010	41,000	100,000	124,000	141,000	265,000	1,026,000	884,000	761,000
Q4 2010	32,000	41,000	90,000	73,000	162,000	939,000	867,000	777,000
Q1 2011	32,000	50,000	77,000	82,000	159,000	925,000	844,000	766,000
Q2 2011	40,000	54,000	91,000	95,000	186,000	979,000	885,000	794,000
Q3 2011	55,000	95,000	117,000	150,000	267,000	1,163,000	1,013,000	896,000
Q4 2011	36,000	49,000	93,000	85,000	178,000	958,000	873,000	780,000
Q1 2012	37,000	57,000	89,000	94,000	183,000	954,000	860,000	771,000
<i>Source: Labour Force Survey</i>			<i>Period: Q1 2007 to Q1 2012 time series</i>					
c. Regional NEET	16 year olds	17 year olds	18 year olds	16-17 year olds	16-18 year olds	16-24 year olds	18-24 year olds	19-24 year olds
South East								
London								
East of England								
South West								
West Midlands								
East Midlands								
Yorks & Humber								
North West								
North East								
<i>Source: Client Caseload Information System</i>			<i>Period: Nov 2011 - Jan 2012 average</i>					

Table 2 (d to e): Not in Education and Training (NET)					Numbers			
d. NET SFR series	16 year olds	17 year olds	18 year olds	16-17 year olds	16-18 year olds	16-24 year olds	18-24 year olds	19-24 year olds
End 1999	77,500	111,600	226,200	189,200	415,400			
End 2000	82,700	116,300	222,400	198,900	421,300			
End 2001	90,500	132,600	236,100	223,100	459,200			
End 2002	85,300	139,900	247,700	225,200	472,900			
End 2003	85,300	133,200	261,300	218,500	479,800			
End 2004	84,300	136,700	259,100	220,900	480,100			
End 2005	76,000	134,500	258,900	210,400	469,300			
End 2006	71,300	126,400	264,200	197,700	461,900			
End 2007	63,100	119,600	254,700	182,700	437,400			
End 2008	46,800	110,300	258,000	157,100	415,100			
End 2009	30,800	79,600	238,600	110,400	348,900			
End 2010	18,400	65,100	219,600	83,500	303,100			
<i>Source: Labour Force Survey and Admin Data</i>					<i>Period: End 1999 to End 2010</i>			
e. NET Quarterly LFS series	16 year olds	17 year olds	18 year olds	16-17 year olds	16-18 year olds	16-24 year olds	18-24 year olds	19-24 year olds
Q1 2007	87,000	121,000	250,000	208,000	458,000	2,785,000	2,577,000	2,327,000
Q2 2007	100,000	135,000	271,000	235,000	506,000	2,892,000	2,657,000	2,386,000
Q3 2007	96,000	214,000	279,000	310,000	589,000	3,115,000	2,806,000	2,527,000
Q4 2007	70,000	117,000	236,000	187,000	424,000	2,797,000	2,610,000	2,374,000
Q1 2008	71,000	121,000	240,000	192,000	432,000	2,796,000	2,604,000	2,364,000
Q2 2008	77,000	141,000	262,000	218,000	480,000	2,920,000	2,702,000	2,440,000
Q3 2008	87,000	216,000	291,000	303,000	594,000	3,230,000	2,927,000	2,635,000
Q4 2008	62,000	102,000	246,000	164,000	410,000	2,807,000	2,643,000	2,397,000
Q1 2009	59,000	120,000	247,000	179,000	427,000	2,822,000	2,643,000	2,395,000
Q2 2009	71,000	135,000	259,000	206,000	466,000	2,884,000	2,678,000	2,418,000
Q3 2009	79,000	174,000	281,000	252,000	534,000	3,120,000	2,868,000	2,586,000
Q4 2009	42,000	82,000	209,000	124,000	333,000	2,725,000	2,601,000	2,392,000
Q1 2010	39,000	99,000	218,000	138,000	356,000	2,748,000	2,610,000	2,392,000
Q2 2010	41,000	109,000	219,000	150,000	369,000	2,765,000	2,615,000	2,396,000
Q3 2010	57,000	180,000	263,000	236,000	499,000	3,129,000	2,892,000	2,630,000
Q4 2010	40,000	62,000	202,000	102,000	304,000	2,786,000	2,684,000	2,482,000
Q1 2011	42,000	74,000	202,000	116,000	318,000	2,777,000	2,661,000	2,459,000
Q2 2011	53,000	98,000	215,000	151,000	366,000	2,971,000	2,821,000	2,605,000
Q3 2011	74,000	149,000	224,000	223,000	447,000	3,149,000	2,927,000	2,702,000
Q4 2011	44,000	72,000	178,000	116,000	294,000	2,728,000	2,612,000	2,434,000
Q1 2012	44,000	79,000	185,000	123,000	309,000	2,730,000	2,606,000	2,421,000
<i>Source: Labour Force Survey</i>					<i>Period: Q1 2007 to Q1 2012 time series</i>			

Table 3 (a to c): Not in Employment, Education, or Training (NEET)						Percentage		
a. NEET SFR series	16 year olds	17 year olds	18 year olds	16-17 year olds	16-18 year olds	16-24 year olds	18-24 year olds	19-24 year olds
End 1999	6.8%	7.2%	10.4%	7.0%	8.1%			
End 2000	6.7%	7.4%	12.2%	7.0%	8.7%			
End 2001	7.7%	9.6%	12.5%	8.6%	9.9%			
End 2002	7.8%	9.0%	13.1%	8.4%	10.0%			
End 2003	7.7%	7.7%	13.0%	7.7%	9.5%			
End 2004	7.3%	9.3%	12.4%	8.3%	9.6%			
End 2005	7.7%	10.4%	14.0%	9.1%	10.7%			
End 2006	6.7%	9.8%	14.7%	8.2%	10.4%			
End 2007	5.5%	9.2%	14.0%	7.3%	9.6%			
End 2008	5.0%	9.0%	17.0%	7.0%	10.4%			
End 2009	3.8%	7.2%	16.7%	5.5%	9.4%			
End 2010	2.3%	6.8%	12.4%	4.5%	7.3%			
<i>Source: Labour Force Survey and Admin Data</i>			<i>Period: End 1999 to End 2010</i>					
b. NEET Quarterly LFS series	16 year olds	17 year olds	18 year olds	16-17 year olds	16-18 year olds	16-24 year olds	18-24 year olds	19-24 year olds
Q1 2007	8.2%	9.8%	14.6%	9.0%	10.9%	14.1%	15.6%	15.7%
Q2 2007	8.7%	10.5%	14.9%	9.6%	11.4%	14.2%	15.5%	15.6%
Q3 2007	9.2%	14.6%	16.3%	12.0%	13.4%	15.4%	16.4%	16.4%
Q4 2007	6.9%	9.0%	13.7%	8.0%	9.9%	13.2%	14.6%	14.8%
Q1 2008	6.3%	9.6%	14.0%	8.0%	9.9%	13.6%	15.2%	15.4%
Q2 2008	7.0%	9.7%	15.1%	8.4%	10.6%	14.0%	15.5%	15.6%
Q3 2008	8.5%	14.8%	15.5%	11.8%	13.0%	16.2%	17.4%	17.7%
Q4 2008	7.4%	8.3%	15.4%	7.9%	10.5%	14.2%	15.9%	16.0%
Q1 2009	6.5%	10.0%	17.1%	8.3%	11.2%	15.5%	17.6%	17.6%
Q2 2009	8.0%	11.2%	16.5%	9.6%	11.9%	15.9%	17.6%	17.8%
Q3 2009	8.8%	14.6%	16.7%	11.7%	13.4%	18.0%	19.7%	20.2%
Q4 2009	5.6%	7.4%	14.8%	6.5%	9.3%	14.9%	17.2%	17.5%
Q1 2010	5.0%	8.8%	16.6%	7.0%	10.1%	15.4%	17.6%	17.8%
Q2 2010	4.9%	10.2%	15.0%	7.7%	10.2%	14.4%	16.3%	16.5%
Q3 2010	6.7%	14.9%	19.5%	11.0%	13.8%	17.1%	18.7%	18.6%
Q4 2010	5.0%	6.6%	13.9%	5.8%	8.6%	15.6%	18.2%	18.8%
Q1 2011	5.0%	8.0%	12.0%	6.5%	8.3%	15.3%	17.7%	18.5%
Q2 2011	6.3%	8.8%	14.3%	7.6%	9.8%	16.2%	18.4%	19.1%
Q3 2011	8.7%	15.1%	18.1%	11.9%	14.0%	19.2%	21.1%	21.5%
Q4 2011	6.0%	7.8%	14.9%	6.9%	9.6%	15.9%	18.2%	18.7%
Q1 2012	6.1%	9.0%	14.3%	7.6%	9.8%	15.8%	18.0%	18.5%
<i>Source: Labour Force Survey</i>			<i>Period: Q1 2007 to Q1 2012 time series</i>					
c. Regional NEET	16 year olds	17 year olds	18 year olds	16-17 year olds	16-18 year olds	16-24 year olds	18-24 year olds	19-24 year olds
South East	3.7%	5.8%	7.9%	4.8%	5.8%			
London	2.5%	4.5%	6.3%	3.6%	4.5%			
East of England	3.8%	6.0%	8.4%	4.9%	6.0%			
South West	3.6%	5.7%	7.9%	4.7%	5.7%			
West Midlands	3.9%	6.0%	8.8%	5.0%	6.2%			
East Midlands	3.6%	5.4%	7.7%	4.5%	5.4%			
Yorks & Humber	4.9%	7.3%	9.2%	6.1%	7.1%			
North West	4.5%	7.1%	9.8%	5.8%	7.1%			
North East	5.2%	8.7%	12.6%	6.9%	8.8%			
<i>Source: Client Caseload Information System</i>			<i>Period: Nov 2011 - Jan 2012 average</i>					

Table 4 (d to e): Not in Education and Training (NET)						Percentage		
d. NET SFR series	16 year olds	17 year olds	18 year olds	16-17 year olds	16-18 year olds	16-24 year olds	18-24 year olds	19-24 year olds
End 1999	12.9%	18.9%	37.9%	15.9%	23.3%			
End 2000	13.6%	19.4%	38.0%	16.5%	23.5%			
End 2001	14.3%	21.6%	39.2%	17.9%	24.9%			
End 2002	13.5%	21.9%	39.8%	17.7%	25.0%			
End 2003	13.2%	20.8%	40.1%	17.0%	24.8%			
End 2004	12.7%	20.9%	39.8%	16.7%	24.4%			
End 2005	11.6%	20.0%	38.9%	15.8%	23.5%			
End 2006	10.7%	19.0%	38.7%	14.9%	22.9%			
End 2007	9.4%	17.8%	37.8%	13.6%	21.7%			
End 2008	7.1%	16.3%	37.7%	11.7%	20.5%			
End 2009	4.8%	11.9%	34.7%	8.5%	17.5%			
End 2010	2.9%	10.1%	32.5%	6.6%	15.6%			
<i>Source: Labour Force Survey and Admin Data</i>			<i>Period: End 1999 to End 2010</i>					
e. NET Quarterly LFS series	16 year olds	17 year olds	18 year olds	16-17 year olds	16-18 year olds	16-24 year olds	18-24 year olds	19-24 year olds
Q1 2007	13.1%	19.1%	38.6%	16.0%	23.5%	47.4%	56.4%	59.3%
Q2 2007	15.5%	21.3%	40.8%	18.4%	26.0%	49.3%	57.9%	60.8%
Q3 2007	14.8%	31.7%	43.9%	23.5%	30.1%	52.7%	61.0%	63.8%
Q4 2007	10.8%	17.9%	36.7%	14.3%	21.7%	47.0%	56.1%	59.3%
Q1 2008	10.7%	18.7%	37.6%	14.7%	22.2%	47.0%	56.1%	59.0%
Q2 2008	12.0%	21.1%	40.1%	16.6%	24.4%	48.6%	57.5%	60.4%
Q3 2008	13.9%	32.0%	44.1%	23.3%	30.3%	53.8%	62.2%	65.2%
Q4 2008	9.7%	15.4%	36.6%	12.6%	20.8%	46.7%	56.1%	59.4%
Q1 2009	9.2%	18.2%	37.9%	13.7%	21.8%	47.2%	56.5%	59.5%
Q2 2009	11.1%	20.4%	39.2%	15.8%	23.7%	48.1%	57.0%	59.9%
Q3 2009	12.3%	27.1%	41.8%	19.7%	27.4%	52.2%	61.0%	64.3%
Q4 2009	6.8%	12.4%	32.9%	9.7%	17.4%	45.3%	55.0%	58.4%
Q1 2010	6.4%	14.6%	34.7%	10.7%	18.5%	45.5%	55.0%	58.1%
Q2 2010	6.7%	16.3%	33.5%	11.7%	19.1%	45.8%	54.9%	58.4%
Q3 2010	9.2%	26.8%	41.4%	18.4%	26.0%	52.1%	61.3%	64.4%
Q4 2010	6.3%	10.1%	31.3%	8.1%	16.0%	46.3%	56.3%	60.2%
Q1 2011	6.5%	11.9%	31.4%	9.1%	16.6%	45.9%	55.7%	59.5%
Q2 2011	8.3%	15.9%	33.7%	12.0%	19.3%	49.1%	58.8%	62.6%
Q3 2011	11.7%	23.5%	34.7%	17.6%	23.4%	51.8%	60.8%	64.9%
Q4 2011	7.3%	11.5%	28.6%	9.4%	15.9%	45.3%	54.5%	58.4%
Q1 2012	7.2%	12.7%	29.7%	9.9%	16.6%	45.3%	54.5%	58.2%
<i>Source: Labour Force Survey</i>			<i>Period: Q1 2007 to Q1 2012 time series</i>					

Additional tables are published with this brief – these show a regional breakdown of the quarterly NEET statistics for 16-24, 18-24 and 19-24 year olds, and time-series data from 2001. Please see the [DfE Q1 2012 NEET Quarterly Brief](#) web-page.