



Department
for Education

Special Educational Needs in England, January 2013

Methodology Document

Contents

1. Background	3
2. Methodology	4
2.1. Data cleaning	4
2.2. Data Processing	4
2.3. Production of Statistical First Release	4
2.4. Percentage calculations	5
3. Process Map	5
Annex A: Data validation rules for SEN2 survey	6

1. Background

Children have special educational needs if they have a learning difficulty which calls for special educational provision to be made for them. Children have a learning difficulty if they:

- a) have a significantly greater difficulty in learning than the majority of children of the same age
- b) have a disability which prevents or hinders them from making use of educational facilities of a kind generally provided for children of the same age in schools within the area of the local education authority
- c) are under compulsory school age and fall within the definition at (a) or (b) above or would so do if special educational provision was not made for them.

Children must not be regarded as having a learning difficulty solely because the language or form of language of their home is different from the language in which they will be taught.

Special educational provision means:

- a) for children of two or over, educational provision which is additional to, or otherwise different from, the educational provision made generally for children of their age in schools maintained by the local authority (LA), other than special schools, in the area
- (a) for children under two, educational provision of any kind.

The special educational needs of the great majority of children should be met effectively within mainstream settings through Early Years Action and Early Years Action Plus or School Action and School Action Plus, without the local education authority needing to make a statutory assessment. In a very small number of cases the LA will need to make a statutory assessment of special educational needs and then consider whether or not to issue a statement.

The figures in Special Educational Needs in England Statistical First Release (SFR) are taken from the School Census statistical return and the SEN2 survey for spring 2013, along with historical figures taken from the collections for 2009 to 2012.

The School Census collects information about individual pupils and information about the schools themselves, such as their educational provision. The individual pupil information collected includes free school meal eligibility, ethnicity, special educational needs (SEN), attendance and exclusions.

The SEN2 Survey collects information on the number of SEN statements issued by an individual local authority. The school census has collected information from schools on pupils with SEN on the census date in January since 1985. Figures for pupils with SEN without statements were collected from maintained primary and secondary schools for the first time in 1995. The SEN2 Survey has collected information on children with statements on the census date in January and new statements made in the previous calendar year from LAs since 1984.

2. Methodology

Local authorities (LAs) and schools return their information on the number of pupils with SEN to DfE via the COLLECT (Collections On-Line for Learning, Education, Children and Teachers) system. Further information on the School Census return can be found here:

<http://www.education.gov.uk/researchandstatistics/stats/schoolcensus/a00208045/school-census-2013>

Further information on the SEN2 Survey can be found here:

<http://www.education.gov.uk/researchandstatistics/stats/senr>

2.1. Data cleaning

COLLECT has built-in validation rules which flag up data which is invalid or the quality is questionable. This allows schools and LAs to identify errors and clean the data before they submit it to DfE. Users are encouraged to clean all errors and double-check data where queries are flagged. Users can add notes to their return if there is a genuine reason for “unusual” data. [Annex A](#) details the validation rules which are ran on the SEN2 Survey in COLLECT. Information on the validation rules for the School Census can be found at the link in section 2 above.

2.2. Data Processing

Once all users have submitted and cleaned their data, a final dataset is formed. The underlying data used in this publication is available to download on the publication page.

The underlying data zip file contains the data itself in .csv format and metadata in .txt format. The metadata document contains a list of the variables and their definitions.

2.3. Production of Statistical First Release

The SFR contains 32 national tables and an additional 14 local authority level tables which cover:

1. Number and percentage of children with SEN in nursery schools, state-funded primary schools, state-funded secondary schools, maintained special schools, non-maintained special schools, independent schools and pupils referral units
2. In state-funded primary, state-funded secondary and special schools information on the number and percentage of pupils at school action, school action plus and with statements of SEN
3. In independent and general hospital schools, the number and percentage of pupils with SEN without a statement and with a statement of SEN
4. The number and percentage of pupils with SEN by pupil characteristics such as age, gender, national curriculum year group, free school meal eligibility, ethnicity and English as an additional language

- The number of special schools including provision approved for and size of school.

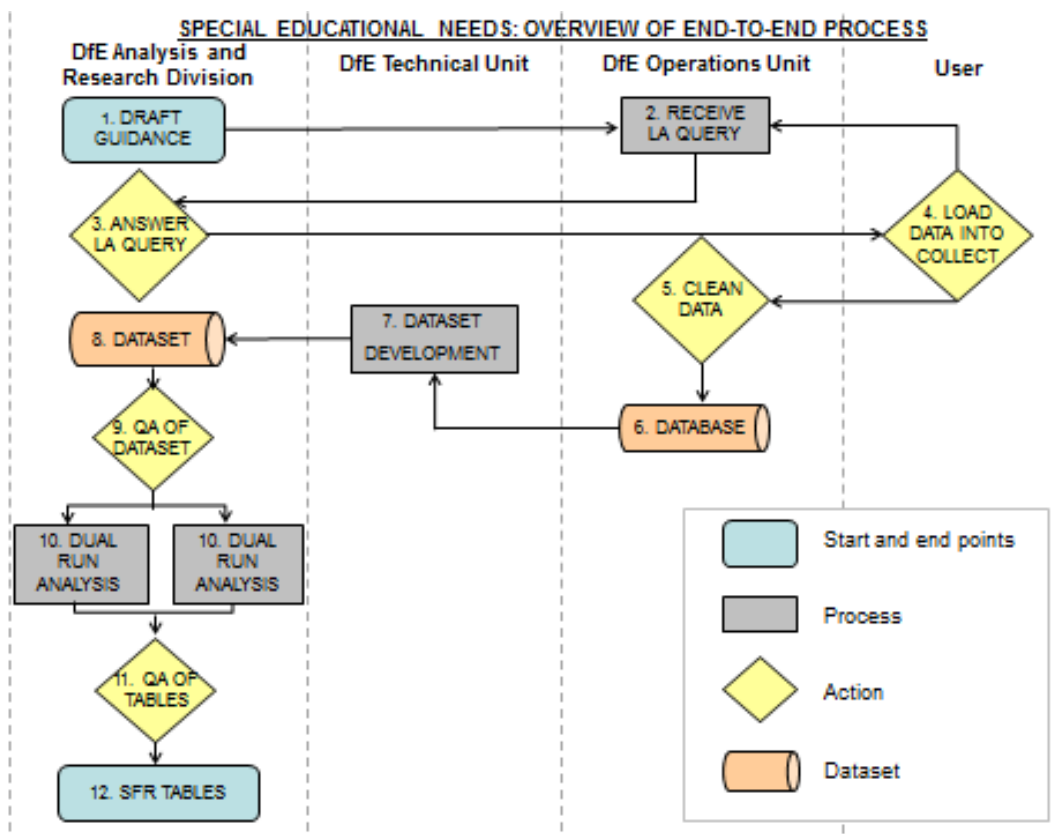
2.4. Percentage calculations

- Incidence of pupils with statements of SEN - Statements expressed as a percentage of Pupils.
- Incidence of pupils with SEN without a statement (Independent and general hospital schools) – No Statements expressed as a percentage of Pupils
- Incidence of pupils with SEN without a statement (other schools) - total of School Action and School Action Plus, expressed as a percentage of Pupils
- Incidence of pupils at School Action – School Action expressed as a percentage of Pupils
- Incidence of pupils at School Action Plus – School Action Plus expressed as a percentage of Pupils

3. Process Map

The process map shown in Figure 1 covers the end to end process of the SEN2 survey from data collection through to publication of the SFR.

Figure 1: Overview of end to end process of SEN collection and publication



Annex A: Data validation rules for SEN2 survey

Number	Error/Query	Description	Field Name	Box No	OK	Message
8025Q	Query	<ContactForename> must be entered.	ContactForename	2A	√	Please Check: Contact Forename is missing
8020Q	Query	<ContactSurname> must be entered.	ContactSurname	2B	√	Please check: Contact Surname is missing
420Q	Query	<Phone> must be entered.	Phone	2C	√	Telephone number is missing
3050	Error	The entry in <Totall> must equal the sum of entries in <Tot05> <Tot510> <Tot1115> and <Tot1619>	Totall Tot05 Tot510 Tot1115 Tot1619	7 3 4 5 6		Message: The total number of children with statements must equal the sum of the age breakdown.
3051	Error	The entry in <TotM> must equal the sum of entries in <Meyedset> <Mumain> <Msen> <Mmmain> <Mmspec> <Mnmspec> <Mispec> <Moind> <Mhosp> <Mmpru> <Mmacad> <Mspacad> <Mapacad> <Mmfree> <Mspfree> and <Mapfree>	Tot_m Meyedset Mumain Msen Mmmain Mmspec Mmmspec Mispec Moind Mhosp Mmpru Mmacad Mspacad Mapacad Mmfree Mspfree Mapfree	24 8 9 10 11 12 13 14 15 16 17 18 19 20 21 22 23		Message: The total number of children receiving the provision specified must equal the sum of the breakdown by establishment.

3052	Error	The entry in <Totm> must not exceed the entry in <Totall>.	Totm Totall	24 7		Message: The number of children receiving the provision specified is greater than the total number of children with statements.
3053	Error	The entry in <Mpexc> must not exceed the entry in <Totall>.	Mpexc Totall	25 7		Message: The number of children with statements who are permanently excluded is greater than the total number of children with statements.
3054	Error	The entry in <Mothlea> must not exceed the entry in <Totall>.	Mothlea Totall	26 7		Message: The number of children with statements who are educated under other arrangements made by the LA is greater than the total number of children with statements.
3055	Error	The entry in <Mothpar> must not exceed the entry in <Totall>.	Mothpar Totall	27 7		Message: The number of children with statements who are educated under other arrangements made by parents is greater than the total number of children with statements.
3056	Error	The entry in <Mawait> must not exceed the entry in <Totall>.	Mawait Totall	28 7		Message: The number of children with statements awaiting provision is greater than the total number of children with statements.
3057	Error	The entry in <Totall> must equal the sum of entries in <Totm> <Mpexc> <Mothlea> <Mothpar> and <Mawait>.	Total Totm Mpexc Mothlea Mothpar Mawait	7 24 25 26 27 28		Message: The total number of children with statements should equal the number on roll of school plus children educated other than in school.

3058Q	Query	Query: {Absolute value of (Total of pupils with statements 2012 minus Total of pupils with statements 2013) > 100} and {% change between 2012 and 2013 > + 5%}	Total 2012 Total 2013		√	Please Check: There is a significant change in the number of pupils with statements since the previous year
3059	Error	The entry in <Newall> must equal the sum of entries in <New05> <New510> <New1115> and <New1619>.	Newall New05 New510 New1115 New1619	33 29 30 31 32		Message: The total number of children for whom statements were newly made in 2012 must equal the sum of the age breakdown.
3060	Error	The entry in <Totn> must equal the sum of entries in <Neyedset> <Numain> <Nsen> <Nmmain> <Nmsspec> <Nnmspec> <Nisspec> <Noind> <Nhosp> <Nmpru> <Nmacad> <Nspacad> <Napakad> <Nmfree> <Nspfree> and <Nafree>	Totn Neyedset Numain Nsen Nmmain Nmsspec Nnmspec Nisspec Noind Nhosp Nmpru Nmacad Nspacad Napakad Nmfree Nspfree Nafree	50 34 35 36 37 38 39 40 41 42 43 44 45 46 47 48 49		Message: The total number of children for whom statements were newly made in 2012 receiving the provision specified must equal the sum of the breakdown by establishment.

3061	Error	The entry in <Totn> must not exceed the entry in <Newall>.	Totn Newall	50 33	Message: The number of children for whom statements were newly made in 2012 receiving the provision specified is greater than the total number of children with statements.
3062	Error	The entry in <Npexc> must not exceed the entry in <Newall>.	Npexc Newall	51 33	Message: The number of children for whom statements were newly made in 2012 who are permanently excluded is greater than the total number of children with statements.
3063	Error	The entry in <Nothlea> must not exceed the entry in <Newall>.	Nothlea Newall	52 33	Message: The number of children for whom statements were newly made in 2012 who are educated under other arrangements made by the LA is greater than the total number of children with statements.
3064	Error	The entry in <Nothpar> must not exceed the entry in <Newall>.	Nothpar Newall	53 33	Message: The number of newly statemented children who are educated under other arrangements made by parents is greater than the total number of children with statements.
3065	Error	The entry in <Nawait> must not exceed the entry in <Newall>.	Nawait Newall	54 33	Message: The number of newly statemented children awaiting provision is greater than the total number of children with statements.

3066	Error	The entry in <Newall> must equal the sum of entries in <Totn> <Npexc> <Nothlea> <Nothpar> and <Nawait>.	Newall Totn Npexc Nothlea Nothpar Nawait	33 50 51 52 53 54		Message: The total number of newly stated children should equal the number on roll of school plus those educated other than in school.
3067	Query	{Absolute value of (Total of pupils with new statements 2012 minus Total of pupils with new statements 2013) > 75} and {% change between 2012 and 2013 > + 20%}	Newall 2012 Newall 2013		√	Please Check: There is a significant change in the number of pupils with new statements since the previous year



Department
for Education

© Crown copyright 2013

You may re-use this information (excluding logos) free of charge in any format or medium, under the terms of the Open Government Licence. To view this licence, visit www.nationalarchives.gov.uk/doc/open-government-licence or email psi@nationalarchives.gsi.gov.uk

Where we have identified any third party copyright information you will need to obtain permission from the copyright holders concerned.

Any enquiries regarding this publication should be sent to us at www.education.gov.uk/contactus

This document is available for download at
<https://www.gov.uk/government/organisations/department-for-education/about/statistics>