



Skills Funding
Agency



Department
for Business
Innovation & Skills

Statistical First Release

Further Education & Skills: Learner Participation, Outcomes and Level of Highest Qualification Held

Publication date:
16th October 2014

Next Updated:
November 2014

Reference: SFA/SFR25

Coverage: England

Theme: Children, Education and Skills

For further information contact:

Service Desk
servicedesk@sfa.bis.gov.uk
0870 267 0001 / 0370 267 0001

Or view our web site at:
<https://www.gov.uk/government/publications/learner-participation-outcomes-and-level-of-highest-qualification-held>

Lead Statistician:
Paula Maratos
Paula.Maratos@bis.gsi.gov.uk
0114 207 5183

Department for Business,
Innovation and Skills,
Level 2,
1 Victoria Street,
London,
SW1H 0ET

© Skills Funding Agency
2014

This release presents information on adult (19+) government-funded¹ further education (excluding schools and Higher Education) and all age (16+) Apprenticeships in England, between 2008/09 and 2012/13. It also includes provisional data for the full 2013/14 academic year, including a breakdown for Traineeships for the first time.

This release also presents key statistics on the highest level of qualification held by adults in England from 2006 to 2013, calculated from Labour Force Survey (LFS) data. Figures relating to 2013 are provisional and are subject to revisions.

Key Points

- Provisional data show that for the full 2013/14 academic year 2,910,900 adult learners aged 19 and over participated in government-funded further education.
- Provisional data show that 848,300 funded Apprentices participated on an Apprenticeship in the full 2013/14 academic year.
- Provisional data show that there were 432,400 Apprenticeship starts in the full 2013/14 academic year.
- Provisional data show that there were 10,500 Traineeship starts for the full 2013/14 academic year.
- Provisional data show that for the full 2013/14 academic year there were 57,100 learners with a 24+ Advanced Learning Loan.

¹ Covering the Skills Funding Agency and the Education Funding Agency.

CONTENTS

Statistical Commentary

Glossary of Key Terms	3
Further Education Statistics for England, 2012/13	4
Adult Attainment in the Population	4
Success Rates	4
Adult Learner (19+) Participation and Achievement	6
Apprenticeships	7
Adult (19+) English and Maths	10
Community Learning	10
Provisional Further Education Statistics for England, 2013/14	12
Adult Learner (19+) Participation	12
Apprenticeships	12
Offender Learning (18+) Participation	13
Adult (19+) English and Maths	14
Community Learning	14
Employer Ownership Pilot	14
24+ Advanced Learning Loans	14
National Statistics	16
Changes included in this SFR	16
Changes in the Next SFR	16

Supporting Data

Scope	17
Data Sources	18
Issues with Using Provisional Data	18
Issues with Comparing Data Across Academic Years	19
Data Definitions	19
Publication Cycle Across the Year	20
Supplementary Tables	20
Related National Statistics Releases	20
Other Related Statistics	21
Further Education Statistics for Other Countries in the UK	21

Table Guide	23
--------------------	-----------

Table Footnotes	24
------------------------	-----------

Tables	26
---------------	-----------

GLOSSARY OF KEY TERMS

Further Education and Skills includes: learners who are studying a course in a FE College, training provider or within their local community; and employees undertaking an Apprenticeship or other qualification in the workplace. For more information, see paragraphs 47 to 49.

Apprenticeships are paid jobs that incorporate on- and off-the-job training leading to nationally recognised qualifications. As an employee, Apprentices earn as they learn and gain practical skills in the workplace. An Apprenticeship framework typically contains the following separately certified elements:

- A knowledge-based element (the theoretical knowledge underpinning a job in a certain occupation and industry, typically certified via a Technical Certificate).
- A competence-based element (the ability to discharge the functions of a certain occupation, typically certified via work-based assessed national vocational qualifications – NVQs).
- Transferable skills (English and maths) – key skills / functional skills.
- A module on employment rights and responsibilities.
- Personal Learning and Thinking Skills (PLTS), namely: independent enquiry, creative thinking, reflective learning, team working, self management and effective participation.

See <http://www.apprenticeships.org.uk/> for further information.

Apprenticeship Grant for Employers (AGE 16 to 24) scheme provides Apprenticeship grants with a value of £1,500 to employers with up to 1,000 employees to encourage employers to take on new Apprentices aged 16 to 24. Eligible employers must not have taken on an Apprentice in the previous 12 months. Subject to budget availability and the employer's commitment to support the Apprentice to the end of their programme, any one employer can claim support for up to ten apprentices. AGE 16 to 24 has been extended to the 2015-16 financial year. See: <http://www.apprenticeships.org.uk/employers/steps-to-make-it-happen/incentive.aspx>

On the **Access to Apprenticeships pathway**, participants use the elements of an Apprenticeship framework to brush up skills and workplace experience, with the aim of securing a paid Apprenticeship with an employer as quickly as possible, up to a maximum of six months. Participants are not categorised or counted as an 'Apprentice' until they become employed. This pathway was announced in May 2011 and closed to new starts at the end of December 2013.

Employer Ownership Pilot offers all employers in England direct access to up to £340 million of public investment over the period of the pilot (up to 2015/16) to design and deliver their own training solutions.

See: <https://www.gov.uk/government/publications/employer-ownership-of-skills-pilot>

Education and Training covers further education learning delivered mainly in a classroom, workshop, or through distance or e-learning. See: [Data Dictionary - Business Definitions - Learner Responsive Business Definition](#)

Workplace Learning covers a broad range of training including basic skills, Level 2, Level 3 and higher-level skills. This training is mainly delivered through the workplace (but excludes Apprenticeships). Between 2008/09 and 2010/11 this included the Train to Gain programme, Employability Skills Pilot and other programmes such as Programmes for the Unemployed. From 2011/12 this includes all training mainly delivered through the workplace (excluding Apprenticeships).

English and Maths qualifications (previously Skills for Life) are designed to give people the reading, writing, maths and communication skills they need in everyday life, to operate effectively in work and to help them succeed on other training courses. See: [Skills Funding Agency - Providers - Our programmes - Basic Skills - Basic Skills](#)

Community Learning funds a wide range of informal courses, ranging from personal development through to older people's learning, IT courses, employability skills, family learning and activities to promote civic engagement and community development. Courses may be offered by local authorities, colleges, and voluntary and community groups, and include activity specifically targeted at deprived areas and disadvantaged groups. See: <http://www.gov.uk/government/collections/community-learning-government-funding>

24+ Advanced Learning Loans - Loans are available for eligible learners aged 24 and above studying at Level 3 and above (including Advanced and Higher Apprenticeships) and will cover the cost of tuition, so learners do not have to pay upfront. See: <https://www.gov.uk/government/collections/sfa-24-advanced-learning-loans>

Full Level 2 is equivalent to an NVQ at Level 2, or 5 GCSEs. The widths of all of a learner's Level 2 aims are summed to establish whether a learner is taking a full Level 2 programme. **Full Level 3** is equivalent to an NVQ at Level 3, or 2 A-Levels. The widths of all a learner's Level 3 aims are summed to establish whether a learner is taking a full Level 3 programme.

Traineeships were introduced in the 2013/14 academic year to provide young people with essential work preparation, English, maths and work experience to secure an apprenticeship or other work.

Academic year runs from 1st August to 31st July (except Ofqual figures in Table 13 which run from 1st October to 30th September).

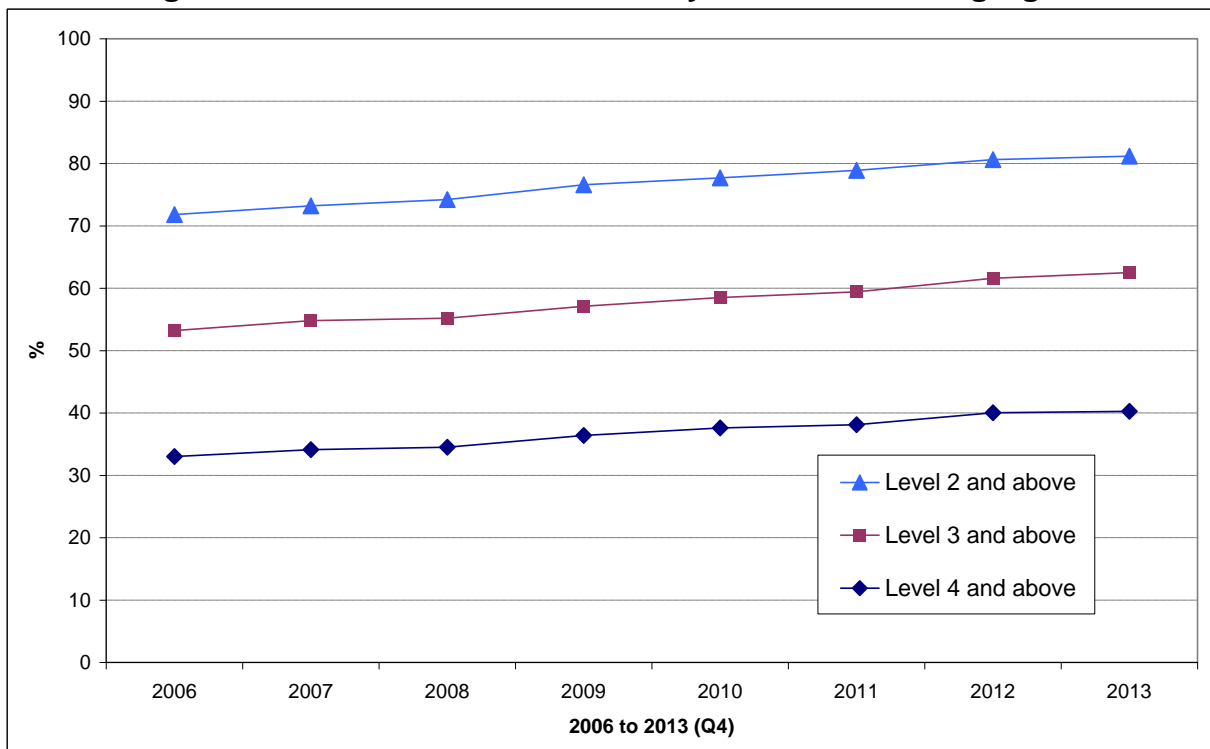
FURTHER EDUCATION STATISTICS FOR ENGLAND, 2012/13

Adult Attainment in the Population

1. The Labour Force Survey is used to measure the level of adult educational attainment in the population. Provisional data for 2013 show that of men aged 19 to 64 and women aged 19 to 59 [Table 11.1]:

- 81.2 per cent were qualified to at least Level 2;
- 62.5 per cent were qualified to at least Level 3;
- 40.3 per cent were qualified to at least Level 4.

Chart 1: Highest Level of Qualification Held by Adults of Working Age

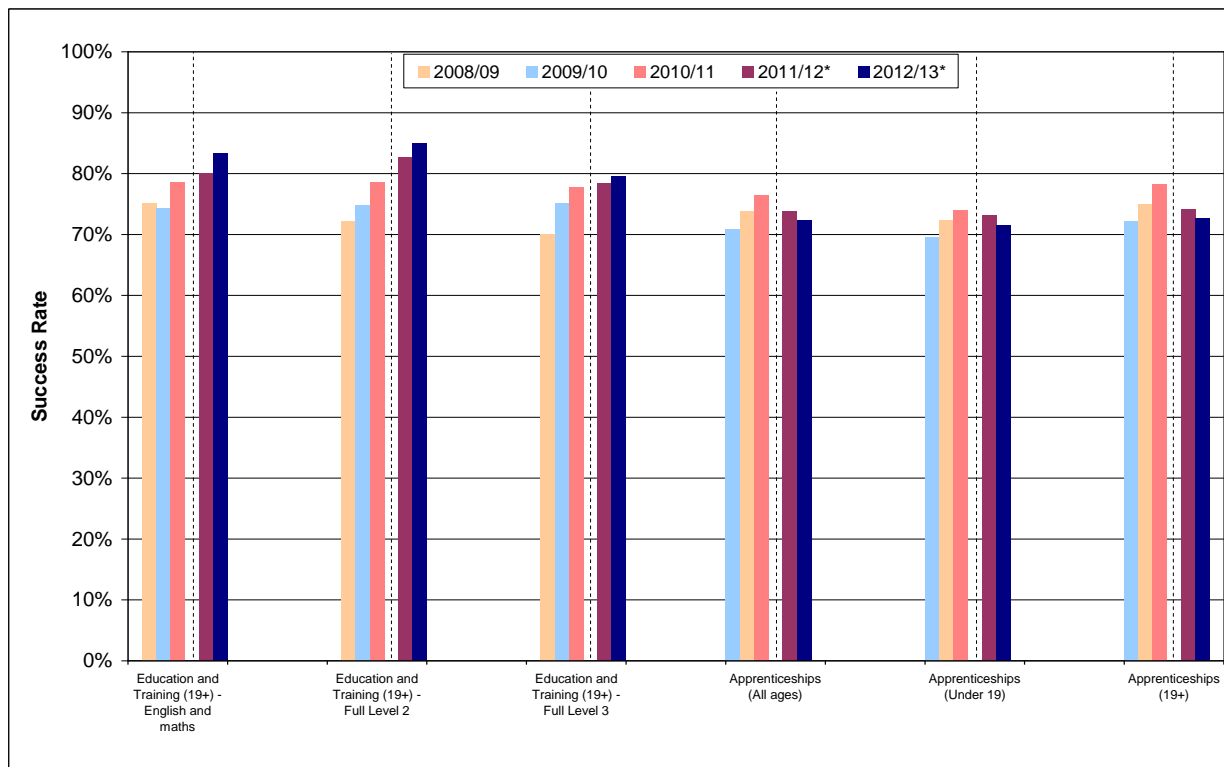


Success Rates

2. Success rates are calculated for individual qualifications. They show how many learners that started a qualification went on to successfully complete it. Success rates are typically calculated at a qualification level, but can be aggregated across different types of course, or for particular colleges or providers. Education and Training, Apprenticeship and Workplace Learning success rates are calculated on a slightly different basis. For more information please see:

<https://www.gov.uk/government/collections/success-rates-2012-to-2013>

3. Chart 2 shows that adult (19+) Education and Training success rates rose steadily between 2009/10 and 2012/13 across all qualification levels. Success rates for Apprenticeships also rose steadily between 2008/09 and 2010/11, but decreased in 2011/12 and 2012/13 [Table 10].

Chart 2: Success Rates

***Note: Success Rates for 2011/12 onwards are not directly comparable with earlier years. See paragraph 59 onwards for more information.**

4. In 2012/13, adult (19+) Education and Training success rates [Table 10.1] were:
 - 86.8 per cent for all Education and Training, an increase of 2.9 percentage points compared to 2011/12;
 - 83.4 per cent for English and maths qualifications, an increase of 3.3 percentage points compared to 2011/12;
 - 85.5 per cent for Level 2 qualifications, an increase of 2.8 percentage points compared to 2011/12 (85.0 per cent for full Level 2, an increase of 2.4 percentage points);
 - 81.6 per cent for Level 3 qualifications, an increase of 2.2 percentage points compared to 2011/12 (79.6 per cent for full Level 3, an increase of 1.2 percentage points).

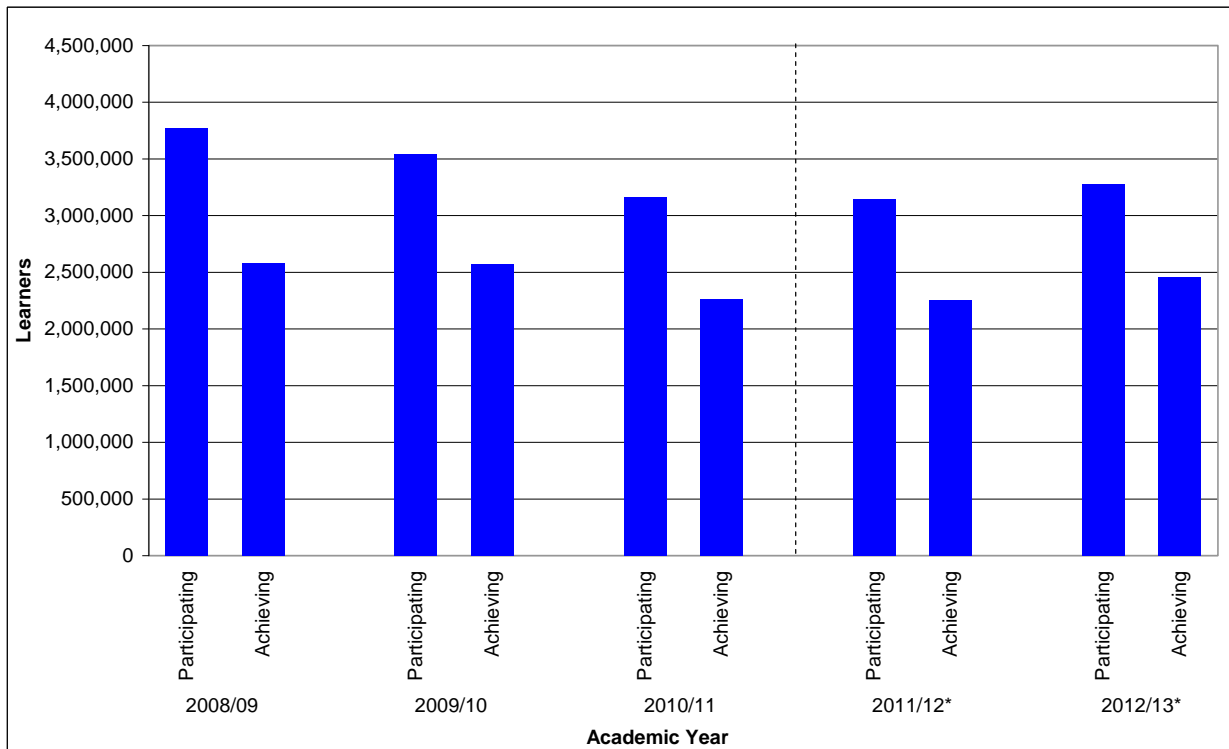
5. In 2012/13, Apprenticeship success rates [Table 10.2] were:
 - 72.3 per cent for all Apprenticeships, a decrease of 1.5 percentage points compared to 2011/12;
 - 72.0 per cent for Intermediate Level Apprenticeships, a slight decrease of 0.6 percentage points compared to 2011/12;
 - 73.0 per cent for Advanced Level Apprenticeships, a decrease of 3.5 percentage points compared to 2011/12;
 - 70.2 per cent for Higher Apprenticeships, a decrease of 2.4 percentage points compared 2011/12;

 - 72.6 per cent for Apprenticeships by those aged 19 and over, a decrease of 1.6 percentage points compared to 2011/12;
 - 71.5 per cent for Apprenticeships by those aged under 19, a decrease of 1.6 percentage points compared to 2011/12.

Adult Learner (19+) Participation and Achievement

6. Chart 3 shows that the total number of adult learners participating in government-funded further education was 3,280,600 in 2012/13, an increase of 4.2 per cent on 2011/12 [Table 1.1]. This was the first increase since the 2008/09 academic year. The total number of adult learners achieving a government-funded further education qualification was 2,453,900 in 2012/13, an increase of 8.7 per cent on 2011/12 [Table 1.2].

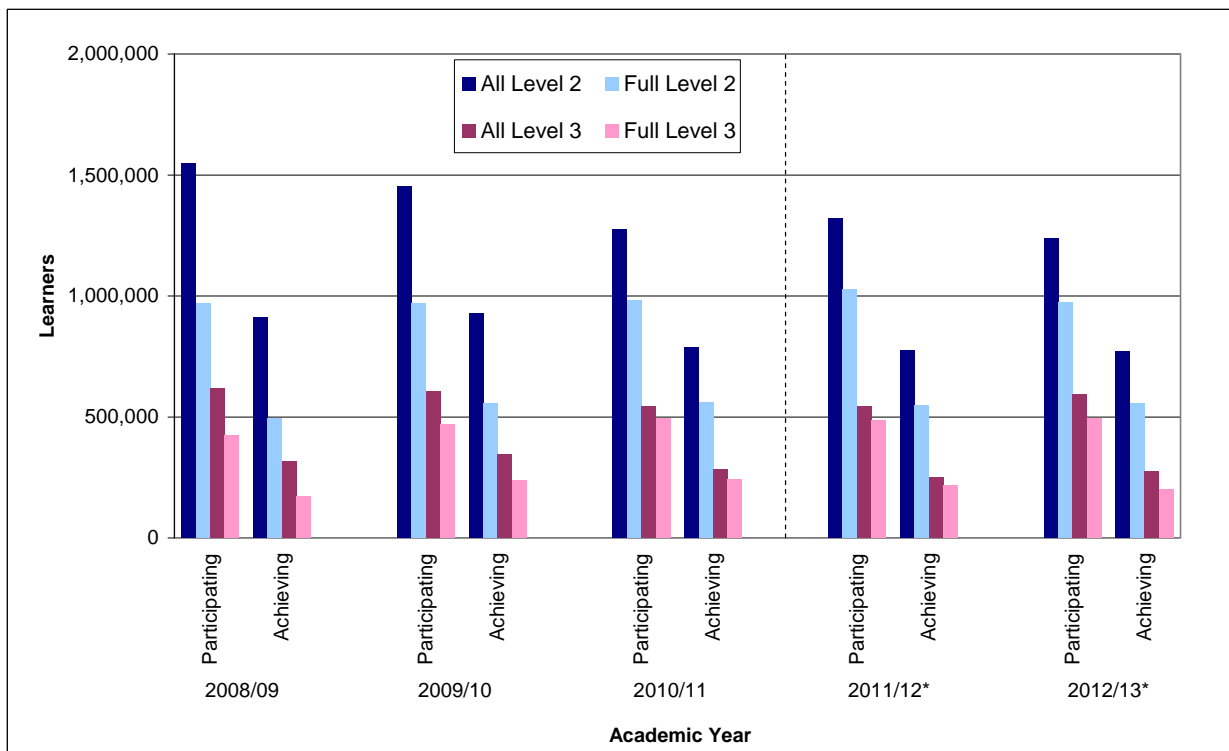
Chart 3: Adult Learner (19+) Participation and Achievement in Government-funded Further Education



***Note: Learner Numbers for 2011/12 onwards are not directly comparable with earlier years. See paragraph 59 onwards for more information.**

7. Chart 4 shows that the number of adult learners participating on government-funded further education Level 2 courses decreased between 2008/09 and 2012/13 with a 6.1 per cent decrease seen in the most recent year. The number participating in full Level 2 courses fell by 5.4 per cent in 2012/13 to a level similar to 2009/10. Achievements in Level 2 courses declined over the last three years whilst full Level 2 achievements increased in 2012/13. The number of learners participating in Level 3 courses fell between 2008/09 and 2011/12 but increased by 9.5 per cent in 2012/13. Participation in full Level 3 courses in 2012/13 was the highest it has been for the last five years. Achievements in Level 3 courses increased in 2012/13 by 9.8 per cent, following a two year decline. Full Level 3 achievements decreased for the second successive year after a period of growth [Tables 1.1 and 1.2].

Chart 4: Adult (19+) Learner Participation and Achievement in Government-funded Further Education by Level



***Note: Learner Numbers for 2011/12 onwards are not directly comparable with earlier years. See paragraph 59 onwards for more information.**

8. Of the 3,280,600 adult learners participating in further education in 2012/13 [Table 2]:
- 56.3 per cent were female and 43.7 per cent were male, similar proportions to 2011/12;
 - 13.2 per cent declared a learning difficulty and/or disability, an increase of 1.4 percentage points on 2011/12;
 - 19.2 per cent were from a Black or Minority Ethnic background (including Mixed, Asian, Black and Other Ethnic Group learners), a decrease of 0.4 percentage points on 2011/12;
 - 496,700 benefited from support for the unemployed (those nearest the workforce). These are defined as those learners reporting that they were in receipt of Employment and Support Allowance - Work Related Activity Group (ESA WRAG), Jobseeker's Allowance (JSA) or Universal Credit (if unemployed and looking for work). These figures are revised since the November 2013 publication to include those learners in receipt of Universal Credit. [footnote to Table 1].
9. In 2012/13 there were 89,900 offenders aged 18 or over in the prison system participating in learning, a similar volume to 2011/12. 68,400 achieved a learning outcome, a decrease of 4.9 per cent [Table 7]. These offenders were funded via the Offenders' Learning and Skills Service (OLASS) budget.

Apprenticeships

10. Two measures of Apprenticeships are presented to give a transparent view of the changes and trends in Apprenticeships in England:

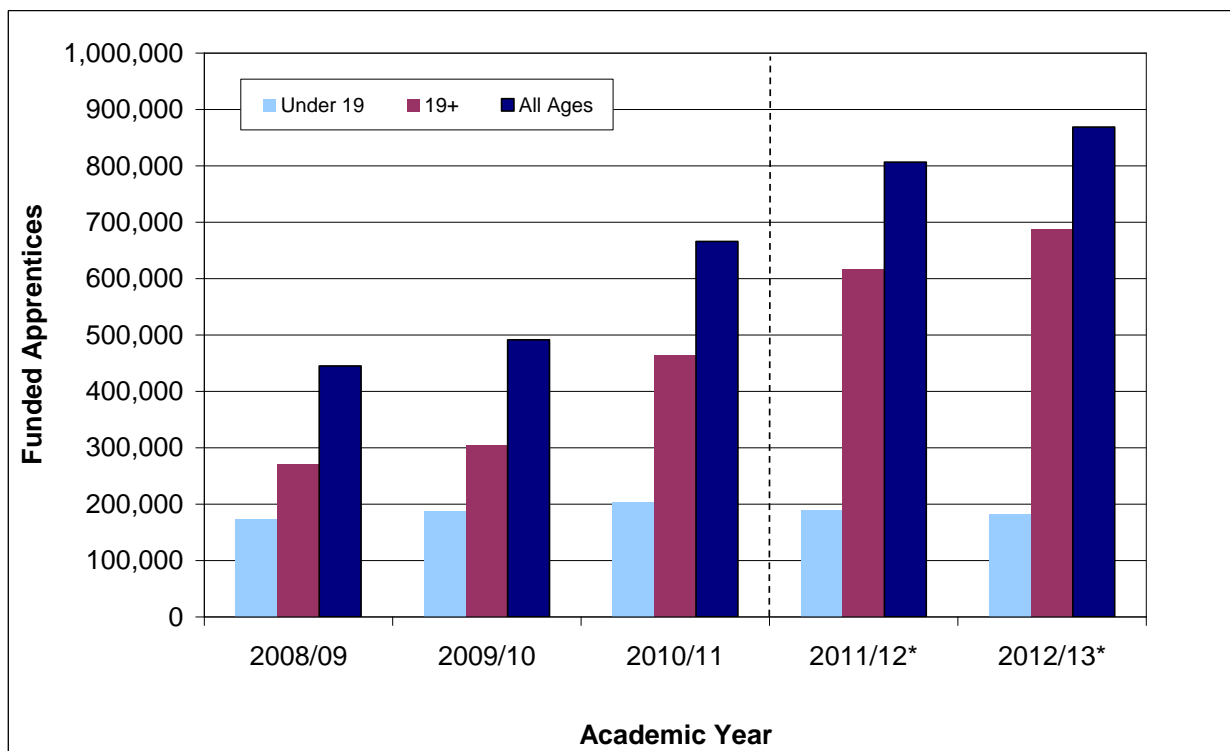
- Participation refers to the number of people who are undertaking an Apprenticeship in a given time period. This measure is helpful for quantifying the number of people on an Apprenticeship programme throughout the academic year. An Apprentice studying towards more than one Apprenticeship at the same level is counted once.
- Starts refer to the number of programmes that begin in a given time period. This measure is helpful in determining the take-up of programmes. An Apprentice is counted for each Apprenticeship they start.

11. The Apprenticeship programme expanded rapidly since 2009/10 as a result of increased government investment in adult Apprenticeships. More recently Apprenticeship policy has focused on raising standards, improving the quality and introducing minimum durations of Apprenticeships. This means some learners find it more difficult or take longer to complete their Apprenticeship.

Participation

12. Chart 5 shows that overall Apprenticeship participation increased in each year since 2008/09, driven by growth in the number of adult (19+) Apprentices. While the number of under 19 Apprenticeships has been relatively flat over the period there has been a small decline after a peak in 2010/11 [Table 5].

Chart 5: Apprenticeship Participation by Age



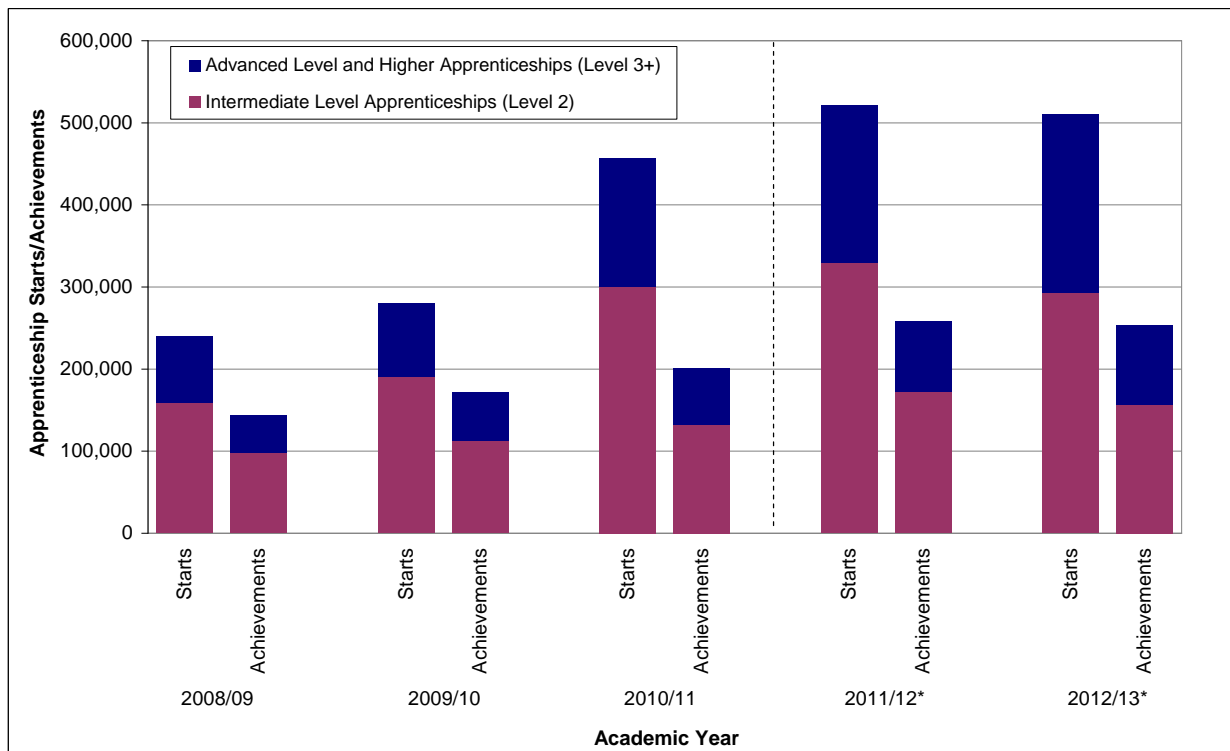
***Note: Learner Numbers for 2011/12 onwards are not directly comparable with earlier years. See paragraph 59 onwards for more information.**

13. Participation on Intermediate Level Apprenticeships increased each year up to 2011/12 but decreased slightly in 2012/13. Advanced Level Apprenticeship participation has increased steadily since 2008/09 while participation on Higher Apprenticeships has increased rapidly, albeit from a low base [Table 5].

Starts and Achievements

14. Chart 6 shows there was strong growth in Apprenticeship starts between 2008/09 and 2011/12 followed by a decline in 2012/13 due to a fall at Intermediate Level. Advanced and Higher Apprenticeships continued to grow. Apprenticeship achievements reflect a similar pattern [Table 6].

Chart 6: Apprenticeship Starts and Framework Achievements by Level



***Note: Starts and achievements for 2011/12 onwards are not directly comparable with earlier years. See paragraph 59 onwards for more information.**

15. The length of an Apprenticeship is typically more than a year and an Apprenticeship framework achievement is recorded against the year it was achieved, not the year it was started. Because of this, the number of achievements is below the number of starts in Chart 6, as a large volume of learners that have started an Apprenticeship have not yet completed it. Furthermore, some learners may withdraw or fail to complete.

16. Under 19 Apprenticeship starts peaked in 2010/11 but have since fallen, while 19 to 24 and 25+ starts have continued to increase. Under 19 and 19 to 24 Apprenticeship achievements declined in 2012/13, while 25+ achievements continued to grow [Table 6].

17. In 2012/13, 5,500 Apprenticeships started through the Access to Apprenticeship pathway, a 23.7 per cent decrease on 2011/12, of which 1,800 converted to paid employment to complete their Apprenticeship in the usual way [Table 19.2].

Planned Length of Stay

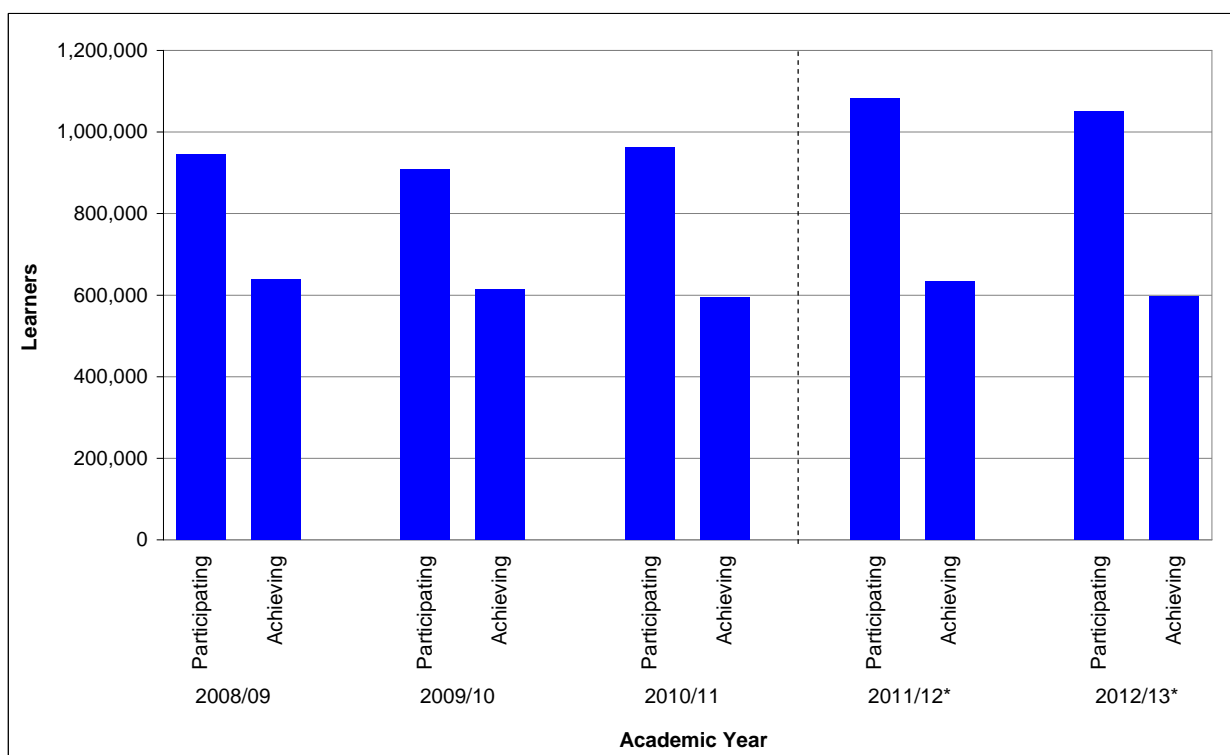
18. In August 2012 a minimum duration of 12 months for Apprenticeships was introduced. Statistics on the actual length of stay of Apprenticeships based on achievements are already published, but to assess the impact of the new policy at this early stage the planned length of stay of Apprenticeships starting in 2012/13

need to be considered. Based on the planned end date, the number of Apprenticeship starts with a planned length of stay of 12 months or more increased by 50.5 per cent to 475,900 between 2011/12 and 2012/13. The numbers increased by 31.9 per cent for under 19s, 59.9 per cent for those aged 19-24 and 55.5 per cent for those aged 25 and above.

Adult (19+) English and Maths

19. Chart 7 shows that after a fall in adult learner participation on English and maths courses in 2009/10, participation increased for two successive years but then fell by 3.1 per cent in 2012/13. Achievement remained broadly flat over the period [Table 3].

Chart 7: Adult Learner (19+) Participation and Achievement on English and Maths Courses



***Note: Learner Numbers for 2011/12 onwards are not directly comparable with earlier years. See paragraph 59 onwards for more information.**

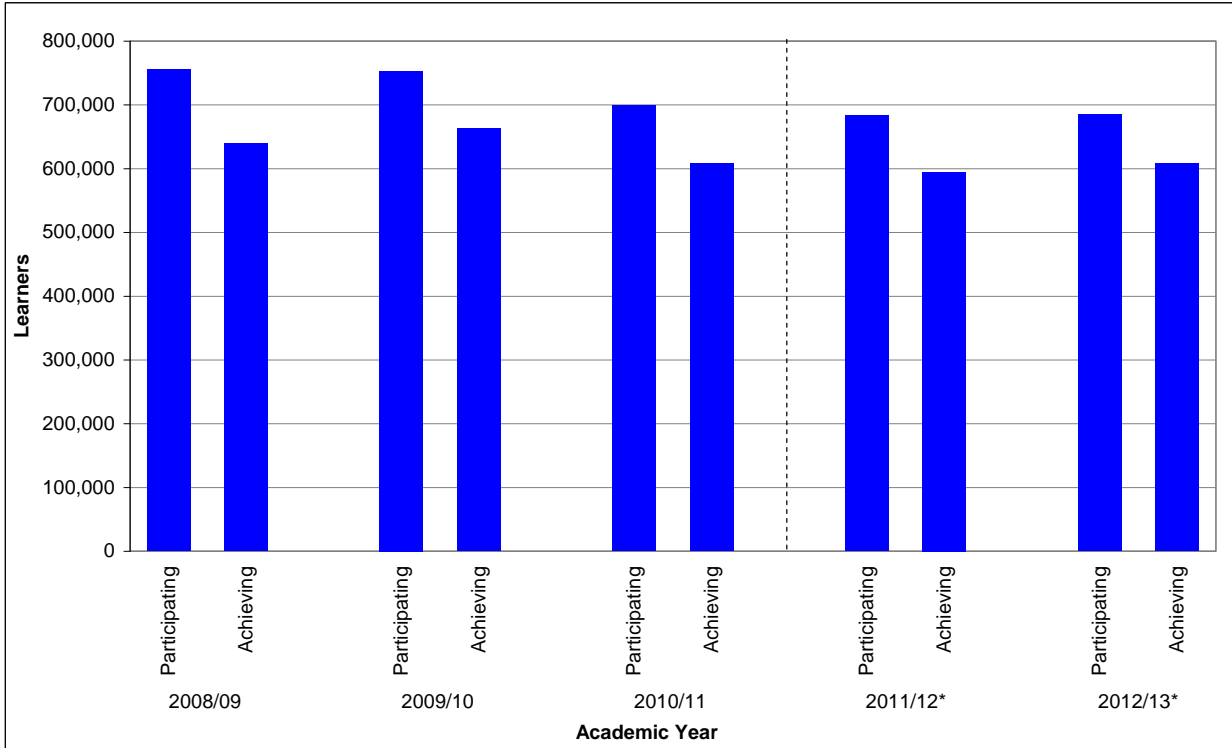
20. Participation on English courses and maths courses fell for the first time since a period of growth. Participation on English for Speakers of Other Languages courses increased after a period of decline. This pattern was also reflected in learner achievement [Table 3].

Community Learning

21. Chart 8 shows that participation on Community Learning courses in 2012/13 remained similar to 2011/12 after falls in the previous academic years. The overall number of Community Learners achieving increased slightly in 2012/13, the first increase in two years. Participation on ‘Personal Community Development Learning’ programmes, which make up the vast majority of Community Learning provision, decreased slightly in 2012/13. However, this was a smaller decrease than seen in

the two previous years. Participation in ‘Neighbourhood Learning in Deprived Communities’ continued to increase, ‘Wider Family Learning’ participation increased slightly after three successive falls and ‘Family English, Maths and Language’ continued to decrease [Table 9].

Chart 8: Community Learning Participation and Achievement



***Note: Learner Numbers for 2011/12 onwards are not directly comparable with earlier years. See paragraph 59 onwards for more information.**

PROVISIONAL FURTHER EDUCATION STATISTICS FOR ENGLAND, 2013/14

22. Data for 2013/14 provide an early view of performance for the full academic year (August 2013 to July 2014). Data are provisional because providers may not have reported all their information relating to this period. It is not possible to determine how incomplete the information behind the provisional data is, so the data cannot be directly compared against provisional or final data from earlier years. Comparisons can only be made once final returns for the academic year are made by providers (as published in November 2014). (See paragraphs 54 to 58 for more information.)

Adult Learner (19+) Participation

23. Provisional data show that in the full 2013/14 academic year there were 2,910,900 learners aged 19 and over participating in government-funded further education [Table 14]. Of these:

- 950,300 participated on a English and maths course;
- 1,128,200 participated on a Level 2 course, of which 861,300 were on a full Level 2 course;
- 483,500 participated on a Level 3 course, of which 434,900 were on a full Level 3 course;
- 573,900 benefited from support for the unemployed (those nearest the workforce). These are defined as those learners reporting that they were in receipt of Employment and Support Allowance - Work Related Activity Group (ESA WRAG), Jobseeker's Allowance (JSA) or Universal Credit (if unemployed and looking for work). These figures are revised since the November 2013 publication to include those learners in receipt of Universal Credit. [footnote to Table 14].

Apprenticeships

24. 24+ Advanced Learning Loans were introduced in August 2013 but withdrawn for Apprenticeships in March 2014. Data show the number of Apprenticeship starts in 2013/14 for those aged 24 and above studying at Level 3 and above has been directly affected.

25. Provisional data for the full 2013/14 academic year show that there were 848,300 funded Apprentices participating [Table 17]. Of these there were²:

- 503,000 Intermediate Level Apprentices;
- 348,700 Advanced Level Apprentices;
- 17,800 Higher Apprentices;

- 184,600 Apprentices aged under 19;
- 308,200 Apprentices aged 19–24;
- 355,500 Apprentices aged 25 and over;
- 663,700 Apprentices aged 19 and over.

² Note that an Apprentice may participate on an Apprenticeship programme at more than one level within an academic year.

26. Provisional data for the full 2013/14 academic year show that there were 432,400 Apprenticeship starts [Table 18.1]. Of these there were:
- 282,500 Intermediate Level Apprenticeship starts;
 - 141,100 Advanced Level Apprenticeship starts;
 - 8,900 Higher Apprenticeship starts;

 - 117,800 Apprenticeship starts by those aged under 19;
 - 156,900 Apprenticeship starts by those aged 19–24;
 - 157,700 Apprenticeship starts by those aged 25 and over;
 - 314,600 Apprenticeship starts by those aged 19 and over.
27. Provisional data for the full 2013/14 academic year show that there were 240,700 Apprenticeship framework achievements [Table 18.2]. Of these there were:
- 142,600 Intermediate Level Apprenticeship framework achievements;
 - 95,600 Advanced Level Apprenticeship framework achievements;
 - 2,500 Higher Apprenticeship framework achievements;

 - 61,000 Apprenticeship framework achievements by those aged under 19;
 - 82,100 Apprenticeship framework achievements by 19–24 year olds;
 - 97,600 Apprenticeship framework achievements by those aged 25 and over;
 - 179,700 Apprenticeship framework achievements by those aged 19 and over.
28. Provisional data show that there were 95,200 Apprenticeship starts for which a payment was made through the Apprenticeship Grant for Employers (AGE 16 to 24) scheme between February 2012 and July 2014. A further 8,200 were in the pipeline (started but not yet paid) [Table 19.1].
29. Provisional data for the full 2013/14 academic year show 1,700 Apprenticeships started through the Access to Apprenticeship pathway, of which 600 converted to paid employment to complete their Apprenticeship in the usual way [Table 19.2]. Access to Apprenticeships closed to new starts at the end of December 2013.

Traineeships

30. Provisional data for the full 2013/14 academic year show that there were 10,500 Traineeship starts [Table 24]. Of these there were:
- 7,000 Traineeships aged under 19;
 - 3,500 Traineeships aged 19-23.

Offender Learning (18+) Participation

31. Provisional data for the full 2013/14 academic year show there were 95,000 offenders aged 18 or over in the prison system participating in learning [Table 16]. These offenders were funded via the Offenders' Learning and Skills Service (OLASS) budget. Of these:
- 73,600 participated on a Below Level 2 (excluding English and maths) course;
 - 37,300 participated on an English and maths course;
 - 43,100 participated on a Level 2 course, of which 11,800 were on a full Level 2 course;
 - 1,000 participated on a Level 3 course, of which 100 were on a full Level 3 course.

Adult (19+) English and Maths

32. Provisional data for the full 2013/14 academic year show that 950,300 learners aged 19 and over participated on an English and maths course [Table 15]. Of these:
- 706,900 participated on an English course;
 - 667,100 participated on a maths course;
 - 138,900 participated on an English for Speakers of Other Languages (ESOL) course.

Community Learning

33. Provisional data for the full 2013/14 academic year show that 645,600 learners participated on a Community Learning course [Table 21]. Of these:
- 492,800 took a Personal and Community Development Learning course;
 - 59,400 took a Neighbourhood Learning in Deprived Communities course;
 - 47,500 took a Family English, Maths and Language course;
 - 67,800 took a Wider Family Learning course.

Employer Ownership Pilot

34. Provisional data show that there were 37,000 Employer Ownership Pilot starts between August 2012 and July 2014 [Table 22]. Of these there were:
- 3,300 Employer Ownership Pilot starts by those aged under 19;
 - 6,900 Employer Ownership Pilot starts by those aged 19–24;
 - 26,800 Employer Ownership Pilot starts by those aged 25 and over;
 - 4,300 Apprenticeship starts.

24+ Advanced Learning Loans

35. Provisional data for the full 2013/14 academic year show there were 57,100 learners with a 24+ Advanced Learning Loan³ (24+ ALL) [Table 23]. Of these there were:
- 54,500 learners with a 24+ ALL participating at Level 3;
 - 2,700 learners with a 24+ ALL participating at Level 4+.

The number of learners with a 24+ Advanced Learning Loan reported through the Individualised Learner Record (ILR) differ from data showing loan applications (<https://www.gov.uk/government/collections/further-education>) and loans paid (<http://www.slc.co.uk/media/844939/slcosp042014.pdf>)

36. 24+ Advanced Learning Loans Application data was released on 28th August 2014. This data relates to applications received for FE provision in the 2013/14 academic year funded through 24+ Advanced Learning Loans. The data used to produce the publication are sourced from the Student Loans Company (SLC) application database, and cover applications received from the launch of the programme on 8th April 2013 up to 31st July 2014. The data refer to received applications, including those not yet processed, and will therefore be higher than actual number of learners on a course with an Advanced Learning Loan between August 2013 and July 2014.

³ On March 7th 2014 Apprenticeships were removed from the scope of the loans programme. Apprentices who have already received a loan will not need to repay it.

37. The SLC 24+ Advanced Learning Loans Paid in England data were also released on 16th October 2014. These data refer to all payments made to FE providers on behalf of learners, and numbers of learners will be lower than the ILR numbers. Only payments made between August 2013 and July 2014 inclusive are captured, whilst the ILR captures learners on a course with a 24+ Advanced Learning Loan that started during this period, including some where the first scheduled payment date was beyond the end of July 2014.

NATIONAL STATISTICS

38. The United Kingdom Statistics Authority has designated these statistics as National Statistics, in accordance with the Statistics and Registration Service Act 2007 and signifying compliance with the Code of Practice for Official Statistics.
39. Designation can be broadly interpreted to mean that the statistics:
- meet identified user needs;
 - are well explained and readily accessible;
 - are produced according to sound methods; and
 - are managed impartially and objectively in the public interest.
40. Once statistics have been designated as National Statistics it is a statutory requirement that the Code of Practice shall continue to be observed. More information regarding compliance with the Code of Practice is available on our website: <https://www.gov.uk/government/publications/sfr-compliance-with-official-statistics-code-of-practice>

CHANGES INCLUDED IN THIS SFR

41. Data on Traineeship starts is included for the first time in this SFR at Table 24. Traineeships is a new programme and we will look to publish completion and progression data in the SFR once data quality is deemed acceptable. We will publish final starts data for 2013/14 in the November 2014 Statistical First Release (SFR), and completion and progression data dependent on data quality. There is additional non-National Statistics traineeships data available on GOV.UK which complement the release, including a breakdown of traineeship opportunities recorded on the Apprenticeship Vacancies website by industry sector. These data can be found at: <https://www.gov.uk/government/statistical-data-sets/fe-data-library-other-statistics-and-research>.

CHANGES IN THE NEXT SFR

42. The next SFR will be in November 2014 and will include final full year data for the 2013/14 academic year (August 2013 to July 2014).
43. Ofqual Vocational Qualification data shown in Table 13 of this release, and accompanying supplementary tables, will be updated in November 2014 as part of a formal cascade of this release. These tables will be updated to include data for the fourth quarter of 2013/14 (July 2014 to September 2014) which will allow Ofqual to update their detailed bulletins that include these data.
44. Data on the highest level of qualification held will be revised in November 2014, following a reweighting of the Labour Force Survey (LFS) covering 2001 to 2013, see the link for a full explanation <http://www.ons.gov.uk/ons/guide-method/method-quality/specific/labour-market/articles-and-reports/revisions-to-labour-force-survey-estimates.pdf>. Tables 11-12 will be updated.
45. Changes to the next release will be pre-announced on the website at least a month prior to coming into effect, at: <https://www.gov.uk/government/publications/learner-participation-outcomes-and-level-of-highest-qualification-held>

SUPPORTING DATA

Scope

46. Should we need to make an unplanned revision to the statistics contained in this release, we will follow the procedures outlined in the Revisions Policy for this Statistical First Release. This includes action to understand the impact that any revisions will have, as well as ensuring that they are clearly communicated to the reader. The Revisions Policy can be found at: <https://www.gov.uk/government/publications/sfr-compliance-with-official-statistics-code-of-practice>
47. Information from the different further education learning options have been drawn together to give a coherent and comprehensive picture of the participation and achievement of young people and adults. These options include:
- Further education organisations
 - Sixth form colleges
 - Local Authorities
 - Independent training organisations.
48. These organisations deliver a wide variety of government programmes, including:
- Education and Training
 - Apprenticeships
 - Workplace Learning
 - Community Learning
 - Traineeships.
49. This SFR covers adults (19+) and does not contain information regarding:
- **Delivery in School Sixth Forms**, including maintained, independent and academy schools. Provisional figures taken from the Department for Education (DfE) [Participation in Education, Training and Employment by 16–18 Year Olds in England](#) Statistical Release show there were 541,000 16-18 year old students studying in School Sixth Forms in 2013, based on a snapshot of January 2013 school census data.
 - **Higher Education in Higher Education Institutions**. The publication referenced in paragraph 72 shows that the total number of HE enrolments at English Higher Education Institutions stood at 2,340,275 in 2012/13.
 - **Privately-funded training at FE organisations and independent training organisations**. There is no single coherent source that provides a measure of privately-funded training. BIS will investigate whether it is possible to develop a measure to support this as part of our wider Dissemination Plan. More detail on the Dissemination Plan updated April 2013 can be found at: [Statistics - Dissemination Plan](#). There are no sources currently available that fully capture privately-funded academic activity, particularly for older learners. However, in Table 13 of this release we do show the total number of Vocational Qualifications awarded in the UK. This includes both public and privately-funded qualifications and gives some sense of scale of total vocationally-related activity in the sector.

Data Sources

50. The data used to produce this SFR are Individualised Learner Record (ILR) collections that are returned to the Skills Funding Agency by further education colleges and providers and Employer Ownership Pilot data returned by employers. A Single ILR collection (SILR) was introduced in 2011/12 to replace the multiple ILR collection types that were collected in previous years. There are no longer separate collections for different funding streams and providers return all of their learners in a single file. The following ILR collections have been used to update this release:

Year	Data Source
2012/13	SILR (R14), Employer Ownership Pilot 1 (R14) Large Employer Outcome Pilot (R14)
2013/14	SILR (R13) Employer Ownership Pilots 1 & 2 (R13) Large Employer Outcome Pilot (R13)

51. The data sources for all years, except 2013/14, are final collections and include information on provision for the full academic year. More information on these data sources is available in a definitions document, which can be found at:

<https://www.gov.uk/government/publications/learner-participation-outcomes-and-level-of-highest-qualification-held>.

52. Ofqual Vocational Qualification data is used in Table 13 of this release.

53. The Labour Force Survey is the other data source used for the SFR (Tables 11 and 12). The latest LFS data used in this release relate to Quarter 4 (October – December) 2013.

Issues with Using Provisional Data

54. It is important to provide the earliest picture of further education performance once it becomes available so that users may assess the impact of government-funded provision and hold the system to account. However, provisional data are taken from an operational information system which is designed to support the funding of providers and there are some important limitations users should take into consideration.

55. In-year information is subject to data lag, which is when a provider submits information after the period it related to. This information is subsequently attributed to the correct time period. Data remain provisional until final returns for the academic year are made by providers, after the end of the academic year. Final data are published in the following November. The size of revision to individual estimates that arise from data lag can vary greatly. They tend to be around 2 to 3 per cent but have been as much as 15 per cent. Revisions are typically upward though it should be noted that on occasions small downward revisions are possible.

56. Data lag from one year to the next is not predictable, as provider behaviour changes over time and there is no source of information that would enable us to provide a robust estimate of completeness of data that have been returned. Provisional data cannot, therefore, be compared with provisional or final data from earlier academic

years. We generally recommend using the final data for the last complete academic year.

57. We carry out a quality assessment of the volume of providers that have made their returns. If we consider estimates to be particularly weak, due to data lag or any other factor, we may defer publication of those estimates. In recent years we have encouraged more timely reporting of data ahead of the final return. This is set out in our quality statement, which can be found at: <https://www.gov.uk/government/publications/sfr-compliance-with-official-statistics-code-of-practice>.
58. In 2013/14 new funding methodologies have been introduced and the validation rules regarding ILR data submission have been tightened. Analysis of the whole ILR return suggests overall levels of data lag are within normal bounds. We would not expect any provision to be affected by earlier issues relating to IT change and validation rules.

Issues with Comparing Data Across Academic Years

59. In the 2011/12 academic year a Single Individualised Learner Record (ILR) data collection system was introduced. This replaced the multiple separate data collections from previous years and led to small technical changes in the way learners from more than one funding stream are counted.
60. Overall the new collection system led to a removal of duplicate learners and a reduction in total learner participation of approximately 2 per cent. However Apprenticeship participation figures were more significantly affected due to a change in the way learners participating on more than one Apprenticeship programme were counted. This has led to a removal of duplicate learners and a reduction in overall Apprenticeship learners of approximately 5 per cent, therefore figures for 2011/12 onwards are not comparable to earlier years. A paper is available on our website to explain the Single ILR and the small effects it has on the SFR at: [Reduction of Duplication in FE and Skills Learner Volumes](#). Further information on the Single ILR is available the GOV.UK website at: <https://www.gov.uk/government/publications/ilr-specification-validation-rules-and-appendices-2013-to-2014>

Data Definitions

61. High-level definitions of some of the key terms used in this release can be found in the Glossary on page 3. A more detailed definitions document to accompany this release is available at: [Statistical First Release Definitions](#)
62. The 'Level of Highest Qualification Held by Adults' statistics are produced using data on the highest qualification held by individuals from the Labour Force Survey in each year. The LFS is conducted by the Office for National Statistics and the estimates provided are the best measure of attainment within the population at Quarter 4 (October – December) each calendar year. Further details of how this information is used to calculate the estimates can be found at: [Statistics - Statistical First Release - SFR Methodology](#)

Publication Cycle Across the Year

63. Further information on future editions of the SFR can be found on the website at: <https://www.gov.uk/government/statistics/learner-participation-outcomes-and-level-of-highest-qualification-held>

64. Table A below shows provisional and final data included for each release.

Table A: Publication Cycle

Release	Data Included
January 2014	- Education and Training; Apprenticeship; and Workplace Learning success rates for 2012/13
	- Provisional FE and Skills data for the first quarter of 2013/14
March 2014	- Provisional FE and Skills data for the first two quarters of 2013/14
	- Final data for 2012 and provisional data for 2013 on the level of highest qualification held for adults in the population
June 2014	- Provisional FE and Skills data for the first three quarters of 2013/14
October 2014	- Provisional FE and Skills data for the full 2013/14 academic year
November 2014	- Final FE and Skills data for the full 2013/14 academic year
January 2015	- Education and Training; Apprenticeship; and Workplace Learning success rates for 2013/14
	- Provisional FE and Skills data for the first quarter of 2014/15

65. The Statistical First Release is an evolving product and we welcome feedback. If you have comments or feedback on the SFR, these can be sent to: servicedesk@sfa.bis.gov.uk, or alternatively, you can call 0870 267 0001.

66. If you have a statistical question around the content or presentation of National Statistics in the release, please contact Paula Maratos at: paula.maratos@bis.gsi.gov.uk

Supplementary Tables

67. A full list of supplementary tables relating to this SFR can be found on the GOV.UK website at <https://www.gov.uk/government/collections/fe-data-library>. These tables include breakdowns by age, gender, ethnicity, learners with learning difficulties and/or disabilities, region, local authority, parliamentary constituency, sector subject area and funding stream. For more information on exactly what data will be released, please see the supplementary tables list on the website.

68. Local Authority Reports are published on the GOV.UK website. Local Authority Districts are shown based on the postcodes of delivery locations and also on the home postcodes of learners. The reports cover 2010/11, 2011/12 and 2012/13: enrolments, participation and provider level. The reports can be found at: <https://www.gov.uk/government/statistical-data-sets/fe-data-library-local-authority-tables>

Related National Statistics Releases

69. There are a number of other National Statistics publications available that can be used to provide contextual information to this SFR. Some of those most relevant to this release are discussed below.

70. [Participation in Education, Training and Employment by 16-18 Year Olds in England](#) published on 25th June 2014 by the Department for Education. This shows that the **provisional** proportion of 16–18 year olds in education and training was 85.6 per cent at end 2013 – the highest rate ever recorded and an increase of 2 percentage points from end 2012.
71. [Level 2 and 3 Attainment by Young People in England Measured Using Matched Administrative Data: Attainment by Age 19 in 2013](#) published on 27th March 2014 by the Department for Education. This shows that in 2013, 86.2 per cent of people aged 19 were qualified to at least Level 2, and 59.1 per cent were qualified to Level 3. These were both increases of 1.1 percentage points since 2012.
72. [Higher Education Student Enrolments and Qualifications Obtained at Higher Education Institutions in the United Kingdom for the Academic Year](#) published on 16th January 2014 by the Higher Education Statistics Agency. This release shows that the total number of HE enrolments at UK Higher Education Institutions stood at 2,340,275 in 2012/13, a decrease of 6% from 2011/12. In terms of qualifications, in 2012/13 there were 403,770 first degree graduates compared to 390,990 in 2011/12, an increase of 3 per cent.
73. [Education and Training Statistics for the United Kingdom](#) published on 7th November 2013 by the Department for Education. This release provides statistics relating to education and training in the UK and includes chapters relating to post-compulsory education & training and qualifications. Information includes participation of learners in further education by country of study, participation in job-related training and the highest level of qualification held by adults in the population (UK).

Other Related Statistics

74. FE Choices provides clear, comparable information to learners and employers so they can make informed choices about post-16 education and training. FE Choices enables users to search and compare provider ratings for four performance indicators: Success Rates; Learner Destinations (including Employment Rate and Learning Rate); Learner Satisfaction; and Employer Satisfaction. These indicators are published on the FE Choices website at: <http://fechoices.skillsfundingagency.bis.gov.uk/>. Results at National level, by type of provider and by individual provider for each performance indicator can be found at: <https://www.gov.uk/government/statistical-data-sets/fe-choices-performance-indicators>

Further Education Statistics for Other Countries in the UK

75. The focus of this SFR is on government-funded further education provision in England. Similar information is available for other countries in the UK, and provides useful contextual background to these statistics.
76. Statistics on Further Education and Work-based learning in **Wales** can be found at: <http://wales.gov.uk/statistics-and-research/further-education-work-based-learning-community-learning-statistics/?lang=en>
77. Statistics on Professional and Technical Enrolments in the **Northern Ireland** Further Education Sector for 2012/13 can be found at: <http://www.delni.gov.uk/index/statsandresearch/further-education-stats/fe->

[enrolments/further-education-provision-enrolments/fe-sector-2012-13.htm](http://www.sfc.ac.uk/web/FILES/further-education-provision-enrolments/fe-sector-2012-13.htm)

78. Statistics on learners in further education in **Scotland** can be found at: http://www.sfc.ac.uk/web/FILES/ReportsandPublications/Facts_and_Figures_2012.pdf. Additionally, user-defined tables on further education learners and courses can be produced at: <https://stats.sfc.ac.uk/infact/>

TABLE GUIDE

79. This section provides a brief summary of what is included in each table of this release. Tables 1 to 10 focus on the 2012/13 academic year; Tables 14 to 23 show provisional data for the full 2013/14 academic year (August 2013 to July 2014).

- **Table 1** shows participation and achievements in further education and skills by level for adults (19+).
- **Table 2** shows a demographic breakdown of participation in further education and skills for adults (19+) by level.
- **Table 3** shows English and maths participation and achievements for adults (19+) by level.
- **Table 4** shows a demographic breakdown of Apprenticeship participation by level.
- **Table 5** shows Apprenticeship participation by age and level.
- **Table 6** shows Apprenticeship starts and achievements by age and level.
- **Table 7** shows Offender Learning participation and achievements by level for adults (18+)
- **Table 8** shows Workplace Learning starts and achievements by level.
- **Table 9** shows Community Learning participation and achievements by provision type.
- **Table 10** shows success rates for Education and Training (19+), Workplace Learning (19+) and Apprenticeships.
- **Tables 11 and 12** show level of attainment in the population (working age and economically active respectively) from the Labour Force Survey.
- **Table 13** shows a quarterly time series of Vocational Qualifications awarded.

UPDATED SINCE LAST RELEASE

- **Tables 14 to 18, 20 and 21** repeat earlier tables showing provisional data for the full 2013/14 academic year (August 2013 to July 2014).
- **Table 19** shows payments made through the Apprenticeship Grant for Employers (AGE 16 – 24) scheme and starts on the Access to Apprenticeship Pathway.
- **Table 22** shows Employer Ownership Pilot starts by type and age on the programme to date.
- **Table 23** shows participation with 24+ Advanced Learning Loans (Level 3+) for the full 2013/14 academic year (August 2013 to July 2014).
- **Table 24** shows Traineeship starts by age for the full 2013/14 academic year.

Table Footnotes

General Footnotes Relevant to All Tables

- 1) Volumes are rounded to the nearest 100; percentages are calculated on pre-rounded data.
- 2) '-' Indicates a base value of less than 50; '*' indicates a percentage of less than 0.5%.
- 3) Tables 1-5, 7, 9, 14-17 & 21 are based on learners that were funded by the Learning and Skills Council or Young People's Learning Agency and/or are now funded by the Skills Funding Agency or Education Funding Agency.
- 4) For definitions of variables used in the Tables please see the data dictionary:
<http://webarchive.nationalarchives.gov.uk/20140107201041/http://www.thedataservice.org.uk/datadictionary/>
- 5) Except for Tables 6, 18-19 & 22 (see Footnote 17 and 26), age is reported as at 31 August of the academic year for all provision.
- 6) In Tables reporting full-year numbers, except for Tables 6 & 8 (see Footnotes 18, 19, 27 & 28), full-year numbers are a count of the number of learners that participated/achieved at any point during the year. Learners undertaking/achieving more than one course will appear only once in the 'total learners' category for each data collection. All learners undertaking/achieving a full Level 2 or full Level 3 qualification will also appear in the Level 2 or Level 3 category, respectively.
- 7) The data source for all tables is the Individualised Learner Record, except where stated.
- 8) Further breakdowns of the data are available at the following website:
https://www.gov.uk/government/publications?departments%5B%5D=skills-funding-agency&publication_filter_option=statistics

Table 10.1 – Education and Training Success Rates

- 9) Education and Training success rates are calculated as the number of learning aims achieved divided by the number of learning aims expected to complete, excluding any learners who transferred on to another learning aim within the same institution.
- 10) Table 1.2 reports on the actual number of achievements within the academic year without reference to those that were expected to complete. Table 10.1 reports on success rates which are based on the reported achievement of individual aims that were expected to complete in the academic year.

Tables 2 and 4 – Demographics

- 11) Learners undertaking courses at more than one level will be counted once for each applicable level, but once only in the Total.
- 12) Age, gender, learners with learning difficulties and/or disabilities and ethnicity are based upon self-declaration by the learner.

Tables 4-6, 10.2 & 17-19 – Apprenticeships

- 13) Apprenticeship starts and achievements include all funded and unfunded learners reported on the ILR.
- 14) Apprenticeship success rates are based on the number of learners who meet all of the requirements of their Apprenticeship framework, divided by the number of learners who have left training or successfully completed their training in the academic year.
- 15) Table 10.2 reports on success rates which are based on the reported achievement of frameworks that were expected to complete in the academic year.
- 16) Apprenticeship success rates are not affected by demand led funding.
- 17) For Apprenticeship starts and achievements, age is calculated based on age at start of the programme rather than based on 31 August.
- 18) In Table 6.1 full-year numbers are a count of the number of starts at any point during the year. Learners starting more than one Apprenticeship will appear more than once.
- 19) In Table 6.2 full-year numbers are a count of the number of framework achievements at any point during the year. Learners achieving more than one framework will appear more than once.
- 20) Programme-Led Apprenticeships recorded in ILR returns are included in the above figures.
- 21) In order to be counted as a successful achievement, all elements of the framework must have been achieved.
- 22) Quarter 1 is 1 August to 31 October; Quarter 2 is 1 November to 31 January; Quarter 3 is 1 February to 30 April; Quarter 4 is 1 May to 31 July.

Tables 8, 10.3 & 20 – Workplace Learning

- 23) Workplace Learning success rates are based on the number of aims achieved, divided by the number of aims completed in the academic year.
- 24) Table 10.3 reports on success rates which are based on the reported achievement of individual aims that were expected to complete in the academic year.
- 25) 2011/12 is the first year that Workplace Learning success rates are available. This is due to a change in the programmes included in Workplace Learning. Between 2007/08 and 2010/11 this included the Train to Gain programme. In 2011/12 this included all training mainly delivered through the workplace (excluding Apprenticeships). Therefore previous years are not comparable. For more information see:
http://webarchive.nationalarchives.gov.uk/20140107201041/http://www.thedataservice.org.uk/Statistics/success_rates/success_rates_2011-12/

26) Age is calculated based on age at start of the programme rather than based on 31 August.

27) In Table 8.1 full-year numbers are a count of the number of starts at any point during the year. Learners starting more than one course will appear more than once.

28) In Table 8.2 full-year numbers are a count of the number of achievements at any point during the year. Learners achieving more than one course will appear more than once.

29) Quarter 1 is 1 August to 31 October; Quarter 2 is 1 November to 31 January; Quarter 3 is 1 February to 30 April; Quarter 4 is 1 May to 31 July.

Tables 9 & 21 – Community Learning

30) Total Learners includes learners participating in Community Learning (previously Adult Safeguarded Learning) provision in the Community Learning and FE funding streams for 2007/08. For 2008/09 to 2010/11, only Community Learning provision recorded in the Community Learning collection is included in totals except for 2009/10 where Community Learning provision recorded in the Education and Training collection for five Specially Designated Colleges is also included.

31) There are a number of learners with Community Learning aims that are recorded in the Education and Training funding stream and are not included in the figures in Table 9. In 2008/09 there were 7,900 participating and 6,400 achieving learners; in 2009/10 there were 7,700 participating and 6,300 achieving learners; and in 2010/11 there were 8,300 participating and 6,900 achieving learners. The only Community Learning provision included for Table 9 for 2008/09 and 2010/11 is recorded in the Community Learning funding stream. Community Learning in 2011/12 onwards is recorded in the Single ILR collection only.

Table 13 – Vocational Qualifications

32) This table covers all levels of vocational qualifications reported through Ofqual. Data are supplied by awarding organisations.

33) Academic year is October to September. For example, the 2006/07 academic year is 1 October 2006 to 30 September 2007.

34) Key Skills data was not collected prior to October 2009.

35) 'Other Vocational Qualifications' include Basic Skills, Entry Level, English for Speakers Other Languages, Functional Skills, Free-Standing Mathematics Qualification, Key Skills, National Qualifications Framework and Other General types.

Table 22 – Employer Ownership Pilot

36) This table covers all Employer Ownership Pilot starts.

37) Age is calculated based on age at start of the programme rather than based on 31 August.

Table 23 – 24+ Advanced Learning Loans (Level 3+)

38) Learners have been eligible to apply for a 24+ Advanced Learning Loan since the start of the 2013/14 academic year (August 2013).

39) A small number of learners aged 23 at the start of the academic year but aged 24 at the start of the aim are included in the figures.

40) This table includes 'Education and Training' learners only. Apprenticeships were removed from the scope of the loans programme in March 2014, Apprentices who already received a loan no longer need to repay it.

Table 1.1: Adult (19+) FE and Skills Participation by Level (2008/09 to 2012/13) – Learner Volumes
 (Revised October 2014 - Support for the Unemployed footnote only)

		Funded Learners								
		2008/09	2009/10	2010/11		2011/12		2012/13		
		Full Year	Full Year	% change 08/09 to 09/10	Full Year	% change 09/10 to 10/11	Full Year	% change 10/11 to 11/12	Full Year	% change 11/12 to 12/13
Level										
Total Learners		3,771,200	3,540,500	-6.1%	3,163,200	-10.7%	3,149,700	*	3,280,600	4.2%
Participation	of which...									
	Below Level 2 (excluding English and maths)	496,800	435,300	-12.4%	370,900	-14.8%	574,700	54.9%	757,800	31.9%
	English and maths	945,100	909,100	-3.8%	961,800	5.8%	1,083,000	12.6%	1,049,600	-3.1%
	Full Level 2	968,600	971,000	*	982,600	1.2%	1,028,100	4.6%	972,500	-5.4%
	Full Level 3	423,900	469,100	10.6%	494,000	5.3%	486,800	-1.5%	495,300	1.7%
	Level 2	1,549,000	1,451,200	-6.3%	1,273,300	-12.3%	1,320,000	3.7%	1,239,200	-6.1%
	Level 3	619,700	604,800	-2.4%	542,900	-10.2%	542,600	*	594,300	9.5%
	Level 4+	58,200	49,500	-14.9%	36,600	-26.0%	39,200	7.1%	50,000	27.6%
	No Level Assigned	910,500	951,100	4.5%	888,300	-6.6%	798,900	-10.1%	818,500	2.5%

Table 1.2: Adult (19+) FE and Skills Achievement by Level (2008/09 to 2012/13) – Learner Volumes

		Funded Learners								
		2008/09	2009/10	2010/11		2011/12		2012/13		
		Full Year	Full Year	% change 08/09 to 09/10	Full Year	% change 09/10 to 10/11	Full Year	% change 10/11 to 11/12	Full Year	% change 11/12 to 12/13
Level										
Total Learners		2,584,000	2,567,700	-0.6%	2,265,100	-11.8%	2,258,500	*	2,453,900	8.7%
Achievement	of which...									
	Below Level 2 (excluding English and maths)	367,000	336,800	-8.2%	298,500	-11.4%	472,300	58.2%	651,900	38.0%
	English and maths	639,100	614,600	-3.8%	595,600	-3.1%	633,000	6.3%	597,300	-5.6%
	Full Level 2	493,900	556,000	12.6%	561,800	1.0%	546,600	-2.7%	557,800	2.0%
	Full Level 3	170,200	237,800	39.7%	242,700	2.1%	216,200	-10.9%	201,700	-6.7%
	Level 2	910,800	926,000	1.7%	788,900	-14.8%	775,200	-1.7%	769,900	-0.7%
	Level 3	317,000	344,400	8.7%	282,600	-17.9%	249,000	-11.9%	273,300	9.8%
	Level 4+	27,600	26,900	-2.3%	20,400	-24.4%	21,500	5.7%	24,200	12.6%
	No Level Assigned	756,400	814,600	7.7%	764,100	-6.2%	685,900	-10.2%	710,100	3.5%

Notes

1) These tables include Apprenticeships, Workplace Learning, Community Learning and Education and Training provision taken at General Further Education Colleges (including Tertiary), Sixth Form Colleges, Special Colleges (Agricultural and Horticultural Colleges and Art and Design Colleges), Specialist Colleges and External Institutions.

2) Figures for 2011/12 onwards are not directly comparable to earlier years as a Single Individualised Learner Record (ILR) data collection system has been introduced. Small technical changes have been made in the way learners from more than one provision type are counted, leading to a removal of duplicate learners and a reduction in overall learner numbers of approximately 2 per cent. More information on the Single ILR is available at:

http://webarchive.nationalarchives.gov.uk/20140107201041/http://www.thedataservice.org.uk/NR/rdonlyres/C05DCDD5-67EE-4AD0-88B9-BEBC8F7F3300/0/SILR_Effects_SFR_Learners_June12.pdf

3) Data for earlier years are available in the Further Education and Skills Supplementary Tables:

<https://www.gov.uk/government/statistical-data-sets/fe-data-library-further-education-and-skills>

4) Prior to 2009/10 Level 4+ Apprenticeships were included with Level 3 Apprenticeships.

5) In 2012/13 there were 89,900 offenders aged 18 or over in the prison system participating in learning, 68,400 achieved a learning outcome. These offenders were funded via the Offenders' Learning and Skills Service (OLASS) budget. Those aged 19 and over are included in Tables 1.1 and 1.2.

6) Since the previous release in June 2014, the figures for learners benefiting from support for the unemployed (those nearest the workforce) have been revised to include those learners in receipt of Universal Credit. In 2012/13 501,400 learners benefited from support for the unemployed (those nearest the workforce), of which 496,700 were aged 19+. These are defined as those learners reporting that they were in receipt of Employment and Support Allowance - Work Related Activity Group (ESA WRAG), Jobseeker's Allowance (JSA) or Universal Credit (if unemployed and looking for work).

7) Figures for English and maths (previously Skills for Life) include GCSEs, Functional Skills, Adult Basic Skills Certificates including ESOL Certificates, and Qualifications and Credit Framework Certificates and Awards in English and maths.

8) Please see the general footnotes and the FE and Skills footnotes sections for further information on these tables.

Table 2: Adult (19+) Demographic Summary of FE and Skills Participation (2012/13) – Learner Volumes

	Funded Learners									
	All FE and Skills Participation									
	Below Level 2 (excluding English and Maths)	English and Maths Total	English	Maths	ESOL	Level 2	Level 3	Level 4+	Total FE and Skills	%
Total Learners	757,800	1,049,600	765,800	748,200	146,200	1,239,200	594,300	50,000	3,280,600	100.0%
Age										
19-24	197,800	308,100	239,700	242,800	20,800	372,900	232,500	10,600	803,900	24.5%
25-49	416,900	630,600	445,800	428,400	109,700	694,200	307,900	32,600	1,822,200	55.5%
50+	142,900	110,600	80,100	76,900	15,700	172,100	53,900	6,900	649,100	19.8%
Unknown	100	300	200	100	-	-	-	-	5,400	*
Gender										
Female	318,200	623,900	441,900	438,200	97,300	631,500	367,500	30,500	1,847,300	56.3%
Male	439,500	425,700	323,900	310,000	48,900	607,600	226,800	19,500	1,433,300	43.7%
Learners with Learning Difficulties and/or Disabilities										
Learning Difficulty/Disability	158,200	129,900	97,500	88,800	9,300	127,800	54,300	3,600	434,700	13.2%
No Learning Difficulty/Disability	564,600	886,000	647,600	641,100	129,400	1,071,100	524,200	43,700	2,686,200	81.9%
Not Known	35,000	33,700	20,700	18,300	7,500	40,300	15,700	2,800	159,800	4.9%
Ethnicity										
Asian/ Asian British	61,600	110,400	59,900	51,200	39,800	88,300	32,300	2,600	263,400	8.0%
Black/ African/ Caribbean/ Black British	67,800	84,500	52,900	49,800	19,600	83,100	35,300	2,200	221,900	6.8%
Mixed/ Multiple Ethnic Group	22,600	25,800	17,100	16,500	5,100	29,600	13,500	900	76,000	2.3%
White	569,100	775,300	608,600	608,400	59,600	998,400	499,100	42,900	2,568,400	78.3%
Other Ethnic Group	16,100	33,200	14,200	10,800	17,500	19,000	6,600	500	67,600	2.1%
Not Known/Not Provided	20,500	20,400	13,100	11,400	4,600	20,800	7,500	900	83,500	2.5%

Notes

1) These tables include Apprenticeships, Workplace Learning, Community Learning and Education and Training provision taken at General Further Education Colleges (including Tertiary), Sixth Form Colleges, Special Colleges (Agricultural and Horticultural Colleges and Art and Design Colleges), Specialist Colleges and External Institutions.

2) Figures for English and maths (previously Skills for Life) include GCSEs, Functional Skills, Adult Basic Skills Certificates including ESOL Certificates, and Qualifications and Credit Framework Certificates and Awards in English and maths.

3) Please see the general footnotes and the FE and Skills Demographics footnotes sections for further information on these tables.

Table 3: Adult (19+) FE and Skills – English and Maths Participation and Achievement by Level (2008/09 to 2012/13)

Measure	Level	Funded Learners							
		2008/09	2009/10	2010/11		2011/12		2012/13	
				% change	% change		% change		% change
		Full Year	Full Year	08/09 to 09/10	09/10 to 10/11	Full Year	10/11 to 11/12	Full Year	11/12 to 12/13
Participation	Total Learners	945,100	909,100	-3.8%	5.8%	961,800	12.6%	1,083,000	-3.1%
	of which English	579,500	555,700	-4.1%	15.0%	639,000	22.5%	782,500	-2.1%
	of which entry level	136,700	112,400	-17.8%	-7.7%	103,800	3.6%	120,200	11.7%
	of which level 1	248,700	226,700	-8.9%	26.1%	285,900	32.7%	340,900	-10.2%
	of which level 2	245,600	252,100	2.7%	13.8%	286,800	16.9%	327,900	-2.2%
	of which maths	517,100	525,000	1.5%	20.1%	630,500	22.5%	748,200	-3.1%
	of which entry level	108,700	101,400	-6.7%	-2.9%	98,500	3.9%	95,500	-6.7%
	of which level 1	241,800	236,800	-2.1%	32.9%	314,800	26.0%	346,800	-12.5%
	of which level 2	218,600	228,800	4.6%	16.2%	265,700	21.7%	334,800	3.5%
	of which ESOL (English for Speakers of Other Languages)	188,700	178,600	-5.4%	-8.4%	163,600	-14.8%	146,200	4.9%
	of which entry level	161,000	150,100	-6.8%	-9.7%	135,500	-12.9%	123,200	4.4%
	of which level 1	24,100	24,100	*	*	24,200	-2.1.4%	21,700	13.8%
	of which level 2	9,300	9,700	3.5%	-0.6%	9,600	-26.1%	7,500	6.1%
Achievement	Total Learners	639,100	614,600	-3.8%	-3.1%	595,600	6.3%	633,000	-5.6%
	of which English	340,300	336,400	-1.1%	-2.0%	329,700	17.5%	351,500	-9.3%
	of which entry level	91,800	79,200	-13.7%	-6.1%	74,400	7.2%	90,500	13.5%
	of which level 1	144,000	130,200	-9.6%	3.1%	134,100	30.9%	152,000	-13.4%
	of which level 2	129,000	144,700	12.2%	-3.3%	139,900	9.2%	116,600	-23.7%
	of which maths	293,000	311,100	6.2%	4.2%	324,300	19.1%	357,100	-7.6%
	of which entry level	68,300	68,400	*	3.7%	70,900	12.4%	73,800	-7.5%
	of which level 1	138,900	138,400	*	9.4%	151,300	26.6%	165,200	-13.8%
	of which level 2	111,400	126,200	13.2%	1.8%	128,500	10.8%	129,600	-9.0%
	of which ESOL (English for Speakers of Other Languages)	135,800	128,200	-5.6%	-4.7%	122,100	-10.0%	117,500	6.9%
	of which entry level	116,700	108,100	-7.4%	-5.9%	101,700	-7.9%	99,100	5.7%
	of which level 1	15,600	15,900	1.6%	3.6%	16,400	-20.0%	15,700	19.6%
	of which level 2	6,100	6,600	8.0%	-1.7%	6,500	-19.7%	5,700	9.7%

Notes

1) Figures for 2011/12 onwards are not directly comparable to earlier years as a Single Individualised Learner Record (ILR) data collection system has been introduced. Small technical changes have been made in the way learners from more than one provision type are counted, leading to a removal of duplicate learners and a reduction in overall learner numbers of approximately 2 per cent. More information on the Single ILR is available at:

http://webarchive.nationalarchives.gov.uk/20140107201041/http://www.thedataservice.org.uk/NR/rdonlyres/C05DCDD5-67EE-4AD0-88B9-BEBC8F7F3300/0/SILR_Effects_SFR_Learners_June12.pdf

2) Data for earlier years are available in the English and maths Supplementary Tables:

<https://www.gov.uk/government/statistical-data-sets/fe-data-library-skills-for-life>

3) Figures for English and maths (previously Skills for Life) include GCSEs, Functional Skills, Adult Basic Skills Certificates including ESOL Certificates, and Qualifications and Credit Framework Certificates and Awards in English and maths.

4) Please see the general footnotes section for further information on this table.

Table 4: All Age Demographic Summary of Apprenticeship Participation (2012/13) – Learner Volumes

Funded Apprentices					
Apprenticeships					
	Intermediate Level Apprenticeship	Advanced Level Apprenticeship	Higher Apprenticeship	Total Apprenticeships	%
Total Learners	501,700	377,000	13,000	868,700	100.0%
Age					
Under 19	132,600	54,800	800	181,300	20.9%
19-24	167,200	132,500	4,200	294,500	33.9%
25-49	167,700	166,000	6,900	334,600	38.5%
50+	34,200	23,700	1,000	58,300	6.7%
Unknown	-	-	-	-	-
Gender					
Female	249,800	210,500	8,300	455,600	52.4%
Male	251,800	166,500	4,700	413,100	47.6%
Learners with Learning Difficulties and/or Disabilities					
Learning Difficulty/Disability	44,600	26,600	600	70,100	8.1%
No Learning Difficulty/Disability	449,500	345,200	12,200	785,800	90.5%
Not Known	7,600	5,200	200	12,800	1.5%
Ethnicity					
Asian/ Asian British	19,900	13,100	500	32,800	3.8%
Black/ African/ Caribbean/ Black British	16,000	12,600	300	28,500	3.3%
Mixed/ Multiple Ethnic Group	9,700	6,600	200	16,200	1.9%
White	447,000	338,800	11,700	776,200	89.4%
Other Ethnic Group	3,900	2,200	-	6,000	0.7%
Not Known/Not Provided	5,200	3,700	200	9,000	1.0%

Notes

1) Please see the general footnotes and the Demographics footnotes sections for further information on this table.

Table 5: All Age Apprenticeship Participation by Level and Age (2008/09 to 2012/13)

Age		Funded Apprentices												
		2008/09	2009/10	2010/11	2011/12	2012/13	2011/12				2012/13			
		Full Year	Full Year	Full Year	Full Year	Full Year	August to October	August to January	August to April	Full Year August to July	August to October	August to January	August to April	Full Year August to July
Intermediate Level Apprenticeship	Under 19	129,800	140,400	150,000	144,200	132,600	88,400	106,700	124,800	144,200	84,100	99,700	114,500	132,600
	19-24	101,300	114,600	141,300	159,100	167,200	101,100	119,300	139,400	159,100	111,400	130,100	149,100	167,200
	25+	42,500	49,000	123,900	203,000	201,900	119,200	145,300	173,000	203,000	130,500	151,800	173,700	201,900
	Total	273,600	304,000	415,200	506,200	501,700	308,600	371,400	437,200	506,200	326,000	381,600	437,300	501,700
	of which 19+	143,800	163,600	265,300	362,100	369,100	220,300	264,700	312,400	362,100	242,000	281,900	322,800	369,100
Advanced Level Apprenticeship	Under 19	44,100	45,800	52,900	53,300	54,800	34,400	40,100	45,600	53,300	36,000	41,600	47,200	54,800
	19-24	90,300	94,900	108,100	118,900	132,500	85,100	95,700	106,600	118,900	95,000	105,700	117,500	132,500
	25+	36,500	44,800	86,100	144,800	189,700	80,600	99,300	119,600	144,800	114,500	131,800	150,900	189,700
	Total	170,900	185,500	247,200	317,000	377,000	200,100	235,200	271,700	317,000	245,500	279,000	315,500	377,000
	of which 19+	126,800	139,700	194,300	263,700	322,200	165,700	195,100	226,200	263,700	209,500	237,400	268,300	322,200
Higher Apprenticeship	Under 19	100	200	300	500	800	200	200	300	500	400	500	600	800
	19-24	200	1,400	2,400	2,900	4,200	2,200	2,400	2,700	2,900	2,800	3,200	3,600	4,200
	25+	-	100	800	2,300	8,000	1,200	1,500	1,800	2,300	2,500	3,300	4,900	8,000
	Total	300	1,700	3,500	5,700	13,000	3,500	4,100	4,900	5,700	5,700	7,000	9,200	13,000
	of which 19+	200	1,500	3,200	5,200	12,200	3,300	3,800	4,600	5,200	5,300	6,400	8,600	12,200
All Apprenticeships	Under 19	173,900	186,400	203,100	189,600	181,300	121,300	143,800	165,200	189,600	118,700	138,600	157,400	181,300
	19-24	191,800	210,900	251,900	272,100	294,500	186,400	213,800	242,600	272,100	206,800	234,500	263,500	294,500
	25+	79,100	93,900	210,900	344,800	392,900	200,200	244,400	291,400	344,800	246,500	284,600	325,700	392,900
	Total	444,800	491,300	665,900	806,500	868,700	507,900	602,000	699,200	806,500	572,000	657,700	746,700	868,700
	of which 19+	270,900	304,800	462,800	616,900	687,400	386,600	458,200	534,100	616,900	453,300	519,100	589,300	687,400

Notes

1) Figures for 2011/12 onwards are not comparable to earlier years as a Single Individualised Learner Record (ILR) data collection system has been introduced. Technical changes have been made in the way learners participating on more than one Apprenticeship programme are counted. This has led to a removal of duplicate learners and a reduction in overall Apprenticeship learners of approximately 5 per cent.

http://webarchive.nationalarchives.gov.uk/20140107201041/http://www.thedataservice.org.uk/NR/rdonlyres/C05DCDD5-67EE-4AD0-88B9-BEBC8F7F3300/0/SILR_Effects_SFR_Learners_June12.pdf

2) Prior to 2011/12, full year numbers are a count of Apprenticeship programmes in each year. Learners undertaking more than one Apprenticeship programme will appear more than once in the 'All Apprenticeships' total as well as the totals for each Apprenticeship level they participated in. From 2011/12 onwards 'All Apprenticeships' counts each Apprenticeship learner only once regardless of how many programmes they participated in. Each learner is still counted in the totals for each Apprenticeship level they participated in.

3) Data for earlier years are available in the Apprenticeship Supplementary Tables:

<https://www.gov.uk/government/statistical-data-sets/fe-data-library-apprenticeships>

4) Figures for 2012/13 include Apprenticeships through the Employer Ownership Pilot.

5) Please see the general footnotes and the Apprenticeships footnotes section for further information on this table.

Table 6.1: All Age Apprenticeship Programme Starts by Level and Age (2008/09 to 2012/13)

	Age	2008/09	2009/10	2010/11	2011/12	2012/13	2011/12				2012/13			
		Full Year	Full Year	Full Year	Full Year	Full Year	Quarter 1	Quarter 2	Quarter 3	Quarter 4	Quarter 1	Quarter 2	Quarter 3	Quarter 4
Intermediate Level Apprenticeship	Under 19	74,200	89,400	97,300	95,400	80,900	40,600	19,400	17,600	17,800	35,500	15,600	14,000	15,900
	19-24	52,600	72,800	90,400	101,700	99,000	29,200	21,900	25,300	25,300	30,100	22,000	24,000	22,800
	25+	31,700	28,400	113,400	131,900	112,900	34,700	30,100	32,200	34,900	30,000	24,100	26,100	32,600
	Total	158,500	190,500	301,100	329,000	292,800	104,500	71,300	75,200	78,000	95,700	61,600	64,100	71,300
	of which 19+	84,300	101,100	203,800	233,600	211,900	63,900	51,900	57,500	60,200	60,200	46,100	50,200	55,500
Advanced Level Apprenticeship	Under 19	25,100	27,200	34,200	34,100	33,100	18,100	5,400	4,500	6,100	17,600	5,100	4,600	5,800
	19-24	32,000	39,800	51,600	58,000	63,900	18,400	12,200	12,900	14,600	21,700	11,900	13,800	16,500
	25+	24,200	20,600	68,000	95,700	110,600	21,700	21,200	23,400	29,400	24,400	19,600	22,400	44,300
	Total	81,300	87,700	153,900	187,900	207,700	58,200	38,900	40,800	50,100	63,700	36,700	40,800	66,500
	of which 19+	56,100	60,400	119,700	153,700	174,600	40,100	33,400	36,300	44,000	46,000	31,500	36,200	60,800
Higher Apprenticeship	Under 19	-	100	200	300	600	100	-	100	100	300	100	100	100
	19-24	100	1,200	1,300	1,700	2,400	800	200	400	300	1,000	400	500	600
	25+	-	100	700	1,700	6,800	500	300	400	500	800	900	1,800	3,300
	Total	200	1,500	2,200	3,700	9,800	1,400	600	900	800	2,100	1,400	2,400	4,000
	of which 19+	100	1,400	2,000	3,400	9,200	1,300	600	800	800	1,700	1,300	2,300	3,900
All Apprenticeships	Under 19	99,400	116,800	131,700	129,900	114,500	58,900	24,900	22,200	24,000	53,400	20,800	18,600	21,700
	19-24	84,700	113,800	143,400	161,400	165,400	48,300	34,300	38,600	40,200	52,800	34,300	38,300	39,900
	25+	55,900	49,100	182,100	229,300	230,300	56,900	51,600	56,000	64,800	55,200	44,600	50,300	80,200
	Total	239,900	279,700	457,200	520,600	510,200	164,100	110,700	116,800	128,900	161,400	99,700	107,300	141,800
	of which 19+	140,600	162,900	325,500	390,700	395,700	105,200	85,900	94,600	104,900	108,000	78,900	88,700	120,100

Table 6.2: All Age Apprenticeship Framework Achievements by Level and Age (2008/09 to 2012/13)

	Age	2008/09	2009/10	2010/11	2011/12	2012/13	2011/12				2012/13			
		Full Year	Full Year	Full Year	Full Year	Full Year	Quarter 1	Quarter 2	Quarter 3	Quarter 4	Quarter 1	Quarter 2	Quarter 3	Quarter 4
Intermediate Level Apprenticeship	Under 19	50,200	52,900	59,400	56,500	42,100	13,700	11,800	11,800	19,300	12,000	9,000	8,400	12,700
	19-24	35,500	38,600	48,400	54,100	47,700	12,400	11,700	13,000	17,000	12,600	11,600	11,200	12,300
	25+	12,500	20,300	23,900	61,800	66,500	10,500	12,500	16,900	21,900	16,600	15,400	16,200	18,300
	Total	98,100	111,900	131,700	172,400	156,300	36,600	36,000	41,700	58,200	41,200	36,000	35,800	43,200
	of which 19+	48,000	59,000	72,400	115,900	114,200	22,900	24,200	29,900	38,900	29,200	27,000	27,400	30,600
Advanced Level Apprenticeship	Under 19	17,500	20,100	23,900	21,300	18,600	5,500	3,700	3,800	8,300	5,400	3,600	3,500	6,000
	19-24	22,400	25,400	27,700	30,600	30,800	7,200	6,300	6,700	10,300	7,800	6,700	7,100	9,300
	25+	5,400	13,900	15,900	32,800	45,700	5,400	6,500	8,400	12,500	9,500	10,400	11,100	14,700
	Total	45,200	59,400	67,500	84,700	95,000	18,100	16,600	18,900	31,100	22,700	20,700	21,700	30,000
	of which 19+	27,700	39,300	43,600	63,400	76,500	12,700	12,900	15,100	22,800	17,300	17,000	18,100	24,000
Higher Apprenticeship	Under 19	-	-	100	100	100	-	-	-	-	-	-	-	-
	19-24	-	100	800	800	800	300	100	100	200	300	200	100	200
	25+	-	-	100	300	600	100	100	-	100	100	100	100	200
	Total	-	200	1,000	1,200	1,600	500	200	200	400	400	400	300	500
	of which 19+	-	200	900	1,200	1,400	400	200	200	400	400	300	200	500
All Apprenticeships	Under 19	67,700	73,100	83,300	77,900	60,800	19,200	15,500	15,600	27,600	17,400	12,700	11,900	18,700
	19-24	57,800	64,200	77,000	85,600	79,300	20,000	18,200	19,900	27,600	20,700	18,400	18,400	21,800
	25+	17,900	34,300	39,900	94,900	112,800	16,000	19,100	25,300	34,500	26,300	25,900	27,400	33,200
	Total	143,400	171,500	200,300	258,400	252,900	55,200	52,700	60,800	89,700	64,400	57,000	57,700	73,700
	of which 19+	75,700	98,400	116,900	180,500	192,100	36,000	37,200	45,200	62,100	47,000	44,400	45,800	55,000

Notes

1) Figures for 2011/12 onwards are not directly comparable to earlier years as a Single Individualised Learner Record (ILR) data collection system has been introduced. Small technical changes have been made in the way learners from more than one provision type are counted, leading to a removal of duplicate learners and a reduction in overall learner numbers of approximately 2 per cent. More information on the Single ILR is available at:

http://webarchive.nationalarchives.gov.uk/20140107201041/http://www.thedata.service.org.uk/NR/rdonlyres/C05DCDD5-67EE-4AD0-88B9-BEBC8F7F3300/0/SILR_Effects_SFR_Learners_June12.pdf

2) Data for earlier years are available in the Apprenticeship Supplementary Tables:

<https://www.gov.uk/government/statistical-data-sets/fe-data-library-apprenticeships>

3) Figures for 2012/13 include Apprenticeships through the Employer Ownership Pilot.

4) Please see the general footnotes and the Apprenticeships footnotes section for further information on these tables.

Table 7.1: Adult (18+) FE and Skills - Offender Learning Participation by Level (2010/11 to 2012/13) – Learner Volumes

		Funded Learners				
		2010/11	2011/12		2012/13	
			% change 10/11 to 11/12		% change 11/12 to 12/13	
Level		Full Year	Full Year	Full Year	Full Year	
Total Offender Learners		88,900	90,100	1.4%	89,900	*
Participation	of which...					
	Below Level 2 (excluding English and maths)	56,800	59,900	5.4%	66,300	10.8%
	English and maths	35,400	37,000	4.5%	34,400	-7.1%
	Full Level 2	3,600	3,800	4.0%	6,900	83.2%
	Full Level 3	100	100	23.3%	100	-25.2%
	Level 2	38,500	41,600	7.9%	40,300	-2.9%
	Level 3	2,000	2,100	5.6%	2,400	16.6%
	Level 4+	-	-	-	-	-
	No Level Assigned	12,400	7,800	-37.1%	-	-

Table 7.2: Adult (18+) FE and Skills - Offender Learning Achievement by Level (2010/11 to 2012/13) – Learner Volumes

		Funded Learners				
		2010/11	2011/12		2012/13	
			% change 10/11 to 11/12		% change 11/12 to 12/13	
Level		Full Year	Full Year	Full Year	Full Year	
Total Offender Learners		70,300	71,900	2.3%	68,400	-4.9%
Achievement	of which...					
	Below Level 2 (excluding English and maths)	44,400	47,200	6.4%	51,500	9.0%
	English and maths	21,700	23,400	7.6%	16,400	-29.7%
	Full Level 2	3,200	2,300	-30.2%	4,000	77.9%
	Full Level 3	100	100	-23.2%	-	-
	Level 2	29,100	31,800	9.2%	29,100	-8.4%
	Level 3	1,200	1,200	7.1%	1,400	9.9%
	Level 4+	-	-	-	-	-
	No Level Assigned	10,400	6,700	-35.6%	-	-

Notes

1) Figures for 2011/12 onwards are not directly comparable to earlier years as a Single Individualised Learner Record (ILR) data collection system has been introduced. Small technical changes have been made in the way learners from more than one provision type are counted, leading to a removal of duplicate learners and a reduction in overall learner numbers of approximately 2 per cent. More information on the Single ILR is available at:

http://webarchive.nationalarchives.gov.uk/20140107201041/http://www.thedataservice.org.uk/NR/rdonlyres/C05DCDD5-67EE-4AD0-88B9-BEBC8F7F3300/0/SILR_Effects_SFR_Learners_June12.pdf

2) Figures for English and maths (previously Skills for Life) include GCSEs, Functional Skills, Adult Basic Skills Certificates including ESOL Certificates, and Qualifications and Credit Framework Certificates and Awards in English and maths.

3) Please see the general footnotes and the FE and Skills footnotes sections for further information on these tables.

4) An offender learner may be counted more than once if they participated/achieved in learning at different institutions during an academic year.

5) For further information on these tables please see the accompanying notes page.

Table 8.1: Workplace Learning Starts by Level (2008/09 to 2012/13)

Level		2008/09	2009/10	2010/11	2011/12	2012/13	2011/12				2012/13			
		Full Year	Full Year	Full Year	Full Year	Full Year	Quarter 1	Quarter 2	Quarter 3	Quarter 4	Quarter 1	Quarter 2	Quarter 3	Quarter 4
Total Starts		906,100	774,500	599,300	331,600	148,500	59,500	66,400	88,200	117,600	30,800	34,700	42,100	40,800
of which...														
	Below Level 2	155,300	147,100	114,300	43,200	30,900	7,900	9,300	11,800	14,200	7,600	9,300	8,100	5,900
	Level 2	579,900	430,500	331,900	252,200	102,100	44,700	49,900	67,500	90,200	20,300	22,500	29,800	29,600
	Level 3	135,800	100,200	81,800	34,200	11,100	6,700	6,900	8,500	12,200	2,700	2,100	3,100	3,200
	Level 4+	11,900	4,300	3,000	2,000	2,000	200	300	500	1,000	200	400	600	800
	No Level Assigned	23,200	92,400	68,300	-	2,400	-	-	-	-	-	400	600	1,400
	Below Level 2 (excluding English and maths)	22,100	27,900	11,200	4,200	2,900	600	900	1,300	1,500	400	700	900	900
	English and maths	191,700	127,000	108,300	62,200	39,400	11,900	13,900	16,600	19,800	9,800	11,300	10,300	8,000
	Full Level 2	520,100	415,100	315,400	226,300	85,200	39,900	44,200	60,900	81,300	16,900	18,800	25,100	24,400
	Full Level 3	136,100	98,200	80,600	31,700	6,000	6,600	6,700	7,900	10,600	1,700	1,200	1,500	1,600

Table 8.2: Workplace Learning Achievements by Level (2008/09 to 2012/13)

Level		2008/09	2009/10	2010/11	2011/12	2012/13	2011/12				2012/13			
		Full Year	Full Year	Full Year	Full Year	Full Year	Quarter 1	Quarter 2	Quarter 3	Quarter 4	Quarter 1	Quarter 2	Quarter 3	Quarter 4
Total Achievements		583,700	676,000	584,900	290,100	197,900	62,900	64,500	68,300	94,500	49,600	49,300	44,800	54,200
of which...														
	Below Level 2	88,700	105,900	95,100	34,900	27,400	4,900	6,900	9,300	13,800	5,200	6,300	7,300	8,600
	Level 2	399,300	389,700	332,500	212,100	145,100	46,800	47,400	49,700	68,100	38,300	36,500	31,600	38,700
	Level 3	68,800	95,500	81,100	41,100	22,800	10,700	9,800	8,800	11,800	5,700	6,000	5,200	5,900
	Level 4+	7,400	7,200	3,600	2,000	2,200	400	400	400	700	300	500	700	800
	No Level Assigned	19,600	77,600	72,600	-	400	-	-	-	-	-	-	100	300
	Below Level 2 (excluding English and maths)	9,300	15,900	10,900	2,700	2,800	300	500	700	1,300	400	500	1,000	900
	English and maths	118,900	94,900	88,500	51,700	35,700	7,900	10,900	13,700	19,100	7,800	8,400	8,500	10,900
	Full Level 2	359,000	378,900	318,700	191,700	129,900	43,600	42,800	44,400	60,900	35,100	33,400	28,500	33,000
	Full Level 3	69,100	93,700	80,200	40,200	16,100	10,700	9,700	8,700	11,200	4,400	4,300	3,600	3,800

Notes

1) Figures for 2011/12 onwards are not directly comparable to earlier years as a Single Individualised Learner Record (ILR) data collection system has been introduced. Small technical changes have been made in the way learners from more than one provision type are counted, leading to a removal of duplicate learners and a reduction in overall learner numbers of approximately 2 per cent. More information on the Single ILR is available at:

http://webarchive.nationalarchives.gov.uk/20140107201041/http://www.thedataservice.org.uk/NR/rdonlyres/C05DCDD5-67FE-4AD0-88B9-BEBC8F7F3300/0/SILR_Effects_SFR_Learners_June12.pdf

2) Workplace Learning includes Train to Gain and other Employer Responsive provision (except Apprenticeships).

3) Data for earlier years are available in the Workplace Learning Supplementary Tables:

<https://www.gov.uk/government/statistical-data-sets/fe-data-library-workplace-learning>

4) English and maths starts and achievements can be at Level 2 or Below Level 2.

5) These tables include some learners aged under 19 who are eligible for funding on certain Workplace Learning programmes (such as Programmes for the Unemployed).

6) Please see the general footnotes and the Workplace Learning footnotes section for further information on these tables.

Table 9: Community Learning Participation and Achievement by Type (2008/09 to 2012/13) – Learner Volumes

Measure	Provision Type	Funded Learners								
		2008/09	2009/10	2010/11		2011/12		2012/13		
		Full Year	Full Year	% change 08/09 to 09/10	Full Year	% change 09/10 to 10/11	Full Year	% change 10/11 to 11/12	Full Year	% change 11/12 to 12/13
Participation	Total Learners	755,000	752,800	*	699,400	-7.1%	683,300	-2.3%	684,700	*
	of which Personal and Community Development Learning	584,400	579,200	-0.9%	534,100	-7.8%	518,600	-2.9%	513,800	-0.9%
	of which Neighbourhood Learning in Deprived Communities	40,300	43,700	8.4%	46,600	6.5%	55,700	19.8%	65,600	17.7%
	of which Family English, Maths and Language	71,000	71,300	*	65,400	-8.3%	58,700	-10.4%	52,600	-10.4%
	of which Wider Family Learning	80,500	79,600	-1.1%	75,400	-5.3%	72,800	-3.4%	74,400	2.2%
Achievement	Total Learners	638,900	663,000	3.8%	608,200	-8.3%	594,500	-2.3%	608,100	2.3%
	of which Personal and Community Development Learning	489,000	505,900	3.5%	458,600	-9.3%	445,400	-2.9%	450,900	1.2%
	of which Neighbourhood Learning in Deprived Communities	34,400	39,800	15.6%	41,300	3.7%	50,100	21.4%	60,600	21.1%
	of which Family English, Maths and Language	61,000	62,700	2.7%	57,000	-9.0%	50,900	-10.8%	46,000	-9.6%
	of which Wider Family Learning	71,400	72,600	1.6%	70,100	-3.4%	67,500	-3.8%	69,500	2.9%

Notes

1) Figures for 2011/12 onwards are not directly comparable to earlier years as a Single Individualised Learner Record (ILR) data collection system has been introduced. Small technical changes have been made in the way learners from more than one provision type are counted, leading to a removal of duplicate learners and a reduction in overall learner numbers of approximately 2 per cent. More information on the Single ILR is available at:

http://webarchive.nationalarchives.gov.uk/20140107201041/http://www.thedataservice.org.uk/NR/rdonlyres/C05DCDD5-67EE-4AD0-88B9-BEBC8F7F3300/0/SILR_Effects_SFR_Learners_June12.pdf

2) Data for earlier years is available in the Community Learning Supplementary Tables:

<https://www.gov.uk/government/statistical-data-sets/fe-data-library-community-learning>

3) Please see the general footnotes and the Community Learning footnotes sections for further information on this table.

Table 10.1: Adult (19+) Education and Training Success Rates by Level (2008/09 to 2012/13) – Percentages

		2008/09	2009/10	2010/11	2011/12	2012/13
Level		Full Year	Full Year	Full Year	Full Year	Full Year
Education and Training Provision		80.6%	80.3%	81.4%	83.9%	86.8%
of which...						
	English and maths	75.1%	74.3%	78.6%	80.1%	83.4%
	Full Level 2	72.1%	74.8%	78.5%	82.6%	85.0%
	Full Level 3	70.1%	75.1%	77.7%	78.4%	79.6%
	Level 2	80.5%	80.3%	80.2%	82.7%	85.5%
	Level 3	78.4%	78.7%	78.8%	79.4%	81.6%

Table 10.2: Apprenticeship Success Rates by Level and Age (2008/09 to 2012/13) – Percentages

		2008/09	2009/10	2010/11	2011/12	2012/13
Level		Full Year	Full Year	Full Year	Full Year	Full Year
Intermediate Level Apprenticeship						
	Under 19	68.3%	71.1%	72.2%	71.9%	69.8%
	19-24	71.7%	74.6%	76.7%	74.8%	71.6%
	25+	76.6%	77.5%	80.6%	71.4%	73.8%
	Total	70.4%	73.4%	75.3%	72.6%	72.0%
	of which 19+	72.8%	75.6%	78.0%	73.0%	72.9%
Advanced Level Apprenticeship						
	Under 19	73.6%	76.2%	79.0%	76.5%	75.9%
	19-24	70.8%	75.4%	79.7%	77.8%	74.1%
	25+	73.9%	71.5%	76.2%	75.1%	71.1%
	Total	72.1%	74.8%	78.6%	76.5%	73.0%
	of which 19+	71.2%	74.0%	78.4%	76.4%	72.3%
Higher Apprenticeship						
	Under 19			83.2%	64.4%	77.4%
	19-24			84.8%	74.4%	75.0%
	25+			84.2%	70.1%	62.4%
	Total			84.6%	72.6%	70.2%
	of which 19+			84.8%	73.2%	69.7%
All Apprenticeships						
	Under 19	69.6%	72.4%	74.0%	73.1%	71.5%
	19-24	71.3%	74.9%	77.8%	75.9%	72.6%
	25+	75.9%	75.1%	78.8%	72.6%	72.7%
	Total	70.9%	73.8%	76.4%	73.8%	72.3%
	of which 19+	72.2%	75.0%	78.2%	74.2%	72.6%

Table 10.3: Adult (19+) Workplace Learning Success Rates by Level (2011/12 and 2012/13) – Percentages

		2011/12	2012/13
Level		Full Year	Full Year
Workplace Learning		90.6%	89.1%
of which...			
	English and maths	92.5%	90.3%
	Full Level 2	90.9%	89.6%
	Full Level 3	86.9%	83.3%

Notes

1) Figures for 2011/12 onwards are not directly comparable to earlier years as a Single Individualised Learner Record (ILR) data collection system has been introduced. Small technical changes have been made in the way learners from more than one provision type are counted, leading to a removal of duplicate learners and a reduction in overall learner numbers of approximately 2 per cent. More information on the Single ILR is available at:

http://webarchive.nationalarchives.gov.uk/20140107201041/http://www.thedataservice.org.uk/NR/rdonlyres/C05DCDD5-67EE-4AD0-88B9-BEBC8F7F3300/0/SILR_Effects_SFR_Learners_June12.pdf

2) Data for earlier years are available in the FE Data Library:

<https://www.gov.uk/government/collections/fe-data-library>

3) Figures for English and maths (previously Skills for Life) include GCSEs, Functional Skills, Adult Basic Skills Certificates including ESOL Certificates, and Qualifications and Credit Framework Certificates and Awards in English and maths.

4) Please see the general footnotes, Apprenticeship and Workplace Learning footnotes sections for further information on these tables.

Table 11.1: Level of Highest Qualification Held by People aged 19-59/64 in England (Quarter 4)¹ - percentages

Year	All people aged 19-59/64 ² (thousands)	Level 4 and above	Level 3	Level 3 and above	Level 2	Level 2 and above	Below Level 2 (incl no qualifications)
2006	29,427	33.0	20.2	53.2	18.6	71.8	28.2
2007	29,584	34.1	20.7	54.8	18.4	73.2	26.8
2008	29,737	34.5	20.7	55.2	19.0	74.2	25.8
2009	29,894	36.4	20.7	57.1	19.6	76.6	23.4
2010	30,105	37.6	21.0	58.5	19.2	77.7	22.3
2011	30,279	38.1	21.3	59.4	19.5	78.9	21.1
2012	30,399	40.0	21.6	61.6	19.0	80.6	19.4
2013	30,567	40.3 ^P	22.3 ^P	62.5 ^P	18.7 ^P	81.2 ^P	18.8 ^P
2013 95% CI (+/-)		0.4	0.3	0.3	0.3	0.4	0.4

Table 11.2: Level of Highest Qualification Held by People aged 19-59/64 in England (Quarter 4)¹ - volumes (thousands)

Year	All people aged 19-59/64 ²	Level 4 and above	Level 3	Level 3 and above	Level 2	Level 2 and above	Below Level 2 (incl no qualifications)
2006	29,427	9,716	5,943	15,659	5,481	21,140	8,288
2007	29,584	10,093	6,116	16,208	5,456	21,664	7,919
2008	29,737	10,263	6,146	16,409	5,653	22,061	7,675
2009	29,894	10,868	6,189	17,057	5,845	22,902	6,993
2010	30,105	11,305	6,315	17,620	5,786	23,406	6,699
2011	30,279	11,522	6,457	17,979	5,908	23,888	6,391
2012	30,399	12,170	6,553	18,723	5,787	24,509	5,890
2013	30,567	12,309 ^P	6,801 ^P	19,110 ^P	5,702 ^P	24,812 ^P	5,754 ^P
2013 95% CI (+/-)		134	98	105	94	124	124

Notes

1) Source: Labour Force Survey

2) Males aged 19 - 64 and females aged 19 - 59.

3) Estimates were revised in March 2011 as a result of an improved methodology being adopted - see methodological note for further details.

P) Provisional estimate - these estimates will be finalised in March 2015.

Table 12.1: Level of Highest Qualification Held By Economically Active Adults In England (Quarter 4)¹ - percentages

Year	Economically active adults ² (thousands)	Level 4 and above	Level 3	Level 3 and above	Level 2	Level 2 and above	Below Level 2 (incl no qualifications)
2006	24,238	35.8	20.8	56.6	19.6	76.2	23.8
2007	24,397	36.8	21.1	57.9	19.4	77.3	22.7
2008	24,672	36.9	21.1	58.0	20.0	78.0	22.0
2009	24,670	38.9	21.0	59.9	20.5	80.3	19.7
2010	24,800	40.2	21.2	61.4	20.1	81.5	18.5
2011	24,970	40.5	21.5	62.1	20.4	82.4	17.6
2012	25,382	42.5	21.8	64.3	19.7	84.0	16.0
2013	25,458	43.0 ^P	22.0 ^P	65.0 ^P	19.3 ^P	84.3 ^P	15.7 ^P
2013 95% CI (+/-)		0.5	0.4	0.4	0.3	0.4	0.4

Table 12.2: Level of Highest Qualification Held By Economically Active Adults In England (Quarter 4)¹ - volumes (thousands)

Year	Economically active adults ²	Level 4 and above	Level 3	Level 3 and above	Level 2	Level 2 and above	Below Level 2 (incl no qualifications)
2006	24,238	8,681	5,046	13,727	4,744	18,471	5,767
2007	24,397	8,975	5,151	14,126	4,731	18,857	5,540
2008	24,672	9,102	5,209	14,310	4,940	19,250	5,422
2009	24,670	9,598	5,173	14,771	5,046	19,818	4,852
2010	24,800	9,965	5,262	15,227	4,976	20,203	4,597
2011	24,970	10,124	5,375	15,500	5,084	20,583	4,386
2012	25,382	10,783	5,532	16,315	4,997	21,313	4,070
2013	25,458	10,955 ^P	5,600 ^P	16,554 ^P	4,904 ^P	21,459 ^P	4,000 ^P
2013 95% CI (+/-)		124	92	89	88	112	112

Notes

1) Source: Labour Force Survey

2) Economically active adults are defined as men aged 18 to 64 and women aged 18 to 59 either in employment or International Labour Organisation unemployed.

3) Estimates for 2006 onwards were revised in March 2011 as a result of an improved methodology being adopted - see methodological note for further details.

P) Provisional estimate - these estimates will be finalised in March 2015.

Table 13: Vocational Qualification Achievements in the UK by Qualification Type, 2006 (October) to 2014 (June)

Quarter	National Vocational Qualification	Occupational Qualification	Qualifications and Credit Framework Qualification	Vocationally Related Qualification	Other Vocational Qualifications	Total
October 2006 to December 2006	121,300	7,100	-	411,400	382,600	922,400
January 2007 to March 2007	126,600	5,700	-	406,800	393,800	932,900
April 2007 to June 2007	129,600	6,000	400	507,900	678,200	1,322,100
July 2007 to September 2007	252,900	8,000	500	920,500	1,151,500	2,333,400
Total 2006/07 Academic Year	630,400	26,800	900	2,246,600	2,606,200	5,510,900
October 2007 to December 2007	128,700	4,900	1,300	408,500	423,500	966,900
January 2008 to March 2008	140,700	4,900	4,600	426,000	500,900	1,077,200
April 2008 to June 2008	170,600	6,400	8,600	643,100	755,700	1,584,400
July 2008 to September 2008	287,900	8,300	19,200	983,800	1,416,700	2,715,800
Total 2007/08 Academic Year	727,900	24,500	33,700	2,461,400	3,096,800	6,344,300
October 2008 to December 2008	164,100	5,800	16,400	416,200	474,500	1,077,000
January 2009 to March 2009	169,600	5,300	39,300	409,900	590,400	1,214,500
April 2009 to June 2009	216,400	6,300	62,000	715,900	829,300	1,830,000
July 2009 to September 2009	372,600	9,100	102,600	1,064,800	1,591,600	3,140,800
Total 2008/09 Academic Year	922,900	26,500	220,300	2,606,800	3,485,800	7,262,200
October 2009 to December 2009	212,000	6,000	85,100	414,700	457,500	1,175,300
January 2010 to March 2010	204,000	5,100	135,200	388,000	552,700	1,285,000
April 2010 to June 2010	213,500	5,700	203,000	726,100	831,100	1,979,300
July 2010 to September 2010	349,500	6,400	353,700	1,078,700	1,727,400	3,515,700
Total 2009/10 Academic Year	979,000	23,200	777,000	2,607,500	3,568,600	7,955,300
October 2010 to December 2010	179,600	6,200	274,800	285,700	422,900	1,169,300
January 2011 to March 2011	155,300	4,100	454,400	166,300	486,500	1,266,600
April 2011 to June 2011	128,600	3,600	722,300	385,700	670,900	1,911,100
July 2011 to September 2011	124,300	3,600	1,384,700	561,800	1,473,700	3,548,000
Total 2010/11 Academic Year	587,800	17,500	2,836,200	1,399,600	3,054,000	7,895,100
October 2011 to December 2011	51,000	2,000	807,200	55,800	355,300	1,271,400
January 2012 to March 2012	31,100	1,000	821,500	51,300	479,700	1,384,500
April 2012 to June 2012	22,600	700	1,225,900	195,100	672,300	2,116,500
July 2012 to September 2012	24,200	900	2,428,700	273,700	1,285,700	4,013,200
Total 2011/12 Academic Year	128,800	4,600	5,283,400	575,800	2,793,000	8,785,600
October 2012 to December 2012	11,800	200	1,016,300	21,100	295,900	1,345,300
January 2013 to March 2013	6,700	100	985,400	22,500	406,900	1,421,700
April 2013 to June 2013	5,200	100	1,728,100	142,600	587,300	2,463,400
July 2013 to September 2013	5,100	100	2,507,400	162,200	1,283,100	3,957,900
Total 2012/13 Academic Year	28,700	600	6,237,200	348,500	2,573,300	9,188,300
October 2013 to December 2013	3,000	100	975,000	12,400	237,200	1,227,700
January 2014 to March 2014	1,900	-	1,072,600	12,900	379,600	1,467,000
April 2014 to June 2014	1,400	-	1,539,900	75,500	526,800	2,143,700
Total 2013/14 Academic Year	6,400	100	3,587,400	100,900	1,143,600	4,838,400

Notes

- 1) This table covers all levels of vocational qualifications reported through Ofqual. Data are supplied by awarding organisations.
- 2) For data relating to Vocational Qualifications, the Academic year runs from October to September. For example, the 2006/07 academic year runs from October 2006 to September 2007.
- 3) The data in this table has been subjected to revisions.
- 4) Please see general footnotes and Vocational Qualifications footnotes section for further information on these tables.

Table 14: Adult (19+) FE and Skills Participation by Level (2013/14) – Learner Volumes

		Funded Learners	
		2013/14	
		Full Year (provisional)	
Level		2,910,900	
Total Learners	of which...	Level	
Participation		Below Level 2 (excluding English and maths)	756,600
		English and maths	950,300
		Full Level 2	861,300
		Full Level 3	434,900
		Level 2	1,128,200
		Level 3	483,500
		Level 4+	35,900
		No Level Assigned	649,800

Table 15: Adult (19+) FE and Skills – English and Maths Participation by Level (2013/14) – Learner Volumes

		Funded Learners	
		2013/14	
		Full Year (provisional)	
Level		950,300	
Participation	Total Learners	Level	
Participation		of which English	706,900
		of which entry level	109,000
		of which level 1	314,100
		of which level 2	307,300
		of which maths	667,100
		of which entry level	79,100
		of which level 1	317,000
		of which level 2	300,700
		of which ESOL (English for Speakers of Other Languages)	138,900
		of which entry level	118,400
		of which level 1	18,000
		of which level 2	6,900

Table 16: Adult (18+) FE and Skills - Offender Learning Participation by Level (2013/14) – Learner Volumes

		Funded Learners	
		2013/14	
		Full Year (provisional)	
Level		95,000	
Total Offender Learners	of which...	Level	
Participation		Below Level 2 (excluding English and maths)	73,600
		English and maths	37,300
		Full Level 2	11,800
		Full Level 3	100
		Level 2	43,100
		Level 3	1,000
		Level 4+	-
		No Level Assigned	4,400

Notes

1) These tables include Apprenticeships, Workplace Learning, Community Learning and Education and Training provision taken at General Further Education Colleges (including Tertiary), Sixth Form Colleges, Special Colleges (Agricultural and Horticultural Colleges and Art and Design Colleges), Specialist Colleges and External Institutions.

2) These tables show provisional full year estimates for 2013/14. Tables 1, 3 and 7 show full year volumes for previous years. It is not possible to directly compare provisional 2013/14 estimates with figures for previous years.

3) Figures for English and maths (previously Skills for Life) include GCSEs, Functional Skills, Adult Basic Skills Certificates including ESOL Certificates, and Qualifications and Credit Framework Certificates and Awards in English and maths.

4) Provisional full year data for 2013/14 show 582,100 learners benefited from support for the unemployed (those nearest the workforce), 573,900 of which were aged 19+. These are defined as those learners reporting that they were in receipt of Employment and Support Allowance - Work Related Activity Group (ESA WRAG), Jobseeker's Allowance (JSA) or Universal Credit (if unemployed and looking for work).

5) An offender learner may be counted more than once in table 16 if they participated in learning at different institutions during 2013/14.

6) Please see the general footnotes section for further information on these tables.

Table 17: All Age Apprenticeship Participation by Level and Age (2013/14) – Learner Volumes

		Funded Apprentices			
		2013/14			
	Age	August to October (provisional)	August to January (provisional)	August to April (provisional)	Full Year August to July (provisional)
Intermediate Level Apprenticeship	Under 19	84,000	100,500	115,900	133,800
	19-24	121,600	140,700	159,500	177,000
	25+	122,000	143,100	167,200	192,200
	Total	327,500	384,200	442,600	503,000
	of which 19+	243,600	283,700	326,700	369,200
Advanced Level Apprenticeship	Under 19	37,400	44,000	49,800	57,300
	19-24	103,800	114,200	125,100	136,300
	25+	118,400	121,000	135,600	155,100
	Total	259,600	279,100	310,500	348,700
	of which 19+	222,200	235,200	260,700	291,400
Higher Apprenticeship	Under 19	600	800	800	900
	19-24	4,200	4,600	5,000	5,600
	25+	6,800	7,000	8,200	11,300
	Total	11,700	12,300	14,000	17,800
	of which 19+	11,100	11,600	13,200	16,900
All Apprenticeships	Under 19	119,700	141,100	160,900	184,600
	19-24	226,100	253,600	281,300	308,200
	25+	246,900	270,500	309,500	355,500
	Total	592,700	665,200	751,700	848,300
	of which 19+	473,000	524,100	590,800	663,700

Notes

- 1) This table shows full year estimates for 2013/14. Apprenticeship participation figures for earlier years are available in Table 5 of this release. It is not possible to directly compare provisional 2013/14 estimates with figures for previous years.
- 2) 24+ Advanced Learning Loans were introduced in August 2013. Data show that the number of Apprenticeship starts for those aged 24 and above studying at Level 3 and above has been directly affected. There is also some anecdotal evidence that the numbers of starts for other ages may have been indirectly affected. The Skills Funding Statement in February 2014 announced that regulations have been laid to remove Apprenticeships from loan funding and make them eligible for funding via the Adult Skills Budget.
- 3) 'All Apprenticeships' count each Apprenticeship learner only once regardless of how many programmes they participated in. Each learner is still counted in the totals for each Apprenticeship level they participated in.
- 4) Figures for 2013/14 include Apprenticeships through the Employer Ownership Pilot.
- 5) Please see the general footnotes and the Apprenticeships footnotes section for further information on this table.

Table 18.1: All Age Apprenticeship Programme Starts by Level and Age (2013/14)

	Age	2013/14				
		Full Year (provisional)	Quarter 1 (provisional)	Quarter 2 (provisional)	Quarter 3 (provisional)	Quarter 4 (provisional)
Intermediate Level Apprenticeship	Under 19	82,300	35,500	16,700	14,500	15,500
	19-24	96,000	27,400	23,000	23,700	21,900
	25+	104,200	22,800	24,200	28,600	28,600
	Total	282,500	85,700	63,900	66,900	65,900
	of which 19+	200,200	50,200	47,200	52,400	50,500
Advanced Level Apprenticeship	Under 19	34,800	18,100	6,000	4,900	5,800
	19-24	58,200	19,400	12,400	13,200	13,200
	25+	48,100	4,000	3,800	17,600	22,600
	Total	141,100	41,500	22,300	35,700	41,700
	of which 19+	106,200	23,400	16,300	30,800	35,800
Higher Apprenticeship	Under 19	700	500	100	-	100
	19-24	2,800	1,300	500	400	600
	25+	5,400	300	200	1,500	3,400
	Total	8,900	2,100	800	1,900	4,000
	of which 19+	8,100	1,600	700	1,900	4,000
All Apprenticeships	Under 19	117,800	54,100	22,800	19,500	21,400
	19-24	156,900	48,100	35,800	37,300	35,700
	25+	157,700	27,100	28,300	47,800	54,500
	Total	432,400	129,300	87,000	104,500	111,600
	of which 19+	314,600	75,100	64,200	85,100	90,200

Table 18.2: All Age Apprenticeship Framework Achievements by Level and Age (2013/14)

	Age	2013/14				
		Full Year (provisional)	Quarter 1 (provisional)	Quarter 2 (provisional)	Quarter 3 (provisional)	Quarter 4 (provisional)
Intermediate Level Apprenticeship	Under 19	42,500	13,800	9,000	8,400	11,200
	19-24	48,100	12,000	11,000	11,600	13,500
	25+	52,000	12,800	11,500	12,500	15,300
	Total	142,600	38,600	31,500	32,500	40,000
	of which 19+	100,200	24,800	22,500	24,100	28,800
Advanced Level Apprenticeship	Under 19	18,300	5,500	3,900	3,900	5,000
	19-24	32,900	8,700	7,200	7,600	9,400
	25+	44,300	10,300	9,600	10,600	13,900
	Total	95,600	24,500	20,800	22,000	28,300
	of which 19+	77,300	19,000	16,900	18,200	23,300
Higher Apprenticeship	Under 19	200	100	-	-	-
	19-24	1,100	500	200	200	200
	25+	1,200	300	200	300	500
	Total	2,500	900	400	500	700
	of which 19+	2,300	800	400	500	700
All Apprenticeships	Under 19	61,000	19,400	12,900	12,300	16,300
	19-24	82,100	21,200	18,400	19,400	23,200
	25+	97,600	23,300	21,300	23,400	29,600
	Total	240,700	64,000	52,600	55,100	69,100
	of which 19+	179,700	44,500	39,700	42,700	52,800

Notes

- 1) This table shows full year estimates for 2013/14. Apprenticeship starts and achievements figures for earlier years are available in Table 6 of this release. It is not possible to directly compare provisional 2013/14 estimates with figures for previous years.
- 2) 24+ Advanced Learning Loans were introduced in August 2013. Data show that the number of Apprenticeship starts for those aged 24 and above studying at Level 3 and above has been directly affected. There is also some anecdotal evidence that the numbers of starts for other ages may have been indirectly affected. The Skills Funding Statement in February 2014 announced that regulations have been laid to remove Apprenticeships from loan funding and make them eligible for funding via the Adult Skills Budget.
- 3) Figures for 2013/14 include Apprenticeships through the Employer Ownership Pilot.
- 4) Please see the general footnotes and the Apprenticeships footnotes section for further information on these tables.

Table 19.1: Starts on the Apprenticeship Grant for Employers Scheme (AGE 16 to 24) - Pipeline Starts Payments Made (February 2012 to July 2014 - provisional estimates)

		2013/14		Programme to Date	
		Full Year (provisional)		February 2012 to July 2014 (provisional)	
Age		Payments Made	Pipeline Starts	Payments Made	Pipeline Starts
Intermediate Level Apprenticeship	Under 19	22,000	3,900	45,900	3,900
	19-24	11,800	2,400	24,400	2,400
	Total	33,700	6,200	70,200	6,200
Advanced Level Apprenticeship	Under 19	7,100	1,000	13,600	1,000
	19-24	5,600	1,000	11,000	1,000
	Total	12,700	1,900	24,600	1,900
Higher Apprenticeship	Under 19	100	-	100	-
	19-24	100	-	200	-
	Total	200	-	300	-
All Apprenticeships	Under 19	29,100	4,800	59,500	4,800
	19-24	17,500	3,400	35,600	3,400
	Total	46,600	8,200	95,200	8,200

Notes

- 1) AGE 16 to 24 was launched in February 2012. Payments are drawn down once the new Apprentice has been in post for 13 weeks, therefore Apprenticeships starting after 1 May 2014 are not included in the Payments Made column because they had not yet triggered a payment.
- 2) Pipeline Starts show those starting between August 2013 and July 2014 who have not yet qualified for a payment, but the payment would be made once the Apprentice has been in post for 13 weeks.
- 3) AGE 16 to 24 starts are defined through the Learning Delivery Funding and Monitoring Codes with values of 132 or 133 as per the ILR specification (http://webarchive.nationalarchives.gov.uk/20140108104635/http://www.theia.org.uk/ilr/ilrdocuments/201112_ildetail.htm). These are validated by the Skills Funding Agency.
- 4) Starts in this table include learners aged 19-24 on application but aged 25 when learning started.
- 5) Starts in this table will also be counted in the main Apprenticeship tables.
- 6) Please see the general footnotes and the Apprenticeships footnotes section for further information on these tables.

Table 19.2: Starts on the Access to Apprenticeship Pathway (2011/12 to 2013/14)

		Age	2011/12	2012/13	2013/14 Full Year (provisional)
			Full Year	Full Year	
All starts on the Access to Apprenticeship pathway		Under 19	5,700	3,900	1,200
		19-24	1,600	1,600	500
		Total	7,200	5,500	1,700
of which	have converted to paid employment to complete their Apprenticeship in any year	Under 19	2,400	1,400	400
		19-24	700	500	200
		Total	3,000	1,900	600
	have not yet converted to paid employment to complete their Apprenticeship in any year	Under 19	3,300	2,500	800
		19-24	900	1,100	300
		Total	4,200	3,600	1,100

Notes

- 1) People starting training under the Access to Apprenticeship pathway are not counted as an Apprentice until they secure paid employment to complete their Apprenticeship in the usual way.
- 2) The year indicates when the learner started on the Access to Apprenticeship pathway. Conversion to paid employment to complete an Apprenticeship does not necessarily occur in the same year as the learner started the Access to Apprenticeship pathway.
- 3) People shown in this table as having converted to paid employment to complete their Apprenticeship in the same year as they started on the Access to Apprenticeship pathway will also be counted as starts in the main Apprenticeship tables. People who convert to paid employment in subsequent years will be counted as participating Apprenticeship learners.
- 4) The Access to Apprenticeship pathway closed to new starts at the end of December 2013. This table includes some learners with a start date after December 2013 due to invalid data. Data for these learners will be updated when the table is finalised in the November 2014 SFR.
- 5) This table shows full year estimates for 2013/14. It is not possible to directly compare provisional 2013/14 estimates with figures for previous years.

Table 20.1: Workplace Learning Starts by Level (2013/14)

		2013/14				
		Full Year (provisional)	Quarter 1 (provisional)	Quarter 2 (provisional)	Quarter 3 (provisional)	Quarter 4 (provisional)
Total Starts		101,400	23,400	23,200	25,800	29,000
of which...	Below Level 2	14,200	3,800	3,600	3,500	3,300
	Level 2	70,800	16,600	16,200	18,400	19,600
	Level 3	12,100	2,300	2,600	2,900	4,100
	Level 4+	4,100	600	700	900	1,900
	No Level Assigned	200	-	100	100	100
	Below Level 2 (excluding English and maths)	4,600	1,400	800	900	1,500
	English and maths	20,100	4,600	5,700	5,600	4,200
	Full Level 2	49,900	12,500	11,900	12,600	12,900
	Full Level 3	2,300	700	500	500	500

Table 20.2: Workplace Learning Achievements by Level (2013/14)

		2013/14				
		Full Year (provisional)	Quarter 1 (provisional)	Quarter 2 (provisional)	Quarter 3 (provisional)	Quarter 4 (provisional)
Total Achievements		97,800	24,200	23,100	23,100	27,300
of which...	Below Level 2	12,400	3,300	2,800	2,900	3,400
	Level 2	68,600	16,800	16,400	16,300	19,200
	Level 3	12,600	3,200	3,200	3,000	3,200
	Level 4+	3,400	600	700	800	1,300
	No Level Assigned	800	300	100	200	200
	Below Level 2 (excluding English and maths)	4,000	1,200	700	700	1,300
	English and maths	17,100	3,900	4,400	4,400	4,400
	Full Level 2	52,700	14,000	12,900	11,900	13,900
	Full Level 3	4,500	1,600	1,200	900	900

Notes

- 1) These tables show full year estimates for 2013/14. Figures for earlier years are available in Table 8 of this release. It is not possible to directly compare provisional 2013/14 estimates with figures for previous years.
- 2) English and maths starts and achievements can be at Level 2 or Below Level 2.
- 3) Figures for starts and achievements in Below Level 2 (excluding English and maths) have increased substantially in this release as data for learning aims collected in the Employer Ownership Pilot 1 has been reclassified from English and maths qualifications to Below Level 2 qualifications. The English and maths figures have decreased substantially as a consequence of this change.
- 4) These tables include some learners aged under 19 who are eligible for funding on certain Workplace Learning programmes.
- 5) Figures for English and maths (previously Skills for Life) include GCSEs, Functional Skills, Adult Basic Skills Certificates including ESOL Certificates, and Qualifications and Credit Framework Certificates and Awards in English and maths.
- 6) Please see the general footnotes and the Workplace Learning footnotes section for further information on these tables.

Table 21: Community Learning Participation by Type (2013/14) – Learner Volumes

		Funded Learners
Provision Type		2013/14 Full Year (provisional)
	Total Learners	645,600
Participation	of which Personal and Community Development Learning	492,800
	of which Neighbourhood Learning in Deprived Communities	59,400
	of which Family English, Maths and Language	47,500
	of which Wider Family Learning	67,800

Notes

1) This table shows full year estimates for 2013/14. Community Learning participation and achievement figures for earlier years are available in Table 9 of this release. It is not possible to directly compare provisional 2013/14 estimates with figures for previous years.

2) Please see the general footnotes and the Community Learning footnotes sections for further information on this table.

Table 22: Employer Ownership Pilot Starts (2012/13 to 2013/14)

				2012/13	2013/14	Programme to Date		
				Full Year (final)	Full Year (provisional)	August 2012 to July 2014 (provisional)		
Starts	Provision		Age					
	Apprenticeships	SASE Compliant	Under 19	200	700	800		
			19-24	400	600	1,100		
			25+	600	1,400	2,100		
			Total	1,200	2,700	3,900		
			Non-SASE Compliant	Under 19	-	100	100	
				19-24	-	100	100	
				25+	-	100	100	
				Total	-	300	300	
	Workplace Learning	QCF Training		Under 19	-	200	300	
				19-24	100	600	700	
				25+	300	2,400	2,700	
				Total	400	3,200	3,700	
				Non-QCF Training	Under 19	200	1,900	2,100
					19-24	1,000	4,100	5,100
25+					4,300	17,600	21,900	
Total					5,500	23,600	29,100	
All Employer Ownership Pilot Starts			Under 19	400	2,800	3,300		
			19-24	1,500	5,400	6,900		
			25+	5,200	21,600	26,800		
			Total	7,200	29,900	37,000		

Notes

- 1) Starts in this table will also be counted in the main Apprenticeship tables and Workplace Learning tables, as well as in FE and Skills participation figures.
- 2) The data sources for this table are Employer Ownership Pilots 1 and 2.
- 3) SASE Compliant Apprenticeships are frameworks that conform to the Specification of Apprenticeship Standards for England (SASE). Non-SASE Compliant Apprenticeships are employer defined programmes.
- 4) QCF Training is learners starting aims that are accredited under the Qualifications and Credit Framework.
- 5) Please see the general footnotes for further information on this table.

Table 23: 24+ FE and Skills – Participation with 24+ Advanced Learning Loans (Level 3+) (2013/14) – Learner Volume:

Funded Learners	
2013/14	
Full Year (provisional)	
Participation with 24+ Advanced Learning Loans	Total Learners
	57,100
	of which Level 3
	54,500
	of which Level 4+
	2,700

Notes

1) This table includes Education and Training provision taken at General Further Education Colleges (including Tertiary), Sixth Form Colleges, Special Colleges (Agricultural and Horticultural Colleges and Art and Design Colleges), Specialist Colleges and External Institutions.

2) Please note that Apprenticeships were removed from loan funding from March 2014. Apprentices who previously received a loan no longer need to repay it. Apprentices that previously appeared in this table earlier in the academic year have now been removed.

3) Please see the general footnotes for further information on this table.

Table 24: Traineeship Starts by Age (2013/14)

Age		2013/14
		Full Year
		(provisional)
Total Traineeships	Under 19	7,000
	19-23	3,500
Total		10,500

Notes

- 1) Age is reported as at 31st August of the academic year.
- 2) There are fewer than 50 learners who were reported as starting in 2012/13 who have been included in the figures for 2013/14.
- 3) Please see the general footnotes for further information on this table.