

Official Statistics Release

Policy area:	Children's social care inspections and outcomes
Theme:	Education, Children's Services and Skills
Published on:	30 June 2011
Coverage:	England
Period covered:	1 January to 31 March 2011
Status:	PROVISIONAL
Issued by:	Office for Standards in Education, Children's Services and Skills (Ofsted) Aviation House 125 Kingsway London WC2B 6SE
Responsible director:	John Goldup
Statistician:	Nollaig Griffin
Public enquiries:	enquiries@ofsted.gov.uk
Press enquiries:	pressenquiries@ofsted.gov.uk
Link to official statistics release web page:	www.ofsted.gov.uk/publications/20110011
Publication medium:	Ofsted website
Publication frequency:	Quarterly
Next publication date:	8 September 2011

Introduction

This official statistics release reports on children’s social care inspections that occurred between 1 January and 31 March 2011 under the Children Act 1989 or the Care Standards Act 2000. These statistics are based on provisional data and are subject to change. Ofsted will release final statistics for this period on 8 September 2011.

Contents

Introduction.....	2
Key findings.....	4
Methodology.....	6
Additional information.....	6
Table 1: Overall care outcome for children's social care providers inspected between 1 January 2011 and 31 March 2011	7
Chart 1: Overall care outcome of children's homes (including secure children's homes) inspected between 1 April 2007 and 31 March 2011, by financial year (provisional).....	8
Chart 2: Overall care of children's homes (including secure children’s homes) inspected between 1 April 2007 and 31 March 2011, by financial quarter (provisional).....	9
Table 2: Number of children’s social care inspections carried out between 1 January 2011 and 31 March 2011, by inspection type (provisional)	10
Table 3a: Inspection outcomes of children's homes inspected between 1 January 2011 and 31 March 2011 (provisional).....	11
Table 3b: Inspection outcomes of secure children's homes inspected between 1 January 2011 and 31 March 2011 (provisional)	12
Table 3c: Inspection outcomes of local authority fostering services inspected between 1 January 2011 and 31 March 2011 (provisional)	13
Table 3d: Inspection outcomes of independent fostering agencies inspected between 1 January 2011 and 31 March 2011 (provisional)	14
Table 3e: Inspection outcomes of local authority adoption services inspected between 1 January 2011 and 31 March 2011 (provisional)	15

Table 3f: Inspection outcomes of voluntary adoption agencies inspected between 1 January 2011 and 31 March 2011 (provisional).....	16
Table 3g: Inspection outcomes of residential family centres inspected between 1 January 2011 and 31 March 2011 (provisional)	17
Table 3h: Inspection outcomes of residential special schools inspected between 1 January 2011 and 31 March 2011 (provisional).....	18
Table 3i: Inspection outcomes of boarding schools inspected between 1 January 2011 and 31 March 2011 (provisional).....	19
Table 3j: Inspection outcomes of further education colleges with residential accommodation inspected between 1 January 2011 and 31 March 2011 (provisional)	20
Glossary	21

Key findings

- There were 1,401 inspections of registered **children's homes** (excluding secure children's homes) in the period 1 January 2011 to 31 March 2011. The majority of these (82%) were interim inspections where not all judgements are made. Of the 1,401 inspections of children's homes that took place during the period, 73% were judged to provide good or outstanding overall quality of care. Almost 1 in 4 children's homes inspected were judged satisfactory with a further 3% (46 homes) inadequate.
- Eight inspections of **secure children's homes** took place in the first quarter of 2011. None were judged to be outstanding for their overall care and quality of standards, seven were judged to be good and none were inadequate.
- When comparing full years (1 April – 31 March) and all children's homes (secure and non-secure), the percentage of **children's home** inspections leading to a judgement of outstanding has doubled between 2007-08 to 2010-11. Over the same period there has been a decreasing percentage of homes receiving an inadequate judgement.
- There were three local authority **fostering services** inspected during the first three months of 2011. All three of these services received good inspection judgements for the overall quality of their care standards. Two independent fostering agencies were inspected in the same period and both were outstanding.
- During the first three months of 2011 there were four inspections of **local authority private fostering services**. Three of these inspections resulted in a good judgement. However one local authority service was inadequate.
- There were 20 **adoption agency** inspections during the period 1 January 2011 to 31 March 2011. Of these, 15 were local authority services and five were voluntary adoption agencies. Fifteen of these services and agencies in total were judged to be good with three services judged outstanding (one local authority service and two voluntary agencies). None were judged inadequate.
- Two **adoption support agencies** were inspected between 1 January 2011 and 31 March 2011 and both received outstanding overall judgements.
- There were four **residential family centre** inspections in the period 1 January 2011 to 31 March 2011. None were outstanding; two were good and two satisfactory.
- There were 30 inspections – either stand-alone or integrated with education – of boarders' welfare in independent and maintained **boarding schools** between 1 January 2011 and 31 March 2011. Five were judged to be providing outstanding care overall, a further 19 were good, and none were inadequate.
- **Residential accommodation** provided by nine **further education (FE) colleges** was inspected during the period 1 January 2011 to 31 March 2011. Three were judged to be providing outstanding care overall, a further six were good, and none were inadequate.

- In the period 1 January 2011 to 31 March 2011, Ofsted inspected 45 **residential special schools**. 21 were judged to be providing outstanding care overall, a further 21 were good, and none were inadequate.

Methodology

1. The data in the release are from inspections undertaken between 1 January 2011 and 31 March 2011, and which were published as at 30 April 2011.
2. Statistics relating to inspections in the most recent quarter are provisional and include inspections in the period where the inspection report was published within one month of the end of the quarter. If, exceptionally, an inspection report is published later than one month after the end of the quarter in which the inspection took place that inspection will be included in the final release of the statistics.
3. Please note that inspections of adoption support agencies and local authority private fostering services are not included in table 3 as the judgements made at inspection are different. They will be included in future releases of these statistics.
4. For more information on how Ofsted regulates and inspects children's social care, please go to the Ofsted website:

www.ofsted.gov.uk/Ofsted-home/Forms-and-guidance/Browse-all-by/Care-and-local-services/Children-s-social-care

Additional information

All the tables and charts shown in this release, along with additional analysis by month and at regional and local authority level, are available in Excel format on the Ofsted website in the same location as this document. Underlying data are also available in Excel and comma separated values (.csv) formats.

Table 1: Overall care outcome for children's social care providers inspected between 1 January 2011 and 31 March 2011

Number of providers

Provider Type	Total number inspected	Overall Care			
		Outstanding	Good	Satisfactory	Inadequate
Children's Home (1409)	1409	246	776	341	46
Children's Home (1401)	1401	246	769	340	46
Secure Children's Home (8)	8	0	7	1	0
Fostering Service (5)	5	2	3	0	0
Local Authority Fostering Service (3)	3	0	3	0	0
Independent Fostering Agency (2)	2	2	0	0	0
Local authority private fostering service (4)	4	0	3	0	1
Adoption Agency (20)	20	3	15	2	0
Local Authority Adoption Service (15)	15	1	12	2	0
Voluntary Adoption Agency (5)	5	2	3	0	0
Adoption Support Agency (2)	2	2	0	0	0
Residential Family Centre (4)	4	0	2	2	0
Residential Special School (45)	45	21	21	3	0
Boarding School (30)	30	5	19	6	0
Further education college with residential accommodation (9)	9	3	6	0	0

Source: Ofsted inspections

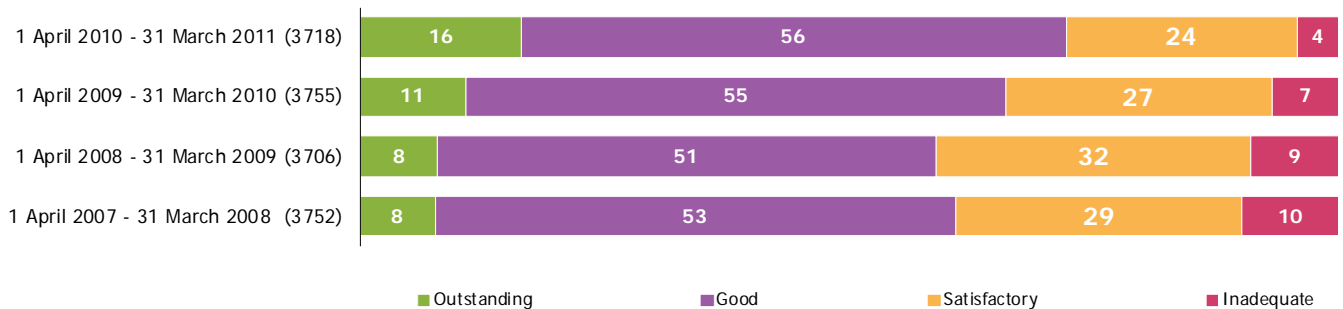
Chart 1: Overall care outcome of children's homes (including secure children's homes) inspected between 1 April 2007 and 31 March 2011, by financial year (provisional)¹

Number of children's homes

Year	Overall Care Judgement				Total
	Outstanding	Good	Satisfactory	Inadequate	
1 April 2010 - 31 March 2011	613	2073	876	156	3718
1 April 2009 - 31 March 2010	405	2075	1020	255	3755
1 April 2008 - 31 March 2009	290	1896	1187	333	3706
1 April 2007 - 31 March 2008	289	1997	1098	368	3752

Source: Ofsted inspections

Percentage of children's homes



1. Percentages are rounded and may not always add to 100.

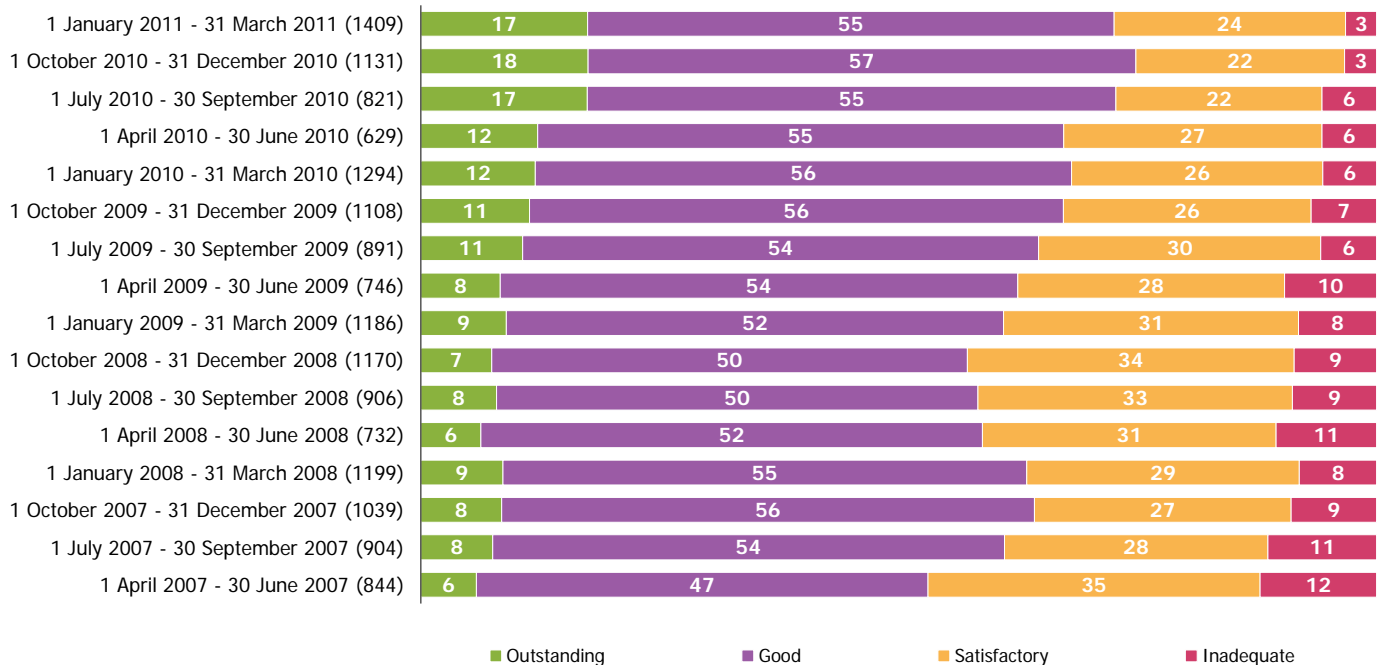
Chart 2: Overall care of children's homes (including secure children's homes) inspected between 1 April 2007 and 31 March 2011, by quarter (provisional)¹

Number of children's homes

Quarter	Overall care outcome				Total
	Outstanding	Good	Satisfactory	Inadequate	
1 January 2011 - 31 March 2011	246	776	341	46	1409
1 October 2010 - 31 December 2010	198	648	247	38	1131
1 July 2010 - 30 September 2010	143	454	177	47	821
1 April 2010 - 30 June 2010	77	346	170	36	629
1 January 2010 - 31 March 2010	155	726	340	73	1294
1 October 2009 - 31 December 2009	126	619	287	76	1108
1 July 2009 - 30 September 2009	95	481	263	52	891
1 April 2009 - 30 June 2009	62	404	208	72	746
1 January 2009 - 31 March 2009	106	617	366	97	1186
1 October 2008 - 31 December 2008	87	582	400	101	1170
1 July 2008 - 30 September 2008	72	456	298	80	906
1 April 2008 - 30 June 2008	46	384	225	77	732
1 January 2008 - 31 March 2008	103	657	342	97	1199
1 October 2007 - 31 December 2007	88	579	279	93	1039
1 July 2007 - 30 September 2007	68	484	249	103	904
1 April 2007 - 30 June 2007	49	399	293	103	844

Source: Ofsted inspections

Percentage of children's homes



1. Percentages are rounded and may not always add to 100.

Table 2: Number of children's social care inspections carried out between 1 January 2011 and 31 March 2011, by inspection type (provisional)¹

	Total	Inspection type	
		Full Inspection ²	Interim Inspection ³
Total number inspected	1528	377	1151
Children's home	1409	259	1150
Children's home	1401	257	1144
Secure children's home	8	2	6
Fostering Service	5	5	0
Local Authority Fostering Service	3	3	0
Independent Fostering Agency	2	2	0
Local authority private fostering service	4	4	0
Adoption Agency	20	20	0
Local Authority Adoption Service	15	15	0
Voluntary Adoption Agency	5	5	0
Adoption Support Agency	2	2	0
Residential Family Centre	4	3	1
Residential Special School	45	45	0
Boarding School	30	30	0
Further education college with residential accommodation	9	9	0

Source: Ofsted inspections

1. Children's homes and secure children's homes figures include those run by the local authority, and those that are run by private, independent or voluntary organisations located in the local authority area.
2. All types of children's social care providers receive full inspections.
3. Interim inspections are usually only carried out in children's homes.

Table 3a: Inspection outcomes of children's homes inspected between 1 January 2011 and 31 March 2011 (provisional)^{1 2 3}

	Total number inspected	Outstanding		Good		Satisfactory		Inadequate		Not Judged ⁴	
		Number	%	Number	%	Number	%	Number	%	Number	%
Overall care judgement - the quality and standards of the care	1401	246	18	769	55	340	24	46	3	0	0
Helping children to be healthy	1401	72	5	209	15	78	6	7	0	1035	74
Protecting children from harm or neglect and helping them stay safe	1401	304	22	774	55	267	19	38	3	18	1
Helping children make a positive contribution	1401	81	6	166	12	38	3	10	1	1106	79
Achieving economic wellbeing	1401	50	4	217	15	96	7	6	0	1032	74
Organisation	1401	67	5	211	15	147	10	30	2	946	68

Source: Ofsted inspections

1. Children's homes and secure children's homes figures include those run by the local authority, and those that are run by private, independent or voluntary organisations located in the local authority area.
2. Percentages are rounded and may not add to 100.
3. Where the number of inspections is small, percentages should be treated with caution.
4. Not all inspection judgements are made at every inspection; in particular, interim inspections will not cover all areas. Where no judgement has been made for 'Protecting children for harm or neglect and helping them stay safe' the provider was closed at the time of inspection.

Table 3b: Inspection outcomes of secure children's homes inspected between 1 January 2011 and 31 March 2011 (provisional)^{1 2}

	Total number inspected	Outstanding		Good		Satisfactory		Inadequate		Not Judged ³	
		Number	%	Number	%	Number	%	Number	%	Number	%
Overall care judgement - the quality and standards of the care	8	0		7		1		0		0	
Helping children to be healthy	8	0		2		0		0		6	
Protecting children from harm or neglect and helping them stay safe	8	1		6		1		0		0	
Helping children make a positive contribution	8	0		2		0		0		6	
Achieving economic wellbeing	8	0		2		0		0		6	
Organisation	8	0		2		0		0		6	

Source: Ofsted inspections

1. Children's homes and secure children's homes figures include those run by the local authority, and those that are run by private, independent or voluntary organisations located in the local authority area.

2. Where the number of inspections is small, percentages should be treated with caution.

3. Not all inspection judgements are made at every inspection; in particular, interim inspections will not cover all areas. Where no judgement has been made for 'Protecting children for harm or neglect and helping them stay safe' the provider was closed at the time of inspection.

Table 3c: Inspection outcomes of local authority fostering services inspected between 1 January 2011 and 31 March 2011 (provisional)¹

	Total number inspected	Outstanding		Good		Satisfactory		Inadequate		Not Judged ²	
		Number	%	Number	%	Number	%	Number	%	Number	%
Overall care judgement - the quality and standards of the care	3	0		3		0		0		0	
Helping children to be healthy	3	0		3		0		0		0	
Protecting children from harm or neglect and helping them stay safe	3	1		2		0		0		0	
Helping children make a positive contribution	3	2		1		0		0		0	
Achieving economic wellbeing	3	0		3		0		0		0	
Organisation	3	1		2		0		0		0	

Source: Ofsted inspections

1. Where the number of inspections is small, percentages should be treated with caution.

2. Not all inspection judgements are made at every inspection; in particular, interim inspections will not cover all areas. Where no judgement has been made for 'Protecting children for harm or neglect and helping them stay safe' the provider was closed at the time of inspection.

Table 3d: Inspection outcomes of independent fostering agencies inspected between 1 January 2011 and 31 March 2011 (provisional)¹

	Total number inspected	Outstanding		Good		Satisfactory		Inadequate		Not Judged ²	
		Number	%	Number	%	Number	%	Number	%	Number	%
Overall care judgement - the quality and standards of the care	2	2		0		0		0		0	
Helping children to be healthy	2	2		0		0		0		0	
Protecting children from harm or neglect and helping them stay safe	2	2		0		0		0		0	
Helping children achieve well and enjoy what they do	2	2		0		0		0		0	
Helping children make a positive contribution	2	1		1		0		0		0	
Achieving economic wellbeing	2	1		1		0		0		0	
Organisation	2	2		0		0		0		0	

Source: Ofsted inspections

1. Where the number of inspections is small, percentages should be treated with caution.
2. Not all inspection judgements are made at every inspection; in particular, interim inspections will not cover all areas. Where no judgement has been made for 'Protecting children from harm or neglect and helping them stay safe' the provider was closed at the time of inspection.

Table 3e: Inspection outcomes of local authority adoption services inspected between 1 January 2011 and 31 March 2011 (provisional)¹

	Total number inspected	Outstanding		Good		Satisfactory		Inadequate		Not Judged ²	
		Number	%	Number	%	Number	%	Number	%	Number	%
Overall care judgement - the quality and standards of the care	15	1		12		2		0		0	
Helping children to be healthy	15	0		0		0		0		15	
Protecting children from harm or neglect and helping them stay safe	15	1		13		1		0		0	
Helping children achieve well and enjoy what they do	15	6		8		1		0		0	
Helping children make a positive contribution	15	3		10		2		0		0	
Achieving economic wellbeing	15	0		0		0		0		15	
Organisation	15	1		12		2		0		0	

Source: Ofsted inspections

1. Where the number of inspections is small, percentages should be treated with caution.

2. Not all inspection judgements are made at every inspection; in particular, interim inspections will not cover all areas. Where no judgement has been made for 'Protecting children from harm or neglect and helping them stay safe' the provider was closed at the time of inspection.

Table 3f: Inspection outcomes of voluntary adoption agencies inspected between 1 January 2011 and 31 March 2011 (provisional)¹

	Total number inspected	Outstanding		Good		Satisfactory		Inadequate		Not Judged ²	
		Number	%	Number	%	Number	%	Number	%	Number	%
Overall care judgement - the quality and standards of the care	5	2		3		0		0		0	
Helping children to be healthy	5	0		0		0		0		5	
Protecting children from harm or neglect and helping them stay safe	5	2		3		0		0		0	
Helping children achieve well and enjoy what they do	5	3		2		0		0		0	
Helping children make a positive contribution	5	0		4		0		0		1	
Achieving economic wellbeing	5	0		0		0		0		5	
Organisation	5	2		3		0		0		0	

Source: Ofsted inspections

1. Where the number of inspections is small, percentages should be treated with caution.

2. Not all inspection judgements are made at every inspection; in particular, interim inspections will not cover all areas. Where no judgement has been made for 'Protecting children for harm or neglect and helping them stay safe' the provider was closed at the time of inspection.

Table 3g: Inspection outcomes of residential family centres inspected between 1 January 2011 and 31 March 2011 (provisional)¹

	Total number inspected	Outstanding		Good		Satisfactory		Inadequate		Not Judged ²	
		Number	%	Number	%	Number	%	Number	%	Number	%
Overall care judgement - the quality and standards of the care	4	0		2		2		0		0	
Helping children to be healthy	4	0		2		2		0		0	
Protecting children from harm or neglect and helping them stay safe	4	0		2		2		0		0	
Helping children make a positive contribution	4	0		1		2		0		1	
Achieving economic wellbeing	4	0		2		1		0		1	
Organisation	4	0		2		2		0		0	

Source: Ofsted inspections

1. Where the number of inspections is small, percentages should be treated with caution.

2. Not all inspection judgements are made at every inspection; in particular, interim inspections will not cover all areas. Where no judgement has been made for 'Protecting children for harm or neglect and helping them stay safe' the provider was closed at the time of inspection.

Table 3h: Inspection outcomes of residential special schools inspected between 1 January 2011 and 31 March 2011 (provisional)^{1 2}

	Total number inspected	Outstanding		Good		Satisfactory		Inadequate		Not Judged ³	
		Number	%	Number	%	Number	%	Number	%	Number	%
Overall care judgement - the quality and standards of the care	45	21	47	21	47	3	7	0	0	0	0
Helping children to be healthy	45	31	69	13	29	0	0	0	0	1	2
Protecting children from harm or neglect and helping them stay safe	45	26	58	17	38	2	4	0	0	0	0
Helping children achieve well and enjoy what they do	45	40	89	4	9	0	0	0	0	1	2
Helping children make a positive contribution	45	33	73	11	24	0	0	0	0	1	2
Achieving economic wellbeing	45	16	36	23	51	5	11	0	0	1	2
Organisation	45	22	49	20	44	2	4	0	0	1	2

Source: Ofsted inspections

1. Percentages are rounded and may not add to 100.

2. Where the number of inspections is small, percentages should be treated with caution.

3. Not all inspection judgements are made at every inspection; in particular, interim inspections will not cover all areas. Where no judgement has been made for 'Protecting children from harm or neglect and helping them stay safe' the provider was closed at the time of inspection.

Table 3i: Inspection outcomes of boarding schools inspected between 1 January 2011 and 31 March 2011 (provisional)¹

	Total number inspected	Outstanding		Good		Satisfactory		Inadequate		Not Judged ²	
		Number	%	Number	%	Number	%	Number	%	Number	%
Overall care judgement - the quality and standards of the care	30	5		19		6		0		0	
Helping children to be healthy	30	10		16		4		0		0	
Protecting children from harm or neglect and helping them stay safe	30	7		18		5		0		0	
Helping children achieve well and enjoy what they do	30	18		12		0		0		0	
Helping children make a positive contribution	30	12		16		2		0		0	
Achieving economic wellbeing	30	5		15		10		0		0	
Organisation	30	7		17		6		0		0	

Source: Ofsted inspections

1. Where the number of inspections is small, percentages should be treated with caution.
2. Not all inspection judgements are made at every inspection; in particular, interim inspections will not cover all areas. Where no judgement has been made for 'Protecting children from harm or neglect and helping them stay safe' the provider was closed at the time of inspection.

Table 3j: Inspection outcomes of further education colleges with residential accommodation inspected between 1 January 2011 and 31 March 2011 (provisional)¹

	Total number inspected	Outstanding		Good		Satisfactory		Inadequate		Not Judged ²	
		Number	%	Number	%	Number	%	Number	%	Number	%
Overall care judgement - the quality and standards of the care	9	3		6		0		0		0	
Helping children to be healthy	9	5		4		0		0		0	
Protecting children from harm or neglect and helping them stay safe	9	6		3		0		0		0	
Helping children make a positive contribution	9	8		1		0		0		0	
Achieving economic wellbeing	9	1		5		3		0		0	
Organisation	9	3		6		0		0		0	

Source: Ofsted inspections

1. Where the number of inspections is small, percentages should be treated with caution.

2. Not all inspection judgements are made at every inspection; in particular, interim inspections will not cover all areas. Where no judgement has been made for 'Protecting children for harm or neglect and helping them stay safe' the provider was closed at the time of inspection.

Glossary

Adoption agencies

The focus of adoption agencies is on placing children successfully into adoptive families who will meet their needs and enable them to develop and achieve throughout their lives. The services maintained by local authorities are described in section 3(1) of the Adoption and Children Act 2002. Local authorities place children with adoptive families recruited and approved by themselves, by voluntary adoption agencies or by other local authorities.

Adoption support agencies

Adoption support agencies are defined by section 8 of the Adoption and Children Act 2002 and provide services to anyone touched by adoption. This includes counselling and help for children and adults to gain information about their adoption or to trace birth relatives. Adoption support agencies can be either organisations or individuals, and may be contracted by a local authority to provide support services.

Boarding Schools

The vast majority of boarding schools are independent and belong to associations which are members of the Independent Schools Council. As education in these schools is inspected by their own inspectorate, Ofsted inspects only the welfare of boarders in these schools. The remainder are maintained boarding schools where both education and the welfare of boarders are the subject of Ofsted inspection.

Children's homes

A children's home is defined in section 1 of the Care Standards Act 2000, and is an establishment that provides care and accommodation wholly or mainly for children. Children's homes fulfil a range of purposes designed to meet the different needs of those children and young people who are assessed as needing a residential care placement. For some children they provide short breaks which are needed to help support them and their family. Some residential special schools are registered as children's homes because boarders are resident for more than 295 days per year.

Fostering services

Local authority fostering services are defined by section 4 of the Care Standards Act 2000. Local authority fostering services and independent fostering agencies recruit, prepare, assess, train and support foster carers. Independent fostering agencies (IFAs) are private companies or charities, who are registered with Ofsted and provide placements to children and young people with foster carers approved by them. IFAs work closely with Local Authorities to deliver these placements.

Residential accommodation in further education colleges

The welfare provision of further education colleges that provide or arrange residential accommodation for one or more students under the age of 18 years.

Full and interim inspections

All types of children's social care providers receive key inspections, which cover all the outcomes for children and the quality of the leadership and management. Children's homes receive a minimum of one full (also known as key) inspection and one interim (also known as random) inspection a year. An interim inspection will include some of the aspects covered by a full inspection, as well as checking on the progress of any actions and recommendations.

Private fostering services

Private fostering is legally defined by section 67 of the Children Act 1989 as an arrangement that occurs when a child who is under 16 (or 18 for a child with learning difficulties and/or disabilities) is cared for in their own home by someone other than their parent or a close relative for 28 consecutive days or more; or children who stay in boarding schools during the holidays for 14 days or more (Children Act 1989 schedule 8 para 9 (i) as amended by section 112 of the Care Standards Act 2000). A private foster carer may be a friend of the family or the child's friend's parents or someone who is not previously known to the family. Children (Private Arrangements for Fostering) Regulations 2005 requires parents and private foster carers to give the local authority advance notice of a private fostering arrangement. It also places specific duties on local authorities with responsibilities for children's services. It is these duties and responsibilities that Ofsted inspects.

Residential family centres

Residential family centres are defined in section 4(2) of the Care Standards Act 2000 as establishments at which: a) accommodation is provided for children and their parents; b) the parents' capacity to respond to the children's needs and to safeguard their welfare is monitored and assessed; and c) the parents are given such advice, guidance and counselling is considered necessary.

Residential special schools

Residential special schools are defined in section 59 of the Safeguarding Vulnerable Groups Act 2006. They vary in size and nature. The sector includes large non-maintained special schools which make provision for very specific needs and take children as full boarders from all over the country, to smaller more local providers catering for children with a range of different special needs and disabilities who may be resident at the school only during the week. Some residential special schools are registered as children's homes because boarders are resident for more than 295 days per year.

© Crown copyright

You may re-use this information (not including logos) free of charge in any format or medium, under the terms of the Open Government Licence. To view this licence, visit <http://www.nationalarchives.gov.uk/doc/open-government-licence/> or write to the Information Policy Team, The National Archives, Kew, London, TW9 4DU or e-mail: psi@nationalarchives.gsi.gov.uk.