

Statistics of Education:

Outcome Indicators for Looked after Children

Twelve months to 30 September 2003

England



STATISTICS
OF **E**DUCATION
*Outcome Indicators for
Looked after Children
Twelve months to
30 September 2003
England*

© Crown copyright 2004. Published with the permission of the DfES on behalf of the Controller of Her Majesty's Stationery Office.

Applications for reproduction should be made in writing to The Copyright Unit, Her Majesty's Stationery Office, St Clements House, 2-16 Colegate, Norwich NR3 1BQ.

ISBN 0 11 271168 5

Contents

	<i>Page</i>
SUMMARY	4
COMMENTARY	5
ENGLAND TABLES	
List	14
Tables	15
LOCAL COUNCIL TABLES	
List	21
Local authority tables	22
TECHNICAL NOTES	67
APPENDIX	
List of local authority social services publications	68

Summary

The main findings are as follows:

1 At 30 September 2003 there were 44,900 children who had been looked after continuously for at least twelve months by English local authorities. This compares to 44,100 at 30 September 2002.

2 35,100 of these children were of school age and of these 27% had SEN statements, 12% missed at least 25 days of school, and 1% received a permanent exclusion. These percentages were similar to last year.

3 On average 53% of those looked after children in the appropriate age group achieved level 2 at Key Stage 1, 42% level 4 at Key Stage 2 and 23% level 5 at Key Stage 3. The comparable percentages for all children were 85%, 78% and 69% respectively.

4 The proportion of children continuously looked after for at least 12 months aged 11 and obtaining KS2 English and Maths was 49% of the proportion of all children. This compares with 46% in 2002.

5 In school year 11, 53% of looked after children obtained at least one GCSE or GNVQ compared with 95% of all school children. These figures were similar to last year. 43% did not sit an examination of this type in 2003 compared with 42% in 2002.

6 9% obtained at least 5 GCSE's (or equivalent) at grades A*- C compared with 53% of all children. This compares to 8% and 52% in 2002. 15% of councils had at least 15% of their children achieving this level in 2003. This compares with 13% in 2002.

7 At the end of school year 11, 57% remained in full-time education compared to 72% of all school-leavers. 22% were unemployed the September after leaving school compared to 7% of all school-leavers.

8 10% of these looked after children aged 10 or over, were cautioned or convicted for an offence during the year, 3 times the rate for all children of this age. This rate has stayed very similar over the past 2 years.

9 For 72% of these looked after children immunisations were up to date, 75% had a dental check, and 75% had an annual health assessment. In 2002 these figures were 73%, 72% and 71% respectively.

1. INTRODUCTION

The OC2 statistical collection

1.1 In September 1999 the Government established 11 objectives for children's social services in England. One of these is 'to ensure that children looked after gain the maximum life chance benefits from educational opportunities, health care and social care'.

1.2 In order to collect the data needed to monitor progress towards this objective three new statistical collections were introduced. One of these (OC2) covers a range of outcome indicators for looked-after children in England. This publication presents the results of this collection for the twelve months ending 30 September 2003. The figures presented include the Personal Social Services Performance Assessment Framework (PAF) indicators C18, C19 and C24.

Data Quality

1.3 This is the fourth time that social services departments have been asked to supply this information. Data quality and response rates have again improved on last year and are significantly better than in the first year of the collection, when many councils experienced difficulties in obtaining the required information. The Technical Notes section at the back of this publication discusses data quality.

1.4 In some councils the number of looked-after children in some of the categories on the OC2 return is relatively small; caution is required when considering these figures as they are more susceptible to chance variation than figures based on larger numbers of children.

Rounding and suppression of very small numbers to preserve confidentiality

1.5 We have again applied rounding and suppression conventions to all data in this publication, in order to conceal very small numbers. This is to prevent the possibility of individual children being identified in the statistical tables. The conventions used are now applied to all personal social services statistics publications, and closely follow the established guidelines which the Department uses to protect the identity of all children.

1.6 A result of applying this procedure is that columns of data at individual councils level which largely consist of very small numbers, now contain many dashes (-) to replace actual numbers in the range 1-5.

Coverage of OC2

1.7 The OC2 collection covers all children and young people in England who had been looked after

continuously for at least twelve months at 30 September. These figures exclude children looked after under an agreed series of short-term placements (sometimes called 'Family Link Placements', 'Short Breaks' or 'respite care') during that period. These figures include asylum-seeking children.

1.8 From the overall group of children who had been looked after for at least twelve months at 30 September, smaller subsets are defined by the scope of some of the data items. These subsets are listed in Table 1.1 in the Technical Notes section at the back of this publication.

1.9 Where a child has 'slipped' a year or more (e.g. is taking key stage tests or GCSEs later than expected from their date of birth) their results are not included.

Duration in Care

1.10 Figures collected separately on the SSDA 903 statistical return (which represents care histories of individual looked-after children) show that the average duration for which a child is looked after continues to increase over time, and the figures from successive OC2 returns appear to support this trend.

1.11 The 2003 OC2 collection shows that 44,900 children had been continuously looked after for at least twelve months at 30 September 2003, compared to 44,100 at 30 September 2002. This represented approximately 75% of all children who were looked after on 30 September.

1.12 The figure of 44,900 from the OC2 returns closely approximates an estimate for children at 31 March 2003 who had been looked after for twelve months or more which can be derived from the SSDA 903 return

2 COMPARABILITY OF FIGURES FROM OC2 WITH FIGURES FOR ALL CHILDREN

2.1 Several tables include comparative figures for all children in England alongside data collected from OC2. The figures for 'all children' are collected on various slightly different bases, which are explained below. Figure 2.2 at the end of this section summarises the differences.

Comparability of educational results (Tables A, B, C, 1,2,3,4,5)

2.2 The figures for educational attainment in Tables A, B, C, 1, 2, 3, 4, and 5 are collated according to the Local Educational Authority (LEA) to which each school belongs. Although LEAs have the same boundaries as social services departments, many

looked-after children are placed out-of-council (Figure 2.1). This is particularly the case in the Greater London area, where typically more than 40% of children who have been looked after for 12 months or more are placed out-of-council and may well attend a school belonging to a different LEA to the council which is looking after them. Caution must therefore be used when comparing educational data collected on OC2, with that for all children.

2.3 Figure 2.1 is derived from the SSDA 903 statistical collection and is derived from foster and residential placement data relating to children who had been looked after for at least twelve months on 31 March 2003. It is derived from SSDA 903 placement codes F1-F6 and H1-H4, which distinguish foster and residential placements inside or outside the council area¹. As there are further placement types for which the distinction between in and out of council is not made, these data should be regarded as probably slightly under-estimating the frequency of out-of-council placements. As it is known that there is little seasonal variation in this dataset, this can be taken as a reasonable proxy for the position at 30 September.

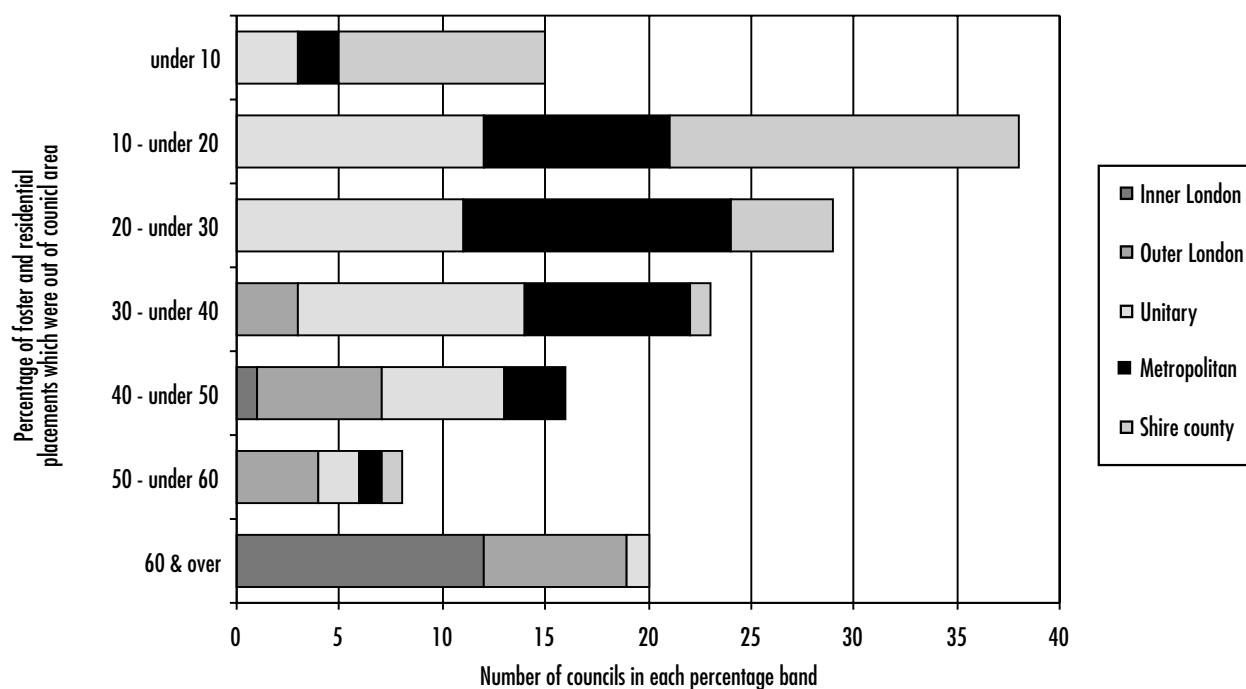
2.4 There are a number of reasons why a child can be placed outside the council's boundary. Many councils, particularly new unitary authorities, cover relatively small geographical areas and if a wide range of placement options is to be available it is inevitable that some of these will be located outside the council's boundary. The inclusion of Figure 2.1 here is not intended as a comment on any council's placing policy, but to help the reader assess the usefulness of the comparator data for all children which are collected from LEAs, rather than social services departments.

2.5 Figures at local council level include maintained schools, including mainstream and maintained special schools, City Technology Colleges and Academies. Figures for "all children" include maintained schools as above plus all independent schools including independent special schools and non maintained special schools, all hospitals and pupil referral units.

2.6 Comparability between educational attainment data for looked after children and all children at local level has to be viewed with these caveats in mind.

FIGURE 2.1:

Children who had been looked after for at least twelve months on 31 March 2003: Number of councils banded according to proportion of foster and residential placements which were known to be out-of-area



Source: SSDA 903

¹ SSDA 903 Guidance notes are available at: http://www.dh.gov.uk/PublicationsAndStatistics/Statistics/StatisticalCollection/StatisticalCollectionArticle/fs/en?CONTENT_ID=4030893&chk=vTHkqe

2.7 The national SEN figures are based on the January school census. All other figures are based on a school year running from 1 September to the following 31 August.

Comparability of education, employment and training status (Tables D and 6)

2.8 The comparative figures in Tables D and 6 were provided by the Connexions Service and are based on a survey of all year 11 pupils in maintained schools in England in the school year which ended in August 2003.

They exclude data from a small number of independent schools.

Comparability of offending data (Table 7)

2.9 The figures for all children cited in Table 7 are for Police Force areas, which do not necessarily follow the same boundaries as individual councils, and in many instances include the areas of a number of councils. These figures must therefore be treated with caution. At present the ‘all children’ data collected on this basis are the only figures available to provide a comparison with looked-after children.

FIGURE 2.2:
Comparability between reference periods of OC2 data for 30 September 2003 and the data for all children obtained from other sources.

Relevant Tables And data item	OC2 data item and time period	‘all children’ data definition, time period, and source
Table A: Children with a statement of SEN	All children looked after continuously for twelve months or more on 30 September 2003, and who had a statement of SEN on that date	All children in the school population at January 2003 with a statement of SEN. Data from Pupil-level Annual School Census, ‘PLASC’. Published September 2003 as DFES Statistical Volume: Statistics of Education, schools in England 2003 edition.
Table A: Numbers of permanent exclusions from schools	All children looked after continuously for twelve months or more on 30 September 2003, and who became permanently excluded from school at any time during the twelve-month period. Where a child was permanently excluded twice during the period, both exclusions are counted.	All children in the school population who became permanently excluded during the school year ending August 2003. Where a child was permanently excluded twice during the period, both exclusions are counted. Published May 2003 as Statistical First Release SFR 16/2004.
Tables B, 2, 3, 4: Key Stage results	Of all children looked after continuously for twelve months or more on 30 September 2003, those who were eligible to sit relevant Key Stage tasks and tests according to their date of birth.	All children in the LEA maintained school population eligible to sit relevant Key Stage tasks and tests according to their date of birth. Refers to the school year ending August 2003. Published January 2003 as SFR. Published January 2004 as SFR ‘GCSE/GNVQ Examination results and KS3 to GCSE/GNVQ value added measures 2002/2003 (revised).
Tables C, 5: GCSE performance	Of all children looked after continuously for twelve months or more on 30 September 2003, those who belonged to Year 11 according to their date of birth.	All children in the school population who were eligible to sit relevant GCSE or GNVQ exams according to their date of birth. Refers to the school year ending August 2003.
Tables D, 6 : Activity following year 11	Of all children looked after continuously for twelve months or more on 30 September 2003, those who belonged to Year 11 according to their date of birth.	All pupils in the LEA maintained school population in England who were in year 11 which ended in August 2003. (Connexions/Careers Service Annual Activity Survey, carried out in October 2003).
Tables E, 7: Offending behaviour	Of all children looked after continuously for twelve months or more on 30 September 2003, those aged 10 or over on that date.	Number of people aged 10 to 17 who were cautioned or convicted for any offence. Refers to calendar year ending 31 December 2002. (Supplied by Crime and Criminal Justice Unit, RDS, Home Office; published on DH website at www.dh.gov.uk/assetroot/04/07/55/80/04075580.xls)

3. EDUCATIONAL ATTAINMENT

Children who have statements of Special Educational Needs (SEN) (Tables A and 1)

3.1 Children have special educational needs if they have a learning difficulty which calls for special educational provision to be made for them. Further definitional and background information is provided in the *Special Educational Needs Code of Practice* which was published in November 2001². Chapter 10 of the *Code of Practice* discusses the responsibility of social services departments to work closely with schools and LEAs on behalf of these children.

3.2 35,100 of the children looked after continuously for a least twelve months were of school age at 30 September 2003. It is estimated that of these, 9,400 (27%) during the 2002/2003 school year held statements

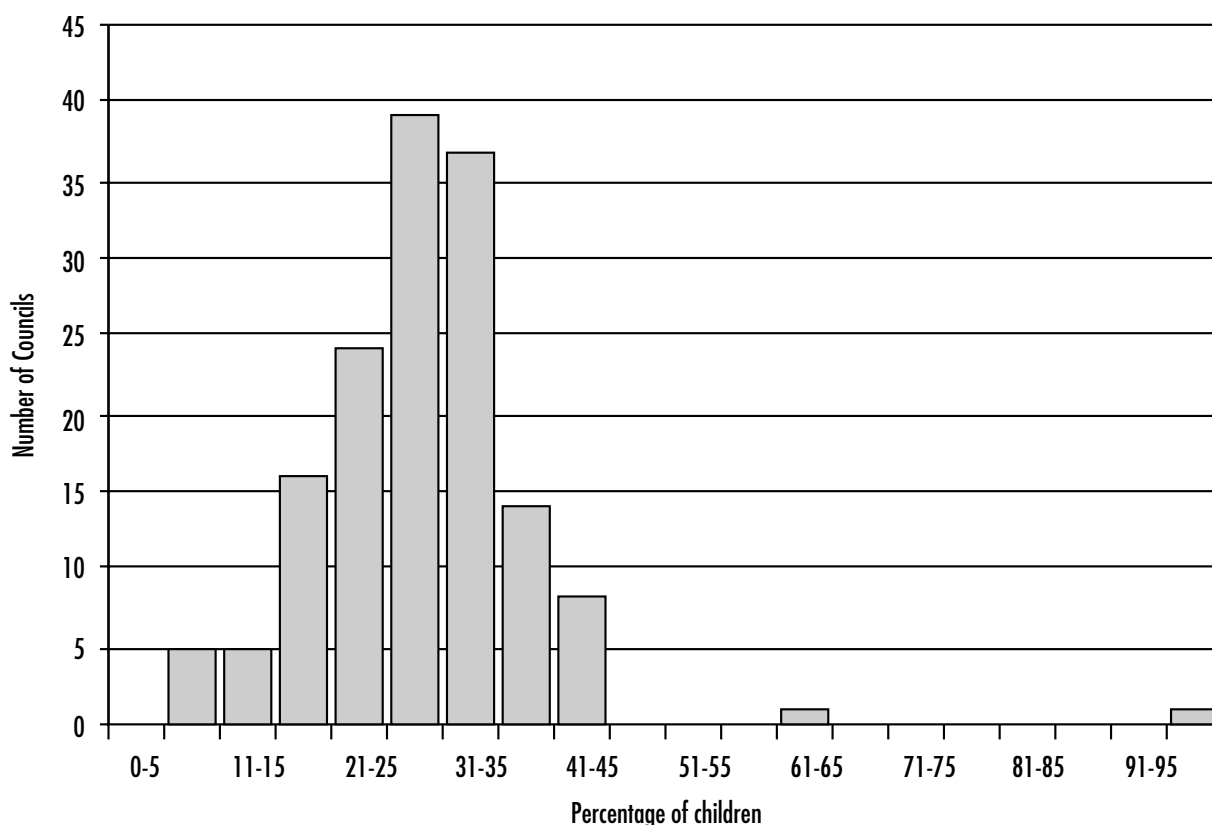
of special educational needs (stage 5 in the Code of Practice). This percentage is very similar to that for the twelve months ending 30 September 2002 (27%).

3.3 Compared to national figures for all children in England, looked-after children are almost nine times more likely to hold a statement of special educational needs. 3% of all school children in England held a statement of SEN at January 2003.

3.4 The comparator figures in Table A for all children in England represent the position at January 2001 to January 2003³.

3.5 Figure 3.1 shows the variation between councils in the percentage of their children looked after for twelve months who had statements of SEN on 30 September. As can be seen, in two-thirds of councils the incidence of looked-after children with special educational needs lies between 21% and 35% inclusive.

FIGURE 3.1: Councils ranked according to percentage of children looked after for at least twelve months at 30 September 2003 who held a statement of SEN



² available at: www.dfes.gov.uk/sen

³ First Release figures at www.dfes.gov.uk/rsgateway/DB/SFR/s000457/index.html

Exclusions from school (Tables A and 1)

3.6 Looked-after children also appear more likely to receive a permanent exclusion from school. Out of the 35,100 looked-after children of school age, there were 380 permanent exclusions during the 2002/2003 school year. Fixed-term exclusions are not included. Although this is a count of exclusions rather than children excluded, it is uncommon for the same child to receive more than one permanent exclusion during the school year.

3.7 The number of exclusions expressed as a percentage of children who had been looked after for at least twelve months and who were eligible for schooling is 1.1% compared to 1.2% for the twelve months ending 30 September 2002.

3.8 This compares with 0.1% of all children in England in the 2003 school year. The comparator figures of exclusions are for all children⁴.

3.9 Small numbers have been suppressed in Table 1. For further details see the section on 'Rounding and Suppression' at the end of the Technical Notes.

Children who missed at least 25 days of school for any reason (Tables A and 1)

3.10 For the 2002/2003 school year, 12% of children looked after continuously throughout the year missed 25 days or more of school for any reason, the same as the previous school year. This represents Performance Assessment Framework indicator C24.

Target on attainment

3.11 There is a Public Service Agreement target⁵ to improve the life chances for children in care by narrowing the gap between the educational attainment and participation of children in care and that of their peers by 2006. The Government revised the target, which took effect from 1 April 2003, in the light of the Social Exclusion Unit's work in this area and their subsequent report, *A Better Education for Children in Care*. The target to narrow the gap will have been achieved, if by 2006;

- *Outcomes for 11 year olds in English and maths are at least 60 per cent as good as those of their peers;*
- *The proportion who became disengaged from education is reduced so that no more than 10 per cent reach school leaving age without having sat a GCSE equivalent exam;*

- *The proportion of those aged 16 who get qualifications equivalent to GCSEs graded A*-C has risen on average by 4 percentage points each year since 2002; and in all authorities at least 15 per cent of young people in care achieve this level of qualifications*

3.12 The target relates to children who were in care on 30 September and had been continuously looked after for at least 12 months. Data presented later in this section show that for the twelve months ending 30 September 2003:

- The proportion of children continuously looked after for at least 12 months aged 11 and obtaining level 4 in KS2 English and Maths was 49% of the proportion for all children (see paragraph 3.14) compared to the target of 60% by 2006⁶. The corresponding percentage for 2002 was 46%.
- Of the children looked after continuously for at least 12 months who were in year 11, 43% did not sit a GCSE or equivalent examination (see paragraph 3.17). The target states that this figure should be no more than 10% by 2006. The corresponding percentage for 2002 was 42%.
- 9% of children continuously looked after for at least 12 months in year 11 attained 5 GCSE or equivalent passes at grades A*-C (see paragraph 3.19). The corresponding percentage in 2002 was 8%.
- 15% of councils had at least 15% of their children achieving 5 GCSEs (or equivalent) A* to C. The target states that all authorities should reach this standard by 2006. In 2002, 13% of councils had at least 15% of their children achieving 5 GCSEs (or equivalent).

Key Stage and GCSE or equivalent results (Tables B&C, and Tables 2, 3, 4 & 5)

3.13 The performance of those children looked after continuously for a year in the tasks and tests at the end of the three Key Stages is shown in Table B. Overall 53% reached the target level 2 at Key Stage 1, 42% reached level 4 at Key Stage 2 and 23% reached level 5 at Key Stage 3. (The comparable figures for school year ending August 2002 were 50%, 40%, and 22% respectively.) It can be seen that the academic performance of looked-after children worsens for older children. This lower performance with age is also apparent in the national school population, with equivalent (provisional) figures for Key Stages 1, 2 and 3 for the school year ending August 2003 being 85%, 78% and 69% respectively.

⁴ First release published May 2004 (provisional) at www.dfes.gov.uk/rsgateway/DB/SFR/s000465/index.html

⁵ http://www.hm-treasury.gov.uk/performance/targets/perf_target_18.cfm

⁶ The combined figure for KS2 English and Maths for all children makes use of aggregate data and may differ from calculations published elsewhere that use individual level data.

3.14 Considering Maths and English only, 36% reached level 4 at Key Stage 2 compared with 34% in August 2002 and 31% in August 2001. Figure 3.2 illustrates these figures more clearly and compares them against the equivalent figures for all children. Combining these figures in 2002/03 shows the proportion of children continuously looked after for at least 12 months aged 11 and obtaining level 4 in KS2 English and Maths to be 49% of the proportion for all children. This compares to 46% in 2001/02 and 43% in 2000/2001.

3.15 Figure 3.3 shows the percentage of looked-after children attaining the target level at each Key Stage

test, as a proportion of the percentage of all children attaining the target level for the 2002/2003 school year⁷.

3.16 Using the data from Figure 3.3 shows that the performance of looked-after children achieving the target level for Key Stage 1 is between 60% and 68% of that of all children. For Key Stage 2, the performance of looked-after children drops to between 48% and 61% of that of all children, and at Key Stage 3, the attainment of looked-after children is only around 33% of that of the total school population at Key Stage 3.

FIGURE 3.2: Percentage of children looked after for at least 12 months at 30 September 2003 reaching level 4 in Maths and English, compared with all children

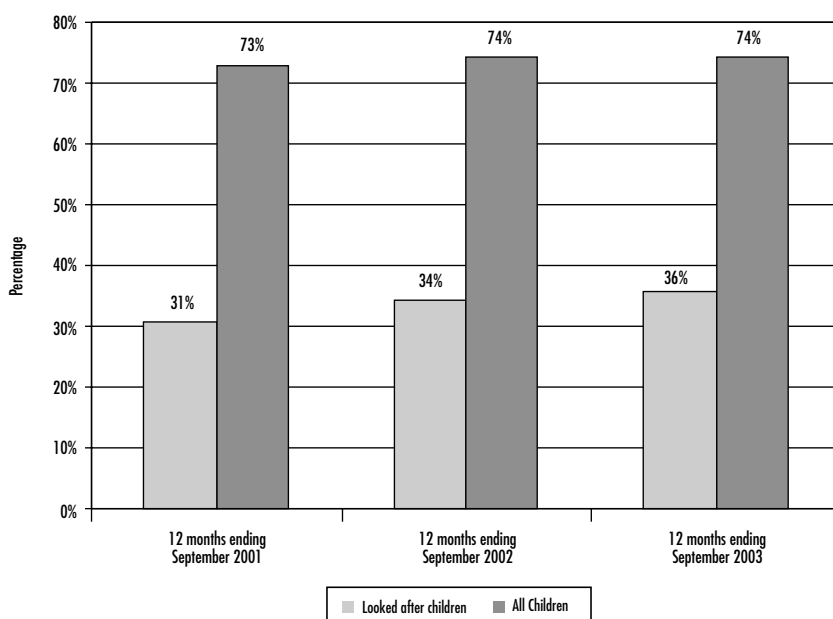
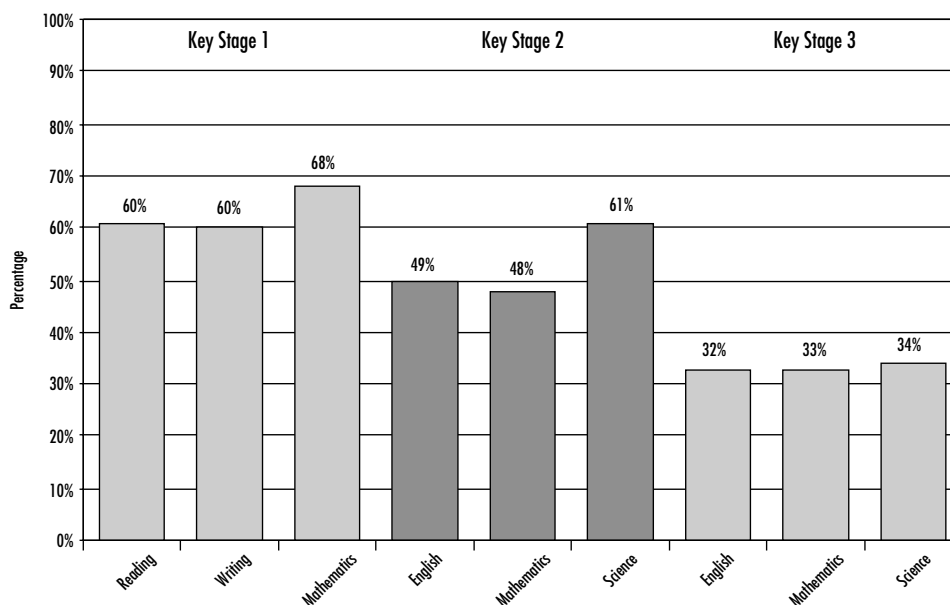


FIGURE 3.3: The proportion of looked-after children attaining the target level of each of the Key Stage tasks and tests, shown as a percentage of the proportion of all children attaining the target level. Twelve months to 30 September 2003



⁷ First release figures for all children at LEA level were published in October 2003 and are available at www.dfes.gov.uk/rsgateway/DB/SFR/s000433/index.shtml

**Year 11: GCSEs and GNVQs
(Tables C and 5)**

3.17 Of the children looked after continuously throughout Year 11 (Tables C and 5), 43% did not sit a GCSE or equivalent exam, compared with 42% in 2002 and 46% in 2001. 53% obtained at least one GCSE at grade A* - G or a GNVQ. This compares to 53% and 50% respectively for the school years ending 30 September 2002 and 2001.

3.18 The provisional equivalent figure for all children in England in year 11 who obtained at least one grade A* - G or a GNVQ during the school year ending August 2003 is 95%. 37% of children looked after during the year achieved 5 or more GCSE or equivalent passes at grades A* - G, compared to 89% of all children.

3.19 Only 9% of looked-after children attained 5 GCSE or equivalent passes at grades A*-C, compared with 53% of all children. This figure for looked after children is similar to previous years (8% in both 2001 and 2002) The OC2 excludes the results of young people who left care after completing year 11 but before 30 September 2003.

3.20 Figure 3.4 compares GCSE or equivalent attainments of looked-after children in year 11 to the attainments of all children.

3.21 Although there is a large difference between the performance of looked-after children and all children at each set of Key Stage tasks and tests and in general GCSE or equivalent attainment, this difference is at its greatest when considering those children obtaining the

higher grades at GCSE or equivalent; five passes between grades A* - C.

Education and employment at age 16 (Tables D and 6)

3.22 The OC2 return collects information on the position of those looked-after children who finished compulsory schooling during the 2002/2003 school year on completing year 11. The reader should bear in mind that these data do not represent outcomes for care leavers, as all of these young people were still looked after on 30 September.

3.23 At 30 September 2003, 57% of these young people were in or about to start full-time education. 8% were in full-time training, 6% in full-time employment and 6% in part-time employment, education, or training. 22% of these young people were unemployed at 30 September; for 2% this was due to ill-health or disability. These percentages are similar to those which were reported for the position at 30 September 2002 (56% were in full-time education, 8% in full-time training, 7% in full-time employment, 6% in part-time employment, education or training and 24% were unemployed).

3.24 Figure 3.5 and Tables D and 6 compare these outcomes with data for all children who completed year 11. The comparative information for all children is from the 'Connexions/ Careers Service Annual Activity Survey 2003'. This survey was carried out in October 2003, covering all young people who were in year 11 during the 2002/2003 school year.

FIGURE 3.4

Percentage of children looked after for at least twelve months at 30 September 2003 obtaining GCSE or equivalent passes, compared with all children

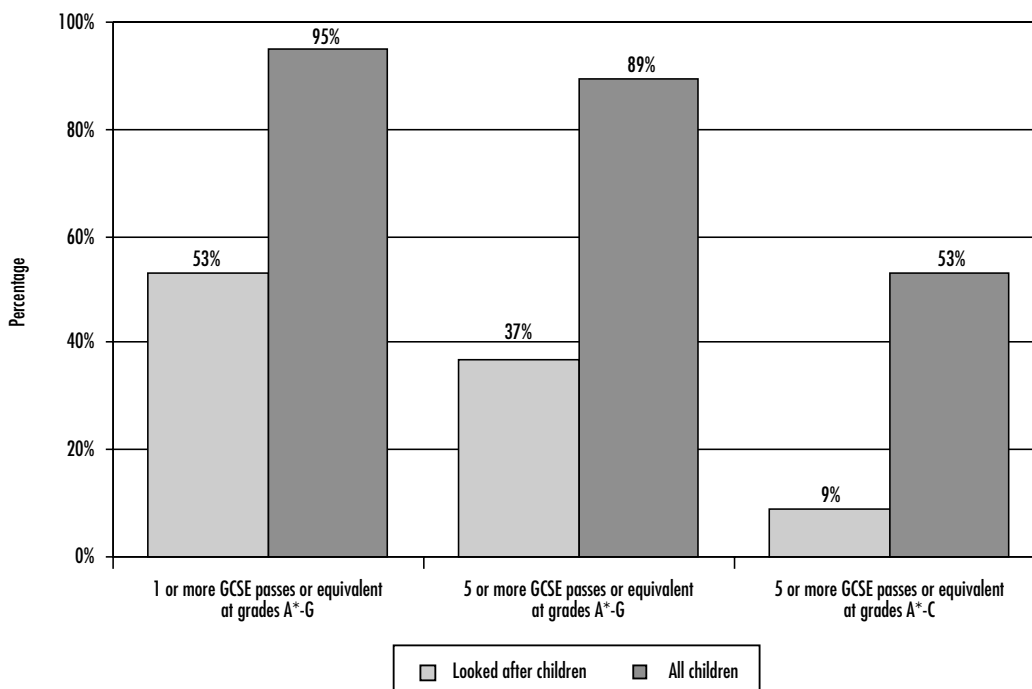
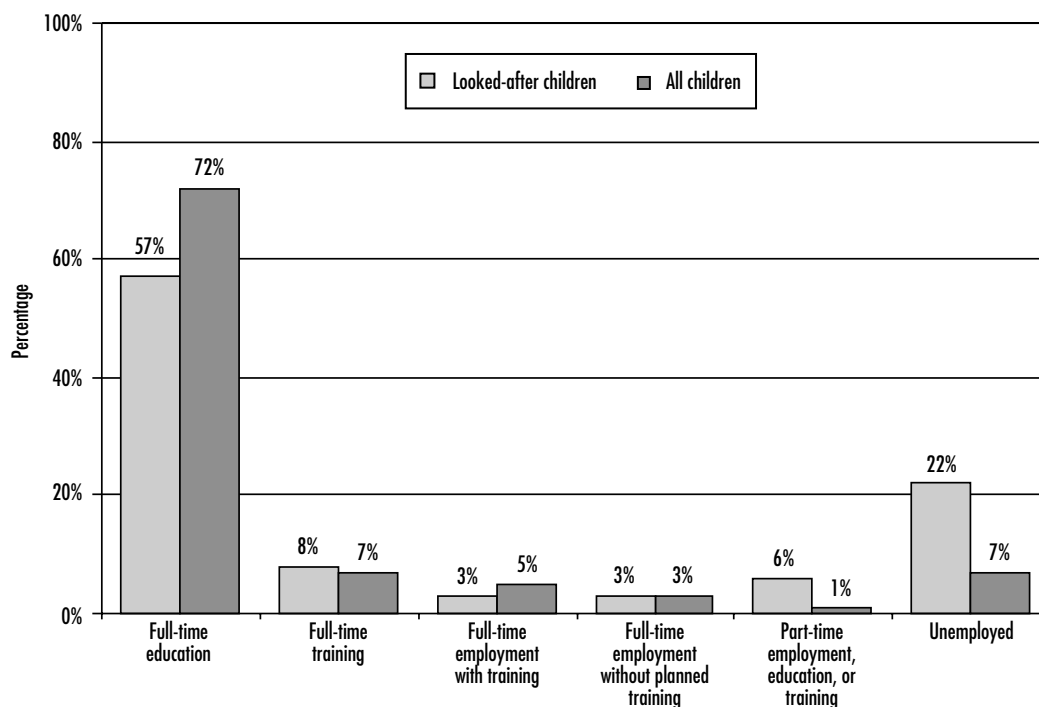


FIGURE 3.5:

The position of looked-after children at 30 September 2003 following the completion of year 11, compared with all children of same age



3.25 The comparison shows that, at a national level, fewer looked-after children remained in full-time education than in the comparator population, whereas more looked-after children were unemployed, or in part-time education, employment or training.

4. CAUTIONS AND CONVICTIONS

Cautions and convictions (Tables E and 7)

4.1 As can be seen from Table E, looked-after children of the age of criminal responsibility are three times more likely to be cautioned or convicted of an offence than others. 9.5% of children looked after for a year or more who were aged 10 or over had been convicted or subject to a final warning or reprimand during the year.

4.2 This compares with a figure of 3.3% for all children. The ratio of these two percentages represents PAF indicator C18. This figure is slightly higher than that for the twelve months ending 30 September 2002 (2.9% in 2003 compared to 2.7% in 2002).

4.3 Table 7 shows these figures at local council level. As explained above, the comparable figures for all children are for Police force areas, which do not necessarily follow the same boundaries as individual councils and in many instances cover the areas of several councils.

4.4 There is a Public Service Agreement target to improve the life chances for children in care by narrowing the gap between the proportions of children in care and their peers who receive a final warning or conviction. The target will be met successfully if the proportions of children in care who were cautioned or convicted in the year to 30 September is reduced by a third from 10.8% to 7.2% by 2004 and maintained until 2006.

5. HEALTH OUTCOMES

Health Assessments (Table F and Tables 8 & 9)

5.1 Of the 44,900 children who had been looked after continuously for twelve months, 33,700 (75%) had their

Children aged 10 or over convicted or subject to a final warning or reprimand during the years ending 30 September 2000 to 2003

England	percentages			
	2000	2001	2002	2003
Looked after children	10.8	10.3	9.7	9.5
All children ¹	3.6	3.5	3.6	3.3
PAF Indicator C18 ²	3.0	3.0	2.7	2.9

¹ Data for all children are from the Home Office and are for calendar years 31 December 2000 to 2002, expressed as a percentage of all children aged 10-17.

² For definitions of PAF C18, see table E and table 7.

annual health assessment and 33,800 (75%) had their teeth checked by a dentist during that period.

5.2 It must be borne in mind when considering these figures that children have a right to refuse a health assessment or dental check. As the OC2 return is for children looked after for a year all babies will have teeth and so they should be checked.

5.3 Nearly three quarters (72%) of children looked after continually throughout the year were up-to-date for their routine immunisations. This figure should also be interpreted with some caution. Children may enter care with their immunisations behind schedule, or unknown as in the case of unaccompanied asylum seekers, and it is not always possible for a local authority to 'catch up' with immunisations.

5.4 The combination of the percentages for dental checks and health assessments make up PAF C19. Immunisations used to be included in this calculation but has now been taken out. Previous years PAF C19 has been recalculated without immunisations for England only so a comparison can be made. The PAF C19 figure for the twelve months ending September 2003 is 75% This compares with a figure of 72% last year.

5.5 In addition, 5,700 (81%) of children under age 5 who had been looked after for at least a year had their development assessments up to date. This compares to 5,500 (75%) in 2002.

England Tables

- A Number of children looked after at 30 September 2001 to 2003 who had been looked after for at least twelve months, and general information on education (numbers and percentages)
- B Eligibility and performance of looked-after children in Key Stage tasks and tests, compared with all children, school years ending 30 September 2001 to 2003 (numbers and percentages)
- C GCSE or equivalents performance of looked- after children in Year 11 compared with all children, school years ending 30 September 2001 to 2003 (numbers and percentages)
- D Education and employment status at 30 September of looked-after children in Year 11 in 2002/2003 school year, compared with all children (numbers and percentages)
- E Offending by looked-after children, twelve months ending 30 September 2001 to 2003 (numbers and percentages)
- F Health care of looked-after children, twelve months ending 30 September 2001 to 2003 (numbers and percentages)

A

Number of children looked after at 30 September 2001 to 2003 who had been looked after for at least twelve months, and general information about education

England

numbers and percentages

	looked-after children						all children		
	number			percentages ¹			percentages ²		
	2001	2002	2003	2001	2002	2003	2001	2002	2003
Number of children looked after at 30 Sept. who had been looked after for at least twelve months	43,400	44,100	44,900
and of these: Number eligible for full-time schooling	33,800	34,500	35,100
and of these: Number with a statement of special educational needs	8,900	9,200	9,400	26.5	26.8	26.8	3.1	3.0	3.0
Number of permanent exclusions from school ³	450	420	380	1.3	1.2	1.1	0.1	0.1	0.1
Number who missed at least 25 days of school ^{4,5}	4,100	4,100	4,400	12.2	12.0	12.4

1 expressed as a percentage of the number eligible for full-time schooling

2 source: DFES statistical bulletins: 'Statistics of Education: Special Educational Needs in England: January 2004 (provisional)', and 'Permanent Exclusions from Schools in England 2002/2003 (provisional estimates)'

3 If a child was permanently excluded more than once in the previous school year, each occasion has been counted.

4 Performance Assessment Framework Indicator C24: The percentage of children who had been looked after continuously for at least 12 months and were of school age, who missed a total of at least 25 days during the previous school year of schooling for any reason.

5 figures on this basis are not collected by DFES for all children

B

Eligibility and performance of looked-after children in Key Stage tasks and tests, compared with all children, school years ending 30 September 2001 to 2003

England

numbers and percentages

	looked-after children						all children ¹		
	number			percentages			percentages		
	2001	2002	2003	2001	2002	2003	2001	2002	2003
YEAR 2									
Number eligible to sit Key Stage 1 tasks and tests	2,100	2,000	1,900
Number who attained at least Level 2 ² in the following:									
Reading task/test ³	950	935	970	45.1	46.2	50.8	84	84	84
Writing task	1,100	1,100	930	50.6	52.4	48.5	86	86	81
Spelling test ⁴	890	905	..	42.2	44.8	..	75	78	..
Mathematics test	1,200	1,200	1,200	55.8	57.9	61.0	91	90	90
YEAR 6									
Number eligible to sit Key Stage 2 tasks and tests	2,800	2,900	3,000
Number who attained at least Level 4 ² in the following:									
English	940	1,000	1,100	33.3	34.6	37.1	75	75	75
Mathematics	820	1,000	1,000	29.1	34.2	34.8	71	73	73
Science	1,400	1,500	1,600	49.8	51.7	52.9	87	86	87
YEAR 9									
Number eligible to sit Key Stage 3 tasks and tests	3,500	3,800	3,800
Number who attained at least Level 5 ² in the following:									
English	710	835	850	20.3	22.1	22.3	65	67	69
Mathematics	760	810	890	21.6	21.4	23.3	66	67	71
Science	740	825	890	21.1	21.8	23.2	66	67	68

1 source: DfES statistical first release 20/2003 'National curriculum assessments of 7, 11 and 14 year olds in England - 2003 (Provisional)' Includes all schools

2 target level for age group

3 the 'all children' Key stage 1 Reading task/test is derived by adding the pupils achieving level 2 in the reading task and level 3 in the reading comprehensive test

4 From September 2003, the spelling test contributed to the writing task and was therefore not reported as a separate item.

C

GCSE performance or equivalents of looked-after children in Year 11 compared with all children, school years ending 30 September 2001 to 2003

England

numbers and percentages

	looked-after children						all children ¹		
	number			percentages ²			percentages		
	2001	2002	2003	2001	2002	2003	2001	2002	2003
Number in Year 11	4,200	4,300	4,600
Number who sat at least one GCSE or GNVQ	2,200	2,500	2,600	54.1	57.9	56.8	96	96	96
Number who obtained at least:									
1 GCSE at grade A* to G or a GNVQ	2,100	2,300	2,400	49.6	53.2	52.9	95	95	95
5 GCSE's (or equivalent) at grade A* to G	1,400	1,500	1,700	33.1	36.3	36.8	89	89	89
5 GCSE's (or equivalent) at grade A* to C	330	320	400	8.0	7.5	8.7	50	52	53

1 source: DFES statistical bulletin: GCSE/GNVQ and GCE A/AS/VCE/Advanced GNVQ Examination Results 2002/2003 - England. Issued January 2004. Includes all schools.

2 expressed as a percentage of all looked after children in Year 11

D

Education and employment status at 30 September 2003 of looked-after children in Year 11 in 2002/2003 school year, compared with all children

Government Office Region		total number of children in Year 11 in 2002/2003 school year	position at 30 September 2003, shown as a percentage of the total						unemployed	
			full-time education	full-time training	full-time employment with planned training	full-time employment with no planned training	part-time employment, education, or training	a result of ill-health or disability	other reason	
ENGLAND	looked after	4,600	57	8	3	3	6	2	21	
	all children^{1,2}	608,800	72	7	5	3	1	7		
NORTH EAST	looked after	240	53	12	4	7	5	-	17	
	all children ^{1,2}	34,400	66	10	3	3	1	11		
NORTH WEST	looked after	630	53	11	3	3	6	2	22	
	all children ^{1,2}	92,100	70	9	6	3	1	8		
YORKS & THE HUMBER	looked after	450	49	8	5	3	7	-	28	
	all children ^{1,2}	64,600	67	9	6	4	1	9		
EAST MIDLANDS	looked after	230	44	13	4	6	12	-	21	
	all children ^{1,2}	52,900	69	8	6	3	1	8		
WEST MIDLANDS	looked after	460	57	12	2	2	3	2	22	
	all children ^{1,2}	69,600	71	9	5	4	1	7		
EAST	looked after	380	58	8	-	5	7	-	20	
	all children ^{1,2}	66,700	73	5	7	3	1	7		
LONDON	looked after	1,220	63	6	2	2	7	1	19	
	all children ^{1,2}	77,200	78	3	2	2	1	7		
SOUTH EAST	looked after	580	59	6	2	4	7	2	19	
	all children ^{1,2}	92,000	76	5	6	2	1	6		
SOUTH WEST	looked after	410	57	6	5	4	5	2	22	
	all children ^{1,2}	59,400	74	7	6	4	1	5		

1 Source: The 'Connexions/Careers Service Annual Activity Survey 2003'. Covers all young people who were in year 11 during the school year ending August 2003, and is based on a survey carried out during October 2003.

2 Percentages for 'all children' do not sum to 100 because the Connexions/Career Service Survey included an additional category of moved away 'no response' and 'refused to participate', which is not relevant to looked-after children.

E

Offending by looked-after children, twelve months ending 30 September 2001 to 2003

England

numbers and percentages

	looked after						all children ¹			PAF Indicator C18 ²		
	number			percentage			percentages					
	2001	2002	2003	2001	2002	2003	2001	2002	2003	2001	2002	2003
Number of children looked after for at least twelve months	43,400	44,100	44,900
Number of children aged 10 or older at 30 September	27,000	28,200	29,100
Number convicted or subject to a final warning or reprimand during the year	2,800	2,700	2,800	10.3	9.7	9.5	3.5	3.6	3.3	3.0	2.7	2.9

1 Data for all children are from Home Office, and are for calendar years ending 31 December 2000 to 2002, expressed as a percentage of all children aged 10-17

2 the proportion of children (aged 10 or over) who had been looked after continuously for at least 12 months, who were convicted or subject to a final warning or reprimand during the year for an offence committed whilst they were looked after, expressed as a ratio of the proportion of all children and young people convicted or subject to a final warning or reprimand for an offence in the police force area.

F

Health care of looked-after children, twelve months ending 30 September 2001 to 2003

England

numbers and percentages

	number			percentage			PAF Indicator C19 ¹		
	2001	2002	2003	2001	2002	2003	2001	2002	2003
number of children looked after for at least one year	43,400	44,100	44,900
of these:									
number whose immunisations were up to date	31,000	32,400	32,300	71.4	73.4	71.9			
number who had their teeth checked by a dentist	29,600	31,800	33,800	68.2	72.2	75.3	68.2	71.6	75.2
number who had their annual health assessment	29,700	31,300	33,700	68.3	71.0	75.0			
number of children looked after for at least one year, and aged 5 or younger at 30 September:	7,300	7,400	7,100
of these:									
number whose development assessments were up to date	5,400	5,500	5,700	74.0	74.5	80.7	.	.	.

¹ The average of the percentages of children looked after at 30 September who had been looked after continuously for at least 12 months, who had their teeth checked by a dentist during the previous 12 months, and had an annual health assessment during the previous 12 months. In previous years this indicator also included immunisations. The figures shown here reflect the revised definition.

Local Authority Tables

- 1 Numbers of children looked after for at least twelve months, and general information on education, twelve months ending 30 September 2003 (numbers and percentages)
- 2 Eligibility and performance of looked-after children in Key Stage 1 tasks and tests, compared with all children, twelve months ending 30 September 2003 (percentages)
- 3 Eligibility and performance of looked-after children in Key Stage 2 tasks and tests, compared with all children, twelve months ending 30 September 2003 (numbers and percentages)
- 4 Eligibility and performance of looked-after children in Key Stage 3 tasks and tests, compared with all children, twelve months ending 30 September 2003 (percentages)
- 5 GCSE or equivalents performance of looked-after children in Year 11 compared with all children, twelve months ending 30 September 2003 (percentages)
- 6 Education and employment status at 30 September of looked-after children in Year 11 in 2002/2003 school year compared with all children (numbers and percentages)
- 7 Offending by looked-after children, twelve months ending 30 September 2003 (numbers and percentages)
- 8 Development assessments of pre-school looked-after children, twelve months ending 30 September 2003 (numbers)
- 9 Health care of looked-after children, twelve months ending 30 September 2003 (numbers and percentages)

Numbers of children looked after for at least twelve months, and general information about their education: twelve months ending 30 September 2003

numbers and percentages

Local Authority	number looked after for at least twelve months	of these, number of school age	Of these: - children with a statement of SEN		- permanent exclusions from school ¹		- children who missed at least 25 days school ²	
			number	%	number	%	number	%
ENGLAND	44,900	35,100	9,400	26.8	380	1.1	4,400	12.4
NORTH EAST	2,395	1,905	560	29	15	1	290	15
Shire Counties								
Durham	330	250	75	29	0	0	35	15
Northumberland	230	185	65	36	-	-	35	18
Unitary Authorities								
Darlington	110	90	15	19	0	0	10	10
Hartlepool	75	60	15	28	0	0	-	-
Middlesbrough	195	160	40	26	5	4	20	12
Redcar & Cleveland	105	90	30	36	0	0	15	17
Stockton On Tees	145	115	35	33	0	0	15	12
Metropolitan Districts								
Gateshead	185	150	45	30	-	-	20	13
Newcastle Upon Tyne	285	240	65	27	-	-	40	16
North Tyneside	185	140	50	36	-	-	30	21
South Tyneside	190	155	45	28	-	-	35	22
Sunderland	360	280	75	27	0	0	40	14
NORTH WEST	7,575	5,970	1,300	22	60	1	870	15
Shire Counties								
Cheshire	345	295	65	21	5	2	40	14
Cumbria	465	360	70	20	-	-	80	23
Lancashire	960	760	170	23	15	2	85	11
Unitary Authorities								
Blackburn With Darwen	220	170	35	22	-	-	10	7
Blackpool	165	125	25	20	-	-	20	15
Halton	140	105	35	31	0	0	10	9
Warrington	150	110	35	32	0	0	5	6
Metropolitan Districts								
Bolton	230	170	50	30	-	-	30	17
Bury	185	160	35	21	-	-	5	4
Knowsley	175	140	35	26	0	0	25	19
Liverpool	825	600	100	16	-	-	115	19
Manchester	995	800	125	16	10	1	125	16
Oldham	220	170	25	13	0	0	10	5
Rochdale	235	175	35	21	5	3	35	19
Salford	490	395	75	19	-	-	75	19
Sefton	260	210	30	14	-	-	20	10
St Helens	195	145	40	28	0	0	20	15
Stockport	295	240	70	28	-	-	35	14
Tameside	205	170	55	33	-	-	15	9
Trafford	140	115	10	10	0	0	15	12
Wigan	310	255	75	30	-	-	40	16
Wirral	360	305	100	33	-	-	50	16

CONTINUED

Numbers of children looked after for at least twelve months, and general information about their education: twelve months ending 30 September 2003

numbers and percentages

Local Authority	number looked after for at least twelve months	of these, number of school age	Of these: - children with a statement of SEN		- permanent exclusions from school ¹		- children who missed at least 25 days school ²	
			number	%	number	%	number	%
YORKSHIRE & THE HUMBER	5,025	3,885	1,070	28	35	1	515	13
Shire Counties								
North Yorkshire	260	155	10	8	0	0	5	4
Unitary Authorities								
East Riding Of Yorkshire	185	140	40	29	-	-	15	11
Kingston Upon Hull	475	375	80	21	15	4	50	14
North East Lincolnshire	190	150	50	32	-	-	15	10
North Lincolnshire	150	120	45	36	-	-	20	17
York	110	85	25	32	-	-	15	19
Metropolitan Districts								
Barnsley	200	155	50	31	0	0	10	6
Bradford	635	480	135	28	-	-	50	10
Calderdale	135	100	40	40	0	0	10	9
Doncaster	315	255	75	29	-	-	60	24
Kirklees	200	145	40	29	0	0	25	19
Leeds	1,080	855	225	26	-	-	160	19
Rotherham	285	225	60	27	-	-	35	15
Sheffield	490	380	125	32	-	-	-	-
Wakefield	325	255	65	26	0	0	40	15
EAST MIDLANDS	2,895	2,260	540	24	25	1	225	10
Shire Counties								
Derbyshire	415	330	100	30	-	-	30	9
Leicestershire	270	215	55	26	-	-	30	14
Lincolnshire	360	275	40	14	0	0	-	-
Northamptonshire	435	345	100	29	-	-	55	15
Nottinghamshire	350	275	45	16	-	-	20	7
Unitary Authorities								
Derby	305	255	75	30	10	4	30	12
Leicester	370	285	95	34	0	0	45	16
Nottingham	385	280	35	12	-	-	15	5
Rutland	5	-	-	-	0	0	0	0

CONTINUED

Numbers of children looked after for at least twelve months, and general information about their education: twelve months ending 30 September 2003

numbers and percentages

Local Authority	number looked after for at least twelve months	of these, number of school age	Of these: - children with a statement of SEN		- permanent exclusions from school ¹		- children who missed at least 25 days school ²	
			number	%	number	%	number	%
WEST MIDLANDS	5,210	4,080	1,095	27	55	1	545	13
Shire Counties								
Shropshire	125	105	30	31	-	-	15	14
Staffordshire	420	340	110	32	-	-	30	9
Warwickshire	300	220	60	27	-	-	30	14
Worcestershire	410	310	120	39	15	5	45	14
Unitary Authorities								
Herefordshire	135	105	30	29	0	0	15	12
Stoke-On-Trent	280	225	40	19	-	-	15	6
Telford & Wrekin	135	110	30	27	0	0	10	9
Metropolitan Districts								
Birmingham	1,515	1,175	275	23	15	1	140	12
Coventry	390	315	75	24	0	0	55	17
Dudley	305	235	70	30	-	-	65	28
Sandwell	385	300	65	21	-	-	40	13
Solihull	140	115	35	31	-	-	10	7
Walsall	365	285	75	25	-	-	35	12
Wolverhampton	300	235	75	32	10	3	50	22
EAST OF ENGLAND	4,155	3,300	955	29	35	1	395	12
Shire Counties								
Bedfordshire	330	260	85	33	0	0	30	12
Cambridgeshire	250	190	85	43	0	0	10	6
Essex	920	735	140	19	15	2	70	10
Hertfordshire	740	590	225	38	-	-	55	10
Norfolk	525	420	135	32	-	-	70	17
Suffolk	520	375	105	28	-	-	60	16
Unitary Authorities								
Luton	260	215	45	21	-	-	20	8
Peterborough	260	215	70	32	-	-	20	9
Southend	200	170	40	24	-	-	30	17
Thurrock	155	125	20	17	-	-	30	24

CONTINUED

Numbers of children looked after for at least twelve months, and general information about their education: twelve months ending 30 September 2003

numbers and percentages

Local Authority	number looked after for at least twelve months	of these, number of school age	Of these:		- permanent exclusions from school ¹		- children who missed at least 25 days school ²	
			- children with a statement of SEN		number	%	number	%
			number	%				
LONDON	8,545	6,415	1,595	25	70	1	695	11
Inner London								
Camden	235	150	30	19	0	0	-	-
City of London	-	-	-	-	0	0	0	0
Greenwich	390	295	125	43	-	-	40	13
Hackney	365	260	60	24	-	-	25	10
Hammersmith & Fulham	310	225	55	24	-	-	20	10
Islington	360	280	70	26	0	0	15	5
Kensington & Chelsea	185	135	25	20	5	4	15	11
Lambeth	475	360	20	6	5	2	55	15
Lewisham	410	295	75	25	-	-	60	20
Southwark	500	380	80	21	-	-	30	8
Tower Hamlets	255	180	50	27	-	-	25	13
Wandsworth	270	210	65	31	-	-	30	13
Westminster	225	165	40	24	-	-	15	10
Outer London								
Barking & Dagenham	285	220	50	23	0	0	20	9
Barnet	285	225	45	21	-	-	25	12
Bexley	160	135	45	35	-	-	20	14
Brent	265	195	10	6	-	-	-	-
Bromley	235	180	65	37	-	-	10	6
Croydon	470	315	95	30	5	2	35	11
Ealing	290	215	60	29	0	0	25	12
Enfield	240	170	15	9	-	-	15	9
Haringey	335	265	65	24	0	0	50	19
Harrow	100	90	35	37	-	-	20	24
Havering	120	95	35	35	-	-	15	14
Hillingdon	295	235	50	20	5	3	10	4
Hounslow	260	195	65	33	-	-	25	12
Kingston Upon Thames	60	45	20	43	-	-	-	-
Merton	125	95	20	22	-	-	5	7
Newham	455	360	80	23	0	0	-	-
Redbridge	115	90	20	24	-	-	10	13
Richmond Upon Thames	80	60	25	38	-	-	15	23
Sutton	120	105	35	34	-	-	15	16
Waltham Forest	270	185	55	29	-	-	30	17

CONTINUED

Numbers of children looked after for at least twelve months, and general information about their education: twelve months ending 30 September 2003

numbers and percentages

Local Authority	number looked after for at least twelve months	of these, number of school age	Of these:		- permanent exclusions from school ¹		- children who missed at least 25 days school ²	
			- children with a statement of SEN		number	%	number	%
			number	%				
SOUTH EAST	5,635	4,520	1,385	31	60	1	535	12
Shire Counties								
Buckinghamshire	210	170	55	31	-	-	20	12
East Sussex	325	255	60	24	-	-	25	11
Hampshire	770	620	185	30	10	2	75	12
Kent	1,140	930	240	26	10	1	110	12
Oxfordshire	375	300	100	33	-	-	45	15
Surrey	565	455	160	35	15	3	30	6
West Sussex	520	420	155	37	10	3	35	9
Unitary Authorities								
Bracknell Forest	45	35	15	42	-	-	5	17
Brighton & Hove	290	225	80	35	-	-	20	9
Isle Of Wight	125	105	15	15	-	-	10	9
Medway Towns	250	200	65	33	-	-	15	6
Milton Keynes	160	125	45	35	-	-	20	14
Portsmouth	190	145	45	32	0	0	30	19
Reading	120	90	35	39	0	0	20	24
Slough	105	80	25	29	0	0	5	8
Southampton	275	200	35	18	0	0	50	24
West Berkshire	85	75	30	41	0	0	5	8
Windsor & Maidenhead	40	40	15	42	-	-	-	-
Wokingham	50	40	25	62	0	0	-	-
SOUTH WEST	3,465	2,770	925	33	30	1	300	11
Shire Counties								
Cornwall	390	310	135	43	-	-	5	2
Devon	505	405	125	31	-	-	60	15
Dorset	185	140	50	35	5	4	15	12
Gloucestershire	370	310	95	31	-	-	30	10
Isle of Scilly	-	-	-	-	0	0	0	0
Somerset	210	165	55	34	-	-	25	16
Wiltshire	195	160	50	30	0	0	20	12
Unitary Authorities								
Bath & North East Somerset	105	85	30	37	0	0	10	13
Bournemouth	135	110	35	32	-	-	10	8
Bristol	400	330	110	33	-	-	60	19
North Somerset	110	85	35	39	0	0	5	8
Plymouth	370	280	85	30	0	0	15	5
Poole	100	90	25	29	-	-	10	11
South Gloucestershire	90	75	35	43	0	0	0	0
Swindon	140	105	20	20	0	0	-	-
Torbay	150	110	40	35	-	-	20	18

1 Where a child was permanently excluded more than once in the previous school year, each occasion has been counted.

2 PAF Indicator C24: The percentage of children who had been looked after continuously for at least 12 months and were of school age, who missed a total of at least 25 days of schooling for any reason during the previous school year

2

Eligibility and performance of looked after children in Key Stage 1 tasks and tests, compared with all children, twelve months ending 30 September 2003

Local Authority	number looked after in year 2 old enough to sit Key Stage 1 tasks and tests	percentage attaining level 2 ¹ or above in each task or test					
		reading task/test		writing task ²		mathematics test	
		looked after	all children ^{3,4}	looked after	all children ³	looked after	all children ³
ENGLAND	1,900	50.8	84	48.5	81	61.0	90
NORTH EAST	125	48	85	39	82	55	90
Shire Counties							
Durham	15	79	84	79	81	79	90
Northumberland	10	-	88	-	86	-	93
Unitary Authorities							
Darlington	-	-	87	-	84	-	91
Hartlepool	-	-	86	0	81	-	90
Middlesbrough	15	67	81	53	80	87	89
Redcar & Cleveland	-	0	85	0	85	-	91
Stockton On Tees	-	-	84	-	83	0	90
Metropolitan Districts							
Gateshead	10	-	82	-	79	-	89
Newcastle Upon Tyne	20	35	82	-	80	50	89
North Tyneside	10	-	89	-	87	-	92
South Tyneside	10	-	86	-	82	-	91
Sunderland	25	40	84	32	80	44	89
NORTH WEST	365	51	84	47	81	60	90
Shire Counties							
Cheshire	10	-	87	-	85	-	92
Cumbria	25	46	85	35	82	58	91
Lancashire	45	49	85	49	82	67	91
Unitary Authorities							
Blackburn With Darwen	10	-	81	-	77	-	88
Blackpool	10	-	81	-	78	-	90
Halton	-	-	84	-	80	-	89
Warrington	5	-	88	-	85	-	93
Metropolitan Districts							
Bolton	15	64	85	57	80	71	89
Bury	10	-	88	-	85	-	92
Knowsley	10	-	81	-	77	-	89
Liverpool	40	59	81	51	78	68	88
Manchester	50	60	76	60	73	76	84
Oldham	5	-	82	-	78	-	89
Rochdale	10	-	82	-	80	50	88
Salford	25	69	84	58	82	73	90
Sefton	10	-	85	-	83	-	92
St Helens	10	55	86	55	86	64	91
Stockport	15	35	87	-	86	35	92
Tameside	10	-	85	-	81	-	91
Trafford	5	-	88	-	85	-	93
Wigan	15	-	84	-	80	-	90
Wirral	20	50	87	44	84	50	92

CONTINUED

Eligibility and performance of looked after children in Key Stage 1 tasks and tests, compared with all children, twelve months ending 30 September 2003

		percentage attaining level 2 ¹ or above in each task or test					
Local Authority	number looked after in year 2 old enough to sit Key Stage 1 tasks and tests	reading task/test		writing task ²		mathematics test	
		looked after	all children ^{3,4}	looked after	all children ³	looked after	all children ³
YORKSHIRE & THE HUMBER	200	58	84	56	81	68	90
Shire Counties							
North Yorkshire	10	-	88	-	84	-	93
Unitary Authorities							
East Riding Of Yorkshire	10	-	88	-	85	-	93
Kingston Upon Hull	10	58	81	50	78	83	89
North East Lincolnshire	10	-	82	-	80	-	89
North Lincolnshire	10	-	87	-	86	-	93
York	-	-	87	-	83	0	92
Metropolitan Districts							
Barnsley	10	-	80	-	79	-	89
Bradford	25	67	83	63	80	59	89
Calderdale	5	-	84	-	81	-	90
Doncaster	15	54	84	62	83	77	91
Kirklees	5	-	85	-	83	-	90
Leeds	45	58	84	53	80	69	90
Rotherham	15	50	82	50	80	57	90
Sheffield	15	59	79	59	77	71	87
Wakefield	10	-	84	-	82	-	89
EAST MIDLANDS	130	48	85	42	82	57	91
Shire Counties							
Derbyshire	15	50	88	-	86	63	94
Leicestershire	15	-	86	-	84	43	92
Lincolnshire	20	33	85	29	84	52	92
Northamptonshire	15	59	87	47	84	71	92
Nottinghamshire	15	76	85	71	83	76	91
Unitary Authorities							
Derby	20	57	83	57	82	57	90
Leicester	10	-	76	-	74	-	85
Nottingham	15	-	74	-	71	38	83
Rutland	0	0	86	0	81	0	95

CONTINUED

Eligibility and performance of looked after children in Key Stage 1 tasks and tests, compared with all children, twelve months ending 30 September 2003

Local Authority	number looked after in year 2 old enough to sit Key Stage 1 tasks and tests	percentage attaining level 2 ¹ or above in each task or test					
		reading task/test		writing task ²		mathematics test	
		looked after	all children ^{3,4}	looked after	all children ³	looked after	all children ³
WEST MIDLANDS	245	45	83	45	80	59	89
Shire Counties							
Shropshire	-	-	86	-	83	-	91
Staffordshire	25	-	87	39	83	61	92
Warwickshire	15	71	87	57	84	79	92
Worcestershire	20	60	86	50	83	60	92
Unitary Authorities							
Herefordshire	5	-	86	-	84	-	91
Stoke-On-Trent	10	55	81	64	77	91	88
Telford & Wrekin	10	-	85	-	83	-	91
Metropolitan Districts							
Birmingham	70	47	79	50	77	56	87
Coventry	20	42	83	37	79	68	89
Dudley	15	53	82	41	79	47	88
Sandwell	20	44	78	-	71	44	85
Solihull	10	-	88	-	87	-	94
Walsall	20	50	81	50	78	50	87
Wolverhampton	10	-	79	-	74	-	87
EAST OF ENGLAND	190	57	86	52	83	60	91
Shire Counties							
Bedfordshire	20	56	87	50	85	67	93
Cambridgeshire	-	-	87	-	84	-	92
Essex	45	66	86	57	82	61	91
Hertfordshire	30	55	88	52	85	62	93
Norfolk	35	52	85	45	82	52	91
Suffolk	20	56	86	56	83	61	91
Unitary Authorities							
Luton	15	59	80	41	76	59	88
Peterborough	15	62	83	69	80	77	90
Southend	10	-	85	-	84	-	90
Thurrock	-	0	78	0	74	0	89

CONTINUED

Eligibility and performance of looked after children in Key Stage 1 tasks and tests, compared with all children, twelve months ending 30 September 2003

Local Authority	number looked after in year 2 old enough to sit Key Stage 1 tasks and tests	percentage attaining level 2 ¹ or above in each task or test					
		reading task/test		writing task ²		mathematics test	
		looked after	all children ^{3,4}	looked after	all children ³	looked after	all children ³
LONDON	295	48	81	52	78	65	88
Inner London							
Camden	5	-	77	-	75	-	85
City of London	0	0	90	0	90	0	97
Greenwich	15	62	73	46	70	69	83
Hackney	15	75	72	81	67	81	82
Hammersmith & Fulham	15	46	80	46	75	46	85
Islington	15	64	75	57	72	64	81
Kensington & Chelsea	-	-	80	-	77	-	89
Lambeth	20	-	75	55	71	70	81
Lewisham	10	-	80	-	76	-	87
Southwark	15	-	79	-	72	-	85
Tower Hamlets	10	-	81	64	79	64	88
Wandsworth	15	-	80	53	76	73	86
Westminster	10	-	84	-	81	-	88
Outer London							
Barking & Dagenham	10	-	81	-	82	-	89
Barnet	15	44	87	50	83	75	92
Bexley	5	-	85	-	81	-	90
Brent	10	-	82	-	79	-	89
Bromley	10	-	86	-	82	-	91
Croydon	10	55	83	-	79	73	90
Ealing	10	-	80	-	75	-	87
Enfield	5	-	78	-	76	-	88
Haringey	10	55	78	64	75	64	87
Harrow	-	-	85	-	81	-	90
Havering	-	-	88	0	86	-	92
Hillingdon	5	-	85	-	81	-	91
Hounslow	10	-	82	-	80	-	90
Kingston Upon Thames	-	-	86	-	86	-	92
Merton	-	-	85	0	82	-	93
Newham	20	38	78	-	72	52	87
Redbridge	-	-	84	-	82	-	91
Richmond Upon Thames	-	0	88	0	86	0	94
Sutton	5	-	87	-	85	-	93
Waltham Forest	10	-	81	-	77	-	88

CONTINUED

Eligibility and performance of looked after children in Key Stage 1 tasks and tests, compared with all children, twelve months ending 30 September 2003

Local Authority	number looked after in year 2 old enough to sit Key Stage 1 tasks and tests	percentage attaining level 2 ¹ or above in each task or test					
		reading task/test		writing task ²		mathematics test	
		looked after	all children ^{3,4}	looked after	all children ³	looked after	all children ³
SOUTH EAST	235	49	85	50	82	61	91
Shire Counties							
Buckinghamshire	10	75	89	-	86	83	94
East Sussex	15	40	83	47	81	53	89
Hampshire	30	47	86	50	85	66	92
Kent	50	41	82	39	77	45	89
Oxfordshire	10	-	85	-	82	-	91
Surrey	20	32	89	50	86	50	93
West Sussex	20	70	85	65	84	75	91
Unitary Authorities							
Bracknell Forest	0	0	87	0	83	0	92
Brighton & Hove	15	56	81	56	78	69	90
Isle Of Wight	-	0	85	0	81	0	90
Medway Towns	15	54	82	54	78	62	91
Milton Keynes	-	-	82	-	81	-	89
Portsmouth	5	-	84	-	82	-	93
Reading	-	-	81	0	75	-	89
Slough	5	-	86	-	85	-	90
Southampton	15	71	84	64	78	86	89
West Berkshire	-	-	84	-	82	-	93
Windsor & Maidenhead	-	-	87	-	82	-	92
Wokingham	-	-	87	-	85	-	93
SOUTH WEST	125	54	85	49	82	59	91
Shire Counties							
Cornwall	10	-	82	-	76	-	89
Devon	10	58	85	67	81	67	91
Dorset	-	-	86	-	84	-	92
Gloucestershire	15	53	89	41	86	59	93
Isle of Scilly	0	0	..	0	..	0	..
Somerset	5	-	84	-	82	-	91
Wiltshire	10	-	83	-	80	-	90
Unitary Authorities							
Bath & North East Somerset	5	-	88	-	85	-	93
Bournemouth	-	0	86	0	83	-	92
Bristol	15	50	81	50	78	57	87
North Somerset	-	-	86	-	81	-	92
Plymouth	20	63	82	47	80	68	89
Poole	-	-	85	-	84	-	90
South Gloucestershire	0	0	89	0	85	0	92
Swindon	5	-	84	-	83	-	91
Torbay	5	-	84	-	84	-	91

1 target level for age group

2 From September 2003, the spelling test contributed to the writing task and was therefore not reported as a separate item.

3 source: DFES statistical first release 20/2003: 'National curriculum assessments of 7, 11 and 14 year olds in England, 2003 (provisional) Includes all schools.

4 the 'all children' Key stage 1 Reading task/test is derived by adding the pupils achieving level 2 in the reading task and level 3 in the reading comprehensive test.

Local Authority	number looked after in year 6 old enough to sit Key Stage 2 tasks and tests	percentage attaining level 4 ¹ or above in each task or test					
		English		Mathematics		Science	
		looked after	all children ²	looked after	all children ²	looked after	all children ²
ENGLAND	3,000	37.1	75	34.8	73	52.9	87
NORTH EAST	150	35	73	35	73	52	86
Shire Counties							
Durham	15	38	75	50	75	63	88
Northumberland	10	-	75	-	72	58	88
Unitary Authorities							
Darlington	5	-	74	-	73	-	88
Hartlepool	5	0	70	0	71	-	84
Middlesbrough	5	-	72	-	71	-	83
Redcar & Cleveland	-	-	73	-	70	-	86
Stockton On Tees	10	-	76	-	74	-	87
Metropolitan Districts							
Gateshead	15	38	76	-	77	63	89
Newcastle Upon Tyne	15	-	66	-	66	-	80
North Tyneside	20	50	77	45	76	60	86
South Tyneside	15	40	72	40	75	53	86
Sunderland	20	32	72	37	71	47	85
NORTH WEST	540	40	75	38	74	56	87
Shire Counties							
Cheshire	25	31	80	27	77	42	90
Cumbria	35	39	76	36	74	58	89
Lancashire	90	41	76	32	75	55	87
Unitary Authorities							
Blackburn With Darwen	20	50	71	50	71	61	82
Blackpool	-	-	72	-	71	-	85
Halton	10	55	74	64	71	73	86
Warrington	10	55	80	64	78	82	89
Metropolitan Districts							
Bolton	15	-	75	-	75	56	86
Bury	15	-	77	-	75	54	89
Knowsley	15	50	71	43	69	50	86
Liverpool	65	30	71	27	68	49	83
Manchester	70	39	67	29	66	46	80
Oldham	20	33	72	33	71	50	85
Rochdale	15	43	68	43	68	50	80
Salford	25	58	73	50	72	69	83
Sefton	20	44	80	44	79	67	90
St Helens	10	-	79	-	76	-	90
Stockport	15	56	79	63	76	75	88
Tameside	15	-	75	-	72	54	87
Trafford	10	-	80	-	78	-	90
Wigan	30	31	74	38	75	59	87
Wirral	20	39	77	61	74	61	88

CONTINUED

Eligibility and performance of looked-after children in Key Stage 2 tasks and tests, compared with all children, twelve months ending 30 September 2003

Local Authority	number looked after in year 6 old enough to sit Key Stage 2 tasks and tests	percentage attaining level 4 ¹ or above in each task or test					
		English		Mathematics		Science	
		looked after	all children ²	looked after	all children ²	looked after	all children ²
YORKSHIRE & THE HUMBER	360	37	73	36	71	56	85
Shire Counties							
North Yorkshire	15	71	80	59	77	76	90
Unitary Authorities							
East Riding Of Yorkshire	5	-	76	-	74	-	89
Kingston Upon Hull	40	25	66	35	71	55	85
North East Lincolnshire	10	0	72	0	72	-	86
North Lincolnshire	10	-	73	-	70	-	86
York	-	-	75	-	74	-	85
Metropolitan Districts							
Barnsley	10	-	65	-	65	55	81
Bradford	45	32	68	32	65	48	79
Calderdale	10	-	75	-	74	-	88
Doncaster	25	42	72	42	70	58	86
Kirklees	10	-	73	50	70	75	85
Leeds	85	43	76	42	74	69	87
Rotherham	20	42	69	-	68	42	84
Sheffield	40	35	69	33	67	48	82
Wakefield	30	25	73	32	72	50	86
EAST MIDLANDS	205	35	75	32	72	48	87
Shire Counties							
Derbyshire	30	46	77	43	75	54	88
Leicestershire	25	27	79	27	75	58	89
Lincolnshire	25	28	77	-	73	32	87
Northamptonshire	30	34	76	28	72	44	88
Nottinghamshire	20	32	76	53	74	53	88
Unitary Authorities							
Derby	20	55	74	50	71	55	85
Leicester	30	30	64	27	62	57	78
Nottingham	25	28	63	-	65	32	80
Rutland	-	-	83	-	82	-	93

CONTINUED

Eligibility and performance of looked-after children in Key Stage 2 tasks and tests, compared with all children, twelve months ending 30 September 2003

Local Authority	number looked after in year 6 old enough to sit Key Stage 2 tasks and tests	percentage attaining level 4 ¹ or above in each task or test					
		English		Mathematics		Science	
		looked after	all children ²	looked after	all children ²	looked after	all children ²
WEST MIDLANDS	355	36	73	33	70	50	85
Shire Counties							
Shropshire	5	-	78	-	75	-	90
Staffordshire	25	52	75	48	73	61	88
Warwickshire	20	30	77	40	75	60	90
Worcestershire	25	35	76	30	70	52	87
Unitary Authorities							
Herefordshire	5	-	76	-	74	-	89
Stoke-On-Trent	20	-	68	29	65	33	82
Telford & Wrekin	10	-	72	-	70	-	88
Metropolitan Districts							
Birmingham	115	41	69	32	67	52	82
Coventry	30	39	72	36	69	46	83
Dudley	25	26	72	26	69	39	85
Sandwell	25	-	65	23	63	50	79
Solihull	10	-	79	-	78	-	91
Walsall	25	-	71	29	65	38	82
Wolverhampton	20	35	69	-	64	40	82
EAST OF ENGLAND	300	35	77	40	73	49	88
Shire Counties							
Bedfordshire	25	38	77	58	71	71	88
Cambridgeshire	15	-	79	-	75	46	89
Essex	70	31	78	47	73	34	88
Hertfordshire	50	35	81	27	76	46	90
Norfolk	45	40	75	45	71	64	86
Suffolk	30	38	75	25	69	44	86
Unitary Authorities							
Luton	15	50	72	50	65	69	82
Peterborough	15	-	73	-	72	47	87
Southend	15	-	74	-	71	50	86
Thurrock	15	-	67	-	65	40	84

CONTINUED

Eligibility and performance of looked-after children in Key Stage 2 tasks and tests, compared with all children, twelve months ending 30 September 2003

Local Authority	number looked after in year 6 old enough to sit Key Stage 2 tasks and tests	percentage attaining level 4 ¹ or above in each task or test					
		English		Mathematics		Science	
		looked after	all children ²	looked after	all children ²	looked after	all children ²
LONDON	465	41	75	36	71	55	84
Inner London							
Camden	20	47	77	-	73	47	87
City of London	0	0	97	0	79	0	93
Greenwich	20	-	69	-	66	45	81
Hackney	15	82	63	65	59	71	74
Hammersmith & Fulham	20	39	78	39	75	50	86
Islington	15	-	69	-	67	53	80
Kensington & Chelsea	5	-	83	0	78	-	91
Lambeth	30	41	71	45	66	62	80
Lewisham	20	44	73	33	69	61	84
Southwark	30	21	70	-	62	32	77
Tower Hamlets	15	-	73	38	70	50	82
Wandsworth	15	67	74	-	67	80	82
Westminster	10	-	78	-	76	-	86
Outer London							
Barking & Dagenham	15	47	71	53	68	53	85
Barnet	15	43	80	43	78	64	88
Bexley	15	-	77	-	69	35	84
Brent	10	67	75	67	71	92	82
Bromley	20	47	83	-	78	53	90
Croydon	20	37	77	47	70	42	85
Ealing	15	44	76	44	72	63	84
Enfield	15	-	77	50	72	64	84
Haringey	15	57	66	-	65	57	76
Harrow	10	-	81	-	76	-	89
Havering	5	-	80	-	78	-	90
Hillingdon	15	-	80	-	74	-	90
Hounslow	20	45	75	45	72	70	85
Kingston Upon Thames	-	-	82	-	76	-	87
Merton	-	-	75	-	66	-	85
Newham	25	42	67	31	65	54	79
Redbridge	-	-	78	-	73	-	87
Richmond Upon Thames	5	-	87	-	82	-	94
Sutton	10	-	81	-	76	-	90
Waltham Forest	10	-	69	-	68	-	80

CONTINUED

Eligibility and performance of looked-after children in Key Stage 2 tasks and tests, compared with all children, twelve months ending 30 September 2003

Local Authority	number looked after in year 6 old enough to sit Key Stage 2 tasks and tests	percentage attaining level 4 ¹ or above in each task or test					
		English		Mathematics		Science	
		looked after	all children ²	looked after	all children ²	looked after	all children ²
SOUTH EAST	360	36	76	30	73	50	88
Shire Counties							
Buckinghamshire	10	64	80	-	77	82	89
East Sussex	20	35	74	-	72	55	87
Hampshire	45	32	78	27	74	48	90
Kent	80	38	73	35	70	55	85
Oxfordshire	25	-	75	-	73	29	87
Surrey	35	79	82	53	78	71	91
West Sussex	25	22	77	22	73	33	90
Unitary Authorities							
Bracknell Forest	-	0	82	0	77	0	92
Brighton & Hove	25	26	75	30	70	48	86
Isle Of Wight	10	-	68	-	67	-	87
Medway Towns	15	-	70	-	67	-	83
Milton Keynes	15	-	68	-	67	-	84
Portsmouth	15	44	68	44	69	81	85
Reading	-	0	71	0	65	0	84
Slough	-	-	75	-	69	-	82
Southampton	25	27	66	31	64	58	84
West Berkshire	-	0	76	0	73	-	87
Windsor & Maidenhead	-	-	82	-	79	-	92
Wokingham	0	0	85	0	81	0	92
SOUTH WEST	220	32	75	28	73	55	88
Shire Counties							
Cornwall	25	39	74	26	72	57	86
Devon	35	23	75	26	74	46	89
Dorset	15	60	76	60	74	60	90
Gloucestershire	30	38	78	34	77	76	91
Isle of Scilly	0	0	59	0	86	0	91
Somerset	10	-	74	-	72	-	88
Wiltshire	10	-	75	-	72	-	87
Unitary Authorities							
Bath & North East Somerset	-	0	78	-	76	-	89
Bournemouth	10	55	78	-	71	91	88
Bristol	30	29	67	23	65	45	81
North Somerset	10	-	76	-	74	-	89
Plymouth	20	35	72	35	71	55	85
Poole	10	-	75	-	71	-	91
South Gloucestershire	-	0	78	-	75	-	89
Swindon	10	0	73	-	72	-	86
Torbay	5	-	76	0	73	-	85

1 target level for age group.

2 source: DfES statistical first release 20/2003 'National curriculum assessments of 7, 11 and 14 year olds in England, 2003 (Provisional)'. Includes all schools.

4

Eligibility and performance of looked after children in Key Stage 3 tasks and tests, compared with all children, twelve months ending 30 September 2003

Local Authority	number looked after in year 9 old enough to sit Key Stage 3 tasks and tests	percentage attaining level 5 ¹ or above in each task or test					
		English		Mathematics		Science	
		looked after	all children ²	looked after	all children ²	looked after	all children ²
ENGLAND	3,800	22.3	69	23.3	71	23.2	68
NORTH EAST	190	23	66	24	68	20	65
Shire Counties							
Durham	30	25	66	29	69	-	67
Northumberland	10	-	71	-	74	-	71
Unitary Authorities							
Darlington	10	-	68	-	73	-	66
Hartlepool	5	0	60	0	67	0	65
Middlesbrough	15	-	56	-	60	-	55
Redcar & Cleveland	10	-	65	-	68	-	66
Stockton On Tees	15	-	66	-	69	-	67
Metropolitan Districts							
Gateshead	20	32	67	-	70	-	68
Newcastle Upon Tyne	20	-	61	-	63	-	60
North Tyneside	20	-	68	-	72	-	67
South Tyneside	10	-	66	-	70	-	65
Sunderland	30	-	65	21	64	-	61
NORTH WEST	585	23	70	25	70	24	67
Shire Counties							
Cheshire	30	23	77	20	76	23	75
Cumbria	40	21	73	21	73	15	74
Lancashire	75	20	72	26	73	26	71
Unitary Authorities							
Blackburn With Darwen	10	-	65	-	68	-	61
Blackpool	10	-	63	-	66	-	59
Halton	10	-	69	-	68	-	63
Warrington	10	55	75	55	77	55	73
Metropolitan Districts							
Bolton	15	-	68	-	70	-	65
Bury	15	-	76	-	76	-	73
Knowsley	15	-	54	-	58	-	52
Liverpool	60	22	64	28	62	23	59
Manchester	70	28	57	28	54	26	51
Oldham	20	-	65	36	65	32	62
Rochdale	15	-	63	-	64	-	61
Salford	35	28	61	22	63	25	56
Sefton	30	28	75	24	75	-	71
St Helens	15	-	70	-	69	-	67
Stockport	25	-	72	-	74	-	70
Tameside	15	43	71	-	68	-	65
Trafford	10	-	78	-	79	-	78
Wigan	35	26	70	26	71	24	68
Wirral	30	24	75	24	73	-	68

CONTINUED

Eligibility and performance of looked after children in Key Stage 3 tasks and tests, compared with all children, twelve months ending 30 September 2003

Local Authority	number looked after in year 9 old enough to sit Key Stage 3 tasks and tests	percentage attaining level 5 ¹ or above in each task or test					
		English		Mathematics		Science	
		looked after	all children ²	looked after	all children ²	looked after	all children ²
YORKSHIRE & THE HUMBER	395	22	68	23	68	24	65
Shire Counties							
North Yorkshire	15	-	80	38	80	38	80
Unitary Authorities							
East Riding Of Yorkshire	15	44	77	38	76	56	76
Kingston Upon Hull	25	-	58	-	55	-	50
North East Lincolnshire	15	-	61	-	62	-	59
North Lincolnshire	15	-	69	-	72	-	67
York	10	-	76	-	77	-	74
Metropolitan Districts							
Barnsley	10	-	60	-	60	-	58
Bradford	55	26	65	13	60	11	55
Calderdale	10	-	73	-	71	-	69
Doncaster	30	-	63	-	66	21	64
Kirklees	15	-	67	-	66	-	64
Leeds	95	23	67	28	67	23	64
Rotherham	30	-	64	21	66	21	63
Sheffield	40	15	64	18	66	26	64
Wakefield	25	24	68	40	68	32	65
EAST MIDLANDS	250	28	67	26	71	28	70
Shire Counties							
Derbyshire	35	22	68	22	74	16	73
Leicestershire	25	30	76	30	80	35	80
Lincolnshire	35	19	71	-	74	22	74
Northamptonshire	40	38	68	38	72	40	71
Nottinghamshire	35	37	65	31	69	37	67
Unitary Authorities							
Derby	25	29	65	25	67	-	61
Leicester	30	29	60	29	62	26	59
Nottingham	20	-	46	-	52	-	48
Rutland	-	-	77	-	82	-	84

4

CONTINUED

Eligibility and performance of looked after children in Key Stage 3 tasks and tests, compared with all children, twelve months ending 30 September 2003

Local Authority	number looked after in year 9 old enough to sit Key Stage 3 tasks and tests	percentage attaining level 5 ¹ or above in each task or test					
		English		Mathematics		Science	
		looked after	all children ²	looked after	all children ²	looked after	all children ²
WEST MIDLANDS	465	20	67	21	69	23	67
Shire Counties							
Shropshire	15	-	74	-	77	-	78
Staffordshire	40	20	71	28	73	20	72
Warwickshire	25	22	73	22	74	26	73
Worcestershire	35	18	70	18	72	29	72
Unitary Authorities							
Herefordshire	15	-	72	-	76	57	74
Stoke-On-Trent	20	43	62	29	63	38	61
Telford & Wrekin	10	0	67	0	69	-	66
Metropolitan Districts							
Birmingham	140	16	61	18	62	18	59
Coventry	30	-	68	-	67	-	63
Dudley	30	-	69	20	70	23	69
Sandwell	35	29	54	26	56	23	54
Solihull	10	-	71	-	75	-	74
Walsall	30	-	63	-	64	-	60
Wolverhampton	30	28	65	34	64	31	61
EAST OF ENGLAND	355	20	70	23	74	24	72
Shire Counties							
Bedfordshire	30	-	73	24	74	24	72
Cambridgeshire	25	-	73	23	75	23	75
Essex	80	22	69	22	73	27	71
Hertfordshire	70	18	74	19	77	22	75
Norfolk	40	20	68	15	73	-	71
Suffolk	40	34	70	47	74	42	75
Unitary Authorities							
Luton	20	-	58	-	62	-	58
Peterborough	15	-	64	38	68	50	67
Southend	15	-	73	-	73	-	73
Thurrock	15	-	62	-	68	-	64

CONTINUED

Eligibility and performance of looked after children in Key Stage 3 tasks and tests, compared with all children, twelve months ending 30 September 2003

Local Authority	number looked after in year 9 old enough to sit Key Stage 3 tasks and tests	percentage attaining level 5 ¹ or above in each task or test					
		English		Mathematics		Science	
		looked after	all children ²	looked after	all children ²	looked after	all children ²
LONDON	745	23	66	23	67	21	63
Inner London							
Camden	30	28	68	28	65	21	65
City of London	0	0	0	0	0	0	0
Greenwich	30	19	61	-	61	-	54
Hackney	25	61	59	48	52	57	47
Hammersmith & Fulham	35	-	62	16	67	16	63
Islington	30	25	49	36	57	25	51
Kensington & Chelsea	20	35	79	30	72	-	72
Lambeth	40	-	61	-	62	18	59
Lewisham	30	-	60	-	59	-	56
Southwark	45	-	51	-	52	-	49
Tower Hamlets	25	25	55	33	55	-	46
Wandsworth	25	22	62	33	63	33	61
Westminster	15	-	69	-	65	-	62
Outer London							
Barking & Dagenham	25	-	62	38	61	29	59
Barnet	25	37	73	33	76	22	74
Bexley	15	-	71	-	73	-	70
Brent	30	25	64	32	66	21	60
Bromley	20	-	73	-	76	-	73
Croydon	35	32	66	27	64	27	63
Ealing	30	27	68	20	69	-	62
Enfield	15	-	67	-	67	-	61
Haringey	35	22	52	19	55	19	51
Harrow	-	-	71	-	75	-	72
Havering	10	-	72	-	76	-	73
Hillingdon	35	-	65	18	72	-	66
Hounslow	20	-	71	-	68	-	64
Kingston Upon Thames	5	-	79	-	80	-	78
Merton	10	-	65	-	67	-	61
Newham	30	50	55	30	60	33	53
Redbridge	5	-	75	-	76	-	72
Richmond Upon Thames	10	0	74	0	72	0	70
Sutton	15	-	75	-	79	-	79
Waltham Forest	20	29	60	-	62	-	59

CONTINUED

Eligibility and performance of looked after children in Key Stage 3 tasks and tests, compared with all children, twelve months ending 30 September 2003

Local Authority	number looked after in year 9 old enough to sit Key Stage 3 tasks and tests	percentage attaining level 5 ¹ or above in each task or test					
		English		Mathematics		Science	
		looked after	all children ²	looked after	all children ²	looked after	all children ²
SOUTH EAST	520	22	72	22	74	23	72
Shire Counties							
Buckinghamshire	20	-	80	30	80	-	78
East Sussex	30	25	70	29	72	25	70
Hampshire	60	23	74	26	76	32	76
Kent	115	19	72	21	73	19	72
Oxfordshire	35	24	72	24	74	27	75
Surrey	55	25	77	23	78	25	76
West Sussex	55	29	74	25	74	27	73
Unitary Authorities							
Bracknell Forest	-	-	72	-	73	-	73
Brighton & Hove	25	-	64	-	69	-	66
Isle Of Wight	10	-	65	-	68	-	69
Medway Towns	15	-	66	47	70	-	67
Milton Keynes	10	-	68	0	70	-	66
Portsmouth	20	-	63	-	63	-	56
Reading	10	-	65	0	69	0	63
Slough	10	-	70	-	72	-	67
Southampton	20	-	62	-	64	-	61
West Berkshire	15	-	77	-	77	-	77
Windsor & Maidenhead	-	0	74	0	78	0	76
Wokingham	10	-	75	0	81	0	77
SOUTH WEST	315	21	71	26	73	25	73
Shire Counties							
Cornwall	40	24	72	32	73	34	73
Devon	45	21	71	26	73	23	72
Dorset	20	-	76	-	77	33	76
Gloucestershire	35	25	73	22	77	22	77
Isle of Scilly	0	0	75	0	92	0	100
Somerset	20	-	71	-	74	-	74
Wiltshire	15	-	74	-	77	-	75
Unitary Authorities							
Bath & North East Somerset	5	-	76	-	77	-	75
Bournemouth	15	43	76	43	74	50	71
Bristol	35	-	53	16	56	22	52
North Somerset	10	-	74	-	75	-	75
Plymouth	25	26	69	26	70	22	69
Poole	-	-	76	-	80	-	78
South Gloucestershire	15	-	74	-	76	-	76
Swindon	15	-	64	-	69	-	66
Torbay	10	-	71	-	72	-	70

¹ target level for age group.

² source: DfES statistical first release 20/2003 'National curriculum assessments of 7, 11 and 14 year olds in England, 2003 (Provisional)'. Includes all schools.

Local Authority	number looked after in year 11 old enough to sit GCSE or GNVQ exams	% who sat one of these exams	percentage obtaining at least:					
			1 GCSE at grade A* to G or a GNVQ		5 GCSE's (or equivalent) at grade A* to G		5 GCSE's (or equivalent) at grade A* to C	
			looked after	all children ¹	looked after	all children ¹	looked after	all children ¹
ENGLAND	4,600	56.8	52.9	95	36.8	89	8.7	51
NORTH EAST	235	67	60	94	43	88	8	47
Shire Counties								
Durham	30	68	68	93	48	86	-	45
Northumberland	30	72	72	95	55	91	-	54
Unitary Authorities								
Darlington	15	73	73	96	60	90	-	51
Hartlepool	10	-	-	94	-	89	0	46
Middlesbrough	30	46	46	91	36	83	-	39
Redcar & Cleveland	10	92	-	95	-	89	-	47
Stockton On Tees	10	92	83	95	67	88	0	47
Metropolitan Districts								
Gateshead	15	41	41	94	35	87	-	60
Newcastle Upon Tyne	25	56	56	90	44	81	-	40
North Tyneside	10	-	-	94	-	91	-	48
South Tyneside	20	86	82	95	27	89	0	44
Sunderland	30	55	55	95	41	91	-	44
NORTH WEST	625	59	55	95	41	89	11	49
Shire Counties								
Cheshire	50	65	60	96	40	93	15	59
Cumbria	35	61	56	95	42	89	17	53
Lancashire	85	65	65	95	55	92	14	53
Unitary Authorities								
Blackburn With Darwen	10	73	64	95	55	89	-	39
Blackpool	15	-	-	94	-	87	0	39
Halton	10	-	-	93	-	89	-	44
Warrington	10	-	-	96	-	92	-	56
Metropolitan Districts								
Bolton	15	44	44	96	-	90	-	46
Bury	10	-	-	98	-	95	-	53
Knowsley	20	47	47	86	32	77	0	33
Liverpool	65	51	51	92	38	84	-	41
Manchester	85	51	48	89	39	79	12	39
Oldham	20	71	48	94	-	89	-	45
Rochdale	15	77	62	94	46	87	-	41
Salford	30	79	76	95	48	88	-	37
Sefton	20	61	56	96	50	91	-	53
St Helens	20	65	60	93	35	86	-	45
Stockport	30	52	52	95	45	91	-	53
Tameside	20	45	45	95	45	90	-	46
Trafford	10	73	64	98	-	94	-	62
Wigan	20	74	68	97	63	92	-	51
Wirral	35	65	49	95	27	89	-	55

CONTINUED

GCSE (or equivalent) performance of looked-after children in year 11 compared with all children, twelve months ending 30 September 2003

Local Authority	number looked after in year 11 old enough to sit GCSE or GNVQ exams	% who sat one of these exams	percentage obtaining at least:					
			1 GCSE at grade A* to G or a GNVQ		5 GCSE's (or equivalent) at grade A* to G		5 GCSE's (or equivalent) at grade A* to C	
			looked after	all children ¹	looked after	all children ¹	looked after	all children ¹
YORKSHIRE & THE HUMBER	445	56	52	94	35	87	7	46
Shire Counties								
North Yorkshire	25	46	46	96	38	92	-	59
Unitary Authorities								
East Riding Of Yorkshire	15	62	62	96	46	92	-	51
Kingston Upon Hull	45	54	54	91	41	80	-	32
North East Lincolnshire	20	55	45	94	30	87	0	35
North Lincolnshire	15	67	60	96	47	90	-	47
York	10	-	-	96	-	92	-	59
Metropolitan Districts								
Barnsley	15	53	53	94	-	85	0	39
Bradford	40	63	51	92	29	84	-	40
Calderdale	15	46	46	96	-	90	0	52
Doncaster	30	53	47	92	27	84	-	40
Kirklees	15	56	56	95	-	90	-	47
Leeds	105	55	51	93	40	85	-	44
Rotherham	25	76	72	95	52	88	-	44
Sheffield	35	54	46	92	17	85	-	43
Wakefield	35	53	53	95	39	90	-	46
EAST MIDLANDS	230	53	52	95	32	89	4	51
Shire Counties								
Derbyshire	35	65	59	96	59	92	-	53
Leicestershire	30	34	34	95	21	91	-	55
Lincolnshire	25	50	50	96	25	91	0	57
Northamptonshire	40	61	61	94	37	88	0	51
Nottinghamshire	25	58	58	95	-	89	0	47
Unitary Authorities								
Derby	30	55	55	95	28	88	-	49
Leicester	30	38	34	94	-	84	-	43
Nottingham	20	60	60	89	55	78	-	35
Rutland	-	0	0	97	0	95	0	62

CONTINUED

GCSE (or equivalent) performance of looked-after children in year 11 compared with all children, twelve months ending 30 September 2003

Local Authority	number looked after in year 11 old enough to sit GCSE or GNVQ exams	% who sat one of these exams	percentage obtaining at least:					
			1 GCSE at grade A* to G or a GNVQ		5 GCSE's (or equivalent) at grade A* to G		5 GCSE's (or equivalent) at grade A* to C	
			looked after	all children ¹	looked after	all children ¹	looked after	all children ¹
WEST MIDLANDS	465	59	54	95	38	89	9	50
Shire Counties								
Shropshire	10	75	67	97	-	93	-	60
Staffordshire	45	100	57	95	41	91	18	52
Warwickshire	25	52	48	95	30	91	-	54
Worcestershire	40	41	37	95	24	90	-	52
Unitary Authorities								
Herefordshire	10	83	83	96	67	92	-	58
Stoke-On-Trent	25	30	30	96	22	88	0	46
Telford & Wrekin	10	50	-	95	-	90	0	50
Metropolitan Districts								
Birmingham	140	63	62	94	43	87	12	49
Coventry	35	59	59	93	50	86	-	46
Dudley	25	58	58	96	42	92	-	51
Sandwell	30	46	46	93	21	84	-	36
Solihull	15	41	41	95	35	91	0	60
Walsall	20	59	59	93	41	85	-	43
Wolverhampton	25	52	52	93	32	86	0	47
EAST OF ENGLAND	385	54	51	96	37	90	7	54
Shire Counties								
Bedfordshire	25	59	59	95	48	90	-	51
Cambridgeshire	25	56	56	96	44	92	0	55
Essex	75	44	44	96	38	91	13	55
Hertfordshire	75	59	54	96	25	91	-	58
Norfolk	45	58	58	95	49	89	-	50
Suffolk	35	54	54	95	43	91	16	57
Unitary Authorities								
Luton	25	68	48	95	32	88	0	42
Peterborough	30	57	57	93	50	86	-	47
Southend	20	43	43	94	38	88	-	57
Thurrock	20	41	36	95	-	91	0	49

CONTINUED

GCSE (or equivalent) performance of looked-after children in year 11 compared with all children, twelve months ending 30 September 2003

Local Authority	number looked after in year 11 old enough to sit GCSE or GNVQ exams	% who sat one of these exams	percentage obtaining at least:					
			1 GCSE at grade A* to G or a GNVQ		5 GCSE's (or equivalent) at grade A* to G		5 GCSE's (or equivalent) at grade A* to C	
			looked after	all children ¹	looked after	all children ¹	looked after	all children ¹
LONDON	1,220	54	50	95	34	90	10	51
Inner London								
Camden	30	61	61	95	52	90	-	50
City of London	-	-	-	0	-	0	0	0
Greenwich	60	52	50	94	29	86	10	36
Hackney	50	58	56	95	50	89	-	39
Hammersmith & Fulham	35	64	61	96	39	89	-	51
Islington	45	46	43	95	24	84	-	39
Kensington & Chelsea	30	68	64	94	46	89	21	56
Lambeth	55	33	32	96	26	88	-	42
Lewisham	75	55	45	95	31	88	-	39
Southwark	65	55	55	95	31	86	10	40
Tower Hamlets	30	64	61	96	43	89	-	43
Wandsworth	25	67	67	93	41	82	-	50
Westminster	35	52	45	95	33	87	-	44
Outer London								
Barking & Dagenham	55	32	32	95	23	90	-	49
Barnet	35	45	45	95	33	91	-	60
Bexley	20	65	65	97	40	93	-	54
Brent	40	77	67	96	44	90	-	51
Bromley	15	100	56	97	-	92	-	59
Croydon	100	55	48	95	35	89	14	49
Ealing	40	56	56	97	44	93	-	54
Enfield	35	61	61	96	42	90	-	48
Haringey	55	47	40	90	25	82	-	39
Harrow	15	53	53	96	35	91	-	58
Havering	15	50	50	97	43	94	-	61
Hillingdon	65	48	46	93	34	86	-	47
Hounslow	30	69	63	95	38	90	-	52
Kingston Upon Thames	15	71	64	95	-	91	-	67
Merton	15	44	44	92	-	84	-	46
Newham	70	51	51	98	35	93	12	46
Redbridge	15	79	57	98	50	95	-	66
Richmond Upon Thames	10	58	-	97	-	91	-	57
Sutton	10	-	-	96	-	92	-	65
Waltham Forest	30	43	33	94	-	89	-	45

CONTINUED

GCSE (or equivalent) performance of looked-after children in year 11 compared with all children, twelve months ending 30 September 2003

Local Authority	number looked after in year 11 old enough to sit GCSE or GNVQ exams	% who sat one of these exams	percentage obtaining at least:					
			1 GCSE at grade A* to G or a GNVQ		5 GCSE's (or equivalent) at grade A* to G		5 GCSE's (or equivalent) at grade A* to C	
			looked after	all children ¹	looked after	all children ¹	looked after	all children ¹
SOUTH EAST	575	56	52	96	36	91	7	55
Shire Counties								
Buckinghamshire	25	67	67	96	42	93	-	66
East Sussex	25	67	67	95	37	88	-	53
Hampshire	75	70	67	97	56	93	8	58
Kent	135	56	54	96	37	91	7	56
Oxfordshire	45	39	32	95	18	89	-	51
Surrey	55	42	42	96	25	92	-	59
West Sussex	60	55	53	96	37	91	-	56
Unitary Authorities								
Bracknell Forest	5	-	-	97	-	94	-	49
Brighton & Hove	25	75	63	94	38	87	-	48
Isle Of Wight	10	-	-	94	-	86	-	44
Medway Towns	30	69	34	97	31	93	-	53
Milton Keynes	15	-	-	96	-	90	-	48
Portsmouth	20	62	62	93	48	82	-	45
Reading	15	-	-	91	0	80	0	46
Slough	10	64	55	93	-	89	-	53
Southampton	10	67	67	93	50	86	-	44
West Berkshire	-	-	-	96	-	93	-	61
Windsor & Maidenhead	-	-	-	97	0	94	0	60
Wokingham	-	-	-	96	-	93	-	63
SOUTH WEST	405	61	58	96	39	91	10	55
Shire Counties								
Cornwall	45	60	58	96	44	92	16	54
Devon	60	61	55	96	40	91	-	53
Dorset	25	69	69	97	46	93	-	60
Gloucestershire	25	74	63	97	37	92	-	61
Isle of Scilly	-	0	0	100	0	100	0	88
Somerset	35	70	70	96	48	90	-	55
Wiltshire	25	54	54	96	42	92	-	58
Unitary Authorities								
Bath & North East Somerset	15	64	57	96	43	92	-	60
Bournemouth	15	57	57	95	-	89	-	55
Bristol	55	47	47	89	30	80	-	35
North Somerset	15	75	63	96	-	91	-	55
Plymouth	30	70	70	96	43	90	-	53
Poole	15	53	53	97	-	93	-	59
South Gloucestershire	15	69	69	95	-	92	0	54
Swindon	15	-	-	94	-	86	-	49
Torbay	20	78	72	95	50	90	-	52

¹ source: DfES Statistical First Release January 2003 www.dfes.gov.uk/statistics/DB/Sfr/s0377/index.html

2002/2003 - England. Issued January 2004. Figures at local council level only include maintained schools, including mainstream and maintained schools, City Technologies and Academies. National figures includes all schools as above plus all independent schools including independent special schools and non maintained special schools, all hospitals and pupil referral units.

6

Education and employment status at 30 September 2003 of looked-after children in Year 11 in 2002/2003 school year, compared with all children

Local authority	Total number of looked after children in year 11 in 2002/2003 school year	Total number of all children in year 11 in 2002/2003 school year ¹	Position of children at 30 September 2003, shown as a percentage of total					
			In full-time education		In full/part time training or employment		Unemployment	
			looked after	All children ^{1,2}	looked after	All children ^{1,2}	looked after	All children ^{1,2}
ENGLAND	4,600	608,800	56.7	72.1	20.9	15.1	22.4	6.6
NORTH EAST	235	34,370	53	66	28	16	19	11
Shire Counties								
Durham	30	6,200	68	64	-	20	19	10
Northumberland	30	4,105	62	69	28	15	-	5
Unitary Authorities								
Darlington	15	1,315	80	70	0	13	-	9
Hartlepool	10	1,375	-	69	-	15	-	9
Middlesbrough	30	2,015	68	65	-	9	21	11
Redcar & Cleveland	10	2,200	-	64	-	12	-	12
Stockton On Tees	10	2,705	-	71	67	12	-	10
Metropolitan Districts								
Gateshead	15	2,320	53	66	-	13	-	10
Newcastle Upon Tyne	25	3,595	44	68	48	12	-	12
North Tyneside	10	2,400	-	68	-	15	-	11
South Tyneside	20	2,185	32	59	41	21	27	10
Sunderland	30	3,950	48	64	28	21	24	11
NORTH WEST	625	92,150	53	70	22	18	24	8
Shire Counties								
Cheshire	50	8,815	52	75	23	14	25	5
Cumbria	35	6,450	53	69	17	20	31	5
Lancashire	85	15,175	48	69	24	21	28	6
Unitary Authorities								
Blackburn With Darwen	10	2,150	64	67	-	20	-	7
Blackpool	15	1,805	67	63	-	21	-	8
Halton	10	1,730	58	74	-	15	-	9
Warrington	10	2,530	-	73	-	16	-	7
Metropolitan Districts								
Bolton	15	3,895	-	69	-	17	50	9
Bury	10	2,575	-	73	-	15	50	8
Knowsley	20	2,095	63	64	-	23	-	9
Liverpool	65	6,240	51	67	28	18	22	10
Manchester	85	5,030	50	68	30	12	20	11
Oldham	20	3,475	62	68	29	21	-	7
Rochdale	15	2,765	54	65	-	21	-	9
Salford	30	2,655	59	61	-	22	24	10
Sefton	20	3,875	39	72	50	19	-	6
St Helens	20	2,330	75	69	-	22	-	7
Stockport	30	3,645	41	72	24	15	34	7
Tameside	20	3,170	50	68	-	17	45	9
Trafford	10	2,985	73	77	-	14	0	5
Wigan	20	4,215	74	66	-	21	-	9
Wirral	35	4,550	59	75	22	15	19	7

Education and employment status at 30 September 2003 of looked-after children in Year 11 in 2002/2003 school year, compared with all children

Local authority	Total number of looked after children in year 11 in 2002/2003 school year	Total number of all children in year 11 in 2002/2003 school year ¹	Position of children at 30 September 2003, shown as a percentage of total					
			In full-time education		In full/part time training or employment		Unemployment	
			looked after	All children ^{1,2}	looked after	All children ^{1,2}	looked after	All children ^{1,2}
YORKSHIRE & THE HUMBER	445	64,580	49	67	22	19	29	9
Shire Counties								
North Yorkshire	25	1,885	42	74	23	18	35	5
Unitary Authorities								
East Riding Of Yorkshire	15	3,980	77	74	-	15	-	3
Kingston Upon Hull	45	3,630	65	58	-	21	24	12
North East Lincolnshire	20	2,335	30	66	-	19	45	7
North Lincolnshire	15	2,190	40	70	-	15	40	7
York	10	7,420	-	74	-	17	-	4
Metropolitan Districts								
Barnsley	15	2,680	71	62	-	24	-	11
Bradford	40	6,300	39	66	34	15	27	11
Calderdale	15	2,740	69	70	-	20	-	5
Doncaster	30	4,000	40	62	-	21	43	10
Kirklees	15	4,920	50	68	-	21	-	5
Leeds	105	8,590	50	67	24	20	25	8
Rotherham	25	3,740	28	67	36	20	36	10
Sheffield	35	5,890	54	66	23	20	23	9
Wakefield	35	4,290	44	62	22	22	33	10
EAST MIDLANDS	230	52,855	44	69	34	17	22	8
Shire Counties								
Derbyshire	35	8,375	44	68	53	20	-	8
Leicestershire	30	7,565	45	74	-	15	38	6
Lincolnshire	25	8,305	46	72	29	19	25	4
Northamptonshire	40	8,505	51	64	24	14	24	8
Nottinghamshire	25	9,755	58	70	29	21	-	3
Unitary Authorities								
Derby	30	3,240	34	67	55	18	-	10
Leicester	30	3,715	31	74	24	11	45	10
Nottingham	20	2,970	40	63	40	18	-	7
Rutland	-	430	-	78	0	17	0	2

CONTINUED

Education and employment status at 30 September 2003 of looked-after children in Year 11 in 2002/2003 school year, compared with all children

Local authority	Total number of looked after children in year 11 in 2002/2003 school year	Total number of all children in year 11 in 2002/2003 school year ¹	Position of children at 30 September 2003, shown as a percentage of total					
			In full-time education		In full/part time training or employment		Unemployment	
			looked after	All children ^{1,2}	looked after	All children ^{1,2}	looked after	All children ^{1,2}
WEST MIDLANDS	465	69,630	57	71	19	17	24	7
Shire Counties								
Shropshire	10	3,335	58	73	-	20	-	3
Staffordshire	45	10,690	68	71	14	20	18	5
Warwickshire	25	6,555	44	73	33	20	22	5
Worcestershire	40	6,150	51	76	-	15	37	5
Unitary Authorities								
Herefordshire	10	1,925	50	71	-	19	-	5
Stoke-On-Trent	25	2,945	44	66	-	22	44	8
Telford & Wrekin	10	2,220	92	67	0	21	-	5
Metropolitan Districts								
Birmingham	140	13,170	54	74	14	11	32	8
Coventry	35	4,045	62	71	32	21	-	5
Dudley	25	4,240	67	65	-	20	-	9
Sandwell	30	4,000	43	61	32	21	25	8
Solihull	15	3,040	53	71	35	15	-	8
Walsall	20	4,000	68	65	-	17	-	9
Wolverhampton	25	3,315	68	68	-	13	-	10
EAST OF ENGLAND	385	66,685	58	73	21	15	21	7
Shire Counties								
Bedfordshire	25	5,225	44	77	30	13	26	6
Cambridgeshire	25	6,045	56	74	37	16	-	5
Essex	75	16,520	66	73	16	16	18	7
Hertfordshire	75	13,305	53	76	21	12	26	4
Norfolk	45	9,105	56	70	21	17	23	7
Suffolk	35	7,930	73	71	-	16	-	7
Unitary Authorities								
Luton	25	2,495	76	77	-	10	-	8
Peterborough	30	2,320	29	65	46	18	25	9
Southend	20	2,060	62	76	0	13	38	7
Thurrock	20	1,675	59	73	-	15	-	9

Education and employment status at 30 September 2003 of looked-after children in Year 11 in 2002/2003 school year, compared with all children

Local authority	Total number of looked after children in year 11 in 2002/2003 school year	Total number of all children in year 11 in 2002/2003 school year ¹	Position of children at 30 September 2003, shown as a percentage of total					
			In full-time education		In full/part time training or employment		Unemployment	
			looked after	All children ^{1,2}	looked after	All children ^{1,2}	looked after	All children ^{1,2}
LONDON	1,220	77,160	63	78	17	7	20	7
Inner London								
Camden	30	1,490	32	81	61	6	-	6
City of London	-	140	-	100	0	0	0	0
Greenwich	60	2,650	76	74	-	9	17	9
Hackney	50	1,540	40	80	29	4	31	7
Hammersmith & Fulham	35	1,220	82	81	-	4	-	6
Islington	45	1,495	76	75	-	8	20	9
Kensington & Chelsea	30	635	75	80	-	5	-	5
Lambeth	55	1,415	46	78	16	4	39	6
Lewisham	75	2,395	21	81	48	6	31	7
Southwark	65	2,605	63	73	18	8	19	9
Tower Hamlets	30	2,730	57	75	-	5	25	10
Wandsworth	25	1,990	67	77	-	5	-	6
Westminster	35	1,370	79	83	-	5	18	7
Outer London								
Barking & Dagenham	55	2,005	73	63	-	12	21	11
Barnet	35	3,795	61	79	-	6	24	6
Bexley	20	3,185	35	80	35	10	30	6
Brent	40	2,330	87	84	-	3	-	4
Bromley	15	3,490	50	81	-	10	-	4
Croydon	100	3,700	71	77	18	9	11	7
Ealing	40	3,125	67	84	15	4	18	6
Enfield	35	3,765	72	82	-	5	22	8
Haringey	55	2,480	46	74	19	3	35	9
Harrow	15	2,155	47	85	-	5	41	4
Havering	15	2,900	57	75	-	11	-	6
Hillingdon	65	2,985	91	74	-	10	-	9
Hounslow	30	2,805	66	81	-	7	22	7
Kingston Upon Thames	15	1,480	57	84	43	7	0	3
Merton	15	1,645	44	77	-	10	-	6
Newham	70	3,635	68	73	19	5	13	9
Redbridge	15	3,170	79	83	-	4	-	5
Richmond Upon Thames	10	1,850	83	85	-	6	0	5
Sutton	10	2,420	-	83	0	8	-	5
Waltham Forest	30	2,560	70	72	-	8	23	8

CONTINUED

Education and employment status at 30 September 2003 of looked-after children in Year 11 in 2002/2003 school year, compared with all children

Local authority	Total number of looked after children in year 11 in 2002/2003 school year	Total number of all children in year 11 in 2002/2003 school year ¹	Position of children at 30 September 2003, shown as a percentage of total					
			In full-time education		In full/part time training or employment		Unemployment	
			looked after	All children ^{1,2}	looked after	All children ^{1,2}	looked after	All children ^{1,2}
SOUTH EAST	575	91,975	59	76	20	12	21	6
Shire Counties								
Buckinghamshire	25	5,790	29	79	38	11	33	4
East Sussex	25	5,230	70	78	-	12	-	5
Hampshire	75	14,720	70	76	19	13	11	5
Kent	135	17,040	66	76	12	11	22	6
Oxfordshire	45	6,400	52	71	32	20	16	5
Surrey	55	10,680	60	79	20	12	20	4
West Sussex	60	8,340	63	79	23	9	15	3
Unitary Authorities								
Bracknell Forest	5	930	-	76	-	14	-	4
Brighton & Hove	25	2,335	54	74	-	14	25	7
Isle Of Wight	10	1,735	-	76	-	13	-	5
Medway Towns	30	3,490	48	73	-	14	38	7
Milton Keynes	15	2,610	65	71	-	13	-	7
Portsmouth	20	2,125	43	70	43	12	-	10
Reading	15	1,175	53	73	-	11	40	9
Slough	10	1,375	55	78	-	9	-	7
Southampton	10	2,550	-	66	-	15	-	10
West Berkshire	-	1,970	-	74	0	14	0	6
Windsor & Maidenhead	-	1,595	-	80	0	10	-	6
Wokingham	-	1,875	-	78	-	11	-	6
SOUTH WEST	405	59,365	57	74	20	16	23	5
Shire Counties								
Cornwall	45	6,670	60	73	16	13	24	6
Devon	60	8,705	47	71	13	17	40	5
Dorset	25	4,400	58	73	35	16	-	4
Gloucestershire	25	6,825	52	76	22	16	26	5
Isle of Scilly	-	15	-	93	0	7	0	0
Somerset	35	5,560	67	72	18	20	-	4
Wiltshire	25	4,920	79	75	0	15	-	3
Unitary Authorities								
Bath & North East Somerset	15	2,100	86	78	-	15	-	4
Bournemouth	15	1,815	57	72	-	17	-	5
Bristol	55	3,735	57	72	19	19	25	5
North Somerset	15	2,160	50	80	-	14	-	3
Plymouth	30	3,580	37	72	40	16	23	7
Poole	15	1,720	60	74	-	17	-	5
South Gloucestershire	15	3,040	69	76	-	19	-	4
Swindon	15	2,400	57	73	-	16	-	6
Torbay	20	1,725	44	72	33	17	-	5

1 Source: 'The Connexions/Careers Service Annual Activity Survey 2003'. Covers all young people who were in year 11 during the school year ending August 2003, and is based on a survey carried out during October 2003.

2 Percentages for 'all children' do not sum to 100 because the Connexions/Career service Survey included an additional category of 'moved away', 'no response', and 'refused to participate', which is not relevant to looked-after children.

Local Authority	looked-after children			all children aged 10-17 in police force area ¹	PAF indicator C18 ²
	number aged 10 years or older during the year	number convicted or subject to a final warning/reprimand during the year	percentage convicted or subject to a final warning/reprimand during the year	percentage convicted or subject to a final warning/reprimand	
ENGLAND	29,100	2,800	9.5	3.3	2.9
NORTH EAST	1,525	230	15	6	2.5
Shire Counties					
Durham	210	35	16	5	3.5
Northumberland	155	20	14	7	2.1
Unitary Authorities					
Darlington	70	10	16	5	3.5
Hartlepool	50	10	24	4	5.6
Middlesbrough	110	20	16	4	3.7
Redcar & Cleveland	80	10	13	4	2.9
Stockton On Tees	95	15	14	4	3.3
Metropolitan Districts					
Gateshead	120	15	13	7	1.9
Newcastle Upon Tyne	180	25	14	7	2.1
North Tyneside	115	20	17	7	2.5
South Tyneside	125	15	13	7	1.9
Sunderland	220	35	17	7	2.5
NORTH WEST	4,655	455	10	4	2.7
Shire Counties					
Cheshire	245	30	12	2	6.1
Cumbria	270	25	9	4	2.2
Lancashire	610	35	6	4	1.5
Unitary Authorities					
Blackburn With Darwen	115	20	17	4	4.5
Blackpool	90	5	8	4	2.0
Halton	85	-	-	2	-
Warrington	80	10	13	2	6.4
Metropolitan Districts					
Bolton	125	20	14	4	3.6
Bury	120	5	5	4	1.2
Knowsley	105	15	12	3	4.0
Liverpool	515	50	10	3	3.1
Manchester	635	75	12	4	3.0
Oldham	140	15	12	4	3.1
Rochdale	120	10	10	4	2.6
Salford	280	40	15	4	3.7
Sefton	175	10	5	3	1.7
St Helens	110	10	8	3	2.7
Stockport	185	25	14	4	3.6
Tameside	145	15	9	4	2.3
Trafford	90	5	7	4	1.7
Wigan	195	10	6	4	1.6
Wirral	225	15	7	3	2.4

Local Authority	looked-after children			all children aged 10-17 in police force area ¹	PAF indicator C18 ²
	number aged 10 years or older during the year	number convicted or subject to a final warning/reprimand during the year	percentage convicted or subject to a final warning/reprimand during the year	percentage convicted or subject to a final warning/reprimand	
YORKSHIRE & THE HUMBER	3,140	380	12	4	3.4
Shire Counties					
North Yorkshire	170	10	5	3	1.9
Unitary Authorities					
East Riding Of Yorkshire	110	10	9	3	3.2
Kingston Upon Hull	355	45	13	3	4.6
North East Lincolnshire	110	5	6	3	2.2
North Lincolnshire	95	25	27	3	9.5
York	65	10	15	3	5.5
Metropolitan Districts					
Barnsley	115	10	8	4	2.1
Bradford	365	45	13	4	3.3
Calderdale	80	10	12	4	3.0
Doncaster	210	30	14	4	3.7
Kirklees	120	20	16	4	4.2
Leeds	680	100	14	4	3.7
Rotherham	135	15	10	4	2.6
Sheffield	315	30	9	4	2.5
Wakefield	220	20	9	4	2.4
EAST MIDLANDS	1,710	175	10	3	3.4
Shire Counties					
Derbyshire	250	25	11	3	3.6
Leicestershire	175	10	6	2	2.4
Lincolnshire	195	15	8	3	2.5
Northamptonshire	290	35	11	3	3.9
Nottinghamshire	190	20	11	4	2.9
Unitary Authorities					
Derby	190	15	8	3	2.8
Leicester	220	30	15	2	6.2
Nottingham	195	20	9	4	2.4
Rutland	-	0	0	2	0.0

Local Authority	looked-after children			all children aged 10-17 in police force area ¹	PAF indicator C18 ²
	number aged 10 years or older during the year	number convicted or subject to a final warning/reprimand during the year	percentage convicted or subject to a final warning/reprimand during the year	percentage convicted or subject to a final warning/reprimand	
WEST MIDLANDS	3,200	300	9	4	2.3
Shire Counties					
Shropshire	95	10	13	3	3.7
Staffordshire	275	25	9	3	2.5
Warwickshire	185	15	8	3	3.1
Worcestershire	255	20	7	3	2.2
Unitary Authorities					
Herefordshire	85	5	7	3	2.1
Stoke-On-Trent	190	30	16	3	4.7
Telford & Wrekin	90	5	7	3	2.0
Metropolitan Districts					
Birmingham	920	90	10	4	2.2
Coventry	235	20	8	4	1.9
Dudley	170	15	9	4	2.0
Sandwell	210	25	12	4	2.7
Solihull	90	-	-	4	-
Walsall	200	20	9	4	2.2
Wolverhampton	200	20	10	4	2.4
EAST OF ENGLAND	2,720	235	9	3	3.2
Shire Counties					
Bedfordshire	210	20	9	3	3.4
Cambridgeshire	190	-	-	3	-
Essex	600	50	8	3	3.3
Hertfordshire	495	45	9	2	3.7
Norfolk	335	35	11	3	4.2
Suffolk	305	30	9	4	2.5
Unitary Authorities					
Luton	170	10	5	3	2.0
Peterborough	170	20	11	3	4.1
Southend	125	15	10	3	4.1
Thurrock	120	10	8	3	3.0

Local Authority	looked-after children			all children aged 10-17 in police force area ¹	PAF indicator C18 ²
	number aged 10 years or older during the year	number convicted or subject to a final warning/reprimand during the year	percentage convicted or subject to a final warning/reprimand during the year	percentage convicted or subject to a final warning/reprimand	
LONDON	5,955	430	7	3	2.2
Inner London					
Camden	180	10	4	3	1.4
City of London	-	0	0	3	0.0
Greenwich	280	10	4	3	1.3
Hackney	185	15	7	3	2.1
Hammersmith & Fulham	220	10	5	3	1.5
Islington	255	15	6	3	1.7
Kensington & Chelsea	145	10	8	3	2.5
Lambeth	350	20	6	3	1.8
Lewisham	310	40	12	3	3.7
Southwark	345	25	7	3	2.3
Tower Hamlets	165	-	-	3	-
Wandsworth	170	15	8	3	2.3
Westminster	135	-	-	3	-
Outer London					
Barking & Dagenham	215	10	4	3	1.1
Barnet	190	10	4	3	1.3
Bexley	105	10	11	3	3.4
Brent	180	10	4	3	1.3
Bromley	150	20	13	3	3.8
Croydon	380	20	5	3	1.4
Ealing	210	20	10	3	2.9
Enfield	165	10	5	3	1.7
Haringey	245	40	17	3	5.0
Harrow	70	5	10	3	3.0
Havering	80	5	7	3	2.2
Hillingdon	235	10	4	3	1.3
Hounslow	150	5	5	3	1.4
Kingston Upon Thames	50	-	-	3	-
Merton	85	10	9	3	2.8
Newham	300	20	6	3	1.9
Redbridge	75	-	-	3	-
Richmond Upon Thames	60	5	11	3	3.5
Sutton	75	15	17	3	5.2
Waltham Forest	185	25	13	3	4.1

Local Authority	looked-after children			all children aged 10-17 in police force area ¹	PAF indicator C18 ²
	number aged 10 years or older during the year	number convicted or subject to a final warning/reprimand during the year	percentage convicted or subject to a final warning/reprimand during the year	percentage convicted or subject to a final warning/reprimand	
SOUTH EAST	3,770	340	9	3	3.3
Shire Counties					
Buckinghamshire	135	5	5	2	2.2
East Sussex	195	15	8	2	3.6
Hampshire	475	55	12	4	3.2
Kent	795	55	7	3	2.4
Oxfordshire	275	30	11	2	4.7
Surrey	410	35	8	2	3.9
West Sussex	375	35	9	2	3.9
Unitary Authorities					
Bracknell Forest	40	-	-	2	-
Brighton & Hove	190	10	5	2	2.3
Isle Of Wight	85	10	13	4	3.4
Medway Towns	165	10	5	3	1.7
Milton Keynes	115	15	12	2	5.1
Portsmouth	120	20	16	4	4.2
Reading	70	-	-	2	-
Slough	65	5	11	2	4.6
Southampton	140	20	15	4	4.0
West Berkshire	60	-	-	2	-
Windsor & Maidenhead	25	-	-	2	-
Wokingham	40	-	-	2	-
SOUTH WEST	2,445	225	9	3	3.6
Shire Counties					
Cornwall	295	25	9	3	2.9
Devon	385	45	11	3	3.7
Dorset	140	10	6	2	2.4
Gloucestershire	255	15	6	3	2.2
Isle of Scilly	-	0	0	3	0.0
Somerset	165	20	11	2	5.3
Wiltshire	135	10	7	3	2.9
Unitary Authorities					
Bath & North East Somerset	70	10	14	2	6.8
Bournemouth	95	-	-	2	-
Bristol	280	25	9	2	4.4
North Somerset	70	10	11	2	5.5
Plymouth	220	25	12	3	4.0
Poole	75	-	-	2	-
South Gloucestershire	80	-	-	2	-
Swindon	90	10	12	3	4.8
Torbay	90	10	13	3	4.4

¹ Home Office source, figures for calendar year 2002.

² the proportion of children (aged 10 or over) who had been looked after continuously for at least 12 months, who were convicted or given a final warning/reprimand during the year for an offence committed whilst they were looked after, expressed as a ratio of the proportion of all children and young people convicted or given a final warning/reprimand for an offence in the police force area.

8

Development assessments of pre-school looked-after children, twelve months ending 30 September 2003

England

Local Authority	number aged 5 years old or younger	number whose development assessments were up-to-date	% whose development assessments were up-to-date
ENGLAND	7,100	5,700	80.7
NORTH EAST	375	285	76
Shire Counties			
Durham	40	20	50
Northumberland	40	30	84
Unitary Authorities			
Darlington	20	20	100
Hartlepool	15	0	0
Middlesbrough	20	20	100
Redcar & Cleveland	10	10	-
Stockton On Tees	25	15	60
Metropolitan Districts			
Gateshead	25	25	85
Newcastle Upon Tyne	40	35	85
North Tyneside	40	25	66
South Tyneside	30	20	71
Sunderland	70	65	93
NORTH WEST	1,265	1,045	83
Shire Counties			
Cheshire	45	45	100
Cumbria	100	95	92
Lancashire	125	75	58
Unitary Authorities			
Blackburn With Darwen	45	35	77
Blackpool	40	40	100
Halton	30	30	100
Warrington	40	40	90
Metropolitan Districts			
Bolton	50	50	98
Bury	20	20	82
Knowsley	30	30	100
Liverpool	105	105	100
Manchester	160	125	77
Oldham	35	15	38
Rochdale	60	50	87
Salford	85	60	75
Sefton	35	30	76
St Helens	40	40	98
Stockport	45	40	95
Tameside	35	25	74
Trafford	20	20	100
Wigan	55	50	89
Wirral	60	35	63

Local Authority	number aged 5 years old or younger	number whose development assessments were up-to-date	% whose development assessments were up-to-date
YORKSHIRE & THE HUMBER	855	705	82
Shire Counties			
North Yorkshire	50	50	92
Unitary Authorities			
East Riding Of Yorkshire	35	30	83
Kingston Upon Hull	75	65	86
North East Lincolnshire	25	20	88
North Lincolnshire	20	20	100
York	20	20	95
Metropolitan Districts			
Barnsley	35	30	94
Bradford	120	120	99
Calderdale	25	20	84
Doncaster	50	40	76
Kirklees	45	45	96
Leeds	190	100	54
Rotherham	35	30	94
Sheffield	80	65	79
Wakefield	45	45	100
EAST MIDLANDS	520	425	82
Shire Counties			
Derbyshire	65	65	97
Leicestershire	35	30	86
Lincolnshire	75	50	62
Northamptonshire	50	35	71
Nottinghamshire	70	65	90
Unitary Authorities			
Derby	45	40	93
Leicester	80	75	94
Nottingham	95	65	69
Rutland	-	-	-

Local Authority	number aged 5 years old or younger	number whose development assessments were up-to-date	% whose development assessments were up-to-date
WEST MIDLANDS	995	735	74
Shire Counties			
Shropshire	15	15	93
Staffordshire	60	60	100
Warwickshire	60	60	100
Worcestershire	80	75	92
Unitary Authorities			
Herefordshire	20	5	32
Stoke-On-Trent	40	40	95
Telford & Wrekin	20	20	100
Metropolitan Districts			
Birmingham	315	180	57
Coventry	75	35	43
Dudley	65	40	59
Sandwell	90	60	70
Solihull	20	20	95
Walsall	80	80	100
Wolverhampton	55	55	100
EAST OF ENGLAND	625	550	87
Shire Counties			
Bedfordshire	50	40	88
Cambridgeshire	30	30	100
Essex	140	120	86
Hertfordshire	110	80	74
Norfolk	80	75	96
Suffolk	110	105	93
Unitary Authorities			
Luton	40	40	97
Peterborough	35	20	63
Southend	15	15	100
Thurrock	20	20	100

Local Authority	number aged 5 years old or younger	number whose development assessments were up-to-date	% whose development assessments were up-to-date
LONDON	1,190	945	79
Inner London			
Camden	25	10	44
City of London	0	0	0
Greenwich	55	40	70
Hackney	75	65	88
Hammersmith & Fulham	40	40	97
Islington	45	45	91
Kensington & Chelsea	20	20	100
Lambeth	55	15	27
Lewisham	40	35	88
Southwark	70	20	26
Tower Hamlets	45	45	93
Wandsworth	55	55	100
Westminster	50	50	100
Outer London			
Barking & Dagenham	35	20	65
Barnet	40	30	76
Bexley	25	25	100
Brent	35	10	33
Bromley	30	30	100
Croydon	50	50	100
Ealing	45	40	89
Enfield	40	40	100
Haringey	45	35	84
Harrow	15	15	100
Havering	10	10	100
Hillingdon	20	20	100
Hounslow	60	55	90
Kingston Upon Thames	-	-	-
Merton	15	15	100
Newham	70	35	46
Redbridge	15	15	100
Richmond Upon Thames	-	-	-
Sutton	-	-	-
Waltham Forest	45	45	98

Local Authority	number aged 5 years old or younger	number whose development assessments were up-to-date	% whose development assessments were up-to-date
SOUTH EAST	805	665	83
Shire Counties			
Buckinghamshire	30	25	81
East Sussex	65	60	95
Hampshire	140	70	50
Kent	135	120	88
Oxfordshire	40	40	100
Surrey	70	45	65
West Sussex	60	60	100
Unitary Authorities			
Bracknell Forest	-	-	-
Brighton & Hove	40	40	100
Isle Of Wight	20	20	100
Medway Towns	35	15	50
Milton Keynes	20	20	100
Portsmouth	40	40	100
Reading	25	20	85
Slough	25	25	100
Southampton	50	50	100
West Berkshire	10	10	-
Windsor & Maidenhead	-	-	-
Wokingham	-	-	-
SOUTH WEST	455	365	80
Shire Counties			
Cornwall	35	30	86
Devon	50	40	78
Dorset	20	20	100
Gloucestershire	45	40	95
Isle of Scilly	0	0	0
Somerset	20	15	67
Wiltshire	25	20	81
Unitary Authorities			
Bath & North East Somerset	10	10	100
Bournemouth	20	15	89
Bristol	55	45	85
North Somerset	20	20	100
Plymouth	75	35	48
Poole	10	5	-
South Gloucestershire	-	-	-
Swindon	25	20	81
Torbay	35	30	94

Local Authority	numbers				percentages			PAF Indicator C19' (average percentage)
	number looked after for at least one year	children whose immunisations were up to date	children who had their teeth checked by a dentist	children who had their annual health assessment	children whose immunisations were up to date	children who had their teeth checked by a dentist	children who had their annual health assessment	
ENGLAND	44,900	32,300	33,800	33,700	72	75	75	75.2
NORTH EAST	2,395	1,830	1,965	1,930	76	82	81	81.3
Shire Counties								
Durham	330	250	250	250	76	76	76	76.1
Northumberland	230	180	200	165	78	87	72	79.3
Unitary Authorities								
Darlington	110	45	95	90	41	87	82	84.4
Hartlepool	75	70	60	55	92	77	76	76.7
Middlesbrough	195	190	185	160	95	94	81	87.8
Redcar & Cleveland	105	60	80	80	57	79	79	78.8
Stockton On Tees	145	70	110	130	49	77	91	83.9
Metropolitan Districts								
Gateshead	185	145	155	165	78	83	88	85.8
Newcastle Upon Tyne	285	225	230	235	80	81	82	81.6
North Tyneside	185	160	90	130	87	48	70	58.7
South Tyneside	190	120	150	130	64	80	70	74.9
Sunderland	360	315	355	335	87	98	93	95.6
NORTH WEST	7,575	5,450	5,785	5,740	72	76	76	76.1
Shire Counties								
Cheshire	345	335	315	290	98	91	84	87.8
Cumbria	465	400	330	395	86	72	85	78.1
Lancashire	960	555	625	680	58	65	71	67.7
Unitary Authorities								
Blackburn With Darwen	220	180	160	165	81	72	75	73.4
Blackpool	165	155	115	100	95	68	60	64.2
Halton	140	125	135	125	92	98	91	94.2
Warrington	150	120	125	120	79	83	79	80.8
Metropolitan Districts								
Bolton	230	140	185	175	60	80	76	77.9
Bury	185	125	140	160	66	75	84	79.7
Knowsley	175	150	135	160	84	77	89	83.1
Liverpool	825	520	790	755	63	96	92	94.1
Manchester	995	590	805	645	59	81	64	72.5
Oldham	220	120	115	100	55	53	45	48.9
Rochdale	235	230	180	185	98	77	78	77.8
Salford	490	280	280	335	57	58	69	63.1
Sefton	260	210	140	130	81	53	49	51.3
St Helens	195	185	165	175	96	85	92	88.6
Stockport	295	230	250	255	77	84	86	85.0
Tameside	205	120	100	150	58	48	73	60.6
Trafford	140	120	130	125	87	91	90	90.7
Wigan	310	280	265	215	90	85	69	77.3
Wirral	360	280	305	305	77	84	85	84.6

Local Authority	numbers				percentages			PAF Indicator C19 ¹ (average percentage)
	number looked after for at least one year	children whose immunisations were up to date	children who had their teeth checked by a dentist	children who had their annual health assessment	children whose immunisations were up to date	children who had their teeth checked by a dentist	children who had their annual health assessment	
YORKSHIRE & THE HUMBER	5,025	3,285	3,430	3,800	65	68	76	71.9
Shire Counties								
North Yorkshire	260	230	215	215	88	84	82	83.0
Unitary Authorities								
East Riding Of Yorkshire	185	125	150	145	68	83	79	80.7
Kingston Upon Hull	475	280	365	435	59	77	92	84.5
North East Lincolnshire	190	160	95	125	85	50	67	58.5
North Lincolnshire	150	125	110	125	82	72	85	78.3
York	110	100	90	80	91	84	75	79.8
Metropolitan Districts								
Barnsley	200	190	185	150	94	93	74	83.7
Bradford	635	470	530	520	74	83	81	82.3
Calderdale	135	80	50	80	60	36	59	47.7
Doncaster	315	225	180	180	72	57	57	57.1
Kirklees	200	145	110	150	73	57	75	65.7
Leeds	1,080	540	755	850	50	70	79	74.5
Rotherham	285	165	195	245	58	70	87	78.1
Sheffield	490	270	185	320	55	37	65	51.1
Wakefield	325	175	210	180	54	65	56	60.2
EAST MIDLANDS	2,895	2,420	2,200	2,080	84	76	72	73.9
Shire Counties								
Derbyshire	415	395	375	340	95	91	82	86.5
Leicestershire	270	225	165	180	84	61	67	64.4
Lincolnshire	360	190	225	235	52	62	65	64.0
Northamptonshire	435	400	370	340	92	85	79	81.8
Nottinghamshire	350	305	300	265	87	85	75	80.1
Unitary Authorities								
Derby	305	295	275	265	97	90	87	88.9
Leicester	370	330	255	255	90	69	70	69.4
Nottingham	385	275	225	190	71	58	49	53.8
Rutland	5	-	5	5	-	-	-	-

Local Authority	numbers				percentages			PAF Indicator C19' (average percentage)
	number looked after for at least one year	children whose immunisations were up to date	children who had their teeth checked by a dentist	children who had their annual health assessment	children whose immunisations were up to date	children who had their teeth checked by a dentist	children who had their annual health assessment	
WEST MIDLANDS	5,210	3,830	3,945	3,845	74	76	74	74.7
Shire Counties								
Shropshire	125	80	105	110	65	82	87	84.6
Staffordshire	420	240	200	310	57	47	73	60.4
Warwickshire	300	280	260	230	93	87	78	82.0
Worcestershire	410	365	325	260	89	80	63	71.5
Unitary Authorities								
Herefordshire	135	130	130	110	95	93	80	86.5
Stoke-On-Trent	280	220	235	220	79	83	78	80.5
Telford & Wrekin	135	90	130	110	68	97	79	88.2
Metropolitan Districts								
Birmingham	1,515	925	1,265	1,120	61	84	74	78.9
Coventry	390	295	230	275	75	59	70	64.7
Dudley	305	270	225	215	89	73	71	72.1
Sandwell	385	230	195	280	59	51	72	61.5
Solihull	140	85	120	105	61	86	75	80.4
Walsall	365	340	325	285	93	90	79	84.2
Wolverhampton	300	280	200	215	92	66	72	68.8
EAST OF ENGLAND	4,155	3,455	3,485	3,305	83	84	79	81.7
Shire Counties								
Bedfordshire	330	300	305	255	91	93	78	85.1
Cambridgeshire	250	245	205	230	98	81	91	86.1
Essex	920	850	660	710	92	72	77	74.6
Hertfordshire	740	615	625	495	83	85	67	75.8
Norfolk	525	495	490	420	94	93	79	86.1
Suffolk	520	240	430	460	47	83	88	85.9
Unitary Authorities								
Luton	260	220	220	225	84	85	87	85.6
Peterborough	260	150	225	200	58	87	77	82.3
Southend	200	195	175	165	97	87	83	85.4
Thurrock	155	150	150	145	95	95	94	94.8

Local Authority	numbers				percentages			PAF Indicator C19 ¹ (average percentage)
	number looked after for at least one year	children whose immunisations were up to date	children who had their teeth checked by a dentist	children who had their annual health assessment	children whose immunisations were up to date	children who had their teeth checked by a dentist	children who had their annual health assessment	
LONDON	8,545	5,250	6,150	6,510	61	72	76	74.1
Inner London								
Camden	235	140	150	185	60	65	78	71.6
City of London	-	-	-	-	-	-	-	-
Greenwich	390	40	270	270	10	69	69	69.4
Hackney	365	245	305	275	67	84	76	80.1
Hammersmith & Fulham	310	185	225	230	60	73	75	73.9
Islington	360	225	295	290	63	81	80	80.8
Kensington & Chelsea	185	140	135	155	75	72	83	77.2
Lambeth	475	275	200	215	58	42	46	43.9
Lewisham	410	280	245	275	68	60	68	64.0
Southwark	500	220	370	435	44	74	87	80.6
Tower Hamlets	255	130	195	180	51	77	70	73.5
Wandsworth	270	200	235	240	74	86	89	87.7
Westminster	225	180	120	170	81	54	77	65.2
Outer London								
Barking & Dagenham	285	110	180	205	38	63	73	67.8
Barnet	285	175	160	255	62	57	90	73.5
Bexley	160	150	155	140	94	96	88	91.9
Brent	265	190	190	195	71	71	73	72.0
Bromley	235	150	140	200	62	60	84	71.7
Croydon	470	355	435	395	76	93	84	88.3
Ealing	290	170	225	245	58	78	85	81.2
Enfield	240	135	150	150	57	63	63	62.8
Haringey	335	260	215	230	77	64	68	66.3
Harrow	100	100	100	95	100	98	93	95.5
Havering	120	110	115	100	94	97	86	91.2
Hillingdon	295	275	240	185	94	81	63	72.1
Hounslow	260	225	220	220	87	85	85	84.6
Kingston Upon Thames	60	60	60	55	98	98	92	94.9
Merton	125	85	95	90	69	77	73	75.0
Newham	455	120	250	320	26	54	70	62.0
Redbridge	115	100	110	105	89	95	92	93.4
Richmond Upon Thames	80	80	75	65	99	91	84	87.5
Sutton	120	90	110	110	75	91	90	90.6
Waltham Forest	270	45	185	220	17	68	82	75.0

Local Authority	numbers				percentages			PAF Indicator C19 ¹ (average percentage)
	number looked after for at least one year	children whose immunisations were up to date	children who had their teeth checked by a dentist	children who had their annual health assessment	children whose immunisations were up to date	children who had their teeth checked by a dentist	children who had their annual health assessment	
SOUTH EAST	5,635	4,045	4,340	4,085	72	77	72	74.7
Shire Counties								
Buckinghamshire	210	175	155	165	84	74	79	76.2
East Sussex	325	310	280	280	96	87	86	86.8
Hampshire	770	350	400	480	45	52	63	57.2
Kent	1,140	790	960	820	69	84	72	78.2
Oxfordshire	375	330	320	255	88	86	69	77.6
Surrey	565	110	325	340	19	57	60	58.6
West Sussex	520	475	470	395	91	90	76	82.9
Unitary Authorities								
Bracknell Forest	45	35	40	40	80	86	91	88.6
Brighton & Hove	290	260	220	205	89	75	70	72.5
Isle Of Wight	125	120	105	95	97	84	76	80.2
Medway Towns	250	230	215	185	92	87	75	80.9
Milton Keynes	160	150	135	120	94	83	74	78.7
Portsmouth	190	145	170	165	76	89	87	88.2
Reading	120	95	90	85	78	73	72	72.5
Slough	105	95	90	95	90	84	90	87.1
Southampton	275	225	210	225	82	76	82	79.1
West Berkshire	85	85	85	55	100	98	65	81.2
Windsor & Maidenhead	40	40	40	35	93	95	88	91.7
Wokingham	50	25	40	40	52	79	79	79.2
SOUTH WEST	3,465	2,715	2,525	2,385	78	73	69	70.8
Shire Counties								
Cornwall	390	235	285	205	61	73	53	62.9
Devon	505	320	240	250	64	48	49	48.5
Dorset	185	170	165	130	91	90	70	80.3
Gloucestershire	370	295	160	285	80	43	77	60.1
Isle of Scilly	-	-	-	-	-	-	-	-
Somerset	210	185	175	175	88	83	82	82.1
Wiltshire	195	185	165	145	93	83	74	78.4
Unitary Authorities								
Bath & North East Somerset	105	65	80	80	64	77	76	76.2
Bournemouth	135	120	105	90	90	77	69	72.8
Bristol	400	325	300	260	82	75	65	69.7
North Somerset	110	85	100	90	79	91	84	87.5
Plymouth	370	325	335	280	88	91	75	82.9
Poole	100	80	80	95	80	79	94	86.8
South Gloucestershire	90	80	85	75	86	95	80	87.5
Swindon	140	105	110	115	73	77	80	78.5
Torbay	150	135	140	115	88	91	74	82.9

¹ The average of the percentages of children looked after at 30 September who had been looked after continuously for at least 12 months, who had their teeth checked by a dentist during the previous 12 months, and had an annual health assessment during the previous 12 months. In previous years this indicator also included immunisations. The figures shown here reflect the revised definition.

TECHNICAL NOTES

Coverage of OC2

The Table below specifies the subset of children captured by each of the OC2's data items.

Twelve month data period

The data collected cover young people looked after at 30 September 2003 in England who had been looked after continuously for at least twelve months, defined as the period from 1 October to the following 30 September inclusive. This departs from the Departments other collections of children's personal social services data, which use a 'year' based on the period ending 31 March. The data period used for the OC2 was designed to accommodate the school year.

Boundaries of authorities

As explained in section 2 of this Commentary, some young people covered by the OC2 will have attended schools outside the boundaries of their home local authority social services department. Hence caution must be used when comparing educational data collected on OC2, with that for all children collected.

TABLE 1.1:

Coverage of each OC2 Data Item, period ending 30 September 2003

Data item On OC2	Definition	Which children were included?
1	Scope of OC2	All children who were looked after on 30 September and on that date had been looked after continuously for at least a year.
<i>Items 2 - 8 are subsets of item 1:</i>		
2	Total eligible for schooling	Children whose date of birth in range 1/9/86 to 31/8/98
3	Key stage 1	Children eligible for school year 2, i.e. whose date of birth in range 1/9/95 to 31/8/96
4	Key stage 2	Children eligible for school year 6, i.e. whose date of birth in range 1/9/91 to 31/8/92
5	Key stage 3	Children eligible for school year 9, i.e. whose date of birth in range 1/9/88 to 31/8/89
6	GCSEs and GNVQs	Children eligible for school year 11, i.e. whose date of birth in range 1/9/86 to 31/8/87
7	Offending	Children aged 10 or over at 30 September, i.e. whose date of birth is 30/9/93 or earlier
8	Development Assessments	Children aged 5 years or younger at 30 September, i.e. whose date of birth is 01/10/97 or greater
9	Immunisations	All children covered by OC2 return, i.e. all children who were looked after on 30 September and had been looked after continuously for at least a year. (This is the same as item 1).
10	Dental checks	
11	Health Assessments	
12	Employment/ school status at 30 Sept 2003	Children eligible for school year 11, i.e. whose date of birth in range 1/9/86 to 31/8/87. (This is the same as Item 6).

ROUNDING AND SUPPRESSION OF VERY SMALL NUMBERS

To ensure that no individual can be identified from statistical Tables, similar conventions from last year have again been used in this publication for the rounding and suppression of very small numbers.

National Tables A - F

For this reason, all **numbers** which appear in the national summary Tables (Tables A to F) have been rounded to the nearest 100 if they exceed 1,000, and to the nearest 10 otherwise. Numbers from 1 to 5 inclusive have been suppressed, being replaced in the Table by a hyphen. Where any number is shown as zero (0) the original figure submitted was also zero.

All **percentages** at national level have been rounded to 1 decimal place. Wherever the numerator is 5 or less or the denominator is 10 or less of the underlying numbers from which a percentage has been calculated, the percentage has been suppressed and replaced by a hyphen. Where any percentage is shown as zero (0) either both the original figures from which it has been calculated were zero or the numerator was zero and the denominator is over 10.

Local Tables 1 - 9

At local council level (Tables 1 - 9) the England total **numbers** at the head of each Table have been rounded either to the nearest 10 or 100, following the rule outlined above.

All other numbers at local council level have been rounded to the nearest five, and numbers from 1 to 5 inclusive have been suppressed, being replaced in the published Tables by a hyphen. Where any number is shown as zero (0), the original figure submitted was also zero.

In local council Tables the England total **percentages** at the head of each Table have been rounded to 1 decimal place, following the rule outlined above.

Ratios and PAF indicators have been expressed to one decimal place. Where percentage figures from other sources have been quoted, they have been left in the form in which they were originally published.

In Tables which include time series, this rounding convention has been applied to data for previous years for the sake of consistency.

Suppression of other numbers

It has also been necessary to suppress other figures whenever it would be possible to calculate the value of a suppressed number by means of simple arithmetic. The rule applied in these circumstances has been to suppress the next smallest data item.

Symbols used

The following symbols have been used in the Tables:

- 0 zero
- Small number suppressed to preserve confidentiality. Normally this will be a number between 1 and 5 inclusive, or a percentage where either the numerator is between 1 and 5 or the denominator is between 1 and 10 inclusive.
- .. Not available
- . Not applicable

TABLE 1.2:

Examples of the rounding conventions used in this publication:

Actual Number	Numbers at England level, as shown in tables	Numbers at local council level, as shown in tables
0	0	0
1	-	-
2	-	-
3	-	-
4	-	-
5	-	-
6	10	5
7	10	5
8	10	10
9	10	10
10	10	10
11	10	10
12	10	10
13	10	15
14	10	15
15	20	15
16	20	15
17	20	15
18	20	20
19	20	20
20	20	20
120	120	120
124	120	125
125	130	125
126	130	125
994	990	995
995	1,000	995
999	1,000	1,000
1,949	1,900	1,950
1,950	2,000	1,950
1,955	2,000	1,955
1,956	2,000	1,955
1,957	2,000	1,955
1,958	2,000	1,960

Figures on the Internet

The department of Education and Skills's website contains a copy of this publication with all the tables in a suitable format for downloading. They can be found at the web address below.

<http://www.dfes.gov.uk/rsgateway/DB/SBU/b000403/index.shtml>

Further enquiries

Further enquiries concerning the statistics contained in this report should be addressed to:

Martin Hill
Department of Education and skills
QPAI9
Sanctuary Buildings
Great Smith Street
London SW1P 3BT

Telephone 020 7925 3806

child.stats@dfes.gsi.gov.uk

© Crown copyright 2004.

CHILDREN'S SOCIAL SERVICES

Recent statistical publications available from the Department of Education and Skills and the Department of Health

Children Looked After by Local Authorities, year ending 31 March 2003; England vols 1 & 2

<http://www.dfes.gov.uk/rsgateway/DB/VOL/v000454/index.shtml>

Children Looked After in England: 2002/2003

<http://www.dfes.gov.uk/rsgateway/DB/SBU/b000424/index.shtml>

Educational Qualifications of Care Leavers year ending 31 March 2003; England

<http://www.dfes.gov.uk/rsgateway/DB/SBU/b000423/index.shtml>

Children Accommodated in Secure Units, year ending 31 March 2003; England and Wales

<http://www.dfes.gov.uk/rsgateway/DB/SFR/s000409/index.shtml>

Outcome Indicators for Looked-after Children, twelve months to 30 September 2002; England

<http://www.dfes.gov.uk/rsgateway/DB/SBU/b000403/index.shtml>

Children in Need in England: Preliminary results

<http://www.dfes.gov.uk/rsgateway/DB/SFR/s000418/index.shtml>

Children adopted from care in England: 2002-03.

<http://www.dfes.gov.uk/rsgateway/DB/SBU/b000425/index.shtml>

Social Services Performance Assessment

Framework Indicators 2002-2003 available from Department of Health at: <http://www.publications.doh.gov.uk/paf>

The Children Act Report 2002

available from The Stationery Office, or from <http://www.dfes.gov.uk/childrenactreport/>