

Official Statistics Release

| | |
|---|---|
| Policy area: | Children's centre inspections and outcomes |
| Theme: | Education, children's services and skills |
| Published on: | 8 March 2012 |
| Coverage: | England |
| Period covered: | 1 April 2010 to 31 December 2011 |
| Status: | Provisional |
| Issued by: | Office for Standards in Education, Children's Services and Skills (Ofsted) Aviation House 125 Kingsway London WC2B 6SE |
| Responsible director: | Jean Humphrys |
| Statistician: | Steve Ball |
| Public enquiries: | enquiries@ofsted.gov.uk |
| Press enquiries: | pressenquiries@ofsted.gov.uk |
| Link to official statistics release web page: | http://www.ofsted.gov.uk/resources/official-statistics-childrens-centres-inspections-and-outcomes |
| Publication medium: | Ofsted website |
| Publication frequency: | Quarterly |
| Next publication date: | 7 June 2012 |

Introduction

This official statistics release reports on children's centre inspections that occurred between 1 April 2010 and 31 December 2011 under Section 3A of the Childcare Act 2006.

Data for inspections carried out between 1 October 2011 and 31 December 2011 are provisional and subject to change. Ofsted will release final statistics for this period on 7 June 2012.

Contents

| | |
|--|----|
| Introduction | 2 |
| Key findings | 3 |
| Methodology | 4 |
| Additional information | 4 |
| Chart 1: Key inspection judgements for children's centres inspected between 1 October 2011 and 31 December 2011 (provisional) | 5 |
| Chart 2: Overall effectiveness of children's centres inspected between April 2010 and 31 December 2011, by quarter | 5 |
| Table 1: Number of children's centres inspected between 1 April 2010 and 31 December 2011, by quarter and monthly period | 6 |
| Table 2: Inspection outcomes of children's centres inspected between 1 October 2011 and 30 December 2011 (provisional) | 7 |
| Table 3: Inspection outcomes of children's centres inspected between 1 April 2010 and 31 December 2011 (provisional) | 9 |
| Table 4: Most recent inspection outcomes of children's centres inspected between 1 April 2010 and 31 December 2011 (provisional) | 11 |
| Table 5: Overall effectiveness of children's centres inspected between 1 April 2010 and 31 December 2011, by quarter | 13 |
| Glossary | 14 |

Key findings

Latest quarter

- Of the 203 children's centres inspected between 1 October 2011 and 31 December 2011, 67% were judged good or outstanding for overall effectiveness. This is an increase of three percentage points on the last quarter, following on from the declining trend in the previous three quarters.
- Compared with the the same quarter in 2010 the proportion of good and outstanding providers is lower by eight percentage points.
- Three of the children's centres inspected in this quarter were judged inadequate. This is one less than during the previous quarter.
- The judgements for outcomes for users and for leadership and management are in-line with the overall effectiveness judgement; however, judgements for the quality of provision were more positive.
- The strongest aspects of provision were found in the effectiveness of the centre's policy, procedures and work with key agencies in safeguarding children, where 87% of children's centres inspected this quarter were judged good or outstanding. The next highest judgements were for the quality of care, guidance and support offered to families (86%) and the extent to which children are safe and protected (86%).
- The least positive outcomes for users are the extent to which children are developing skills for the future and parents are developing economic stability and independence, where 52% of centres were judged good or outstanding. This is a two percentage point decrease on the previous quarter.
- The effectiveness of evaluation and its use in setting ambitious targets which secure improvement in outcomes was the next least positive outcome, where 61% of centres were judged good or outstanding. However, this is a seven percentage point increase on the month of September 2011 figure.

All inspections (1 April 2010 – 31 December 2011)

- The inspection of children's centres commenced in May 2010. Since then, 1,007 children's centres have been inspected and their findings published on the Ofsted website.
- Of the 1,007 centres inspected, 71% were judged as good or outstanding for overall effectiveness at their most recent inspection and almost all (99%) were judged to be at least satisfactory.
- Twenty children's centres have been judged inadequate since May 2010. Of these, six centres have received a second inspection. All six were judged satisfactory for overall effectiveness at this most recent inspection.

Methodology

1. The data in this release are from inspections carried out between 1 April 2010 and 31 December 2011.
2. Statistics relating to inspections undertaken in the most recent quarter are provisional and include inspections in the period where the inspection report was published within one month of the end of the quarter. If exceptionally, an inspection report is published later than one month after the end of the quarter in which the inspection took place, it will be included in the final release of the statistics.
3. Following an evaluation of the first year of children's centre inspection, the children's centre inspection framework was refreshed to remove repetition and ensure a sharper focus on families in target groups. The refreshed evaluation schedule took effect on 1 September 2011 and impacts on the way the statistics should be viewed. Two judgements in the quality of provision section and two in the leadership and management section were combined. The outcomes for these new judgements do not match across to either of the judgements they replaced. Furthermore, whilst the wording of most of the remaining children's centre judgements were slightly amended to increase the focus on outcomes, in particular for families in target groups and those most in need of intervention and support, the focus of inspection has not significantly changed. These judgements, therefore, match across to their April 2010 to August 2011 iterations.
4. Revisions are published in line with Ofsted's revisions policy for official statistics which can be found on the Ofsted website:

<http://www.ofsted.gov.uk/resources/statistical-notice-ofsted-revisions-policy-for-official-statistics>

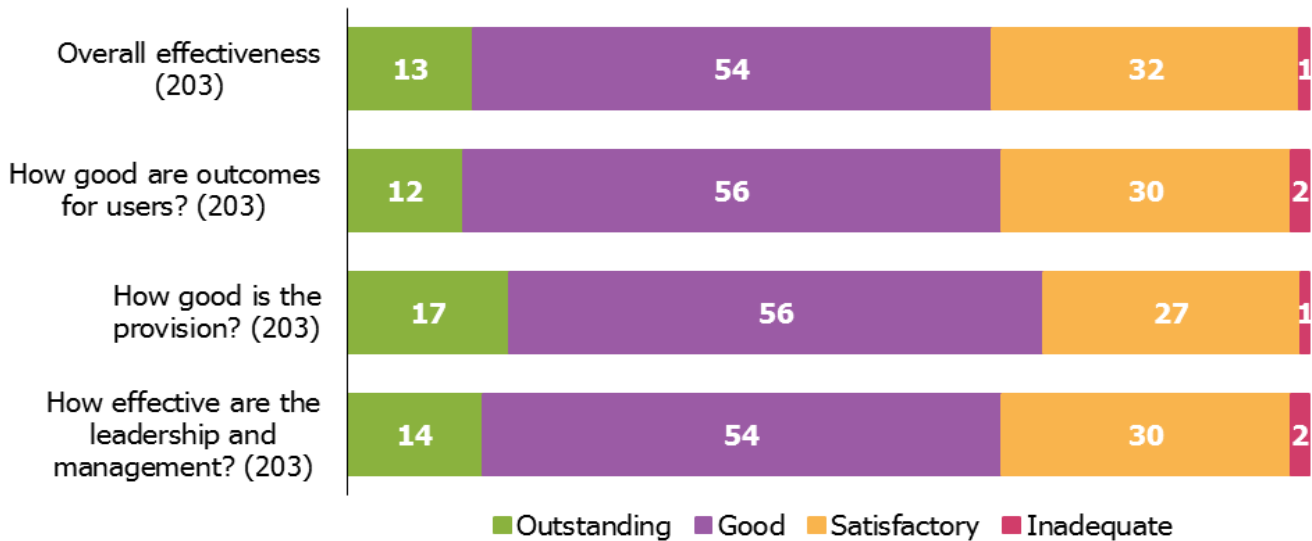
5. The inspection framework for children's centres was published in April 2010 and refreshed in September 2011. For more information about the framework and how Ofsted inspects children's centres please go to the Ofsted website:

<http://www.ofsted.gov.uk/Ofsted-home/Forms-and-guidance/Browse-all-by/Other/General/Framework-for-children-s-centre-inspection>.

Additional information

All the tables and charts shown in this release, along with additional analysis by month and at regional and local authority level, are available in Excel and csv format on the Ofsted website in the same location as this document.

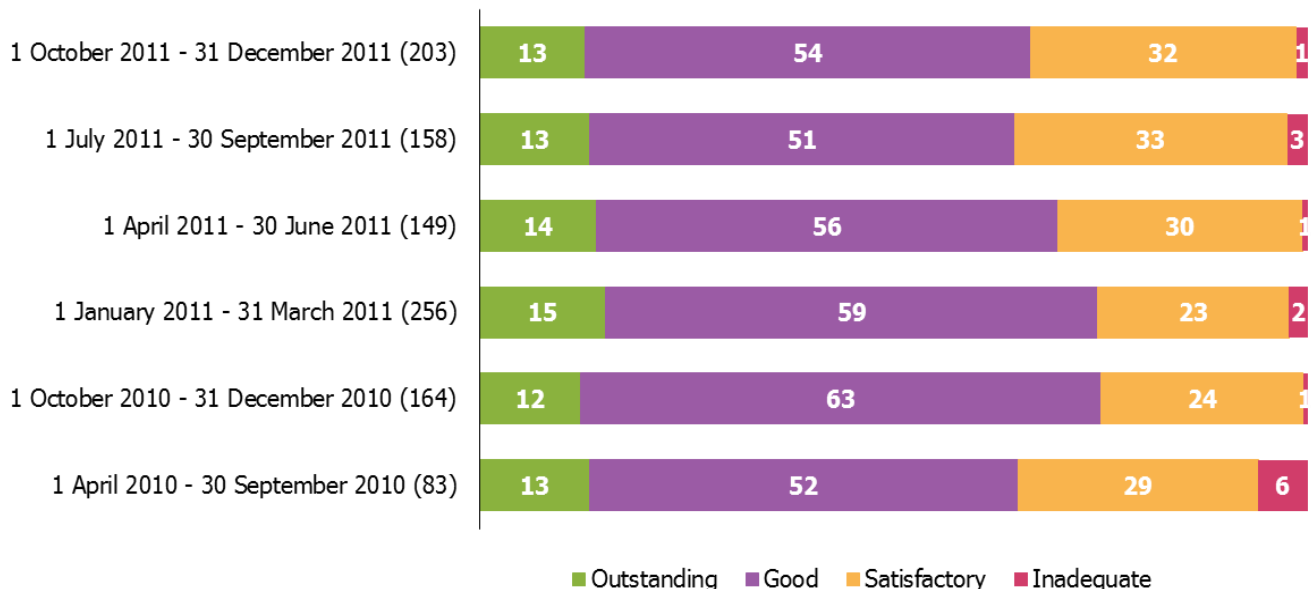
Chart 1: Key inspection judgements for children's centres inspected between 1 October 2011 and 31 December 2011 (provisional)¹



Source: Ofsted Inspections

1. Percentages are rounded and may not add to 100.

Chart 2: Overall effectiveness of children's centres inspected between 1 April 2010 and 31 December 2011, by quarter¹



Source: Ofsted Inspections

1. Percentages are rounded and may not add to 100.

2. Data for 1 October 2011 and 31 December 2011 are provisional.

3. The first two quarters of children's centres inspection have been combined for this chart owing to the small number of centres inspected during this period.

Table 1: Number of children's centres inspected between 1 April 2010 and 31 December 2011, by quarter and monthly period

| | Full inspections |
|---|-------------------------|
| All inspections ¹ | 1,013 |
| First year (1 April 2010 - 31 March 2011) | 503 |
| 1 April 2010 - 30 June 2010 | 23 |
| 1 July 2010 - 30 September 2010 | 60 |
| 1 October 2010 - 31 December 2010 | 164 |
| 1 January 2011 - 31 March 2011 | 256 |
| January 2011 | 52 |
| February 2011 | 80 |
| March 2011 | 124 |
| Second year (1 April 2011 - 30 September 2012) ¹ | 510 |
| 1 April 2011 - 30 June 2011 | 149 |
| April 2011 | 18 |
| May 2011 | 66 |
| June 2011 | 65 |
| 1 July 2011 - 30 September 2011 | 158 |
| July 2011 | 64 |
| August 2011 | 33 |
| September 2011 | 61 |
| 1 October 2011 - 31 December 2011 ¹ | 203 |
| October 2011 ¹ | 78 |
| November 2011 ¹ | 85 |
| December 2011 ¹ | 40 |

Source: Ofsted Inspections

1. Data are provisional.

Table 2: Inspection outcomes of children's centres inspected between 1 October 2011 and 31 December 2011 (provisional)^{1 2}

| | Total number inspected | Outstanding | | Good | | Satisfactory | | Inadequate | |
|---|------------------------|-------------|-----------|------------|-----------|--------------|-----------|------------|----------|
| | | Number | % | Number | % | Number | % | Number | % |
| The effectiveness of the children's centre in meeting the needs of and improving outcomes for families | 203 | 26 | 13 | 109 | 54 | 65 | 32 | 3 | 1 |
| The centre's capacity for sustained improvement, including the quality of its leadership and management | 203 | 30 | 15 | 110 | 54 | 60 | 30 | 3 | 1 |
| How good are outcomes for families? | 203 | 24 | 12 | 114 | 56 | 61 | 30 | 4 | 2 |
| The extent to which children, including those from target groups, are physically, mentally and emotionally healthy and families have healthy lifestyles | 203 | 24 | 12 | 112 | 55 | 67 | 33 | 0 | 0 |
| The extent to which children are safe and protected, their welfare concerns are identified and appropriate steps taken to address them | 203 | 52 | 26 | 121 | 60 | 28 | 14 | 2 | 1 |
| The extent to which all children and parents, including those from target groups, enjoy and achieve educationally and in their personal and social development | 203 | 32 | 16 | 116 | 57 | 55 | 27 | 0 | 0 |
| The extent to which children engage in positive behaviour and develop positive relationships and parents, including those from target groups, contribute to decision-making and governance of the centre | 203 | 35 | 17 | 98 | 48 | 67 | 33 | 3 | 1 |
| The extent to which children are developing skills for the future and parents, including those from target groups, are developing economic stability and independence including access to training and employment | 203 | 18 | 9 | 88 | 43 | 96 | 47 | 1 | 0 |
| How good is the provision? | 203 | 34 | 17 | 113 | 56 | 54 | 27 | 2 | 1 |
| ³ The extent to which the range of services, activities and opportunities meet the needs of families, including those in target groups | 203 | 29 | 14 | 109 | 54 | 62 | 31 | 3 | 1 |
| The extent to which the centre promotes purposeful learning, development and enjoyment for all families, including those in target groups | 203 | 33 | 16 | 114 | 56 | 56 | 28 | 0 | 0 |

Table 2 (continued)

| | Total number inspected | Outstanding | | Good | | Satisfactory | | Inadequate | |
|--|------------------------|-------------|-----------|------------|-----------|--------------|-----------|------------|----------|
| | | Number | % | Number | % | Number | % | Number | % |
| The quality of care, guidance and support offered to families, including those in target groups | 203 | 72 | 35 | 104 | 51 | 26 | 13 | 1 | 0 |
| How effective are the leadership and management? | 203 | 28 | 14 | 110 | 54 | 61 | 30 | 4 | 2 |
| The extent to which governance, accountability, professional supervision and day-to-day management arrangements are clear and understood | 203 | 26 | 13 | 110 | 54 | 63 | 31 | 4 | 2 |
| ³ The effectiveness of evaluation and its use in setting ambitious targets which secure improvement in outcomes | 203 | 28 | 14 | 95 | 47 | 76 | 37 | 4 | 2 |
| The extent to which resources are used and managed efficiently and effectively to meet the needs of families, including those in target groups | 203 | 32 | 16 | 104 | 51 | 64 | 32 | 3 | 1 |
| The extent to which equality is promoted and diversity celebrated, illegal or unlawful discrimination is tackled and the centre fulfils its statutory duties | 203 | 30 | 15 | 107 | 53 | 64 | 32 | 2 | 1 |
| The effectiveness of the centre's policy, procedures and work with key agencies in safeguarding children and, where applicable, vulnerable adults | 203 | 59 | 29 | 117 | 58 | 25 | 12 | 2 | 1 |
| The extent to which partnerships with other agencies ensure the integrated delivery of the range of services provided by the centre to meet its core purpose | 203 | 45 | 22 | 107 | 53 | 50 | 25 | 1 | 0 |
| The extent to which the centre supports and encourages families in the reach area to engage with services and uses their views to develop the range of provision | 203 | 29 | 14 | 106 | 52 | 67 | 33 | 1 | 0 |

Source: Ofsted Inspections

1. Percentages are rounded and may not add to 100.

2. Where the number of inspections is small, percentages are not shown.

3. Judgement only made at inspections since 1 September 2011.

4. Wording of some judgements refreshed on 1 September 2011 but the criteria for assessing them remained unchanged. Data are amalgamated for inspections conducted before and after this date.

Table 3: Inspection outcomes of children's centres inspected between 1 October 2011 and 31 December 2011 (provisional)^{1 2}

| | Total number inspected | Outstanding | | Good | | Satisfactory | | Inadequate | |
|---|------------------------|-------------|-----------|------------|-----------|--------------|-----------|------------|----------|
| | | Number | % | Number | % | Number | % | Number | % |
| The effectiveness of the children's centre in meeting the needs of and improving outcomes for families | 1,013 | 138 | 14 | 571 | 56 | 284 | 28 | 20 | 2 |
| The centre's capacity for sustained improvement, including the quality of its leadership and management | 1,013 | 157 | 15 | 571 | 56 | 264 | 26 | 21 | 2 |
| How good are outcomes for families? | 1,013 | 132 | 13 | 606 | 60 | 262 | 26 | 13 | 1 |
| The extent to which children, including those from target groups, are physically, mentally and emotionally healthy and families have healthy lifestyles | 1,013 | 153 | 15 | 584 | 58 | 273 | 27 | 3 | 0 |
| The extent to which children are safe and protected, their welfare concerns are identified and appropriate steps taken to address them | 1,013 | 239 | 24 | 627 | 62 | 141 | 14 | 6 | 1 |
| The extent to which all children and parents, including those from target groups, enjoy and achieve educationally and in their personal and social development | 1,013 | 158 | 16 | 620 | 61 | 229 | 23 | 6 | 1 |
| The extent to which children engage in positive behaviour and develop positive relationships and parents, including those from target groups, contribute to decision-making and governance of the centre | 1,013 | 175 | 17 | 542 | 54 | 284 | 28 | 12 | 1 |
| The extent to which children are developing skills for the future and parents, including those from target groups, are developing economic stability and independence including access to training and employment | 1,013 | 105 | 10 | 513 | 51 | 387 | 38 | 8 | 1 |
| How good is the provision? | 1,013 | 170 | 17 | 583 | 58 | 249 | 25 | 11 | 1 |
| ⁴ The effectiveness of the assessment of the needs of children, parents and other users | 750 | 169 | 23 | 400 | 53 | 173 | 23 | 8 | 1 |
| ³ The extent to which the range of services, activities and opportunities meet the needs of families, including those in target groups | 263 | 39 | 15 | 133 | 51 | 87 | 33 | 4 | 2 |
| The extent to which the centre promotes purposeful learning, development and enjoyment for all families, including those in target groups | 1,013 | 154 | 15 | 626 | 62 | 226 | 22 | 7 | 1 |
| ⁴ The extent to which the range of services, activities and opportunities meet the needs of users and the wider community | 750 | 124 | 17 | 413 | 55 | 204 | 27 | 9 | 1 |

Table 3 (continued)

| | Total number inspected | Outstanding | | Good | | Satisfactory | | Inadequate | |
|--|------------------------|-------------|-----------|------------|-----------|--------------|-----------|------------|----------|
| | | Number | % | Number | % | Number | % | Number | % |
| The quality of care, guidance and support offered to families, including those in target groups | 1,013 | 356 | 35 | 519 | 51 | 133 | 13 | 5 | 0 |
| How effective are the leadership and management? | 1,013 | 152 | 15 | 571 | 56 | 270 | 27 | 20 | 2 |
| The extent to which governance, accountability, professional supervision and day-to-day management arrangements are clear and understood | 1,013 | 153 | 15 | 546 | 54 | 289 | 29 | 25 | 2 |
| ³ The effectiveness of evaluation and its use in setting ambitious targets which secure improvement in outcomes | 263 | 38 | 14 | 117 | 44 | 103 | 39 | 5 | 2 |
| ⁴ The extent to which ambitious targets drive improvement, provision is integrated and there are high expectations for users and the wider community | 750 | 127 | 17 | 392 | 52 | 213 | 28 | 18 | 2 |
| The extent to which resources are used and managed efficiently and effectively to meet the needs of families, including those in target groups | 1,013 | 186 | 18 | 534 | 53 | 279 | 28 | 14 | 1 |
| The extent to which equality is promoted and diversity celebrated, illegal or unlawful discrimination is tackled and the centre fulfils its statutory duties | 1,013 | 152 | 15 | 569 | 56 | 282 | 28 | 10 | 1 |
| The effectiveness of the centre's policy, procedures and work with key agencies in safeguarding children and, where applicable, vulnerable adults | 1,013 | 272 | 27 | 593 | 59 | 139 | 14 | 9 | 1 |
| ⁴ The extent to which evaluation is used to shape and improve services and activities | 750 | 98 | 13 | 349 | 47 | 282 | 38 | 21 | 3 |
| The extent to which partnerships with other agencies ensure the integrated delivery of the range of services provided by the centre to meet its core purpose | 1,013 | 292 | 29 | 493 | 49 | 220 | 22 | 8 | 1 |
| The extent to which the centre supports and encourages families in the reach area to engage with services and uses their views to develop the range of provision | 1,013 | 158 | 16 | 534 | 53 | 303 | 30 | 18 | 2 |

Source: Ofsted Inspections

1. Percentages are rounded and may not add to 100.

2. Wording of some judgements refreshed on 1 September 2011 but the criteria for assessing them remained unchanged. Data are amalgamated for inspections conducted before and after this date.

3. Judgement only made at inspections since 1 September 2011.

4. Judgement only made at inspections between 1 April 2010 and 31 August 2011.

Table 4: Most recent inspection outcomes of children's centres inspected between 1 April 2010 and 31 December 2011 (provisional)^{1 2}

| | Total number inspected | Outstanding | | Good | | Satisfactory | | Inadequate | |
|---|------------------------|-------------|-----------|------------|-----------|--------------|-----------|------------|----------|
| | | Number | % | Number | % | Number | % | Number | % |
| The effectiveness of the children's centre in meeting the needs of and improving outcomes for families | 1,007 | 138 | 14 | 571 | 57 | 284 | 28 | 14 | 1 |
| The centre's capacity for sustained improvement, including the quality of its leadership and management | 1,007 | 157 | 16 | 571 | 57 | 263 | 26 | 16 | 2 |
| How good are outcomes for families? | 1,007 | 132 | 13 | 606 | 60 | 260 | 26 | 9 | 1 |
| The extent to which children, including those from target groups, are physically, mentally and emotionally healthy and families have healthy lifestyles | 1,007 | 153 | 15 | 584 | 58 | 268 | 27 | 2 | 0 |
| The extent to which children are safe and protected, their welfare concerns are identified and appropriate steps taken to address them | 1,007 | 239 | 24 | 627 | 62 | 137 | 14 | 4 | 0 |
| The extent to which all children and parents, including those from target groups, enjoy and achieve educationally and in their personal and social development | 1,007 | 158 | 16 | 620 | 62 | 225 | 22 | 4 | 0 |
| The extent to which children engage in positive behaviour and develop positive relationships and parents, including those from target groups, contribute to decision-making and governance of the centre | 1,007 | 175 | 17 | 542 | 54 | 280 | 28 | 10 | 1 |
| The extent to which children are developing skills for the future and parents, including those from target groups, are developing economic stability and independence including access to training and employment | 1,007 | 105 | 10 | 513 | 51 | 384 | 38 | 5 | 0 |
| How good is the provision? | 1,007 | 170 | 17 | 583 | 58 | 246 | 24 | 8 | 1 |
| ⁴ The effectiveness of the assessment of the needs of children, parents and other users | 744 | 169 | 23 | 400 | 54 | 170 | 23 | 5 | 1 |
| ³ The extent to which the range of services, activities and opportunities meet the needs of families, including those in target groups | 263 | 39 | 15 | 133 | 51 | 87 | 33 | 4 | 2 |
| The extent to which the centre promotes purposeful learning, development and enjoyment for all families, including those in target groups | 1,007 | 154 | 15 | 626 | 62 | 222 | 22 | 5 | 0 |
| ⁴ The extent to which the range of services, activities and opportunities meet the needs of users and the wider community | 744 | 124 | 17 | 413 | 56 | 202 | 27 | 5 | 1 |

Table 4 (continued)

| | Total number inspected | Outstanding | | Good | | Satisfactory | | Inadequate | |
|--|------------------------|-------------|-----------|------------|-----------|--------------|-----------|------------|----------|
| | | Number | % | Number | % | Number | % | Number | % |
| The quality of care, guidance and support offered to families, including those in target groups | 1,007 | 356 | 35 | 519 | 52 | 129 | 13 | 3 | 0 |
| How effective are the leadership and management? | 1,007 | 152 | 15 | 571 | 57 | 270 | 27 | 14 | 1 |
| The extent to which governance, accountability, professional supervision and day-to-day management arrangements are clear and understood | 1,007 | 153 | 15 | 546 | 54 | 288 | 29 | 20 | 2 |
| ³ The effectiveness of evaluation and its use in setting ambitious targets which secure improvement in outcomes | 263 | 38 | 14 | 117 | 44 | 103 | 39 | 5 | 2 |
| ⁴ The extent to which ambitious targets drive improvement, provision is integrated and there are high expectations for users and the wider community | 744 | 127 | 17 | 392 | 53 | 212 | 28 | 13 | 2 |
| The extent to which resources are used and managed efficiently and effectively to meet the needs of families, including those in target groups | 1,007 | 186 | 18 | 534 | 53 | 276 | 27 | 11 | 1 |
| The extent to which equality is promoted and diversity celebrated, illegal or unlawful discrimination is tackled and the centre fulfils its statutory duties | 1,007 | 152 | 15 | 569 | 57 | 279 | 28 | 7 | 1 |
| The effectiveness of the centre's policy, procedures and work with key agencies in safeguarding children and, where applicable, vulnerable adults | 1,007 | 272 | 27 | 592 | 59 | 137 | 14 | 6 | 1 |
| ⁴ The extent to which evaluation is used to shape and improve services and activities | 744 | 98 | 13 | 349 | 47 | 281 | 38 | 16 | 2 |
| The extent to which partnerships with other agencies ensure the integrated delivery of the range of services provided by the centre to meet its core purpose | 1,007 | 292 | 29 | 493 | 49 | 215 | 21 | 7 | 1 |
| The extent to which the centre supports and encourages families in the reach area to engage with services and uses their views to develop the range of provision | 1,007 | 158 | 16 | 534 | 53 | 300 | 30 | 15 | 1 |

Source: Ofsted Inspections

1. Percentages are rounded and may not add to 100.

2. Wording of some judgements refreshed on 1 September 2011 but the criteria for assessing them remained unchanged. Data are amalgamated for inspections conducted before and after this date.

3. Judgement only made at inspections since 1 September 2011.

4. Judgement only made at inspections between 1 April 2010 and 31 August 2011.

Table 5: Overall effectiveness of children's centres inspected between 1 April 2010 and 31 December 2011, by quarter¹

| | Total number inspected | Outstanding | | Good | | Satisfactory | | Inadequate | |
|--|------------------------|-------------|----|--------|----|--------------|----|------------|---|
| | | Number | % | Number | % | Number | % | Number | % |
| 1 October 2011 - 31 December 2011 ² | 203 | 26 | 13 | 109 | 54 | 65 | 32 | 3 | 1 |
| 1 July 2011 - 30 September 2011 | 158 | 21 | 13 | 81 | 51 | 52 | 33 | 4 | 3 |
| 1 April 2011 - 30 June 2011 | 149 | 21 | 14 | 83 | 56 | 44 | 30 | 1 | 1 |
| 1 January 2011 - 31 March 2011 | 256 | 39 | 15 | 152 | 59 | 59 | 23 | 6 | 2 |
| 1 October 2010 - 31 December 2010 | 164 | 20 | 12 | 103 | 63 | 40 | 24 | 1 | 1 |
| 1 July 2010 - 30 September 2010 ³ | 60 | 8 | 13 | 34 | 57 | 16 | 27 | 2 | 3 |
| 1 April 2010 - 30 June 2010 ⁴ | 23 | 3 | - | 9 | - | 8 | - | 3 | - |

Source: Ofsted Inspections

1. Where the number of inspections is small, percentages are not shown.
2. Data are provisional.
3. There were no inspections of children's centres carried out in August 2010.
4. Inspection of children's centres commenced in May 2010.

Glossary

Children's centres

Children's centres are expected to provide, or make arrangements for parents-to-be and families with young children, including wider family members such as grandparents, to access early childhood services. They are a local port of call when a mother, father or carer needs help or advice; whether that is in relation to their role as parent/carer, or their child's well-being or learning and development, or simply to find out about neighbourhood activities for parents or activities for children including play groups or nurseries. In this context, early childhood services are:

- childcare for young children
- social services functions of the local authority relating to young children, parents and prospective parents
- health services relating to young children, parents and prospective parents
- employment support from Jobcentre Plus for parents or prospective parents¹
- the local authority's information, advice and assistance service relating to childcare and other services and facilities relevant to young children and their families.

Additional full inspections

Children's centres judged inadequate for overall effectiveness will receive an additional full inspection approximately 12 months after the inspection that judged them to be inadequate. Apart from inadequate provision, Ofsted will inspect all other provision once in the current cycle, which is due to end in 2015.

© Crown copyright

You may re-use this information (not including logos) free of charge in any format or medium, under the terms of the Open Government Licence. To view this licence, visit <http://www.nationalarchives.gov.uk/doc/open-government-licence/> or write to the Information Policy Team, The National Archives, Kew, London, TW9 4DU or e-mail: psi@nationalarchives.gsi.gov.uk.

¹ This may include partnership working with other services to provide services to parents and prospective parents on site or by referral elsewhere.