



Education
Funding
Agency

Business Plan

2012-15

April 2012

This plan will be updated annually

Contents

The Education Funding Agency (EFA)	2
The EFA Business Plan in Context	3
EFA High-level Objectives 2012-15	4
Priorities	5
Key deliverables and performance measures for 2012-13	6
Organisational Structure of the Education Funding Agency	7
Planned Investment 2012-13	8

1. The Education Funding Agency (EFA)

The Education Funding Agency (EFA) was established on 1 April 2012 as an Executive Agency of the Department for Education (DfE). Annex A sets out the structure of the EFA.

The EFA's principal responsibilities are:

- to provide funding for the education of pupils in academies;
- to distribute the Dedicated Schools Grant for the education of pupils up to age 16 in local authority maintained schools;
- to provide funding for all 16-19 education and training;
- to provide funding for learners with learning difficulties and/or disabilities aged 16-25;
- to support the delivery of capital programmes for schools, academies, Free Schools and sixth form colleges.

2. The EFA Business Plan in Context

The EFA Business Plan has been developed in the context of the Department for Education Business Plan 2011-2015 and the Framework Document agreed between the Secretary of State for Education and the EFA Chief Executive. The plan will be updated annually.

The plan supports the Government's priorities for reform, which are to:

- increase the number of high quality schools and introduce fair funding;
- reform the school curriculum and qualifications;
- reduce bureaucracy and improve accountability;
- train and develop the professionals who work with children;
- introduce new support for Early Years;
- improve support for children, young people and families, focusing on the most disadvantaged.

3. EFA High-level Objectives 2012-15

The EFA has four high-level objectives.

- **Allocations:** ensuring that revenue and capital allocations are accurate and on time.
- **Payments:** ensuring that funding agreements are in place and payments are made accurately and on time.
- **Capital:** delivering effective programme management and evaluation of strategic capital programmes that will improve the condition of existing buildings and support the creation of new places for pupils and learners.
- **Financial Assurance:** ensuring the proper use of public funds through financial assurance undertaken by the EFA itself, or by others.

4. Priorities

Academies and School Funding

- Calculate annual revenue funding allocations for all open academies, including Free Schools.
- Develop and simplify the school funding system and allocate dedicated schools grant to local authorities.
- Provide an efficient customer enquiry service for academies on issues arising from the funding agreement and deal with any compliance issues on behalf of the Secretary of State.

Young People

- Allocate 16-19 revenue funding and learner support budgets to 2,500 providers accurately and on time.
- Maintain and develop the funding systems for 16-19 education and for learners with learning difficulties and/or disabilities up to age 25.
- Tender and fund the 'youth contract' allocations for disengaged 16 and 17-year-olds.

Capital

- Provide programme management and support for Free Schools, Building Schools for the Future and the Priority School Building Programme, and make capital grants for building programmes at academies and sixth form colleges.
- Ensure capital investment is delivered on time, on budget and to agreed quality standards.
- Provide advice and guidance on the effective and efficient design of school buildings.

Finance, Performance and Maintained Schools

- Make payments to local authorities (for maintained schools), academies, sixth form colleges, further education colleges and other providers, accurately and on time.
- Seek assurance on the proper use of funds provided by the EFA.
- Prepare and publish accurate accounts for the EFA's £52 billion spend.

5. Key Deliverables and Performance Measures 2012-13

The EFA will publish details of its performance against the following service standards:

Allocations

- Proportion of allocations made accurately and on time.

Payments

- Proportion of payments made accurately and on time.

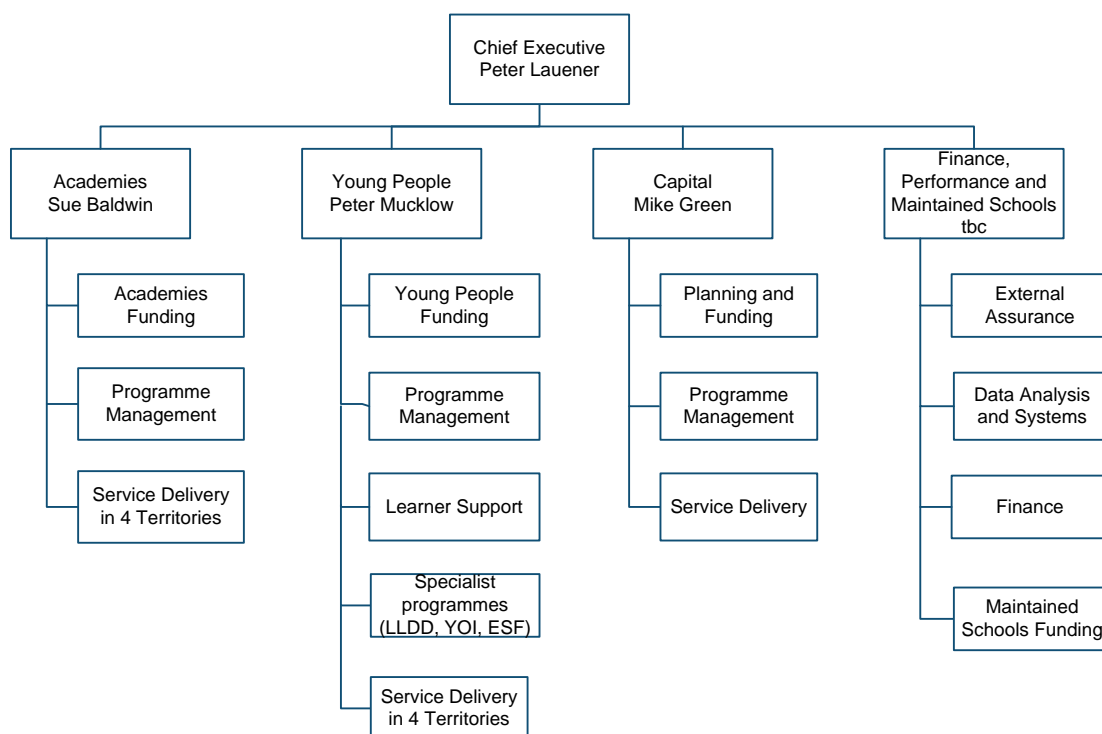
Capital

- Percentage of academy, Free School, University Technical College, Studio School projects completed on time.
- Progress on delivery of Priority Schools Building Programme and Building Schools for the Future.
- Progress on securing up to date information on the condition of the nation's schools.

Financial Assurance

- Timely receipt, and where relevant consolidation, of all financial returns from academies, sixth form colleges and local authorities.
- External assurance visits undertaken to academies and sixth form colleges in line with the external assurance plan.

Organisational Structure of the Education Funding Agency



Note

LLDD Learners with learning difficulties and/or disabilities
 YOI Young Offender Institutions
 ESF European Social Fund

The four EFA territories cover the following regions:

North North West, North East, Yorkshire and the Humber
 West West Midlands, South West
 East East Midlands, East of England
 South South East, Greater London

Planned Investment 2012-13

Area of Spend	£ million
Pre-16	
Dedicated Schools Grant	28,912
Capital	4,228
Pupil Premium	1,250
Private Finance Initiative	692
Academies	9,383
16-19	
Sixth forms (including academies)	2,349
Further education	3,985
Youth Contract	42
Learners with Learning Difficulties and/or Disabilities	261
Capital	109
Financial support for 16-18 year olds	275
Administration	
EFA administration	70
Total	
Total planned investment	51,556



Education
Funding
Agency

© Crown copyright 2012

You may re-use this information (excluding logos) free of charge in any format or medium, under the terms of the Open Government Licence. To view this licence, visit <http://www.nationalarchives.gov.uk/doc/open-government-licence/> or e-mail: psi@nationalarchives.gsi.gov.uk.

Where we have identified any third party copyright information you will need to obtain permission from the copyright holders concerned.

Any enquiries regarding this publication should be sent to us at:
<http://www.education.gov.uk/help/contactus>.

This document is also available from our website at
www.education.gov.uk/educationfundingagency