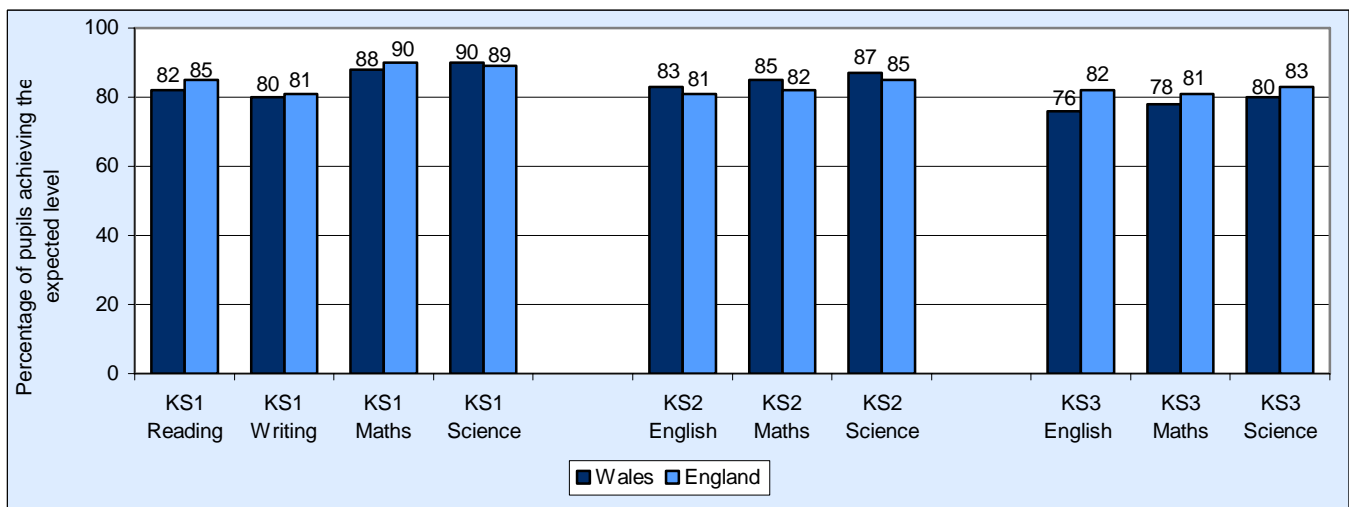


## Assessment Performance in Wales: Comparison with England and its Regions, 2011

This Statistical Bulletin presents a summary of previously published Key Stage 1 to 3 results for Wales, England and the English Government Office Regions (GOR).

*Note: The national results presented for Wales and England in Tables 1 to 3 include both maintained and independent schools. They differ from figures 1 to 10 which relate to maintained schools only in Wales and the English GORs (published in the Department for Education Releases SFR 22/2011, SFR 31/2011, SFR18/2011).*

**Chart 1: Key Stage 1, 2 and 3 teacher assessment results summary, all schools in England and Wales, 2011**



### Key Results

**Key Stage 1:** Table 1 (all schools) and Charts 1 to 4 (maintained schools)

- In 2011, the proportion of pupils in Wales achieving the expected level was slightly lower than England in all subjects with the exception of Science, where the average for Wales was slightly higher at 90 per cent.
- The difference in performance was greatest in English Reading teacher assessments, where there was a 3 percentage point difference between England and Wales in 2011.
- Results for pupils in Wales were lower than all GORs in England for English Reading. For Mathematics Wales maintained one of the lowest results. There was parity between Wales and England for English writing. In Science however, Wales shared the highest position with the South East.

**Statistician:** Stephen Hughes

**Tel:** 029 2082 5060

**E-mail:** school.stats@wales.gsi.gov.uk

**Next update:** Jan 2013 (provisional)

**Twitter:** www.twitter.com/statisticswales | www.twitter.com/ystadegaucymru

Cyhoeddwyd gan Y Gwasanaethau Gwybodaeth a Dadansoddi  
Llywodraeth Cymru, Parc Cathays, Caerdydd, CF10 3NQ  
Ffôn – Swyddfa'r Wasg **029 2089 8099**, Ymholiadau Cyhoeddus **029 2082 3332**  
**www.cymru.gov.uk/ystadegau**

Issued by Knowledge and Analytical Services

Welsh Government, Cathays Park, Cardiff, CF10 3NQ

Telephone – Press Office **029 2089 8099**, Public Enquiries **029 2082 5050**

**www.wales.gov.uk/statistics**



**Llywodraeth Cymru**  
**Welsh Government**

- In 2002 in Science, England outperformed Wales by 1 percentage point. This gap had closed by 2006 and from 2008 onwards Wales has performed better.
- In all other subjects England continue to outperform Wales, a trend that has existed over the last decade. The biggest difference since 2002 can be seen in English reading with an average difference of 3 percentage points over the period 2002-2011.

**Key Stage 2:** *Table 2 (all schools) and Charts 5 to 7 (maintained schools)*

- In 2011, pupils in Wales performed better than their counterparts in England in all subjects.
- The difference in performance was greatest in Mathematics: in 2011, 85 per cent of pupils in Wales achieved the expected level compared with 82 per cent in England.
- The figures for 2011 continue the trend of the last decade where Wales has performed better in all subjects.
- In 2011, pupils in maintained schools in Wales achieved higher results than all GORs in England in English, Mathematics and Science.

**Key Stage 3:** *Table 3 (all schools) and Charts 8 to 10 (maintained schools)*

- In 2011, the proportion of pupils in Wales achieving the expected level was lower than England for all subjects.
- The difference in performance was greatest in English, where there was a 6 percentage points difference between England and Wales in 2011. This difference has decreased by 1 percentage point since 2010.
- England have outperformed Wales in most years in the last decade, the exception being in Science in 2004 and 2005.
- Results for pupils in Wales were lower than all GORs in England for English and for Mathematics. The results for Science put Wales above one English GOR, London.

**Table 1: Key Stage 1 - National Curriculum Assessments of 7 year olds, Wales and England (a)**

	Percentage of all pupils attaining the expected level by Teacher Assessment (TA)	
	Wales	England (b)
Key Stage 1:		
English (c)		
2002	83	85
2003	82	85
2004	83	85
2005	84	..
2006	83	..
2007	82	..
2008	82	..
2009	83	..
2010	83	..
2011	84	..
English Reading		
2002	82	85
2003	81	85
2004	82	85
2005	82	85
2006	82	84
2007	81	84
2008	81	84
2009	81	84
2010	81	85
2011	82	85
English Writing		
2002	81	84
2003	80	82
2004	80	83
2005	81	82
2006	80	81
2007	79	80
2008	79	80
2009	79	81
2010	79	81
2011	80	81
Mathematics		
2002	88	89
2003	87	89
2004	87	89
2005	87	91
2006	87	90
2007	87	90
2008	87	90
2009	87	89
2010	87	89
2011	88	90
Science		
2002	88	89
2003	88	89
2004	89	90
2005	89	90
2006	89	89
2007	89	89
2008	90	89
2009	90	89
2010	90	89
2011	90	89

(a) Includes all maintained schools and those independent schools that returned results. The data shown in Charts 1-4 include maintained schools only and may differ from this table.

Since 2002 in Wales statutory assessment at the end of Key Stage 1 has been by means of teacher assessment only.

The general expectation is the majority of 7 year olds will attain level 2.

(b) England data for 2011 is provisional.

**Table 2: Key Stage 2 - National Curriculum Assessments of 11 year olds, Wales and England (a)**

	Percentage of all pupils attaining the expected level by Teacher Assessment (TA)	
	Wales	England (b)
Key Stage 2		
English		
2002	76	73
2003	76	72
2004	77	74
2005	79	75
2006	79	77
2007	79	78
2008	80	79
2009	81	79
2010	82	81
2011	83	81
Mathematics		
2002	75	74
2003	76	74
2004	78	75
2005	80	76
2006	81	78
2007	80	78
2008	81	79
2009	82 r	80
2010	83	81
2011	85	82
Science		
2002	83	82
2003	84	82
2004	86	82
2005	87	83
2006	86	84
2007	85	85
2008	86	85
2009	86 r	86
2010	86	85
2011	87	85

(a) Includes all maintained schools and those independent schools that returned results. The data shown in

Charts 5-7 include maintained schools only and may differ from this table.

Since 2005 in Wales statutory assessment at the end of Key Stage 2 has been by means of teacher assessment only.

The general expectation is the majority of 11 year olds will attain level 4.

(b) England data for 2011 is provisional.

(r) revised on 26 June 2012. Minor revisions only.

**Table 3: Key Stage 3 - National Curriculum Assessments of 14 year olds, Wales and England (a)**

	Percentage of all pupils attaining the expected level by Teacher Assessment (TA)	
	Wales	England (b)
Key Stage 3		
English		
2002	64	67
2003	65	68
2004	67	69
2005	67	71
2006	68	73
2007	69	74
2008	69	76
2009	71 r	77
2010	72	79
2011	76	82
Mathematics		
2002	66	70
2003	69	72
2004	71	74
2005	73	75
2006	72	77
2007	70	79
2008	72	79
2009	73 r	79
2010	75	80
2011	78	81
Science		
2002	66	67
2003	69	69
2004	72	71
2005	72	71
2006	73	73
2007	70	75
2008	74	76
2009	76 r	78
2010	77	80
2011	80	83

(a) Includes all maintained schools and those independent schools that returned results. The data shown in Charts 8-10 include maintained schools only and may differ from this table.

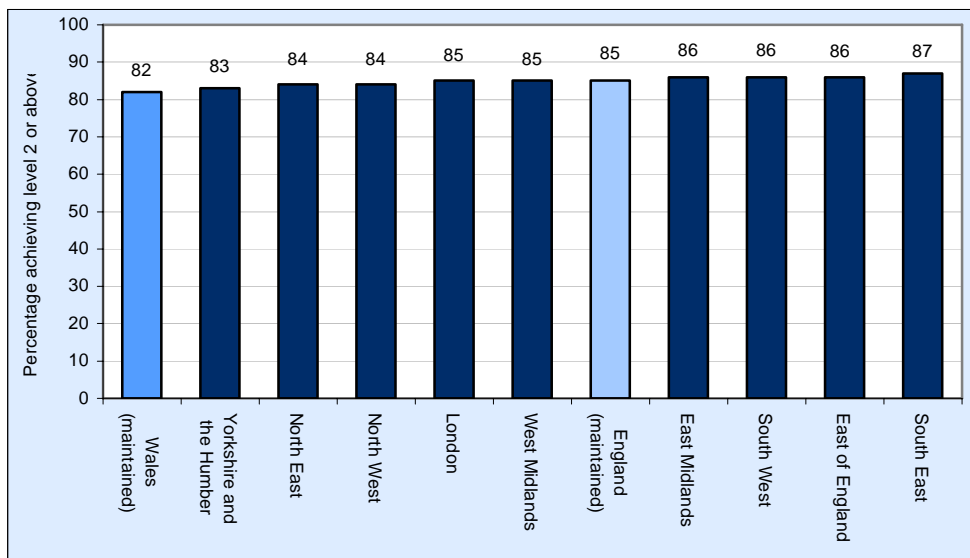
Since 2002 in Wales statutory assessment at the end of Key Stage 3 has been by means of teacher assessment only.

The general expectation is the majority of 14 year olds will attain level 5.

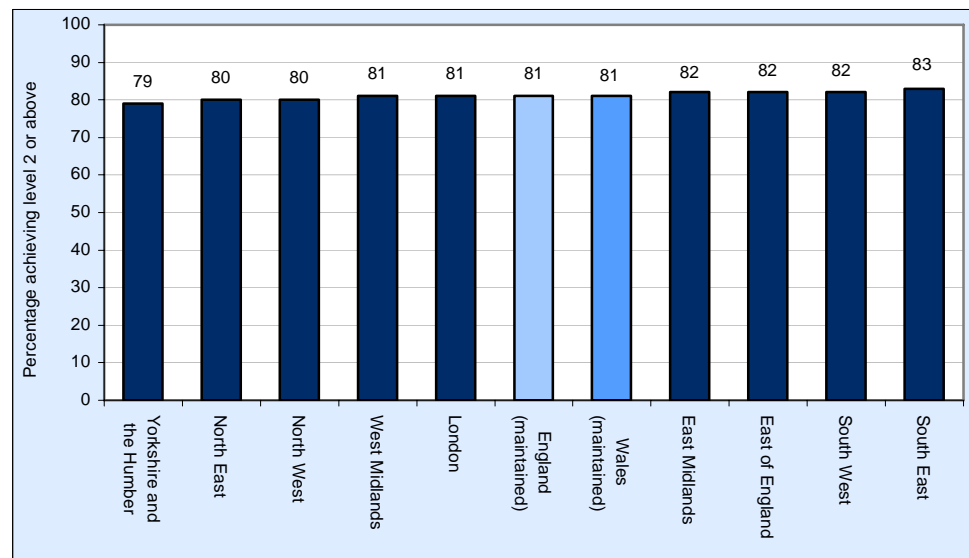
(b) England data for 2011 is provisional.

(r) revised on 26 June 2012. Minor revisions only.

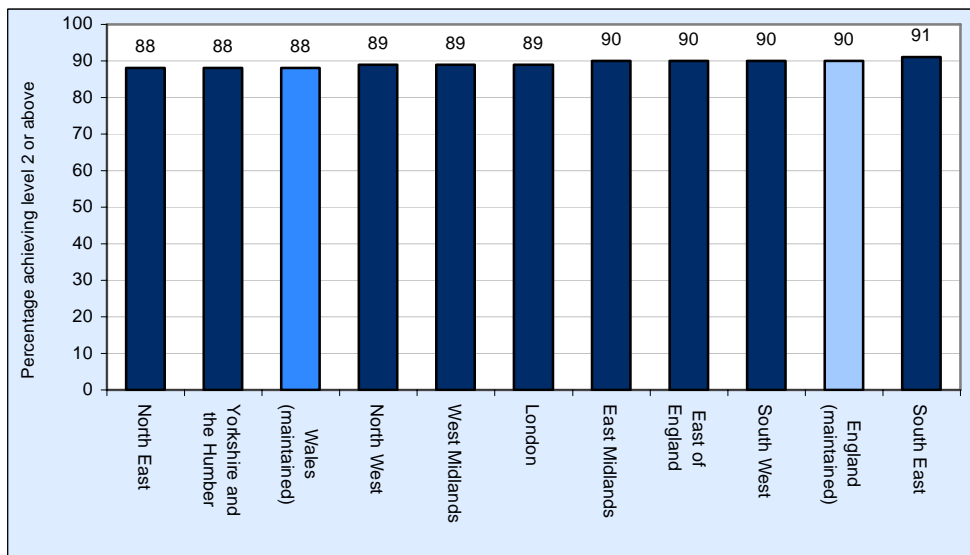
**Chart 1: Percentage of pupils achieving level 2 or above for English Reading Teacher Assessment at Key Stage 1, 2011**



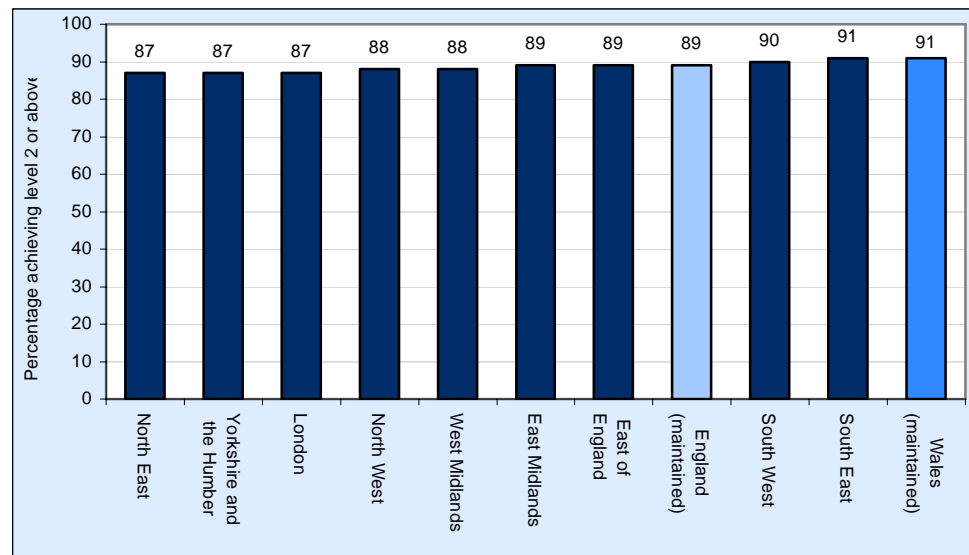
**Chart 2: Percentage of pupils achieving level 2 or above for English Writing Teacher Assessment at Key Stage 1, 2011**



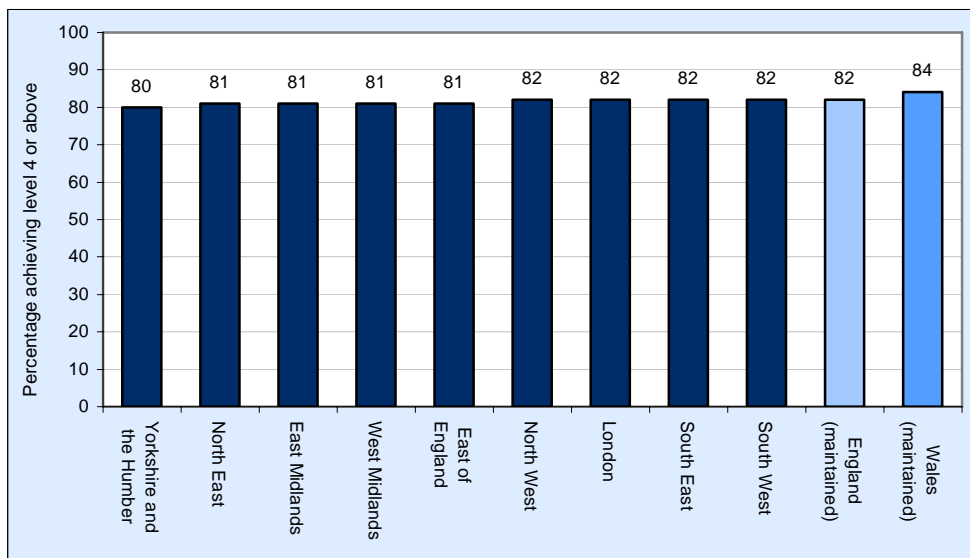
**Chart 3: Percentage of pupils achieving level 2 or above for Mathematics Teacher Assessment at Key Stage 1, 2011**



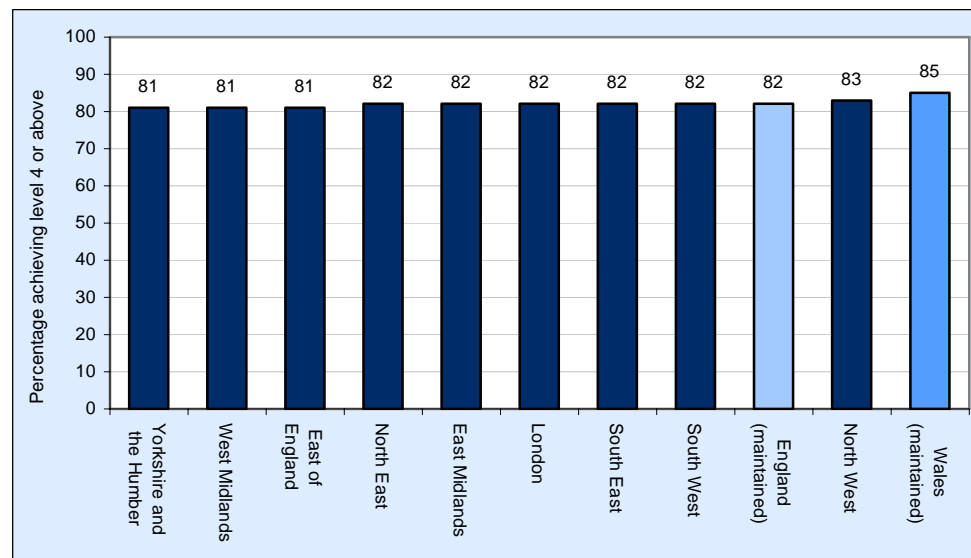
**Chart 4: Percentage of pupils achieving level 2 or above for Science Teacher Assessment at Key Stage 1, 2011**



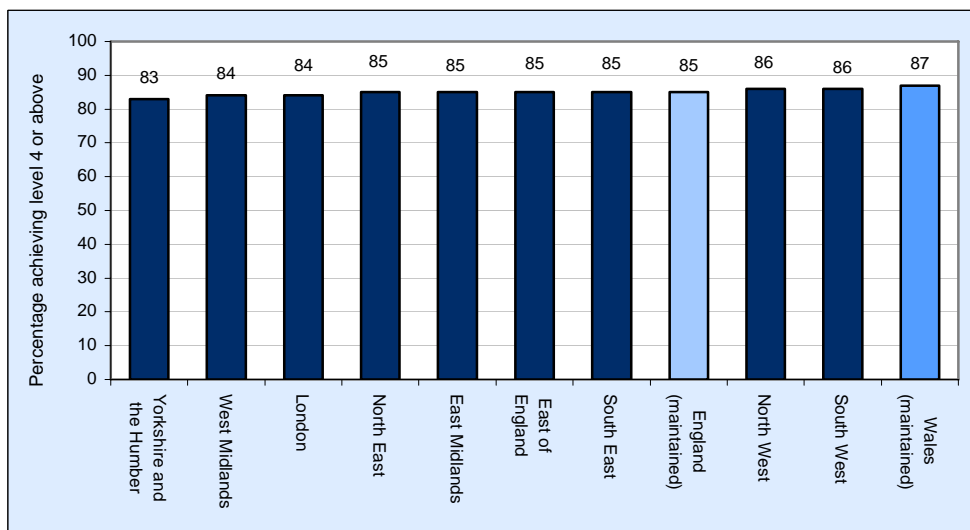
**Chart 5: Percentage of pupils achieving level 4 or above for English Teacher Assessment at Key Stage 2, 2011**



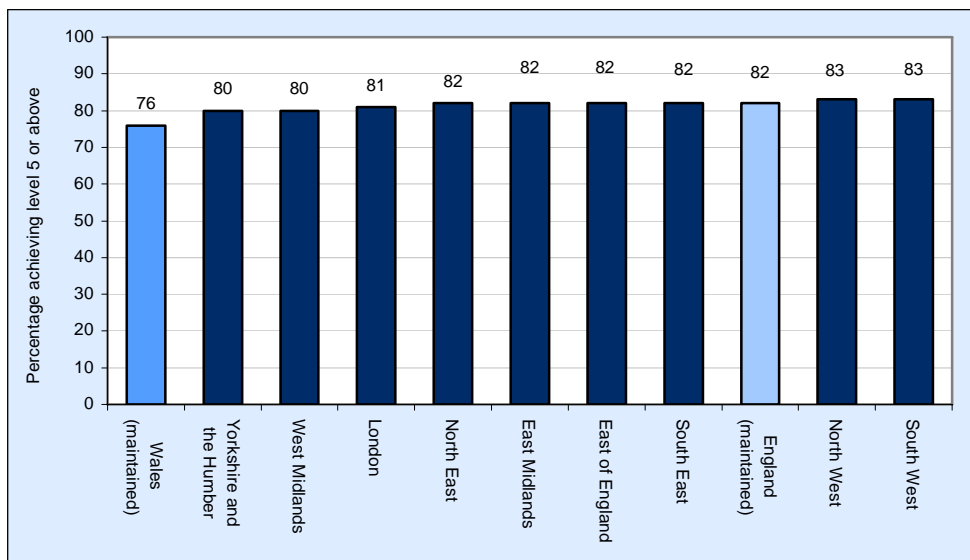
**Chart 6: Percentage of pupils achieving level 4 or above for Mathematics Teacher Assessment at Key Stage 2, 2011**



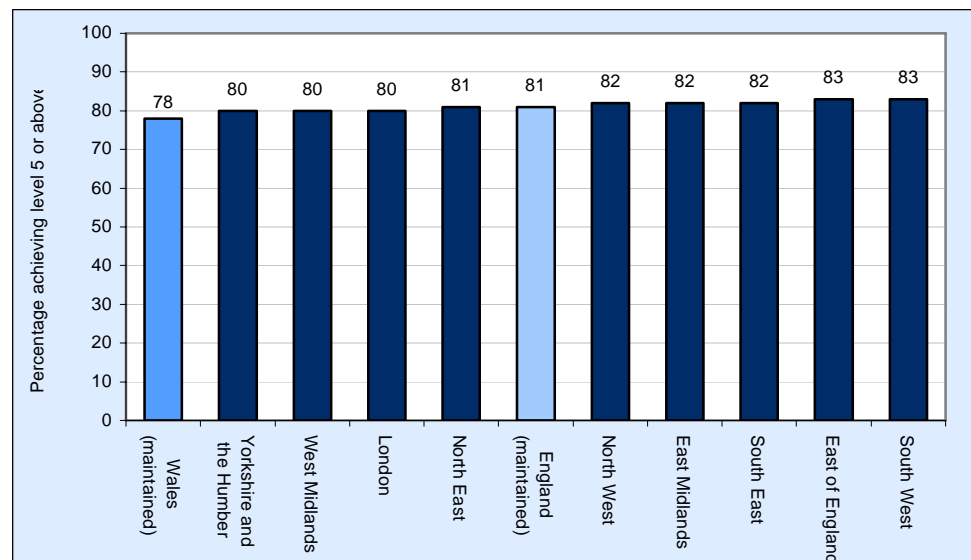
**Chart 7: Percentage of pupils achieving level 4 or above for Science Teacher Assessment at Key Stage 2, 2011**



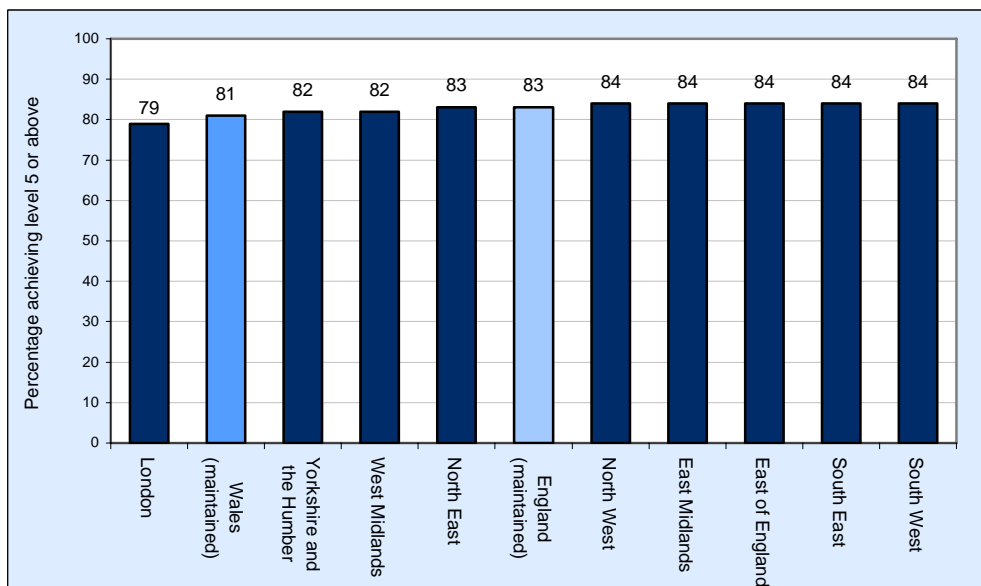
**Chart 8: Percentage of pupils achieving level 5 or above for English at Key Stage 3, 2011**



**Chart 9: Percentage of pupils achieving level 5 or above for Mathematics at Key Stage 3, 2011**

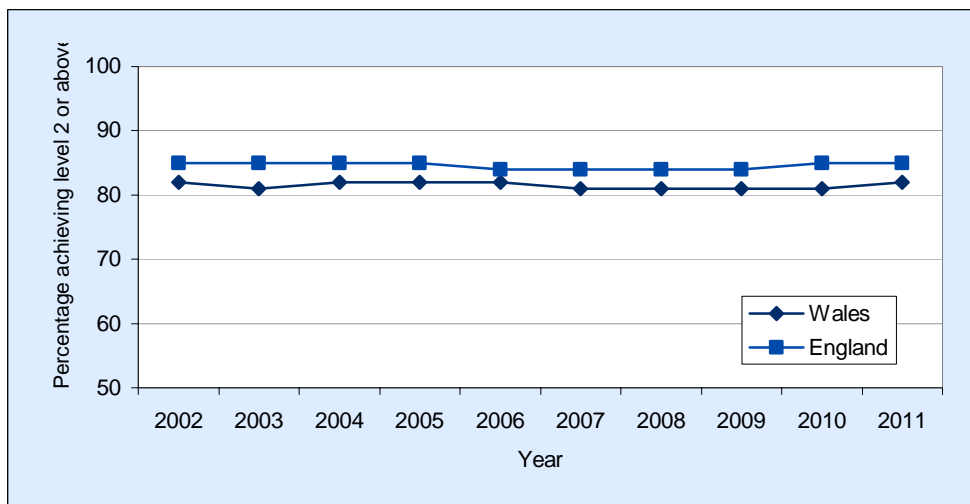


**Chart 10: Percentage of pupils achieving level 5 or above for Science at Key Stage 3, 2011**

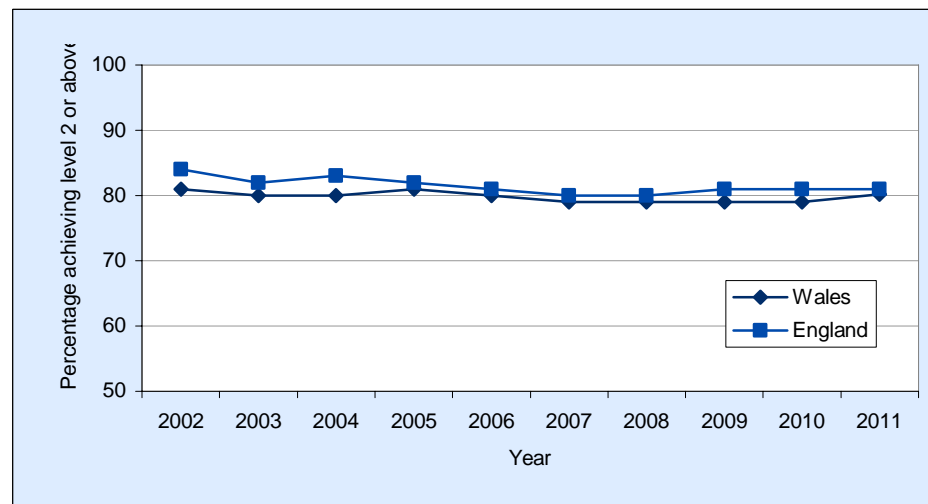




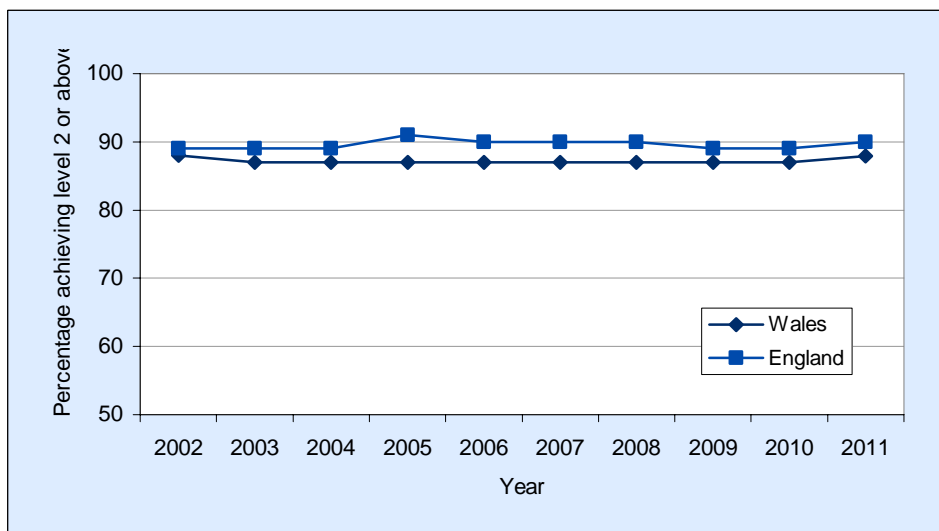
**Chart 11: Key Stage 1 National Curriculum Assessments of 7 year olds, English Reading**



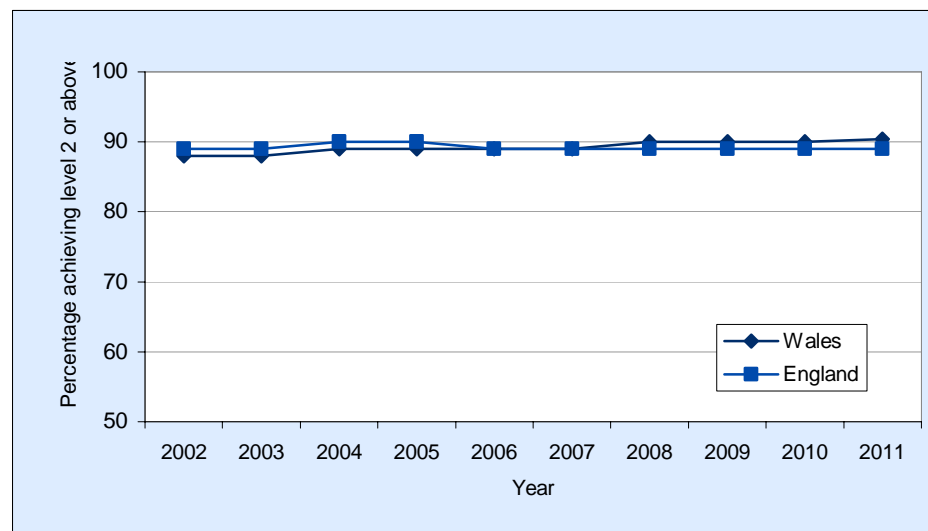
**Chart 12: Key Stage 1 National Curriculum Assessments of 7 year olds, English Writing**



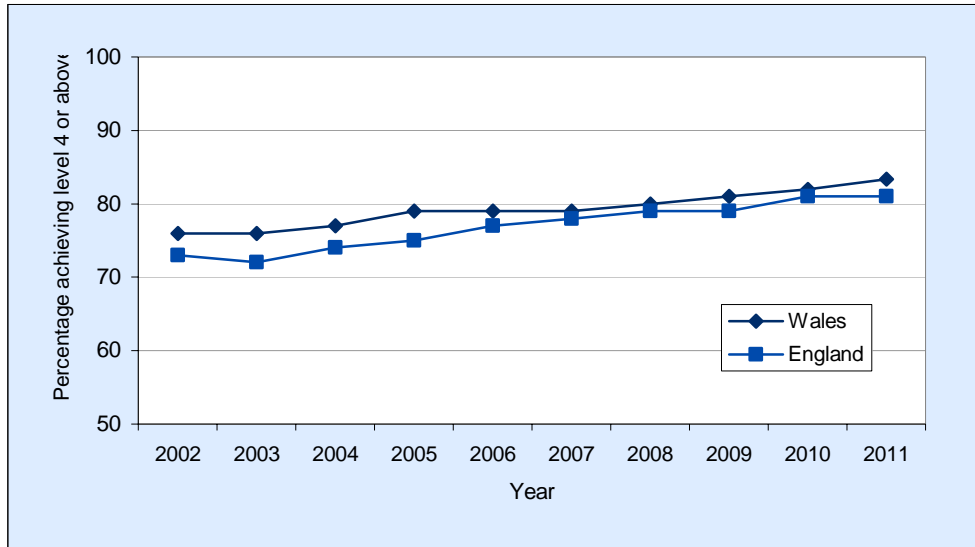
**Chart 13: Key Stage 1 National Curriculum Assessments of 7 year olds, Mathematics**



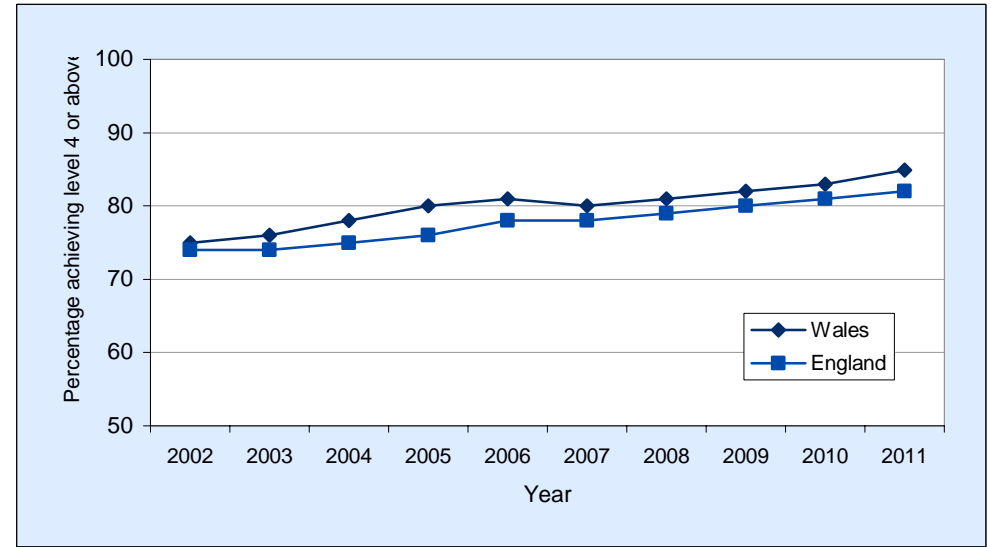
**Chart 14: Key Stage 1 National Curriculum Assessments of 7 year olds, Science**



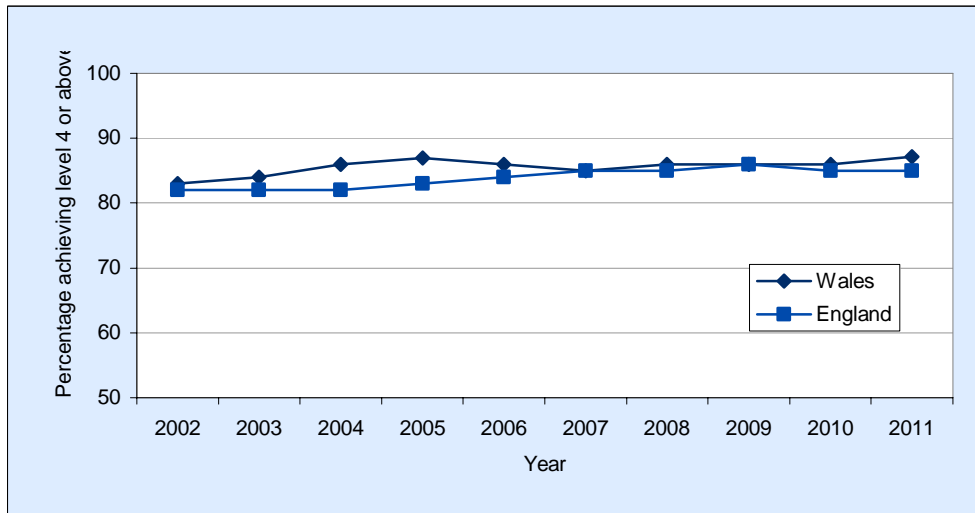
**Chart 15: Key Stage 2 National Curriculum Assessments of 11 year olds, English**



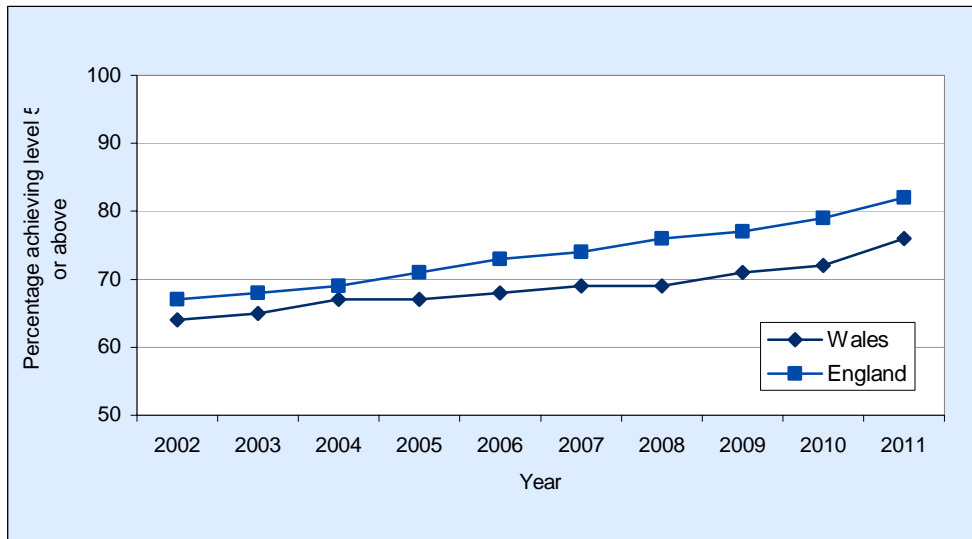
**Chart 16: Key Stage 2 National Curriculum Assessments of 11 year olds, Mathematics**



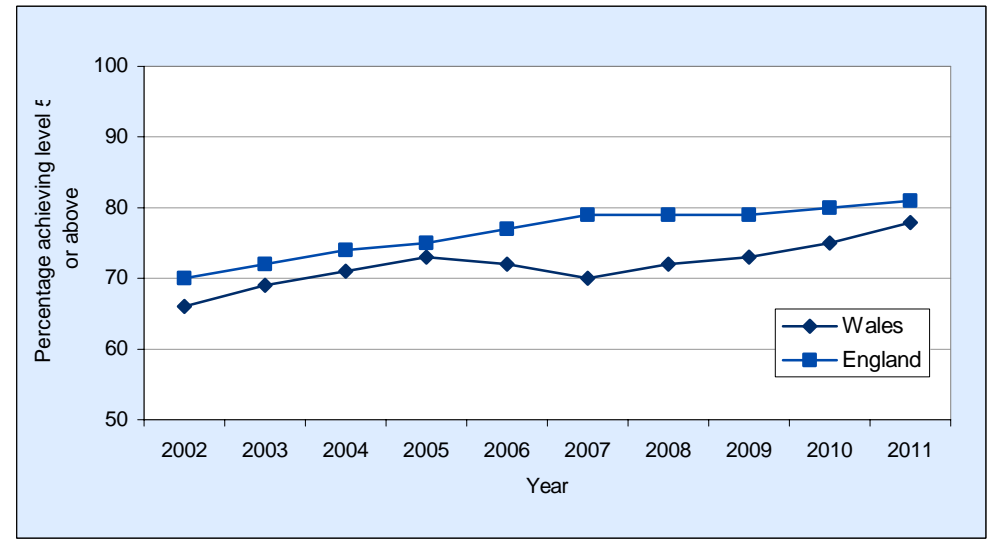
**Chart 17: Key Stage 2 National Curriculum Assessments of 11 year olds, Science**



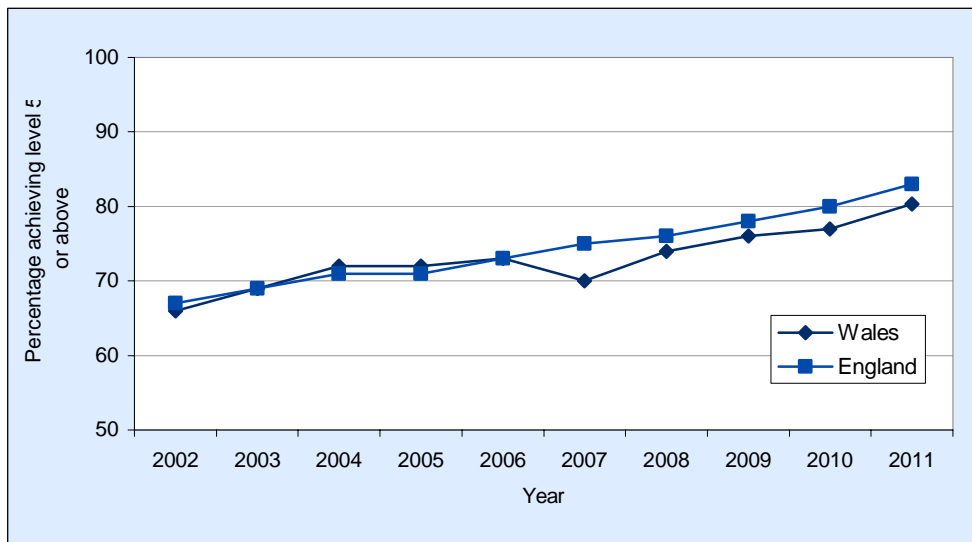
**Chart 18: Key Stage 3 National Curriculum Assessments of 14 year olds, English**



**Chart 19: Key Stage 3 National Curriculum Assessments of 14 year olds, Mathematics**



**Chart 20: Key Stage 3 National Curriculum Assessments of 14 year olds, Science**



## Key Quality Information

### 1. Data Collection and quality

- Data for England at Key Stage 1 are taken from the Statistical First Release [National Curriculum Assessments at Key Stage 1 in England, 2011 \(Provisional\) \(SFR22/2011\)](#)
- Key Stage 2 information for England is taken from the Statistical First Release [National Curriculum Assessments at Key Stage 2 in England, 2011 \(Revised\) \(SFR31/2011\)](#)
- Key Stage 3 information for England is taken from the Statistical First Release [Interim Results for Key Stage 2 and 3 National Curriculum Assessments in England, 2010/11 \(SFR18/2011\)](#)
- Data for Wales are taken from the Statistical First Release [National Curriculum Assessments of the Core Subjects, 2011](#)
- Information on data quality and collection methods can be found in these releases.

### 2. Data Coverage and Comparability

- For tables 1-3, results for all schools in Wales and England are included.
- Government Office Region (GOR) statistics for England include maintained mainstream and maintained special schools only. This includes City Technology Colleges and Academies but excludes hospital schools and pupil referral units. The Wales maintained schools figure includes maintained mainstream and maintained special schools only, but excludes pupil referral units for consistency with England figures.
- From 2005, schools in England have only been required to report teacher assessment results for Key Stage 1 which have been informed by the task/test activities undertaken by the child during the academic year.
- Since 2002 in Wales statutory assessment at the end of Key Stage 1 has been by means of teacher assessment only. From 2005 in Wales statutory assessment at the end of Key Stage 2 has been by means of teacher assessment only. From 2006 in Wales statutory assessment at the end of Key Stage 3 has been by means of teacher assessment only. All data provided in this bulletin are consistent.
- For the majority of pupils the expected level of achievement at National Curriculum is level 2 at Key Stage 1, level 4 at Key Stage 2 and level 5 at Key Stage 3.
- England data for Key Stage 1 and Key Stage 3 2010 are provisional. The data for Key Stage 2 are revised.

### Who are the key users of this data?

These statistics are used widely both within and outside the Welsh Government. Some of the key users are:

- Ministers and the Members Research Service in the National Assembly for Wales;
- The Department for Education in England;
- Other government departments;
- Local authorities;
- Schools;
- Estyn, Her Majesty's Inspectorate of Education and Training in Wales;
- The Department for Education and Skills in the Welsh Government;
- Other areas of the Welsh Government;
- The research community;
- Students, academics and universities;
- Individual citizens and private companies.

### What are the data used for?

These statistics are used in a variety of ways. Some examples of these are:

- advice to Ministers;

- the all-Wales education core data packs (the replacement for the National Pupil Database);
- local authority and school comparisons and benchmarks;
- to inform the education policy decision-making process in Wales;
- to inform ESTYN during school inspections;
- contributes to the National Performance Indicators;
- international benchmarking;
- to assist in research in educational attainment.

### **3. Symbols**

- . The data item is not applicable.
- .. The data item is not available.

### **4. Further Information**

- The above releases are published by the Department for Education. Further details and historical data can be found at <http://www.education.gov.uk/rsgateway/>.
- Data for Wales can be found at [www.wales.gov.uk/statistics](http://www.wales.gov.uk/statistics).

### **5. Future Publication**

Due to the increasing divergence in assessment practises at Key Stage 1, 2 and 3 between the two countries, including the introduction of Foundation Phase in Wales and the changes in assessment policy in England we intend to review the content and requirement for this Bulletin in the future. If you have any comments please email [School.Stats@Wales.GSI.Gov.Uk](mailto:School.Stats@Wales.GSI.Gov.Uk).