

## **Statistics Bulletin**

Higher Qualifications Quarterly:  
January to March 2012



May 2012

Ofqual/12/5168

# Contents

|                                      |    |
|--------------------------------------|----|
| Key findings .....                   | 2  |
| Introduction.....                    | 3  |
| Geographical coverage .....          | 4  |
| Qualification type .....             | 4  |
| Revisions .....                      | 4  |
| Completeness of the data .....       | 5  |
| Definitions .....                    | 5  |
| Achievements this quarter .....      | 7  |
| Regulated higher qualifications..... | 11 |
| Achievements .....                   | 13 |
| Awarding organisations .....         | 17 |
| Sector subject area.....             | 20 |
| Level of qualification .....         | 26 |
| Tables.....                          | 29 |

## Key findings

There were 27,400 higher qualification achievements in January to March 2012, a decrease of 4 per cent on the same quarter of 2011. This figure covered 652 individual qualifications. Higher qualifications cover all qualification at level 4 and above (equivalent to post A level but excluding) university degrees.

The individual qualification with the greatest number of achievements was the City & Guilds Level 4 Award in Preparing to Teach in the Lifelong Learning Sector, with 2,300 achievements.

Since 2010 there has been a large growth in available higher qualifications. This increase is in line with the transition of qualifications to the Qualifications and Credit Framework (QCF), which started to see large growth at the beginning of 2010.

While there has been a growth in the number of available higher qualifications – 2,143 in January to March 2012 compared with 1,697 in 2011 (representing 26 per cent growth) – there has not yet been a sizeable increase in the number of achievements (in fact there was a decrease this quarter). This is probably due to higher level (HL) qualifications generally taking a long period of time to complete. As a result of this, we may expect to see a growth in the number of achievements from July 2012, following on from the increase in the number of qualifications available.

In January to March 2012 achievements for higher qualifications were awarded by 87 awarding organisations. The awarding organisation that awarded the most achievements was City & Guilds, with 4,150 achievements.

The sector subject area (SSA) with the most achievements was business, administration and law, with 14,100 achievements, representing 51 per cent of the total higher achievements.

The higher qualification type with the greatest number of achievements was the QCF type, with 21,250 achievements, representing 78 per cent of all higher achievements.

The level with the most achievements was level 4, which awarded 15,150 achievements, representing 55 per cent of the total higher achievements.

## Introduction

This statistical bulletin is published by the Office of Qualifications and Examinations Regulation (Ofqual). We regulate qualifications, examinations and assessments in England, and vocational qualifications in Northern Ireland.

Under the new Apprenticeships, Skills, Children and Learning Act 2009, one of our key objectives is to improve public confidence in regulated qualifications and assessments, by raising awareness and understanding of the qualifications we regulate. This bulletin will be used to inform that future work.

In this bulletin we present data on achievements for regulated higher qualifications in England, Wales and Northern Ireland during the quarter January to March 2012.

This bulletin covers higher qualifications of all types at level 4 and above (equivalent to post A level). It excludes university degrees, as these are not regulated by Ofqual, but by the Quality Assurance Agency (QAA). In this bulletin these qualifications are considered to be higher qualifications.

Under the new Apprenticeships, Skills, Children and Learning Act 2009, one of our key objectives is to improve public confidence in regulated qualifications and assessments, by raising awareness and understanding of the qualifications we regulate. This bulletin will be used to inform that future work.

This bulletin is one of a suite of three publications presenting quarterly data on achievements for regulated qualifications, excluding GCSEs, GCEs<sup>1</sup> and the Diploma. The other two bulletins are:

- *Vocational Qualifications Quarterly* (covers national vocational qualifications (NVQs), vocationally-related qualifications (VRQs), QCF qualifications and occupational qualifications (OQs) at all levels). There is an overlap with this bulletin as vocational qualifications can also be higher qualifications
- *Supplemental Qualifications Quarterly* (covers entry to level 3 for basic skills, entry level, English for Speakers of Other Languages (ESOL), free-standing mathematics qualifications, functional skills, key skills and other general (OG) qualifications).

---

<sup>1</sup> Data for GCSEs and GCEs can be found on the Joint Council for Qualifications (JCQ) website at [www.jcq.org.uk/national\\_results/index.cfm](http://www.jcq.org.uk/national_results/index.cfm) or at [www.ofqual.gov.uk/research-and-statistics/statistics/general-data](http://www.ofqual.gov.uk/research-and-statistics/statistics/general-data).

Each quarter, awarding organisations submit to us data on the number of achievements for regulated qualifications (excluding GCSEs and GCEs) during the quarter. Achievements are awarded in the quarter during which the final certificates are issued. This bulletin presents this data, giving information on the number of achievements by awarding organisations, along with the SSA, type and level of qualification. All regulated qualifications are included, regardless of age of learner, centre type and funding status of the qualification.

## **Geographical coverage**

The bulletin covers the achievements in regulated vocational qualifications, and in particular higher qualifications, of all recognised<sup>2</sup> awarding organisations in England, Wales and Northern Ireland. Since 2011 we have begun to collect data for England, Wales and Northern Ireland individually. As of this quarter we are publishing a quarterly bulletin for Northern Ireland.

## **Qualification type**

At the point of accreditation, regulated qualifications are allocated to one of 18 qualification types, which are used to classify qualifications in this bulletin. We recognise that the classification system is not ideal, as very similar qualifications may appear under different types, for example NVQs and the QCF, and some qualifications are miscoded. We are working with experts to investigate how this situation might be improved in the future.

This bulletin presents figures on six of these types: ESOL, HL, key skills, NVQs, qualifications on the QCF, and OQs. Note the figures relate to qualifications in these types that are at level 4 or above.

## **Revisions**

Once published, data on the number of certifications for any qualification is not usually subject to revision. However, data may be revised in subsequent bulletins due to late-received data or if an error is identified. Qualifications may also be re-categorised to a different type, level, SSA or awarding organisation. In some cases, this may result in previous data being amended to reflect the new categorisation.

In this bulletin some figures have been revised since the quarter 4 2011 bulletin. These revisions were due to historical updates from two awarding organisations.

---

<sup>2</sup> We recognise awarding organisations against the Criteria for Recognition ([www.ofqual.gov.uk/files/2011-05-16-criteria-for-recognition.pdf](http://www.ofqual.gov.uk/files/2011-05-16-criteria-for-recognition.pdf)). This is required before they can begin awarding regulated qualifications.

## **Completeness of the data**

Awarding organisations send us data every quarter. We contact any awarding organisation that does not return a complete set of data within the collection period to ensure that the data is as complete as possible. For this quarter, we received data from all the awarding organisations.

Figures in the commentary and the tables for the number of achievements awarded are rounded to the nearest 50. This reflects the inaccuracies inherent in any large-scale data collection. As a result of rounded figures, the percentages shown in pie charts will not necessarily sum to 100 per cent.

Due to seasonal variation in the number of achievements over the year, comparisons in this bulletin are only made to data in the same quarter of the previous year.

The raw data, since 1989, is available in the Regulated Qualifications Activity data set in the statistics section of our website: [www.ofqual.gov.uk/research-and-statistics/statistics/vocational-data](http://www.ofqual.gov.uk/research-and-statistics/statistics/vocational-data) .

## **Definitions**

Definitions of some of the key terms used in this bulletin are:

Accreditation – a process that reviews and confirms achievement to specific criteria and standards

Achievements – any award that is not graded as U or Absent or X

Available qualification – a qualification eligible for an award

Awarding organisation – organisations recognised to develop, deliver and award descriptions of qualifications

Active qualification – a qualification eligible for learners to be awarded upon, even if the qualification is no longer available for enrolment

Certificating – a formal recognition of learner achievement

Recognition – an evidence-based process of achieving compliance to the Criteria for Recognition

A glossary is available on our website at: [www.ofqual.gov.uk/research-and-statistics/165/411](http://www.ofqual.gov.uk/research-and-statistics/165/411) with further details on SSA classifications, and qualification types and levels.

In this bulletin 'quarter' refers to calendar quarters. So Q1 refers to January to March, Q2 to April to June, Q3 to July to September, and Q4 to October to December.

We welcome any suggestions or comments regarding this bulletin. Our contact details are at the back of this document.

## Achievements this quarter

To provide an overall perspective on achievements during the latest quarter, this section presents figures for all qualification types, except GCEs, GCSEs and the Diploma. Further details for qualification types not included in this bulletin can be found in the companion bulletins on vocational and supplemental qualifications.

The total number of achievements across all qualification types for the period January to March 2012 is shown in the table below (with January to March 2011 shown for comparison).

| <b>Qualification</b>                        | <b>January to<br/>March<br/>2011</b> | <b>January<br/>to March<br/>2012</b> | <b>% change</b> | <b>Direction<br/>of<br/>change</b> |
|---|--------------------------------------|--------------------------------------|-----------------|------------------------------------|
| Basic skills                                | 170,800                              | 127,500                              | (-25)           | ↓                                  |
| ESOL  | 62,350                               | 67,950                               | 9               | ↑                                  |
| Entry level                                 | 7,350                                | 6,100                                | (-17)           | ↓                                  |
| Free-standing<br>mathematics qualifications | 1,550                                | 500                                  | (-68)           | ↓                                  |
| Functional skills                           | 63,000                               | 96,800                               | 54              | ↑                                  |
| HL  | 7,450                                | 3,600                                | (-52)           | ↓                                  |
| Key skills                                  | 124,050                              | 130,650                              | 5               | ↑                                  |
| NVQ   | 154,950                              | 31,350                               | (-80)           | ↓                                  |
| OQ  | 4,050                                | 1,000                                | (-75)           | ↓                                  |
| OG  | 49,700                               | 46,450                               | (-7)            | ↓                                  |
| QCF   | 455,400                              | 817,950                              | 80              | ↑                                  |
| VRQ   | 165,150                              | 51,100                               | (-69)           | ↓                                  |
| <b>Total number of<br/>achievements</b>     | <b>1,265,800</b>                     | <b>1,380,900</b>                     | <b>9</b>        | <b>↑</b>                           |



From the table above we can see the impact of qualifications being restructured onto the QCF, with an increase of 80 per cent in the number of achievements for these qualifications. Qualifications in ESOL also increased, by 9 per cent. The increase in QCF achievements could be due to a variety of reasons, including:

- The Skills Funding Agency's preference to fund qualifications on the QCF
- The revisions of qualifications to fit with the Apprenticeship framework
- The QCF offers three different sizes of a qualification (award, certificate and diploma), creating potential for a greater number of qualifications and associated achievements
- Awarding organisations engaging with sectors to offer new, innovative qualifications based on subject content.

We also see an increase of 54 per cent in functional skills achievements, a qualification type that will replace key skills and basic skills. Basic skills had a corresponding decline of 43,300 (25 per cent) on the achievements given in January to March 2011, although key skills sees a slight increase of 5 per cent. This increase is partly due to the increase in Apprenticeships, which require functional skills and key skills qualifications, as well as the discontinuation of key skills qualifications, which were postponed to September 2012. In the 2010/11 academic year there were 200,300 Apprenticeship achievements compared with 171,500 in 2009/10.<sup>3</sup>

With qualifications being restructured onto the QCF, we see a decline in all other qualification types, with the largest decreases in achievements reported in NVQs (80 per cent), OQs (75 per cent), free-standing mathematics qualifications (68 per cent), VRQs (69 per cent) and HL (52 per cent).

The one remaining qualification type, OG, had a considerably smaller decline, of 7 per cent.

---

<sup>3</sup> [www.thedataservice.org.uk/statistics/statisticalfirstrelease/sfr\\_current](http://www.thedataservice.org.uk/statistics/statisticalfirstrelease/sfr_current) .

The 20 qualifications with the highest number of achievements across all qualification types, for the period January to March 2012, are shown in the table below.

| <b>Qualification</b>   | <b>Qualification type</b> | <b>Number of achievements</b> |
|--|---------------------------|-------------------------------|
| CIEH Level 2 Award in Food Safety in Catering (QCF)                | QCF                       | 44,400                        |
| HABC Level 2 Award in Door Supervision (QCF)                       | QCF                       | 12,150                        |
| Edexcel Level 2 Certificate in Adult Literacy                      | BS                        | 12,000                        |
| Skillsfirst Level 2 Diploma in Retail Skills (QCF)                 | QCF                       | 11,900                        |
| Edexcel Functional Skills qualification in Mathematics at Level 1  | FS                        | 11,750                        |
| OCR Level 2 Certificate in Adult Literacy                          | BS                        | 11,200                        |
| OCR Level 1 Certificate in Adult Numeracy                          | BS                        | 11,000                        |
| Edexcel Level 2 Certificate in Adult Numeracy                      | BS                        | 10,850                        |
| CIEH Level 2 Award in Health and Safety in the Workplace (QCF)     | QCF                       | 10,750                        |
| OCR Level 1 Certificate in Adult Literacy                          | BS                        | 10,350                        |
| BCS Level 2 Certificate in IT User Skills (ECDL Extra) (ITQ) (QCF) | QCF                       | 10,250                        |
| OCR Level 2 National First Award in ICT                            | VRQ                       | 9,750                         |
| Edexcel Level 1 Key Skills in Application of Number                | KS                        | 9,550                         |
| Skillsfirst Level 2 Certificate in Retail Knowledge (QCF)          | QCF                       | 9,450                         |
| HABC Level 2 Award in Food Safety in Catering (QCF)                | QCF                       | 9,250                         |
| Cambridge ESOL Level 2 Certificate in English (IELTS 7.0-8.0)      | ESOL                      | 9,200                         |

|   |     |       |
|---|-----|-------|
| OCR Level 2 Certificate in Adult Numeracy                         | BS  | 9,050 |
| Edexcel Functional Skills qualification in Mathematics at Level 2 | FS  | 9,050 |
| BCS Level 1 Award in IT User Skills (ECDL Essentials) (ITQ) (QCF) | QCF | 9,000 |
| BIIAB Level 2 Award for Personal Licence Holders (QCF)            | QCF | 8,850 |

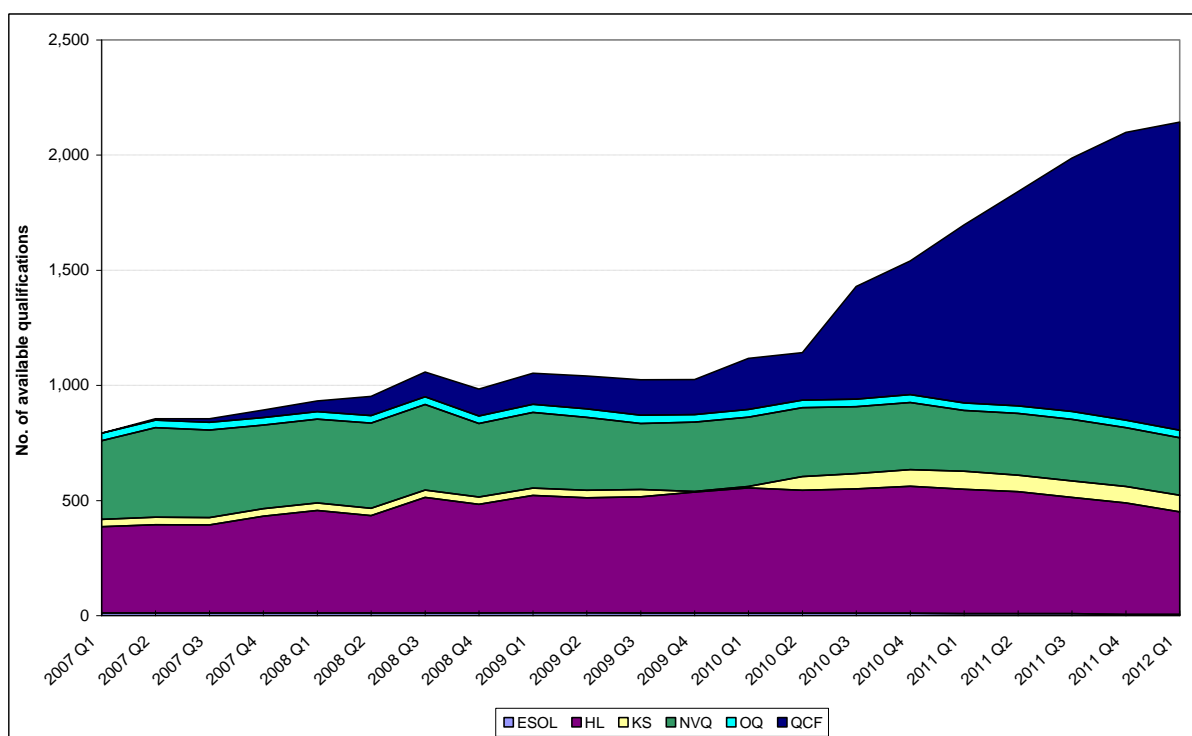
---

(Key: basic skills (BS); other general (OG); functional skills (FS); key skills (KS))

## Regulated higher qualifications

There are currently 2,143 available regulated higher qualifications: qualifications that are available to be awarded. This is an increase of 26 per cent on the same quarter of 2011. These comprise 1,338 qualifications on the QCF, 446 HL qualifications, 249 NVQs, 72 key skills, 33 OQs and 5 ESOL qualifications (see figure 1 and table 1).

**Figure 1:** Number of available regulated higher qualifications per quarter by qualification type, January to March 2007 (2007 Q1) to January to March 2012 (2012 Q1)



The continual growth of available higher qualifications is in part due to higher qualifications being available on the QCF. The QCF began in 2008 after tests and trials. The large increase in available higher qualifications since 2010 is in line with the transition of qualifications to the QCF.

However, we do not see a steep, corresponding decline in the number of available qualifications in the other types of qualifications, but we do see a decline in the number of achievements.

During the last quarter, 294 new HL qualifications were added to the list of available regulated qualifications. All but two of these were QCF type.

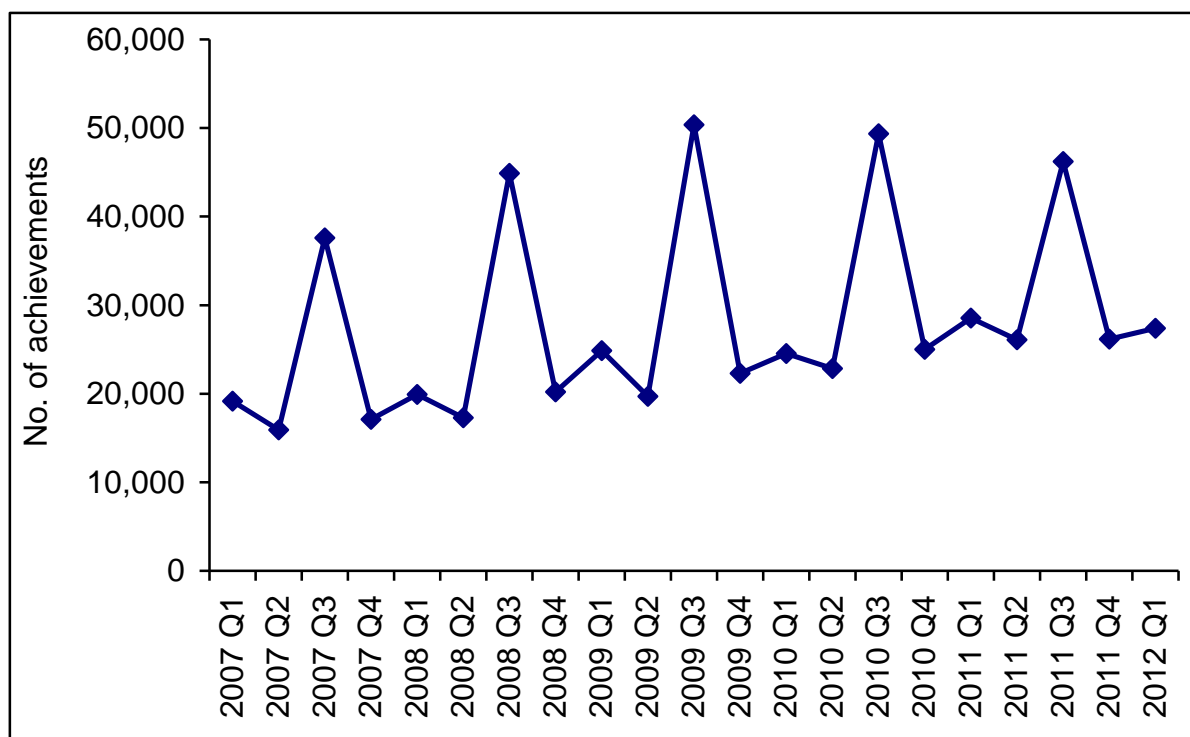
During the last quarter, no existing HL qualifications were re-categorised to a different type or level. One qualification changed SSA code: the City & Guilds Level 5 Diploma in Primary Care and Health Management (QCF) changed from accounting and finance (15.1) to administration (15.2).

Since the previous quarter, no qualifications have transferred between awarding organisations.

## Achievements

There were 27,400 achievements awarded for regulated higher qualifications in January to March 2012, a decrease of 4 per cent on the same quarter of 2011 (see table 2 and figure 2).

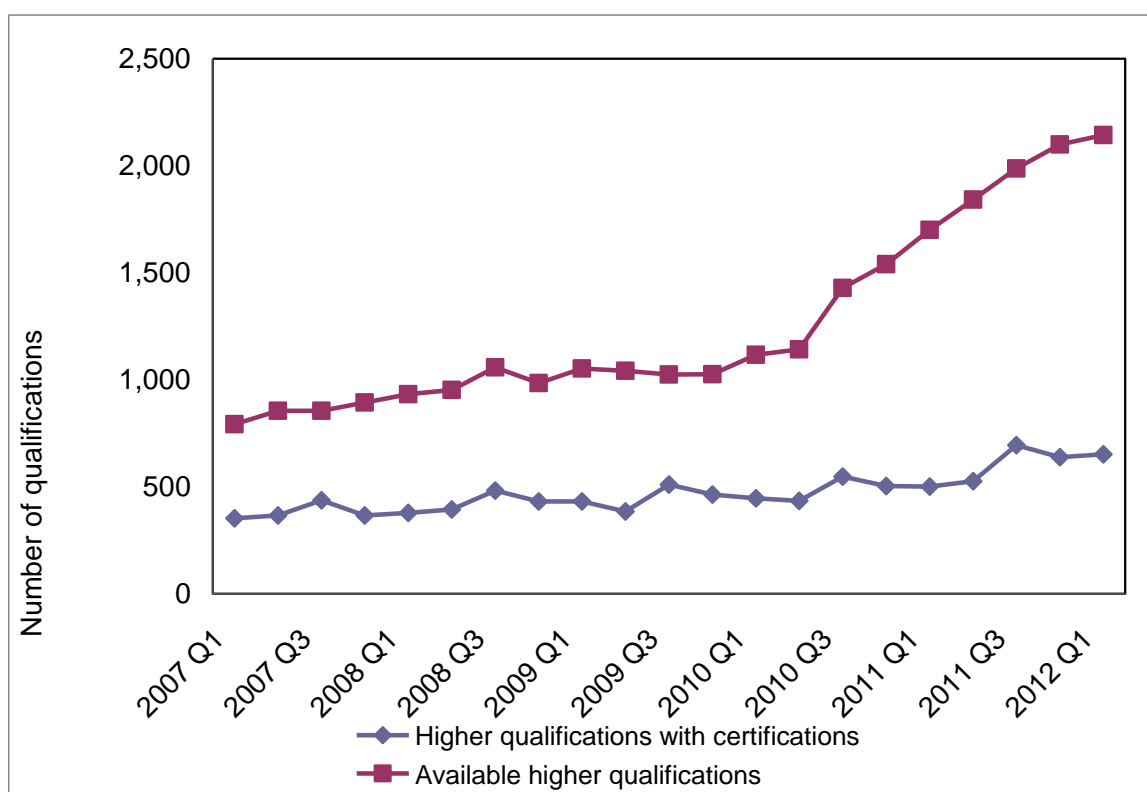
**Figure 2:** Total number of higher qualification achievements per quarter, January to March 2007 (2007 Q1) to January to March 2012 (2012 Q1)



From figure 2 we can see that there has been a consistent increase in the number of achievements in each corresponding quarter of the previous year until this quarter's decrease. In previous quarters this increase has been partly a result of the increasing numbers of achievements for QCF qualifications. Although the number of achievements for QCF qualifications has increased in this quarter, the achievements for other qualification types have decreased by a greater number (see table 6).

Figure 3 shows there has been a steady seasonal increase in the number of higher qualifications with certifications. This is contrasted with the dramatic increase in the number of available higher qualifications, as mentioned earlier. However, we would not expect to see a significant increase in the number of achievements, or the range of qualifications awarding, until later in 2012, as it takes time for the new available qualifications to be taken and awarded.

**Figure 3:** Total number of available higher qualifications per quarter, and total number of qualifications certificating (awarding), January to March 2007 (2007 Q1) to January to March 2012 (2012 Q1)



The achievements in January to March 2012 covered 652 individual qualifications, with a wide range in the number of achievements per qualification. For 55 qualifications there were more than 100 achievements during January to March 2012, and for two qualifications there were at least 1,000 achievements.

The five higher qualifications with the greatest number of achievements in January to March 2012 are shown in the table below (with January to March 2011 figures shown for comparison).

| <b>Qualification</b>  | <b>Number of achievements</b> |                       |
|---|-------------------------------|-----------------------|
|   | January to March 2011         | January to March 2012 |
| City & Guilds Level 4 Award in Preparing to Teach in the Lifelong Learning Sector (QCF)             | 1,850                         | 2,300                 |
| CII Level 4 Diploma in Financial Planning (QCF)   | 700                           | 1,250                 |
| Cambridge ESOL Level 5 Certificate in Teaching English to Speakers of Other Languages (CELTA) (QCF) | 400                           | 950                   |
| AAT Level 4 Diploma in Accounting (QCF)   | 100                           | 900                   |
| CMI Level 5 Certificate in Management and Leadership (QCF)  | 1,100                         | 900                   |

All five of the above qualifications are on the QCF. The AAT Level 4 Diploma in Accounting (QCF) has shown an 800 per cent increase in the number of certifications, but this is a deceptive figure: the majority of the achievements for this qualification may have been awarded to learners who would previously have taken the AAT Level 4 NVQ in Accounting.

The qualification that showed the second greatest increase in achievements was the Cambridge ESOL Level 5 Certificate in Teaching English to Speakers of Other Languages (CELTA) (QCF), with 950 achievements in January to March 2012, representing an increase of 138 per cent.

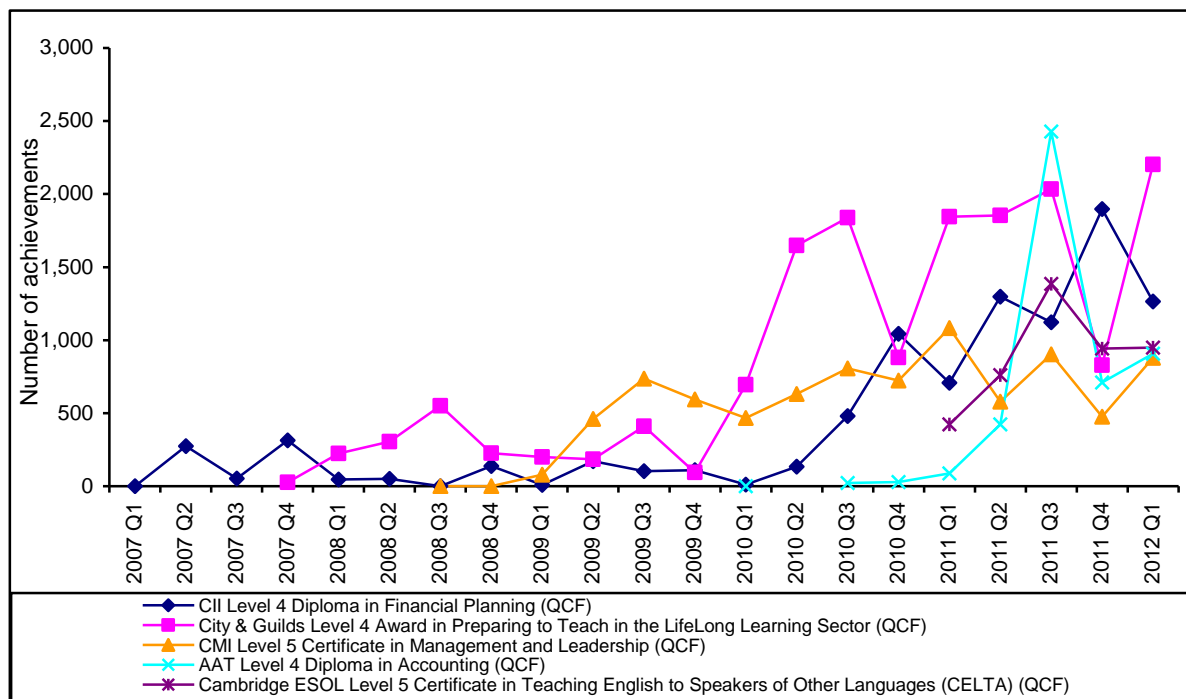
The CMI Level 5 Certificate in Management and Leadership (QCF) is the only qualification in the top five to decline in the number of achievements when compared with the same quarter in 2011.

The 50 qualifications with the greatest number of achievements are listed in table 3.



Figure 4 shows the five-year trend for the five higher qualifications with the greatest number of achievements in January to March 2012.

**Figure 4:** The five higher qualifications with the largest number of achievements in January to March 2012 (2012 Q1), showing the trend from January to March 2007 (2007 Q1)



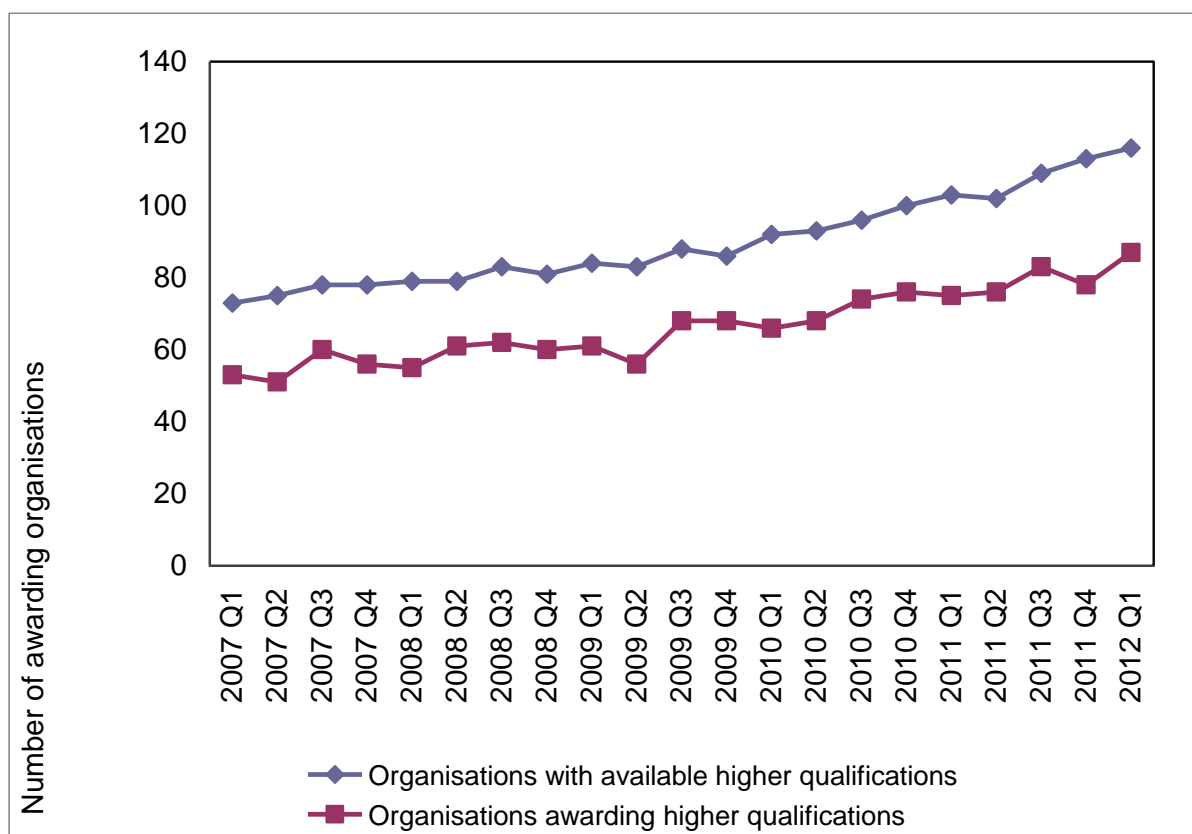
## Awarding organisations

There are currently 116 recognised awarding organisations that offer regulated higher qualifications.

In January to March 2012, 87 awarding organisations awarded achievements.

It is clear from figure 5 below that there has been a gradual increase in both the number of awarding organisations with available higher qualifications and the number of awarding organisations awarding higher certifications. This shows that the number of awarding organisations certificating is in line with the number of new awarding organisations creating higher qualifications.

**Figure 5:** Total number of awarding organisations with at least one available higher qualification per quarter, and awarding organisations with at least one qualification award, January to March 2007 (2007 Q1) to January to March 2012 (2012 Q1)



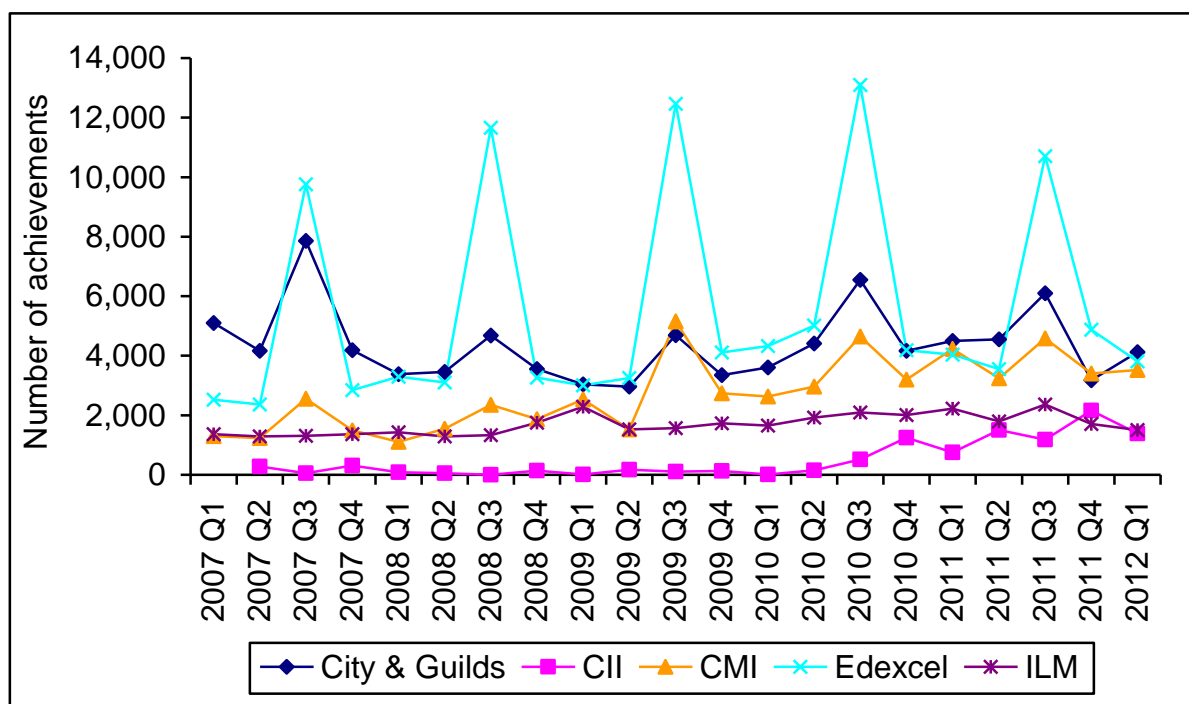
The 10 awarding organisations with the greatest number of achievements in higher qualifications in January to March 2012 are shown in the table below (with January to March 2011 figures shown for comparison).

| <b>Awarding organisation</b>                 | <b>Number of achievements</b> |                       | <b>% change in achievements</b> |
|--|-------------------------------|-----------------------|---------------------------------|
|  | January to March 2011         | January to March 2012 |                                 |
| Pearson Education Ltd                        | 4,200                         | 4,850                 | 15                              |
| Chartered Management Institute               | 3,200                         | 3,400                 | 6                               |
| City & Guilds of London Institute            | 4,150                         | 3,150                 | (-24)                           |
| Chartered Insurance Institute                | 1,250                         | 2,150                 | 72                              |
| Institute of Leadership & Management         | 2,000                         | 1,700                 | (-15)                           |
| OCR  | 1,950                         | 1,150                 | (-41)                           |
| University of Cambridge ESOL Examinations    | 950                           | 1,100                 | 16                              |
| Association of Accounting Technicians        | 650                           | 1,050                 | 62                              |
| Trinity College London                       | 450                           | 750                   | 67                              |
| Chartered Institute of Purchasing and Supply | 150                           | 500                   | 233                             |

The two awarding organisations with the largest number of achievements in the latest quarter showed an increase in the number of awards when compared with the same quarter of 2011. Of the top 10 awarding organisations only three showed a decline in this time (bracketed).

Figure 6 shows the five-year trend for the five awarding organisations with the greatest number of achievements during January to March 2012. The 50 awarding organisations with the greatest number of achievements are listed in table 4.

**Figure 6:** The five awarding organisations with the greatest number of achievements for higher qualifications in January to March 2012 (2012 Q1), showing the trend from January to March 2007 (2007 Q1)

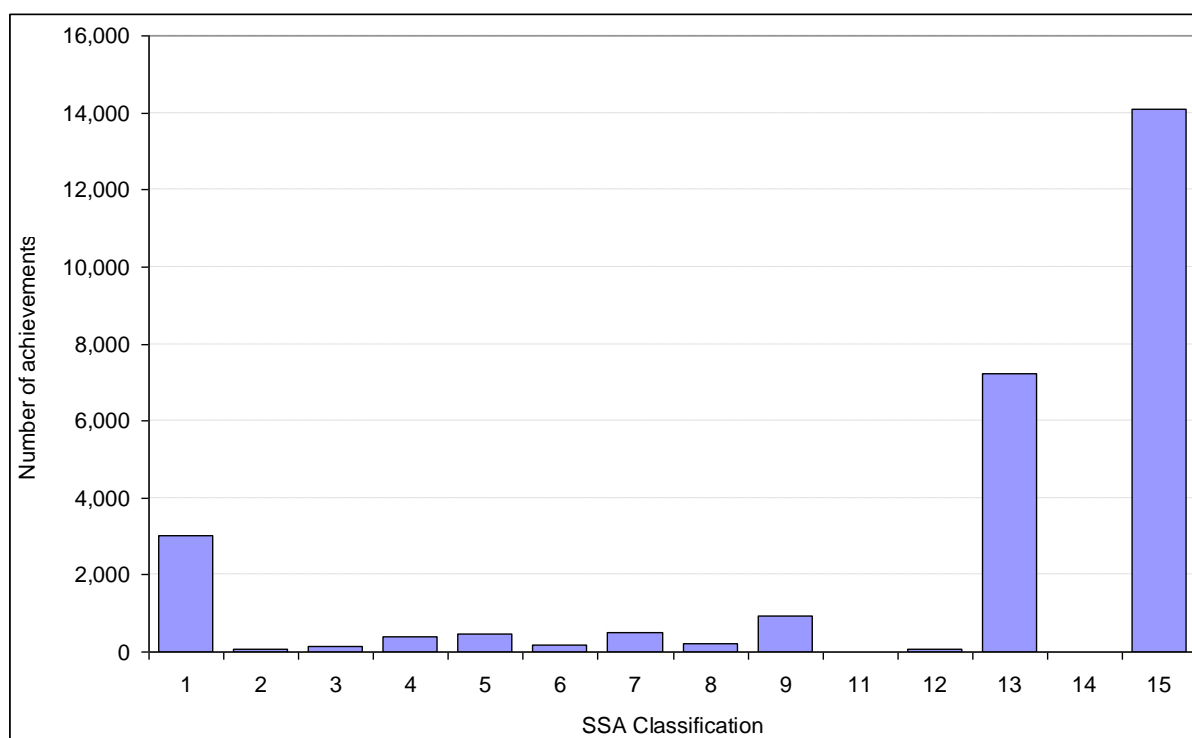


## Sector subject area

Regulated qualifications are allocated to one of 15 SSA codes (see glossary for further details).

Figure 7 compares the number of achievements seen in each SSA. The SSA with the greatest number of achievements for higher qualifications in January to March 2012 was business, administration and law, with 14,100 achievements – a slight decrease of 5 per cent when compared with the same quarter of 2011. The second most common SSA was education and training, with 7,250 achievements, an increase of 20 per cent on the same quarter of 2011. The third most common SSA was health, public services and care, with 3,050 achievements (see table 5 and figure 7).

**Figure 7:** Higher qualification achievements by SSA for January to March 2012



- |  |                                      |
|--|--------------------------------------|
| 1 Health, public services and care                 | 8 Leisure, travel and tourism        |
| 2 Science and mathematics                          | 9 Arts, media and publishing         |
| 3 Agriculture, horticulture and animal care        | 11 Social science                    |
| 4 Engineering and manufacturing technologies       | 12 Languages, literature and culture |
| 5 Construction, planning and the built environment | 13 Education and training            |
| 6 Information and communication technology         | 14 Preparation for life and work     |
| 7 Retail and commercial enterprise                 | 15 Business, administration and law  |

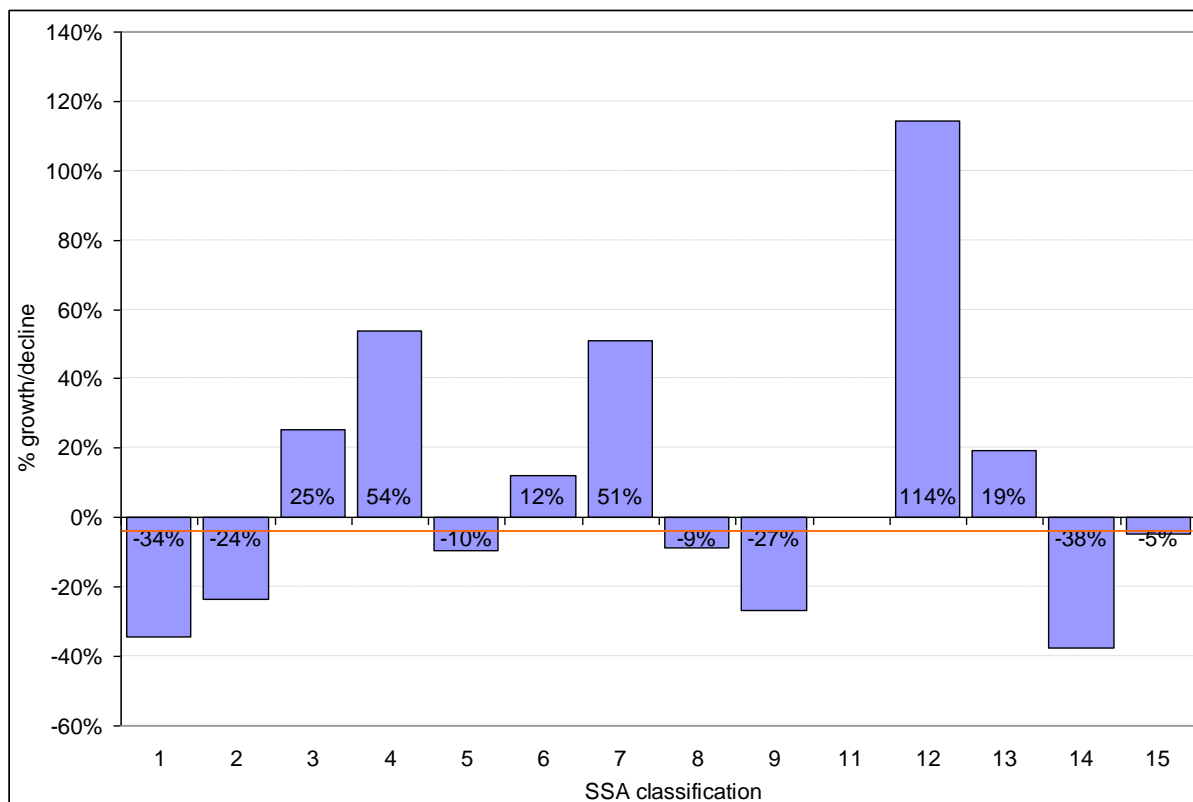
Note, there were no achievements in history, philosophy and theology (SSA code 10).

Figure 8 (overleaf) compares the percentage change in achievements from January to March 2011 to January to March 2012. Several of the SSA codes showed significant increases in the number of achievements awarded. Languages, literature and culture showed a 114 per cent increase (although the number of achievements was quite low – with less than 100 certifications in the most recent quarter - so significant conclusions should not be drawn). Engineering and manufacturing technologies showed a 54 per cent increase, with 400 achievements in the first quarter of 2012, and retail and commercial enterprise increased by 51 per cent, with 500 achievements.

We can see that six SSA classifications saw a reduction in the number of certifications from January to March 2011 to January to March 2012.

The largest decreases were seen in health, public services and care, and preparation for life and work, with 34 per cent and 38 per cent respectively, although the total achievements for preparation for life and work were again so low that no significant conclusions should be drawn.

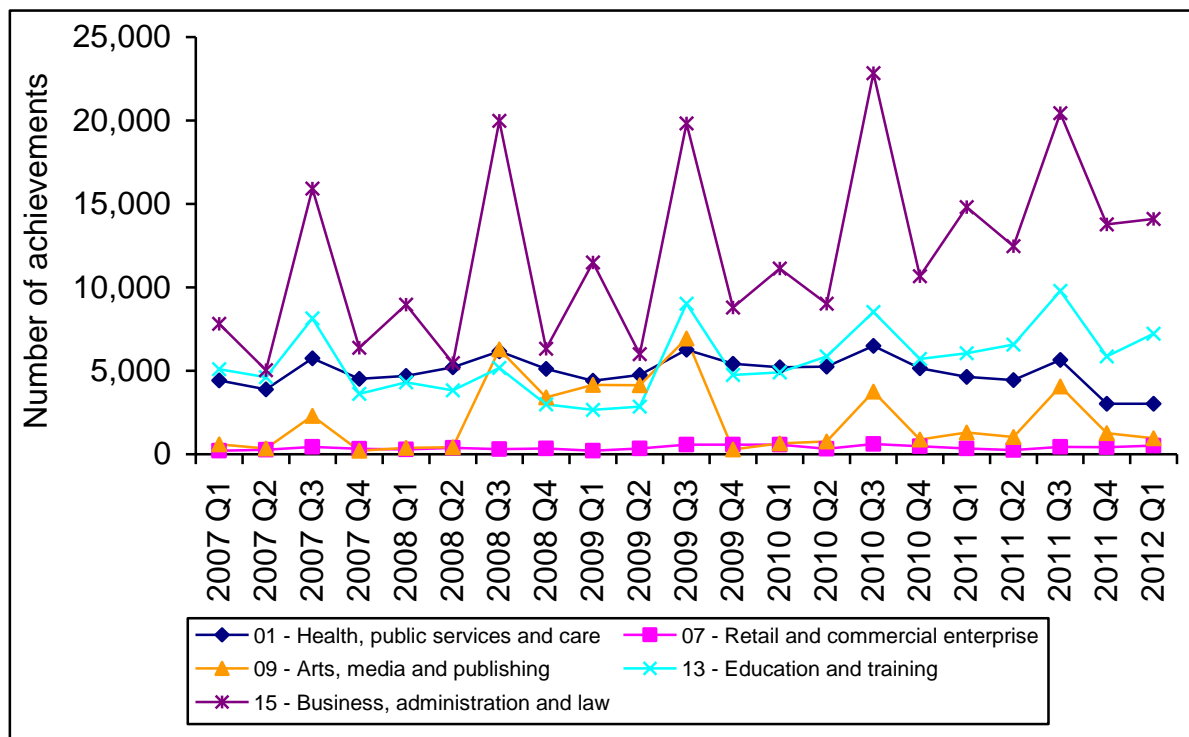
**Figure 8:** Percentage growth and decline in achievements between January to March 2011 and January to March 2012 by SSA. The red line shows average change for all higher qualifications (-4 per cent).



- |  |                                      |
|--|--------------------------------------|
| 1 Health, public services and care                 | 8 Leisure, travel and tourism        |
| 2 Science and mathematics                          | 9 Arts, media and publishing         |
| 3 Agriculture, horticulture and animal care        | 11 Social science                    |
| 4 Engineering and manufacturing technologies       | 12 Languages, literature and culture |
| 5 Construction, planning and the built environment | 13 Education and training            |
| 6 Information and communication technology         | 14 Preparation for life and work     |
| 7 Retail and commercial enterprise                 | 15 Business, administration and law  |

Figure 9 shows the five-year trend for the five largest SSAs in terms of achievements during January to March 2012.

**Figure 9:** Higher qualification achievements by SSA, January to March 2007 (2007 Q1) to January to March 2012 (2012 Q1), showing the five SSAs with the largest number of achievements (see table 5 for further details)



From the figure we can see that business, administration and law, and education and training are growing sectors for higher qualification achievements. Whereas, health, public services and care is on a downward trend.



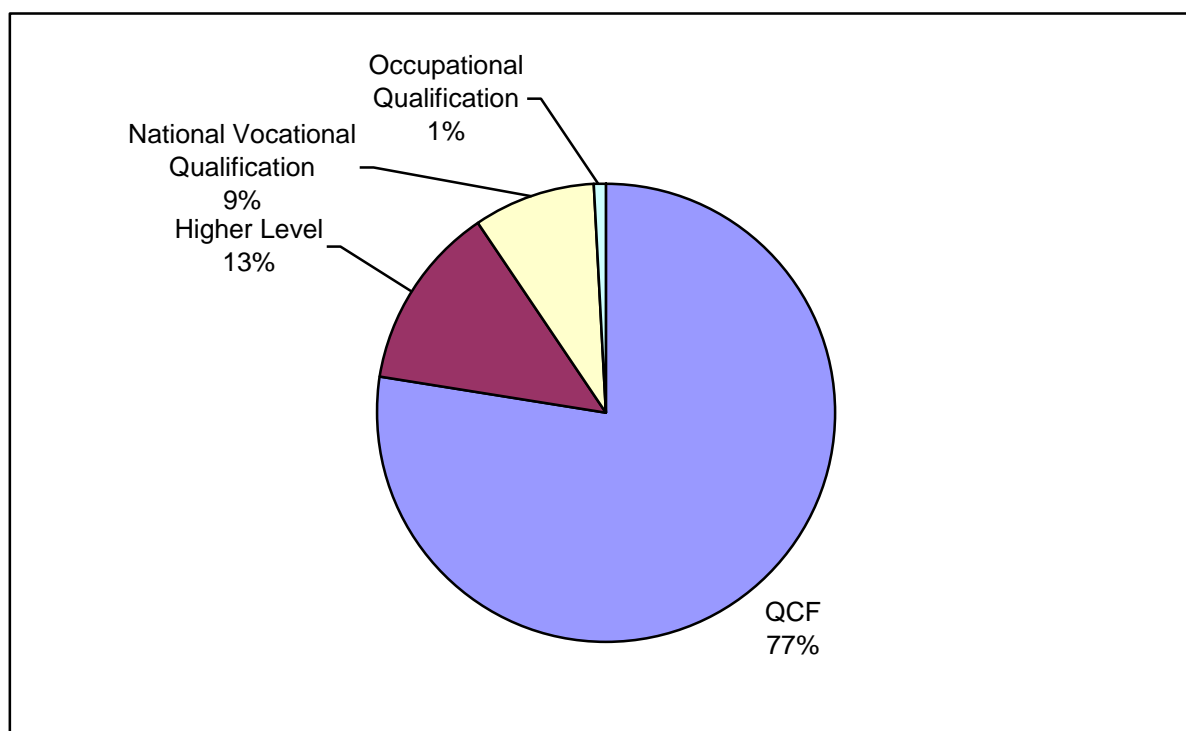
## Type of qualification

Regulated qualifications are allocated to one of 18 qualification types (see glossary<sup>4</sup> for a full listing).

The qualification type with the greatest number of achievements for higher qualifications in January to March 2012 was the QCF type, with 21,250 achievements. This is an increase of 67 per cent compared with the same quarter of 2011. The increase reflects the restructuring of many qualifications that were previously on the National Qualifications Framework (NQF) and are now on the QCF.

The second most frequently awarded qualification type was the HL, with 3,600 achievements, a decrease of 52 per cent on the same quarter of 2011. The qualification type with the third highest number of achievements was the NVQ, with 2,350 achievements, a decrease of 69 per cent on the same quarter of 2011. Figure 10 shows the breakdown of higher qualifications by type for January to March 2011.

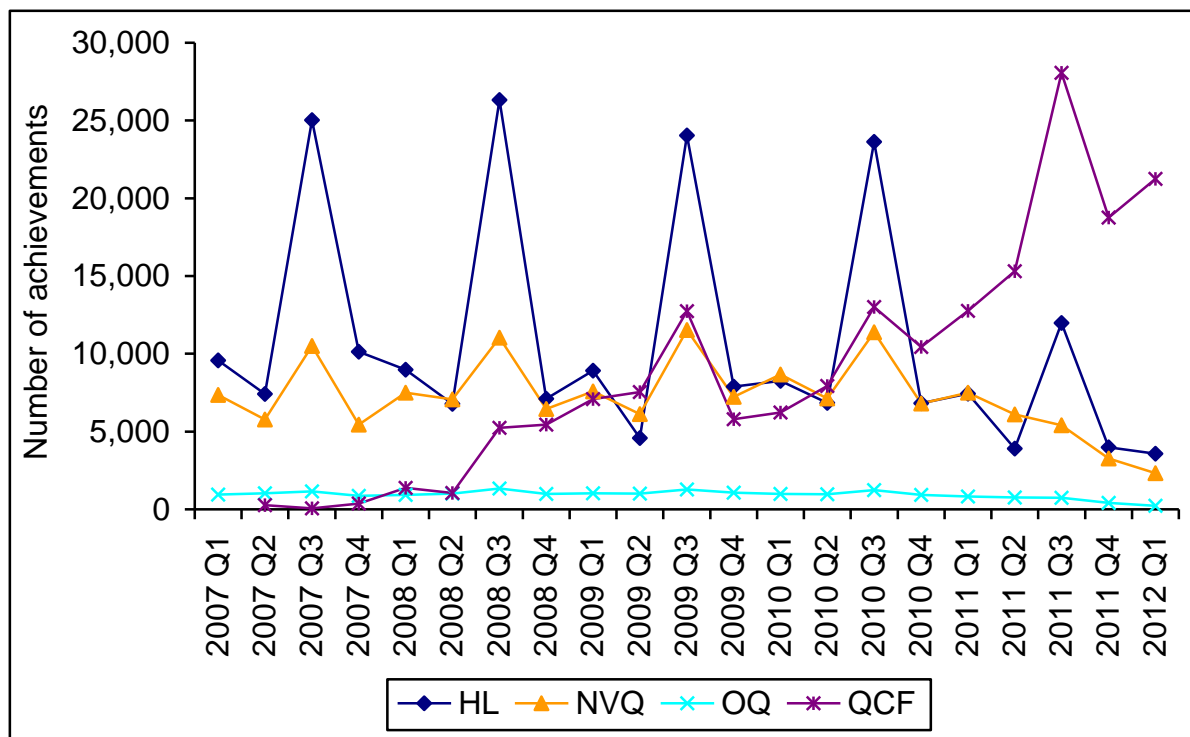
**Figure 10:** Higher qualification achievements by qualification type for January to March 2012



<sup>4</sup> [www.ofqual.gov.uk/research-and-statistics/165/411](http://www.ofqual.gov.uk/research-and-statistics/165/411)

Figure 11 shows the five-year trend for all qualification types certificating during January to March 2012.

**Figure 11:** Higher qualification achievements by qualification type for January to March 2007 (2007 Q1) to January to March 2012 (2012 Q1), showing the four types with the achievements in January to March 2012 (see table 6 for further details)



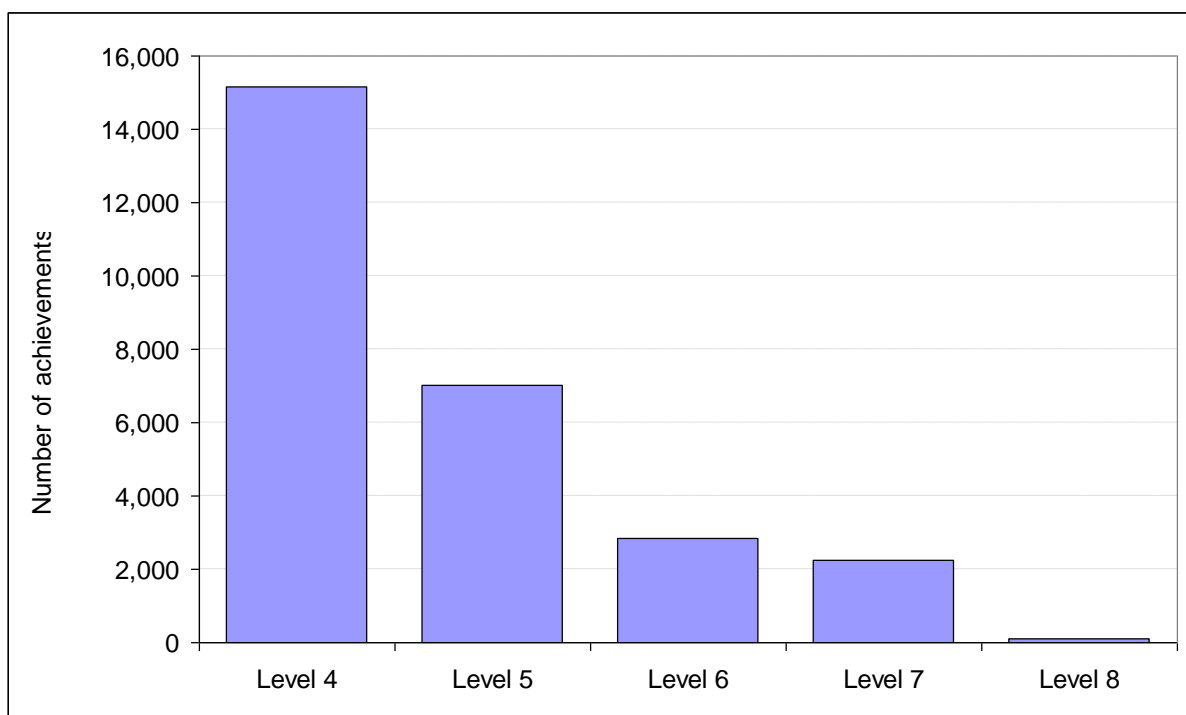
## Level of qualification

All regulated qualifications are assigned a level, ranging from entry, then 1 to 8 (see glossary for full details). Higher qualifications are those at levels 4 to 8.

Figures 12 and 13 show the large variation in the number of achievements by level and also the variation in change between January to March 2011 and the latest quarter. Level 4 has the highest number of achievements, with 15,150 in the last quarter. Level 5 has the second highest number of achievements, with 7,000, and level 6 the third highest, with 2,850. Of the five levels, 6, 7 and 8 showed an increase in achievements since January to March 2011. Level 8 saw the largest increase, of 144 per cent. However, the number of achievements overall was very low. Levels 4 and 5 showed a decrease in the number of achievements, 16 per cent and 6 per cent respectively.

Figure 12 shows the number of achievements by level of qualification.

**Figure 12:** Higher qualification achievements by level for January to March 2012



**Figure 13:** Percentage growth and decline in achievements between January to March 2011 and January to March 2012 by level. The red line shows average change for all higher qualifications (-4 per cent).

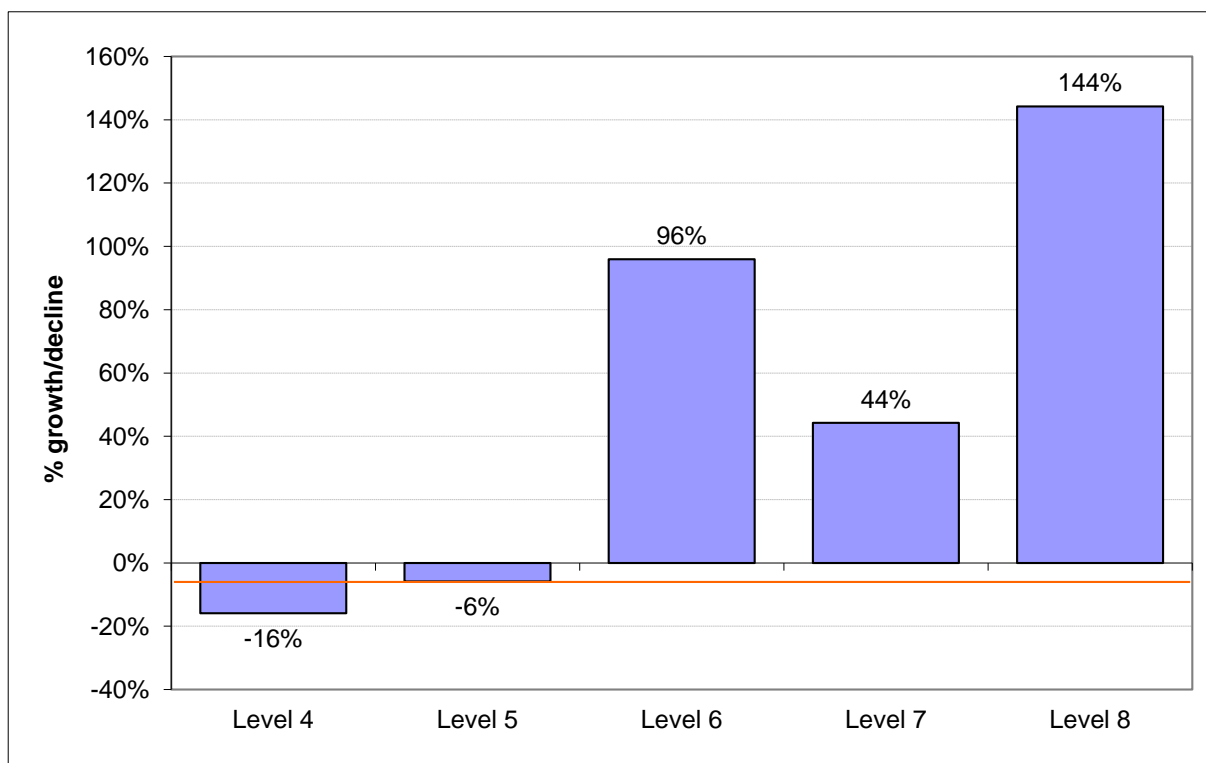
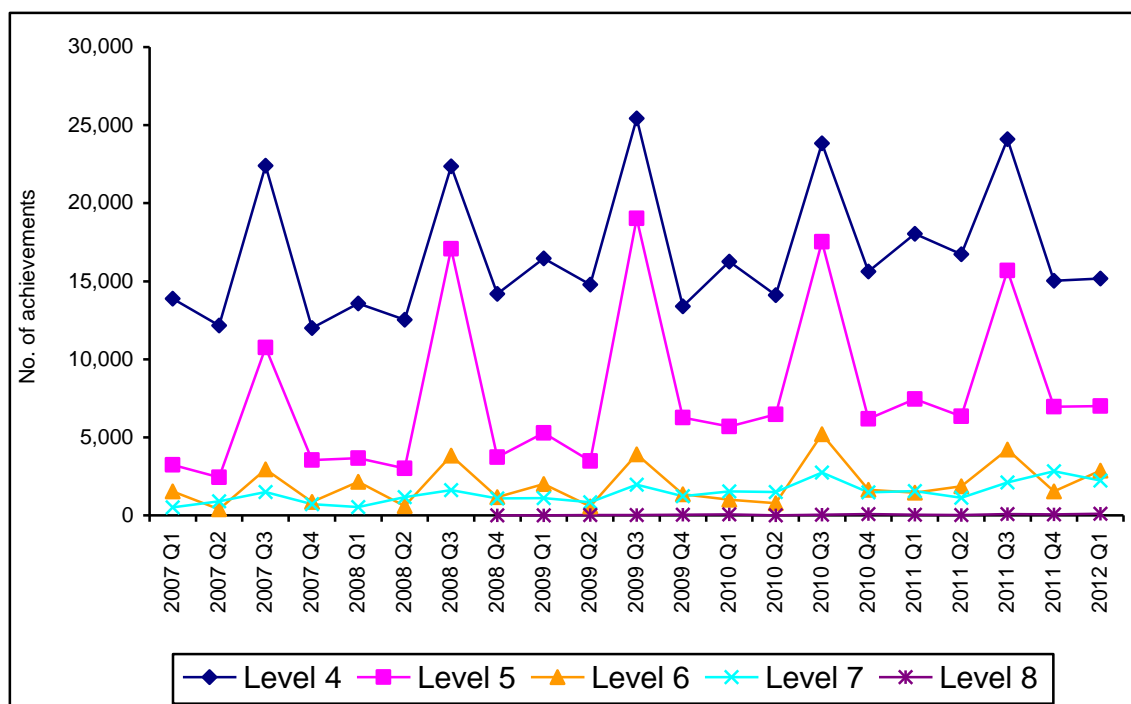


Figure 14 shows the trend in the number of achievements awarded since 2007 for each qualification level.

**Figure 14:** Higher qualification achievements by level, January to March 2007 (2007 Q1) to January to March 2012 (2012 Q1) (see table 7 for further details)



## Tables

Table 1: Number of available regulated qualifications for higher level qualifications, covering higher, supplemental and vocational qualifications, from 06-07 to Jan-Mar 2012

England, Wales and Northern Ireland

| Period       | ESOL<br>English for Speakers<br>of Other Languages | HL<br>Higher level | KS<br>Key skills | NVQ<br>National Vocational<br>qualification | OQ<br>Occupational<br>qualification | QCF<br>Qualifications and<br>Credit Framework | Total number<br>of<br>qualifications |
|--------------|--|--------------------|------------------|---|-------------------------------------|---|--------------------------------------|
| 06-07        | 11   | 413                | 32               | 414   | 33                                  | 17  | 920                                  |
| 07-08        | 11   | 505                | 32               | 399   | 33                                  | 108   | 1,088                                |
| 08-09        | 12   | 545                | 32               | 365   | 37                                  | 160   | 1,151                                |
| 09-10        | 11   | 577                | 68               | 315   | 35                                  | 496   | 1,502                                |
| 10-11        | 10   | 554                | 78               | 291   | 35                                  | 1,117   | 2,085                                |
| 11-12        | 5  | 485                | 72               | 256   | 33                                  | 1,341   | 2,192                                |
| Oct-Dec 2006 | 11   | 364                | 32               | 384   | 33                                  |   | 824                                  |
| Jan-Mar 2007 | 11   | 375                | 32               | 341   | 33                                  |   | 792                                  |
| Apr-Jun 2007 | 11   | 384                | 32               | 389   | 33                                  | 6   | 855                                  |
| Jul-Sep 2007 | 11   | 383                | 32               | 380   | 33                                  | 16  | 855                                  |
| Oct-Dec 2007 | 11   | 421                | 32               | 363   | 33                                  | 33  | 893                                  |
| Jan-Mar 2008 | 11   | 446                | 32               | 364   | 33                                  | 46  | 932                                  |
| Apr-Jun 2008 | 11   | 423                | 32               | 370   | 33                                  | 83  | 952                                  |
| Jul-Sep 2008 | 11   | 502                | 32               | 372   | 33                                  | 108   | 1,058                                |
| Oct-Dec 2008 | 11   | 472                | 32               | 319   | 33                                  | 117   | 984                                  |
| Jan-Mar 2009 | 12   | 510                | 32               | 328   | 36                                  | 135   | 1,053                                |
| Apr-Jun 2009 | 12   | 500                | 32               | 317   | 37                                  | 143   | 1,041                                |
| Jul-Sep 2009 | 11   | 505                | 32               | 286   | 36                                  | 154   | 1,024                                |
| Oct-Dec 2009 | 11   | 526                | 2                | 301   | 33                                  | 152   | 1,025                                |
| Jan-Mar 2010 | 10   | 545                | 6                | 301   | 33                                  | 222   | 1,117                                |
| Apr-Jun 2010 | 10   | 534                | 60               | 299   | 33                                  | 206   | 1,142                                |
| Jul-Sep 2010 | 10   | 540                | 67               | 290   | 33                                  | 489   | 1,429                                |
| Oct-Dec 2010 | 10   | 552                | 72               | 291   | 35                                  | 580   | 1,540                                |
| Jan-Mar 2011 | 9  | 540                | 78               | 264   | 33                                  | 773   | 1,697                                |
| Apr-Jun 2011 | 9  | 529                | 72               | 268   | 33                                  | 930   | 1,841                                |
| Jul-Sep 2011 | 9  | 504                | 72               | 267   | 35                                  | 1,100   | 1,987                                |
| Oct-Dec 2011 | 5  | 484                | 72               | 255   | 33                                  | 1,249   | 2,098                                |
| Jan-Mar 2012 | 5  | 446                | 72               | 249   | 33                                  | 1,338   | 2,143                                |

*Source: Regulated Qualifications Activity Database*

Notes:

1. Secondary qualifications represent qualifications from entry level to level 3. Higher qualifications represent qualifications from Level 4 to Level 8
2. Data is supplied by awarding organisations
3. Annual data is for academic years i.e. October to September

Rounding: All figures are rounded to the nearest 50, values less than 25 will appear as '-'. Figures have been rounded independently so may not sum to the total.

Table 2: Total achievements for higher level qualifications covering higher, supplemental and vocational qualifications, from 06-07 to Jan-Mar 2012

England, Wales and Northern Ireland

| Period       | <b>Total number of achievements</b> |
|--------------|-------------------------------------|
| 06-07        | <b>89,550</b>                       |
| 07-08        | <b>99,200</b>                       |
| 08-09        | <b>115,100</b>                      |
| 09-10        | <b>119,050</b>                      |
| 10-11        | <b>125,800</b>                      |
| 11-12        | <b>53,800</b>                       |
| Oct-Dec 2006 | <b>16,900</b>                       |
| Jan-Mar 2007 | <b>19,150</b>                       |
| Apr-Jun 2007 | <b>15,900</b>                       |
| Jul-Sep 2007 | <b>37,600</b>                       |
| Oct-Dec 2007 | <b>17,100</b>                       |
| Jan-Mar 2008 | <b>19,900</b>                       |
| Apr-Jun 2008 | <b>17,300</b>                       |
| Jul-Sep 2008 | <b>44,900</b>                       |
| Oct-Dec 2008 | <b>20,200</b>                       |
| Jan-Mar 2009 | <b>24,850</b>                       |
| Apr-Jun 2009 | <b>19,700</b>                       |
| Jul-Sep 2009 | <b>50,350</b>                       |
| Oct-Dec 2009 | <b>22,300</b>                       |
| Jan-Mar 2010 | <b>24,550</b>                       |
| Apr-Jun 2010 | <b>22,850</b>                       |
| Jul-Sep 2010 | <b>49,350</b>                       |
| Oct-Dec 2010 | <b>25,000</b>                       |
| Jan-Mar 2011 | <b>28,550</b>                       |
| Apr-Jun 2011 | <b>26,100</b>                       |
| Jul-Sep 2011 | <b>46,200</b>                       |
| Oct-Dec 2011 | <b>26,450</b>                       |
| Jan-Mar 2012 | <b>27,400</b>                       |

*Source: Regulated Qualifications Activity Database*

Notes:

1. Secondary qualifications represent qualifications from entry level to level 3. Higher qualifications represent qualifications from level 4 to level 8
2. Data is supplied by awarding organisations
3. Annual data is for academic years i.e. October to September

Rounding: All figures are rounded to the nearest 50, values less than 25 will appear as '-'. Figures have been rounded independently so may not sum to the total.

Table 3: Top 50 qualifications with the most achievements for higher level qualifications covering higher, supplemental and vocational qualifications, Jan-Mar 2012 (Jan-Mar 2011 shown for comparison)

England, Wales and Northern Ireland

| Qualification   | Number of achievements |              |
|---|------------------------|--------------|
|   | Jan-Mar 2011           | Jan-Mar 2012 |
| City & Guilds Level 4 Award in Preparing to Teach in the LifeLong Learning Sector (QCF)             | 1850                   | 2300         |
| CII Level 4 Diploma in Financial Planning (QCF)   | 700                    | 1250         |
| Cambridge ESOL Level 5 Certificate in Teaching English to Speakers of Other Languages (CELTA) (QCF) | 400                    | 950          |
| AAT Level 4 Diploma in Accounting (QCF)   | 100                    | 900          |
| CMI Level 5 Certificate in Management and Leadership (QCF)  | 1100                   | 900          |
| CILEx Level 6 Certificate in Law (QCF)  | 0                      | 850          |
| IFS Level 4 Diploma for Financial Advisers (QCF)  | 0                      | 850          |
| EDEXCEL Level 4 BTEC Certificate in Teaching in the Lifelong Learning Sector (QCF)                  | 750                    | 650          |
| Edexcel BTEC Level 4 Award in Preparing to Teach in the Lifelong Learning Sector                    | 300                    | 550          |
| CMI Level 5 Diploma in Management and Leadership (QCF)  | 500                    | 550          |
| CMI Level 7 Diploma in Strategic Management and Leadership (QCF)                                    | 350                    | 450          |
| Edexcel BTEC Level 7 Extended Diploma in Strategic Management and Leadership (QCF)                  | 0                      | 400          |
| TCL Level 5 Certificate In Teaching English to Speakers of Other Languages (Cert TESOL) (QCF)       | 0                      | 350          |
| CFA UK Level 4 Certificate in Investment Management (QCF)   | 250                    | 300          |
| CMI Level 7 Certificate in Strategic Management and Leadership (QCF)                                | 150                    | 300          |
| City & Guilds Level 4 NVQ in Leadership and Management for Care Services                            | 450                    | 300          |
| CMI Level 5 Award in Management and Leadership (QCF)  | 450                    | 300          |
| CMI Level 6 Award in Management and Leadership (QCF)  | 250                    | 250          |
| City & Guilds Level 4 NVQ in Health and Social Care   | 500                    | 250          |
| ILM Level 5 Award in Management (QCF)   | 400                    | 250          |
| CIM Level 6 Professional Diploma in Marketing   | 0                      | 250          |
| OCR Level 4 Award in Preparing to Teach in the Lifelong Learning Sector (QCF)                       | 150                    | 250          |
| ISTD Level 4 Certificate in Vocational Graded Examination in Dance: Advanced 1 (QCF)                | 250                    | 200          |
| EDEXCEL Level 5 BTEC Higher National Diploma in Business  | 150                    | 200          |
| ABE Level 5 Diploma in Business Management  | 350                    | 200          |
| ILM Level 5 Certificate in Coaching and Mentoring in Management (QCF)                               | 250                    | 200          |
| CIM Level 4 Professional Certificate in Marketing   | 50                     | 200          |
| CISI Level 6 Certificate in Private Client Investment Advice & Management (QCF)                     | 150                    | 200          |
| CIPS Level 6 Graduate Diploma in Purchasing and Supply  | 150                    | 200          |
| EDEXCEL Level 4 NVQ in Leadership and Management for Care Services                                  | 300                    | 150          |
| City & Guilds Level 4 Certificate in Teaching in the Lifelong Learning sector (QCF)                 | 200                    | 150          |
| CMI Level 5 Award in Management Coaching and Mentoring (QCF)  | 100                    | 150          |
| CIPS Level 5 Advanced Diploma in Purchasing and Supply  | 100                    | 150          |
| EDEXCEL BTEC Level 5 HND Diploma in Business (QCF)  | 0                      | 150          |
| CISI Level 4 Diploma in Investment Advice (QCF)   | 0                      | 150          |
| EDEXCEL Level 4 NVQ in Health and Social Care   | 250                    | 150          |
| ABRSM Level 4 Diploma in Music Performance (QCF)  | 0                      | 150          |
| Cambridge ESOL Level 4 Award in Preparing to Teach in the Lifelong Learning Sector (QCF)            | 100                    | 150          |
| CACHE Level 4 NVQ in Children's Care, Learning and Development                                      | 250                    | 150          |
| CIPS Level 4 Foundation Diploma in Purchasing and Supply  | 200                    | 150          |
| CIPD Level 7 Postgraduate Certificate in Personnel and Development                                  | 0                      | 150          |
| City & Guilds Level 5 Diploma in Teaching in the Lifelong Learning Sector (QCF)                     | 150                    | 100          |
| CIPD Level 7 Postgraduate Diploma in Personnel and Development                                      | 0                      | 100          |
| Ascentis Level 4 Award In Preparing to Teach in the Lifelong Learning Sector (QCF)                  | 0                      | 100          |
| Edexcel BTEC Level 5 Diploma in Management and Leadership (QCF)                                     | 0                      | 100          |
| AAT Level 4 Award In Tax (HMRC) (QCF)   | 0                      | 100          |
| CPCAB Level 4 Diploma in Therapeutic Counselling  | 100                    | 100          |
| HABC Level 4 Award in Managing Food Safety in Catering (QCF)  | 100                    | 100          |
| CIEH Level 4 Award in Managing Food Safety in Catering (QCF)  | 50                     | 100          |

*Source: Regulated Qualifications Activity Database*

Notes:

1. Secondary qualifications represent qualifications from entry level to level 3. Higher qualifications represent qualifications from level 4 to level 8
2. Data is supplied by awarding organisations
3. Annual data is for academic years i.e. October to September

Rounding: All figures are rounded to the nearest 50, values less than 25 will appear as '!'. Figures have been rounded independently so may not sum to the total.



Table 4: Top 50 awarding organisations with the most achievements for higher level qualifications covering higher, supplemental and vocational qualifications, Jan-Mar 2012 (Jan-Mar 2011 shown for comparison)

England, Wales and Northern Ireland

| Awarding organisation  | Number of achievements |              |
|--|------------------------|--------------|
|  | Jan-Mar 2011           | Jan-Mar 2012 |
| City and Guilds of London Institute                          | 4,500                  | 4,150        |
| Pearson Education Ltd  | 4,050                  | 3,800        |
| Chartered Management Institute                               | 4,250                  | 3,500        |
| Institute of Leadership & Management                         | 2,250                  | 1,500        |
| Chartered Insurance Institute                                | 750                    | 1,400        |
| Association of Accounting Technicians                        | 1,600                  | 1,200        |
| University of Cambridge ESOL Examinations                    | 1,050                  | 1,200        |
| OCR  | 1,750                  | 1,150        |
| Chartered Institute of Legal Executives                      | 0                      | 950          |
| IFS School of Finance  | 500                    | 900          |
| Trinity College London                                       | 400                    | 600          |
| Association of Business Executives                           | 1,100                  | 550          |
| Chartered Institute of Purchasing and Supply                 | 450                    | 450          |
| Chartered Institute of Marketing                             | 50                     | 450          |
| Chartered Institute for Securities & Investment              | 200                    | 350          |
| EDI  | 550                    | 350          |
| CFA Society of UK  | 250                    | 300          |
| Imperial Society of Teachers of Dancing                      | 900                    | 300          |
| Chartered Institute of Personnel and Development             | 50                     | 250          |
| Cskills Awards   | 150                    | 250          |
| Chartered Institute of Environmental Health                  | 100                    | 250          |
| Associated Board of the Royal Schools of Music               | 150                    | 200          |
| Accrediting and Assessment Bureau for Post-Secondary Schools | 0                      | 200          |
| Counselling and Psychotherapy Central Awarding Body          | 100                    | 200          |
| The Confederation of Tourism and Hospitality                 | 150                    | 200          |
| Council for Awards in Care, Health and Education             | 300                    | 150          |
| Institute of Commercial Management                           | 50                     | 150          |
| Institute of Administrative Management                       | 1,250                  | 150          |
| Highfield Awarding Body for Compliance                       | 100                    | 150          |
| Organisation for Tourism and Hospitality Management          | 200                    | 100          |
| Ascentis   | 100                    | 100          |
| Association of British Dispensing Opticians                  | 100                    | 100          |
| National Open College Network                                | 0                      | 100          |
| WAMITAB  | 0                      | 100          |
| Chartered Quality Institute                                  | 0                      | 100          |
| EMTA Awards Limited  | 100                    | 100          |
| ABC Awards   | 100                    | 100          |
| Assessment and Qualifications Alliance                       | 50                     | 100          |
| NCFE   | 100                    | 100          |
| Signature  | 50                     | 100          |
| Chartered Institute of Housing                               | 50                     | 50           |
| VTCT   | 0                      | 50           |
| Active IQ  | 0                      | 50           |
| Mineral Products Qualifications Council                      | 50                     | 50           |
| BCS, The Chartered Institute for IT                          | 0                      | 50           |
| Royal Academy of Dance                                       | 0                      | 50           |
| Graded Qualifications Alliance                               | 0                      | 50           |
| Association of Chartered Certified Accountants               | 0                      | 50           |
| Awarding Body for Vocational Achievement Ltd                 | 50                     | 50           |
| University of West London                                    | 0                      | 50           |

*Source: Regulated Qualifications Activity Database*

Notes:

1. Secondary qualifications represent qualifications from entry level to level 3. Higher qualifications represent qualifications from level 4 to level 8
2. Data is supplied by awarding organisations
3. Annual data is for academic years i.e. October to September

Rounding: All figures are rounded to the nearest 50, values less than 25 will appear as '-'. Figures have been rounded independently so may not sum to the total.

Table 5: Achievements by sector subject area for higher level qualifications covering higher, supplemental and vocational qualifications, from 06-07 to Jan-Mar 2012  
England, Wales and Northern Ireland

| Period       | 01 - Health,<br>public services<br>and care | 02 - Science and<br>mathematics | 03 - Agriculture,<br>horticulture and<br>animal care | 04 - Engineering<br>and<br>manufacturing<br>technologies | 05 -<br>Construction,<br>planning and the<br>built environment | 06 - Information<br>and<br>communication<br>technology | 07 - Retail and<br>commercial<br>enterprise | 08 - Leisure,<br>travel and<br>tourism | 09 - Arts, media<br>and publishing | 10 - History,<br>philosophy and<br>theology | 11 - Social<br>sciences | 12 - Languages,<br>literature and<br>culture | 13 - Education<br>and training | 14 - Preparation<br>for life and work | 15 - Business,<br>administration<br>and law | Total number of<br>achievements |
|--------------|---|---------------------------------|--|--|--|--|---|--|------------------------------------|---|-------------------------|--|--------------------------------|---------------------------------------|---|---------------------------------|
| 06-07        | 18,450                                      | 400                             | 1,100  | 2,250  | 3,150  | 1,300  | 1,050                                       | 250                                    | 3,500                              | 0   | 0                       | 900  | 23,100                         | 150                                   | 33,950                                      | <b>89,550</b>                   |
| 07-08        | 20,600                                      | 350                             | 1,250  | 2,850  | 3,850  | 2,500  | 1,300                                       | 450                                    | 7,300                              | 0   | 0                       | 900  | 16,950                         | 150                                   | 40,800                                      | <b>99,200</b>                   |
| 08-09        | 20,550                                      | 800                             | 1,150  | 3,300  | 4,750  | 2,050  | 1,500                                       | 450                                    | 18,650                             | 0   | 0                       | 500  | 17,500                         | 200                                   | 43,650                                      | <b>115,100</b>                  |
| 09-10        | 22,350                                      | 650                             | 950  | 3,600  | 5,150  | 1,500  | 2,100                                       | 900                                    | 5,450                              | 0   | 0                       | 500  | 24,050                         | 100                                   | 51,750                                      | <b>119,050</b>                  |
| 10-11        | 19,850                                      | 300                             | 700  | 3,350  | 3,450  | 1,450  | 1,500                                       | 950                                    | 7,250                              | 0   | 0                       | 400  | 28,150                         | 50                                    | 58,400                                      | <b>125,800</b>                  |
| 11-12        | 5,900                                       | 100                             | 250  | 900  | 1,200  | 500  | 950   | 400                                    | 2,200                              | 0   | 0                       | 200  | 13,100                         | 50                                    | 27,900                                      | <b>53,650</b>                   |
| Oct-Dec 2006 | 4,400                                       | 50                              | 250  | 200  | 400  | 300  | 150   | 50                                     | 300                                | 0   | 0                       | 400  | 5,250                          | 0                                     | 5,200                                       | <b>16,900</b>                   |
| Jan-Mar 2007 | 4,400                                       | 100                             | 250  | 150  | 400  | 50   | 200   | 0                                      | 600                                | 0   | 0                       | 0  | 5,100                          | 100                                   | 7,800                                       | <b>19,150</b>                   |
| Apr-Jun 2007 | 3,900                                       | 50                              | 250  | 150  | 650  | 250  | 250   | 0                                      | 350                                | 0   | 0                       | 400  | 4,600                          | 0                                     | 5,050                                       | <b>15,900</b>                   |
| Jul-Sep 2007 | 5,750                                       | 250                             | 400  | 1,750  | 1,700  | 700  | 450   | 150                                    | 2,300                              | 0   | 0                       | 50   | 8,150                          | 50                                    | 15,900                                      | <b>37,600</b>                   |
| Oct-Dec 2007 | 4,550                                       | 50                              | 200  | 350  | 650  | 350  | 300   | 0                                      | 200                                | 0   | 0                       | 400  | 3,650                          | 0                                     | 6,350                                       | <b>17,100</b>                   |
| Jan-Mar 2008 | 4,700                                       | 100                             | 300  | 150  | 500  | 50   | 300   | 50                                     | 400                                | 0   | 0                       | 50   | 4,300                          | 0                                     | 8,950                                       | <b>19,900</b>                   |
| Apr-Jun 2008 | 5,200                                       | 50                              | 300  | 200  | 550  | 400  | 400   | 50                                     | 450                                | 0   | 0                       | 400  | 3,850                          | 50                                    | 5,450                                       | <b>17,300</b>                   |
| Jul-Sep 2008 | 6,150                                       | 150                             | 400  | 2,150  | 2,200  | 1,650  | 300   | 350                                    | 6,300                              | 0   | 0                       | 50   | 5,150                          | 50                                    | 20,000                                      | <b>44,900</b>                   |
| Oct-Dec 2008 | 5,100                                       | 100                             | 250  | 450  | 550  | 200  | 350   | 50                                     | 3,400                              | 0   | 0                       | 300  | 3,000                          | 0                                     | 6,300                                       | <b>20,200</b>                   |
| Jan-Mar 2009 | 4,400                                       | 250                             | 250  | 350  | 550  | 450  | 200   | 50                                     | 4,150                              | 0   | 0                       | 50   | 2,650                          | 0                                     | 11,500                                      | <b>24,850</b>                   |
| Apr-Jun 2009 | 4,750                                       | 0                               | 200  | 250  | 950  | 100  | 350   | 50                                     | 4,150                              | 0   | 0                       | 50   | 2,850                          | 50                                    | 6,000                                       | <b>19,700</b>                   |
| Jul-Sep 2009 | 6,250                                       | 400                             | 450  | 2,300  | 2,650  | 1,300  | 600   | 300                                    | 6,950                              | 0   | 0                       | 100  | 9,000                          | 150                                   | 19,800                                      | <b>50,350</b>                   |
| Oct-Dec 2009 | 5,400                                       | 50                              | 200  | 500  | 950  | 400  | 550   | 100                                    | 300                                | 0   | 0                       | 350  | 4,750                          | 0                                     | 8,800                                       | <b>22,300</b>                   |
| Jan-Mar 2010 | 5,200                                       | 200                             | 250  | 300  | 850  | 200  | 600   | 200                                    | 650                                | 0   | 0                       | 50   | 4,900                          | 50                                    | 11,100                                      | <b>24,550</b>                   |
| Apr-Jun 2010 | 5,250                                       | 50                              | 150  | 200  | 1,000  | 50   | 300   | 150                                    | 750                                | 0   | 0                       | 50   | 5,850                          | 0                                     | 9,000                                       | <b>22,850</b>                   |
| Jul-Sep 2010 | 6,500                                       | 350                             | 350  | 2,650  | 2,400  | 850  | 600   | 450                                    | 3,750                              | 0   | 0                       | 50   | 8,550                          | 50                                    | 22,850                                      | <b>49,350</b>                   |
| Oct-Dec 2010 | 5,150                                       | 50                              | 150  | 400  | 600  | 400  | 500   | 200                                    | 900                                | 0   | 0                       | 300  | 5,700                          | 0                                     | 10,650                                      | <b>25,000</b>                   |
| Jan-Mar 2011 | 4,650                                       | 50                              | 100  | 250  | 550  | 150  | 350   | 250                                    | 1,300                              | 0   | 0                       | 50   | 6,050                          | 0                                     | 14,800                                      | <b>28,550</b>                   |
| Apr-Jun 2011 | 4,450                                       | 50                              | 200  | 350  | 550  | 50   | 250   | 100                                    | 1,050                              | 0   | 0                       | 50   | 6,550                          | 0                                     | 12,450                                      | <b>26,100</b>                   |
| Jul-Sep 2011 | 5,650                                       | 200                             | 200  | 2,300  | 1,800  | 850  | 450   | 400                                    | 4,050                              | 0   | 0                       | 50   | 9,800                          | 0                                     | 20,450                                      | <b>46,200</b>                   |
| Oct-Dec 2011 | 3,050                                       | 50                              | 150  | 500  | 700  | 350  | 400   | 200                                    | 1,250                              | 0   | 0                       | 150  | 5,850                          | 0                                     | 13,800                                      | <b>26,450</b>                   |
| Jan-Mar 2012 | 3,050                                       | 50                              | 150  | 400  | 500  | 200  | 500   | 200                                    | 950                                | 0   | 0                       | 100  | 7,250                          | 0                                     | 14,100                                      | <b>27,400</b>                   |

Source: Regulated Qualifications Activity Database

- Notes:
1. Secondary qualifications represent qualifications from entry level to level 3. Higher qualifications represent qualifications from level 4 to level 8
  2. Data is supplied by awarding organisations
  3. Annual data is for academic years i.e. October to September

Rounding: All figures are rounded to the nearest 50, values less than 25 will appear as '-'. Figures have been rounded independently so may not sum to the total.

Table 6: Achievements by type of qualification for higher level qualifications covering higher, supplemental and vocational qualifications, from 06-07 to Jan-Mar 2012

England, Wales and Northern Ireland

| Period       | ESOL<br>English for<br>Speakers of<br>Other<br>Languages | HL<br>Higher level | KS<br>Key skills | NVQ<br>National<br>Vocational<br>qualification | OQ<br>Occupational<br>qualification | QCF<br>Qualifications<br>and Credit<br>Framework | Total number of<br>achievements |
|--------------|--|--------------------|------------------|--|-------------------------------------|--|---------------------------------|
| 06-07        | 4,050  | 50,950             | 150              | 29,950   | 4,100                               | 350  | <b>89,550</b>                   |
| 07-08        | 3,600  | 52,200             | 150              | 31,100   | 4,150                               | 8,050  | <b>99,200</b>                   |
| 08-09        | 1,450  | 44,650             | 200              | 31,650   | 4,300                               | 32,800   | <b>115,100</b>                  |
| 09-10        | 700  | 46,600             | 100              | 34,450   | 4,250                               | 32,950   | <b>119,050</b>                  |
| 10-11        |  | 30,150             | 50               | 25,800   | 3,250                               | 66,600   | <b>125,800</b>                  |
| 11-12        |  | 7,550              |                  | 5,600  | 650                                 | 40,000   | <b>53,800</b>                   |
| Oct-Dec 2006 | 650  | 8,950              |                  | 6,300  | 1,000                               |  | <b>16,900</b>                   |
| Jan-Mar 2007 | 1,200  | 9,550              | 100              | 7,350  | 950                                 |  | <b>19,150</b>                   |
| Apr-Jun 2007 | 1,400  | 7,400              |                  | 5,800  | 1,050                               | 300  | <b>15,900</b>                   |
| Jul-Sep 2007 | 850  | 25,000             | 50               | 10,500   | 1,150                               | 50   | <b>37,600</b>                   |
| Oct-Dec 2007 | 300  | 10,150             |                  | 5,450  | 850                                 | 350  | <b>17,100</b>                   |
| Jan-Mar 2008 | 1,100  | 9,000              |                  | 7,500  | 950                                 | 1,400  | <b>19,900</b>                   |
| Apr-Jun 2008 | 1,300  | 6,800              | 50               | 7,100  | 1,000                               | 1,050  | <b>17,300</b>                   |
| Jul-Sep 2008 | 900  | 26,300             | 50               | 11,050   | 1,350                               | 5,250  | <b>44,900</b>                   |
| Oct-Dec 2008 | 200  | 7,100              |                  | 6,450  | 1,000                               | 5,450  | <b>20,200</b>                   |
| Jan-Mar 2009 | 250  | 8,900              |                  | 7,600  | 1,000                               | 7,100  | <b>24,850</b>                   |
| Apr-Jun 2009 | 400  | 4,600              | 50               | 6,100  | 1,000                               | 7,550  | <b>19,700</b>                   |
| Jul-Sep 2009 | 600  | 24,050             | 150              | 11,550   | 1,250                               | 12,750   | <b>50,350</b>                   |
| Oct-Dec 2009 | 300  | 7,900              |                  | 7,250  | 1,050                               | 5,800  | <b>22,300</b>                   |
| Jan-Mar 2010 | 350  | 8,250              | 50               | 8,650  | 1,000                               | 6,200  | <b>24,550</b>                   |
| Apr-Jun 2010 |  | 6,850              |                  | 7,150  | 950                                 | 7,950  | <b>22,850</b>                   |
| Jul-Sep 2010 |  | 23,600             | 50               | 11,400   | 1,250                               | 13,000   | <b>49,350</b>                   |
| Oct-Dec 2010 |  | 6,800              |                  | 6,800  | 950                                 | 10,450   | <b>25,000</b>                   |
| Jan-Mar 2011 |  | 7,450              |                  | 7,500  | 800                                 | 12,750   | <b>28,550</b>                   |
| Apr-Jun 2011 |  | 3,900              |                  | 6,100  | 750                                 | 15,300   | <b>26,100</b>                   |
| Jul-Sep 2011 |  | 12,000             |                  | 5,400  | 750                                 | 28,050   | <b>46,200</b>                   |
| Oct-Dec 2011 |  | 4,000              |                  | 3,250  | 400                                 | 18,750   | <b>26,450</b>                   |
| Jan-Mar 2012 |  | 3,600              |                  | 2,350  | 250                                 | 21,250   | <b>27,400</b>                   |

*Source: Regulated Qualifications Activity Database*

Notes:

1. Secondary qualifications represent qualifications from entry level to level 3. Higher qualifications represent qualifications from level 4 to level 8
2. Data is supplied by awarding organisations
3. Annual data is for academic years i.e. October to September

Rounding: All figures are rounded to the nearest 50, values less than 25 will appear as '-'. Figures have been rounded independently so may not sum to the total.

Table 7: Achievements by level of qualification for higher level qualifications covering higher, supplemental and vocational qualifications, from 06-07 to Jan-Mar 2012

England, Wales and Northern Ireland

| Period       | Level 4 | Level 5 | Level 6 | Level 7 | Level 8 | Total number of achievements |
|--------------|---------|---------|---------|---------|---------|------------------------------|
| 06-07        | 61,350  | 19,250  | 5,600   | 3,350   | -       | <b>89,550</b>                |
| 07-08        | 60,500  | 27,300  | 7,400   | 4,000   | -       | <b>99,200</b>                |
| 08-09        | 70,900  | 31,500  | 7,650   | 5,000   | 50      | <b>115,100</b>               |
| 09-10        | 67,600  | 35,950  | 8,300   | 7,000   | 150     | <b>119,050</b>               |
| 10-11        | 74,500  | 35,650  | 9,150   | 6,250   | 200     | <b>125,800</b>               |
| 11-12        | 30,200  | 14,000  | 4,400   | 5,050   | 150     | <b>53,800</b>                |
| Oct-Dec 2006 | 12,900  | 2,800   | 750     | 450     | -       | <b>16,900</b>                |
| Jan-Mar 2007 | 13,900  | 3,250   | 1,550   | 500     | -       | <b>19,150</b>                |
| Apr-Jun 2007 | 12,150  | 2,450   | 400     | 900     | -       | <b>15,900</b>                |
| Jul-Sep 2007 | 22,400  | 10,750  | 2,950   | 1,500   | -       | <b>37,600</b>                |
| Oct-Dec 2007 | 12,000  | 3,550   | 850     | 700     | -       | <b>17,100</b>                |
| Jan-Mar 2008 | 13,550  | 3,650   | 2,150   | 550     | -       | <b>19,900</b>                |
| Apr-Jun 2008 | 12,550  | 3,000   | 600     | 1,150   | -       | <b>17,300</b>                |
| Jul-Sep 2008 | 22,350  | 17,100  | 3,850   | 1,600   | -       | <b>44,900</b>                |
| Oct-Dec 2008 | 14,200  | 3,750   | 1,150   | 1,100   | -       | <b>20,200</b>                |
| Jan-Mar 2009 | 16,450  | 5,300   | 2,000   | 1,100   | -       | <b>24,850</b>                |
| Apr-Jun 2009 | 14,800  | 3,500   | 550     | 850     | -       | <b>19,700</b>                |
| Jul-Sep 2009 | 25,450  | 19,050  | 3,900   | 1,950   | -       | <b>50,350</b>                |
| Oct-Dec 2009 | 13,400  | 6,250   | 1,350   | 1,250   | 50      | <b>22,300</b>                |
| Jan-Mar 2010 | 16,250  | 5,700   | 1,000   | 1,550   | 50      | <b>24,550</b>                |
| Apr-Jun 2010 | 14,100  | 6,500   | 800     | 1,500   | -       | <b>22,850</b>                |
| Jul-Sep 2010 | 23,850  | 17,500  | 5,200   | 2,750   | 50      | <b>49,350</b>                |
| Oct-Dec 2010 | 15,650  | 6,200   | 1,650   | 1,450   | 100     | <b>25,000</b>                |
| Jan-Mar 2011 | 18,050  | 7,450   | 1,450   | 1,550   | 50      | <b>28,550</b>                |
| Apr-Jun 2011 | 16,750  | 6,350   | 1,850   | 1,150   | -       | <b>26,100</b>                |
| Jul-Sep 2011 | 24,100  | 15,700  | 4,200   | 2,100   | 100     | <b>46,200</b>                |
| Oct-Dec 2011 | 15,050  | 6,950   | 1,550   | 2,850   | 50      | <b>26,450</b>                |
| Jan-Mar 2012 | 15,150  | 7,000   | 2,850   | 2,250   | 100     | <b>27,400</b>                |

*Source: Regulated Qualifications Activity Database*

Notes:

1. Secondary qualifications represent qualifications from entry level to level 3. Higher qualifications represent qualifications from level 4 to level 8
2. Data is supplied by awarding organisations
3. Annual data is for academic years i.e. October to September

Rounding: All figures are rounded to the nearest 50, values less than 25 will appear as '-'. Figures have been rounded independently so may not sum to the total.

We wish to make our publications widely accessible. Please contact us if you have any specific accessibility requirements.

First published by the Office of Qualifications and Examinations Regulation in 2012

© Crown copyright 2012

You may re-use this publication (not including logos) free of charge in any format or medium, under the terms of the [Open Government Licence](#). To view this licence, [visit The National Archives](#); or write to the Information Policy Team, The National Archives, Kew, Richmond, Surrey, TW9 4DU; or email: [psi@nationalarchives.gsi.gov.uk](mailto:psi@nationalarchives.gsi.gov.uk)

This publication is also available on our website at [www.ofqual.gov.uk](http://www.ofqual.gov.uk)

Any enquiries regarding this publication should be sent to us at:

|  |                   |
|--|-------------------|
| Office of Qualifications and Examinations Regulation |                   |
| Spring Place   | 2nd Floor         |
| Coventry Business Park                               | Glendinning House |
| Herald Avenue  | 6 Murray Street   |
| Coventry CV5 6UB                                     | Belfast BT1 6DN   |

Telephone 0300 303 3344

Textphone 0300 303 3345

Helpline 0300 303 3346

[www.ofqual.gov.uk](http://www.ofqual.gov.uk)

Alison Fisher – Head of Statistics