



Skills Funding  
Agency



Department  
for Business  
Innovation & Skills

## Statistical First Release

### Further Education & Skills: Learner Participation, Outcomes and Level of Highest Qualification Held

**Publication date:**  
30<sup>th</sup> January 2014

**Next Updated:**  
March 2014

**Reference:** DS/SFR22

**Coverage:** England

**Theme:** Children, Education and Skills

**For further information contact:**

**Service Desk**  
[servicesdesk@thedata.service.gov.uk](mailto:servicesdesk@thedata.service.gov.uk)  
0870 267 0001

**Or view our web site at:**  
<https://www.gov.uk/government/publications/learner-participation-outcomes-and-level-of-highest-qualification-held>

**Lead Statistician:**  
Jessie Evans  
[Jessie.Evans@bis.gsi.gov.uk](mailto:Jessie.Evans@bis.gsi.gov.uk)  
020 7215 1868

Department for Business,  
Innovation and Skills,  
Level 2,  
1 Victoria Street,  
London,  
SW1H 0ET

© Skills Funding Agency  
2014

This release presents information on adult (19+) government-funded<sup>1</sup> further education (excluding schools and Higher Education) and all age (16+) Apprenticeships in England, between 2008/09 and 2012/13. It also includes provisional data for the first quarter of the 2013/14 academic year.

This release also presents key statistics on the highest level of qualification held by adults in England from 2006 to 2012, calculated from Labour Force Survey (LFS) data. Figures relating to 2012 are provisional and are subject to revisions.

#### Key Points

- The overall 2012/13 Education and Training success rate for government funded adult learners was 86.8 per cent, an increase of 2.9 percentage points compared to 2011/12. Increases were seen at all levels.
- The overall 2012/13 Apprenticeship success rate was 72.3 per cent, a decrease of 1.5 percentage points compared to 2011/12. Decreases were seen at all ages, except for those aged 25+, and all levels.
- Provisional data show that for the first quarter of the 2013/14 academic year 1,475,600 adult learners aged 19 and over participated in government-funded further education.
- Provisional data show that 559,700 funded Apprentices participated on an Apprenticeship in the first quarter of the 2013/14 academic year.
- Provisional data show that there were 108,800 Apprenticeship starts in the first quarter of the 2013/14 academic year.
- Provisional data show that for the first quarter of the 2013/14 academic year there were 25,200 learners with a 24+ Advanced Learning Loan.

<sup>1</sup> Covering the Skills Funding Agency and the Education Funding Agency.

# CONTENTS

## Statistical Commentary

Glossary of Key Terms	3
Further Education Statistics for England, 2012/13	4
Adult Attainment in the Population	4
Success Rates	4
Adult Learner (19+) Participation and Achievement	6
Apprenticeships	7
Adult (19+) English and Maths	10
Community Learning	10
Provisional Further Education Statistics for England, 2013/14	12
Adult Learner (19+) Participation	12
Apprenticeships	12
Adult (19+) English and Maths	13
Community Learning	14
Employer Ownership Pilot	14
24+ Advanced Learning Loans	14
National Statistics	15
Changes included in this SFR	15
Changes in the Next SFR	15

## Supporting Data

Scope	16
Data Sources	17
Issues with Using Provisional Data	17
Issues with Comparing Data Across Academic Years	18
Data Definitions	18
Publication Cycle Across the Year	19
Supplementary Tables	19
Related National Statistics Releases	19
Other Related Statistics	20
Further Education Statistics for Other Countries in the UK	20

<b>Table Guide</b>	<b>22</b>
--------------------	-----------

<b>Table Footnotes</b>	<b>23</b>
------------------------	-----------

<b>Tables</b>	<b>25</b>
---------------	-----------

## GLOSSARY OF KEY TERMS

**Further Education and Skills** includes: learners who are studying a course in a FE College, training provider or within their local community; and employees undertaking an Apprenticeship or other qualification in the workplace. For more information, see paragraphs 49 to 51.

**Apprenticeships** are paid jobs that incorporate on- and off-the-job training leading to nationally recognised qualifications. As an employee, Apprentices earn as they learn and gain practical skills in the workplace. An Apprenticeship framework typically contains the following separately certified elements:

- A knowledge-based element (the theoretical knowledge underpinning a job in a certain occupation and industry, typically certified via a Technical Certificate).
- A competence-based element (the ability to discharge the functions of a certain occupation, typically certified via work-based assessed national vocational qualifications – NVQs).
- Transferable skills (English and maths) – key skills / functional skills.
- A module on employment rights and responsibilities.
- Personal Learning and Thinking Skills (PLTS), namely: independent enquiry, creative thinking, reflective learning, team working, self management and effective participation.

See <http://www.apprenticeships.org.uk/> for further information.

**Apprenticeship Grant for Employers (AGE 16 to 24) scheme** provides Apprenticeship grants with a value of £1,500 to employers with up to 1,000 employees to encourage employers to take on new Apprentices aged 16 to 24. Eligible employers must not have taken on an Apprentice in the previous 12 months. Subject to budget availability and the employer's commitment to support the Apprentice to the end of their programme, any one employer can claim support for up to ten apprentices. AGE 16 to 24 has been extended to Dec 2014. See: <http://www.apprenticeships.org.uk/Partners/Policy/AGE-1624.aspx>

On the **Access to Apprenticeships pathway**, participants use the elements of an Apprenticeship framework to brush up skills and workplace experience, with the aim of securing a paid Apprenticeship with an employer as quickly as possible, up to a maximum of six months. Participants are not categorised or counted as an 'Apprentice' until they become employed. This pathway was announced in May 2011.

**Employer Ownership Pilot** offers all employers in England direct access to up to £340 million of public investment over the period of the pilot (up to 2015/16) to design and deliver their own training solutions. See: <http://www.ukces.org.uk/employeroownership>

**Education and Training** covers further education learning delivered mainly in a classroom, workshop, or through distance or e-learning. See: <http://www.thedataservice.org.uk/datadictionary/businessdefinitions/Learner+Responsive.htm>

**Workplace Learning** covers a broad range of training including basic skills, Level 2, Level 3 and higher-level skills. This training is mainly delivered through the workplace (but excludes Apprenticeships). Between 2008/09 and 2010/11 this included the Train to Gain programme, Employability Skills Pilot and other programmes such as Programmes for the Unemployed. From 2011/12 this includes all training mainly delivered through the workplace (excluding Apprenticeships).

**English and Maths** qualifications (previously Skills for Life) are designed to give people the reading, writing, maths and communication skills they need in everyday life, to operate effectively in work and to help them succeed on other training courses. See: <http://skillsfundingagency.bis.gov.uk/providers/programmes/Basic+Skills/>

**Community Learning** funds a wide range of informal courses, ranging from personal development through to older people's learning, IT courses, employability skills, family learning and activities to promote civic engagement and community development. Courses may be offered by local authorities, colleges, and voluntary and community groups, and include activity specifically targeted at deprived areas and disadvantaged groups. See: <http://skillsfundingagency.bis.gov.uk/providers/programmes/asl/>

**24+ Advanced Learning Loans** - Loans are available for eligible learners aged 24 and above studying at Level 3 and above (including Advanced and Higher Apprenticeships) and will cover the cost of tuition, so learners do not have to pay upfront. See: <http://skillsfundingagency.bis.gov.uk/providers/programmes/24AdvancedLearningLoans/>

**Full Level 2** is equivalent to an NVQ at Level 2, or 5 GCSEs. The widths of all of a learner's Level 2 aims are summed to establish whether a learner is taking a full Level 2 programme. **Full Level 3** is equivalent to an NVQ at Level 3, or 2 A-Levels. The widths of all a learner's Level 3 aims are summed to establish whether a learner is taking a full Level 3 programme.

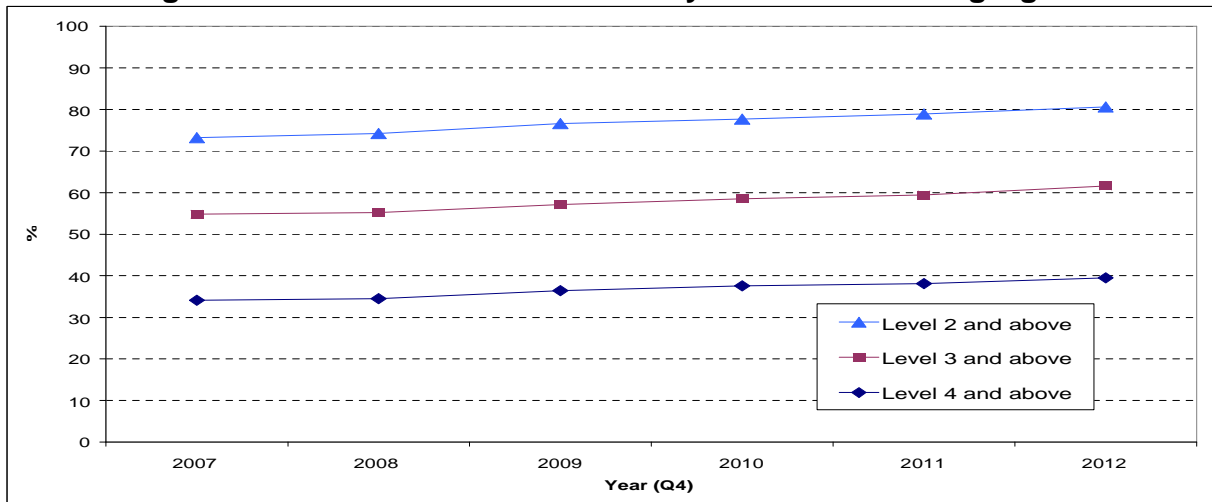
**Academic year** runs from 1<sup>st</sup> August to 31<sup>st</sup> July (except for Ofqual figures in Table 13 which run from 1<sup>st</sup> October to 30<sup>th</sup> September).

# FURTHER EDUCATION STATISTICS FOR ENGLAND, 2012/13

## Adult Attainment in the Population

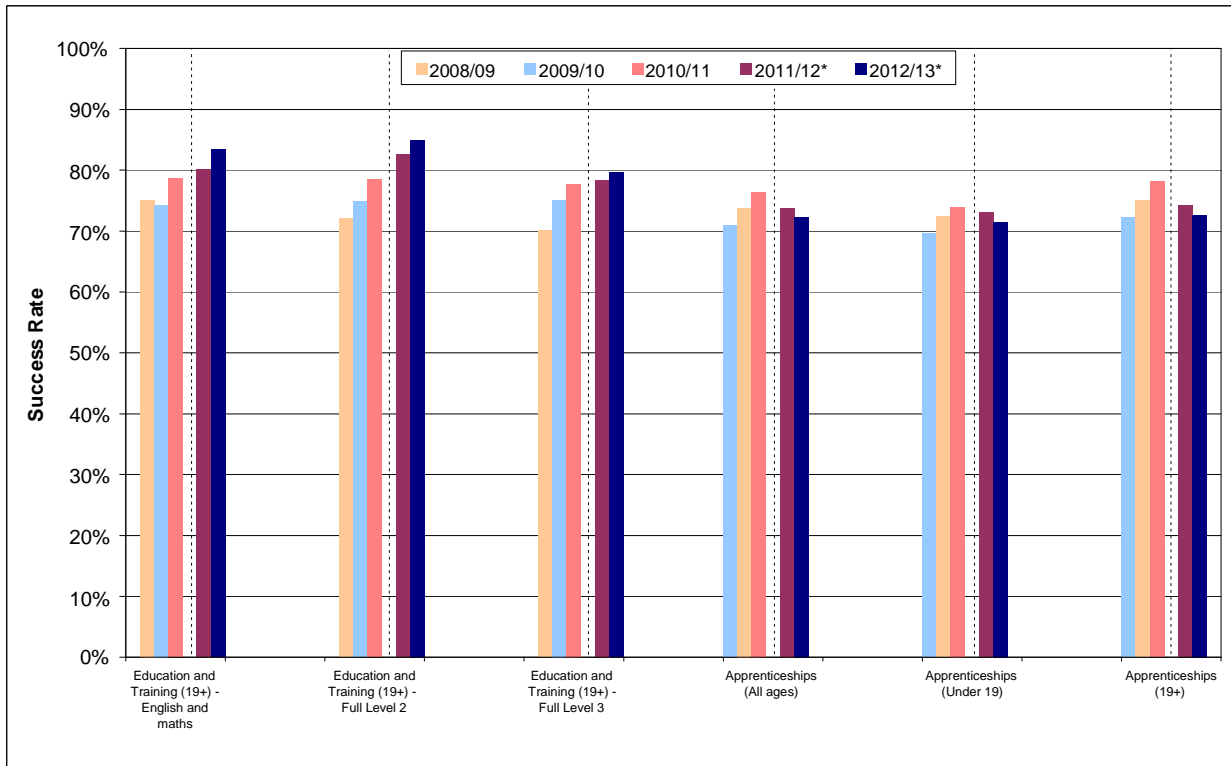
- The Labour Force Survey is used to measure the level of adult educational attainment in the population. Provisional data for 2012 show that of men aged 19 to 64 and women aged 19 to 59 [Table 11.1]:
  - 80.6 per cent were qualified to at least Level 2;
  - 61.6 per cent were qualified to at least Level 3;
  - 39.5 per cent were qualified to Level 4 and above.

**Chart 1: Highest Level of Qualification Held by Adults of Working Age**



## Success Rates

- Success rates are calculated for individual qualifications. They show how many learners that started a qualification went on to successfully complete it. Success rates are typically calculated at a qualification level, but can be aggregated across different types of course, or for particular colleges or providers. Education and Training, Apprenticeship and Workplace Learning success rates are calculated on a slightly different basis. For more information please see: [http://www.thedataservice.org.uk/Statistics/success\\_rates/](http://www.thedataservice.org.uk/Statistics/success_rates/)
- Chart 2 shows that adult (19+) Education and Training success rates rose steadily between 2009/10 and 2012/13 across all qualification levels. Success rates for Apprenticeships also rose steadily between 2008/09 and 2010/11, but decreased in 2011/12 and 2012/13 [Table 10].

**Chart 2: Success Rates**

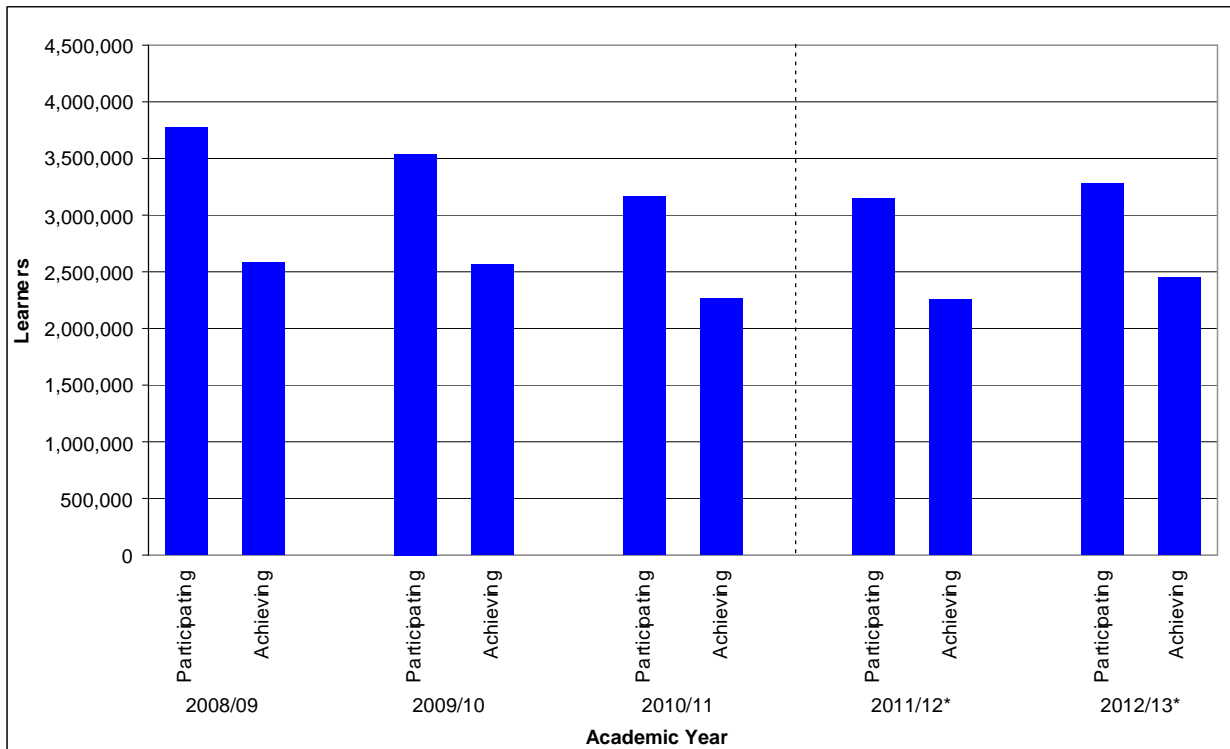
**\*Note: Success Rates for 2011/12 onwards are not directly comparable with earlier years. See paragraph 60 onwards for more information.**

4. In 2012/13, adult (19+) Education and Training success rates [Table 10.1] were:
  - 86.8 per cent for all Education and Training, an increase of 2.9 percentage points compared to 2011/12;
  - 83.4 per cent for English and Maths qualifications, an increase of 3.3 percentage points compared to 2011/12;
  - 85.5 per cent for Level 2 qualifications, an increase of 2.8 percentage points compared to 2011/12 (85.0 per cent for full Level 2, an increase of 2.4 percentage points);
  - 81.6 per cent for Level 3 qualifications, an increase of 2.2 percentage points compared to 2011/12 (79.6 per cent for full Level 3, an increase of 1.2 percentage points).
  
5. In 2012/13, Apprenticeship success rates [Table 10.2] were:
  - 72.3 per cent for all Apprenticeships, a decrease of 1.5 percentage points compared to 2011/12;
  - 72.0 per cent for Intermediate Level Apprenticeships, a slight decrease of 0.6 percentage points compared to 2011/12;
  - 73.0 per cent for Advanced Level Apprenticeships, a decrease of 3.5 percentage points compared to 2011/12;
  - 70.2 per cent for Higher Apprenticeships, a decrease of 2.4 percentage points compared 2011/12;
  
  - 72.6 per cent for Apprenticeships by those aged 19 and over, a decrease of 1.6 percentage points compared to 2011/12;
  - 71.5 per cent for Apprenticeships by those aged under 19, a decrease of 1.6 percentage points compared to 2011/12.

## Adult Learner (19+) Participation and Achievement

6. Chart 3 shows that the total number of adult learners participating in government-funded further education was 3,280,600 in 2012/13, an increase of 4.2 per cent on 2011/12 [Table 1.1]. This was the first increase since the 2008/09 academic year. The total number of adult learners achieving a government-funded further education qualification was 2,453,900 in 2012/13, an increase of 8.7 per cent on 2011/12 [Table 1.2].

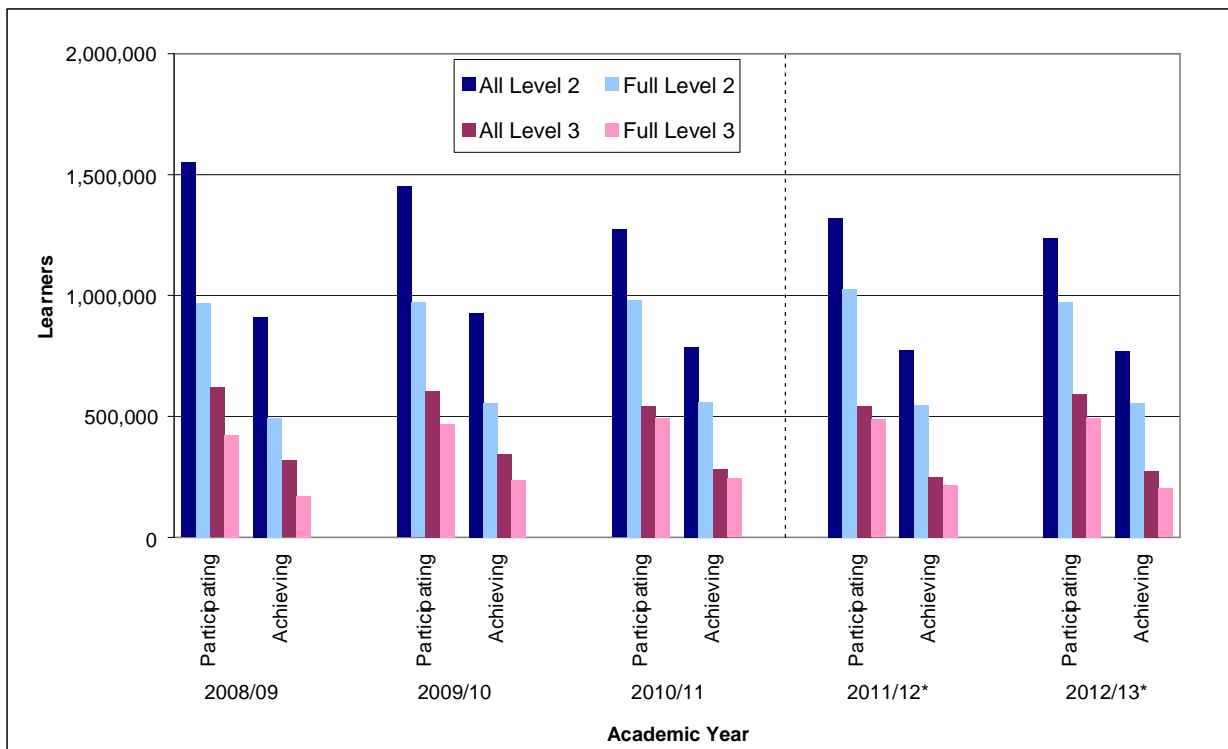
**Chart 3: Adult Learner (19+) Participation and Achievement in Government-funded Further Education**



**\*Note: Learner Numbers for 2011/12 onwards are not directly comparable with earlier years. See paragraph 60 onwards for more information.**

7. Chart 4 shows that the number of adult learners participating on government-funded further education Level 2 courses decreased between 2008/09 and 2012/13 with a 6.1 per cent decrease seen in the most recent year. The number participating in full Level 2 courses fell by 5.4 per cent in 2012/13 to a level similar to 2009/10. Achievements in Level 2 courses declined over the last three years whilst full Level 2 achievements increased in 2012/13. The number of learners participating in Level 3 courses fell between 2008/09 and 2011/12 but increased by 9.5 per cent in 2012/13. Participation in full Level 3 courses increased, now at its highest level. Achievements in Level 3 courses increased in 2012/13 by 9.8 per cent, following a two year decline. Full Level 3 achievements decreased for the second successive year after a period of growth [Tables 1.1 and 1.2].

**Chart 4: Adult (19+) Learner Participation and Achievement in Government-funded Further Education by Level**



**\*Note: Learner Numbers for 2011/12 onwards are not directly comparable with earlier years. See paragraph 60 onwards for more information.**

8. Of the 3,280,600 adult learners participating in further education in 2012/13 [Table 2]:
  - 56.3 per cent were female and 43.7 per cent were male, similar proportions to 2011/12;
  - 13.2 per cent declared a learning difficulty and/or disability, an increase of 1.4 percentage points on 2011/12;
  - 19.2 per cent were from a Black or Minority Ethnic background (including Mixed, Asian, Black and Other Ethnic Group learners), a decrease of 0.4 percentage points on 2011/12;
  - 496,200 benefited from support for the unemployed (those nearest the workforce) [Table 1].
9. In 2012/13 there were 89,900 offenders aged 18 or over in the prison system participating in learning, a similar volume to 2011/12. 68,400 achieved a learning outcome, a decrease of 4.9 per cent [Footnote 5, Table 1]. These offenders were funded via the Offenders' Learning and Skills Service (OLASS) budget.

## Apprenticeships

10. Two measures of Apprenticeships are presented to give a transparent view of the changes and trends in Apprenticeships in England:

- Participation refers to the number of people who are undertaking an Apprenticeship in a given time period. This measure is helpful for quantifying the number of people on an Apprenticeship programme throughout the academic year. An Apprentice studying towards more than one Apprenticeship is counted once.

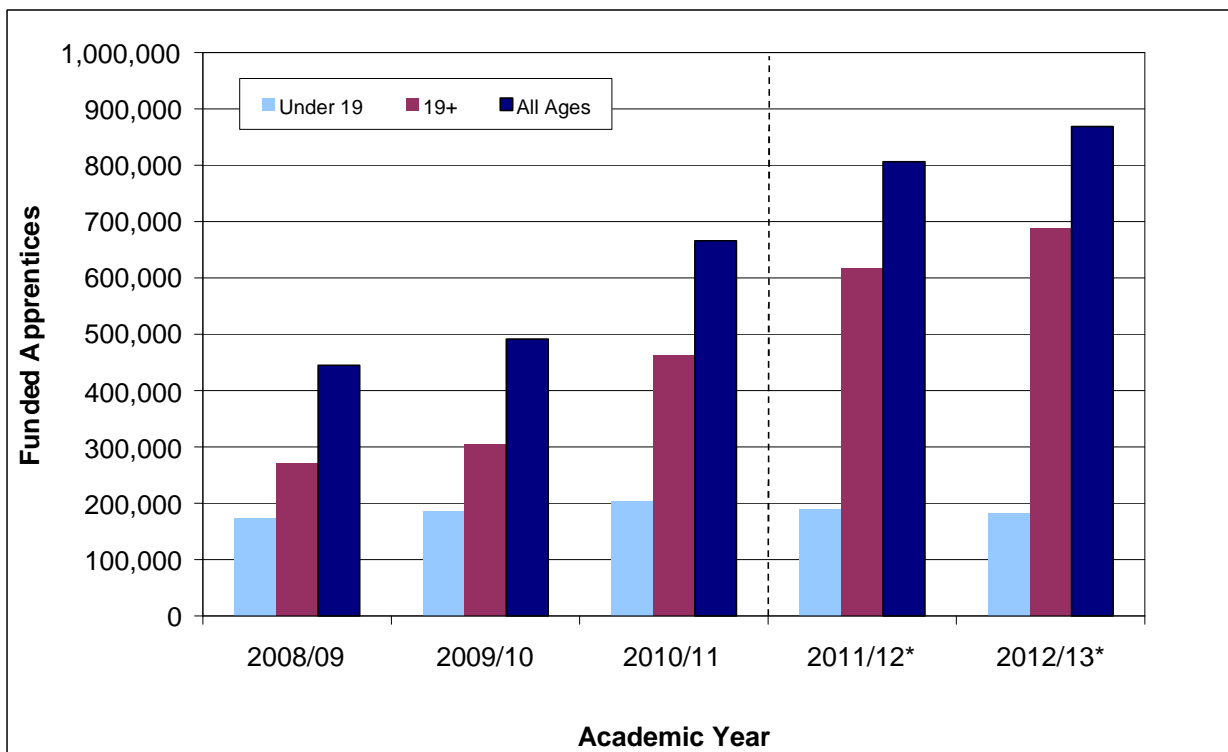
- Starts refer to the number of programmes that begin in a given time period. This measure is helpful in determining the take-up of programmes. An Apprentice is counted for each Apprenticeship they start.

11. The Apprenticeship programme expanded rapidly since 2009/10 as a result of increased government investment in adult Apprenticeships. More recently Apprenticeship policy has focused on raising standards, improving the quality and introducing minimum durations of Apprenticeships, this means some learners find it more difficult or take longer to complete their Apprenticeship.

### Participation

12. Chart 5 shows that overall Apprenticeship participation increased in each year since 2008/09, driven by growth in the number of adult (19+) Apprentices. While the number of under 19 Apprenticeships has been relatively flat over the period there has been a small decline after a peak in 2010/11 [Table 5].

**Chart 5: Apprenticeship Participation by Age**



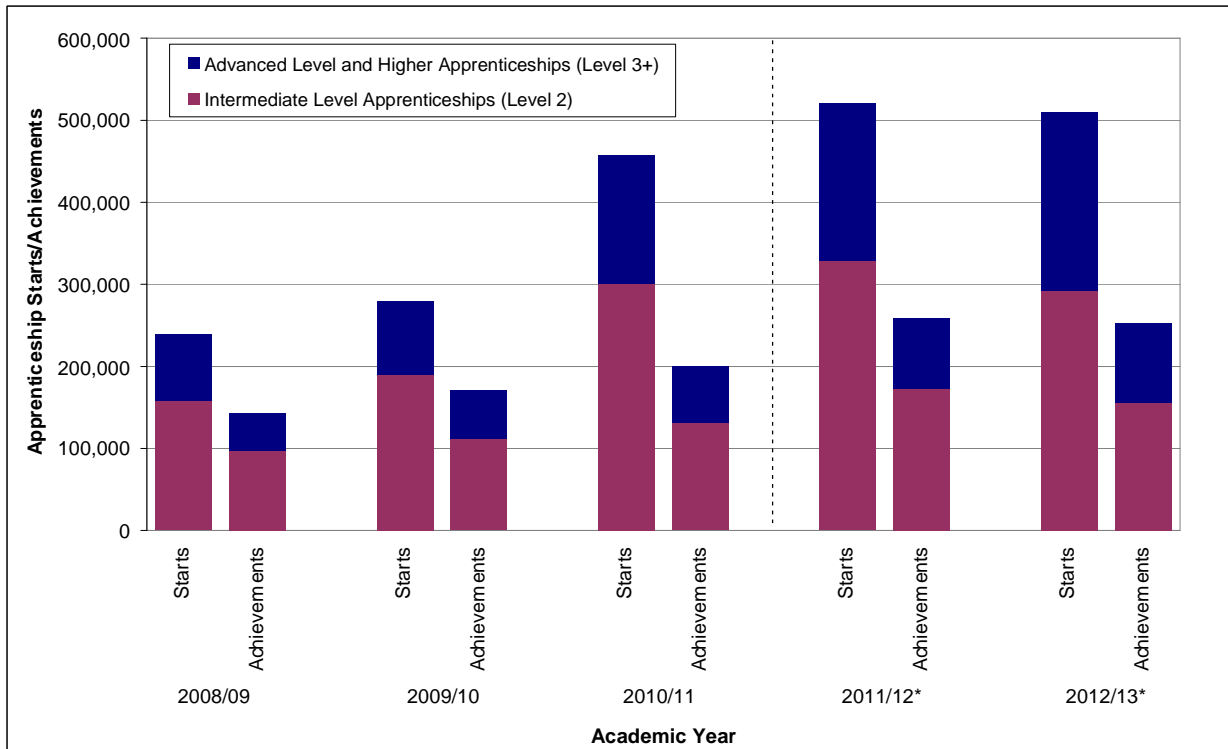
**\*Note: Learner Numbers for 2011/12 onwards are not directly comparable with earlier years. See paragraph 60 onwards for more information.**

13. Participation on Intermediate Level Apprenticeships increased each year up to 2011/12 but decreased slightly in 2012/13. Advanced Level Apprenticeship participation has increased steadily since 2008/09 while Higher participation has increased rapidly, albeit from a low base [Table 5].

### Starts and Achievements

14. Chart 6 shows there was strong growth in Apprenticeship starts between 2008/09 and 2011/12 followed by a decline in 2012/13 due to a fall at Intermediate Level. Advanced Level and Higher Apprenticeships continued to grow. Apprenticeship achievements reflect a similar pattern [Table 6].



**Chart 6: Apprenticeship Starts and Framework Achievements by Level**

**\*Note: Starts for 2011/12 onwards are not directly comparable with earlier years. See paragraph 60 onwards for more information.**

15. The length of an Apprenticeship is typically more than a year and an Apprenticeship framework achievement is recorded against the year it was achieved, not the year it was started. Because of this, the number of achievements is below the number of starts in Chart 6, as a large volume of learners that have started an Apprenticeship have not yet completed it. Furthermore, some learners may withdraw or fail to complete.

16. Under 19 Apprenticeship starts peaked in 2010/11 but have since fallen, while 19 to 24 and 25+ starts have continued to increase. Under 19 and 19 to 24 Apprenticeship achievements declined in 2012/13, while 25+ achievements continued to grow [Table 6].

17. In 2012/13, 5,500 Apprenticeships started through the Access to Apprenticeship pathway, a 23.7 per cent decrease on 2011/12, of which 1,400 converted to paid employment to complete their Apprenticeship in the usual way [Table 7.2].

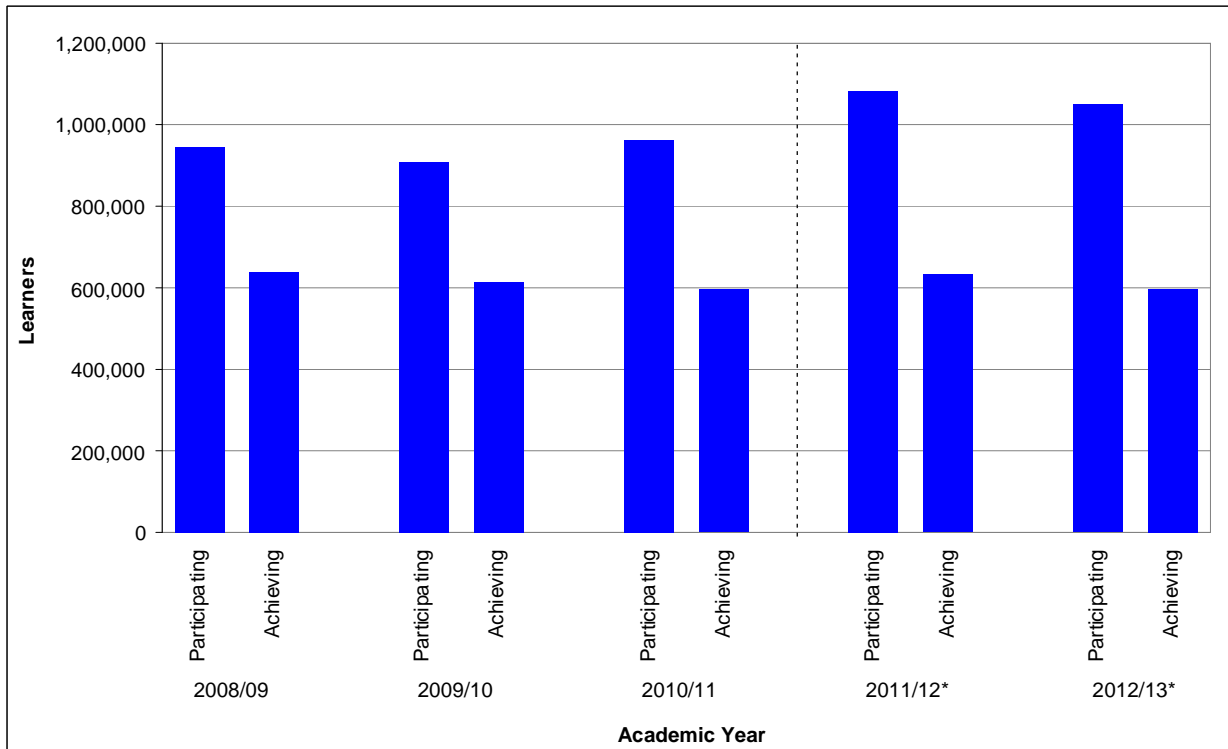
### ***Planned Length of Stay***

18. In August 2012 a minimum duration of 12 months for Apprenticeships was introduced. The policy applies to all starts for those aged 16-18 and for those aged 19 and over unless prior learning or attainment has been recorded. Statistics on the actual length of stay of Apprenticeships based on achievements are already published, but to assess the impact of the new policy at this early stage the planned length of stay of Apprenticeships starting in 2012/13 need to be considered. Based on the planned end date, the number of Apprenticeship starts with a planned length of stay of 12 months or more increased by 50.5 per cent to 475,900 between 2011/12 and 2012/13. The numbers increased by 31.9 per cent for under 19s, 59.9 per cent for those aged 19-24 and 55.5 per cent for those aged 25 and above.

## Adult (19+) English and Maths

19. Chart 7 shows that after a fall in adult learner participation on English and maths courses in 2009/10, participation increased for two successive years but then fell by 3.1 per cent in 2012/13. Achievement remained broadly flat over the period [Table 3].

**Chart 7: Adult Learner (19+) Participation and Achievement on English and Maths Courses**



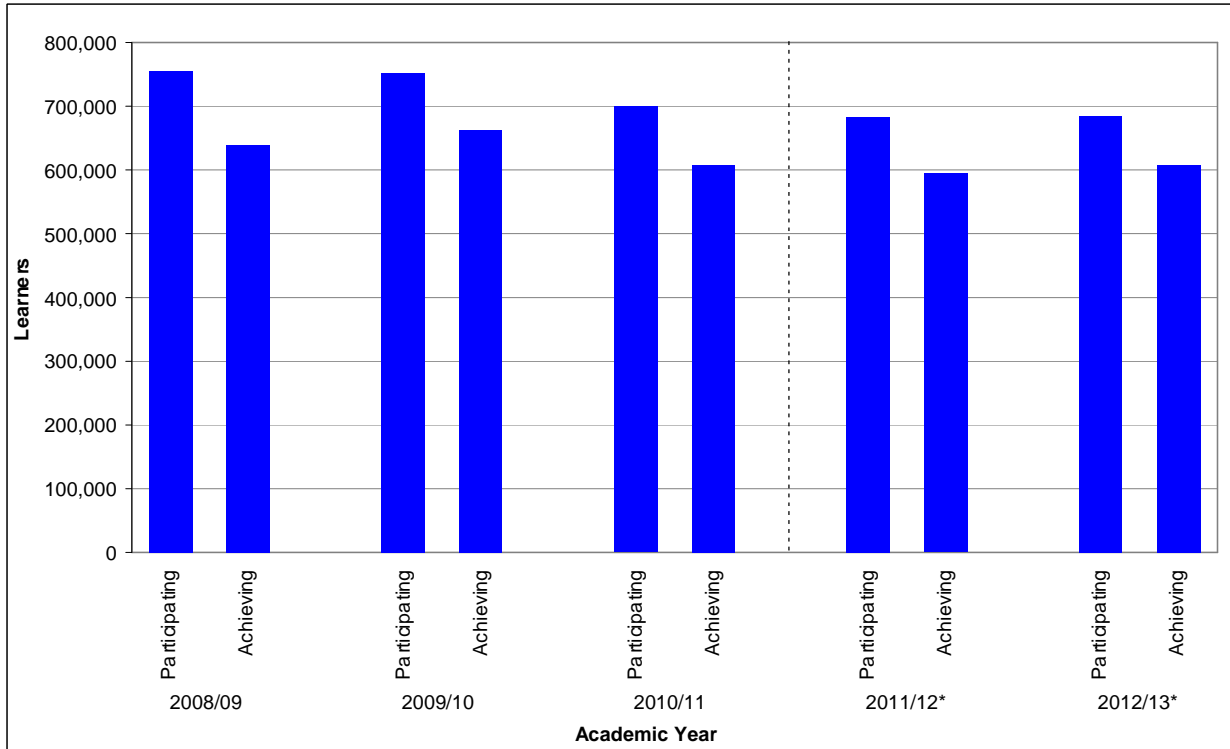
**\*Note: Learner Numbers for 2011/12 onwards are not directly comparable with earlier years. See paragraph 60 onwards for more information.**

20. Participation on English courses and maths courses fell for the first time since a period of growth. Participation on English for Speakers of Other Languages courses increased after a period of decline. This pattern was also reflected in learner achievement [Table 3].

## Community Learning

21. Chart 8 shows that participation on Community Learning courses in 2012/13 remained similar to 2011/12 after falls in the previous academic years. The overall number of Community Learners achieving increased slightly in 2012/13, the first increase in two years. Participation on ‘Personal Community Development Learning’ programmes, which make up the vast majority of Community Learning provision, decreased slightly in 2012/13. However, this was a smaller decrease than seen in the two previous years. Participation in ‘Neighbourhood Learning in Deprived Communities’ continued to increase, ‘Wider Family Learning’ participation increased slightly after three successive falls and ‘Family English, Maths and Language’ continued to decrease [Table 9].

**Chart 8: Community Learning Participation and Achievement**



**\*Note: Learner Numbers for 2011/12 onwards are not directly comparable with earlier years. See paragraph 60 onwards for more information.**

## PROVISIONAL FURTHER EDUCATION STATISTICS FOR ENGLAND, 2013/14

22. Data for 2013/14 provide an early view of performance for the first quarter of the academic year (August 2013 to October 2013). Data are provisional because providers may not have reported all their information relating to this period. It is not possible to determine how incomplete the information behind the provisional data is, so the data cannot be directly compared against provisional or final data from earlier academic years. Comparisons can only be made once final returns for the academic year are made by providers (as published in November 2014). (See paragraphs 56 to 59 for more information.) There is evidence of increased data lag for the first quarter of 2013/14 compared to the same period of previous years.

### Adult Learner (19+) Participation

23. Provisional data show that in the first quarter of the 2013/14 academic year (August 2013 to October 2013) there were 1,475,600 learners aged 19 and over participating in government-funded further education [Table 14]. Of these

- 521,400 participated on a English and maths course;
- 576,300 participated on a Level 2 course, of which 456,100 were on a full Level 2 course;
- 363,000 participated on a Level 3 course, of which 329,900 were on a full Level 3 course;
- 186,600 benefited from support for the unemployed (those nearest the workforce).

24. Provisional data for the first quarter of the 2013/14 academic year (August 2013 to October 2013) show there were 32,300 offenders aged 18 or over in the prison system participating in learning [Footnote 4, Table 14 and 15]. These offenders were funded via the Offenders' Learning and Skills Service (OLASS) budget.

### Apprenticeships

25. 24+ Advanced Learning Loans were introduced in August 2013. Data show that the number of Apprenticeship starts for those aged 24 and above studying at Level 3 and above has been directly affected. There is also some anecdotal evidence that the number of starts for other ages may have been indirectly affected.

26. Provisional data for the first quarter of the 2013/14 academic year (August 2013 to October 2013) show that there were 559,700 funded Apprentices participating [Table 16]. Of these there were<sup>2</sup>:

- 308,600 Intermediate Level Apprentices;
- 244,800 Advanced Level Apprentices;
- 10,700 Higher Apprentices;
  
- 111,200 Apprentices aged under 19;

---

<sup>2</sup> Note that an Apprentice may participate on an Apprenticeship programme at more than one level within an academic year

- 213,400 Apprentices aged 19–24;
- 235,100 Apprentices aged 25 and over;
- 448,400 Apprentices aged 19 and over.

27. Provisional data for the first quarter of the 2013/14 academic year (August 2013 to October 2013) show that there were 108,800 Apprenticeship starts [Table 17.1]. Of these there were:

- 73,500 Intermediate Level Apprenticeship starts;
- 33,800 Advanced Level Apprenticeship starts;
- 1,500 Higher Apprenticeship starts;
  
- 45,800 Apprenticeship starts by those aged under 19;
- 40,700 Apprenticeship starts by those aged 19–24;
- 22,300 Apprenticeship starts by those aged 25 and over;
- 63,000 Apprenticeship starts by those aged 19 and over.

28. Provisional data for the first quarter of the 2013/14 academic year (August 2013 to October 2013) show that there were 50,400 Apprenticeship framework achievements [Table 17.2]. Of these there were:

- 29,900 Intermediate Level Apprenticeship framework achievements;
- 19,800 Advanced Level Apprenticeship framework achievements;
- 700 Higher Apprenticeship framework achievements;
  
- 15,700 Apprenticeship framework achievements by those aged under 19;
- 16,500 Apprenticeship framework achievements by 19–24 year olds;
- 18,200 Apprenticeship framework achievements by those aged 25 and over;
- 34,700 Apprenticeship framework achievements by those aged 19 and over.

29. Provisional data show that there were 49,300 Apprenticeship starts for which a payment was made through the Apprenticeship Grant for Employers (AGE 16 to 24) scheme between February 2012 and October 2013. A further 15,800 were in the pipeline (started but not yet paid) [Table 18.1].

30. Provisional data for the first quarter of the 2013/14 academic year (August 2013 to October 2013) show that there were 800 Apprenticeships started through the Access to Apprenticeship pathway, of which 100 converted to paid employment to complete their Apprenticeship in the usual way [Table 18.2].

## **Adult (19+) English and Maths**

31. Provisional data for the first quarter of the 2013/14 academic year (August 2013 to October 2013) show that 521,400 learners aged 19 and over participated on an English and maths course [Table 15]. Of these:

- 403,400 participated on an English course;
- 388,100 participated on a maths course;
- 48,300 participated on an English for Speakers of Other Languages (ESOL) course.

## Community Learning

32. Provisional data for the first quarter of the 2013/14 academic year (August 2013 to October 2013) show that 211,400 learners participated on a Community Learning course [Table 20]. Of these:
- 180,300 took a Personal and Community Development Learning course;
  - 8,500 took a Neighbourhood Learning in Deprived Communities course;
  - 11,300 took a Family English, Maths and Language course;
  - 13,600 took a Wider Family Learning course.

## Employer Ownership Pilot

33. Provisional data show that there were 10,000 Employer Ownership Pilot starts between August 2012 and October 2013 [Table 21]. Of these there were:
- 1,300 Employer Ownership Pilot starts by those aged under 19;
  - 1,900 Employer Ownership Pilot starts by those aged 19–24;
  - 6,800 Employer Ownership Pilot starts by those aged 25 and over;
  - 1,500 Apprenticeship starts.

## 24+ Advanced Learning Loans

34. Provisional data for the first quarter of the 2013/14 academic year (August 2013 to October 2013) show that there were 25,200 learners with a 24+ Advanced Learning Loan (24+ ALL) [Table 22]. Of these there were:
- 24,000 learners with a 24+ ALL participating at Level 3;
  - 1,300 learners with a 24+ ALL participating at Level 4+;
  - 25,100 learners with a 24+ ALL participating on Education and Training courses;
  - 100 learners with a 24+ ALL participating on Apprenticeships.
35. The number of learners with a 24+ Advanced Learning Loan reported through the Individualised Learner Record (ILR) differ from data showing loan applications ([http://www.thedataservice.org.uk/Statistics/fe\\_data\\_library/other\\_statistics\\_and\\_research/24advancedlearningloans/](http://www.thedataservice.org.uk/Statistics/fe_data_library/other_statistics_and_research/24advancedlearningloans/)) and loans paid ([www.slc.co.uk/media/705979/slcosp012014.pdf](http://www.slc.co.uk/media/705979/slcosp012014.pdf)).
36. The *24+ Advanced Learning Loans Application* data publication was also released on 30<sup>th</sup> January 2014. This publication presents data relating to applications received for FE provision funded through 24+ Advanced Learning Loans. The data used to produce the publication are sourced from the Student Loans Company (SLC) application database, and cover applications received since the launch of the programme on 8<sup>th</sup> April 2013 up to 31<sup>st</sup> December 2013. The data refer to received applications (including those unprocessed), and therefore will be higher than the actual number of learners on a course with a 24+ Advanced Learning Loan between August 2013 and October 2013.
37. The SLC 24+ Advanced Learning Loans Paid data were also released on 30<sup>th</sup> January. These data refer to all payments made to FE providers on behalf of learners and numbers of learners will be lower than the ILR numbers. Only payments made between August 2013 and October 2013 are captured, whilst the ILR captures learners on a course with a 24+ Advanced Learning Loan that started during this period, including some where the first scheduled payment date is beyond the end of October 2013.

## NATIONAL STATISTICS

38. The United Kingdom Statistics Authority has designated these statistics as National Statistics, in accordance with the Statistics and Registration Service Act 2007 and signifying compliance with the Code of Practice for Official Statistics.
39. Designation can be broadly interpreted to mean that the statistics:
- meet identified user needs;
  - are well explained and readily accessible;
  - are produced according to sound methods; and
  - are managed impartially and objectively in the public interest.
40. Once statistics have been designated as National Statistics it is a statutory requirement that the Code of Practice shall continue to be observed. More information regarding compliance with the Code of Practice is available on our website:  
<http://www.thedataservice.org.uk/statistics/statisticalfirstrelease/compliance/>

## CHANGES INCLUDED IN THIS SFR

41. A new table has been introduced showing learner participation with a 24+ Advanced Learning Loan. This data will continue to be reported throughout the publication cycle.
42. We had planned on including a table showing Traineeship starts in this release but we do not have a reliable estimate of learners on the programme at present. We are working with providers to ensure that they are following the guidance and will publish information in due course.
43. We have revised figures for the Apprenticeship Grant for Employers Scheme (AGE 16 to 24) in 2012/13 as a small number of AGE payments have been backdated to this period.
44. The Data Service website is migrating to the data.gov website, all new data will be published on the new website. Archived information will remain available at the previous Data Service website before a full migration later in the year.

## CHANGES IN THE NEXT SFR

45. The next SFR will be in March 2014 and will include provisional data for the first two quarters of the 2013/14 academic year (August 2013 to January 2014).
46. Ofqual Vocational Qualification data shown in Table 13 of this release, and accompanying supplementary tables will be updated on the 20<sup>th</sup> February 2014 as part of a formal cascade of this release. These tables will be updated to include data for the first quarter of 2013/14 (October 2013 to December 2013) which will allow Ofqual to update their detailed bulletins that include these data.
47. Changes to the next release will be pre-announced on the website at least a month prior to coming into effect, at: <https://www.gov.uk/government/publications/learner-participation-outcomes-and-level-of-highest-qualification-held>

## SUPPORTING DATA

### Scope

48. Should we need to make an unplanned revision to the statistics contained in this release, we will follow the procedures outlined in the Revisions Policy for this Statistical First Release. This includes action to understand the impact that any revisions will have, as well as ensuring that they are clearly communicated to the reader. The Revisions Policy can be found at:  
<http://www.thedataservice.org.uk/statistics/statisticalfirstrelease/compliance/>
49. Information from the different further education learning options have been drawn together to give a coherent and comprehensive picture of the participation and achievement of young people and adults. These options include:
- Further education organisations
  - Sixth form colleges
  - Local Authorities
  - Independent training organisations.
50. These organisations deliver a wide variety of government programmes, including:
- Education and Training
  - Apprenticeships
  - Workplace Learning
  - Community Learning.
51. This SFR covers adults (19+) and does not contain information regarding:
- **Delivery in School Sixth Forms**, including maintained, independent and academy schools. We are hoping to include this in future, once more work has been done to reconcile the different data sources. Provisional figures taken from the Department for Education (DfE) [Participation in Education, Training and Employment by 16–18 Year Olds in England](#), Statistical Release show there were 528,200 students studying in School Sixth Forms in 2012, based on a snapshot of January 2012 school census data.
  - **Higher Education in Higher Education Institutions**. The publication referenced in paragraph 73 shows that the total number of HE enrolments at English Higher Education Institutions stood at 2,496,645 in 2011/12.
  - **Privately-funded training at FE organisations and independent training organisations**. There is no single coherent source that provides a measure of privately-funded training. BIS will investigate whether it is possible to develop a measure to support this as part of our wider Dissemination Plan. More detail on the Dissemination Plan can be found at:  
[http://www.thedataservice.org.uk/statistics/dissemination\\_plan/](http://www.thedataservice.org.uk/statistics/dissemination_plan/). There are no sources currently available that fully capture privately-funded academic activity, particularly for older learners. However, in Table 13 of this release we do show the total number of Vocational Qualifications awarded in the UK. This includes both public and privately-funded qualifications and gives some sense of scale of total vocationally-related activity in the sector.



## Data Sources

52. The data used to produce this SFR are Individualised Learner Record (ILR) collections that are returned to the Data Service by further education colleges and providers and Employer Ownership Pilot information. The Data Service and *the information authority* introduced a Single ILR collection (SILR) in 2011/12 to replace the multiple ILR collection types that were collected in previous years. There are no longer separate collections for different funding streams and providers return all of their learners in a single file. The following ILR collections have been used to update this release:

Year	Data Source
2012/13	ALL Apprenticeships & Workplace Learning, Employer Ownership Pilot and Large Employer Outcome Pilot
2013/14	ALL Apprenticeships & Workplace Learning, Employer Ownership Pilot and Large Employer Outcome Pilot

53. The data sources for all years, except 2013/14, are final collections and include information on provision for the full academic year. More information on these data sources is available in a definitions document, which can be found at: [http://www.thedataservice.org.uk/statistics/statisticalfirstrelease/sfr\\_current/](http://www.thedataservice.org.uk/statistics/statisticalfirstrelease/sfr_current/).

54. Ofqual Vocational Qualification data is used in Table 13 of this release.

55. The Labour Force Survey is the other data source used for the SFR (Tables 11 and 12). The latest LFS data used in this release relate to Quarter 4 (October – December) 2012.

## Issues with Using Provisional Data

56. It is important to provide the earliest picture of further education performance once it becomes available so that users may assess the impact of government-funded provision and hold the system to account. However, provisional data are taken from an operational information system which is designed to support the funding of providers and there are some important limitations users should take into consideration.

57. In-year information is subject to data lag, which is when a provider submits information after the period it related to. This information is subsequently attributed to the correct time period. Data remain provisional until final returns for the academic year are made by providers, after the end of the academic year. Final data are published in the following November. The size of revision to individual estimates that arise from data lag can vary greatly. They tend to be around 2 to 3 per cent but have been as much as 15 per cent. Revisions are typically upward though it should be noted that on occasions small downward revisions are possible.

58. Data lag from one year to the next is not predictable, as provider behaviour changes over time and there is no source of information that would enable us to provide a robust estimate of completeness of data that have been returned. Provisional data cannot, therefore, be compared with provisional or final data from earlier academic years. We generally recommend using the final data for the last complete academic year.
59. We carry out a quality assessment of the volume of providers that have made their returns. If we consider estimates to be particularly weak, due to data lag or any other factor, we may defer publication of those estimates. In recent years we have encouraged more timely reporting of data ahead of the final return. This is set out in our quality statement, which can be found at:  
<http://www.thedataservice.org.uk/statistics/statisticalfirstrelease/compliance/>.

## Issues with Comparing Data Across Academic Years

60. In the 2011/12 academic year a Single Individualised Learner Record (ILR) data collection system was introduced. This replaced the multiple separate data collections from previous years and led to small technical changes in the way learners from more than one funding stream are counted.
61. Overall the new collection system led to a removal of duplicate learners and a reduction in total learner participation of approximately 2 per cent. However Apprenticeship participation figures were more significantly affected due to a change in the way learners participating on more than one Apprenticeship programme were counted. This has led to a removal of duplicate learners and a reduction in overall Apprenticeship learners of approximately 5 per cent, therefore figures for 2011/12 onwards are not comparable to earlier years. A paper is available on our website to explain the Single ILR and the small effects it has on the SFR at:  
[http://www.thedataservice.org.uk/NR/rdonlyres/C05DCDD5-67EE-4AD0-88B9-BEBC8F7F3300/0/SILR\\_Effects\\_SFR\\_Learners\\_June12.pdf](http://www.thedataservice.org.uk/NR/rdonlyres/C05DCDD5-67EE-4AD0-88B9-BEBC8F7F3300/0/SILR_Effects_SFR_Learners_June12.pdf). Further information on the Single ILR is available on the Information Authority's website at:  
<http://www.theia.org.uk/ilr>

## Data Definitions

62. High-level definitions of some of the key terms used in this release can be found in the Glossary on page 3. A more detailed definitions document to accompany this release is available on the Data Service website at:  
[http://www.thedataservice.org.uk/statistics/statisticalfirstrelease/sfr\\_current/](http://www.thedataservice.org.uk/statistics/statisticalfirstrelease/sfr_current/)
63. The 'Level of Highest Qualification Held by Adults' statistics are produced using data on the highest qualification held by individuals from the Labour Force Survey in each year. The LFS is conducted by the Office for National Statistics and the estimates provided are the best measure of attainment within the population at Quarter 4 (October – December) each calendar year. Further details of how this information is used to calculate the estimates can be found at:  
<http://www.thedataservice.org.uk/statistics/statisticalfirstrelease/methodology/>

## Publication Cycle Across the Year

64. Further information on future editions of the SFR can be found on the website at: <https://www.gov.uk/government/publications/learner-participation-outcomes-and-level-of-highest-qualification-held>

65. Table A below shows provisional and final data included for each release.

**Table A: Publication Cycle**

Release	Data Included
November 2013	- <b>Final</b> FE and Skills data for the full 2012/13 academic year
January 2014	- Education and Training; Apprenticeship; and Workplace Learning success rates for 2012/13
	- Provisional FE and Skills data for the first quarter of 2013/14
March 2014	- Provisional FE and Skills data for the first two quarters of 2013/14
	- <b>Final</b> data for 2012 and provisional data for 2013 on the level of highest qualification held for adults in the population
June 2014	- Provisional FE and Skills data for the first three quarters of 2013/14
October 2014	- Provisional FE and Skills data for the full 2013/14 academic year
November 2014	- <b>Final</b> FE and Skills data for the full 2013/14 academic year

66. The Statistical First Release is an evolving product and we welcome feedback. If you have comments or feedback on the SFR, these can be sent to: [servicedesk@thedata.service.org.uk](mailto:servicedesk@thedata.service.org.uk), or alternatively, you can call 0870 267 0001.

67. If you have a statistical question around the content or presentation of National Statistics in the release, please contact Jessie Evans at: [jessie.evans@bis.gsi.gov.uk](mailto:jessie.evans@bis.gsi.gov.uk)

## Supplementary Tables

68. A full list of supplementary tables relating to this SFR can be found on the Data Service website at: [http://www.thedata.service.org.uk/Statistics/fe\\_data\\_library/](http://www.thedata.service.org.uk/Statistics/fe_data_library/). These tables include breakdowns by age, gender, ethnicity, learners with learning difficulties and/or disabilities, region, local authority, parliamentary constituency, sector subject area and funding stream. For more information on exactly what data will be released, and on which date, please see the supplementary tables list on the website.

69. Local Authority Reports are published on the Data Service website. Local Authority Districts are shown based on the postcodes of delivery locations and also on the home postcodes of learners. The reports cover 2010/11 and 2011/12: enrolments, participation and provider level. The reports can be found at: [http://www.thedata.service.org.uk/Statistics/fe\\_data\\_library/further\\_education\\_skills/local\\_authority\\_tables/](http://www.thedata.service.org.uk/Statistics/fe_data_library/further_education_skills/local_authority_tables/)

## Related National Statistics Releases

70. There are a number of other National Statistics publications available that can be used to provide contextual information to this SFR. Some of those most relevant to this release are discussed below.

71. [Participation in Education, Training and Employment by 16-18 Year Olds in England](#) published on 27<sup>th</sup> June 2013 by the Department for Education. This shows that the proportion of 16–18 year olds in education and training was 83.3 per cent at end 2011 – the highest rate ever recorded and an increase of 1.0 percentage points from 82.3 per cent at end 2010. More recent quarterly data published in the NEET Quarterly Brief on 28<sup>th</sup> February 2013 showed that participation at ages 16-18 had remained broadly static since the start of the 2011/12 academic year.
72. [Level 2 and 3 Attainment by Young People in England Measured Using Matched Administrative Data: Attainment by Age 19 in 2012](#) published on 27<sup>th</sup> March 2013 by the Department for Education. This shows that in 2012, 85.1 per cent of people aged 19 were qualified to at least Level 2, and 57.9 per cent were qualified to Level 3. These were increases of 1.6 percentage points and 1.3 percentage points respectively, since 2011.
73. [Higher Education Student Enrolments and Qualifications Obtained at Higher Education Institutions in the United Kingdom for the Academic Year](#) published on 16<sup>th</sup> January 2014 by the Higher Education Statistics Agency. This release shows that the total number of HE enrolments at UK Higher Education Institutions stood at 2,340,275 in 2012/13, a decrease of 6% from 2011/12. In terms of qualifications, in 2012/13 there were 403,770 first degree graduates compared to 390,990 in 2011/12, an increase of 3 per cent.
74. [Education and Training Statistics for the United Kingdom](#) published on 7<sup>th</sup> November 2013 by the Department for Education. This release provides statistics relating to education and training in the UK and includes chapters relating to post-compulsory education & training and qualifications. Information includes participation of learners in further education by country of study, participation in job-related training and the highest level of qualification held by adults in the population (UK).

## Other Related Statistics

75. FE Choices provides clear, comparable information to learners and employers so they can make informed choices about post-16 education and training. FE Choices enables users to search and compare provider ratings for four performance indicators: Success Rates; Learner Destinations (including Employment Rate and Learning Rate); Learner Satisfaction; and Employer Satisfaction. These indicators are published on the FE Choices website at: <http://fechoices.skillsfundingagency.bis.gov.uk/>. Results at National level, by type of provider and by individual provider for each performance indicator can be found at: [http://www.thedataservice.org.uk/statistics/statistics\\_fechoices/](http://www.thedataservice.org.uk/statistics/statistics_fechoices/)

## Further Education Statistics for Other Countries in the UK

76. The focus of this SFR is on government-funded further education provision in England. Similar information is available for other countries in the UK, and provides useful contextual background to these statistics.
77. Statistics on Further Education and Work-based learning in **Wales** can be found at: <http://wales.gov.uk/topics/statistics/?lang=en>
78. Statistics on Professional and Technical Enrolments in the **Northern Ireland** Further Education Sector for 2011/12 can be found at:

<http://www.delni.gov.uk/index/statsandresearch/further-education-stats/further-education-enrolments-2/prof-and-tech-enrolments-in-ni-fe-sector-2011-12.htm>

79. Statistics on learners in further education in **Scotland** can be found at: [http://www.sfc.ac.uk/web/FILES/ReportsandPublications/Facts\\_and\\_Figures\\_2012.pdf](http://www.sfc.ac.uk/web/FILES/ReportsandPublications/Facts_and_Figures_2012.pdf). Additionally, user-defined tables on further education learners and courses can be produced at: <https://stats.sfc.ac.uk/infact/>

## TABLE GUIDE

80. This section provides a brief summary of what is included in each table of this release. Tables 1 to 10 focus on the 2012/13 academic year; Tables 14 to 22 show provisional data for the first quarter of the 2013/14 academic year (August 2013 to October 2013).

- **Table 1** shows participation and achievements in further education and skills by level for adults (19+).
- **Table 2** shows a demographic breakdown of participation in further education and skills for adults (19+) by level.
- **Table 3** shows English and maths participation and achievements for adults (19+).
- **Table 4** shows a demographic breakdown of Apprenticeship participation by level.
- **Table 5** shows Apprenticeship participation by age and level.
- **Table 6** shows Apprenticeship starts and achievements by age and level.
- **Table 7** shows payments made through the Apprenticeship Grant for Employers (AGE 16 – 24) scheme and starts on the Access to Apprenticeship Pathway.
- **Table 8** shows Workplace Learning starts and achievements by level.
- **Table 9** shows Community Learning participation and achievements by provision type.
- **Table 10** shows success rates for Education and Training (19+), Workplace Learning (19+) and Apprenticeships.
- **Tables 11 and 12** show level of attainment in the population (working age and economically active respectively) from the Labour Force Survey.
- **Table 13** shows a quarterly time series of Vocational Qualifications awarded.
- **Table 14 to 20** repeat earlier tables; showing provisional data for the first quarter of the 2013/14 academic year (August 2013 to October 2013).
- **Table 21** shows Employer Ownership Pilot starts by type and age on the programme to date.
- **Table 22** shows participation with 24+ Advanced Learning Loans (Level 3+) for the first quarter of the 2013/14 academic year (August 2013 to October 2013).

## Table Footnotes

### General Footnotes Relevant to All Tables

- 1) Volumes are rounded to the nearest 100; percentages are calculated on pre-rounded data.
- 2) '-' Indicates a base value of less than 50; '\*\*' indicates a percentage of less than 0.5%.
- 3) Tables 1-5, 9, 14-16 & 20 are based on learners that were funded by the Learning and Skills Council or Young People's Learning Agency and/or are now funded by the Skills Funding Agency or Education Funding Agency.
- 4) For definitions of variables used in the Tables please see the data dictionary:  
<http://www.thedataservice.org.uk/datadictionary/>
- 5) Except for Tables 6-8, 17-19 & 21 (see Footnotes 18 & 27), age is reported as at 31 August of the academic year for all provision.
- 6) In Tables reporting full-year numbers, except for Tables 6, 7.2 & 8 (see Footnotes 19, 20, 29 & 30), full-year numbers are a count of the number of learners that participated/achieved at any point during the year. Learners undertaking/achieving more than one course will appear only once in the 'total learners' category for each data collection. All learners undertaking/achieving a full Level 2 or full Level 3 qualification will also appear in the Level 2 or Level 3 category, respectively.
- 7) The data source for all tables is the Individualised Learner Record, except where stated.
- 8) Further breakdowns of the data are available at the Data Service website:  
[http://www.thedataservice.org.uk/Statistics/fe\\_data\\_library/](http://www.thedataservice.org.uk/Statistics/fe_data_library/)

### Table 10.1 – Education and Training Success Rates

- 9) Education and Training success rates are calculated as the number of learning aims achieved divided by the number of learning aims expected to complete, excluding any learners who transferred on to another learning aim within the same institution.
- 10) Table 1.2 reports on the actual number of achievements within the academic year without reference to those that were expected to complete. Table 10.1 reports on success rates which are based on the reported achievement of individual aims that were expected to complete in the academic year.

### Tables 2 and 4 – Demographics

- 11) Learners undertaking courses at more than one level will be counted once for each applicable level, but once only in the Total. Learners studying a Level 2 English and Maths qualification will be counted in both the Level 2 and English and Maths categories, but only once in the Total.
- 12) Age, gender, learners with learning difficulties and/or disabilities and ethnicity are based upon self-declaration by the learner.

### Tables 4-7, 10.2 & 16-18 – Apprenticeships

- 13) Apprenticeship starts and achievements include all funded and unfunded learners reported on the ILR.
- 14) Apprenticeship success rates are based on the number of learners who meet all of the requirements of their Apprenticeship framework, divided by the number of learners who have left training or successfully completed their training in the academic year.
- 15) Table 10.2 reports on success rates which are based on the reported achievement of frameworks that were expected to complete in the academic year.
- 16) Apprenticeship success rates are not affected by demand led funding.
- 17) Unlike learner figures in earlier tables, figures for 2008/09 onwards are comparable with earlier years as demand led funding rules are not applied to starts and achievements.
- 18) Age is calculated based on age at start of the programme rather than based on 31 August.
- 19) In Table 6.1 full-year numbers are a count of the number of starts at any point during the year. Learners starting more than one Apprenticeship will appear more than once.
- 20) In Table 6.2 full-year numbers are a count of the number of framework achievements at any point during the year. Learners achieving more than one framework will appear more than once.
- 21) Programme-Led Apprenticeships recorded in ILR returns are included in the above figures.
- 22) In order to be counted as a successful achievement, all elements of the framework must have been achieved.
- 23) Quarter 1 is 1 August to 31 October; Quarter 2 is 1 November to 31 January; Quarter 3 is 1 February to 30 April; Quarter 4 is 1 May to 31 July.

### Tables 8, 10.3 & 19 – Workplace Learning

- 24) Workplace Learning success rates are based on the number of aims achieved, divided by the number of aims completed in the academic year.
- 25) Table 10.3 reports on success rates which are based on the reported achievement of individual aims that were expected to complete in the academic year.

**26)** 2011/12 is the first year that Workplace Learning success rates are available. This is due to a change in the programmes included in Workplace Learning. Between 2007/08 and 2010/11 this included the Train to Gain programme. In 2011/12 this included all training mainly delivered through the workplace (excluding Apprenticeships). Therefore previous years are not comparable. For more information see:

[http://www.thedataservice.org.uk/Statistics/success\\_rates/success\\_rates\\_2011-12](http://www.thedataservice.org.uk/Statistics/success_rates/success_rates_2011-12)

**27)** Age is calculated based on age at start of the programme rather than based on 31 August.

**28)** Figures for 2008/09 and 2009/10 are not comparable with earlier years as in 2008/09 and 2009/10 NVQs delivered in the workplace changed from being funded by FE to be funded by Train to Gain. There were 181,000 starts and 132,000 achievements in NVQs delivered in the workplace in 2007/08 (Source - FE 2007/08 F05 Final).

**29)** In Table 8.1 full-year numbers are a count of the number of starts at any point during the year. Learners starting more than one course will appear more than once.

**30)** In Table 8.2 full-year numbers are a count of the number of achievements at any point during the year. Learners achieving more than one course will appear more than once.

**31)** Quarter 1 is 1 August to 31 October; Quarter 2 is 1 November to 31 January; Quarter 3 is 1 February to 30 April; Quarter 4 is 1 May to 31 July.

### **Tables 9 & 20 – Community Learning**

**32)** Total Learners includes learners participating in Community Learning (previously Adult Safeguarded Learning) provision in the Community Learning and FE funding streams for 2007/08. For 2008/09 to 2010/11, only Community Learning provision recorded in the Community Learning collection is included in totals except for 2009/10 where Community Learning provision recorded in the Education and Training collection for five Specially Designated Colleges is also included.

**33)** There are a number of learners with Community Learning aims that are recorded in the Education and Training funding stream and are not included in the figures in Table 9. In 2008/09 there were 7,900 participating and 6,400 achieving learners; in 2009/10 there were 7,700 participating and 6,300 achieving learners; and in 2010/11 there were 8,300 participating and 6,900 achieving learners. The only Community Learning provision included for Table 9 for 2008/09 and 2010/11 is recorded in the Community Learning funding stream. Community Learning in 2011/12 onwards is recorded in the Single ILR collection only.

### **Table 13 – Vocational Qualifications**

**34)** This table covers all levels of vocational qualifications reported through Ofqual. Data are supplied by awarding organisations.

**35)** Academic year is October to September. For example, the 2006/07 academic year is 1 October 2006 to 30 September 2007.

**36)** Key Skills data was not collected prior to October 2009.

**37)** 'Other Vocational Qualifications' include Basic Skills, Entry Level, English for Speakers Other Languages, Functional Skills, Free-Standing Mathematics Qualification, Key Skills, National Qualifications Framework and Other General types.

### **Table 21 – Employer Ownership Pilot**

**38)** This table covers all Employer Ownership Pilot starts.

**39)** Age is calculated based on age at start of the programme rather than based on 31 August.

### **Table 22 – 24+ Advanced Learning Loans (Level 3+)**

**40)** Learners have been eligible to apply for a 24+ Advanced Learning Loan since the start of the 2013/14 academic year (August 2013).

**41)** A small number of learners aged 23 at the start of the academic year but aged 24 at the start of the aim are included in the figures.



Table 1.1: Adult (19+) FE and Skills Participation by Level (2008/09 to 2012/13) – Learner Volumes

		Funded Learners								
		2008/09	2009/10		2010/11		2011/12		2012/13	
		Full Year	Full Year	% change 08/09 to 09/10	Full Year	% change 09/10 to 10/11	Full Year	% change 10/11 to 11/12	Full Year	% change 11/12 to 12/13
Level										
<b>Total Learners</b>		<b>3,771,200</b>	<b>3,540,500</b>	<b>-6.1%</b>	<b>3,163,200</b>	<b>-10.7%</b>	<b>3,149,700</b>	*	<b>3,280,600</b>	<b>4.2%</b>
<b>Participation</b>	<b>of which...</b>									
	Below Level 2 (excluding English and Maths)	496,800	435,300	-12.4%	370,900	-14.8%	574,700	54.9%	757,800	31.9%
	English and Maths	945,100	909,100	-3.8%	961,800	5.8%	1,083,000	12.6%	1,049,600	-3.1%
	Full Level 2	968,600	971,000	*	982,600	1.2%	1,028,100	4.6%	972,500	-5.4%
	Full Level 3	423,900	469,100	10.6%	494,000	5.3%	486,800	-1.5%	495,300	1.7%
	Level 2	1,549,000	1,451,200	-6.3%	1,273,300	-12.3%	1,320,000	3.7%	1,239,200	-6.1%
	Level 3	619,700	604,800	-2.4%	542,900	-10.2%	542,600	*	594,300	9.5%
	Level 4+	58,200	49,500	-14.9%	36,600	-26.0%	39,200	7.1%	50,000	27.6%
	No Level Assigned	910,500	951,100	4.5%	888,300	-6.6%	798,900	-10.1%	818,500	2.5%

Table 1.2: Adult (19+) FE and Skills Achievement by Level (2008/09 to 2012/13) – Learner Volumes

		Funded Learners								
		2008/09	2009/10		2010/11		2011/12		2012/13	
		Full Year	Full Year	% change 08/09 to 09/10	Full Year	% change 09/10 to 10/11	Full Year	% change 10/11 to 11/12	Full Year	% change 11/12 to 12/13
Level										
<b>Total Learners</b>		<b>2,584,000</b>	<b>2,567,700</b>	<b>-0.6%</b>	<b>2,265,100</b>	<b>-11.8%</b>	<b>2,258,500</b>	*	<b>2,453,900</b>	<b>8.7%</b>
<b>Achievement</b>	<b>of which...</b>									
	Below Level 2 (excluding English and Maths)	367,000	336,800	-8.2%	298,500	-11.4%	472,300	58.2%	651,900	38.0%
	English and Maths	639,100	614,600	-3.8%	595,600	-3.1%	633,000	6.3%	597,300	-5.6%
	Full Level 2	493,900	556,000	12.6%	561,800	1.0%	546,600	-2.7%	557,800	2.0%
	Full Level 3	170,200	237,800	39.7%	242,700	2.1%	216,200	-10.9%	201,700	-6.7%
	Level 2	910,800	926,000	1.7%	788,900	-14.8%	775,200	-1.7%	769,900	-0.7%
	Level 3	317,000	344,400	8.7%	282,600	-17.9%	249,000	-11.9%	273,300	9.8%
	Level 4+	27,600	26,900	-2.3%	20,400	-24.4%	21,500	5.7%	24,200	12.6%
	No Level Assigned	756,400	814,600	7.7%	764,100	-6.2%	685,900	-10.2%	710,100	3.5%

**Notes**

1) These tables include Apprenticeships, Workplace Learning, Community Learning and Education and Training provision taken at General Further Education Colleges (including Tertiary), Sixth Form Colleges, Special Colleges (Agricultural and Horticultural Colleges and Art and Design Colleges), Specialist Colleges and External Institutions.

2) Figures for 2011/12 onwards are not directly comparable to earlier years as a Single Individualised Learner Record (ILR) data collection system has been introduced. Small technical changes have been made in the way learners from more than one provision type are counted, leading to a removal of duplicate learners and a reduction in overall learner numbers of approximately 2 per cent. More information on the Single ILR is available at:

[http://www.thedataservice.org.uk/NR/rdonlyres/C05DCDD5-67EE-4AD0-88B9-BEBC8F7F3300/0/SILR\\_Effects\\_SFR\\_Learners\\_June12.pdf](http://www.thedataservice.org.uk/NR/rdonlyres/C05DCDD5-67EE-4AD0-88B9-BEBC8F7F3300/0/SILR_Effects_SFR_Learners_June12.pdf)

3) Data for earlier years are available in the Further Education and Skills Supplementary Tables:

[http://www.thedataservice.org.uk/Statistics/fe\\_data\\_library/further\\_education\\_skills/](http://www.thedataservice.org.uk/Statistics/fe_data_library/further_education_skills/)

4) Prior to 2009/10 Level 4+ Apprenticeships were included with Level 3 Apprenticeships.

5) In 2012/13 there were 89,900 offenders aged 18 or over in the prison system participating in learning, 68,400 achieved a learning outcome. These offenders were funded via the Offenders' Learning and Skills Service (OLASS) budget. Those aged 19 and over are included in Tables 1.1 and 1.2.

6) In 2012/13 500,900 learners benefited from support for the unemployed (those nearest the workforce), of which 496,200 were aged 19+. These are defined as those learners reporting that they were in receipt of Employment and Support Allowance - Work Related Activity Group (ESA WRAG) or Jobseeker's Allowance (JSA).

7) Figures for English and Maths (previously Skills for Life) include GCSEs, Functional Skills, Adult Basic Skills Certificates including ESOL Certificates, and Qualifications and Credit Framework Certificates and Awards in English and maths.

8) Please see the general footnotes and the FE and Skills footnotes sections for further information on these tables.

**Table 2: Adult (19+) Demographic Summary of FE and Skills Participation (2012/13) – Learner Volumes**

	Funded Learners						
	All FE and Skills Participation						
	Below Level 2 (excluding SfL)	English and Maths	Level 2	Level 3	Level 4+	Total FE and Skills	%
<b>Total Learners</b>	<b>757,800</b>	<b>1,049,600</b>	<b>1,239,200</b>	<b>594,300</b>	<b>50,000</b>	<b>3,280,600</b>	<b>100.0%</b>
<b>Age</b>							
19-24	197,800	308,100	372,900	232,500	10,600	803,900	24.5%
25-49	416,900	630,600	694,200	307,900	32,600	1,822,200	55.5%
50+	142,900	110,600	172,100	53,900	6,900	649,100	19.8%
Unknown	100	300	-	-	-	5,400	*
<b>Gender</b>							
Female	318,200	623,900	631,500	367,500	30,500	1,847,300	56.3%
Male	439,500	425,700	607,600	226,800	19,500	1,433,300	43.7%
<b>Learners with Learning Difficulties and/or Disabilities</b>							
Learning Difficulty/Disability	158,200	129,900	127,800	54,300	3,600	434,700	13.2%
No Learning Difficulty/Disability	564,600	886,000	1,071,100	524,200	43,700	2,686,200	81.9%
Not Known	35,000	33,700	40,300	15,700	2,800	159,800	4.9%
<b>Ethnicity</b>							
Asian/ Asian British	61,600	110,400	88,300	32,300	2,600	263,300	8.0%
Black/ African/ Caribbean/ Black British	67,800	84,500	83,100	35,300	2,200	221,900	6.8%
Mixed/ Multiple Ethnic Group	22,600	25,800	29,600	13,500	900	76,000	2.3%
White	569,000	775,300	998,400	499,100	42,900	2,568,400	78.3%
Other Ethnic Group	16,100	33,200	19,000	6,600	500	67,600	2.1%
Not Known/Not Provided	20,600	20,400	20,800	7,500	900	83,500	2.5%

**Notes**

1) These tables include Apprenticeships, Workplace Learning, Community Learning and Education and Training provision taken at General Further Education Colleges (including Tertiary), Sixth Form Colleges, Special Colleges (Agricultural and Horticultural Colleges and Art and Design Colleges), Specialist Colleges and External Institutions.

2) Figures for English and Maths (previously Skills for Life) include GCSEs, Functional Skills, Adult Basic Skills Certificates including ESOL Certificates, and Qualifications and Credit Framework Certificates and Awards in English and maths.

3) Please see the general footnotes and the FE and Skills Demographics footnotes sections for further information on these tables.

**Table 3: Adult (19+) FE and Skills – English and Maths Participation and Achievement by Level (2008/09 to 2012/13)**

Measure	Level	Funded Learners								
		2008/09	2009/10	2010/11	2011/12	2012/13	% change 08/09 to 09/10	% change 09/10 to 10/11	% change 10/11 to 11/12	% change 11/12 to 12/13
		Full Year	Full Year	Full Year	Full Year	Full Year	Full Year	Full Year	Full Year	Full Year
<b>Participation</b>	<b>Total Learners</b>	<b>945,100</b>	<b>909,100</b>	<b>-3.8%</b>	<b>961,800</b>	<b>5.8%</b>	<b>1,083,000</b>	<b>12.6%</b>	<b>1,049,600</b>	<b>-3.1%</b>
	of which English	579,500	555,700	-4.1%	639,000	15.0%	782,500	22.5%	765,800	-2.1%
	of which entry level	136,700	112,400	-17.8%	103,800	-7.7%	107,600	3.6%	120,200	11.7%
	of which level 1	248,700	226,700	-8.9%	285,900	26.1%	379,500	32.7%	340,900	-10.2%
	of which level 2	245,600	252,100	2.7%	286,800	13.8%	335,400	16.9%	327,900	-2.2%
	of which maths	517,100	525,000	1.5%	630,500	20.1%	772,500	22.5%	748,200	-3.1%
	of which entry level	108,700	101,400	-6.7%	98,500	-2.9%	102,400	3.9%	95,500	-6.7%
	of which level 1	241,800	236,800	-2.1%	314,800	32.9%	396,500	26.0%	346,800	-12.5%
	of which level 2	218,600	228,800	4.6%	265,700	16.2%	323,400	21.7%	334,800	3.5%
	of which ESOL (English for Speakers of Other Languages)	188,700	178,600	-5.4%	163,600	-8.4%	139,400	-14.8%	146,200	4.9%
	of which entry level	161,000	150,100	-6.8%	135,500	-9.7%	118,000	-12.9%	123,200	4.4%
	of which level 1	24,100	24,100	*	24,200	*	19,000	-21.4%	21,700	13.8%
	of which level 2	9,300	9,700	3.5%	9,600	-0.6%	7,100	-26.1%	7,500	6.1%
<b>Achievement</b>	<b>Total Learners</b>	<b>639,100</b>	<b>614,600</b>	<b>-3.8%</b>	<b>595,600</b>	<b>-3.1%</b>	<b>633,000</b>	<b>6.3%</b>	<b>597,300</b>	<b>-5.6%</b>
	of which English	340,300	336,400	-1.1%	329,700	-2.0%	387,400	17.5%	351,500	-9.3%
	of which entry level	91,800	79,200	-13.7%	74,400	-6.1%	79,700	7.2%	90,500	13.5%
	of which level 1	144,000	130,200	-9.6%	134,100	3.1%	175,600	30.9%	152,000	-13.4%
	of which level 2	129,000	144,700	12.2%	139,900	-3.3%	152,800	9.2%	116,600	-23.7%
	of which maths	293,000	311,100	6.2%	324,300	4.2%	386,400	19.1%	357,100	-7.6%
	of which entry level	68,300	68,400	*	70,900	3.7%	79,700	12.4%	73,800	-7.5%
	of which level 1	138,900	138,400	*	151,300	9.4%	191,600	26.6%	165,200	-13.8%
	of which level 2	111,400	126,200	13.2%	128,500	1.8%	142,400	10.8%	129,600	-9.0%
	of which ESOL (English for Speakers of Other Languages)	135,800	128,200	-5.6%	122,100	-4.7%	110,000	-10.0%	117,500	6.9%
	of which entry level	116,700	108,100	-7.4%	101,700	-5.9%	93,700	-7.9%	99,100	5.7%
	of which level 1	15,600	15,900	1.6%	16,400	3.6%	13,200	-20.0%	15,700	19.6%
	of which level 2	6,100	6,600	8.0%	6,500	-1.7%	5,200	-19.7%	5,700	9.7%

**Notes**

1) Figures for 2011/12 onwards are not directly comparable to earlier years as a Single Individualised Learner Record (ILR) data collection system has been introduced. Small technical changes have been made in the way learners from more than one provision type are counted, leading to a removal of duplicate learners and a reduction in overall learner numbers of approximately 2 per cent. More information on the Single ILR is available at:

[http://www.thedataservice.org.uk/NR/rdonlyres/C05DCDD5-67EE-4AD0-88B9-BEBC8F7F3300/0/SILR\\_Effects\\_SFR\\_Learners\\_June12.pdf](http://www.thedataservice.org.uk/NR/rdonlyres/C05DCDD5-67EE-4AD0-88B9-BEBC8F7F3300/0/SILR_Effects_SFR_Learners_June12.pdf)

2) Data for earlier years are available in the English and Maths Supplementary Tables:

[http://www.thedataservice.org.uk/Statistics/fe\\_data\\_library/skills\\_for\\_life/](http://www.thedataservice.org.uk/Statistics/fe_data_library/skills_for_life/)

3) Figures for English and Maths (previously Skills for Life) include GCSEs, Functional Skills, Adult Basic Skills Certificates including ESOL Certificates, and Qualifications and Credit Framework Certificates and Awards in English and maths.

4) Please see the general footnotes section for further information on this table.

**Table 4: All Age Demographic Summary of Apprenticeship Participation (2012/13) – Learner Volumes**

<b>Funded Apprentices</b>					
<b>Apprenticeships</b>					
	<b>Intermediate Level Apprenticeship</b>	<b>Advanced Level Apprenticeship</b>	<b>Higher Apprenticeship</b>	<b>Total Apprenticeships</b>	<b>%</b>
<b>Total Learners</b>	<b>501,700</b>	<b>377,000</b>	<b>13,000</b>	<b>868,700</b>	<b>100.0%</b>
<b>Age</b>					
Under 19	132,600	54,800	800	181,300	20.9%
19-24	167,200	132,500	4,200	294,500	33.9%
25-49	167,700	166,000	6,900	334,600	38.5%
50+	34,200	23,700	1,000	58,300	6.7%
Unknown	-	-	-	-	-
<b>Gender</b>					
Female	249,800	210,500	8,300	455,600	52.4%
Male	251,800	166,500	4,700	413,100	47.6%
<b>Learners with Learning Difficulties and/or Disabilities</b>					
Learning Difficulty/Disability	44,600	26,600	600	70,100	8.1%
No Learning Difficulty/Disability	449,500	345,200	12,200	785,800	90.5%
Not Known	7,600	5,200	200	12,800	1.5%
<b>Ethnicity</b>					
Asian/ Asian British	19,900	13,100	500	32,800	3.8%
Black/ African/ Caribbean/ Black British	16,000	12,600	300	28,500	3.3%
Mixed/ Multiple Ethnic Group	9,700	6,600	200	16,200	1.9%
White	447,000	338,800	11,700	776,200	89.4%
Other Ethnic Group	3,900	2,200	-	6,000	0.7%
Not Known/Not Provided	5,200	3,700	200	9,000	1.0%

**Notes**

1) Please see the general footnotes and the Demographics footnotes sections for further information on this table.

Table 5: All Age Apprenticeship Participation by Level and Age (2008/09 to 2012/13)

Age		Funded Apprentices												
		2008/09	2009/10	2010/11	2011/12	2012/13	2011/12				2012/13			
		Full Year	Full Year	Full Year	Full Year	Full Year	August to October	August to January	August to April	Full Year August to July	August to October	August to January	August to April	Full Year August to July
Intermediate Level Apprenticeship	Under 19	129,800	140,400	150,000	144,200	132,600	88,400	106,700	124,800	144,200	84,100	99,700	114,500	132,600
	19-24	101,300	114,600	141,300	159,100	167,200	101,100	119,300	139,400	159,100	111,400	130,100	149,100	167,200
	25+	42,500	49,000	123,900	203,000	201,900	119,200	145,300	173,000	203,000	130,500	151,800	173,700	201,900
	<b>Total</b>	<b>273,600</b>	<b>304,000</b>	<b>415,200</b>	<b>506,200</b>	<b>501,700</b>	<b>308,600</b>	<b>371,400</b>	<b>437,200</b>	<b>506,200</b>	<b>326,000</b>	<b>381,600</b>	<b>437,300</b>	<b>501,700</b>
	of which 19+	143,800	163,600	265,300	362,100	369,100	220,300	264,700	312,400	362,100	242,000	281,900	322,800	369,100
Advanced Level Apprenticeship	Under 19	44,100	45,800	52,900	53,300	54,800	34,400	40,100	45,600	53,300	36,000	41,600	47,200	54,800
	19-24	90,300	94,900	108,100	118,900	132,500	85,100	95,700	106,600	118,900	95,000	105,700	117,500	132,500
	25+	36,500	44,800	86,100	144,800	189,700	80,600	99,300	119,600	144,800	114,500	131,800	150,900	189,700
	<b>Total</b>	<b>170,900</b>	<b>185,500</b>	<b>247,200</b>	<b>317,000</b>	<b>377,000</b>	<b>200,100</b>	<b>235,200</b>	<b>271,700</b>	<b>317,000</b>	<b>245,500</b>	<b>279,000</b>	<b>315,500</b>	<b>377,000</b>
	of which 19+	126,800	139,700	194,300	263,700	322,200	165,700	195,100	226,200	263,700	209,500	237,400	268,300	322,200
Higher Apprenticeship	Under 19	100	200	300	500	800	200	200	300	500	400	500	600	800
	19-24	200	1,400	2,400	2,900	4,200	2,200	2,400	2,700	2,900	2,800	3,200	3,600	4,200
	25+	-	100	800	2,300	8,000	1,200	1,500	1,800	2,300	2,500	3,300	4,900	8,000
	<b>Total</b>	<b>300</b>	<b>1,700</b>	<b>3,500</b>	<b>5,700</b>	<b>13,000</b>	<b>3,500</b>	<b>4,100</b>	<b>4,900</b>	<b>5,700</b>	<b>5,700</b>	<b>7,000</b>	<b>9,200</b>	<b>13,000</b>
	of which 19+	200	1,500	3,200	5,200	12,200	3,300	3,800	4,600	5,200	5,300	6,400	8,600	12,200
All Apprenticeships	Under 19	173,900	186,400	203,100	189,600	181,300	121,300	143,800	165,200	189,600	118,700	138,600	157,400	181,300
	19-24	191,800	210,900	251,900	272,100	294,500	186,400	213,800	242,600	272,100	206,800	234,500	263,500	294,500
	25+	79,100	93,900	210,900	344,800	392,900	200,200	244,400	291,400	344,800	246,500	284,600	325,700	392,900
	<b>Total</b>	<b>444,800</b>	<b>491,300</b>	<b>665,900</b>	<b>806,500</b>	<b>868,700</b>	<b>507,900</b>	<b>602,000</b>	<b>699,200</b>	<b>806,500</b>	<b>572,000</b>	<b>657,700</b>	<b>746,700</b>	<b>868,700</b>
	of which 19+	270,900	304,800	462,800	616,900	687,400	386,600	458,200	534,100	616,900	453,300	519,100	589,300	687,400

**Notes**

1) Figures for 2011/12 onwards are not comparable to earlier years as a Single Individualised Learner Record (ILR) data collection system has been introduced. Technical changes have been made in the way learners participating on more than one Apprenticeship programme are counted. This has led to a removal of duplicate learners and a reduction in overall Apprenticeship learners of approximately 5 per cent.

[http://www.thedataservice.org.uk/NR/rdonlyres/C05DCDD5-67EE-4AD0-88B9-BEBC8F7F3300/0/SILR\\_Effects\\_SFR\\_Learners\\_June12.pdf](http://www.thedataservice.org.uk/NR/rdonlyres/C05DCDD5-67EE-4AD0-88B9-BEBC8F7F3300/0/SILR_Effects_SFR_Learners_June12.pdf)

2) Prior to 2011/12, full year numbers are a count of Apprenticeship programmes in each year. Learners undertaking more than one Apprenticeship programme will appear more than once in the 'All Apprenticeships' total as well as the totals for each Apprenticeship level they participated in. From 2011/12 onwards 'All Apprenticeships' counts each Apprenticeship learner only once regardless of how many programmes they participated in. Each learner is still counted in the totals for each Apprenticeship level they participated in.

3) Data for earlier years are available in the Apprenticeship Supplementary Tables:

[http://www.thedataservice.org.uk/Statistics/fe\\_data\\_library/Apprenticeships/](http://www.thedataservice.org.uk/Statistics/fe_data_library/Apprenticeships/)

4) Figures for 2012/13 include Apprenticeships through the Employer Ownership Pilot.

5) Please see the general footnotes and the Apprenticeships footnotes section for further information on this table.

Table 6.1: All Age Apprenticeship Programme Starts by Level and Age (2008/09 to 2012/13)

	Age	2008/09 Full Year	2009/10 Full Year	2010/11 Full Year	2011/12		2012/13							
					Full Year	Full Year	Quarter 1	Quarter 2	Quarter 3	Quarter 4	Quarter 1	Quarter 2	Quarter 3	Quarter 4
Intermediate Level Apprenticeship	Under 19	74,200	89,400	97,300	95,400	80,900	40,600	19,400	17,600	17,800	35,500	15,600	14,000	15,900
	19-24	52,600	72,800	90,400	101,700	99,000	29,200	21,900	25,300	25,300	30,100	22,000	24,000	22,800
	25+	31,700	28,400	113,400	131,900	112,900	34,700	30,100	32,200	34,900	30,000	24,100	26,100	32,600
	<b>Total</b>	<b>158,500</b>	<b>190,500</b>	<b>301,100</b>	<b>329,000</b>	<b>292,800</b>	<b>104,500</b>	<b>71,300</b>	<b>75,200</b>	<b>78,000</b>	<b>95,700</b>	<b>61,600</b>	<b>64,100</b>	<b>71,300</b>
	of which 19+	84,300	101,100	203,800	233,600	211,900	63,900	51,900	57,500	60,200	60,200	46,100	50,200	55,500
Advanced Level Apprenticeship	Under 19	25,100	27,200	34,200	34,100	33,100	18,100	5,400	4,500	6,100	17,600	5,100	4,600	5,800
	19-24	32,000	39,800	51,600	58,000	63,900	18,400	12,200	12,900	14,600	21,700	11,900	13,800	16,500
	25+	24,200	20,600	68,000	95,700	110,600	21,700	21,200	23,400	29,400	24,400	19,600	22,400	44,300
	<b>Total</b>	<b>81,300</b>	<b>87,700</b>	<b>153,900</b>	<b>187,900</b>	<b>207,700</b>	<b>58,200</b>	<b>38,900</b>	<b>40,800</b>	<b>50,100</b>	<b>63,700</b>	<b>36,700</b>	<b>40,800</b>	<b>66,500</b>
	of which 19+	56,100	60,400	119,700	153,700	174,600	40,100	33,400	36,300	44,000	46,000	31,500	36,200	60,800
Higher Apprenticeship	Under 19	-	100	200	300	600	100	-	100	100	300	100	100	100
	19-24	100	1,200	1,300	1,700	2,400	800	200	400	300	1,000	400	500	600
	25+	-	100	700	1,700	6,800	500	300	400	500	800	900	1,800	3,300
	<b>Total</b>	<b>200</b>	<b>1,500</b>	<b>2,200</b>	<b>3,700</b>	<b>9,800</b>	<b>1,400</b>	<b>600</b>	<b>900</b>	<b>800</b>	<b>2,100</b>	<b>1,400</b>	<b>2,400</b>	<b>4,000</b>
	of which 19+	100	1,400	2,000	3,400	9,200	1,300	600	800	800	1,700	1,300	2,300	3,900
All Apprenticeships	Under 19	99,400	116,800	131,700	129,900	114,500	58,900	24,900	22,200	24,000	53,400	20,800	18,600	21,700
	19-24	84,700	113,800	143,400	161,400	165,400	48,300	34,300	38,600	40,200	52,800	34,300	38,300	39,900
	25+	55,900	49,100	182,100	229,300	230,300	56,900	51,600	56,000	64,800	55,200	44,600	50,300	80,200
	<b>Total</b>	<b>239,900</b>	<b>279,700</b>	<b>457,200</b>	<b>520,600</b>	<b>510,200</b>	<b>164,100</b>	<b>110,700</b>	<b>116,800</b>	<b>128,900</b>	<b>161,400</b>	<b>99,700</b>	<b>107,300</b>	<b>141,800</b>
	of which 19+	140,600	162,900	325,500	390,700	395,700	105,200	85,900	94,600	104,900	108,000	78,900	88,700	120,100

Table 6.2: All Age Apprenticeship Framework Achievements by Level and Age (2008/09 to 2012/13)

	Age	2008/09 Full Year	2009/10 Full Year	2010/11 Full Year	2011/12		2012/13							
					Full Year	Full Year	Quarter 1	Quarter 2	Quarter 3	Quarter 4	Quarter 1	Quarter 2	Quarter 3	Quarter 4
Intermediate Level Apprenticeship	Under 19	50,200	52,900	59,400	56,500	42,100	13,700	11,800	11,800	19,300	12,000	9,000	8,400	12,700
	19-24	35,500	38,600	48,400	54,100	47,700	12,400	11,700	13,000	17,000	12,600	11,600	11,200	12,300
	25+	12,500	20,300	23,900	61,800	66,500	10,500	12,500	16,900	21,900	16,600	15,400	16,200	18,300
	<b>Total</b>	<b>98,100</b>	<b>111,900</b>	<b>131,700</b>	<b>172,400</b>	<b>156,300</b>	<b>36,600</b>	<b>36,000</b>	<b>41,700</b>	<b>58,200</b>	<b>41,200</b>	<b>36,000</b>	<b>35,800</b>	<b>43,200</b>
	of which 19+	48,000	59,000	72,400	115,900	114,200	22,900	24,200	29,900	38,900	29,200	27,000	27,400	30,600
Advanced Level Apprenticeship	Under 19	17,500	20,100	23,900	21,300	18,600	5,500	3,700	3,800	8,300	5,400	3,600	3,500	6,000
	19-24	22,400	25,400	27,700	30,600	30,800	7,200	6,300	6,700	10,300	7,800	6,700	7,100	9,300
	25+	5,400	13,900	15,900	32,800	45,700	5,400	6,500	8,400	12,500	9,500	10,400	11,100	14,700
	<b>Total</b>	<b>45,200</b>	<b>59,400</b>	<b>67,500</b>	<b>84,700</b>	<b>95,000</b>	<b>18,100</b>	<b>16,600</b>	<b>18,900</b>	<b>31,100</b>	<b>22,700</b>	<b>20,700</b>	<b>21,700</b>	<b>30,000</b>
	of which 19+	27,700	39,300	43,600	63,400	76,500	12,700	12,900	15,100	22,800	17,300	17,000	18,100	24,000
Higher Apprenticeship	Under 19	-	-	100	100	100	-	-	-	-	-	-	-	-
	19-24	-	100	800	800	800	300	100	100	200	300	200	100	200
	25+	-	-	100	300	600	100	100	-	100	100	100	100	200
	<b>Total</b>	<b>-</b>	<b>200</b>	<b>1,000</b>	<b>1,200</b>	<b>1,600</b>	<b>500</b>	<b>200</b>	<b>200</b>	<b>400</b>	<b>400</b>	<b>400</b>	<b>300</b>	<b>500</b>
	of which 19+	-	200	900	1,200	1,400	400	200	200	400	400	300	200	500
All Apprenticeships	Under 19	67,700	73,100	83,300	77,900	60,800	19,200	15,500	15,600	27,600	17,400	12,700	11,900	18,700
	19-24	57,800	64,200	77,000	85,600	79,300	20,000	18,200	19,900	27,600	20,700	18,400	18,400	21,800
	25+	17,900	34,300	39,900	94,900	112,800	16,000	19,100	25,300	34,500	26,300	25,900	27,400	33,200
	<b>Total</b>	<b>143,400</b>	<b>171,500</b>	<b>200,300</b>	<b>258,400</b>	<b>252,900</b>	<b>55,200</b>	<b>52,700</b>	<b>60,800</b>	<b>89,700</b>	<b>64,400</b>	<b>57,000</b>	<b>57,700</b>	<b>73,700</b>
	of which 19+	75,700	98,400	116,900	180,500	192,100	36,000	37,200	45,200	62,100	47,000	44,400	45,800	55,000

**Notes**

1) Figures for 2011/12 onwards are not directly comparable to earlier years as a Single Individualised Learner Record (ILR) data collection system has been introduced. Small technical changes have been made in the way learners from more than one provision type are counted, leading to a removal of duplicate learners and a reduction in overall learner numbers of approximately 2 per cent. More information on the Single ILR is available at:

[http://www.thedataservice.org.uk/NR/rdonlyres/C05DCDD5-67EE-4AD0-88B9-BEBC8F7F3300/0/SILR\\_Effects\\_SFR\\_Learners\\_June12.pdf](http://www.thedataservice.org.uk/NR/rdonlyres/C05DCDD5-67EE-4AD0-88B9-BEBC8F7F3300/0/SILR_Effects_SFR_Learners_June12.pdf)

2) Data for earlier years are available in the Apprenticeship Supplementary Tables:

[http://www.thedataservice.org.uk/Statistics/fe\\_data\\_library/Apprenticeships/](http://www.thedataservice.org.uk/Statistics/fe_data_library/Apprenticeships/)

3) Figures for 2012/13 include Apprenticeships through the Employer Ownership Pilot.

4) Please see the general footnotes and the Apprenticeships footnotes section for further information on these tables.

**Table 7.1: Starts on the Apprenticeship Grant for Employers Scheme (AGE 16 to 24) - Payments Made (2011/12 and 2012/13)**  
(Revised January 2014)

	Age	2011/12	2012/13	February 2012 to July 2013 <sup>R</sup>
		February 2012 to July 2012 <sup>R</sup>	Full Year <sup>R</sup>	
Intermediate Level Apprenticeship	Under 19	4,100	20,100	24,100
	19-24	2,100	10,600	12,800
	<b>Total</b>	<b>6,200</b>	<b>30,700</b>	<b>36,900</b>
Advanced Level Apprenticeship	Under 19	800	5,700	6,500
	19-24	700	4,700	5,400
	<b>Total</b>	<b>1,500</b>	<b>10,400</b>	<b>11,900</b>
Higher Apprenticeship	Under 19	-	-	-
	19-24	-	100	100
	<b>Total</b>	<b>-</b>	<b>200</b>	<b>200</b>
All Apprenticeships	Under 19	4,900	25,800	30,700
	19-24	2,900	15,400	18,300
	<b>Total</b>	<b>7,800</b>	<b>41,200</b>	<b>49,000</b>

**Notes**

R) Figures have been revised as a small number of AGE payments have been backdated. Payments Made in 2011/12 include 100 payments and Payments Made in 2012/13 include 1,800 payments made after the end of each academic year respectively. We expect a further revision to the 2012/13 figures in the March 2014 SFR.

- 1) AGE 16 to 24 was launched in February 2012. Payments are drawn down once the new Apprentice has been in post for 13 weeks.
- 2) AGE 16 to 24 starts are defined through the Learning Delivery Funding and Monitoring Codes with values of 132 or 133 as per the ILR specification ([http://www.theia.org.uk/ilr/ilrdocuments/201112\\_ilrdetail.htm](http://www.theia.org.uk/ilr/ilrdocuments/201112_ilrdetail.htm)). These are validated by the Skills Funding Agency.
- 3) Starts in this table include learners aged 19-24 on application but aged 25 when learning started.
- 4) Starts in this table will also be counted in the main Apprenticeship tables.
- 5) Please see the general footnotes and the Apprenticeships footnotes section for further information on these tables.

**Table 7.2: Starts on the Access to Apprenticeship Pathway (2011/12 and 2012/13)**

	Age	Starts on Access to Apprenticeship Pathway in 2011/12	Starts on Access to Apprenticeship Pathway in 2012/13
		Full Year	Full Year
<b>All starts on the Access to Apprenticeship pathway</b>	Under 19	5,700	3,900
	19-24	1,600	1,600
	<b>Total</b>	<b>7,200</b>	<b>5,500</b>
of which	have converted to paid employment to complete their Apprenticeship in any year	Under 19 19-24 <b>Total</b>	2,300 700 <b>3,000</b>
	have not yet converted to paid employment to complete their Apprenticeship in any year	Under 19 19-24 <b>Total</b>	3,300 900 <b>4,200</b>
			<b>1,000</b> <b>400</b> <b>1,400</b>

**Notes**

- 1) People starting training under the Access to Apprenticeship pathway are not counted as an Apprentice until they secure paid employment to complete their Apprenticeship in the usual way.
- 2) The year indicates when the learner started on the Access to Apprenticeship pathway. Conversion to paid employment to complete an Apprenticeship does not necessarily occur in the same year as the learner started the Access to Apprenticeship pathway.
- 3) People shown in this table as having converted to paid employment to complete their Apprenticeship in the same year as they started on the Access to Apprenticeship pathway, will also be counted as starts in the main Apprenticeship tables. People who convert to paid employment in subsequent years will be counted as participating Apprenticeship learners.

Table 8.1: Workplace Learning Starts by Level (2008/09 to 2012/13)

Level		2008/09	2009/10	2010/11	2011/12	2012/13	2011/12				2012/13			
		Full Year	Full Year	Full Year	Full Year	Full Year	Quarter 1	Quarter 2	Quarter 3	Quarter 4	Quarter 1	Quarter 2	Quarter 3	Quarter 4
<b>Total Starts</b>		<b>906,100</b>	<b>774,500</b>	<b>599,300</b>	<b>331,600</b>	<b>148,800</b>	<b>59,500</b>	<b>66,400</b>	<b>88,200</b>	<b>117,600</b>	<b>30,900</b>	<b>34,800</b>	<b>42,200</b>	<b>40,900</b>
<b>of which...</b>	Below Level 2	155,300	147,100	114,300	43,200	30,900	7,900	9,300	11,800	14,200	7,600	9,300	8,100	5,900
	Level 2	579,900	430,500	331,900	252,200	102,200	44,700	49,900	67,500	90,200	20,400	22,500	29,800	29,600
	Level 3	135,800	100,200	81,800	34,200	11,300	6,700	6,900	8,500	12,200	2,700	2,100	3,200	3,300
	Level 4+	11,900	4,300	3,000	2,000	2,000	200	300	500	1,000	200	400	600	800
	No Level Assigned	23,200	92,400	68,300	-	2,400	-	-	-	-	-	400	600	1,400
	Below Level 2 (excluding English and Maths)	22,100	27,900	11,200	4,200	2,900	600	900	1,300	1,500	400	700	900	900
	English and Maths	191,700	127,000	108,300	62,200	39,400	11,900	13,900	16,600	19,800	9,800	11,300	10,300	8,000
	Full Level 2	520,100	415,100	315,400	226,300	85,200	39,900	44,200	60,900	81,300	16,900	18,800	25,100	24,400
	Full Level 3	136,100	98,200	80,600	31,700	6,100	6,600	6,700	7,900	10,600	1,700	1,200	1,500	1,600

Table 8.2: Workplace Learning Achievements by Level (2008/09 to 2012/13)

Level		2008/09	2009/10	2010/11	2011/12	2012/13	2011/12				2012/13			
		Full Year	Full Year	Full Year	Full Year	Full Year	Quarter 1	Quarter 2	Quarter 3	Quarter 4	Quarter 1	Quarter 2	Quarter 3	Quarter 4
<b>Total Achievements</b>		<b>583,700</b>	<b>676,000</b>	<b>584,900</b>	<b>290,100</b>	<b>198,000</b>	<b>62,900</b>	<b>64,500</b>	<b>68,300</b>	<b>94,500</b>	<b>49,600</b>	<b>49,300</b>	<b>44,900</b>	<b>54,300</b>
<b>of which...</b>	Below Level 2	88,700	105,900	95,100	34,900	27,400	4,900	6,900	9,300	13,800	5,200	6,300	7,300	8,600
	Level 2	399,300	389,700	332,500	212,100	145,100	46,800	47,400	49,700	68,100	38,300	36,500	31,600	38,700
	Level 3	68,800	95,500	81,100	41,100	22,900	10,700	9,800	8,800	11,800	5,700	6,000	5,200	6,000
	Level 4+	7,400	7,200	3,600	2,000	2,300	400	400	400	700	300	500	700	800
	No Level Assigned	19,600	77,600	72,600	-	400	-	-	-	-	-	-	100	300
	Below Level 2 (excluding English and Maths)	9,300	15,900	10,900	2,700	2,800	300	500	700	1,300	400	500	1,000	900
	English and Maths	118,900	94,900	88,500	51,700	35,700	7,900	10,900	13,700	19,100	7,800	8,400	8,500	10,900
	Full Level 2	359,000	378,900	318,700	191,700	129,900	43,600	42,800	44,400	60,900	35,100	33,400	28,500	33,000
	Full Level 3	69,100	93,700	80,200	40,200	16,100	10,700	9,700	8,700	11,200	4,400	4,300	3,600	3,800

**Notes**

1) Figures for 2011/12 onwards are not directly comparable to earlier years as a Single Individualised Learner Record (ILR) data collection system has been introduced. Small technical changes have been made in the way learners from more than one provision type are counted, leading to a removal of duplicate learners and a reduction in overall learner numbers of approximately 2 per cent. More information on the Single ILR is available at:

[http://www.thedataservice.org.uk/NR/rdonlyres/C05DCDD5-67FE-4AD0-88B9-BEBC8F7F3300/0/SILR\\_Effects\\_SFR\\_Learners\\_June12.pdf](http://www.thedataservice.org.uk/NR/rdonlyres/C05DCDD5-67FE-4AD0-88B9-BEBC8F7F3300/0/SILR_Effects_SFR_Learners_June12.pdf)

2) Workplace Learning includes Train to Gain and other Employer Responsive provision (except Apprenticeships).

3) Data for earlier years are available in the Workplace Learning Supplementary Tables:

[http://www.thedataservice.org.uk/Statistics/fe\\_data\\_library/workplace\\_learning/](http://www.thedataservice.org.uk/Statistics/fe_data_library/workplace_learning/)

4) These tables include some learners aged under 19 who are eligible for funding on certain Workplace Learning programmes (such as Programmes for the Unemployed).

5) English and maths starts and achievements can be at Level 2 or Below Level 2.

6) Figures for English and Maths (previously Skills for Life) include GCSEs, Functional Skills, Adult Basic Skills Certificates including ESOL Certificates, and Qualifications and Credit Framework Certificates and Awards in English and maths.

7) Please see the general footnotes and the Workplace Learning footnotes section for further information on these tables.



**Table 9: Community Learning Participation and Achievement by Type (2008/09 to 2012/13) – Learner Volumes**

Measure	Provision Type	Funded Learners									
		2008/09		2009/10		2010/11		2011/12		2012/13	
		Full Year	Full Year	% change 08/09 to 09/10	Full Year	Full Year	% change 09/10 to 10/11	Full Year	Full Year	% change 10/11 to 11/12	% change 11/12 to 12/13
<b>Participation</b>	<b>Total Learners</b>	<b>755,000</b>	<b>752,800</b>	*	<b>699,400</b>	<b>-7.1%</b>	<b>683,300</b>	<b>-2.3%</b>	<b>684,700</b>	*	
	of which Personal and Community Development Learning	584,400	579,200	-0.9%	534,100	-7.8%	518,600	-2.9%	513,800	-0.9%	
	of which Neighbourhood Learning in Deprived Communities	40,300	43,700	8.4%	46,600	6.5%	55,700	19.8%	65,600	17.7%	
	of which Family English, Maths and Language	71,000	71,300	*	65,400	-8.3%	58,700	-10.4%	52,600	-10.4%	
	of which Wider Family Learning	80,500	79,600	-1.1%	75,400	-5.3%	72,800	-3.4%	74,400	2.2%	
<b>Achievement</b>	<b>Total Learners</b>	<b>638,900</b>	<b>663,000</b>	<b>3.8%</b>	<b>608,200</b>	<b>-8.3%</b>	<b>594,500</b>	<b>-2.3%</b>	<b>608,100</b>	<b>2.3%</b>	
	of which Personal and Community Development Learning	489,000	505,900	3.5%	458,600	-9.3%	445,400	-2.9%	450,900	1.2%	
	of which Neighbourhood Learning in Deprived Communities	34,400	39,800	15.6%	41,300	3.7%	50,100	21.4%	60,600	21.1%	
	of which Family English, Maths and Language	61,000	62,700	2.7%	57,000	-9.0%	50,900	-10.8%	46,000	-9.6%	
	of which Wider Family Learning	71,400	72,600	1.6%	70,100	-3.4%	67,500	-3.8%	69,500	2.9%	

**Notes**

1) Figures for 2011/12 onwards are not directly comparable to earlier years as a Single Individualised Learner Record (ILR) data collection system has been introduced. Small technical changes have been made in the way learners from more than one provision type are counted, leading to a removal of duplicate learners and a reduction in overall learner numbers of approximately 2 per cent. More information on the Single ILR is available at:

[http://www.thedataservice.org.uk/NR/rdonlyres/C05DCDD5-67EE-4AD0-88B9-BEBC8F7F3300/0/SILR\\_Effects\\_SFR\\_Learners\\_June12.pdf](http://www.thedataservice.org.uk/NR/rdonlyres/C05DCDD5-67EE-4AD0-88B9-BEBC8F7F3300/0/SILR_Effects_SFR_Learners_June12.pdf)

2) Data for earlier years is available in the Community Learning Supplementary Tables:

[http://www.thedataservice.org.uk/Statistics/fe\\_data\\_library/community\\_learning/](http://www.thedataservice.org.uk/Statistics/fe_data_library/community_learning/)

3) Please see the general footnotes and the Community Learning footnotes sections for further information on this table.

**Table 10.1: Adult (19+) Education and Training Success Rates by Level (2008/09 to 2012/13) – Percentages**

Level		2008/09 Full Year	2009/10 Full Year	2010/11 Full Year	2011/12 Full Year	2012/13 Full Year
<b>Education and Training Provision</b>		<b>80.6%</b>	<b>80.3%</b>	<b>81.4%</b>	<b>83.9%</b>	<b>86.8%</b>
of which...	English and Maths	75.1%	74.3%	78.6%	80.1%	83.4%
	Full Level 2	72.1%	74.8%	78.5%	82.6%	85.0%
	Full Level 3	70.1%	75.1%	77.7%	78.4%	79.6%
	Level 2	80.5%	80.3%	80.2%	82.7%	85.5%
	Level 3	78.4%	78.7%	78.8%	79.4%	81.6%

**Table 10.2: Apprenticeship Success Rates by Level and Age (2008/09 to 2012/13) – Percentages**

Level	Age	2008/09 Full Year	2009/10 Full Year	2010/11 Full Year	2011/12 Full Year	2012/13 Full Year
Intermediate Level Apprenticeship	Under 19	68.3%	71.1%	72.2%	71.9%	69.8%
	19-24	71.7%	74.6%	76.7%	74.8%	71.6%
	25+	76.6%	77.5%	80.6%	71.4%	73.8%
	<b>Total</b>	<b>70.4%</b>	<b>73.4%</b>	<b>75.3%</b>	<b>72.6%</b>	<b>72.0%</b>
	of which 19+	72.8%	75.6%	78.0%	73.0%	72.9%
Advanced Level Apprenticeship	Under 19	73.6%	76.2%	79.0%	76.5%	75.9%
	19-24	70.8%	75.4%	79.7%	77.8%	74.1%
	25+	73.9%	71.5%	76.2%	75.1%	71.1%
	<b>Total</b>	<b>72.1%</b>	<b>74.8%</b>	<b>78.6%</b>	<b>76.5%</b>	<b>73.0%</b>
	of which 19+	71.2%	74.0%	78.4%	76.4%	72.3%
Higher Apprenticeship	Under 19			83.2%	64.4%	77.4%
	19-24			84.8%	74.4%	75.0%
	25+			84.2%	70.1%	62.4%
	<b>Total</b>			<b>84.6%</b>	<b>72.6%</b>	<b>70.2%</b>
	of which 19+			84.8%	73.2%	69.7%
All Apprenticeships	Under 19	69.6%	72.4%	74.0%	73.1%	71.5%
	19-24	71.3%	74.9%	77.8%	75.9%	72.6%
	25+	75.9%	75.1%	78.8%	72.6%	72.7%
	<b>Total</b>	<b>70.9%</b>	<b>73.8%</b>	<b>76.4%</b>	<b>73.8%</b>	<b>72.3%</b>
	of which 19+	72.2%	75.0%	78.2%	74.2%	72.6%

**Table 10.3: Adult (19+) Workplace Learning Success Rates by Level (2011/12 and 2012/13) – Percentages**

Level		2011/12 Full Year	2012/13 Full Year
<b>Workplace Learning</b>		<b>90.6%</b>	<b>89.5%</b>
of which...	English and maths	92.5%	90.1%
	Full Level 2	90.9%	89.8%
	Full Level 3	86.9%	85.0%

**Notes**

1) Figures for 2011/12 onwards are not directly comparable to earlier years as a Single Individualised Learner Record (ILR) data collection system has been introduced. Small technical changes have been made in the way learners from more than one provision type are counted, leading to a removal of duplicate learners and a reduction in overall learner numbers of approximately 2 per cent. More information on the Single ILR is available at:

[http://www.thedataservice.org.uk/NR/rdonlyres/C05DCDD5-67FE-4AD0-88B9-BEFC8F7F3300/0/SILR\\_Effects\\_SFR\\_Learners\\_June12.pdf](http://www.thedataservice.org.uk/NR/rdonlyres/C05DCDD5-67FE-4AD0-88B9-BEFC8F7F3300/0/SILR_Effects_SFR_Learners_June12.pdf)

2) Data for earlier years are available in the FE Data Library:

[http://www.thedataservice.org.uk/Statistics/fe\\_data\\_library/](http://www.thedataservice.org.uk/Statistics/fe_data_library/)

3) Figures for English and Maths (previously Skills for Life) include GCSEs, Functional Skills, Adult Basic Skills Certificates including ESOL Certificates, and Qualifications and Credit Framework Certificates and Awards in English and maths.

4) Please see the general footnotes, Apprenticeship and Workplace Learning footnotes sections for further information on these tables.

**Table 11.1: Level of Highest Qualification Held by People aged 19-59/64 in England (Quarter 4)<sup>1</sup> - percentages**

Year	aged 19-59/64 <sup>2</sup> (thousands)	Level 4 and above	Level 3	Level 3 and above	Level 2	Level 2 and above	Below Level 2 (incl no qualifications)
2006	29,427	33.0	20.2	53.2	18.6	71.8	28.2
2007	29,584	34.1	20.7	54.8	18.4	73.2	26.8
2008	29,737	34.5	20.7	55.2	19.0	74.2	25.8
2009	29,894	36.4	20.7	57.1	19.6	76.6	23.4
2010	30,105	37.6	21.0	58.5	19.2	77.7	22.3
2011	30,279	38.1	21.3	59.4	19.5	78.9	21.1
2012	30,399	39.5 <sup>P</sup>	22.1 <sup>P</sup>	61.6 <sup>P</sup>	19.0 <sup>P</sup>	80.6 <sup>P</sup>	19.4 <sup>P</sup>
2012 95% CI (+/-)		0.4	0.3	0.3	0.3	0.4	0.4

**Table 11.2: Level of Highest Qualification Held by People aged 19-59/64 in England (Quarter 4)<sup>1</sup> - volumes (thousands)**

Year	All people aged 19-59/64 <sup>2</sup>	Level 4 and above	Level 3	Level 3 and above	Level 2	Level 2 and above	Below Level 2 (incl no qualifications)
2006	29,427	9,716	5,943	15,659	5,481	21,140	8,288
2007	29,584	10,093	6,116	16,208	5,456	21,664	7,919
2008	29,737	10,263	6,146	16,409	5,653	22,061	7,675
2009	29,894	10,868	6,189	17,057	5,845	22,902	6,993
2010	30,105	11,305	6,315	17,620	5,786	23,406	6,699
2011	30,279	11,522	6,457	17,979	5,908	23,888	6,391
2012	30,399	12,007 <sup>P</sup>	6,728 <sup>P</sup>	18,735 <sup>P</sup>	5,762 <sup>P</sup>	24,497 <sup>P</sup>	5,903 <sup>P</sup>
2012 95% CI (+/-)		130	95	99	91	121	121

**Notes**

1) Source: Labour Force Survey

2) Estimates were revised in March 2011 as a result of an improved methodology being adopted - see methodological note for further details.

3) Males aged 19 - 64 and females aged 19 - 59.

P) Provisional estimate - these estimates will be finalised in March 2014.

**Table 12.1: Level Of Highest Qualification Held By Economically Active Adults In England (Quarter 4) <sup>1</sup> - percentages**

Year	Economically active adults <sup>2</sup> (thousands)	Level 4 and above	Level 3	Level 3 and above	Level 2	Level 2 and above	Below Level 2 (incl no qualifications)
2006	24,238	35.8	20.8	56.6	19.6	76.2	23.8
2007	24,397	36.8	21.1	57.9	19.4	77.3	22.7
2008	24,672	36.9	21.1	58.0	20.0	78.0	22.0
2009	24,670	38.9	21.0	59.9	20.5	80.3	19.7
2010	24,800	40.2	21.2	61.4	20.1	81.5	18.5
2011	24,970	40.5	21.5	62.1	20.4	82.4	17.6
2012	25,382	42.0 <sup>P</sup>	22.1 <sup>P</sup>	64.1 <sup>P</sup>	19.8 <sup>P</sup>	83.9 <sup>P</sup>	16.1 <sup>P</sup>
2012 95% CI (+/-)		0.5	0.4	0.3	0.3	0.4	0.4

**Table 12.2: Level Of Highest Qualification Held By Economically Active Adults In England (Quarter 4) <sup>1</sup> - volumes (thousands)**

Year	Economically active adults <sup>2</sup>	Level 4 and above	Level 3	Level 3 and above	Level 2	Level 2 and above	Below Level 2 (incl no qualifications)
2006	24,238	8,681	5,046	13,727	4,744	18,471	5,767
2007	24,397	8,975	5,151	14,126	4,731	18,857	5,540
2008	24,672	9,102	5,209	14,310	4,940	19,250	5,422
2009	24,670	9,598	5,173	14,771	5,046	19,818	4,852
2010	24,800	9,965	5,262	15,227	4,976	20,203	4,597
2011	24,970	10,124	5,375	15,500	5,084	20,583	4,386
2012	25,382	10,662 <sup>P</sup>	5,607 <sup>P</sup>	16,270 <sup>P</sup>	5,014 <sup>P</sup>	21,284 <sup>P</sup>	4,099 <sup>P</sup>
2012 95% CI (+/-)		119	89	85	86	108	108

**Notes**

1) Source: Labour Force Survey

2) Estimates for 2006 onwards were revised in March 2011 as a result of an improved methodology being adopted - see methodological note for further details.

3) Economically active adults are defined as men aged 18 to 64 and women aged 18 to 59 either in employment or International Labour Organisation unemployed.

P) Provisional estimate - these estimates will be finalised in March 2014.

**Table 13: Vocational Qualification Achievements in the UK by Qualification Type, 2006 (October) to 2013 (September)**

Quarter	National Vocational Qualification	Occupational Qualification	Qualifications and Credit Framework Qualification	Vocationally Related Qualification	Other Vocational Qualifications	Total
October 2006 to December 2006	121,300	7,100	-	411,400	382,600	<b>922,400</b>
January 2007 to March 2007	126,600	5,700	-	406,800	393,800	<b>932,900</b>
April 2007 to June 2007	129,600	6,000	400	507,900	678,200	<b>1,322,100</b>
July 2007 to September 2007	252,900	8,000	500	920,500	1,151,500	<b>2,333,400</b>
<b>Total 2006/07 Academic Year</b>	<b>630,400</b>	<b>26,800</b>	<b>900</b>	<b>2,246,600</b>	<b>2,606,200</b>	<b>5,510,900</b>
October 2007 to December 2007	128,700	4,900	1,300	408,500	423,500	<b>966,900</b>
January 2008 to March 2008	140,700	4,900	4,600	426,000	500,900	<b>1,077,200</b>
April 2008 to June 2008	170,600	6,400	8,600	643,100	755,700	<b>1,584,400</b>
July 2008 to September 2008	287,900	8,300	19,200	983,800	1,416,700	<b>2,715,800</b>
<b>Total 2007/08 Academic Year</b>	<b>727,900</b>	<b>24,500</b>	<b>33,700</b>	<b>2,461,400</b>	<b>3,096,800</b>	<b>6,344,300</b>
October 2008 to December 2008	164,100	5,800	16,400	416,200	474,500	<b>1,077,000</b>
January 2009 to March 2009	169,600	5,300	39,300	409,900	590,400	<b>1,214,500</b>
April 2009 to June 2009	216,400	6,300	62,000	715,900	829,300	<b>1,830,000</b>
July 2009 to September 2009	372,600	9,100	102,600	1,064,800	1,591,600	<b>3,140,800</b>
<b>Total 2008/09 Academic Year</b>	<b>922,900</b>	<b>26,500</b>	<b>220,300</b>	<b>2,606,800</b>	<b>3,485,800</b>	<b>7,262,200</b>
October 2009 to December 2009	212,000	6,000	85,100	414,700	457,500	<b>1,175,300</b>
January 2010 to March 2010	204,000	5,100	135,200	388,000	552,700	<b>1,285,000</b>
April 2010 to June 2010	213,500	5,700	203,000	726,100	831,100	<b>1,979,300</b>
July 2010 to September 2010	349,500	6,400	353,700	1,078,700	1,727,400	<b>3,515,700</b>
<b>Total 2009/10 Academic Year</b>	<b>979,000</b>	<b>23,200</b>	<b>777,000</b>	<b>2,607,500</b>	<b>3,568,600</b>	<b>7,955,300</b>
October 2010 to December 2010	179,600	6,200	274,800	285,700	422,900	<b>1,169,300</b>
January 2011 to March 2011	155,300	4,100	454,400	166,300	486,500	<b>1,266,600</b>
April 2011 to June 2011	128,600	3,600	722,300	385,700	670,900	<b>1,911,100</b>
July 2011 to September 2011	124,300	3,600	1,384,700	561,800	1,473,700	<b>3,548,000</b>
<b>Total 2010/11 Academic Year</b>	<b>587,800</b>	<b>17,500</b>	<b>2,836,200</b>	<b>1,399,600</b>	<b>3,054,000</b>	<b>7,895,100</b>
October 2011 to December 2011	51,000	2,000	807,200	55,800	355,300	<b>1,271,400</b>
January 2012 to March 2012	31,100	1,000	821,500	51,300	479,700	<b>1,384,500</b>
April 2012 to June 2012	22,600	700	1,225,900	195,100	672,300	<b>2,116,500</b>
July 2012 to September 2012	24,200	900	2,428,700	273,700	1,285,700	<b>4,013,200</b>
<b>Total 2011/12 Academic Year</b>	<b>128,800</b>	<b>4,600</b>	<b>5,283,400</b>	<b>575,800</b>	<b>2,793,000</b>	<b>8,785,600</b>
October 2012 to December 2012	11,800	200	1,016,300	21,100	295,900	<b>1,345,300</b>
January 2013 to March 2013	6,700	100	985,400	22,500	406,900	<b>1,421,700</b>
April 2013 to June 2013	5,200	100	1,728,100	142,600	587,300	<b>2,463,400</b>
July 2013 to September 2013	5,100	100	2,507,400	162,200	1,283,100	<b>3,957,900</b>
<b>Total 2012/13 Academic Year</b>	<b>28,700</b>	<b>600</b>	<b>6,237,200</b>	<b>348,500</b>	<b>2,573,300</b>	<b>9,188,300</b>

**Notes**

- 1) This table covers all levels of vocational qualifications reported through Ofqual. Data are supplied by awarding organisations.
- 2) For data relating to Vocational Qualifications, the Academic year runs from October to September. For example, the 2006/07 academic year runs from October 2006 to September 2007.
- 3) The data in this table has been subjected to revisions.
- 4) Please see general footnotes and Vocational Qualifications footnotes section for further information on these tables.

**Table 14: Adult (19+) FE and Skills Participation by Level (2013/14 – in-year estimates) – Learner Volumes**

		Funded Learners	
		2013/14	
		Quarter 1 August to October (provisional)	
		Level	
Total Learners			1,475,600
<b>Participation</b>	<b>of which...</b>	Below Level 2 (excluding English and Maths)	320,600
		English and Maths	521,400
		Full Level 2	456,100
		Full Level 3	329,900
		Level 2	576,300
		Level 3	363,000
		Level 4+	23,000
		No Level Assigned	222,400

**Table 15: Adult (19+) FE and Skills – English and Maths Participation by Level (2013/14 – in-year estimates) - Learner Volumes**

		Funded Learners	
		2013/14	
		Quarter 1 August to October (provisional)	
		Level	
Participation		Total Learners	521,400
		of which English	403,400
		of which entry level	38,800
		of which level 1	172,700
		of which level 2	195,100
		of which maths	388,100
		of which entry level	31,900
		of which level 1	170,400
		of which level 2	190,000
		of which ESOL (English for Speakers of Other Languages)	48,300
		of which entry level	37,500
		of which level 1	8,000
		of which level 2	3,100

**Notes**

1) These tables include Apprenticeships, Workplace Learning, Community Learning and Education and Training provision taken at General Further Education Colleges (including Tertiary), Sixth Form Colleges, Special Colleges (Agricultural and Horticultural Colleges and Art and Design Colleges), Specialist Colleges and External Institutions.

2) These tables show in-year estimates for 2013/14. Tables 1 and 3 show full year volumes for previous years. It is not possible to directly compare provisional 2013/14 estimates with figures for previous years.

3) Figures for English and Maths (previously Skills for Life) include GCSEs, Functional Skills, Adult Basic Skills Certificates including ESOL Certificates, and Qualifications and Credit Framework Certificates and Awards in English and maths.

4) Provisional in-year data for 2013/14 show there were 32,300 offenders aged 18 or over in the prison system participating in learning. These offenders were funded via the Offenders' Learning and Skills Service (OLASS) budget.

5) Provisional in-year data for 2013/14 show 189,100 learners benefited from support for the unemployed (those nearest the workforce), 186,600 of which were aged 19+. These are defined as those learners reporting that they were in receipt of Employment and Support Allowance - Work Related Activity Group (ESA WRAG) or Jobseeker's Allowance (JSA).

6) Please see the general footnotes section for further information on these tables.

**Table 16: All Age Apprenticeship Participation by Level and Age (2013/14 – in-year estimates) – Learner Volumes****NOTE QUALITY AND POLICY FOOTNOTES 1 AND 2**

<b>Funded Apprentices</b>		
<b>2013/14</b>		
<b>Quarter 1</b>		
<b>August to</b>		
<b>October</b>		
<b>(provisional)</b>		
<b>Age</b>		
Intermediate Level Apprenticeship	Under 19	78,200
	19-24	115,100
	25+	115,300
	<b>Total</b>	<b>308,600</b>
	of which 19+	230,400
Advanced Level Apprenticeship	Under 19	34,300
	19-24	97,100
	25+	113,500
	<b>Total</b>	<b>244,800</b>
	of which 19+	210,500
Higher Apprenticeship	Under 19	500
	19-24	3,800
	25+	6,500
	<b>Total</b>	<b>10,700</b>
	of which 19+	10,200
All Apprenticeships	Under 19	111,200
	19-24	213,400
	25+	235,100
	<b>Total</b>	<b>559,700</b>
	of which 19+	448,400

**Notes**

1) This table shows in-year estimates for 2013/14. Apprenticeship participation for earlier years are available in Table 5 of this release. It is not possible to directly compare provisional 2013/14 estimates with figures for previous years. There is evidence of increased data lag for the first three months of 2013/14 compared to the same period of previous years.

2) 24+ Advanced Learning Loans were introduced in August 2013. Data show that the number Apprenticeship starts for those aged 24 and above studying at Level 3 and above has been directly affected. There is also some anecdotal evidence that the numbers of starts for other ages may have been indirectly affected.

3) 'All Apprenticeships' count each Apprenticeship learner only once regardless of how many programmes they participated in. Each learner is still counted in the totals for each Apprenticeship level they participated in.

4) Figures for 2013/14 include Apprenticeships through the Employer Ownership Pilot.

5) Please see the general footnotes and the Apprenticeships footnotes section for further information on this table.

**Table 17.1: All Age Apprenticeship Programme Starts by Level and Age (2013/14 – in-year estimates)**  
**NOTE QUALITY AND POLICY FOOTNOTES 1 AND 2**

		2013/14
		Quarter 1 August to October (provisional)
	Age	
Intermediate Level Apprenticeship	Under 19	30,300
	19-24	23,700
	25+	19,500
	<b>Total</b>	<b>73,500</b>
	of which 19+	43,200
Advanced Level Apprenticeship	Under 19	15,100
	19-24	16,000
	25+	2,700
	<b>Total</b>	<b>33,800</b>
	of which 19+	18,700
Higher Apprenticeship	Under 19	400
	19-24	1,000
	25+	100
	<b>Total</b>	<b>1,500</b>
	of which 19+	1,100
All Apprenticeships	Under 19	45,800
	19-24	40,700
	25+	22,300
	<b>Total</b>	<b>108,800</b>
	of which 19+	63,000

**Table 17.2: All Age Apprenticeship Framework Achievements by Level and Age (2013/14 – in-year estimates)**

		2013/14
		Quarter 1 August to October (provisional)
	Age	
Intermediate Level Apprenticeship	Under 19	11,200
	19-24	9,100
	25+	9,600
	<b>Total</b>	<b>29,900</b>
	of which 19+	18,700
Advanced Level Apprenticeship	Under 19	4,500
	19-24	7,000
	25+	8,400
	<b>Total</b>	<b>19,800</b>
	of which 19+	15,400
Higher Apprenticeship	Under 19	-
	19-24	400
	25+	200
	<b>Total</b>	<b>700</b>
	of which 19+	600
All Apprenticeships	Under 19	15,700
	19-24	16,500
	25+	18,200
	<b>Total</b>	<b>50,400</b>
	of which 19+	34,700

**Notes**

1) This table shows in-year estimates for 2013/14. Apprenticeship starts and achievements figures for earlier years are available in Table 6 of this release. It is not possible to directly compare provisional 2013/14 estimates with figures for previous years. There is evidence of increased data lag for the first three months of 2013/14 compared to the same period of previous years.

2) 24+ Advanced Learning Loans were introduced in August 2013. Data show that the number Apprenticeship starts for those aged 24 and above studying at Level 3 and above has been directly affected. There is also some anecdotal evidence that the numbers of starts for other ages may have been indirectly affected.

3) Figures for 2013/14 include Apprenticeships through the Employer Ownership Pilot.

4) Please see the general footnotes and the Apprenticeships footnotes section for further information on these tables.



**Table 18.1: Starts on the Apprenticeship Grant for Employers Scheme (AGE 16 to 24) - Pipeline Starts Payments Made (February 2012 to October 2013 - in-year estimate)**

	Age	2013/14		Programme to Date	
		Payments Made	Pipeline Starts	Payments Made	Pipeline Starts
		Quarter 1 August to October (provisional)		February 2012 to October 2013 (provisional)	
Intermediate Level Apprenticeship	Under 19	200	8,200	24,300	8,200
	19-24	100	3,200	12,800	3,200
	<b>Total</b>	<b>200</b>	<b>11,400</b>	<b>37,100</b>	<b>11,400</b>
Advanced Level Apprenticeship	Under 19	-	2,800	6,600	2,800
	19-24	-	1,600	5,400	1,600
	<b>Total</b>	<b>100</b>	<b>4,400</b>	<b>12,000</b>	<b>4,400</b>
Higher Apprenticeship	Under 19	-	-	-	-
	19-24	-	-	100	-
	<b>Total</b>	<b>-</b>	<b>100</b>	<b>200</b>	<b>100</b>
All Apprenticeships	Under 19	200	11,000	30,900	11,000
	19-24	100	4,800	18,400	4,800
	<b>Total</b>	<b>300</b>	<b>15,800</b>	<b>49,300</b>	<b>15,800</b>

**Notes**

- 1) AGE 16 to 24 was launched in February 2012. Payments are drawn down once the new Apprentice has been in post for 13 weeks, therefore Apprenticeships starting after 1 August 2013 are not included in the Payments Made column because they had not yet triggered a payment.
- 2) Pipeline Starts show those starting between August 2013 and October 2013 who have not yet qualified for a payment, but the payment would be made once the Apprentice has been in post for 13 weeks.
- 3) AGE 16 to 24 starts are defined through the Learning Delivery Funding and Monitoring Codes with values of 132 or 133 as per the ILR specification ([http://www.theia.org.uk/ilr/llrdocuments/201112\\_iirdetail.htm](http://www.theia.org.uk/ilr/llrdocuments/201112_iirdetail.htm)). These are validated by the Skills Funding Agency.
- 4) Starts in this table include learners aged 19-24 on application but aged 25 when learning started.
- 5) Starts in this table will also be counted in the main Apprenticeship tables.
- 6) Please see the general footnotes and the Apprenticeships footnotes section for further information on these tables.

**Table 18.2: Starts on the Access to Apprenticeship Pathway (2013/14 – in-year estimates)**

		Age	Starts on Access to Apprenticeship Pathway in 2013/14
		Quarter 1 August to October (provisional)	
<b>All starts on the Access to Apprenticeship pathway</b>		Under 19	600
		19-24	200
		<b>Total</b>	<b>800</b>
of which	have converted to paid employment to complete their Apprenticeship in any year	Under 19	100
		19-24	-
		<b>Total</b>	<b>100</b>
	have not yet converted to paid employment to complete their Apprenticeship in any year	Under 19	500
		19-24	200
		<b>Total</b>	<b>700</b>

**Notes**

- 1) People starting training under the Access to Apprenticeship pathway are not counted as an Apprentice until they secure paid employment to complete their Apprenticeship in the usual way.
- 2) The year indicates when the learner started on the Access to Apprenticeship pathway. Conversion to paid employment to complete an Apprenticeship does not necessarily occur in the same year as the learner started the Access to Apprenticeship pathway.
- 3) People shown in this table as having converted to paid employment to complete their Apprenticeship in the same year as they started on the Access to Apprenticeship pathway, will also be counted as starts in the main Apprenticeship tables. People who convert to paid employment in subsequent years will be counted as participating Apprenticeship learners.
- 4) This table shows in-year estimates for 2013/14. It is not possible to directly compare provisional 2013/14 estimates with figures for previous years.

**Table 19.1: Workplace Learning Starts by Level (2013/14 – in-year estimates)**

		2013/14
		Quarter 1 August to October (provisional)
<b>Total Starts</b>		<b>18,100</b>
<b>of which...</b>		
	Below Level 2	3,100
	Level 2	13,300
	Level 3	1,400
	Level 4+	300
	No Level Assigned	-
	Below Level 2 (excluding English and Maths)	1,300
	English and Maths	3,800
	Full Level 2	10,200
	Full Level 3	700

**Table 19.2: Workplace Learning Achievements by Level (2013/14 – in-year estimates)**

		2013/14
		Quarter 1 August to October (provisional)
<b>Total Achievements</b>		<b>16,800</b>
<b>of which...</b>		
	Below Level 2	2,300
	Level 2	12,100
	Level 3	1,900
	Level 4+	300
	No Level Assigned	200
	Below Level 2 (excluding English and Maths)	1,100
	English and Maths	2,500
	Full Level 2	10,200
	Full Level 3	1,200

**Notes**

1) These tables show in-year estimates for 2013/14. Figures for earlier years are available in Table 8 of this release. It is not possible to directly compare provisional 2013/14 estimates with figures for previous years.

2) English and Maths starts and achievements can be at Level 2 or Below Level 2.

3) These tables include some learners aged under 19 who are eligible for funding on certain Workplace Learning programmes.

4) Figures for English and Maths (previously Skills for Life) include GCSEs, Functional Skills, Adult Basic Skills Certificates including ESOL Certificates, and Qualifications and Credit Framework Certificates and Awards in English and maths.

5) Please see the general footnotes and the Workplace Learning footnotes section for further information on these tables.

**Table 20: Community Learning Participation by Type (2013/14 – in-year estimates) – Learner Volumes**

		<b>Funded Learners</b>
<b>Provision Type</b>		<b>2013/14</b>
		<b>Quarter 1 August to October (provisional)</b>
	<b>Total Learners</b>	<b>211,400</b>
<b>Participation</b>	of which Personal and Community Development Learning	180,300
	of which Neighbourhood Learning in Deprived Communities	8,500
	of which Family English, Maths and Language	11,300
	of which Wider Family Learning	13,600

**Notes**

1) This table shows in-year estimates for 2013/14. Community Learning participation and achievement figures for earlier years are available in Table 9 of this release. It is not possible to directly compare provisional 2013/14 estimates with figures for previous years.

2) Please see the general footnotes and the Community Learning footnotes sections for further information on this table.

**Table 21: Employer Ownership Pilot Starts (2012/13 and 2013/14 – in-year estimates)**

				2012/13	2013/14	Programme to Date
				Full Year (final)	Quarter 1 August to October (provisional)	August 2012 to October 2013 (provisional)
Starts	Provision		Age			
Starts	Apprenticeships	SASE Compliant	Under 19	200	100	200
			19-24	400	-	500
			25+	600	100	700
			Total	1,200	200	1,400
		Non-SASE Compliant	Under 19	-	-	100
			19-24	-	-	-
			25+	-	-	-
			Total	-	-	100
	Workplace Learning	QCF Training	Under 19	-	100	100
			19-24	100	100	100
			25+	300	100	400
			Total	400	300	700
		Non-QCF Training	Under 19	200	700	900
			19-24	1,100	200	1,300
25+			4,500	1,100	5,700	
Total			5,800	2,000	7,900	
<b>All Employer Ownership Pilot Starts</b>			<b>Under 19</b>	<b>500</b>	<b>800</b>	<b>1,300</b>
			<b>19-24</b>	<b>1,600</b>	<b>300</b>	<b>1,900</b>
			<b>25+</b>	<b>5,400</b>	<b>1,400</b>	<b>6,800</b>
			<b>Total</b>	<b>7,500</b>	<b>2,500</b>	<b>10,000</b>

**Notes**

- 1) Starts in this table will also be counted in the main Apprenticeship tables and Workplace Learning tables, as well as in FE and Skills participation figures.
- 2) The data source for this table is the Employer Ownership Pilot.
- 3) Please see the general footnotes for further information on this table.

**Table 22: 24+ FE and Skills – Participation with 24+ Advanced Learning Loans (Level 3+) (2013/14 – in-year estimates) – Learner Volumes**

	Provision	Funded Learners	
		24+, Level 3+	2013/14 August to October (provisional)
<b>Participation with 24+ Advanced Learning Loans</b>	Apprenticeships	<b>Total Learners</b>	<b>100</b>
		of which Level 3	100
		of which Level 4+	-
	Education and Training	<b>Total Learners</b>	<b>25,100</b>
		of which Level 3	23,900
		of which Level 4+	1,300
	Workplace Learning	<b>Total Learners</b>	-
		of which Level 3	-
		of which Level 4+	-
	<b>Total FE and Skills</b>	<b>Total Learners</b>	<b>25,200</b>
	of which Level 3	24,000	
	of which Level 4+	1,300	

**Notes**

1) Please see the general footnotes for further information on this table.