



Department
for Education

Local Area Interactive Tool

User Guide

October 2013

Table of Contents

Introduction	5
System Settings	5
Opening the Interactive Tool	5
Navigation	6
LAIT Contents	7
Local Authority Context Information	7
Local Authority Detail Page	8
Regional Level Data Page	12
All Local Authorities Detail Page	13
Statistical Neighbour Detail Page	14
Create Your Own Table and Chart	15
'Exporting' a Report/Fixed View	17
Ofsted Judgements	18
Data Items included in the LAIT	20
Printing the Tool	20
Closing the Tool	20
Troubleshooting	20

Table of Figures

Figure 1: Enable Content.....	5
Figure 2: Navigation Menu.....	6
Figure 3: Contents	7
Figure 4: LA Context Information	8
Figure 5: LA Detail Page.....	9
Figure 6: Data Table for Chosen Authority/Data Item	9
Figure 7: Charting the Data.....	10
Figure 8: Data Methodology and Description.....	11
Figure 9: View School Level Attainment Data.....	11
Figure 10: Regional Level Detail Page	12
Figure 11: Regional Level Charting	13
Figure 12: The view of all England's upper tier Local Authorities.....	13
Figure 13: Statistical Neighbour View	14
Figure 14: Statistical Neighbour Charting	15
Figure 15: "Create Your Own" Drop Downs.....	15
Figure 16: The Data Table Populates as Data is Added.....	16
Figure 17: Range of User Selectable Buttons.....	16
Figure 18: Chart Being Created by Adding Data items	17
Figure 19: Sheet Exported Successfully Message.....	17
Figure 20: Contents Page	18
Figure 21: Ofsted Judgements.....	19

Figure 22: Ofsted Data View Service19

Figure 23: Indicator List20

Introduction

The Department has developed the Local Area Interactive Tool (LAIT) to provide easy access to a wide range of data related to children and young people sourced from various departments across government. It acts as a single central evidence base that helps support the Accountability Framework and Transparency Agenda.

The Tool provides the functionality to 'benchmark' an authority against either its Region or Statistical Neighbours. The data items are presented largely in the form of tables and charts, which can be varied and 'exported' from the system for use elsewhere.

System Settings

The LAIT has been designed to work in Microsoft Office and is authored in Excel version 2010 (although Excel 2007 user should still be able to use the tool). If you experience viewing or visual basic issues please ask your technical team to upgrade to the 2010 version of Excel.

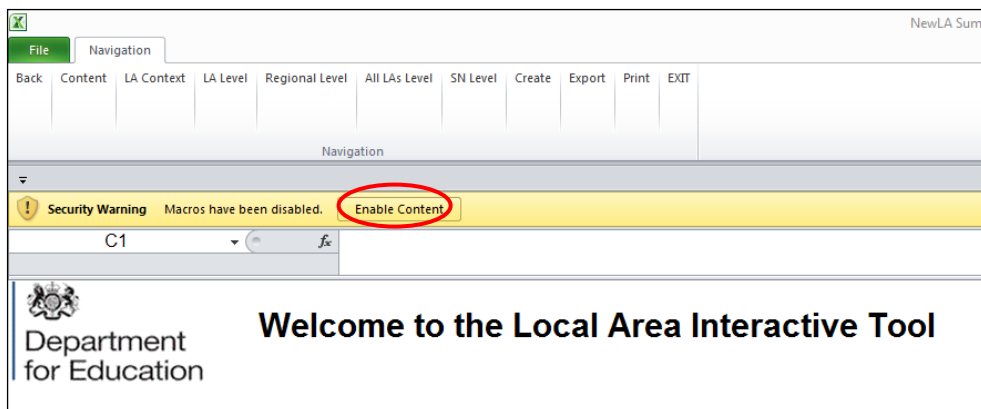
Opening the Interactive Tool

Before opening the Interactive Tool it is essential to close all other Excel documents as there is a chance that other open documents will become password protected with an unknown password.

Also – it is essential that you download the tool from the web-site (rather than running it from the browser window) for the functionality to work (right click > save target as...).

On opening the Interactive Tool the following dialogue box may appear (figure 3):

Figure 1: Enable Content



Excel 2010 dialogue box

Please click the “Enable Content” button.

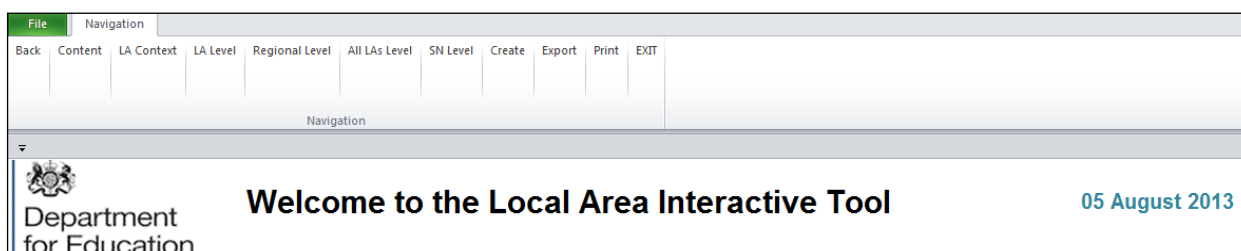
If macros are disabled the functionality of the Tool is impaired and navigation links to more detailed levels of data will not operate. The workbook should always be opened as read-only. Any changes made to the workbook will not be saved.

Please Note: due to the Excel workbook file size, opening the workbook may take a few moments. These opening times will vary depending on the specification of the machine being used, network connections or local area broadband speed.

Navigation

The customised menu bar that launches with the Tool (figure 2) allows for quick navigation using the indicated menu items.

Figure 2: Navigation Menu



Note that the ‘Back’ menu item will always take the Tool back to the previous screen viewed.

LAIT Contents

The LAIT has a Contents page which appears on first opening the tool (figure 3).

Figure 3: Contents

NewLA Summary - 2007 [Read-Only] - Microsoft Excel

File Navigation

Back Content LA Context LA Level Regional Level All LAs Level SN Level Create Export Print EXIT

Navigation

Department for Education

Welcome to the Local Area Interactive Tool

05 August 2013

LATEST NEWS - Data Items

First Time entrants to the Youth Justice System
Young People receiving a conviction rate per 1000 of 10-17 population
Re-offending by young offenders
Percentage of PVLs with at least one member of staff with QTS 2013
Percentage of PVLs with at least one member of staff with EYPS 2013

CONTENTS

Click the first button to view the latest **Ofsted inspection ratings** and other historical judgements from CAAs, APAs and JARs. The second button provides a direct link to **Ofsted's new Data View service**, which is a digital tool enabling users to compare regional and local performance of schools, further education and childcare providers.

Ofsted Judgements Ofsted Data View Service

Click to view the list of **data items** available

Indicators

The main sections of the tool can be accessed, at all times, from the navigation tool bar at the top of the screen.

Local Authority Context Data - includes general information about the number and type of schools, social context (FSM), latest and historical performance assessments.

Local Authority Level Data - for over 250 data items is available. You can see this presented in table and chart form over time, together with an indicator of ranks and trends. The methodology is also shown together with a description.

Regional Level Data - The 250+ data items are also available at Regional level. Showing the performance of all the LAs within their region, together with figures for all regions. Again, this is presented in table and chart form over time.

All LAs - Look at all data for all Local Authorities for any indicator over the whole time period available.

Statistical Neighbours - You can check on the performance of your chosen Local Authority against its set of Statistical Neighbours. Again, this is presented in table and chart form over time.

Create Your Own - You can even use the data within the tool to create charts and tables of your own making.

Local Authority Context Information

Figure 4: LA Context Information

NewLA Summary - 2007

File Navigation

Back Content **LA Context** LA Level Regional Level All LAs Level SN Level Create Export Print EXIT

Barking and Dagenham Local Authority Context View

Director of Children's Services: Ms Helen Jenner Barking and Dagenham

Schools Information:								Academies:			
LA Maintained	Number of Pupils (January 2013)	Number of Schools (January 2013)	Schools on Special Measures (30 June 2013)	Schools requiring Significant Improvement (30 June 2013)	Teaching Schools (May 2013)	CTCs (January 2013)	Free Schools (22 May 2013)	Sure Start Children's Centres (July 2013)	Number of Academies (1 July 2013)	Schools on Special Measures (30 June 2013)	Schools requiring Significant Improvement (30 June 2013)
Nursery	0	0	-	-	-	-	-	-	-	-	-
Primary	24,056	45	2	0	0	-	-	-	-	-	-
Secondary	13,347	10	1	0	1	0	-	-	-	-	-
Independent	61	2	-	-	-	-	-	-	-	-	-
Special	275	1	0	0	0	-	-	-	-	-	-
PRU	123	1	0	0	-	-	-	-	-	-	-
Total	37,862	59	3	0	1	0	0	12	1	0	0

Social Context:					Index of Multiple Deprivation 2010		National Engagement	School Improvement Inspection	
	Primary FSM Eligibility 2013 (inc. Nurseries)	Secondary FSM Eligibility 2013	Primary First language other than English 2013	Secondary First language other than English 2013	Average Score	Rank of Average Score	Priority Engagement (July 2013)	Publication Date	Assessment
Percentage	26.40	27.80	48.20	34.90	34.20	20*	-	-	-
Rank	128	133	132	125					
England %	18.10	15.10	18.10	13.60					

* - 1 being most deprived

Unannounced Inspection of local authority arrangements for the protection of children

Publication Date	Overall Effectiveness	The effectiveness of the help and protection provided to children, young people, families and carers	The quality of practice	Leadership and governance
-	-	-	-	-

Unannounced Inspection of local authority arrangements for children looked after

Publication Date	Overall Effectiveness	Capacity to Improve	Outcomes for looked after children and young people	Quality of provision	Leadership and management

The aim of this section is to give background information about the chosen authority. The page gives information from the latest school data, deprivation and independent performance assessments (Inspections, Comprehensive Area Assessment, CPA, APA, JAR, Primary Care Trust etc).

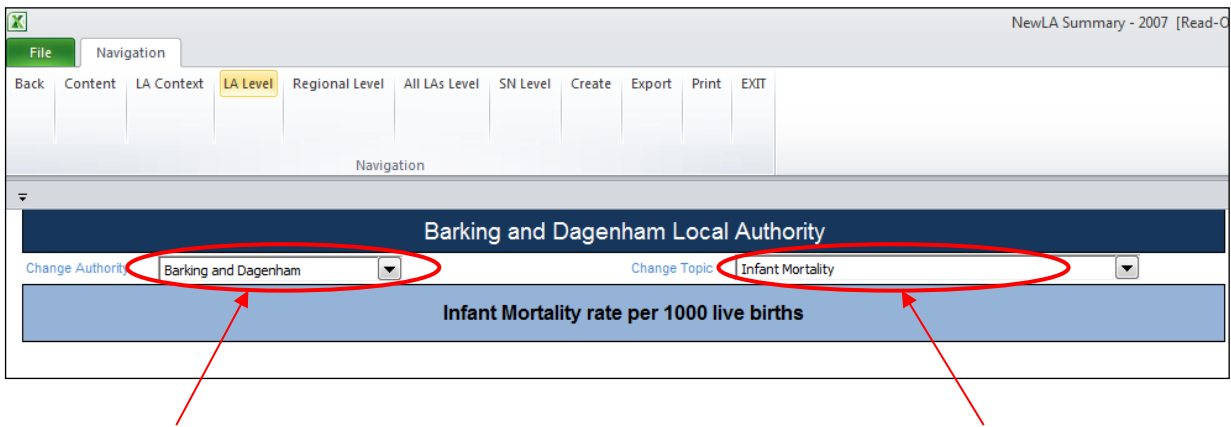
The authority being viewed can be changed by using the drop down list provided at the top of the page/screen.

Local Authority Detail Page

Following on from the LA context is the detailed information available in the Tool for interrogation. The menu item LA Level changes the view to the chosen authority's detail page (figure 5).

There are various elements to this page. It begins with a header detailing the chosen data item from the drop down box at the top right of the page. There is also an option to change the target authority at the top left of the page.

Figure 5: LA Detail Page



change authority

and/or

change data item

As this is an interactive system, the table and chart (and relevant titling) changes on this page occur automatically depending on the indicator chosen.

Having chosen the data item, there is a table beneath this which will show time series data for the indicator in respect of the authority, its Region and Statistical Neighbours and England - for comparison/benchmarking purposes (figure 6).

Figure 6: Data Table for Chosen Authority/Data Item

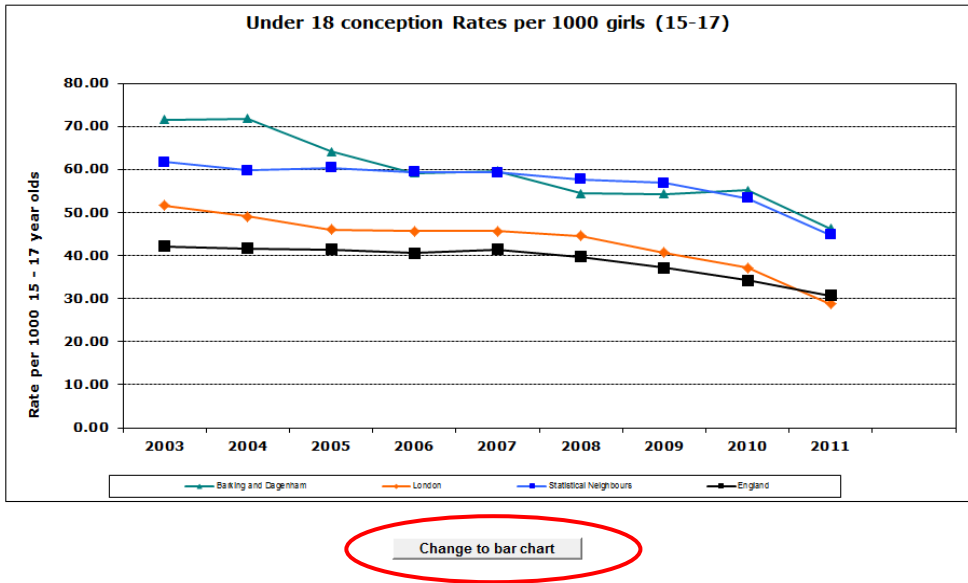
Local Authority, Region and England		2003	2004	2005	2006	2007	2008	2009	2010	2011	-
301	Barking and Dagenham	71.60	71.80	64.10	59.20	59.60	54.40	54.30	55.10	46.30	-
986	London	51.60	49.10	46.00	45.60	45.60	44.60	40.70	37.10	28.70	-
	Statistical Neighbours	61.76	59.79	60.40	59.35	59.31	57.63	56.87	53.27	44.81	-
970	England	42.10	41.60	41.40	40.60	41.40	39.70	37.10	34.20	30.70	-

Quartile bands

Beneath this is a sub-table showing trends and placing the authority in a quartile banding for the measure. Formatting will flag up As and Ds for clarity.

These tables are followed by a chart, which plots the authority and regional data over the same time period as the table, providing a visual representation of the data (figure 7).

Figure 7: Charting the Data



The Tool provides an option to toggle between a bar chart and a line chart for this data, depending on preference.

Beneath the chart are two boxes, one describes the data item in more detail whilst the other provides the methodology behind its calculation (figure 8).

Also given is the date last published and next due publication date.

Should the user wish for further information, the source of the latest data is given and the 'Go to source' button will launch the relevant website.

Figure 8: Data Methodology and Description

Description:
Conception Statistics are produced by the Office for National Statistics (ONS) and are published in Health Statistics Quarterly. The data are compiled by combining information from registrations of births and notifications of legal abortions, they do not include miscarriages or illegal abortions.

Methodology:
Conception data are compiled partly from birth registrations (which legally can be undertaken up to 6 weeks after birth), the raw data are not available until up to 11 months after the event. Time is also needed to collate, input, validate and compile the data, so that the statistics are published about fourteen months after the end of the period to which they relate. Hence the data for the year 2000 were published in February 2002. The ranking is based on the change since 1998.

Last Updated: March 2013
Next Updated: March 2014

Source: [Go to the source...](http://www.ons.gov.uk/ons/re1/vsob1/conception-statistics-england-and-wales/2014/index.html)
<http://www.ons.gov.uk/ons/re1/vsob1/conception-statistics-england-and-wales/2014/index.html>

Note: If Key Stage 2 or Key Stage 4 (GCSE) is selected, a button will appear on the **LA Level view** called 'View performance at school level' (figure 9). Clicking on this button will launch the School Achievement and Attainment Table for the selected Key Stage and chosen Local Authority. This will allow a 'drill-down' into school level data.

Figure 9: View School Level Attainment Data

The screenshot shows a web interface with a dark blue header. Below it is a dropdown menu with '4 English' selected. Underneath is a light blue bar with the word 'English' partially visible. At the bottom, there is a button labeled 'View school performance tables' which is circled in red.

Note: If under 18 conception rates is the chosen data item, then an extra option appears on the LA Level view. This allows access to more detailed analysis of the teenage pregnancy data, in the form of a direct link to the Teenage Pregnancy Units website, on which there are further charts and analysis.

Regional Level Data Page

The menu item Regional Level changes the view to the Regional Level detail page (figure 10). This shows the selected authority's Regional data against the other Local Authority Regional data (and England) in the top part of the table, and the selected authority against its Regional neighbours in the bottom part of the table. Note that each of these tables is sorted by the latest data.

Figure 10: Regional Level Detail Page

Regional Data										
		2004	2005	2006	2007	2008	2009	2010	2011	
989	South East	3.90	3.90	4.10	3.90	4.00	3.90	3.60	3.50	-
980	North East	4.90	4.50	5.40	4.70	4.20	3.80	3.90	3.60	-
990	South West	4.70	4.50	4.00	4.20	4.00	4.00	3.20	3.70	-
986	London	5.20	5.10	4.90	4.50	4.30	4.50	4.70	4.10	-
985	East of England	4.20	4.00	4.10	4.30	4.40	4.00	3.60	4.10	-
983	East Midlands	5.10	4.70	5.40	5.30	4.90	5.10	4.00	4.30	-
981	North West	5.40	5.80	5.60	5.00	5.20	4.90	4.70	4.70	-
982	Yorkshire and the Humber	5.50	6.10	5.70	5.60	5.40	5.50	5.20	4.90	-
984	West Midlands	6.80	6.40	6.40	5.90	6.50	6.00	5.50	6.00	-
970	England	5.10	5.00	5.00	4.80	4.70	4.60	4.30	4.30	-

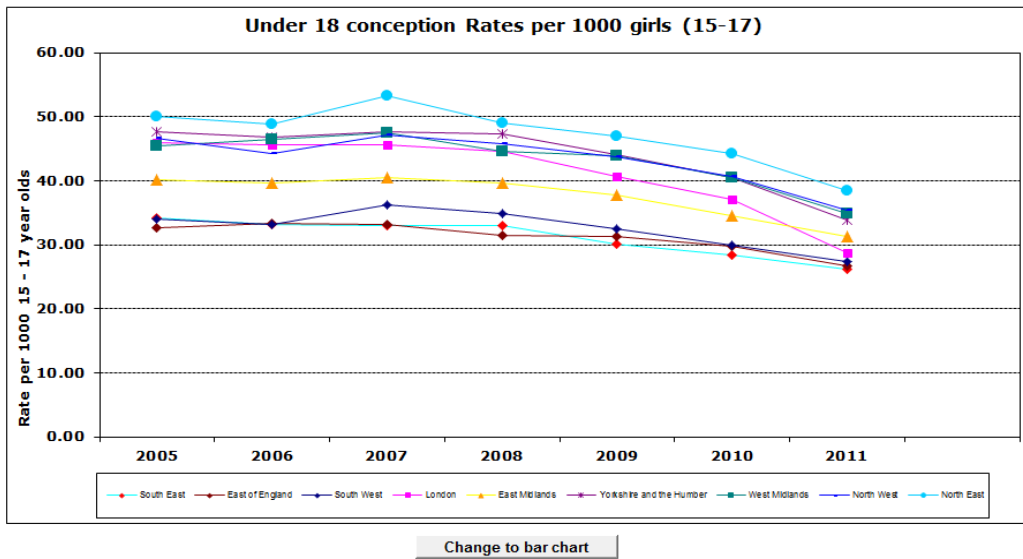
LA No	Regional Authorities	2004	2005	2006	2007	2008	2009	2010	2011	
305	Bromley	-	2.70	3.50	2.50	-	2.90	2.90	1.90	-
319	Sutton	-	4.30	4.10	3.10	-	2.90	2.20	2.20	-
303	Bexley	-	4.80	4.30	3.40	-	3.30	3.00	2.80	-
312	Hillingdon	-	4.00	4.10	6.80	-	5.70	5.70	3.00	-
203	Greenwich	-	3.80	4.70	5.40	-	4.20	5.60	3.10	-
317	Redbridge	-	4.20	5.50	6.40	-	4.90	5.60	3.30	-
302	Barnet	-	6.80	2.90	3.30	-	5.30	3.80	3.50	-
314	Kingston upon Thames	-	3.00	3.40	2.30	-	3.90	4.30	3.50	-
318	Richmond upon Thames	-	3.10	1.80	2.80	-	3.50	2.70	3.70	-
301	Barking and Dagenham	-	3.70	4.70	4.70	-	5.80	4.00	3.80	-
306	Croydon	-	7.90	6.00	4.90	-	4.80	4.30	4.00	-
307	Ealing	-	4.30	4.50	2.80	-	3.50	3.90	4.10	-
311	Havering	-	2.00	5.80	3.50	-	3.00	5.00	4.10	-
315	Merton	-	4.40	5.50	3.30	-	2.60	5.10	4.20	-
308	Enfield	-	6.70	7.30	6.20	-	4.80	7.00	4.30	-
313	Hounslow	-	6.30	3.10	4.90	-	4.00	5.20	4.40	-
310	Harrow	-	9.70	4.80	4.50	-	6.70	7.40	5.20	-
320	Waltham Forest	-	4.50	6.90	4.50	-	4.90	6.40	5.40	-
304	Brent	-	4.90	6.60	4.80	-	4.50	4.00	5.90	-

Regional level data (with the chosen/target region in 'teal' and the others in blue).

LA level data for all LAs in the chosen LA's region (target LA in 'teal').

Following the pattern of the Local Authority page, beneath this table is a chart of the data in the table (figure 11) together with the option to change to a line chart.

Figure 11: Regional Level Charting



Again, like the Local Authority page, the description, methodology, last and next update dates, and a link to the latest source (from which you can launch directly into the source of the data by clicking on the 'Go to source...' button) is given.

All Local Authorities Detail Page

The menu item All LAs Level changes the view to show all 152 Local Authorities on one screen, (figure 12). This page can be exported to allow users to build up a more detailed analysis across all LAs themselves.

Figure 12: The view of all England's upper tier Local Authorities

LA No	LA Name	2004	2005	2006	2007	2008	2009	2010	2011	-	-
301	Barking and Dagenham	-	3.70	4.70	4.70	-	5.80	4.00	3.80	-	-
302	Barnet	-	6.80	2.90	3.30	-	5.30	3.80	3.50	-	-
370	Barnsley	-	4.00	5.80	3.60	-	5.00	5.20	2.70	-	-
800	Bath and North East Somerset	-	1.80	5.60	4.40	-	4.00	0.50	2.20	-	-
822	Bedford Borough	-	-	-	-	-	3.70	4.70	9.10	-	-
303	Bexley	-	4.80	4.30	3.40	-	3.30	3.00	2.80	-	-
330	Birmingham	-	7.80	9.40	7.60	-	7.70	6.50	8.20	-	-
889	Blackburn with Darwen	-	8.30	5.60	7.30	-	7.80	10.00	5.10	-	-
890	Blackpool	-	5.50	10.90	7.10	-	7.50	7.30	4.00	-	-
350	Bolton	-	6.70	7.40	4.80	-	4.90	5.40	5.20	-	-

The data item drop down operates in the usual way, of course, but the authorities are just listed alphabetically, not in order of the latest data item.

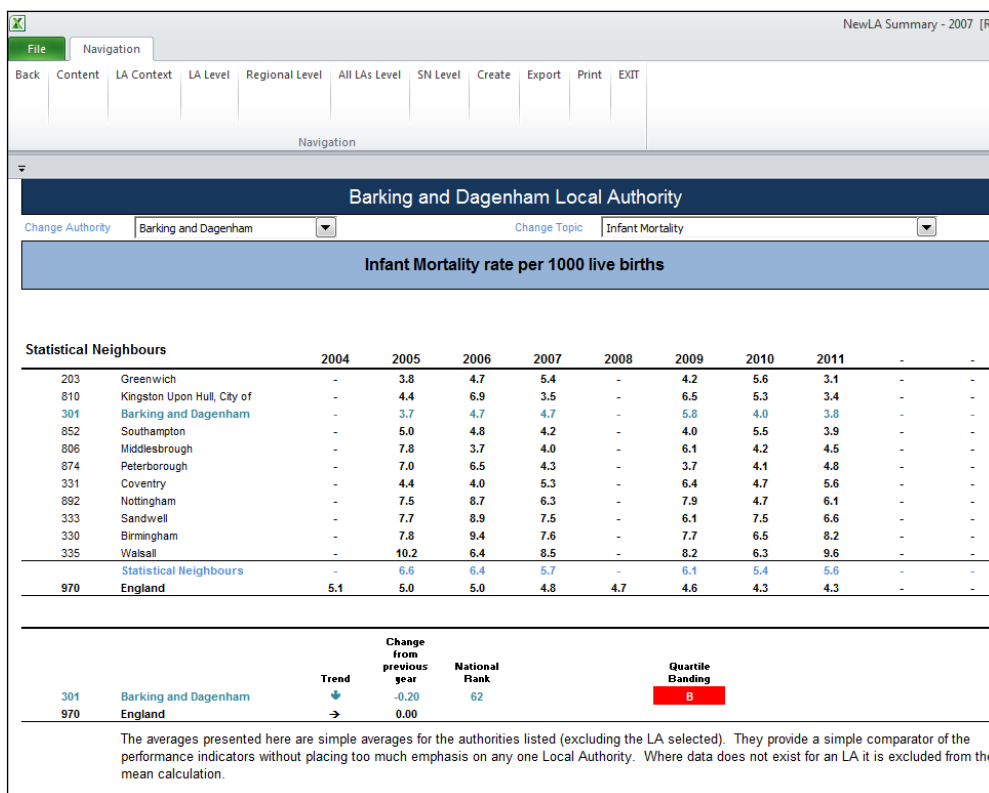
Statistical Neighbour Detail Page

Statistical neighbours provide a method for benchmarking progress. For each local authority (LA), these models designate a number of other LAs deemed to have similar characteristics. These designated LAs are known as statistical neighbours. The National Foundation for Educational Research (NFER) was commissioned in 2007 by the Department to identify and group similar LAs in terms of the socio-economic characteristics, each LA was assign 10 such neighbours.

These neighbour groupings have been used in this tool to allow comparison of the target/chosen authority with the authorities in its Statistical Neighbour group.

The menu item SN Level changes the view to the chosen authority's statistical neighbours page where, again, time series information is shown, the spread of which depends on the data item (figure 13).

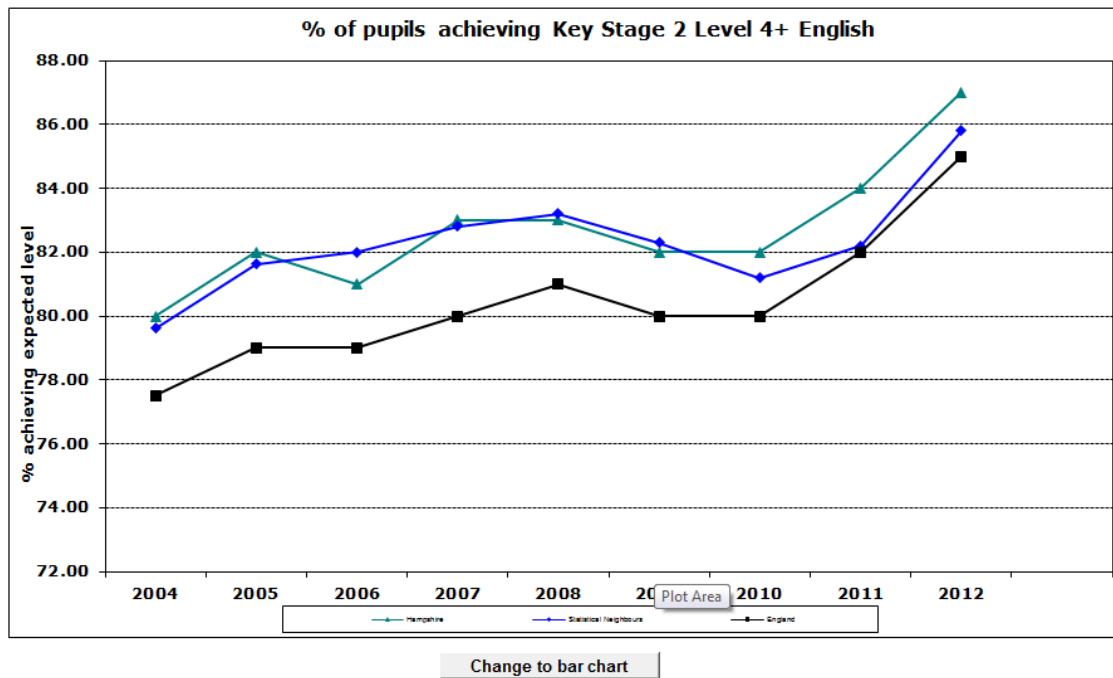
Figure 13: Statistical Neighbour View



Chosen authority in 'teal' sorted within the statistical neighbour group, with SN and England averages

Under this is a chart of the data for the chosen/target authority and the Statistical Neighbour average (figure 14). The usual description, methodology and link to source are given beneath the chart.

Figure 14: Statistical Neighbour Charting

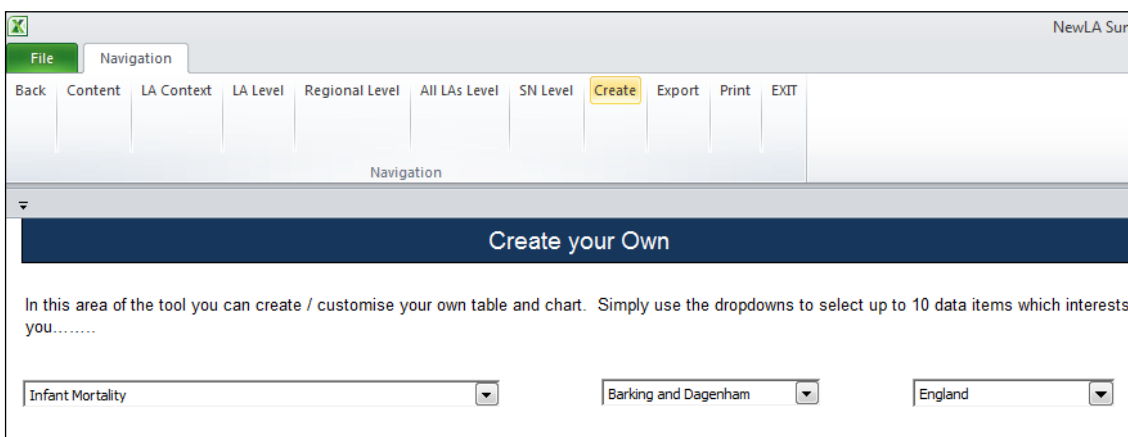


Again, this table/chart combination is interactive depending on the data item chosen.

Create Your Own Table and Chart

The Tool allows you to use the data within it to create your own data tables and associated charts. The menu item **Create** opens a screen with 3 user selectable drop down boxes (figure 15). This allows for a choice of data item, local authority and regional level.

Figure 15: "Create Your Own" Drop Downs



To create a table and chart combination, select a choice from these 3 boxes and select the 'Add' button to populate the table (figure 16). The chart will populate automatically.

Figure 16: The Data Table Populates as Data is Added

Under 18 conception Rates per 1000 girls (15-17)		2004	2005	2006	2007	2008	2009	2010	2011	-	
301	Barking and Dagenham-Conception	71.80	64.10	59.20	59.60	54.40	54.30	55.10	46.30	-	Add
970	England-Conception Rates	41.60	41.40	40.60	41.40	39.70	37.10	34.20	30.70	-	Add
970	England-Conception Rates	41.60	41.40	40.60	41.40	39.70	37.10	34.20	30.70	-	Add

Clear Selection Show Chart Title

As up to 10 items can be chosen using these drop down combinations, a second table lists the actual items selected. There are also buttons provided to allow for the deletion of individual rows or to clear the whole selection of data, as well as to allow the addition of a chart title (figure 17).

Figure 17: Range of User Selectable Buttons

NewLA Summary - 2007

File Navigation

Back Content LA Context LA Level Regional Level All LAs Level SN Level Create Export Print EXIT

Navigation

Create your Own

In this area of the tool you can create / customise your own table and chart. Simply use the dropdowns to select up to 10 data items which interests you.....

Infant Mortality City of Bristol London

Infant Mortality rate per 1000 live births		2005	2006	2007	2008	2009	2010	2011	-	-	
801	City of Bristol-Infant Mortality	5.00	4.40	4.60	-	3.20	2.30	3.00	-	-	Add
986	London-Infant Mortality	5.10	4.90	4.50	4.30	4.50	4.70	4.10	-	-	Add
970	England-Infant Mortality	5.00	5.00	4.80	4.70	4.60	4.30	4.30	-	-	Add

Clear Selection Show Chart Title

Data Selected

	2005	2006	2007	2008	2009	2010	2011	-	-	
Barking and Dagenham-Infant Mortalit	3.70	4.70	4.70	-	5.80	4.00	3.80	-	-	Remove
England-Infant Mortality	5.00	5.00	4.80	4.70	4.60	4.30	4.30	-	-	Remove
London-Infant Mortality	5.10	4.90	4.50	4.30	4.50	4.70	4.10	-	-	Remove
City of Bristol-Infant Mortality	5.00	4.40	4.60	-	3.20	2.30	3.00	-	-	Remove

As these data items are added, the chart will build automatically and there is the same option to change between line and bar chart (figure 18).

Figure 18: Chart Being Created by Adding Data items



‘Exporting’ a Report/Fixed View

On the navigation bar there is an option to export ‘fixed views’ of the page being displayed. This means that, once an authority and data item is chosen, the sheet in the Excel workbook tool can be exported into another Excel workbook and saved to a PC or network drive.

Choose ‘Export’ from the custom menu bar and, once the sheet has exported, a message appears (figure 19).

Figure 19: Sheet Exported Successfully Message



The ‘Save As’ dialogue box will then appear to allow for a local copy to be saved.

Ofsted Judgements

Details of results of Ofsted inspections can be viewed from the contents page by clicking on the Ofsted judgements button (fig 20). This will show the ratings of the current Unannounced Inspections as well as other historical judgements from CAAs, APAs and JARs (fig 21).

Figure 20: Contents Page

NewLA Summary - 2007 [Read-Only] - Microsoft Excel

File Navigation

Back Content LA Context LA Level Regional Level All LAs Level SN Level Create Export Print EXIT

Navigation

Department for Education **Welcome to the Local Area Interactive Tool** 05 August 2013

LATEST NEWS - Data Items

First Time entrants to the Youth Justice System
 Young People receiving a conviction rate per 1000 of 10-17 population
 Re-offending by young offenders
 Percentage of PVI's with at least one member of staff with QTS 2013
 Percentage of PVI's with at least one member of staff with EYPS 2013

CONTENTS

Click the first button to view the latest **Ofsted inspection ratings** and other historical judgements from CAAs, APAs and JARs. The second button provides a direct link to **Ofsted's new Data View service**, which is a digital tool enabling users to compare regional and local performance of schools, further education and childcare providers.

Ofsted Judgements Ofsted Data View Service

Click to view the list of **data items** available Indicators

The main sections of the tool can be accessed, at all times, from the navigation tool bar at the top of the screen.

Local Authority Context Data - includes general information about the number and type of schools, social context (FSM), latest and historical performance assessments.

Local Authority Level Data - for over 250 data items is available. You can see this presented in table and chart form over time, together with an indicator of ranks and trends. The methodology is also shown together with a description.

Regional Level Data - The 250+ data items are also available at Regional level. Showing the performance of all the LAs within their region, together with figures for all regions. Again, this is presented in table and chart form over time.

All LAs - Look at all data for all Local Authorities for any indicator over the whole time period available.

Statistical Neighbours - You can check on the performance of your chosen Local Authority against its set of Statistical Neighbours. Again, this is presented in table and chart form over time.

Create Your Own - You can even use the data within the tool to create charts and tables of your own making.

Figure 21: Ofsted Inspection results

LA Name	Unannounced Inspection of local authority arrangements for the protection of children				Unannounced Inspection of local authority arrangements for children looked after				Inspection of local authority school improvement arrangements		Ofsted Children's Services Annual Rating			Safeguarding and Looked after Children Inspection Ratings								
	Publication Date	Overall effectiveness	The effectiveness of the risk and protection arrangements (from people, families, agencies)	The quality of practice	Leadership and governance	Publication Date	Overall effectiveness	Capacity to improve	Availability of services for children and young people	Quality of provision	Leadership and management	Publication Date	Inspection LA Arrangement	2011 Annual Rating	2012 Annual Rating	2013 Annual Rating	Overall effectiveness	Safeguarding - Overall effectiveness	Safeguarding - Arrangements for children	Overall effectiveness	Capacity for improvement	
Barking & Dagenham (Barking)													2	2	2	2	2	2	2	2	2	2
Bath & North East Somerset	16/04/2013	Adequate	Adequate	Adequate	Adequate								3	4	3	2	3	3	3	2	3	3
Bedford Borough	16/02/2012	Adequate	Adequate	Adequate	Adequate								2	2	2	2	2	2	2	2	2	2
Birmingham	18/02/2012	Inadequate	Inadequate	Inadequate	Inadequate								3	1	1	1	1	1	1	1	1	1
Blackburn with Darwen													3	3	3	3	3	3	3	3	3	3
Blackpool	13/05/2012	Inadequate	Inadequate	Inadequate	Inadequate								3	3	3	3	3	3	3	3	3	3
Bolton													3	2	3	3	3	3	3	3	3	3
Bournemouth													3	3	3	3	3	3	3	3	3	3
Blackwell Forest													3	3	3	3	3	3	3	3	3	3
Bradford													2	2	2	2	2	2	2	2	2	2
Brent	30/09/2012	Adequate	Adequate	Adequate	Adequate								3	3	3	3	3	3	3	3	3	3
Brighton & Hove													3	3	3	3	3	3	3	3	3	3
Bristol													3	3	3	3	3	3	3	3	3	3
Bromley													3	3	3	3	3	3	3	3	3	3
Buckinghamshire	17/06/2012	Adequate	Adequate	Adequate	Adequate								2	2	2	2	2	2	2	2	2	2

The second button on the contents page (fig 20) provides a direct link to Ofsted's new Data View service. This is a digital tool to enable users to compare regional and local performance of schools, further education and childcare providers (fig 22)

Figure 22: Ofsted Data View Service

The screenshot displays the Ofsted Data View service interface. At the top, there are navigation tabs for 'Regional breakdown' and 'Regional comparison'. Below these, there are filter options for 'Remit' (Schools), 'Provider type' (Secondary), and 'Provision type' (All). The 'Regional breakdown' section shows 'East Midlands' with a valid date of 75. The 'Regional comparison' section shows 'England' with a valid date of 75. A key indicates that blue represents 'Outstanding' and red represents 'Satisfactory'. The interface is clean and professional, with a clear layout for data analysis.

Data Items included in the LAIT

An indicator list (fig 23) is provided for all data provided in the LAIT; this can be accessed via the last button on the contents page.

Figure 23: Indicator List

Dropdown Description	Indicator description
Health and Wellbeing>>>	
Infant Mortality	Infant Mortality rate per 1000 live births
Assessed Child Deaths - modifiable factors	Number of child death reviews completed on behalf of the LSCB which were assessed as having modifiable factors
Under 18 Conception rates	Under 18 conception Rates per 1000 girls (15-17)
Prevalence of breastfeeding	Prevalence of breastfeeding at 6-8 weeks
Coverage of breastfeeding	Prevalence of breastfeeding at 6-8 weeks (Coverage)
Excess weight in Reception year	% of children in reception year who are overweight or obese
Excess weight in Year 6	% of children in year 6 who are overweight or obese
Emergency Hospital Admissions 0-17yr olds	Emergency Hospital admissions caused by unintentional and deliberate injuries to children
Child Road Traffic Casualties	Number of children killed and seriously injured in RTAs
Child Protection >>>	
Referrals to children's social care going on to initial assessment	Referrals to children's social care going on to initial assessment
Initial Assessments with 7 working days	Initial Assessments for children's social care carried out within 7 working days of referral
Initial Assessments with 10 working days	Initial Assessments for children's social care carried out within 10 working days of referral
Core assessments completed rate per 10,000	Core assessments completed by Children's Social Care Services rate per 10,000
Timing of Core Assessments	% Core assessments completed within 35 working days of initial assessments (CF/C64)
Child Protection Plans lasting 2 years or more	Child Protection Plans lasting 2 years or more

Printing the Tool

The current view/screen can be printed from within the Tool by choosing the Print option from the custom menu. This will bring up the print dialogue box in the usual way.

Closing the Tool

The correct way out is via the 'EXIT' menu item in the navigation tool bar.

Troubleshooting

If at any point you receive a 'run-time error' warning, it means that the action you were attempting has failed and it is likely that other functionality within the Tool may be compromised. It has been found that by saving a local copy of the Tool once downloaded (Ctrl + S), rather than using the Tool as it arrives from the web-page, many of the issues may resolve themselves.



Department
for Education

© Crown copyright 2013

You may re-use this information (excluding logos) free of charge in any format or medium, under the terms of the Open Government Licence. To view this licence, visit www.nationalarchives.gov.uk/doc/open-government-licence or email: psi@nationalarchives.gsi.gov.uk.

Where we have identified any third party copyright information you will need to obtain permission from the copyright holders concerned.

Any enquiries regarding this publication should be sent to us at: www.education.gov.uk/contactus.

This document is available online at <http://www.education.gov.uk/childrenandyoungpeople/strategy/research/lait/a0070240/lait>