



Skills Funding  
Agency



Department  
for Business  
Innovation & Skills

## Statistical First Release

### Further Education & Skills: Learner Participation, Outcomes and Level of Highest Qualification Held

**Publication date:**  
26<sup>th</sup> June 2014

**Next Updated:**  
October 2014

**Reference:** SFA/SFR24

**Coverage:** England

**Theme:** Children, Education and Skills

**For further information contact:**

**Service Desk**  
[servicedesk@sfa.bis.gov.uk](mailto:servicedesk@sfa.bis.gov.uk)  
0870 267 0001 / 0370 267 0001

**Or view our web site at:**  
<https://www.gov.uk/government/publications/learner-participation-outcomes-and-level-of-highest-qualification-held>

**Lead Statistician:**  
Paula Maratos  
[Paula.Maratos@bis.gsi.gov.uk](mailto:Paula.Maratos@bis.gsi.gov.uk)  
0114 207 5183

Department for Business,  
Innovation and Skills,  
Level 2,  
1 Victoria Street,  
London,  
SW1H 0ET

© Skills Funding Agency  
2014

This release presents information on adult (19+) government-funded<sup>1</sup> further education (excluding schools and Higher Education) and all age (16+) Apprenticeships in England, between 2008/09 and 2012/13. It also includes provisional data for the first three quarters of the 2013/14 academic year.

This release also presents key statistics on the highest level of qualification held by adults in England from 2006 to 2013, calculated from Labour Force Survey (LFS) data. Figures relating to 2013 are provisional and are subject to revisions.

#### Key Points

- Provisional data for 2013 show that of men aged 19 to 64 and women aged 19 to 59, 81.2 per cent were qualified to at least Level 2, 62.5 per cent were qualified to at least Level 3 and 40.3 per cent were qualified to at least Level 4. All are increases on 2012.
- Provisional data show that for the first three quarters of the 2013/14 academic year 2,492,800 adult learners aged 19 and over participated in government-funded further education.
- Provisional data show that 751,900 funded Apprentices participated on an Apprenticeship in the first three quarters of the 2013/14 academic year.
- Provisional data show that there were 314,600 Apprenticeship starts in the first three quarters of the 2013/14 academic year.
- Provisional data show that for the first three quarters of the 2013/14 academic year there were 52,400 learners with a 24+ Advanced Learning Loan.

<sup>1</sup> Covering the Skills Funding Agency and the Education Funding Agency.

# CONTENTS

## Statistical Commentary

|   |    |
|---|----|
| Glossary of Key Terms   | 3  |
| Further Education Statistics for England, 2012/13             | 4  |
| Adult Attainment in the Population                            | 4  |
| Success Rates   | 4  |
| Adult Learner (19+) Participation and Achievement             | 6  |
| Apprenticeships   | 7  |
| Adult (19+) English and Maths                                 | 10 |
| Community Learning  | 10 |
| Provisional Further Education Statistics for England, 2013/14 | 12 |
| Adult Learner (19+) Participation                             | 12 |
| Apprenticeships   | 12 |
| Offender Learning (18+) Participation                         | 13 |
| Adult (19+) English and Maths                                 | 14 |
| Community Learning  | 14 |
| Employer Ownership Pilot                                      | 14 |
| 24+ Advanced Learning Loans                                   | 14 |
| National Statistics   | 16 |
| Changes included in this SFR                                  | 16 |
| Changes in the Next SFR                                       | 16 |

## Supporting Data

|  |    |
|--|----|
| Scope  | 17 |
| Data Sources   | 18 |
| Issues with Using Provisional Data                         | 18 |
| Issues with Comparing Data Across Academic Years           | 19 |
| Data Definitions   | 19 |
| Publication Cycle Across the Year                          | 20 |
| Supplementary Tables                                       | 20 |
| Related National Statistics Releases                       | 21 |
| Other Related Statistics                                   | 21 |
| Further Education Statistics for Other Countries in the UK | 21 |

|                    |           |
|--------------------|-----------|
| <b>Table Guide</b> | <b>23</b> |
|--------------------|-----------|

|                        |           |
|------------------------|-----------|
| <b>Table Footnotes</b> | <b>24</b> |
|------------------------|-----------|

|               |           |
|---------------|-----------|
| <b>Tables</b> | <b>26</b> |
|---------------|-----------|

## GLOSSARY OF KEY TERMS

**Further Education and Skills** includes: learners who are studying a course in a FE College, training provider or within their local community; and employees undertaking an Apprenticeship or other qualification in the workplace. For more information, see paragraphs 46 to 48.

**Apprenticeships** are paid jobs that incorporate on- and off-the-job training leading to nationally recognised qualifications. As an employee, Apprentices earn as they learn and gain practical skills in the workplace. An Apprenticeship framework typically contains the following separately certified elements:

- A knowledge-based element (the theoretical knowledge underpinning a job in a certain occupation and industry, typically certified via a Technical Certificate).
- A competence-based element (the ability to discharge the functions of a certain occupation, typically certified via work-based assessed national vocational qualifications – NVQs).
- Transferable skills (English and maths) – key skills / functional skills.
- A module on employment rights and responsibilities.
- Personal Learning and Thinking Skills (PLTS), namely: independent enquiry, creative thinking, reflective learning, team working, self management and effective participation.

See <http://www.apprenticeships.org.uk/> for further information.

**Apprenticeship Grant for Employers (AGE 16 to 24) scheme** provides Apprenticeship grants with a value of £1,500 to employers with up to 1,000 employees to encourage employers to take on new Apprentices aged 16 to 24. Eligible employers must not have taken on an Apprentice in the previous 12 months. Subject to budget availability and the employer's commitment to support the Apprentice to the end of their programme, any one employer can claim support for up to ten apprentices. AGE 16 to 24 has been extended to the 2015-16 financial year. See: <http://www.apprenticeships.org.uk/Partners/Policy/AGE-1624.aspx>

On the **Access to Apprenticeships pathway**, participants use the elements of an Apprenticeship framework to brush up skills and workplace experience, with the aim of securing a paid Apprenticeship with an employer as quickly as possible, up to a maximum of six months. Participants are not categorised or counted as an 'Apprentice' until they become employed. This pathway was announced in May 2011 and closed to new starts at the end of December 2013.

**Employer Ownership Pilot** offers all employers in England direct access to up to £340 million of public investment over the period of the pilot (up to 2015/16) to design and deliver their own training solutions.

See: <https://www.gov.uk/government/publications/employer-ownership-of-skills-pilot>

**Education and Training** covers further education learning delivered mainly in a classroom, workshop, or through distance or e-learning. See: [\[ARCHIVED CONTENT\] The Data Service - Data Dictionary - Business Definitions - Learner Responsive Business Definition](#)

**Workplace Learning** covers a broad range of training including basic skills, Level 2, Level 3 and higher-level skills. This training is mainly delivered through the workplace (but excludes Apprenticeships). Between 2008/09 and 2010/11 this included the Train to Gain programme, Employability Skills Pilot and other programmes such as Programmes for the Unemployed. From 2011/12 this includes all training mainly delivered through the workplace (excluding Apprenticeships).

**English and Maths** qualifications (previously Skills for Life) are designed to give people the reading, writing, maths and communication skills they need in everyday life, to operate effectively in work and to help them succeed on other training courses. See: [Skills Funding Agency - Providers - Our programmes - Basic Skills - Basic Skills](#)

**Community Learning** funds a wide range of informal courses, ranging from personal development through to older people's learning, IT courses, employability skills, family learning and activities to promote civic engagement and community development. Courses may be offered by local authorities, colleges, and voluntary and community groups, and include activity specifically targeted at deprived areas and disadvantaged groups. See: <http://www.gov.uk/government/collections/community-learning-government-funding>

**24+ Advanced Learning Loans** - Loans are available for eligible learners aged 24 and above studying at Level 3 and above (including Advanced and Higher Apprenticeships) and will cover the cost of tuition, so learners do not have to pay upfront. See: <https://www.gov.uk/government/collections/sfa-24-advanced-learning-loans>

**Full Level 2** is equivalent to an NVQ at Level 2, or 5 GCSEs. The widths of all of a learner's Level 2 aims are summed to establish whether a learner is taking a full Level 2 programme. **Full Level 3** is equivalent to an NVQ at Level 3, or 2 A-Levels. The widths of all a learner's Level 3 aims are summed to establish whether a learner is taking a full Level 3 programme.

**Academic year** runs from 1<sup>st</sup> August to 31<sup>st</sup> July (except for Ofqual figures in Table 13 which run from 1<sup>st</sup> October to 30<sup>th</sup> September).

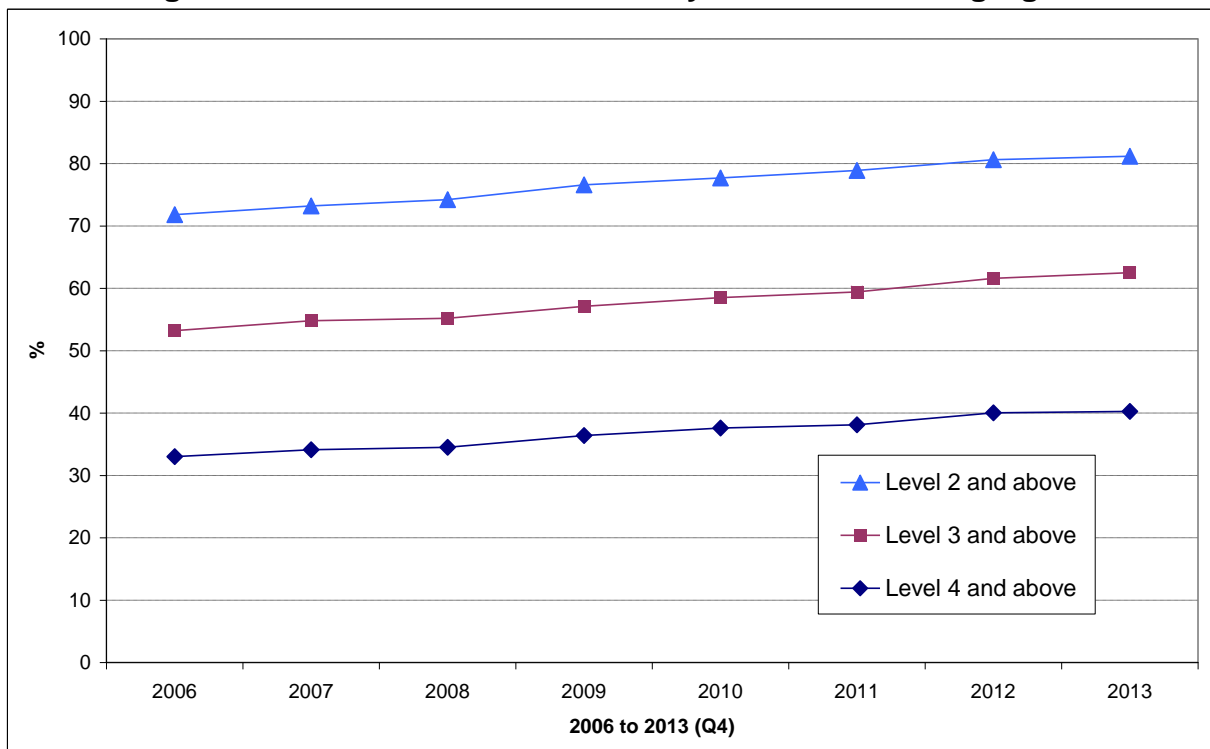
# FURTHER EDUCATION STATISTICS FOR ENGLAND, 2012/13

## Adult Attainment in the Population

1. The Labour Force Survey is used to measure the level of adult educational attainment in the population. Provisional data for 2013 show that of men aged 19 to 64 and women aged 19 to 59 [Table 11.1]:

- 81.2 per cent were qualified to at least Level 2;
- 62.5 per cent were qualified to at least Level 3;
- 40.3 per cent were qualified to at least Level 4.

**Chart 1: Highest Level of Qualification Held by Adults of Working Age**

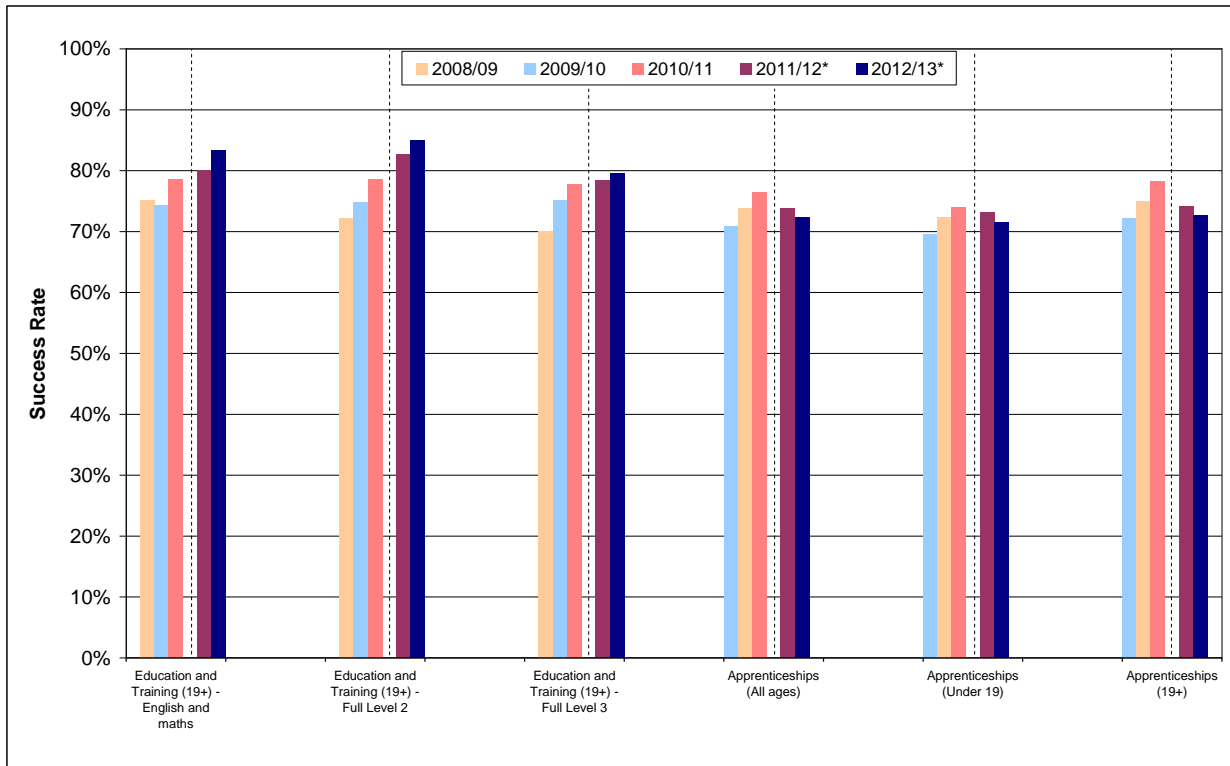


## Success Rates

2. Success rates are calculated for individual qualifications. They show how many learners that started a qualification went on to successfully complete it. Success rates are typically calculated at a qualification level, but can be aggregated across different types of course, or for particular colleges or providers. Education and Training, Apprenticeship and Workplace Learning success rates are calculated on a slightly different basis. For more information please see:

<https://www.gov.uk/government/collections/success-rates-2012-to-2013>

3. Chart 2 shows that adult (19+) Education and Training success rates rose steadily between 2009/10 and 2012/13 across all qualification levels. Success rates for Apprenticeships also rose steadily between 2008/09 and 2010/11, but decreased in 2011/12 and 2012/13 [Table 10].

**Chart 2: Success Rates**

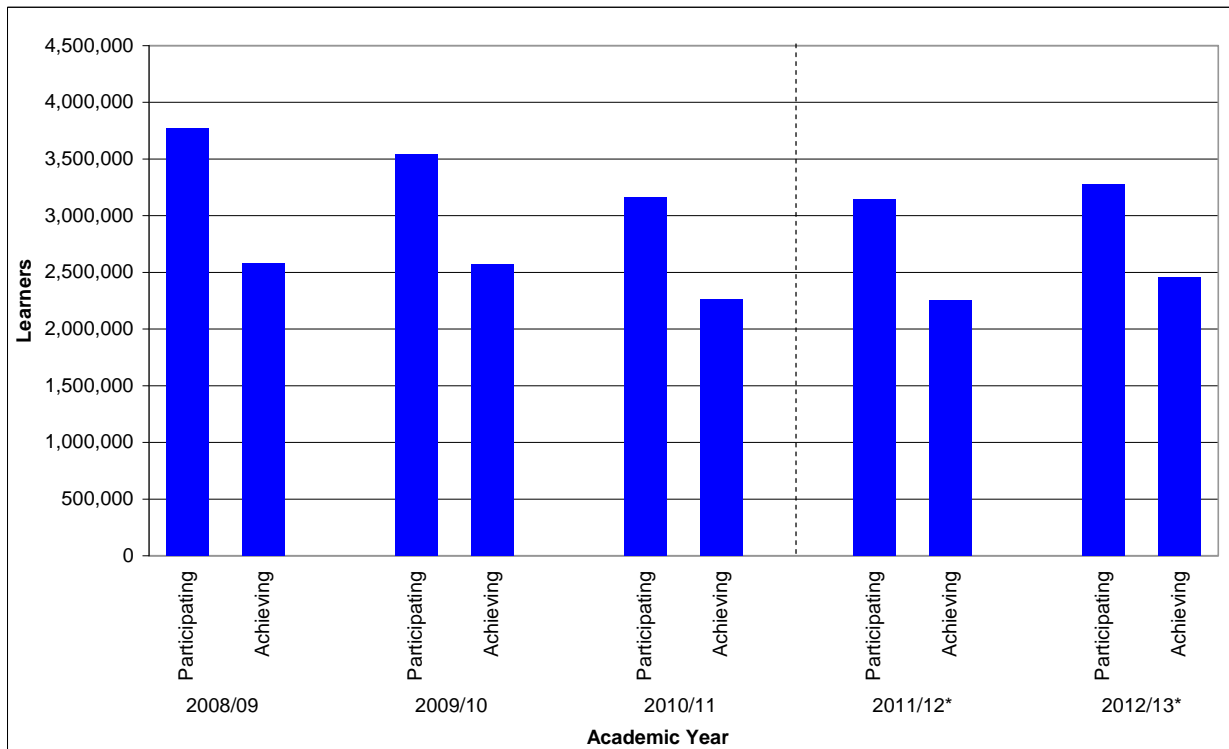
**\*Note: Success Rates for 2011/12 onwards are not directly comparable with earlier years. See paragraph 58 onwards for more information.**

4. In 2012/13, adult (19+) Education and Training success rates [Table 10.1] were:
  - 86.8 per cent for all Education and Training, an increase of 2.9 percentage points compared to 2011/12;
  - 83.4 per cent for English and Maths qualifications, an increase of 3.3 percentage points compared to 2011/12;
  - 85.5 per cent for Level 2 qualifications, an increase of 2.8 percentage points compared to 2011/12 (85.0 per cent for full Level 2, an increase of 2.4 percentage points);
  - 81.6 per cent for Level 3 qualifications, an increase of 2.2 percentage points compared to 2011/12 (79.6 per cent for full Level 3, an increase of 1.2 percentage points).
  
5. In 2012/13, Apprenticeship success rates [Table 10.2] were:
  - 72.3 per cent for all Apprenticeships, a decrease of 1.5 percentage points compared to 2011/12;
  - 72.0 per cent for Intermediate Level Apprenticeships, a slight decrease of 0.6 percentage points compared to 2011/12;
  - 73.0 per cent for Advanced Level Apprenticeships, a decrease of 3.5 percentage points compared to 2011/12;
  - 70.2 per cent for Higher Apprenticeships, a decrease of 2.4 percentage points compared 2011/12;
  
  - 72.6 per cent for Apprenticeships by those aged 19 and over, a decrease of 1.6 percentage points compared to 2011/12;
  - 71.5 per cent for Apprenticeships by those aged under 19, a decrease of 1.6 percentage points compared to 2011/12.

## Adult Learner (19+) Participation and Achievement

6. Chart 3 shows that the total number of adult learners participating in government-funded further education was 3,280,600 in 2012/13, an increase of 4.2 per cent on 2011/12 [Table 1.1]. This was the first increase since the 2008/09 academic year. The total number of adult learners achieving a government-funded further education qualification was 2,453,900 in 2012/13, an increase of 8.7 per cent on 2011/12 [Table 1.2].

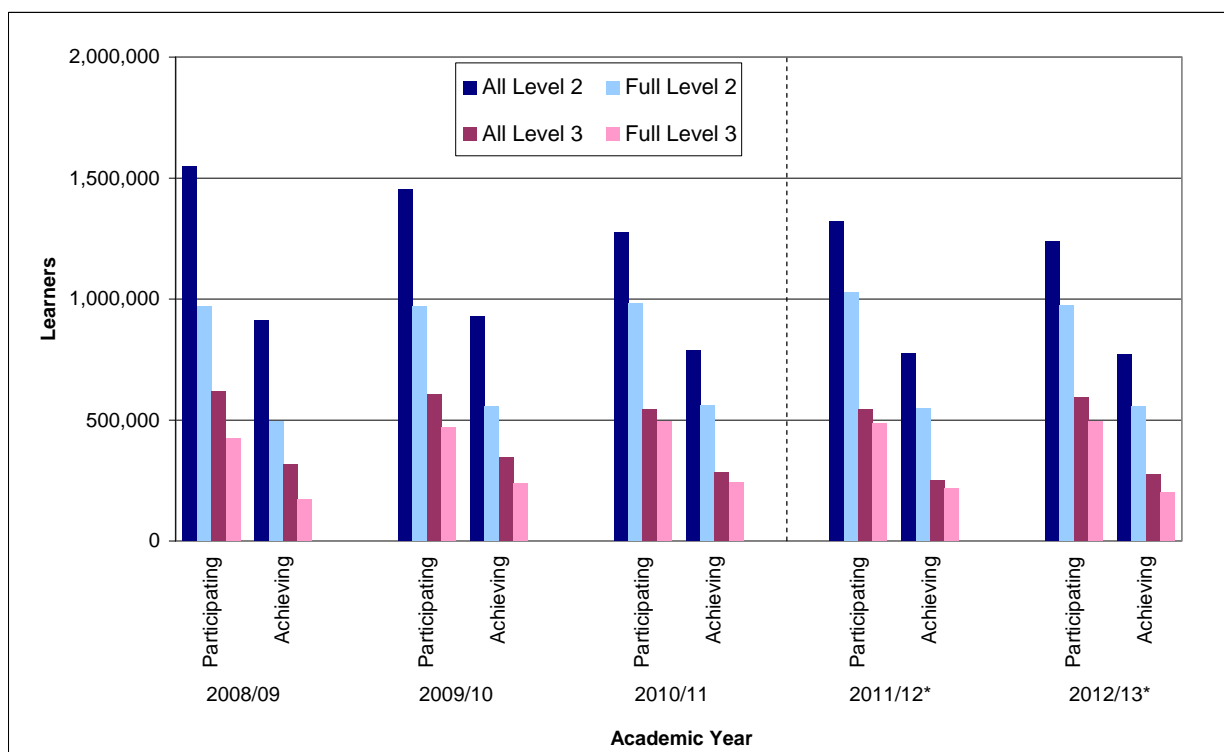
**Chart 3: Adult Learner (19+) Participation and Achievement in Government-funded Further Education**



**\*Note: Learner Numbers for 2011/12 onwards are not directly comparable with earlier years. See paragraph 58 onwards for more information.**

7. Chart 4 shows that the number of adult learners participating on government-funded further education Level 2 courses decreased between 2008/09 and 2012/13 with a 6.1 per cent decrease seen in the most recent year. The number participating in full Level 2 courses fell by 5.4 per cent in 2012/13 to a level similar to 2009/10. Achievements in Level 2 courses declined over the last three years whilst full Level 2 achievements increased in 2012/13. The number of learners participating in Level 3 courses fell between 2008/09 and 2011/12 but increased by 9.5 per cent in 2012/13. Participation in full Level 3 courses increased, now at its highest level. Achievements in Level 3 courses increased in 2012/13 by 9.8 per cent, following a two year decline. Full Level 3 achievements decreased for the second successive year after a period of growth [Tables 1.1 and 1.2].

**Chart 4: Adult (19+) Learner Participation and Achievement in Government-funded Further Education by Level**



**\*Note: Learner Numbers for 2011/12 onwards are not directly comparable with earlier years. See paragraph 58 onwards for more information.**

8. Of the 3,280,600 adult learners participating in further education in 2012/13 [Table 2]:
- 56.3 per cent were female and 43.7 per cent were male, similar proportions to 2011/12;
  - 13.2 per cent declared a learning difficulty and/or disability, an increase of 1.4 percentage points on 2011/12;
  - 19.2 per cent were from a Black or Minority Ethnic background (including Mixed, Asian, Black and Other Ethnic Group learners), a decrease of 0.4 percentage points on 2011/12;
  - 496,200 benefited from support for the unemployed (those nearest the workforce) [footnote to Table 1].
9. In 2012/13 there were 89,900 offenders aged 18 or over in the prison system participating in learning, a similar volume to 2011/12. 68,400 achieved a learning outcome, a decrease of 4.9 per cent [Table 7]. These offenders were funded via the Offenders' Learning and Skills Service (OLASS) budget.

## Apprenticeships

10. Two measures of Apprenticeships are presented to give a transparent view of the changes and trends in Apprenticeships in England:
- Participation refers to the number of people who are undertaking an Apprenticeship in a given time period. This measure is helpful for quantifying the number of people on an Apprenticeship programme throughout the academic year. An Apprentice studying towards more than one Apprenticeship is counted once.

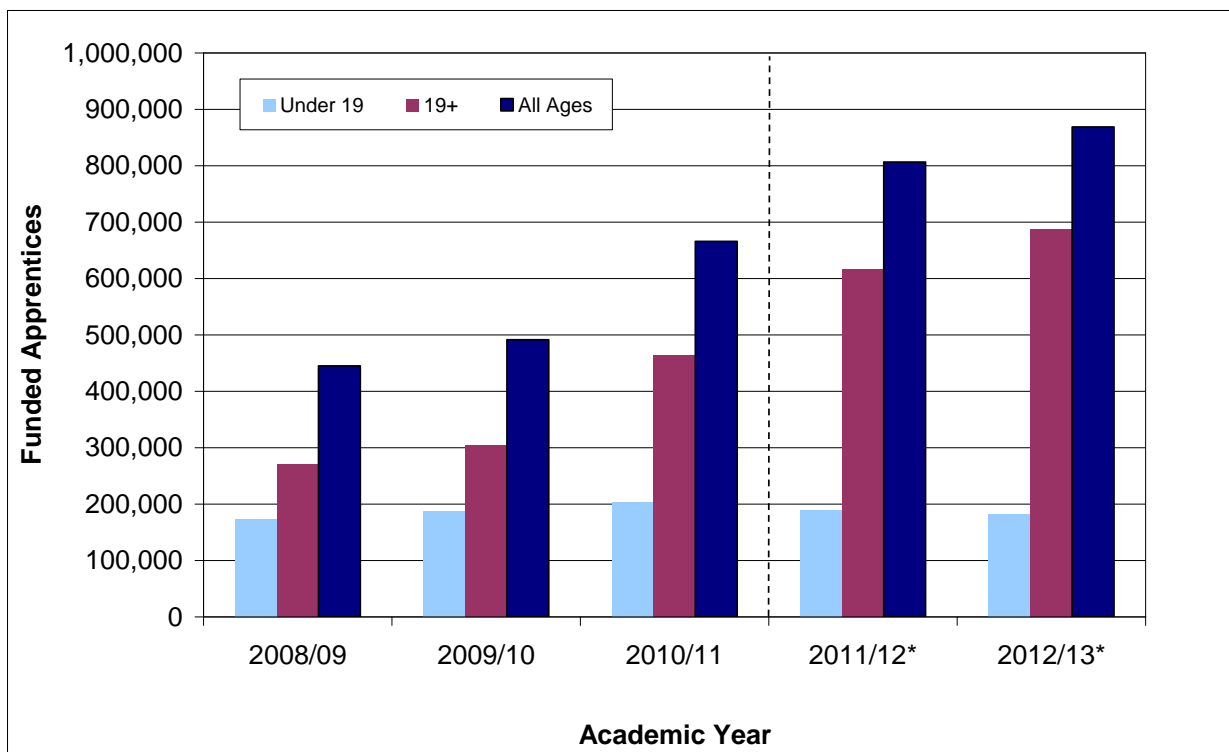
- Starts refer to the number of programmes that begin in a given time period. This measure is helpful in determining the take-up of programmes. An Apprentice is counted for each Apprenticeship they start.

11. The Apprenticeship programme expanded rapidly since 2009/10 as a result of increased government investment in adult Apprenticeships. More recently Apprenticeship policy has focused on raising standards, improving the quality and introducing minimum durations of Apprenticeships, this means some learners find it more difficult or take longer to complete their Apprenticeship.

## Participation

12. Chart 5 shows that overall Apprenticeship participation increased in each year since 2008/09, driven by growth in the number of adult (19+) Apprentices. While the number of under 19 Apprenticeships has been relatively flat over the period there has been a small decline after a peak in 2010/11 [Table 5].

**Chart 5: Apprenticeship Participation by Age**



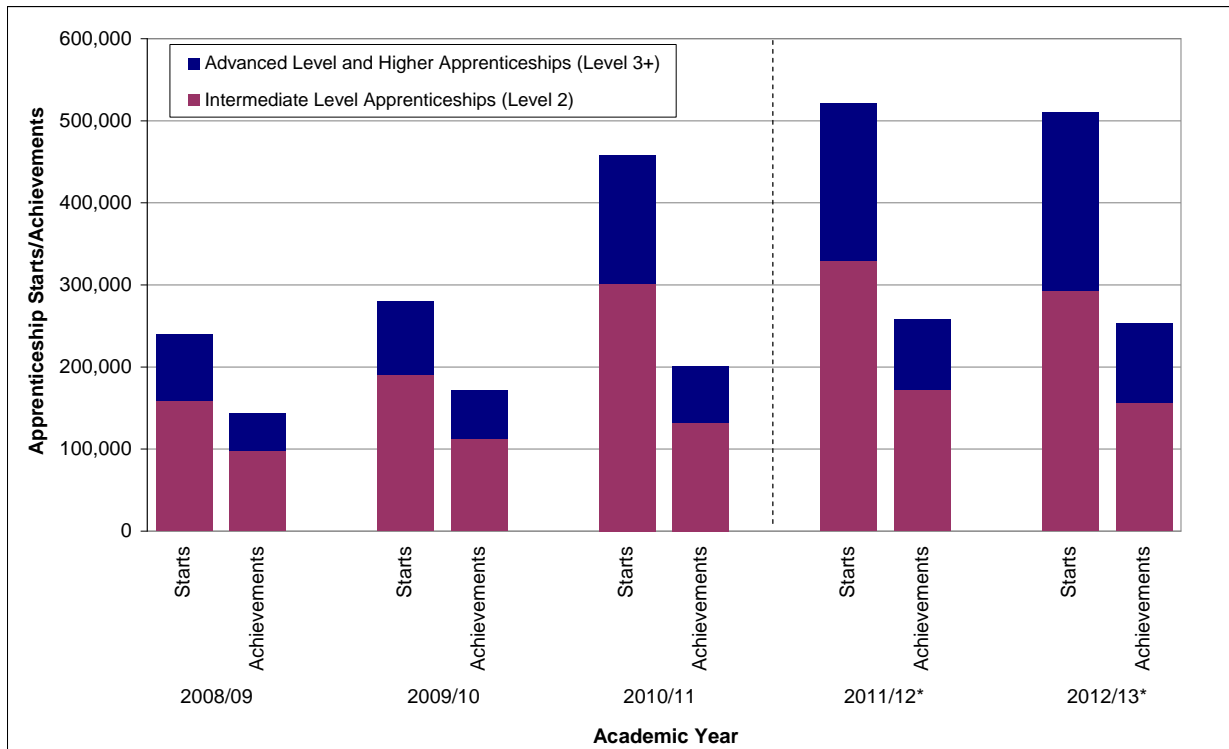
\*Note: Learner Numbers for 2011/12 onwards are not directly comparable with earlier years. See paragraph 58 onwards for more information.

13. Participation on Intermediate Level Apprenticeships increased each year up to 2011/12 but decreased slightly in 2012/13. Advanced Level Apprenticeship participation has increased steadily since 2008/09 while participation on Higher Apprenticeships has increased rapidly, albeit from a low base [Table 5].

## Starts and Achievements

14. Chart 6 shows there was strong growth in Apprenticeship starts between 2008/09 and 2011/12 followed by a decline in 2012/13 due to a fall at Intermediate Level. Advanced and Higher Apprenticeships continued to grow. Apprenticeship achievements reflect a similar pattern [Table 6].



**Chart 6: Apprenticeship Starts and Framework Achievements by Level**

**\*Note: Starts and achievements for 2011/12 onwards are not directly comparable with earlier years. See paragraph 58 onwards for more information.**

15. The length of an Apprenticeship is typically more than a year and an Apprenticeship framework achievement is recorded against the year it was achieved, not the year it was started. Because of this, the number of achievements is below the number of starts in Chart 6, as a large volume of learners that have started an Apprenticeship have not yet completed it. Furthermore, some learners may withdraw or fail to complete.

16. Under 19 Apprenticeship starts peaked in 2010/11 but have since fallen, while 19 to 24 and 25+ starts have continued to increase. Under 19 and 19 to 24 Apprenticeship achievements declined in 2012/13, while 25+ achievements continued to grow [Table 6].

17. In 2012/13, 5,500 Apprenticeships started through the Access to Apprenticeship pathway, a 23.7 per cent decrease on 2011/12, of which 1,800 converted to paid employment to complete their Apprenticeship in the usual way [Table 19.2].

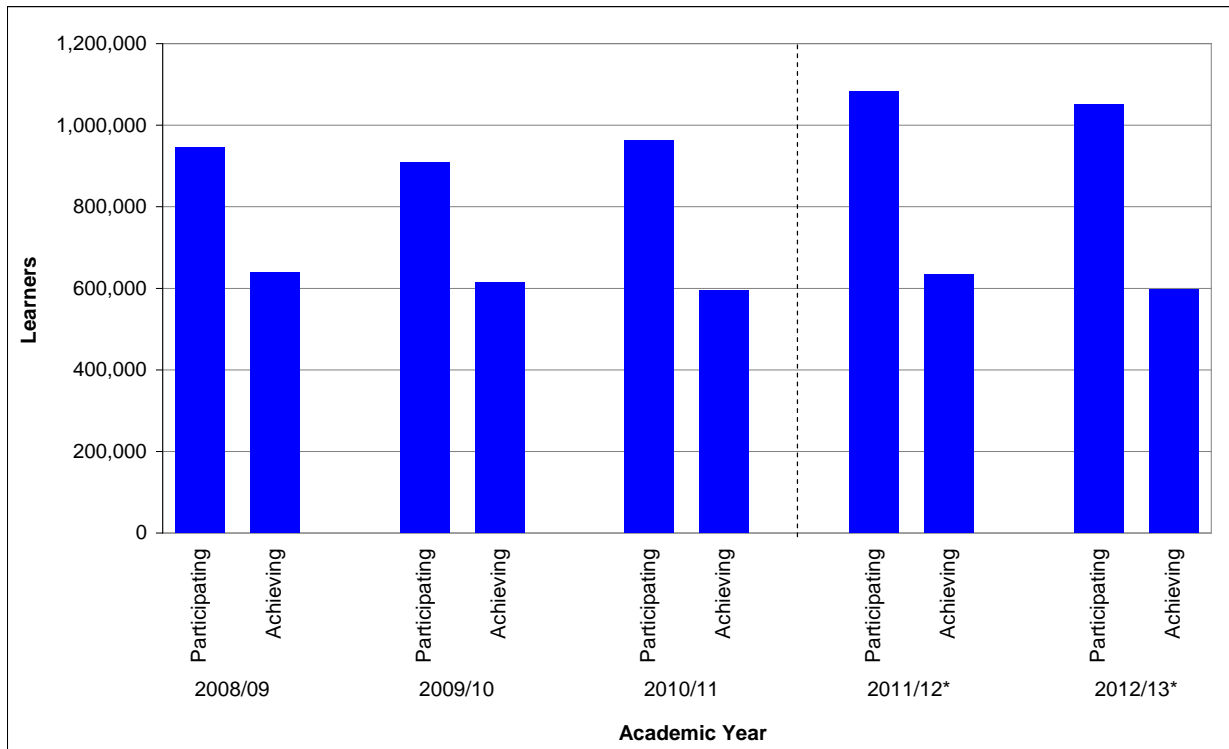
### ***Planned Length of Stay***

18. In August 2012 a minimum duration of 12 months for Apprenticeships was introduced. Statistics on the actual length of stay of Apprenticeships based on achievements are already published, but to assess the impact of the new policy at this early stage the planned length of stay of Apprenticeships starting in 2012/13 need to be considered. Based on the planned end date, the number of Apprenticeship starts with a planned length of stay of 12 months or more increased by 50.5 per cent to 475,900 between 2011/12 and 2012/13. The numbers increased by 31.9 per cent for under 19s, 59.9 per cent for those aged 19-24 and 55.5 per cent for those aged 25 and above.

## Adult (19+) English and Maths

19. Chart 7 shows that after a fall in adult learner participation on English and maths courses in 2009/10, participation increased for two successive years but then fell by 3.1 per cent in 2012/13. Achievement remained broadly flat over the period [Table 3].

**Chart 7: Adult Learner (19+) Participation and Achievement on English and Maths Courses**



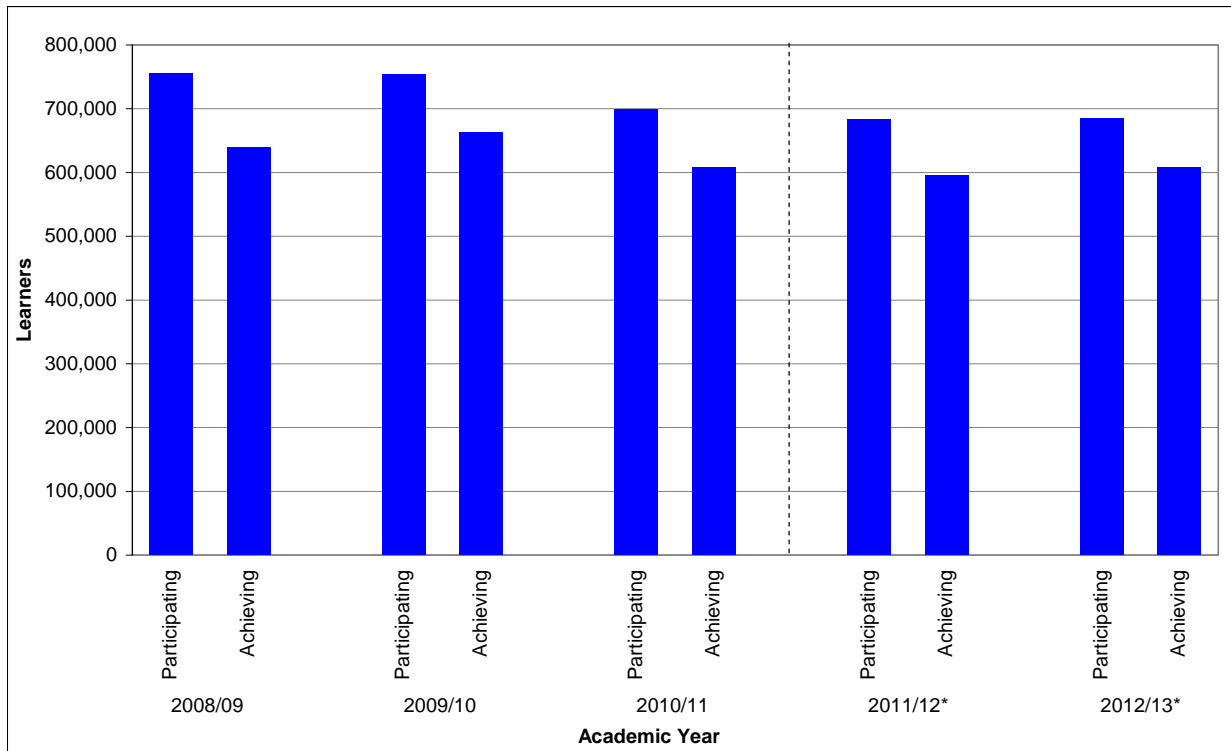
**\*Note: Learner Numbers for 2011/12 onwards are not directly comparable with earlier years. See paragraph 58 onwards for more information.**

20. Participation on English courses and maths courses fell for the first time since a period of growth. Participation on English for Speakers of Other Languages courses increased after a period of decline. This pattern was also reflected in learner achievement [Table 3].

## Community Learning

21. Chart 8 shows that participation on Community Learning courses in 2012/13 remained similar to 2011/12 after falls in the previous academic years. The overall number of Community Learners achieving increased slightly in 2012/13, the first increase in two years. Participation on 'Personal Community Development Learning' programmes, which make up the vast majority of Community Learning provision, decreased slightly in 2012/13. However, this was a smaller decrease than seen in the two previous years. Participation in 'Neighbourhood Learning in Deprived Communities' continued to increase, 'Wider Family Learning' participation increased slightly after three successive falls and 'Family English, Maths and Language' continued to decrease [Table 9].

**Chart 8: Community Learning Participation and Achievement**



**\*Note: Learner Numbers for 2011/12 onwards are not directly comparable with earlier years. See paragraph 58 onwards for more information.**

## PROVISIONAL FURTHER EDUCATION STATISTICS FOR ENGLAND, 2013/14

22. Data for 2013/14 provide an early view of performance for the first three quarters of the academic year (August 2013 to April 2014). Data are provisional because providers may not have reported all their information relating to this period. It is not possible to determine how incomplete the information behind the provisional data is, so the data cannot be directly compared against provisional or final data from earlier academic years. Comparisons can only be made once final returns for the academic year are made by providers (as published in November 2014). (See paragraphs 53 to 57 for more information.)

### Adult Learner (19+) Participation

23. Provisional data show that in the first three quarters of the 2013/14 academic year (August 2013 to April 2014) there were 2,492,800 learners aged 19 and over participating in government-funded further education [Table 14]. Of these:

- 855,300 participated on a English and maths course;
- 958,900 participated on a Level 2 course, of which 738,800 were on a full Level 2 course;
- 441,600 participated on a Level 3 course, of which 399,300 were on a full Level 3 course;
- 451,800 benefited from support for the unemployed (those nearest the workforce).

### Apprenticeships

24. 24+ Advanced Learning Loans were introduced in August 2013 but withdrawn for Apprenticeships in March 2014. Data show that the number of Apprenticeship starts for those aged 24 and above studying at Level 3 and above has been directly affected.

25. Provisional data for the first three quarters of the 2013/14 academic year (August 2013 to April 2014) show that there were 751,900 funded Apprentices participating [Table 17]. Of these there were<sup>2</sup>:

- 443,700 Intermediate Level Apprentices;
- 309,400 Advanced Level Apprentices;
- 13,600 Higher Apprentices;
  
- 161,000 Apprentices aged under 19;
- 281,700 Apprentices aged 19–24;
- 309,200 Apprentices aged 25 and over;
- 590,900 Apprentices aged 19 and over.

---

<sup>2</sup> Note that an Apprentice may participate on an Apprenticeship programme at more than one level within an academic year.

26. Provisional data for the first three quarters of the 2013/14 academic year (August 2013 to April 2014) show that there were 314,600 Apprenticeship starts [Table 18.1]. Of these there were:
- 213,500 Intermediate Level Apprenticeship starts;
  - 96,800 Advanced Level Apprenticeship starts;
  - 4,300 Higher Apprenticeship starts;
  
  - 95,200 Apprenticeship starts by those aged under 19;
  - 119,100 Apprenticeship starts by those aged 19–24;
  - 100,300 Apprenticeship starts by those aged 25 and over;
  - 219,400 Apprenticeship starts by those aged 19 and over.
27. Provisional data for the first three quarters of the 2013/14 academic year (August 2013 to April 2014) show that there were 162,600 Apprenticeship framework achievements [Table 18.2]. Of these there were:
- 97,400 Intermediate Level Apprenticeship framework achievements;
  - 63,600 Advanced Level Apprenticeship framework achievements;
  - 1,600 Higher Apprenticeship framework achievements;
  
  - 43,000 Apprenticeship framework achievements by those aged under 19;
  - 56,100 Apprenticeship framework achievements by 19–24 year olds;
  - 63,500 Apprenticeship framework achievements by those aged 25 and over;
  - 119,600 Apprenticeship framework achievements by those aged 19 and over.
28. Provisional data show that there were 83,500 Apprenticeship starts for which a payment was made through the Apprenticeship Grant for Employers (AGE 16 to 24) scheme between February 2012 and April 2014. A further 11,000 were in the pipeline (started but not yet paid) [Table 19.1].
29. Provisional data for the first three quarters of the 2013/14 academic year (August 2013 to April 2014) show that there were 1,600 Apprenticeships started through the Access to Apprenticeship pathway, of which 500 converted to paid employment to complete their Apprenticeship in the usual way [Table 19.2]. Access to Apprenticeships closed to new starts at the end of December 2013.

## **Offender Learning (18+) Participation**

30. Provisional data for the first three quarters of the 2013/14 academic year (August 2013 to April 2014) show there were 77,900 offenders aged 18 or over in the prison system participating in learning [Table 16]. These offenders were funded via the Offenders' Learning and Skills Service (OLASS) budget. Of these:
- 57,200 participated on a Below Level 2 (excluding English and maths) course;
  - 30,300 participated on an English and maths course;
  - 34,500 participated on a Level 2 course, of which 9,100 were on a full Level 2 course;
  - 800 participated on a Level 3 course, of which 100 were on a full Level 3 course.

## Adult (19+) English and Maths

31. Provisional data for the first three quarters of the 2013/14 academic year (August 2013 to April 2014) show that 855,300 learners aged 19 and over participated on an English and maths course [Table 15]. Of these:
- 620,800 participated on an English course;
  - 586,400 participated on a maths course;
  - 127,200 participated on an English for Speakers of Other Languages (ESOL) course.

## Community Learning

32. Provisional data for the first three quarters of the 2013/14 academic year (August 2013 to April 2014) show that 525,100 learners participated on a Community Learning course [Table 21]. Of these:
- 413,400 took a Personal and Community Development Learning course;
  - 40,300 took a Neighbourhood Learning in Deprived Communities course;
  - 37,300 took a Family English, Maths and Language course;
  - 48,700 took a Wider Family Learning course.

## Employer Ownership Pilot

33. Provisional data show that there were 20,700 Employer Ownership Pilot starts between August 2012 and April 2014 [Table 22]. Of these there were:
- 2,300 Employer Ownership Pilot starts by those aged under 19;
  - 4,100 Employer Ownership Pilot starts by those aged 19–24;
  - 14,300 Employer Ownership Pilot starts by those aged 25 and over;
  - 2,700 Apprenticeship starts.

## 24+ Advanced Learning Loans

34. Provisional data for the first three quarters of the 2013/14 academic year (August 2013 to April 2014) show that there were 52,400 learners with a 24+ Advanced Learning Loan<sup>3</sup> (24+ ALL) [Table 23]. Of these there were:
- 49,900 learners with a 24+ ALL participating at Level 3;
  - 2,500 learners with a 24+ ALL participating at Level 4+.
35. The number of learners with a 24+ Advanced Learning Loan reported through the Individualised Learner Record (ILR) differ from data showing loan applications (<https://www.gov.uk/government/collections/further-education>) and loans paid (<http://www.slc.co.uk/media/775307/slcosp032014.pdf>).
36. The *24+ Advanced Learning Loans Application* data publication was also released on 26<sup>th</sup> June 2014. This publication presents data relating to applications received for FE provision funded through 24+ Advanced Learning Loans. The data used to produce the publication are sourced from the Student Loans Company (SLC) application database, and cover applications received since the launch of the

---

<sup>3</sup> On March 7<sup>th</sup> 2014 Apprenticeships were removed from the scope of the loans programme. Apprentices who have already received a loan will not need to repay it.

programme on 8<sup>th</sup> April 2013 up to 31<sup>st</sup> May 2014. The data refer to received applications (including those unprocessed), and therefore will be higher than the actual number of learners on a course with a 24+ Advanced Learning Loan between August 2013 and April 2014.

37. The SLC *24+ Advanced Learning Loans Paid* data were also released on 26<sup>th</sup> June 2014. These data refer to all payments made to FE providers on behalf of learners and numbers of learners will be lower than the ILR numbers. Only payments made between August 2013 and April 2014 are captured, whilst the ILR captures learners on a course with a 24+ Advanced Learning Loan that started during this period, including some where the first scheduled payment date is beyond the end of April 2014.

## NATIONAL STATISTICS

38. The United Kingdom Statistics Authority has designated these statistics as National Statistics, in accordance with the Statistics and Registration Service Act 2007 and signifying compliance with the Code of Practice for Official Statistics.
39. Designation can be broadly interpreted to mean that the statistics:
- meet identified user needs;
  - are well explained and readily accessible;
  - are produced according to sound methods; and
  - are managed impartially and objectively in the public interest.
40. Once statistics have been designated as National Statistics it is a statutory requirement that the Code of Practice shall continue to be observed. More information regarding compliance with the Code of Practice is available on our website:  
<http://webarchive.nationalarchives.gov.uk/20140107201041/http://www.thedataservice.org.uk/Statistics/statisticalfirstrelease/compliance/>

## CHANGES INCLUDED IN THIS SFR

41. Alongside this SFR we have published a note on Traineeship data. Traineeships are a new programme and it is taking time for the quality of the reported data to settle. We have deemed it in the public interest for transparency purposes to publish the number of Traineeship starts that have been reported to date:  
<https://www.gov.uk/government/statistical-data-sets/fe-data-library-other-statistics-and-research>

## CHANGES IN THE NEXT SFR

42. The next SFR will be in October 2014 and will include provisional full year data for the 2013/14 academic year (August 2013 to July 2014).
43. Ofqual Vocational Qualification data shown in Table 13 of this release, and accompanying supplementary tables, will be updated in September 2014 as part of a formal cascade of this release. These tables will be updated to include data for the third quarter of 2013/14 (April 2014 to June 2014) which will allow Ofqual to update their detailed bulletins that include these data.
44. Changes to the next release will be pre-announced on the website at least a month prior to coming into effect, at: <https://www.gov.uk/government/publications/learner-participation-outcomes-and-level-of-highest-qualification-held>



## SUPPORTING DATA

### Scope

45. Should we need to make an unplanned revision to the statistics contained in this release, we will follow the procedures outlined in the Revisions Policy for this Statistical First Release. This includes action to understand the impact that any revisions will have, as well as ensuring that they are clearly communicated to the reader. The Revisions Policy can be found at:  
<https://www.gov.uk/government/publications/sfr-compliance-with-official-statistics-code-of-practice>
46. Information from the different further education learning options have been drawn together to give a coherent and comprehensive picture of the participation and achievement of young people and adults. These options include:
- Further education organisations
  - Sixth form colleges
  - Local Authorities
  - Independent training organisations.
47. These organisations deliver a wide variety of government programmes, including:
- Education and Training
  - Apprenticeships
  - Workplace Learning
  - Community Learning.
48. This SFR covers adults (19+) and does not contain information regarding:
- **Delivery in School Sixth Forms**, including maintained, independent and academy schools. Provisional figures taken from the Department for Education (DfE) [Participation in Education, Training and Employment by 16–18 Year Olds in England](#), Statistical Release show there were 541,000 students studying in School Sixth Forms in 2013, based on a snapshot of January 2013 school census data.
  - **Higher Education in Higher Education Institutions**. The publication referenced in paragraph 71 shows that the total number of HE enrolments at English Higher Education Institutions stood at 2,340,275 in 2012/13.
  - **Privately-funded training at FE organisations and independent training organisations**. There is no single coherent source that provides a measure of privately-funded training. BIS will investigate whether it is possible to develop a measure to support this as part of our wider Dissemination Plan. More detail on the Dissemination Plan can be found at: [http://webarchive.nationalarchives.gov.uk/20140107201041/http://www.thedataservice.org.uk/Statistics/dissemination\\_plan/](http://webarchive.nationalarchives.gov.uk/20140107201041/http://www.thedataservice.org.uk/Statistics/dissemination_plan/). There are no sources currently available that fully capture privately-funded academic activity, particularly for older learners. However, in Table 13 of this release we do show the total number of Vocational Qualifications awarded in the UK. This includes both public and privately-funded qualifications and gives some sense of scale of total vocationally-related activity in the sector.

## Data Sources

49. The data used to produce this SFR are Individualised Learner Record (ILR) collections that are returned to the Skills Funding Agency by further education colleges and providers and Employer Ownership Pilot information. A Single ILR collection (SILR) was introduced in 2011/12 to replace the multiple ILR collection types that were collected in previous years. There are no longer separate collections for different funding streams and providers return all of their learners in a single file. The following ILR collections have been used to update this release:

| Year    | Data Source   |
|---------|---|
| 2012/13 | SILR (R14),<br>Employer Ownership Pilot (R14)<br>Large Employer Outcome Pilot (R14) |
| 2013/14 | SILR (R10)<br>Employer Ownership Pilot (R10)<br>Large Employer Outcome Pilot (R10)  |

50. The data sources for all years, except 2013/14, are final collections and include information on provision for the full academic year. More information on these data sources is available in a definitions document, which can be found at:

<https://www.gov.uk/government/publications/learner-participation-outcomes-and-level-of-highest-qualification-held>.

51. Ofqual Vocational Qualification data is used in Table 13 of this release.

52. The Labour Force Survey is the other data source used for the SFR (Tables 11 and 12). The latest LFS data used in this release relate to Quarter 4 (October – December) 2013.

## Issues with Using Provisional Data

53. It is important to provide the earliest picture of further education performance once it becomes available so that users may assess the impact of government-funded provision and hold the system to account. However, provisional data are taken from an operational information system which is designed to support the funding of providers and there are some important limitations users should take into consideration.

54. In-year information is subject to data lag, which is when a provider submits information after the period it related to. This information is subsequently attributed to the correct time period. Data remain provisional until final returns for the academic year are made by providers, after the end of the academic year. Final data are published in the following November. The size of revision to individual estimates that arise from data lag can vary greatly. They tend to be around 2 to 3 per cent but have been as much as 15 per cent. Revisions are typically upward though it should be noted that on occasions small downward revisions are possible.

55. Data lag from one year to the next is not predictable, as provider behaviour changes over time and there is no source of information that would enable us to provide a robust estimate of completeness of data that have been returned. Provisional data cannot, therefore, be compared with provisional or final data from earlier academic

years. We generally recommend using the final data for the last complete academic year.

56. We carry out a quality assessment of the volume of providers that have made their returns. If we consider estimates to be particularly weak, due to data lag or any other factor, we may defer publication of those estimates. In recent years we have encouraged more timely reporting of data ahead of the final return. This is set out in our quality statement, which can be found at:  
<http://webarchive.nationalarchives.gov.uk/20140107201041/http://www.thedataservice.org.uk/Statistics/statisticalfirstrelease/compliance/>.
57. This year new funding methodologies have been introduced and the validation rules regarding ILR data submission have been tightened. Analysis of the whole ILR return suggests overall levels of data lag are within normal bounds. We would not expect any provision to be affected by earlier issues relating to IT change and validation rules.

## Issues with Comparing Data Across Academic Years

58. In the 2011/12 academic year a Single Individualised Learner Record (ILR) data collection system was introduced. This replaced the multiple separate data collections from previous years and led to small technical changes in the way learners from more than one funding stream are counted.
59. Overall the new collection system led to a removal of duplicate learners and a reduction in total learner participation of approximately 2 per cent. However Apprenticeship participation figures were more significantly affected due to a change in the way learners participating on more than one Apprenticeship programme were counted. This has led to a removal of duplicate learners and a reduction in overall Apprenticeship learners of approximately 5 per cent, therefore figures for 2011/12 onwards are not comparable to earlier years. A paper is available on our website to explain the Single ILR and the small effects it has on the SFR at:  
[http://webarchive.nationalarchives.gov.uk/20140107201041/http://www.thedataservice.org.uk/NR/rdonlyres/C05DCDD5-67EE-4AD0-88B9-BEBC8F7F3300/0/SILR\\_Effects\\_SFR\\_Learners\\_June12.pdf](http://webarchive.nationalarchives.gov.uk/20140107201041/http://www.thedataservice.org.uk/NR/rdonlyres/C05DCDD5-67EE-4AD0-88B9-BEBC8F7F3300/0/SILR_Effects_SFR_Learners_June12.pdf). Further information on the Single ILR is available the GOV.UK website at:  
<https://www.gov.uk/government/publications/ilr-specification-validation-rules-and-appendices-2013-to-2014>

## Data Definitions

60. High-level definitions of some of the key terms used in this release can be found in the Glossary on page 3. A more detailed definitions document to accompany this release is available on the Data Service website at:  
<https://www.gov.uk/government/publications/learner-participation-outcomes-and-level-of-highest-qualification-held>.
61. The 'Level of Highest Qualification Held by Adults' statistics are produced using data on the highest qualification held by individuals from the Labour Force Survey in each year. The LFS is conducted by the Office for National Statistics and the estimates provided are the best measure of attainment within the population at Quarter 4 (October – December) each calendar year. Further details of how this information is used to calculate the estimates can be found at:

<http://webarchive.nationalarchives.gov.uk/20140107201041/http://www.thedataservice.org.uk/Statistics/statisticalfirstrelease/methodology/>

## Publication Cycle Across the Year

62. Further information on future editions of the SFR can be found on the website at: <https://www.gov.uk/government/publications/learner-participation-outcomes-and-level-of-highest-qualification-held>

63. Table A below shows provisional and final data included for each release.

**Table A: Publication Cycle**

| Release              | Data Included  |
|----------------------|--|
| <b>November 2013</b> | - <b>Final</b> FE and Skills data for the full 2012/13 academic year   |
| <b>January 2014</b>  | - Education and Training; Apprenticeship; and Workplace Learning success rates for 2012/13   |
|                      | - Provisional FE and Skills data for the first quarter of 2013/14  |
| <b>March 2014</b>    | - Provisional FE and Skills data for the first two quarters of 2013/14   |
|                      | - <b>Final</b> data for 2012 and provisional data for 2013 on the level of highest qualification held for adults in the population |
| <b>June 2014</b>     | - Provisional FE and Skills data for the first three quarters of 2013/14   |
| <b>October 2014</b>  | - Provisional FE and Skills data for the full 2013/14 academic year  |
| <b>November 2014</b> | - <b>Final</b> FE and Skills data for the full 2013/14 academic year   |

64. The Statistical First Release is an evolving product and we welcome feedback. If you have comments or feedback on the SFR, these can be sent to: [servicedesk@sfa.bis.gov.uk](mailto:servicedesk@sfa.bis.gov.uk), or alternatively, you can call 0870 267 0001.

65. If you have a statistical question around the content or presentation of National Statistics in the release, please contact Paula Maratos at: [paula.maratos@bis.gsi.gov.uk](mailto:paula.maratos@bis.gsi.gov.uk)

## Supplementary Tables

66. A full list of supplementary tables relating to this SFR can be found on the Data Service website at: [https://www.gov.uk/government/publications?departments%5B%5D=skills-funding-agency&publication\\_filter\\_option=statistics](https://www.gov.uk/government/publications?departments%5B%5D=skills-funding-agency&publication_filter_option=statistics). These tables include breakdowns by age, gender, ethnicity, learners with learning difficulties and/or disabilities, region, local authority, parliamentary constituency, sector subject area and funding stream. For more information on exactly what data will be released, please see the supplementary tables list on the website.

67. Local Authority Reports are published on the GOV.UK website. Local Authority Districts are shown based on the postcodes of delivery locations and also on the home postcodes of learners. The reports cover 2010/11 and 2011/12: enrolments, participation and provider level. The reports can be found at: <https://www.gov.uk/government/statistical-data-sets/fe-data-library-local-authority-tables>

## Related National Statistics Releases

68. There are a number of other National Statistics publications available that can be used to provide contextual information to this SFR. Some of those most relevant to this release are discussed below.
69. [Participation in Education, Training and Employment by 16-18 Year Olds in England](#) published on 25<sup>th</sup> June 2014 by the Department for Education. Final data shows that the proportion of 16–18 year olds in education and training was 83.6 per cent at end 2012 – a slight increase from 83.5 per cent at end 2011.
70. [Level 2 and 3 Attainment by Young People in England Measured Using Matched Administrative Data: Attainment by Age 19 in 2013](#) published on 27<sup>th</sup> March 2014 by the Department for Education. This shows that in 2013, 86.2 per cent of people aged 19 were qualified to at least Level 2, and 59.1 per cent were qualified to Level 3. These were both increases of 1.1 percentage points since 2012.
71. [Higher Education Student Enrolments and Qualifications Obtained at Higher Education Institutions in the United Kingdom for the Academic Year](#) published on 16<sup>th</sup> January 2014 by the Higher Education Statistics Agency. This release shows that the total number of HE enrolments at UK Higher Education Institutions stood at 2,340,275 in 2012/13, a decrease of 6% from 2011/12. In terms of qualifications, in 2012/13 there were 403,770 first degree graduates compared to 390,990 in 2011/12, an increase of 3 per cent.
72. [Education and Training Statistics for the United Kingdom](#) published on 7<sup>th</sup> November 2013 by the Department for Education. This release provides statistics relating to education and training in the UK and includes chapters relating to post-compulsory education & training and qualifications. Information includes participation of learners in further education by country of study, participation in job-related training and the highest level of qualification held by adults in the population (UK).

## Other Related Statistics

73. FE Choices provides clear, comparable information to learners and employers so they can make informed choices about post-16 education and training. FE Choices enables users to search and compare provider ratings for four performance indicators: Success Rates; Learner Destinations (including Employment Rate and Learning Rate); Learner Satisfaction; and Employer Satisfaction. These indicators are published on the FE Choices website at: <http://fechoices.skillsfundingagency.bis.gov.uk/>. Results at National level, by type of provider and by individual provider for each performance indicator can be found at: <https://www.gov.uk/government/statistical-data-sets/fe-choices-performance-indicators>

## Further Education Statistics for Other Countries in the UK

74. The focus of this SFR is on government-funded further education provision in England. Similar information is available for other countries in the UK, and provides useful contextual background to these statistics.
75. Statistics on Further Education and Work-based learning in **Wales** can be found at: <http://wales.gov.uk/topics/statistics/?lang=en>

76. Statistics on Professional and Technical Enrolments in the **Northern Ireland** Further Education Sector for 2012/13 can be found at:

<http://www.delni.gov.uk/index/statsandresearch/further-education-stats/fe-enrolments/further-education-provision-enrolments/prof-and-tech-enrolments-in-ni-fe-sector-2012-13.htm>

77. Statistics on learners in further education in **Scotland** can be found at:

[http://www.sfc.ac.uk/web/FILES/ReportsandPublications/Facts\\_and\\_Figures\\_2012.pdf](http://www.sfc.ac.uk/web/FILES/ReportsandPublications/Facts_and_Figures_2012.pdf). Additionally, user-defined tables on further education learners and courses can be produced at: <https://stats.sfc.ac.uk/infact/>

## TABLE GUIDE

78. This section provides a brief summary of what is included in each table of this release. Tables 1 to 10 focus on the 2012/13 academic year; Tables 14 to 23 show provisional data for the first three quarters of the 2013/14 academic year (August 2013 to April 2014).

- **Table 1** shows participation and achievements in further education and skills by level for adults (19+).
- **Table 2** shows a demographic breakdown of participation in further education and skills for adults (19+) by level.
- **Table 3** shows English and maths participation and achievements for adults (19+) by level.
- **Table 4** shows a demographic breakdown of Apprenticeship participation by level.
- **Table 5** shows Apprenticeship participation by age and level.
- **Table 6** shows Apprenticeship starts and achievements by age and level.
- **Table 7** shows Offender Learning participation and achievements by level for adults (18+)
- **Table 8** shows Workplace Learning starts and achievements by level.
- **Table 9** shows Community Learning participation and achievements by provision type.
- **Table 10** shows success rates for Education and Training (19+), Workplace Learning (19+) and Apprenticeships.
- **Tables 11 and 12** show level of attainment in the population (working age and economically active respectively) from the Labour Force Survey.
- **Table 13** shows a quarterly time series of Vocational Qualifications awarded.

### UPDATED SINCE LAST RELEASE

- **Tables 14 to 18, 20 and 21** repeat earlier tables showing provisional data for the first three quarters of the 2013/14 academic year (August 2013 to April 2014).
- **Table 19** shows payments made through the Apprenticeship Grant for Employers (AGE 16 – 24) scheme and starts on the Access to Apprenticeship Pathway.
- **Table 22** shows Employer Ownership Pilot starts by type and age on the programme to date.
- **Table 23** shows participation with 24+ Advanced Learning Loans (Level 3+) for the first three quarters of the 2013/14 academic year (August 2013 to April 2014).

## Table Footnotes

### General Footnotes Relevant to All Tables

- 1) Volumes are rounded to the nearest 100; percentages are calculated on pre-rounded data.
- 2) '-' Indicates a base value of less than 50; '\*\*' indicates a percentage of less than 0.5%.
- 3) Tables 1-5, 7, 9, 14-17 & 21 are based on learners that were funded by the Learning and Skills Council or Young People's Learning Agency and/or are now funded by the Skills Funding Agency or Education Funding Agency.
- 4) For definitions of variables used in the Tables please see the data dictionary:  
<http://webarchive.nationalarchives.gov.uk/20140107201041/http://www.thedataservice.org.uk/datadictionary/>
- 5) Except for Tables 6, 18-19 & 22 (see Footnote 17 and 26), age is reported as at 31 August of the academic year for all provision.
- 6) In Tables reporting full-year numbers, except for Tables 6 & 8 (see Footnotes 18, 19, 27 & 28), full-year numbers are a count of the number of learners that participated/achieved at any point during the year. Learners undertaking/achieving more than one course will appear only once in the 'total learners' category for each data collection. All learners undertaking/achieving a full Level 2 or full Level 3 qualification will also appear in the Level 2 or Level 3 category, respectively.
- 7) The data source for all tables is the Individualised Learner Record, except where stated.
- 8) Further breakdowns of the data are available at the following website:  
[https://www.gov.uk/government/publications?departments%5B%5D=skills-funding-agency&publication\\_filter\\_option=statistics](https://www.gov.uk/government/publications?departments%5B%5D=skills-funding-agency&publication_filter_option=statistics)

### Table 10.1 – Education and Training Success Rates

- 9) Education and Training success rates are calculated as the number of learning aims achieved divided by the number of learning aims expected to complete, excluding any learners who transferred on to another learning aim within the same institution.
- 10) Table 1.2 reports on the actual number of achievements within the academic year without reference to those that were expected to complete. Table 10.1 reports on success rates which are based on the reported achievement of individual aims that were expected to complete in the academic year.

### Tables 2 and 4 – Demographics

- 11) Learners undertaking courses at more than one level will be counted once for each applicable level, but once only in the Total.
- 12) Age, gender, learners with learning difficulties and/or disabilities and ethnicity are based upon self-declaration by the learner.

### Tables 4-6, 10.2 & 17-19 – Apprenticeships

- 13) Apprenticeship starts and achievements include all funded and unfunded learners reported on the ILR.
- 14) Apprenticeship success rates are based on the number of learners who meet all of the requirements of their Apprenticeship framework, divided by the number of learners who have left training or successfully completed their training in the academic year.
- 15) Table 10.2 reports on success rates which are based on the reported achievement of frameworks that were expected to complete in the academic year.
- 16) Apprenticeship success rates are not affected by demand led funding.
- 17) For Apprenticeship starts and achievements, age is calculated based on age at start of the programme rather than based on 31 August.
- 18) In Table 6.1 full-year numbers are a count of the number of starts at any point during the year. Learners starting more than one Apprenticeship will appear more than once.
- 19) In Table 6.2 full-year numbers are a count of the number of framework achievements at any point during the year. Learners achieving more than one framework will appear more than once.
- 20) Programme-Led Apprenticeships recorded in ILR returns are included in the above figures.
- 21) In order to be counted as a successful achievement, all elements of the framework must have been achieved.
- 22) Quarter 1 is 1 August to 31 October; Quarter 2 is 1 November to 31 January; Quarter 3 is 1 February to 30 April; Quarter 4 is 1 May to 31 July.

### Tables 8, 10.3 & 20 – Workplace Learning

- 23) Workplace Learning success rates are based on the number of aims achieved, divided by the number of aims completed in the academic year.



- 24) Table 10.3 reports on success rates which are based on the reported achievement of individual aims that were expected to complete in the academic year.
- 25) 2011/12 is the first year that Workplace Learning success rates are available. This is due to a change in the programmes included in Workplace Learning. Between 2007/08 and 2010/11 this included the Train to Gain programme. In 2011/12 this included all training mainly delivered through the workplace (excluding Apprenticeships). Therefore previous years are not comparable. For more information see: [http://webarchive.nationalarchives.gov.uk/20140107201041/http://www.thedataservice.org.uk/Statistics/success\\_rates/success\\_rates\\_2011-12/](http://webarchive.nationalarchives.gov.uk/20140107201041/http://www.thedataservice.org.uk/Statistics/success_rates/success_rates_2011-12/)
- 26) Age is calculated based on age at start of the programme rather than based on 31 August.
- 27) In Table 8.1 full-year numbers are a count of the number of starts at any point during the year. Learners starting more than one course will appear more than once.
- 28) In Table 8.2 full-year numbers are a count of the number of achievements at any point during the year. Learners achieving more than one course will appear more than once.
- 29) Quarter 1 is 1 August to 31 October; Quarter 2 is 1 November to 31 January; Quarter 3 is 1 February to 30 April; Quarter 4 is 1 May to 31 July.

#### **Tables 9 & 21 – Community Learning**

- 30) Total Learners includes learners participating in Community Learning (previously Adult Safeguarded Learning) provision in the Community Learning and FE funding streams for 2007/08. For 2008/09 to 2010/11, only Community Learning provision recorded in the Community Learning collection is included in totals except for 2009/10 where Community Learning provision recorded in the Education and Training collection for five Specially Designated Colleges is also included.
- 31) There are a number of learners with Community Learning aims that are recorded in the Education and Training funding stream and are not included in the figures in Table 9. In 2008/09 there were 7,900 participating and 6,400 achieving learners; in 2009/10 there were 7,700 participating and 6,300 achieving learners; and in 2010/11 there were 8,300 participating and 6,900 achieving learners. The only Community Learning provision included for Table 9 for 2008/09 and 2010/11 is recorded in the Community Learning funding stream. Community Learning in 2011/12 onwards is recorded in the Single ILR collection only.

#### **Table 13 – Vocational Qualifications**

- 32) This table covers all levels of vocational qualifications reported through Ofqual. Data are supplied by awarding organisations.
- 33) Academic year is October to September. For example, the 2006/07 academic year is 1 October 2006 to 30 September 2007.
- 34) Key Skills data was not collected prior to October 2009.
- 35) 'Other Vocational Qualifications' include Basic Skills, Entry Level, English for Speakers Other Languages, Functional Skills, Free-Standing Mathematics Qualification, Key Skills, National Qualifications Framework and Other General types.

#### **Table 22 – Employer Ownership Pilot**

- 36) This table covers all Employer Ownership Pilot starts.
- 37) Age is calculated based on age at start of the programme rather than based on 31 August.

#### **Table 23 – 24+ Advanced Learning Loans (Level 3+)**

- 38) Learners have been eligible to apply for a 24+ Advanced Learning Loan since the start of the 2013/14 academic year (August 2013).
- 39) A small number of learners aged 23 at the start of the academic year but aged 24 at the start of the aim are included in the figures.
- 40) This table includes 'Education and Training' learners only. Apprenticeships were removed from the scope of the loans programme in March 2014, Apprentices who already received a loan no longer need to repay it.

Table 1.1: Adult (19+) FE and Skills Participation by Level (2008/09 to 2012/13) – Learner Volumes

|                       |   | Funded Learners  |                  |                               |                  |                               |                  |                               |                  |                               |
|-----------------------|---|------------------|------------------|-------------------------------|------------------|-------------------------------|------------------|-------------------------------|------------------|-------------------------------|
|                       |   | 2008/09          | 2009/10          | 2010/11                       |                  | 2011/12                       |                  | 2012/13                       |                  |                               |
|                       |   | Full Year        | Full Year        | % change<br>08/09 to<br>09/10 | Full Year        | % change<br>09/10 to<br>10/11 | Full Year        | % change<br>10/11 to<br>11/12 | Full Year        | % change<br>11/12 to<br>12/13 |
| Level                 |   |                  |                  |                               |                  |                               |                  |                               |                  |                               |
| <b>Total Learners</b> |   | <b>3,771,200</b> | <b>3,540,500</b> | <b>-6.1%</b>                  | <b>3,163,200</b> | <b>-10.7%</b>                 | <b>3,149,700</b> | *                             | <b>3,280,600</b> | <b>4.2%</b>                   |
| <b>Participation</b>  | <b>of which...</b>                          |                  |                  |                               |                  |                               |                  |                               |                  |                               |
|                       | Below Level 2 (excluding English and maths) | 496,800          | 435,300          | -12.4%                        | 370,900          | -14.8%                        | 574,700          | 54.9%                         | 757,800          | 31.9%                         |
|                       | English and maths                           | 945,100          | 909,100          | -3.8%                         | 961,800          | 5.8%                          | 1,083,000        | 12.6%                         | 1,049,600        | -3.1%                         |
|                       | Full Level 2                                | 968,600          | 971,000          | *                             | 982,600          | 1.2%                          | 1,028,100        | 4.6%                          | 972,500          | -5.4%                         |
|                       | Full Level 3                                | 423,900          | 469,100          | 10.6%                         | 494,000          | 5.3%                          | 486,800          | -1.5%                         | 495,300          | 1.7%                          |
|                       | Level 2                                     | 1,549,000        | 1,451,200        | -6.3%                         | 1,273,300        | -12.3%                        | 1,320,000        | 3.7%                          | 1,239,200        | -6.1%                         |
|                       | Level 3                                     | 619,700          | 604,800          | -2.4%                         | 542,900          | -10.2%                        | 542,600          | *                             | 594,300          | 9.5%                          |
|                       | Level 4+                                    | 58,200           | 49,500           | -14.9%                        | 36,600           | -26.0%                        | 39,200           | 7.1%                          | 50,000           | 27.6%                         |
|                       | No Level Assigned                           | 910,500          | 951,100          | 4.5%                          | 888,300          | -6.6%                         | 798,900          | -10.1%                        | 818,500          | 2.5%                          |

Table 1.2: Adult (19+) FE and Skills Achievement by Level (2008/09 to 2012/13) – Learner Volumes

|                       |   | Funded Learners  |                  |                               |                  |                               |                  |                               |                  |                               |
|-----------------------|---|------------------|------------------|-------------------------------|------------------|-------------------------------|------------------|-------------------------------|------------------|-------------------------------|
|                       |   | 2008/09          | 2009/10          | 2010/11                       |                  | 2011/12                       |                  | 2012/13                       |                  |                               |
|                       |   | Full Year        | Full Year        | % change<br>08/09 to<br>09/10 | Full Year        | % change<br>09/10 to<br>10/11 | Full Year        | % change<br>10/11 to<br>11/12 | Full Year        | % change<br>11/12 to<br>12/13 |
| Level                 |   |                  |                  |                               |                  |                               |                  |                               |                  |                               |
| <b>Total Learners</b> |   | <b>2,584,000</b> | <b>2,567,700</b> | <b>-0.6%</b>                  | <b>2,265,100</b> | <b>-11.8%</b>                 | <b>2,258,500</b> | *                             | <b>2,453,900</b> | <b>8.7%</b>                   |
| <b>Achievement</b>    | <b>of which...</b>                          |                  |                  |                               |                  |                               |                  |                               |                  |                               |
|                       | Below Level 2 (excluding English and maths) | 367,000          | 336,800          | -8.2%                         | 298,500          | -11.4%                        | 472,300          | 58.2%                         | 651,900          | 38.0%                         |
|                       | English and maths                           | 639,100          | 614,600          | -3.8%                         | 595,600          | -3.1%                         | 633,000          | 6.3%                          | 597,300          | -5.6%                         |
|                       | Full Level 2                                | 493,900          | 556,000          | 12.6%                         | 561,800          | 1.0%                          | 546,600          | -2.7%                         | 557,800          | 2.0%                          |
|                       | Full Level 3                                | 170,200          | 237,800          | 39.7%                         | 242,700          | 2.1%                          | 216,200          | -10.9%                        | 201,700          | -6.7%                         |
|                       | Level 2                                     | 910,800          | 926,000          | 1.7%                          | 788,900          | -14.8%                        | 775,200          | -1.7%                         | 769,900          | -0.7%                         |
|                       | Level 3                                     | 317,000          | 344,400          | 8.7%                          | 282,600          | -17.9%                        | 249,000          | -11.9%                        | 273,300          | 9.8%                          |
|                       | Level 4+                                    | 27,600           | 26,900           | -2.3%                         | 20,400           | -24.4%                        | 21,500           | 5.7%                          | 24,200           | 12.6%                         |
|                       | No Level Assigned                           | 756,400          | 814,600          | 7.7%                          | 764,100          | -6.2%                         | 685,900          | -10.2%                        | 710,100          | 3.5%                          |

**Notes**

1) These tables include Apprenticeships, Workplace Learning, Community Learning and Education and Training provision taken at General Further Education Colleges (including Tertiary), Sixth Form Colleges, Special Colleges (Agricultural and Horticultural Colleges and Art and Design Colleges), Specialist Colleges and External Institutions.

2) Figures for 2011/12 onwards are not directly comparable to earlier years as a Single Individualised Learner Record (ILR) data collection system has been introduced. Small technical changes have been made in the way learners from more than one provision type are counted, leading to a removal of duplicate learners and a reduction in overall learner numbers of approximately 2 per cent. More information on the Single ILR is available at:

[http://webarchive.nationalarchives.gov.uk/20140107201041/http://www.thedataservice.org.uk/NR/rdonlyres/C05DCDD5-67EE-4AD0-88B9-BEBC8F7F3300/0/SILR\\_Effects\\_SFR\\_Learners\\_June12.pdf](http://webarchive.nationalarchives.gov.uk/20140107201041/http://www.thedataservice.org.uk/NR/rdonlyres/C05DCDD5-67EE-4AD0-88B9-BEBC8F7F3300/0/SILR_Effects_SFR_Learners_June12.pdf)

3) Data for earlier years are available in the Further Education and Skills Supplementary Tables:

<https://www.gov.uk/government/statistical-data-sets/fe-data-library-further-education-and-skills>

4) Prior to 2009/10 Level 4+ Apprenticeships were included with Level 3 Apprenticeships.

5) In 2012/13 there were 89,900 offenders aged 18 or over in the prison system participating in learning, 68,400 achieved a learning outcome. These offenders were funded via the Offenders' Learning and Skills Service (OLASS) budget. Those aged 19 and over are included in Tables 1.1 and 1.2.

6) In 2012/13 500,900 learners benefited from support for the unemployed (those nearest the workforce), of which 496,200 were aged 19+. These are defined as those learners reporting that they were in receipt of Employment and Support Allowance - Work Related Activity Group (ESA WRAG) or Jobseeker's Allowance (JSA).

7) Figures for English and maths (previously Skills for Life) include GCSEs, Functional Skills, Adult Basic Skills Certificates including ESOL Certificates, and Qualifications and Credit Framework Certificates and Awards in English and maths.

8) Please see the general footnotes and the FE and Skills footnotes sections for further information on these tables.

**Table 2: Adult (19+) Demographic Summary of FE and Skills Participation (2012/13) – Learner Volumes**

|  | Funded Learners                                   |                               |                |                |                |                  |                |               |                        |               |
|--|---|-------------------------------|----------------|----------------|----------------|------------------|----------------|---------------|------------------------|---------------|
|  | All FE and Skills Participation                   |                               |                |                |                |                  |                |               |                        |               |
|  | Below Level 2<br>(excluding English<br>and Maths) | English and<br>Maths<br>Total | English        | Maths          | ESOL           | Level 2          | Level 3        | Level 4+      | Total<br>FE and Skills | %             |
| <b>Total Learners</b>  | <b>757,800</b>                                    | <b>1,049,600</b>              | <b>765,800</b> | <b>748,200</b> | <b>146,200</b> | <b>1,239,200</b> | <b>594,300</b> | <b>50,000</b> | <b>3,280,600</b>       | <b>100.0%</b> |
| <b>Age</b>   |   |                               |                |                |                |                  |                |               |                        |               |
| 19-24  | 197,800   | 308,100                       | 239,700        | 242,800        | 20,800         | 372,900          | 232,500        | 10,600        | 803,900                | 24.5%         |
| 25-49  | 416,900   | 630,600                       | 445,800        | 428,400        | 109,700        | 694,200          | 307,900        | 32,600        | 1,822,200              | 55.5%         |
| 50+  | 142,900   | 110,600                       | 80,100         | 76,900         | 15,700         | 172,100          | 53,900         | 6,900         | 649,100                | 19.8%         |
| Unknown  | 100   | 300                           | 200            | 100            | -              | -                | -              | -             | 5,400                  | *             |
| <b>Gender</b>  |   |                               |                |                |                |                  |                |               |                        |               |
| Female   | 318,200   | 623,900                       | 441,900        | 438,200        | 97,300         | 631,500          | 367,500        | 30,500        | 1,847,300              | 56.3%         |
| Male   | 439,500   | 425,700                       | 323,900        | 310,000        | 48,900         | 607,600          | 226,800        | 19,500        | 1,433,300              | 43.7%         |
| <b>Learners with Learning Difficulties<br/>and/or Disabilities</b> |   |                               |                |                |                |                  |                |               |                        |               |
| Learning Difficulty/Disability                                     | 158,200   | 129,900                       | 97,500         | 88,800         | 9,300          | 127,800          | 54,300         | 3,600         | 434,700                | 13.2%         |
| No Learning Difficulty/Disability                                  | 564,600   | 886,000                       | 647,600        | 641,100        | 129,400        | 1,071,100        | 524,200        | 43,700        | 2,686,200              | 81.9%         |
| Not Known  | 35,000  | 33,700                        | 20,700         | 18,300         | 7,500          | 40,300           | 15,700         | 2,800         | 159,800                | 4.9%          |
| <b>Ethnicity</b>   |   |                               |                |                |                |                  |                |               |                        |               |
| Asian/ Asian British   | 61,600  | 110,400                       | 59,900         | 51,200         | 39,800         | 88,300           | 32,300         | 2,600         | 263,400                | 8.0%          |
| Black/ African/ Caribbean/ Black British                           | 67,800  | 84,500                        | 52,900         | 49,800         | 19,600         | 83,100           | 35,300         | 2,200         | 221,900                | 6.8%          |
| Mixed/ Multiple Ethnic Group                                       | 22,600  | 25,800                        | 17,100         | 16,500         | 5,100          | 29,600           | 13,500         | 900           | 76,000                 | 2.3%          |
| White  | 569,100   | 775,300                       | 608,600        | 608,400        | 59,600         | 998,400          | 499,100        | 42,900        | 2,568,400              | 78.3%         |
| Other Ethnic Group   | 16,100  | 33,200                        | 14,200         | 10,800         | 17,500         | 19,000           | 6,600          | 500           | 67,600                 | 2.1%          |
| Not Known/Not Provided   | 20,500  | 20,400                        | 13,100         | 11,400         | 4,600          | 20,800           | 7,500          | 900           | 83,500                 | 2.5%          |

**Notes**

1) These tables include Apprenticeships, Workplace Learning, Community Learning and Education and Training provision taken at General Further Education Colleges (including Tertiary), Sixth Form Colleges, Special Colleges (Agricultural and Horticultural Colleges and Art and Design Colleges), Specialist Colleges and External Institutions.

2) Figures for English and maths (previously Skills for Life) include GCSEs, Functional Skills, Adult Basic Skills Certificates including ESOL Certificates, and Qualifications and Credit Framework Certificates and Awards in English and maths.

3) Please see the general footnotes and the FE and Skills Demographics footnotes sections for further information on these tables.

**Table 3: Adult (19+) FE and Skills – English and Maths Participation and Achievement by Level (2008/09 to 2012/13)**

| Measure              | Level   | Funded Learners |                |                |                |                |                |                  |                |
|----------------------|---|-----------------|----------------|----------------|----------------|----------------|----------------|------------------|----------------|
|                      |   | 2008/09         | 2009/10        | 2010/11        |                | 2011/12        |                | 2012/13          |                |
|                      |   |                 |                | % change       | % change       |                | % change       |                  | % change       |
|                      |   | Full Year       | Full Year      | 08/09 to 09/10 | 09/10 to 10/11 | Full Year      | 10/11 to 11/12 | Full Year        | 11/12 to 12/13 |
| <b>Participation</b> | <b>Total Learners</b>                                   | <b>945,100</b>  | <b>909,100</b> | <b>-3.8%</b>   | <b>5.8%</b>    | <b>961,800</b> | <b>12.6%</b>   | <b>1,083,000</b> | <b>-3.1%</b>   |
|                      | of which English  | 579,500         | 555,700        | -4.1%          | 15.0%          | 639,000        | 22.5%          | 782,500          | -2.1%          |
|                      | of which entry level                                    | 136,700         | 112,400        | -17.8%         | -7.7%          | 103,800        | 3.6%           | 107,600          | 11.7%          |
|                      | of which level 1  | 248,700         | 226,700        | -8.9%          | 26.1%          | 285,900        | 32.7%          | 340,900          | -10.2%         |
|                      | of which level 2  | 245,600         | 252,100        | 2.7%           | 13.8%          | 286,800        | 16.9%          | 335,400          | -2.2%          |
|                      | of which maths  | 517,100         | 525,000        | 1.5%           | 20.1%          | 630,500        | 22.5%          | 772,500          | -3.1%          |
|                      | of which entry level                                    | 108,700         | 101,400        | -6.7%          | -2.9%          | 98,500         | 3.9%           | 102,400          | -6.7%          |
|                      | of which level 1  | 241,800         | 236,800        | -2.1%          | 32.9%          | 314,800        | 26.0%          | 396,500          | -12.5%         |
|                      | of which level 2  | 218,600         | 228,800        | 4.6%           | 16.2%          | 265,700        | 21.7%          | 323,400          | 3.5%           |
|                      | of which ESOL (English for Speakers of Other Languages) | 188,700         | 178,600        | -5.4%          | -8.4%          | 163,600        | -14.8%         | 139,400          | 4.9%           |
|                      | of which entry level                                    | 161,000         | 150,100        | -6.8%          | -9.7%          | 135,500        | -12.9%         | 118,000          | 4.4%           |
|                      | of which level 1  | 24,100          | 24,100         | *              | *              | 24,200         | -21.4%         | 19,000           | 13.8%          |
|                      | of which level 2  | 9,300           | 9,700          | 3.5%           | -0.6%          | 9,600          | -26.1%         | 7,100            | 6.1%           |
| <b>Achievement</b>   | <b>Total Learners</b>                                   | <b>639,100</b>  | <b>614,600</b> | <b>-3.8%</b>   | <b>-3.1%</b>   | <b>595,600</b> | <b>6.3%</b>    | <b>633,000</b>   | <b>-5.6%</b>   |
|                      | of which English  | 340,300         | 336,400        | -1.1%          | -2.0%          | 329,700        | 17.5%          | 387,400          | -9.3%          |
|                      | of which entry level                                    | 91,800          | 79,200         | -13.7%         | -6.1%          | 74,400         | 7.2%           | 79,700           | 13.5%          |
|                      | of which level 1  | 144,000         | 130,200        | -9.6%          | 3.1%           | 134,100        | 30.9%          | 175,600          | -13.4%         |
|                      | of which level 2  | 129,000         | 144,700        | 12.2%          | -3.3%          | 139,900        | 9.2%           | 152,800          | -23.7%         |
|                      | of which maths  | 293,000         | 311,100        | 6.2%           | 4.2%           | 324,300        | 19.1%          | 386,400          | -7.6%          |
|                      | of which entry level                                    | 68,300          | 68,400         | *              | 3.7%           | 70,900         | 12.4%          | 79,700           | -7.5%          |
|                      | of which level 1  | 138,900         | 138,400        | *              | 9.4%           | 151,300        | 26.6%          | 191,600          | -13.8%         |
|                      | of which level 2  | 111,400         | 126,200        | 13.2%          | 1.8%           | 128,500        | 10.8%          | 142,400          | -9.0%          |
|                      | of which ESOL (English for Speakers of Other Languages) | 135,800         | 128,200        | -5.6%          | -4.7%          | 122,100        | -10.0%         | 110,000          | 6.9%           |
|                      | of which entry level                                    | 116,700         | 108,100        | -7.4%          | -5.9%          | 101,700        | -7.9%          | 93,700           | 5.7%           |
|                      | of which level 1  | 15,600          | 15,900         | 1.6%           | 3.6%           | 16,400         | -20.0%         | 15,700           | 19.6%          |
|                      | of which level 2  | 6,100           | 6,600          | 8.0%           | -1.7%          | 6,500          | -19.7%         | 5,700            | 9.7%           |

**Notes**

1) Figures for 2011/12 onwards are not directly comparable to earlier years as a Single Individualised Learner Record (ILR) data collection system has been introduced. Small technical changes have been made in the way learners from more than one provision type are counted, leading to a removal of duplicate learners and a reduction in overall learner numbers of approximately 2 per cent. More information on the Single ILR is available at:

[http://webarchive.nationalarchives.gov.uk/20140107201041/http://www.thedataservice.org.uk/NR/rdonlyres/C05DCDD5-67EE-4AD0-88B9-BEBC8F7F3300/0/SILR\\_Effects\\_SFR\\_Learners\\_June12.pdf](http://webarchive.nationalarchives.gov.uk/20140107201041/http://www.thedataservice.org.uk/NR/rdonlyres/C05DCDD5-67EE-4AD0-88B9-BEBC8F7F3300/0/SILR_Effects_SFR_Learners_June12.pdf)

2) Data for earlier years are available in the English and maths Supplementary Tables:

<https://www.gov.uk/government/statistical-data-sets/fe-data-library-skills-for-life>

3) Figures for English and maths (previously Skills for Life) include GCSEs, Functional Skills, Adult Basic Skills Certificates including ESOL Certificates, and Qualifications and Credit Framework Certificates and Awards in English and maths.

4) Please see the general footnotes section for further information on this table.

**Table 4: All Age Demographic Summary of Apprenticeship Participation (2012/13) – Learner Volumes**

|  | Funded Apprentices                |                               |                       |                       |               | % |
|--|-----------------------------------|-------------------------------|-----------------------|-----------------------|---------------|---|
|  | Apprenticeships                   |                               |                       |                       |               |   |
|  | Intermediate Level Apprenticeship | Advanced Level Apprenticeship | Higher Apprenticeship | Total Apprenticeships |               |   |
| <b>Total Learners</b>  | <b>501,700</b>                    | <b>377,000</b>                | <b>13,000</b>         | <b>868,700</b>        | <b>100.0%</b> |   |
| <b>Age</b>   |                                   |                               |                       |                       |               |   |
| Under 19   | 132,600                           | 54,800                        | 800                   | 181,300               | 20.9%         |   |
| 19-24  | 167,200                           | 132,500                       | 4,200                 | 294,500               | 33.9%         |   |
| 25-49  | 167,700                           | 166,000                       | 6,900                 | 334,600               | 38.5%         |   |
| 50+  | 34,200                            | 23,700                        | 1,000                 | 58,300                | 6.7%          |   |
| Unknown  | -                                 | -                             | -                     | -                     | -             |   |
| <b>Gender</b>  |                                   |                               |                       |                       |               |   |
| Female   | 249,800                           | 210,500                       | 8,300                 | 455,600               | 52.4%         |   |
| Male   | 251,800                           | 166,500                       | 4,700                 | 413,100               | 47.6%         |   |
| <b>Learners with Learning Difficulties and/or Disabilities</b> |                                   |                               |                       |                       |               |   |
| Learning Difficulty/Disability                                 | 44,600                            | 26,600                        | 600                   | 70,100                | 8.1%          |   |
| No Learning Difficulty/Disability                              | 449,500                           | 345,200                       | 12,200                | 785,800               | 90.5%         |   |
| Not Known  | 7,600                             | 5,200                         | 200                   | 12,800                | 1.5%          |   |
| <b>Ethnicity</b>   |                                   |                               |                       |                       |               |   |
| Asian/ Asian British   | 19,900                            | 13,100                        | 500                   | 32,800                | 3.8%          |   |
| Black/ African/ Caribbean/ Black British                       | 16,000                            | 12,600                        | 300                   | 28,500                | 3.3%          |   |
| Mixed/ Multiple Ethnic Group                                   | 9,700                             | 6,600                         | 200                   | 16,200                | 1.9%          |   |
| White  | 447,000                           | 338,800                       | 11,700                | 776,200               | 89.4%         |   |
| Other Ethnic Group   | 3,900                             | 2,200                         | -                     | 6,000                 | 0.7%          |   |
| Not Known/Not Provided   | 5,200                             | 3,700                         | 200                   | 9,000                 | 1.0%          |   |

**Notes**

1) Please see the general footnotes and the Demographics footnotes sections for further information on this table.

Table 5: All Age Apprenticeship Participation by Level and Age (2008/09 to 2012/13)

| Age                               |              | 2008/09        | 2009/10        | 2010/11        | 2011/12        | 2012/13        | Funded Apprentices |                   |                 |                          |                   |                   |                 |                          |
|-----------------------------------|--------------|----------------|----------------|----------------|----------------|----------------|--------------------|-------------------|-----------------|--------------------------|-------------------|-------------------|-----------------|--------------------------|
|                                   |              |                |                |                |                |                | 2011/12            |                   |                 |                          | 2012/13           |                   |                 |                          |
|                                   |              |                |                |                |                |                | August to October  | August to January | August to April | Full Year August to July | August to October | August to January | August to April | Full Year August to July |
|                                   | Full Year    | Full Year      | Full Year      | Full Year      | Full Year      |                |                    |                   |                 |                          |                   |                   |                 |                          |
| Intermediate Level Apprenticeship | Under 19     | 129,800        | 140,400        | 150,000        | 144,200        | 132,600        | 88,400             | 106,700           | 124,800         | 144,200                  | 84,100            | 99,700            | 114,500         | 132,600                  |
|                                   | 19-24        | 101,300        | 114,600        | 141,300        | 159,100        | 167,200        | 101,100            | 119,300           | 139,400         | 159,100                  | 111,400           | 130,100           | 149,100         | 167,200                  |
|                                   | 25+          | 42,500         | 49,000         | 123,900        | 203,000        | 201,900        | 119,200            | 145,300           | 173,000         | 203,000                  | 130,500           | 151,800           | 173,700         | 201,900                  |
|                                   | <b>Total</b> | <b>273,600</b> | <b>304,000</b> | <b>415,200</b> | <b>506,200</b> | <b>501,700</b> | <b>308,600</b>     | <b>371,400</b>    | <b>437,200</b>  | <b>506,200</b>           | <b>326,000</b>    | <b>381,600</b>    | <b>437,300</b>  | <b>501,700</b>           |
|                                   | of which 19+ | 143,800        | 163,600        | 265,300        | 362,100        | 369,100        | 220,300            | 264,700           | 312,400         | 362,100                  | 242,000           | 281,900           | 322,800         | 369,100                  |
| Advanced Level Apprenticeship     | Under 19     | 44,100         | 45,800         | 52,900         | 53,300         | 54,800         | 34,400             | 40,100            | 45,600          | 53,300                   | 36,000            | 41,600            | 47,200          | 54,800                   |
|                                   | 19-24        | 90,300         | 94,900         | 108,100        | 118,900        | 132,500        | 85,100             | 108,700           | 106,600         | 118,900                  | 95,000            | 105,700           | 117,500         | 132,500                  |
|                                   | 25+          | 36,500         | 44,800         | 86,100         | 144,800        | 189,700        | 80,600             | 99,300            | 119,600         | 144,800                  | 114,500           | 131,800           | 150,900         | 189,700                  |
|                                   | <b>Total</b> | <b>170,900</b> | <b>185,500</b> | <b>247,200</b> | <b>317,000</b> | <b>377,000</b> | <b>200,100</b>     | <b>235,200</b>    | <b>271,700</b>  | <b>317,000</b>           | <b>245,500</b>    | <b>279,000</b>    | <b>315,500</b>  | <b>377,000</b>           |
|                                   | of which 19+ | 126,800        | 139,700        | 194,300        | 263,700        | 322,200        | 165,700            | 195,100           | 226,200         | 263,700                  | 209,500           | 237,400           | 268,300         | 322,200                  |
| Higher Apprenticeship             | Under 19     | 100            | 200            | 300            | 500            | 800            | 200                | 200               | 300             | 500                      | 400               | 500               | 600             | 800                      |
|                                   | 19-24        | 200            | 1,400          | 2,400          | 2,900          | 4,200          | 2,200              | 2,400             | 2,700           | 2,900                    | 2,800             | 3,200             | 3,600           | 4,200                    |
|                                   | 25+          | -              | 100            | 800            | 2,300          | 8,000          | 1,200              | 1,500             | 1,800           | 2,300                    | 2,500             | 3,300             | 4,900           | 8,000                    |
|                                   | <b>Total</b> | <b>300</b>     | <b>1,700</b>   | <b>3,500</b>   | <b>5,700</b>   | <b>13,000</b>  | <b>3,500</b>       | <b>4,100</b>      | <b>4,900</b>    | <b>5,700</b>             | <b>5,700</b>      | <b>7,000</b>      | <b>9,200</b>    | <b>13,000</b>            |
|                                   | of which 19+ | 200            | 1,500          | 3,200          | 5,200          | 12,200         | 3,300              | 3,800             | 4,600           | 5,200                    | 5,300             | 6,400             | 8,600           | 12,200                   |
| All Apprenticeships               | Under 19     | 173,900        | 186,400        | 203,100        | 189,600        | 181,300        | 121,300            | 143,800           | 165,200         | 189,600                  | 118,700           | 138,600           | 157,400         | 181,300                  |
|                                   | 19-24        | 191,800        | 210,900        | 251,900        | 272,100        | 294,500        | 186,400            | 213,800           | 242,600         | 272,100                  | 206,800           | 234,500           | 263,500         | 294,500                  |
|                                   | 25+          | 79,100         | 93,900         | 210,900        | 344,800        | 392,900        | 200,200            | 244,400           | 291,400         | 344,800                  | 246,500           | 284,600           | 325,700         | 392,900                  |
|                                   | <b>Total</b> | <b>444,800</b> | <b>491,300</b> | <b>665,900</b> | <b>806,500</b> | <b>868,700</b> | <b>507,900</b>     | <b>602,000</b>    | <b>699,200</b>  | <b>806,500</b>           | <b>572,000</b>    | <b>657,700</b>    | <b>746,700</b>  | <b>868,700</b>           |
|                                   | of which 19+ | 270,900        | 304,800        | 462,800        | 616,900        | 687,400        | 386,600            | 458,200           | 534,100         | 616,900                  | 453,300           | 519,100           | 589,300         | 687,400                  |

**Notes**

1) Figures for 2011/12 onwards are not comparable to earlier years as a Single Individualised Learner Record (ILR) data collection system has been introduced. Technical changes have been made in the way learners participating on more than one Apprenticeship programme are counted. This has led to a removal of duplicate learners and a reduction in overall Apprenticeship learners of approximately 5 per cent.

[http://webarchive.nationalarchives.gov.uk/20140107201041/http://www.thedataservice.org.uk/NR/rdonlyres/C05DCDD5-67EE-4AD0-88B9-BEBC8F7F3300/0/SILR\\_Effects\\_SFR\\_Learners\\_June12.pdf](http://webarchive.nationalarchives.gov.uk/20140107201041/http://www.thedataservice.org.uk/NR/rdonlyres/C05DCDD5-67EE-4AD0-88B9-BEBC8F7F3300/0/SILR_Effects_SFR_Learners_June12.pdf)

2) Prior to 2011/12, full year numbers are a count of Apprenticeship programmes in each year. Learners undertaking more than one Apprenticeship programme will appear more than once in the 'All Apprenticeships' total as well as the totals for each Apprenticeship level they participated in. From 2011/12 onwards 'All Apprenticeships' counts each Apprenticeship learner only once regardless of how many programmes they participated in. Each learner is still counted in the totals for each Apprenticeship level they participated in.

3) Data for earlier years are available in the Apprenticeship Supplementary Tables:

<https://www.gov.uk/government/statistical-data-sets/fe-data-library-apprenticeships>

4) Figures for 2012/13 include Apprenticeships through the Employer Ownership Pilot.

5) Please see the general footnotes and the Apprenticeships footnotes section for further information on this table.



**Table 7.1: Adult (18+) FE and Skills - Offender Learning Participation by Level (2010/11 to 2012/13) – Learner Volumes**

| Level                          |   | Funded Learners |               |                               |               |                               |
|--------------------------------|---|-----------------|---------------|-------------------------------|---------------|-------------------------------|
|                                |   | 2010/11         | 2011/12       |                               | 2012/13       |                               |
|                                |   | Full Year       | Full Year     | % change<br>10/11 to<br>11/12 | Full Year     | % change<br>11/12 to<br>12/13 |
| <b>Total Offender Learners</b> |   | <b>88,900</b>   | <b>90,100</b> | <b>1.4%</b>                   | <b>89,900</b> | <b>*</b>                      |
| <b>Participation</b>           | <b>of which...</b>                          |                 |               |                               |               |                               |
|                                | Below Level 2 (excluding English and maths) | 56,800          | 59,900        | 5.4%                          | 66,300        | 10.8%                         |
|                                | English and maths                           | 35,400          | 37,000        | 4.5%                          | 34,400        | -7.1%                         |
|                                | Full Level 2                                | 3,600           | 3,800         | 4.0%                          | 6,900         | 83.2%                         |
|                                | Full Level 3                                | 100             | 100           | 23.3%                         | 100           | -25.2%                        |
|                                | Level 2                                     | 38,500          | 41,600        | 7.9%                          | 40,300        | -2.9%                         |
|                                | Level 3                                     | 2,000           | 2,100         | 5.6%                          | 2,400         | 16.6%                         |
|                                | Level 4+                                    | -               | -             | -                             | -             | -                             |
|                                | No Level Assigned                           | 12,400          | 7,800         | -37.1%                        | -             | -                             |

**Table 7.2: Adult (18+) FE and Skills - Offender Learning Achievement by Level (2010/11 to 2012/13) – Learner Volumes**

| Level                          |   | Funded Learners |               |                               |               |                               |
|--------------------------------|---|-----------------|---------------|-------------------------------|---------------|-------------------------------|
|                                |   | 2010/11         | 2011/12       |                               | 2012/13       |                               |
|                                |   | Full Year       | Full Year     | % change<br>10/11 to<br>11/12 | Full Year     | % change<br>11/12 to<br>12/13 |
| <b>Total Offender Learners</b> |   | <b>70,300</b>   | <b>71,900</b> | <b>2.3%</b>                   | <b>68,400</b> | <b>-4.9%</b>                  |
| <b>Achievement</b>             | <b>of which...</b>                          |                 |               |                               |               |                               |
|                                | Below Level 2 (excluding English and maths) | 44,400          | 47,200        | 6.4%                          | 51,500        | 9.0%                          |
|                                | English and maths                           | 21,700          | 23,400        | 7.6%                          | 16,400        | -29.7%                        |
|                                | Full Level 2                                | 3,200           | 2,300         | -30.2%                        | 4,000         | 77.9%                         |
|                                | Full Level 3                                | 100             | 100           | -23.2%                        | -             | -                             |
|                                | Level 2                                     | 29,100          | 31,800        | 9.2%                          | 29,100        | -8.4%                         |
|                                | Level 3                                     | 1,200           | 1,200         | 7.1%                          | 1,400         | 9.9%                          |
|                                | Level 4+                                    | -               | -             | -                             | -             | -                             |
|                                | No Level Assigned                           | 10,400          | 6,700         | -35.6%                        | -             | -                             |

**Notes**

1) Figures for 2011/12 onwards are not directly comparable to earlier years as a Single Individualised Learner Record (ILR) data collection system has been introduced. Small technical changes have been made in the way learners from more than one provision type are counted, leading to a removal of duplicate learners and a reduction in overall learner numbers of approximately 2 per cent. More information on the Single ILR is available at:

[http://webarchive.nationalarchives.gov.uk/20140107201041/http://www.thedataservice.org.uk/NR/rdonlyres/C05DCDD5-67EE-4AD0-88B9-BEBC8F7F3300/0/SILR\\_Effects\\_SFR\\_Learners\\_June12.pdf](http://webarchive.nationalarchives.gov.uk/20140107201041/http://www.thedataservice.org.uk/NR/rdonlyres/C05DCDD5-67EE-4AD0-88B9-BEBC8F7F3300/0/SILR_Effects_SFR_Learners_June12.pdf)

2) Figures for English and maths (previously Skills for Life) include GCSEs, Functional Skills, Adult Basic Skills Certificates including ESOL Certificates, and Qualifications and Credit Framework Certificates and Awards in English and maths.

3) Please see the general footnotes and the FE and Skills footnotes sections for further information on these tables.

4) An offender learner may be counted more than once if they participated/achieved in learning at different institutions during an academic year.

5) For further information on these tables please see the accompanying notes page.



Table 8.1: Workplace Learning Starts by Level (2008/09 to 2012/13)

| Level               |   | 2008/09        | 2009/10        | 2010/11        | 2011/12        | 2012/13        | 2011/12       |               |               |                | 2012/13       |               |               |               |
|---------------------|---|----------------|----------------|----------------|----------------|----------------|---------------|---------------|---------------|----------------|---------------|---------------|---------------|---------------|
|                     |   | Full Year      | Full Year      | Full Year      | Full Year      | Full Year      | Quarter 1     | Quarter 2     | Quarter 3     | Quarter 4      | Quarter 1     | Quarter 2     | Quarter 3     | Quarter 4     |
| <b>Total Starts</b> |   | <b>906,100</b> | <b>774,500</b> | <b>599,300</b> | <b>331,600</b> | <b>148,500</b> | <b>59,500</b> | <b>66,400</b> | <b>88,200</b> | <b>117,600</b> | <b>30,800</b> | <b>34,700</b> | <b>42,100</b> | <b>40,800</b> |
| <b>of which...</b>  |   |                |                |                |                |                |               |               |               |                |               |               |               |               |
|                     | Below Level 2                               | 155,300        | 147,100        | 114,300        | 43,200         | 30,900         | 7,900         | 9,300         | 11,800        | 14,200         | 7,600         | 9,300         | 8,100         | 5,900         |
|                     | Level 2                                     | 579,900        | 430,500        | 331,900        | 252,200        | 102,100        | 44,700        | 49,900        | 67,500        | 90,200         | 20,300        | 22,500        | 29,800        | 29,600        |
|                     | Level 3                                     | 135,800        | 100,200        | 81,800         | 34,200         | 11,100         | 6,700         | 6,900         | 8,500         | 12,200         | 2,700         | 2,100         | 3,100         | 3,200         |
|                     | Level 4+                                    | 11,900         | 4,300          | 3,000          | 2,000          | 2,000          | 200           | 300           | 500           | 1,000          | 200           | 400           | 600           | 800           |
|                     | No Level Assigned                           | 23,200         | 92,400         | 68,300         | -              | 2,400          | -             | -             | -             | -              | -             | 400           | 600           | 1,400         |
|                     | Below Level 2 (excluding English and maths) | 22,100         | 27,900         | 11,200         | 4,200          | 2,900          | 600           | 900           | 1,300         | 1,500          | 400           | 700           | 900           | 900           |
|                     | English and maths                           | 191,700        | 127,000        | 108,300        | 62,200         | 39,400         | 11,900        | 13,900        | 16,600        | 19,800         | 9,800         | 11,300        | 10,300        | 8,000         |
|                     | Full Level 2                                | 520,100        | 415,100        | 315,400        | 226,300        | 85,200         | 39,900        | 44,200        | 60,900        | 81,300         | 16,900        | 18,800        | 25,100        | 24,400        |
|                     | Full Level 3                                | 136,100        | 98,200         | 80,600         | 31,700         | 6,000          | 6,600         | 6,700         | 7,900         | 10,600         | 1,700         | 1,200         | 1,500         | 1,600         |

Table 8.2: Workplace Learning Achievements by Level (2008/09 to 2012/13)

| Level                     |   | 2008/09        | 2009/10        | 2010/11        | 2011/12        | 2012/13        | 2011/12       |               |               |               | 2012/13       |               |               |               |
|---------------------------|---|----------------|----------------|----------------|----------------|----------------|---------------|---------------|---------------|---------------|---------------|---------------|---------------|---------------|
|                           |   | Full Year      | Full Year      | Full Year      | Full Year      | Full Year      | Quarter 1     | Quarter 2     | Quarter 3     | Quarter 4     | Quarter 1     | Quarter 2     | Quarter 3     | Quarter 4     |
| <b>Total Achievements</b> |   | <b>583,700</b> | <b>676,000</b> | <b>584,900</b> | <b>290,100</b> | <b>197,900</b> | <b>62,900</b> | <b>64,500</b> | <b>68,300</b> | <b>94,500</b> | <b>49,600</b> | <b>49,300</b> | <b>44,800</b> | <b>54,200</b> |
| <b>of which...</b>        |   |                |                |                |                |                |               |               |               |               |               |               |               |               |
|                           | Below Level 2                               | 88,700         | 105,900        | 95,100         | 34,900         | 27,400         | 4,900         | 6,900         | 9,300         | 13,800        | 5,200         | 6,300         | 7,300         | 8,600         |
|                           | Level 2                                     | 399,300        | 389,700        | 332,500        | 212,100        | 145,100        | 46,800        | 47,400        | 49,700        | 68,100        | 38,300        | 36,500        | 31,600        | 38,700        |
|                           | Level 3                                     | 68,800         | 95,500         | 81,100         | 41,100         | 22,800         | 10,700        | 9,800         | 8,800         | 11,800        | 5,700         | 6,000         | 5,200         | 5,900         |
|                           | Level 4+                                    | 7,400          | 7,200          | 3,600          | 2,000          | 2,200          | 400           | 400           | 400           | 700           | 300           | 500           | 700           | 800           |
|                           | No Level Assigned                           | 19,600         | 77,600         | 72,600         | -              | 400            | -             | -             | -             | -             | -             | -             | 100           | 300           |
|                           | Below Level 2 (excluding English and maths) | 9,300          | 15,900         | 10,900         | 2,700          | 2,800          | 300           | 500           | 700           | 1,300         | 400           | 500           | 1,000         | 900           |
|                           | English and maths                           | 118,900        | 94,900         | 88,500         | 51,700         | 35,700         | 7,900         | 10,900        | 13,700        | 19,100        | 7,800         | 8,400         | 8,500         | 10,900        |
|                           | Full Level 2                                | 359,000        | 378,900        | 318,700        | 191,700        | 129,900        | 43,600        | 42,800        | 44,400        | 60,900        | 35,100        | 33,400        | 28,500        | 33,000        |
|                           | Full Level 3                                | 69,100         | 93,700         | 80,200         | 40,200         | 16,100         | 10,700        | 9,700         | 8,700         | 11,200        | 4,400         | 4,300         | 3,600         | 3,800         |

**Notes**

1) Figures for 2011/12 onwards are not directly comparable to earlier years as a Single Individualised Learner Record (ILR) data collection system has been introduced. Small technical changes have been made in the way learners from more than one provision type are counted, leading to a removal of duplicate learners and a reduction in overall learner numbers of approximately 2 per cent. More information on the Single ILR is available at:

[http://webarchive.nationalarchives.gov.uk/20140107201041/http://www.thedataservice.org.uk/NR/rdonlyres/C05DCDD5-67EE-4AD0-88B9-BEBC8F7F3300/0/SILR\\_Effects\\_SFR\\_Learners\\_June12.pdf](http://webarchive.nationalarchives.gov.uk/20140107201041/http://www.thedataservice.org.uk/NR/rdonlyres/C05DCDD5-67EE-4AD0-88B9-BEBC8F7F3300/0/SILR_Effects_SFR_Learners_June12.pdf)

2) Workplace Learning includes Train to Gain and other Employer Responsive provision (except Apprenticeships).

3) Data for earlier years are available in the Workplace Learning Supplementary Tables:

<https://www.gov.uk/government/statistical-data-sets/fe-data-library-workplace-learning>

4) English and maths starts and achievements can be at Level 2 or Below Level 2.

5) These tables include some learners aged under 19 who are eligible for funding on certain Workplace Learning programmes (such as Programmes for the Unemployed).

6) Please see the general footnotes and the Workplace Learning footnotes section for further information on these tables.

**Table 9: Community Learning Participation and Achievement by Type (2008/09 to 2012/13) – Learner Volumes**

| Measure              | Provision Type  | Funded Learners |                |                               |                |                               |                |                               |                |                               |
|----------------------|---|-----------------|----------------|-------------------------------|----------------|-------------------------------|----------------|-------------------------------|----------------|-------------------------------|
|                      |   | 2008/09         | 2009/10        | 2010/11                       |                | 2011/12                       |                | 2012/13                       |                |                               |
|                      |   | Full Year       | Full Year      | % change<br>08/09 to<br>09/10 | Full Year      | % change<br>09/10 to<br>10/11 | Full Year      | % change<br>10/11 to<br>11/12 | Full Year      | % change<br>11/12 to<br>12/13 |
| <b>Participation</b> | <b>Total Learners</b>                                   | <b>755,000</b>  | <b>752,800</b> | *                             | <b>699,400</b> | <b>-7.1%</b>                  | <b>683,300</b> | <b>-2.3%</b>                  | <b>684,700</b> | *                             |
|                      | of which Personal and Community Development Learning    | 584,400         | 579,200        | -0.9%                         | 534,100        | -7.8%                         | 518,600        | -2.9%                         | 513,800        | -0.9%                         |
|                      | of which Neighbourhood Learning in Deprived Communities | 40,300          | 43,700         | 8.4%                          | 46,600         | 6.5%                          | 55,700         | 19.8%                         | 65,600         | 17.7%                         |
|                      | of which Family English, Maths and Language             | 71,000          | 71,300         | *                             | 65,400         | -8.3%                         | 58,700         | -10.4%                        | 52,600         | -10.4%                        |
|                      | of which Wider Family Learning                          | 80,500          | 79,600         | -1.1%                         | 75,400         | -5.3%                         | 72,800         | -3.4%                         | 74,400         | 2.2%                          |
| <b>Achievement</b>   | <b>Total Learners</b>                                   | <b>638,900</b>  | <b>663,000</b> | <b>3.8%</b>                   | <b>608,200</b> | <b>-8.3%</b>                  | <b>594,500</b> | <b>-2.3%</b>                  | <b>608,100</b> | <b>2.3%</b>                   |
|                      | of which Personal and Community Development Learning    | 489,000         | 505,900        | 3.5%                          | 458,600        | -9.3%                         | 445,400        | -2.9%                         | 450,900        | 1.2%                          |
|                      | of which Neighbourhood Learning in Deprived Communities | 34,400          | 39,800         | 15.6%                         | 41,300         | 3.7%                          | 50,100         | 21.4%                         | 60,600         | 21.1%                         |
|                      | of which Family English, Maths and Language             | 61,000          | 62,700         | 2.7%                          | 57,000         | -9.0%                         | 50,900         | -10.8%                        | 46,000         | -9.6%                         |
|                      | of which Wider Family Learning                          | 71,400          | 72,600         | 1.6%                          | 70,100         | -3.4%                         | 67,500         | -3.8%                         | 69,500         | 2.9%                          |

**Notes**

1) Figures for 2011/12 onwards are not directly comparable to earlier years as a Single Individualised Learner Record (ILR) data collection system has been introduced. Small technical changes have been made in the way learners from more than one provision type are counted, leading to a removal of duplicate learners and a reduction in overall learner numbers of approximately 2 per cent. More information on the Single ILR is available at:

[http://webarchive.nationalarchives.gov.uk/20140107201041/http://www.thedataservice.org.uk/NR/rdonlyres/C05DCDD5-67EE-4AD0-88B9-BEBC8F7F3300/0/SILR\\_Effects\\_SFR\\_Learners\\_June12.pdf](http://webarchive.nationalarchives.gov.uk/20140107201041/http://www.thedataservice.org.uk/NR/rdonlyres/C05DCDD5-67EE-4AD0-88B9-BEBC8F7F3300/0/SILR_Effects_SFR_Learners_June12.pdf)

2) Data for earlier years is available in the Community Learning Supplementary Tables:

<https://www.gov.uk/government/statistical-data-sets/fe-data-library-community-learning>

3) Please see the general footnotes and the Community Learning footnotes sections for further information on this table.

**Table 10.1: Adult (19+) Education and Training Success Rates by Level (2008/09 to 2012/13) – Percentages**

| Education and Training Provision | Level             | 2008/09      | 2009/10      | 2010/11      | 2011/12      | 2012/13      |
|----------------------------------|-------------------|--------------|--------------|--------------|--------------|--------------|
|                                  |                   | Full Year    | Full Year    | Full Year    | Full Year    | Full Year    |
|                                  |                   | <b>80.6%</b> | <b>80.3%</b> | <b>81.4%</b> | <b>83.9%</b> | <b>86.8%</b> |
| of which...                      | English and maths | 75.1%        | 74.3%        | 78.6%        | 80.1%        | 83.4%        |
|                                  | Full Level 2      | 72.1%        | 74.8%        | 78.5%        | 82.6%        | 85.0%        |
|                                  | Full Level 3      | 70.1%        | 75.1%        | 77.7%        | 78.4%        | 79.6%        |
|                                  | Level 2           | 80.5%        | 80.3%        | 80.2%        | 82.7%        | 85.5%        |
|                                  | Level 3           | 78.4%        | 78.7%        | 78.8%        | 79.4%        | 81.6%        |

**Table 10.2: Apprenticeship Success Rates by Level and Age (2008/09 to 2012/13) – Percentages**

| Level                             | Age          | 2008/09      | 2009/10      | 2010/11      | 2011/12      | 2012/13      |
|-----------------------------------|--------------|--------------|--------------|--------------|--------------|--------------|
|                                   |              | Full Year    | Full Year    | Full Year    | Full Year    | Full Year    |
| Intermediate Level Apprenticeship | Under 19     | 68.3%        | 71.1%        | 72.2%        | 71.9%        | 69.8%        |
|                                   | 19-24        | 71.7%        | 74.6%        | 76.7%        | 74.8%        | 71.6%        |
|                                   | 25+          | 76.6%        | 77.5%        | 80.6%        | 71.4%        | 73.8%        |
|                                   | <b>Total</b> | <b>70.4%</b> | <b>73.4%</b> | <b>75.3%</b> | <b>72.6%</b> | <b>72.0%</b> |
|                                   | of which 19+ | 72.8%        | 75.6%        | 78.0%        | 73.0%        | 72.9%        |
| Advanced Level Apprenticeship     | Under 19     | 73.6%        | 76.2%        | 79.0%        | 76.5%        | 75.9%        |
|                                   | 19-24        | 70.8%        | 75.4%        | 79.7%        | 77.8%        | 74.1%        |
|                                   | 25+          | 73.9%        | 71.5%        | 76.2%        | 75.1%        | 71.1%        |
|                                   | <b>Total</b> | <b>72.1%</b> | <b>74.8%</b> | <b>78.6%</b> | <b>76.5%</b> | <b>73.0%</b> |
|                                   | of which 19+ | 71.2%        | 74.0%        | 78.4%        | 76.4%        | 72.3%        |
| Higher Apprenticeship             | Under 19     |              |              | 83.2%        | 64.4%        | 77.4%        |
|                                   | 19-24        |              |              | 84.8%        | 74.4%        | 75.0%        |
|                                   | 25+          |              |              | 84.2%        | 70.1%        | 62.4%        |
|                                   | <b>Total</b> |              |              | <b>84.6%</b> | <b>72.6%</b> | <b>70.2%</b> |
|                                   | of which 19+ |              |              | 84.8%        | 73.2%        | 69.7%        |
| All Apprenticeships               | Under 19     | 69.6%        | 72.4%        | 74.0%        | 73.1%        | 71.5%        |
|                                   | 19-24        | 71.3%        | 74.9%        | 77.8%        | 75.9%        | 72.6%        |
|                                   | 25+          | 75.9%        | 75.1%        | 78.8%        | 72.6%        | 72.7%        |
|                                   | <b>Total</b> | <b>70.9%</b> | <b>73.8%</b> | <b>76.4%</b> | <b>73.8%</b> | <b>72.3%</b> |
|                                   | of which 19+ | 72.2%        | 75.0%        | 78.2%        | 74.2%        | 72.6%        |

**Table 10.3: Adult (19+) Workplace Learning Success Rates by Level (2011/12 and 2012/13) – Percentages**

| Workplace Learning | Level             | 2011/12      | 2012/13      |
|--------------------|-------------------|--------------|--------------|
|                    |                   | Full Year    | Full Year    |
|                    |                   | <b>90.6%</b> | <b>89.1%</b> |
| of which...        | English and maths | 92.5%        | 90.3%        |
|                    | Full Level 2      | 90.9%        | 89.6%        |
|                    | Full Level 3      | 86.9%        | 83.3%        |

**Notes**

1) Figures for 2011/12 onwards are not directly comparable to earlier years as a Single Individualised Learner Record (ILR) data collection system has been introduced. Small technical changes have been made in the way learners from more than one provision type are counted, leading to a removal of duplicate learners and a reduction in overall learner numbers of approximately 2 per cent. More information on the Single ILR is available at:

[http://webarchive.nationalarchives.gov.uk/20140107201041/http://www.thedataservice.org.uk/NR/rdonlyres/C05DCDD5-67EE-4AD0-88B9-BEBC8F7F3300/0/SILR\\_Effects\\_SFR\\_Learners\\_June12.pdf](http://webarchive.nationalarchives.gov.uk/20140107201041/http://www.thedataservice.org.uk/NR/rdonlyres/C05DCDD5-67EE-4AD0-88B9-BEBC8F7F3300/0/SILR_Effects_SFR_Learners_June12.pdf)

2) Data for earlier years are available in the FE Data Library:

<https://www.gov.uk/government/collections/fe-data-library>

3) Figures for English and maths (previously Skills for Life) include GCSEs, Functional Skills, Adult Basic Skills Certificates including ESOL Certificates, and Qualifications and Credit Framework Certificates and Awards in English and maths.

4) Please see the general footnotes, Apprenticeship and Workplace Learning footnotes sections for further information on these tables.

**Table 11.1: Level of Highest Qualification Held by People aged 19-59/64 in England (Quarter 4)<sup>1</sup> - percentages**

| Year              | All people aged<br>19-59/64 <sup>2</sup><br>(thousands) | Level 4 and<br>above | Level 3           | Level 3 and<br>above | Level 2           | Level 2 and<br>above | Below Level 2<br>(incl no<br>qualifications) |
|-------------------|---|----------------------|-------------------|----------------------|-------------------|----------------------|--|
| 2006              | 29,427  | 33.0                 | 20.2              | 53.2                 | 18.6              | 71.8                 | 28.2   |
| 2007              | 29,584  | 34.1                 | 20.7              | 54.8                 | 18.4              | 73.2                 | 26.8   |
| 2008              | 29,737  | 34.5                 | 20.7              | 55.2                 | 19.0              | 74.2                 | 25.8   |
| 2009              | 29,894  | 36.4                 | 20.7              | 57.1                 | 19.6              | 76.6                 | 23.4   |
| 2010              | 30,105  | 37.6                 | 21.0              | 58.5                 | 19.2              | 77.7                 | 22.3   |
| 2011              | 30,279  | 38.1                 | 21.3              | 59.4                 | 19.5              | 78.9                 | 21.1   |
| 2012              | 30,399  | 40.0                 | 21.6              | 61.6                 | 19.0              | 80.6                 | 19.4   |
| 2013              | 30,567  | 40.3 <sup>P</sup>    | 22.3 <sup>P</sup> | 62.5 <sup>P</sup>    | 18.7 <sup>P</sup> | 81.2 <sup>P</sup>    | 18.8 <sup>P</sup>                            |
| 2013 95% CI (+/-) |   | 0.4                  | 0.3               | 0.3                  | 0.3               | 0.4                  | 0.4  |

**Table 11.2: Level of Highest Qualification Held by People aged 19-59/64 in England (Quarter 4)<sup>1</sup> - volumes (thousands)**

| Year              | All people aged<br>19-59/64 <sup>2</sup> | Level 4 and<br>above | Level 3            | Level 3 and<br>above | Level 2            | Level 2 and<br>above | Below Level 2<br>(incl no<br>qualifications) |
|-------------------|--|----------------------|--------------------|----------------------|--------------------|----------------------|--|
| 2006              | 29,427                                   | 9,716                | 5,943              | 15,659               | 5,481              | 21,140               | 8,288  |
| 2007              | 29,584                                   | 10,093               | 6,116              | 16,208               | 5,456              | 21,664               | 7,919  |
| 2008              | 29,737                                   | 10,263               | 6,146              | 16,409               | 5,653              | 22,061               | 7,675  |
| 2009              | 29,894                                   | 10,868               | 6,189              | 17,057               | 5,845              | 22,902               | 6,993  |
| 2010              | 30,105                                   | 11,305               | 6,315              | 17,620               | 5,786              | 23,406               | 6,699  |
| 2011              | 30,279                                   | 11,522               | 6,457              | 17,979               | 5,908              | 23,888               | 6,391  |
| 2012              | 30,399                                   | 12,170               | 6,553              | 18,723               | 5,787              | 24,509               | 5,890  |
| 2013              | 30,567                                   | 12,309 <sup>P</sup>  | 6,801 <sup>P</sup> | 19,110 <sup>P</sup>  | 5,702 <sup>P</sup> | 24,812 <sup>P</sup>  | 5,754 <sup>P</sup>                           |
| 2013 95% CI (+/-) |  | 134                  | 98                 | 105                  | 94                 | 124                  | 124  |

**Notes**

1) Source: Labour Force Survey

2) Males aged 19 - 64 and females aged 19 - 59.

3) Estimates were revised in March 2011 as a result of an improved methodology being adopted - see methodological note for further details.

P) Provisional estimate - these estimates will be finalised in March 2015.

**Table 12.1: Level of Highest Qualification Held By Economically Active Adults In England (Quarter 4)<sup>1</sup> - percentages**

| Year              | Economically active adults <sup>2</sup> (thousands) | Level 4 and above | Level 3           | Level 3 and above | Level 2           | Level 2 and above | Below Level 2 (incl no qualifications) |
|-------------------|---|-------------------|-------------------|-------------------|-------------------|-------------------|--|
| 2006              | 24,238  | 35.8              | 20.8              | 56.6              | 19.6              | 76.2              | 23.8                                   |
| 2007              | 24,397  | 36.8              | 21.1              | 57.9              | 19.4              | 77.3              | 22.7                                   |
| 2008              | 24,672  | 36.9              | 21.1              | 58.0              | 20.0              | 78.0              | 22.0                                   |
| 2009              | 24,670  | 38.9              | 21.0              | 59.9              | 20.5              | 80.3              | 19.7                                   |
| 2010              | 24,800  | 40.2              | 21.2              | 61.4              | 20.1              | 81.5              | 18.5                                   |
| 2011              | 24,970  | 40.5              | 21.5              | 62.1              | 20.4              | 82.4              | 17.6                                   |
| 2012              | 25,382  | 42.5              | 21.8              | 64.3              | 19.7              | 84.0              | 16.0                                   |
| 2013              | 25,458  | 43.0 <sup>P</sup> | 22.0 <sup>P</sup> | 65.0 <sup>P</sup> | 19.3 <sup>P</sup> | 84.3 <sup>P</sup> | 15.7 <sup>P</sup>                      |
| 2013 95% CI (+/-) |   | 0.5               | 0.4               | 0.4               | 0.3               | 0.4               | 0.4                                    |

**Table 12.2: Level of Highest Qualification Held By Economically Active Adults In England (Quarter 4)<sup>1</sup> - volumes (thousands)**

| Year              | Economically active adults <sup>2</sup> | Level 4 and above   | Level 3            | Level 3 and above   | Level 2            | Level 2 and above   | Below Level 2 (incl no qualifications) |
|-------------------|---|---------------------|--------------------|---------------------|--------------------|---------------------|--|
| 2006              | 24,238                                  | 8,681               | 5,046              | 13,727              | 4,744              | 18,471              | 5,767                                  |
| 2007              | 24,397                                  | 8,975               | 5,151              | 14,126              | 4,731              | 18,857              | 5,540                                  |
| 2008              | 24,672                                  | 9,102               | 5,209              | 14,310              | 4,940              | 19,250              | 5,422                                  |
| 2009              | 24,670                                  | 9,598               | 5,173              | 14,771              | 5,046              | 19,818              | 4,852                                  |
| 2010              | 24,800                                  | 9,965               | 5,262              | 15,227              | 4,976              | 20,203              | 4,597                                  |
| 2011              | 24,970                                  | 10,124              | 5,375              | 15,500              | 5,084              | 20,583              | 4,386                                  |
| 2012              | 25,382                                  | 10,783              | 5,532              | 16,315              | 4,997              | 21,313              | 4,070                                  |
| 2013              | 25,458                                  | 10,955 <sup>P</sup> | 5,600 <sup>P</sup> | 16,554 <sup>P</sup> | 4,904 <sup>P</sup> | 21,459 <sup>P</sup> | 4,000 <sup>P</sup>                     |
| 2013 95% CI (+/-) |   | 124                 | 92                 | 89                  | 88                 | 112                 | 112                                    |

**Notes**

1) Source: Labour Force Survey

2) Economically active adults are defined as men aged 18 to 64 and women aged 18 to 59 either in employment or International Labour Organisation unemployed.

3) Estimates for 2006 onwards were revised in March 2011 as a result of an improved methodology being adopted - see methodological note for further details.

P) Provisional estimate - these estimates will be finalised in March 2015.

**Table 13: Vocational Qualification Achievements in the UK by Qualification Type, 2006 (October) to 2014 (March)**

| Quarter                            | National Vocational Qualification | Occupational Qualification | Qualifications and Credit Framework Qualification | Vocationally Related Qualification | Other Vocational Qualifications | Total            |
|------------------------------------|-----------------------------------|----------------------------|---|------------------------------------|---------------------------------|------------------|
| October 2006 to December 2006      | 121,300                           | 7,100                      | -   | 411,400                            | 382,600                         | <b>922,400</b>   |
| January 2007 to March 2007         | 126,600                           | 5,700                      | -   | 406,800                            | 393,800                         | <b>932,900</b>   |
| April 2007 to June 2007            | 129,600                           | 6,000                      | 400   | 507,900                            | 678,200                         | <b>1,322,100</b> |
| July 2007 to September 2007        | 252,900                           | 8,000                      | 500   | 920,500                            | 1,151,500                       | <b>2,333,400</b> |
| <b>Total 2006/07 Academic Year</b> | <b>630,400</b>                    | <b>26,800</b>              | <b>900</b>  | <b>2,246,600</b>                   | <b>2,606,200</b>                | <b>5,510,900</b> |
| October 2007 to December 2007      | 128,700                           | 4,900                      | 1,300   | 408,500                            | 423,500                         | <b>966,900</b>   |
| January 2008 to March 2008         | 140,700                           | 4,900                      | 4,600   | 426,000                            | 500,900                         | <b>1,077,200</b> |
| April 2008 to June 2008            | 170,600                           | 6,400                      | 8,600   | 643,100                            | 755,700                         | <b>1,584,400</b> |
| July 2008 to September 2008        | 287,900                           | 8,300                      | 19,200  | 983,800                            | 1,416,700                       | <b>2,715,800</b> |
| <b>Total 2007/08 Academic Year</b> | <b>727,900</b>                    | <b>24,500</b>              | <b>33,700</b>                                     | <b>2,461,400</b>                   | <b>3,096,800</b>                | <b>6,344,300</b> |
| October 2008 to December 2008      | 164,100                           | 5,800                      | 16,400  | 416,200                            | 474,500                         | <b>1,077,000</b> |
| January 2009 to March 2009         | 169,600                           | 5,300                      | 39,300  | 409,900                            | 590,400                         | <b>1,214,500</b> |
| April 2009 to June 2009            | 216,400                           | 6,300                      | 62,000  | 715,900                            | 829,300                         | <b>1,830,000</b> |
| July 2009 to September 2009        | 372,600                           | 9,100                      | 102,600   | 1,064,800                          | 1,591,600                       | <b>3,140,800</b> |
| <b>Total 2008/09 Academic Year</b> | <b>922,900</b>                    | <b>26,500</b>              | <b>220,300</b>                                    | <b>2,606,800</b>                   | <b>3,485,800</b>                | <b>7,262,200</b> |
| October 2009 to December 2009      | 212,000                           | 6,000                      | 85,100  | 414,700                            | 457,500                         | <b>1,175,300</b> |
| January 2010 to March 2010         | 204,000                           | 5,100                      | 135,200   | 388,000                            | 552,700                         | <b>1,285,000</b> |
| April 2010 to June 2010            | 213,500                           | 5,700                      | 203,000   | 726,100                            | 831,100                         | <b>1,979,300</b> |
| July 2010 to September 2010        | 349,500                           | 6,400                      | 353,700   | 1,078,700                          | 1,727,400                       | <b>3,515,700</b> |
| <b>Total 2009/10 Academic Year</b> | <b>979,000</b>                    | <b>23,200</b>              | <b>777,000</b>                                    | <b>2,607,500</b>                   | <b>3,568,600</b>                | <b>7,955,300</b> |
| October 2010 to December 2010      | 179,600                           | 6,200                      | 274,800   | 285,700                            | 422,900                         | <b>1,169,300</b> |
| January 2011 to March 2011         | 155,300                           | 4,100                      | 454,400   | 166,300                            | 486,500                         | <b>1,266,600</b> |
| April 2011 to June 2011            | 128,600                           | 3,600                      | 722,300   | 385,700                            | 670,900                         | <b>1,911,100</b> |
| July 2011 to September 2011        | 124,300                           | 3,600                      | 1,384,700   | 561,800                            | 1,473,700                       | <b>3,548,000</b> |
| <b>Total 2010/11 Academic Year</b> | <b>587,800</b>                    | <b>17,500</b>              | <b>2,836,200</b>                                  | <b>1,399,600</b>                   | <b>3,054,000</b>                | <b>7,895,100</b> |
| October 2011 to December 2011      | 51,000                            | 2,000                      | 807,200   | 55,800                             | 355,300                         | <b>1,271,400</b> |
| January 2012 to March 2012         | 31,100                            | 1,000                      | 821,500   | 51,300                             | 479,700                         | <b>1,384,500</b> |
| April 2012 to June 2012            | 22,600                            | 700                        | 1,225,900   | 195,100                            | 672,300                         | <b>2,116,500</b> |
| July 2012 to September 2012        | 24,200                            | 900                        | 2,428,700   | 273,700                            | 1,285,700                       | <b>4,013,200</b> |
| <b>Total 2011/12 Academic Year</b> | <b>128,800</b>                    | <b>4,600</b>               | <b>5,283,400</b>                                  | <b>575,800</b>                     | <b>2,793,000</b>                | <b>8,785,600</b> |
| October 2012 to December 2012      | 11,800                            | 200                        | 1,016,300   | 21,100                             | 295,900                         | <b>1,345,300</b> |
| January 2013 to March 2013         | 6,700                             | 100                        | 985,400   | 22,500                             | 406,900                         | <b>1,421,700</b> |
| April 2013 to June 2013            | 5,200                             | 100                        | 1,728,100   | 142,600                            | 587,300                         | <b>2,463,400</b> |
| July 2013 to September 2013        | 5,100                             | 100                        | 2,507,400   | 162,200                            | 1,283,100                       | <b>3,957,900</b> |
| <b>Total 2012/13 Academic Year</b> | <b>28,700</b>                     | <b>600</b>                 | <b>6,237,200</b>                                  | <b>348,500</b>                     | <b>2,573,300</b>                | <b>9,188,300</b> |
| October 2013 to December 2013      | 3,000                             | 100                        | 975,000   | 12,400                             | 237,200                         | <b>1,227,700</b> |
| January 2014 to March 2014         | 1,900                             | -                          | 1,072,700   | 12,900                             | 379,700                         | <b>1,467,300</b> |
| <b>Total 2013/14 Academic Year</b> | <b>4,900</b>                      | <b>100</b>                 | <b>2,047,700</b>                                  | <b>25,400</b>                      | <b>617,000</b>                  | <b>2,695,000</b> |

**Notes**

- 1) This table covers all levels of vocational qualifications reported through Ofqual. Data are supplied by awarding organisations.
- 2) For data relating to Vocational Qualifications, the Academic year runs from October to September. For example, the 2006/07 academic year runs from October 2006 to September 2007.
- 3) The data in this table has been subjected to revisions.
- 4) Please see general footnotes and Vocational Qualifications footnotes section for further information on these tables.

Table 14: Adult (19+) FE and Skills Participation by Level (2013/14 – in-year estimates) – Learner Volumes

|                |             | Funded Learners                             |           |
|----------------|-------------|---|-----------|
|                |             | 2013/14                                     |           |
|                |             | August to April (provisional)               |           |
|                |             | Level                                       |           |
| Total Learners |             |   | 2,492,800 |
| Participation  | of which... | Below Level 2 (excluding English and maths) | 618,700   |
|                |             | English and maths                           | 855,300   |
|                |             | Full Level 2                                | 738,800   |
|                |             | Full Level 3                                | 399,300   |
|                |             | Level 2                                     | 958,900   |
|                |             | Level 3                                     | 441,600   |
|                |             | Level 4+                                    | 29,900    |
|                |             | No Level Assigned                           | 529,000   |

Table 15: Adult (19+) FE and Skills – English and Maths Participation by Level (2013/14 – in-year estimates) – Learner Volumes

|                |             | Funded Learners   |         |
|----------------|-------------|---|---------|
|                |             | 2013/14   |         |
|                |             | August to April (provisional)                           |         |
|                |             | Level   |         |
| Total Learners |             |   | 855,300 |
| Participation  | of which... | of which English  | 620,800 |
|                |             | of which entry level                                    | 96,000  |
|                |             | of which level 1  | 274,000 |
|                |             | of which level 2  | 267,900 |
|                |             | of which maths  | 586,400 |
|                |             | of which entry level                                    | 71,400  |
|                |             | of which level 1  | 274,600 |
|                |             | of which level 2  | 262,000 |
|                |             | of which ESOL (English for Speakers of Other Languages) | 127,200 |
|                |             | of which entry level                                    | 107,700 |
|                |             | of which level 1  | 16,800  |
|                |             | of which level 2  | 6,300   |

Table 16: Adult (18+) FE and Skills - Offender Learning Participation by Level (2013/14 – in-year estimates) – Learner Volumes

|                         |             | Funded Learners                             |        |
|-------------------------|-------------|---|--------|
|                         |             | 2013/14                                     |        |
|                         |             | August to April (provisional)               |        |
|                         |             | Level                                       |        |
| Total Offender Learners |             |   | 77,900 |
| Participation           | of which... | Below Level 2 (excluding English and maths) | 57,200 |
|                         |             | English and maths                           | 30,300 |
|                         |             | Full Level 2                                | 9,100  |
|                         |             | Full Level 3                                | 100    |
|                         |             | Level 2                                     | 34,500 |
|                         |             | Level 3                                     | 800    |
|                         |             | Level 4+                                    | -      |
|                         |             | No Level Assigned                           | 2,400  |

**Notes**

1) These tables include Apprenticeships, Workplace Learning, Community Learning and Education and Training provision taken at General Further Education Colleges (including Tertiary), Sixth Form Colleges, Special Colleges (Agricultural and Horticultural Colleges and Art and Design Colleges), Specialist Colleges and External Institutions.

2) These tables show in-year estimates for 2013/14. Tables 1, 3 and 7 show full year volumes for previous years. It is not possible to directly compare provisional 2013/14 estimates with figures for previous years.

3) Figures for English and maths (previously Skills for Life) include GCSEs, Functional Skills, Adult Basic Skills Certificates including ESOL Certificates, and Qualifications and Credit Framework Certificates and Awards in English and maths.

4) Provisional in-year data for 2013/14 show 458,000 learners benefited from support for the unemployed (those nearest the workforce), 451,800 of which were aged 19+. These are defined as those learners reporting that they were in receipt of Employment and Support Allowance - Work Related Activity Group (ESA WRAG) or Jobseeker's Allowance (JSA).

5) An offender learner may be counted more than once in table 16 if they participated in learning at different institutions during 2013/14.

6) Please see the general footnotes section for further information on these tables.

**Table 17: All Age Apprenticeship Participation by Level and Age (2013/14 – in-year estimates) – Learner Volumes**

|                                   |              | <b>Funded Apprentices</b>                      |  |  |
|-----------------------------------|--------------|--|--|--|
|                                   |              | <b>2013/14</b>                                 |  |  |
|                                   | <b>Age</b>   | <b>August to<br/>October<br/>(provisional)</b> | <b>August to<br/>January<br/>(provisional)</b> | <b>August to<br/>April<br/>(provisional)</b> |
| Intermediate Level Apprenticeship | Under 19     | 84,400   | 101,000  | 116,200                                      |
|                                   | 19-24        | 121,900  | 141,200  | 160,100                                      |
|                                   | 25+          | 121,700  | 143,000  | 167,400                                      |
|                                   | <b>Total</b> | <b>328,000</b>                                 | <b>385,200</b>                                 | <b>443,700</b>                               |
|                                   | of which 19+ | 243,600  | 284,300  | 327,500                                      |
| Advanced Level Apprenticeship     | Under 19     | 37,500   | 44,000   | 49,500                                       |
|                                   | 19-24        | 103,700  | 114,100  | 124,800                                      |
|                                   | 25+          | 118,400  | 120,800  | 135,200                                      |
|                                   | <b>Total</b> | <b>259,600</b>                                 | <b>278,800</b>                                 | <b>309,400</b>                               |
|                                   | of which 19+ | 222,100  | 234,900  | 259,900                                      |
| Higher Apprenticeship             | Under 19     | 600  | 700  | 800  |
|                                   | 19-24        | 4,200  | 4,500  | 4,800  |
|                                   | 25+          | 6,800  | 6,900  | 8,000  |
|                                   | <b>Total</b> | <b>11,500</b>                                  | <b>12,200</b>                                  | <b>13,600</b>                                |
|                                   | of which 19+ | 10,900   | 11,500   | 12,900                                       |
| All Apprenticeships               | Under 19     | 120,200  | 141,600  | 161,000                                      |
|                                   | 19-24        | 226,400  | 254,100  | 281,700                                      |
|                                   | 25+          | 246,600  | 270,300  | 309,200                                      |
|                                   | <b>Total</b> | <b>593,200</b>                                 | <b>666,000</b>                                 | <b>751,900</b>                               |
|                                   | of which 19+ | 473,000  | 524,400  | 590,900                                      |

**Notes**

1) This table shows in-year estimates for 2013/14. Apprenticeship participation for earlier years are available in Table 5 of this release. It is not possible to directly compare provisional 2013/14 estimates with figures for previous years.

2) 24+ Advanced Learning Loans were introduced in August 2013. Data show that the number of Apprenticeship starts for those aged 24 and above studying at Level 3 and above has been directly affected. There is also some anecdotal evidence that the numbers of starts for other ages may have been indirectly affected. The Skills Funding Statement in February 2014 announced that regulations have been laid to remove Apprenticeships from loan funding and make them eligible for funding via the Adult Skills Budget.

3) 'All Apprenticeships' count each Apprenticeship learner only once regardless of how many programmes they participated in. Each learner is still counted in the totals for each Apprenticeship level they participated in.

4) Figures for 2013/14 include Apprenticeships through the Employer Ownership Pilot.

5) Please see the general footnotes and the Apprenticeships footnotes section for further information on this table.



Table 18.1: All Age Apprenticeship Programme Starts by Level and Age (2013/14 – in-year estimates)

|                                   |              | 2013/14                          |                            |                            |                            |
|-----------------------------------|--------------|----------------------------------|----------------------------|----------------------------|----------------------------|
|                                   | Age          | August to April<br>(provisional) | Quarter 1<br>(provisional) | Quarter 2<br>(provisional) | Quarter 3<br>(provisional) |
| Intermediate Level Apprenticeship | Under 19     | 66,100                           | 35,600                     | 16,700                     | 13,800                     |
|                                   | 19-24        | 73,000                           | 27,300                     | 22,900                     | 22,800                     |
|                                   | 25+          | 74,400                           | 22,800                     | 24,200                     | 27,500                     |
|                                   | <b>Total</b> | <b>213,500</b>                   | <b>85,600</b>              | <b>63,800</b>              | <b>64,100</b>              |
|                                   | of which 19+ | 147,400                          | 50,000                     | 47,100                     | 50,300                     |
| Advanced Level Apprenticeship     | Under 19     | 28,600                           | 18,100                     | 5,900                      | 4,600                      |
|                                   | 19-24        | 44,000                           | 19,300                     | 12,300                     | 12,500                     |
|                                   | 25+          | 24,200                           | 3,800                      | 3,700                      | 16,700                     |
|                                   | <b>Total</b> | <b>96,800</b>                    | <b>41,200</b>              | <b>21,900</b>              | <b>33,700</b>              |
|                                   | of which 19+ | 68,200                           | 23,100                     | 16,000                     | 29,100                     |
| Higher Apprenticeship             | Under 19     | 600                              | 500                        | 100                        | -                          |
|                                   | 19-24        | 2,000                            | 1,300                      | 400                        | 300                        |
|                                   | 25+          | 1,700                            | 200                        | 200                        | 1,200                      |
|                                   | <b>Total</b> | <b>4,300</b>                     | <b>2,000</b>               | <b>700</b>                 | <b>1,600</b>               |
|                                   | of which 19+ | 3,700                            | 1,500                      | 600                        | 1,600                      |
| All Apprenticeships               | Under 19     | 95,200                           | 54,200                     | 22,700                     | 18,400                     |
|                                   | 19-24        | 119,100                          | 47,800                     | 35,600                     | 35,600                     |
|                                   | 25+          | 100,300                          | 26,800                     | 28,100                     | 45,400                     |
|                                   | <b>Total</b> | <b>314,600</b>                   | <b>128,800</b>             | <b>86,400</b>              | <b>99,500</b>              |
|                                   | of which 19+ | 219,400                          | 74,600                     | 63,700                     | 81,100                     |

Table 18.2: All Age Apprenticeship Framework Achievements by Level and Age (2013/14 – in-year estimates)

|                                   |              | 2013/14                          |                            |                            |                            |
|-----------------------------------|--------------|----------------------------------|----------------------------|----------------------------|----------------------------|
|                                   | Age          | August to April<br>(provisional) | Quarter 1<br>(provisional) | Quarter 2<br>(provisional) | Quarter 3<br>(provisional) |
| Intermediate Level Apprenticeship | Under 19     | 30,200                           | 13,900                     | 8,800                      | 7,500                      |
|                                   | 19-24        | 32,900                           | 12,000                     | 10,700                     | 10,200                     |
|                                   | 25+          | 34,300                           | 12,400                     | 11,100                     | 10,800                     |
|                                   | <b>Total</b> | <b>97,400</b>                    | <b>38,300</b>              | <b>30,600</b>              | <b>28,500</b>              |
|                                   | of which 19+ | 67,200                           | 24,400                     | 21,800                     | 21,000                     |
| Advanced Level Apprenticeship     | Under 19     | 12,700                           | 5,500                      | 3,800                      | 3,400                      |
|                                   | 19-24        | 22,300                           | 8,600                      | 7,100                      | 6,600                      |
|                                   | 25+          | 28,600                           | 10,200                     | 9,300                      | 9,000                      |
|                                   | <b>Total</b> | <b>63,600</b>                    | <b>24,300</b>              | <b>20,200</b>              | <b>19,100</b>              |
|                                   | of which 19+ | 50,900                           | 18,800                     | 16,400                     | 15,700                     |
| Higher Apprenticeship             | Under 19     | 100                              | 100                        | -                          | -                          |
|                                   | 19-24        | 800                              | 500                        | 200                        | 200                        |
|                                   | 25+          | 600                              | 300                        | 200                        | 200                        |
|                                   | <b>Total</b> | <b>1,600</b>                     | <b>800</b>                 | <b>400</b>                 | <b>400</b>                 |
|                                   | of which 19+ | 1,500                            | 800                        | 300                        | 400                        |
| All Apprenticeships               | Under 19     | 43,000                           | 19,400                     | 12,600                     | 10,900                     |
|                                   | 19-24        | 56,100                           | 21,100                     | 18,000                     | 17,000                     |
|                                   | 25+          | 63,500                           | 22,900                     | 20,600                     | 20,000                     |
|                                   | <b>Total</b> | <b>162,600</b>                   | <b>63,400</b>              | <b>51,200</b>              | <b>47,900</b>              |
|                                   | of which 19+ | 119,600                          | 44,000                     | 38,600                     | 37,100                     |

**Notes**

1) This table shows in-year estimates for 2013/14. Apprenticeship starts and achievements figures for earlier years are available in Table 6 of this release. It is not possible to directly compare provisional 2013/14 estimates with figures for previous years.

2) 24+ Advanced Learning Loans were introduced in August 2013. Data show that the number of Apprenticeship starts for those aged 24 and above studying at Level 3 and above has been directly affected. There is also some anecdotal evidence that the numbers of starts for other ages may have been indirectly affected. The Skills Funding Statement in February 2014 announced that regulations have been laid to remove Apprenticeships from loan funding and make them eligible for funding via the Adult Skills Budget.

3) Figures for 2013/14 include Apprenticeships through the Employer Ownership Pilot.

4) Please see the general footnotes and the Apprenticeships footnotes section for further information on these tables.

**Table 19.1: Starts on the Apprenticeship Grant for Employers Scheme (AGE 16 to 24) - Pipeline Starts and Payments Made (February 2012 to April 2014 - in-year estimates)**

| Age                               | 2013/14                       |                 | Programme to Date                         |                 |               |
|-----------------------------------|-------------------------------|-----------------|---|-----------------|---------------|
|                                   | August to April (provisional) |                 | February 2012 to April 2014 (provisional) |                 |               |
|                                   | Payments Made                 | Pipeline Starts | Payments Made                             | Pipeline Starts |               |
| Intermediate Level Apprenticeship | Under 19                      | 17,300          | 4,500                                     | 41,200          | 4,500         |
|                                   | 19-24                         | 7,800           | 4,000                                     | 20,400          | 4,000         |
|                                   | <b>Total</b>                  | <b>25,100</b>   | <b>8,500</b>                              | <b>61,600</b>   | <b>8,500</b>  |
| Advanced Level Apprenticeship     | Under 19                      | 5,700           | 1,100                                     | 12,200          | 1,100         |
|                                   | 19-24                         | 3,900           | 1,500                                     | 9,300           | 1,500         |
|                                   | <b>Total</b>                  | <b>9,600</b>    | <b>2,600</b>                              | <b>21,600</b>   | <b>2,600</b>  |
| Higher Apprenticeship             | Under 19                      | 100             | -   | 100             | -             |
|                                   | 19-24                         | 100             | -   | 200             | -             |
|                                   | <b>Total</b>                  | <b>100</b>      | <b>-</b>                                  | <b>300</b>      | <b>-</b>      |
| All Apprenticeships               | Under 19                      | 23,100          | 5,600                                     | 53,600          | 5,600         |
|                                   | 19-24                         | 11,700          | 5,400                                     | 29,900          | 5,400         |
|                                   | <b>Total</b>                  | <b>34,800</b>   | <b>11,000</b>                             | <b>83,500</b>   | <b>11,000</b> |

**Notes**

1) AGE 16 to 24 was launched in February 2012. Payments are drawn down once the new Apprentice has been in post for 13 weeks, therefore Apprenticeships starting after 29 January 2014 are not included in the Payments Made column because they had not yet triggered a payment.

2) Pipeline Starts show those starting between August 2013 and April 2014 who have not yet qualified for a payment, but the payment would be made once the Apprentice has been in post for 13 weeks.

3) AGE 16 to 24 starts are defined through the Learning Delivery Funding and Monitoring Codes with values of 132 or 133 as per the ILR specification ([http://webarchive.nationalarchives.gov.uk/20140108104635/http://www.theia.org.uk/ilr/ilrdocuments/201112\\_ilrdetail.htm](http://webarchive.nationalarchives.gov.uk/20140108104635/http://www.theia.org.uk/ilr/ilrdocuments/201112_ilrdetail.htm)). These are validated by the Skills Funding Agency.

4) Starts in this table include learners aged 19-24 on application but aged 25 when learning started.

5) Starts in this table will also be counted in the main Apprenticeship tables.

6) Please see the general footnotes and the Apprenticeships footnotes section for further information on these tables.

**Table 19.2: Starts on the Access to Apprenticeship Pathway (2011/12 to 2013/14 – in-year estimates)**

| Age   | 2011/12  | 2012/13      | 2013/14                       |              |     |
|---|--|--------------|-------------------------------|--------------|-----|
|   | Full Year  | Full Year    | August to April (provisional) |              |     |
| <b>All starts on the Access to Apprenticeship pathway</b> | Under 19   | 5,700        | 3,900                         | 1,100        |     |
|   | 19-24  | 1,600        | 1,600                         | 500          |     |
|   | <b>Total</b>   | <b>7,200</b> | <b>5,500</b>                  | <b>1,600</b> |     |
| of which  | have converted to paid employment to complete their Apprenticeship in any year         | Under 19     | 2,300                         | 1,400        | 300 |
|   |  | 19-24        | 700                           | 500          | 100 |
|   | <b>Total</b>   | <b>3,000</b> | <b>1,900</b>                  | <b>500</b>   |     |
|   | have not yet converted to paid employment to complete their Apprenticeship in any year | Under 19     | 3,300                         | 2,500        | 800 |
|   |  | 19-24        | 900                           | 1,100        | 300 |
|   | <b>Total</b>   | <b>4,200</b> | <b>3,600</b>                  | <b>1,100</b> |     |

**Notes**

1) People starting training under the Access to Apprenticeship pathway are not counted as an Apprentice until they secure paid employment to complete their Apprenticeship in the usual way.

2) The year indicates when the learner started on the Access to Apprenticeship pathway. Conversion to paid employment to complete an Apprenticeship does not necessarily occur in the same year as the learner started the Access to Apprenticeship pathway.

3) People shown in this table as having converted to paid employment to complete their Apprenticeship in the same year as they started on the Access to Apprenticeship pathway, will also be counted as starts in the main Apprenticeship tables. People who convert to paid employment in subsequent years will be counted as participating Apprenticeship learners.

4) This table shows in-year estimates for 2013/14. It is not possible to directly compare provisional 2013/14 estimates with figures for previous years.

**Table 20.1: Workplace Learning Starts by Level (2013/14 – in-year estimates)**

|                     |   | 2013/14                             |                            |                            |                            |
|---------------------|---|-------------------------------------|----------------------------|----------------------------|----------------------------|
|                     |   | August to<br>April<br>(provisional) | Quarter 1<br>(provisional) | Quarter 2<br>(provisional) | Quarter 3<br>(provisional) |
| <b>Total Starts</b> |   | <b>68,300</b>                       | <b>23,600</b>              | <b>22,900</b>              | <b>21,800</b>              |
| <b>of which...</b>  | Below Level 2                               | 10,800                              | 4,000                      | 3,800                      | 3,100                      |
|                     | Level 2                                     | 48,800                              | 16,700                     | 16,000                     | 16,100                     |
|                     | Level 3                                     | 6,700                               | 2,300                      | 2,400                      | 2,000                      |
|                     | Level 4+                                    | 1,800                               | 600                        | 600                        | 600                        |
|                     | No Level Assigned                           | 100                                 | -                          | -                          | 100                        |
|                     | Below Level 2 (excluding English and maths) | 700                                 | 200                        | 200                        | 300                        |
|                     | English and maths                           | 27,600                              | 9,200                      | 9,700                      | 8,700                      |
|                     | Full Level 2                                | 36,200                              | 12,700                     | 11,800                     | 11,700                     |
|                     | Full Level 3                                | 1,800                               | 800                        | 600                        | 500                        |

**Table 20.2: Workplace Learning Achievements by Level (2013/14 – in-year estimates)**

|                           |   | 2013/14                             |                            |                            |                            |
|---------------------------|---|-------------------------------------|----------------------------|----------------------------|----------------------------|
|                           |   | August to<br>April<br>(provisional) | Quarter 1<br>(provisional) | Quarter 2<br>(provisional) | Quarter 3<br>(provisional) |
| <b>Total Achievements</b> |   | <b>63,800</b>                       | <b>23,900</b>              | <b>22,000</b>              | <b>17,900</b>              |
| <b>of which...</b>        | Below Level 2                               | 8,100                               | 3,300                      | 2,600                      | 2,100                      |
|                           | Level 2                                     | 45,100                              | 16,500                     | 15,600                     | 13,000                     |
|                           | Level 3                                     | 8,200                               | 3,200                      | 3,000                      | 2,000                      |
|                           | Level 4+                                    | 1,900                               | 600                        | 700                        | 500                        |
|                           | No Level Assigned                           | 600                                 | 300                        | 100                        | 200                        |
|                           | Below Level 2 (excluding English and maths) | 400                                 | 200                        | 100                        | 100                        |
|                           | English and maths                           | 22,100                              | 7,400                      | 7,900                      | 6,800                      |
|                           | Full Level 2                                | 36,100                              | 13,900                     | 12,400                     | 9,800                      |
|                           | Full Level 3                                | 3,400                               | 1,600                      | 1,100                      | 700                        |

**Notes**

- 1) These tables show in-year estimates for 2013/14. Figures for earlier years are available in Table 8 of this release. It is not possible to directly compare provisional 2013/14 estimates with figures for previous years.
- 2) English and maths starts and achievements can be at Level 2 or Below Level 2.
- 3) These tables include some learners aged under 19 who are eligible for funding on certain Workplace Learning programmes.
- 4) Figures for English and maths (previously Skills for Life) include GCSEs, Functional Skills, Adult Basic Skills Certificates including ESOL Certificates, and Qualifications and Credit Framework Certificates and Awards in English and maths.
- 5) Please see the general footnotes and the Workplace Learning footnotes section for further information on these tables.

**Table 21: Community Learning Participation by Type (2013/14 – in-year estimates) – Learner Volumes**

|                       |   | <b>Funded Learners</b>                                   |
|-----------------------|---|--|
| <b>Provision Type</b> |   | <b>2013/14<br/>August to<br/>April<br/>(provisional)</b> |
|                       | <b>Total Learners</b>                                   | <b>525,100</b>   |
| <b>Participation</b>  | of which Personal and Community Development Learning    | 413,400  |
|                       | of which Neighbourhood Learning in Deprived Communities | 40,300   |
|                       | of which Family English, Maths and Language             | 37,300   |
|                       | of which Wider Family Learning                          | 48,700   |

**Notes**

1) This table shows in-year estimates for 2013/14. Community Learning participation and achievement figures for earlier years are available in Table 9 of this release. It is not possible to directly compare provisional 2013/14 estimates with figures for previous years.

2) Please see the general footnotes and the Community Learning footnotes sections for further information on this table.

**Table 22: Employer Ownership Pilot Starts (2012/13 and 2013/14 – in-year estimates)**

|  |                    |                    |                 | 2012/13              | 2013/14                          | Programme to Date                             |
|--|--------------------|--------------------|-----------------|----------------------|----------------------------------|---|
|  |                    |                    |                 | Full Year<br>(final) | August to April<br>(provisional) | August 2012 to<br>April 2014<br>(provisional) |
| Starts                                     | Provision          |                    | Age             |                      |                                  |   |
| Starts                                     | Apprenticeships    | SASE Compliant     | Under 19        | 200                  | 400                              | 500   |
|  |                    |                    | 19-24           | 400                  | 300                              | 800   |
|  |                    |                    | 25+             | 600                  | 800                              | 1,400   |
|  |                    |                    | Total           | 1,200                | 1,500                            | 2,700   |
|  |                    | Non-SASE Compliant | Under 19        | -                    | -                                | 100   |
|  |                    |                    | 19-24           | -                    | -                                | -   |
|  |                    |                    | 25+             | -                    | -                                | -   |
|  |                    |                    | Total           | -                    | -                                | 100   |
|  | Workplace Learning | QCF Training       | Under 19        | -                    | 200                              | 200   |
|  |                    |                    | 19-24           | 100                  | 200                              | 300   |
|  |                    |                    | 25+             | 300                  | 900                              | 1,100   |
|  |                    |                    | Total           | 400                  | 1,300                            | 1,700   |
|  |                    | Non-QCF Training   | Under 19        | 200                  | 1,300                            | 1,500   |
|  |                    |                    | 19-24           | 1,000                | 2,000                            | 3,000   |
| 25+  |                    |                    | 4,300           | 7,500                | 11,800                           |   |
| Total                                      |                    |                    | 5,500           | 10,800               | 16,300                           |   |
| <b>All Employer Ownership Pilot Starts</b> |                    |                    | <b>Under 19</b> | <b>400</b>           | <b>1,900</b>                     | <b>2,300</b>                                  |
|  |                    |                    | <b>19-24</b>    | <b>1,500</b>         | <b>2,600</b>                     | <b>4,100</b>                                  |
|  |                    |                    | <b>25+</b>      | <b>5,200</b>         | <b>9,100</b>                     | <b>14,300</b>                                 |
|  |                    |                    | <b>Total</b>    | <b>7,200</b>         | <b>13,600</b>                    | <b>20,700</b>                                 |

**Notes**

- 1) Starts in this table will also be counted in the main Apprenticeship tables and Workplace Learning tables, as well as in FE and Skills participation figures.
- 2) The data source for this table is the Employer Ownership Pilot.
- 3) Please see the general footnotes for further information on this table.

**Table 23: 24+ FE and Skills – Participation with 24+ Advanced Learning Loans (Level 3+) (2013/14 – in-year estimates) – Learner Volumes**

| <b>Funded Learners</b>                                |                       | <b>2013/14</b>                           |
|---|-----------------------|--|
|   |                       | <b>August to April<br/>(provisional)</b> |
| <b>Provision</b>                                      | <b>Total Learners</b> | <b>52,400</b>                            |
| <b>Participation with 24+ Advanced Learning Loans</b> | of which Level 3      | 49,900                                   |
|   | of which Level 4+     | 2,500                                    |

**Notes**

1) This table includes Education and Training provision taken at General Further Education Colleges (including Tertiary), Sixth Form Colleges, Special Colleges (Agricultural and Horticultural Colleges and Art and Design Colleges), Specialist Colleges and External Institutions.

2) Please note that Apprenticeships were removed from loan funding from March 2014. Apprentices who previously received a loan no longer need to repay it. Apprentices that previously appeared in this table earlier in the academic year have now been removed.

3) Please see the general footnotes for further information on this table.