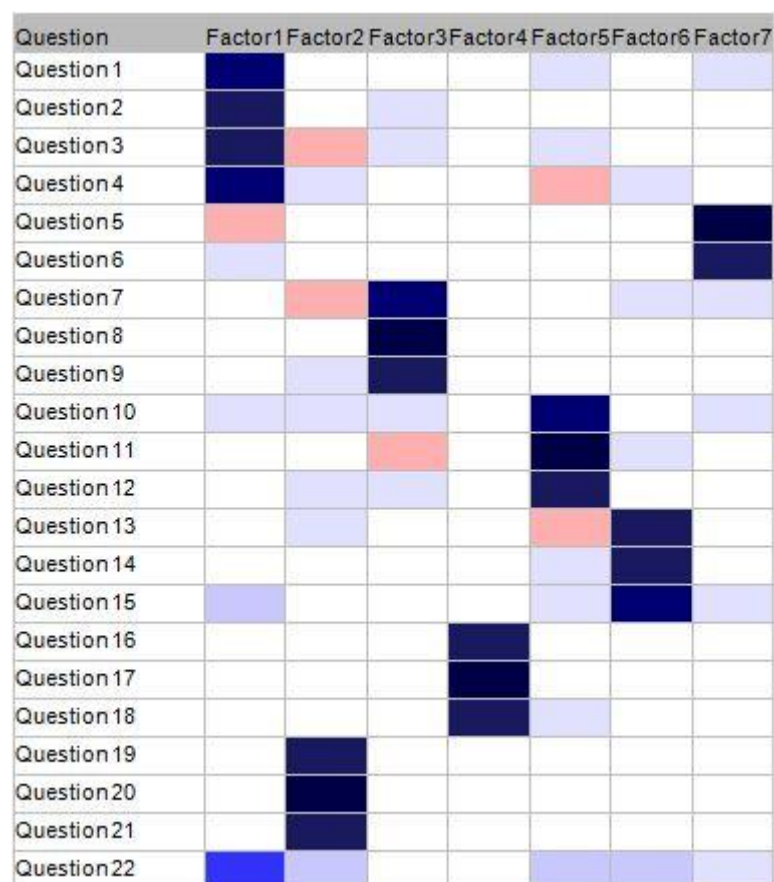


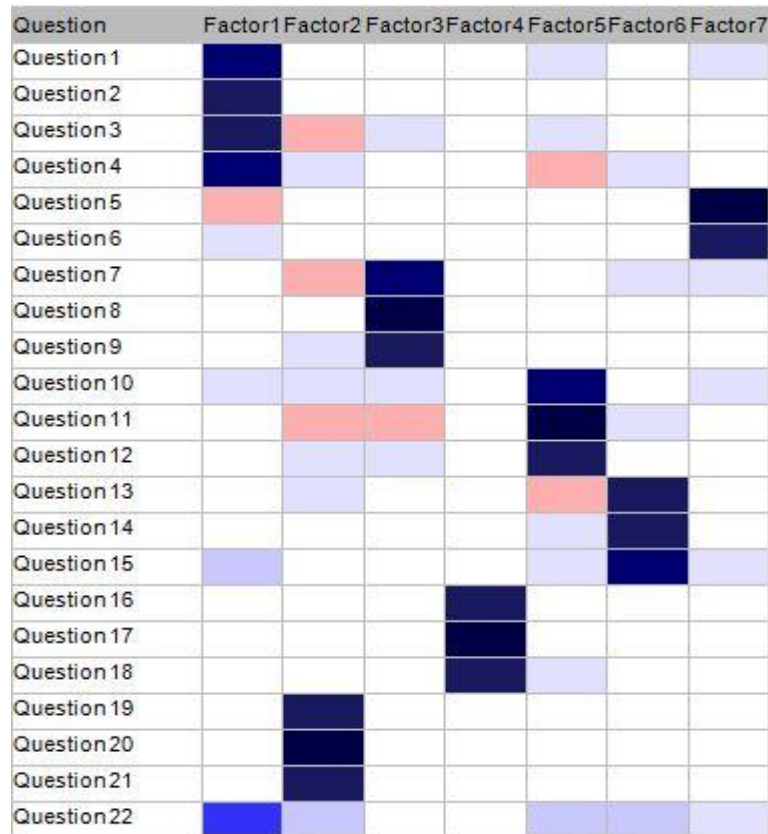
## Annex G: Heat maps from principal component analysis in chronological order

This annex shows heat maps of the results for the core population of respondents from the principal component analysis for all nine years of National Student Survey (NSS) data.

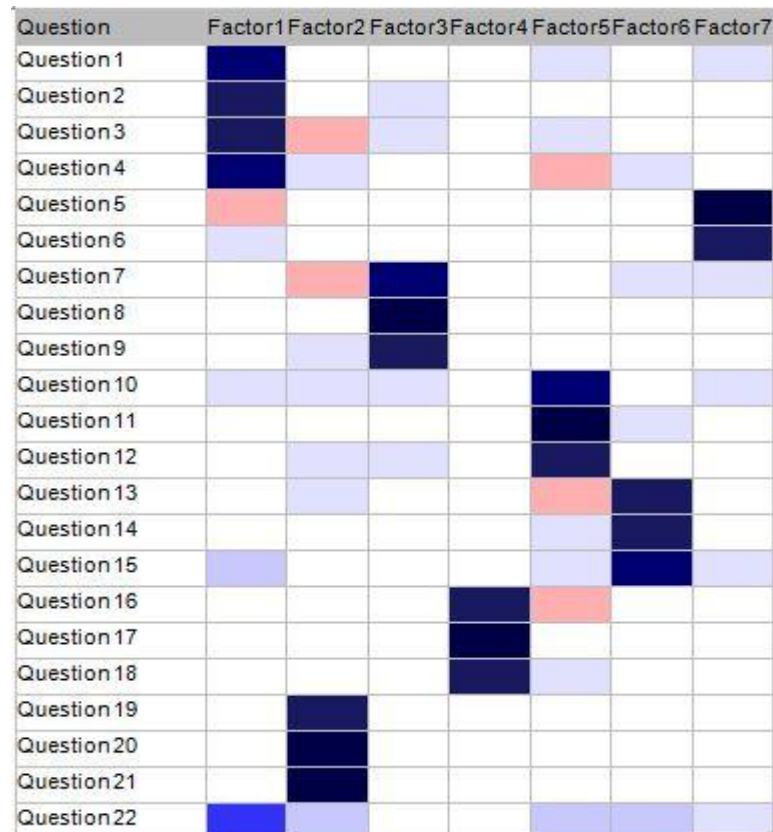
**Figure 1: Heat map of results from a principal component analysis on the 2005 NSS results**



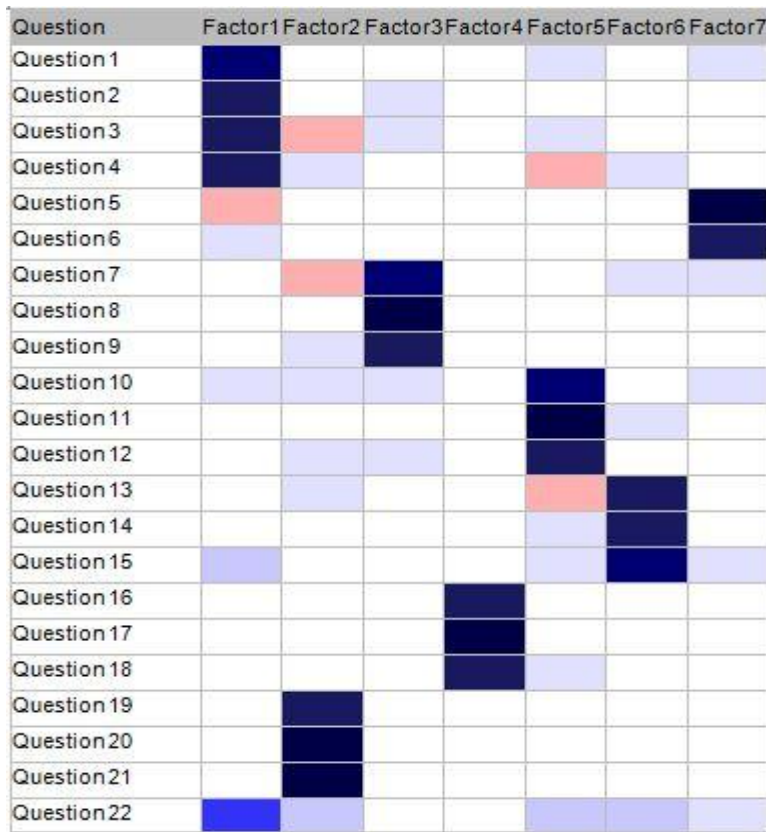
**Figure 2: Heat map of results from a principal component analysis on the 2006 NSS results**



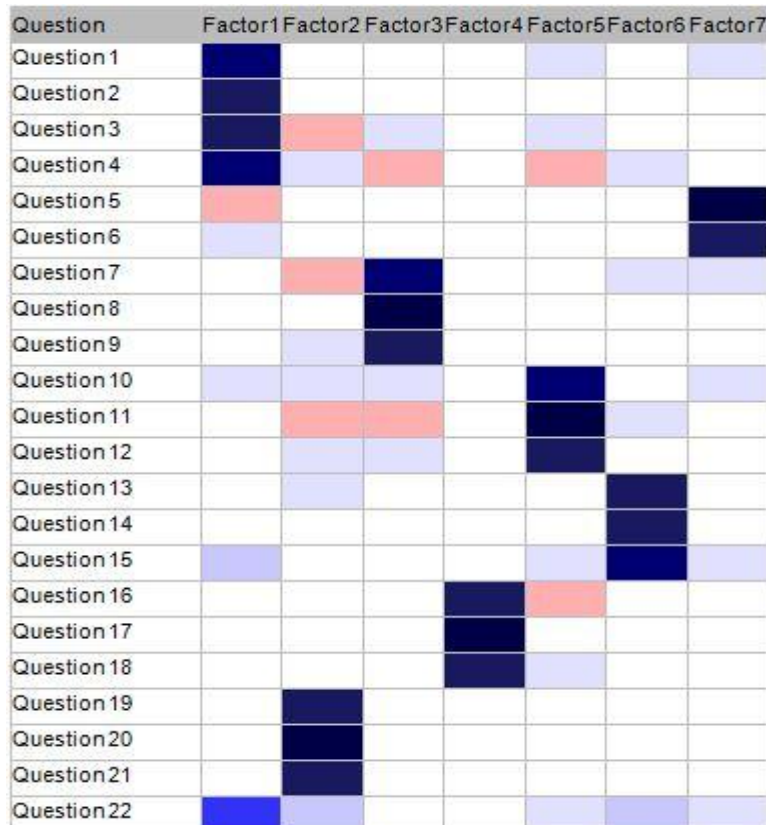
**Figure 3: Heat map of results from a principal component analysis on the 2007 NSS results**



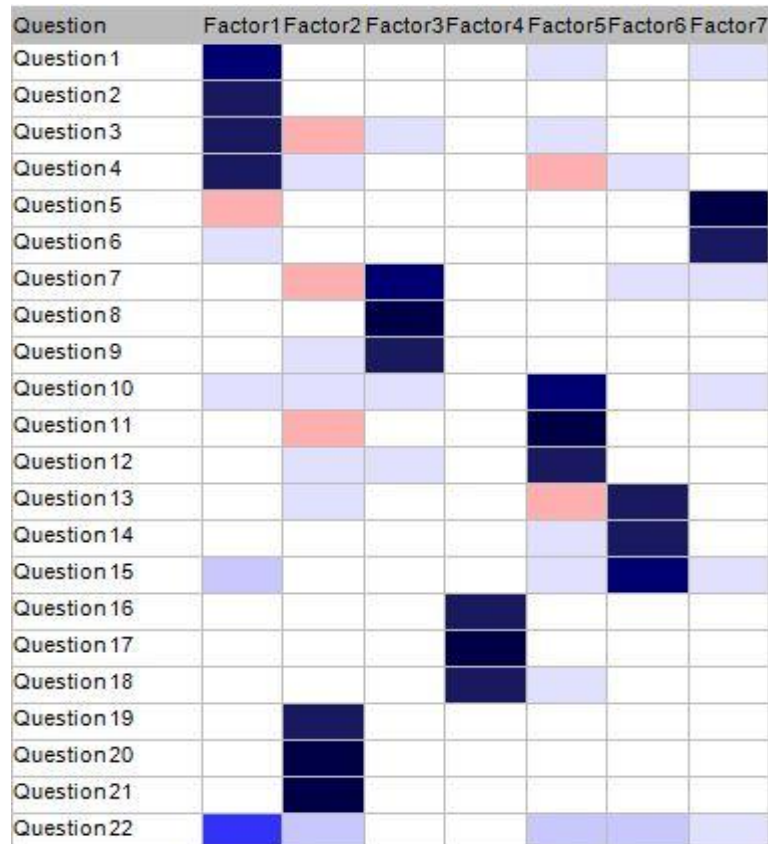
**Figure 4: Heat map of results from a principal component analysis on the 2008 NSS results**



**Figure 5: Heat map of results from a principal component analysis on the 2009 NSS results**



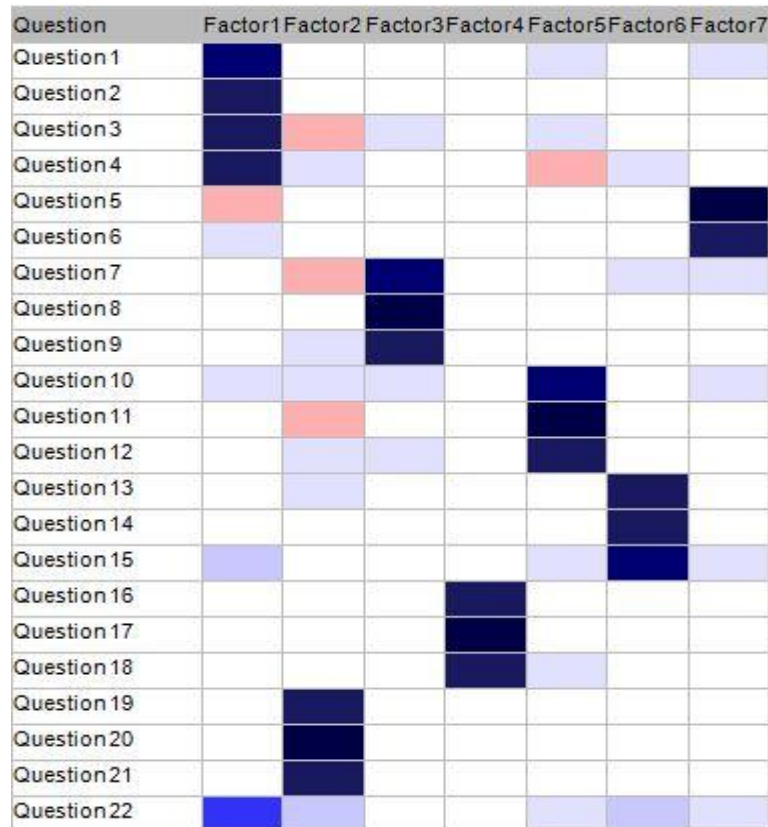
**Figure 6: Heat map of results from a principal component analysis on the 2010 NSS results**



**Figure 7: Heat map of results from a principal component analysis on the 2011 NSS results**



**Figure 8: Heat map of results from a principal component analysis on the 2012 NSS results**



**Figure 9: Heat map of results from a principal component analysis on the 2013 NSS results**

