



Welsh Office
Y Swyddfa Gymreig

'98

GCSE/GNVQ RESULTS IN WALES: 1998

KEY STAGE 4

CANLYNIADAU TGAU/CGCC

YNG NGHYMRU: 1998

CYFNOD ALLWEDDOL 4



Published as part of the BEST PROGRAMME

Cyhoeddwyd fel rhan o RAGLEN BEST

CONTENTS

	page tudalen
INTRODUCTION	4 - 5
Section 1: Results Summaries	
5 or more GCSE grades A*-C or equivalent	8 - 9
5 or more GCSE grades A*-G or equivalent	10 - 11
Average GCSE/GNVQ points score	12 - 13
Core Subject Indicator	14 - 15
English	16 - 17
Welsh	18
Mathematics	19 - 20
Science	21 - 22
Attendance	23
LEA Summary Tables	24 - 26

Section 2: LEA Area Summaries

Anglesey	28
Gwynedd	28
Conwy	29
Denbighshire	29
Flintshire	30
Wrexham	30
Powys	31
Ceredigion	31
Pembrokeshire	32
Carmarthenshire	32
Swansea	33
Neath Port Talbot	33
Bridgend	34
The Vale of Glamorgan	34
Rhondda, Cynon, Taff	35
Merthyr Tydfil	35
Caerphilly	36
Blaenau Gwent	36
Torfaen	37
Monmouthshire	37
Newport	38
Cardiff	38

Section 3: Performance Bands

5 or more GCSE grades A*-C or equivalent	42
5 or more GCSE grades A*-G or equivalent	42
Core Subject Indicator	43
English	44
Welsh	44
Mathematics	45
Science	45

CYNNWYS

CYFLWYNIAD

Adran 1: Crynodebau Canlyniadau

5 TGAU graddau A*-C neu ragor neu gymhwyster cyfatebol
5 TGAU graddau A*-G neu ragor neu gymhwyster cyfatebol
Sgor pwyntiau TGAU/CGCC cyfartalog
Dangosydd Pynciau Craidd
Saesneg
Cymraeg
Mathemateg
Gwyddoniaeth
Presenoldeb
Tablau Crynod AALL

Adran 2: Crynodebau Ardal AALI

Ynys Môn
Gwynedd
Conwy
Sir Ddinbych
Sir y Fflint
Wrexham
Powys
Sir Ceredigion
Sir Benfro
Sir Gaefyrddin
Abertawe
Castell-nedd Port Talbot
Pen-y-bont ar Ogwr
Bro Morgannwg
Rhondda, Cynon, Taf
Merthyr Tudful
Caerffili
Blaenau Gwent
Torfaen
Sir Fynwy
Casnewydd
Caerdydd

Adran 3: Bandiau Perfformiad

5 TGAU graddau A*-C neu ragor neu gymhwyster cyfatebol
5 TGAU graddau A*-G neu ragor neu gymhwyster cyfatebol
Dangosydd Pynciau Craidd
Saesneg
Cymraeg
Mathemateg
Gwyddoniaeth

KEY STAGE 4 - GCSE/GNVQ: 15-YEAR-OLDS

Published as part of the
BEST PROGRAMME

Other titles available:

National Curriculum Assessment Results in Wales: 1995 and 1996 - Primary Schools
National Curriculum Assessment Results in Wales: 1995 and 1996 - Secondary Schools
National Curriculum Assessment Results in Wales: Key Stage 1 for 1997 & **1998**
National Curriculum Assessment Results in Wales: Key Stage 2 for 1997 & **1998**
National Curriculum Assessment Results in Wales: Key Stage 3 for 1997 & **1998**

Secondary Schools Performance Information Booklets (for each LEA area) for 1993, 1994 and 1995
Secondary Schools Performance Information Booklets (grouped LEAs) for 1996, 1997 & **1998**
Secondary School Performance Information Digests (for each LEA area) for **1998**

Further copies of this booklet and those listed above, may be obtained from:

Schools Performance Division 3
Welsh Office Education Department
Cathays Park
CARDIFF CF1 3NQ
☎ (01222) 826010
Fax (01222) 826016

ISBN 0 7504 23293

February 1999

Cyhoeddwyd fel rhan o
RAGLEN BEST

Teitlau eraill sydd ar gael:

Canlyniadau Aseidiadau'r Cwricwlwm Cenedlaethol yng Nghymru: 1995 ac 1996- Ysgolion Cynradd

Canlyniadau Aseidiadau'r Cwricwlwm Cenedlaethol yng Nghymru: 1995 ac 1996- Ysgolion Uwchradd

Canlyniadau Aseidiadau'r Cwricwlwm Cenedlaethol yng Nghymru: Cyfnod Allweddol 1 am 1997 a **1998**

Canlyniadau Aseidiadau'r Cwricwlwm Cenedlaethol yng Nghymru: Cyfnod Allweddol 2 am 1997 a **1998**

Canlyniadau Aseidiadau'r Cwricwlwm Cenedlaethol yng Nghymru: Cyfnod Allweddol 3 am 1997 a **1998**

Llyfrynau Gwybodaeth Perfformiad Ysgolion Uwchradd (am ardal pob AALI) ym 1993, 1994 a 1995

Llyfrynau Gwybodaeth Perfformiad Ysgolion Uwchradd (ar gyfer grwpiau a AALI) am 1996, a 1997 a **1998**

Crynodebau Gwybodaeth Perfformiad Ysgolion Uwchradd (am adral pob AALI) - 1998

Gellir cael copïau pellach o'r llyfryn, a'r rhai a restrwyd uchod, oddi wrth:

Adran Perfformiad Ysgolion 3
Adran Addysg y Swyddfa Gymreig
Parc Cathays
CAERDYDD CF1 3NQ
☎ (01222) 826010
Ffacs (01222) 826016

Introduction

1. This booklet, published as part of the BEST programme, presents for Wales and each local authority area the 1998 GCSE results. It completes the range of published information for each Key Stage and complements the Secondary School Performance Information Booklets.

2. As with the booklets covering Key Stages 1, 2 and 3, this document presents the results for the core subjects and the Core Subject Indicator. Additionally this booklet reports on progress made towards the BEST targets for 2002 as well as providing other data which helps put the results into context.

3. Data in this booklet is derived from the information provided by the Welsh Examinations Database as part of the Secondary Schools Performance Information exercise. As part of the original exercise the data were returned to schools in the Autumn of 1998 for checking.

Access to Information.

4. Schools are required to report all examination results to parents. For comparative purposes, it is also a requirement that schools should have available the relevant Performance Information Booklets and Digests which present the local and national results. These documents are produced by the Welsh Office and provided free of charge to schools.

5. Schools are also required to include in their prospectuses and governors' annual reports a wider range of information which the Welsh Office provides on the RE2 form. This booklet highlights some of that information at a local level. In particular performance in GCSE grades A*-C and A*-G, and in the Core Subject Indicator of those pupils achieving at least grades C in English or Welsh (first language), mathematics and science in combination. The booklet also presents the relative performance of boys and girls which supports the BEST target of halving the extent to which boys underperform girls by 2002

Cyflwyniad

1. Mae'r llyfryn hwn, a gyhoeddir fel rhan o raglen BEST, yn cyflwyno canlyniadau TGAU 1998 ar gyfer Cymru gyfan ac ardal pob awdurdod lleol. Mae'n cwblhau'r ystod o wybodaeth gyhoeddedig ar gyfer pob Cyfnod Allweddol gan gydategu Llyfrynnau Gwybodaeth Perfformiad Ysgolion Uwchradd.

2. Fel gyda'r llyfrynnau sy'n cynnwys Cyfnodau Allweddol 1, 2 a 3, mae'r ddogfen hon yn cyflwyno canlyniadau'r pynciau craidd a'r Dangosydd Pynciau Craidd. Yn ychwanegol, mae'r llyfryn hwn yn adrodd ar y cynnydd sydd wedi'i wneud tuag at dargedau BEST ar gyfer 2002 yn ogystal â darparu data arall sy'n helpu i roi'r canlyniadau yn eu cyd-destun.

3. Mae'r data yn y llyfryn hwn yn deillio o'r wybodaeth a ddarparwyd gan Gronfa Ddata Arholiadau Cymru fel rhan o ymarfer Gwybodaeth Perfformiad Ysgolion Uwchradd. Fel rhan o'r ymarfer gwreiddiol dychwelwyd y data i'r ysgolion yn ystod yr Hydref 1998 i'w wirio.

Mynediad i Wybodaeth

4. Mae'n ofynnol i ysgolion adrodd holl ganlyniadau arholiadau i'r rhieni. At ddibenion cymharu, mae'n ofynnol hefyd i'r Llyfrynnau Gwybodaeth ar Berfformiad a Chrynodebau (perthnasol) sy'n cyflwyno'r canlyniadau lleol a chenedlaethol bod cyhoeddir y dogfennau hyn gan y Swyddfa Gymreig a'u rhoi yn rhad ac am ddim i ysgolion.

5. Mae'n ofynnol hefyd i ysgolion gynnwys yn eu llawlyfrau ac yn adroddiadau blynyddol y llywodraethwyr ystod ehangach o wybodaeth a ddarperir gan y Swyddfa Gymreig ar ffurflen RE2. Mae'r ffurflen hon yn tanlinellu rhywfaint o'r wybodaeth honno ar lefel leol, yn enwedig perfformiad mewn TGAU graddau A*C ac A*G, ac yn y Dangosydd Pynciau Craidd yn achos y disgyblion hynny sy'n ennill o leiaf gradd C mewn Cymraeg (iaith gyntaf) neu Saesneg, mathemateg a gwydoniaeth wedi'u cyfuno. Mae'r llyfryn hefyd yn cyflwyno perfformiad cymharol bechgyn a merched sy'n cefnogi targed BEST o haneru i ba raddau y mae bechgyn yn tanberfformio o'u cymharu â merched erbyn 2002.

Contents of Booklet.

6. This booklet comprises three sections.

Results Summaries:

This section displays in bar charts, the percentage of pupils in Wales and each local authority area attaining:

- 5 or more GCSE grades A*-C or equivalent;
- 5 or more GCSE grades A*-G or equivalent;
- GCSE grades A*-C in:
 - the separate subjects of English, Welsh (first language), mathematics and science; and
 - the core subject indicator;

This data is shown for all 15-year-olds and, separately, the performance of girls and boys.

The section also contains a chart showing the unauthorised absence rates for each local authority area.

Area Summaries:

This section presents a full summary of the results of each local authority area. The summary shows the results for each subject for boys, girls and all pupils. The local authorities are listed according to their Welsh Office/LEA number.

Performance Bands:

This section shows the distribution of performance for each subject within the upper and lower quartiles of LEA maintained and Grant Maintained schools in Wales. Also displayed is the median for each subject, the figures are shown for all such schools in Wales.

7. This section also contains charts which show the distribution of schools across each subject, measured by the percentage of pupils achieving GCSE grades A*-C, and separately the percentage of pupils achieving 5 or more GCSE grades A*-C or equivalent, 5 or more GCSE grades A*-G or equivalent and the Core Subject Indicator.

Cynnwys y Llyfryn

6. Tair adran sydd i'r llyfryn hwn.

Crynodebau Canlyniadau:

Mae'r adran hon yn dangos, ar ffurf siartiau bar, y ganran o ddisgyblion yng Nghymru ac yn ardal pob awdurdod addysg lleol a enillodd:

- 5 TGAU neu ragor, graddau A*-C neu gymhwyster cyfatebol;
- 5 TGAU neu ragor, graddau A*-G neu gymhwyster cyfatebol;
- TGAU graddau A*-C;
 - yn y pynciau ar wahân sef Cymraeg (iaith gyntaf), Saesneg, mathemateg a gwyddoniaeth; ac
- yn y dangosydd pynciau craidd;

Dangosir y data hwn ar gyfer pob disgybl 15 oed ac, ar wahân, perfformiad merched a bechgyn.

Mae'r adran hefyd yn cynnwys siart yn dangos cyfraddau absenoldeb heb ei awdurdodi ar gyfer pob ardal awdurdod lleol.

Crynodebau Ardal:

Mae'r adran hon yn cyflwyno crynodeb cyflawn o ganlyniadau ardal pob awdurdod lleol. Mae'r crynodeb yn dangos y canlyniadau ar gyfer pob pwnc ar gyfer bechgyn, merched a phob disgybl. Rhestrir yr awdurdodau lleol yn ôl rhif y Swyddfa Gymreig/AALI.

Bandiau Perfformiad:

Mae'r adran hon yn dangos dosbarthiad y perfformiad ar gyfer pob pwnc o fewn chwarterlau uchaf ac isaf ysgolion a gynhelir gan AALI ac ysgolion a Gynhelir â Grant yng Nghymru. Dangosir hefyd y canolrif ar gyfer pob pwnc, dangosir y ffigurau ar gyfer pob ysgol o'r fath yng Nghymru.

7. Mae'r adran hon hefyd yn cynnwys siartiau sy'n dangos dosbarthiad yr ysgolion ar draws pob pwnc, a fesurir yn ôl y ganran o'r disgyblion yn ennill TGAU graddau A*-C, ac ar wahân y ganran o'r disgyblion yn ennill 5 TGAU neu ragor, graddau A*-C neu gymhwyster cyfatebol, 5 TGAU neu ragor, graddau A*-G neu gymhwyster cyfatebol a'r Dangosydd Pynciau Craidd.



RESULTS SUMMARIES
CRYNODEBAU CANLYNIADAU

**section
adran**

1

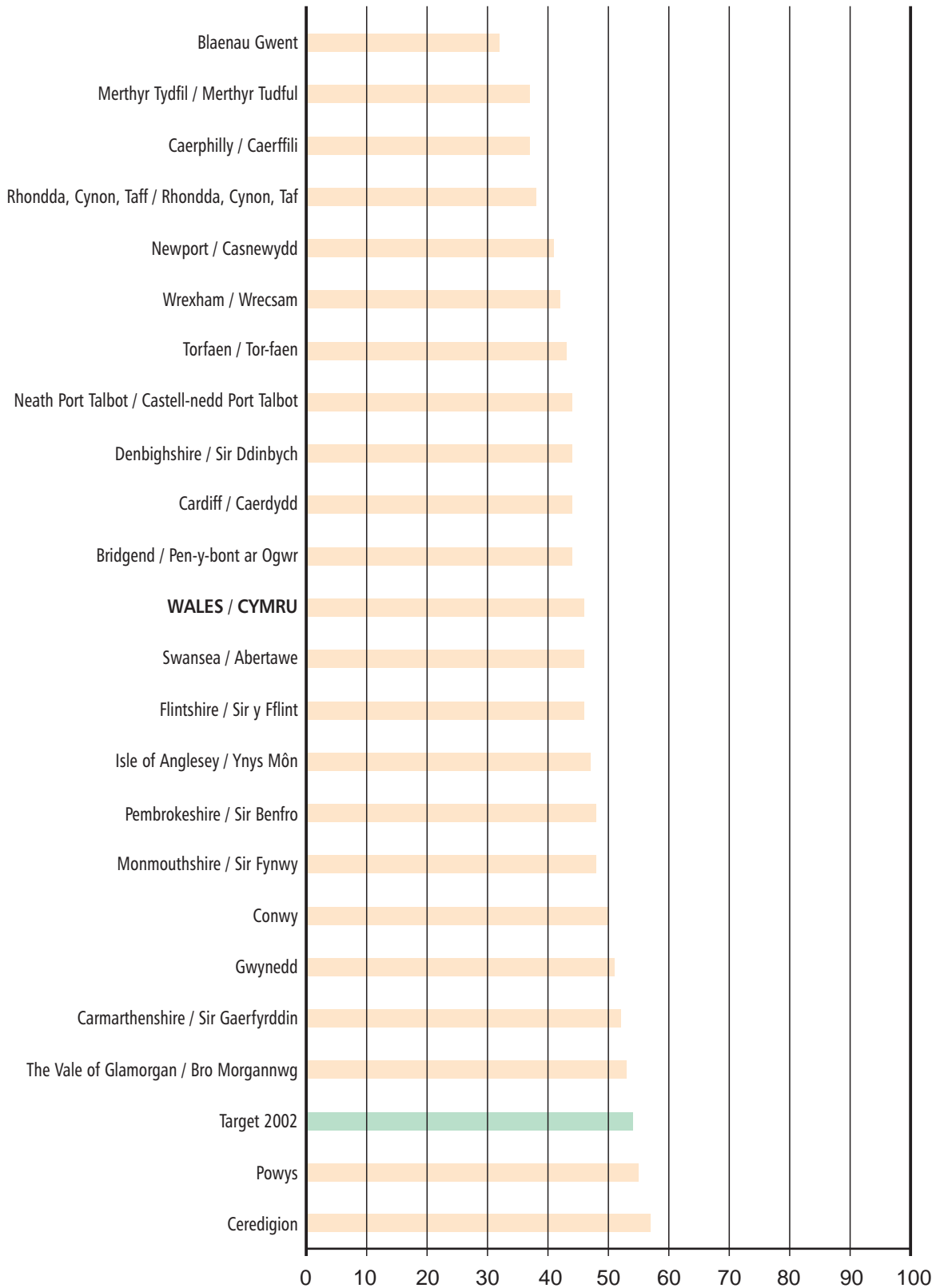
GCSE/GNVQ Results In Wales: 1998

Canlyniadau TGAU/CGCC Yng Nghymru: 1998



Local Authority Analysis - Dadansoddiad yr Awdurdodau Lleol

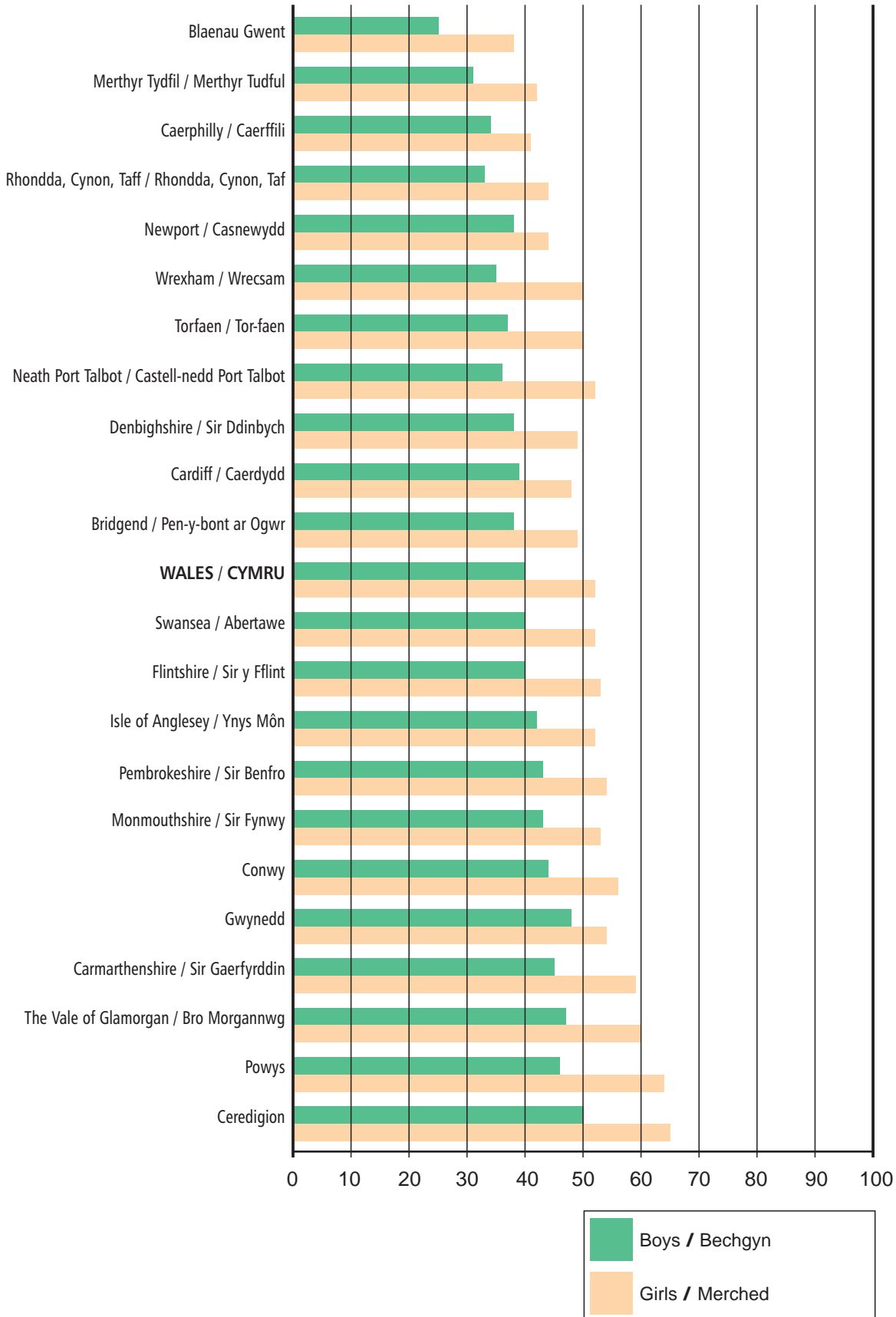
Percentage of 15-year-old pupils gaining 5 or more GCSE grades A*-C or equivalent
 Canran o ddisgyblion 15 oed yn ennill 5 TGAU graddau A*-C neu gymhwyster cyfatebol



Local Authority Analysis - Dadansoddiad yr Awdurdodau Lleol

Percentage of 15-year-old pupils gaining 5 or more GCSE grades A*-C or equivalent by gender

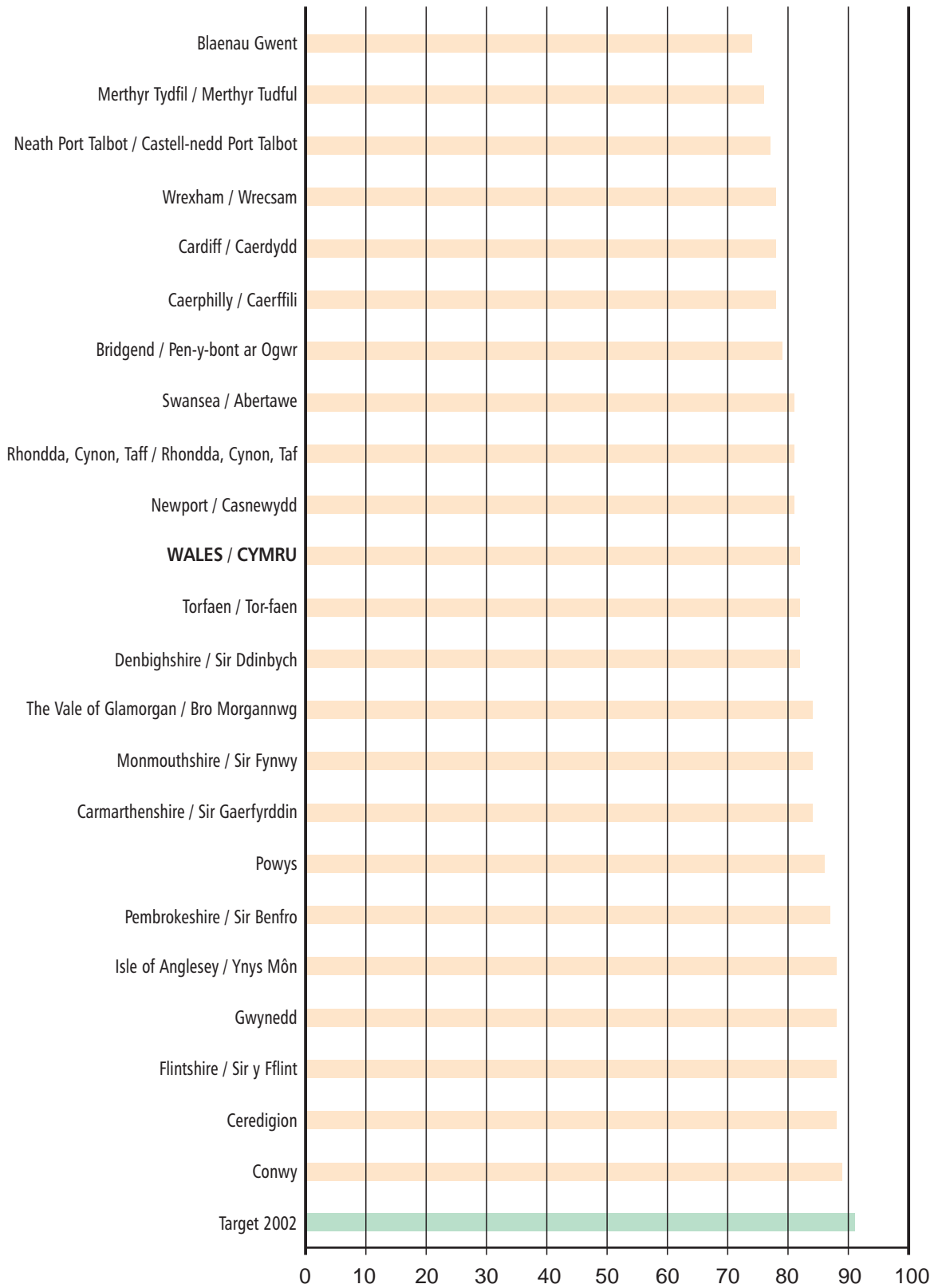
Canran o ddisgyblion 15 oed yn ennill 5 TGAU graddau A*-C neu gymhwyster cyfatebol yn ôl rhyw



Local authorities listed as page 8/Awdurdodau lleol yn ôl y rhestr ar dudalen 8

Local Authority Analysis - Dadansoddiad yr Awdurdodau Lleol

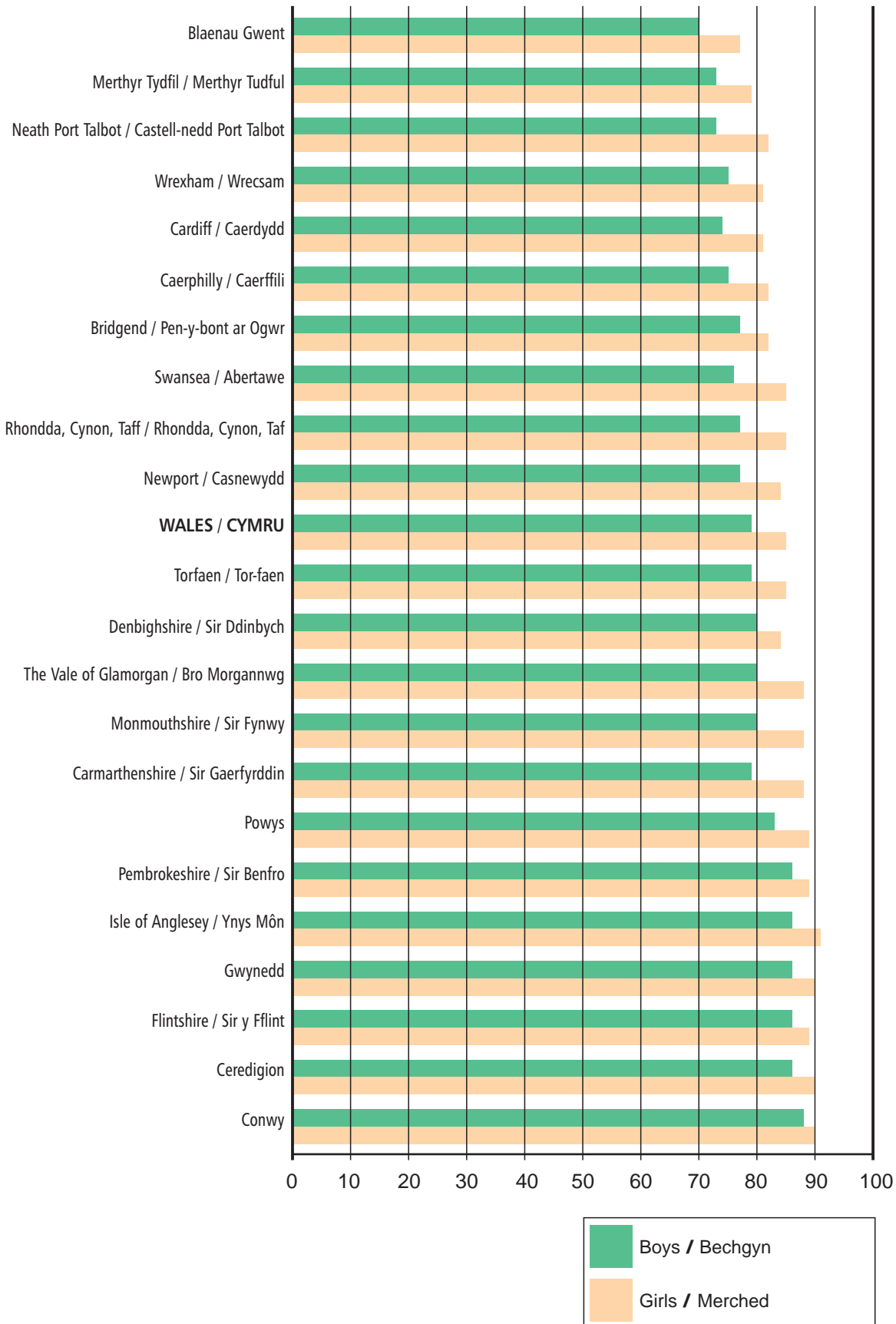
Percentage of 15-year-old pupils gaining 5 or more GCSE grades A*-G or equivalent
 Canran o ddisgyblion 15 oed yn ennill 5 TGAU graddau A*-G neu gymhwyster cyfatebol



Local Authority Analysis - Dadansoddiad yr Awdurdodau Lleol

Percentage of 15-year-old pupils gaining 5 or more GCSE grades A*-G or equivalent by gender

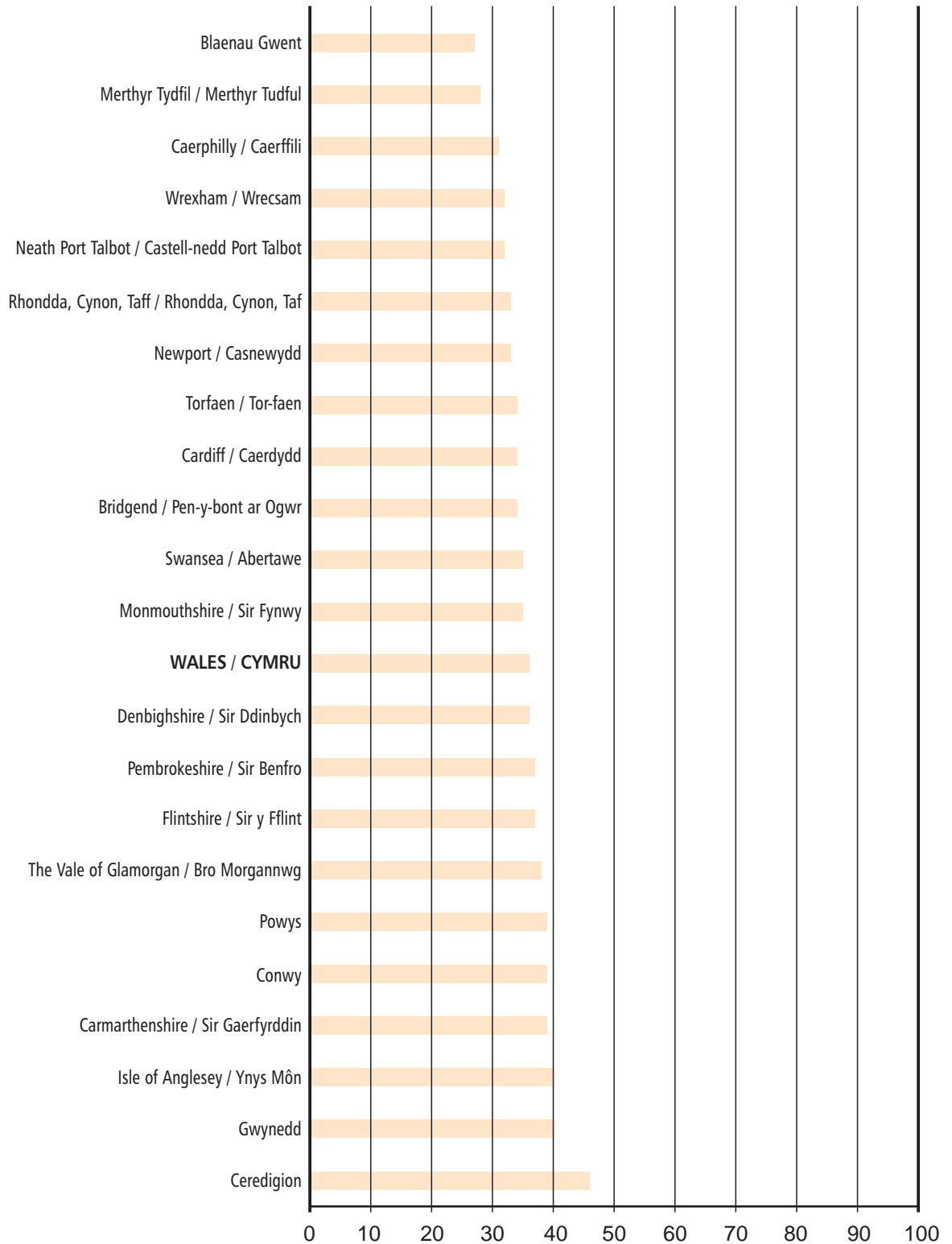
Canran o ddisgyblion 15 oed yn ennill 5 TGAU graddau A*-G neu gymhwyster cyfatebol yn ôl rhyw



Local authorities listed as page 10/Awdurdodau Lleol yn ôl y rhestr ar dudalen 10

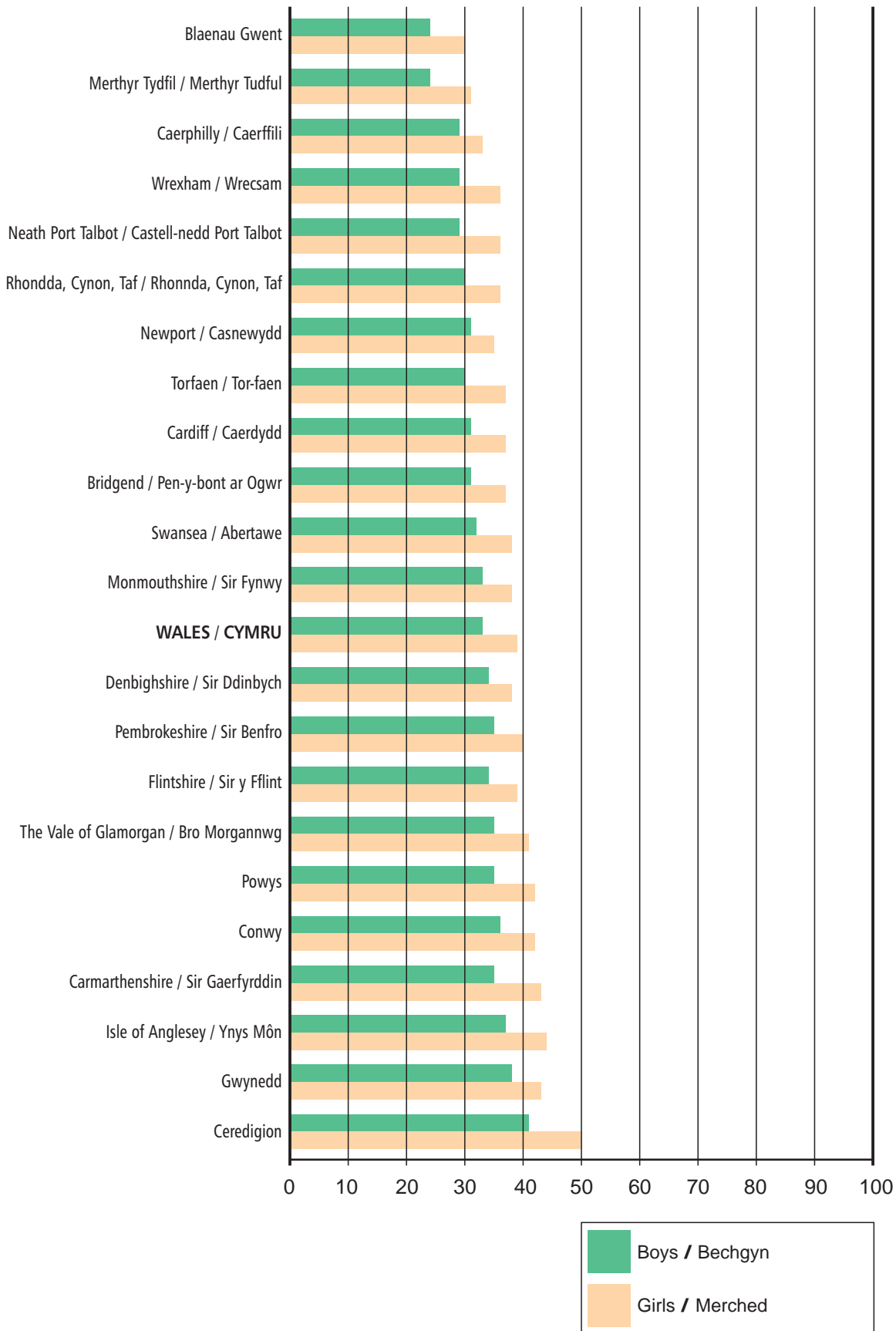
Local Authority Analysis - Dadansoddiad yr Awdurdodau Lleol

Average GCSE/GNVQ points score per 15-year-old pupil Sgôr pwntiau TGAU/CGCC cyfartalog am bob disgybl 15 oed



Local Authority Analysis - Dadansoddiad yr Awdurdodau Lleol

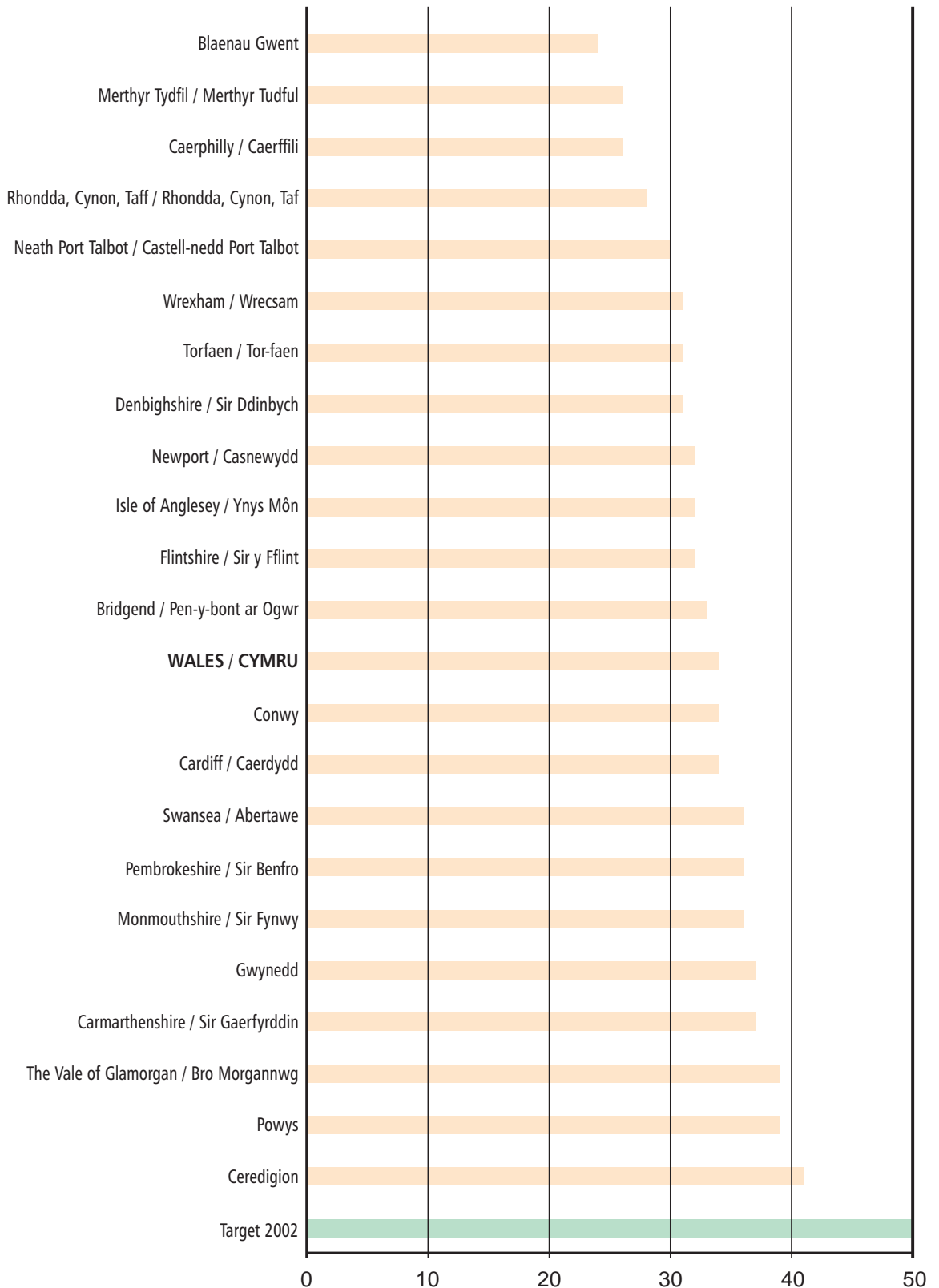
Average GCSE/GNVQ points score per 15-year-old pupil by gender Sgôr pwntiau TGAU/CGCC cyfartalog am bob disgybl 15 oed yn ôl rhyw



Local authorities listed as page 12/Awdurdodau lleol yn ôl rhestr ar dudalen 12

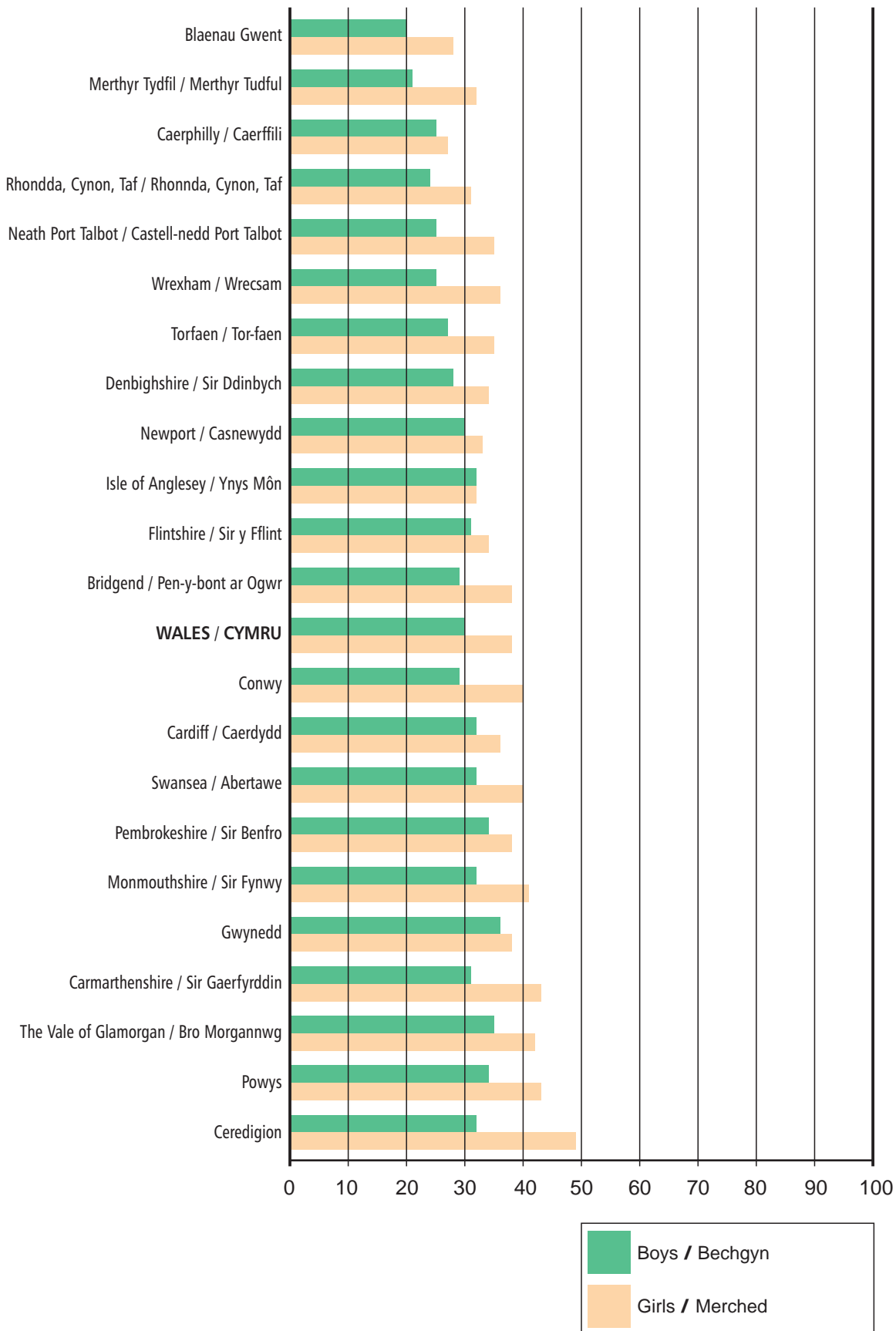
Local Authority Analysis - Dadansoddiad yr Awdurdodau Lleol

Percentage of 15-year-old pupils achieving the Core Subject Indicator Canran o ddisgylion 15 oed yn ennill y Dangosydd Pynciau Craidd



Local Authority Analysis - Dadansoddiad yr Awdurdodau Lleol

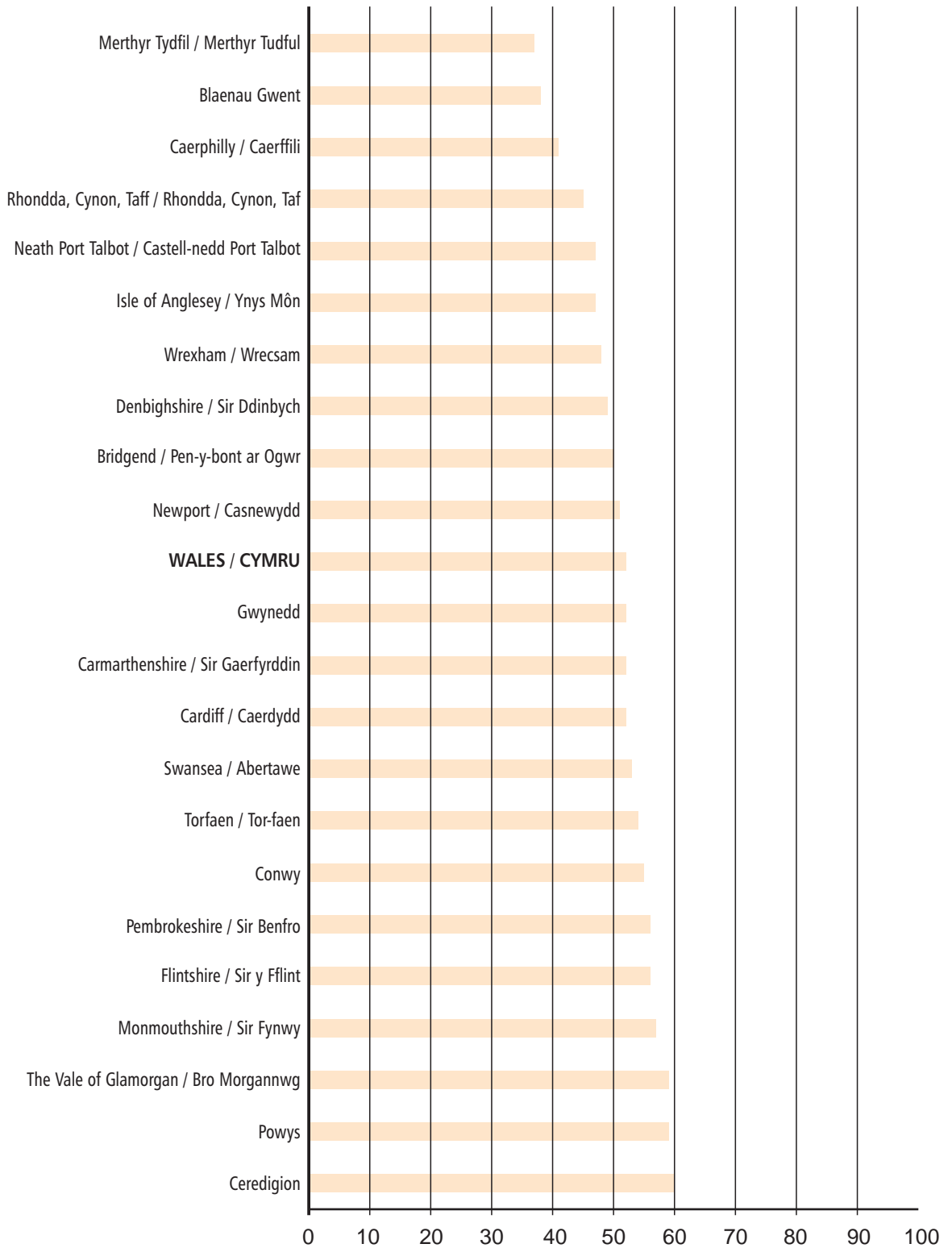
Percentage of 15-year-old pupils achieving the Core Subject Indicator by gender Canran o ddisgyblion 15 oed yn ennill y Dangosydd Pynciau Craidd yn ôl rhyw



Local authorities listed as page 14/Awdurdodau lleol yn ôl y rhestr ar dudalen 14

Local Authority Analysis - Dadansoddiad yr Awdurdodau Lleol

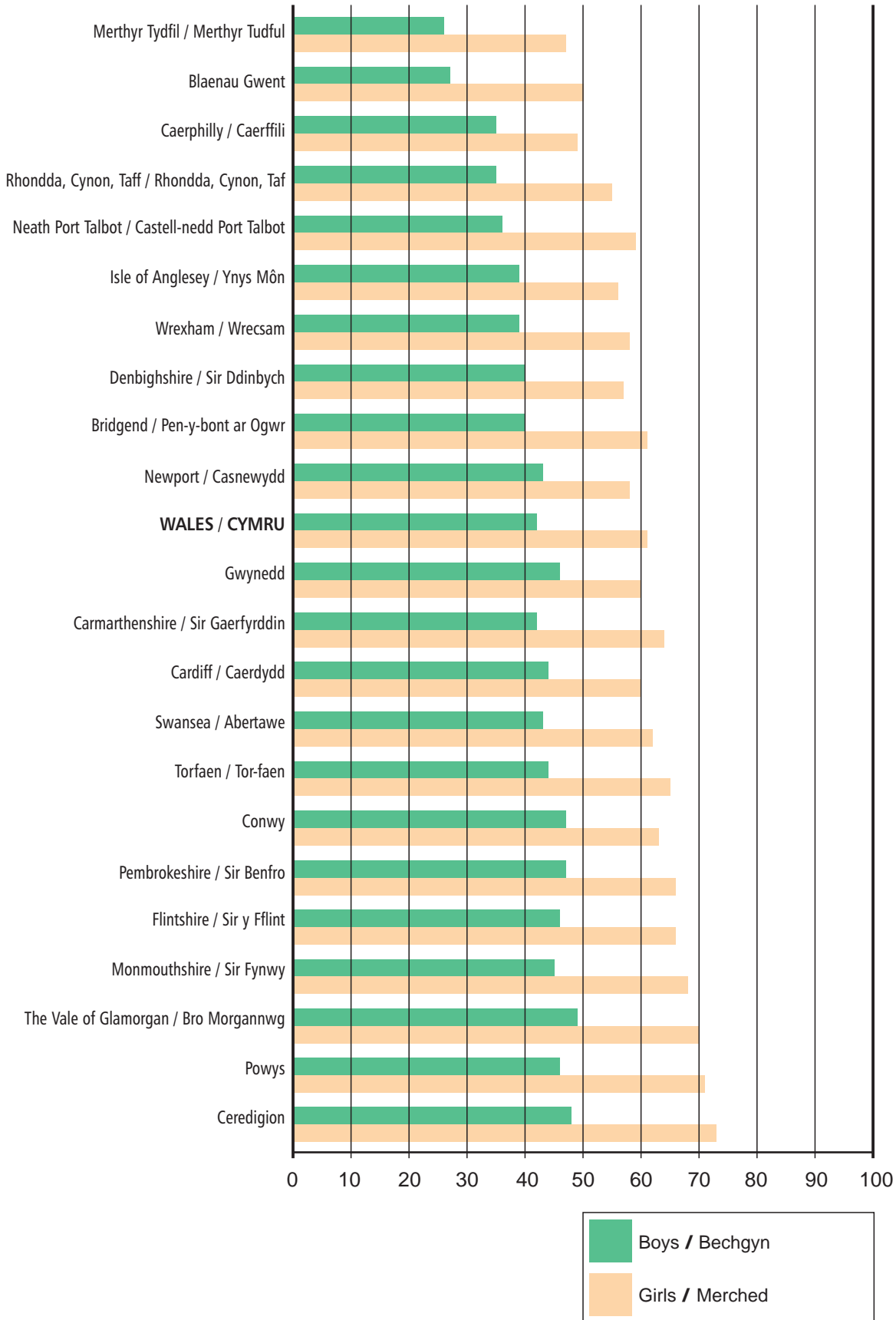
Percentage of 15-year-old pupils achieving GCSE grades A*-C in English Canran o ddisgyblion 15 oed ennill TGAU graddau A*-C mewn Saesneg



Local Authority Analysis - Dadansoddiad yr Awdurdodau Lleol

Percentage of 15 year old pupils achieving GCSE grades A*-C in English by gender

Canran o ddisgyblion 15 oed yn ennill TGAU graddau A*-C mewn Saesneg yn ôl rhyw

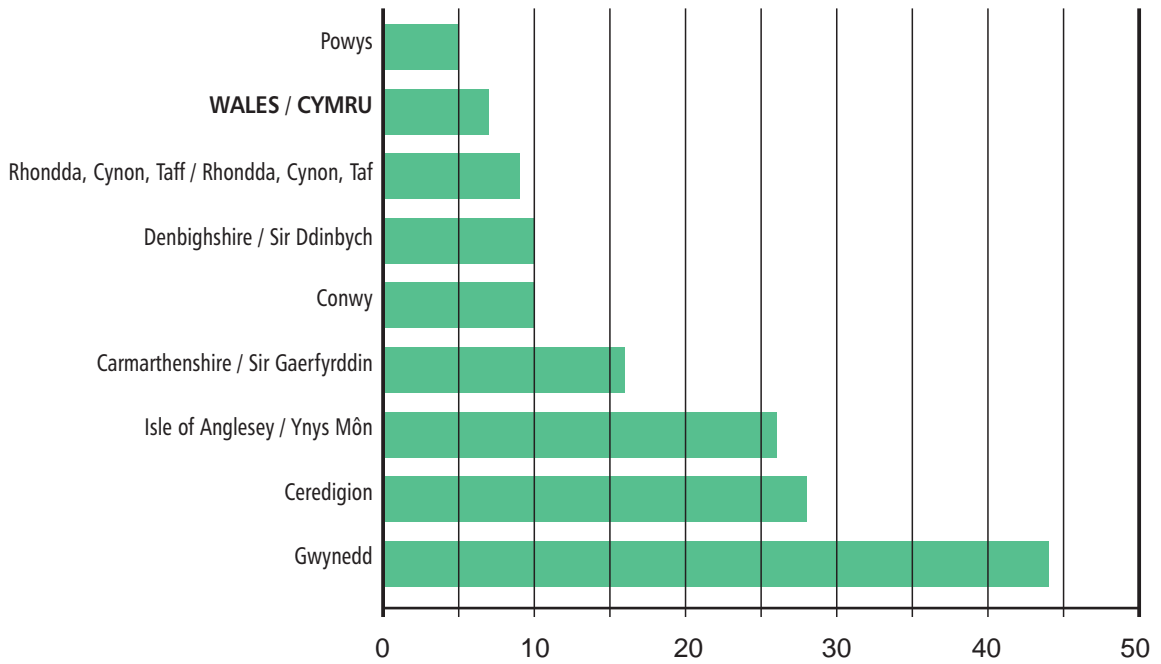


Local authorities listed as page 16/Awdurdodau Lleol yn ôl y rhestr ar dudalen 16

Local Authority Analysis - Dadansoddiad yr Awdurdodau Lleol

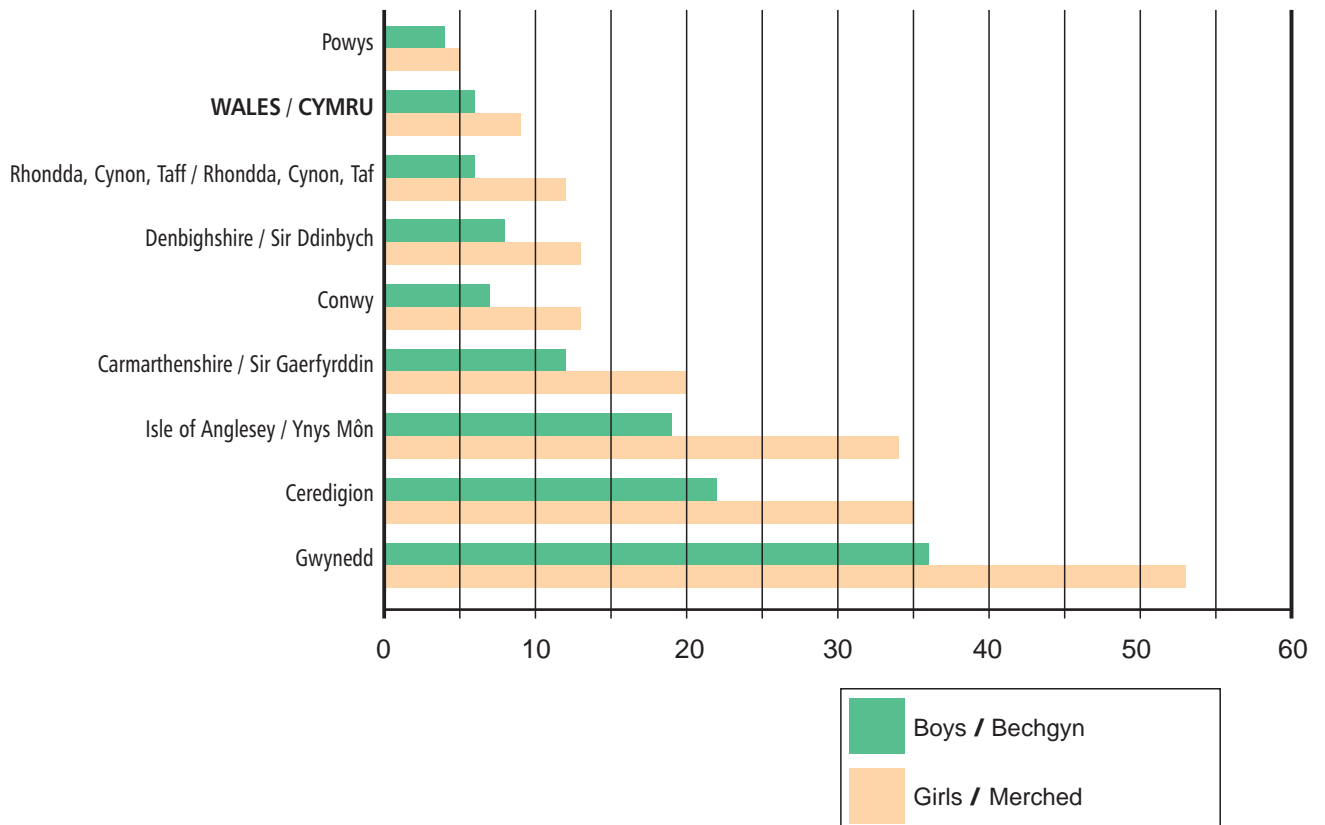
Percentage of 15-year-old pupils achieving GCSE grades A*-C in Welsh (1st Language)

Canran o ddisgyblion 15 oed yn ennill TGAU graddau A*-C mewn Cymraeg (Iaith Gyntaf)



Percentage of 15-year-old pupils achieving GCSE grades A*-C in Welsh (1st Language) by gender

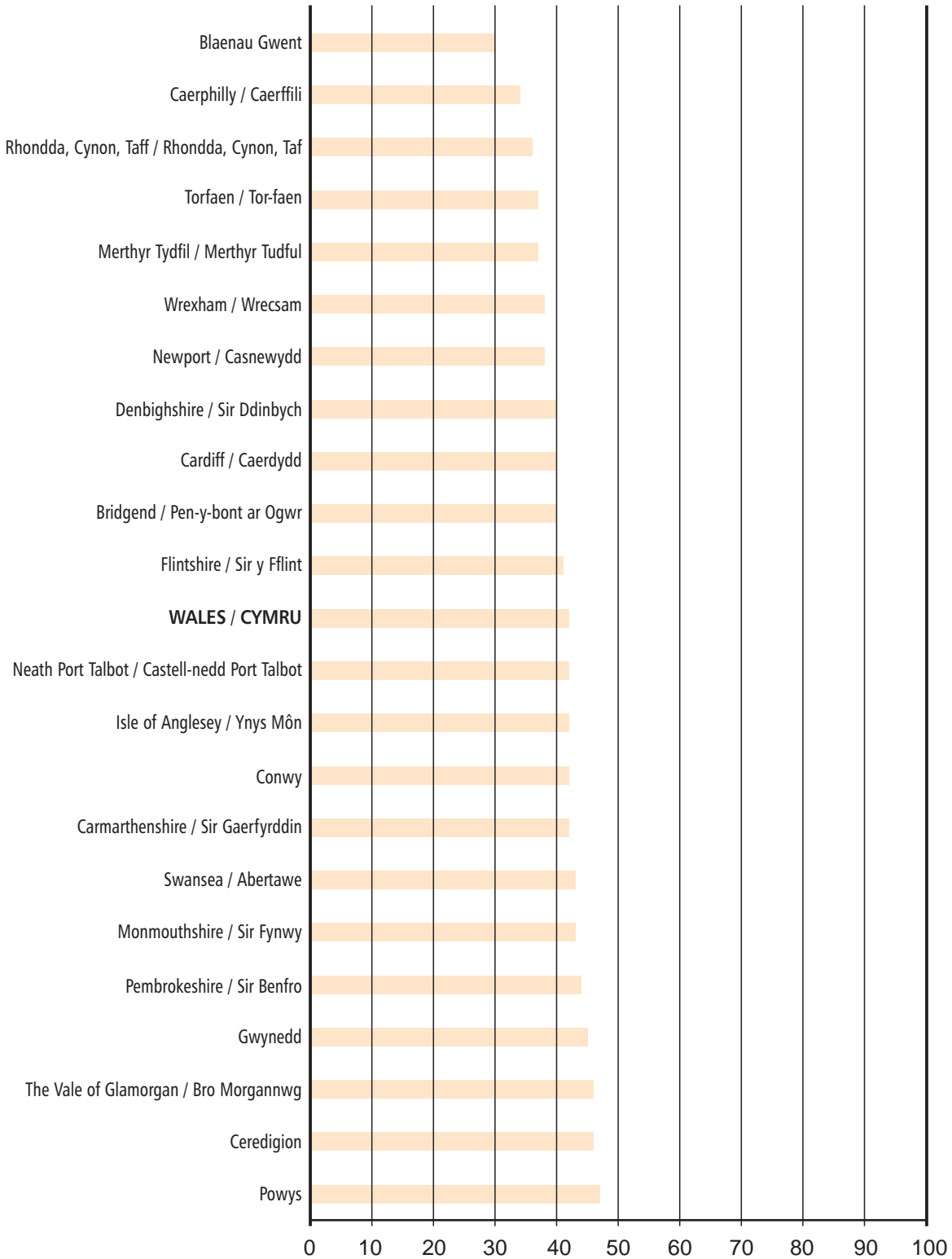
Canran o ddisgyblion 15 oed yn ennill 5 TGAU graddau A*-C mewn Cymraeg (Iaith Gyntaf) yn ôl rhyw



Local authorities listed as first chart/Awdurdodau lleol yn ôl y rhestr siart cunfaf

Local Authority Analysis - Dadansoddiad yr Awdurdodau Lleol

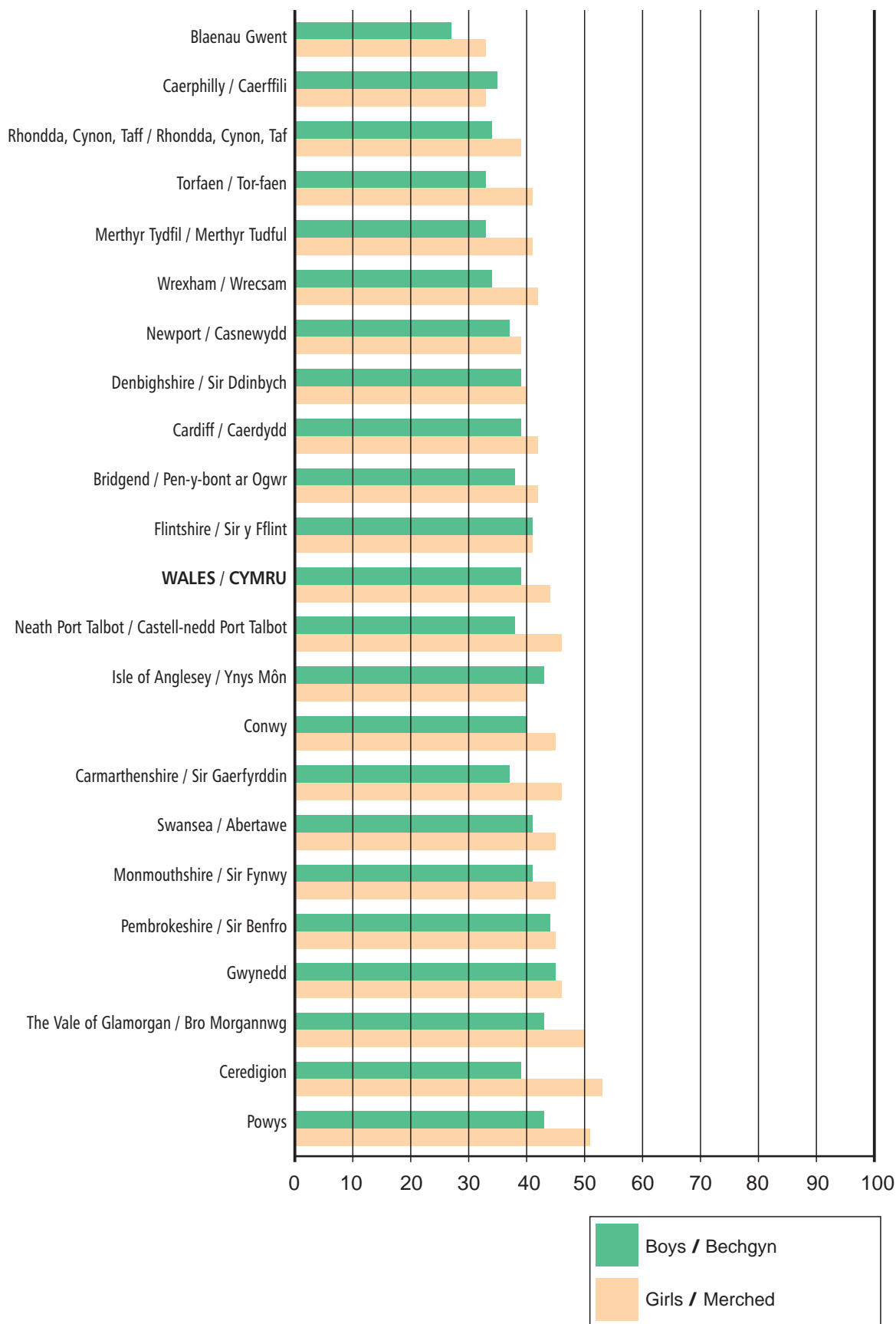
Percentage of 15-year-old pupils achieving GCSE grades A*-C in Mathematics Canran o ddisgyblion 15 oed yn ennill TGAU graddau A*-C mewn Mathemateg



Local Authority Analysis - Dadansoddiad yr Awdurdodau Lleol

Percentage of 15-year-old pupils achieving GCSE grades A*-C in Mathematics by gender

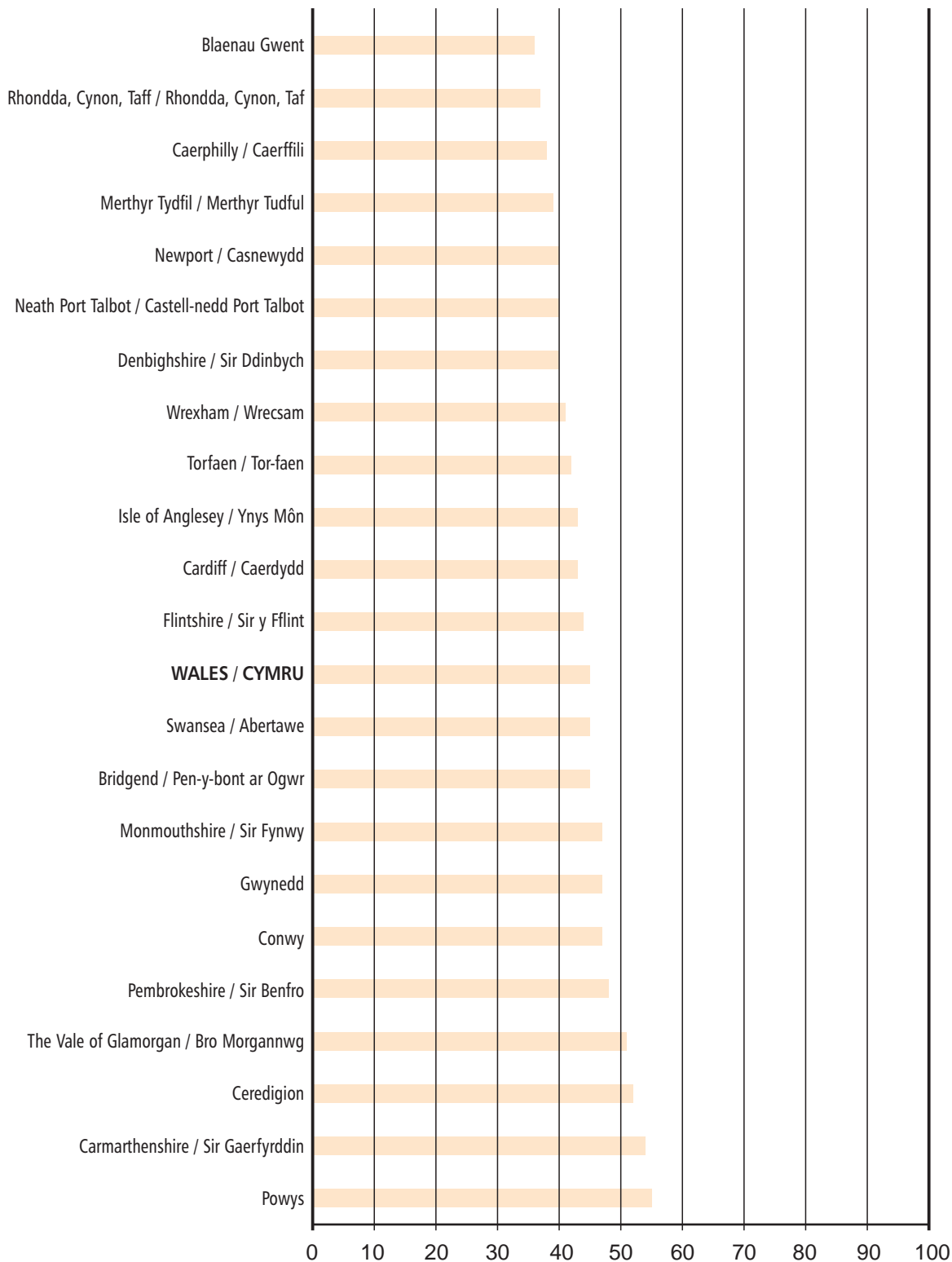
Canran o ddisgyblion 15 oed yn ennill TGAU graddau A*-C mewn Mathemateg yn ôl rhyw



Local authorities listed as page 19/Awdurdodau lleol yn ôl y rhestr ar dudalen 19

Local Authority Analysis - Dadansoddiad yr Awdurdodau Lleol

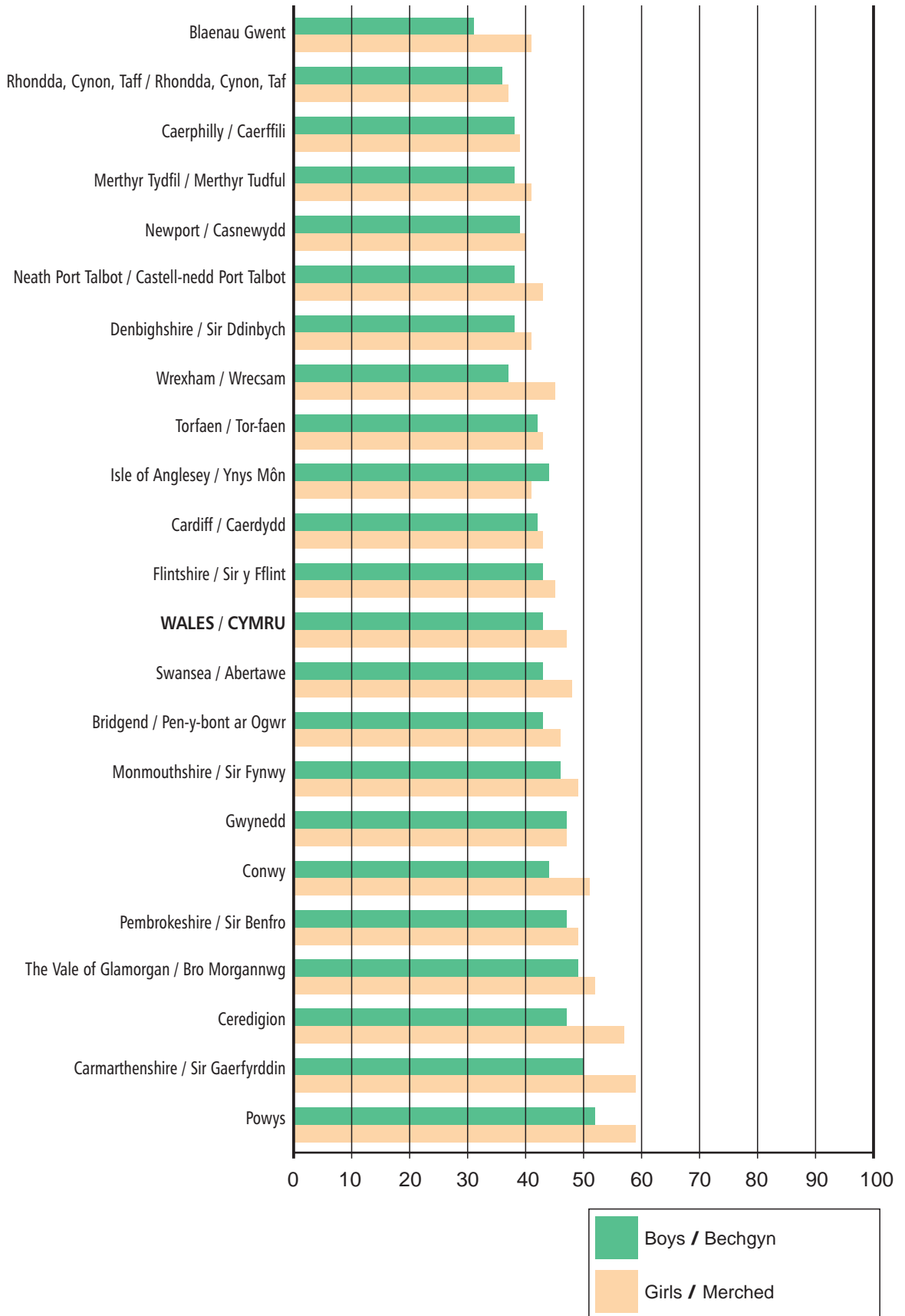
Percentage of 15-year-old pupils achieving GCSE grades A*-C in Science Canran o ddisgyblion 15 oed ennill TGAU graddau A*-C mewn Gwyddoniaeth



Local Authority Analysis - Dadansoddiad yr Awdurdodau Lleol

Percentage of 15-year-old pupils achieving GCSE grades A*-C in Science by gender

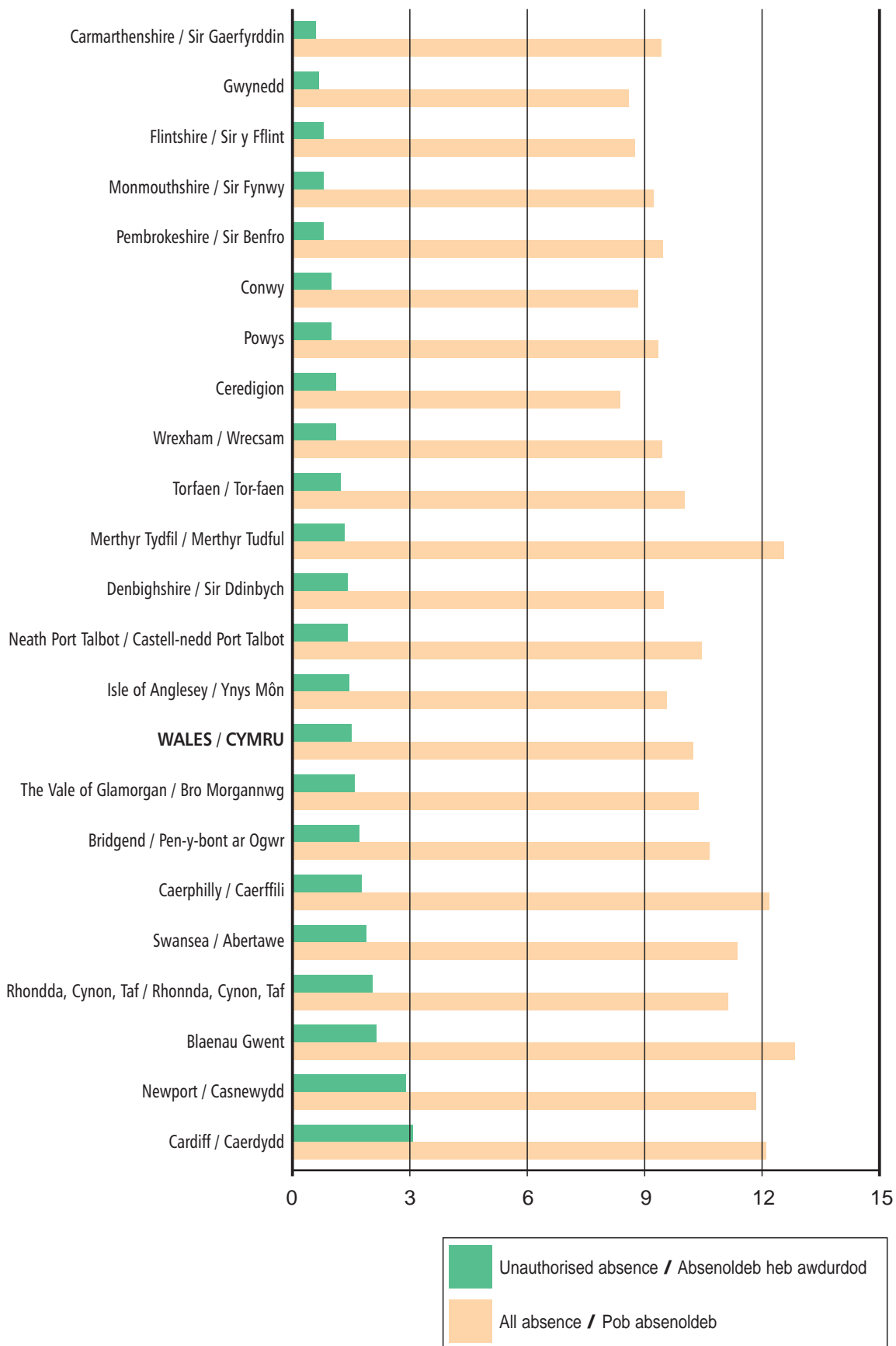
Canran o ddisgyblion 15 oed yn ennill TGAU graddau A*-C mewn Gwyddoniaeth yn ôl rhyw



Local authorities listed as page 21/Awdurdodau lleol yn ôl y rhestr ar dudalen 21

Local Authority Analysis - Dadansoddiad yr Awdurdodau Lleol

Percentage of school sessions missed due to absence Canran y sesiynau ysgol a gollwyd oherwydd absenoldeb



Local Authority Area: Summary Table / Ardal Awdurdod Lleol: Tabl Crynodeb

	15-year-old pupils				Percentage achieving 5 or more GCSE grades A*-C				Percentage achieving 5 or more GCSE grades A*-G				Percentage achieving 5 or more GCSE grades A*-G or equivalent			
	Total		Girls		Total		Girls		Total		Girls		Total		Girls	
	Cyfanswm	Bechgyn	Merched	Bechgyn	Cyfanswm	Bechgyn	Merched	Bechgyn	Cyfanswm	Bechgyn	Merched	Bechgyn	Cyfanswm	Bechgyn	Merched	Bechgyn
Disgyblion 15 oed																
Isle of Anglesey/Ynys Môn	860	456	404	42	88	86	91	47	42	52	42	88	86	91	47	42
Gwynedd	1,333	701	632	48	88	86	90	51	48	90	48	88	86	90	51	48
Conwy	1,057	533	524	43	89	87	90	50	44	90	44	89	88	90	50	44
Denbighshire/Sir Ddinbych	1,186	591	595	38	82	80	84	44	38	84	38	82	80	84	44	38
Flintshire/Sir y Fflint	1,736	894	842	40	88	86	89	46	40	89	40	88	86	89	46	40
Wrexham/Wrecsam	1,395	709	686	35	77	74	81	42	35	81	35	78	75	81	42	35
Powys	1,403	698	705	46	86	83	89	55	46	89	46	86	83	89	55	46
Ceredigion	847	428	419	56	88	86	90	57	50	90	50	88	86	90	57	50
Pembrokeshire/Sir Benfro	1,345	716	629	43	87	86	89	48	43	89	43	87	86	89	48	43
Carmarthenshire/Sir Gaerfyrddin	2,181	1,121	1,060	44	83	79	88	52	45	88	45	84	79	88	52	45
Swansea/Abertawe	2,806	1,420	1,386	40	81	76	85	46	40	85	40	81	76	85	46	40
Neath Port Talbot/ Castell-nedd Port Talbot	1,726	900	826	36	77	73	82	44	36	82	36	77	73	82	44	36
Bridgend/Pen- y-bont ar Ogwr	1,559	779	780	38	79	77	82	44	38	82	38	79	77	82	44	38
The Vale of Glamorgan/Bro Morgannwg	1,372	680	692	47	84	80	88	53	47	88	47	84	80	88	53	47
Rhondda, Cynon, Taff/Rhondda, Cynon, Taf	2,979	1,537	1,442	33	81	77	85	38	33	85	33	81	77	85	38	33
Merthyr Tydfil/Merthyr Tudful	783	383	400	31	75	72	79	37	31	79	31	75	72	79	37	31
Caerphilly/Caerffili	2,167	1,097	1,070	33	78	75	82	37	33	82	33	78	75	82	37	33
Blaenau Gwent	819	400	419	25	74	70	77	32	25	77	25	74	70	77	32	25
Torfaen/Tor-faen	1,237	660	577	36	80	78	83	43	36	83	37	80	78	83	43	37
Monmouthshire/Sir Fynwy	896	456	440	43	84	80	88	48	43	88	43	84	80	88	48	43
Newport/Casnewydd	1,522	733	789	38	81	77	84	41	38	84	38	81	77	84	41	38
Cardiff/Caerdydd	3,571	1,802	1,769	39	76	73	80	44	39	80	39	76	73	80	44	39
WALES/CYMRU	35,680	18,157	17,523	46	82	79	85	46	40	85	40	82	79	85	46	40

Local Authority Area: Summary Table / Ardal Awdurdod Lleol: Tabl Crynodeb

	Average GCSE/GNVQ points score per 15-year-old pupil		Percentage not entered for GCSEs		Percentage of school sessions missed due to:			
	Sgôr pwyntiau TGAU/CGCC cyfartalog am bob disgybl 15 oed		Canran heb eu cofrestru ar gyfer TGAU		Canran y sesiynau ysgol a gollwyd oherwydd:			
	Total Cyfanswm	Boys Bechgyn	Girls Merched	Total Cyfanswm	Boys Bechgyn	Girls Merched	All absences Pob absenoldeb	Unauthorised absences Absenoldebau awdurdod
Isle of Anglesey/Ynys Môn	40	37	44	5	7	3	9.5	1.4
Gwynedd	40	38	43	5	7	4	8.6	0.6
Conwy	39	36	42	4	6	3	8.9	0.9
Denbighshire/Sir Ddinbych	36	34	38	10	10	10	9.4	1.3
Flintshire/Sir y Fflint	37	34	39	4	5	3	8.7	0.7
Wrexham/Wrecsam	32	29	36	10	11	10	9.4	1.0
Powys	39	35	42	5	7	4	9.3	0.9
Ceredigion	46	41	50	4	5	4	8.4	1.0
Pembrokeshire/Sir Benfro	37	35	40	4	4	4	9.4	0.7
Carmarthenshire/Sir Gaerfyrddin	39	35	43	6	8	4	9.4	0.5
Swansea/Abertawe	35	32	38	8	10	6	11.4	1.9
Neath Port Talbot/ Castell-nedd Port Talbot	32	29	36	6	8	4	10.7	1.3
Bridgend/Pen- y-bont ar Ogwr	34	31	37	10	13	6	10.7	1.6
The Vale of Glamorgan/Bro Morgannwg	38	35	41	8	9	8	10.5	1.6
Rhondda, Cynon, Taf/Rhondda, Cynon, Taf	33	30	36	8	10	6	11.1	2.2
Merthyr Tydfil/Merthyr Tudful	28	24	31	9	12	7	12.3	1.2
Caerphilly/Caerffili	31	29	33	9	9	9	12.2	1.8
Blaenau Gwent	27	24	30	11	14	9	13.0	2.4
Torfaen/Tor-faen	34	30	37	6	8	5	10.0	1.1
Monmouthshire/Sir Fynwy	35	33	38	5	6	3	9.2	0.7
Newport/Casnewydd	33	31	35	5	6	3	11.8	2.9
Cardiff/Caerdydd	34	31	37	10	12	9	12.1	3.1
WALES/CYMRU	36	33	39	7	9	6	10.4	1.5

Local Authority Area: Summary Table / Ardal Awdurdod Lleol: Tabl Crynodeb

	Percentage achieving the core subject indicator (a)				Percentage achieving A*-C in English				Percentage achieving A*-C in Welsh (1st language)				Percentage achieving A*-C in Mathematics				Percentage achieving A*-C in Science			
	Canran yn ennill y dangosydd pynciau craidd (a)		Canran yn ennill A*-C mewn Saesneg		Canran yn ennill A*-C mewn Cymraeg (iaith gyntaf)		Canran yn ennill A*-C mewn Mathemateg		Canran yn ennill A*-C mewn Gwyddoniaeth											
	Total Cyfanswm	Boys Bechgyn	Girls Merched	Total Cyfanswm	Boys Bechgyn	Girls Merched	Total Cyfanswm	Boys Bechgyn	Girls Merched	Total Cyfanswm	Boys Bechgyn	Girls Merched	Total Cyfanswm	Boys Bechgyn	Girls Merched					
Isle of Anglesey/Ynys Môn	32	32	32	47	39	56	26	19	34	42	43	40	43	44	41					
Gwynedd	37	36	38	52	46	60	44	36	53	45	47	46	47	47	47					
Conwy	34	29	40	55	47	63	10	7	13	42	47	45	47	44	51					
Denbighshire/Sir Ddinbych	31	28	34	49	40	57	10	8	13	40	40	40	40	38	41					
Flintshire/Sir y Fflint	32	31	34	56	46	66	41	44	41	44	43	45					
Wrexham/Wrecsam	31	25	36	48	39	58	38	41	42	41	37	45					
Powys	39	34	43	59	46	71	5	4	5	47	55	51	55	52	59					
Ceredigion	41	32	49	60	48	73	28	22	35	46	39	53	52	47	57					
Pembrokeshire/Sir Benfro	36	34	38	56	47	66	44	48	45	48	47	49					
Cardiganshire/Sir Gaerfyrddin	37	31	43	52	42	64	16	12	20	42	37	46	54	50	59					
Swansea/Abertawe	36	32	40	53	43	62	43	41	45	45	43	48					
Neath Port Talbot/ Castell-nedd Port Talbot	30	25	35	47	36	59	42	38	46	40	38	43					
Bridgend/Pen- y-bont ar Ogor	33	29	38	50	40	61	40	38	42	45	43	46					
The Vale of Glamorgan/Bro Morgannwg	39	35	42	59	49	70	9	6	12	46	43	50	51	49	52					
Rhondda, Cynon, Taff/Rhondda, Cynon, Taf	28	24	31	45	35	55	36	34	39	37	36	37					
Merthyr Tydfil/Merthyr Tudful	26	21	32	37	26	47	37	33	41	39	38	41					
Caerphilly/Caerffili	26	25	27	41	35	49	34	35	33	38	38	39					
Blaenau Gwent	24	20	28	38	27	50	30	27	33	36	31	41					
Torfaen/Tor-faen	31	27	35	54	44	65	37	33	41	42	42	43					
Monmouthshire/Sir Fynwy	36	32	41	57	45	68	43	41	45	47	46	49					
Newport/Casnewydd	32	30	33	51	43	58	38	37	39	40	39	40					
Cardiff/Caerdydd	34	32	36	52	44	60	40	39	42	43	42	43					
WALES/CYMRU	34	30	38	52	42	61	7	6	9	42	39	44	45	43	47					

(a) Percentage achieving GCSE grades A*-C in mathematics, science and either English or Welsh (First language) in combination.
 (a) Canran yn ennill TGAU graddau A*-C mewn mathemateg, gwyddoniaeth a naill ai Cymraeg (iaith gyntaf) neu Saesneg mewn cyfuniad.
 .. Results are not shown where their inclusion may make it possible to identify individual schools.
 .. Ni ddangosir canlyniadau lle byddai eu cynnwys yn golygu bod modd adnabod ysgolion unigol.



LEA AREA SUMMARIES
CRYNODEBAU ARDAL AALL

section
adran **2**

GCSE/GNVQ Results In Wales: 1998

Canlyniadau TGAU/CGCC Yng Nghymru: 1998



Isle of Anglesey / Sir Ynys Môn

Percentage of 15-year-old boys/Canran bechgyn 15 oed

	achieving yn ennill A*-C	achieving yn ennill D-G	achieving yn ennill A*-G	not graded heb eu graddio	not entered heb eu cofrestru	Total Cyfanswm	Base Sail
English/Saesneg	39.3	45.8	85.1	0.0	14.9	100	456
Welsh/Cymraeg (a)	19.1	14.3	33.3	0.2	66.4	100	456
Mathematics/Mathemateg	43.0	42.1	85.1	2.2	12.7	100	456
Science/Gwyddoniaeth	43.9	44.1	87.9	1.1	11.0	100	456

Percentage of 15-year-old girls/Canran merched 15 oed

	achieving yn ennill A*-C	achieving yn ennill D-G	achieving yn ennill A*-G	not graded heb eu graddio	not entered heb eu cofrestru	Total Cyfanswm	Base Sail
English/Saesneg	56.4	36.1	92.6	0.5	6.9	100	404
Welsh/Cymraeg (a)	34.4	10.1	44.6	0.0	55.4	100	404
Mathematics/Mathemateg	40.1	48.5	88.6	2.0	9.4	100	404
Science/Gwyddoniaeth	41.1	49.3	90.3	1.5	8.2	100	404

Percentage of 15-year-old pupils/Canran disgyblion 15 oed

	achieving yn ennill A*-C	achieving yn ennill D-G	achieving yn ennill A*-G	not graded heb eu graddio	not entered heb eu cofrestru	Total Cyfanswm	Base Sail
English/Saesneg	47.3	41.3	88.6	0.2	11.2	100	860
Welsh/Cymraeg (a)	26.3	12.3	38.6	0.1	61.3	100	860
Mathematics/Mathemateg	41.6	45.1	86.7	2.1	11.2	100	860
Science/Gwyddoniaeth	42.6	46.5	89.1	1.3	9.7	100	860

(a) Of 851 secondary school pupils in Year 11 in 1998, 56.8 per cent were not taught Welsh as a first language.

(a) Of 851 disgyblion ysgolion uwchradd ym Mlwyddyn 11 ym 1998, nid addysgwyd Cymraeg fel iaith gyntaf i 56.8 y cant.

Gwynedd

Percentage of 15-year-old boys/Canran bechgyn 15 oed

	achieving yn ennill A*-C	achieving yn ennill D-G	achieving yn ennill A*-G	not graded heb eu graddio	not entered heb eu cofrestru	Total Cyfanswm	Base Sail
English/Saesneg	45.6	41.2	86.9	0.6	12.6	100	701
Welsh/Cymraeg (a)	35.7	30.1	65.8	0.0	34.2	100	701
Mathematics/Mathemateg	45.2	42.5	87.7	2.0	10.3	100	701
Science/Gwyddoniaeth	46.8	41.2	88.0	1.6	10.4	100	701

Percentage of 15-year-old girls/Canran merched 15 oed

	achieving yn ennill A*-C	achieving yn ennill D-G	achieving yn ennill A*-G	not graded heb eu graddio	not entered heb eu cofrestru	Total Cyfanswm	Base Sail
English/Saesneg	59.7	32.8	92.4	0.6	7.0	100	632
Welsh/Cymraeg (a)	52.5	20.6	73.1	0.0	26.9	100	632
Mathematics/Mathemateg	45.6	44.1	89.7	1.7	8.5	100	632
Science/Gwyddoniaeth	47.0	43.4	90.3	1.7	7.9	100	632

Percentage of 15-year-old pupils/Canran disgyblion 15 oed

	achieving yn ennill A*-C	achieving yn ennill D-G	achieving yn ennill A*-G	not graded heb eu graddio	not entered heb eu cofrestru	Total Cyfanswm	Base Sail
English/Saesneg	52.3	37.2	89.5	0.6	9.9	100	1,333
Welsh/Cymraeg (a)	43.7	25.6	69.2	0.0	30.8	100	1,333
Mathematics/Mathemateg	45.4	43.3	88.7	1.9	9.5	100	1,333
Science/Gwyddoniaeth	46.9	42.2	89.1	1.7	9.2	100	1,333

(a) Of 1,317 secondary school pupils in Year 11 in 1998, 24.4 per cent were not taught Welsh as a first language.

(a) Of 1,317 disgyblion ysgolion uwchradd ym Mlwyddyn 11 ym 1998, nid addysgwyd Cymraeg fel iaith gyntaf i 24.4 y cant.

Conwy

Percentage of 15-year-old boys/Canran bechgyn 15 oed

	achieving yn ennill A*-C	achieving yn ennill D-G	achieving yn ennill A*-G	not graded heb eu graddio	not entered heb eu cofrestru	Total Cyfanswm	Base Sail
English/Saesneg	47.3	40.9	88.2	0.6	11.3	100	533
Welsh/Cymraeg (a)	6.6	6.0	12.6	0.0	87.4	100	533
Mathematics/Mathemateg	39.6	49.5	89.1	1.9	9.0	100	533
Science/Gwyddoniaeth	43.7	45.6	89.3	1.7	9.0	100	533

Percentage of 15-year-old girls/Canran merched 15 oed

	achieving yn ennill A*-C	achieving yn ennill D-G	achieving yn ennill A*-G	not graded heb eu graddio	not entered heb eu cofrestru	Total Cyfanswm	Base Sail
English/Saesneg	63.4	30.9	94.3	0.8	5.0	100	524
Welsh/Cymraeg (a)	12.8	2.9	15.6	0.0	84.4	100	524
Mathematics/Mathemateg	44.8	44.8	89.7	2.9	7.4	100	524
Science/Gwyddoniaeth	51.1	40.5	91.6	2.7	5.7	100	524

Percentage of 15-year-old pupils/Canran disgyblion 15 oed

	achieving yn ennill A*-C	achieving yn ennill D-G	achieving yn ennill A*-G	not graded heb eu graddio	not entered heb eu cofrestru	Total Cyfanswm	Base Sail
English/Saesneg	55.3	36.0	91.2	0.7	8.1	100	1,057
Welsh/Cymraeg (a)	9.6	4.4	14.1	0.0	85.9	100	1,057
Mathematics/Mathemateg	42.2	47.2	89.4	2.4	8.2	100	1,057
Science/Gwyddoniaeth	47.4	43.0	90.4	2.2	7.4	100	1,057

(a) Of 1,055 secondary school pupils in Year 11 in 1998, 85.1 per cent were not taught Welsh as a first language.

(a) O 1,055 disgyblion ysgolion uwchradd ym Mlwyddyn 11 ym 1998, nid addysgwyd Cymraeg fel iaith gyntaf i 85.1 y cant.

Denbighshire / Sir Ddinbych

Percentage of 15-year-old boys/Canran bechgyn 15 oed

	achieving yn ennill A*-C	achieving yn ennill D-G	achieving yn ennill A*-G	not graded heb eu graddio	not entered heb eu cofrestru	Total Cyfanswm	Base Sail
English/Saesneg	40.1	39.8	79.9	0.5	19.6	100	591
Welsh/Cymraeg (a)	8.0	7.1	15.1	0.0	84.9	100	591
Mathematics/Mathemateg	39.3	42.6	81.9	1.9	16.2	100	591
Science/Gwyddoniaeth	37.9	46.5	84.4	2.7	12.9	100	591

Percentage of 15-year-old girls/Canran merched 15 oed

	achieving yn ennill A*-C	achieving yn ennill D-G	achieving yn ennill A*-G	not graded heb eu graddio	not entered heb eu cofrestru	Total Cyfanswm	Base Sail
English/Saesneg	57.1	28.2	85.4	0.5	14.1	100	595
Welsh/Cymraeg (a)	12.6	3.2	15.8	0.0	84.2	100	595
Mathematics/Mathemateg	40.3	42.9	83.2	1.8	15.0	100	595
Science/Gwyddoniaeth	41.2	44.2	85.4	1.8	12.8	100	595

Percentage of 15-year-old pupils/Canran disgyblion 15 oed

	achieving yn ennill A*-C	achieving yn ennill D-G	achieving yn ennill A*-G	not graded heb eu graddio	not entered heb eu cofrestru	Total Cyfanswm	Base Sail
English/Saesneg	48.7	34.0	82.6	0.5	16.9	100	1,186
Welsh/Cymraeg (a)	10.3	5.1	15.4	0.0	84.6	100	1,186
Mathematics/Mathemateg	39.8	42.7	82.5	1.9	15.6	100	1,186
Science/Gwyddoniaeth	39.5	45.4	84.9	2.3	12.8	100	1,186

(a) Of 1,115 secondary school pupils in Year 11 in 1998, 82.2 per cent were not taught Welsh as a first language.

(a) O 1,115 disgyblion ysgolion uwchradd ym Mlwyddyn 11 ym 1998, nid addysgwyd Cymraeg fel iaith gyntaf i 82.2 y cant.

Flintshire / Sir y Fflint

Percentage of 15-year-old boys/Canran bechgyn 15 oed

	achieving yn ennill A*-C	achieving yn ennill D-G	achieving yn ennill A*-G	not graded heb eu graddio	not entered heb eu cofrestru	Total Cyfanswm	Base Sail
English/Saesneg	46.3	42.3	88.6	1.1	10.3	100	894
Welsh/Cymraeg (a)	*	*	*	*	*	*	*
Mathematics/Mathemateg	41.5	46.1	87.6	2.8	9.6	100	894
Science/Gwyddoniaeth	42.5	45.6	88.1	1.8	10.1	100	894

Percentage of 15-year-old girls/Canran merched 15 oed

	achieving yn ennill A*-C	achieving yn ennill D-G	achieving yn ennill A*-G	not graded heb eu graddio	not entered heb eu cofrestru	Total Cyfanswm	Base Sail
English/Saesneg	66.3	26.8	93.1	1.2	5.7	100	842
Welsh/Cymraeg (a)	*	*	*	*	*	*	*
Mathematics/Mathemateg	41.4	48.2	89.7	3.6	6.8	100	842
Science/Gwyddoniaeth	45.4	45.2	90.6	1.1	8.3	100	842

Percentage of 15-year-old pupils/Canran disgyblion 15 oed

	achieving yn ennill A*-C	achieving yn ennill D-G	achieving yn ennill A*-G	not graded heb eu graddio	not entered heb eu cofrestru	Total Cyfanswm	Base Sail
English/Saesneg	56.0	34.8	90.8	1.2	8.1	100	1,736
Welsh/Cymraeg (a)	*	*	*	*	*	*	*
Mathematics/Mathemateg	41.5	47.1	88.6	3.2	8.2	100	1,736
Science/Gwyddoniaeth	43.9	45.4	89.3	1.4	9.2	100	1,736

Wrexham / Wrecsam

Percentage of 15-year-old boys/Canran bechgyn 15 oed

	achieving yn ennill A*-C	achieving yn ennill D-G	achieving yn ennill A*-G	not graded heb eu graddio	not entered heb eu cofrestru	Total Cyfanswm	Base Sail
English/Saesneg	39.2	42.5	81.7	1.8	16.5	100	709
Welsh/Cymraeg (a)	*	*	*	*	*	*	*
Mathematics/Mathemateg	33.6	45.3	78.8	4.8	16.4	100	709
Science/Gwyddoniaeth	37.1	45.0	82.1	1.3	16.6	100	709

Percentage of 15-year-old girls/Canran merched 15 oed

	achieving yn ennill A*-C	achieving yn ennill D-G	achieving yn ennill A*-G	not graded heb eu graddio	not entered heb eu cofrestru	Total Cyfanswm	Base Sail
English/Saesneg	57.9	28.6	86.4	1.3	12.2	100	686
Welsh/Cymraeg (a)	*	*	*	*	*	*	*
Mathematics/Mathemateg	42.0	41.0	82.9	2.8	14.3	100	686
Science/Gwyddoniaeth	44.6	38.5	83.1	0.7	16.2	100	686

Percentage of 15-year-old pupils/Canran disgyblion 15 oed

	achieving yn ennill A*-C	achieving yn ennill D-G	achieving yn ennill A*-G	not graded heb eu graddio	not entered heb eu cofrestru	Total Cyfanswm	Base Sail
English/Saesneg	48.4	35.6	84.0	1.6	14.4	100	1,395
Welsh/Cymraeg (a)	*	*	*	*	*	*	*
Mathematics/Mathemateg	37.7	43.2	80.9	3.8	15.3	100	1,395
Science/Gwyddoniaeth	40.8	41.8	82.6	1.0	16.4	100	1,395

Powys

Percentage of 15-year-old boys/Canran bechgyn 15 oed

	achieving yn ennill A*-C	achieving yn ennill D-G	achieving yn ennill A*-G	not graded heb eu graddio	not entered heb eu cofrestru	Total Cyfanswm	Base Sail
English/Saesneg	46.3	39.5	85.8	1.0	13.2	100	698
Welsh/Cymraeg (a)	3.9	2.6	6.4	0.0	93.6	100	698
Mathematics/Mathemateg	43.3	42.0	85.2	2.7	12.0	100	698
Science/Gwyddoniaeth	51.7	32.7	84.4	1.7	13.9	100	698

Percentage of 15-year-old girls/Canran merched 15 oed

	achieving yn ennill A*-C	achieving yn ennill D-G	achieving yn ennill A*-G	not graded heb eu graddio	not entered heb eu cofrestru	Total Cyfanswm	Base Sail
English/Saesneg	70.8	21.0	91.8	0.4	7.8	100	705
Welsh/Cymraeg (a)	5.4	0.7	6.1	0.0	93.9	100	705
Mathematics/Mathemateg	51.5	38.2	89.6	2.3	8.1	100	705
Science/Gwyddoniaeth	58.9	30.2	89.1	0.4	10.5	100	705

Percentage of 15-year-old pupils/Canran disgyblion 15 oed

	achieving yn ennill A*-C	achieving yn ennill D-G	achieving yn ennill A*-G	not graded heb eu graddio	not entered heb eu cofrestru	Total Cyfanswm	Base Sail
English/Saesneg	58.6	30.2	88.8	0.7	10.5	100	1,403
Welsh/Cymraeg (a)	4.6	1.6	6.3	0.0	93.7	100	1,403
Mathematics/Mathemateg	47.4	40.1	87.5	2.5	10.0	100	1,403
Science/Gwyddoniaeth	55.3	31.4	86.7	1.1	12.2	100	1,403

(a) Of 1,382 secondary school pupils in Year 11 in 1998, 93.6 per cent were not taught Welsh as a first language.

(a) O 1,382 disgyblion ysgolion uwchradd ym Mlwyddyn 11 ym 1998, nid addysgwyd Cymraeg fel iaith gyntaf i 93.6 y cant.

Ceredigion

Percentage of 15-year-old boys/Canran bechgyn 15 oed

	achieving yn ennill A*-C	achieving yn ennill D-G	achieving yn ennill A*-G	not graded heb eu graddio	not entered heb eu cofrestru	Total Cyfanswm	Base Sail
English/Saesneg	48.4	39.7	88.1	0.0	11.9	100	428
Welsh/Cymraeg (a)	22.2	15.7	37.9	0.0	62.1	100	428
Mathematics/Mathemateg	39.3	50.0	89.3	1.4	9.3	100	428
Science/Gwyddoniaeth	47.2	40.9	88.1	0.9	11.0	100	428

Percentage of 15-year-old girls/Canran merched 15 oed

	achieving yn ennill A*-C	achieving yn ennill D-G	achieving yn ennill A*-G	not graded heb eu graddio	not entered heb eu cofrestru	Total Cyfanswm	Base Sail
English/Saesneg	72.6	20.3	92.8	0.2	6.9	100	419
Welsh/Cymraeg (a)	34.8	7.2	42.0	0.0	58.0	100	419
Mathematics/Mathemateg	52.7	37.2	90.0	1.0	9.1	100	419
Science/Gwyddoniaeth	57.3	33.4	90.7	0.5	8.8	100	419

Percentage of 15-year-old pupils/Canran disgyblion 15 oed

	achieving yn ennill A*-C	achieving yn ennill D-G	achieving yn ennill A*-G	not graded heb eu graddio	not entered heb eu cofrestru	Total Cyfanswm	Base Sail
English/Saesneg	60.3	30.1	90.4	0.1	9.4	100	847
Welsh/Cymraeg (a)	28.5	11.5	39.9	0.0	60.1	100	847
Mathematics/Mathemateg	45.9	43.7	89.6	1.2	9.2	100	847
Science/Gwyddoniaeth	52.2	37.2	89.4	0.7	9.9	100	847

(a) Of 850 secondary school pupils in Year 11 in 1998, 58.1 per cent were not taught Welsh as a first language.

(a) O 850 disgyblion ysgolion uwchradd ym Mlwyddyn 11 ym 1998, nid addysgwyd Cymraeg fel iaith gyntaf i 58.1 y cant.

Pembrokeshire / Sir Benfro**Percentage of 15-year-old boys/Canran bechgyn 15 oed**

	achieving yn ennill A*-C	achieving yn ennill D-G	achieving yn ennill A*-G	not graded heb eu graddio	not entered heb eu cofrestru	Total Cyfanswm	Base Sail
English/Saesneg	46.6	42.6	89.2	1.1	9.6	100	716
Welsh/Cymraeg (a)	*	*	*	*	*	*	*
Mathematics/Mathemateg	44.0	41.1	85.1	5.0	9.9	100	716
Science/Gwyddoniaeth	47.1	40.5	87.6	3.4	9.1	100	716

Percentage of 15-year-old girls/Canran merched 15 oed

	achieving yn ennill A*-C	achieving yn ennill D-G	achieving yn ennill A*-G	not graded heb eu graddio	not entered heb eu cofrestru	Total Cyfanswm	Base Sail
English/Saesneg	66.5	25.6	92.1	0.8	7.2	100	629
Welsh/Cymraeg (a)	*	*	*	*	*	*	*
Mathematics/Mathemateg	44.7	40.9	85.5	5.1	9.4	100	629
Science/Gwyddoniaeth	49.0	39.7	88.7	3.2	8.1	100	629

Percentage of 15-year-old pupils/Canran disgyblion 15 oed

	achieving yn ennill A*-C	achieving yn ennill D-G	achieving yn ennill A*-G	not graded heb eu graddio	not entered heb eu cofrestru	Total Cyfanswm	Base Sail
English/Saesneg	55.9	34.6	90.6	1.0	8.5	100	1,345
Welsh/Cymraeg (a)	*	*	*	*	*	*	*
Mathematics/Mathemateg	44.3	41.0	85.3	5.1	9.7	100	1,345
Science/Gwyddoniaeth	48.0	40.1	88.1	3.3	8.6	100	1,345

Carmarthenshire / Sir Gaerfyrddin**Percentage of 15-year-old boys/Canran bechgyn 15 oed**

	achieving yn ennill A*-C	achieving yn ennill D-G	achieving yn ennill A*-G	not graded heb eu graddio	not entered heb eu cofrestru	Total Cyfanswm	Base Sail
English/Saesneg	41.8	41.9	83.8	1.2	15.1	100	1,121
Welsh/Cymraeg (a)	11.7	9.5	21.1	0.0	78.9	100	1,121
Mathematics/Mathemateg	37.4	43.4	80.7	3.2	16.1	100	1,121
Science/Gwyddoniaeth	50.2	33.7	83.9	0.9	15.2	100	1,121

Percentage of 15-year-old girls/Canran merched 15 oed

	achieving yn ennill A*-C	achieving yn ennill D-G	achieving yn ennill A*-G	not graded heb eu graddio	not entered heb eu cofrestru	Total Cyfanswm	Base Sail
English/Saesneg	63.8	27.8	91.6	1.1	7.3	100	1,060
Welsh/Cymraeg (a)	20.5	5.6	26.0	0.0	74.0	100	1,060
Mathematics/Mathemateg	46.0	41.7	87.7	3.8	8.5	100	1,060
Science/Gwyddoniaeth	58.7	30.8	89.4	1.4	9.2	100	1,060

Percentage of 15-year-old pupils/Canran disgyblion 15 oed

	achieving yn ennill A*-C	achieving yn ennill D-G	achieving yn ennill A*-G	not graded heb eu graddio	not entered heb eu cofrestru	Total Cyfanswm	Base Sail
English/Saesneg	52.5	35.1	87.6	1.1	11.3	100	2,181
Welsh/Cymraeg (a)	16.0	7.6	23.5	0.0	76.5	100	2,181
Mathematics/Mathemateg	41.6	42.5	84.1	3.5	12.4	100	2,181
Science/Gwyddoniaeth	54.3	32.3	86.6	1.1	12.2	100	2,181

(a) Of 2,152 secondary school pupils in Year 11 in 1998, 73.6 per cent were not taught Welsh as a first language.

(a) O 2,152 disgyblion ysgolion uwchradd ym Mlwyddyn 11 ym 1998, nid addysgwyd Cymraeg fel iaith gyntaf i 73.6 y cant.

Swansea / Abertawe

Percentage of 15-year-old boys/Canran bechgyn 15 oed

	achieving yn ennill A*-C	achieving yn ennill D-G	achieving yn ennill A*-G	not graded heb eu graddio	not entered heb eu cofrestru	Total Cyfanswm	Base Sail
English/Saesneg	43.5	37.8	81.3	1.3	17.4	100	1,420
Welsh/Cymraeg (a)	*	*	*	*	*	*	*
Mathematics/Mathemateg	41.4	39.2	80.6	4.6	14.7	100	1,420
Science/Gwyddoniaeth	42.9	36.5	79.4	3.9	16.6	100	1,420

Percentage of 15-year-old girls/Canran merched 15 oed

	achieving yn ennill A*-C	achieving yn ennill D-G	achieving yn ennill A*-G	not graded heb eu graddio	not entered heb eu cofrestru	Total Cyfanswm	Base Sail
English/Saesneg	61.9	27.0	88.9	1.0	10.1	100	1,386
Welsh/Cymraeg (a)	*	*	*	*	*	*	*
Mathematics/Mathemateg	45.4	41.1	86.5	3.5	10.0	100	1,386
Science/Gwyddoniaeth	48.1	38.3	86.4	2.6	11.0	100	1,386

Percentage of 15-year-old pupils/Canran disgyblion 15 oed

	achieving yn ennill A*-C	achieving yn ennill D-G	achieving yn ennill A*-G	not graded heb eu graddio	not entered heb eu cofrestru	Total Cyfanswm	Base Sail
English/Saesneg	52.6	32.5	85.0	1.2	13.8	100	2,806
Welsh/Cymraeg (a)	*	*	*	*	*	*	*
Mathematics/Mathemateg	43.4	40.2	83.5	4.1	12.4	100	2,806
Science/Gwyddoniaeth	45.5	37.4	82.9	3.3	13.8	100	2,806

Neath Port talbot / Castell-nedd Port Talbot

Percentage of 15-year-old boys/Canran bechgyn 15 oed

	achieving yn ennill A*-C	achieving yn ennill D-G	achieving yn ennill A*-G	not graded heb eu graddio	not entered heb eu cofrestru	Total Cyfanswm	Base Sail
English/Saesneg	36.4	44.4	80.9	1.4	17.7	100	900
Welsh/Cymraeg (a)	*	*	*	*	*	*	*
Mathematics/Mathemateg	38.2	39.8	78.0	6.7	15.3	100	900
Science/Gwyddoniaeth	37.8	39.4	77.2	3.8	19.0	100	900

Percentage of 15-year-old girls/Canran merched 15 oed

	achieving yn ennill A*-C	achieving yn ennill D-G	achieving yn ennill A*-G	not graded heb eu graddio	not entered heb eu cofrestru	Total Cyfanswm	Base Sail
English/Saesneg	59.3	30.1	89.5	1.5	9.1	100	826
Welsh/Cymraeg (a)	*	*	*	*	*	*	*
Mathematics/Mathemateg	45.5	38.4	83.9	6.1	10.0	100	826
Science/Gwyddoniaeth	42.7	40.8	83.5	3.5	13.0	100	826

Percentage of 15-year-old pupils/Canran disgyblion 15 oed

	achieving yn ennill A*-C	achieving yn ennill D-G	achieving yn ennill A*-G	not graded heb eu graddio	not entered heb eu cofrestru	Total Cyfanswm	Base Sail
English/Saesneg	47.4	37.6	85.0	1.4	13.6	100	1,726
Welsh/Cymraeg (a)	*	*	*	*	*	*	*
Mathematics/Mathemateg	41.7	39.1	80.8	6.4	12.8	100	1,726
Science/Gwyddoniaeth	40.2	40.1	80.2	3.7	16.1	100	1,726

Bridgend / Pen-y-bont ar Ogwr

Percentage of 15-year-old boys/Canran bechgyn 15 oed

	achieving yn ennill A*-C	achieving yn ennill D-G	achieving yn ennill A*-G	not graded heb eu graddio	not entered heb eu cofrestru	Total Cyfanswm	Base Sail
English/Saesneg	39.9	39.5	79.5	1.2	19.4	100	779
Welsh/Cymraeg (a)	*	*	*	*	*	*	*
Mathematics/Mathemateg	38.1	38.8	76.9	4.6	18.5	100	779
Science/Gwyddoniaeth	42.9	37.7	80.6	2.7	16.7	100	779

Percentage of 15-year-old girls/Canran merched 15 oed

	achieving yn ennill A*-C	achieving yn ennill D-G	achieving yn ennill A*-G	not graded heb eu graddio	not entered heb eu cofrestru	Total Cyfanswm	Base Sail
English/Saesneg	61.0	26.7	87.7	1.9	10.4	100	780
Welsh/Cymraeg (a)	*	*	*	*	*	*	*
Mathematics/Mathemateg	41.9	41.2	83.1	5.9	11.0	100	780
Science/Gwyddoniaeth	46.2	39.4	85.5	3.6	10.9	100	780

Percentage of 15-year-old pupils/Canran disgyblion 15 oed

	achieving yn ennill A*-C	achieving yn ennill D-G	achieving yn ennill A*-G	not graded heb eu graddio	not entered heb eu cofrestru	Total Cyfanswm	Base Sail
English/Saesneg	50.5	33.1	83.6	1.5	14.9	100	1,559
Welsh/Cymraeg (a)	*	*	*	*	*	*	*
Mathematics/Mathemateg	40.0	40.0	80.0	5.3	14.8	100	1,559
Science/Gwyddoniaeth	44.5	38.6	83.1	3.1	13.8	100	1,559

The Vale of Glamorgan / Bro Morgannwg

Percentage of 15-year-old boys/Canran bechgyn 15 oed

	achieving yn ennill A*-C	achieving yn ennill D-G	achieving yn ennill A*-G	not graded heb eu graddio	not entered heb eu cofrestru	Total Cyfanswm	Base Sail
English/Saesneg	48.8	34.9	83.7	2.5	13.8	100	680
Welsh/Cymraeg (a)	*	*	*	*	*	*	*
Mathematics/Mathemateg	43.1	33.7	76.8	9.4	13.8	100	680
Science/Gwyddoniaeth	49.0	34.6	83.5	4.9	11.6	100	680

Percentage of 15-year-old girls/Canran merched 15 oed

	achieving yn ennill A*-C	achieving yn ennill D-G	achieving yn ennill A*-G	not graded heb eu graddio	not entered heb eu cofrestru	Total Cyfanswm	Base Sail
English/Saesneg	69.9	19.9	89.9	0.7	9.4	100	692
Welsh/Cymraeg (a)	*	*	*	*	*	*	*
Mathematics/Mathemateg	49.7	38.3	88.0	1.4	10.5	100	692
Science/Gwyddoniaeth	52.2	34.4	86.6	1.0	12.4	100	692

Percentage of 15-year-old pupils/Canran disgyblion 15 oed

	achieving yn ennill A*-C	achieving yn ennill D-G	achieving yn ennill A*-G	not graded heb eu graddio	not entered heb eu cofrestru	Total Cyfanswm	Base Sail
English/Saesneg	59.5	27.3	86.8	1.6	11.6	100	1,372
Welsh/Cymraeg (a)	*	*	*	*	*	*	*
Mathematics/Mathemateg	46.4	36.0	82.4	5.4	12.2	100	1,372
Science/Gwyddoniaeth	50.6	34.5	85.1	2.9	12.0	100	1,372

Rhondda, Cynon, Taff / Rhondda, Cynon, Taf

Percentage of 15-year-old boys/Canran bechgyn 15 oed

	achieving yn ennill A*-C	achieving yn ennill D-G	achieving yn ennill A*-G	not graded heb eu graddio	not entered heb eu cofrestru	Total Cyfanswm	Base Sail
English/Saesneg	35.4	47.1	82.5	2.4	15.1	100	1,537
Welsh/Cymraeg (a)	5.7	6.9	12.6	0.0	87.4	100	1,537
Mathematics/Mathemateg	34.2	44.2	78.4	6.2	15.4	100	1,537
Science/Gwyddoniaeth	36.5	43.9	80.4	5.0	14.6	100	1,537

Percentage of 15-year-old girls/Canran merched 15 oed

	achieving yn ennill A*-C	achieving yn ennill D-G	achieving yn ennill A*-G	not graded heb eu graddio	not entered heb eu cofrestru	Total Cyfanswm	Base Sail
English/Saesneg	54.6	34.5	89.1	1.5	9.4	100	1,442
Welsh/Cymraeg (a)	11.6	4.1	15.7	0.0	84.3	100	1,442
Mathematics/Mathemateg	38.8	44.6	83.4	6.1	10.5	100	1,442
Science/Gwyddoniaeth	36.7	49.0	85.6	3.5	10.9	100	1,442

Percentage of 15-year-old pupils/Canran disgyblion 15 oed

	achieving yn ennill A*-C	achieving yn ennill D-G	achieving yn ennill A*-G	not graded heb eu graddio	not entered heb eu cofrestru	Total Cyfanswm	Base Sail
English/Saesneg	44.7	41.0	85.7	2.0	12.3	100	2,979
Welsh/Cymraeg (a)	8.5	5.5	14.1	0.0	85.9	100	2,979
Mathematics/Mathemateg	36.5	44.4	80.8	6.2	13.0	100	2,979
Science/Gwyddoniaeth	36.6	46.3	82.9	4.3	12.8	100	2,979

(a) Of 2,940 secondary school pupils in Year 11 in 1998, 83.6 per cent were not taught Welsh as a first language.

(a) O 2,940 disgyblion ysgolion uwchradd ym Mlwyddyn 11 ym 1998, nid addysgwyd Cymraeg fel iaith gyntaf i 83.6 y cant.

Merthyr Tydfil / Merthyr Tudful

Percentage of 15-year-old boys/Canran bechgyn 15 oed

	achieving yn ennill A*-C	achieving yn ennill D-G	achieving yn ennill A*-G	not graded heb eu graddio	not entered heb eu cofrestru	Total Cyfanswm	Base Sail
English/Saesneg	26.4	50.4	76.8	3.1	20.1	100	383
Welsh/Cymraeg (a)	*	*	*	*	*	*	*
Mathematics/Mathemateg	33.4	37.3	70.8	9.1	20.1	100	383
Science/Gwyddoniaeth	37.9	37.1	74.9	4.7	20.4	100	383

Percentage of 15-year-old girls/Canran merched 15 oed

	achieving yn ennill A*-C	achieving yn ennill D-G	achieving yn ennill A*-G	not graded heb eu graddio	not entered heb eu cofrestru	Total Cyfanswm	Base Sail
English/Saesneg	47.0	37.0	84.0	4.0	12.0	100	400
Welsh/Cymraeg (a)	*	*	*	*	*	*	*
Mathematics/Mathemateg	40.5	37.5	78.0	7.0	15.0	100	400
Science/Gwyddoniaeth	41.0	40.3	81.3	3.5	15.3	100	400

Percentage of 15-year-old pupils/Canran disgyblion 15 oed

	achieving yn ennill A*-C	achieving yn ennill D-G	achieving yn ennill A*-G	not graded heb eu graddio	not entered heb eu cofrestru	Total Cyfanswm	Base Sail
English/Saesneg	36.9	43.6	80.5	3.6	16.0	100	783
Welsh/Cymraeg (a)	*	*	*	*	*	*	*
Mathematics/Mathemateg	37.0	37.4	74.5	8.0	17.5	100	783
Science/Gwyddoniaeth	39.5	38.7	78.2	4.1	17.8	100	783

Caerphilly / Caerffili**Percentage of 15-year-old boys/Canran bechgyn 15 oed**

	achieving yn ennill A*-C	achieving yn ennill D-G	achieving yn ennill A*-G	not graded heb eu graddio	not entered heb eu cofrestru	Total Cyfanswm	Base Sail
English/Saesneg	34.5	46.6	81.1	2.5	16.4	100	1,097
Welsh/Cymraeg (a)	*	*	*	*	*	*	*
Mathematics/Mathemateg	35.3	42.8	78.1	4.6	17.2	100	1,097
Science/Gwyddoniaeth	37.8	41.3	79.1	3.8	17.0	100	1,097

Percentage of 15-year-old girls/Canran merched 15 oed

	achieving yn ennill A*-C	achieving yn ennill D-G	achieving yn ennill A*-G	not graded heb eu graddio	not entered heb eu cofrestru	Total Cyfanswm	Base Sail
English/Saesneg	48.6	37.0	85.6	1.6	12.8	100	1,070
Welsh/Cymraeg (a)	*	*	*	*	*	*	*
Mathematics/Mathemateg	33.1	49.1	82.1	5.3	12.5	100	1,070
Science/Gwyddoniaeth	38.6	44.3	82.9	3.2	13.9	100	1,070

Percentage of 15-year-old pupils/Canran disgyblion 15 oed

	achieving yn ennill A*-C	achieving yn ennill D-G	achieving yn ennill A*-G	not graded heb eu graddio	not entered heb eu cofrestru	Total Cyfanswm	Base Sail
English/Saesneg	41.5	41.9	83.3	2.0	14.6	100	2,167
Welsh/Cymraeg (a)	*	*	*	*	*	*	*
Mathematics/Mathemateg	34.2	45.9	80.1	5.0	14.9	100	2,167
Science/Gwyddoniaeth	38.2	42.8	81.0	3.5	15.5	100	2,167

Blaenau Gwent**Percentage of 15-year-old boys/Canran bechgyn 15 oed**

	achieving yn ennill A*-C	achieving yn ennill D-G	achieving yn ennill A*-G	not graded heb eu graddio	not entered heb eu cofrestru	Total Cyfanswm	Base Sail
English/Saesneg	26.5	48.8	75.3	3.3	21.5	100	400
Welsh/Cymraeg (a)	*	*	*	*	*	*	*
Mathematics/Mathemateg	27.0	46.5	73.5	2.3	24.3	100	400
Science/Gwyddoniaeth	31.3	44.8	76.0	3.8	20.3	100	400

Percentage of 15-year-old girls/Canran merched 15 oed

	achieving yn ennill A*-C	achieving yn ennill D-G	achieving yn ennill A*-G	not graded heb eu graddio	not entered heb eu cofrestru	Total Cyfanswm	Base Sail
English/Saesneg	49.6	35.1	84.7	1.4	13.8	100	419
Welsh/Cymraeg (a)	*	*	*	*	*	*	*
Mathematics/Mathemateg	33.2	46.3	79.5	2.1	18.4	100	419
Science/Gwyddoniaeth	40.8	41.1	81.9	3.1	15.0	100	419

Percentage of 15-year-old pupils/Canran disgyblion 15 oed

	achieving yn ennill A*-C	achieving yn ennill D-G	achieving yn ennill A*-G	not graded heb eu graddio	not entered heb eu cofrestru	Total Cyfanswm	Base Sail
English/Saesneg	38.3	41.8	80.1	2.3	17.6	100	819
Welsh/Cymraeg (a)	*	*	*	*	*	*	*
Mathematics/Mathemateg	30.2	46.4	76.6	2.2	21.2	100	819
Science/Gwyddoniaeth	36.1	42.9	79.0	3.4	17.6	100	819

Torfaen / Tor-faen

Percentage of 15-year-old boys/Canran bechgyn 15 oed

	achieving yn ennill A*-C	achieving yn ennill D-G	achieving yn ennill A*-G	not graded heb eu graddio	not entered heb eu cofrestru	Total Cyfanswm	Base Sail
English/Saesneg	44.2	40.6	84.8	1.1	14.1	100	660
Welsh/Cymraeg (a)	*	*	*	*	*	*	*
Mathematics/Mathemateg	32.7	48.0	80.8	6.2	13.0	100	660
Science/Gwyddoniaeth	41.7	42.3	83.9	1.4	14.7	100	660

Percentage of 15-year-old girls/Canran merched 15 oed

	achieving yn ennill A*-C	achieving yn ennill D-G	achieving yn ennill A*-G	not graded heb eu graddio	not entered heb eu cofrestru	Total Cyfanswm	Base Sail
English/Saesneg	65.2	26.9	92.0	0.7	7.3	100	577
Welsh/Cymraeg (a)	*	*	*	*	*	*	*
Mathematics/Mathemateg	40.9	46.4	87.3	4.0	8.7	100	577
Science/Gwyddoniaeth	43.3	45.4	88.7	2.1	9.2	100	577

Percentage of 15-year-old pupils/Canran disgyblion 15 oed

	achieving yn ennill A*-C	achieving yn ennill D-G	achieving yn ennill A*-G	not graded heb eu graddio	not entered heb eu cofrestru	Total Cyfanswm	Base Sail
English/Saesneg	54.0	34.2	88.2	0.9	10.9	100	1,237
Welsh/Cymraeg (a)	*	*	*	*	*	*	*
Mathematics/Mathemateg	36.5	47.3	83.8	5.2	11.0	100	1,237
Science/Gwyddoniaeth	42.4	43.7	86.2	1.7	12.1	100	1,237

Monmouthshire / Sir Fynwy

Percentage of 15-year-old boys/Canran bechgyn 15 oed

	achieving yn ennill A*-C	achieving yn ennill D-G	achieving yn ennill A*-G	not graded heb eu graddio	not entered heb eu cofrestru	Total Cyfanswm	Base Sail
English/Saesneg	45.2	39.7	84.9	2.0	13.2	100	456
Welsh/Cymraeg (a)	*	*	*	*	*	*	*
Mathematics/Mathemateg	40.8	41.4	82.2	7.9	9.9	100	456
Science/Gwyddoniaeth	46.1	39.3	85.3	4.8	9.9	100	456

Percentage of 15-year-old girls/Canran merched 15 oed

	achieving yn ennill A*-C	achieving yn ennill D-G	achieving yn ennill A*-G	not graded heb eu graddio	not entered heb eu cofrestru	Total Cyfanswm	Base Sail
English/Saesneg	68.4	22.0	90.5	1.4	8.2	100	440
Welsh/Cymraeg (a)	*	*	*	*	*	*	*
Mathematics/Mathemateg	45.2	40.5	85.7	7.3	7.0	100	440
Science/Gwyddoniaeth	48.9	41.6	90.5	2.5	7.0	100	440

Percentage of 15-year-old pupils/Canran disgyblion 15 oed

	achieving yn ennill A*-C	achieving yn ennill D-G	achieving yn ennill A*-G	not graded heb eu graddio	not entered heb eu cofrestru	Total Cyfanswm	Base Sail
English/Saesneg	56.6	31.0	87.6	1.7	10.7	100	896
Welsh/Cymraeg (a)	*	*	*	*	*	*	*
Mathematics/Mathemateg	43.0	41.0	83.9	7.6	8.5	100	896
Science/Gwyddoniaeth	47.4	40.4	87.8	3.7	8.5	100	896

Newport / Casnewydd

Percentage of 15-year-old boys/Canran bechgyn 15 oed

	achieving yn ennill A*-C	achieving yn ennill D-G	achieving yn ennill A*-G	not graded heb eu graddio	not entered heb eu cofrestru	Total Cyfanswm	Base Sail
English/Saesneg	42.7	38.9	81.6	2.3	16.1	100	733
Welsh/Cymraeg (a)	*	*	*	*	*	*	*
Mathematics/Mathemateg	37.1	42.2	79.3	7.4	13.4	100	733
Science/Gwyddoniaeth	39.0	43.4	82.4	8.5	9.1	100	733

Percentage of 15-year-old girls/Canran merched 15 oed

	achieving yn ennill A*-C	achieving yn ennill D-G	achieving yn ennill A*-G	not graded heb eu graddio	not entered heb eu cofrestru	Total Cyfanswm	Base Sail
English/Saesneg	58.4	29.0	87.5	2.4	10.1	100	789
Welsh/Cymraeg (a)	*	*	*	*	*	*	*
Mathematics/Mathemateg	39.4	41.2	80.6	6.6	12.8	100	789
Science/Gwyddoniaeth	40.2	43.2	83.4	7.4	9.3	100	789

Percentage of 15-year-old pupils/Canran disgyblion 15 oed

	achieving yn ennill A*-C	achieving yn ennill D-G	achieving yn ennill A*-G	not graded heb eu graddio	not entered heb eu cofrestru	Total Cyfanswm	Base Sail
English/Saesneg	50.9	33.8	84.6	2.4	13.0	100	1,522
Welsh/Cymraeg (a)	*	*	*	*	*	*	*
Mathematics/Mathemateg	38.3	41.7	80.0	7.0	13.1	100	1,522
Science/Gwyddoniaeth	39.6	43.3	82.9	7.9	9.2	100	1,522

Cardiff / Caerdydd

Percentage of 15-year-old boys/Canran bechgyn 15 oed

	achieving yn ennill A*-C	achieving yn ennill D-G	achieving yn ennill A*-G	not graded heb eu graddio	not entered heb eu cofrestru	Total Cyfanswm	Base Sail
English/Saesneg	44.1	35.4	79.5	2.0	18.5	100	1,802
Welsh/Cymraeg (a)	*	*	*	*	*	*	*
Mathematics/Mathemateg	39.1	38.7	77.8	4.7	17.5	100	1,802
Science/Gwyddoniaeth	42.4	34.9	77.3	3.2	19.5	100	1,802

Percentage of 15-year-old girls/Canran merched 15 oed

	achieving yn ennill A*-C	achieving yn ennill D-G	achieving yn ennill A*-G	not graded heb eu graddio	not entered heb eu cofrestru	Total Cyfanswm	Base Sail
English/Saesneg	59.8	25.2	85.0	1.4	13.6	100	1,769
Welsh/Cymraeg (a)	*	*	*	*	*	*	*
Mathematics/Mathemateg	41.9	39.8	81.7	4.6	13.7	100	1,769
Science/Gwyddoniaeth	43.0	37.9	80.9	3.1	16.0	100	1,769

Percentage of 15-year-old pupils/Canran disgyblion 15 oed

	achieving yn ennill A*-C	achieving yn ennill D-G	achieving yn ennill A*-G	not graded heb eu graddio	not entered heb eu cofrestru	Total Cyfanswm	Base Sail
English/Saesneg	51.9	30.4	82.2	1.7	16.1	100	3,571
Welsh/Cymraeg (a)	*	*	*	*	*	*	*
Mathematics/Mathemateg	40.5	39.3	79.7	4.7	15.6	100	3,571
Science/Gwyddoniaeth	42.7	36.4	79.1	3.2	17.8	100	3,571



**PERFORMANCE BANDS
BANDIAU PERFFORMIAD**

**section
adran**

3

GCSE/GNVQ Results In Wales: 1998

Canlyniadau TGAU/CGCC Yng Nghymru: 1998



Introduction to Section 3

The following tables show the median, upper and lower quartiles of the distribution of schools according to the percentage of 15-year-olds achieving GCSE grades A*-C and grades A*-G in the core subjects. The first table also shows the Core Subject Indicator, i.e. the percentage of pupils achieving GCSE grades A*-C in English or Welsh (first language), mathematics and science in combination.

Median: The median is that percentage of pupils achieving GCSE grades A*-C which represents the mid point of the results of schools. In half the schools, the percentage of pupils achieving grades A*-C is above the median, and in half the percentage is below the median.

Example: the figures show that in half of all schools in Wales more than 43 per cent of pupils achieved a GCSE grade A-C in science.*

Upper and Lower Quartiles: Quartiles divide the number of schools into four equally sized groups based on the GCSE results, i.e. the upper quartile represents the performance of the top 25 per cent of schools. Separate quartiles are calculated for each subject and the Core Subject Indicator.

Therefore, schools where the percentage of pupils achieving GCSE grades A*-C are at or above the upper quartile figure, have results in the top 25 per cent of schools. Similarly, schools where the percentage of pupils achieving GCSE grades A*-C are at or below the lower quartile figure have results in the bottom 25 per cent of schools.

Example: In school x, 48 per cent of pupils achieved GCSE grades A-C in mathematics. The median for mathematics is 40 per cent. School x's results are above the median, which means its results are in the upper 50 per cent of schools. However, the results are below the upper quartile of 49 per cent, which means that its results are not in the top 25 per cent.*

Performance Bands: The charts which follow the tables show the number of schools in a range of performance bands for each subject, the Core Subject Indicator, and the percentage of pupils achieving 5 or more GCSE grades A*-C and A*-G

Cyflwyniad i Adran 3

Mae'r tablau canlynol yn dangos canolrif, a chwartelau uchaf ac isaf dosbarthiad yr ysgolion yn ôl y ganran o ddisgyblion 15 oed yn ennill TGAU graddau A*-C a graddau A*-G yn y pynciau craidd. Mae'r tabl cyntaf hefyd yn dangos y Dangosydd Pynciau Craidd h.y. y ganran o ddisgyblion yn ennill TGAU graddau A*-C mewn Cymraeg (iaith gyntaf) neu Saesneg, Mathemateg a Gwyddoniaeth wedi'u cyfuno.

Canolrif: Y canolrif yw'r ganran honno o ddisgyblion yn ennill TGAU graddau A*-C sy'n cynrychioli pwynt canol canlyniadau'r ysgolion. Yn hanner yr ysgolion, mae'r ganran o ddisgyblion yn ennill graddau A*-C yn uwch na'r canolrif, ac yn hanner ohonynt mae'r ganran yn is na'r canolrif.

Enghraifft: mae'r ffigurau'n dangos bod mwy na 43 y cant o ddisgyblion yn hanner o holl ysgolion Cymru wedi ennill TGAU gradd A-C mewn Gwyddoniaeth.*

Chwartelau Uchaf ac Isaf: Mae'r chwartelau'n rhannu nifer yr ysgolion yn bedwar grŵp o'r un maint ar sail canlyniadau TGAU, h.y. mae'r chwartel uchaf yn cynrychioli perfformiad y 25 y cant uchaf o ysgolion. Cyfrifir chwartelau ar wahân ar gyfer pob pwnc a'r Dangosydd Pynciau Craidd.

Felly, mae gan yr ysgolion lle mae'r ganran o ddisgyblion a enillodd TGAU graddau A*-C yn gyfartal â ffigur y chwartel uchaf, neu'n uwch, ganlyniadau yn y 25 y cant uchaf o ysgolion. Yn yr un modd, mae gan ysgolion lle mae'r ganran o'r ddisgyblion a enillodd TGAU graddau A*-C yn gyfartal â ffigur y chwartel isaf neu'n is, ganlyniadau yn y 25 y cant isaf o ysgolion.

Enghraifft: Yn ysgol x, enillodd 48 y cant o'r ddisgyblion TGAU graddau A-C mewn mathemateg. Y canolrif ar gyfer mathemateg yw 40%. Mae canlyniadau ysgol x yn uwch na'r canolrif, sy'n golygu bod ei chanlyniadau yn y 49% uchaf o ysgolion. Er hynny, mae'r canlyniadau yn uwch na'r chwarter uchaf o 50 y cant sy'n golygu nad yw ei chanlyniadau yn y 25 y cant uchaf.*

Bandiau Perfformiad: Mae'r siartiau sy'n dilyn y tablau'n dangos y nifer o ysgolion mewn amrediad o fandiau perfformiad ar gyfer pob pwnc, y Dangosydd Pynciau Craidd, a'r ganran o ddisgyblion a enillodd 5 TGAU graddau A*-C ac A*-G.

Performance bands – Bandiau perfformiad

LEA maintained and GM secondary schools with 15-year-old pupils Ysgolion uwchradd AALI ac AGAG gyda disgyblion 15 oed

Percentage achieving GCSE grades A*-C in National Curriculum core subjects
Canran yn ennill TGAU graddau A*-C ym mhynciau craidd y Cwricwlwm Cenedlaethol

Subject Pwnc	Number of schools Nifer o ysgolion	Lowest value Gwerth isaf	Lower quartile Chwarterel isaf	Median Canolrif	Upper quartile Chwarterel uchaf	Highest value Gwerth uchaf
English/Saesneg	225	15	42	51	61	92
Welsh/Cymraeg	59	0	14	41	61	81
Mathematics/ Mathemateg	225	11	30	40	49	85
Science/Gwyddoniaeth	225	10	32	43	54	88
Core Subject indicator/ Dangosydd pynciau craidd (a)	225	7	24	32	40	74

(a) Pupils achieving grades A*-C in mathematics, science and either English or Welsh (first language) in combination.

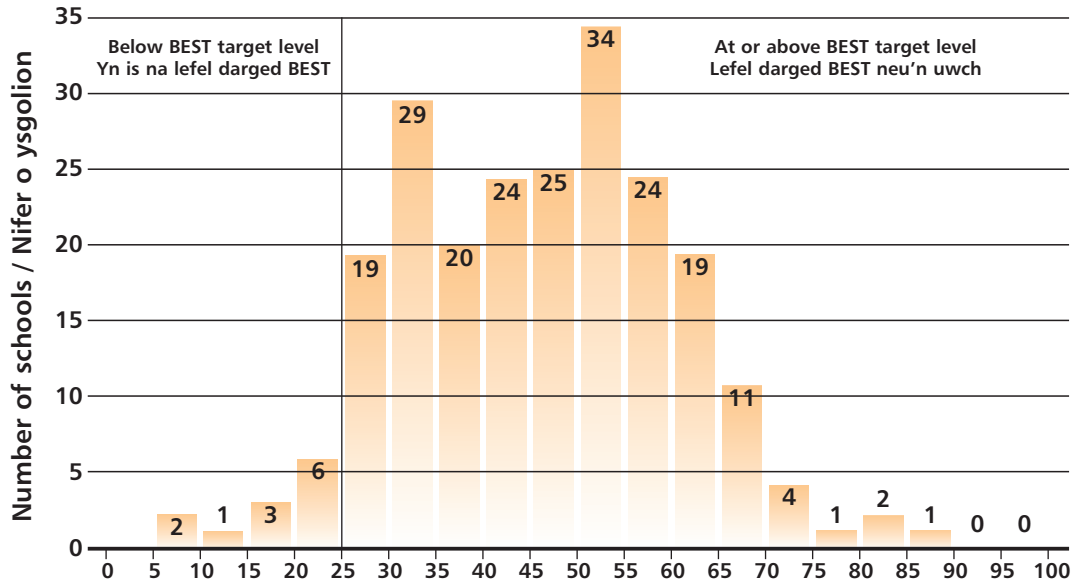
Disgyblion yn ennill graddau A*-C mewn mathemateg, gwyddoniaeth a naill ai Cymraeg (iaith gyntaf) neu Saesneg mewn cyfuniad.

Percentage achieving GCSE grades A*-G in National Curriculum core subjects.
Canran yn ennill TGAU graddau A*-G ym mhynciau craidd y Cwricwlwm Cenedlaethol.

Subject Pwnc	Number of schools Nifer o ysgolion	Lowest value Gwerth isaf	Lower quartile Chwarterel isaf	Median Canolrif	Upper quartile Chwarterel uchaf	Highest value Gwerth uchaf
English/Saesneg	225	60	83	88	93	100
Welsh/Cymraeg	59	1	25	58	90	96
Mathematics/ Mathemateg	225	54	79	86	91	100
Science/Gwyddoniaeth	225	44	81	86	92	100

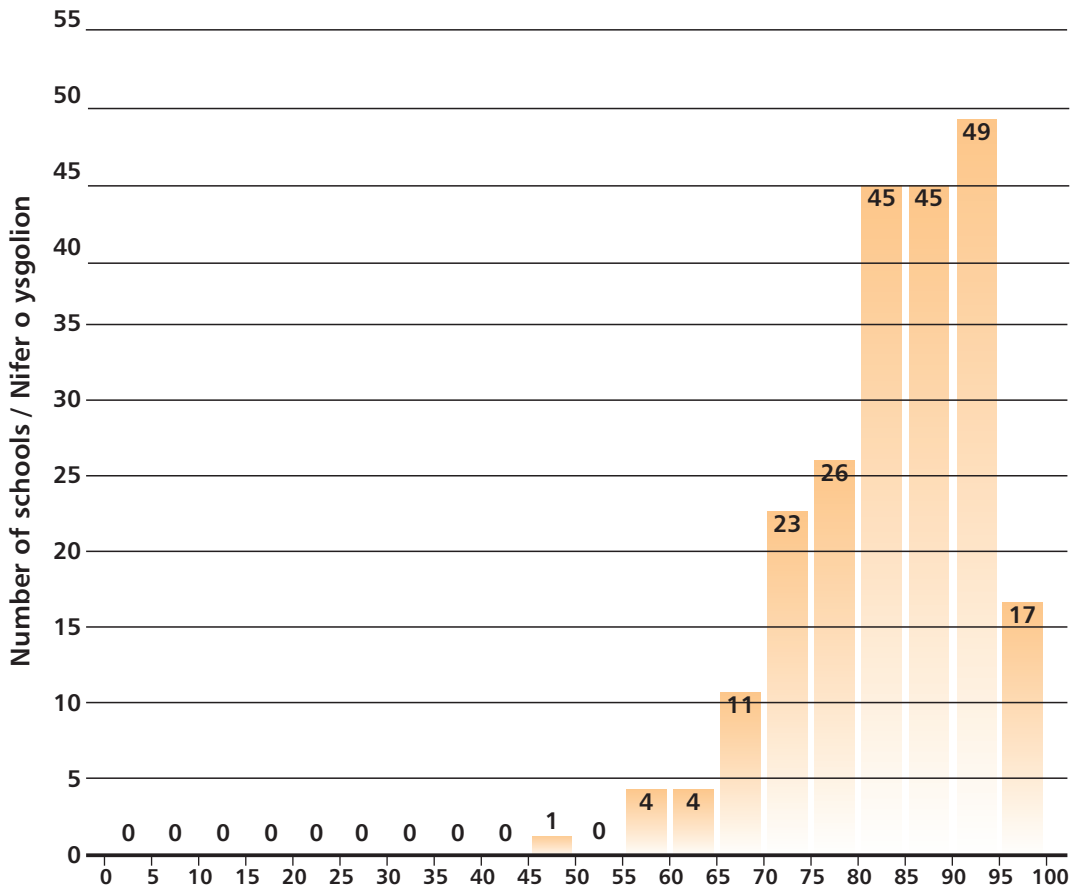
Distribution of LEA and GM schools based on percentage of 15-year-olds achieving 5 or more GCSE at grades A* C or equivalent

Dosbarthiad ysgolion uwchradd AALI ac AGAG ar sail y ganran o ddisgyblion 15 oed yn ennill 5 TGAU graddau A*-C neu gymhwyster cyfatebol



Distribution of LEA and GM schools based on percentage of 15-year-olds achieving 5 or more GCSE at grades A* G or equivalent

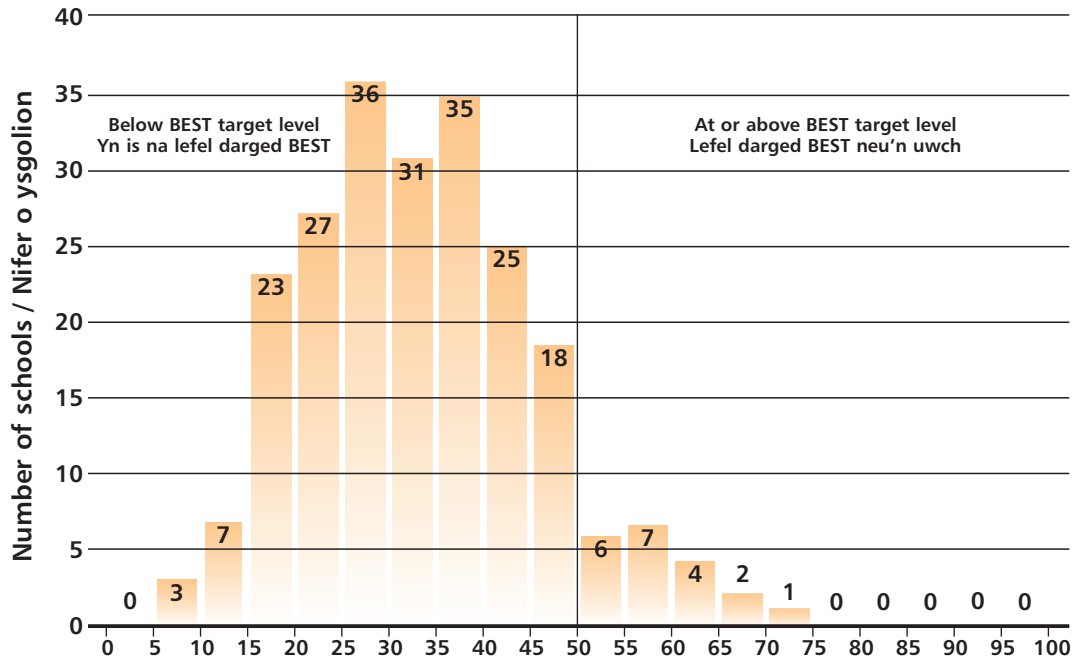
Dosbarthiad ysgolion uwchradd AALI ac AGAG ar sail y ganran o ddisgyblion 15 oed yn ennill 5 TGAU graddau A*-G neu gymhwyster cyfatebol



Core Subject Indicator/Dangosydd Pynciau Craidd

Distribution of LEA and GM schools based on percentage of 15-year-olds achieving the Core Subject Indicator

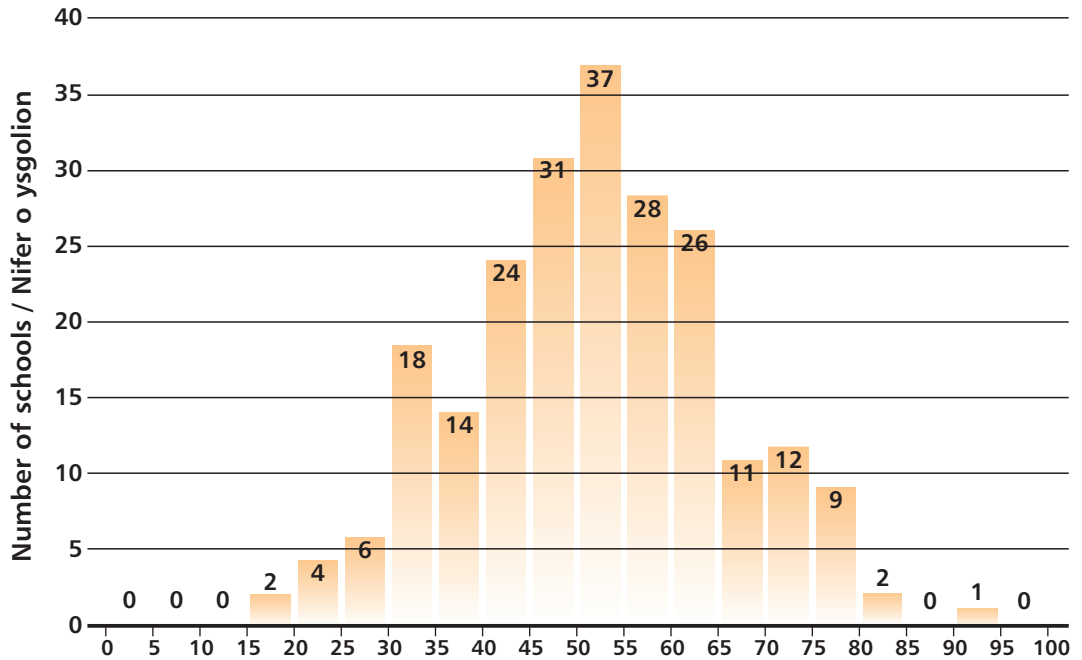
Dosbarthiad ysgolion uwchradd AALI ac AGAG ar sail y ganran o ddisgyblion 15 oed yn ennill y Dangosydd Pynciau Craidd



English/Saesneg

Distribution of LEA and GM schools based on percentage of 15-year-olds gaining GCSE grades A*-C

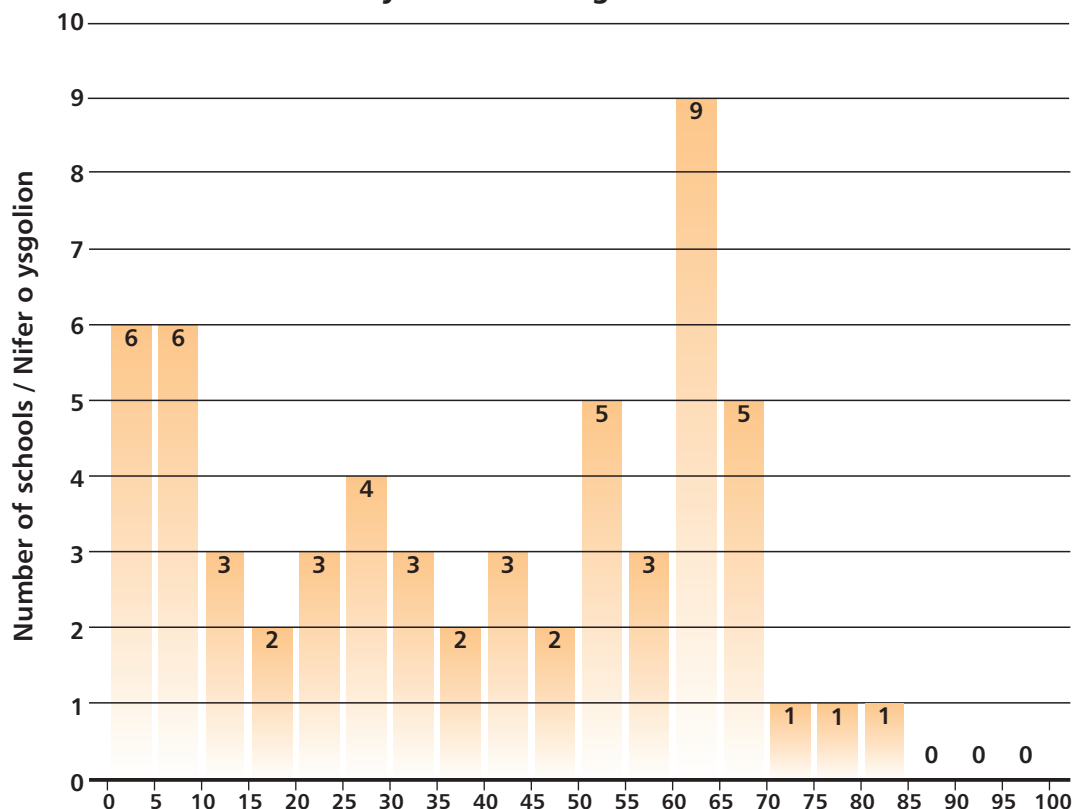
Dosbarthiad ysgolion uwchradd AALI ac AGAG ar sail y ganran o ddisgyblion 15 oed yn ennill TGAU graddau A*-C



Welsh (first language)/Cymraeg (iaith gyntaf)

Distribution of LEA and GM schools entering pupils for Welsh First Language based on percentage of 15-year-olds gaining GCSE grades A*-C

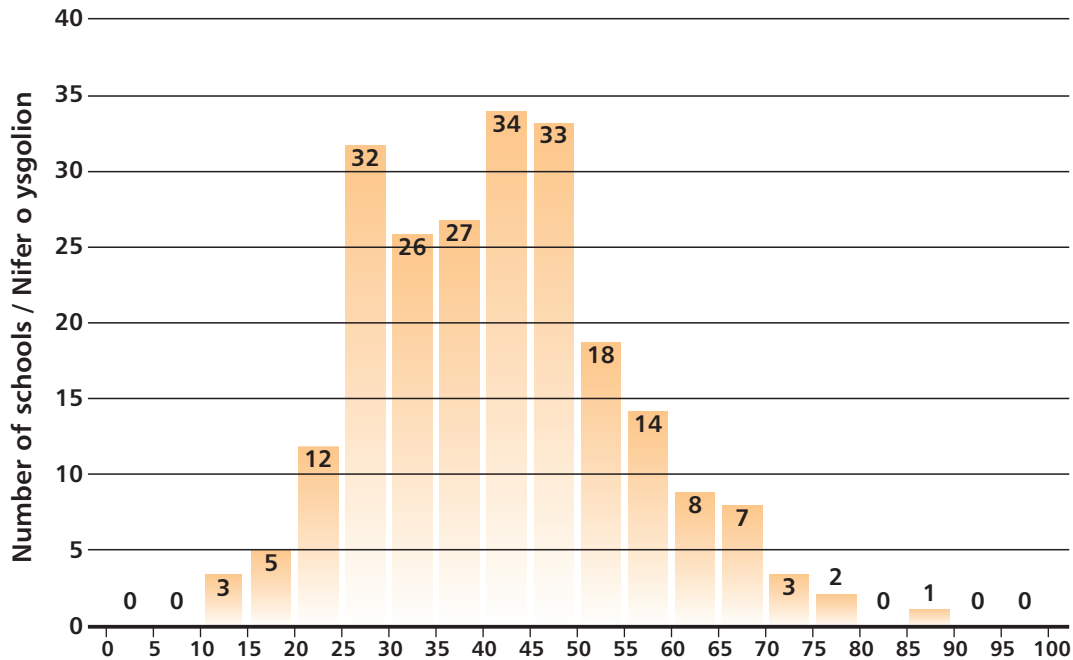
Dosbarthiad ysgolion uwchradd AALI ac AGAG yn cofrestru disgyblion ar gyfer Cymraeg Iaith Gyntaf ar sail y ganran o ddisgyblion 15 oed yn ennill TGAU graddau A*-C



Mathematics/Mathemateg

Distribution of LEA and GM schools based on percentage of 15-year-olds gaining GCSE grades A*-C

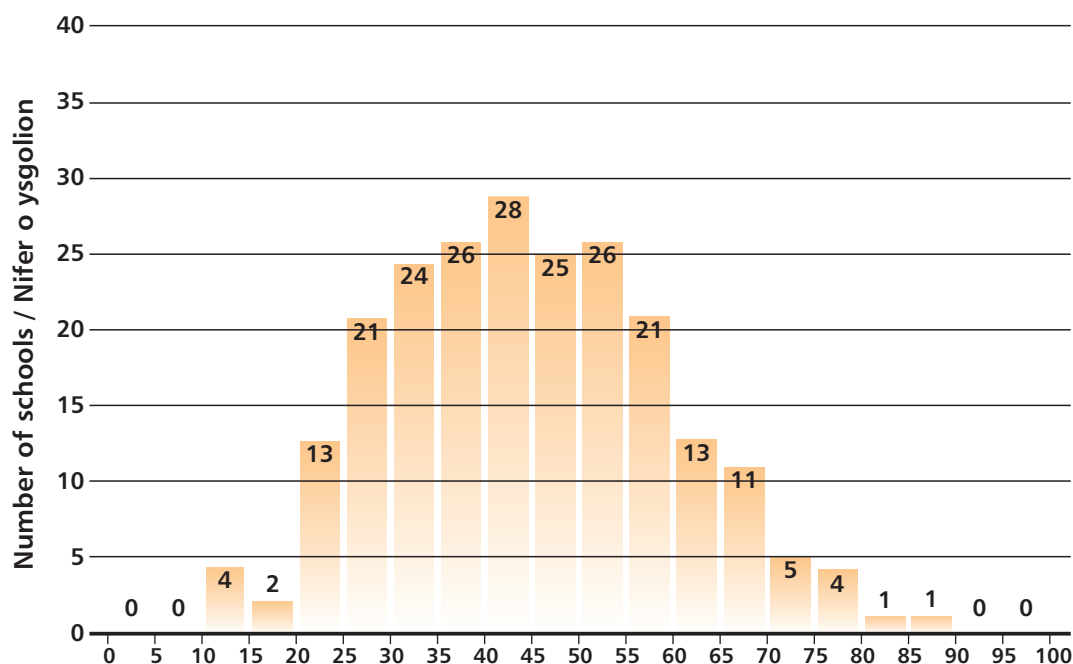
Dosbarthiad ysgolion uwchradd AALI ac AGAG ar sail y ganran o ddisgyblion 15 oed yn ennill TGAU graddau A*-C



Science/Gwyddoniaeth

Distribution of LEA and GM schools based on percentage of 15-year-olds gaining GCSE grades A*-C

Dosbarthiad ysgolion uwchradd AALI ac AGAG ar sail y ganran o ddisgyblion 15 oed yn ennill TGAU graddau A*-C



Notes / Nodiadau

Notes / Nodiadau

Notes / Nodiadau