

Enrolments at UK Higher Education Institutions:

Northern Ireland analysis 2015/16

Date of Publication:
16 February 2017

Frequency of Publication:
Annual

Issued by:
Statistics and Research Branch
(Tertiary Education)
Department for the Economy
Adelaide House
39-49 Adelaide Street
Belfast
BT2 8FD

Public Enquiries:
Statistics and Research Branch
(Tertiary Education)
(028) 9025 7895

Statistician:
Andy Bannon

Email:
analyticalservices@economy-ni.gov.uk

Internet:
<https://www.economy-ni.gov.uk/topics/statistics-and-economic-research/higher-education-statistics>

This statistical bulletin has been produced by the Department for the Economy (DfE) and provides information on the number of Northern Ireland (NI) students enrolled at UK Higher Education Institutions (HEIs) and the number of students enrolled at NI HEIs.

- Over the past decade, the number of NI students enrolled at UK HEIs increased initially, from 63,015 in 2006/07 to a peak of 65,590 in 2011/12, before declining to 63,600 in 2015/16 (Tables 1a and 1b).
- Of the 63,600 NI students enrolled at UK HEIs in 2015/16, 74.1% were enrolled at NI HEIs (including 5.9% studying locally at the Open University) and 25.9% at HEIs in GB (Table 1a).
- In 2015/16, 48.1% of NI domiciled students at UK HEIs were studying a Science, Technology, Engineering or Maths (Broad STEM) related subject and 26.5% a Narrow STEM related subject (Table 7a).
- Despite a 2.1% (1,200) decrease between 2014/15 (56,445) and 2015/16 (55,245), student enrolments at NI HEIs have increased by a net 5.0% (2,625) over the past decade (from 52,615 in 2006/07) (Tables 8f and 8g).
- Between 2014/15 and 2015/16, the number of first year undergraduates enrolling at NI HEIs decreased by 7.2%, from 18,585 to 17,250; a 14.2% decrease in full-time enrolments (from 11,490 to 9,855) was partially offset by a 4.3% increase in part-time enrolments (from 7,095 to 7,395) (Table 9b).
- Of the 55,245 students enrolled at NI HEIs in 2015/16, 85.4% were from NI, 4.0% from the Republic of Ireland, 5.3% from GB, 0.7% from other EU countries and 4.7% from non-EU countries (Table 8a).

READER INFORMATION

Purpose	Monitor and report on 1) NI domiciled Enrolments in Higher Education Institutions in the United Kingdom, and 2) All Enrolments at NI Higher Education Institutions.
Authors	Andy Bannon, Kerry McColgan, Michael MacNeill.
Publication Date	Thursday 16th February 2017
Reporting Period	Academic Years 2006/07 to 2015/16
Publication Issue	20
Statistical Quality	Information detailed in this release has been quality assured by the Higher Education Statistics Authority (HESA) prior to release.
Target audience	Department for the Economy (DfE), Directors of HE institutions in Northern Ireland, Board members of HE institutions, educational professionals, academics, media and members of the public interested in the HE sector.
Further copies from	analyticalservices@economy-ni.gov.uk
Internet address	https://www.economy-ni.gov.uk/topics/statistics-and-economic-research/higher-education-statistics
Price	Free
Copyright	This publication is Crown copyright and may be reproduced free of charge in any format or medium. Any material used must be acknowledged, and the title of the publication specified.
Feedback	<p>As we want to engage with users of our statistics, we invite you to feedback your comments on this publication to:</p> <p>Michael MacNeill – Michael.MacNeill@economy-ni.gov.uk (Tel: 028 90 2 57897)</p> <p>Andy Bannon – Andrew.Bannon@economy-ni.gov.uk (Tel: 028 90 2 57895)</p> <p>Kerry McColgan – Kerry.McColgan@economy-ni.gov.uk (Tel: 028 90 2 57753)</p>

TABLE OF CONTENTS

Reader Information	Page 2
Table of Contents	Page 3
List of Figures	Page 4
Statistics and Research Branch	Page 5
Key Statistics	Page 6
Introduction	Page 8
Structure of Report	Page 11
Section 1: Northern Ireland domiciled students enrolled at UK Higher Education Institutions	Page 12
Change over the last 10 years	Page 12
Breakdown of enrolments	Page 13
Location of study	Page 14
Multiple Deprivation Measure quintiles	Page 16
Subject of study	Page 16
Section 2: Enrolments at Northern Ireland Higher Education Institutions	Page 18
Change over the last 10 years	Page 18
Breakdown of enrolments	Page 19
Country of domicile	Page 20
Subject of study	Page 22
Institutional breakdown	Page 23
UK comparison	Page 25
Notes and definitions	Page 27
List of tables	Page 33
Annex A: Detailed statistical tables	Page 38

LIST OF FIGURES

Figure 1 – NI domiciled students enrolled at UK HEIs – 2006/07 to 2015/16.....	Page 12
Figure 2 – NI domiciled students enrolled at UK HEIs by age group, mode and level of study – 2015/16.....	Page 14
Figure 3 – NI domiciled students enrolled at UK HEIs by mode of study and multiple deprivation measure quintiles – 2015/16.....	Page 16
Figure 4 – NI domiciled students enrolled at UK HEIs by gender and subject area – 2015/16.....	Page 17
Figure 5 – Enrolments at NI HEIs – 2006/07 to 2015/16.....	Page 18
Figure 6 – Enrolments at NI HEIs by age group, mode and level of study – 2015/16.....	Page 20
Figure 7 – Enrolments at NI HEIs by domicile and level of study – 2015/16.....	Page 22
Figure 8 – Enrolments at NI HEIs by gender and subject area – 2015/16.....	Page 23
Figure 9 – Enrolments at NI HEIs by institution and level of study – 2015/16.....	Page 25
Figure 10 – Percentage change in enrolments at UK HEIs by level of study and location of institution – 2014/15 to 2015/16.....	Page 26
Map 1 – Northern Ireland students enrolled at GB Higher Education Institutions – 2015/16.....	Page 15
Map 2 – HE Enrolments at campuses in NI by country of domicile – 2015/16.....	Page 21

Statistics and Research Branch (Tertiary Education) is responsible for the collection, quality assurance, analysis and publication of timely and accurate information derived from a wide range of statistical information returns supplied by the Higher Education Institutions (HEIs) and Further Education (FE) colleges across Northern Ireland (NI) and the Higher Education Statistics Agency (HESA), focused on NI HEIs and NI domiciled students in attendance at any UK HEI. Statistical information is collected routinely from a variety of electronic individual level administrative systems.

The Head of Branch is the Principal Statistician, Brian French. The Branch aims to present information in a meaningful way and provide advice on its uses to customers in the Economy Committee, FE colleges, universities, Professional Advisory Groups, policy branches within the DfE, other educational organisations, academia, private sector organisations, charity/voluntary organisations, as well as the general public.

The statistical information collected is used to contribute to major exercises such as reporting on the performance of the Higher Education (HE) and FE sectors, other comparative performance exercises, target setting and monitoring, departmental research projects, development of service frameworks, as well as policy formulation and evaluation. In addition, the information is used in response to a significantly high volume of Assembly questions and ad hoc queries each year.

Information is disseminated through a number of key statistical publications, including: HE enrolments; HE qualifications; Destinations of leavers from Higher Education (DLHE); FE activity; and Essential Skills enrolments and outcomes.

A detailed list of these publications is available from:

Website: <https://www.economy-ni.gov.uk/topics/statistics-and-economic-research/higher-and-further-education-and-training-statistics>

KEY STATISTICS FOR NORTHERN IRELAND DOMICILED ENROLMENTS IN UK HEIs

Over the past decade, NI student enrolments at UK HEIs increased initially, before declining again...	Over the past decade, the number of NI students enrolled at UK HEIs increased initially, from 63,015 in 2006/07 to a peak of 65,590 in 2011/12, before declining again to 63,600 in 2015/16; this included a 0.6% (365) decrease between 2014/15 (63,965) and 2015/16 (63,600).
Most NI students study full-time...	In 2015/16, 73.5% of enrolments were full-time and 26.5% were part-time. In comparison with 2014/15, full-time enrolments have increased by 0.6% (from 46,430 to 46,720) and part-time enrolments have decreased by 3.7% (from 17,535 to 16,885).
Most NI students study in NI...	Of the 63,600 NI students enrolled at UK HEIs in 2015/16, 74.1% were enrolled at NI HEIs (including 5.9% studying locally at the Open University) and 25.9% at HEIs in GB.
...however, outside of Northern Ireland, the North West of England is the most popular region for NI students...	The most popular regions for NI students who studied in GB were the North West of England and Scotland with 4,510 and 4,150 NI students enrolled at HEIs in each region respectively.
More NI female students are enrolling...	Females accounted for 56.6% of NI students enrolled at UK HEIs in 2015/16. A higher proportion of males (75.0%) were studying full-time than females (72.3%).
Fewer NI students are enrolling on full-time undergraduate courses at UK HEIs...	The number of NI students enrolled on full-time first year undergraduate courses at UK HEIs decreased by 3.3%, from 13,735 in 2014/15 to 13,280 in 2015/16.
A quarter of NI student enrolments are on Narrow STEM courses...	In 2015/16, 26.5% of NI students at UK HEIs were studying a Narrow STEM related subject and 48.1% a Broad STEM related subject.

KEY STATISTICS FOR ENROLMENTS AT NORTHERN IRELAND INSTITUTIONS

Student enrolments at NI HEIs have increased by a net 5.0% over the past decade...	Despite a 2.1% (1,200) decrease between 2014/15 (56,445) and 2015/16 (55,245), student enrolments at NI HEIs have increased by a net 5.0% (2,625) over the past decade (from 52,615 in 2006/07).
Most students enrolled at NI HEIs were studying full-time...	In 2015/16, 68.0% of enrolments were full-time and 32.0% were part-time. In comparison with 2014/15, full-time enrolments have decreased by 1.9% (from 38,280 to 37,545) and part time enrolments have decreased by 2.6% (from 18,165 to 17,700).
Most students in NI HEIs are from NI...	Of the 55,245 students enrolled at NI HEIs in 2015/16, 85.4% were from NI, 4.0% from the Republic of Ireland (RoI), 5.3% from Great Britain (GB), 0.7% from other EU countries and 4.7% from non-EU countries.
...however, we have students from a wide range of countries...	In 2015/16, students from over 100 different countries throughout the world were enrolled at NI HEIs. The non-EU countries with the highest number of students at NI HEIs were China (785) and Malaysia (385).
More females are enrolling in NI HEIs...	Females accounted for 56.8% of students enrolled at NI HEIs in 2015/16. A higher proportion of males (71.2%) were studying full-time than females (65.5%).
Fewer students are enrolling on full-time undergraduate courses at NI HEIs...	Between 2014/15 and 2015/16, the number of first year undergraduates enrolling at NI HEIs decreased by 7.2%, from 18,585 to 17,250; a 14.2% decrease in full-time enrolments (from 11,490 to 9,855) was partially offset by a 4.3% increase in part-time enrolments (from 7,095 to 7,395).
Almost a quarter of enrolments at NI HEIs are on Narrow STEM courses...	In 2015/16, 25.7% of NI HEIs students were studying a Narrow STEM related subject and 47.8% a Broad STEM related subject.

Coverage

This statistical bulletin has been produced by the Department for the Economy (DfE) and presents information on students enrolled at Higher Education Institutions (HEIs) in the UK in the 2015/16 academic year. The statistics presented in this bulletin cover a range of topics including changes over the last ten years, breakdown of the most recent enrolments, subject of study and where Northern Ireland (NI) students go to study.

National Statistics

The United Kingdom Statistics Authority (the Authority) has designated these statistics as National Statistics, in accordance with the Statistics and Registration Service Act 2007 and signifying compliance with the [Code of Practice](#) for Official Statistics.

National Statistics status means that Official Statistics meet the highest standards of trustworthiness, quality and public value.

All Official Statistics should comply with all aspects of the Code of Practice for Official Statistics. They are awarded National Statistics status following an assessment by the Authority's regulatory arm. The Authority considers whether the statistics meet the highest standards of Code compliance, including the value they add to public decisions and debate. Designation can be broadly interpreted to mean that the statistics: meet identified user needs; are well explained and readily accessible; are produced according to sound methods; and are managed impartially and objectively in the public interest.

Once statistics have been designated as National Statistics, it is a statutory requirement that the Code of Practice shall continue to be observed. It is DfE's responsibility to maintain compliance with the standards expected of National Statistics. If we become concerned about whether these statistics are still meeting the appropriate standards, we will discuss any concerns with the Authority promptly. National Statistics status can be removed at any point when the highest standards are not maintained, and reinstated when standards are restored.

Policy and Operational Context

The Minister for the Economy has responsibility within the NI Executive and to the NI Assembly for the NI Higher Education Institutions (HEIs) and their students; and for student support for NI domiciled students in NI and the rest of the UK. The Assembly's Economy Committee has a scrutiny role in regard to these issues.

There continues to be a lot of media interest in the HE sector and HE statistics. With changes in fee regimes throughout the UK, the effect of the economic recession and the potential impact of Brexit, the demand for HE is often in the spotlight.

It is within this context that DfE is implementing [Graduating to Success](#), its Higher Education strategy, which aims to promote and sustain the development of an internationally competitive sector, accessible to all who are able to benefit, and meeting the needs of the Northern Ireland economy and wider society. This bulletin forms part of the evidence base that shapes the future strategies and policies of DfE.

Data Collection

The information presented in this statistical bulletin is based on data supplied by the Higher Education Statistics Agency (HESA). HESA is the official agency for the collection of information on publicly funded HEIs in the UK. It was set up in 1993 following the White Paper *Higher Education: a new framework*, which called for more coherence in HE statistics. In this context, HEIs include all publicly-funded universities. The HESA data presented in this bulletin relate to students at HEIs in the UK and therefore do not include HE enrolments at FE colleges in NI or GB, or at institutions in the Republic of Ireland (RoI).

Rounding Strategy

To prevent the identification of individuals, figures throughout the report are rounded to the nearest 5, with 0, 1, and 2 rounded to 0. Due to rounding, the sum of numbers in each row or column may not match the total shown. Percentages are based on unrounded figures. Percentages have also been rounded to one decimal place. More information on the rounding strategy can be found in the [notes and definitions](#) section.

Data Quality

All information presented in this bulletin has been validated and quality assured by HEIs prior to publication. HEIs are given a set period of time to submit the information to the HESA. Following submission, both HESA and DfE perform a series of validation checks to ensure that information is consistent both within and across returns. Trend analyses are used to monitor annual variations and emerging trends. Queries arising from validation checks are presented to HEIs for clarification and, if required, returns may be amended and/or re-submitted. Finally, prior to publication, the data are presented to HEIs for a final sign-off. More detail is available via the link: [Quality of Higher Education Statistics](#).

Who will be interested in this bulletin?

The information presented in this statistical bulletin will be of interest to a wide variety of people. For example, the statistics within and those derived from this bulletin are currently used by DfE policy officials in their role of assisting and advising the Minister for the Economy to discharge his duties; by the NI Assembly and Economy committee to scrutinise the HE sector; by other government departments such as DoF as a key indicator in the education domain of the NI Multiple Deprivation Measure (MDM); by prospective students to inform their choices around HE; by local businesses to quantify the supply of graduates in their business area; and by researchers and academics to try and understand the underlying trends in HE. Further details about the uses made of HE statistics can be found in the [notes and definitions](#) section.

Main Uses of HE statistics

The main uses of these data are to monitor HE enrolments and the characteristics of students enrolling both from NI and to NI HEIs. This helps assess HEI performance, corporate monitoring, informing and monitoring related policy, and responding to parliamentary/assembly questions and ad hoc queries from the public.

DfE is responsible for the policy, strategic development and financing of the statutory HE sector. Analysis of data trends against key strategic priorities remains a crucial component of data development within DfE.

HE Activity Elsewhere

Summary figures for the four UK administrations were published by HESA in their Statistical First Release on 12th January 2017.

This statistical first release can be viewed at the following page -

<https://www.hesa.ac.uk/news/12-01-2017/sfr242-student-enrolments-and-qualifications>

More in depth reports for England, Scotland and Wales can be downloaded from the following pages:

England - <http://www.bis.gov.uk/policies/higher-education/research-analysis>

Scotland - <http://www.scotland.gov.uk/Topics/Statistics/Browse/Lifelong-learning>

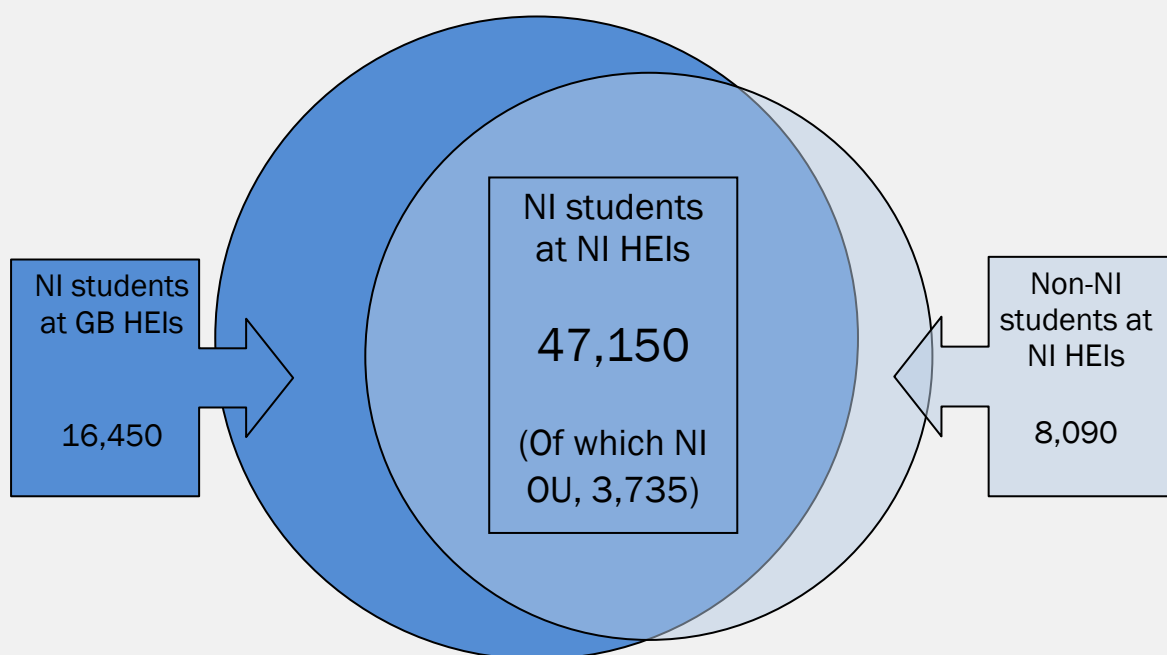
Wales - <http://wales.gov.uk/topics/statistics/theme/post16ed/higher-educa>



STRUCTURE OF REPORT

The bulletin is divided into two sections. Section 1 focuses on NI domiciled students enrolled at HEIs in NI, England, Scotland or Wales. Section 2 concentrates on all students enrolled at NI HEIs. This division into two sections reflects the two distinct policy and operational responsibilities of the Minister and the Department. Furthermore, it is clear from customer feedback, the nature of questions on HE asked in the NI Assembly, and coverage of HE issues in the local media, that these two aspects are of key interest to readers.

It is worth noting that there is a large overlap between Section 1 and Section 2, namely NI students enrolled at NI HEIs are included in both sections. See the diagram below for details:

Diagram summarising the structure of the bulletin: Enrolments 2015/16

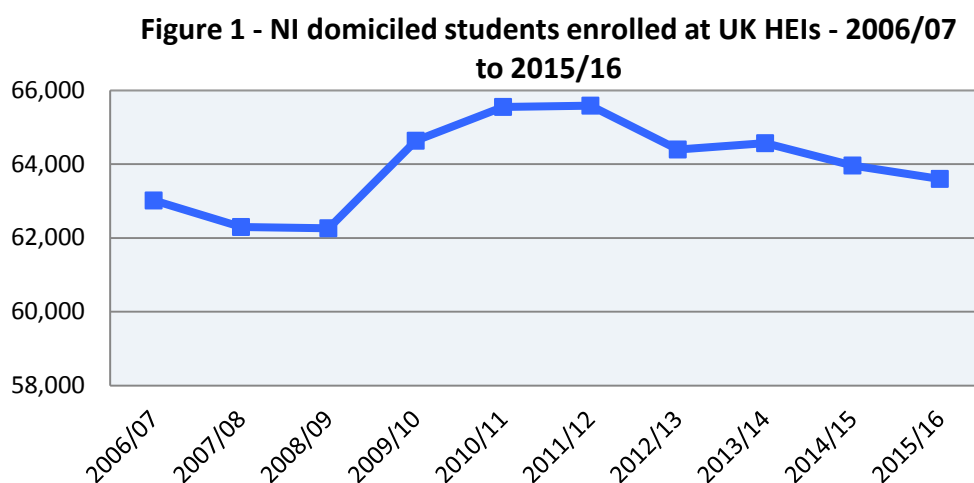


-  Section 1 - NI domiciled students enrolled at UK HEIs - 2015/16 (63,600)
-  Section 2 - Enrolments at NI HEIs - 2015/16 (55,245)

SECTION 1: Northern Ireland domiciled students enrolled at UK Higher Education Institutions (Tables 1 to 7)

1.1 Change over the last 10 years – 2006/07 to 2015/16 (Tables 1 and 2, Figure 1)

Although the number of NI students enrolled at UK HEIs in 2015/16 was 0.9% higher than in 2006/07, over the past decade, enrolments increased initially, from 63,015 in 2006/07 to a peak of 65,590 in 2011/12, before declining again to 63,600 in 2015/16; this included a 0.6% (365) decrease between 2014/15 (63,965) and 2015/16 (63,600) (Tables 1a, 1b and 1d, Figure 1).



Although the proportion of NI domiciled students studying in GB in 2015/16 (25.9%) was similar to that of a decade ago (25.8% in 2006/07) during this period, it rose to 26.7% in 2011/12, before dipping to 24.8% in 2014/15 and increasing again to 25.9% in 2015/16. When we examine the full-time first year undergraduate cohort, this proportion has increased from 30.7% to 36.0% over the ten year period. Again this increase has not been constant, peaking in 2011/12 and again in 2015/16 (Tables 1a and 2a).

Over the 10 year period, the number of NI students going to GB to study increased by 1.2%, from 16,260 in 2006/07 to 16,450 in 2015/16; those studying through the Open University decreased by 0.5%, from 3,760 to 3,740 over the same period; while NI enrolments at NI HEIs (excluding the OU) increased by 1.0%, from 43,000 in 2006/07 to 43,415 in 2015/16 (Tables 1a and 1b).

In terms of level of study, 'first degree' courses have experienced the largest percentage increase of NI domiciled students, rising by 7.6% over the last ten years, from 44,545 in 2006/07 to 47,915 in 2015/16. While 'postgraduate' enrolments have increased by 5.5% over the same period, from 8,980 to 9,475, the number of students enrolled on 'other undergraduate' courses (such as foundation degrees, diplomas, HNDs and HNCs) has fallen by 34.5%, from 9,490 in 2006/07 to 6,215 in 2015/16 (Table 1c).

Full-time enrolments rose by 6.0% over the decade, compared with a 10.8% decrease in part-time enrolments. The drop in part-time enrolments is mainly related to the drop in the number doing part-time 'other undergraduate' courses (Table 1c).

1.2 Breakdown of enrolments – 2015/16 (Tables 1 to 4, Figure 2)

In 2015/16, 63,600 NI students were enrolled at UK HEIs, showing a decrease of 0.6% from 63,965 in 2014/15 (Table 1d).

Mode of study – In 2015/16, 73.5% of enrolments were full-time and 26.5% were part-time. In comparison with 2014/15, full-time enrolments have increased by 0.6%, from 46,430 in 2014/15 to 46,720 in 2015/16; and part-time enrolments have decreased by 3.7%, from 17,535 in 2014/15 to 16,885 in 2015/16 (Table 1e).

Level of study – Just over three quarters (75.3%) of NI students were enrolled on a ‘first degree’ course, 9.8% on ‘other undergraduate’ courses and 14.9% on a ‘postgraduate’ course in 2015/16. ‘First degree’ enrolments increased by 0.8%, from 47,525 in 2014/15 to 47,915 in 2015/16, while ‘other undergraduates’ decreased by 4.1%, from 6,480 to 6,215, and ‘postgraduates’ decreased by 4.9%, from 9,955 to 9,475 over the same period (Tables 1f).

The number of NI domiciled full-time first year undergraduate enrolments at UK HEIs decreased by 3.3%, from 13,735 in 2014/15 to 13,280 in 2015/16 (Table 2c).

Gender – In recent history, more females have been progressing into higher education than males. This gender gap does not begin at the point of entry to HE, but can be observed early on in the educational system. In NI, females are more likely to stay on in full-time education at age 16. They are more likely to be entered for A levels, more likely to pass them, and also more likely to do better (achieve an A grade, including A*) than males. (Source: DENI Statistical Press Release: Year 12 and Year 14 Examination Performance at Post Primary Schools in 2014/15¹).

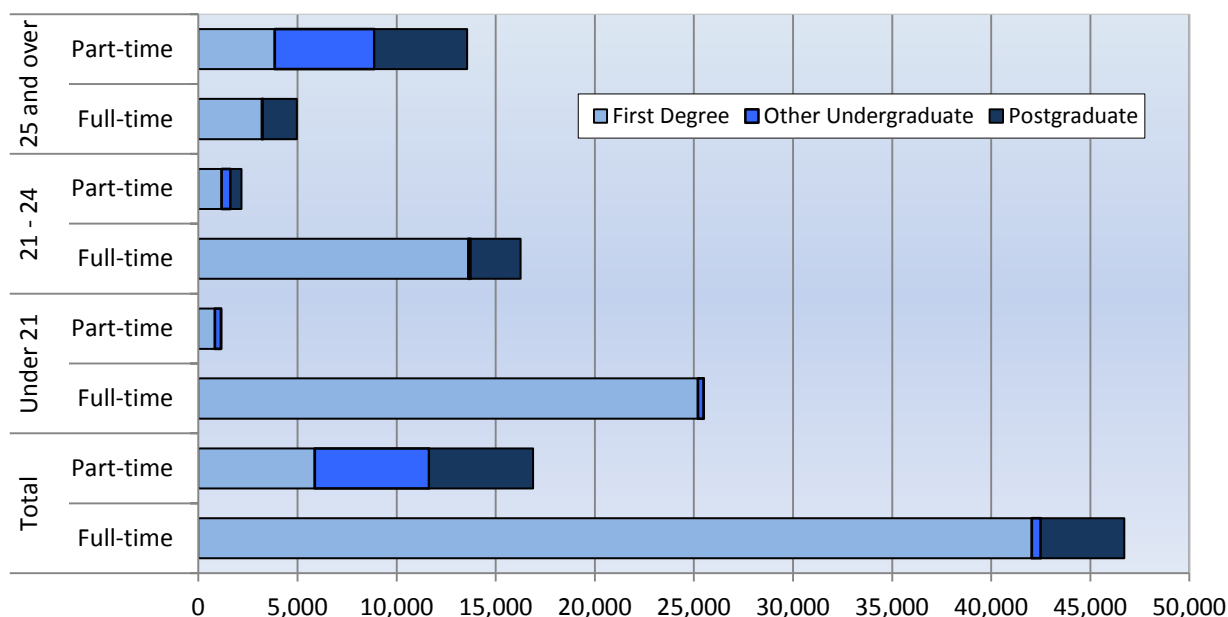
Over the past ten years, the female share of the NI domiciled student population enrolled at UK HEIs has declined, from 58.9% in 2006/07 to 56.6% in 2015/16. A higher proportion of males (75.0%) than females (72.3%) were studying full-time in 2015/16 (Table 3a and 3b).

A higher proportion of males than females were enrolled on ‘first degree’ courses in 2015/16 – 77.5% compared with 73.7%, whereas females (10.8%) were more likely than males (8.4%) to be undertaking an ‘other undergraduate’ course. Females (15.5%) were also more likely than males (14.1%) to be enrolled on ‘postgraduate’ courses (Table 3c).

Age – In 2015/16, 41.9% of NI domiciled students enrolled at UK HEIs were aged ‘under 21’, 29.0% were aged ‘21 to 24’ and 29.1% were aged ‘25 and over’ (Table 4a).

¹ <https://www.education-ni.gov.uk/publications/statistical-bulletin-92015-year-12-and-14-examination-performance-post-primary-schools>

Figure 2 : NI domiciled students enrolled at UK HEIs by age group, mode and level of study - 2015/16



The majority of younger students (those aged under 21) tend to enter HE straight from school and continue to study on a full-time basis. Older students (aged 25 and over) are more likely to study part-time. Many older students are combining work with part-time study and see HE as a way to develop their career, or to enable them to change to a different career. The majority (95.7%) of NI students aged 'under 21' were enrolled on a full-time course, as were 88.2% of those aged '21 to 24'. In comparison, the majority (73.2%) of those aged '25+' were enrolled on part-time courses (Table 4c, Figure 2).

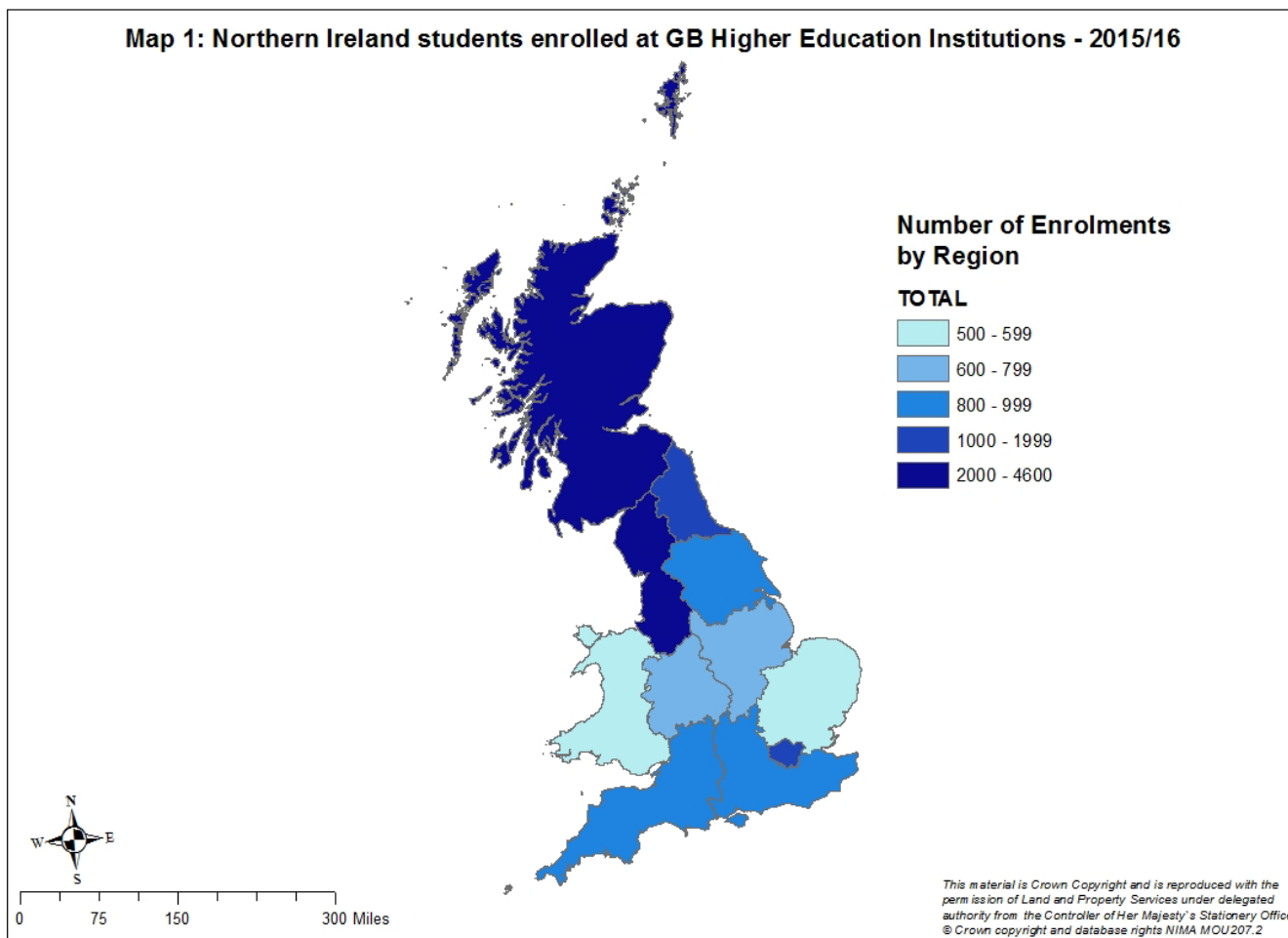
1.3 Location of Study (Tables 1 to 3 & 5)

There are various reasons why students leave NI to study, including their choice of subject, for example, some courses such as veterinary science are not supplied in Northern Ireland. However, available research² would suggest that the majority of those who plan to leave NI to study do so out of choice. Indeed, figures from the latest Destinations of Leavers from Higher Education survey³ show that around 68.5% of full-time students who left NI to study in GB did not return to NI to work six months after qualifying.

² <https://www.economy-ni.gov.uk/publications/after-school-attitudes-and-perceptions-northern-ireland-school-leavers-towards-higher>

³ <https://www.economy-ni.gov.uk/articles/destinations-leavers-higher-education>

Map 1: Northern Ireland students enrolled at GB Higher Education Institutions - 2015/16



Of the 63,600 NI students enrolled at UK HEIs in 2015/16, 74.1% were enrolled at NI HEIs (including 5.9% studying locally at the Open University) and 25.9% at HEIs in GB (Table 1a).

There were 16,450 NI students studying at HEIs in GB in 2015/16. The map above illustrates how many NI students were studying in each region of GB. The darker the shade of blue, the higher the number of NI students enrolled at HEIs in that region.

The most popular regions for NI students who studied in GB were the North West of England and Scotland, with 4,510 and 4,150 NI students enrolled at HEIs in each region respectively. Other popular regions were the North East of England, with 1,555 NI students, and London, with 1,190 (Table 5a).

In Scotland, the HEIs with the most NI students in 2015/16 were the University of Glasgow (705), the University of Dundee (690) and the University of Edinburgh (475). In the North West, Liverpool John Moore's University alone had 1,570 NI student enrolments, making it the most popular HEI in GB for NI students. In the North East, the University of Northumbria at Newcastle had 700 students from NI. In fact, it is worth noting that NI students were enrolled at 161 of the 163 publicly funded HEIs in the UK (Table 5b).

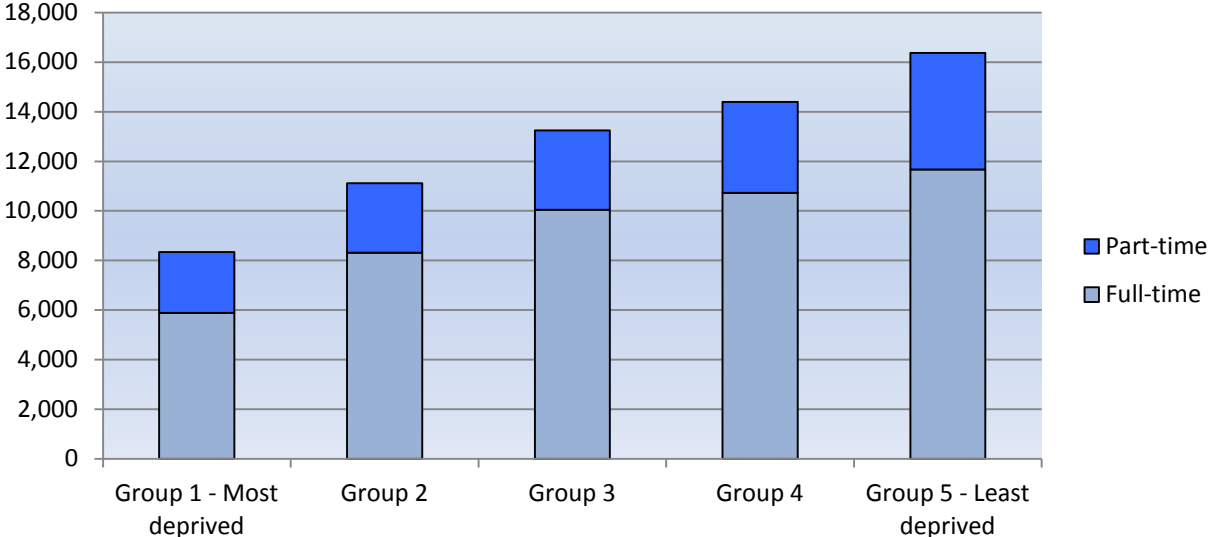
Similar proportions of males and females study in GB, with around 26% of both NI domiciled males and females enrolled at GB HEIs in 2015/16 (25.8% of males and 25.9% of females) (Table 3d).

Of the 13,280 NI domiciled full-time first year undergraduate enrolments at UK HEIs in 2015/16, 64.0% were enrolled at NI HEIs (a drop of 5 percentage points from 2014/15) and 36.0% were enrolled at HEIs in GB (an increase of 5 percentage points from 2014/15) (Table 2a).

1.4 Multiple Deprivation Measure quintiles (Table 6, Figure 3)

Of the 63,460 NI domiciled students enrolled at UK HEIs in 2015/16 whose postcodes were known, the highest proportion (25.8%) were from the least deprived multiple deprivation area in NI (quintile 5), around double the proportion (13.1%) from the most deprived multiple deprivation area (quintile 1).

Figure 3: NI domiciled students enrolled at UK HEIs by mode of study and multiple deprivation measure quintile - 2015/16

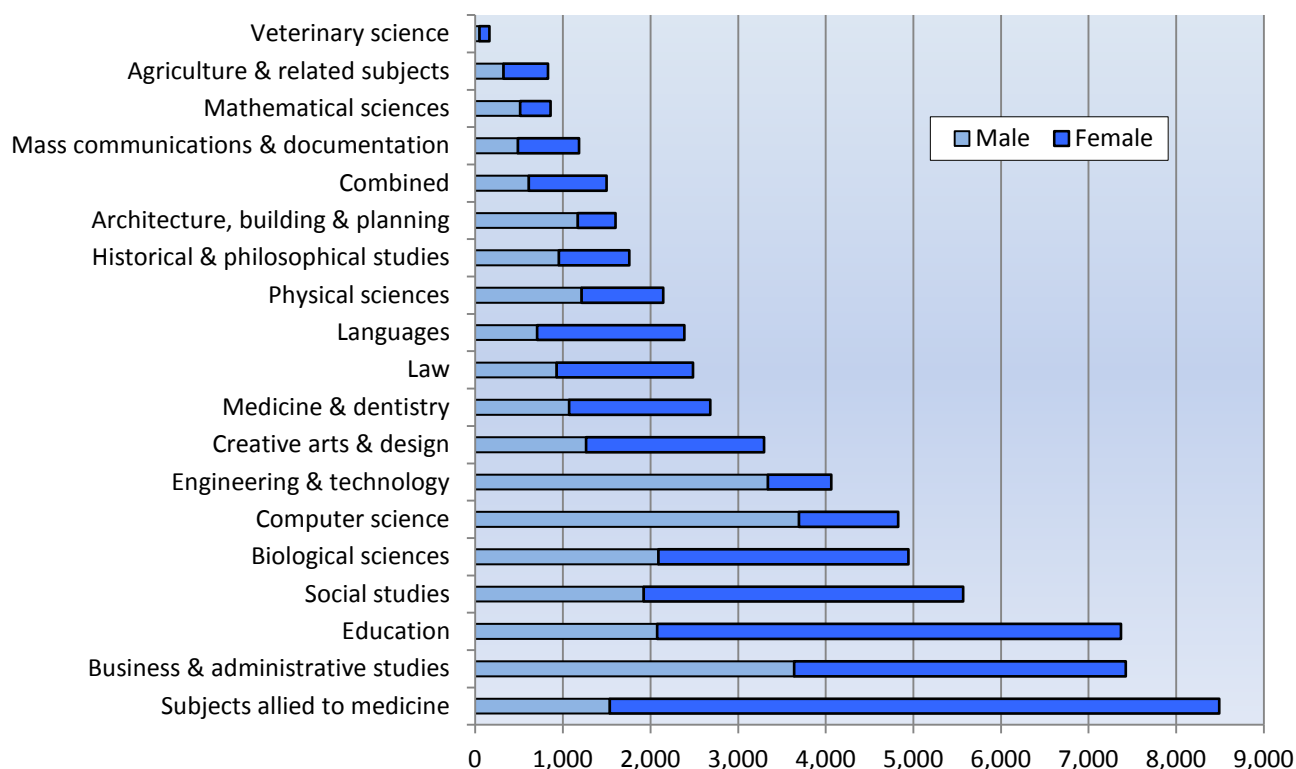


1.5 Subject of Study (Table 7, Figure 4)

In 2015/16, the most popular subject areas for NI students studying at UK HEIs were: ‘subjects allied to medicine’ (which includes subjects such as nursing, pharmacy, occupational Therapy and physiotherapy), with 8,490 (13.4%) enrolments; ‘business and administrative studies’ (which includes subjects such as business studies, management studies, accounting, marketing and finance), with 7,425 (11.7%) enrolments; and ‘education’(which includes subjects such as training teachers, research study skills in education and academic studies in education), with 7,370 (11.6%) (Table 7c).

Females accounted for 81.9% of 2015/16 enrolments in ‘subjects allied to medicine’, 71.8% of those studying ‘education’ and 70.4% of those studying ‘languages’. In contrast, males accounted for 82.2% of those studying ‘engineering and technology’, 76.6% of ‘computer science’ enrolments and 73.1% of ‘architecture, building and planning’ enrolments (Table 7c, Figure 4).

Figure 4 : NI domiciled students enrolled at UK HEIs by gender and subject area - 2015/16



The key priority identified within the *Programme for Government (2011-15)* by the NI Executive is to grow a sustainable economy and invest in the future. To help achieve this, a target has been set to increase the uptake in economically relevant STEM⁴ places in education.

In 2015/16, 48.1% of NI students at UK HEIs were studying a Broad STEM related subject. A higher proportion of males (54.4%) than females (43.4%) were studying Broad STEM subjects. Full-time students (53.2%) were more likely to be studying Broad STEM subjects than part-time students (34.1%) (Tables 7a and 7b).

In 2015/16, 26.5% of NI students at UK HEIs were studying a Narrow STEM related subject. A higher proportion of males (39.3%) than females (16.6%) were studying Narrow STEM subjects. Full-time students (30.1%) were more likely to be studying Narrow STEM subjects than part-time students (16.4%) (Tables 7a and 7b).

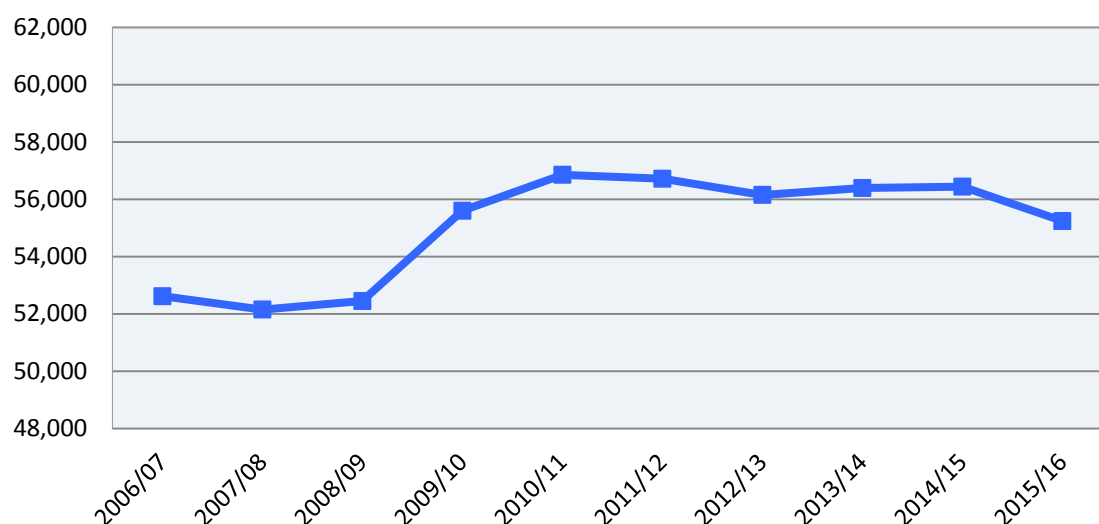
⁴ Science, Technology, Engineering and Mathematics – see notes to readers for full description.

SECTION 2: Enrolments at Northern Ireland Higher Education Institutions (Tables 8 to 14)

2.1 Change over the last 10 years – 2006/07 to 2015/16 (Tables 8 & 9, Figure 5)

Despite a 2.1% (1,200) decrease between 2014/15 (56,445) and 2015/16 (55,245), student enrolments at NI HEIs have increased by a net 5.0% (2,625) over the past decade (from 52,615 in 2006/07) (Tables 8f and 8g, Figure 5).

Figure 5 - Enrolments at NI HEIs - 2006/07 to 2015/16



Students from NI now account for a smaller proportion of the total population of students at NI HEIs than they did 10 years ago. In 2006/07, students from NI accounted for 87.1% (45,805) of the total population of students at NI HEIs. However, by 2015/16 this proportion has decreased to 85.4% (47,150), despite numbers increasing by 2.9% over the ten year period (from 45,805 to 47,150). Over this period, NI HEIs have seen an increase in students from outside NI: The number of students from GB or non-EU countries increased by 57.2% (1,865 to 2,930) and 87.6% (1,380 to 2,585) respectively. In contrast, the number of students from Rol or other EU countries decreased by 30.6% (from 3,165 to 2,195) and 6.5% (from 400 to 375) respectively (Tables 8a and 8f).

In 2011/12, Ulster University returned to HESA students enrolled through a new partnership with QA Higher Education, which includes significant numbers of non-EU students. The increase in non-EU students at NI HEIs over the past ten years is partly due to there being 370 non-EU domiciled students enrolled on courses that have been jointly developed by Ulster University and QA Higher Education in Birmingham (50) and London (320) in 2015/16. Although these students are based in Birmingham and London, they are registered as Ulster University students (Table 8e).

In terms of level of study, 'first degree' enrolments have experienced an increase of 9.7% (from 34,720 to 38,095) over the ten year period. Enrolments on 'postgraduate courses have also shown an increase of 15.6% (from 9,235 to 10,675), while those for 'other undergraduate' courses (such as foundation degrees, diplomas, HNDs and HNCs) have fallen by 25.2% (from 8,660 to 6,475) over the same time period (Table 8h).

The number of full-time enrolments increased by 10.1%, from 34,110 in 2006/07 to 37,545 in 2015/16, whereas there was a 4.4% decrease in part-time enrolments over the same period, from 18,505 to 17,700 (Table 8i).

2.2 Breakdown of enrolments – 2015/16 (Tables 8 to 11, Figure 6)

In 2015/16, 55,245 students were enrolled at NI HEIs, showing a decrease of 2.1% from 56,445 in 2014/15 (Table 8g).

Mode of study – In 2015/16, 68.0% of enrolments were full-time and 32.0% were part-time. In comparison with 2014/15, full-time enrolments have decreased by 1.9% (from 38,280 to 37,545) and part-time enrolments have decreased by 2.6% (from 18,165 to 17,700) (Tables 8j and 8k).

Level of study – In 2015/16, 69.0% of students were enrolled on a ‘first degree’ course, 11.7% on ‘other undergraduate’ courses and 19.3% on a ‘postgraduate’ course. Between 2014/15 and 2015/16, ‘first degree’ enrolments decreased by 0.9% (from 38,450 to 38,095), while ‘other undergraduates’ decreased by 3.3% (from 6,695 to 6,475) and ‘postgraduates’ decreased by 5.5% (from 11,295 to 10,675) (Tables 8l and 8m).

Between 2014/15 and 2015/16, the number of first year undergraduates enrolling at NI HEIs decreased by 7.2%, from 18,585 to 17,250; a 14.2% decrease in full-time enrolments (from 11,490 to 9,855) was partially offset by a 4.3% increase in part-time enrolments (from 7,095 to 7,395) (Table 9b).

Gender – In recent history, more females have been progressing into higher education than males. This gender gap does not begin at the point of entry to HE, but can be observed early on in the educational system. In NI, girls are more likely to stay on in full-time education at age 16. They are more likely to be entered for A levels, more likely to pass them, and also more likely to do better (achieve an A grade, including A*) than boys (Source: DENI Statistical Press Release: Year 12 and Year 14 Examination Performance at Post Primary Schools in 2014/15⁵).

Of the 55,245 students enrolled at NI HEIs in 2015/16, 56.8% were female and 43.2% were male (Table 10a).

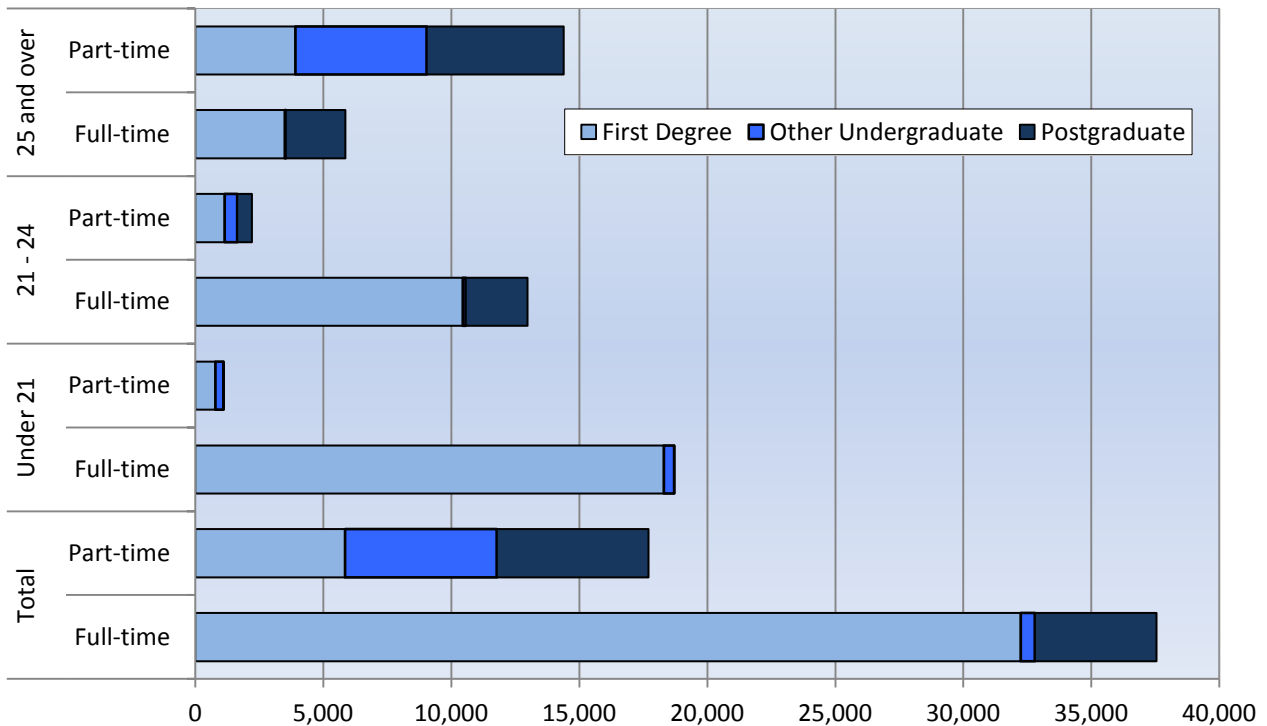
A higher proportion of males (71.2%) than females (65.5%) were studying full-time. Over the past ten years, the female share of the student population at NI HEIs has declined from 59.8% to 56.8% (Table 10b).

In 2015/16, males (72.5%) were more likely to be undertaking a ‘first degree’ course than females (66.2%), while a higher proportion of females (13.1%) were enrolled on an ‘other undergraduate’ course than males (9.8%) and on ‘postgraduate’ courses (20.6% of females and 17.6% of males) (Table 10d).

Age – In 2015/16, 35.9% of students enrolled at NI HEIs were aged ‘under 21’, 27.5% were aged ‘21 to 24’ and 36.7% were ‘25 and over’ (Table 11a).

⁵ <https://www.education-ni.gov.uk/publications/statistical-bulletin-92015-year-12-and-14-examination-performance-post-primary-schools>

Figure 6: Enrolments at NI HEIs by age group, mode and level of study - 2015/16



The majority of younger students (those aged under 21) tend to enter HE straight from school and continue to study on a full-time basis. Older students (aged 25 and over) are more likely to study part-time. Many older students are combining work with part-time study and see HE as a way to develop their career, or to enable them to change to a different career.

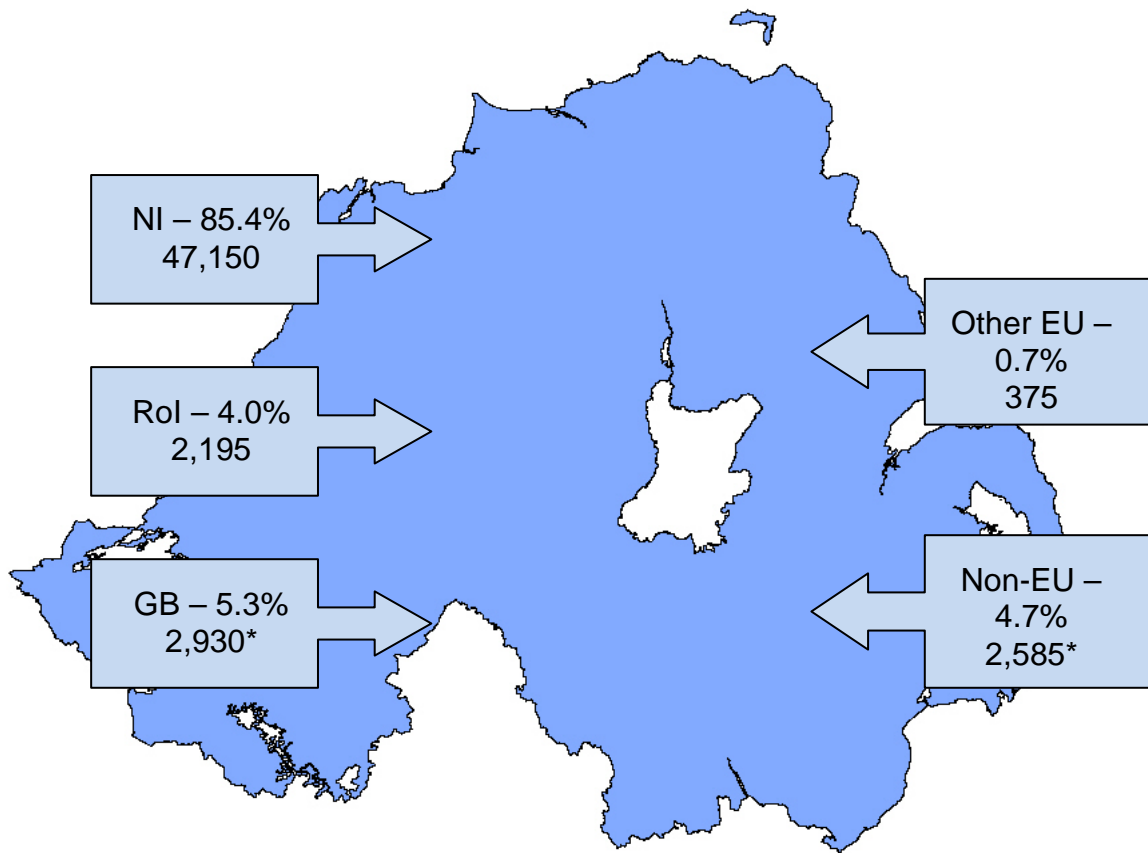
In 2015/16, the majority (94.5%) of students at NI HEIs aged 'under 21' were enrolled on a full-time course, as were 85.4% of those aged '21 to 24'. In contrast, the majority (71.1%) of those aged '25+' were enrolled on part-time courses (Table 11d, Figure 6).

2.3 Country of Domicile (Tables 8 to 10, Figure 7)

Over the last 10 years, NI HEIs have experienced an increase in the number of enrolments of students from outside NI.

Of the 55,245 students enrolled at NI HEIs in 2015/16, 85.4% were from NI, 5.3% from Great Britain (GB), 4.7% from non-EU countries, 4.0% from the Republic of Ireland (RoI) and 0.7% from other EU countries (Table 8a, Map 2).

Map 2: HE Enrolments at campuses in NI by country of domicile – 2015/16



*Of the non-EU and GB enrolments, **370** enrolled on courses that have been jointly developed by the Ulster University and the QA Higher Education in Birmingham and London. Although these students were based in Birmingham and London they were registered as Ulster University students.

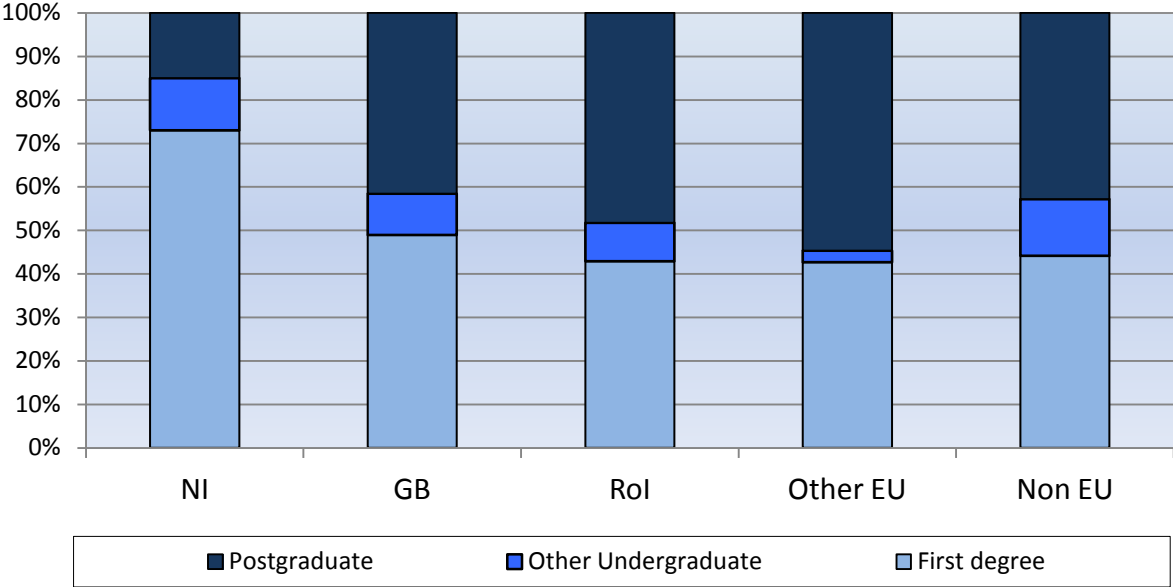
Reproduced by permission of LPSNI on behalf of the Controller of HMSO.
NIMA. No. MOU 203 © Crown Copyright

In 2015/16, students from over 100 different countries throughout the world were enrolled at NI HEIs. The countries from outside NI, GB and the RoI with the most students enrolled at NI campuses (not including those registered to Ulster University but based in Birmingham and London) were China (740), Malaysia (385), United States (195), Hong Kong (Special Administrative Region of China) (125) and India (85) (Table 8d).

The 370 non-EU students registered to Ulster University but based in Birmingham and London were made up of students from around 40 different countries, including Bangladesh (85 students), China (45), India (30), Colombia (30) and Nepal (30) (Table 8e).

Figure 7 below illustrates the contrast in level of study for NI students and those from other countries. The majority of students at NI HEIs from outside NI are enrolled on 'postgraduate' or 'other undergraduate' courses, whereas the majority of students from NI are enrolled on 'first degree' courses (Table 8).

Figure 7 : Enrolments at NI HEIs by domicile and level of study - 2015/16

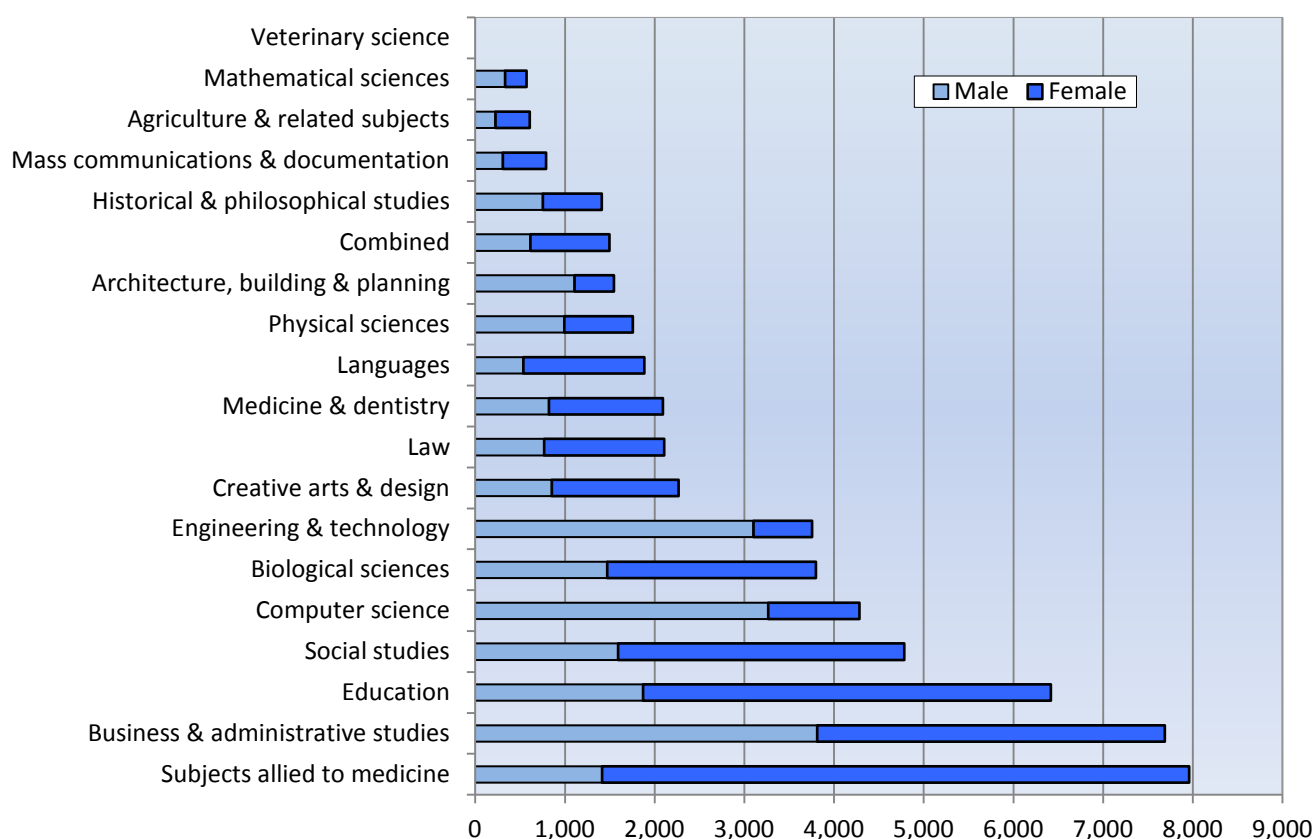


2.4 Subject of Study (Table 12, Figure 8)

In 2015/16, the most popular subject areas students were studying at NI HEIs were: 'subjects allied to medicine' (which includes subjects such as nursing, pharmacy, occupational therapy and physiotherapy), with 7,960 (14.4%) enrolments; 'business and administrative studies' (which includes subjects such as business studies, management studies, accounting, marketing and finance), with 7,690 (13.9%) enrolments; and 'education' (which includes subjects such as training teachers, research study skills in education and academic studies in education), with 6,415 (11.6%) enrolments (Table 12c).

Females accounted for 82.2% of 2015/16 enrolments in 'subjects allied to medicine', 71.5% of those studying 'languages' and 70.9% of those studying 'education'. In contrast, males accounted for 82.6% of those studying 'engineering and technology', 76.2% of 'computer science' enrolments and 71.8% of 'architecture, building and planning' enrolments (Table 12c, Figure 8).

Figure 8 : Enrolments at NI HEIs by gender and subject area - 2015/16



The key priority identified within the *Programme for Government (2011-15)* by the NI Executive is to grow a sustainable economy and invest in the future. To help achieve this, a target has been set to increase the uptake in economically relevant STEM⁶ places in education.

In 2015/16, 47.8% of students at NI HEIs were studying a Broad STEM related subject. A higher proportion of males (53.4%) were studying Broad STEM subjects compared to females (43.5%). Full-time students (53.7%) were more likely to be studying Broad STEM subjects than part-time students (35.1%) (Tables 12a and 12b).

In 2015/16, 25.7% of students at NI HEIs were studying a Narrow STEM related subject. A higher proportion of males (38.4%) were studying Narrow STEM subjects compared to females (16.0%). Full-time students (30.6%) were more likely to be studying Narrow STEM subjects than part-time students (15.3%) (Tables 12a and 12b).

2.5 Institutional breakdown (Table 13, Figure 9)

Of all students enrolled at NI HEIs in 2015/16, 45.5% were enrolled at Ulster University, 43.2% at Queen’s University Belfast, 2.6% at Stranmillis University College, 1.9% at St Mary’s University College and 6.8% at the Open University (Table 13b).

⁶ Science, Technology, Engineering and Maths – see notes to readers for full description.

Ulster University

Ulster University enrolments decreased by 3.6% between 2014/15 and 2015/16 (from 26,085 to 25,155). Full-time enrolments decreased by 5.4% (from 18,720 to 17,700) while part-time enrolments increased by 1.2% (from 7,365 to 7,455) (Table 13a).

The number of full-time students enrolled on courses jointly developed by Ulster University and QA Higher Education, and based in Birmingham and London, decreased by 40.0%, from 1,330 in 2014/15 to 795 in 2015/16 (Table 13c).

The number of full-time enrolments at Ulster University campuses based in NI (therefore not including UU Birmingham or London) decreased by 2.8%, from 17,390 in 2014/15 to 16,905 in 2015/16, whereas part-time enrolments based in NI increased by 1.2%, from 7,365 in 2014/15 to 7,455 in 2015/16 (Table 13d).

Between 2014/15 and 2015/16, 'first degree' enrolments at Ulster University showed a decrease of 2.0% (from 18,350 to 17,975), while 'other undergraduate' enrolments decreased by 14.9% (from 2,220 to 1,890) and 'postgraduate' enrolments decreased by 4.0% (from 5,510 to 5,290) (Table 13e).

Queen's University Belfast

Enrolments at Queen's University Belfast increased by 0.1% between 2014/15 and 2015/16, from 23,855 to 23,870. Full-time enrolments increased by 1.3% (from 17,730 to 17,965), while part-time enrolments decreased by 3.5% (from 6,120 to 5,905) (Table 13d).

'First degree' enrolments increased by 0.2% (from 15,155 to 15,190) between 2014/15 and 2015/16, while all 'other undergraduates' increased by 1.9% (from 3,700 to 3,770) and 'postgraduate' enrolments decreased by 1.7% (from 4,995 to 4,910) (Table 13e).

Open University

Enrolments at the Open University (where the national centre is located in NI) decreased by 1.6% between 2014/15 and 2015/16, from 3,795 to 3,735. There were no full-time enrolments, so this decrease is reflective of part-time enrolments (Table 13d).

'First degree' enrolments decreased by 2.1% (from 3,065 to 3,000) between 2014/15 and 2015/16, while 'other undergraduate' enrolments increased by 5.5% (from 560 to 590) and 'postgraduate' enrolments decreased by 14.9% (from 175 to 150) (Table 13e).

Stranmillis University College

Enrolments at Stranmillis University College decreased by 7.4% from 1,555 in 2014/15 to 1,440 in 2015/16. This decrease can be attributed to part-time enrolments, where there was a decrease of 26.1% (from 600 to 440), while full-time enrolments increased by 4.3% (from 955 to 1,000) (Table 13d).

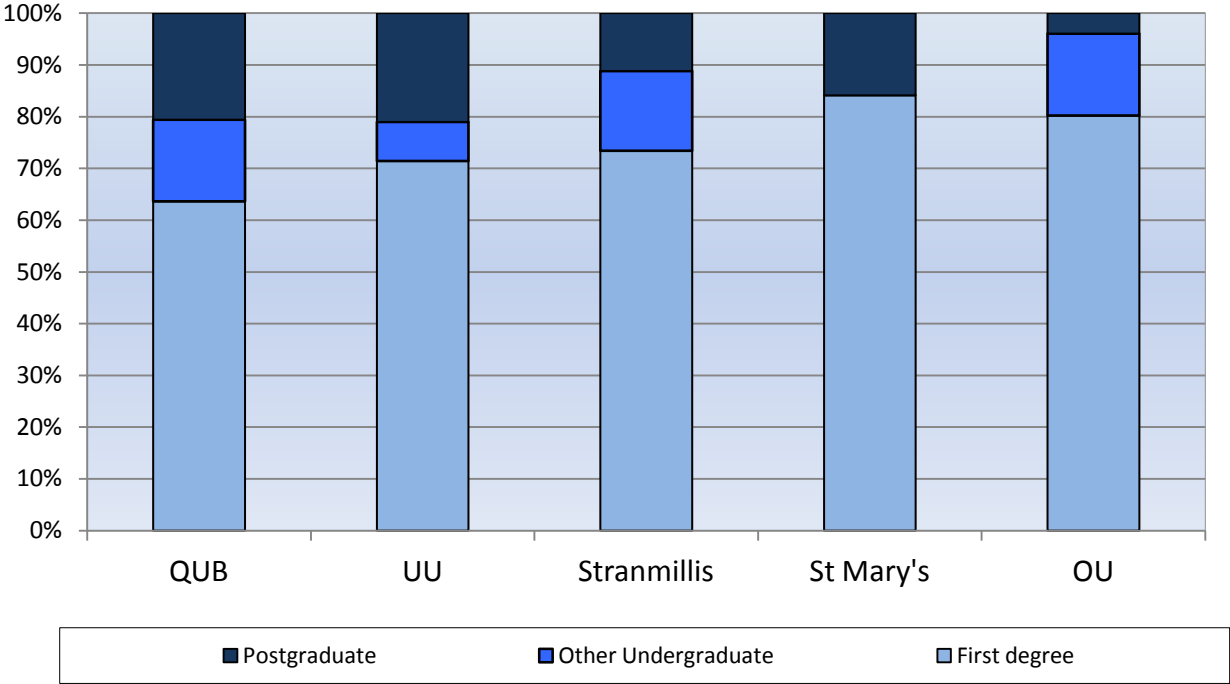
'First degree' enrolments increased by 3.1% (from 1,025 to 1,055) over this period and 'other undergraduate' enrolments increased by 4.2% (from 215 to 220), while 'postgraduate' enrolments decreased by 49.2% (from 315 to 160) (Table 13e).

St Mary’s University College

The number of students enrolled at St Mary’s University College decreased by 10.1%, from 1,155 in 2014/15 to 1,040 in 2015/16. This decrease can be attributed to part-time enrolments, which fell by 44.4% (from 285 to 160), while full-time enrolments increased by 1.1% (from 870 to 880) (Table 13d).

‘First degree’ enrolments increased by 1.7% (from 860 to 875) over this period, while ‘postgraduate’ enrolments decreased by 44.4% (from 295 to 165). There were no ‘other undergraduates’ at this institution (Table 13e).

Figure 9 : Enrolments at NI HEIs by Institution and level of study - 2015/16



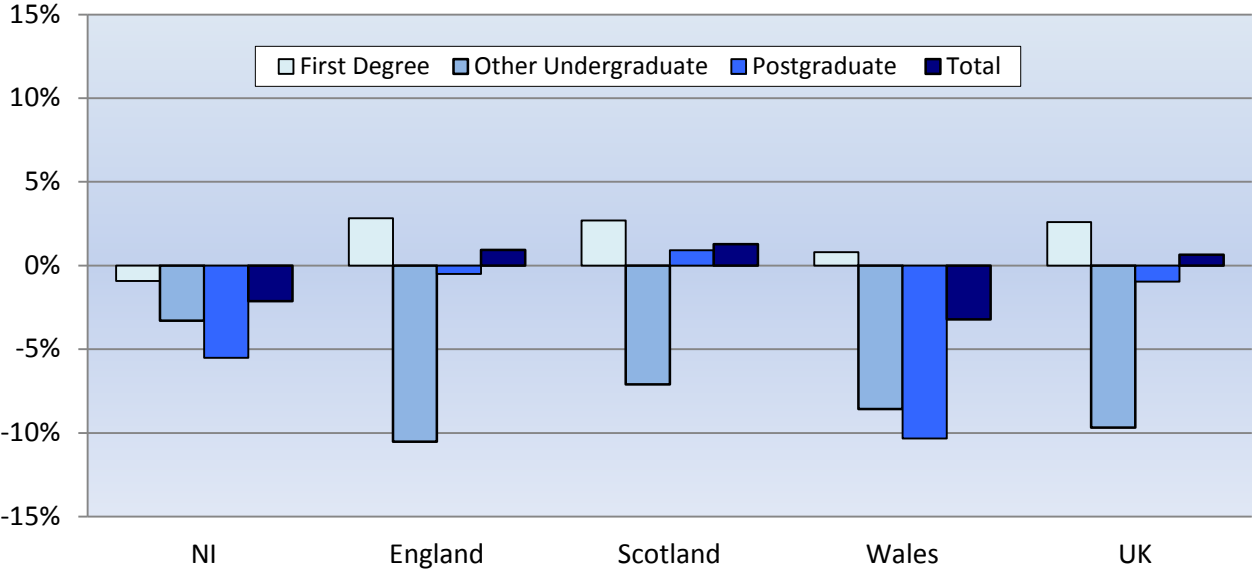
2.6 UK Comparison (Table 14, Chart 10)

In 2015/16, 2,280,830 students were enrolled at HEIs throughout the UK. In comparison with 2014/15, student numbers have increased by 0.7% (from 2,266,075) (Table 14a).

Over the same period, enrolments at English HEIs rose by 0.9% (from 1,844,095 to 1,861,345) and Scottish HEIs showed an increase of 1.3% (from 232,570 to 235,565). However, Welsh HEIs showed a decrease of 3.2% (from 132,965 to 128,675), while enrolments at NI HEIs decreased by 2.1% (from 56,445 to 55,245) (Table 14a).

Between 2014/15 and 2015/16, the number of ‘first degree’ enrolments increased at English HEIs (2.8%), Scottish HEIs (2.7%) and Welsh HEIs (0.8%), but decreased at NI HEIs (0.9%); the number of ‘other undergraduate’ enrolments fell in all locations. ‘Postgraduate’ enrolments fell in all locations except Scotland, where there was an increase of 0.9% (Table 14b, Figure 10).

Figure 10 : Percentage change in Enrolments at UK HEIs by level of study and location of institution - 2014/15 to 2015/16



Between 2014/15 and 2015/16, full-time enrolments at English and Scottish HEIs increased by 2.9% (from 1,391,975 to 1,431,735) and 2.6% (from 174,840 to 179,460) respectively, whereas those in NI and Welsh HEIs fell by 1.9% (from 38,280 to 37,545) and 0.3% (from 92,050 to 91,800) respectively (Table 14a).

Over the same period, the number of part-time enrolments fell in all locations; decreasing by 5.0% in England (from 452,120 to 429,610), 2.8% in Scotland (from 57,730 to 56,105), 9.9% in Wales (from 40,915 to 36,875), and 2.6% in NI (from 18,165 to 17,700) (Table 14a).

NOTES:

1. The United Kingdom Statistics Authority (the Authority) has designated these statistics as National Statistics, in accordance with the Statistics and Registration Service Act 2007 and signifying compliance with the [Code of Practice](#) for Official Statistics.

National Statistics status means that Official Statistics meet the highest standards of trustworthiness, quality and public value.

All Official Statistics should comply with all aspects of the Code of Practice for Official Statistic. They are awarded National Statistics status following an assessment by the Authority's regulatory arm. The Authority considers whether the statistics meet the highest standards of Code compliance, including the value they add to public decisions and debate. Designation can be broadly interpreted to mean that the statistics: meet identified user needs; are well explained and readily accessible; are produced according to sound methods, and are managed impartially and objectively in the public interest.

Once statistics have been designated as National Statistics it is a statutory requirement that the Code of Practice shall continue to be observed. It is the Department for the Economy's (DfE's) responsibility to maintain compliance with the standards expected of National Statistics. If we become concerned about whether these statistics are still meeting the appropriate standards, we will discuss any concerns with the Authority promptly. National Statistics status can be removed at any point when the highest standards are not maintained, and reinstated when standards are restored.

2. The data presented in this bulletin are based on data supplied by the Higher Education Statistics Agency (HESA). HESA is the official agency for the collection of information on publicly funded Higher Education (HE) institutions in the UK. It was set up in 1993 following the White Paper 'Higher Education: a new framework', which called for more coherence in HE statistics. HE institutions include all publicly-funded universities. The HESA data presented in this bulletin relate to students at HE institutions in the UK and therefore do not include HE enrolments at FE colleges in NI or GB, or at institutions in the Republic of Ireland.
3. HESA releases separate publications providing information on HE Student Enrolments and Qualifications obtained at HEIs for the whole of the UK. A notable difference in the HESA publications and those released by DfE is that from 2014/15 HESA uses revised data returns for the time series figures, whereas DfE does not. Consequently, historical figures for the number of enrolments and qualifications at UK HEIs published by DfE may differ from those in HESA's publications. Further information on this can be found in the 'Notes and frequently asked questions' of HESA's Statistical First Release (SFR) 2015/16: <https://www.hesa.ac.uk/news/12-01-2017/sfr242-student-enrolments-and-qualifications>
4. **Change to HESA Methodology** - From 2013/14, HESA has changed the allocation of Open University (OU) students to England, Wales, Scotland and Northern Ireland.

Previously, all OU enrolments and qualifications were counted as being within England, where the OU has its administrative centre. HESA has decided from their 2013/14 release onwards that enrolments and qualifications registered at one of the OU's national centres in Wales, Scotland and Northern Ireland will contribute to the totals of those countries where statistics are shown by country of provider.

A full public consultation of NI users of Higher Education Statistics was undertaken by DfE (formerly DEL) in 2015 on this change to the method for allocating OU students, which showed full support for the change. Therefore, this publication and future NI Higher Education publications will use the new method for OU allocation.

5. **Change to NI government departments** – The number of Northern Ireland government departments has been reduced from twelve to nine. The functions and services delivered by the twelve former departments have been restructured and transferred to the relevant new departments. The nine new departments are:
 - Agriculture, Environment and Rural Affairs
 - Infrastructure
 - Economy
 - Education
 - Finance
 - Health
 - Justice
 - The Executive Office
 - Communities

More information can be found at:

<https://www.nidirect.gov.uk/articles/changes-government-departments>

6. The bulletin contains HESA data only (that is, data on enrolments at UK HEIs only). Information on enrolments on HE courses at NI and GB FE colleges, RoI institutions and the College of Agriculture, Food and Rural Enterprise (CAFRE) is available via a separate statistical fact sheet, which is published on the Department's website (<https://www.economy-ni.gov.uk/publications/ni-domiciled-students-enrolled-he-courses-uk-and-roi-201011-201415>).
7. **Further statistics** on the Northern Ireland HE sector, including qualification gained, graduate destinations and various higher education fact sheets can be downloaded from the Department's website: <https://www.economy-ni.gov.uk/topics/statistics-and-economic-research/higher-education-statistics>
8. **Guidance on the production of HE statistics** - Information on methods for collecting and analysing HE data, the quality of HE statistics, and links to the quality guidance used in managing the production of HE statistics can be accessed on our statistics guidance page: <https://www.economy-ni.gov.uk/articles/quality-higher-education-statistics>
9. **Uses made of HE statistics** - This bulletin is disseminated direct to approximately 100 users. In addition, it is published on the Department's website and can be accessed through a link on the UK National Statistics GOV.UK publication hub (<https://www.gov.uk/government/statistics>) using a filter of 'higher education' as

the policy area and 'Department for the Economy' as the department. Users include policy colleagues in DfE, academics, researchers, members of the public, the NI Assembly, other government departments and other interested parties and individuals.

The bulletin and further analysis of the data provide an evidence base that is used in a number of DfE policies, strategies and reviews. Some of the most recent examples are:

- DfE's Higher Education Strategy
- DfE's Widening Participation Strategy
- DfE's STEM Strategy

Further details on these strategies are available from the DfE website:

<https://www.economy-ni.gov.uk/articles/higher-education-strategies-northern-ireland>

In addition, HE data are used within other NI departments and their agencies. Some of the most recent examples are:

- DoF - as a key indicator in the Education Domain of the Northern Ireland Multiple Deprivation Measure (NI MDM).
- DE – teacher demand model
- Invest NI – to quantify the supply of graduates for potential inward investment to NI

Around 200 HE statistical enquiries per year are received by the Department from various sources. These include requests for further breakdowns of enrolments, qualifications and destinations data.

In addition, approximately 20 assembly questions (either written or oral), relating to HE data, are received by the Department each year.

10. Government Targets

Data from this bulletin are used in the measurement of the following key commitment as set in the Northern Ireland Executive's *Programme for Government (2011-15)*:

<https://www.northernireland.gov.uk/publications/programme-government-2011-2015>

"Increase uptake in economically relevant Science, Technology, Engineering and Mathematics (STEM) places (DfE)."

11. Rounding Strategy – DfE conforms to the HESA rounding strategy. Due to the provisions of the Data Protection Act (1998) and the Human Rights Act (1998), HESA (and therefore DfE) implements a strategy, in published and released tabulations, designed to prevent the disclosure of personal information about any individual. This strategy involves rounding all numbers to the nearest 5, and suppressing percentages and averages based on small populations.

The HESA rounding strategy changed for the 2013/14 release onwards. Percentages are now suppressed if based on a population of fewer than 22.5 individuals; this is a

change from the previous threshold of 52 individuals, used in earlier publications. This change will enable more percentage calculations to be published. A full list of the rounding strategy includes:

- 0, 1 and 2 are rounded to 0;
- all other numbers are rounded to the nearest multiple of 5;
- percentages based on fewer than 22.5 individuals are suppressed;
- averages based on fewer individuals are also suppressed;
- percentages and averages are based on unrounded figures;
- percentages are rounded to one decimal place;
- full-time equivalent (FTE) data are not rounded; and
- financial data are not rounded

Total figures are also subject to this rounding methodology; so the sum of numbers in each row or column may not match the total shown.

DEFINITIONS:

Higher Education

12. Higher education students for the purpose of HESA's data collection are those students on courses for which the level of instruction is above that of level 3 of the Qualifications and Curriculum Authority (QCA) National Qualifications Framework (NQF) (e.g. courses at the level of Certificate of HE and above).

Count of Students

13. The HESA Student Record contains information about individual enrolments which, because a student can be enrolled on more than one programme of study, will exceed the number of students.

14. HESA data are a count of enrolments across the entire academic year.

Academic year

15. The academic year runs from 1st August to 31st July.

First year students

16. First year students are based on the HESA standard registration population who commenced their instance in the reporting period relevant to the data collection year. The term 'instance' is used to describe a student's engagement with the institution aiming towards the award of a qualification(s) or credit.

Domicile

17. Domicile refers to a student's permanent place of residence prior to enrolment on a HE course.

18. Student enrolments recorded with domicile UK region unknown, Channel Islands and Isle of Man are included in the GB category for the purposes of this statistical bulletin.

Level of course

19. Level of study

- I. *Postgraduate* programmes of study are those leading to higher degrees, diplomas and certificates (including Postgraduate Certificate of Education (PGCE) and professional qualifications) and usually require that entrants are already qualified to degree level (that is, already qualified at level 6 of the QCA National Qualifications Framework).
- II. *First degrees* include: first degrees with or without eligibility to register to practice with a health or social care or veterinary statutory regulatory body; first degrees with Qualified Teacher Status (QTS)/registration with a General Teaching Council (GTC); enhanced first degrees; first degrees obtained concurrently with a diploma; and intercalated first degrees.
- III. *Foundation degrees* were first introduced in September 2001. They are vocational higher education qualifications and are at level 5 of the QCA National Qualifications Framework.
- IV. *Other undergraduate* includes qualification aims equivalent to and below first degree level, such as Professional Graduate Certificate in Education (PGCE), foundation degrees, diplomas in HE with eligibility to register to practice with a Health or Social Care or veterinary statutory regulatory body, Higher National Diploma (HND), Higher National Certificate (HNC), Diploma of Higher Education (DipHE), Certificate of Higher Education (CertHE), foundation courses at HE level, NVQ/SVQ levels 4 and 5, post-degree diplomas and certificates at undergraduate level, professional qualifications at undergraduate level, other undergraduate diplomas and certificates including post registration health and social care courses, other formal HE qualifications of less than degree standard, institutional undergraduate credit and no formal undergraduate qualifications.

Mode of attendance

20. Mode of attendance distinguishes students studying full-time or part-time:

- I. *Full-time* students are those normally required to attend an Institution for periods amounting to at least 24 weeks within the year of study, on thick or thin sandwich courses, and those on a study-related year out of their institution. During that time students are normally expected to undertake periods of study, tuition or work experience which amount to an average of at least 21 hours per week.
- II. *Part-time* students are those recorded as studying part-time, or studying full-time on courses lasting less than 24 weeks, on block release, or studying during the evenings only.

Age

21. Age is as at 31st August within the relevant academic year.

Gender

22. From 2007/08, the field 'gender' changed to be consistent with the Aligned Data Definitions adopted by the Information Standards Board for education, skills, and children's services. Students of 'indeterminate gender' are included in total figures but not in separate breakdowns.

STEM – Science, Technology, Engineering and Maths Enrolments

23. Broad STEM includes the following subject areas: Medicine and Dentistry; Subjects allied to Medicine; Biological Sciences; Veterinary Sciences; Agriculture and related subjects; Physical Sciences; Mathematical Sciences; Computer Science; Engineering and Technology; and Architecture, Building and Planning.

Narrow STEM is a subset of Broad STEM and includes the following subject areas: Biological Sciences; Physical Sciences; Mathematical Sciences; Computer Science; and Engineering and Technology.

The Open University (OU)

24. The Open University was previously defined as an English Institution (where it has its administrative centre). However, from the 2014/15 bulletin forward, where enrolments are broken down by country of institution, OU enrolments will be split between Northern Ireland, England, Scotland and Wales, depending on the location of the national centre.

Multiple Deprivation Measure (MDM)

25. The analysis presented in section 1.4 utilises five groups (quintiles) of Super Output Areas (SOAs) across Northern Ireland. These five groups are determined based on level of deprivation using the Northern Ireland Multiple Deprivation Measure (NIMDM).

SOAs ranked 1 to 178 are the most deprived quintile relative to all other SOAs. Those ranked 713 to 890 are the most affluent relative to all other SOAs. SOA is determined using the postcode provided on the enrolment record.

The NIMDM (2010) is a weighted combination of the seven domains of deprivation. The Income and Employment Deprivation domains account for nearly 50% of the multiple deprivation measure. The Health Deprivation and Disability Domain, and Education, Skills and Training Deprivation Domain account for a further 30%, and the remainder is made up of the Proximity to Services, Living Environment and Crime and Disorder Domains.

For further details on deprivation measurement in Northern Ireland, please follow this link: http://www.nisra.gov.uk/deprivation/nimdm_2010.htm

In 2016, there was a consultation proposing changes to the methodology of MDM measurement. Once the findings of this are analysed, a new version, MDM2017, may be introduced for use in NI.

Media enquiries should be made to the Department's Press Office in Netherleigh, Massey Avenue, Belfast, BT4 2JP, Tel: (028) 9052 9604, Email: pressoffice@economy-ni.gov.uk

Northern Ireland domiciled students enrolled at UK Higher Education Institutions

[Table 1](#) – Northern Ireland domiciled students enrolled at UK HEIs by level of study, mode of study and location of institution – 2006/07 to 2015/16.....Page 39

[Table 1a](#) – Northern Ireland domiciled students enrolled at UK HEIs by mode of study and location of institution – 2006/07 and 2015/16 (with %).....Page 40

[Table 1b](#) – Percentage change of Northern Ireland domiciled students enrolled at UK HEIs in each location by mode of study between 2006/07 and 2015/16.....Page 40

[Table 1c](#) – Percentage change of Northern Ireland domiciled students enrolled at UK HEIs by mode of study and level of study between 2006/07 and 2015/16.....Page 40

[Table 1d](#) – Percentage change of Northern Ireland domiciled students enrolled at UK HEIs by mode of study and location of institution between 2014/15 and 2015/16.....Page 41

[Table 1e](#) – Percentage change in Northern Ireland domiciled students enrolled at UK HEIs by mode of study between 2014/15 and 2015/16 (with %).....Page 41

[Table 1f](#) – Percentage change of Northern Ireland domiciled students enrolled at UK HEIs by mode of study and level of study between 2014/15 and 2015/16 (with %).....Page 41

[Table 2](#) – Northern Ireland domiciled first year students enrolled at UK HEIs by level of study, mode of study and location of institution – 2006/07 to 2015/16.....Page 42

[Table 2a](#) – Northern Ireland domiciled first year undergraduate students enrolled at UK HEIs by mode of study and location of institution - 2006/07 and 2015/16 (with %).....Page 43

[Table 2b](#) – Percentage change of Northern Ireland domiciled first year undergraduate students enrolled at UK HEIs in each location by mode of study between 2006/07 and 2015/16.....Page 43

[Table 2c](#) – Percentage change of Northern Ireland domiciled first year undergraduate students enrolled at UK HEIs in each location by mode of study between 2014/15 and 2015/16.....Page 43

[Table 3](#) – Northern Ireland domiciled students enrolled at UK HEIs by mode of study, level of study, location of institution and gender - 2015/16.....Page 44

[Table 3a](#) – Northern Ireland domiciled students enrolled at UK HEIs by mode of study and gender - 2006/07 and 2015/16 (with %).....Page 45

Table 3b – Northern Ireland domiciled students enrolled at UK HEIs by gender and mode of study 2006/07 and 2015/16 (with %)	Page 45
Table 3c – Northern Ireland domiciled students enrolled at UK HEIs by gender and level of study – 2015/16 (with %)	Page 45
Table 3d – Northern Ireland domiciled students enrolled at UK HEIs by mode of study, gender and location of institution – 2015/16 (with %)	Page 45
Table 4 – Northern Ireland domiciled students enrolled at UK HEIs by level of study, mode of study, gender and age – 2015/16	Page 46
Table 4a – Northern Ireland domiciled students enrolled at UK HEIs by level of study and age group – 2015/16 (with %)	Page 47
Table 4b – Northern Ireland domiciled students enrolled at UK HEIs by age group, level and mode of study – 2015/16	Page 47
Table 4c – Proportion of Northern Ireland domiciled students enrolled at UK HEIs by age group, level and mode of study – 2015/16	Page 47
Table 5 – Northern Ireland domiciled students enrolled at UK HEIs by year of study and gender – 2015/16 (a) by region of institution (b) by institution (top 20 only)	Page 48
Table 6 – Northern Ireland domiciled students enrolled at UK Higher Education Institutions by mode of study, MDM quintile, level of study and gender – 2015/16	Page 49
Table 6a – Northern Ireland domiciled students enrolled at UK Higher Education Institutions by mode of study and MDM quintile – 2015/16 (with %)	Page 50
Table 7 – Northern Ireland domiciled students enrolled at UK HEIs by mode of study, gender and subject area – 2015/16	Page 51
Table 7a – Northern Ireland domiciled students enrolled at UK HEIs by gender and STEM – 2015/16 (with %)	Page 52
Table 7b – Northern Ireland domiciled students enrolled at UK HEIs by mode of study and STEM – 2015/16 (with %)	Page 52
Table 7c – Northern Ireland domiciled students enrolled at UK HEIs by subject area and gender – 2015/16 (with %)	Page 52

Enrolments at Northern Ireland Higher Education Institutions

Table 8 – Enrolments at Northern Ireland HEIs by level of study, mode of study and domicile – 2006/07 to 2015/16	Page 53
Table 8a – Enrolments at Northern Ireland HEIs by domicile – 2006/07 to 2015/16 (with %)	Page 54

Table 8b – Enrolments at NI HEIs by domicile, level of study, mode of study and institution – 2015/16.....	Page 54
Table 8c – Enrolments at Ulster University by domicile, level of study, mode of study and campus – 2015/16.....	Page 55
Table 8d – Enrolments at Northern Ireland HEIs (not including UU Birmingham or London) by country of domicile (top 20) and institution – 2015/16.....	Page 56
Table 8e – Enrolments at UU Birmingham and London by country of domicile (top 20) and institution – 2015/16.....	Page 56
Table 8f – Percentage change of enrolments at Northern Ireland HEIs by domicile between 2006/07 and 2015/16.....	Page 56
Table 8g – Percentage change of enrolments at Northern Ireland HEIs by domicile between 2014/15 and 2015/16.....	Page 56
Table 8h – Percentage change of enrolments at Northern Ireland HEIs by level of study between 2006/07 and 2015/16.....	Page 57
Table 8i – Percentage change of enrolments at Northern Ireland HEIs by mode of study between 2006/07 and 2015/16.....	Page 57
Table 8j – Enrolments at Northern Ireland HEIs by mode of study – 2006/07 to 2015/16 (with %).....	Page 57
Table 8k – Percentage change of enrolments at Northern Ireland HEIs by mode of study between 2014/15 and 2015/16.....	Page 57
Table 8l – Enrolments at Northern Ireland HEIs by level of study – 2006/07 to 2015/16 (with %).....	Page 58
Table 8m – Percentage change of enrolments at Northern Ireland HEIs by level of study between 2014/15 and 2015/16.....	Page 58
Table 9 – <u>First year</u> enrolments at Northern Ireland HEIs by level of study, mode of study and domicile – 2006/07 to 2015/16.....	Page 59
Table 9a – <u>First year undergraduate</u> enrolments at Northern Ireland HEIs by mode of study – 2006/07 to 2015/16.....	Page 60
Table 9b – Percentage change of <u>first year undergraduate</u> enrolments at Northern Ireland HEIs by mode of study between 2014/15 and 2015/16.....	Page 60
Table 10 – Enrolments at Northern Ireland HEIs by level of study, mode of study, gender, year of student and country of domicile – 2015/16.....	Page 61
Table 10a – Enrolments at Northern Ireland HEIs by mode of study and gender – 2015/16 (with %).....	Page 62

Table 10b – Enrolments at Northern Ireland HEIs by gender and mode of study – 2015/16 (with %)	Page 62
Table 10c – Enrolments at Northern Ireland HEIs by gender and level of study – 2015/16	Page 62
Table 10d – Proportion of enrolments at Northern Ireland HEIs by gender and level of study – 2015/16	Page 62
Table 11 – Enrolments at Northern Ireland HEIs by level of study, age group, year of student, mode of study and gender – 2015/16	Page 63
Table 11a – Enrolments at Northern Ireland HEIs by level of study and age group – 2015/16 (with %)	Page 64
Table 11b – Enrolments at Northern Ireland HEIs by age group by level of study – 2015/16 (with %)	Page 64
Table 11c – Enrolments at Northern Ireland HEIs by age group, mode of study and level of study – 2015/16	Page 64
Table 11d – Proportion of enrolments at Northern Ireland HEIs in each mode and level of study by age group – 2015/16	Page 64
Table 12 – Enrolments at Northern Ireland HEIs by subject area, year of student, mode of study and gender – 2015/16	Page 65
Table 12a – Enrolments at Northern Ireland HEIs by gender and STEM – 2015/16 (with %)	Page 66
Table 12b – Enrolments at Northern Ireland HEIs by mode of study and STEM – 2015/16 (with %)	Page 66
Table 12c – Enrolments at Northern Ireland HEIs by subject area and gender – 2015/16 (with %)	Page 66
Table 13 – Enrolments at Northern Ireland HEIs by level of study, mode of study and institution – 2011/12 to 2015/16	Page 67
Table 13a – Percentage change of enrolments at Northern Ireland HEIs in each level of study and institution between 2014/15 and 2015/16	Page 68
Table 13b – Proportion of enrolments at Northern Ireland HEIs in each institution by mode of study – 2015/16	Page 68
Table 13c – Percentage change of enrolments at UU Birmingham and London by mode of study between 2014/15 and 2015/16	Page 68
Table 13d – Percentage change of enrolments at Northern Ireland HEIs (not including UU Birmingham or London) by mode of study between 2014/15 and 2015/16	Page 69

[Table 13e](#) – Percentage change of enrolments at Northern Ireland HEIs in each institution by level of study between 2014/15 and 2015/16.....Page 69

[Table 14](#) – (UK COMPARISON) All enrolments at UK HEIs by level of study, mode of study and location of institution – 2011/12 to 2015/16.....Page 70

[Table 14a](#) – Percentage change of enrolments at UK HEIs in each institution by mode of study between 2014/15 and 2015/16.....Page 71

[Table 14b](#) – Percentage change of enrolments at UK HEIs in each institution by level of study between 2014/15 and 2015/16.....Page 71

ANNEX A: TABLES

Table 1: Northern Ireland domiciled students enrolled at UK HEIs by level of study, mode of study and location of institution - 2006/07 to 2015/16

Mode and Year	First degree				Other undergraduate				Postgraduate				Total				NI HEIs (incl. NI OU)	
	Location of Institution				Location of Institution				Location of Institution				Location of Institution					
	NI	GB	OU ⁽¹⁾	Total	NI	GB	OU ⁽¹⁾	Total	NI	GB	OU ⁽¹⁾	Total	NI	GB	OU ⁽¹⁾	Total		
Full-time																		
2006/07	27,285	11,855	0	39,145	1,035	355	0	1,390	2,275	1,280	0	3,555	30,595	13,490	0	44,085	30,535	
2007/08	27,075	12,125	0	39,200	720	405	0	1,125	2,430	1,190	0	3,620	30,225	13,720	0	43,950	30,225	
2008/09	27,505	12,235	0	39,740	230	375	0	605	3,030	1,135	0	4,165	30,765	13,745	0	44,510	30,765	
2009/10	28,200	12,305	0	40,500	245	365	0	610	3,160	1,270	0	4,430	31,600	13,935	0	45,540	31,600	
2010/11	28,230	12,585	0	40,815	230	370	0	600	3,555	1,300	0	4,860	32,015	14,255	0	46,270	32,015	
2011/12	28,255	13,470	0	41,725	255	390	0	645	3,075	1,270	0	4,345	31,585	15,125	0	46,715	31,585	
2012/13	28,100	13,270	0	41,370	250	230	0	480	2,850	1,090	0	3,940	31,200	14,590	0	45,790	31,200	
2013/14	28,505	13,130	0	41,635	300	185	0	485	2,950	1,175	0	4,125	31,760	14,485	0	46,245	31,760	
2014/15	29,065	12,795	0	41,860	270	150	0	420	2,980	1,170	0	4,150	32,310	14,115	0	46,430	32,310	
2015/16	28,810	13,235	0	42,045	280	170	0	450	2,960	1,265	0	4,225	32,045	14,675	0	46,720	32,045	
Part-time																		
2006/07	2,985	580	1,840	5,405	5,645	935	1,525	8,105	3,775	1,255	395	5,425	12,405	2,765	3,760	18,930	15,270	
2007/08	3,050	520	1,910	5,480	4,995	915	1,695	7,600	3,815	1,095	355	5,265	11,860	2,530	3,960	18,350	15,815	
2008/09	2,560	505	2,130	5,190	4,685	955	1,785	7,420	3,695	1,140	305	5,140	10,940	2,595	4,220	17,755	15,145	
2009/10	3,000	480	2,340	5,820	4,880	690	1,985	7,555	4,190	1,235	300	5,725	12,070	2,405	4,625	19,100	16,680	
2010/11	2,860	425	2,595	5,885	5,085	825	1,995	7,905	4,000	1,220	270	5,490	11,945	2,470	4,865	19,280	16,805	
2011/12	2,765	355	2,790	5,910	4,605	825	1,770	7,200	4,300	1,205	255	5,765	11,675	2,380	4,820	18,875	16,490	
2012/13	2,880	280	3,000	6,160	5,020	605	1,195	6,825	4,280	1,095	250	5,625	12,180	1,980	4,445	18,610	16,620	
2013/14	2,615	270	3,005	5,890	5,020	455	880	6,355	4,750	1,080	255	6,085	12,380	1,805	4,140	18,325	16,520	
2014/15	2,325	280	3,065	5,665	5,110	390	560	6,060	4,550	1,085	175	5,810	11,985	1,755	3,800	17,535	15,780	
2015/16	2,610	260	3,000	5,870	4,790	385	590	5,765	3,970	1,125	150	5,250	11,370	1,775	3,740	16,885	15,105	
Total																		
2006/07	30,275	12,435	1,840	44,545	6,680	1,290	1,525	9,490	6,045	2,535	395	8,980	43,000	16,260	3,760	63,015	45,805	
2007/08	30,130	12,645	1,910	44,685	5,710	1,320	1,695	8,725	6,245	2,285	355	8,885	42,085	16,250	3,960	62,300	46,040	
2008/09	30,060	12,740	2,130	44,930	4,915	1,325	1,785	8,025	6,725	2,275	305	9,310	41,700	16,345	4,220	62,265	45,910	
2009/10	31,200	12,785	2,340	46,320	5,120	1,055	1,985	8,165	7,350	2,505	300	10,155	43,670	16,345	4,625	64,635	48,285	
2010/11	31,090	13,010	2,595	46,695	5,310	1,200	1,995	8,505	7,555	2,520	270	10,350	43,960	16,730	4,865	65,555	48,820	
2011/12	31,025	13,825	2,790	47,635	4,860	1,210	1,770	7,845	7,375	2,475	255	10,105	43,260	17,510	4,820	65,590	48,075	
2012/13	30,980	13,550	3,000	47,535	5,270	835	1,195	7,300	7,130	2,185	250	9,565	43,380	16,570	4,445	64,400	47,820	
2013/14	31,120	13,400	3,005	47,520	5,320	635	880	6,840	7,700	2,255	255	10,210	44,140	16,290	4,140	64,570	48,275	
2014/15	31,390	13,075	3,065	47,525	5,380	540	560	6,480	7,525	2,255	175	9,955	44,295	15,870	3,800	63,965	48,090	
2015/16	31,415	13,500	3,000	47,915	5,065	555	590	6,215	6,930	2,390	150	9,475	43,415	16,450	3,740	63,600	47,150	

Source: Higher Education Statistics Agency (HESA)

Notes

⁽¹⁾ Open University. May include a few NI students who are registered with the OU in GB rather than NI.

To prevent the identification of individuals, figures in the attached table are rounded to the nearest 5, with 0, 1, 2 rounded to 0. Due to rounding, the sum of numbers in each row or column may not match the total shown.

Table 1a: Northern Ireland domiciled students enrolled at UK HEIs by mode of study and location of institution - 2006/07 to 2015/16 (with %)

Mode and Year	Location of Institution							NI HEIs (incl. NI OU)	NI HEIs (incl. NI OU) (%)
	NI	NI %	GB	GB %	OU ⁽¹⁾	OU %	Total		
Full-time									
2006/07	30,595	69.4%	13,490	30.6%	0	0.0%	44,085	30,535	69.3%
2007/08	30,225	68.8%	13,720	31.2%	0	0.0%	43,950	30,225	68.8%
2008/09	30,765	69.1%	13,745	30.9%	0	0.0%	44,510	30,765	69.1%
2009/10	31,600	69.4%	13,935	30.6%	0	0.0%	45,540	31,600	69.4%
2010/11	32,015	69.2%	14,255	30.8%	0	0.0%	46,270	32,015	69.2%
2011/12	31,585	67.6%	15,125	32.4%	0	0.0%	46,715	31,585	67.6%
2012/13	31,200	68.1%	14,590	31.9%	0	0.0%	45,790	31,200	68.1%
2013/14	31,760	68.7%	14,485	31.3%	0	0.0%	46,245	31,760	68.7%
2014/15	32,310	69.6%	14,115	30.4%	0	0.0%	46,430	32,310	69.6%
2015/16	32,045	68.6%	14,675	31.4%	0	0.0%	46,720	32,045	68.6%
Part-time									
2006/07	12,405	65.5%	2,765	14.6%	3,760	19.9%	18,930	15,270	80.7%
2007/08	11,860	64.6%	2,530	13.8%	3,960	21.6%	18,350	15,815	86.2%
2008/09	10,940	61.6%	2,595	14.6%	4,220	23.8%	17,755	15,145	85.3%
2009/10	12,070	63.2%	2,405	12.6%	4,625	24.2%	19,100	16,680	87.3%
2010/11	11,945	62.0%	2,470	12.8%	4,865	25.2%	19,280	16,805	87.1%
2011/12	11,675	61.8%	2,380	12.6%	4,820	25.5%	18,875	16,490	87.4%
2012/13	12,180	65.5%	1,980	10.7%	4,445	23.9%	18,610	16,620	89.3%
2013/14	12,380	67.6%	1,805	9.8%	4,140	22.6%	18,325	16,520	90.1%
2014/15	11,985	68.3%	1,755	10.0%	3,800	21.7%	17,535	15,780	90.0%
2015/16	11,370	67.3%	1,775	10.5%	3,740	22.1%	16,885	15,105	89.5%
Total									
2006/07	43,000	68.2%	16,260	25.8%	3,760	6.0%	63,015	45,805	72.7%
2007/08	42,085	67.6%	16,250	26.1%	3,960	6.4%	62,300	46,040	73.9%
2008/09	41,700	67.0%	16,345	26.2%	4,220	6.8%	62,265	45,910	73.7%
2009/10	43,670	67.6%	16,345	25.3%	4,625	7.2%	64,635	48,285	74.7%
2010/11	43,960	67.1%	16,730	25.5%	4,865	7.4%	65,555	48,820	74.5%
2011/12	43,260	66.0%	17,510	26.7%	4,820	7.3%	65,590	48,075	73.3%
2012/13	43,380	67.4%	16,570	25.7%	4,445	6.9%	64,400	47,820	74.3%
2013/14	44,140	68.4%	16,290	25.2%	4,140	6.4%	64,570	48,275	74.8%
2014/15	44,295	69.2%	15,870	24.8%	3,800	5.9%	63,965	48,090	75.2%
2015/16	43,415	68.3%	16,450	25.9%	3,740	5.9%	63,600	47,150	74.1%

Source: Higher Education Statistics Agency (HESA)

Table 1b: Percentage change of Northern Ireland domiciled students enrolled at UK HEIs in each location by mode of study between 2006/07 and 2015/16

Mode	Location of Institution			
	NI	GB	OU ⁽¹⁾	Total
Full-time	4.7%	8.8%	-	6.0%
Part-time	-8.3%	-35.9%	-0.5%	-10.8%
Total	1.0%	1.2%	-0.5%	0.9%

Source: Higher Education Statistics Agency (HESA)

Table 1c: Percentage change of Northern Ireland domiciled students enrolled at UK HEIs by mode of study and level of study between 2006/07 and 2015/16

Mode and Year	Level of Study			
	First Degree	Other Undergraduate	Postgraduate	Total
Full-time				
2006/07	39,145	1,390	3,555	44,085
2015/16	42,045	450	4,225	46,720
% change	7.4%	-67.7%	18.8%	6.0%
Part-time				
2006/07	5,405	8,105	5,425	18,930
2015/16	5,870	5,765	5,250	16,885
% change	8.6%	-28.8%	-3.2%	-10.8%
Total				
2006/07	44,545	9,490	8,980	63,015
2015/16	47,915	6,215	9,475	63,600
% change	7.6%	-34.5%	5.5%	0.9%

Source: Higher Education Statistics Agency (HESA)

Notes

⁽¹⁾ Open University. May include a few NI students who are registered with the OU in GB rather than NI.

To prevent the identification of individuals, figures in the attached table are rounded to the nearest 5, with 0, 1, 2 rounded to 0. Due to rounding, the sum of numbers in each row or column may not match the total shown.

Table 1d: Percentage change of Northern Ireland domiciled students enrolled at UK HEIs by mode of study and location of institution between 2014/15 and 2015/16

Mode and Year	Location of Institution				
	NI	GB	OU ⁽¹⁾	Total	
Full-time	2014/15	32,310	14,115	0	46,430
	2015/16	32,045	14,675	0	46,720
	% change	-0.8%	4.0%	-	0.6%
Part-time	2014/15	11,985	1,755	3,800	17,535
	2015/16	11,370	1,775	3,740	16,885
	% change	-5.1%	1.1%	-1.6%	-3.7%
Total	2014/15	44,295	15,870	3,800	63,965
	2015/16	43,415	16,450	3,740	63,600
	% change	-2.0%	3.6%	-1.6%	-0.6%

Source: Higher Education Statistics Agency (HESA)

Table 1e: Percentage change in Northern Ireland domiciled students enrolled at UK HEIs by mode of study between 2014/15 and 2015/16 (with %)

Year	Mode of study				
	Full-time	Full-time %	Part-time	Part-time %	Total
2014/15	46,430	72.6%	17,535	27.4%	63,965
2015/16	46,720	73.5%	16,885	26.5%	63,600
% change	0.6%		-3.7%		-0.6%

Source: Higher Education Statistics Agency (HESA)

Table 1f: Percentage change in Northern Ireland domiciled students enrolled at UK HEIs by mode of study and level of study between 2014/15 and 2015/16 (with %)

Mode and Year	Level of Study							
	First Degree	First Degree %	Other Undergraduate	Other Undergraduate %	Postgraduate	Postgraduate %	Total	
Full-time	2014/15	41,860	90.2%	420	0.9%	4,150	8.9%	46,430
	2015/16	42,045	90.0%	450	1.0%	4,225	9.0%	46,720
	% change	0.4%		6.9%		1.9%		0.6%
Part-time	2014/15	5,665	32.3%	6,060	34.6%	5,810	33.1%	17,535
	2015/16	5,870	34.8%	5,765	34.2%	5,250	31.1%	16,885
	% change	3.6%		-4.9%		-9.6%		-3.7%
Total	2014/15	47,525	74.3%	6,480	10.1%	9,955	15.6%	63,965
	2015/16	47,915	75.3%	6,215	9.8%	9,475	14.9%	63,600
	% change	0.8%		-4.1%		-4.9%		-0.6%

Source: Higher Education Statistics Agency (HESA)

Notes

⁽¹⁾ Open University. May include a few NI students who are registered with the OU in GB rather than NI.

To prevent the identification of individuals, figures in the attached table are rounded to the nearest 5, with 0, 1, 2 rounded to 0. Due to rounding, the sum of numbers in each row or column may not match the total shown.

Table 2: Northern Ireland domiciled first year students enrolled at UK HEIs by level of study, mode of study and location of institution - 2006/07 to 2015/16

Level and Year	First degree				Other undergraduate				Postgraduate				Total				NI HEIs (incl. NI OU)	
	Location of Institution				Location of Institution				Location of Institution				Location of Institution					
	NI	GB	OU ⁽¹⁾	Total	NI	GB	OU ⁽¹⁾	Total	NI	GB	OU ⁽¹⁾	Total	NI	GB	OU ⁽¹⁾	Total		
Full-time																		
2006/07	8,530	3,875	0	12,405	570	155	0	720	1,570	960	0	2,525	10,665	4,990	0	15,655	10,605	
2007/08	9,100	3,985	0	13,085	330	235	0	565	1,555	845	0	2,395	10,985	5,065	0	16,050	10,985	
2008/09	9,345	3,990	0	13,335	85	205	0	290	1,675	840	0	2,515	11,105	5,030	0	16,135	11,105	
2009/10	9,750	3,960	0	13,710	165	200	0	370	1,950	980	0	2,930	11,865	5,140	0	17,010	11,865	
2010/11	8,850	4,220	0	13,065	150	225	0	375	1,880	980	0	2,860	10,880	5,420	0	16,300	10,880	
2011/12	8,820	4,800	0	13,620	135	210	0	345	1,840	930	0	2,775	10,800	5,940	0	16,740	10,800	
2012/13	8,950	3,805	0	12,755	125	100	0	230	1,795	790	0	2,585	10,870	4,700	0	15,570	10,870	
2013/14	9,620	4,080	0	13,700	120	115	0	235	1,905	905	0	2,810	11,640	5,100	0	16,740	11,640	
2014/15	9,340	4,170	0	13,515	130	95	0	225	1,775	890	0	2,665	11,245	5,155	0	16,400	11,245	
2015/16	8,365	4,655	0	13,020	135	120	0	255	1,730	990	0	2,720	10,235	5,765	0	16,000	10,235	
Part-time																		
2006/07	725	155	700	1,585	5,125	590	1,080	6,795	1,895	475	190	2,555	7,745	1,220	1,970	10,935	8,825	
2007/08	685	100	675	1,460	4,455	610	1,130	6,195	1,995	535	140	2,670	7,130	1,250	1,950	10,330	9,080	
2008/09	745	95	890	1,730	4,205	670	1,140	6,015	1,780	515	120	2,415	6,730	1,280	2,150	10,160	8,880	
2009/10	740	85	955	1,775	4,275	525	1,240	6,040	2,055	620	125	2,800	7,065	1,230	2,320	10,615	9,385	
2010/11	710	75	1,015	1,800	4,565	680	1,205	6,445	2,000	515	100	2,615	7,275	1,270	2,320	10,860	9,595	
2011/12	705	70	1,020	1,795	4,175	665	1,090	5,930	2,130	505	90	2,725	7,010	1,245	2,200	10,450	9,205	
2012/13	785	65	1,245	2,100	4,700	370	775	5,845	2,130	450	115	2,690	7,615	885	2,135	10,635	9,750	
2013/14	595	50	920	1,570	4,775	355	545	5,675	2,475	475	105	3,060	7,850	880	1,575	10,305	9,420	
2014/15	555	65	1,000	1,625	4,805	300	305	5,410	2,300	495	70	2,865	7,665	860	1,375	9,900	9,040	
2015/16	975	65	955	1,995	4,535	275	355	5,165	1,970	540	65	2,575	7,480	875	1,380	9,735	8,855	
Total																		
2006/07	9,255	4,030	700	13,990	5,690	745	1,080	7,515	3,460	1,435	190	5,085	18,410	6,210	1,970	26,590	19,425	
2007/08	9,785	4,085	675	14,550	4,785	845	1,130	6,760	3,550	1,380	140	5,070	18,115	6,310	1,950	26,375	20,065	
2008/09	10,090	4,085	890	15,065	4,290	870	1,140	6,300	3,455	1,355	120	4,930	17,835	6,310	2,150	26,295	19,985	
2009/10	10,490	4,045	955	15,490	4,440	725	1,240	6,405	4,000	1,600	125	5,730	18,930	6,370	2,320	27,625	21,250	
2010/11	9,555	4,295	1,015	14,865	4,715	900	1,205	6,820	3,880	1,490	100	5,475	18,155	6,690	2,320	27,160	20,475	
2011/12	9,525	4,870	1,020	15,415	4,310	880	1,090	6,275	3,970	1,440	90	5,500	17,805	7,185	2,200	27,190	20,005	
2012/13	9,735	3,875	1,245	14,855	4,825	470	775	6,075	3,925	1,240	115	5,280	18,485	5,585	2,140	26,205	20,620	
2013/14	10,215	4,130	920	15,265	4,895	470	545	5,905	4,380	1,380	105	5,870	19,490	5,980	1,575	27,045	21,065	
2014/15	9,900	4,235	1,000	15,135	4,935	395	305	5,635	4,075	1,385	70	5,525	18,910	6,015	1,375	26,300	20,285	
2015/16	9,340	4,720	955	15,015	4,675	395	355	5,425	3,700	1,525	65	5,295	17,715	6,640	1,380	25,730	19,090	

Source: Higher Education Statistics Agency (HESA)

Notes

⁽¹⁾ Open University. May include a few NI students who are registered with the OU in GB rather than NI.

To prevent the identification of individuals, figures in the attached table are rounded to the nearest 5, with 0, 1, 2 rounded to 0. Due to rounding, the sum of numbers in each row or column may not match the total shown.

Table 2a: Northern Ireland domiciled first year undergraduate students enrolled at UK HEIs by mode of study and location of institution - 2006/07 to 2015/16 (with %)

Mode and Year	Location of Institution							NI HEIs (incl. NI OU)	NI HEIs (incl. NI OU) (%)
	NI	NI %	GB	GB %	OU ⁽¹⁾	OU %	Total		
Full-time									
2006/07	9,095	69.3%	4,030	30.7%	0	0.0%	13,125	9,035	68.8%
2007/08	9,430	69.1%	4,220	30.9%	0	0.0%	13,650	9,430	69.1%
2008/09	9,430	69.2%	4,190	30.8%	0	0.0%	13,620	9,430	69.2%
2009/10	9,915	70.4%	4,160	29.6%	0	0.0%	14,080	9,915	70.4%
2010/11	9,000	66.9%	4,445	33.1%	0	0.0%	13,440	9,000	66.9%
2011/12	8,960	64.1%	5,010	35.9%	0	0.0%	13,970	8,960	64.1%
2012/13	9,075	69.9%	3,910	30.1%	0	0.0%	12,985	9,075	69.9%
2013/14	9,740	69.9%	4,195	30.1%	0	0.0%	13,930	9,740	69.9%
2014/15	9,470	69.0%	4,265	31.0%	0	0.0%	13,735	9,470	69.0%
2015/16	8,505	64.0%	4,775	36.0%	0	0.0%	13,280	8,505	64.0%
Part-time									
2006/07	5,850	69.8%	745	8.9%	1,780	21.3%	8,380	6,740	80.5%
2007/08	5,135	67.1%	710	9.3%	1,810	23.6%	7,655	6,945	90.7%
2008/09	4,950	63.9%	765	9.9%	2,030	26.2%	7,745	6,980	90.1%
2009/10	5,010	64.1%	610	7.8%	2,195	28.1%	7,815	7,205	92.2%
2010/11	5,275	64.0%	755	9.1%	2,220	26.9%	8,245	7,490	90.9%
2011/12	4,880	63.2%	740	9.6%	2,110	27.3%	7,725	6,985	90.4%
2012/13	5,485	69.0%	435	5.5%	2,025	25.5%	7,945	7,510	94.5%
2013/14	5,370	74.2%	405	5.6%	1,465	20.2%	7,240	6,840	94.4%
2014/15	5,365	76.2%	365	5.2%	1,305	18.5%	7,035	6,670	94.8%
2015/16	5,510	77.0%	340	4.7%	1,310	18.3%	7,160	6,820	95.3%
Total									
2006/07	14,945	69.5%	4,775	22.2%	1,780	8.3%	21,505	15,775	73.4%
2007/08	14,570	68.4%	4,930	23.1%	1,810	8.5%	21,310	16,375	76.9%
2008/09	14,385	67.3%	4,955	23.2%	2,030	9.5%	21,365	16,410	76.8%
2009/10	14,930	68.2%	4,770	21.8%	2,195	10.0%	21,895	17,125	78.2%
2010/11	14,270	65.8%	5,195	24.0%	2,220	10.2%	21,685	16,490	76.0%
2011/12	13,835	63.8%	5,750	26.5%	2,110	9.7%	21,690	15,945	73.5%
2012/13	14,560	69.6%	4,345	20.8%	2,025	9.7%	20,930	16,585	79.2%
2013/14	15,110	71.4%	4,600	21.7%	1,465	6.9%	21,175	16,575	78.3%
2014/15	14,835	71.4%	4,630	22.3%	1,305	6.3%	20,770	16,140	77.7%
2015/16	14,015	68.6%	5,115	25.0%	1,310	6.4%	20,440	15,325	75.0%

Source: Higher Education Statistics Agency (HESA)

Table 2b: Percentage change of Northern Ireland domiciled first year undergraduate students enrolled at UK HEIs in each location by mode of study between 2006/07 and 2015/16

Mode	Location of Institution			
	NI	GB	OU ⁽¹⁾	Total
Full-time	-6.5%	18.4%	-	1.2%
Part-time	-5.8%	-54.5%	-26.4%	-14.5%
Total	-6.2%	7.1%	-26.4%	-5.0%

Source: Higher Education Statistics Agency (HESA)

Table 2c: Percentage change of Northern Ireland domiciled first year undergraduate students enrolled at UK HEIs in each location by mode of study between 2014/15 and 2015/16

Mode	Location of Institution			
	NI	GB	OU ⁽¹⁾	Total
Full-time	-10.2%	11.9%	-	-3.3%
Part-time	2.7%	-7.6%	0.5%	1.8%
Total	-5.5%	10.4%	0.5%	-1.6%

Source: Higher Education Statistics Agency (HESA)

Notes

⁽¹⁾ Open University. May include a few NI students who are registered with the OU in GB rather than NI.

To prevent the identification of individuals, figures in the attached table are rounded to the nearest 5, with 0, 1, 2 rounded to 0. Due to rounding, the sum of numbers in each row or column may not match the total shown.

Table 3: Northern Ireland domiciled students enrolled at UK HEIs by mode of study, level of study, location of institution and gender - 2015/16

Level	Mode	Gender	First Year Students						All Students					
			Location of Institution						Location of Institution					
			NI	England	OU ⁽¹⁾	Scotland	Wales	Total	NI	England	OU ⁽¹⁾	Scotland	Wales	Total
First Degree	Full-time	Male	3,635	1,525	0	430	75	5,665	12,990	3,955	0	1,440	195	18,585
		Female	4,730	1,960	0	580	85	7,355	15,815	5,270	0	2,125	255	23,460
		Total	8,365	3,485	0	1,010	155	13,020	28,810	9,220	0	3,565	450	42,045
	Part-time	Male	470	25	430	5	0	930	1,300	110	1,380	30	5	2,820
		Female	505	30	525	10	0	1,065	1,310	85	1,620	35	0	3,050
		Total	975	55	955	15	0	1,995	2,610	195	3,000	60	5	5,870
	All First Degree	Male	4,105	1,550	430	435	75	6,595	14,295	4,065	1,380	1,470	200	21,405
		Female	5,235	1,990	525	590	85	8,420	17,125	5,355	1,620	2,155	255	26,510
		Total	9,340	3,540	955	1,025	155	15,015	31,415	9,415	3,000	3,625	455	47,915
Other Undergraduate	Full-time	Male	60	70	0	0	0	130	135	90	0	5	5	230
		Female	80	45	0	0	0	130	145	65	0	5	0	215
		Total	135	115	0	0	5	255	280	160	0	5	5	450
	Part-time	Male	1,535	130	135	10	0	1,820	1,630	185	260	15	5	2,095
		Female	3,000	110	220	15	5	3,350	3,160	155	330	20	5	3,670
		Total	4,535	240	355	25	5	5,165	4,790	340	590	35	10	5,765
	All Other Undergraduate	Male	1,595	200	135	15	0	1,945	1,760	280	260	20	5	2,325
		Female	3,080	155	220	15	5	3,475	3,305	220	330	25	10	3,890
		Total	4,675	355	355	30	10	5,425	5,065	500	590	45	15	6,215
All Undergraduate	Full-time	Male	3,695	1,595	0	430	75	5,790	13,125	4,045	0	1,445	200	18,815
		Female	4,810	2,010	0	580	85	7,485	15,960	5,335	0	2,125	255	23,680
		Total	8,505	3,600	0	1,015	160	13,280	29,085	9,380	0	3,575	455	42,495
	Part-time	Male	2,010	155	565	15	0	2,750	2,930	295	1,640	45	5	4,915
		Female	3,500	135	745	20	5	4,410	4,470	240	1,950	55	10	6,720
		Total	5,510	295	1,310	40	5	7,160	7,400	535	3,590	100	15	11,635
	All Undergraduate	Male	5,700	1,750	565	450	75	8,540	16,055	4,340	1,640	1,490	205	23,730
		Female	8,315	2,145	745	605	90	11,900	20,430	5,575	1,950	2,180	265	30,400
		Total	14,015	3,895	1,310	1,050	165	20,440	36,485	9,915	3,590	3,670	470	54,130
Postgraduate	Full-time	Male	765	335	0	60	10	1,175	1,330	450	0	90	20	1,895
		Female	965	495	0	70	15	1,545	1,625	585	0	105	15	2,330
		Other	0	0	0	0	0	0	0	0	0	0	0	0
	Part-time	Total	1,730	830	0	130	25	2,720	2,960	1,035	0	195	35	4,225
		Male	650	165	30	40	10	900	1,410	370	70	125	20	1,995
		Female	1,320	225	40	80	15	1,675	2,565	420	80	160	30	3,255
	All Postgraduate	Total	1,970	395	65	120	25	2,575	3,970	795	150	285	50	5,250
		Male	1,415	505	30	100	20	2,070	2,740	825	70	215	40	3,890
		Female	2,285	725	40	150	25	3,220	4,190	1,005	80	260	45	5,580
All Postgraduate	Other	0	0	0	0	0	0	0	0	0	0	0	0	
	Total	3,700	1,225	65	250	50	5,295	6,930	1,825	150	480	85	9,475	
	All Students	Full-time	Male	4,460	1,930	0	490	85	6,965	14,455	4,495	0	1,535	220
Female			5,775	2,505	0	655	100	9,030	17,590	5,920	0	2,230	270	26,010
Other			0	0	0	0	0	0	0	0	0	0	0	0
Part-time		Total	10,235	4,435	0	1,145	185	16,000	32,045	10,415	0	3,770	490	46,720
		Male	2,660	325	595	60	10	3,645	4,340	670	1,710	170	25	6,910
		Female	4,820	365	785	100	20	6,085	7,030	660	2,030	210	40	9,970
All Students		Total	7,480	690	1,380	160	30	9,735	11,370	1,330	3,740	380	65	16,885
		Male	7,120	2,255	595	550	95	10,610	18,795	5,165	1,710	1,705	245	27,620
		Female	10,595	2,870	785	755	120	15,120	24,620	6,580	2,030	2,440	310	35,980
All Students	Other	0	0	0	0	0	0	0	0	0	0	0	0	
	Total	17,715	5,120	1,380	1,305	215	25,730	43,415	11,745	3,740	4,150	555	63,600	

Source: Higher Education Statistics Agency (HESA)

Notes

⁽¹⁾ Open University. May include a few NI students who are registered with the OU in GB rather than NI.

To prevent the identification of individuals, figures in the attached table are rounded to the nearest 5, with 0, 1, 2 rounded to 0. Due to rounding, the sum of numbers in each row or column may not match the total shown.

Table 3a: Northern Ireland domiciled students enrolled at UK HEIs by mode of study and gender - 2006/07 and 2015/16 (with %)

Mode and Year	Gender					
	Male	Male %	Female	Female %	Total	
Full-time	2006/07	18,590	42.2%	25,495	57.8%	44,085
	2015/16	20,710	44.3%	26,010	55.7%	46,720
Part-time	2006/07	7,820	38.8%	12,340	61.2%	20,160
	2015/16	6,910	40.9%	9,970	59.1%	16,885
Total	2006/07	26,410	41.1%	37,840	58.9%	64,245
	2015/16	27,620	43.4%	35,980	56.6%	63,600

Source: Higher Education Statistics Agency (HESA)

Table 3b: Northern Ireland domiciled students enrolled at UK HEIs by gender and mode of study - 2006/07 and 2015/16 (with %)

Gender and Year	Mode of Study					
	Full-time	Full-time %	Part-time	Part-time %	Total	
Male	2006/07	18,590	70.4%	7,820	29.6%	26,410
	2015/16	20,710	75.0%	6,910	25.0%	27,620
Female	2006/07	25,495	67.4%	12,340	32.6%	37,840
	2015/16	26,010	72.3%	9,970	27.7%	35,980
Total	2006/07	44,085	68.6%	20,160	31.4%	64,245
	2015/16	46,720	73.5%	16,885	26.5%	63,600

Source: Higher Education Statistics Agency (HESA)

Table 3c: Northern Ireland domiciled students enrolled at UK HEIs by gender and level of study - 2015/16 (with %)

Gender	Level of Study						Total
	First Degree	First Degree %	Other Undergraduate	Other Undergraduate %	Postgraduate	Postgraduate %	
Male	21,405	77.5%	2,325	8.4%	3,890	14.1%	27,620
Female	26,510	73.7%	3,890	10.8%	5,580	15.5%	35,980
Total	47,915	75.3%	6,215	9.8%	9,475	14.9%	63,600

Source: Higher Education Statistics Agency (HESA)

Table 3d: Northern Ireland domiciled students enrolled at UK HEIs by mode of study, gender and location of institution - 2015/16 (with %)

Mode	Gender	Location of Institution						Total
		NI	NI %	GB	GB %	OU ⁽¹⁾	OU %	
Full-time	Male	14,455	69.8%	6,255	30.2%	0	0.0%	20,710
	Female	17,590	67.6%	8,420	32.4%	0	0.0%	26,010
	Total	32,045	68.6%	14,675	31.4%	0	0.0%	46,720
Part-time	Male	4,340	62.8%	865	12.5%	1,710	24.7%	6,910
	Female	7,030	70.5%	910	9.1%	2,030	20.4%	9,970
	Total	11,370	67.3%	1,775	10.5%	3,740	22.1%	16,885
All Students	Male	18,795	68.0%	7,115	25.8%	1,710	6.2%	27,620
	Female	24,620	68.4%	9,330	25.9%	2,030	5.6%	35,980
	Total	43,415	68.3%	16,450	25.9%	3,740	5.9%	63,600

Source: Higher Education Statistics Agency (HESA)

Notes

⁽¹⁾ Open University. May include a few NI students who are registered with the OU in GB rather than NI.

To prevent the identification of individuals, figures in the attached table are rounded to the nearest 5, with 0, 1, 2 rounded to 0. Due to rounding, the sum of numbers in each row or column may not match the total shown.

Table 4: Northern Ireland domiciled students enrolled at UK HEIs by level of study, mode of study, gender and age - 2015/16

Level	Age	First Year Students									All Students								
		Full-time			Part-time			Full-time & Part-time			Full-time			Part-time			Full-time & Part-time		
		Male	Female	Total	Male	Female	Total	Male	Female	Total	Male	Female	Total	Male	Female	Total	Male	Female	Total
First Degree	Under 21	4,650	6,010	10,660	270	225	500	4,920	6,240	11,160	10,900	14,300	25,200	465	370	830	11,365	14,665	26,030
	21 - 24	680	755	1,435	165	190	360	845	945	1,795	6,465	7,165	13,630	570	605	1,175	7,035	7,770	14,810
	25 and over	335	590	925	490	645	1,140	825	1,235	2,060	1,215	1,995	3,215	1,785	2,075	3,860	3,005	4,070	7,075
	Total	5,665	7,355	13,020	930	1,065	1,995	6,595	8,420	15,015	18,585	23,460	42,045	2,820	3,050	5,870	21,405	26,510	47,915
Other Undergraduate	Under 21	100	85	185	135	140	275	230	225	460	155	140	295	140	165	305	295	305	595
	21 - 24	20	30	50	155	245	400	175	275	445	55	55	105	180	270	455	235	325	560
	25 and over	10	10	25	1,530	2,965	4,495	1,540	2,975	4,515	25	25	50	1,775	3,235	5,010	1,800	3,260	5,060
	Total	130	130	255	1,820	3,350	5,165	1,945	3,475	5,425	230	215	450	2,095	3,670	5,765	2,325	3,890	6,215
All Undergraduate	Under 21	4,750	6,100	10,845	405	365	775	5,155	6,465	11,620	11,055	14,440	25,495	600	535	1,135	11,660	14,970	26,630
	21 - 24	700	785	1,485	320	435	755	1,020	1,220	2,240	6,515	7,220	13,740	755	875	1,630	7,270	8,100	15,370
	25 and over	345	600	950	2,020	3,610	5,630	2,365	4,210	6,580	1,240	2,020	3,260	3,560	5,310	8,870	4,805	7,330	12,130
	Total	5,790	7,485	13,280	2,750	4,410	7,160	8,540	11,900	20,440	18,815	23,680	42,495	4,915	6,720	11,635	23,730	30,400	54,130
Postgraduate	Under 21	0	0	0	0	10	10	0	10	10	0	0	0	0	15	15	0	15	15
	21 - 24	795	1,050	1,850	125	220	345	925	1,270	2,195	1,130	1,390	2,520	200	340	540	1,330	1,730	3,060
	25 and over	375	495	870	775	1,445	2,220	1,150	1,940	3,090	765	935	1,700	1,795	2,900	4,695	2,560	3,835	6,395
	Total	1,175	1,545	2,720	900	1,675	2,575	2,070	3,220	5,295	1,895	2,330	4,225	1,995	3,255	5,250	3,890	5,580	9,475
All Students	Under 21	4,750	6,100	10,845	405	380	785	5,155	6,475	11,630	11,060	14,440	25,495	600	545	1,150	11,660	14,985	26,645
	21 - 24	1,495	1,835	3,335	445	655	1,100	1,940	2,490	4,435	7,645	8,615	16,260	955	1,215	2,170	8,600	9,830	18,430
	25 and over	720	1,095	1,820	2,795	5,055	7,850	3,515	6,150	9,670	2,005	2,955	4,965	5,355	8,210	13,565	7,360	11,165	18,530
	Total	6,965	9,030	16,000	3,645	6,085	9,735	10,610	15,120	25,730	20,710	26,010	46,720	6,910	9,970	16,885	27,620	35,980	63,600

Source: Higher Education Statistics Agency (HESA)

To prevent the identification of individuals, figures in the attached table are rounded to the nearest 5, with 0, 1, 2 rounded to 0. Due to rounding, the sum of numbers in each row or column may not match the total shown.

Table 4a: Northern Ireland domiciled students enrolled at UK HEIs by level of study and age group - 2015/16 (with %)

Level	Age group						
	Under 21	Under 21 %	21 - 24	21-24 %	25 and over	25 and over %	Total
First Degree	26,030	54.3%	14,810	30.9%	7,075	14.8%	47,915
Other Undergraduate	595	9.6%	560	9.0%	5,060	81.4%	6,215
All Undergraduate	26,630	49.2%	15,370	28.4%	12,130	22.4%	54,130
Postgraduate	15	0.2%	3,060	32.3%	6,395	67.5%	9,475
All Students	26,645	41.9%	18,430	29.0%	18,530	29.1%	63,600

Source: Higher Education Statistics Agency (HESA)

Table 4b: Northern Ireland domiciled students enrolled at UK HEIs by age group, level and mode of study - 2015/16

Age	Level of study														
	First Degree			Other Undergraduate			All Undergraduate			Postgraduate			Total		
	Full-time	Part-time	Total	Full-time	Part-time	Total	Full-time	Part-time	Total	Full-time	Part-time	Total	Full-time	Part-time	Total
Under 21	25,200	830	26,030	295	305	595	25,495	1,135	26,630	0	15	15	25,495	1,150	26,645
21 - 24	13,630	1,175	14,810	105	455	560	13,740	1,630	15,370	2,520	540	3,060	16,260	2,170	18,430
25 and over	3,215	3,860	7,075	50	5,010	5,060	3,260	8,870	12,130	1,700	4,695	6,395	4,965	13,565	18,530
Total	42,045	5,870	47,915	450	5,765	6,215	42,495	11,635	54,130	4,225	5,250	9,475	46,720	16,885	63,600

Source: Higher Education Statistics Agency (HESA)

Table 4c: Proportion of Northern Ireland domiciled students enrolled at UK HEIs by age group, level and mode of study - 2015/16

Age	Level of study														
	First Degree			Other Undergraduate			All Undergraduate			Postgraduate			Total		
	Full-time	Part-time	Total	Full-time	Part-time	Total	Full-time	Part-time	Total	Full-time	Part-time	Total	Full-time	Part-time	Total
Under 21	94.6%	3.1%	97.7%	1.1%	1.1%	2.2%	95.7%	4.3%	99.9%	0.0%	0.1%	0.1%	95.7%	4.3%	26,645
21 - 24	74.0%	6.4%	80.3%	0.6%	2.5%	3.0%	74.5%	8.8%	83.4%	13.7%	2.9%	16.6%	88.2%	11.8%	18,430
25 and over	17.3%	20.8%	38.2%	0.3%	27.0%	27.3%	17.6%	47.9%	65.5%	9.2%	25.3%	34.5%	26.8%	73.2%	18,530
Total	66.1%	9.2%	75.3%	0.7%	9.1%	9.8%	66.8%	18.3%	85.1%	6.6%	8.3%	14.9%	73.5%	26.5%	63,600

Source: Higher Education Statistics Agency (HESA)

Notes

To prevent the identification of individuals, figures in the attached table are rounded to the nearest 5, with 0, 1, 2 rounded to 0. Due to rounding, the sum of numbers in each row or column may not match the total shown.

Table 5: Northern Ireland domiciled students enrolled at UK HEIs by year of study and gender - 2015/16

(a) by region of Institution

Region of Institution	First Year Students			All Students		
	Male	Female	Total	Male	Female	Total
Northern Ireland	7,120	10,595	17,715	18,795	24,620	43,415
North West	875	1,220	2,095	1,835	2,670	4,510
Scotland	550	755	1,305	1,705	2,440	4,150
North East	255	345	600	695	860	1,555
London	225	300	525	545	650	1,190
South East	190	220	410	420	475	890
South West	145	180	330	390	465	855
Yorkshire and The Humber	140	190	330	340	465	805
West Midlands	200	185	380	375	390	765
East Midlands	120	115	240	300	300	600
East of England	100	110	215	265	305	570
Wales	95	120	215	245	310	555
The Open University	595	785	1,380	1,710	2,030	3,740
Total	10,610	15,120	25,730	27,620	35,980	63,600

(b) by Institution (top 20 only)

Institution	First Year Students			All Students		
	Male	Female	Total	Male	Female	Total
University of Ulster	3,490	4,665	8,155	9,570	11,620	21,190
The Queen's University of Belfast	3,445	5,330	8,775	8,640	11,155	19,795
The Open University	595	785	1,380	1,710	2,030	3,740
Liverpool John Moores University	320	415	740	665	905	1,570
Stranmillis University College	100	395	495	285	1,125	1,410
St Mary's University College	85	210	290	305	715	1,020
The University of Glasgow	75	120	200	300	405	705
University of Northumbria at Newcastle	100	145	245	305	395	700
The University of Dundee	75	125	200	245	445	690
Liverpool Hope University	75	205	285	160	390	550
Newcastle University	75	105	180	220	260	475
The University of Edinburgh	70	95	165	210	265	475
The University of Manchester	80	95	175	190	265	455
The University of Liverpool	50	90	140	155	290	445
The Manchester Metropolitan University	80	105	180	185	230	415
Heriot-Watt University	75	45	120	210	165	375
The University of Stirling	55	85	140	140	225	365
Edinburgh Napier University	40	70	110	115	185	295
University of Cumbria	75	80	155	125	150	275
The University of Cambridge	35	30	65	120	115	230
All Others	1,615	1,930	3,545	3,780	4,645	8,425
Total	10,610	15,120	25,730	27,620	35,980	63,600

Source: Higher Education Statistics Agency (HESA)

To prevent the identification of individuals, figures in the attached table are rounded to the nearest 5, with 0, 1, 2 rounded to 0. Due to rounding, the sum of numbers in each row or column may not match the total shown.

Table 6: Northern Ireland domiciled students enrolled at UK Higher Education Institutions by mode of study, mdm quintile, level of study and gender - 2015/16

Mode of study	Multiple Deprivation Measure Decile (2010)	Level of study											
		First degree			Other undergraduate			Postgraduate			Total		
		Male	Female	Total	Male	Female	Total	Male	Female	Total	Male	Female	Total
Full-time	Group 1 - Most deprived	2,275	3,140	5,415	30	25	55	175	245	420	2,480	3,410	5,890
	Group 2	3,250	4,330	7,575	40	50	90	280	365	645	3,570	4,740	8,315
	Group 3	3,915	5,140	9,055	50	65	115	360	510	870	4,330	5,710	10,040
	Group 4	4,300	5,345	9,645	60	45	105	440	545	985	4,800	5,935	10,735
	Group 5 - Least deprived	4,835	5,495	10,325	45	35	85	615	650	1,265	5,495	6,180	11,675
	Total	18,575	23,440	42,015	230	215	450	1,875	2,315	4,190	20,680	25,975	46,655
Part-time	Group 1 - Most deprived	505	620	1,120	295	440	735	220	370	585	1,015	1,430	2,445
	Group 2	525	665	1,190	260	525	785	275	550	825	1,065	1,740	2,800
	Group 3	555	570	1,125	350	650	1,000	420	660	1,075	1,320	1,880	3,200
	Group 4	630	630	1,260	440	750	1,190	465	740	1,205	1,535	2,125	3,655
	Group 5 - Least deprived	605	555	1,160	745	1,285	2,035	605	905	1,510	1,955	2,745	4,700
	Total	2,815	3,035	5,855	2,090	3,655	5,745	1,980	3,225	5,205	6,890	9,915	16,805
Total	Group 1 - Most deprived	2,780	3,760	6,535	330	465	795	395	615	1,010	3,500	4,840	8,335
	Group 2	3,775	4,990	8,765	300	575	875	555	915	1,470	4,635	6,480	11,115
	Group 3	4,470	5,710	10,175	400	715	1,115	780	1,170	1,950	5,650	7,590	13,245
	Group 4	4,930	5,975	10,905	500	795	1,295	905	1,285	2,195	6,335	8,055	14,390
	Group 5 - Least deprived	5,440	6,045	11,485	795	1,325	2,115	1,220	1,555	2,775	7,450	8,925	16,375
	Total	21,390	26,475	47,870	2,325	3,870	6,195	3,855	5,540	9,400	27,570	35,890	63,460

Source: Higher Education Statistics Agency (HESA)

To prevent the identification of individuals, figures in the attached table are rounded to the nearest 5, with 0, 1, 2 rounded to 0. Due to rounding, the sum of numbers in each row or column may not match the total shown.

Note: There were 140 cases where the postcode was unknown and therefore no MDM Quintile could be assigned.

Table 6a: Northern Ireland domiciled students enrolled at UK Higher Education Institutions by mode of study and mdm quintile - 2015/16 (with %)

Mode of study	Multiple Deprivation Measure Decile 2010										
	Group 1 - Most deprived	Group 1 - Most deprived %	Group 2	Group 2 %	Group 3	Group 3 %	Group 4	Group 4 %	Group 5 - Least deprived	Group 5 - Least deprived %	Total
Full-time	5,890	12.6%	8,315	17.8%	10,040	21.5%	10,735	23.0%	11,675	25.0%	46,655
Part-time	2,445	14.6%	2,800	16.7%	3,200	19.1%	3,655	21.8%	4,700	28.0%	16,805
Total	8,335	13.1%	11,115	17.5%	13,245	20.9%	14,390	22.7%	16,375	25.8%	63,460

Source: Higher Education Statistics Agency (HESA)

To prevent the identification of individuals, figures in the attached table are rounded to the nearest 5, with 0, 1, 2 rounded to 0.

Due to rounding, the sum of numbers in each row or column may not match the total shown.

Note: There were 140 cases where the postcode was unknown and therefore no MDM Quintile could be assigned.

Table 7: Northern Ireland domiciled students enrolled at UKHEIs by mode of study, gender and subject area - 2015/16

Subject Area	First Year Students									All Students								
	Full-time			Part-time			Full-time & Part-time			Full-time			Part-time			Full-time & Part-time		
	Male	Female	Total	Male	Female	Total	Male	Female	Total	Male	Female	Total	Male	Female	Total	Male	Female	Total
Medicine & dentistry	195	285	480	75	90	165	270	375	650	905	1,425	2,330	165	190	355	1,070	1,615	2,685
Subjects allied to medicine	385	1,755	2,140	210	1,230	1,440	595	2,985	3,580	1,175	5,200	6,370	365	1,755	2,120	1,540	6,955	8,490
Biological sciences	620	825	1,445	165	220	385	785	1,045	1,830	1,665	2,250	3,915	425	605	1,030	2,095	2,850	4,945
Veterinary science	10	25	30	0	5	10	10	30	40	45	100	145	5	15	15	50	115	160
Agriculture & related subjects	75	130	205	60	60	120	135	185	325	230	415	645	95	90	185	325	505	830
Physical sciences	320	265	585	45	50	90	365	310	675	1,045	815	1,860	170	115	285	1,215	930	2,145
Mathematical sciences	155	105	260	30	15	40	180	120	300	410	295	705	100	55	155	515	350	860
Computer science	1,030	335	1,365	195	50	245	1,230	385	1,610	3,085	1,010	4,095	615	120	730	3,695	1,130	4,825
Engineering & technology	855	220	1,075	195	20	215	1,050	240	1,295	2,835	660	3,495	505	65	570	3,340	725	4,065
Architecture, building & planning	330	125	455	110	40	150	440	165	605	955	330	1,285	215	100	315	1,170	430	1,605
Social studies	500	900	1,405	225	615	840	725	1,515	2,240	1,410	2,455	3,865	515	1,190	1,710	1,925	3,645	5,570
Law	300	480	775	70	105	175	370	585	950	735	1,285	2,020	200	270	470	930	1,555	2,485
Business & administrative studies	840	895	1,735	455	480	935	1,295	1,375	2,670	2,650	2,835	5,485	990	950	1,940	3,640	3,780	7,425
Mass communications & documentation	160	200	365	20	45	65	180	250	430	440	610	1,050	45	85	135	485	700	1,185
Languages	175	445	615	70	110	180	240	555	795	550	1,405	1,950	160	275	435	705	1,680	2,390
Historical & philosophical studies	235	220	460	65	45	110	305	265	565	755	655	1,410	200	150	350	955	805	1,760
Creative arts & design	410	650	1,060	30	45	75	440	695	1,135	1,160	1,915	3,075	105	115	220	1,270	2,030	3,295
Education	360	1,170	1,535	1,230	2,275	3,505	1,595	3,445	5,040	655	2,335	2,990	1,425	2,960	4,380	2,075	5,295	7,370
Combined	0	10	10	400	590	990	400	600	1,000	5	15	20	610	870	1,480	615	885	1,500
Total	6,965	9,030	16,000	3,645	6,085	9,735	10,610	15,120	25,730	20,710	26,010	46,720	6,910	9,970	16,885	27,620	35,980	63,600

Source: Higher Education Statistics Agency (HESA)

To prevent the identification of individuals, figures in the attached table are rounded to the nearest 5, with 0, 1, 2 rounded to 0. Due to rounding, the sum of numbers in each row or column may not match the total shown.

Table 7a: Northern Ireland domiciled students enrolled at UK HEIs by gender and STEM - 2015/16 (with %)

Gender	STEM category				
	Broad STEM	Broad STEM %	Narrow STEM	Narrow STEM %	Total
Male	15,015	54.4%	10,860	39.3%	27,620
Female	15,605	43.4%	5,985	16.6%	35,980
Total	30,620	48.1%	16,845	26.5%	63,600

Source: Higher Education Statistics Agency (HESA)

Table 7b: Northern Ireland domiciled students enrolled at UK HEIs by mode of study and STEM - 2015/16 (with %)

Mode	STEM category				
	Broad STEM	Broad STEM %	Narrow STEM	Narrow STEM %	Total
Full-time	24,855	53.2%	14,075	30.1%	46,720
Part-time	5,765	34.1%	2,770	16.4%	16,885
Total	30,620	48.1%	16,845	26.5%	63,600

Source: Higher Education Statistics Agency (HESA)

Table 7c: Northern Ireland domiciled students enrolled at UK HEIs by subject area and gender - 2015/16 (with %)

Subject Area	All Students					
	Male	Male %	Female	Female %	Total	Total %
Subjects allied to medicine	1,540	18.1%	6,955	81.9%	8,490	13.4%
Business & administrative studies	3,640	49.1%	3,780	50.9%	7,425	11.7%
Education	2,075	28.2%	5,295	71.8%	7,370	11.6%
Social studies	1,925	34.6%	3,645	65.4%	5,570	8.8%
Biological sciences	2,095	42.3%	2,850	57.7%	4,945	7.8%
Computer science	3,695	76.6%	1,130	23.4%	4,825	7.6%
Engineering & technology	3,340	82.2%	725	17.8%	4,065	6.4%
Creative arts & design	1,270	38.5%	2,030	61.5%	3,295	5.2%
Medicine & dentistry	1,070	39.9%	1,615	60.1%	2,685	4.2%
Law	930	37.5%	1,555	62.5%	2,485	3.9%
Languages	705	29.6%	1,680	70.4%	2,390	3.8%
Physical sciences	1,215	56.7%	930	43.3%	2,145	3.4%
Historical & philosophical studies	955	54.3%	805	45.7%	1,760	2.8%
Architecture, building & planning	1,170	73.1%	430	26.9%	1,605	2.5%
Combined	615	40.9%	885	59.1%	1,500	2.4%
Mass communications & documentation	485	41.1%	700	58.9%	1,185	1.9%
Mathematical sciences	515	59.6%	350	40.5%	860	1.4%
Agriculture & related subjects	325	39.0%	505	61.0%	830	1.3%
Veterinary science	50	30.2%	115	69.8%	160	0.3%
Total	27,620	43.4%	35,980	56.6%	63,600	100.0%

Source: Higher Education Statistics Agency (HESA)

Notes

To prevent the identification of individuals, figures in the attached table are rounded to the nearest 5, with 0, 1, 2 rounded to 0. Due to rounding, the sum of numbers in each row or column may not match the total shown.

Table 8: Enrolments at Northern Ireland HEIs including OU by level of study, mode of study and domicile - 2006/07 to 2015/16

Mode and Year	First Degree						Other Undergraduate						Postgraduate						Total						
	Country of domicile						Country of domicile						Country of domicile						Country of domicile						
	NI	GB	RoI	Other EU	Non EU	Total	NI	GB	RoI	Other EU	Non EU	Total	NI	GB	RoI	Other EU	Non EU	Total	NI	GB	RoI	Other EU	Non EU	Total	
Full-time																									
2006/07	27,225	365	1,395	105	495	29,585	1,035	5	20	25	50	1,135	2,275	80	340	150	545	3,390	30,535	450	1,755	285	1,090	34,110	
2007/08	27,075	365	1,190	95	435	29,155	720	5	20	30	20	795	2,430	125	415	185	635	3,790	30,225	500	1,625	305	1,085	33,740	
2008/09	27,505	445	1,045	90	400	29,485	230	0	10	5	70	320	3,030	165	550	200	800	4,745	30,765	615	1,605	295	1,270	34,545	
2009/10	28,200	520	950	95	415	30,180	245	0	15	25	55	335	3,160	140	715	175	815	5,005	31,600	665	1,675	295	1,285	35,520	
2010/11	28,230	620	1,015	90	485	30,440	230	0	5	0	155	390	3,555	160	895	170	910	5,690	32,015	780	1,915	265	1,550	36,520	
2011/12	28,255	710	950	90	1,370	31,375	255	0	5	5	175	445	3,075	130	700	145	1,115	5,165	31,585	840	1,655	235	2,665	36,985	
2012/13	28,100	760	935	95	1,535	31,435	250	5	5	5	265	525	2,850	135	545	140	1,220	4,885	31,200	900	1,485	240	3,025	36,845	
2013/14	28,505	855	860	115	1,495	31,825	300	10	0	10	360	680	2,950	190	495	150	1,215	5,000	31,760	1,050	1,355	270	3,070	37,505	
2014/15	29,065	1,430	865	180	1,290	32,835	270	5	5	5	325	610	2,980	225	445	145	1,040	4,830	32,310	1,665	1,315	335	2,655	38,280	
2015/16	28,810	1,340	820	155	1,115	32,245	280	5	0	5	260	550	2,960	240	370	155	1,025	4,750	32,045	1,590	1,195	315	2,400	37,545	
Part-time																									
2006/07	4,825	20	270	5	20	5,135	6,275	900	240	15	95	7,525	4,170	500	900	100	175	5,845	15,270	1,415	1,410	115	290	18,505	
2007/08	4,955	25	275	5	20	5,280	6,685	25	395	15	10	7,130	4,170	540	995	105	190	6,000	15,815	590	1,665	125	220	18,410	
2008/09	4,685	30	215	5	35	4,970	6,465	165	375	30	60	7,095	3,995	495	1,045	115	185	5,835	15,145	690	1,635	150	280	17,905	
2009/10	5,335	30	235	5	15	5,620	6,865	330	745	5	95	8,040	4,485	485	1,140	105	210	6,425	16,680	845	2,125	115	320	20,080	
2010/11	5,455	40	200	5	10	5,715	7,075	120	1,230	20	280	8,730	4,270	500	940	80	105	5,895	16,805	660	2,370	105	395	20,335	
2011/12	5,555	40	190	5	15	5,810	6,375	95	875	60	200	7,605	4,555	845	800	50	65	6,320	16,490	980	1,870	115	285	19,740	
2012/13	5,880	50	175	5	20	6,130	6,220	110	455	55	50	6,885	4,525	935	720	45	70	6,295	16,620	1,095	1,350	105	140	19,310	
2013/14	5,620	80	155	5	25	5,885	5,900	115	190	10	20	6,230	5,000	925	720	45	85	6,775	16,520	1,115	1,065	60	130	18,890	
2014/15	5,385	70	120	10	30	5,615	5,670	165	195	5	50	6,085	4,725	925	715	40	60	6,465	15,780	1,165	1,030	55	140	18,165	
2015/16	5,605	95	120	5	25	5,850	5,380	270	190	5	80	5,925	4,120	980	690	50	80	5,925	15,105	1,340	1,005	60	185	17,700	
Total																									
2006/07	32,050	385	1,665	110	515	34,720	7,310	905	260	40	145	8,660	6,440	580	1,240	255	720	9,235	45,805	1,865	3,165	400	1,380	52,615	
2007/08	32,030	390	1,465	95	455	34,435	7,405	30	420	45	30	7,925	6,605	665	1,410	290	825	9,795	46,040	1,085	3,290	430	1,310	52,155	
2008/09	32,190	475	1,265	95	435	34,455	6,695	170	385	35	135	7,415	7,025	660	1,595	315	985	10,580	45,910	1,305	3,240	445	1,550	52,450	
2009/10	33,535	550	1,185	100	430	35,800	7,105	330	760	30	150	8,375	7,645	625	1,855	280	1,025	11,425	48,285	1,510	3,800	410	1,605	55,600	
2010/11	33,685	665	1,215	95	495	36,155	7,305	120	1,235	20	440	9,120	7,825	660	1,835	250	1,010	11,585	48,820	1,445	4,285	370	1,945	56,860	
2011/12	33,815	750	1,140	95	1,390	37,185	6,630	95	885	65	375	8,050	7,630	980	1,500	195	1,185	11,485	48,075	1,825	3,520	355	2,950	56,720	
2012/13	33,980	815	1,115	100	1,555	37,565	6,465	110	460	60	315	7,415	7,375	1,075	1,260	180	1,290	11,180	47,820	2,000	2,835	340	3,160	56,155	
2013/14	34,125	935	1,010	120	1,520	37,710	6,200	120	190	15	380	6,915	7,950	1,110	1,215	195	1,300	11,775	48,275	2,170	2,420	330	3,200	56,395	
2014/15	34,450	1,505	985	190	1,320	38,450	5,940	175	200	10	375	6,695	7,700	1,150	1,160	185	1,100	11,295	48,090	2,825	2,345	385	2,795	56,445	
2015/16	34,415	1,435	945	160	1,140	38,095	5,660	275	195	10	340	6,475	7,080	1,220	1,060	205	1,110	10,675	47,150	2,930	2,195	375	2,585	55,245	

Source: Higher Education Statistics Agency (HESA)

To prevent the identification of individuals, figures in the attached table are rounded to the nearest 5, with 0, 1, 2 rounded to 0. Due to rounding, the sum of numbers in each row or column may not match the total shown.

Table 8a: Enrolments at Northern Ireland HEIs by domicile - 2006/07 to 2015/16 (with %)

Year	Domicile										
	NI	NI %	GB	GB %	ROI	ROI %	Other EU	Other EU %	Non EU	Non EU %	Total
2006/07	45,805	87.1%	1,865	3.5%	3,165	6.0%	400	0.8%	1,380	2.6%	52,615
2007/08	46,040	88.3%	1,085	2.1%	3,290	6.3%	430	0.8%	1,310	2.5%	52,155
2008/09	45,910	87.5%	1,305	2.5%	3,240	6.2%	445	0.8%	1,550	3.0%	52,450
2009/10	48,285	86.8%	1,510	2.7%	3,800	6.8%	410	0.7%	1,605	2.9%	55,600
2010/11	48,820	85.9%	1,445	2.5%	4,285	7.5%	370	0.6%	1,945	3.4%	56,860
2011/12	48,075	84.8%	1,825	3.2%	3,520	6.2%	355	0.6%	2,950	5.2%	56,720
2012/13	47,820	85.2%	2,000	3.6%	2,835	5.1%	340	0.6%	3,160	5.6%	56,155
2013/14	48,275	85.6%	2,170	3.8%	2,420	4.3%	330	0.6%	3,200	5.7%	56,395
2014/15	48,090	85.2%	2,825	5.0%	2,345	4.2%	385	0.7%	2,795	5.0%	56,445
2015/16	47,150	85.4%	2,930	5.3%	2,195	4.0%	375	0.7%	2,585	4.7%	55,245

Source: Higher Education Statistics Agency (HESA)

Table 8b: Enrolments at NI HEIs by domicile, level of study, mode of study and institution - 2015/16

Domicile	Level of study	Mode of study																
		Full-time and Sandwich					Part-time and Other					Total						
		Institution identifier					Institution identifier					Institution identifier						
		Queen's University Belfast	Ulster University	Stranmillis University College	St Mary's University College	Total	Queen's University Belfast	Ulster University	Stranmillis University College	St Mary's University College	The Open University (NI)	Total	Queen's University Belfast	Ulster University	Stranmillis University College	St Mary's University College	The Open University (NI)	Total
NI	Undergraduate	12,800	14,475	960	850	29,085	3,695	3,385	300	15	3,590	10,985	16,495	17,860	1,265	865	3,590	40,075
	Postgraduate	1,790	1,130	25	20	2,960	1,515	2,200	125	135	150	4,120	3,300	3,330	145	155	150	7,080
	Total	14,590	15,605	985	870	32,045	5,210	5,585	425	150	3,735	15,105	19,795	21,190	1,410	1,020	3,735	47,150
GB	Undergraduate	830	515	5	0	1,350	85	280	0	0	0	365	915	795	5	0	0	1,710
	Postgraduate	190	50	0	0	240	165	815	0	0	0	980	355	865	0	0	0	1,220
	Total	1,020	565	5	0	1,590	245	1,095	0	0	0	1,340	1,270	1,655	5	0	0	2,930
ROI	Undergraduate	250	560	5	10	825	60	245	5	0	0	310	310	805	10	10	0	1,135
	Postgraduate	165	200	0	0	370	240	430	10	10	0	690	410	630	10	10	0	1,060
	Total	420	755	5	10	1,195	300	680	15	10	0	1,005	720	1,435	25	20	0	2,195
Other EU	Undergraduate	60	95	0	0	160	5	5	0	0	0	10	65	105	0	0	0	170
	Postgraduate	120	35	0	0	155	30	20	0	0	0	50	150	55	0	0	0	205
	Total	180	130	0	0	315	35	25	0	0	0	60	215	160	0	0	0	375
Other OSeas	Undergraduate	1,115	260	0	0	1,375	60	40	0	0	0	105	1,175	300	0	0	0	1,480
	Postgraduate	640	385	0	0	1,025	55	25	0	0	0	80	695	410	0	0	0	1,110
	Total	1,755	645	0	0	2,400	115	70	0	0	0	185	1,870	715	0	0	0	2,585
Total	Undergraduate	15,055	15,905	970	860	32,795	3,905	3,965	305	15	3,590	11,775	18,960	19,865	1,280	875	3,590	44,570
	Postgraduate	2,905	1,800	25	20	4,750	2,005	3,490	135	145	150	5,925	4,910	5,290	160	165	150	10,675
	Total	17,965	17,700	1,000	880	37,545	5,905	7,455	440	160	3,735	17,700	23,870	25,155	1,440	1,040	3,735	55,245

Source: Higher Education Statistics Agency (HESA)

Notes

To prevent the identification of individuals, figures in the attached table are rounded to the nearest 5, with 0, 1, 2 rounded to 0. Due to rounding, the sum of numbers in each row or column may not match the total shown.

Table8c: Enrolments at Ulster University by domicile, level of study, mode of study and campus - 2015/16

Domicile	Level	Mode of study																		
		Full-time							Part-time					Total						
		Ulster University							Ulster University					Ulster University						
		Belfast	Coleraine	Birmingham	Jordanstown	London	Magee	Total	Belfast	Coleraine	Jordanstown	Magee	Total	Belfast	Coleraine	Birmingham	Jordanstown	London	Magee	Total
NI	Undergraduate	1,430	3,360	0	6,685	0	2,995	14,475	220	310	2,280	575	3,385	1,650	3,675	0	8,965	0	3,570	17,860
	Postgraduate	75	405	0	525	0	125	1,130	80	215	1,710	190	2,200	155	620	0	2,235	0	315	3,330
	Total	1,505	3,765	0	7,210	0	3,120	15,605	300	530	3,990	765	5,585	1,805	4,295	0	11,200	0	3,885	21,190
GB	Undergraduate	15	35	115	25	310	15	515	0	140	130	10	280	20	175	115	155	310	25	795
	Postgraduate	5	25	0	15	5	5	50	0	240	540	30	815	5	265	0	555	5	35	865
	Total	20	60	115	40	310	20	565	5	380	670	40	1095	25	440	115	710	310	60	1,655
ROI	Undergraduate	40	200	0	100	0	215	560	0	10	155	80	245	45	210	0	260	0	295	805
	Postgraduate	15	45	0	80	0	55	200	5	35	340	50	430	20	80	0	420	0	105	630
	Total	60	245	0	185	0	270	755	5	45	495	130	680	65	290	0	680	0	400	1,435
Other EU	Undergraduate	5	10	0	40	35	5	95	0	0	5	0	5	5	10	0	50	35	5	105
	Postgraduate	0	10	0	20	0	5	35	0	0	20	0	20	0	10	0	40	0	5	55
	Total	5	20	0	60	35	10	130	0	0	25	0	25	5	20	0	85	35	10	160
Other Overseas	Undergraduate	10	35	25	75	95	20	260	0	0	0	40	40	10	35	25	75	95	60	300
	Postgraduate	15	45	25	95	190	20	385	5	0	20	0	25	15	45	25	115	190	20	410
	Total	25	80	50	170	285	35	645	5	0	20	40	70	25	80	50	190	285	80	715
Total	Undergraduate	1,505	3,650	140	6,925	435	3,245	15,905	225	460	2,570	705	3,965	1,730	4,105	140	9,500	435	3,955	19,865
	Postgraduate	110	525	25	735	195	210	1,800	90	495	2,630	275	3,490	200	1,020	25	3,365	195	480	5,290
	Total	1,615	4,170	165	7,665	630	3,455	17,700	315	955	5,200	980	7,455	1,930	5,125	165	12,865	630	4,435	25,155

Source: Higher Education Statistics Agency (HESA)

Notes

To prevent the identification of individuals, figures in the attached table are rounded to the nearest 5, with 0, 1, 2 rounded to 0. Due to rounding, the sum of numbers in each row or column may not

Table 8d: Enrolments from outside the UK and ROI at Northern Ireland HEIs (not including UU Birmingham or London) by country of domicile (top 20) and institution - 2015/16

Country	Institution					Total
	QUB	UU	Stranmillis	St Mary's		
China	630	110	0	0	0	740
Malaysia	385	0	0	0	0	385
United States	110	85	0	0	0	195
Hong Kong (Special Administrative Region of China) [Hong Kong]	100	25	0	0	0	125
India	50	35	0	0	0	85
Germany	30	40	0	0	0	70
Canada	50	15	0	0	0	65
Singapore	50	0	0	0	0	50
Saudi Arabia	35	10	0	0	0	45
Nigeria	35	5	0	0	0	45
Pakistan	35	5	0	0	0	40
Spain (includes Ceuta, Melilla)	25	10	0	0	0	40
France (includes Corsica)	35	5	0	0	0	40
Italy (Includes Sardinia, Sicily)	25	10	0	0	0	40
Indonesia	25	5	0	0	0	30
Jordan	25	5	0	0	0	30
Greece	20	10	0	0	0	25
Vietnam [Viet Nam]	25	0	0	0	0	25
Brunei [Brunei Darussalam]	25	0	0	0	0	25
Korea (South) [Korea, Republic of]	25	0	0	0	0	25
Total	2,085	500	0	0	0	2,590

Source: Higher Education Statistics Agency (HESA)

Table 8e: Non-EU Enrolments at UU Birmingham and London by country of domicile (top 20) and institution - 2015/16

Country	Ulster University		Total
	Birmingham	London	
Bangladesh	5	80	85
China	15	30	45
India	5	25	30
Colombia	0	25	30
Nepal	0	30	30
Romania	0	25	25
Sri Lanka	0	20	20
Pakistan	5	15	20
Vietnam [Viet Nam]	5	10	10
Cameroon	5	0	10
Nigeria	0	5	10
Senegal	0	5	5
Albania	0	5	5
Morocco	0	5	5
Philippines	0	5	5
Georgia	0	0	5
Italy (Includes Sardinia, Sicily)	0	5	5
Saudi Arabia	0	5	5
Uzbekistan	0	0	5
Brazil	0	0	0
Total	50	320	370

Source: Higher Education Statistics Agency (HESA)

Table 8f: Percentage change of enrolments at Northern Ireland HEIs by domicile between 2006/07 and 2015/16

Year	Country of domicile					Total
	NI	GB	Roi	Other EU	Non EU	
2006/07	45,805	1,865	3,165	400	1,380	52,615
2015/16	47,150	2,930	2,195	375	2,585	55,245
% change	2.9%	57.2%	-30.6%	-6.5%	87.6%	5.0%

Source: Higher Education Statistics Agency (HESA)

Table 8g: Percentage change of enrolments at Northern Ireland HEIs by domicile between 2014/15 and 2015/16

Year	Country of domicile					Total
	NI	GB	Roi	Other EU	Non EU	
2014/15	48,090	2,825	2,345	385	2,795	56,445
2015/16	47,150	2,930	2,195	375	2,585	55,245
% change	-2.0%	3.8%	-6.3%	-3.1%	-7.4%	-2.1%

Source: Higher Education Statistics Agency (HESA)

Notes

To prevent the identification of individuals, figures in the attached table are rounded to the nearest 5, with 0, 1, 2 rounded to 0. Due to rounding, the sum of numbers in each row or column may not match the total shown.

Table 8h: Percentage change of enrolments at Northern Ireland HEIs by level of study between 2006/07 and 2015/16

Year	Level of study			
	First Degree	Other Undergraduate	Postgraduate	Total
2006/07	34,720	8,660	9,235	52,615
2015/16	38,095	6,475	10,675	55,245
% change	9.7%	-25.2%	15.6%	5.0%

Source: Higher Education Statistics Agency (HESA)

Table 8i: Percentage change of enrolments at Northern Ireland HEIs by mode of study between 2006/07 and 2015/16

Year	Mode of study		
	Full-time	Part-time	Total
2006/07	34,110	18,505	52,615
2015/16	37,545	17,700	55,245
% change	10.1%	-4.4%	5.0%

Source: Higher Education Statistics Agency (HESA)

Table 8j: Enrolments at Northern Ireland HEIs by mode of study - 2006/07 to 2015/16 (with %)

Year	Mode of Study				
	Full-time	Full-time %	Part-time	Part-time %	Total
2006/07	34,110	64.8%	18,505	35.2%	52,615
2007/08	33,740	64.7%	18,410	35.3%	52,155
2008/09	34,545	65.9%	17,905	34.1%	52,450
2009/10	35,520	63.9%	20,080	36.1%	55,600
2010/11	36,520	64.2%	20,335	35.8%	56,860
2011/12	36,985	65.2%	19,740	34.8%	56,720
2012/13	36,845	65.6%	19,310	34.4%	56,155
2013/14	37,505	66.5%	18,890	33.5%	56,395
2014/15	38,280	67.8%	18,165	32.2%	56,445
2015/16	37,545	68.0%	17,700	32.0%	55,245

Source: Higher Education Statistics Agency (HESA)

Table 8k: Percentage change of enrolments at Northern Ireland HEIs by mode of study between 2014/15 and 2015/16

Year	Mode of Study		
	Full-time	Part-time	Total
2014/15	38,280	18,165	56,445
2015/16	37,545	17,700	55,245
% change	-1.9%	-2.6%	-2.1%

Source: Higher Education Statistics Agency (HESA)

Notes

To prevent the identification of individuals, figures in the attached table are rounded to the nearest 5, with 0, 1, 2 rounded to 0. Due to rounding, the sum of numbers in each row or column may not match the total shown.

Table 8l: Enrolments at Northern Ireland HEIs by level of study - 2006/07 to 2015/16 (with %)

Year	Level of study						
	First Degree	First Degree %	Other Undergraduate	Other Undergraduate %	Postgraduate	Postgraduate %	Total
2006/07	34,720	66.0%	8,660	16.5%	9,235	17.5%	52,615
2007/08	34,435	66.0%	7,925	15.2%	9,795	18.8%	52,155
2008/09	34,455	65.7%	7,415	14.1%	10,580	20.2%	52,450
2009/10	35,800	64.4%	8,375	15.1%	11,425	20.6%	55,600
2010/11	36,155	63.6%	9,120	16.0%	11,585	20.4%	56,860
2011/12	37,185	65.6%	8,050	14.2%	11,485	20.2%	56,720
2012/13	37,565	66.9%	7,415	13.2%	11,180	19.9%	56,155
2013/14	37,710	66.9%	6,915	12.3%	11,775	20.9%	56,395
2014/15	38,450	68.1%	6,695	11.9%	11,295	20.0%	56,445
2015/16	38,095	69.0%	6,475	11.7%	10,675	19.3%	55,245

Source: Higher Education Statistics Agency (HESA)

Table 8m: Percentage change of enrolments at Northern Ireland HEIs by level of study between 2014/15 and 2015/16

Year	Level of study			
	First Degree	Other Undergraduate	Postgraduate	Total
2014/15	38,450	6,695	11,295	56,445
2015/16	38,095	6,475	10,675	55,245
% change	-0.9%	-3.3%	-5.5%	-2.1%

Source: Higher Education Statistics Agency (HESA)

Notes

To prevent the identification of individuals, figures in the attached table are rounded to the nearest 5, with 0, 1, 2 rounded to 0. Due to rounding, the sum of numbers in each row or column may not match the total shown.

Table 9: First year enrolments at Northern Ireland HEIs including OU by level of study, mode of study and domicile - 2006/07 to 2015/16

Mode and Year	First Degree						Other Undergraduate						Postgraduate						Total											
	Country of domicile						Country of domicile						Country of domicile						Country of domicile											
	NI	GB	Rol	Other EU	Non EU	Total	NI	GB	Rol	Other EU	Non EU	Total	NI	GB	Rol	Other EU	Non EU	Total	NI	GB	Rol	Other EU	Non EU	Total						
Full-time																														
2006/07	8,470	150	310	50	220	9,205	565	0	5	25	45	650	1,570	40	245	95	325	2,270	10,605	195	560	175	590	12,125						
2007/08	9,100	130	335	40	185	9,790	330	5	15	30	20	395	1,555	75	285	85	325	2,325	10,985	210	635	150	525	12,510						
2008/09	9,345	200	295	45	190	10,075	85	0	10	5	70	170	1,675	70	270	80	410	2,505	11,105	270	570	130	670	12,750						
2009/10	9,750	205	340	40	190	10,525	165	0	10	25	50	255	1,950	65	515	70	410	3,010	11,865	270	865	135	655	13,785						
2010/11	8,850	225	355	35	220	9,680	150	0	0	0	155	310	1,880	70	475	70	390	2,890	10,880	290	830	110	765	12,880						
2011/12	8,820	280	255	40	1,090	10,485	135	0	5	5	170	315	1,840	70	425	70	770	3,180	10,800	350	685	120	2,030	13,980						
2012/13	8,950	265	295	40	700	10,245	125	5	0	5	265	400	1,795	70	270	65	785	2,985	10,870	340	565	110	1,745	13,630						
2013/14	9,620	280	250	50	455	10,655	120	5	0	10	355	490	1,905	115	310	80	615	3,020	11,640	400	565	135	1,425	14,165						
2014/15	9,340	830	295	120	445	11,030	130	5	0	5	320	460	1,775	115	250	75	555	2,765	11,245	950	540	195	1,320	14,255						
2015/16	8,365	415	235	35	400	9,450	135	5	0	5	260	405	1,730	110	200	75	640	2,755	10,235	530	430	115	1,295	12,610						
Part-time																														
2006/07	1,430	10	90	0	5	1,535	5,310	900	215	15	95	6,535	2,080	250	440	45	75	2,895	8,825	1,160	745	55	175	10,965						
2007/08	1,360	5	80	0	0	1,450	5,585	25	345	15	10	5,980	2,135	260	490	45	55	2,980	9,080	290	915	60	65	10,410						
2008/09	1,635	5	60	5	10	1,715	5,345	160	270	30	60	5,865	1,900	235	505	55	80	2,775	8,880	400	835	85	150	10,355						
2009/10	1,690	15	70	0	0	1,775	5,515	270	670	5	80	6,540	2,180	190	460	20	25	2,870	9,385	470	1,200	25	105	11,190						
2010/11	1,725	10	45	0	0	1,780	5,765	75	785	20	250	6,895	2,100	210	255	20	20	2,610	9,595	295	1,090	40	270	11,290						
2011/12	1,725	15	60	5	5	1,810	5,260	75	800	55	120	6,310	2,220	565	285	15	15	3,105	9,205	655	1,145	75	140	11,225						
2012/13	2,030	10	45	0	0	2,090	5,475	80	395	20	50	6,025	2,240	610	310	15	30	3,200	9,750	700	750	35	80	11,315						
2013/14	1,520	45	55	5	5	1,625	5,320	100	140	10	20	5,585	2,585	590	320	20	20	3,530	9,420	735	510	30	40	10,740						
2014/15	1,560	15	35	5	0	1,610	5,110	150	170	5	50	5,485	2,370	510	280	15	20	3,195	9,040	675	485	25	70	10,290						
2015/16	1,930	50	30	5	0	2,015	4,895	245	155	5	80	5,380	2,035	580	270	25	35	2,945	8,855	880	460	35	115	10,340						
Total																														
2006/07	9,895	165	400	50	225	10,735	5,880	900	220	40	145	7,185	3,650	290	685	140	400	5,165	19,425	1,355	1,310	230	770	23,090						
2007/08	10,460	140	420	40	185	11,240	5,915	30	360	40	30	6,375	3,690	335	775	125	380	5,305	20,065	500	1,555	210	590	22,920						
2008/09	10,980	205	355	45	200	11,785	5,430	160	280	35	130	6,035	3,570	305	775	135	490	5,280	19,985	670	1,410	215	825	23,100						
2009/10	11,440	215	410	45	190	12,300	5,685	270	680	30	130	6,795	4,125	250	980	85	435	5,880	21,250	740	2,070	160	760	24,975						
2010/11	10,570	235	400	35	225	11,465	5,920	75	790	20	400	7,205	3,985	280	730	90	410	5,500	20,475	585	1,920	150	1,035	24,165						
2011/12	10,545	290	315	45	1,095	12,295	5,400	75	800	60	290	6,625	4,060	640	710	90	785	6,285	20,005	1,005	1,830	195	2,170	25,205						
2012/13	10,980	275	340	45	700	12,340	5,605	80	400	25	315	6,425	4,035	680	580	80	810	6,185	20,620	1,040	1,315	145	1,825	24,950						
2013/14	11,140	330	305	50	460	12,280	5,440	105	140	15	375	6,075	4,485	700	630	95	635	6,550	21,065	1,135	1,075	165	1,465	24,900						
2014/15	10,900	845	325	120	445	12,640	5,240	155	170	10	365	5,945	4,145	630	530	85	575	5,965	20,285	1,630	1,025	220	1,390	24,545						
2015/16	10,295	465	265	40	400	11,465	5,030	250	155	10	340	5,785	3,765	695	470	100	675	5,700	19,090	1,410	890	145	1,410	22,950						

Source: Higher Education Statistics Agency (HESA)

To prevent the identification of individuals, figures in the attached table are rounded to the nearest 5, with 0, 1, 2 rounded to 0. Due to rounding, the sum of numbers in each row or column may not match the total shown.

Table 9a: First year undergraduate enrolments at Northern Ireland HEIs by mode of study - 2006/07 to 2015/16

Year	Undergraduate		
	Full-time	Part-time	Total
2006/07	9,850	8,070	17,920
2007/08	10,185	7,430	17,615
2008/09	10,245	7,580	17,825
2009/10	10,780	8,320	19,095
2010/11	9,990	8,680	18,670
2011/12	10,800	8,120	18,920
2012/13	10,650	8,115	18,765
2013/14	11,145	7,210	18,355
2014/15	11,490	7,095	18,585
2015/16	9,855	7,395	17,250

Source: Higher Education Statistics Agency (HESA)

Table 9b: Percentage change of first year undergraduate enrolments at Northern Ireland HEIs by mode of study between 2014/15 and 2015/16

Year	Undergraduate		
	Full-time	Part-time	Total
2014/15	11,490	7,095	18,585
2015/16	9,855	7,395	17,250
% change	-14.2%	4.3%	-7.2%

Source: Higher Education Statistics Agency (HESA)

Notes

To prevent the identification of individuals, figures in the attached table are rounded to the nearest 5, with 0, 1, 2 rounded to 0. Due to rounding, the sum of numbers in each row or column may not match the total shown.

Table 10: Enrolments at Northern Ireland HEIs by level of study, mode of study, gender, year of student and country of domicile - 2015/16

Level	Mode	Gender	First Year Students						All Students					
			Country of domicile						Country of domicile					
			NI	GB	RoI	Other EU	Non EU	Total	NI	GB	RoI	Other EU	Non EU	Total
First Degree	Full-time	Male	3,635	185	65	15	200	4,095	12,990	620	270	80	560	14,520
		Female	4,730	230	170	20	200	5,355	15,815	720	550	75	560	17,720
		Total	8,365	415	235	35	400	9,450	28,810	1,340	820	155	1,115	32,245
	Part-time	Male	900	20	15	0	0	935	2,680	35	60	0	10	2,785
		Female	1,030	30	20	5	0	1,080	2,925	60	60	5	10	3,065
		Total	1,930	50	30	5	0	2,015	5,605	95	120	5	25	5,850
	All First Degree	Male	4,535	205	80	15	200	5,030	15,670	655	330	80	570	17,305
		Female	5,760	260	185	25	200	6,435	18,745	780	615	80	570	20,785
		Total	10,295	465	265	40	400	11,465	34,415	1,435	945	160	1,140	38,095
Other Undergraduate	Full-time	Male	60	5	0	5	155	220	135	5	0	5	155	295
		Female	80	0	0	0	105	185	145	0	0	0	105	255
		Total	135	5	0	5	260	405	280	5	0	5	260	550
	Part-time	Male	1,675	85	35	5	30	1,825	1,890	90	45	5	30	2,055
		Female	3,220	165	120	0	50	3,560	3,490	180	150	0	50	3,870
		Total	4,895	245	155	5	80	5,380	5,380	270	190	5	80	5,925
	All Other Undergraduate	Male	1,730	85	35	5	180	2,040	2,020	95	45	5	180	2,350
		Female	3,300	165	120	5	155	3,745	3,635	180	150	5	155	4,125
		Total	5,030	250	155	10	340	5,785	5,660	275	195	10	340	6,475
All Undergraduate	Full-time	Male	3,695	190	65	15	350	4,315	13,125	625	270	80	710	14,815
		Female	4,810	230	170	25	305	5,540	15,960	720	555	75	665	17,975
		Total	8,505	420	235	40	655	9,855	29,085	1,350	825	160	1,375	32,795
	Part-time	Male	2,575	105	50	5	30	2,760	4,570	125	100	5	40	4,840
		Female	4,250	195	140	5	50	4,635	6,420	240	210	5	65	6,935
		Total	6,820	300	190	10	80	7,395	10,985	365	310	10	105	11,775
	All Undergraduate	Male	6,265	290	115	20	380	7,075	17,695	750	375	85	750	19,655
		Female	9,060	425	305	30	355	10,175	22,380	960	765	85	725	24,915
		Total	15,325	715	420	50	735	17,250	40,075	1,710	1,135	170	1,480	44,570
Postgraduate	Full-time	Male	765	60	90	25	295	1,235	1,330	135	165	65	485	2,185
		Female	965	50	110	45	345	1,520	1,625	105	205	90	540	2,565
		Total	1,730	110	200	75	640	2,755	2,960	240	370	155	1,025	4,750
	Part-time	Male	680	105	110	10	20	920	1,475	210	275	25	40	2,025
		Female	1,355	480	160	15	15	2,025	2,645	765	420	25	45	3,900
		Total	2,035	580	270	25	35	2,945	4,120	980	690	50	80	5,925
	All Postgraduate	Male	1,445	165	195	40	315	2,155	2,810	345	440	90	525	4,210
		Female	2,320	530	270	60	360	3,540	4,270	875	620	115	585	6,465
		Total	3,765	695	470	100	675	5,700	7,080	1,220	1,060	205	1,110	10,675
All Students	Full-time	Male	4,460	250	155	45	645	5,550	14,455	760	435	145	1,200	17,000
		Female	5,775	280	280	70	650	7,060	17,590	830	755	165	1,205	20,545
		Total	10,235	530	430	115	1,295	12,610	32,045	1,590	1,195	315	2,400	37,545
	Part-time	Male	3,250	205	160	15	50	3,680	6,045	335	375	25	80	6,865
		Female	5,605	670	300	20	65	6,660	9,060	1,005	630	35	105	10,835
		Total	8,855	880	460	35	115	10,340	15,105	1,340	1,005	60	185	17,700
	All Students	Male	7,710	455	310	60	695	9,230	20,505	1,100	810	175	1,275	23,865
		Female	11,380	955	580	90	720	13,720	26,650	1,835	1,385	200	1,310	31,380
		Total	19,090	1,410	890	145	1,410	22,950	47,150	2,930	2,195	375	2,585	55,245

Source: Higher Education Statistics Agency (HESA)

To prevent the identification of individuals, figures in the attached table are rounded to the nearest 5, with 0, 1, 2 rounded to 0. Due to rounding, the sum of numbers in each row or column may not match the total shown.

Table 10a: Enrolments at Northern Ireland HEIs by mode of study and gender - 2015/16 (with %)

Mode	Gender				
	Male	Male %	Female	Female %	Total
Full-time	17,000	45.3%	20,545	54.7%	37,545
Part-time	6,865	38.8%	10,835	61.2%	17,700
Total	23,865	43.2%	31,380	56.8%	55,245

Source: Higher Education Statistics Agency (HESA)

Table 10b: Enrolments at Northern Ireland HEIs by gender and mode of study - 2015/16 (with %)

Gender	Mode of study				
	Full-time	Full-time %	Part-time	Part-time %	Total
Male	17,000	71.2%	6,865	28.8%	23,865
Female	20,545	65.5%	10,835	34.5%	31,380
Total	37,545	68.0%	17,700	32.0%	55,245

Source: Higher Education Statistics Agency (HESA)

Table 10c: Enrolments at Northern Ireland HEIs by gender and level of study - 2015/16

Gender	Level of study				Total
	First Degree	Other Undergraduate	All Undergraduate	Postgraduate	
Male	17,305	2,350	19,655	4,210	23,865
Female	20,785	4,125	24,915	6,465	31,380
Total	38,095	6,475	44,570	10,675	55,245

Source: Higher Education Statistics Agency (HESA)

Table 10d: Proportion of enrolments at Northern Ireland HEIs by gender and level of study - 2015/16

Gender	Level of study				Total
	First Degree	Other Undergraduate	All Undergraduate	Postgraduate	
Male	72.5%	9.8%	82.4%	17.6%	23,865
Female	66.2%	13.1%	79.4%	20.6%	31,380
Total	69.0%	11.7%	80.7%	19.3%	55,245

Source: Higher Education Statistics Agency (HESA)

Notes

To prevent the identification of individuals, figures in the attached table are rounded to the nearest 5, with 0, 1, 2 rounded to 0. Due to rounding, the sum of numbers in each row or column may not match the total shown.

Table 11: Enrolments at Northern Ireland HEIs by level of study, age group, year of student, mode of study and gender - 2015/16

Level	Age	First Year Students									All Students								
		Full-time			Part-time			Full-time & Part-time			Full-time			Part-time			Full-time & Part-time		
		Male	Female	Total	Male	Female	Total	Male	Female	Total	Male	Female	Total	Male	Female	Total	Male	Female	Total
First Degree	Under 21	3,240	4,085	7,330	270	230	495	3,510	4,315	7,825	8,095	10,205	18,300	440	345	790	8,535	10,550	19,090
	21 - 24	515	650	1,165	170	195	365	685	845	1,530	5,055	5,395	10,450	555	595	1,150	5,610	5,990	11,600
	25 and over	335	615	955	500	655	1,155	835	1,275	2,110	1,370	2,125	3,495	1,790	2,120	3,910	3,160	4,245	7,405
	Total	4,095	5,355	9,450	935	1,080	2,015	5,030	6,435	11,465	14,520	17,720	32,245	2,785	3,065	5,850	17,305	20,785	38,095
Other Undergraduate	Under 21	170	135	300	140	150	290	310	280	590	220	175	400	140	170	310	360	345	705
	21 - 24	35	40	75	150	290	440	190	330	520	60	55	115	170	315	485	230	375	600
	25 and over	10	15	25	1,530	3,120	4,650	1,545	3,135	4,675	15	20	35	1,745	3,385	5,130	1,760	3,410	5,170
	Total	220	185	405	1,825	3,560	5,380	2,040	3,745	5,785	295	255	550	2,055	3,870	5,925	2,350	4,125	6,475
All Undergraduate	Under 21	3,410	4,220	7,630	410	375	785	3,820	4,595	8,415	8,320	10,380	18,700	580	515	1,095	8,900	10,895	19,795
	21 - 24	555	690	1,245	320	485	805	875	1,175	2,050	5,115	5,450	10,565	725	910	1,635	5,840	6,365	12,200
	25 and over	350	630	980	2,030	3,775	5,805	2,380	4,405	6,785	1,385	2,145	3,530	3,535	5,510	9,045	4,920	7,655	12,575
	Total	4,315	5,540	9,855	2,760	4,635	7,395	7,075	10,175	17,250	14,815	17,975	32,795	4,840	6,935	11,775	19,655	24,915	44,570
Postgraduate	Under 21	0	10	10	0	0	0	0	10	10	5	10	10	0	0	0	5	10	15
	21 - 24	735	925	1,655	125	270	395	860	1,190	2,050	1,075	1,335	2,405	190	385	575	1,265	1,720	2,985
	25 and over	500	585	1,085	795	1,755	2,550	1,295	2,340	3,635	1,105	1,225	2,330	1,835	3,510	5,345	2,940	4,740	7,675
	Total	1,235	1,520	2,755	920	2,025	2,945	2,155	3,540	5,700	2,185	2,565	4,750	2,025	3,900	5,925	4,210	6,465	10,675
All Students	Under 21	3,415	4,230	7,640	410	380	785	3,820	4,605	8,425	8,320	10,390	18,710	580	515	1,100	8,905	10,905	19,810
	21 - 24	1,285	1,615	2,900	445	755	1,200	1,735	2,365	4,100	6,185	6,785	12,970	915	1,295	2,215	7,105	8,080	15,185
	25 and over	850	1,215	2,065	2,825	5,530	8,355	3,675	6,745	10,425	2,490	3,370	5,860	5,365	9,020	14,390	7,860	12,390	20,250
	Total	5,550	7,060	12,610	3,680	6,660	10,340	9,230	13,720	22,950	17,000	20,545	37,545	6,865	10,835	17,700	23,865	31,380	55,245

Source: Higher Education Statistics Agency (HESA)

To prevent the identification of individuals, figures in the attached table are rounded to the nearest 5, with 0, 1, 2 rounded to 0. Due to rounding, the sum of numbers in each row or column may not match the total shown.

Table 11a: Enrolments at Northern Ireland HEIs by level of study and age group - 2015/16 (with %)

Level	Age group						Total
	Under 21	Under 21 %	21-24	21-24 %	25 and over	25 and over %	
First Degree	19,090	50.1%	11,600	30.5%	7,405	19.4%	38,095
Other Undergraduate	705	10.9%	600	9.3%	5,170	79.8%	6,475
All Undergraduate	19,795	44.4%	12,200	27.4%	12,575	28.2%	44,570
Postgraduate	15	0.1%	2,985	28.0%	7,675	71.9%	10,675
All Students	19,810	35.9%	15,185	27.5%	20,250	36.7%	55,245

Source: Higher Education Statistics Agency (HESA)

Table 11b: Enrolments at Northern Ireland HEIs by age group and level of study - 2015/16 (with %)

Age group	Level of study								Total
	First Degree	First Degree %	Other Undergraduate	Other Undergraduate %	All Undergraduate	All Undergraduate %	Postgraduate	Postgraduate %	
Under 21	19,090	96.4%	705	3.6%	19,795	99.9%	15	0.1%	19,810
21 - 24	11,600	76.4%	600	4.0%	12,200	80.3%	2,985	19.7%	15,185
25 and over	7,405	36.6%	5,170	25.5%	12,575	62.1%	7,675	37.9%	20,250
Total	38,095	69.0%	6,475	11.7%	44,570	80.7%	10,675	19.3%	55,245

Source: Higher Education Statistics Agency (HESA)

Table 11c: Enrolments at Northern Ireland HEIs by age group, mode of study and level of study - 2015/16

Age	Mode of study										
	Full-time					Part-time					Total
	First Degree	Other Undergraduate	All Undergraduate	Postgraduate	Total	First Degree	Other Undergraduate	All Undergraduate	Postgraduate	Total	
Under 21	18,300	400	18,700	10	18,710	790	310	1,095	0	1,100	19,810
21 - 24	10,450	115	10,565	2,405	12,970	1,150	485	1,635	575	2,215	15,185
25 and over	3,495	35	3,530	2,330	5,860	3,910	5,130	9,045	5,345	14,390	20,250
Total	32,245	550	32,795	4,750	37,545	5,850	5,925	11,775	5,925	17,700	55,245

Source: Higher Education Statistics Agency (HESA)

Table 11d: Proportion of enrolments at Northern Ireland HEIs in each mode and level of study by age group - 2015/16

Age	Mode of study										
	Full-time					Part-time					Total
	First Degree	Other Undergraduate	All Undergraduate	Postgraduate	Total	First Degree	Other Undergraduate	All Undergraduate	Postgraduate	Total	
Under 21	92.4%	2.0%	94.4%	0.1%	94.5%	4.0%	1.6%	5.5%	0.0%	5.5%	19,810
21 - 24	68.8%	0.8%	69.6%	15.9%	85.4%	7.6%	3.2%	10.8%	3.8%	14.6%	15,185
25 and over	17.3%	0.2%	17.4%	11.5%	28.9%	19.3%	25.3%	44.7%	26.4%	71.1%	20,250
Total	58.4%	1.0%	59.4%	8.6%	68.0%	10.6%	10.7%	21.3%	10.7%	32.0%	55,245

Source: Higher Education Statistics Agency (HESA)

Notes

To prevent the identification of individuals, figures in the attached table are rounded to the nearest 5, with 0, 1, 2 rounded to 0. Due to rounding, the sum of numbers in each row or column may not match the total shown.

Table 12: Enrolments at Northern Ireland HEIs by subject area, year of student, mode of study and gender - 2015/16

Subject Area	First Year Students									All Students								
	Full-time			Part-time			Full-time & Part-time			Full-time			Part-time			Full-time & Part-time		
	Male	Female	Total	Male	Female	Total	Male	Female	Total	Male	Female	Total	Male	Female	Total	Male	Female	Total
Medicine & dentistry	165	255	420	70	75	145	230	330	565	685	1,115	1,800	135	155	290	820	1,270	2,095
Subjects allied to medicine	305	1,420	1,725	250	1,680	1,935	560	3,100	3,660	1,005	4,130	5,135	410	2,415	2,825	1,415	6,545	7,960
Biological sciences	355	605	960	145	205	350	500	810	1,310	1,090	1,745	2,830	380	585	970	1,470	2,330	3,800
Veterinary science	0	0	0	0	0	0	0	0	0	0	0	0	0	0	0	0	0	0
Agriculture & related subjects	55	90	150	10	25	40	70	120	185	190	325	520	35	55	90	230	380	610
Physical sciences	235	185	420	55	65	115	290	250	540	790	615	1,410	200	150	350	995	765	1,760
Mathematical sciences	85	65	150	25	15	40	110	80	190	235	185	420	100	55	150	335	240	575
Computer science	835	290	1,125	190	45	230	1,020	335	1,355	2,675	910	3,585	590	110	700	3,265	1,020	4,285
Engineering & technology	830	215	1,045	180	20	200	1,005	240	1,245	2,630	590	3,225	470	65	535	3,100	655	3,755
Architecture, building & planning	320	135	455	105	35	140	425	175	595	900	335	1,240	210	100	310	1,110	435	1,545
Social studies	390	750	1,140	210	590	805	600	1,345	1,945	1,110	2,015	3,125	480	1,180	1,660	1,595	3,190	4,785
Law	255	435	685	55	95	150	305	530	840	605	1,075	1,680	165	265	430	770	1,340	2,110
Business & administrative studies	940	925	1,870	560	615	1,175	1,500	1,545	3,045	2,685	2,735	5,420	1,130	1,145	2,270	3,815	3,875	7,690
Mass communications & documentation	80	115	200	20	40	60	100	160	260	265	405	670	45	75	120	310	480	790
Languages	115	365	475	60	105	165	170	470	640	390	1,065	1,455	150	285	430	540	1,350	1,890
Historical & philosophical studies	160	190	350	55	40	95	215	230	445	580	515	1,100	175	140	315	755	660	1,415
Creative arts & design	245	380	625	35	40	75	280	420	700	740	1,310	2,050	115	105	220	855	1,415	2,270
Education	185	635	815	1,255	2,350	3,605	1,440	2,980	4,420	410	1,465	1,875	1,460	3,085	4,545	1,870	4,545	6,415
Combined	0	0	0	410	605	1,015	410	605	1,015	0	0	0	615	880	1,495	615	880	1,500
Total	5,550	7,060	12,610	3,680	6,660	10,340	9,230	13,720	22,950	17,000	20,545	37,545	6,865	10,835	17,700	23,865	31,380	55,245

Source: Higher Education Statistics Agency (HESA)

To prevent the identification of individuals, figures in the attached table are rounded to the nearest 5, with 0, 1, 2 rounded to 0. Due to rounding, the sum of numbers in each row or column may not match the total shown.

Table 12a: Enrolments at Northern Ireland HEIs by gender and STEM - 2015/16 (with %)

Gender	STEM category				Total
	Broad STEM	Broad STEM %	Narrow STEM	Narrow STEM %	
Male	12,740	53.4%	9,165	38.4%	23,865
Female	13,640	43.5%	5,005	16.0%	31,380
Total	26,380	47.8%	14,175	25.7%	55,245

Source: Higher Education Statistics Agency (HESA)

Table 12b: Enrolments at Northern Ireland HEIs by STEM and mode of study - 2015/16 (with %)

Mode	STEM category				Total
	Broad STEM	Broad STEM %	Narrow STEM	Narrow STEM %	
Full-time	20,165	53.7%	11,470	30.6%	37,545
Part-time	6,215	35.1%	2,700	15.3%	17,700
Total	26,380	47.8%	14,175	25.7%	55,245

Source: Higher Education Statistics Agency (HESA)

Table 12c: Enrolments at Northern Ireland HEIs by subject area and gender - 2015/16 (with %)

Subject Area	Gender				Total	Total %
	Male	Male %	Female	Female %		
Subjects allied to medicine	1,415	17.8%	6,545	82.2%	7,960	14.4%
Business & administrative studies	3,815	49.6%	3,875	50.4%	7,690	13.9%
Education	1,870	29.2%	4,545	70.9%	6,415	11.6%
Social studies	1,595	33.3%	3,190	66.7%	4,785	8.7%
Computer science	3,265	76.2%	1,020	23.8%	4,285	7.8%
Biological sciences	1,470	38.7%	2,330	61.3%	3,800	6.9%
Engineering & technology	3,100	82.6%	655	17.4%	3,755	6.8%
Creative arts & design	855	37.7%	1,415	62.3%	2,270	4.1%
Law	770	36.5%	1,340	63.5%	2,110	3.8%
Medicine & dentistry	820	39.3%	1,270	60.7%	2,095	3.8%
Languages	540	28.5%	1,350	71.5%	1,890	3.4%
Physical sciences	995	56.5%	765	43.5%	1,760	3.2%
Architecture, building & planning	1,110	71.8%	435	28.2%	1,545	2.8%
Combined	615	41.2%	880	58.8%	1,500	2.7%
Historical & philosophical studies	755	53.4%	660	46.6%	1,415	2.6%
Mass communications & documentation	310	39.2%	480	60.8%	790	1.4%
Agriculture & related subjects	230	37.4%	380	62.6%	610	1.1%
Mathematical sciences	335	58.2%	240	41.8%	575	1.0%
Veterinary science	0	-	0	-	0	0.0%
Total	23,865	43.2%	31,380	56.8%	55,245	100.0%

Source: Higher Education Statistics Agency (HESA)

Notes

To prevent the identification of individuals, figures in the attached table are rounded to the nearest 5, with 0, 1, 2 rounded to 0. Due to rounding, the sum of numbers in each row or column may not match the total shown.

Table 13: Enrolments at Northern Ireland HEIs by level of study, mode of study and institution - 2011/12 to 2015/16

Level and Year	Full-time						Part-time						Total						
	Institution						Institution						Institution						
	QUB ⁽¹⁾	UU ⁽²⁾	Stranmillis ⁽³⁾	St Mary's ⁽⁴⁾	OU ⁽⁵⁾	Total	QUB ⁽¹⁾	UU ⁽²⁾	Stranmillis ⁽³⁾	St Mary's ⁽⁴⁾	OU ⁽⁵⁾	Total	QUB ⁽¹⁾	UU ⁽²⁾	Stranmillis ⁽³⁾	St Mary's ⁽⁴⁾	OU ⁽⁵⁾	Total	
First Degree	2011/12	13,490	16,175	840	865	0	31,375	830	1,975	205	10	2,790	5,810	14,320	18,150	1,045	875	2,790	37,185
	2012/13	13,860	15,905	805	860	0	31,435	700	2,225	205	5	3,000	6,130	14,560	18,130	1,010	865	3,000	37,565
	2013/14	14,135	16,000	845	845	0	31,825	565	2,155	140	15	3,005	5,885	14,700	18,155	985	860	3,005	37,710
	2014/15	14,645	16,510	830	850	0	32,835	510	1,840	195	10	3,065	5,615	15,155	18,350	1,025	860	3,065	38,450
	2015/16	14,730	15,800	850	860	0	32,245	460	2,175	205	15	3,000	5,850	15,190	17,975	1,055	875	3,000	38,095
Other Undergraduate	2011/12	275	120	50	0	0	445	3,270	2,465	100	0	1,770	7,605	3,545	2,585	150	0	1,770	8,050
	2012/13	285	180	60	0	0	525	3,230	2,350	110	0	1,195	6,885	3,515	2,525	175	0	1,195	7,415
	2013/14	265	315	100	0	0	680	3,405	1,865	80	0	880	6,230	3,670	2,180	180	0	880	6,915
	2014/15	300	210	100	0	0	610	3,405	2,015	110	0	560	6,085	3,700	2,220	215	0	560	6,695
	2015/16	325	105	120	0	0	550	3,445	1,790	100	0	590	5,925	3,770	1,890	220	0	590	6,475
All Undergraduate	2011/12	13,765	16,300	890	865	0	31,820	4,100	4,440	305	10	4,560	13,420	17,865	20,740	1,195	875	4,560	45,235
	2012/13	14,145	16,085	870	860	0	31,960	3,925	4,575	315	5	4,195	13,015	18,075	20,655	1,185	865	4,195	44,975
	2013/14	14,400	16,315	945	845	0	32,505	3,970	4,020	220	15	3,885	12,115	18,370	20,335	1,165	860	3,885	44,620
	2014/15	14,945	16,720	935	850	0	33,445	3,915	3,855	305	10	3,625	11,705	18,855	20,570	1,240	860	3,625	45,150
	2015/16	15,055	15,905	970	860	0	32,795	3,905	3,965	305	15	3,590	11,775	18,960	19,865	1,280	875	3,590	44,570
Postgraduate	2011/12	2,835	2,265	45	20	0	5,165	2,290	3,555	95	125	250	6,320	5,120	5,820	145	145	250	11,485
	2012/13	2,510	2,325	35	20	0	4,885	2,115	3,480	240	215	245	6,295	4,625	5,800	275	235	245	11,180
	2013/14	2,615	2,335	25	20	0	5,000	2,330	3,530	330	330	250	6,775	4,950	5,865	360	350	250	11,775
	2014/15	2,785	2,000	25	20	0	4,830	2,210	3,510	295	275	175	6,465	4,995	5,510	315	295	175	11,295
	2015/16	2,905	1,800	25	20	0	4,750	2,005	3,490	135	145	150	5,925	4,910	5,290	160	165	150	10,675
Total	2011/12	16,600	18,565	935	885	0	36,985	6,390	7,995	400	140	4,815	19,740	22,985	26,560	1,340	1,020	4,815	56,720
	2012/13	16,655	18,405	900	880	0	36,845	6,045	8,050	560	220	4,440	19,310	22,700	26,460	1,460	1,100	4,440	56,155
	2013/14	17,020	18,650	970	865	0	37,505	6,300	7,555	555	345	4,135	18,890	23,320	26,200	1,525	1,210	4,135	56,395
	2014/15	17,730	18,720	955	870	0	38,280	6,120	7,365	600	285	3,795	18,165	23,855	26,085	1,555	1,155	3,795	56,445
	2015/16	17,965	17,700	1,000	880	0	37,545	5,905	7,455	440	160	3,735	17,700	23,870	25,155	1,440	1,040	3,735	55,245

Source: Higher Education Statistics Agency (HESA)

Notes

(1) The Queen's University of Belfast (2) Ulster University (3) Stranmillis University College (4) St Mary's University College (5) Open University

To prevent the identification of individuals, figures in the attached table are rounded to the nearest 5, with 0, 1, 2 rounded to 0. Due to rounding, the sum of numbers in each row or column may not match the total shown.

Table 13a: Percentage change of enrolments at Northern Ireland HEIs in each level of study and institution between 2014/15 and 2015/16

Year	Mode of study																	
	Full-time						Part-time						Total					
	Institution						Institution						Institution					
	QUB	UU	Stranmillis	St Marys	OU	Total	QUB	UU	Stranmillis	St Marys	OU	Total	QUB	UU	Stranmillis	St Marys	OU	Total
2014/15	17,730	18,720	955	870	0	38,280	6,120	7,365	600	285	3,795	18,165	23,855	26,085	1,555	1,155	3,795	56,445
2015/16	17,965	17,700	1,000	880	0	37,545	5,905	7,455	440	160	3,735	17,700	23,870	25,155	1,440	1,040	3,735	55,245
% change	1.3%	-5.4%	4.3%	1.1%	-	-1.9%	-3.5%	1.2%	-26.1%	-44.4%	-1.6%	-2.6%	0.1%	-3.6%	-7.4%	-10.1%	-1.6%	-2.1%

Source: Higher Education Statistics Agency (HESA)

Table 13b: Proportion of enrolments at Northern Ireland HEIs in each institution by mode of study - 2015/16

Mode	Institution						Total
	QUB	UU	Stranmillis	St Marys	OU	Total	
Full-time	47.8%	47.1%	2.7%	2.3%	0.0%	37,545	
Part-time	33.4%	42.1%	2.5%	0.9%	21.1%	17,700	
Total	43.2%	45.5%	2.6%	1.9%	6.8%	55,245	

Source: Higher Education Statistics Agency (HESA)

Table 13c: Percentage change of enrolments at UU Birmingham and London by mode of study between 2014/15 and 2015/16

Mode and Year	Ulster University		Total
	Birmingham	London	
Full-time	2014/15	1,025	1,330
	2015/16	630	795
	% change	-38.7%	-40.0%
Part-time	2014/15	0	0
	2015/16	0	0
	% change	-	-
Total	2014/15	1,025	1,330
	2015/16	630	795
	% change	-38.7%	-40.0%

Source: Higher Education Statistics Agency (HESA)

Notes

To prevent the identification of individuals, figures in the attached table are rounded to the nearest 5, with 0, 1, 2 rounded to 0. Due to rounding, the sum of numbers in each row or column may not match the total shown.

Table 13d: Percentage change of enrolments at Northern Ireland HEIs (not including UU Birmingham or London) by mode of study between 2014/15 and 2015/16

Mode and Year	Institution						
	QUB	UU	Stranmillis	St Mary's	OU	Total	
Full-time	2014/15	17,730	17,390	955	870	0	36,950
	2015/16	17,965	16,905	1,000	880	0	36,745
	% change	1.3%	-2.8%	4.3%	1.1%	-	-0.6%
Part-time	2014/15	6,120	7,365	600	285	3,795	18,165
	2015/16	5,905	7,455	440	160	3,735	17,700
	% change	-3.5%	1.2%	-26.1%	-44.4%	-1.6%	-2.6%
Total	2014/15	23,855	24,755	1,555	1,155	3,795	55,115
	2015/16	23,870	24,360	1,440	1,040	3,735	54,445
	% change	0.1%	-1.6%	-7.4%	-10.1%	-1.6%	-1.2%

Source: Higher Education Statistics Agency (HESA)

Table 13e: Percentage change of enrolments at Northern Ireland HEIs in each institution by level of study between 2014/15 and 2015/16

Level and Year	Institution						
	QUB	UU	Stranmillis	St Mary's	OU	Total	
First Degree	2014/15	15,155	18,350	1,025	860	3,065	38,450
	2015/16	15,190	17,975	1,055	875	3,000	38,095
	% change	0.2%	-2.0%	3.1%	1.7%	-2.1%	-0.9%
Other Undergraduate	2014/15	3,700	2,220	215	0	560	6,695
	2015/16	3,770	1,890	220	0	590	6,475
	% change	1.9%	-14.9%	4.2%	-	5.5%	-3.3%
All Undergraduate	2014/15	18,855	20,570	1,240	860	3,625	45,150
	2015/16	18,960	19,865	1,280	875	3,590	44,570
	% change	0.6%	-3.4%	3.3%	1.7%	-0.9%	-1.3%
Postgraduate	2014/15	4,995	5,510	315	295	175	11,295
	2015/16	4,910	5,290	160	165	150	10,675
	% change	-1.7%	-4.0%	-49.2%	-44.4%	-14.9%	-5.5%
Total	2014/15	23,855	26,085	1,555	1,155	3,795	56,445
	2015/16	23,870	25,155	1,440	1,040	3,735	55,245
	% change	0.1%	-3.6%	-7.4%	-10.1%	-1.6%	-2.1%

Source: Higher Education Statistics Agency (HESA)

Notes

To prevent the identification of individuals, figures in the attached table are rounded to the nearest 5, with 0, 1, 2 rounded to 0. Due to rounding, the sum of numbers in each row or column may not match the total shown.

UK COMPARISON

Table 14: All enrolments at UK HEIs including OU by level of study, mode of study and location of institution - 2011/12 to 2015/16

Level and Year	Full-time					Part-time					Total				
	Location of Institution					Location of Institution					Location of Institution				
	NI	England	Scotland	Wales	Total UK	NI	England	Scotland	Wales	Total UK	NI	England	Scotland	Wales	Total UK
First Degree															
2011/12	31,375	1,076,115	131,050	73,580	1,312,115	5,810	196,460	17,380	9,600	229,250	37,185	1,272,575	148,425	83,180	1,541,365
2012/13	31,435	1,076,195	132,040	72,665	1,312,335	6,130	182,365	17,820	9,830	216,145	37,565	1,258,560	149,860	82,490	1,528,480
2013/14	31,825	1,095,175	133,820	73,425	1,334,245	5,885	166,945	17,505	9,280	199,610	37,710	1,262,120	151,325	82,705	1,533,855
2014/15	32,835	1,099,325	136,230	72,200	1,340,595	5,615	152,050	17,095	8,870	183,630	38,450	1,251,375	153,325	81,070	1,524,225
2015/16	32,245	1,143,385	139,615	73,610	1,388,855	5,850	143,255	17,825	8,115	175,045	38,095	1,286,640	157,440	81,725	1,563,900
Other Undergraduate															
2011/12	445	90,480	4,815	4,120	99,860	7,605	229,890	24,860	24,560	286,915	8,050	320,370	29,675	28,680	386,775
2012/13	525	64,400	4,020	4,390	73,340	6,885	148,940	23,590	22,605	202,020	7,415	213,340	27,610	26,995	275,360
2013/14	680	47,745	4,700	4,215	57,340	6,230	120,595	20,675	21,225	168,720	6,915	168,340	25,370	25,435	226,065
2014/15	610	40,970	5,180	4,350	51,110	6,085	109,165	17,870	19,435	152,555	6,695	150,135	23,050	23,785	203,670
2015/16	550	36,245	5,130	4,640	46,565	5,925	98,075	16,285	17,105	137,390	6,475	134,320	21,410	21,745	183,955
All Undergraduate															
2011/12	31,820	1,166,595	135,860	77,700	1,411,975	13,420	426,350	42,235	34,160	516,165	45,235	1,592,945	178,100	111,860	1,928,140
2012/13	31,960	1,140,600	136,060	77,055	1,385,675	13,015	331,305	41,410	32,435	418,165	44,975	1,471,905	177,470	109,490	1,803,840
2013/14	32,505	1,142,920	138,520	77,635	1,391,585	12,115	287,540	38,175	30,505	368,335	44,620	1,430,460	176,695	108,140	1,759,915
2014/15	33,445	1,140,300	141,410	76,550	1,391,705	11,705	261,215	34,965	28,305	336,190	45,150	1,401,515	176,370	104,860	1,727,895
2015/16	32,795	1,179,630	144,745	78,255	1,435,420	11,775	241,330	34,105	25,220	312,435	44,570	1,420,960	178,850	103,475	1,747,855
Postgraduate															
2011/12	5,165	257,260	31,505	15,495	309,425	6,320	216,280	23,385	13,095	259,080	11,485	473,540	54,890	28,590	568,505
2012/13	4,885	244,720	31,005	15,860	296,470	6,295	199,040	22,475	12,160	239,965	11,180	443,760	53,480	28,020	536,440
2013/14	5,000	250,555	32,280	16,610	304,445	6,775	194,005	21,825	12,385	234,995	11,775	444,560	54,105	28,995	539,440
2014/15	4,830	251,680	33,435	15,500	305,445	6,465	190,905	22,765	12,605	232,740	11,295	442,580	56,200	28,105	538,180
2015/16	4,750	252,110	34,715	13,550	305,120	5,925	188,275	21,995	11,655	227,850	10,675	440,385	56,715	25,200	532,975
Total															
2011/12	36,985	1,423,855	167,365	93,195	1,721,400	19,740	642,630	65,620	47,255	775,240	56,720	2,066,485	232,985	140,450	2,496,645
2012/13	36,845	1,385,315	167,065	92,915	1,682,145	19,310	530,345	63,885	44,590	658,130	56,155	1,915,660	230,950	137,510	2,340,275
2013/14	37,505	1,393,475	170,800	94,250	1,696,030	18,890	481,545	60,000	42,890	603,325	56,395	1,875,020	230,805	137,135	2,299,355
2014/15	38,280	1,391,975	174,840	92,050	1,697,150	18,165	452,120	57,730	40,915	568,930	56,445	1,844,095	232,570	132,965	2,266,075
2015/16	37,545	1,431,735	179,460	91,800	1,740,540	17,700	429,610	56,105	36,875	540,285	55,245	1,861,345	235,565	128,675	2,280,830

Source: Higher Education Statistics Agency (HESA)

Notes

To prevent the identification of individuals, figures in the attached table are rounded to the nearest 5, with 0, 1, 2 rounded to 0. Due to rounding, the sum of numbers in each row or column may not match the total shown.

Table 14a: Percentage change of enrolments at UK HEIs in each institution by mode of study between 2014/15 and 2015/16

Mode and Year	Location of Institution					
	NI	England	Scotland	Wales	Total UK	
Full-time	2014/15	38,280	1,391,975	174,840	92,050	1,697,150
	2015/16	37,545	1,431,735	179,460	91,800	1,740,540
	% change	-1.9%	2.9%	2.6%	-0.3%	2.6%
Part-time	2014/15	18,165	452,120	57,730	40,915	568,930
	2015/16	17,700	429,610	56,105	36,875	540,285
	% change	-2.6%	-5.0%	-2.8%	-9.9%	-5.0%
Total	2014/15	56,445	1,844,095	232,570	132,965	2,266,075
	2015/16	55,245	1,861,345	235,565	128,675	2,280,830
	% change	-2.1%	0.9%	1.3%	-3.2%	0.7%

Source: Higher Education Statistics Agency (HESA)

Table 14b: Percentage change of enrolments at UK HEIs in each institution by level of study between 2014/15 and 2015/16

Mode and Year	Location of Institution					
	NI	England	Scotland	Wales	Total UK	
First Degree	2014/15	38,450	1,251,375	153,325	81,070	1,524,225
	2015/16	38,095	1,286,640	157,440	81,725	1,563,900
	% change	-0.9%	2.8%	2.7%	0.8%	2.6%
Other Undergraduate	2014/15	6,695	150,135	23,050	23,785	203,670
	2015/16	6,475	134,320	21,410	21,745	183,955
	% change	-3.3%	-10.5%	-7.1%	-8.6%	-9.7%
All Undergraduate	2014/15	45,150	1,401,515	176,370	104,860	1,727,895
	2015/16	44,570	1,420,960	178,850	103,475	1,747,855
	% change	-1.3%	1.4%	1.4%	-1.3%	1.2%
Postgraduate	2014/15	11,295	442,580	56,200	28,105	538,180
	2015/16	10,675	440,385	56,715	25,200	532,975
	% change	-5.5%	-0.5%	0.9%	-10.3%	-1.0%
Total	2014/15	56,445	1,844,095	232,570	132,965	2,266,075
	2015/16	55,245	1,861,345	235,565	128,675	2,280,830
	% change	-2.1%	0.9%	1.3%	-3.2%	0.7%

Source: Higher Education Statistics Agency (HESA)

Notes

To prevent the identification of individuals, figures in the attached table are rounded to the nearest 5, with 0, 1, 2 rounded to 0. Due to rounding, the sum of numbers in each row or column may not match the total