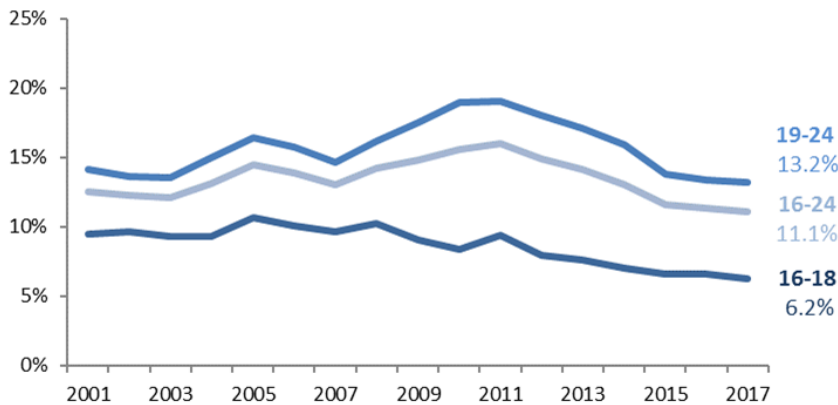




SFR 13/2018: 1 March 2018

The proportion of young people not in education, employment or training (NEET) decreased for the 16-18 age group and remained relatively stable for the 19-24 and 16-24 age groups

October to December NEET rate: England



Source: Labour Force Survey

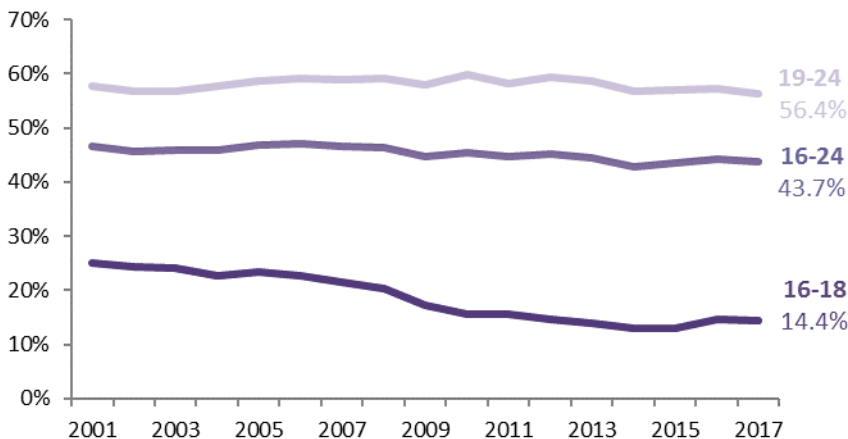
The 19-24 and overall 16-24 NEET rates remained relatively stable, both decreasing slightly by 0.2 percentage points (to 13.2% and 11.1% respectively) from the comparable quarter in 2016.

Over the same period, the 16-18 NEET rate decreased by 0.4 percentage points (to 6.2%).

None of these annual changes to the NEET rates were statistically significant.

The proportion of young people not in education or training (NET) decreased for the 19-24 and 16-24 age groups and remained relatively stable for the 16-18 age group

October to December NET rate: England



Source: Labour Force Survey

The proportion of 16-18 year olds NET remained relatively stable between October to December 2016 and 2017 (down slightly by 0.2 percentage points to 14.4%).

Over the same period, the 19-24 NET rate decreased by 1.0 percentage points (to 56.4%) and the overall 16-24 NET rate decreased by 0.5 percentage points (to 43.7%).

None of these annual changes to the NET rates were statistically significant.

Note that the Office for National Statistics (ONS) publish NEET estimates on the same day as this release but their figures cover the UK, are based on calendar age and are seasonally adjusted.

Contents

1.	Not in education, employment or training (NEET) quarterly LFS series	3
2.	Not in education or training (NET) quarterly LFS series.....	4
3.	NEET Participation SFR series (last updated August 2017)	4
4.	Regional NEET	5
5.	Accompanying tables.....	5
6.	Further information is available	6
7.	National Statistics	7
8.	Technical information.....	7
9.	Get in touch.....	7
	Media enquiries	7
	Other enquiries/feedback.....	7
10.	Tables	8

About this release

This statistical first release (SFR) provides the most timely statistics on young people not in education, employment or training (NEET) and young people not in education or training (NET).

The data covers England and is based on academic age. Trends are assessed by comparing the current time period with the same time period in the previous year to account for seasonal effects.

The ONS releases NEET estimates on the same day as this release but their figures cover the UK, are based on calendar age and are seasonally adjusted.

Data in this publication is included from:

- Quarterly Labour Force Survey (LFS)
- Statistical First Release (SFR) 'Participation in Education, Training and Employment by 16-18 Year Olds in England'

In this publication

The following tables are published alongside the SFR:

- NEET and NET estimates from the LFS (excel.xls)
- NEET and NET estimates from the Participation SFR (excel.xls)
- NEET estimates by region and gender from the LFS for: 16- 24, 18- 24 and 19-24 year-olds (excel.xls)
- National NEET estimates from the LFS for all age groups (excel.xls)
- NEET estimates from the LFS by age and gender and labour market status (excel.xls)
- Underlying data – *please note we published a more comprehensive underlying data file for the first time in November 2017. This includes a time series of regional, gender and labour market status. See accompanying metadata for further information.*

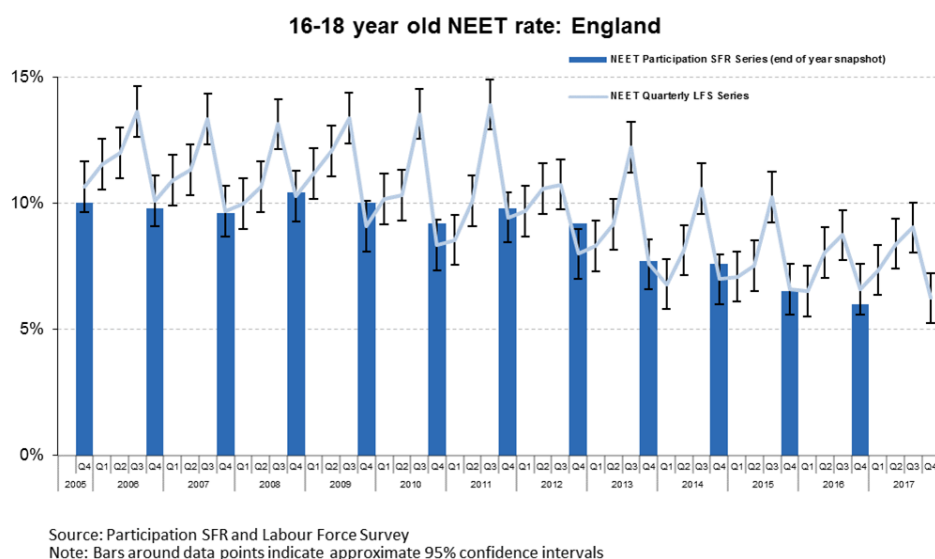
Feedback

As a result of user feedback and internal review, we are changing the periodicity of the NEET Statistics publication to an annual release to be published in February/March each year following the release of the final quarter Labour Force Survey data, relating to the October to December quarter. **Therefore this will be the final publication of these NEET quarterly statistics until the first annual release in February/March 2019.** Quarterly NEET estimates for the UK will continue to be published by the Office for National Statistics.

We would welcome feedback on any aspect of this publication at Post16.STATISTICS@education.gov.uk.

1. Not in education, employment or training (NEET) quarterly LFS series

Figure 1: NEET Quarterly LFS Series, age 16-18: England, Oct-Dec 2005 to Oct-Dec 2017



The trend for 16-18 year olds shows seasonal patterns that reflect the academic year: lower rates in autumn (October to December) followed by a gradual rise in spring and early summer (January to June) with a peak in late summer (July to September).

Figure 1 shows recent trends in the quarterly LFS NEET estimates compared to the Department for Education (DfE's) annual estimates published in the 16-18

Participation SFR. It shows that the October-December LFS estimates of NEET correspond most closely to the annual SFR estimates.

In October to December 2017 the proportion of 16-18 year olds NEET decreased by 0.4 percentage points to 6.2% when compared to the same period in the previous year. This change was not statistically significant.

The 19-24 NEET rate remained relatively stable, decreasing slightly by 0.2 percentage points to 13.2% when compared to the same period in 2016 and was 5.8 percentage points lower than the October to December peak of 19.0% in 2011. The latest annual fall in NEET was a result of a decrease in the NET rate of 1.0 percentage points to 56.4%. Neither of these changes were statistically significant.

The 16-24 NEET rate also remained relatively stable, decreasing slightly by 0.2 percentage points to 11.1% when compared to the same period in 2016 and was 4.9 percentage points lower than the October to December peak of 16.0% in 2011.

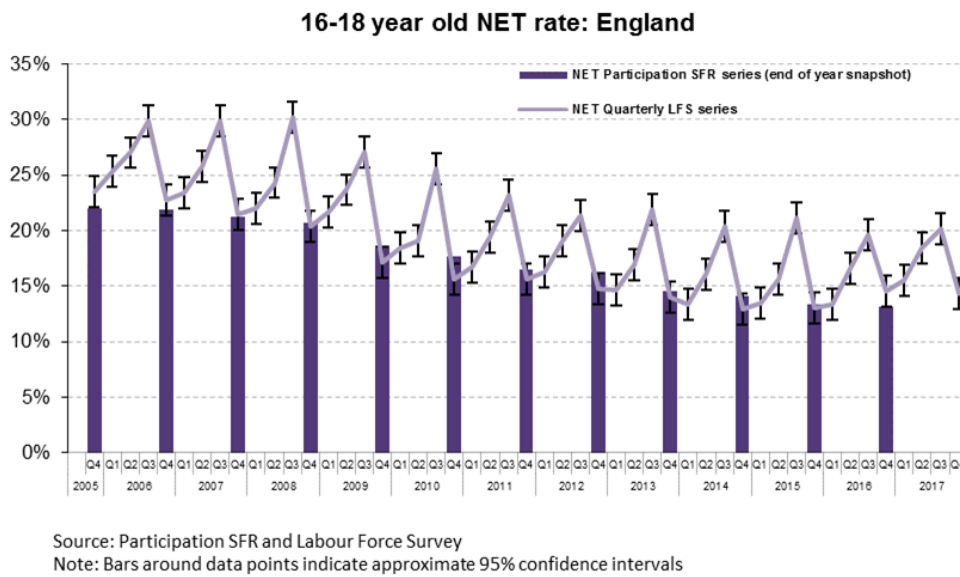
Figure 2: NEET rates for different age cohorts: England 2015 - 2017

	Oct to Dec 2015	Oct to Dec 2016	Oct to Dec 2017	95% confidence interval ¹ (percentage points)	% point change from Oct-Dec 2016 to Oct-Dec 2017
Ages 16 and 17	3.3%	4.6%	3.6%	+/- 0.9ppts	-1.0ppts
Age 16-18	6.6%	6.6%	6.2%	+/- 1.0ppts	-0.4ppts
Age 16	2.0%	3.5%	2.7%	+/- 1.1ppts	-0.8ppts
Age 17	4.5%	5.6%	4.4%	+/- 1.5ppts	-1.2ppts
Age 18	13.3%	10.4%	11.1%	+/- 2.2ppts	+0.7ppts
Age 19-24	13.8%	13.4%	13.2%	+/- 1.0ppts	-0.2ppts
Age 16-24	11.6%	11.3%	11.1%	+/- 0.8ppts	-0.2ppts

¹ It should be noted that sample sizes in the LFS are small for individual age cohorts, so sampling variation is large and caution should be taken in interpreting changes over the short term, particularly when the characteristic of interest is rare, such as the NEET rate at 16 and 17.

2. Not in education or training (NET) quarterly LFS series

Figure 3: NET Quarterly LFS Series, age 16-18: England, Oct-Dec 2005 to Oct-Dec 2017



The NET rate follows a seasonal pattern similar to the NEET rate, and is also closest to the DfE annual estimates in the October-December quarter, as Figure 3 shows.

In October to December 2017 the proportion of 16-18 year olds NET remained relatively stable, decreasing slightly by 0.2 percentage points to 14.4% compared to the same period last year. This change was not statistically significant.

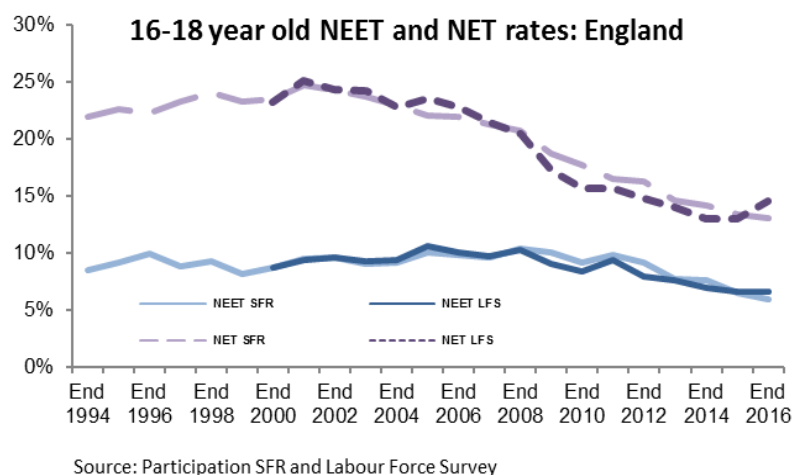
Between October to December 2016 and 2017 the NET rate decreased for 16 year olds (-1.4 percentage points to 3.0%), decreased for 17 year olds (-0.9 percentage points to 7.7%) and increased for 18 year olds (+1.2 percentage points to 31.1%). None of these changes in the proportion NET for the individual age groups were significant.

3. NEET Participation SFR series (last updated August 2017)

Understanding the historical trends in NEET rates is an important part of placing current performance in perspective.

Figure 4 shows the long-term time series in NEET and NET from the annual 16-18 [Participation SFR](#), which is the source of DfE’s definitive annual measures of participation for 16-18 year olds based largely on administrative data, alongside those published in the quarterly brief series from the LFS (Oct-Dec quarter each year).

Figure 4: NEET historical series for 16-18 year olds: England, end 1994 - end 2016



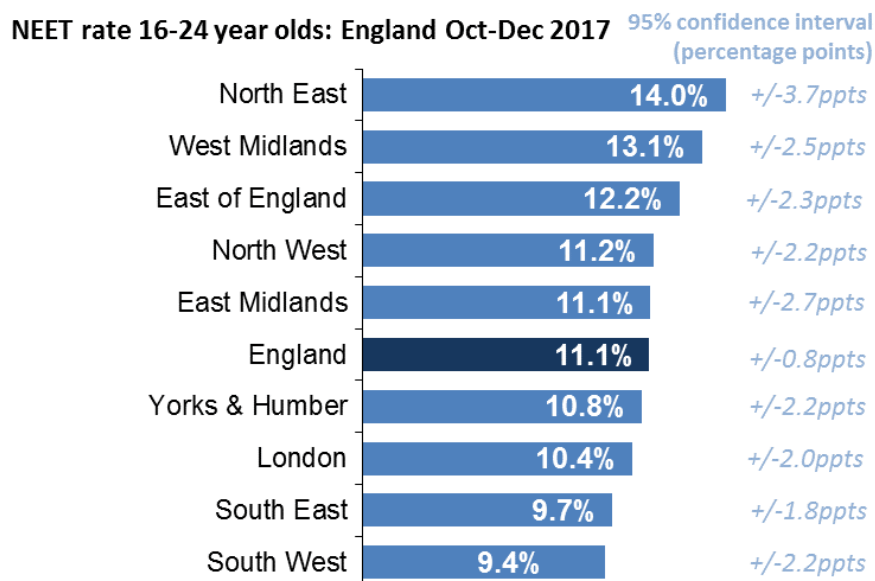
Historically the end year estimates of the 16-18 NEET rate tended to fluctuate at around 8-10%, but since 2008 both measures have shown a downward trend.

The latest Participation SFR shows the proportion of 16-18 year olds NEET at the end of 2016 was 6.0%, a fall of 0.5 percentage points from end 2015. This is the lowest comparable figure since consistent data began in 1994.

The fall in the NEET rate reported in the Participation SFR was a result of an increase from 86.6% to 86.9% in the proportion of 16-18 year olds participating in education and training, combined with an increase in the employment rate of those not in education or training, which increased from 51.3% to 54.0% over the same period.

4. Regional NEET

Figure 5: Regional NEET, age 16-24: England, Labour Force Survey Oct-Dec 2017



Regional data is published as part of this release. However, it should be noted that regional estimates have a large degree of uncertainty due to lower sample sizes, resulting in wide confidence intervals of between +/-1.8 percentage points in the South East and +/-3.7 percentage points in the North East.

Regional NEET estimates for 16-24, 18-24 and 19-24 year olds summary age groups based on the LFS are published as supplementary tables alongside this Quarterly Brief.

Regional 16-17 NEET estimates are published annually as transparency data from [Local Authorities' Client Caseload Information System \(CCIS\)](#). These estimates tend to show a lower percentage NEET than either the Participation SFR or LFS data sources.

5. Accompanying tables

The following tables are available in Excel format on the department's statistics [website](#).

National tables

Table 1	NEET estimates from the LFS and Participation SFR, England
Table 2	NET estimates from the LFS and Participation SFR, England
Table 3	NEET estimates 16 to 24 by region and gender
Table 4	NEET estimates 18 to 24 by region and gender
Table 5	NEET estimates 19 to 24 by region and gender
Table 6	NEET time series for England
Table 7	NEET estimates by labour market status

When reviewing the tables, please note that:

Labour Force Survey (LFS) datasets are routinely reweighted in line with population estimates. In May 2017 a new weighting variable was introduced, PWT17, to LFS datasets from July - September 2012 onwards. More information about the impact of the reweighting on the NEET and NET rates is available in an additional spreadsheet published alongside the [January to March 2017 quarterly brief](#).

The 2017 reweighting project completed by the Office for National Statistics resulted in revisions back to 2012 due to incorporating the latest published mid-2015 population estimates (and updates to MYE's for 2012-14) and 2014 based sub-national population projections.

6. Further information is available

Wales

The Welsh Assembly Government (WG) publishes an annual SFR produced in a similar way to DfE's Participation SFR. [The Participation of Young People in Education and the Labour Market](#) is regarded as the definitive measure of NEET estimates in Wales. It covers those in academic age 16-18 and 19-24.

The WG also publishes [NEET figures based on the Annual Population Survey \(APS\)](#) which is similar to the LFS data used in this publication. It covers academic age 16-18 and 19-24.

WG also published [local area estimates of NEET](#) which looks at pupil destinations based on the Careers Wales Survey. These are based on interviews done in October following Year 11.

Scotland

The Scottish Government (SG) publishes an annual SFR based on the Annual Population Survey (APS) [Regional Employment Patterns in Scotland: Statistics from the Annual Population Survey 2016](#) provides national NEET estimates that cover actual age 16-19.

The SG also published [Annual school leaver statistics](#) which are used to give the proportion of young people in 'positive destinations'. These NEET estimates include some young people in part-time education. The coverage is actual age 16-19.

SG also published a combination of [DWP benefits data and school leaver destinations](#) that provide local NEET estimates.

ONS

Monthly Labour Force Survey (LFS) statistics for young people not in full-time education and not in employment -Table 14 from the Labour Market Statistics bulletin. Part of wider labour market statistics; rolling 3-month average both seasonally-adjusted and not seasonally-adjusted; roughly equivalent to NEET but will include some young people in part-time education. [ONS statistical bulletin: UK Labour Market, February 2018](#) Actual age 16-17 and 18-24.

Quarterly Statistics based on the Labour Force Survey (LFS). Definition of NEET corresponds to that used in the DfE NEET Quarterly Brief. UK estimate, seasonally adjusted. [ONS National Statistics: Young People not in Education, Employment or Training \(NEETs\)](#)

OECD

The Organisation for Economic Co-operation and Development (OECD) publishes annual NEET estimates. Their [Education at a Glance UK country note](#) publication covers young people aged 15-19 and 15-29 in the UK.

7. National Statistics

The United Kingdom Statistics Authority has designated these statistics as National Statistics, in accordance with the Statistics and Registration Service Act 2007 and signifying compliance with the Code of Practice for Official Statistics.

Designation can be broadly interpreted to mean that the statistics:

- meet identified user needs;
- are well explained and readily accessible;
- are produced according to sound methods, and
- are managed impartially and objectively in the public interest.

Once statistics have been designated as National Statistics it is a statutory requirement that the Code of Practice shall continue to be observed.

The Department has a set of [statistical policies](#) in line with the Code of Practice for Official Statistics.

8. Technical information

A methodology information document accompanies this SFR. This provides further information on the data sources, their coverage and quality, and explains the methodology used in producing the data, including how it is validated and processed.

	Coverage	Last Published	Next Published
NEET and NET quarterly LFS series	October to December 2017	March 2018	Feb/March 2019
NEET and NET Participation SFR series	End 2016	June 2017	June 2018

9. Get in touch

Media enquiries

Press Office News Desk, Department for Education, Sanctuary Buildings, Great Smith Street, London SW1P 3BT.

Tel: 020 7783 8300

Other enquiries/feedback

Sally Marshall

Post-16 Statistics, Data Insight and Statistics Division, Department for Education, 4th Floor, 2 St Paul's Place, 125 Norfolk Street, Sheffield, S1 2FJ.

Tel: 0114 274 2317 Email: Post16.STATISTICS@education.gov.uk

10. Tables

Figure 6: Percentage Not in Education, Employment or Training (NEET): England

NEET Quarterly LFS series	16 year olds	17 year olds	18 year olds	16 & 17 year olds	16-18 year olds	16-24 year olds	18-24 year olds	19-24 year olds
Oct-Dec (Q4) 2000	7.5%	7.3%	11.4%	7.4%	8.7%	12.3%	13.7%	14.1%
Oct-Dec (Q4) 2001	7.3%	8.5%	12.8%	7.9%	9.4%	12.5%	13.9%	14.1%
Oct-Dec (Q4) 2002	8.5%	8.8%	11.6%	8.7%	9.6%	12.3%	13.3%	13.6%
Oct-Dec (Q4) 2003	8.2%	7.5%	12.1%	7.8%	9.3%	12.1%	13.3%	13.6%
Oct-Dec (Q4) 2004	8.9%	7.2%	11.8%	8.1%	9.3%	13.1%	14.6%	15.0%
Oct-Dec (Q4) 2005	8.8%	9.5%	13.5%	9.2%	10.6%	14.5%	16.0%	16.4%
Oct-Dec (Q4) 2006	8.1%	8.5%	13.6%	8.3%	10.1%	13.9%	15.4%	15.7%
Oct-Dec (Q4) 2007	6.4%	8.8%	13.8%	7.6%	9.7%	13.0%	14.6%	14.7%
Oct-Dec (Q4) 2008	6.3%	8.3%	16.0%	7.3%	10.3%	14.2%	16.1%	16.2%
Oct-Dec (Q4) 2009	4.5%	7.4%	15.3%	6.0%	9.1%	14.8%	17.2%	17.5%
Oct-Dec (Q4) 2010	4.3%	6.6%	13.9%	5.4%	8.3%	15.6%	18.3%	19.0%
Oct-Dec (Q4) 2011	5.1%	8.1%	14.9%	6.6%	9.4%	16.0%	18.5%	19.0%
Oct-Dec (Q4) 2012	3.6%	5.3%	14.5%	4.5%	8.0%	14.9%	17.6%	18.1%
Oct-Dec (Q4) 2013	3.2%	4.9%	14.3%	4.1%	7.6%	14.1%	16.7%	17.1%
Oct-Dec (Q4) 2014	2.5%	5.2%	13.0%	3.9%	7.0%	13.1%	15.5%	15.9%
Oct-Dec (Q4) 2015	2.0%	4.5%	13.3%	3.3%	6.6%	11.6%	13.7%	13.8%
Oct-Dec (Q4) 2016	3.5%	5.6%	10.4%	4.6%	6.6%	11.3%	13.0%	13.4%
Oct-Dec (Q4) 2017	2.7%	4.4%	11.1%	3.6%	6.2%	11.1%	12.9%	13.2%

Source: Labour Force Survey.

Figure 7: Percentage Not in Education or Training (NET): England

NET Quarterly LFS series	16 year olds	17 year olds	18 year olds	16 & 17 year olds	16-18 year olds	16-24 year olds	18-24 year olds	19-24 year olds
Oct-Dec (Q4) 2000	13.9%	19.3%	37.2%	16.6%	23.2%	45.4%	54.0%	56.7%
Oct-Dec (Q4) 2001	14.4%	21.1%	40.9%	17.7%	25.1%	46.5%	55.3%	57.7%
Oct-Dec (Q4) 2002	13.7%	20.3%	39.3%	17.1%	24.3%	45.7%	54.2%	56.7%
Oct-Dec (Q4) 2003	14.0%	19.9%	38.7%	16.9%	24.2%	45.9%	54.3%	56.9%
Oct-Dec (Q4) 2004	14.3%	17.9%	36.2%	16.1%	22.7%	46.0%	54.6%	57.7%
Oct-Dec (Q4) 2005	12.3%	18.7%	38.8%	15.5%	23.5%	46.9%	55.7%	58.6%
Oct-Dec (Q4) 2006	11.5%	17.5%	38.9%	14.5%	22.7%	47.0%	56.2%	59.1%
Oct-Dec (Q4) 2007	10.3%	17.6%	36.7%	14.0%	21.5%	46.7%	55.9%	59.0%
Oct-Dec (Q4) 2008	8.6%	15.2%	36.9%	11.9%	20.4%	46.3%	55.9%	59.1%
Oct-Dec (Q4) 2009	5.8%	12.3%	33.3%	9.1%	17.2%	44.8%	54.6%	58.0%
Oct-Dec (Q4) 2010	5.5%	10.1%	31.0%	7.8%	15.7%	45.5%	55.8%	59.8%
Oct-Dec (Q4) 2011	6.4%	11.7%	28.6%	9.1%	15.6%	44.8%	54.3%	58.3%
Oct-Dec (Q4) 2012	4.9%	8.7%	29.4%	6.8%	14.7%	45.2%	55.2%	59.4%
Oct-Dec (Q4) 2013	3.7%	8.1%	29.6%	5.8%	14.0%	44.5%	54.7%	58.6%
Oct-Dec (Q4) 2014	2.9%	8.3%	27.1%	5.7%	13.0%	42.9%	52.8%	56.8%
Oct-Dec (Q4) 2015	2.5%	7.7%	28.9%	5.1%	13.0%	43.4%	53.4%	57.0%
Oct-Dec (Q4) 2016	4.4%	8.6%	29.9%	6.5%	14.6%	44.2%	53.7%	57.4%
Oct-Dec (Q4) 2017	3.0%	7.7%	31.1%	5.3%	14.4%	43.7%	53.1%	56.4%

Source: Labour Force Survey.

Figure 8: Number Not in Education, Employment or Training (NEET): England

NEET Quarterly LFS series	16 year olds	17 year olds	18 year olds	16 & 17 year olds	16-18 year olds	16-24 year olds	18-24 year olds	19-24 year olds
Oct-Dec (Q4) 2000	44,000	43,000	63,000	87,000	150,000	629,000	542,000	479,000
Oct-Dec (Q4) 2001	46,000	51,000	73,000	97,000	171,000	660,000	563,000	489,000
Oct-Dec (Q4) 2002	52,000	56,000	69,000	107,000	177,000	661,000	554,000	484,000
Oct-Dec (Q4) 2003	51,000	45,000	76,000	96,000	172,000	667,000	571,000	495,000
Oct-Dec (Q4) 2004	58,000	45,000	74,000	103,000	177,000	738,000	635,000	561,000
Oct-Dec (Q4) 2005	54,000	60,000	87,000	115,000	202,000	824,000	710,000	622,000
Oct-Dec (Q4) 2006	53,000	53,000	88,000	106,000	194,000	804,000	698,000	610,000
Oct-Dec (Q4) 2007	42,000	57,000	88,000	98,000	186,000	768,000	669,000	581,000
Oct-Dec (Q4) 2008	40,000	55,000	107,000	95,000	202,000	845,000	750,000	643,000
Oct-Dec (Q4) 2009	28,000	49,000	98,000	77,000	175,000	880,000	803,000	705,000
Oct-Dec (Q4) 2010	28,000	41,000	92,000	70,000	161,000	933,000	863,000	772,000
Oct-Dec (Q4) 2011	32,000	52,000	96,000	84,000	180,000	967,000	883,000	787,000
Oct-Dec (Q4) 2012	22,000	33,000	96,000	55,000	152,000	893,000	837,000	741,000
Oct-Dec (Q4) 2013	21,000	30,000	93,000	51,000	144,000	846,000	795,000	702,000
Oct-Dec (Q4) 2014	15,000	34,000	84,000	49,000	133,000	786,000	737,000	653,000
Oct-Dec (Q4) 2015	12,000	28,000	81,000	40,000	122,000	692,000	652,000	571,000
Oct-Dec (Q4) 2016	20,000	35,000	66,000	55,000	121,000	671,000	616,000	551,000
Oct-Dec (Q4) 2017	16,000	26,000	69,000	41,000	111,000	649,000	607,000	538,000

Source: Labour Force Survey.

Figure 9: Number Not in Education or Training (NET): England

NET Quarterly LFS series	16 year olds	17 year olds	18 year olds	16 & 17 year olds	16-18 year olds	16-24 year olds	18-24 year olds	19-24 year olds
Oct-Dec (Q4) 2000	82,000	114,000	205,000	195,000	400,000	2,325,000	2,130,000	1,925,000
Oct-Dec (Q4) 2001	91,000	127,000	235,000	218,000	453,000	2,454,000	2,236,000	2,001,000
Oct-Dec (Q4) 2002	83,000	128,000	235,000	211,000	447,000	2,462,000	2,251,000	2,016,000
Oct-Dec (Q4) 2003	88,000	119,000	241,000	207,000	448,000	2,527,000	2,320,000	2,079,000
Oct-Dec (Q4) 2004	92,000	111,000	227,000	203,000	430,000	2,586,000	2,383,000	2,156,000
Oct-Dec (Q4) 2005	75,000	119,000	252,000	194,000	446,000	2,671,000	2,477,000	2,225,000
Oct-Dec (Q4) 2006	75,000	110,000	253,000	184,000	437,000	2,728,000	2,544,000	2,291,000
Oct-Dec (Q4) 2007	66,000	114,000	234,000	180,000	414,000	2,753,000	2,572,000	2,339,000
Oct-Dec (Q4) 2008	55,000	100,000	247,000	155,000	402,000	2,754,000	2,598,000	2,352,000
Oct-Dec (Q4) 2009	36,000	82,000	213,000	118,000	331,000	2,667,000	2,549,000	2,336,000
Oct-Dec (Q4) 2010	36,000	63,000	204,000	99,000	303,000	2,733,000	2,633,000	2,429,000
Oct-Dec (Q4) 2011	40,000	75,000	183,000	115,000	298,000	2,711,000	2,596,000	2,413,000
Oct-Dec (Q4) 2012	30,000	55,000	195,000	85,000	280,000	2,715,000	2,630,000	2,435,000
Oct-Dec (Q4) 2013	24,000	49,000	193,000	73,000	265,000	2,673,000	2,600,000	2,407,000
Oct-Dec (Q4) 2014	18,000	54,000	176,000	71,000	247,000	2,586,000	2,515,000	2,339,000
Oct-Dec (Q4) 2015	15,000	49,000	177,000	64,000	241,000	2,599,000	2,536,000	2,358,000
Oct-Dec (Q4) 2016	26,000	53,000	189,000	78,000	267,000	2,625,000	2,546,000	2,357,000
Oct-Dec (Q4) 2017	17,000	44,000	194,000	61,000	255,000	2,558,000	2,497,000	2,303,000

Source: Labour Force Survey.



Department
for Education



© Crown copyright 2018

This publication (not including logos) is licensed under the terms of the Open Government Licence v3.0 except where otherwise stated. Where we have identified any third party copyright information you will need to obtain permission from the copyright holders concerned.

To view this licence:

visit www.nationalarchives.gov.uk/doc/open-government-licence/version/3
email psi@nationalarchives.gsi.gov.uk
write to Information Policy Team, The National Archives, Kew, London, TW9 4DU

About this publication:

enquiries Data Insight and Statistics Division,
Department for Education, Great Smith Street, London SW1P 3BT.
Tel: 0870 000 2288 Email: Post16.STATISTICS@education.gov.uk
download <https://www.gov.uk/government/collections/statistics-neet>

Reference: [SFR 13/2018]



Follow us on Twitter:
[@educationgovuk](https://twitter.com/educationgovuk)



Like us on Facebook:
facebook.com/educationgovuk