

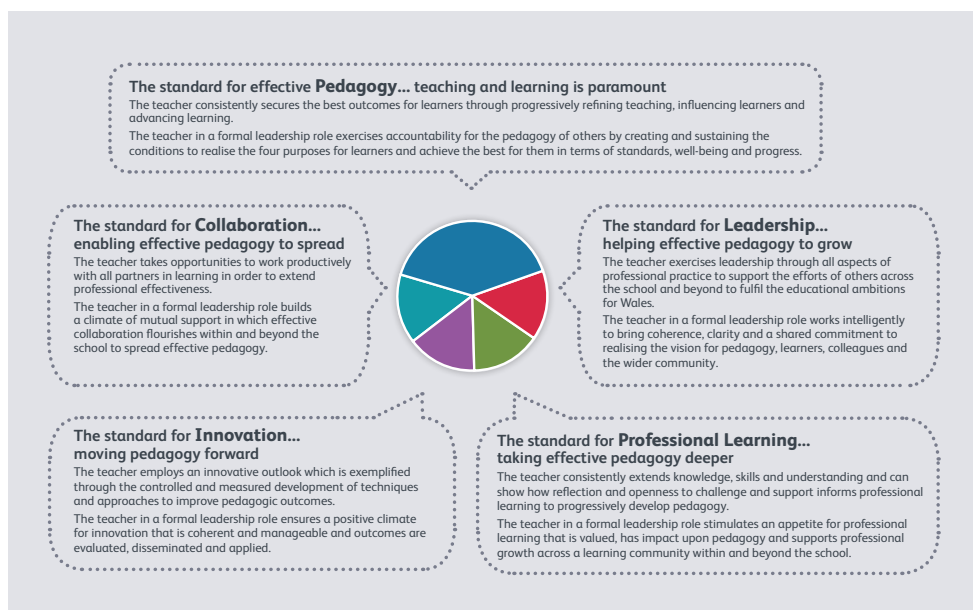


# An introduction to the professional standards for teaching and leadership



# What are the professional standards for teaching and leadership?

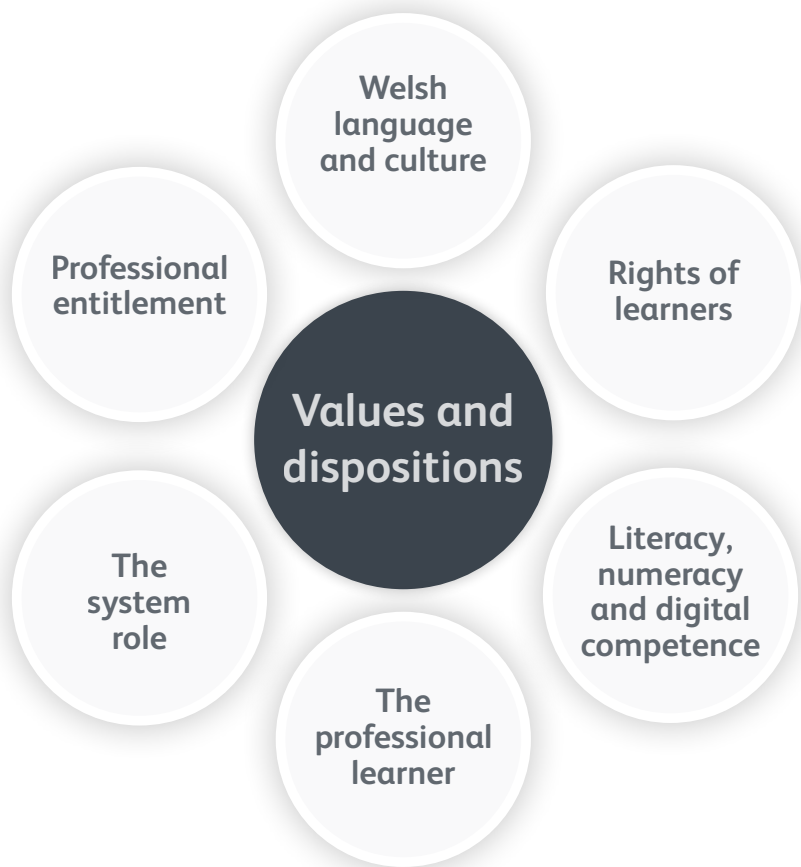
Professional standards describe the skills, knowledge and behaviours that characterise excellent practice and support professional growth. The five professional standards for teaching and leadership concentrate on the five essential elements of every teacher's work.



Download the interactive PDF to explore the professional standards in more detail.  
[learning.gov.wales/professionalstandards](https://learning.gov.wales/professionalstandards)

---

**The professional standards are accompanied by overarching values and dispositions that drive all teachers to be the best they can be.**



# How do the professional standards affect me?

Each professional standard is divided into elements with descriptors that exemplify how the professional standard could apply to a practitioner's work, depending on where that practitioner is in their role and career.

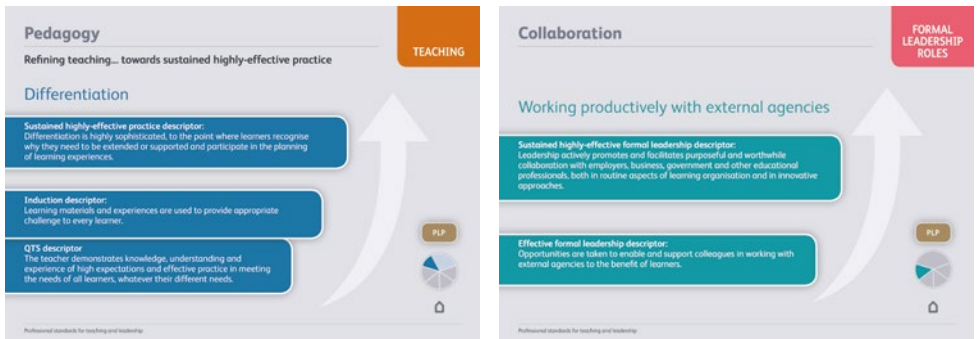
## Student teachers and newly qualified teachers (NQTs)

The descriptors identify the outcomes that student teachers and NQTs must achieve and be assessed against to enter the profession.

## Serving teachers and leaders

The majority of teachers and leaders will use the five professional standards to reflect on their practice. If required, practitioners can explore the descriptors, which exemplify the professional standards in more detail.

The descriptors also contain an aspirational level which provides a focus for career-long professional learning.



Examples of descriptors from the interactive PDF

---

## The new professional standards are aligned to:

reforms  
in initial  
teacher  
education  
(ITE)

an evolving  
qualifications  
framework

the National  
Academy for  
Educational  
Leadership.

The new professional standards support practitioners to strive for sustained excellent practice from initial training through to school leadership.

The Education Workforce Council (EWC) hosts the Professional Learning Passport (PLP) which should be used with the professional standards as a tool to support professional learning.

The PLP is portable and can go with you from job to job or from school to school, provided you are still registered with the EWC.

---

## Professional standards timeline

<ul style="list-style-type: none"><li>Professional standards for teaching and leadership available for use in schools.</li><li>NQTs commencing induction move to the new professional standards for teaching and leadership.</li></ul>	From September 2017
<ul style="list-style-type: none"><li>Professional standards for teaching and leadership adopted by serving teachers and leaders.</li><li>Professional standards for teaching and leadership available for use in ITE programmes.</li><li>Professional standards for assisting teaching available for use in schools.</li></ul>	By September 2018
<ul style="list-style-type: none"><li>Professional standards for teaching and leadership apply to all new ITE programmes.</li></ul>	By September 2019

For further information visit [learning.gov.wales/professionalstandards](https://learning.gov.wales/professionalstandards) or e-mail [professionalstandardsreview@gov.wales](mailto:professionalstandardsreview@gov.wales)

Mae'r ddogfen yma hefyd ar gael yn Gymraeg.  
This document is also available in Welsh.