

Further Education, Work-based Learning and Community Learning in Wales Statistics, 2008/09

PHOTO REDACTED DUE TO THIRD PARTY RIGHTS OR OTHER LEGAL ISSUES

Statistician: Phil Lovell Tel: 029 2092 6041
Email: Post16Ed.Stats@wales.gsi.gov.uk

Next update: October 2011 (provisional)
Y Gyfarwyddiaeth Ystadegol
Llywodraeth Cynulliad Cymru
Parc Cathays, Caerdydd, CF10 3NQ

Issued by
Statistical Directorate
Welsh Assembly Government
Cathays Park, Cardiff, CF10 3NQ

© Crown copyright October 2010
WAG10-10342
F3981011

CONTENTS

Introduction	vi
Section A: Further Education In Wales	1
Tables:	
F1.1 Numbers of learners (FE, HE and WBL) enrolled at FE institutions by programme 2008/09.....	7
F1.2 Numbers of learners (FE, HE and WBL) enrolled at FE institutions by level 2008/09	8
F1.3a Numbers of full-time learners enrolled at FE institutions 2008/09	9
F1.3b Numbers of part-time learners enrolled at FE institutions 2008/09	10
F1.3c Numbers of learners on work-based learning programmes at FE institutions 2008/09	11
F1.4 Student load for learners at FE institutions	12
F1.5 Numbers of learners (FE and WBL) enrolled at FE and HE institutions 2008/09	13
F1.6 Numbers of learners (FE, HE and WBL) taught at FE institutions 2008/09	14
F1.7a Numbers of Welsh for Adults learners and their learning activities enrolled at FE and HE institutions (standard registration population) 2008/09	15
F1.7b Numbers of Welsh for Adults learners and their learning activities enrolled at FE and HE institutions (session population) 2008/09	15
F2.1 Trends in further education student numbers in December (at FE institutions and HE institutions) by mode of attendance and age 2002/03 to 2008/09	16
F2.2 Trends in further education student numbers at FE institutions by age group 2003/04 to 2008/09	16
F3.1 Numbers of learners (FE, HE and WBL) enrolled at FE institutions by age group, mode of learning and sex 2008/09	17
F3.2 Numbers of learners (FE, HE and WBL) enrolled at FE institutions by age group, mode of learning and level 2008/09	18
F3.3 Numbers of learners (FE, HE and WBL) enrolled at FE institutions by country of domicile, mode of learning and sex 2008/09	19
F3.4a Numbers of learners (FE, HE and WBL) enrolled at FE institutions by unitary authority of domicile and age group 2008/09	20
F3.4b Numbers of learners (FE, HE and WBL) enrolled at FE institutions by unitary authority of domicile and sex 2008/09	22
F3.5 Numbers of learners (FE, HE and WBL) enrolled at FE institutions by ethnicity, age band and sex 2008/09	23
F3.6 Numbers of learners (FE, HE and WBL) enrolled at FE institutions by disability status, age band and sex 2008/09	24
F3.7 Numbers of learners (FE, HE and WBL) enrolled at FE institutions by learning difficulty status, age band and sex 2008/09	25
F3.8 Numbers of learners at FE institutions by deprivation status, sex and age group 2008/09	26
F3.9 Number of distinct learners at FE institutions leaving in academic year 2008/09 by destination and age group	28

F4.1a	Numbers of learning activities at FE institutions by subject and DCELLS Region of domicile 2008/09	30
F4.1b	Numbers of learning activities at FE institutions by subject and age group 2008/09	32
F4.2a	Numbers of learning activities at FE institutions by sector subject area and DCELLS Region of domicile 2008/09	34
F4.2b	Learning activity completion rates at FE institutions by sector subject area 2008/09	36
F4.2c	Learning activity attainment rates at FE institutions by sector subject area 2008/09	37
F4.3	Numbers of learning activities at FE institutions by subject and credit Level 2008/09	38
F4.4	Numbers of learning activities at FE institutions by subject and Welsh Medium status of learning delivery 2008/09	40
F4.5	Numbers of learning activities at FE institutions by qualification type, age band and sex 2008/09	41
F4.6a	Numbers of awards attained for learners enrolled at FE institutions by qualification type and age band 2008/09	42
F4.6b	Numbers of learners attaining awards at FE institutions by qualification type and age band 2008/09	42

Section B: Local Authority Community Learning In Wales 43

Tables:

L1.1	Numbers of learners in Local Authority Community Learning by unitary authority and provision type 2008/09.....	46
L1.2a	Numbers of learners in Local Authority Community Learning by age group, mode of learning and sex 2008/09	47
L1.2b	Numbers of learners in Local Authority Community Learning by age group, mode of learning and sex 2008/09 - excluding contracted-in from FE.....	47
L2.1	Numbers of Local Authority Community Learning activities by unitary authority and provision type 2008/09	48
L2.2	Numbers of Local Authority Community Learning activities by age group, mode of learning and sex 2008/09	49
L2.3	Numbers of Local Authority Community Learning activities by subject and age group 2008/09	50
L2.4	Numbers of Local Authority Community Learning activities by subject and sex 2008/09	52

Section C: Work-Based Learning In Wales 53

Tables:

T1.1	Numbers of learners at work-based learning (WBL) providers by age group, sex and programme type 2008/09	56
T1.2	Number of learners by programme and DCELLS Region of domicile 2008/09.....	57

T1.3	Number of enrolments on learning programmes by programme and DCELLS Region of domicile 2008/09	57
T1.4	Numbers of learners at work-based learning (WBL) providers by ethnicity, age band and sex 2008/09.....	58
T1.5	Numbers of learners at work-based learning (WBL) providers by disability status, age band and sex 2008/09.....	59
T2.1	Trends in work-based learning - number in training 2003/04 to 2008/09	60
T2.2	Numbers of unique learners and individual learning programmes by programme type.....	60
T3.1	Number of learning programmes for Foundation Modern Apprenticeships, Modern Apprenticeships and Modern Skills Diplomas by sector frameworks and programme type 2008/09	61
T3.2	Numbers of learning activities at WBL providers by subject and credit level 2008/09	62
T3.3a	Leaver destinations: Number of learning programmes left in academic year 2008/09 by destination and age group	64
T3.3b	Leaver destinations: Number of distinct learners leaving (their most recent learning programme) in academic year 2008/09 by destination and age group	64
 Appendices		
A	Data sources and definitions	67
B	Other useful information sources	72

INTRODUCTION

This volume is the sixth in a series providing statistics about the post-16 learning sector (excluding sixth forms and excluding HE institutions apart from in a few specific tables) in Wales. The main purpose of the publication series is to provide an annual picture of learning which was undertaken in the post-16 learning sector in Wales.

The statistics in this volume complement previously issued Welsh Assembly Government statistical releases on the 2008/09 post-16 learning sector and summary data available via the StatsWales website (www.statswales.wales.gov.uk). The volume also provides a continuation to certain trend statistics provided in the former publication series *Higher Education, Further Education and Training Statistics in Wales* which was a series of publications produced jointly by the Higher Education Funding Council for Wales (HEFCW) and Education and Learning Wales (ELWa). Following the separation of HEFCW and ELWa the joint publication was no longer issued. In April 2006 ELWa was merged into the Welsh Assembly Government.

In 2003/04 ELWa introduced a new data collection system known as the Lifelong Learning Wales Record (LLWR), with the aim of collecting consistent and comparable data across the post-16 learning sector. This system has been continued by The Welsh Assembly Government's Department for Children, Education, Lifelong Learning and Skills (DCELLS). In its first year of operation the LLWR collected data from Further Education (FE) and Community Learning providers whereas Work-based Learning (WBL) providers continued to return data via existing funding systems. From its second year of operation the LLWR also collected data from the WBL sector. Therefore, all of the data in this publication is sourced from the LLWR, with the sole exception of data on learners at HE institutions.

Previous *Higher Education, Further Education and Training Statistics* publications included not only data regarding learners and the learning they had undertaken but also information on FE staff and FE institution finances. The current series by contrast only focuses on learners and their learning. FE staff and finance data is available separately and further details of these publications can be found in Appendix B.

Structure of the Volume

This volume is divided into three sections with two appendices at the end. Each section contains a series of tables (with brief accompanying notes and data caveats on coverage and data sources) and a short commentary which brings attention to key statistics from the section.

The sections are :

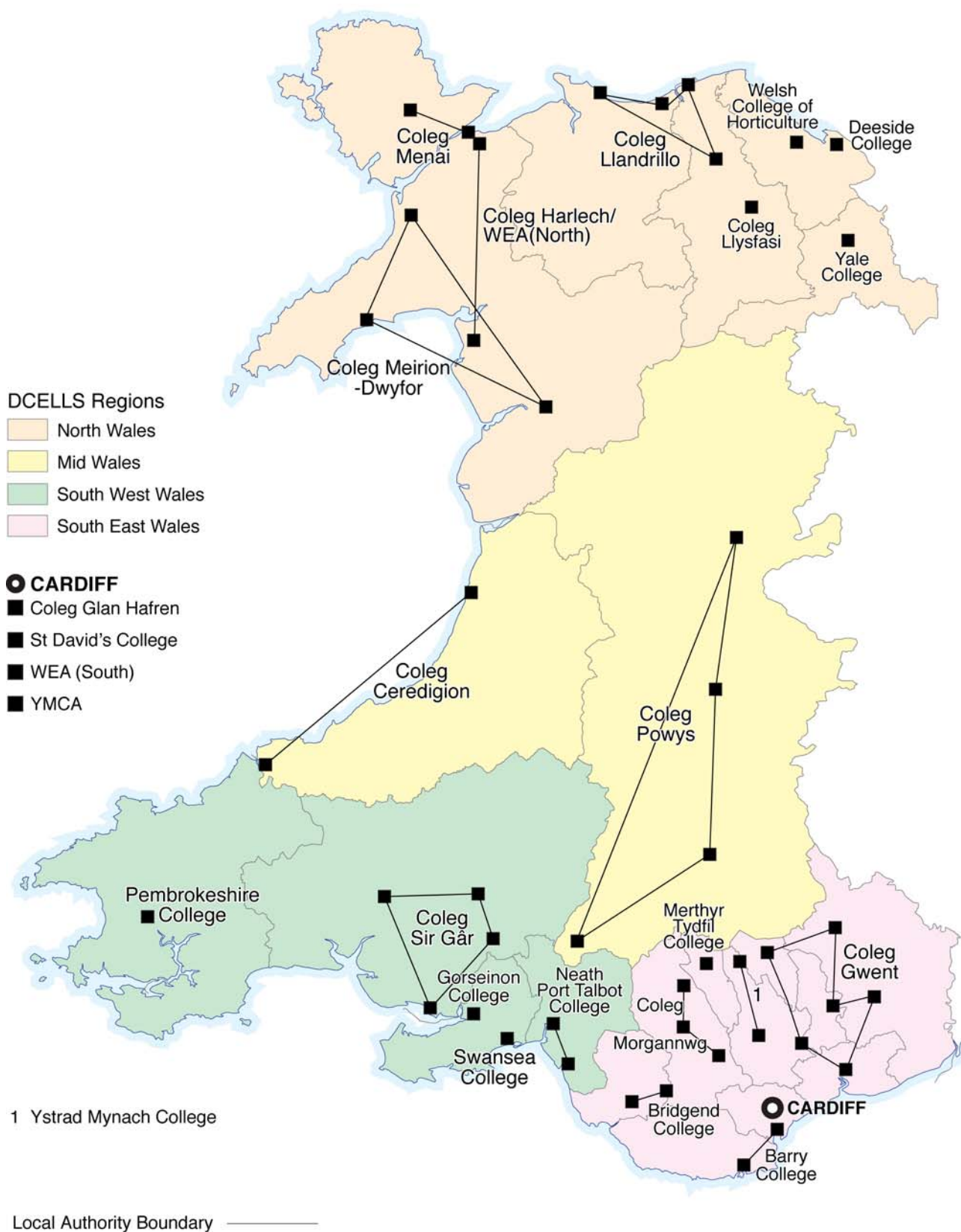
- | | |
|-----------|---|
| Section A | Further Education in Wales |
| Section B | Local Authority Community Learning in Wales |
| Section C | Work-based Learning in Wales |

Appendix A provides fuller information on sources of data and notes on the definitions.

Appendix B provides a few further information sources relating to the learning sector in Wales.

SECTION A

FURTHER EDUCATION IN WALES



Site locations in 2008/09 of FE Institutions with multiple main sites:

Institution Name	Site Location
Bridgend College	Bridgend Pencoed
Coleg Sir Gâr	Llanelli Carmarthen Llandeilo Ammanford
Coleg Ceredigion	Cardigan Aberystwyth
Coleg Gwent	Usk Newport Cross Keys Pontypool Ebbw Vale Abergavenny
Coleg Llandrillo	Rhos-on-Sea Abergele Denbigh Rhyl
Coleg Meirion-Dwyfor	Dolgellau Pwllheli Glynllifon
Coleg Menai	Bangor Llangefni
Neath Port Talbot College	Neath Afan
Coleg Morgannwg	Pontypridd Rhondda Aberdare
Coleg Powys	Newtown Llandrindod Wells Brecon Ystradgynlais
Ystrad Mynach College	Ystrad Mynach Rhymney
Coleg Harlech / WEA (North)	Harlech Bangor

Further Education Summary

- 192,770 distinct learners were enrolled at FE institutions (FEIs) in 2008/09, 6.7 per cent fewer than in 2007/08. [Table F1.1]
- 131,960 learners were in-learning at an FE institution as at the week of 1 December 2008.
- There was a 16 per cent decrease in FE learner numbers at Further Education and Higher Education (HE) institutions between December 2002 and December 2008.
- Between December 2002 and December 2008, full-time FE learner numbers grew by 8 per cent but part-time numbers fell by 23 per cent; over the same period, the number of FE learners aged 18 and under grew by 12 per cent but the number aged 19 and over fell by 24 per cent.
- 1,440 learners at FE institutions were enrolled on a designated HE programme (only) in 2008/09; however in total 4,925 provider learners pursued one or more qualifications at HE level within overarching FE, HE and work-based learning (WBL) programmes. [Tables F1.1 and F1.2]
- Around 17,700 learners at HE institutions, around the same as in 2007/08, were enrolled on FE level courses. [Table F1.5]
- 16,745 learners (using HESA standard registration population – see Appendix A) undertook Welsh for Adult learning activities, slightly more than in 2007/08 (16,385). [Table F1.7a]
- Although the HESA registration population is used as standard for HE institution learner counts in this publication (and commonly elsewhere), the session population is often appropriate given the nature of Welsh for Adults courses and gives a learner count of 18,220. [Table F1.7b]
- As in the previous year, 57 per cent of learners at FE institutions were female. The proportion has remained virtually constant at between 57 and 58 per cent since 2003/04. [Table F3.1]
- 23 per cent of learners at FE institutions were full-time, 71 per cent part-time and just under 7 per cent work-based learners.
- 41 per cent of learners at FE institutions were aged under 25 and 26 per cent were under the age of 19.
- 5 per cent of learners at FE institutions were of a non-white ethnic origin. [Table F3.5]
- 4 per cent of learners at FE institutions had a disability affecting learning. The data underlying this percentage are not directly comparable with those of the previous year for which the disabilities criterion was not restricted to those affecting learning. [Table F3.6]
- 633,590 learning activities were undertaken by learners at FE institutions.
- The two most popular subject areas were Care/Personal Development (including Basic Skills) (22 per cent) and Information Technology (15 per cent). [Table F4.1a]
- 4.5 per cent of learning activities were undertaken bilingually and 0.5 per cent through the medium of Welsh. [Table F4.4]
- The most popular types of learning activities recorded (excluding the 'other' category) were Open College Network (OCN) credits (26 per cent) and key skills (21 per cent). [Table F4.5]
- For leavers whose destination was known, 17 per cent of learners at FE institutions went on to higher education study and 42 per cent to other forms of further learning. [Table F3.9]
- 90 per cent of learning activities at FE institutions were completed. [Table F4.2b]
- Of the completed learning activities with an assessable outcome, 85 per cent were attained. [Table F4.2c]

Note: all the percentages above are as a proportion of the total for which data were available

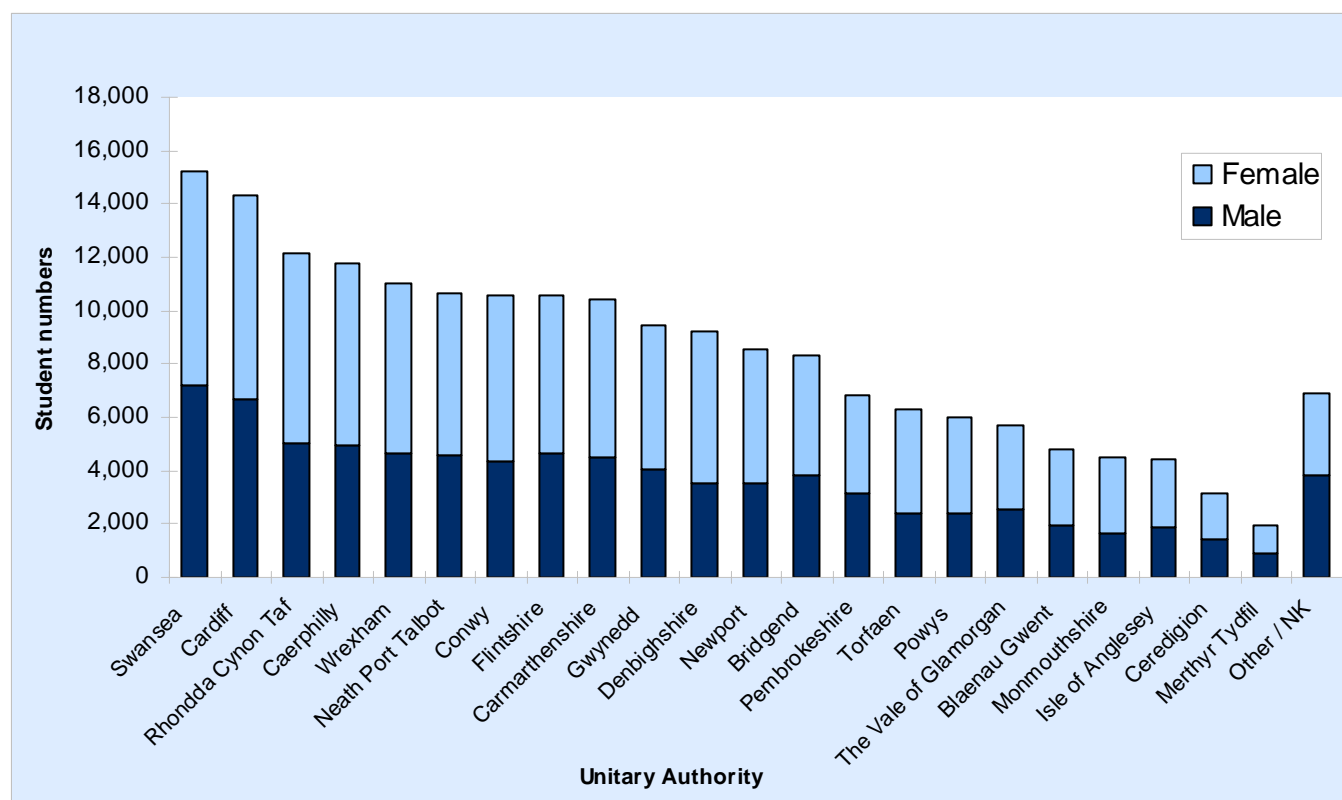
Learners [Tables F1.1 to F3.8]

There were 192,770 learners enrolled at FE institutions in 2008/09. These learners were enrolled at 25 Further Education institutions (FEIs) in Wales (including the work-based learning component of Merthyr Tydfil College). Most of their programmes of study were at the equivalent of NVQ Level 3 or below but 21 institutions enrolled some learners on higher education (HE) courses / learning activities. There were also around 17,700 learners at HE institutions enrolled on FE level courses, including those linked to five Welsh for Adults Centres based at HE institutions (previously included in the FEI figures up to 2006/07). 12,815 learners enrolled at FE institutions were pursuing work-based learning programmes and are also included within the counts of the work-based learning section C.

When duplicate instances of learners enrolled at more than one FE institution are included then the total number of learners enrolled at FEIs is 202,145 (the 'provider-learner' count) as compared with the count of unique learners in the sector which is 192,770.

Although 202,145 provider learners were enrolled at FE institutions, not all the learning was delivered by staff at FE institutions. 22,695 were taught by third parties (such as Local Education Authorities delivering community learning); conversely 5,820 learners were enrolled with HE institutions but undertook learning at FE institutions. Table F1.6 provides information on these third party arrangements. Those learners appearing within the FE institution figures who are taught by local authority community learning staff are identified in the appropriate tables of section B (Local Authority Community learning in Wales) in which they also appear.

Figure F1: Learners Enrolled at FE Institutions by Local Authority of Domicile 2008/09



Learning Activities [Tables F4.1a to F4.5]

Overall 633,590 learning activities (equivalent to courses / qualification aims) were followed by learners enrolled at FE institutions in 2008/09. The vast majority of these learning activities were at a level equivalent to NVQ level 1, 2 or 3.

0.5 per cent of the learning activities were delivered in the medium of Welsh and a further 4.5 per cent bilingually but all the remainder were delivered in the medium of English.

Aside from the 'other' category (which amalgamates a number of different types of qualification, including City & Guild certificates, ECDL and CLAIT), the most prevalent types of qualification undertaken were:

- Open College Network (OCN) credits (26 per cent)
- Key Skills (21 per cent)
- NVQs (7 per cent)
- GCE A/AS levels or GCSEs (7 per cent)

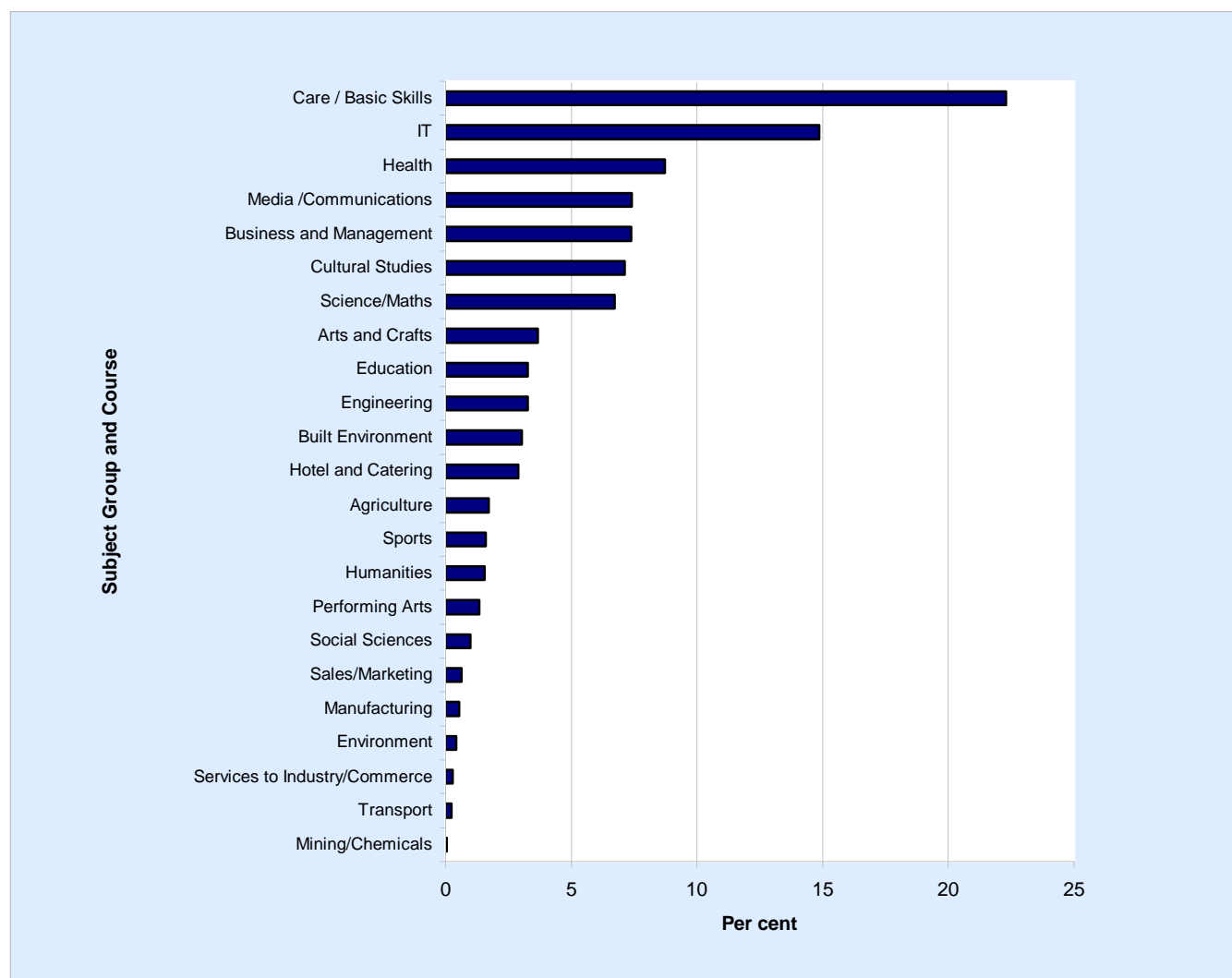
There was some variation in qualification type by learner age group with Key Skills, A/AS levels and GCSEs more popular with learners aged 18 and under than with the older cohort of learners.

The most popular subjects being undertaken by learners at FE institutions were (with their proportion of the total excluding unspecified subjects):

- Care/Personal Development (including Basic Skills) (22 per cent) (24 per cent in 2005/06)
- Information Technology (15 per cent) (18 per cent in 2005/06)
- Health/Care/Medicine/Health & Safety (9 per cent) (9 per cent in 2005/06)
- Media/Communication/Publishing (7 per cent) (7 per cent in 2005/06)
- Business/Management/Office Studies (7 per cent) (5 per cent in 2005/06)
- Cultural Studies/Languages/Literature (7 per cent) (8 per cent in 2005/06)
- Science/Mathematics (7 per cent) (3 per cent in 2005/06)

16,745 learners at FE and HE institutions undertook 23,770 Welsh for Adult course enrolments in 2008/09.

Figure F2: Subject of Study 2008/09



Completion Rates and Attainment Rates [Tables F4.2b and F4.2c]

Of the learning activities which ended in 2008/09 (i.e. those which were either completed or withdrawn from but which were not continuing at the end of the year) 90 per cent were completed. This indicates that the courses were completed, not that there were necessarily attained qualifications. Of those completed learning activities which included assessable awards, 85 per cent were successfully attained. Tables F4.2b and F4.2c split these figures by sector subject area (see also F4.2a).

Awards [Tables F4.6a and F4.2b]

362,720 individual awards were successfully attained by 141,060 learners in 2008/09. Tables 4.6a and 4.6b provide a breakdown by qualification type and learner age band.

Trends in Learning

Table F2.1 and Figure F3 on trends in learner numbers continue a series originally published by the Welsh Office, then the Welsh Funding Councils, ELWa and now the Welsh Assembly Government. From 2003/04 onwards, the source has been the Welsh Assembly Government's Lifelong Learning Wales Record (LLWR). In contrast to the population definition usually used in this publication, the count is of all FE (and WBL at FEI) students, including those at higher education institutions. The figures are taken as at the week of 1 December and, for 2008/09, can be derived from the December counts of Table F1.5.

It should also be noted that when comparing more recent learner numbers with those of the years prior to 2003/04, provider-learner counts must be used because unique learner identifiers were not available in the pre-LLWR years.

Some care should be taken when comparing full-time and 'other' mode of learning figures for 2003/04 to 2007/08 with those of previous years as the learner mode definition changed with the advent of the LLWR data collection system. However, across the FE sector as a whole, the number of full-time and 'other' learners remained fairly stable over the transition years 2002/03 to 2003/04.

Between December 2002 and December 2008 there was a decrease in the total FE learner numbers at FE and HE institutions of 16 per cent. Previous volumes have noted the substantial growth in FE learner numbers between 1992/93 and 2002/03 which was attributable to an increase in part-time learners. This pattern has subsequently changed and there was a decline in part-time learner numbers of 23 per cent between December 2002 and December 2008 (primarily occurring in the last two years) but an increase in full-time FE learner numbers of 8 per cent over the same period.

Figure F3: FE Learners Enrolled - December 2002 to December 2008

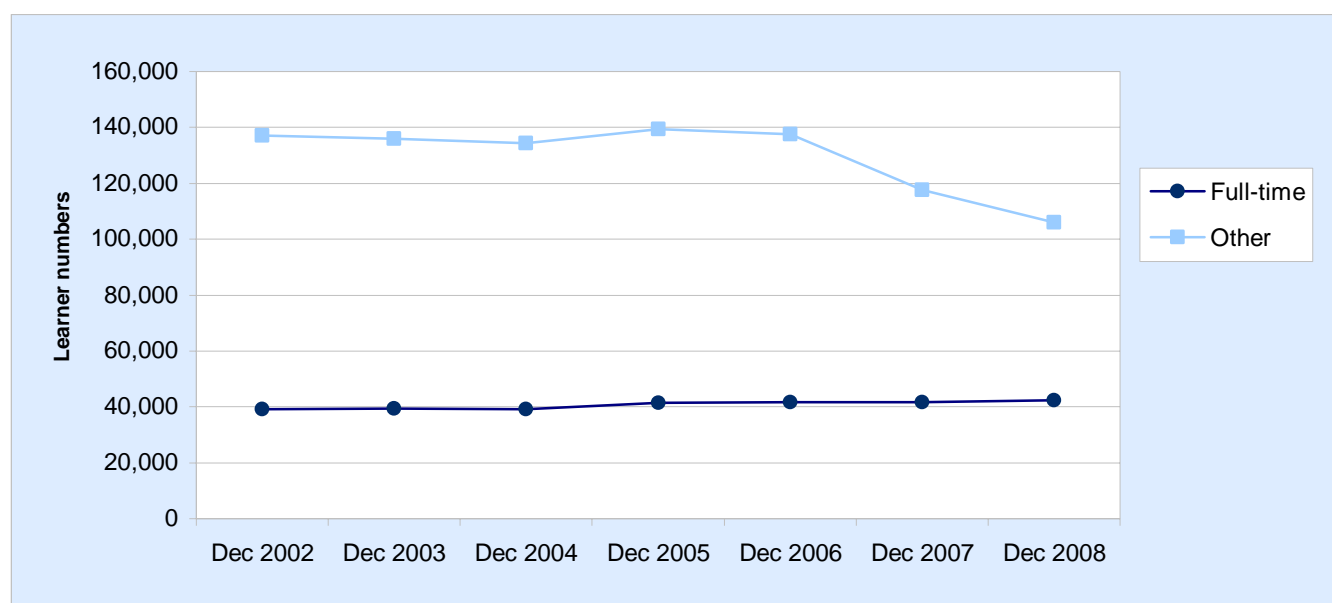


Table F1.1 Numbers of learners (FE, HE and WBL) enrolled at FE institutions by programme 2008/09 (a-k)

Institution	Numbers							
	Learners on FE programmes		Learners on HE programmes		Learners on WBL programmes		Total	
	All	Enrolled 1 Dec	All	Enrolled 1 Dec	All	Enrolled 1 Dec	All	Enrolled 1 Dec
Barry College	6,460	4,725	0	0	1,550	905	8,010	5,635
Bridgend College	9,955	7,040	35	30	145	130	10,135	7,205
Coleg Sir Gar	7,785	6,295	315	310	760	455	8,860	7,055
Coleg Ceredigion	2,645	1,535	0	0	90	80	2,735	1,620
Deeside College	9,400	6,060	*	*	2,045	1,160	11,445	7,225
Coleg Glan Hafren	9,255	7,285	20	15	225	190	9,500	7,495
Gorseinon College	4,440	3,770	0	0	260	160	4,700	3,930
Coleg Gwent	27,895	20,150	0	0	330	285	28,225	20,440
Coleg Llandrillo	15,645	10,330	840	820	1,865	950	18,350	12,100
Coleg Llysfasi	2,420	1,195	40	40	340	250	2,800	1,480
Coleg Meirion Dwyfor	4,050	3,320	10	10	60	30	4,120	3,360
Merthyr Tydfil College WBL	0	0	0	0	375	185	375	185
Pembrokeshire College	6,445	3,755	0	0	565	270	7,015	4,025
Coleg Morgannwg	9,735	6,575	10	0	155	115	9,900	6,690
Coleg Powys	4,770	2,575	0	0	195	160	4,965	2,735
St David's Catholic College	1,325	1,260	0	0	0	0	1,325	1,260
Swansea College	11,530	6,985	10	10	925	565	12,465	7,560
Welsh College of Horticulture	3,290	2,230	*	*	350	195	3,645	2,430
Yale College	11,545	7,055	90	85	1,240	655	12,875	7,795
Ystrad Mynach College	7,915	5,880	0	0	400	265	8,315	6,145
WEA South	5,545	2,930	0	0	0	0	5,545	2,930
YMCA	4,010	745	0	0	0	0	4,010	745
Coleg Menai	6,755	4,535	10	10	550	415	7,315	4,965
Neath Port Talbot College	10,430	7,835	70	65	680	380	11,180	8,280
Coleg Harlech/WEA (North)	4,325	2,170	0	0	0	0	4,325	2,170
Total (including any multiple-counting between providers)	187,575	126,240	1,455	1,400	13,115	7,810	202,145	135,455
Total unique learners	178,515	122,770	1,440	1,395	12,815	7,795	192,770	131,960

Source: LLWR (Lifelong Learning Wales Record) post-16 database

- (a) Individual row counts are based on providers' own learner identifiers and their total includes some multiple-counting between providers.
- (b) The total unique learners row removes multiple-counting between providers by counting unique learner identifiers (ULIs).
- (c) 'Enrolled 1 Dec' is the population during the week of 1 December 2008; 'All' refers to the complete academic year.
- (d) Includes full-time, part-time and work-based learners.
- (e) A learner pursuing any WBL programme is designated as work-based learning.
- (f) Includes WBL subsidiaries of FE institutions.
- (g) A learner pursuing an HE learning programme but not also pursuing a WBL programme is designated as HE.
- (h) For the purpose of this table, HE refers only to programmes designated as higher education in their entirety.
- (i) Higher education excludes learners enrolled at HE institutions and franchised in to FE institutions.
- (j) Includes local authority community learning where there is a formal enrolment with an FE institution.
- (k) Numbers greater than 0 and less than 5 have been replaced by *. Other figures are rounded to the nearest 5 and there may be slight discrepancies between the sums of constituent items and the independently rounded totals.

Table F1.2 Numbers of learners (FE, HE and WBL) enrolled at FE institutions by level 2008/09 (a-h)

Institution	Numbers					
	Learners with FE level highest qualification pursued		Learners with HE level highest qualification pursued		Total	
	All	Enrolled 1 Dec	All	Enrolled 1 Dec	All	Enrolled 1 Dec
Barry College	7,790	5,460	220	170	8,010	5,635
Bridgend College	10,050	7,130	85	70	10,135	7,205
Coleg Sir Gar	8,335	6,560	525	495	8,860	7,055
Coleg Ceredigion	2,670	1,560	70	60	2,735	1,620
Deeside College	10,885	6,875	565	350	11,445	7,225
Coleg Glan Hafren	9,290	7,420	210	75	9,500	7,495
Gorseinon College	4,660	3,900	40	30	4,700	3,930
Coleg Gwent	28,065	20,320	160	115	28,225	20,440
Coleg Llandrillo	17,165	11,050	1,185	1,050	18,350	12,100
Coleg Lllysfasi	2,640	1,365	160	115	2,800	1,480
Coleg Meirion Dwyfor	3,845	3,090	275	270	4,120	3,360
Merthyr Tydfil College WBL	375	185	0	0	375	185
Pembrokeshire College	6,845	3,900	165	125	7,015	4,025
Coleg Morgannwg	9,820	6,630	80	60	9,900	6,690
Coleg Powys	4,885	2,685	80	50	4,965	2,735
St David's Catholic College	1,325	1,260	0	0	1,325	1,260
Swansea College	12,210	7,385	255	175	12,465	7,560
Welsh College of Horticulture	3,505	2,315	140	110	3,645	2,430
Yale College	12,595	7,545	280	255	12,875	7,795
Ystrad Mynach College	8,235	6,085	80	60	8,315	6,145
WEA South	5,540	2,930	5	0	5,545	2,930
YMCA	4,010	745	0	0	4,010	745
Coleg Menai	7,205	4,880	115	85	7,315	4,965
Neath Port Talbot College	10,960	8,115	220	165	11,180	8,280
Coleg Harlech/WEA (North)	4,325	2,170	0	0	4,325	2,170
Total (including any multiple-counting between providers)	197,225	131,560	4,925	3,895	202,145	135,455
Total unique learners					192,770	131,960

Source: LLWR (Lifelong Learning Wales Record) post-16 database

- (a) Counts are based on providers' own learner identifiers and therefore include some multiple-counting between providers.
- (b) 'Enrolled 1 Dec' is the population during the week of 1 December 2008; 'All' refers to the complete academic year.
- (c) Includes full-time, part-time and work-based learners.
- (d) Includes WBL subsidiaries of FE institutions.
- (e) In contrast to table F1.1, this table allocates learners to the HE columns if any of their learning activities is at HE level.
- (f) The allocation to FE level or HE level columns is made independently of the FE, HE or WBL overarching programme.
- (g) Includes local authority community learning where there is a formal enrolment with an FE institution.
- (h) Numbers greater than 0 and less than 5 have been replaced by *. Other figures are rounded to the nearest 5 and there may be slight discrepancies between the sums of constituent items and the independently rounded totals.

Table F1.3a Numbers of full-time learners enrolled at FE institutions 2008/09 (a-i)

Institution	Numbers					
	Learners with FE level highest qualification pursued		Learners with HE level highest qualification pursued		Total	
	All	Enrolled 1 Dec	All	Enrolled 1 Dec	All	Enrolled 1 Dec
Barry College	1,745	1,575	5	5	1,750	1,580
Bridgend College	2,195	2,040	30	30	2,225	2,070
Coleg Sir Gar	2,535	2,420	255	250	2,790	2,670
Coleg Ceredigion	620	585	*	*	625	590
Deeside College	1,990	1,840	*	*	1,995	1,845
Coleg Glan Hafren	2,445	2,340	15	*	2,460	2,345
Gorseinon College	2,135	2,025	0	0	2,135	2,025
Coleg Gwent	6,210	5,840	10	10	6,215	5,850
Coleg Llandrillo	3,260	3,155	210	200	3,465	3,355
Coleg Llysfas	225	215	*	*	225	215
Coleg Meirion Dwyfor	980	960	140	140	1,120	1,100
Pembrokeshire College	1,515	1,520	0	0	1,515	1,520
Coleg Morgannwg	2,330	2,120	*	*	2,330	2,120
Coleg Powys	1,035	960	0	0	1,035	960
St David's Catholic College	1,290	1,230	0	0	1,290	1,230
Swansea College	2,460	2,040	5	5	2,465	2,050
Welsh College of Horticulture	345	320	*	0	345	320
Yale College	3,450	3,175	30	30	3,480	3,200
Ystrad Mynach College	1,725	1,705	0	0	1,725	1,705
WEA South	25	25	0	0	25	25
Coleg Menai	1,590	1,530	0	0	1,590	1,530
Neath Port Talbot College	3,055	2,880	50	45	3,100	2,925
Coleg Harlech/WEA (North)	105	100	0	0	105	100
Total (including any multiple-counting between providers)	43,265	40,600	760	725	44,025	41,325
Total unique learners						43,640

Source: LLWR (Lifelong Learning Wales Record) post-16 database

- (a) Counts are based on providers' own learner identifiers and therefore include some multiple-counting between providers.
- (b) 'Enrolled 1 Dec' is the population during the week of 1 December 2008; 'All' refers to the complete academic year.
- (c) A full-time learner is one whose total guided contact hours across all their learning activities amounts to at least 450 hours.
- (d) Excludes learners pursuing any work-based learning programme.
- (e) Excludes learners enrolled at HE institutions and franchised in to FE institutions.
- (f) Includes local authority community learning where there is a formal enrolment with an FE institution.
- (g) In contrast to table F1.1, this table allocates learners to the HE columns if any of their learning activities is at HE level.
- (h) The allocation to FE level or HE level columns is made independently of the overarching programme.
- (i) Numbers greater than 0 and less than 5 have been replaced by *. Other figures are rounded to the nearest 5 and there may be slight discrepancies between the sums of constituent items and the independently rounded totals.

Table F1.3b Numbers of part-time learners enrolled at FE institutions 2008/09 (a-i)*Numbers*

Institution	Learners with FE level highest qualification pursued		Learners with HE level highest qualification pursued		Total	
	All	Enrolled 1 Dec	All	Enrolled 1 Dec	All	Enrolled 1 Dec
Barry College	4,605	3,055	105	90	4,710	3,145
Bridgend College	7,705	4,960	55	45	7,760	5,005
Coleg Sir Gar	5,100	3,730	210	200	5,310	3,935
Coleg Ceredigion	1,985	920	35	30	2,020	950
Deeside College	7,050	3,990	360	230	7,410	4,220
Coleg Glan Hafren	6,620	4,885	195	70	6,815	4,955
Gorseinon College	2,280	1,725	25	20	2,305	1,745
Coleg Gwent	21,525	14,195	155	110	21,680	14,305
Coleg Llandrillo	12,210	7,035	805	760	13,020	7,795
Coleg Llysfas	2,145	945	95	70	2,235	1,015
Coleg Meirion Dwyfor	2,810	2,100	130	130	2,940	2,230
Pembrokeshire College	4,765	2,115	165	120	4,930	2,235
Coleg Morgannwg	7,335	4,395	80	60	7,415	4,455
Coleg Powys	3,655	1,565	80	50	3,735	1,615
St David's Catholic College	35	30	0	0	35	30
Swansea College	8,910	4,845	165	100	9,075	4,950
Welsh College of Horticulture	2,810	1,800	135	110	2,945	1,910
Yale College	7,965	3,760	195	180	8,155	3,940
Ystrad Mynach College	6,120	4,120	70	55	6,190	4,175
WEA South	5,510	2,900	5	0	5,515	2,900
YMCA	4,010	745	0	0	4,010	745
Coleg Menai	5,060	2,935	115	85	5,175	3,020
Neath Port Talbot College	7,260	4,870	140	100	7,400	4,975
Coleg Harlech/WEA (North)	4,220	2,070	0	0	4,220	2,070
Total (including any multiple-counting between providers)	141,690	83,695	3,315	2,620	145,010	86,315
Total unique learners					136,315	

Source: LLWR (Lifelong Learning Wales Record) post-16 database

- (a) Counts are based on providers' own learner identifiers and therefore include some multiple-counting between providers.
- (b) 'Enrolled 1 Dec' is the population during the week of 1 December 2008; 'All' refers to the complete academic year.
- (c) A part-time learner is one whose total guided contact hours across all their learning activities amounts to less than 450 hours.
- (d) Excludes learners pursuing any work-based learning programme.
- (e) Excludes learners enrolled at HE institutions and franchised in to FE institutions.
- (f) Includes local authority community learning where there is a formal enrolment with an FE institution.
- (g) In contrast to table F1.1, this table allocates learners to the HE columns if any of their learning activities is at HE level.
- (h) The allocation to FE level or HE level columns is made independently of the overarching programme.
- (i) Numbers greater than 0 and less than 5 have been replaced by *. Other figures are rounded to the nearest 5 and there may be slight discrepancies between the sums of constituent items and the independently rounded totals.

Table F1.3c Numbers of learners on work-based learning programmes at FE institutions 2008/09 (a-h)

Institution	Numbers					
	Learners with FE level highest qualification pursued		Learners with HE level highest qualification pursued		Total	
	All	Enrolled 1 Dec	All	Enrolled 1 Dec	All	Enrolled 1 Dec
Barry College	1,440	830	105	75	1,550	905
Bridgend College	145	130	*	0	145	130
Coleg Sir Gar	700	410	60	45	760	455
Coleg Ceredigion	60	55	30	25	90	80
Deeside College	1,845	1,045	205	120	2,045	1,160
Coleg Glan Hafren	225	190	*	0	225	190
Gorseinon College	245	145	20	15	260	160
Coleg Gwent	330	285	*	*	330	285
Coleg Llandrillo	1,695	860	170	90	1,865	950
Coleg Lllysfas	270	205	70	45	340	250
Coleg Meirion Dwyfor	55	30	*	0	60	30
Merthyr Tydfil College WBL	375	185	0	0	375	185
Pembrokeshire College	565	265	*	*	565	270
Coleg Morgannwg	155	115	0	0	155	115
Coleg Powys	195	160	0	0	195	160
Swansea College	840	495	85	65	925	565
Welsh College of Horticulture	350	195	*	*	350	195
Yale College	1,180	610	55	45	1,240	655
Ystrad Mynach College	390	260	10	*	400	265
Coleg Menai	550	415	0	0	550	415
Neath Port Talbot College	645	365	35	15	680	380
Total (including any multiple-counting between providers)	12,265	7,265	850	550	13,115	7,810
Total unique learners						12,815

Source: LLWR (Lifelong Learning Wales Record) post-16 database

- (a) Counts are based on providers' own learner identifiers and therefore include some multiple-counting between providers.
- (b) 'Enrolled 1 Dec' is the population during the week of 1 December 2008; 'All' refers to the complete academic year.
- (c) A learner pursuing any WBL programme is designated as work-based learning.
- (d) Some learners included above may also be pursuing non-WBL programmes at some point in the year.
- (e) Includes WBL subsidiaries of FE institutions.
- (f) In contrast to table F1.1, this table allocates learners to the HE columns if any of their learning activities is at HE level.
- (g) The allocation to FE level or HE level columns is made independently of the overarching programme.
- (h) Numbers greater than 0 and less than 5 have been replaced by *. Other figures are rounded to the nearest 5 and there may be slight discrepancies between the sums of constituent items and the independently rounded totals.

Table F1.4 Student load for learners at FE institutions (a-f)

Institution	Numbers				
	2004/05	2005/06	2006/07	2007/08	2008/09
Barry College	2,395	2,625	2,590	2,590	2,540
Bridgend College	3,455	3,575	3,405	3,085	3,055
Coleg Sir Gar	3,865	3,820	3,885	3,595	3,580
Coleg Ceredigion	800	900	905	840	765
Deeside College	1,840	2,045	2,370	2,530	2,530
Coleg Glan Hafren	4,460	4,750	4,445	4,390	3,810
Gorseinon College	2,290	2,350	2,250	2,375	2,525
Coleg Gwent	9,005	8,900	8,705	8,810	8,730
Coleg Llandrillo	4,460	4,940	4,695	4,735	5,185
Coleg Llysfasi	380	430	475	465	410
Coleg Meirion Dwyfor	1,085	1,080	1,125	1,185	1,235
Merthyr Tydfil College (to 2005/06)	1,215	1,190	.	.	.
Pembrokeshire College	2,605	2,605	2,405	2,125	1,945
Coleg Morgannwg	3,740	3,595	3,765	3,315	3,265
Coleg Powys	1,370	1,400	1,355	1,340	1,285
St David's Catholic College	1,170	1,235	1,145	1,240	1,310
Swansea College	3,320	3,585	4,020	3,500	3,380
Welsh College of Horticulture	605	635	540	545	510
Yale College	4,390	4,285	4,200	4,210	4,260
Ystrad Mynach College	2,555	2,595	2,830	2,950	2,635
WEA South	490	460	440	505	335
YMCA	110	120	120	125	165
Coleg Menai	2,095	2,540	2,445	2,380	2,250
Neath Port Talbot College	4,485	4,790	4,325	3,965	3,975
Coleg Harlech/WEA (North)	455	470	465	385	405
Total	62,640	64,920	62,890	61,190	60,085
Total excluding Merthyr Tydfil College	61,425	63,730	62,890	61,190	60,085

Source: LLWR (Lifelong Learning Wales Record) post-16 database

(a) FTE=Full Time Equivalent.

(b) The student load methodology has been designed purely for the purpose of this volume and may not have wider applicability.

(c) Merthyr Tydfil College is included in years up to and including 2005/06. However, following its merger into the University of Glamorgan in 2006, it is excluded from the figures for 2006/07 onwards.

(d) Each learner's student load has been derived by dividing his or her guided contact hours for the year by the mean for a full-time learner, with the result capped to 1 FTE at most.

(e) The calculation includes full-time and part-time learners at FEIs but excludes WBL learners.

(f) Numbers greater than 0 and less than 5 have been replaced by *. Other figures are rounded to the nearest 5 and there may be slight discrepancies between the sums of constituent items and the independently rounded totals.

Table F1.5 Numbers of learners (FE and WBL) enrolled at FE and HE institutions 2008/09 (a-i)

Institution	Numbers							
	Full-time learners		Part-time learners		Work-based learners		Total	
	All	Enrolled 1 Dec	All	Enrolled 1 Dec	All	Enrolled 1 Dec	All	Enrolled 1 Dec
Barry College	1,750	1,580	4,710	3,145	1,550	905	8,010	5,635
Bridgend College	2,205	2,050	7,750	4,995	145	130	10,100	7,170
Coleg Sir Gar	2,550	2,435	5,235	3,855	760	455	8,545	6,750
Coleg Ceredigion	625	590	2,020	950	90	80	2,735	1,620
Deeside College	1,995	1,845	7,405	4,220	2,045	1,160	11,445	7,225
Coleg Glan Hafren	2,460	2,345	6,795	4,940	225	190	9,480	7,480
Gorseinon College	2,135	2,025	2,305	1,745	260	160	4,700	3,930
Coleg Gwent	6,215	5,850	21,680	14,305	330	285	28,225	20,440
Coleg Llandrillo	3,285	3,175	12,360	7,155	1,865	950	17,510	11,280
Coleg Llysfas	225	215	2,195	975	340	250	2,760	1,440
Coleg Meirion Dwyfor	1,120	1,100	2,930	2,220	60	30	4,105	3,350
Merthyr Tydfil College WBL	0	0	0	0	375	185	375	185
Pembrokeshire College	1,515	1,520	4,930	2,235	565	270	7,015	4,025
Coleg Morgannwg	2,330	2,120	7,405	4,455	155	115	9,895	6,690
Coleg Powys	1,035	960	3,735	1,615	195	160	4,965	2,735
St David's Catholic College	1,290	1,230	35	30	0	0	1,325	1,260
Swansea College	2,460	2,045	9,065	4,940	925	565	12,455	7,550
Welsh College of Horticulture	345	320	2,945	1,910	350	195	3,645	2,425
Yale College	3,455	3,175	8,095	3,880	1,240	655	12,785	7,710
Ystrad Mynach College	1,725	1,705	6,190	4,175	400	265	8,315	6,145
WEA South	25	25	5,515	2,900	0	0	5,545	2,930
YMCA	0	0	4,010	745	0	0	4,010	745
Coleg Menai	1,590	1,530	5,165	3,010	550	415	7,305	4,955
Neath Port Talbot College	3,060	2,885	7,370	4,950	680	380	11,110	8,215
Coleg Harlech/WEA (North)	105	100	4,220	2,070	0	0	4,325	2,170
Total (including any multiple-counting between providers)	43,510	40,820	144,065	85,420	13,115	7,810	200,690	134,050
HE Institutions								
University of Glamorgan	1,145	1,115	3,365	2,780				
Aberystwyth University	0	0	2,370	1,965				
Bangor University	5	5	4,785	3,440				
Cardiff University	0	0	1,890	1,460				
Swansea University	0	0	3,640	2,950				
University of Wales Institute, Cardiff	115	115	10	10				
University of Wales, Newport	160	150	75	30				
North East Wales Institute of Higher Education	0	0	0	0				
Swansea Metropolitan University	105	95	50	50				
Trinity College Carmarthen	0	0	0	0				
Total	1,530	1,480	16,185	12,685				

Source: LLWR (Lifelong Learning Wales Record) post-16 database

2008/09 HESA Student Record - registration population - learner basis

- (a) Counts are based on providers' own learner identifiers and therefore include some multiple-counting between providers.
(b) 'Enrolled 1 Dec' is the population during the week of 1 December 2008; 'All' refers to the complete academic year.
(c) Includes full-time, part-time and work-based learners.
(d) A learner pursuing any WBL programme is designated as work-based learning.
(e) Includes WBL subsidiaries of FE institutions but excludes WBL subsidiaries of HE institutions.
(f) This table excludes learning programmes designated as higher education in their entirety.
(g) Includes local authority community learning where there is a formal enrolment with an FE institution.

Table F1.6 Numbers of learners (FE, HE and WBL) taught at FE institutions 2008/09 (a-h)

Institution	Numbers			
	FE, HE and WBL learners	Third Party	Franchised in from HE institutions	Learners Taught
Barry College	8,010	2,160	375	6,220
Bridgend College	10,135	1,710	1,015	9,435
Coleg Sir Gar	8,860	1,125	635	8,370
Coleg Ceredigion	2,735	0	40	2,775
Deeside College	11,445	90	140	11,495
Coleg Glan Hafren	9,500	2,575	90	7,015
Gorseinon College	4,700	0	65	4,765
Coleg Gwent	28,225	10,135	445	18,535
Coleg Llandrillo	18,350	0	75	18,425
Coleg Llysfasi	2,800	0	15	2,815
Coleg Meirion Dwyfor	4,120	0	60	4,180
Merthyr Tydfil College WBL	375	0	.	375
Pembrokeshire College	7,015	*	505	7,515
Coleg Morgannwg	9,900	1,745	420	8,575
Coleg Powys	4,965	645	160	4,480
St David's Catholic College	1,325	0	0	1,325
Swansea College	12,465	415	435	12,485
Welsh College of Horticulture	3,645	0	60	3,705
Yale College	12,875	135	105	12,850
Ystrad Mynach College	8,315	255	335	8,395
WEA South	5,545	0	0	5,545
YMCA	4,010	0	0	4,010
Coleg Menai	7,315	0	325	7,645
Neath Port Talbot College	11,180	1,690	515	10,000
Coleg Harlech/WEA (North)	4,325	0	0	4,325
Total (including any multiple-counting between providers)	202,145	22,695	5,820	185,270

Source: LLWR (Lifelong Learning Wales Record) post-16 database

2008/09 HESA Student Record - registration population - learner basis

- (a) Counts are based on providers' own learner identifiers and therefore include some multiple-counting between providers.
- (b) Includes full-time, part-time and work-based learners.
- (c) Includes WBL subsidiaries of FE institutions.
- (d) Includes local authority community learning where there is a formal enrolment with an FE institution.
- (e) Third party figures indicate where the learning delivery is by a body other than that at which the learner is enrolled.
- (f) Third party figures exclude arrangements between an FE institution and its WBL subsidiary.
- (g) The main component of third party provision is learning contracted in to LEAs. - see table L1.1
- (h) Numbers greater than 0 and less than 5 have been replaced by *. Other figures are rounded to the nearest 5 and there may be slight discrepancies between the sums of constituent items and the independently rounded totals.

Table F1.7a Numbers of Welsh for Adults learners and their learning activities at FE and HE institutions (standard registration population) 2008/09 (a-h)

Institutions serving as Welsh for Adults Centres (a)	<i>Numbers</i>	
	Learners (d)	Enrolments (d)(g)
University of Glamorgan	1,720	1,900
Aberystwyth University	2,370	3,525
Bangor University	4,790	6,550
Cardiff University	1,890	2,070
Swansea University	3,640	4,925
Coleg Gwent (b)(c)	2,335	4,800
Total at FE and HE institutions	16,745	23,770

Source: LLWR (Lifelong Learning Wales Record) post-16 database
2008/09 HESA Student Record (f)

- (a) The Welsh for Adults Centres comprise five HE institution and one FE institution (Coleg Gwent).
(b) The learner count for Coleg Gwent is based on unique learner identifiers and its enrolment count is of learning activities.
(c) The type of learning programme (LP17) is used to separate Welsh for Adults programmes from othe Coleg Gwent data.
(d) Learners and enrolments at the remaining five centres are derived from the HESA Student Record using the standard registration population - see Appendix A.
(e) Students on Welsh for Adults courses are included regardless of the age of the learner.
(f) Excludes enrolments at the University of Wales Lampeter - no longer submitted to HESA.
(g) The same learner may be enrolled on more than one course enrolment / learning activity.
(h) Numbers greater than 0 and less than 5 have been replaced by *. Other figures are rounded to the nearest 5 and there may be slight discrepancies between the sums of constituent items and the independently rounded totals.

Table F1.7b Numbers of Welsh for Adults learners and their learning activities at FE and HE institutions (session population) 2008/09 (a-h)

Institutions serving as Welsh for Adults Centres (a)	<i>Numbers</i>	
	Learners (d)	Enrolments (d)(g)
University of Glamorgan	1,830	2,460
Aberystwyth University	2,455	3,625
Bangor University	5,780	9,010
Cardiff University	2,070	2,265
Swansea University	3,750	5,215
Coleg Gwent (b)(c)	2,335	4,800
Total at FE and HE institutions	18,220	27,375

Source: LLWR (Lifelong Learning Wales Record) post-16 database
2008/09 HESA Student Record (f)

- (a) The Welsh for Adults Centres comprise five HE institution and one FE institution (Coleg Gwent).
(b) The learner count for Coleg Gwent is based on unique learner identifiers and its enrolment count is of learning activities.
(c) The type of learning programme (LP17) is used to separate Welsh for Adults programmes from othe Coleg Gwent data.
(d) Learners and enrolments at the remaining five centres are derived from the HESA Student Record using the session population, for the purpose of this table - see Appendix A.
(e) Students on Welsh for Adults courses are included regardless of the age of the learner.
(f) Excludes enrolments at the University of Wales Lampeter - no longer submitted to HESA.
(g) The same learner may be enrolled on more than one course enrolment / learning activity.
(h) Numbers greater than 0 and less than 5 have been replaced by *. Other figures are rounded to the nearest 5 and there may be slight discrepancies between the sums of constituent items and the independently rounded totals.

Table F2.1: Trends in further education student numbers in December (at FE institutions and HE institutions) by mode of attendance and age 2002/03 to 2008/09 (a-i)

	<i>Numbers</i>						
	Dec-2002	Dec-2003	Dec-2004	Dec-2005	Dec-2006 (r)	Dec-2007 (r)	Dec-2008
Full-time:							
18 & under	28,815	28,525	28,975	30,645	30,945	31,490	32,110
19 & over	10,345	10,890	10,285	10,860	10,680	10,215	10,190
All Ages	39,165	39,415	39,255	41,505	41,630	41,705	42,300
Other:							
18 & under	12,080	12,830	13,670	15,060	15,225	13,240	13,755
19 & over	125,065	123,230	120,705	124,415	122,240	104,500	92,160
All Ages	137,145	136,055	134,375	139,475	137,460	117,735	105,915
All learners:							
18 & under	40,900	41,350	42,645	45,705	46,170	44,730	45,865
19 & over	135,410	134,120	130,990	135,275	132,920	114,710	102,350
All Ages	176,310	175,470	173,635	180,980	179,090	159,440	148,215

Source: For HEI figures: HESA Student Record.
For FEI figures: 2002/03: ISR (Individualised Student Record)
LLWR (Lifelong Learning Wales Record) post-16 database

- (a) Includes further education and higher education institutions in Wales.
(b) Merthyr Tydfil College is included in all years (as part of FE at FEIs up to 2005/06 and as part of FE at HEIs from 2006/07).
(c) Restricted to FE learners enrolled in early December of academic year. Includes learners enrolled at FE institutions who are on work-based learning programmes but excludes those on HE programmes.
(d) Counts are based on providers' own learner identifiers and therefore include some multiple-counting between providers.
(e) 'All Ages' totals and the 19 & over row include instances of unknown age.
(f) Age is as at 31 August of academic year.
(h) Includes local authority community learning where there is a formal enrolment with an FE institution.
(i) Numbers greater than 0 and less than 5 have been replaced by *. Other figures are rounded to the nearest 5 and there may be slight discrepancies between the sums of constituent items and the independently rounded totals.
(r) A data correction, removing learning activities with a very large gap between actual end date and expected end date has been applied retrospectively and is standard from 2008/09 - see Appendix A.

Table F2.2 Trends in further education student numbers (including WBL, excluding HE programmes) at FE institutions by age group 2003/04 to 2008/09 (a-i)

	<i>Provider-learner numbers</i>					<i>Unique learner numbers</i>				
	2004/05	2005/06	2006/07 (r)	2007/08 (r)	2008/09	2004/05	2005/06	2006/07 (r)	2007/08 (r)	2008/09
All learners										
18 & under	51,880	54,790	54,695	51,660	53,055	49,460	51,840	51,110	49,535	50,785
19 & over	199,195	203,680	194,585	163,695	147,635	188,530	191,675	181,090	155,385	140,545
All Ages	251,075	258,465	249,280	215,350	200,690	237,990	243,520	232,200	204,925	191,330

Source: LLWR (Lifelong Learning Wales Record) post-16 database

- (a) Includes further education institutions in Wales, across full academic year (1 August to 31 July).
(b) Merthyr Tydfil College is included in years up to and including 2005/06. However, following its merger into the University of Glamorgan in 2006, it is excluded from the figures for 2006/07 onwards.
(c) Includes learners enrolled at FE institutions who are on work-based learning programmes but excludes those on HE programmes.
(d) Counts in the provider-learner block are based on providers' own learner identifiers and therefore include some multiple-counting between providers.
(e) Counts in the unique learner numbers block are based on Unique Learner Identifiers to remove multiple-counting between providers.
(f) 'All Ages' totals and the 19 & over row include instances of unknown age.
(g) Age is as at 31 August of academic year.
(h) Includes local authority community learning where there is a formal enrolment with an FE institution.
(i) Numbers greater than 0 and less than 5 have been replaced by *. Other figures are rounded to the nearest 5 and there may be slight discrepancies between the sums of constituent items and the independently rounded totals.
(r) A data correction, removing learning activities with a very large gap between actual end date and expected end date has been applied retrospectively and is standard from 2008/09 - see Appendix A.

Table F3.1 Numbers of learners (FE, HE and WBL) enrolled at FE institutions 2008/09 by age group, mode of learning and sex (a-h)

	<i>Numbers</i>		
	Male	Female	Total
Full-time learners aged:			
Under 16	165	115	280
16	7,090	6,800	13,890
17	5,970	6,245	12,215
18	3,080	2,965	6,040
19	1,310	1,220	2,530
20-24	2,050	1,995	4,040
25-39	1,080	2,225	3,305
40-49	290	650	945
50-59	85	200	290
60-64	25	25	50
65+	15	15	30
Full time learners	21,175	22,465	43,640
Part-time learners aged:			
Under 16	2,335	1,830	4,170
16	1,480	1,425	2,905
17	1,740	1,540	3,280
18	2,115	1,810	3,925
19	1,750	1,605	3,355
20-24	6,850	8,125	14,975
25-39	15,915	24,235	40,145
40-49	9,755	16,960	26,715
50-59	6,525	11,495	18,020
60-64	2,520	4,865	7,380
65+	3,735	6,405	10,135
Part time learners	55,305	81,010	136,315
Work-based learners aged:			
Under 16	160	75	235
16	890	500	1,385
17	915	460	1,375
18	825	350	1,175
19	765	275	1,040
20-24	1,640	995	2,635
25-39	1,275	1,615	2,890
40-49	475	995	1,470
50-59	180	375	555
60-64	20	30	50
65+	*	10	10
Work-based learners	7,140	5,675	12,815
All Modes of learning:			
Under 16	2,665	2,020	4,685
16	9,455	8,725	18,180
17	8,620	8,245	16,865
18	6,020	5,125	11,145
19	3,830	3,100	6,930
20-24	10,535	11,110	21,650
25-39	18,265	28,070	46,340
40-49	10,520	18,605	29,125
50-59	6,785	12,075	18,860
60-64	2,565	4,915	7,480
65+	3,755	6,425	10,175
Total	83,620	109,150	192,770

Source: LLWR (Lifelong Learning Wales Record) post-16 database

- (a) Counts are on a unique learner identifier (ULI) basis to eliminate multiple-counting between providers.
- (b) A learner pursuing any WBL programme is designated as work-based learning.
- (c) Non-WBL learners are allocated to either the full-time or the part-time mode of learning using the methodology of notes (d) and (e).
- (d) A full-time learner is one whose total guided contact hours across all their learning activities amount to at least 450 hours.
- (e) A part-time learner is one whose total guided contact hours across all their learning activities amount to less than 450 hours.
- (f) Local authority community learning has been included where there is a formal enrolment with an FE institution.
- (g) Age is as at 31 August 2008; totals include examples of unspecified ages not shown in separate rows.
- (h) Numbers greater than 0 and less than 5 have been replaced by *. Other figures are rounded to the nearest 5 and there may be slight discrepancies between the sums of constituent items and the independently rounded totals.

Table F3.2 Numbers of learners (FE, HE and WBL) enrolled at FE institutions by age group, mode of learning and level 2008/09 (a-l)

	Numbers			
	Learners on FE programmes	Learners on HE programmes	Learners on WBL programmes	Total
Full-time learners aged:				
Under 16	280	0	.	280
16	13,890	0	.	13,890
17	12,210	*	.	12,215
18	5,985	55	.	6,040
19	2,465	65	.	2,530
20-24	3,845	195	.	4,040
25-39	3,195	105	.	3,305
40-49	880	60	.	945
50-59	265	20	.	290
60-64	45	*	.	50
65+	25	5	.	30
Full time learners	43,120	520	.	43,640
Part-time learners aged:				
Under 16	4,170	0	.	4,170
16	2,905	*	.	2,905
17	3,280	0	.	3,280
18	3,900	30	.	3,925
19	3,300	55	.	3,355
20-24	14,775	200	.	14,975
25-39	39,805	340	.	40,145
40-49	26,515	205	.	26,715
50-59	17,945	75	.	18,020
60-64	7,370	10	.	7,380
65+	10,130	5	.	10,135
Part-time learners	135,390	920	.	136,315
All Modes of learning (including work-based learning)				
Under 16	4,450	0	235	4,685
16	16,790	*	1,385	18,180
17	15,490	*	1,375	16,865
18	9,885	85	1,175	11,145
19	5,770	120	1,040	6,930
20-24	18,620	395	2,635	21,650
25-39	43,000	450	2,890	46,340
40-49	27,395	265	1,470	29,125
50-59	18,210	95	555	18,860
60-64	7,415	15	50	7,480
65+	10,155	15	10	10,175
Total	178,515	1,440	12,815	192,770

Source: LLWR (Lifelong Learning Wales Record) post-16 database

- (a) Counts are on a unique learner identifier (ULI) basis to eliminate multiple-counting between providers.
- (b) Includes full-time, part-time and work-based learners.
- (c) Includes WBL subsidiaries of FE institutions.
- (d) A learner pursuing any WBL programme is designated as work-based learning.
- (e) A learner pursuing an HE learning programme but not also pursuing a WBL programme is designated as HE.
- (f) For the purpose of note (e), HE refers only to programmes designated as higher education in their entirety.
- (g) A full-time learner is one whose total guided contact hours across all their learning activities amount to at least 450 hours.
- (h) A part-time learner is one whose total guided contact hours across all their learning activities amount to less than 450 hours.
- (i) Higher education excludes learners enrolled at HE institutions and franchised in to FE institutions.
- (j) Local authority community learning has been included where there is a formal enrolment with an FE institution.
- (k) Age is as at 31 August 2008; totals include examples of unspecified ages not shown in separate rows.
- (l) Numbers greater than 0 and less than 5 have been replaced by *. Other figures are rounded to the nearest 5 and there may be slight discrepancies between the sums of constituent items and the independently rounded totals.

Table F3.3 Numbers of learners (FE, HE and WBL) enrolled at FE institutions 2008/09 by country of domicile, mode of learning and sex (a-i)

	<i>Numbers</i>		
	Male	Female	Total
Full-time learners by country of domicile:			
Wales	20,435	21,775	42,210
England	420	365	785
Scotland	0	*	*
Northern Ireland	0	0	0
UK not known	215	250	465
Channel Islands and Isle of Man	*	0	*
Other EU	10	15	25
Other Overseas	95	60	150
Full-time learners	21,175	22,465	43,640
Part-time learners by country of domicile:			
Wales	52,650	78,100	130,755
England	1,645	1,435	3,075
Scotland	5	5	10
Northern Ireland	0	0	0
UK not known	670	970	1,640
Channel Islands and Isle of Man	0	0	0
Other EU	195	315	510
Other Overseas	80	95	175
Part-time learners	55,305	81,010	136,315
Work-based learners by country of domicile:			
Wales	6,810	5,570	12,385
England	310	85	400
Scotland	0	0	0
Northern Ireland	0	*	*
UK not known	15	15	30
Channel Islands and Isle of Man	0	0	0
Other EU	0	*	*
Other Overseas	0	0	0
Work-based learners	7,140	5,675	12,815
All Modes of learning by country of domicile:			
Wales	79,900	105,450	185,350
England	2,375	1,885	4,260
Scotland	5	5	10
Northern Ireland	0	*	*
UK not known	905	1,230	2,135
Channel Islands and Isle of Man	*	0	*
Other EU	200	330	535
Other Overseas	170	155	325
Total	83,620	109,150	192,770

Source: LLWR (Lifelong Learning Wales Record) post-16 database

- (a) Counts are on a unique learner identifier (ULI) basis to eliminate multiple-counting between providers.
- (b) Includes work-based learning (WBL) subsidiaries of FE institutions.
- (c) A learner pursuing any WBL programme is designated as work-based learning.
- (d) Non-WBL learners are allocated to either the full-time or the part-time mode of learning using the methodology of notes (e) and (f).
- (e) A full-time learner is one whose total guided contact hours across all their learning activities amount to at least 450 hours.
- (f) A part-time learner is one whose total guided contact hours across all their learning activities amount to less than 450 hours.
- (g) Local authority community learning has been included where there is a formal enrolment with an FE institution.
- (h) Totals and sub-totals include some learners (155 in total) where the country of domicile has not been recorded on the LLWR. These learners do not appear in (other) individual rows.
- (i) Numbers greater than 0 and less than 5 have been replaced by *. Other figures are rounded to the nearest 5 and there may be slight discrepancies between the sums of constituent items and the independently rounded totals.

Table F3.4a Numbers of learners (FE, HE and WBL) enrolled at FE institutions 2008/09 by unitary authority of domicile and age group (a-f)

Unitary authority of domicile	Under 16	16	17	18	19	20 to 24	25 to 39
Blaenau Gwent	20	535	400	295	160	545	1,120
Bridgend	25	710	670	430	270	945	2,215
Caerphilly	285	1,275	1,155	660	360	1,175	2,695
Cardiff	585	1,680	1,435	910	530	1,850	4,165
Carmarthenshire	155	1,190	1,040	665	370	1,220	2,295
Ceredigion	275	265	225	185	130	375	685
Conwy	330	680	685	530	360	1,135	2,580
Denbighshire	385	665	625	425	315	935	2,185
Flintshire	305	930	925	595	415	1,200	2,575
Gwynedd	175	890	840	680	420	1,010	2,120
Isle of Anglesey	10	405	335	245	135	490	1,145
Merthyr Tydfil	25	150	140	105	70	260	450
Monmouthshire	40	260	230	200	125	330	895
Neath Port Talbot	65	1,355	1,215	730	485	1,150	2,225
Newport	40	600	700	485	275	1,020	2,195
Pembrokeshire	205	690	690	460	280	805	1,410
Powys	45	540	475	290	185	565	1,375
Rhondda Cynon Taf	350	955	990	740	475	1,385	2,890
Swansea	110	1,705	1,565	915	595	1,950	3,785
The Vale of Glamorgan	380	590	565	360	235	670	1,350
Torfaen	70	465	445	280	195	625	1,515
Wrexham	665	1,130	1,075	590	330	1,160	2,750
Outside Wales or not known	130	525	440	355	215	855	1,720
Total	4,685	18,180	16,865	11,145	6,930	21,650	46,340

(a) Counts are on a unique learner identifier (ULI) basis to eliminate multiple-counting between providers.

(b) Includes work-based learning (WBL) subsidiaries of FE institutions.

(c) Local authority community learning has been included where there is a formal enrolment with an FE institution.

(d) Age is as at 31 August 2008.

(e) Unitary authority of domicile is calculated from the recorded home postcode of the learner.

(f) Numbers greater than 0 and less than 5 have been replaced by *. Other figures are rounded to the nearest 5 and there may be slight discrepancies between the sums of constituent items and the independently rounded totals.

**Table F3.4a (continued) Numbers of learners (FE, HE and WBL) enrolled at
FE institutions 2008/09 by unitary authority of domicile and age group (a-f)**

						<i>Numbers</i>
40 to 49	50 to 59	60 to 64	65 plus	Age not stated	Total	Unitary authority of domicile
725	495	205	310	15	4,825	Blaenau Gwent
1,290	855	340	530	60	8,345	Bridgend
1,680	1,155	510	785	30	11,760	Caerphilly
1,730	890	185	230	160	14,350	Cardiff
1,565	940	365	515	95	10,415	Carmarthenshire
455	310	100	120	25	3,150	Ceredigion
1,805	1,165	475	735	75	10,555	Conwy
1,645	975	415	560	65	9,190	Denbighshire
1,805	1,030	330	385	65	10,555	Flintshire
1,365	990	400	480	80	9,450	Gwynedd
685	485	170	250	50	4,405	Isle of Anglesey
350	210	80	100	10	1,955	Merthyr Tydfil
850	615	340	575	50	4,520	Monmouthshire
1,405	950	425	570	55	10,635	Neath Port Talbot
1,395	855	370	540	65	8,540	Newport
1,005	690	255	305	10	6,805	Pembrokeshire
970	700	325	470	35	5,980	Powys
1,695	1,165	655	815	30	12,145	Rhondda Cynon Taf
2,175	1,345	485	560	55	15,250	Swansea
780	430	145	180	55	5,735	The Vale of Glamorgan
995	770	350	530	35	6,275	Torfaen
1,565	1,000	305	370	75	11,015	Wrexham
1,195	835	255	260	140	6,920	Outside Wales or not known
29,125	18,860	7,480	10,175	1,335	192,770	Total

Source: LLWR (Lifelong Learning Wales Record) post-16 database

Table F3.4b Numbers of learners (FE, HE and WBL) enrolled at FE institutions 2008/09 by unitary authority of domicile and sex (a-e)

Unitary authority of domicile	Numbers		
	Male	Female	Total
Blaenau Gwent	1,950	2,875	4,825
Bridgend	3,860	4,485	8,345
Caerphilly	4,930	6,830	11,760
Cardiff	6,640	7,710	14,350
Carmarthenshire	4,500	5,915	10,415
Ceredigion	1,390	1,755	3,150
Conwy	4,355	6,200	10,555
Denbighshire	3,505	5,685	9,190
Flintshire	4,665	5,890	10,555
Gwynedd	4,015	5,435	9,450
Isle of Anglesey	1,860	2,545	4,405
Merthyr Tydfil	900	1,055	1,955
Monmouthshire	1,630	2,890	4,520
Neath Port Talbot	4,600	6,035	10,635
Newport	3,535	5,000	8,540
Pembrokeshire	3,180	3,625	6,805
Powys	2,400	3,585	5,980
Rhondda Cynon Taf	5,040	7,105	12,145
Swansea	7,170	8,080	15,250
The Vale of Glamorgan	2,585	3,150	5,735
Torfaen	2,435	3,840	6,275
Wrexham	4,655	6,360	11,015
Outside Wales or not known	3,820	3,100	6,920
Total	83,620	109,150	192,770

Source: LLWR (Lifelong Learning Wales Record) post-16 database

- (a) Counts are on a unique learner identifier (ULI) basis to eliminate multiple-counting between providers.
- (b) Includes work-based learning (WBL) subsidiaries of FE institutions.
- (c) Local authority community learning has been included where there is a formal enrolment with an FE institution.
- (d) Unitary authority of domicile is calculated from the recorded home postcode of the learner.
- (e) Numbers greater than 0 and less than 5 have been replaced by *. Other figures are rounded to the nearest 5 and there may be slight discrepancies between the sums of constituent items and the independently rounded totals.

Table F3.5 Numbers of learners (FE, HE and WBL) enrolled at FE institutions 2008/09 by ethnicity, age band and sex (a-e)

Numbers

Aged 18 and under			
Ethnicity	Male	Female	Total
Asian	440	310	745
Black	180	125	310
Mixed	260	250	510
Other	135	175	315
White	23,635	21,270	44,910
Information refused/not known	2,105	1,980	4,085
Total	26,760	24,115	50,875

Aged 19 and over			
Ethnicity	Male	Female	Total
Asian	1,340	2,065	3,405
Black	795	985	1,780
Mixed	360	445	805
Other	525	495	1,020
White	50,480	76,500	126,975
Information refused/not known	3,365	4,545	7,910
Total	56,865	85,035	141,900

All ages			
Ethnicity	Male	Female	Total
Asian	1,780	2,370	4,150
Black	975	1,110	2,085
Mixed	620	700	1,320
Other	660	670	1,335
White	74,115	97,770	171,885
Information refused/not known	5,470	6,530	12,000
Total	83,620	109,150	192,770

Source: LLWR (Lifelong Learning Wales Record) post-16 database

- (a) Counts are on a unique learner identifier (ULI) basis to eliminate multiple-counting between providers.
 (b) Includes work-based learning (WBL) subsidiaries of FE institutions.
 (c) Local authority community learning has been included where there is a formal enrolment with an FE institution.
 (d) Age is as at 31 August 2008.
 (e) Numbers greater than 0 and less than 5 have been replaced by *. Other figures are rounded to the nearest 5 and there may be slight discrepancies between the sums of constituent items and the independently rounded totals.

Table F3.6 Numbers of learners (FE, HE and WBL) enrolled at FE institutions 2008/09 by disability status, age band and sex (a-f)

Numbers

Aged 18 and under

Disability Status	Male	Female	Total
Disabled (affecting learning)	1,345	900	2,245
Not applicable / Not Disabled	25,415	23,215	48,630
	0	0	0
Total	26,760	24,115	50,875

Aged 19 and over

Disability Status	Male	Female	Total
Disabled (affecting learning)	2,315	2,900	5,215
Not applicable / Not Disabled	54,550	82,135	136,685
	0	0	0
Total	56,865	85,035	141,900

All ages

Disability Status	Male	Female	Total
Disabled (affecting learning)	3,660	3,800	7,460
Not applicable / Not Disabled	79,960	105,350	185,310
	0	0	0
Total	83,620	109,150	192,770

Source: LLWR (Lifelong Learning Wales Record) post-16 database

(a) Counts are on a unique learner identifier (ULI) basis to eliminate multiple-counting between providers.

(b) Includes work-based learning (WBL) subsidiaries of FE institutions.

(c) Local authority community learning has been included where there is a formal enrolment with an FE institution.

(d) Disability status is on the basis of the learner's own assessment.

(e) Age is as at 31 August 2008.

(f) Numbers greater than 0 and less than 5 have been replaced by *. Other figures are rounded to the nearest 5 and there may be slight discrepancies between the sums of constituent items and the independently rounded totals.

Table F3.7 Numbers of learners (FE, HE and WBL) enrolled at FE institutions 2008/09 by learning difficulty status, age band and sex (a-e)

Numbers

Aged 18 and under

Learning difficulty status	Male	Female	Total
Learning difficulty	1,425	920	2,345
Not applicable / No learning difficulty	25,335	23,195	48,525
	0	0	0
Total	26,760	24,115	50,875

Aged 19 and over

Learning difficulty status	Male	Female	Total
Learning difficulty	1,665	1,660	3,325
Not applicable / No learning difficulty	55,195	83,375	138,570
	0	0	0
Total	56,865	85,035	141,900

All ages

Learning difficulty status	Male	Female	Total
Learning difficulty	3,090	2,580	5,675
Not applicable / No learning difficulty	80,530	106,570	187,100
	0	0	0
Total	83,620	109,150	192,770

Source: LLWR (Lifelong Learning Wales Record) post-16 database

- (a) Counts are on a unique learner identifier (ULI) basis to eliminate multiple-counting between providers.
- (b) Includes work-based learning (WBL) subsidiaries of FE institutions.
- (c) Local authority community learning has been included where there is a formal enrolment with an FE institution.
- (d) Age is as at 31 August 2008.
- (e) Numbers greater than 0 and less than 5 have been replaced by *. Other figures are rounded to the nearest 5 and there may be slight discrepancies between the sums of constituent items and the independently rounded totals.

Table F3.8 Numbers of learners at FE institutions by deprivation status, sex and age group 2008/09 (a-f)

<i>Numbers</i>			
Welsh domiciled learners in deprived areas (Community first areas)			
Age Group	Male	Female	Total
Under 16	540	455	995
16	2,120	2,000	4,120
17	1,805	1,785	3,590
18	1,310	1,210	2,520
19	785	765	1,550
20-24	2,355	2,760	5,115
25-39	3,820	6,225	10,045
40-49	2,055	3,295	5,350
50-59	1,205	1,965	3,170
60-64	395	730	1,120
65+	570	975	1,540
Not Specified	110	115	225
Total	17,065	22,275	39,340

Learners domiciled outside Wales or with incomplete home postcode information

Age Group	Male	Female	Total
Under 16	85	45	130
16	280	245	525
17	240	200	440
18	225	135	355
19	150	65	215
20-24	505	345	850
25-39	1,020	695	1,715
40-49	640	555	1,195
50-59	395	435	835
60-64	105	150	255
65+	105	155	260
Not Specified	70	70	140
Total	3,820	3,100	6,915

- (a) Counts are on a unique learner identifier (ULI) basis to eliminate multiple-counting between providers.
- (b) The Community First areas methodology differs from that adopted in previous volumes.
- (c) Age is as at 31 August 2008.
- (d) Includes work-based learning (WBL) subsidiaries of FE institutions.
- (e) Includes local authority community learning where there is a formal enrolment with an FE institution.
- (f) Numbers greater than 0 and less than 5 have been replaced by *. Other figures are rounded to the nearest 5 and there may be slight discrepancies between the sums of constituent items and the independently rounded totals.

Table F3.8 (Continued) Numbers of learners at FE institutions by deprivation status, sex and age group 2008/09 (a-f)

Numbers

Welsh domiciled learners outside deprived areas (Community First areas)

Age Group	Male	Female	Total
Under 16	2,040	1,520	3,555
16	7,060	6,475	13,535
17	6,575	6,260	12,840
18	4,485	3,785	8,270
19	2,895	2,270	5,165
20-24	7,675	8,005	15,680
25-39	13,425	21,150	34,575
40-49	7,825	14,755	22,580
50-59	5,185	9,675	14,860
60-64	2,065	4,040	6,100
65+	3,080	5,295	8,375
Not Specified	430	545	975
Total	62,740	83,775	146,515

All learners

Age Group	Male	Female	Total
Under 16	2,665	2,020	4,685
16	9,455	8,725	18,180
17	8,620	8,245	16,865
18	6,020	5,125	11,145
19	3,830	3,100	6,930
20-24	10,535	11,110	21,650
25-39	18,265	28,070	46,340
40-49	10,520	18,605	29,125
50-59	6,785	12,075	18,860
60-64	2,565	4,915	7,480
65+	3,755	6,425	10,175
Not Specified	610	730	1,335
Total	83,620	109,150	192,770

Source: LLWR (Lifelong Learning Wales Record) post-16 database

Table F3.9 Number of distinct learners at FE institutions leaving in academic year 2008/09 by destination and age group (a-h)

Destination	Age Group						
	Under 16	16	17	18	19	20-24	25-39
New programme of learning (not HE)	75	3,640	1,935	860	350	625	545
Higher education	0	25	1,600	780	255	355	270
Education or training - type not known	*	70	60	35	15	35	20
Entering new employment/changing employment	*	320	515	380	165	180	120
Continuing current employment	*	100	230	210	90	170	115
Seeking work /unemployed	15	420	730	435	165	240	200
Self employment	0	10	15	10	10	25	35
Voluntary work	0	5	15	*	*	*	*
Other	30	840	655	405	250	430	300
Not known	90	3,140	2,885	1,495	600	1,060	915
Total	210	8,570	8,640	4,610	1,895	3,125	2,530

(a) Counts are on a unique learner identifier (ULI) basis to eliminate multiple-counting between providers.

(b) Includes work-based learning (WBL) provision at FE institutions.

(c) Local authority community learning has been included where there is a formal enrolment with an FE institution.

(d) Figures comprise the number of distinct learners who have left their most recent learning programme of academic year.

(e) Excludes learners whose latest learning programme is on-going.

(f) Destination is recorded immediately after the end of the learning programme.

(g) Age is as at 31 August 2008.

(h) Numbers greater than 0 and less than 5 have been replaced by *. Other figures are rounded to the nearest 5 and there may be slight discrepancies between the sums of constituent items and the independently rounded totals.

Table F3.9 (Continued) Number of distinct learners at FE institutions leaving in academic year 2008/09 by destination and age group (a-h)

						Numbers
Age Group					Total	Destination
40-49	50-59	60-64	65 plus	Not Specified		
165	40	10	*	*	8,250	New programme of learning (not HE)
70	15	*	0	*	3,370	Higher education
5	*	0	0	0	245	Education or training - type not known
25	5	0	0	0	1,715	Entering new employment/changing employment
45	10	*	*	0	975	Continuing current employment
40	15	0	0	*	2,260	Seeking work /unemployed
15	20	5	*	0	145	Self employment
*	*	*	*	0	40	Voluntary work
85	30	10	*	5	3,040	Other
270	85	10	10	15	10,570	Not known
725	220	40	20	25	30,610	Total

Source: LLWR (Lifelong Learning Wales Record) post-16 database

Table F4.1a Numbers of Learning Activities at FE Institutions by Subject and DCELLS Region of domicile 2008/09 (a-e)

Subject	DCELLS Region of domicile					
	North Wales		Mid Wales		South West Wales	
	Number	Percentage	Number	Percentage	Number	Percentage
Agriculture, Horticulture and Animal Care	3,845	2	1,470	5	1,705	1
Arts and Crafts	5,870	3	895	3	5,360	4
Business/Management/Office Studies	15,100	9	1,830	6	10,640	7
Care/Personal Development(incl Basic Skills)	31,680	18	5,925	21	31,990	22
Catering/Food/Leisure Services/Tourism	7,345	4	1,160	4	3,185	2
Construction & Property (Built Environment)	4,380	3	735	3	5,150	4
Cultural Studies/Languages/Literature	11,460	7	1,565	5	8,200	6
Education/Training/Teaching	9,485	6	525	2	5,375	4
Engineering	5,425	3	795	3	5,050	4
Environment Protection/Energy/Cleansing/Security	655	0	175	1	935	1
Health Care/Medicine/Health & Safety	16,845	10	3,440	12	11,920	8
Humanities	1,895	1	275	1	2,210	2
Information Technology & Information	23,815	14	4,215	15	18,045	13
Logistics/Distribution/Transport/Driving	520	0	80	0	390	0
Manufacturing/Production Work	940	1	115	0	825	1
Media/Communication/Publishing	13,605	8	2,285	8	11,305	8
Oil/Mining/Plastics/Chemicals	105	0	5	0	125	0
Performing Arts	1,755	1	340	1	2,165	2
Sales, Marketing and Retailing	1,350	1	60	0	745	1
Sciences & Mathematics	11,765	7	1,655	6	11,940	8
Services to Industry & Commerce	490	0	50	0	655	0
Social Sciences	1,245	1	205	1	1,925	1
Sports, Games and Recreation	2,305	1	1,090	4	2,870	2
Not specified	1,395	.	50	.	1,280	.
Total	173,275		28,935		143,995	

(a) Subjects are derived from the first letter of the LearnDirect Classification System (LDCS) codes.

(b) DCELLS Region of domicile is based on the home postcode of the learner.

(c) 'Other' column consists of learners domiciled outside of Wales and/or where postcode information is incomplete.

(d) Percentages are calculated as a proportion of the total excluding subject not known.

(e) Numbers greater than 0 and less than 5 have been replaced by *. Other figures are rounded to the nearest 5 and there may be slight discrepancies between the sums of constituent items and the independently rounded totals.

Table F4.1a (continued) Numbers of Learning Activities at FE Institutions by Subject and Region of domicile 2008/09 (a-e)

DCELLS Region of domicile						Subject
South East Wales		Other		Total		
Number	Percentage	Number	Percentage	Number	Percentage	
3,070	1	775	4	10,865	2	Agriculture, Horticulture and Animal Care
10,165	4	705	4	22,995	4	Arts and Crafts
17,170	6	1,705	9	46,445	7	Business/Management/Office Studies
66,665	25	3,840	21	140,100	22	Care/Personal Development(incl Basic Skills)
6,040	2	425	2	18,155	3	Catering/Food/Leisure Services/Tourism
8,200	3	555	3	19,010	3	Construction & Property (Built Environment)
22,225	8	1,315	7	44,770	7	Cultural Studies/Languages/Literature
4,495	2	715	4	20,595	3	Education/Training/Teaching
8,280	3	980	5	20,530	3	Engineering
780	0	70	0	2,615	0	Environment Protection/Energy/Cleansing/Security
20,860	8	1,735	9	54,800	9	Health Care/Medicine/Health & Safety
5,215	2	180	1	9,770	2	Humanities
45,605	17	1,695	9	93,380	15	Information Technology & Information
365	0	120	1	1,475	0	Logistics/Distribution/Transport/Driving
1,310	0	195	1	3,380	1	Manufacturing/Production Work
18,075	7	1,330	7	46,605	7	Media/Communication/Publishing
80	0	20	0	340	0	Oil/Mining/Plastics/Chemicals
3,855	1	290	2	8,405	1	Performing Arts
1,770	1	110	1	4,035	1	Sales, Marketing and Retailing
15,660	6	1,250	7	42,265	7	Sciences & Mathematics
560	0	80	0	1,835	0	Services to Industry & Commerce
2,660	1	175	1	6,215	1	Social Sciences
3,505	1	295	2	10,070	2	Sports, Games and Recreation
2,120	.	85	.	4,935	.	Not specified
268,735		18,650		633,590		Total

Table F4.1b Numbers of learning activities at FE institutions 2008/09 by subject and Age Group (a-e)

Subject	Under 16	16	17	18	19	20 to 24
Agriculture, Horticulture and Animal Care	345	1,510	1,500	870	430	1,060
Arts and Crafts	185	2,775	2,560	1,735	585	1,075
Business/Management/Office Studies	285	9,980	10,125	5,355	2,420	3,985
Care/Personal Development(incl Basic Skills)	3,415	35,110	27,040	13,810	6,945	14,680
Catering/Food/Leisure Services/Tourism	495	2,570	2,020	1,190	670	1,790
Construction & Property (Built Environment)	1,095	4,185	2,955	1,850	1,240	2,935
Cultural Studies/Languages/Literature	375	4,390	3,670	1,655	1,010	4,315
Education/Training/Teaching	105	4,130	2,350	1,275	920	2,135
Engineering	950	3,755	3,275	2,540	1,510	3,290
Environment Protection/Energy/Cleansing/Security	90	410	275	145	85	310
Health Care/Medicine/Health & Safety	560	7,810	6,005	3,590	2,080	6,755
Humanities	30	2,850	2,385	865	330	570
Information Technology & Information	480	14,355	12,015	6,190	2,900	6,985
Logistics/Distribution/Transport/Driving	25	110	125	135	40	120
Manufacturing/Production Work	75	165	270	240	185	690
Media/Communication/Publishing	270	13,550	10,965	5,250	2,235	3,865
Oil/Mining/Plastics/Chemicals	25	10	25	40	25	80
Performing Arts	300	2,015	2,135	930	410	645
Sales, Marketing and Retailing	65	610	540	315	190	610
Sciences & Mathematics	260	13,805	10,465	4,645	2,130	3,790
Services to Industry & Commerce	*	85	155	185	190	470
Social Sciences	55	1,755	1,700	715	325	545
Sports, Games and Recreation	55	3,980	3,120	1,305	455	485
Not specified	60	880	730	420	210	530
Total	9,605	130,785	106,405	55,260	27,510	61,725

(a) Includes work-based learning (WBL) subsidiaries of FE institutions.

(b) Local authority community learning has been included where there is a formal enrolment with an FE institution.

(c) Subjects are derived from the first letter of the LearnDirect Classification System (LDCS) codes.

(d) Age is as at 31 August 2008.

(e) Numbers greater than 0 and less than 5 have been replaced by *. Other figures are rounded to the nearest 5 and there may be slight discrepancies between the sums of constituent items and the independently rounded totals.

Table F4.1b (continued) Numbers of learning activities at FE institutions 2008/09 by subject and Age Group (a-e)

							<i>Numbers</i>
25 to 39	40 to 49	50 to 59	60 to 64	65 plus	Age not stated	Total	Subject
1,970	1,415	995	400	285	90	10,865	Agriculture, Horticulture and Animal Care
2,370	2,170	3,160	2,505	3,750	120	22,995	Arts and Crafts
6,935	4,340	2,300	370	260	85	46,445	Business/Management/Office Studies
20,055	9,740	5,040	1,740	2,060	470	140,100	Care/Personal Development(incl Basic Skills)
3,675	2,655	1,840	585	485	175	18,155	Catering/Food/Leisure Services/Tourism
3,060	1,090	430	115	30	25	19,010	Construction & Property (Built Environment)
13,905	6,335	4,325	2,235	2,350	210	44,770	Cultural Studies/Languages/Literature
4,940	3,055	1,290	200	160	40	20,595	Education/Training/Teaching
3,070	1,240	675	125	40	60	20,530	Engineering
555	415	250	40	15	20	2,615	Environment Protection/Energy/Cleansing/Security
13,970	8,630	4,300	615	225	255	54,800	Health Care/Medicine/Health & Safety
1,150	390	300	305	570	25	9,770	Humanities
14,680	12,000	9,125	5,310	9,155	180	93,380	Information Technology & Information
340	320	205	30	10	5	1,475	Logistics/Distribution/Transport/Driving
955	450	255	55	25	10	3,380	Manufacturing/Production Work
4,695	2,535	1,375	745	1,040	85	46,605	Media/Communication/Publishing
70	35	25	5	*	*	340	Oil/Mining/Plastics/Chemicals
565	450	395	170	325	75	8,405	Performing Arts
1,000	445	210	25	10	15	4,035	Sales, Marketing and Retailing
4,735	1,730	555	75	55	15	42,265	Sciences & Mathematics
435	185	95	25	5	*	1,835	Services to Industry & Commerce
705	275	105	15	10	5	6,215	Social Sciences
305	155	85	45	50	40	10,070	Sports, Games and Recreation
1,145	630	260	35	20	5	4,935	Not specified
105,290	60,685	37,595	15,770	20,940	2,020	633,590	Total

Source: LLWR (Lifelong Learning Wales Record) post-16 database

Table F4.2a Numbers of Learning Activities at FE institutions by Sector Subject Area and DCELLS Region of domicile 2008/09 (a-e)

Sector Subject Area	DCELLS Region of domicile					
	North Wales		Mid Wales		South West Wales	
	Number	Percentage	Number	Percentage	Number	Percentage
Health, Public Services and Care	20,295	12	3,540	12	13,680	10
Science and Mathematics	3,760	2	645	2	6,665	5
Agriculture, Horticulture and Animal Care	4,380	3	1,590	5	1,895	1
Engineering and Manufacturing Technologies	7,815	5	1,060	4	7,335	5
Construction, Planning and the Built Environment	4,895	3	785	3	5,105	4
Information and Communication Technology	18,440	11	3,525	12	13,240	9
Retail and Commercial Enterprise	7,865	5	1,520	5	4,655	3
Leisure, Travel and Tourism	3,015	2	1,305	5	3,680	3
Arts, Media and Publishing	9,900	6	1,960	7	9,515	7
History, Philosophy and Theology	980	1	265	1	1,900	1
Social Sciences	975	1	195	1	1,565	1
Languages, Literature and Culture	8,435	5	835	3	6,920	5
Education and Training	9,370	5	445	2	2,720	2
Preparation for Life and Work	61,745	36	9,810	34	55,175	38
Business, Administration and Law	11,360	7	1,460	5	9,500	7
Unknown	40	.	*	.	435	.
Total	173,275		28,935		143,995	

(a) Sector Subject Areas are derived from the LearnDirect Classification System.

(b) Sector Subject Areas are the QCA defined learning areas with some amendments to be consistent with Estyn statistics.

(c) DCELLS Region of domicile is based on the home postcode of the learner.

(d) 'Other' category consists of learners domiciled outside of Wales and missing postcode information.

(e) Percentages are calculated as a proportion of the total excluding subject sector area Not Known.

Table F4.2a (Continued) Numbers of Learning Activities at FE institutions by Sector Subject Area and DCELLS Region of domicile 2008/09 (a-e)

DCELLS Region of domicile					
South East Wales		Other		Total	
Number	Percentage	Number	Percentage	Number	Percentage
23,190	9	1,830	10	62,535	10
8,250	3	455	2	19,775	3
3,535	1	875	5	12,280	2
10,975	4	1,380	7	28,570	5
8,605	3	615	3	20,005	3
36,470	14	1,080	6	72,750	11
11,445	4	515	3	26,000	4
5,505	2	360	2	13,865	2
18,505	7	1,310	7	41,195	7
3,630	1	110	1	6,885	1
1,725	1	130	1	4,595	1
13,870	5	980	5	31,045	5
3,500	1	690	4	16,725	3
104,225	39	7,030	38	237,985	38
15,215	6	1,275	7	38,810	6
90	.	10	.	575	.
268,735		18,650		633,590	

Source: LLWR (Lifelong Learning Wales Record) post-16 database

Table F4.2b Learning Activity completion rates at FE institutions by Sector Subject Area 2008/09 (a-f)

Sector Subject Area	2008/09					
	Long activities		Short activities		All lengths	
	Completed Learning Activities	per cent (d)	Completed Learning Activities	per cent (d)	Completed Learning Activities	per cent (d)
1: Health, Public Services and Care	17,935	86	26,695	97	45,120	92
2: Science and Mathematics	12,630	86	1,280	90	14,045	87
3: Agriculture, Horticulture and Animal Care	4,070	87	3,870	96	7,945	91
4: Engineering and Manufacturing Technologies	11,425	87	4,825	99	16,640	90
5: Construction, Planning and the Built Environment	9,565	85	2,930	98	12,505	88
6: Information and Communication Technology	20,490	88	17,970	91	56,340	89
7: Retail and Commercial Enterprise	10,905	84	6,000	96	17,015	88
7(a): Retailing and Customer Service	1,300	82	405	95	1,815	86
7(b): Hair and Beauty	6,020	85	955	88	6,975	85
7(c): Hospitality and Catering	3,585	84	4,645	97	8,230	91
8: Leisure, Travel and Tourism	8,630	88	1,820	95	10,465	89
9: Arts, Media and Publishing	20,010	87	10,995	91	31,005	88
9(a): Performing Arts	4,695	88	1,310	92	6,005	89
9(b): Art and Design	15,315	86	9,685	91	25,000	88
10: History, Philosophy and Theology	3,055	89	1,360	92	4,495	90
11: Social Sciences	3,105	88	405	95	3,510	89
12: Languages, Literature and Culture	13,955	87	9,755	94	25,540	90
13: Education and Training	4,110	89	4,610	95	8,720	92
14: Preparation for Life and Work	119,530	88	36,495	93	161,960	89
14(a): Independent Living Skills	4,375	91	1,450	94	5,840	91
14(b): Adult Basic Education	12,205	88	9,715	94	25,875	91
14(c): Foundation for Work	99,860	88	19,290	94	120,940	89
14(d): English for Speakers of Other Languages	3,095	76	6,040	88	9,305	84
15: Business, Administration and Law	15,745	88	9,185	97	26,455	91
Total	275,230	87	138,220	94	442,250	90

Source: Lifelong Learning Wales Record (LLWR)

(a) Sector Subject Areas are derived from the LearnDirect Classification System.

(b) Sector Subject Areas are the QCA defined learning areas with some amendments to be consistent with Estyn statistics.

(c) Based on the WAG bulletin 'National Comparators for Further Education and Work-based Learning 2008/09'.

(d) Expressed as a percentage of learning activities completed or withdrawn (i.e. excluding continuing activities).

(e) Activities with unspecified sector subject areas are included in the total but not identified separately.

Table F4.2c Learning Activity attainment rates at FE institutions by Sector Subject Area 2008/09 (a-f)

Sector Subject Area	2008/09					
	Long activities		Short activities		All lengths	
	Attained Learning Activities	per cent (d)	Attained Learning Activities	per cent (d)	Attained Learning Activities	per cent (d)
1: Health, Public Services and Care	14,700	88	22,320	93	37,055	91
2: Science and Mathematics	10,335	82	1,010	83	11,345	82
3: Agriculture, Horticulture and Animal Care	3,265	85	3,330	93	6,595	89
4: Engineering and Manufacturing Technologies	9,705	86	3,595	86	13,585	86
5: Construction, Planning and the Built Environment	8,065	85	2,240	89	10,305	86
6: Information and Communication Technology	15,540	82	14,010	88	31,220	83
7: Retail and Commercial Enterprise	9,450	88	5,025	91	14,515	89
7(a): Retailing and Customer Service	1,165	89	275	90	1,480	90
7(b): Hair and Beauty	5,300	88	865	92	6,165	89
7(c): Hospitality and Catering	2,985	86	3,880	91	6,870	89
8: Leisure, Travel and Tourism	6,495	89	1,475	89	7,980	89
9: Arts, Media and Publishing	16,935	88	8,110	86	25,045	88
9(a): Performing Arts	3,605	83	835	93	4,440	85
9(b): Art and Design	13,330	90	7,280	85	20,605	88
10: History, Philosophy and Theology	2,580	87	790	79	3,365	85
11: Social Sciences	2,665	86	280	77	2,945	85
12: Languages, Literature and Culture	11,910	87	5,885	85	17,820	86
13: Education and Training	2,700	85	3,725	84	6,425	85
14: Preparation for Life and Work	91,135	83	27,160	85	118,745	83
14(a): Independent Living Skills	2,370	81	825	77	3,195	80
14(b): Adult Basic Education	8,150	80	5,790	78	14,305	79
14(c): Foundation for Work	78,700	83	16,170	91	94,955	84
14(d): English for Speakers of Other Languages	1,920	72	4,375	77	6,295	75
15: Business, Administration and Law	10,840	81	5,860	88	16,715	83
Total	216,380	84	104,810	88	323,735	85

Source: Lifelong Learning Wales Record (LLWR)

(a) Sector Subject Areas are derived from the LearnDirect Classification System.

(b) Sector Subject Areas are the QCA defined learning areas with some amendments to be consistent with Estyn statistics.

(c) Based on the WAG bulletin 'National Comparators for Further Education and Work-based Learning 2008/09'.

(d) Expressed as a percentage of completed assessable learning activities.

(e) Activities with unspecified sector subject areas are included in the total but not identified separately.

Table F4.3 Numbers of Learning Activities at FE Institutions by Subject and Credit Level 2008/09 (a-d)

Subject	Credit Level				
	Pre entry Level	Entry Level	NVQ Level 1 or equivalent	NVQ Level 2 or equivalent	NVQ Level 3 or equivalent
Agriculture, Horticulture and Animal Care	65	975	2,600	4,665	1,835
Arts and Crafts	*	1,905	7,720	5,570	6,390
Business/Management/Office Studies	55	885	8,440	19,430	13,065
Care/Personal Development(incl Basic Skills)	535	28,630	39,590	38,550	17,965
Catering/Food/Leisure Services/Tourism	0	1,210	4,510	10,215	1,640
Construction & Property (Built Environment)	0	735	8,485	5,730	2,695
Cultural Studies/Languages/Literature	675	15,675	12,830	7,300	5,400
Education/Training/Teaching	320	315	3,940	5,785	4,300
Engineering	0	660	4,065	7,735	7,650
Environment Protection/Energy/Cleansing/Security	0	175	825	1,265	295
Health Care/Medicine/Health & Safety	0	530	12,915	16,045	18,465
Humanities	0	1,085	1,595	1,055	5,360
Information Technology & Information	40	6,885	39,505	32,335	8,510
Logistics/Distribution/Transport/Driving	0	0	340	835	85
Manufacturing/Production Work	30	175	495	1,805	515
Media/Communication/Publishing	0	630	14,340	18,795	10,820
Oil/Mining/Plastics/Chemicals	0	0	120	140	85
Performing Arts	0	685	1,080	1,660	4,425
Sales, Marketing and Retailing	0	5	845	2,130	810
Sciences & Mathematics	60	235	10,490	19,335	11,830
Services to Industry & Commerce	0	0	20	560	1,200
Social Sciences	0	105	175	585	5,180
Sports, Games and Recreation	0	495	3,845	2,600	2,895
Not specified	0	55	1,910	1,165	135
Total	1,780	62,040	180,685	205,295	131,550

(a) Includes work-based learning (WBL) subsidiaries of FE institutions.

(b) Local authority community learning has been included where there is a formal enrolment with an FE institution.

(c) Subjects are derived from the first letter of the LearnDirect Classification System (LDCS) codes.

(d) Numbers greater than 0 and less than 5 have been replaced by *. Other figures are rounded to the nearest 5 and there may be slight discrepancies between the sums of constituent items and the independently rounded totals.

Table F4.3 (Continued) Numbers of Learning Activities at FE Institutions by Subject and Credit Level 2008/09 (a-d)

Credit Level				Number
HE Level/ NVQ Level 4, 5 or equivalent	Mixed Levels	Not known/ Not Applicable	Total	Subject
120	0	610	10,865	Agriculture, Horticulture and Animal Care
320	0	1,090	22,995	Arts and Crafts
2,220	370	1,985	46,445	Business/Management/Office Studies
385	110	14,330	140,100	Care/Personal Development(incl Basic Skills)
85	0	495	18,155	Catering/Food/Leisure Services/Tourism
185	0	1,185	19,010	Construction & Property (Built Environment)
30	0	2,860	44,770	Cultural Studies/Languages/Literature
5,365	0	570	20,595	Education/Training/Teaching
115	20	285	20,530	Engineering
10	0	45	2,615	Environment Protection/Energy/Cleansing/Security
510	0	6,335	54,800	Health Care/Medicine/Health & Safety
0	0	675	9,770	Humanities
55	0	6,045	93,380	Information Technology & Information
*	0	210	1,475	Logistics/Distribution/Transport/Driving
0	0	355	3,380	Manufacturing/Production Work
210	10	1,805	46,605	Media/Communication/Publishing
0	0	0	340	Oil/Mining/Plastics/Chemicals
*	0	555	8,405	Performing Arts
55	0	190	4,035	Sales, Marketing and Retailing
15	0	295	42,265	Sciences & Mathematics
25	0	30	1,835	Services to Industry & Commerce
5	0	160	6,215	Social Sciences
15	0	215	10,070	Sports, Games and Recreation
195	0	1,470	4,935	Not specified
9,925	505	41,805	633,590	Total

Source: LLWR (Lifelong Learning Wales Record) post-16 database

Table F4.4 Numbers of Learning Activities at FE Institutions by Subject and Welsh Medium status of learning delivery 2008/09 (a-d)

Subject	Welsh Medium Status			Number
	Welsh	Bilingual	English	Total
Agriculture, Horticulture and Animal Care	35	1,645	9,185	10,865
Arts and Crafts	105	735	22,155	22,995
Business/Management/Office Studies	205	4,190	42,055	46,445
Care/Personal Development(incl Basic Skills)	925	4,650	134,525	140,100
Catering/Food/Leisure Services/Tourism	190	1,480	16,485	18,155
Construction & Property (Built Environment)	145	1,295	17,570	19,010
Cultural Studies/Languages/Literature	500	1,465	42,810	44,770
Education/Training/Teaching	25	505	20,065	20,595
Engineering	*	1,030	19,500	20,530
Environment Protection/Energy/Cleansing/Security	0	145	2,475	2,615
Health Care/Medicine/Health & Safety	290	2,375	52,135	54,800
Humanities	125	130	9,520	9,770
Information Technology & Information	115	3,160	90,100	93,380
Logistics/Distribution/Transport/Driving	0	45	1,425	1,475
Manufacturing/Production Work	15	180	3,185	3,380
Media/Communication/Publishing	60	2,240	44,305	46,605
Oil/Mining/Plastics/Chemicals	0	0	340	340
Performing Arts	30	445	7,930	8,405
Sales, Marketing and Retailing	75	150	3,810	4,035
Sciences & Mathematics	50	1,595	40,620	42,265
Services to Industry & Commerce	15	95	1,725	1,835
Social Sciences	15	160	6,040	6,215
Sports, Games and Recreation	10	680	9,375	10,070
Not specified	10	115	4,810	4,935
Total	2,930	28,510	602,150	633,590

Source: LLWR (Lifelong Learning Wales Record) post-16 database

(a) Includes work-based learning (WBL) subsidiaries of FE institutions.

(b) Local authority community learning has been included where there is a formal enrolment with an FE institution.

(c) Subjects are derived from the first letter of the LearnDirect Classification System (LDCS) codes.

(d) Numbers greater than 0 and less than 5 have been replaced by *. Other figures are rounded to the nearest 5 and there may be slight discrepancies between the sums of constituent items and the independently rounded totals.

Table F4.5 Numbers of learning activities at FE institutions by qualification type, age band and sex 2008/09 (a-d)

	Numbers		
	Male	Female	Total
Aged 18 and under:			
A Level / A2	3,905	5,560	9,465
AS Level	8,205	11,115	19,320
Access Certificate/Diploma	205	165	370
First Certificate	290	290	580
First Certificate/Diploma Units	615	425	1,040
First Diploma	1,725	1,420	3,145
GCSE/VCE	2,575	3,015	5,590
HE (excluding NVQs)	245	180	425
Key Skills	51,000	47,260	98,255
NVQ	6,805	6,170	12,975
National Certificate	1,190	770	1,960
National Certificate/Diploma Units	2,555	1,795	4,350
National Diploma	4,225	4,305	8,525
OCN credit(s)	27,755	27,260	55,015
Other	41,375	39,665	81,045
Aged 18 and under	152,665	149,390	302,055
Aged 19 and over:			
A Level / A2	650	740	1,390
AS Level	970	1,250	2,220
Access Certificate/Diploma	715	2,115	2,825
First Certificate	25	20	50
First Certificate/Diploma Units	75	135	210
First Diploma	220	140	360
GCSE/VCE	1,110	2,130	3,240
HE (excluding NVQs)	2,320	3,000	5,320
Key Skills	14,990	16,970	31,960
NVQ	12,310	18,605	30,915
National Certificate	1,250	525	1,780
National Certificate/Diploma Units	720	345	1,065
National Diploma	995	640	1,635
OCN credit(s)	37,510	70,425	107,935
Other	57,820	82,810	140,630
Aged 19 and over	131,680	199,855	331,535
All ages:			
A Level / A2	4,555	6,300	10,855
AS Level	9,175	12,365	21,540
Access Certificate/Diploma	920	2,280	3,195
First Certificate	315	315	630
First Certificate/Diploma Units	690	560	1,250
First Diploma	1,945	1,560	3,505
GCSE/VCE	3,685	5,145	8,825
HE (excluding NVQs)	2,565	3,180	5,740
Key Skills	65,985	64,230	130,215
NVQ	19,110	24,775	43,890
National Certificate	2,440	1,295	3,740
National Certificate/Diploma Units	3,275	2,140	5,415
National Diploma	5,220	4,945	10,165
OCN credit(s)	65,265	97,685	162,955
Other	99,200	122,475	221,675
Total	284,345	349,245	633,590

Source: LLWR (Lifelong Learning Wales Record) post-16 database

(a) Includes work-based learning (WBL) subsidiaries of FE institutions.

(b) Local authority community learning has been included where there is a formal enrolment with an FE institution.

(c) Age is as at 31 August 2008.

(d) Numbers greater than 0 and less than 5 have been replaced by *. Other figures are rounded to the nearest 5 and there may be slight discrepancies between the sums of constituent items and the independently rounded totals.

Table F4.6a Numbers of Awards attained for Learners enrolled at FE institutions by Qualification type and age band 2008/09 (a-f)

Qualification type	Numbers		
	18 and Under	19 and Over	Total
A Level / A2	5,570	2,245	7,815
AS Level	9,880	1,780	11,660
Access Certificate/Diploma	285	1,755	2,040
First Certificate	360	45	405
First Certificate/Diploma Units	730	110	840
First Diploma	2,200	245	2,445
GCSE/VCE	2,405	2,035	4,440
GNVQ/AVCE	105	65	170
Key Skills	52,370	18,890	71,260
NVQ	6,220	15,300	21,525
National Certificate	820	1,190	2,010
National Certificate/Diploma Units	1,950	805	2,755
National Diploma	2,785	885	3,670
OCN credit(s)	40,140	86,040	126,180
Not specified	*	110	115
Other	33,395	71,995	105,390
Total	159,225	203,495	362,720

Source: LLWR (Lifelong Learning Wales Record) post-16 database

- (a) Awards numbers are for those attained during 2008/09 but some may be associated with learning activities which took place in the previous academic year
- (b) Includes work-based learning (WBL) subsidiaries of FE institutions.
- (c) Local authority community learning has been included where there is a formal enrolment with an FE institution.
- (d) Attained awards are those where the result of the award is achieving a pass or higher within the academic year
- (e) Age is as at 31 August 2008.
- (f) Numbers greater than 0 and less than 5 have been replaced by *. Other figures are rounded to the nearest 5 and there may be slight discrepancies between the sums of constituent items and the independently rounded totals.

Table F4.6b Numbers of Learners attaining awards at FE institutions by Qualification type and age band 2008/09 (a-f)

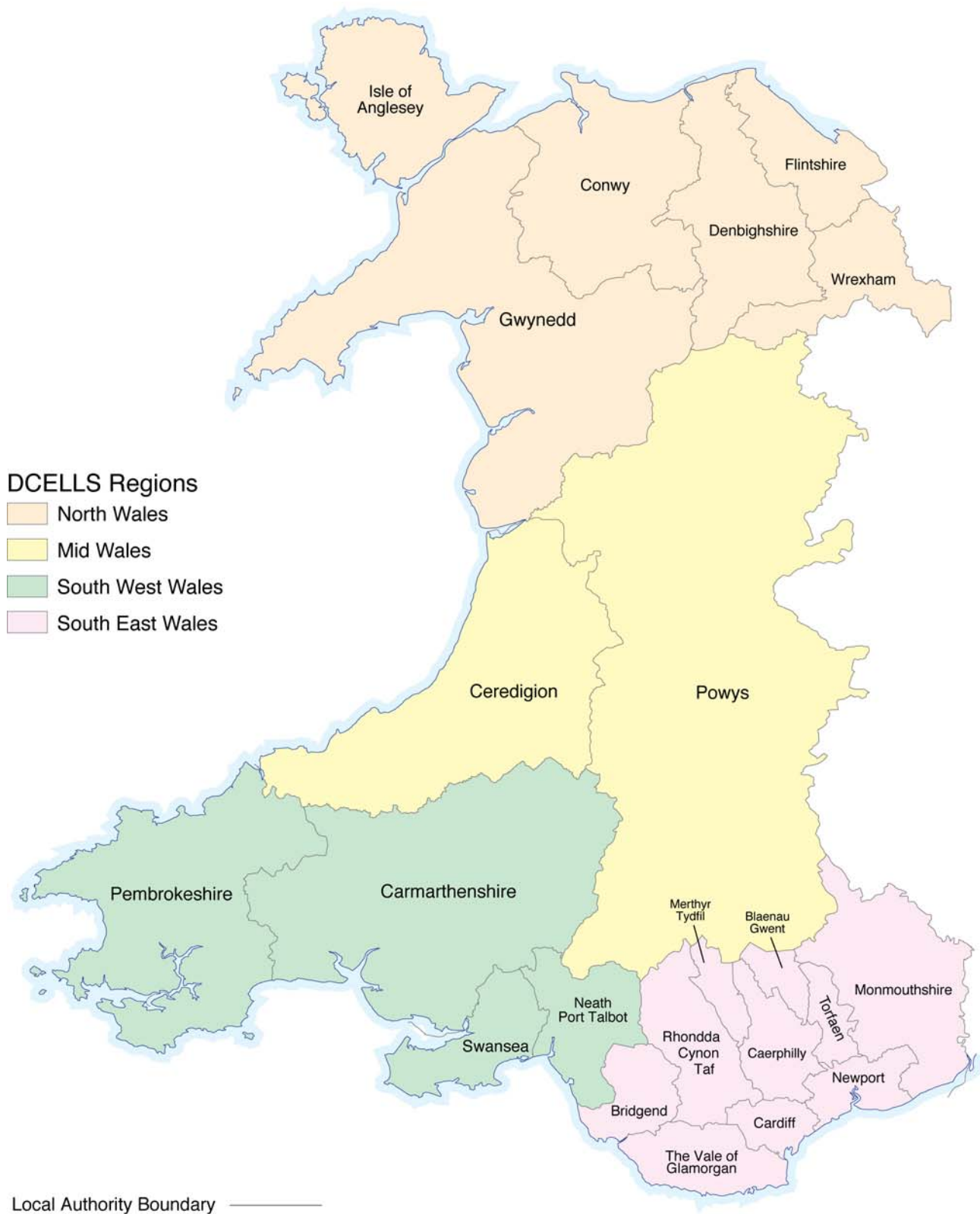
Qualification type	Numbers		
	18 and Under	19 and Over	Total
A Level / A2	2,385	1,305	3,685
AS Level	4,295	1,315	5,615
Access Certificate/Diploma	95	1,290	1,385
First Certificate	260	40	300
First Certificate/Diploma Units	415	75	490
First Diploma	2,160	240	2,400
GCSE/VCE	1,820	1,695	3,510
GNVQ/AVCE	60	30	90
Key Skills	20,650	8,915	29,565
NVQ	5,375	13,915	19,290
National Certificate	800	1,130	1,930
National Certificate/Diploma Units	875	360	1,235
National Diploma	2,760	875	3,635
OCN credit(s)	18,385	41,580	59,965
Not specified	*	110	115
Other	20,155	49,935	70,090
Total (including multiple counting between qualification types)	80,490	122,805	203,295
Total distinct learners gaining awards in academic year	42,615	98,445	141,060

Source: LLWR (Lifelong Learning Wales Record) post-16 database

- (a) Includes work-based learning (WBL) subsidiaries of FE institutions.
- (b) Local authority community learning has been included where there is a formal enrolment with an FE institution.
- (c) Attained awards are those where the result of the award is achieving a pass or higher within the academic year
- (d) Learner counts are on a unique learner basis. However the first total row includes multiple counting between qualification type rows whereas the second total row does not.
- (e) Age is as at 31 August 2008.
- (f) Numbers greater than 0 and less than 5 have been replaced by *. Other figures are rounded to the nearest 5 and there may be slight discrepancies between the sums of constituent items and the independently rounded totals.

SECTION B

LOCAL AUTHORITY COMMUNITY LEARNING IN WALES



Local Authority Community Learning Summary

- 43,485 learners undertook a Local Authority Community Learning activity in 2008/09, 1.5 per cent fewer than in 2007/08.
- 30,460 learners were in-learning during the week of 1 December 2008.
- 10 per cent of learners in the full year were under the age of 25.
- 58 per cent of learners were aged between 25 and 59.
- 33 per cent of learners were aged 60 and over.
- 72 per cent of learners were female.
- 74,800 learning activities were undertaken in 2008/09.
- The most popular subject areas for learning activities were Cultural Studies/Languages/Literature (21 per cent), Information Technology (20 per cent), Arts and Crafts (19 per cent) and Care/Personal Development [including Basic Skills] (19 per cent).

Note: all percentages are as a proportion of the total for which data were available

Learners

Sixteen of the twenty-two Lifelong Learning or equivalent departments at local authorities in Wales, directly or indirectly (excluding 'assisted' provision not returned via the LLWR), delivered community learning in 2008/09 within their authority. In total 43,485 learners were undertaking a local authority community learning programme. Some learners undertook community learning with more than one provider resulting in a total of 45,605 provider learner enrolments.

In 2008/09 there were three main ways that a learner could be engaged in a local authority community learning programme. They could have been:

- receiving community learning by local authority employed staff and enrolled at the local authority (maintained provision);
- receiving community learning by local authority employed staff but enrolled for the learning at an FE institution (contracted-in from FE institutions provision);
- receiving community learning by a third party but enrolled for the learning at the local authority (contracted-out from local authority provision).

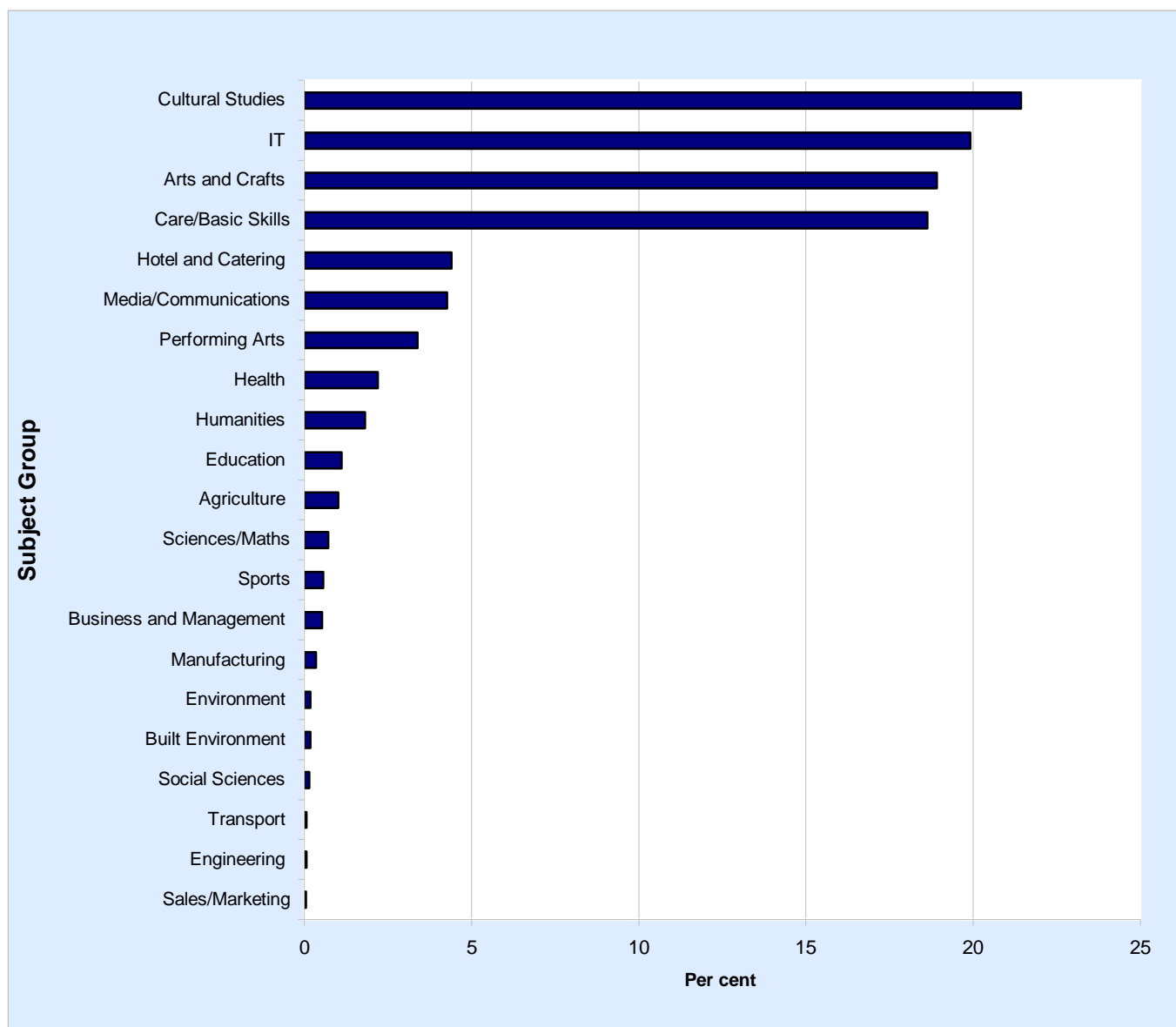
In 2008/09, no local authorities contracted out community learning provision to a third party organisation. The two local authorities which had contracted out provision in 2007/08 have subsequently switched to entirely maintained provision based services. 54 per cent of learners were undertaking maintained provision and the remaining 46 per cent of learners (down from 53 per cent the previous year) were undertaking provision contracted-in from FE institutions.

Learning Activities

The 51,725 learners were undertaking 86,155 learning activities during 2007/08. These learning activities were in a number of different subject areas, with the largest numbers in:

- Cultural Studies/Languages/Literature (21 per cent)
- Information Technology (20 per cent)
- Arts & Crafts (19 per cent)
- Care/Personal Development (including Basic Skills) (19 per cent)

Figure L1: Subject of Study 2008/09



Trends in Learning

The first edition of this volume, produced by ELWa, covering 2003/04 recorded the number of learners in learning on the week of 1 December 2003 who were undertaking Local Authority Community Learning maintained provision to be 16,130 and the number undertaking contracted-in provision to be 25,830. The learner numbers in this edition, for the week of 1 December 2008, show a 1.0 per cent decline in learners on maintained provision since 2003/04 and a 41 per cent decrease in learners on contracted-in provision (including a large component resulting from the transfer of Welsh for Adults learners to HEI-based centres).

In the full year on a comparable basis, local authority community learning underwent a decline in total learners of 1.5 per cent between 2007/08 and 2008/09, a fall in contracted-in provision offsetting a rise in maintained provision.

Table L1.1 Numbers of learners in Local Authority Community Learning by unitary authority and provision type 2008/09 (a-f)

<i>Numbers</i>								
Unitary Authority	Maintained Provision		Contracted-out from local authorities		Contracted-in from FE institutions		Total	
	All	Enrolled 1 Dec	All	Enrolled 1 Dec	All	Enrolled 1 Dec	All	Enrolled 1 Dec
Isle of Anglesey County Council	0	0	0	0	0	0	0	0
Gwynedd County Council	0	0	0	0	0	0	0	0
Conwy County Borough Council	0	0	0	0	0	0	0	0
Denbighshire County Council	0	0	0	0	0	0	0	0
Flintshire County Council	0	0	0	0	0	0	0	0
Wrexham County Borough Council	0	0	0	0	0	0	0	0
Powys County Council	835	330	0	0	0	0	835	330
Ceredigion County Council	565	465	0	0	0	0	565	465
Pembrokeshire County Council	3,620	2,560	0	0	0	0	3,620	2,560
Carmarthenshire County Council	1,540	1,190	0	0	1,185	855	2,720	2,045
City and County of Swansea	2,350	1,750	0	0	15	15	2,360	1,765
Neath Port Talbot County Council	0	0	0	0	1,705	1,215	1,705	1,215
Bridgend County Borough Council	640	535	0	0	1,425	1,115	2,065	1,650
Vale of Glamorgan County Borough Council	3,165	2,205	0	0	335	260	3,500	2,465
Rhondda Cynon Taff County Borough Council	1,570	870	0	0	1,830	995	3,405	1,870
Merthyr Tydfil County Borough Council	300	240	0	0	0	0	300	240
Caerphilly County Borough Council	890	435	0	0	1,220	1,040	2,110	1,470
Blaenau Gwent County Borough Council	0	0	0	0	1,815	1,440	1,815	1,440
Torfaen County Borough Council	1,165	395	0	0	2,690	2,300	3,855	2,695
Monmouthshire County Council	0	0	0	0	1,860	1,300	1,860	1,300
Newport County Borough Council	0	0	0	0	3,260	2,255	3,260	2,255
Cardiff County Council	7,840	5,000	0	0	3,790	2,550	11,630	7,550
Total (including any multiple-counting between providers)	24,475	15,975	0	0	21,130	15,335	45,605	31,310
Total unique learners							43,485	30,460

Source: LLWR (Lifelong Learning Wales Record) post-16 database

- (a) Individual row counts are based on providers' own learner identifiers and their total includes some multiple-counting between providers.
- (b) The total unique learners row removes multiple-counting between providers by counting unique learner identifiers (ULIs).
- (c) 'Enrolled 1 Dec' is the population during the week of 1 December 2008; 'All' refers to the complete academic year.
- (d) Contracted-in learning also contributes towards figures in the FE institution tables, in particular the third party column of Table F1.5.
- (e) Excludes 'assisted' provision (e.g. a significant component of North Wales provision) not present on the LLWR.
- (f) Numbers greater than 0 and less than 5 have been replaced by *. Other figures are rounded to the nearest 5 and there may be slight discrepancies between the sums of constituent items and the independently rounded totals.

Table L1.2a Numbers of learners in Local Authority Community Learning by age group and sex 2008/09 (a-e)

Age Group	Numbers					
	Full academic year			Week of 1 December		
	Male	Female	Total	Male	Female	Total
Under 16	70	120	190	35	35	70
16	180	255	435	105	140	245
17	125	235	365	100	150	250
18	145	215	365	95	130	225
19	125	215	340	65	125	190
20-24	745	1,765	2,510	430	1,045	1,475
25-39	2,460	7,465	9,925	1,575	4,825	6,400
40-49	1,895	5,600	7,490	1,290	3,860	5,150
50-59	1,955	5,370	7,325	1,430	3,970	5,400
60-64	1,345	3,805	5,150	995	2,965	3,960
65+	2,835	6,010	8,840	2,150	4,680	6,830
Not Specified	165	385	555	90	185	275
Total	12,045	31,440	43,485	8,355	22,110	30,460

Source: LLWR (Lifelong Learning Wales Record) post-16 database

- (a) Counts are based on unique learner identifiers (ULIs) to remove multiple-counting between providers.
(b) Includes local authority maintained and contracted-out provision and also contracted-in provision from FE institutions.
(c) Age is as at 31 August 2008
(d) Numbers greater than 0 and less than 5 have been replaced by *. Other figures are rounded to the nearest 5 and there may be slight discrepancies between the sums of constituent items and the independently rounded totals.

Table L1.2b Numbers of learners in Local Authority Community Learning by age group and sex - excluding contracted-in from FE 2008/09 (a-e)

Age Group	Numbers					
	Full academic year			Week of 1 December		
	Male	Female	Total	Male	Female	Total
Under 16	40	95	135	15	20	35
16	85	130	215	45	65	110
17	45	105	155	35	60	90
18	60	90	145	40	50	90
19	40	80	120	20	45	65
20-24	240	830	1,070	120	450	565
25-39	915	3,580	4,495	550	2,095	2,645
40-49	850	2,835	3,685	540	1,840	2,375
50-59	955	3,090	4,045	660	2,155	2,810
60-64	740	2,390	3,130	505	1,785	2,285
65+	1,725	4,070	5,795	1,255	3,050	4,305
Not Specified	100	295	395	45	130	175
Total	5,800	17,590	23,390	3,830	11,730	15,560

Source: LLWR (Lifelong Learning Wales Record) post-16 database

- (a) Counts are based on unique learner identifiers (ULIs) to remove multiple-counting between providers.
(b) Includes maintained and contracted-out provision but excludes contracted-in provision from FE institutions.
(c) In the event of a learner having both contracted-in and maintained (and/or contracted-out) learning activities, the assignment of the learner is made on the basis of the most recent learning programme and in accordance with the allocation method of Table L1.1.
(d) Age is as at 31 August 2008
(e) Numbers greater than 0 and less than 5 have been replaced by *. Other figures are rounded to the nearest 5 and there may be slight discrepancies between the sums of constituent items and the independently rounded totals.

Table L2.1 Numbers of Local Authority Community Learning activities by unitary authority and provision type 2008/09 (a-d)

Numbers

Unitary Authority	Maintained Provision		Contracted-out from local authorities		Contracted-in from FE institutions		Total	
	All	Enrolled 1 Dec	All	Enrolled 1 Dec	All	Enrolled 1 Dec	All	Enrolled 1 Dec
Isle of Anglesey County Council	0	0	0	0	0	0	0	0
Gwynedd County Council	0	0	0	0	0	0	0	0
Conwy County Borough Council	0	0	0	0	0	0	0	0
Denbighshire County Council	0	0	0	0	0	0	0	0
Flintshire County Council	0	0	0	0	0	0	0	0
Wrexham County Borough Council	0	0	0	0	0	0	0	0
Powys County Council	1,290	170	0	0	0	0	1,290	170
Ceredigion County Council	665	515	0	0	0	0	665	515
Pembrokeshire County Council	5,060	2,855	0	0	0	0	5,060	2,855
Carmarthenshire County Council	3,165	1,270	0	0	1,460	950	4,625	2,220
City and County of Swansea	3,030	1,895	0	0	15	15	3,045	1,910
Neath Port Talbot County Council	0	0	0	0	2,260	1,455	2,260	1,455
Bridgend County Borough Council	720	565	0	0	2,295	1,760	3,010	2,325
Vale of Glamorgan County Borough Council	5,565	2,410	0	0	525	415	6,090	2,825
Rhondda Cynon Taff County Borough Council	1,855	880	0	0	5,395	2,760	7,255	3,635
Merthyr Tydfil County Borough Council	310	245	0	0	0	0	310	245
Caerphilly County Borough Council	1,335	585	0	0	3,230	1,995	4,565	2,580
Blaenau Gwent County Borough Council	0	0	0	0	2,625	1,775	2,625	1,775
Torfaen County Borough Council	1,745	625	0	0	4,160	3,175	5,905	3,800
Monmouthshire County Council	0	0	0	0	2,645	1,645	2,645	1,645
Newport County Borough Council	0	0	0	0	5,390	3,030	5,390	3,030
Cardiff County Council	11,050	5,650	0	0	9,015	3,360	20,065	9,010
Total	35,795	17,665	0	0	39,010	22,335	74,800	40,000

Source: LLWR (Lifelong Learning Wales Record) post-16 database

- (a) 'Enrolled 1 Dec' is the population during the week of 1 December 2008; 'All' refers to the complete academic year.
- (b) Contracted-in learning also contributes towards figures in the FE institution tables, in particular the third party column of Table F1.6.
- (c) Excludes 'assisted' provision (e.g. a significant component of North Wales provision) not present on the LLWR.
- (d) Numbers greater than 0 and less than 5 have been replaced by *. Other figures are rounded to the nearest 5 and there may be slight discrepancies between the sums of constituent items and the independently rounded totals.

Table L2.2 Numbers of Local Authority Community Learning activities 2008/09 by age group, mode of learning and sex (a-d)

Age Group	Numbers					
	Full academic year			Week of 1 December		
	Male	Female	Total	Male	Female	Total
Under 16	125	150	275	50	35	85
16	340	390	730	140	170	305
17	255	365	620	135	205	340
18	270	355	625	120	170	290
19	230	345	575	85	155	235
20-24	1,545	2,900	4,445	725	1,425	2,150
25-39	4,845	12,775	17,625	2,365	6,435	8,800
40-49	3,300	9,335	12,640	1,875	4,955	6,830
50-59	3,335	9,165	12,500	1,935	5,155	7,090
60-64	2,275	6,895	9,170	1,300	3,880	5,180
65+	4,585	10,300	14,890	2,610	5,790	8,400
Not Specified	215	495	710	95	200	295
Total	21,320	53,480	74,800	11,425	28,580	40,000

Source: LLWR (Lifelong Learning Wales Record) post-16 database

- (a) Includes local authority maintained and contracted-out provision and also contracted-in provision from FE institutions.
(b) Age is as at 31 August 2008
(c) Numbers greater than 0 and less than 5 have been replaced by *. Other figures are rounded to the nearest 5 and there may be slight discrepancies between the sums of constituent items and the independently rounded totals.

Table L2.3 Numbers of Local Authority Community Learning activities by subject and age group 2008/09 (a-e)

Subject	Under 16	16	17	18	19	20 to 24
Agriculture, Horticulture and Animal Care	*	0	*	10	*	50
Arts and Crafts	45	55	60	40	15	440
Business/Management/Office Studies	*	0	*	5	*	30
Care/Personal Development(incl Basic Skills)	25	165	165	210	140	1,170
Catering/Food/Leisure Services/Tourism	65	105	35	20	30	250
Construction & Property (Built Environment)	*	*	0	*	5	30
Cultural Studies/Languages/Literature	50	185	200	180	230	1,380
Education/Training/Teaching	0	15	10	15	5	75
Engineering	0	0	*	0	0	*
Environment Protection/Energy/Cleansing/Security	0	0	*	0	*	10
Health Care/Medicine/Health & Safety	5	45	20	30	30	175
Humanities	*	15	10	15	*	25
Information Technology & Information	10	35	25	40	50	415
Logistics/Distribution/Transport/Driving	0	*	0	0	0	*
Manufacturing/Production Work	*	*	0	*	*	5
Media/Communication/Publishing	15	30	30	20	15	195
Performing Arts	10	25	10	15	10	75
Sales, Marketing and Retailing	0	0	0	*	0	0
Sciences & Mathematics	40	55	35	10	15	70
Social Sciences	*	*	5	5	*	15
Sports, Games and Recreation	*	0	*	0	*	10
Not specified	0	0	0	*	*	10
Total	275	730	620	625	575	4,445

(a) Includes local authority maintained and contracted-out provision and also contracted-in provision from FE institutions.

(b) Age is as at 31 August 2008

(c) Subjects are derived from the first letter of the LearnDirect Classification System (LDCS) codes.

(d) Numbers greater than 0 and less than 5 have been replaced by *. Other figures are rounded to the nearest 5 and there may be slight discrepancies between the sums of constituent items and the independently rounded totals.

Table L2.3 (Continued) Numbers of Local Authority Community Learning activities by subject and age group 2008/09 (a-e)

Numbers

25 to 39	40 to 49	50 to 59	60 to 64	65 plus	Age not stated	Total	Subject
145	140	155	100	150	0	765	Agriculture, Horticulture and Animal Care
1,925	1,880	2,700	2,475	4,315	165	14,125	Arts and Crafts
130	110	70	20	25	0	400	Business/Management/Office Studies
4,330	2,620	2,215	1,200	1,545	120	13,905	Care/Personal Development(incl Basic Skills)
920	650	535	320	320	35	3,285	Catering/Food/Leisure Services/Tourism
55	25	15	*	*	*	140	Construction & Property (Built Environment)
5,720	2,805	2,210	1,340	1,590	110	16,005	Cultural Studies/Languages/Literature
325	160	95	40	65	10	830	Education/Training/Teaching
10	5	10	10	15	0	50	Engineering
55	30	30	*	5	*	140	Environment Protection/Energy/Cleansing/Security
590	405	200	50	65	30	1,640	Health Care/Medicine/Health & Safety
135	150	260	310	425	10	1,360	Humanities
1,930	2,385	2,690	2,320	4,850	125	14,870	Information Technology & Information
10	15	15	5	*	0	55	Logistics/Distribution/Transport/Driving
70	35	50	30	60	0	260	Manufacturing/Production Work
515	440	535	480	870	40	3,185	Media/Communication/Publishing
440	570	585	330	430	25	2,530	Performing Arts
10	10	5	5	5	*	40	Sales, Marketing and Retailing
185	70	20	10	15	15	540	Sciences & Mathematics
40	20	5	*	*	0	110	Social Sciences
55	45	70	100	120	20	425	Sports, Games and Recreation
35	50	25	5	*	0	140	Not specified
17,625	12,640	12,500	9,170	14,890	710	74,800	Total

Source: LLWR (Lifelong Learning Wales Record) post-16 database

Table L2.4 Numbers of Local Authority Community Learning activities 2008/09 by subject and sex (a-d)

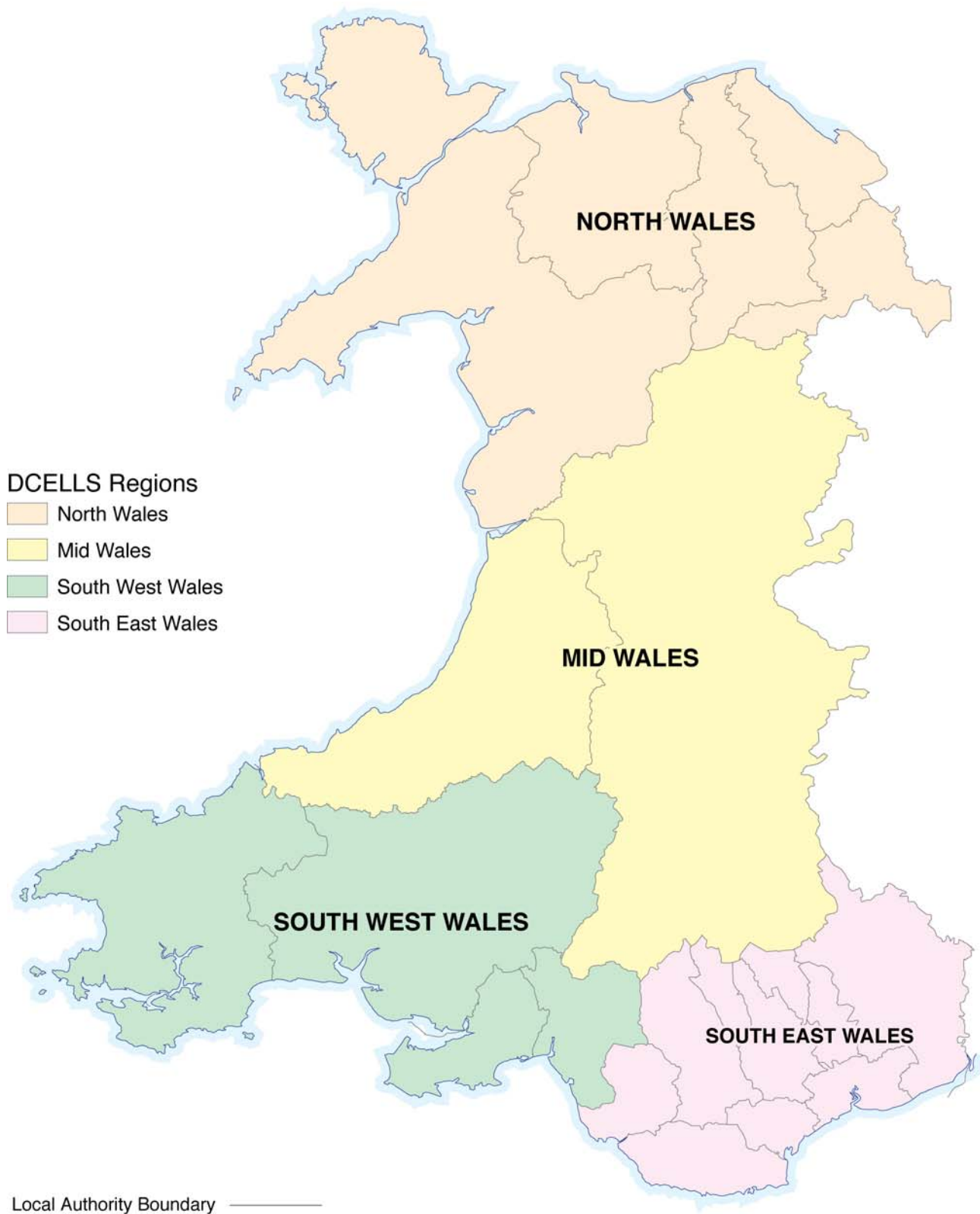
Subject	Numbers		
	Male	Female	Total
Agriculture, Horticulture and Animal Care	290	470	765
Arts and Crafts	2,595	11,530	14,125
Business/Management/Office Studies	80	320	400
Care/Personal Development(incl Basic Skills)	3,335	10,570	13,905
Catering/Food/Leisure Services/Tourism	730	2,555	3,285
Construction & Property (Built Environment)	70	70	140
Cultural Studies/Languages/Literature	6,290	9,715	16,005
Education/Training/Teaching	160	670	830
Engineering	40	5	50
Environment Protection/Energy/Cleansing/Security	100	40	140
Health Care/Medicine/Health & Safety	280	1,365	1,640
Humanities	420	940	1,360
Information Technology & Information	4,640	10,230	14,870
Logistics/Distribution/Transport/Driving	45	10	55
Manufacturing/Production Work	125	135	260
Media/Communication/Publishing	860	2,325	3,185
Performing Arts	885	1,650	2,530
Sales, Marketing and Retailing	10	25	40
Sciences & Mathematics	155	385	540
Social Sciences	30	75	110
Sports, Games and Recreation	160	270	425
Not specified	15	120	140
Total	21,320	53,480	74,800

Source: LLWR (Lifelong Learning Wales Record) post-16 database

- (a) Includes local authority maintained and contracted-out provision and also contracted-in provision from FE institutions.
 (b) Subjects are derived from the first letter of the LearnDirect Classification System (LDCS) codes.
 (c) Numbers greater than 0 and less than 5 have been replaced by *. Other figures are rounded to the nearest 5 and there may be slight discrepancies between the sums of constituent items and the independently rounded totals.

SECTION C

WORK-BASED LEARNING IN WALES



Work-based Learning Summary

- 56,550 learners pursued WBL programmes in 2008/09, taken as a whole, 1.7 per cent fewer than in 2007/08.
- Of these, around 31,900 were in-learning at the end of March 2009, the same as in March 2004.
- 52 per cent of learners were under the age of 25 (compared with 50 per cent in 2007/08, 52 per cent in 2006/07, 54 per cent in 2005/06 and 66 per cent in 2004/05); 29 per cent were under the age of 19.
- 47 per cent of learners in 2008/09 were male, the same as in the previous year, though prior to that the proportion had been declining since 2004/05 when the male proportion had been 52 per cent.
- 2.9 per cent of learners were of a non-white ethnic origin.
- 2.4 per cent of learners had a disability affecting learning.
- 70 per cent of learners were on a Modern Apprenticeship or Foundation Modern Apprenticeship programme, down from 74 per cent in 2007/08.
- 70 per cent of the learning activities taken were at a notional level of NVQ level 1 or 2; 12 per cent were at pre-entry level or entry level, 15 per cent were at level 3 and 2 per cent were at level 4 or above.
- 60 per cent of learning programmes finished were followed by (current or new) employment, with 66 per cent of learners leaving with employment as their destination.
- The most popular sector frameworks for MAs, FMAs and MSDs overall were Health and Social Care (17 per cent), Management (9 per cent) and Customer Service (8 per cent). The Management sector framework accounted for almost half (45 per cent) of Modern Skills Diploma learning programmes pursued in 2008/09.
- Around 198,800 learning activities were undertaken through work-based in 2008/09.

Note: All percentages are as a proportion of the total for which data were available.

Learners

The LLWR was introduced for work-based learning in 2004/05 and replaced the National Trainee Database (NTD). 56,550 learners undertook a work-based learning programme in 2008/09. Some learners undertook more than one training episode during the year resulting in a total of 61,215 individual learning programmes.

Programmes

In 2008/09 there were five main training programme types plus an 'other' category which includes bespoke Skill Build programmes. The learning programme enrolments in each category comprised:

- | | |
|--|-----------------|
| • Foundation Modern Apprenticeships | (40.4 per cent) |
| • Modern Apprenticeships | (30.1 per cent) |
| • Modern Skills Diploma | (3.6 per cent) |
| • Pre-apprenticeship Learning | (0.3 per cent) |
| • Skill Build (excluding bespoke programmes) | (21.4 per cent) |
| • Other (including bespoke Skill Build) | (4.2 per cent) |

Overall 61,215 work-based learning programmes were taken by learners in 2008/09. Information on the sector framework of the trainees is available [Table T3.1] for Foundation Modern Apprenticeships,

Modern Apprenticeships and Modern Skills Diplomas. 43,955 learning programmes were taken via these programmes with the largest numbers in:

- Health and Social Care (17 per cent)
- Management (9 per cent)
- Customer Service (8 per cent)
- Construction (7 per cent)
- Early Years Care & Education (7 per cent)

60 per cent of (known) learning programme destinations were 'employment', primarily current employment; 19 per cent were seeking work or unemployed; 18 per cent went on to further learning (FE, including new programmes on LLWR in the same year, and HE). On a learner basis (taking only the final programme of the year) 66 per cent went into new or continued current employment, 19 per cent were seeking work or unemployed and 12 per cent went on to new learning [Tables T3.3 a/b].

Learning activities

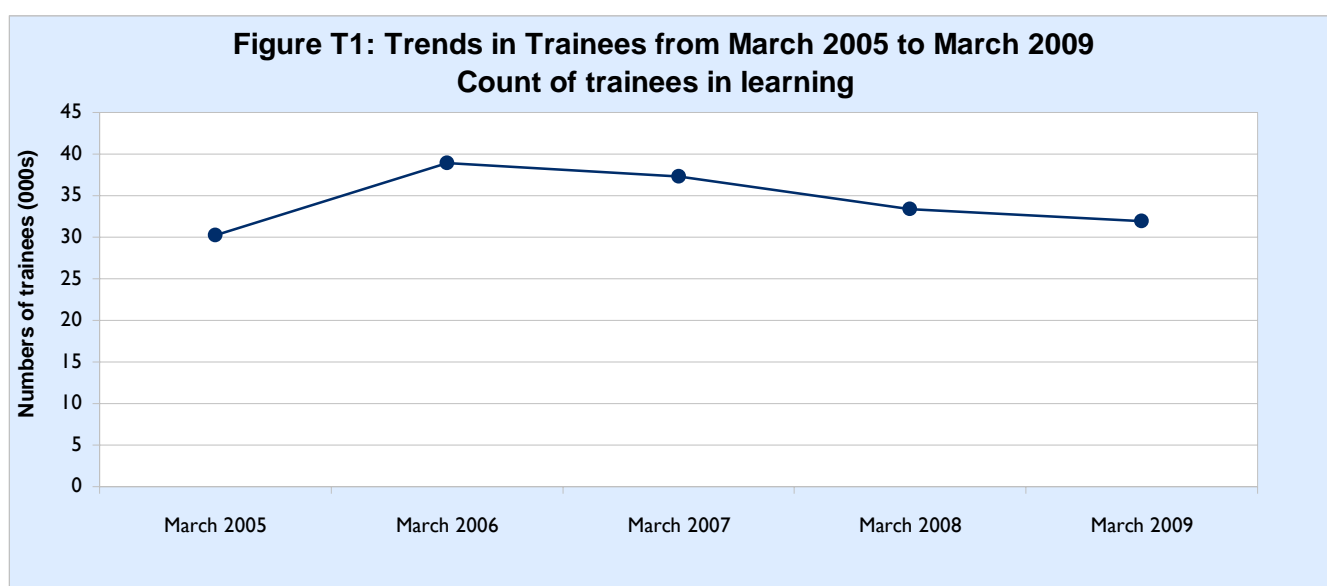
Overall 198,785 learning activities were followed by learners in work-based learning. The vast majority of these were at a level equivalent to NVQ level 1, 2 or 3 [Table T3.2].

The most popular subjects being undertaken by learners in work-based learning were:

- Care/Personal Development (including Basic Skills) (24 per cent)
- Media/Communication/Publishing (13 per cent)
- Science/Mathematics (13 per cent)
- Health/Care/Medicine/Health & Safety (11 per cent)
- Business/Management (10 per cent)

Trends in work-based learning

The trend information in Table T2.1 on learner numbers continues a series published by the Welsh Assembly Government. Whereas most counts in this publication are for the full year, the count in the time series is of those in training at the end of March (and July) each year.



Within year figures at a variety of dates in 2008/09 are illustrated in Table T2.2 which also compares counts of learning programmes with those of unique learners by programme type.

Table T1.1 Numbers of learners at work-based learning (WBL) providers 2008/09 by age group, sex and programme type (a-d)(g)

	<i>Numbers</i>						
	Foundation Modern Apprenticeship	Modern Apprenticeship	Modern Skills Diploma	SkillBuild (d)	Pre- Apprenticeship Learning	Other Programmes (e)	Total
Female learners							
aged:							
Under 16	10	*	0	265	*	15	290
16	400	10	0	1,950	10	150	2,520
17	805	110	0	1,310	5	95	2,330
18	915	260	*	255	*	50	1,485
19	690	360	10	70	*	55	1,185
20-24	2,455	1,815	155	190	10	180	4,805
25-39	3,770	3,560	665	490	30	400	8,920
40-49	2,640	2,080	490	325	10	295	5,840
50-59	1,095	760	195	170	10	160	2,390
60-64	95	50	20	*	5	15	185
65+	15	5	*	0	0	*	25
Female learners	12,890	9,010	1,540	5,030	90	1,415	29,975
Male learners							
aged:							
Under 16	10	15	0	495	*	10	530
16	515	130	0	2,545	*	185	3,370
17	1,165	445	0	1,855	*	135	3,600
18	1,080	840	*	415	*	75	2,415
19	735	1,005	*	100	0	15	1,865
20-24	2,040	2,660	50	255	15	90	5,105
25-39	2,645	1,955	220	780	15	255	5,870
40-49	1,210	675	180	365	10	130	2,575
50-59	490	270	50	245	*	75	1,135
60-64	55	20	5	15	0	5	100
65+	5	*	0	0	0	*	10
Male learners	9,945	8,015	515	7,070	55	975	26,575
All WBL provision							
Under 16	20	15	0	755	*	25	820
16	910	140	0	4,495	15	335	5,895
17	1,975	555	0	3,165	10	230	5,930
18	1,995	1,100	*	675	5	125	3,900
19	1,425	1,365	10	175	*	70	3,045
20-24	4,490	4,475	210	445	25	270	9,910
25-39	6,415	5,510	890	1,270	50	655	14,790
40-49	3,855	2,755	670	690	20	425	8,415
50-59	1,585	1,030	245	415	10	235	3,525
60-64	150	70	25	15	5	20	285
65+	20	10	*	0	0	*	35
Total	22,840	17,025	2,055	12,100	145	2,385	56,550

Source: LLWR (Lifelong Learning Wales Record) post-16 database

(a) Counts are on a unique learner identifier (ULI) basis to eliminate multiple-counting between providers.

(b) Includes work-based learning (WBL) provision at FE institutions.

(c) Age is as at 31 August 2008.

(d) The 'SkillBuild' column excludes bespoke programmes.

(e) The 'Other Programmes' column includes other WBL programmes at FE institutions and all other programmes at WBL subsidiaries and other training providers; it also includes bespoke Skill Build programmes.

(f) Numbers greater than 0 and less than 5 have been replaced by *. Other figures are rounded to the nearest 5 and there may be slight discrepancies between the sums of constituent items and the independently rounded totals.

Table T1.2 Number of learners by programme and DCELLS Area of domicile 2008/09 (a)(b)(f)

Programme	DCELLS Region of domicile					Numbers
	North Wales	Mid Wales	South West Wales	South East Wales	Other (e)	Total
Foundation Modern Apprenticeship	5,780	1,390	4,865	10,020	785	22,840
Modern Apprenticeship	3,860	905	3,485	8,160	615	17,025
Modern Skills Diploma	535	135	505	800	75	2,055
Pre-apprenticeship Learning	50	5	20	65	*	145
SkillBuild (c)	1,665	520	2,895	6,660	360	12,100
Other Programmes (d)	150	100	300	1,785	50	2,385
Total	12,045	3,055	12,070	27,495	1,885	56,550

Source: LLWR (Lifelong Learning Wales Record) post-16 database

(a) Includes work-based learning (WBL) provision at FE institutions.

(b) Counts are on a unique learner identifier (ULI) basis to eliminate multiple-counting between providers.

(c) The 'SkillBuild' row includes the new SkillBuild programme and learners pursuing the former preparatory learning and skills learning programmes.

(d) The 'Other Programmes' row includes other WBL programmes at FE institutions and all other programmes at WBL subsidiaries and other training providers.

(e) Other' DCELLS Region of domicile includes learners domiciled outside Wales and learners without a valid postcode.

(f) Numbers greater than 0 and less than 5 have been replaced by *. Other figures are rounded to the nearest 5 and there may be slight discrepancies between the sums of constituent items and the independently rounded totals.

Table T1.3 Number of enrolments on learning programmes by programme and DCELLS Area of domicile 2008/09 (a-e)

Programme	DCELLS Region of domicile					Numbers
	North Wales	Mid Wales	South West Wales	South East Wales	Other (d)	Total
Foundation Modern Apprenticeship	6,135	1,500	5,295	10,760	815	24,510
Modern Apprenticeship	3,930	925	3,575	8,305	630	17,365
Modern Skills Diploma	540	140	510	815	75	2,075
Pre-apprenticeship Learning	60	5	25	85	*	175
SkillBuild (b)	1,935	605	3,750	7,770	420	14,480
Other Programmes (c)	175	120	305	1,955	55	2,610
Total	12,775	3,295	13,460	29,690	1,995	61,215

Source: LLWR (Lifelong Learning Wales Record) post-16 database

(a) Includes work-based learning (WBL)

(b) The 'SkillBuild' row includes the new SkillBuild programme and learners pursuing the former preparatory learning and skills learning programmes.

(c) The 'Other Programmes' row includes other WBL programmes at FE institutions and all other programmes at WBL subsidiaries and other training providers.

(d) Other' DCELLS Region of domicile includes learners domiciled outside Wales and learners without a valid postcode.

(e) Numbers greater than 0 and less than 5 have been replaced by *. Other figures are rounded to the nearest 5 and there may be slight discrepancies between the sums of constituent items and the independently rounded totals.

Table T1.4 Numbers of learners at work-based learning (WBL) providers 2008/09 by ethnicity, age band and sex (a-e)

Aged 18 and under			<i>Numbers</i>
Ethnicity	Male	Female	Total
Asian	55	45	100
Black	40	30	70
Mixed	105	65	170
Other	10	5	20
White	9,645	6,465	16,105
Information refused/not known	60	15	75
Total	9,915	6,625	16,540

Aged 19 and over			
Ethnicity	Male	Female	Total
Asian	295	380	670
Black	120	160	280
Mixed	120	125	240
Other	50	55	105
White	15,985	22,425	38,410
Information refused/not known	90	210	300
Total	16,655	23,350	40,010

All ages			
Ethnicity	Male	Female	Total
Asian	350	425	770
Black	155	190	345
Mixed	225	190	415
Other	60	65	125
White	25,630	28,890	54,520
Information refused/not known	155	225	375
Total	26,575	29,975	56,550

Source: LLWR (Lifelong Learning Wales Record) post-16 database

- (a) Counts are on a unique learner identifier (ULI) basis to eliminate multiple-counting between providers.
- (b) Where a learner participates in more than one learning programme over the course of the year, the most recent programme has been selected.
- (c) Includes work-based learning (WBL) provision at FE institutions.
- (d) Age is as at 31 August 2008.
- (e) Numbers greater than 0 and less than 5 have been replaced by *. Other figures are rounded to the nearest 5 and there may be slight discrepancies between the sums of constituent items and the independently rounded totals.

Table T1.5 Numbers of learners at work-based learning (WBL) providers 2008/09 by disability status, age band and sex (a-f)

Aged 18 and under		<i>Numbers</i>	
Disability Status	Male	Female	Total
Disabled	355	190	545
Not Disabled	9,045	6,185	15,230
Not known	515	250	770
Total	9,915	6,625	16,540

Aged 19 and over			
Disability Status	Male	Female	Total
Disabled	370	385	760
Not Disabled	15,990	22,635	38,625
Not known	295	330	625
Total	16,655	23,350	40,010

All ages			
Disability Status	Male	Female	Total
Disabled	725	575	1,300
Not Disabled	25,035	28,820	53,855
Not known	815	580	1,390
Total	26,575	29,975	56,550

Source: LLWR (Lifelong Learning Wales Record) post-16 database

- (a) Counts are on a unique learner identifier (ULI) basis to eliminate multiple-counting between providers.
- (b) Where a learner participates in more than one learning programme over the course of the year, the most recent programme has been selected.
- (c) Includes work-based learning (WBL) provision at FE institutions.
- (d) Age is as at 31 August 2008.
- (e) Disability status is on the basis of the learner's own assessment.
- (f) Numbers greater than 0 and less than 5 have been replaced by *. Other figures are rounded to the nearest 5 and there may be slight discrepancies between the sums of constituent items and the independently rounded totals.

Table T2.1 Trends in work-based learning - numbers in training by programme type 2004/05 to 2008/09 (a-c)(f)

	<i>Thousands</i>									
	March 2005	July 2005	March 2006	July 2006	March 2007 (r)	July 2007 (r)	March 2008 (r)	July 2008 (r)	March 2009	July 2009
Foundation Modern Apprenticeship	11.7	13.9	17.8	18.5	17.6	14.2	15.5	14.1	14.0	12.8
Modern Apprenticeship	12.5	12.9	13.7	13.4	13.1	11.3	11.9	10.8	10.9	10.2
Preparatory Learning	1.9	2.8	2.6	3.0	2.2	1.4
Skills Learning	2.3	2.0	2.8	2.6	2.4	1.5
SkillBuild (d)	4.1	3.9	4.6	4.3
Pre-apprenticeship Learning	0.0	0.1	0.1	0.1
Modern Skills Diploma	1.5	1.6	1.9	2.0	1.9	1.5	1.4	1.2	1.3	1.1
Other Programmes (e)	0.3	0.2	0.1	0.2	0.1	1.0	0.4	1.1	1.0	1.0
All Programmes	30.2	33.4	38.9	39.6	37.3	31.0	33.4	31.1	31.9	29.6

Source: LLWR (Lifelong Learning Wales Record) post-16 database

(a) Each individual programme row includes conversions from other programmes.

(b) Some values in the 'All Programmes' row appear not to equal the sum of their parts owing to independent rounding.

(c) . = not applicable.

(d) The 'SkillBuild' row includes the new SkillBuild programme and learners pursuing the former preparatory learning and skills learning programmes.

(e) The 'Other Programmes' row includes other WBL programmes at FE institutions and all other programmes at WBL subsidiaries and other training providers.

(f) Counts are of distinct learners (000s).

(r) Adjusted population removes learning activities with a very large gap between expected and actual end dates. This has a retrospective impact on years 2006/07 and 2007/08, effectively applying a data correction to these years. The approach is standard from 2008/09 onwards.

Table T2.2 Numbers of unique learners and individual learning programmes by programme type

	<i>Numbers (f)</i>				
	Week of 1 December 2008	31 December 2008	31 March 2009	31 July 2009	2008/09 year
Unique learner numbers by programme type (a)(b)					
Foundation Modern Apprenticeship	14,650	14,245	14,005	12,785	22,840
Modern Apprenticeship	11,500	11,260	10,940	10,205	17,025
Modern Skills Diploma	1,240	1,215	1,260	1,150	2,055
SkillBuild (d)	4,345	3,965	4,605	4,345	12,100
Pre-apprenticeship Learning	95	85	80	65	145
Other Programmes (e)	980	1,020	1,000	1,030	2,385
Total unique learners	32,810	31,795	31,890	29,575	56,550
Numbers of learning programmes by type (c)					
Foundation Modern Apprenticeship	14,675	14,260	14,020	12,800	24,510
Modern Apprenticeship	11,530	11,280	10,960	10,225	17,365
Modern Skills Diploma	1,240	1,215	1,265	1,150	2,075
SkillBuild (d)	4,350	3,965	4,610	4,380	14,480
Pre-apprenticeship Learning	95	85	80	65	175
Other Programmes (e)	990	1,025	1,005	1,040	2,610
Total learning programmes	32,885	31,840	31,940	29,655	61,215

Source: LLWR (Lifelong Learning Wales Record) post-16 database

(a) Unique learner counts are based on unique learner identifiers (ULI) to eliminate multiple-counting between providers.

(b) Where a learner participates in more than one learning programme, the most recent one for the period is selected for the unique learner programme type.

(c) Where a learner participates in more than one learning programme over a period, all are included in the learning programme counts.

(d) The 'SkillBuild' rows include the new SkillBuild programme and also learners pursuing the former preparatory learning and skills learning programmes.

(e) The 'Other Programmes' row includes other WBL programmes at FE institutions and all other programmes at WBL subsidiaries and other training providers (This adds e.g. 46 extra learners into the WBL provision count for the full year 2008/09 relative to the equivalent number pursuing WBL programs only).

(f) Numbers greater than 0 and less than 5 have been replaced by *. Other figures are rounded to the nearest 5 and there may be slight discrepancies between the sums of constituent items and the independently rounded totals.

Table T3.1 Numbers of Learning Programmes for Foundation Modern Apprenticeships, Modern Apprenticeships and Modern Skills Diplomas by sector framework and programme type 2008/09 (a-d)

Sector	Numbers			
	Foundation Modern Apprenticeship	Modern Apprenticeship	Modern Skills Diploma	Total
Accountancy	145	270	155	570
Active Leisure and Learning	270	315	0	580
Advice and Guidance	20	110	5	135
Agriculture Crops and Livestock	55	45	15	115
Amenity Horticulture	65	25	0	90
Business Administration	1,505	1,235	55	2,795
Call Handling	150	45	*	195
Chemical, Pharmaceutical, Petro-Chemical Manufacturing and R	30	25	0	55
Cleaning & Support Service Industry	50	0	0	50
Construction	2,125	785	0	2,910
Customer Service	2,800	865	*	3,665
Dental Nursing	*	230	0	230
Driving Goods Vehicle	105	30	0	130
Early Years Care & Education	930	1,650	330	2,910
Electrotechnical	310	1,135	0	1,445
Emergency Fire Service Operations	0	75	0	75
Engineering	775	1,825	*	2,600
Engineering Construction	*	95	0	100
Equine Industry	25	15	0	40
Food & Drink Manufacturing Operations	165	*	0	165
Food Manufacture	465	10	0	475
Glass Industry	95	*	0	100
Hairdressing	1,380	395	0	1,780
Health & Social Care	4,635	2,480	545	7,660
Heating, Ventilation, Air Conditioning & Refrigeration	115	55	0	170
Hospitality	1,670	540	0	2,215
IT & telecoms professional	85	30	0	115
IT User	1,030	490	0	1,520
Industrial Applications	990	*	0	995
Information Technology & Electronic Services	365	75	*	435
Information Technology (Other)	50	30	0	80
Insurance	55	60	0	115
Learning and Development (Direct Training & Support)	*	70	15	85
Management	915	1,925	940	3,785
Meat & Poultry Processing	80	0	0	80
Motor Industry	215	130	*	345
Occupational Health and Safety Practice	0	55	*	55
Plumbing	605	520	0	1,125
Polymer Processing and Signmaking	65	5	0	70
Retail	745	135	0	880
Retail Financial Services	50	0	0	50
Sporting Excellence	0	70	0	70
Teaching Assistants	150	765	0	920
Travel Services	30	45	0	75
Vehicle Body and Paint Operations	35	35	0	65
Vehicle Maintenance and Repair	540	370	0	910
Wholesale, Distribution, Warehousing and Storage	420	60	0	475
Other	205	230	10	445
Total	24,510	17,365	2,075	43,955

Source: LLWR (Lifelong Learning Wales Record) post-16 database

(a) Includes work-based learning (WBL) subsidiaries of FE institutions.

(b) Framework sectors are only required for Foundation Modern Apprenticeships, Modern Apprenticeships and Modern Skills Diplomas.

(c) Sectors with fewer than 40 learning programmes associated with them have been grouped together under 'Other'.

(d) Numbers greater than 0 and less than 5 have been replaced by *. Other figures are rounded to the nearest 5 and there may be slight discrepancies between the sums of constituent items and the independently rounded totals.

Table T3.2 Numbers of Learning Activities at WBL providers by Subject and Credit Level 2008/09 (a-c)

Subject	Credit Level				
	Pre entry Level	Entry Level	NVQ Level 1 or equivalent	NVQ Level 2 or equivalent	NVQ Level 3 or equivalent
Agriculture, Horticulture and Animal Care	0	0	75	220	160
Business/Management/Office Studies	395	265	3,290	7,755	5,830
Care/Personal Development(incl Basic Skills)	2,120	15,905	15,115	9,865	1,525
Catering/Food/Leisure Services/Tourism	0	75	135	1,955	830
Construction & Property (Built Environment)	0	0	785	4,250	1,880
Cultural Studies/Languages/Literature	0	40	0	0	0
Education/Training/Teaching	795	1,830	35	850	1,535
Engineering	0	5	520	3,605	3,050
Environment Protection/Energy/Cleansing/Security	0	0	305	185	90
Health Care/Medicine/Health & Safety	70	450	420	11,025	8,370
Information Technology & Information	0	1,950	7,085	6,110	1,090
Logistics/Distribution/Transport/Driving	0	0	140	835	150
Manufacturing/Production Work	0	0	65	3,570	750
Media/Communication/Publishing	0	0	13,020	12,625	505
Oil/Mining/Plastics/Chemicals	0	0	0	145	60
Sales, Marketing and Retailing	*	*	790	6,240	1,735
Sciences & Mathematics	0	0	13,675	11,170	175
Services to Industry & Commerce	0	0	0	315	1,790
Social Sciences	125	0	0	0	15
Sports, Games and Recreation	0	0	210	220	340
Not specified	0	*	40	295	220
Total	3,510	20,530	55,705	81,245	30,095

(a) Includes work-based learning (WBL) provision at FE institutions.

(b) Subjects are derived from the first letter of the LearnDirect Classification System (LDCS) codes.

(c) Numbers greater than 0 and less than 5 have been replaced by *. Other figures are rounded to the nearest 5 and there may be slight discrepancies between the sums of constituent items and the independently rounded totals.

Table T3.2 (Continued) Numbers of Learning Activities at WBL providers by Subject and Credit Level 2008/09 (a-c)

				<i>Numbers</i>
Credit Level				
HE Level/ NVQ Level 4, 5 or equivalent	Mixed Levels	Not known/ Not Applicable	Total	Subject
0	0	10	465	Agriculture, Horticulture and Animal Care
2,380	*	125	20,045	Business/Management/Office Studies
595	0	1,580	46,705	Care/Personal Development(incl Basic Skills)
5	0	0	3,000	Catering/Food/Leisure Services/Tourism
0	0	10	6,930	Construction & Property (Built Environment)
0	0	*	40	Cultural Studies/Languages/Literature
50	0	1,735	6,830	Education/Training/Teaching
85	0	*	7,270	Engineering
0	0	0	580	Environment Protection/Energy/Cleansing/Security
300	0	150	20,790	Health Care/Medicine/Health & Safety
*	0	*	16,235	Information Technology & Information
*	0	50	1,180	Logistics/Distribution/Transport/Driving
0	0	240	4,620	Manufacturing/Production Work
5	0	*	26,160	Media/Communication/Publishing
0	0	0	205	Oil/Mining/Plastics/Chemicals
*	0	85	8,860	Sales, Marketing and Retailing
*	0	0	25,025	Sciences & Mathematics
20	0	0	2,125	Services to Industry & Commerce
0	0	*	140	Social Sciences
*	0	0	770	Sports, Games and Recreation
225	0	30	810	Not specified
3,670	*	4,025	198,785	Total

Source: LLWR (Lifelong Learning Wales Record) post-16 database

Table T3.3a Leaver destinations: Number of learning programmes left in academic year 2008/09 by destination and age group (a-e)

Destination	Age Group					
	Under 16	16	17	18	19	20-24
New programme of learning (not HE) with same provider	30	580	605	335	205	325
New programme of learning (not HE) with another provider	*	705	530	155	55	155
Higher education	*	225	170	55	20	60
Education or training - type not known	5	320	230	30	20	20
Entering new employment/changing employment	*	720	925	315	130	340
Continuing current employment	0	100	525	850	915	3,560
Seeking work /unemployed	20	1,375	1,235	495	210	535
Self employment	0	5	10	*	5	10
Voluntary work	0	15	20	5	*	*
Other	*	165	185	85	35	155
Not known	*	220	175	60	25	110
Total	65	4,430	4,600	2,385	1,625	5,275

(a) Includes work-based learning (WBL) provision at FE institutions.

(b) Figures exclude continuing learning programmes (identified through LLWR destination coding and/or absence of end date)

(c) Destination is recorded immediately after the end of the learning programme.

(d) Age is as at 31 August 2008.

(e) Numbers greater than 0 and less than 5 have been replaced by *. Other figures are rounded to the nearest 5 and there may be slight discrepancies between the sums of constituent items and the independently rounded totals.

Table T3.3b Leaver destinations: Number of distinct learners leaving (their most recent learning programme) in academic year 2008/09 by destination and age group (a-f)

Destination	Age Group						
	Under 16	16	17	18	19	20-24	25-39
New programme of learning (not HE)	30	605	495	220	115	245	260
Higher education	*	185	150	50	15	55	50
Education or training - type not known	5	225	180	30	20	20	10
Entering new employment/changing employment	*	565	805	295	125	335	470
Continuing current employment	0	75	455	760	840	3,365	4,840
Seeking work /unemployed	15	1,015	1,040	465	205	530	1,010
Self employment	0	*	10	*	5	10	30
Voluntary work	0	15	20	5	*	*	15
Other	*	140	165	85	35	155	170
Not known	*	165	150	55	25	110	115
Total	60	2,995	3,465	1,965	1,385	4,820	6,965

(a) Includes work-based learning (WBL) provision at FE institutions.

(b) Figures comprise the number of distinct learners who have left their most recent learning programme of academic year

(c) Excludes learners whose latest learning programme is on-going

(d) Destination is recorded immediately after the end of the learning programme.

(e) Age is as at 31 August 2008.

(f) Numbers greater than 0 and less than 5 have been replaced by *. Other figures are rounded to the nearest 5 and there may be slight discrepancies between the sums of constituent items and the independently rounded totals.

Table T3.3a (Continued) Leaver destinations: Number of learning programmes left in academic year 2008/09 by destination and age group (a-e)

Numbers

Age Group					Not Specified	Total	Destination
25-39	40-49	50-59	60-64	65 plus			
235	95	40	*	*	0	2,445	New programme of learning (not HE) with same provider
175	95	35	*	0	0	1,910	New programme of learning (not HE) with another provider
65	35	10	*	0	0	640	Higher education
10	10	*	0	0	0	645	Education or training - type not known
480	240	90	5	0	0	3,245	Entering new employment/changing employment
5,125	3,090	1,295	130	15	0	15,605	Continuing current employment
1,030	525	285	15	*	0	5,725	Seeking work /unemployed
30	5	*	*	0	0	75	Self employment
15	10	5	*	0	0	80	Voluntary work
175	75	35	*	*	0	920	Other
120	55	20	5	0	0	795	Not known
7,460	4,240	1,815	170	20	0	32,085	Total

Source: LLWR (Lifelong Learning Wales Record) post-16 database

Table T3.3b (Continued) Leaver destinations: Number of distinct learners leaving (their most recent learning programme) in academic year 2008/09 by destination and age group (a-f)

Numbers

Age Group					Not Specified	Total	Destination
40-49	50-59	60-64	65 plus				
125	50	*	0	0	0	2,140	New programme of learning (not HE)
35	10	*	0	0	0	545	Higher education
10	*	0	0	0	0	495	Education or training - type not known
235	85	5	0	0	0	2,920	Entering new employment/changing employment
2,945	1,240	130	15	0	0	14,665	Continuing current employment
510	280	15	*	0	0	5,085	Seeking work /unemployed
5	*	*	0	0	0	70	Self employment
10	*	*	0	0	0	75	Voluntary work
75	35	*	*	0	0	865	Other
55	20	5	0	0	0	700	Not known
3,995	1,725	165	20	0	0	27,560	Total

Source: LLWR (Lifelong Learning Wales Record) post-16 database

APPENDICES

APPENDIX A : DATA SOURCES & DEFINITIONS

A1 DATA SOURCES

All data in Sections A and B, relating to Further Education institutions and Local Authority Community Learning, are sourced from the Lifelong Learning Wales Record (LLWR). The LLWR was introduced in the 2003/04 academic year as the new data collection system for Further Education (FE) and Local Authority Community Learning. It replaced the FE Individualised Student Record (ISR) and the LEA Adult Community Learning December census data collection.

All Work-based Learning (WBL) data in Section C are sourced from the Lifelong Learning Wales Record (LLWR). The LLWR was introduced for WBL in 2004/05 as the new data collection system to replace the National Trainee Database (NTD). The LLWR data collection system provides the evidence for WBL payments from 2004/05 onwards.

There is some overlap between the WBL and the FE data due to some FE institutions delivering WBL provision. For this reason figures from Section C of this publication should not be aggregated with those from Section A and B. Furthermore, although tables F1.1, F1.3c and F3.1 to F3.3 disaggregate those learners on WBL programmes at FE institutions it should be noted that these learners will not necessarily have been funded through the WBL payment system.

Further Education provision at Higher Education institutions has been included in tables F1.5, F1.7 and F2.1 using the 2008/09 HESA (Higher Education Statistics Agency) Student Record.

All data in this publication are consistent with the 2008/09 data previously published in the National Statistics First Release 'Further Education, Work-based Learning and Community Learning in Wales, 2008/09 and 2009/10 (early figures)' (SDR60/2010).

A2 ROUNDING

All data in this publication have been rounded to the nearest 5. This convention may lead to some small discrepancies between an independently rounded total and its constituent parts. Where an asterisk (*) is shown it represents a number which is greater than 0 and less than 5.

A3 SECTIONS A, B & C : FURTHER EDUCATION, COMMUNITY LEARNING and WBL

A3.1 DATA COVERAGE FOR FE and CL

Section A details the learning delivered by the further education sector in Wales. The further education sector comprises a range of institutions providing part-time and full-time education. In 2008/09, 20 of these institutions were colleges of further education (including two land-based colleges) or tertiary colleges providing the greater part of post-16 education for their area. This number excluded Merthyr Tydfil College which merged into the University of Glamorgan in 2006 and (apart from its work-based learning provision) is included under the figures for FE at Higher Education institutions and excluded from the figures for Further Education institutions. The sector also included a denominational sixth form college, an adult residential college, two districts of the Workers' Educational Association (WEA), one of which (WEA-North) merged with Coleg Harlech in 2001/02, and adult education provision by the Young Men's Christian Association (YMCA).

Community Learning is a broad term that can encompass a wide range of provision. For instance it could include Adult Basic Education (ABE) and English for Speakers of Other Languages (ESOL)

provision or learning delivered at outreach centres of FE institutions. However, Section B details only that Community Learning provision which is delivered by Local Authorities. To make the distinction clear the term Local Authority Community Learning is used throughout this publication. In 2008/09, sixteen of the twenty-two Local Authorities in Wales delivered Community Learning either directly or in collaboration with FE institutions.

The majority of tables in Sections A and B are based on all learning undertaken within the 2008/09 academic year (1 August 2008 to 31 July 2009). In addition, certain tables (or parts of tables) include counts based on a census date of the week of 1 December 2008.

A3.2 DATA COVERAGE FOR WBL

Section C details the learning delivered by the work-based learning (WBL) sector in Wales. The time period (2008/09) on which training tables are based runs from 1 August 2008 to 31 July 2009, (as in Sections A and B). This population differs from the funding year approach adopted for WBL data in 'Higher Education, Further Education and Training Statistics in Wales' publications up to and including that for the 2002-03 funding year (i.e. April 2002 to March 2003). In addition, certain tables (or parts of tables) include counts based on a specific date or range of dates: the week of 1 December 2008 and the days 31 March 2009 and 31 July 2009.

The connection with individual trainees is through training providers. In some cases the training provider provides the learning experiences directly. In other cases, the training may be performed mainly by an employer with the learning overseen and assessed by the training provider.

A3.3 DATA COUNTS

The LLWR from which the data in all sections have been derived has datasets based on learners, their learning programmes, their constituent learning activities and an award dataset registering achievements.

As noted in SDR 60/2010 (released on 22 April 2010), for 2008/09 LLWR data, learning activities have been excluded (directly and also in deriving learner counts) if their expected end date is more than two years earlier than the start of the academic year. For the purpose of time series in this volume, the methodology has been applied retrospectively and has an impact on the years 2006/07 and 2007/08. It is the standard approach from 2008/09.

Five different counts are used for FE institutions in the Tables:

- **Unique Learners**, based on the unique learner identifier (ULI) and counting any learner once only regardless of how many learning programmes they were pursuing with different learning providers;
- **Non-Unique Learners ('provider learners')**, based on the learning providers' own learner identifier and so leading to multiple counting of learners between providers; This count is used just for FE and CL.
- **Learning Programmes**, based on the number of learning programmes taken by the learner. This count is primarily used for Work-based learning.
- **Learning Activities**, based on the number of recorded enrolments on learning activities (i.e. learning aims) by learners.
- **Awards**, giving qualification achievements attained.

FE statistics published by ELWa and the National Assembly for learning prior to 2003/04 identified learners according to the learning providers' own learner identifier, as there was no ULI on the ISR. Therefore, when comparing 2003/04 to 2008/09 learner numbers with learner numbers from previous years the 'non-unique learner' count should be used.

Tables T1.1, T1.2, T1.4 and T1.5 are based on the total number of WBL learners receiving training at any time during 2008/09. Tables T1.3 and T3.1 are based on the number of learning programmes taken by learners. Table T3.2 details the number of learning activities by subject in 2008/09. Table T3.3a details the number of leavers of learning programmes and their destination and table T3.3b covers destinations by learner count.

For counts, derived from HESA data, of students and their individual enrolments at HE institutions, two population types are used:

The **standard registration population** counts registrations once for each year of programme of study (deemed to start on the commencement date of the programme with subsequent years starting on, or near, the anniversary of that date). Students who leave within two weeks of their start date (or its anniversary) and are on a course of more than two weeks duration, are not included in the standard population. It also excludes dormant students, incoming visiting and exchange students and students studying for the whole of their programme of study outside of the UK.

The **session population** includes all enrolments active at any point in the academic year except for dormant students, incoming visiting and exchange students and students studying for the whole of their programme of study outside of the UK.

All HE institution learner and enrolment counts in this volume have been based on the standard registration population with the exception of Table F1.7b which gives Welsh for Adult numbers at the HEI-based centres on a session population basis, in contrast with Table F1.7a which gives the equivalent numbers on a standard registration population basis.

A3.4 PROVISION TYPE DEFINITIONS (FE and Local Authority CL)

Learners at FE institutions are recorded as being engaged in FE, HE or WBL provision.

WBL : Learners on WBL programmes (in Tables F1.1 and F3.2) are defined as those learners at FE institutions who are enrolled on designated WBL programmes (e.g. modern apprenticeships, skills learning). All learners on WBL programmes have their mode of learning defined as being work-based learning (see A3.6). Note that this definition of WBL is different to that used for funding purposes. See A1 for more information about the differences between WBL data reported on in Section A and that reported on in Section C.

HE : Higher Education (HE) level learners are defined in the tables in two distinct ways. Tables F1.1 and F3.2, provide information on the number of learners undertaking designated HE programmes (e.g. HE degree, Foundation degree). A higher number of HE learners is recorded in Tables F1.2 and F1.3 based on recording a learner as studying at HE level if any one of their learning activities is at HE level (above NVQ level 3).

FE : Learners on FE programmes (in Tables F1.1 and F3.2) are defined as those learners at FE institutions who are not enrolled on designated WBL or HE programmes.

Learners engaged in local authority community learning can be enrolled (see Table L1.1) under maintained, contracted-out or contracted-in provision:

Maintained: Learners in maintained local authority provision are defined as those learners who the local authority delivers learning to and who are enrolled with the local authority.

Contracted-out: Learners in contracted-out local authority provision are defined as those learners who receive learning from a third party but who are enrolled with the local authority for that learning.

Contracted-in: Learners in contracted-in local authority provision are defined as those learners to whom the local authority delivers learning but who are enrolled with an FE Institution for that learning.

Note that the contracted-in provision is included both in tables in Section B (as it is delivered by a local authority) and in table in Section A (as the enrolment for the learning is with a FE institution).

A3.5 PROVISION TYPE DEFINITIONS FOR WBL

Tables T1.1, T1.2, T1.3 and T2.1 give information by programme type. Note that the categories are based on current programmes and certain former programmes continuing into 2008/09 have been re-categorised.

The programmes available were:

- Foundation Modern Apprenticeship;
- Modern Apprenticeship;
- Modern Skills Diploma;
- Pre-apprenticeship learning;
- Skill Build (excluding bespoke programmes);
- Other programme: (Includes bespoke programmes delivered by selected providers.) This category includes all other WBL programmes delivered by FE institutions and all programmes not included above delivered by other training providers.

A3.6 MODE OF LEARNING DEFINITIONS

The mode of learning for a learner (i.e. full-time learner, part-time learner and work-based learner) has been derived using the guided contact hours. Guided contact hours are the number of teaching/instructional hours delivered by the provider to the learner. A full-time learner is one whose total guided contact hours across all their learning activities amounts to at least 450 hours; a part-time learner is one whose total guided contact hours amounts to less than 450 hours. As work-based learning cannot be classified using guided contact hours, as significant amounts of learning are undertaken at the workplace, a distinct work-based learning mode has been assigned to learners on WBL programmes.

FE statistics published by ELWa and the National Assembly for learning prior to 2003/04 used a different definition of mode (based on what was recorded by learning providers on the ISR). Therefore, 2004/05 mode of learning statistics are not directly comparable with data from previous years.

A3.7 DOMICILE / DEPRIVATION DEFINITIONS

The country of domicile information presented in Table F3.3 is based on information recorded directly on the LLWR. By contrast, the unitary authority of domicile (in Tables F3.4a and F3.4b) and deprivation areas (in Table F3.8) have been calculated from the home postcode recorded on the LLWR. Inconsistencies between the recorded country of domicile and home postcode account for the differences between these tables.

A3.8 SUBJECT AND SECTOR SUBJECT DEFINITIONS

All subject of study area groupings are based on the LearnDirect Classification System (LDCS) which assigns a subject code to each qualification. The subject of study area groupings in Tables F4.1a/b, F4.3 and F4.4 are derived from the first letter of the LDCS code for the qualification being undertaken. The

subject of study area groupings in Table F4.2a/b/c are the 15 first-tier sector subject areas in QCA's Sector Subject framework (www.qca.org.uk/qca_8488.aspx). These sector subject areas are derived from the LDCS code for the qualification being undertaken. Some modification has been made to the QCA sector subject area boundaries, as reported in Tables F4.2a/b/c, so as to be consistent with designations used in Estyn inspection statistics.

A3.9 QUALIFICATION LEVEL / TYPE DEFINITIONS

The qualification type and level (Tables F4.5 & F4.3 respectively) are allocated to learning activities using information recorded either on the Welsh Learning Aims database or directly on the LLWR. The 'not known / not applicable' credit level category is assigned where there was insufficient information to assign a qualification level to the learning activity. The 'other' qualification type category mainly consists of all qualification types not specifically listed (e.g. City & Guild certificates, ECDL, CLAIT), it may however also include some cases of the listed qualifications where there was insufficient information to assign them to the appropriate category.

A3.10 AGE

Where age groups are identified, the age is that at 31 August 2008. Learners whose date of birth is not recorded in the LLWR are dealt with in one of two ways. In tables with detailed age groupings the learner age is given as 'not specified'; where the table uses less detailed age groupings the learner is assumed to be aged 25 years or over and appropriately categorised.

A3.11 WBL SECTOR FRAMEWORKS

The sector groupings in table T3.1 reflect the type of work and training being undertaken by the learner and are directly related to the qualification being studied for. The most frequently occurring sector codes have been identified separately with the less common codes being identified as 'other'.

APPENDIX B : OTHER USEFUL INFORMATION SOURCES

Welsh Assembly Government Statistical First Releases (SFRs), bulletins and publications

A wide range of educational releases, bulletins and publications produced by the Statistical Directorate can be accessed via the 'Post-16 Education and Training' and 'Schools and Teachers' key publications sections of the Welsh Assembly Government's website at www.wales.gov.uk/statistics.

These releases, bulletins and publications include, for example:

- Schools in Wales : General Statistics
- Schools in Wales : Examination Performance
- Pupil Destinations from Schools In Wales
- Students in Higher Education Institutions – Wales
- Initial Teacher Training in Wales
- FE, WBL and Community Learning in Wales SFRs
- Participation in Education and the Labour Market
- Staff at FE Institutions
- Education Maintenance Allowances (EMA) awarded
- Progress towards meeting the Lifelong Learning Targets for Wales
- Analysis of Participation in post-16 Education & Training in Wales
- National Comparators for Further Education and Work-based Learning
- Learning Network Analysis

Other Sources

Higher Education Statistical Agency (HESA) Data

Full details on the data collected by HESA from Higher Education institutions can be found at www.hesa.ac.uk.

HEFCW Statistical Publications

Statistical information on the Higher Education sector in Wales can be accessed at [www.hefcw.ac.uk/about he in wales/statistics/statistics.aspx](http://www.hefcw.ac.uk/about_he_in_wales/statistics/statistics.aspx).