

Further Education, Work-based Learning and Community Learning in Wales Statistics, 2006/07



Cyhoeddwyd gan
Y Gyfarwyddiaeth Ystadegol
Llywodraeth Cynulliad Cymru
Parc Cathays, Caerdydd, CF10 3NQ

Issued by
Statistical Directorate
Welsh Assembly Government
Cathays Park, Cardiff, CF10 3NQ

CONTENTS

Introduction	vi
Section A: Further Education In Wales	1
Tables:	
F1.1 Numbers of learners (FE, HE and WBL) enrolled at FE institutions by programme 2006/07	7
F1.2 Numbers of learners (FE, HE and WBL) enrolled at FE institutions by level 2006/07	8
F1.3a Numbers of full-time learners enrolled at FE institutions 2006/07	9
F1.3b Numbers of part-time learners enrolled at FE institutions 2006/07	10
F1.3c Numbers of learners on work-based learning programmes at FE institutions 2006/07	11
F1.4 Student load for learners at FE institutions	12
F1.5 Numbers of learners (FE and WBL) enrolled at FE and HE institutions 2006/07	13
F1.6 Numbers of learners (FE, HE and WBL) taught at FE institutions 2006/07	14
F1.7 Numbers of Welsh for Adults learners and their learning activities enrolled at FE and HE institutions 2006/07	15
F2.1 Trends in further education student numbers in December (at FE institutions and HE institutions) by mode of attendance and age 2001/02 to 2006/07	16
F2.2 Trends in further education student numbers at FE institutions by age group 2001/02 to 2006/07	16
F3.1 Numbers of learners (FE, HE and WBL) enrolled at FE institutions by age group, mode of learning and sex 2006/07	17
F3.2 Numbers of learners (FE, HE and WBL) enrolled at FE institutions by age group, mode of learning and level 2006/07	18
F3.3 Numbers of learners (FE, HE and WBL) enrolled at FE institutions by country of domicile, mode of learning and sex 2006/07	19
F3.4a Numbers of learners (FE, HE and WBL) enrolled at FE institutions by unitary authority of domicile and age group 2006/07	20
F3.4b Numbers of learners (FE, HE and WBL) enrolled at FE institutions by unitary authority of domicile and sex 2006/07	22
F3.5 Numbers of learners (FE, HE and WBL) enrolled at FE institutions by ethnicity, age band and sex 2006/07	23
F3.6 Numbers of learners (FE, HE and WBL) enrolled at FE institutions by disability status, age band and sex 2006/07	24
F3.7 Numbers of learners (FE, HE and WBL) enrolled at FE institutions by learning difficulty status, age band and sex 2006/07	25
F3.8 Numbers of learners at FE institutions by deprivation status, sex and age group 2006/07	26
F4.1a Numbers of learning activities at FE institutions by subject and DCELLS Area of domicile 2006/07	28
F4.1b Numbers of learning activities at FE institutions by subject and age group 2006/07	30

F4.2a	Numbers of learning activities at FE institutions by sector subject area and DCELLS Area of domicile 2006/07	32
F4.2b	Learning activity completion rates at FE institutions by sector subject area 2006/07	34
F4.2c	Learning activity attainment rates at FE institutions by sector subject area 2006/07	35
F4.3	Numbers of learning activities at FE institutions by subject and credit Level 2006/07	36
F4.4	Numbers of learning activities at FE institutions by subject and Welsh Medium status of learning delivery 2006/07	38
F4.5	Numbers of learning activities at FE institutions by qualification type, age band and sex 2006/07	39
F4.6a	Numbers of awards attained for learners enrolled at FE institutions by qualification type and age band 2006/07	40
F4.6b	Numbers of learners attaining awards at FE institutions by qualification type and age band 2006/07	40

Section B: Local Authority Community Learning In Wales 41

Tables:

L1.1	Numbers of learners in LEA Community Learning by unitary authority and provision type 2006/07	44
L1.2a	Numbers of learners in LEA Community Learning by age group, mode of learning and sex 2006/07	45
L1.2b	Numbers of learners in LEA Community Learning by age group, mode of learning and sex 2006/07 - excluding contracted-in from FE	46
L2.1	Numbers of LEA Community Learning learning activities by unitary authority and provision type 2006/07	47
L2.2	Numbers of LEA Community Learning learning activities by age group, mode of learning and sex 2006/07	47
L2.3	Numbers of LEA Community Learning learning activities by subject and age group 2006/07	48
L2.4	Numbers of LEA Community Learning learning activities by subject and sex 2006/07	50

Section C: Work-Based Learning In Wales 51

Tables:

T1.1	Numbers of learners at work-based learning (WBL) providers by age group, sex and programme type 2006/07	54
T1.2	Number of learners by programme and DCELLS Area of domicile 2006/07	55
T1.3	Number of enrolments on learning programmes by programme and DCELLS Area of domicile 2006/07	55
T1.4	Numbers of learners at work-based learning (WBL) providers by ethnicity, age band and sex 2006/07	56

T1.5	Numbers of learners at work-based learning (WBL) providers by disability status, age band and sex 2006/07.....	57
T2.1	Trends in work-based learning - number in training 1999-2000 to 2006/07	58
T2.2	Numbers of unique learners and individual learning programmes by programme type.....	58
T3.1	Number of learning programmes for Foundation Modern Apprenticeships, Modern Apprenticeships and Modern Skills Diplomas by sector frameworks and programme type 2006/07	59
T3.2	Numbers of learning activities at WBL providers by subject and credit level 2006/07	60
T3.3a	Leaver destinations: Number of learning programmes left in academic year 2006/07 by destination and age group	62
T3.3b	Leaver destinations: Number of distinct learners leaving (their most recent learning programme) in academic year 2006/07 by destination and age group	62

Appendices

A	Data sources and definitions	65
B	Other useful information sources	70

INTRODUCTION

This volume is the fourth in a series providing statistics about the post-16 learning sector (excluding sixth forms and excluding HE institutions apart from in a few specific tables) in Wales. The main purpose of the publication series is to provide an annual picture of learning which was undertaken in the post-16 learning sector in Wales.

The statistics in this volume complement previously issued Welsh Assembly Government statistical releases on the 2006/07 post-16 learning sector and summary data available via the StatsWales website (www.statswales.wales.gov.uk). The volume also provides a continuation to certain trend statistics provided in the former publication series *Higher Education, Further Education and Training Statistics in Wales* which was a series of publications produced jointly by the Higher Education Funding Council for Wales (HEFCW) and Education and Learning Wales (ELWa). Following the separation of HEFCW and ELWa the joint publication was no longer issued. In April 2006 ELWa was merged into the Welsh Assembly Government.

In 2003/04 ELWa introduced a new data collection system known as the Lifelong Learning Wales Record (LLWR), with the aim of collecting consistent and comparable data across the post-16 learning sector. This system has been continued by The Welsh Assembly Government's Department for Children, Education, Lifelong Learning and Skills (DCELLS). In its first year of operation the LLWR collected data from Further Education (FE) and Community Learning providers whereas Work-based Learning (WBL) providers continued to return data via existing funding systems. From its second year of operation the LLWR also collected data from the WBL sector. Therefore, all of the data in this publication is sourced from the LLWR, with the sole exception of data on learners at HE institutions.

Previous *Higher Education, Further Education and Training Statistics* publications included not only data regarding learners and the learning they had undertaken but also information on FE staff and FE institution finances. The current series by contrast only focuses on learners and their learning. FE staff and finance data is available separately and further details of these publications can be found in Appendix B.

Structure of the Volume

This volume is divided into three sections with two appendices at the end. Each section contains a series of tables (with brief accompanying notes and data caveats on coverage and data sources) and a short commentary which brings attention to key statistics from the section.

The sections are :

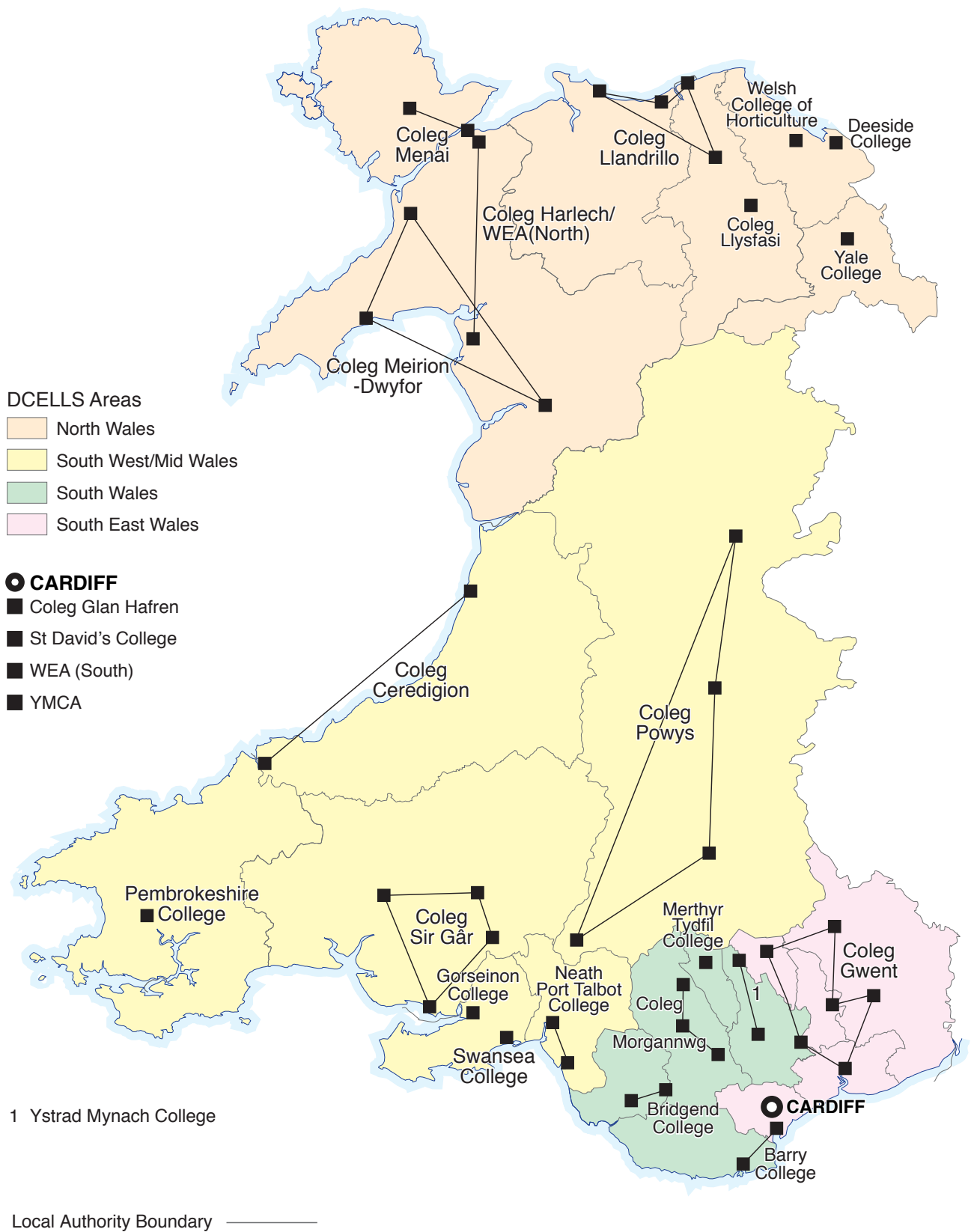
- Section A Further Education in Wales
- Section B Local Authority Community Learning in Wales
- Section C Work-based Learning in Wales

Appendix A provides fuller information on sources of data and notes on the definitions.

Appendix B provides a few further information sources relating to the learning sector in Wales.

SECTION A

FURTHER EDUCATION IN WALES



Site locations of FE Institutions with multiple main sites:

Institution Name	Site Location
Bridgend College	Bridgend Pencoed
Coleg Sir Gâr	Llanelli Carmarthen Llandeilo Ammanford
Coleg Ceredigion	Cardigan Aberystwyth
Coleg Gwent	Usk Newport Cross Keys Pontypool Ebbw Vale Abergavenny
Coleg Llandrillo	Rhos-on-Sea Abergele Denbigh Rhyl
Coleg Meirion-Dwyfor	Dolgellau Pwllheli Glynllifon
Coleg Menai	Bangor Llangefni
Neath Port Talbot College	Neath Afan
Coleg Morgannwg	Pontypridd Rhondda Aberdare
Coleg Powys	Newtown Llandrindod Wells Brecon Ystradgynlais
Ystrad Mynach College	Ystrad Mynach Rhymney
Coleg Harlech / WEA (North)	Harlech Bangor

Further Education Summary

- 235,775 learners were enrolled at an FE institution in 2006/07
- 167,005 learners were in-learning at an FE institution as at the week of 1 December 2006
- There was a 4.4 per cent increase in FE learner numbers (at FE and HE institutions) between December 2001 and December 2006
- 2,010 learners at FE institutions were enrolled on a designated HE programme (and not also pursuing a WBL programme); however 6,200 learners (including multiple counting between providers) were undertaking one or more qualifications at HE level
- Around 9,800 learners at HE institutions were enrolled on FE level courses. This figure includes learners at Merthyr Tydfil College which merged into the University of Glamorgan in 2006. These learners are excluded from the counts at FE institutions.
- 18,295 learners undertook Welsh for Adult learning activities; 35 per cent of these were enrolled at HE institutions in Wales
- 58 per cent of learners at FE institutions were female
- 18 per cent of learners at FE institutions were full-time, 76 per cent part-time and 6 per cent work-based learners
- 36 per cent of learners at FE institutions were aged under 25
- 4 per cent of learners at FE institutions were of a non-white ethnic origin
- 8 per cent of learners at FE institutions had a disability
- 96 per cent of learners at FE institutions were domiciled in Wales, and 24 per cent of these were domiciled in areas designated as deprived
- 719,105 learning activities were undertaken by learners at FE institutions
- The two most popular subject areas were Care/Personal Development (including Basic Skills) (24 per cent) and Information Technology (17 per cent)
- 3.3 per cent of learning activities were undertaken bilingually and 0.3 per cent through the medium of Welsh
- The most popular types of learning activities recorded (excluding 'other' category) were Open College Network (OCN) credits (29 per cent) and key skills (19 per cent)

Note : all percentages are as a proportion of the total for which data were available

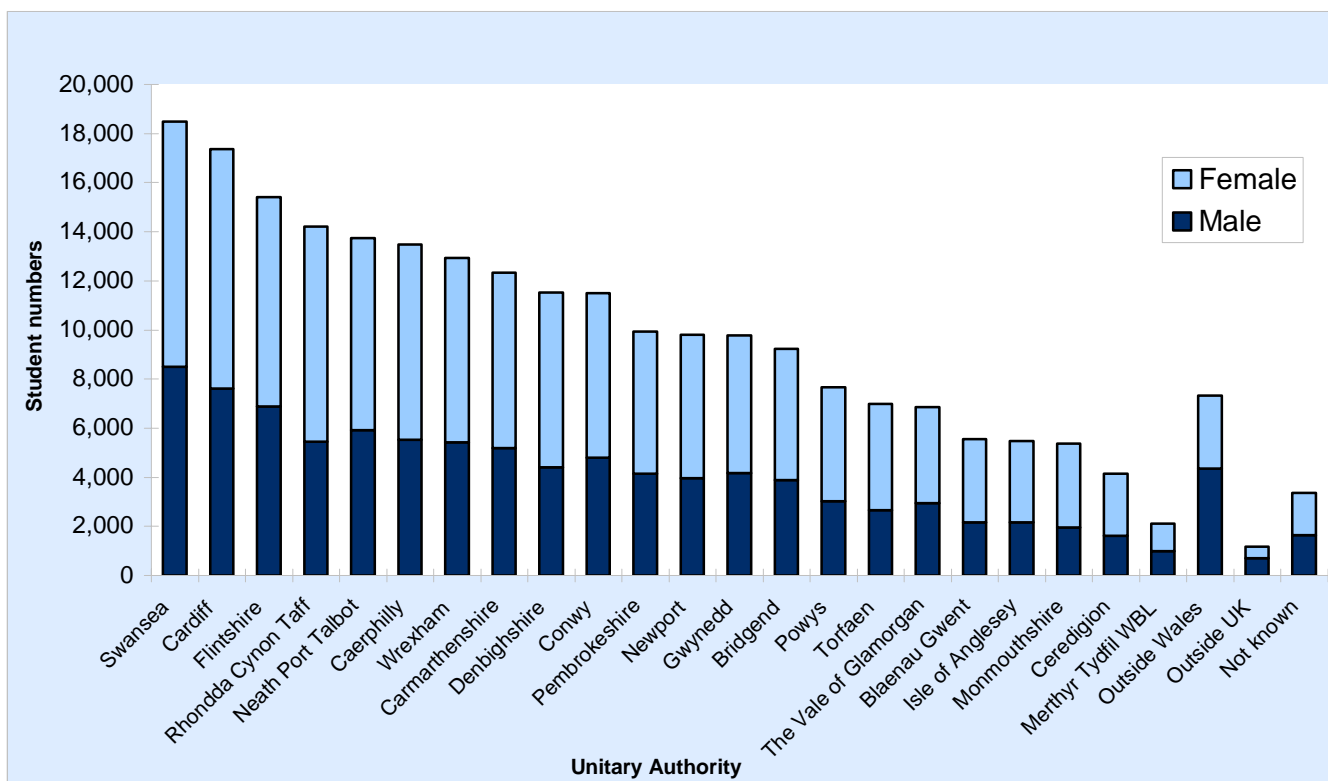
Learners [Tables F1.1 to F3.8]

There were 235,775 learners enrolled at FE institutions in 2006/07. These learners were enrolled at 25 Further Education institutions (FEIs) in Wales (including the work-based learning subsidiary of Merthyr Tydfil College). Most of their programmes of study were at the equivalent of NVQ Level 3 or below but 20 institutions enrolled some learners on higher education (HE) courses / learning activities. There were also around 9,800 learners undertaking FE level programmes who were enrolled at eleven of the HE institutions in Wales. Most of the increase in the number of FE learners at HE institutions is the result of the incorporation of Merthyr Tydfil College into the University of Glamorgan in 2006. 13,275 learners enrolled at FE institutions were pursuing work-based learning programmes and are also included within the counts of the work-based learning section C.

Although 235,775 learners were enrolled at FE institutions not all the learning was delivered by staff at FE institutions. Some learners received learning from third parties (such as Local Education Authorities delivering community learning) and other learners would have been enrolled with third parties (such as HE institutions) but received learning at FE institutions. Table F1.6 provides information on these third party arrangements. Those learners appearing within the FE institution figures who are taught by LEA community learning staff are identified in the appropriate tables of section B (Local Authority Community learning in Wales) in which they also appear.

The introduction of the Lifelong Learning Wales Record (LLWR) data collection system has allowed individual learners to be tracked statistically. Previous data collection systems operating in the FE sector have only allowed unique instances of learners at specific FEIs to be counted. When duplicate instances of learners enrolled at more than one FE institution are included then the total number of learners enrolled at FEIs is 253,155 (the 'provider-learner' count) as compared with the count of unique learners in the sector which is 235,775.

Figure F1: Learners Enrolled at FE Institutions by Local Authority of Domicile 2006/7



Learning Activities [Tables F4.1a to F4.5]

Overall 719,105 learning activities (equivalent to courses / qualification aims) were followed by learners enrolled at FE institutions in 2006/07. The vast majority of these learning activities were at a level equivalent to NVQ level 1, 2 or 3.

0.3 per cent of the learning activities were delivered in the medium of Welsh and a further 3.3 per cent bilingually but all the remainder were delivered in the medium of English.

Aside from the 'other' category (which amalgamates a number of different types of qualification, including City & Guild certificates, ECDL and CLAIT), the most prevalent types of qualification undertaken were:

- Open College Network (OCN) credits (29 per cent)
- Key Skills (19 per cent)
- NVQs, or GNVQs (8 per cent)
- GCE A/AS levels, or GCSEs (6 per cent)

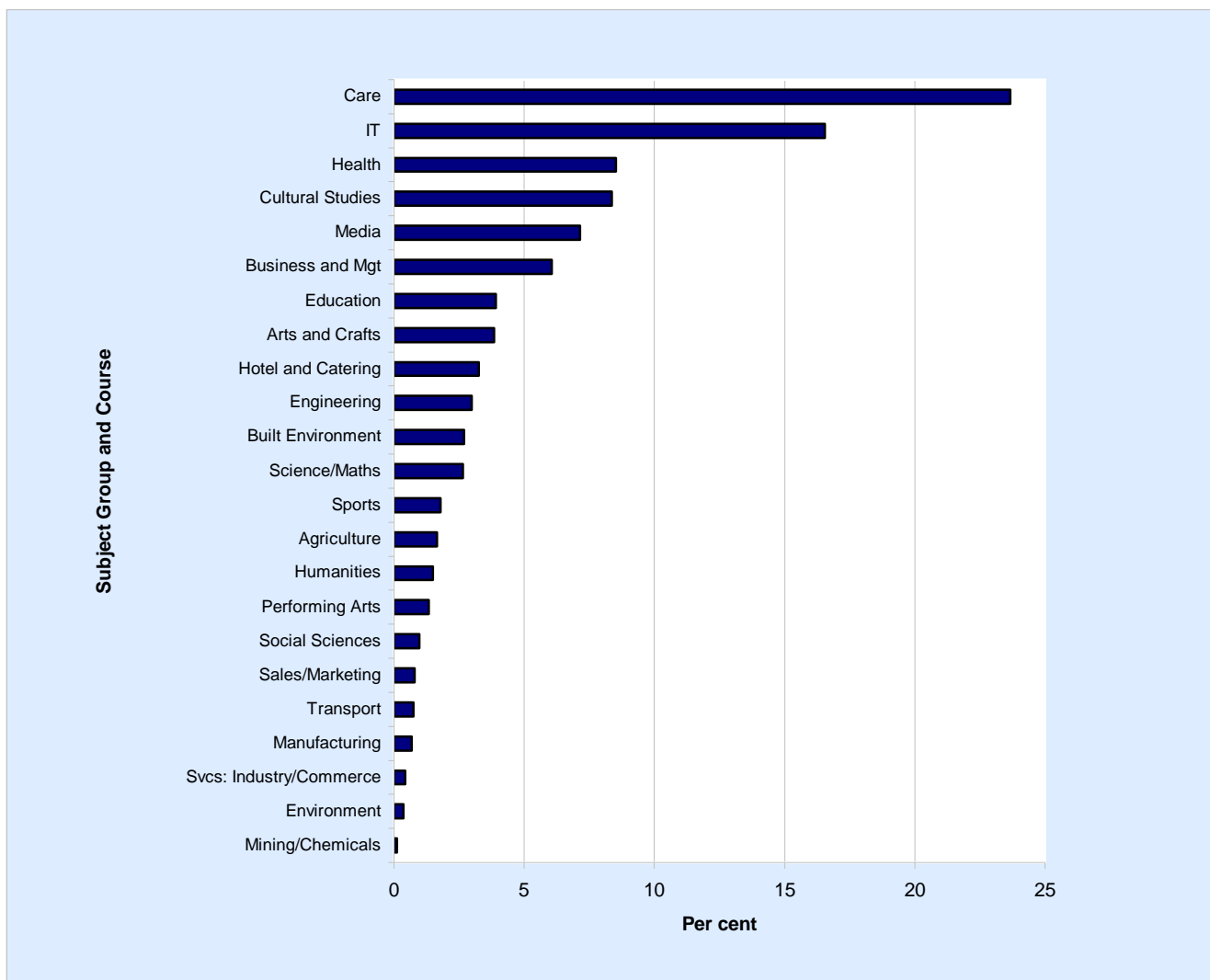
There was some variation in qualification type by learner age group with Key Skills, A/AS levels and GCSEs more popular with learners aged 18 and under than with the older cohort of learners.

The most popular subjects being undertaken by learners at FE institutions were (with their proportion of the total excluding unspecified subjects):

- Care/Personal Development (including Basic Skills) (24 per cent)
- Information Technology (17 per cent)
- Health/Care/Medicine/Health & Safety (9 per cent)
- Cultural Studies/Languages/Literature (8 per cent)
- Media/Communication/Publishing (7 per cent)

18,295 learners at FE and HE institutions undertook 29,395 Welsh for Adult courses in 2006/07. Just over a third of these courses were registered at HE institutions.

Figure F2: Subject of Study 2006/07



Completion Rates and Attainment Rates [Tables F4.2b and F4.2c]

Of the learning activities which ended in 2006/07 (i.e. those which were either completed or withdrawn from but which were not continuing at the end of the year) 87 per cent were completed. This indicates that the courses were completed, not that there were necessarily attained qualifications. Of those completed learning activities which included assessable awards, 72 per cent were successfully attained. Tables F4.2b and F4.2c split these figures by sector subject area (see also F4.2a).

Awards [Tables F4.6a and F4.2b]

355,555 individual awards were successfully attained by 151,960 learners in 2006/07. Tables 4.6a and 4.6b provide a breakdown by qualification type and learner age band.

Trends in Learning

Table F2.1 and Figure F3 on trends in learner numbers continue a series originally published by the Welsh Office, then the Welsh Funding Councils, ELWa and now the Welsh Assembly Government. From 2003/04 onwards, the source has been the Welsh Assembly Government's Lifelong Learning Wales Record (LLWR). In contrast to the population definition usually used in this publication, the count is of all FE (and WBL at FEI) students, including those at higher education institutions. The count is taken as at the week of 1 December and, for 2006/07, can be derived from the December counts of Table F1.5.

It should also be noted that when comparing more recent learner numbers with those of the years prior to 2003/04, provider-learner counts must be used because unique learner identifiers were not available in the pre-LLWR years.

Some care should be taken when comparing full-time and 'other' mode of learning figures for 2003/04 to 2006/07 with those of previous years as the learner mode definition changed with the advent of the LLWR data collection system. However, across the FE sector as a whole, the number of full-time and 'other' learners remained fairly stable over the transition years 2002/03 to 2003/04.

Between December 2001 and December 2006 there was a rise in the total FE learner numbers at FE and HE institutions of 4.4 per cent. The higher level of growth noted in previous volumes in the years leading up to 2001/02 was largely attributable to the growth in part-time learner numbers. In absolute terms this remains true in the period 2001/02 to 2006/07 even though the percentage rise in full-time learner numbers actually exceeds that of part-time numbers over this period.

Figure F3: FE Learners Enrolled - December 2001 to December 2006

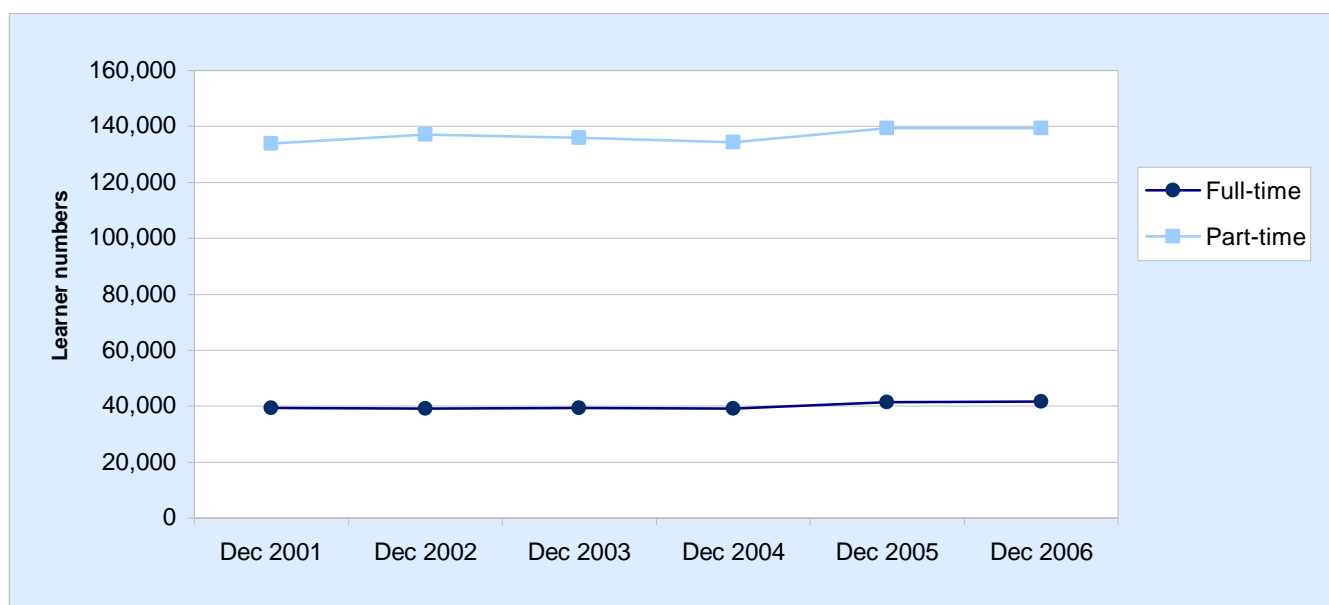


Table F1.1 Numbers of learners (FE, HE and WBL) enrolled at FE institutions by programme 2006/07 (a-k)

Institution	<i>Numbers</i>							
	Learners on FE programmes		Learners on HE programmes		Learners on WBL programmes		Total	
	All	Enrolled 1 Dec	All	Enrolled 1 Dec	All	Enrolled 1 Dec	All	Enrolled 1 Dec
Barry College	7,595	5,605	0	0	1,150	725	8,745	6,330
Bridgend College	11,385	8,560	45	45	95	60	11,530	8,665
Coleg Sir Gar	9,390	7,505	390	375	660	455	10,435	8,335
Coleg Ceredigion	3,730	2,315	0	0	95	70	3,825	2,385
Deeside College	20,705	15,810	0	0	1,630	880	22,335	16,685
Coleg Glan Hafren	13,235	9,915	95	70	330	265	13,660	10,250
Gorseinon College	5,765	4,030	0	0	340	180	6,105	4,210
Coleg Gwent	30,870	21,690	0	0	820	645	31,695	22,340
Coleg Llandrillo	18,250	11,830	1,050	885	1,285	820	20,585	13,535
Coleg Llysfasi	4,110	2,090	60	35	485	350	4,655	2,475
Coleg Meirion Dwyfor	3,165	2,465	40	40	95	65	3,305	2,570
Merthyr Tydfil College WBL	0	0	0	0	615	310	615	310
Pembrokeshire College	10,085	6,815	15	15	510	310	10,615	7,145
Coleg Morgannwg	11,705	8,460	95	90	300	170	12,100	8,720
Coleg Powys	6,220	3,535	0	0	285	235	6,505	3,765
St David's Catholic College	1,295	1,150	0	0	0	0	1,295	1,150
Swansea College	15,155	10,335	20	20	1,240	785	16,415	11,135
Welsh College of Horticulture	3,875	1,710	0	0	715	545	4,590	2,260
Yale College	13,485	8,195	125	120	1,315	700	14,925	9,015
Ystrad Mynach College	9,705	6,615	0	0	520	350	10,225	6,965
WEA South	6,545	3,810	0	0	0	0	6,545	3,810
YMCA	3,415	685	0	0	0	0	3,415	685
Coleg Menai	8,385	5,805	25	25	715	570	9,125	6,400
Neath Port Talbot College	14,265	12,930	55	55	800	425	15,120	13,405
Coleg Harlech/WEA (North)	4,800	2,890	0	0	0	0	4,800	2,890
Total (including any multiple-counting between providers)	237,140	164,745	2,015	1,770	14,000	8,915	253,155	175,435
Total unique learners	220,495	156,480	2,010	1,765	13,275	8,760	235,775	167,005

Source: LLWR (Lifelong Learning Wales Record) post-16 database

- (a) Individual row counts are based on providers' own learner identifiers and their total includes some multiple-counting between providers.
- (b) The total unique learners row removes multiple-counting between providers by counting unique learner identifiers (ULIs).
- (c) 'Enrolled 1 Dec' is the population during the week of 1 December 2006; 'All' refers to the complete academic year.
- (d) Includes full-time, part-time and work-based learners.
- (e) A learner pursuing any WBL programme is designated as work-based learning.
- (f) Includes WBL subsidiaries of FE institutions.
- (g) A learner pursuing an HE learning programme but not also pursuing a WBL programme is designated as HE.
- (h) For the purpose of this table, HE refers only to programmes designated as higher education in their entirety.
- (i) Higher education excludes learners enrolled at HE institutions and franchised in to FE institutions.
- (j) Includes LEA community learning where there is a formal enrolment with an FE institution.
- (k) Numbers greater than 0 and less than 5 have been replaced by *. Other figures are rounded to the nearest 5 and there may be slight discrepancies between the sums of constituent items and the independently rounded totals.

Table F1.2 Numbers of learners (FE, HE and WBL) enrolled at FE institutions by level 2006/07 (a-h)

Institution	<i>Numbers</i>					
	Learners with FE level highest qualification pursued		Learners with HE level highest qualification pursued		Total	
	All	Enrolled 1 Dec	All	Enrolled 1 Dec	All	Enrolled 1 Dec
Barry College	8,540	6,165	205	165	8,745	6,330
Bridgend College	11,375	8,535	155	130	11,530	8,665
Coleg Sir Gar	9,850	7,800	585	535	10,435	8,335
Coleg Ceredigion	3,755	2,330	65	55	3,825	2,385
Deeside College	21,725	16,190	605	495	22,335	16,685
Coleg Glan Hafren	13,305	9,975	355	275	13,660	10,250
Gorseinon College	6,050	4,160	55	50	6,105	4,210
Coleg Gwent	31,370	22,175	320	160	31,695	22,340
Coleg Llandrillo	19,295	12,465	1,290	1,070	20,585	13,535
Coleg Lllysfasi	4,395	2,295	260	180	4,655	2,475
Coleg Meirion Dwyfor	3,135	2,405	170	170	3,305	2,570
Merthyr Tydfil College WBL	615	310	0	0	615	310
Pembrokeshire College	10,345	6,925	270	215	10,615	7,145
Coleg Morgannwg	11,920	8,565	180	155	12,100	8,720
Coleg Powys	6,425	3,710	75	55	6,505	3,765
St David's Catholic College	1,295	1,150	0	0	1,295	1,150
Swansea College	16,045	10,855	370	280	16,415	11,135
Welsh College of Horticulture	4,400	2,110	190	150	4,590	2,260
Yale College	14,560	8,705	365	310	14,925	9,015
Ystrad Mynach College	10,075	6,845	150	120	10,225	6,965
WEA South	6,545	3,810	0	0	6,545	3,810
YMCA	3,415	685	0	0	3,415	685
Coleg Menai	9,000	6,290	125	110	9,125	6,400
Neath Port Talbot College	14,715	13,060	400	345	15,120	13,405
Coleg Harlech/WEA (North)	4,800	2,890	0	0	4,800	2,890
Total (including any multiple-counting between providers)	246,955	170,410	6,200	5,020	253,155	175,435
Total unique learners					235,775	167,005

Source: LLWR (Lifelong Learning Wales Record) post-16 database

- (a) Counts are based on providers' own learner identifiers and therefore include some multiple-counting between providers.
- (b) 'Enrolled 1 Dec' is the population during the week of 1 December 2006; 'All' refers to the complete academic year.
- (c) Includes full-time, part-time and work-based learners.
- (d) Includes WBL subsidiaries of FE institutions.
- (e) In contrast to table F1.1, this table allocates learners to the HE columns if any of their learning activities is at HE level.
- (f) The allocation to FE level or HE level columns is made independently of the FE, HE or WBL overarching programme.
- (g) Includes LEA community learning where there is a formal enrolment with an FE institution.
- (h) Numbers greater than 0 and less than 5 have been replaced by *. Other figures are rounded to the nearest 5 and there may be slight discrepancies between the sums of constituent items and the independently rounded totals.

Table F1.3a Numbers of full-time learners enrolled at FE institutions 2006/07 (a-i)
Numbers

Institution	Learners with FE level highest qualification pursued		Learners with HE level highest qualification pursued		Total	
	All	Enrolled 1 Dec	All	Enrolled 1 Dec	All	Enrolled 1 Dec
	Barry College	1,780	1,600	*	*	1,780
Bridgend College	2,375	2,235	35	35	2,410	2,270
Coleg Sir Gar	2,560	2,390	285	275	2,845	2,660
Coleg Ceredigion	705	675	0	0	705	675
Deeside College	1,655	1,565	0	0	1,655	1,565
Coleg Glan Hafren	2,805	2,660	25	15	2,830	2,675
Gorseinon College	1,895	1,825	0	0	1,895	1,825
Coleg Gwent	5,935	5,590	15	10	5,950	5,600
Coleg Llandrillo	2,715	2,675	170	140	2,885	2,815
Coleg Lllysfasi	230	215	0	0	230	215
Coleg Meirion Dwyfor	850	815	110	110	960	920
Pembrokeshire College	1,690	1,665	0	0	1,690	1,665
Coleg Morgannwg	2,595	2,425	95	90	2,690	2,515
Coleg Powys	990	950	0	0	990	950
St David's Catholic College	1,140	1,095	0	0	1,140	1,095
Swansea College	2,465	2,225	15	15	2,475	2,240
Welsh College of Horticulture	300	285	10	10	315	300
Yale College	3,330	3,000	*	*	3,330	3,000
Ystrad Mynach College	1,790	1,740	5	5	1,795	1,745
WEA South	30	30	0	0	30	30
Coleg Menai	1,670	1,630	*	*	1,670	1,630
Neath Port Talbot College	3,080	2,930	5	*	3,085	2,930
Coleg Harlech/WEA (North)	105	85	0	0	105	85
	0	0	0	0	0	0
Total (including any multiple-counting between providers)	42,685	40,305	775	710	43,460	41,015
Total unique learners					43,030	

Source: LLWR (Lifelong Learning Wales Record) post-16 database

- (a) Counts are based on providers' own learner identifiers and therefore include some multiple-counting between providers.
- (b) 'Enrolled 1 Dec' is the population during the week of 1 December 2006; 'All' refers to the complete academic year.
- (c) A full-time learner is one whose total guided contact hours across all their learning activities amounts to at least 450 hours.
- (d) Excludes learners pursuing any work-based learning programme.
- (e) Excludes learners enrolled at HE institutions and franchised in to FE institutions.
- (f) Includes LEA community learning where there is a formal enrolment with an FE institution.
- (g) In contrast to table F1.1, this table allocates learners to the HE columns if any of their learning activities is at HE level.
- (h) The allocation to FE level or HE level columns is made independently of the overarching programme.
- (i) Numbers greater than 0 and less than 5 have been replaced by *. Other figures are rounded to the nearest 5 and there may be slight discrepancies between the sums of constituent items and the independently rounded totals.

Table F1.3b Numbers of part-time learners enrolled at FE institutions 2006/07 (a-i)
Numbers

Institution	Learners with FE level highest qualification pursued		Learners with HE level highest qualification pursued		Total	
	All	Enrolled 1 Dec	All	Enrolled 1 Dec	All	Enrolled 1 Dec
	Barry College	5,685	3,890	125	110	5,810
Bridgend College	8,905	6,240	115	95	9,020	6,335
Coleg Sir Gar	6,735	5,035	200	185	6,935	5,220
Coleg Ceredigion	2,990	1,615	35	25	3,025	1,640
Deeside College	18,570	13,820	480	420	19,050	14,245
Coleg Glan Hafren	10,195	7,070	305	240	10,500	7,305
Gorseinon College	3,825	2,165	45	40	3,870	2,205
Coleg Gwent	24,640	15,960	285	130	24,920	16,090
Coleg Llandrillo	15,465	9,085	955	810	16,415	9,895
Coleg Lllysfasi	3,790	1,805	150	105	3,940	1,910
Coleg Meirion Dwyfor	2,190	1,525	60	60	2,250	1,585
Pembrokeshire College	8,165	4,965	250	200	8,415	5,165
Coleg Morgannwg	9,045	5,980	65	55	9,110	6,035
Coleg Powys	5,165	2,535	70	50	5,230	2,580
St David's Catholic College	150	55	0	0	150	55
Swansea College	12,470	7,935	225	180	12,695	8,115
Welsh College of Horticulture	3,450	1,325	115	85	3,560	1,415
Yale College	9,945	5,030	335	285	10,280	5,315
Ystrad Mynach College	7,790	4,775	120	95	7,915	4,870
WEA South	6,515	3,780	0	0	6,515	3,780
YMCA	3,415	685	0	0	3,415	685
Coleg Menai	6,620	4,095	120	100	6,740	4,200
Neath Port Talbot College	10,925	9,765	310	285	11,235	10,050
Coleg Harlech/WEA (North)	4,695	2,805	0	0	4,695	2,805
	0	0	0	0	0	0
Total (including any multiple-counting between providers)	191,335	121,945	4,360	3,555	195,695	125,500
Total unique learners					179,475	

Source: LLWR (Lifelong Learning Wales Record) post-16 database

- (a) Counts are based on providers' own learner identifiers and therefore include some multiple-counting between providers.
- (b) 'Enrolled 1 Dec' is the population during the week of 1 December 2006; 'All' refers to the complete academic year.
- (c) A part-time learner is one whose total guided contact hours across all their learning activities amounts to less than 450 hours.
- (d) Excludes learners pursuing any work-based learning programme.
- (e) Excludes learners enrolled at HE institutions and franchised in to FE institutions.
- (f) Includes LEA community learning where there is a formal enrolment with an FE institution.
- (g) In contrast to table F1.1, this table allocates learners to the HE columns if any of their learning activities is at HE level.
- (h) The allocation to FE level or HE level columns is made independently of the overarching programme.
- (i) Numbers greater than 0 and less than 5 have been replaced by *. Other figures are rounded to the nearest 5 and there may be slight discrepancies between the sums of constituent items and the independently rounded totals.

Table F1.3c Numbers of learners on work-based learning programmes at FE institutions 2006/07 (a-h)

Institution	<i>Numbers</i>					
	Learners with FE level highest qualification pursued		Learners with HE level highest qualification pursued		Total	
	All	Enrolled 1 Dec	All	Enrolled 1 Dec	All	Enrolled 1 Dec
Barry College	1,070	670	80	55	1,150	725
Bridgend College	95	60	0	0	95	60
Coleg Sir Gar	560	380	100	75	660	455
Coleg Ceredigion	60	40	35	30	95	70
Deeside College	1,500	805	130	75	1,630	880
Coleg Glan Hafren	305	245	25	20	330	265
Gorseinon College	330	170	10	10	340	180
Coleg Gwent	800	625	25	20	820	645
Coleg Llandrillo	1,115	700	170	120	1,285	820
Coleg Llysfasi	380	270	105	80	485	350
Coleg Meirion Dwyfor	95	65	*	*	95	65
Merthyr Tydfil College WBL	615	310	0	0	615	310
Pembrokeshire College	490	295	20	15	510	310
Coleg Morgannwg	285	160	15	10	300	170
Coleg Powys	275	225	10	5	285	235
Swansea College	1,110	695	135	90	1,240	785
Welsh College of Horticulture	650	495	65	50	715	545
Yale College	1,285	680	30	20	1,315	700
Ystrad Mynach College	495	335	25	20	520	350
Coleg Menai	710	565	5	5	715	570
Neath Port Talbot College	715	365	85	60	800	425
Total (including any multiple-counting between providers)	12,930	8,160	1,065	760	14,000	8,915
Total unique learners					13,275	

Source: LLWR (Lifelong Learning Wales Record) post-16 database

- (a) Counts are based on providers' own learner identifiers and therefore include some multiple-counting between providers.
 (b) 'Enrolled 1 Dec' is the population during the week of 1 December 2006; 'All' refers to the complete academic year.
 (c) A learner pursuing any WBL programme is designated as work-based learning.
 (d) Some learners included above may also be pursuing non-WBL programmes at some point in the year.
 (e) Includes WBL subsidiaries of FE institutions.
 (f) In contrast to table F1.1, this table allocates learners to the HE columns if any of their learning activities is at HE level.
 (g) The allocation to FE level or HE level columns is made independently of the overarching programme.
 (h) Numbers greater than 0 and less than 5 have been replaced by *. Other figures are rounded to the nearest 5 and there may be slight discrepancies between the sums of constituent items and the independently rounded totals.

Table F1.4 Student load for learners at FE institutions (a-f)

Institution	<i>Numbers</i>				
	2002/03	2003/04	2004/05	2005/06	2006/07
Barry College	2,125	2,595	2,395	2,625	2,590
Bridgend College	3,160	3,340	3,455	3,575	3,405
Coleg Sir Gar	4,465	4,165	3,865	3,820	3,885
Coleg Ceredigion	865	875	800	900	905
Deeside College	2,050	1,850	1,840	2,045	2,370
Coleg Glan Hafren	4,185	4,770	4,460	4,750	4,445
Gorseinon College	2,280	2,200	2,290	2,350	2,250
Coleg Gwent	8,675	9,200	9,005	8,900	8,705
Coleg Llandrillo	4,870	4,580	4,460	4,940	4,695
Coleg Llysfasi	490	420	380	430	475
Coleg Meirion Dwyfor	1,085	1,160	1,085	1,080	1,125
Merthyr Tydfil College (to 2005/06)	1,110	1,315	1,215	1,190	-
Pembrokeshire College	2,555	2,540	2,605	2,605	2,405
Coleg Morgannwg	3,740	3,480	3,740	3,595	3,765
Coleg Powys	1,550	1,365	1,370	1,400	1,355
St David's Catholic College	1,050	1,155	1,170	1,235	1,145
Swansea College	3,545	3,750	3,320	3,585	4,020
Welsh College of Horticulture	640	585	605	635	540
Yale College	3,995	4,270	4,390	4,285	4,200
Ystrad Mynach College	3,195	2,835	2,555	2,595	2,830
WEA South	580	600	490	460	440
YMCA	110	115	110	120	120
Coleg Menai	2,760	2,565	2,095	2,540	2,445
Neath Port Talbot College	4,590	4,590	4,485	4,790	4,325
Coleg Harlech/WEA (North)	545	510	455	470	465
Total	64,220	64,835	62,640	64,920	62,890

Source: 2002/03 Individualised Student Record (ISR) for student load.

LLWR (Lifelong Learning Wales Record) post-16 database

- (a) FTE=Full Time Equivalent.
- (b) The student load ISR and LLWR methodologies have been designed purely for the purpose of this volume and may not have wider applicability.
- (c) The ISR figures are not fully compatible with the LLWR figures because of the change in data source and accompanying methodological differences.
- (d) Each learner's student load has been derived by dividing his or her guided contact hours for the year by the mean for a full-time learner, with the result capped to 1 FTE at most.
- (e) The calculation includes full-time and part-time learners at FEIs but excludes WBL learners.
- (f) Numbers greater than 0 and less than 5 have been replaced by *. Other figures are rounded to the nearest 5 and there may be slight discrepancies between the sums of constituent items and the independently rounded totals.

Table F1.5 Numbers of learners (FE and WBL) enrolled at FE and HE institutions 2006/07 (a-i)

Institution	Numbers							
	Full-time learners		Part-time learners		Work-based learners		Total	
	All	Enrolled 1 Dec	All	Enrolled 1 Dec	All	Enrolled 1 Dec	All	Enrolled 1 Dec
Barry College	1,780	1,600	5,810	4,005	1,150	725	8,745	6,330
Bridgend College	2,385	2,245	9,000	6,315	95	65	11,485	8,620
Coleg Sir Gar	2,565	2,395	6,820	5,110	660	455	10,050	7,960
Coleg Ceredigion	705	675	3,025	1,640	95	70	3,825	2,385
Deeside College	1,655	1,565	19,050	14,245	1,630	880	22,335	16,685
Coleg Glan Hafren	2,830	2,675	10,405	7,240	330	265	13,565	10,180
Gorseinon College	1,895	1,825	3,870	2,205	340	180	6,105	4,210
Coleg Gwent	5,950	5,600	24,920	16,090	820	645	31,695	22,340
Coleg Llandrillo	2,730	2,695	15,515	9,135	1,285	820	19,535	12,650
Coleg Lllyfasi	230	215	3,880	1,875	485	350	4,595	2,440
Coleg Meirion Dwyfor	960	920	2,210	1,545	95	65	3,265	2,530
Merthyr Tydfil College WBL	0	0	0	0	615	310	615	310
Pembrokeshire College	1,690	1,665	8,400	5,150	510	310	10,595	7,125
Coleg Morgannwg	2,595	2,425	9,110	6,035	300	170	12,005	8,630
Coleg Powys	990	950	5,230	2,580	285	235	6,505	3,765
St David's Catholic College	1,140	1,095	150	55	0	0	1,295	1,150
Swansea College	2,465	2,230	12,690	8,105	1,240	785	16,395	11,120
Welsh College of Horticulture	315	300	3,560	1,415	715	545	4,590	2,260
Yale College	3,330	3,000	10,155	5,195	1,315	700	14,800	8,895
Ystrad Mynach College	1,795	1,745	7,915	4,870	520	350	10,225	6,965
WEA South	30	30	6,515	3,780	0	0	6,545	3,810
YMCA	0	0	3,415	685	0	0	3,415	685
Coleg Menai	1,670	1,630	6,715	4,175	715	570	9,100	6,375
Neath Port Talbot College	3,085	2,930	11,180	9,995	800	425	15,065	13,350
Coleg Harlech/WEA (North)	105	85	4,695	2,805	0	0	4,800	2,890
Total (including any multiple-counting between providers)	42,895	40,500	194,240	124,250	14,000	8,915	251,135	173,665
HE Institutions								
University of Glamorgan	825	800	2,970	2,265				
University of Wales, Aberystwyth	0	0	1,225	865				
University of Wales, Bangor	0	0	2,070	1,480				
Cardiff University	0	0	1,035	635				
University of Wales Swansea	0	0	890	570				
University of Wales Institute, Cardiff	115	115	30	30				
University of Wales, Newport	145	130	100	50				
North East Wales Institute of Higher Education	0	0	95	75				
Swansea Institute of Higher Education	85	85	85	80				
Trinity College Carmarthen	0	0	115	105				
Total	1,170	1,130	8,615	6,160				

Source: LLWR (Lifelong Learning Wales Record) post-16 database
2006/07 HESA Student Record - registration population - learner basis

- (a) Counts are based on providers' own learner identifiers and therefore include some multiple-counting between providers.
- (b) 'Enrolled 1 Dec' is the population during the week of 1 December 2006; 'All' refers to the complete academic year.
- (c) Includes full-time, part-time and work-based learners.
- (d) A learner pursuing any WBL programme is designated as work-based learning.
- (e) Includes WBL subsidiaries of FE institutions but excludes WBL subsidiaries of HE institutions.
- (f) This table excludes learning programmes designated as higher education in their entirety.
- (g) Includes LEA community learning where there is a formal enrolment with an FE institution.
- (h) The figures for HE institutions are on a learner basis and therefore differ from previously published HE enrolment figures.
- (i) Excludes 40 enrolments at the University of Wales Lampeter (non-credit bearing record) - see Table F1.7.
- (j) Numbers greater than 0 and less than 5 have been replaced by *. Other figures are rounded to the nearest 5 and there may be slight discrepancies between the sums of constituent items and the independently rounded totals.

Table F1.6 Numbers of learners (FE, HE and WBL) taught at FE institutions 2006/07 (a-h)

Institution	<i>Numbers</i>			
	FE, HE and WBL learners	Third Party	Franchised in from HE institutions	Learners Taught
Barry College	8,745	2,700	220	6,265
Bridgend College	11,530	2,150	960	10,335
Coleg Sir Gar	10,435	2,175	620	8,880
Coleg Ceredigion	3,825	825	55	3,050
Deeside College	22,335	195	90	22,230
Coleg Glan Hafren	13,660	5,105	90	8,645
Gorseinon College	6,105	0	70	6,175
Coleg Gwent	31,695	13,415	585	18,865
Coleg Llandrillo	20,585	0	200	20,785
Coleg Lllyfasi	4,655	0	15	4,670
Coleg Meirion Dwyfor	3,305	0	70	3,375
Merthyr Tydfil College WBL	615	0	0	615
Pembrokeshire College	10,615	1,675	480	9,420
Coleg Morgannwg	12,100	2,695	500	9,905
Coleg Powys	6,505	1,490	225	5,240
St David's Catholic College	1,295	0	0	1,295
Swansea College	16,415	345	360	16,430
Welsh College of Horticulture	4,590	0	95	4,685
Yale College	14,925	590	100	14,435
Ystrad Mynach College	10,225	750	345	9,820
WEA South	6,545	0	0	6,545
YMCA	3,415	0	0	3,415
Coleg Menai	9,125	0	390	9,510
Neath Port Talbot College	15,120	2,550	460	13,030
Coleg Harlech/WEA (North)	4,800	0	0	4,800
Total (including any multiple-counting between providers)	253,155	36,660	5,925	222,420

Source: LLWR (Lifelong Learning Wales Record) post-16 database
HE Funding 2006/07 Volume 2: Enrolments

- (a) Counts are based on providers' own learner identifiers and therefore include some multiple-counting between providers.
- (b) Includes full-time, part-time and work-based learners.
- (c) Includes WBL subsidiaries of FE institutions.
- (d) Includes LEA community learning where there is a formal enrolment with an FE institution.
- (e) Third party figures indicate where the learning delivery is by a body other than that at which the learner is enrolled.
- (f) Third party figures exclude arrangements between an FE institution and its WBL subsidiary.
- (g) The main component of third party provision is learning contracted in to LEAs. - see table L1.1
- (h) Numbers greater than 0 and less than 5 have been replaced by *. Other figures are rounded to the nearest 5 and there may be slight discrepancies between the sums of constituent items and the independently rounded totals.

Table F1.7 Numbers of Welsh for Adults learners and their learning activities enrolled at FE and HE institutions 2006/07 (a-g)

Institution	Numbers	
	Learners	Learning Activities
Barry College	245	630
Bridgend College	185	185
Coleg Sir Gar	880	1,085
Coleg Ceredigion	750	1,940
Deeside College	320	555
Coleg Glan Hafren	575	645
Gorseinon College	220	515
Coleg Gwent	2,280	4,225
Coleg Llandrillo	1,180	1,725
Coleg Llysfasi	525	530
Coleg Meirion Dwyfor	230	280
Pembrokeshire College	645	810
Coleg Morgannwg	755	2,105
Coleg Powys	555	865
St David's Catholic College	0	0
Swansea College	610	655
Welsh College of Horticulture	165	215
Yale College	210	320
Ystrad Mynach College	385	735
WEA South	325	670
YMCA	55	55
Coleg Menai	365	430
Neath Port Talbot College	380	390
Coleg Harlech/WEA (North)	525	910
Total (including any multiple-counting between providers)	12,370	20,460
Unique Learners at FE institutions	11,950	
HE Institutions	Learners	Enrolments
University of Glamorgan	875	1,010
University of Wales, Aberystwyth	1,225	1,485
University of Wales, Bangor	2,070	3,490
Cardiff University	1,035	1,290
University of Wales, Swansea	890	1,410
North East Wales Institute	95	95
Trinity College Carmarthen	115	115
University of Wales, Lampeter	40	40
Total at HE institutions	6,345	8,935

Source: LLWR (Lifelong Learning Wales Record) post-16 database
2006/07 HESA Student Record - session population - learner basis
HESA Non-Credit Bearing Aggregate Record 2006/07

- (a) Counts by institution are based on providers' own learner identifiers and therefore include some multiple-counting.
 (b) The total unique learners row removes multiple-counting between providers by counting unique learner identifiers (ULIs).
 (c) The same student may be enrolled on more than one course enrolment / learning activity.
 (d) The definition of 'Welsh for Adults' courses is that used for Estyn, Sector Skills and Sector/Subject purposes from 2003/04 to 2006/07.
 (e) Students on Welsh for Adults courses are included regardless of the age of the learner.
 (f) GCSE/GCE Welsh courses are excluded from these figures.
 (g) Numbers greater than 0 and less than 5 have been replaced by *. Other figures are rounded to the nearest 5 and there may be slight discrepancies between the sums of constituent items and the independently rounded totals.

Table F2.1: Trends in further education student numbers in December (at FE institutions and HE institutions) by mode of attendance and age 2001/02 to 2006/07 (a-i)

	<i>Numbers</i>					
	Dec-2001	Dec-2002	Dec-2003	Dec-2004	Dec-2005	Dec-2006
Full-time:						
18 & under	29,105	28,815	28,525	28,975	30,645	30,945
19 & over	10,265	10,345	10,890	10,285	10,860	10,680
All Ages	39,370	39,165	39,415	39,255	41,505	41,625
Other:						
18 & under	11,940	12,080	12,830	13,670	15,060	15,250
19 & over	122,050	125,065	123,230	120,705	124,415	124,080
All Ages	133,990	137,145	136,055	134,375	139,475	139,325
All learners:						
18 & under	41,050	40,900	41,350	42,645	45,705	46,195
19 & over	132,315	135,410	134,120	130,990	135,275	134,760
All Ages	173,365	176,310	175,470	173,635	180,980	180,955

Source: For HEI figures: 1999/2000 to 2004/05: HESA Student Record.
For FEI figures: 1999/2000 to 2002/03: ISR (Individualised Student Record)
LLWR (Lifelong Learning Wales Record) post-16 database

- (a) Includes further education and higher education institutions in Wales.
- (b) Merthyr Tydfil College is included in all years (as part of FE at FEIs up to 2005/06 and as part of FE at HEIs from 2006/07).
- (c) Restricted to FE learners enrolled in early December of academic year. Includes learners enrolled at FE institutions who are on work-based learning programmes but excludes those on HE programmes.
- (d) Counts are based on providers' own learner identifiers and therefore include some multiple-counting between providers.
- (e) 'All Ages' totals and the 19 & over row include instances of unknown age.
- (f) Age is as at 31 August of academic year.
- (g) The figures for 2003/04 differ slightly from those in the 2003/04 annual volume because of an amendment in the HEI figures to include learner numbers, replacing enrolment number figures previously available from HEFCW.
- (h) Includes LEA community learning where there is a formal enrolment with an FE institution.
- (i) Numbers greater than 0 and less than 5 have been replaced by *. Other figures are rounded to the nearest 5 and there may be slight discrepancies between the sums of constituent items and the independently rounded totals.

Table F2.2 Trends in further education student numbers (including WBL, excluding HE programmes) at FE institutions by age group 2001/02 to 2006/07 (a-j)

	<i>Provider-learner numbers</i>						<i>Unique learner numbers</i>			
	2001/02	2002/03	2003/04	2004/05	2005/06	2006/07	2003/04	2004/05	2005/06	2006/07
All learners	49,175	49,780	51,460	51,880	54,790	54,720	48,980	49,460	51,840	51,130
18 & under	49,175	49,780	51,460	51,880	54,790	54,720	48,980	49,460	51,840	51,130
19 & over	204,540	208,820	205,505	199,195	203,680	196,415	194,820	188,530	191,675	182,635
All Ages	253,715	258,600	256,960	251,075	258,465	251,135	243,800	237,990	243,520	233,770

Source: 1999/2000 to 2002/03: ISR (Individualised Student Record)
LLWR (Lifelong Learning Wales Record) post-16 database

- (a) Includes further education institutions in Wales, across full academic year (1 August to 31 July).
- (b) Merthyr Tydfil College is included in years up to and including 2005/06. However, following its merger into the University of Glamorgan in 2006, it is excluded from the figures for 2006/07.
- (c) Includes learners enrolled at FE institutions who are on work-based learning programmes but excludes those on HE programmes.
- (d) Counts in the six year block are based on providers' own learner identifiers and therefore include some multiple-counting between providers.
- (e) Counts in the four year unique learner numbers block are based on Unique Learner Identifiers to remove multiple-counting between providers.
- (f) 'All Ages' totals and the 19 & over row include instances of unknown age.
- (g) Age is as at 31 August of academic year.
- (h) Includes LEA community learning where there is a formal enrolment with an FE institution.
- (i) The figures from 2003/04 are not precisely comparable with those prior to 2003/04 as the ISR years used a slightly reduced standard population at the start of the academic year.
- (j) Numbers greater than 0 and less than 5 have been replaced by *. Other figures are rounded to the nearest 5 and there may be slight discrepancies between the sums of constituent items and the independently rounded totals.

Table F3.1 Numbers of learners (FE, HE and WBL) enrolled at FE institutions 2006/07 by age group, mode of learning and sex (a-h)

	<i>Numbers</i>		
	Male	Female	Total
Full-time learners aged:			
Under 16	225	150	375
16	6,975	6,710	13,685
17	5,545	5,920	11,465
18	2,945	2,870	5,815
19	1,330	1,125	2,455
20-24	2,075	1,965	4,040
25-39	1,165	2,440	3,605
40-49	355	745	1,100
50-59	115	210	325
60-64	25	30	55
65+	30	30	60
Full time learners	20,805	22,225	43,030
Part-time learners aged:			
Under 16	2,565	1,800	4,365
16	1,400	1,455	2,860
17	1,810	1,515	3,320
18	2,690	2,385	5,080
19	2,175	2,175	4,355
20-24	8,570	10,590	19,155
25-39	20,780	32,605	53,385
40-49	12,700	22,850	35,555
50-59	9,145	16,220	25,365
60-64	3,330	6,320	9,650
65+	5,475	8,810	14,285
Part time learners	71,535	107,940	179,475
Work-based learners aged:			
Under 16	150	55	205
16	1,025	485	1,515
17	905	435	1,345
18	890	365	1,255
19	830	305	1,135
20-24	1,800	1,000	2,800
25-39	1,415	1,560	2,975
40-49	590	880	1,470
50-59	180	350	530
60-64	15	20	35
65+	*	5	5
Work-based learners	7,805	5,470	13,275
All Modes of learning:			
Under 16	2,935	2,010	4,945
16	9,400	8,655	18,055
17	8,265	7,870	16,135
18	6,525	5,625	12,150
19	4,335	3,610	7,940
20-24	12,445	13,555	26,000
25-39	23,360	36,605	59,965
40-49	13,645	24,480	38,125
50-59	9,440	16,785	26,225
60-64	3,370	6,370	9,745
65+	5,505	8,845	14,350
Total	100,140	135,635	235,775

Source: LLWR (Lifelong Learning Wales Record) post-16 database

- (a) Counts are on a unique learner identifier (ULI) basis to eliminate multiple-counting between providers.
- (b) A learner pursuing any WBL programme is designated as work-based learning.
- (c) Non-WBL learners are allocated to either the full-time or the part-time mode of learning using the methodology of notes 5 and 6.
- (d) A full-time learner is one whose total guided contact hours across all their learning activities amount to at least 450 hours.
- (e) A part-time learner is one whose total guided contact hours across all their learning activities amount to less than 450 hours.
- (f) LEA community learning has been included where there is a formal enrolment with an FE institution.
- (g) Age is as at 31 August 2006; totals include examples of unspecified ages not shown in separate rows.
- (h) Numbers greater than 0 and less than 5 have been replaced by *. Other figures are rounded to the nearest 5 and there may be slight discrepancies between the sums of constituent items and the independently rounded totals.

Table F3.2 Numbers of learners (FE, HE and WBL) enrolled at FE institutions by age group, mode of learning and level 2006/07 (a-l)

	<i>Numbers</i>			
	Learners on FE programmes	Learners on HE programmes	Learners on WBL programmes	Total
Full-time learners aged:				
Under 16	375	0	0	375
16	13,675	5	0	13,685
17	11,450	20	0	11,465
18	5,755	60	0	5,815
19	2,350	105	0	2,455
20-24	3,830	210	0	4,040
25-39	3,510	95	0	3,605
40-49	1,055	45	0	1,100
50-59	305	20	0	325
60-64	55	*	0	55
65+	55	*	0	60
Full time learners	42,460	570	0	43,030
Part-time learners aged:				
Under 16	4,365	0	0	4,365
16	2,825	35	0	2,860
17	3,320	*	0	3,320
18	5,045	35	0	5,080
19	4,295	55	0	4,355
20-24	18,860	295	0	19,155
25-39	52,860	525	0	53,385
40-49	35,235	320	0	35,555
50-59	25,230	135	0	25,365
60-64	9,630	25	0	9,650
65+	14,270	15	0	14,285
Part-time learners	178,035	1,440	0	179,475
All Modes of learning (including work-based learning)				
Under 16	4,740	0	205	4,945
16	16,500	40	1,515	18,055
17	14,770	20	1,345	16,135
18	10,805	90	1,255	12,150
19	6,650	160	1,135	7,940
20-24	22,690	505	2,800	26,000
25-39	56,370	620	2,975	59,965
40-49	36,290	365	1,470	38,125
50-59	25,535	155	530	26,225
60-64	9,680	25	35	9,745
65+	14,325	20	5	14,350
Total	220,495	2,010	13,275	235,775

Source: LLWR (Lifelong Learning Wales Record) post-16 database

- (a) Counts are on a unique learner identifier (ULI) basis to eliminate multiple-counting between providers.
- (b) Includes full-time, part-time and work-based learners.
- (c) Includes WBL subsidiaries of FE institutions.
- (d) A learner pursuing any WBL programme is designated as work-based learning.
- (e) A learner pursuing an HE learning programme but not also pursuing a WBL programme is designated as HE.
- (f) For the purpose of note 5, HE refers only to programmes designated as higher education in their entirety.
- (g) A full-time learner is one whose total guided contact hours across all their learning activities amount to at least 450 hours.
- (h) A part-time learner is one whose total guided contact hours across all their learning activities amount to less than 450 hours.
- (i) Higher education excludes learners enrolled at HE institutions and franchised in to FE institutions.
- (j) LEA community learning has been included where there is a formal enrolment with an FE institution.
- (k) Age is as at 31 August 2006; totals include examples of unspecified ages not shown in separate rows.
- (l) Numbers greater than 0 and less than 5 have been replaced by *. Other figures are rounded to the nearest 5 and there may be slight discrepancies between the sums of constituent items and the independently rounded totals.

Table F3.3 Numbers of learners (FE, HE and WBL) enrolled at FE institutions 2006/07 by country of domicile, mode of learning and sex (a-i)

Numbers

	Male	Female	Total
Full-time learners by country of domicile:			
Wales	20,085	21,590	41,675
England	380	280	660
Scotland	*	*	*
Northern Ireland	0	0	0
UK not known	210	285	495
Channel Islands and Isle of Man	0	0	0
Other EU	30	20	50
Other Overseas	85	50	135
Full-time learners	20,805	22,225	43,030
Part-time learners by country of domicile:			
Wales	66,995	104,005	171,000
England	2,935	1,980	4,915
Scotland	30	5	35
Northern Ireland	*	*	*
UK not known	880	1,425	2,310
Channel Islands and Isle of Man	0	*	*
Other EU	485	225	710
Other Overseas	60	80	140
Part-time learners	71,535	107,940	179,475
Work-based learners by country of domicile:			
Wales	7,455	5,375	12,830
England	310	65	375
Scotland	0	0	0
Northern Ireland	0	*	*
UK not known	35	30	65
Channel Islands and Isle of Man	0	0	0
Other EU	0	0	0
Other Overseas	0	0	0
Work-based learners	7,805	5,470	13,275
All Modes of learning by country of domicile:			
Wales	94,535	130,970	225,505
England	3,630	2,325	5,950
Scotland	30	10	40
Northern Ireland	*	*	5
UK not known	1,130	1,740	2,870
Channel Islands and Isle of Man	0	*	*
Other EU	515	250	765
Other Overseas	150	130	275
Total	100,140	135,635	235,775

Source: LLWR (Lifelong Learning Wales Record) post-16 database

- (a) Counts are on a unique learner identifier (ULI) basis to eliminate multiple-counting between providers.
- (b) Includes work-based learning (WBL) subsidiaries of FE institutions.
- (c) A learner pursuing any WBL programme is designated as work-based learning.
- (d) Non-WBL learners are allocated to either the full-time or the part-time mode of learning using the methodology of notes 5 and 6.
- (e) A full-time learner is one whose total guided contact hours across all their learning activities amount to at least 450 hours.
- (f) A part-time learner is one whose total guided contact hours across all their learning activities amount to less than 450 hours.
- (g) LEA community learning has been included where there is a formal enrolment with an FE institution.
- (h) Totals and sub-totals include some learners (365 in total) where the country of domicile has not been recorded on the LLWR. These learners do not appear in (other) individual rows.
- (i) Numbers greater than 0 and less than 5 have been replaced by *. Other figures are rounded to the nearest 5 and there may be slight discrepancies between the sums of constituent items and the independently rounded totals.

Table F3.4a Numbers of learners (FE, HE and WBL) enrolled at FE institutions 2006/07 by unitary authority of domicile and age group (a-f)

Unitary authority of domicile	Under 16	16	17	18	19	20 to 24	25 to 39
Blaenau Gwent	25	545	430	295	175	615	1,515
Bridgend	15	660	665	495	295	935	2,430
Caerphilly	475	1,285	1,085	685	365	1,330	3,245
Cardiff	610	1,690	1,460	1,030	610	2,295	5,155
Carmarthenshire	185	1,120	1,000	730	425	1,245	2,945
Ceredigion	285	235	225	185	125	420	940
Conwy	250	700	635	475	340	1,175	2,880
Denbighshire	265	825	570	445	290	1,065	2,985
Flintshire	340	920	870	685	485	1,600	4,150
Gwynedd	240	850	725	405	275	1,030	2,465
Isle of Anglesey	75	390	380	265	185	605	1,315
Merthyr Tydfil	20	200	150	115	80	255	520
Monmouthshire	45	240	260	190	125	400	1,130
Neath Port Talbot	285	1,390	1,090	1,035	720	1,475	2,870
Newport	110	565	610	465	355	1,180	2,640
Pembrokeshire	240	720	655	490	390	980	2,320
Powys	60	540	420	335	180	750	1,920
Rhondda Cynon Taff	130	925	1,035	785	470	1,605	3,660
Swansea	290	1,700	1,465	1,285	715	2,190	4,555
The Vale of Glamorgan	290	565	590	425	275	825	1,665
Torfaen	35	470	430	350	200	670	1,775
Wrexham	495	1,025	930	495	370	1,435	3,665
Outside Wales	50	300	270	270	250	965	2,120
Outside UK	30	25	20	65	110	475	280
Not known	105	175	185	145	125	475	825
Total	4,945	18,055	16,135	12,150	7,940	26,000	59,965

(a) Counts are on a unique learner identifier (ULI) basis to eliminate multiple-counting between providers.

(b) Includes work-based learning (WBL) subsidiaries of FE institutions.

(c) LEA community learning has been included where there is a formal enrolment with an FE institution.

(d) Age is as at 31 August 2006.

(e) Unitary authority of domicile is calculated from the recorded home postcode of the learner.

(f) Numbers greater than 0 and less than 5 have been replaced by *. Other figures are rounded to the nearest 5 and there may be slight discrepancies between the sums of constituent items and the independently rounded totals.

Table F3.4a (continued) Numbers of learners (FE, HE and WBL) enrolled at FE institutions 2006/07 by unitary authority of domicile and age group (a-f)

						<i>Numbers</i>
40 to 49	50 to 59	60 to 64	65 plus	Age not stated	Total	Unitary authority of domicile
835	555	200	335	25	5,545	Blaenau Gwent
1,525	1,015	435	685	65	9,225	Bridgend
1,965	1,455	610	910	70	13,475	Caerphilly
2,225	1,125	350	585	225	17,365	Cardiff
2,020	1,370	510	680	95	12,330	Carmarthenshire
690	545	205	230	55	4,145	Ceredigion
2,225	1,380	525	800	105	11,490	Conwy
2,220	1,470	540	750	115	11,530	Denbighshire
2,900	1,950	565	790	145	15,405	Flintshire
1,545	1,140	445	575	70	9,770	Gwynedd
860	660	285	415	55	5,485	Isle of Anglesey
325	225	85	135	15	2,115	Merthyr Tydfil
990	890	400	635	60	5,375	Monmouthshire
1,875	1,410	585	950	70	13,755	Neath Port Talbot
1,590	1,095	425	710	55	9,800	Newport
1,685	1,275	475	675	35	9,930	Pembrokeshire
1,360	1,065	400	565	80	7,665	Powys
2,120	1,560	730	1,115	80	14,205	Rhondda Cynon Taff
2,705	1,790	655	1,005	135	18,490	Swansea
1,065	635	180	270	80	6,860	The Vale of Glamorgan
1,200	895	360	555	55	7,000	Torfaen
2,145	1,425	395	520	50	12,945	Wrexham
1,470	920	245	240	220	7,325	Outside Wales
80	40	15	25	20	1,175	Outside UK
520	335	125	185	170	3,375	Not known
38,125	26,225	9,745	14,350	2,140	235,775	Total

Source: LLWR (Lifelong Learning Wales Record) post-16 database

Table F3.4b Numbers of learners (FE, HE and WBL) enrolled at FE institutions 2006/07 by unitary authority of domicile and sex (a-e)

Unitary authority of domicile	Numbers		
	Male	Female	Total
Blaenau Gwent	2,175	3,370	5,545
Bridgend	3,895	5,325	9,225
Caerphilly	5,525	7,955	13,475
Cardiff	7,625	9,740	17,365
Carmarthenshire	5,180	7,150	12,330
Ceredigion	1,610	2,540	4,145
Conwy	4,800	6,690	11,490
Denbighshire	4,415	7,115	11,530
Flintshire	6,875	8,530	15,405
Gwynedd	4,185	5,585	9,770
Isle of Anglesey	2,175	3,310	5,485
Merthyr Tydfil	980	1,135	2,115
Monmouthshire	1,955	3,420	5,375
Neath Port Talbot	5,930	7,820	13,755
Newport	3,965	5,830	9,800
Pembrokeshire	4,135	5,790	9,930
Powys	3,025	4,635	7,665
Rhondda Cynon Taff	5,450	8,755	14,205
Swansea	8,500	9,990	18,490
The Vale of Glamorgan	2,940	3,920	6,860
Torfaen	2,660	4,340	7,000
Wrexham	5,435	7,510	12,945
Outside Wales	4,360	2,965	7,325
Outside UK	700	475	1,175
Not known	1,635	1,740	3,375
Total	100,140	135,635	235,775

Source: LLWR (Lifelong Learning Wales Record) post-16 database

- (a) Counts are on a unique learner identifier (ULI) basis to eliminate multiple-counting between providers.
- (b) Includes work-based learning (WBL) subsidiaries of FE institutions.
- (c) LEA community learning has been included where there is a formal enrolment with an FE institution.
- (d) Unitary authority of domicile is calculated from the recorded home postcode of the learner.
- (e) Numbers greater than 0 and less than 5 have been replaced by *. Other figures are rounded to the nearest 5 and there may be slight discrepancies between the sums of constituent items and the independently rounded totals.

Table F3.5 Numbers of learners (FE, HE and WBL) enrolled at FE institutions 2006/07 by ethnicity, age band and sex (a-e)

Numbers

Aged 18 and under			
Ethnicity	Male	Female	Total
Asian	460	305	770
Black	180	140	320
Mixed	260	260	520
Other Minority Ethnic	95	75	170
White	25,185	22,615	47,800
Information refused/not known	950	760	1,710
Total	27,125	24,155	51,285

Aged 19 and over			
Ethnicity	Male	Female	Total
Asian	1,440	2,115	3,550
Black	770	955	1,725
Mixed	355	460	815
Other Minority Ethnic	535	485	1,020
White	64,855	101,160	166,020
Information refused/not known	5,060	6,305	11,360
Total	73,015	111,480	184,495

All ages			
Ethnicity	Male	Female	Total
Asian	1,900	2,420	4,320
Black	950	1,095	2,045
Mixed	615	720	1,330
Other Minority Ethnic	630	560	1,190
White	90,040	123,780	213,820
Information refused/not known	6,005	7,065	13,070
Total	100,140	135,635	235,775

Source: LLWR (Lifelong Learning Wales Record) post-16 database

- (a) Counts are on a unique learner identifier (ULI) basis to eliminate multiple-counting between providers.
- (b) Includes work-based learning (WBL) subsidiaries of FE institutions.
- (c) LEA community learning has been included where there is a formal enrolment with an FE institution.
- (d) Age is as at 31 August 2006.
- (e) Numbers greater than 0 and less than 5 have been replaced by *. Other figures are rounded to the nearest 5 and there may be slight discrepancies between the sums of constituent items and the independently rounded totals.

Table F3.6 Numbers of learners (FE, HE and WBL) enrolled at FE institutions 2006/07 by disability status, age band and sex (a-f)

Numbers

Aged 18 and under

Disability Status	Male	Female	Total
Disabled	1,725	1,280	3,005
Not disabled	20,570	18,980	39,550
Not known	4,830	3,895	8,725
Total	27,125	24,155	51,285

Aged 19 and over

Disability Status	Male	Female	Total
Disabled	5,635	7,240	12,875
Not disabled	51,495	80,965	132,460
Not known	15,885	23,270	39,160
Total	73,015	111,480	184,495

All ages

Disability Status	Male	Female	Total
Disabled	7,360	8,520	15,880
Not disabled	72,065	99,945	172,010
Not known	20,715	27,170	47,885
Total	100,140	135,635	235,775

Source: LLWR (Lifelong Learning Wales Record) post-16 database

- (a) Counts are on a unique learner identifier (ULI) basis to eliminate multiple-counting between providers.
- (b) Includes work-based learning (WBL) subsidiaries of FE institutions.
- (c) LEA community learning has been included where there is a formal enrolment with an FE institution.
- (d) Disability status is on the basis of the learner's own assessment.
- (e) Age is as at 31 August 2006.
- (f) Numbers greater than 0 and less than 5 have been replaced by *. Other figures are rounded to the nearest 5 and there may be slight discrepancies between the sums of constituent items and the independently rounded totals.

Table F3.7 Numbers of learners (FE, HE and WBL) enrolled at FE institutions 2006/07 by learning difficulty status, age band and sex (a-e)

Numbers

Aged 18 and under			
<u>Learning difficulty status</u>	<u>Male</u>	<u>Female</u>	<u>Total</u>
Learning difficulty	2,425	1,525	3,950
No learning difficulty	13,735	12,535	26,270
Not known	10,970	10,095	21,065
Total	27,125	24,155	51,285

Aged 19 and over			
<u>Learning difficulty status</u>	<u>Male</u>	<u>Female</u>	<u>Total</u>
Learning difficulty	2,640	2,660	5,295
No learning difficulty	34,230	53,115	87,345
Not known	36,145	55,705	91,850
Total	73,015	111,480	184,495

All ages			
<u>Learning difficulty status</u>	<u>Male</u>	<u>Female</u>	<u>Total</u>
Learning difficulty	5,065	4,180	9,245
No learning difficulty	47,960	65,655	113,615
Not known	47,115	65,800	112,915
Total	100,140	135,635	235,775

Source: LLWR (Lifelong Learning Wales Record) post-16 database

- (a) Counts are on a unique learner identifier (ULI) basis to eliminate multiple-counting between providers.
- (b) Includes work-based learning (WBL) subsidiaries of FE institutions.
- (c) LEA community learning has been included where there is a formal enrolment with an FE institution.
- (d) Age is as at 31 August 2006.
- (e) Numbers greater than 0 and less than 5 have been replaced by *. Other figures are rounded to the nearest 5 and there may be slight discrepancies between the sums of constituent items and the independently rounded totals.

Table F3.8 Numbers of learners at FE institutions by deprivation status, sex and age group 2006/07 (a-f)

Numbers

Welsh domiciled learners in deprived areas (Community first areas)			
Age Group	Male	Female	Total
Under 16	800	550	1,345
16	2,540	2,325	4,860
17	2,170	2,030	4,200
18	1,615	1,485	3,100
19	1,075	970	2,040
20-24	2,945	3,755	6,700
25-39	5,365	9,060	14,425
40-49	2,775	4,855	7,630
50-59	1,750	3,045	4,795
60-64	605	1,085	1,690
65+	1,010	1,685	2,695
Not Specified	175	185	360
Total	22,815	31,030	53,845

Learners domiciled outside Wales or with incomplete home postcode information			
Age Group	Male	Female	Total
Under 16	135	50	185
16	270	230	500
17	275	195	470
18	295	190	480
19	320	170	490
20-24	1,190	725	1,915
25-39	1,875	1,350	3,225
40-49	1,130	935	2,070
50-59	660	630	1,290
60-64	180	205	385
65+	190	265	455
Not Specified	170	245	410
Total	6,695	5,180	11,875

- (a) Counts are on a unique learner identifier (ULI) basis to eliminate multiple-counting between providers.
- (b) The Community First areas are defined for this purpose as the 100 most deprived wards in Wales according to the Welsh Index of Multiple Deprivation 2000 and do not include other designated Community First areas.
- (c) Age is as at 31 August 2006
- (d) Includes work-based learning (WBL) subsidiaries of FE institutions.
- (e) Includes LEA community learning where there is a formal enrolment with an FE institution.
- (f) Numbers greater than 0 and less than 5 have been replaced by *. Other figures are rounded to the nearest 5 and there may be slight discrepancies between the sums of constituent items and the independently rounded totals.

Table F3.8 (Continued) Numbers of learners at FE institutions by deprivation status, sex and age group 2006/07 (a-f)

Numbers

Welsh domiciled learners outside deprived areas (Community First areas)			
Age Group	Male	Female	Total
Under 16	2,005	1,405	3,410
16	6,590	6,105	12,695
17	5,815	5,645	11,465
18	4,620	3,950	8,570
19	2,940	2,470	5,410
20-24	8,310	9,075	17,385
25-39	16,115	26,195	42,315
40-49	9,740	18,685	28,425
50-59	7,030	13,105	20,135
60-64	2,590	5,080	7,670
65+	4,305	6,895	11,205
Not Specified	570	800	1,370
Total	70,630	99,425	170,055

All learners			
Age Group	Male	Female	Total
Under 16	2,935	2,010	4,945
16	9,400	8,655	18,055
17	8,265	7,870	16,135
18	6,525	5,625	12,150
19	4,335	3,610	7,940
20-24	12,445	13,555	26,000
25-39	23,360	36,605	59,965
40-49	13,645	24,480	38,125
50-59	9,440	16,785	26,225
60-64	3,370	6,370	9,745
65+	5,505	8,845	14,350
Not Specified	910	1,230	2,140
Total	100,140	135,635	235,775

Source: LLWR (Lifelong Learning Wales Record) post-16 database

Table F4.1a Numbers of Learning Activities at FE Institutions by Subject and DCELLS Area of domicile 2006/07 (a-e)

Subject	DCELLS Area of domicile					
	North Wales		South West / Mid Wales		South Wales	
	Number	Percentage	Number	Percentage	Number	Percentage
Agriculture, Horticulture and Animal Care	4,285	2	3,570	2	1,250	1
Arts and Crafts	7,685	4	6,535	3	6,830	5
Business/Management/Office Studies	11,635	6	12,705	6	9,350	6
Care/Personal Development(incl Basic Skills)	38,145	20	52,810	25	38,190	26
Catering/Food/Leisure Services/Tourism	8,910	5	7,275	3	3,425	2
Construction & Property (Built Environment)	4,835	3	5,480	3	4,030	3
Cultural Studies/Languages/Literature	13,255	7	16,770	8	11,660	8
Education/Training/Teaching	10,595	6	9,965	5	2,830	2
Engineering	6,000	3	5,930	3	4,050	3
Environment Protection/Energy/Cleansing/Security	830	0	685	0	515	0
Health Care/Medicine/Health & Safety	19,150	10	16,520	8	10,945	7
Humanities	1,585	1	5,095	2	1,330	1
Information Technology & Information	32,765	17	31,355	15	28,645	20
Logistics/Distribution/Transport/Driving	3,205	2	870	0	240	0
Manufacturing/Production Work	1,870	1	985	0	830	1
Media/Communication/Publishing	13,370	7	15,080	7	10,610	7
Oil/Mining/Plastics/Chemicals	250	0	215	0	60	0
Performing Arts	2,160	1	2,640	1	2,050	1
Sales, Marketing and Retailing	1,940	1	1,235	1	1,515	1
Sciences & Mathematics	3,410	2	6,425	3	4,485	3
Services to Industry & Commerce	1,010	1	845	0	495	0
Social Sciences	1,650	1	2,395	1	1,265	1
Sports, Games and Recreation	3,040	2	3,915	2	2,100	1
Not specified	780	-	565	-	560	-
Total	192,350		209,870		147,260	

(a) Subjects are derived from the first letter of the LearnDirect Classification System (LDCS) codes.

(b) DCELLS Area of domicile is based on the home postcode of the learner.

(c) 'Other' column consists of learners domiciled outside of Wales and/or where postcode information is incomplete.

(d) 'Not specified' row includes a large component of Welsh for Adults activities with no LDCS code.

(e) Subject split differs from that available on StatsWales, at time of publishing, owing to improvements in methodology.

Table F4.1a (continued) Numbers of Learning Activities at FE Institutions by Subject and Region of domicile 2006/07 (a-e)

DCELLS Area of domicile						Subject
South East Wales		Other		Total		
Number	Percentage	Number	Percentage	Number	Percentage	
1,705	1	995	3	11,805	2	Agriculture, Horticulture and Animal Care
5,270	4	1,170	4	27,490	4	Arts and Crafts
7,910	6	1,805	6	43,405	6	Business/Management/Office Studies
35,150	25	5,150	18	169,445	24	Care/Personal Development(incl Basic Skills)
2,910	2	770	3	23,290	3	Catering/Food/Leisure Services/Tourism
4,270	3	680	2	19,295	3	Construction & Property (Built Environment)
15,285	11	2,910	10	59,880	8	Cultural Studies/Languages/Literature
3,235	2	1,375	5	27,995	4	Education/Training/Teaching
3,960	3	1,435	5	21,380	3	Engineering
490	0	150	1	2,670	0	Environment Protection/Energy/Cleansing/Security
12,010	9	2,400	8	61,025	9	Health Care/Medicine/Health & Safety
2,440	2	265	1	10,720	1	Humanities
21,820	16	3,960	14	118,550	17	Information Technology & Information
200	0	835	3	5,345	1	Logistics/Distribution/Transport/Driving
695	0	445	2	4,825	1	Manufacturing/Production Work
10,335	7	1,825	6	51,220	7	Media/Communication/Publishing
160	0	60	0	745	0	Oil/Mining/Plastics/Chemicals
2,335	2	420	1	9,605	1	Performing Arts
750	1	220	1	5,660	1	Sales, Marketing and Retailing
4,020	3	575	2	18,910	3	Sciences & Mathematics
365	0	295	1	3,010	0	Services to Industry & Commerce
1,375	1	320	1	7,000	1	Social Sciences
3,250	2	470	2	12,775	2	Sports, Games and Recreation
1,015	-	140	-	3,060	-	Not specified
140,950		28,675		719,105		Total

Table F4.1b Numbers of learning activities at FE institutions 2006/07 by subject and Age Group (a-e)

Subject	Under 16	16	17	18	19	20 to 24
Agriculture, Horticulture and Animal Care	420	1,790	1,345	1,005	420	1,085
Arts and Crafts	255	2,795	2,495	2,220	770	1,425
Business/Management/Office Studies	400	8,885	7,915	4,550	2,030	4,155
Care/Personal Development(incl Basic Skills)	3,855	39,835	28,780	16,225	8,325	17,815
Catering/Food/Leisure Services/Tourism	510	3,370	2,635	1,680	860	2,415
Construction & Property (Built Environment)	1,275	2,975	2,455	1,995	1,390	3,400
Cultural Studies/Languages/Literature	275	4,060	3,400	1,770	1,215	6,160
Education/Training/Teaching	115	6,060	3,710	1,965	990	2,805
Engineering	1,020	4,130	3,175	2,775	1,890	3,330
Environment Protection/Energy/Cleansing/Security	20	285	225	125	75	345
Health Care/Medicine/Health & Safety	485	7,940	5,980	3,600	2,335	7,610
Humanities	35	2,990	2,525	1,405	470	700
Information Technology & Information	715	15,015	11,235	6,815	3,440	8,710
Logistics/Distribution/Transport/Driving	60	435	280	210	125	525
Manufacturing/Production Work	265	360	285	275	230	865
Media/Communication/Publishing	450	13,335	9,930	5,590	2,700	5,205
Oil/Mining/Plastics/Chemicals	*	20	35	40	25	135
Performing Arts	495	2,090	1,955	1,185	495	860
Sales, Marketing and Retailing	25	705	535	345	255	955
Sciences & Mathematics	145	5,770	4,650	2,290	935	1,905
Services to Industry & Commerce	10	145	220	210	230	610
Social Sciences	35	1,660	1,730	855	375	855
Sports, Games and Recreation	150	4,630	3,700	1,645	520	695
Not specified	35	625	340	215	130	355
Total	11,060	129,890	99,545	58,985	30,230	72,905

(a) Includes work-based learning (WBL) subsidiaries of FE institutions.

(b) LEA community learning has been included where there is a formal enrolment with an FE institution.

(c) Subjects are derived from the first letter of the LearnDirect Classification System (LDCS) codes.

(d) Age is as at 31 August 2006

(e) Numbers greater than 0 and less than 5 have been replaced by *. Other figures are rounded to the nearest 5 and there may be slight discrepancies between the sums of constituent items and the independently rounded totals.

Table F4.1b (continued) Numbers of learning activities at FE institutions 2006/07 by subject and Age Group (a-e)

Numbers

25 to 39	40 to 49	50 to 59	60 to 64	65 plus	Age not stated	Total	Subject
2,250	1,645	1,080	325	245	190	11,805	Agriculture, Horticulture and Animal Care
3,200	2,810	3,885	2,775	4,635	220	27,490	Arts and Crafts
7,860	4,670	2,165	350	295	135	43,405	Business/Management/Office Studies
27,990	13,185	7,010	2,425	3,615	380	169,445	Care/Personal Development(incl Basic Skills)
4,880	3,525	2,215	545	445	205	23,290	Catering/Food/Leisure Services/Tourism
3,695	1,365	560	90	25	70	19,295	Construction & Property (Built Environment)
17,365	9,075	7,655	3,845	4,620	430	59,880	Cultural Studies/Languages/Literature
5,925	3,885	1,890	340	255	55	27,995	Education/Training/Teaching
3,000	1,250	575	115	80	45	21,380	Engineering
690	505	305	60	30	5	2,670	Environment Protection/Energy/Cleansing/Security
17,120	9,640	4,915	735	325	340	61,025	Health Care/Medicine/Health & Safety
855	320	375	310	685	45	10,720	Humanities
22,695	17,665	14,175	6,425	11,295	370	118,550	Information Technology & Information
1,590	1,225	660	155	70	10	5,345	Logistics/Distribution/Transport/Driving
1,325	665	355	100	80	20	4,825	Manufacturing/Production Work
6,360	3,270	2,055	920	1,305	100	51,220	Media/Communication/Publishing
250	140	85	15	0	*	745	Oil/Mining/Plastics/Chemicals
785	505	495	165	480	90	9,605	Performing Arts
1,560	845	375	35	15	10	5,660	Sales, Marketing and Retailing
2,155	760	210	50	35	5	18,910	Sciences & Mathematics
845	480	220	30	5	*	3,010	Services to Industry & Commerce
980	370	100	25	10	5	7,000	Social Sciences
820	395	110	40	35	40	12,775	Sports, Games and Recreation
710	365	180	40	60	10	3,060	Not specified
134,915	78,560	51,650	19,910	28,655	2,805	719,105	Total

Source: LLWR (Lifelong Learning Wales Record) post-16 database

Table F4.2a Numbers of Learning Activities at FE institutions by Sector Subject Area and DCELLS Area of domicile 2006/07 (a-e)

Sector Subject Area	DCELLS Area of domicile					
	North Wales		South West / Mid Wales		South Wales	
	Number	Percentage	Number	Percentage	Number	Percentage
1: Health, Public Services and Care	25,060	13	22,745	11	13,690	10
2: Science and Mathematics	3,730	2	6,680	3	3,215	2
3: Agriculture, Horticulture and Animal Care	4,765	3	4,065	2	1,320	1
4: Engineering and Manufacturing Technologies	10,630	6	8,980	4	5,750	4
5: Construction, Planning and the Built Environment	5,070	3	5,155	2	4,035	3
6: Information and Communication Technology	24,760	13	23,785	11	19,510	14
7(a): Retailing and Costumer Service	1,745	1	845	0	800	1
7(b): Hair and Beauty	3,525	2	2,400	1	3,060	2
7(c): Hospitality and Catering	3,270	2	3,700	2	2,005	1
8: Leisure, Travel and Tourism	4,830	3	5,865	3	3,385	2
9(a): Performing Arts	2,165	1	2,685	1	2,015	1
9(b): Art and Design	10,365	5	9,955	5	9,115	6
10: History, Philosophy and Theology	1,165	1	4,700	2	1,110	1
11: Social Sciences	970	1	1,775	1	715	0
12(a): Welsh for Adults	4,640	2	6,300	3	4,845	3
12(b): Welsh, English and Other Languages	5,165	3	8,950	4	5,625	4
13: Education and Training	10,270	5	4,585	2	1,680	1
14(a): Independent Living Skills	1,510	1	3,145	2	1,930	1
14(b): Adult Basic Education	6,155	3	2,965	1	4,365	3
14(c): Foundation for Work	45,285	24	63,645	31	45,035	31
14(d): English for Speakers of Other Languages	3,775	2	2,600	1	1,845	1
15: Business, Administration and Law	11,040	6	11,580	6	8,120	6
Unspecified subject sector area	2,470	-	2,775	-	4,075	-
Total	192,350		209,870		147,260	

(a) Sector Subject Areas are derived from the LearnDirect Classification System.

(b) Sector Subject Areas are the QCA defined learning areas with some amendments to be consistent with Estyn statistics.

(c) DCELLS Area of domicile is based on the home postcode of the learner.

(d) 'Other' category consists of learners domiciled outside of Wales and missing postcode information.

(e) Percentages are calculated as a proportion of the total excluding subject sector area Not Known.

Table F4.2a (Continued) Numbers of Learning Activities at FE institutions by Sector Subject Area and DCELLS Area of domicile 2006/07 (a-e)

DCELLS Area of domicile						Sector Subject Area
South East Wales		Other		Total		
Number	Percentage	Number	Percentage	Number	Percentage	
14,350	10	3,385	12	79,230	11	1: Health, Public Services and Care
4,610	3	575	2	18,815	3	2: Science and Mathematics
1,910	1	1,085	4	13,145	2	3: Agriculture, Horticulture and Animal Care
5,610	4	2,380	8	33,350	5	4: Engineering and Manufacturing Technologies
4,190	3	735	3	19,180	3	5: Construction, Planning and the Built Environment
14,705	11	2,965	10	85,725	12	6: Information and Communication Technology
655	0	230	1	4,270	1	7(a): Retailing and Costumer Service
2,835	2	275	1	12,090	2	7(b): Hair and Beauty
1,455	1	370	1	10,805	2	7(c): Hospitality and Catering
4,260	3	690	2	19,025	3	8: Leisure, Travel and Tourism
2,270	2	420	1	9,560	1	9(a): Performing Arts
8,900	6	1,745	6	40,080	6	9(b): Art and Design
1,120	1	215	1	8,320	1	10: History, Philosophy and Theology
950	1	145	1	4,550	1	11: Social Sciences
3,895	3	775	3	20,460	3	12(a): Welsh for Adults
5,325	4	800	3	25,860	4	12(b): Welsh, English and Other Languages
1,700	1	1,225	4	19,460	3	13: Education and Training
700	1	160	1	7,445	1	14(a): Independent Living Skills
4,115	3	490	2	18,090	3	14(b): Adult Basic Education
41,555	30	6,565	23	202,080	29	14(c): Foundation for Work
6,690	5	1,400	5	16,305	2	14(d): English for Speakers of Other Languages
7,255	5	1,730	6	39,720	6	15: Business, Administration and Law
1,905	-	320	-	11,535	-	Unspecified subject sector area
140,950		28,675		719,105		Total

Source: LLWR (Lifelong Learning Wales Record) post-16 database

Table F4.2b Learning Activity completion rates at FE institutions by Sector Subject Area 2006/07 (a-c)

Sector Subject Area	2006/07					
	Long activities		Short activities		All lengths	
	Completed Learning Activities	per cent (d)	Completed Learning Activities	per cent (d)	Completed Learning Activities	per cent (d)
1: Health, Public Services and Care	25,220	84	32,155	97	57,395	91
2: Science and Mathematics	10,995	80	935	92	11,930	81
3: Agriculture, Horticulture and Animal Care	3,510	82	4,660	97	8,175	90
4: Engineering and Manufacturing Technologies	12,190	83	4,370	97	16,650	86
5: Construction, Planning and the Built Environment	9,195	84	3,150	96	12,355	87
6: Information and Communication Technology	27,235	84	23,055	90	59,205	86
7: Retail and Commercial Enterprise	10,005	81	6,225	92	16,235	85
7(a): Retailing and Customer Service	1,785	84	420	90	2,205	85
7(b): Hair and Beauty	5,220	80	1,255	80	6,475	80
7(c): Hospitality and Catering	3,005	82	4,555	96	7,555	90
8: Leisure, Travel and Tourism	9,140	88	5,340	96	14,485	91
9: Arts, Media and Publishing	22,765	85	13,300	90	36,145	87
9(a): Performing Arts	4,380	84	1,640	90	6,025	86
9(b): Art and Design	18,385	85	11,655	90	30,120	87
10: History, Philosophy and Theology	3,560	85	2,510	95	6,075	89
11: Social Sciences	2,930	84	305	92	3,235	84
12: Languages, Literature and Culture	19,695	80	13,515	94	35,275	85
12(a): Welsh for Adults	8,320	82	8,365	96	16,690	88
12(b): Welsh, English and Other Languages	11,370	79	5,150	90	18,585	83
13: Education and Training	3,695	87	5,070	94	9,795	90
14: Preparation for Life and Work	106,940	84	45,765	91	158,665	86
14(a): Independent Living Skills	3,850	91	2,280	97	6,135	93
14(b): Adult Basic Education	5,605	84	8,660	93	14,315	89
14(c): Foundation for Work	94,325	84	26,330	93	126,185	86
14(d): English for Speakers of Other Languages	3,160	68	8,495	85	12,030	80
15: Business, Administration and Law	15,190	84	7,705	94	23,410	87
Unspecified sector subject area	1,530	87	400	99	7,760	93
Total	283,795	84	168,475	93	476,785	87

Source: Lifelong Learning Wales Record (LLWR)

- (a) Sector Subject Areas are derived from the LearnDirect Classification System.
(b) Sector Subject Areas are the QCA defined learning areas with some amendments to be consistent with Estyn statistics.
(c) Based on the WAG bulletin 'National Comparators for Further Education and Work-based Learning 2007/08' which included an update of 2006/07 figures using a more recent LLWR freeze.
(d) Expressed as a percentage of learning activities completed or withdrawn (i.e. excluding continuing activities).

Table F4.2c Learning Activity attainment rates at FE institutions by Sector Subject Area 2006/07 (a-c)

Sector Subject Area	2006/07					
	Long activities		Short activities		All lengths	
	Attained Learning Activities	per cent (d)	Attained Learning Activities	per cent (d)	Attained Learning Activities	per cent (d)
1: Health, Public Services and Care	17,215	81	24,450	87	41,665	84
2: Science and Mathematics	8,510	77	660	74	9,170	77
3: Agriculture, Horticulture and Animal Care	2,450	71	2,805	64	5,255	67
4: Engineering and Manufacturing Technologies	8,730	74	2,955	80	11,725	75
5: Construction, Planning and the Built Environment	6,960	76	2,200	79	9,170	77
6: Information and Communication Technology	17,460	67	15,765	75	35,270	69
7: Retail and Commercial Enterprise	8,150	82	5,110	88	13,260	84
7(a): Retailing and Customer Service	1,475	83	340	93	1,815	84
7(b): Hair and Beauty	4,325	83	950	79	5,275	82
7(c): Hospitality and Catering	2,350	78	3,820	91	6,170	86
8: Leisure, Travel and Tourism	6,450	78	3,925	82	10,375	79
9: Arts, Media and Publishing	17,235	77	8,530	75	25,765	77
9(a): Performing Arts	3,280	77	730	74	4,015	76
9(b): Art and Design	13,950	77	7,795	75	21,750	77
10: History, Philosophy and Theology	2,010	79	1,070	52	3,080	67
11: Social Sciences	2,420	83	260	85	2,680	83
12: Languages, Literature and Culture	15,485	80	6,715	71	22,205	77
12(a): Welsh for Adults	6,510	79	2,590	56	9,100	71
12(b): Welsh, English and Other Languages	8,975	81	4,125	86	13,105	82
13: Education and Training	2,335	74	3,230	70	5,570	71
14: Preparation for Life and Work	65,025	65	27,040	69	92,745	66
14(a): Independent Living Skills	2,300	82	1,505	76	3,810	80
14(b): Adult Basic Education	3,015	65	3,525	60	6,540	62
14(c): Foundation for Work	58,285	65	18,450	79	77,415	67
14(d): English for Speakers of Other Languages	1,420	49	3,560	46	4,980	46
15: Business, Administration and Law	10,880	74	4,570	74	15,485	74
Total	191,990	72	109,300	76	304,455	72

Source: Lifelong Learning Wales Record (LLWR)

- (a) Sector Subject Areas are derived from the LearnDirect Classification System.
- (b) Sector Subject Areas are the QCA defined learning areas with some amendments to be consistent with Estyn statistics.
- (c) Based on the WAG bulletin 'National Comparators for Further Education and Work-based Learning 2007/08' which included an update of 2006/07 figures using a more recent LLWR freeze.
- (d) Expressed as a percentage of completed assessable learning activities.

Table F4.3 Numbers of Learning Activities at FE Institutions by Subject and Credit Level 2006/07 (a-d)

Subject	Credit Level				
	Pre entry Level	Entry Level	NVQ Level 1 or equivalent	NVQ Level 2 or equivalent	NVQ Level 3 or equivalent
Agriculture, Horticulture and Animal Care	170	940	2,570	5,245	2,035
Arts and Crafts	15	2,405	8,950	6,870	7,175
Business/Management/Office Studies	55	1,270	7,420	16,115	11,910
Care/Personal Development(incl Basic Skills)	1,090	29,500	56,420	51,140	16,675
Catering/Food/Leisure Services/Tourism	5	1,010	7,115	12,500	1,965
Construction & Property (Built Environment)	0	530	6,590	7,635	2,880
Cultural Studies/Languages/Literature	135	14,425	17,780	10,180	6,795
Education/Training/Teaching	265	3,125	1,805	9,215	5,500
Engineering	0	570	4,880	9,185	6,010
Environment Protection/Energy/Cleansing/Security	0	55	960	1,160	425
Health Care/Medicine/Health & Safety	*	820	17,950	15,725	19,200
Humanities	0	210	1,520	1,745	4,780
Information Technology & Information	135	7,225	54,700	39,440	8,775
Logistics/Distribution/Transport/Driving	0	*	730	1,440	175
Manufacturing/Production Work	40	280	1,110	2,305	845
Media/Communication/Publishing	0	785	18,385	20,515	10,045
Oil/Mining/Plastics/Chemicals	0	0	105	370	265
Performing Arts	0	1,315	1,540	1,845	4,490
Sales, Marketing and Retailing	0	10	1,130	2,965	1,125
Sciences & Mathematics	75	80	1,885	7,855	8,865
Services to Industry & Commerce	0	5	30	1,665	1,215
Social Sciences	0	5	305	740	5,380
Sports, Games and Recreation	*	635	4,030	4,385	3,100
Not specified	0	25	605	1,380	595
Total	1,985	65,225	218,510	231,625	130,205

(a) Includes work-based learning (WBL) subsidiaries of FE institutions.

(b) LEA community learning has been included where there is a formal enrolment with an FE institution.

(c) Subjects are derived from the first letter of the LearnDirect Classification System (LDCS) codes.

(d) Numbers greater than 0 and less than 5 have been replaced by *. Other figures are rounded to the nearest 5 and there may be slight discrepancies between the sums of constituent items and the independently rounded totals.

Table F4.3 (Continued) Numbers of Learning Activities at FE Institutions by Subject and Credit Level 2006/07 (a-d)

Credit Level				<i>Number</i>
HE Level/ NVQ Level 4, 5 or equivalent	Mixed Levels	Not known/ Not Applicable	Total	Subject
110	0	740	11,805	Agriculture, Horticulture and Animal Care
475	0	1,600	27,490	Arts and Crafts
2,560	1,735	2,340	43,405	Business/Management/Office Studies
220	205	14,195	169,445	Care/Personal Development(incl Basic Skills)
145	0	545	23,290	Catering/Food/Leisure Services/Tourism
270	0	1,390	19,295	Construction & Property (Built Environment)
205	0	10,350	59,880	Cultural Studies/Languages/Literature
4,685	15	3,385	27,995	Education/Training/Teaching
115	0	625	21,380	Engineering
15	0	60	2,670	Environment Protection/Energy/Cleansing/Security
775	0	6,560	61,025	Health Care/Medicine/Health & Safety
0	0	2,465	10,720	Humanities
140	0	8,130	118,550	Information Technology & Information
25	0	2,975	5,345	Logistics/Distribution/Transport/Driving
75	0	175	4,825	Manufacturing/Production Work
195	15	1,280	51,220	Media/Communication/Publishing
*	0	*	745	Oil/Mining/Plastics/Chemicals
*	0	420	9,605	Performing Arts
155	20	265	5,660	Sales, Marketing and Retailing
20	0	135	18,910	Sciences & Mathematics
20	0	75	3,010	Services to Industry & Commerce
25	0	550	7,000	Social Sciences
25	0	595	12,775	Sports, Games and Recreation
205	0	250	3,060	Not specified
10,460	1,990	59,100	719,105	Total

Source: LLWR (Lifelong Learning Wales Record) post-16 database

Table F4.4 Numbers of Learning Activities at FE Institutions by Subject and Welsh Medium status of learning delivery 2006/07 (a-d)

Subject	Welsh Medium Status			Number
	Welsh	Bilingual	English	Total
	Agriculture, Horticulture and Animal Care	10	1,740	10,050
Arts and Crafts	45	785	26,660	27,490
Business/Management/Office Studies	60	1,935	41,410	43,405
Care/Personal Development(incl Basic Skills)	210	2,740	166,495	169,445
Catering/Food/Leisure Services/Tourism	15	1,025	22,255	23,290
Construction & Property (Built Environment)	95	1,545	17,650	19,295
Cultural Studies/Languages/Literature	1,200	3,625	55,055	59,880
Education/Training/Teaching	100	320	27,575	27,995
Engineering	15	675	20,690	21,380
Environment Protection/Energy/Cleansing/Security	0	50	2,620	2,670
Health Care/Medicine/Health & Safety	200	1,655	59,170	61,025
Humanities	35	155	10,530	10,720
Information Technology & Information	85	4,110	114,355	118,550
Logistics/Distribution/Transport/Driving	15	45	5,285	5,345
Manufacturing/Production Work	10	220	4,595	4,825
Media/Communication/Publishing	30	1,300	49,895	51,220
Oil/Mining/Plastics/Chemicals	0	0	745	745
Performing Arts	175	650	8,785	9,605
Sales, Marketing and Retailing	*	80	5,580	5,660
Sciences & Mathematics	100	460	18,355	18,910
Services to Industry & Commerce	15	80	2,915	3,010
Social Sciences	10	130	6,860	7,000
Sports, Games and Recreation	0	435	12,340	12,775
Not specified	0	30	3,030	3,060
Total	2,425	23,780	692,900	719,105

Source: LLWR (Lifelong Learning Wales Record) post-16 database

(a) Includes work-based learning (WBL) subsidiaries of FE institutions.

(b) LEA community learning has been included where there is a formal enrolment with an FE institution.

(c) Subjects are derived from the first letter of the LearnDirect Classification System (LDCS) codes.

(d) Numbers greater than 0 and less than 5 have been replaced by *. Other figures are rounded to the nearest 5 and there may be slight discrepancies between the sums of constituent items and the independently rounded totals.

Table F4.5 Numbers of learning activities at FE institutions by qualification type, age band and sex 2006/07 (a-d)

	<i>Numbers</i>		
	Male	Female	Total
Aged 18 and under:			
A Level / A2	4,335	5,950	10,280
AS Level	7,975	11,450	19,425
Access Certificate/Diploma	110	65	175
First Certificate	125	105	230
First Certificate/Diploma Units	520	460	980
First Diploma	1,840	1,385	3,220
GCSE/VCE	2,605	3,325	5,925
GNVQ/AVCE	360	205	565
HE sub-degree (excl Foundation Degree)	35	20	55
Key Skills	52,140	46,180	98,320
NVQ	8,030	7,795	15,830
National Certificate	1,180	720	1,900
National Certificate/Diploma Units	2,060	1,485	3,550
National Diploma	4,145	4,110	8,255
OCN credit(s)	34,335	30,300	64,635
Other	34,960	30,865	65,830
Not specified	205	95	300
Aged 18 and under	154,955	144,520	299,480
Aged 19 and over:			
A Level / A2	705	1,015	1,720
AS Level	1,015	1,575	2,590
Access Certificate/Diploma	580	2,285	2,865
BTEC Award	5	25	30
First Certificate	85	130	210
First Certificate/Diploma Units	50	65	115
First Diploma	215	155	370
GCSE/VCE	1,155	2,525	3,685
GNVQ/AVCE	70	110	185
HE sub-degree (excl Foundation Degree)	495	260	755
Key Skills	20,480	19,090	39,570
NVQ	17,125	23,175	40,300
National Certificate	1,365	620	1,985
National Certificate/Diploma Units	405	245	655
National Diploma	1,050	695	1,740
OCN credit(s)	47,065	92,870	139,935
Postgraduate degree	25	65	90
Other	71,620	107,530	179,150
Not specified	1,855	1,820	3,675
Aged 19 and over	165,370	254,255	419,625
All ages:			
A Level / A2	5,040	6,965	12,005
AS Level	8,990	13,025	22,015
Access Certificate/Diploma	690	2,350	3,040
BTEC Award	5	25	30
First Certificate	210	235	440
First Certificate/Diploma Units	570	525	1,095
First Diploma	2,050	1,540	3,590
GCSE/VCE	3,760	5,850	9,610
GNVQ/AVCE	435	320	750
HE sub-degree (excl Foundation Degree)	530	280	810
Key Skills	72,620	65,270	137,890
NVQ	25,155	30,970	56,130
National Certificate	2,545	1,340	3,885
National Certificate/Diploma Units	2,470	1,735	4,205
National Diploma	5,195	4,800	9,995
OCN credit(s)	81,395	123,170	204,570
Postgraduate degree	25	65	90
Other	106,580	138,395	244,975
Not specified	2,060	1,915	3,975
Total	320,325	398,775	719,105

Source: LLWR (Lifelong Learning Wales Record) post-16 database

(a) Includes work-based learning (WBL) subsidiaries of FE institutions.

(b) LEA community learning has been included where there is a formal enrolment with an FE institution.

(c) Age is as at 31 August 2006

(d) Numbers greater than 0 and less than 5 have been replaced by *. Other figures are rounded to the nearest 5 and there may be slight discrepancies between the sums of constituent items and the independently rounded totals.

Table F4.6a Numbers of Awards attained for Learners enrolled at FE institutions by Qualification type and age band 2006/07 (a-f)

Qualification type	Numbers		
	18 and Under	19 and Over	Total
A Level / A2	5,625	1,775	7,400
AS Level	8,925	1,510	10,435
Access Certificate/Diploma	145	4,440	4,585
BTEC Award	0	25	25
First Certificate	2,490	965	3,455
First Certificate/Diploma Units	365	60	425
First Diploma	1,765	170	1,935
GCSE/VCE	2,505	1,945	4,450
GNVQ/AVCE	1,055	400	1,450
HE sub-degree (excl Foundation Degree)	5	255	260
Key Skills	48,130	19,240	67,365
NVQ	6,655	15,300	21,960
National Certificate	170	885	1,055
National Certificate/Diploma Units	635	345	985
National Diploma	70	35	100
OCN credit(s)	36,440	72,810	109,250
Postgraduate degree	0	35	35
Other	30,615	89,765	120,380
Total	145,595	209,960	355,555

Source: LLWR (Lifelong Learning Wales Record) post-16 database

- (a) Awards numbers are for those attained during 2006/07 but some may be associated with learning activities which took place in the previous academic year
- (b) Includes work-based learning (WBL) subsidiaries of FE institutions.
- (c) LEA community learning has been included where there is a formal enrolment with an FE institution.
- (d) Attained awards are those where the result of the award is achieving a pass or higher within the academic year
- (e) Age is as at 31 August 2006
- (f) Numbers greater than 0 and less than 5 have been replaced by *. Other figures are rounded to the nearest 5 and there may be slight discrepancies between the sums of constituent items and the independently rounded totals.

Table F4.6b Numbers of Learners attaining awards at FE institutions by Qualification type and age band 2006/07 (a-f)

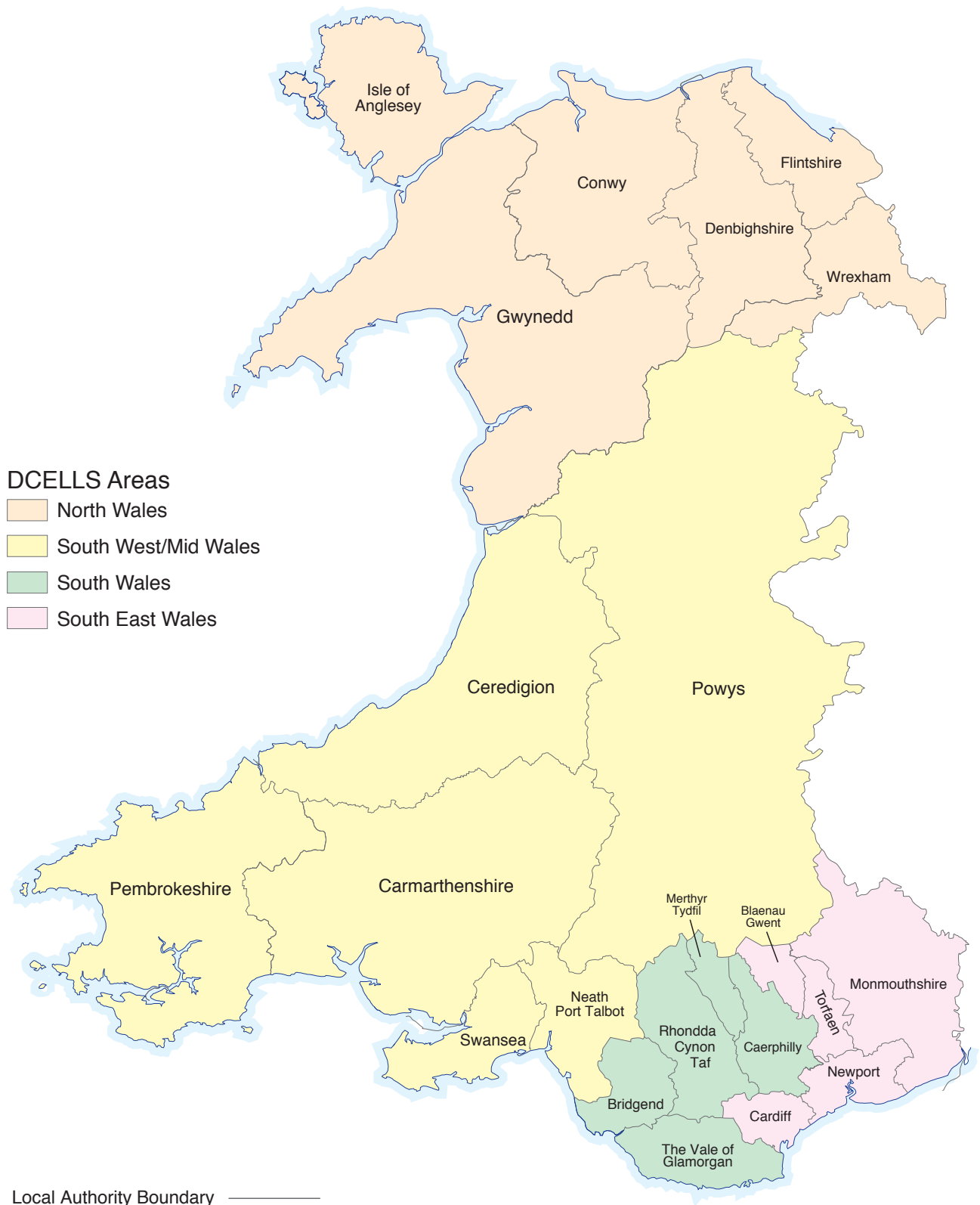
Qualification type	Numbers		
	18 and Under	19 and Over	Total
A Level / A2	2,470	1,095	3,565
AS Level	3,790	1,140	4,930
Access Certificate/Diploma	40	1,770	1,815
BTEC Award	0	25	25
First Certificate	2,425	955	3,385
First Certificate/Diploma Units	235	30	265
First Diploma	1,755	165	1,925
GCSE/VCE	1,905	1,625	3,535
GNVQ/AVCE	920	350	1,270
HE sub-degree (excl Foundation Degree)	5	250	255
Key Skills	18,440	8,815	27,260
NVQ	5,230	13,850	19,080
National Certificate	165	775	940
National Certificate/Diploma Units	335	245	580
National Diploma	55	35	90
OCN credit(s)	16,080	42,970	59,050
Postgraduate degree	0	35	35
Other	18,720	58,950	77,670
Total (including multiple counting between qualification types)	72,580	133,090	205,670
Total distinct learners gaining awards in academic year	42,000	109,960	151,960

Source: LLWR (Lifelong Learning Wales Record) post-16 database

- (a) Includes work-based learning (WBL) subsidiaries of FE institutions.
- (b) LEA community learning has been included where there is a formal enrolment with an FE institution.
- (c) Attained awards are those where the result of the award is achieving a pass or higher within the academic year
- (d) Learner counts are on a unique learner basis. However the first total row includes multiple counting between qualification type rows whereas the second total row does not.
- (e) Age is as at 31 August 2006
- (f) Numbers greater than 0 and less than 5 have been replaced by *. Other figures are rounded to the nearest 5 and there may be slight discrepancies between the sums of constituent items and the independently rounded totals.

SECTION B

LOCAL AUTHORITY COMMUNITY LEARNING IN WALES



Local Authority Community Learning Summary

- 51,725 learners undertook a Local Authority Community Learning activity in 2006/07
- 38,080 learners were in-learning during the week of 1 December 2006
- 8 per cent of learners were under the age of 25
- 59 per cent of learners were aged between 25 and 59
- 33 per cent of learners were aged 60 and over
- 72 per cent of learners were female
- 86,155 learning activities were undertaken in 2006/07
- 27 per cent of learning activities were in Cultural Studies, 19 per cent in Information Technology, 18 per cent for Arts and Crafts and 17 per cent for Care/Basic Skills subject areas

Note : all percentages are as a proportion of the total for which data were available

Learners

Sixteen of the twenty-two Local Education Authorities (LEAs) or equivalent departments at local authorities in Wales, directly or indirectly (excluding 'assisted' provision not returned via the LLWR), delivered community learning in 2006/07 within their authority. In total there were 51,725 learners who were undertaking an LEA community learning programme. Some learners undertook community learning with more than one provider resulting in a total of 54,430 provider learner enrolments.

In 2006/07 there were three main ways that a learner could be engaged in an LEA community learning programme. They could have been:

- receiving community learning by local authority employed staff and enrolled at the LEA (maintained provision);
- receiving community learning by local authority employed staff but enrolled for the learning at an FE institution (contracted-in from FE institutions provision);
- receiving community learning by a third party but enrolled for the learning at the local authority (contracted-out from LEA provision).

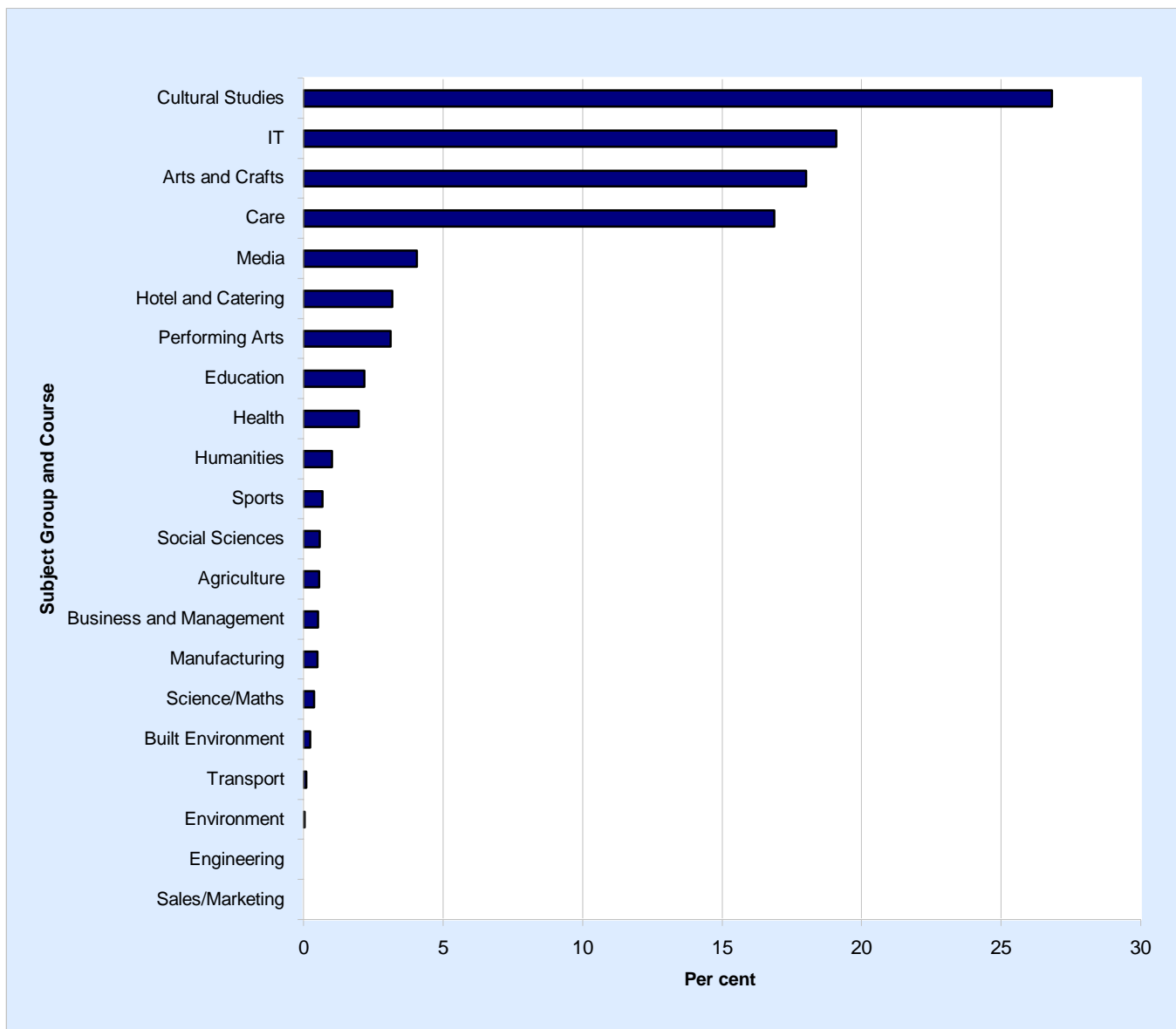
Only two LEAs contracted-out community learning provision to a third party organisation, accounting for 1.2 per cent of the total number of community learning learners; another 41 per cent of learners were undertaking maintained provision and the remaining 58 per cent of learners were undertaking provision contracted-in from FE institutions.

Learning Activities

The 51,725 learners were undertaking 86,155 learning activities during 2006/07. These learning activities were in a number of different subject areas, with the largest numbers in:

- | | | |
|--------------------------|--------|---------------|
| • Cultural Studies | 23,110 | (27 per cent) |
| • Information Technology | 16,450 | (19 per cent) |
| • Arts & Crafts | 15,520 | (18 per cent) |
| • Care/Basic Skills | 14,540 | (17 per cent) |

Figure L1: Subject of Study 2006/07



Trends in Learning

The first edition of this volume, produced by ELWa, covering 2003/04 recorded the number of learners in learning on the week of 1 December 2003 who were undertaking LEA Community Learning maintained provision to be 16,130 and the number undertaking contracted-in provision to be 25,830. The learner numbers in this edition, for the week of 1 December 2006, show a 3 per cent decline in learners on maintained provision since 2003/04 and an 11 per cent decrease in learners on contracted-in provision.

Table L1.1 Numbers of learners in LEA Community Learning by unitary authority and provision type 2006/07 (a-e)

Unitary Authority (LEA)	<i>Numbers</i>								
	Maintained Provision		Contracted-out from LEAs		Contracted-in from FE institutions		Total		
	All	Enrolled 1 Dec	All	Enrolled 1 Dec	All	Enrolled '1 Dec	All	Enrolled 1 Dec	
Isle of Anglesey County Council	0	0	0	0	0	0	0	0	
Gwynedd County Council	0	0	0	0	0	0	0	0	
Conwy County Borough Council	0	0	0	0	0	0	0	0	
Denbighshire County Council	0	0	0	0	0	0	0	0	
Flintshire County Council	0	0	0	0	0	0	0	0	
Wrexham County Borough Council	0	0	0	0	0	0	0	0	
Powys County Council	605	445	540	335	530	495	1,675	1,275	
Ceredigion County Council	630	475	0	0	855	705	1,485	1,180	
Pembrokeshire County Council	2,910	1,770	0	0	0	0	2,910	1,770	
Carmarthenshire County Council	2,425	1,625	0	0	2,290	1,535	4,715	3,160	
City and County of Swansea	2,480	1,775	0	0	0	0	2,480	1,775	
Neath Port Talbot County Council	0	0	0	0	2,600	2,440	2,600	2,440	
Bridgend County Borough Council	1,155	970	0	0	1,505	1,220	2,665	2,190	
Vale of Glamorgan County Borough Council	2,910	2,265	0	0	710	620	3,620	2,885	
Rhondda Cynon Taff County Borough Council	795	335	0	0	2,700	1,890	3,495	2,225	
Merthyr Tydfil County Borough Council	0	0	125	105	0	0	125	105	
Caerphilly County Borough Council	1,045	725	0	0	2,325	1,675	3,375	2,400	
Blaenau Gwent County Borough Council	0	0	0	0	2,155	1,540	2,155	1,540	
Torfaen County Borough Council	790	150	0	0	3,235	2,565	4,025	2,715	
Monmouthshire County Council	0	0	0	0	2,455	1,695	2,455	1,695	
Newport County Borough Council	0	0	0	0	3,930	2,635	3,930	2,635	
Cardiff County Council	6,645	5,105	0	0	6,085	4,090	12,725	9,200	
Total (including any multiple-counting between providers)	22,395	15,640	665	440	31,370	23,105	54,430	39,185	
							Total unique learners	51,725	38,080

Source: LLWR (Lifelong Learning Wales Record) post-16 database

- (a) Individual row counts are based on providers' own learner identifiers and their total includes some multiple-counting between providers.
- (b) The total unique learners row removes multiple-counting between providers by counting unique learner identifiers (ULIs).
- (c) 'Enrolled 1 Dec' is the population during the week of 1 December 2006; 'All' refers to the complete academic year.
- (d) Contracted-in learning also contributes towards figures in the FE institution tables, in particular the third party column of Table F1.5.
- (e) Excludes 'assisted' provision (e.g. a significant component of North Wales provision) not present on the LLWR.
- (f) Numbers greater than 0 and less than 5 have been replaced by *. Other figures are rounded to the nearest 5 and there may be slight discrepancies between the sums of constituent items and the independently rounded totals.

Table L1.2a Numbers of learners in LEA Community Learning by age group, mode of learning and sex 2006/07 (a-e)

Age Group	Numbers					
	Full academic year			Week of 1 December		
	Male	Female	Total	Male	Female	Total
Under 16	90	115	205	65	75	140
16	145	230	375	85	160	245
17	135	235	375	80	135	215
18	120	225	345	65	135	200
19	115	290	405	60	175	235
20-24	775	2,170	2,940	465	1,375	1,835
25-39	3,140	9,345	12,485	2,130	6,405	8,535
40-49	2,215	6,705	8,915	1,620	4,950	6,570
50-59	2,510	6,825	9,335	1,935	5,190	7,120
60-64	1,540	4,085	5,625	1,175	3,270	4,450
65+	3,250	6,710	9,960	2,560	5,480	8,040
Not Specified	230	535	760	155	340	495
Total	14,265	37,460	51,725	10,395	27,685	38,080

Source: LLWR (Lifelong Learning Wales Record) post-16 database

- (a) Counts are based on unique learner identifiers (ULIs) to remove multiple-counting between providers.
 (b) LEA community learning has been included where there is a formal enrolment with an FE institution or LEA.
 (c) Includes maintained, contracted-in and contracted-out provision.
 (d) Age is as at 31 August 2006
 (e) Numbers greater than 0 and less than 5 have been replaced by *. Other figures are rounded to the nearest 5 and there may be slight discrepancies between the sums of constituent items and the independently rounded totals.

Table L1.2b Numbers of learners in LEA Community Learning by age group, mode of learning and sex - excluding contracted-in from FE 2006/07 (a-e)

Age Group	Numbers					
	Full academic year			Week of 1 December		
	Male	Female	Total	Male	Female	Total
Under 16	35	60	95	25	35	60
16	50	85	135	30	55	85
17	50	70	120	25	40	65
18	25	50	75	10	25	35
19	25	60	85	10	30	45
20-24	170	680	850	85	380	465
25-39	870	3,635	4,500	545	2,140	2,685
40-49	805	2,860	3,665	535	1,960	2,495
50-59	1,050	3,415	4,465	760	2,490	3,250
60-64	655	2,250	2,910	475	1,730	2,200
65+	1,550	3,865	5,415	1,195	3,060	4,255
Not Specified	145	400	545	95	250	345
Total	5,430	17,435	22,865	3,790	12,190	15,985

Source: LLWR (Lifelong Learning Wales Record) post-16 database

- (a) Counts are based on unique learner identifiers (ULIs) to remove multiple-counting between providers.
 (b) LEA community learning has been included where there is a formal enrolment with an LEA.
 (c) Includes maintained and contracted-out but excludes contracted-in provision.
 (d) Age is as at 31 August 2006
 (e) Numbers greater than 0 and less than 5 have been replaced by *. Other figures are rounded to the nearest 5 and there may be slight discrepancies between the sums of constituent items and the independently rounded totals.

Table L2.1 Numbers of LEA Community Learning activities by unitary authority and provision type 2006/07 (a-d)

Unitary Authority (LEA)	<i>Numbers</i>							
	Maintained Provision		Contracted-out from LEAs		Contracted-in from FE institutions		Total	
	All	Enrolled 1 Dec	All	Enrolled 1 Dec	All	Enrolled 1 Dec	All	Enrolled 1 Dec
Isle of Anglesey County Council	0	0	0	0	0	0	0	0
Gwynedd County Council	0	0	0	0	0	0	0	0
Conwy County Borough Council	0	0	0	0	0	0	0	0
Denbighshire County Council	0	0	0	0	0	0	0	0
Flintshire County Council	0	0	0	0	0	0	0	0
Wrexham County Borough Council	0	0	0	0	0	0	0	0
Powys County Council	1,035	480	965	340	830	510	2,830	1,330
Ceredigion County Council	830	495	0	0	2,060	720	2,890	1,215
Pembrokeshire County Council	3,910	1,895	0	0	0	0	3,910	1,895
Cardiganshire County Council	5,210	1,865	0	0	2,895	1,675	8,105	3,540
City and County of Swansea	2,965	1,915	0	0	0	0	2,965	1,915
Neath Port Talbot County Council	0	0	0	0	3,080	2,845	3,080	2,845
Bridgend County Borough Council	1,490	1,230	0	0	2,470	1,975	3,960	3,205
Vale of Glamorgan County Borough Council	4,300	2,650	0	0	2,115	1,735	6,410	4,390
Rhondda Cynon Taff County Borough Council	865	300	0	0	8,000	6,130	8,865	6,435
Merthyr Tydfil County Borough Council	0	0	125	105	0	0	125	105
Caerphilly County Borough Council	1,580	795	0	0	4,185	2,660	5,765	3,455
Blaenau Gwent County Borough Council	0	0	0	0	3,205	1,860	3,205	1,860
Torfaen County Borough Council	1,010	165	0	0	4,825	3,250	5,835	3,410
Monmouthshire County Council	0	0	0	0	3,355	1,965	3,355	1,965
Newport County Borough Council	0	0	0	0	6,245	3,210	6,245	3,210
Cardiff County Council	8,670	5,690	0	0	9,935	4,675	18,605	10,360
Total	31,865	17,480	1,090	450	53,205	33,215	86,155	51,140

Source: LLWR (Lifelong Learning Wales Record) post-16 database

- (a) 'Enrolled 1 Dec' is the population during the week of 1 December 2006; 'All' refers to the complete academic year.
- (b) Contracted-in learning also contributes towards figures in the FE institution tables, in particular the third party column of Table F1.5.
- (c) Excludes 'assisted' provision (e.g. a significant component of North Wales provision) not present on the LLWR.
- (d) Numbers greater than 0 and less than 5 have been replaced by *. Other figures are rounded to the nearest 5 and there may be slight discrepancies between the sums of constituent items and the independently rounded totals.

Table L2.2 Numbers of LEA Community Learning activities 2006/07 by age group, mode of learning and sex (a-d)

Age Group	Numbers					
	Full academic year			Week of 1 December		
	Male	Female	Total	Male	Female	Total
Under 16	105	165	270	75	95	170
16	225	340	565	110	215	325
17	225	315	540	115	155	270
18	160	350	510	80	185	265
19	205	500	700	100	290	385
20-24	1,320	3,670	4,985	705	2,050	2,750
25-39	5,260	15,400	20,660	2,960	8,595	11,555
40-49	3,535	10,975	14,505	2,215	6,520	8,735
50-59	3,970	11,515	15,485	2,480	6,955	9,435
60-64	2,645	7,405	10,045	1,570	4,475	6,040
65+	5,335	11,515	16,850	3,315	7,320	10,640
Not Specified	300	735	1,035	185	385	565
Total	23,280	62,875	86,155	13,900	37,240	51,140

Source: LLWR (Lifelong Learning Wales Record) post-16 database

- (a) LEA community learning has been included where there is a formal enrolment with an FE institution or LEA.
- (b) Includes maintained, contracted-in and contracted-out provision.
- (c) Age is as at 31 August 2006
- (d) Numbers greater than 0 and less than 5 have been replaced by *. Other figures are rounded to the nearest 5 and there may be slight discrepancies between the sums of constituent items and the independently rounded totals.

Table L2.3 Numbers of LEA Community Learning activities by subject and age group 2006/07 (a-e)

Subject	Under 16	16	17	18	19	20 to 24
Agriculture, Horticulture and Animal Care	0	0	0	0	0	35
Arts and Crafts	40	65	35	35	55	385
Business/Management/Office Studies	0	*	*	*	5	45
Care/Personal Development(incl Basic Skills)	70	130	135	130	190	1,050
Catering/Food/Leisure Services/Tourism	5	15	20	25	15	190
Construction & Property (Built Environment)	*	*	*	*	*	20
Cultural Studies/Languages/Literature	65	145	175	150	265	1,955
Education/Training/Teaching	0	10	25	10	20	170
Engineering	5	0	*	0	0	*
Environment Protection/Energy/Cleansing/Security	*	0	0	0	0	0
Health Care/Medicine/Health & Safety	5	20	20	25	25	165
Humanities	*	*	*	0	*	20
Information Technology & Information	15	45	25	50	70	495
Logistics/Distribution/Transport/Driving	0	*	*	0	0	*
Manufacturing/Production Work	*	*	*	0	0	5
Media/Communication/Publishing	15	45	45	30	25	225
Performing Arts	15	30	5	10	5	115
Sales, Marketing and Retailing	0	0	0	0	0	0
Sciences & Mathematics	20	25	15	20	10	40
Social Sciences	5	10	20	15	5	50
Sports, Games and Recreation	*	20	10	5	5	25
Not specified	0	0	0	0	0	0
Total	270	565	540	510	700	4,985

(a) LEA community learning has been included where there is a formal enrolment with an FE institution or LEA.

(b) Includes maintained, contracted-in and contracted-out provision.

(c) Age is as at 31 August 2006

(d) Subjects are derived from the first letter of the LearnDirect Classification System (LDCS) codes.

(e) Numbers greater than 0 and less than 5 have been replaced by *. Other figures are rounded to the nearest 5 and there may be slight discrepancies between the sums of constituent items and the independently rounded totals.

Table L2.3 (Continued) Numbers of LEA Community Learning activities by subject and age group 2006/07 (a-e)

Numbers

25 to 39	40 to 49	50 to 59	60 to 64	65 plus	Age not stated	Total	Subject
100	90	110	40	95	5	475	Agriculture, Horticulture and Animal Care
2,030	2,080	3,280	2,600	4,675	240	15,520	Arts and Crafts
155	100	65	30	50	0	455	Business/Management/Office Studies
4,235	2,610	2,420	1,335	2,070	170	14,540	Care/Personal Development(incl Basic Skills)
750	510	510	295	375	45	2,750	Catering/Food/Leisure Services/Tourism
65	40	35	20	15	*	200	Construction & Property (Built Environment)
7,450	4,025	3,745	2,190	2,695	250	23,110	Cultural Studies/Languages/Literature
840	375	200	90	140	10	1,885	Education/Training/Teaching
*	5	*	0	*	*	25	Engineering
15	10	5	*	0	*	30	Environment Protection/Energy/Cleansing/Security
610	375	265	90	90	20	1,710	Health Care/Medicine/Health & Safety
70	95	195	200	290	10	880	Humanities
2,555	2,820	3,155	2,270	4,835	110	16,450	Information Technology & Information
20	20	25	*	5	*	85	Logistics/Distribution/Transport/Driving
60	70	90	70	120	*	425	Manufacturing/Production Work
705	520	580	435	830	55	3,505	Media/Communication/Publishing
555	545	635	280	430	75	2,695	Performing Arts
*	*	5	0	0	0	5	Sales, Marketing and Retailing
115	50	15	*	*	0	320	Sciences & Mathematics
230	85	40	10	15	15	500	Social Sciences
95	90	110	95	125	10	585	Sports, Games and Recreation
0	*	0	*	0	0	*	Not specified
20,660	14,505	15,485	10,045	16,850	1,035	86,155	Total

Source: LLWR (Lifelong Learning Wales Record) post-16 database

Table L2.4 Numbers of LEA Community Learning activities 2006/07 by subject and sex (a-d)

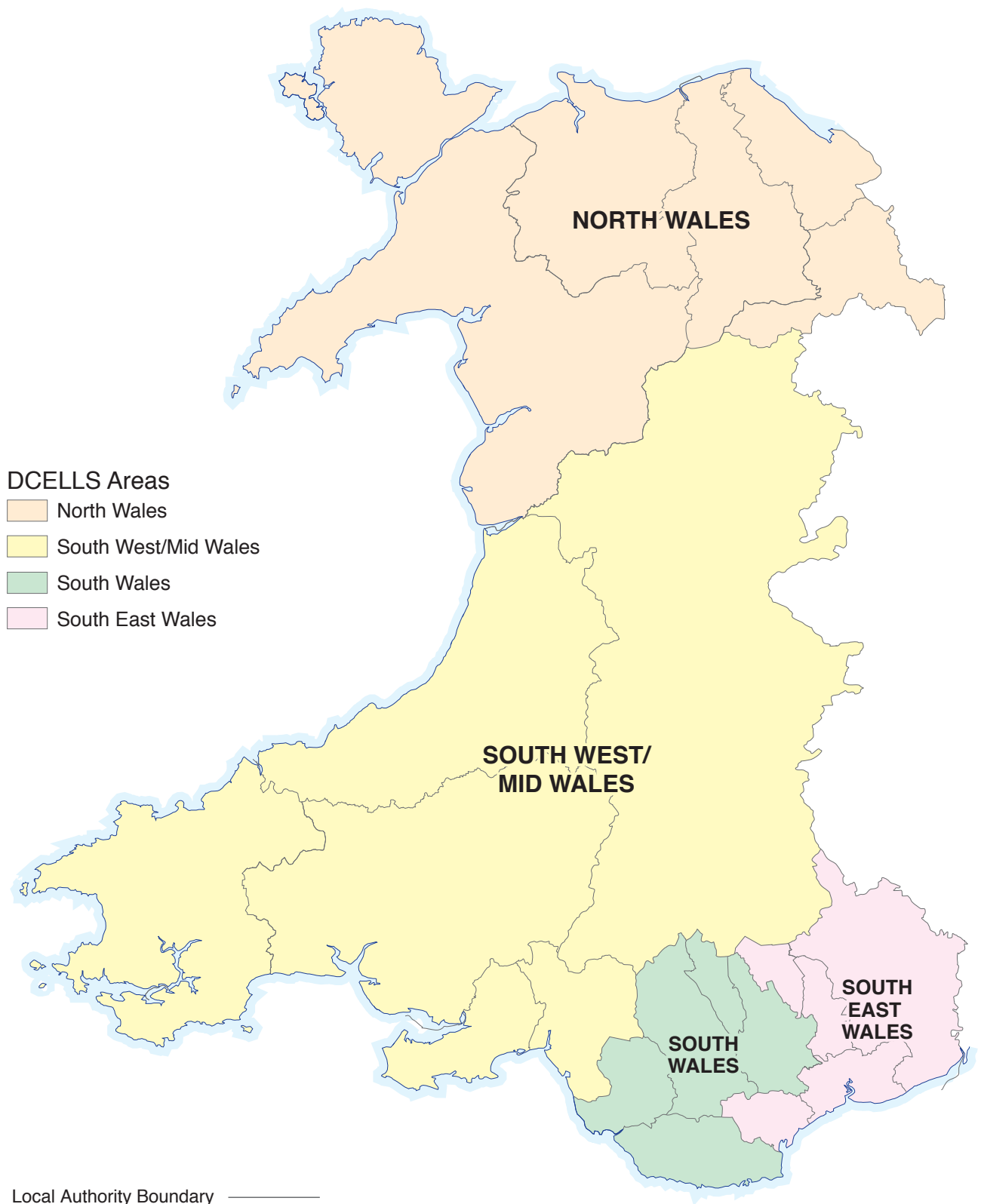
Subject	Numbers		
	Male	Female	Total
Agriculture, Horticulture and Animal Care	110	365	475
Arts and Crafts	2,840	12,680	15,520
Business/Management/Office Studies	60	390	455
Care/Personal Development(incl Basic Skills)	3,025	11,515	14,540
Catering/Food/Leisure Services/Tourism	545	2,210	2,750
Construction & Property (Built Environment)	70	130	200
Cultural Studies/Languages/Literature	7,890	15,220	23,110
Education/Training/Teaching	410	1,475	1,885
Engineering	25	*	25
Environment Protection/Energy/Cleansing/Security	20	10	30
Health Care/Medicine/Health & Safety	295	1,415	1,710
Humanities	235	645	880
Information Technology & Information	5,130	11,320	16,450
Logistics/Distribution/Transport/Driving	65	20	85
Manufacturing/Production Work	255	165	425
Media/Communication/Publishing	935	2,570	3,505
Performing Arts	875	1,820	2,695
Sales, Marketing and Retailing	*	5	5
Sciences & Mathematics	90	230	320
Social Sciences	155	345	500
Sports, Games and Recreation	240	340	585
Not specified	0	*	*
Total	23,280	62,875	86,155

Source: LLWR (Lifelong Learning Wales Record) post-16 database

- (a) LEA community learning has been included where there is a formal enrolment with an FE institution or LEA.
- (b) Includes maintained, contracted-in and contracted-out provision.
- (c) Subjects are derived from the first letter of the LearnDirect Classification System (LDCS) codes.
- (d) Numbers greater than 0 and less than 5 have been replaced by *. Other figures are rounded to the nearest 5 and there may be slight discrepancies between the sums of constituent items and the independently rounded totals.

SECTION C

WORK-BASED LEARNING IN WALES



Work-based Learning Summary

- 64,475 learners undertook a WBL programme in 2006/07
- Around 38,190 work-based learning programmes were pursued by 37,695 distinct learners as at the end of March 2007
- There was a 40 per cent increase in the number of distinct learners on WBL programmes between March 2002 and March 2007.
- 52 per cent of learners were under the age of 25 (compared with 54 per cent in 2005/06 and 66 per cent in 2004/05) and 28 percent under the age of 19
- 48 per cent (a declining proportion) of learners were male
- 2.6 per cent of learners were of a non-white ethnic origin
- 4.6 per cent of learners had a disability
- 73 per cent of learners were on a Modern Apprenticeship or Foundation Modern Apprenticeship programme
- 75 per cent of the learning activities taken were at a notional level of NVQ level 1 or 2
- 56 per cent of learning programmes finished were followed by employment, with 64 per cent of learners leaving with employment as their destination.
- The most popular sector framework area for MAs, FMAs and MSDs was Health and Social Care (15 per cent)
- 243,185 learning activities were undertaken by work-based learning learners at WBL providers in 2006/07

Note : all percentages are as a proportion of the total for which data were available

Learners

The LLWR was introduced for work-based learning in 2004/05 and replaced the National Trainee Database (NTD). There were 64,475 learners undertaking a work-based learning programme in 2006/07. Some learners undertook more than one training episode during the year resulting in a total of 73,170 individual learning programmes.

Programmes

In 2006/07 there were five main training programme types plus an 'other' category which included programmes such as bespoke programmes. The proportion of all learning programme enrolments on each type, were:

Foundation Modern Apprenticeships	(42 per cent)
Modern Apprenticeships	(27per cent)
Modern Skills Diploma	(4 per cent)
Preparatory Learning	(16 per cent)
Skills Learning	(9 per cent)
Other	(2 per cent)

Overall 73,170 work-based learning programmes were taken by learners in 2006/07. Information on the sector framework of the trainees is available for Foundation Modern Apprenticeships, Modern Apprenticeships and Modern Skills Diplomas only. 53,390 learning programmes were taken via these programmes with the largest numbers in:

Health and Social Care	7,865	(15 per cent)
Customer Service	5,420	(10 per cent)
Management	4,640	(9 per cent)
Business Administration	3,875	(7 per cent)

Of those leaving individual learning programmes (excluding unknown destinations) for over half (56 per cent) the destination was employment, primarily current employment and 20 per cent were seeking work or unemployed. 19 per cent went on to further learning (including new programmes on LLWR in the same year). On a learner basis (taking only the final programme of the year) 64 per cent went into or continued employment, 22 per cent were seeking work or unemployed and 9 per cent went on to new learning.

Learning activities

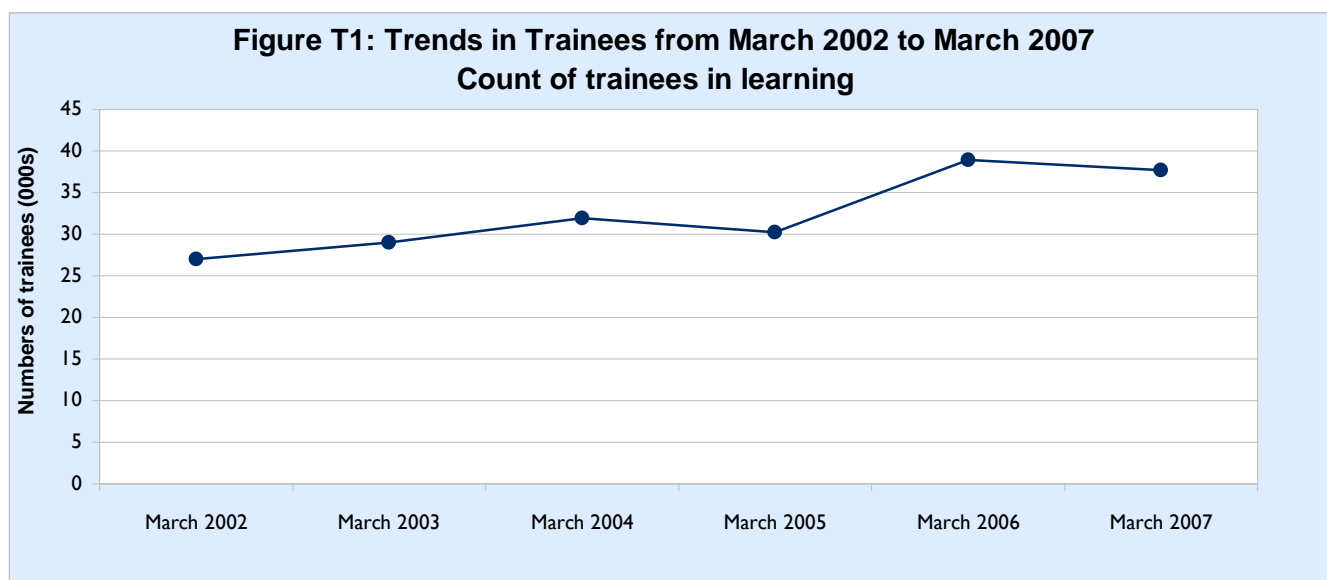
Overall 243,185 learning activities were followed by learners in work-based learning. The vast majority of these were at a level equivalent to NVQ level 1, 2 or 3.

The most popular subjects being undertaken by learners in work-based learning were:

Care/Basic Skills	77,735	(33 per cent)
Media	36,430	(15 per cent)
IT	22,960	(10 per cent)
Business/Management	23,250	(10 per cent)

Trends in work-based learning

The trend information in Table T2.1 on learner numbers continues a series published by the Welsh Assembly Government. From 2004/05, the source is the LLWR (Lifelong Learning Wales Record) which has replaced ELWa's National Trainee Database (NTD). Whereas most counts in this publication are for the full year, the count in the time series is of those in training at the end of March (and July) each year.



Within year figures at a variety of dates in 2006/07 are illustrated in Table T2.2 which also compares counts of learning programmes with those of unique learners by programme type.

Table T1.1 Numbers of learners at work-based learning (WBL) providers 2006/07 by age group, sex and programme type (a-e)

							<i>Numbers</i>
	Foundation Modern Apprenticeship	Modern Apprenticeship	Modern Skills Diploma	Preparatory Learning	Skills Learning	Other Programmes	Total
Female learners aged:							
Under 16	10	0	0	185	15	165	380
16	525	20	0	1,290	610	285	2,725
17	1,015	120	0	715	595	55	2,500
18	1,165	325	*	85	145	*	1,720
19	1,055	455	*	15	35	*	1,565
20-24	3,075	2,155	150	45	110	*	5,540
25-39	4,405	4,000	795	170	440	10	9,825
40-49	2,870	2,205	640	145	275	10	6,145
50-59	1,250	790	340	65	165	5	2,620
60-64	100	40	30	*	5	0	175
65+	10	5	10	0	0	0	25
Female learners	15,480	10,115	1,965	2,715	2,395	540	33,215
Male learners aged:							
Under 16	10	20	0	285	10	265	595
16	660	135	0	1,895	805	415	3,910
17	1,310	440	0	950	940	120	3,760
18	1,360	935	0	140	290	10	2,735
19	970	1,095	10	45	100	*	2,215
20-24	2,805	2,920	55	75	90	10	5,955
25-39	3,455	2,295	400	740	495	45	7,435
40-49	1,425	815	300	295	295	20	3,145
50-59	600	250	115	195	215	5	1,375
60-64	65	20	10	10	20	0	125
65+	10	*	*	0	*	0	15
Male learners	12,670	8,920	890	4,630	3,255	890	31,260
All WBL provision							
Under 16	25	20	0	470	25	435	970
16	1,185	150	0	3,185	1,410	700	6,635
17	2,325	560	0	1,665	1,535	175	6,260
18	2,525	1,260	*	220	435	10	4,455
19	2,025	1,545	10	60	135	*	3,775
20-24	5,880	5,075	205	120	200	10	11,495
25-39	7,860	6,300	1,195	910	935	55	17,260
40-49	4,290	3,020	940	445	570	30	9,290
50-59	1,850	1,040	450	260	380	10	3,995
60-64	165	60	40	10	25	0	300
65+	15	10	10	0	*	0	40
Total	28,150	19,035	2,860	7,345	5,650	1,435	64,475

Source: LLWR (Lifelong Learning Wales Record) post-16 database

- (a) Counts are on a unique learner identifier (ULI) basis to eliminate multiple-counting between providers.
 (b) Includes work-based learning (WBL) provision at FE institutions.
 (c) Age is as at 31 August 2006.
 (d) The 'Other Programmes' column includes other WBL programmes at FE institutions and all other programmes at WBL subsidiaries and other training providers.
 (e) Numbers greater than 0 and less than 5 have been replaced by *. Other figures are rounded to the nearest 5 and there may be slight discrepancies between the sums of constituent items and the independently rounded totals.

Table T1.2 Number of learners by programme and DCELLS Area of domicile 2006/07 (a-f)

Programme	DCELLS Area of domicile					Numbers
	North Wales	South West / Mid Wales	South Wales	South East Wales	Other	Total
Foundation Modern Apprenticeship	6,205	7,930	6,540	6,520	960	28,150
Modern Apprenticeship	3,720	5,395	4,780	4,350	795	19,035
Modern Skills Diploma	725	955	530	510	135	2,860
Preparatory Learning	1,055	1,960	2,350	1,745	240	7,345
Skills Learning	720	1,595	1,820	1,360	155	5,650
Other Programme	150	440	370	415	55	1,435
Total	12,570	18,280	16,390	14,900	2,335	64,475

Source: LLWR (Lifelong Learning Wales Record) post-16 database

- (a) Includes work-based learning (WBL) provision at FE institutions.
 (b) Counts are on a unique learner identifier (ULI) basis to eliminate multiple-counting between providers.
 (c) The 'Other Programmes' column includes other WBL programmes at FE institutions and all other programmes at WBL subsidiaries and other training providers.
 (d) Preparatory Learning is marketed as "Skillbuild" and Skills Learning is marketed as "Skillbuild Plus".
 (e) Other' DCELLS Area of domicile includes learners domiciled outside Wales and learners without a valid postcode.
 (f) Numbers greater than 0 and less than 5 have been replaced by *. Other figures are rounded to the nearest 5 and there may be slight discrepancies between the sums of constituent items and the independently rounded totals.

Table T1.3 Number of enrolments on learning programmes by programme and DCELLS Area of domicile 2006/07 (a-e)

Programme	DCELLS Area of domicile					Numbers
	North Wales	South West / Mid Wales	South Wales	South East Wales	Other	Total
Foundation Modern Apprenticeship	6,790	8,740	6,985	7,075	1,025	30,610
Modern Apprenticeship	3,900	5,730	4,920	4,495	830	19,875
Modern Skills Diploma	735	975	535	515	140	2,905
Preparatory Learning	1,525	3,310	3,690	2,690	330	11,545
Skills Learning	850	1,895	2,110	1,605	170	6,630
Other Programme	155	465	445	485	55	1,605
Total	13,955	21,115	18,685	16,865	2,550	73,170

Source: LLWR (Lifelong Learning Wales Record) post-16 database

- (a) Includes work-based learning (WBL) provision at FE institutions.
 (b) The 'Other Programmes' column includes other WBL programmes at FE institutions and all other programmes at WBL subsidiaries and other training providers.
 (c) Preparatory Learning is marketed as "Skillbuild" and Skills Learning is marketed as "Skillbuild Plus".
 (d) Other' DCELLS Area of domicile includes learners domiciled outside Wales and learners without a valid postcode.
 (e) Numbers greater than 0 and less than 5 have been replaced by *. Other figures are rounded to the nearest 5 and there may be slight discrepancies between the sums of constituent items and the independently rounded totals.

Table T1.4 Numbers of learners at work-based learning (WBL) providers 2006/07 by ethnicity, age band and sex (a-e)

Aged 18 and under			<i>Numbers</i>
Ethnicity	Male	Female	Total
Asian	75	50	120
Black	70	25	95
Mixed	100	90	190
Other Minority Ethnic	10	5	15
White	10,710	7,145	17,855
Information refused/not known	35	10	45
Total	10,995	7,325	18,320

Aged 19 and over			
Ethnicity	Male	Female	Total
Asian	265	285	550
Black	150	145	295
Mixed	110	145	255
Other Minority Ethnic	70	60	130
White	19,545	25,145	44,690
Information refused/not known	125	105	230
Total	20,265	25,890	46,155

All ages			
Ethnicity	Male	Female	Total
Asian	335	335	675
Black	215	170	390
Mixed	210	235	445
Other Minority Ethnic	80	65	145
White	30,255	32,295	62,545
Information refused/not known	160	115	275
Total	31,260	33,215	64,475

Source: LLWR (Lifelong Learning Wales Record) post-16 database

- (a) Counts are on a unique learner identifier (ULI) basis to eliminate multiple-counting between providers.
- (b) Where a learner participates in more than one learning programme over the course of the year, the most recent programme has been selected.
- (c) Includes work-based learning (WBL) provision at FE institutions.
- (d) Age is as at 31 August 2006.
- (e) Numbers greater than 0 and less than 5 have been replaced by *. Other figures are rounded to the nearest 5 and there may be slight discrepancies between the sums of constituent items and the independently rounded totals.

Table T1.5 Numbers of learners at work-based learning (WBL) providers 2006/07 by disability status, age band and sex (a-f)

Aged 18 and under			<i>Numbers</i>
Disability Status	Male	Female	Total
Disabled	510	325	835
Not disabled	10,265	6,835	17,100
Not known	220	165	385
Total	10,995	7,325	18,320

Aged 19 and over			
Disability Status	Male	Female	Total
Disabled	1,130	900	2,025
Not disabled	18,145	24,445	42,590
Not known	990	550	1,535
Total	20,265	25,890	46,155

All ages			
Disability Status	Male	Female	Total
Disabled	1,640	1,225	2,860
Not disabled	28,410	31,280	59,690
Not known	1,210	710	1,920
Total	31,260	33,215	64,475

Source: LLWR (Lifelong Learning Wales Record) post-16 database

- (a) Counts are on a unique learner identifier (ULI) basis to eliminate multiple-counting between providers.
- (b) Where a learner participates in more than one learning programme over the course of the year, the most recent programme has been selected.
- (c) Includes work-based learning (WBL) provision at FE institutions.
- (d) Age is as at 31 August 2006.
- (e) Disability status is on the basis of the learner's own assessment.
- (f) Numbers greater than 0 and less than 5 have been replaced by *. Other figures are rounded to the nearest 5 and there may be slight discrepancies between the sums of constituent items and the independently rounded totals.

Table T2.1 Trends in work-based learning - numbers in training by programme type 2001-2002 to 2006/07 (a-g)

	<i>Thousands</i>									
	March 2002	March 2003	March 2004	July 2004	March 2005	July 2005	March 2006	July 2006	March 2007	July 2007
Foundation Modern Apprenticeships	10.9	10.9	11.5	11.5	11.7	13.9	17.8	18.5	17.8	14.3
Modern Apprenticeships	9.8	10.9	13.0	13.4	12.5	12.9	13.7	13.4	13.1	11.4
Skillbuild	2.9	3.5	3.7	4.2
Preparatory Learning	1.9	2.8	2.6	3.0	2.2	1.5
Employability Training	0.5	0.6	0.6	0.6
Skills Training	1.2	1.3	1.2	1.0
Skills Learning	2.3	2.0	2.8	2.6	2.5	1.7
Recruit and Train	0.3	0.4	0.3	0.2
Modern Skills Diploma	0.9	1.3	1.5	1.5	1.5	1.6	1.9	2.0	1.9	1.6
Other Training	0.3	0.2	0.2	0.2	0.3	0.2	0.1	0.2	0.1	1.0
All Programmes	27.0	29.0	31.9	32.6	30.2	33.4	38.9	39.6	37.7	31.4

Sources: NTD (National Trainee Database) for 2001-02 to 2003-04
LLWR (Lifelong Learning Wales Record) post-16 database

- (a) Each individual programme row includes conversions from other programmes.
 (b) Some values in the 'All Programmes' row appear not to equal the sum of their parts owing to independent rounding.
 (c) . = not applicable.
 (d) Number in training is taken at the end of the former statistical training year in March or the newer statistical training year in July.
 (e) Preparatory Learning is marketed as "Skillbuild" and Skills Learning is marketed as "Skillbuild Plus".
 (f) Counts up to July 2004 are of training episodes which may be very slightly higher than the numbers of learners on a given date.
 (g) Counts from March 2005 onwards are of distinct learners.

Table T2.2 Numbers of unique learners and individual learning programmes by programme type (a-g)

	<i>Numbers</i>				
	Week of 1 December 2006	31 December 2006	31 March 2007	31 July 2007	2006/07 year
Unique learner numbers by programme type					
Foundation Modern Apprenticeship	18,870	18,225	17,770	14,340	28,150
Modern Apprenticeship	13,640	13,275	13,130	11,365	19,035
Modern Skills Diploma	2,045	1,965	1,945	1,555	2,860
Preparatory Learning	3,230	2,655	2,195	1,455	7,345
Skills Learning	2,620	2,550	2,525	1,665	5,650
Other programmes	105	85	135	1,015	1,435
Total unique learners	40,515	38,755	37,695	31,395	64,475
Numbers of learning programmes by type					
Foundation Modern Apprenticeship	19,140	18,490	18,050	14,590	30,610
Modern Apprenticeship	13,795	13,430	13,295	11,495	19,875
Modern Skills Diploma	2,055	1,975	1,955	1,555	2,905
Preparatory Learning	3,285	2,670	2,215	1,475	11,545
Skills Learning	2,650	2,575	2,540	1,680	6,630
Other programmes	105	90	135	1,015	1,605
Total learning programmes	41,035	39,230	38,190	31,815	73,170

Source: LLWR (Lifelong Learning Wales Record) post-16 database

- (a) Includes work-based learning (WBL) provision at FE institutions.
 (b) Unique learner counts are based on unique learner identifiers (ULI) to eliminate multiple-counting between providers.
 (c) Where a learner participates in more than one learning programme, the most recent one for the period is selected for the learner count programme type.
 (d) Where a learner participates in more than one learning programme over a period, all are included in the learning programme counts.
 (e) The 'Other Programmes' column includes other WBL programmes at FE institutions and all other programmes at WBL subsidiaries and other training providers (This adds e.g. 30 extra learners into the WBL provision count for the full year 2006/07 relative to the equivalent number pursuing WBL programs only).
 (f) Preparatory Learning is marketed as "Skillbuild" and Skills Learning is marketed as "Skillbuild Plus".
 (g) Numbers greater than 0 and less than 5 have been replaced by *. Other figures are rounded to the nearest 5 and there may be slight discrepancies between the sums of constituent items and the independently rounded totals.

Table T3.1 Numbers of Learning Programmes for Foundation Modern Apprenticeships, Modern Apprenticeships and Modern Skills Diplomas by sector framework and programme type 2006/07 (a-d)

Sector	<i>Numbers</i>			
	Foundation Modern Apprenticeship	Modern Apprenticeship	Modern Skills Diploma	Total
Accountancy	240	390	180	810
Active Leisure and Learning	490	290	25	800
Advice and Guidance	20	155	10	180
Agriculture Crops and Livestock	125	95	20	240
Amenity Horticulture	135	60	0	200
Business Administration	2,300	1,535	40	3,875
Call Handling	225	75	0	300
Chemical, Pharmaceutical, Petro-Chemical	25	15	0	45
Construction	1,860	700	0	2,560
Customer Service	4,220	1,185	15	5,420
Dental Nursing	15	165	0	185
Driving Goods Vehicle	250	15	0	265
Early Years Care & Education	820	1,225	190	2,235
Electrotechnical	385	960	*	1,345
Emergency Fire Service Operations	0	120	0	120
Engineering	1,055	1,985	45	3,090
Engineering Construction	20	90	0	105
Equine Industry	35	10	0	45
Floristry	25	25	0	50
Food & Drink Manufacturing Operations	745	25	*	775
Furniture Industry	60	*	0	60
Glass Industry	155	*	0	155
Hairdressing	1,620	615	0	2,235
Health & Social Care	4,390	2,720	750	7,865
Heating, Ventilation, Air Conditioning & Refrigeration	80	95	*	175
Hospitality	2,470	840	25	3,335
IT User	1,090	685	0	1,770
Industrial Applications	1,730	25	0	1,760
Information Technology & Electronic Services	475	240	*	720
Information Technology	150	90	5	250
Insurance	45	105	10	160
Landbased Service Engineering	55	20	0	75
Learning and Development (Direct Training & Support)	0	100	15	115
Management	790	2,345	1,505	4,640
Meat & Poultry Processing	390	*	0	395
Motor Industry	755	680	15	1,445
Occupational Health and Safety Practice	0	120	30	155
Pharmacy Technicians	0	55	0	55
Plumbing	755	490	0	1,240
Retail	1,345	225	*	1,570
Road Haulage & Distribution Industry	45	*	0	45
Sporting Excellence	0	65	0	65
Teaching Assistants	65	685	0	750
Telecommunications	5	50	0	55
Travel Services	30	60	0	95
Vehicle Maintenance and Repair	130	135	0	265
Wholesale, Distribution, Warehousing and Storage	595	80	0	675
Other	390	220	15	625
Total	30,610	19,875	2,905	53,390

Source: LLWR (Lifelong Learning Wales Record) post-16 database

- (a) Includes work-based learning (WBL) subsidiaries of FE institutions.
 (b) Framework sectors are only required for Foundation Modern Apprenticeships, Modern Apprenticeships and Modern Skills Diplomas.
 (c) Sectors with fewer than 43 learning programmes associated with them have been grouped together under 'Other'.
 (d) Numbers greater than 0 and less than 5 have been replaced by *. Other figures are rounded to the nearest 5 and there may be slight discrepancies between the sums of constituent items and the independently rounded totals.

Table T3.2 Numbers of Learning Activities at WBL providers by Subject and Credit Level 2006/07 (a-c)

Subject	Credit Level				
	Pre entry Level	Entry Level	NVQ Level 1 or equivalent	NVQ Level 2 or equivalent	NVQ Level 3 or equivalent
Agriculture, Horticulture and Animal Care	*	30	135	1,080	280
Arts and Crafts	0	0	*	0	*
Business/Management/Office Studies	165	55	2,580	8,775	6,615
Care/Personal Development(incl Basic Skills)	1,475	11,455	31,670	27,220	2,710
Catering/Food/Leisure Services/Tourism	0	15	810	3,035	915
Construction & Property (Built Environment)	10	5	435	4,205	1,640
Cultural Studies/Languages/Literature	0	*	*	5	*
Education/Training/Teaching	1,160	1,625	745	2,790	1,580
Engineering	0	40	560	3,555	2,510
Environment Protection/Energy/Cleansing/Security	0	0	75	80	160
Health Care/Medicine/Health & Safety	5	335	2,145	10,335	6,965
Humanities	0	0	0	*	0
Information Technology & Information	0	2,135	10,410	8,530	1,870
Logistics/Distribution/Transport/Driving	*	*	530	1,205	135
Manufacturing/Production Work	0	0	120	3,915	670
Media/Communication/Publishing	0	0	18,185	17,030	1,210
Oil/Mining/Plastics/Chemicals	0	0	0	175	50
Performing Arts	0	0	0	0	0
Sales, Marketing and Retailing	0	*	440	8,130	2,220
Sciences & Mathematics	0	0	2,580	1,535	85
Services to Industry & Commerce	0	0	10	325	1,920
Social Sciences	10	0	*	235	285
Sports, Games and Recreation	0	10	860	390	275
Not specified	0	*	870	3,330	1,880
Total	2,830	15,710	73,160	105,875	33,995

(a) Includes work-based learning (WBL) provision at FE institutions.

(b) Subjects are derived from the first letter of the LearnDirect Classification System (LDCS) codes.

(c) Numbers greater than 0 and less than 5 have been replaced by *. Other figures are rounded to the nearest 5 and there may be slight discrepancies between the sums of constituent items and the independently rounded totals.

Table T3.2 (Continued) Numbers of Learning Activities at WBL providers by Subject and Credit Level 2006/07 (a-c)

Numbers

Credit Level			Total	Subject
HE Level/ NVQ Level 4, 5 or equivalent	Mixed Levels	Not known/ Not Applicable		
15	0	70	1,615	Agriculture, Horticulture and Animal Care
0	0	0	*	Arts and Crafts
2,560	1,965	545	23,250	Business/Management/Office Studies
455	10	2,745	77,735	Care/Personal Development(incl Basic Skills)
5	0	10	4,785	Catering/Food/Leisure Services/Tourism
15	0	40	6,350	Construction & Property (Built Environment)
*	0	*	15	Cultural Studies/Languages/Literature
80	0	655	8,640	Education/Training/Teaching
70	0	30	6,765	Engineering
*	0	0	315	Environment Protection/Energy/Cleansing/Security
495	0	450	20,735	Health Care/Medicine/Health & Safety
0	0	0	*	Humanities
10	0	5	22,960	Information Technology & Information
15	0	100	1,985	Logistics/Distribution/Transport/Driving
55	0	495	5,255	Manufacturing/Production Work
10	0	*	36,430	Media/Communication/Publishing
0	0	0	225	Oil/Mining/Plastics/Chemicals
*	0	0	*	Performing Arts
15	*	60	10,865	Sales, Marketing and Retailing
0	0	0	4,200	Sciences & Mathematics
15	0	0	2,275	Services to Industry & Commerce
*	0	15	550	Social Sciences
45	0	5	1,585	Sports, Games and Recreation
555	0	*	6,645	Not specified
4,425	1,975	5,220	243,185	Total

Source: LLWR (Lifelong Learning Wales Record) post-16 database

Table T3.3a Leaver destinations: Number of learning programmes left in academic year 2006/07 by destination and age group (a-e)

Destination	Age Group					
	Under 16	16	17	18	19	20-24
New programme of learning (not HE) with same provider	50	1,665	1,120	395	175	330
New programme of learning (not HE) with another provider	*	535	330	150	80	205
Higher education	0	155	120	40	25	35
Education or training - type not known	*	190	100	25	10	20
Entering new employment/changing employment	*	745	765	335	195	610
Continuing current employment	*	155	665	1,105	1,170	4,105
Seeking work /unemployed	20	2,205	1,750	485	175	405
Self employment	0	*	10	10	5	20
Voluntary work	0	10	10	*	0	*
Other	*	400	325	130	90	280
Not known	5	755	540	185	105	265
Total	85	6,820	5,740	2,865	2,030	6,275

(a) Includes work-based learning (WBL) provision at FE institutions.

(b) Figures exclude continuing learning programmes (identified through LLWR destination coding and/or absence of end date)

(c) Destination is recorded immediately after the end of the learning programme.

(d) Age is as at 31 August 2006.

(e) Numbers greater than 0 and less than 5 have been replaced by *. Other figures are rounded to the nearest 5 and there may be slight discrepancies between the sums of constituent items and the independently rounded totals.

Table T3.3b Leaver destinations: Number of distinct learners leaving (their most recent learning programme) in academic year 2006/07 by destination and age group (a-f)

Destination	Age Group						
	Under 16	16	17	18	19	20-24	25-39
New programme of learning (not HE)	50	475	370	200	110	270	335
Higher education	0	115	90	35	25	30	20
Education or training - type not known	*	145	80	25	10	15	20
Entering new employment/changing employment	*	630	695	315	190	590	800
Continuing current employment	*	125	565	985	1,060	3,810	5,215
Seeking work /unemployed	20	1,650	1,465	465	165	390	1,425
Self employment	0	*	5	10	5	20	40
Voluntary work	0	5	10	*	0	*	5
Other	*	300	290	125	85	265	325
Not known	5	525	445	175	100	255	350
Total	80	3,970	4,015	2,335	1,750	5,645	8,545

(a) Includes work-based learning (WBL) provision at FE institutions.

(b) Figures comprise the number of distinct learners who have left their most recent learning programme of academic year

(c) Excludes learners whose latest learning programme is on-going

(d) Destination is recorded immediately after the end of the learning programme.

(e) Age is as at 31 August 2006.

(f) Numbers greater than 0 and less than 5 have been replaced by *. Other figures are rounded to the nearest 5 and there may be slight discrepancies between the sums of constituent items and the independently rounded totals.

Table T3.3a (Continued) Leaver destinations: Number of learning programmes left in academic year 2006/07 by destination and age group (a-e)

Numbers

Age Group						Total	Destination
25-39	40-49	50-59	60-64	65 plus	Not Specified		
475	280	110	10	*	0	4,605	New programme of learning (not HE) with same provider
270	145	55	*	*	0	1,775	New programme of learning (not HE) with another provider
25	10	5	0	0	0	410	Higher education
20	10	*	0	0	0	380	Education or training - type not known
825	330	135	15	0	*	3,960	Entering new employment/changing employment
5,560	3,090	1,350	110	20	0	17,340	Continuing current employment
1,495	770	420	25	*	*	7,755	Seeking work /unemployed
40	25	5	*	*	0	120	Self employment
5	*	*	0	0	0	30	Voluntary work
340	140	80	10	*	0	1,795	Other
365	170	55	*	*	0	2,445	Not known
9,415	4,965	2,220	175	30	*	40,620	Total

Source: LLWR (Lifelong Learning Wales Record) post-16 database

Table T3.3b (Continued) Leaver destinations: Number of distinct learners leaving (their most recent learning programme) in academic year 2006/07 by destination and age group (a-f)

Numbers

Age Group					Total	Destination
40-49	50-59	60-64	65 plus	Not Specified		
180	55	*	*	0	2,040	New programme of learning (not HE)
10	5	0	0	0	335	Higher education
10	*	0	0	0	310	Education or training - type not known
320	135	15	0	*	3,685	Entering new employment/changing employment
2,945	1,295	105	20	0	16,130	Continuing current employment
735	405	25	*	*	6,750	Seeking work /unemployed
20	5	*	*	0	110	Self employment
0	*	0	0	0	30	Voluntary work
135	75	10	*	0	1,615	Other
160	55	*	*	0	2,075	Not known
4,510	2,035	165	30	*	33,075	Total

Source: LLWR (Lifelong Learning Wales Record) post-16 database

APPENDICES

APPENDIX A : DATA SOURCES & DEFINITIONS

A1 DATA SOURCES

All data in Sections A and B, relating to Further Education institutions and Local Education Authority (LEA) Community Learning, are sourced from the Lifelong Learning Wales Record (LLWR). The LLWR was introduced in the 2003/04 academic year as the new data collection system for Further Education (FE) and LEA Community Learning. It replaced the FE Individualised Student Record (ISR) and the LEA Adult Community Learning December census data collection.

All Work-based Learning (WBL) data in Section C are sourced from the Lifelong Learning Wales Record (LLWR). The LLWR was introduced for WBL in 2004/05 as the new data collection system to replace the National Trainee Database (NTD). The LLWR data collection system provides the evidence for WBL payments from 2004/05 onwards.

There is some overlap between the WBL and the FE data due to some FE institutions delivering WBL provision. For this reason figures from Section C of this publication should not be aggregated with those from Section A and B. Furthermore, although tables F1.1, F1.3c and F3.1 to F3.3 disaggregate those learners on WBL programmes at FE institutions it should be noted that these learners will not necessarily have been funded through the WBL payment system.

Further Education provision at Higher Education institutions has been included in tables F1.5, F1.7 and F2.1 using the 2006/07 HESA Student and Non-Credit Bearing Records.

All data in this publication are consistent with the 2006/07 data previously published in the National Statistics First Release 'Further Education, Work-based Learning and Community Learning in Wales, 2006/07' (SDR68/2008).

A2 ROUNDING

All data in this publication have been rounded to the nearest 5. This convention may lead to some small discrepancies between an independently rounded total and its constituent parts. Where an asterisk (*) is shown it represents a number which is greater than 0 and less than 5.

A3 SECTIONS A, B & C : FURTHER EDUCATION, COMMUNITY LEARNING and WBL

A3.1 DATA COVERAGE FOR FE and CL

Section A details the learning delivered by the further education sector in Wales. The further education sector comprises a range of institutions providing part-time and full-time education. In 2006/07, 20 of these institutions were colleges of further education (including two land-based colleges) or tertiary colleges providing the greater part of post-16 education for their area. This number excluded Merthyr Tydfil College which merged into the University of Glamorgan in 2006 and (apart from its work-based learning provision) is included under the figures for FE at Higher Education institutions and excluded from the figures for Further Education institutions. The sector also included a denominational sixth form college, an adult residential college, two districts of the Workers' Educational Association (WEA), one of which (WEA-North) merged with Coleg Harlech in 2001/02, and adult education provision by the Young Men's Christian Association (YMCA).

Community Learning is a broad term that can encompass a wide range of provision. For instance it could include Adult Basic Education (ABE) and English for Speakers of Other Languages (ESOL) provision or learning delivered at outreach centres of FE institutions. However, Section B details only that Community Learning provision which is delivered by Local Education Authorities (LEAs). To make the distinction clear the term LEA Community Learning is used throughout this publication. In 2006/07, sixteen of the twenty-two LEAs in Wales delivered Community Learning either directly or in collaboration with FE institutions.

The majority of tables in Sections A and B are based on all learning undertaken within the 2006/07 academic year (1 August 2006 to 31 July 2007). In addition, certain tables (or parts of tables) include counts based on a census date of the week of 1 December 2006.

A3.2 DATA COVERAGE FOR WBL

Section C details the learning delivered by the work-based learning (WBL) sector in Wales. In 2006/07, the WBL sector comprised around a hundred training providers delivering programmes of learning to people of all ages. The time period (2006/07) on which training tables are based runs from 1 August 2006 to 31 July 2007, (as in Sections A and B). This population differs from the funding year approach adopted for WBL data in 'Higher Education, Further Education and Training Statistics in Wales' publications up to and including that for the 2002-03 funding year (i.e. April 2002 to March 2003). In addition, certain tables (or parts of tables) include counts based on a census date: the week of 1 December 2006 or 31 March or 31 July.

The connection with individual trainees is through training providers. In some cases the training provider provides the learning experiences directly. In other cases, the training may be performed mainly by an employer with the learning overseen and assessed by the training provider.

A3.3 DATA COUNTS

The LLWR from which the data in all sections have been derived has datasets based on learners, their learning programmes, their constituent learning activities and an award dataset registering achievements.

Five different counts are used in the Tables:

- **Unique Learners**, based on the unique learner identifier (ULI) and counting any learner once only regardless of how many learning programmes they were pursuing with different learning providers;
- **Non-Unique Learners ('provider learners')**, based on the learning providers' own learner identifier and so leading to multiple counting of learners between providers; This count is used just for FE and CL.
- **Learning Programmes**, based on the number of learning programmes taken by the learner. This count is primarily used for Work-based learning.
- **Learning Activities**, based on the number of recorded enrolments on learning activities (i.e. learning aims) by learners.
- **Awards**, giving qualification achievements attained.

FE statistics published by ELWa and the National Assembly for learning prior to 2003/04 identified learners according to the learning providers' own learner identifier, as there was no ULI on the ISR. Therefore, when comparing 2003/04 to 2006/07 learner numbers with learner numbers from previous years the 'non-unique learner' count should be used.

Table T2.1 shows the number of enrolments on WBL programmes as of a census date at the end of March. The trend data for March 2002 and 2003 have been sourced from the joint ELWa and HEFCW publication series 'Higher Education, Further Education and Training Statistics in Wales'. The trend data for March 2001 and earlier have been obtained from the National Statistics First Release 'Work-based Training for Young People and Work-based Learning for Adults in Wales' (SDR17/2002) produced by the National Assembly for Wales.

Tables T1.1, T1.2, T1.4 and T1.5 are based on the total number of WBL learners receiving training at any time during 2006/07. Tables T1.3 and T3.1 are based on the number of learning programmes taken by learners. Table T3.2 details the number of learning activities by subject in 2006/07. Table T3.3a details the number of leavers of learning programmes and their destination and table T3.3b covers destinations by learner count.

A3.4 PROVISION TYPE DEFINITIONS (FE and LEA CL)

Learners at FE institutions are recorded as being engaged in FE, HE or WBL provision.

WBL : Learners on WBL programmes (in Tables F1.1 and F3.2) are defined as those learners at FE institutions who are enrolled on designated WBL programmes (e.g. modern apprenticeships, skills learning). All learners on WBL programmes have their mode of learning defined as being work-based learning (see A3.6). Note that this definition of WBL is different to that used for funding purposes. See A1 for more information about the differences between WBL data reported on in Section A and that reported on in Section C.

HE : Higher Education (HE) level learners are defined in the tables in two distinct ways. Tables F1.1 and F3.2, provide information on the number of learners undertaking designated HE programmes (e.g. HE degree, Foundation degree). A higher number of HE learners is recorded in Tables F1.2 and F1.3 based on recording a learner as studying at HE level if any one of their learning activities is at HE level (above NVQ level 3).

FE : Learners on FE programmes (in Tables F1.1 and F3.2) are defined as those learners at FE institutions who are not enrolled on designated WBL or HE programmes.

Learners at LEAs are recorded as being engaged in maintained, contracted-out or contracted-in provision. Learners in LEA community learning have the following provision types:

Maintained : Learners in maintained LEA provision (in Table L1.1) are defined as those learners who the LEA delivers learning to and who are enrolled with the LEA.

Contracted-out : Learners in contracted-out LEA provision (in Table L1.1) are defined as those learners who receive learning from a third party but who are enrolled with the LEA for that learning.

Contracted-in : Learners in contracted-in LEA provision (in Table L1.1) are defined as those learners who the LEA delivers learning to but who are enrolled with a FE Institution for that learning.

Note that the contracted-in provision is included both in tables in Section B (as it is delivered by an LEA) and in table in Section A (as the enrolment for the learning is with a FE institution).

A3.5 PROVISION TYPE DEFINITIONS FOR WBL

Tables T1.1, T1.2, T1.3 and T2.1 give information by programme type. Note that the categories are based on current programmes and certain former programmes continuing into 2006/07 have been re-categorised. Pre 2006/07 programmes were split into two categories based on age. Programmes were restricted to either youth or adult learners. These restrictions were lifted in 2004/05.

The programmes available were:

- Foundation Modern Apprenticeship;
- Modern Apprenticeship;
- Modern Skills Diploma;
- Preparatory Learning (marketed as Skillbuild);
- Skills Training (marketed as Skillbuild Plus);
- Other programme: (Includes bespoke programmes delivered by selected providers.) This category includes all other WBL programmes delivered by FE institutions and all programmes not included above delivered by other training providers.

A3.6 MODE OF LEARNING DEFINITIONS

The mode of learning for a learner (i.e. full-time learner, part-time learner and work-based learner) has been derived using the guided contact hours. Guided contact hours are the number of teaching/instructional hours delivered by the provider to the learner. A full-time learner is one whose total guided contact hours across all their learning activities amounts to at least 450 hours; a part-time learner is one whose total guided contact hours amounts to less than 450 hours. As work-based learning cannot be classified using guided contact hours, as significant amounts of learning are undertaken at the workplace, a distinct work-based learning mode has been assigned to learners on WBL programmes.

FE statistics published by ELWa and the National Assembly for learning prior to 2003/04 used a different definition of mode (based on what was recorded by learning providers on the ISR). Therefore, 2004/05 mode of learning statistics are not directly comparable with data from previous years.

A3.7 DOMICILE / DEPRIVATION DEFINITIONS

The country of domicile information presented in Table F3.3 is based on information recorded directly on the LLWR. By contrast, the unitary authority of domicile (in Tables F3.4a and F3.4b) and deprivation areas (in Table F3.8) have been calculated from the home postcode recorded on the LLWR. Inconsistencies between the recorded country of domicile and home postcode account for the differences between these tables.

The areas of Wales considered to be deprived in Table F3.8 are the 100 most deprived wards in Wales according to the Welsh Index of Multiple Deprivation 2000. These 100 wards form the basis of the Welsh Assembly designated Community First areas. Other defined Community First areas which lie outside these 100 wards are not included in the deprivation area definition for Table F3.8.

A3.8 SUBJECT AND SECTOR SUBJECT DEFINITIONS

All subject of study area groupings are based on the LearnDirect Classification System (LDCS) which assigns a subject code to each qualification. The subject of study area groupings in Tables F4.1a/b, F4.3 and F4.4 are derived from the first letter of the LDCS code for the qualification being undertaken. The subject of study area groupings in Table F4.2a/b/c are the 15 first-tier sector subject areas in QCA's Sector Subject framework (www.qca.org.uk/qca_8488.aspx). These sector subject areas are derived from the LDCS code for the qualification being undertaken. Some modification has been made to the QCA sector subject area boundaries, as reported in Tables F4.2a/b/c, so as to be consistent with designations used in Estyn inspection statistics.

A3.9 QUALIFICATION LEVEL / TYPE DEFINITIONS

The qualification type and level (Tables F4.5 & F4.3 respectively) are allocated to learning activities using information recorded either on the Welsh Learning Aims database or directly on the LLWR. The 'not known / not applicable' credit level category is assigned where there was insufficient information to assign a qualification level to the learning activity. The 'other' qualification type category mainly consists of all qualification types not specifically listed (e.g. City & Guild certificates, ECDL, CLAIT), it may however also include some cases of the listed qualifications where there was insufficient information to assign them to the appropriate category.

A3.10 AGE

Where age groups are identified, the age is that at 31 August 2006. Learners whose date of birth is not recorded in the LLWR are dealt with in one of two ways. In tables with detailed age groupings the learner age is given as 'not specified'; where the table uses less detailed age groupings the learner is assumed to be aged 25 years or over and appropriately categorised.

A3.11 WBL SECTOR FRAMEWORKS

The sector groupings in table T3.1 reflect the type of work and training being undertaken by the learner and are directly related to the qualification being studied for. The most frequently occurring sector codes have been identified separately with the less common codes being identified as 'other'.

APPENDIX B : OTHER USEFUL INFORMATION SOURCES

Welsh Assembly Government Statistical First Releases (SFRs), bulletins and publications

A wide range of educational releases, bulletins and publications produced by the Statistical Directorate can be accessed via the 'Post-16 Education and Training' and 'Schools and Teachers' key publications sections of the Welsh Assembly Government's website at www.wales.gov.uk/statistics.

These releases, bulletins and publications include, for example:

- Schools in Wales : General Statistics
- Schools in Wales : Examination Performance
- Pupil Destinations from Schools In Wales
- Students in Higher Education Institutions – Wales
- Initial Teacher Training in Wales
- FE, WBL and Community Learning in Wales SFRs
- Participation in Education and the Labour Market
- Staff at FE Institutions
- Education Maintenance Allowances (EMA) awarded
- Progress towards meeting the Lifelong Learning Targets for Wales
- Analysis of Participation in post-16 Education & Training in Wales
- National Comparators for Further Education and Work-based Learning
- Learning Network Analysis

Other Sources

Higher Education Statistical Agency (HESA) Data

Full details on the data collected by HESA from Higher Education institutions can be found at www.hesa.ac.uk.

HEFCW Statistical Publications

Statistical information on the Higher Education sector in Wales (including student, staff and finance data) can be accessed at www.hefcw.ac.uk/Publications/statistics.htm.

DCELLS Statistical Publications

Previous editions of this volume (and certain other releases and bulletins) can be downloaded by entering the DCELLS component of the WAG website at www.wales.gov.uk/educationandskills and selecting 'publications' and then 'statistical reports'.