

Independent Schools' Census, January 2011

The schools' census information for 2011 was published on 6 September 2011 in our Statistical First Release 'Schools' Census 2011: Final Results' (SDR 153/2011). This bulletin provides additional information on the independent schools sector. The figures are based primarily on the STATS 1 census returns for 2011 (i.e. academic year 2010/11). Several tables of historical information are also provided going back to 2000.

Key Points

- The percentage of full-time equivalent (FTE) pupils in independent schools in Wales has decreased slightly to 1.9, from 2.0 last year. (*Table 1*)
- Powys and Cardiff have the greatest number of independent schools, with 10 each. However, the highest percentage of FTE pupils in independent schools is in Monmouthshire, with 11.4 per cent, followed by Conwy with 5.2 per cent and then Cardiff with 4.7 per cent. (*Table 2, Chart 2*)
- At January 2011, 16.5 per cent of boys and 11.0 per cent of girls at independent schools were boarders. (*Table 5*)
- Pupil Teacher Ratios for independent schools are lower than in the maintained sector, the 2011 figure of 8.0 being less than half that of the 18.2 at maintained schools. (*Table 9*)
- Pupil Support Staff Ratios in both independent and maintained schools have improved since 2000, from 47.3 and 68.3 respectively, to 21.9 in independent schools and 25.4 in maintained schools at January 2011. (*Table 9*)
- The incidence of pupils with statements of special educational needs (SEN) was higher in independent schools, 4.9 per cent, than in maintained schools, 2.9 per cent. Conversely, the incidence of pupils with SEN identified by the school is lower in independent schools (10.6 per cent) than in maintained schools (18.6 per cent). (*Table 10*)
- 70.2 per cent of registered nursery classes and 70.5 per cent of registered infant & junior classes had less than 16 pupils. The percentage was even greater for registered secondary classes at 72.8 per cent. All registered special classes had under 16 pupils. (*Table 11*)
- The majority of pupils aged 16 and over (77.2 per cent) were studying A levels. (*Table 12*)
- 0.5 per cent of pupils in independent schools were taught Welsh first language, with a further 20.1 per cent taught Welsh as a second language and 79.4 per cent not taught Welsh at all. (*Table 13*)

Statistician: Stephen Hughes

Tel: 029 2082 5060

E-mail: school.stats@wales.gsi.gov.uk

Next Update: October 2012 (provisional)

Twitter: www.twitter.com/statisticswales | www.twitter.com/ystadegaucymru

Cyhoeddwyd gan Y Gyfarwyddiaeth Ystadegol
Llywodraeth Cymru, Parc Cathays, Caerdydd, CF10 3NQ
Ffôn – Swyddfa'r Wasg **029 2089 8099**, Ymholiadau Cyhoeddus **029 2082 3332**
www.cymru.gov.uk/ystadegau

Issued by Statistical Directorate
Welsh Government, Cathays Park, Cardiff, CF10 3NQ
Telephone – Press Office **029 2089 8099**, Public Enquiries **029 2082 5050**
www.wales.gov.uk/statistics



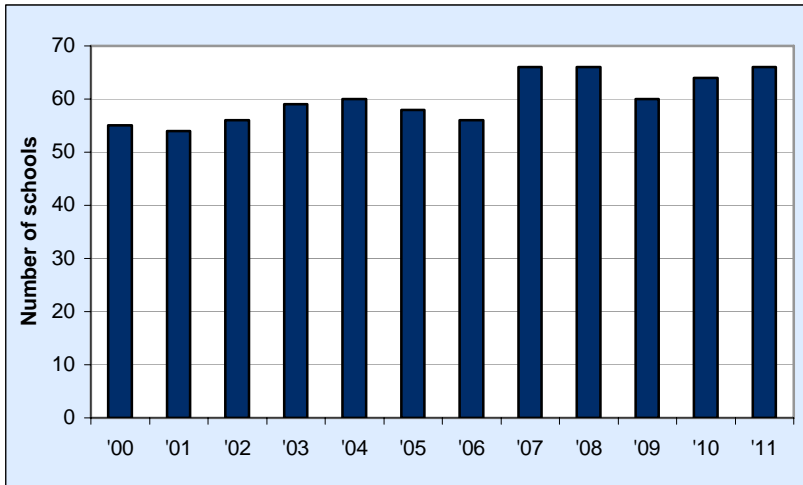
Llywodraeth Cymru
Welsh Government

Contents

		Page
	<u>Schools and Pupils</u>	
Chart 1	Number of independent schools in Wales, 2000 to 2011	3
Chart 2	Percentage of full-time equivalent pupils in independent schools, by local authority, January 2011	3
Table 1	Independent Schools and their pupils, 2000 to 2011	4
Table 2	Independent Schools and their pupils, by local authority, January 2011	4
Table 3	Pupils in independent schools, by broad age group, 2000 to 2011	5
Table 4	Pupils in independent schools, full-time and part-time, by sex and local authority, January 2011	5
Table 5	Boarders in independent schools, by sex and local authority, January 2011	6
	<u>Teachers and support staff</u>	
Chart 3	Pupil Teacher Ratios in schools, 2000 to 2011	7
Chart 4	Pupil Support Staff Ratios in schools, 2000 to 2011	7
Table 6	Qualified teachers in independent schools, 2000 to 2011	7
Table 7	Qualified teachers in independent schools, full-time and part-time, by category, sex and local authority, January 2011	8
Table 8	Full-time equivalent support staff in independent schools, 2000 to 2011	9
Table 9	Ratios of pupils to teachers, support staff and adults in schools, 2000 to 2011	9
	<u>Special Educational Needs (SEN)</u>	
Chart 5	Incidence of pupils with statements of special educational needs, in independent and maintained schools, by major need, January 2011	10
Table 10	Pupils with special educational needs, by major need, January 2011	10
	<u>Classes and Courses</u>	
Table 11	Registered classes in independent schools, January 2011	11
Table 12	Courses studied by pupils aged 16 and over in independent schools, January 2011	11
	<u>Welsh Language</u>	
Chart 6	Percentage of pupils taught Welsh in independent schools, January 2011	12
Table 13	Pupils taught Welsh in independent schools, by local authority, January 2011	12
Table 14	Teaching of Welsh in independent schools, January 2011	13
Notes		14
Key Quality Information		15

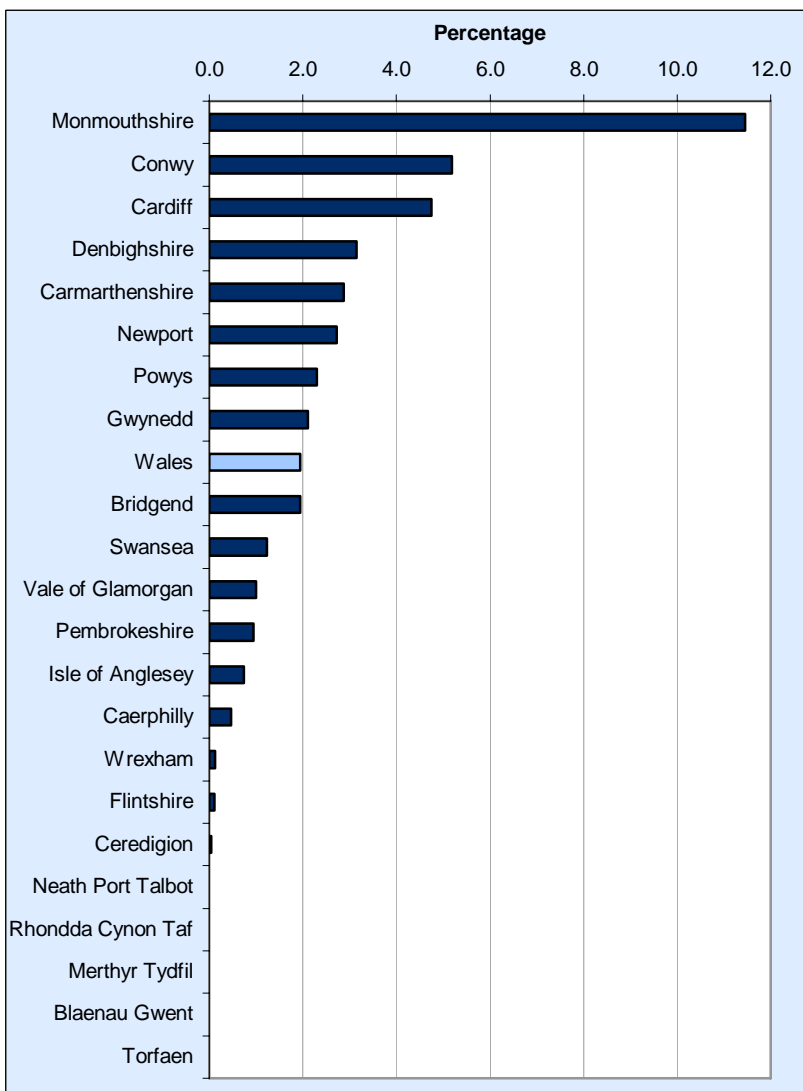
Schools and Pupils

Chart 1: Number of independent schools in Wales, 2000 to 2011



- The number of schools has increased from 55 in 2000, to 66 in 2011.
- Although there was a decrease in 2005 and 2006, and again in 2009, generally the number of independent schools has increased.

Chart 2: Percentage of full-time equivalent (FTE) pupils in independent schools, by local authority, January 2011 (a)



- In Monmouthshire, Conwy, Cardiff, Denbighshire, Carmarthenshire, Newport, Powys and Gwynedd the percentage of FTE pupils attending independent school was greater than the Wales average of 1.9 per cent.
- The highest percentage of FTE pupils was in Monmouthshire, with 11.4 per cent of the pupils educated there going to independent schools.
- Blaenau Gwent, Merthyr Tydfil, Neath Port Talbot, Rhondda Cynon Taf and Torfaen have no independent schools

(a) The independent schools' census collects information based on the location of the school rather than each pupil's place of residence. Pupils travelling across borders are therefore counted in the area the school is based.

Table 1: Independent schools and their pupils, 2000 to 2011 (a)

	Schools	Pupils				<i>Number and percentage</i>	
		Full-time	Part-time	Total	Full-time (FTE) equivalent (b)	Total FTE pupils as a	
						percentage of total FTE pupils in all schools (c)	
2000	55	9,289	232	9,521	9,405.0	1.9	
2001	54	9,257	220	9,477	9,367.0	1.9	
2002	56	9,326	281	9,607	9,466.5	1.9	
2003	59	9,603	242	9,845	9,724.0	2.0	
2004	60	9,616	335	9,951	9,783.5	2.0	
2005	58	9,532	255	9,787	9,659.5	2.0	
2006	56	9,397	238	9,635	9,516.0	2.0	
2007	66	9,452	247	9,699	9,575.5	2.0	
2008	66	9,261	294	9,555	9,408.0	2.0	
2009	60	9,051	251	9,302	9,176.5	2.0	
2010	64	8,943	279	9,222	9,082.5	2.0	
2011	66	8,891	197	9,088	8,989.5	1.9	

(a) At January each year.

(b) Each part-time pupil is counted as 0.5 of a pupil.

(c) Total number of full-time equivalent (FTE) pupils in independent schools as a percentage of the total FTE pupils in maintained nursery, primary, secondary, special and independent schools.

Table 2: Independent schools and their pupils, by local authority, January 2011

	Schools	Pupils				<i>Number and percentage</i>	
		Full-time	Part-time	Total	Full-time (FTE) equivalent (a)	Total FTE pupils as a	
						percentage of total fte pupils in all schools (b)	
Isle of Anglesey	1	45	47	92	68.5	0.7	
Gwynedd	4	362	0	362	362.0	2.1	
Conwy	2	847	0	847	847.0	5.2	
Denbighshire	4	497	0	497	497.0	3.1	
Flintshire	2	25	0	25	25.0	0.1	
Wrexham	3	23	0	23	23.0	0.1	
Powys	10	451	0	451	451.0	2.3	
Ceredigion	1	4	0	4	4.0	0.0	
Pembrokeshire	4	172	0	172	172.0	0.9	
Carmarthenshire	6	793	0	793	793.0	2.9	
Swansea	4	392	42	434	413.0	1.2	
Neath Port Talbot	0	
Bridgend	3	435	9	444	439.5	1.9	
The Vale of Glamorgan	3	209	8	217	213.0	1.0	
Rhondda Cynon Taf	0	
Merthyr Tydfil	0	
Caerphilly	1	133	0	133	133.0	0.5	
Blaenau Gwent	0	
Torfaen	0	
Monmouthshire	7	1,474	56	1,530	1,502.0	11.4	
Newport	1	639	11	650	644.5	2.7	
Cardiff	10	2,390	24	2,414	2,402.0	4.7	
Wales	66	8,891	197	9,088	8,989.5	1.9	

(a) Each part-time pupil is counted as 0.5 of a pupil.

(b) Total number of full-time equivalent (FTE) pupils in independent schools as a percentage of the total FTE pupils in maintained nursery, primary, secondary, special and independent schools.

Table 3: Pupils in independent schools, by broad age group, 2000 to 2011 (a)

	<i>Number and percentage</i>							
	Pupils under 5 years old			Pupils 5 to 15 years old			Pupils over school leaving age (b)	
	Full-time	Part-time	Total	Full-time	Part-time	Total	Number	Percentage (c)
2000	729	232	961	7,142	0	7,142	1,418	25.7
2001	709	220	929	7,147	0	7,147	1,401	25.3
2002	689	281	970	7,175	0	7,175	1,462	25.7
2003	755	242	997	7,308	0	7,308	1,540	26.1
2004	640	335	975	7,397	0	7,397	1,579	26.3
2005	663	255	918	7,353	0	7,353	1,516	25.4
2006	653	238	891	7,155	0	7,155	1,589	26.5
2007	668	247	915	7,164	0	7,164	1,620	26.8
2008	611	294	905	7,038	0	7,038	1,612	26.9
2009	567	251	818	6,860	0	6,860	1,624	27.4
2010	556	279	835	6,711	0	6,711	1,676	28.2
2011	586	197	783	6,528	0	6,528	1,777	30.0

(a) At January each year. Ages at 31 August.

(b) Pupils aged over 15.

(c) Pupils aged over 15 as a percentage of all pupils aged 11 and over.

Table 4: Pupils in independent schools, full-time and part-time, by sex and local authority, January 2011

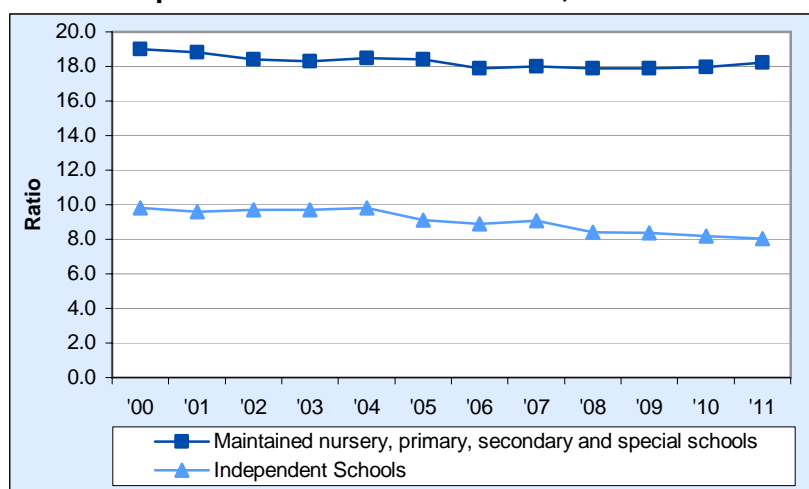
	<i>Number and percentage</i>								
	Boys				Girls				All
	Full-time	Part-time	Total	Percentage	Full-time	Part-time	Total	Percentage	Pupils
Isle of Anglesey	16	28	44	47.8	29	19	48	52.2	92
Gwynedd	180	0	180	49.7	182	0	182	50.3	362
Conwy	516	0	516	60.9	331	0	331	39.1	847
Denbighshire	195	0	195	39.2	302	0	302	60.8	497
Flintshire	23	0	23	92.0	2	0	2	8.0	25
Wrexham	16	0	16	69.6	7	0	7	30.4	23
Powys	275	0	275	61.0	176	0	176	39.0	451
Ceredigion	2	0	2	50.0	2	0	2	50.0	4
Pembrokeshire	91	0	91	52.9	81	0	81	47.1	172
Carmarthenshire	447	0	447	56.4	346	0	346	43.6	793
Swansea	198	20	218	50.2	194	22	216	49.8	434
Neath Port Talbot
Bridgend	221	6	227	51.1	214	3	217	48.9	444
The Vale of Glamorgan	133	4	137	63.1	76	4	80	36.9	217
Rhondda Cynon Taf
Merthyr Tydfil
Caerphilly	56	0	56	42.1	77	0	77	57.9	133
Blaenau Gwent
Torfaen
Monmouthshire	779	30	809	52.9	695	26	721	47.1	1,530
Newport	331	4	335	51.5	308	7	315	48.5	650
Cardiff	1,084	4	1,088	45.1	1,306	20	1,326	54.9	2,414
Wales	4,563	96	4,659	51.3	4,328	101	4,429	48.7	9,088

Table 5: Boarders in independent schools, by sex and local authority, January 2011

	<i>Number and percentage</i>					
	Boarders			Boarders as a percentage of all pupils on roll		
	Boys	Girls	Total	Boys	Girls	Total
Isle of Anglesey	0	0	0	0.0	0.0	0.0
Gwynedd	14	0	14	7.8	0.0	3.9
Conwy	169	68	237	32.8	20.5	28.0
Denbighshire	74	127	201	37.9	42.1	40.4
Flintshire	22	2	24	95.7	100.0	96.0
Wrexham	1	0	1	6.3	0.0	4.3
Powys	169	88	257	61.5	50.0	57.0
Ceredigion	2	2	4	100.0	100.0	100.0
Pembrokeshire	5	5	10	5.5	6.2	5.8
Carmarthenshire	117	57	174	26.2	16.5	21.9
Swansea	0	0	0	0.0	0.0	0.0
Neath Port Talbot
Bridgend	0	0	0	0.0	0.0	0.0
The Vale of Glamorgan	11	2	13	8.0	2.5	6.0
Rhondda Cynon Taf
Merthyr Tydfil
Caerphilly	0	0	0	0.0	0.0	0.0
Blaenau Gwent
Torfaen
Monmouthshire	160	125	285	19.8	17.3	18.6
Newport	0	0	0	0.0	0.0	0.0
Cardiff	27	13	40	2.5	1.0	1.7
Wales	771	489	1,260	16.5	11.0	13.9

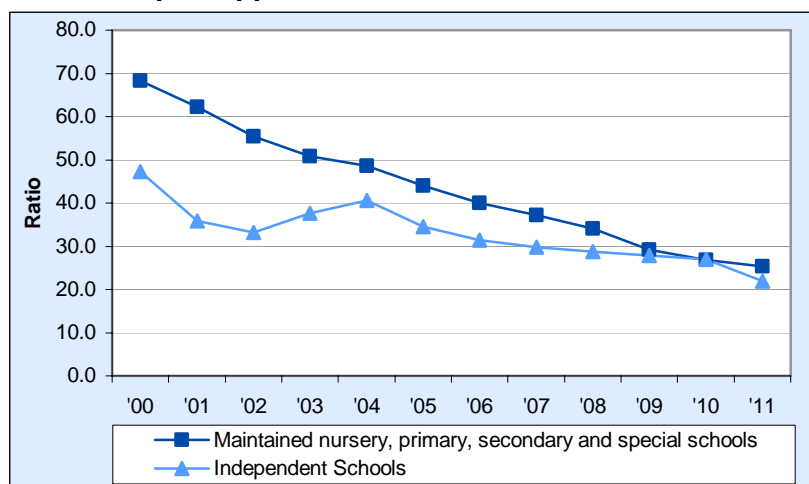
Teachers and Support Staff

Chart 3: Pupil Teacher Ratios in schools, 2000 to 2011



- Pupil Teacher Ratios in independent schools have always been lower than in the maintained sector.
- The 2011 ratio of 8.0 pupils per teacher is the lowest it's been in independent schools.

Chart 4: Pupil Support Staff Ratios in schools, 2000 to 2011



- In 2000 there were 47.3 pupils per member of support staff in independent schools compared with 75.0 pupils in the maintained sector.
- The ratio in independent schools has always been lower than in maintained schools, apart from in 2010, where the figure was slightly higher.

Table 6: Qualified teachers in independent schools, 2000 to 2011 (a)

	Full-time	Part-time	Total	Full-time equivalent (b)
2000	821	311	1,132	959.0
2001	812	318	1,130	972.1
2002	835	290	1,125	975.9
2003	831	334	1,165	1,007.3
2004	833	355	1,188	1,003.3
2005	859	376	1,235	1,057.0
2006	875	376	1,251	1,071.4
2007	873	368	1,241	1,053.1
2008	916	386	1,302	1,117.8
2009	882	385	1,267	1,097.2
2010	868	429	1,297	1,109.5
2011	863	446	1,309	1,117.3

(a) At January each year.

(b) Full-time equivalent for part-time teachers is the number of hours worked per week divided by 26.

Table 7: Qualified teachers in independent schools, full-time and part-time, by category, sex and local authority, January 2011

	Head or acting head teacher						Deputy head						Other qualified teachers						All qualified teachers					
	Male			Female			Male			Female			Male			Female			Male			Female		
	Full-time	Part-time	Total	Full-time	Part-time	Total	Full-time	Part-time	Total	Full-time	Part-time	Total	Full-time	Part-time	Total	Full-time	Part-time	Total	Full-time	Part-time	Total	Full-time	Part-time	Total
	time	time		time	time		time	time		time	time		time	time		time	time		time	time		time	time	
Isle of Anglesey	1	0	1	1	0	1	0	0	0	0	0	0	0	0	0	0	7	7	1	0	1	1	7	8
Gwynedd	3	0	3	1	0	1	1	0	1	2	0	2	18	3	21	16	15	31	22	3	25	19	15	34
Conwy	3	0	3	0	0	0	3	0	3	1	0	1	45	9	54	40	38	78	51	9	60	41	38	79
Denbighshire	3	0	3	1	0	1	1	0	1	3	0	3	13	3	16	39	12	51	17	3	20	43	12	55
Flintshire	1	0	1	1	0	1	1	0	1	1	0	1	1	1	2	4	0	4	3	1	4	6	0	6
Wrexham	1	0	1	2	0	2	1	0	1	0	0	0	2	2	4	3	3	6	4	2	6	5	3	8
Powys	5	0	5	4	0	4	3	0	3	2	0	2	32	7	39	18	21	39	40	7	47	24	21	45
Ceredigion	0	0	0	1	0	1	0	0	0	1	0	1	0	0	0	1	0	1	0	0	0	3	0	3
Pembrokeshire	1	0	1	4	0	4	0	0	0	0	0	0	7	4	11	7	10	17	8	4	12	11	10	21
Carmarthenshire	2	0	2	5	0	5	2	0	2	1	0	1	22	13	35	32	32	64	26	13	39	38	32	70
Swansea	3	0	3	2	0	2	1	0	1	0	0	0	7	7	14	23	21	44	11	7	18	25	21	46
Neath Port Talbot
Bridgend	1	0	1	3	0	3	0	0	0	3	0	3	10	6	16	27	15	42	11	6	17	33	15	48
Vale of Glamorgan	2	0	2	2	0	2	2	0	2	0	0	0	10	5	15	16	15	31	14	5	19	18	15	33
Rhondda Cynon Taf
Merthyr Tydfil
Caerphilly	1	0	1	1	0	1	0	0	0	0	0	0	0	3	3	1	11	12	1	3	4	2	11	13
Blaenau Gwent
Torfaen
Monmouthshire	3	0	3	4	0	4	2	0	2	0	0	0	68	26	94	84	50	134	73	26	99	88	50	138
Newport	1	0	1	1	0	1	1	0	1	1	0	1	18	2	20	30	8	38	20	2	22	32	8	40
Cardiff	6	0	6	4	0	4	3	1	4	6	0	6	40	23	63	113	73	186	49	24	73	123	73	196
Wales	37	0	37	37	0	37	21	1	22	21	0	21	293	114	407	454	331	785	351	115	466	512	331	843

Table 8: Full-time equivalent support staff in independent schools, 2000 to 2011 (a)(b)

	<i>FTE</i>							
	NNEB or CACHE qualified nursery assistants (c)	Foreign language assistants	SEN support staff (d)	Office or clerical (e)	Laboratory or workshop technicians	Resource technicians	Nurses/ matrons (f)	Total
2000	62.8	14.0	40.5	126.0	33.0	7.9	40.6	324.8
2001	68.2	8.4	107.6	129.9	33.8	8.0	35.2	391.1
2002	70.8	12.3	125.6	135.0	33.5	9.3	33.2	419.8
2003	75.0	13.8	85.4	139.7	36.8	10.7	36.7	398.0
2004	76.4	5.4	78.5	145.4	37.2	10.7	32.6	386.2
2005	90.4	7.0	96.6	152.8	40.0	13.3	32.5	432.5
2006	98.9	6.5	103.1	143.9	41.2	17.0	36.4	447.0
2007	85.8	15.5	126.6	153.0	43.0	20.3	30.5	474.6
2008	83.8	9.3	143.9	152.4	42.7	17.3	30.0	479.3
2009	104.9	11.4	120.1	155.0	43.4	14.7	35.7	485.3
2010	122.9	8.8	111.5	160.5	44.4	24.5	25.6	498.2
2011	199.1	9.1	105.8	154.8	50.4	18.1	27.2	564.5

(a) At January each year.

(b) Full-time equivalent for part-time support staff is the number of hours worked per week divided by 26.

(c) Including CACHE students in training and other assistants employed in classrooms.

(d) Including ancillary sessional workers.

(e) Including library assistants.

(f) Including NHS employees.

Table 9: Ratios of pupils to teachers, support staff and adults in schools, 2000 to 2011 (a)

	<i>Ratios</i>					
	Independent schools			Maintained nursery, primary, secondary and special schools		
	Pupil Teacher (b)	Pupil Support Staff (c)	Pupil Adult (d)	Pupil Teacher (b)	Pupil Support Staff (c)	Pupil Adult (d)
2000	9.8	47.3	8.1	19.0	68.3	14.9
2001	9.6	35.9	7.6	18.8	62.2	14.4
2002	9.7	33.2	7.5	18.4	55.4	13.8
2003	9.7	37.6	7.7	18.3	50.7	13.5
2004	9.8	40.6	7.9	18.5	48.7	13.4
2005	9.1	34.5	7.2	18.4	44.0	13.0
2006	8.9	31.4	6.9	17.9	39.9	12.4
2007	9.1	29.8	7.0	18.0	37.2	12.1
2008	8.4	28.8	6.5	17.9	34.1	11.8
2009	8.4	27.8	6.4	17.9	29.2	11.1
2010	8.2	26.9	6.3	18.0	26.8	10.8
2011	8.0	21.9	5.9	18.2	25.4	10.6

(a) At January each year.

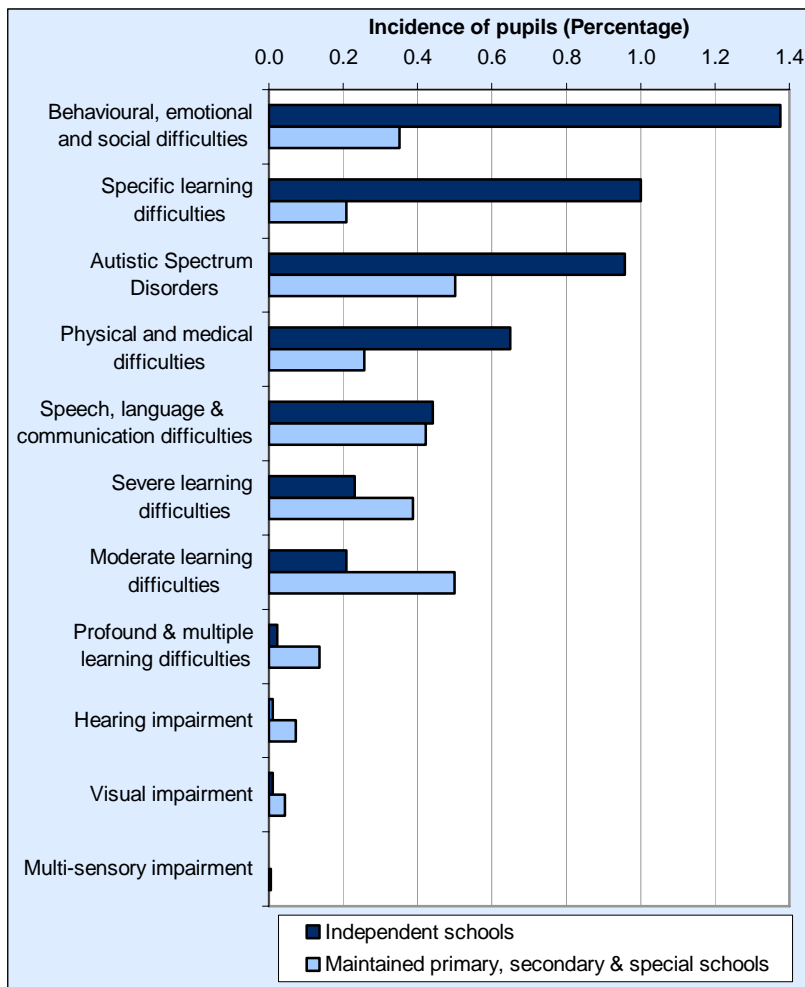
(b) The pupil teacher ratio is calculated by dividing the full-time equivalent pupils figure by the full-time equivalent qualified teachers figure.

(c) The pupil support staff ratio is calculated by dividing the full-time equivalent pupils figure by the full-time equivalent support staff figure, excluding administrative staff.

(d) The pupil adult ratio is calculated by dividing the full-time equivalent pupils figure by the full-time equivalent total of all support staff plus qualified teachers, excluding administrative staff.

Special Educational Needs

Chart 5: Incidence of pupils with statements of special educational needs, in independent and maintained schools, by major need, January 2011



- Although the number of pupils with statements of SEN in independent schools is lower than that for maintained schools, the incidence (number as a proportion of the total pupils on roll) is higher for some needs.
- In particular, the incidence of pupils with 'Specific Learning difficulties' is approximately five times, and for those with 'Behavioural, Emotional, and Social difficulties' approximately four times, that in maintained schools.

Table 10: Pupils with special educational needs, by major need, January 2011

	<i>Number and percentage</i>			
	Independent schools		Maintained primary, secondary & special schools	
	Number	Incidence % (a)	Number	Incidence % (a)
Pupils with a statement of special need (b):				
Moderate learning difficulties	19	0.2	2,322	0.5
Severe learning difficulties	21	0.2	1,797	0.4
Profound & multiple learning difficulties	2	-	636	0.1
Specific learning difficulties	91	1.0	966	0.2
Autistic Spectrum Disorders	87	1.0	2,326	0.5
Physical and medical difficulties	59	0.6	1,193	0.3
Hearing impairment	1	-	333	0.1
Visual impairment	1	-	198	-
Multi-sensory impairment	0	0.0	24	-
Speech, language & communication difficulties	40	0.4	1,963	0.4
Behavioural, emotional and social difficulties	125	1.4	1,635	0.4
Total	446	4.9	13,393	2.9
Pupils with special educational needs but no statement (c)	964	10.6	86,381	18.6
Total pupils on roll (headcount)	9,088		464,600	

(a) Incidence of pupils - the number of pupils expressed as a proportion of the total number of pupils on roll.

(b) Major need identified on individual statements for special educational needs prepared by the local authority.

(c) Special need identified by the school.

Classes and Courses

Table 11: Registered classes in independent schools, January 2011

Number of pupils in class	<i>Number and percentage</i>							
	Nursery classes: pupils aged under 5 (a)		Infant & junior classes: pupils aged 5-10 (a)		Secondary classes: pupils aged 11 and over (b)		Special classes: pupils of any age (c)	
	Number	Percentage	Number	Percentage	Number	Percentage	Number	Percentage
5 or less	5	10.6	12	6.2	104	21.6	63	85.1
6 - 10	17	36.2	46	23.8	91	18.9	11	14.9
11 - 15	11	23.4	78	40.4	155	32.2	0	0.0
16 - 20	9	19.1	39	20.2	89	18.5	0	0.0
21 - 25	2	4.3	18	9.3	41	8.5	0	0.0
25 or more	3	6.4	0	0.0	1	0.2	0	0.0
Total	47	100.0	193	100.0	481	100.0	74	100.0

(a) Where a class has both full-time and part-time morning and afternoon pupils attending, the size of the class will be the number of full-time pupils plus either the number of morning or afternoon part-time pupils, whichever is the greatest.

(b) The number of classes relating to a specific period in the school timetable.

(c) Number of classes in which the majority of pupils have a statement of special educational needs.

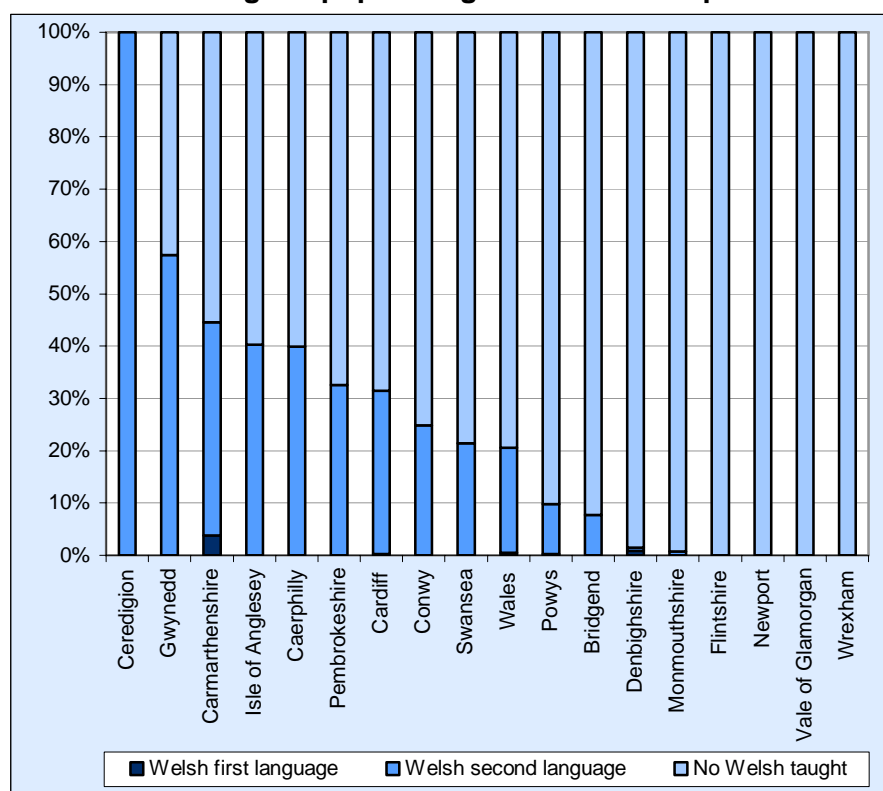
Table 12: Courses studied by pupils aged 16 and over in independent schools, January 2011 (a)

	<i>Number and percentage</i>			
	Boys	Girls	Total	% of total
Post A Level Studies (Pupils who have completed A level but remain at school for further studies)	0	0	0	0.0
NVQ Level 3:				
1st year	0	0	0	0.0
2nd year or later	0	0	0	0.0
BTEC National Certificates & Diplomas and City & Guilds Diploma of Vocational Education (at national level):				
1st year	3	1	4	0.2
2nd year or later	0	0	0	0.0
Advanced GNVQ / Vocational A-level:				
1st year	21	11	32	1.8
2nd year or later	17	16	33	1.9
A-Level studies:				
1st year	359	387	746	42.0
2nd year or later	302	323	625	35.2
NVQ Level 2	0	0	0	0.0
BTEC First Certificate & Diplomas and City & Guilds Diploma of Vocational Education (at intermediate level)	8	5	13	0.7
Intermediate GNVQ	88	57	145	8.2
NVQ level 1	0	1	1	0.1
Foundation GNVQ	0	0	0	0.0
All pupils aged 16 and over not entered above	123	55	178	10.0
Total	921	856	1,777	100.0

(a) Ages at 31 August 2010.

Welsh Language

Chart 6: Percentage of pupils taught Welsh in independent schools, January 2011



- The highest percentage of pupils taught Welsh - either first or second language - is Ceredigion, where all pupils are taught Welsh.
- Gwynedd, with 57.5 per cent, is the only other area where the majority of pupils are taught Welsh.
- Carmarthenshire has the highest percentage of pupils taught Welsh first language, 3.8 per cent.

Table 13: Pupils taught Welsh in independent schools, by local authority, January 2011

	<i>Number and percentage</i>								
	Welsh first language			Welsh second language			No Welsh taught		
	Classes	Pupils	Percentage of pupils	Classes	Pupils	Percentage of pupils	Classes	Pupils	Percentage of pupils
Isle of Anglesey	0	0	0.0	3	37	40.2	4	55	59.8
Gwynedd	0	0	0.0	22	208	57.5	18	154	42.5
Conwy	0	0	0.0	8	210	24.8	49	637	75.2
Denbighshire	1	4	0.8	1	3	0.6	52	490	98.6
Flintshire	0	0	0.0	0	0	0.0	6	25	100.0
Wrexham	0	0	0.0	0	0	0.0	15	23	100.0
Powys	1	1	0.2	5	43	9.5	58	407	90.2
Ceredigion	0	0	0.0	3	4	100.0	0	0	0.0
Pembrokeshire	0	0	0.0	5	56	32.6	15	116	67.4
Carmarthenshire	5	30	3.8	23	323	40.7	44	440	55.5
Swansea	0	0	0.0	9	93	21.4	30	341	78.6
Neath Port Talbot
Bridgend	0	0	0.0	4	34	7.7	33	410	92.3
The Vale of Glamorgan	0	0	0.0	0	0	0.0	23	217	100.0
Rhondda Cynon Taf
Merthyr Tydfil
Caerphilly	0	0	0.0	7	53	39.8	6	80	60.2
Blaenau Gwent
Torfaen
Monmouthshire	0	0	0.0	4	11	0.7	139	1,519	99.3
Newport	0	0	0.0	0	0	0.0	43	650	100.0
Cardiff	3	7	0.3	60	751	31.1	93	1,656	68.6
Wales	10	42	0.5	154	1,826	20.1	628	7,220	79.4

Table 14: Teaching of Welsh in independent schools, January 2011

									<i>Number</i>	
	Male				Female				Total	
	Full-time		Part-time		Full-time		Part-time			
	Number	Hours per week (a)	Number	Hours per week (a)	Number	Hours per week (a)	Number	Hours per week (a)	Number	Hours per week (a)
Teachers teaching Welsh:										
First language	2	21	1	3	3	7	2	7	8	38
Second language only	4	19	0	0	24	116	13	53	41	188
Teachers teaching other subjects through the medium of Welsh	0	0	0	0	0	0	0	0	0	0
Total	6	40	1	3	27	123	15	60	49	226
Teachers qualified to teach Welsh but not doing so (b)	6	.	2	.	16	.	6	.	30	.

(a) Number of hours taught through Welsh, or in which Welsh is taught. Total for all staff shown in the associated 'Number' column.

(b) Number of teachers who are considered able or qualified to teach Welsh, or through the medium of Welsh, but are not doing so.

Notes

1. Context

1.1 Policy/Operational

Schools' data are derived from STATS 1 returns supplied by independent schools open on Census day in January each year. The returns are authorised by Headteachers or equivalents.

1.2 Related Publications

Final school census information is available here, as published on 6 September 2011:

<http://wales.gov.uk/topics/statistics/headlines/schools2011/110906/?skip=1&lang=en>

Examination information is also collected for pupils in independent schools, as part of the annual School Examination Performance Information collection. This information is published as part of the national data in 'Schools in Wales: Examination Performance 2010', available here:

<http://wales.gov.uk/topics/statistics/headlines/schools2011/110525/?lang=en>

Names and addresses for Independent schools in Wales are available via this link:

<http://wales.gov.uk/topics/statistics/about/reference/schooladdress/?lang=en>

Further information on Schools and Teachers statistics is available via this link:

<http://wales.gov.uk/topics/statistics/theme/schools/?lang=en>

2. Data source

School Census (STATS 1 Return)

From January 1994 independent schools in Wales complete a STATS 1 return which replaced Form 101A (school census return for independent schools prior to January 1994).

An example of the STATS1 form is available on the Welsh Government's Statistics for Wales website:

<http://wales.gov.uk/topics/statistics/about/data-collection/schools/pupildensus/?lang=en>

3. Definitions

3.1 Coverage

The data in this release relates to all independent schools in Wales.

3.2 Glossary of terms used in both the release and the data files

Age of pupils - Throughout this release pupils' ages are quoted as at 31 August. This refers to the start of the academic year and is a useful reference in that pupils normally transfer through the school system, according to their age on 31 August.

Full-time equivalent (FTE) -

- i. of pupils: each part-time pupil is counted as half of a pupil
- ii. of teachers/support staff: the full-time equivalent of part-time teachers/support staff expresses the teachers'/support staff service in hours as a proportion of a school week, normally 26 hours for independent schools.

Independent schools - Schools which charge fees and may also be financed by individuals, companies or charitable institutions. All independent schools in Wales have to register with the Welsh Government (formerly the Welsh Office).

Pupil Adult Ratio (PAR) - The pupil adult ratio is calculated by dividing the FTE of pupils on roll in schools by the FTE of all teachers and support staff employed in schools, excluding administrative staff.

Pupil Support Staff Ratio - The pupil support staff ratio is calculated by dividing the FTE of pupils on roll in schools by the FTE of support staff employed in schools, excluding administrative staff.

Pupil Teacher Ratios (PTR) - The pupil teacher ratio is calculated by dividing the FTE of pupils on roll in schools by the FTE of qualified teachers (Headteachers, Deputy Heads and other qualified teachers).

Pupils with Special Educational Needs (SEN) - A child has special needs if he or she has learning difficulties which requires special educational provision to be made for him or her. A learning difficulty means that the child has significantly greater difficulty in learning than most children of the same age or that the child has a disability that needs different educational facilities from those that the school generally provides for children. Pupils with SEN may have statements issued by the LA or may have their needs identified by the school.

4. Rounding and symbols

In tables where figures have been rounded to the nearest final digit, there may be an apparent discrepancy between the sum of the constituent items and the total shown.

The following symbols have been used throughout the publication:

- percentages less than 0.5 but not zero
- . not applicable
- .. not available
- ~ not yet available
- * figure is less than 5, or is based on a figure less than 5.

5. Key Quality Information

This section provides a summary of information on this output against five dimensions of quality: Relevance, Accuracy, Timeliness and Punctuality, Accessibility and Clarity, and Comparability. It also covers specific issues relating to quality of 2011 data, and describes the quality management tool applied to this area of work. Between September and November 2010 we conducted a public consultation on our Education Statistics outputs, in which we asked for feedback on the quality of the outputs. A summary of responses has been published and is available here:

<http://wales.gov.uk/consultations/statistics/education/?lang=en>

5.1 Relevance

The statistics are used both within and outside the Welsh Government to monitor educational trends and as a baseline for further analysis of the underlying data. Some of the key users are:

- Ministers and the Members Research Service in the National Assembly for Wales;
- The Department for Education and Skills in the Welsh Government;
- Other government departments;
- The research community;
- LAs and schools;
- Students, academics and universities;
- Individual citizens, private companies and the media.

These statistics are used in a variety of ways. Some examples of these are:

- General background and research;
- Inclusions in reports and briefings;
- Advice to Ministers;
- LA and school comparisons and benchmarks;
- To inform the education policy decision-making process in Wales;
- To inform ESTYN during school inspections;
- The education domain of the Welsh Index of Multiple Deprivation;
- To assist in research in educational attainment.

5.2 Accuracy

The Welsh Government works closely with schools in order to ensure all data are validated before tables are published. Various stages of automated validation and sense-checking are built into the process to ensure a high quality of data.

5.3 Timeliness and Punctuality

STATS 1 returns were made available to schools by 18 January 2011, with schools asked to submit data for every pupil on roll at the school on that date.

5.4 Accessibility and Clarity

This Statistical First Release is pre-announced and then published on the Statistics section of the Welsh Government website. It is accompanied by more detailed tables on [StatsWales](#), a free to use service that allows visitors to view, manipulate, create and download data.

5.5 Comparability

This release shows final data at Wales and LA level for 1998/99 – 2010/11. In January 2011 there were 66 independent schools. Overall, there are 2 more independent schools than at January 2010.