

GCSE/GNVQ AND GCE A/AS/VCE/AGNVQ EXAMINATION RESULTS 2000/01 - ENGLAND**Introduction**

1. A database of GCSE/GNVQ and GCE A/AS/VCE/AGNVQ examination results for each candidate has been assembled for the publication of secondary school and college performance tables for England in November 2001. This bulletin presents further analyses of this database. Full details of the sources and definitions of the data in this bulletin are given at the end of the text. The convention of referring to ages at the beginning of the academic year has been used to be consistent with the performance tables themselves. The results shown in this bulletin take account of any amendments notified by secondary schools and colleges and agreed since publication of the performance tables and the Statistical First Release (SFR45/2001) in November 2001. Final 2000/01 figures for each Local Education Authority are included in this bulletin - updating the data published in November 2001.

Key points

2. The tables show that:

- 50.0 per cent of 15 year old pupils gained at least five GCSEs at grades A*-C or the GNVQ equivalent in 2000/01, This shows that the Government's target (set in October 1998) that 50 per cent of pupils will achieve this level by 2002 has been achieved a year early. (*Table 1*).
- The percentage of 15 year old girls in schools with five or more GCSEs at grades A*-C or the GNVQ equivalent has increased from 54.6 per cent in 1999/00 to 55.4 per cent in 2000/01. Achievements of girls remained well above those of boys, whose percentages with five or more grades A*-C or the GNVQ equivalent increased from 44.0 per cent in 1999/00 to 44.8 per cent in 2000/01. (*Table 1*)
- 88.9 per cent of 15 year old pupils gained at least five GCSEs at grades A*-G or the GNVQ equivalent in 2000/01, 91.0 per cent of girls and 86.9 per cent of boys (*Table 1*).
- 5.5 per cent of 15 year old pupils failed to gain at least one GCSE at grades A*-G or the GNVQ equivalent in 2000/01, 6.5 per cent of boys and 4.4 per cent of girls. (*Table 1*)
- 95.7 per cent of 15 year old pupils in schools were entered for one or more GCSEs or the GNVQ equivalent in 2000/01 and 90.8 per cent were entered for five or more. (*Table 1*)
- The average point score per 17 or 18 year old candidate in all schools and FE colleges entered for GCE A/AS/VCE/Advanced GNVQ examinations was 17.4 (*Table 9*)

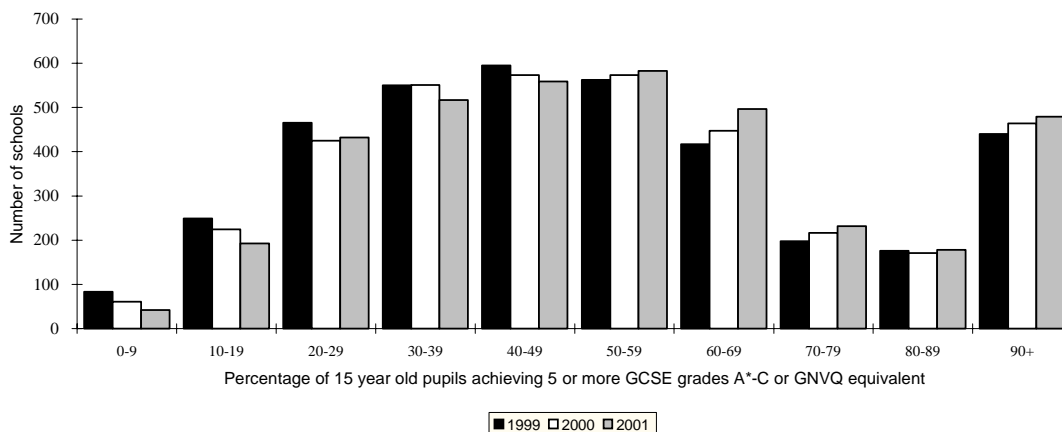
- The average point score per candidate entered for GCE A/AS examinations in all schools and FE colleges was 17.8 (Table 9).
- The average point score per candidate in all schools and FE colleges entered for VCE/Advanced GNVQ examinations was 10.2 (Table 9)
- The average point score per entry was 5.5 for GCE A/AS/VCE/Advanced GNVQ and 5.6 for GCE A/AS (Table 9).

GCSE/GNVQ attempts and achievements by 15 year old pupils

3. The percentage of boys aged 15 in all schools that achieved 5 or more GCSE or the GNVQ equivalent at grades A*-C by 2000/01 was 44.8 per cent compared with 55.4 per cent for girls. However, the increase over 2000/01 was the same for both girls and boys (0.8 percentage points). As in the previous year maintained selective schools had the highest percentage of pupils aged 15 gaining 5 or more grades A*-C in 2000/01, with 97.5 per cent achieving this level, compared with 82.0 per cent in independent schools, 47.1 per cent in comprehensive schools and 36.8 per cent in modern schools. (Table 1)

4. Chart 1 shows how the distribution of all schools (excluding special schools and schools with less than 20 pupils aged 15) by the percentage of 15 year old pupils achieving 5 or more GCSE grades A*-C or the GNVQ equivalent, has changed between 1999 and 2001. The chart shows that the number of schools with 50 per cent or more pupils achieving 5 or more GCSE grades A*-C has tended to increase over the years while those with pupils achieving less has tended to decrease. There has been a large reduction in the number of schools with 10-29 per cent of 15 year old pupils achieving 5 or more GCSE grades A*-C or the GNVQ equivalent. This has been counterbalanced by an increase in the number of schools with 60-79 per cent of 15 year old pupils achieving 5 or more GCSE grades A*-C or the GNVQ equivalent.

Chart 1 : Number of schools (excluding special schools and schools with less than 20 pupils aged 15) analysed by percentage of 15 year old pupils achieving 5 or more GCSE/GNVQ grades A*-C



5. In each authority a higher percentage of girls achieved five or more grades A*-C or the GNVQ equivalent than boys. Kensington and Chelsea remains the only exception to this where, as in previous years, boys outperformed girls. (Table 2). The proportion of 15 year old

pupils in maintained mainstream schools gaining five or more grades A*-C or the GNVQ equivalent varied between LEAs and between regions. The average for the Inner London boroughs, at 39.0 per cent, was lower than non London metropolitan areas, which ranged from 41.2 per cent for South Yorkshire to 45.1 per cent for Greater Manchester. The level of attainment in these areas was in turn lower than the shire counties which varied from 41.9 per cent in Durham to 65.1 per cent in Buckinghamshire (*Table 3*)

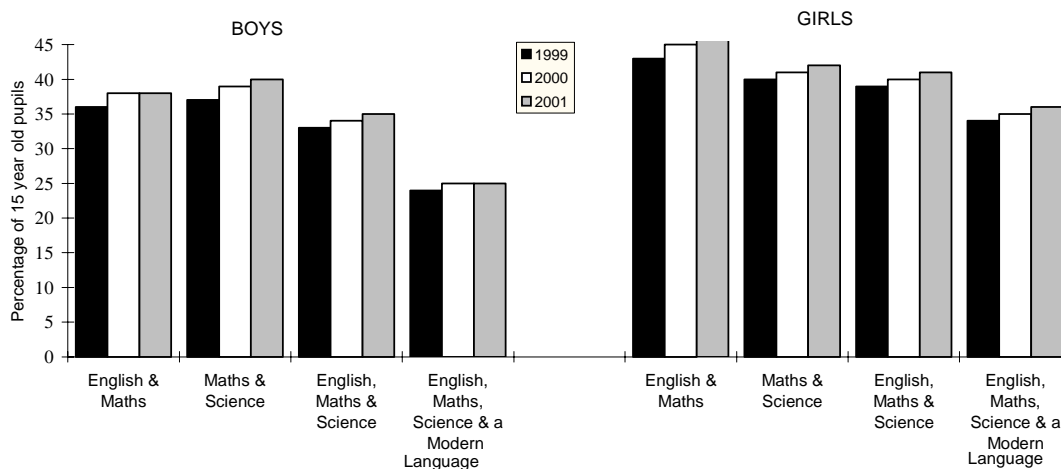
6. Table 3 shows for each LEA, the distribution of maintained schools (excluding special schools) by various ranges of the percentage of 15 year old pupils gaining 5 or more grades A*-C or the GNVQ equivalent. For example, in Islington only 11 per cent of their schools had 40 per cent or more 15 year old pupils gaining 5 or more grades A*-C, whereas in Cornwall the proportion was 97 per cent. In England as a whole, the proportion of maintained schools with 40 per cent or more 15 year old pupils gaining 5 or more grades A*-C at GCSE or the GNVQ equivalent was 64 per cent, compared with 61 per cent in 1999/00 (Statistical Bulletin 6/01 published in May 2001). Please note that the proportion of selective schools in an LEA will affect the numbers of schools where high proportions of pupils gain five or more A*-C grades. (*Table 3*)

7. At a subject level there was a marked difference in the attainment of girls and boys. For example in modern languages 48 per cent of girls aged 15 achieved a GCSE grade A*-C compared with 32 per cent of boys. Similarly a higher proportion of girls achieved GCSE grades A*-C in English - 62 per cent compared with 46 per cent of boys. Boys, however, did outperform girls in some subjects; the proportion of boys achieving a grade A*-C in geography was 23 per cent compared with 21 per cent for girls; plus a higher proportion of 15 year old boys also achieved GCSE grades A*-C in physics, chemistry, biology, information technology, business studies and physical education. The achievements by subject refer to full GCSE courses and take no account of the GCSE short courses. In addition the achievements are expressed as a percentage of 15 year old pupils in school rather than those attempting the subject. (*Table 5*)

8. Seventy seven per cent of the 15 year olds in schools attempted the GCSE double science award - a much higher proportion than the single science award or the individual subjects of physics, chemistry or biology. (*Tables 5*)

9. Ninety per cent of pupils aged 15 attempted a GCSE in English, mathematics and a science, and 38 per cent achieved a grade A*-C in all three subjects. Very few pupils only attempt two of these three subjects with 42 per cent achieving a grade A*-C in both English and mathematics and 41 per cent achieving a grade A*-C in both mathematics and science. The proportion of 15 year old pupils in schools achieving a grade A*-C in English, mathematics, a science and a modern foreign language was 36 per cent of girls and 25 per cent of boys. Chart 2 shows how the proportion of 15 year old boys and girls in schools achieving grades A*-C in these subject combinations has changed over the last 3 years. (*Table 5*)

Chart 2 : Percentage of 15 year old pupils in schools achieving GCSE grades A*-C in each subject of selected subject combinations - 1999 - 2001



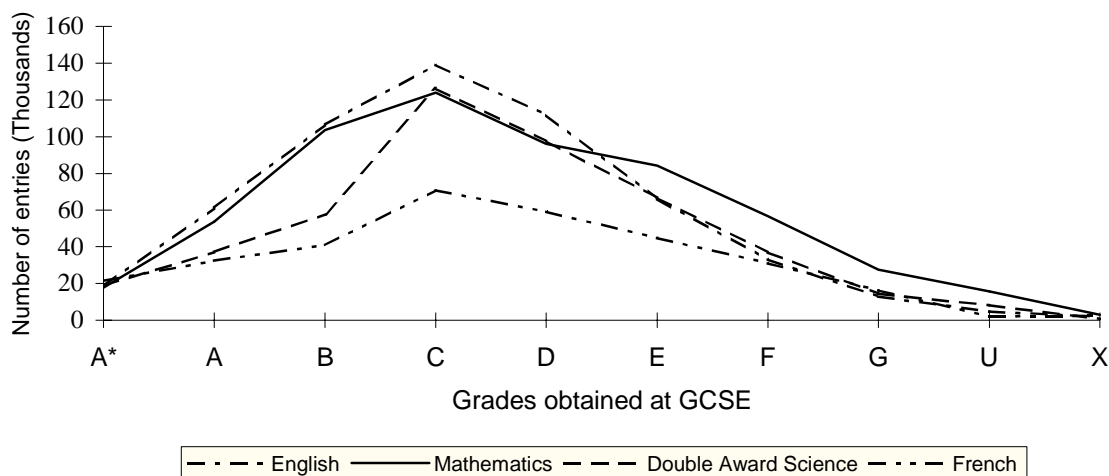
Analysis of individual GCSE/GNVQ subjects by grades or types

10. In the majority of GCSE full courses subjects in 2000/01, the most common grade obtained by 15 year old candidates was grade C. In chemistry and physics the most common grade was A whereas in physical education it was D and in single award science it was an E. There were nearly 5 million GCSE full course examination entries in 2000/01, of which 239,000 resulted in the A* grade. (*Table 6*)

11. There has been a significant increase in the numbers of 15 year olds taking GCSE short courses, from just under 258,000 in 1999/00 to just over 285,000 in 2000/01. The most popular subjects taken as GCSE short courses were religious studies (157,000), computer studies (61,000), design & technology (31,000) and French (10,000). The GNVQ results of 15 year old pupils in schools include both the pre-September 2000 and post-September 2000 GNVQs. The figures show that business, information technology and health & social care, continued to be the most popular subjects at both GNVQ Part 1 and full GNVQ. Information technology, which includes ICT has now become more popular than health and social care with the numbers achieving a Part One or Full GNVQ at intermediate level almost doubling since 1999/00 (*Tables 7 and 8*)

12. Chart 3 shows the distribution of full GCSE grades obtained by 15 year old candidates by 2000/01 for English, mathematics, double award science and French. (*Table 6*)

Chart 3 : Distribution of GCSE grades in selected subjects - 2000/01



GCE A/AS/VCE/Advanced GNVQ results

13. The presentation and coverage of the Advanced level results in this publication differ to that of previous years bulletins and so a number of Tables that appeared in last year's bulletin 6/01 have not been updated here. They will be updated in due course and published in batches on the internet from time to time. However, in their place additional tables from this year's Statistical First Release 45/01, published in November 2001, have been included. The statistics therefore show the cumulative attainment over the last two academic years for 17-18 year olds. In previous years, the publication presented an annual "snapshot" of Advanced level results for 16-18 year old candidates.

14. The change to this has been made because of the Qualifying for Success (QfS) reforms introduced in September 2000. Under the QfS reforms students are encouraged to follow a wide range of subjects in their first year of post-16 study, with students taking between one and five Advanced Subsidiaries. Table 10 shows that in 2000/01, the average number of general Advanced Subsidiary examinations taken by a student of any age was 3. It is anticipated that students on A level programmes will then progress three of these Advanced Subsidiaries on to full A-levels in their second year of post-16 study. In addition, students are encouraged to study a combination of both general and vocational advanced level examinations. As post-16 examinations have now moved to a building-block approach, the Statistical Bulletin has moved to reflect this by adopting cumulative reporting rather than a single year snapshot.

15. The average GCE A/AS/VCE/Advanced GNVQ point score of 17 and 18 year old candidates was 18.9 in schools compared with 14.9 in Further Education sector colleges. The average GCE A/AS point score for those entered for GCE A/AS was 18.9 for candidates in schools compared with 15.4 in FE sector colleges. The equivalent figures for England as a whole are 17.4 for GCE A/AS/VCE/AGNVQ and 17.8 for GCE A/AS. FE colleges entered more of their candidates for AGNVQs, 25,000 in FE colleges compared with 16,000 in schools, Table 9 shows that there was very little difference in the average point score achieved by these candidates with those in schools scoring 10.2 compared with 9.9 in FE sector colleges.

16. The proportion of GCE A level candidates who achieved 2 or more passes in the academic year 2000/01 was higher in schools (83.0 per cent) and at sixth form colleges (78.7 per cent) than at other Further Education sector colleges (57.5 per cent of candidates aged 18 and under). Under the Qualifying for Success reforms introduced in September 2000, the number of students entered for the new Advanced Subsidiary examinations was 254,000, with an overall average of three being taken by each candidate. In 1999/00, the number of students entered for the Advanced supplementary examinations was nearly 64,000 with students taking an average of one compared with 26,000 in 2000/01. (Table 10)

Success rates in selected subjects at GCE A level

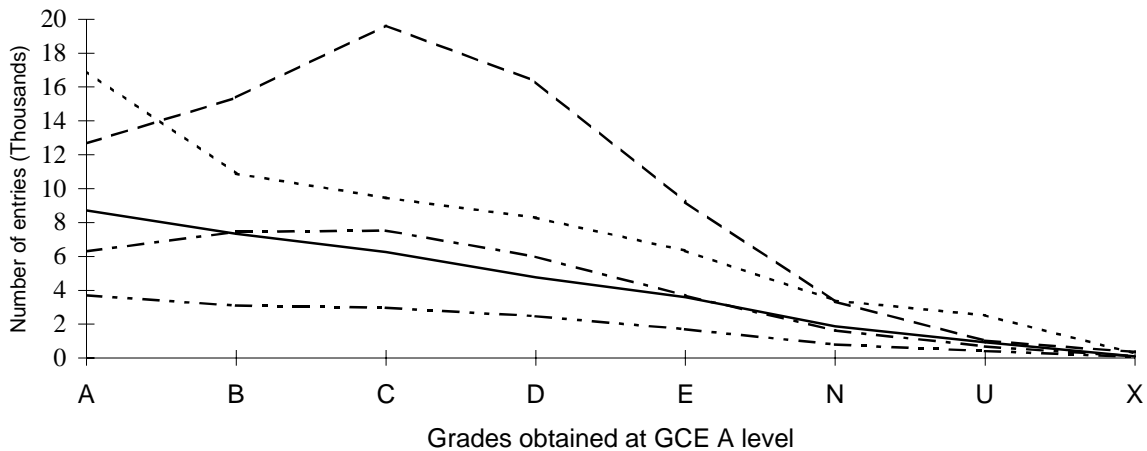
17. Female candidates of all ages who entered for GCE A levels in mathematics, physics, and technology had higher success rates than males, although a far higher number of males entered and passed these subjects. The opposite was true of French at GCE A level. Apart from General Studies, English and mathematics continued to be the most popular subjects at GCE A level. The proportions of the 17 and 18 year old candidates entering English were much higher for females than males (44 per cent compared with 21 per cent), with the position reversed for mathematics (17 per cent compared with 32 per cent). (Table 11)

Analysis of individual GCE A level entries and achievements of 17 and 18 year olds by subject and grade

18. There were nearly 684,000 GCE A level entries by 17 and 18 year old candidates. The coverage here is for 17 and 18 year old students at the end of their second year of post-16 study provided they were entered for a GCE A level, VCE double award or AGNVQ in Summer 2001. Overall the most frequent grade achieved was C (over 148,000 grades). In mathematics, however, the most frequent grade achieved was A, with a considerable difference between the numbers achieving grades A (16,900) and B (10,900). Biology and Economics had a fairly even distribution with similar numbers gaining grades A, B, C and D. (Table 12)

19. Chart 4 shows the grade distribution for GCE A level chemistry, mathematics, geography, English and French for 17 and 18 year old candidates in 2000/01. (Table 12)

Chart 4: Distribution of GCE A level grades in selected subjects - 2000/01



Analysis of individual GCE Advanced subsidiary entries and achievements of 16 by subject and grade

20. There were 647,000 GCE Advanced subsidiary entries made by 16 year old candidates in 2000/01. Overall the most frequent grade achieved was C (over 134,000 grades). In mathematics, physics, chemistry and biology, however, the most frequent grade achieved was A. Biology and economics had a fairly even distribution with similar numbers gaining grades A, B, C and D. (Table 13)

Advanced GNVQ achievements of 17 and 18 year old candidates in schools and FE sector colleges in 2000/01

21. Advanced level GNVQs continue to be popular along side the traditional GCE A levels, although under the Qualifying for Success reforms they become Vocational A levels. In addition to the 232,000 young people that attempted GCE A levels in 2000/01 (see Table 10), there were more than 40,000 17 and 18 year old candidates who completed an Advanced GNVQ. Of these candidates 38 per cent were in schools and 62 per cent in FE sector colleges. Of these candidates, a quarter of those in schools achieved a distinction compared with one fifth in FE sector colleges. However, the proportion of those awarded a merit was 40 per cent in both schools and FE sector colleges. The distribution of awards is similar to last year. A full Advanced GNVQ award is broadly equivalent to 2 GCE A level passes. The most popular subjects taken were Business studies, leisure & tourism, health & social care and information technology. (Table 14)

Time series of GCE A/AS & Advanced GNVQ results of students aged 18 and under from 1998/99 to 2000/01

22. Table 15 shows the number of candidates aged 18 or under who achieved their GCE A/AS level (or VCE/AGNVQ equivalent) passes for the first time in each of the relevant years. It should be noted that as a result of the Qualifying for Success reforms, the figures for 2000/01 are not directly comparable to earlier years. In 2000/01, 309,300 young people in schools and

Further Education sector colleges achieved two or more GCE A/AS/VCE/AGNVQ passes (50.9 per cent of the 17 year old population) compared with 209,300 (34.5 per cent) in 1999/00 (Table 15). However, these figures for 2000/01 are inflated by the number of young people that achieved 4 or more passes in the Advanced subsidiary examinations that were introduced in September 2000. These students would have been in their first year of post-16 education and if we exclude the number of students that did not attempt at least a GCE A level, double VCE or Advanced GNVQ, the percentage achieving 2 or more passes becomes 36.4, which is more in line with the 34.5 per cent from the previous year. (Table 15)

National Learning Targets

23. The GCSE/GNVQ and GCE A/AS/Advanced GNVQ results described in this bulletin make a major contribution - but only a contribution - to the achievement of the National Learning Targets for England for the year 2002. The targets (launched in October 1998) are:

By age 16:

- at least 50% to achieve 5 or more higher grade (A*-C) GCSEs or the equivalent
- at least 95% to achieve 1 or more GCSE or the equivalent

By age 19:

- at least 85% to achieve a level 2 qualification i.e. 5 GCSEs at grade C or above, an Intermediate GNVQ or an NVQ level 2

By age 21:

- at least 60% to achieve a level 3 qualification i.e. 2 GCE A levels, an Advanced GNVQ or an NVQ level 3. Note: AS examinations count as half a GCE A level.

24. The denominators used for these targets are the total population who are in the relevant age range. It should be noted that other denominators are used in this publication, for example the number of candidates entered for a particular examination.

25. National monitoring of progress towards the latter two targets, taking account of all academic and vocational qualifications gained by the target ages, is based on data from the Labour Force Survey (LFS). The latest estimates for Autumn 2001 show that within England, 75.3 per cent of 19 year olds had a level 2 qualification or above and 53.7 per cent of 21 year olds had a level 3 qualification.

26. Note that the targets for 21 year olds cannot be compared directly with the attainment of 17 year olds in 2000/01 because they relate to a different cohort. The bulk of the difference between A/AS/VCE/AGNVQ attainment by 17 year olds and level 3 attainment by age 21 is accounted for by vocational qualifications, although a small proportion of young people do achieve A/AS/VCE/AGNVQs between the ages of 18 and 21.

27. The 15 and 17 year olds in 1998/99 form the cohorts against which the targets for 19 and 21 year olds will be measured in 2002. The substantial increases in GCSE and GCE A level attainment between 1992/93 and 1998/99, with the percentage of 15 year olds with 5 or more GCSE grades A*-C up by 6.7 percentage points (from 41.2 per cent to 47.9 per cent), and the percentage of 17 year olds with 2 or more GCE A levels (or equivalent) up by 10 percentage points (from 24 per cent to 34 per cent), have been feeding through into the progress towards

the National Learning Targets for 2002. The 2000/01 figures for both indicators show improvement over the 1998/99 levels with the percentage of 15 year olds achieving 5 higher grades now reaching 50 per cent.

Definitions and Sources

28. The data on examination entries and passes were obtained from the GCSE/GNVQ and GCE A/AS/VCE/AGNVQ Awarding Bodies. After further processing by the Department's contractors, schools and Further Education sector colleges checked their data before it was publication in the Secondary school and college (16-18) performance tables. Results for GCSE/GNVQ candidates aged 15 and GCE A/AS/VCE/AGNVQ candidates aged 17 and 18 (but not for other ages) were accumulated from entries made by the candidates in the previous academic years. Results for pupils in the 17-18 age range were those taken over the past two years, i.e. the final two years of post-16 education.

29. The results for 15 year olds show their overall achievements in GCSEs, GCSE (Short Courses), Part One GNVQs (Foundation and Intermediate), full GNVQs (Foundation and Intermediate) and the GNVQ Language Units, including the pre- and post-September 2000 examinations. GCSE (Sort Courses) are of the same academic standard as a full GCSE but have half the content. GCSE (Short Courses) and GNVQ awards have been reported on the basis of the following broad equivalencies:

Qualification		Number of GCSEs	GCSE grades
GNVQ Part One	Intermediate	2	A*-C
	Foundation	2	D-G
GNVQ Full	Intermediate	4	A*-C
	Foundation	4	D-G
GNVQ Language unit	Intermediate	½	A
	Foundation	½	D
GCSE Short Course		½	same grade

The figures for those achieving 1 or more GCSE grade A*-G or the GNVQ equivalent also include those 15 year olds that achieved at least one pass in a GCSE short course or GNVQ language unit.

30. Where a candidate had attempted an examination in the same subject more than once, only the highest value pass was counted. A GCE A level pass was always taken in place of an AS examination pass in the same subject, regardless of the AS grade. A GCSE full course pass was always taken in place of the GCSE short course in the same subject.

31. The pupil population aged 15 is taken from the Annual Schools Census carried out in January 2001, but modified by schools when they were consulted in October about the information to be published in the performance tables. The source of the estimates of the 17 year old population in Table 15 is the Government Actuaries Department. A pupil's age is that at the start of the academic year (i.e. 31 August 2000). Fifteen year olds are therefore in the last year of compulsory education and seventeen year olds are in the second year of post compulsory education.

32. At an Local education authority (LEA) - and Government Office Region (GOR) - level the population of 15 year olds have been adjusted. Through the performance tables exercise some schools requested that pupils recently admitted from overseas with little or no English be discounted from the figures. This has been agreed where the pupil was admitted to the school in the 1999/2000 or 2000/01 academic year from outside the United Kingdom, and their first language is not English. The results of these 15 year old pupils are also excluded from any LEA or GOR level figures in this bulletin. Figures for England, however, are unadjusted.

33. GCSE/GNVQ point scores are determined by totalling pupils' individual GCSE/GNVQ results as follows:

GCSE: grades A to G count as 7 to 1 points respectively, with A* counting as 8; GCSE Short Courses grades A to G count as 3½ to ½ respectively, with A* counting as 4.

GNVQ: grades D, M and P count as 7½, 6 and 5 points respectively at Intermediate level, and 4, 3 and 1½ point respectively at Foundation level. These points need to be multiplied by 2 for GNVQ Part One and by 4 for GNVQ Full.

34. GCE A/AS/VCE/AGNVQ point scores are derived as follows: an A level or VCE A level pass and an AS or VCE AS examination pass are classified as grade E or above. Each grade at AS examination is counted as half that grade at A level. The double award VCE also has different scores as does the Advanced GNVQ and all scores are calculated as shown below:

<u>A level</u>	<u>AS examination</u>	<u>Advanced GNVQ</u>		<u>VCE Double Award</u>	
A 10	A 5		<u>12 unit</u>	<u>6 unit</u>	AA 20
B 8	B 4	Distinction	18	9	AB 18
C 6	C 3	Merit	12	6	BB 16
D 4	D 2	Pass	6	3	BC 14
E 2	E 1				CC 12
					CD 10
					DD 8
					DE 6
					EE 4

35. Rounding has been used in tables to aid clarity. It is therefore possible that some totals may differ slightly from the sum of their constituent parts.

36. Table 16 gives the final 2000/01 figures for Local Education Authority areas, updating the information published in the Secondary school and the Secondary school and college performance tables published in November 2001. The definitions used are the same as those in the relevant performance tables. The maintained sector (LEAs, GORs) are based on adjustments made for refugees and include maintained schools including maintained special schools and CTCs- together with FE sector colleges for the school and college tables. The England figures relate to all schools and or FE sector colleges and include independent schools.

Further Information

37. Enquiries on the contents of this bulletin should be addressed to Analytical Services, Department for Education and Skills, Level 6P, Sanctuary Buildings, Great Smith Street, London SW1H 3BT (Tel: 0207 925 5436). This Bulletin is available on the DfES's website: <http://www.dfes.gov.uk/statistics>. Booklets for schools in individual local education authorities

are available, free of charge, through the performance tables order line on 0800 24 23 22. The Secondary school and college performance tables for the years 1994-2001 are also available on the Internet on <http://www.dfes.gov.uk/performance-tables/>.

? Crown copyright 2002

Extracts, not exceeding 20% of this publication, may be reproduced freely for non-commercial purposes provided that the source is fully acknowledged. Applications covering longer extracts or involving the use of the material for sale or commercial purposes should be made to the Department for Education and Skills.

TABLES

Table 1 shows the GCSE/GNVQ attempts and achievements of 15 year old pupils by the end of 2000/01, analysed by gender and type of school. Table also includes historical attempts and achievements of 15 year old pupils by the end of 1998/99 and 1999/00, by gender.

Table 2 shows the GCSE/GNVQ attempts and achievements of 15 year old pupils in maintained schools analysed by Local Education Authority

Table 3 shows the GCSE/GNVQ achievements of 15 year old pupils in maintained schools analysed by Local Education Authority and percentage of schools achieving various 5 A*-C

Table 4 & 5 show the attempts and achievements of 15 year old pupils in selected GCSE subjects by the end of 2000/01 analysed by numbers and percentages.

Table 6 shows the GCSE results of all 15 year old pupils by the end of 2000/01, analysed by subject and grade.

Table 7 shows the GCSE (Short Course) results of all 15 year old pupils by the end of 2000/01, analysed by grade.

Table 8 shows the GNVQ and language units of all 15 year old pupils in schools in 2000/01, analysed by subject and level of qualification.

Table 9 shows GCE A/AS/VCE/AGNVQ results of students aged 17-18, analysed by type of establishment and gender for 2000/01.

Table 10 shows the attempts and achievements of candidates of all ages in all schools and FE colleges for GCE A level, Advanced Subsidiary and Advanced Supplementary examinations in 2000/01.

Table 11 shows the success rates of GCE A level and Advanced Supplementary candidates aged 17-18 and candidates of all ages in all schools and FE colleges for 2000/01.

Table 12 shows GCE A level and Advanced Supplementary examination results of 17-18 year olds in all schools and FE colleges analysed by subject and grade.

Table 13 shows GCE Advanced Subsidiary examination results for 16 year olds and candidates of all ages in all schools and colleges analysed by subject and grade.

Table 14 shows Advanced GNVQ examination results of 17-18 year olds in all schools and colleges analysed by subject and grade for 2000/01

Table 15 shows a time series of GCE A/AS/VCE/AGNVQ achievements of students in all schools and FE colleges from 1998/99 to 2000/01

Table 16 shows the data published in the 2001 secondary school and school and college performance tables for each Local Education Authority and Government Office Region.

TABLE 1

GCSE/GNVQ attempts and achievements of 15 year old pupils¹ by the end of 2000/01²

School Type	Number of 15 year old pupils ¹	Percentage entered for 5+ GCSE/GNVQ	Percentage who achieved at GCSE/GNVQ			Percentage entered for GCSE/GNVQ	Percentage who achieved at GCSE/GNVQ			Average GCSE/GNVQ point score ⁶ per 15 year old pupil
			5+ A*-C grades	5+ A*-G grades	5+ A*-G inc. English & mathematics		1+ A*-C grades	1+ A*-G grades	No passes	
Comprehensive Schools ³										
Boys	253,564	91.7	41.8	89.3	86.9	96.8	68.5	95.4	4.6	35.7
Girls	246,822	94.0	52.6	92.2	90.2	97.6	78.5	96.5	3.5	41.0
Total	500,386	92.8	47.1	90.7	88.5	97.2	73.4	96.0	4.0	38.4
Selective Schools										
Boys	10,221	99.2	96.7	99.2	99.0	99.5	99.3	99.5	0.5	61.9
Girls	10,750	99.5	98.3	99.5	99.4	99.8	99.7	99.8	0.2	63.8
Total	20,971	99.4	97.5	99.3	99.2	99.7	99.5	99.7	0.3	62.9
Modern Schools										
Boys	12,364	91.0	31.1	88.2	85.9	97.0	62.8	95.6	4.4	30.9
Girls	12,360	93.3	42.5	91.5	89.6	97.1	74.4	95.9	4.1	36.1
Total	24,724	92.2	36.8	89.9	87.8	97.1	68.6	95.8	4.2	33.5
Other Maintained Schools ⁴										
Boys	8,908	5.5	0.4	4.7	4.3	38.3	7.5	34.1	65.9	2.6
Girls	4,327	6.3	1.0	5.8	5.4	39.7	11.6	36.4	63.6	3.3
Total	13,235	5.7	0.6	5.1	4.7	38.7	8.8	34.8	65.2	2.8
All Maintained Schools										
Boys	285,057	89.3	42.1	86.9	84.7	95.1	67.5	93.7	6.3	35.4
Girls	274,259	92.8	53.1	91.1	89.2	96.7	78.1	95.6	4.4	41.1
Total	559,316	91.0	47.5	89.0	86.9	95.9	72.7	94.6	5.4	38.2
Independent Schools ⁵										
Boys	22,803	86.2	78.8	85.8	84.5	92.1	89.0	91.9	8.1	50.5
Girls	21,199	90.3	85.4	90.1	89.0	95.0	93.7	94.8	5.2	54.7
Total	44,002	88.2	82.0	87.9	86.7	93.5	91.3	93.3	6.7	52.5
All Schools										
Boys	307,860	89.0	44.8	86.9	84.7	94.9	69.1	93.5	6.5	36.6
Girls	295,458	92.6	55.4	91.0	89.2	96.6	79.2	95.6	4.4	42.1
Total	603,318	90.8	50.0	88.9	86.9	95.7	74.0	94.5	5.5	39.3
All Schools										
Boys in 2000/01	307,860	89.0	44.8	86.9	84.7	94.9	69.1	93.5	6.5	36.6
Boys in 1999/00	295,546	89.1	44.0	87.0	84.7	94.7	68.7	93.5	6.5	36.2
Boys in 1998/99	297,107	88.6	42.8	86.5	83.7	94.1	67.5	93.0	7.0	35.5
Girls in 2000/01	295,458	92.6	55.4	91.0	89.2	96.6	79.2	95.6	4.4	42.1
Girls in 1999/00	284,847	92.6	54.6	90.9	89.0	96.3	78.8	95.4	4.6	41.6
Girls in 1998/99	283,865	92.2	53.4	90.6	88.1	95.9	77.8	95.0	5.0	40.9
Boys and Girls in 2000/01	603,318	90.8	50.0	88.9	86.9	95.7	74.0	94.5	5.5	39.3
Boys and Girls in 1999/00	580,393	90.8	49.2	88.9	86.8	95.5	73.6	94.4	5.6	38.9
Boys and Girls in 1998/99	580,972	90.4	47.9	88.5	85.8	95.0	72.6	94.0	6.0	38.1

¹ Number of pupils on roll aged 15 at the start of the 2000/01 academic year, ie. 31 August 2000.² Including attempts and achievements by these pupils in previous academic years.³ Including City Technology Colleges.⁴ Including community and foundation special schools, hospital schools and pupil referral units.⁵ Including non-maintained special schools.⁶ GCSE/GNVQ point scores are calculated as follows: GCSE grades A* to G count as 8 to 1 points respectively, GCSE Short Courses grades A* to G count as 4 to ½ respectively. The GNVQ grades D,M and P count as 7½, 6 and 5 points respectively at Intermediate level, and 4,3 and 1½ points respectively at Foundation level. These points need to be multiplied by 2 for GNVQ Part One and by 4 for Full GNVQs.

TABLE 2

GCSE/GNVQ achievements of 15 year old pupils¹ in maintained schools² in each Local Education Authority by the end of 2000/01³

Local Education Authority	Boys					Girls				
	Number of 15 year olds	Percentage of 15 year old pupils ¹ achieving at GCSE/GNVQ			Average GCSE/GNVQ point score per 15 year old	Number of 15 year olds	Percentage of 15 year old pupils ¹ achieving at GCSE/GNVQ			Average GCSE/GNVQ point score per 15 year old
		5+ A*-C grades	5+ A*-G grades	1+ A*-G grades			5+ A*-C grades	5+ A*-G grades	1+ A*-G grades	
NORTH EAST GOR	16,111	38.2	86.4	92.9	33.9	15,715	46.9	89.9	94.8	38.7
Hartlepool	634	36.0	86.4	95.4	33.4	626	44.9	88.7	94.6	37.5
Middlesbrough	948	33.2	84.4	92.9	31.0	995	36.7	86.5	93.9	33.9
Redcar and Cleveland	1,047	39.8	87.1	94.0	34.4	1,014	47.0	92.1	96.4	39.3
Stockton on Tees	1,247	38.5	90.1	95.0	35.7	1,242	51.2	93.1	96.9	41.3
Darlington	586	43.2	88.7	94.0	35.7	568	51.4	91.7	95.8	41.2
Durham	3,067	35.6	84.4	92.4	31.9	2,870	46.6	89.1	94.7	37.5
Northumberland	1,982	44.6	88.4	92.9	36.9	1,938	53.1	90.7	94.3	41.4
Tyne and Wear Met County	6,600	37.6	86.1	92.1	33.7	6,462	45.8	89.6	94.4	38.5
Gateshead	1,151	46.1	86.7	91.0	38.2	1,082	52.9	90.8	93.1	42.6
Newcastle upon Tyne	1,450	33.3	77.4	86.7	29.6	1,339	40.6	83.8	91.4	34.8
North Tyneside	1,079	43.2	89.3	93.4	36.0	1,129	49.8	92.0	96.0	40.2
South Tyneside	1,021	35.6	89.6	95.6	34.0	999	42.6	91.3	94.9	37.4
Sunderland	1,899	33.6	88.5	94.3	32.7	1,913	44.7	90.9	96.0	38.5
NORTH WEST GOR	42,527	40.9	87.4	93.7	34.6	41,367	51.5	91.1	95.5	40.1
Halton	829	35.7	90.3	94.7	33.4	806	44.3	91.4	96.9	37.4
Warrington	1,246	46.0	90.0	95.0	37.4	1,197	54.8	93.2	96.1	42.3
Cheshire	4,045	49.7	92.6	96.3	38.5	4,026	61.8	94.7	97.3	44.8
Cumbria	3,062	44.0	88.6	94.7	36.5	2,831	58.2	92.3	96.6	43.6
Greater Manchester Met County	15,811	39.2	86.7	93.3	33.5	15,449	49.4	90.5	94.9	38.8
Bolton	1,823	41.8	88.8	94.8	34.9	1,651	49.4	92.4	95.8	39.8
Bury	1,163	49.3	94.5	97.8	38.1	1,122	59.4	96.6	98.8	42.7
Manchester	2,155	25.6	72.8	84.3	25.9	2,256	36.2	80.4	88.3	31.7
Oldham	1,618	37.5	89.2	95.0	33.7	1,504	45.9	89.4	94.7	38.1
Rochdale	1,304	35.0	84.3	93.3	32.0	1,213	46.2	89.3	95.2	37.1
Salford	1,274	29.0	86.1	92.9	28.8	1,220	39.8	91.6	95.7	34.5
Stockport	1,553	48.2	90.5	94.5	37.0	1,671	59.8	93.2	95.8	42.5
Tameside	1,468	38.2	89.6	94.6	33.1	1,448	45.8	91.4	95.5	37.5
Trafford	1,382	52.2	89.1	95.8	39.1	1,381	63.3	93.2	96.9	45.3
Wigan	2,071	40.8	88.1	93.9	34.8	1,983	53.8	93.2	96.2	41.7
Blackburn with Darwen	978	32.3	86.4	91.5	32.5	868	43.5	90.3	95.2	38.2
Blackpool	676	31.2	84.3	92.9	30.9	658	40.1	87.1	93.6	35.2
Lancashire	6,857	44.7	89.4	94.9	36.9	6,745	55.6	92.9	96.6	42.4
Merseyside	9,023	37.5	84.0	91.8	32.6	8,787	46.9	88.8	94.3	37.7
Knowsley	1,027	24.4	75.9	86.8	25.3	967	30.0	79.9	90.2	28.3
Liverpool	2,935	29.5	79.3	89.9	28.5	2,893	40.9	85.8	92.4	34.6
St Helens	1,131	41.5	85.0	90.8	33.5	1,106	50.3	92.4	96.7	40.0
Sefton	1,828	44.3	90.9	95.4	36.7	1,802	55.8	93.7	96.5	42.9
Wirral	2,102	47.2	87.9	94.5	38.0	2,019	54.0	90.9	95.6	41.0

Local Education Authority	Boys					Girls				
	Number of 15 year olds	Percentage of 15 year old pupils ¹ achieving at GCSE/GNVQ			Average GCSE/GNVQ point score per 15 year old	Number of 15 year olds	Percentage of 15 year old pupils ¹ achieving at GCSE/GNVQ			Average GCSE/GNVQ point score per 15 year old
		5+ A*-C grades	5+ A*-G grades	1+ A*-G grades			5+ A*-C grades	5+ A*-G grades	1+ A*-G grades	
YORKSHIRE & HUMBER GOR	30,435	37.8	86.7	93.5	33.5	29,233	48.3	90.1	95.0	38.6
East Riding of Yorkshire	1,961	45.2	90.5	94.4	36.9	1,977	54.9	92.5	95.8	41.0
Kingston upon Hull	1,603	23.8	79.2	89.5	26.3	1,467	31.6	82.1	91.3	30.1
North East Lincolnshire	1,141	33.4	87.2	94.3	32.3	1,072	39.8	90.3	95.7	36.2
North Lincolnshire	1,062	38.9	92.2	97.4	34.9	1,016	46.0	93.4	97.1	39.1
York	882	49.4	90.0	95.2	38.6	864	59.0	91.7	96.4	43.2
North Yorkshire	3,379	52.3	92.1	96.8	40.2	3,315	64.5	94.5	97.2	45.7
South Yorkshire Met County	7,763	34.9	85.5	92.6	32.5	7,291	46.6	89.1	94.3	38.0
Barnsley	1,279	29.6	80.9	91.3	29.0	1,242	40.7	88.1	94.8	35.2
Doncaster	1,893	33.8	86.3	92.6	32.1	1,793	46.3	88.7	93.5	37.4
Rotherham	1,878	38.2	88.4	94.4	34.5	1,728	48.5	91.0	95.8	39.4
Sheffield	2,713	35.9	85.1	91.9	32.9	2,528	48.5	88.4	93.6	38.9
West Yorkshire Met County	12,644	35.9	85.7	93.0	32.3	12,231	46.1	89.6	94.8	37.6
Bradford	3,014	29.5	82.4	90.9	28.5	2,977	39.1	87.3	93.7	34.0
Calderdale	1,291	42.6	87.9	94.7	35.7	1,246	55.1	90.5	95.7	40.8
Kirklees	2,354	40.4	88.9	94.2	34.7	2,251	48.1	90.3	94.9	39.2
Leeds	4,027	34.1	84.0	92.7	31.6	3,830	45.5	89.1	94.2	37.1
Wakefield	1,958	39.6	88.7	94.3	34.2	1,927	50.0	92.6	96.9	40.1
EAST MIDLANDS GOR	24,865	41.7	86.7	93.5	35.2	23,897	53.5	91.2	95.7	40.9
Derby	1,447	38.4	85.8	92.3	32.0	1,399	47.7	90.9	94.9	37.0
Derbyshire	4,124	45.0	90.8	95.7	37.1	4,053	58.1	94.0	96.8	43.2
Leicester	1,732	31.4	78.5	90.1	29.5	1,669	42.8	85.8	93.9	35.1
Rutland	237	50.2	96.2	98.3	39.8	205	65.4	95.6	97.6	45.5
Leicestershire	3,723	43.2	88.9	94.4	36.1	3,392	56.7	93.1	96.3	42.4
Lincolnshire	3,782	48.2	89.3	95.1	38.3	3,691	60.3	93.5	97.2	44.5
Northamptonshire	3,805	43.2	86.0	93.5	36.3	3,706	54.3	90.4	94.8	41.9
Nottingham	1,386	25.6	72.5	85.9	25.5	1,293	35.3	81.3	92.8	31.0
Nottinghamshire	4,629	40.4	86.8	93.3	34.9	4,489	51.0	90.6	95.2	40.1
WEST MIDLANDS GOR	32,664	39.9	86.8	93.7	34.5	31,280	51.8	91.0	95.6	40.6
Herefordshire	899	46.9	88.8	93.9	38.1	868	60.3	92.6	96.0	44.7
Worcestershire	3,096	44.0	86.9	93.5	36.1	2,852	55.7	92.4	95.8	42.3
The Wrekin	1,078	42.9	90.5	94.6	39.0	1,013	51.9	91.9	96.2	43.7
Shropshire	1,631	45.7	89.3	96.1	37.9	1,544	62.4	94.4	97.3	45.4
Stoke on Trent	1,448	30.2	83.8	91.4	29.8	1,396	41.2	88.3	93.1	35.6
Staffordshire	5,069	42.0	89.7	94.6	35.4	4,856	54.7	92.6	96.0	41.5
Warwickshire	2,852	44.8	89.3	95.3	36.9	2,808	56.3	92.3	96.0	42.8
West Midlands Met County	16,592	37.4	85.2	93.2	33.2	15,943	48.9	89.8	95.3	39.1
Birmingham	6,129	35.4	83.9	92.9	32.6	5,699	47.6	89.4	95.3	39.2
Coventry	1,792	38.3	83.1	91.0	32.0	1,779	47.0	87.9	93.6	37.2
Dudley	2,056	45.1	91.0	95.0	36.7	1,895	54.7	93.4	96.8	42.0
Sandwell	1,870	28.4	81.8	91.1	29.3	1,777	40.5	87.2	93.1	35.1
Solihull	1,544	50.1	90.2	95.9	38.6	1,539	61.8	93.2	97.6	44.7
Walsall	1,887	36.6	83.9	94.1	32.8	1,871	44.7	87.9	95.2	36.7
Wolverhampton	1,314	33.1	85.6	92.6	31.6	1,383	51.2	90.6	95.8	39.7

Local Education Authority	Boys					Girls				
	Number of 15 year olds	Percentage of 15 year old pupils ¹ achieving at GCSE/GNVQ			Average GCSE/GNVQ point score per 15 year old	Number of 15 year olds	Percentage of 15 year old pupils ¹ achieving at GCSE/GNVQ			Average GCSE/GNVQ point score per 15 year old
		5+ A*-C grades	5+ A*-G grades	1+ A*-G grades			5+ A*-C grades	5+ A*-G grades	1+ A*-G grades	
EAST OF ENGLAND GOR	30,662	46.4	89.0	94.8	37.8	29,655	57.4	92.6	96.3	43.4
Luton	1,104	33.7	87.5	94.8	33.2	1,106	42.8	92.0	96.3	37.9
Bedfordshire	2,354	44.0	89.0	94.8	37.5	2,229	54.7	92.0	95.8	42.9
Peterborough	1,074	37.6	84.9	91.2	34.4	1,142	49.6	90.4	94.0	41.3
Cambridgeshire	2,835	49.0	87.7	94.0	38.4	2,696	58.5	92.0	96.0	43.2
Southend	957	50.9	85.7	93.7	39.9	914	61.2	89.9	96.4	45.8
Thurrock	728	34.8	84.6	91.9	33.0	780	48.5	89.2	94.1	38.6
Essex	7,516	46.2	89.3	94.7	38.0	7,154	58.1	93.9	96.9	43.9
Hertfordshire	6,054	50.6	90.0	94.9	39.0	5,926	62.1	93.0	96.3	45.2
Norfolk	4,347	45.0	88.9	95.3	36.6	4,156	54.6	92.0	96.0	41.4
Suffolk	3,693	48.7	91.6	96.5	39.5	3,552	60.0	93.4	97.0	45.0
LONDON GOR	34,545	40.4	86.8	94.2	35.0	33,990	52.0	91.6	96.6	41.1
Inner London	10,757	32.2	82.7	92.8	31.0	10,966	43.8	89.7	96.5	37.6
Camden	650	41.7	88.5	95.5	35.0	986	56.0	91.8	96.1	42.2
Hackney	561	29.6	78.4	90.9	29.5	820	36.1	86.2	94.6	35.0
Hammersmith and Fulham	492	45.1	87.2	95.1	36.3	560	56.4	89.5	97.0	41.7
Haringey	966	24.8	73.7	87.0	25.9	885	37.5	85.9	97.6	35.7
Islington	742	23.3	75.1	85.6	25.0	610	35.2	84.6	92.3	32.6
Kensington and Chelsea	320	61.9	93.4	96.6	45.1	266	47.4	92.1	95.9	38.8
Lambeth	572	31.1	77.6	92.5	29.4	710	39.7	91.3	97.9	36.6
Lewisham	1,122	28.8	81.8	90.7	29.8	1,078	41.9	89.7	95.1	36.1
Newham	1,463	34.2	89.7	97.5	33.9	1,528	43.8	93.1	97.8	38.4
Southwark	915	28.6	80.2	92.8	29.1	946	38.4	88.8	97.8	34.8
Tower Hamlets	1,287	28.4	84.7	95.5	29.8	1,190	41.8	92.0	97.6	38.0
Wandsworth	1,034	38.6	84.9	94.5	34.6	748	49.5	87.7	96.1	39.7
Westminster	633	25.9	79.9	90.8	27.7	639	52.3	89.7	96.9	40.1
Outer London	23,788	44.1	88.7	94.9	36.9	23,024	55.8	92.6	96.7	42.7
Barking and Dagenham	881	36.7	91.0	96.0	34.2	840	39.8	90.1	94.0	35.9
Barnet	1,794	50.9	89.5	94.9	39.3	1,605	61.2	91.5	95.6	46.0
Bexley	1,489	43.5	89.5	95.4	36.4	1,338	54.3	92.8	95.6	41.4
Brent	1,192	37.2	84.9	94.8	32.9	1,164	54.2	93.0	97.6	40.6
Bromley	1,539	51.1	92.7	96.3	40.8	1,679	59.6	92.9	96.4	44.3
Croydon	1,656	36.8	88.2	94.9	34.1	1,685	53.2	93.6	97.1	41.1
Ealing	1,204	41.4	91.2	96.5	37.0	1,179	52.8	94.7	100.0	42.6
Enfield	1,710	42.0	90.1	95.9	36.8	1,653	52.1	92.9	97.8	40.7
Greenwich	1,159	27.4	80.3	90.3	29.8	1,144	40.3	87.8	95.0	37.0
Harrow	1,035	52.9	91.4	96.0	40.4	1,005	62.1	93.4	97.3	45.1
Havering	1,445	49.6	89.7	94.7	39.6	1,414	62.0	94.7	97.8	46.0
Hillingdon	1,338	41.0	88.0	95.4	35.1	1,294	53.4	92.5	97.1	40.8
Hounslow	1,379	40.5	85.7	94.8	34.5	1,241	51.2	90.9	96.7	41.0
Kingston upon Thames	654	54.6	85.9	92.4	42.4	724	67.4	91.9	95.4	48.0
Merton	787	32.7	83.6	91.4	31.7	720	48.1	89.4	96.3	37.7
Redbridge	1,411	57.1	93.3	97.7	42.1	1,399	68.9	95.1	98.1	48.6
Richmond upon Thames	735	50.1	88.3	93.6	37.4	742	59.0	91.8	94.7	43.7
Sutton	1,147	55.9	91.5	95.8	43.3	1,066	64.9	94.0	96.2	49.2
Waltham Forest	1,233	34.7	86.1	91.7	31.8	1,132	51.7	92.3	95.7	39.8

Local Education Authority	Boys					Girls				
	Number of 15 year olds	Percentage of 15 year old pupils ¹ achieving at GCSE/GNVQ			Average GCSE/GNVQ point score per 15 year old	Number of 15 year olds	Percentage of 15 year old pupils ¹ achieving at GCSE/GNVQ			Average GCSE/GNVQ point score per 15 year old
		5+ A*-C grades	5+ A*-G grades	1+ A*-G grades			5+ A*-C grades	5+ A*-G grades	1+ A*-G grades	
SOUTH EAST GOR	43,071	47.5	89.3	94.9	38.3	41,411	58.4	92.5	96.0	43.7
Bracknell Forest	556	45.3	91.2	95.3	36.8	457	53.6	91.9	94.3	39.9
Reading	495	46.3	79.6	91.1	40.8	514	47.3	86.0	92.2	39.4
Slough	637	48.5	93.2	96.4	38.6	660	56.1	93.8	98.0	44.4
West Berkshire	944	47.5	91.5	95.8	38.1	910	65.2	95.3	98.0	46.0
Windsor and Maidenhead	786	53.6	91.7	95.7	41.0	737	64.3	93.1	95.4	45.2
Wokingham	933	50.6	90.9	95.4	38.0	814	73.6	94.6	96.7	48.9
Milton Keynes	1,295	37.4	88.2	93.1	36.7	1,222	47.9	89.9	94.8	41.5
Buckinghamshire	2,732	58.5	91.1	94.9	44.3	2,681	68.4	93.5	96.1	47.2
Brighton and Hove	1,060	37.8	80.9	90.1	33.9	1,022	48.7	87.4	93.9	39.3
East Sussex	2,497	43.7	87.7	94.8	36.4	2,488	56.9	91.6	95.5	42.9
Portsmouth	995	27.0	80.6	89.9	28.7	955	41.8	88.0	93.9	35.6
Southampton	1,239	35.9	87.2	93.3	32.3	1,216	50.3	91.6	96.1	40.9
Hampshire	6,831	50.1	91.3	96.1	39.7	6,491	59.9	94.6	97.4	44.8
Isle of Wight	781	39.1	83.7	91.8	33.5	702	50.3	88.6	93.6	38.8
Kent	7,719	47.9	89.4	95.5	38.2	7,371	57.2	92.4	95.7	43.0
Medway	1,598	39.2	89.7	95.6	35.1	1,715	55.9	93.8	96.5	42.7
Oxfordshire	3,073	43.9	85.6	92.6	36.7	2,959	55.7	90.8	95.8	42.9
Surrey	5,021	53.6	91.6	95.4	41.1	4,780	63.0	93.1	95.7	45.8
West Sussex	3,879	50.1	90.9	96.2	38.8	3,717	60.1	93.0	96.6	44.3
SOUTH WEST GOR	27,046	47.1	89.7	95.2	38.0	26,032	57.6	92.4	96.1	43.1
Bath and North East Somerset	1,038	53.3	92.1	97.6	39.6	1,016	59.5	92.3	94.6	44.1
Bristol	1,588	28.5	78.0	88.0	27.7	1,562	35.1	83.1	90.3	32.3
North Somerset	1,041	47.2	91.0	96.2	38.3	1,028	54.5	91.7	95.7	42.3
South Gloucestershire	1,459	43.2	91.9	96.0	37.2	1,417	54.5	93.9	96.2	41.8
Cornwall	2,962	49.0	90.4	95.1	38.5	2,735	58.0	93.9	97.4	43.7
Isles of Scilly	10	40.0	100.0	100.0	41.5	14	92.9	100.0	100.0	60.8
Plymouth	1,574	44.7	89.3	95.8	36.8	1,521	56.2	91.4	95.3	42.4
Torbay	774	45.9	89.0	93.8	37.8	710	58.0	92.1	95.5	42.5
Devon	3,491	45.5	88.7	94.9	36.8	3,441	57.3	92.4	96.5	43.1
Bournemouth	892	46.6	85.0	93.5	36.6	909	56.5	91.3	94.8	42.5
Poole	782	52.2	92.6	96.7	42.4	842	64.4	95.7	97.9	47.6
Dorset	2,127	50.5	91.3	95.7	39.8	2,012	62.5	93.0	95.7	44.9
Gloucestershire	3,220	53.8	92.0	97.0	41.5	3,060	63.1	94.2	97.6	46.0
Somerset	2,636	48.4	91.6	96.5	39.3	2,469	61.3	94.5	98.0	45.1
Swindon	1,097	40.1	88.1	93.5	34.6	1,074	49.1	88.5	93.8	38.0
Wiltshire	2,354	49.2	90.5	95.2	39.1	2,222	62.2	92.9	96.3	45.0
England Average	281,926	42.5	87.8	94.1	35.8	272,580	53.4	91.5	95.8	41.3

¹ Number of pupils on roll aged 15 at the start of the 2000/01 academic year, ie 31 August 2000

² Including LEA maintained schools, special schools, and City Technology Colleges.

³ Including attempts and achievements by these pupils in previous academic years.

TABLE 3

GCSE/GNVQ achievements^{1,2} by 15 year old³ pupils in each Local Education Authority by the end of 2000/01⁴

Local Education Authority	Number of schools	Percentage of pupils with 5+ A*-C GCSE grades or GNVQ	Percentage of maintained schools in which the following percentages of pupils achieved 5+ GCSE grades A*-C or the GNVQ equivalent					
			Under 10	10-19	20-29	30-39	40-59	60 or more
NORTH EAST GOR	164	43.4	0	8	20	24	29	20
Hartlepool	6	41.0	0	0	17	50	17	17
Middlesbrough	12	35.7	0	33	25	17	17	8
Redcar and Cleveland	13	43.8	0	15	23	23	15	23
Stockton on Tees	13	46.0	0	0	31	8	31	31
Darlington	7	48.3	0	0	14	14	29	43
Durham	36	41.9	0	3	28	28	31	11
Northumberland	15	49.7	0	0	7	33	27	33
Tyne and Wear Met County	62	42.6	0	10	15	24	34	18
Gateshead	11	50.5	0	9	27	9	18	36
Newcastle upon Tyne	12	37.7	0	25	17	25	17	17
North Tyneside	11	47.6	0	0	9	27	45	18
South Tyneside	11	40.0	0	9	9	27	45	9
Sunderland	17	40.0	0	6	12	29	41	12
NORTH WEST GOR	484	47.0	0	7	14	19	35	24
Halton	9	40.8	0	22	0	22	56	0
Warrington	12	51.0	0	0	17	17	42	25
Cheshire	45	56.6	0	0	16	9	31	44
Cumbria	42	51.1	0	0	7	14	48	31
Greater Manchester Met County	169	45.1	1	8	15	21	38	18
Bolton	16	45.8	0	0	19	13	50	19
Bury	14	54.6	0	0	7	14	43	36
Manchester	23	32.1	0	17	30	26	22	4
Oldham	15	42.3	0	7	27	33	13	20
Rochdale	14	41.3	0	7	21	21	50	0
Salford	16	35.0	0	19	19	38	25	0
Stockport	14	55.1	0	0	0	14	50	36
Tameside	18	42.7	0	11	11	6	61	11
Trafford	18	59.0	0	11	6	22	22	39
Wigan	21	48.3	5	5	5	19	48	19
Blackburn with Darwen	9	38.9	0	11	22	22	33	11
Blackpool	8	36.5	0	13	25	25	38	0
Lancashire	89	51.1	0	6	9	24	28	34
Merseyside	101	43.2	0	12	21	17	32	19
Knowsley	11	28.2	0	27	27	27	18	0
Liverpool	33	36.2	0	24	21	21	15	18
St Helens	12	47.3	0	0	17	8	58	17
Sefton	22	50.7	0	0	23	9	50	18
Wirral	23	51.5	0	4	17	17	30	30

Local Education Authority	Number of schools	Percentage of pupils with 5+ A*-C GCSE grades or GNVQ	Percentage of maintained schools in which the following percentages of pupils achieved 5+ GCSE grades A*-C or the GNVQ equivalent					
			Under 10	10-19	20-29	30-39	40-59	60 or more
YORKSHIRE & HUMBER GOR	314	43.6	1	10	15	19	35	19
East Riding of Yorkshire	18	50.7	0	0	6	17	56	22
Kingston upon Hull	16	27.9	6	25	31	19	19	0
North East Lincolnshire	12	36.8	0	17	25	25	17	17
North Lincolnshire	14	42.7	0	0	7	36	50	7
York	11	55.4	0	0	18	18	18	45
North Yorkshire	42	58.9	0	0	5	7	43	45
South Yorkshire Met County	75	41.2	0	9	20	24	35	12
Barnsley	14	35.4	0	7	21	43	29	0
Doncaster	17	40.7	0	0	24	47	12	18
Rotherham	17	44.0	0	12	18	6	59	6
Sheffield	27	42.6	0	15	19	11	37	19
West Yorkshire Met County	126	41.4	2	14	15	19	34	16
Bradford	25	34.7	4	24	20	12	24	16
Calderdale	15	48.9	0	13	0	27	40	20
Kirklees	25	45.0	0	8	16	24	36	16
Leeds	43	40.0	2	19	19	12	33	16
Wakefield	18	45.7	0	0	11	33	44	11
EAST MIDLANDS GOR	272	48.1	3	7	13	13	43	21
Derby	15	43.8	13	13	13	13	20	27
Derbyshire	47	51.9	0	2	13	6	53	26
Leicester	16	37.9	0	13	25	0	63	0
Rutland	3	57.2	0	0	0	0	67	33
Leicestershire	18	50.0	0	0	6	6	72	17
Lincolnshire	63	55.1	0	11	14	17	29	29
Northamptonshire	39	49.4	3	0	13	15	46	23
Nottingham	21	30.9	19	29	10	14	24	5
Nottinghamshire	50	46.1	0	2	14	18	46	20
WEST MIDLANDS GOR	379	46.6	0	7	16	18	36	23
Herefordshire	14	54.1	0	0	7	14	43	36
Worcestershire	30	50.7	0	7	3	17	53	20
The Wrekin	14	48.4	0	7	21	7	43	21
Shropshire	22	54.1	0	0	0	18	36	45
Stoke on Trent	17	36.3	0	12	35	12	35	6
Staffordshire	55	49.1	0	0	15	13	51	22
Warwickshire	37	51.3	0	3	8	19	41	30
West Midlands Met County	190	44.0	1	11	21	21	27	21
Birmingham	77	42.3	0	14	19	25	23	18
Coventry	19	43.8	0	16	5	26	32	21
Dudley	22	50.6	0	5	14	14	36	32
Sandwell	20	35.0	0	10	40	10	40	0
Solihull	14	56.7	0	7	14	7	14	57
Walsall	20	41.2	5	5	20	25	25	20
Wolverhampton	18	43.2	0	6	33	22	22	17

Local Education Authority	Number of schools	Percentage of pupils with 5+ A*-C GCSE grades or GNVQ	Percentage of maintained schools in which the following percentages of pupils achieved 5+ GCSE grades A*-C or the GNVQ equivalent					
			Under 10	10-19	20-29	30-39	40-59	60 or more
EAST OF ENGLAND GOR	338	52.6	0	1	11	12	40	35
Luton	12	38.7	0	0	25	25	50	0
Bedfordshire	17	50.2	0	0	12	12	47	29
Peterborough	13	44.6	0	0	8	46	38	8
Cambridgeshire	29	54.4	0	0	7	14	31	48
Southend	12	56.9	0	8	8	25	8	50
Thurrock	10	42.7	10	10	30	0	30	20
Essex	78	52.8	0	3	8	10	46	33
Hertfordshire	77	57.5	0	1	14	16	23	45
Norfolk	52	50.5	0	0	13	4	58	25
Suffolk	38	54.9	0	0	5	5	47	42
LONDON GOR	405	47.0	1	8	17	18	29	28
Inner London	134	39.0	1	13	25	19	26	16
Camden	10	51.1	0	0	10	10	50	30
Hackney	9	34.3	0	0	44	22	22	11
Hammersmith and Fulham	8	52.9	0	13	13	25	13	38
Haringey	10	31.6	0	40	10	20	20	10
Islington	9	29.2	0	11	44	33	11	0
Kensington and Chelsea	4	55.8	0	0	0	25	25	50
Lambeth	10	37.8	0	20	10	20	50	0
Lewisham	14	36.4	14	14	21	7	29	14
Newham	14	39.2	0	0	43	14	29	14
Southwark	13	34.5	0	23	31	0	31	15
Tower Hamlets	15	35.8	0	7	27	40	27	0
Wandsworth	10	45.4	0	20	20	10	20	30
Westminster	8	39.6	0	13	25	38	0	25
Outer London	271	50.7	0	6	13	17	30	34
Barking and Dagenham	8	38.6	0	0	50	13	25	13
Barnet	21	56.3	0	0	14	10	33	43
Bexley	16	49.5	0	6	19	25	13	38
Brent	13	46.3	0	8	15	15	38	23
Bromley	17	56.6	0	0	6	24	29	41
Croydon	23	46.0	0	17	13	13	26	30
Ealing	12	47.8	0	0	17	25	25	33
Enfield	16	47.6	0	6	19	13	38	25
Greenwich	14	34.9	0	21	14	29	21	14
Harrow	10	58.1	0	0	0	10	50	40
Havering	18	56.1	0	6	17	6	22	50
Hillingdon	16	47.8	0	6	6	25	31	31
Hounslow	14	46.2	0	7	7	29	29	29
Kingston upon Thames	10	62.4	0	0	0	30	20	50
Merton	9	40.8	0	22	11	22	22	22
Redbridge	16	64.2	0	0	0	0	50	50
Richmond upon Thames	8	55.6	0	13	0	13	50	25
Sutton	14	61.1	7	0	14	7	21	50
Waltham Forest	16	44.0	0	6	19	25	38	13

Local Education Authority	Number of schools	Percentage of pupils with 5+ A*-C GCSE grades or GNVQ	Percentage of maintained schools in which the following percentages of pupils achieved 5+ GCSE grades A*-C or the GNVQ equivalent					
			Under 10	10-19	20-29	30-39	40-59	60 or more
SOUTH EAST GOR	476	53.9	1	4	11	13	33	37
Bracknell Forest	6	49.7	0	0	17	33	0	50
Reading	8	48.2	0	25	0	25	25	25
Slough	11	53.5	9	0	18	36	0	36
West Berkshire	10	57.2	0	0	0	10	60	30
Windsor and Maidenhead	9	59.7	0	0	11	0	11	78
Wokingham	9	62.5	0	0	0	11	22	67
Milton Keynes	9	43.3	0	0	44	0	22	33
Buckinghamshire	34	65.1	0	6	9	9	29	47
Brighton and Hove	10	45.1	0	10	20	10	60	0
East Sussex	25	51.1	0	0	4	20	48	28
Portsmouth	9	35.0	11	11	22	0	44	11
Southampton	14	44.3	0	7	14	29	29	21
Hampshire	71	56.0	0	3	3	14	38	42
Isle of Wight	5	45.2	0	0	0	20	80	0
Kent	102	53.6	3	6	22	12	20	38
Medway	20	48.3	5	15	20	10	20	30
Oxfordshire	35	50.4	0	0	6	17	57	20
Surrey	53	59.5	2	4	2	11	32	49
West Sussex	36	55.8	0	0	3	11	47	39
SOUTH WEST GOR	301	53.1	0	2	9	13	41	35
Bath and North East Somerset	13	58.1	0	0	0	15	38	46
Bristol	20	32.7	0	15	45	20	5	15
North Somerset	10	51.5	0	0	10	30	20	40
South Gloucestershire	15	49.4	0	0	0	27	47	27
Cornwall	31	53.7	0	0	0	3	74	23
Isles of Scilly	1	70.8	0	0	0	0	0	100
Plymouth	18	51.7	0	6	22	17	22	33
Torbay	8	53.3	0	0	25	0	38	38
Devon	37	52.2	0	0	3	14	62	22
Bournemouth	10	52.3	0	0	20	30	20	30
Poole	8	59.2	0	0	25	13	13	50
Dorset	20	57.1	0	0	5	0	50	45
Gloucestershire	42	59.5	0	2	5	17	21	55
Somerset	30	55.5	0	0	10	3	47	40
Swindon	10	45.6	0	10	10	10	60	10
Wiltshire	28	56.2	0	0	0	18	46	36
TOTAL ENGLAND	3,133	48.7	1	6	14	16	36	28

¹ Excluding special schools and including City Technology Colleges.

² Excluding schools with fewer than five 15 year old pupils.

³ Number of pupils on roll aged 15 at the start of the 2000/01 academic year, i.e. 31 August 2000

⁴ Including attempts and achievements by these pupils in previous academic years.

TABLE 4

GCSE attempts and achievements¹ in selected subjects by 15 year old pupils in schools² by the end of 2000/01³

Thousands

	Attempted GCSE			Achieved grade A*-C			Achieved grade A*-G		
	Boys	Girls	Total	Boys	Girls	Total	Boys	Girls	Total
Any subject	291.7	285.1	576.7	211.7	233.1	444.8	287.5	282.1	569.7
English/Mathematics	275.5	274.8	550.3	117.3	135.2	252.5	266.6	267.3	533.9
Mathematics/Science	276.5	272.7	549.2	121.9	124.9	246.8	266.0	264.0	530.1
English/Mathematics/Science	270.7	270.2	540.9	106.5	121.0	227.5	261.0	262.1	523.1
English/Mathematics/Science and a Modern Language	222.2	240.4	462.6	78.0	105.3	183.3	214.8	234.0	448.7
English	278.0	277.4	555.4	141.1	184.2	325.2	273.9	274.8	548.7
Mathematics	284.8	279.1	563.9	143.1	143.6	286.7	274.7	270.6	545.3
Any Science	279.5	275.3	554.8	142.3	144.7	287.0	272.5	269.6	542.1
Single Award Science	25.4	24.5	49.9	3.9	5.0	8.9	23.2	23.0	46.1
Double Award Science	230.6	233.8	464.4	116.1	123.7	239.8	225.8	229.7	455.5
Physics	23.0	15.4	38.5	20.8	13.7	34.5	22.9	15.4	38.3
Chemistry	22.8	16.0	38.8	20.3	14.5	34.9	22.7	16.0	38.7
Biological Sciences	23.3	17.2	40.5	20.8	15.5	36.3	23.2	17.1	40.3
Other Sciences	2.0	0.9	3.0	1.1	0.4	1.5	2.0	0.9	2.9
Design and Technology ⁴	213.5	202.6	416.0	93.1	121.4	214.5	203.5	197.2	400.7
Information Technology ⁵	59.4	40.3	99.6	32.0	24.4	56.3	56.4	38.9	95.3
Business Studies	51.0	40.5	91.5	26.3	22.9	49.2	48.1	38.8	86.9
Home Economics	1.9	31.0	32.9	0.6	14.7	15.3	1.8	29.5	31.3
Geography	123.0	97.4	220.4	69.6	61.5	131.2	119.3	95.0	214.2
History	97.1	98.1	195.2	56.8	62.9	119.7	90.7	94.4	185.1
Humanities	9.9	10.6	20.5	3.6	5.1	8.7	8.8	9.8	18.6
Social Studies	4.0	10.3	14.4	1.8	6.0	7.7	3.9	10.2	14.1
Music	17.9	23.7	41.6	11.6	17.4	29.0	17.0	23.3	40.2
Any Modern Language	227.8	245.6	473.4	99.7	142.5	242.3	217.5	235.0	452.4
French	153.8	167.4	321.2	67.3	98.0	165.3	148.0	160.6	308.7
German	62.7	67.9	130.6	30.8	42.4	73.2	59.7	66.0	125.7
Spanish	19.5	26.2	45.6	9.4	16.2	25.6	17.8	23.9	41.6
Other Modern Languages	9.2	11.1	20.3	6.0	8.6	14.7	8.7	10.3	19.0
Art and Design	80.5	100.1	180.6	43.4	74.8	118.2	79.2	95.4	174.7
English Literature	239.0	254.3	493.3	132.3	179.5	311.7	221.7	240.2	461.9
Drama	33.6	56.1	89.8	20.6	42.9	63.5	31.6	52.0	83.6
Communication Studies	15.2	19.4	34.6	7.1	12.2	19.3	13.2	17.4	30.5
Classical Studies	6.9	6.8	13.6	5.9	6.0	11.9	6.5	6.5	13.1
Physical Education	68.4	37.2	105.7	35.6	20.7	56.3	62.1	33.9	95.9
Religious Education	41.4	59.1	100.4	20.6	38.3	58.9	36.6	54.8	91.4
Any other subjects	11.1	10.8	21.9	5.7	5.7	11.4	10.2	10.2	20.4

¹ For each subject, only one attempt is counted - that which achieved the highest grade.² Those in all schools who were 15 at the start of the 2000/01 academic year, i.e. 31 August 2000³ Including attempts and achievements by these pupils in previous academic years.⁴ Includes any combined syllabus of which Design and Technology is the major part.⁵ Also includes Computer Studies, Information Systems and any combined syllabus of which Information Technology is the major part.

TABLE 5

GCSE attempts and achievements¹ in selected subjects by 15 year old pupils in schools² by the end of 2000/01³

Percentage of 15 year old pupils in schools

	Attempted GCSE			Achieved grade A*-C			Achieved grade A*-G		
	Boys	Girls	Total	Boys	Girls	Total	Boys	Girls	Total
Any subject (000s)	292	285	577	212	233	445	288	282	570
Any subject	95	96	96	69	79	74	93	95	94
English/Mathematics	89	93	91	38	46	42	87	90	88
Mathematics/Science	90	92	91	40	42	41	86	89	88
English/Mathematics/Science	88	91	90	35	41	38	85	89	87
English/Mathematics/Science and a Modern Language	72	81	77	25	36	30	70	79	74
English	90	94	92	46	62	54	89	93	91
Mathematics	92	94	93	46	49	48	89	92	90
Any Science	91	93	92	46	49	48	89	91	90
Single Award Science	8	8	8	1	2	1	8	8	8
Double Award Science	75	79	77	38	42	40	73	78	75
Physics	7	5	6	7	5	6	7	5	6
Chemistry	7	5	6	7	5	6	7	5	6
Biological Sciences	8	6	7	7	5	6	8	6	7
Other Sciences	1	0	0	0	0	0	1	0	0
Design and Technology ⁴	69	69	69	30	41	36	66	67	66
Information Technology ⁵	19	14	17	10	8	9	18	13	16
Business Studies	17	14	15	9	8	8	16	13	14
Home Economics	1	10	5	0	5	3	1	10	5
Geography	40	33	37	23	21	22	39	32	36
History	32	33	32	18	21	20	29	32	31
Humanities	3	4	3	1	2	1	3	3	3
Social Studies	1	3	2	1	2	1	1	3	2
Music	6	8	7	4	6	5	6	8	7
Any Modern Language	74	83	78	32	48	40	71	80	75
French	50	57	53	22	33	27	48	54	51
German	20	23	22	10	14	12	19	22	21
Spanish	6	9	8	3	5	4	6	8	7
Other Modern Languages	3	4	3	2	3	2	3	3	3
Art and Design	26	34	30	14	25	20	26	32	29
English Literature	78	86	82	43	61	52	72	81	77
Drama	11	19	15	7	15	11	10	18	14
Communication Studies	5	7	6	2	4	3	4	6	5
Classical Studies	2	2	2	2	2	2	2	2	2
Physical Education	22	13	18	12	7	9	20	11	16
Religious Education	13	20	17	7	13	10	12	19	15
Any other subjects	4	4	4	2	2	2	3	3	3

¹ For each subject, only one attempt is counted - that which achieved the highest grade.² Those in all schools who were 15 at the start of the 2000/01 academic year, i.e. 31 August 2000³ Including attempts and achievements by these pupils in previous academic years.⁴ Includes any combined syllabus of which Design and Technology is the major part.⁵ Also includes Computer Studies, Information Systems and any combined syllabus of which Information Technology is the major part.

TABLE 6

GCSE results of 15 year olds¹ in educational establishments, analysed by subject and grade - by the end of 2000/01²

Subjects	Grades obtained										Total Entries
	A*	A	B	C	D	E	F	G	U	X	
	Thousands										
SCIENCES											
Biological Science	6.7	10.8	11.0	7.9	2.8	0.8	0.3	0.1	0.2	0.1	40.6
Chemistry	6.6	10.9	9.8	7.6	2.8	0.7	0.2	0.0	0.1	0.0	38.8
Physics	7.1	10.5	9.4	7.6	2.8	0.7	0.2	0.1	0.1	0.0	38.5
Single Award Science	0.2	0.6	1.2	7.0	9.5	11.4	10.5	5.9	3.4	0.3	50.0
Double Award Science	18.8	37.1	57.7	126.2	97.6	66.7	37.1	14.4	8.1	0.6	464.6
Other Science	0.2	0.3	0.4	0.6	0.5	0.4	0.3	0.1	0.1	0.0	3.0
Mathematics	17.8	53.8	103.5	124.0	96.1	84.2	56.7	27.5	15.7	3.0	583.1
Design and Technology ³	10.3	44.5	63.2	98.7	83.4	55.3	33.4	17.4	12.4	3.4	422.0
Computer Studies	4.6	11.1	15.8	25.2	17.2	11.2	7.0	3.7	3.6	0.7	100.3
Home Economics	1.0	2.5	4.0	8.1	6.6	4.9	3.1	1.8	1.4	0.3	33.6
SOCIAL SCIENCES											
Business Studies	2.8	8.1	13.5	24.8	16.2	10.8	7.0	3.9	3.8	0.9	91.6
Geography	17.1	28.9	35.6	49.7	35.5	24.4	15.5	7.7	5.4	0.7	220.6
History	15.0	31.0	38.2	35.5	26.5	20.4	14.5	8.6	4.7	0.8	195.3
Economics	0.2	0.6	1.0	1.2	0.7	0.3	0.2	0.1	0.1	0.0	4.6
Humanities	0.4	1.5	3.0	3.9	3.8	3.2	2.4	1.5	0.8	0.1	20.5
Social Studies	0.4	1.2	2.3	3.8	2.7	1.7	1.0	0.5	0.6	0.2	14.5
Physical Education	3.9	11.5	19.7	21.5	26.5	14.8	6.0	1.6	0.5	0.4	106.4
Vocational Studies	0.4	1.1	1.7	4.2	2.9	2.1	1.3	0.7	0.8	0.2	15.5
ARTS											
Art and Design	11.1	26.0	37.0	45.7	26.1	18.2	10.6	4.9	1.2	2.3	183.2
English	18.7	61.2	106.6	139.1	111.8	66.1	33.1	12.9	4.8	1.8	556.3
English Literature	18.4	59.1	111.2	123.2	85.7	50.3	25.2	11.6	6.9	2.0	493.5
Drama	3.5	15.2	23.2	21.7	13.4	7.5	3.3	1.2	0.3	0.6	89.8
Communication Studies	1.1	3.8	6.3	8.3	6.5	4.3	2.4	1.2	0.6	0.5	35.2
French	21.3	32.4	40.8	70.8	59.1	44.8	31.0	16.2	2.1	2.4	321.3
German	8.6	14.4	19.1	31.2	24.5	16.2	9.9	5.2	0.8	0.7	130.7
Spanish	4.3	6.1	6.4	8.8	7.6	5.7	3.9	2.1	0.4	0.3	45.7
Other Modern Languages	4.1	4.7	3.5	2.8	2.2	1.6	1.0	0.4	0.1	0.4	20.9
Classical Studies	3.8	4.3	2.9	2.0	0.9	0.4	0.2	0.1	0.2	0.1	14.8
Music	4.3	7.9	9.3	7.6	4.6	3.2	2.1	1.2	1.1	0.4	41.7
Religious Studies	7.7	13.4	18.4	19.4	13.5	10.9	7.9	5.0	3.6	0.6	100.5
Total	239.1	551.9	833.7	1,164.8	888.2	610.2	364.3	172.1	91.8	24.6	4,944.0

¹ Number of 15 year olds, in all educational establishments, at the start of the 2000/01 academic year, i.e. 31 August 2000² Including attempts and achievements by these pupils in previous academic years .³ Combined syllabuses for Design and Technology and Information Systems are shown with the main subject.

TABLE 7

GCSE Short Courses results of 15 year olds¹ in educational establishments, analysed by subject and grade - by the end of 2000/01²

Subjects	Grades obtained										Grades Pending	Total Entries
	A*	A	B	C	D	E	F	G	U	X		
SCIENCES												
Design and Technology ³	744	2,862	4,428	6,424	5,924	4,115	2,800	1,690	1,563	466	5	31,021
Computer Studies	1,384	4,926	7,890	13,782	10,900	8,474	5,861	3,330	3,633	952	39	61,171
SOCIAL SCIENCES												
Geography	55	174	402	796	784	583	500	398	494	40	4	4,230
History	129	284	477	632	646	614	533	404	417	67	6	4,209
Physical Education	176	526	1,187	1,638	1,941	1,520	861	399	221	68	4	8,541
ARTS												
Art and Design	51	190	376	635	620	650	487	280	111	128	8	3,536
French	20	61	160	1,047	1,996	2,679	2,419	1,340	319	221	24	10,286
German	7	28	67	339	589	631	600	445	108	50	0	2,864
Spanish	14	34	46	145	204	285	317	203	33	18	11	1,310
Music	26	51	87	107	113	80	71	36	29	23	0	623
Religious Studies	9,839	15,989	24,690	30,470	23,983	20,345	13,485	8,626	5,431	4,434	275	157,567
Total	12,445	25,125	39,810	56,015	47,700	39,976	27,934	17,151	12,359	6,467	376	285,358

¹ Number of 15 year olds, in all educational establishments, at the start of the 2000/01 academic year, i.e. 31 August 2000² Including attempts and achievements by these pupils in previous academic years.³ Combined syllabuses for Design and Technology and Information Systems are shown with the main subject.

TABLE 8

GNVQ results of 15 year old pupils¹ in all schools, analysed by subject, qualification and level - by the end of 2000/01²

	Qualifications obtained					
	GNVQ Part One		Full GNVQ		GNVQ Language Unit	
	Intermediate	Foundation	Intermediate	Foundation	Intermediate	Foundation
Art and Design	663	45	233	55	-	-
Business	4,331	899	431	134	-	-
Health and Social Care	2,682	950	148	184	-	-
Leisure and Tourism	1,671	783	140	177	-	-
Manufacturing	667	343	38	40	-	-
Construction	-	-	-	48	-	-
Hospitality and Catering	-	-	34	59	-	-
Engineering	508	133	31	29	-	-
Information Technology	4,238	445	550	24	-	-
Management Studies	-	-	27	-	-	-
Media: Communication and Production	-	-	9	16	-	-
Performing Arts	-	-	34	7	-	-
French	-	-	-	-	11	27
German	-	-	-	-	-	6
Total	14,760	3,598	1,675	773	11	33

¹ Number of 15 year olds, in all schools, at the start of the 2000/01 academic year, i.e. 31 August 2000

² Including attempts and achievements by these pupils in previous academic years.

TABLE 9

GCE A/AS/VCE/AGNVQ results of students¹ aged 17-18², by type of establishment and gender in 2000/01³

	17-18 year old students entered for:							
	GCE A/AS/VCE/AGNVQ		GCE A/AS		VCE/Advanced GNVQs		Average point score ⁷ per entry	
	Number entered	Average point score ⁷	Number entered	Average point score ⁷	Number entered	Average point score ⁷	A/AS/VCE/AGNVQ	A/AS only
Comprehensive Schools ⁴								
Males	50,439	15.7	46,349	15.7	6,783	9.7	5.0	5.0
Females	57,223	17.0	52,514	16.9	7,732	11.3	5.4	5.4
Total	107,662	16.4	98,863	16.4	14,515	10.6	5.3	5.2
Selective Schools								
Males	8,718	24.3	8,656	24.3	135	14.2	6.5	6.5
Females	9,393	24.4	9,335	24.4	122	13.6	6.7	6.7
Total	18,111	24.4	17,991	24.3	257	13.9	6.6	6.6
Modern Schools								
Males	1,195	10.1	921	8.0	499	9.5	4.1	3.7
Females	1,646	12.4	1,306	10.1	641	11.2	4.8	4.4
Total	2,841	11.4	2,227	9.2	1,140	10.5	4.5	4.1
All Maintained Schools ⁵								
Males	60,355	16.9	55,929	16.9	7,417	9.8	5.3	5.3
Females	68,266	17.9	63,159	17.9	8,497	11.4	5.6	5.6
Total	128,621	17.4	119,088	17.4	15,914	10.6	5.5	5.5
Independent Schools ⁶								
Males	17,016	24.1	16,964	24.1	182	10.4	7.0	7.0
Females	15,163	25.1	15,130	25.1	149	12.8	7.3	7.3
Total	32,179	24.6	32,094	24.6	331	11.5	7.2	7.2
All Schools								
Males	77,371	18.5	72,893	18.6	7,599	9.8	5.7	5.7
Females	83,429	19.3	78,289	19.3	8,646	11.4	6.0	6.0
Total	160,800	18.9	151,182	18.9	16,245	10.6	5.8	5.8
Sixth Form Colleges								
Males	20,092	16.9	18,647	16.8	2,682	9.8	5.1	5.1
Females	24,097	18.7	22,519	18.5	3,126	11.3	5.5	5.5
Total	44,189	17.9	41,166	17.7	5,808	10.6	5.3	5.3
Other FE Sector Colleges								
Males	22,266	11.3	14,237	12.0	9,246	8.8	4.4	4.3
Females	28,463	12.9	20,011	13.1	10,217	10.4	4.8	4.7
Total	50,729	12.2	34,248	12.6	19,463	9.6	4.6	4.5
FE Sector Colleges								
Males	42,358	14.0	32,884	14.7	11,928	9.1	4.7	4.8
Females	52,560	15.6	42,530	15.9	13,343	10.6	5.2	5.2
Total	94,918	14.9	75,414	15.4	25,271	9.9	5.0	5.0
Schools & FE Sector Colleges								
Males	119,729	16.9	105,777	17.4	19,527	9.3	5.4	5.4
Females	135,989	17.8	120,819	18.1	21,989	10.9	5.7	5.7
Total	255,718	17.4	226,596	17.8	41,516	10.2	5.5	5.6
All Schools								
2000/01	160,800	18.9	151,182	18.9	16,245	10.6	5.8	5.8
Schools & FE Sector Colleges								
2000/01	255,718	17.4	226,596	17.8	41,516	10.2	5.5	5.6

¹ Including students who were entered for a pre-September 2000 or post-September 2000 A-level, be at the end of their second year of an advanced GNVQ or have entered for a double award VCE A-level in Summer 2001.

² Students aged 17-18 at the start of the academic year.

³ Cumulative GCE A/AS/VCE/AGNVQ results obtained in academic years 1999/00 and 2000/01.

⁴ Includes City Technology Colleges.

⁵ Includes the results for community and foundation special schools, hospital schools and pupil referral units.

⁶ Including non maintained special schools.

⁷ For information on how to calculate point scores refer to paragraph 34 of the text.

TABLE 10

GCE A level, Advanced Subsidiary and Advanced Supplementary examination attempts and passes in 2000/01¹ analysed by establishment type

	Number of candidates	Number of attempts per candidate	Successful ² attempts as a percentage of attempts	Percentage of candidates gaining passes:			Mean number of passes per candidate
				3 or more	2	1	
A Levels							
Schools³							
Males	76,112	3.0	90.3	65.2	16.8	13.6	2.7
Females	81,905	3.0	92.1	68.3	15.7	12.4	2.8
Total	158,017	3.0	91.2	66.8	16.2	13.0	2.8
Sixth Form Colleges							
Males	19,450	3.0	88.0	58.4	18.3	16.6	2.6
Females	23,665	3.0	91.0	64.4	16.0	14.5	2.7
Total	43,115	3.0	89.7	61.7	17.0	15.4	2.7
Other FE Sector Colleges (aged 18 or below)							
Males	14,670	2.3	80.3	34.6	20.6	29.6	1.9
Females	20,819	2.4	84.1	38.7	20.4	28.8	2.0
Total	35,489	2.3	82.5	37.0	20.5	29.2	1.9
All Establishments⁴							
Males	108,288	2.9	88.9	60.7	17.6	15.7	2.6
Females	123,829	2.9	91.0	63.7	16.7	14.7	2.7
Total	232,117	2.9	90.0	62.3	17.1	15.2	2.6
Other FE Sector Colleges (aged 19 or above)							
Males	6,739	1.4	69.1	7.1	10.3	53.3	1.0
Females	11,047	1.3	71.7	4.4	7.9	60.8	0.9
Total	17,786	1.3	70.7	5.4	8.8	58.0	0.9
Advanced Subsidiary Examinations							
Schools³							
Males	71,626	3.1	85.3	57.1	13.9	19.6	2.7
Females	77,889	3.2	89.1	61.9	12.7	18.5	2.8
Total	149,515	3.1	87.3	59.6	13.3	19.0	2.7
Sixth Form Colleges							
Males	25,381	2.9	82.6	48.9	15.2	25.2	2.4
Females	29,662	3.0	88.5	56.4	13.1	23.1	2.6
Total	55,043	2.9	85.9	52.9	14.1	24.1	2.5
Other FE Sector Colleges (aged 18 or below)							
Males	22,041	2.3	72.2	29.6	15.3	32.3	1.7
Females	29,371	2.4	78.9	35.8	14.9	32.4	1.9
Total	51,412	2.4	76.1	33.2	15.1	32.4	1.8
All Establishments⁴							
Males	118,172	2.9	82.8	50.5	14.5	22.9	2.4
Females	135,594	3.0	87.2	55.6	13.3	22.1	2.6
Total	253,766	3.0	85.2	53.3	13.9	22.4	2.5
Other FE Sector Colleges (aged 19 or above)							
Males	4,420	1.4	68.5	6.3	8.3	56.2	0.9
Females	6,792	1.2	73.1	4.1	6.6	64.2	0.9
Total	11,212	1.3	71.2	5.0	7.3	61.1	0.9
Advanced Supplementary Examinations							
Schools³							
Males	9,767	1.1	69.9	0.2	3.7	67.6	0.8
Females	9,053	1.1	77.6	0.2	4.3	74.2	0.8
Total	18,820	1.1	73.6	0.2	4.0	70.8	0.8
Sixth Form Colleges							
Males	2,439	1.1	67.0	0.2	3.8	64.9	0.7
Females	2,252	1.1	74.2	0.1	2.7	72.9	0.8
Total	4,691	1.1	70.4	0.1	3.3	68.7	0.8
Other FE Sector Colleges (aged 18 or below)							
Males	1,456	1.1	65.0	0.2	3.2	62.6	0.7
Females	1,833	1.0	67.8	0.1	1.9	66.8	0.7
Total	3,289	1.1	66.5	0.1	2.5	64.9	0.7
All Establishments⁴							
Males	13,464	1.1	69.0	0.2	3.7	66.6	0.7
Females	12,957	1.1	75.9	0.2	3.7	73.0	0.8
Total	26,421	1.1	72.3	0.2	3.7	69.8	0.8
Other FE Sector Colleges (aged 19 or above)							
Males	507	1.1	57.9	0.0	1.8	58.0	0.6
Females	635	1.0	60.5	0.0	1.3	60.2	0.6
Total	1,142	1.0	59.3	0.0	1.5	59.2	0.6

¹ Attempts and passes in the 2000/01 academic year only.² The total number of grade A-E passes as a percentage of the total number of attempts.³ Including all candidates of all ages in all maintained and independent schools.⁴ Including all candidates in all schools and sixth form colleges, and all of those aged 18 or below in other FE sector colleges.

TABLE 11

Success rates¹ of GCE A level² and Advanced Supplementary examination students by gender by age group in selected subjects

	Males				Females			
	All age groups		Aged 17-18 ⁴		All age groups		Aged 17-18 ⁴	
	Candidates	Success rate	Candidates	Success rate	Candidates	Success rate	Candidates	Success rate
Any Subject								
A Level	115,669	92.9	104,562	94.7	136,180	93.5	119,395	95.8
Advanced Supplementary	17,163	70.3	16,669	70.3	17,718	76.1	17,172	76.0
English								
A Level	23,815	92.3	22,362	93.2	56,411	93.6	52,586	94.6
Advanced Supplementary	252	88.5	247	88.7	485	88.2	473	88.8
Mathematics								
A Level	34,826	87.0	33,069	87.6	20,951	90.4	19,809	91.0
Advanced Supplementary	5,629	64.0	5,401	64.0	3,674	70.6	3,519	70.5
Physics								
A Level	22,644	88.6	21,769	89.0	6,268	91.6	5,935	92.0
Advanced Supplementary	798	52.8	769	52.8	250	70.4	236	70.3
Chemistry								
A Level	17,832	90.0	16,992	90.5	17,499	91.7	16,546	92.3
Advanced Supplementary	498	47.4	482	46.7	488	52.5	473	52.4
Biology								
A Level	17,881	87.1	16,973	87.9	29,251	89.0	27,435	90.3
Advanced Supplementary	768	57.3	724	56.1	1,296	60.5	1,217	59.2
Technology								
A Level	10,432	90.5	10,338	90.6	4,401	94.0	4,364	94.0
Advanced Supplementary	49	77.6	48	79.2	24	83.3	23	82.6
Geography								
A Level	18,339	91.7	18,050	91.8	15,550	94.0	15,274	94.1
Advanced Supplementary	223	70.0	214	69.6	182	72.0	180	71.7
History								
A Level	16,653	88.8	15,932	89.6	18,839	87.8	17,953	88.8
Advanced Supplementary	93	57.0	92	57.6	120	71.7	118	71.2
Music								
A Level	2,777	93.1	2,615	93.3	3,503	95.0	3,380	95.0
Advanced Supplementary	323	87.3	320	87.2	416	91.3	409	91.4
French								
A Level	5,058	92.8	4,600	92.8	11,273	91.2	10,570	91.2
Advanced Supplementary	444	84.2	437	84.2	696	79.6	677	79.2
Business Studies								
A Level	18,047	90.1	17,058	91.5	14,784	89.5	13,861	91.2
Advanced Supplementary	401	73.3	393	74.3	326	73.3	318	73.9
General Studies								
A Level	45,580	84.9	44,422	85.2	49,688	84.7	48,269	85.0
Advanced Supplementary	3,987	74.3	3,951	74.2	4,507	77.3	4,460	77.2

¹ The total number of grade A-E passes as a percentage of the total number of attempts.² Including pre-September 2000 and post-September 2000 A levels.³ Cumulative GCE A /Advanced Supplementary results obtained in academic years 1999/00 and 2000/01. Including students who were entered for a pre-2000 or post-2000 A level, be at the end of their second year of an advanced GNVQ or have entered for a double award VCE A level in Summer 2001.⁴ Age at the start of the 2000/01 academic year, i.e. 31 August 2000.

TABLE 12

GCE A level¹ and Advanced Supplementary examination results of 17-18² year old students in all schools and colleges

	Grades obtained								Total Entries
	A	B	C	D	E	N	U	X	
A Levels									
Biological Sciences	8,164	8,911	8,834	7,618	6,167	2,986	1,672	94	44,452
Chemistry	8,713	7,344	6,252	4,760	3,579	1,878	911	96	33,538
Physics	6,847	5,521	5,154	4,094	3,210	1,793	1,020	60	27,704
Other Science	864	1,121	1,493	1,409	1,043	437	235	41	6,643
Mathematics	16,947	10,899	9,452	8,280	6,335	3,386	2,526	252	58,082
Computer Studies	1,620	2,843	4,424	4,737	3,538	1,857	1,192	88	20,300
Design and Technology	2,201	2,454	3,759	3,215	1,957	830	366	74	14,866
Home Economics	156	198	235	247	181	112	75	3	1,207
Business Studies	3,381	6,554	8,109	6,428	3,774	1,769	817	90	30,924
Geography	6,297	7,457	7,532	5,972	3,681	1,613	685	83	33,324
History	6,202	7,037	7,476	5,975	3,530	1,967	1,539	156	33,884
Economics	3,693	3,160	3,417	2,957	1,911	996	627	51	16,819
Social Studies	8,818	11,845	12,493	10,192	7,601	4,049	3,454	469	58,943
Physical Education	2,030	2,335	4,115	4,328	2,823	1,043	309	68	17,058
Vocational Studies	309	484	486	473	393	282	316	52	2,796
Art and Design	8,797	7,109	8,490	5,522	2,536	657	225	513	33,891
English	12,662	15,374	19,626	16,322	9,215	3,330	1,016	351	77,903
Communication Studies	3,532	5,350	8,717	6,512	3,337	1,249	730	218	29,648
French	3,691	3,093	2,965	2,462	1,695	794	410	55	15,170
German	2,095	1,518	1,432	1,145	786	304	177	31	7,488
Spanish	1,203	1,022	869	603	409	31	44	32	4,447
Other Modern Languages	1,519	923	577	244	116	125	68	19	3,494
Classical Studies	1,368	1,293	989	637	266	125	68	19	4,765
Music	1,368	1,220	1,541	1,207	600	240	95	21	6,299
Religious Studies	1,333	1,763	1,971	1,300	670	294	198	24	7,553
General Studies	11,979	14,932	17,998	19,048	14,877	7,945	4,847	1,052	92,691
Total	125,798	131,763	148,414	125,691	84,230	40,157	23,680	4,015	683,914
Advanced Supplementary									
Biological sciences	26	43	94	192	774	424	375	12	1,946
Chemistry	12	35	51	118	257	274	187	21	955
Physics	29	47	75	129	292	194	222	15	1,005
Other Science	134	134	139	162	142	93	81	12	897
Mathematics	875	781	933	1,352	2,072	1,257	1,670	155	9,099
Computer Studies	61	140	259	325	384	231	248	23	1,675
Design and Technology	11	13	16	9	8	8	2	4	71
Home Economics	4	2	2	5	5	5	9	0	32
Business Studies	44	66	104	178	135	96	69	19	711
Geography	26	25	31	50	146	54	52	10	394
History	12	24	30	37	34	31	35	7	210
Economics	45	49	64	72	75	48	75	5	433
Social Studies	224	324	424	569	1,265	436	678	98	4,022
Physical Education	26	47	37	41	19	17	34	8	229
Vocational Studies	36	57	72	92	113	91	117	20	598
Art and Design	147	139	199	200	143	58	27	39	954
English	88	127	200	133	99	47	23	11	728
Communication Studies	14	64	105	84	31	20	6	6	330
French	131	140	179	173	281	118	74	18	1,114
German	53	63	76	116	127	40	26	5	506
Spanish	35	25	32	26	41	18	15	9	201
Other Modern Languages	16	24	19	17	12	5	4	2	100
Classical Studies	70	69	59	55	26	21	12	5	317
Music	121	146	162	139	86	47	23	8	732
Religious Studies	130	212	236	218	171	87	60	19	1,137
General Studies	724	885	1,324	1,570	1,873	937	904	194	8,411
Total	3,094	3,682	4,926	6,066	8,612	4,658	5,028	725	36,818

¹ Including pre-September 2000 and post-September 2000 A levels.² Age at start of the 2000/01 academic year i.e. 31 August 2000.

TABLE 13

GCE Advanced Subsidiary examination results of 16¹ year old students in all schools and colleges analysed by subject and grade in 2000/01

	Grades obtained							Pending	Total Entries
	A	B	C	D	E	U	X		
Candidates aged 16									
Biological Sciences	8,548	7,901	8,266	7,613	6,046	6,456	394	21	45,245
Chemistry	7,277	6,148	5,661	4,607	3,348	3,723	215	7	30,986
Physics	6,339	4,940	4,820	4,031	3,047	3,458	177	34	26,846
Other Science	744	782	941	983	749	666	55	1	4,921
Mathematics	9,199	5,996	6,292	6,330	5,667	12,277	812	36	46,609
Computer Studies	2,437	4,145	6,016	6,516	5,202	5,151	540	267	30,274
Design and Technology	1,640	2,392	3,312	3,358	2,521	2,098	308	8	15,638
Home Economics	129	135	158	159	110	74	11	0	776
Business Studies	3,649	5,717	7,476	6,693	4,459	3,398	341	70	31,803
Geography	6,010	6,132	6,547	5,294	3,490	2,466	224	24	30,187
History	6,261	8,251	8,183	5,570	2,973	1,878	239	47	33,402
Economics	3,111	2,339	2,030	1,685	1,225	1,238	92	9	11,729
Social Studies	11,670	13,462	15,870	14,574	11,168	11,056	1,358	123	79,281
Physical Education	2,024	2,680	4,026	4,311	3,053	1,857	293	74	18,318
Vocational Studies	334	320	448	460	367	720	73	5	2,727
Art and Design	8,432	6,368	6,497	5,100	3,125	2,875	1,237	400	34,034
English	13,543	17,661	21,299	17,239	8,916	3,788	887	223	83,556
Communication Studies	3,196	6,311	7,337	4,790	2,223	1,357	388	33	25,635
French	3,998	3,138	2,999	2,464	1,623	1,349	223	12	15,806
German	1,711	1,338	1,441	1,245	845	585	73	16	7,254
Spanish	1,020	891	791	594	417	329	55	1	4,098
Other Modern Languages	471	280	201	135	102	56	32	10	1,287
Classical Studies	1,404	945	820	525	292	129	26	0	4,141
Music	1,360	1,568	1,679	1,161	548	288	88	14	6,706
Religious Studies	1,542	2,013	1,972	1,437	872	632	96	11	8,575
General Studies	5,752	7,120	9,242	9,259	7,645	7,472	841	130	47,461
Total	111,808	118,978	134,331	116,139	80,052	75,423	9,078	1,577	647,387
Candidates of all ages									
Biological Sciences	9,298	8,799	9,421	8,949	7,313	8,249	645	37	52,711
Chemistry	7,970	6,921	6,524	5,441	4,061	4,678	337	9	35,941
Physics	6,916	5,567	5,522	4,764	3,636	4,283	292	58	31,047
Other Science	976	1,113	1,380	1,365	1,077	1,065	132	5	7,113
Mathematics	10,334	6,788	7,199	7,347	6,742	14,991	1,222	51	54,674
Computer Studies	2,750	4,771	7,151	7,937	6,643	7,211	932	338	37,733
Design and Technology	1,722	2,528	3,545	3,684	2,839	2,555	410	8	17,297
Home Economics	133	156	171	180	134	93	13	0	880
Business Studies	4,081	6,573	8,798	8,169	5,695	4,838	594	111	38,859
Geography	6,321	6,528	7,110	5,894	3,978	2,989	295	29	33,144
History	6,641	8,859	8,987	6,261	3,472	2,287	347	70	36,924
Economics	3,456	2,624	2,433	2,004	1,537	1,663	155	12	13,884
Social Studies	13,699	16,160	19,560	18,288	14,435	15,395	2,622	251	100,410
Physical Education	2,210	3,001	4,533	5,002	3,680	2,465	456	97	21,449
Vocational Studies	531	559	750	784	643	1,273	173	10	4,723
Art and Design	10,141	7,937	8,132	6,436	4,131	4,134	2,271	678	43,860
English	14,656	19,293	23,665	19,597	10,453	4,842	1,284	309	94,099
Communication Studies	3,773	7,603	9,006	6,110	2,997	2,119	649	44	32,301
French	4,713	3,567	3,384	2,724	1,819	1,509	352	25	18,093
German	2,038	1,490	1,586	1,353	906	646	126	20	8,165
Spanish	1,476	1,178	1,017	737	503	442	181	5	5,539
Other Modern Languages	1,175	611	407	252	172	136	115	30	2,898
Classical Studies	1,566	1,056	926	622	356	176	44	0	4,746
Music	1,557	1,799	1,940	1,412	706	381	164	23	7,982
Religious Studies	1,664	2,225	2,234	1,658	1,025	794	140	15	9,755
General Studies	6,156	7,755	10,289	10,483	8,823	9,242	1,202	207	54,157
Total	125,964	135,476	155,688	137,473	97,810	98,520	15,158	2,445	768,554

¹ Age at start of the 2000/01 academic year i.e. 31 August 2000.

TABLE 14

Advanced GNVQ results of 17-18¹ year old students in all schools and colleges in 2000/01² analysed by schools and colleges, subject and grade

	Grades obtained				Total students
	Distinction	Merit	Pass	No result	
SCHOOLS					
Art and Design	454	408	183	86	1,131
Business	1,930	3,059	1,559	897	7,445
Health and Social Care	780	1,073	392	327	2,573
Leisure and Tourism	530	1,009	545	310	2,394
Manufacturing	7	11	20	10	48
Construction	0	0	0	1	1
Hospitality and Catering	5	4	2	1	12
Science	83	196	113	60	452
Engineering	26	26	19	7	78
Information Technology	256	381	239	139	1,015
Media: Communication and Production	43	51	16	16	126
Retail and Distribution	0	2	0	0	2
Land and Environment	5	4	0	3	12
Performing Arts	35	40	10	29	114
Total	4,157	6,270	3,099	1,887	15,414
FE SECTOR COLLEGES					
Art and Design	695	1,394	795	388	3,273
Business	1,441	2,437	1,287	869	6,034
Health and Social Care	619	1,229	611	395	2,854
Leisure and Tourism	907	1,700	1,271	663	4,541
Manufacturing	3	3	1	0	7
Construction	60	149	87	67	363
Hospitality and Catering	80	182	206	106	574
Science	123	274	177	146	720
Engineering	157	309	289	172	927
Information Technology	567	1,589	1,284	586	4,026
Media: Communication and Production	257	453	193	125	1,028
Retail and Distribution	14	34	22	13	83
Land and Environment	4	8	1	3	16
Performing Arts	101	87	31	58	277
Total	5,028	9,855	6,265	3,591	24,740
SCHOOLS & FE SECTOR COLLEGES					
Art and Design	1,149	1,802	978	474	4,404
Business	3,371	5,496	2,846	1,766	13,479
Health and Social Care	1,399	2,302	1,003	722	5,427
Leisure and Tourism	1,437	2,709	1,816	973	6,935
Manufacturing	10	14	21	10	55
Construction	60	149	87	68	364
Hospitality and Catering	85	186	208	107	586
Science	206	470	290	206	1,172
Engineering	183	335	308	179	1,005
Information Technology	823	1,970	1,523	725	5,041
Media: Communication and Production	300	504	209	141	1,154
Retail and Distribution	14	36	22	13	85
Land and Environment	9	12	1	6	28
Performing Arts	136	127	41	87	391
Total	9,185	16,125	9,364	5,478	40,154

¹ Age at the start of the academic year i.e. 31 August 2000² The number of 17-18 year old students who registered on an Advanced GNVQ course between 1 September and 31 December 1999

TABLE 15

GCE A level/AS and Advanced GNVQ achievements¹ of students² in all Schools and FE Sector Colleges - 1998/99 to 2000/01

	1998/99			1999/00			2000/01 ³		
	Males	Females	Total	Males	Females	Total	Males	Females	Total
Thousands									
Schools									
Students with 1 or more GCE A level (or AS/AGNVQ equivalent) passes	71.8	77.6	149.4	70.7	78.1	148.9	123.1	137.1	260.2
- as % of those attempting A/AS/AGNVQ	96.2	97.0	96.6	96.1	97.1	96.6	93.0	94.8	93.9
- as % of the 17 year old age group ⁴	22.8	26.0	24.3	22.7	26.5	24.6	39.2	46.5	42.8
Students with 2 or more GCE A level (or AS/AGNVQ equivalent) passes	65.4	71.9	137.3	64.8	72.5	137.4	95.7	109.4	205.2
- as % of those attempting A/AS/AGNVQ	87.6	90.0	88.8	88.1	90.1	89.2	86.7	89.5	88.2
- as % of the 17 year old age group ⁴	20.8	24.1	22.4	20.8	24.6	22.7	30.5	37.1	33.7
Students with 3 or more GCE A level (or AS/AGNVQ equivalent) passes	50.8	56.5	107.3	50.5	57.3	107.8	53.0	59.8	112.7
- as % of those attempting A/AS/AGNVQ	68.1	70.6	69.4	68.6	71.2	70.0	84.8	87.6	86.2
- as % of the 17 year old age group ⁴	16.1	18.9	17.5	16.2	19.4	17.8	16.9	20.3	18.5
FE Sector Colleges									
Students with 1 or more GCE A level (or AS/AGNVQ equivalent) passes	36.7	47.2	83.9	35.3	45.6	80.9	61.8	81.2	142.9
- as % of those attempting A/AS/AGNVQ	88.1	90.2	89.3	88.8	91.6	90.4	84.3	88.6	86.7
- as % of the 17 year old age group ⁴	11.7	15.8	13.7	11.3	15.5	13.3	19.7	27.5	23.5
Students with 2 or more GCE A level (or AS/AGNVQ equivalent) passes	31.8	41.2	73.1	31.2	40.8	71.9	44.2	60.0	104.2
- as % of those attempting A/AS/AGNVQ	76.5	78.8	77.8	78.4	81.9	80.4	80.7	85.4	83.4
- as % of the 17 year old age group ⁴	10.1	13.8	11.9	10.0	13.8	11.9	14.1	20.4	17.1
Students with 3 or more GCE A level (or AS/AGNVQ equivalent) passes	18.4	25.7	44.1	17.9	25.9	43.8	19.3	27.3	46.6
- as % of those attempting A/AS/AGNVQ	44.1	49.2	46.9	45.2	52.0	49.0	78.7	83.1	81.2
- as % of the 17 year old age group ⁴	5.8	8.6	7.2	5.8	8.8	7.2	6.2	9.3	7.7
Schools and FE Sector Colleges									
Students with 1 or more GCE A level (or AS/AGNVQ equivalent) passes	108.4	124.8	233.2	106.0	123.7	229.8	184.9	218.3	403.1
- as % of those attempting A/AS/AGNVQ	93.3	94.3	93.8	93.6	95.0	94.3	89.9	92.4	91.3
- as % of the 17 year old age group ⁴	34.5	41.8	38.0	34.0	42.0	37.9	58.9	74.1	66.3
Students with 2 or more GCE A level (or AS/AGNVQ equivalent) passes	97.2	113.2	210.4	96.0	113.3	209.3	139.9	169.5	309.3
- as % of those attempting A/AS/AGNVQ	83.6	85.6	84.7	84.7	87.0	85.9	84.7	88.0	86.5
- as % of the 17 year old age group ⁴	30.9	37.9	34.3	30.8	38.5	34.5	44.6	57.5	50.9
Students with 3 or more GCE A level (or AS/AGNVQ equivalent) passes	69.2	82.2	151.4	68.4	83.2	151.6	72.3	87.1	159.4
- as % of those attempting A/AS/AGNVQ	59.5	62.1	60.9	60.4	63.9	62.3	83.1	86.1	84.7
- as % of the 17 year old age group ⁴	22.0	27.5	24.7	22.0	28.2	25.0	23.1	29.5	26.2

¹ Each GCE AS and VCE AS attempt or pass counts as half of a GCE A level and each Advanced GNVQ or VCE double award as 2 GCE A levels² Figures are derived from the number of students aged 18 or under who achieved the stated result for the first time, in the relevant year, in all Schools and Further Education Sector Colleges.³ The increases in the number of students gaining 1 or more and 2 or more GCE A levels (or equivalents) are a result of Year 12 students entering for Advanced Subsidiaries under the Qualifying for Success reforms. This change has resulted in a break in the time series.⁴ The GAD estimates of the population aged 17 at 31 August are:

1998/99			1999/00			2000/01		
Males	Females	Total	Males	Females	Total	Males	Females	Total
314.7	298.7	613.5	311.6	294.6	606.3	313.6	294.7	608.3

TABLE 16

Update of data published in the Secondary School & School and College Performance Tables in November 2001- for each Local Education Authority and Government Office Region

	Percentage of 15 year old pupils ¹ achieving at GCSE or GNVQ equivalent			Average GCSE point score per 15 year old	Percentage achieving pre- 16 Vocational Qualification ²	Average point score of 17-18 year old students ¹			Advanced GNVQ	Percentage achieving post- 16 Vocational Qualification ³	
	5+ A*-C grades	5+ A*-G grades	No passes			entered for A/AS/VCE/ AGNVQ	entered for A/AS	entered for VCE/ AGNVQ		Advanced	Intermediate
NORTH EAST GOR	42.5	88.2	6.2	36.3	77.9	15.3	15.5	10.2	5.1	81.3	65.7
Hartlepool	40.4	87.5	5.0	35.5	75.7	15.7	16.7	9.3	5.2	91.0	76.0
Middlesbrough	35.0	85.5	6.6	32.5	85.2	14.0	13.5	11.3	5.1	82.2	73.3
Redcar and Cleveland	43.4	89.6	4.9	36.8	61.5	17.2	17.3	9.2	4.9	76.4	25.9
Stockton on Tees	44.8	91.6	4.1	38.5	-	17.2	17.7	9.7	5.6	55.0	54.5
Darlington	47.2	90.2	5.1	38.4	-	18.9	20.1	9.8	5.8	79.3	60.1
Durham	40.9	86.7	6.5	34.6	77.6	15.0	15.3	9.2	5.1	80.4	70.3
Northumberland	48.8	89.5	6.4	39.1	85.3	16.2	16.7	10.3	5.5	61.5	58.1
Tyne and Wear Met County	41.6	87.8	6.8	36.1	79.4	14.1	14.0	10.5	4.8	83.9	69.7
Gateshead	49.4	88.7	8.0	40.3	72.1	16.0	16.1	11.5	5.6	90.5	70.7
Newcastle upon Tyne	36.8	80.5	11.0	32.1	75.3	12.9	13.0	9.5	4.7	85.9	66.1
North Tyneside	46.6	90.7	5.3	38.1	89.7	14.7	14.3	10.3	4.8	63.2	71.7
South Tyneside	39.1	90.4	4.8	35.7	68.3	12.7	13.0	8.9	4.7	89.1	82.2
Sunderland	39.2	89.7	4.9	35.6	84.4	14.2	13.9	11.1	4.5	95.5	72.2
NORTH WEST GOR	46.1	89.2	5.5	37.3	73.0	16.9	17.4	10.2	5.2	79.8	69.6
Halton	39.9	90.9	4.2	35.4	67.3	14.0	14.1	8.8	4.1	-	72.7
Warrington	50.3	91.6	4.5	39.8	89.6	17.1	17.8	10.1	5.2	75.0	69.6
Cheshire	55.8	93.6	3.2	41.6	79.7	18.1	18.9	10.9	5.4	94.7	78.2
Cumbria	50.8	90.4	4.4	39.9	64.4	18.7	18.8	9.8	5.6	43.1	68.6
Greater Manchester Met County	44.3	88.6	5.9	36.1	74.5	16.1	16.4	9.8	5.0	78.3	66.9
Bolton	45.4	90.5	4.7	37.2	72.1	15.4	15.5	10.7	4.8	78.9	78.7
Bury	54.3	95.5	1.8	40.4	84.8	16.3	16.7	9.5	4.9	100.0	83.6
Manchester	31.0	76.7	13.6	28.9	74.5	14.7	15.2	9.4	5.2	80.1	49.5
Oldham	41.5	89.3	5.2	35.8	71.3	16.3	16.7	9.9	4.9	84.2	76.3
Rochdale	40.4	86.7	5.8	34.4	85.2	13.7	14.0	10.3	4.4	72.1	76.3
Salford	34.3	88.8	5.7	31.6	81.1	13.2	12.2	9.8	4.4	64.3	64.6
Stockport	54.2	91.9	4.9	39.8	88.9	16.4	16.6	9.8	5.0	77.7	58.2
Tameside	42.0	90.5	4.9	35.3	100.0	15.9	15.6	11.1	4.7	84.0	66.8
Trafford	57.8	91.2	3.7	42.2	72.4	21.3	21.7	11.6	6.0	85.1	52.6
Wigan	47.1	90.6	5.0	38.2	65.9	16.1	16.7	8.4	4.9	-	100.0
Blackburn with Darwen	37.6	88.2	6.8	35.2	72.9	15.6	16.5	9.0	5.3	88.8	68.3
Blackpool	35.6	85.7	6.7	33.0	-	15.4	15.7	9.8	4.6	76.5	70.0
Lancashire	50.1	91.1	4.2	39.6	81.3	19.4	20.3	12.1	5.8	83.6	73.8
Merseyside	42.2	86.3	7.0	35.2	65.6	15.9	16.4	9.6	4.9	80.3	67.1
Knowsley	27.1	77.8	11.6	26.8	78.7	11.0	10.2	11.9	4.1	89.1	50.0
Liverpool	35.2	82.5	8.9	31.5	50.9	14.5	15.1	8.9	4.8	75.7	66.7
St Helens	45.8	88.6	6.3	36.7	55.8	17.2	17.1	10.1	5.0	79.1	59.2
Sefton	50.0	92.3	4.0	39.7	81.6	15.9	16.6	9.9	4.8	87.9	65.8
Wirral	50.5	89.3	5.0	39.5	54.7	17.1	17.6	9.1	5.1	66.7	76.3

	Percentage of 15 year old pupils ¹ achieving at GCSE or GNVQ equivalent			Average GCSE point score per 15 year old	Percentage achieving pre- 16 Vocational Qualification ²	Average point score of 17-18 year old students ¹			Advanced GNVQ	Percentage achieving post- 16 Vocational Qualification ³	
	5+ A*-C grades	5+ A*-G grades	No passes			entered for A/AS/VCE/ AGNVQ	entered for A/AS	entered for VCE/ AGNVQ		Advanced	Intermediate
YORKSHIRE & HUMBER GOR	43.0	88.4	5.8	36.0	67.7	16.7	17.1	9.8	5.1	73.8	66.1
East Riding of Yorkshire	50.1	91.5	4.9	39.0	71.7	16.4	16.8	9.8	5.0	86.0	76.0
Kingston upon Hull	27.5	80.6	9.6	28.1	58.6	14.4	13.9	9.8	4.5	71.0	57.6
North East Lincolnshire	36.5	88.7	5.0	34.2	78.3	16.2	17.0	9.2	4.8	79.7	62.5
North Lincolnshire	42.3	92.8	2.7	37.0	56.7	18.0	17.1	11.6	5.0	80.8	77.9
York	54.2	90.8	4.2	40.9	52.5	18.8	20.2	9.2	5.7	79.1	66.4
North Yorkshire	58.3	93.3	3.0	42.9	72.5	19.6	20.2	11.1	5.8	73.1	81.4
South Yorkshire Met County	40.6	87.2	6.6	35.2	64.3	15.8	16.1	9.8	5.0	65.4	60.4
Barnsley	35.1	84.5	7.0	32.0	62.0	13.9	14.7	9.7	4.8	47.3	42.0
Doncaster	39.9	87.5	7.0	34.7	43.8	15.3	15.1	9.6	4.6	81.6	61.9
Rotherham	43.1	89.7	5.0	36.9	59.8	16.2	16.2	9.6	4.9	50.9	54.1
Sheffield	42.0	86.7	7.3	35.8	76.8	16.5	17.3	10.1	5.4	78.3	73.8
West Yorkshire Met County	40.9	87.6	6.1	34.9	72.5	16.2	16.6	9.4	5.0	73.8	67.3
Bradford	34.3	84.8	7.7	31.3	64.4	13.6	13.7	9.1	4.5	79.1	69.2
Calderdale	48.8	89.2	4.8	38.2	78.3	15.8	16.0	8.3	4.9	63.5	65.2
Kirklees	44.2	89.6	5.5	36.9	68.5	18.2	18.7	10.0	5.5	83.9	74.0
Leeds	39.6	86.5	6.6	34.3	78.5	16.4	17.0	9.3	5.1	62.1	50.5
Wakefield	44.8	90.7	4.4	37.1	72.9	16.6	16.9	9.7	5.0	87.4	87.9
EAST MIDLANDS GOR	47.5	88.9	5.4	38.0	70.9	16.3	16.4	9.9	5.2	84.7	72.4
Derby	43.0	88.3	6.4	34.4	42.4	15.0	15.4	9.5	5.2	84.1	57.1
Derbyshire	51.5	92.4	3.8	40.1	73.0	17.3	17.4	10.3	5.3	87.2	72.3
Leicester	37.0	82.1	8.0	32.3	63.6	14.8	14.6	9.4	5.2	83.3	75.0
Rutland	57.2	95.9	2.0	42.4	-	-	-	-	-	-	-
Leicestershire	49.6	90.9	4.7	39.1	61.5	16.5	16.9	10.1	5.3	81.2	77.0
Lincolnshire	54.2	91.4	3.9	41.4	71.1	19.0	19.3	10.4	5.7	80.5	68.0
Northamptonshire	48.7	88.2	5.9	39.1	97.5	15.5	15.3	10.1	5.0	90.0	80.8
Nottingham	30.3	76.7	10.8	28.2	90.9	15.6	16.3	9.0	5.1	83.1	70.0
Nottinghamshire	45.6	88.7	5.7	37.5	60.0	14.8	15.0	9.2	4.7	84.8	73.7
WEST MIDLANDS GOR	45.8	88.9	5.4	37.5	77.8	16.3	16.7	10.3	5.2	75.1	61.9
Herefordshire	53.5	90.7	5.1	41.4	100.0	18.9	19.9	10.6	5.7	76.1	45.1
Worcestershire	49.6	89.5	5.4	39.0	90.7	17.0	17.4	10.4	5.4	81.3	72.5
The Wrekin	47.3	91.2	4.6	41.3	94.1	18.0	18.4	10.2	5.8	78.7	71.0
Shropshire	53.8	91.8	3.3	41.5	36.6	18.6	18.7	10.6	5.4	99.7	84.0
Stoke on Trent	35.6	86.0	7.8	32.6	84.0	17.1	17.4	9.5	5.1	83.6	75.3
Staffordshire	48.2	91.1	4.7	38.4	81.7	16.2	16.4	10.7	5.0	83.1	70.2
Warwickshire	50.5	90.8	4.4	39.8	70.2	17.3	17.6	10.2	5.5	38.8	34.5
West Midlands Met County	43.1	87.4	5.8	36.1	78.1	15.3	15.7	10.2	5.0	79.3	62.3
Birmingham	41.2	86.6	5.9	35.7	72.8	15.7	16.3	9.2	5.0	78.2	62.3
Coventry	42.6	85.5	7.7	34.6	81.6	14.9	14.7	10.8	5.1	81.2	60.0
Dudley	49.7	92.1	4.1	39.2	89.7	15.2	16.2	10.4	5.0	83.7	73.7
Sandwell	34.3	84.4	7.9	32.1	45.1	12.1	11.2	9.8	4.0	67.1	72.3
Solihull	55.9	91.7	3.3	41.7	83.8	15.9	16.8	10.6	5.3	78.7	43.7
Walsall	40.6	85.9	5.3	34.7	74.0	15.7	16.1	9.3	5.0	81.4	71.1
Wolverhampton	42.4	88.2	5.7	35.8	79.3	14.4	14.0	11.8	5.0	78.9	57.0

	Percentage of 15 year old pupils ¹ achieving at GCSE or GNVQ equivalent			Average GCSE point score per 15 year old	Percentage achieving pre- 16 Vocational Qualification ²	Average point score of 17-18 year old students ¹			Advanced GNVQ	Percentage achieving post- 16 Vocational Qualification ³		
	5+ A*-C grades	5+ A*-G grades	No passes			entered for A/AS/VCE/ AGNVQ	entered for A/AS	entered for VCE/ AGNVQ		Advanced	Intermediate	
											Advanced	Intermediate
EAST OF ENGLAND GOR	51.8	90.8	4.5	40.6	76.0	16.5	17.0	9.9	5.4	80.4	70.0	
Luton	38.2	89.7	4.4	35.6	92.9	13.9	13.1	11.3	5.0	83.2	73.8	
Bedfordshire	49.2	90.4	4.7	40.1	97.4	17.0	16.7	10.3	5.2	76.3	64.2	
Peterborough	43.8	87.7	7.4	38.0	60.6	16.3	17.0	9.9	5.2	60.7	58.3	
Cambridgeshire	53.6	89.8	5.0	40.7	84.9	19.2	19.2	11.7	6.0	84.6	79.7	
Southend	55.9	87.8	5.0	42.8	94.7	17.7	21.1	8.5	5.6	96.5	87.5	
Thurrock	41.8	87.0	7.0	35.9	34.9	12.6	12.7	9.4	4.7	89.3	65.3	
Essex	52.0	91.5	4.2	40.9	74.8	16.7	17.5	9.6	5.2	78.9	65.2	
Hertfordshire	56.3	91.5	4.4	42.1	73.5	16.0	16.4	9.7	5.4	76.6	75.4	
Norfolk	49.7	90.4	4.4	39.0	76.6	16.0	16.2	10.1	5.3	77.9	73.1	
Suffolk	54.3	92.5	3.3	42.2	84.2	16.0	16.6	9.4	5.3	86.9	70.4	
LONDON GOR	46.1	89.2	4.6	38.0	77.0	14.7	15.1	9.9	5.2	79.3	62.0	
Inner London	38.0	86.2	5.3	34.3	67.0	13.2	13.4	9.8	4.9	79.3	58.2	
Camden	50.3	90.5	4.1	39.3	50.0	16.8	17.1	10.9	6.1	58.3	65.2	
Hackney	33.5	83.1	6.9	32.8	36.6	10.2	10.7	7.9	4.1	79.1	38.4	
Hammersmith and Fulham	51.1	88.4	3.9	39.1	53.7	15.4	16.2	9.4	5.4	71.6	44.1	
Haringey	30.9	79.5	7.9	30.6	48.8	12.3	12.5	6.9	4.9	76.9	41.4	
Islington	28.7	79.4	11.4	28.4	100.0	11.9	12.0	10.7	4.7	61.5	50.8	
Kensington and Chelsea	55.3	92.8	3.8	42.3	77.1	15.3	14.6	11.3	5.6	60.0	91.8	
Lambeth	35.9	85.2	4.5	33.4	62.3	11.6	11.6	8.1	3.8	83.3	59.3	
Lewisham	35.2	85.7	7.1	32.9	44.4	13.7	13.8	9.9	5.0	89.1	67.3	
Newham	39.1	91.5	2.4	36.2	58.7	12.1	12.4	10.1	4.6	89.4	63.5	
Southwark	33.6	84.6	4.7	32.0	74.4	10.8	10.3	12.2	4.5	82.6	55.1	
Tower Hamlets	34.8	88.2	3.5	33.7	97.4	10.0	9.7	8.9	4.1	71.0	50.7	
Wandsworth	43.2	86.1	4.8	36.7	75.6	13.2	13.5	9.1	5.0	88.7	67.0	
Westminster	39.2	84.8	6.1	33.9	91.4	12.0	12.2	10.2	4.4	67.7	67.4	
Outer London	49.9	90.6	4.2	39.8	82.5	15.2	15.6	9.9	5.2	79.3	64.4	
Barking and Dagenham	38.2	90.6	4.9	35.0	92.3	11.8	12.4	7.4	4.5	91.2	71.3	
Barnet	55.8	90.4	4.8	42.5	93.2	16.6	17.1	10.4	5.6	94.7	77.2	
Bexley	48.6	91.1	4.5	38.8	84.0	16.7	16.9	8.5	5.4	100.0	68.0	
Brent	45.6	88.9	3.8	36.7	-	13.4	13.8	9.7	5.0	47.4	63.6	
Bromley	55.5	92.8	3.7	42.6	68.8	16.0	16.4	9.9	5.2	74.8	61.2	
Croydon	45.1	90.9	4.0	37.6	76.6	11.9	12.0	8.5	4.5	95.3	69.2	
Ealing	47.1	93.0	1.8	39.8	88.5	14.9	14.9	10.7	5.3	-	64.4	
Enfield	47.0	91.5	3.2	38.7	63.6	14.4	15.0	9.8	5.2	63.9	61.7	
Greenwich	33.8	84.1	7.4	33.4	84.2	11.1	10.5	10.4	4.5	85.2	58.5	
Harrow	57.5	92.4	3.3	42.7	-	14.8	14.8	11.2	5.0	98.5	81.9	
Havering	55.7	92.2	3.7	42.8	87.5	16.9	17.9	9.1	5.0	73.9	68.8	
Hillingdon	47.1	90.2	3.8	37.9	70.1	15.3	15.8	10.1	5.4	73.3	44.4	
Hounslow	45.6	88.2	4.3	37.6	100.0	13.6	13.8	10.8	5.1	75.7	64.6	
Kingston upon Thames	61.3	89.0	6.0	45.4	76.5	16.2	16.6	10.4	5.4	72.8	68.3	
Merton	40.0	86.4	6.3	34.6	82.2	13.0	12.8	10.0	4.8	64.0	56.4	
Redbridge	63.0	94.2	2.1	45.3	50.0	15.3	15.6	9.1	5.3	84.2	72.4	
Richmond upon Thames	54.6	90.0	5.8	40.6	93.0	15.9	15.9	11.4	5.5	75.9	82.1	
Sutton	60.2	92.7	4.0	46.2	61.7	19.9	20.8	8.7	6.2	76.0	68.1	
Waltham Forest	42.8	89.0	6.4	35.7	62.4	12.9	13.5	9.4	4.5	78.3	67.2	

	Percentage of 15 year old pupils ¹ achieving at GCSE or GNVQ equivalent			Average GCSE point score per 15 year old	Percentage achieving pre- 16 Vocational Qualification ²	Average point score of 17-18 year old students ¹			Advanced GNVQ	Percentage achieving post- 16 Vocational Qualification ³		
	5+ A*-C grades	5+ A*-G grades	No passes			entered for A/AS/VCE/ AGNVQ	entered for A/AS	entered for VCE/ AGNVQ		Advanced	Intermediate	
											Advanced	Intermediate
SOUTH EAST GOR	52.8	90.9	4.6	40.9	77.2	16.9	16.9	10.4	5.5	78.5	71.3	
Bracknell Forest	49.1	91.5	5.1	38.2	100.0	14.5	14.3	10.0	5.1	82.2	71.8	
Reading	46.8	82.9	8.3	40.1	60.0	17.6	17.6	12.1	5.9	82.0	73.9	
Slough	52.4	93.5	2.8	41.5	-	16.5	16.7	12.0	5.5	90.2	77.8	
West Berkshire	56.1	93.4	3.1	42.0	91.3	17.2	17.4	9.2	5.2	71.4	74.0	
Windsor and Maidenhead	58.8	92.4	4.5	43.0	-	16.4	15.4	13.0	5.7	85.9	77.8	
Wokingham	61.3	92.6	4.0	43.1	-	16.5	16.5	12.6	5.7	-	100.0	
Milton Keynes	42.5	89.0	6.1	39.1	45.9	15.6	15.3	10.3	5.1	84.8	68.1	
Buckinghamshire	63.4	92.3	4.5	45.7	38.5	18.9	19.0	10.5	6.2	61.2	69.1	
Brighton and Hove	43.2	84.1	8.0	36.6	77.3	17.9	17.9	10.3	5.5	71.2	74.8	
East Sussex	50.3	89.6	4.9	39.7	85.1	15.8	15.9	9.7	5.1	75.1	74.1	
Portsmouth	34.3	84.2	8.1	32.0	18.2	15.4	15.3	9.6	4.8	66.0	53.0	
Southampton	43.1	89.4	5.3	36.6	91.7	14.5	14.4	10.3	5.2	78.1	74.1	
Hampshire	54.9	92.9	3.2	42.2	76.4	17.9	18.0	10.3	5.5	84.5	72.2	
Isle of Wight	44.4	86.0	7.3	36.0	64.1	15.3	15.7	10.8	5.3	76.8	69.3	
Kent	52.5	90.9	4.4	40.5	92.1	17.4	17.3	10.5	5.6	80.1	73.0	
Medway	47.8	91.8	3.9	39.1	41.7	16.1	16.1	10.7	5.2	79.2	75.1	
Oxfordshire	49.7	88.2	5.8	39.8	77.5	15.4	15.7	10.5	5.4	84.4	66.9	
Surrey	58.2	92.3	4.5	43.4	76.7	16.9	16.8	10.3	5.4	73.8	69.3	
West Sussex	55.0	91.9	3.6	41.5	87.2	16.0	15.9	10.1	5.4	69.3	67.9	
SOUTH WEST GOR	52.2	91.0	4.4	40.5	85.2	17.1	17.1	10.8	5.5	85.5	74.0	
Bath and North East Somerset	56.4	92.2	3.9	41.8	88.0	15.1	15.2	10.4	5.5	90.5	73.8	
Bristol	31.8	80.5	10.8	30.0	71.8	14.9	15.0	9.8	5.0	100.0	64.4	
North Somerset	50.8	91.3	4.1	40.3	90.0	17.1	17.3	8.2	5.4	99.3	93.4	
South Gloucestershire	48.7	92.9	3.9	39.4	88.7	15.4	15.0	11.8	5.3	75.6	70.7	
Cornwall	53.3	92.1	3.8	41.0	82.1	16.8	17.0	10.1	5.2	89.4	78.8	
Isles of Scilly	70.8	100.0	0.0	52.8	-	-	-	-	-	-	-	
Plymouth	50.3	90.3	4.5	39.6	97.1	17.3	17.4	11.8	5.5	90.8	83.7	
Torbay	51.7	90.5	5.4	40.0	68.4	19.1	19.9	8.8	5.8	74.1	70.3	
Devon	51.3	90.5	4.3	40.0	81.7	17.5	17.0	10.7	5.6	87.3	79.7	
Bournemouth	51.6	88.2	5.8	39.6	61.2	21.0	20.8	13.8	6.1	100.0	100.0	
Poole	58.5	94.2	2.7	45.1	-	16.3	17.2	10.4	5.4	75.3	53.4	
Dorset	56.4	92.1	4.3	42.2	93.5	17.5	16.6	12.7	5.4	83.4	65.0	
Gloucestershire	58.3	93.1	2.7	43.7	78.9	18.4	19.0	10.0	5.6	88.8	71.9	
Somerset	54.7	93.0	2.8	42.1	87.6	18.1	17.9	12.4	5.9	86.5	78.2	
Swindon	44.5	88.3	6.4	36.3	79.4	14.5	14.8	10.7	5.2	72.5	62.0	
Wiltshire	55.5	91.7	4.3	42.0	85.7	16.3	16.6	10.0	5.7	87.7	80.4	
TOTAL (Maintained⁴ sector)	47.9	89.6	5.1	38.5	75.6	16.4	16.6	10.2	5.3	79.4	67.5	
England Average⁵	50.0	88.9	5.5	39.3	75.7	17.4	17.8	10.2	5.5	79.4	67.5	
	(Secondary School Tables)				(School and College Performance Tables)							

¹ Age at the start of the 2000/01 academic year, ie. 31 August 2000.

² Pupils aged 15 studying for vocational qualifications or units awarded by C&G and RSA.

³ Students aged 16-18 in the final year of study for BTEC National Certificate or Diploma or C&G National Diploma of Vocational Education.

⁴ GCSE/GNVQ data and vocational qualifications for 15 year olds in LEA maintained schools and CTCs and 16-18 year old data for LEA maintained schools including CTCs and FE Sector Colleges

⁵ England averages in the secondary performance tables include all schools, and England averages in the school and college performance tables include all schools and FE Sector Colleges