

SFR 04/2012

28 March 2012

Coverage: England

**Theme: Children,
Education and Skills**

Issued by
Department for Education
Sanctuary Buildings
Great Smith Street
London SW1P 3BT

Telephone:
Press Office
020 7783 8300
Public Enquiries
0370 000 2288

Statistician
Andrew Clarke

Email
schools.statistics@education.gov.uk
on.gsi.gov.uk

Internet
<http://www.education.gov.uk/rsgateway/DB/SFR/s001060/index.shtml>

PUPIL ABSENCE IN SCHOOLS IN ENGLAND, INCLUDING PUPIL CHARACTERISTICS: 2010/11

INTRODUCTION

This Statistical First Release (SFR) reports on absence in state-funded primary, secondary and special schools during the 2010/11 school year. It provides information on the levels of absence (overall, authorised and unauthorised) by type of school, on persistent absentees, on absence by reason and by pupil characteristics.

The main change from last year's SFR is around the definition of persistent absentees. See Technical Note 7.

KEY POINTS

ABSENCE RATES

The percentage of possible sessions missed due to absence.

- The overall absence rate decreased, from 6.0 per cent in 2009/10 to 5.8 per cent in 2010/11, continuing the recent downward trend. (Table 1.1)
- The authorised absence rate decreased, from 5.0 per cent to 4.7 per cent, continuing the recent downward trend. (Table 1.1)
- There was a small increase in the unauthorised absence rate, from 1.0 per cent to 1.1 per cent, but this rate has changed little over the last five years. (Table 1.1)

PERSISTENT ABSENTEES

A persistent absentee is defined as having 46 or more sessions of absence (authorised and unauthorised) during the year, around 15 per cent overall absence rate.

- the percentage of pupil enrolments classed as persistent absentees decreased, from 6.8 per cent in 2009/10 to 6.1 per cent in 2010/11, continuing the recent downward trend. (Table 1.2)
- The rate of overall absence for persistent absentees was 25.0 per cent, more than 4 times the rate for all pupils. (Tables 1.1 and 1.2)
- Across state-funded primary, secondary and special schools, persistent absentees accounted for 26.6 per cent of overall absence; 20.8 per cent of authorised absence and 52.1 per cent of unauthorised absence. (Table 1.2)

In most state-funded primary schools (94.0 per cent of schools), 9.0 per cent or less of the school population were persistent absentees. The percentage of the school population who were persistent absentees was 9.0 per cent or lower in over 6 out of 10 state-funded secondary schools. (Table 4.1)

REASON FOR ABSENCE

It is not compulsory for schools to provide reasons for absence data; it is dependent on the software used by schools to collate their attendance data. See Technical Note 12.

- The most common reason for absence was “illness (not medical or dental appointments)”, as in 2009/10, which accounted for 59.0 per cent of overall absence. (Table 2.1)
- The second most common reason for absence was family holiday which includes the following reason codes: agreed family holiday; agreed extended family holiday; and family holiday not agreed. Absence for family holidays accounted for 9.5 per cent of overall absence (9.3 per cent in 2009/10). (Table 2.1)

DISTRIBUTION OF ABSENCE

- Per pupil enrolment, the average total absence in state-funded primary schools was just over 7 school days (around 14 sessions); in state-funded secondary schools it was just under 10 school days (around 20 sessions); and in special schools the figure was just over 14 school days (around 28 sessions).
- 7.1 per cent of pupil enrolments had no absence from school in 2010/11. (Table 3.1)

ABSENCE BY PUPIL CHARACTERISTICS

- In state-funded primary schools the rate of overall absence for boys was 5.1 per cent, slightly higher than that for girls (5.0 per cent). In state-funded secondary schools, however, the rate of overall absence was 6.7 per cent for girls, compared to 6.4 per cent for boys. (Table 5.1)
- In 2010/11, 3.9 per cent of girls in state-funded primary schools were persistent absentees. This is slightly lower than the proportion of boys who were persistent absentees (4.0 per cent). Conversely, in state-funded secondary schools, 8.8 per cent of girls were persistent absentees compared to 8.1 per cent of boys. (Table 5.2)
- The rate of overall absence for those pupils who are known to be eligible for and claiming free school meals (8.4 per cent) was again higher than that for other pupils (approximately 1.6 times higher). (Table 5.1)
- The occurrence of persistent absentees was higher amongst pupils who were known to be eligible for and claiming free school meals. In 2010/11 in state-funded primary, state-funded secondary and special schools, 12.9 per cent of pupils who were known to be eligible for and claiming free school meals were persistent absentees, compared with 4.6 per cent for other pupils. (Table 5.2)
- Rates of overall absence generally increase through the main national curriculum year groups. The rate of overall absence for pupils in national curriculum year group 11 (8.0 per cent) was 1.5 times the rate of overall absence for those pupils in national curriculum year group 7 (5.2 per cent). (Table 5.1)

- The proportion of pupil enrolments that were persistent absentees in national curriculum year group 11 was 12.8 per cent compared with 5.0 per cent for pupils in national curriculum year 7. (Table 5.2)
- Looking at absence rates by pupils with special educational needs, the highest rate of overall absence was amongst those pupils at *School Action Plus* at 8.9 per cent. This is 1.7 times the rate for those pupils with no identified special educational needs. (Table 5.1)
- Of all pupils with a statement of special educational needs, 14.5 per cent were persistent absentees; this is 3.3 times the persistent absence rate for those pupils with no identified special educational need. Of pupils at *School Action Plus* 14.5 per cent were persistent absentees and of pupils at *School Action* 9.8 per cent were persistent absentees. (Table 5.2)
- Of pupils with special educational needs, pupils with Profound and Multiple Learning Difficulty had the highest rate of overall absence, at 14.0 per cent. Those pupils with Speech, Language and Communications Needs had the lowest overall absence rate (6.3 per cent). (Table 5.5)
- Absence rates were highest for Traveller of Irish Heritage (23.0 per cent overall absence) and Gypsy/Roma (17.5 per cent overall absence) ethnic groups. The rates of overall absence for pupils of Black African (4.0 per cent overall absence) and Chinese (3.4 per cent overall absence) ethnic origin were well below the national average of 5.8 per cent. Caution is recommended in interpreting the data for Traveller of Irish Heritage children and Gypsy/Roma children due to potential under-reporting for these ethnic classifications. (Table 5.3)
- The proportion of persistent absentees was highest for Traveller of Irish Heritage (45.7 per cent of all Traveller of Irish Heritage children were persistent absentees); Gypsy/Roma (37.0 per cent) and White and Black Caribbean (9.2 per cent) ethnic groups. The proportion of persistent absence for all pupils was 6.1 per cent. Caution is recommended in interpreting the data for Traveller of Irish Heritage children and Gypsy/Roma children due to potential under-reporting for these ethnic classifications. (Table 5.4)

INCOME DEPRIVATION AFFECTING CHILDREN INDICES (IDACI)

- Overall rates of absence and persistent absence have decreased between 2009/10 and 2010/11 in the most deprived areas, but absence levels in these areas remain higher than those in less deprived areas. The rate of overall absence for pupils living in the most deprived areas (7.0 per cent) is 1.7 times the rate for pupils living in the least deprived areas (4.2 per cent).
- Half (50.4 per cent) of all persistent absentees live in the 30 per cent most deprived areas and account for 13.6 per cent of all absence. A fifth (20.0 per cent) of persistent absentees live in the 10 per cent most deprived areas. These pupils account for 5.4 per cent of all absence.
- Rates of overall and persistent absence are proportionally higher in urban areas overall but this pattern varies depending on the relative level of deprivation. Rates of overall and persistent absence are higher in the most deprived rural areas than the most deprived urban areas.

CHARTS

- Chart A** State-funded primary, secondary and special schools: Distribution of enrolments by length of overall absence, England 2010/11
- Chart B** State-funded primary, secondary and special schools: Overall absence rates by sector, England 2006/07 to 2010/11

TABLES

- Table 1.1** State-funded primary, secondary and special schools: Pupil absence by type of school, England 2006/07 to 2010/11
- Table 1.2** State-funded primary, secondary and special schools: Persistent absentees, those missing around 15 per cent of sessions (new definition), England 2006/07 to 2010/11
- Table 1.3** State-funded primary, secondary and special schools: Persistent absentees, those missing around 20 per cent of sessions, (old definition), England 2006/07 to 2010/11
- Table 1.4** State-funded primary, secondary and special schools: Persistent absentees, comparison by different rates of absence, England 2010/11
- Table 2.1** State-funded primary, secondary and special schools: Absence by reason and gender, England 2010/11
- Table 2.2** State-funded primary, secondary and special schools: Absence by reason for persistent absentees, England 2010/11
- Table 3.1** State-funded primary, secondary and special schools: Distribution of enrolments by length of overall absence, England 2010/11
- Table 3.2** State-funded primary, secondary and special schools: Percentage of enrolments by their overall absence rates, England 2010/11
- Table 4.1** State-funded primary, secondary and special schools: Number of schools by the percentage of persistent absentees, England 2010/11
- Table 5.1** State-funded primary, secondary and special schools: Pupil absence by characteristics, England 2010/11
- Table 5.2** State-funded primary, secondary and special schools: Characteristics of persistent absentees, England 2010/11
- Table 5.3** State-funded primary, secondary and special schools: Pupil absence by ethnic group, England 2010/11
- Table 5.4** State-funded primary, secondary and special schools: Persistent absentees by ethnic group, England 2010/11
- Table 5.5** State-funded primary, secondary and special schools: Absence rates by type of special educational need, England 2010/11

Table 6.1 State-funded primary, secondary and special schools: Pupil absence by Income Deprivation Affecting Children Indices (IDACI) decile of pupil residence, England 2009/10 and 2010/11

ADDITIONAL INFORMATION

Supplementary tables, including figures at Local Authority (LA), Region, Local Authority District level and Income Deprivation Affecting Children Indices (IDACI) are available on the DfE statistics website:

<http://www.education.gov.uk/rsgateway/DB/SFR/s001060/index.shtml>

Table 7.1 State-funded primary, secondary and special schools: Pupil absence by type of school, by Local Authority Area and Region, England 2010/11

Table 8.1 Pupil absence in schools by degree of rurality of school location, England 2010/11

Table 8.2 Pupil absence in schools by Local Authority District of school location, England 2010/11

Table 8.3 Pupil absence in schools by IDACI decile of pupil residence, England 2010/11

Table 8.4 Pupil absence in schools by degree of rurality of pupil residence, England 2010/11

Table 8.5 Pupil absence in schools by Local Authority District of pupil residence, England 2010/11

Table 8.6 Pupil absence in schools in by IDACI decile and degree of rurality of pupil residence, England 2010/11

Additional analyses showing absence in pupil referral units will be made available in May 2012 at <http://www.education.gov.uk/rsgateway/DB/SFR/s001060/index.shtml>. The exact date and format will be preannounced four weeks before publication.

In line with the Government's data transparency agenda, underlying data (including some summary school level analyses) will be published at <http://www.education.gov.uk/rsgateway/DB/SFR/s001060/index.shtml> on 28 March 2012 in the 'Publication's Underlying Data' section.

RELATED PUBLICATIONS

DfE: Pupil Absence in Schools in England, Including Pupil Characteristics: 2009/10
<http://www.education.gov.uk/rsgateway/DB/SFR/s000994/index.shtml>

DfE: Pupil Absence in Schools in England: Autumn Term 2010 and Spring Term 2011
<http://www.education.gov.uk/rsgateway/DB/SFR/s001030/index.shtml>

DfE: Pupil Absence in Schools in England - Spring Term 2011
<http://www.education.gov.uk/rsgateway/DB/SFR/s001020/index.shtml>

DfE: Statistical Release - Pupil Absence in Autumn Term 2010
<http://www.education.gov.uk/rsgateway/DB/SFR/s001003/index.shtml>

DfE: Outcomes for Children Looked After by Local Authorities in England, as at 31 March 2011
<http://www.education.gov.uk/rsgateway/DB/SFR/s001046/index.shtml>. The absence data shown in this release have been updated to the 2010/11 school year.

Guidance on school and pupil characteristics collected via the School Census is available on the DfE Statistics website: <http://www.education.gov.uk/rsgateway/schoolcensus.shtml>

TECHNICAL NOTES

Definitions

1. The measures of absence used here are rates of authorised, unauthorised and overall absence and persistent absentees. Some cases of unauthorised absence may change to authorised absence at a later stage (once an explanation has been reported to the school). However, if this is supplied to the school after the School Census database has closed, the absence will still be recorded as “no reason yet”. In this respect, using overall absence rates and the rate of persistent absentees gives more suitable data for performance reporting.
2. The Department for Education (DfE) has published specific guidance ‘Keeping Pupil Registers’, which provides guidance on applying the Education (Pupil Registration) (England) Regulations 2006; and ‘Absence and Attendance Codes’ which provides guidance on the use of codes to record pupil attendance and absence in schools. Both are available at <http://www.education.gov.uk/schools/pupilsupport/behaviour/attendance/schoolattendancedata/a0010008/pupil-registration-regulations-and-guidance>.
3. In law, parents of children of compulsory school age (aged 5 to 15 at the start of the school year) are required to ensure that they receive a suitable education by regular attendance at school or otherwise. Failure to comply with this statutory duty can lead to prosecution. Local authorities (LAs) are responsible in law for making sure that pupils attend school.
4. Schools are required to take attendance registers twice a day: once at the beginning of the morning session and once during the afternoon session. In their register, schools are required to distinguish whether pupils are present, engaged in an approved educational activity or are absent. Where a day pupil of compulsory school age is absent, schools have to indicate in their register whether the absence is authorised by the school or unauthorised.
5. Authorised absence is absence with permission from a teacher or other authorised representative of the school. This includes instances of absences for which a satisfactory explanation has been provided (for example, illness).
6. Unauthorised absence is absence without permission from a teacher or other authorised representative of the school. This includes all unexplained or unjustified absences. Arriving late for school, after the register has closed, is recorded as unauthorised absence.
7. The Department’s key measure of persistent absence relates to the school year. The Department recently reduced the threshold at which a pupil is classified as a persistent absentee. For the school year, this is now defined in terms of those with around 15 per cent overall absence (missing 46 or more sessions), down from around 20 per cent overall absence (64 or more sessions).
8. Data on the new threshold has been included in this release, along with data on the old threshold. In addition, we have also released national figures showing other potential persistent absence thresholds ie the numbers of pupils who miss 12.5 per cent, 10 per cent and 5 per cent of sessions.

Data Collection

9. Prior to 2005/06 the Department's main source of absence data was the Absence in Schools Survey which was conducted in May each year and collected the number of day pupils of compulsory school age together with information on the number of sessions missed due to authorised and unauthorised absence from maintained primary, maintained secondary, all special and independent schools, city technology colleges and academies in England. Findings from the 2005/06 survey have been published in SFR 35/2006 available at: <http://www.education.gov.uk/rsgateway/DB/SFR/s000679/index.shtml>. Coverage of the 2006/07 survey was reduced to maintained primary schools only. These findings have not been published as national statistics but have been used to validate data collected via the School Census (see Technical Note 11).
10. In 2006 the School Census started to collect pupil level absence data on a termly basis (spring, summer and autumn collections) from maintained secondary schools, city technology colleges and academies relating to absence during the 2005/06 school year. For the 2006/07 school year the scope of collection was extended to also include maintained primary schools and special schools. Special schools provide annual absence data in the autumn School Census.
11. Absence data for maintained primary schools in 2006/07 collected via the Absence in Schools Survey provides very similar absence rates (authorised, unauthorised and overall) to those derived from data collected via the School Census. A comparison of figures derived from the two sets of data is given in the table:

**MAINTAINED PRIMARY SCHOOLS:
COMPARISON OF ABSENCE DATA COLLECTED VIA THE ABSENCE IN
SCHOOLS SURVEY AND THE SCHOOL CENSUS**
2006/07
England

	Absence in Schools Survey	School Census
Maintained Primary Schools		
Number of day pupils of compulsory school age	..	3,306,900
Number of enrolments	3,439,020	3,463,120
Percentage of half days missed:		
authorised absence	4.68	4.66
unauthorised absence	0.51	0.52
overall absence	5.18	5.18

.. Not available

At school level the variation in the authorised absence rate between both collections is small – 94 per cent of schools show a difference of less than one percentage point. This pattern is also reflected in unauthorised absence rates.

12. Reason for absence was collected for the first time for the autumn term 2006. Schools are able to provide absence data using a reason code or by using total figures for the number of sessions missed due to authorised or unauthorised absence. A small proportion of schools have provided both a breakdown of absence by reason and totals. In addition, some schools do not have the required software to provide absence data by reason, and therefore are only able to provide overall totals. To derive absence rates, the sum of absence by reason has been used unless this is missing or is less than the total provided, in which case overall totals have been used.

13. Data are collected a term in arrears, meaning that where a school closes, data are not collected for the last term the school was open. School closures tend to take place in the summer, in which case data for the summer term (first half of) will not be collected.

Data Coverage and Quality

14. Schools have provided, via the School Census, individual level attendance data relating to the autumn term 2010, spring term 2011 and first half of the summer term 2011 for pupils aged 5 to 15 (at the start of the school year), who are non-boarders at the time of the census. In each term, the School Census has collected the number of possible sessions of attendance; the number of sessions missed, broken down by reason for absence, and overall totals of sessions missed due to authorised and unauthorised absence.
15. The School Census collects information for a pupil's attendance in the term prior to the census. For example, the spring School Census collects information on absence during the previous autumn term. Absence data for the 2010/11 year have been derived by linking pupil records collected in the spring 2011 School Census, summer 2011 School Census and autumn 2011 School Census to derive overall annual totals for the number of possible sessions; the number of sessions missed by reason for absence and the number of sessions missed due to authorised and unauthorised absence for each enrolment. Pupil characteristic data are not collected retrospectively. For example, the autumn 2011 School Census collects a pupil's national curriculum year group as at autumn 2011 together with their attendance in the previous summer 2011 term. Derived annual absence totals have been linked to characteristic data collected in the spring School Census. Where characteristic data are missing in the spring School Census, information collected in the summer School Census has been used. For free school meals and special educational needs, where this characteristic data was still missing, information collected in the autumn 2010 census, or, finally, the spring 2010 census has been used.
16. Information relating to pupil absence counts the number of pupil enrolments rather than the number of pupils. Where a pupil has moved school throughout the year, they will be counted more than once as they have recorded attendance in more than one school. Pupil absence is recorded for the period a pupil is enrolled at a school. Where a pupil has a dual registration, their absence may be returned from both schools, if both schools return absence data via the School Census.
17. For a pupil enrolment, if the number of possible sessions in a term is zero/missing or is less than the total number of sessions missed due to overall absence, or if the total number of possible sessions exceeds the limit for the term, then the absence variables have been set to zero for that term only, and that term's information has been discounted from this SFR. If the total number of possible sessions for each and every term equals zero, then the enrolment has not been included.
18. The information provided in this release is for 2.5 terms of the 2010/11 academic year. Data relating to the summer term is only required up until the Friday before the Spring Bank Holiday at the end of May, rather than the full term. Four sponsor-led academies opened at the beginning of January 2011, of which two mistakenly returned data for the autumn term. The autumn term data for these two schools has been excluded from this analysis. One sponsor-led academy opened half way through the spring term. As the absence data related to both the academy and its' predecessor school it has been removed from this analysis. Eight sponsor-led academies and one free school mistakenly returned data for the summer term. The summer term data for these schools has been excluded from this analysis. Year on year comparisons of local authority data may be affected due to schools converting to academies.

19. The information in this SFR is based on data returned by schools as part of the School Census. It does not include data which has been submitted by local authorities or schools outside of the School Census collection.
20. The data presented here are based on attendance registers which are taken twice a day: once at the beginning of the morning session and once during the afternoon session. It therefore does not include "internal unauthorised absence". This is defined as unauthorised absence by pupils between the school's twice-daily registrations, i.e. a pupil is recorded as attending during morning or afternoon registration but is physically not present at another part of the relevant session. The Department's current data systems are limited insofar as they only record and measure the registrations, not any subsequent absence.
21. The data contained in this SFR relates only to those pupils on the roll of a maintained primary or maintained secondary school, city technology college, academy or special school. It does not include those children who are not registered at a school.
22. For SFR03/2009 (<http://www.education.gov.uk/rsgateway/DB/SFR/s000832/index.shtml>), regarding 2007/08 figures, there was a late notification from a school, which was not deemed sufficiently significant to be reflected in the SFR. However, it was decided to feature this change in all future analyses, and so there are some minor differences in 2007/08 figures quoted in this publication.

Local Area Statistics

23. The Income Deprivation Affecting Children Index (IDACI) is provided by the Department for Communities and Local Government (CLG). IDACI is a subset of the Income Deprivation Domain of the Index of Multiple Deprivation 2010. The index is based on Super Output Areas (SOAs) in England. Each SOA is given a rank between 1 and 32,482 where 1 is the most deprived SOA. Each SOA is given a score showing the percentage of children aged under 16 that live in families that are income deprived, i.e. they are in receipt of certain benefits and their equivalised income is below 60% of median before housing costs. Further information about IDACI can be found on the CLG website at: <http://www.communities.gov.uk/publications/corporate/statistics/indices2010?view=Standard>.
24. IDACI bands for 2010/11 are based on 2010 IDACI scores. IDACI bands for 2007/08, 2008/09 and 2009/10 are based on 2007 IDACI scores. Care should be taken when comparing IDACI tables based on different IDACI scores.

Urban / Rural Areas

25. The Rural and Urban Area Classification is a product of a joint project to produce a single and consistent classification of urban and rural areas. The project was sponsored by a number of Government Departments. The rural and urban definitions classify Output Areas, Wards and Super Output Areas by aggregating the underlying hectare grid squares classifications for the measures of settlement size and sparsity. Up to 8 classes of Output Areas could be distinguished; four settlement types (urban, town and fringe, village, hamlet and isolated dwelling) in either a sparse or less sparse regional setting. Further information about the Rural and Urban Area Classification 2004 can be found on the National Statistics website at: <http://www.ons.gov.uk/ons/guide-method/geography/products/area-classifications/rural-urban-definition-and-la/index.html>

General

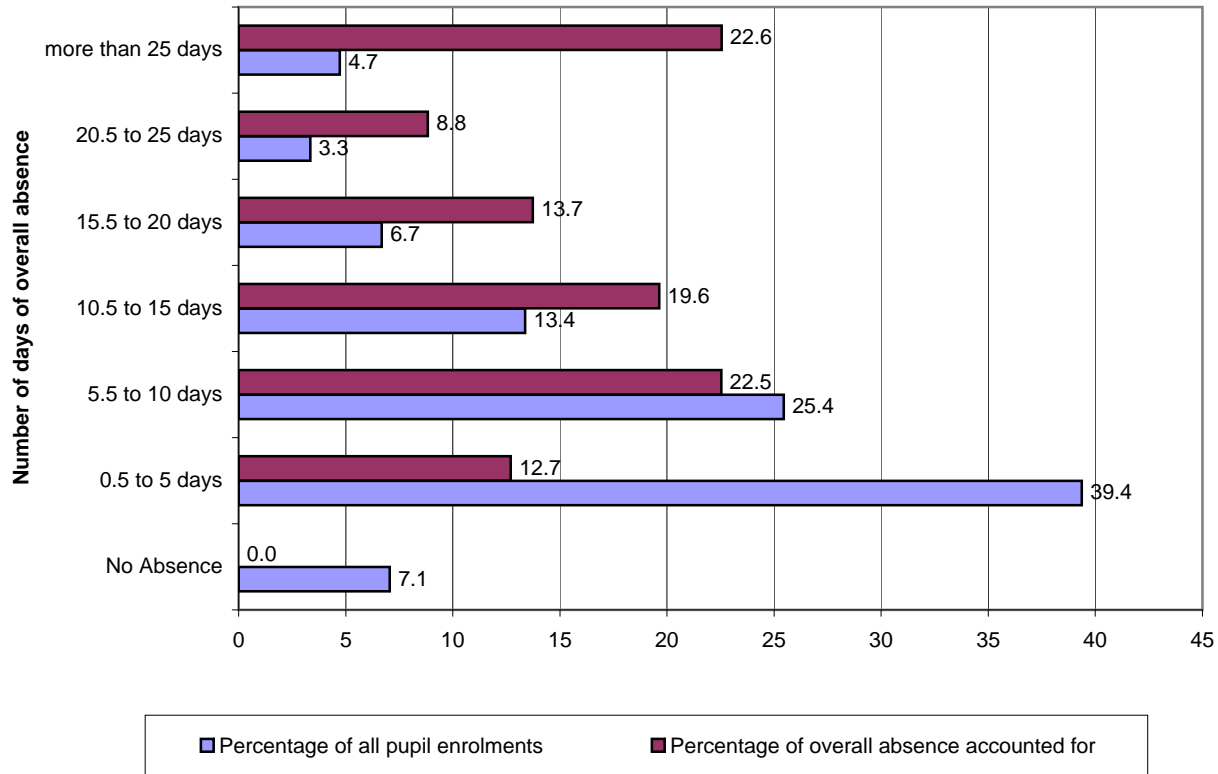
26. For national tables (tables 1.1 to 6.1), pupil or enrolment numbers have been rounded to the nearest 5. Pupil or enrolment numbers of 1 or 2 have been suppressed, being replaced in the table by an 'x'. The corresponding absence rates have also been suppressed. Where any number is shown as zero (0), the original figure was also zero. Where the numerator or denominator of any percentage calculated on enrolment numbers is 1 or 2, this has been replaced by an 'x'.
27. For the local authority table (table 7.1), national and region enrolment numbers have been rounded to the nearest 5. Enrolment numbers of 1 or 2 have been suppressed, being replaced in the table by an 'x'. The corresponding absence rates have also been suppressed. Where any number is shown as zero (0), the original figure was also zero. Where the numerator or denominator of any percentage calculated on enrolment numbers is 1 or 2, this has been replaced by an 'x'.
28. For tables 8.1 to 8.6 an 'x' indicates that a figure has been suppressed due to small numbers. Values of 1 to 2 inclusive, or percentages of persistent absentees based on 1 or 2 pupils who were (or were not) persistent absentees are suppressed. Some additional figures have also been suppressed to prevent the possibility of a suppressed figure being revealed.
29. All percentages have been rounded to one decimal place.
30. The following symbols have been used within this publication:
- | | |
|----|--|
| 0 | – zero |
| x | – small number suppressed to preserve confidentiality (see Technical Notes 26 to 28) |
| . | – not applicable |
| .. | – not available |
31. The United Kingdom Statistics Authority has designated these statistics as National Statistics, in accordance with the Statistics and Registration Service Act 2007 and signifying compliance with the Code of Practice for Official Statistics.
Designation can be broadly interpreted to mean that the statistics:
- meet identified user needs;
 - are well explained and readily accessible;
 - are produced according to sound methods, and
 - are managed impartially and objectively in the public interest.
- Once statistics have been designated as National Statistics it is a statutory requirement that the Code of Practice shall continue to be observed.
32. Further information, including local authority level analyses, are available through the following link:-
<http://www.education.gov.uk/rsgateway/DB/SFR/s001060/index.shtml>
33. There are no planned revisions to this Statistical First Release, however, if at a later date we need to make a revision, this will comply with the departmental revisions policy which is published at
<http://www.education.gov.uk/rsgateway/nat-stats.shtml>.
34. Enquiries (non-media) or feedback about information contained in this release should be addressed to Schools Data Unit, Room 1F Area H, Mowden Hall, Staindrop Road, Darlington, Co Durham, DL3 9BG or e-mail schools.statistics@education.gsi.gov.uk.
35. Media enquiries about information contained in this Statistical First Release should be made to the Department's Press Office at DfE, Sanctuary Buildings, Great Smith Street, London, SW1P 3BT or telephone 020 7783 8300.

Chart A

**STATE-FUNDED PRIMARY, SECONDARY AND SPECIAL SCHOOLS (1)(2)(3)(4):
DISTRIBUTION OF ENROLMENTS BY LENGTH OF OVERALL ABSENCE**

2010/11

England



(1) Includes middle schools as deemed.

(2) Includes primary academies.

(3) Includes maintained secondary schools, city technology colleges and academies (including all-through academies).

(4) Includes maintained and non-maintained special schools. Excludes general hospital schools.

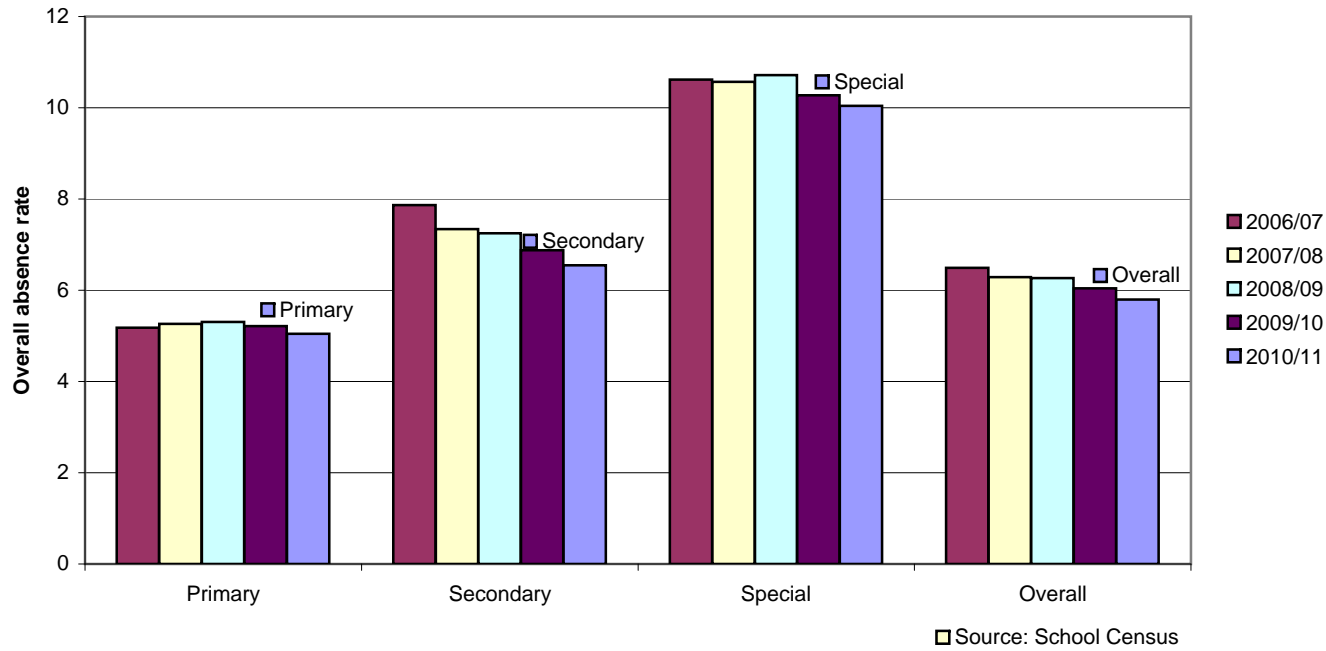
Chart B

STATE-FUNDED PRIMARY, SECONDARY AND SPECIAL SCHOOLS (1)(2)(3):

OVERALL ABSENCE RATES BY SECTOR

2006/07 to 2010/11

England



(1) Includes middle schools as deemed.

(2) Includes primary academies.

(3) Includes maintained secondary schools, city technology colleges and academies (including all through academies).

(4) Includes maintained and non-maintained special schools. Excludes general hospital schools.

Table 1.1

STATE-FUNDED PRIMARY, SECONDARY AND SPECIAL SCHOOLS (1)(2)(3)(4):**PUPIL ABSENCE BY TYPE OF SCHOOL**

2006/07 to 2010/11

England

	2006/07	2007/08	2008/09	2009/10	2010/11
Total					
Number of day pupils of compulsory school age (5)	6,332,065	6,244,890	6,182,245	6,163,875	6,160,830
Number of pupil enrolments (6)	6,582,425	6,478,155	6,408,545	6,387,685	6,382,835
Percentage of half days missed due to (7):					
Authorised absence	5.5	5.3	5.2	5.0	4.7
Unauthorised absence	1.0	1.0	1.1	1.0	1.1
Overall absence	6.5	6.3	6.3	6.0	5.8
State-funded primary schools (1)(2)					
Number of day pupils of compulsory school age (5)	3,306,905	3,263,380	3,231,375	3,232,455	3,255,995
Number of pupil enrolments (6)	3,463,120	3,412,005	3,375,830	3,374,040	3,392,330
Percentage of half days missed due to (7):					
Authorised absence	4.7	4.7	4.7	4.5	4.3
Unauthorised absence	0.5	0.6	0.6	0.7	0.7
Overall absence	5.2	5.3	5.3	5.2	5.0
State-funded secondary schools (1)(3)					
Number of day pupils of compulsory school age (5)	2,952,355	2,910,515	2,879,555	2,859,695	2,832,395
Number of pupil enrolments (6)	3,042,075	2,988,750	2,954,325	2,934,805	2,911,100
Percentage of half days missed due to (7):					
Authorised absence	6.4	5.9	5.8	5.4	5.1
Unauthorised absence	1.5	1.5	1.5	1.4	1.4
Overall absence	7.9	7.4	7.2	6.9	6.5
Special schools (4)					
Number of day pupils of compulsory school age (5)	72,810	70,995	71,315	71,725	72,435
Number of pupil enrolments (6)	77,225	77,400	78,385	78,840	79,405
Percentage of half days missed due to (7):					
Authorised absence	8.5	8.4	8.6	8.3	8.0
Unauthorised absence	2.1	2.2	2.1	2.0	2.0
Overall absence	10.6	10.6	10.7	10.3	10.0

Source: School Census

(1) Includes middle schools as deemed.

(2) Includes primary academies.

(3) Includes city technology colleges and secondary academies.

(4) Includes maintained and non-maintained special schools. Excludes general hospital schools, independent special schools and independent schools approved for SEN pupils.

(5) Pupil numbers are as at January each year. Includes pupils aged 5 to 15 with sole and dual (main) registration. Excludes boarders and those pupils for whom boarding information was not supplied.

(6) Number of pupil enrolments in schools from start of the school year up until the end of the fifth half term. Includes pupils on the school roll for at least one session who are aged between 5 and 15, excluding boarders. Some pupils may be counted more than once (if they moved schools during the school year or are registered at more than one school). See Technical Notes 14 to 16.

(7) The number of sessions missed due to authorised/ unauthorised/ overall absence expressed as a percentage of the total number of possible sessions.

Totals may not appear to equal the sum of component parts because numbers have been rounded to the nearest 5.

Table 1.2

**STATE-FUNDED PRIMARY, SECONDARY AND SPECIAL SCHOOLS (1)(2)(3)(4):
PERSISTENT ABSENTEES, THOSE MISSING AROUND 15 PER CENT OF SESSIONS (NEW DEFINITION) (5)**

2006/07 to 2010/11

England

	2006/07	2007/08	2008/09	2009/10	2010/11
Total					
Number of pupil enrolments that are persistent absentees (5)(6)	561,120	499,665	472,865	433,130	392,305
Total number of pupil enrolments (6)	6,582,425	6,478,155	6,408,545	6,387,685	6,382,835
Percentage of pupil enrolments that are persistent absentees	8.5	7.7	7.4	6.8	6.1
Percentage of half days missed by persistent absentees due to (7):					
Authorised absence	18.6	17.8	17.0	16.3	16.0
Unauthorised absence	7.5	8.1	8.2	8.3	9.0
Overall absence	26.1	25.9	25.2	24.7	25.0
Percentage of absence for which persistent absentees are responsible (8):					
Authorised absence	29.1	26.2	24.3	22.3	20.8
Unauthorised absence	64.5	61.7	57.5	54.5	52.1
Overall absence	34.6	31.9	29.8	27.9	26.6
State-funded primary schools (1)(2)					
Number of pupil enrolments that are persistent absentees (5)(6)	167,225	161,350	156,710	148,410	133,445
Total number of pupil enrolments (6)	3,463,120	3,412,005	3,375,830	3,374,040	3,392,330
Percentage of pupil enrolments that are persistent absentees	4.8	4.7	4.6	4.4	3.9
Percentage of half days missed by persistent absentees due to (7):					
Authorised absence	17.5	17.1	16.5	15.9	15.6
Unauthorised absence	4.5	4.9	5.1	5.3	5.9
Overall absence	22.1	22.0	21.6	21.2	21.5
Percentage of absence for which persistent absentees are responsible (8):					
Authorised absence	18.4	17.4	16.6	15.6	14.3
Unauthorised absence	42.5	41.2	37.4	35.0	32.8
Overall absence	20.9	20.0	19.1	18.1	16.9
State-funded secondary schools (1)(3)					
Number of pupil enrolments that are persistent absentees (5)(6)	380,070	324,905	302,005	271,225	245,590
Total number of pupil enrolments (6)	3,042,075	2,988,750	2,954,325	2,934,805	2,911,100
Percentage of pupil enrolments that are persistent absentees	12.5	10.9	10.2	9.2	8.4
Percentage of half days missed by persistent absentees due to (7):					
Authorised absence	18.8	17.9	17.0	16.2	15.8
Unauthorised absence	8.8	9.6	9.7	10.0	10.7
Overall absence	27.6	27.5	26.8	26.2	26.4
Percentage of absence for which persistent absentees are responsible (8):					
Authorised absence	37.1	33.1	30.2	27.6	26.1
Unauthorised absence	72.4	69.8	66.4	63.9	61.9
Overall absence	43.9	40.6	37.7	35.2	34.0
Special schools (4)					
Number of pupil enrolments that are persistent absentees (5)(6)	13,825	13,410	14,150	13,490	13,270
Total number of pupil enrolments (6)	77,225	77,400	78,385	78,840	79,405
Percentage of pupil enrolments that are persistent absentees	17.9	17.3	18.0	17.1	16.7
Percentage of half days missed by persistent absentees due to (7):					
Authorised absence	24.3	24.1	23.7	23.3	22.6
Unauthorised absence	9.1	9.7	9.3	9.0	9.5
Overall absence	33.3	33.8	33.0	32.2	32.0
Percentage of absence for which persistent absentees are responsible (8):					
Authorised absence	54.2	53.3	52.6	50.7	49.2
Unauthorised absence	83.7	83.4	82.9	81.8	81.6
Overall absence	59.9	59.4	58.7	56.7	55.8

Source: School Census

(1) Includes middle schools as deemed.

(2) Includes primary academies.

(3) Includes city technology colleges and secondary academies.

(4) Includes maintained and non-maintained special schools. Excludes general hospital schools, independent special schools and independent schools approved for SEN pupils.

(5) Persistent Absentees are defined as having an overall absence rate of around **15 per cent** or more. This equates to 46 or more sessions of absence (authorised and unauthorised) during the year.

(6) Number of pupil enrolments in schools from start of the school year to the end of the fifth half term. Includes pupils on the school roll for at least one session who are aged between 5 and 15, excluding boarders. Some pupils may be counted more than once (if they moved schools during the school year or are registered in more than one school). See Technical Notes 14 to 16.

(7) The number of sessions missed due to authorised/unauthorised/overall absence expressed as a percentage of the total number of possible sessions.

(8) The total number of sessions missed due to authorised/unauthorised/overall absence by persistent absentees expressed as a percentage of the total number of sessions missed due to authorised/unauthorised/overall absence by all pupil enrolments.

Totals may not appear to equal the sum of the component parts because numbers have been rounded to the nearest 5.

Table 1.3

**STATE-FUNDED PRIMARY, SECONDARY AND SPECIAL SCHOOLS (1)(2)(3)(4):
PERSISTENT ABSENTEES, THOSE MISSING AROUND 20 PER CENT OF SESSIONS (OLD DEFINITION) (5)**

2006/07 to 2010/11

England

	2006/07	2007/08	2008/09	2009/10	2010/11
Total					
Number of pupil enrolments that are persistent absentees (5)(6)	272,955	232,810	208,380	184,020	167,915
Total number of pupil enrolments (6)	6,582,425	6,478,155	6,408,545	6,387,685	6,382,835
Percentage of pupil enrolments that are persistent absentees	4.1	3.6	3.3	2.9	2.6
Percentage of half days missed by persistent absentees due to (7):					
Authorised absence	22.6	21.5	20.6	19.8	19.3
Unauthorised absence	12.5	13.7	14.1	14.5	15.3
Overall absence	35.1	35.2	34.7	34.3	34.6
Percentage of absence for which persistent absentees are responsible (8):					
Authorised absence	17.1	14.6	12.8	11.4	10.7
Unauthorised absence	51.8	48.3	43.4	40.0	37.6
Overall absence	22.5	20.1	18.0	16.3	15.7
State-funded primary schools (1)(2)					
Number of pupil enrolments that are persistent absentees (5)(6)	60,960	56,750	51,955	47,510	42,540
Total number of pupil enrolments (6)	3,463,120	3,412,005	3,375,830	3,374,040	3,392,330
Percentage of pupil enrolments that are persistent absentees	1.8	1.7	1.5	1.4	1.3
Percentage of half days missed by persistent absentees due to (7):					
Authorised absence	22.2	21.5	20.8	20.2	20.0
Unauthorised absence	7.8	8.5	8.8	9.0	9.8
Overall absence	30.0	29.9	29.6	29.2	29.8
Percentage of absence for which persistent absentees are responsible (8):					
Authorised absence	8.4	7.6	6.9	6.3	5.8
Unauthorised absence	26.4	24.8	21.1	18.9	17.1
Overall absence	10.3	9.5	8.6	7.9	7.4
State-funded secondary schools (1)(3)					
Number of pupil enrolments that are persistent absentees (5)(6)	203,175	167,610	147,635	128,210	117,255
Total number of pupil enrolments (6)	3,042,075	2,988,750	2,954,325	2,934,805	2,911,100
Percentage of pupil enrolments that are persistent absentees	6.7	5.6	5.0	4.4	4.0
Percentage of half days missed by persistent absentees due to (7):					
Authorised absence	22.4	21.1	20.1	19.1	18.6
Unauthorised absence	13.9	15.4	16.0	16.6	17.4
Overall absence	36.3	36.5	36.1	35.8	35.9
Percentage of absence for which persistent absentees are responsible (8):					
Authorised absence	23.5	20.0	17.3	15.3	14.5
Unauthorised absence	60.9	57.6	53.2	50.0	48.0
Overall absence	30.7	27.6	24.7	22.6	22.0
Special schools (4)					
Number of pupil enrolments that are persistent absentees (5)(6)	8,820	8,450	8,790	8,300	8,120
Total number of pupil enrolments (6)	77,225	77,400	78,385	78,840	79,405
Percentage of pupil enrolments that are persistent absentees	11.4	10.9	11.2	10.5	10.2
Percentage of half days missed by persistent absentees due to (7):					
Authorised absence	29.3	29.1	28.6	28.1	27.1
Unauthorised absence	13.0	13.8	13.5	13.1	13.8
Overall absence	42.2	43.0	42.1	41.2	40.9
Percentage of absence for which persistent absentees are responsible (8):					
Authorised absence	41.6	40.4	39.4	37.5	36.1
Unauthorised absence	76.0	75.0	74.2	73.3	72.5
Overall absence	48.3	47.5	46.4	44.4	43.5

Source: School Census

(1) Includes middle schools as deemed.

(2) Includes primary academies.

(3) Includes city technology colleges and secondary academies.

(4) Includes maintained and non-maintained special schools. Excludes general hospital schools, independent special schools and independent schools approved for SEN pupils.

(5) Persistent Absentees (old definition) are defined as having an overall absence rate of around **20 per cent** or more. This equates to 64 or more sessions of absence (authorised and unauthorised) during the year.

(6) Number of pupil enrolments in schools from start of the school year to the end of the fifth half term. Includes pupils on the school roll for at least one session who are aged between 5 and 15, excluding boarders. Some pupils may be counted more than once (if they moved schools during the school year or are registered in more than one school). See Technical Notes 14 to 16.

(7) The number of sessions missed due to authorised/unauthorised/overall absence expressed as a percentage of the total number of possible sessions.

(8) The total number of sessions missed due to authorised/unauthorised/overall absence by persistent absentees expressed as a percentage of the total number of sessions missed due to authorised/unauthorised/overall absence by all pupil enrolments.

Totals may not appear to equal the sum of the component parts because numbers have been rounded to the nearest 5.

Table 1.4
STATE-FUNDED PRIMARY, SECONDARY AND SPECIAL SCHOOLS (1)(2)(3)(4):
PERSISTENT ABSENTEES - COMPARISON BY DIFFERENT RATES OF ABSENCE
 2010/11
 England

	State-funded primary schools (1)(2)	State-funded secondary schools (1)(3)	Special schools (4)	Total
Number of pupil enrolments having around 5 per cent or more overall absence (5)(10)	1,220,705	1,249,900	40,645	2,511,250
Percentage of pupil enrolments having around 5 per cent or more overall absence (5)	36.0	42.9	51.2	39.3
Number of pupil enrolments having around 10 per cent or more overall absence (6)(10)	427,705	560,335	23,110	1,011,145
Percentage of pupil enrolments having around 10 per cent or more overall absence (6)	12.6	19.2	29.1	15.8
Number of pupil enrolments having around 12.5 per cent or more overall absence (7)(10)	235,975	364,045	17,305	617,325
Percentage of pupil enrolments having around 12.5 per cent or more overall absence (7)	7.0	12.5	21.8	9.7
Number of pupil enrolments that are persistent absentees having around 15 per cent or more overall absence (8)(10)	133,445	245,590	13,270	392,305
Percentage of pupil enrolments that are persistent absentees having around 15 per cent or more overall absence (8)	3.9	8.4	16.7	6.1
Number of pupil enrolments that are persistent absentees (old definition) having around 20 per cent or more overall absence (9)(10)	42,540	117,255	8,120	167,915
Percentage of pupil enrolments that are persistent absentees (old definition) having around 20 per cent or more overall absence (9)	1.3	4.0	10.2	2.6

Source: School Census

(1) Includes middle schools as deemed.

(2) Includes primary academies.

(3) Includes city technology colleges and secondary academies.

(4) Includes maintained and non-maintained special schools. Excludes general hospital schools, independent special schools and independent schools approved for SEN pupils.

(5) 5 per cent or more overall absence equates to 16 or more sessions of absence (authorised and unauthorised) during the year.

(6) 10 per cent or more overall absence equates to 30 or more sessions of absence (authorised and unauthorised) during the year.

(7) 12.5 per cent or more overall absence equates to 38 or more sessions of absence (authorised and unauthorised) during the year.

(8) Persistent Absentees are defined as having an overall absence rate of around **15 per cent** or more. This equates to 46 or more sessions of absence (authorised and unauthorised) during the year.

(9) Persistent Absentees (old definition) are defined as having an overall absence rate of around **20 per cent** or more. This equates to 64 or more sessions of absence (authorised and unauthorised) during the year.

(10) Number of pupil enrolments in schools from start of the school year to the end of the fifth half term. Includes pupils on the school roll for at least one session who are aged between 5 and 15, excluding boarders. Some pupils may be counted more than once (if they moved schools during the school year or are registered in more than one school). See Technical Notes 14 to 16.

Totals may not appear to equal the sum of the component parts because numbers have been rounded to the nearest 5.

Table 2.1

STATE-FUNDED PRIMARY, SECONDARY AND SPECIAL SCHOOLS (1)(2)(3)(4):**ABSENCE BY REASON AND GENDER**

2010/11

England

	State-funded primary schools (1)(2)			State-funded secondary schools (1)(3)			Special schools (4)			Total		
	Boys	Girls	Total	Boys	Girls	Total	Boys	Girls	Total	Boys	Girls	Total
DISTRIBUTION OF REASONS FOR ABSENCE												
Percentage of absent sessions due to (5):												
Illness (NOT medical or dental appointments)	61.9	62.7	62.3	55.1	56.8	55.9	42.7	53.7	45.6	57.9	59.5	58.7
Medical/dental appointments	5.3	4.9	5.1	5.9	6.7	6.3	9.0	13.0	10.1	5.7	6.0	5.8
Religious observance	2.1	2.0	2.0	1.3	1.1	1.2	0.8	1.2	0.9	1.6	1.5	1.6
Study leave	0.0	0.0	0.0	1.9	1.9	1.9	0.3	0.1	0.2	1.0	1.0	1.0
Traveller absence	0.4	0.4	0.4	0.1	0.1	0.1	0.2	0.1	0.2	0.3	0.2	0.3
Agreed family holiday	9.9	10.3	10.1	3.4	3.4	3.4	5.2	6.0	5.4	6.5	6.6	6.5
Agreed extended family holiday	0.3	0.3	0.3	0.1	0.0	0.1	0.3	0.3	0.3	0.2	0.2	0.2
Excluded, no alternative provision	0.6	0.1	0.3	3.3	1.2	2.2	3.1	0.7	2.5	2.0	0.7	1.4
Other authorised circumstances	5.4	5.1	5.2	6.9	6.6	6.7	15.1	12.3	14.3	6.4	6.0	6.2
Total Authorised Absence	85.8	85.9	85.9	77.9	77.8	77.9	76.7	87.5	79.6	81.6	81.6	81.6
Percentage of absent sessions due to (5):												
Family holiday not agreed	3.4	3.5	3.4	2.2	2.3	2.3	0.6	0.8	0.7	2.7	2.8	2.8
Arrived late	1.2	1.2	1.2	1.2	1.2	1.2	0.8	0.6	0.7	1.2	1.2	1.2
Other unauthorised circumstances	7.6	7.4	7.5	15.3	15.6	15.4	20.6	10.3	17.8	11.9	11.8	11.8
No reason yet	2.0	1.9	2.0	3.3	3.2	3.2	1.3	0.9	1.2	2.6	2.6	2.6
Total Unauthorised Absence	14.2	14.1	14.1	22.1	22.2	22.1	23.3	12.5	20.4	18.4	18.4	18.4
Total Overall Absence	100.0	100.0	100.0	100.0	100.0	100.0	100.0	100.0	100.0	100.0	100.0	100.0
ABSENCE RATES BY REASON												
Percentage of possible sessions missed due to (6):												
Illness (NOT medical or dental appointments)	3.1	3.2	3.1	3.5	3.8	3.7	4.3	5.1	4.5	3.3	3.5	3.4
Medical/dental appointments	0.3	0.2	0.3	0.4	0.5	0.4	0.9	1.2	1.0	0.3	0.3	0.3
Religious observance	0.1	0.1	0.1	0.1	0.1	0.1	0.1	0.1	0.1	0.1	0.1	0.1
Study leave	0.0	0.0	0.0	0.1	0.1	0.1	0.0	0.0	0.0	0.1	0.1	0.1
Traveller absence	0.0	0.0	0.0	0.0	0.0	0.0	0.0	0.0	0.0	0.0	0.0	0.0
Agreed family holiday	0.5	0.5	0.5	0.2	0.2	0.2	0.5	0.6	0.5	0.4	0.4	0.4
Agreed extended family holiday	0.0	0.0	0.0	0.0	0.0	0.0	0.0	0.0	0.0	0.0	0.0	0.0
Excluded, no alternative provision	0.0	0.0	0.0	0.2	0.1	0.1	0.3	0.1	0.2	0.1	0.0	0.1
Other authorised circumstances	0.3	0.3	0.3	0.4	0.4	0.4	1.5	1.2	1.4	0.4	0.3	0.4
Unclassified (7)	0.0	0.0	0.0	0.0	0.0	0.0	0.2	0.2	0.2	0.0	0.0	0.0
Total Authorised Absence	4.3	4.3	4.3	5.0	5.2	5.1	7.8	8.5	8.0	4.7	4.8	4.7
Percentage of possible sessions missed due to (6):												
Family holiday not agreed	0.2	0.2	0.2	0.1	0.2	0.1	0.1	0.1	0.1	0.2	0.2	0.2
Arrived late	0.1	0.1	0.1	0.1	0.1	0.1	0.1	0.1	0.1	0.1	0.1	0.1
Other unauthorised circumstances	0.4	0.4	0.4	1.0	1.0	1.0	2.1	1.0	1.8	0.7	0.7	0.7
No reason yet	0.1	0.1	0.1	0.2	0.2	0.2	0.1	0.1	0.1	0.2	0.2	0.2
Unclassified (7)	0.0	0.0	0.0	0.0	0.0	0.0	0.0	0.0	0.0	0.0	0.0	0.0
Total Unauthorised Absence	0.7	0.7	0.7	1.4	1.5	1.4	2.4	1.2	2.0	1.1	1.1	1.1
Total Overall Absence	5.1	5.0	5.0	6.4	6.7	6.5	10.2	9.7	10.0	5.7	5.8	5.8

Source: School Census

(1) Includes middle schools as deemed.

(2) Includes primary academies.

(3) Includes city technology colleges and secondary academies.

(4) Includes maintained and non-maintained special schools. Excludes general hospital schools, independent special schools and independent schools approved for SEN pupils.

(5) The number of sessions absent by reason expressed as a percentage of the total number of sessions absent as reported by reason (not overall totals). See Technical Notes 12 and 14.

(6) The number of sessions absent by reason expressed as a percentage of the total number of sessions possible. See Technical Notes 12 and 14.

(7) Includes absence returned as either authorised or unauthorised totals but not broken down by reason. See Technical Note 12.

Table 2.2

STATE-FUNDED PRIMARY, SECONDARY AND SPECIAL SCHOOLS (1)(2)(3)(4):**ABSENCE BY REASON FOR PERSISTENT ABSENTEES (5)**

2010/11

England

	Persistent Absentees (5)				Other Pupils			
	State-funded primary schools (1)(2)	State-funded secondary schools (1)(3)	Special schools (4)	Total	State-funded primary schools (1)(2)	State-funded secondary schools (1)(3)	Special schools (4)	Total
DISTRIBUTION OF REASONS FOR ABSENCE								
Percentage of absent sessions due to (6):								
Illness (NOT medical or dental appointments)	52.0	40.2	38.5	43.6	64.4	64.0	54.6	64.1
Medical/dental appointments	4.0	4.1	6.3	4.2	5.3	7.5	14.8	6.4
Religious observance	0.8	0.3	0.5	0.4	2.3	1.6	1.5	2.0
Study leave	0.0	1.3	0.3	0.9	0.0	2.2	0.1	1.0
Traveller absence	2.2	0.3	0.3	0.9	0.1	0.0	0.0	0.0
Agreed family holiday	4.8	1.1	2.9	2.3	11.2	4.5	8.5	8.1
Agreed extended family holiday	0.8	0.1	0.4	0.3	0.2	0.0	0.2	0.1
Excluded, no alternative provision	0.9	3.7	3.0	2.9	0.2	1.5	1.8	0.8
Other authorised circumstances	7.0	8.6	17.8	8.5	4.9	5.8	10.0	5.4
Total Authorised Absence	72.5	59.7	70.1	63.9	88.6	87.2	91.6	88.0
Percentage of absent sessions due to (6):								
Family holiday not agreed	4.2	1.6	0.7	2.3	3.3	2.6	0.7	2.9
Arrived late	2.3	1.9	0.8	2.0	1.0	0.8	0.7	0.9
Other unauthorised circumstances	17.6	32.4	27.0	27.8	5.4	6.7	6.3	6.0
No reason yet	3.3	4.4	1.4	4.0	1.7	2.7	0.9	2.1
Total Unauthorised Absence	27.5	40.3	29.9	36.1	11.4	12.8	8.4	12.0
Total Overall Absence	100.0	100.0	100.0	100.0	100.0	100.0	100.0	100.0
ABSENCE RATES BY REASON								
Percentage of possible sessions missed due to (7):								
Illness (NOT medical or dental appointments)	11.2	10.6	12.1	10.9	2.8	3.0	2.9	2.9
Medical/dental appointments	0.9	1.1	2.0	1.0	0.2	0.4	0.8	0.3
Religious observance	0.2	0.1	0.1	0.1	0.1	0.1	0.1	0.1
Study leave	0.0	0.4	0.1	0.2	0.0	0.1	0.0	0.0
Traveller absence	0.5	0.1	0.1	0.2	0.0	0.0	0.0	0.0
Agreed family holiday	1.0	0.3	0.9	0.6	0.5	0.2	0.4	0.4
Agreed extended family holiday	0.2	0.0	0.1	0.1	0.0	0.0	0.0	0.0
Excluded, no alternative provision	0.2	1.0	0.9	0.7	0.0	0.1	0.1	0.0
Other authorised circumstances	1.5	2.3	5.6	2.1	0.2	0.3	0.5	0.2
Unclassified (8)	0.0	0.0	0.5	0.0	0.0	0.0	0.1	0.0
Total Authorised Absence	15.6	15.8	22.6	16.0	3.9	4.1	4.9	4.0
Percentage of possible sessions missed due to (7):								
Family holiday not agreed	0.9	0.4	0.2	0.6	0.1	0.1	0.0	0.1
Arrived late	0.5	0.5	0.2	0.5	0.0	0.0	0.0	0.0
Other unauthorised circumstances	3.8	8.6	8.5	6.9	0.2	0.3	0.3	0.3
No reason yet	0.7	1.2	0.5	1.0	0.1	0.1	0.0	0.1
Unclassified (8)	0.0	0.0	0.1	0.0	0.0	0.0	0.0	0.0
Total Unauthorised Absence	5.9	10.7	9.5	9.0	0.5	0.6	0.5	0.5
Total Overall Absence	21.5	26.4	32.0	25.0	4.4	4.7	5.4	4.5

Source: School Census

(1) Includes middle schools as deemed.

(2) Includes primary academies.

(3) Includes city technology colleges and secondary academies.

(4) Includes maintained and non-maintained special schools. Excludes general hospital schools, independent special schools and independent schools approved for SEN pupils.

(5) Persistent Absentees are defined as having an overall absence rate of around **15 per cent** or more. This equates to 46 or more sessions of absence (authorised and unauthorised) during the year.

(6) The number of sessions absent by reason expressed as a percentage of the total number of sessions absent as reported by reason (not overall totals). See Technical Notes 12 and 14.

(7) The number of sessions absent by reason expressed as a percentage of the total number of sessions possible. See Technical Notes 12 and 14.

(8) Includes absence returned as either authorised or unauthorised totals but not broken down by reason. See Technical Note 12.

Table 3.1

**STATE-FUNDED PRIMARY, SECONDARY AND SPECIAL SCHOOLS (1)(2)(3)(4):
DISTRIBUTION OF ENROLMENTS BY LENGTH OF OVERALL ABSENCE**

2010/11

England

	State-funded primary schools (1)(2)			State-funded secondary schools (1)(3)			Special schools (4)			Total		
	Pupil enrolments in schools during 2010/11 (5)		Percentage of overall absence (6)	Pupil enrolments in schools during 2010/11 (5)		Percentage of overall absence (6)	Pupil enrolments in schools during 2010/11 (5)		Percentage of overall absence (6)	Pupil enrolments in schools during 2010/11 (5)		Percentage of overall absence (6)
	Number	Percentage		Number	Percentage		Number	Percentage		Number	Percentage	
Number of days overall absence:												
No absence	250,575	7.4	0.0	192,865	6.6	0.0	6,910	8.7	0.0	450,350	7.1	0.0
0.5 to 5 days	1,420,070	41.9	15.6	1,070,255	36.8	10.4	22,610	28.5	5.7	2,512,935	39.4	12.7
5.5 to 10 days	889,995	26.2	26.7	717,030	24.6	19.2	17,145	21.6	11.7	1,624,170	25.4	22.5
10.5 to 15 days	439,380	13.0	21.9	403,610	13.9	17.9	10,600	13.4	12.0	853,590	13.4	19.6
15.5 to 20 days	204,265	6.0	14.2	215,985	7.4	13.4	6,580	8.3	10.4	426,830	6.7	13.7
20.5 to 25 days	93,800	2.8	8.4	115,670	4.0	9.2	4,135	5.2	8.4	213,605	3.3	8.8
more than 25 days	94,240	2.8	13.1	195,690	6.7	29.8	11,430	14.4	51.8	301,360	4.7	22.6
Total	3,392,330	100.0	100.0	2,911,100	100.0	100.0	79,405	100.0	100.0	6,382,835	100.0	100.0

Source: School Census

(1) Includes middle schools as deemed.

(2) Includes primary academies.

(3) Includes city technology colleges and secondary academies.

(4) Includes maintained and non-maintained special schools. Excludes general hospital schools, independent special schools and independent schools approved for SEN pupils.

(5) Number of pupil enrolments in schools from start of the school year up until 27 May 2011. Includes pupils on the school roll for at least one session who are aged between 5 and 15, excluding boarders. Some pupils may be counted more than once (if they moved schools during the school year or are registered in more than one school). See Technical Notes 14 to 16.

(6) The number of sessions missed due to overall absence in each band expressed as a percentage of the total number of sessions missed due to overall absence.

Totals may not appear to equal the sum of the component parts because numbers have been rounded to the nearest 5.

Table 3.2

STATE-FUNDED PRIMARY, SECONDARY AND SPECIAL SCHOOLS (1)(2)(3)(4):**PERCENTAGE OF ENROLMENTS BY THEIR OVERALL ABSENCE RATES**

2010/11

England

	State-funded primary schools (1)(2)			State-funded secondary schools (1)(3)			Special schools (4)			Total		
	Pupil enrolments in schools during 2010/11 (5)		Percentage of overall absence (6)	Pupil enrolments in schools during 2010/11 (5)		Percentage of overall absence (6)	Pupil enrolments in schools during 2010/11 (5)		Percentage of overall absence (6)	Pupil enrolments in schools during 2010/11 (5)		Percentage of overall absence (6)
	Number	Percentage		Number	Percentage		Number	Percentage		Number	Percentage	
Overall absence rate:												
None	250,575	7.4	0.0	192,865	6.6	0.0	6,910	8.7	0.0	450,350	7.1	0.0
more than 0, up to and including 4%	1,572,425	46.4	19.7	1,199,875	41.2	13.3	24,855	31.3	7.2	2,797,155	43.8	16.1
more than 4%, up to and including 6%	536,515	15.8	15.9	429,895	14.8	11.4	10,345	13.0	6.9	976,755	15.3	13.4
more than 6%, up to and including 10%	592,635	17.5	27.1	527,935	18.1	21.8	13,725	17.3	14.3	1,134,295	17.8	24.1
more than 10%, up to and including 20%	364,275	10.7	27.7	408,155	14.0	28.9	13,805	17.4	25.1	786,235	12.3	28.3
more than 20%, up to and including 30%	47,835	1.4	5.7	79,845	2.7	9.6	4,260	5.4	13.1	131,940	2.1	7.9
more than 30%, up to and including 50%	17,775	0.5	2.6	44,760	1.5	7.9	3,060	3.9	14.2	65,595	1.0	5.6
more than 50%	10,300	0.3	1.3	27,770	1.0	7.1	2,445	3.1	19.2	40,515	0.6	4.7
Total	3,392,330	100.0	100.0	2,911,100	100.0	100.0	79,405	100.0	100.0	6,382,835	100.0	100.0

Source: School Census

(1) Includes middle schools as deemed.

(2) Includes primary academies.

(3) Includes city technology colleges and secondary academies.

(4) Includes maintained and non-maintained special schools. Excludes general hospital schools, independent special schools and independent schools approved for SEN pupils.

(5) Number of pupil enrolments in schools from start of the school year up until 27 May 2011. Includes pupils on the school roll for at least one session who are aged between 5 and 15, excluding boarders. Some pupils may be counted more than once (if they moved schools during the school year or are registered in more than one school). See Technical Notes 14 to 16.

(6) The number of sessions missed due to overall absence in each band expressed as a percentage of the total number of sessions missed due to overall absence.

Totals may not appear to equal the sum of the component parts because numbers have been rounded to the nearest 5.

Table 4.1

**STATE-FUNDED PRIMARY, SECONDARY AND SPECIAL SCHOOLS (1)(2)(3)(4):
NUMBER OF SCHOOLS BY THE PERCENTAGE OF PERSISTENT ABSENTEES (5)(6)**

2010/11

England

	State-funded primary schools (1)(2)		State-funded secondary schools (1)(3)		Special schools (4)		Total	
	Number of schools	% of schools	Number of schools	% of schools	Number of schools	% of schools	Number of schools	% of schools
Percentage of school enrolments who are Persistent Absentees (7):								
None	1,288	8	6	0	27	3	1,321	6
more than 0, up to and including 3%	6,809	40	222	7	15	1	7,046	33
more than 3%, up to and including 6%	5,528	33	718	22	72	7	6,318	30
more than 6%, up to and including 9%	2,239	13	1,106	33	104	10	3,449	16
more than 9%, up to and including 12%	697	4	728	22	160	16	1,585	7
more than 12%, up to and including 15%	223	1	332	10	162	16	717	3
more than 15%, up to and including 20%	83	0	160	5	173	17	416	2
more than 20%	22	0	36	1	302	30	360	2
Total	16,889	100	3,308	100	1,015	100	21,212	100

Source: School Census

(1) Includes middle schools as deemed.

(2) Includes primary academies.

(3) Includes city technology colleges and secondary academies.

(4) Includes maintained and non-maintained special schools. Excludes general hospital schools, independent special schools and independent schools approved for SEN pupils.

(5) Includes schools with at least one enrolment from the start of the school year up until 27 May 2011. Includes pupils on the school roll for at least one session who are aged between 5 and 15, excluding boarders. Some pupils may be counted in more than one school (if they moved schools during the school year or are registered at more than one school). See Technical Notes 14 to 16.

(6) Persistent Absentees are defined as having an overall absence rate of around **15 per cent** or more. This equates to 46 or more sessions of absence (authorised and unauthorised) during the year.

(7) The number of Persistent Absentees expressed as a percentage of the total number of enrolments.

Table 5.1
STATE-FUNDED PRIMARY, SECONDARY AND SPECIAL SCHOOLS (1)(2)(3)(4):
PUPIL ABSENCE BY CHARACTERISTICS (5)
 2010/11
 England

	State-funded primary schools (1)(2)				State-funded secondary schools (1)(3)				Special schools (4)				Total				
	Pupil enrolments in schools during 2010/11 (6)	Percentage of half days missed (7):			Pupil enrolments in schools during 2010/11 (6)	Percentage of half days missed (7):			Pupil enrolments in schools during 2010/11 (6)	Percentage of half days missed (7):			Pupil enrolments in schools during 2010/11 (6)	Percentage of half days missed (7):			
		Authorised absence	Unauthorised absence	Overall absence		Authorised absence	Unauthorised absence	Overall absence		Authorised absence	Unauthorised absence	Overall absence		Authorised absence	Unauthorised absence	Overall absence	
Gender																	
Boys	1,731,725	4.3	0.7	5.1	1,476,785	5.0	1.4	6.4	56,970	7.8	2.4	10.2	3,265,480	4.7	1.1	5.7	
Girls	1,660,605	4.3	0.7	5.0	1,434,315	5.2	1.5	6.7	22,435	8.5	1.2	9.7	3,117,355	4.8	1.1	5.8	
Total	3,392,330	4.3	0.7	5.0	2,911,100	5.1	1.4	6.5	79,405	8.0	2.0	10.0	6,382,835	4.7	1.1	5.8	
Free school meal (FSM) eligibility																	
Known to be eligible for and claiming FSM	663,145	5.4	1.6	7.0	468,970	6.6	3.4	10.1	28,375	8.6	2.9	11.5	1,160,490	6.0	2.4	8.4	
Other pupils (8)	2,729,185	4.1	0.5	4.6	2,442,130	4.8	1.1	5.9	51,030	7.7	1.5	9.2	5,222,345	4.5	0.8	5.2	
Total (8)	3,392,330	4.3	0.7	5.0	2,911,100	5.1	1.4	6.5	79,405	8.0	2.0	10.0	6,382,835	4.7	1.1	5.8	
National curriculum year group:																	
1 and below	591,140	4.9	0.8	5.7	2,005	5.2	1.3	6.5	3,455	10.6	0.5	11.1	596,600	5.0	0.8	5.7	
2	577,440	4.4	0.7	5.1	1,920	4.5	1.1	5.6	3,760	9.2	0.6	9.8	583,120	4.4	0.7	5.1	
3	559,470	4.2	0.7	4.9	1,785	4.3	1.0	5.3	4,340	8.1	0.6	8.7	565,595	4.2	0.7	4.9	
4	537,990	4.1	0.7	4.8	1,700	4.2	1.2	5.3	4,660	7.7	0.6	8.4	544,350	4.2	0.7	4.8	
5	523,860	4.1	0.7	4.8	19,010	4.3	0.4	4.7	5,205	7.6	0.7	8.3	548,075	4.2	0.7	4.8	
6	524,400	4.1	0.6	4.7	24,530	4.6	0.5	5.1	5,825	7.3	0.9	8.2	554,760	4.1	0.6	4.8	
7	2,605	4.6	0.4	4.9	554,180	4.5	0.7	5.2	8,640	6.7	1.2	7.9	565,425	4.5	0.7	5.2	
8	75	5.6	1.4	7.0	563,790	5.0	1.0	6.0	9,465	7.2	1.7	9.0	573,325	5.0	1.0	6.1	
9	15	6.1	0.9	7.0	576,910	5.2	1.4	6.6	10,140	7.7	2.6	10.4	587,065	5.2	1.4	6.6	
10	20	2.4	0.0	2.4	566,075	5.1	1.8	6.9	9,960	8.4	3.5	11.8	576,050	5.1	1.8	6.9	
11	25	1.1	0.1	1.3	556,825	5.6	2.3	7.9	9,570	8.9	4.6	13.5	566,420	5.7	2.3	8.0	
12 and above	0	0.0	0.0	0.0	640	6.9	4.7	11.6	25	8.3	12.4	20.8	665	6.9	4.9	11.8	
Total (8)	3,392,330	4.3	0.7	5.0	2,911,100	5.1	1.4	6.5	79,405	8.0	2.0	10.0	6,382,835	4.7	1.1	5.8	
First language																	
First language is known or believed to be other than English	582,040	4.6	1.1	5.7	359,040	4.4	1.5	5.8	8,880	10.5	1.3	11.8	949,960	4.6	1.2	5.8	
First language is known or believed to be English	2,804,610	4.3	0.6	4.9	2,541,180	5.2	1.4	6.6	70,340	7.7	2.1	9.8	5,416,130	4.8	1.0	5.8	
Total (8)	3,392,330	4.3	0.7	5.0	2,911,100	5.1	1.4	6.5	79,405	8.0	2.0	10.0	6,382,835	4.7	1.1	5.8	
Special educational needs																	
Statements of SEN	55,530	6.4	0.9	7.3	61,825	6.6	2.1	8.8	74,645	8.0	2.0	9.9	192,000	7.1	1.7	8.8	
School Action Plus	254,380	5.4	1.2	6.6	214,390	7.3	4.1	11.5	1,540	12.2	6.9	19.1	470,315	6.3	2.5	8.9	
School Action	448,860	5.0	1.1	6.1	404,070	5.9	2.3	8.3	235	9.2	6.3	15.5	853,165	5.4	1.7	7.1	
No identified SEN	2,624,800	4.1	0.6	4.7	2,224,345	4.7	1.0	5.7	685	5.0	1.1	6.2	4,849,830	4.4	0.8	5.1	
Total (8)	3,392,330	4.3	0.7	5.0	2,911,100	5.1	1.4	6.5	79,405	8.0	2.0	10.0	6,382,835	4.7	1.1	5.8	

Source: School Census

(1) Includes middle schools as deemed.

(2) Includes primary academies.

(3) Includes city technology colleges and secondary academies.

(4) Includes maintained and non-maintained special schools. Excludes general hospital schools, independent special schools and independent schools approved for SEN pupils.

(5) See Technical Note 15 for further information on how absence and pupil characteristic data have been linked.

(6) Number of enrolments in schools from start of the school year up until 27 May 2011. Includes pupils on the school roll for at least one session who are aged between 5 and 15, excluding boarders. Some pupils may be counted more than once (if they moved schools during the school year or are registered in more than one school). See Technical Notes 14 to 16.

(7) The number of sessions missed due to authorised/ unauthorised/ overall absence expressed as a percentage of the total number of possible sessions.

(8) Includes pupil enrolments for whom characteristic data were unclassified or missing. Total rates may be higher than rates for each subgroup.

Totals may not appear to equal the sum of the component parts because numbers have been rounded to the nearest 5.

Table 5.2
STATE-FUNDED PRIMARY, SECONDARY AND SPECIAL SCHOOLS (1)(2)(3)(4):
CHARACTERISTICS OF PERSISTENT ABSENTEES (5)(6)
 2010/11
 England

	Persistent Absentees (5)																			
	State-funded primary schools (1)(2)					State-funded secondary schools (1)(3)					Special schools (4)					Total				
	Pupil enrolments in schools during 2010/11 (7)		Percentage of half days missed (8):			Pupil enrolments in schools during 2010/11 (7)		Percentage of half days missed (8):			Pupil enrolments in schools during 2010/11 (7)		Percentage of half days missed (8):			Pupil enrolments in schools during 2010/11 (7)		Percentage of half days missed (8):		
	Number	Percentage (9)	Authorised absence	Unauthorised absence	Overall absence	Number	Percentage (9)	Authorised absence	Unauthorised absence	Overall absence	Number	Percentage (9)	Authorised absence	Unauthorised absence	Overall absence	Number	Percentage (9)	Authorised absence	Unauthorised absence	Overall absence
Gender																				
Boys	69,280	4.0	15.8	5.9	21.8	119,095	8.1	15.7	10.6	26.4	9,705	17.0	21.7	11.0	32.7	198,080	6.1	16.1	9.0	25.1
Girls	64,165	3.9	15.4	5.9	21.3	126,495	8.8	15.8	10.7	26.5	3,565	15.9	24.9	5.3	30.2	194,230	6.2	15.9	9.0	24.9
Total	133,445	3.9	15.6	5.9	21.5	245,590	8.4	15.8	10.7	26.4	13,270	16.7	22.6	9.5	32.0	392,305	6.1	16.0	9.0	25.0
Free school meal (FSM) eligibility																				
Known to be eligible for and claiming FSM	58,135	8.8	14.4	7.5	21.9	85,650	18.3	14.6	13.3	27.9	6,175	21.8	20.6	11.0	31.5	149,965	12.9	14.8	11.0	25.7
Other pupils (10)	75,310	2.8	16.5	4.7	21.2	159,940	6.5	16.4	9.2	25.7	7,095	13.9	24.3	8.2	32.5	242,345	4.6	16.7	7.8	24.5
Total (10)	133,445	3.9	15.6	5.9	21.5	245,590	8.4	15.8	10.7	26.4	13,270	16.7	22.6	9.5	32.0	392,305	6.1	16.0	9.0	25.0
National curriculum year group:																				
1 and below	31,455	5.3	15.8	5.5	21.3	130	6.6	15.2	7.5	22.7	695	20.1	26.9	1.4	28.3	32,280	5.4	16.0	5.4	21.4
2	22,915	4.0	15.2	5.9	21.1	100	5.2	13.5	7.2	20.7	615	16.4	25.6	2.4	27.9	23,630	4.1	15.4	5.8	21.3
3	19,965	3.6	15.2	6.1	21.3	75	4.2	14.4	6.7	21.0	800	13.8	24.1	2.6	26.7	20,640	3.6	15.5	6.0	21.4
4	19,205	3.6	15.5	5.7	21.2	85	5.0	13.0	8.9	21.9	600	12.9	24.8	2.8	27.6	19,890	3.7	15.8	5.7	21.4
5	18,920	3.6	15.6	5.7	21.3	665	3.5	18.0	4.2	22.2	675	13.0	24.1	3.4	27.5	20,260	3.7	15.9	5.6	21.5
6	18,440	3.5	15.8	5.7	21.5	990	4.0	17.9	4.7	22.6	755	13.0	23.5	4.1	27.6	20,185	3.6	16.2	5.6	21.8
7	100	3.8	17.3	3.3	20.6	27,075	4.9	16.6	6.7	23.2	1,060	12.3	21.5	6.4	27.9	28,235	5.0	16.7	6.6	23.4
8	10	12.2	17.5	7.3	24.8	37,980	6.7	16.3	7.9	24.2	1,415	15.0	21.5	8.7	30.2	39,410	6.9	16.5	7.9	24.4
9	x	x	x	x	x	48,335	8.4	15.8	9.7	25.6	1,895	18.7	20.8	11.6	32.5	50,230	8.6	16.0	9.8	25.8
10	0	0.0	0.0	0.0	0.0	55,420	9.8	15.3	11.9	27.2	2,170	21.8	21.4	13.6	35.0	57,585	10.0	15.5	12.0	27.5
11	0	0.0	0.0	0.0	0.0	70,065	12.6	15.2	12.9	28.1	2,445	25.5	21.4	16.5	37.9	72,510	12.8	15.4	13.0	28.4
12 and above	0	0.0	0.0	0.0	0.0	125	19.2	15.4	13.9	29.3	10	32.0	16.1	43.2	59.2	130	19.7	15.4	15.0	30.4
Total (10)	133,445	3.9	15.6	5.9	21.5	245,590	8.4	15.8	10.7	26.4	13,270	16.7	22.6	9.5	32.0	392,305	6.1	16.0	9.0	25.0
First language																				
First language is known or believed to be other than English	27,870	4.8	14.4	6.7	21.1	21,635	6.0	13.6	10.8	24.4	1,995	22.5	25.5	4.0	29.5	51,505	5.4	14.5	8.3	22.8
First language is known or believed to be English	105,315	3.8	15.9	5.7	21.6	222,960	8.8	16.0	10.6	26.6	11,235	16.0	22.0	10.5	32.5	339,510	6.3	16.2	9.1	25.3
Total (10)	133,445	3.9	15.6	5.9	21.5	245,590	8.4	15.8	10.7	26.4	13,270	16.7	22.6	9.5	32.0	392,305	6.1	16.0	9.0	25.0
Special educational needs																				
Statements of SEN	5,685	10.2	20.1	4.1	24.2	9,325	15.1	18.5	10.4	28.9	12,770	17.1	22.5	9.3	31.8	27,780	14.5	20.7	8.6	29.3
School Action Plus	20,400	8.0	16.6	6.6	23.2	47,330	22.1	16.3	15.0	31.3	415	26.9	23.5	16.2	39.7	68,145	14.5	16.4	12.5	28.9
School Action	29,535	6.6	14.8	7.0	21.7	53,895	13.3	14.9	11.6	26.4	50	20.5	19.4	18.6	38.0	83,480	9.8	14.8	9.9	24.8
No identified SEN	77,740	3.0	15.3	5.5	20.8	134,935	6.1	15.8	8.8	24.6	25	3.5	30.4	8.2	38.6	212,695	4.4	15.6	7.6	23.2
Total (10)	133,445	3.9	15.6	5.9	21.5	245,590	8.4	15.8	10.7	26.4	13,270	16.7	22.6	9.5	32.0	392,305	6.1	16.0	9.0	25.0

Source: School Census

- (1) Includes middle schools as deemed.
- (2) Includes primary academies.
- (3) Includes city technology colleges and secondary academies.
- (4) Includes maintained and non-maintained special schools. Excludes general hospital schools, independent special schools and independent schools approved for SEN pupils.
- (5) Persistent Absentees are defined as having an overall absence rate of around **5 per cent** or more. This equates to 46 or more sessions of absence (authorised and unauthorised) during the year.
- (6) See Technical Note 15 for further information on how absence and pupil characteristic data have been linked.
- (7) Number of enrolments in schools from start of the school year up until 27 May 2011. Includes pupils on the school roll for at least one session who are aged between 5 and 15, excluding boarders. Some pupils may be counted more than once (if they moved schools during the school year or are registered in more than one school). See Technical Notes 14 to 16.
- (8) The number of sessions missed due to authorised/unauthorised/overall absence expressed as a percentage of the total number of possible sessions.
- (9) The number of persistent absentee enrolments expressed as a percentage of the total number of enrolments with same characteristics.
- (10) Includes pupil enrolments for whom characteristic data were unclassified or missing. Total rates may be higher than rates for each subgroup.

Totals may not appear to equal the sum of the component parts because numbers have been rounded to the nearest 5.
 x - 1 or 2 enrolments, or a percentage based on 1 or 2 enrolments.

Table 5.3

**STATE-FUNDED PRIMARY, SECONDARY AND SPECIAL SCHOOLS (1)(2)(3)(4):
PUPIL ABSENCE BY ETHNIC GROUP (5)**

2010/11

England

	State-funded primary schools (1)(2)				State-funded secondary schools (1)(3)				Special schools (4)				Total			
	Pupil enrolments in schools during 2010/11 (6)	Percentage of half days missed (7):			Pupil enrolments in schools during 2010/11 (6)	Percentage of half days missed (7):			Pupil enrolments in schools during 2010/11 (6)	Percentage of half days missed (7):			Pupil enrolments in schools during 2010/11 (6)	Percentage of half days missed (7):		
		Authorised absence	Unauthorised absence	Overall absence		Authorised absence	Unauthorised absence	Overall absence		Authorised absence	Unauthorised absence	Overall absence		Authorised absence	Unauthorised absence	Overall absence
White	2,618,170	4.3	0.6	4.9	2,346,245	5.3	1.5	6.7	62,220	7.7	2.1	9.8	5,026,635	4.8	1.0	5.8
White British	2,449,745	4.2	0.6	4.8	2,230,270	5.2	1.4	6.7	59,620	7.6	2.1	9.7	4,739,635	4.8	1.0	5.8
Irish	10,430	4.6	0.8	5.5	9,910	5.5	1.7	7.1	235	9.3	3.1	12.5	20,580	5.1	1.3	6.4
Traveller of Irish heritage	3,710	15.7	6.0	21.7	1,275	14.8	11.7	26.4	80	18.8	8.2	27.0	5,065	15.5	7.5	23.0
Gypsy/ Roma	9,775	10.8	5.5	16.3	4,695	10.0	9.7	19.7	200	14.4	7.1	21.5	14,670	10.5	6.9	17.5
Any other white background	144,510	4.9	1.1	6.1	100,095	5.1	2.0	7.1	2,085	9.2	1.5	10.8	246,685	5.0	1.5	6.5
Mixed	156,155	4.5	1.0	5.5	108,980	5.2	1.8	7.0	3,390	8.0	2.7	10.7	268,525	4.8	1.4	6.2
White and Black Caribbean	46,250	4.6	1.3	5.8	37,425	5.6	2.4	7.9	1,270	8.3	3.6	11.9	84,940	5.1	1.8	6.8
White and Black African	18,585	4.2	1.0	5.2	11,555	4.7	1.6	6.3	355	6.0	2.0	8.0	30,490	4.4	1.2	5.6
White and Asian	34,450	4.5	0.8	5.3	22,525	5.0	1.4	6.3	550	8.2	2.2	10.4	57,525	4.7	1.0	5.8
Any other mixed background	56,875	4.5	1.0	5.5	37,475	5.0	1.6	6.6	1,220	8.0	2.4	10.4	95,570	4.8	1.2	6.0
Asian	335,730	4.9	1.0	5.9	231,685	4.6	1.2	5.8	6,435	11.3	1.3	12.6	573,850	4.8	1.1	5.9
Indian	86,830	4.4	0.7	5.1	66,575	3.9	0.7	4.6	1,215	9.4	0.7	10.1	154,620	4.2	0.7	4.9
Pakistani	141,385	5.2	1.2	6.4	90,390	5.3	1.6	6.9	3,385	12.1	1.4	13.5	235,155	5.4	1.3	6.7
Bangladeshi	57,550	5.4	1.2	6.6	38,615	4.7	1.5	6.2	905	12.3	1.4	13.7	97,075	5.2	1.3	6.5
Any other Asian background	49,965	4.3	0.8	5.1	36,100	3.8	0.9	4.7	930	10.0	1.5	11.5	86,995	4.2	0.8	5.0
Black	181,150	3.3	0.9	4.3	134,455	3.5	1.2	4.7	4,555	7.2	1.6	8.8	320,155	3.5	1.1	4.5
Black Caribbean	46,935	3.8	1.3	5.1	40,700	4.3	1.6	5.9	1,430	7.0	2.5	9.5	89,070	4.0	1.5	5.5
Black African	112,030	3.1	0.8	3.9	78,720	3.0	1.0	4.0	2,430	7.4	1.1	8.6	193,180	3.1	0.8	4.0
Any other Black background	22,180	3.5	1.1	4.6	15,030	3.9	1.5	5.4	695	6.9	1.6	8.4	37,905	3.7	1.3	5.0
Chinese	11,995	3.3	0.4	3.7	10,375	2.5	0.4	2.9	185	6.4	0.7	7.1	22,560	2.9	0.4	3.4
Any other ethnic group	53,315	4.6	1.3	5.8	36,060	4.2	1.6	5.8	825	9.6	1.5	11.2	90,200	4.5	1.4	5.9
Minority ethnic pupils (8)	906,770	4.6	1.1	5.7	637,530	4.5	1.5	6.1	17,990	9.3	1.8	11.1	1,562,290	4.6	1.3	5.9
All pupils (9)	3,392,330	4.3	0.7	5.0	2,911,100	5.1	1.4	6.5	79,405	8.0	2.0	10.0	6,382,835	4.7	1.1	5.8

Source: School Census

(1) Includes middle schools as deemed.

(2) Includes primary academies.

(3) Includes city technology colleges and secondary academies.

(4) Includes maintained and non-maintained special schools. Excludes general hospital schools, independent special schools and independent schools approved for SEN pupils.

(5) See Technical Note 15 for further information on how absence and pupil characteristic data have been linked.

(6) Number of enrolments in schools from start of the school year up until 27 May 2011. Includes pupils on the school roll for at least one session who are aged between 5 and 15, excluding boarders. Some pupils may be counted more than once (if they moved schools during the school year or are registered in more than one school). See Technical Notes 14 to 16.

(7) The number of sessions missed due to authorised/ unauthorised/ overall absence expressed as a percentage of the total number of possible sessions.

(8) Pupils who have been classified according to their ethnic group, excluding White British.

(9) Includes pupil enrolments for whom information on ethnic group was unclassified or missing.

Totals may not appear to equal the sum of the component parts because numbers have been rounded to the nearest 5.

Table 5.4

STATE-FUNDED PRIMARY, SECONDARY AND SPECIAL SCHOOLS (1)(2)(3)(4)

PERSISTENT ABSENTEES BY ETHNIC GROUP (5)(6)

2010/11

England

	Persistent Absentees (5)																							
	State-funded primary schools (1)(2)						State-funded secondary schools (1)(3)						Special schools (4)						Total					
	Pupil enrolments in schools during 2010/11 (7)		Percentage of half days missed (8):				Pupil enrolments in schools during 2010/11 (7)		Percentage of half days missed (8):				Pupil enrolments in schools during 2010/11 (7)		Percentage of half days missed (8):				Pupil enrolments in schools during 2010/11 (7)			Percentage of half days missed (8):		
	Number	Percentage (9)	Authorised absence	Unauthorised absence	Overall absence		Number	Percentage (9)	Authorised absence	Unauthorised absence	Overall absence		Number	Percentage (9)	Authorised absence	Unauthorised absence	Overall absence		Number	Percentage (9)	Authorised absence	Unauthorised absence	Overall absence	
White	99,410	3.8	16.1	5.6	21.7	210,450	9.0	16.0	10.7	26.7		10,070	16.2	22.0	10.3	32.4		319,925	6.4	16.2	9.1	25.3		
White British	85,930	3.5	15.9	5.3	21.2	197,360	8.8	16.1	10.5	26.6		9,490	15.9	21.9	10.4	32.4		292,785	6.2	16.2	9.0	25.2		
Irish	555	5.3	16.4	7.3	23.7	995	10.0	15.5	11.8	27.3		50	21.9	23.5	12.1	35.6		1,600	7.8	16.0	10.3	26.3		
Traveller Of Irish Heritage	1,585	42.8	25.4	9.7	35.1	685	53.6	21.4	18.3	39.7		45	59.0	26.9	12.6	39.5		2,315	45.7	24.2	12.3	36.6		
Gypsy / Roma	3,300	33.8	19.0	10.3	29.3	2,045	43.5	14.8	17.4	32.3		80	39.8	25.1	14.8	39.9		5,425	37.0	17.5	13.1	30.6		
Any Other white Background	8,035	5.6	15.0	6.7	21.7	9,365	9.4	13.8	12.0	25.8		400	19.2	24.2	6.0	30.2		17,805	7.2	14.6	9.4	24.0		
Mixed	8,080	5.2	14.4	7.4	21.8	10,540	9.7	14.8	11.8	26.6		615	18.2	21.0	12.1	33.1		19,235	7.2	14.8	10.0	24.8		
White and Black Caribbean	2,895	6.3	13.8	8.2	21.9	4,690	12.5	14.4	12.7	27.1		260	20.3	20.5	14.0	34.5		7,845	9.2	14.3	11.1	25.4		
White and Black African	835	4.5	14.3	7.5	21.8	900	7.8	14.9	11.4	26.3		40	11.9	19.2	12.7	31.9		1,775	5.8	14.7	9.6	24.3		
White and Asian	1,510	4.4	14.6	6.9	21.5	1,775	7.9	15.5	10.6	26.1		100	18.5	21.8	10.0	31.8		3,385	5.9	15.3	9.0	24.2		
Any Other mixed Background	2,840	5.0	15.0	6.8	21.7	3,175	8.5	15.1	11.2	26.3		215	17.7	21.6	10.6	32.2		6,225	6.5	15.3	9.2	24.4		
Asian	16,820	5.0	14.4	5.9	20.2	12,675	5.5	14.5	8.5	23.0		1,515	23.5	25.9	3.7	29.6		31,010	5.4	15.0	6.8	21.8		
Indian	2,975	3.4	15.2	4.8	20.0	2,250	3.4	15.5	6.9	22.4		205	16.8	26.2	2.0	28.2		5,430	3.5	15.7	5.6	21.3		
Pakistani	8,605	6.1	14.0	6.3	20.3	6,665	7.4	14.4	8.7	23.1		860	25.5	26.4	3.9	30.3		16,130	6.9	14.8	7.1	22.0		
Bangladeshi	3,440	6.0	14.3	5.9	20.2	2,360	6.1	13.6	9.7	23.2		250	27.8	25.4	3.2	28.5		6,050	6.2	14.5	7.2	21.7		
Any Other Asian Background	1,800	3.6	15.0	5.6	20.6	1,405	3.9	14.7	8.5	23.2		195	21.1	24.1	5.4	29.5		3,405	3.9	15.4	6.8	22.2		
Black	5,265	2.9	13.7	8.4	22.1	6,190	4.6	14.3	10.9	25.3		650	14.2	22.9	8.1	30.9		12,105	3.8	14.5	9.7	24.2		
Caribbean	2,295	4.9	12.7	9.4	22.0	2,980	7.3	14.4	11.2	25.5		240	16.7	20.2	11.2	31.4		5,515	6.2	13.9	10.4	24.3		
African	2,185	2.0	14.9	7.3	22.2	2,265	2.9	14.4	10.4	24.8		315	13.0	25.3	5.8	31.1		4,770	2.5	15.4	8.7	24.1		
Any Other Black Background	785	3.5	13.7	8.2	21.9	945	6.3	14.1	11.5	25.6		95	13.4	21.4	7.7	29.0		1,820	4.8	14.3	9.9	24.2		
Chinese	195	1.6	17.5	4.0	21.5	155	1.5	16.3	7.5	23.8		20	10.3	23.9	5.7	29.5		370	1.6	17.3	5.6	22.9		
Any other ethnic group	2,475	4.6	14.3	7.3	21.6	2,115	5.9	13.3	11.9	25.2		160	19.2	24.1	5.4	29.5		4,750	5.3	14.2	9.3	23.5		
Minority ethnic pupils (10)	46,310	5.1	15.1	7.1	22.2	44,765	7.0	14.5	11.1	25.6		3,535	19.6	24.2	6.7	30.9		94,605	6.1	15.2	9.0	24.1		
All pupils (11)	133,445	3.9	15.6	5.9	21.5	245,590	8.4	15.8	10.7	26.4		13,270	16.7	22.6	9.5	32.0		392,305	6.1	16.0	9.0	25.0		

Source: School Census

(1) Includes middle schools as deemed.

(2) Includes primary academies.

(3) Includes city technology colleges and secondary academies.

(4) Includes maintained and non-maintained special schools. Excludes general hospital schools, independent special schools and independent schools approved for SEN pupils.

(5) Persistent Absentees are defined as having an overall absence rate of around 15 per cent or more. This equates to 46 or more sessions of absence (authorised and unauthorised) during the year.

(6) See Technical Note 15 for further information on how absence and pupil characteristic data have been linked.

(7) Number of enrolments in schools from start of the school year up until 27 May 2011. Includes pupils on the school roll for at least one session who are aged between 5 and 15, excluding boarders. Some pupils may be counted more than once (if they moved schools during the school year or are registered in more than one school). See Technical Notes 14 to 16.

(8) The number of sessions missed due to authorised/unauthorised/overall absence expressed as a percentage of the total number of possible sessions of Persistent Absentees.

(9) The number of Persistent Absentee enrolments expressed as a percentage of the total number of pupil enrolments of same ethnic origin.

(10) Pupils who have been classified according to their ethnic group, excluding White British.

(11) Includes pupil enrolments for whom information on ethnic group was unclassified or missing.

Totals may not appear to equal the sum of the component parts because numbers have been rounded to the nearest 5.

Table 5.5

**STATE-FUNDED PRIMARY, SECONDARY AND SPECIAL SCHOOLS(1)(2)(3)(4):
ABSENCE RATES BY TYPE OF SPECIAL EDUCATIONAL NEED (5)(6)**

2010/11

England

	Pupils at School Action Plus or with statements of SEN (6)					
	Pupil enrolments in schools during 2010/11 (8)	Percentage of half days missed (7):			Persistent Absentees	
		Authorised absence	Unauthorised absence	Overall absence	Number of pupil enrolments who are Persistent Absentees (9)	Percentage of pupil enrolments who are Persistent Absentees
Specific learning difficulty	75,890	5.8	1.7	7.5	8,385	11.1
Moderate learning difficulty	156,595	6.1	2.3	8.3	21,055	13.4
Severe learning difficulty	22,750	7.1	0.9	8.0	2,925	12.8
Profound & multiple learning difficulty	7,160	13.3	0.7	14.0	2,105	29.4
Behaviour, emotional & social difficulties	155,195	7.5	4.4	11.9	35,815	23.1
Speech, language and communications needs	101,365	5.2	1.1	6.3	7,470	7.4
Hearing impairment	13,805	5.9	1.1	7.0	1,285	9.3
Visual impairment	7,545	6.4	1.2	7.6	805	10.7
Multi- sensory impairment	790	7.3	1.1	8.4	100	12.9
Physical disability	23,015	9.2	1.0	10.2	4,470	19.4
Autistic spectrum disorder	54,340	5.8	0.9	6.8	4,995	9.2
Other difficulty/disability	28,295	7.5	2.7	10.2	5,430	19.2
Total (10)	662,315	6.5	2.3	8.8	95,930	14.5

Source: School Census

(1) Includes middle schools as deemed.

(2) Includes primary academies.

(3) Includes city technology colleges and secondary academies.

(4) Includes maintained and non-maintained special schools. Excludes general hospital schools, independent special schools and independent schools approved for SEN pupils.

(5) See Technical Note 15 for further information on how absence and pupil characteristic data have been linked.

(6) Pupils at School Action Plus and those pupils with a statement of SEN provided information on their primary need, and if appropriate, their secondary need. Information on primary need only is given here.

(7) The number of sessions missed due to authorised/ unauthorised/ overall absence expressed as a percentage of the total number of possible sessions.

(8) Number of enrolments in schools from start of the school year up until 27 May 2011. Includes pupils on the school roll for at least one session who are aged between 5 and 15, excluding boarders. Some pupils may be counted more than once (if they moved schools during the school year or are registered in more than one school). See Technical Notes 14 to 16.

(9) Persistent Absentees are defined as having an overall absence rate of around **15 per cent** or more. This equates to 46 or more sessions of absence (authorised and unauthorised) during the year.

(10) Includes pupil enrolments for whom information on type of special educational need was unclassified or missing.

Totals may not appear to equal the sum of component parts because numbers have been rounded to the nearest 5.

Table 6.1

**STATE-FUNDED PRIMARY, SECONDARY AND SPECIAL SCHOOLS (1)(2)(3)(4):
PUPIL ABSENCE IN SCHOOLS BY INCOME DEPRIVATION AFFECTING CHILDREN INDICES (IDACI) DECILE (5)(6) OF PUPIL RESIDENCE**

2009/10 - 2010/11

England (7)

IDACI decile (5)(6)	2009/10					2010/11				
	State-funded primary, secondary and special schools (1)(2)(3)(4)					State-funded primary, secondary and special schools (1)(2)(3)(4)				
	Number of enrolments (8)	Percentage of half days missed (9)			Percentage of persistent absentees (10)	Number of enrolments (8)	Percentage of half days missed (9)			Percentage of persistent absentees (10)
Authorised absence		Unauthorised absence	Overall absence	Authorised absence			Unauthorised absence	Overall absence		
E92000001 England										
0 - 10 % most deprived	809,314	5.3	1.9	7.2	10.2	798,958	5.0	2.0	7.0	9.5
10 - 20 %	716,440	5.5	1.7	7.2	9.9	709,201	5.1	1.7	6.8	9.0
20 - 30 %	650,674	5.4	1.4	6.8	8.9	645,267	5.1	1.4	6.5	8.1
30 - 40 %	609,224	5.3	1.1	6.4	7.9	607,584	5.0	1.1	6.2	7.2
40 - 50 %	593,054	5.1	0.9	6.0	6.8	585,267	4.9	0.9	5.8	6.2
50 - 60 %	579,929	4.9	0.7	5.7	5.8	566,516	4.7	0.7	5.4	5.3
60 - 70 %	571,196	4.7	0.6	5.3	5.0	570,042	4.5	0.6	5.1	4.5
70 - 80 %	575,777	4.5	0.5	5.0	4.3	566,394	4.3	0.5	4.8	3.9
80 - 90 %	573,491	4.4	0.4	4.8	3.7	562,804	4.1	0.4	4.5	3.2
90 - 100 % least deprived	561,042	4.1	0.3	4.5	3.0	536,144	3.9	0.3	4.2	2.6

Source: National Pupil Database

(1) Includes middle schools as deemed.

(2) Includes primary academies

(3) Includes city technology colleges and secondary academies

(4) Includes maintained and non-maintained special schools. Excludes general hospital schools.

(5) Income Deprivation Affecting Children Indices based on pupil postcode. Each SOA in England is given a score which ranks it between 1 and 32482, 1 being the most deprived.

(6) IDACI bands for 2011 are based on 2010 IDACI scores. Care should be taken when comparing to IDACI tables for 2010 and earlier which are based on 2007 IDACI scores.

(7) The residency of 145,754 pupils in 2009/10 and 232,937 pupils in 2010/11 is unknown due to missing or invalid postcode information. These pupils are excluded from the figures in the table.

(8) Number of pupil enrolments in schools from start of the school year up until the end of the fifth half term. Includes pupils on the school roll for at least one session who are aged between 5 and 15, excluding boarders. Some pupils may be counted more than once (if they moved schools during the school year or are registered at more than one school). See Technical Notes 14 to 16.

(9) The number of sessions missed due to authorised/unauthorised/overall absence expressed as a percentage of the total number of possible sessions.

(10) Number of Persistent Absentees expressed as a percentage of the total number of enrolments. Persistent Absentees are defined as having an overall absence rate of around **15 per cent** or more. This equates to 46 or more sessions of absence (authorised and unauthorised).