

SUMMARY

1. At 30 September 2001 there were 43,400 children looked after by English local councils who had been looked after continuously for at least twelve months. This compares to 42,200 at 30 September 2000.
2. 33,800 of these children were of school age. Of these: 26% had SEN statements, 12% missed at least 25 days of school, and 1.3% received a permanent exclusion.
3. On average 48% of those looked after children in the appropriate age group achieved level 2 at Key Stage 1, 37% level 4 at Key Stage 2 and 21% level 5 at Key Stage 3. The comparable percentages for all children were 84%, 77% and 65% respectively.
4. In school year 11, 50% of looked after children obtained at least one GCSE or GNVQ compared with 95% of all school children. 8% obtained at least 5 GCSE's at grades A*- C compared with 48% of all children.
5. At the end of school year 11, 53% remained in full-time education compared to 72% of all school-leavers. 24% were unemployed the September after leaving school.
6. 10% of these looked after children aged 10 or over, were cautioned or convicted for an offence during the year, three times the rate for all children of this age.
7. For 71% of these looked after children immunisations were up to date, 67% had a dental check, and 68% had an annual health assessment.
8. There are no significant differences between the outcome indicator figures for the twelve-month periods ending 30 September 2000 and 30 September 2001.

COMMENTARY

1. Introduction

The OC2 statistical collection

- 1.1 In September 1999 the Government established 11 objectives for children's social services in England. One of these is 'to ensure that children looked after gain the maximum life chance benefits from educational opportunities, health care and social care'.
- 1.2 In order to collect the data needed to monitor progress towards this objective the Department of Health introduced three new statistical collections. One of these (OC2) covers a range of outcome indicators for looked-after children in England. This publication presents the results of this collection for the twelve months ending 30 September 2001. The figures presented include the Personal Social Services Performance Assessment Framework (PAF) indicators C18, C19 and C24.
- 1.3 The relationship between the OC2 and the other two new collections is discussed further in Section 2.

Data Quality

- 1.4 This is the second time that the Department of Health has asked social services departments to supply this information. Data quality and response rates are significantly better than in the first year of the collection, when many councils experienced difficulties in obtaining the required information. The Technical Notes section below discusses data quality.

- 1.5 In some councils the number of looked-after children in some of the categories on the OC2 return is relatively small; caution is required when considering these figures as they are more susceptible to chance variation than figures based on larger numbers of children.

Rounding and suppression of very small numbers to preserve confidentiality

- 1.6 We have applied new rounding and suppression conventions to all data in this publication, in order to conceal very small numbers. This is to prevent the possibility of individual children being identified in the statistical Tables. The conventions used will be applied in future to all Department of Health personal social services statistics publications, and closely follow the established guidelines which the Department uses to protect the identity of patients in hospital statistics.
- 1.7 A result of applying this procedure is that columns of data at individual councils level which largely consist of very small numbers, now contain many dashes (-) to replace actual numbers in the range 1-5.
- 1.8 Table 6 consists of very small numbers, and has therefore been produced in a different format to last year.

Coverage of OC2

- 1.9 The OC2 is one of three 'Outcome Indicator' statistical collections. The other two are OC1 ('Educational

Qualifications of Care Leavers’) and OC3 (‘Care Leavers on their 19th birthday’). The three returns and the respective cohorts on which they report are discussed in more detail in Appendix A at the back of this publication.

- 1.10 The OC2 collection covers all children and young people in England who had been looked after continuously for at least twelve months at 30 September. These figures exclude children looked after under an agreed series of short-term placements (sometimes called ‘Family Link Placements’, ‘Short Breaks’ or ‘respite care’) during that period. These figures include asylum-seeking children.
- 1.11 From the overall group of children who had been looked after for at least twelve months at 30 September, smaller subsets are defined by the scope of some of the data items. These subsets are listed in figure 6.1 in the Technical Notes section.
- 1.12 Where a child has ‘slipped’ a year or more (e.g. is taking key stage tests or GCSEs later than expected from their

date of birth) their results are not included.

Duration in Care

- 1.13 Figures collected separately on the SSDA 903 statistical return (which represents care histories of individual looked-after children) show that the average duration for which a child is looked after continues to increase over time, and the figures from the two successive OC2 returns appear to support this trend.
- 1.14 The 2001 OC2 collection shows that 43,400 children had been continuously looked after for at least twelve months at 30 September 2001, compared to 42,200 at 30 September 2000. In 2001 this represented approximately 74% of all children who were looked after on 30 September.
- 1.15 The figure of 43,400 from the OC2 returns closely approximates an estimate for children at 31 March 2001 who had been looked after for twelve months or more which can be derived from SSDA 903 and CLA 100 returns.

2. Comparability of figures from OC2 with figures for all children

2.1 Several Tables include comparative figures for all children in England alongside data collected from OC2. The figures for ‘all children’ are collected on various slightly different bases, which are explained below. Figure 2.2 at the end of this section summarises the differences.

Comparability of educational results (Tables A, B, C, 1,2,3,4,5)

2.2 The figures for educational attainment in Tables A, B, C, 1, 2, 3, 4, and 5 are provided by DfES and are collated according to the Local Educational Authority (LEA) to which each school belongs. Although LEAs have the same boundaries as social services departments, many looked-after children are placed out-of-council (Figure 2.1). This is particularly the case in the Greater London area, where typically between 30% and 60% of children who have been looked after for 12 months or more are placed out-of-council and may well attend a school belonging to a different LEA to the council which is looking after them. Caution must therefore be used when comparing educational data collected on OC2, with that for all children collected by DfES.

2.3 Figure 2.1 is derived from the SSDA 903 statistical collection and is derived from placement data relating to children who had been looked after for at least twelve months on 31 March 2001. It is derived from SSDA 903 placement codes F1-F6 and H1-H4, which distinguish foster and residential placements inside or outside the council area¹. As there are further

placement types for which the distinction between in and out of council is not made, these data should be regarded as probably slightly under-estimating the frequency of out-of-council placements. As it is known that there is little seasonal variation in this dataset, this can be taken as a reasonable proxy for the position at 30 September.

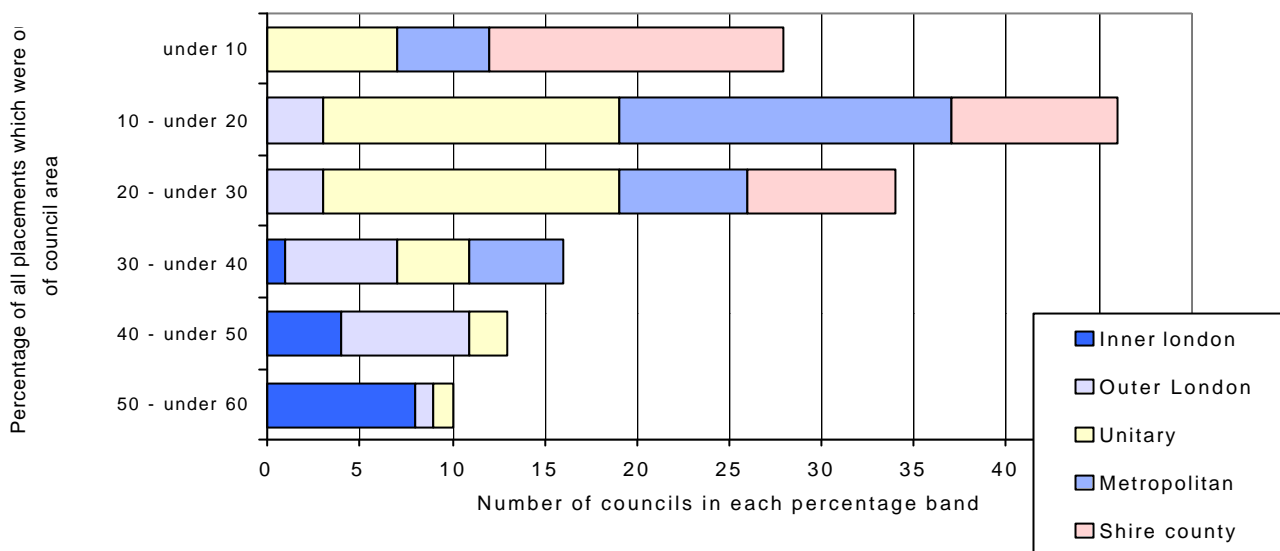
2.4 There are a number of reasons why a child can be placed outside the council’s boundary. Many councils, particularly new unitary authorities, cover relatively small geographical areas and if a wide range of placement options is to be available it is inevitable that some of these will be located outside the council’s boundary. The inclusion of Figure 2.1 here is not intended as a comment on any council’s placing policy, but to help the reader assess the usefulness of the comparator data for all children provided by DfES which are collected from LEAs, rather than social services departments.

2.5 The reader may also be interested in comparing the data presented here to that discussed in paragraphs 5.10 and 5.11 of the Commentary to ‘Children looked after by Local Authorities Year Ending 31 March 2001’ which presents a similar analysis for all children looked after at 31 March². Such a comparison suggests that the incidence of out-of-council placements is higher in children who have been looked after continuously for at least twelve months.

¹ SSDA 903 Guidance notes are available at: www.doh.gov.uk/stats/forms.htm

² The publication is available at: www.doh.gov.uk/public/stats3.htm

Figure 2.1: Children who had been looked after for at least twelve months on 31 March 2001: Number of councils banded according to proportion of all placements which were known to be out-of-area



2.6 The DfES data are for all children in mainstream and independent schools. The reader should bear in mind that some of the young people covered by the OC2 collection will be in young offenders institutions, pupil referral units, or special needs schools, which are not accounted for in the DfES data.

2.7 Comparability between educational attainment data for looked after children and all children at local level has to be viewed with these caveats in mind.

2.8 The national SEN figures are based on the January school census. All other figures from DfES are based on a school year running from 1 September to the following 31 August.

Comparability of education, employment and training status (Table D)

2.9 The comparative figures in Tables D and 6 were provided by the Connexions Service and are based on a survey of all year 11 pupils in maintained schools in England in the school year which ended in August 2001. They exclude data from a small number of independent schools.

Comparability of offending data (Table 7)

2.10 The figures for all children cited in Table 7 are for Police Force areas, which do not necessarily follow the same boundaries as individual councils, and in many instances include the areas of a number of councils. These figures must therefore be treated with caution. At present the 'all children' data collected on this basis are the only figures available to provide a comparison with looked-after children.

Figure 2.2: Comparability between reference periods of OC2 data for 30 September 2001 and the data for all children obtained from other sources.

Relevant Tables And data item	OC2 data item and time period	'all children' data definition, time period, and source
Table A: Children with a statement of SEN	All children looked after continuously for twelve months or more on 30 September 2001, and who had a statement of SEN on that date	All children in the school population at January 2001 with a statement of SEN. DfES data from Pupil-level Annual School Census, 'PLASC'. Published May 2002 as DfES Statistical First Release SFR 11/2002.
Table A: Numbers of permanent exclusions from schools	All children looked after continuously for twelve months or more on 30 September 2001, and who became permanently excluded from school at any time during the twelve-month period. Where a child was permanently excluded twice during the period, both exclusions are counted.	All children in the school population who became permanently excluded during the school year ending August 2001. Where a child was permanently excluded twice during the period, both exclusions are counted. Published May 2002 as DfES Statistical First Release SFR 10/2002.
Tables B, 2, 3, 4: Key Stage results	Of all children looked after continuously for twelve months or more on 30 September 2001, those who were eligible to sit relevant Key Stage tasks and tests according to their date of birth.	All children in the LEA maintained school population eligible to sit relevant Key Stage tasks and tests according to their date of birth. Refers to the school year ending August 2001. Published by DfES October 2001 as Statistical First Release SFR 40/2001, and in May 2002 as Bulletin 03/02.
Tables C, 5: GCSE performance	Of all children looked after continuously for twelve months or more on 30 September 2001, those who belonged to Year 11 according to their date of birth.	All children in the school population who were eligible to sit relevant GCSE or GNVQ exams according to their date of birth. Refers to the school year ending August 2001. Published by DfES May 2002 as Statistical Bulletin 'GCSE/GNVQ and GCE A/AS/VCE/Advanced GNVQ Examination Results 2000/2001 – England'.
Tables D, 6 : Activity following year 11	Of all children looked after continuously for twelve months or more on 30 September 2001, those who belonged to Year 11 according to their date of birth.	All pupils in the LEA maintained school population in England who were in year 11 which ended in August 2001. (Connexions/Careers Service Annual Activity Survey, carried out in October 2001).
Tables E, 7: Offending behaviour	Of all children looked after continuously for twelve months or more on 30 September 2001, those who aged 10 or over on that date.	Number of people aged 10 to 17 who were cautioned or convicted for any offence. Refers to calendar year ending 31 December 2000. (Supplied by Crime and Criminal Justice Unit, RDS, Home Office; published on DH website at www.doh.gov.uk/stats/forms.htm#oc2)

3. Educational Attainment

Children who have statements of Special Educational Needs (SEN) (Tables A and 1)

3.1 Children have special educational needs if they have a learning difficulty which calls for special educational provision to be made for them. Further definitional and background information is provided in the *Special Educational Needs Code of Practice* which was published by DfES in November 2001³. Chapter 10 of the *Code of Practice* discusses the responsibility of social services departments to work closely with schools and LEAs on behalf of these children.

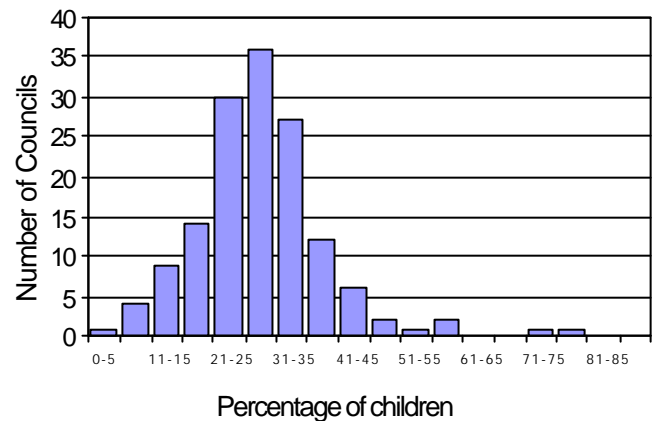
3.2 33,800 of the children looked after continuously for a least twelve months were of school age at 30 September 2001. It is estimated that of these, 8,900 (26%) during the 2000/2001 school year held statements of special educational needs (stage 5 in the *Code of Practice*). This percentage is very similar to that for the twelve months ending 30 September 2000.

3.3 Compared to national figures for all children in England, looked-after children are almost nine times more likely to hold a statement of special educational needs. 3.1% of all school children in England held a statement of SEN at January 2001.

3.4 The comparator figures in Table A for all children in England were provided by DfES and represent the position at January 2000 and January 2001 respectively⁴.

3.5 Figure 3.1 shows the variation between councils in the percentage of their children looked after for twelve months who had statements of SEN on 30 September. As can be seen, in two-thirds of councils the incidence of looked-after children with special educational needs lies between 21% and 35% inclusive, clustering around a mean of 28%. The total range is between 4% (Hackney) and 79% (North Yorkshire).

Figure 3.1: Councils ranked according to % of children looked after for at least twelve months at 30 Sept. 2001 who held a statement of SEN



Exclusions from school (Tables A and 1)

3.6 Looked-after children also appear more likely to receive a permanent exclusion from school. Out of the 33,800 looked-after children of school age, there were 450 permanent exclusions during the 2000/2001 school year. Fixed-term exclusions are not included. Although this is a count of exclusions rather than children excluded, it is uncommon for the same child to receive more than one permanent exclusion during the school year.

³ available at: www.dfes.gov.uk/sen

⁴ First Release figures at www.dfes.gov.uk/statistics/DB/SFR/s0332/index.html.

- 3.7 The number of exclusions expressed as a percentage of children who had been looked after for at least twelve months is 1.3% (Quality Protects indicator QP9). This is a similar figure to that for the twelve months ending 30 September 2000.
- 3.8 This compares with 0.1% of all children in England in the 2001 school year. The comparator figures of exclusions for all children are provided by DfES⁵.
- 3.9 A large number of entries in this column of Table 1 have been suppressed (shown by a dash) because the number of children involved is between 1 and 5. Where a percentage has been replaced by a dash it is because either of the numbers used to calculate the percentage is between 1 and 5. For further details see the section on 'Rounding and Suppression' at the end of the Technical Notes.

Children who missed at least 25 days of school for any reason (Tables A and 1)

- 3.10 For the 2000/2001 school year, 12% of children looked after continuously throughout the year missed 25 days or more of school for any reason; a very similar figure to that for the previous school year. This represents Performance Assessment Framework indicator C24.

Key Stage and GCSE results (Tables B&C, and Tables 2, 3, 4 & 5)

- 3.11 The performance of those children looked after continuously for a year in the tasks and tests at the end of the three Key Stages is shown in Table B. Overall 48% reached the target level 2

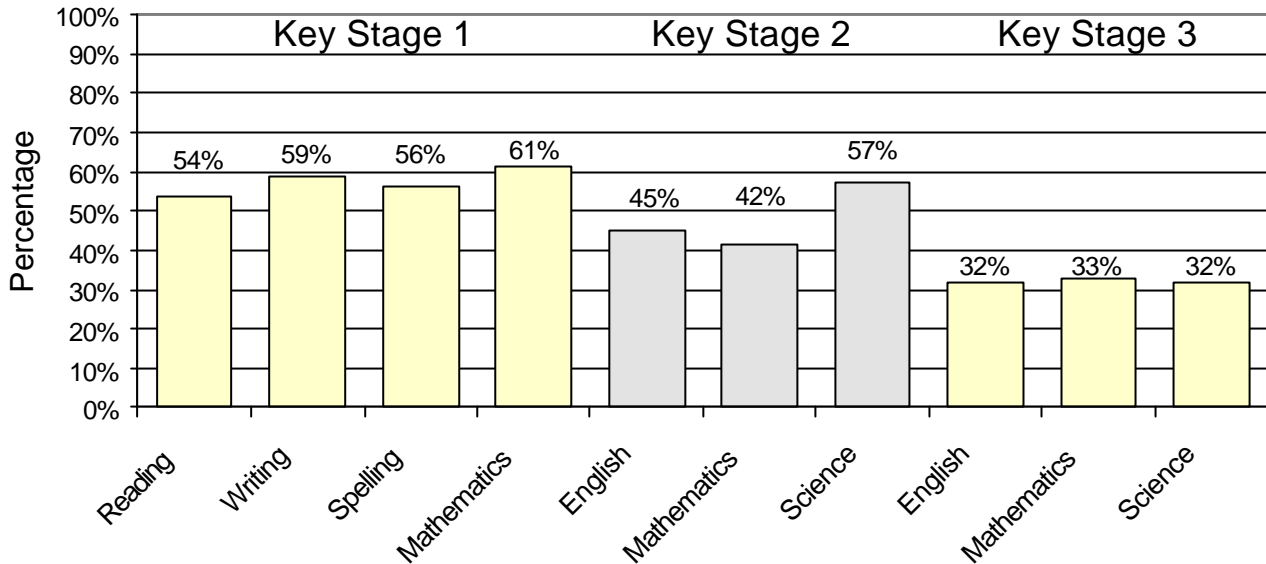
at Key Stage 1, 37% reached level 4 at Key Stage 2 and 21% reached level 5 at Key Stage 3. (The comparable figures for school year ending August 2000 were 47%, 36%, and 19% respectively.) It can be seen that the academic performance of looked-after children worsens for older children. This lower performance with age is also apparent in the national school population, with equivalent figures for Key Stages 1, 2 and 3 for the school year ending August 2001 being 84%, 77% and 65% respectively.

- 3.12 Figure 3.2 shows the percentage of looked-after children attaining the target level at each Key Stage test, as a proportion of the percentage of all children attaining the target level for the 2000/2001 school year⁶.
- 3.13 It can be seen from Figure 3.2 and Table B that the performance of looked-after children achieving the target level for Key Stage 1 is between 54% and 61% of that of all children. For Key Stage 2, the performance of looked-after children drops to between 42% and 57% of that of all children, and at Key Stage 3, the attainment of looked-after children is only around 32% of that of the total school population at Key Stage 3. These ratios represent Quality Protects indicator QP7.

⁵ First release published May 2002 at www.dfes.gov.uk/statistics/DB/SFR/s0331/index.html

⁶ First release figures for all children at LEA level were published in October 2001 and are available at www.dfes.gov.uk/statistics/DB/SFR/s0291/index.html. National figures were published May 2002 at www.dfes.gov.uk/statistics/DB/SBU/b0333/index.html

Figure 3.2 The proportion of looked-after children attaining the target level of each of the Key Stage tasks and tests, shown as a percentage of the proportion of all children attaining the target level. Twelve months to 30 September 2001



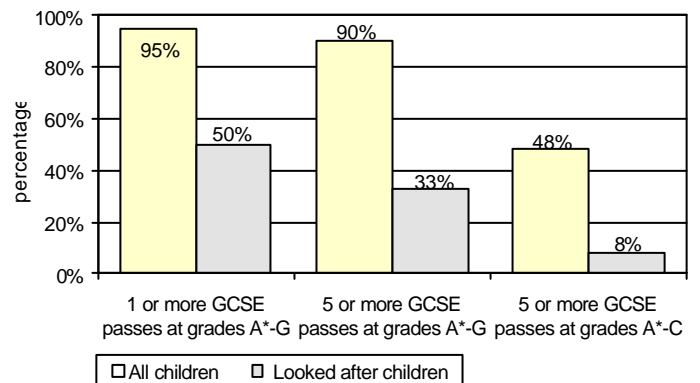
Year 11 : GCSEs and GNVQs

3.14 Of the children looked after continuously throughout Year 11 (Tables C and 5), 54% sat at least one GCSE/GNVQ examination, and 50% obtained at least one GCSE at grade A*- G or a GNVQ. This compares with almost identical figures of 54% and 49% respectively for the school year ending 30 September 2000.

3.15 The latest available equivalent figure for all children in England in year 11 who obtained at least one grade A* - G or a GNVQ during the school year ending August 2001 is 95%. 33% of children looked after during the year achieved 5 or more GCSE passes at grades A*- G, compared to 90% of all children. Only 8% of looked-after children attained 5 GCSE passes at grades A*-C, compared with 48% of all children. The OC2 excludes the results of young people who left care after completing year 11 but before 30 September 2001.

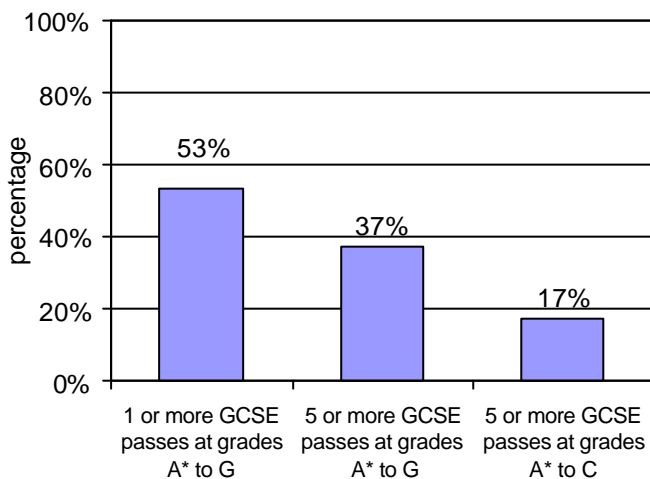
3.16 Figure 3.3 compares GCSE attainments of looked-after children in year 11 to the attainments of all children.

Figure 3.3 Percentage of children looked after for at least twelve months at 30 September 2001 obtaining GCSE passes, compared with all children



3.17 Although there is a large difference between the performance of looked-after children and all children at each set of Key Stage tasks and tests and in general GCSE attainment, this difference is at its greatest when considering those children obtaining the higher grades at GCSE; five passes between grades A*- C. This is illustrated in Figure 3.4.

Figure 3.4 The proportion of looked-after children in year 11 obtaining GCSE passes shown as a percentage of the proportion of all children obtaining GCSE passes



Education and employment at age 16 (Table D and Table 6)

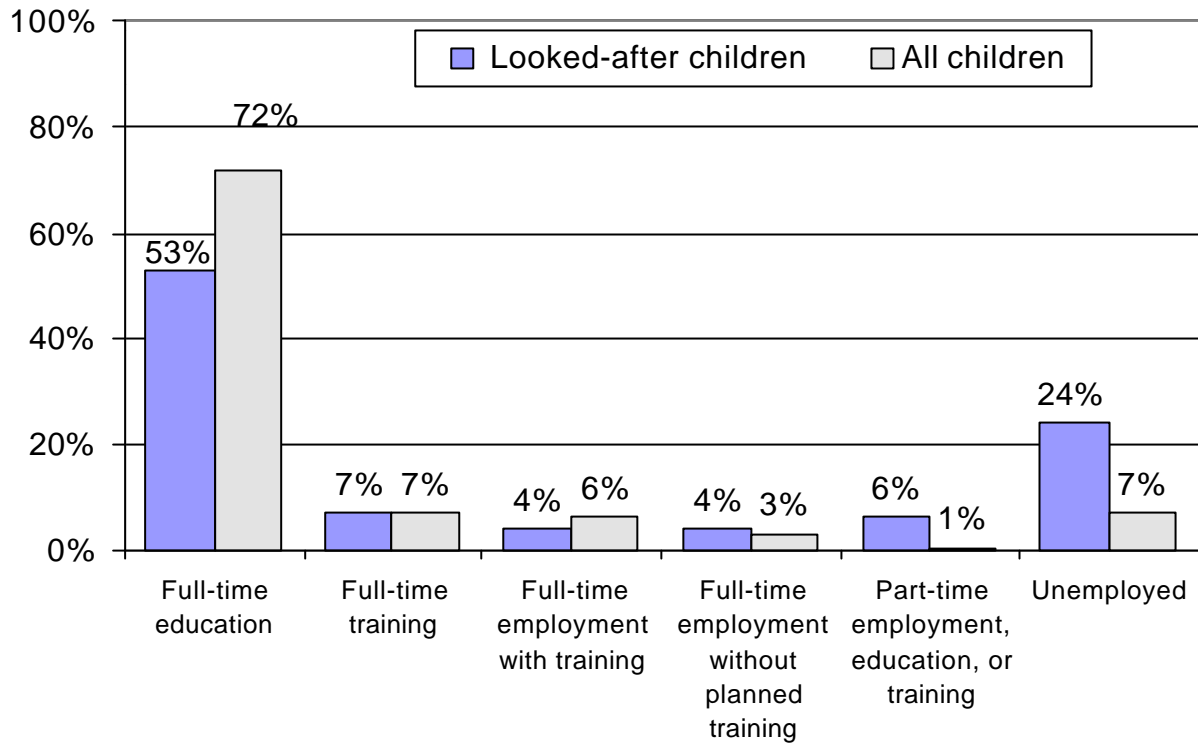
3.18 The OC2 return collects information on the position of those looked-after children who finished compulsory schooling during the 2000/2001 school year on completing year 11. The reader should bear in mind that these data do not represent outcomes for care leavers, as all of these young people were still looked after on 30 September.

3.19 53% of these young people were in or about to start full-time education. 7% were in full-time training, 8% in full-time employment and 6% in part-time employment, education, or training. 24% of these young people were unemployed at 30 September; for 2% this was due to ill-health or disability. These percentages are very similar to those which were reported for the position at 30 September 2000.

3.20 Figure 3.5 and Tables D and 6 compare these outcomes with data for all children who completed year 11. The comparative information for all children is from the 'Connexions/ Careers Service Annual Activity Survey 2001'. This survey was carried out in October 2001, covering all young people who were in year 11 during the 2000/2001 school year.

3.21 The comparison shows that, at a national level, fewer looked-after children remained in full-time education than in the comparator population, whereas more looked-after children were unemployed, or in part-time education, employment or training (figure 3.5).

Figure 3.5: The position of looked-after children at 30 September 2001 following the completion of year 11, compared with all children of same age.

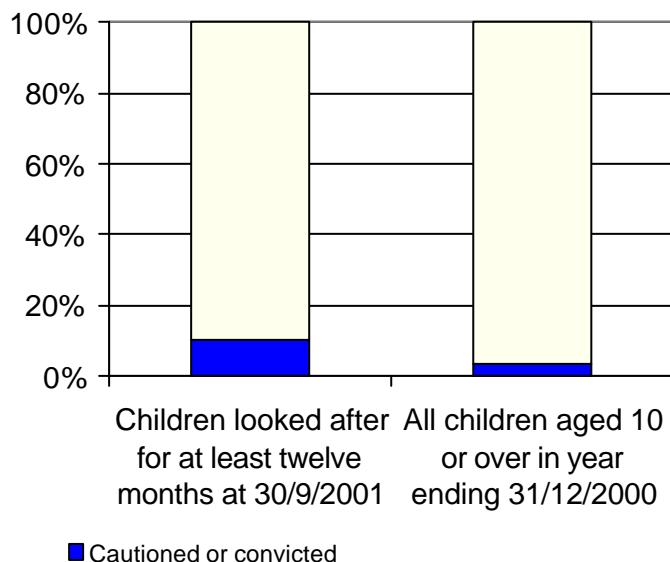


4. Cautions and Convictions

Cautions and convictions (Tables E and 7)

- 4.1 As can be seen from Table E and figure 4.1, looked-after children of the age of criminal responsibility are three times more likely to be cautioned or convicted of an offence than others. 10.4% of children looked after for a year or more who were aged 10 or over had been cautioned or convicted during the year.
- 4.2 This compares with a figure of 3.5% for all children. The ratio of these two percentages represents PAF indicator C18. Again, these figures are almost identical to those for the twelve months ending 30 September 2000.
- 4.3 Table 7 shows these figures at local council level. As explained above, the comparable figures for all children are for Police force areas, which do not necessarily follow the same boundaries as individual councils and in many instances cover the areas of several councils.

Figure 4.1: Children aged 10 or over: comparison of looked-after children and all children, showing percentage with a caution or conviction



5. Health Outcomes

Health Assessments (Tables F and Tables 8 & 9)

- 5.1 Of the 43,400 children who had been looked after continuously for twelve months, 29,300 (68%) had their annual health assessment and 29,200 (67%) had their teeth checked by a dentist during that period.
- 5.2 It must be borne in mind when considering these figures that children have a right to refuse a health assessment or dental check. As the OC2 return is for children looked after for a year all babies will have teeth by then which should be checked.
- 5.3 Just over two thirds (71%) of children looked after continually throughout the year were up-to-date for their routine immunisations. This figure should also be interpreted with some caution. Children may enter care with their immunisations behind schedule, or unknown as in the case of unaccompanied asylum seekers, and it is not always possible for a local authority to 'catch up' with immunisations.
- 5.4 The combination of these percentages gives a value of 69% for PAF indicator C19.
- 5.5 In addition, 5,400 (74%) of children under age 5 who had been looked after for at least a year had their development assessments up to date.
- 5.6 All these figures, at the national level, show an increase over the corresponding figures for the twelve months ending 30 September 2000.

TECHNICAL NOTES

6. Coverage of OC2

6.1 The Table below specifies the subset of children captured by each of the OC2's data items.

Figure 6.1: Coverage of each OC2 Data Item, period ending 30 September 2001

Data item On OC2	Definition	Which children were included?
1	Scope of OC2	All children who were looked after on 30 September and on that date had been looked after continuously for at least a year.
<i>Items 2 – 8 are subsets of item 1:</i>		
2	Total eligible schooling	Children whose date of birth in range 1/9/84 to 31/8/96
3	Key stage 1	Children eligible for school year 2, i.e. whose date of birth in range 1/9/93 to 31/8/94
4	Key stage 2	Children eligible for school year 6, i.e. whose date of birth in range 1/9/89 to 31/8/90
5	Key stage 3	Children eligible for school year 9, i.e. whose date of birth in range 1/9/86 to 31/8/87
6	GCSEs and GNVQs	Children eligible for school year 11, i.e. whose date of birth in range 1/9/84 to 31/8/85
7	Offending	Children aged 10 or over at 30 September, i.e. whose date of birth is 30/9/91 or earlier
8	Development Assessments	Children aged 5 years or younger at 30 September, i.e. whose date of birth is 01/10/95 or greater
9	Immunisations	All children covered by OC2 return, i.e. all children who were looked after on 30 September and had been looked after continuously for at least a year. (This is the same as item 1).
10	Dental checks	
11	Health Assessments	
12	Employment/school status at 30 Sept 2001	Children eligible for school year 11, i.e. whose date of birth in range 1/9/84 to 31/8/85. (This is the same as Item 6).

Twelve month data period

6.2 The data collected cover young people looked after at 30 September 2001 in England who had been looked after continuously for at least twelve months, defined as the period from 1 October to the following 30 September inclusive. This departs from the Department of Health's other collections of children's personal social services data, which use a 'year' based on the period ending 31 March. The data period used for the OC2 was designed to accommodate the school year.

Boundaries of authorities

6.3 As was explained in section 2 of this Commentary, some young people covered by the OC2 will have attended schools outside the boundaries of their home local authority social services department. Hence caution must be used when comparing educational data collected on OC2, with that for all children collected by DfES.

7. Missing data for 2000/2001

7.1 There were far fewer missing data items than for the previous twelve months. All councils in England with social services responsibilities submitted an OC2. The following notes explain how missing data have been dealt with in this publication:

Incomplete OC2 returns received

7.2 Incomplete returns were received from six councils, and the relevant figures have therefore been shown in the Tables as 'not available', represented by two dots (..). Figure 7.1 lists these six councils, and shows which data items they were unable to provide in each case. All figures presented at England and Government Office Region level include estimates for missing data based on national percentages.

All items on OC2 completed, but some only partially

7.3 Twelve councils provided at least one item based on partial data only, estimates being derived by grossing up; in some cases this was done by the authority themselves and in other cases

by the Department of Health. These estimates are shown in the local authority Tables, and where a figure presented has been extrapolated from partial data the authority name is marked with a †.

Problems reported in collection of data

7.4 Where a council was unable to find the information, they reported the child as having no qualifications or not being up to date with regard to health checks. For this reason the figures for some councils may underestimate the proportions of their looked-after children for certain items.

Validation checks

7.5 The Department of Health subjected the data to a number of validation checks including, where possible, comparison with other collections (SSDA 903). Councils were informed of validation failures. Many returned corrected data, although inconsistencies, often minor, remain in the figures for some councils.

Figure 7.1: OC2 missing data items, twelve months to September 2001

Council	OC2 return item number										
	2a	2b	2c	2d	7a	7b	8a	8b	9	10	11
Cumbria				n/a							
Oldham				n/a			n/a	n/a			
Staffordshire				n/a				n/a	n/a		
Devon						n/a		n/a		n/a	n/a
Portsmouth				n/a							
Southampton		n/a		n/a							

8. Rounding and Suppression of very small Numbers

8.1 To ensure that no individual can be identified from statistical Tables, new conventions have been introduced in this publication for the rounding and suppression of very small numbers.

National Tables A - F

8.2 For this reason, all **numbers** which appear in the national summary Tables (Tables A to F) have been rounded to the nearest 100 if they exceed 1,000, and to the nearest 10 otherwise. Numbers from 1 to 5 inclusive have been suppressed, being replaced in the Table by a hyphen. Where any number is shown as zero (0) the original figure submitted was also zero.

8.3 All **percentages** at national level have been rounded to 1 decimal place. Wherever either of the underlying numbers from which a percentage has been calculated is five or less, the percentage has been suppressed and replaced by a hyphen. Where any percentage is shown as zero (0) both the original figures from which it has been calculated were zero.

Local Tables 1 - 9

8.4 At local council level (Tables 1 - 9) the England total **numbers** at the head of each Table have been rounded either to the nearest 10 or 100, following the rule outlined above.

8.5 All other numbers at local council level have been rounded to the nearest five, and numbers from 1 to 5 inclusive have been suppressed, being replaced in the published Tables by a hyphen. Where any number is shown as zero (0), the original figure submitted was also zero.

8.6 In local council Tables the England total **percentages** at the head of each Table have been rounded to 1 decimal place, following the rule outlined above.

8.7 All other percentages at local council level have been rounded to a whole number. Where any percentage is shown as zero (0), both the original figures from which it has been calculated were zero. Some comparative data from other sources is rounded to a whole number.

8.8 Ratios and PAF indicators have been expressed to one decimal place. Where percentage figures from other sources (e.g. DfES) have been quoted, they have been left in the form in which they were originally published.

8.9 In Tables which include time series, this rounding convention has been applied to data for previous years for the sake of consistency.

Suppression of other numbers

8.10 It has also been necessary to suppress other figures whenever it would be possible to calculate the value of a suppressed number by means of simple arithmetic. The rule applied in these circumstances has been to suppress the next smallest data item.

Exclusion of three councils

8.11 In addition, all information about the City of London, Isles of Scilly and Rutland has been suppressed, due to the very small numbers of children looked after by these councils.

Symbols used

8.12 The following symbols have been used in the Tables:

- 0 zero
- Small number suppressed to preserve confidentiality. Normally this will be a number between 1 and 5 inclusive, or a percentage where either the numerator or denominator is between 1 and 5 inclusive.
- .. Not available
- . Not applicable
- † Placed against a local council's name indicates that some figures for that authority have been estimated.

Figure 8.1: Examples of the rounding conventions used in this publication:

Actual Number	Numbers at England level, as shown in Tables	Numbers at local council level, as shown in Tables
0	0	0
1	-	-
2	-	-
3	-	-
4	-	-
5	-	-
6	10	5
7	10	5
8	10	10
9	10	10
10	10	10
11	10	10
12	10	10
13	10	15
14	10	15
15	20	15
16	20	15

Actual Number	Numbers at England level, as shown in Tables	Numbers at local council level, as shown in Tables
17	20	15
18	20	20
19	20	20
20	20	20
120	120	120
124	120	125
125	130	125
126	130	125
994	990	995
995	1,000	995
999	1,000	1,000
1,949	1,900	1,950
1,950	2,000	1,950
1,955	2,000	1,955
1,956	2,000	1,955
1,957	2,000	1,955
1,958	2,000	1,960

Figures on the Internet

- 8.13 The department of Health's website contains a copy of this publication with all the Tables in a suitable format for downloading. They can be found under the heading 'social care' at:

<http://www.doh.gov.uk/public.stats3.htm>

Further enquiries

- 8.13 Further enquiries concerning the statistics contained in this report should be addressed to:

Marcus Carlton
Department of Health
Room 451C
Skipton House
80 London Road
London SE1 6LH

Telephone 020 7972 3801

Further copies of this report can be obtained from:

Henderson Burrows
Department of Health
Room 451C
Skipton House
80 London road
London SE1 6LH

Telephone 020 7972 5581

Email:

childstats@doh.gsi.gov.uk

© Crown copyright 2002.

Outcome Indicators for Looked-after Children, 12 months to 30 September 2001

The accompanying tables should be read in conjunction with the Commentary and Technical notes.

Numbers in these tables have been rounded, and very small numbers have been suppressed so that no individual children in these tables can be identified by inference. This is explained in more detail in section 8 of the Technical notes.

The following symbols have been used in these tables:

- 0 Zero, where the data item submitted was zero - not a result of rounding.
- (hyphen): Small number suppressed to preserve confidentiality. Normally this will be a number between 1 and 5 inclusive, or a percentage where either the numerator or the denominator is between 1 and 5 inclusive.
- .. (double dots): Not available. Normally this means that the data item was not supplied to DH by the council concerned.
- . (single dot): Not applicable.

Published by DH Statistics Division, July 2002

Contact: childstats@doh.gsi.gov.uk

© Crown copyright 2002

Table A Number of children looked after at 30 September 2000 and 2001 who had been looked after for at least twelve months, and general information about education

England	numbers and percentages					
	looked-after children				all children	
	number		percentages ¹		percentages ²	
	2000	2001	2000	2001	2000	2001
Number of children looked after at 30 Sept. who had been looked after for at least twelve months	42,200	43,400
and of these: Number eligible for full-time schooling	33,100	33,800
and of these: Number with a statement of special educational needs	8,600	8,900	26.0	26.5	3.0	3.1
Number of permanent exclusions from school ³	490	450	1.5	1.3	0.1	0.1
Number who missed at least 25 days of school ^{4,5}	4,000	4,100	11.9	12.2

¹ expressed as a percentage of the number eligible for full-time schooling

² source: DfES statistical bulletins: 'Statistics of Education: Special Educational Needs in England: January 2002 (provisional)', and 'Permanent Exclusions from Schools in England 2000/2001 (provisional estimates)'

³ If a child was permanently excluded more than once in the previous school year, each occasion has been counted.

⁴ Performance Assessment Framework Indicator C24: The percentage of children who had been looked after continuously for at least 12 months and were of school age, who missed a total of at least 25 days during the previous school year of schooling for any reason.

⁵ figures on this basis are not collected by DfES for all children

Table B Eligibility and performance of looked-after children in Key Stage tasks and tests, compared with all children, school years ending 30 September 2000 and 2001

England	numbers and percentages							
	looked-after children				all children ¹		ratio QP7 ²	
	numbers		percentages		percentages			
	2000	2001	2000	2001	2000	2001	2000	2001
YEAR 2								
Number eligible to sit Key Stage 1 tasks and tests	2,000	2,100
Number who attained at least Level 2 ³ in the following:								
Reading task ⁴	970	950	47.6	45.1	83	84	0.6	0.5
Writing task	990	1,100	48.6	50.6	84	86	0.6	0.6
Spelling test	780	890	38.2	42.2	71	75	0.5	0.6
Mathematics task/test	1,100	1,200	53.8	55.8	90	91	0.6	0.6
YEAR 6								
Number eligible to sit Key Stage 2 tasks and tests	2,700	2,800
Number who attained at least Level 4 ³ in the following:								
English	860	940	32.3	33.3	74	74	0.4	0.4
Mathematics	810	820	30.4	29.1	71	70	0.4	0.4
Science	1,200	1,400	44.0	49.8	84	87	0.5	0.6
YEAR 9								
Number eligible to sit Key Stage 3 tasks and tests	3,400	3,500
Number who attained at least Level 5 ³ in the following:								
English	640	710	18.9	20.3	63	64	0.3	0.3
Mathematics	660	760	19.4	21.6	65	66	0.3	0.3
Science	610	740	17.9	21.1	59	66	0.3	0.3

¹ source: DfES statistical bulletin 'National curriculum assessments of 7, 11 and 14 year olds in England - 2001.

² the proportion of looked after children attaining the target levels or better in each of the tested subjects in the National Curriculum Assessments tests, expressed as a ratio of the proportion of all children at that stage attaining the target level or better in the Local Education Authority.

³ target level for age group

⁴ the 'all children' Key stage 1 Reading task figure is derived by DfES from an average of children attaining level 2 or above in the reading task and pupils attaining level 3 or above in the reading comprehension test, therefore cannot be directly compared with the reading task or reading comprehension test figures for looked-after children. There was also a reading comprehension task in 2000. Figures shown for 2000 are for reading task only

Table C GCSE performance of looked-after children in Year 11 compared with all children, school years ending 30 September 2000 and 2001

England	numbers and percentages							
	looked-after children				all children ¹		Quality Protects Indicator 8 ³	
	numbers		percentages ²		percentages			
	2000	2001	2000	2001	2000	2001	2000	2001
Number in Year 11	3,900	4,200
Number who sat at least one GCSE or GNVQ ⁴	2,100	2,200	53.5	54.1
Number who obtained at least:								
1 GCSE at grade A* to G or a GNVQ	1,900	2,100	49.2	49.6	94	95	0.5	0.5
5 GCSE's at grade A* to G	1,400	1,400	35.5	33.1	89	90	0.4	0.4
5 GCSE's at grade A* to C	280	330	7.3	8.0	49	48	0.2	0.2

¹ source: DfES statistical bulletin: GCSE/GNVQ and GCE A/AS/VCE/Advanced GNVQ Examination Result 2000/2001 - England. Issued May 2002.

² expressed as a percentage of all looked after children in Year 11

³ the proportion of looked after children obtaining at least 5 GCSE's at grades A*-C during the most recent school year, expressed as a ratio of the proportion of all children in the local authority achieving these standards.

⁴ DfES does not collect this data item for all children

Table D Education and employment status at 30 September 2001 of looked-after children in Year 11 in 2000/2001 school year, compared with all children

Government Office Region		total number of children in Year 11 in 2000/2001 school year	position at 30 September 2001, shown as a percentage of the total						unemployed	
			full-time education	full-time training	full-time employment with planned training	full-time employment with no planned training	part-time employment, education, or training	a result of ill-health or disability	other reason	
ENGLAND	looked after	4,200	52.8	7.3	3.9	4.0	6.4	1.8	22.1	
	all children^{1,2}	582,900	71.7	7.1	6.4	2.5	0.5	6.8		
NORTH EAST	looked after	200	44	10	7	2	13	1	23	
	all children ^{1,2}	33,600	66	13	4	2	0.2	10		
NORTH WEST & MERSEYSIDE	looked after	600	53	11	5	4	4	2	21	
	all children ^{1,2}	80,700	68	10	7	3	0.3	8		
YORKS & THE HUMBER	looked after	400	47	10	4	5	8	2	24	
	all children ^{1,2}	62,200	68	9	6	4	1	8		
EAST MIDLANDS	looked after	300	50	7	4	4	13	2	21	
	all children ^{1,2}	49,400	70	8	7	3	1	6		
WEST MIDLANDS	looked after	400	41	12	5	6	4	3	30	
	all children ^{1,2}	62,400	70	9	5	3	1	8		
SOUTH WEST	looked after	300	52	10	6	4	5	3	19	
	all children ^{1,2}	49,700	74	7	6	4	1	5		
LONDON	looked after	1,000	61	3	2	3	6	1	23	
	all children ^{1,2}	76,300	76	3	4	2	0.5	7		
EAST	looked after	400	57	5	4	4	8	1	21	
	all children ^{1,2}	63,100	74	5	9	2	1	5		
SOUTH EAST	looked after	600	55	5	3	4	5	2	16	
	all children ^{1,2}	88,200	76	4	8	2	0.5	5.3		

¹ Source: The Connexions/Careers Service Annual Activity Survey 2001'. Covers all young people who were in year 11 during the school year ending August 2001, and is based on a survey carried out during October 2001.

² Percentages for 'all children' do not sum to 100 because the Connexions/Career Service Survey included an additional category of 'moved away' 'no response' and 'refused to participate', which is not relevant to looked-after children.

Table E Offending by looked-after children, twelve months ending 30 September 2000, and 30 September 2001

England	numbers and percentages							
	looked after				all children ¹		PAF Indicator C18 ²	
	number		percentage		percentages			
	2000	2001	2000	2001	2000	2001	2000	2001
Number of children looked after for at least twelve months	42,200	43,400
Number of children aged 10 or older at 30 September	25,700	27,000
Number cautioned or convicted during the year	2,800	2,800	10.8	10.4	3.6	3.5	3.0	3.0

¹ Data for all children are from Home Office, and are for calendar years ending 31 December 1999 and 2000, expressed as a percentage of all children aged 10-17

² the proportion of children (aged 10 or over) who had been looked after continuously for at least 12 months, who were cautioned or convicted during the year for an offence committed whilst they were looked after, expressed as a ratio of the proportion of all children and young people convicted of or cautioned for an offence in the police force area.

Table F Health care of looked-after children, twelve months ending 30 September 2000, and 30 September 2001

England	numbers of looked after children and percentages					
	number		percentage		PAF Indicator C19 ¹	
	2000	2001	2000	2001	2000	2001
number of children looked after for at least one year	42,200	43,400
of these:						
number whose immunisations were up to date	29,000	30,800	68.6	71.3	}	65.7
number who had their teeth checked by a dentist	26,800	29,200	63.5	67.3		
number who had their annual health assessment	27,400	29,300	65.1	67.6		
number of children looked after for at least one year, and aged 5 or younger at 30 September:	7,500	7,300
of these:						
number whose development assessments were up to date	5,300	5,400	71.6	74.0	.	.

¹ The average of the percentages of children looked after at 30 September who had been looked after continuously for at least 12 months, and who had routine immunisations up to date, had their teeth checked by a dentist during the previous 12 months, and had an annual health assessment during the previous 12 months

Table 1 Numbers of children looked after for at least twelve months, and general information about their education: twelve months ending 30 September 2001

numbers and percentages

Local Authority	number looked after for at least twelve months	of these, number of school age	of these:							
			children with a statem ent of SEN	perman ent exclusi ons from school ¹	children who missed at least 25 days school ²	number	%	number	%	number
ENGLAND	43,400	33,800	8,900	26.5	450	1.3	4,100	12.2		
NORTH EAST	2,435	1,910	490	26	20	1	300	16		
Durham	335	250	50	19	-	-	45	17		
Northumberland	200	160	55	35	-	-	25	16		
Darlington	85	70	20	26	0	0	-	-		
Hartlepool	80	55	10	22	-	-	0	0		
Middlesbrough	170	130	35	27	0	0	15	11		
Redcar & Cleveland	120	100	25	26	-	-	35	36		
Stockton On Tees	140	110	15	15	0	0	10	8		
Gateshead	200	160	45	29	0	0	35	21		
Newcastle Upon Tyne	290	230	60	26	-	-	40	18		
North Tyneside	220	180	35	19	-	-	10	7		
South Tyneside	205	170	60	35	-	-	35	22		
Sunderland	385	300	80	27	-	-	45	16		
NORTH WEST	5,590	4,295	1,065	25	60	1	575	13		
Cheshire	340	270	75	28	5	3	35	13		
Cumbria †	420	365	80	22	-	-		
Lancashire	985	775	230	30	15	2	90	11		
Blackburn With Darwen	200	165	35	22	-	-	10	7		
Blackpool	230	160	60	37	0	0	25	14		
Halton	110	80	30	35	-	-	0	0		
Warrington	115	85	20	24	0	0	10	14		
Bolton	205	155	40	25	-	-	15	11		
Bury	160	135	20	17	-	-	-	-		
Manchester	965	705	130	18	10	1	175	25		
Oldham †	230	165	30	19	-	-		
Rochdale	205	145	40	26	0	0	-	-		
Salford	480	360	55	15	5	2	50	13		
Stockport	285	225	75	33	-	-	30	13		
Tameside	195	145	40	28	-	-	15	10		
Trafford	110	85	30	34	-	-	15	15		
Wigan	365	275	80	29	-	-	40	15		

Table 1 Numbers of children looked after for at least twelve months, and general information about their education: twelve months ending 30 September 2001

numbers and percentages

Local Authority	number looked after for at least twelve months	of these, number of school age	of these:							
			children with a statem ent of SEN	perman ent exclusi ons from school ¹	children who missed at least 25 days school ²	number	%	number	%	number
MERSEYSIDE	1,945	1,530	305	20	10	1	200	13		
Knowsley	200	160	50	32	0	0	15	9		
Liverpool	965	745	90	12	5	1	70	9		
Sefton	250	205	35	16	-	-	35	18		
St Helens	210	175	55	32	-	-	25	15		
Wirral	320	245	75	30	-	-	50	20		
YORKS & THE HUMBER	4,925	3,850	1,175	31	45	1	630	16		
North Yorkshire	280	210	165	79	0	0	10	5		
East Riding Of Yorkshire	150	120	15	11	-	-	15	13		
Kingston Upon Hull	445	375	135	36	-	-	70	18		
North East Lincolnshire	195	155	25	16	-	-	40	27		
North Lincolnshire	150	115	40	37	0	0	15	15		
York	100	80	30	37	0	0	15	18		
Barnsley	245	180	50	28	0	0	35	18		
Bradford	520	450	145	32	20	4	80	18		
Calderdale	140	100	40	38	0	0	20	20		
Doncaster	320	255	75	29	-	-	60	24		
Kirklees	215	140	35	25	-	-	30	20		
Leeds	1,020	810	220	27	-	-	125	16		
Rotherham	290	220	45	21	-	-	35	17		
Sheffield	510	370	75	21	-	-	45	13		
Wakefield	345	270	80	29	-	-	25	10		
EAST MIDLANDS	2,995	2,275	540	24	40	2	305	13		
Derbyshire	450	350	80	23	-	0	40	12		
Leicestershire	195	145	40	26	-	-	30	20		
Lincolnshire	385	285	35	13	-	-	-	-		
Northamptonshire	455	350	115	33	-	-	65	19		
Nottinghamshire	370	280	50	18	-	-	35	12		
Derby	325	255	80	32	-	-	30	12		
Leicester	375	280	85	31	15	5	60	22		
Nottingham	430	325	50	16	-	-	40	12		

Table 1 Numbers of children looked after for at least twelve months, and general information about their education: twelve months ending 30 September 2001

numbers and percentages

Local Authority	number looked after for at least twelve months	of these, number of school age	of these:					
			- children with a statem ent of SEN		- perman ent exclusi ons from school ¹		- children who missed at least 25 days school ²	
			number	%	number	%	number	%
WEST MIDLANDS	4,770	3,740	895	24	40	1	490	13
Shropshire	120	110	35	29	0	0	20	16
Staffordshire †	365	290	75	27	-	-
Warwickshire	235	170	65	39	-	-	25	15
Worcestershire	460	365	35	10	15	4	20	5
Herefordshire	160	125	30	23	-	-	20	16
Stoke-On-Trent	285	230	40	18	5	3	35	16
Telford & Wrekin	105	95	30	33	0	0	20	20
Birmingham	1,315	1,010	240	24	-	-	145	14
Coventry	410	310	70	22	-	-	50	16
Dudley	290	220	65	30	0	0	35	17
Sandwell	350	260	55	22	-	-	30	11
Solihull	110	90	30	30	-	-	10	11
Walsall	290	235	55	24	-	-	30	13
Wolverhampton	275	230	65	29	5	3	20	9
SOUTH WEST	3,490	2,875	785	27	45	2	255	9
Cornwall	410	340	145	43	-	-	10	3
Devon	515	480	60	12	20	4	10	2
Dorset	175	140	20	16	0	0	20	13
Gloucestershire	415	365	95	26	0	0	35	10
Somerset	190	155	45	28	-	-	25	18
Wiltshire	175	140	30	21	-	-	25	19
Bath & North East Somerset	110	95	35	37	0	0	10	9
Bournemouth	155	125	25	21	-	-	15	10
Bristol	400	305	95	31	-	-	30	10
North Somerset	110	80	30	38	-	-	-	-
Plymouth	360	270	65	24	-	-	25	10
Poole	100	85	25	26	0	0	15	16
South Gloucestershire	100	80	35	43	-	-	10	10
Swindon	115	95	25	24	-	-	5	6
Torbay	165	120	55	46	-	-	15	14

Table 1 Numbers of children looked after for at least twelve months, and general information about their education: twelve months ending 30 September 2001

numbers and percentages

Local Authority	number looked after for at least twelve months	of these, number of school age	of these:		-		-	
			children with a statem ent of SEN	perman ent exclusi ons from school ¹	children who missed at least 25 days school ²			
			number	%	number	%	number	%
LONDON	7,815	5,960	1,430	24	100	2	615	10
Camden	235	165	60	35	-	-	15	10
Greenwich	340	225	120	54	25	12	40	17
Hackney	395	295	10	4	-	-	35	12
Hammersmith & Fulham	315	260	20	8	-	-	25	10
Islington	395	275	60	22	0	0	30	11
Kensington & Chelsea	165	115	25	22	-	-	10	10
Lambeth	585	530	110	21	15	3	25	4
Lewisham	390	280	70	25	10	3	60	21
Southwark	550	370	50	14	-	-	40	11
Tower Hamlets	210	150	45	31	0	0	-	-
Wandsworth	245	180	40	22	0	0	30	18
Westminster	195	150	35	25	-	-	15	11
Barking & Dagenham	205	175	70	39	-	-	20	10
Barnet	200	160	45	29	-	-	20	14
Bexley	135	100	25	24	-	-	10	8
Brent	220	170	35	21	-	-	-	-
Bromley	245	185	60	32	0	0	5	3
Croydon	335	240	35	15	-	-	30	13
Ealing	290	220	55	25	-	-	20	10
Enfield	195	145	45	30	-	-	10	8
Haringey	280	220	90	42	0	0	30	13
Harrow	90	80	25	33	-	-	10	10
Havering	110	90	25	28	-	-	10	9
Hillingdon	260	215	40	20	-	-	15	7
Hounslow	230	165	45	26	-	-	20	13
Kingston Upon Thames	60	45	25	57	0	0	-	-
Merton	140	105	10	10	-	-	-	-
Newham	345	270	25	9	-	-	20	7
Redbridge	90	80	15	20	-	-	10	13
Richmond Upon Thames	75	60	15	28	-	-	15	28
Sutton	125	100	35	36	-	-	10	11
Waltham Forest	170	140	50	35	-	-	15	10

Table 1 Numbers of children looked after for at least twelve months, and general information about their education: twelve months ending 30 September 2001

numbers and percentages

Local Authority	number looked after for at least twelve months	of these, number of school age	of these:		-		-	
			children with a statem ent of SEN	perman ent exclusi ons from school ¹	children who missed at least 25 days school ²			
			number	%	number	%	number	%
EAST OF ENGLAND	3,900	2,990	850	29	25	1	315	11
Bedfordshire	275	215	65	31	-	-	20	9
Cambridgeshire	270	210	85	41	0	0	20	8
Essex	885	640	110	17	5	1	50	8
Hertfordshire	635	490	165	34	-	-	15	3
Norfolk	490	400	130	33	0	0	55	13
Suffolk	490	360	125	35	-	-	65	18
Luton	260	200	45	22	-	-	30	14
Peterborough	295	240	65	27	-	-	40	16
Southend	165	135	45	33	-	-	15	10
Thurrock	130	100	15	15	5	6	15	15
SOUTH EAST	5,580	4,330	1,390	32	60	1	435	10
Buckinghamshire	210	145	30	22	-	-	15	9
East Sussex	330	235	80	33	-	-	20	8
Hampshire	710	550	130	24	-	-	30	6
Kent	1,170	945	265	28	5	1	125	13
Oxfordshire	330	270	115	42	5	2	35	12
Surrey	525	395	155	40	10	3	30	8
West Sussex	570	435	125	29	20	4	45	11
Bracknell Forest	40	30	15	48	0	0	-	-
Brighton & Hove	270	205	75	37	-	-	10	5
Isle Of Wight	120	90	25	27	-	-	10	10
Medway Towns	260	195	60	30	-	-	10	4
Milton Keynes	180	145	60	41	0	0	20	15
Portsmouth †	170	130	45	33	-	-
Reading	95	75	45	57	0	0	15	19
Slough	110	85	25	32	0	0	10	12
Southampton †	290	225	-	-
West Berkshire	95	80	25	34	-	-	10	14
Windsor & Maidenhead	50	35	10	26	-	-	-	-
Wokingham	60	50	35	71	-	-	15	25

¹ Where a child was permanently excluded more than once in the previous school year, each occasion has been counted.

² PAF Indicator C24: The percentage of children who had been looked after continuously for at least 12 months and were of school age, who missed a total of at least 25 days of schooling for any reason during the previous school year

† some numbers for these councils have been estimated.

Table 2 Eligibility and performance of looked after children in Key Stage 1 tasks and tests, compared to all children, twelve months ending 30 September 2001

Local Authority	percentage attaining level 2 ¹ or above in each task or test												
	reading task			writing task			spelling test			mathematics task/test			
	looked after	all children ^{3,4}	ratio QP7 ²	looked after	all children ³	ratio QP7 ²	looked after	all children ³	ratio QP7 ²	looked after	all children ³	ratio QP7 ²	
ENGLAND	2,100	45.1	84	0.5	50.6	86	0.6	42.2	75	0.6	55.8	91	0.6
NORTH EAST	115	34	85	0.4	46	87	0.5	37	79	0.5	47	91	0.5
Durham	15	-	86	-	-	87	-	-	81	-	-	91	-
Northumberland	5	-	89	-	-	90	-	-	82	-	-	94	-
Darlington	-	-	86	-	-	88	-	-	82	-	-	91	-
Hartlepool	-	-	84	-	-	84	-	0	79	0.0	-	91	-
Middlesbrough	10	0	79	0	60	82	0.7	-	74	-	60	87	0.7
Redcar & Cleveland	10	-	84	-	-	86	-	-	78	-	-	91	-
Stockton On Tees	10	-	87	-	-	89	-	-	82	-	-	92	-
Gateshead	10	60	83	0.7	60	85	0.7	60	79	0.8	60	90	0.7
Newcastle Upon Tyne	10	-	81	-	-	84	-	-	74	-	-	89	-
North Tyneside	10	-	88	-	-	91	-	-	83	-	-	92	-
South Tyneside	10	50	85	0.6	58	87	0.7	58	79	0.7	58	92	0.6
Sunderland	25	-	83	-	39	85	0.5	30	77	0.4	39	90	0.4
NORTH WEST	305	43	84	0.5	53	86	0.6	50	77	0.6	60	91	0.7
Cheshire	15	-	87	-	-	89	-	-	82	-	-	93	-
Cumbria	15	54	86	0.6	54	88	0.6	-	77	-	77	92	0.8
Lancashire	50	25	84	0.3	56	85	0.7	44	77	0.6	58	91	0.6
Blackburn With Darwen	20	61	80	0.8	67	81	0.8	67	72	0.9	-	87	-
Blackpool	15	47	78	0.6	47	75	0.6	47	67	0.7	67	87	0.8
Halton	10	-	82	-	-	86	-	75	74	1.0	-	89	-
Warrington	5	-	88	-	-	90	-	-	82	-	-	93	-
Bolton	10	75	84	0.9	58	84	0.7	50	75	0.7	83	90	0.9
Bury	10	-	88	-	-	90	-	-	82	-	-	93	-
Manchester	55	21	75	0.3	55	77	0.7	50	67	0.7	66	85	0.8
Oldham	10	55	80	0.7	55	84	0.6	55	74	0.7	55	89	0.6
Rochdale	10	-	79	-	75	81	0.9	-	70	-	-	86	-
Salford	30	61	84	0.7	50	85	0.6	50	76	0.7	68	90	0.8
Stockport	15	-	86	-	57	89	0.6	57	79	0.7	64	93	0.7
Tameside	15	-	85	-	-	87	-	46	76	0.6	46	92	0.5
Trafford	5	-	89	-	-	89	-	-	83	-	-	93	-
Wigan	20	70	84	0.8	65	86	0.8	55	75	0.7	70	90	0.8

Table 2 Eligibility and performance of looked after children in Key Stage 1 tasks and tests, compared to all children, twelve months ending 30 September 2001

Local Authority	number looked after			percentage attaining level 2 ¹ or above in each task or test											
				reading task			writing task			spelling test			mathematics task/test		
	looked after	all children ^{3,4}	ratio QP7 ²	looked after	all children ³	ratio QP7 ²	looked after	all children ³	ratio QP7 ²	looked after	all children ³	ratio QP7 ²	looked after	all children ³	ratio QP7 ²
MERSEYSIDE	110	56	85	0.7	61	87	0.7	48	78	0.6	62	91	0.7		
Knowsley	10	58	82	0.7	58	84	0.7	58	75	0.8	67	90	0.7		
Liverpool	55	61	83	0.7	67	84	0.8	56	74	0.8	67	90	0.7		
Sefton	15	-	86	-	69	87	0.8	-	79	-	69	93	0.7		
St Helens	10	64	87	0.7	64	90	0.7	-	82	-	64	93	0.7		
Wirral	15	44	88	0.5	38	89	0.4	-	82	-	38	93	0.4		
YORKS & THE HUMBER	240	46	84	0.6	53	86	0.6	39	76	0.5	61	90	0.7		
North Yorkshire	10	70	88	0.8	80	90	0.9	60	80	0.8	80	93	0.9		
East Riding Of Yorkshire	5	-	88	-	-	90	-	-	80	-	-	92	-		
Kingston Upon Hull	30	29	80	0.4	36	81	0.4	21	71	0.3	43	88	0.5		
North East Lincolnshire	10	60	83	0.7	60	84	0.7	60	72	0.8	60	90	0.7		
North Lincolnshire	10	-	87	-	-	90	-	-	82	-	55	93	0.6		
York	5	-	87	-	-	88	-	-	80	-	-	92	-		
Barnsley	10	64	82	0.8	55	83	0.7	-	74	-	55	90	0.6		
Bradford	25	52	81	0.6	57	83	0.7	26	74	0.4	52	88	0.6		
Calderdale	-	-	84	-	-	87	-	-	78	-	-	91	-		
Doncaster	15	54	86	0.6	62	87	0.7	46	78	0.6	62	91	0.7		
Kirklees	5	-	83	-	-	86	-	-	76	-	-	91	-		
Leeds	55	49	84	0.6	49	85	0.6	44	76	0.6	65	90	0.7		
Rotherham	15	63	83	0.8	69	87	0.8	69	76	0.9	75	91	0.8		
Sheffield	25	-	81	-	60	82	0.7	32	73	0.4	68	88	0.8		
Wakefield	15	43	84	0.5	-	86	-	-	78	-	71	91	0.8		
EAST MIDLANDS	165	46	85	0.5	51	86	0.6	42	77	0.5	55	91	0.6		
Derbyshire	30	43	87	0.5	50	88	0.6	43	80	0.5	63	92	0.7		
Leicestershire	15	-	86	-	-	87	-	-	78	-	-	92	-		
Lincolnshire	20	58	86	0.7	53	88	0.6	42	78	0.5	47	92	0.5		
Northamptonshire	20	59	87	0.7	68	89	0.8	50	78	0.6	68	93	0.7		
Nottinghamshire	20	72	85	0.8	67	87	0.8	50	78	0.6	78	93	0.8		
Derby	15	53	84	0.6	60	87	0.7	53	78	0.7	-	90	-		
Leicester	25	29	76	0.4	38	78	0.5	33	65	0.5	58	85	0.7		
Nottingham	25	44	74	0.6	40	77	0.5	36	65	0.6	44	85	0.5		

Table 2 Eligibility and performance of looked after children in Key Stage 1 tasks and tests, compared to all children, twelve months ending 30 September 2001

Local Authority	number looked after			percentage attaining level 2 ¹ or above in each task or test									
	reading task			writing task			spelling test			mathematics task/test			
	looked after	all children ^{3,4}	ratio QP7 ²	looked after	all children ³	ratio QP7 ²	looked after	all children ³	ratio QP7 ²	looked after	all children ³	ratio QP7 ²	
WEST MIDLANDS	235	40	83	0.5	48	85	0.6	43	75	0.6	52	90	0.6
Shropshire	-	-	86	-	-	90	-	-	78	-	-	92	-
Staffordshire	10	-	87	-	60	89	0.7	-	79	-	80	92	0.9
Warwickshire	10	60	87	0.7	-	88	-	-	78	-	60	91	0.7
Worcestershire	20	33	84	0.4	33	86	0.4	-	75	-	38	90	0.4
Herefordshire	10	-	85	-	-	87	-	-	77	-	-	91	-
Stoke-On-Trent	10	58	81	0.7	58	83	0.7	-	73	-	67	89	0.7
Telford & Wrekin	-	-	83	-	-	88	-	-	75	-	-	92	-
Birmingham	70	14	80	0.2	45	82	0.5	46	71	0.7	42	88	0.5
Coventry	25	52	82	0.6	52	84	0.6	43	71	0.6	57	88	0.6
Dudley	15	54	84	0.6	54	87	0.6	46	76	0.6	54	90	0.6
Sandwell	15	53	77	0.7	47	77	0.6	35	66	0.5	76	85	0.9
Solihull	-	-	90	-	-	90	-	-	83	-	-	94	-
Walsall	25	52	82	0.6	56	82	0.7	52	74	0.7	56	89	0.6
Wolverhampton	10	50	80	0.6	50	82	0.6	50	71	0.7	58	88	0.7
SOUTH WEST	155	52	84	0.6	52	86	0.6	42	74	0.6	58	91	0.6
Cornwall	15	-	83	-	-	81	-	-	73	-	43	90	0.5
Devon	25	61	84	0.7	65	86	0.8	48	73	0.7	61	92	0.7
Dorset	5	-	86	-	-	87	-	-	75	-	-	91	-
Gloucestershire	25	57	88	0.6	57	90	0.6	52	80	0.7	57	94	0.6
Somerset	-	-	84	-	-	86	-	-	73	-	-	90	-
Wiltshire	5	100	83	1.2	100	85	1.2	100	71	1.4	-	90	-
Bath & North East Somerse	-	-	88	-	-	89	-	-	79	-	-	92	-
Bournemouth	-	-	83	-	-	85	-	-	73	-	-	91	-
Bristol	20	33	81	0.4	43	81	0.5	29	70	0.4	48	87	0.5
North Somerset	-	-	88	-	-	88	-	-	78	-	-	94	-
Plymouth	25	63	81	0.8	50	83	0.6	33	72	0.5	71	89	0.8
Poole	-	-	85	-	-	88	-	-	78	-	-	92	-
South Gloucestershire	-	-	87	-	-	87	-	-	80	-	-	92	-
Swindon	-	-	82	-	-	85	-	-	72	-	-	89	-
Torbay	10	-	82	-	-	84	-	-	75	-	-	89	-

Table 2 Eligibility and performance of looked after children in Key Stage 1 tasks and tests, compared to all children, twelve months ending 30 September 2001

Local Authority	number looked after			percentage attaining level 2 ¹ or above in each task or test											
				reading task			writing task			spelling test			mathematics task/test		
	looked after	all children ^{3,4}	ratio QP7 ²	looked after	all children ³	ratio QP7 ²	looked after	all children ³	ratio QP7 ²	looked after	all children ³	ratio QP7 ²	looked after	all children ³	ratio QP7 ²
LONDON	365	39	81	0.5	46	83	0.6	40	71	0.6	49	89	0.6		
Camden	10	-	78	-	-	80	-	-	67	-	-	86	-		
Greenwich	25	29	76	0.4	29	77	0.4	29	66	0.4	38	86	0.4		
Hackney	15	65	72	0.9	65	74	0.9	59	61	1.0	47	83	0.6		
Hammersmith & Fulham	15	50	83	0.6	63	84	0.7	63	74	0.8	63	88	0.7		
Islington	20	56	75	0.7	44	77	0.6	39	62	0.6	50	84	0.6		
Kensington & Chelsea	-	-	81	-	-	83	-	-	73	-	-	89	-		
Lambeth	45	-	78	-	-	79	-	-	67	-	-	86	-		
Lewisham	15	0	79	0	57	79	0.7	43	66	0.6	57	87	0.7		
Southwark	25	33	76	0.4	29	77	0.4	29	64	0.5	42	86	0.5		
Tower Hamlets	-	-	78	-	-	81	-	-	69	-	-	88	-		
Wandsworth	15	-	83	-	-	85	-	-	74	-	46	90	0.5		
Westminster	5	-	82	-	-	83	-	-	71	-	-	88	-		
Barking & Dagenham	5	-	82	-	-	85	-	-	70	-	-	89	-		
Barnet	10	-	85	-	-	87	-	-	75	-	-	91	-		
Bexley	10	-	85	-	-	87	-	-	71	-	75	90	0.8		
Brent	10	60	83	0.7	80	84	1.0	60	73	0.8	70	90	0.8		
Bromley	5	-	88	-	-	87	-	-	77	-	-	93	-		
Croydon	15	40	84	0.5	40	85	0.5	40	71	0.6	53	90	0.6		
Ealing	20	53	80	0.7	100	81	1.2	53	71	0.7	58	89	0.7		
Enfield	10	-	80	-	67	84	0.8	-	69	-	-	90	-		
Haringey	10	73	75	1	73	76	1.0	73	65	1.1	73	84	0.9		
Harrow	-	-	86	-	-	88	-	-	78	-	-	92	-		
Havering	5	-	88	-	-	90	-	-	78	-	-	93	-		
Hillingdon	5	-	85	-	-	88	-	-	76	-	-	93	-		
Hounslow	15	-	80	-	-	83	-	-	68	-	60	88	0.7		
Kingston Upon Thames	0	0	86	0	0	89	0.0	0	78	0.0	0	92	0.0		
Merton	-	-	83	-	-	85	-	-	75	-	-	91	-		
Newham	25	58	75	0.8	54	77	0.7	50	66	0.8	73	89	0.8		
Redbridge	-	-	83	-	-	85	-	-	73	-	-	90	-		
Richmond Upon Thames	-	-	89	-	-	91	-	-	82	-	-	95	-		
Sutton	5	-	86	-	-	88	-	-	76	-	100	94	1.1		
Waltham Forest	5	-	79	-	-	79	-	-	66	-	-	88	-		

Table 2 Eligibility and performance of looked after children in Key Stage 1 tasks and tests, compared to all children, twelve months ending 30 September 2001

Local Authority	number looked after			percentage attaining level 2 ¹ or above in each task or test									
	reading task			writing task			spelling test			mathematics task/test			
	looked after	all children ^{3,4}	ratio QP7 ²	looked after	all children ³	ratio QP7 ²	looked after	all children ³	ratio QP7 ²	looked after	all children ³	ratio QP7 ²	
EAST OF ENGLAND	175	58	85	0.7	57	86	0.7	44	75	0.6	60	91	0.7
Bedfordshire	15	-	88	-	43	89	0.5	-	77	-	-	92	-
Cambridgeshire	10	-	85	-	-	87	-	-	76	-	-	92	-
Essex	30	47	85	0.5	47	87	0.5	33	75	0.4	50	91	0.5
Hertfordshire	30	79	86	0.9	72	86	0.8	48	78	0.6	72	92	0.8
Norfolk	30	74	84	0.9	84	87	1.0	65	75	0.9	94	92	1.0
Suffolk	25	50	85	0.6	42	87	0.5	25	74	0.3	50	91	0.5
Luton	10	-	79	-	-	80	-	-	68	-	-	87	-
Peterborough ⁵	20	47	81	0.6	47	84	0.6	47	73	0.6	59	88	0.7
Southend	5	100	85	1.2	100	89	1.1	-	75	-	-	93	-
Thurrock	-	-	80	-	-	81	-	-	67	-	-	89	-
SOUTH EAST	245	48	85	0.6	47	86	0.6	38	75	0.5	56	91	0.6
Buckinghamshire	5	-	87	-	-	88	-	-	79	-	-	93	*
East Sussex	25	58	82	0.7	54	85	0.6	42	72	0.6	67	90	0.7
Hampshire	40	41	87	0.5	36	89	0.4	33	77	0.4	44	93	0.5
Kent	45	42	81	0.5	44	83	0.5	29	70	0.4	56	89	0.6
Oxfordshire	15	50	85	0.6	50	86	0.6	44	75	0.6	50	91	0.5
Surrey	20	50	89	0.6	60	90	0.7	35	80	0.4	60	93	0.6
West Sussex	20	33	84	0.4	38	86	0.4	33	74	0.5	33	91	0.4
Bracknell Forest	0	0	86	0	0	89	0.0	0	78	0.0	0	93	0.0
Brighton & Hove	15	59	81	0.7	65	84	0.8	53	72	0.7	71	91	0.8
Isle Of Wight	5	-	86	-	-	88	-	-	72	-	-	93	-
Medway Towns	10	-	83	-	-	85	-	-	73	-	-	91	-
Milton Keynes	5	-	79	-	-	83	-	-	67	-	-	89	-
Portsmouth	5	-	82	-	-	84	-	-	71	-	-	91	-
Reading	-	-	79	-	-	77	-	-	68	-	-	87	-
Slough	-	-	86	-	-	88	-	-	80	-	-	91	-
Southampton	15	64	83	0.8	57	84	0.7	43	73	0.6	86	92	0.9
West Berkshire	5	-	83	-	-	87	-	-	71	-	-	92	-
Windsor & Maidenhead	-	-	87	-	-	87	-	-	80	-	-	93	-
Wokingham	-	-	88	-	-	92	-	-	80	-	-	94	-

¹ target level for age group

² the proportion of looked-after children attaining the target levels or better in each of the tested subjects in the National Curriculum Assessment tests, expressed as a ratio of the proportion of all children at that stage attaining the target level or better in the council

³ source: DfES statistical first release: 'National curriculum assessments of 7, 11 and 14 year olds by Local Education Authority, 2001'

⁴ the 'all children' Key stage 1 Reading task figure is derived by DfES from an average of children attaining level 2 or above in the reading task and pupils attaining level 3 or above in the reading comprehension test, therefore cannot be directly compared with the reading task or reading comprehension test figures for looked-after children

⁵ Percentage breakdown based on a sample of children

Table 3 Eligibility and performance of looked-after children in Key Stage 2 tasks and tests, compared to all children, twelve months ending 30 September 2001

Local Authority	number looked after in Year 6 old enough to sit Key Stage 2 tasks and tests	percentage attaining level 4 ¹ or above in each task or test								
		English			Mathematics			Science		
		looked after	all children ²	ratio QP7 ³	looked after	all children ²	ratio QP7 ³	looked after	all children ²	ratio QP7 ³
ENGLAND	2,800	33.3	74	0.4	29.1	70	0.4	49.8	87	0.6
NORTH EAST	155	37	74	0.5	30	71	0.4	52	88	0.6
Durham	15	38	75	0.5	-	74	-	38	89	0.4
Northumberland	10	-	78	-	-	69	-	67	88	0.8
Darlington	-	-	76	-	-	77	-	-	90	-
Hartlepool	10	-	73	-	-	71	-	78	89	0.9
Middlesbrough	15	-	72	-	-	67	-	64	87	0.7
Redcar & Cleveland	10	50	75	0.7	50	72	0.7	50	89	0.6
Stockton On Tees	-	-	74	-	-	71	-	-	87	-
Gateshead	10	55	75	0.7	-	74	-	64	90	0.7
Newcastle Upon Tyne	30	28	65	0.4	-	62	-	41	82	0.5
North Tyneside	15	-	77	-	-	73	-	-	89	-
South Tyneside	15	-	74	-	-	72	-	56	87	0.6
Sunderland	15	50	73	0.7	44	70	0.6	69	88	0.8
NORTH WEST	380	35	75	0.5	32	72	0.4	52	88	0.6
Cheshire	20	36	80	0.5	32	77	0.4	55	91	0.6
Cumbria	25	42	77	0.5	33	74	0.5	58	90	0.6
Lancashire	60	35	76	0.5	37	73	0.5	50	88	0.6
Blackburn With Darwen	20	32	70	0.5	-	64	-	32	81	0.4
Blackpool	15	-	73	-	-	72	-	43	88	0.5
Halton	5	-	76	-	-	71	-	-	86	-
Warrington	-	-	81	-	-	76	-	-	92	-
Bolton	20	-	76	-	-	73	-	57	88	0.6
Bury	10	-	79	-	-	77	-	-	90	-
Manchester	75	32	66	0.5	30	64	0.5	47	82	0.6
Oldham	10	-	72	-	-	70	-	-	86	-
Rochdale	10	55	72	0.8	55	69	0.8	55	86	0.6
Salford	35	35	73	0.5	30	70	0.4	41	86	0.5
Stockport	20	56	79	0.7	39	76	0.5	78	90	0.9
Tameside	15	-	73	-	-	69	-	44	86	0.5
Trafford	5	-	80	-	-	75	-	86	89	1.0
Wigan	25	32	76	0.4	44	75	0.6	68	89	0.8

Table 3 Eligibility and performance of looked-after children in Key Stage 2 tasks and tests, compared to all children, twelve months ending 30 September 2001

Local Authority	number looked after in Year 6 old enough to sit Key Stage 2 tasks and tests	percentage attaining level 4 ¹ or above in each task or test								
		English			Mathematics			Science		
		looked after	all children ²	ratio QP7 ³	looked after	all children ²	ratio QP7 ³	looked after	all children ²	ratio QP7 ³
MERSEYSIDE	120	32	75	0.4	31	70	0.4	53	88	0.6
Knowsley	10	-	72	-	-	69	-	73	88	0.8
Liverpool	60	28	70	0.4	25	64	0.4	52	84	0.6
Sefton	10	-	80	-	58	76	0.8	75	90	0.8
St Helens	15	38	77	0.5	38	75	0.5	44	90	0.5
Wirral	20	32	78	0.4	-	72	-	42	89	0.5
YORKS & THE HUMBER	335	34	73	0.5	33	69	0.5	53	86	0.6
North Yorkshire	20	44	81	0.5	-	76	-	50	91	0.5
East Riding Of Yorkshire	15	50	78	0.6	-	72	-	50	90	0.6
Kingston Upon Hull	30	31	67	0.5	28	69	0.4	56	87	0.6
North East Lincolnshire	10	-	71	-	60	67	0.9	70	86	0.8
North Lincolnshire	10	-	75	-	-	71	-	-	89	-
York	5	-	79	-	-	75	-	86	89	1.0
Barnsley	10	0	66	0	-	63	-	-	82	-
Bradford	40	24	66	0.4	21	59	0.4	26	75	0.3
Calderdale	10	58	74	0.8	-	72	-	67	89	0.7
Doncaster	15	-	71	-	-	67	-	-	86	-
Kirklees	15	47	73	0.6	53	70	0.8	60	86	0.7
Leeds	75	38	75	0.5	38	71	0.5	56	88	0.6
Rotherham	20	41	72	0.6	41	70	0.6	68	88	0.8
Sheffield	35	24	67	0.4	30	64	0.5	46	82	0.6
Wakefield	20	35	73	0.5	35	71	0.5	75	87	0.9
EAST MIDLANDS	200	36	74	0.5	27	70	0.4	48	87	0.6
Derbyshire	30	40	75	0.5	23	70	0.3	47	87	0.5
Leicestershire	15	-	78	-	-	73	-	46	89	0.5
Lincolnshire	25	30	77	0.4	26	72	0.4	65	88	0.7
Northamptonshire	35	48	75	0.6	33	70	0.5	55	88	0.6
Nottinghamshire	20	43	73	0.6	29	70	0.4	52	88	0.6
Derby	25	28	71	0.4	36	68	0.5	32	85	0.4
Leicester	25	-	64	-	-	60	-	43	81	0.5
Nottingham	30	32	62	0.5	23	62	0.4	45	80	0.6

Table 3 Eligibility and performance of looked-after children in Key Stage 2 tasks and tests, compared to all children, twelve months ending 30 September 2001

Local Authority	number looked after in Year 6 old enough to sit Key Stage 2 tasks and tests	percentage attaining level 4 ¹ or above in each task or test								
		English			Mathematics			Science		
		looked after	all children ²	ratio QP7 ³	looked after	all children ²	ratio QP7 ³	looked after	all children ²	ratio QP7 ³
WEST MIDLANDS	295	33	73	0.5	27	68	0.4	53	86	0.6
Shropshire	10	-	78	-	0	74	0.0	-	91	-
Staffordshire	25	30	75	0.4	30	71	0.4	63	89	0.7
Warwickshire	10	-	76	-	-	72	-	-	89	-
Worcestershire	25	-	74	-	-	66	-	38	86	0.4
Herefordshire	15	54	79	0.7	54	75	0.7	77	90	0.9
Stoke-On-Trent	20	-	68	-	37	67	0.5	63	87	0.7
Telford & Wrekin	10	-	72	-	-	66	-	-	85	-
Birmingham	80	34	71	0.5	24	67	0.4	49	85	0.6
Coventry	35	27	71	0.4	27	65	0.4	48	85	0.6
Dudley	15	-	73	-	-	65	-	43	86	0.5
Sandwell	15	35	65	0.5	41	65	0.6	59	82	0.7
Solihull	-	-	82	-	-	76	-	-	91	-
Walsall	20	29	68	0.4	-	62	-	43	81	0.5
Wolverhampton	20	45	69	0.7	40	63	0.6	55	83	0.7
SOUTH WEST	245	33	75	0.4	28	70	0.4	51	88	0.6
Cornwall	35	17	75	0.2	-	70	-	31	88	0.4
Devon	45	40	75	0.5	33	71	0.5	63	89	0.7
Dorset	10	-	77	-	-	70	-	64	89	0.7
Gloucestershire	30	21	79	0.3	25	74	0.3	36	91	0.4
Somerset	10	-	75	-	-	69	-	-	88	-
Wiltshire	5	-	73	-	-	70	-	-	87	-
Bath & North East Somerset	10	-	78	-	50	74	0.7	50	89	0.6
Bournemouth	15	-	74	-	-	71	-	50	88	0.6
Bristol	25	27	66	0.4	-	62	-	42	81	0.5
North Somerset	15	-	78	-	-	77	-	62	91	0.7
Plymouth	15	44	72	0.6	44	72	0.6	63	87	0.7
Poole	5	-	73	-	-	64	-	-	85	-
South Gloucestershire	10	50	78	0.6	-	73	-	67	91	0.7
Swindon	10	50	72	0.7	-	67	-	50	86	0.6
Torbay	-	-	75	-	-	71	-	-	88	-

Table 3 Eligibility and performance of looked-after children in Key Stage 2 tasks and tests, compared to all children, twelve months ending 30 September 2001

Local Authority	number looked after in Year 6 old enough to sit Key Stage 2 tasks and tests	percentage attaining level 4 ¹ or above in each task or test								
		English			Mathematics			Science		
		looked after	all children ²	ratio QP7 ³	looked after	all children ²	ratio QP7 ³	looked after	all children ²	ratio QP7 ³
LONDON	470	31	74	0.4	25	70	0.4	40	86	0.5
Camden	10	-	77	-	-	74	-	-	88	-
Greenwich	25	-	64	-	-	61	-	-	79	-
Hackney	20	27	62	0.4	-	60	-	32	78	0.4
Hammersmith & Fulham	10	55	77	0.7	55	74	0.7	73	88	0.8
Islington	15	47	67	0.7	-	65	-	47	83	0.6
Kensington & Chelsea	10	-	81	-	-	79	-	-	92	-
Lambeth	85	10	68	0.2	9	66	0.1	9	83	0.1
Lewisham	20	-	71	-	-	65	-	50	86	0.6
Southwark	25	32	66	0.5	28	61	0.5	36	80	0.5
Tower Hamlets	10	0	72	0	0	69	0	0	83	0
Wandsworth	10	-	74	-	-	67	-	-	84	-
Westminster	10	70	77	0.9	70	76	0.9	80	89	0.9
Barking & Dagenham	10	50	72	0.7	-	72	-	67	88	0.8
Barnet	20	44	82	0.5	39	77	0.5	78	91	0.9
Bexley	-	-	78	-	-	71	-	-	86	-
Brent	10	55	75	0.7	55	73	0.7	73	86	0.8
Bromley	15	-	81	-	-	76	-	-	90	-
Croydon	20	-	75	-	-	70	-	36	86	0.4
Ealing	10	-	77	-	-	72	-	64	88	0.7
Enfield	10	-	74	-	-	71	-	-	86	-
Haringey	20	35	67	0.5	-	64	-	45	77	0.6
Harrow	5	-	79	-	-	74	-	-	89	-
Havering	5	-	79	-	-	74	-	-	90	-
Hillingdon	10	-	81	-	-	76	-	78	91	0.9
Hounslow	10	-	73	-	-	69	-	55	87	0.6
Kingston Upon Thames	-	-	80	-	-	76	-	-	89	-
Merton	5	-	73	-	-	66	-	-	88	-
Newham	25	28	65	0.4	32	64	0.5	48	81	0.6
Redbridge	-	-	77	-	-	72	-	-	87	-
Richmond Upon Thames	-	-	84	-	-	81	-	-	93	-
Sutton	5	100	80	1.3	-	72	-	-	91	-
Waltham Forest	10	60	68	0.9	60	63	1.0	60	79	0.8

Table 3 Eligibility and performance of looked-after children in Key Stage 2 tasks and tests, compared to all children, twelve months ending 30 September 2001

Local Authority	number looked after in Year 6 old enough to sit Key Stage 2 tasks and tests	percentage attaining level 4 ¹ or above in each task or test								
		English			Mathematics			Science		
		looked after	all children ²	ratio QP7 ³	looked after	all children ²	ratio QP7 ³	looked after	all children ²	ratio QP7 ³
EAST OF ENGLAND	275	36	76	0.5	29	70	0.4	52	88	0.6
Bedfordshire	20	-	77	-	-	67	-	43	87	0.5
Cambridgeshire	20	40	76	0.5	35	71	0.5	40	89	0.4
Essex	60	29	75	0.4	21	71	0.3	47	87	0.5
Hertfordshire	45	61	79	0.8	57	76	0.7	63	91	0.7
Norfolk	35	40	74	0.5	26	68	0.4	63	87	0.7
Suffolk	25	-	76	-	-	67	-	48	88	0.5
Luton	25	50	71	0.7	46	63	0.7	71	83	0.9
Peterborough	20	-	72	-	-	68	-	36	86	0.4
Southend	10	-	73	-	-	71	-	-	87	-
Thurrock	5	-	68	-	-	62	-	-	83	-
SOUTH EAST	355	31	76	0.4	30	71	0.4	52	88	0.6
Buckinghamshire	5	-	82	-	-	76	-	-	91	-
East Sussex	25	26	73	0.4	26	68	0.4	57	86	0.7
Hampshire	50	31	79	0.4	31	73	0.4	53	92	0.6
Kent	60	26	73	0.4	28	68	0.4	51	85	0.6
Oxfordshire	30	19	76	0.3	23	71	0.3	42	87	0.5
Surrey	35	38	83	0.5	32	76	0.4	62	92	0.7
West Sussex	50	38	76	0.5	31	70	0.4	54	89	0.6
Bracknell Forest	-	-	79	-	-	75	-	-	92	-
Brighton & Hove	15	41	72	0.6	47	66	0.7	47	83	0.6
Isle Of Wight	10	-	70	-	-	67	-	-	91	-
Medway Towns	15	-	69	-	-	63	-	44	82	0.5
Milton Keynes	-	-	67	-	-	62	-	-	84	-
Portsmouth	10	-	70	-	-	64	-	-	86	-
Reading	10	-	71	-	-	64	-	-	85	-
Slough	5	0	74	0.0	-	72	-	-	86	-
Southampton	20	33	63	0.5	33	66	0.5	48	87	0.5
West Berkshire	5	-	79	-	-	74	-	100	91	1.1
Windsor & Maidenhead	0	0	78	0	0	74	0	0	91	0
Wokingham	5	-	84	-	-	79	-	-	93	-

¹ target level for age group

² source: DfES statistical first release 'National curriculum assessments of 7, 11 and 14 year olds by Local Education Authority, 2001'

³ the proportion of looked after children attaining the target levels or better in each of the tested subjects in the National Curriculum Assessment tests, expressed as a ratio of the proportion of all children at that stage attaining the target level or better in the authority

Table 4 Eligibility and performance of looked after children in Key Stage 3 tasks and tests, compared to all children, twelve months ending 30 September 2001

Local Authority	number looked after in Year 9 old enough to sit Key Stage 3 tasks and tests	percentage attaining level 5 ¹ or above in each task or test								
		English			Mathematics			Science		
		looked after	all children ²	ratio QP7 ³	looked after	all children ²	ratio QP7 ³	looked after	all children ²	ratio QP7 ³
ENGLAND	3,500	20.3	64.0	0.3	21.6	66.0	0.3	21.1	66.0	0.3
NORTH EAST	210	15	63	0.2	16	63	0.3	17	63	0.3
Durham	30	-	64	-	-	64	-	-	64	-
Northumberland	20	27	68	0.4	-	69	-	-	69	-
Darlington	5	-	60	-	-	63	-	-	65	-
Hartlepool	-	-	58	-	-	59	-	-	60	-
Middlesbrough	20	-	55	-	-	55	-	-	52	-
Redcar & Cleveland	10	-	63	-	-	64	-	-	65	-
Stockton On Tees	10	0	65	0	0	62	0	0	61	0
Gateshead	10	-	64	-	-	66	-	-	66	-
Newcastle Upon Tyne	25	-	57	-	-	56	-	-	56	-
North Tyneside	15	-	69	-	-	68	-	-	66	-
South Tyneside	25	-	64	-	26	63	0.4	-	62	-
Sunderland	30	25	64	0.4	32	61	0.5	29	61	0.5
NORTH WEST	430	23	65	0.4	22	65	0.3	21	64	0.3
Cheshire	40	-	72	-	-	73	-	-	74	-
Cumbria	30	36	67	0.5	32	70	0.5	29	72	0.4
Lancashire	85	20	69	0.3	18	70	0.3	17	69	0.2
Blackburn With Darwen	10	-	53	-	-	55	-	-	54	-
Blackpool	15	-	60	-	-	61	-	-	58	-
Halton	10	-	63	-	-	61	-	-	60	-
Warrington	10	-	66	-	-	70	-	-	64	-
Bolton	20	-	62	-	-	64	-	-	62	-
Bury	10	-	73	-	-	72	-	0	71	0
Manchester	70	26	52	0.5	21	49	0.4	26	47	0.6
Oldham	20	-	60	-	-	60	-	-	57	-
Rochdale	15	41	54	0.8	35	59	0.6	47	58	0.8
Salford	25	23	57	0.4	-	58	-	-	57	-
Stockport	25	39	70	0.6	43	71	0.6	35	69	0.5
Tameside	15	-	61	-	-	61	-	-	61	-
Trafford	5	-	74	-	0	73	0	0	73	0.0
Wigan	25	30	64	0.5	43	68	0.6	39	66	0.6

Table 4 Eligibility and performance of looked after children in Key Stage 3 tasks and tests, compared to all children, twelve months ending 30 September 2001

Local Authority	number looked after in Year 9 old enough to sit Key Stage 3 tasks and tests	percentage attaining level 5 ¹ or above in each task or test								
		English			Mathematics			Science		
		looked after	all children ²	ratio QP7 ³	looked after	all children ²	ratio QP7 ³	looked after	all children ²	ratio QP7 ³
MERSEYSIDE	150	26	66	0.4	21	62	0.3	20	61	0.3
Knowsley	15	-	49	-	-	51	-	-	50	-
Liverpool	70	24	61	0.4	24	55	0.4	14	55	0.3
Sefton	20	37	73	0.5	32	71	0.4	42	70	0.6
St Helens	20	-	67	-	-	66	-	-	65	-
Wirral	25	31	73	0.4	-	68	-	-	67	-
YORKS & THE HUMBER	415	19	62	0.3	18	63	0.3	16	63	0.3
North Yorkshire	25	-	75	-	-	76	-	-	77	-
East Riding Of Yorkshire	10	-	72	-	-	73	-	-	73	-
Kingston Upon Hull	40	20	48	0.4	22	51	0.4	20	48	0.4
North East Lincolnshire	20	-	56	-	-	58	-	-	57	-
North Lincolnshire	10	-	60	-	-	66	-	-	67	-
York	10	-	71	-	-	71	-	-	74	-
Barnsley	15	-	52	-	-	58	-	-	57	-
Bradford	40	-	53	-	-	55	-	-	51	-
Calderdale	10	-	66	-	-	67	-	-	65	-
Doncaster	25	23	59	0.4	-	60	-	-	60	-
Kirklees	15	-	63	-	-	64	-	-	65	-
Leeds	95	27	62	0.4	19	63	0.3	19	62	0.3
Rotherham	20	-	58	-	-	63	-	-	61	-
Sheffield	40	21	61	0.3	-	61	-	-	59	-
Wakefield	35	17	62	0.3	22	61	0.4	22	61	0.4
EAST MIDLANDS	195	14	62	0.2	18	67	0.3	20	67	0.3
Derbyshire	35	-	63	-	21	70	0.3	41	70	0.6
Leicestershire	10	0	72	0	0	77	0	0	79	0
Lincolnshire	25	-	67	-	-	72	-	-	71	-
Northamptonshire	25	-	60	-	-	68	-	-	69	-
Nottinghamshire	25	-	60	-	-	64	-	-	65	-
Derby	25	-	56	-	-	62	-	-	60	-
Leicester	25	-	55	-	-	58	-	-	51	-
Nottingham	20	-	43	-	33	47	0.7	33	44	0.8

Table 4 Eligibility and performance of looked after children in Key Stage 3 tasks and tests, compared to all children, twelve months ending 30 September 2001

Local Authority	number looked after in Year 9 old enough to sit Key Stage 3 tasks and tests	percentage attaining level 5 ¹ or above in each task or test								
		English			Mathematics			Science		
		looked after	all children ²	ratio QP7 ³	looked after	all children ²	ratio QP7 ³	looked after	all children ²	ratio QP7 ³
WEST MIDLANDS	385	20	63	0.3	21	64	0.3	19	64	0.3
Shropshire	10	-	71	-	-	73	-	-	76	-
Staffordshire	30	24	69	0.3	-	69	-	24	71	0.3
Warwickshire	20	-	65	-	-	70	-	-	72	-
Worcestershire	45	20	64	0.3	17	69	0.3	22	71	0.3
Herefordshire	10	-	69	-	-	74	-	-	75	-
Stoke-On-Trent	15	-	60	-	-	57	-	-	59	-
Telford & Wrekin	5	-	64	-	-	66	-	-	65	-
Birmingham	110	23	56	0.4	22	56	0.4	16	54	0.3
Coventry	30	26	61	0.4	32	63	0.5	26	61	0.4
Dudley	25	-	62	-	-	65	-	-	66	-
Sandwell	20	-	54	-	-	51	-	-	50	-
Solihull	15	-	74	-	43	74	0.6	-	73	-
Walsall	20	-	53	-	-	59	-	-	57	-
Wolverhampton	25	-	60	-	-	58	-	-	55	-
SOUTH WEST	320	24	66	0.4	26	70	0.4	27	70	0.4
Cornwall	45	30	68	0.4	27	70	0.4	25	71	0.4
Devon	35	16	65	0.2	24	70	0.3	24	70	0.3
Dorset	20	27	70	0.4	-	73	-	36	75	0.5
Gloucestershire	25	-	74	-	-	74	-	-	75	-
Somerset	25	37	65	0.6	48	71	0.7	44	72	0.6
Wiltshire	20	30	69	0.4	35	73	0.5	30	73	0.4
Bath & North East Somerset	10	-	66	-	-	72	-	55	73	0.7
Bournemouth	15	-	74	-	-	72	-	-	71	-
Bristol	40	24	48	0.5	18	51	0.4	21	51	0.4
North Somerset	15	-	66	-	-	72	-	-	70	-
Plymouth	25	26	62	0.4	41	67	0.6	26	68	0.4
Poole	10	-	68	-	-	73	-	-	75	-
South Gloucestershire	10	-	71	-	-	71	-	-	70	-
Swindon	10	-	61	-	0	66	0	-	62	-
Torbay	10	-	61	-	-	69	-	-	70	-

Table 4 Eligibility and performance of looked after children in Key Stage 3 tasks and tests, compared to all children, twelve months ending 30 September 2001

Local Authority	number looked after in Year 9 old enough to sit Key Stage 3 tasks and tests	percentage attaining level 5 ¹ or above in each task or test								
		English			Mathematics			Science		
		looked after	all children ²	ratio QP7 ³	looked after	all children ²	ratio QP7 ³	looked after	all children ²	ratio QP7 ³
LONDON	685	19	61	0.3	20	61	0.3	18	58	0.3
Camden	10	-	64	-	-	62	-	50	60	0.8
Greenwich	35	21	50	0.4	26	49	0.5	21	47	0.4
Hackney	40	-	45	-	-	47	-	-	38	-
Hammersmith & Fulham	15	-	59	-	-	58	-	-	57	-
Islington	25	29	44	0.7	-	43	-	-	39	-
Kensington & Chelsea	15	-	64	-	-	61	-	-	64	-
Lambeth	105	8	51	0.2	9	46	0.2	7	46	0.1
Lewisham	40	18	52	0.3	25	50	0.5	18	50	0.4
Southwark	40	15	42	0.4	18	44	0.4	15	40	0.4
Tower Hamlets	10	-	50	-	0	45	0	0	41	0.0
Wandsworth	20	32	58	0.5	-	58	-	-	56	-
Westminster	15	-	60	-	-	59	-	-	53	-
Barking & Dagenham	20	-	57	-	-	57	-	-	58	-
Barnet	20	-	71	-	-	73	-	-	69	-
Bexley	10	-	69	-	-	67	-	-	65	-
Brent	10	50	60	0.8	50	61	0.8	50	56	0.9
Bromley	10	-	75	-	-	73	-	-	72	-
Croydon	30	24	61	0.4	31	63	0.5	28	61	0.5
Ealing	25	30	60	0.5	30	62	0.5	30	59	0.5
Enfield	20	-	65	-	-	63	-	-	57	-
Haringey	20	-	48	-	-	48	-	-	42	-
Harrow	10	-	70	-	-	70	-	-	66	-
Havering	5	-	72	-	-	72	-	-	70	-
Hillingdon	25	28	62	0.5	32	66	0.5	-	64	-
Hounslow	20	-	66	-	-	62	-	-	61	-
Kingston Upon Thames	-	-	74	-	-	77	-	-	75	-
Merton	15	0	64	0	0	62	0	0	56	0
Newham	40	-	53	-	-	51	-	-	46	-
Redbridge	10	-	71	-	-	74	-	-	70	-
Richmond Upon Thames	-	-	69	-	-	69	-	-	69	-
Sutton	5	0	76	0	-	75	-	-	76	-
Waltham Forest	10	0	58	0	0	57	0	0	55	0

Table 4 Eligibility and performance of looked after children in Key Stage 3 tasks and tests, compared to all children, twelve months ending 30 September 2001

Local Authority	number looked after in Year 9 old enough to sit Key Stage 3 tasks and tests	percentage attaining level 5 ¹ or above in each task or test								
		English			Mathematics			Science		
		looked after	all children ²	ratio QP7 ³	looked after	all children ²	ratio QP7 ³	looked after	all children ²	ratio QP7 ³
EAST OF ENGLAND	300	27	66	0.4	33	70	0.5	36	70	0.5
Bedfordshire	20	33	65	0.5	33	70	0.5	50	70	0.7
Cambridgeshire	25	-	67	-	-	72	-	-	72	-
Essex	60	30	68	0.4	38	69	0.6	32	69	0.5
Hertfordshire	55	39	69	0.6	54	74	0.7	63	73	0.9
Norfolk	35	17	65	0.3	31	69	0.4	31	69	0.4
Suffolk	40	21	64	0.3	17	71	0.2	29	73	0.4
Luton	15	-	57	-	40	60	0.7	40	56	0.7
Peterborough	25	-	60	-	23	62	0.4	23	62	0.4
Southend	10	-	69	-	-	71	-	-	70	-
Thurrock	10	-	59	-	-	63	-	-	61	-
SOUTH EAST	435	17	68	0.3	21	70	0.3	20	71	0.3
Buckinghamshire	25	-	79	-	35	77	0.5	-	77	-
East Sussex	25	28	65	0.4	28	67	0.4	40	68	0.6
Hampshire	55	15	69	0.2	21	73	0.3	26	74	0.4
Kent	110	19	68	0.3	19	70	0.3	18	70	0.3
Oxfordshire	25	23	64	0.4	-	70	-	-	70	-
Surrey	40	-	73	-	21	75	0.3	16	76	0.2
West Sussex	40	15	70	0.2	26	71	0.4	21	73	0.3
Bracknell Forest	-	-	67	-	-	69	-	-	70	-
Brighton & Hove	15	38	62	0.6	44	64	0.7	38	63	0.6
Isle Of Wight	10	-	57	-	-	63	-	-	66	-
Medway Towns	25	-	68	-	-	68	-	-	65	-
Milton Keynes	10	0	61	0	0	65	0.0	0	64	0
Portsmouth	20	-	55	-	50	59	0.8	33	57	0.6
Reading	10	0	59	0	0	65	0	0	62	0
Slough	5	-	62	-	0	66	0	-	62	-
Southampton	15	-	59	-	-	60	-	-	58	-
West Berkshire	-	-	66	-	-	73	-	-	75	-
Windsor & Maidenhead	-	-	79	-	-	76	-	-	77	-
Wokingham	-	-	74	-	-	78	-	-	79	-

¹ target level for age group

² source: DfES statistical first release 'National curriculum assessments of 7, 11 and 14 year olds by Local Education Authority, 2001' (please note - these figures are provisional)

³ the proportion of looked after children attaining the target levels or better in each of the tested subjects in the National Curriculum Assessment tests, expressed as a ratio of the proportion of all children at that stage attaining the target level or better in the authority

Table 5 GCSE performance of looked-after children in year 11 compared with all children, twelve months ending 30 September 2001

Local Authority	number looked after in year 11 old enough to sit one	% who sat one	percentage obtaining at least:								
			1 GCSE at grade A* to G or a GNVQ			5 GCSE's at grade A* to G			5 GCSE's at grade A* to C		
			looked after	all children ¹	ratio	looked after	all children ¹	ratio	looked after	all children ¹	ratio QP8 ²
ENGLAND	4,200	54.1	49.6	95	0.5	33.1	90	0.4	8.0	48	0.2
NORTH EAST	190	47	44	94	0.5	32	88	0.4	7	42	0.2
Durham	35	41	41	94	0.4	26	87	0.3	-	41	0.1
Northumberland	15	56	56	94	0.6	38	90	0.4	-	49	0.1
Darlington	-	-	-	95	0.5	-	90	0.3	0	47	0
Hartlepool	-	-	-	95	0.6	-	88	0.5	0	40	0
Middlesbrough	5	0	0	93	0	0	86	0	0	35	0
Redcar & Cleveland	-	-	-	95	0.6	-	90	0.4	-	43	0.5
Stockton On Tees	-	-	-	96	0.6	-	92	0.7	0	45	0
Gateshead	20	35	35	92	0.4	-	89	0.3	-	49	0.1
Newcastle Upon Tyne	30	38	38	89	0.4	22	81	0.3	0	37	0
North Tyneside	25	74	57	95	0.6	52	91	0.6	-	47	0.3
South Tyneside	15	63	63	95	0.7	50	90	0.6	-	39	0.5
Sunderland	25	36	36	95	0.4	24	90	0.3	-	39	0.2
NORTH WEST	445	57	53	95	0.6	38	90	0.4	6	47	0.1
Cheshire	40	76	66	97	0.7	58	94	0.6	-	56	0.2
Cumbria	20	63	63	96	0.7	47	90	0.5	-	51	0.2
Lancashire	105	49	42	96	0.4	27	91	0.3	6	50	0.1
Blackburn With Darwen	20	50	50	93	0.5	-	88	0.1	-	38	0.1
Blackpool	15	64	-	93	0.4	-	86	0.2	0	36	0
Halton	-	-	-	96	0.8	-	91	0.9	-	40	0.5
Warrington	15	60	53	96	0.6	53	92	0.6	-	50	0.3
Bolton	10	-	-	95	0.5	-	91	0.5	0	45	0
Bury	25	56	56	98	0.6	44	96	0.5	0	54	0
Manchester	65	52	48	86	0.6	33	77	0.4	-	31	0.2
Oldham	10	58	58	95	0.6	50	89	0.6	0	42	0
Rochdale	5	-	-	94	0.5	-	87	0.5	0	40	0
Salford	40	60	60	94	0.6	38	89	0.4	-	34	0.1
Stockport	25	59	59	95	0.6	44	92	0.5	-	54	0.1
Tameside	10	70	70	95	0.7	60	91	0.7	-	42	0.7
Trafford	10	58	58	96	0.6	-	91	0.3	0	58	0
Wigan	20	65	60	95	0.6	55	91	0.6	-	47	0.1

Table 5 GCSE performance of looked-after children in year 11 compared with all children, twelve months ending 30 September 2001

Local Authority	number looked after in year 11 old enough to sit one	% who sat one	percentage obtaining at least:								
			1 GCSE at grade A* to G or a GNVQ			5 GCSE's at grade A* to G			5 GCSE's at grade A* to C		
			looked after	all children ¹	ratio	looked after	all children ¹	ratio	looked after	all children ¹	ratio QP8 ²
MERSEYSIDE	160	55	52	93	1.1	36	86	0.4	10	42	0.2
Knowsley	20	55	55	88	0.6	36	78	0.5	-	27	0.3
Liverpool	70	48	45	91	0.5	39	83	0.5	-	35	0.2
Sefton	20	59	59	96	0.6	50	92	0.5	-	50	0.4
St Helens	20	47	42	94	0.4	-	89	0.2	0	46	0
Wirral	30	73	70	95	0.7	33	89	0.4	-	51	0.3
YORKS & THE HUMBER	405	51	48	94	0.5	32	88	0.4	5	43	0.1
North Yorkshire	25	56	56	97	0.6	41	93	0.4	-	58	0.1
East Riding Of Yorkshire	10	-	-	95	0.5	-	92	0.4	0	50	0
Kingston Upon Hull	30	33	33	90	0.4	23	81	0.3	0	28	0
North East Lincolnshire	15	53	-	95	0.2	-	89	0.1	0	37	0
North Lincolnshire	15	56	56	97	0.6	-	93	0.3	-	42	0.1
York	10	75	75	96	0.8	-	91	0.5	-	54	0.2
Barnsley	20	57	52	93	0.6	38	85	0.4	-	35	0.1
Bradford	45	44	42	92	0.5	20	85	0.2	-	34	0.1
Calderdale	20	45	45	95	0.5	-	89	0.2	0	49	0
Doncaster	25	39	30	93	0.3	-	88	0.2	0	40	0
Kirklees	25	43	43	95	0.5	26	90	0.3	0	44	0
Leeds	65	69	67	93	0.7	44	87	0.5	11	40	0.3
Rotherham	20	43	38	95	0.4	-	90	0.3	-	43	0.2
Sheffield	45	42	40	93	0.4	28	87	0.3	-	42	0.1
Wakefield	35	63	63	96	0.7	54	91	0.6	-	45	0.1
EAST MIDLANDS	260	60	47	95	0.5	36	89	0.4	7	47	0.1
Derbyshire	50	56	56	96	0.6	48	92	0.5	16	52	0.3
Leicestershire	25	73	50	95	0.5	35	91	0.4	-	50	0.2
Lincolnshire	30	60	57	96	0.6	53	91	0.6	-	54	0.1
Northamptonshire	50	48	40	94	0.4	29	88	0.3	-	49	0.1
Nottinghamshire	25	64	64	94	0.7	48	89	0.5	-	46	0.3
Derby	30	41	31	94	0.3	21	88	0.2	0	43	0
Leicester	25	100	41	92	0.4	22	82	0.3	0	37	0
Nottingham	25	48	36	89	0.4	28	77	0.4	-	30	0.1

Table 5 GCSE performance of looked-after children in year 11 compared with all children, twelve months ending 30 September 2001

Local Authority	number looked after in year 11 old enough to sit one	% who sat one	percentage obtaining at least:								
			1 GCSE at grade A* to G or a GNVQ			5 GCSE's at grade A* to G			5 GCSE's at grade A* to C		
			looked after	all children ¹	ratio	looked after	all children ¹	ratio	looked after	all children ¹	ratio QP8 ²
WEST MIDLANDS	435	51	48	95	0.5	32	89	0.4	4	46	0.1
Shropshire	10	78	78	97	0.8	67	92	0.7	-	54	0.6
Staffordshire	40	60	60	95	0.6	45	91	0.5	-	48	0.1
Warwickshire	25	40	40	96	0.4	28	91	0.3	-	51	0.2
Worcestershire	45	48	41	95	0.4	32	90	0.4	-	50	0.2
Herefordshire	10	64	64	95	0.7	-	91	0.5	-	54	0.2
Stoke-On-Trent	30	61	61	92	0.7	46	86	0.5	-	36	0.1
Telford & Wrekin	10	64	55	95	0.6	-	91	0.2	0	47	0
Birmingham	115	38	33	94	0.4	21	87	0.2	-	41	0.0
Coventry	30	50	43	92	0.5	-	86	0.2	0	43	0
Dudley	25	54	50	96	0.5	38	92	0.4	-	50	0.1
Sandwell	30	60	60	92	0.7	40	84	0.5	0	34	0
Solihull	25	74	74	97	0.8	52	92	0.6	-	56	0.1
Walsall	20	50	50	95	0.5	33	86	0.4	-	41	0.1
Wolverhampton	25	44	44	94	0.5	26	88	0.3	0	42	0
SOUTH WEST	340	62	61	96	0.6	44	91	0.5	16	52	0.3
Cornwall	40	56	56	96	0.6	37	92	0.4	37	53	0.7
Devon	50	61	57	96	0.6	43	91	0.5	14	51	0.3
Dorset	25	63	59	96	0.6	59	92	0.6	-	56	0.3
Gloucestershire	30	65	65	97	0.7	48	93	0.5	-	58	0.2
Somerset	20	84	84	97	0.9	63	93	0.7	-	55	0.3
Wiltshire	20	56	56	96	0.6	-	92	0.3	0	56	0
Bath & North East Somerset	10	83	83	96	0.9	58	92	0.6	-	56	0.1
Bournemouth	20	56	56	94	0.6	44	88	0.5	-	52	0.5
Bristol	30	48	48	89	0.5	23	81	0.3	-	32	0.4
North Somerset	10	67	67	96	0.7	-	91	0.2	-	51	0.2
Plymouth	35	74	74	96	0.8	56	90	0.6	-	50	0.2
Poole	15	54	54	97	0.6	54	94	0.6	-	59	0.3
South Gloucestershire	10	-	-	96	0.3	-	93	0.2	0	49	0
Swindon	10	80	80	94	0.9	-	88	0.6	-	45	0.2
Torbay	20	58	58	95	0.6	47	91	0.5	-	52	0.2

Table 5 GCSE performance of looked-after children in year 11 compared with all children, twelve months ending 30 September 2001

Local Authority	number looked after in year 11 old enough to sit one	% who sat one	percentage obtaining at least:								
			1 GCSE at grade A* to G or a GNVQ			5 GCSE's at grade A* to G			5 GCSE's at grade A* to C		
			looked after	all children ¹	ratio	looked after	all children ¹	ratio	looked after	all children ¹	ratio QP8 ²
LONDON	1,010	47	41	95	0.4	23	89	0.3	8	46	0.2
Camden	35	42	36	96	0.4	19	91	0.2	-	50	0.1
Greenwich	25	35	-	93	0.2	-	84	0.2	0	34	0
Hackney	45	56	56	93	0.6	33	83	0.4	21	34	0.6
Hammersmith & Fulham	45	63	61	96	0.6	39	88	0.4	-	51	0.1
Islington	50	41	41	89	0.5	27	79	0.3	-	29	0.3
Kensington & Chelsea	20	58	53	96	0.5	-	93	0.3	-	55	0.3
Lambeth	155	27	16	96	0.2	7	85	0.1	7	36	0.2
Lewisham	50	62	52	93	0.6	24	86	0.3	-	35	0.2
Southwark	65	40	35	95	0.4	25	85	0.3	0	34	0
Tower Hamlets	20	60	55	97	0.6	-	88	0.3	-	35	0.1
Wandsworth	25	56	56	95	0.6	33	86	0.4	-	43	0.2
Westminster	25	42	42	94	0.5	31	85	0.4	-	39	0.1
Barking & Dagenham	10	-	-	95	0.2	-	91	0.2	-	38	0.2
Barnet	20	75	75	95	0.8	55	90	0.6	-	56	0.4
Bexley	15	75	69	96	0.7	56	91	0.6	-	49	0.3
Brent	25	83	78	96	0.8	-	89	0.2	-	46	0.2
Bromley	15	59	59	96	0.6	-	93	0.2	0	56	0
Croydon	40	63	45	96	0.5	-	91	0.1	-	45	0.1
Ealing	30	41	41	98	0.4	31	93	0.3	-	47	0.3
Enfield	30	50	50	97	0.5	32	92	0.3	-	47	0.2
Haringey	60	41	41	92	0.4	31	80	0.4	12	31	0.4
Harrow	10	-	-	97	0.5	-	92	0.3	0	58	0
Havering	15	41	41	96	0.4	-	92	0.3	0	56	0
Hillingdon	35	57	32	96	0.3	16	90	0.2	-	47	0.1
Hounslow	20	-	-	96	0.3	-	88	0.2	-	46	0.1
Kingston Upon Thames	5	-	-	94	0.4	-	89	0.2	0	61	0
Merton	20	74	58	94	0.6	-	86	0.3	-	40	0.3
Newham	40	36	33	98	0.3	-	92	0.1	-	39	0.1
Redbridge	15	92	69	98	0.7	54	94	0.6	46	63	0.7
Richmond Upon Thames	15	62	-	94	0.2	-	90	0.3	-	55	0.1
Sutton	10	67	67	96	0.7	-	93	0.6	-	60	0.6
Waltham Forest	25	27	27	94	0.3	-	89	0.1	0	43	0

Table 5 GCSE performance of looked-after children in year 11 compared with all children, twelve months ending 30 September 2001

Local Authority	number looked after in year 11 old enough to sit one	% who sat one	percentage obtaining at least:								
			1 GCSE at grade A* to G or a GNVQ			5 GCSE's at grade A* to G			5 GCSE's at grade A* to C		
			looked after	all children ¹	ratio	looked after	all children ¹	ratio	looked after	all children ¹	ratio QP ²
EAST OF ENGLAND	355	59	55	96	0.6	38	91	0.4	10	52	0.2
Bedfordshire	20	64	59	95	0.6	41	90	0.5	-	49	0.2
Cambridgeshire	25	87	70	95	0.7	39	90	0.4	-	54	0.3
Essex	75	44	44	96	0.5	29	92	0.3	9	52	0.2
Hertfordshire	70	72	62	96	0.6	42	92	0.5	12	56	0.2
Norfolk	40	62	62	96	0.6	45	90	0.5	-	50	0.1
Suffolk	45	60	60	97	0.6	45	93	0.5	-	54	0.2
Luton	20	70	70	96	0.7	45	90	0.5	-	38	0.3
Peterborough	25	52	52	93	0.6	43	88	0.5	-	44	0.1
Southend	20	37	37	95	0.4	-	88	0.2	0	56	0
Thurrock	15	-	-	93	0.2	-	87	0.2	-	42	0.5
SOUTH EAST	555	60	57	95	0.6	37	91	0.4	9	53	0.2
Buckinghamshire	15	38	38	96	0.4	-	92	0.3	0	63	0
East Sussex	20	50	50	95	0.5	27	90	0.3	-	50	0.1
Hampshire	70	60	56	97	0.6	37	93	0.4	11	55	0.2
Kent	130	66	61	96	0.6	40	91	0.4	9	53	0.2
Oxfordshire	25	48	44	94	0.5	37	88	0.4	-	50	0.3
Surrey	45	53	53	96	0.6	30	92	0.3	-	58	0.1
West Sussex	70	54	54	96	0.6	34	92	0.4	9	55	0.2
Bracknell Forest	-	-	-	95	0.6	-	92	0.4	0	49	0
Brighton & Hove	25	59	59	92	0.6	33	84	0.4	0	43	0
Isle Of Wight	10	78	78	93	0.8	-	86	0.5	-	44	0.3
Medway Towns	25	75	67	96	0.7	54	92	0.6	-	48	0.3
Milton Keynes	25	62	62	94	0.7	50	89	0.6	-	43	0.2
Portsmouth	10	67	-	92	0.6	-	84	0.5	-	34	0.7
Reading	10	-	-	92	0.7	-	83	0.3	0	47	0
Slough	15	73	73	97	0.8	53	94	0.6	-	52	0.4
Southampton	30	50	47	95	0.5	25	89	0.3	-	43	0.1
West Berkshire	10	67	-	97	0.6	-	93	0.1	-	56	0.2
Windsor & Maidenhead	5	86	-	96	0.7	-	92	0.6	-	59	1.0
Wokingham	-	-	-	96	0.6	-	93	0.4	0	61	0

¹ source: DfES Statistical Bulletin May 2002. www.dfes.gov.uk/statistics/DB/SBU/b0334/index.html

² the proportion of looked after children obtaining at least 5 GCSE's at grades A*-C during the most recent school year, as a ratio of the proportion of all children in the local authority achieving these standards

Table 6: Education and employment status at 30 September 2001 of looked-after children in Year 11 in 2000/2001 school year, compared with all children

Local authority	Total number of looked after children	Total number of all children in year 11 in	Position of children at 30 September 2001, shown as a percentage of total					
			In full-time education		In full/part time training or employment		Unemployment	
			Looked after	All children ^{1,2}	Looked after	All children ^{1,2}	Looked after	All children ^{1,2}
ENGLAND	4,200	582,900	52.8	71.7	21.6	16.5	23.9	6.8
NORTH EAST	190	33,635	44	66	32	19	24	10
Durham	35	6,275	41	63	26	23	32	9
Northumberland	15	3,955	38	73	56	16	-	6
Darlington	-	1,200	-	66	-	23	-	5
Hartlepool	-	1,305	-	63	-	25	-	8
Middlesbrough	5	2,040	-	64	0	17	-	11
Redcar & Cleveland	-	2,145	-	64	-	19	0	12
Stockton On Tees	-	2,675	-	67	-	19	-	9
Gateshead	20	2,285	35	68	35	18	30	9
Newcastle Upon Tyne	30	3,385	44	69	41	16	-	13
North Tyneside	25	2,380	35	70	48	16	-	10
South Tyneside	15	2,100	44	66	-	20	38	11
Sunderland	25	3,885	60	63	24	20	-	14
NORTH WEST	445	61,715	55	68	23	19	23	8
Cheshire	40	9,040	63	75	26	14	-	5
Cumbria	20	6,475	47	68	32	22	-	6
Lancashire	105	4,850	59	63	21	24	20	7
Blackburn With Darwen	20	2,160	39	65	39	21	-	9
Blackpool	15	1,545	50	63	0	21	50	8
Halton	-	1,705	-	70	-	15	0	10
Warrington	15	2,555	47	73	-	17	-	6
Bolton	10	3,810	-	68	-	21	-	8
Bury	25	2,555	64	74	28	16	-	7
Manchester	65	4,795	54	65	18	16	28	12
Oldham	10	3,495	-	66	-	20	-	10
Rochdale	5	2,615	-	62	-	23	-	10
Salford	40	2,610	55	60	-	27	33	10
Stockport	25	3,435	52	72	30	18	-	6
Tameside	10	3,030	-	67	-	20	-	8
Trafford	10	2,890	58	75	-	15	-	6
Wigan	20	4,140	60	66	30	23	-	9

Table 6: Education and employment status at 30 September 2001 of looked-after children in Year 11 in 2000/2001 school year, compared with all children

Local authority	Total number of looked after children	Total number of all children in year 11 in	Position of children at 30 September 2001, shown as a percentage of total					
			In full-time education		In full/part time training or employment		Unemployment	
			Looked after	All children ^{1,2}	Looked after	All children ^{1,2}	Looked after	All children ^{1,2}
MERSEYSIDE	160	19,020	48	68	28	17	24	9
Knowsley	20	2,035	41	62	32	21	27	12
Liverpool	70	6,360	45	65	30	17	25	12
Sefton	20	3,790	77	72	-	15	-	8
St Helens	20	2,310	32	69	42	19	-	7
Wirral	30	4,520	47	72	23	16	30	8
YORKS & THE HUMBER	405	62,230	47	68	27	19	26	8
North Yorkshire	25	7,080	56	73	22	17	22	5
East Riding Of Yorkshire	10	4,030	73	75	-	17	-	5
Kingston Upon Hull	30	3,210	60	58	23	24	-	12
North East Lincolnshire	15	2,285	60	70	-	19	-	7
North Lincolnshire	15	2,050	38	76	-	16	-	6
York	10	1,850	-	73	-	17	-	7
Barnsley	20	2,550	57	65	-	24	-	8
Bradford	45	6,240	36	64	33	16	31	12
Calderdale	20	2,630	59	71	-	20	-	6
Doncaster	25	3,765	39	65	-	21	57	10
Kirklees	25	4,885	39	69	48	20	-	7
Leeds	65	8,230	44	68	33	18	23	9
Rotherham	20	3,690	52	68	-	19	38	8
Sheffield	45	5,450	33	65	28	22	40	10
Wakefield	35	4,275	51	62	34	20	-	10
EAST MIDLANDS	260	49,405	50	70	27	19	23	6
Derbyshire	50	7,270	58	68	26	22	16	6
Leicestershire	25	7,310	50	73	35	18	-	6
Lincolnshire	30	8,055	47	71	23	17	30	6
Northamptonshire	50	7,915	42	71	33	19	25	5
Nottinghamshire	25	9,200	56	71	24	22	-	5
Derby	30	2,965	41	64	34	22	24	9
Leicester	25	3,470	48	75	-	12	44	11
Nottingham	25	2,765	56	63	32	22	-	9

Table 6: Education and employment status at 30 September 2001 of looked-after children in Year 11 in 2000/2001 school year, compared with all children

Local authority	Total number of looked after children	Total number of all children in year 11 in	Position of children at 30 September 2001, shown as a percentage of total					
			In full-time education		In full/part time training or employment		Unemployment	
			Looked after	All children ^{1,2}	Looked after	All children ^{1,2}	Looked after	All children ^{1,2}
WEST MIDLANDS	435	62,405	41	70	27	19	32	8
Shropshire	10	3,230	78	70	-	24	0	4
Staffordshire	40	10,520	48	72	26	19	26	7
Warwickshire	25	6,190	48	73	24	18	28	6
Worcestershire	45	585	43	96	27	1	30	-
Herefordshire	10	1,950	0	71	64	18	-	7
Stoke-On-Trent	30	2,985	43	63	21	20	36	14
Telford & Wrekin	10	2,165	-	66	-	24	-	6
Birmingham	115	12,655	27	73	19	15	54	7
Coventry	30	3,700	39	72	46	18	-	6
Dudley	25	4,195	63	64	-	23	-	9
Sandwell	30	3,900	60	61	20	23	20	11
Solihull	25	3,135	65	73	30	17	-	7
Walsall	20	3,995	39	67	50	19	-	9
Wolverhampton	25	3,190	33	67	22	16	44	12
SOUTH WEST	340	49,725	52	74	26	17	22	5
Cornwall	40	6,365	61	77	20	12	20	6
Devon	50	7,685	63	73	12	16	24	6
Dorset	25	4,320	48	75	41	14	-	5
Gloucestershire	30	..	32	..	52	..	-	..
Somerset	20	5,320	53	73	32	19	-	4
Wiltshire	20	4,625	61	77	-	17	33	2
Bath & North East Somerset	10	2,050	58	78	-	16	-	4
Bournemouth	20	1,855	44	75	39	16	-	5
Bristol	30	3,280	65	65	-	22	23	8
North Somerset	10	2,085	67	79	-	16	-	4
Plymouth	35	3,415	24	71	47	16	29	9
Poole	15	1,610	46	73	-	19	-	6
South Gloucestershire	10	3,080	89	74	0	20	-	4
Swindon	10	2,195	60	68	-	25	-	3
Torbay	20	1,820	42	74	-	12	42	7

Table 6: Education and employment status at 30 September 2001 of looked-after children in Year 11 in 2000/2001 school year, compared with all children

Local authority	Total number of looked after children	Total number of all children in year 11 in	Position of children at 30 September 2001, shown as a percentage of total					
			In full-time education		In full/part time training or employment		Unemployment	
			Looked after	All children ^{1,2}	Looked after	All children ^{1,2}	Looked after	All children ^{1,2}
LONDON	1,010	76,275	61	76	14	10	24	7
Camden	35	1,620	78	81	0	7	22	6
Greenwich	25	2,530	52	67	-	14	30	12
Hackney	45	1,480	47	74	14	8	40	8
Hammersmith & Fulham	45	1,200	80	77	-	6	-	7
Islington	50	1,405	47	69	33	9	20	9
Kensington & Chelsea	20	630	89	77	-	7	-	8
Lambeth	155	1,500	59	63	12	6	28	12
Lewisham	50	2,550	40	71	-	9	52	8
Southwark	65	2,505	74	68	14	9	12	11
Tower Hamlets	20	2,725	0	69	0	8	40	9
Wandsworth	25	1,900	67	76	-	10	22	6
Westminster	25	1,300	69	75	-	8	-	6
Barking & Dagenham	10	1,885	-	60	-	17	-	10
Barnet	20	3,985	45	83	35	7	-	5
Bexley	15	3,090	38	68	50	17	-	8
Brent	25	2,330	70	85	-	5	-	3
Bromley	15	3,545	53	82	-	11	-	4
Croydon	40	3,770	66	75	18	12	16	8
Ealing	30	2,905	66	81	-	6	21	7
Enfield	30	3,715	68	80	-	8	25	6
Haringey	60	2,160	59	71	10	5	31	9
Harrow	10	2,090	60	86	0	6	-	4
Havering	15	2,915	65	73	-	17	-	5
Hillingdon	35	3,005	81	73	-	12	-	7
Hounslow	20	2,870	55	78	-	10	-	6
Kingston Upon Thames	5	1,530	100	81	0	8	0	5
Merton	20	1,645	63	69	-	15	-	8
Newham	40	3,475	67	71	15	9	18	9
Redbridge	15	2,925	92	83	-	6	0	4
Richmond Upon Thames	15	1,985	46	82	-	7	-	5
Sutton	10	2,365	89	80	0	12	-	4
Waltham Forest	25	2,525	38	73	-	11	54	7

Table 6: Education and employment status at 30 September 2001 of looked-after children in Year 11 in 2000/2001 school year, compared with all children

Local authority	Total number of looked after children	Total number of all children in year 11 in	Position of children at 30 September 2001, shown as a percentage of total					
			In full-time education		In full/part time training or employment		Unemployment	
			Looked after	All children ^{1,2}	Looked after	All children ^{1,2}	Looked after	All children ^{1,2}
EAST OF ENGLAND	355	63,095	57	74	21	16	22	5
Bedfordshire	20	5,215	64	78	-	15	-	4
Cambridgeshire	25	5,655	57	76	-	16	-	4
Essex	75	15,345	60	73	19	17	21	6
Hertfordshire	70	12,545	49	77	28	12	23	5
Norfolk	40	8,775	67	70	19	18	14	6
Suffolk	45	7,470	55	72	13	18	32	6
Luton	20	2,275	70	75	-	14	-	6
Peterborough	25	2,225	61	72	-	16	26	8
Southend	20	1,965	-	76	42	14	32	5
Thurrock	15	1,625	64	72	-	17	-	7
SOUTH EAST	555	88,220	55	76	16	14	18	5
Buckinghamshire	15	5,620	44	79	44	13	-	4
East Sussex	20	5,085	50	78	41	12	-	4
Hampshire	70	14,315	36	75	-	15	13	5
Kent	130	16,425	59	76	17	12	23	6
Oxfordshire	25	6,240	89	71	-	20	-	4
Surrey	45	9,935	66	81	17	12	17	4
West Sussex	70	7,780	41	78	13	13	-	4
Bracknell Forest	-	975	-	76	-	15	-	3
Brighton & Hove	25	2,115	63	75	-	15	22	7
Isle Of Wight	10	1,565	89	78	0	14	-	5
Medway Towns	25	3,515	54	72	29	14	-	9
Milton Keynes	25	2,625	58	65	-	20	23	8
Portsmouth	10	2,020	-	65	-	17	-	10
Reading	10	975	-	71	-	15	-	9
Slough	15	1,315	67	80	-	11	-	5
Southampton	30	2,645	50	69	-	17	38	8
West Berkshire	10	1,800	-	74	-	16	-	3
Windsor & Maidenhead	5	1,525	86	80	0	12	-	5
Wokingham	-	1,740	-	78	-	14	-	5

¹ Source: 'The Connexions/Careers Service Annual Activity Survey 2001'. Covers all young people who were in year 11 during the school year ending August 2001, and is based on a survey carried out during October 2001.

² Percentages for 'all children' do not sum to 100 because the Connexions/Career service Survey included an additional category of 'moved away', 'no response', and 'refused to participate', which is not relevant to looked-after children.

Table 7 Offending by looked-after children, twelve months ending 30 September 2001

Local Authority	looked-after children			all children aged 10-17 in police	PAF indicator
	number aged 10 years old or older	number cautioned or convicted during the year	percentage cautioned or convicted during the year	percentage cautioned or convicted during the year	
ENGLAND	27,000	2,800	10.4	3.5	3.0
NORTH EAST	1,470	220	15	6	2.6
Durham	220	30	14	5	2.9
Northumberland	135	20	14	7	2.1
Darlington	50	10	16	5	3.5
Hartlepool	30	-	-	4	-
Middlesbrough	100	20	21	4	4.6
Redcar & Cleveland	70	-	-	4	-
Stockton On Tees	75	10	11	4	2.4
Gateshead	130	20	14	7	2.1
Newcastle Upon Tyne	190	35	17	7	2.6
North Tyneside	135	25	18	7	2.7
South Tyneside	125	20	17	7	2.6
Sunderland	220	30	15	7	2.2
NORTH WEST	3,195	420	13	4	3.2
Cheshire	220	25	11	3	4.1
Cumbria	245	45	18	4	4.1
Lancashire	595	95	16	4	4.1
Blackburn With Darwen	110	10	7	4	1.9
Blackpool	95	5	6	4	1.6
Halton	60	10	21	3	7.4
Warrington	65	10	14	3	5.1
Bolton	125	10	9	4	2.0
Bury	100	20	18	4	4.1
Manchester	550	65	12	4	2.6
Oldham	125	15	14	4	3.0
Rochdale	105	15	14	4	3.2
Salford	260	20	8	4	1.9
Stockport	165	10	7	4	1.5
Tameside	120	15	12	4	2.8
Trafford	65	10	13	4	2.8
Wigan	195	40	21	4	4.6

Table 7 Offending by looked-after children, twelve months ending 30 September 2001

Local Authority	looked-after children			all children aged 10-17 in police	
	number aged 10 years old or older	number cautioned or convicted during the year	percentage cautioned or convicted during the year	percentage cautioned or convicted during the year	PAF indicator
MERSEYSIDE	1,110	90	8	3	2.3
Knowsley	125	10	6	3	1.9
Liverpool	525	50	9	3	2.6
Sefton	150	10	5	3	1.6
St Helens	125	10	6	3	1.9
Wirral	190	15	8	3	2.4
YORKS & THE HUMBER	2,985	450	15	4	4.0
North Yorkshire	145	20	13	3	4.1
East Riding Of Yorkshire	90	10	11	4	3.0
Kingston Upon Hull	270	25	10	4	2.5
North East Lincolnshire	120	15	11	4	2.8
North Lincolnshire	90	15	16	4	4.2
York	65	10	16	3	5.0
Barnsley	130	15	11	4	3.2
Bradford	370	50	14	4	3.3
Calderdale	95	15	18	4	4.3
Doncaster	185	25	14	4	3.8
Kirklees	130	25	19	4	4.6
Leeds	620	145	23	4	5.6
Rotherham	165	20	11	4	3.1
Sheffield	285	35	12	4	3.5
Wakefield	225	30	14	4	3.4
EAST MIDLANDS	1,755	200	11	3	3.5
Derbyshire	280	20	6	3	2.3
Leicestershire	125	15	14	3	5.2
Lincolnshire	210	10	4	3	1.5
Northamptonshire	290	45	16	3	4.9
Nottinghamshire	210	25	11	5	2.4
Derby	205	20	11	3	3.9
Leicester	210	35	16	3	5.9
Nottingham	220	30	14	5	3.0

Table 7 Offending by looked-after children, twelve months ending 30 September 2001

Local Authority	looked-after children			all children aged 10-17 in police		PAF indicator
	number aged 10 years old or older	number cautioned or convicted during the year	percentage cautioned or convicted during the year	percentage cautioned or convicted during the year		
WEST MIDLANDS	2,905	305	10	4	2.8	
Shropshire	95	10	11	3	3.4	
Staffordshire	250	35	13	4	3.8	
Warwickshire	160	15	9	2	3.7	
Worcestershire	280	30	11	3	3.5	
Herefordshire	95	10	11	3	3.4	
Stoke-On-Trent	180	25	13	4	3.8	
Telford & Wrekin	75	5	8	3	2.5	
Birmingham	775	75	10	4	2.2	
Coventry	225	35	15	4	3.5	
Dudley	145	15	11	4	2.5	
Sandwell	205	10	6	4	1.3	
Solihull	85	-	-	4	-	
Walsall	155	15	10	4	2.2	
Wolverhampton	185	20	10	4	2.4	
SOUTH WEST	2,440	220	9	3	3.3	
Cornwall	290	20	6	3	2.2	
Devon †	365	3	..	
Dorset	130	15	11	3	4.1	
Gloucestershire	260	20	9	3	2.7	
Somerset	155	15	10	2	4.3	
Wiltshire	115	15	14	4	3.8	
Bath & North East Somerset	80	-	-	2	-	
Bournemouth	105	15	15	3	5.6	
Bristol	270	15	6	2	2.5	
North Somerset	75	5	9	2	4.1	
Plymouth	260	40	15	3	5.2	
Poole	70	-	-	3	-	
South Gloucestershire	85	-	-	2	-	
Swindon	75	5	8	4	2.2	
Torbay	110	15	15	3	5.2	

Table 7 Offending by looked-after children, twelve months ending 30 September 2001

Local Authority	looked-after children			all children aged 10-17 in police	
	number aged 10 years old or older	number cautioned or convicted during the year	percentage cautioned or convicted during the year	percentage cautioned or convicted during the year	PAF indicator
LONDON	5,145	360	7	4	1.9
Camden	160	10	6	4	1.7
Greenwich	205	10	4	4	1.2
Hackney	250	15	6	4	1.7
Hammersmith & Fulham	200	15	8	4	2.3
Islington	270	30	10	4	2.9
Kensington & Chelsea	115	10	8	4	2.1
Lambeth	430	20	4	4	1.2
Lewisham	265	20	8	4	2.1
Southwark	355	30	8	4	2.3
Tower Hamlets	140	-	-	4	-
Wandsworth	155	10	7	4	2.0
Westminster	120	5	6	4	1.6
Barking & Dagenham	150	15	10	4	2.8
Barnet	135	-	-	4	-
Bexley	80	-	-	4	-
Brent	100	20	20	4	5.6
Bromley	145	10	8	4	2.1
Croydon	235	20	9	4	2.4
Ealing	195	5	3	4	0.9
Enfield	135	15	10	4	2.6
Haringey	180	10	4	4	1.2
Harrow	55	5	11	4	3.0
Havering	75	-	-	4	-
Hillingdon	205	10	4	4	1.1
Hounslow	130	5	5	4	1.5
Kingston Upon Thames	50	-	-	4	-
Merton	100	15	14	4	3.9
Newham	200	25	11	4	3.1
Redbridge	55	-	-	4	-
Richmond Upon Thames	55	5	13	4	3.5
Sutton	80	5	8	4	2.1
Waltham Forest	120	0	0	4	0

Table 7 Offending by looked-after children, twelve months ending 30 September 2001

Local Authority	looked-after children			all children aged 10-17 in police	PAF indicator
	number aged 10 years old or older	number cautioned or convicted during the year	percentage cautioned or convicted during the year	percentage cautioned or convicted during the year	
EAST OF ENGLAND	2,430	220	9	3	3.3
Bedfordshire	175	15	9	3	3.2
Cambridgeshire	200	10	6	3	2.3
Essex	540	30	6	3	2.1
Hertfordshire	400	35	9	2	3.6
Norfolk	295	30	10	3	3.3
Suffolk	315	60	20	3	5.7
Luton	145	10	8	3	3.1
Peterborough	170	10	5	3	1.8
Southend	110	10	9	3	3.3
Thurrock	75	-	-	3	-
SOUTH EAST	3,600	325	9	3	3.1
Buckinghamshire	125	15	10	2	4.2
East Sussex	190	20	11	3	3.9
Hampshire	440	50	12	4	2.9
Kent	780	45	6	3	1.7
Oxfordshire	220	30	13	2	5.1
Surrey	345	25	8	2	5.1
West Sussex	385	30	8	3	2.7
Bracknell Forest	30	-	-	2	-
Brighton & Hove	175	10	6	3	2.3
Isle Of Wight	70	-	-	4	-
Medway Towns	170	-	-	3	-
Milton Keynes	120	15	12	2	4.7
Portsmouth	100	25	23	4	5.6
Reading	60	5	11	2	4.6
Slough	65	-	-	2	-
Southampton	175	30	18	4	4.6
West Berkshire	60	-	-	2	-
Windsor & Maidenhead	35	5	18	2	7.1
Wokingham	50	-	-	2	-

1 Home Office source, figures for calendar year 2000

2 the proportion of children (aged 10 or over) who had been looked after continuously for at least 12 months, who were cautioned or convicted during the year for an offence committed whilst they were looked after, expressed as a ratio of the proportion of all children and young people convicted of or cautioned for an offence in the police force area

Table 8 Development assessments of pre-school looked-after children, twelve months ending 30 September 2001

England		Numbers	
Local Authority	number aged 5 years old or younger	number whose development assessments were up-to-date	% whose development assessments were up-to-date
ENGLAND	7,300	5,400	73.9
NORTH EAST	410	315	77
Durham	50	15	27
Northumberland	30	25	93
Darlington	15	15	100
Hartlepool	25	-	-
Middlesbrough	35	30	94
Redcar & Cleveland	25	20	96
Stockton On Tees	30	25	93
Gateshead	30	30	90
Newcastle Upon Tyne	40	25	63
North Tyneside	30	25	93
South Tyneside	40	30	82
Sunderland	75	75	96
NORTH WEST	1,030	775	75
Cheshire	45	45	91
Cumbria	70	40	62
Lancashire	170	120	71
Blackburn With Darwen	40	25	65
Blackpool	75	75	100
Halton	20	10	45
Warrington	25	15	74
Bolton	40	40	100
Bury	25	15	61
Manchester	145	95	65
Oldham †
Rochdale	55	50	93
Salford	75	30	42
Stockport	60	50	77
Tameside	30	25	86
Trafford	25	20	96
Wigan	85	75	89

Table 8 Development assessments of pre-school looked-after children, twelve months ending 30 September 2001

England		Numbers	
Local Authority	number aged 5 years old or younger	number whose development assessments were up-to-date	% whose development assessments were up-to-date
MERSEYSIDE	360	255	72
Knowsley	30	15	50
Liverpool	205	140	68
Sefton	45	35	70
St Helens	30	30	100
Wirral	50	40	83
YORKS & THE HUMBER	855	605	71
North Yorkshire	60	55	91
East Riding Of Yorkshire	30	25	77
Kingston Upon Hull	55	40	75
North East Lincolnshire	30	25	84
North Lincolnshire	20	20	90
York	20	15	89
Barnsley	55	50	86
Bradford	70	70	100
Calderdale	25	20	70
Doncaster	70	35	49
Kirklees	40	40	100
Leeds	180	60	32
Rotherham	60	50	79
Sheffield	85	60	70
Wakefield	50	45	94
EAST MIDLANDS	610	510	84
Derbyshire	80	60	79
Leicestershire	35	30	91
Lincolnshire	85	60	73
Northamptonshire	75	75	100
Nottinghamshire	65	55	81
Derby	60	60	100
Leicester	100	90	91
Nottingham	110	75	68

Table 8 Development assessments of pre-school looked-after children, twelve months ending 30 September 2001

England		Numbers	
Local Authority	number aged 5 years old or younger	number whose development assessments were up-to-date	% whose development assessments were up-to-date
WEST MIDLANDS	815	595	73
Shropshire	10	5	64
Staffordshire †	40
Warwickshire	40	40	100
Worcestershire	90	45	52
Herefordshire	30	25	74
Stoke-On-Trent	45	40	89
Telford & Wrekin	10	-	-
Birmingham	190	130	68
Coventry	90	55	63
Dudley	80	60	76
Sandwell	70	45	64
Solihull	15	15	100
Walsall	60	60	100
Wolverhampton	40	40	95
SOUTH WEST	470	365	78
Cornwall	50	40	77
Devon †	45
Dorset	20	10	56
Gloucestershire	70	40	60
Somerset	15	10	75
Wiltshire	25	15	54
Bath & North East Somerset	15	15	100
Bournemouth	20	20	100
Bristol	55	50	96
North Somerset	25	20	92
Plymouth	75	60	78
Poole	5	5	86
South Gloucestershire	-	-	-
Swindon	15	10	71
Torbay	30	30	94

Table 8 Development assessments of pre-school looked-after children, twelve months ending 30 September 2001

England		Numbers	
Local Authority	number aged 5 years old or younger	number whose development assessments were up-to-date	% whose development assessments were up-to-date
LONDON	1,235	795	64
Camden	40	30	84
Greenwich	50	20	35
Hackney	75	35	45
Hammersmith & Fulham	40	40	98
Islington	70	65	92
Kensington & Chelsea	25	25	100
Lambeth	65	50	77
Lewisham	65	25	38
Southwark	95	50	52
Tower Hamlets	40	0	0
Wandsworth	45	45	98
Westminster	35	35	100
Barking & Dagenham	25	10	39
Barnet	35	25	68
Bexley	25	25	100
Brent	35	0	0
Bromley	50	35	71
Croydon	50	45	90
Ealing	45	25	56
Enfield	20	20	100
Haringey	30	30	90
Harrow	15	15	100
Havering	20	20	100
Hillingdon	20	20	100
Hounslow	55	40	75
Kingston Upon Thames	-	-	-
Merton	25	-	-
Newham	65	10	17
Redbridge	20	20	100
Richmond Upon Thames	5	5	100
Sutton	15	15	94
Waltham Forest	20	10	45

Table 8 Development assessments of pre-school looked-after children, twelve months ending 30 September 2001

England		Numbers	
Local Authority	number aged 5 years old or younger	number whose development assessments were up-to-date	% whose development assessments were up-to-date
EAST OF ENGLAND	685	560	82
Bedfordshire	40	40	95
Cambridgeshire	20	20	100
Essex	175	135	76
Hertfordshire	120	100	85
Norfolk	90	90	98
Suffolk	90	45	47
Luton	60	55	93
Peterborough	55	50	91
Southend	20	20	95
Thurrock	10	10	100
SOUTH EAST	865	640	74
Buckinghamshire	55	35	65
East Sussex	60	55	88
Hampshire	125	40	33
Kent	185	175	95
Oxfordshire	40	40	98
Surrey	80
West Sussex	60	50	85
Bracknell Forest	-	-	-
Brighton & Hove	40	40	97
Isle Of Wight	20	20	100
Medway Towns	35	35	100
Milton Keynes	20	20	100
Portsmouth	35	30	89
Reading	15	15	94
Slough	30	25	83
Southampton	40	35	88
West Berkshire	10	10	90
Windsor & Maidenhead	10	10	100
Wokingham	-	-	-

Table 9 Health care of looked-after children, twelve months ending 30 September 2001

Local Authority	numbers			percentages		PAF		
	number looked after for at least one year	children	children	children who	children		children who	
ENGLAND	43,400	30,800	29,200	29,300	71	67	68	68.7
NORTH EAST	2,435	1,840	1,820	1,860	76	75	76	75.6
Durham	335	220	220	220	65	65	65	65.0
Northumberland	200	170	130	130	84	65	64	71.2
Darlington	85	50	55	60	56	63	68	62.5
Hartlepool	80	60	55	65	77	69	79	74.9
Middlesbrough	170	160	150	145	95	87	84	88.5
Redcar & Cleveland	120	40	60	75	35	49	64	49.4
Stockton On Tees	140	130	130	135	94	91	96	93.6
Gateshead	200	145	170	150	71	86	74	76.8
Newcastle Upon Tyne	290	225	235	240	78	82	83	80.9
North Tyneside	220	200	155	165	91	70	74	78.2
South Tyneside	205	145	165	165	71	81	82	77.8
Sunderland	385	295	300	310	77	78	81	78.6
NORTH WEST	5,590	3,770	3,965	3,620	67	71	65	67.7
Cheshire	340	325	310	280	96	92	83	90.3
Cumbria	420	235	245	270	57	58	64	59.8
Lancashire	985	845	740	525	86	75	53	71.5
Blackburn With Darwen	200	180	90	150	90	44	76	69.7
Blackpool	230	210	165	175	91	71	76	79.5
Halton	110	85	100	85	79	90	78	82.3
Warrington	115	75	60	70	65	53	59	59.1
Bolton	205	130	160	150	65	79	75	73.1
Bury	160	115	70	70	72	44	45	53.8
Manchester	965	335	710	610	35	74	63	57.0
Oldham †	230	160	69	69.3
Rochdale	205	170	160	155	84	78	75	78.9
Salford	480	240	210	305	51	44	63	52.6
Stockport	285	85	210	120	30	74	43	49.1
Tameside	195	180	175	150	92	90	77	86.3
Trafford	110	80	90	60	71	80	56	69.1
Wigan	365	315	315	300	87	87	82	85.1

Table 9 Health care of looked-after children, twelve months ending 30 September 2001

Local Authority	numbers				children		percentages	PAF
	number looked after for at least one year	children	children	children who	children	children	children who	
MERSEYSIDE	1,945	1,160	1,220	1,200	60	63	62	61.4
Knowsley	200	115	130	115	58	66	57	60.3
Liverpool	965	540	530	625	56	55	65	58.7
Sefton	250	160	190	175	65	76	69	70.1
St Helens	210	105	135	60	50	63	28	47.2
Wirral	320	235	235	230	74	73	71	72.6
YORKS & THE HUMBER	4,925	3,320	3,120	3,280	67	63	67	65.8
North Yorkshire	280	255	255	255	92	92	91	91.5
East Riding Of Yorkshire	150	115	65	60	75	43	40	52.9
Kingston Upon Hull	445	310	370	305	70	84	69	74.0
North East Lincolnshire	195	90	25	30	47	12	15	24.5
North Lincolnshire	150	150	145	140	100	95	94	96.5
York	100	75	50	70	74	51	71	65.7
Barnsley	245	235	200	175	96	82	71	83.3
Bradford	520	400	435	405	77	83	78	79.3
Calderdale	140	110	85	95	78	61	68	69.0
Doncaster	320	230	205	195	71	65	60	65.4
Kirklees	215	195	165	200	90	76	92	86.1
Leeds	1,020	505	560	690	49	55	67	57.2
Rotherham	290	225	165	190	77	58	65	66.6
Sheffield	510	255	135	270	50	27	53	43.4
Wakefield	345	175	255	210	52	74	61	62.0
EAST MIDLANDS	2,995	2,700	2,385	2,195	90	80	73	81.0
Derbyshire	450	415	395	375	92	87	83	87.1
Leicestershire	195	180	115	145	92	59	76	75.6
Lincolnshire	385	315	285	270	82	74	70	75.5
Northamptonshire	455	415	375	360	91	83	79	84.2
Nottinghamshire	370	320	295	270	87	80	74	80.3
Derby	325	320	275	265	98	85	81	87.7
Leicester	375	315	240	245	84	63	65	70.9
Nottingham	430	420	395	255	98	92	59	82.8

Table 9 Health care of looked-after children, twelve months ending 30 September 2001

Local Authority	numbers				percentages			PAF
	number looked after for at least one year	children	children	children who	children	children	children who	
WEST MIDLANDS	4,770	3,790	2,740	3,190	79	58	67	68
Shropshire	120	80	90	110	65	74	90	76.3
Staffordshire †	365	..	165	230	..	45	63	53.6
Warwickshire	235	215	190	145	92	82	63	78.7
Worcestershire	460	300	275	255	66	60	56	60.6
Herefordshire	160	140	155	125	86	98	78	87.3
Stoke-On-Trent	285	265	240	225	93	85	79	85.7
Telford & Wrekin	105	70	100	90	64	93	84	80.1
Birmingham	1,315	1,015	265	750	77	20	57	51.4
Coventry	410	280	260	300	68	64	73	68
Dudley ²	290	270	210	230	94	73	80	81.9
Sandwell	350	300	265	250	87	76	72	78.3
Solihull	110	75	100	85	65	91	76	77.4
Walsall	290	265	265	225	92	91	78	87.0
Wolverhampton	275	250	190	175	91	69	63	74.4
SOUTH WEST	3,490	2,680	2,540	2,100	77	73	60	70.0
Cornwall	410	225	205	190	55	50	46	50.4
Devon †	515	355	69	69.1
Dorset	175	160	150	80	93	88	46	75.5
Gloucestershire	415	380	370	220	91	89	53	77.8
Somerset	190	140	165	130	76	88	69	77.7
Wiltshire	175	160	155	130	93	89	74	85.2
Bath & North East Somerset	110	90	100	90	81	92	84	85.5
Bournemouth	155	145	135	115	95	88	74	85.7
Bristol	400	345	310	260	86	77	65	75.7
North Somerset	110	90	85	100	82	79	89	83.3
Plymouth	360	260	225	185	72	63	51	62.0
Poole	100	65	60	65	63	60	63	62.0
South Gloucestershire	100	85	80	70	86	82	72	79.9
Swindon	115	55	45	75	47	38	67	50.7
Torbay	165	125	125	125	76	76	77	76.4

Table 9 Health care of looked-after children, twelve months ending 30 September 2001

Local Authority	numbers			percentages			PAF	
	number looked after for at least one year	children	children	children who	children	children		children who
LONDON	7,815	4,495	4,540	5,345	58	58	68	61
Camden	235	115	160	150	49	68	64	60.1
Greenwich	340	315	285	270	92	84	80	85.2
Hackney	395	80	335	275	21	85	69	58.3
Hammersmith & Fulham	315	185	200	230	60	64	73	65.4
Islington	395	110	130	240	28	33	60	40.6
Kensington & Chelsea	165	135	125	130	82	76	80	79.3
Lambeth	585	310	300	340	53	51	58	53.9
Lewisham	390	240	110	185	62	28	47	45.6
Southwark	550	285	295	355	52	54	65	56.9
Tower Hamlets	210	20	15	90	10	7	44	20.1
Wandsworth ³	245	190	110	225	78	46	93	72.2
Westminster	195	175	110	160	89	56	82	75.5
Barking & Dagenham	205	165	70	115	80	33	56	56
Barnet	200	100	80	150	51	41	75	55.3
Bexley	135	125	120	115	92	90	87	89.3
Brent	220	145	180	125	65	83	57	68.2
Bromley	245	65	130	120	26	54	48	42.4
Croydon	335	245	265	275	73	79	83	78.4
Ealing	290	35	50	225	11	17	78	35.3
Enfield	195	85	165	145	43	86	74	67.7
Haringey	280	185	185	200	66	67	71	68.1
Harrow	90	80	80	80	89	87	88	87.9
Havering	110	105	95	100	96	86	88	89.9
Hillingdon	260	235	230	220	91	90	85	88.8
Hounslow	230	165	110	155	73	48	67	62.6
Kingston Upon Thames	60	55	60	60	89	100	95	94.5
Merton	140	30	35	90	23	24	65	37.4
Newham	345	180	160	145	52	47	43	47.2
Redbridge	90	90	80	90	97	90	97	94.5
Richmond Upon Thames	75	70	70	65	95	92	85	90.5
Sutton	125	100	105	110	80	84	88	84.0
Waltham Forest	170	80	85	115	45	50	66	53.9

Table 9 Health care of looked-after children, twelve months ending 30 September 2001

Local Authority	numbers				percentages			PAF
	number looked after for at least one year	children	children	children who	children	children	children who	
EAST OF ENGLAND	3,900	3,450	3,050	2,890	88	78	74	80.2
Bedfordshire	275	240	235	170	87	85	62	77.9
Cambridgeshire	270	225	240	190	83	89	69	80.3
Essex	885	775	585	600	88	66	68	73.9
Hertfordshire	635	565	435	410	89	68	65	73.8
Norfolk	490	475	455	405	97	93	83	90.6
Suffolk	490	475	395	400	97	80	81	86.0
Luton	260	220	225	210	85	87	80	83.8
Peterborough	295	220	250	275	75	84	93	83.8
Southend	165	150	135	130	91	80	79	83.3
Thurrock	130	105	100	100	80	75	77	77.4
SOUTH EAST	5,580	3,760	3,825	3,670	67	69	66	67.2
Buckinghamshire	210	160	145	170	76	69	81	75.5
East Sussex	330	295	285	285	90	87	86	87.7
Hampshire	710	105	135	110	14	19	15	16.2
Kent	1,170	745	895	800	64	77	68	69.5
Oxfordshire	330	235	270	260	71	82	79	77.5
Surrey	525	320	290	325	61	55	62	59.3
West Sussex	570	515	540	515	91	95	90	91.9
Bracknell Forest	40	25	30	25	62	72	69	67.5
Brighton & Hove	270	210	240	230	78	90	85	84.5
Isle Of Wight	120	115	105	85	98	88	71	85.7
Medway Towns	260	255	225	215	98	87	83	89.1
Milton Keynes	180	155	120	130	87	67	73	75.5
Portsmouth	170	125	145	110	74	84	63	73.7
Reading	95	85	70	65	89	75	66	76.8
Slough	110	80	60	75	74	55	70	66.4
Southampton	290	180	100	130	62	34	45	47.1
West Berkshire	95	90	85	60	98	91	65	84.6
Windsor & Maidenhead	50	50	50	45	92	94	85	90.4
Wokingham	60	15	35	40	24	61	69	51.4

¹ The average of the percentages of children looked after at 30 September who had been looked after continuously for at least 12 months, and who had routine immunisations up to date, had their teeth checked by a dentist during the previous 12 months, and had an annual health assessment during the previous 12 months

² based on a sample of children

³ does not include Meningitis C