

# Statistics Bulletin

Supplemental Qualifications Quarterly:  
October to December 2011



February 2012

Ofqual/12/5132

Version 2

# Contents

|   |    |
|---|----|
| Key findings .....                          | 2  |
| Introduction.....                           | 3  |
| Geographical coverage .....                 | 3  |
| Qualification type .....                    | 4  |
| Revisions .....                             | 4  |
| Completeness of the data .....              | 4  |
| Definitions .....                           | 4  |
| Achievements this quarter .....             | 6  |
| Regulated supplemental qualifications ..... | 9  |
| Achievements .....                          | 10 |
| Awarding organisations .....                | 14 |
| Sector subject area.....                    | 17 |
| Type of qualification.....                  | 20 |
| Level of qualification .....                | 23 |

## Key findings

This bulletin covers qualifications at secondary level (up to level 3 or A level equivalent) for Basic Skills, Entry level, English for Speakers of Other Languages (ESOL), Free-standing Mathematics Qualifications, Functional Skills, Key Skills and other general qualifications. It does not include vocational qualifications, which are dealt with in a companion bulletin, Vocational Qualifications Quarterly. It also does not include GCSE, GCE or Diploma qualifications.<sup>1</sup>

Please note that the Office of Qualifications and Examinations Regulation (Ofqual) did not collect data on Key Skills prior to 2010, so all figures referencing this data are based on data provided by the Department for Education. These figures have been included in our data set to improve its completeness.

There were 351,050 supplemental qualification achievements recorded in October to December 2011, a decrease of 16% on the same quarter of 2010.

The achievements for supplemental qualifications covered 682 different qualifications. The individual qualification with the greatest number of achievements was the Cambridge ESOL Level 2 Certificate in English, with 10,300 achievements.

In October to December 2011 achievements for supplemental qualifications were recorded by 26 awarding organisations. The organisation that recorded the greatest number of achievements was the City & Guilds, with 100,200 achievements. This was an increase of 6% on the same period last year.

The sector subject area (SSA) with the greatest number of achievements was preparation for life and work, with 313,400 achievements, which represents 89 per cent of the total supplemental achievements.

The qualification type with the highest number of achievements was Key Skills, with 108,050 achievements, representing 31 per cent of the total supplemental achievements.

The most common level was level 1, with 144,950 achievements, which represents 41 per cent of the total supplemental achievements. Entry-level qualifications were the only level showing a growth in this quarter, with 66,200 achievements. This was an increase of 49% on the same quarter of last year.

---

<sup>1</sup> Data for GCSEs and GCEs can be found on the Joint Council for Qualifications (JCQ) website at [www.jcq.org.uk/national\\_results/index.cfm](http://www.jcq.org.uk/national_results/index.cfm) or at [www.ofqual.gov.uk/research-and-statistics/statistics/general-data](http://www.ofqual.gov.uk/research-and-statistics/statistics/general-data)

## Introduction

This statistical bulletin is published by Ofqual. We regulate qualifications, examinations and assessments in England and vocational qualifications in Northern Ireland. In this bulletin we present data on achievements for regulated supplemental qualifications in England, Wales and Northern Ireland during the October to December 2011 quarter.

This bulletin is one of a suite of three publications presenting quarterly data on achievements for regulated qualifications, excluding GCSEs, GCEs<sup>2</sup> and the Diploma. The other two bulletins are:

- Vocational Qualifications Quarterly (covers National Vocational qualifications (NVQ), vocationally related qualifications (VRQ), Qualifications and Credit Framework (QCF) qualifications and occupational qualifications (OQ) at all levels)
- Higher Qualifications Quarterly (covers all qualifications at level 4 and above).

Each quarter awarding organisations submit to us data on the number of achievements for regulated qualifications (excluding GCSE and GCE) during the quarter. Achievements are recorded in the quarter during which the final certificate is issued. This bulletin presents this data, giving information on the number of achievements recorded by awarding organisations and the SSA, qualification type and level of achievements. All regulated qualifications are included, regardless of age of learner, centre type and funding status of the qualification.

## Geographical coverage

This bulletin covers the regulated qualifications of all recognised awarding organisations in England, Wales and Northern Ireland. Only one figure for the total number of achievements for each qualification is available, so it is not currently possible to present the data at country level. We have now started collecting more comprehensive data, however, and eventually expect to be able to present data at country level.

---

<sup>2</sup> Data for GCSEs and GCEs can be found on the Joint Council for Qualifications (JCQ) website at [www.jcq.org.uk/national\\_results/index.cfm](http://www.jcq.org.uk/national_results/index.cfm) or at [www.ofqual.gov.uk/research-and-statistics/statistics/general-data](http://www.ofqual.gov.uk/research-and-statistics/statistics/general-data)

## **Qualification type**

At the point of accreditation, regulated qualifications are allocated to one of 18 qualification types, which are used to classify qualifications in this bulletin. We recognise that this classification system is not ideal, as very similar qualifications may be classified under more than one type, for example NVQ and QCF, and some qualifications are miscoded. We are working with experts to investigate how this situation might be improved in the future.

## **Revisions**

Once published, data on the number of certifications for any qualification is not usually subject to revision. However, data may be revised in subsequent bulletins due to late-received data or if an error is identified. Qualifications may also be re-categorised to a different type, level, SSA or awarding organisation. In some cases, this may result in previous data being amended to reflect the new categorisation.

In this bulletin some figures have been revised since the quarter 3 2011 bulletin. These revisions were due to historical updates from two awarding organisations.

## **Completeness of the data**

Awarding organisations send us data every quarter. We contact any awarding organisation that does not return a complete set of data within the collection to ensure the data is as complete as possible. For this quarter we received data from all the awarding organisations.

Figures in the commentary and the tables for the numbers of achievements recorded are rounded to the nearest 50. This reflects the inaccuracies inherent in any large-scale data collection. As a result of rounded figures, the percentages shown in pie charts will not necessarily sum to 100%.

Due to seasonal variation in the number of achievements over the year, comparisons in this bulletin are only made with data in the same quarter of the previous year.

The raw data, since 1989, is available in the Regulated Qualifications Activity data set in the statistics section of our website: [www.ofqual.gov.uk/research-and-statistics/statistics/vocational-data](http://www.ofqual.gov.uk/research-and-statistics/statistics/vocational-data)

## **Definitions**

A glossary is available as a separate document in the statistics section of our website: [www.ofqual.gov.uk/research-and-statistics/165/411](http://www.ofqual.gov.uk/research-and-statistics/165/411) with further details on SSA classifications, qualification types and levels.

In the charts in this bulletin quarter numbers refer to calendar quarters. So, Q1 refers to January to March, Q2 April to June, Q3 July to September and Q4 October to December.

We welcome any suggestions or comments regarding this bulletin. Our contact details are at the back of this document.

## Achievements this quarter

To provide an overall perspective on achievements during the latest quarter, this section presents figures for all qualification types, except GCE, GCSE and Diploma types. Further details for types not included in this bulletin can be found in the companion bulletins on higher and vocational qualifications.

The total number of achievements across all qualification types for the period October to December 2011 is shown in the table below (with October to December 2010 shown for comparison).

| Qualification                           | October to December 2010 | October to December 2011 | % change | Direction of change |
|---|--------------------------|--------------------------|----------|---------------------|
| Basic Skills                            | 126,650                  | 99,650                   | (-21)    | ↓                   |
| ESOL                                    | 42,750                   | 52,250                   | 22       | ↑                   |
| Entry level                             | 4,650                    | 3,450                    | (-26)    | ↓                   |
| Free-standing Mathematics Qualification | 0                        | 0                        | 0        |                     |
| Functional Skills                       | 13,300                   | 70,600                   | 431      | ↑                   |
| Higher level                            | 6,800                    | 4,000                    | (-41)    | ↓                   |
| Key Skills                              | 120,500                  | 108,050                  | (-10)    | ↓                   |
| NVQ                                     | 179,600                  | 50,950                   | (-72)    | ↓                   |
| OQ                                      | 6,200                    | 2,000                    | (-68)    | ↓                   |
| Other general qualification             | 108,250                  | 17,050                   | (-84)    | ↓                   |
| QCF                                     | 274,750                  | 803,550                  | 192      | ↑                   |
| VRQ                                     | 285,750                  | 55,600                   | (-81)    | ↓                   |
| <b>Total number of achievements</b>     | <b>1,169,250</b>         | <b>1,267,100</b>         | <b>8</b> | <b>↑</b>            |

From the table above we can see the impact of qualifications being restructured onto the QCF, with an increase of over 190% in the number of achievements for these qualifications. Qualifications in ESOL also increased, by 22%.

We also see an increase of 431% in Functional Skills achievements, a qualification type which replaces Key Skills and Basic Skills. Key Skills and Basic Skills have a corresponding decline of 12,450 (10%) and 27,000 (21%) on the achievements given in October to December 2010. The increase in Functional Skills could also be attributed in part to the increase in Apprenticeships. In 2010/11 academic year there were 200,300 apprenticeship achievements compared with 171,500 in 2009/10.<sup>3</sup>

With qualifications being restructured onto the QCF we see a decline in all other qualification types, with the largest decreases in achievements reported in other general qualifications (84%), VRQs (81%), NVQs (72%) and OQs (68%). The decrease in other general qualifications is largely impacted upon by the Associated Board of the Royal Schools of Music transferring their qualifications onto the QCF.

Those with a rather smaller decline were higher level (41%) and Entry level (26%) qualifications.

As with the same quarter of last year, no awards were reported in Free-standing Mathematics Qualifications.

The 20 qualifications with the highest number of achievements across all qualification types, for the period October to December 2011, are shown in the table below.

| <b>Qualification</b>   | <b>Qualification type</b> | <b>Number of achievements</b> |
|--|---------------------------|-------------------------------|
| CIEH Level 2 Award in Food Safety in Catering (QCF)                            | QCF                       | 50,900                        |
| ABRSM Level 1 Award in Graded Examination in Music Performance (Grade 1) (QCF) | QCF                       | 17,450                        |
| Skillsfirst Level 2 Diploma in Retail Skills (QCF)                             | QCF                       | 15,600                        |
| CIEH Level 2 Award in Health and Safety in the Workplace (QCF)                 | QCF                       | 12,700                        |
| ABRSM Level 1 Award in Graded Examination in Music Performance (Grade 2) (QCF) | QCF                       | 12,600                        |
| ABRSM Level 1 Award in Graded Examination in Music Performance (Grade 3) (QCF) | QCF                       | 10,600                        |

<sup>3</sup> [http://www.thedataservice.org.uk/statistics/statisticalfirstrelease/sfr\\_current](http://www.thedataservice.org.uk/statistics/statisticalfirstrelease/sfr_current)



| <b>Qualification</b>   | <b>Qualification type</b> | <b>Number of achievements</b> |
|--|---------------------------|-------------------------------|
| Cambridge ESOL Level 2 Certificate in English (IELTS 6/6.5)                          | ESOL                      | 10,300                        |
| OCR Level 1 Certificate in Adult Numeracy  | BS                        | 10,200                        |
| OCR Level 2 Certificate in Adult Literacy  | BS                        | 10,100                        |
| Sports Leaders UK Level 1 Award in Sports Leadership (QCF)                           | OG                        | 10,100                        |
| City & Guilds Level 1 Key Skills in Application of Number                            | KS                        | 9,300                         |
| OCR Level 2 Certificate in Adult Numeracy  | BS                        | 9,300                         |
| OCR Level 1 Certificate in Adult Literacy  | BS                        | 9,250                         |
| Skillsfirst Level 2 Certificate in Retail Knowledge (QCF)                            | QCF                       | 8,650                         |
| Cambridge ESOL Level 1 Certificate in English (IELTS 5/5.5)                          | ESOL                      | 8,500                         |
| BSC Level 1 Award in Health and Safety at Work (QCF)                                 | QCF                       | 8,350                         |
| ABRSM Level 2 Certificate in Graded Examination in Music Performance (Grade 4) (QCF) | QCF                       | 8,250                         |
| EDEXCEL Level 1 Key Skills in Application of Number                                  | KS                        | 8,100                         |
| City & Guilds Level 1 Key Skills in Communication                                    | KS                        | 8,100                         |
| HABC Level 2 Award in Food Safety in Catering (QCF)                                  | QCF                       | 8,000                         |

(Key: Basic Skills (BS); other general (OG); Functional Skills (FS); Key Skills (KS))

## Regulated supplemental qualifications

There are currently 1,844 available regulated supplemental qualifications, that is to say qualifications that have not yet passed their certification end date and so are available to be awarded. These comprise 724 other general, 334 Entry level, 305 Key Skills, 202 Functional Skills, 171 ESOL and 88 Basic Skills qualifications and 20 Free-standing Mathematics Qualifications (see figure 1 and table 1).

**Figure 1:** Number of available regulated supplemental qualifications per quarter, October –December 2006 to October–December 2011

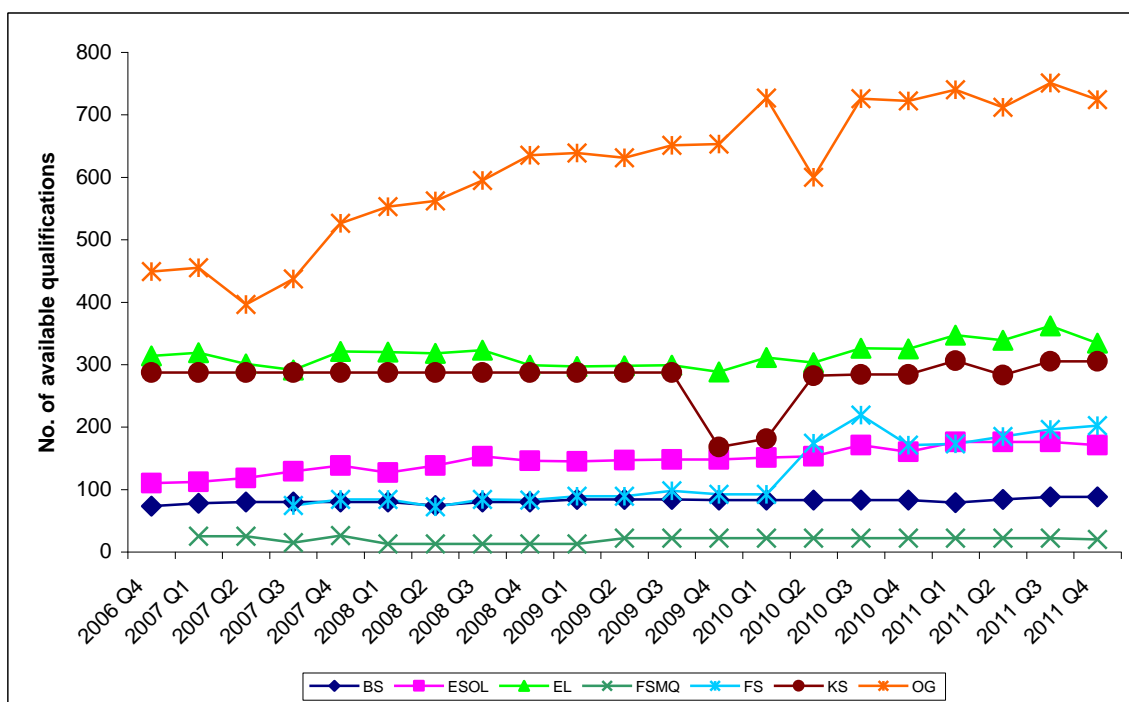


Figure 1 shows that in the past year, Functional Skills qualifications have seen the largest growth in available qualifications (an increase of 18%), and there has been a slight increase in number of Basic Skills (6%), ESOL (7%), Entry level (3%), Key Skills (7%), and other general (less than 1%) qualifications available. The number of available Free-standing Mathematics Qualifications has fallen by two since the same quarter in the previous year.

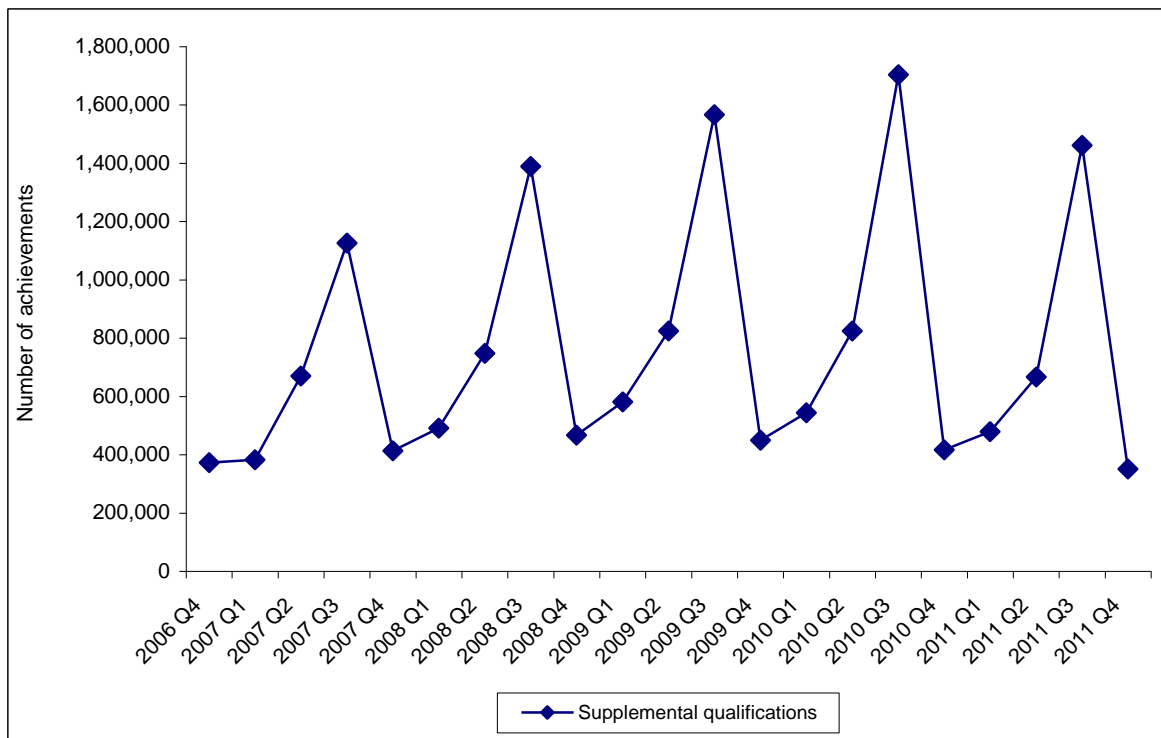
During the last quarter, 12 new supplemental qualifications were added to the list of available regulated qualifications: 8 OG, 1 ESOL and 3 Functional Skills qualifications.

During the last quarter, one supplemental qualification was re-categorised to a different SSA; none changed awarding organisation, qualification type or level.

## Achievements

There were 351,050 achievements recorded for regulated supplemental qualifications in the October-to-December quarter of 2011 (see table 2), a decrease of 16% on the same quarter of 2010.

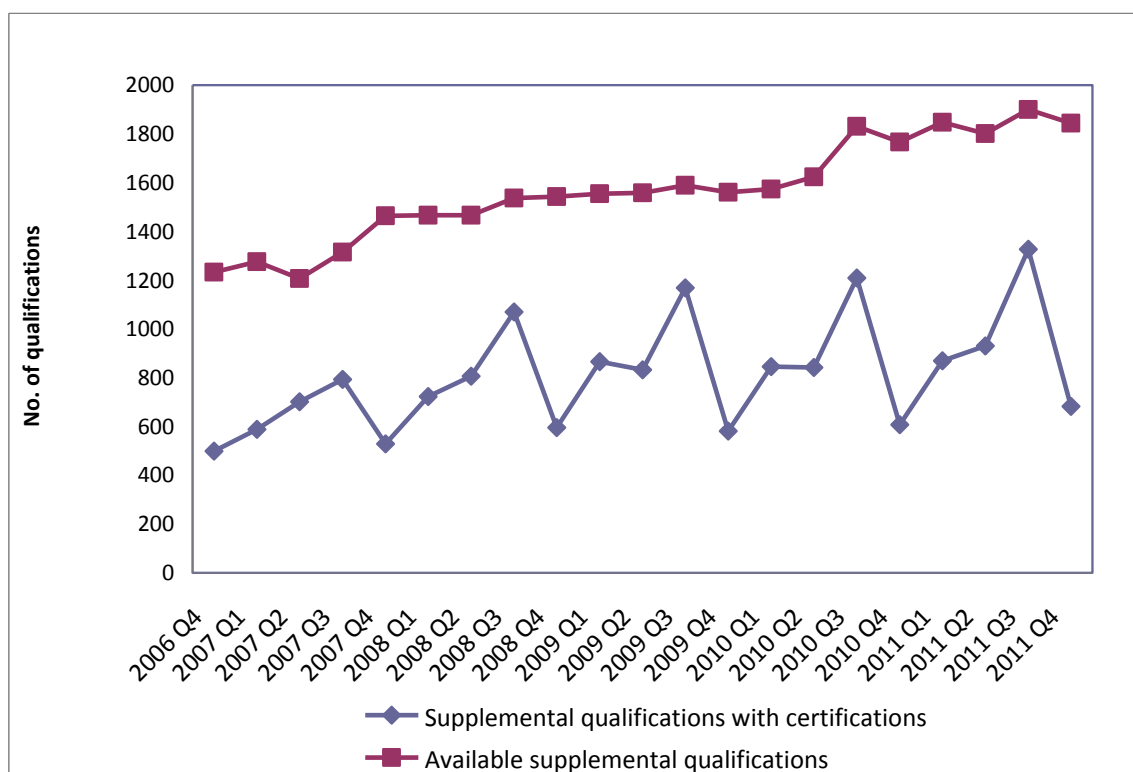
**Figure 2:** Total number of supplemental qualification achievements per quarter, October–December 2006 to October–December 2011



The decline in the number of achievements occurs in spite of an increase in the number of available qualifications.

In Figure 3 it is clear that the number of available qualifications has gradually increased over the past two years and that the number of qualifications with at least one certification is also increasing. Given the decline in the number of achievements, the average number of certifications per qualification is therefore decreasing.

**Figure 3:** Total number of available supplemental qualifications per quarter, and total number of qualifications certifying, October–December 2006 to October–December 2011



The achievements for October to December 2011 covered 682 different qualifications, only 37 per cent of all available qualifications. There was a wide variation in the number of achievements per qualification. The data from awarding organisations showed that for 282 qualifications there were at least 100 achievements, for 76 qualifications there were at least 1,000 achievements, and for 3 qualifications there were at least 10,000 achievements.

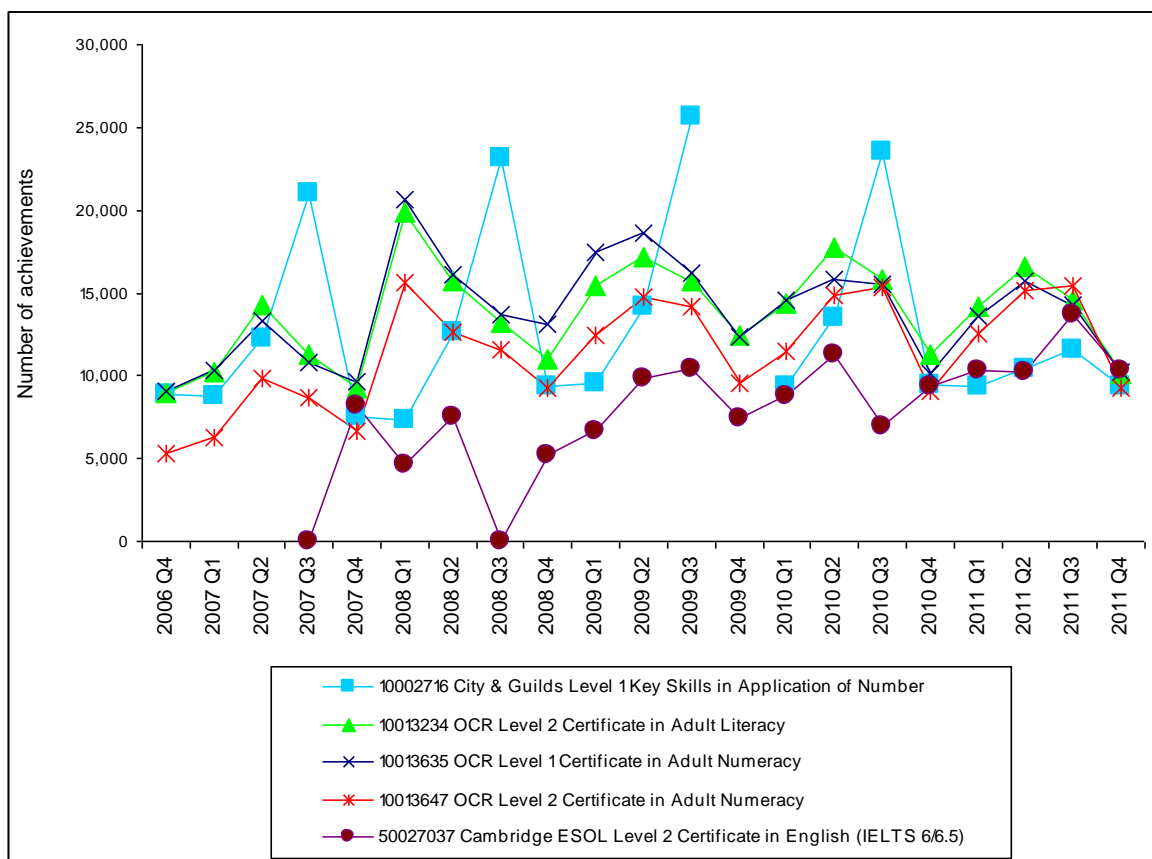
The five supplemental qualifications with the greatest number of achievements in October to December 2011 are shown in the table below (with October to December 2010 figures shown for comparison).

| Qualification   | Number of achievements   |                          |
|---|--------------------------|--------------------------|
|   | October to December 2010 | October to December 2011 |
| Cambridge ESOL Level 2 Certificate in English (IELTS 6/6.5) | 9400                     | 10300                    |
| OCR Level 1 Certificate in Adult Numeracy                   | 10100                    | 10200                    |
| OCR Level 2 Certificate in Adult Literacy                   | 11300                    | 10100                    |
| City & Guilds Level 1 Key Skills in Application of Number   | 9450                     | 9300                     |
| OCR Level 2 Certificate in Adult Numeracy                   | 9100                     | 9300                     |

The top two qualifications each showed an increase compared with the same quarter in the last year, in particular the Cambridge ESOL Level 2 Certificate in English. However, the number of achievements for the next top two qualifications declined when compared with the same quarter in 2010.

The 50 supplemental qualifications with the greatest number of achievements are listed in table 3. Figure 4 shows the five-year trend for the five supplemental qualifications with the greatest number of achievements in October to December 2011.

**Figure 4:** The five supplemental qualifications with the most achievements in October to December 2011, showing the trends from the same quarter of 2006

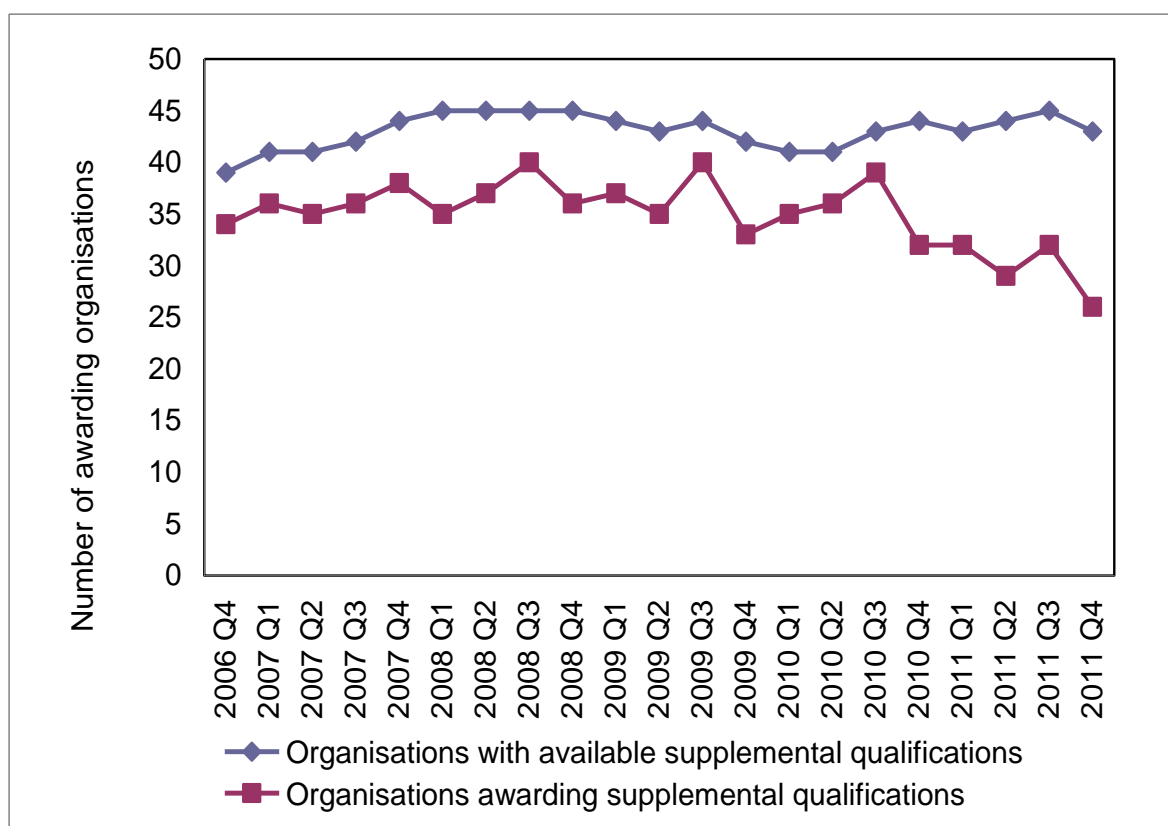


## Awarding organisations

There are currently 43 recognised awarding organisations that offer regulated supplemental qualifications. In October to December 2011, 26 awarding organisations recorded achievements.

It is clear from figure 5 below that there is a seasonal pattern to the number of awarding organisations certificating supplemental qualifications (with a consistent spike in quarter 3 in recent years), but that there has been a general decrease in the number that have been awarding. Whilst the number of awarding organisations offering supplemental qualifications has remained relatively constant, the number awarding certifications has gradually decreased. This may in part be due to the move of qualifications to the QCF; there are a number of organisations whose supplemental qualifications (on the National Qualifications Framework) are still available for certification, but whose awarding has moved entirely to replacement qualifications on the QCF.

**Figure 5:** Total number of awarding organisations with at least one available supplemental qualification per quarter, and awarding organisations with at least one qualification award, October–December 2006 to October–December 2011



The ten awarding organisations with the greatest number of achievements in October to December 2011 are shown in the table below (with October to December 2010 figures shown for comparison).

| Awarding organisation                              | Number of achievements   |                          | Percentage change in achievements |
|--|--------------------------|--------------------------|-----------------------------------|
|  | October to December 2010 | October to December 2011 |                                   |
| City & Guilds of London Institute                  | 94,550                   | 100,200                  | 6                                 |
| Pearson Education Ltd                              | 64,600                   | 79,750                   | 23                                |
| OCR  | 57,350                   | 59,400                   | 4                                 |
| University of Cambridge ESOL Examinations          | 23,750                   | 29,200                   | 23                                |
| EDI  | 18,300                   | 26,950                   | 47                                |
| Assessment and Qualifications Alliance             | 6,500                    | 10,350                   | 59                                |
| EMTA Awards Limited                                | 4,950                    | 8,350                    | 69                                |
| Trinity College London                             | 7,100                    | 8,250                    | 16                                |
| NCFE   | 14,300                   | 7,100                    | (-50)                             |
| Award Scheme Development and Accreditation Network | 15,350                   | 6,600                    | (-57)                             |

Most of the top ten awarding organisations are showing an increase in achievements when compared with October to December 2010. Only two of these organisations showed a decline in the number of achievements (bracketed): NCFE showed 50% decrease (with 7,100 achievements) and the Award Scheme Development and Accreditation Network (ASDAN) showed 57% decrease (with 6,600 achievements). Interestingly, whilst for ASDAN the overall number of certifications for qualifications also decreased (by 37%), for NCFE the decrease in supplemental achievements did not reflect their overall levels of achievements, which increased by 39%.

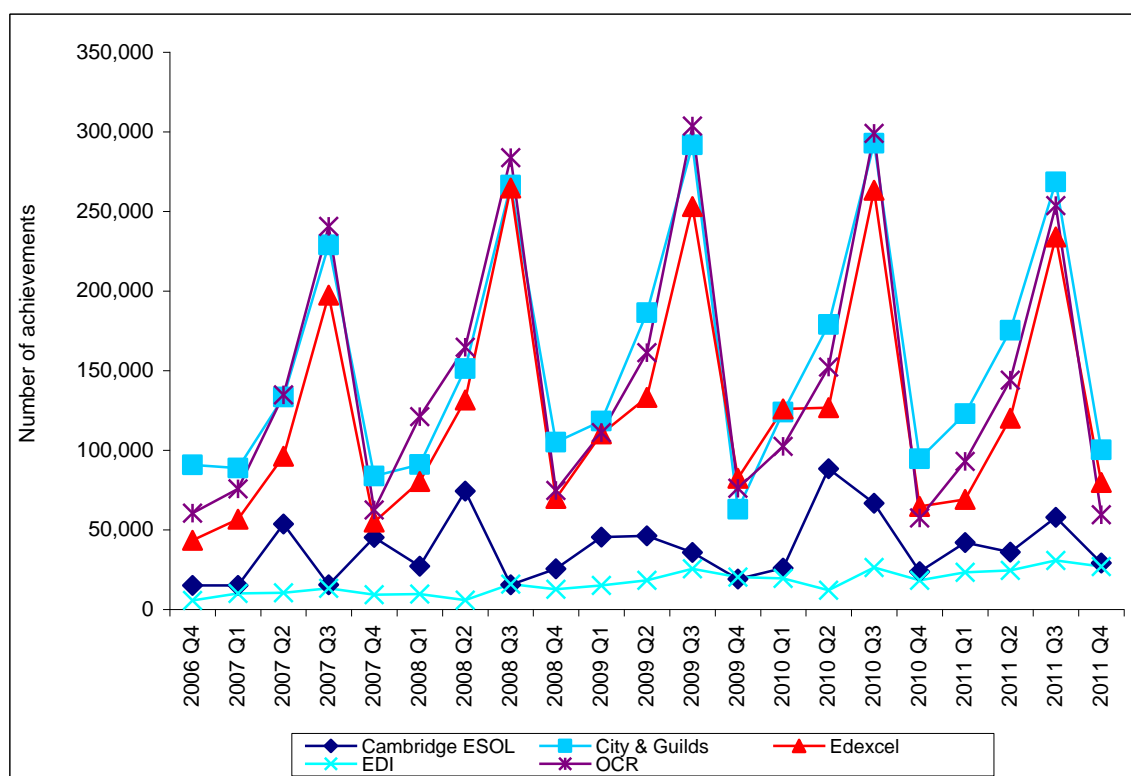
A significant change is an absence in this table of the Associated Board of the Royal Schools of Music (ABRSM). They have historically made a significant contribution to the number of supplemental qualification achievements, with 74,300 achievements in



quarter 4 of 2010 (more than 99 per cent of their achievements in this quarter). This year, however, their qualifications have all been transferred to the QCF, and they have no supplemental awards at all.

Figure 6 shows the five-year trend for the five awarding organisations with the greatest number of achievements in October to December 2011. A full list of awarding organisations and their achievements can be found in table 4.

**Figure 6:** The five awarding organisations with the greatest number of achievements for supplemental qualifications in October to December 2011, showing trends from October to December 2006.

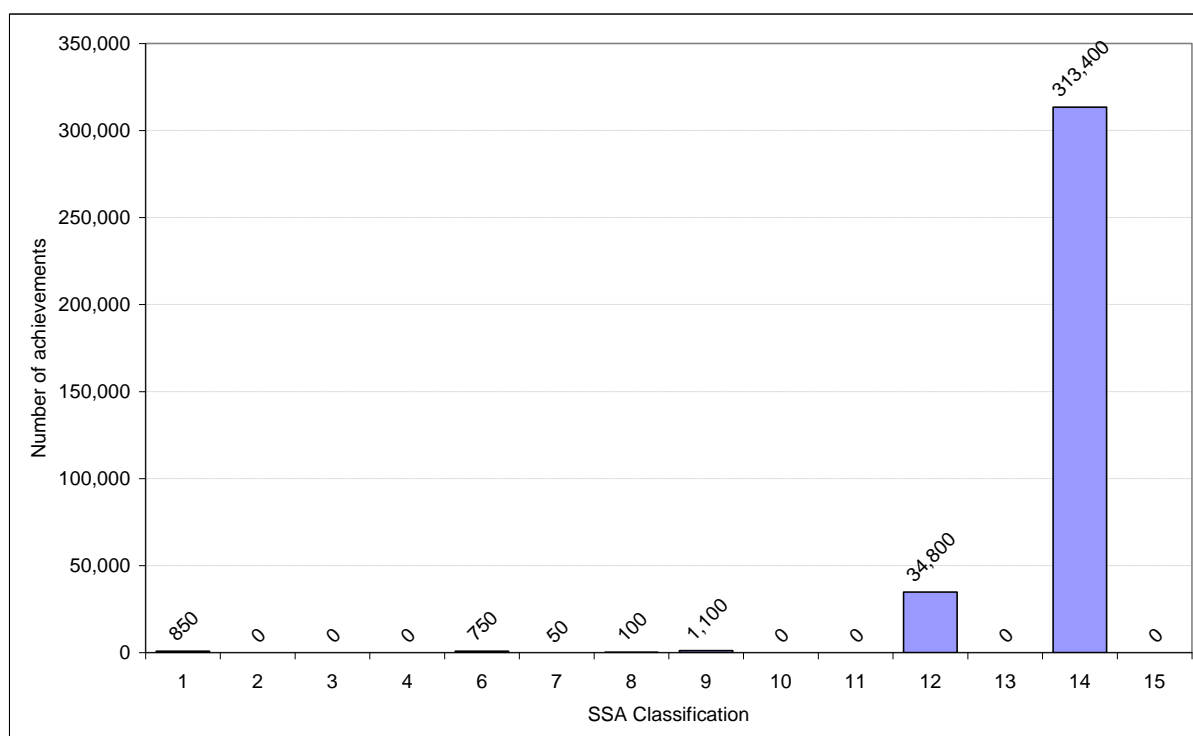


## Sector subject area

Regulated qualifications are allocated to one of 15 SSA codes (see the glossary for a full listing).

Figure 7 compares the number of achievements seen in each SSA. The SSA with the highest number of achievements for supplemental qualifications in October to December 2011 was preparation for life and work, with 313,400 achievements, an increase of 8% on the same quarter of 2010. The second most common SSA was languages, literature and culture, with 34,800 achievements, an increase of 50% on the same quarter of 2010. The third most common SSA was arts, media and publishing, with 1,100 achievements. This figure was a decrease of almost 100% on the same quarter of 2010, largely caused by the move of achievements for the ABRSM qualifications from the other general type to the QCF.

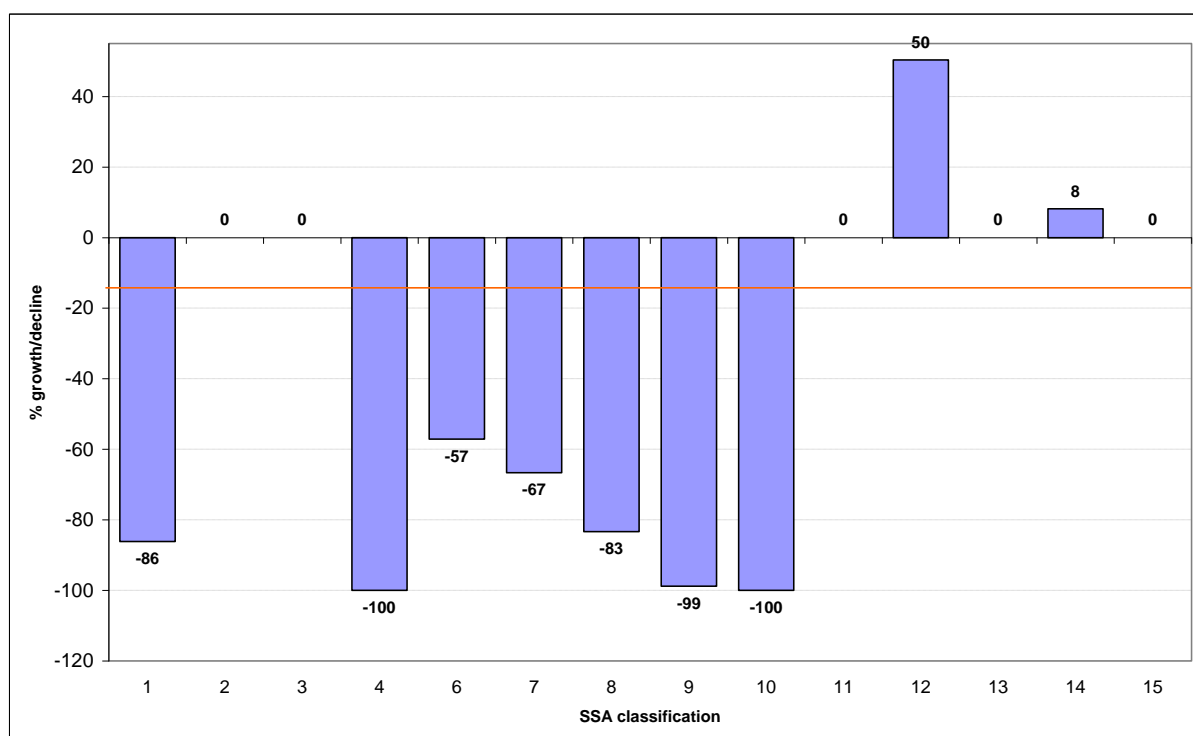
**Figure 7:** Supplemental qualification achievements by SSA for October to December 2011



- |  |                                      |
|--|--------------------------------------|
| 1 Health, public services and care                 | 8 Leisure, travel and tourism        |
| 2 Science and mathematics                          | 9 Arts, media and publishing         |
| 3 Agriculture, horticulture and animal care        | 12 Languages, literature and culture |
| 4 Engineering and manufacturing technologies       | 13 Education and training            |
| 5 Construction, planning and the built environment | 14 Preparation for life and work     |
| 6 Information and communication technology         | 15 Business, administration and law  |
| 7 Retail and commercial enterprise                 |                                      |

Figure 8 compares the percentage change in achievements from October to December 2010 to October to December 2011. Only the two SSAs with the highest number of achievements for supplemental qualifications showed increases in the number of achievements compared with the same quarter of last year. They also showed consistent achievement over the four quarters of the year. All other SSAs showed a decline when compared with the same quarter of the previous year.

**Figure 8:** Percentage growth and decline in achievements between October to December 2010 and October to December 2011, by SSA. The red line shows average change (-16%).

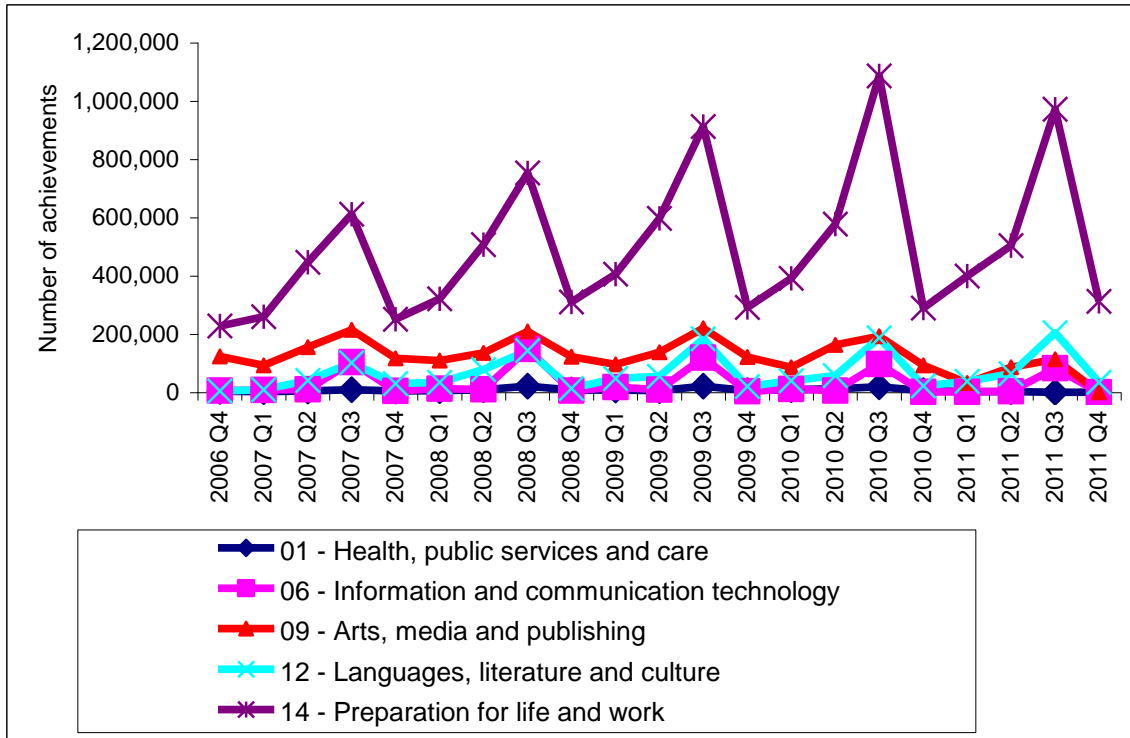


- |  |                                      |
|--|--------------------------------------|
| 1 Health, public services and care                 | 8 Leisure, travel and tourism        |
| 2 Science and mathematics                          | 9 Arts, media and publishing         |
| 3 Agriculture, horticulture and animal care        | 12 Languages, literature and culture |
| 4 Engineering and manufacturing technologies       | 13 Education and training            |
| 5 Construction, planning and the built environment | 14 Preparation for life and work     |
| 6 Information and communication technology         | 15 Business, administration and law  |
| 7 Retail and commercial enterprise                 |                                      |

Note, there are no supplemental qualifications in the SSA sector construction, planning and built environment.

Figure 9 shows the five-year trend in achievements for the five SSAs with the most achievements in October to December 2011.

**Figure 9:** Supplemental qualification achievements, by SSA, October–December 2006 to October–December 2011, showing the five codes with the greatest number of achievements (see table 5 for further details)



## Type of qualification

Regulated qualifications are allocated to one of 18 qualification types (see the glossary for further details).

Figure 10 shows the number of achievements by type of qualification for October to December 2011.

The supplemental qualification type with the greatest number of achievements in October to December 2011 was Key Skills with 108,050 achievements, a decrease of 10% on the same quarter of 2010. The type with the second highest number of achievements was Basic Skills with 99,650 achievements, a decrease of 21% on the same quarter of 2010. The third most common type was Functional Skills with 70,600 achievements. These qualifications saw the greatest increases when compared with the same quarter in the previous year (13,300 achievements in 2010). Key Skills and Basic Skills are being replaced by Functional Skills, and if we combine the number of achievements in these three qualification types, there is a total of 278,300. This shows an increase of 17,850 achievements for the same three qualifications from quarter 4 of last year. We can see from figure 11 that the decline in Key Skills and Basic Skills is not due solely to the transfer to Functional Skills.

**Figure 10:** Supplemental qualification achievements by type for October to December 2011

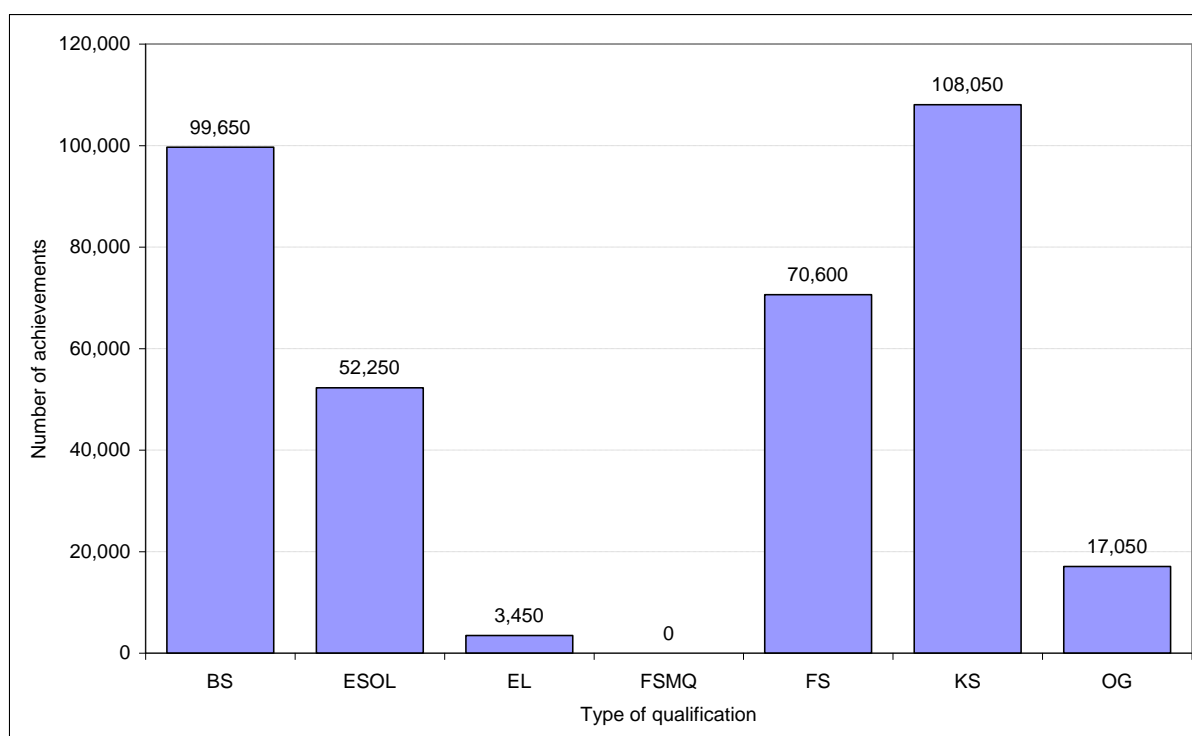
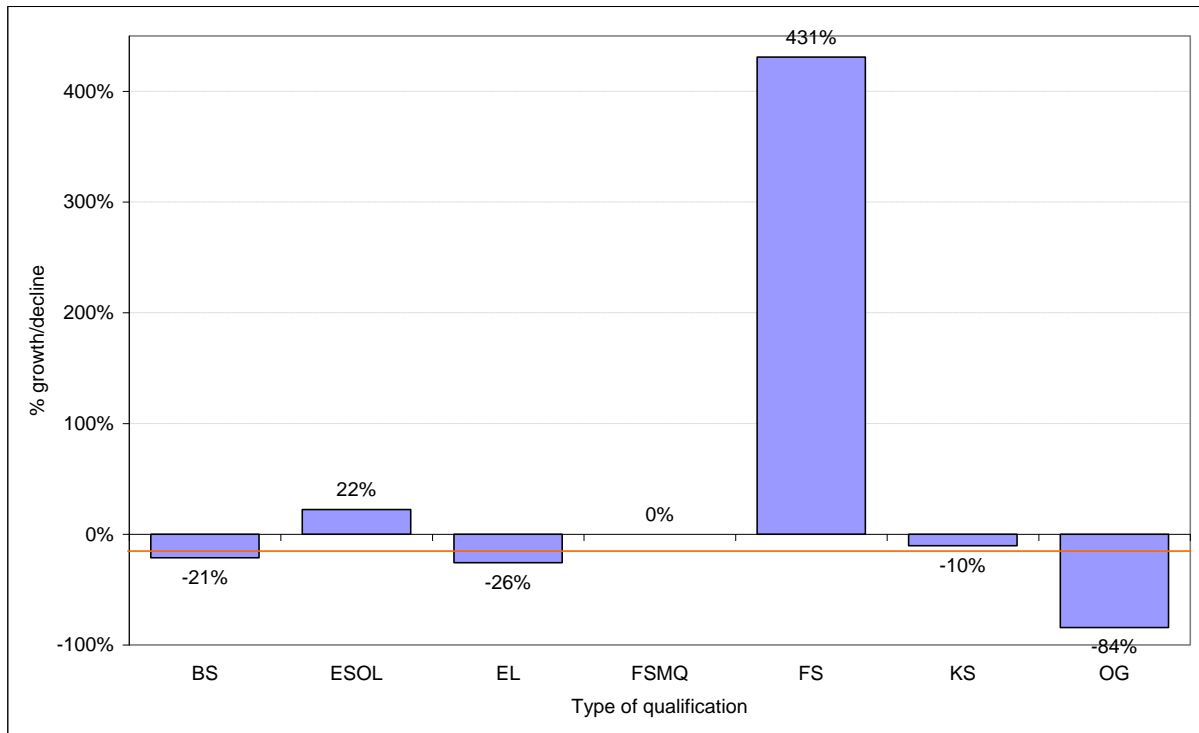


Figure 11 shows the percentage growth and decline in this quarter compared with the same quarter in 2010.

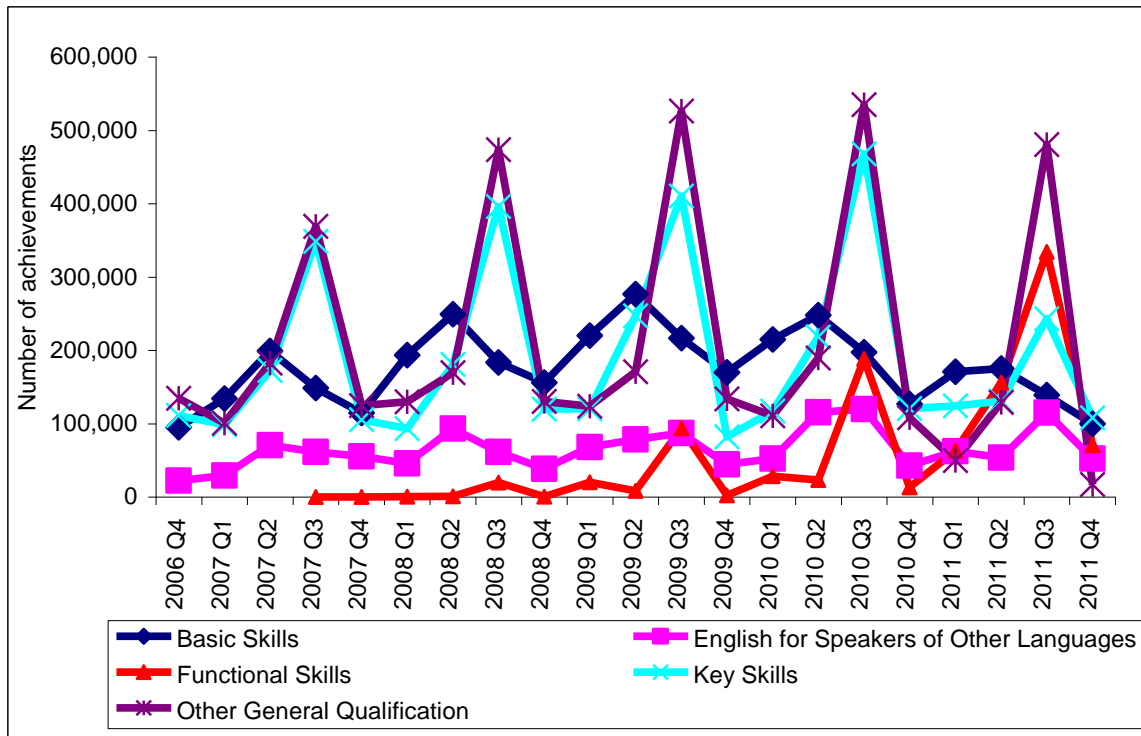
**Figure 11:** Percentage growth and decline in achievements between October to December 2010 and October to December 2011, by SSA. The red line shows average change (-16%).



|      |  |    |                              |
|------|--|----|------------------------------|
| BS   | Basic Skills                             | FS | Functional Skills            |
| ESOL | English for Speakers of Other Languages  | KS | Key Skills                   |
| EL   | Entry Level                              | OG | Other General Qualifications |
| FSMQ | Free Standing Mathematics Qualifications |    |                              |

Figure 12 shows the five-year trend for the qualification types with the greatest number of achievements in October to December 2011.

**Figure 12:** Supplemental qualification achievements by qualification type, October–December 2006 to October–December 2011, showing the types with the largest number of achievements this quarter (see table 6 for further details)



## Level of qualification

All regulated qualifications are allocated a level, ranging from Entry, then 1 to 8 (see the glossary for further details). Supplemental qualifications are at Entry level to level 3.

Figure 13 shows the number of achievements by level of qualification for October to December 2011.

The level with the greatest number of achievements for supplemental qualifications in October to December 2011 was level 1, with 144,950 achievements recorded, a decrease of 21% on the same quarter of 2010. The second most frequent qualification level was level 2, with 130,900 achievements, with a decrease of 21% on the same quarter of 2010. The third most common level was Entry level, with 66,200 achievements. This was the only level showing a growth in this quarter, with an increase of 49% on the same quarter of 2010.

**Figure 13:** Supplemental qualification achievements by level for October to December 2011

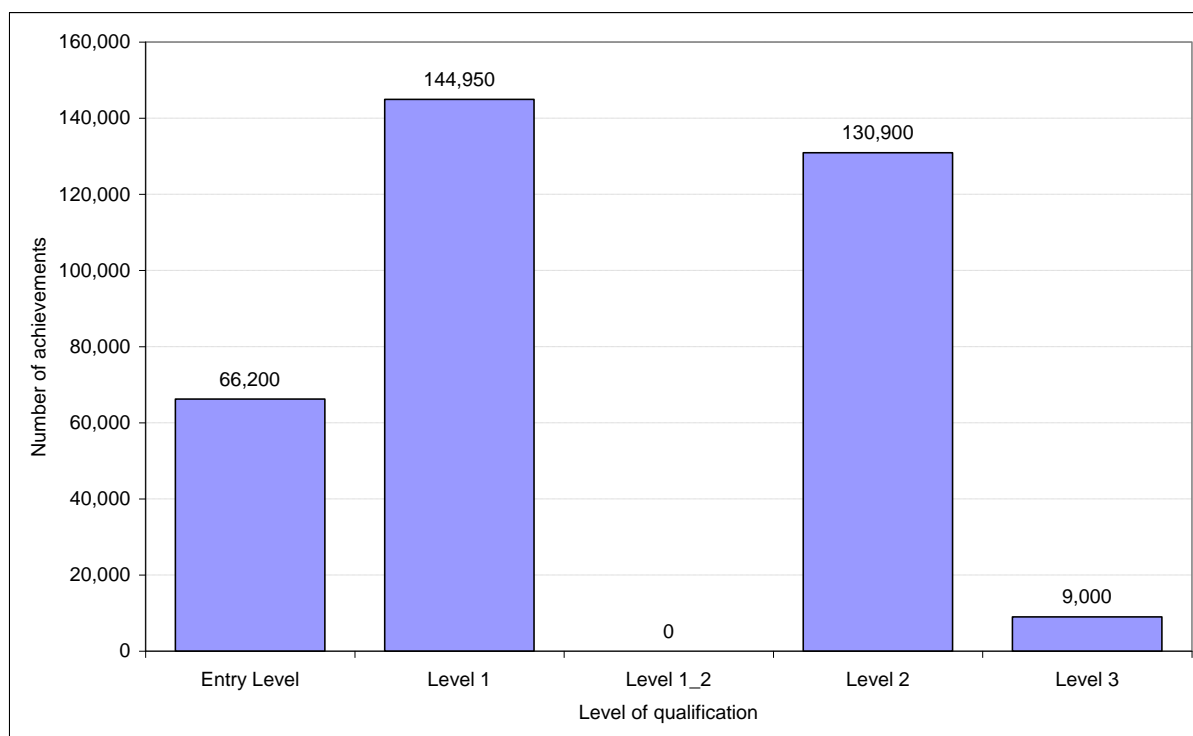




Figure 14 shows the percentage growth and decline in this quarter compared with the same quarter in 2010.

**Figure 14:** Percentage growth and decline in achievements between October to December 2010 and October to December 2011, by SSA. The red line shows average change (-16%).

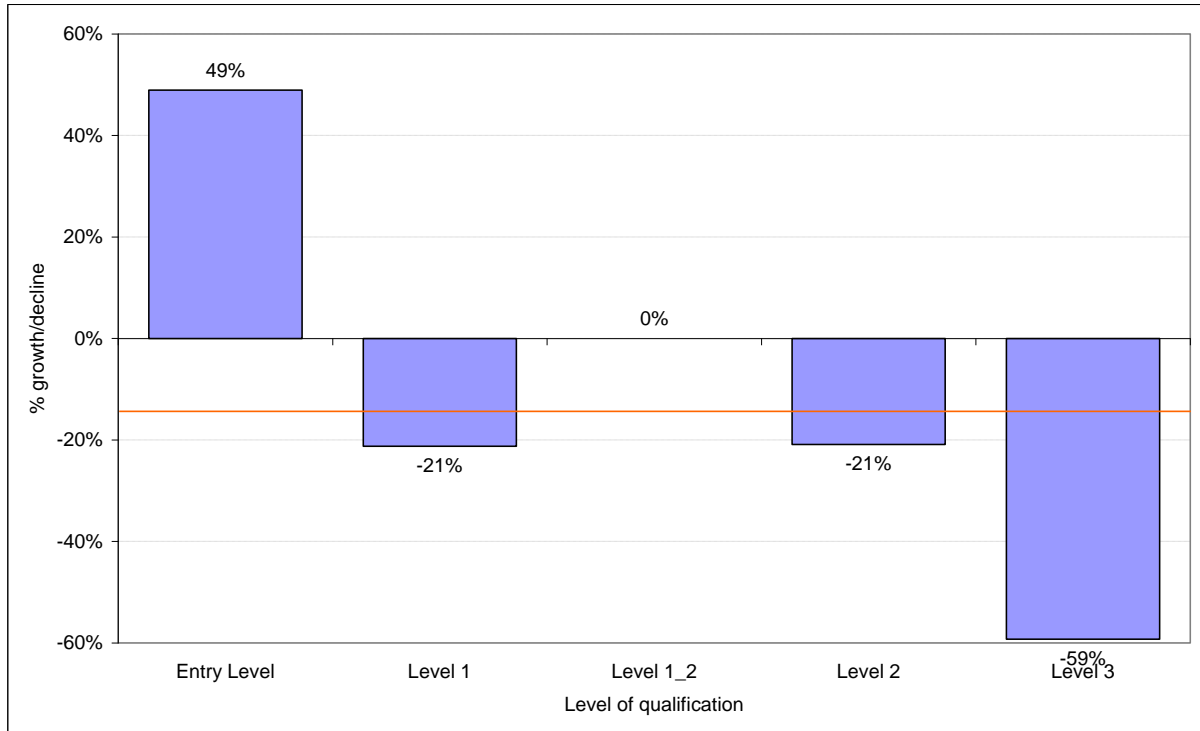
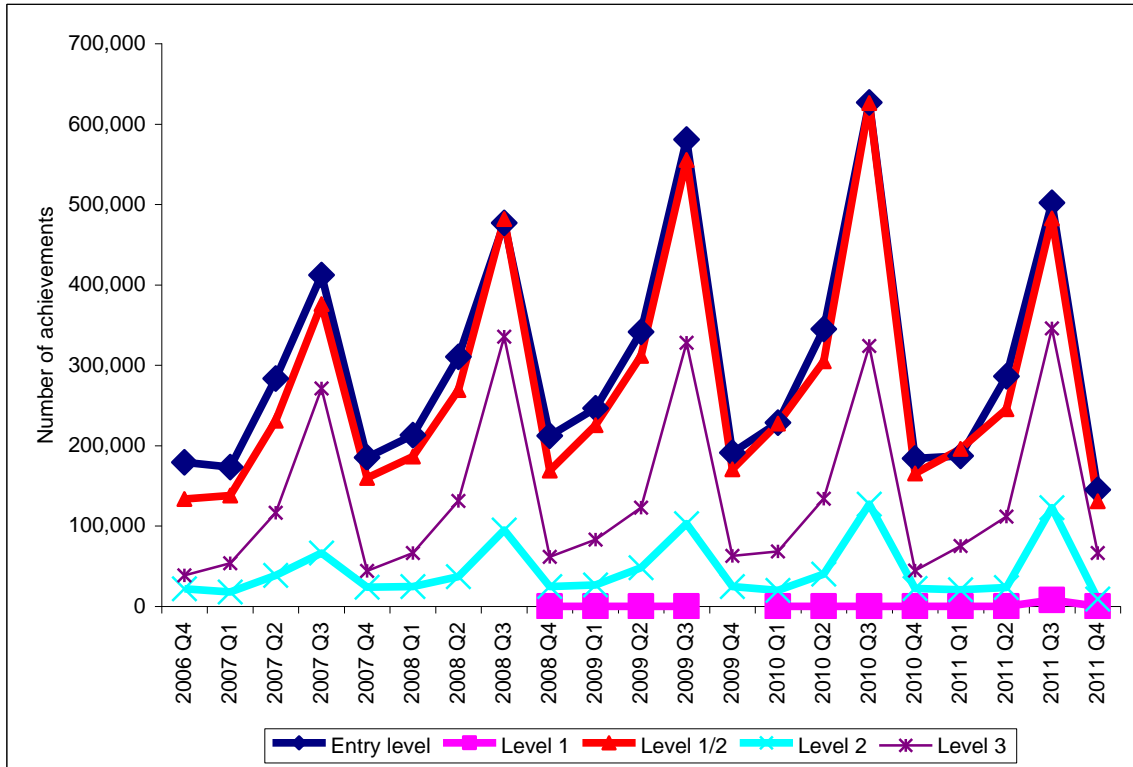


Figure 15 shows the five-year trend in achievements for each qualification level.

**Figure 15:** Supplemental qualification achievements by level of qualification, July–September 2006 to October–December 2011 (see table 7 for further details)



## Tables

Table 1: Number of available regulated qualifications for secondary level, covering supplemental qualifications England, Wales and Northern Ireland

| Period       | BS<br>Basic Skills | ESOL<br>English for Speakers<br>of Other Languages | EL<br>Entry Level | FSMQ<br>Free Standing<br>Mathematics<br>Qualification | FS<br>Functional Skills | FS NQF<br>Functional Skills<br>(NQF) | FS QCF<br>Functional Skills<br>(QCF) | KS<br>Key Skills | OG<br>Other General<br>Qualification | Total number<br>of<br>qualifications |
|--------------|--------------------|--|-------------------|---|-------------------------|--------------------------------------|--------------------------------------|------------------|--------------------------------------|--------------------------------------|
| 06-07        | 82                 | 154  | 334               | 26  | 74                      |                                      |                                      | 287              | 538                                  | 1,495                                |
| 07-08        | 80                 | 160  | 327               | 26  | 84                      |                                      |                                      | 287              | 611                                  | 1,575                                |
| 08-09        | 84                 | 162  | 301               | 22  | 98                      |                                      |                                      | 287              | 658                                  | 1,612                                |
| 09-10        | 83                 | 173  | 340               | 22  | 98                      | 121                                  |                                      | 284              | 738                                  | 1,859                                |
| 10-11        | 90                 | 176  | 384               | 22  | 203                     |                                      | 27                                   | 327              | 781                                  | 2,010                                |
| 11-12        | 88                 | 171  | 334               | 20  | 202                     |                                      |                                      | 305              | 724                                  | 1,844                                |
| Oct-Dec 2006 | 73                 | 110  | 314               |   |                         |                                      |                                      | 287              | 449                                  | 1,233                                |
| Jan-Mar 2007 | 78                 | 112  | 319               | 25  |                         |                                      |                                      | 287              | 455                                  | 1,276                                |
| Apr-Jun 2007 | 80                 | 118  | 301               | 25  |                         |                                      |                                      | 287              | 396                                  | 1,207                                |
| Jul-Sep 2007 | 80                 | 129  | 291               | 15  | 74                      |                                      |                                      | 287              | 437                                  | 1,313                                |
| Oct-Dec 2007 | 80                 | 138  | 321               | 26  | 84                      |                                      |                                      | 287              | 526                                  | 1,462                                |
| Jan-Mar 2008 | 80                 | 127  | 320               | 13  | 84                      |                                      |                                      | 287              | 553                                  | 1,464                                |
| Apr-Jun 2008 | 74                 | 138  | 318               | 13  | 72                      |                                      |                                      | 287              | 562                                  | 1,464                                |
| Jul-Sep 2008 | 80                 | 153  | 323               | 13  | 84                      |                                      |                                      | 287              | 597                                  | 1,537                                |
| Oct-Dec 2008 | 80                 | 146  | 299               | 13  | 83                      |                                      |                                      | 287              | 635                                  | 1,543                                |
| Jan-Mar 2009 | 84                 | 145  | 297               | 13  | 89                      |                                      |                                      | 287              | 639                                  | 1,554                                |
| Apr-Jun 2009 | 84                 | 147  | 298               | 22  | 89                      |                                      |                                      | 287              | 631                                  | 1,558                                |
| Jul-Sep 2009 | 84                 | 148  | 299               | 22  | 98                      |                                      |                                      | 287              | 651                                  | 1,589                                |
| Oct-Dec 2009 | 83                 | 148  | 288               | 22  | 92                      |                                      |                                      | 168              | 153                                  | 954                                  |
| Jan-Mar 2010 | 83                 | 151  | 311               | 22  | 92                      |                                      |                                      | 181              | 727                                  | 1,567                                |
| Apr-Jun 2010 | 83                 | 153  | 303               | 22  | 98                      | 82                                   |                                      | 282              | 600                                  | 1,623                                |
| Jul-Sep 2010 | 83                 | 171  | 326               | 22  | 98                      | 121                                  |                                      | 284              | 726                                  | 1,831                                |
| Oct-Dec 2010 | 83                 | 160  | 325               | 22  | 144                     |                                      | 27                                   | 284              | 722                                  | 1,767                                |
| Jan-Mar 2011 | 79                 | 176  | 347               | 22  | 146                     |                                      | 27                                   | 306              | 740                                  | 1,843                                |
| Apr-Jun 2011 | 84                 | 176  | 339               | 22  | 185                     |                                      |                                      | 283              | 712                                  | 1,801                                |
| Jul-Sep 2011 | 88                 | 176  | 362               | 22  | 196                     |                                      |                                      | 305              | 751                                  | 1,900                                |
| Oct-Dec 2011 | 88                 | 171  | 334               | 20  | 202                     |                                      |                                      | 305              | 724                                  | 1,844                                |

Source: Regulated Qualifications Activity Database

Notes:

1. Secondary qualifications represent qualifications from Entry level to level 3. Higher qualifications represent qualifications from level 4 to level 8.
2. Data is supplied by awarding organisations.
3. Annual data is for academic years i.e. October to September.

Rounding: All figures are rounded to the nearest 50, values less than 25 will appear as '-'. Figures have been rounded independently so may not sum to the total.

Table 2: Total achievements – secondary level qualifications for supplemental qualifications  
 England, Wales and Northern Ireland

| Period       | Total number of achievements |
|--------------|------------------------------|
| 06-07        | 2,551,000                    |
| 07-08        | 3,040,900                    |
| 08-09        | 3,439,500                    |
| 09-10        | 3,521,250                    |
| 10-11        | 3,023,400                    |
| 11-12        | 351,050                      |
| Oct-Dec 2006 | 373,000                      |
| Jan-Mar 2007 | 382,950                      |
| Apr-Jun 2007 | 669,400                      |
| Jul-Sep 2007 | 1,125,650                    |
| Oct-Dec 2007 | 413,100                      |
| Jan-Mar 2008 | 490,850                      |
| Apr-Jun 2008 | 747,550                      |
| Jul-Sep 2008 | 1,389,400                    |
| Oct-Dec 2008 | 467,200                      |
| Jan-Mar 2009 | 581,250                      |
| Apr-Jun 2009 | 824,300                      |
| Jul-Sep 2009 | 1,566,750                    |
| Oct-Dec 2009 | 449,300                      |
| Jan-Mar 2010 | 544,000                      |
| Apr-Jun 2010 | 824,200                      |
| Jul-Sep 2010 | 1,703,700                    |
| Oct-Dec 2010 | 416,100                      |
| Jan-Mar 2011 | 478,800                      |
| Apr-Jun 2011 | 666,950                      |
| Jul-Sep 2011 | 1,461,600                    |
| Oct-Dec 2011 | 351,050                      |

*Source: Regulated Qualifications Activity Database*

Notes:

1. Secondary qualifications represent qualifications from Entry level to level 3. Higher qualifications represent qualifications from level 4 to level 8.
2. Data is supplied by awarding organisations.
3. Annual data is for academic years i.e. October to September.

Rounding: All figures are rounded to the nearest 50, values less than 25 will appear as '!. Figures have been rounded independently so may not sum to the total.

Table 3: Top 50 qualifications by achievements, for secondary level qualifications for supplemental qualifications – quarter 4, 2011 (quarter 4 2010 shown for comparison)

| Qualification  | Total number of achievements |         |
|--|------------------------------|---------|
|  | Q4 2010                      | Q4 2011 |
| Cambridge ESOL Level 2 Certificate in English (IELTS 6/6.5)                                      | 9400                         | 10300   |
| OCR Level 1 Certificate in Adult Numeracy  | 10100                        | 10200   |
| OCR Level 2 Certificate in Adult Literacy  | 11300                        | 10100   |
| City & Guilds Level 1 Key Skills in Application of Number  | 9450                         | 9300    |
| OCR Level 2 Certificate in Adult Numeracy  | 9100                         | 9300    |
| OCR Level 1 Certificate in Adult Literacy  | 10000                        | 9250    |
| Cambridge ESOL Level 1 Certificate in English (IELTS 5/5.5)                                      | 6500                         | 8500    |
| EDEXCEL Level 1 Key Skills in Application of Number  | 7050                         | 8100    |
| City & Guilds Level 1 Key Skills in Communication  | 8800                         | 8100    |
| EDEXCEL Level 1 Key Skills in Communication  | 6300                         | 7350    |
| EDEXCEL Level 2 Certificate in Adult Literacy  | 11800                        | 6550    |
| EDEXCEL Level 2 Certificate in Adult Numeracy  | 11000                        | 6450    |
| City & Guilds Level 2 Certificate in Adult Literacy  | 6350                         | 5650    |
| EDI Level 1 Key Skills in Application of Number  | 3400                         | 5450    |
| City & Guilds Level 2 Key Skills in Communication  | 7800                         | 5200    |
| Cambridge ESOL Level 3 Certificate in English (IELTS 7/7.5)                                      | 4700                         | 5050    |
| Edexcel Functional Skills qualification in Mathematics at Level 2                                | 0                            | 5000    |
| City & Guilds Level 2 Certificate in Adult Numeracy  | 5500                         | 4950    |
| EDI Level 2 Key Skills in Communication  | 2850                         | 4850    |
| City & Guilds Level 1 Certificate in Adult Numeracy  | 6000                         | 4800    |
| City & Guilds Level 2 Key Skills in Application of Number  | 6350                         | 4800    |
| City & Guilds Level 1 Certificate in Adult Literacy  | 5700                         | 4650    |
| Edexcel Functional Skills qualification in Mathematics at Level 1                                | 0                            | 4100    |
| City & Guilds Functional Skills qualification in English at Level 1                              | 50                           | 4050    |
| EDI Level 1 Key Skills in Communication  | 2350                         | 4050    |
| City & Guilds Entry Level Certificate in Adult Numeracy  | 6750                         | 3900    |
| EDI Level 2 Key Skills in Application of Number  | 2200                         | 3700    |
| EDEXCEL Entry Level Certificate in ESOL Skills for Life (Speaking and Listening) (Entry 1)       | 1350                         | 3550    |
| EDEXCEL Level 1 Certificate in Adult Numeracy  | 5400                         | 3350    |
| City & Guilds Functional Skills qualification in mathematics at Entry 3                          | 200                          | 3300    |
| EDEXCEL Level 1 Certificate in Adult Literacy  | 5150                         | 3050    |
| EDEXCEL Entry Level Certificate in Adult Numeracy  | 1950                         | 2950    |
| City & Guilds Functional Skills qualification in English at Entry 3                              | 100                          | 2850    |
| EDEXCEL Level 2 Key Skills in Communication  | 3350                         | 2800    |
| AQA Functional Skills qualification in English at Level 2  | 2000                         | 2700    |
| EDEXCEL Functional Skills qualification in English at Level 1                                    | 0                            | 2700    |
| City & Guilds Functional Skills qualification in Information and Communication Technology (ICT)  | 200                          | 2600    |
| EDEXCEL Functional Skills qualification in Information and Communication Technology (ICT) at     | 0                            | 2300    |
| City & Guilds Entry Level Certificate in ESOL Skills for Life (Speaking and Listening) (Entry 1) | 3400                         | 2300    |
| Cambridge ESOL Entry Level Certificate in English (IELTS 4/4.5) (Entry 3)                        | 1750                         | 2300    |
| Edexcel Functional Skills qualification in Mathematics at Entry 3                                | 0                            | 2200    |
| EDEXCEL Level 2 Key Skills in Application of Number  | 2300                         | 2100    |
| City & Guilds Entry Level Certificate in Adult Literacy  | 3200                         | 2100    |
| EDEXCEL Functional Skills qualification in English at Level 2                                    | 0                            | 2050    |
| City & Guilds Level 1 Certificate in ESOL International (Spoken)                                 | 50                           | 2000    |
| EDI Functional Skills qualification in mathematics at level 1                                    | 500                          | 1900    |
| AQA Functional Skills qualification in Mathematics at Level 2                                    | 1900                         | 1900    |
| TCL Entry Level Certificate in ESOL International - Speaking and Listening (Entry 3)             | 50                           | 1900    |
| EDEXCEL Functional Skills Qualification in English at Entry 3                                    | 0                            | 1850    |
| City & Guilds Level 1 Certificate in ESOL International (reading, writing and listening)         | 50                           | 1850    |

*Source: Regulated Qualifications Activity Database*

Notes:

1. Secondary qualifications represent qualifications from Entry level to level 3. Higher qualifications represent qualifications from level 4 to level 8.
2. Data is supplied by awarding organisations.
3. Annual data is for academic years i.e. October to September.

Rounding: All figures are rounded to the nearest 50, values less than 25 will appear as '-'. Figures have been rounded independently so may not sum to the total.

Table 4: Top 26 awarding organisations by achievement, for secondary level qualifications covering supplemental qualifications – quarter 4 2011 (quarter 4 2010 shown for comparison)

England, Wales and Northern Ireland

| Awarding organisation                                   | Number of achievements |         |
|---|------------------------|---------|
|   | Q4 2010                | Q4 2011 |
| City and Guilds of London Institute                     | 94,550                 | 100,200 |
| Pearson Education Ltd                                   | 64,600                 | 79,750  |
| OCR   | 57,350                 | 59,400  |
| University of Cambridge ESOL Examinations               | 23,750                 | 29,200  |
| EDI   | 18,300                 | 26,950  |
| Assessment and Qualifications Alliance                  | 6,500                  | 10,350  |
| EMTA Awards Limited                                     | 4,950                  | 8,350   |
| Trinity College London                                  | 7,100                  | 8,250   |
| NCFE  | 14,300                 | 7,100   |
| Award Scheme Development and Accreditation Network      | 15,350                 | 6,600   |
| National Open College Network                           | 4,450                  | 4,850   |
| IMI Awards Ltd  | 3,600                  | 3,050   |
| Council for the Curriculum, Examinations and Assessment | 2,250                  | 2,950   |
| English Speaking Board (International) Ltd              | 2,400                  | 1,700   |
| VTCT  | 900                    | 600     |
| Graded Qualifications Alliance                          | 5,450                  | 550     |
| British Ballet Organisation                             | 150                    | 550     |
| Council for Awards in Care, Health and Education        | 250                    | 200     |
| Ascentis  | 5,100                  | 100     |
| British Horseracing Education and Standards Trust       | 100                    | 100     |
| Signature   | 300                    | 50      |
| Active IQ   | 50                     | 50      |
| ITEC  | 0                      | 0       |
| ABC Awards  | 500                    | 0       |
| Skillsfirst Awards Ltd                                  | 0                      | 0       |
| LAMDA Examinations                                      | 250                    | 0       |

*Source: Regulated Qualifications Activity Database*

Notes:

1. Secondary qualifications represent qualifications from Entry level to level 3. Higher qualifications represent qualifications from level 4 to level 8.
2. Data is supplied by awarding organisations.
3. Annual data is for academic years i.e. October to September.

Rounding: All figures are rounded to the nearest 50, values less than 25 will appear as '-'. Figures have been rounded independently so may not sum to the total.

Table 5: Achievements by sector subject area, for secondary level qualifications covering supplemental qualifications  
England, Wales and Northern Ireland

| Period       | 01 - Health,<br>Public Services<br>and Care | 02 - Science<br>and Mathematics | 03 - Agriculture,<br>Horticulture and<br>Animal Care | 04 - Engineering<br>and<br>Manufacturing<br>Technologies | 06 - Information and<br>Communication<br>Technology | 07 - Retail<br>and<br>Commercial<br>Enterprise | 08 - Leisure,<br>Travel and<br>Tourism | 09 - Arts, Media<br>and Publishing | 10 - History,<br>Philosophy and<br>Theology | 11 - Social<br>Sciences | 12 - Languages,<br>Literature and<br>Culture | 13 - Education<br>and Training | 14 - Preparation<br>for Life and Work | 15 - Business,<br>Administration<br>and Law | Total number<br>of<br>achievements |
|--------------|---|---------------------------------|--|--|---|--|--|------------------------------------|---|-------------------------|--|--------------------------------|---------------------------------------|---|------------------------------------|
| 06-07        | 23,900                                      | 45,600                          | 150  | 8,750  | 130,700   | 3,600  | 18,150                                 | 589,700                            | 10,100                                      | 3,450                   | 160,100                                      | 200                            | 1,548,550                             | 8,000                                       | 2,551,000                          |
| 07-08        | 44,000                                      | 45,300                          | 150  | 8,000  | 180,600   | 6,600  | 17,300                                 | 572,300                            | 30,900                                      | 2,950                   | 290,450                                      | 100                            | 1,834,800                             | 7,500                                       | 3,040,900                          |
| 08-09        | 45,950                                      | 47,200                          | 150  | 8,750  | 155,950   | 6,800  | 16,300                                 | 578,800                            | 41,400                                      | 2,950                   | 303,700                                      | 50                             | 2,229,200                             | 2,400                                       | 3,439,500                          |
| 09-10        | 50,150                                      | 51,450                          | 250  | 7,850  | 121,150   | 3,500  | 16,900                                 | 566,550                            | 41,250                                      | 2,750                   | 307,550                                      | 0                              | 2,350,250                             | 1,700                                       | 3,521,250                          |
| 10-11        | 14,300                                      | 53,450                          | 200  | 6,150  | 92,100  | 2,350  | 11,400                                 | 328,050                            | 13,000                                      | 4,050                   | 330,950                                      | 0                              | 2,166,400                             | 1,000                                       | 3,023,400                          |
| 11-12        | 850   | 0                               | 0  | 0  | 750   | 50   | 100                                    | 1,100                              | 0   | 0                       | 34,800                                       | 0                              | 313,400                               | 0   | 351,050                            |
| Oct-Dec 2006 | 4,750                                       | 0                               | 0  | 300  | 6,100   | 200  | 1,900                                  | 124,500                            | 0   | 650                     | 5,900  | 50                             | 228,250                               | 350   | 373,000                            |
| Jan-Mar 2007 | 3,800                                       | 2,100                           | 0  | 300  | 9,000   | 150  | 900                                    | 93,300                             | 0   | 200                     | 10,000                                       | 0                              | 260,750                               | 2,350                                       | 362,950                            |
| Apr-Jun 2007 | 5,600                                       | 1,000                           | 0  | 1,150  | 10,850  | 700  | 1,300                                  | 155,950                            | 1,400                                       | 200                     | 42,300                                       | 50                             | 447,300                               | 1,650                                       | 669,400                            |
| Jul-Sep 2007 | 9,750                                       | 42,500                          | 150  | 7,000  | 104,750   | 2,550  | 14,050                                 | 215,950                            | 8,700                                       | 2,400                   | 101,900                                      | 50                             | 612,250                               | 3,650                                       | 1,125,650                          |
| Oct-Dec 2007 | 5,500                                       | 0                               | 0  | 200  | 5,950   | 300  | 800                                    | 117,100                            | 0   | 0                       | 31,300                                       | 50                             | 251,750                               | 150   | 413,100                            |
| Jan-Mar 2008 | 6,100                                       | 850                             | 0  | 200  | 13,450  | 250  | 300                                    | 110,050                            | 0   | 0                       | 35,650                                       | 0                              | 321,800                               | 2,200                                       | 490,850                            |
| Apr-Jun 2008 | 10,450                                      | 50                              | 0  | 350  | 11,500  | 800  | 1,150                                  | 135,800                            | 0   | 0                       | 79,050                                       | 0                              | 507,200                               | 1,200                                       | 747,550                            |
| Jul-Sep 2008 | 22,000                                      | 44,400                          | 150  | 7,200  | 149,700   | 5,250  | 15,050                                 | 209,350                            | 30,900                                      | 2,950                   | 144,400                                      | 50                             | 754,000                               | 3,950                                       | 1,389,400                          |
| Oct-Dec 2008 | 8,750                                       | 0                               | 0  | 350  | 7,100   | 650  | 800                                    | 123,050                            | 400   | 0                       | 14,400                                       | 0                              | 311,450                               | 200   | 467,200                            |
| Jan-Mar 2009 | 8,950                                       | 750                             | 0  | 300  | 18,600  | 1,500  | 550                                    | 96,300                             | 100   | 0                       | 48,050                                       | 0                              | 406,150                               | 0   | 581,250                            |
| Apr-Jun 2009 | 6,350                                       | 1,850                           | 0  | 1,450  | 10,150  | 1,200  | 500                                    | 138,200                            | 10,400                                      | 50                      | 56,150                                       | 0                              | 597,900                               | 100   | 824,300                            |
| Jul-Sep 2009 | 21,900                                      | 44,600                          | 150  | 6,650  | 120,100   | 3,450  | 14,400                                 | 221,250                            | 30,500                                      | 2,850                   | 185,100                                      | 0                              | 913,700                               | 2,100                                       | 1,566,750                          |
| Oct-Dec 2009 | 7,000                                       | 50                              | 0  | 250  | 4,750   | 700  | 1,000                                  | 122,300                            | 50  | 0                       | 20,600                                       | 0                              | 292,500                               | 0   | 449,300                            |
| Jan-Mar 2010 | 9,450                                       | 1,000                           | 0  | 250  | 12,400  | 150  | 800                                    | 86,450                             | 0   | 0                       | 40,950                                       | 0                              | 392,550                               | 0   | 544,000                            |
| Apr-Jun 2010 | 13,350                                      | 1,600                           | 0  | 750  | 6,250   | 400  | 1,400                                  | 164,150                            | 0   | 0                       | 58,000                                       | 0                              | 578,300                               | 0   | 824,200                            |
| Jul-Sep 2010 | 20,300                                      | 48,800                          | 250  | 6,650  | 97,700  | 2,300  | 13,650                                 | 193,600                            | 41,150                                      | 2,750                   | 188,000                                      | 0                              | 1,086,850                             | 1,650                                       | 1,703,700                          |
| Oct-Dec 2010 | 6,150                                       | 0                               | 0  | 100  | 1,750   | 150  | 600                                    | 93,650                             | 750   | 0                       | 23,150                                       | 0                              | 289,800                               | 0   | 416,100                            |
| Jan-Mar 2011 | 3,350                                       | 1,700                           | 0  | 50   | 2,100   | 50   | 100                                    | 33,000                             | 50  | 0                       | 38,050                                       | 0                              | 400,200                               | 0   | 478,800                            |
| Apr-Jun 2011 | 3,200                                       | 950                             | 0  | 250  | 4,250   | 250  | 850                                    | 87,200                             | 1,050                                       | 50                      | 64,550                                       | 0                              | 504,300                               | 50  | 666,950                            |
| Jul-Sep 2011 | 1,600                                       | 50,750                          | 200  | 5,700  | 84,000  | 1,900  | 9,850                                  | 114,200                            | 11,150                                      | 4,000                   | 205,250                                      | 0                              | 972,100                               | 950   | 1,461,600                          |
| Oct-Dec 2011 | 850   | 0                               | 0  | 0  | 750   | 50   | 100                                    | 1,100                              | 0   | 0                       | 34,800                                       | 0                              | 313,400                               | 0   | 351,050                            |

Source: Regulated Qualifications Activity Database

Notes:

1. Secondary qualifications represent qualifications from Entry level to level 3. Higher qualifications represent qualifications from level 4 to level 8.
2. Data is supplied by awarding organisations.
3. Annual data is for academic years i.e. October to September
4. There are no supplemental qualifications in the SSA sector construction, planning and built environment.

Rounding: All figures are rounded to the nearest 50, values less than 25 will appear as '-'. Figures have been rounded independently so may not sum to the total.

Table 6: Achievements by qualification type for secondary level qualifications, covering supplementary qualifications  
England, Wales and Northern Ireland

| Period       | BS<br>Basic Skills | ESOL<br>English for<br>Speakers of<br>Other<br>Languages | EL<br>Entry Level | FSMQ<br>Free Standing<br>Mathematics<br>Qualification | FS<br>Functional Skills | FS NQF<br>Functional Skills<br>(NQF) | FS QCF<br>Functional Skills<br>(QCF) | KS<br>Key Skills | OG<br>Other General<br>Qualification | Total number of<br>achievements |
|--------------|--------------------|--|-------------------|---|-------------------------|--------------------------------------|--------------------------------------|------------------|--------------------------------------|---------------------------------|
| 06-07        | 576,950            | 183,600  | 255,300           | 17,200  |                         |                                      |                                      | 731,150          | 786,850                              | <b>2,551,000</b>                |
| 07-08        | 740,800            | 255,450  | 331,850           | 18,500  | 21,100                  |                                      |                                      | 776,150          | 897,100                              | <b>3,040,900</b>                |
| 08-09        | 869,250            | 271,700  | 308,100           | 19,600  | 122,400                 |                                      |                                      | 897,350          | 951,100                              | <b>3,439,500</b>                |
| 09-10        | 829,850            | 331,800  | 239,350           | 23,750  | 242,250                 |                                      |                                      | 885,150          | 969,100                              | <b>3,521,250</b>                |
| 10-11        | 611,550            | 273,900  | 160,100           | 25,500  | 562,550                 |                                      | 4,000                                | 618,350          | 767,400                              | <b>3,023,400</b>                |
| 11-12        | 99,650             | 52,250   | 3,450             |   | 70,600                  |                                      |                                      | 108,050          | 17,050                               | <b>351,050</b>                  |
| Oct-Dec 2006 | 94,950             | 22,000   | 10,350            |   |                         |                                      |                                      | 111,250          | 134,450                              | <b>373,000</b>                  |
| Jan-Mar 2007 | 134,050            | 29,250   | 18,500            | 2,000   |                         |                                      |                                      | 98,600           | 100,600                              | <b>382,950</b>                  |
| Apr-Jun 2007 | 199,350            | 70,700   | 44,100            |   |                         |                                      |                                      | 172,650          | 182,600                              | <b>669,400</b>                  |
| Jul-Sep 2007 | 148,650            | 61,650   | 182,350           | 15,200  |                         |                                      |                                      | 348,600          | 369,200                              | <b>1,125,650</b>                |
| Oct-Dec 2007 | 114,500            | 55,250   | 13,250            |   |                         |                                      |                                      | 105,600          | 124,500                              | <b>413,100</b>                  |
| Jan-Mar 2008 | 193,450            | 45,850   | 27,250            | 800   | 350                     |                                      |                                      | 93,400           | 129,700                              | <b>490,850</b>                  |
| Apr-Jun 2008 | 249,250            | 93,100   | 54,200            |   | 1,000                   |                                      |                                      | 180,950          | 169,050                              | <b>747,550</b>                  |
| Jul-Sep 2008 | 183,600            | 61,250   | 237,100           | 17,700  | 19,700                  |                                      |                                      | 396,200          | 473,800                              | <b>1,389,400</b>                |
| Oct-Dec 2008 | 155,850            | 38,300   | 22,550            |   | 400                     |                                      |                                      | 119,700          | 130,400                              | <b>467,200</b>                  |
| Jan-Mar 2009 | 220,200            | 67,850   | 28,750            | 700   | 20,050                  |                                      |                                      | 120,100          | 123,600                              | <b>581,250</b>                  |
| Apr-Jun 2009 | 276,500            | 78,300   | 43,350            |   | 8,350                   |                                      |                                      | 247,050          | 170,750                              | <b>824,300</b>                  |
| Jul-Sep 2009 | 216,700            | 87,250   | 213,450           | 18,900  | 93,600                  |                                      |                                      | 410,500          | 526,400                              | <b>1,566,750</b>                |
| Oct-Dec 2009 | 169,850            | 44,650   | 16,600            |   | 2,400                   |                                      |                                      | 81,900           | 133,900                              | <b>449,300</b>                  |
| Jan-Mar 2010 | 214,900            | 52,200   | 19,600            | 850   | 28,500                  |                                      |                                      | 117,100          | 110,850                              | <b>544,000</b>                  |
| Apr-Jun 2010 | 247,900            | 115,350  | 30,300            |   | 23,050                  |                                      |                                      | 218,300          | 189,350                              | <b>824,200</b>                  |
| Jul-Sep 2010 | 197,200            | 119,600  | 172,850           | 22,900  | 188,300                 |                                      |                                      | 467,800          | 535,000                              | <b>1,703,700</b>                |
| Oct-Dec 2010 | 126,650            | 42,750   | 4,650             |   | 9,600                   |                                      | 3,700                                | 120,500          | 108,250                              | <b>416,100</b>                  |
| Jan-Mar 2011 | 170,800            | 62,350   | 7,350             | 1,550   | 62,700                  |                                      | 300                                  | 124,000          | 49,700                               | <b>478,800</b>                  |
| Apr-Jun 2011 | 175,300            | 53,750   | 22,500            |   | 156,050                 |                                      |                                      | 130,600          | 128,800                              | <b>666,950</b>                  |
| Jul-Sep 2011 | 138,800            | 115,100  | 125,600           | 23,900  | 334,300                 |                                      |                                      | 243,250          | 480,650                              | <b>1,461,600</b>                |
| Oct-Dec 2011 | 99,650             | 52,250   | 3,450             |   | 70,600                  |                                      |                                      | 108,050          | 17,050                               | <b>351,050</b>                  |

Source: Regulated Qualifications Activity Database

Notes:

1. Secondary qualifications represent qualifications from Entry level to level 3. Higher qualifications represent qualifications from level 4 to level 8.
2. Data is supplied by awarding organisations.
3. Annual data is for academic years i.e. October to September.

Rounding: All figures are rounded to the nearest 50, values less than 25 will appear as '-'. Figures have been rounded independently so may not sum to the total.



Table 7: Detailed exam-level achievements for secondary level qualifications, covering supplemental qualifications  
England, Wales and Northern Ireland

| Period       | Entry Level | Level 1   | Level 1_2 | Level 2   | Level 3 | Total number of achievements |
|--------------|-------------|-----------|-----------|-----------|---------|------------------------------|
| 06-07        | 480,000     | 1,048,200 | -         | 878,650   | 144,150 | <b>2,551,000</b>             |
| 07-08        | 577,200     | 1,185,900 | -         | 1,097,100 | 180,700 | <b>3,040,900</b>             |
| 08-09        | 595,200     | 1,380,850 | -         | 1,261,200 | 202,250 | <b>3,439,500</b>             |
| 09-10        | 589,100     | 1,391,550 | -         | 1,328,750 | 211,900 | <b>3,521,250</b>             |
| 10-11        | 577,450     | 1,159,750 | 7,950     | 1,089,250 | 189,000 | <b>3,023,400</b>             |
| 11-12        | 66,200      | 144,950   | -         | 130,900   | 9,000   | <b>351,050</b>               |
| Oct-Dec 2006 | 38,450      | 179,300   | -         | 133,500   | 21,750  | <b>373,000</b>               |
| Jan-Mar 2007 | 53,850      | 173,250   | -         | 138,050   | 17,800  | <b>382,950</b>               |
| Apr-Jun 2007 | 116,550     | 283,300   | -         | 231,150   | 38,350  | <b>669,400</b>               |
| Jul-Sep 2007 | 271,150     | 412,300   | -         | 375,950   | 66,250  | <b>1,125,650</b>             |
| Oct-Dec 2007 | 44,100      | 185,200   | -         | 159,950   | 23,850  | <b>413,100</b>               |
| Jan-Mar 2008 | 66,400      | 213,150   | -         | 186,550   | 24,700  | <b>490,850</b>               |
| Apr-Jun 2008 | 131,200     | 310,350   | -         | 268,950   | 37,000  | <b>747,550</b>               |
| Jul-Sep 2008 | 335,450     | 477,200   | -         | 481,650   | 95,100  | <b>1,389,400</b>             |
| Oct-Dec 2008 | 61,550      | 212,150   | -         | 169,000   | 24,500  | <b>467,200</b>               |
| Jan-Mar 2009 | 82,950      | 246,550   | -         | 225,250   | 26,500  | <b>581,250</b>               |
| Apr-Jun 2009 | 122,950     | 341,300   | -         | 311,800   | 48,250  | <b>824,300</b>               |
| Jul-Sep 2009 | 327,750     | 580,850   | -         | 555,200   | 102,950 | <b>1,566,750</b>             |
| Oct-Dec 2009 | 62,750      | 191,250   | -         | 170,500   | 24,800  | <b>449,300</b>               |
| Jan-Mar 2010 | 68,400      | 228,450   | -         | 227,500   | 19,700  | <b>544,000</b>               |
| Apr-Jun 2010 | 134,150     | 345,150   | -         | 304,750   | 40,200  | <b>824,200</b>               |
| Jul-Sep 2010 | 323,850     | 626,700   | -         | 626,000   | 127,150 | <b>1,703,700</b>             |
| Oct-Dec 2010 | 44,450      | 184,050   | -         | 165,500   | 22,100  | <b>416,100</b>               |
| Jan-Mar 2011 | 75,250      | 187,200   | -         | 195,800   | 20,500  | <b>478,800</b>               |
| Apr-Jun 2011 | 111,750     | 286,350   | -         | 245,350   | 23,500  | <b>666,950</b>               |
| Jul-Sep 2011 | 345,950     | 502,200   | 7,950     | 482,600   | 122,850 | <b>1,461,600</b>             |
| Oct-Dec 2011 | 66,200      | 144,950   | -         | 130,900   | 9,000   | <b>351,050</b>               |

*Source: Regulated Qualifications Activity Database*

Notes:

1. Secondary qualifications represent qualifications from Entry level to level 3. Higher qualifications represent qualifications from level 4 to level 8.
2. Data is supplied by awarding organisations.
3. Annual data is for academic years i.e. October to September.

Rounding: All figures are rounded to the nearest 50, values less than 25 will appear as '-'. Figures have been rounded independently so may not sum to the total.

We wish to make our publications widely accessible. Please contact us if you have any specific accessibility requirements.

First published by the Office of Qualifications and Examinations Regulation in 2012

© Crown copyright 2012

You may re-use this publication (not including logos) free of charge in any format or medium, under the terms of the [Open Government Licence](#). To view this licence, [visit The National Archives](#); or write to the Information Policy Team, The National Archives, Kew, Richmond, Surrey, TW9 4DU; or email: [psi@nationalarchives.gsi.gov.uk](mailto:psi@nationalarchives.gsi.gov.uk)

This publication is also available on our website at [www.ofqual.gov.uk](http://www.ofqual.gov.uk)

Any enquiries regarding this publication should be sent to us at:

|  |                   |
|--|-------------------|
| Office of Qualifications and Examinations Regulation |                   |
| Spring Place   | 2nd Floor         |
| Coventry Business Park                               | Glendinning House |
| Herald Avenue  | 6 Murray Street   |
| Coventry CV5 6UB                                     | Belfast BT1 6DN   |

Telephone 0300 303 3344

Textphone 0300 303 3345

Helpline 0300 303 3346

[www.ofqual.gov.uk](http://www.ofqual.gov.uk)

Alison Fisher – Head of Statistics