

Further Education, Work-based Learning and Community Learning in Wales Statistics, 2010/11

PHOTO REDACTED DUE TO THIRD PARTY RIGHTS OR OTHER LEGAL ISSUES

Statistician: Phil Lovell Tel: 029 2082 5139
E-mail: post16ed.stats@wales.gsi.gov.uk

Issued by
Knowledge and Analytical Services
Welsh Government
Cathays Park, Cardiff, CF10 3NQ

ISBN 978 0 7504 7962 2
© Crown copyright 2012

WG16477

CONTENTS

Introduction	vi	
Section A: Further Education In Wales	1	
Tables:		
F1.1	Numbers of learners (FE, HE and WBL) enrolled at FE institutions by programme 2010/11.....	7
F1.2	Numbers of learners (FE, HE and WBL) enrolled at FE institutions by level 2010/11	8
F1.3a	Numbers of full-time learners enrolled at FE institutions 2010/11	9
F1.3b	Numbers of part-time learners enrolled at FE institutions 2010/11	10
F1.3c	Numbers of learners on work-based learning programmes at FE institutions 2010/11	11
F1.4	Student load FTEs for FE and HE learners (excluding WBL) at FE institutions 2006/07 to 2010/11	12
F1.5	Numbers of FE and WBL learners enrolled at FE and HE institutions 2010/11	13
F1.6	Numbers of learners (FE, HE and WBL) taught at FE institutions 2010/11	14
F1.7a	Numbers of Welsh for Adults learners and their enrolments by learning centre (standard registration population) 2010/11	15
F1.7b	Numbers of Welsh for Adults learners and their enrolments by learning centre (session population) 2010/11	15
F2.1	Trends in further education student numbers in December (at FE institutions and HE institutions) by mode of attendance and age 2004/05 to 2010/11	16
F2.2	Trends in further education student numbers at FE institutions by age group 2006/07 to 2010/11	16
F3.1	Numbers of learners (FE, HE and WBL) enrolled at FE institutions by age group, mode of learning and sex 2010/11	17
F3.2	Numbers of learners (FE, HE and WBL) enrolled at FE institutions by age group, mode of learning and level 2010/11	18
F3.3	Numbers of learners (FE, HE and WBL) enrolled at FE institutions by country of domicile, mode of learning and sex 2010/11	19
F3.4a	Numbers of learners (FE, HE and WBL) enrolled at FE institutions by unitary authority of domicile and age group 2010/11	20
F3.4b	Numbers of learners (FE, HE and WBL) enrolled at FE institutions by unitary authority of domicile and sex 2010/11	22
F3.5	Numbers of learners (FE, HE and WBL) enrolled at FE institutions by ethnicity, age band and sex 2010/11	23
F3.6	Numbers of learners (FE, HE and WBL) enrolled at FE institutions by (primary) disability and/or learning difficulty, age band and sex 2010/11	24
F3.7	Numbers of learners (FE, HE and WBL) enrolled at FE institutions by disability and/or learning difficulty (including both primary and secondary) type, age band and sex 2010/11	25
F3.8	Numbers of learners at FE institutions by deprivation status, sex and age group 2010/11	26

F3.9	Numbers of distinct full-time learners at FE institutions leaving in academic year 2010/11 by destination and age group	28
F4.1a	Numbers of learning activities at FE institutions by subject and Region of domicile 2010/11	30
F4.1b	Numbers of learning activities at FE institutions by subject and age group 2010/11	32
F4.2a	Numbers of learning activities at FE institutions by sector subject area and Region of domicile 2010/11	34
F4.2b	Learning activity completion rates at FE institutions by sector subject area 2010/11	36
F4.2c	Learning activity attainment rates at FE institutions by sector subject area 2010/11	37
F4.3	Numbers of learning activities at FE institutions by subject and credit level 2010/11	38
F4.4	Numbers of learning activities at FE institutions by subject and Welsh medium status of learning delivery 2010/11	40
F4.5	Numbers of learning activities at FE institutions by qualification type, age band and sex 2010/11	41
F4.6a	Numbers of awards attained for learners enrolled at FE institutions by qualification type and age band 2010/11	42
F4.6b	Numbers of learners attaining awards at FE institutions by qualification type and age band 2010/11	42

Section B: Local Authority Community Learning In Wales 43

Tables:

L1.1	Numbers of learners in Local Authority Community Learning by unitary authority and provision type 2010/11.....	46
L1.2a	Numbers of learners in Local Authority Community Learning by age group and sex 2010/11	47
L1.2b	Numbers of learners in Local Authority Community Learning by age group and sex 2010/11 - excluding contracted-in from FE.....	47
L2.1	Numbers of Local Authority Community Learning activities by unitary authority and provision type 2010/11	48
L2.2	Numbers of Local Authority Community Learning activities by age group and sex 2010/11	49
L2.3	Numbers of Local Authority Community Learning activities by subject and age group 2010/11	50
L2.4	Numbers of Local Authority Community Learning activities by subject and sex 2010/11	52

Section C: Work-Based Learning (WBL) in Wales 53

Tables:

T1.1	WBL provision: Numbers of learners by age group, sex and programme type 2010/11..	56
T1.2	Numbers of learners in WBL provision by programme and region of domicile 2010/11	57
T1.3	WBL provision: Numbers of enrolments on learning programmes by type and region of domicile 2010/11	57
T1.4	Numbers of learners in WBL provision by ethnicity, age band and sex 2010/11	58
T1.5	Numbers of learners in WBL provision by disability status, age band and sex 2010/11 ..	59
T2.1	Trends in work-based learning - number in training by programme type 2006/07 to 2010/11	60
T2.2	WBL provision: Numbers of unique learners and individual learning programmes by programme type.....	60
T3.1	Numbers of learning programmes for Foundation Apprenticeships, Apprenticeships and Modern Skills Diplomas by sector frameworks and programme type 2010/11	61
T3.2	WBL provision: Numbers of learning activities by subject and credit level 2010/11	62
T3.3a	Leaver destinations: Number of learning programmes left in academic year 2010/11 by destination and age group	64
T3.3b	Leaver destinations: Number of distinct learners leaving (their most recent learning programme) in academic year 2010/11 by destination and age group	64

Appendices

A	Data sources and definitions	67
B	Other useful information sources	72

INTRODUCTION

This volume is the eighth in a series providing statistics about the post-16 learning sector in Wales. The coverage includes Welsh Government -funded post-16 education providers with the exception of sixth forms and also excluding Higher Education (HE) institutions apart from in a few specific tables. The main purpose of the publication series is to provide an annual picture of learning undertaken in the post-16 sector in Wales.

The statistics in this volume complement previously issued Welsh Government statistical releases on the 2010/11 post-16 learning sector and summary data available via the StatsWales website (www.statswales.wales.gov.uk). The volume also provides a continuation to certain trend statistics provided in the former publication series *Higher Education, Further Education and Training Statistics in Wales* which was a series of publications produced jointly by the Higher Education Funding Council for Wales (HEFCW) and Education and Learning Wales (ELWa) prior to the merger of ELWa into the Welsh Government in April 2006.

With the exception of learners at HE institutions, all of the data in this publication are sourced from the (Lifelong Learning Wales Record) LLWR data collection system. The Welsh Government's Department for Education and Skills (DfES) maintains and develops the LLWR and employs the system to collect data from Further Education (FE) institutions, other work-based learning (WBL) providers and local authority community learning providers.

Structure of the Volume

This volume is divided into three sections with two appendices at the end. Each section contains a series of tables (with brief accompanying notes and data caveats on coverage and data sources) and a short commentary which brings attention to key statistics from the section.

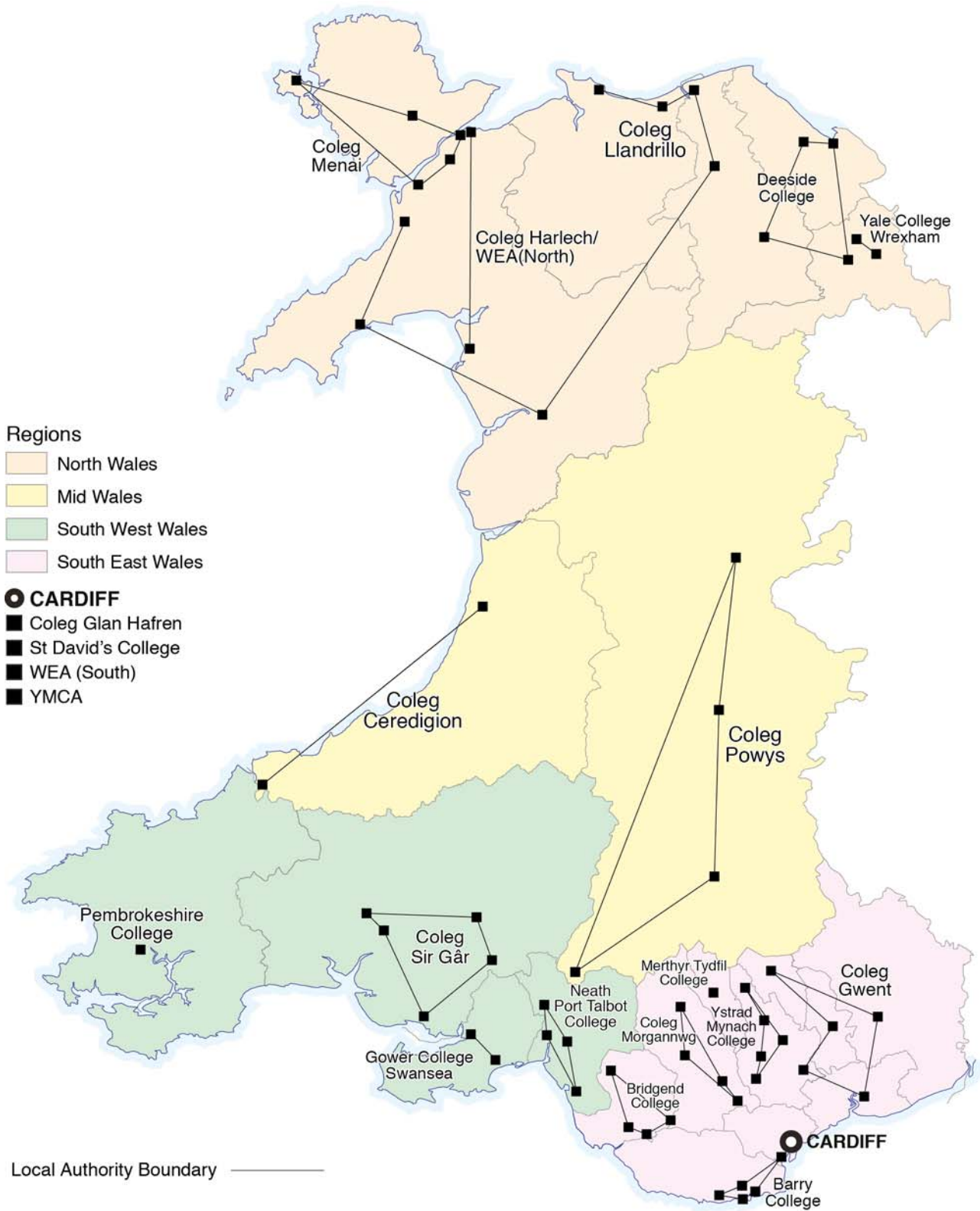
The sections are :

- Section A Further Education in Wales
- Section B Local Authority Community Learning in Wales
- Section C Work-based Learning in Wales

Appendix A provides fuller information on sources of data and notes on the definitions.

Appendix B provides a few further information sources relating to the learning sector in Wales.

SECTION A FURTHER EDUCATION IN WALES



Site locations in 2010/11 of FE Institutions with multiple main sites:

Institution Name	Site Location
Barry College	Colcot Road, Gladstone Road, Waterfront Centre, ICAT, Dumballs Road (Cardiff)
Bridgend College	Bridgend, Pencoed, Queens Road, Maesteg
Coleg Sir Gâr	Llanelli, Carmarthen, Llandeilo, Ammanford, Pibwrlwyd
Coleg Ceredigion	Cardigan Aberystwyth
Coleg Glan Hafren	The Parade, City Road Trowbridge
Coleg Gwent	Usk, Newport, Cross Keys, Pontypool, Ebbw Vale
Coleg Harlech / WEA (North)	Harlech Bangor
Coleg Llandrillo	Rhos-on-Sea, Abergele, Denbigh, Rhyl Coleg Meirion-Dwyfor (Dolgellau, Pwllheli, Glynllifon)
Coleg Menai	Bangor, Llangefni, Caernarfon, Parc Menai, Holyhead
Coleg Morgannwg	Pontypridd, Rhondda, Aberdare, Nantgarw
Deeside College	Connah's Quay Northop College (WCoH) Ruthin (Coleg Llysfasi) Wrexham Training (Llysfasi)
Gower College Swansea	Tycoch (Swansea College) Belgrave Road (Gorseinon College)
Neath Port Talbot College	Neath, Afan, Queen Street, Pontardawe
Coleg Powys	Newtown, Llandrindod Wells, Brecon, Ystradgynlais
Yale College, Wrexham	Grove Park Bersham Road
Ystrad Mynach College	Ystrad Mynach, Rhymney Bargoed, Aber Valley, Blackwood

Further Education Summary

- 186,330 distinct learners were enrolled at FE institutions (FEIs) in 2010/11, 0.9 per cent higher than in 2009/10. [Table F1.1]
- 123,710 learners were in-learning at an FE institution as at the week of 1 December 2010.
- There was a 20 per cent decrease in FE learner numbers at Further Education and Higher Education (HE) institutions between December 2004 and December 2010. [Table F2.1]
- Between December 2004 and December 2010, full-time FE learner numbers grew by 13 per cent but part-time numbers fell by 30 per cent; over the same period, the number of FE learners aged 18 and under grew by 9 per cent but the number aged 19 and over fell by 30 per cent.
- Between 2006/07 and 2010/11, full-time equivalent (FTE) learner numbers (excluding WBL) at FEIs declined by 3 per cent. [Table F1.4]
- 2,545 learners at FE institutions were enrolled on a designated HE programme (only) in 2010/11; however in total 5,680 provider learners pursued one or more qualifications at HE level within overarching FE, HE and work-based learning (WBL) programmes. [Tables F1.1 and F1.2]
- Around 19,000 learners at HE institutions were enrolled on FE level courses. [Table F1.5]
- 17,575 learners (using HESA standard registration population – see Appendix A) undertook Welsh for Adult learning activities. [Table F1.7a]
- Although the HESA registration population is used as standard for HE institution learner counts in this publication (and commonly elsewhere), the session population is often appropriate given the nature of Welsh for Adults courses and gives a learner count of 18,205. [Table F1.7b]
- In 2010/11, 54 per cent of learners at FE institutions were female, down from 55 per cent in 2009/10 and 57 per cent in 2008/09. The proportion had previously remained virtually constant at between 57 and 58 per cent since 2003/04. [Table F3.1]
- 25 per cent of learners at FE institutions were full-time, 67 per cent part-time (down from 71 per cent in 2008/09) and 9 per cent were work-based learners.
- 45 per cent of learners at FE institutions were aged under 25 (a slightly higher proportion than in the previous year and up from 41 per cent in 2008/09) and 28 per cent were under the age of 19.
- 5 per cent of learners at FE institutions were of a non-white ethnic origin, as in 2009/10. [Table F3.5]
- 3.0 per cent of learners at FE institutions had a disability affecting learning and 3.8 per cent had a learning difficulty (including some overlap with the previous figure). [Tables F3.6 and F3.7]
- 668,770 learning activities were undertaken by learners at FE institutions. [Tables F4.1a/b]
- The two most popular subject areas were Care/Personal Development (including Basic Skills) (29 per cent) (up from 26 per cent) and Information Technology (11 per cent). [Table F4.1a]
- 3.8 per cent of learning activities were undertaken bilingually and a further 0.9 per cent through the medium of Welsh. [Table F4.4]
- The most popular types of learning activities recorded (excluding the 'other' category) were Open College Network (OCN) credits (23 per cent). [Table F4.5]
- For leavers whose destination was known, 14.5 per cent of full-time learners at FE institutions went on to higher education and 42.5 per cent to other forms of further learning. [Table F3.9]
- 90 per cent of learning activities at FE institutions were completed. [Table F4.2b]
- Of the completed learning activities with an assessable outcome, 90 per cent were attained. [Table F4.2c]

Note: all the percentages above are as a proportion of the total for which data were available

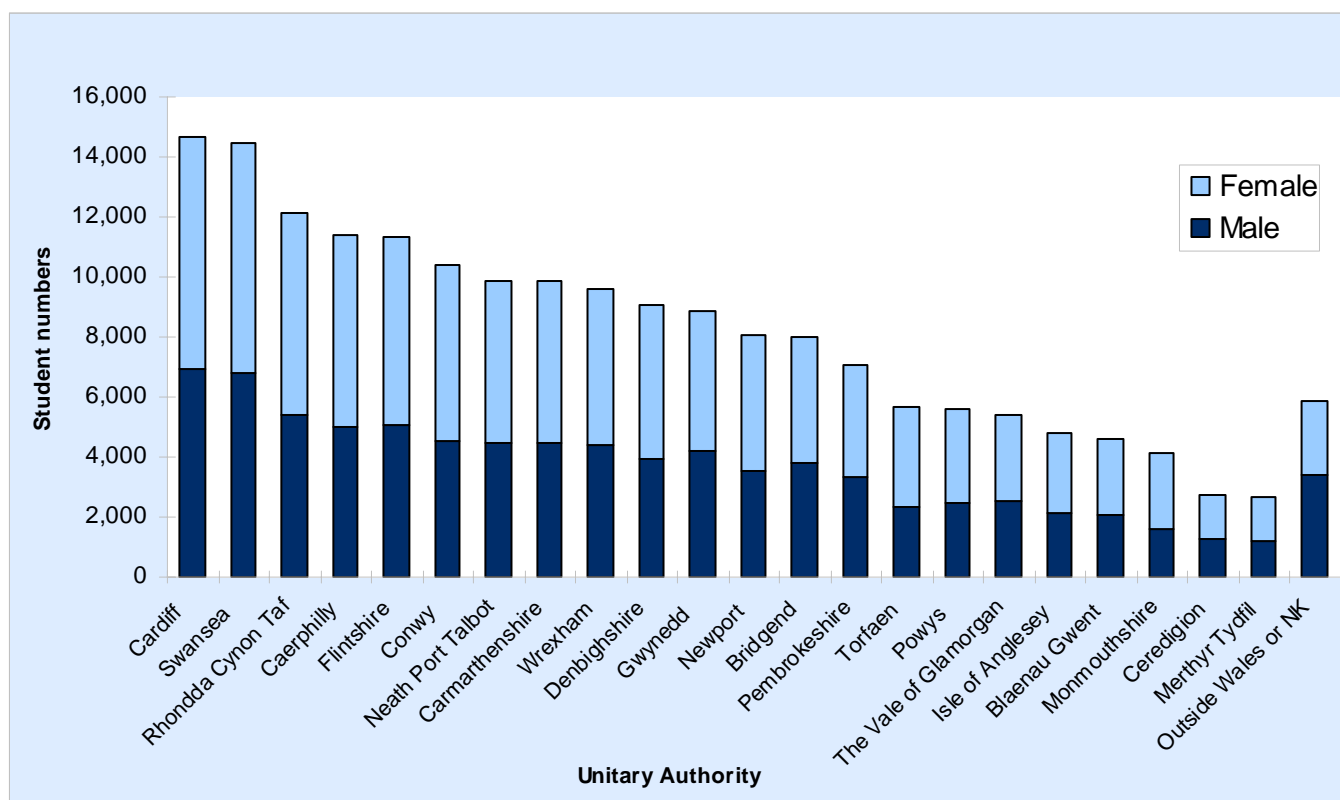
Learners [Tables F1.1 to F3.8]

There were 186,330 learners enrolled at FE institutions in 2010/11. These learners were enrolled at 21 Further Education institutions (FEIs) in Wales, including the work-based learning component of Merthyr Tydfil College. The number of FEIs had fallen from 24 in 2009/10 following mergers. Most of their programmes of study were at the equivalent of NQF (National Qualifications Framework) Level 3 or below but 18 institutions enrolled some learners on higher education (HE) courses / learning activities. There were also around 19,000 learners at HE institutions enrolled on FE level courses, including those linked to five Welsh for Adults Centres based at HE institutions (since 2007/08, when they took over the role from FE institutions). 16,385 learners enrolled at FE institutions were pursuing work-based learning programmes and are also included within the counts of the work-based learning section C.

When duplicate instances of learners enrolled at more than one FE institution are included then the total number of learners enrolled at FEIs is 195,900 (the 'provider-learner' count) as compared with the count of unique learners in the sector which is 186,330.

Although 195,900 provider learners were enrolled at FE institutions, not all the learning was delivered by staff at FE institutions. 20,840 were taught by third parties (such as Local Education Authorities delivering community learning); conversely 5,345 learners were enrolled with HE institutions but undertook learning at FE institutions. Table F1.6 provides information on these third party arrangements. Those learners appearing within the FE institution figures who are taught by local authority community learning staff are identified in the appropriate tables of section B (Local Authority Community learning in Wales) in which they also appear.

Figure F1: Learners Enrolled at FE Institutions by Local Authority of Domicile 2010/11



Excluding colleges affected by mergers during the course of the academic year and the WBL component of a university subsidiary, the relative changes in head count learner numbers from 2009/10 to 2010/11 ranged from an 21 per cent increase (at Coleg Harlech/WEA North) to a 9 per cent decrease (at Coleg Sir Gar).

Learning Activities [Tables F4.1a to F4.5]

Overall 668,770 learning activities (equivalent to courses / qualification aims) were followed by learners enrolled at FE institutions in 2010/11. The vast majority of these learning activities were at a level equivalent to NQF level 1, 2 or 3.

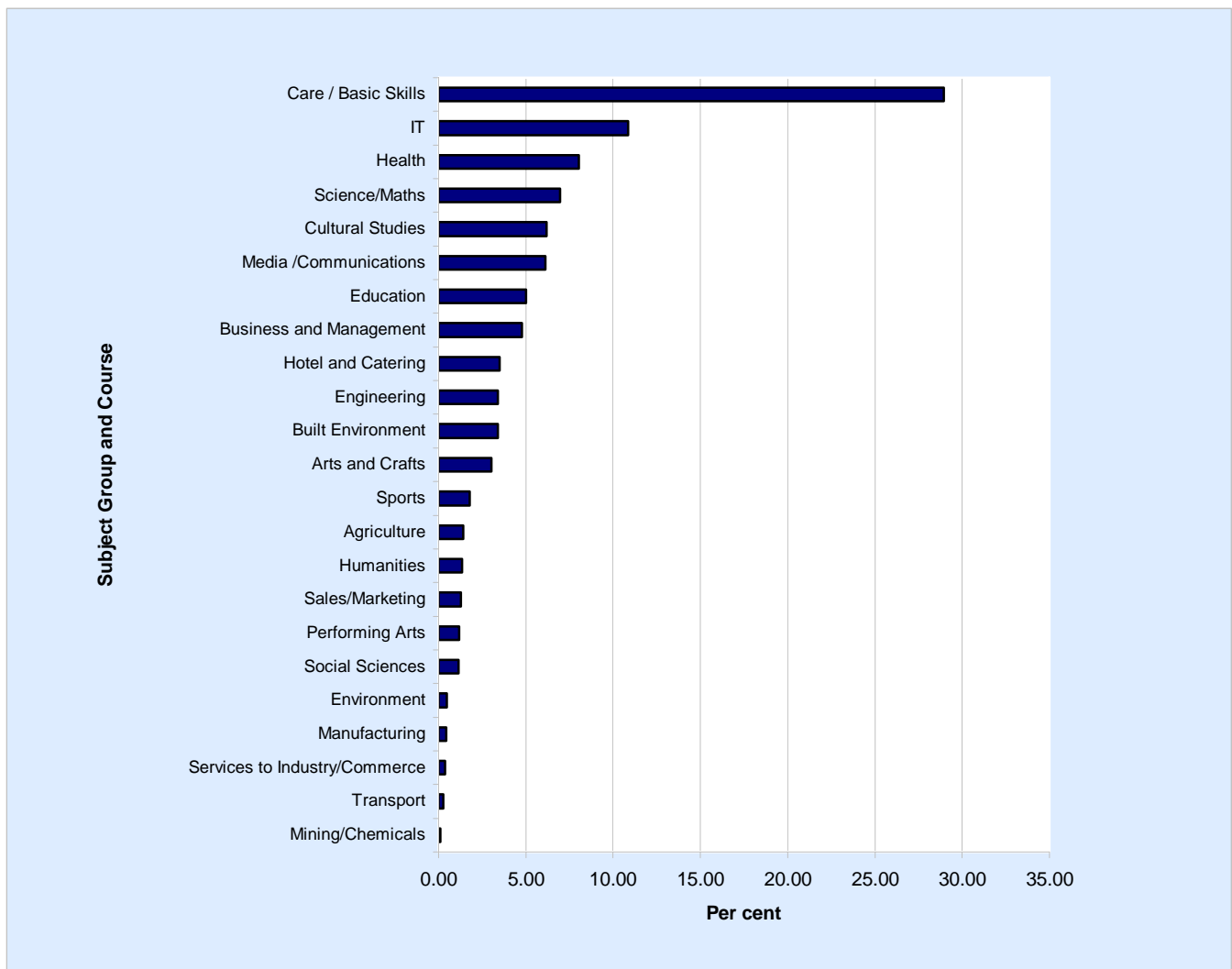
0.9 per cent of the learning activities were delivered in the medium of Welsh and a further 3.8 per cent bilingually but all the remainder were delivered in the medium of English.

The most popular subjects being undertaken by learners at FE institutions were (with their proportion of the total excluding unspecified subjects):

- Care/Personal Development (including Basic Skills) (29 per cent) (24 per cent in 2005/06)
- Information Technology (11 per cent) (18 per cent in 2005/06)
- Health/Care/Medicine/Health & Safety (8 per cent) (9 per cent in 2005/06)
- Science/Mathematics (7 per cent) (3 per cent in 2005/06)
- Cultural Studies/Languages/Literature (6 per cent) (8 per cent in 2005/06)
- Media/Communication/Publishing (6 per cent) (7 per cent in 2005/06)

17,575 learners at FE and HE institutions undertook 24,970 Welsh for Adult course enrolments in 2010/11.

Figure F2: Subject of Study 2010/11



Aside from the 'other' category (which amalgamates a number of different types of qualification, including City & Guild certificates, ECDL and CLAIT), the most prevalent types of qualification undertaken were:

- Open College Network (OCN) credits (23 per cent)
- Key Skills and Essential Skills Wales (21 per cent)
- NVQs (6 per cent)
- GCE A/AS levels or GCSEs (6 per cent)

There was some variation in qualification type by learner age group with Key/Essential Skills, A/AS levels and GCSEs more popular with learners aged 18 and under than with the older cohort of learners.

Completion Rates and Attainment Rates [Tables F4.2b and F4.2c]

Of the learning activities which ended in 2010/11 (i.e. those which were either completed or withdrawn from but which were not continuing at the end of the year) 90 per cent were completed. This indicates that the courses were completed, not that there were necessarily attained qualifications. Of those completed learning activities which included assessable awards, 90 per cent were successfully attained. Tables F4.2b and F4.2c split these figures by sector subject area (see also F4.2a).

Awards [Tables F4.6a and F4.2b]

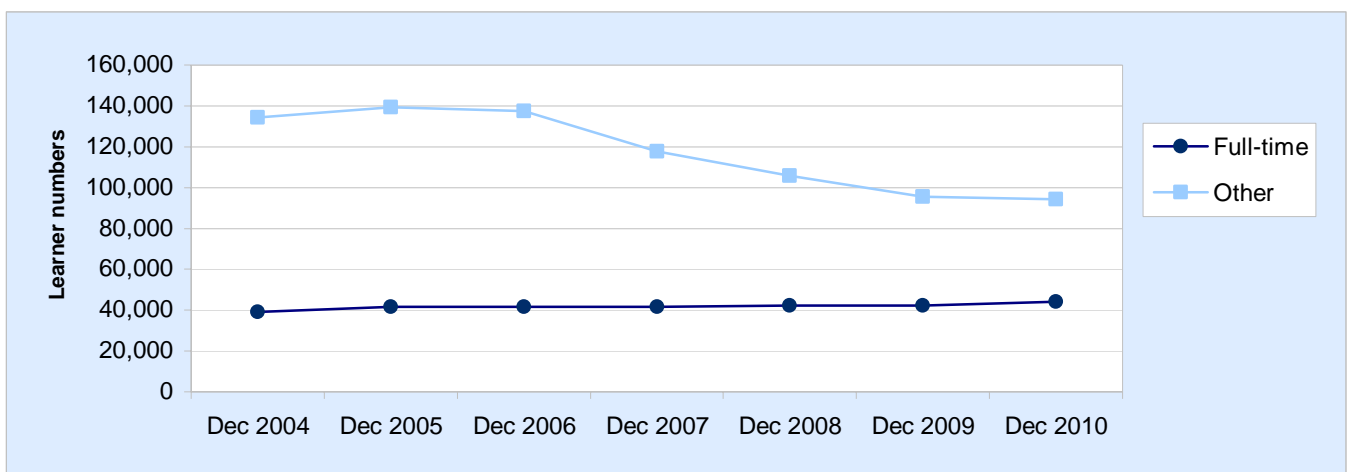
371,330 individual awards were successfully attained by 141,525 learners in 2010/11. Tables 4.6a and 4.6b provide a breakdown by qualification type and learner age band.

Trends in Learning

Table F2.1 and Figure F3 on trends in learner numbers continue a series originally published by the Welsh Office, then the Welsh Funding Councils, ELWa and now the Welsh Government. From 2003/04 onwards, the source has been the Welsh Government’s Lifelong Learning Wales Record (LLWR). In contrast to the population definition usually used in this publication, the count is of all FE (and WBL at FEI) students, including those at higher education institutions. The figures are taken as at the week of 1 December and, for 2010/11, can be derived from the December counts of Table F1.5.

These figures are on a provider-learner basis to enable comparison with years prior to 2003/04 because unique learner identifiers were not available in the pre-LLWR years. As Table F2.1 and Figure F3 include FE learners at both FE institutions and HE institutions, Welsh for Adults learners are counted in all years of the time series.

Figure F3: FE Learners Enrolled - December 2004 to December 2010



Between December 2004 and December 2010 there was a decrease in the total FE learner numbers at FE and HE institutions of 20 per cent. Previous volumes have noted the substantial growth in FE learner numbers between 1992/93 and 2002/03 (then staying fairly level but peaking in 2005/06) which was attributable to an increase in part-time learners. This pattern has subsequently changed with a decline in part-time learner numbers since 2005/06. Between December 2004 and December 2010 there was an increase in full-time FE learner numbers of 13 per cent but a net decline of 30 per cent in other (mainly part-time) learner numbers over the same period.

Table F1.1 Numbers of learners (FE, HE and WBL) enrolled at FE institutions by programme 2010/11 (a-p)

Numbers

Institution	Learners on FE programmes		Learners on HE programmes		Learners on WBL programmes		Total	
	All	Enrolled	All	Enrolled	All	Enrolled	All	Enrolled
		1 Dec		1 Dec		1 Dec		1 Dec
Barry College	5,670	4,230	0	0	1,795	1,095	7,460	5,325
Bridgend College	9,120	5,615	35	35	380	340	9,540	5,990
Coleg Ceredigion	2,155	1,055	*	0	115	100	2,270	1,150
Coleg Glan Hafren	10,485	7,140	225	200	345	240	11,050	7,580
Coleg Gwent	23,960	16,515	0	0	530	455	24,495	16,965
Coleg Harlech/WEA (North)	4,825	1,585	0	0	0	0	4,825	1,585
Coleg Llandrillo	18,980	12,195	1,225	1,175	1,815	1,100	22,020	14,465
Coleg Menai	5,770	3,885	0	0	1,640	1,135	7,410	5,020
Coleg Morgannwg	8,845	5,730	*	*	325	220	9,175	5,950
Coleg Powys	4,585	2,345	0	0	200	140	4,785	2,490
Coleg Sir Gar	6,565	5,520	425	415	825	555	7,815	6,490
Deeside College	14,585	9,705	50	35	3,070	1,665	17,705	11,410
Gower College Swansea	14,585	10,455	175	85	1,240	735	15,995	11,275
Merthyr Tydfil College WBL	0	0	0	0	635	260	635	260
Neath Port Talbot College	10,035	7,635	70	70	855	545	10,960	8,250
Pembrokeshire College	6,555	3,930	215	165	990	570	7,765	4,665
Saint David's Catholic College	1,535	1,475	0	0	0	0	1,535	1,475
WEA South	7,230	2,965	0	0	0	0	7,230	2,965
YMCA	4,420	705	0	0	0	0	4,420	705
Yale College Wrexham	9,860	6,205	115	110	1,255	785	11,230	7,100
Ystrad Mynach College	6,960	5,295	30	30	585	405	7,575	5,730
Total (including any multiple-counting between providers)	176,725	114,190	2,565	2,320	16,605	10,340	195,900	126,845
Total unique learners	167,400	111,090	2,545	2,305	16,385	10,315	186,330	123,710

Source: LLWR (Lifelong Learning Wales Record) post-16 database

- (a) Individual row counts are based on providers' own learner identifiers and their total includes some multiple-counting between providers.
- (b) The total unique learners row removes multiple-counting between providers by counting unique learner identifiers (ULIs).
- (c) 'Enrolled 1 Dec' is the population during the week of 1 December 2010; 'All' refers to the complete academic year.
- (d) Includes full-time, part-time and work-based learners.
- (e) A learner pursuing any WBL programme is designated as work-based learning.
- (f) Includes WBL subsidiaries of FE institutions.
- (g) A learner pursuing an HE learning programme but not also pursuing a WBL programme is designated as HE.
- (h) For the purpose of this table, HE refers only to programmes designated as higher education in their entirety.
- (i) Higher education excludes learners enrolled at HE institutions and franchised in to FE institutions.
- (j) Includes local authority community learning where there is a formal enrolment with an FE institution.
- (k) Merthyr Tydfil College merged into the University of Glamorgan in April 2006. Its WBL data appear here but its FE data are excluded from this table, appearing instead under the University of Glamorgan (e.g. in Table F1.5).
- (l) The Welsh College of Horticulture merged into Deeside College in August 2009.
- (m) Coleg Meirion Dwyfor merged into Coleg Llandrillo in April 2010.
- (n) Coleg Llysfasi merged into Deeside College in August 2010.
- (o) Swansea College and Gorseinon College merged to form Gower College Swansea in August 2010.
- (p) Numbers greater than 0 and less than 5 have been replaced by *. Other figures are rounded to the nearest 5 and there may be slight discrepancies between the sums of constituent items and the independently rounded totals.

Table F1.2 Numbers of learners (FE, HE and WBL) enrolled at FE institutions by level 2010/11 (a-m)

Institution	<i>Numbers</i>					
	Learners with FE level highest qualification pursued		Learners with HE level highest qualification pursued		Total	
	All	Enrolled 1 Dec	All	Enrolled 1 Dec	All	Enrolled 1 Dec
Barry College	7,215	5,140	245	180	7,460	5,325
Bridgend College	9,430	5,895	110	95	9,540	5,990
Coleg Ceredigion	2,225	1,110	50	40	2,270	1,150
Coleg Glan Hafren	10,680	7,280	370	300	11,050	7,580
Coleg Gwent	24,335	16,855	160	110	24,495	16,965
Coleg Harlech/WEA (North)	4,790	1,570	35	15	4,825	1,585
Coleg Llandrillo	20,345	12,960	1,675	1,505	22,020	14,465
Coleg Menai	7,260	4,890	150	125	7,410	5,020
Coleg Morgannwg	9,075	5,860	100	95	9,175	5,950
Coleg Powys	4,720	2,430	65	60	4,785	2,490
Coleg Sir Gar	7,240	5,935	575	555	7,815	6,490
Deeside College	16,965	10,905	735	505	17,705	11,410
Gower College Swansea	15,500	10,915	500	360	15,995	11,275
Merthyr Tydfil College WBL	635	260	0	0	635	260
Neath Port Talbot College	10,690	8,035	270	215	10,960	8,250
Pembrokeshire College	7,575	4,520	190	145	7,765	4,665
Saint David's Catholic College	1,490	1,435	45	40	1,535	1,475
WEA South	7,230	2,965	0	0	7,230	2,965
YMCA	4,420	705	0	0	4,420	705
Yale College Wrexham	10,915	6,840	320	260	11,230	7,100
Ystrad Mynach College	7,485	5,650	90	80	7,575	5,730
Total (including any multiple-counting between providers)	190,215	122,150	5,680	4,695	195,900	126,845
Total unique learners					186,330	123,710

Source: LLWR (Lifelong Learning Wales Record) post-16 database

- (a) Counts are based on providers' own learner identifiers and therefore include some multiple-counting between providers.
- (b) 'Enrolled 1 Dec' is the population during the week of 1 December 2010; 'All' refers to the complete academic year.
- (c) Includes full-time, part-time and work-based learners.
- (d) Includes WBL subsidiaries of FE institutions.
- (e) In contrast to table F1.1, this table allocates learners to the HE columns if any of their learning activities is at HE level.
- (f) The allocation to FE level or HE level columns is made independently of the FE, HE or WBL overarching programme.
- (g) Includes local authority community learning where there is a formal enrolment with an FE institution.
- (h) Merthyr Tydfil College merged into the University of Glamorgan in April 2006. Its WBL data appear here but its FE data are excluded from this table, appearing instead under the University of Glamorgan (e.g. in Table F1.5).
- (i) The Welsh College of Horticulture merged into Deeside College in August 2009.
- (j) Coleg Meirion Dwyfor merged into Coleg Llandrillo in April 2010.
- (k) Coleg Lllysfasi merged into Deeside College in August 2010.
- (l) Swansea College and Gorseinon College merged to form Gower College Swansea in August 2010.
- (m) Numbers greater than 0 and less than 5 have been replaced by *. Other figures are rounded to the nearest 5 and there may be slight discrepancies between the sums of constituent items and the independently rounded totals.

Table F1.3a Numbers of full-time learners enrolled at FE institutions 2010/11 (a-i)

Numbers

Institution	Learners with FE level highest qualification pursued		Learners with HE level highest qualification pursued		Total		
	All	Enrolled 1 Dec	All	Enrolled 1 Dec	All	Enrolled 1 Dec	
	Barry College	1,575	1,440	10	10	1,585	1,450
Bridgend College	2,070	1,960	35	30	2,105	1,995	
Coleg Ceredigion	645	600	0	0	645	600	
Coleg Glan Hafren	3,395	2,770	40	40	3,435	2,810	
Coleg Gwent	6,490	6,075	10	10	6,500	6,080	
Coleg Harlech/WEA (North)	105	95	0	0	105	95	
Coleg Llandrillo	5,155	4,730	275	250	5,430	4,980	
Coleg Menai	1,625	1,560	0	0	1,625	1,560	
Coleg Morgannwg	2,490	2,330	0	0	2,490	2,330	
Coleg Powys	1,045	1,020	*	*	1,050	1,020	
Coleg Sir Gar	2,520	2,405	100	100	2,620	2,505	
Deeside College	3,260	2,865	*	*	3,260	2,865	
Gower College Swansea	4,495	4,180	20	20	4,515	4,200	
Neath Port Talbot College	3,240	3,005	80	75	3,315	3,080	
Pembrokeshire College	1,565	1,520	0	0	1,565	1,520	
Saint David's Catholic College	1,460	1,400	45	40	1,500	1,440	
WEA South	30	25	0	0	30	25	
Yale College Wrexham	2,935	2,750	5	5	2,940	2,755	
Ystrad Mynach College	1,745	1,750	*	*	1,745	1,750	
Total (including any multiple-counting between providers)	45,845	42,490	615	585	46,460	43,070	
Total unique learners						45,850	

Source: LLWR (Lifelong Learning Wales Record) post-16 database

- (a) Counts are based on providers' own learner identifiers and therefore include some multiple-counting between providers.
- (b) 'Enrolled 1 Dec' is the population during the week of 1 December 2010; 'All' refers to the complete academic year.
- (c) A full-time learner is one whose total guided contact hours across all their learning activities amounts to at least 450 hours.
- (d) Excludes learners pursuing any work-based learning programme.
- (e) Excludes learners enrolled at HE institutions and franchised in to FE institutions.
- (f) Includes local authority community learning where there is a formal enrolment with an FE institution.
- (g) In contrast to table F1.1, this table allocates learners to the HE columns if any of their learning activities is at HE level.
- (h) The allocation to FE level or HE level columns is made independently of the overarching programme.
- (i) Numbers greater than 0 and less than 5 have been replaced by *. Other figures are rounded to the nearest 5 and there may be slight discrepancies between the sums of constituent items and the independently rounded totals.

Table F1.3b Numbers of part-time learners enrolled at FE institutions 2010/11 (a-i)*Numbers*

Institution	Learners with FE level highest qualification pursued		Learners with HE level highest qualification pursued		Total		
	All	Enrolled 1 Dec	All	Enrolled 1 Dec	All	Enrolled 1 Dec	
	Barry College	3,985	2,700	100	75	4,085	2,780
Bridgend College	6,975	3,590	75	65	7,055	3,655	
Coleg Ceredigion	1,490	440	20	15	1,510	450	
Coleg Glan Hafren	6,940	4,270	330	260	7,270	4,530	
Coleg Gwent	17,310	10,330	150	105	17,465	10,430	
Coleg Harlech/WEA (North)	4,685	1,475	35	15	4,720	1,490	
Coleg Llandrillo	13,505	7,215	1,275	1,165	14,780	8,385	
Coleg Menai	4,015	2,215	135	110	4,145	2,325	
Coleg Morgannwg	6,260	3,305	100	95	6,360	3,400	
Coleg Powys	3,470	1,265	65	60	3,535	1,325	
Coleg Sir Gar	3,980	3,050	390	380	4,365	3,430	
Deeside College	10,935	6,575	435	305	11,370	6,880	
Gower College Swansea	9,835	6,065	410	280	10,240	6,345	
Neath Port Talbot College	6,655	4,520	135	110	6,790	4,625	
Pembrokeshire College	5,030	2,445	175	130	5,205	2,575	
Saint David's Catholic College	35	35	0	0	35	35	
WEA South	7,200	2,940	0	0	7,200	2,940	
YMCA	4,420	705	0	0	4,420	705	
Yale College Wrexham	6,775	3,335	260	220	7,035	3,555	
Ystrad Mynach College	5,155	3,500	85	80	5,245	3,575	
Total (including any multiple-counting between providers)	128,660	69,970	4,170	3,465	132,830	73,435	
Total unique learners						124,095	

Source: LLWR (Lifelong Learning Wales Record) post-16 database

- (a) Counts are based on providers' own learner identifiers and therefore include some multiple-counting between providers.
- (b) 'Enrolled 1 Dec' is the population during the week of 1 December 2010; 'All' refers to the complete academic year.
- (c) A part-time learner is one whose total guided contact hours across all their learning activities amounts to less than 450 hours.
- (d) Excludes learners pursuing any work-based learning programme.
- (e) Excludes learners enrolled at HE institutions and franchised in to FE institutions.
- (f) Includes local authority community learning where there is a formal enrolment with an FE institution.
- (g) In contrast to table F1.1, this table allocates learners to the HE columns if any of their learning activities is at HE level.
- (h) The allocation to FE level or HE level columns is made independently of the overarching programme.
- (i) Numbers greater than 0 and less than 5 have been replaced by *. Other figures are rounded to the nearest 5 and there may be slight discrepancies between the sums of constituent items and the independently rounded totals.

Table F1.3c Numbers of learners on work-based learning programmes at FE institutions 2010/11 (a-h)

Institution	<i>Numbers</i>						
	Learners with FE level highest qualification pursued		Learners with HE level highest qualification pursued		Total		
	All	Enrolled 1 Dec	All	Enrolled 1 Dec	All	Enrolled 1 Dec	
Barry College	1,655	995	135	95	1,795	1,095	
Bridgend College	380	340	0	0	380	340	
Coleg Ceredigion	85	70	30	25	115	100	
Coleg Glan Hafren	345	240	0	0	345	240	
Coleg Gwent	530	455	0	0	530	455	
Coleg Llandrillo	1,685	1,010	125	90	1,815	1,100	
Coleg Menai	1,625	1,115	20	15	1,640	1,135	
Coleg Morgannwg	325	220	0	0	325	220	
Coleg Powys	200	140	0	0	200	140	
Coleg Sir Gar	740	480	85	75	825	555	
Deeside College	2,770	1,465	300	200	3,070	1,665	
Gower College Swansea	1,170	670	70	60	1,240	735	
Merthyr Tydfil College WBL	635	260	0	0	635	260	
Neath Port Talbot College	800	510	55	35	855	545	
Pembrokeshire College	975	555	15	15	990	570	
Yale College Wrexham	1,205	750	50	35	1,255	785	
Ystrad Mynach College	585	405	*	*	585	405	
Total (including any multiple-counting between providers)	15,715	9,690	895	650	16,605	10,340	
Total unique learners						16,385	

Source: LLWR (Lifelong Learning Wales Record) post-16 database

- (a) Counts are based on providers' own learner identifiers and therefore include some multiple-counting between providers.
- (b) 'Enrolled 1 Dec' is the population during the week of 1 December 2010; 'All' refers to the complete academic year.
- (c) A learner pursuing any WBL programme is designated as work-based learning.
- (d) Some learners included above may also be pursuing non-WBL programmes at some point in the year.
- (e) Includes WBL subsidiaries of FE institutions.
- (f) In contrast to table F1.1, this table allocates learners to the HE columns if any of their learning activities is at HE level.
- (g) The allocation to FE level or HE level columns is made independently of the overarching programme.
- (h) Numbers greater than 0 and less than 5 have been replaced by *. Other figures are rounded to the nearest 5 and there may be slight discrepancies between the sums of constituent items and the independently rounded totals.

Table F1.4 Student load FTEs for FE and HE learners (excluding WBL) at FE institutions 2006/07 to 2010/11 (a-k)

Institution	<i>Numbers</i>				
	2006/07	2007/08	2008/09	2009/10	2010/11
Barry College	2,590	2,590	2,540	2,195	2,270
Bridgend College	3,405	3,085	3,055	2,605	2,755
Coleg Ceredigion	905	840	765	725	745
Coleg Glan Hafren	4,445	4,390	3,810	4,275	4,930
Coleg Gwent	8,705	8,810	8,730	8,385	8,335
Coleg Harlech/WEA (North)	465	385	405	330	400
Coleg Llandrillo	4,695	4,735	5,185	5,925	7,240
Coleg Lllysfasi (f)	475	465	410	360	.
Coleg Meirion Dwyfor (e)	1,125	1,185	1,235	1,075	.
Coleg Menai	2,445	2,380	2,250	2,200	2,130
Coleg Morgannwg	3,765	3,315	3,265	3,295	3,230
Coleg Powys	1,355	1,340	1,285	1,255	1,280
Coleg Sir Gar	3,885	3,595	3,580	3,655	3,340
Deeside College	2,370	2,530	2,530	3,005	4,120
Gorseinon College (g)	2,250	2,375	2,525	2,440	.
Gower College Swansea (g)	5,500
Neath Port Talbot College	4,325	3,965	3,975	4,185	4,170
Pembrokeshire College	2,405	2,125	1,945	1,910	1,975
St David's Catholic College	1,145	1,240	1,310	1,480	1,515
Swansea College (g)	4,020	3,500	3,380	2,870	.
WEA South	440	505	335	365	360
Welsh College of Horticulture (d)	540	545	510	.	.
Yale College Wrexham	4,200	4,210	4,260	3,905	3,770
YMCA	120	125	165	180	205
Ystrad Mynach College	2,830	2,950	2,635	2,695	2,595
Total	62,890	61,190	60,085	59,315	60,860

Source: LLWR (Lifelong Learning Wales Record) post-16 database

- (a) FTE=Full Time Equivalent.
- (b) The student load methodology has been designed purely for the purpose of this volume and may not have wider applicability.
- (c) Merthyr Tydfil College has been excluded, following its merger into the University of Glamorgan in April 2006.
- (d) The Welsh College of Horticulture merged into Deeside College in August 2009.
- (e) Coleg Meirion Dwyfor merged into Coleg Llandrillo in April 2010.
- (f) Coleg Lllysfasi merged into Deeside College in August 2010.
- (g) Swansea College and Gorseinon College merged to form Gower College Swansea in August 2010.
- (h) Each learner's student load has been derived by dividing his or her guided contact hours for the year by the mean for a full-time learner, with the result capped to 1 FTE at most.
- (i) The calculation includes full-time and part-time learners at FEIs but excludes WBL learners.
- (j) The FTE of a full-time learner has been set to 1.
- (k) Numbers greater than 0 and less than 5 have been replaced by *. Other figures are rounded to the nearest 5 and there may be slight discrepancies between the sums of constituent items and the independently rounded totals.

Table F1.5 Numbers of FE and WBL learners enrolled at FE and HE institutions 2010/11 (a-k)

FE Institutions	Numbers							
	Full-time learners		Part-time learners		Work-based learners		Total	
	All	Enrolled 1 Dec	All	Enrolled 1 Dec	All	Enrolled 1 Dec	All	Enrolled 1 Dec
Barry College	1,585	1,450	4,085	2,780	1,795	1,095	7,460	5,325
Bridgend College	2,075	1,965	7,045	3,650	380	340	9,505	5,955
Coleg Ceredigion	645	600	1,510	450	115	100	2,270	1,150
Coleg Glan Hafren	3,420	2,795	7,065	4,350	345	240	10,830	7,380
Coleg Gwent	6,500	6,080	17,465	10,430	530	455	24,495	16,965
Coleg Harlech/WEA (North)	105	95	4,720	1,490	0	0	4,825	1,585
Coleg Llandrillo	5,260	4,820	13,725	7,370	1,815	1,100	20,795	13,290
Coleg Menai	1,625	1,560	4,145	2,325	1,640	1,135	7,410	5,020
Coleg Morgannwg	2,490	2,330	6,360	3,400	325	220	9,170	5,950
Coleg Powys	1,050	1,020	3,535	1,325	200	140	4,785	2,490
Coleg Sir Gar	2,525	2,410	4,040	3,110	825	555	7,390	6,075
Deeside College	3,260	2,865	11,320	6,845	3,070	1,665	17,655	11,375
Gower College Swansea	4,500	4,185	10,085	6,270	1,240	735	15,820	11,190
Merthyr Tydfil College WBL	0	0	0	0	635	260	635	260
Neath Port Talbot College	3,245	3,010	6,790	4,625	855	545	10,890	8,180
Pembrokeshire College	1,565	1,520	4,990	2,410	990	570	7,545	4,500
Saint David's Catholic College	1,500	1,440	35	35	0	0	1,535	1,475
WEA South	30	25	7,200	2,940	0	0	7,230	2,965
YMCA	0	0	4,420	705	0	0	4,420	705
Yale College Wrexham	2,935	2,750	6,925	3,450	1,255	785	11,115	6,990
Ystrad Mynach College	1,740	1,745	5,220	3,550	585	405	7,540	5,700
Total (including any multiple-counting between providers)	46,050	42,680	130,675	71,510	16,605	10,340	193,335	124,525
HE Institutions								
University of Glamorgan	1,225	1,165	3,590	2,930	.	.	4,815	4,095
Aberystwyth University	0	0	2,515	1,810	.	.	2,515	1,810
Bangor University	0	0	5,720	3,375	.	.	5,720	3,375
Cardiff University	0	0	1,955	1,400	.	.	1,955	1,400
Swansea University	0	0	3,370	2,850	.	.	3,370	2,850
University of Wales Institute, Cardiff	120	120	0	0	.	.	120	120
The University of Wales, Newport	215	205	35	30	.	.	250	230
Swansea Metropolitan University	105	100	90	90	.	.	195	190
The University of Wales, Trinity Saint David	35	15	0	0	.	.	35	15
Total	1,700	1,600	17,275	12,485	.	.	18,975	14,085

Sources: LLWR (Lifelong Learning Wales Record) post-16 database
2010/11 HESA Student Record - learner basis:
registration population (full year) & December population

- (a) Counts are based on providers' own learner identifiers and therefore include some multiple-counting between providers.
 (b) 'Enrolled 1 Dec' is the population during the week of 1 December 2010; 'All' refers to the complete academic year.
 (c) This table excludes learning programmes designated as higher education in their entirety.
 (d) A learner pursuing any WBL programme is designated as work-based learning.
 (e) Includes local authority community learning where there is a formal enrolment with an FE institution.
 (f) Following its merger in 2006 into the University of Glamorgan, the FE component of Merthyr Tydfil College has been included in the figures (from HESA) for the HE institution. However the WBL programmes of Merthyr Tydfil College (from LLWR) are not present in the HEI figures but are included in the FE Institutions block.
 (g) The full year HESA population is based on new registrations within the academic year (and anniversaries of registrations for multi-year courses) whereas the December population is on an in-learning basis (see Appendix A). It is unusual but possible occasionally for the December population to exceed the full year registration population.
 (h) Numbers greater than 0 and less than 5 have been replaced by *. Other figures are rounded to the nearest 5 and there may be slight discrepancies between the sums of constituent items and the independently rounded totals.

Table F1.6 Numbers of learners (FE, HE and WBL) taught at FE institutions 2010/11 (a-h)

Institution	<i>Numbers</i>			
	FE, HE and WBL learners	Third Party	Franchised in from HE institutions	Learners Taught
Barry College	7,460	1,530	330	6,265
Bridgend College	9,540	1,640	1,080	8,980
Coleg Sir Gar	7,815	925	635	7,525
Coleg Ceredigion	2,270	0	30	2,300
Deeside College	17,705	20	110	17,795
Coleg Glan Hafren	11,050	2,760	140	8,430
Coleg Gwent	24,495	8,890	440	16,045
Coleg Llandrillo	22,020	0	240	22,260
Merthyr Tydfil College WBL	635	0	0	635
Pembrokeshire College	7,765	200	465	8,025
Coleg Morgannwg	9,175	1,645	355	7,880
Coleg Powys	4,785	700	130	4,215
Saint David's Catholic College	1,535	0	0	1,535
Yale College Wrexham	11,230	0	85	11,320
Ystrad Mynach College	7,575	300	280	7,555
WEA South	7,230	0	0	7,230
YMCA	4,420	0	0	4,420
Coleg Menai	7,410	0	290	7,705
Neath Port Talbot College	10,960	1,355	445	10,050
Coleg Harlech/WEA (North)	4,825	0	0	4,825
Gower College Swansea	15,995	875	285	15,410
Total (including any multiple-counting between providers)	195,900	20,840	5,345	180,400

Source: LLWR (Lifelong Learning Wales Record) post-16 database

2009/10 HESA Student Record - registration population - learner basis

- (a) Counts are based on providers' own learner identifiers and therefore include some multiple-counting between providers.
- (b) Includes full-time, part-time and work-based learners.
- (c) Includes WBL subsidiaries of FE institutions.
- (d) Includes local authority community learning where there is a formal enrolment with an FE institution.
- (e) Third party figures indicate where the learning delivery is by a body other than that at which the learner is enrolled.
- (f) Third party figures exclude arrangements between an FE institution and its WBL subsidiary.
- (g) The main component of third party provision is learning contracted in to LEAs. - see table L1.1
- (h) Numbers greater than 0 and less than 5 have been replaced by *. Other figures are rounded to the nearest 5 and there may be slight discrepancies between the sums of constituent items and the independently rounded totals.

Table F1.7a Numbers of Welsh for Adults learners and enrolments by learning centre (standard registration population) 2010/11 (e)(g)

Institutions serving as Welsh for Adults Centres (a)	Numbers	
	Learners (d)	Enrolments (d)(f)
University of Glamorgan	1,585	1,655
Aberystwyth University	2,515	3,815
Bangor University	5,700	7,895
Cardiff University	1,955	2,115
Swansea University	3,370	4,850
Coleg Gwent (b)(c)	2,455	4,645
Total at FE and HE institutions	17,575	24,970

Source: LLWR (Lifelong Learning Wales Record) post-16 database
2010/11 HESA Student Record

- (a) The Welsh for Adults Centres comprise five HE institutions and one FE institution (Coleg Gwent).
 (b) The learner count for Coleg Gwent is based on unique learner identifiers and its enrolment count is of learning activities.
 (c) The type of learning programme (LP17) is used to separate Welsh for Adults programmes from other Coleg Gwent data.
 (d) Learners and enrolments at the remaining five centres are derived from the HESA Student Record using the standard registration population - see Appendix A.
 (e) Students on Welsh for Adults courses are included regardless of the age of the learner.
 (f) The same learner may be enrolled on more than one course enrolment / learning activity.
 (g) Numbers greater than 0 and less than 5 have been replaced by *. Other figures are rounded to the nearest 5 and there may be slight discrepancies between the sums of constituent items and the independently rounded totals.

Table F1.7b Numbers of Welsh for Adults learners and enrolments by learning centre (session population) 2010/11 (e)(g)

Institutions serving as Welsh for Adults Centres (a)	Numbers	
	Learners (d)	Enrolments (d)(f)
University of Glamorgan	1,620	2,140
Aberystwyth University	2,630	4,005
Bangor University	5,990	9,310
Cardiff University	2,075	2,235
Swansea University	3,435	5,125
Coleg Gwent (b)(c)	2,455	4,645
Total at FE and HE institutions	18,205	27,465

Source: LLWR (Lifelong Learning Wales Record) post-16 database
2010/11 HESA Student Record

- (a) The Welsh for Adults Centres comprise five HE institutions and one FE institution (Coleg Gwent).
 (b) The learner count for Coleg Gwent is based on unique learner identifiers and its enrolment count is of learning activities.
 (c) The type of learning programme (LP17) is used to separate Welsh for Adults programmes from other Coleg Gwent data.
 (d) Learners and enrolments at the remaining five centres are derived from the HESA Student Record using the session population, for the purpose of this table - see Appendix A.
 (e) Students on Welsh for Adults courses are included regardless of the age of the learner.
 (f) The same learner may be enrolled on more than one course enrolment / learning activity.
 (g) Numbers greater than 0 and less than 5 have been replaced by *. Other figures are rounded to the nearest 5 and there may be slight discrepancies between the sums of constituent items and the independently rounded totals.

Table F2.1: Trends in further education student numbers in December (at FE institutions and HE institutions) by mode of attendance and age 2004/05 to 2010/11 (a-i)

	<i>Numbers</i>						
	Dec-2004	Dec-2005	Dec-2006	Dec-2007	Dec-2008	Dec-2009	Dec-2010
Full-time:							
18 & under	28,975	30,645	30,945	31,490	32,110	31,395	32,025
19 & over	10,285	10,860	10,680	10,215	10,190	10,790	12,255
All Ages	39,255	41,505	41,630	41,705	42,300	42,180	44,280
Part-time & WBL:							
18 & under	13,670	15,060	15,225	13,240	13,755	14,030	14,490
19 & over	120,705	124,415	122,240	104,500	92,160	81,555	79,840
All Ages	134,375	139,475	137,460	117,735	105,915	95,585	94,330
All learners:							
18 & under	42,645	45,705	46,170	44,730	45,865	45,420	46,520
19 & over	130,990	135,275	132,920	114,710	102,350	92,345	92,095
All Ages	173,635	180,980	179,090	159,440	148,215	137,770	138,615

Sources: HEIs: HESA Student Record.
FEIs: LLWR (Lifelong Learning Wales Record) post-16 database

- (a) Includes further education and higher education institutions in Wales.
 (b) Merthyr Tydfil College is included in all years (as part of FE at FEIs up to 2005/06 and as part of FE at HEIs from 2006/07).
 (c) Restricted to FE learners enrolled in early December of academic year. Includes learners enrolled at FE institutions who are on work-based learning programmes but excludes those on HE programmes.
 (d) Counts are based on providers' own learner identifiers and therefore include some multiple-counting between providers.
 (e) 'All Ages' totals and the 19 & over row include instances of unknown age.
 (f) Age is as at 31 August of academic year.
 (g) Includes local authority community learning where there is a formal enrolment with an FE institution.
 (h) A data correction, removing learning activities with a very large gap between actual end date and expected end date has been applied retrospectively and is standard from 2008/09 - see Appendix A.
 (i) Numbers greater than 0 and less than 5 have been replaced by *. Other figures are rounded to the nearest 5 and there may be slight discrepancies between the sums of constituent items and the independently rounded totals.

Table F2.2 Trends in further education student numbers (including WBL, excluding HE programmes) at FE institutions by age group 2006/07 to 2010/11 (a-j)

	<i>Provider-learner numbers</i>					<i>Unique learner numbers</i>				
	2006/07	2007/08	2008/09	2009/10	2010/11	2006/07	2007/08	2008/09	2009/10	2010/11
All learners										
18 & under	54,695	51,660	53,055	53,115	53,770	51,110	49,535	50,785	50,860	51,480
19 & over	194,585	163,695	147,635	138,665	139,565	181,090	155,385	140,545	131,950	132,305
All Ages	249,280	215,350	200,690	191,780	193,335	232,200	204,925	191,330	182,810	183,785

Source: LLWR (Lifelong Learning Wales Record) post-16 database

- (a) Includes further education institutions in Wales, across full academic year (1 August to 31 July).
 (b) Merthyr Tydfil College is excluded from this table, following its merger into the University of Glamorgan in April 2006.
 (c) Includes learners enrolled at FE institutions who are on work-based learning programmes but excludes those on HE programmes.
 (d) Counts in the provider-learner block are based on providers' own learner identifiers and therefore include some multiple-counting between providers.
 (e) Counts in the unique learner numbers block are based on Unique Learner Identifiers to remove multiple-counting between providers.
 (f) 'All Ages' totals and the 19 & over row include instances of unknown age.
 (g) Age is as at 31 August of academic year.
 (h) Includes local authority community learning where there is a formal enrolment with an FE institution.
 (i) A data correction, removing learning activities with a very large gap between actual end date and expected end date has been applied retrospectively and is standard from 2008/09 - see Appendix A.
 (j) Numbers greater than 0 and less than 5 have been replaced by *. Other figures are rounded to the nearest 5 and there may be slight discrepancies between the sums of constituent items and the independently rounded totals.

Table F3.1 Numbers of learners (FE, HE and WBL) enrolled at FE institutions 2010/11 by age group, mode of learning and sex (a-h)

	<i>Numbers</i>		
	Male	Female	Total
Full-time learners aged:			
Under 16	185	105	290
16	6,525	6,480	13,005
17	5,900	5,965	11,870
18	3,590	3,435	7,020
19	1,670	1,520	3,190
20-24	2,480	2,430	4,910
25-39	1,555	2,450	4,005
40-49	445	640	1,085
50-59	175	195	370
60-64	25	25	50
65+	25	15	40
Full time learners	22,585	23,265	45,850
Part-time learners aged:			
Under 16	2,805	2,075	4,880
16	1,080	1,145	2,225
17	1,385	1,350	2,735
18	1,835	1,700	3,530
19	1,725	1,535	3,260
20-24	7,205	8,070	15,270
25-39	15,775	22,140	37,915
40-49	9,030	14,470	23,495
50-59	6,335	9,420	15,755
60-64	2,205	3,695	5,900
65+	3,090	5,375	8,470
Part time learners	52,795	71,300	124,095
Work-based learners aged:			
Under 16	10	5	15
16	1,375	690	2,060
17	1,500	830	2,330
18	1,080	530	1,615
19	945	380	1,325
20-24	2,195	1,255	3,450
25-39	1,570	1,670	3,240
40-49	575	1,030	1,605
50-59	235	455	690
60-64	25	20	45
65+	*	5	10
Work-based learners	9,515	6,875	16,385
All Modes of learning:			
Under 16	3,000	2,185	5,185
16	8,980	8,310	17,290
17	8,785	8,145	16,935
18	6,505	5,665	12,165
19	4,340	3,435	7,780
20-24	11,875	11,755	23,630
25-39	18,900	26,260	45,160
40-49	10,050	16,135	26,190
50-59	6,745	10,075	16,815
60-64	2,250	3,740	5,990
65+	3,120	5,395	8,520
Total	84,895	101,435	186,330

Source: LLWR (Lifelong Learning Wales Record) post-16 database

- (a) Counts are on a unique learner identifier (ULI) basis to eliminate multiple-counting between providers.
 (b) A learner pursuing any WBL programme is designated as work-based learning.
 (c) Non-WBL learners are allocated to either the full-time or the part-time mode of learning using the methodology of notes (d) and (e).
 (d) A full-time learner is one whose total guided contact hours across all their learning activities amount to at least 450 hours.
 (e) A part-time learner is one whose total guided contact hours across all their learning activities amount to less than 450 hours.
 (f) Local authority community learning has been included where there is a formal enrolment with an FE institution.
 (g) Age is as at 31 August 2010; totals include examples of unspecified ages not shown in separate rows.
 (h) Numbers greater than 0 and less than 5 have been replaced by *. Other figures are rounded to the nearest 5 and there may be slight discrepancies between the sums of constituent items and the independently rounded totals.

Table F3.2 Numbers of learners (FE, HE and WBL) enrolled at FE institutions by age group, mode of learning and level 2010/11 (a-l)

	<i>Numbers</i>			
	Learners on FE programmes	Learners on HE programmes	Learners on WBL programmes	Total
Full-time learners aged:				
Under 16	290	0	.	290
16	13,005	0	.	13,005
17	11,865	*	.	11,870
18	6,990	30	.	7,020
19	3,130	60	.	3,190
20-24	4,750	160	.	4,910
25-39	3,920	85	.	4,005
40-49	1,040	45	.	1,085
50-59	350	15	.	370
60-64	45	*	.	50
65+	30	5	.	40
Full time learners	45,440	410	.	45,850
Part-time learners aged:				
Under 16	4,880	0	.	4,880
16	2,225	0	.	2,225
17	2,735	*	.	2,735
18	3,475	60	.	3,530
19	3,145	120	.	3,260
20-24	14,780	495	.	15,270
25-39	37,135	780	.	37,915
40-49	23,050	445	.	23,495
50-59	15,575	180	.	15,755
60-64	5,865	30	.	5,900
65+	8,455	15	.	8,470
Part-time learners	121,960	2,135	.	124,095
All Modes of learning (including work-based learning)				
Under 16	5,170	0	15	5,185
16	15,230	0	2,060	17,290
17	14,595	5	2,330	16,935
18	10,465	90	1,615	12,165
19	6,275	180	1,325	7,780
20-24	19,530	650	3,450	23,630
25-39	41,055	865	3,240	45,160
40-49	24,090	490	1,605	26,190
50-59	15,925	200	690	16,815
60-64	5,910	35	45	5,990
65+	8,485	20	10	8,520
Total	167,400	2,545	16,385	186,330

Source: LLWR (Lifelong Learning Wales Record) post-16 database

- (a) Counts are on a unique learner identifier (ULI) basis to eliminate multiple-counting between providers.
- (b) Includes full-time, part-time and work-based learners.
- (c) Includes WBL subsidiaries of FE institutions.
- (d) A learner pursuing any WBL programme is designated as work-based learning.
- (e) A learner pursuing an HE learning programme but not also pursuing a WBL programme is designated as HE.
- (f) For the purpose of note (e), HE refers only to programmes designated as higher education in their entirety.
- (g) A full-time learner is one whose total guided contact hours across all their learning activities amount to at least 450 hours.
- (h) A part-time learner is one whose total guided contact hours across all their learning activities amount to less than 450 hours.
- (i) Higher education excludes learners enrolled at HE institutions and franchised in to FE institutions.
- (j) Local authority community learning has been included where there is a formal enrolment with an FE institution.
- (k) Age is as at 31 August 2010; totals include examples of unspecified ages not shown in separate rows.
- (l) Numbers greater than 0 and less than 5 have been replaced by *. Other figures are rounded to the nearest 5 and there may be slight discrepancies between the sums of constituent items and the independently rounded totals.

Table F3.3 Numbers of learners (FE, HE and WBL) enrolled at FE institutions 2010/11 by country of domicile, mode of learning and sex (a-h)

Numbers

	Male	Female	Total
Full-time learners by country of domicile:			
Wales	22,085	22,805	44,890
England	410	395	805
Scotland	*	*	*
Northern Ireland	0	*	*
UK not known	5	*	10
Other EU	15	15	30
Other Overseas	65	50	115
Full-time learners	22,585	23,265	45,850
Part-time learners by country of domicile:			
Wales	50,560	69,605	120,165
England	1,950	1,465	3,410
Scotland	10	15	25
Northern Ireland	*	*	5
UK not known	5	5	10
Other EU	170	130	305
Other Overseas	95	80	175
Part-time learners	52,795	71,300	124,095
Work-based learners by country of domicile:			
Wales	9,075	6,750	15,825
England	435	120	560
Scotland	0	0	0
Northern Ireland	0	*	*
UK not known	*	0	*
Other EU	*	0	*
Other Overseas	0	*	*
Work-based learners	9,515	6,875	16,385
All Modes of learning by country of domicile:			
Wales	81,720	99,160	180,880
England	2,795	1,980	4,775
Scotland	10	15	25
Northern Ireland	*	*	5
UK not known	15	10	25
Other EU	190	145	335
Other Overseas	160	125	285
Total	84,895	101,435	186,330

Source: LLWR (Lifelong Learning Wales Record) post-16 database

- (a) Counts are on a unique learner identifier (ULI) basis to eliminate multiple-counting between providers.
- (b) Includes work-based learning (WBL) subsidiaries of FE institutions.
- (c) A learner pursuing any WBL programme is designated as work-based learning.
- (d) Non-WBL learners are allocated to either the full-time or the part-time mode of learning using the methodology of notes (e) and (f).
- (e) A full-time learner is one whose total guided contact hours across all their learning activities amount to at least 450 hours.
- (f) A part-time learner is one whose total guided contact hours across all their learning activities amount to less than 450 hours.
- (g) Local authority community learning has been included where there is a formal enrolment with an FE institution.
- (h) Numbers greater than 0 and less than 5 have been replaced by *. Other figures are rounded to the nearest 5 and there may be slight discrepancies between the sums of constituent items and the independently rounded totals.

Table F3.4a Numbers of learners (FE, HE and WBL) enrolled at FE institutions 2010/11 by unitary authority of domicile and age group (a-f)

Unitary authority of domicile	Under 16	16	17	18	19	20 to 24	25 to 39
Blaenau Gwent	25	495	490	330	175	520	1,095
Bridgend	30	625	665	545	335	1,065	2,145
Caerphilly	340	1,160	1,105	720	425	1,270	2,510
Cardiff	585	1,640	1,505	1,005	595	2,090	4,450
Carmarthenshire	120	1,150	1,105	795	425	1,270	2,090
Ceredigion	385	240	230	200	145	375	530
Conwy	310	675	670	540	400	1,310	2,410
Denbighshire	405	760	685	520	385	1,075	2,100
Flintshire	325	885	890	790	520	1,480	2,665
Gwynedd	505	920	845	500	295	1,055	2,055
Isle of Anglesey	15	355	365	295	205	660	1,125
Merthyr Tydfil	20	180	210	150	105	395	685
Monmouthshire	60	215	235	195	120	355	860
Neath Port Talbot	75	1,280	1,290	690	405	1,070	2,115
Newport	80	605	630	465	345	1,010	2,195
Pembrokeshire	260	695	690	550	375	935	1,450
Powys	25	555	425	315	225	585	1,235
Rhondda Cynon Taf	235	835	1,005	920	595	1,845	2,930
Swansea	55	1,670	1,560	1,010	625	1,850	3,865
The Vale of Glamorgan	415	515	610	400	235	735	1,240
Torfaen	85	450	415	330	220	665	1,450
Wrexham	690	1,030	970	565	390	1,180	2,325
Outside Wales or Not known	125	355	345	345	235	850	1,640
Total	5,185	17,290	16,935	12,165	7,780	23,630	45,160

(a) Counts are on a unique learner identifier (ULI) basis to eliminate multiple-counting between providers.

(b) Includes work-based learning (WBL) subsidiaries of FE institutions.

(c) Local authority community learning has been included where there is a formal enrolment with an FE institution.

(d) Age is as at 31 August 2010.

(e) Unitary authority of domicile is calculated from the recorded home postcode of the learner.

(f) Numbers greater than 0 and less than 5 have been replaced by *. Other figures are rounded to the nearest 5 and there may be slight discrepancies between the sums of constituent items and the independently rounded totals.

Table F3.4a (continued) Numbers of learners (FE, HE and WBL) enrolled at FE institutions 2010/11 by unitary authority of domicile and age group (a-f)

						<i>Numbers</i>
40 to 49	50 to 59	60 to 64	65 plus	Age not stated	Total	Unitary authority of domicile
625	415	190	240	5	4,600	Blaenau Gwent
1,265	765	225	320	25	8,015	Bridgend
1,550	1,070	485	745	10	11,385	Caerphilly
1,630	830	165	130	65	14,690	Cardiff
1,290	810	290	475	10	9,835	Carmarthenshire
330	220	55	30	*	2,740	Ceredigion
1,665	1,125	465	740	105	10,415	Conwy
1,395	870	315	510	70	9,095	Denbighshire
1,800	1,070	345	535	40	11,345	Flintshire
1,210	770	250	345	95	8,840	Gwynedd
705	525	195	315	20	4,780	Isle of Anglesey
410	280	90	155	5	2,690	Merthyr Tydfil
785	540	305	490	10	4,170	Monmouthshire
1,225	835	300	595	20	9,890	Neath Port Talbot
1,250	775	320	410	15	8,090	Newport
905	600	235	345	*	7,040	Pembrokeshire
860	670	245	430	15	5,585	Powys
1,595	1,065	480	625	10	12,140	Rhondda Cynon Taf
1,945	1,180	340	330	50	14,480	Swansea
685	385	75	100	10	5,405	The Vale of Glamorgan
850	645	235	275	10	5,635	Torfaen
1,245	755	225	225	25	9,625	Wrexham
970	615	165	150	50	5,845	Outside Wales or Not known
26,190	16,815	5,990	8,520	670	186,330	Total

Source: LLWR (Lifelong Learning Wales Record) post-16 database

Table F3.4b Numbers of learners (FE, HE and WBL) enrolled at FE institutions 2010/11 by unitary authority of domicile and sex (a-e)

Unitary authority of domicile	Numbers		
	Male	Female	Total
Blaenau Gwent	2,035	2,565	4,600
Bridgend	3,785	4,230	8,015
Caerphilly	5,005	6,380	11,385
Cardiff	6,945	7,745	14,690
Carmarthenshire	4,440	5,395	9,835
Ceredigion	1,260	1,480	2,740
Conwy	4,565	5,850	10,415
Denbighshire	3,910	5,185	9,095
Flintshire	5,080	6,265	11,345
Gwynedd	4,200	4,640	8,840
Isle of Anglesey	2,115	2,665	4,780
Merthyr Tydfil	1,210	1,475	2,690
Monmouthshire	1,620	2,545	4,170
Neath Port Talbot	4,480	5,410	9,890
Newport	3,530	4,565	8,090
Pembrokeshire	3,350	3,685	7,040
Powys	2,490	3,095	5,585
Rhondda Cynon Taf	5,385	6,755	12,140
Swansea	6,820	7,665	14,480
The Vale of Glamorgan	2,505	2,900	5,405
Torfaen	2,350	3,285	5,635
Wrexham	4,430	5,200	9,625
Outside Wales or Not known	3,390	2,455	5,845
Total	84,895	101,435	186,330

Source: LLWR (Lifelong Learning Wales Record) post-16 database

- (a) Counts are on a unique learner identifier (ULI) basis to eliminate multiple-counting between providers.
- (b) Includes work-based learning (WBL) subsidiaries of FE institutions.
- (c) Local authority community learning has been included where there is a formal enrolment with an FE institution.
- (d) Unitary authority of domicile is calculated from the recorded home postcode of the learner.
- (e) Numbers greater than 0 and less than 5 have been replaced by *. Other figures are rounded to the nearest 5 and there may be slight discrepancies between the sums of constituent items and the independently rounded totals.

Table F3.5 Numbers of learners (FE, HE and WBL) enrolled at FE institutions 2010/11 by ethnicity, age band and sex (a-e)

Numbers

Aged 18 and under			
Ethnicity	Male	Female	Total
Asian	435	340	775
Black	225	165	385
Mixed	290	290	575
Other	100	70	175
White	25,750	23,025	48,775
Information refused/not known	475	415	890
Total	27,270	24,305	51,575

Aged 19 and over			
Ethnicity	Male	Female	Total
Asian	1,370	2,130	3,500
Black	865	1,040	1,905
Mixed	360	470	830
Other	555	525	1,085
White	51,910	69,905	121,815
Information refused/not known	2,560	3,060	5,620
Total	57,625	77,130	134,755

All ages			
Ethnicity	Male	Female	Total
Asian	1,805	2,470	4,275
Black	1,090	1,205	2,290
Mixed	650	760	1,405
Other	655	600	1,255
White	77,660	92,930	170,590
Information refused/not known	3,035	3,475	6,510
Total	84,895	101,435	186,330

Source: LLWR (Lifelong Learning Wales Record) post-16 database

- (a) Counts are on a unique learner identifier (ULI) basis to eliminate multiple-counting between providers.
- (b) Includes work-based learning (WBL) subsidiaries of FE institutions.
- (c) Local authority community learning has been included where there is a formal enrolment with an FE institution.
- (d) Age is as at 31 August 2010.
- (e) Numbers greater than 0 and less than 5 have been replaced by *. Other figures are rounded to the nearest 5 and there may be slight discrepancies between the sums of constituent items and the independently rounded totals.

Table F3.6 Numbers of learners (FE, HE and WBL) enrolled at FE institutions 2010/11 by (primary) disability and/or learning difficulty, age band and sex (a-f)

Numbers

Aged 18 and under			
Disability/Learning Difficulty Type	Male	Female	Total
Visual Impairment	90	50	140
Hearing Impairment	60	70	130
Physical and/or medical difficulties	295	240	535
Behavioural, emotional and social difficulties	215	85	300
Multi-sensory impairment	30	15	45
Autistic spectrum disorders	165	45	205
Speech, language and communication difficulties	135	80	215
Moderate learning difficulties	510	355	865
Severe learning difficulties	55	25	80
Profound and Multiple learning difficulties	15	*	15
Specific learning difficulties	1,085	690	1,775
Does not apply	24,620	22,650	47,275
Total	27,270	24,305	51,575

Aged 19 and over			
Disability/Learning Difficulty Type	Male	Female	Total
Visual Impairment	180	180	365
Hearing Impairment	225	320	545
Physical and/or medical difficulties	745	1,085	1,825
Behavioural, emotional and social difficulties	170	185	355
Multi-sensory impairment	65	80	140
Autistic spectrum disorders	110	25	135
Speech, language and communication difficulties	100	100	195
Moderate learning difficulties	910	805	1,715
Severe learning difficulties	120	135	255
Profound and Multiple learning difficulties	90	80	170
Specific learning difficulties	915	840	1,750
Does not apply	54,000	73,300	127,300
Total	57,625	77,130	134,755

All ages			
Disability/Learning Difficulty Type	Male	Female	Total
Visual Impairment	270	235	505
Hearing Impairment	285	390	675
Physical and/or medical difficulties	1,040	1,325	2,360
Behavioural, emotional and social difficulties	385	270	655
Multi-sensory impairment	90	95	185
Autistic spectrum disorders	275	65	340
Speech, language and communication difficulties	235	180	415
Moderate learning difficulties	1,420	1,160	2,580
Severe learning difficulties	175	160	335
Profound and Multiple learning difficulties	100	80	185
Specific learning difficulties	2,000	1,525	3,525
Does not apply	78,620	95,950	174,570
Total	84,895	101,435	186,330

Source: LLWR (Lifelong Learning Wales Record) post-16 database

- (a) Counts are on a unique learner identifier (ULI) basis to eliminate multiple-counting between providers.
- (b) Includes work-based learning (WBL) subsidiaries of FE institutions.
- (c) Local authority community learning has been included where there is a formal enrolment with an FE institution.
- (d) Disability type relates only to those learners who have a disability or learning difficulty which impacts on their ability to learn and/or use facilities of a kind generally supplied by the learning provider. Only the primary disability type is given in this table.
- (e) Age is as at 31 August 2010.
- (f) Numbers greater than 0 and less than 5 have been replaced by *. Other figures are rounded to the nearest 5 and there may be slight discrepancies between the sums of constituent items and the independently rounded totals.

Table F3.7 Numbers of learners (FE, HE and WBL) enrolled at FE institutions 2010/11 by disability and/or learning difficulty (including both primary and secondary) type, age band and sex (a-d)(g)

Numbers

Disability/Learning Difficulty Type	Male	Female	Total
Visual Impairment	310	260	570
Hearing Impairment	330	430	765
Physical and/or medical difficulties	1,190	1,480	2,670
Behavioural, emotional and social difficulties	485	335	820
Multi-sensory impairment	95	95	190
Autistic spectrum disorders	325	80	405
Speech, language and communication difficulties	295	235	530
Moderate learning difficulties	1,570	1,250	2,815
Severe learning difficulties	235	205	440
Profound and Multiple learning difficulties	130	95	225
Specific learning difficulties	2,145	1,645	3,795
Total learners with disabilities(e)	2,840	2,730	5,570
Total learners with learning difficulties(e)	3,960	3,100	7,060
Total LLDD(e)(f)	6,275	5,485	11,760

Source: LLWR (Lifelong Learning Wales Record) post-16 database

- (a) Counts are on a unique learner identifier (ULI) basis to eliminate multiple-counting between providers.
- (b) Includes work-based learning (WBL) subsidiaries of FE institutions.
- (c) Local authority community learning has been included where there is a formal enrolment with an FE institution.
- (d) Disability type relates only to those learners who have a disability which impacts on their ability to learn and/or use facilities of a kind generally supplied by the learning provider. Entries into individual rows take into account both the primary and the secondary (if applicable) disability and/or learning difficulty type.
- (e) Note that none of the total rows is equal to the sum of its constituent rows. These totals are actually less than the sum of their constituent categories because of overlaps where learners have more than one type of disability or learning difficulty. (This contrasts with Table F3.6 which gives only the primary disability or learning difficulty in its individual rows and is therefore additive.)
- (f) LLDD = Learners with learning difficulties and/or disabilities affecting learning.
- (g) Numbers greater than 0 and less than 5 have been replaced by *. Other figures are rounded to the nearest 5 and there may be slight discrepancies between the sums of constituent items and the independently rounded totals.

Table F3.8 Numbers of learners at FE institutions by deprivation status, sex and age group 2010/11 (a-e)

Numbers

Welsh domiciled learners in deprived areas (Community first areas)

Age Group	Male	Female	Total
Under 16	615	450	1,065
16	1,970	1,940	3,910
17	1,950	1,835	3,785
18	1,465	1,295	2,760
19	940	810	1,750
20-24	2,690	2,905	5,595
25-39	4,265	6,390	10,655
40-49	1,970	3,130	5,100
50-59	1,310	1,730	3,040
60-64	380	600	975
65+	510	835	1,345
Not Specified	60	55	115
Total	18,115	21,980	40,095

Learners domiciled outside Wales or with incomplete home postcode information

Age Group	Male	Female	Total
Under 16	70	55	125
16	190	165	355
17	175	170	345
18	185	160	345
19	140	95	235
20-24	535	315	850
25-39	975	665	1,640
40-49	580	385	970
50-59	355	255	615
60-64	80	85	165
65+	75	75	150
Not Specified	30	20	50
Total	3,390	2,455	5,845

- (a) Counts are on a unique learner identifier (ULI) basis to eliminate multiple-counting between providers.
- (b) Age is as at 31 August 2010.
- (c) Includes work-based learning (WBL) subsidiaries of FE institutions.
- (d) Includes local authority community learning where there is a formal enrolment with an FE institution.
- (e) Numbers greater than 0 and less than 5 have been replaced by *. Other figures are rounded to the nearest 5 and there may be slight discrepancies between the sums of constituent items and the independently rounded totals.

Table F3.8 (Continued) Numbers of learners at FE institutions by deprivation status, sex and age group 2010/11 (a-e)

Numbers

Welsh domiciled learners outside deprived areas (Community First areas)

Age Group	Male	Female	Total
Under 16	2,315	1,680	3,995
16	6,820	6,205	13,025
17	6,665	6,140	12,805
18	4,855	4,210	9,060
19	3,265	2,530	5,795
20-24	8,655	8,530	17,185
25-39	13,665	19,205	32,870
40-49	7,500	12,625	20,120
50-59	5,075	8,085	13,160
60-64	1,795	3,055	4,850
65+	2,535	4,490	7,020
Not Specified	250	255	505
Total	63,390	77,000	140,390

All learners

Age Group	Male	Female	Total
Under 16	3,000	2,185	5,185
16	8,980	8,310	17,290
17	8,785	8,145	16,935
18	6,505	5,665	12,165
19	4,340	3,435	7,780
20-24	11,875	11,755	23,630
25-39	18,900	26,260	45,160
40-49	10,050	16,135	26,190
50-59	6,745	10,075	16,815
60-64	2,250	3,740	5,990
65+	3,120	5,395	8,520
Not Specified	335	335	670
Total	84,895	101,435	186,330

Source: LLWR (Lifelong Learning Wales Record) post-16 database

Table F3.9 Numbers of distinct full-time learners at FE institutions leaving in academic year 2010/11 by destination and age group (a-h)

Destination	Age Group						
	Under 16	16	17	18	19	20-24	25-39
New programme of learning (not HE)	85	3,665	2,130	1,055	590	940	720
Higher education	*	10	1,250	775	325	420	345
Entering new employment/changing employment	*	270	595	445	200	250	170
Continuing current employment	*	75	210	200	100	200	290
Seeking work /unemployed	10	445	660	505	245	315	280
Self employment	*	5	20	20	10	30	45
Voluntary work	0	5	20	10	5	5	20
Other	30	610	710	540	270	535	545
Not known	70	2,735	2,595	1,590	730	1,115	910
Total	205	7,830	8,195	5,145	2,475	3,815	3,320

- (a) Counts are on a unique learner identifier (ULI) basis to eliminate multiple-counting between providers.
- (b) Includes work-based learning (WBL) provision at FE institutions.
- (c) Local authority community learning has been included where there is a formal enrolment with an FE institution.
- (d) Figures comprise the number of distinct learners who have left their most recent learning programme of academic year.
- (e) Excludes learners whose latest learning programme is on-going.
- (f) Destination is recorded immediately after the end of the learning programme.
- (g) Age is as at 31 August 2010.
- (h) Numbers greater than 0 and less than 5 have been replaced by *. Other figures are rounded to the nearest 5 and there may be slight discrepancies between the sums of constituent items and the independently rounded totals.

Table F3.9 (Continued) Numbers of distinct full-time learners at FE institutions leaving in academic year 2010/11 by destination and age group (a-h)

Age Group					<i>Numbers</i>	
40-49	50-59	60-64	65 plus	Not Specified	Total	Destination
185	55	10	*	0	9,430	New programme of learning (not HE)
70	15	0	*	0	3,215	Higher education
45	10	0	0	0	1,990	Entering new employment/changing employment
155	65	10	5	*	1,315	Continuing current employment
50	15	*	*	0	2,535	Seeking work /unemployed
15	5	*	0	0	160	Self employment
*	0	0	0	0	70	Voluntary work
145	45	10	5	5	3,455	Other
230	80	5	5	5	10,070	Not known
895	290	40	30	15	32,245	Total

Source: LLWR (Lifelong Learning Wales Record) post-16 database

Table F4.1a Numbers of learning activities at FE institutions by subject and region of domicile 2010/11 (a-e)

Subject	Region of domicile					
	North Wales		Mid Wales		South West Wales	
	Number	Percentage	Number	Percentage	Number	Percentage
Agriculture, Horticulture and Animal Care	3,400	2	1,260	4	1,100	1
Arts and Crafts	5,240	3	760	3	4,930	4
Business/Management/Office Studies	9,355	5	1,195	4	7,385	6
Care/Personal Development(incl Basic Skills)	41,105	24	8,150	27	38,615	29
Catering/Food/Leisure Services/Tourism	7,925	5	1,685	6	3,930	3
Construction & Property (Built Environment)	6,560	4	855	3	4,935	4
Cultural Studies/Languages/Literature	7,765	4	1,580	5	6,595	5
Education/Training/Teaching	16,760	10	1,435	5	6,030	5
Engineering	5,980	3	870	3	5,360	4
Environment Protection/Energy/Cleansing/Security	985	1	110	0	795	1
Health Care/Medicine/Health & Safety	16,260	9	2,955	10	10,070	8
Humanities	2,080	1	365	1	1,425	1
Information Technology & Information	16,180	9	2,240	8	13,425	10
Logistics/Distribution/Transport/Driving	490	0	230	1	400	0
Manufacturing/Production Work	1,020	1	115	0	490	0
Media/Communication/Publishing	10,790	6	1,770	6	7,025	5
Oil/Mining/Plastics/Chemicals	*	0	290	1	25	0
Performing Arts	1,495	1	100	0	1,935	1
Sales, Marketing and Retailing	2,015	1	1,545	5	820	1
Sciences & Mathematics	13,100	8	85	0	11,120	8
Services to Industry & Commerce	565	0	220	1	590	0
Social Sciences	1,175	1	660	2	2,085	2
Sports, Games and Recreation	3,165	2	1,360	5	1,855	1
Not specified	12,795	.	0	.	10,460	.
Total	186,205		29,835		141,415	

(a) Subjects are derived from the first letter of the LearnDirect Classification System (LDCS) codes.

(b) Region of domicile is based on the home postcode of the learner.

(c) 'Other' column consists of learners domiciled outside of Wales and/or where postcode information is incomplete.

(d) Percentages are calculated as a proportion of the total excluding subject not known.

(e) Numbers greater than 0 and less than 5 have been replaced by *. Other figures are rounded to the nearest 5 and there may be slight discrepancies between the sums of constituent items and the independently rounded totals.

Table F4.1a (continued) Numbers of learning activities at FE institutions by subject and region of domicile 2010/11 (a-e)

Region of domicile						Subject
South East Wales		Other		Total		
Number	Percentage	Number	Percentage	Number	Percentage	
2,640	1	550	3	8,945	1	Agriculture, Horticulture and Animal Care
7,530	3	480	3	18,940	3	Arts and Crafts
10,960	4	1,005	6	29,905	5	Business/Management/Office Studies
90,275	33	3,460	21	181,605	29	Care/Personal Development(incl Basic Skills)
7,950	3	475	3	21,970	4	Catering/Food/Leisure Services/Tourism
8,415	3	545	3	21,315	3	Construction & Property (Built Environment)
21,675	8	1,140	7	38,755	6	Cultural Studies/Languages/Literature
6,365	2	855	5	31,445	5	Education/Training/Teaching
8,210	3	935	6	21,350	3	Engineering
1,025	0	70	0	2,985	0	Environment Protection/Energy/Cleansing/Security
19,655	7	1,430	9	50,370	8	Health Care/Medicine/Health & Safety
4,300	2	225	1	8,395	1	Humanities
35,110	13	1,240	7	68,200	11	Information Technology & Information
450	0	115	1	1,690	0	Logistics/Distribution/Transport/Driving
850	0	275	2	2,750	0	Manufacturing/Production Work
17,770	6	935	6	38,290	6	Media/Communication/Publishing
35	0	305	2	660	0	Oil/Mining/Plastics/Chemicals
3,580	1	170	1	7,280	1	Performing Arts
2,400	1	1,135	7	7,915	1	Sales, Marketing and Retailing
19,330	7	80	0	43,720	7	Sciences & Mathematics
720	0	130	1	2,225	0	Services to Industry & Commerce
3,060	1	190	1	7,170	1	Social Sciences
3,730	1	1,065	6	11,175	2	Sports, Games and Recreation
18,465	.	0	.	41,720	.	Not specified
294,505		16,815		668,770		Total

Table F4.1b Numbers of learning activities at FE institutions 2010/11 by subject and age group (a-e)

Subject	Under 16	16	17	18	19	20 to 24
Agriculture, Horticulture and Animal Care	285	1,355	1,340	795	600	1,085
Arts and Crafts	185	2,545	2,520	1,725	840	1,310
Business/Management/Office Studies	185	4,165	3,870	2,810	1,410	3,480
Care/Personal Development(incl Basic Skills)	2,760	44,790	38,110	22,125	11,050	20,585
Catering/Food/Leisure Services/Tourism	440	3,010	2,550	1,605	960	2,570
Construction & Property (Built Environment)	1,775	4,260	3,570	2,320	1,455	3,020
Cultural Studies/Languages/Literature	265	4,505	3,490	1,790	1,100	4,355
Education/Training/Teaching	40	5,560	3,510	2,165	1,545	4,635
Engineering	995	3,665	3,555	2,755	1,855	3,905
Environment Protection/Energy/Cleansing/Security	75	265	395	270	165	395
Health Care/Medicine/Health & Safety	575	7,185	5,570	3,665	2,160	6,865
Humanities	30	2,505	2,035	795	415	675
Information Technology & Information	180	6,305	5,945	4,320	2,505	6,385
Logistics/Distribution/Transport/Driving	10	125	165	105	65	170
Manufacturing/Production Work	115	100	115	115	140	590
Media/Communication/Publishing	255	9,380	8,075	4,575	2,375	4,045
Oil/Mining/Plastics/Chemicals	0	5	0	5	5	35
Performing Arts	445	1,575	1,880	1,085	515	625
Sales, Marketing and Retailing	55	655	595	420	265	935
Sciences & Mathematics	200	13,845	10,230	5,290	2,700	5,370
Services to Industry & Commerce	0	55	170	205	205	610
Social Sciences	65	1,740	1,630	890	355	720
Sports, Games and Recreation	45	3,540	2,980	1,525	500	495
Not specified	595	13,930	9,235	4,895	2,450	4,660
Total	9,580	135,070	111,525	66,245	35,630	77,510

(a) Includes work-based learning (WBL) subsidiaries of FE institutions.

(b) Local authority community learning has been included where there is a formal enrolment with an FE institution.

(c) Subjects are derived from the first letter of the LearnDirect Classification System (LDCS) codes.

(d) Age is as at 31 August 2010.

(e) Numbers greater than 0 and less than 5 have been replaced by *. Other figures are rounded to the nearest 5 and there may be slight discrepancies between the sums of constituent items and the independently rounded totals.

Table F4.1b (continued) Numbers of learning activities at FE institutions 2010/11 by subject and age group (a-e)

							<i>Numbers</i>
25 to 39	40 to 49	50 to 59	60 to 64	65 plus	Age not stated	Total	Subject
1,585	975	565	165	165	25	8,945	Agriculture, Horticulture and Animal Care
1,960	1,400	1,905	1,795	2,725	30	18,940	Arts and Crafts
7,020	4,195	2,225	325	110	110	29,905	Business/Management/Office Studies
23,675	9,670	4,975	1,465	2,290	115	181,605	Care/Personal Development(incl Basic Skills)
4,505	3,055	2,030	620	545	75	21,970	Catering/Food/Leisure Services/Tourism
3,095	1,175	495	105	15	20	21,315	Construction & Property (Built Environment)
12,275	4,695	3,075	1,440	1,680	85	38,755	Cultural Studies/Languages/Literature
7,540	4,135	1,525	325	445	20	31,445	Education/Training/Teaching
2,950	1,050	495	80	30	20	21,350	Engineering
725	370	260	35	25	10	2,985	Environment Protection/Energy/Cleansing/Security
12,550	7,205	3,645	605	200	145	50,370	Health Care/Medicine/Health & Safety
690	270	225	260	490	*	8,395	Humanities
12,960	10,395	7,805	3,660	7,640	100	68,200	Information Technology & Information
410	340	245	35	10	15	1,690	Logistics/Distribution/Transport/Driving
800	440	240	55	40	5	2,750	Manufacturing/Production Work
4,580	2,220	1,305	580	865	30	38,290	Media/Communication/Publishing
*	10	*	0	0	*	65	Oil/Mining/Plastics/Chemicals
415	260	255	145	360	40	7,610	Performing Arts
1,450	655	390	45	20	10	5,500	Sales, Marketing and Retailing
5,590	2,115	745	80	50	10	46,230	Sciences & Mathematics
480	205	95	15	5	*	2,045	Services to Industry & Commerce
780	285	130	20	40	25	6,670	Social Sciences
295	120	60	15	10	5	9,600	Sports, Games and Recreation
4,805	2,105	990	220	225	35	44,145	Not specified
111,140	57,350	33,680	12,095	17,990	950	668,770	Total

Source: LLWR (Lifelong Learning Wales Record) post-16 database

Table F4.2a Numbers of learning activities at FE institutions by Sector Subject Area and region of domicile 2010/11 (a-e)

Sector Subject Area	Region of domicile					
	North Wales		Mid Wales		South West Wales	
	Number	Percentage	Number	Percentage	Number	Percentage
Health, Public Services and Care	20,245	11	3,525	12	11,745	8
Science and Mathematics	4,000	2	720	2	5,915	4
Agriculture, Horticulture and Animal Care	3,780	2	1,385	5	1,320	1
Engineering and Manufacturing Technologies	9,140	5	1,285	4	7,175	5
Construction, Planning and the Built Environment	6,950	4	885	3	5,035	4
Information and Communication Technology	15,800	9	2,205	7	13,285	9
Retail and Commercial Enterprise	10,905	6	2,095	7	5,695	4
Leisure, Travel and Tourism	4,020	2	860	3	2,890	2
Arts, Media and Publishing	9,400	5	1,595	5	8,665	6
History, Philosophy and Theology	1,135	1	360	1	1,255	1
Social Sciences	900	0	210	1	1,590	1
Languages, Literature and Culture	5,515	3	1,235	4	5,040	4
Education and Training	13,130	7	960	3	2,415	2
Preparation for Life and Work	69,855	38	11,090	37	59,250	42
Business, Administration and Law	10,420	6	1,375	5	9,550	7
Unknown	1,015	.	45	.	590	.
Total	186,205		29,835		141,415	

(a) Sector Subject Areas are derived from the LearnDirect Classification System.

(b) Sector Subject Areas are the QCA defined learning areas with some amendments to be consistent with Estyn statistics.

(c) Region of domicile is based on the home postcode of the learner.

(d) 'Other' category consists of learners domiciled outside of Wales and missing postcode information.

(e) Percentages are calculated as a proportion of the total excluding subject sector area Not Known.

Table F4.2a (Continued) Numbers of learning activities at FE institutions by Sector Subject Area and region of domicile 2010/11 (a-e)

Region of domicile						Sector Subject Area
South East Wales		Other		Total		
Number	Percentage	Number	Percentage	Number	Percentage	
20,835	7	1,560	9	57,905	9	Health, Public Services and Care
8,950	3	415	3	20,000	3	Science and Mathematics
3,310	1	610	4	10,410	2	Agriculture, Horticulture and Animal Care
10,995	4	1,430	9	30,025	5	Engineering and Manufacturing Technologies
8,755	3	590	4	22,215	3	Construction, Planning and the Built Environment
33,995	12	1,150	7	66,435	10	Information and Communication Technology
13,550	5	695	4	32,935	5	Retail and Commercial Enterprise
5,900	2	250	2	13,920	2	Leisure, Travel and Tourism
15,390	5	1,015	6	36,065	5	Arts, Media and Publishing
3,645	1	95	1	6,495	1	History, Philosophy and Theology
2,055	1	95	1	4,855	1	Social Sciences
16,215	6	795	5	28,800	4	Languages, Literature and Culture
4,245	1	685	4	21,435	3	Education and Training
130,030	44	6,070	36	276,290	41	Preparation for Life and Work
16,160	5	1,190	7	38,695	6	Business, Administration and Law
475	.	175	.	2,300	.	Unknown
294,505		16,815		668,770		Total

Source: LLWR (Lifelong Learning Wales Record) post-16 database

Table F4.2b Learning activity completion rates at FE institutions by Sector Subject Area 2010/11 (a-f)

Sector Subject Area	Long activities		Short activities		All lengths	
	Completed Learning Activities	per cent (d)	Completed Learning Activities	per cent (d)	Completed Learning Activities	per cent (d)
1: Health, Public Services and Care	16,970	85	20,570	98	38,785	92
2: Science and Mathematics	12,880	85	1,475	92	14,385	86
3: Agriculture, Horticulture and Animal Care	4,685	91	2,725	98	7,415	93
4: Engineering and Manufacturing Technologies	11,230	89	3,685	99	15,100	91
5: Construction, Planning and the Built Environment	9,690	89	2,345	99	12,040	91
6: Information and Communication Technology	16,835	91	14,715	94	51,110	92
7: Retail and Commercial Enterprise	18,345	91	3,905	95	22,320	92
7(a): Retailing and Customer Service	1,360	90	465	99	1,860	92
7(b): Hair and Beauty	6,575	86	875	90	7,450	87
7(c): Hospitality and Catering	10,410	95	2,565	96	13,010	95
8: Leisure, Travel and Tourism	7,795	89	1,905	97	10,020	90
9: Arts, Media and Publishing	18,020	87	8,720	95	26,795	90
9(a): Performing Arts	4,430	87	1,070	95	5,500	89
9(b): Art and Design	13,585	88	7,650	95	21,290	90
10: History, Philosophy and Theology	3,930	89	1,070	94	5,020	90
11: Social Sciences	3,200	88	490	95	3,685	89
12: Languages, Literature and Culture	12,110	88	4,775	92	18,780	88
13: Education and Training	6,545	92	3,905	96	10,620	93
14: Preparation for Life and Work	139,515	89	36,550	96	183,980	90
14(a): Independent Living Skills	2,700	92	1,005	97	3,855	93
14(b): Adult Basic Education	12,370	93	9,075	94	26,715	93
14(c): Foundation for Work	119,400	88	20,235	97	142,020	89
14(d): English for Speakers of Other Languages	5,045	87	6,230	94	11,390	91
15: Business, Administration and Law	14,595	89	8,640	98	26,460	92
Total	297,285	89	116,245	96	448,870	90

Source: Lifelong Learning Wales Record (LLWR)

- (a) Sector Subject Areas are derived from the LearnDirect Classification System.
- (b) Sector Subject Areas are the QCA defined learning areas with some amendments to be consistent with Estyn statistics.
- (c) Based on the Welsh Government bulletin 'National Comparators for Further Education and Work-based Learning 2009/10'.
- (d) Expressed as a percentage of learning activities completed or withdrawn (i.e. excluding continuing activities).
- (e) Activities with unspecified sector subject areas are included in the total but not identified separately.
- (f) Absolute numbers are rounded to the nearest 5 and there may be slight discrepancies between the sums of constituent items and the independently rounded totals.

Table F4.2c Learning activity attainment rates at FE institutions by Sector Subject Area 2010/11 (a-f)

Sector Subject Area	Long activities		Short activities		All lengths	
	Attained Learning Activities	per cent (d)	Attained Learning Activities	per cent (d)	Attained Learning Activities	per cent (d)
1: Health, Public Services and Care	14,235	90	16,850	95	31,180	93
2: Science and Mathematics	10,795	85	1,195	91	12,000	86
3: Agriculture, Horticulture and Animal Care	3,750	90	2,290	93	6,045	91
4: Engineering and Manufacturing Technologies	9,665	88	2,185	89	11,900	88
5: Construction, Planning and the Built Environment	8,265	89	1,850	92	10,115	89
6: Information and Communication Technology	11,755	87	11,170	92	25,780	89
7: Retail and Commercial Enterprise	16,750	93	2,895	92	19,655	93
7(a): Retailing and Customer Service	1,260	93	250	93	1,505	93
7(b): Hair and Beauty	5,920	92	590	90	6,515	92
7(c): Hospitality and Catering	9,570	94	2,055	93	11,635	93
8: Leisure, Travel and Tourism	7,055	92	1,555	97	8,615	93
9: Arts, Media and Publishing	15,780	92	7,085	93	22,880	92
9(a): Performing Arts	3,805	90	780	95	4,580	91
9(b): Art and Design	11,980	92	6,310	93	18,300	93
10: History, Philosophy and Theology	3,430	92	505	88	3,935	92
11: Social Sciences	2,820	90	235	95	3,050	90
12: Languages, Literature and Culture	9,885	91	3,875	92	13,905	91
13: Education and Training	5,200	88	2,860	94	8,080	90
14: Preparation for Life and Work	109,530	89	28,030	92	139,205	90
14(a): Independent Living Skills	1,285	91	650	86	1,935	89
14(b): Adult Basic Education	6,770	92	5,480	88	13,535	91
14(c): Foundation for Work	97,655	89	17,275	95	115,295	90
14(d): English for Speakers of Other Languages	3,815	88	4,625	88	8,440	88
15: Business, Administration and Law	10,805	84	4,700	90	15,635	86
Total	240,080	89	87,780	93	332,855	90

Source: Lifelong Learning Wales Record (LLWR)

- (a) Sector Subject Areas are derived from the LearnDirect Classification System.
- (b) Sector Subject Areas are the QCA defined learning areas with some amendments to be consistent with Estyn statistics.
- (c) Based on the Welsh Government bulletin 'National Comparators for Further Education and Work-based Learning 2009/10'.
- (d) Expressed as a percentage of completed assessable learning activities.
- (e) Activities with unspecified sector subject areas are included in the total but not identified separately.
- (f) Absolute numbers are rounded to the nearest 5 and there may be slight discrepancies between the sums of constituent items and the independently rounded totals.

Table F4.3 Numbers of learning activities at FE institutions by subject and credit level 2010/11 (a-d)

Subject	Credit Level				
	Pre entry Level	Entry Level	NQF Level 1 or equivalent	NQF Level 2 or equivalent	NQF Level 3 or equivalent
Agriculture, Horticulture and Animal Care	0	1,035	1,480	4,135	1,675
Arts and Crafts	*	1,605	5,540	3,960	5,890
Business/Management/Office Studies	10	1,440	4,675	9,320	9,970
Care/Personal Development(incl Basic Skills)	980	26,460	51,960	55,975	32,050
Catering/Food/Leisure Services/Tourism	0	1,310	4,735	13,435	1,970
Construction & Property (Built Environment)	0	460	8,835	8,485	2,400
Cultural Studies/Languages/Literature	615	14,145	9,165	6,535	4,675
Education/Training/Teaching	75	685	5,680	8,295	8,355
Engineering	0	470	4,000	8,910	6,680
Environment Protection/Energy/Cleansing/Security	0	130	1,010	1,060	725
Health Care/Medicine/Health & Safety	0	495	11,775	15,815	15,040
Humanities	0	200	1,070	855	5,330
Information Technology & Information	55	4,385	29,550	19,240	5,615
Logistics/Distribution/Transport/Driving	0	0	280	1,110	45
Manufacturing/Production Work	0	215	425	1,320	675
Media/Communication/Publishing	0	460	10,585	19,330	7,335
Oil/Mining/Plastics/Chemicals	0	0	15	0	30
Performing Arts	0	665	925	1,345	4,315
Sales, Marketing and Retailing	15	235	1,285	2,885	815
Sciences & Mathematics	0	100	13,120	21,595	11,300
Services to Industry & Commerce	0	0	100	415	1,495
Social Sciences	0	40	370	790	5,005
Sports, Games and Recreation	*	685	2,955	3,020	2,785
Not specified	5	8,645	13,455	13,700	6,730
Total	1,770	63,865	182,985	221,530	140,920

(a) Includes work-based learning (WBL) subsidiaries of FE institutions.

(b) Local authority community learning has been included where there is a formal enrolment with an FE institution.

(c) Subjects are derived from the first letter of the LearnDirect Classification System (LDCS) codes.

(d) Numbers greater than 0 and less than 5 have been replaced by *. Other figures are rounded to the nearest 5 and there may be slight discrepancies between the sums of constituent items and the independently rounded totals.

Table F4.3 (Continued) Numbers of learning activities at FE institutions by subject and credit level 2010/11 (a-d)

Credit Level				<i>Number</i>
HE Level/ NQF Level 4 or above	Mixed Levels	Not known/ Not Applicable	Total	Subject
15	0	605	8,945	Agriculture, Horticulture and Animal Care
1,140	0	800	18,940	Arts and Crafts
2,085	0	2,400	29,905	Business/Management/Office Studies
*	65	14,115	181,605	Care/Personal Development(incl Basic Skills)
50	0	465	21,970	Catering/Food/Leisure Services/Tourism
115	0	1,015	21,315	Construction & Property (Built Environment)
0	0	3,615	38,755	Cultural Studies/Languages/Literature
7,855	0	500	31,445	Education/Training/Teaching
470	0	820	21,350	Engineering
*	0	60	2,985	Environment Protection/Energy/Cleansing/Security
735	0	6,505	50,370	Health Care/Medicine/Health & Safety
160	0	775	8,395	Humanities
415	0	8,935	68,200	Information Technology & Information
0	0	255	1,690	Logistics/Distribution/Transport/Driving
0	0	115	2,750	Manufacturing/Production Work
295	0	285	38,290	Media/Communication/Publishing
0	0	20	65	Oil/Mining/Plastics/Chemicals
*	0	360	7,610	Performing Arts
150	0	115	5,500	Sales, Marketing and Retailing
60	0	60	46,230	Sciences & Mathematics
0	0	30	2,045	Services to Industry & Commerce
15	0	455	6,670	Social Sciences
50	0	105	9,600	Sports, Games and Recreation
350	0	1,255	44,145	Not specified
13,960	65	43,675	668,770	Total

Source: LLWR (Lifelong Learning Wales Record) post-16 database

Table F4.4 Numbers of learning activities at FE institutions by subject and Welsh medium status of learning delivery 2010/11 (a-d)

Subject	Welsh Medium Status			Number
	Welsh	Bilingual	English	Total
Agriculture, Horticulture and Animal Care	310	490	8,145	8,945
Arts and Crafts	200	1,115	17,625	18,940
Business/Management/Office Studies	240	1,060	28,605	29,905
Care/Personal Development(incl Basic Skills)	1,100	5,735	174,770	181,605
Catering/Food/Leisure Services/Tourism	660	1,220	20,090	21,970
Construction & Property (Built Environment)	90	1,750	19,475	21,315
Cultural Studies/Languages/Literature	760	315	37,675	38,755
Education/Training/Teaching	130	1,395	29,920	31,445
Engineering	5	1,155	20,190	21,350
Environment Protection/Energy/Cleansing/Security	50	90	2,850	2,985
Health Care/Medicine/Health & Safety	430	2,685	47,250	50,370
Humanities	135	245	8,015	8,395
Information Technology & Information	255	1,435	66,510	68,200
Logistics/Distribution/Transport/Driving	0	5	1,685	1,690
Manufacturing/Production Work	15	135	2,600	2,750
Media/Communication/Publishing	115	1,130	37,050	38,290
Oil/Mining/Plastics/Chemicals	0	0	65	65
Performing Arts	110	440	7,055	7,610
Sales, Marketing and Retailing	240	120	5,145	5,500
Sciences & Mathematics	340	1,770	44,120	46,230
Services to Industry & Commerce	10	75	1,960	2,045
Social Sciences	0	145	6,525	6,670
Sports, Games and Recreation	35	995	8,570	9,600
Not specified	765	1,895	41,485	44,145
Total	6,000	25,405	637,370	668,770

Source: LLWR (Lifelong Learning Wales Record) post-16 database

- (a) Includes work-based learning (WBL) subsidiaries of FE institutions.
- (b) Local authority community learning has been included where there is a formal enrolment with an FE institution.
- (c) Subjects are derived from the first letter of the LearnDirect Classification System (LDCS) codes.
- (d) Numbers greater than 0 and less than 5 have been replaced by *. Other figures are rounded to the nearest 5 and there may be slight discrepancies between the sums of constituent items and the independently rounded totals.

Table F4.5 Numbers of learning activities at FE institutions by qualification type, age band and sex 2010/11 (a-d)

	<i>Numbers</i>		
	Male	Female	Total
Aged 18 and under:			
A Level / A2	3,690	5,100	8,790
AS Level	7,265	9,905	17,170
Access Certificate/Diploma	25	105	130
First Certificate	220	200	420
First Certificate/Diploma Units	185	120	305
First Diploma	335	635	970
GCSE/VCE	2,305	2,590	4,890
HE (excluding NVQs)	170	300	470
Key Skills & ESW	52,580	47,385	99,965
NVQ	6,175	4,430	10,605
National Certificate	580	585	1,165
National Certificate/Diploma Units	1,525	1,110	2,630
National Diploma	2,135	2,870	5,005
OCN credit(s)	25,940	26,840	52,775
QCF	18,305	16,915	35,220
Other	44,745	37,165	81,910
Aged 18 and under	166,175	156,250	322,425
Aged 19 and over:			
A Level / A2	700	770	1,470
AS Level	1,030	1,180	2,210
Access Certificate/Diploma	640	2,265	2,910
First Certificate	25	40	65
First Certificate/Diploma Units	20	55	75
First Diploma	25	130	155
GCSE/VCE	1,275	2,135	3,410
HE (excluding NVQs)	4,240	4,885	9,125
Key Skills & ESW	19,505	23,395	42,900
NVQ	14,000	16,200	30,200
National Certificate	400	230	630
National Certificate/Diploma Units	455	190	640
National Diploma	780	595	1,375
OCN credit(s)	35,070	62,685	97,755
QCF	13,935	22,615	36,550
Other	53,620	63,255	116,875
Aged 19 and over	145,725	200,620	346,345
All ages:			
A Level / A2	4,390	5,870	10,260
AS Level	8,295	11,085	19,375
Access Certificate/Diploma	665	2,375	3,040
First Certificate	245	245	485
First Certificate/Diploma Units	205	175	380
First Diploma	360	765	1,125
GCSE/VCE	3,580	4,725	8,305
HE (excluding NVQs)	4,415	5,185	9,600
Key Skills & ESW	72,085	70,780	142,865
NVQ	20,175	20,630	40,805
National Certificate	980	815	1,795
National Certificate/Diploma Units	1,975	1,295	3,270
National Diploma	2,915	3,465	6,380
OCN credit(s)	61,010	89,525	150,535
QCF	32,240	39,530	71,770
Other	98,365	100,420	198,785
Total	311,900	356,870	668,770

Source: LLWR (Lifelong Learning Wales Record) post-16 database

- (a) Includes work-based learning (WBL) subsidiaries of FE institutions.
 (b) Local authority community learning has been included where there is a formal enrolment with an FE institution.
 (c) Age is as at 31 August 2010.
 (d) Numbers greater than 0 and less than 5 have been replaced by *. Other figures are rounded to the nearest 5 and there may be slight discrepancies between the sums of constituent items and the independently rounded totals.

Table F4.6a Numbers of awards attained by learners enrolled at FE institutions by qualification type and age band 2010/11 (a-f)

Qualification type	Numbers		
	18 and Under	19 and Over	Total
A Level / A2	5,405	1,885	7,290
AS Level	9,590	1,930	11,520
Access Certificate/Diploma	85	1,740	1,825
First Certificate	255	90	345
First Certificate/Diploma Units	245	90	335
First Diploma	835	125	965
GCSE/VCE	2,280	2,265	4,545
Key Skills	34,460	16,080	50,540
NVQ	3,435	13,355	16,790
National Certificate	670	580	1,250
National Certificate/Diploma Units	1,240	635	1,880
National Diploma	2,925	1,115	4,040
OCN credit(s)	41,950	87,800	129,755
Not specified	140	1,940	2,080
Other	63,285	74,900	138,190
Total	166,795	204,530	371,330

Source: LLWR (Lifelong Learning Wales Record) post-16 database

- (a) Awards numbers are for those attained during 2009/10 but some may be associated with learning activities which took place in the previous academic year
- (b) Includes work-based learning (WBL) subsidiaries of FE institutions.
- (c) Local authority community learning has been included where there is a formal enrolment with an FE institution.
- (d) Attained awards are those where the result of the award is achieving a pass or higher within the academic year
- (e) Age is as at 31 August 2010.
- (f) Numbers greater than 0 and less than 5 have been replaced by *. Other figures are rounded to the nearest 5 and there may be slight discrepancies between the sums of constituent items and the independently rounded totals.

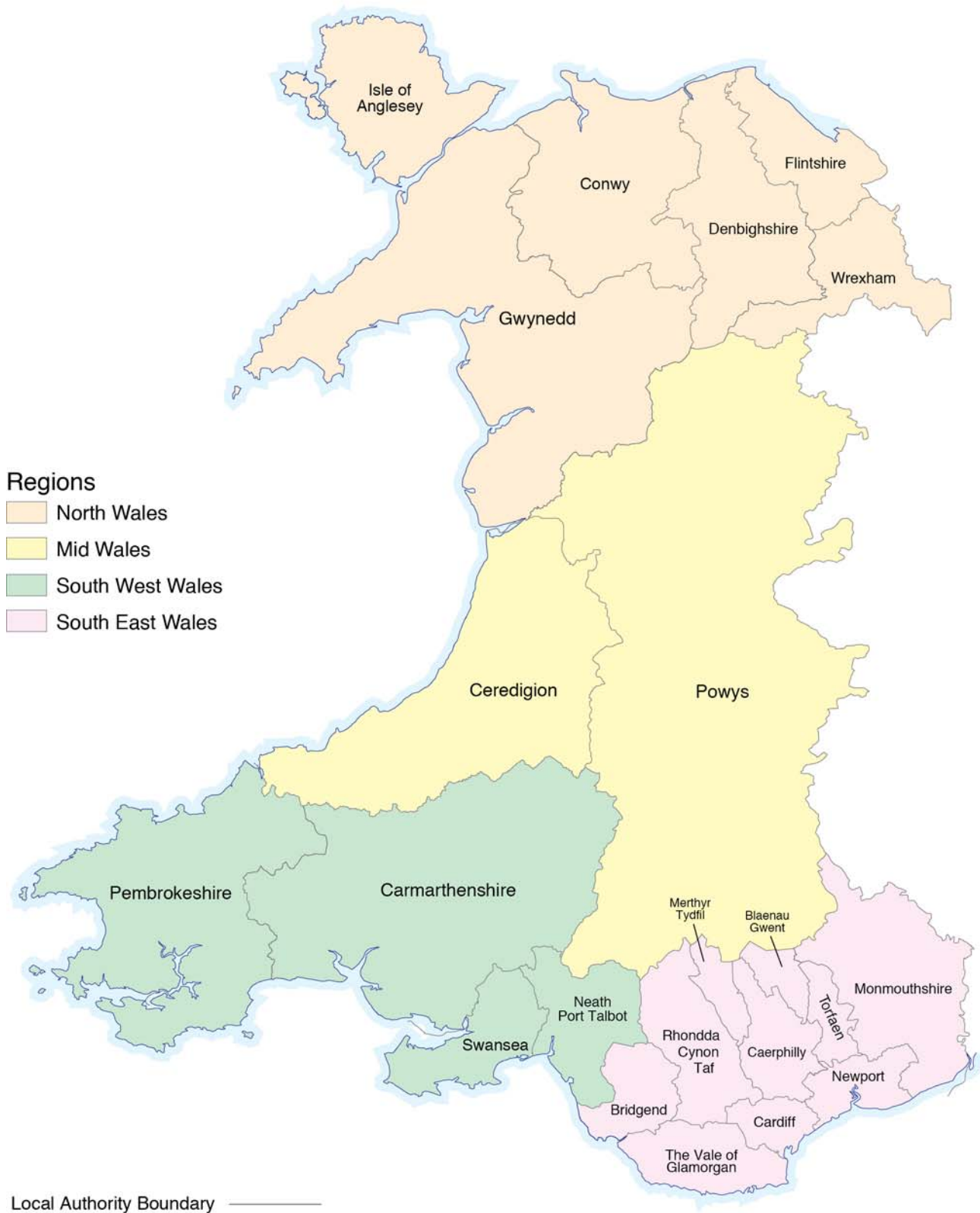
Table F4.6b Numbers of learners attaining awards at FE institutions by qualification type and age band 2010/11 (a-f)

Qualification type	Numbers		
	18 and Under	19 and Over	Total
A Level / A2	2,345	1,160	3,510
AS Level	4,125	1,315	5,440
Access Certificate/Diploma	65	1,455	1,525
First Certificate	245	85	330
First Certificate/Diploma Units	145	45	190
First Diploma	820	125	945
GCSE/VCE	1,820	1,855	3,675
Key Skills	15,390	7,755	23,145
NVQ	3,025	12,400	15,425
National Certificate	650	555	1,200
National Certificate/Diploma Units	625	280	905
National Diploma	2,895	1,105	4,005
OCN credit(s)	19,220	40,895	60,115
Not specified	25	575	595
Other	28,705	49,825	78,530
Total (including multiple counting between qualification types)	80,105	119,435	199,540
Total distinct learners gaining awards in academic year	44,545	96,980	141,525

Source: LLWR (Lifelong Learning Wales Record) post-16 database

- (a) Includes work-based learning (WBL) subsidiaries of FE institutions.
- (b) Local authority community learning has been included where there is a formal enrolment with an FE institution.
- (c) Attained awards are those where the result of the award is achieving a pass or higher within the academic year
- (d) Learner counts are on a unique learner basis. However the first total row includes multiple counting between qualification type rows whereas the second total row does not.
- (e) Age is as at 31 August 2010.
- (f) Numbers greater than 0 and less than 5 have been replaced by *. Other figures are rounded to the nearest 5 and there may be slight discrepancies between the sums of constituent items and the independently rounded totals.

SECTION B LOCAL AUTHORITY COMMUNITY LEARNING IN WALES



Local Authority Community Learning Summary

- 38,440 learners undertook a Local Authority Community Learning (LA CL) activity in 2010/11, 2.9 per cent fewer than in 2009/10.
- 24,525 learners were in-learning during the week of 1 December 2010.
- 12 per cent of learners in the full year were under the age of 25 (10 per cent in 2009/10).
- 58 per cent of learners were aged between 25 and 59, as for the previous year.
- 30 per cent of learners were aged 60 and over (32 per cent in 2009/10).
- 71 per cent of learners were female, as in 2009/10.
- 68,285 learning activities were undertaken in 2010/11, 31 per cent lower than in 2009/10 offsetting a similar increase between 2008/09 and 2009/10.
- The most popular subject areas for learning activities were Information Technology (20 per cent), Care/Personal Development [including Basic Skills](19 per cent), Cultural Studies/Languages/Literature (17 per cent, down from 40 per cent the previous year owing to a temporary increase in the number of short literacy skill learning activities in 2009/10) and Arts and Crafts (17 per cent).

Note: all percentages are as a proportion of the total for which data were available

Learners

Sixteen of the twenty-two Lifelong Learning or equivalent departments at local authorities in Wales, directly or indirectly (excluding 'assisted' provision not returned via the LLWR), delivered community learning in 2010/11 within their authority. In total 38,440 learners were undertaking a local authority community learning programme. Some learners undertook community learning with more than one provider resulting in a total of 40,235 provider learner enrolments.

In 2010/11 there were three main ways that a learner could be engaged in a local authority community learning programme. They could have been:

- receiving community learning by local authority employed staff and enrolled at the local authority (maintained provision);
- receiving community learning by local authority employed staff but enrolled for the learning at an FE institution (contracted-in from FE institutions provision);
- receiving community learning by a third party but enrolled for the learning at the local authority (contracted-out from local authority provision).

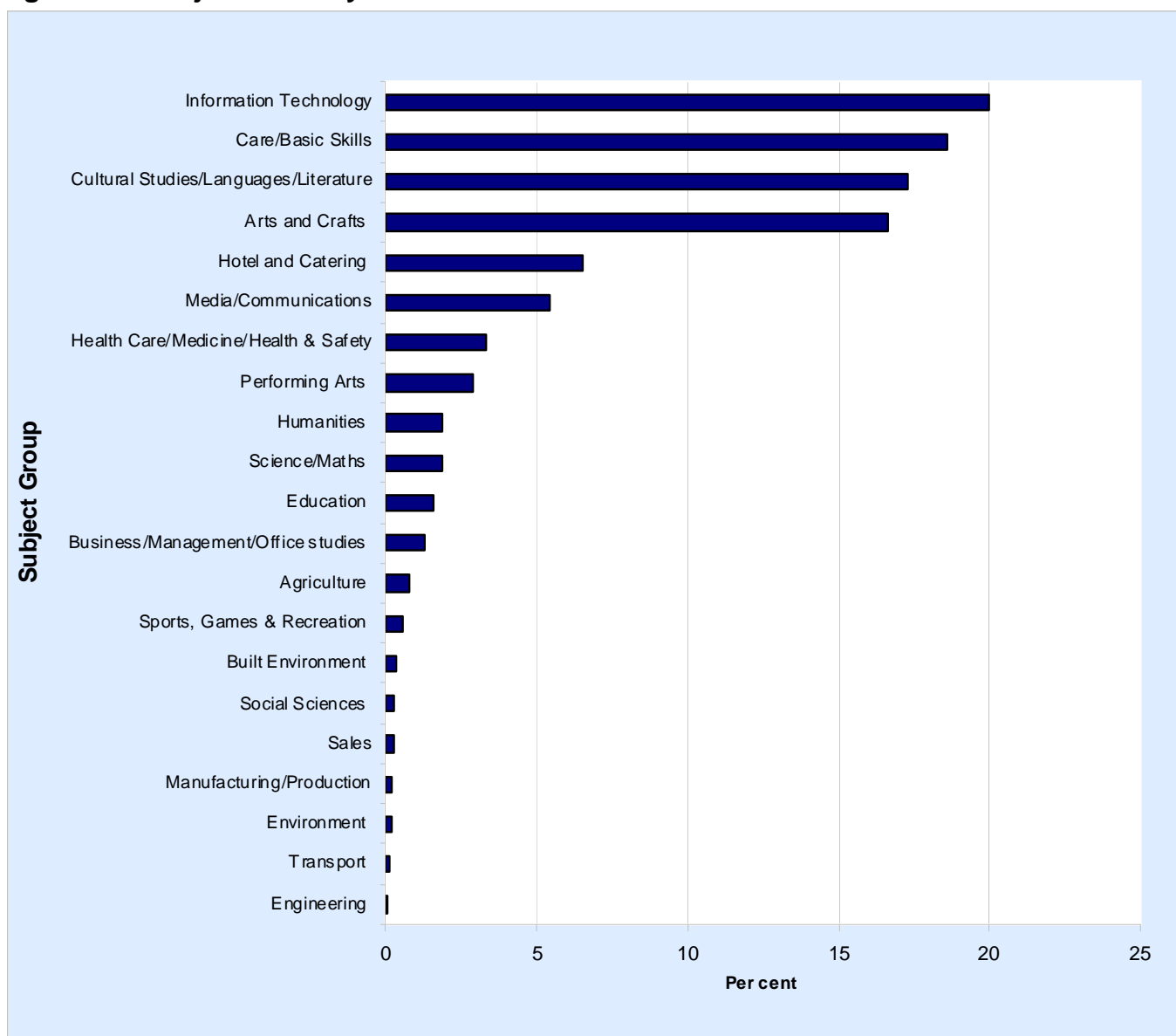
In 2010/11, only two local authorities contracted out community learning provision to a third party organisation. This category accounted for 0.6 per cent of LA CL provision (having been just under 2 per cent in 2003/04). Around 54 per cent of learners pursued maintained provision and the remaining 45 per cent undertook provision contracted-in from FE institutions (down from 61 per cent in 2003/04).

Learning Activities

The 38,440 learners were undertaking 68,285 learning activities during 2010/11. These learning activities were in a number of different subject areas, with the largest numbers in:

- Information Technology (20 per cent)
- Care/Personal Development (including Basic Skills) (19 per cent)
- Cultural Studies/Languages/Literature (17 per cent)
- Arts & Crafts (17 per cent)

Figure L1: Subject of Study 2010/11



Trends in Learning

The first edition of this volume, produced by ELWa, covering 2003/04 reported the number of learners in the week of 1 December 2003 undertaking Local Authority Community Learning maintained provision to be 16,130 and the number pursuing contracted-in provision to be 25,830. The learner numbers in this edition for the week of 1 December 2010 show a 13 per cent decline for maintained provision since December 2003 and a 58 per cent decrease in learners on contracted-in provision (including a fairly large component resulting from the transfer of Welsh for Adults learners to HEI-based centres between 2006/07 and 2007/08 when contracted-in provision fell by almost 21 per cent, partly as a result of these transfers). Note that the contracted-in learners also appear in the counts for FE institutions – see Further Education section.

In the full year, local authority community learning underwent a decline in total learners of around 3 per cent between 2009/10 and 2010/11, maintained provision falling by 5.5 per cent but the contracted-in provision total was practically unchanged between the two years.

The Cultural Studies/Languages/Literature proportion of 17 per cent was down from 40 per cent in 2009/10 which, because of the very large numbers of short course modules, noted in the previous volume, in English for Students of Other Languages (ESOL) contracted-in from an FE institution was itself up from 21 per cent in 2008/09.

Table L1.1 Numbers of learners in Local Authority Community Learning by unitary authority and provision type 2010/11 (a-f)

Numbers

Unitary Authority	Maintained Provision		Contracted-out from local authorities		Contracted-in from FE institutions		Total		
	All	Enrolled 1 Dec	All	Enrolled 1 Dec	All	Enrolled 1 Dec	All	Enrolled 1 Dec	
	Isle of Anglesey	0	0	0	0	0	0	0	0
Gwynedd	0	0	0	0	0	0	0	0	
Conwy	0	0	0	0	0	0	0	0	
Denbighshire	0	0	0	0	0	0	0	0	
Flintshire	0	0	0	0	0	0	0	0	
Wrexham	0	0	0	0	0	0	0	0	
Powys	810	395	0	0	0	0	810	395	
Ceredigion	510	380	0	0	0	0	510	380	
Pembrokeshire	3,360	2,340	0	0	0	0	3,360	2,340	
Carmarthenshire	510	425	0	0	945	680	1,455	1,105	
Swansea	1,860	1,340	0	0	*	*	1,860	1,345	
Neath Port Talbot	280	120	0	0	1,415	1,210	1,695	1,325	
Bridgend	730	355	0	0	1,300	300	2,025	655	
The Vale of Glamorgan	3,120	2,340	0	0	270	165	3,390	2,505	
Rhondda Cynon Taff	1,110	855	0	0	1,755	655	2,865	1,510	
Merthyr Tydfil	525	50	30	25	0	0	550	75	
Caerphilly	1,150	670	0	0	1,345	785	2,495	1,455	
Blaenau Gwent	0	0	0	0	1,465	1,085	1,465	1,085	
Torfaen	1,435	455	0	0	2,120	1,500	3,550	1,950	
Monmouthshire	0	0	0	0	1,620	990	1,620	990	
Newport	175	40	0	0	3,035	2,010	3,215	2,045	
Cardiff	6,275	4,245	235	105	2,865	1,505	9,375	5,850	
Total (including any multiple-counting between providers)	21,840	14,010	260	130	18,130	10,880	40,235	25,020	
							Total unique learners	38,440	24,525

Source: LLWR (Lifelong Learning Wales Record) post-16 database

- (a) Individual row counts are based on providers' own learner identifiers and their total includes some multiple-counting between providers.
- (b) The total unique learners row removes multiple-counting between providers by counting unique learner identifiers (ULIs).
- (c) 'Enrolled 1 Dec' is the population during the week of 1 December 2010; 'All' refers to the complete academic year.
- (d) Contracted-in learning also contributes towards figures in the FE institution tables, in particular the third party column of Table F1.5.
- (e) Excludes 'assisted' provision (e.g. a significant component of North Wales provision) not present on the LLWR.
- (f) Numbers greater than 0 and less than 5 have been replaced by *. Other figures are rounded to the nearest 5 and there may be slight discrepancies between the sums of constituent items and the independently rounded totals.

Table L1.2a Numbers of learners in Local Authority Community Learning by age group and sex 2010/11 (a-d)

Age Group	Numbers					
	Full academic year			Week of 1 December		
	Male	Female	Total	Male	Female	Total
Under 16	40	60	100	15	20	35
16	125	220	345	75	140	215
17	110	200	310	50	100	155
18	205	235	440	65	95	155
19	200	275	475	70	135	205
20-24	930	1,835	2,765	385	975	1,365
25-39	2,510	7,150	9,660	1,345	4,075	5,420
40-49	1,705	4,700	6,405	1,070	3,020	4,090
50-59	1,850	4,250	6,100	1,215	2,905	4,120
60-64	1,210	3,035	4,245	865	2,295	3,160
65+	2,345	5,035	7,380	1,675	3,840	5,515
Not Specified	70	145	215	25	65	90
Total	11,300	27,140	38,440	6,850	17,675	24,525

Source: LLWR (Lifelong Learning Wales Record) post-16 database

- (a) Counts are based on unique learner identifiers (ULIs) to remove multiple-counting between providers.
 (b) Includes local authority maintained and contracted-out provision and also contracted-in provision from FE institutions.
 (c) Age is as at 31 August 2010.
 (d) Numbers greater than 0 and less than 5 have been replaced by *. Other figures are rounded to the nearest 5 and there may be slight discrepancies between the sums of constituent items and the independently rounded totals.

Table L1.2b Numbers of learners in Local Authority Community Learning by age group and sex - excluding contracted-in from FE 2010/11 (a-e)

Age Group	Numbers					
	Full academic year			Week of 1 December		
	Male	Female	Total	Male	Female	Total
Under 16	20	40	60	10	10	20
16	50	80	130	25	40	60
17	45	100	145	15	50	65
18	75	100	175	20	45	65
19	65	105	165	15	55	65
20-24	330	790	1,120	125	430	550
25-39	990	3,360	4,350	480	1,830	2,310
40-49	825	2,490	3,315	515	1,610	2,120
50-59	1,005	2,565	3,570	675	1,770	2,445
60-64	720	2,125	2,845	525	1,620	2,140
65+	1,535	3,675	5,210	1,105	2,845	3,950
Not Specified	55	125	175	20	60	80
Total	5,720	15,545	21,265	3,520	10,355	13,875

Source: LLWR (Lifelong Learning Wales Record) post-16 database

- (a) Counts are based on unique learner identifiers (ULIs) to remove multiple-counting between providers.
 (b) Includes maintained and contracted-out provision but excludes contracted-in provision from FE institutions.
 (c) In the event of a learner having both contracted-in and maintained (and/or contracted-out) learning activities, the assignment of the learner is made on the basis of the most recent learning programme and in accordance with the allocation method of Table L1.1.
 (d) Age is as at 31 August 2010.
 (e) Numbers greater than 0 and less than 5 have been replaced by *. Other figures are rounded to the nearest 5 and there may be slight discrepancies between the sums of constituent items and the independently rounded totals.

Table L2.1 Numbers of Local Authority Community Learning activities by unitary authority and provision type 2010/11 (a-d)

Unitary Authority	<i>Numbers</i>							
	Maintained Provision		Contracted-out from local authorities		Contracted-in from FE institutions		Total	
	All	Enrolled 1 Dec	All	Enrolled 1 Dec	All	Enrolled 1 Dec	All	Enrolled 1 Dec
Isle of Anglesey	0	0	0	0	0	0	0	0
Gwynedd	0	0	0	0	0	0	0	0
Conwy	0	0	0	0	0	0	0	0
Denbighshire	0	0	0	0	0	0	0	0
Flintshire	0	0	0	0	0	0	0	0
Wrexham	0	0	0	0	0	0	0	0
Powys	1,385	325	0	0	0	0	1,385	325
Ceredigion	600	410	0	0	0	0	600	410
Pembrokeshire	4,690	2,590	0	0	0	0	4,690	2,590
Carmarthenshire	605	450	0	0	1,130	760	1,740	1,210
Swansea	2,490	1,495	0	0	15	10	2,505	1,505
Neath Port Talbot	430	190	0	0	1,995	1,570	2,425	1,760
Bridgend	985	390	0	0	2,595	405	3,580	790
The Vale of Glamorgan	6,210	3,185	0	0	425	225	6,635	3,410
Rhondda Cynon Taff	2,470	1,350	0	0	5,425	1,710	7,895	3,060
Merthyr Tydfil	730	60	30	25	0	0	760	85
Caerphilly	1,775	765	0	0	3,350	1,670	5,125	2,430
Blaenau Gwent	0	0	0	0	2,105	1,375	2,105	1,375
Torfaen	1,980	510	0	0	3,825	2,130	5,805	2,635
Monmouthshire	0	0	0	0	2,665	1,430	2,665	1,430
Newport	225	50	0	0	4,895	2,535	5,120	2,585
Cardiff	9,695	5,240	310	115	5,255	1,725	15,255	7,080
Total	34,275	17,010	335	140	33,675	15,540	68,285	32,690

Source: LLWR (Lifelong Learning Wales Record) post-16 database

- (a) 'Enrolled 1 Dec' is the population during the week of 1 December 2010; 'All' refers to the complete academic year.
 (b) Contracted-in learning also contributes towards figures in the FE institution tables, in particular the third party column of Table F1.6.
 (c) Excludes 'assisted' provision (e.g. a significant component of North Wales provision) not present on the LLWR.
 (d) Numbers greater than 0 and less than 5 have been replaced by *. Other figures are rounded to the nearest 5 and there may be slight discrepancies between the sums of constituent items and the independently rounded totals.

Table L2.2 Numbers of Local Authority Community Learning activities 2010/11 by age group and sex (a-c)

Age Group	<i>Numbers</i>					
	Full academic year			Week of 1 December		
	Male	Female	Total	Male	Female	Total
Under 16	70	80	150	35	30	65
16	175	310	485	80	155	235
17	245	290	540	65	115	180
18	550	460	1,010	85	115	200
19	430	495	925	110	165	275
20-24	2,045	3,400	5,445	635	1,380	2,010
25-39	4,685	12,790	17,475	2,115	5,625	7,735
40-49	3,115	8,360	11,475	1,625	3,995	5,620
50-59	3,300	7,310	10,605	1,705	3,750	5,455
60-64	2,065	5,415	7,480	1,135	2,910	4,045
65+	3,845	8,560	12,405	2,070	4,685	6,750
Not Specified	80	195	275	25	80	105
Total	20,605	47,665	68,270	9,685	23,005	32,690

Source: LLWR (Lifelong Learning Wales Record) post-16 database

- (a) Includes local authority maintained and contracted-out provision and also contracted-in provision from FE institutions.
 (b) Age is as at 31 August 2010.
 (c) Numbers greater than 0 and less than 5 have been replaced by *. Other figures are rounded to the nearest 5 and there may be slight discrepancies between the sums of constituent items and the independently rounded totals.

Table L2.3 Numbers of Local Authority Community Learning activities by subject and age group 2010/11 (a-d)

Subject	Under 16	16	17	18	19	20 to 24
Agriculture, Horticulture and Animal Care	0	0	*	0	*	30
Arts and Crafts	15	25	50	30	30	310
Business/Management/Office Studies	0	*	*	55	30	130
Care/Personal Development(incl Basic Skills)	15	175	85	295	285	1,575
Catering/Food/Leisure Services/Tourism	10	55	65	60	75	355
Construction & Property (Built Environment)	*	0	*	*	*	35
Cultural Studies/Languages/Literature	10	75	145	145	140	810
Education/Training/Teaching	5	*	5	15	15	125
Engineering	0	0	0	0	*	*
Environment Protection/Energy/Cleansing/Security	0	0	0	0	*	15
Health Care/Medicine/Health & Safety	*	10	30	115	60	405
Humanities	*	*	*	*	5	45
Information Technology & Information	25	20	25	75	85	525
Logistics/Distribution/Transport/Driving	0	*	0	*	0	*
Manufacturing/Production Work	0	0	0	0	0	*
Media/Communication/Publishing	10	40	25	20	45	265
Performing Arts	25	5	15	10	15	90
Sales, Marketing and Retailing	0	*	*	5	5	30
Sciences & Mathematics	5	35	30	40	35	190
Social Sciences	0	*	5	40	15	70
Sports, Games and Recreation	0	0	*	*	5	15
Not specified	20	40	45	95	70	420
Total	150	485	540	1,010	925	5,450

(a) Includes local authority maintained and contracted-out provision and also contracted-in provision from FE institutions.

(b) Age is as at 31 August 2010.

(c) Subjects are derived from the first letter of the LearnDirect Classification System (LDCS) codes.

(d) Numbers greater than 0 and less than 5 have been replaced by *. Other figures are rounded to the nearest 5 and there may be slight discrepancies between the sums of constituent items and the independently rounded totals.

Table L2.3 (Continued) Numbers of Local Authority Community Learning activities by subject and age group 2010/11 (a-d)

							<i>Numbers</i>
25 to 39	40 to 49	50 to 59	60 to 64	65 plus	Age not stated	Total	Subject
100	100	105	60	100	*	505	Agriculture, Horticulture and Animal Care
1,775	1,465	1,930	1,930	3,235	35	10,825	Arts and Crafts
245	210	120	25	20	*	840	Business/Management/Office Studies
4,075	2,115	1,590	805	1,005	45	12,065	Care/Personal Development(incl Basic Skills)
1,330	910	650	345	355	20	4,240	Catering/Food/Leisure Services/Tourism
75	45	30	5	10	*	215	Construction & Property (Built Environment)
3,710	1,965	1,755	1,085	1,370	30	11,250	Cultural Studies/Languages/Literature
450	190	90	50	60	15	1,020	Education/Training/Teaching
5	*	5	10	15	0	40	Engineering
55	15	15	*	5	0	105	Environment Protection/Energy/Cleansing/Security
765	445	220	55	25	5	2,135	Health Care/Medicine/Health & Safety
115	135	235	250	425	*	1,220	Humanities
1,950	2,045	2,250	1,805	4,140	55	13,000	Information Technology & Information
5	20	15	10	10	0	65	Logistics/Distribution/Transport/Driving
15	15	40	40	25	*	140	Manufacturing/Production Work
745	585	560	465	740	15	3,520	Media/Communication/Publishing
320	335	375	250	410	10	1,860	Performing Arts
45	20	20	15	10	0	155	Sales, Marketing and Retailing
505	235	105	20	15	*	1,220	Sciences & Mathematics
25	10	10	*	*	0	180	Social Sciences
60	35	70	65	115	5	370	Sports, Games and Recreation
1,100	575	420	195	315	25	3,320	Not specified
17,475	11,475	10,610	7,485	12,410	275	68,285	Total

Source: LLWR (Lifelong Learning Wales Record) post-16 database

Table L2.4 Numbers of Local Authority Community Learning activities 2010/11 by subject and sex (a-c)

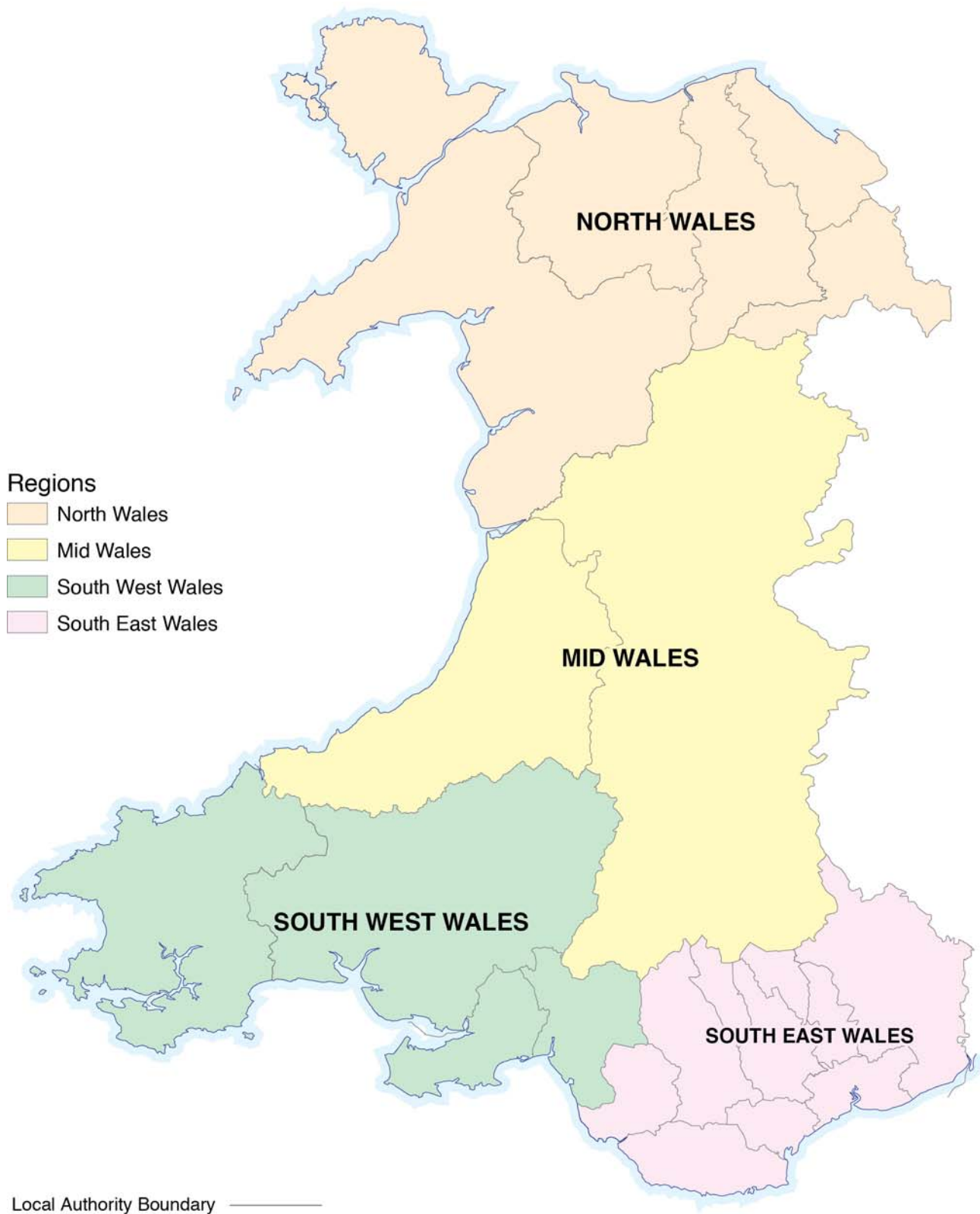
Subject	Numbers		
	Male	Female	Total
Agriculture, Horticulture and Animal Care	175	330	505
Arts and Crafts	1,900	8,925	10,825
Business/Management/Office Studies	230	610	840
Care/Personal Development(incl Basic Skills)	3,480	8,580	12,065
Catering/Food/Leisure Services/Tourism	960	3,280	4,240
Construction & Property (Built Environment)	125	90	215
Cultural Studies/Languages/Literature	4,250	7,000	11,250
Education/Training/Teaching	120	895	1,015
Engineering	35	*	40
Environment Protection/Energy/Cleansing/Security	55	55	105
Health Care/Medicine/Health & Safety	665	1,470	2,135
Humanities	410	810	1,220
Information Technology & Information	4,380	8,610	12,990
Logistics/Distribution/Transport/Driving	55	10	65
Manufacturing/Production Work	100	40	140
Media/Communication/Publishing	955	2,565	3,520
Performing Arts	780	1,080	1,860
Sales, Marketing and Retailing	75	80	155
Sciences & Mathematics	400	820	1,220
Social Sciences	115	65	180
Sports, Games and Recreation	145	225	370
Not specified	1,200	2,120	3,320
Total	20,605	47,665	68,270

Source: LLWR (Lifelong Learning Wales Record) post-16 database

- (a) Includes local authority maintained and contracted-out provision and also contracted-in provision from FE institutions.
- (b) Subjects are derived from the first letter of the LearnDirect Classification System (LDCS) codes.
- (c) Numbers greater than 0 and less than 5 have been replaced by *. Other figures are rounded to the nearest 5 and there may be slight discrepancies between the sums of constituent items and the independently rounded totals.

SECTION C

WORK-BASED LEARNING IN WALES



Work-based Learning Summary

- 57,030 learners were engaged in work-based learning (WBL) provision in 2010/11, taken as a whole, 1.0 per cent fewer than in 2009/10. 1,915 of these learners were pursuing the Pathways to Apprenticeships (PtA) scheme, an FE programme supporting WBL provision.
- Of WBL learners, 32,655 were in-learning at the end of March 2011, up 0.9 per cent on March 2010 but 16 per cent fewer than in March 2006.
- 54 per cent of learners were under the age of 25 (compared with 55 per cent in 2009/10, 50 per cent in 2007/08 but 54 per cent in 2005/06); 29 per cent were under the age of 19.
- 49 per cent of learners in 2010/11 were male, the same as in 2009/10, as compared with 47 per cent in the previous two years and 52 per cent in 2004/05.
- 3.1 per cent of learners were of a non-white ethnic origin, the same as in the previous year (but contrasting with 2.2 per cent in 2004/05).
- 2.2 per cent of learners had a disability affecting learning (as in 2009/10).
- 62 per cent of learners were on a Level 3 Apprenticeship or Foundation Apprenticeship programme, down from 70 per cent in 2008/09 and 74 per cent in 2007/08.
- 70 per cent of the learning activities taken were at a notional level of NQF (National Qualifications Framework) level 1 or 2; 14.5 per cent were at pre-entry level or entry level, 14 per cent were at level 3 and 1.6 per cent were at level 4 or above.
- 54 per cent of learning programmes finished were followed by (current or new) employment, with 62 per cent of learners leaving with employment as their destination.
- The most popular sector frameworks for MAs, FMAs and MSDs overall were Health and Social Care (18 per cent) , Management (8 per cent), Early Years' Care and Education (8 per cent) and Customer Service (8 per cent). The Management sector framework accounted for 42 per cent of Modern Skills Diploma learning programmes pursued in 2010/11.
- 210,650 learning activities were undertaken through work-based learning in 2010/11.

Note: All percentages are as a proportion of the total for which data were available.

Learners and Programmes

57,030 learners undertook work-based learning provision in 2010/11. Some learners undertook more than one training episode during the year resulting in a total of 64,980 individual learning programmes.

In 2010/11 there were five main training programme types plus an 'other' category which included e.g. Pathways to Apprenticeships and bespoke programmes. The proportions of learners in the full year pursuing each type comprised:

- | | |
|-------------------------------|-----------------|
| • Foundation Apprenticeships | (34.2 per cent) |
| • Apprenticeships (Level 3) | (28.1 per cent) |
| • Modern Skills Diploma | (3.6 per cent) |
| • Pre-apprenticeship Learning | (0.1 per cent) |
| • Skill Build | (26.4 per cent) |
| • Other | (7.6 per cent) |

Overall 64,980 work-based learning programmes were taken by learners in 2010/11 of which 39,600 were Foundation Apprenticeships, Apprenticeships or Modern Skills Diplomas. Information on the sector framework of these three programmes is given in Table T3.1 from which the sector frameworks with the largest numbers were:

- Health and Social Care (18 per cent)
- Management (8 per cent)
- Early Years Care & Education (8 per cent)
- Customer Service (8 per cent)
- Business Administration (7 per cent)
- Engineering (6 per cent)

54 per cent of (known) learning programme destinations were 'employment', primarily current employment; 18 per cent were seeking work or unemployed; 24 per cent went on to further learning (FE, including new programmes on LLWR in the same year, and HE). On a learner basis (taking only the final programme of the year) 62 per cent went into new or continued current employment, 20 per cent were seeking work or unemployed and 13 per cent went on to new learning [Tables T3.3 a/b].

Learning activities

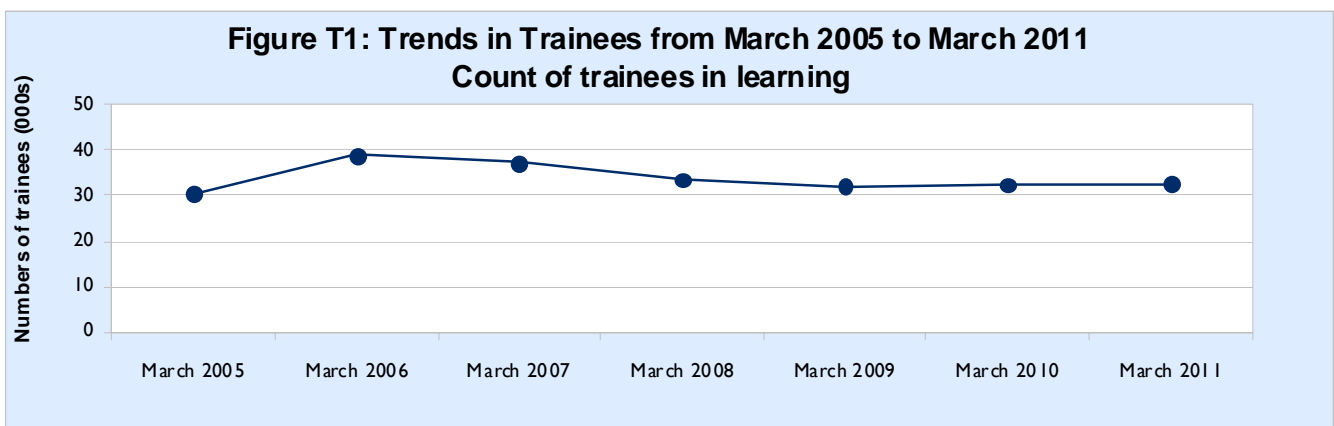
Overall 210,650 learning activities were followed by learners in work-based learning. The vast majority of these were at a level equivalent to NQF level 1, 2 or 3 [Table T3.2].

The most popular subjects being undertaken by learners in work-based learning were:

- Care/Personal Development (including Basic Skills) (29 per cent)
- Media/Communication/Publishing (13 per cent)
- Science/Mathematics (13 per cent)
- Business/Management (7 per cent)
- Health Care/Medicine/Health & Safety (7 per cent)
- Information Technology and Information (5 per cent)

Trends in work-based learning

The trend information in Table T2.1 on learner numbers continues a series published by the Welsh Government. Whereas most counts in this publication are for the full year, the count in the time series is of those in training at the end of March (and July) each year.



Within year figures at a variety of dates in 2010/11 are illustrated in Table T2.2 which also compares counts of learning programmes with those of unique learners by programme type.

Table T1.1 Work-based learning provision: Numbers of learners 2010/11 by age group, sex and programme type (a-c)(f)

	<i>Numbers</i>						
	Foundation Modern Apprenticeship	Modern Apprenticeship	Modern Skills Diploma	SkillBuild (d)	Pre-Apprenticeship Learning	Other Programmes (e)	Total
Female learners aged:							
Under 16	15	*	0	5	0	*	20
16	280	5	0	1,855	*	75	2,220
17	550	75	*	1,660	*	225	2,510
18	705	255	5	585	0	135	1,680
19	670	375	10	255	*	100	1,410
20-24	2,345	1,865	165	565	5	255	5,200
25-39	3,065	3,260	710	840	10	255	8,135
40-49	2,200	2,000	460	465	*	165	5,300
50-59	1,095	745	180	240	5	100	2,365
60-64	80	35	15	*	0	*	130
65+	10	10	*	0	0	0	25
Female learners	11,005	8,625	1,550	6,470	35	1,315	29,000
Male learners aged:							
Under 16	10	*	0	10	0	10	25
16	445	65	0	2,455	0	480	3,445
17	900	280	0	2,110	0	505	3,795
18	815	790	0	730	0	310	2,645
19	610	965	*	310	*	180	2,070
20-24	1,800	2,595	35	860	5	480	5,780
25-39	2,335	1,905	230	1,225	5	560	6,265
40-49	1,025	580	175	560	*	310	2,655
50-59	510	180	60	325	*	145	1,220
60-64	55	15	5	30	0	10	120
65+	10	*	*	0	0	*	15
Male learners	8,515	7,385	510	8,615	15	2,995	28,030
All WBL provision							
Under 16	20	*	0	15	0	10	45
16	725	70	0	4,310	*	555	5,665
17	1,450	355	*	3,770	*	730	6,305
18	1,520	1,040	5	1,310	0	445	4,325
19	1,280	1,340	10	560	*	280	3,480
20-24	4,140	4,460	205	1,425	15	735	10,980
25-39	5,400	5,165	940	2,065	15	815	14,405
40-49	3,225	2,585	635	1,030	*	475	7,955
50-59	1,600	925	240	560	10	245	3,585
60-64	130	55	20	35	0	10	250
65+	20	10	5	0	0	*	35
Total	19,520	16,010	2,060	15,085	50	4,305	57,030

Source: LLWR (Lifelong Learning Wales Record) post-16 database

(a) Counts are on a unique learner identifier (ULI) basis to eliminate multiple-counting between providers.

(b) Includes work-based learning (WBL) provision at FE institutions and at other training providers.

(c) Age is as at 31 August 2010.

(d) The 'SkillBuild' column excludes bespoke programmes.

(e) The 'Other Programmes' column includes other WBL programmes at FE institutions and all other programmes at WBL subsidiaries and other training providers; it also includes Pathways to Apprenticeships and bespoke programmes.

(f) Numbers greater than 0 and less than 5 have been replaced by *. Other figures are rounded to the nearest 5 and there may be slight discrepancies between the sums of constituent items and the independently rounded totals.

Table T1.2 Numbers of learners in work-based learning provision 2010/11 by programme and region of domicile (a)(b)(e)

Programme Type	Region of domicile					Total
	North Wales	Mid Wales	South West Wales	South East Wales	Other (d)	
Apprenticeship (Level 3)	3,535	835	3,295	7,815	530	16,010
Foundation Apprenticeship	4,920	1,215	3,985	8,860	540	19,520
Modern Skills Diploma	535	130	510	825	60	2,060
Pre-Apprenticeship Learning	15	*	0	30	0	50
Skill Build	1,770	710	3,525	8,785	295	15,085
Other Programmes (c)	995	95	695	2,340	185	4,305
Total	11,765	2,990	12,010	28,655	1,610	57,030

Source: LLWR (Lifelong Learning Wales Record) post-16 database

- (a) Includes work-based learning (WBL) provision at FE institutions and at other training providers.
 (b) Counts are on a unique learner identifier (ULI) basis to eliminate multiple-counting between providers.
 (c) The 'Other Programmes' column includes other WBL programmes at FE institutions and all other programmes at WBL subsidiaries and other training providers; it also includes Pathways to Apprenticeships and bespoke programmes.
 (d) Other' Region of domicile includes learners domiciled outside Wales and learners without a valid postcode.
 (e) Numbers greater than 0 and less than 5 have been replaced by *. Other figures are rounded to the nearest 5 and there may be slight discrepancies between the sums of constituent items and the independently rounded totals.

Table T1.3 Work-based learning provision: Numbers of enrolments on learning programmes by type and region of domicile 2010/11 (a-d)

Programme Type	Region of domicile					Total
	North Wales	Mid Wales	South West Wales	South East Wales	Other (c)	
Apprenticeship (Level 3)	3,610	855	3,400	8,015	565	16,450
Foundation Apprenticeship	5,225	1,295	4,405	9,530	575	21,035
Modern Skills Diploma	545	130	520	855	65	2,115
Pre-Apprenticeship Learning	20	*	0	40	0	65
Skill Build	2,380	865	5,005	12,075	395	20,725
Other Programmes (b)	1,085	100	755	2,450	195	4,590
Total	12,870	3,250	14,090	32,970	1,800	64,980

Source: LLWR (Lifelong Learning Wales Record) post-16 database

- (a) Includes work-based learning (WBL) provision at FE institutions and at other training providers.
 (b) The 'Other Programmes' column includes other WBL programmes at FE institutions and all other programmes at WBL subsidiaries and other training providers; it also includes Pathways to Apprenticeships and bespoke programmes.
 (c) Other' Region of domicile includes learners domiciled outside Wales and learners without a valid postcode.
 (d) Numbers greater than 0 and less than 5 have been replaced by *. Other figures are rounded to the nearest 5 and there may be slight discrepancies between the sums of constituent items and the independently rounded totals.

Table T1.4 Numbers of learners in work-based learning provision 2010/11 by ethnicity, age band and sex (a-e)

Aged 18 and under			
	<i>Numbers</i>		
Ethnicity	Male	Female	Total
Asian	85	40	125
Black	60	10	70
Mixed	100	70	170
Other	10	5	15
White	9,615	6,290	15,910
Information refused/not known	45	15	60
Total	9,915	6,430	16,345

Aged 19 and over			
Ethnicity	Male	Female	Total
Asian	285	325	610
Black	160	145	310
Mixed	140	160	300
Other	60	80	140
White	17,360	21,635	38,995
Information refused/not known	110	220	330
Total	18,115	22,565	40,685

All ages			
Ethnicity	Male	Female	Total
Asian	365	365	735
Black	220	155	380
Mixed	240	230	470
Other	70	85	155
White	26,975	27,925	54,900
Information refused/not known	155	235	390
Total	28,030	29,000	57,030

Source: LLWR (Lifelong Learning Wales Record) post-16 database

- (a) Counts are on a unique learner identifier (ULI) basis to eliminate multiple-counting between providers.
- (b) Where a learner participates in more than one learning programme over the course of the year, the most recent programme has been selected.
- (c) Includes work-based learning (WBL) provision at FE institutions and at other training providers.
- (d) Age is as at 31 August 2010.
- (e) Numbers greater than 0 and less than 5 have been replaced by *. Other figures are rounded to the nearest 5 and there may be slight discrepancies between the sums of constituent items and the independently rounded totals.

Table T1.5 Numbers of learners in work-based learning provision 2010/11 by disability status, age band and sex (a-f)

Aged 18 and under			<i>Numbers</i>
Disability Status (e)	Male	Female	Total
Disabled (affecting learning)	345	175	520
Not applicable / not disabled	9,570	6,255	15,825
Total	9,915	6,430	16,345
Aged 19 and over			
Disability Status (e)	Male	Female	Total
Disabled (affecting learning)	395	360	755
Not applicable / not disabled	17,720	22,205	39,930
Total	18,115	22,565	40,685
All ages			
Disability Status (e)	Male	Female	Total
Disabled (affecting learning)	740	535	1,275
Not applicable / not disabled	27,295	28,460	55,755
Total	28,030	29,000	57,030

Source: LLWR (Lifelong Learning Wales Record) post-16 database

- (a) Counts are on a unique learner identifier (ULI) basis to eliminate multiple-counting between providers.
- (b) Where a learner participates in more than one learning programme over the course of the year, the most recent programme has been selected.
- (c) Includes work-based learning (WBL) provision at FE institutions and at other training providers.
- (d) Age is as at 31 August 2010.
- (e) Disability status relates only to those learners who have a disability which impacts on their ability to learn and/or use facilities of a kind generally supplied by the learning provider.
- (f) Numbers greater than 0 and less than 5 have been replaced by *. Other figures are rounded to the nearest 5 and there may be slight discrepancies between the sums of constituent items and the independently rounded totals.

Table T2.1 Trends in work-based learning - numbers in training by programme type 2006/07 to 2010/11 (a-f)

	<i>Thousands</i>									
	March 2007	July 2007	March 2008	July 2008	March 2009	July 2009	March 2010	July 2010	March 2011	July 2011
Foundation Modern Apprenticeship	17.6	14.2	15.5	14.1	14.0	12.8	12.3	10.8	10.5	9.0
Modern Apprenticeship	13.1	11.3	11.9	10.8	10.9	10.2	10.7	9.8	12.1	10.5
Preparatory Learning	2.2	1.4
Skills Learning	2.4	1.5
SkillBuild	.	.	4.1	3.9	4.6	4.3	5.7	5.8	6.2	4.2
Pre-apprenticeship Learning	.	.	0.0	0.1	0.1	0.1	0.0	0.0	0.0	0.0
Modern Skills Diploma	1.9	1.5	1.4	1.2	1.3	1.1	1.2	1.2	1.3	1.1
Other Programmes (d)	0.1	1.0	0.4	1.1	1.0	1.0	2.3	1.4	2.5	0.9
All Programmes	37.3	31.0	33.4	31.1	31.9	29.6	32.4	29.0	32.7	25.6

Source: LLWR (Lifelong Learning Wales Record) post-16 database

- (a) Each individual programme row includes conversions from other programmes.
 (b) Some values in the 'All Programmes' row appear not to equal the sum of their parts owing to independent rounding.
 (c) . = not applicable.
 (d) The 'Other Programmes' row includes other WBL programmes at FE institutions and all other programmes at WBL subsidiaries and other training providers.
 (e) Counts are of distinct learners (000s).
 (f) Adjusted population removes learning activities with a very large gap between expected and actual end dates. This has a retrospective impact on years 2006/07 and 2007/08, effectively applying a data correction to these years. The approach is standard from 2008/09 onwards.

Table T2.2 Work-based learning provision: Numbers of unique learners and individual learning programmes by programme type (a-e)

	<i>Numbers (f)</i>				
	Week of 1 December 2010	31 December 2010	31 March 2011	31 July 2011	2010/11 year
Unique learner numbers by programme type (a)(b)					
Apprenticeship (Level 3)	10,565	10,495	10,485	8,960	16,010
Foundation Apprenticeship	11,790	11,780	12,120	10,470	19,520
Modern Skills Diploma	1,310	1,335	1,305	1,100	2,060
Skill Build	6,305	5,805	6,225	4,190	15,085
Pre-Apprenticeship Learning	20	10	25	5	50
Other Programmes (d)	2,470	2,370	2,500	860	4,305
Total unique learners	32,460	31,790	32,655	25,585	57,030
Numbers of learning programmes by type (c)					
Apprenticeship (Level 3)	10,620	10,545	10,525	9,000	16,450
Foundation Apprenticeship	11,860	11,830	12,175	10,520	21,035
Modern Skills Diploma	1,320	1,345	1,320	1,105	2,115
Skill Build	6,430	5,930	6,385	4,395	20,725
Pre-Apprenticeship Learning	20	10	25	5	65
Other Programmes (d)	2,505	2,405	2,550	890	4,590
Total learning programmes	32,755	32,065	32,975	25,920	64,980

Source: LLWR (Lifelong Learning Wales Record) post-16 database

- (a) Unique learner counts are based on unique learner identifiers (ULI) to eliminate multiple-counting between providers.
 (b) Where a learner participates in more than one learning programme, the most recent one for the period is selected for the unique learner programme type.
 (c) Where a learner participates in more than one learning programme over a period, all are included in the learning programme counts.
 (d) The 'Other Programmes' row includes other WBL programmes at FE institutions and all other programmes at WBL subsidiaries and other training providers. It also includes Pathways to Apprenticeship programmes (amounting to 1,915 learners in the full year 2010/11) which are non-WBL programmes at FEIs supporting WBL provision.
 (e) Numbers greater than 0 and less than 5 have been replaced by *. Other figures are rounded to the nearest 5 and there may be slight discrepancies between the sums of constituent items and the independently rounded totals.

Table T3.1 Numbers of Learning Programmes for Foundation Apprenticeships, Apprenticeships and Modern Skills Diplomas by sector framework and programme type 2010/11 (a-d)

Sector	<i>Numbers</i>			
	Foundation Apprenticeship	Apprenticeship (Level 3)	Modern Skills Diploma	Total
Accountancy	100	170	140	405
Active Leisure and Learning	280	335	0	615
Advice and Guidance	35	205	30	270
Agriculture Crops and Livestock	60	35	10	105
Amenity Horticulture	45	10	0	55
Beauty Therapy	55	10	0	65
Business Administration	1,565	1,260	85	2,910
Call Handling	105	25	*	135
Chemical, Pharmaceutical and Petro-Chemical	10	30	0	40
Cleaning & Support Service Industry	120	0	0	120
Construction	1,545	685	0	2,230
Customer Service	2,250	850	*	3,105
Dental Nursing	*	220	0	220
Driving Goods Vehicle	55	10	0	65
Early Years Care & Education	825	1,855	440	3,115
Electrotechnical	115	1,020	0	1,130
Emergency Fire Service Operations	0	50	0	50
Engineering	570	1,755	*	2,325
Engineering Construction	5	115	0	125
Engineering Technology	0	70	15	85
Food Manufacture	460	5	0	470
Glass Industry	50	10	0	60
Hairdressing	1,205	525	0	1,730
Health & Social Care	4,485	2,240	475	7,205
Heating, Ventilation, Air Conditioning & Refrigeration	90	70	0	160
Hospitality	1,560	550	0	2,115
IT & Telecoms Professional	65	30	*	95
IT User	855	360	0	1,215
Industrial Applications	740	0	0	740
Information Technology & Electronic Services	220	60	0	280
Learning and Development (Direct Training & Support)	*	25	25	50
Management	795	1,515	880	3,185
Motor Industry	80	40	0	120
Pharmacy Technicians	5	75	0	80
Plumbing	550	485	0	1,035
Retail	565	115	0	685
Retail Financial Services	160	165	0	325
Sporting Excellence	0	45	0	45
Teaching Assistants	105	620	0	725
Travel Services	25	45	0	70
Vehicle Body and Paint Operations	55	40	0	95
Vehicle Maintenance and Repair	680	475	0	1,155
Wholesale, Distribution, Warehousing and Storage	265	20	0	280
Other	285	215	5	505
Total	21,035	16,450	2,115	39,600

Source: LLWR (Lifelong Learning Wales Record) post-16 database

- (a) Includes work-based learning (WBL) at FE institutions and at other training providers.
- (b) Sectors with fewer than 40 learning programmes associated with them have been grouped together under 'Other'.
- (c) Note that the Learning Network Analysis bulletins and associated StatsWales cubes do not employ these detailed sector frameworks but instead group them into broad sector categories.
- (d) Numbers greater than 0 and less than 5 have been replaced by *. Other figures are rounded to the nearest 5 and there may be slight discrepancies between the sums of constituent items and the independently rounded totals.

Table T3.2 Work-based learning provision: Numbers of learning activities by Subject and credit level 2010/11 (a-c)

Subject	Credit Level				
	Pre entry Level	Entry Level	NQF Level 1 or equivalent	NQF Level 2 or equivalent	NQF Level 3 or equivalent
Agriculture, Horticulture and Animal Care	0	*	140	210	75
Arts and Crafts	0	0	0	0	*
Business/Management/Office Studies	0	415	1,035	5,615	4,945
Care/Personal Development(incl Basic Skills)	3,570	15,840	18,735	10,540	1,980
Catering/Food/Leisure Services/Tourism	0	255	120	3,165	1,205
Construction & Property (Built Environment)	0	65	2,265	5,030	1,840
Cultural Studies/Languages/Literature	0	45	95	*	0
Education/Training/Teaching	75	2,125	160	2,510	3,960
Engineering	0	50	925	4,465	3,005
Environment Protection/Energy/Cleansing/Security	0	0	290	670	85
Health Care/Medicine/Health & Safety	0	145	1,355	6,745	3,965
Humanities	0	0	30	*	5
Information Technology & Information	0	1,990	4,020	3,725	760
Logistics/Distribution/Transport/Driving	0	0	55	895	80
Manufacturing/Production Work	0	0	70	1,845	605
Media/Communication/Publishing	0	0	11,655	13,005	345
Oil/Mining/Plastics/Chemicals	0	0	0	0	30
Sales, Marketing and Retailing	10	0	970	5,395	1,770
Sciences & Mathematics	0	0	12,965	11,760	215
Services to Industry & Commerce	0	0	40	260	2,135
Social Sciences	0	0	0	0	10
Sports, Games and Recreation	0	0	370	120	150
Not specified	55	4,810	5,420	4,980	1,670
Total	3,710	25,745	60,710	80,940	28,855

(a) Includes work-based learning (WBL) provision at FE institutions and at other training providers.

(b) Subjects are derived from the first letter of the LearnDirect Classification System (LDCS) codes.

(c) Numbers greater than 0 and less than 5 have been replaced by *. Other figures are rounded to the nearest 5 and there may be slight discrepancies between the sums of constituent items and the independently rounded totals.

Table T3.2 (Continued) Work-based learning provision: Numbers of learning activities by subject and credit level 2010/11 (a-c)

Numbers

Credit Level		Total	Subject
HE Level/ NQF Level 4 and above	Not known/ Not Applicable		
10	0	440	Agriculture, Horticulture and Animal Care
0	0	*	Arts and Crafts
2,020	250	14,285	Business/Management/Office Studies
*	4,620	55,285	Care/Personal Development(incl Basic Skills)
0	10	4,760	Catering/Food/Leisure Services/Tourism
5	80	9,290	Construction & Property (Built Environment)
0	30	170	Cultural Studies/Languages/Literature
455	1,030	10,315	Education/Training/Teaching
95	15	8,560	Engineering
0	45	1,095	Environment Protection/Energy/Cleansing/Security
475	125	12,815	Health Care/Medicine/Health & Safety
0	45	80	Humanities
*	0	10,500	Information Technology & Information
*	30	1,065	Logistics/Distribution/Transport/Driving
0	190	2,710	Manufacturing/Production Work
0	*	25,005	Media/Communication/Publishing
0	0	30	Oil/Mining/Plastics/Chemicals
5	*	8,160	Sales, Marketing and Retailing
0	5	24,945	Sciences & Mathematics
0	0	2,435	Services to Industry & Commerce
0	0	10	Social Sciences
0	0	640	Sports, Games and Recreation
170	955	18,060	Not specified
3,245	7,440	210,650	Total

Source: LLWR (Lifelong Learning Wales Record) post-16 database

Table T3.3a Leaver destinations: Number of learning programmes left in academic year 2010/11 by destination and age group (a-e)

Destination	Age Group					
	Under 16	16	17	18	19	20-24
New programme of learning (not HE)	5	2,790	2,420	780	345	670
Higher education	0	70	85	40	25	25
Education or training - type not known	0	*	5	0	0	0
Entering new employment/changing employment	*	495	910	525	255	650
Continuing current employment	0	75	370	745	975	3,585
Seeking work /unemployed	5	1,015	1,170	595	345	960
Self employment	0	5	5	5	*	25
Voluntary work	0	40	40	20	20	45
Other	0	165	220	90	60	145
Not known	0	885	835	330	215	595
Total	10	5,545	6,065	3,125	2,245	6,700

- (a) Includes work-based learning (WBL) provision at FE institutions and at other training providers.
 (b) Figures exclude continuing learning programmes (identified through LLWR destination coding and/or absence of end date)
 (c) Destination is recorded immediately after the end of the learning programme.
 (d) Age is as at 31 August 2010.
 (e) Numbers greater than 0 and less than 5 have been replaced by *. Other figures are rounded to the nearest 5 and there may be slight discrepancies between the sums of constituent items and the independently rounded totals.

Table T3.3b Leaver destinations: Number of distinct learners leaving (their most recent learning programme) in academic year 2010/11 by destination and age group (a-f)

Destination	Age Group						
	Under 16	16	17	18	19	20-24	25-39
New programme of learning (not HE)	*	1,175	1,030	365	170	305	230
Higher education	0	55	70	40	25	20	25
Education or training - type not known	0	*	*	0	0	0	0
Entering new employment/changing employment	*	400	775	460	225	610	655
Continuing current employment	0	50	305	635	875	3,260	4,440
Seeking work /unemployed	*	785	980	550	335	930	1,255
Self employment	0	5	*	5	*	20	25
Voluntary work	0	30	35	15	20	45	65
Other	0	130	190	85	55	145	155
Not known	0	630	700	310	200	565	590
Total	5	3,260	4,090	2,470	1,915	5,900	7,440

- (a) Includes work-based learning (WBL) provision at FE institutions and at other training providers.
 (b) Figures comprise the number of distinct learners who have left their most recent learning programme of academic year
 (c) Excludes learners whose latest learning programme is on-going
 (d) Destination is recorded immediately after the end of the learning programme.
 (e) Age is as at 31 August 2010.
 (f) Numbers greater than 0 and less than 5 have been replaced by *. Other figures are rounded to the nearest 5 and there may be slight discrepancies between the sums of constituent items and the independently rounded totals.

Table T3.3a (Continued) Leaver destinations: Number of learning programmes left in academic year 2010/11 by destination and age group (a-e)

Numbers

Age Group						Total	Destination
25-39	40-49	50-59	60-64	65 plus	Not Specified		
620	270	135	10	*	0	8,040	New programme of learning (not HE)
30	10	*	0	0	0	285	Higher education
0	0	0	0	0	0	5	Education or training - type not known
685	335	175	10	*	0	4,050	Entering new employment/changing employment
4,735	2,955	1,375	110	20	0	14,940	Continuing current employment
1,305	595	330	20	*	0	6,340	Seeking work /unemployed
25	10	5	*	0	0	85	Self employment
70	45	35	*	0	0	315	Voluntary work
155	65	40	*	0	0	950	Other
620	270	110	10	*	0	3,870	Not known
8,240	4,565	2,200	165	25	0	38,885	Total

Source: LLWR (Lifelong Learning Wales Record) post-16 database

Table T3.3b (Continued) Leaver destinations: Number of distinct learners leaving (their most recent learning programme) in academic year 2010/11 by destination and age group (a-f)

Numbers

Age Group					Total	Destination
40-49	50-59	60-64	65 plus	Not Specified		
100	50	*	0	0	3,430	New programme of learning (not HE)
10	*	0	0	0	245	Higher education
0	0	0	0	0	*	Education or training - type not known
320	170	10	*	0	3,630	Entering new employment/changing employment
2,820	1,315	110	20	0	13,835	Continuing current employment
565	315	15	*	0	5,740	Seeking work /unemployed
10	5	*	0	0	80	Self employment
45	30	*	0	0	290	Voluntary work
65	40	*	0	0	865	Other
265	105	10	*	0	3,370	Not known
4,200	2,040	155	25	0	31,495	Total

Source: LLWR (Lifelong Learning Wales Record) post-16 database

APPENDICES

APPENDIX A : DATA SOURCES & DEFINITIONS

A1 DATA SOURCES

All the data in Sections A, B and C which relate to Further Education institutions, Local Authority Community Learning and Work-based Learning (WBL) provision are sourced from the Lifelong Learning Wales Record (LLWR). The LLWR was introduced in 2003/04 as the new data collection system for Further Education (FE) and Local Authority Community Learning. It replaced the FE Individualised Student Record (ISR) and the LEA Adult Community Learning December census data collection. The scope of the LLWR was extended to become the data collection system for WBL in 2004/05, replacing the National Trainee Database (NTD).

There is some overlap between WBL and FE data because some FE institutions deliver WBL provision. For this reason figures from Section C of this publication should not be aggregated with those from Section A and B. Furthermore, although tables F1.1, F1.3c and F3.1 to F3.3 disaggregate those learners on WBL programmes at FE institutions it should be noted that these learners will not necessarily have been funded through the WBL payment system.

Further Education provision at Higher Education institutions has been included in tables F1.5, F1.7 and F2.1 using the 2010/11 HESA (Higher Education Statistics Agency) Student Record.

All data in this publication are consistent with the 2010/11 data previously published in the National Statistics First Release 'Further Education, Work-based Learning and Community Learning in Wales, 2010/11 and December 2011 (early figures)' (SDR51/2012).

A2 ROUNDING

Absolute figures in this publication have been rounded to the nearest 5 (with the exception of Table T2.1). This convention can lead to some small discrepancies between an independently rounded total and its constituent parts. Where an asterisk (*) is shown it represents a number which is greater than 0 and less than 5.

A3 SECTIONS A, B & C : FURTHER EDUCATION, COMMUNITY LEARNING and WBL

A3.1 DATA COVERAGE FOR FE and CL

Section A details the learning delivered by the further education sector in Wales. The further education sector comprises a range of institutions providing part-time and full-time education. In 2010/11, 16 of these institutions were colleges of further education or tertiary colleges providing the greater part of post-16 education for their area. This number excluded Merthyr Tydfil College which merged into the University of Glamorgan in 2006 and (apart from its work-based learning provision) is included under the figures for FE at Higher Education institutions and excluded from the figures for Further Education institutions. The sector also included a denominational sixth form college, an adult residential college, two districts of the Workers' Educational Association (WEA), one of which (WEA-North) merged with Coleg Harlech in 2001/02, and adult education provision by the Young Men's Christian Association (YMCA).

Community Learning is a broad term that can encompass a wide range of provision. For instance it could include Adult Basic Education (ABE) and English for Speakers of Other Languages (ESOL) provision or learning delivered at outreach centres of FE institutions. However, Section B details only that Community Learning provision which is delivered by Local Authorities. To make the distinction clear the term Local Authority Community Learning is used throughout this publication. In 2010/11,

sixteen of the twenty-two Local Authorities in Wales delivered Community Learning either directly or in collaboration with FE institutions.

The majority of tables in Sections A and B are based on all learning undertaken within the 2010/11 academic year (1 August 2010 to 31 July 2011). In addition, certain tables (or parts of tables) include counts based on a census date of the week of 1 December 2010.

A3.2 DATA COVERAGE FOR WBL

Section C details the learning delivered by the work-based learning (WBL) sector in Wales. The time period (2010/11) on which training tables are based runs from 1 August 2010 to 31 July 2011, (as in Sections A and B). In addition, certain tables (or parts of tables) include counts based on a specific date or range of dates: the week of 1 December 2010 and the days 31 March 2011 and 31 July 2011.

The connection with individual trainees is through training providers. In some cases the training provider provides the learning experiences directly. In other cases, the training may be performed mainly by an employer with the learning overseen and assessed by the training provider.

A3.3 DATA COUNTS

The LLWR from which the data in all sections have been derived has datasets based on learners, their learning programmes, their constituent learning activities and an award dataset registering achievements.

As noted in SDR 60/2010 (released on 22 April 2010), for 2008/09 LLWR data and subsequent releases, learning activities have been excluded (directly and also in deriving learner counts) if their expected end date is more than two years earlier than the start of the academic year. For the purpose of time series in this volume, the methodology has been applied retrospectively and has had an impact on the years 2006/07 and 2007/08. It has been the standard approach from 2008/09 onwards.

Five different counts are used for FE institutions in the Tables:

- **Unique Learners**, based on the unique learner identifier (ULI) and counting any learner once only regardless of how many learning programmes they were pursuing with different learning providers;
- **Non-Unique Learners ('provider learners')**, based on the learning providers' own learner identifier and so leading to multiple counting of learners between providers; This count is used just for FE and CL.
- **Learning Programmes**, based on the number of learning programmes taken by the learner. This count is primarily used for Work-based learning.
- **Learning Activities**, based on the number of recorded enrolments on learning activities (i.e. learning aims) by learners.
- **Awards**, giving qualification achievements attained.

FE statistics published by ELWa and the National Assembly for learning prior to 2003/04 identified learners according to the learning providers' own learner identifiers (as there was no ULI on the ISR) and are therefore more closely related to provider-learner counts.

Tables T1.1, T1.2, T1.4 and T1.5 are based on the total number of WBL learners receiving training at any time during 2010/11. Tables T1.3 and T3.1 are based on the number of learning programmes taken by learners. Table T3.2 details the number of learning activities by subject in 2010/11. Table T3.3a details the number of leavers of learning programmes and their destination and table T3.3b covers destinations by learner count.

For counts, derived from HESA data, of students and their individual enrolments at HE institutions, two population types are used:

The **standard registration population** counts registrations once for each year of programme of study (deemed to start on the commencement date of the programme with subsequent years starting on, or near, the anniversary of that date). Students who leave within two weeks of their start date (or its anniversary) and are on a course of more than two weeks duration, are not included in the standard population. It also excludes dormant students, incoming visiting and exchange students and students studying for the whole of their programme of study outside of the UK.

The **session population** includes all enrolments active at any point in the academic year except for dormant students, incoming visiting and exchange students and students studying for the whole of their programme of study outside of the UK.

All HE institution learner and enrolment counts in this volume have been based on the standard registration population with the exception of Table F1.7b which gives Welsh for Adult numbers at the HEI-based centres on a session population basis, in contrast with Table F1.7a which gives the equivalent numbers on a standard registration population basis.

A3.4 PROVISION TYPE DEFINITIONS (FE and Local Authority CL)

Learners at FE institutions are recorded as being engaged in FE, HE or WBL provision.

WBL: Learners on WBL programmes (in Tables F1.1 and F3.2) are defined as those learners at FE institutions who are enrolled on designated WBL programmes, such as apprenticeships. All learners on WBL programmes have their mode of learning defined as being work-based learning (see A3.6). Note that this definition of WBL is different to that used for funding purposes. See A1 for more information about the differences between WBL data reported on in Section A and that reported on in Section C. A distinction is made between WBL programmes and WBL provision, the latter also including Pathways to Apprenticeships which are FE programmes supporting WBL. Section C of this volume covers WBL provision.

HE: Higher Education (HE) level learners are defined in the tables in two distinct ways. Tables F1.1 and F3.2, provide information on the number of learners undertaking designated HE programmes (e.g. HE degree, Foundation degree). A higher number of HE learners is recorded in Tables F1.2 and F1.3 based on recording a learner as studying at HE level if any one of their learning activities is at HE level, i.e. above NQF (National Qualifications Framework) level 3.

FE: Learners on FE programmes (in Tables F1.1 and F3.2) are defined as those learners at FE institutions who are not enrolled on designated WBL or HE programmes.

Learners engaged in local authority community learning can be enrolled (see Table L1.1) under maintained, contracted-out or contracted-in provision:

Maintained: Learners in maintained local authority provision are defined as those learners who the local authority delivers learning to and who are enrolled with the local authority.

Contracted-out: Learners in contracted-out local authority provision are defined as those learners who receive learning from a third party but who are enrolled with the local authority for that learning.

Contracted-in: Learners in contracted-in local authority provision are defined as those learners to whom the local authority delivers learning but who are enrolled with an FE Institution for that learning.

Note that the contracted-in provision is included both in tables in Section B (as it is delivered by a local authority) and in table in Section A (as the enrolment for the learning is with a FE institution).

A3.5 PROVISION TYPE DEFINITIONS FOR WBL

Tables T1.1, T1.2, T1.3 and T2.1 give information by programme type. Note that the categories are based on current programmes and certain former programmes continuing into 2010/11 have been re-categorised.

The programmes available were:

- Foundation Apprenticeship (formerly Foundation Modern Apprenticeships);
- Apprenticeship (Level 3) (formerly Modern Apprenticeships);
- Modern Skills Diploma;
- Pre-apprenticeship learning;
- Skill Build;
- Other programmes: This category includes Pathways to Apprenticeships delivered by FE institutions and all programmes not included above delivered by training providers in general.

A3.6 MODE OF LEARNING DEFINITIONS

The mode of learning for a learner (i.e. full-time learner, part-time learner and work-based learner) has been derived using the guided contact hours. Guided contact hours are the number of teaching/instructional hours delivered by the provider to the learner. A full-time learner is one whose total guided contact hours across all their learning activities amounts to at least 450 hours; a part-time learner is one whose total guided contact hours amounts to less than 450 hours. As work-based learning cannot be classified using guided contact hours, as significant amounts of learning are undertaken at the workplace, a distinct work-based learning mode has been assigned to learners in WBL provision.

FE statistics published by ELWa and the National Assembly for learning prior to 2003/04 used a different definition of mode (based on what was recorded by learning providers on the ISR). Therefore, 2004/05 mode of learning statistics are not directly comparable with data from previous years.

A3.7 DOMICILE / DEPRIVATION DEFINITIONS

The country of domicile information presented in Table F3.3 is based on information recorded directly on the LLWR. By contrast, the unitary authority of domicile (in Tables F3.4a and F3.4b) and deprivation areas (in Table F3.8) have been calculated from the home postcode recorded on the LLWR. Inconsistencies between the recorded country of domicile and home postcode account for slight differences between these tables.

A3.8 SUBJECT AND SECTOR SUBJECT DEFINITIONS

All subject of study area groupings are based on the LearnDirect Classification System (LDCS) which assigns a subject code to each qualification. The subject of study area groupings in Tables F4.1a/b, F4.3 and F4.4 are derived from the first letter of the LDCS code for the qualification being undertaken. The subject of study area groupings in Table F4.2a/b/c are the 15 first-tier sector subject areas in QCA's Sector Subject framework (www.qca.org.uk/qca_8488.aspx). These sector subject areas are derived from the LDCS code for the qualification being undertaken. Some modification has been made to the QCA sector subject area boundaries, as reported in Tables F4.2a/b/c, so as to be consistent with designations used in Estyn inspection statistics.

A3.9 QUALIFICATION LEVEL / TYPE DEFINITIONS

The qualification type and level (Tables F4.5 & F4.3 respectively) are allocated to learning activities using information recorded either on the Welsh Learning Aims database or directly on the LLWR. The 'not known / not applicable' credit level category is assigned where there was insufficient information to assign a qualification level to the learning activity. The 'other' qualification type category mainly consists of all qualification types not specifically listed (e.g. City & Guild certificates, ECDL, CLAIT), it may however also include some cases of the listed qualifications where there was insufficient information to assign them to the appropriate category.

A3.10 AGE

Where age groups are identified, the age is that at 31 August 2010. Learners whose date of birth is not recorded in the LLWR are dealt with in one of two ways. In tables with detailed age groupings the learner age is given as 'not specified'; where the table uses less detailed age groupings the learner is assumed to be aged 25 years or over and appropriately categorised.

A3.11 WBL SECTOR FRAMEWORKS

The sector groupings in table T3.1 reflect the type of work and training being undertaken by the learner and are directly related to the qualification being studied for. The most frequently occurring sector codes have been identified separately with the less common codes being identified as 'other'. (Note that Learning Networks Analysis uses broader groupings of these individual sectors.)

A3.12 Pre-LLWR VOLUMES

This volume provides a continuation to certain trend statistics provided in the former publication series *Higher Education, Further Education and Training Statistics in Wales* which was a series of publications produced jointly by the Higher Education Funding Council for Wales (HEFCW) and Education and Learning Wales (ELWa). Following the separation of HEFCW and ELWa the joint publication was no longer issued. In April 2006 ELWa was merged into the Welsh Government.

Previous *Higher Education, Further Education and Training Statistics* publications included not only data regarding learners and the learning they had undertaken but also information on FE staff and FE institution finances. The current series by contrast only focuses on learners and their learning. FE staff and finance data is available separately and further details of these publications can be found in Appendix B.

A3.13 Key Quality Information

Quality information and information on the policy context can be found in the statistical release SDR 51/2012 (issued on 28 March 2012) which was based on the same underlying LLWR data as this volume.

Some background to quality is contained elsewhere in this Appendix and within the general text of the volume. Many of the other tables illustrate the extent to which the data in the LLWR fields used to populate these tables are 'not specified', 'not known' or (Table F3.5) 'Information refused/not known'.

APPENDIX B : OTHER USEFUL INFORMATION SOURCES

Welsh Government Statistical First Releases (SFRs), bulletins and publications

A wide range of educational releases, bulletins and publications produced by the Statistical Directorate can be accessed via the 'Post-16 Education and Training' and 'Schools and Teachers' key publications sections of the Welsh Government's website at www.wales.gov.uk/statistics.

These releases, bulletins and publications include, for example:

- Schools in Wales : General Statistics
- Schools in Wales : Examination Performance
- Pupil Destinations from Schools In Wales
- Students in Higher Education Institutions – Wales
- Initial Teacher Training in Wales
- FE, WBL and Community Learning in Wales SFRs
- Participation in Education and the Labour Market
- Staff at FE Institutions
- Education Maintenance Allowances (EMA) awarded
- Progress towards meeting the Lifelong Learning Targets for Wales
- Analysis of Participation in post-16 Education & Training in Wales
- National Comparators for Further Education and Work-based Learning
- Learning Network Analysis

Other Sources

Higher Education Statistical Agency (HESA) Data

Full details on the data collected by HESA from Higher Education institutions can be found at www.hesa.ac.uk.

HEFCW Statistical Publications

Statistical information on the Higher Education sector in Wales can be accessed at www.hefcw.ac.uk/about_he_in_wales/statistics/statistics.aspx.