



Quarterly Statistical First Release

Publication date:11th October 2012**Next Updated:**

January 2013

Reference: DS/SFR16**Coverage:** England**Theme:** Children, Education and Skills**For further information contact:****Data Service: Service Desk**servicedesk@thedata-service.org.uk

0870 267 0001

Or view our web site at:<http://www.thedata-service.org.uk/statistics>**Lead Statistician:**

Jessie Evans

Jessie.Evans@bis.gsi.gov.uk

020 7215 1868

Department for Business, Innovation
and Skills,

Level 2,

1 Victoria Street,

London,

SW1H 0ET

© Data Service 2012

Publication reference number

Skills Funding Agency-P-120263

Post-16 Education & Skills: Learner Participation, Outcomes and Level of Highest Qualification Held

1. This is a Department for Business, Innovation and Skills (BIS) Statistical First Release (SFR), and updates information published on 28th June 2012. It includes information on government-funded¹ participation, achievement and success rates for post-16 education² (excluding schools and Higher Education) in England, between 2006/07 and 2010/11.
2. This SFR includes final data for the 2010/11 academic year and provisional data for the full 2011/12 academic year. In the January 2013 SFR final data for the full 2011/12 academic year will be presented.
3. This SFR shows key statistics on the highest level of qualification held by adults in England from 2006 to 2011, calculated from Labour Force Survey (LFS) data. These include attainment rates for specific priority groups of adult learners in the population that are of key interest within BIS and the Skills Funding Agency. Figures relating to 2011 are provisional and are subject to revisions.
4. This SFR also shows the number of vocational qualifications awarded in the United Kingdom, as collected by the Office of Qualifications and Examinations Regulation (Ofqual) and through the National Vocational Qualifications Database.

¹ Covering the Skills Funding Agency and the Education Funding Agency.

² Post-16 education includes provision delivered in FE organisations, sixth form colleges, independent training organisations, local authorities and other providers. This includes programmes such as Apprenticeships. For more information on the scope of this release, please see paragraphs 54 to 57.

CONTENTS

Statistical Commentary

Summary of Further Education Statistics for England, 2010/11	3
Glossary of Key Terms	4
Adult Learner (19+) Participation and Achievement in Further Education	5
Apprenticeships	7
Workplace Learning	9
Adult (19+) Skills for Life	9
Community Learning	10
Success Rates	10
Headlines for Provisional 2011/12 Data	13
National Statistics	15
Changes Included in this SFR	15
Changes Included in the Next SFR	15

Supporting Data

Scope	16
Data Sources	17
Issues with Using Provisional Data	17
Issues with Comparing Data Across Academic Years	18
Data Definitions	18
Publication Cycle Across the Year	19
Supplementary Tables	20
Related National Statistics Releases	20
Other Related Statistics	21
Further Education Statistics for Other Countries in the UK	21

Table Guide	22
--------------------	----

Table Footnotes	23
------------------------	----

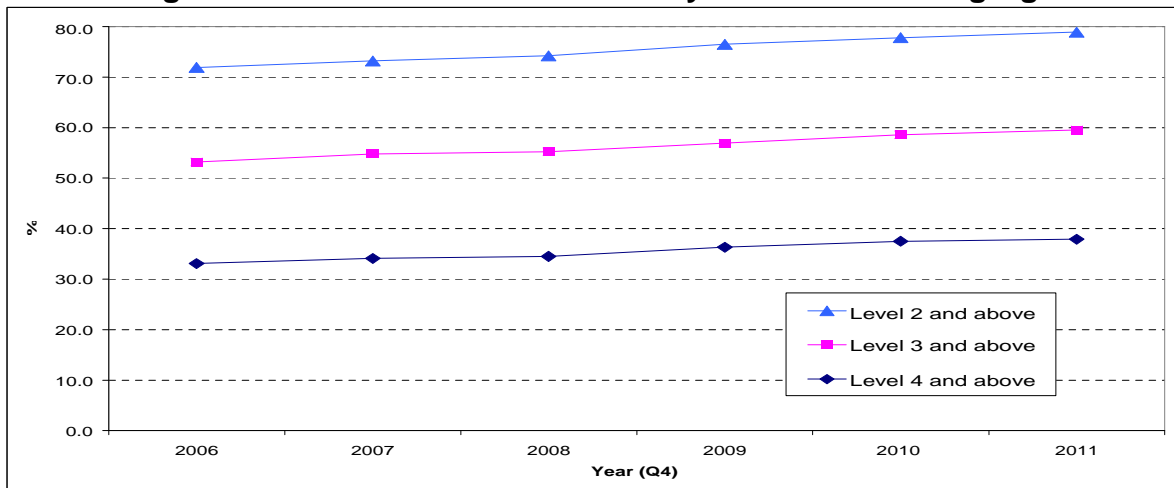
Tables	25
---------------	----

SUMMARY OF FURTHER EDUCATION STATISTICS FOR ENGLAND, 2010/11

Adult Attainment in the Population in 2011

5. The Labour Force Survey is used to measure the level of adult educational attainment in the population. Provisional data for 2011 show that of men aged 19 to 64 and women aged 19 to 59 [Table 12.1]:
- 78.9 per cent were qualified to at least Level 2;
 - 59.5 per cent were qualified to at least Level 3;
 - 37.9 per cent were qualified to Level 4 and above.

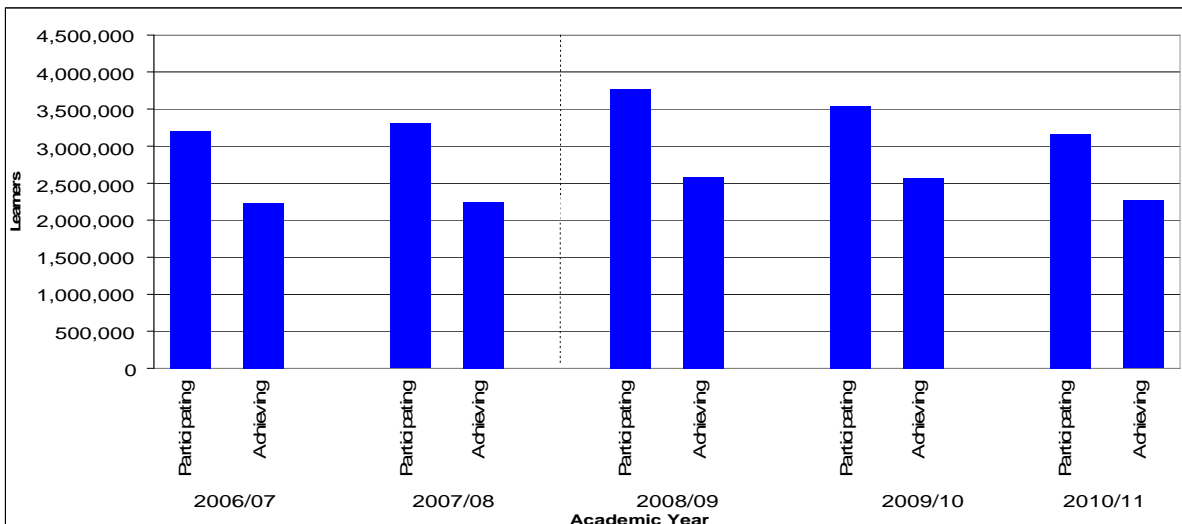
Chart 1: Highest Level of Qualification Held by Adults of Working Age



Adult Learner (19+) Participation and Achievement in Government-funded Further Education

6. The total number of adult learners participating in government-funded further education fell by 10.7 per cent to 3,163,200 in 2010/11. [Table 2.1].
7. The total number of adult learners achieving a government-funded further education qualification fell by 11.8 per cent to 2,265,100 in 2010/11 [Table 2.2].

Chart 2: Adult Learner (19+) Participation and Achievement in Government-funded Further Education



GLOSSARY OF KEY TERMS

Further Education and Skills includes learners who are studying on a course at a further education college or training provider, learners who are studying a course within their local community, employees undertaking an Apprenticeship, and employees undertaking other qualifications in the workplace.

Apprenticeships are paid jobs that incorporate on- and off-the-job training leading to nationally recognised qualifications. As an employee, Apprentices earn as they learn and gain practical skills in the workplace.

An Apprenticeship framework typically contains the following separately certified elements:

- A knowledge-based element (the theoretical knowledge underpinning a job in a certain occupation and industry, typically certified via a Technical Certificate).
- A competence-based element (the ability to discharge the functions of a certain occupation, typically certified via work-based assessed national vocational qualifications – NVQs).
- Transferable skills (English and maths) – key skills / functional skills.
- A module on employment rights and responsibilities.

See <http://www.apprenticeships.org.uk/> for further information on Apprenticeships.

Education and Training (previously Learner Responsive and University for Industry) covers further education learning delivered mainly in a classroom, workshop, or through distance or e-learning. For further information on Education and Training, please see:

<http://www.thedataservice.org.uk/datadictionary/businessdefinitions/Learner+Responsive.htm>

Workplace Learning covers a broad range of training – from basic skills to Level 2, Level 3 and other higher-level skills such as Leadership and Management. This training is mainly delivered through the workplace (but excludes Apprenticeships). Between 2005/06 and 2007/08 this included the Train to Gain programme and Standalone NVQs. Between 2008/09 and 2010/11 this included the Train to Gain programme, Employability Skills Pilot and other programmes such as Programmes for the Unemployed. In 2011/12 this includes all training mainly delivered through the workplace (excluding Apprenticeships).

Skills for Life qualifications are designed to give people the reading, writing, maths and communication skills they need in everyday life, to operate effectively in work and to help them succeed on other training courses. For further information on Skills for Life, please see

<http://skillsfundingagency.bis.gov.uk/providers/programmes/skillsforlife/>

Community Learning funds a wide range of informal courses, ranging from personal development through to older people's learning, IT courses, employability skills, family learning and activities to promote civic engagement and community development. Courses may be offered by local authorities, colleges, and voluntary and community groups, and include activity specifically targeted at deprived areas and disadvantaged groups. More information on Community Learning and the different programmes can be found at: <http://skillsfundingagency.bis.gov.uk/providers/programmes/asl/>

Full Level 2 is equivalent to an NVQ at Level 2, or 5 GCSEs. The widths of all of a learner's Level 2 aims are summed to establish whether a learner is taking a full Level 2 programme.

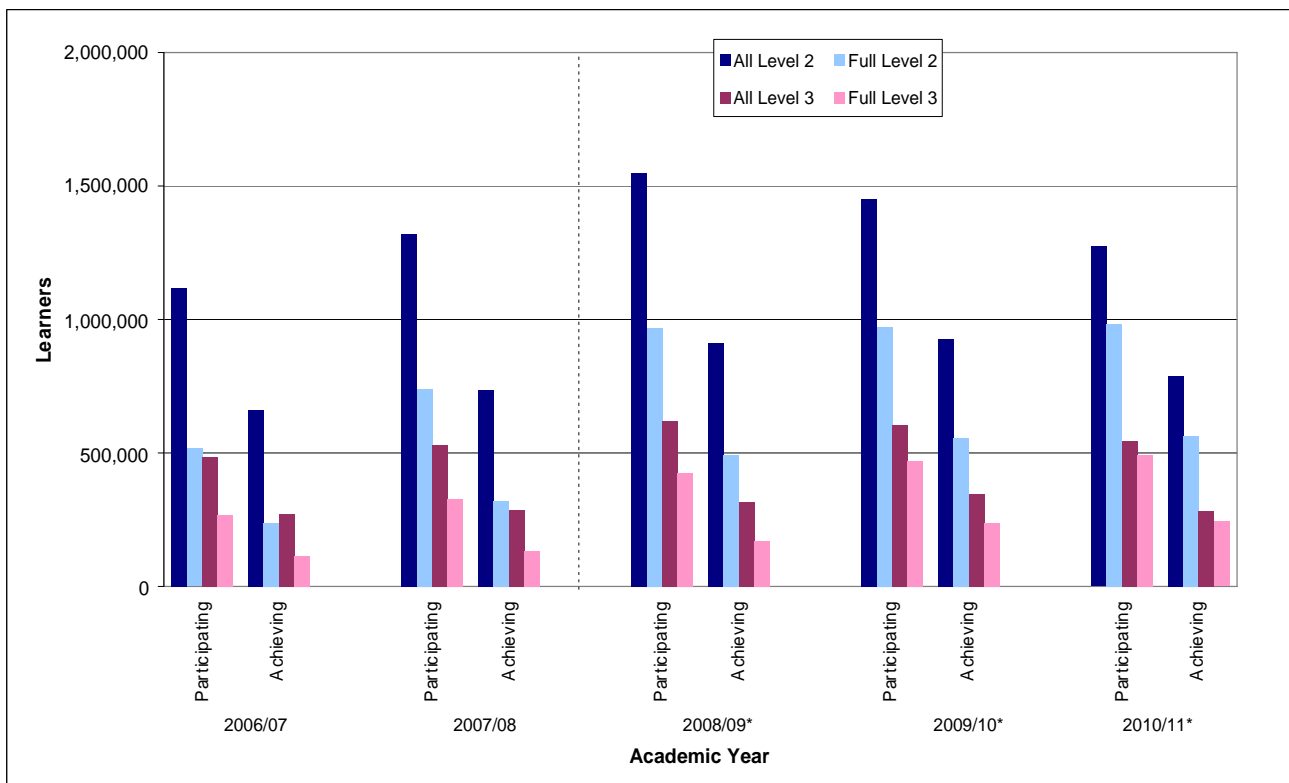
Full Level 3 is equivalent to an NVQ at Level 3, or 2 A-Levels. The widths of all a learner's Level 3 aims are summed to establish whether a learner is taking a full Level 3 programme.

Academic year runs from 1st August to 31st July (except for Ofqual figures in Table 14 which run from 1st October to 30th September).

ADULT LEARNER (19+) PARTICIPATION AND ACHIEVEMENT IN FURTHER EDUCATION

8. This section reports on 2010/11 adult learner participation and achievement in further education. 2010/11 is the latest academic year for which we have final, full-year data which we can use to accurately report learner participation and achievement. Provisional data for the 2011/12 academic year (August 2011 to July 2012) are presented separately, starting from page 13 of this release.
9. Some 3,163,200 adult learners participated in some form of government-funded further education in the 2010/11 academic year [Table 2.1]. This was a decrease of 10.7 per cent compared to 2009/10. Some 2,265,100 adult learners achieved a government-funded further education qualification in the 2010/11 academic year [Table 2.2]. This was a decrease of 11.8 per cent compared to 2009/10. These include adult learners across all of the learning routes outlined in the Glossary on Page 4 of this release.
10. Chart 3 shows the number of adult learners participating in and achieving a Level 2 (equivalent to GCSE level) or Level 3 (equivalent to A-Level) qualification in government-funded further education between the 2006/07 and 2010/11 academic years. Chart 3 shows that the number of adult learners participating in Level 2 and Level 3 courses gradually increased between 2006/07 and 2008/09 and then declined over the following two years. Achievements gradually increased between 2006/07 and 2009/10, but have decreased in 2010/11. Those participating in and achieving full Level 2 increased in every year shown.

Chart 3: Adult (19+) Learner Participation and Achievement in Government-funded Further Education by Level



*Note: Learner Numbers for 2008/09 onwards are not directly comparable with earlier years. See paragraph 66 onwards for more information.

11. Of all adult learners in 2010/11:

- 1,273,300 participated on a Level 2 course, a decrease of 12.3 per cent compared to 2009/10. Of these, 982,600 were studying a full Level 2 qualification, an increase of 1.2 per cent [Table 2.1];
- 542,900 participated on a Level 3 course, a decrease of 10.2 per cent compared to 2009/10. Of these, 494,000 were studying a full Level 3 qualification, an increase of 5.3 per cent [Table 2.1].

12. Of all adult achievements in 2010/11:

- 788,900 achieved a Level 2 qualification, a decrease of 14.8 per cent compared to 2009/10. Of these, 561,800 achieved a full Level 2 qualification, an increase of 1.0 per cent;
- 282,600 achieved a Level 3 qualification, a decrease of 17.9 per cent compared to 2009/10. Of these, 242,700 achieved a full Level 3 qualification, an increase of 2.1 per cent.

13. Of the 3,163,200 adult learners participating in further education in 2010/11 [Supplementary Table³]:

- 57.1 per cent were female, 42.9 per cent were male;
- 11.2 per cent declared a learning difficulty and/or disability;
- 19.2 per cent were from a Black or Minority Ethnic background (including Mixed, Asian, Black and Chinese or Other Ethnic Group learners).

14. In 2010/11 there were 88,900 offenders aged 18 or over in the prison system participating in learning, 70,300 achieved a learning outcome [Table 7]. These offenders were funded via the Offenders' Learning and Skills Service (OLASS) budget.

15. In the wider context, 4,264,900 learners of all ages participated in some form of government-funded further education (excluding schools) in the 2010/11 academic year [Table 7.1]. This was a decrease of 8.0 per cent compared to 2009/10.

³http://www.thedataservice.org.uk/statistics/statisticalfirstrelease/sfr_supplementary_tables/further_education_skills/

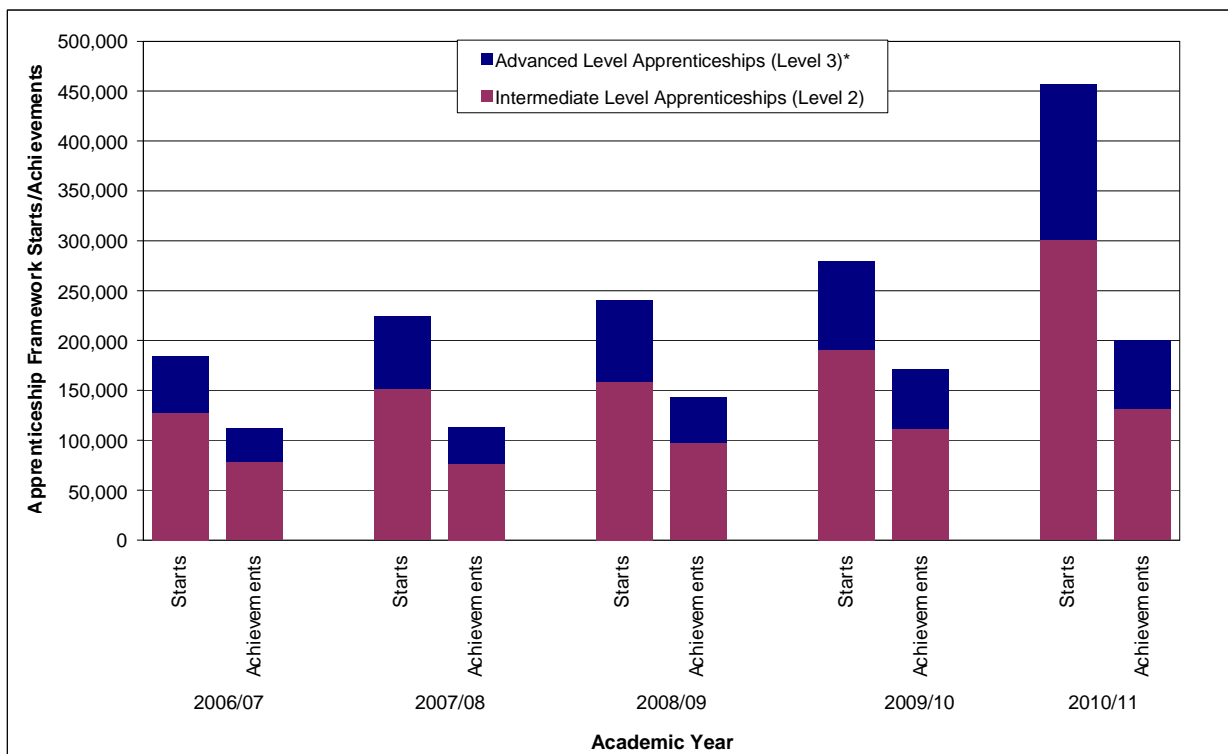
Apprenticeships

16. The total volume of Apprenticeship starts in 2010/11 was 457,200 [Table 8.1]. This was an increase of 63.5 per cent compared to 2009/10. Of these there were:

- 301,100 Intermediate Level Apprenticeship starts, a 58.1 per cent increase on 2009/10;
- 153,900 Advanced Level Apprenticeship starts, a 75.5 per cent increase on 2009/10.
- 2,200 Higher Apprenticeship starts, a 47.8 per cent increase on 2009/10;

17. Chart 4 shows there was a steady increase in Apprenticeship starts between 2006/07 and 2009/10, followed by a large increase between 2009/10 and 2010/11. Apprenticeship framework achievements have increased steadily since 2006/07, both for Intermediate Level Apprenticeships and Advanced Level Apprenticeships.

Chart 4: Total Government-funded Apprenticeship Starts and Framework Achievements by Level



***Note: Advanced Level Apprenticeship figures include a small number of Higher Apprenticeships**

18. The length of an Apprenticeship is typically more than a year and an Apprenticeship framework achievement is recorded against the year it was achieved, not the year it was started. Because of this, the number of achievements is below the number of starts in Chart 4, as a large volume of learners that have started an Apprenticeship have not yet completed it.

Under 19

19. In 2010/11 there were 131,700 Apprenticeship starts by those aged under 19 [Table 8.1]. This was an increase of 12.8 per cent compared to 2009/10. Of these there were:

- 97,300 Intermediate Level Apprenticeship starts, an 8.9 per cent increase on 2009/10;
- 34,200 Advanced Level Apprenticeship starts, a 25.6 per cent increase on 2009/10.
- 200 Higher Apprenticeship starts, compared to 100 in 2009/10.

20. In 2010/11 there were 83,300 Apprenticeship framework achievements by those aged under 19 [Table 8.2]. This was an increase of 14.1 per cent compared to 2009/10. Of these there were:

- 59,400 Intermediate Level Apprenticeship framework achievements, a 12.2 per cent increase on 2009/10;
- 23,900 Advanced Level Apprenticeship framework achievements, a 18.8 per cent increase on 2009/10.
- 100 Higher Apprenticeship framework achievements.

19 and Over

21. In 2010/11 there were 325,500 Apprenticeship starts by those aged 19 and over. [Table 3.1]. This was an increase of 99.8 per cent compared to 2009/10. Of these there were:

- 203,800 Intermediate Level Apprenticeship starts, more than double the volume compared to 2009/10;
- 119,700 Advanced Level Apprenticeship starts, a 98.1 per cent increase on 2009/10;
- 2,000 Higher Apprenticeship starts, a 48.5 per cent increase on 2009/10.
- 143,400 Apprenticeships starts by 19–24 year olds, a 26.1 per cent increase on 2009/10;
- 182,100 Apprenticeship starts by those aged 25 and over, more than three times the volume compared to 2009/10.

22. In 2010/11 there were 116,900 Apprenticeship framework achievements by those aged 19 and over [Table 3.2]. This was an increase of 18.8 per cent compared to 2009/10. Of these there were:

- 72,400 Intermediate Level Apprenticeship framework achievements, a 22.8 per cent increase on 2009/10;
- 43,600 Advanced Level Apprenticeship framework achievements, an 11.0 per cent increase on 2009/10.
- 900 Higher Apprenticeship framework achievements;
- 77,000 Apprenticeship framework achievements by 19–24 year olds, a 20.0 per cent increase on 2009/10;
- 39,900 Apprenticeship framework achievements by those aged 25 and over, a 16.6 per cent increase on 2009/10.

23. In May 2010, the Department for Business, Innovation and Skills announced that it would fund 50,000 new adult (aged 19 and over) Apprenticeship starts in the 2010-11 financial year (running from April 2010 to March 2011). The Statistical First Release presents academic year statistics, but the underlying data can be used to calculate financial year statistics. In the January 2012 SFR the final data for Apprenticeships showed that the department had achieved the ambition of 50,000 additional adult Apprenticeship starts over the 2010-11 financial year (or 203,200 in total), by delivering 255,600 adult Apprenticeship starts.

Workplace Learning

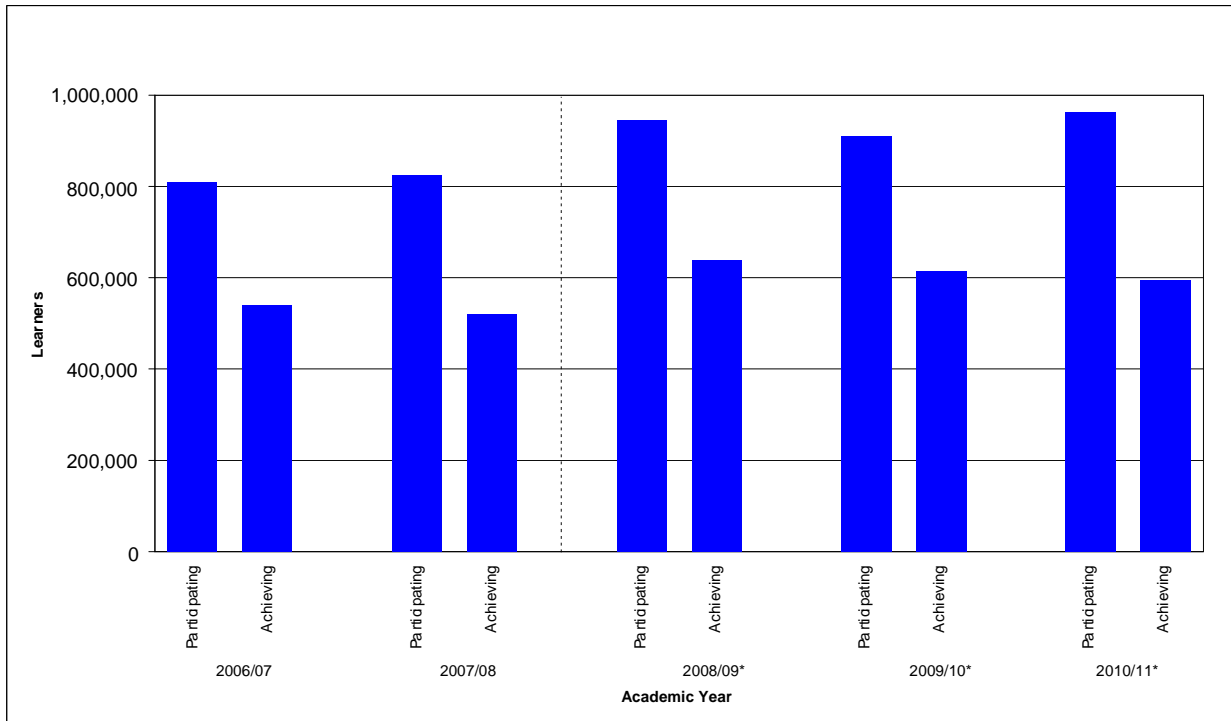
24. In 2010/11 there were 599,300 Workplace Learning starts [Table 5.1]. Over half of Workplace Learning starts in 2010/11 were at Level 2, with nearly a fifth at below Level 2.

25. In 2010/11, learners achieved 584,900 Workplace Learning qualifications [Table 5.2]. In line with starts, over half of Workplace Learning achievements were at Level 2 in 2010/11.

Adult (19+) Skills for Life

26. Chart 5 shows that adult learner participation on Skills for Life courses has fluctuated since 2006/07, but since 2009/10 participation figures have risen slightly.

Chart 5: Adult Learner (19+) Participation and Achievement on Skills for Life Courses



***Note: Learner Numbers for 2008/09 onwards are not directly comparable with earlier years. See paragraph 66 onwards for more information.**

27. In 2010/11, 961,800 adult learners participated on a Skills for Life course [Table 2.1]. This was an increase of 5.8 per cent compared to 2009/10. Of these:

- 639,000^R participated on an English course [Table 4];
- 630,500^R participated on a maths course [Table 4];
- 163,600^R participated on an English for Speakers of Other Languages (ESOL) course [Table 4].

^R Figures use an improved counting methodology for English, maths and ESOL courses to remove duplicate learners. Total learner figures are not affected. For further information please see: http://www.thedataservice.org.uk/NR/rdonlyres/907339C7-439B-43D8-9831-C957BD130A83/0/SFL_Revision_June12.pdf.

Note that some learners undertake more than one type of Skills for Life qualification within an academic year, and hence the sum of English, maths and ESOL participation is greater than the total number of learners participating.

28. In 2010/11, 595,600 adult learners achieved a Skills for Life qualification [Table 2.2]. This was a decrease of 3.1 per cent compared to 2009/10. Of these:

- 329,700^R achieved an English qualification [Table 4];
- 324,300^R achieved a maths qualification [Table 4];
- 122,100^R achieved an ESOL qualification [Table 4].

Note that some learners achieve more than one type of Skills for Life qualification within an academic year, and hence the sum of English, maths and ESOL achievements is greater than the total number of learners achieving.

29. In the wider context, 1,471,300 learners of all ages participated on a Skills for Life course (excluding schools) in the 2010/11 academic year [Table 7.1]. This was an increase of 2.8 per cent compared to 2009/10.

Community Learning

30. In 2010/11, 699,400 learners participated on a Community Learning course, and there were 608,200 achievements [Table 6]. Of these:

- 534,100 took a Personal and Community Development Learning course, and 458,600 achieved;
- 46,600 took a Neighbourhood Learning in Deprived Communities course, and 41,300 achieved;
- 65,400 took a Family Literacy, Language and Numeracy course, and 57,000 achieved;
- 75,400 took a Wider Family Learning course, and 70,100 achieved.

Note that these figures include learners participating on more than one type of Community Learning course.

Success Rates

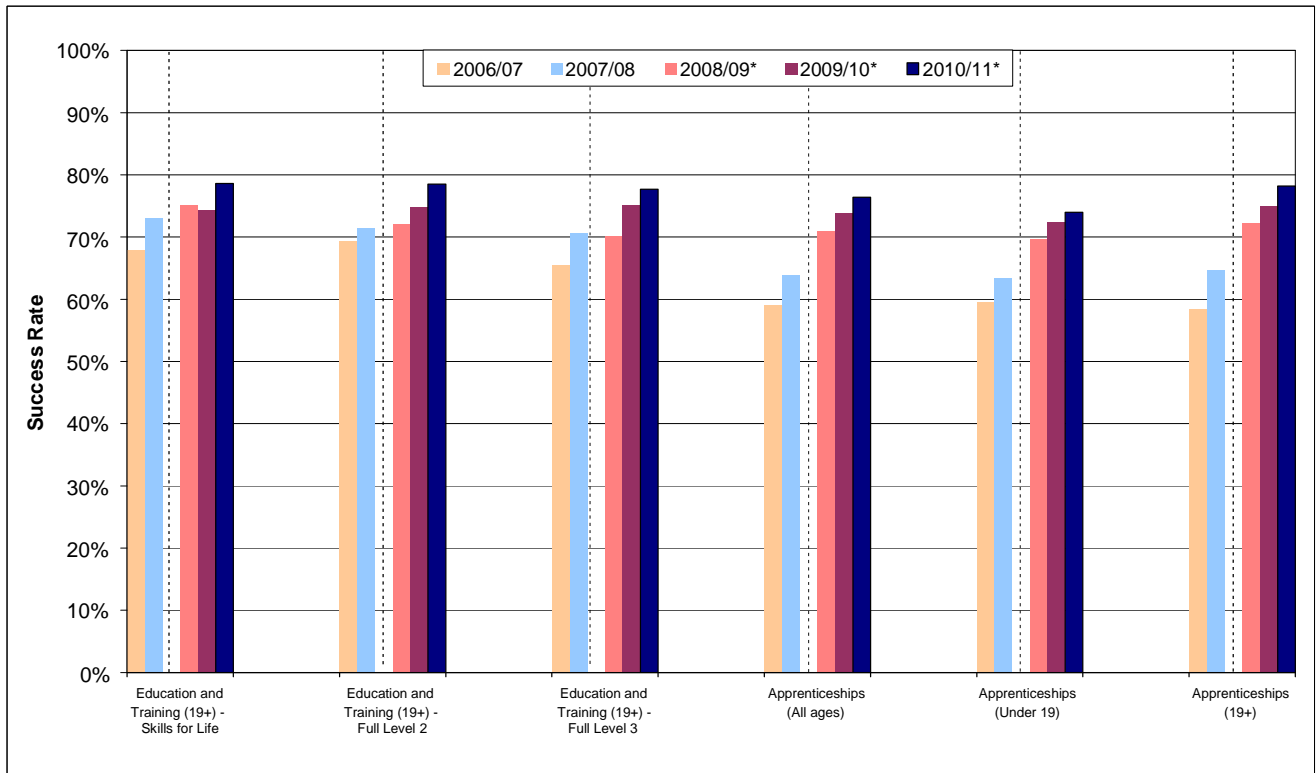
31. Success rates are calculated for individual qualifications. They show how many learners that started a qualification went on to successfully complete it. Success rates are typically calculated at a qualification level, but can be aggregated across different types of course, or for particular colleges or providers. Education and Training, and Apprenticeship success rates are calculated on a slightly different basis. For more information please see:

<http://www.thedataservice.org.uk/datadictionary/technicaldefinitions/>

^R Figures use an improved counting methodology for English, maths and ESOL courses to remove duplicate learners. Total learner figures are not affected. For further information please see: http://www.thedataservice.org.uk/NR/rdonlyres/907339C7-439B-43D8-9831-C957BD130A83/0/SFL_Revision_June12.pdf.

32. Chart 6 shows that adult (19+) Education and Training success rates have risen steadily between 2006/07 and 2010/11, across all qualification levels except for Skills for Life. Success rates for Apprenticeships have risen dramatically since 2006/07, increasing overall by over 17.4 percentage points to 76.4 per cent in 2010/11.

Chart 6: Success Rates



***Note: Education and Training Success Rates for 2008/09 onwards are not directly comparable with earlier years. See paragraph 66 onwards for more information.**

33. In 2010/11, adult (19+) Education and Training success rates [Table 2.3] were:

- 78.6 per cent for Skills for Life qualifications, an increase of 4.3 percentage points compared to 2009/10;
- 80.2 per cent for Level 2 qualifications, a decrease of 0.1 percentage points compared to 2009/10 (78.5 per cent for full Level 2, an increase of 3.7 percentage points);
- 78.8 per cent for Level 3 qualifications, an increase of 0.1 percentage points compared to 2009/10 (77.7 per cent for full Level 3, an increase of 2.6 percentage points).

34. In 2010/11, Apprenticeship success rates were:

- 76.4 per cent for all Apprenticeships, an increase of 2.6 percentage points compared to 2009/10 [Table 7.3];
- 75.3 per cent for Intermediate Level Apprenticeships, an increase of 1.9 percentage points compared to 2009/10 [Table 7.3];
- 78.6 per cent for Advanced Level Apprenticeships, an increase of 3.8 percentage points compared to 2009/10 [Table 7.3];
- 84.6 per cent for Higher Apprenticeships (the first year with enough achievements to calculate a success rate) [Table 7.3];

- 78.2 per cent for Apprenticeships by those aged 19 and over, an increase of 3.2 percentage points compared to 2009/10 [Table 2.3];
- 74.0 per cent for Apprenticeships by those aged under 19, an increase of 1.7 percentage points compared to 2009/10 [Table 10.3].

HEADLINES FOR PROVISIONAL 2011/12 DATA

35. Data for 2011/12 provide an early view of performance for the full academic year (August 2011 to July 2012). Data are provisional because providers may not have reported all their information relating to this period. It is not possible to determine how incomplete the information behind the provisional data is, so the data cannot be compared against provisional or final data from earlier academic years. Comparisons can only be made once final returns for the academic year are made by providers (as published each January).

Adult Learner (19+) Participation

36. Provisional data show that in the full 2011/12 academic year (August 2011 to July 2012) there were 3,139,200 learners aged 19 or over participating in government-funded further education [Table 16]. Of these:

- 1,088,300 participated on a Skills for Life course [Table 16];
- 1,315,400 participated on a Level 2 course, of which 1,026,900 were on a full Level 2 course [Table 16];
- 539,700 participated on a Level 3 course, of which 485,500 were on a full Level 3 course [Table 16].
- 203,300 benefited from support for the unemployed (those nearest the workforce).

37. Provisional data for the full 2011/12 academic year (August 2011 to July 2012) show there were 90,000 offenders aged 18 or over in the prison system participating in learning. These offenders were funded via the Offenders' Learning and Skills Service (OLASS) budget.

38. In the wider context provisional data show that in the full 2011/12 academic year (August 2011 to July 2012) there were 4,208,200 learners of all ages participating in government-funded further education (excluding schools) [Table 17].

Apprenticeships

39. Provisional data show that there were 502,500 Apprenticeship starts in the full 2011/12 academic year (August 2011 to July 2012) [Table 18.1]. Of these there were:

- 318,700 Intermediate Level Apprenticeship starts;
- 180,400 Advanced Level Apprenticeship starts; and
- 3,500 Higher Apprenticeship starts.
- 126,300 Apprenticeship starts by those aged under 19;
- 156,300 Apprenticeship starts by 19–24 year olds; and
- 219,900 Apprenticeship starts by those aged 25 and over.

40. Provisional data show that there were 233,700 Apprenticeship framework achievements in the full 2011/12 academic year (August 2011 to July 2012) [Table 18.2]. Of these there were:

- 156,700 Intermediate Level Apprenticeship framework achievements;

- 75,900 Advanced Level Apprenticeship framework achievements; and
- 1,100 Higher Apprenticeship framework achievements.

- 69,700 Apprenticeship framework achievements by those aged under 19;
- 78,300 Apprenticeship framework achievements by 19–24 year olds;
- 85,700 Apprenticeship framework achievements by those aged 25 and over.

Workplace Learning

41. Provisional data show that there were 323,900 Workplace Learning starts in the full 2011/12 academic year (August 2011 to July 2012) [Table 19.1].
42. Provisional data show that there were 261,700 Workplace Learning achievements in the full 2011/12 academic year (August 2011 to July 2012) [Table 19.2].

Adult (19+) Skills for Life

43. Provisional data show that 1,088,300 learners aged 19 or over participated on a Skills for Life course in the full 2011/12 academic year (August 2011 to July 2012) [Table 21]. Of these:
- 788,600^R participated on an English course [Table 21];
 - 778,500^R participated on a maths course [Table 21];
 - 138,400^R participated on an English for Speakers of Other Languages (ESOL) course [Table 21].
44. In the wider context provisional data show that 1,545,500 learners of all ages participated on a Skills for Life course (excluding schools) in the full 2011/12 academic year (August 2011 to July 2012) [Table 22].

Community Learning

45. Provisional data show that 681,400 learners participated on a Community Learning course in the full 2011/12 academic year (August 2011 to July 2012) [Table 23]. Of these:
- 521,500 took a Personal and Community Development Learning course;
 - 52,100 took a Neighbourhood Learning in Deprived Communities course;
 - 58,300 took a Family Literacy, Language and Numeracy course;
 - 71,400 took a Wider Family Learning course.

^R Figures use an improved counting methodology for English, maths and ESOL courses to remove duplicate learners. Total learner figures are not affected. For further information please see: http://www.thedataservice.org.uk/NR/rdonlyres/907339C7-439B-43D8-9831-C957BD130A83/0/SFL_Revision_June12.pdf.

NATIONAL STATISTICS

46. The United Kingdom Statistics Authority has designated these statistics as National Statistics, in accordance with the Statistics and Registration Service Act 2007 and signifying compliance with the Code of Practice for Official Statistics.
47. Designation can be broadly interpreted to mean that the statistics:
- meet identified user needs;
 - are well explained and readily accessible;
 - are produced according to sound methods; and
 - are managed impartially and objectively in the public interest.
48. Once statistics have been designated as National Statistics it is a statutory requirement that the Code of Practice shall continue to be observed. More information regarding compliance with the Code of Practice is available on our website:
<http://www.thedataservice.org.uk/statistics/statisticalfirstrelease/compliance/>

CHANGES INCLUDED IN THIS SFR

49. From the 2011/12 academic year a Single Individualised Learner Record (ILR) data collection system has been introduced. This has replaced the multiple separate data collections from previous years and has led to small technical changes in the way learners from more than one funding stream are counted. A paper is available on our website to explain the Single ILR and the small effects it has on the SFR at: http://www.thedataservice.org.uk/NR/ronlyres/C05DCDD5-67EE-4AD0-88B9-BEBC8F7F3300/0/SILR_Effects_SFR_Learners_June12.pdf. Further information on the Single ILR is available on the Information Authority's website at: <http://www.theia.org.uk/ilr/singleilr/>
50. Improvements have been made to the methodology for measuring learner participation and achievement on Skills for Life courses; these include English, maths and English for Speakers of Other Languages (ESOL). Total learner figures are not affected. For further information please see: http://www.thedataservice.org.uk/NR/ronlyres/907339C7-439B-43D8-9831-C957BD130A83/0/SFL_Revision_June12.pdf

CHANGES IN THE NEXT SFR

51. The January 2013 SFR will include final data for the full 2011/12 academic year. It will also include provisional data for the first quarter of the 2012/13 academic year.
52. Ofqual Vocational Qualification data shown in Table 14 of this release, and accompanying supplementary tables will be updated on the 29th November as part of a formal cascade of this release. These tables will be updated to include data for the fourth quarter of 2011/12 (July 2012 to September 2012) which will allow Ofqual to update their detailed bulletins that include these data.
53. Changes to the next release will be pre-announced on the Data Service website at least a month prior to coming into effect, at:
http://www.thedataservice.org.uk/statistics/statisticalfirstrelease/sfr_next/

SUPPORTING DATA

Scope

54. Should we need to make an unplanned revision to the statistics contained in this release, we will follow the procedures outlined in the Revisions Policy for this Statistical First Release. This includes action to understand the impact that any revisions will have, as well as ensuring that they are clearly communicated to the reader. The Revisions Policy can be found at:

<http://www.thedataservice.org.uk/statistics/statisticalfirstrelease/compliance/>

55. Information from the different post-16 learning options have been drawn together to give a coherent and comprehensive picture of the participation and achievement of young people and adults after the age of 16. These options include:

- Further education organisations
- Sixth form colleges
- Local Authorities
- Independent training organisations.

56. These organisations deliver a wide variety of government programmes, including:

- Education and Training
- Apprenticeships
- Workplace Learning
- Community Learning.

57. This SFR does not contain information regarding:

- **Delivery in School Sixth Forms**, including maintained, independent and academy schools. We are hoping to include this in future editions of the SFR, once more work has been done to reconcile the different data sources. Provisional figures taken from the Department for Education (DfE) [Participation in Education, Training and Employment by 16–18 Year Olds in England](#), Statistical Release show there were 521,900 students studying in School Sixth Forms in 2011, based on a snapshot of January 2012 school census data.
- **Higher Education in Higher Education Institutions**. The publication referenced in paragraph 80 shows that the total number of HE enrolments at English Higher Education Institutions stood at 2,097,215 in 2010/11.
- **Privately-funded training at FE organisations and independent training organisations**. There is no single coherent source that provides a measure of privately-funded training. BIS will investigate whether it is possible to develop a measure to support this as part of our wider Dissemination Plan. More detail on the Dissemination Plan can be found at: http://www.thedataservice.org.uk/statistics/dissemination_plan/. There are no sources currently available that fully capture privately-funded academic activity, particularly for older learners. However, in Table 14 of this release we do show the total number of Vocational Qualifications awarded in the UK. This includes both public and privately-funded qualifications and gives some sense of scale of total vocationally-related activity in the sector.

Data Sources

58. The data used to produce this SFR are Individualised Learner Record (ILR) collections that are returned to the Data Service by further education colleges and providers. The Data Service and *the information authority* introduced a Single ILR collection in 2011/12 to replace the multiple ILR collection types that were collected in previous years. There are no longer separate collections for different funding streams and providers return all of their learners in a single file. The following ILR collections have been used to populate this release:

Year	Data Source	
2010/11	Education and Training	ILR LR05 – final
	Apprenticeships and Workplace Learning	ILR ER13 – final
	Community Learning	ILR SL05 – final
2011/12	ALL	SILR R14 – final
	Apprenticeships	Employer Outcomes Pilot R12 - final

59. For 2011/12, R14 is used to provide provisional data on learning in all further education and skills providers for the period 1st August 2011 to 31st July 2012.

60. The data sources for earlier years, including 2010/11, are the final collections of each funding stream and include information on provision for the full academic year. More information on these data sources is available in a definitions document, which can be found at:

http://www.thedataservice.org.uk/statistics/statisticalfirstrelease/sfr_current/.

61. The Labour Force Survey is the other data source used for the SFR (Tables 12 and 13). The latest LFS data used in this release relate to Quarter 4 (October – December) 2011.

Issues with Using Provisional Data

62. It is important to provide the earliest picture of further education performance once it becomes available so that users may assess the impact of government-funded provision and hold the system to account. However, provisional data are taken from an operational information system which is designed to support the funding of providers and there are some important limitations users should take into consideration.

63. In-year information is subject to data lag, which is when a provider submits information after the period it related to. This information is subsequently attributed to the correct time period. Data remain provisional until final returns for the academic year are made by providers, after the end of the academic year. Final data are published in the following January. The size of revision to individual estimates that arise from data lag can vary greatly. They tend to be around 2 to 3 per cent but have been as much as 15 per cent. Revisions are typically upward though it should be noted that on occasions small downward revisions are possible.

64. Data lag from one year to the next is not predictable, as provider behaviour changes over time and there is no source of information that would enable us to provide a robust estimate of completeness of data that have been returned. Provisional data

cannot, therefore, be compared with provisional or final data from earlier academic years. We generally recommend using the final data for the last complete academic year.

65. We carry out a quality assessment of the volume of providers that have made their returns. If we consider estimates to be particularly weak, due to data lag or any other factor, we may defer publication of those estimates. In recent years we have encouraged more timely reporting of data ahead of the final return. This is set out in our quality statement, which can be found at:

<http://www.thedataservice.org.uk/statistics/statisticalfirstrelease/compliance/>.

Issues with Comparing Data Across Academic Years

66. In January 2007, BIS consulted on a new funding approach for learners. This included three new demand led funding (DLF) models and a new funding formula, all of which were introduced in the 2008/09 academic year. To support this, it was necessary to bring in some technical changes from 2008/09 on how and where some activities are counted.

67. Overall the new funding methodology had a small impact of just over 1 per cent on total learner participation, and minimal effect on overall achievements. However, individual series (excluding Apprenticeship starts and achievements) were more significantly affected, and should not be compared with those in earlier years. The level of provision at which a learner was studying was unaffected. More information on these changes can be found at:

<http://www.thedataservice.org.uk/NR/rdonlyres/5DC702AA-5117-40E1-A15E-01F95F2AF32B/0/TheeffectsofDemandLedFundingonthecountof2008v2.doc>

Data Definitions

68. High-level definitions of some of the key terms used in this release can be found in the Glossary on page 4. A more detailed definitions document to accompany this release is available on the Data Service website at:

http://www.thedataservice.org.uk/statistics/statisticalfirstrelease/sfr_current/

69. The 'Level of Highest Qualification Held by Adults' statistics are produced using data on the highest qualification held by individuals from the Labour Force Survey in each year. The LFS is conducted by the Office for National Statistics and the estimates provided are the best measure of attainment within the population at Quarter 4 (October – December) each calendar year. Further details of how this information is used to calculate the estimates can be found at:

<http://www.thedataservice.org.uk/statistics/statisticalfirstrelease/methodogy/>

Publication Cycle Across the Year

70. Further information on future editions of the SFR can be found on the Data Service statistics website at:

http://www.thedataservice.org.uk/statistics/statisticalfirstrelease/sfr_next/

71. Table A below shows provisional and final data included for each quarterly release.

Table A: Publication Cycle

Release	Data Included
October 2012	- Provisional Apprenticeship, Workplace Learning and overall FE and Skills participation data for the full 2011/12 academic year
	- Provisional Apprenticeship and Workplace Learning achievement data for the full 2011/12 academic year
January 2013	- Final participation and achievement data for the full 2011/12 academic year for Further Education and Skills
	- Education and Training and Apprenticeship success rates for 2011/12
	- Provisional Apprenticeship, Workplace Learning and overall FE and Skills participation data for the first three months of 2012/13
	- Provisional Apprenticeship and Workplace Learning achievement data for the first three months of 2012/13
March 2013	- Provisional Apprenticeship, Workplace Learning and overall FE and Skills participation data for the first six months of 2012/13
	- Provisional Apprenticeship and Workplace Learning achievement data for the first six months of 2012/13
	- Final data for 2011 and provisional data for 2012 on the level of highest qualification held for adults in the population
June 2013	- Provisional Apprenticeship, Workplace Learning and overall FE and Skills participation data for the first nine months of 2012/13
	- Provisional Apprenticeship and Workplace Learning achievement data for the first nine months of 2012/13

72. The Statistical First Release is an evolving product and we welcome feedback. If you have comments or feedback on the SFR, these can be sent to: servicedesk@thedataservice.org.uk, or alternatively, you can call 0870 267 0001.

73. If you have a statistical question around the content or presentation of National Statistics in the release, please contact Jessie Evans at: jessie.evans@bis.gsi.gov.uk

74. If you would like to sign up for Web alerts, so that you are automatically sent an alert when new information is put on the website, please subscribe at: http://www.thedataservice.org.uk/News/ds_alerts/

Supplementary Tables

75. A full list of Supplementary Tables relating to this SFR can be found on the Data Service website at:
http://www.thedataservice.org.uk/statistics/statisticalfirstrelease/sfr_supplementary_tables/. These tables include breakdowns by age, gender, ethnicity, learners with learning difficulties and/or disabilities, region, local authority, parliamentary constituency, sector subject area and funding stream. For more information on exactly what data will be released, and on which date, please see the Supplementary Tables list on the website.
76. Local Authority Reports are published on the Data Service website (last updated in May 2012). Local Authorities are shown based on the postcodes of delivery locations and also on the home postcodes of learners. The reports cover 2008/09 to 2010/11: enrolments, starts and achievements by sector; enrolments and achievements by provider; and participation by provider by funding stream, learning and learner characteristics. The reports can be found at:
http://mireportslibrary.thedataservice.org.uk/demographics/geography_reports/local_authority.htm

Related National Statistics Releases

77. There are a number of other National Statistics publications available that can be used to provide contextual information to this SFR. Some of those most relevant to this release are discussed below.
78. [*Participation in Education, Training and Employment by 16-18 Year Olds in England*](#) published on 28th June 2012 by the Department for Education. This shows that the proportion of 16–18 year olds in education and training was 85.4 per cent at end 2011 – the highest rate ever recorded and an increase of 1.3 percentage points from 84.1 per cent at end 2010. More recent quarterly data published in the NEET Quarterly Brief on 22nd August 2012 showed that participation at ages 16-18 had remained broadly static since the start of the 2011/12 academic year.
79. [*Level 2 and 3 Attainment by Young People in England Measured Using Matched Administrative Data: Attainment by Age 19 in 2011*](#) published on 19th April 2012 by the Department for Education. This shows that in 2011, 83.8 per cent of people aged 19 were qualified to at least Level 2, and 56.7 per cent were qualified to Level 3. These were increases of 2.3 percentage points and 2.5 percentage points respectively, since 2011.
80. [*Higher Education Student Enrolments and Qualifications Obtained at Higher Education Institutions in the United Kingdom for the Academic Year*](#) published on 12th January 2012 by the Higher Education Statistics Agency. This release shows that the total number of HE enrolments at English Higher Education Institutions stood at 2,097,215 in 2010/11, showing no percentage change from 2009/10. In terms of qualifications, in 2010/11 there were 308,340 first degree graduates compared to 292,410 in 2009/10, an increase of 5 per cent.
81. [*Education and Training Statistics for the United Kingdom*](#) published on 8th December 2011 by the Department for Education. This release provides statistics relating to education and training in the UK and includes chapters relating to post-compulsory education & training and qualifications. Information includes participation of learners

in further education by country of study, participation in job-related training and the highest level of qualification held by adults in the population (UK).

Other Related Statistics

82. In January 2012 the Government launched FE Choices. The prime purpose of FE Choices is to provide clear, comparable information to learners and employers so they can make informed choices about post-16 education and training. FE Choices enables users to search and compare provider ratings for four performance indicators: Success Rates; Learner Destinations (including Employment Rate and Learning Rate); Learner Satisfaction; and Employer Satisfaction. These indicators are published on the FE Choices website at: <http://fechoices.skillsfundingagency.bis.gov.uk/>. Results at National level, by type of provider and by individual provider for each performance indicator can be found at: http://www.thedataservice.org.uk/statistics/statistics_fechoices/

Further Education Statistics for Other Countries in the UK

83. The focus of this SFR is on government-funded further education provision in England. Similar information is available for other countries in the UK, and provides useful contextual background to these statistics.
84. Statistics on Further Education and Work-based learning in **Wales** can be found at: <http://wales.gov.uk/topics/statistics/?lang=en>
85. Statistics on Professional and Technical Enrolments in the **Northern Ireland** Further Education Sector for 2010/11 can be found at: <http://www.delni.gov.uk/index/statsandresearch/further-education-stats/further-education-enrolments-2/prof-and-tech-enrolments-in-the-ni-fe-sector-10-11.htm>
86. Statistics on learners in further education in **Scotland** can be found at: http://www.sfc.ac.uk/web/FILES/ReportsandPublications/Facts_and_Figures_2011.pdf Additionally, user-defined tables on further education learners and courses can be produced at: <https://stats.sfc.ac.uk/infact/>

TABLE GUIDE

87. This section provides a brief summary of what is included in each table of this release. Tables 1 to 11 focus on the 2010/11 academic year; Tables 15 to 23 show provisional data for the full 2011/12 academic year (August 2011 – July 2012).

- **Table 1** shows a demographic breakdown of all government-funded learners in further education.
- **Tables 2, 7 and 10** show participation and achievement in further education and skills by level for adults (aged 19 and over), all ages, and young people (aged under 19) respectively.
- **Tables 3 and 8** show Apprenticeship starts and achievements by level for adults (aged 19 and over) and all ages, respectively.
- **Tables 4, 9 and 11** show Skills for Life participation and achievement for adults (aged 19 and over), all ages, and young people (aged under 19) respectively.
- **Table 5** shows Workplace Learning starts and achievements by level.
- **Table 6** shows Community Learning participation and achievements by provision type.
- **Tables 12 and 13** show level of attainment in the population (working age and economically active respectively) from the Labour Force Survey.
- **Table 14** shows a quarterly time series of information on Vocational Qualifications awarded.
- **Tables 15 to 23** repeat earlier tables; showing provisional in-year participation for the first nine months of the 2011/12 academic year (August 2011 to April 2012).

Supplementary Tables

88. A full list of Supplementary Tables relating to this SFR can be found on the Data Service website at:

http://www.thedataservice.org.uk/statistics/statisticalfirstrelease/sfr_supplementary_tables/. These tables include breakdowns by age, gender, ethnicity, learners with learning difficulties and/or disabilities, region, Local Authority, parliamentary constituency, sector subject area and funding stream.

Table Footnotes

General Footnotes Relevant to All Tables

- 1) Volumes are rounded to the nearest 100; percentages are calculated on pre-rounded data.
- 2) '-' Indicates a base value of less than 50; '**' indicates a percentage of less than 0.5%.
- 3) These tables (except 12-14) include learners that were funded by the Learning and Skills Council or Young People's Learning Agency and/or are now funded by the Skills Funding Agency or Education Funding Agency.
- 4) For definitions of variables used in the tables please see the data dictionary:
<http://www.thedataservice.org.uk/datadictionary/>
- 5) Except for Tables 3, 5, 8, 18 and 19 (see footnote 19), age is reported as at 31 August of the academic year for all provision. Where under 19 year olds are reported, these include a small number of under 16 year olds.
- 6) In tables reporting full-year numbers, except for Tables 3, 5 and 8 (see footnotes 20 and 21), full-year numbers are a count of the number of learners that participated/achieved at any point during the year. Learners undertaking/achieving more than one course will appear only once in the 'total learners' category for each data collection. However, learners that are included in different data collections, whether that relates to different years or different funding streams, will be counted more than once. All learners undertaking/achieving a full Level 2 or full Level 3 qualification will also appear in the Level 2 or Level 3 category, respectively.
- 7) The data source for all tables is the Individualised Learner Record, except where stated.
- 8) Further breakdowns of the data are available at the Data Service website:
http://www.thedataservice.org.uk/statistics/statisticalfirstrelease/sfr_supplementary_tables/

Table 1 – FE and Skills Demographics

- 9) Total Education and Training (previously Learner Responsive) also includes learners on courses with 'No Level Assigned'. Learners undertaking courses at more than one level will be counted once for each applicable level, but once only in Total Education and Training. Learners studying a Level 2 Skills for Life qualification will be counted in both the Level 2 and Skills for Life categories, but only once in totals.
- 10) Age, gender, learners with learning difficulties and/or disabilities and ethnicity is based upon self-declaration by the learner.
- 11) Education and Training includes those learners studying under the University for Industry programme.

Tables 2, 7, 10 and 15-17 – FE and Skills

- 12) Success rates are calculated as the number of learning aims achieved divided by the number of learning aims expected to complete, excluding any learners who transferred on to another learning aim within the same institution.
- 13) Apprenticeship success rates are based on the number of learners who meet all of the requirements of their Apprenticeship framework, divided by the number of learners who have left training or successfully completed their training in the academic year.
- 14) Apprenticeship success rates are not affected by demand led funding.
- 15) Tables 2.2, 7.2 and 10.2 report on the actual number of achievements within the academic year without reference to those that were expected to complete. Tables 2.3, 7.3 and 10.3 report on success rates which are based on the reported achievement of individual aims that were expected to complete in the academic year.
- 16) FE and Skills participation figures for 2011/12 are available in Tables 15-17 of this release.
- 17) Tables that show provisional estimates for 2011/12 are not directly comparable with figures for previous years.

Tables 3, 8 and 18 – Apprenticeships

- 18) Unlike learner figures in earlier tables, figures for 2008/09 onwards are comparable with earlier years as demand led funding rules are not applied to starts and achievements.
- 19) Age is calculated based on age at start of the programme rather than based on 31 August.
- 20) In Tables 3.1, 8.1 and 18.1 full-year numbers are a count of the number of starts at any point during the year. Learners starting more than one Apprenticeship will appear more than once.
- 21) In Tables 3.2, 8.2 and 18.2 full-year numbers are a count of the number of framework achievements at any point during the year. Learners achieving more than one framework will appear more than once.
- 22) Programme-Led Apprenticeships recorded in ILR returns are included in the above figures.
- 23) In order to be counted as a successful achievement, all elements of the framework must have been achieved.
- 24) Quarter 1 is 1 August to 31 October; Quarter 2 is 1 November to 31 January; Quarter 3 is 1 February to 30 April; Quarter 4 is 1 May to 31 July.

Tables 5 and 19 – Workplace Learning

25) This covers a broad range of training – from basic skills to Level 2, Level 3 and other higher-level skills such as Leadership and Management. This training is mainly delivered through the workplace (but excludes Apprenticeships). Between 2005/06 and 2007/08 this included the Train to Gain programme and Standalone NVQs. Between 2008/09 and 2010/11 this included the Train to Gain programme, Employability Skills Pilot and other programmes such as Programmes for the Unemployed. In 2011/12 this includes all training mainly delivered through the workplace (excluding Apprenticeships). Figures for 2008/09 and 2009/10 are not comparable with earlier years as in 2008/09 and 2009/10 NVQs delivered in the workplace changed from being funded by FE to be funded by Train to Gain. There were 181,000 starts and 132,000 achievements in NVQs delivered in the workplace in 2007/08 (Source - FE 2007/08 F05 Final).

26) In Tables 5.1 and 19.1 full-year numbers are a count of the number of starts at any point during the year. Learners starting more than one course will appear more than once.

27) In Tables 5.2 and 19.2 full-year numbers are a count of the number of achievements at any point during the year. Learners achieving more than one course will appear more than once.

28) Quarter 1 is 1 August to 31 October; Quarter 2 is 1 November to 31 January; Quarter 3 is 1 February to 30 April; Quarter 4 is 1 May to 31 July.

Tables 6 and 23 – Community Learning

29) Total Learners includes learners participating in Community Learning (previously Adult Safeguarded Learning) provision in the Community Learning and FE funding streams for 2005/06 to 2007/08. For 2008/09 to 2010/11, only Community Learning provision recorded in the Community Learning collection is included in totals except for 2009/10 where Community Learning provision recorded in the Education and Training collection for five Specially Designated Colleges is also included. No Formal First Step learners are included except for 2006/07, where Formal First Step provision cannot be accurately separated from other Community Learning provision. These learners are therefore included in Total Learners. This means the Total Learners for 2006/07 are not directly comparable to 2005/06 or 2007/08.

30) Provision type figures are only shown for years where provision type can be accurately determined for all learners. Community Learning learners in 2005/06 cannot be accurately categorised.

31) There are a number of learners with Community Learning aims that are recorded in the Education and Training funding stream and are not included in the figures in Table 6. In 2008/09 there were 7,900 participating and 6,400 achieving learners; in 2009/10 there were 7,700 participating and 6,300 achieving learners; and in 2010/11 there were 8,300 participating and 6,900 achieving learners. The only Community Learning provision included for Table 6 for 2008/09 and 2010/11 is recorded in the Community Learning funding stream.

32) Community Learning participation figures for 2011/12 are available in Table 23 of this release.

Table 14 – Vocational Qualifications

33) This table covers all levels of vocational qualifications reported through Ofqual. Data are supplied by awarding organisations.

34) Academic year is October to September. For example, the 2005/06 academic year is 1 October 2005 to 30 September 2006.

35) Key Skills data was not collected prior to October 2009.

36) 'Other Vocational Qualifications' include Basic Skills, Entry Level, English for Speakers Other Languages, Functional Skills, Free-Standing Mathematics Qualification, Key Skills, National Qualifications Framework and Other General types.

Table 1: All Age Demographic Summary of FE and Skills Participation (2010/11) – Learner Volumes

	Funded Learners																	
	Apprenticeships					Education and Training							Workplace Learning		Community Learning		Total	
	Intermediate Level Apprenticeship	Advanced Level Apprenticeship	Higher Apprenticeship	Total Apprenticeships	%	Below Level 2 (excluding SfL)	Skills For Life (SfL)	Level 2	Level 3	Level 4+	Total Education and Training	%	Total Workplace Learning	%	Total Community Learning	%		
Total Learners	415,200	247,200	3,500	665,900	100.0%	676,000	887,400	898,500	674,300	28,400	2,100,000	100.0%	761,400	100.0%	737,500	100.0%	4,264,900	100.0%
Age																		
Under 19	150,000	52,900	300	203,100	30.5%	348,000	397,200	392,600	468,000	1,700	386,600	42.2%	8,100	1.1%	3,800	0.5%	1,101,700	25.8%
19-24	141,300	108,100	2,400	251,900	37.8%	84,800	127,700	133,900	89,300	4,600	303,900	14.5%	134,100	17.6%	54,300	7.4%	744,200	17.5%
25-49	103,300	77,100	800	181,200	27.2%	178,400	312,700	305,400	99,900	18,300	722,000	34.4%	493,100	64.8%	376,200	51.0%	1,772,500	41.6%
50+	20,700	9,000	-	29,700	4.5%	64,600	49,700	86,500	17,100	3,800	187,100	8.9%	126,000	16.5%	293,500	39.8%	636,300	14.9%
Unknown	-	-	-	-	-	200	100	100	-	-	400	-	-	-	9,700	1.3%	10,200	*
Gender																		
Female	210,600	122,800	2,200	335,500	50.4%	305,600	461,000	473,300	371,900	18,400	1,108,500	52.8%	330,600	43.4%	549,100	74.4%	2,323,700	54.5%
Male	204,600	124,400	1,400	330,400	49.6%	370,400	426,400	425,200	302,400	10,000	991,600	47.2%	430,700	56.6%	188,500	25.6%	1,941,100	45.5%
Learners with Learning Difficulties and/or Disabilities																		
Learning Difficulty/Disability	38,100	17,700	100	56,000	8.4%	165,300	176,500	130,900	87,600	2,100	354,500	16.9%	46,000	6.0%	90,200	12.2%	546,700	12.8%
No Learning Difficulty/Disability	373,800	227,600	3,400	604,800	90.8%	472,600	660,100	711,900	563,800	25,100	1,621,500	77.2%	699,600	91.9%	569,600	77.2%	3,495,500	82.0%
Not Known	3,300	1,800	-	5,200	0.8%	38,100	50,800	55,700	22,900	1,200	124,100	5.9%	15,800	2.1%	77,700	10.5%	222,700	5.2%
Ethnicity																		
Asian or Asian British	16,100	7,800	100	24,000	3.6%	52,700	108,100	68,500	53,100	1,500	192,100	9.1%	61,000	8.0%	55,100	7.5%	332,200	7.8%
Black or Black British	11,600	6,300	-	18,000	2.7%	50,200	88,100	67,000	42,700	1,200	163,600	7.8%	42,900	5.6%	33,600	4.6%	258,100	6.1%
Mixed	7,500	3,800	100	11,400	1.7%	21,500	28,500	26,200	21,800	500	62,600	3.0%	10,800	1.4%	10,600	1.4%	95,400	2.2%
White	373,600	225,500	3,300	602,400	90.5%	521,800	608,200	701,800	536,900	24,200	1,578,400	75.2%	621,300	81.6%	590,800	80.1%	3,393,000	79.6%
Chinese or Other Ethnic Group	3,000	1,600	-	4,700	0.7%	14,500	38,800	18,400	11,400	500	60,400	2.9%	13,800	1.8%	20,100	2.7%	99,100	2.3%
Not Known/Not Provided	3,400	2,100	-	5,500	0.8%	15,300	15,600	16,500	8,400	500	42,800	2.0%	11,500	1.5%	27,300	3.7%	87,100	2.0%

Notes

1) These tables include Apprenticeships, Workplace Learning, Community Learning and Education and Training provision taken at General Further Education Colleges (including Tertiary), Sixth Form Colleges, Special Colleges (Agricultural and Horticultural Colleges and Art and Design Colleges), Specialist Colleges and External Institutions.

2) Please see the general footnotes and the FE and Skills Demographics footnotes sections for further information on these tables.

3) Total Community Learning in this table will not match total participation in Table 6 as here Formal First Step provision in the Education and Training funding stream is included. Table 6 does not include Formal First Step provision.

Table 2.1: Adult (19+) FE and Skills Participation by Level (2006/07 to 2010/11) – Learner Volumes

Level		Funded Learners										
		2006/07		2007/08		2008/09		2009/10		2010/11		
		Full Year	Full Year	% change 06/07 to 07/08		Full Year	Full Year	% change 08/09 to 09/10		Full Year	% change 09/10 to 10/11	
Total Learners		3,205,700	3,304,400	3.1%		3,771,200	3,540,500	-6.1%		3,163,200	-10.7%	
Participation	of which...											
	Below Level 2 (excluding Skills for Life)	589,500	532,500	-9.7%		496,800	435,300	-12.4%		370,900	-14.8%	
	Skills for Life	809,300	824,800	1.9%		945,100	909,100	-3.8%		961,800	5.8%	
	Full Level 2	516,300	740,000	43.3%		968,600	971,000	*		982,600	1.2%	
	Full Level 3	267,600	328,100	22.6%		423,900	469,100	10.6%		494,000	5.3%	
	Level 2	1,118,400	1,319,400	18.0%		1,549,000	1,451,200	-6.3%		1,273,300	-12.3%	
	Level 3	485,800	528,200	8.7%		619,700	604,800	-2.4%		542,900	-10.2%	
	Level 4+	59,900	53,200	-11.1%		58,200	49,500	-14.9%		36,600	-26.0%	
No Level Assigned	842,300	803,600	-4.6%		910,500	951,100	4.5%		888,300	-6.6%		

Table 2.2: Adult (19+) FE and Skills Achievement by Level (2006/07 to 2010/11) – Learner Volumes

Level		Funded Learners										
		2006/07		2007/08		2008/09		2009/10		2010/11		
		Full Year	Full Year	% change 06/07 to 07/08		Full Year	Full Year	% change 08/09 to 09/10		Full Year	% change 09/10 to 10/11	
Total Learners		2,233,100	2,243,600	*		2,584,000	2,567,700	-0.6%		2,265,100	-11.8%	
Achievement	of which...											
	Below Level 2 (excluding Skills for Life)	430,200	406,500	-5.5%		367,000	336,800	-8.2%		298,500	-11.4%	
	Skills for Life	540,900	520,700	-3.7%		639,100	614,600	-3.8%		595,600	-3.1%	
	Full Level 2	235,600	320,300	35.9%		493,900	556,000	12.6%		561,800	1.0%	
	Full Level 3	115,000	134,400	16.9%		170,200	237,800	39.7%		242,700	2.1%	
	Level 2	660,600	734,700	11.2%		910,800	926,000	1.7%		788,900	-14.8%	
	Level 3	271,400	285,600	5.2%		317,000	344,400	8.7%		282,600	-17.9%	
	Level 4+	30,300	25,800	-14.9%		27,600	26,900	-2.3%		20,400	-24.4%	
No Level Assigned	689,700	682,800	-1.0%		756,400	814,600	7.7%		764,100	-6.2%		

Table 2.3: Adult (19+) Education and Training and Apprenticeship Success Rates by Level (2006/07 to 2010/11) – Percentages

Level		2006/07	2007/08	2008/09	2009/10	2010/11
		Full Year	Full Year	Full Year	Full Year	Full Year
Education and Training Provision		76.5%	80.5%	80.6%	80.3%	81.4%
of which...	Skills for Life	67.9%	73.1%	75.1%	74.3%	78.6%
	Full Level 2	69.4%	71.4%	72.1%	74.8%	78.5%
	Full Level 3	65.5%	70.6%	70.1%	75.1%	77.7%
	Level 2	75.6%	79.6%	80.5%	80.3%	80.2%
	Level 3	72.0%	77.1%	78.4%	78.7%	78.8%
	Apprenticeships					
of which...	Intermediate Level Apprenticeship	60.1%	64.8%	72.8%	75.6%	78.0%
	Advanced Level Apprenticeship	56.0%	64.5%	71.2%	74.0%	78.4%
	Higher Apprenticeship					84.8%
	All Apprenticeships	58.5%	64.7%	72.2%	75.0%	78.2%

Notes

1) These tables include Apprenticeships, Workplace Learning, Community Learning and Education and Training provision taken at General Further Education Colleges (including Tertiary), Sixth Form Colleges, Special Colleges (Agricultural and Horticultural Colleges and Art and Design Colleges), Specialist Colleges and External Institutions.

2) Figures for 2008/09 onwards are not directly comparable to earlier years as the introduction of demand led funding has changed how data is collected and how funded learners are defined from 2008/09 onwards. Apprenticeship success rates are not affected by demand led funding. More information on demand led funding is available at:

<http://www.thedataservice.org.uk/datarictionary/businessdefinitions/Demand+Led+Funding.htm>

3) Data for earlier years are available in the Further Education and Skills Supplementary Tables:

http://www.thedataservice.org.uk/statistics/statisticalfirstrelease/sfr_supplementary_tables/further_education_skills/

4) Please see the general footnotes and the FE and Skills footnotes sections for further information on these tables.

Table 3.1: Adult (19+) Apprenticeship Programme Starts by Level and Age (2006/07 to 2010/11)

	Age	2006/07	2007/08	2008/09	2009/10	2010/11	2009/10				2010/11			
		Full Year	Full Year	Full Year	Full Year	Full Year	Quarter 1	Quarter 2	Quarter 3	Quarter 4	Quarter 1	Quarter 2	Quarter 3	Quarter 4
Intermediate Level Apprenticeship	19-24	46,500	55,200	52,600	72,800	90,400	20,100	16,200	17,200	19,300	21,000	20,000	23,300	26,100
	25+	100	14,600	31,700	28,400	113,400	7,600	5,400	8,100	7,200	16,400	26,800	31,700	38,400
	Total	46,600	69,800	84,300	101,100	203,800	27,700	21,600	25,300	26,500	37,400	46,800	55,000	64,500
Advanced Level Apprenticeship	19-24	32,000	34,800	32,000	39,800	51,600	14,900	7,000	8,700	9,200	16,000	10,100	12,400	13,300
	25+	100	12,600	24,200	20,600	68,000	5,800	3,300	6,100	5,500	10,800	13,300	20,200	23,700
	Total	32,100	47,400	56,100	60,400	119,700	20,600	10,300	14,800	14,700	26,800	23,400	32,600	36,900
Higher Apprenticeship	19-24	100	-	100	1,200	1,300	600	200	300	100	700	200	200	200
	25+	-	-	-	100	700	100	-	-	-	400	100	100	100
	Total	100	-	100	1,400	2,000	700	300	300	100	1,100	300	300	300
All Apprenticeships	19-24	78,600	90,100	84,700	113,800	143,400	35,600	23,400	26,100	28,600	37,700	30,300	35,900	39,600
	25+	300	27,200	55,900	49,100	182,100	13,400	8,700	14,200	12,800	27,600	40,200	52,000	62,200
	Total	78,900	117,300	140,600	162,900	325,500	49,000	32,100	40,400	41,400	65,300	70,500	87,900	101,800

Table 3.2: Adult (19+) Apprenticeship Framework Achievements by Level and Age (2006/07 to 2010/11)

	Age	2006/07	2007/08	2008/09	2009/10	2010/11	2009/10				2010/11			
		Full Year	Full Year	Full Year	Full Year	Full Year	Quarter 1	Quarter 2	Quarter 3	Quarter 4	Quarter 1	Quarter 2	Quarter 3	Quarter 4
Intermediate Level Apprenticeship	19-24	28,200	28,400	35,500	38,600	48,400	9,100	7,200	8,900	13,400	10,700	10,800	11,400	15,500
	25+	100	900	12,500	20,300	23,900	5,300	4,400	4,800	5,900	4,600	4,500	5,600	9,200
	Total	28,300	29,300	48,000	59,000	72,400	14,300	11,600	13,700	19,300	15,300	15,300	17,000	24,800
Advanced Level Apprenticeship	19-24	17,800	19,700	22,400	25,400	27,700	6,200	4,700	5,700	8,800	6,500	5,300	6,100	9,900
	25+	100	300	5,400	13,900	15,900	2,900	3,000	3,600	4,400	3,300	2,900	3,900	5,900
	Total	17,900	20,000	27,700	39,300	43,600	9,100	7,700	9,300	13,200	9,800	8,200	9,900	15,700
Higher Apprenticeship	19-24	-	-	-	100	800	-	-	-	100	300	100	200	300
	25+	-	-	-	-	100	-	-	-	-	-	-	-	-
	Total	-	-	-	200	900	-	-	-	100	400	100	200	300
All Apprenticeships	19-24	46,000	48,100	57,800	64,200	77,000	15,300	12,000	14,600	22,300	17,500	16,100	17,600	25,700
	25+	200	1,200	17,900	34,300	39,900	8,200	7,400	8,400	10,300	7,900	7,400	9,500	15,100
	Total	46,200	49,300	75,700	98,400	116,900	23,500	19,400	23,000	32,600	25,400	23,600	27,100	40,800

Notes

1) Data for earlier years are available in the Apprenticeship Supplementary Tables:

http://www.thedataservice.org.uk/statistics/statisticalfirstrelease/sfr_supplementary_tables/Apprenticeship_sfr_supplementary_tables/

2) Please see the general footnotes and the Apprenticeships footnotes section for all information on these tables.

Table 4: Adult (19+) FE and Skills – Skills for Life Participation and Achievement by Level (2006/07 to 2010/11) – Learner Volumes (Revised methodology since June 2012)

Measure	Level	Funded Learners							
		2006/07	2007/08		2008/09	2009/10		2010/11	
		Full Year	Full Year	% change 06/07 to 07/08	Full Year	Full Year	% change 08/09 to 09/10	Full Year	% change 09/10 to 10/11
Participation	Total Learners	809,300	824,800	1.9%	945,100	909,100	-3.8%	961,800	5.8%
	of which English ^R	435,300	485,400	11.5%	579,500	555,700	-4.1%	639,000	15.0%
	of which entry level ^R	130,000	132,000	1.5%	136,700	112,400	-17.8%	103,800	-7.7%
	of which level 1 ^R	179,200	204,400	14.1%	248,700	226,700	-8.9%	285,900	26.1%
	of which level 2 ^R	178,400	197,100	10.5%	245,600	252,100	2.7%	286,800	13.8%
	of which maths ^R	333,400	395,600	18.7%	517,100	525,000	1.5%	630,500	20.1%
	of which entry level ^R	70,400	82,600	17.4%	108,700	101,400	-6.7%	98,500	-2.9%
	of which level 1 ^R	153,700	185,200	20.5%	241,800	236,800	-2.1%	314,800	32.9%
	of which level 2 ^R	148,600	171,600	15.5%	218,600	228,800	4.6%	265,700	16.2%
	of which ESOL (English for Speakers of Other Languages) ^R	214,000	193,300	-9.7%	188,700	178,600	-5.4%	163,600	-8.4%
	of which entry level ^R	178,400	164,600	-7.7%	161,000	150,100	-6.8%	135,500	-9.7%
	of which level 1 ^R	30,500	24,400	-20.0%	24,100	24,100	*	24,200	*
	of which level 2 ^R	11,500	9,400	-17.9%	9,300	9,700	3.5%	9,600	-0.6%
Achievement	Total Learners	540,900	520,700	-3.7%	639,100	614,600	-3.8%	595,600	-3.1%
	of which English ^R	274,700	275,000	*	340,300	336,400	-1.1%	329,700	-2.0%
	of which entry level ^R	95,900	92,800	-3.2%	91,800	79,200	-13.7%	74,400	-6.1%
	of which level 1 ^R	103,900	106,900	2.9%	144,000	130,200	-9.6%	134,100	3.1%
	of which level 2 ^R	99,800	97,800	-2.1%	129,000	144,700	12.2%	139,900	-3.3%
	of which maths ^R	195,100	208,900	7.1%	293,000	311,100	6.2%	324,300	4.2%
	of which entry level ^R	51,100	53,500	4.8%	68,300	68,400	*	70,900	3.7%
	of which level 1 ^R	88,200	94,400	7.1%	138,900	138,400	*	151,300	9.4%
	of which level 2 ^R	75,100	82,300	9.5%	111,400	126,200	13.2%	128,500	1.8%
	of which ESOL (English for Speakers of Other Languages) ^R	146,700	138,600	-5.5%	135,800	128,200	-5.6%	122,100	-4.7%
	of which entry level ^R	123,100	119,500	-2.9%	116,700	108,100	-7.4%	101,700	-5.9%
	of which level 1 ^R	19,800	15,700	-20.9%	15,600	15,900	1.6%	16,400	3.6%
	of which level 2 ^R	7,200	6,200	-13.7%	6,100	6,600	8.0%	6,500	-1.7%

Notes

R) Figures have been revised due to a methodological change in how learners are counted for English, maths and ESOL courses to remove duplicate learners. Total learner figures are not affected. Please see http://www.thedataservice.org.uk/NR/rdonlyres/907339C7-439B-43D8-9831-C957BD130A83/0/SFL_Revision_June12.pdf for further information.

1) Figures for 2008/09 onwards are not directly comparable to earlier years as the introduction of demand led funding has changed how data is collected and how funded learners are defined from 2008/09 onwards. More information on demand led funding is available at:

<http://www.thedataservice.org.uk/datadictionary/businessdefinitions/Demand+Led+Funding.htm>

2) Total Participation in this table will not match Skills for Life participation in Table 1 as here Skills for Life courses on all funding streams are covered. Table 1 records Skills for Life for Education and Training only.

3) Data for earlier years are available in the Further Education and Skills Supplementary Tables:

http://www.thedataservice.org.uk/statistics/statisticalfirstrelease/sfr_supplementary_tables/further_education_skills/

4) Please see the general footnotes section for further information on this table.

Table 5.1: Workplace Learning Starts by Level (2006/07 to 2010/11)

Level		2006/07	2007/08	2008/09	2009/10	2010/11	2009/10				2010/11			
		Full Year	Full Year	Full Year	Full Year	Full Year	Quarter 1	Quarter 2	Quarter 3	Quarter 4	Quarter 1	Quarter 2	Quarter 3	Quarter 4
Total Starts		207,400	347,300	906,100	774,500	599,300	194,900	148,900	235,300	195,300	179,800	172,500	143,300	103,700
of which...	Below Level 2	15,500	28,700	155,300	147,100	114,300	40,500	29,400	43,400	33,900	37,700	37,700	21,900	17,000
	Level 2	176,200	274,300	579,900	430,500	331,900	107,300	83,000	132,300	107,900	89,600	88,400	85,500	68,400
	Level 3	14,600	43,100	135,800	100,200	81,800	30,000	16,900	28,500	24,800	26,300	21,100	17,300	17,100
	Level 4+	1,000	1,100	11,900	4,300	3,000	1,700	700	1,100	800	900	800	700	600
	No Level Assigned	100	-	23,200	92,400	68,300	15,500	18,900	30,100	27,900	25,200	24,500	18,000	600
	Below Level 2 (excluding Skills for Life)	-	-	22,100	27,900	11,200	7,000	6,000	8,600	6,400	4,900	3,900	1,700	700
	Skills for Life	19,300	39,200	191,700	127,000	108,300	35,300	25,000	37,000	29,700	34,900	36,300	20,800	16,300
	Full Level 2	172,400	263,900	520,100	415,100	315,400	104,900	79,900	127,400	102,900	83,700	82,200	81,800	67,600
	Full Level 3	14,600	43,100	136,100	98,200	80,600	29,700	16,400	27,700	24,400	25,800	20,700	17,000	16,900

Table 5.2: Workplace Learning Achievements by Level (2006/07 to 2010/11)

Level		2006/07	2007/08	2008/09	2009/10	2010/11	2009/10				2010/11			
		Full Year	Full Year	Full Year	Full Year	Full Year	Quarter 1	Quarter 2	Quarter 3	Quarter 4	Quarter 1	Quarter 2	Quarter 3	Quarter 4
Total Achievements		91,100	187,500	583,700	676,000	584,900	151,200	143,600	183,300	198,000	144,600	142,500	155,300	142,400
of which...	Below Level 2	6,500	14,200	88,700	105,900	95,100	25,600	25,400	25,900	29,000	22,200	26,300	28,400	18,200
	Level 2	78,400	158,200	399,300	389,700	332,500	91,100	80,600	106,300	111,700	80,000	76,500	79,600	96,400
	Level 3	3,200	14,200	68,800	95,500	81,100	22,400	21,500	24,300	27,300	17,800	17,300	19,900	26,200
	Level 4+	900	800	7,400	7,200	3,600	1,800	1,700	1,800	1,800	1,100	800	900	900
	No Level Assigned	300	100	19,600	77,600	72,600	10,200	14,300	25,000	28,100	23,700	21,700	26,500	700
	Below Level 2 (excluding Skills for Life)	-	-	9,300	15,900	10,900	3,300	3,800	4,300	4,500	3,700	3,400	3,000	700
	Skills for Life	9,600	19,000	118,900	94,900	88,500	23,300	22,700	23,000	26,000	19,700	24,300	27,000	17,500
	Full Level 2	77,100	153,400	359,000	378,900	318,700	89,400	78,700	102,800	108,000	75,800	72,100	74,900	95,900
	Full Level 3	3,200	14,200	69,100	93,700	80,200	22,000	21,100	23,700	26,800	17,500	17,100	19,600	26,100

Notes

- 1) Figures for 2008/09 onwards are not comparable with earlier years as from 2008/09 onwards NVQs delivered in the workplace changed from being funded by FE to be funded by Train to Gain.
- 2) Workplace Learning includes Train to Gain and other Employer Responsive provision (except Apprenticeships).
- 3) Data for 2005/06 are available in the Workplace Learning Supplementary Tables:
http://www.thedataservice.org.uk/statistics/statisticalfirstrelease/sfr_supplementary_tables/train_to_gain_supplementary_tables/
- 4) Please see the general footnotes and the Workplace Learning footnotes section for further information on these tables.
- 5) Skills for Life starts and achievements can be at Level 2 or Below Level 2.
- 6) Achievement figures for 2006/07 include 1,800 Skills for Life achievements with an unidentifiable level. These are included in the total achievements but not in the Below Level 2 or Level 2 categories.
- 7) These tables include some learners aged under 19 who are eligible for funding on certain Workplace Learning programmes (such as Programmes for the Unemployed).

Table 6: Community Learning Participation and Achievement by Type (2006/07 to 2010/11) – Learner Volumes

Measure	Provision Type	Funded Learners						
		2006/07	2007/08	2008/09	2009/10		2010/11	
		Full Year	Full Year	Full Year	Full Year	% change 08/09 to 09/10	Full Year	% change 09/10 to 10/11
Participation	Total Learners	796,700	709,200	755,000	752,800	*	699,400	-7.1%
	of which Personal and Community Development Learning	546,800	557,900	584,400	579,200	-0.9%	534,100	-7.8%
	of which Neighbourhood Learning in Deprived Communities	23,900	32,200	40,300	43,700	8.4%	46,600	6.5%
	of which Family Literacy, Language and Numeracy	68,800	67,100	71,000	71,300	*	65,400	-8.3%
	of which Wider Family Learning	70,000	75,300	80,500	79,600	-1.1%	75,400	-5.3%
Achievement	Total Learners	653,800	610,500	638,900	663,000	3.8%	608,200	-8.3%
	of which Personal and Community Development Learning	449,800	477,000	489,000	505,900	3.5%	458,600	-9.3%
	of which Neighbourhood Learning in Deprived Communities	20,800	28,400	34,400	39,800	15.6%	41,300	3.7%
	of which Family Literacy, Language and Numeracy	57,500	57,200	61,000	62,700	2.7%	57,000	-9.0%
	of which Wider Family Learning	57,800	67,300	71,400	72,600	1.6%	70,100	-3.4%

Notes

1) Figures for 2008/09 onwards are not directly comparable to earlier years as the introduction of demand led funding has changed how data is collected and how funded learners are defined from 2008/09 onwards. More information on demand led funding is available at:

<http://www.thedataservice.org.uk/datadictionary/businessdefinitions/Demand+Led+Funding.htm>

2) Total participation in this table will not match Community Learning participation in Table 1 as here Formal First Step provision in the Education and Training funding stream is not included. Table 1 includes Formal First Step provision.

3) Data for earlier years is available in the Community Learning Supplementary Tables:

http://www.thedataservice.org.uk/statistics/statisticalfirstrelease/sfr_supplementary_tables/further_education_skills/

4) Please see the general footnotes and the Community Learning footnotes sections for all information on these tables.

Table 7.1: All Age FE and Skills Participation by Level (2006/07 to 2010/11) – Learner Volumes

			Funded Learners							
			2006/07		2007/08	2008/09		2009/10	2010/11	
			Full Year		% change 06/07 to 07/08	Full Year		% change 08/09 to 09/10	Full Year	
Level										
Total Learners			4,231,900	4,360,700	3.0%	4,837,100	4,635,500	-4.2%	4,264,900	-8.0%
Participation	of which...	Below Level 2 (excluding Skills for Life)	905,200	864,700	-4.5%	788,400	745,800	-5.4%	720,000	-3.5%
		Skills for Life	1,297,800	1,312,100	1.1%	1,449,800	1,430,600	-1.3%	1,471,300	2.8%
		Full Level 2	817,200	1,042,300	27.5%	1,263,900	1,286,500	1.8%	1,312,600	2.0%
		Full Level 3	611,400	685,900	12.2%	795,300	867,000	9.0%	919,800	6.1%
		Level 2	1,676,100	1,882,100	12.3%	2,125,400	2,045,200	-3.8%	1,817,100	-11.2%
		Level 3	944,700	1,001,800	6.0%	1,105,600	1,115,000	0.9%	1,063,700	-4.6%
		Level 4+	60,900	54,600	-10.4%	59,300	50,800	-14.4%	38,600	-24.0%
		No Level Assigned	1,276,700	1,268,600	-0.6%	1,492,800	1,558,300	4.4%	1,502,100	-3.6%

Table 7.2: All Age FE and Skills Achievement by Level (2006/07 to 2010/11) – Learner Volumes

			Funded Learners							
			2006/07		2007/08	2008/09		2009/10	2010/11	
			Full Year		% change 06/07 to 07/08	Full Year		% change 08/09 to 09/10	Full Year	
Level										
Total Learners			2,912,700	2,960,900	1.7%	3,359,700	3,377,400	0.5%	3,091,300	-8.5%
Achievement	of which...	Below Level 2 (excluding Skills for Life)	626,800	625,100	*	592,200	581,400	-1.8%	578,800	*
		Skills for Life	821,100	812,600	-1.0%	965,900	952,400	-1.4%	910,200	-4.4%
		Full Level 2	369,500	458,800	24.2%	644,500	721,100	11.9%	740,700	2.7%
		Full Level 3	263,200	294,300	11.8%	338,100	421,500	24.7%	464,400	10.2%
		Level 2	962,300	1,055,200	9.7%	1,268,300	1,302,500	2.7%	1,135,400	-12.8%
		Level 3	549,700	579,100	5.4%	628,100	674,600	7.4%	620,900	-8.0%
		Level 4+	30,600	26,400	-13.6%	28,000	27,500	-2.1%	21,500	-21.6%
		No Level Assigned	990,000	1,010,500	2.1%	1,146,100	1,219,100	6.4%	1,185,700	-2.7%

Table 7.3: All Age Education and Training and Apprenticeship Success Rates by Level (2006/07 to 2010/11) – Percentages

			2006/07	2007/08	2008/09	2009/10	2010/11
Level			Full Year	Full Year	Full Year	Full Year	Full Year
Education and Training Provision			76.8%	80.2%	80.6%	80.7%	81.8%
of which...	Skills for Life		69.8%	74.2%	75.5%	74.7%	78.7%
	Full Level 2		69.7%	72.7%	74.4%	76.5%	79.1%
	Full Level 3		66.6%	71.6%	72.9%	76.0%	78.1%
	Level 2		74.8%	78.6%	79.6%	80.0%	81.5%
	Level 3		77.2%	79.9%	80.9%	80.9%	81.1%
Apprenticeships							
of which...	Intermediate Level Apprenticeship		60.2%	64.4%	70.4%	73.4%	75.3%
	Advanced Level Apprenticeship		56.4%	62.8%	72.1%	74.8%	78.6%
	Higher Apprenticeship						84.6%
	All Apprenticeships		59.0%	63.9%	70.9%	73.8%	76.4%

Notes

1) These tables include Apprenticeships, Workplace Learning, Community Learning and Education and Training provision taken at General Further Education Colleges (including Tertiary), Sixth Form Colleges, Special Colleges (Agricultural and Horticultural Colleges and Art and Design Colleges), Specialist Colleges and External Institutions.

2) Figures for 2008/09 onwards are not directly comparable to earlier years as the introduction of demand led funding has changed how data is collected and how funded learners are defined from 2008/09 onwards. Apprenticeship success rates are not affected by demand led funding. More information on demand led funding is available at:

<http://www.thedataservice.org.uk/datadictionary/businessdefinitions/Demand+Led+Funding.htm>

3) Data for earlier years are available in the Further Education and Skills Supplementary Tables:

http://www.thedataservice.org.uk/statistics/statisticalfirstrelease/sfr_supplementary_tables/further_education_skills/

4) In 2010/11 there were 88,900 offenders aged 18 or over in the prison system participating in learning, 70,300 achieved a learning outcome. These offenders were funded via the Offenders' Learning and Skills Service (OLASS) budget.

5) Please see the general footnotes and the FE and Skills footnotes sections for further information on these tables.

Table 8.1: All Age Apprenticeship Programme Starts by Level and Age (2006/07 to 2010/11)

	Age	2006/07	2007/08	2008/09	2009/10	2010/11	2009/10				2010/11			
		Full Year	Full Year	Full Year	Full Year	Full Year	Quarter 1	Quarter 2	Quarter 3	Quarter 4	Quarter 1	Quarter 2	Quarter 3	Quarter 4
Intermediate Level Apprenticeship	Under 19	80,800	82,000	74,200	89,400	97,300	35,700	15,500	19,500	18,800	38,100	18,300	18,900	22,000
	19-24	46,500	55,200	52,600	72,800	90,400	20,100	16,200	17,200	19,300	21,000	20,000	23,300	26,100
	25+	100	14,600	31,700	28,400	113,400	7,600	5,400	8,100	7,200	16,400	26,800	31,700	38,400
	Total	127,400	151,800	158,500	190,500	301,100	63,400	37,100	44,800	45,300	75,500	65,200	73,900	86,500
Advanced Level Apprenticeship	Under 19	24,800	25,500	25,100	27,200	34,200	14,600	3,400	5,000	4,300	17,100	4,700	6,400	6,000
	19-24	32,000	34,800	32,000	39,800	51,600	14,900	7,000	8,700	9,200	16,000	10,100	12,400	13,300
	25+	100	12,600	24,200	20,600	68,000	5,800	3,300	6,100	5,500	10,800	13,300	20,200	23,700
	Total	56,900	72,900	81,300	87,700	153,900	35,200	13,600	19,700	19,100	43,800	28,100	39,000	42,900
Higher Apprenticeship	Under 19	-	-	-	100	200	100	-	-	-	100	-	-	-
	19-24	100	-	100	1,200	1,300	600	200	300	100	700	200	200	200
	25+	-	-	-	100	700	100	-	-	-	400	100	100	100
	Total	100	100	200	1,500	2,200	700	300	300	200	1,200	300	300	400
All Apprenticeships	Under 19	105,600	107,600	99,400	116,800	131,700	50,300	18,900	24,500	23,100	55,200	23,100	25,400	28,000
	19-24	78,600	90,100	84,700	113,800	143,400	35,600	23,400	26,100	28,600	37,700	30,300	35,900	39,600
	25+	300	27,200	55,900	49,100	182,100	13,400	8,700	14,200	12,800	27,600	40,200	52,000	62,200
	Total	184,400	224,800	239,900	279,700	457,200	99,300	51,000	64,800	64,500	120,600	93,600	113,300	129,800

Table 8.2: All Age Apprenticeship Framework Achievements by Level and Age (2006/07 to 2010/11)

	Age	2006/07	2007/08	2008/09	2009/10	2010/11	2009/10				2010/11			
		Full Year	Full Year	Full Year	Full Year	Full Year	Quarter 1	Quarter 2	Quarter 3	Quarter 4	Quarter 1	Quarter 2	Quarter 3	Quarter 4
Intermediate Level Apprenticeship	Under 19	50,100	47,100	50,200	52,900	59,400	12,200	8,700	9,800	22,300	13,700	11,000	13,000	21,700
	19-24	28,200	28,400	35,500	38,600	48,400	9,100	7,200	8,900	13,400	10,700	10,800	11,400	15,500
	25+	100	900	12,500	20,300	23,900	5,300	4,400	4,800	5,900	4,600	4,500	5,600	9,200
	Total	78,400	76,300	98,100	111,900	131,700	26,500	20,300	23,500	41,600	29,000	26,300	30,000	46,400
Advanced Level Apprenticeship	Under 19	15,600	16,200	17,500	20,100	23,900	4,500	3,700	3,800	8,100	5,100	3,600	5,800	9,400
	19-24	17,800	19,700	22,400	25,400	27,700	6,200	4,700	5,700	8,800	6,500	5,300	6,100	9,900
	25+	100	300	5,400	13,900	15,900	2,900	3,000	3,600	4,400	3,300	2,900	3,900	5,900
	Total	33,400	36,200	45,200	59,400	67,500	13,600	11,500	13,100	21,300	14,900	11,800	15,700	25,100
Higher Apprenticeship	Under 19	-	-	-	-	100	-	-	-	-	-	-	-	-
	19-24	-	-	-	100	800	-	-	-	100	300	100	200	300
	25+	-	-	-	-	100	-	-	-	-	-	-	-	-
	Total	-	-	-	200	1,000	100	-	-	100	400	100	200	300
All Apprenticeships	Under 19	65,700	63,300	67,700	73,100	83,300	16,700	12,400	13,600	30,400	18,800	14,600	18,800	31,100
	19-24	46,000	48,100	57,800	64,200	77,000	15,300	12,000	14,600	22,300	17,500	16,100	17,600	25,700
	25+	200	1,200	17,900	34,300	39,900	8,200	7,400	8,400	10,300	7,900	7,400	9,500	15,100
	Total	111,800	112,600	143,400	171,500	200,300	40,200	31,800	36,600	63,000	44,300	38,100	46,000	71,900

Notes

1) Data for earlier years are available in the Apprenticeship Supplementary Tables:

http://www.thedataservice.org.uk/statistics/statisticalfirstrelease/sfr_supplementary_tables/Apprenticeship_sfr_supplementary_tables/

2) Please see the general footnotes and the Apprenticeships footnotes section for all information on these tables.

Table 9: All Age FE and Skills – Skills for Life Participation and Achievement by Level (2006/07 to 2010/11) – Learner Volumes (Revised methodology since June 2012)

Measure	Level	Funded Learners							
		2006/07	2007/08		2008/09		2009/10		2010/11
		Full Year	Full Year	% change 06/07 to 07/08	Full Year	Full Year	% change 08/09 to 09/10	Full Year	% change 09/10 to 10/11
Participation	Total Learners	1,297,800	1,312,100	1.1%	1,449,800	1,430,600	-1.3%	1,471,300	2.8%
	of which English ^R	819,500	860,200	5.0%	965,200	951,100	-1.5%	1,028,700	8.2%
	of which entry level ^R	157,300	160,300	1.9%	165,700	150,200	-9.4%	202,700	34.9%
	of which level 1 ^R	360,300	384,300	6.7%	434,800	420,700	-3.3%	476,600	13.3%
	of which level 2 ^R	371,600	378,400	1.8%	434,800	437,000	0.5%	409,200	-6.4%
	of which maths ^R	675,300	721,700	6.9%	848,000	872,800	2.9%	994,300	13.9%
	of which entry level ^R	102,800	115,900	12.7%	145,900	148,500	1.7%	198,700	33.9%
	of which level 1 ^R	336,600	360,700	7.2%	417,100	420,200	0.7%	493,200	17.4%
	of which level 2 ^R	292,200	302,400	3.5%	353,700	364,500	3.0%	370,000	1.5%
	of which ESOL (English for Speakers of Other Languages) ^R	227,000	207,400	-8.7%	203,000	192,400	-5.2%	176,000	-8.6%
	of which entry level ^R	189,700	176,800	-6.8%	173,000	161,700	-6.5%	145,700	-9.9%
	of which level 1 ^R	32,300	26,400	-18.4%	26,200	26,300	*	26,300	*
	of which level 2 ^R	11,900	10,000	-16.2%	10,100	10,400	3.1%	10,300	-0.6%
Achievement	Total Learners	821,100	812,600	-1.0%	965,900	952,400	-1.4%	910,200	-4.4%
	of which English ^R	476,100	481,800	1.2%	570,500	570,900	*	540,800	-5.3%
	of which entry level ^R	113,500	111,400	-1.9%	110,400	104,000	-5.8%	137,400	32.1%
	of which level 1 ^R	203,700	208,800	2.5%	256,800	242,100	-5.7%	231,400	-4.4%
	of which level 2 ^R	191,900	190,100	-0.9%	234,100	248,800	6.3%	195,100	-21.6%
	of which maths ^R	369,800	385,200	4.2%	488,700	515,300	5.5%	531,500	3.1%
	of which entry level ^R	72,900	76,300	4.7%	93,300	100,000	7.1%	140,600	40.6%
	of which level 1 ^R	190,200	195,000	2.5%	249,800	249,600	*	248,100	-0.6%
	of which level 2 ^R	133,300	140,800	5.6%	177,600	193,700	9.0%	174,500	-9.9%
	of which ESOL (English for Speakers of Other Languages) ^R	156,400	149,400	-4.5%	146,700	138,800	-5.4%	131,800	-5.1%
	of which entry level ^R	131,500	128,900	-2.0%	126,000	117,000	-7.2%	109,700	-6.3%
	of which level 1 ^R	21,000	17,000	-19.2%	17,000	17,400	1.9%	17,900	3.3%
	of which level 2 ^R	7,500	6,600	-11.8%	6,700	7,200	7.7%	7,000	-1.7%

Notes

R) Figures have been revised due to a methodological change in how learners are counted for English, maths and ESOL courses to remove duplicate learners. Total learner figures are not affected. Please see http://www.thedataservice.org.uk/NR/rdonlyres/907339C7-439B-43D8-9831-C957BD130A83/0/SFL_Revision_June12.pdf for further information.

1) Figures for 2008/09 onwards are not directly comparable to earlier years as the introduction of demand led funding has changed how data is collected and how funded learners are defined from 2008/09 onwards. More information on demand led funding is available at:

<http://www.thedataservice.org.uk/datadictionary/businessdefinitions/Demand+Led+Funding.htm>

2) Total Participation in this table will not match Skills for Life participation in Table 1 as here Skills for Life courses on all funding streams are covered. Table 1 records Skills for Life for Education and Training only.

3) Data for earlier years are available in the Further Education and Skills Supplementary Tables:

http://www.thedataservice.org.uk/statistics/statisticalfirstrelease/sfr_supplementary_tables/further_education_skills/

4) Please see the general footnotes section for further information on this table.

Table 10.1: Young People (Under 19) FE and Apprenticeship Participation by Level (2006/07 to 2010/11) – Learner Volumes

		Funded Learners							
		2006/07	2007/08		2008/09	2009/10		2010/11	
		Full Year	Full Year	% change 06/07 to 07/08	Full Year	Full Year	% change 08/09 to 09/10	Full Year	% change 09/10 to 10/11
Level									
Total Learners		1,026,200	1,056,400	2.9%	1,065,900	1,095,000	2.7%	1,101,700	0.6%
Participation	of which...								
	Below Level 2 (excluding Skills for Life)	315,700	332,200	5.2%	291,600	310,500	6.5%	349,100	12.4%
	Skills for Life	488,500	487,200	*	504,700	521,500	3.3%	509,500	-2.3%
	Full Level 2	300,900	302,200	*	295,400	315,500	6.8%	330,100	4.6%
	Full Level 3	343,800	357,800	4.1%	371,300	397,900	7.2%	425,800	7.0%
	Level 2	557,700	562,700	0.9%	576,400	594,000	3.1%	543,800	-8.5%
	Level 3	458,900	473,600	3.2%	485,900	510,300	5.0%	520,900	2.1%
	Level 4+	1,000	1,300	34.0%	1,100	1,300	12.2%	2,000	57.9%
	No Level Assigned	434,400	464,900	7.0%	582,200	607,200	4.3%	613,800	1.1%

Table 10.2: Young People (Under 19) FE and Apprenticeship Achievement by Level (2006/07 to 2010/11) – Learner Volumes

		Funded Learners							
		2006/07	2007/08		2008/09	2009/10		2010/11	
		Full Year	Full Year	% change 06/07 to 07/08	Full Year	Full Year	% change 08/09 to 09/10	Full Year	% change 09/10 to 10/11
Level									
Total Learners		679,600	717,300	5.5%	775,800	809,600	4.4%	826,300	2.1%
Achievement	of which...								
	Below Level 2 (excluding Skills for Life)	196,600	218,600	11.2%	225,200	244,600	8.6%	280,300	14.6%
	Skills for Life	280,200	291,900	4.2%	326,800	337,800	3.4%	314,600	-6.9%
	Full Level 2	133,900	138,600	3.5%	150,600	165,100	9.6%	178,900	8.4%
	Full Level 3	148,200	159,800	7.8%	167,900	183,700	9.4%	221,700	20.7%
	Level 2	301,700	320,500	6.2%	357,500	376,500	5.3%	346,500	-8.0%
	Level 3	278,300	293,500	5.5%	311,200	330,200	6.1%	338,300	2.5%
	Level 4+	200	900	142.5%	500	500	9.8%	1,200	128.8%
	No Level Assigned	300,400	327,700	9.1%	389,600	404,500	3.8%	421,600	4.2%

Table 10.3: Young People (Under 19) Education and Training and Apprenticeship Success Rates by Level (2006/07 to 2010/11) – Percentages

		2006/07	2007/08	2008/09	2009/10	2010/11
		Full Year	Full Year	Full Year	Full Year	Full Year
Level						
Education and Training Provision		77.4%	79.9%	80.6%	81.1%	82.0%
of which...						
	Skills for Life	72.8%	76.0%	76.0%	75.5%	79.4%
	Full Level 2	70.1%	74.1%	75.9%	77.8%	79.8%
	Full Level 3	67.7%	72.6%	74.5%	76.6%	78.3%
	Level 2	73.3%	77.0%	78.3%	79.6%	82.9%
	Level 3	79.3%	81.0%	81.6%	81.5%	81.6%
Apprenticeships						
of which...						
	Intermediate Level Apprenticeship	60.3%	64.2%	68.3%	71.1%	72.2%
	Advanced Level Apprenticeship	56.9%	60.7%	73.6%	76.2%	79.0%
	Higher Apprenticeship					83.2%
	All Apprenticeships	59.5%	63.3%	69.6%	72.4%	74.0%

Notes

1) These tables include Apprenticeships, Workplace Learning, Community Learning and Education and Training provision taken at General Further Education Colleges (including Tertiary), Sixth Form Colleges, Special Colleges (Agricultural and Horticultural Colleges and Art and Design Colleges), Specialist Colleges and External Institutions.

2) Figures for 2008/09 onwards are not directly comparable to earlier years as the introduction of demand led funding has changed how data is collected and how funded learners are defined from 2008/09 onwards. Apprenticeship success rates are not affected by demand led funding. More information on demand led funding is available at:

<http://www.thedataservice.org.uk/datadictionary/businessdefinitions/Demand+Led+Funding.htm>

3) Data for earlier years are available in the Further Education and Skills Supplementary Tables:

http://www.thedataservice.org.uk/statistics/statisticalfirstrelease/sfr_supplementary_tables/further_education_skills/

4) Please see the general footnotes and the FE and Skills footnotes sections for further information on these tables.

Measure	Level	Funded Learners							
		2006/07	2007/08		2008/09	2009/10		2010/11	
		Full Year	Full Year	% change 06/07 to 07/08	Full Year	Full Year	% change 08/09 to 09/10	Full Year	% change 09/10 to 10/11
Participation	Total Learners	488,500	487,200	*	504,700	521,500	3.3%	509,500	-2.3%
	of which English ^R	384,200	374,800	-2.5%	385,700	395,400	2.5%	389,800	-1.4%
	of which entry level ^R	27,300	28,300	3.4%	29,000	37,800	30.3%	98,900	161.4%
	of which level 1 ^R	181,100	179,900	-0.6%	186,100	194,000	4.2%	190,800	-1.7%
	of which level 2 ^R	193,200	181,300	-6.1%	189,200	184,900	-2.3%	122,400	-33.8%
	of which maths ^R	342,000	326,100	-4.6%	330,900	347,900	5.1%	363,800	4.6%
	of which entry level ^R	32,500	33,300	2.4%	37,300	47,100	26.4%	100,300	113.0%
	of which level 1 ^R	182,900	175,500	-4.0%	175,200	183,400	4.7%	178,400	-2.7%
	of which level 2 ^R	143,600	130,800	-9.0%	135,100	135,700	*	104,300	-23.2%
	of which ESOL (English for Speakers of Other Languages) ^R	13,000	14,100	8.5%	14,200	13,900	-2.6%	12,300	-11.0%
	of which entry level ^R	11,300	12,200	7.3%	12,000	11,600	-3.1%	10,100	-12.9%
	of which level 1 ^R	1,800	1,900	11.0%	2,100	2,100	0.8%	2,100	-2.3%
	of which level 2 ^R	400	600	28.4%	700	700	-3.1%	700	*
Achievement	Total Learners	280,200	291,900	4.2%	326,800	337,800	3.4%	314,600	-6.9%
	of which English ^R	201,400	206,700	2.6%	230,200	234,500	1.9%	211,100	-10.0%
	of which entry level ^R	17,600	18,600	5.5%	18,600	24,800	33.1%	63,000	154.6%
	of which level 1 ^R	99,800	101,900	2.2%	112,800	111,900	-0.8%	97,200	-13.1%
	of which level 2 ^R	92,100	92,400	*	105,100	104,100	-0.9%	55,200	-47.0%
	of which maths ^R	174,700	176,300	1.0%	195,700	204,200	4.4%	207,100	1.4%
	of which entry level ^R	21,800	22,800	4.4%	25,000	31,600	26.2%	69,700	120.4%
	of which level 1 ^R	102,000	100,500	-1.4%	110,900	111,300	*	96,800	-13.0%
	of which level 2 ^R	58,200	58,500	0.6%	66,200	67,500	2.0%	46,000	-31.8%
	of which ESOL (English for Speakers of Other Languages) ^R	9,700	10,800	11.5%	10,900	10,700	-2.4%	9,700	-9.1%
	of which entry level ^R	8,500	9,400	10.9%	9,300	8,900	-4.2%	8,000	-10.6%
	of which level 1 ^R	1,200	1,300	8.9%	1,400	1,500	5.3%	1,500	*
	of which level 2 ^R	300	400	37.8%	500	500	3.9%	500	-1.1%

Notes

R) Figures have been revised due to a methodological change in how learners are counted for English, maths and ESOL courses to remove duplicate learners. Total learner figures are not affected. Please see http://www.thedataservice.org.uk/NR/rdonlyres/907339C7-439B-43D8-9831-C957BD130A83/0/SFL_Revision_June12.pdf for further information.

1) Figures for 2008/09 onwards are not directly comparable to earlier years as the introduction of demand led funding has changed how data is collected and how funded learners are defined from 2008/09 onwards. More information on demand led funding is available at:

<http://www.thedataservice.org.uk/datadictionary/businessdefinitions/Demand+Led+Funding.htm>

2) Total Participation in this table will not match Skills for Life participation in Table 1 as here Skills for Life courses on all funding streams are covered. Table 1 records Skills for Life for Education and Training only.

3) Data for earlier years are available in the Further Education and Skills Supplementary Tables:

http://www.thedataservice.org.uk/statistics/statisticalfirstrelease/sfr_supplementary_tables/further_education_skills/

4) Please see the general footnotes section for further information on this table.

Table 12.1: Level of Highest Qualification Held by People aged 19-59/64 in England (Quarter 4)¹ - percentages

Year	All people aged 19-59/64² (thousands)	Level 4 and above	Level 3	Level 3 and above	Level 2	Level 2 and above	Below Level 2 (incl no qualifications)
2006	29,427	33.1	20.2	53.2	18.7	71.9	28.1
2007	29,584	34.1	20.7	54.8	18.5	73.2	26.8
2008	29,737	34.5	20.7	55.2	19.0	74.2	25.8
2009	29,911	36.3	20.7	56.9	19.6	76.5	23.5
2010	30,127	37.5	21.1	58.6	19.2	77.8	22.2
2011	30,287	37.9 ^P	21.6 ^P	59.5 ^P	19.4 ^P	78.9 ^P	21.1 ^P
2011 95% CI (+/-)		0.4	0.3	0.4	0.3	0.4	0.4

Table 12.2: Level of Highest Qualification Held by People aged 19-59/64 in England (Quarter 4)¹ - volumes (thousands)

Year	All people aged 19-59/64	Level 4 and above	Level 3	Level 3 and above	Level 2	Level 2 and above	Below Level 2 (incl no qualifications)
2006	29,427	9,727	5,935	15,661	5,499	21,160	8,267
2007	29,584	10,091	6,112	16,203	5,461	21,664	7,920
2008	29,737	10,260	6,149	16,409	5,654	22,063	7,674
2009	29,911	10,850	6,178	17,028	5,848	22,876	7,035
2010	30,127	11,287	6,366	17,652	5,773	23,425	6,702
2011	30,287	11,473 ^P	6,549 ^P	18,021 ^P	5,865 ^P	23,887 ^P	6,400 ^P
2011 95% CI (+/-)		133	98	106	95	127	127

Notes

- 1) Estimates were revised in March 2011 as a result of an improved methodology being adopted - see methodological note for further details.
- 2) Males aged 19 - 64 and females aged 19 - 59.
- P) Provisional estimate - these estimates will be finalised in March 2013.

Table 13.1: Level Of Highest Qualification Held By Economically Active Adults In England (Quarter 4)¹ - percentages

Year	Economically active adults ² (thousands)	Level 4 and above	Level 3	Level 3 and above	Level 2	Level 2 and above	Below Level 2 (incl no qualifications)
2006	24,238	35.8	20.8	56.6	19.6	76.2	23.8
2007	24,397	36.8	21.1	57.9	19.4	77.3	22.7
2008	24,672	36.9	21.1	58.0	20.0	78.0	22.0
2009	24,684	38.9	20.9	59.8	20.5	80.2	19.8
2010	24,819	40.2	21.2	61.4	20.0	81.4	18.6
2011	24,971	40.3 ^P	21.9 ^P	62.2 ^P	20.2 ^P	82.4 ^P	17.6 ^P
2011 95% CI (+/-)		0.5	0.3	0.4	0.3	0.4	0.4

Table 13.2: Level Of Highest Qualification Held By Economically Active Adults In England (Quarter 4)¹ - volumes (thousands)

Year	Economically active adults ²	Level 4 and above	Level 3	Level 3 and above	Level 2	Level 2 and above	Below Level 2 (incl no qualifications)
2006	24,238	8,681	5,046	13,727	4,744	18,471	5,767
2007	24,397	8,975	5,151	14,126	4,731	18,857	5,540
2008	24,672	9,098	5,217	14,314	4,933	19,247	5,425
2009	24,684	9,590	5,162	14,752	5,050	19,802	4,882
2010	24,819	9,974	5,272	15,247	4,965	20,212	4,607
2011	24,971	10,059 ^P	5,469 ^P	15,528 ^P	5,048 ^P	20,576 ^P	4,395 ^P
2011 95% CI (+/-)		119	81	88	78	105	105

Notes

1) Estimates for 2006 onwards were revised in March 2011 as a result of an improved methodology being adopted - see methodological note for further details.

2) Economically active adults are defined as men aged 18 to 64 and women aged 18 to 59 either in employment or International Labour Organisation unemployed.

P) Provisional estimate - these estimates will be finalised in March 2013.

Table 14: Vocational Qualification Achievements in the UK by Qualification Type, 2006 (October) to 2012 (June)

Quarter	National Vocational Qualification	Occupational Qualification	Qualifications and Credit Framework Qualification	Vocationally Related Qualification	Other Vocational Qualifications	Total
October 2006 to December 2006	121,300	7,100	-	411,400	382,600	922,400
January 2007 to March 2007	126,600	5,700	-	406,800	393,800	932,900
April 2007 to June 2007	129,600	6,000	400	507,900	678,200	1,322,100
July 2007 to September 2007	252,900	8,000	500	920,500	1,151,500	2,333,400
Total 2006/07 Academic Year	630,400	26,800	900	2,246,600	2,606,200	5,510,900
October 2007 to December 2007	128,700	4,900	1,300	408,500	423,500	966,900
January 2008 to March 2008	140,700	4,900	4,600	426,000	500,900	1,077,200
April 2008 to June 2008	170,600	6,400	8,600	643,100	755,700	1,584,400
July 2008 to September 2008	287,900	8,300	19,200	983,800	1,416,700	2,715,800
Total 2007/08 Academic Year	727,900	24,500	33,700	2,461,400	3,096,800	6,344,300
October 2008 to December 2008	164,100	5,800	19,400	416,200	474,500	1,079,900
January 2009 to March 2009	169,600	5,300	42,200	409,900	590,400	1,217,500
April 2009 to June 2009	216,400	6,300	65,000	715,900	829,300	1,832,900
July 2009 to September 2009	372,600	9,100	102,000	1,064,800	1,591,600	3,140,200
Total 2008/09 Academic Year	922,900	26,500	228,600	2,606,800	3,485,800	7,270,500
October 2009 to December 2009	212,000	6,000	85,000	414,700	457,500	1,175,200
January 2010 to March 2010	204,000	5,100	135,000	388,000	552,700	1,284,800
April 2010 to June 2010	213,500	5,700	202,700	726,100	831,100	1,979,000
July 2010 to September 2010	349,500	6,400	348,500	1,078,700	1,727,400	3,510,600
Total 2009/10 Academic Year	979,000	23,200	771,100	2,607,500	3,568,600	7,949,400
October 2010 to December 2010	179,600	6,200	274,700	285,700	422,900	1,169,200
January 2011 to March 2011	154,900	4,100	455,400	165,100	486,200	1,265,800
April 2011 to June 2011	128,500	3,600	721,300	385,000	670,900	1,909,200
July 2011 to September 2011	124,200	3,600	1,377,300	561,300	1,473,600	3,540,000
Total 2010/11 Academic Year	587,300	17,500	2,828,700	1,397,200	3,053,600	7,884,200
October 2011 to December 2011	50,900	2,000	804,100	55,600	355,100	1,267,700
January 2012 to March 2012	31,000	1,000	818,600	51,000	479,500	1,381,100
April 2012 to June 2012	22,500	700	1,221,800	195,000	628,500	2,068,400
Total 2011/12 Academic Year	104,500	3,700	2,844,500	301,600	1,463,000	4,717,200

Notes

- 1) This table covers all levels of vocational qualifications reported through Ofqual. Data are supplied by awarding organisations.
- 2) For data relating to Vocational Qualifications, the Academic year runs from October to September. For example, the 2006/07 academic year runs from October 2006 to September 2007.
- 3) The data in this table has been subjected to revisions.
- 4) Please see general notes and Vocational Qualifications footnotes section for all information on these tables.

Table 15: Young People (Under 19) FE and Apprenticeship Participation by Level (2011/12) – Learner Volumes

		Funded Learners	
		2011/12	
		Full Year	
		(provisional)	
Level			
Total Learners		1,068,900	
Participation	of which...	Below Level 2 (excluding Skills for Life)	384,900
		Skills for Life	457,100
		Full Level 2	349,400
		Full Level 3	415,800
		Level 2	546,900
		Level 3	515,800
		Level 4+	2,300
		No Level Assigned	586,300

Table 16: Adult (19+) FE and Skills Participation by Level (2011/12) – Learner Volumes

		Funded Learners	
		2011/12	
		Full Year	
		(provisional)	
Level			
Total Learners		3,139,200	
Participation	of which...	Below Level 2 (excluding Skills for Life)	570,000
		Skills for Life	1,088,300
		Full Level 2	1,026,900
		Full Level 3	485,500
		Level 2	1,315,400
		Level 3	539,700
		Level 4+	38,500
		No Level Assigned	794,200

Table 17: All Age FE and Skills Participation by Level (2011/12) – Learner Volumes

		Funded Learners	
		2011/12	
		Full Year	
		(provisional)	
Level			
Total Learners		4,208,200	
Participation	of which...	Below Level 2 (excluding Skills for Life)	954,900
		Skills for Life	1,545,500
		Full Level 2	1,376,300
		Full Level 3	901,300
		Level 2	1,862,300
		Level 3	1,055,500
		Level 4+	40,900
		No Level Assigned	1,380,500

Notes

1) These tables include Apprenticeships, Workplace Learning, Community Learning and Education and Training provision taken at General Further Education Colleges (including Tertiary), Sixth Form Colleges, Special Colleges (Agricultural and Horticultural Colleges and Art and Design Colleges), Specialist Colleges and External Institutions.

2) These tables show full year estimates for 2011/12. Tables 2, 7 and 10 show full year volumes for previous years. It is not possible to directly compare provisional 2011/12 estimates with figures for previous years.

3) 209,800 learners benefited from support for the unemployed (those nearest the workforce), of which 203,300 were aged 19+. These are defined as those learners reporting that they were in receipt of Employment and Support Allowance - Work Related Activity Group (ESA WRAG) or Jobseeker's Allowance (JSA).

4) Table 17 includes 90,000 offenders aged 18 or over in the prison system participating in learning. These offenders were funded via the Offenders' Learning and Skills Service (OLASS) budget.

5) Please see the general footnotes and FE and Skills footnotes section for further information on these tables.

Table 18.1: All Age Apprenticeship Programme Starts by Level and Age (2011/12)

	Age	2011/12				
		Full Year (provisional)	Quarter 1 (provisional)	Quarter 2 (provisional)	Quarter 3 (provisional)	Quarter 4 (provisional)
Intermediate Level Apprenticeship	Under 19	93,000	40,000	19,100	17,200	16,700
	19-24	98,800	28,900	21,600	24,800	23,400
	25+	126,900	34,500	29,800	31,400	31,100
	Total	318,700	103,500	70,500	73,500	71,300
Advanced Level Apprenticeship	Under 19	33,000	17,900	5,300	4,300	5,500
	19-24	55,900	18,000	12,000	12,500	13,400
	25+	91,400	21,300	20,600	22,700	26,700
	Total	180,400	57,200	37,900	39,600	45,600
Higher Apprenticeship	Under 19	300	100	-	100	100
	19-24	1,600	800	200	400	300
	25+	1,600	500	300	400	400
	Total	3,500	1,400	600	800	700
All Apprenticeships	Under 19	126,300	58,100	24,400	21,600	22,200
	19-24	156,300	47,800	33,800	37,700	37,000
	25+	219,900	56,300	50,700	54,500	58,300
	Total	502,500	162,100	109,000	113,900	117,500

Table 18.2: All Age Apprenticeship Framework Achievements by Level and Age (2011/12)

	Age	2011/12				
		Full Year (provisional)	Quarter 1 (provisional)	Quarter 2 (provisional)	Quarter 3 (provisional)	Quarter 4 (provisional)
Intermediate Level Apprenticeship	Under 19	50,800	13,300	11,300	11,200	15,000
	19-24	49,700	12,200	11,300	12,400	13,800
	25+	56,200	10,300	12,200	16,100	17,700
	Total	156,700	35,800	34,800	39,700	46,500
Advanced Level Apprenticeship	Under 19	18,800	5,400	3,600	3,500	6,400
	19-24	27,800	7,100	6,100	6,300	8,300
	25+	29,300	5,300	6,200	7,700	10,000
	Total	75,900	17,700	16,000	17,500	24,700
Higher Apprenticeship	Under 19	100	-	-	-	-
	19-24	800	300	100	100	200
	25+	300	100	100	-	100
	Total	1,100	400	200	200	300
All Apprenticeships	Under 19	69,700	18,700	14,900	14,700	21,400
	19-24	78,300	19,600	17,600	18,900	22,200
	25+	85,700	15,700	18,500	23,800	27,700
	Total	233,700	54,000	51,000	57,400	71,400

Notes

1) This table shows full year estimates for 2011/12. Apprenticeship starts and achievements figures for earlier years are available in Table 8 of this release. It is not possible to directly compare provisional 2011/12 estimates with figures for previous years.

2) 5,400 Apprenticeships started through the Access to Apprenticeship pathway. Table 18.1 includes 1,200 that converted to paid employment to complete their Apprenticeship in the usual way.

3) Table 18.1 includes 2,300 Apprenticeship starts for which a payment was made through the Apprenticeship Grant for Employers scheme (AGE 16 to 24). AGE 16 to 24 was launched in February 2012. Payments were drawn down once the new Apprentice had been in post for 8 weeks, therefore apprenticeships starting after 11th June are not included because they had not yet triggered a payment.

4) Please see the general footnotes and the Apprenticeships footnotes section for further information on these tables.

Table 19.1: Workplace Learning Starts by Level (2011/12)

Level	2011/12				
	Full Year (provisional)	Quarter 1 (provisional)	Quarter 2 (provisional)	Quarter 3 (provisional)	Quarter 4 (provisional)
Total	323,900	61,700	68,200	89,700	104,400
of which Below Level 2	42,200	8,100	9,300	12,100	12,700
Level 2	246,700	46,500	51,500	68,400	80,300
Level 3	33,200	6,800	7,000	8,800	10,600
Level 4+	1,900	300	300	500	800
No Level Assigned	-	-	-	-	-
Below Level 2 (excluding Skills for Life)	4,300	700	800	1,500	1,400
Skills for Life	60,400	12,100	13,900	16,700	17,800
Full Level 2	215,400	41,700	45,900	60,600	67,300
Full Level 3	30,900	6,700	6,800	8,000	9,300

Table 19.2: Workplace Learning Achievements by Level (2011/12)

Level	2011/12				
	Full Year (provisional)	Quarter 1 (provisional)	Quarter 2 (provisional)	Quarter 3 (provisional)	Quarter 4 (provisional)
Total	261,700	61,500	62,800	65,200	72,200
of which Below Level 2	31,500	4,900	6,700	9,000	10,900
Level 2	191,100	45,800	46,200	47,400	51,600
Level 3	37,300	10,400	9,400	8,300	9,200
Level 4+	1,700	400	400	400	500
No Level Assigned	-	-	-	-	-
Below Level 2 (excluding Skills for Life)	2,200	300	500	700	800
Skills for Life	47,300	7,800	10,600	13,200	15,700
Full Level 2	171,500	42,600	41,800	42,300	44,800
Full Level 3	36,700	10,300	9,300	8,200	8,800

Notes

1) These tables show provisional estimates for 2011/12. Table 19.2 includes achievements for Workplace Learning qualifications which were started prior to 2010/11. Figures for earlier years are available in Table 5 of this release. It is not possible to directly compare provisional 2011/12 estimates with figures for previous years.

2) Skills for Life starts and achievements can be at Level 2 or Below Level 2.

3) These tables include some learners aged under 19 who are eligible for funding on certain Workplace Learning programmes.

4) 5,400 Apprenticeships started through the Access to Apprenticeship pathway. Table 19.1 includes 4,300 that have not yet converted to paid employment to complete their Apprenticeship in the usual way.

5) Please see the general footnotes and the Workplace Learning footnotes section for further information on these tables.

Table 20: Young People (Under 19) FE and Apprenticeship – Skills for Life Participation by Level (2011/12) – Learner Volumes (Revised methodology since June 2012)

Measure	Level	Funded Learners
		2011/12 Full Year (provisional)
Participation	Total Learners	457,100
	of which English	339,200
	of which entry level	84,100
	of which level 1	169,700
	of which level 2	101,000
	of which maths	331,300
	of which entry level	91,600
	of which level 1	165,100
	of which level 2	93,000
	of which ESOL (English for Speakers of Other Languages)	11,500
	of which entry level	9,500
of which level 1	1,900	
of which level 2	500	

Table 21: Adult (19+) FE and Skills – Skills for Life Participation by Level (2011/12) – Learner Volumes (Revised methodology since June 2012)

Measure	Level	Funded Learners
		2011/12 Full Year (provisional)
Participation	Total Learners	1,088,300
	of which English	788,600
	of which entry level	107,800
	of which level 1	385,000
	of which level 2	334,700
	of which maths	778,500
	of which entry level	102,900
	of which level 1	401,700
	of which level 2	322,800
	of which ESOL (English for Speakers of Other Languages)	138,400
	of which entry level	117,100
of which level 1	19,000	
of which level 2	7,000	

Table 22: All Age FE and Skills – Skills for Life Participation by Level (2011/12) – Learner Volumes (Revised methodology since June 2012)

Measure	Level	Funded Learners
		2011/12 Full Year (provisional)
Participation	Total Learners	1,545,500
	of which English	1,127,800
	of which entry level	191,900
	of which level 1	554,800
	of which level 2	435,700
	of which maths	1,109,800
	of which entry level	194,500
	of which level 1	566,700
	of which level 2	415,900
	of which ESOL (English for Speakers of Other Languages)	149,900
	of which entry level	126,600
of which level 1	20,900	
of which level 2	7,600	

Notes

R) There has been a methodological change in how learners are counted for English, maths and ESOL courses to remove duplicate learners. Total learner figures are not affected. Please see http://www.thedataservice.org.uk/NR/rdonlyres/907339C7-439B-43D8-9831-C957BD130A83/0/SFL_Revision_June12.pdf for further information.

1) These tables show full year estimates for 2011/12. Skills for Life participation and achievement figures for earlier years are available in Tables 4, 9 and 11 of this release. It is not possible to directly compare provisional 2011/12 estimates with figures for previous years.

2) Please see the general footnotes section for further information on this table.

Table 23: Community Learning Participation by Type (2011/12) – Learner Volumes

Measure	Provision Type	Funded Learners
		2011/12 Full Year (provisional)
	Total Learners	681,400
Participation	of which Personal and Community Development Learning	521,500
	of which Neighbourhood Learning in Deprived Communities	52,100
	of which Family Literacy, Language and Numeracy	58,300
	of which Wider Family Learning	71,400

Notes

1) These tables show full year estimates for 2011/12. Community Learning participation and achievement figures for earlier years are available in Table 6 of this release. It is not possible to directly compare provisional 2011/12 estimates with figures for previous years.

2) Please see the general footnotes and the Community Learning footnotes section for further information on these tables.