

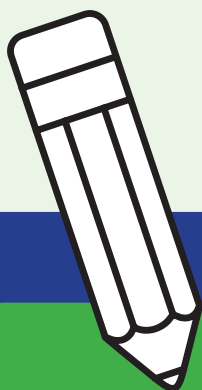
Consultation questionnaire

School Organisation Code



Llywodraeth Cymru
Welsh Government

www.cymru.gov.uk



Introduction

If the local council or someone else wants to open or close a school, or make a major change to it, like making it much bigger, there are rules they have to follow.

First, they have to ask children and young people, parents/carers, teachers and so on, what they think about it. Then, if they decide to go ahead, they have to let everyone know by sending out something called a notice (like an advert). Anyone who does not want the change to happen can write a letter saying why. The people who make the final decision have to read these letters before they make up their minds.

New rules, called laws, are currently being made. One of those new laws would allow us to make a new guidance book called a Code. The Code will tell people who want to close, open or change schools, how they should do it. It will also tell them the important things that they need to think about before they send out a notice or decide to make a change.

Questions

Question 1. What do you think are the most important things to think about before a school is opened, closed or changed in some other way?

Question 2. Do you think that children and young people should have their own Code which tells them how things should work?

Yes

No

Don't know

Question 3. If someone wants to open or close a school, how do you think children and young people should have their say? For example, do you think everyone should go to a special meeting or should the school council give everyone's view?

Yes

No

Don't know

Question 4. Have you ever been asked about changes to schools in your area? If so, did you give your views and how?

Yes

No

Don't know

Question 5. Would you like to be told what difference your views made?
If so, how?

Yes

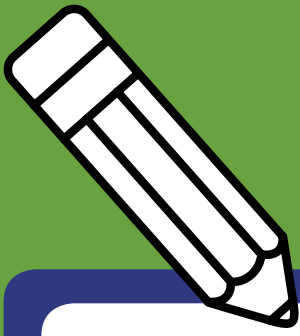
No

Don't know

Empty response area for Question 5.

Question 6. Other comments (Please write as much as you want here).

Large empty response area for Question 6.



Please write as much as you can to help us with the guidance.

We need your views by 16 January 2013 and they can either be sent in the post or electronically to:

Schools Management and Effectiveness Division
Department for Education and Skills
Welsh Government
Cathays Park
Cardiff
CF10 3NQ
e-mail: schoolsmanagementdivision3@wales.gsi.gov.uk

Your age: 10 or younger 11–16 16+

Name/group/organisation (optional)

.....

.....

.....

Sometimes responses to consultations are made public – put on the internet or used in a report. If you would prefer we kept your response confidential please tick here:

If you would like more information or to read the full consultation paper it can be accessed at: www.wales.gov.uk/consultations