

SB 4/2013

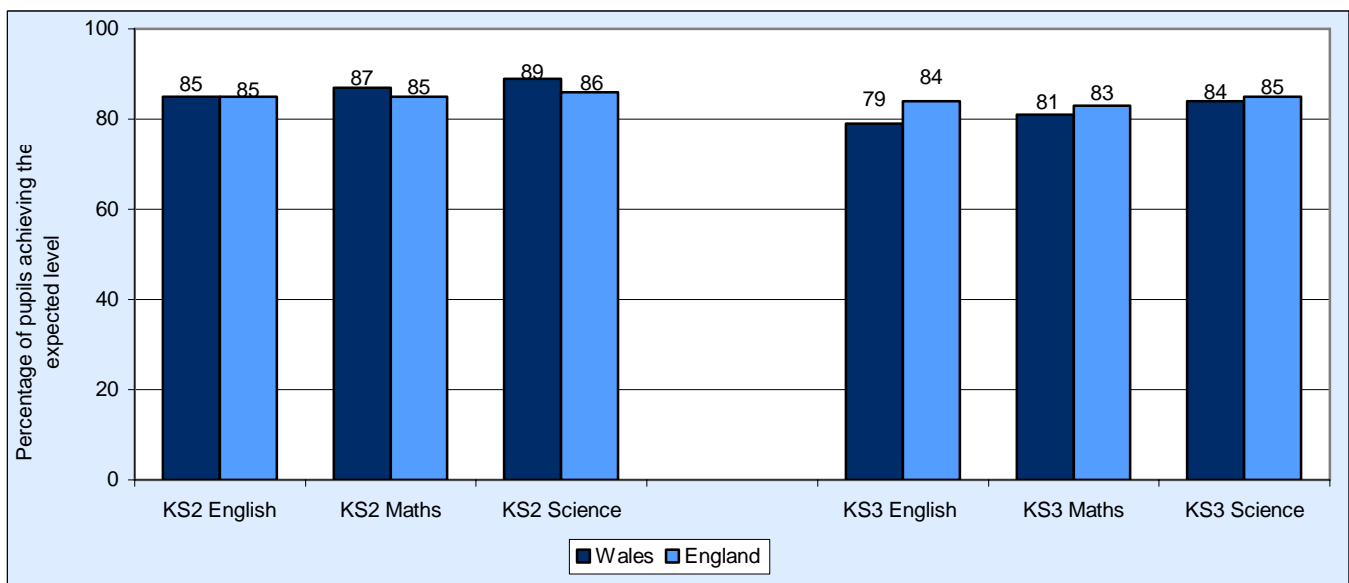
24 January 2013

Key Stage 2 and 3 Assessment Performance in Wales: Comparison with England and its Regions, 2012

This Statistical Bulletin presents a summary of previously published Key Stage 2 to 3 results for Wales, England and the English Government Office Regions (GOR). Since Foundation Phase outcomes are not comparable with Key Stage 1 in England, this Bulletin is now restricted to Key Stages 2 and 3. Therefore we are seeking feedback on the usefulness of this Bulletin – please see notes.

Note: The national results presented for Wales and England in Tables 1 to 2 include both maintained and independent schools. They differ from charts 2 to 7 which relate to maintained schools only in Wales and the English GORs (published in the Department for Education Releases SFR33/2012, SFR25/2012).

Chart 1: Key Stage 2 and 3 teacher assessment results summary, all schools in England and Wales, 2012



Key Results

Key Stage 2: Table 1 (all schools) and Charts 2 to 4 (maintained schools)

- In 2012, pupils in Wales performed better than their counterparts in England in Maths and Science.
- The difference in performance was greatest in Science: in 2012, 89 per cent of pupils in Wales achieved the expected level compared with 86 per cent in England.
- First time in the last decade that Wales has not outperformed England in English, both achieved 85 per cent.
- In 2012, pupils in maintained schools in Wales achieved higher results than all GORs in England in Science and matched London, the highest performing GOR in England in Mathematics.

Statistician: Stephen Hughes **Tel:** 029 2082 5060 **Email:** school.stats@wales.gsi.gov.uk
Next update: Jan 2014 (provisional) **Twitter:** www.twitter.com/statisticswales | www.twitter.com/ystadegaucymru

Cyhoeddwyd gan Y Gwasanaethau Gwybodaeth a Dadansoddi
Llywodraeth Cymru, Parc Cathays, Caerdydd, CF10 3NQ
Ffôn – Swyddfa'r Wasg **029 2089 8099**, Ymholiadau Cyhoeddus **029 2082 3332**
www.cymru.gov.uk/ystadegau

Issued by Knowledge and Analytical Services
Welsh Government, Cathays Park, Cardiff, CF10 3NQ
Telephone – Press Office **029 2089 8099**, Public Enquiries **029 2082 5050**
www.wales.gov.uk/statistics



Llywodraeth Cymru
Welsh Government

Key Stage 3: *Table 2 (all schools) and Charts 5 to 7 (maintained schools)*

- In 2012, the proportion of pupils in Wales achieving the expected level was lower than England for all subjects.
- The difference in performance was greatest in English, where there was a 5 percentage points difference between England and Wales in 2012. This difference has decreased by 1 percentage point since 2011.
- England have outperformed Wales in most years in the last decade, the exception being in Science between 2003 and 2006.
- Results for pupils in Wales were lower than all GORs in England for English. For Mathematics the results matched the lowest English GORs of West Midlands and Yorkshire and the Humber. The results for Science put Wales above one English GOR, London.

Table 1: Key Stage 2 - National Curriculum Assessments of 11 year olds, Wales and England (a)

	Percentage of all pupils attaining the expected level by Teacher Assessment (TA)	
	Wales	England
Key Stage 2		
English		
2002	76	73
2003	76	72
2004	77	74
2005	79	75
2006	79	77
2007	79	78
2008	80	79
2009	81	79
2010	82	81
2011	83	81
2012	85	85
Mathematics		
2002	75	74
2003	76	74
2004	78	75
2005	80	76
2006	81	78
2007	80	78
2008	81	79
2009	82	80
2010	83	81
2011	85	82
2012	87	85
Science		
2002	83	82
2003	84	82
2004	86	82
2005	87	83
2006	86	84
2007	85	85
2008	86	85
2009	86	86
2010	86	85
2011	87	85
2012	89	86

(a) Includes all maintained schools and those independent schools that returned results. The data shown in Charts 2-4 include maintained schools only and may differ from this table.

Since 2005 in Wales statutory assessment at the end of Key Stage 2 has been by means of teacher assessment only.

The general expectation is the majority of 11 year olds will attain level 4.

Table 2: Key Stage 3 - National Curriculum Assessments of 14 year olds, Wales and England (a)

	Percentage of all pupils attaining the expected level by Teacher Assessment (TA)	
	Wales	England (b)
Key Stage 3		
English		
2002	64	67
2003	65	68
2004	67	69
2005	67	71
2006	68	73
2007	69	74
2008	69	76
2009	71	77
2010	72	79
2011	76	82
2012	79	84
Mathematics		
2002	66	70
2003	69	72
2004	71	74
2005	73	75
2006	72	77
2007	70	79
2008	72	79
2009	73	79
2010	75	80
2011	78	81
2012	81	83
Science		
2002	66	67
2003	69	69
2004	72	71
2005	72	71
2006	73	73
2007	70	75
2008	74	76
2009	76	78
2010	77	80
2011	80	83
2012	84	85

(a) Includes all maintained schools and those independent schools that returned results. The data shown in Charts 5-7 include maintained schools only and may differ from this table.

Since 2006 in Wales statutory assessment at the end of Key Stage 3 has been by means of teacher assessment only.

The general expectation is the majority of 14 year olds will attain level 5.

(b) England data for 2012 is provisional.

Chart 2: Percentage of pupils achieving level 4 or above for English Teacher Assessment at Key Stage 2, 2012

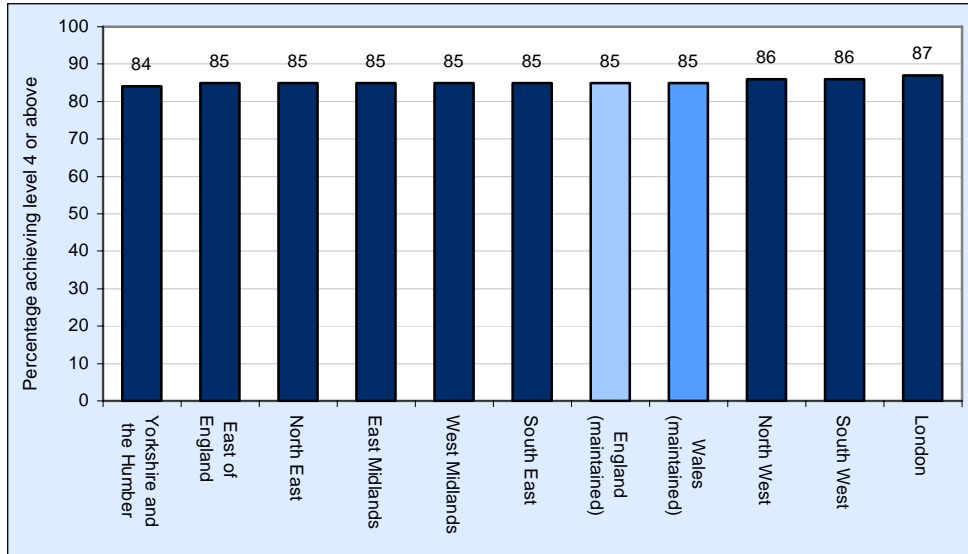


Chart 3: Percentage of pupils achieving level 4 or above for Mathematics Teacher Assessment at Key Stage 2, 2012

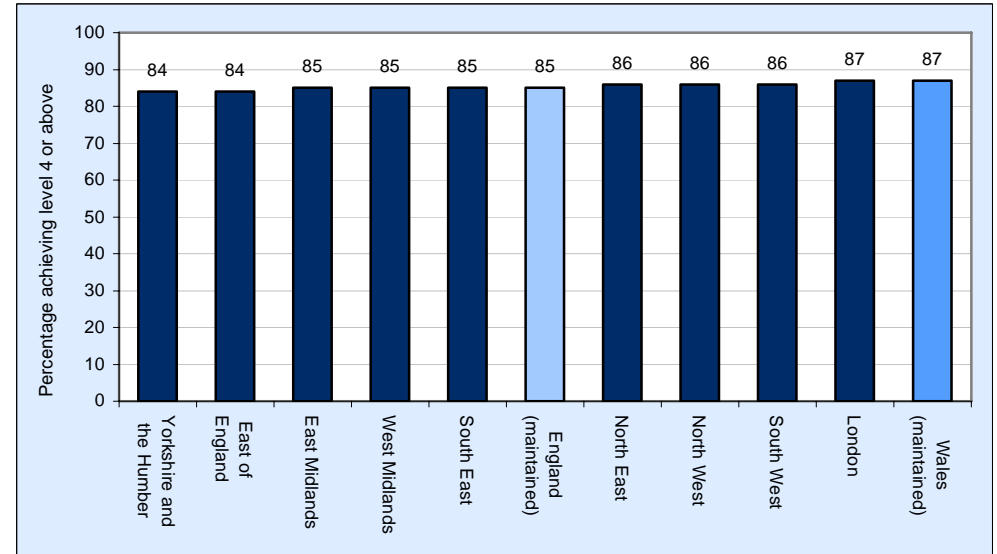


Chart 4: Percentage of pupils achieving level 4 or above for Science Teacher Assessment at Key Stage 2, 2012

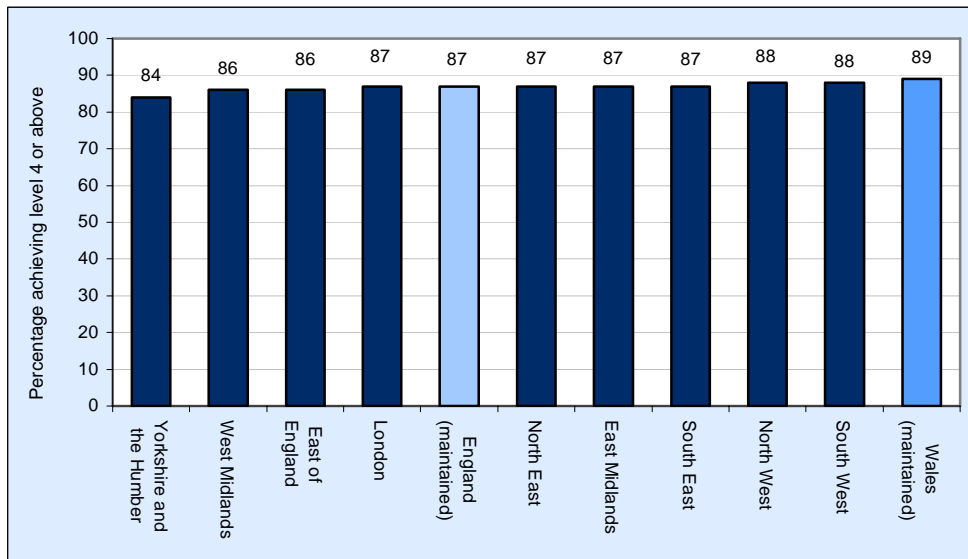


Chart 5: Percentage of pupils achieving level 5 or above for English at Key Stage 3, 2012

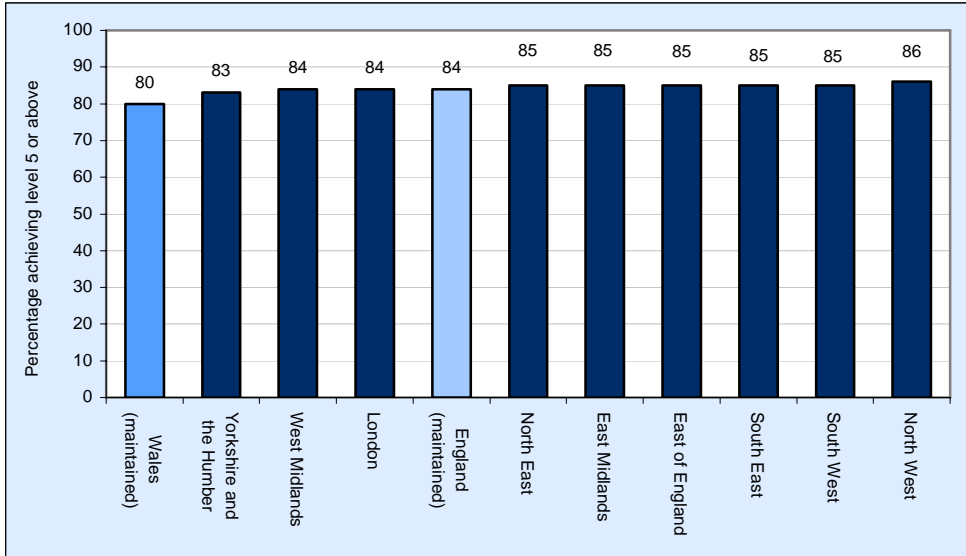


Chart 6: Percentage of pupils achieving level 5 or above for Mathematics at Key Stage 3, 2012

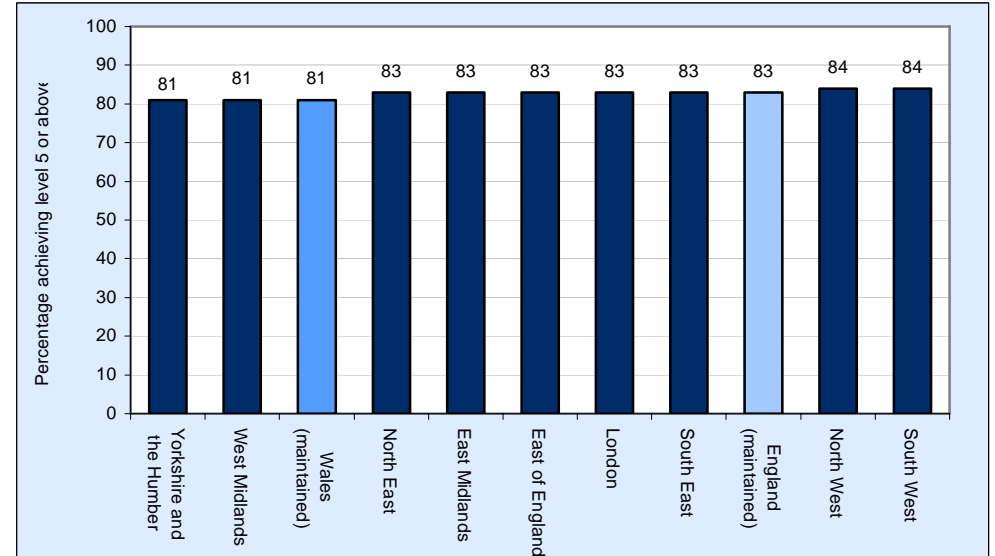


Chart 7: Percentage of pupils achieving level 5 or above for Science at Key Stage 3, 2012

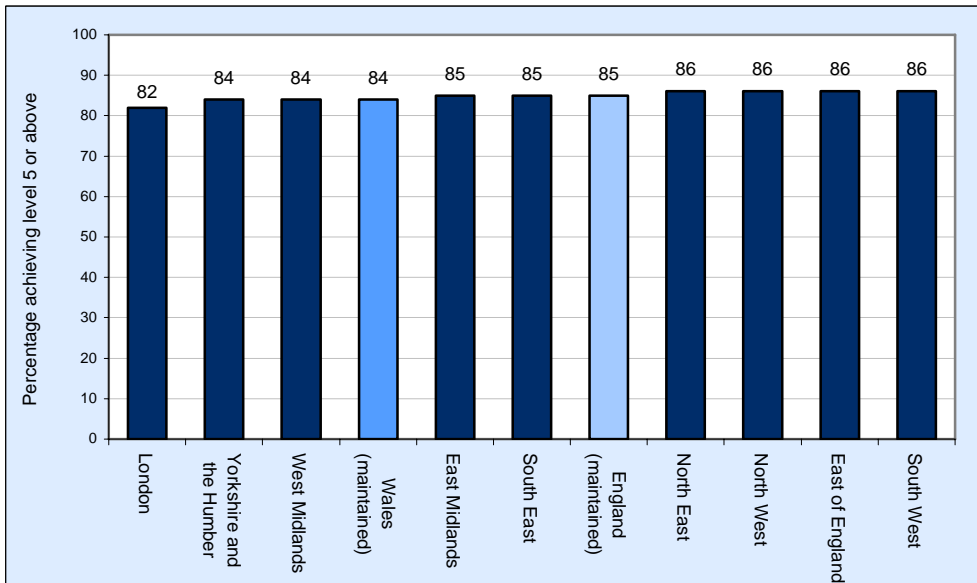


Chart 8: Key Stage 2 National Curriculum Assessments of 11 year olds, English

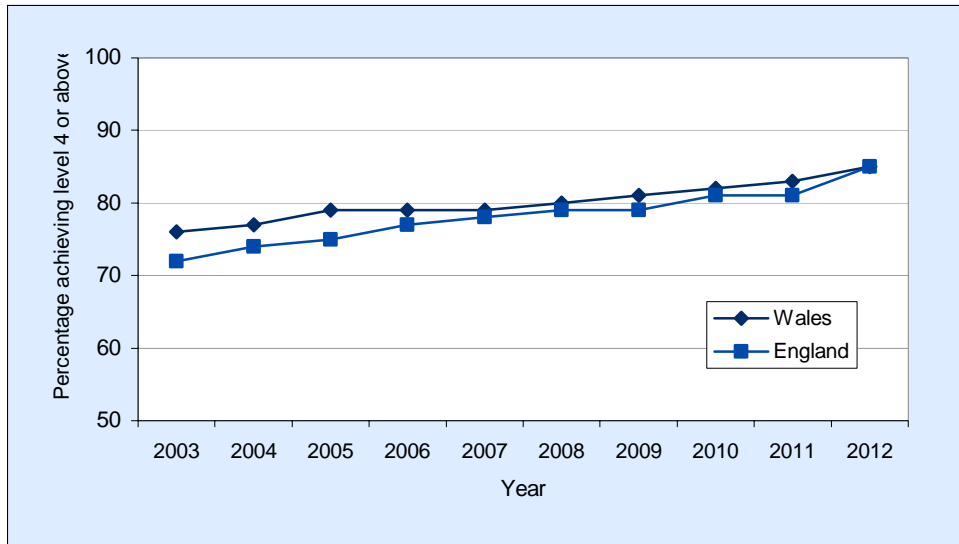


Chart 9: Key Stage 2 National Curriculum Assessments of 11 year olds, Mathematics

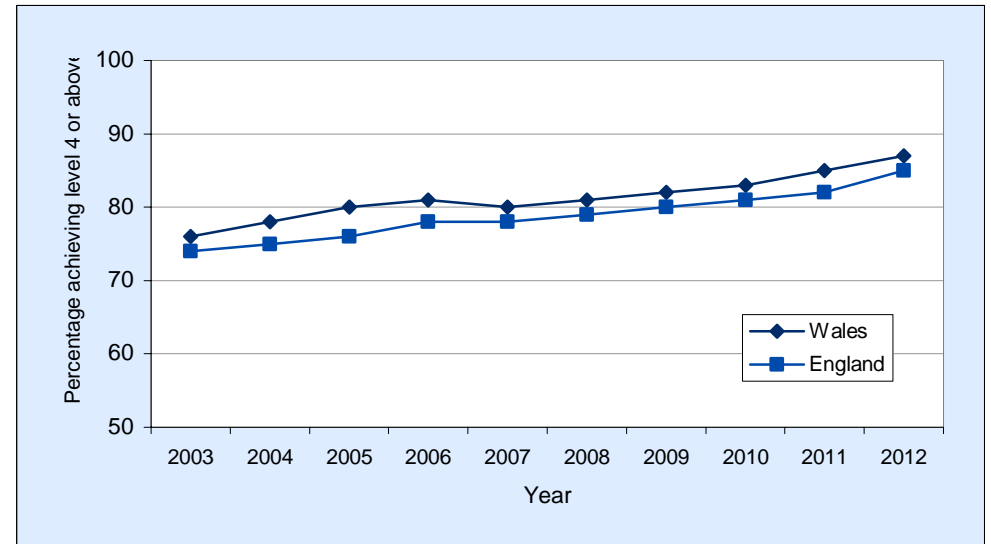


Chart 10: Key Stage 2 National Curriculum Assessments of 11 year olds, Science

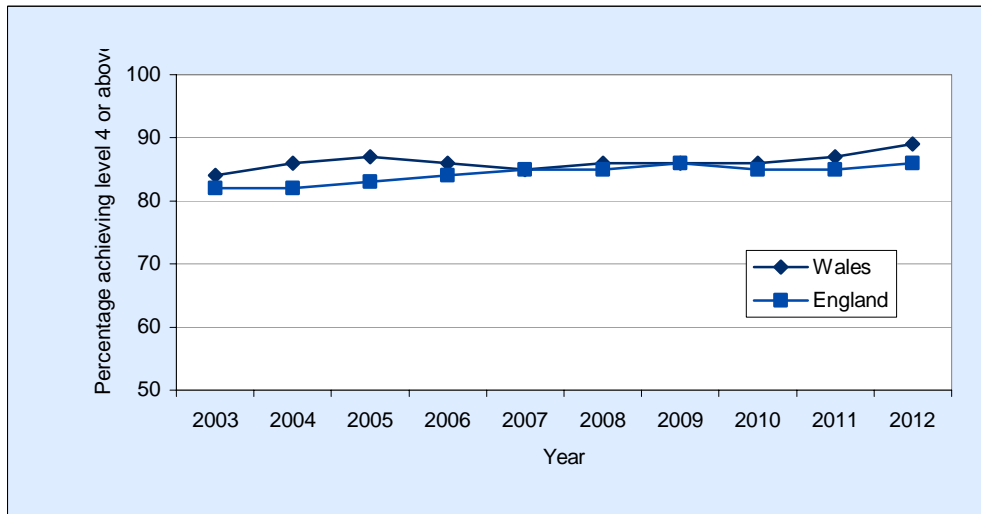


Chart 11: Key Stage 3 National Curriculum Assessments of 14 year olds, English

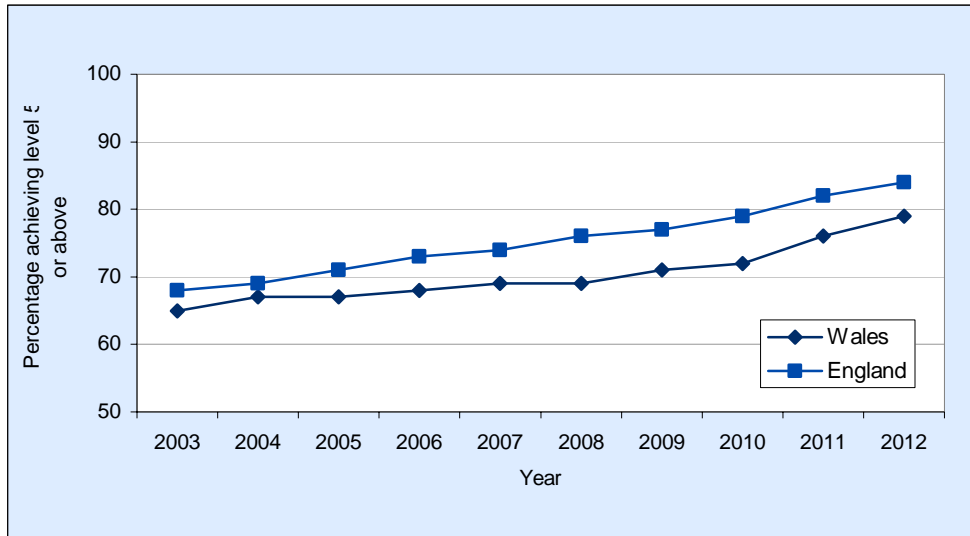


Chart 12: Key Stage 3 National Curriculum Assessments of 14 year olds, Mathematics

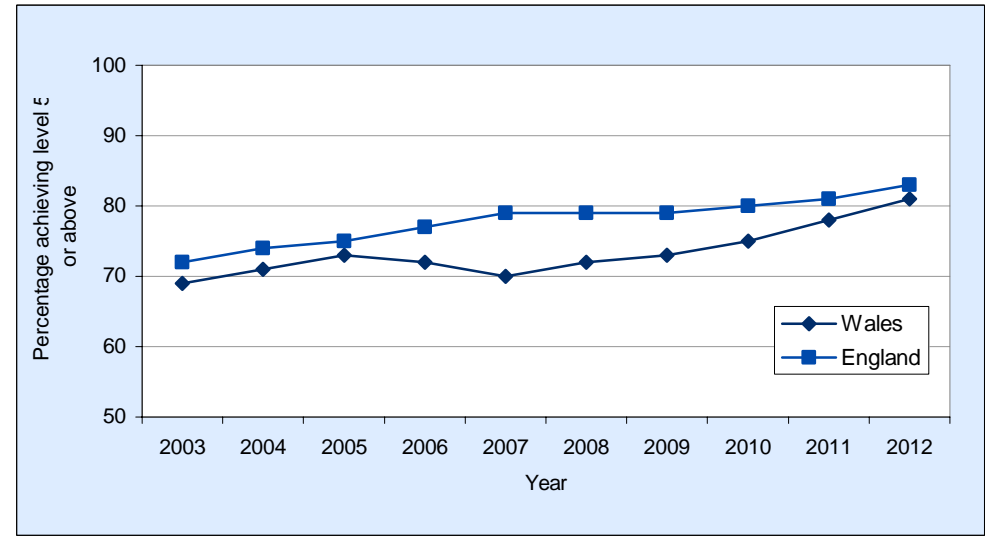
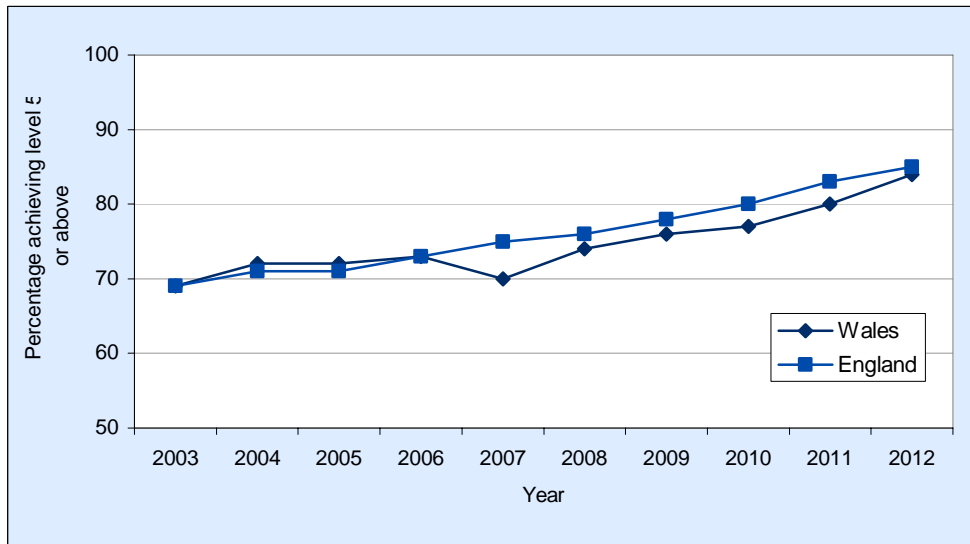


Chart 13: Key Stage 3 National Curriculum Assessments of 14 year olds, Science



Key Quality Information

1. Data Collection and quality

- Key Stage 2 information for England is taken from the Statistical First Release [National Curriculum Assessments at Key Stage 2 in England 2011/2012 \(Revised\) SFR 33/2012](#)
- Key Stage 3 information for England is taken from the Statistical First Release [GCSE and Equivalent Results \(Provisional\) and National Curriculum Teacher Assessments at Key Stage 3 in England, 2011/12, SFR 25/2012](#)
- Data for Wales are taken from the Statistical First Release [End of Foundation Phase Outcomes and National Curriculum Teacher Assessment of Core Subjects at Key Stages 2 and 3, 2012, SDR 129/2012](#)
- Information on data quality and collection methods can be found in these releases.

2. Data Coverage and Comparability

- For tables 1-2, results for all schools in Wales and England are included.
- Government Office Region (GOR) statistics for England include maintained mainstream and maintained special schools only. This includes City Technology Colleges and Academies but excludes hospital schools and pupil referral units. The Wales maintained schools figure includes maintained mainstream and maintained special schools only, but excludes pupil referral units for consistency with England figures.
- From 2005 in Wales statutory assessment at the end of Key Stage 2 has been by means of teacher assessment only. From 2006 in Wales statutory assessment at the end of Key Stage 3 has been by means of teacher assessment only. All data provided in this bulletin are consistent.
- For the majority of pupils the expected level of achievement at National Curriculum is level 4 at Key Stage 2 and level 5 at Key Stage 3.
- England data for Key Stage 2 2012 are revised.

Who are the key users of this data?

These statistics are used widely both within and outside the Welsh Government. Some of the key users are:

- Ministers and the Members Research Service in the National Assembly for Wales;
- The Department for Education in England;
- Other government departments;
- Local authorities;
- Schools;
- Estyn, Her Majesty's Inspectorate of Education and Training in Wales;
- The Department for Education and Skills in the Welsh Government;
- Other areas of the Welsh Government;
- The research community;
- Students, academics and universities;
- Individual citizens and private companies.

What are the data used for?

These statistics are used in a variety of ways. Some examples of these are:

- advice to Ministers;
- the all-Wales education core data packs (the replacement for the National Pupil Database);
- local authority and school comparisons and benchmarks;
- to inform the education policy decision-making process in Wales;
- to inform ESTYN during school inspections;
- contributes to the National Performance Indicators;

- international benchmarking;
- to assist in research in educational attainment.

3. Symbols

- . The data item is not applicable.
- .. The data item is not available.

4. Further Information

- The above releases are published by the Department for Education. Further details and historical data can be found at <http://www.education.gov.uk/rsgateway/>.
- Data for Wales can be found at www.wales.gov.uk/statistics.

We are currently seeking views on the usefulness and future of this Bulletin as comparisons can no longer be made between Foundation Phase and Key Stage 4 data in Wales and similar data in England. If you would like to provide us with any feedback regarding the usefulness of this Bulletin please e-mail school.stats@Wales.gsi.gov.uk.