

SDR 19/2013

13 February 2013

Education Maintenance Allowances awarded in Wales – update at end of January 2013

This monthly Statistical First Release presents information on the number of Education Maintenance Allowances (EMAs) awarded to students in further education in academic year 2012/13, as at the end of January 2013. The release is based on data provided by the Student Loans Company (SLC) and is correct as at 4 February 2013.

The EMA Wales scheme was introduced for 16 year olds in 2004/05 and extended to include 17 year olds in 2005/06 and finally to include 18 year olds in 2006/07. EMA is a weekly allowance, linked to satisfactory attendance, paid fortnightly to eligible students attending learning centres in Wales.

From academic year 2011/12, the criteria for new EMA students receiving the £30 award changed, and the £10 and the £20 awards are no longer available. Students new to EMA may qualify for an award of £30 per week, depending on household income and family circumstances. Students who received EMA in 2010/11 who are returning to education and meet the same eligibility criteria as for 2010/11 will continue to get their EMA, be it for £10, £20 or £30 per week. The performance bonus payments (previously paid in September, January and July) were removed at the end of academic year 2010/2011, and are no longer paid out to any students.

Key results

As at 31 January 2013, approved applications were down 7 per cent on last year, whilst the total number of applications received was down by 6 per cent (*Charts 1 and 2*). As a result of some of the policy changes mentioned above, i.e. the removal of £10 and £20 awards for students new to EMA from academic year 2011/12, fewer students are eligible for this support. The number of students receiving the £30 award has decreased slightly when compared to the same point last year. This is the third monthly data point available for applications for 2012/13, and it is too early to predict whether the percentage decreases seen this month will apply to final data.

- A total of 31,855 EMA Wales applications had been received for the academic year 2012/13 (*Table 1*).
- 30,120 (95 per cent) of applications received were approved, 800 (3 per cent) were rejected and 895 (3 per cent) were incomplete (*Chart 3, Table 1*).

Statistician: Michelle Morgan **Tel:** 029 2082 3895 **E-mail:** post16ed.stats@wales.gsi.gov.uk **Next Update:** 13 March 2013
Twitter: www.twitter.com/statisticswales | www.twitter.com/ystadegaucymru

Cyhoeddwyd gan Y Gwasanaethau Gwybodaeth a Dadansoddi
Llywodraeth Cymru, Parc Cathays, Caerdydd, CF10 3NQ
Ffôn – Swyddfa'r Wasg **029 2089 8099**, Ymholiadau Cyhoeddus **029 2082 3332**
www.cymru.gov.uk/ystadegau

Issued by Knowledge and Analytical Services
Welsh Government, Cathays Park, Cardiff, CF10 3NQ
Telephone – Press Office **029 2089 8099**, Public Enquiries **029 2082 5050**
www.wales.gov.uk/statistics



Llywodraeth Cymru
Welsh Government

Chart 1: Cumulative number of all EMA applications received, by month and year of study

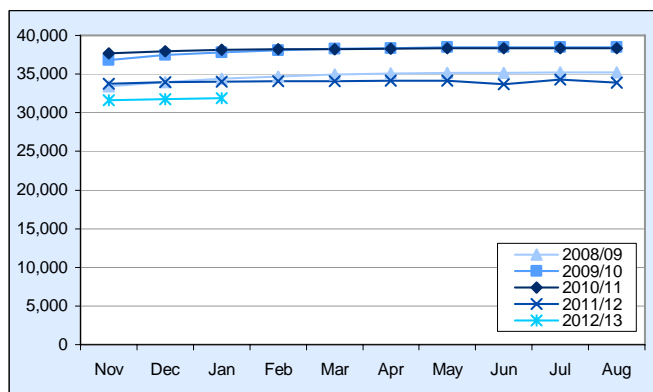


Chart 2: Cumulative number of approved EMA applications, by month and year of study

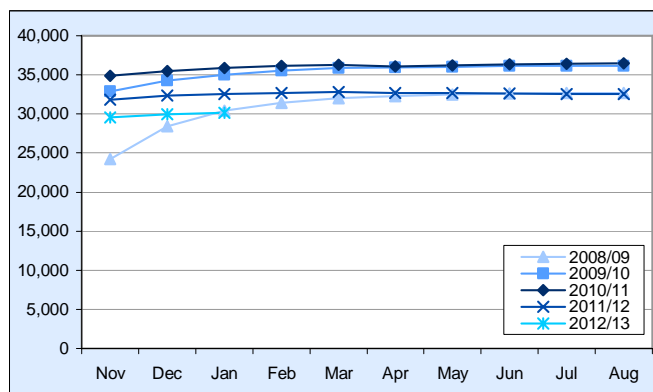
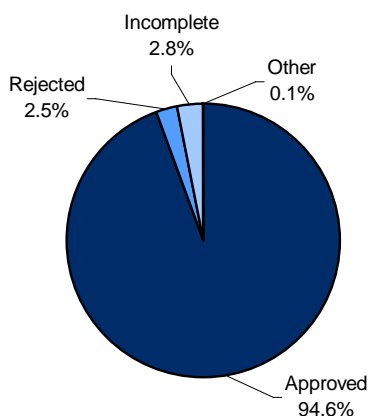


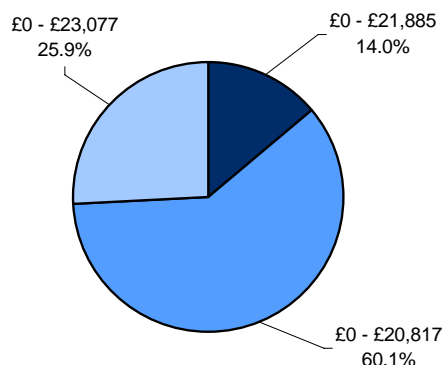
Chart 3: Total applications received by current work stage for academic year 2012/13, as at 31 January 2013 (a)



As at 31 January 2013, 95 per cent of EMA applications received had been approved and 3 per cent had been rejected (*Table 1*). The majority of the remaining applications received were incomplete. These are applications that are either “missing information” (e.g. no date of birth included) or “missing evidence” (e.g. no birth certificate attached).

(a) Current work stage denotes the status of the application at 4 February 2013, when the data was extracted from SLC’s database.

Chart 4: Approved applications, by EMA £30 award and threshold levels, as at 31 January 2013 (a)



As at 31 January 2013, £30 awards accounted for 98 per cent of all approved applications, with £20 awards accounting for 1 per cent and £10 awards accounting for 1 per cent (*Table 2*). Of those entitled to a £30 award, 14 per cent of approved applications were from returning students with a household threshold income of £21,885 or less; 60 per cent were from new claimants with a household income of £20,817 or less (independent students/only child in household), and the remaining 26 per cent were from new claimants with a household income of £23,077 or less (with siblings aged 16 or under in the household / one or more siblings aged 20 or under in full-time education or training and eligible for child benefit in the household) (*Chart 4*).

(a) Current work stage denotes the status of the application at 4 February 2013, when the data was extracted from SLC’s database.

There were 20 claimants whose household income was ‘unknown’.

Table 1: Applications by workstage, as at 31 January 2013 

Current work stage	2007/08	2008/09	2009/10	2010/11	2011/12	2012/13
Approved	30,225	30,425	35,010	35,880	32,565	30,120
Rejected	705	690	765	550	655	800
Incomplete (b)	1,570	2,995	1,665	1,505	800	895
Other (c)	200	280	340	175	15	40
Total	32,705	34,390	37,785	38,110	34,035	31,855

Source: Student Loans Company

(b) These are applications that are either "missing information" (e.g. no date of birth included) or "missing evidence" (e.g. no birth certificate attached).

(c) These are applications that are in one of the following workstages (as defined by SLC): assessed; awaiting rejection; data capture incomplete; failed assessment; validated; verified.

Table 2: Approved applications for academic year 2012/13 by learning centre type, gender and value of EMA award, as at 31 January 2013

	£30	£20	£10	Total
Further Education College:	19,040	280	145	19,465
Males	9,305	130	70	9,505
Females	9,740	150	75	9,960
Secondary School:	9,930	55	30	10,015
Males	4,445	35	15	4,495
Females	5,485	20	15	5,520
Other Learning Centre:	620	10	5	640
Males	355	*	*	365
Females	265	5	*	275
All Learning Centres:	29,595	345	185	30,120
Males	14,105	170	90	14,365
Females	15,485	175	95	15,755

Source: Student Loans Company

Annex 1: Notes

1. Context

1.1 Policy/operational context

EMA (Education Maintenance Allowance) is a scheme providing young people who wish to continue in education after school leaving age with an incentive to earn awards through good attendance and achieving agreed objectives. Changes to this scheme were introduced from September 2011, further details are provided here: <http://wales.gov.uk/docs/dcells/publications/101109emaen.pdf>

These monthly releases aim to provide high level operational updates on the EMA application process.

1.2 Eligibility criteria, 2012/13

A student has a general entitlement to receive an EMA if:

Student criteria

- the student is aged 16, 17 or 18 years old¹ on 31 August 2012.
- the student has a bank or building society current account.
- the student meets the nationality/residency criteria.

Course criteria

- the student is studying full-time at a school; or studying at least 12 guided hours a week at a recognised further education institution/other learning centre.
- the student is studying an academic or vocational course up to and including level 3. Eligible academic or vocational course include GCSEs, A-Levels, BTECs, NVQs, GNVQs and Basic Skills courses.
- the student is studying an eligible course that lasts at least 10 weeks.

Household income criteria

Evidence of household income in the prior tax year determines whether a student will be eligible for an EMA.

Students new to EMA in 2012/13 may qualify for an award of £30 per week. There are two different household income thresholds, which are based on the student's family circumstances. Students will not be able to receive EMA if their household income is above the threshold levels.

Students new to EMA from 2011/12 onwards (eligible for the £30 award only)

Family circumstances	Household income threshold
You are the only dependant child in the household	£0 - £20,817
You have one or more dependants aged 16 or under in the household	£0 - £23,077
You have one or more dependants aged 20 or under in full-time education or training and eligible for child benefit in the household	£0 - £23,077

Returning EMA students, who continue to meet the eligibility criteria for 2010/11 EMA scheme, will continue to get their EMA, be it for £10, £20 or £30 per week.

Returning EMA students in 2012/13 (who are still eligible for the £10, £20, and £30 awards)

Household Income (per annum)	Entitlement Amount (per week)
£0 - £21,885	£30
£21,886 - £26,840	£20
£26,841 - £32,400	£10
£32,401 or above	Nil

2. Data source

EMA applications and payments are administered by the Student Loans Company (SLC). Data held on EMA students is entered by SLC staff onto an administrative database for the purpose of assessing and paying EMA to students. This data is also stored in a management information data warehouse for the

¹ Entitlement may be extended to 19 year olds if they have not already received 3 years of EMA.

purpose of management reporting, operational performance reporting, audit of processes, statistics, future policy planning and forecasting. Further details of SLC's administrative sources will be published on [SLC's web page](#) later this year. Processes and systems which enable customer and application assessment data to be held electronically are subject to periodic audit and integrity checks. SLC Internal Audit ensures that the processes governing data entry and application assessment are adhered to. Data integrity validation rules are used to identify and correct errors in data. Management Information extracted from SLC systems are subject to quality assurances prior to distribution.

The data in this release were collected via the SLC management information system and were extracted on 4 February 2013. All information is based on applications received by 31 January 2013.

3. Definitions

3.1 Change in applicant circumstances

The data represented in this release refer to applicants' most recent learning agreement. Therefore if an applicant has attended more than one type of learning centre or has received different values of weekly payments, to avoid double-counting, they are only included under their most recent status.

4. Rounding strategy

Figures in this release have been rounded to the nearest 5. Due to rounding, the sums of some rows or columns may not add to the total figure given. Numbers less than 5, but not zero, are represented by '*'.

5. Key Quality Information

This section provides a summary of information on this output against five dimensions of quality: Relevance, Accuracy, Timeliness and Punctuality, Accessibility and Clarity, and Comparability.

5.1 Relevance

The statistics are used both within and outside the Welsh Government to monitor educational trends and as a baseline for further analysis of the underlying data. Some of the key users are:

- Ministers and the Members Research Service in the National Assembly for Wales;
- Officials in the Welsh Government;
- Other government departments;
- Further Education Institutions, Work-Based Learning providers, schools and local authorities;
- Wales Audit Office;
- Students, researchers, academics and universities;
- Individual citizens, private companies, and the media.

These statistics are used in a variety of ways. Some examples of these are:

- advice to Ministers;
- to inform and evaluate the education policy-making process in Wales;
- to forecast future expenditure of student support schemes in Wales.

5.2 Accuracy

Statisticians within the Welsh Government review the data and query any anomalies with the SLC before tables are published. The updated monthly figures for the current academic year are correct at the time of publication. They are subject to revisions following further SLC processing, for example due to applications being re-classified from EMA to "Pathways to Apprenticeships" or vice versa. See "Further Information" for more details.

5.3 Timeliness and Punctuality

For 2012/13 this is the third monthly publication on the number of EMA applications and relates to applications up until the end of January 2013. Monthly updates during a given academic year relate to data from the end of November each month until the end of July and are published as soon as possible, a few weeks following the end of a given month, and according to a planned and pre-announced series of publication dates. Final data for 2012/13 will be published in September 2013, and the final publication will include more detailed data tables.

5.4 Accessibility and Clarity

This statistical release is pre-announced and then published on the Statistics section of the Welsh Government website. It is accompanied by more detailed tables on StatsWales, a free to use service that allows visitors to view, manipulate, create and download data.

5.5 Comparability

For the academic year 2004/05 only students aged 16 at the start of the academic year were eligible to receive an EMA. The scheme was extended to 17 year olds for the 2005/06 academic year and finally 18 year olds in 2006/07. Therefore comparability between years varies, and before 2006/07 should be restricted to comparisons. Figures from 2006/07 onwards are comparable with each other.

The data used for the cumulative number of EMA Wales applications as reported on the StatsWales website are now taken from the SLC via their management information system, which are based on the same definitions used for the September Statistical First Release, which was not the case in years prior to 2009/10.

Data from 2010/11 will only be comparable with previous years' data from November onwards. This is due to a change in the SLC's procedure for renewing applications for existing students who received an Education Maintenance Allowance (EMA) during the academic year 2009/10.

From academic year 2011/12, students new to EMA can qualify for an award of £30 per week, depending on household income. Students who received EMA in 2010/11 who are returning to education and meet the same eligibility criteria as for 2010/11 will continue to get their EMA, be it for £10, £20 or £30 per week. No further bonus payments (previously paid in September, January and July) will be made to any students.

Northern Ireland and Scotland have their own EMA schemes. EMA closed to new applicants in England from 1 January 2011.

The United Kingdom Statistics Authority has designated these statistics as National Statistics, in accordance with the Statistics and Registration Service Act 2007 and signifying compliance with the Code of Practice for Official Statistics.

Designation can be broadly interpreted to mean that the statistics:

- meet identified user needs;
- are well explained and readily accessible;
- are produced according to sound methods, and
- are managed impartially and objectively in the public interest.

Once statistics have been designated as National Statistics it is a statutory requirement that the Code of Practice shall continue to be observed.

6. Further Information

Updates providing the number of EMA applications during 2012/13 will be published monthly, and will be found on the [Statistics for Wales](#) website.

Comparable monthly data for previous academic years (similar to Table 1 of this Release) can be found in the StatsWales table on [cumulative totals of applications for EMA](#) (please note that monthly data for 2012/13 are subject to change – see “Revisions Policy” – and should be treated as provisional until final figures are published in September 2013). Please note that monthly 2009/10 data are confirmed as final (as at 31 August 2010) in [cumulative totals of applications for EMA](#) table, and will therefore differ slightly to what is seen in Table 1 of this Release, as these figures were those correct as at 31 July 2010.

Further detailed information on EMA applications for academic years 2004/05 to 2010/11 (similar to Table 2 of this Release) can be found in the StatsWales table on [approved EMA applications by LEA](#).

The latest final EMA Statistical First Release, for academic year 2011/12, was published in September 2012. The provisional Statistical First Release, which had previously been published in January, was discontinued due to more detailed data now being published within this monthly release. Please contact us if you have further queries on the data published.

Further information about the EMA scheme can be found at www.StudentFinanceWales.co.uk.

Related articles

The final EMA Statistical First Release for academic year 2011/12 is available via the following link:
<http://wales.gov.uk/topics/statistics/headlines/post16education2012/120920/?lang=en>

The Scottish Government publish statistics on recipients of EMA, for example in the following link:
<http://www.scotland.gov.uk/Publications/2012/01/6891>

Statistical Releases on other strands of student support in Wales are available via the following link:
<http://wales.gov.uk/topics/statistics/theme/post16ed/student-finance/?lang=en>