

Young people not in education, employment or training (NEET) (Year to 31 December 2012)

This Bulletin summarises the available statistics on young people not in education, employment or training (NEET) in Wales.

The definitive source for estimates of the proportion of young people who are NEET in Wales is the annual Statistical First Release (SFR), published on 25 July 2012 *Participation of young people in education and the labour market*. The latest SFR provided final data for 2010 and provisional estimates for 2011. Within this quarter's Bulletin these estimates have been revised to take account of new population estimates for 2001 to 2011 released by the Office for National Statistics following new data from the 2011 Census of Population.

Additionally, this quarterly Bulletin provides users with more timely, but less statistically robust, statistics between SFRs and includes analysis by gender, age and region, not possible with the annual data. The statistics from the Annual Population Survey are based on relatively small sample sizes of 16-18 year olds and are statistically less robust than those published in the SFR. Care also needs to be taken when comparing estimates from the different sources due to differences in definitions.

The main focus of this Bulletin is the 16-18 year old age group. For completeness equivalent statistics for the 19-24 year old age group are also given in the tables.

The statistics included in this bulletin are taken from the following sources:

- Statistical First Release 'Participation of young people in education and the labour market' using education data sources and the Annual Population Survey (APS);
- Annual Population Survey (ONS); and
- Careers Wales Pupil Destinations from Schools in Wales survey.

New data are highlighted.

Most recent results from these sources:

- **SFR basis - Revised data** As at end 2011(p), 12.1 per cent of 16-18 year olds were NEET (13,800) compared with 11.5 per cent (13,500) at end 2010;
- **APS basis - New data** For the year ending Quarter 4 2012, 11.8 per cent of 16-18 year olds were estimated to be NEET, compared with 13.3 per cent for the year ending Q4 2011.
- **Pupil Destinations basis - New data** As at Nov 2012, 4.2 per cent of Year 11 leavers were NEET compared with 4.4 per cent in 2011.

Statistician: Rachel Lloyd

Tel: 029 2082 3357

Email: post16ed.stats@wales.gsi.gov.uk

Next update: July 2013 (provisional)

Twitter: www.twitter.com/statisticswales | www.twitter.com/ystadegaucymru

Cyhoeddwyd gan Y Gwasanaethau Gwybodaeth a Dadansoddi

Llywodraeth Cymru, Parc Cathays, Caerdydd, CF10 3NQ

Ffôn – Swyddfa'r Wasg **029 2089 8099**, Ymholiadau Cyhoeddus **029 2082 3332**

www.cymru.gov.uk/ystadegau

Issued by Knowledge and Analytical Services

Welsh Government, Cathays Park, Cardiff, CF10 3NQ

Telephone – Press Office **029 2089 8099**, Public Enquiries **029 2082 5050**

www.wales.gov.uk/statistics



Llywodraeth Cymru
Welsh Government

Introduction

This provides policy makers and those working with young people with data to monitor trends by age and gender and assess the impact of education and labour market interventions on young people, towards the Welsh Government's strategic approach to reducing the proportion of young people who are NEET as set out in the *2011-2015 Youth Engagement and Employment Action Plan* which is currently in transition to a new *Youth Engagement and Progression Framework* (see notes for further detail).

When to use each source of data

Statistical First Release (SFR) series

The number and proportion of young people who are NEET in Wales is published annually in the Statistical First Release (SFR) *Participation of young people in education and the labour market*. The SFR series should be used:-

- as the definitive headline measures for young people who are NEET in Wales.

However, these data are only available annually and can only be disaggregated by gender, therefore we need to supplement this series with other data sources.

Annual Population Survey (APS) series

The Annual Population Survey (APS) provides more regular and timely data on young people who are NEET. However, these in-year estimates, based solely on survey data, are much less robust than the annual SFR measure. The APS series can be used:-

- where a more recent indication of data is required, between publication of SFRs;
- to provide analysis by region or single year of age (although it is necessary to use estimates based on 3 year averages for this purpose).

Careers Wales Survey

The only source of data in respect of local areas available to us is the Careers Wales pupil destinations survey. This provides estimates of young people who are NEET in the October after completing Year 11 and is available at a local authority level. However the Careers Wales survey uses slightly different definitions for NEET than those used in the SFR. The Careers Wales series can be used:-

- to consider relative levels of young people who are NEET by local authority.

Note that this bulletin is restricted to statistical sources and does not include information derived from non-statistical sources such as Careers Wales management information systems.

SFR series (last updated – July 2012, revised April 2013)

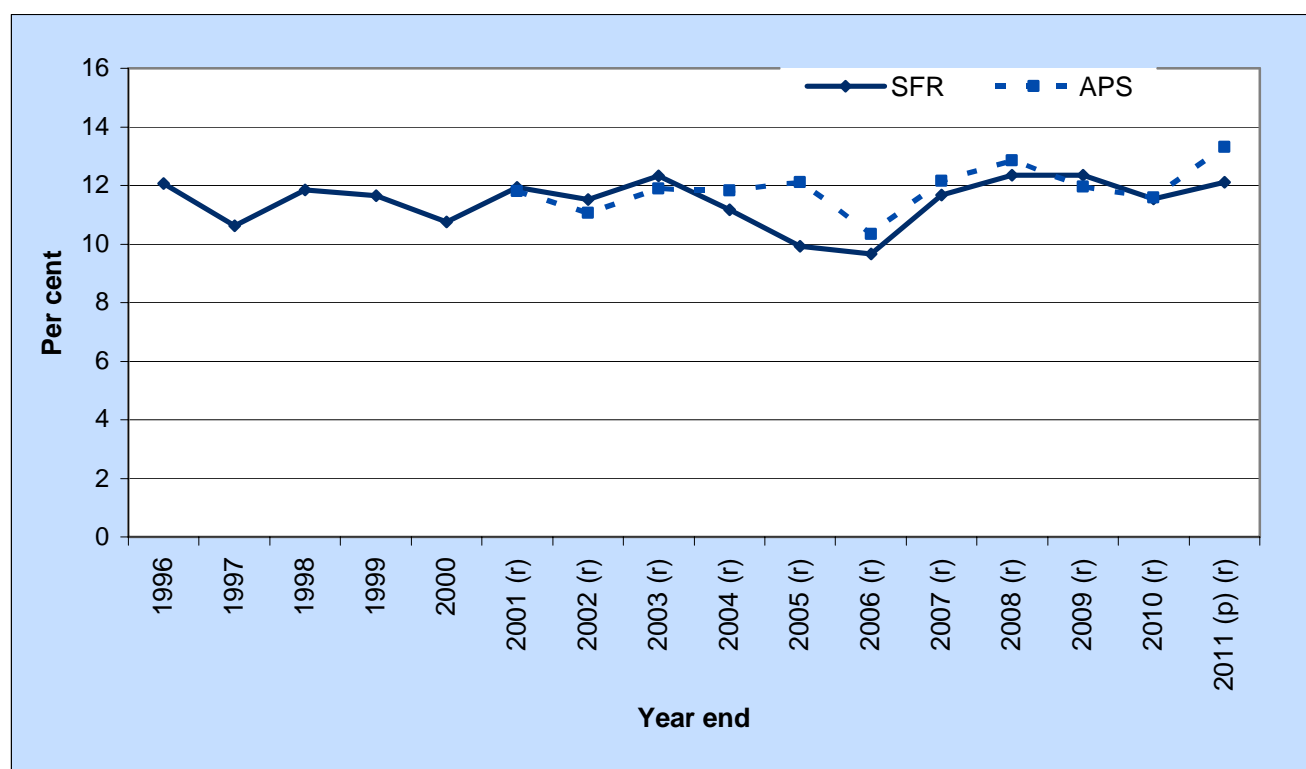
[Link to SFR](#)

For this series the data presented covers 16-18 year olds on an academic age basis (ie age as at 31 August prior to the start of the academic year).

The estimates published in the SFR are a measure of the proportion of young people who are NEET as at the end of the calendar year. It is based on population estimates as at the end of the calendar year, education enrolment counts in December for work-based learning, further and higher education and in the following January for schools. The Annual Population Survey is used to estimate the proportion of those not in education or training who are unemployed or inactive and relates to the whole of the reference year. Within this quarter's Bulletin these estimates have been revised to take account of new population estimates for 2001 to 2011 released by the Office for National Statistics following new data from the 2011 Census of Population.

As at end 2011(p), 12.1 per cent (r) of 16-18 year olds were NEET (13,800 (r)) compared with 11.5 per cent (13,500) (r) at end 2010. Chart 1 shows the published SFR time series of NEET rates for 16-18 year olds. The series shows that the proportion of young people who are NEET has ranged between 10-12 per cent over the years 1996 to 2011 accounting for around 12,000-15,000 young people. Due to the use of survey data within the calculations there will be some element of sampling variability in the estimates. The chart also shows an estimate of NEET rate based on the Annual Population Survey¹ only. These estimates are for the calendar year. Both series show similar trends.

Chart 1: Young people not in education, employment or training in Wales, age 16-18: Comparison of estimates in the Statistical First Release and using the Annual Population Survey (calendar year)



(p) SFR: Year end 2011 is provisional

(r) SFR data revised

¹ For years 2001-2003 the source is the annual Local Labour Force Survey for Wales

APS rolling year series (last updated – April 2013) *New data*

The data presented covers 16-18 year olds on an academic age basis (ie age as at 31 August prior to the start of the academic year).

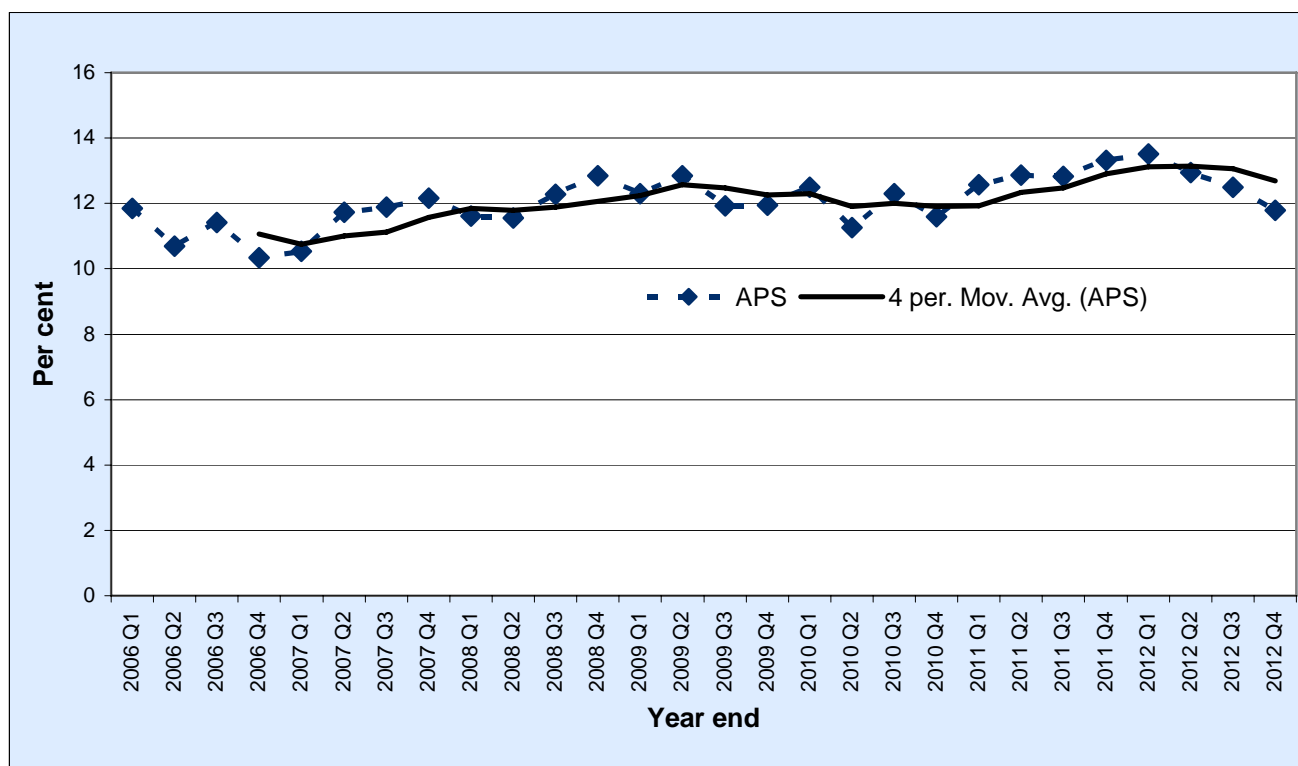
The Annual Population Survey (APS) is published on a rolling year basis every quarter. The most recent published year covers the period October 2011 to September 2012. Estimates based on the APS are less robust than the annual series, given the sample sizes involved, particularly for the 16 to 18 cohort. They can be used to give an indication, only, of trends in NEET rates between publications of the annual SFR.

The reference period for these estimates is the whole year and there is a large overlap in the responses included in consecutive rolling years. Therefore the overall trend of the series should be considered with comparisons to the same point a year previous and not changes between consecutive rolling year estimates. As these estimates are based on survey data there will be some variability in estimates due to sampling variation.

Chart 2 shows the APS rolling year series for the years (April 2005-March 2006) to (January 2012 to December 2012) along with a four-point moving average of the series. Over this period the estimate of the proportion of young people who are NEET has fluctuated between 10.3-13.5 per cent, with an upward trend from year ending Q1 2011 to Q1 2012, and now showing a downward trend. Table 2 includes approximate 95 per cent confidence intervals for these estimates which for all periods is around ± 2 per cent.

The latest data show, for the year ending Quarter 4 2012, 11.8 per cent of 16-18 year olds were estimated to be NEET, compared with 13.3 per cent for the year ending Q4 2011.

Chart 2: Young people not in education, employment or training in Wales, age 16-18: Annual Population Survey (rolling year ending) and 4 point moving average



The APS can also be used to provide analysis of NEET rates by characteristics not available via the SFR series. Due to small sample sizes when looking at sub-groups it has been necessary to use estimates based on three year averages and therefore should be used to compare groups or regions only. Chart 3 shows analysis by gender and single year of age and Chart 4 provides regional data².

Chart 3: Young people not in education, employment or training in Wales: by age and gender (average of years ending 2010Q4, 2011Q4, 2012Q4)

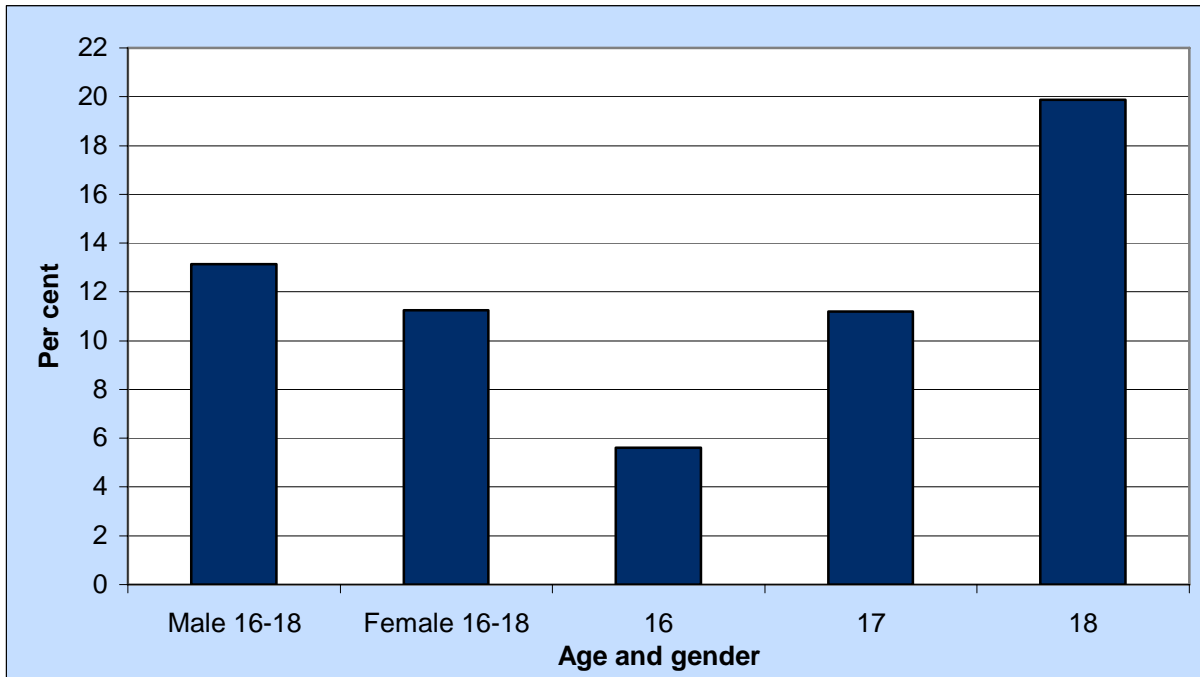
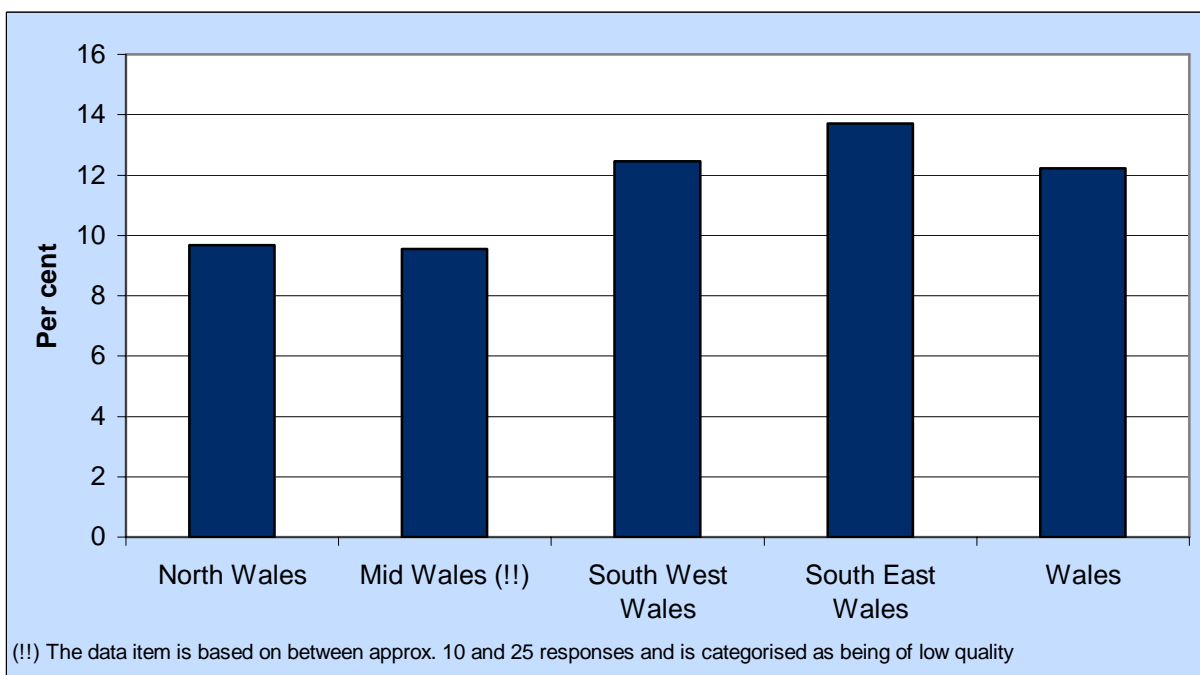


Chart 4: Young people not in education, employment or training in Wales, age 16-18: by region (average of years ending 2010Q4, 2011Q4, 2012Q4)

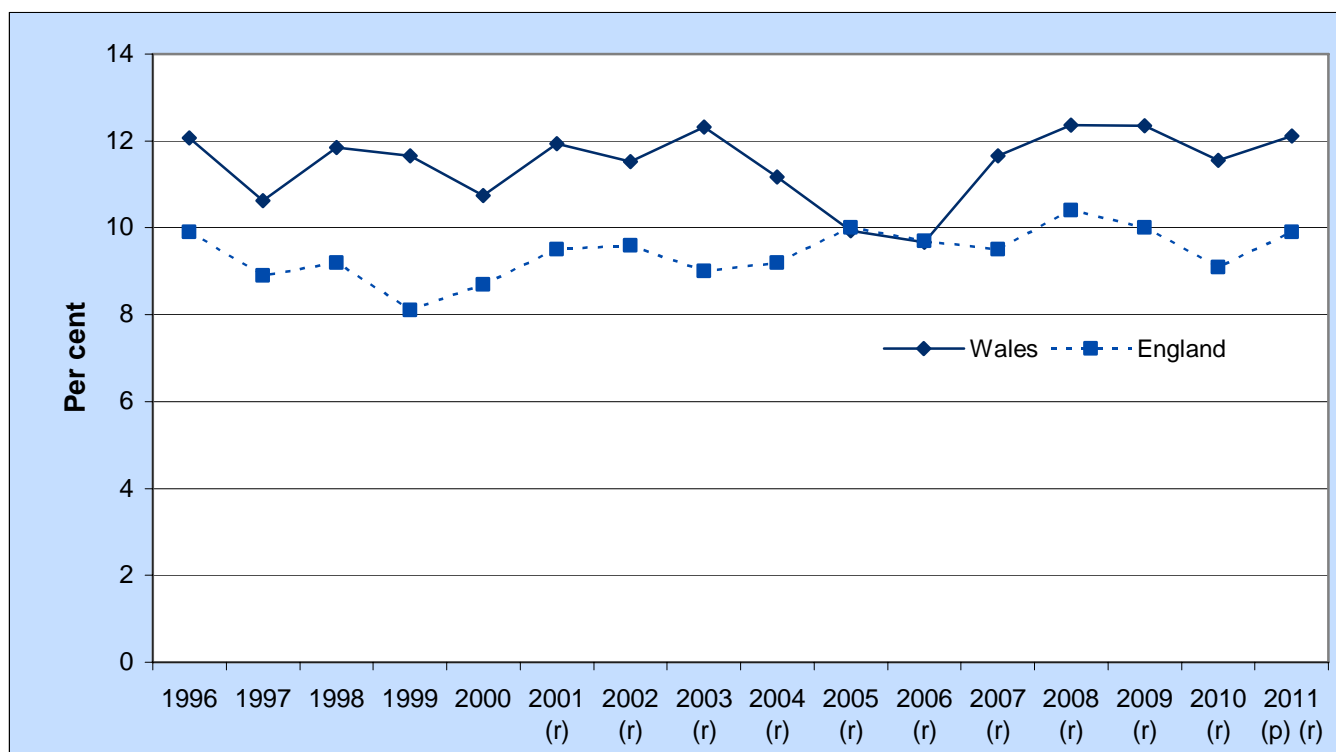


² See notes section for regional breakdown.

Comparisons with the rest of the UK

The Department for Education (DFE) publish estimates of 16-18 year old NEET rates for England using similar methodology to our SFR on an annual basis. The most recent published data are 2011 provisional figures. DFE have also recently revised this series in light of new population estimates following the 2011 Census of Population. Chart 5 shows a comparison of the English and Welsh estimates. The revised estimates show a lower level of 16 to 18 year olds who are NEET in England, but following the same trend as in Wales. (Previous estimates - prior to the latest revisions - had indicated a widening of the gap between England and Wales.)

Chart 5: Young people not in education, employment or training in Wales, age 16-18: Wales and England



The DFE also publish a quarterly brief on young people who are NEET which includes NEET rates estimates based on the Quarterly Labour Force Survey (LFS). These quarterly estimates are not seasonally adjusted. The quarterly estimates are not comparable with the Welsh APS only estimates published in this bulletin. The sample size for 16-18 year olds in Wales in the Quarterly LFS is not sufficiently large to produce quarterly estimates for Wales.

For Scotland and Northern Ireland comparable NEET estimates for 16-18 year olds are not published.

Pupil destinations from schools in Wales (last updated – April 2013) [New data](#)
[Link to Pupil Destinations Headline](#)

Careers Wales undertakes an annual survey of all leavers from maintained schools² in Wales to obtain their destinations as at end of October. The results from this survey can be used to provide estimates of NEET rates by UA for 16 year olds. Chart 6 shows the proportion of 2012 Year 11 leavers who were NEET. The survey also includes information on whether those recorded as NEET were able to enter employment. Leavers may be unable to enter employment due to sickness, pregnancy, custodial sentence etc.

Chart 6: Year 11 leavers who are NEET by Unitary Authority of school, 2012

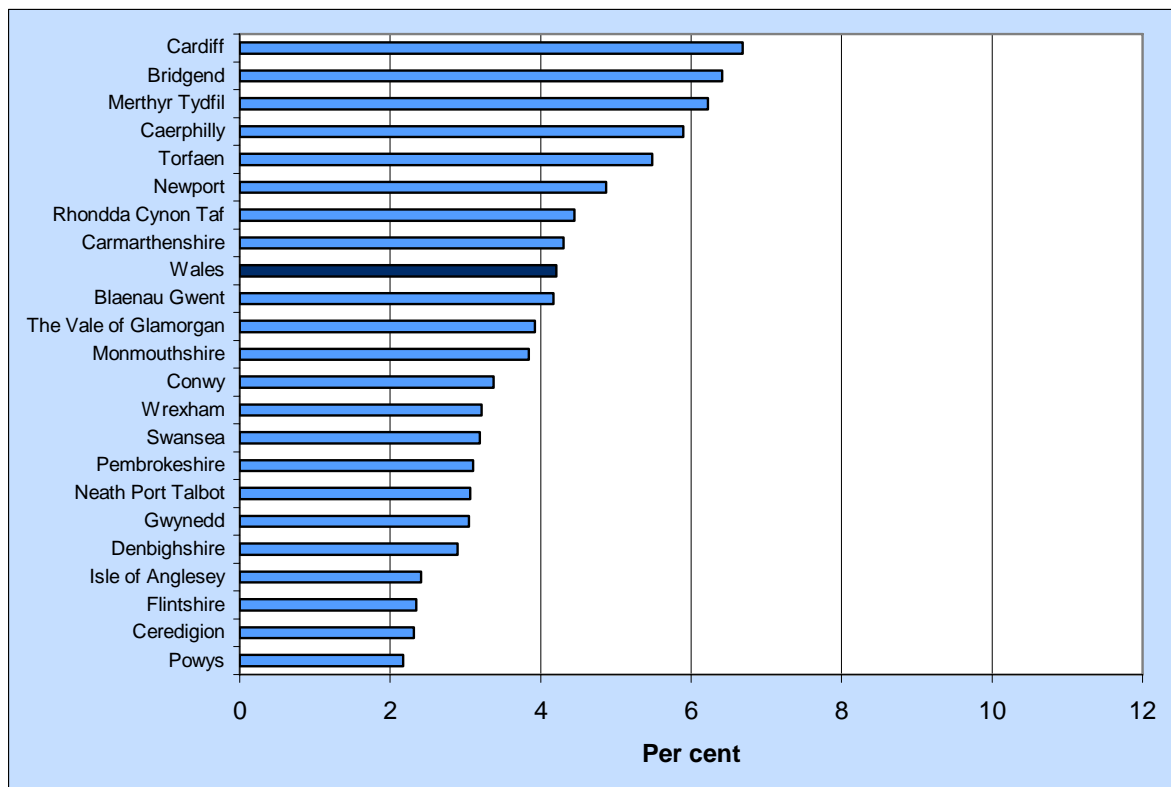
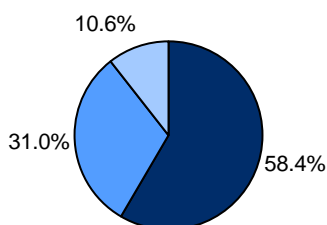


Chart 7: Year 11 leavers who are NEET and employment entry status, 2012



- Able to enter employment etc, registered w ith Careers Wales
- Able to enter employment etc, NOT registered w ith Careers Wales
- Unable to enter employment etc

² Includes maintained secondary and special schools, PRUs and some learners educated other than at school.

Tables

Table 1: Young people not in education, employment or training in Wales, Calendar Year

	16-18 year olds				19-24 year olds			
	SFR NEET		APS NEET		SFR NEET		APS NEET	
	Per cent	Number	Per cent	Number	Per cent	Number	Per cent	Number
End 1996	12.1	12,800	19.7	40,900
End 1997	10.6	11,700	18.5	36,800
End 1998	11.9	13,200	19.3	37,600
End 1999	11.6	12,800	18.6	37,100
End 2000	10.7	11,700	17.9	36,500
End 2001	11.9 (r)	13,500 (r)	11.8	13,000	18.9 (r)	38,900 (r)	19.9	39,700
End 2002	11.5 (r)	13,200 (r)	11.1	12,500	18.0 (r)	38,000 (r)	19.1	39,300
End 2003	12.3 (r)	14,300 (r)	11.9	13,700	16.7 (r)	36,700 (r)	17.6	36,800
End 2004	11.2 (r)	13,100 (r)	11.8	13,900	16.1 (r)	36,600 (r)	16.4	35,400
End 2005	9.9 (r)	11,700 (r)	12.1	13,900	17.5 (r)	40,600 (r)	18.2	40,800
End 2006	9.7 (r)	11,500 (r)	10.3	12,300	18.0 (r)	43,200 (r)	18.6	41,400
End 2007	11.7 (r)	14,000 (r)	12.2	14,800	17.6 (r)	43,400 (r)	18.0	42,100
End 2008	12.4 (r)	14,900 (r)	12.8	15,200	17.6 (r)	44,300 (r)	17.4	42,000
End 2009	12.4 (r)	14,700 (r)	11.9	13,900	22.0 (r)	56,300 (r)	21.3	52,100
End 2010	11.5 (r)	13,500 (r)	11.6	13,900	23.0 (r)	59,300 (r)	23.2	57,000
End 2011 (p)	12.1 (r)	13,800 (r)	13.3	15,300	22.2 (r)	57,400 (r)	22.3	54,200
End 2012	11.8	13,300	22.2	55,200

Source: WG Statistical First Release (SDR 111/2012) Participation of Young People in Education and the Labour Market; Annual Local Labour Force Survey for Wales 2001-2003; Annual Population Survey 2004-2011

(p) SFR: Year end 2011 is provisional

**Table 2: Young people not in education, employment or training in Wales,
Annual Population Survey (Rolling Year End)**

Year End	16-18 year olds			19-24 year olds		
	Per cent	Approx 95% Confidence Interval	Number	Per cent	Approx 95% Confidence Interval	Number
2006 Q1	11.8	1.6	13,800	18.2	1.5	40,700
2006 Q2	10.7	1.6	12,600	18.2	1.6	40,100
2006 Q3	11.4	1.6	13,600	18.8	1.6	41,400
2006 Q4	10.3	1.5	12,300	18.6	1.6	41,400
2007 Q1	10.5	1.6	12,700	18.5	1.6	41,300
2007 Q2	11.7	1.6	14,000	18.3	1.6	41,900
2007 Q3	11.9	1.6	14,400	18.3	1.6	42,300
2007 Q4	12.2	1.6	14,800	18.0	1.6	42,100
2008 Q1	11.6	1.6	14,100	17.9	1.6	42,400
2008 Q2	11.5	1.7	14,000	17.2	1.6	41,000
2008 Q3	12.3	1.7	14,600	17.0	1.6	41,000
2008 Q4	12.8	1.8	15,200	17.4	1.7	42,000
2009 Q1	12.3	1.8	14,500	18.6	1.7	45,000
2009 Q2	12.8	1.8	15,000	19.1	1.7	46,500
2009 Q3	11.9	1.8	14,000	19.6	1.7	47,600
2009 Q4	11.9	1.8	13,900	21.3	1.8	52,100
2010 Q1	12.5	1.8	14,600	22.5	1.8	55,300
2010 Q2	11.3	1.7	13,100	22.4	1.8	55,100
2010 Q3	12.3	1.8	14,400	23.3	1.9	56,700
2010 Q4	11.6	1.8	13,900	23.2	1.9	57,000
2011 Q1	12.6	1.8	15,000	23.4	1.9	57,500
2011 Q2	12.9	1.9	15,400	23.6	1.9	58,000
2011 Q3	12.8	1.9	15,000	23.3	1.9	56,700
2011 Q4	13.3	2.0	15,300	22.3	1.8	54,200
2012 Q1	13.5	1.9	15,400	22.6	1.8	55,500
2012 Q2	12.9	1.9	14,600	23.3	1.8	57,600
2012 Q3	12.5	1.9	14,200	22.3	1.8	55,200
2012 Q4	11.8	1.8	13,300	22.2	1.8	55,200

Source: Annual Population Survey 2006-2012

Table 3: Year 11 Leavers for Schools in Wales known to be not in education, employment or training by Unitary Authority

	2007	2008	2009	2010	2011	2012
Wales	6.9	7.1	5.7	5.4	4.4	4.2
Isle of Anglesey	6.7	8.1	5.2	5.3	2.7	2.4
Gwynedd	4.4	5.7	4.2	3.6	3.6	3.0
Conwy	5.5	5.7	4.8	3.7	4.0	3.4
Denbighshire	4.9	6.2	4.4	4.4	3.6	2.9
Flintshire	4.6	7.2	3.7	2.8	2.7	2.3
Wrexham	8.9	9.6	5.0	4.2	3.4	3.2
Powys	5.3	3.0	2.1	2.9	3.0	2.2
Ceredigion	2.6	3.8	2.3	2.3	3.3	2.3
Pembrokeshire	4.7	6.4	4.8	4.8	3.8	3.1
Carmarthenshire	5.5	4.4	4.0	2.9	2.8	4.3
Swansea	5.8	5.8	6.4	4.2	3.1	3.2
Neath Port Talbot	9.0	7.7	7.1	6.6	4.6	3.1
Bridgend	7.3	8.0	7.6	7.1	4.4	6.4
The Vale of Glamorgan	6.8	6.2	5.6	4.6	4.3	3.9
Cardiff	8.5	10.6	8.9	8.8	7.7	6.7
Rhondda, Cynon, Taff	7.5	6.1	4.9	5.7	3.9	4.5
Merthyr Tydfil	7.9	7.8	4.6	7.6	5.6	6.2
Caerphilly	7.1	7.1	5.0	6.0	4.5	5.9
Blaenau Gwent	10.4	9.7	6.6	8.7	6.6	4.2
Torfaen	10.5	10.1	8.2	7.0	6.7	5.5
Monmouthshire	5.6	5.3	5.0	3.9	3.8	3.8
Newport	9.3	10.4	9.1	7.5	6.7	4.9

Source: Careers Wales Pupil Destinations from Schools in Wales

NOTES

Policy/Operational context

This Bulletin summarises the available statistics on young people not in education, employment or training (NEET) in Wales. It is updated quarterly with latest estimates from the Annual Population Survey, and annually with the headline SFR series (July) and the Careers Wales destinations survey data (April). The statistics are used within the Welsh Government to monitor trends in the level and proportion of young people who are NEET. It is one of the measures included within the *Programme for Government* in the context of Tackling Poverty.

The 2011-2015 *Youth Engagement and Employment Action Plan* was published in January 2011. It outlined the Welsh Government's approach to preventing children and young people from disengaging from learning and supporting them with entry to the labour market. In January 2013, the Deputy Minister for Skills reaffirmed the Welsh Government's commitment to reducing the number of young people who are not in education, employment or training (NEET) and announced a transition from this 18 point action plan to a new *Youth Engagement and Progression Framework*. The Framework which is currently being finalised will be based on 6 key building blocks of Identifying young people most at risk of disengagement; Better brokerage and co-ordination of support for them; Stronger tracking and transitions of young people through the system; Ensuring provision meets the needs of young people; Strengthening employability skills and opportunities for employment; and Greater accountability for Local Authorities. Further detail is given in the Written Statement below.

<http://wales.gov.uk/about/cabinet/cabinetstatements/2013/youthengagementandemploymentactionplan/?lang=en>

1. Summary of data sources

a. NEET SFR series

Description	This data is the definitive measure for NEET rates in Wales.
Uses	This series is the key statistical source for estimates of the number and proportion of young people who are NEET in Wales. The SFR series provides policy makers and those working with young people with data to monitor trends by age and gender and the impact of education and labour market interventions on young people. The Welsh Government is committed to reducing the proportion of young people who are NEET in Wales as outlined in the Written Statement of 17 January 2013 (link above), which also outlined the transition from the 2011-2015 <i>Youth Engagement and Employment Action Plan</i> to a new <i>Youth Engagement and Progression Framework</i> . This series is used in the measure of young people who are NEET in Wales within the <i>Programme for Government</i> .
Published source	WG Statistical First Release <i>Participation of young people in education and the labour market</i>
Primary sources	Pupil Level Annual Schools' Census (WG) Lifelong Learning Wales Record (WG) Student Record (HESA) Open University Annual Population Survey (ONS) Mid- year estimates of resident population and population projections(ONS)
Last period covered	End 2011 (p)
Last published	July 2012

Next published	July 2013 (provisional)
Revisions	This bulletin includes revisions to the historical time series, in light of new population estimates for 2001 to 2011 released by the Office for National Statistics following new data from the 2011 Census of Population.

b. NEET APS series

Description	This series is a rolling year annual estimate of the proportion of young people who are NEET from the Annual Population Survey.
Uses	This series provides more timely data than the annual SFR and is used to provide an indication of trends in the proportion of young people who are NEET between SFRs. It is not directly comparable with the SFR series and estimates are less robust. The APS estimates, published quarterly, are based on survey data and therefore there is variability due to sampling error. For the latest 12 month period around 1,200 young people aged 16-18 responded to the survey. Also given the structure of the APS there is a large overlap between consecutive rolling years. Trends should be considered and not changes between consecutive rolling year estimates. Comparisons are made with the same point a year previous. For sub-groups the sample sizes are relatively small and subject to relatively large sampling error so three year averages are generally used.
Published source	Annual Population Survey (ONS)
Primary sources	Annual Population Survey (ONS)
Last period covered	Year ending 2012 Q3
Last published	APS published March 2013, NEET APS series published April 2013
Next published	APS published, June 2013, NEET APS series published July 2013

c. NEET Pupil Destinations Survey

Description	This series is an annual estimate of the Year 11 leavers (aged 16) who are NEET as at October following the end of the academic year.
Uses	Neither the SFR nor the APS series can be used to provide estimates at a Unitary Authority level due to small sample sizes in the APS and methodology used to derive the SFR estimates. This series provides an indication of the level of young people who are NEET at a Unitary Authority level. It should only be used for 16 year olds. It is not directly comparable with the SFR series or the APS series due to differences in definitions.
Published source	Destinations of leavers from schools in Wales (Careers Wales)
Primary sources	Destinations of leavers from schools in Wales (Careers Wales)
Last period covered	November 2012
Last published	April 2013
Next published	April 2014

2. Definitions

Education and training

For the SFR estimates: it is based on those who are enrolled on a course in a school, FE college, HE institution (including the OU) or with a work-based learning provider in Wales. In addition, an estimate is made of the number of those in employment who undertake off-the job training.

For the APS based estimates: respondents to the APS who are either:

- Currently enrolled on any full-time or part-time education course excluding leisure classes; or
- Currently working or studying towards any qualifications; or
- Have undertaken any job-related education or training in the previous 4 weeks.

Employment

The APS is used to estimate the proportion in employment for both the SFR and APS based estimates. In addition employment status from Post-16 enrolment data is used in the SFR.

From the APS respondents are in employment if they are either:

- Employed; or
- Self-employed; or
- On government employment or training programmes; or
- An unpaid family worker.

Key Quality Information

3. Annual Population Survey (APS): Quality

The Annual Population Survey (APS) is a household survey carried out by the ONS. The survey seeks information on respondents' personal circumstances, including their labour market status and their education and training activity. The APS combines the boosted samples of the Labour Force Survey (LFS) and provides rolling four quarter data. The APS datasets are derived from a sample of approximately 23,000 people of working age across Wales, with a minimum of around 800 people of working age in most local authorities in Wales. However, for 16-18 year olds there are less than 1,500 respondents in the sample across Wales.

As the data come from a survey, the results are sample-based estimates and are therefore subject to differing degrees of sampling variability, i.e. the true value for any measure lies in a differing range about the estimated value. Approximate 95 per cent confidence intervals have been calculated for the APS estimates of the proportion of young people aged 16-18 who are NEET. These have been calculated assuming a simple weighted random sample and do not take into account the design of the sample and thus only provide an indication of the confidence interval. The sampling variability increases as the detail in the data increases and therefore for the 16-18 age group, of interest in this bulletin, estimates for sub-groups and regions are based on three year averages.

Further information about the quality of the Annual Population Survey can be accessed via the following link <http://www.ons.gov.uk/ons/guide-method/method-quality/quality/quality-information/social-statistics/index.html>

Chart 1 demonstrates, from 2006 onwards, the similar levels and trend in young people who are NEET shown between the SFR and APS series, with a difference at most of 1 percentage point.

4. Timeliness

The latest SFR provides new data for 2010 and provisional data for 2011. The provisional estimates use the best data for 2011 currently available for each aspect of participation; this includes some final data, some provisional data and some modelling.

5. Estimates below Wales level

It is not possible to disaggregate the SFR NEET estimate down to UA level. This is due to the way the data is put together using enrolment data and because the employment status is estimated using the APS. For 16-18 year olds the number of respondents to the APS is relatively small in each UA; less than 100 respondents.

The APS has been used to estimate the proportion of young people who are NEET for DfES regions. However as the sample sizes are around 300-400 in each area the estimates have been averaged over three years. The regional breakdown was changed as at the beginning of the 2010. The regions in use are as follows:

North Wales:	Isle of Anglesey, Gwynedd, Conwy, Denbighshire, Flintshire, Wrexham
Mid Wales:	Powys, Ceredigion
South West Wales:	Pembrokeshire, Carmarthenshire, Swansea, Neath Port Talbot
South East Wales:	Bridgend, Vale of Glamorgan, Rhondda Cynon Taf, Merthyr Tydfil, Caerphilly, Blaenau Gwent, Torfaen, Monmouthshire, Newport, Cardiff

The Pupil Destinations survey provides an estimate of 16 year olds who are NEET by UA. However, there are some differences in the NEET definitions compared with the SFR and APS based estimates.

6. Revisions

SFR series: Provisional 2011 figures will be finalised in the next SFR publication, due for release in July 2013. For the proportion of 16-18 year olds estimated to be NEET in 2010, the difference between the provisional estimate published in the previous release and the final published estimate was 0.1 percentage point.

This bulletin includes revisions to the historical time series, in light of new population estimates for 2001 to 2011 released by the Office for National Statistics following new data from the 2011 Census of Population. The scale of the revisions to the headline measures of NEET for 16-18 and 19-24 are outlined below. It should be noted that as part of the process of incorporating the new population estimates, other supporting data, and all calculations have been checked, and the revisions also reflect some minor amendments to data other than the revised population estimates. Details of these amendments will be outlined through the July SFR and supporting StatsWales tables.

Given the revisions are relatively minor we are releasing the data through this quarterly bulletin, rather than a full update of the Statistical First Release, this will be updated to our existing timetable in July. The revised data will be included in the Programme for Government indicator update.

Percentage point change in headline measure of NEET from July 2012 SFR

	16-18	19-24
2001	0.2	0.3
2002	-0.3	0.3
2003	-0.3	-0.2
2004	-0.5	0.0
2005	-0.4	0.0
2006	-0.3	-0.1
2007	-0.1	-0.2
2008	-0.1	-0.2
2009	0.2	-0.3
2010	0.5	0.0
2011 (p)	0.1	-0.2

APS series: These estimates of young people who are NEET are revised when the Office for National Statistics (ONS) releases revised Annual Population Survey datasets.

6. Forthcoming changes to Bulletin

We intend to make some changes to the next update of this quarterly Bulletin (due in July). The main changes will be as follows:-

- Move to a new definition of deriving NEET data from the Annual Population Survey. This is a new harmonised definition agreed across the Government Statistical Service for deriving estimates from the Labour Force Survey or Annual Population Survey. The change in methodology however is not substantial and will have only a small impact on the level of young people who are NEET shown by the series.
- Widen the focus of the commentary from just 16 to 18 year olds, to also include 19 to 24 year olds.
- Use the SFR measure (rather than the APS) in the context of young people who are NEET by gender.
- Additionally include analysis from the APS on young people who are NEET by disabled status.

If you have any feedback on these changes, please use the contact details at the front of the Bulletin to get in touch.

7. Missing value symbols

Missing value symbols used in this Bulletin are as outlined below.

- .. The data item is not available
- .
- The data item is not exactly zero, but estimated as zero or less than half the final digit shown
- * The data item is disclosive or not sufficiently robust for publication
- (r) Data have been revised since previous edition of bulletin