

## Official Statistics Release

|   |   |
|---|---|
| Policy area:                                  | Learning and skills inspections and outcomes  |
| Theme:  | Education, children's services and skills   |
| Published on:                                 | 6 June 2013   |
| Coverage:                                     | England   |
| Period covered:                               | 1 January 2013 to 31 March 2013   |
| Status:                                       | Provisional   |
| Issued by:                                    | Office for Standards in Education, Children's Services and Skills (Ofsted)<br>125 Kingsway<br>London<br>WC2B 6SE  |
| Responsible director:                         | Matthew Coffey  |
| Statistician:                                 | Jo Parkman  |
| Public enquiries:                             | <a href="mailto:enquiries@ofsted.gov.uk">enquiries@ofsted.gov.uk</a>  |
| Press enquiries:                              | <a href="mailto:pressenquiries@ofsted.gov.uk">pressenquiries@ofsted.gov.uk</a>  |
| Link to official statistics release web page: | <a href="http://www.ofsted.gov.uk/resources/official-statistics-learning-and-skills-inspections-and-outcomes">http://www.ofsted.gov.uk/resources/official-statistics-learning-and-skills-inspections-and-outcomes</a> |
| Publication medium:                           | Ofsted website  |
| Publication frequency:                        | Quarterly   |

## Contents

|   |    |
|---|----|
| Introduction .....  | 4  |
| Key findings .....  | 4  |
| Chart 1: Overall effectiveness of learning and skills providers inspected between 1 January 2013 and 31 March 2013, percentage (provisional) .....  | 6  |
| Chart 2: Proportion of previously grade 3 learning and skills providers that improved, declined or stayed the same at their next inspection at 31 March 2013 percentage (provisional) .....   | 7  |
| Chart 3: Key inspection judgements of learning and skills providers inspected between 1 January 2013 and 31 March 2013, percentage (provisional) .....  | 8  |
| Chart 4: Overall effectiveness of learning and skills providers inspected at 31 March 2013, percentage .....  | 9  |
| Chart 5: Overall effectiveness of colleges inspected between 1 September 2005 and 31 March 2013, by academic year, percentage .....   | 10 |
| Chart 5a: Overall effectiveness of independent learning providers inspected between 1 September 2007 and 31 March 2013, by academic year, percentage .....  | 11 |
| Chart 5b: Overall effectiveness of community learning and skills providers inspected between 1 September 2007 and 31 March 2013, by academic year, percentage .....   | 12 |
| Chart 6: Most recent overall effectiveness of learning and skills providers inspected at 31 March 2013 compared to the most recent overall effectiveness at 31 August 2012, 31 August 2011 and 31 August 2010, percentage (provisional) ..... | 13 |
| Table 1: Number of learning and skills providers inspected between 1 January 2013 and 31 March 2013, by provider and inspection type (provisional) .....  | 14 |
| Table 2: Inspection outcomes of learning and skills providers inspected between 1 January 2013 and 31 March 2013 (provisional).....   | 15 |
| Table 2a: Inspection outcomes of colleges inspected between 1 January 2013 and 31 March 2013 (provisional) .....  | 16 |
| Table 2b: Inspection outcomes of general further education colleges/tertiary college inspected between 1 January 2013 and 31 March 2013 (provisional) .....   | 17 |
| Table 2c: Inspection outcomes of sixth form colleges inspected between 1 January 2013 and 31 March 2013 (provisional) <sup>1</sup> .....  | 18 |

|  |    |
|--|----|
| Table 2d: Inspection outcomes of independent specialist colleges inspected between 1 January 2013 and 31 March 2013 (provisional) .....  | 19 |
| Table 2e: Inspection outcomes of higher education institutions inspected between 1 January 2013 and 31 March 2013 (provisional) .....  | 20 |
| Table 2f: Inspection outcomes of dance and drama colleges inspected between 1 January 2013 and 31 March 2013 (provisional) .....   | 21 |
| Table 2g: Inspection outcomes of independent learning providers inspected between 1 January 2013 and 31 March 2013 (provisional) .....   | 22 |
| Table 2h: Inspection outcomes of community learning and skills providers inspected between 1 January 2013 and 31 March 2013 (provisional) .....                                | 23 |
| Table 2i: Inspection outcomes of prison and young offender institutions where the inspection report was published between 1 January 2013 and 31 March 2013 (provisional) ..... | 24 |
| Table 3: Learning and skills providers judged outstanding between 1 January 2013 and 31 March 2013 (provisional).....  | 25 |
| Table 4: Learning and skills providers judged inadequate between 1 January 2013 and 31 March 2013 (provisional).....   | 26 |
| Impact of revisions on key points of previous publication .....  | 27 |
| Methodology .....  | 27 |
| Glossary .....   | 29 |

## Introduction

1. This official statistics release reports on inspections of further education and skills providers that occurred between 1 January 2013 and 31 March 2013. Providers were inspected against the *Common inspection framework for further education and skills 2012*. This framework sets out the judgements that inspectors will make during inspection and the principles that apply to further education and skills inspections under the Education and Inspections Act 2006. The inspection framework can be found at [www.ofsted.gov.uk/resources/120062](http://www.ofsted.gov.uk/resources/120062).
2. There are four main areas against which a provider is assessed:
  - a. Overall effectiveness
  - b. Outcomes for learners
  - c. The quality of teaching, training and assessment
  - d. The effectiveness of leadership and management
3. There are four main judgements a provider can receive against these areas: outstanding, good, requires improvement and inadequate. Further information can be found on the Ofsted website: <http://www.ofsted.gov.uk/resources/common-inspection-framework-for-further-education-and-skills-2012>
4. The overall aim of inspection is to evaluate how efficiently and effectively the education and training provision meets learners' needs. Inspection arrangements – together with other government initiatives – are intended to speed up improvement in the quality of the further education and skills sector.
5. This release contains provisional statistics which may be subject to change. Final statistics for the period 1 January 2013 to 31 March 2013 will be published during September 2013.
6. Additional tables providing more detailed breakdowns are available here: <http://www.ofsted.gov.uk/resources/official-statistics-learning-and-skills-inspections-and-outcomes>

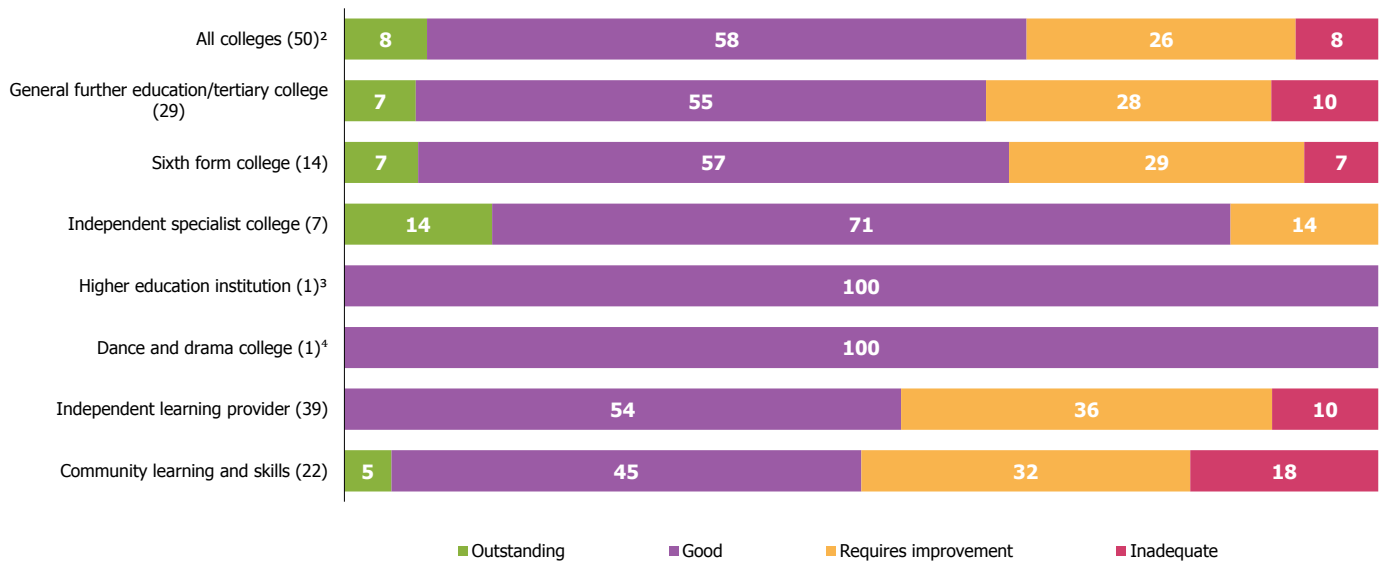
## Key findings

- From 1 September 2012 Ofsted has been inspecting against a new common inspection framework. Between 1 January 2013 and 31 March 2013, there have been 113 inspections of learning and skills providers. This included 50 inspections of colleges, 39 inspections of independent learning providers, 22 inspections of community learning and skills providers, one inspection of further education in higher education institutions and one inspection of a dance and drama course. Ofsted also contributed to the inspection of nine prisoner and young offender institutes where the reports were published between 1 January 2013 and the 31 March 2013.

- Ofsted continues to select a proportion of providers for inspection based on concerns about their current performance. Between 1 January 2013 and 31 March 2013, 32% of the providers inspected were selected for this reason. This is broadly in line with the proportion selected as a result of risk assessment in the same period of the previous year.
- Sixth form colleges continue to be one of the highest performing providers in the further education and skills sector. Of the 14 sixth form colleges inspected between 1 January 2013 and 31 March 2013, eight were good and one was outstanding. So far in the first six months of the 2012/13 inspection year only one sixth form college has been judged inadequate.
- Ofsted's new approach to grading identifies grade 3 providers as requiring improvement. The proportion of previously grade 3 providers improving at their most recent inspection is increasing steadily. So far in the inspection year 2012/13 half of those providers previously judged as satisfactory have improved at their latest inspection compared with 46% in 2011/12.
- The new framework is raising the challenge for some types of provider. Independent learning providers continue to cause concern as 10% of those inspected between 1 January 2013 and 31 March 2013 were found to be inadequate – the same proportion as in the first four months of this inspection year. Community learning and skills providers have also performed less well as nearly one fifth of those inspected between 1 January 2013 and 31 March 2013 were judged inadequate.
- Ofsted has increased the focus on the quality of teaching and learning in its new framework. Of the 113 inspections carried out in this reporting period, two general further education colleges, one sixth form college, one independent specialist college and one community learning and skills provider were judged outstanding for this aspect of their provision. Although numbers remain small, this is the first time in three years that any general further education college has been judged to have outstanding teaching and learning.

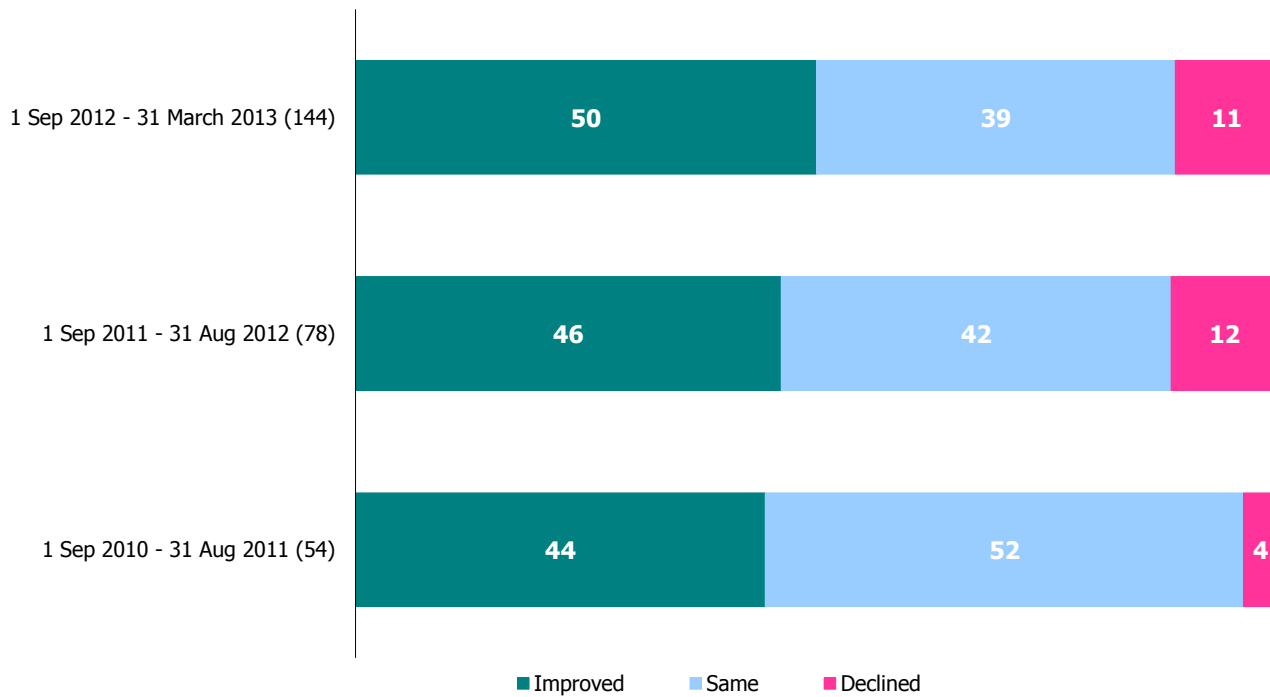
**Chart 1: Overall effectiveness of learning and skills providers inspected between 1 January 2013 and 31 March 2013, percentage (provisional)<sup>1</sup>**

**Overall effectiveness of learning and skills providers inspected (percentage)**



1. Percentages are rounded and may not add to exactly 100. Percentages should be viewed with caution where the number of providers is small
2. Includes general further education college/tertiary college, sixth form college, specialist further education college and independent specialist college.
3. Overall effectiveness grades relate to further education provision only.
4. Overall effectiveness grades relate to the Dance and Drama Awards scheme only.

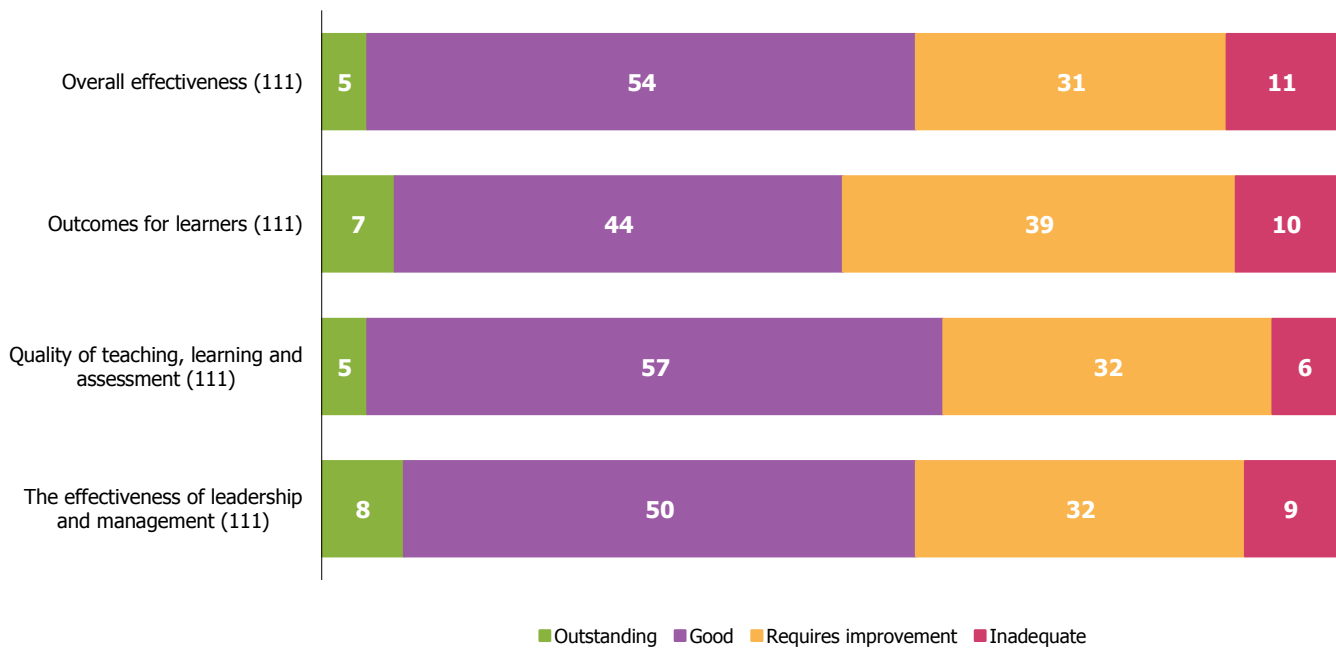
**Chart 2: Proportion of previously grade 3 learning and skills providers that improved, declined or stayed the same at their next inspection at 31 March 2013 percentage (provisional) <sup>1 2</sup>**



1. Percentages are rounded and may not add to exactly 100. Percentages should be viewed with caution where the number of providers is small.
2. As of 1 September 2012, learning and skills providers with the inspection outcome of grade 3 have been judged as requires improvement. Prior to September 2012, learning and skills providers with an inspection outcome of grade 3 were judged as satisfactory.

**Chart 3: Key inspection judgements of learning and skills providers inspected between 1 January 2013 and 31 March 2013, percentage (provisional) <sup>1 2</sup>**

**Key inspection judgements of learning and skills providers inspected (percentage)**



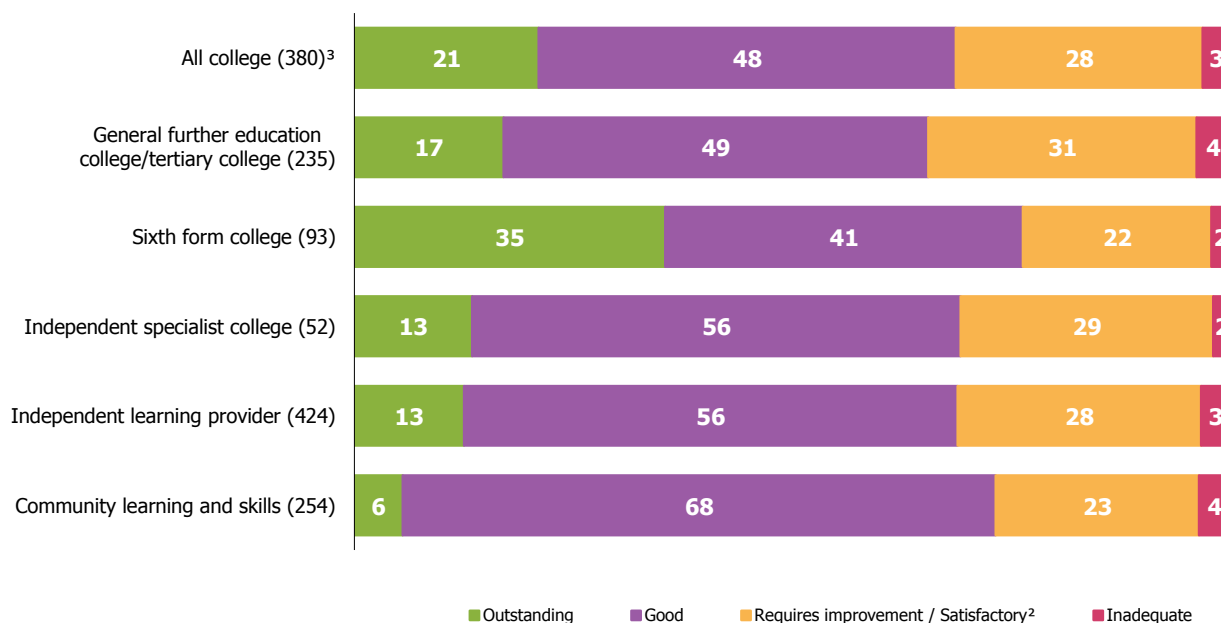
1. Percentages are rounded and may not add to exactly 100. Percentages should be viewed with caution where the number of providers is small.  
2. Does not include inspections of the Dance and Drama Awards scheme, further education in higher education institution inspections, or prison inspections.



## Summary of the inspection year 2012/13

**Chart 4: Overall effectiveness of learning and skills providers inspected at 31 March 2013, percentage <sup>1</sup>**

**Overall effectiveness of learning and skills providers inspected (percentage)**



1. Percentages are rounded and may not add to exactly 100. Percentages should be viewed with caution where the number of providers is small.
2. As of 1 September 2012, learning and skills providers with the inspection outcome of grade 3 have been judged as requires improvement. Prior to September 2012, learning and skills providers with an inspection outcome of grade 3 were judged as satisfactory.
3. Includes general further education college/tertiary college, sixth form college, specialist further education college and independent specialist college.

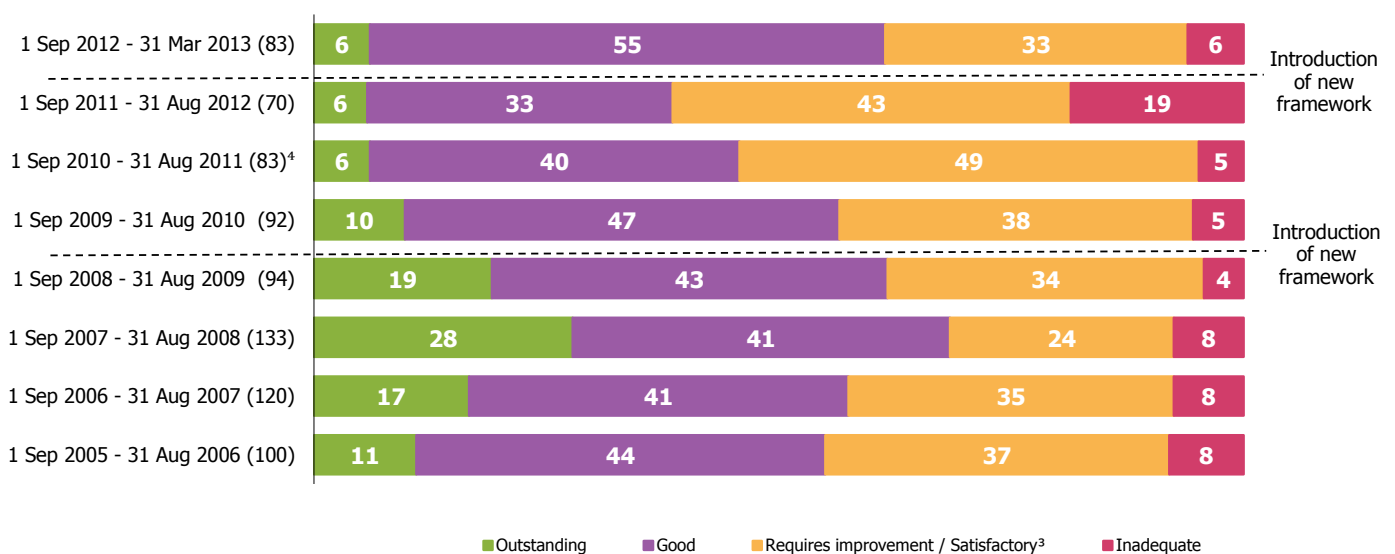
- At 31 March 2013, there were 380 colleges which had received an Ofsted inspection and were in receipt of funding<sup>1</sup>. Variations exist amongst the overall effectiveness for different types of college and sixth form colleges have the highest proportion of providers currently judged to be outstanding. Independent specialist colleges, which cater for particularly vulnerable learners, have improved this quarter and now only two per cent are inadequate compared with four per cent of general further education colleges.

<sup>1</sup>The Common Inspection Framework applies to the inspection of provision either wholly or partly funded by the Skills Funding Agency (SFA) or Education Funding Agency (EFA). For colleges this includes general further education/tertiary colleges, specialist further education colleges, sixth form colleges and independent specialist colleges.

- At 31 March 2013, 424 independent learning providers had received an Ofsted inspection and were in receipt of funding. Whilst the proportion found to require improvement or to be inadequate matched that for colleges, a much smaller proportion was outstanding.
- At 31 March 2013, 254 community learning and skills providers had received an Ofsted inspection and were in receipt of funding. These providers had the lowest proportion of outstanding provision at only six per cent although a high proportion, over two thirds, was good.

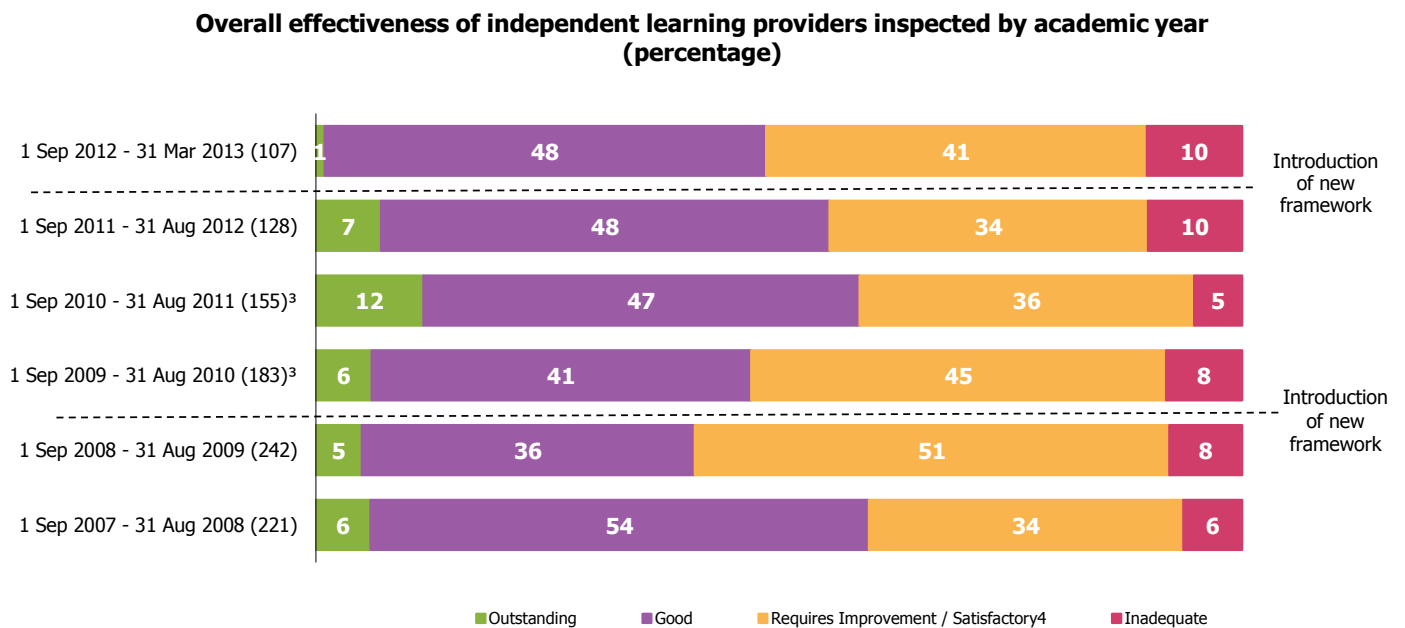
**Chart 5: Overall effectiveness of colleges inspected between 1 September 2005 and 31 March 2013, by academic year, percentage**<sup>1 2</sup>

**Overall effectiveness of colleges inspected by academic year (percentage)**



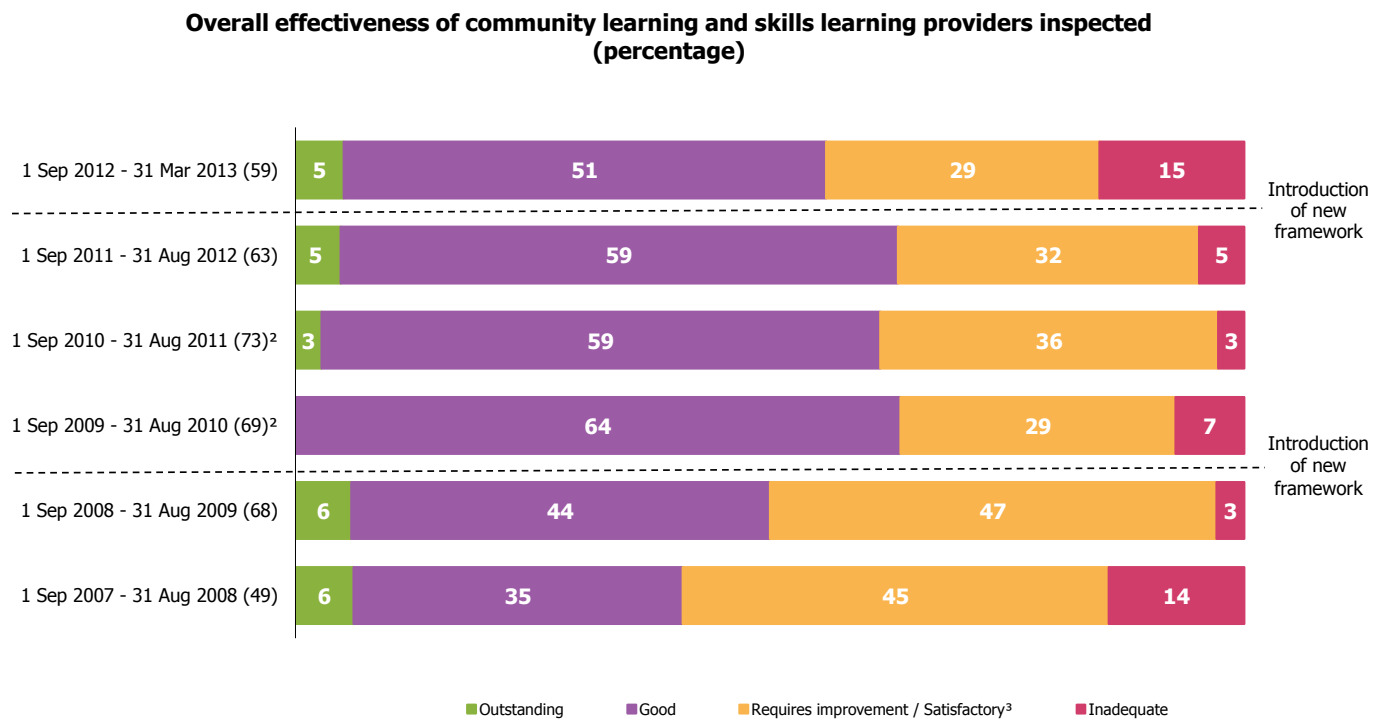
- Percentages are rounded and may not add to exactly 100. Percentages should be viewed with caution where the number of providers is small.
- Includes general further education/tertiary college (including specialist further education), sixth form college and independent specialist college.
- As of 1 September 2012, learning and skills providers with the inspection outcome of grade 3 have been judged as requires improvement. Prior to September 2012, learning and skills providers with an inspection outcome of grade 3 were judged as satisfactory.
- Data vary slightly to that reported in previous years due to Ofsted's change in provider types.

**Chart 5a: Overall effectiveness of independent learning providers inspected between 1 September 2007 and 31 March 2013, by academic year, percentage** <sup>1 2 3</sup>



1. Percentages are rounded and may not add to exactly 100. Percentages should be viewed with caution where the number of providers is small.
2. Includes employer providers.
3. Data vary slightly to that reported in previous years due to Ofsted's change in provider types.
4. As of 1 September 2012, learning and skills providers with the inspection outcome of grade 3 have been judged as requires improvement. Prior to September 2012, learning and skills providers with an inspection outcome of grade 3 were judged as satisfactory.

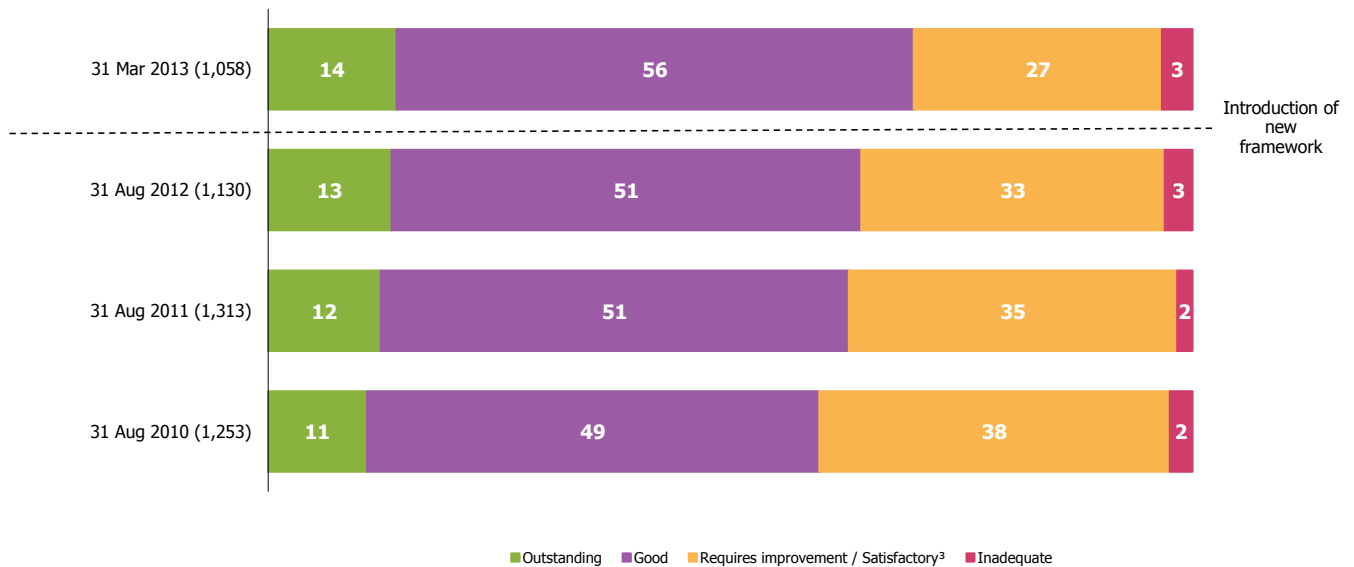
**Chart 5b: Overall effectiveness of community learning and skills providers inspected between 1 September 2007 and 31 March 2013, by academic year, percentage**<sup>1 2 3</sup>



1. Percentages are rounded and may not add to exactly 100. Percentages should be viewed with caution where the number of providers is small.
2. Data vary slightly to that reported in previous years due to Ofsted's change in provider types.
3. As of 1 September 2012, learning and skills providers with the inspection outcome of grade 3 have been judged as requires improvement. Prior to September 2012, learning and skills providers with an inspection outcome of grade 3 were judged as satisfactory.

**Chart 6: Most recent overall effectiveness of learning and skills providers inspected at 31 March 2013 compared to the most recent overall effectiveness at 31 August 2012, 31 August 2011 and 31 August 2010, percentage (provisional) <sup>1 2 3</sup>**

**Most recent overall effectiveness of learning and skills providers inspected over time (percentage)**



1. Percentages are rounded and may not add to exactly 100. Percentages should be viewed with caution where the number of providers is small.
2. Includes general further education/tertiary college (including specialist further education college), sixth form college, independent specialist college, independent learning provider (including employer provider), and community learning and skills providers.
3. As of 1 September 2012, learning and skills providers with the inspection outcome of grade 3 have been judged as requires improvement. Prior to September 2012, learning and skills providers with an inspection outcome of grade 3 were judged as satisfactory.

**Table 1: Number of learning and skills providers inspected between 1 January 2013 and 31 March 2013, by provider and inspection type (provisional)**

| Inspection activity             | All learning and skills | All colleges <sup>1</sup> | Further education in higher education institutions <sup>2</sup> | Dance and drama colleges <sup>3</sup> | Independent learning provider <sup>4</sup> | Community learning and skills | Prisons <sup>5</sup> |
|---------------------------------|-------------------------|---------------------------|---|---------------------------------------|--|-------------------------------|----------------------|
| Full inspections                | 115                     | 45                        | 1   | 1                                     | 37   | 22                            | 9                    |
| Re-inspections                  | 7                       | 5                         | 0   | 0                                     | 2  | 0                             | 0                    |
| Monitoring visits               | 0                       | 0                         | 0   | 0                                     | 0  | 0                             | 0                    |
| Re-inspection monitoring visits | 1                       | 0                         | 0   | 0                                     | 1  | 0                             | 0                    |
| <b>Total</b>                    | <b>123</b>              | <b>50</b>                 | <b>1</b>  | <b>1</b>                              | <b>40</b>                                  | <b>22</b>                     | <b>9</b>             |

*Source: Ofsted*

1. Includes general further education college/tertiary college, sixth form college, specialist further education college and independent specialist college.

2. Inspection of further education provision only, not providers as a whole.

3. Inspection of the Dance and Drama Awards scheme only, not providers as a whole.

4. Includes employer providers.

5. Prison inspections where the report has been published within the reporting period.

**Table 2: Inspection outcomes of learning and skills providers inspected between 1 January 2013 and 31 March 2013 (provisional) <sup>1 2</sup>**

|   | Total number inspected | Outstanding |          | Good      |           | Requires Improvement |           | Inadequate |           |
|---|------------------------|-------------|----------|-----------|-----------|----------------------|-----------|------------|-----------|
|   |                        | Number      | %        | Number    | %         | Number               | %         | Number     | %         |
| <b>Overall effectiveness</b>                            | <b>111</b>             | <b>5</b>    | <b>5</b> | <b>60</b> | <b>54</b> | <b>34</b>            | <b>31</b> | <b>12</b>  | <b>11</b> |
| <b>Outcomes for learners</b>                            | <b>111</b>             | <b>8</b>    | <b>7</b> | <b>49</b> | <b>44</b> | <b>43</b>            | <b>39</b> | <b>11</b>  | <b>10</b> |
| <b>The quality of teaching, learning and assessment</b> | <b>111</b>             | <b>5</b>    | <b>5</b> | <b>63</b> | <b>57</b> | <b>36</b>            | <b>32</b> | <b>7</b>   | <b>6</b>  |
| <b>The effectiveness of leadership and management</b>   | <b>111</b>             | <b>9</b>    | <b>8</b> | <b>56</b> | <b>50</b> | <b>36</b>            | <b>32</b> | <b>10</b>  | <b>9</b>  |

*Source: Ofsted*

1. Does not include inspections of further education in higher education institution inspections, Dance and Drama Awards scheme inspections and prison inspections.

2. Percentages are rounded and may not add to 100. Where the number of inspections is small, percentages should be treated with caution.

**Table 2a: Inspection outcomes of colleges inspected between 1 January 2013 and 31 March 2013 (provisional) <sup>1 2</sup>**

|   | Total number inspected | Outstanding |           | Good      |           | Requires Improvement |           | Inadequate |           |
|---|------------------------|-------------|-----------|-----------|-----------|----------------------|-----------|------------|-----------|
|   |                        | Number      | %         | Number    | %         | Number               | %         | Number     | %         |
| <b>Overall effectiveness</b>                            | <b>50</b>              | <b>4</b>    | <b>8</b>  | <b>29</b> | <b>58</b> | <b>13</b>            | <b>26</b> | <b>4</b>   | <b>8</b>  |
| <b>Outcomes for learners</b>                            | <b>50</b>              | <b>5</b>    | <b>10</b> | <b>21</b> | <b>42</b> | <b>18</b>            | <b>36</b> | <b>6</b>   | <b>12</b> |
| <b>The quality of teaching, learning and assessment</b> | <b>50</b>              | <b>4</b>    | <b>8</b>  | <b>32</b> | <b>64</b> | <b>11</b>            | <b>22</b> | <b>3</b>   | <b>6</b>  |
| <b>The effectiveness of leadership and management</b>   | <b>50</b>              | <b>5</b>    | <b>10</b> | <b>29</b> | <b>58</b> | <b>14</b>            | <b>28</b> | <b>2</b>   | <b>4</b>  |

*Source: Ofsted*

1. Includes general further education college/tertiary college, sixth form college and independent specialist college.

2. Percentages are rounded and may not add to 100. Where the number of inspections is small, percentages should be treated with caution.



**Table 2b: Inspection outcomes of general further education colleges/tertiary college inspected between 1 January 2013 and 31 March 2013 (provisional) <sup>1 2</sup>**

|   | Total number inspected | Outstanding |           | Good      |           | Requires Improvement |           | Inadequate |           |
|---|------------------------|-------------|-----------|-----------|-----------|----------------------|-----------|------------|-----------|
|   |                        | Number      | %         | Number    | %         | Number               | %         | Number     | %         |
| <b>Overall effectiveness</b>                            | <b>29</b>              | <b>2</b>    | <b>7</b>  | <b>16</b> | <b>55</b> | <b>8</b>             | <b>28</b> | <b>3</b>   | <b>10</b> |
| <b>Outcomes for learners</b>                            | <b>29</b>              | <b>2</b>    | <b>7</b>  | <b>12</b> | <b>41</b> | <b>10</b>            | <b>34</b> | <b>5</b>   | <b>17</b> |
| <b>The quality of teaching, learning and assessment</b> | <b>29</b>              | <b>2</b>    | <b>7</b>  | <b>19</b> | <b>66</b> | <b>5</b>             | <b>17</b> | <b>3</b>   | <b>10</b> |
| <b>The effectiveness of leadership and management</b>   | <b>29</b>              | <b>3</b>    | <b>10</b> | <b>16</b> | <b>55</b> | <b>8</b>             | <b>28</b> | <b>2</b>   | <b>7</b>  |

*Source: Ofsted*

1. Includes specialist further education college.

2. Percentages are rounded and may not add to 100. Where the number of inspections is small, percentages should be treated with caution.

**Table 2c: Inspection outcomes of sixth form colleges inspected between 1 January 2013 and 31 March 2013 (provisional) <sup>1</sup>**

|   | Total number inspected | Outstanding |          | Good     |           | Requires Improvement |           | Inadequate |          |
|---|------------------------|-------------|----------|----------|-----------|----------------------|-----------|------------|----------|
|   |                        | Number      | %        | Number   | %         | Number               | %         | Number     | %        |
| <b>Overall effectiveness</b>                            | <b>14</b>              | <b>1</b>    | <b>7</b> | <b>8</b> | <b>57</b> | <b>4</b>             | <b>29</b> | <b>1</b>   | <b>7</b> |
| <b>Outcomes for learners</b>                            | <b>14</b>              | <b>1</b>    | <b>7</b> | <b>5</b> | <b>36</b> | <b>7</b>             | <b>50</b> | <b>1</b>   | <b>7</b> |
| <b>The quality of teaching, learning and assessment</b> | <b>14</b>              | <b>1</b>    | <b>7</b> | <b>8</b> | <b>57</b> | <b>5</b>             | <b>36</b> | <b>0</b>   | <b>0</b> |
| <b>The effectiveness of leadership and management</b>   | <b>14</b>              | <b>1</b>    | <b>7</b> | <b>9</b> | <b>64</b> | <b>4</b>             | <b>29</b> | <b>0</b>   | <b>0</b> |

*Source: Ofsted*

1. Percentages are rounded and may not add to 100. Where the number of inspections is small, percentages should be treated with caution.

**Table 2d: Inspection outcomes of independent specialist colleges inspected between 1 January 2013 and 31 March 2013 (provisional) <sup>1</sup>**

|   | Total number inspected | Outstanding |           | Good     |           | Requires Improvement |           | Inadequate |          |
|---|------------------------|-------------|-----------|----------|-----------|----------------------|-----------|------------|----------|
|   |                        | Number      | %         | Number   | %         | Number               | %         | Number     | %        |
| <b>Overall effectiveness</b>                            | <b>7</b>               | <b>1</b>    | <b>14</b> | <b>5</b> | <b>71</b> | <b>1</b>             | <b>14</b> | <b>0</b>   | <b>0</b> |
| <b>Outcomes for learners</b>                            | <b>7</b>               | <b>2</b>    | <b>29</b> | <b>4</b> | <b>57</b> | <b>1</b>             | <b>14</b> | <b>0</b>   | <b>0</b> |
| <b>The quality of teaching, learning and assessment</b> | <b>7</b>               | <b>1</b>    | <b>14</b> | <b>5</b> | <b>71</b> | <b>1</b>             | <b>14</b> | <b>0</b>   | <b>0</b> |
| <b>The effectiveness of leadership and management</b>   | <b>7</b>               | <b>1</b>    | <b>14</b> | <b>4</b> | <b>57</b> | <b>2</b>             | <b>29</b> | <b>0</b>   | <b>0</b> |

*Source: Ofsted*

1. Percentages are rounded and may not add to exactly 100. Where the number of inspections is small, percentages should be treated with caution.

**Table 2e: Inspection outcomes of higher education institutions inspected between 1 January 2013 and 31 March 2013 (provisional)<sup>1</sup>**

**Inspection judgements relate to the further education provision only not providers as a whole.**

|   | Total number inspected | Outstanding |          | Good     |            | Requires Improvement |          | Inadequate |          |
|---|------------------------|-------------|----------|----------|------------|----------------------|----------|------------|----------|
|   |                        | Number      | %        | Number   | %          | Number               | %        | Number     | %        |
| <b>Overall effectiveness</b>                            | <b>1</b>               | <b>0</b>    | <b>0</b> | <b>1</b> | <b>100</b> | <b>0</b>             | <b>0</b> | <b>0</b>   | <b>0</b> |
| <b>Outcomes for learners</b>                            | <b>1</b>               | <b>0</b>    | <b>0</b> | <b>1</b> | <b>100</b> | <b>0</b>             | <b>0</b> | <b>0</b>   | <b>0</b> |
| <b>The quality of teaching, learning and assessment</b> | <b>1</b>               | <b>0</b>    | <b>0</b> | <b>1</b> | <b>100</b> | <b>0</b>             | <b>0</b> | <b>0</b>   | <b>0</b> |
| <b>The effectiveness of leadership and management</b>   | <b>1</b>               | <b>0</b>    | <b>0</b> | <b>1</b> | <b>100</b> | <b>0</b>             | <b>0</b> | <b>0</b>   | <b>0</b> |

*Source: Ofsted*

1. Percentages are rounded and may not add to 100. Where the number of inspections is small, percentages should be treated with caution.

**Table 2f: Inspection outcomes of dance and drama colleges inspected between 1 January 2013 and 31 March 2013 (provisional)<sup>1</sup>**

**Inspection judgements relate to the provision of the Dance and Drama Awards scheme only and not providers as a whole.**

|   | Total number inspected | Outstanding |          | Good     |            | Requires Improvement |          | Inadequate |          |
|---|------------------------|-------------|----------|----------|------------|----------------------|----------|------------|----------|
|   |                        | Number      | %        | Number   | %          | Number               | %        | Number     | %        |
| <b>Overall effectiveness</b>                            | <b>1</b>               | <b>0</b>    | <b>0</b> | <b>1</b> | <b>100</b> | <b>0</b>             | <b>0</b> | <b>0</b>   | <b>0</b> |
| <b>Outcomes for learners</b>                            | <b>1</b>               | <b>0</b>    | <b>0</b> | <b>1</b> | <b>100</b> | <b>0</b>             | <b>0</b> | <b>0</b>   | <b>0</b> |
| <b>The quality of teaching, learning and assessment</b> | <b>1</b>               | <b>0</b>    | <b>0</b> | <b>1</b> | <b>100</b> | <b>0</b>             | <b>0</b> | <b>0</b>   | <b>0</b> |
| <b>The effectiveness of leadership and management</b>   | <b>1</b>               | <b>0</b>    | <b>0</b> | <b>1</b> | <b>100</b> | <b>0</b>             | <b>0</b> | <b>0</b>   | <b>0</b> |

*Source: Ofsted*

1. Percentages are rounded and may not add to 100. Where the number of inspections is small, percentages should be treated with caution.

**Table 2g: Inspection outcomes of independent learning providers inspected between 1 January 2013 and 31 March 2013 (provisional)<sup>1 2</sup>**

|   | Total number inspected | Outstanding |          | Good      |           | Requires Improvement |           | Inadequate |           |
|---|------------------------|-------------|----------|-----------|-----------|----------------------|-----------|------------|-----------|
|   |                        | Number      | %        | Number    | %         | Number               | %         | Number     | %         |
| <b>Overall effectiveness</b>                            | <b>39</b>              | <b>0</b>    | <b>0</b> | <b>21</b> | <b>54</b> | <b>14</b>            | <b>36</b> | <b>4</b>   | <b>10</b> |
| <b>Outcomes for learners</b>                            | <b>39</b>              | <b>2</b>    | <b>5</b> | <b>18</b> | <b>46</b> | <b>17</b>            | <b>44</b> | <b>2</b>   | <b>5</b>  |
| <b>The quality of teaching, learning and assessment</b> | <b>39</b>              | <b>0</b>    | <b>0</b> | <b>21</b> | <b>54</b> | <b>15</b>            | <b>38</b> | <b>3</b>   | <b>8</b>  |
| <b>The effectiveness of leadership and management</b>   | <b>39</b>              | <b>1</b>    | <b>3</b> | <b>19</b> | <b>49</b> | <b>15</b>            | <b>38</b> | <b>4</b>   | <b>10</b> |

*Source: Ofsted*

1. Percentages are rounded and may not add to 100. Where the number of inspections is small, percentages should be treated with caution.

2. Includes employer providers.

**Table 2h: Inspection outcomes of community learning and skills providers inspected between 1 January 2013 and 31 March 2013 (provisional) <sup>1</sup>**

|   | Total number inspected | Outstanding |    | Good   |    | Requires Improvement |    | Inadequate |    |
|---|------------------------|-------------|----|--------|----|----------------------|----|------------|----|
|   |                        | Number      | %  | Number | %  | Number               | %  | Number     | %  |
| <b>Overall effectiveness</b>                            | 22                     | 1           | 5  | 10     | 45 | 7                    | 32 | 4          | 18 |
| <b>Outcomes for learners</b>                            | 22                     | 1           | 5  | 10     | 45 | 8                    | 36 | 3          | 14 |
| <b>The quality of teaching, learning and assessment</b> | 22                     | 1           | 5  | 10     | 45 | 10                   | 45 | 1          | 5  |
| <b>The effectiveness of leadership and management</b>   | 22                     | 3           | 14 | 8      | 36 | 7                    | 32 | 4          | 18 |

*Source: Ofsted*

1. Percentages are rounded and may not add to 100. Where the number of inspections is small, percentages should be treated with caution.

**Table 2i: Inspection outcomes of prison and young offender institutions where the inspection report was published between 1 January 2013 and 31 March 2013 (provisional) <sup>1 2</sup>**

|   | Total number inspected | Outstanding |   | Good   |    | Requires Improvement |    | Inadequate |    |
|---|------------------------|-------------|---|--------|----|----------------------|----|------------|----|
|   |                        | Number      | % | Number | %  | Number               | %  | Number     | %  |
| <b>Achievements of prisoners engaged in learning and skills and work (Outcomes for learners)</b>                  | 9                      | 0           | 0 | 5      | 56 | 4                    | 44 | 0          | 0  |
| <b>Quality of learning and skills and work provision (The quality of teaching, learning and assessment)</b>       | 9                      | 0           | 0 | 3      | 33 | 5                    | 56 | 1          | 11 |
| <b>Leadership and management of learning and skills and work (The effectiveness of leadership and management)</b> | 9                      | 0           | 0 | 3      | 33 | 4                    | 44 | 2          | 22 |

Source: Ofsted

1. Percentages are rounded and may not add to 100. Where the number of inspections is small, percentages should be treated with caution.

2. Approximate equivalent judgement in the *Common inspection framework for further education and skills* is shown in brackets.



**Table 3: Learning and skills providers judged outstanding between 1 January 2013 and 31 March 2013 (provisional)**

| <b>URN</b> | <b>Provider name</b>        | <b>Type of provider</b>                    | <b>Date of inspection</b> |
|------------|-----------------------------|--|---------------------------|
| 130483     | Walsall College             | General further education/tertiary college | 15/02/2013                |
| 130849     | Swindon College             | General further education/tertiary college | 01/03/2013                |
| 135659     | Rochdale Sixth Form College | Sixth form college                         | 08/03/2013                |
| 130403     | The Working Men's College   | Community learning and skills              | 22/03/2013                |
| 131860     | David Lewis College         | Independent specialist college             | 22/03/2013                |

*Source: Ofsted*

**Table 4: Learning and skills providers judged inadequate between 1 January 2013 and 31 March 2013 (provisional)**

| <b>URN</b> | <b>Provider name</b>                   | <b>Type of provider</b>                    | <b>Date of inspection</b> |
|------------|--|--|---------------------------|
| 130433     | Coulsdon Sixth Form College            | Sixth form college                         | 18/01/2013                |
| 58439      | Norfolk & Suffolk Care Support Limited | Independent learning provider/employer     | 08/02/2013                |
| 53295      | Medway Council                         | Community learning and skills              | 08/02/2013                |
| 50083      | A4e Ltd                                | Independent learning provider/employer     | 08/02/2013                |
| 130487     | The City of Liverpool College          | General further education/tertiary college | 08/02/2013                |
| 50170      | NACRO                                  | Community learning and skills              | 22/02/2013                |
| 54837      | Farriery Training Agency               | Independent learning provider/employer     | 22/02/2013                |
| 131094     | City of Bristol College                | General further education/tertiary college | 22/02/2013                |
| 50638      | Bedford Training Group Limited         | Community learning and skills              | 07/03/2013                |
| 50228      | Myrrh Limited                          | Community learning and skills              | 15/03/2013                |
| 130473     | City College Coventry                  | General further education/tertiary college | 15/03/2013                |
| 54364      | Shire Training Workshops Limited       | Independent learning provider/employer     | 22/03/2013                |

*Source: Ofsted*

## **Impact of revisions on key points of previous publication**

The data on the latest inspection outcome for colleges included one duplicate entry, indicating that there were 381 colleges, instead of 380. This error has been amended in the final version of the official statistics release for the period September 2012 to December 2012 which is published on the Ofsted website.

## **Methodology**

1. The data in this release are from inspections undertaken between 1 January 2013 and 31 March 2013. These inspections were carried out under the *Common Inspection Framework for further education and skills*. Statistics relating to inspections carried out in this period are provisional.
2. The quarterly selection of learning and skills providers for inspection comprises three elements: compulsory inspections, inspections resulting from risk assessment, and a random selection:
  - The compulsory inspections are carried out for providers that have reached the end point of their inspection window (For example a good provider must be inspected every six years). New providers will also be subject to a compulsory inspection after their first year of operation but within three years.
  - The second element of the year's selection comprises providers selected through risk assessment. This risk assessment looks at a number of current performance measures, and also trends in these performance measures.
  - Finally, random selection is used to try to maintain a balance in the year's inspection programme, and resulting inspection judgements.

Only providers who consistently perform at a high level tend to reach the end point of their inspection window. Risk assessment enables Ofsted to optimise the use of resources, concentrating inspection activity in areas where it is likely to add most value. The result of using a risk based approach to selection is that inspection judgements for providers, in any given year, can look slightly more pessimistic than we know the national picture to be.

3. In September 2012 Ofsted introduced a new common inspection framework for further education and skills. For more information about the framework and how Ofsted inspects learning and skills providers, please go to the Ofsted website:

<http://www.ofsted.gov.uk/resources/common-inspection-framework-for-further-education-and-skills-2012>

4. Since 1 January 2012, Ofsted has not produced its own summary report for prison inspections. Ofsted continues to report within the HMI Prisons report and in line with the *Common Inspection Framework for further education and skills*. Ofsted statistics will now report on prison inspections which have been published within the reporting period of the official statistics. Further information on how Ofsted inspects prisoner education and training in the further education and skills sector can be found on the Ofsted website:

<http://www.ofsted.gov.uk/resources/handbook-for-inspection-of-learning-and-skills-training-for-young-adults-and-adults-custody>

5. Revisions are published in line with Ofsted's revisions policy for official statistics which can be found on the Ofsted website:

<http://www.ofsted.gov.uk/resources/statistical-notice-ofsted-revisions-policy-for-official-statistics>

## **Glossary**

From September 2011 Ofsted categorises providers in the following ways:

### Community learning and skills provider

Community learning and skills providers include local authorities, charities, voluntary and community organisations, specially designated institutions, and community interest companies. Their provision is diverse in character and aims to meet the needs and interests of a wide range of communities. Courses include those leading to qualifications; programmes leading to qualifications whilst in employment; provision for informal adult learning; provision for social and personal development.

From 1 September 2012 Ofsted categorised adult and community learning providers as community learning and skills providers.

### General further education college

General further education colleges offer a range of education and training opportunities for learners aged from 14 years upwards, including adults.

### Higher education institute

Where higher education institutes offer further education courses these are subject to inspection by Ofsted.

### Independent learning provider

A company which provides government funded education. The category independent learning provider includes employer providers who only offer government funded training to their own employees.

### Independent specialist college

Independent specialist colleges provide education and training for students with complex learning difficulties and/or disabilities, whose learning needs cannot be met by their local college or provider.

### Offender learning

Ofsted undertakes judicial service inspections in partnership with HMI Prisons. Ofsted HMI evaluate the quality of learning and skills in prisons, including young offender institutions and secure units for young people and also provision in community settings. Since 1 January 2012, Ofsted no longer

publishes reports for prison and young offender institutions. These reports can now be found on the HMIP website:

<http://www.justice.gov.uk/about/hmi-prisons>

Ofsted contributes to a reduced number of judgements in these reports. From 30 June 2012 Ofsted ceased to inspect probation trusts.

### Sector subject areas

Sector subjects are grouped into 15 areas of learning. Each area of learning has a number of tier 2 subject areas. For example area of learning 7 retail and commercial enterprise, includes 7.4 hospitality and catering, 7.2 warehousing and 7.3a hairdressing and beauty therapy. Ofsted inspects teaching and learning in a sample of tier 2 subjects during full inspections and re-inspections.

A full list of sector subject areas can be found on the Ofqual website:

<http://www2.ofqual.gov.uk/standards/142-statistics-articles/429-sector-subject-area-classification-system-ssac>

### Sixth form college

A sixth form college is an educational institution where students aged 16 to 18 typically study for advanced school-level qualifications, such as A-levels, or school-level qualifications such as GCSEs.

© Crown copyright

You may re-use this information (not including logos) free of charge in any format or medium, under the terms of the Open Government Licence. To view this licence, visit <http://www.nationalarchives.gov.uk/doc/open-government-licence/> or write to the Information Policy Team, The National Archives, Kew, London, TW9 4DU or e-mail: [psi@nationalarchives.gsi.gov.uk](mailto:psi@nationalarchives.gsi.gov.uk)