

Framework for Excellence 2010

Summary Statistics

December 2010

Of interest to everyone in the learning and skills sector

Content

	Paragraph number
Introduction	1
Background and Approach	6
Statistical Commentary	
Performance indicator 1: Learner Views	17
Performance indicator 2: Learner Destinations	22
Performance indicator 3: Employer Views	34
Performance indicator 4: Success Rates	39

Introduction

- 1 This publication contains summary statistics, analysis and interpretation for the Framework for Excellence (FfE) 2010 Performance Indicators (PI): Learner Views (LV), Learner Destinations (LD), Employer Views (EV) and Success Rates (SR).
- 2 The prime purpose of the FfE is to provide information for learners and employers to make informed choices about post-16 education and training. Giving learners and employers better information will drive a 'step change' in quality improvement; where accountability is founded on the relationship between provider and customer rather than provider and government.
- 3 FfE also provides consistent management information on key Performance Indicators for all post-16 providers except school sixth form provision.
- 4 The detail of FfE publication and reporting has been developed in collaboration with national stakeholders and provider representative bodies in order to ensure that future reporting is consistent across the sector and aligned with the Coalition Government's programme to empower customer choice in accessing publicly supported services.
- 5 Information at college and training provider level is available through the [FfE publication](#).

Background and Approach

- 6 In order to ensure that the published measures are fit for purpose and respond to Government policy, changes have been made to the way FfE results are calculated and presented since the publication of *Unified Post-16 Performance Assessment: FfE Provider Guide 2009/10* (LSC, July 2009). Details of these changes and guidance on the interpretation of the individual provider reports can be found in the [FfE Outputs Guide 2009/10](#).
- 7 Five categories of provider type are used for comparison purposes - consistent with the post 16 Statistical First Release (SFR)
 - General FE and Tertiary Colleges
 - Sixth Form Colleges
 - Specialist Colleges (includes Art & Design/ Land-based /Special Designated Institutions)
 - Other Public Funded Institutions (Local Authorities, Government Agencies)
 - Private Sector Public Funded Institutions (that is. Private Training Organisations)
- 8 In the FfE publication scores for each provider are published alongside the range of scores obtained for each PI for comparison purposes.
- 9 In this document, Summary Statistics, the comparative statistics considered include the range (lowest to highest score), the median (50th percentile) and the inter-quartile range (middle 50 per cent). In the case of SRs the 5th and 95th percentiles are used in place of the range for data protection and statistical robustness.
- 10 Comparisons are shown against all in-scope providers with valid scores as well as data grouped by providers of a similar type. In the case of SRs data is also grouped by age for two age groups (16 to 18 and 19+).
- 11 Sixth form colleges do not have to undertake the Learner Views and Employer Views surveys from 2010/11. DfE officials have requested that 2009/10 results for the

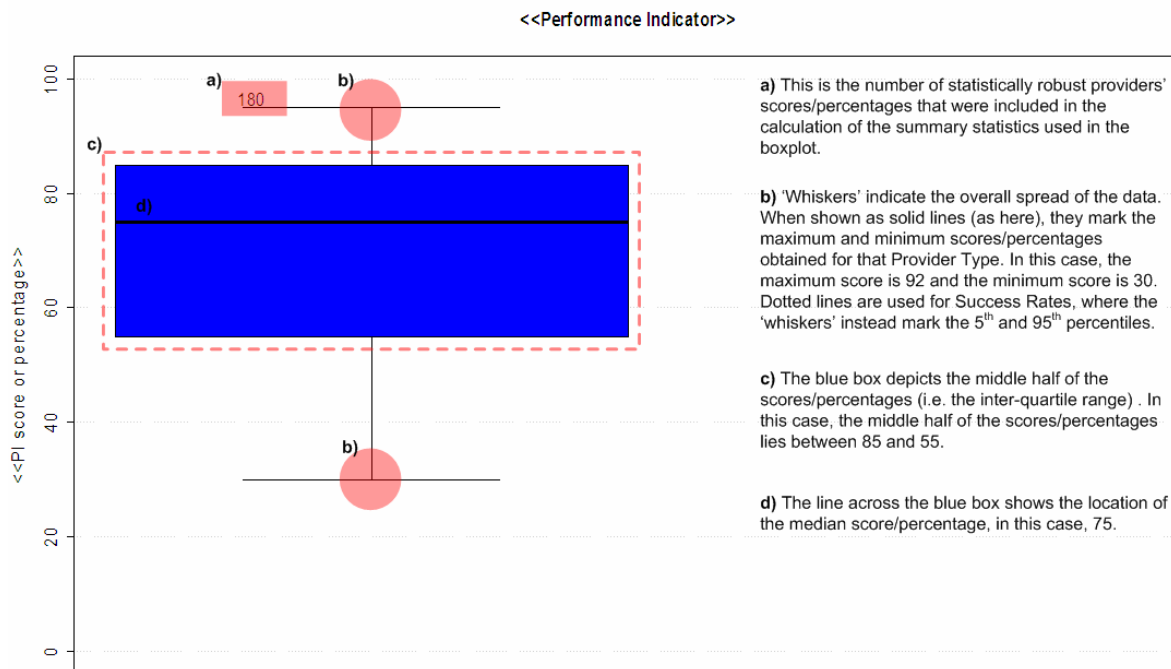
surveys are not published or included in the analysis. However, Sixth Form college results are included in the National figures for consistency in the comparisons.

- 12 The Summary Statistics tables include the number of providers in scope and those with valid scores for the analysis. Examples where providers might not be in scope include providers with less than ten learners. Reasons where providers might not have a valid score include no data returns, insufficient survey response rates etc..

Statistical Commentary

Technical Note

- 13 Full details about the methodology and data sources that relate to the Performance Indicators can be found in the Data Explained section of the [FfE Publication](#) and in the [FfE Outputs Guide 2009/10](#).
- 14 The key comparative statistic in the FfE SRs is the Median Qualification Success Rate as distinct to the National Success Rate used in the SFR. The Median, or 50th percentile, is the middle value of a distribution.
- 15 Box Plots are used here as a visual aid. An illustrative example of how to read a Box Plot is provided here:



- 16 The box plots for Learner Views and Employer Views for Sixth Form Colleges are suppressed (see paragraph 11). In all other instances where box plots are not shown, this is done when the number of providers is less than five in order to maintain robust comparative information. The data in the corresponding Summary Statistics tables are then also suppressed.

Performance indicator 1: Learner Views

Definition

- 17 This performance measure for LV is a score derived from the questionnaire on learners' views about:
- a. the information, advice and guidance they have received from their provider;
 - b. the quality of teaching and learning on their programme;
 - c. their overall satisfaction with their learning experience;
 - d. their satisfaction with the level of support available to them from their provider;
 - e. whether they have been treated with respect.
- 18 The data were obtained from the survey of learners' views undertaken between 1 October 2009 and 12 February 2010.

Sector Results for the Learner Views Survey

- 19 In total there were 2,573,544 learners in scope for the survey and 716,958 respondents. This can be compared to 223,363 students who completed the 2009 National Student Survey.
- 20 There were 1540 in-scope providers nationally and 809 providers had valid scores for use in the analysis.
- 21 The median score for all provider types was 8.4 out of 10. Figure 1 shows that scores are nationally clustered at the top end indicating that generally learners are satisfied with their experience.

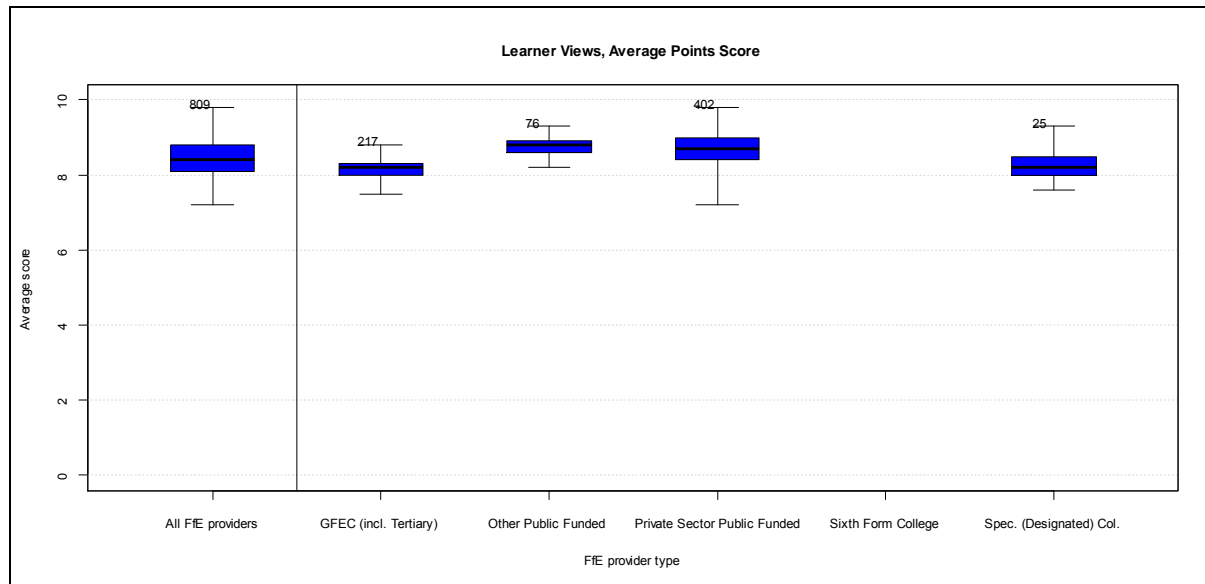


Figure 1 – Summary statistics for the Learner Views performance indicator (see paragraph 15 for guidance on how to interpret this chart).

Learner views	In scope providers	Valid score providers	Lowest score	25th perc.	Median	75th perc.	Highest score
National	1540	809	7.2	8.1	8.4	8.8	9.8
General FE College incl. Tertiary	229	217	7.5	8.0	8.2	8.3	8.8
Other Public Funded	152	76	8.2	8.6	8.8	8.9	9.3
Private Sector Public Funded	1034	402	7.2	8.4	8.7	9.0	9.8
Specialist Colleges	32	25	7.6	8.0	8.2	8.5	9.3

Performance indicator 2: Learner Destinations

Definition

- 22 The performance measure for Learner Destinations is the percentage of learners on priority programmes completing an LSC-funded programme in 2007/08 and progressing to a positive destination in 2008/09. Positive destinations are defined as:
- a. Enrolled in priority learning in 2008/09 with the same highest level of learning
 - b. Progressed to learning with a higher level of highest learning aim
 - c. Remained in employment or self-employment, with improved job security or enhanced career prospects
 - d. Entered employment or self-employment in 2008/09, having been in learning prior to 2007/08 where the 2007/08 learning had a positive impact
 - e. Entered employment or self-employment or training in 2008/09, having previously been outside the labour market
- 23 Destinations were established through a combination of data matching and telephone interviews. A total of 1.06 million learners were in scope. Of these, 254,000 were matched, 107,000 matched and interviewed, 143,000 interviewed but not matched and 563,000 were not matched or interviewed.

Sector Results for Learner Destinations

- 24 Actual or projected destinations have been recorded for a total of 444 providers with an overall range from 50.3 per cent to 98.7 per cent. The median score was 82.5 per cent; the fifty percent of results between the 25th percentile figure and 75th ranged from 78.9 per cent to 86.1 per cent with an overall highest score of 98.7 per cent and lowest score of 50.3 per cent.
- 25 Sector results for Learner Destinations are summarised in figure 2.

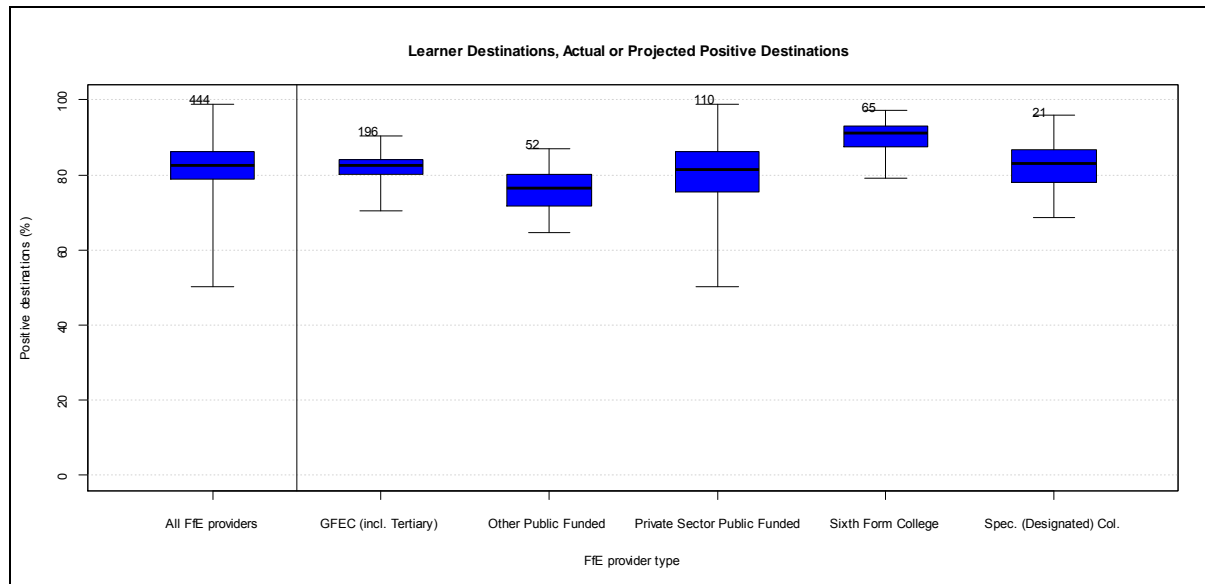


Figure 2 - Summary statistics for the Learner Destinations performance indicator (see paragraph 15 for guidance on how to interpret this chart)

Learner destinations	In scope providers	Valid score providers	Lowest score	25th perc.	Median	75th perc.	Highest score
National	1110	444	50.3	78.9	82.5	86.1	98.7
General FE College incl. Tertiary	229	196	70.4	80.2	82.4	84.1	90.3
Other Public Funded	112	52	64.8	71.8	76.4	80.1	87.0
Private Sector Public Funded	647	110	50.3	75.4	81.5	86.2	98.7
Sixth Form College	93	65	79.0	87.5	91.1	92.9	97.3
Specialist Colleges	29	21	68.5	78.1	83.1	86.6	95.8

Employment Rate

- 26 The employment rate is the percentage of in-scope learners completing an LSC-funded programme in 2007/08 (“the completion year”) that are projected to have progressed to one of the following destinations in 2008/09 (“the destination year”):
- a. remained in employment or self-employment in the destination year, with improved job security or enhanced career prospects;
 - b. entered employment or self-employment in the destination year, having been in learning prior to the completion year where the completion year’s learning had a positive impact; or
 - c. entered employment, self-employment or training in the destination year, having been outside the labour market prior to the completion year.
- 27 These three employment routes to a positive destination are referred to as “positive employment destinations”.

Sector Results for Employment Rate

- 28 For the employment rate, scores were obtained from 431 providers across all types, ranging from a low of 13 per cent to a high of 85 per cent and a median of 48 per cent. 25th and 75th percentiles were recorded at 41 per cent and 58 per cent respectively.
- 29 Sector results for Employment rate are summarised in figure 3.

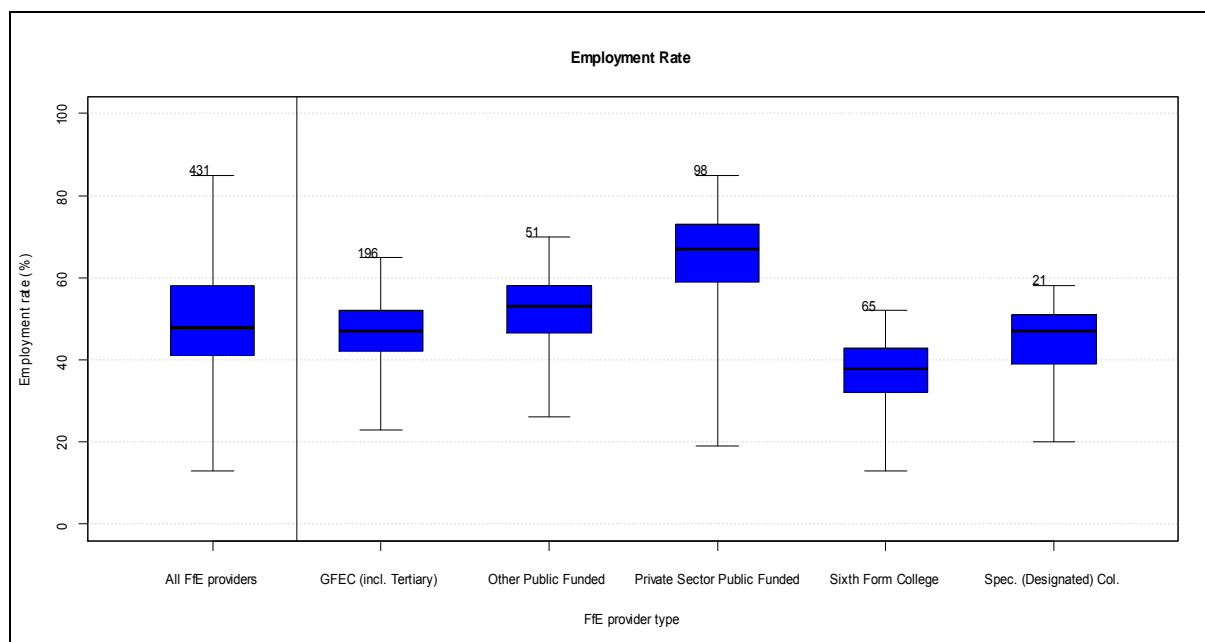


Figure 3 - Summary statistics for the Employment Rate performance indicator (see paragraph 15 for guidance on how to interpret this chart)

Employment rate	In scope providers	Valid score providers	Lowest score	25th perc.	Median	75th perc.	Highest score
National	1198	431	13.0	41.0	48.0	58.0	85.0
General FE College incl. Tertiary	229	196	23.0	42.0	47.0	52.0	65.0
Other Public Funded	120	51	26.0	46.5	53.0	58.0	70.0
Private Sector Public Funded	727	98	19.0	59.0	67.0	73.0	85.0
Sixth Form College	93	65	13.0	32.0	38.0	43.0	52.0
Specialist Colleges	29	21	20.0	39.0	47.0	51.0	58.0

Learning Rate

- 30 The learning rate is the percentage of in-scope learners completing an LSC-funded programme in 2007/08 (“the completion year”) that are projected to have progressed to one of the following destinations in 2008/09 (“the destination year”):
- a. remained in learning with the same highest learning aim, where at least one aim was a priority learning aim;
 - b. remained in publicly-funded education or training with a highest learning aim below Level 4 that was higher than the highest learning aim in the completion year; or
 - c. remained in publicly-funded learning with a highest learning aim of Level 4 or above.
- 31 These three progression routes are referred to as “positive learning destinations”.

Sector Results for Learning Rate

- 32 For the learning rate, scores were obtained for 444 providers of all types. The overall median score was 55 per cent, the fifty percent of scores that lie between the 25th and 75th percentile ranged from 46 per cent to 62 per cent. The lowest recorded score was 3 per cent and the highest 91 per cent.
- 33 Sector results for Learning rate are summarised in figure 4.

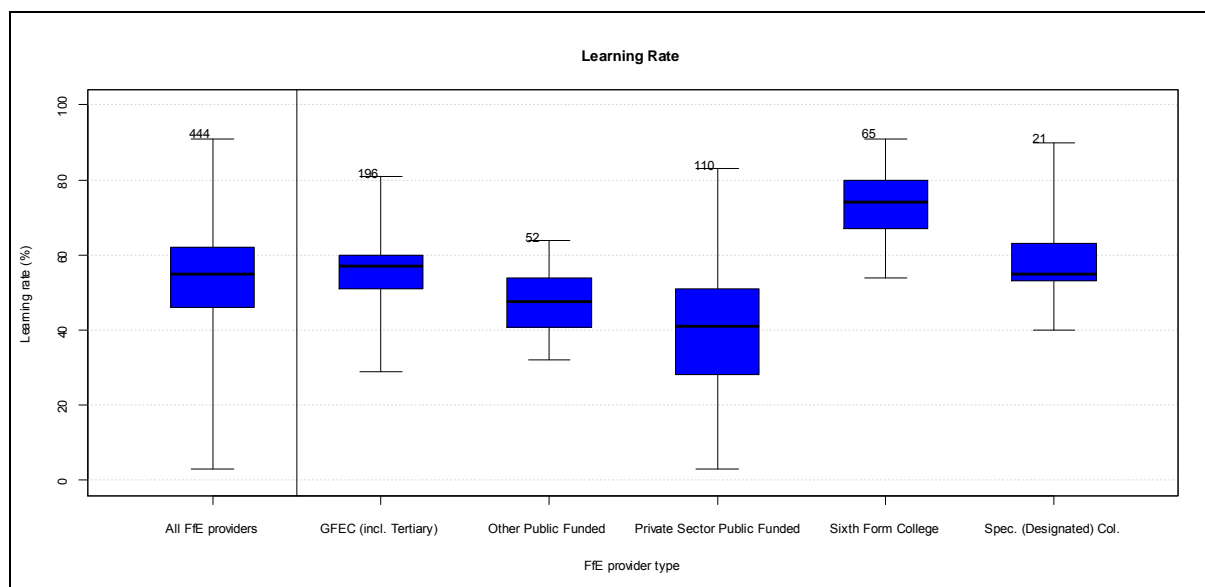


Figure 4 - Summary statistics for the Learning Rate performance indicator (see paragraph 15 for guidance on how to interpret this chart)

Learning rate	In scope providers	Valid score providers	Lowest score	25th perc.	Median	75th perc.	Highest score
National	1198	444	3.0	46.0	55.0	62.0	91.0
General FE College incl. Tertiary	229	196	29.0	51.0	57.0	60.0	81.0
Other Public Funded	120	52	32.0	40.8	47.5	54.0	64.0
Private Sector Public Funded	727	110	3.0	28.3	41.0	51.0	83.0
Sixth Form College	93	65	54.0	67.0	74.0	80.0	91.0
Specialist Colleges	29	21	40.0	53.0	55.0	63.0	90.0

Performance indicator 3: Employer Views

Definition

- 34 This is a performance measure of each employer's views of its provider's responsiveness. The measure captures employers' perceptions on the quality of the training provided and the responsiveness of the provider to the employer's needs.
- 35 Data for assessment comes from the collation of employers' responses to the Employer Views survey.

Sector Results for the Employer Views Survey

- 36 In total 191,766 employers were in scope for the FfE 2009/10 Employer Views survey. Of these, 46,186 gave valid responses and the number of scoring questions answered by these providers was 406,878.
- 37 The median score for the FfE 2009/10 Employer Views survey across all provider types was 8.1 out of 10.
- 38 Sector results for Employer Views are summarised in figure 5.

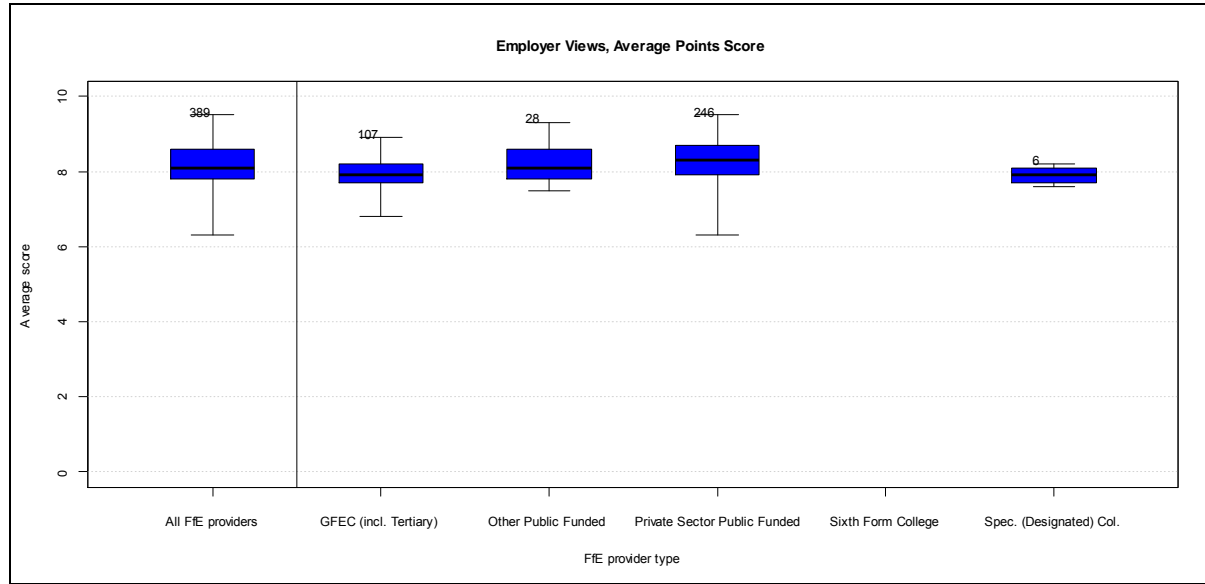


Figure 5 - Summary statistics for the Employer Views performance indicator (see paragraph 15 for guidance on how to interpret this chart)

Employer views	In scope providers	Valid score providers	Lowest score	25th perc.	Median	75th perc.	Highest score
National	852	389	6.3	7.8	8.1	8.6	9.5
General FE College incl. Tertiary	130	107	6.8	7.7	7.9	8.2	8.9
Other Public Funded	79	28	7.5	7.8	8.1	8.6	9.3
Private Sector Public Funded	616	246	6.3	7.9	8.3	8.7	9.5
Specialist Colleges	10	6	7.6	7.7	7.9	8.1	8.2

Performance indicator 4: Success Rates

Definition

- 39 The SR performance indicator is composed of Qualification Success Rates for seven qualification types:
- a. FE long qualifications, excluding A-levels, AS and A2 courses
 - b. FE short qualifications (5-24 wks)
 - c. FE very short qualifications (<5 wks)
 - d. A-levels, including A2 and AS
 - e. Apprenticeships (overall success rate for framework completions)
 - f. Advanced Apprenticeships (overall success rate for framework completions)
 - g. Train to Gain (Full Level 2 and Full Level 3 qualifications only)
- 40 The data sources for this PI are full year Qualification Success Rates derived from 2008/09 ILR data. Key skills and Functional Skills are excluded. The methodology for calculating QSRs can be found on the [Data Service's website](#).

Sector Results for Success Rates by Provider Type

- 41 The median success rate in 2008/09 varies significantly by type of institution as well as between qualifications of different lengths although this difference is reduced particularly for General Further Education (GFE) and Tertiary Colleges.
- 42 The highest success rate sector median was in Private Sector Public Funded institutions at 95.7 per cent for FE Very short qualifications. The lowest sector median was in Other Public Funded Organisations at 66.3 per cent for A AS qualifications.
- 43 The median success rate for GFE and Tertiary Colleges was highest for very short qualifications, at 93.6 per cent, and lowest for apprenticeships at 70.7 per cent.
- 44 For Specialist Colleges the median achievement rate was highest for very short courses at 68.2 but it was lowest for Advanced Apprenticeships at 68.2 per cent.
- 45 In Other Public Funded institutions the highest median was 90.4 per cent in Very Short qualifications and the lowest was at 66.3 per cent in A, AS, A2 qualifications.
- 46 For Sixth Form Colleges the highest median was in Apprenticeships at 95 per cent and the lowest was in TtG at 67.6 per cent.
- 47 In Private Sector Public Funded institutions the highest median was in very short qualifications at 95.7 per cent and the lowest median was in Apprenticeships at 91.8 per cent.

Sector Results for Success Rates by Qualification Type

- 48 For A, AS and A2 qualifications the highest median was at 84.3 per cent in Sixth Form Colleges and the lowest in Other Public Funded bodies at 66.3 per cent (see figure 6).

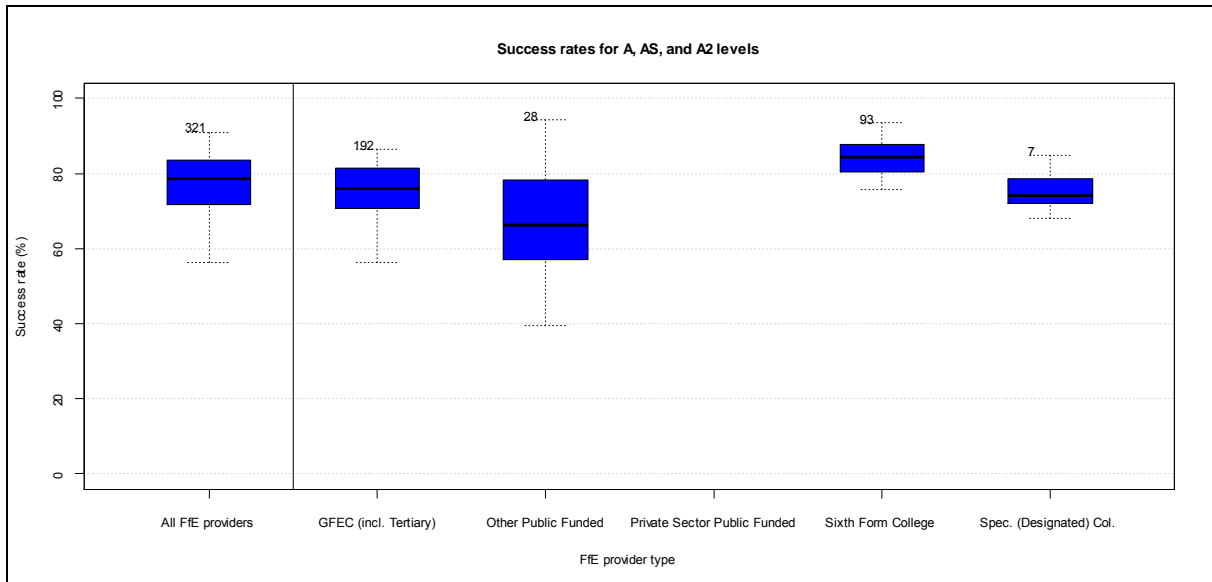


Figure 6 - Summary statistics for A, AS and A2 level Success Rates

49 In Advanced Apprenticeships the highest median was 77.1 per cent in Private Sector Public Funded organisations. The lowest median at 68.6 per cent was in Specialist Colleges (see figure 7).

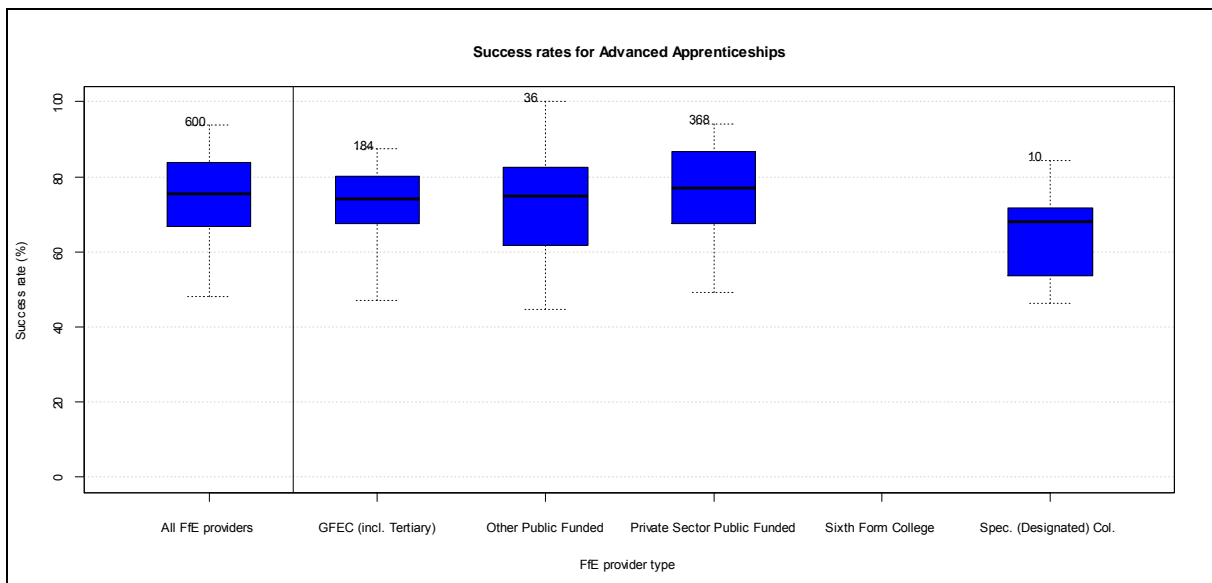


Figure 7 - Summary statistics for Advanced Apprenticeship Success Rates

50 For Apprenticeships the highest median at 95 per cent was for Sixth Form Colleges and the lowest at 70.7 per cent was in GFE Colleges (see figure 8).

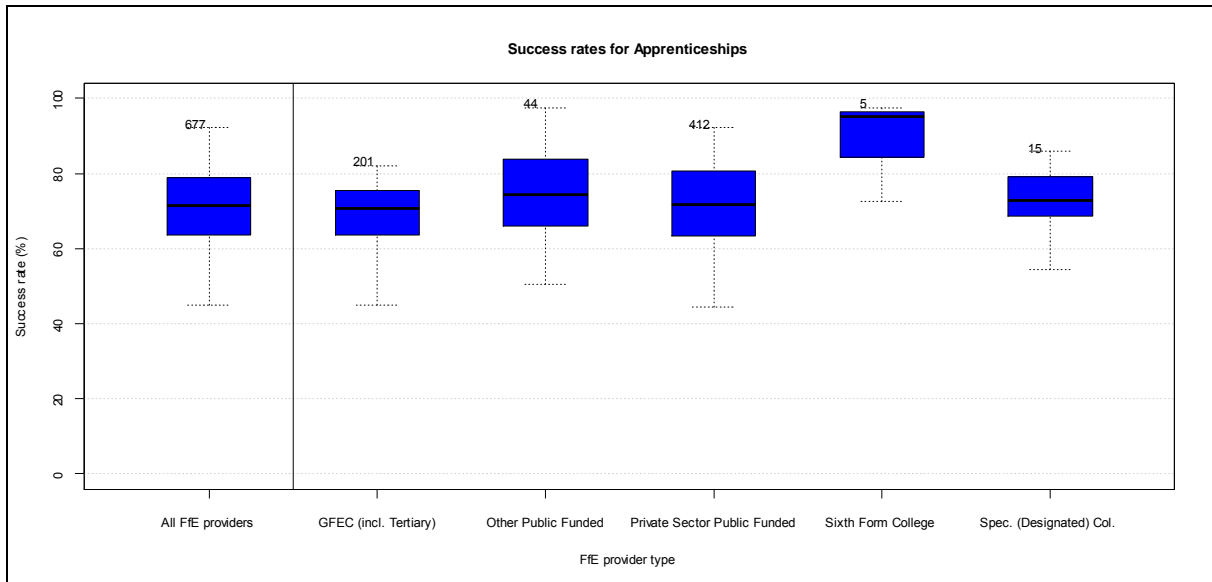


Figure 8 - Summary statistics for Apprenticeship Success Rates

51 For FE long qualifications the highest median was in Sixth Form Colleges at 80 per cent and the lowest was at 73.7 per cent in Private Sector Public Funded Organisations (see figure 9).

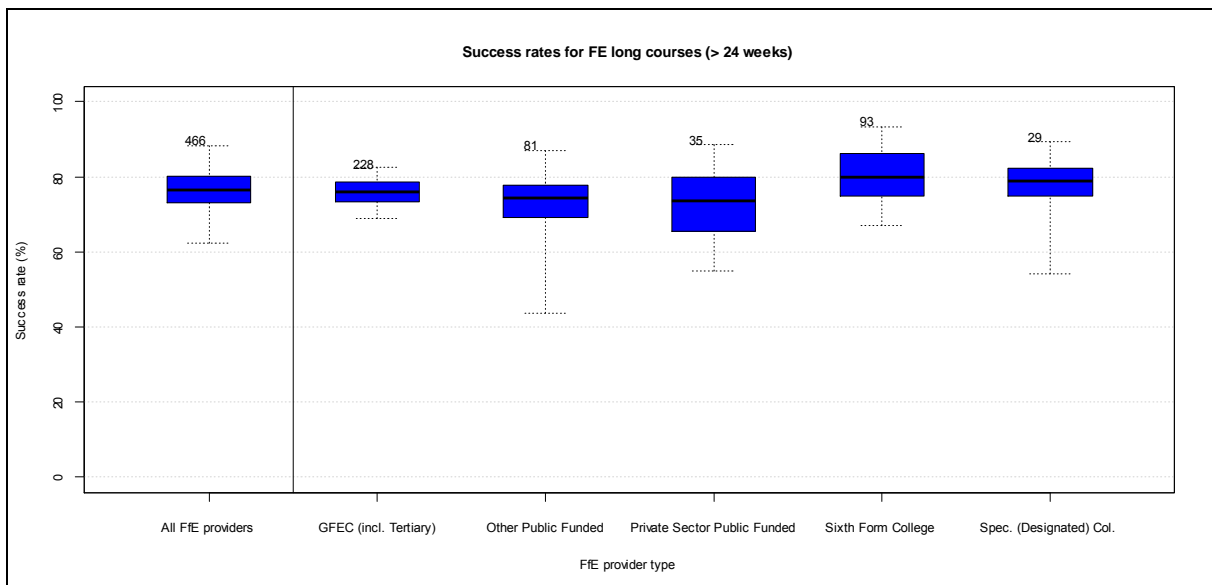


Figure 9 - Summary statistics for FE long course (>24 weeks) Success Rates

52 For FE short qualifications the highest median score is 88.4 per cent in Specialist Colleges and the lowest median in Sixth Form Colleges at 79.8 per cent (see figure 10).

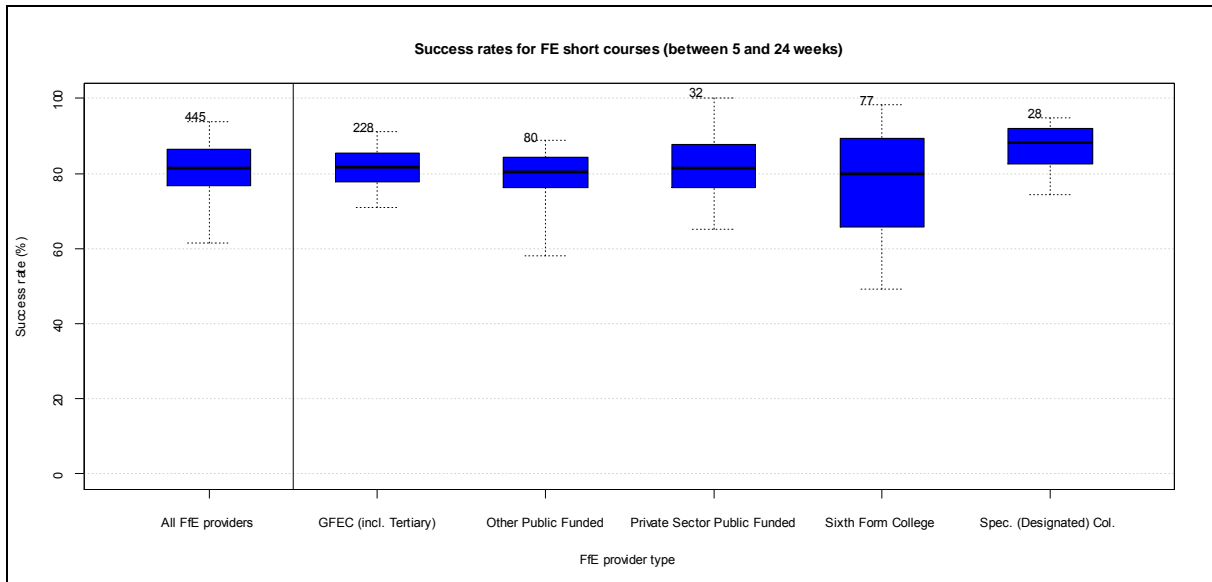


Figure 10 - Summary statistics for FE short course (between 5-24 weeks) Success Rates

53 For FE very short qualifications the highest median was 95.7 per cent for Private Sector Public Funded institutions and the lowest median was 90.4 per cent for Other Public Funded Organisations (see figure 11).

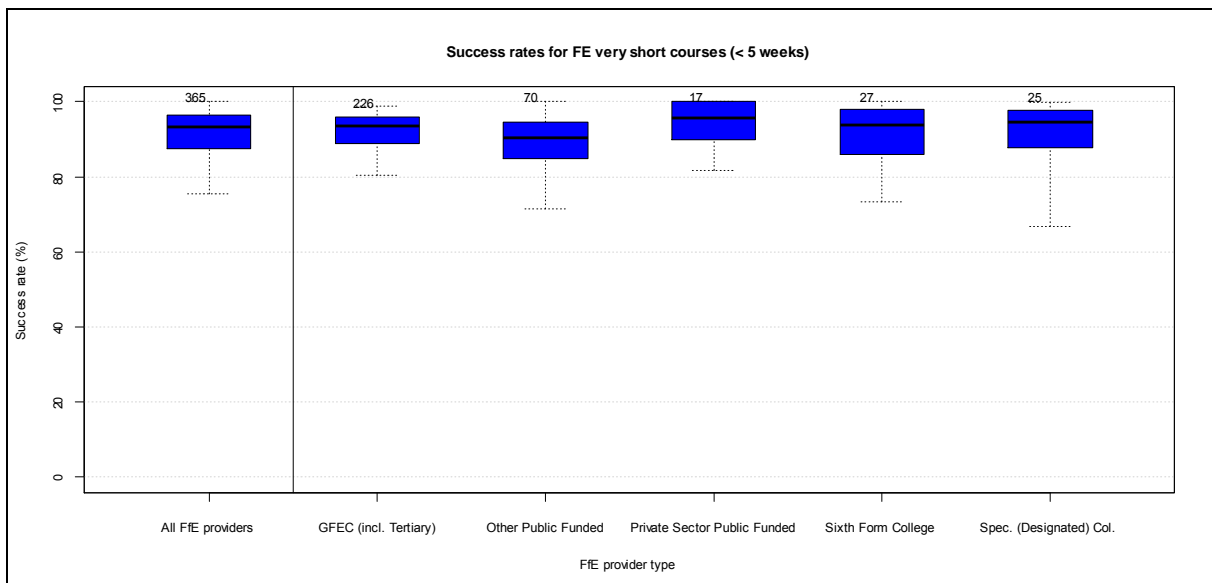


Figure 11 - Summary statistics for FE very short course (< 5 weeks) Success Rates

54 In Train to Gain the highest median was 73.8% for GFE and Tertiary Colleges and the lowest median was 67.6% for Sixth Form Colleges (see figure 12).

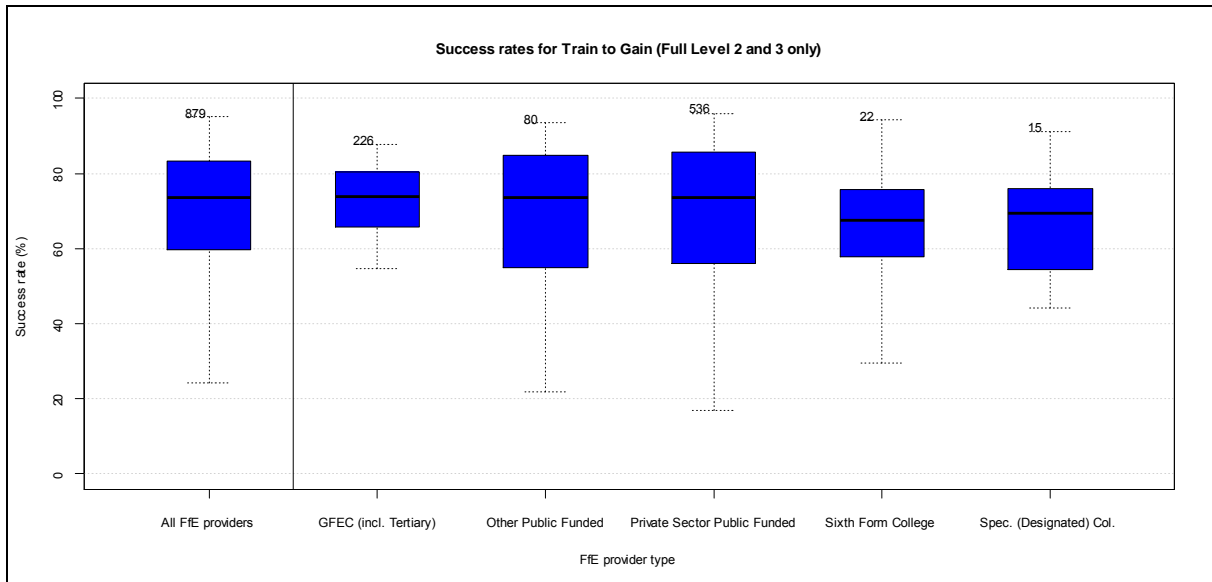


Figure 7 - Summary statistics for Train to Gain (Full Level 2 and 3 only) Success Rates

Sector Results for Success Rates by Qualification Type and by Age-band

55 These results are summarised in the tables and figures 13 to 18.

Qualification type	Provider type	Age-band	5th perc.	25th perc.	Median	75th perc.	95th perc.	Valid providers
A AS A2	National	16-18	57.2	72.5	79.2	83.9	90.9	289
		19+	58.2	68.0	75.3	81.4	92.1	268
		all	56.4	71.7	78.5	83.7	91.0	321
	General FE College incl. Tertiary	16-18	53.7	70.5	75.9	81.2	86.8	182
		19+	60.1	68.8	75.0	80.4	89.3	167
		all	56.4	70.6	75.9	81.5	86.5	192
	Other Public Funded	16-18	50.5	55.1	60.0	63.6	88.2	9
		19+	40.0	57.0	67.0	80.9	94.5	27
		all	39.6	57.0	66.3	78.3	94.3	28
	Private Sector Public Funded	19+ *	-	-	-	-	-	-
		all *	-	-	-	-	-	-
	Sixth Form College	16-18	75.7	80.6	84.3	87.7	93.6	93
		19+	60.0	68.8	78.6	84.6	92.1	69
		all	75.6	80.4	84.3	87.8	93.6	93
	Specialist Colleges	16-18	67.7	72.8	76.7	82.2	86.6	5
		19+	-	-	-	-	-	-
		all	68.0	72.1	74.2	78.6	85.0	7

* where the number of providers is less than 5, the information is suppressed

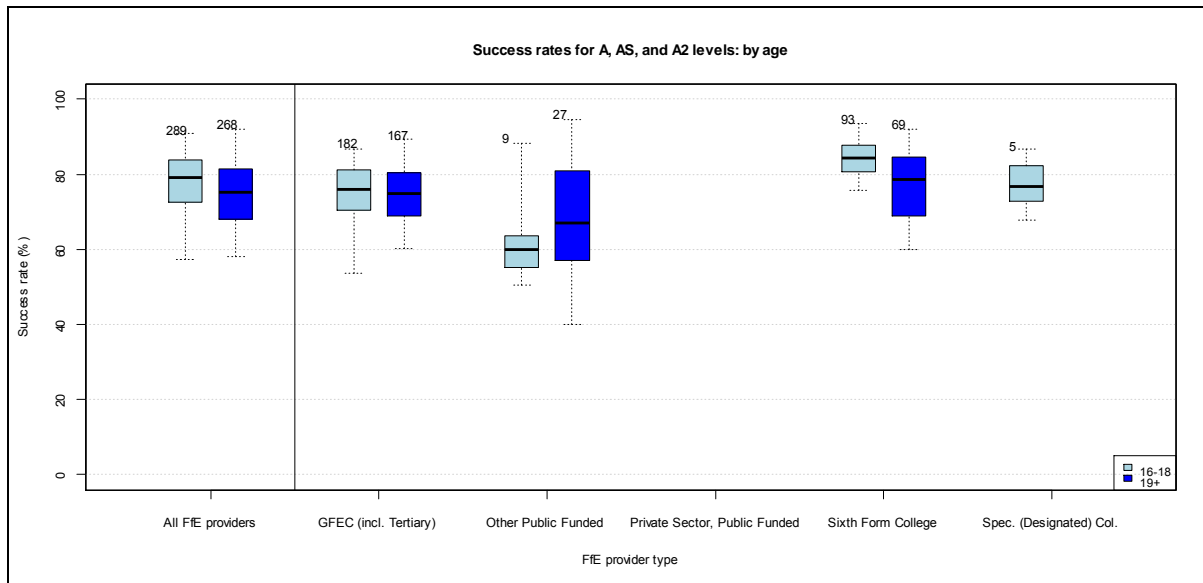


Figure 8 - Summary statistics by age-band for A, AS and A2 level Success Rates (see paragraph 15 for guidance on how to interpret this chart)

Qualification type	Provider type	Age-band	5th perc.	25th perc.	Median	75th perc.	95th perc.	Valid providers
FE long	National	16-18	54.8	72.0	77.2	80.9	88.9	432
		19+	59.3	70.3	74.7	78.5	84.8	438
		all	62.2	73.0	76.6	80.1	88.2	466
	General FE College incl. Tertiary	16-18	69.8	73.9	77.0	79.8	84.1	228
		19+	66.7	71.9	75.2	78.5	82.6	228
		all	68.9	73.4	76.0	78.7	82.5	228
	Other Public Funded	16-18	38.3	55.8	66.1	72.5	83.3	65
		19+	43.8	69.7	74.7	78.5	86.9	81
		all	43.7	69.1	74.3	77.9	86.9	81
	Private Sector Public Funded	16-18	28.2	50.8	66.0	77.7	94.4	23
		19+	53.2	66.9	74.2	78.8	90.2	32
		all	55.0	65.5	73.7	79.9	88.5	35
	Sixth Form College	16-18	69.1	76.9	81.1	87.3	94.0	93
		19+	49.3	66.2	71.7	78.2	86.1	68
		all	67.0	75.0	80.0	86.2	93.4	93
	Specialist Colleges	16-18	68.2	77.7	80.5	84.2	91.8	23
		19+	52.6	68.2	75.1	79.0	85.6	29
		all	54.3	74.9	78.9	82.2	89.3	29

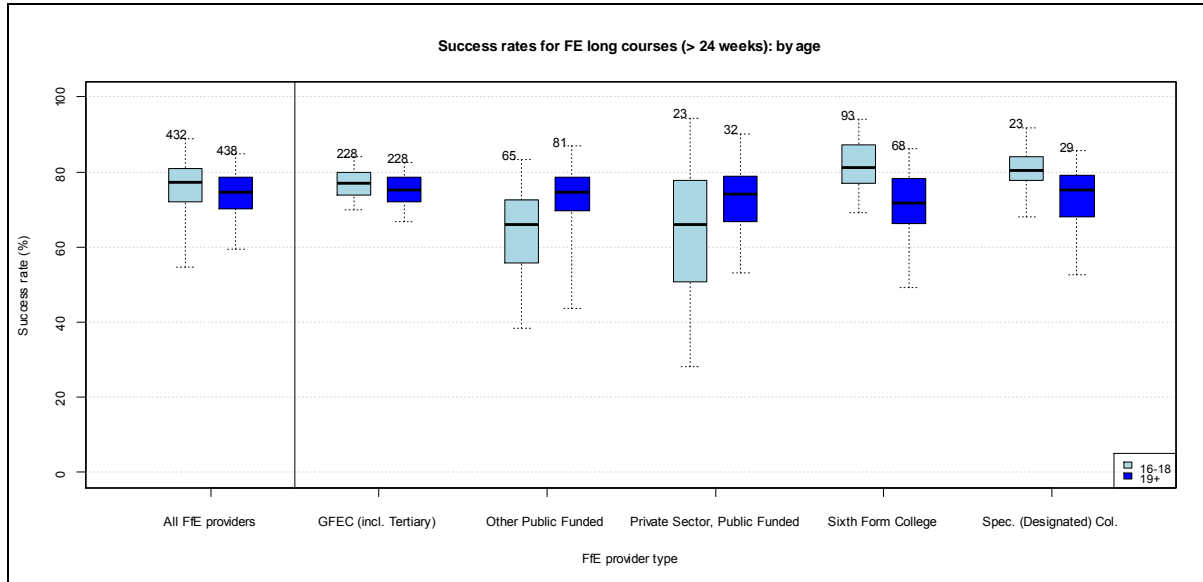


Figure 9 - Summary statistics by age-band for FE long course (>24 weeks) Success Rates (see paragraph 15 for guidance on how to interpret this chart)

Qualification type	Provider type	Age-band	5th perc.	25th perc.	Median	75th perc.	95th perc.	Valid providers
FE short	National	16-18	55.5	70.7	79.0	86.1	95.8	394
		19+	62.5	76.9	81.8	86.5	92.2	410
		all	61.6	76.8	81.5	86.4	93.7	445
	General FE College incl. Tertiary	16-18	61.6	72.8	78.7	85.3	91.6	227
		19+	70.8	78.3	82.4	86.4	91.0	228
		all	71.0	77.9	81.7	85.5	91.2	228
	Other Public Funded	16-18	50.9	63.6	72.2	78.5	88.1	53
		19+	58.7	76.2	80.4	85.0	88.7	80
		all	58.2	76.2	80.4	84.4	88.7	80
	Private Sector Public Funded	16-18	63.7	73.6	82.2	86.7	100.0	16
		19+	62.2	77.0	85.0	87.7	98.7	29
		all	65.1	76.2	81.6	87.8	100.0	32
	Sixth Form College	16-18	41.9	65.9	81.8	89.9	100.0	74
		19+	46.6	68.6	76.5	81.7	88.2	46
		all	49.1	65.8	79.8	89.3	98.3	77
	Specialist Colleges	16-18	58.5	82.1	89.8	93.8	99.4	24
		19+	76.5	82.0	87.9	90.5	94.1	27
		all	74.3	82.6	88.4	91.9	94.9	28

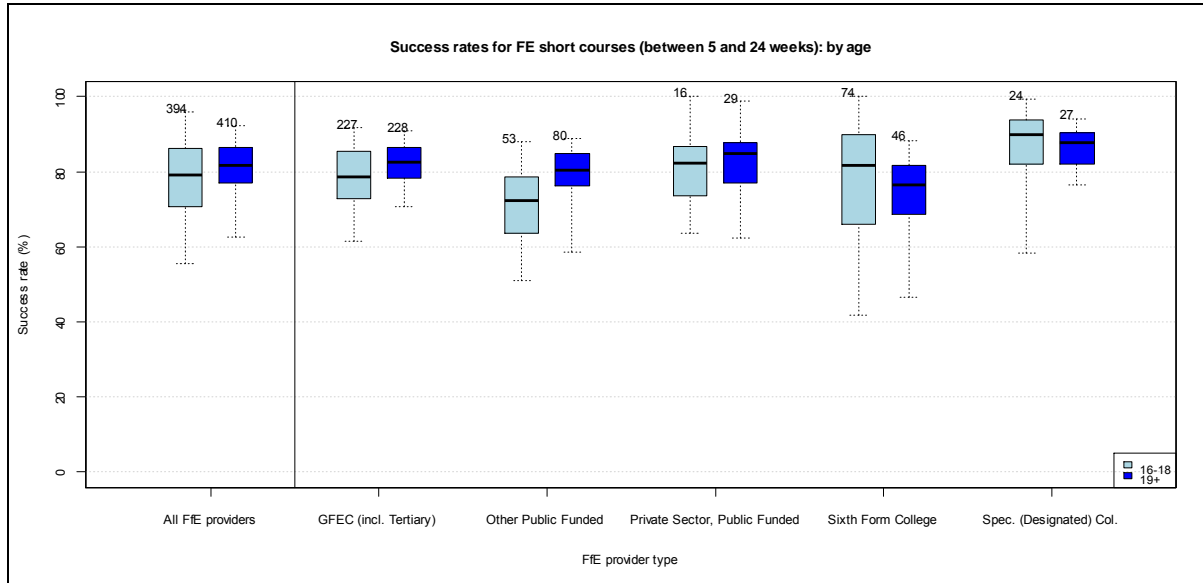


Figure 10 - Summary statistics by age-band for FE short course (between 5-24 weeks) Success Rates (see para. 15 for guidance on how to interpret this chart)

Qualification type	Provider type	Age-band	5th perc.	25th perc.	Median	75th perc.	95th perc.	Valid providers
FE very short	National	16-18	72.3	86.7	92.2	96.0	100.0	275
		19+	76.7	88.2	93.6	96.5	100.0	345
		all	75.4	87.6	93.3	96.4	100.0	365
	General FE College incl. Tertiary	16-18	72.9	86.7	91.6	95.4	100.0	207
		19+	81.8	89.2	94.0	96.6	99.5	222
		all	80.3	88.8	93.6	96.0	98.9	226
	Other Public Funded	16-18	77.5	81.1	92.0	95.9	100.0	28
		19+	72.8	85.0	90.0	94.3	100.0	69
		all	71.5	85.0	90.4	94.6	100.0	70
	Private Sector Public Funded	16-18	88.4	90.2	91.8	95.0	98.9	6
		19+	82.3	89.4	97.5	100.0	100.0	12
		all	81.8	90.0	95.7	100.0	100.0	17
	Sixth Form College	16-18	84.7	93.9	100.0	100.0	100.0	17
		19+	70.6	83.3	92.3	95.8	98.0	21
		all	73.3	86.0	93.8	98.0	100.0	27
	Specialist Colleges	16-18	56.3	87.3	91.9	98.1	100.0	17
		19+	78.0	90.7	94.9	97.7	100.0	21
		all	66.9	87.7	94.6	97.8	99.9	25

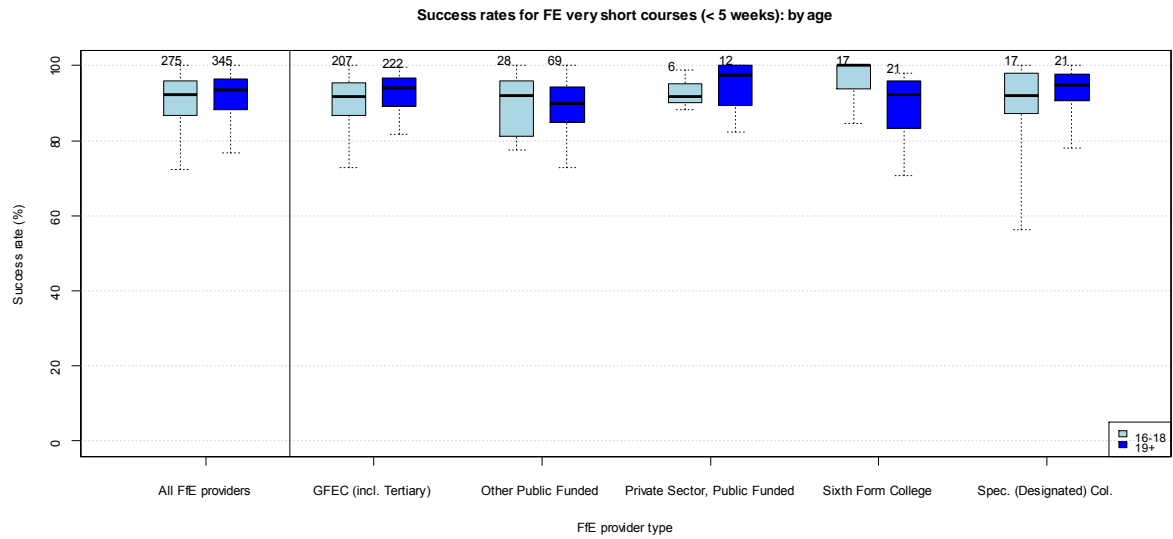


Figure 11 - Summary statistics by age-band for FE very short course (< 5 weeks) Success Rates (see para. 15 for guidance on how to interpret this chart)

Qualification type	Provider type	Age-band	5th perc.	25th perc.	Median	75th perc.	95th perc.	Valid providers
Apprenticeships	National	16-18	46.1	61.5	69.9	78.0	90.3	619
		19+	46.9	64.8	73.8	81.8	92.0	476
		all	45.0	63.7	71.4	78.9	92.2	677
	General FE College incl. Tertiary	16-18	45.8	61.6	69.3	74.5	82.7	195
		19+	46.8	64.3	72.7	78.7	88.2	157
		all	45.0	63.7	70.7	75.4	82.1	201
	Other Public Funded	16-18	50.2	63.8	73.1	83.6	94.5	39
		19+	47.6	60.3	72.3	80.4	98.2	18
		all	50.5	65.9	74.5	83.9	97.6	44
	Private Sector Public Funded	16-18	45.6	60.7	70.0	79.3	91.5	365
		19+	46.1	67.2	75.0	83	92.8	288
		all	44.4	63.3	71.8	80.7	92.3	412
	Sixth Form College	16-18	77.2	86.2	95.0	95.2	97.3	5
		19+ *	-	-	-	-	-	-
		all	72.6	84.4	95.0	96.4	97.6	5
	Specialist Colleges	16-18	51.6	63.3	72.5	82.6	85.8	15
		19+	61.9	67.6	75.0	80.8	88.5	11
		all	54.4	68.7	72.7	79.0	86.0	15

* where the number of providers is less than 5, the information is suppressed

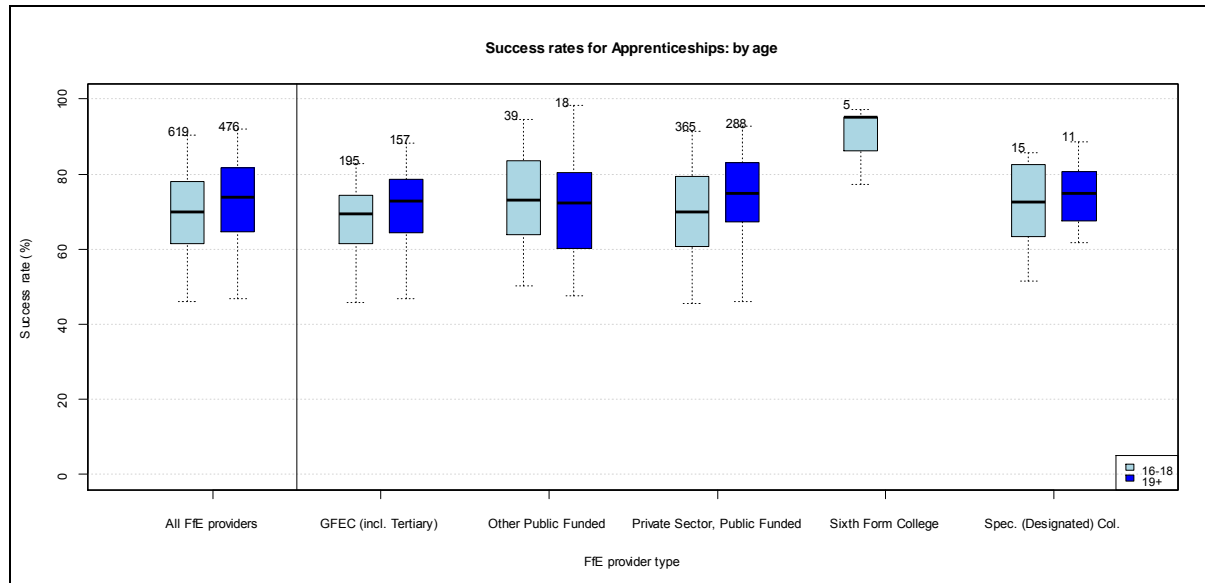


Figure 12 - Summary statistics by age-band for Apprenticeship Success Rates (see paragraph 15 for guidance on how to interpret this chart)

Qualification type	Provider type	Age-band	5th perc.	25th perc.	Median	75th perc.	95th perc.	Valid providers
Advanced Apprenticeships	National	16-18	47.4	66.7	76.0	84.6	94.2	407
		19+	47.7	66.9	76.6	85.1	94.1	483
		all	48.1	66.7	75.5	83.9	93.8	600
	General FE College incl. Tertiary	16-18	42.9	63.9	74.1	80.0	89.5	153
		19+	53.3	68.4	76.7	82.9	91.1	161
		all	47.0	67.5	74.0	80.2	87.5	184
	Other Public Funded	16-18	53.0	62.3	72.7	90.2	100.0	20
		19+	35.7	50.0	70.0	80.3	96.2	21
		all	44.7	61.8	75.0	82.6	100.0	36
	Private Sector Public Funded	16-18	50.8	69.3	79.5	88.2	95.0	225
		19+	49.6	66.7	76.9	86.9	94.8	292
		all	49.2	67.6	77.1	86.6	94.1	368
	Sixth Form College	16-18 *	-	-	-	-	-	-
		19+ *	-	-	-	-	-	-
		all *	-	-	-	-	-	-
	Specialist Colleges	16-18	27.3	38.6	52.5	70.6	79.2	7
		19+	56.0	64.7	72.5	79.9	84.9	8
		all	46.3	53.6	68.2	71.8	84.3	10

* where the number of providers is less than 5, the information is suppressed

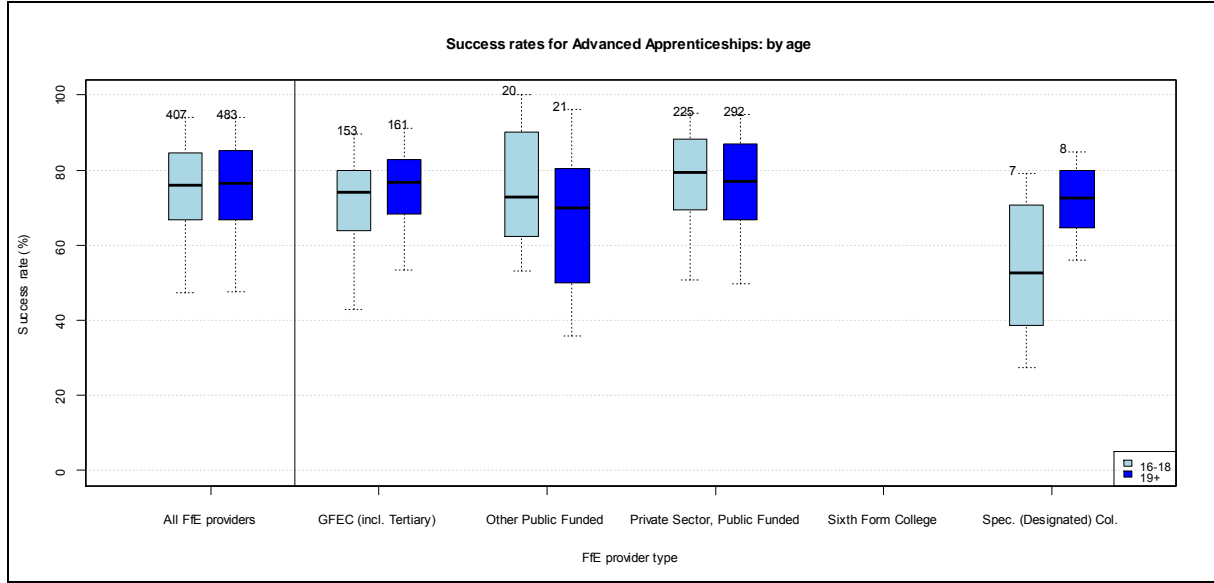


Figure 13 - Summary statistics by age-band for Advanced Apprenticeship Success Rates (see paragraph 15 for guidance on how to interpret this chart)

