

# Further Education, Work-based Learning and Community Learning in Wales Statistics, 2011/12

PHOTO REDACTED DUE TO THIRD PARTY RIGHTS OR OTHER LEGAL ISSUES

## Contact points

### Wales

For statistical enquiries contact the Knowledge and Analytical Services:

Tel: 029 2082 5050

E-mail: [stats.info.desk@wales.gsi.gov.uk](mailto:stats.info.desk@wales.gsi.gov.uk)

Minicom: 029 2082 3280

Fax: 029 2082 5350

Address: Statistical Publication Unit,  
Knowledge and Analytical Services,  
Welsh Government,  
Cathays Park,  
CARDIFF, CF10 3NQ

You can also find Statistics for Wales on the internet

[www.wales.gov.uk/statistics](http://www.wales.gov.uk/statistics)

[www.twitter.com/statisticswales](http://www.twitter.com/statisticswales)

### United Kingdom

For statistical enquiries, contact the Office for National Statistics:

Tel: 0845 601 3034

Enquiries in Welsh: 01633 813381

Minicom: 01633 812399

E-mail: [info@statistics.gov.uk](mailto:info@statistics.gov.uk)

Fax: 01633 652747

Address: Customer Contact Centre,  
Room 1.015,  
Office for National Statistics,  
Cardiff Road,  
Newport,  
NP10 8XG

You can also find National Statistics on the internet

[www.statistics.gov.uk](http://www.statistics.gov.uk)

### A National Statistics publication

Official statistics bearing the National Statistics logo are produced to high professional standards set out in the National Statistics Code of Practice. They undergo regular quality assurance reviews to ensure that they meet customer needs. They are produced free from any political interference.

© Crown copyright 2013

First published 2013

ISBN 978 1 4734 0245 4

Welsh Government

WG19780

Brief extracts from this publication, with the exception of maps, may be reproduced providing the source is fully acknowledged. Proposals for reproductions of maps and larger extracts should be addressed to

The Copyright Unit,  
Her Majesty's Stationery Office,  
St Clements House,  
2-16 Colegate,  
Norwich,  
NR3 1BQ

The maps are based upon the Ordnance Survey map by the National Assembly for Wales with the permission of Ordnance Survey on behalf of The Controller of Her Majesty's Stationery Office, © Crown copyright. All rights reserved. Unauthorised reproduction infringes Crown copyright and may lead to prosecution or civil proceedings. Licence Number GD272221.

For enquiries about this publication, contact  
Tel: 029 2082 5139

E-mail: [post16ed.stats@wales.gsi.gov.uk](mailto:post16ed.stats@wales.gsi.gov.uk)

# CONTENTS

<b>Introduction</b>	vi	
<b>Section A: Further Education In Wales</b>	1	
<b>Tables:</b>		
F1.1	Numbers of learners (FE, HE and WBL) enrolled at FE institutions by programme 2011/12.....	7
F1.2	Numbers of learners (FE, HE and WBL) enrolled at FE institutions by level 2011/12	8
F1.3a	Numbers of full-time learners enrolled at FE institutions 2011/12 .....	9
F1.3b	Numbers of part-time learners enrolled at FE institutions 2011/12 .....	10
F1.3c	Numbers of learners in work-based learning provision at FE institutions 2011/12	11
F1.4	Student load FTEs for FE and HE learners (excluding WBL) at FE institutions 2007/08 to 2011/12 .....	12
F1.5	Numbers of FE and WBL learners enrolled at FE and HE institutions 2011/12 .....	13
F1.6	Numbers of learners (FE, HE and WBL) taught at FE institutions 2011/12 .....	14
F1.7a	Numbers of Welsh for Adults learners and their enrolments by learning centre (standard registration population) 2011/12 .....	15
F1.7b	Numbers of Welsh for Adults learners and their enrolments by learning centre (session population) 2011/12 .....	15
F2.1	Trends in further education student numbers in December (at FE institutions and HE institutions) by mode of attendance and age 2005/06 to 2011/12 .....	16
F2.2	Trends in further education student numbers at FE institutions by age group 2008/09 to 2011/12 .....	16
F3.1	Numbers of learners (FE, HE and WBL) enrolled at FE institutions by age group, mode of learning and sex 2011/12 .....	17
F3.2	Numbers of learners (FE, HE and WBL) enrolled at FE institutions by age group, mode of learning and level 2011/12 .....	18
F3.3	Numbers of learners (FE, HE and WBL) enrolled at FE institutions by country of domicile, mode of learning and sex 2011/12 .....	19
F3.4a	Numbers of learners (FE, HE and WBL) enrolled at FE institutions by unitary authority of domicile and age group 2011/12 .....	20
F3.4b	Numbers of learners (FE, HE and WBL) enrolled at FE institutions by unitary authority of domicile and sex 2011/12 .....	22
F3.5	Numbers of learners (FE, HE and WBL) enrolled at FE institutions by ethnicity, age band and sex 2011/12 .....	23
F3.6	Numbers of learners (FE, HE and WBL) enrolled at FE institutions by (primary) disability and/or learning difficulty, age band and sex 2011/12 .....	24
F3.7	Numbers of learners (FE, HE and WBL) enrolled at FE institutions by disability and/or learning difficulty (including both primary and secondary) type, age band and sex 2011/12 .....	25
F3.8	Numbers of learners at FE institutions by deprivation status, sex and age group 2011/12 .....	26

F3.9	Numbers of distinct full-time learners at FE institutions leaving in academic year 2011/12 by destination and age group .....	28
F4.1a	Numbers of learning activities at FE institutions by subject and Region of domicile 2011/12 .....	30
F4.1b	Numbers of learning activities at FE institutions by subject and age group 2011/12	32
F4.2a	Numbers of learning activities at FE institutions by sector subject area and Region of domicile 2011/12 .....	34
F4.2b	Learning activity completion rates at FE institutions by sector subject area 2011/12 .....	36
F4.2c	Learning activity attainment rates at FE institutions by sector subject area 2011/12 .....	37
F4.3	Numbers of learning activities at FE institutions by subject and credit level 2011/12	38
F4.4	Numbers of learning activities at FE institutions by subject and Welsh medium status of learning delivery 2011/12 .....	40
F4.5	Numbers of learning activities at FE institutions by qualification type, age band and sex 2011/12 .....	41
F4.6a	Numbers of awards attained for learners enrolled at FE institutions by qualification type and age band 2011/12 .....	42
F4.6b	Numbers of learners attaining awards at FE institutions by qualification type and age band 2011/12 .....	42

**Section B: Local Authority Community Learning In Wales** 43

**Tables:**

L1.1	Numbers of learners in Local Authority Community Learning by unitary authority and provision type 2011/12.....	46
L1.2a	Numbers of learners in Local Authority Community Learning by age group and sex 2011/12 .....	47
L1.2b	Numbers of learners in Local Authority Community Learning by age group and sex 2011/12 - excluding contracted-in from FE.....	47
L2.1	Numbers of Local Authority Community Learning activities by unitary authority and provision type 2011/12 .....	48
L2.2	Numbers of Local Authority Community Learning activities by age group and sex 2011/12 .....	49
L2.3	Numbers of Local Authority Community Learning activities by subject and age group 2011/12 .....	50
L2.4	Numbers of Local Authority Community Learning activities by subject and sex 2011/12 .....	52

**Section C: Work-Based Learning (WBL) in Wales** 53

**Tables:**

T1.1	WBL provision: Numbers of learners by age group, sex and programme type 2011/12..	56
------	---	----

T1.2	Numbers of learners in WBL provision by programme and region of domicile 2011/12 .....	57
T1.3	WBL provision: Numbers of enrolments on learning programmes by type and region of domicile 2011/12 .....	57
T1.4	Numbers of learners in WBL provision by ethnicity, age band and sex 2011/12 .....	58
T1.5	Numbers of learners in WBL provision by disability status, age band and sex 2011/12..	59
T2.1	Trends in work-based learning - number in training as at March and July by programme type 2007/08 to 2011/12.....	60
T2.2	WBL provision: Numbers of unique learners and individual learning programmes by programme type.....	60
T3.1	Numbers of learning programmes for Foundation Apprenticeships, Apprenticeships and Modern Skills Diplomas by sector frameworks and programme type 2011/12.....	61
T3.2	WBL provision: Numbers of learning activities by subject and credit level 2011/12	62
T3.3a	Leaver destinations: Number of learning programmes left in academic year 2011/12 by destination and age group .....	64
T3.3b	Leaver destinations: Number of distinct learners leaving (their most recent learning programme) in academic year 2011/12 by destination and age group .....	64
 <b>Appendices</b>		
A	Data sources and definitions .....	67
B	Other useful information sources .....	72

## INTRODUCTION

This volume is the ninth in a series providing statistics about the post-16 learning sector in Wales. The coverage includes Welsh Government -funded post-16 education providers with the exception of sixth forms and also excluding Higher Education (HE) institutions apart from in a few specific tables. The main purpose of the publication series is to provide an annual picture of learning undertaken in the post-16 sector in Wales.

The statistics in this volume complement previously issued Welsh Government statistical releases on the 2011/12 post-16 learning sector and summary data available via the StatsWales website ([www.statswales.wales.gov.uk](http://www.statswales.wales.gov.uk)). The volume also provides a continuation to certain trend statistics provided in the former publication series *Higher Education, Further Education and Training Statistics in Wales* which was a series of publications produced jointly by the Higher Education Funding Council for Wales (HEFCW) and Education and Learning Wales (ELWa) prior to the merger of ELWa into the Welsh Government in April 2006.

With the exception of learners at HE institutions, all of the data in this publication are sourced from the (Lifelong Learning Wales Record) LLWR data collection system. The Welsh Government's Department for Education and Skills (DfES) maintains and develops the LLWR and employs the system to collect data from Further Education (FE) institutions, other work-based learning (WBL) providers and local authority community learning providers.

### Structure of the Volume

This volume is divided into three sections with two appendices at the end. Each section contains a series of tables (with brief accompanying notes and data caveats on coverage and data sources) and a short commentary which brings attention to key statistics from the section.

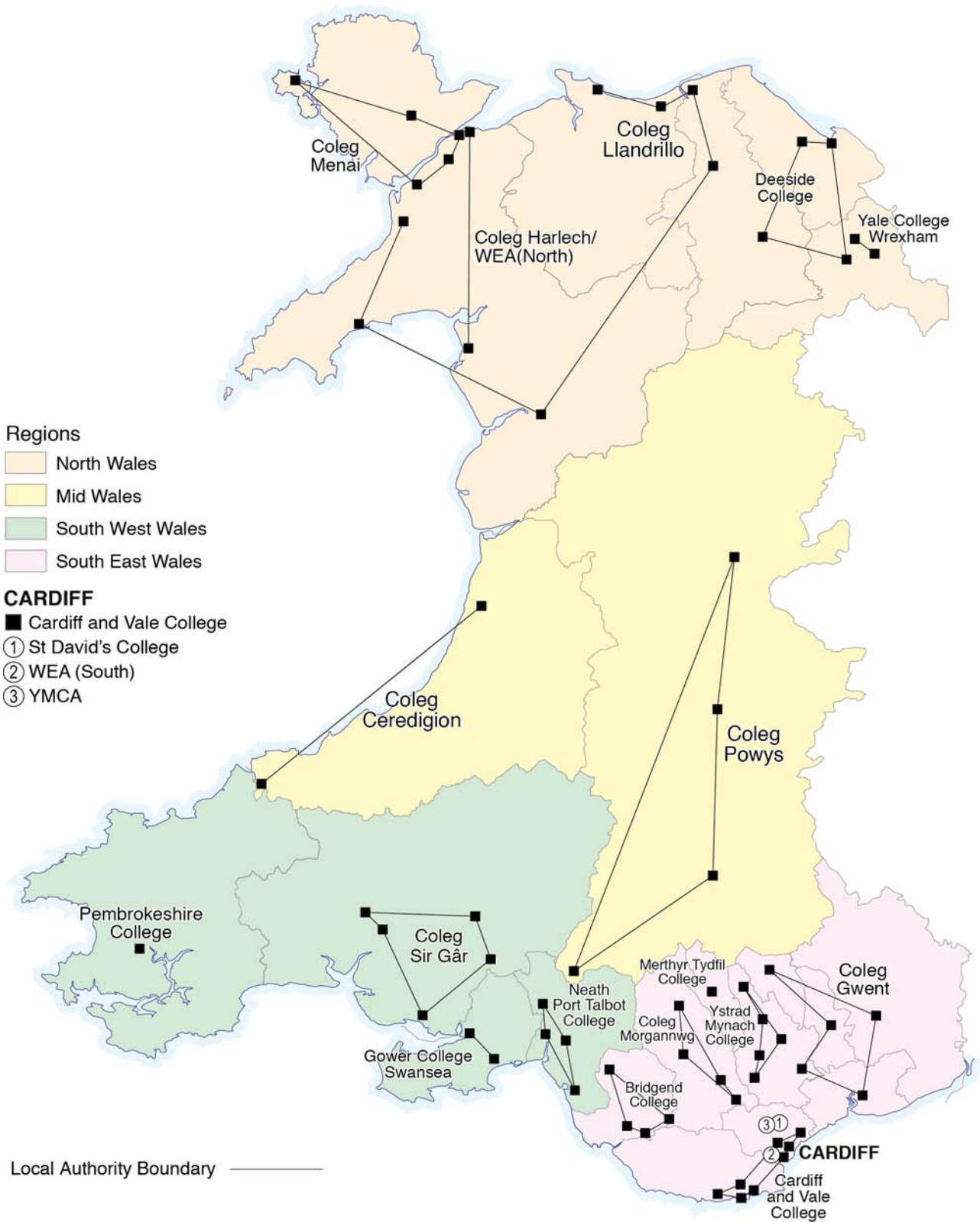
The sections are :

- Section A Further Education in Wales
- Section B Local Authority Community Learning in Wales
- Section C Work-based Learning in Wales

Appendix A provides fuller information on sources of data and notes on the definitions.

Appendix B provides a few further information sources relating to the learning sector in Wales.

# SECTION A FURTHER EDUCATION IN WALES



## Site locations in 2011/12 of FE Institutions with multiple main sites:

Institution Name	Site Location
Cardiff and Vale College	Barry: Colcot Road, Gladstone Road, Waterfront Centre, ICAT Cardiff: Dumballs Road, The Parade, City Road Trowbridge
Bridgend College	Bridgend, Pencoed, Queens Road, Maesteg
Coleg Sir Gâr	Llanelli, Carmarthen, Llandeilo, Ammanford, Pibwrlwyd
Coleg Ceredigion	Cardigan Aberystwyth
Coleg Gwent	Usk, Newport, Cross Keys, Pontypool, Ebbw Vale
Coleg Harlech / WEA (North)	Harlech Bangor
Coleg Llandrillo	Rhos-on-Sea, Abergele, Denbigh, Rhyl Coleg Meirion-Dwyfor (Dolgellau, Pwllheli, Glynllifon)
Coleg Menai	Bangor, Llangefni, Caernarfon, Parc Menai, Holyhead
Coleg Morgannwg	Pontypridd, Rhondda, Aberdare, Nantgarw
Deeside College	Connah's Quay Northop College (WCoH) Ruthin (Coleg Llysfasi) Wrexham Training (Llysfasi)
Gower College Swansea	Tycoch (Swansea College) Belgrave Road (Gorseinon College)
Neath Port Talbot College	Neath, Afan, Queen Street, Pontardawe
Coleg Powys	Newtown, Llandrindod Wells, Brecon, Ystradgynlais
Yale College, Wrexham	Grove Park Bersham Road
Ystrad Mynach College	Ystrad Mynach, Rhymney Bargoed, Aber Valley, Blackwood



## Further Education Summary

- 179,290 distinct learners were enrolled at Further Education institutions (FEIs) in 2011/12, 3.8 per cent fewer than in 2010/11. [Table F1.1]
- 118,215 learners were in-learning at an FE institution as at the week of 1 December 2011.
- There was a 27 per cent decrease in FE learner numbers at Further Education and Higher Education (HE) institutions between December 2005 and December 2011. [Table F2.1]
- Between December 2005 and December 2011, full-time FE learner numbers grew by 6 per cent but part-time numbers fell by 36 per cent; over the same period, the number of FE learners aged 18 and under fell slightly by 2 per cent but the number aged 19 and over fell by 35 per cent.
- Between 2007/08 and 2011/12, full-time equivalent (FTE) learner numbers (excluding WBL) at FEIs declined by 1.7 per cent. [Table F1.4]
- 2,200 learners at FE institutions were enrolled on a designated HE programme (only) in 2011/12; however in total 4,940 provider learners pursued one or more qualifications at HE level within overarching FE, HE and work-based learning (WBL) programmes. [Tables F1.1 and F1.2]
- Around 18,400 learners at HE institutions were enrolled on FE level courses. [Table F1.5]
- 17,370 learners (using HESA standard registration population – see Appendix A) undertook Welsh for Adult learning activities. [Table F1.7a]
- Although the HESA registration population is used as standard for HE institution learner counts in this publication (and commonly elsewhere), the session population is often appropriate given the nature of Welsh for Adults courses and gives a learner count of 18,050. [Table F1.7b]
- In 2011/12, 55 per cent of learners at FE institutions were female, very close to the proportions in 2009/10 and 2010/11, though having previously remained at a slightly higher level of between 57 and 58 per cent from 2003/04 to 2008/09. [Table F3.1]
- 25 per cent of learners at FE institutions were full-time, 66 per cent part-time (down from 71 per cent in 2008/09) and 9 per cent were work-based learners.
- 45 per cent of learners at FE institutions were aged under 25 (the same as in the previous year and up from 41 per cent in 2008/09) and 28 per cent were under the age of 19.
- 5.5 per cent of learners at FE institutions were of a non-white ethnic origin, around the same proportion as in the previous two years (5 per cent). [Table F3.5]
- 3.4 per cent of learners at FE institutions had a disability affecting learning and 5.2 per cent had a learning difficulty (including some overlap with the previous figure). [Tables F3.6 and F3.7]
- 655,020 learning activities were undertaken by learners at FE institutions. [Tables F4.1a/b]
- The three most popular subject areas were Care/Personal Development (including Basic Skills) (31 per cent) (up from 26 per cent), Health Care/Health & Safety (8 per cent) and Information Technology (8 per cent). [Table F4.1a]
- 5.2 per cent of learning activities were undertaken bilingually and a further 0.4 per cent through the medium of Welsh. [Table F4.4]
- The most popular types of learning activities recorded (excluding the 'other' category) were Open College Network (OCN) credits (21 per cent) and Key Skills (21 per cent). [Table F4.5]
- For leavers whose destination was known, 15.6 per cent of full-time learners at FE institutions went on to higher education and 42 per cent to other forms of further learning. [Table F3.9]
- 90 per cent of learning activities at FE institutions were completed [Table F4.2b] and, of the completed learning activities with an assessable outcome, 91 per cent were attained [Table F4.2c].

Note: all the percentages above are as a proportion of the total for which data were available.

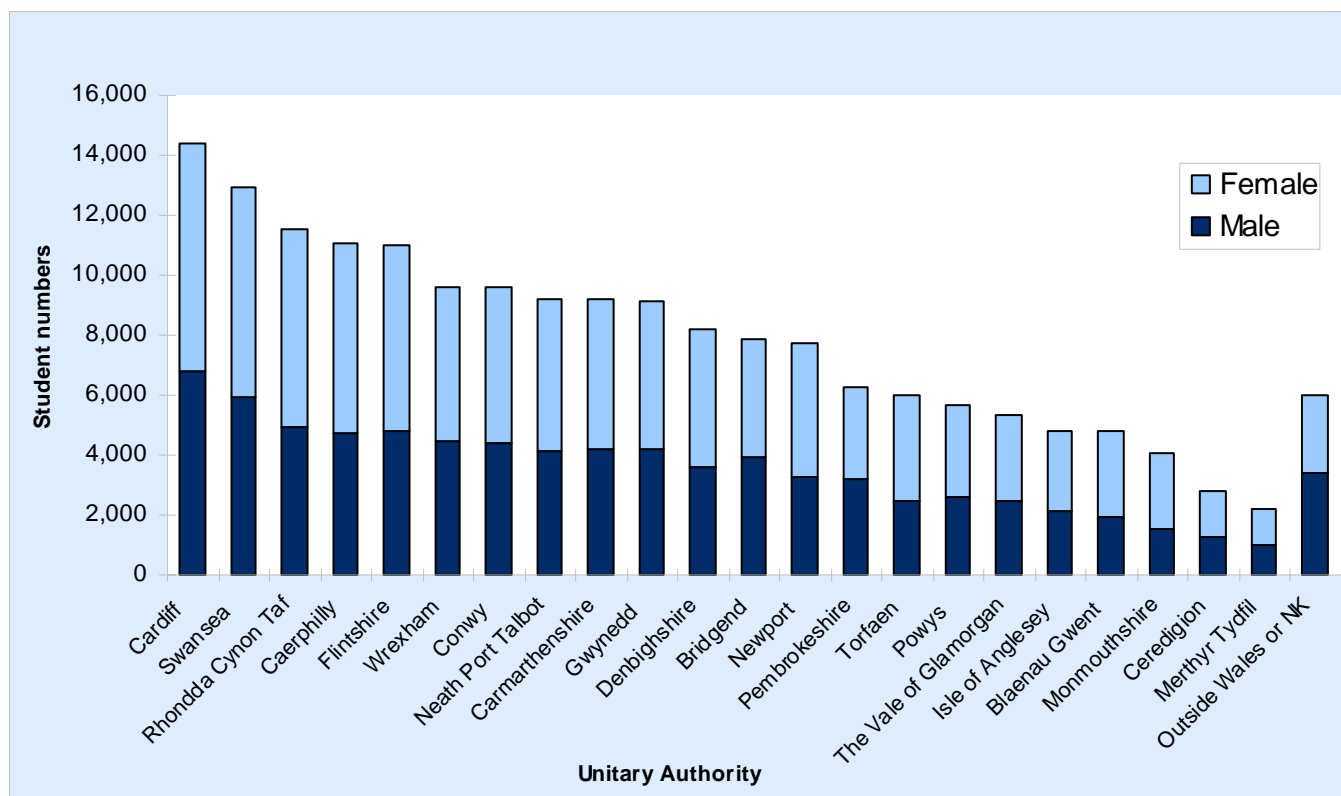
## Learners [Tables F1.1 to F3.8]

There were 179,290 learners enrolled at FE institutions in 2011/12. These learners were enrolled at 20 Further Education institutions (FEIs) in Wales, including the work-based learning component of Merthyr Tydfil College. The number of FEIs had fallen from 21 in 2010/11 following the merger of Barry College and Coleg Glan Hafren to form Cardiff and Vale College. Most of their programmes of study were at the equivalent of NQF (National Qualifications Framework) Level 3 or below but 17 institutions enrolled some learners on higher education (HE) courses / learning activities. There were also around 18,400 learners at HE institutions enrolled on FE level courses, including those linked to five Welsh for Adults Centres based at HE institutions (since 2007/08, when they took over the role from FE institutions). 16,065 learners enrolled at FE institutions were pursuing work-based learning programmes and are also included within the counts of the work-based learning section C.

If duplicate instances of learners enrolled at more than one FE institution are included then the total number of learners enrolled at FEIs was 188,935 (the 'provider-learner' count) as compared with the count of unique learners in the sector which was 179,290.

Although 188,935 provider learners were enrolled at FE institutions, not all the learning was delivered by staff at FE institutions. 20,355 were taught by third parties (such as Local Education Authorities delivering community learning); conversely 4,990 learners were enrolled with HE institutions but undertook learning at FE institutions. Table F1.6 provides information on these third party arrangements. Those learners appearing within the FE institution figures who are taught by local authority community learning staff are identified in the appropriate tables of section B (Local Authority Community learning in Wales) in which they also appear.

**Figure F1: Learners Enrolled at FE Institutions by Local Authority of Domicile 2011/12**



Excluding the contribution a University FEI subsidiary made to a WBL consortium, the changes in head count learner numbers from 2010/11 to 2011/12 ranged from a 26 per cent increase (at Coleg Harlech/WEA North) to a 13 per cent decrease (at Gower College Swansea).

## Learning Activities [Tables F4.1a to F4.5]

Overall 655,020 learning activities (equivalent to courses / qualification aims) were followed by learners enrolled at FE institutions in 2011/12. The vast majority of these learning activities were at a level equivalent to NQF level 1, 2 or 3.

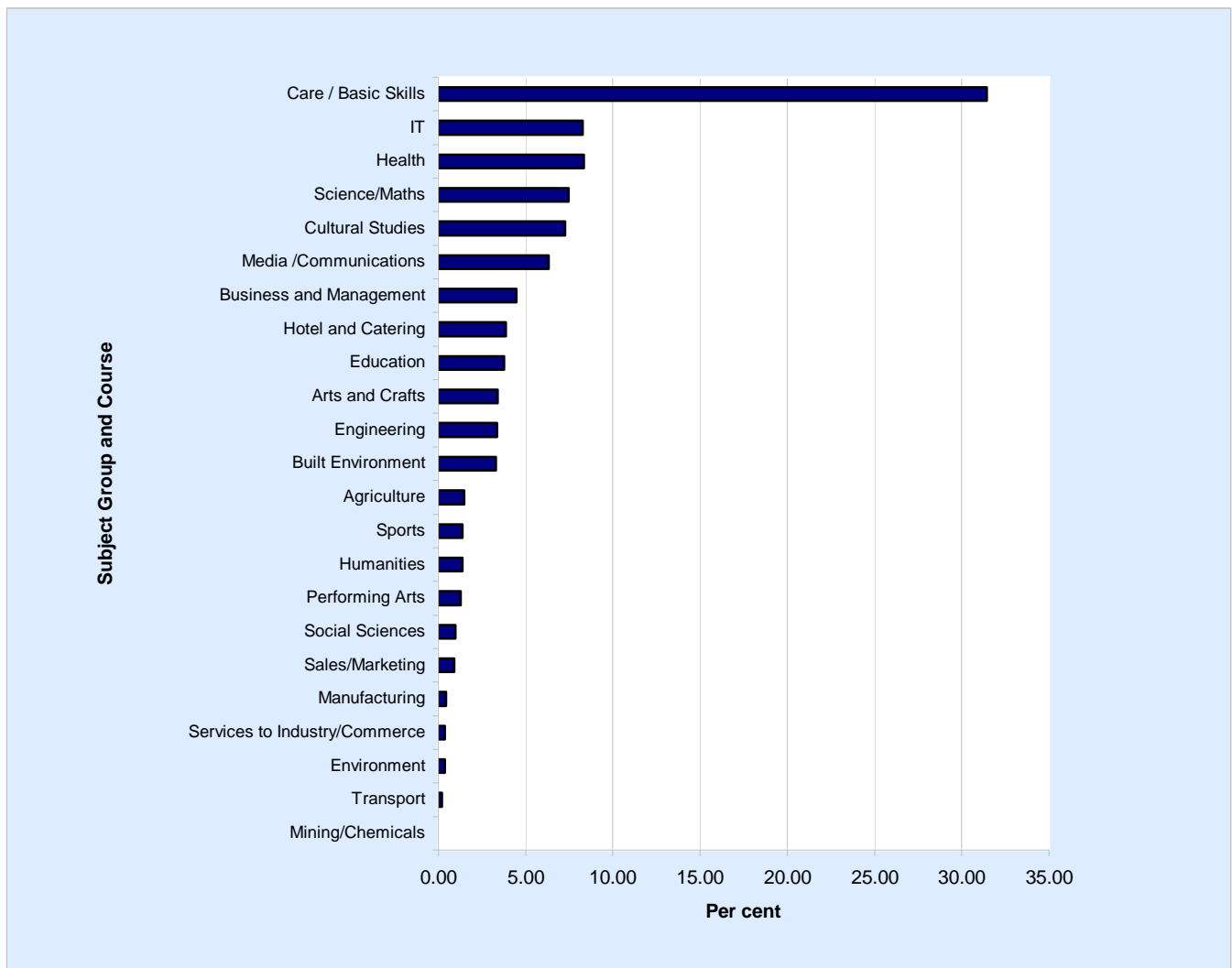
0.4 per cent of the learning activities were delivered in the medium of Welsh and a further 5.2 per cent bilingually but all the remainder were delivered in the medium of English.

The most popular subjects being undertaken by learners at FE institutions were (with their proportion of the total excluding unspecified subjects):

- Care/Personal Development (including Basic Skills) (31 per cent) (24 per cent in 2005/06)
- Health/Care/Medicine/Health & Safety (8 per cent) (9 per cent in 2005/06)
- Information Technology (8 per cent) (18 per cent in 2005/06)
- Science/Mathematics (7 per cent) (3 per cent in 2005/06)
- Cultural Studies/Languages/Literature (7 per cent) (8 per cent in 2005/06)
- Media/Communication/Publishing (6 per cent) (7 per cent in 2005/06)

17,370 learners at FE and HE institutions undertook 29,620 Welsh for Adult course enrolments in 2011/12.

**Figure F2: Subject of Study 2011/12**



Aside from the 'other' category (which amalgamates a number of different types of qualification, including City & Guild certificates, ECDL and CLAIT), the most prevalent types of qualification undertaken were:

- Open College Network (OCN) credits (21 per cent)
- QCF and NVQs (21 per cent)
- Key Skills and Essential Skills Wales (21 per cent)
- GCE A/ AS levels or GCSEs (5 per cent)

There was some variation in qualification type by learner age group with Key/Essential Skills, A/AS levels and GCSEs more popular with learners aged 18 and under than with the older cohort of learners.

### Completion Rates and Attainment Rates [Tables F4.2b and F4.2c]

Of the learning activities which ended in 2011/12 (i.e. those which were either completed or withdrawn from but which were not continuing at the end of the year) 90 per cent were completed. This indicates that the courses were completed, not that there were necessarily attained qualifications. Of those completed learning activities which included assessable awards, 91 per cent were successfully attained. Tables F4.2b and F4.2c split these figures by sector subject area (see also F4.2a).

### Awards [Tables F4.6a and F4.2b]

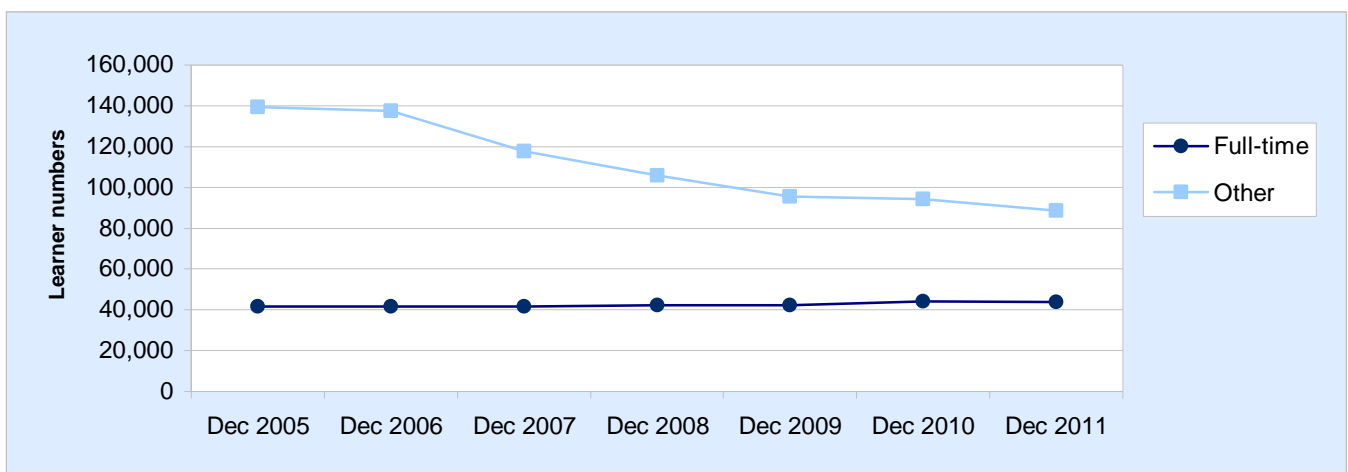
402,580 individual awards were successfully attained by 145,415 learners in 2011/12. Tables 4.6a and 4.6b provide a breakdown by qualification type and learner age band.

### Trends in Learning

Table F2.1 and Figure F3 on trends in learner numbers continue a series originally published by the Welsh Office, then the Welsh Funding Councils, ELWa and now the Welsh Government. From 2003/04 onwards, the source has been the Welsh Government’s Lifelong Learning Wales Record (LLWR). In contrast to the population definition usually used in this publication, the count is of all FE (and WBL at FEI) students, including those at higher education institutions. The figures are taken as at the week of 1 December and, for 2011/12, can be derived from the December counts of Table F1.5.

These figures are on a provider-learner basis to enable comparison with years prior to 2003/04 because unique learner identifiers were not available in the pre-LLWR years. As Table F2.1 and Figure F3 include FE learners at both FE institutions and HE institutions, Welsh for Adults learners are counted in all years of the time series.

**Figure F3: FE Learners Enrolled - December 2005 to December 2011**



Between December 2005 and December 2011 there was a decrease in the total FE learner numbers at FE and HE institutions of 27 per cent. Previous volumes have noted the substantial growth in FE learner numbers between 1992/93 and 2002/03 (then staying fairly level but peaking in 2005/06) which was attributable to an increase in part-time learners. This pattern subsequently changed with a decline in part-time learner numbers since 2005/06. Between December 2005 and December 2011 there was an increase in full-time FE learner numbers of 6 per cent but a net decline of 36 per cent in other (mainly part-time) learner numbers over the same period.

**Table F1.1 Numbers of learners (FE, HE and WBL) enrolled at FE institutions by programme 2011/12 (a-r)**

Institution	<i>Numbers</i>							
	Learners on FE programmes		Learners on HE programmes		Learners in WBL provision		Total	
	All	Enrolled 1 Dec	All	Enrolled 1 Dec	All	Enrolled 1 Dec	All	Enrolled 1 Dec
Bridgend College	8,945	5,830	25	20	280	250	9,245	6,100
Cardiff and Vale College	14,720	11,425	355	325	1,990	1,525	17,065	13,275
Coleg Ceredigion	2,325	830	0	0	95	85	2,415	915
Coleg Gwent	24,185	16,705	0	0	475	420	24,665	17,125
Coleg Harlech/WEA (North)	6,080	1,985	0	0	0	0	6,080	1,985
Coleg Llandrillo	17,430	11,190	1,015	980	1,395	775	19,840	12,945
Coleg Menai	6,220	3,560	0	0	1,660	1,185	7,880	4,745
Coleg Morgannwg	8,025	5,710	*	0	305	170	8,330	5,880
Coleg Powys	4,575	2,400	0	0	190	165	4,765	2,565
Coleg Sir Gar	5,905	5,095	490	475	845	590	7,240	6,160
Deeside College	13,020	8,320	85	45	3,445	1,960	16,550	10,325
Gower College Swansea	12,510	9,125	90	90	1,375	860	13,975	10,080
Merthyr Tydfil College WBL	0	0	0	0	430	205	430	205
Neath Port Talbot College	9,010	7,075	55	50	870	505	9,935	7,625
Pembrokeshire College	6,375	4,030	5	*	1,295	600	7,680	4,630
Saint David's Catholic College	1,445	1,400	0	0	0	0	1,445	1,400
WEA South	8,245	2,450	0	0	0	0	8,245	2,450
YMCA	5,020	780	0	0	0	0	5,020	780
Yale College Wrexham	9,930	6,010	145	135	1,165	735	11,240	6,880
Ystrad Mynach College	6,520	4,965	0	0	365	305	6,885	5,270
Total (including any multiple-counting between providers)	170,485	108,880	2,265	2,120	16,185	10,335	188,935	121,335
Total unique learners	161,020	105,815	2,200	2,080	16,065	10,320	179,290	118,215

Source: LLWR (Lifelong Learning Wales Record) post-16 database

- (a) Individual row counts are based on providers' own learner identifiers and their total includes some multiple-counting between providers.
- (b) The total unique learners row removes multiple-counting between providers by counting unique learner identifiers (ULIs).
- (c) 'Enrolled 1 Dec' is the population during the week of 1 December 2011; 'All' refers to the complete academic year.
- (d) Includes full-time, part-time and work-based learners.
- (e) A learner pursuing any work-based learning provision is designated as WBL.
- (f) Includes WBL subsidiaries of FE institutions.
- (g) A learner pursuing an HE learning programme but not also pursuing a WBL programme is designated as HE.
- (h) For the purpose of this table, HE refers only to programmes designated as higher education in their entirety.
- (i) Higher education excludes learners enrolled at HE institutions and franchised in to FE institutions.
- (j) Includes local authority community learning where there is a formal enrolment with an FE institution.
- (k) Merthyr Tydfil College merged into the University of Glamorgan in April 2006. Its WBL data appear here but its FE data are excluded from this table, appearing instead under the University of Glamorgan (e.g. in Table F1.5).
- (l) The Welsh College of Horticulture merged into Deeside College in August 2009.
- (m) Coleg Meirion Dwyfor merged into Coleg Llandrillo in April 2010.
- (n) Coleg Lllyfasi merged into Deeside College in August 2010.
- (o) Swansea College and Gorseinon College merged to form Gower College Swansea in August 2010.
- (p) Barry College and Coleg Glan Hafren merged to form Cardiff and Vale College in August 2011.
- (q) Where a provider is part of a WBL consortium, the assignment of learners on WBL programmes to an FE provider or to another training provider has been made according to the status of the consortium member. This is the same approach that was used in the release SDR 48/2013 (March 2013) but differs from that of SB 73/2013 (R) which assigns all provision led by (FEI-based or other) WBL consortia to 'other training providers'.
- (r) Numbers greater than 0 and less than 5 have been replaced by \*. Other figures are rounded to the nearest 5 and there may be slight discrepancies between the sums of constituent items and the independently rounded totals.

**Table F1.2 Numbers of learners (FE, HE and WBL) enrolled at FE institutions by level 2011/12 (a-n)**

Institution	<i>Numbers</i>					
	Learners with FE level highest qualification pursued		Learners with HE level highest qualification pursued		Total	
	All	Enrolled 1 Dec	All	Enrolled 1 Dec	All	Enrolled 1 Dec
Bridgend College	9,175	6,035	70	65	9,245	6,100
Cardiff and Vale College	16,440	12,760	625	515	17,065	13,275
Coleg Ceredigion	2,380	885	35	30	2,415	915
Coleg Gwent	24,545	17,040	120	85	24,665	17,125
Coleg Harlech/WEA (North)	5,985	1,920	95	65	6,080	1,985
Coleg Llandrillo	18,420	11,715	1,420	1,230	19,840	12,945
Coleg Menai	7,735	4,645	140	100	7,880	4,745
Coleg Morgannwg	8,270	5,825	60	55	8,330	5,880
Coleg Powys	4,710	2,520	55	45	4,765	2,565
Coleg Sir Gar	6,680	5,635	560	525	7,240	6,160
Deeside College	15,940	9,855	610	470	16,550	10,325
Gower College Swansea	13,605	9,775	375	305	13,975	10,080
Merthyr Tydfil College WBL	430	205	0	0	430	205
Neath Port Talbot College	9,785	7,520	150	105	9,935	7,625
Pembrokeshire College	7,520	4,535	160	95	7,680	4,630
Saint David's Catholic College	1,390	1,345	55	55	1,445	1,400
WEA South	8,245	2,450	0	0	8,245	2,450
YMCA	5,020	780	0	0	5,020	780
Yale College Wrexham	10,910	6,630	330	250	11,240	6,880
Ystrad Mynach College	6,810	5,200	75	70	6,885	5,270
Total (including any multiple-counting between providers)	183,995	117,275	4,940	4,065	188,935	121,335
Total unique learners					179,290	118,215

Source: LLWR (Lifelong Learning Wales Record) post-16 database

- (a) Counts are based on providers' own learner identifiers and therefore include some multiple-counting between providers.
- (b) 'Enrolled 1 Dec' is the population during the week of 1 December 2011; 'All' refers to the complete academic year.
- (c) Includes full-time, part-time and work-based learners.
- (d) Includes WBL provision at FE institutions on a consortium member basis.
- (e) In contrast to table F1.1, this table allocates learners to the HE columns if any of their learning activities is at HE level.
- (f) The allocation to FE level or HE level columns is made independently of the FE, HE or WBL overarching programme.
- (g) Includes local authority community learning where there is a formal enrolment with an FE institution.
- (h) Merthyr Tydfil College merged into the University of Glamorgan in April 2006. Its WBL data appear here but its FE data are excluded from this table, appearing instead under the University of Glamorgan (e.g. in Table F1.5).
- (i) The Welsh College of Horticulture merged into Deeside College in August 2009.
- (j) Coleg Meirion Dwyfor merged into Coleg Llandrillo in April 2010.
- (k) Coleg Llysfasi merged into Deeside College in August 2010.
- (l) Swansea College and Gorseinon College merged to form Gower College Swansea in August 2010.
- (m) Barry College and Coleg Glan Hafren merged to form Cardiff and Vale College in August 2011.
- (n) Numbers greater than 0 and less than 5 have been replaced by \*. Other figures are rounded to the nearest 5 and there may be slight discrepancies between the sums of constituent items and the independently rounded totals.

**Table F1.3a Numbers of full-time learners enrolled at FE institutions 2011/12 (a-i)**

*Numbers*

Institution	Learners with FE level highest qualification pursued		Learners with HE level highest qualification pursued		Total		
	All	Enrolled 1 Dec	All	Enrolled 1 Dec	All	Enrolled 1 Dec	
	Bridgend College	2,400	2,260	25	25	2,420	2,280
Cardiff and Vale College	4,680	4,375	35	30	4,715	4,410	
Coleg Ceredigion	640	595	0	0	640	595	
Coleg Gwent	6,625	6,210	0	0	6,625	6,210	
Coleg Harlech/WEA (North)	35	35	*	*	40	40	
Coleg Llandrillo	4,960	4,555	250	185	5,210	4,740	
Coleg Menai	1,560	1,500	0	0	1,560	1,500	
Coleg Morgannwg	2,465	2,270	0	0	2,465	2,270	
Coleg Powys	1,115	1,050	0	0	1,115	1,050	
Coleg Sir Gar	2,535	2,440	20	15	2,555	2,455	
Deeside College	3,610	3,095	0	0	3,610	3,095	
Gower College Swansea	3,935	3,605	5	*	3,940	3,605	
Neath Port Talbot College	3,225	3,005	65	60	3,290	3,060	
Pembrokeshire College	1,545	1,465	0	0	1,545	1,465	
Saint David's Catholic College	1,320	1,280	55	55	1,375	1,335	
WEA South	30	30	0	0	30	30	
Yale College Wrexham	2,900	2,735	0	0	2,900	2,735	
Ystrad Mynach College	1,865	1,800	*	*	1,870	1,800	
Total (including any multiple-counting between providers)	45,450	42,305	455	375	45,905	42,680	
Total unique learners						45,470	

Source: LLWR (Lifelong Learning Wales Record) post-16 database

- (a) Counts are based on providers' own learner identifiers and therefore include some multiple-counting between providers.
- (b) 'Enrolled 1 Dec' is the population during the week of 1 December 2011; 'All' refers to the complete academic year.
- (c) A full-time learner is one whose total guided contact hours across all their learning activities amounts to at least 450 hours.
- (d) Excludes learners pursuing any work-based learning programme.
- (e) Excludes learners enrolled at HE institutions and franchised in to FE institutions.
- (f) Includes local authority community learning where there is a formal enrolment with an FE institution.
- (g) In contrast to table F1.1, this table allocates learners to the HE columns if any of their learning activities is at HE level.
- (h) The allocation to FE level or HE level columns is made independently of the overarching programme.
- (i) Numbers greater than 0 and less than 5 have been replaced by \*. Other figures are rounded to the nearest 5 and there may be slight discrepancies between the sums of constituent items and the independently rounded totals.

**Table F1.3b Numbers of part-time learners enrolled at FE institutions 2011/12 (a-i)**

Numbers

Institution	Learners with FE level highest qualification pursued		Learners with HE level highest qualification pursued		Total		
	All	Enrolled 1 Dec	All	Enrolled 1 Dec	All	Enrolled 1 Dec	
	Bridgend College	6,500	3,530	45	40	6,545	3,570
Cardiff and Vale College	9,860	6,915	500	430	10,360	7,340	
Coleg Ceredigion	1,665	220	15	15	1,685	235	
Coleg Gwent	17,440	10,410	120	85	17,560	10,495	
Coleg Harlech/WEA (North)	5,950	1,880	95	65	6,040	1,945	
Coleg Llandrillo	12,115	6,415	1,125	1,020	13,235	7,430	
Coleg Menai	4,535	1,975	125	85	4,660	2,060	
Coleg Morgannwg	5,500	3,385	60	55	5,560	3,435	
Coleg Powys	3,405	1,305	55	45	3,460	1,350	
Coleg Sir Gar	3,325	2,615	515	495	3,840	3,115	
Deeside College	9,120	4,975	380	295	9,500	5,270	
Gower College Swansea	8,365	5,375	295	235	8,660	5,610	
Neath Port Talbot College	5,715	4,030	60	30	5,770	4,060	
Pembrokeshire College	4,685	2,470	150	95	4,835	2,565	
Saint David's Catholic College	70	65	*	*	70	65	
WEA South	8,215	2,420	0	0	8,215	2,420	
YMCA	5,020	780	0	0	5,020	780	
Yale College Wrexham	6,880	3,180	290	230	7,170	3,410	
Ystrad Mynach College	4,580	3,100	75	65	4,650	3,165	
Total (including any multiple-counting between providers)	122,940	65,040	3,905	3,285	126,845	68,325	
Total unique learners						117,755	

Source: LLWR (Lifelong Learning Wales Record) post-16 database

- (a) Counts are based on providers' own learner identifiers and therefore include some multiple-counting between providers.
- (b) 'Enrolled 1 Dec' is the population during the week of 1 December 2011; 'All' refers to the complete academic year.
- (c) A part-time learner is one whose total guided contact hours across all their learning activities amounts to less than 450 hours.
- (d) Excludes learners pursuing any work-based learning programme.
- (e) Excludes learners enrolled at HE institutions and franchised in to FE institutions.
- (f) Includes local authority community learning where there is a formal enrolment with an FE institution.
- (g) In contrast to table F1.1, this table allocates learners to the HE columns if any of their learning activities is at HE level.
- (h) The allocation to FE level or HE level columns is made independently of the overarching programme.
- (i) Numbers greater than 0 and less than 5 have been replaced by \*. Other figures are rounded to the nearest 5 and there may be slight discrepancies between the sums of constituent items and the independently rounded totals.



**Table F1.3c Numbers of learners in work-based learning provision at FE institutions 2011/12 (a-i)**

Institution	<i>Numbers</i>						
	Learners with FE level highest qualification pursued		Learners with HE level highest qualification pursued		Total		
	All	Enrolled 1 Dec	All	Enrolled 1 Dec	All	Enrolled 1 Dec	
Bridgend College	280	250	0	0	280	250	
Cardiff and Vale College	1,895	1,475	90	55	1,990	1,525	
Coleg Ceredigion	75	70	20	15	95	85	
Coleg Gwent	475	420	0	0	475	420	
Coleg Llandrillo	1,350	745	45	30	1,395	775	
Coleg Menai	1,645	1,170	15	15	1,660	1,185	
Coleg Morgannwg	305	170	0	0	305	170	
Coleg Powys	190	165	0	0	190	165	
Coleg Sir Gar	820	580	25	15	845	590	
Deeside College	3,210	1,790	235	175	3,445	1,960	
Gower College Swansea	1,305	800	70	65	1,375	860	
Merthyr Tydfil College WBL	430	205	0	0	430	205	
Neath Port Talbot College	845	485	25	15	870	505	
Pembrokeshire College	1,290	595	10	*	1,295	600	
Yale College Wrexham	1,125	715	40	20	1,165	735	
Ystrad Mynach College	365	305	*	*	365	305	
	0	0	0	0	0	0	
Total (including any multiple-counting between providers)	15,605	9,930	580	405	16,185	10,335	
Total unique learners						16,065	

Source: LLWR (Lifelong Learning Wales Record) post-16 database

- (a) Counts are based on providers' own learner identifiers and therefore include some multiple-counting between providers.
- (b) 'Enrolled 1 Dec' is the population during the week of 1 December 2011; 'All' refers to the complete academic year.
- (c) A learner pursuing any WBL provision is designated as work-based learning.
- (d) Some learners included above may also be pursuing non-WBL programmes at some point in the year.
- (e) Includes WBL provision at FE institutions on a consortium member basis.
- (f) In contrast to table F1.1, this table allocates learners to the HE columns if any of their learning activities is at HE level.
- (g) The allocation to FE level or HE level columns is made independently of the overarching programme.
- (h) Where a provider is part of a WBL consortium, the assignment of learners on WBL programmes to an FE provider or to another training provider has been made according to the status of the consortium member. This is the same approach that was used in the release SDR 48/2013 (March 2013) but differs from that of SB 73/2013 (R) which assigns all provision led by (FEI-based or other) WBL consortia to 'other training providers'.
- (i) Numbers greater than 0 and less than 5 have been replaced by \*. Other figures are rounded to the nearest 5 and there may be slight discrepancies between the sums of constituent items and the independently rounded totals.

**Table F1.4 Student load FTEs for FE and HE learners (excluding WBL) at FE institutions 2007/08 to 2011/12 (a-l)**

Institution	<i>Numbers</i>				
	2007/08	2008/09	2009/10	2010/11	2011/12
Barry College	2,590	2,540	2,195	2,270	.
Bridgend College	3,085	3,055	2,605	2,755	3,050
Cardiff and Vale College	.	.	.	.	7,305
Coleg Ceredigion	840	765	725	745	710
Coleg Glan Hafren	4,390	3,810	4,275	4,930	.
Coleg Gwent	8,810	8,730	8,385	8,335	8,420
Coleg Harlech/WEA (North)	385	405	330	400	440
Coleg Llandrillo	4,735	5,185	5,925	7,240	6,925
Coleg Llysfasi (f)	465	410	360	.	.
Coleg Meirion Dwyfor (e)	1,185	1,235	1,075	.	.
Coleg Menai	2,380	2,250	2,200	2,130	2,065
Coleg Morgannwg	3,315	3,265	3,295	3,230	3,150
Coleg Powys	1,340	1,285	1,255	1,280	1,365
Coleg Sir Gar	3,595	3,580	3,655	3,340	3,210
Deeside College	2,530	2,530	3,005	4,120	4,210
Gorseinon College (g)	2,375	2,525	2,440	.	.
Gower College Swansea (g)	.	.	.	5,500	5,000
Neath Port Talbot College	3,965	3,975	4,185	4,170	4,040
Pembrokeshire College	2,125	1,945	1,910	1,975	1,990
St David's Catholic College	1,240	1,310	1,480	1,515	1,400
Swansea College (g)	3,500	3,380	2,870	.	.
WEA South	505	335	365	360	385
Welsh College of Horticulture (d)	545	510	.	.	.
Yale College Wrexham	4,210	4,260	3,905	3,770	3,615
YMCA	125	165	180	205	235
Ystrad Mynach College	2,950	2,635	2,695	2,595	2,645
<b>Total</b>	<b>61,190</b>	<b>60,085</b>	<b>59,315</b>	<b>60,860</b>	<b>60,170</b>

Source: LLWR (Lifelong Learning Wales Record) post-16 database

- (a) FTE=Full Time Equivalent.
- (b) The student load methodology has been designed purely for the purpose of this volume and may not have wider applicability.
- (c) Merthyr Tydfil College has been excluded, following its merger into the University of Glamorgan in April 2006.
- (d) The Welsh College of Horticulture merged into Deeside College in August 2009.
- (e) Coleg Meirion Dwyfor merged into Coleg Llandrillo in April 2010.
- (f) Coleg Llysfasi merged into Deeside College in August 2010.
- (g) Swansea College and Gorseinon College merged to form Gower College Swansea in August 2010.
- (h) Barry College and Coleg Glan Hafren merged to form Cardiff and Vale College in August 2011.
- (i) Each learner's student load has been derived by dividing his or her guided contact hours for the year by the mean for a full-time learner, with the result capped to 1 FTE at most.
- (j) The calculation includes full-time and part-time learners at FEIs but excludes WBL learners.
- (k) The FTE of a full-time learner has been set to 1.
- (l) Numbers greater than 0 and less than 5 have been replaced by \*. Other figures are rounded to the nearest 5 and there may be slight discrepancies between the sums of constituent items and the independently rounded totals.

**Table F1.5 Numbers of FE and WBL learners enrolled at FE and HE institutions 2011/12 (a-h)**

FE Institutions	Numbers							
	Full-time learners		Part-time learners		Work-based learners		Total	
	All	Enrolled 1 Dec	All	Enrolled 1 Dec	All	Enrolled 1 Dec	All	Enrolled 1 Dec
Bridgend College	2,400	2,260	6,545	3,570	280	250	9,225	6,075
Cardiff and Vale College	4,690	4,380	10,030	7,045	1,990	1,525	16,705	12,955
Coleg Ceredigion	640	595	1,685	235	95	85	2,415	915
Coleg Gwent	6,625	6,210	17,560	10,495	475	420	24,665	17,125
Coleg Harlech/WEA (North)	40	40	6,040	1,945	0	0	6,080	1,985
Coleg Llandrillo	5,075	4,615	12,350	6,575	1,395	775	18,825	11,965
Coleg Menai	1,560	1,500	4,660	2,060	1,660	1,185	7,880	4,745
Coleg Morgannwg	2,465	2,270	5,560	3,435	305	170	8,330	5,880
Coleg Powys	1,115	1,050	3,460	1,350	190	165	4,765	2,565
Coleg Sir Gar	2,540	2,445	3,365	2,650	845	590	6,755	5,690
Deeside College	3,610	3,095	9,410	5,230	3,445	1,960	16,465	10,285
Gower College Swansea	3,940	3,605	8,570	5,520	1,375	860	13,885	9,990
Merthyr Tydfil College WBL	0	0	0	0	430	205	430	205
Neath Port Talbot College	3,240	3,010	5,770	4,060	870	505	9,880	7,575
Pembrokeshire College	1,545	1,465	4,830	2,565	1,295	600	7,675	4,625
Saint David's Catholic College	1,375	1,335	70	65	0	0	1,445	1,400
WEA South	30	30	8,215	2,420	0	0	8,245	2,450
YMCA	0	0	5,020	780	0	0	5,020	780
Yale College Wrexham	2,900	2,735	7,030	3,275	1,165	735	11,095	6,745
Ystrad Mynach College	1,870	1,800	4,650	3,165	365	305	6,885	5,270
Total (including any multiple-counting between providers)	45,655	42,445	124,825	66,440	16,185	10,335	186,670	119,215
<b>HE Institutions</b>								
University of Glamorgan	1,215	1,145	3,445	2,825	.	.	4,665	3,975
Aberystwyth University	0	0	2,360	1,575	.	.	2,360	1,575
Bangor University	0	0	5,710	3,360	.	.	5,710	3,360
Cardiff University	0	0	2,005	1,385	.	.	2,005	1,385
Swansea University	0	0	3,270	2,705	.	.	3,270	2,705
Cardiff Metropolitan University	100	95	0	0	.	.	100	95
The University of Wales, Newport	150	145	15	10	.	.	170	155
Swansea Metropolitan University	80	75	55	40	.	.	130	115
The University of Wales, Trinity Saint David	5	5	0	0	.	.	5	5
Total	1,550	1,470	16,860	11,905	.	.	18,415	13,370

Sources: LLWR (Lifelong Learning Wales Record) post-16 database  
2011/12 HESA Student Record - learner basis:  
registration population (full year) & December population

- (a) Counts are based on providers' own learner identifiers and therefore include some multiple-counting between providers.
- (b) 'Enrolled 1 Dec' is the population during the week of 1 December 2011; 'All' refers to the complete academic year.
- (c) This table excludes learning programmes designated as higher education in their entirety.
- (d) A learner pursuing any WBL programme is designated as work-based learning.
- (e) Includes local authority community learning where there is a formal enrolment with an FE institution.
- (f) Following its merger in 2006 into the University of Glamorgan, the FE component of Merthyr Tydfil College has been included in the figures (from HESA) for the HE institution. However the WBL programmes of Merthyr Tydfil College (from LLWR) are not present in the HEI figures but are included in the FE Institutions block.
- (g) The full year HESA population is based on new registrations within the academic year (and anniversaries of registrations for multi-year courses) whereas the December population is on an in-learning basis (see Appendix A). It is unusual but possible occasionally for the December population to exceed the full year registration population.
- (h) Numbers greater than 0 and less than 5 have been replaced by \*. Other figures are rounded to the nearest 5 and there may be slight discrepancies between the sums of constituent items and the independently rounded totals.

**Table F1.6 Numbers of learners (FE, HE and WBL) taught at FE institutions 2011/12 (a-h)**

Institution	<i>Numbers</i>			
	FE, HE and WBL learners	Third Party	Franchised in from HE institutions	Learners Taught
Bridgend College	9,245	1,510	1,055	8,790
Cardiff and Vale College	17,065	4,015	525	13,575
Coleg Ceredigion	2,415	0	25	2,440
Coleg Gwent	24,665	9,030	455	16,090
Coleg Harlech/WEA (North)	6,080	0	0	6,080
Coleg Llandrillo	19,840	0	250	20,090
Coleg Menai	7,880	0	260	8,140
Coleg Morgannwg	8,330	1,695	325	6,955
Coleg Powys	4,765	520	90	4,330
Coleg Sir Gar	7,240	815	610	7,040
Deeside College	16,550	140	150	16,560
Gower College Swansea	13,975	620	160	13,520
Merthyr Tydfil College WBL	430	0	0	430
Neath Port Talbot College	9,935	1,350	410	8,995
Pembrokeshire College	7,680	380	390	7,685
Saint David's Catholic College	1,445	0	0	1,445
WEA South	8,245	0	0	8,245
YMCA	5,020	0	15	5,035
Yale College Wrexham	11,240	0	95	11,335
Ystrad Mynach College	6,885	285	190	6,785
Total (including any multiple-counting between providers)	188,935	20,355	4,990	173,570

Source: LLWR (Lifelong Learning Wales Record) post-16 database  
2011/12 HESA Student Record - registration population - learner basis

- (a) Counts are based on providers' own learner identifiers and therefore include some multiple-counting between providers.
- (b) Includes full-time, part-time and work-based learners.
- (c) Includes WBL provision at FE institutions on a consortium member basis.
- (d) Includes local authority community learning where there is a formal enrolment with an FE institution.
- (e) Third party figures indicate where the learning delivery is by a body other than that at which the learner is enrolled.
- (f) Third party figures exclude arrangements between an FE institution and its WBL subsidiary.
- (g) The main component of third party provision is learning contracted in to local authority community learning providers - see table L1.1.
- (h) Numbers greater than 0 and less than 5 have been replaced by \*. Other figures are rounded to the nearest 5 and there may be slight discrepancies between the sums of constituent items and the independently rounded totals.

**Table F1.7a Numbers of Welsh for Adults learners and enrolments by learning centre (standard registration population) 2011/12 (e)(g)**

Institutions serving as Welsh for Adults Centres (a)	Numbers	
	Learners (d)	Enrolments (d)(f)
University of Glamorgan	1,535	1,595
Aberystwyth University	2,360	3,900
Bangor University	5,710	12,290
Cardiff University	2,005	2,255
Swansea University	3,270	5,015
Coleg Gwent (b)(c)	2,490	4,565
<b>Total at FE and HE institutions</b>	<b>17,370</b>	<b>29,620</b>

Source: LLWR (Lifelong Learning Wales Record) post-16 database  
2011/12 HESA Student Record

- (a) The Welsh for Adults Centres comprise five HE institutions and one FE institution (Coleg Gwent).  
 (b) The learner count for Coleg Gwent is based on unique learner identifiers and its enrolment count is of learning activities.  
 (c) The type of learning programme (LP17) is used to separate Welsh for Adults programmes from other Coleg Gwent data.  
 (d) Learners and enrolments at the remaining five centres are derived from the HESA Student Record using the standard registration population - see Appendix A.  
 (e) Students on Welsh for Adults courses are included regardless of the age of the learner.  
 (f) The same learner may be enrolled on more than one course enrolment / learning activity.  
 (g) Numbers greater than 0 and less than 5 have been replaced by \*. Other figures are rounded to the nearest 5 and there may be slight discrepancies between the sums of constituent items and the independently rounded totals.

**Table F1.7b Numbers of Welsh for Adults learners and enrolments by learning centre (session population) 2011/12 (e)(g)**

Institutions serving as Welsh for Adults Centres (a)	Numbers	
	Learners (d)	Enrolments (d)(f)
University of Glamorgan	1,620	2,110
Aberystwyth University	2,450	4,050
Bangor University	5,785	12,425
Cardiff University	2,340	2,690
Swansea University	3,360	5,350
Coleg Gwent (b)(c)	2,490	4,565
<b>Total at FE and HE institutions</b>	<b>18,050</b>	<b>31,190</b>

Source: LLWR (Lifelong Learning Wales Record) post-16 database  
2011/12 HESA Student Record

- (a) The Welsh for Adults Centres comprise five HE institutions and one FE institution (Coleg Gwent).  
 (b) The learner count for Coleg Gwent is based on unique learner identifiers and its enrolment count is of learning activities.  
 (c) The type of learning programme (LP17) is used to separate Welsh for Adults programmes from other Coleg Gwent data.  
 (d) Learners and enrolments at the remaining five centres are derived from the HESA Student Record using the session population, for the purpose of this table - see Appendix A.  
 (e) Students on Welsh for Adults courses are included regardless of the age of the learner.  
 (f) The same learner may be enrolled on more than one course enrolment / learning activity.  
 (g) Numbers greater than 0 and less than 5 have been replaced by \*. Other figures are rounded to the nearest 5 and there may be slight discrepancies between the sums of constituent items and the independently rounded totals.

**Table F2.1: Trends in further education student numbers in December (at FE institutions and HE institutions) by mode of attendance and age 2005/06 to 2011/12 (a-h)**

	<i>Numbers</i>						
	Dec-2005	Dec-2006	Dec-2007	Dec-2008	Dec-2009	Dec-2010	Dec-2011
<b>Full-time:</b>							
18 & under	30,645	30,945	31,490	32,110	31,395	32,025	31,500
19 & over	10,860	10,680	10,215	10,190	10,790	12,255	12,415
All Ages	41,505	41,630	41,705	42,300	42,180	44,280	43,910
<b>Part-time &amp; WBL:</b>							
18 & under	15,060	15,225	13,240	13,755	14,030	14,490	13,205
19 & over	124,415	122,240	104,500	92,160	81,555	79,840	75,470
All Ages	139,475	137,460	117,735	105,915	95,585	94,330	88,675
<b>All learners:</b>							
18 & under	45,705	46,170	44,730	45,865	45,420	46,520	44,705
19 & over	135,275	132,920	114,710	102,350	92,345	92,095	87,885
All Ages	180,980	179,090	159,440	148,215	137,770	138,615	132,585

Sources: HEIs: HESA Student Record.

FEIs: LLWR (Lifelong Learning Wales Record) post-16 database

- (a) Includes further education and higher education institutions in Wales.
- (b) Merthyr Tydfil College is included in all years (as part of FE at FEIs up to 2005/06 and as part of FE at HEIs from 2006/07).
- (c) Restricted to FE learners enrolled in early December of academic year. Includes learners enrolled at FE institutions who are in work-based learning provision but excludes those on HE programmes.
- (d) Counts are based on providers' own learner identifiers and therefore include some multiple-counting between providers.
- (e) 'All Ages' totals and the 19 & over row include instances of unknown age.
- (f) Age is as at 31 August of academic year.
- (g) Includes local authority community learning where there is a formal enrolment with an FE institution.
- (h) Numbers greater than 0 and less than 5 have been replaced by \*. Other figures are rounded to the nearest 5 and there may be slight discrepancies between the sums of constituent items and the independently rounded totals.

**Table F2.2 Trends in further education student numbers (including WBL, excluding HE programmes) at FE institutions by age group 2008/09 to 2011/12 (a-j)**

	<i>Provider-learner numbers</i>				<i>Unique learner numbers</i>			
	2008/09	2009/10	2010/11	2011/12	2008/09	2009/10	2010/11	2011/12
All learners								
18 & under	53,055	53,115	53,770	51,910	50,785	50,860	51,480	49,480
19 & over	147,635	138,665	139,565	134,760	140,545	131,950	132,305	127,610
All Ages	200,690	191,780	193,335	186,670	191,330	182,810	183,785	177,090

Source: LLWR (Lifelong Learning Wales Record) post-16 database

- (a) Includes further education institutions in Wales, across full academic year (1 August to 31 July).
- (b) Merthyr Tydfil College is excluded from this table, following its merger into the University of Glamorgan in April
- (c) Includes learners enrolled at FE institutions who are in work-based learning provision but excludes those on HE programmes.
- (d) Counts in the provider-learner block are based on providers' own learner identifiers and therefore include some multiple-counting between providers.
- (e) Counts in the unique learner numbers block are based on Unique Learner Identifiers to remove multiple-counting between providers.
- (f) 'All Ages' totals and the 19 & over row include instances of unknown age.
- (g) Age is as at 31 August of academic year.
- (h) Includes local authority community learning where there is a formal enrolment with an FE institution.
- (i) Numbers greater than 0 and less than 5 have been replaced by \*. Other figures are rounded to the nearest 5 and there may be slight discrepancies between the sums of constituent items and the independently rounded totals.

**Table F3.1 Numbers of learners (FE, HE and WBL) enrolled at FE institutions 2011/12 by age group, mode of learning and sex (a-h)**

	<i>Numbers</i>		
	Male	Female	Total
Full-time learners aged:			
Under 16	165	90	255
16	6,485	6,415	12,900
17	5,920	5,900	11,825
18	3,470	3,355	6,825
19	1,805	1,580	3,385
20-24	2,440	2,480	4,920
25-39	1,500	2,425	3,925
40-49	385	615	1,000
50-59	145	190	335
60-64	25	25	45
65+	30	15	40
Full time learners	22,365	23,105	45,470
Part-time learners aged:			
Under 16	2,020	1,720	3,735
16	985	1,200	2,185
17	1,520	1,485	3,005
18	1,680	1,575	3,255
19	1,535	1,540	3,075
20-24	7,025	8,095	15,115
25-39	15,090	21,235	36,325
40-49	8,560	13,820	22,380
50-59	6,125	8,995	15,120
60-64	1,990	3,390	5,380
65+	2,835	4,940	7,775
Part time learners	49,510	68,245	117,755
Work-based learners aged:			
Under 16	120	80	200
16	1,235	520	1,755
17	1,375	635	2,010
18	1,165	460	1,625
19	965	415	1,380
20-24	2,350	1,280	3,630
25-39	1,475	1,675	3,150
40-49	590	985	1,575
50-59	260	425	685
60-64	25	30	55
65+	*	5	10
Work-based learners	9,565	6,505	16,065
All Modes of learning:			
Under 16	2,300	1,890	4,190
16	8,705	8,135	16,840
17	8,815	8,020	16,835
18	6,315	5,390	11,705
19	4,305	3,535	7,840
20-24	11,815	11,855	23,670
25-39	18,065	25,330	43,395
40-49	9,535	15,425	24,955
50-59	6,535	9,605	16,140
60-64	2,040	3,445	5,480
65+	2,870	4,960	7,825
Total	81,440	97,850	179,290

Source: LLWR (Lifelong Learning Wales Record) post-16 database

- (a) Counts are on a unique learner identifier (ULI) basis to eliminate multiple-counting between providers.  
 (b) Includes WBL provision at FE institutions on a consortium member basis.  
 (c) Non-WBL learners are allocated to either the full-time or the part-time mode of learning using the methodology of notes (d) and (e).  
 (d) A full-time learner is one whose total guided contact hours across all their learning activities amount to at least 450 hours.  
 (e) A part-time learner is one whose total guided contact hours across all their learning activities amount to less than 450 hours.  
 (f) Local authority community learning has been included where there is a formal enrolment with an FE institution.  
 (g) Age is as at 31 August 2011; totals include examples of unspecified ages not shown in separate rows.  
 (h) Numbers greater than 0 and less than 5 have been replaced by \*. Other figures are rounded to the nearest 5 and there may be slight discrepancies between the sums of constituent items and the independently rounded totals.

**Table F3.2 Numbers of learners (FE, HE and WBL) enrolled at FE institutions by age group, mode of learning and level 2011/12 (a-l)**

	<i>Numbers</i>			
	Learners on FE programmes	Learners on HE programmes	Learners on WBL programmes	Total
Full-time learners aged:				
Under 16	255	0	.	255
16	12,900	0	.	12,900
17	11,825	*	.	11,825
18	6,800	25	.	6,825
19	3,340	45	.	3,385
20-24	4,830	90	.	4,920
25-39	3,855	70	.	3,925
40-49	970	30	.	1,000
50-59	330	10	.	335
60-64	45	*	.	45
65+	40	*	.	40
Full time learners	45,200	270	.	45,470
Part-time learners aged:				
Under 16	3,735	0	.	3,735
16	2,185	0	.	2,185
17	3,005	*	.	3,005
18	3,185	70	.	3,255
19	2,960	115	.	3,075
20-24	14,610	510	.	15,115
25-39	35,670	655	.	36,325
40-49	22,015	370	.	22,380
50-59	14,965	155	.	15,120
60-64	5,350	30	.	5,380
65+	7,755	20	.	7,775
Part-time learners	115,825	1,930	.	117,755
All Modes of learning (including work-based learning)				
Under 16	3,990	0	200	4,190
16	15,085	0	1,755	16,840
17	14,825	*	2,010	16,835
18	9,990	95	1,625	11,705
19	6,300	160	1,380	7,840
20-24	19,440	600	3,630	23,670
25-39	39,525	725	3,150	43,395
40-49	22,980	400	1,575	24,955
50-59	15,290	165	685	16,140
60-64	5,395	30	55	5,480
65+	7,795	20	10	7,825
Total	161,020	2,200	16,065	179,290

Source: LLWR (Lifelong Learning Wales Record) post-16 database

- (a) Counts are on a unique learner identifier (ULI) basis to eliminate multiple-counting between providers.
- (b) Includes full-time, part-time and work-based learners.
- (c) Includes WBL provision at FE institutions on a consortium member basis.
- (d) A learner pursuing any WBL programme is designated as work-based learning.
- (e) A learner pursuing an HE learning programme but not also pursuing a WBL programme is designated as HE.
- (f) For the purpose of note (e), HE refers only to programmes designated as higher education in their entirety.
- (g) A full-time learner is one whose total guided contact hours across all their learning activities amount to at least 450 hours.
- (h) A part-time learner is one whose total guided contact hours across all their learning activities amount to less than 450 hours.
- (i) Higher education excludes learners enrolled at HE institutions and franchised in to FE institutions.
- (j) Local authority community learning has been included where there is a formal enrolment with an FE institution.
- (k) Age is as at 31 August 2011; totals include examples of unspecified ages not shown in separate rows.
- (l) Numbers greater than 0 and less than 5 have been replaced by \*. Other figures are rounded to the nearest 5 and there may be slight discrepancies between the sums of constituent items and the independently rounded totals.



**Table F3.3 Numbers of learners (FE, HE and WBL) enrolled at FE institutions 2011/12 by country of domicile, mode of learning and sex (a-h)**

Numbers

	Male	Female	Total
Full-time learners by country of domicile:			
Wales	21,935	22,625	44,560
England	380	425	805
Scotland	*	*	5
Northern Ireland	*	0	*
UK not known	5	*	10
Other EU	10	10	20
Other Overseas	35	35	70
Channel Islands and Isle of Man	0	*	*
Full-time learners	22,365	23,105	45,470
Part-time learners by country of domicile:			
Wales	47,400	66,540	113,945
England	1,845	1,415	3,260
Scotland	15	10	25
Northern Ireland	*	*	5
UK not known	*	*	*
Other EU	180	170	345
Other Overseas	65	105	170
Channel Islands and Isle of Man	0	0	0
Part-time learners	49,510	68,245	117,755
Work-based learners by country of domicile:			
Wales	9,045	6,360	15,405
England	515	140	655
Scotland	0	0	0
Northern Ireland	0	*	*
UK not known	0	0	0
Other EU	*	0	*
Other Overseas	0	*	*
Channel Islands and Isle of Man	*	*	*
Work-based learners	9,565	6,505	16,065
All Modes of learning by country of domicile:			
Wales	78,385	95,525	173,910
England	2,740	1,980	4,720
Scotland	15	15	30
Northern Ireland	*	5	10
UK not known	5	*	10
Other EU	190	180	370
Other Overseas	100	140	235
Channel Islands and Isle of Man	*	*	*
Total	81,440	97,850	179,290

Source: LLWR (Lifelong Learning Wales Record) post-16 database

- (a) Counts are on a unique learner identifier (ULI) basis to eliminate multiple-counting between providers.
- (b) Includes WBL provision at FE institutions on a consortium member basis.
- (c) A learner pursuing any WBL programme is designated as work-based learning.
- (d) Non-WBL learners are allocated to either the full-time or the part-time mode of learning using the methodology of notes (e) and (f).
- (e) A full-time learner is one whose total guided contact hours across all their learning activities amount to at least 450 hours.
- (f) A part-time learner is one whose total guided contact hours across all their learning activities amount to less than 450 hours.
- (g) Local authority community learning has been included where there is a formal enrolment with an FE institution.
- (h) Numbers greater than 0 and less than 5 have been replaced by \*. Other figures are rounded to the nearest 5 and there may be slight discrepancies between the sums of constituent items and the independently rounded totals.

**Table F3.4a Numbers of learners (FE, HE and WBL) enrolled at FE institutions 2011/12 by unitary authority of domicile and age group (a-f)**

Unitary authority of domicile	Under 16	16	17	18	19	20 to 24	25 to 39
Blaenau Gwent	40	515	485	335	220	585	1,100
Bridgend	25	630	665	490	360	1,120	2,105
Caerphilly	270	1,180	1,100	685	425	1,260	2,440
Cardiff	540	1,595	1,490	915	690	2,005	4,410
Carmarthenshire	65	1,135	1,075	720	470	1,260	1,960
Ceredigion	175	245	280	185	165	430	560
Conwy	330	630	740	520	355	1,305	2,170
Denbighshire	380	625	685	535	345	1,075	1,850
Flintshire	70	840	900	765	555	1,555	2,530
Gwynedd	560	865	850	510	300	1,105	2,130
Isle of Anglesey	35	355	385	270	210	705	1,125
Merthyr Tydfil	30	130	200	135	90	300	560
Monmouthshire	25	220	235	210	130	395	910
Neath Port Talbot	80	1,300	1,135	725	395	990	1,935
Newport	75	610	580	485	315	985	2,150
Pembrokeshire	225	560	685	530	325	940	1,325
Powys	35	515	480	335	210	655	1,280
Rhondda Cynon Taf	175	850	985	830	615	1,710	2,800
Swansea	70	1,640	1,540	885	525	1,660	3,250
The Vale of Glamorgan	300	560	575	415	265	755	1,245
Torfaen	155	475	465	335	220	785	1,510
Wrexham	345	965	920	620	395	1,265	2,505
Outside Wales or Not known	190	405	390	265	255	830	1,550
<b>Total</b>	<b>4,190</b>	<b>16,840</b>	<b>16,835</b>	<b>11,705</b>	<b>7,840</b>	<b>23,670</b>	<b>43,395</b>

- (a) Counts are on a unique learner identifier (ULI) basis to eliminate multiple-counting between providers.
- (b) Includes WBL provision at FE institutions on a consortium member basis.
- (c) Local authority community learning has been included where there is a formal enrolment with an FE institution.
- (d) Age is as at 31 August 2011.
- (e) Unitary authority of domicile is calculated from the recorded home postcode of the learner.
- (f) Numbers greater than 0 and less than 5 have been replaced by \*. Other figures are rounded to the nearest 5 and there may be slight discrepancies between the sums of constituent items and the independently rounded totals.

**Table F3.4a (continued) Numbers of learners (FE, HE and WBL) enrolled at FE institutions by unitary authority of domicile and age group 2011/12 (a-f)**

						<i>Numbers</i>
40 to 49	50 to 59	60 to 64	65 plus	Age not stated	Total	Unitary authority of domicile
605	440	185	265	5	4,785	Blaenau Gwent
1,210	715	205	330	*	7,865	Bridgend
1,515	1,025	450	685	20	11,050	Caerphilly
1,635	755	145	120	110	14,410	Cardiff
1,150	715	255	370	10	9,185	Carmarthenshire
360	295	80	35	*	2,805	Ceredigion
1,480	1,070	385	590	25	9,600	Conwy
1,280	785	265	375	15	8,220	Denbighshire
1,805	1,115	370	470	10	10,985	Flintshire
1,260	855	280	390	40	9,145	Gwynedd
695	520	190	305	10	4,805	Isle of Anglesey
330	225	80	100	*	2,180	Merthyr Tydfil
755	500	250	400	10	4,040	Monmouthshire
1,075	725	265	560	10	9,195	Neath Port Talbot
1,175	685	245	385	20	7,705	Newport
835	585	150	135	*	6,300	Pembrokeshire
835	650	250	415	*	5,665	Powys
1,415	930	485	720	15	11,525	Rhondda Cynon Taf
1,635	1,015	295	400	25	12,935	Swansea
645	400	75	90	20	5,340	The Vale of Glamorgan
925	620	210	270	5	5,985	Torfaen
1,305	810	220	245	10	9,600	Wrexham
1,025	700	155	160	45	5,970	Outside Wales or Not known
24,955	16,140	5,480	7,825	405	179,290	Total

Source: LLWR (Lifelong Learning Wales Record) post-16 database

**Table F3.4b Numbers of learners (FE, HE and WBL) enrolled at FE institutions 2011/12 by unitary authority of domicile and sex (a-e)**

Unitary authority of domicile	Numbers		
	Male	Female	Total
Blaenau Gwent	1,960	2,825	4,785
Bridgend	3,950	3,915	7,865
Caerphilly	4,715	6,335	11,050
Cardiff	6,815	7,595	14,410
Carmarthenshire	4,220	4,970	9,185
Ceredigion	1,260	1,540	2,805
Conwy	4,395	5,200	9,600
Denbighshire	3,575	4,645	8,220
Flintshire	4,795	6,185	10,985
Gwynedd	4,175	4,970	9,145
Isle of Anglesey	2,150	2,655	4,805
Merthyr Tydfil	980	1,200	2,180
Monmouthshire	1,540	2,500	4,040
Neath Port Talbot	4,160	5,040	9,195
Newport	3,280	4,425	7,705
Pembrokeshire	3,170	3,130	6,300
Powys	2,630	3,040	5,665
Rhondda Cynon Taf	4,955	6,570	11,525
Swansea	5,945	6,990	12,935
The Vale of Glamorgan	2,445	2,900	5,340
Torfaen	2,475	3,510	5,985
Wrexham	4,470	5,130	9,600
Outside Wales or Not known	3,380	2,590	5,970
<b>Total</b>	<b>81,440</b>	<b>97,850</b>	<b>179,290</b>

Source: LLWR (Lifelong Learning Wales Record) post-16 database

- (a) Counts are on a unique learner identifier (ULI) basis to eliminate multiple-counting between providers.
- (b) Includes WBL provision at FE institutions on a consortium member basis.
- (c) Local authority community learning has been included where there is a formal enrolment with an FE institution.
- (d) Unitary authority of domicile is calculated from the recorded home postcode of the learner.
- (e) Numbers greater than 0 and less than 5 have been replaced by \*. Other figures are rounded to the nearest 5 and there may be slight discrepancies between the sums of constituent items and the independently rounded totals.

**Table F3.5 Numbers of learners (FE, HE and WBL) enrolled at FE institutions 2011/12 by ethnicity, age band and sex (a-e)**

*Numbers*

**Aged 18 and under**

Ethnicity	Male	Female	Total
Asian	480	380	860
Black	200	145	345
Mixed	315	295	610
Other Minority Ethnic	100	75	170
White	24,635	22,155	46,790
Information refused/not known	400	395	795
<b>Total</b>	<b>26,135</b>	<b>23,440</b>	<b>49,575</b>

**Aged 19 and over**

Ethnicity	Male	Female	Total
Asian	1,555	2,265	3,820
Black	830	985	1,815
Mixed	435	505	945
Other Minority Ethnic	520	555	1,075
White	50,115	67,780	117,895
Information refused/not known	1,845	2,320	4,165
<b>Total</b>	<b>55,305</b>	<b>74,410</b>	<b>129,715</b>

**All ages**

Ethnicity	Male	Female	Total
Asian	2,035	2,645	4,680
Black	1,035	1,130	2,160
Mixed	755	800	1,555
Other Minority Ethnic	620	630	1,245
White	74,755	89,930	164,685
Information refused/not known	2,245	2,715	4,965
<b>Total</b>	<b>81,440</b>	<b>97,850</b>	<b>179,290</b>

Source: LLWR (Lifelong Learning Wales Record) post-16 database

- (a) Counts are on a unique learner identifier (ULI) basis to eliminate multiple-counting between providers.
- (b) Includes WBL provision at FE institutions on a consortium member basis.
- (c) Local authority community learning has been included where there is a formal enrolment with an FE institution.
- (d) Age is as at 31 August 2011.
- (e) Numbers greater than 0 and less than 5 have been replaced by \*. Other figures are rounded to the nearest 5 and there may be slight discrepancies between the sums of constituent items and the independently rounded totals.

**Table F3.6 Numbers of learners (FE, HE and WBL) enrolled at FE institutions 2011/12 by (primary) disability and/or learning difficulty, age band and sex (a-f)**

Numbers

**Aged 18 and under**

Disability/Learning Difficulty Type	Male	Female	Total
Visual Impairment	70	60	130
Hearing Impairment	60	65	130
Physical and/or medical difficulties	315	275	590
Behavioural, emotional and social difficulties	220	70	290
Multi-sensory impairment	10	*	10
Autistic spectrum disorders	190	40	230
Speech, language and communication difficulties	185	95	285
Moderate learning difficulties	960	760	1,720
Severe learning difficulties	50	20	70
Profound and Multiple learning difficulties	5	0	5
Specific learning difficulties	1,225	895	2,120
Does not apply	22,845	21,145	43,990
<b>Total</b>	<b>26,135</b>	<b>23,440</b>	<b>49,575</b>

**Aged 19 and over**

Disability/Learning Difficulty Type	Male	Female	Total
Visual Impairment	130	200	330
Hearing Impairment	235	390	625
Physical and/or medical difficulties	795	1,265	2,055
Behavioural, emotional and social difficulties	225	210	435
Multi-sensory impairment	10	10	20
Autistic spectrum disorders	145	35	185
Speech, language and communication difficulties	140	120	260
Moderate learning difficulties	1,380	1,315	2,695
Severe learning difficulties	130	130	260
Profound and Multiple learning difficulties	40	30	70
Specific learning difficulties	980	985	1,965
Does not apply	51,090	69,725	120,815
<b>Total</b>	<b>55,305</b>	<b>74,410</b>	<b>129,715</b>

**All ages**

Disability/Learning Difficulty Type	Male	Female	Total
Visual Impairment	200	260	460
Hearing Impairment	300	455	755
Physical and/or medical difficulties	1,105	1,540	2,645
Behavioural, emotional and social difficulties	445	280	730
Multi-sensory impairment	20	10	30
Autistic spectrum disorders	335	80	415
Speech, language and communication difficulties	330	215	545
Moderate learning difficulties	2,340	2,080	4,415
Severe learning difficulties	180	150	325
Profound and Multiple learning difficulties	45	30	75
Specific learning difficulties	2,210	1,875	4,085
Does not apply	73,935	90,870	164,810
<b>Total</b>	<b>81,440</b>	<b>97,850</b>	<b>179,290</b>

Source: LLWR (Lifelong Learning Wales Record) post-16 database

- (a) Counts are on a unique learner identifier (ULI) basis to eliminate multiple-counting between providers.
- (b) Includes WBL provision at FE institutions on a consortium member basis.
- (c) Local authority community learning has been included where there is a formal enrolment with an FE institution.
- (d) Disability type relates only to those learners who have a disability or learning difficulty which impacts on their ability to learn and/or use facilities of a kind generally supplied by the learning provider. Only the primary disability type is given in this table.
- (e) Age is as at 31 August 2011.
- (f) Numbers greater than 0 and less than 5 have been replaced by \*. Other figures are rounded to the nearest 5 and there may be slight discrepancies between the sums of constituent items and the independently rounded totals.

**Table F3.7 Numbers of learners (FE, HE and WBL) enrolled at FE institutions 2011/12 by disability and/or learning difficulty (including both primary and secondary) type, age band and sex (a-d)(g)**

*Numbers*

Disability/Learning Difficulty Type	Male	Female	Total
Visual Impairment	250	310	565
Hearing Impairment	335	490	825
Physical and/or medical difficulties	1,280	1,720	3,000
Behavioural, emotional and social difficulties	570	375	950
Multi-sensory impairment	25	15	40
Autistic spectrum disorders	380	85	465
Speech, language and communication difficulties	420	285	705
Moderate learning difficulties	2,535	2,200	4,740
Severe learning difficulties	215	175	390
Profound and Multiple learning difficulties	55	40	95
Specific learning difficulties	2,365	2,010	4,370
Total learners with disabilities(e)	3,055	3,100	6,155
Total learners with learning difficulties(e)	5,050	4,305	9,355
Total LLDD(e)(f)	7,505	6,980	14,480

Source: LLWR (Lifelong Learning Wales Record) post-16 database

- (a) Counts are on a unique learner identifier (ULI) basis to eliminate multiple-counting between providers.
- (b) Includes WBL provision at FE institutions on a consortium member basis.
- (c) Local authority community learning has been included where there is a formal enrolment with an FE institution.
- (d) Disability type relates only to those learners who have a disability which impacts on their ability to learn and/or use facilities of a kind generally supplied by the learning provider. Entries into individual rows take into account both the primary and the secondary (if applicable) disability and/or learning difficulty type.
- (e) Note that none of the total rows is equal to the sum of its constituent rows. These totals are actually less than the sum of their constituent categories because of overlaps where learners have more than one type of disability or learning difficulty. (This contrasts with Table F3.6 which gives only the primary disability or learning difficulty in its individual rows and is therefore additive.)
- (f) LLDD = Learners with learning difficulties and/or disabilities affecting learning.
- (g) Numbers greater than 0 and less than 5 have been replaced by \*. Other figures are rounded to the nearest 5 and there may be slight discrepancies between the sums of constituent items and the independently rounded totals.

**Table F3.8 Numbers of learners at FE institutions by deprivation status, sex and age group 2011/12 (a-f)**

*Numbers*

**Welsh domiciled learners in deprived areas (Community first areas)**

Age Group	Male	Female	Total
Under 16	515	420	935
16	1,925	1,765	3,690
17	1,860	1,735	3,595
18	1,360	1,255	2,615
19	945	805	1,755
20-24	2,460	2,780	5,240
25-39	3,770	5,995	9,765
40-49	1,725	2,830	4,560
50-59	1,195	1,665	2,855
60-64	320	550	870
65+	505	825	1,330
Not Specified	20	35	55
<b>Total</b>	<b>16,600</b>	<b>20,670</b>	<b>37,270</b>

**Learners domiciled outside Wales or with incomplete home postcode information**

Age Group	Male	Female	Total
Under 16	65	125	190
16	205	200	405
17	205	185	390
18	150	115	265
19	130	125	255
20-24	520	310	830
25-39	930	615	1,550
40-49	600	425	1,025
50-59	405	295	700
60-64	75	80	155
65+	75	85	160
Not Specified	25	25	45
<b>Total</b>	<b>3,380</b>	<b>2,590</b>	<b>5,970</b>

- (a) Counts are on a unique learner identifier (ULI) basis to eliminate multiple-counting between providers.
- (b) Age is as at 31 August 2011.
- (c) Includes WBL provision at FE institutions on a consortium member basis.
- (d) Includes local authority community learning where there is a formal enrolment with an FE institution.
- (e) The Communities First definition used here is that relating to 2011/12 and does not take account of the revised approach introduced in January 2013.
- (f) Numbers greater than 0 and less than 5 have been replaced by \*. Other figures are rounded to the nearest 5 and there may be slight discrepancies between the sums of constituent items and the independently rounded totals.



**Table F3.8 (Continued) Numbers of learners at FE institutions by deprivation status, sex and age group 2011/12 (a-f)**

*Numbers*

**Welsh domiciled learners outside deprived areas (Community First areas)**

Age Group	Male	Female	Total
Under 16	1,720	1,345	3,060
16	6,575	6,170	12,745
17	6,755	6,100	12,850
18	4,805	4,020	8,825
19	3,230	2,605	5,835
20-24	8,835	8,765	17,600
25-39	13,365	18,720	32,080
40-49	7,210	12,165	19,375
50-59	4,935	7,645	12,580
60-64	1,645	2,810	4,455
65+	2,285	4,050	6,335
Not Specified	105	195	305
<b>Total</b>	<b>61,460</b>	<b>74,590</b>	<b>136,050</b>

**All learners**

Age Group	Male	Female	Total
Under 16	2,300	1,890	4,190
16	8,705	8,135	16,840
17	8,815	8,020	16,835
18	6,315	5,390	11,705
19	4,305	3,535	7,840
20-24	11,815	11,855	23,670
25-39	18,065	25,330	43,395
40-49	9,535	15,425	24,955
50-59	6,535	9,605	16,140
60-64	2,040	3,445	5,480
65+	2,870	4,960	7,825
Not Specified	150	255	405
<b>Total</b>	<b>81,440</b>	<b>97,850</b>	<b>179,290</b>

Source: LLWR (Lifelong Learning Wales Record) post-16 database

**Table F3.9 Numbers of distinct full-time learners at FE institutions leaving in academic year 2011/12 by destination and age group (a-h)**

Destination	Age Group						
	Under 16	16	17	18	19	20-24	25-39
New programme of learning (not HE)	60	3,415	2,020	965	470	775	735
Higher education	0	15	1,370	715	365	435	265
Entering new employment/changing employment	*	335	540	385	220	225	150
Continuing current employment	*	105	330	260	130	215	160
Seeking work /unemployed	10	560	890	620	290	395	275
Self employment	0	5	5	20	5	35	30
Voluntary work	0	10	15	15	10	5	10
Other	15	445	405	295	165	335	355
Not known	55	2,200	2,465	1,590	780	1,165	995
<b>Total</b>	<b>140</b>	<b>7,090</b>	<b>8,030</b>	<b>4,860</b>	<b>2,435</b>	<b>3,585</b>	<b>2,975</b>

- (a) Counts are on a unique learner identifier (ULI) basis to eliminate multiple-counting between providers.
- (b) Includes WBL provision at FE institutions on a consortium member basis.
- (c) Local authority community learning has been included where there is a formal enrolment with an FE institution.
- (d) Figures comprise the number of distinct learners who have left their most recent learning programme of academic year.
- (e) Excludes learners whose latest learning programme is on-going.
- (f) Destination is recorded immediately after the end of the learning programme.
- (g) Age is as at 31 August 2011.
- (h) Numbers greater than 0 and less than 5 have been replaced by \*. Other figures are rounded to the nearest 5 and there may be slight discrepancies between the sums of constituent items and the independently rounded totals.

**Table F3.9 (Continued) Numbers of distinct full-time learners at FE institutions leaving in academic year 2011/12 by destination and age group (a-h)**

Age Group					<i>Numbers</i>	
40-49	50-59	60-64	65 plus	Not Specified	Total	Destination
180	45	10	5	*	8,680	New programme of learning (not HE)
40	*	0	0	0	3,205	Higher education
40	10	0	*	*	1,900	Entering new employment/changing employment
55	25	0	*	*	1,285	Continuing current employment
65	30	*	0	0	3,135	Seeking work /unemployed
15	5	0	0	0	120	Self employment
*	*	*	*	0	75	Voluntary work
95	40	10	10	*	2,175	Other
285	105	15	5	*	9,660	Not known
775	270	40	30	5	30,240	Total

Source: LLWR (Lifelong Learning Wales Record) post-16 database

**Table F4.1a Numbers of learning activities at FE institutions by subject and region of domicile 2011/12 (a-e)**

Subject	Region of domicile					
	North Wales		Mid Wales		South West Wales	
	Number	Percentage	Number	Percentage	Number	Percentage
Agriculture, Horticulture and Animal Care	2,930	2	1,620	6	1,090	1
Arts and Crafts	5,150	3	965	4	4,995	4
Business/Management/Office Studies	9,835	6	1,335	5	4,495	4
Care/Personal Development(incl Basic Skills)	41,815	25	8,250	31	36,175	32
Catering/Food/Leisure Services/Tourism	8,260	5	1,480	5	3,365	3
Construction & Property (Built Environment)	5,845	4	925	3	4,455	4
Cultural Studies/Languages/Literature	9,660	6	2,625	10	6,965	6
Education/Training/Teaching	12,915	8	530	2	1,760	2
Engineering	5,885	4	730	3	4,725	4
Environment Protection/Energy/Cleansing/Security	1,025	1	105	0	380	0
Health Care/Medicine/Health & Safety	15,565	9	2,630	10	9,105	8
Humanities	1,370	1	115	0	2,285	2
Information Technology & Information	11,570	7	1,470	5	7,910	7
Logistics/Distribution/Transport/Driving	365	0	65	0	335	0
Manufacturing/Production Work	920	1	105	0	480	0
Media/Communication/Publishing	11,615	7	1,640	6	7,120	6
Oil/Mining/Plastics/Chemicals	0	0	*	0	15	0
Performing Arts	1,580	1	230	1	2,130	2
Sales, Marketing and Retailing	1,535	1	255	1	860	1
Sciences & Mathematics	13,525	8	1,195	4	10,430	9
Services to Industry & Commerce	565	0	85	0	655	1
Social Sciences	1,175	1	55	0	1,720	2
Sports, Games and Recreation	2,210	1	515	2	1,735	2
Not specified	17,265	.	1,675	.	12,810	.
<b>Total</b>	<b>182,575</b>		<b>28,600</b>		<b>126,000</b>	

(a) Subjects are derived from the first letter of the LearnDirect Classification System (LDCS) codes.

(b) Region of domicile is based on the home postcode of the learner.

(c) 'Other' column consists of learners domiciled outside of Wales and/or where postcode information is incomplete.

(d) Percentages are calculated as a proportion of the total excluding subject not known.

(e) Numbers greater than 0 and less than 5 have been replaced by \*. Other figures are rounded to the nearest 5 and there may be slight discrepancies between the sums of constituent items and the independently rounded totals.

**Table F4.1a (continued) Numbers of learning activities at FE institutions by subject and region of domicile 2011/12 (a-e)**

Region of domicile						Subject
South East Wales		Other		Total		
Number	Percentage	Number	Percentage	Number	Percentage	
2,625	1	485	3	8,745	1	Agriculture, Horticulture and Animal Care
8,545	3	565	4	20,230	3	Arts and Crafts
9,935	4	1,085	7	26,685	4	Business/Management/Office Studies
97,965	35	3,490	22	187,690	31	Care/Personal Development(incl Basic Skills)
9,460	3	585	4	23,145	4	Catering/Food/Leisure Services/Tourism
7,990	3	440	3	19,655	3	Construction & Property (Built Environment)
22,620	8	1,455	9	43,320	7	Cultural Studies/Languages/Literature
6,325	2	860	6	22,395	4	Education/Training/Teaching
7,800	3	835	5	19,980	3	Engineering
640	0	80	1	2,225	0	Environment Protection/Energy/Cleansing/Security
21,005	8	1,460	9	49,760	8	Health Care/Medicine/Health & Safety
4,215	2	180	1	8,170	1	Humanities
27,780	10	710	5	49,440	8	Information Technology & Information
310	0	55	0	1,130	0	Logistics/Distribution/Transport/Driving
740	0	345	2	2,590	0	Manufacturing/Production Work
16,325	6	995	6	37,695	6	Media/Communication/Publishing
25	0	0	0	45	0	Oil/Mining/Plastics/Chemicals
3,520	1	220	1	7,680	1	Performing Arts
2,650	1	185	1	5,485	1	Sales, Marketing and Retailing
18,335	7	1,125	7	44,605	7	Sciences & Mathematics
855	0	85	1	2,240	0	Services to Industry & Commerce
2,670	1	135	1	5,755	1	Social Sciences
3,655	1	180	1	8,300	1	Sports, Games and Recreation
24,995	.	1,305	.	58,050	.	Not specified
300,980		16,865		655,020		Total

**Table F4.1b Numbers of learning activities at FE institutions 2011/12  
by subject and age group (a-e)**

Subject	Under 16	16	17	18	19	20 to 24
Agriculture, Horticulture and Animal Care	210	1,615	1,495	725	525	1,145
Arts and Crafts	140	2,405	2,450	1,865	965	1,715
Business/Management/Office Studies	155	3,930	3,660	2,455	1,360	3,315
Care/Personal Development(incl Basic Skills)	3,005	45,225	39,560	22,530	11,760	21,775
Catering/Food/Leisure Services/Tourism	275	3,150	2,710	1,695	1,085	2,870
Construction & Property (Built Environment)	1,440	3,950	3,025	2,045	1,140	2,760
Cultural Studies/Languages/Literature	325	5,605	4,565	2,315	1,360	4,575
Education/Training/Teaching	60	2,960	2,355	1,820	1,380	3,235
Engineering	650	3,550	3,660	2,790	1,825	3,660
Environment Protection/Energy/Cleansing/Security	5	110	115	75	85	335
Health Care/Medicine/Health & Safety	480	6,990	5,875	3,560	2,225	6,705
Humanities	25	2,215	2,135	795	390	640
Information Technology & Information	100	3,975	4,215	3,085	1,705	4,455
Logistics/Distribution/Transport/Driving	*	25	105	105	80	160
Manufacturing/Production Work	25	105	145	125	80	395
Media/Communication/Publishing	215	8,810	7,730	4,330	2,400	4,335
Oil/Mining/Plastics/Chemicals	0	0	*	5	5	25
Performing Arts	275	1,585	1,805	950	560	705
Sales, Marketing and Retailing	20	590	650	385	270	890
Sciences & Mathematics	120	13,075	10,375	5,405	2,705	5,425
Services to Industry & Commerce	0	70	180	230	260	695
Social Sciences	40	1,670	1,520	675	330	590
Sports, Games and Recreation	50	2,845	2,655	1,245	485	485
Not specified	435	16,090	12,210	6,595	3,625	6,660
<b>Total</b>	<b>8,050</b>	<b>130,550</b>	<b>113,200</b>	<b>65,805</b>	<b>36,600</b>	<b>77,540</b>

(a) Includes WBL provision at FE institutions on a consortium member basis.

(b) Local authority community learning has been included where there is a formal enrolment with an FE institution.

(c) Subjects are derived from the first letter of the LearnDirect Classification System (LDCS) codes.

(d) Age is as at 31 August 2011.

(e) Numbers greater than 0 and less than 5 have been replaced by \*. Other figures are rounded to the nearest 5 and there may be slight discrepancies between the sums of constituent items and the independently rounded totals.

**Table F4.1b (continued) Numbers of learning activities at FE institutions by subject and age group 2011/12 (a-e)**

							<i>Numbers</i>
25 to 39	40 to 49	50 to 59	60 to 64	65 plus	Age not stated	Total	Subject
1,425	850	510	135	95	15	8,745	Agriculture, Horticulture and Animal Care
2,150	1,625	2,090	1,850	2,930	40	20,230	Arts and Crafts
6,050	3,445	1,885	260	130	45	26,685	Business/Management/Office Studies
24,875	9,690	5,200	1,525	2,415	135	187,690	Care/Personal Development(incl Basic Skills)
4,985	3,125	2,090	615	520	35	23,145	Catering/Food/Leisure Services/Tourism
3,035	1,310	715	150	75	5	19,655	Construction & Property (Built Environment)
12,915	5,065	3,310	1,460	1,765	60	43,320	Cultural Studies/Languages/Literature
5,630	3,130	1,335	240	165	80	22,395	Education/Training/Teaching
2,540	835	360	70	35	5	19,980	Engineering
650	475	295	50	25	*	2,225	Environment Protection/Energy/Cleansing/Security
12,055	6,785	3,830	725	445	95	49,760	Health Care/Medicine/Health & Safety
520	180	260	335	675	*	8,170	Humanities
10,050	7,450	5,835	2,685	5,840	40	49,440	Information Technology & Information
270	190	145	35	10	*	1,130	Logistics/Distribution/Transport/Driving
895	480	270	45	20	*	2,590	Manufacturing/Production Work
4,380	2,165	1,425	715	1,160	25	37,695	Media/Communication/Publishing
*	*	*	0	0	0	45	Oil/Mining/Plastics/Chemicals
460	310	335	185	460	50	7,680	Performing Arts
1,395	735	420	75	25	25	5,485	Sales, Marketing and Retailing
4,970	1,805	620	65	40	*	44,605	Sciences & Mathematics
495	200	95	10	5	*	2,240	Services to Industry & Commerce
615	195	80	20	25	*	5,755	Social Sciences
295	130	75	20	5	*	8,300	Sports, Games and Recreation
7,210	3,165	1,650	240	140	35	58,050	Not specified
107,870	53,355	32,845	11,510	16,990	710	655,020	Total

Source: LLWR (Lifelong Learning Wales Record) post-16 database

**Table F4.2a Numbers of learning activities at FE institutions by Sector Subject Area and region of domicile 2011/12 (a-f)**

Sector Subject Area	Region of domicile					
	North Wales		Mid Wales		South West Wales	
	Number	Percentage	Number	Percentage	Number	Percentage
Health, Public Services and Care	19,765	11	3,115	11	10,975	9
Science and Mathematics	4,005	2	290	1	5,650	4
Agriculture, Horticulture and Animal Care	3,040	2	1,815	6	1,135	1
Engineering and Manufacturing Technologies	10,525	6	1,130	4	7,155	6
Construction, Planning and the Built Environment	6,645	4	990	3	4,850	4
Information and Communication Technology	12,015	7	1,480	5	8,715	7
Retail and Commercial Enterprise	11,215	6	1,880	7	5,455	4
Leisure, Travel and Tourism	3,110	2	665	2	2,440	2
Arts, Media and Publishing	9,865	5	1,760	6	8,950	7
History, Philosophy and Theology	860	0	115	0	2,150	2
Social Sciences	915	1	50	0	1,335	1
Languages, Literature and Culture	6,425	4	2,200	8	5,400	4
Education and Training	10,290	6	305	1	1,425	1
Preparation for Life and Work	72,945	40	10,575	37	54,745	44
Business, Administration and Law	10,585	6	2,210	8	5,310	4
Unknown	365	.	25	.	315	.
<b>Total</b>	<b>182,575</b>		<b>28,600</b>		<b>126,000</b>	

- (a) Sector Subject Areas are derived from the LearnDirect Classification System.
- (b) Sector Subject Areas are the QCA defined learning areas with some amendments to be consistent with Estyn statistics.
- (c) Region of domicile is based on the home postcode of the learner.
- (d) 'Other' category consists of learners domiciled outside of Wales and missing postcode information.
- (e) Percentages are calculated as a proportion of the total excluding subject sector area Not Known.
- (f) Absolute numbers are rounded to the nearest 5 and there may be slight discrepancies between the sums of constituent items and the independently rounded totals.



**Table F4.2a (Continued) Numbers of learning activities at FE institutions by Sector Subject Area and region of domicile 2011/12 (a-f)**

Region of domicile						Sector Subject Area
South East Wales		Other		Total		
Number	Percentage	Number	Percentage	Number	Percentage	
22,245	7	1,720	10	57,825	9	Health, Public Services and Care
8,760	3	390	2	19,095	3	Science and Mathematics
2,970	1	510	3	9,465	1	Agriculture, Horticulture and Animal Care
11,795	4	1,540	9	32,140	5	Engineering and Manufacturing Technologies
9,175	3	490	3	22,145	3	Construction, Planning and the Built Environment
28,415	9	715	4	51,350	8	Information and Communication Technology
14,515	5	845	5	33,915	5	Retail and Commercial Enterprise
6,060	2	250	1	12,520	2	Leisure, Travel and Tourism
15,980	5	1,030	6	37,585	6	Arts, Media and Publishing
3,900	1	100	1	7,125	1	History, Philosophy and Theology
1,825	1	90	1	4,210	1	Social Sciences
19,725	7	790	5	34,540	5	Languages, Literature and Culture
4,435	1	660	4	17,115	3	Education and Training
134,230	45	6,430	38	278,920	43	Preparation for Life and Work
15,545	5	1,280	8	34,925	5	Business, Administration and Law
1,410	.	20	.	2,135	.	Unknown
300,980		16,865		655,020		Total

Source: LLWR (Lifelong Learning Wales Record) post-16 database

**Table F4.2b Learning activity completion rates at FE institutions by Sector Subject Area 2011/12 (a-f)**

Sector Subject Area	18 and under		19 and over		All ages	
	Completed Learning Activities	per cent (d)	Completed Learning Activities	per cent (d)	Completed Learning Activities	per cent (d)
1: Health, Public Services and Care	12,900	91	19,795	93	32,695	92
2: Science and Mathematics	9,620	89	3,885	85	13,505	88
3: Agriculture, Horticulture and Animal Care	2,755	92	2,830	94	5,585	93
4: Engineering and Manufacturing Technologies	7,010	89	9,045	94	16,055	92
5: Construction, Planning and the Built Environment	6,720	90	6,610	94	13,330	92
6: Information and Communication Technology	8,350	89	15,155	89	23,505	89
7: Retail and Commercial Enterprise	9,245	91	11,555	93	20,795	92
7(a): Retailing and Customer Service	615	89	1,340	91	1,955	90
7(b): Hair and Beauty	4,695	89	3,280	87	7,975	88
7(c): Hospitality and Catering	3,930	94	6,930	97	10,865	96
8: Leisure, Travel and Tourism	6,450	90	1,910	92	8,360	90
9: Arts, Media and Publishing	11,175	89	3,585	88	14,760	89
9(a): Performing Arts	3,055	89	860	87	3,920	89
9(b): Art and Design	8,120	89	2,725	88	10,840	89
10: History, Philosophy and Theology	3,625	91	770	82	4,395	89
11: Social Sciences	2,440	89	605	85	3,040	88
12: Languages, Literature and Culture	13,395	89	6,505	87	19,900	89
13: Education and Training	2,410	95	3,885	90	6,300	92
14: Preparation for Life and Work	113,545	90	45,770	89	159,320	89
14(a): Independent Living Skills	975	92	1,105	94	2,080	93
14(b): Adult Basic Education	12,410	89	12,170	91	24,580	90
14(c): Foundation for Work	99,965	90	30,610	87	130,575	89
14(d): English for Speakers of Other Languages	195	96	1,880	94	2,080	94
15: Business, Administration and Law	10,700	91	10,295	91	21,000	91
<b>Total</b>	<b>220,420</b>	<b>90</b>	<b>142,255</b>	<b>90</b>	<b>362,675</b>	<b>90</b>

Source: Lifelong Learning Wales Record (LLWR)

(a) Sector Subject Areas are derived from the LearnDirect Classification System.

(b) Sector Subject Areas are the QCA defined learning areas with some amendments to be consistent with Estyn statistics.

(c) Based on the Welsh Government bulletin 'Learner Outcome Measures for Further Education and Work-based Learning 2011/12'.

(d) Expressed as a percentage of learning activities completed or withdrawn (i.e. excluding continuing activities).

(e) Activities with unspecified sector subject areas are included in the total but not identified separately.

(f) Absolute numbers are rounded to the nearest 5 and there may be slight discrepancies between the sums of constituent items and the independently rounded totals.

**Table F4.2c Learning activity attainment rates at FE institutions by Sector Subject Area 2011/12 (a-f)**

Sector Subject Area	18 and under		19 and over		All ages	
	Attained Learning Activities	per cent (d)	Attained Learning Activities	per cent (d)	Attained Learning Activities	per cent (d)
1: Health, Public Services and Care	10,010	90	15,860	93	25,870	92
2: Science and Mathematics	7,680	86	3,080	85	10,760	86
3: Agriculture, Horticulture and Animal Care	2,345	89	2,395	89	4,740	89
4: Engineering and Manufacturing Technologies	6,025	88	7,610	91	13,640	90
5: Construction, Planning and the Built Environment	5,910	92	5,765	91	11,670	91
6: Information and Communication Technology	4,985	89	5,905	90	10,890	90
7: Retail and Commercial Enterprise	8,250	92	10,670	96	18,925	94
7(a): Retailing and Customer Service	490	90	1,160	96	1,645	94
7(b): Hair and Beauty	4,215	93	2,925	94	7,140	93
7(c): Hospitality and Catering	3,550	92	6,590	97	10,140	95
8: Leisure, Travel and Tourism	5,545	91	1,370	90	6,915	91
9: Arts, Media and Publishing	9,985	92	2,890	91	12,875	92
9(a): Performing Arts	2,710	89	675	88	3,385	89
9(b): Art and Design	7,275	93	2,215	92	9,495	92
10: History, Philosophy and Theology	2,745	85	530	77	3,270	84
11: Social Sciences	2,010	87	505	87	2,515	87
12: Languages, Literature and Culture	8,955	93	3,475	91	12,430	93
13: Education and Training	2,220	94	3,105	90	5,325	91
14: Preparation for Life and Work	87,315	93	32,960	91	120,280	92
14(a): Independent Living Skills	740	97	640	91	1,380	94
14(b): Adult Basic Education	2,745	93	6,150	94	8,895	94
14(c): Foundation for Work	83,715	92	24,670	90	108,380	92
14(d): English for Speakers of Other Languages	120	94	1,500	92	1,620	92
15: Business, Administration and Law	4,965	88	6,735	87	11,700	87
<b>Total</b>	<b>168,945</b>	<b>91</b>	<b>102,870</b>	<b>91</b>	<b>271,815</b>	<b>91</b>

Source: Lifelong Learning Wales Record (LLWR)

(a) Sector Subject Areas are derived from the LearnDirect Classification System.

(b) Sector Subject Areas are the QCA defined learning areas with some amendments to be consistent with Estyn statistics.

(c) Based on the Welsh Government bulletin 'Learner Outcome Measures for Further Education and Work-based Learning 2011/12'.

(d) Expressed as a percentage of completed assessable learning activities.

(e) Activities with unspecified sector subject areas are included in the total but not identified separately.

(f) Absolute numbers are rounded to the nearest 5 and there may be slight discrepancies between the sums of constituent items and the independently rounded totals.

**Table F4.3 Numbers of learning activities at FE institutions by subject and credit level 2011/12 (a-d)**

Subject	Credit Level				
	Pre entry Level	Entry Level	NQF Level 1 or equivalent	NQF Level 2 or equivalent	NQF Level 3 or equivalent
Agriculture, Horticulture and Animal Care	0	760	1,600	4,280	1,525
Arts and Crafts	*	1,725	5,195	4,660	5,540
Business/Management/Office Studies	0	1,590	4,905	7,205	8,275
Care/Personal Development(incl Basic Skills)	1,355	28,560	52,565	57,220	31,910
Catering/Food/Leisure Services/Tourism	0	1,315	5,170	13,910	1,805
Construction & Property (Built Environment)	0	530	7,480	7,720	2,710
Cultural Studies/Languages/Literature	20	16,850	11,320	6,890	4,090
Education/Training/Teaching	0	215	3,615	5,340	6,465
Engineering	0	510	3,505	8,930	6,020
Environment Protection/Energy/Cleansing/Security	0	120	465	1,115	355
Health Care/Medicine/Health & Safety	0	915	11,420	16,200	12,895
Humanities	0	235	1,215	1,010	4,475
Information Technology & Information	*	3,135	21,565	15,115	4,390
Logistics/Distribution/Transport/Driving	0	0	165	835	25
Manufacturing/Production Work	0	150	310	1,245	740
Media/Communication/Publishing	20	590	10,770	19,355	6,305
Oil/Mining/Plastics/Chemicals	0	0	0	0	45
Performing Arts	15	820	1,165	1,225	3,885
Sales, Marketing and Retailing	0	95	1,120	3,150	835
Sciences & Mathematics	0	175	11,895	21,920	10,490
Services to Industry & Commerce	0	0	60	460	1,675
Social Sciences	0	45	130	895	4,390
Sports, Games and Recreation	*	280	1,755	3,135	2,955
Not specified	0	10,640	14,975	20,755	10,305
<b>Total</b>	<b>1,415</b>	<b>69,250</b>	<b>172,370</b>	<b>222,570</b>	<b>132,105</b>

(a) Includes WBL provision at FE institutions on a consortium member basis.

(b) Local authority community learning has been included where there is a formal enrolment with an FE institution.

(c) Subjects are derived from the first letter of the LearnDirect Classification System (LDCS) codes.

(d) Numbers greater than 0 and less than 5 have been replaced by \*. Other figures are rounded to the nearest 5 and there may be slight discrepancies between the sums of constituent items and the independently rounded totals.

**Table F4.3 (Continued) Numbers of learning activities at FE institutions by subject and credit level 2011/12 (a-d)**

Credit Level				<i>Number</i>
HE Level/ NQF Level 4 or above	Mixed Levels	Not known/ Not Applicable	Total	Subject
20	0	565	8,745	Agriculture, Horticulture and Animal Care
2,030	0	1,085	20,230	Arts and Crafts
1,580	0	3,135	26,685	Business/Management/Office Studies
*	55	16,020	187,690	Care/Personal Development(incl Basic Skills)
55	0	885	23,145	Catering/Food/Leisure Services/Tourism
110	0	1,100	19,655	Construction & Property (Built Environment)
0	0	4,155	43,320	Cultural Studies/Languages/Literature
6,370	0	390	22,395	Education/Training/Teaching
515	0	495	19,980	Engineering
0	0	170	2,225	Environment Protection/Energy/Cleansing/Security
575	0	7,755	49,760	Health Care/Medicine/Health & Safety
115	0	1,120	8,170	Humanities
325	0	4,910	49,440	Information Technology & Information
0	0	105	1,130	Logistics/Distribution/Transport/Driving
10	0	135	2,590	Manufacturing/Production Work
315	0	340	37,695	Media/Communication/Publishing
0	0	0	45	Oil/Mining/Plastics/Chemicals
5	0	565	7,680	Performing Arts
80	0	210	5,485	Sales, Marketing and Retailing
45	0	85	44,605	Sciences & Mathematics
0	0	45	2,240	Services to Industry & Commerce
*	0	285	5,755	Social Sciences
25	0	145	8,300	Sports, Games and Recreation
815	0	560	58,050	Not specified
12,995	55	44,255	655,020	Total

Source: LLWR (Lifelong Learning Wales Record) post-16 database

**Table F4.4 Numbers of learning activities at FE institutions by subject and Welsh medium status of learning delivery 2011/12 (a-d)**

Subject	Welsh Medium Status			Number
	Welsh	Bilingual	English	Total
Agriculture, Horticulture and Animal Care	10	715	8,020	8,745
Arts and Crafts	160	1,160	18,910	20,230
Business/Management/Office Studies	115	1,680	24,890	26,685
Care/Personal Development(incl Basic Skills)	505	9,415	177,770	187,690
Catering/Food/Leisure Services/Tourism	155	1,715	21,280	23,145
Construction & Property (Built Environment)	65	2,480	17,110	19,655
Cultural Studies/Languages/Literature	300	1,105	41,915	43,320
Education/Training/Teaching	110	1,070	21,215	22,395
Engineering	5	1,215	18,760	19,980
Environment Protection/Energy/Cleansing/Security	0	200	2,025	2,225
Health Care/Medicine/Health & Safety	160	2,810	46,795	49,760
Humanities	105	220	7,845	8,170
Information Technology & Information	75	1,820	47,545	49,440
Logistics/Distribution/Transport/Driving	0	15	1,115	1,130
Manufacturing/Production Work	0	85	2,505	2,590
Media/Communication/Publishing	60	1,490	36,140	37,695
Oil/Mining/Plastics/Chemicals	0	0	45	45
Performing Arts	90	375	7,215	7,680
Sales, Marketing and Retailing	305	135	5,045	5,485
Sciences & Mathematics	90	2,305	42,215	44,605
Services to Industry & Commerce	0	80	2,160	2,240
Social Sciences	0	175	5,580	5,755
Sports, Games and Recreation	10	530	7,760	8,300
Not specified	285	3,195	54,570	58,050
<b>Total</b>	<b>2,615</b>	<b>33,975</b>	<b>618,430</b>	<b>655,020</b>

Source: LLWR (Lifelong Learning Wales Record) post-16 database

- (a) Includes WBL provision at FE institutions on a consortium member basis.
- (b) Local authority community learning has been included where there is a formal enrolment with an FE institution.
- (c) Subjects are derived from the first letter of the LearnDirect Classification System (LDCS) codes.
- (d) Note that the demarcation between the Welsh and Bilingual columns is now made on the basis of LLWR field LA26 (type of Welsh Medium learning) whereas previous volumes used a proportion of learning basis and are therefore not directly comparable.

**Table F4.5 Numbers of learning activities at FE institutions by qualification type, age band and sex 2011/12 (a-d)**

	<i>Numbers</i>		
	Male	Female	Total
Aged 18 and under:			
A Level / A2	3,620	4,695	8,310
AS Level	6,405	8,935	15,340
Access Certificate/Diploma	20	95	115
First Certificate	75	130	205
First Certificate/Diploma Units	35	60	95
First Diploma	30	85	115
GCSE/VCE	2,300	2,330	4,635
HE (excluding NVQs)	345	280	625
Key Skills & ESW	49,920	45,030	94,955
NVQ	5,390	3,090	8,475
National Certificate	65	300	360
National Certificate/Diploma Units	1,280	950	2,230
National Diploma	160	950	1,110
OCN credit(s)	23,505	25,815	49,320
QCF	28,375	23,010	51,385
Other	41,750	38,570	80,325
Aged 18 and under	163,275	154,325	317,600
Aged 19 and over:			
A Level / A2	635	665	1,300
AS Level	805	945	1,750
Access Certificate/Diploma	645	2,460	3,105
First Certificate	*	*	5
First Certificate/Diploma Units	25	50	75
First Diploma	5	15	20
GCSE/VCE	1,300	2,035	3,335
HE (excluding NVQs)	3,525	4,725	8,250
Key Skills & ESW	19,375	22,620	41,995
NVQ	11,585	10,660	22,245
National Certificate	95	140	235
National Certificate/Diploma Units	290	175	465
National Diploma	130	210	335
OCN credit(s)	32,080	58,500	90,580
QCF	22,365	32,745	55,110
Other	47,840	60,760	108,600
Aged 19 and over	140,705	196,710	337,415
All ages:			
A Level / A2	4,250	5,360	9,610
AS Level	7,210	9,880	17,090
Access Certificate/Diploma	665	2,560	3,220
First Certificate	75	130	210
First Certificate/Diploma Units	60	110	170
First Diploma	35	100	135
GCSE/VCE	3,600	4,370	7,970
HE (excluding NVQs)	3,870	5,005	8,875
Key Skills & ESW	69,300	67,655	136,950
NVQ	16,975	13,750	30,725
National Certificate	160	435	595
National Certificate/Diploma Units	1,575	1,120	2,695
National Diploma	285	1,160	1,445
OCN credit(s)	55,585	84,315	139,900
QCF	50,740	55,755	106,495
Other	89,590	99,335	188,925
Total	303,985	351,035	655,020

Source: LLWR (Lifelong Learning Wales Record) post-16 database

- (a) Includes WBL provision at FE institutions on a consortium member basis.  
 (b) Local authority community learning has been included where there is a formal enrolment with an FE institution.  
 (c) Age is as at 31 August 2011.  
 (d) Numbers greater than 0 and less than 5 have been replaced by \*. Other figures are rounded to the nearest 5 and there may be slight discrepancies between the sums of constituent items and the independently rounded totals.

**Table F4.6a Numbers of awards attained by learners enrolled at FE institutions by qualification type and age band 2011/12 (a-f)**

Qualification type	Numbers		
	18 and Under	19 and Over	Total
A Level / A2	5,790	2,385	8,175
AS Level	9,485	1,930	11,415
Access Certificate/Diploma	70	1,950	2,020
First Certificate	135	10	150
First Certificate/Diploma Units	60	45	110
First Diploma	205	45	250
GCSE/VCE	2,580	2,575	5,155
Key Skills & ESW	26,705	9,860	36,565
NVQ	1,370	7,720	9,090
National Certificate	315	365	680
National Certificate/Diploma Units	1,585	420	2,005
National Diploma	850	535	1,385
OCN credit(s)	41,165	90,750	131,915
Not specified	5	355	360
Other	91,325	101,980	193,305
<b>Total</b>	<b>181,650</b>	<b>220,930</b>	<b>402,580</b>

Source: LLWR (Lifelong Learning Wales Record) post-16 database

- (a) Awards numbers are for those attained during 2011/12 but some may be associated with learning activities which took place in the previous academic year
- (b) Includes WBL provision at FE institutions on a consortium member basis.
- (c) Local authority community learning has been included where there is a formal enrolment with an FE institution.
- (d) Attained awards are those where the result of the award is achieving a pass or higher within the academic year
- (e) Age is as at 31 August 2011.
- (f) Numbers greater than 0 and less than 5 have been replaced by \*. Other figures are rounded to the nearest 5 and there may be slight discrepancies between the sums of constituent items and the independently rounded totals.

**Table F4.6b Numbers of learners attaining awards at FE institutions by qualification type and age band 2011/12 (a-f)**

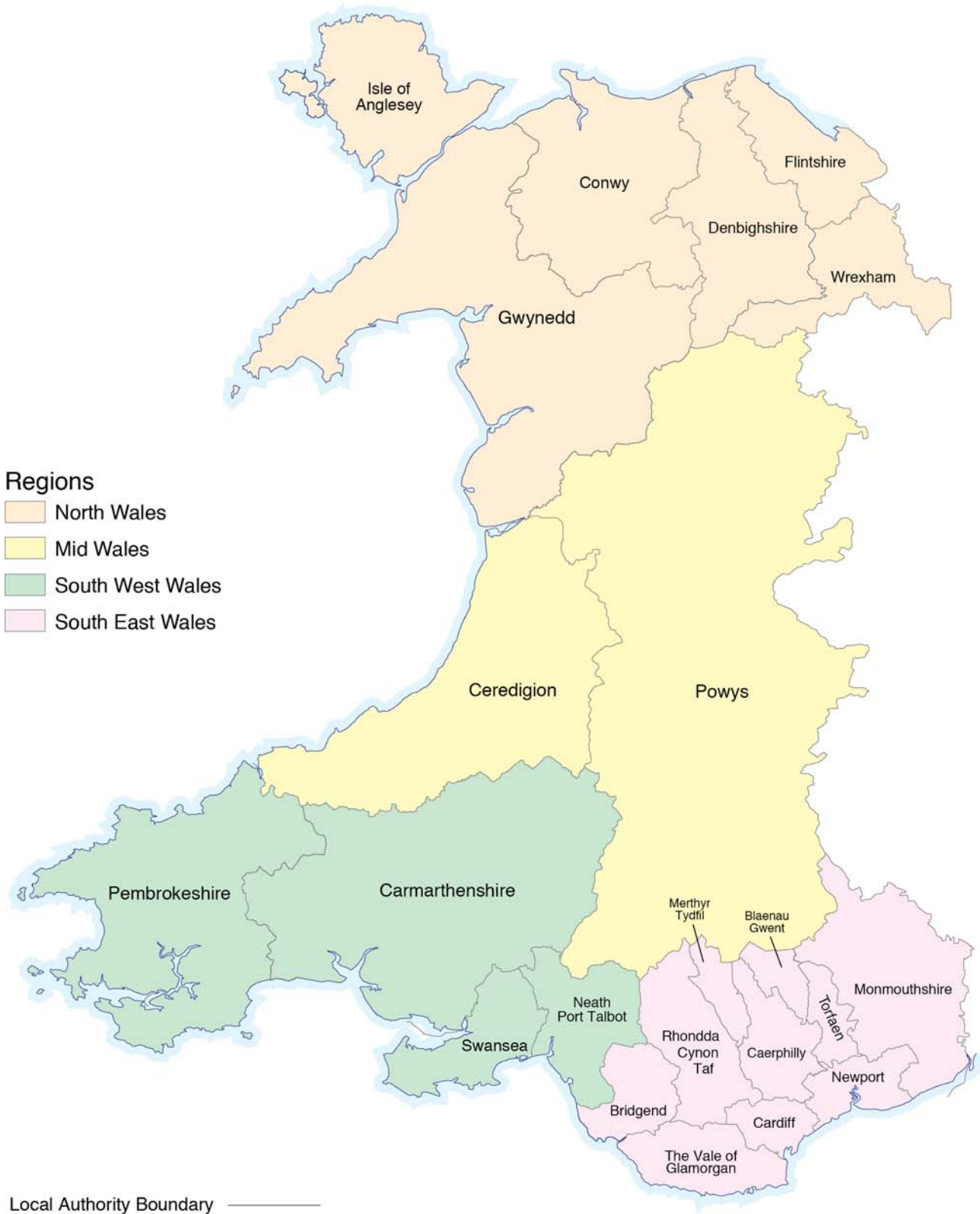
Qualification type	Numbers		
	18 and Under	19 and Over	Total
A Level / A2	2,485	1,415	3,905
AS Level	4,085	1,315	5,400
Access Certificate/Diploma	50	1,820	1,870
First Certificate	135	10	145
First Certificate/Diploma Units	40	15	55
First Diploma	190	40	230
GCSE/VCE	2,005	2,085	4,090
Key Skills & ESW	14,875	5,700	20,570
NVQ	1,115	7,315	8,430
National Certificate	310	335	645
National Certificate/Diploma Units	915	285	1,200
National Diploma	850	535	1,385
OCN credit(s)	20,020	42,180	62,205
Not specified	5	320	325
Other	33,980	59,940	93,920
<b>Total (including multiple counting between qualification types)</b>	<b>81,060</b>	<b>123,310</b>	<b>204,370</b>
<b>Total distinct learners gaining awards in academic year</b>	<b>44,535</b>	<b>100,880</b>	<b>145,415</b>

Source: LLWR (Lifelong Learning Wales Record) post-16 database

- (a) Includes WBL provision at FE institutions on a consortium member basis.
- (b) Local authority community learning has been included where there is a formal enrolment with an FE institution.
- (c) Attained awards are those where the result of the award is achieving a pass or higher within the academic year
- (d) Learner counts are on a unique learner basis. However the first total row includes multiple counting between qualification type rows whereas the second total row does not.
- (e) Age is as at 31 August 2011.
- (f) Numbers greater than 0 and less than 5 have been replaced by \*. Other figures are rounded to the nearest 5 and there may be slight discrepancies between the sums of constituent items and the independently rounded totals.



# SECTION B LOCAL AUTHORITY COMMUNITY LEARNING IN WALES



## Local Authority Community Learning Summary

- 35,560 learners undertook a Local Authority Community Learning (LA CL) activity in 2011/12, 7.5 per cent fewer than in 2010/11.
- 22,565 learners were in-learning during the week of 1 December 2011.
- 11.5 per cent of learners in the full year were under the age of 25, around the same as in 2010/11 (10 per cent in 2009/10).
- 58 per cent of learners were aged between 25 and 59, as in the previous two years.
- 30 per cent of learners were aged 60 and over, as in 2010/11.
- 71 per cent of learners were female, as in the previous two years.
- 65,915 learning activities were undertaken in 2011/12, 3.5 per cent lower than in 2010/11.
- The most popular subject areas for learning activities were Care/Personal Development [including Basic Skills](19 per cent), Cultural Studies/Languages/ Literature (18 per cent), Information Technology (17 per cent) and Arts and Crafts (16 per cent).

Note: all percentages are as a proportion of the total for which data were available

### Learners

Sixteen of the twenty-two Lifelong Learning or equivalent departments at local authorities in Wales, directly or indirectly (excluding 'assisted' provision not returned via the LLWR), delivered community learning in 2011/12 within their authority. In total 35,560 learners were undertaking a local authority community learning programme. Some learners undertook community learning with more than one provider resulting in a total of 37,275 provider learner enrolments.

There were three main ways that a learner could be engaged in a local authority community learning programme. They could have been:

- receiving community learning by local authority employed staff and enrolled at the local authority (maintained provision);
- receiving community learning by local authority employed staff but enrolled for the learning at an FE institution (contracted-in from FE institutions provision);
- receiving community learning by a third party but enrolled for the learning at the local authority (contracted-out from local authority provision).

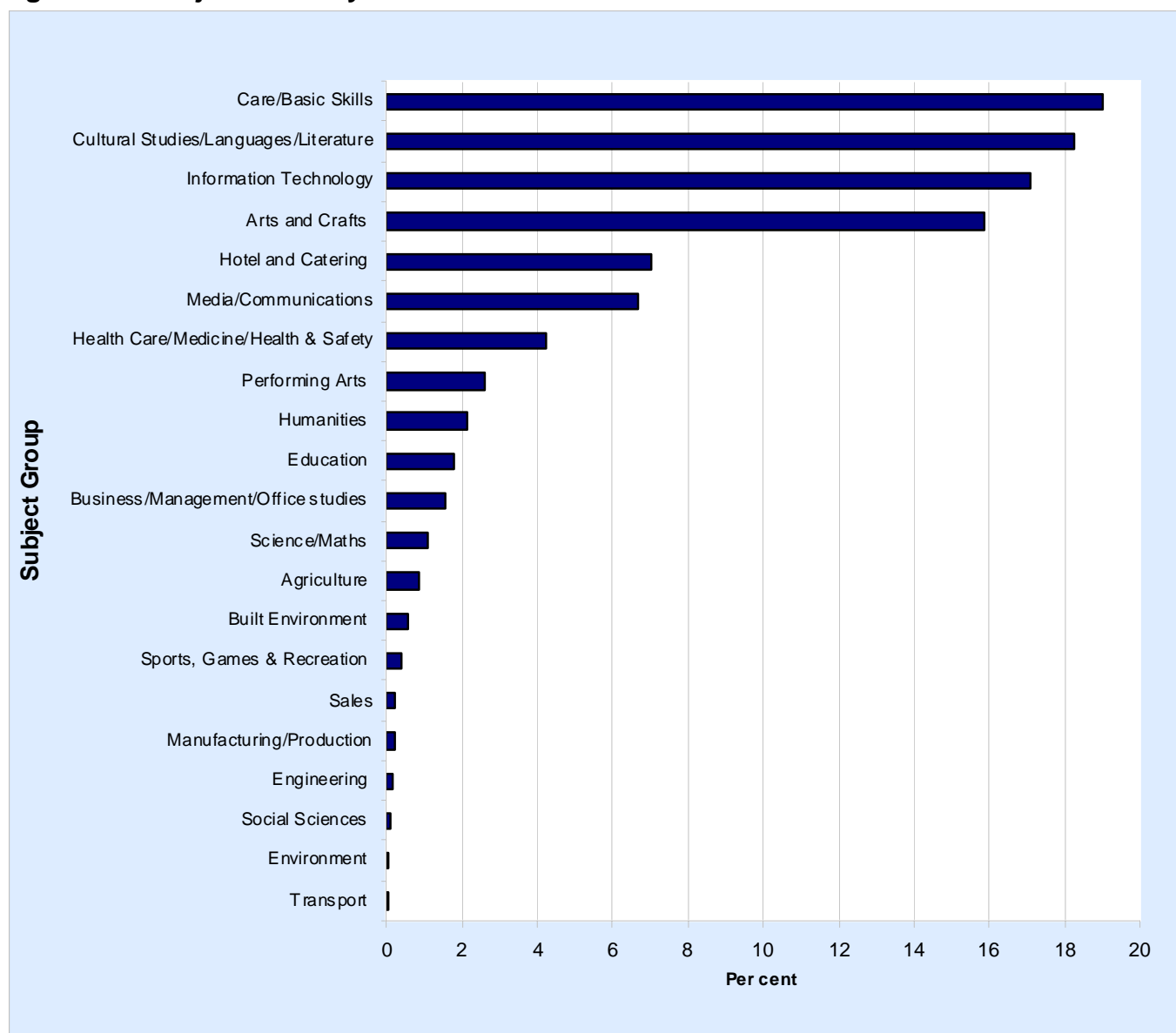
In 2011/12, only one local authority contracted out community learning provision to a third party organisation. This category accounted for 0.6 per cent of LA CL provision (having been just under 2 per cent in 2003/04). 52 per cent of learners pursued maintained provision and the remaining 47 per cent undertook provision contracted-in from FE institutions (down from 61 per cent in 2003/04).

### Learning Activities

The 35,560 learners undertook 65,915 learning activities during 2011/12. These learning activities were in a number of different subject areas, with the largest numbers in:

- Care/Personal Development (including Basic Skills) (19 per cent) (19 per cent in 2010/11)
- Cultural Studies/Languages/Literature (18 per cent) (17 per cent in 2010/11)
- Information Technology (17 per cent) (20 per cent in 2010/11)
- Arts & Crafts (16 per cent) (17 per cent in 2010/11)

**Figure L1: Subject of Study 2011/12**



### Trends in Learning

The first edition of this volume, produced by ELWa, covering 2003/04 reported the number of learners in the week of 1 December 2003 undertaking Local Authority Community Learning maintained provision to be 16,130 and the number pursuing contracted-in provision to be 25,830. The learner numbers in this edition for the week of 1 December 2011 show a 27 per cent decline in maintained provision since December 2003 and a 57 per cent decrease in learners on contracted-in provision (including a fairly large component resulting from the transfer of Welsh for Adults learners to HEI-based centres between 2006/07 and 2007/08 when contracted-in provision fell by almost 21 per cent, partly as a result of these transfers). Note that the contracted-in learners also appear in the counts for FE institutions – see Further Education section.

In the full year, local authority community learning underwent a decline in total learners of around 7.5 per cent between 2010/11 and 2011/12, maintained provision falling by 10.4 per cent and the contracted-in provision total by 3.6 per cent.

**Table L1.1 Numbers of learners in Local Authority Community Learning by unitary authority and provision type 2011/12 (a-f)**

Numbers

Unitary Authority	Maintained Provision		Contracted-out from local authorities		Contracted-in from FE institutions		Total	
	All	Enrolled 1 Dec	All	Enrolled 1 Dec	All	Enrolled '1 Dec	All	Enrolled 1 Dec
Isle of Anglesey	0	0	0	0	0	0	0	0
Gwynedd	0	0	0	0	0	0	0	0
Conwy	0	0	0	0	0	0	0	0
Denbighshire	0	0	0	0	0	0	0	0
Flintshire	0	0	0	0	0	0	0	0
Wrexham	0	0	0	0	0	0	0	0
Powys	685	360	0	0	0	0	685	360
Ceredigion	400	265	0	0	0	0	400	265
Pembrokeshire	3,035	2,050	0	0	0	0	3,035	2,050
Carmarthenshire	635	415	0	0	830	635	1,470	1,045
Swansea	1,735	1,280	0	0	*	*	1,740	1,285
Neath Port Talbot	135	90	0	0	1,405	1,170	1,540	1,255
Bridgend	450	195	0	0	1,155	230	1,605	425
The Vale of Glamorgan	2,630	1,845	0	0	235	165	2,865	2,015
Rhondda Cynon Taff	1,160	810	0	0	1,770	900	2,925	1,710
Merthyr Tydfil	500	80	0	0	0	0	500	80
Caerphilly	1,030	520	0	0	1,230	930	2,260	1,455
Blaenau Gwent	0	0	0	0	1,575	1,160	1,575	1,160
Torfaen	1,710	370	0	0	2,350	1,660	4,060	2,025
Monmouthshire	0	0	0	0	1,695	1,060	1,695	1,060
Newport	385	100	0	0	2,595	1,465	2,980	1,570
Cardiff	5,075	3,405	240	120	2,630	1,755	7,945	5,275
Total (including any multiple-counting between providers)	19,560	11,785	240	120	17,475	11,135	37,275	23,040
Total unique learners							35,560	22,565

Source: LLWR (Lifelong Learning Wales Record) post-16 database

- (a) Individual row counts are based on providers' own learner identifiers and their total includes some multiple-counting between providers.
- (b) The total unique learners row removes multiple-counting between providers by counting unique learner identifiers (ULIs).
- (c) 'Enrolled 1 Dec' is the population during the week of 1 December 2011; 'All' refers to the complete academic year.
- (d) Contracted-in learning also contributes towards figures in the FE institution tables, in particular the third party column of Table F1.5.
- (e) Excludes 'assisted' provision (e.g. a significant component of North Wales provision) not present on the LLWR.
- (f) Numbers greater than 0 and less than 5 have been replaced by \*. Other figures are rounded to the nearest 5 and there may be slight discrepancies between the sums of constituent items and the independently rounded totals.

**Table L1.2a Numbers of learners in Local Authority Community Learning by age group and sex 2011/12 (a-d)**

Age Group	Numbers					
	Full academic year			Week of 1 December		
	Male	Female	Total	Male	Female	Total
Under 16	25	65	95	10	25	35
16	140	225	365	60	135	195
17	120	195	320	45	90	135
18	145	235	380	55	100	155
19	165	255	425	65	105	165
20-24	765	1,730	2,490	375	890	1,265
25-39	2,300	6,755	9,055	1,315	3,850	5,165
40-49	1,585	4,470	6,055	985	2,700	3,685
50-59	1,660	3,925	5,585	1,040	2,650	3,690
60-64	1,010	2,725	3,740	725	2,045	2,770
65+	2,190	4,720	6,910	1,600	3,630	5,225
Not Specified	40	110	150	25	45	70
<b>Total</b>	<b>10,150</b>	<b>25,410</b>	<b>35,560</b>	<b>6,300</b>	<b>16,265</b>	<b>22,565</b>

Source: LLWR (Lifelong Learning Wales Record) post-16 database

- (a) Counts are based on unique learner identifiers (ULIs) to remove multiple-counting between providers.  
 (b) Includes local authority maintained and contracted-out provision and also contracted-in provision from FE institutions.  
 (c) Age is as at 31 August 2011.  
 (d) Numbers greater than 0 and less than 5 have been replaced by \*. Other figures are rounded to the nearest 5 and there may be slight discrepancies between the sums of constituent items and the independently rounded totals.

**Table L1.2b Numbers of learners in Local Authority Community Learning by age group and sex - excluding contracted-in from FE 2011/12 (a-e)**

Age Group	Numbers					
	Full academic year			Week of 1 December		
	Male	Female	Total	Male	Female	Total
Under 16	15	55	70	*	20	20
16	55	75	130	20	25	40
17	60	90	150	15	30	45
18	60	85	145	20	30	50
19	55	90	145	15	30	45
20-24	270	690	965	110	300	410
25-39	880	3,135	4,015	425	1,530	1,955
40-49	740	2,360	3,100	420	1,270	1,690
50-59	905	2,400	3,310	535	1,525	2,065
60-64	625	1,920	2,545	420	1,400	1,820
65+	1,445	3,475	4,920	1,035	2,635	3,665
Not Specified	25	85	110	15	30	45
<b>Total</b>	<b>5,135</b>	<b>14,470</b>	<b>19,600</b>	<b>3,035</b>	<b>8,820</b>	<b>11,855</b>

Source: LLWR (Lifelong Learning Wales Record) post-16 database

- (a) Counts are based on unique learner identifiers (ULIs) to remove multiple-counting between providers.  
 (b) Includes maintained and contracted-out provision but excludes contracted-in provision from FE institutions.  
 (c) In the event of a learner having both contracted-in and maintained (and/or contracted-out) learning activities, the assignment of the learner is made on the basis of the most recent learning programme and in accordance with the allocation method of Table L1.1.  
 (d) Age is as at 31 August 2011.  
 (e) Numbers greater than 0 and less than 5 have been replaced by \*. Other figures are rounded to the nearest 5 and there may be slight discrepancies between the sums of constituent items and the independently rounded totals.

**Table L2.1 Numbers of Local Authority Community Learning activities by unitary authority and provision type 2011/12 (a-d)**

Unitary Authority	<i>Numbers</i>							
	Maintained Provision		Contracted-out from local authorities		Contracted-in from FE institutions		Total	
	All	Enrolled 1 Dec	All	Enrolled 1 Dec	All	Enrolled 1 Dec	All	Enrolled 1 Dec
Isle of Anglesey	0	0	0	0	0	0	0	0
Gwynedd	0	0	0	0	0	0	0	0
Conwy	0	0	0	0	0	0	0	0
Denbighshire	0	0	0	0	0	0	0	0
Flintshire	0	0	0	0	0	0	0	0
Wrexham	0	0	0	0	0	0	0	0
Powys	1,195	285	0	0	0	0	1,195	285
Ceredigion	495	285	0	0	0	0	495	285
Pembrokeshire	4,265	2,295	0	0	0	0	4,265	2,295
Carmarthenshire	910	445	0	0	990	695	1,900	1,145
Swansea	2,345	1,385	0	0	*	0	2,345	1,385
Neath Port Talbot	260	185	0	0	3,150	1,450	3,410	1,635
Bridgend	560	200	0	0	2,255	315	2,815	515
The Vale of Glamorgan	4,950	2,145	0	0	415	315	5,365	2,465
Rhondda Cynon Taff	2,925	1,325	0	0	4,955	2,085	7,880	3,405
Merthyr Tydfil	620	70	0	0	0	0	620	70
Caerphilly	2,130	590	0	0	3,290	1,775	5,420	2,365
Blaenau Gwent	0	0	0	0	2,465	1,490	2,465	1,490
Torfaen	2,330	375	0	0	4,510	2,405	6,840	2,780
Monmouthshire	0	0	0	0	2,870	1,400	2,870	1,400
Newport	480	120	0	0	4,270	1,825	4,745	1,945
Cardiff	7,795	4,095	325	120	5,160	2,675	13,285	6,890
<b>Total</b>	<b>31,255</b>	<b>13,805</b>	<b>325</b>	<b>120</b>	<b>34,330</b>	<b>16,435</b>	<b>65,915</b>	<b>30,360</b>

Source: LLWR (Lifelong Learning Wales Record) post-16 database

- (a) 'Enrolled 1 Dec' is the population during the week of 1 December 2011; 'All' refers to the complete academic year.  
 (b) Contracted-in learning also contributes towards figures in the FE institution tables, in particular the third party column of Table F1.6.  
 (c) Excludes 'assisted' provision (e.g. a significant component of North Wales provision) not present on the LLWR.  
 (d) Numbers greater than 0 and less than 5 have been replaced by \*. Other figures are rounded to the nearest 5 and there may be slight discrepancies between the sums of constituent items and the independently rounded totals.

**Table L2.2 Numbers of Local Authority Community Learning activities 2011/12 by age group and sex (a-c)**

Age Group	<i>Numbers</i>					
	Full academic year			Week of 1 December		
	Male	Female	Total	Male	Female	Total
Under 16	50	100	150	15	30	45
16	230	315	540	75	155	230
17	195	315	505	55	110	165
18	265	405	670	70	130	200
19	295	440	735	85	150	235
20-24	1,525	3,195	4,720	685	1,290	1,975
25-39	4,455	12,670	17,120	2,085	5,425	7,505
40-49	2,995	8,025	11,025	1,485	3,535	5,020
50-59	3,060	7,095	10,155	1,400	3,390	4,790
60-64	1,860	5,340	7,200	920	2,630	3,550
65+	4,085	8,810	12,895	2,030	4,535	6,565
Not Specified	50	145	190	25	50	75
<b>Total</b>	<b>19,060</b>	<b>46,845</b>	<b>65,915</b>	<b>8,925</b>	<b>21,430</b>	<b>30,360</b>

Source: LLWR (Lifelong Learning Wales Record) post-16 database

- (a) Includes local authority maintained and contracted-out provision and also contracted-in provision from FE institutions.  
 (b) Age is as at 31 August 2011.  
 (c) Numbers greater than 0 and less than 5 have been replaced by \*. Other figures are rounded to the nearest 5 and there may be slight discrepancies between the sums of constituent items and the independently rounded totals.

**Table L2.3 Numbers of Local Authority Community Learning activities by subject and age group 2011/12 (a-d)**

Subject	Under 16	16	17	18	19	20 to 24
Agriculture, Horticulture and Animal Care	*	*	*	*	0	35
Arts and Crafts	15	25	30	20	30	300
Business/Management/Office Studies	*	5	5	15	15	85
Care/Personal Development(incl Basic Skills)	35	185	115	200	200	1,285
Catering/Food/Leisure Services/Tourism	10	40	70	75	70	380
Construction & Property (Built Environment)	0	20	15	15	10	55
Cultural Studies/Languages/Literature	10	75	80	95	150	835
Education/Training/Teaching	*	*	15	15	25	120
Engineering	0	5	*	*	*	10
Environment Protection/Energy/Cleansing/Security	0	0	0	0	0	10
Health Care/Medicine/Health & Safety	20	15	35	50	75	310
Humanities	0	25	5	*	*	30
Information Technology & Information	5	20	25	40	40	395
Logistics/Distribution/Transport/Driving	0	0	*	0	0	*
Manufacturing/Production Work	0	0	0	0	0	*
Media/Communication/Publishing	10	35	40	30	20	255
Performing Arts	15	20	10	*	5	90
Sales, Marketing and Retailing	0	*	*	10	10	20
Sciences & Mathematics	*	30	20	40	30	140
Social Sciences	*	*	*	*	*	10
Sports, Games and Recreation	*	*	*	5	5	15
Not specified	5	25	25	40	45	325
<b>Total</b>	<b>150</b>	<b>540</b>	<b>505</b>	<b>670</b>	<b>735</b>	<b>4,720</b>

(a) Includes local authority maintained and contracted-out provision and also contracted-in provision from FE institutions.

(b) Age is as at 31 August 2011.

(c) Subjects are derived from the first letter of the LearnDirect Classification System (LDCS) codes.

(d) Numbers greater than 0 and less than 5 have been replaced by \*. Other figures are rounded to the nearest 5 and there may be slight discrepancies between the sums of constituent items and the independently rounded totals.



**Table L2.3 (Continued) Numbers of Local Authority Community Learning activities by subject and age group 2011/12 (a-d)**

							<i>Numbers</i>
25 to 39	40 to 49	50 to 59	60 to 64	65 plus	Age not stated	Total	Subject
110	90	130	80	90	0	550	Agriculture, Horticulture and Animal Care
1,575	1,445	1,750	1,750	3,055	30	10,025	Arts and Crafts
250	240	155	75	145	*	990	Business/Management/Office Studies
3,920	2,070	1,610	910	1,460	45	12,035	Care/Personal Development(incl Basic Skills)
1,340	995	720	350	375	15	4,445	Catering/Food/Leisure Services/Tourism
100	70	60	20	20	0	375	Construction & Property (Built Environment)
4,170	2,105	1,715	935	1,360	25	11,550	Cultural Studies/Languages/Literature
495	220	120	30	75	15	1,135	Education/Training/Teaching
20	20	15	10	15	0	105	Engineering
15	0	5	0	*	0	35	Environment Protection/Energy/Cleansing/Security
940	540	345	130	230	5	2,695	Health Care/Medicine/Health & Safety
95	90	220	310	550	*	1,335	Humanities
1,640	1,580	1,755	1,475	3,825	10	10,820	Information Technology & Information
*	10	10	*	*	0	30	Logistics/Distribution/Transport/Driving
20	15	35	35	20	0	130	Manufacturing/Production Work
795	635	750	680	960	10	4,230	Media/Communication/Publishing
295	275	320	210	390	10	1,645	Performing Arts
45	25	15	*	*	*	130	Sales, Marketing and Retailing
250	105	45	5	15	0	680	Sciences & Mathematics
15	20	*	*	*	0	65	Social Sciences
35	20	35	35	75	*	240	Sports, Games and Recreation
990	465	335	150	230	20	2,665	Not specified
17,120	11,025	10,155	7,200	12,895	190	65,915	Total

Source: LLWR (Lifelong Learning Wales Record) post-16 database

**Table L2.4 Numbers of Local Authority Community Learning activities 2011/12 by subject and sex (a-c)**

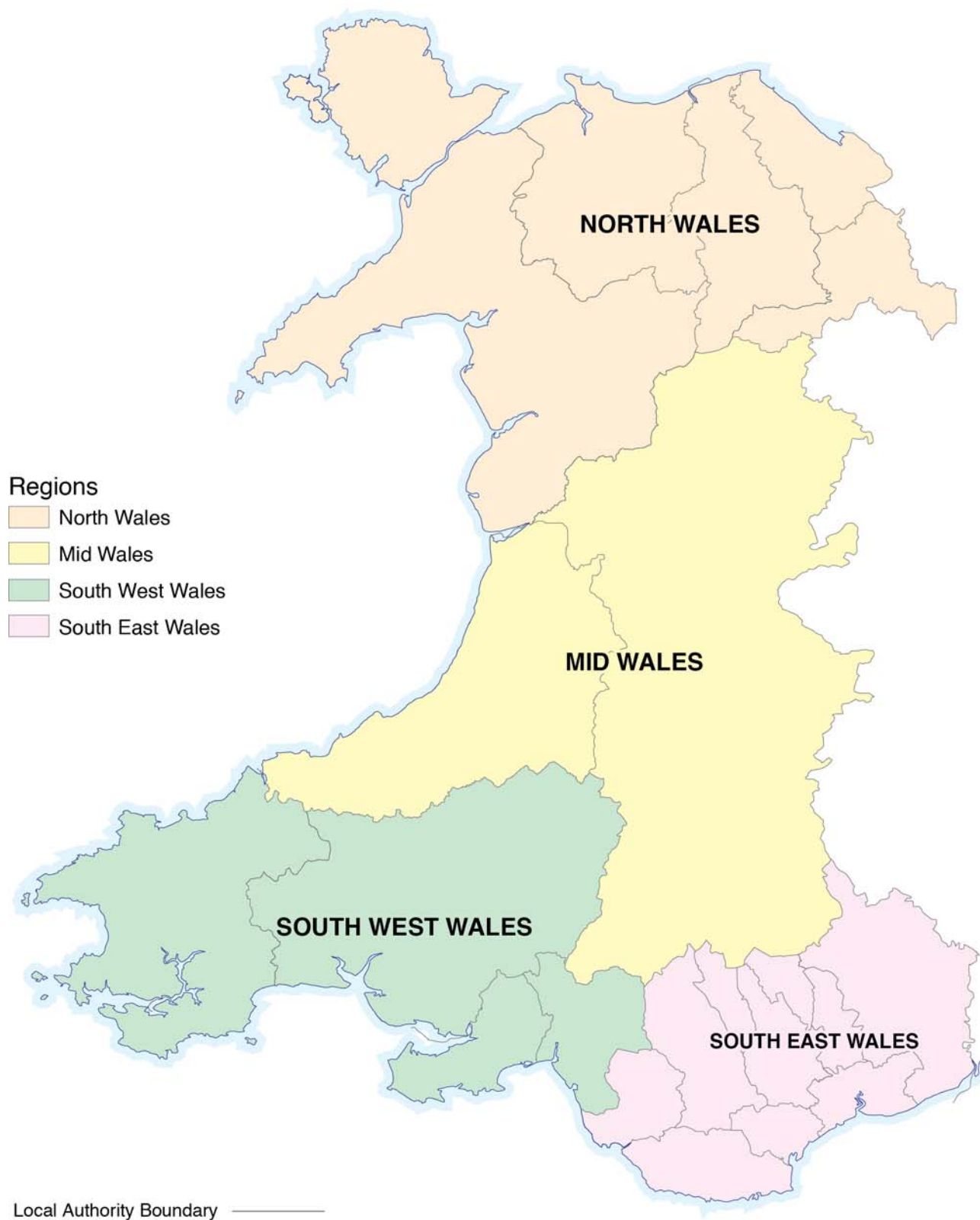
Subject	Numbers		
	Male	Female	Total
Agriculture, Horticulture and Animal Care	175	375	550
Arts and Crafts	1,775	8,250	10,025
Business/Management/Office Studies	245	745	990
Care/Personal Development(incl Basic Skills)	3,195	8,840	12,035
Catering/Food/Leisure Services/Tourism	930	3,510	4,445
Construction & Property (Built Environment)	275	105	375
Cultural Studies/Languages/Literature	4,265	7,285	11,550
Education/Training/Teaching	160	975	1,135
Engineering	100	5	105
Environment Protection/Energy/Cleansing/Security	15	20	35
Health Care/Medicine/Health & Safety	670	2,025	2,695
Humanities	445	890	1,335
Information Technology & Information	3,545	7,265	10,820
Logistics/Distribution/Transport/Driving	25	5	30
Manufacturing/Production Work	75	55	130
Media/Communication/Publishing	1,230	2,995	4,230
Performing Arts	730	915	1,645
Sales, Marketing and Retailing	40	90	130
Sciences & Mathematics	220	465	680
Social Sciences	25	45	65
Sports, Games and Recreation	110	130	240
Not specified	810	1,855	2,665
<b>Total</b>	<b>19,060</b>	<b>46,845</b>	<b>65,915</b>

Source: LLWR (Lifelong Learning Wales Record) post-16 database

- (a) Includes local authority maintained and contracted-out provision and also contracted-in provision from FE institutions.
- (b) Subjects are derived from the first letter of the LearnDirect Classification System (LDCS) codes.
- (c) Numbers greater than 0 and less than 5 have been replaced by \*. Other figures are rounded to the nearest 5 and there may be slight discrepancies between the sums of constituent items and the independently rounded totals.

# SECTION C

## WORK-BASED LEARNING IN WALES



## Work-based Learning Summary

- 53,430 learners were engaged in work-based learning (WBL) provision in 2011/12, taken as a whole, 6.3 per cent fewer than in 2010/11. Of these learners, 1,445 were pursuing the Pathways to Apprenticeships (PtA) scheme, an FE programme supporting WBL provision.
- Of WBL learners, 30,535 were in-learning at the end of March 2012, 6.5 per cent fewer than in March 2011, 8.6 per cent fewer than in March 2008 and 22 per cent fewer than in March 2006.
- 56 per cent of learners were under the age of 25 (compared with 54 per cent in 2010/11, 50 per cent in 2007/08 but 54 per cent in 2005/06); 29 per cent were under the age of 19.
- 49 per cent of learners in 2011/12 were male, the same as in the previous two years, as compared with 47 per cent in 2008/09 and 52 per cent in 2004/05.
- 3.1 per cent of learners were of a non-white ethnic origin, the same as in the previous two years (but contrasting with 2.2 per cent in 2004/05).
- 2.6 per cent of learners had a disability affecting learning, slightly up from 2.2 per cent in the previous year.
- 65 per cent of learners were on a Level 3 Apprenticeship or Foundation Apprenticeship programme, up from 62 per cent the previous year but down from 70 per cent in 2008/09 and 74 per cent in 2007/08.
- 69 per cent of the learning activities taken were at a notional level of NQF (National Qualifications Framework) level 1 or 2; 15 per cent were at pre-entry level or entry level, 15 per cent were at level 3 and 1.4 per cent were at level 4 or above.
- 59 per cent of learning programmes finished were followed by (current or new) employment, with 66 per cent of learners (up from 62 per cent the previous year) leaving with employment as their destination.
- The most popular sector frameworks for MAs, FMAs and MSDs overall were Health and Social Care (21 per cent), Management (8 per cent), Business and Administration (7 per cent) and Customer Service (7 per cent). The Management sector framework accounted for 47 per cent of Modern Skills Diploma / Higher Apprenticeship learning programmes pursued in 2011/12.
- Around 185,000 learning activities were undertaken through work-based learning in 2011/12.

Note: All percentages are as a proportion of the total for which data were available.

## Learners and Programmes

53,430 learners undertook work-based learning provision in 2011/12. Some learners undertook more than one training episode during the year resulting in a total of 59,665 individual learning programmes.

In 2011/12 there were five main training programme types plus an 'other' category which included e.g. Pathways to Apprenticeships and bespoke programmes. The proportions of learners in the full year pursuing each type comprised:

- |  |                 |
|--|-----------------|
| • Foundation Apprenticeships                     | (35.4 per cent) |
| • Apprenticeships (Level 3)                      | (29.5 per cent) |
| • Higher Apprenticeships / Modern Skills Diploma | (2.5 per cent)  |
| • Steps to Employment                            | (7.9 per cent)  |
| • Traineeships                                   | (13.7 per cent) |
| • Other  | (11.0 per cent) |

Overall 59,665 work-based learning programmes were taken by learners in 2011/12 of which 37,670 were Foundation Apprenticeships, Apprenticeships or Modern Skills Diplomas. Information on the sector framework of these three programmes is given in Table T3.1 from which the sector frameworks with the largest numbers were:

- Health and Social Care (21 per cent)
- Management (8 per cent)
- Business and Administration (7 per cent)
- Customer Service (7 per cent)
- Early Years Care & Education plus Children’s Care Learning and Development (7 per cent)
- Construction (5 per cent)

59 per cent of (known) learning programme destinations were ‘employment’, primarily current employment; 16 per cent were seeking work or unemployed; 26 per cent went on to further learning (FE, including new programmes on LLWR in the same year, and HE). On a learner basis (taking only the final programme of the year) 66 per cent went into new or continued current employment, 18 per cent were seeking work or unemployed and 11 per cent went on to new learning [Tables T3.3 a/b].

### Learning activities

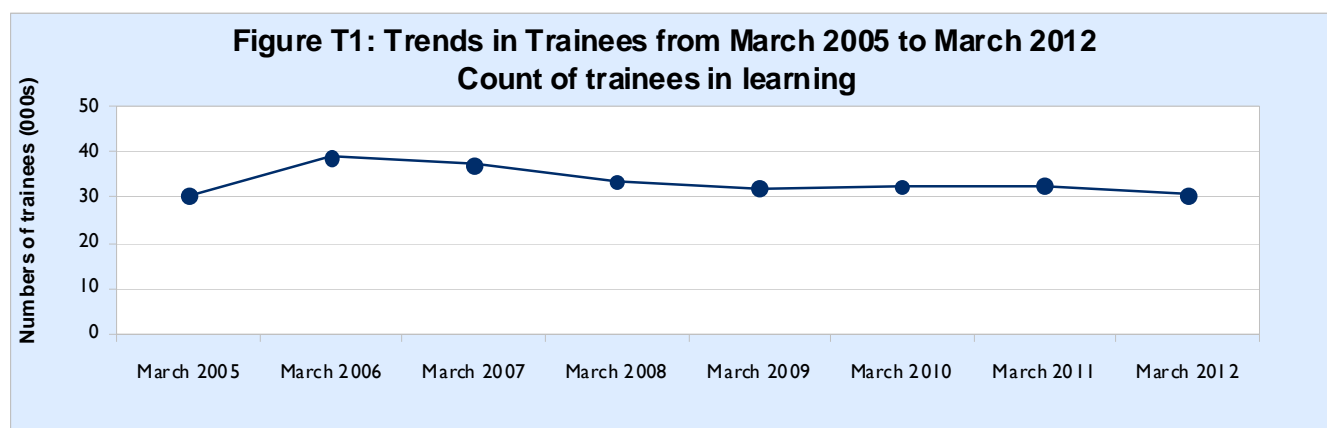
Overall 185,145 learning activities were followed by learners in work-based learning. The vast majority of these were at a level equivalent to NQF level 1, 2 or 3 [Table T3.2].

The most popular subjects being undertaken by learners in work-based learning were:

- Care/Personal Development (including Basic Skills) (27 per cent) (29 per cent in 2010/11)
- Science/Mathematics (16 per cent) (13 per cent in 2010/11)
- Media/Communication/Publishing (16 per cent) (13 per cent in 2010/11)
- Business/Management (8 per cent) (7 per cent in 2010/11)
- Engineering (5 per cent) (4 per cent in 2010/11)

### Trends in work-based learning

The trend information in Table T2.1 on learner numbers continues a series published by the Welsh Government. Whereas most counts in this publication are for the full year, the count in the time series is of those in training at the end of March (and July) each year.



Within year figures at a variety of dates in 2011/12 are illustrated in Table T2.2 which also compares counts of learning programmes with those of unique learners by programme type.

**Table T1.1 Work-based learning provision: Numbers of learners 2011/12 by age group, sex and programme type (a-c)(f)**

	<i>Numbers</i>						
	Foundation Apprenticeship	Apprenticeship (Level 3)	Higher Apprenticeship & MSD (d)	Steps to Employment	Traineeship	Other Programmes (e)	Total
<b>Female learners aged:</b>							
Under 16	10	*	0	*	380	0	395
16	310	20	0	*	1,645	30	2,010
17	545	105	0	60	1,110	480	2,300
18	675	270	0	160	100	355	1,560
19	705	415	10	165	10	130	1,435
20-24	2,555	1,925	90	450	*	285	5,305
25-39	2,785	3,190	455	665	0	405	7,500
40-49	1,915	1,860	275	330	0	215	4,595
50-59	1,005	750	105	165	0	125	2,150
60-64	75	35	10	*	0	5	130
65+	10	10	*	0	0	0	20
Female learners	10,590	8,585	950	1,990	3,250	2,030	27,390
<b>Male learners aged:</b>							
Under 16	10	15	0	0	430	0	455
16	350	75	0	*	2,105	505	3,035
17	860	325	0	50	1,390	870	3,495
18	815	710	*	205	140	590	2,460
19	595	905	10	230	5	215	1,960
20-24	1,870	2,555	40	610	*	475	5,555
25-39	2,235	1,830	165	670	0	610	5,510
40-49	1,015	585	120	285	0	365	2,375
50-59	480	185	40	170	0	180	1,060
60-64	65	15	*	15	0	15	105
65+	10	*	*	0	0	0	15
Male learners	8,305	7,200	380	2,240	4,075	3,835	26,035
<b>All WBL provision</b>							
Under 16	20	15	0	*	810	0	850
16	655	95	0	*	3,755	535	5,045
17	1,405	435	0	110	2,500	1,350	5,795
18	1,490	980	*	365	240	945	4,020
19	1,300	1,320	20	395	15	350	3,395
20-24	4,430	4,480	130	1,060	5	760	10,860
25-39	5,020	5,020	620	1,335	0	1,015	13,010
40-49	2,930	2,445	395	615	0	580	6,970
50-59	1,485	935	150	335	0	305	3,210
60-64	140	50	15	15	0	20	240
65+	20	10	5	0	0	0	35
Total	18,895	15,785	1,330	4,230	7,320	5,865	53,430

Source: LLWR (Lifelong Learning Wales Record) post-16 database

- (a) Counts are on a unique learner identifier (ULI) basis to eliminate multiple-counting between providers.  
 (b) Includes work-based learning (WBL) provision at FE institutions and at other training providers.  
 (c) Age is as at 31 August 2011.  
 (d) MSD = 'Modern Skills Diploma'; replaced by Higher Apprenticeships for new programmes starting from August 2011.  
 (e) The 'Other Programmes' column includes other WBL programmes at FE institutions and all other programmes at WBL subsidiaries and other training providers; it also includes Pathways to Apprenticeships and bespoke programmes.  
 (f) Numbers greater than 0 and less than 5 have been replaced by \*. Other figures are rounded to the nearest 5 and there may be slight discrepancies between the sums of constituent items and the independently rounded totals.

**Table T1.2 Numbers of learners in work-based learning provision 2011/12 by programme and region of domicile (a)(b)(e)**

Programme Type	Region of domicile					Total
	North Wales	Mid Wales	South West Wales	South East Wales	Other (d)	
Apprenticeship (Level 3)	3,570	765	3,290	7,660	500	15,785
Foundation Apprenticeship	4,775	1,025	3,915	8,715	465	18,895
Higher Apprenticeship / MSD	345	70	315	555	50	1,330
Steps to Employment	770	170	885	2,335	70	4,230
Traineeship	980	255	1,805	4,155	130	7,320
Other Programmes (c)	1,205	235	1,120	3,030	280	5,865
<b>Total</b>	<b>11,640</b>	<b>2,525</b>	<b>11,325</b>	<b>26,445</b>	<b>1,495</b>	<b>53,430</b>

Source: LLWR (Lifelong Learning Wales Record) post-16 database

- (a) Includes work-based learning (WBL) provision at FE institutions and at other training providers.  
 (b) Counts are on a unique learner identifier (ULI) basis to eliminate multiple-counting between providers.  
 (c) The 'Other Programmes' row includes other WBL programmes at FE institutions and all other programmes at WBL subsidiaries and other training providers; it also includes Pathways to Apprenticeships and bespoke programmes.  
 (d) Other' Region of domicile includes learners domiciled outside Wales and learners without a valid postcode.  
 (e) Numbers greater than 0 and less than 5 have been replaced by \*. Other figures are rounded to the nearest 5 and there may be slight discrepancies between the sums of constituent items and the independently rounded totals.

**Table T1.3 Work-based learning provision: Numbers of enrolments on learning programmes by type and region of domicile 2011/12 (a-d)**

Programme Type	Region of domicile					Total
	North Wales	Mid Wales	South West Wales	South East Wales	Other (c)	
Apprenticeship (Level 3)	3,630	775	3,355	7,845	505	16,110
Foundation Apprenticeship	5,100	1,105	4,250	9,265	490	20,215
Higher Apprenticeship / MSD	350	70	315	555	50	1,345
Steps to Employment	800	180	920	2,415	70	4,385
Traineeship	1,305	335	2,530	5,940	170	10,280
Other Programmes (b)	1,350	270	1,430	3,970	310	7,330
<b>Total</b>	<b>12,535</b>	<b>2,740</b>	<b>12,805</b>	<b>29,990</b>	<b>1,595</b>	<b>59,665</b>

Source: LLWR (Lifelong Learning Wales Record) post-16 database

- (a) Includes work-based learning (WBL) provision at FE institutions and at other training providers.  
 (b) The 'Other Programmes' row includes other WBL programmes at FE institutions and all other programmes at WBL subsidiaries and other training providers; it also includes Pathways to Apprenticeships and bespoke programmes.  
 (c) Other' Region of domicile includes learners domiciled outside Wales and learners without a valid postcode.  
 (d) Numbers greater than 0 and less than 5 have been replaced by \*. Other figures are rounded to the nearest 5 and there may be slight discrepancies between the sums of constituent items and the independently rounded totals.

**Table T1.4 Numbers of learners in work-based learning provision 2011/12 by ethnicity, age band and sex (a-e)**

<b>Aged 18 and under</b>			
	<i>Numbers</i>		
Ethnicity	Male	Female	Total
Asian	65	40	110
Black	45	10	55
Mixed	115	80	195
Other Minority Ethnic	15	5	25
White	9,170	6,110	15,280
Information refused/not known	35	15	45
<b>Total</b>	<b>9,450</b>	<b>6,260</b>	<b>15,710</b>

<b>Aged 19 and over</b>			
	<i>Numbers</i>		
Ethnicity	Male	Female	Total
Asian	255	310	565
Black	135	150	290
Mixed	120	155	280
Other Minority Ethnic	55	65	120
White	15,920	20,320	36,240
Information refused/not known	95	130	225
<b>Total</b>	<b>16,585</b>	<b>21,135</b>	<b>37,720</b>

<b>All ages</b>			
	<i>Numbers</i>		
Ethnicity	Male	Female	Total
Asian	320	355	675
Black	185	160	345
Mixed	240	235	475
Other Minority Ethnic	75	70	145
White	25,090	26,430	51,520
Information refused/not known	130	145	275
<b>Total</b>	<b>26,035</b>	<b>27,390</b>	<b>53,430</b>

Source: LLWR (Lifelong Learning Wales Record) post-16 database

- (a) Counts are on a unique learner identifier (ULI) basis to eliminate multiple-counting between providers.
- (b) Where a learner participates in more than one learning programme over the course of the year, the most recent programme has been selected.
- (c) Includes work-based learning (WBL) provision at FE institutions and at other training providers.
- (d) Age is as at 31 August 2011.
- (e) Numbers greater than 0 and less than 5 have been replaced by \*. Other figures are rounded to the nearest 5 and there may be slight discrepancies between the sums of constituent items and the independently rounded totals.



**Table T1.5 Numbers of learners in work-based learning provision 2011/12 by disability status, age band and sex (a-f)**

<b>Aged 18 and under</b>			<i>Numbers</i>
Disability Status (e)	Male	Female	Total
Disabled (affecting learning)	435	230	665
Not applicable / not disabled	9,015	6,030	15,045
Total	9,450	6,260	15,710
<b>Aged 19 and over</b>			
Disability Status (e)	Male	Female	Total
Disabled (affecting learning)	350	365	715
Not applicable / not disabled	16,235	20,770	37,005
Total	16,585	21,135	37,720
<b>All ages</b>			
Disability Status (e)	Male	Female	Total
Disabled (affecting learning)	785	595	1,380
Not applicable / not disabled	25,250	26,800	52,050
Total	26,035	27,390	53,430

Source: LLWR (Lifelong Learning Wales Record) post-16 database

- (a) Counts are on a unique learner identifier (ULI) basis to eliminate multiple-counting between providers.
- (b) Where a learner participates in more than one learning programme over the course of the year, the most recent programme has been selected.
- (c) Includes work-based learning (WBL) provision at FE institutions and at other training providers.
- (d) Age is as at 31 August 2011.
- (e) Disability status relates only to those learners who have a disability which impacts on their ability to learn and/or use facilities of a kind generally supplied by the learning provider.
- (f) Numbers greater than 0 and less than 5 have been replaced by \*. Other figures are rounded to the nearest 5 and there may be slight discrepancies between the sums of constituent items and the independently rounded totals.

**Table T2.1 Trends in work-based learning - numbers in training as at March and July by programme type 2007/08 to 2011/12 (a-f)**

	<i>Thousands</i>									
	March 2008	July 2008	March 2009	July 2009	March 2010	July 2010	March 2011	July 2011	March 2012	July 2012
Foundation Apprenticeship	15.5	14.1	14.0	12.8	12.3	10.8	10.5	9.0	11.9	10.5
Apprenticeship (Level 3)	11.9	10.8	10.9	10.2	10.7	9.8	12.1	10.5	10.1	9.1
Higher Apprenticeship / MSD	1.4	1.2	1.3	1.1	1.2	1.2	1.3	1.1	0.8	0.5
Steps to Employment	.	.	.	.	.	.	.	.	1.4	1.3
Traineeship	.	.	.	.	.	.	.	.	3.7	3.6
Other Programmes (d)	4.6	5.0	5.7	5.4	8.1	7.2	8.7	5.1	2.8	1.4
All Programmes	33.4	31.1	31.9	29.6	32.4	29.0	32.7	25.6	30.5	26.3

Source: LLWR (Lifelong Learning Wales Record) post-16 database

- (a) Each individual programme row includes conversions from other programmes.  
 (b) Some values in the 'All Programmes' row appear not to equal the sum of their parts owing to independent rounding.  
 (c) . = not applicable.  
 (d) The 'Other Programmes' row includes other WBL programmes at FE institutions and all other programmes at WBL subsidiaries and other training providers.  
 (e) Counts are of distinct learners (000s).  
 (f) MSD = 'Modern Skills Diploma'; this programme was replaced by Higher Apprenticeships in August 2011.

**Table T2.2 Work-based learning provision: Numbers of unique learners and individual learning programmes by programme type (a-e)**

	<i>Numbers (f)</i>				
	Week of 1 December 2011	31 December 2011	31 March 2012	31 July 2012	2011/12 year
<b>Unique learner numbers by programme type (a)(b)</b>					
Foundation Apprenticeship	11,735	11,350	11,880	10,450	18,895
Apprenticeship (Level 3)	10,305	10,095	10,100	9,100	15,785
Higher Apprenticeship / MSD	955	895	755	510	1,330
Steps to Employment	1,095	995	1,350	1,310	4,230
Traineeship	3,335	3,210	3,665	3,585	7,320
Other Programmes (d)	3,400	3,180	2,780	1,355	5,865
Total unique learners	30,825	29,730	30,535	26,310	53,430
<b>Numbers of learning programmes by type (c)</b>					
Foundation Apprenticeship	11,750	11,360	11,900	10,470	20,215
Apprenticeship (Level 3)	10,320	10,110	10,115	9,115	16,110
Higher Apprenticeship / MSD	955	895	755	510	1,345
Steps to Employment	1,095	995	1,355	1,310	4,385
Traineeship	3,340	3,215	3,670	3,590	10,280
Other Programmes (d)	3,525	3,285	2,875	1,385	7,330
Total learning programmes	30,985	29,860	30,670	26,375	59,665

Source: LLWR (Lifelong Learning Wales Record) post-16 database

- (a) Unique learner counts are based on unique learner identifiers (ULI) to eliminate multiple-counting between providers.  
 (b) Where a learner participates in more than one learning programme, the most recent one for the period is selected for the unique learner programme type.  
 (c) Where a learner participates in more than one learning programme over a period, all are included in the learning programme counts.  
 (d) The 'Other Programmes' row includes other WBL programmes at FE institutions and all other programmes at WBL subsidiaries and other training providers. It also includes Pathways to Apprenticeship programmes (amounting to 1,445 learners in the full year 2011/12) which are non-WBL programmes at FEIs supporting WBL provision.  
 (e) Numbers greater than 0 and less than 5 have been replaced by \*. Other figures are rounded to the nearest 5 and there may be slight discrepancies between the sums of constituent items and the independently rounded totals.

**Table T3.1 Numbers of Learning Programmes for Foundation Apprenticeships, Apprenticeships and Modern Skills Diplomas by sector framework and programme type 2011/12 (a-d)**

Sector	<i>Numbers</i>			
	Foundation Apprenticeship	Apprenticeship (Level 3)	Modern Skills Diploma	Total
Accountancy / Accounting	50	130	105	280
Active Leisure and Learning	250	330	0	580
Advice and Guidance	5	95	10	115
Agriculture Crops and Livestock	80	40	10	130
Barbering	55	25	0	80
Beauty Therapy	40	35	0	75
Business and Administration	1,365	1,215	40	2,620
Call Handling	65	25	0	90
Children's Care Learning And Development	235	470	0	705
Cleaning & Support Service Industry	100	0	0	100
Construction	1,365	630	0	1,995
Construction (Building - excluding Specialist)	70	0	0	70
Customer Service	1,755	760	*	2,520
Dental Nursing	0	265	0	265
Driving Goods Vehicles	70	5	0	80
Early Years Care & Education	420	1,180	270	1,870
Electrotechnical	50	885	0	935
Engineering	380	1,480	0	1,865
Engineering Construction	0	85	0	85
Engineering Manufacture	*	110	0	110
Food Manufacture	485	10	0	495
Food and Drink	50	25	0	70
Hairdressing	1,140	570	0	1,710
Health and Social Care	5,030	2,575	220	7,825
Heating, Ventilation, Air Conditioning and Refrigeration	85	45	0	130
Hospitality	1,075	475	0	1,550
Hospitality and Catering	480	40	0	520
IT User	600	240	0	840
Improving Operational Performance	200	0	0	200
Industrial Applications	610	0	0	610
Information Technology & Electronic Services	100	35	0	135
Management	825	1,470	635	2,930
Motor Industry	45	25	0	70
Plumbing and Heating	530	450	0	985
Rail Engineering (Track)	170	0	0	170
Retail	545	170	0	715
Retail Financial Services	30	60	0	90
Supporting Teaching and Learning in Schools	60	375	0	435
Sustainable Resource Management	75	5	0	80
Teaching Assistants	55	365	0	420
Vehicle Body and Paint Operations	40	40	0	80
Vehicle Maintenance and Repair	620	390	0	1,010
Wholesale, Distribution, Warehousing and Storage	260	20	0	275
Other	735	970	45	1,750
<b>Total</b>	<b>20,215</b>	<b>16,110</b>	<b>1,345</b>	<b>37,665</b>

Source: LLWR (Lifelong Learning Wales Record) post-16 database

- (a) Includes work-based learning (WBL) at FE institutions and at other training providers.
- (b) Sectors with fewer than 70 learning programmes associated with them have been grouped together under 'Other'.
- (c) Note that the Learning Network Analysis bulletins and associated StatsWales cubes do not employ these detailed sector frameworks (from LLWR fields LP16 and LP66) but instead group them into broad sector categories.
- (d) Numbers greater than 0 and less than 5 have been replaced by \*. Other figures are rounded to the nearest 5 and there may be slight discrepancies between the sums of constituent items and the independently rounded totals.

**Table T3.2 Work-based learning provision: Numbers of learning activities by Subject and credit level 2011/12 (a-c)**

Subject	Credit Level				
	Pre entry Level	Entry Level	NQF Level 1 or equivalent	NQF Level 2 or equivalent	NQF Level 3 or equivalent
Agriculture, Horticulture and Animal Care	0	*	190	435	80
Arts and Crafts	0	0	0	0	*
Business/Management/Office Studies	0	30	1,250	4,415	4,805
Care/Personal Development(incl Basic Skills)	3,710	15,920	10,200	6,620	1,915
Catering/Food/Leisure Services/Tourism	0	*	225	3,170	1,270
Construction & Property (Built Environment)	0	35	1,440	3,650	1,450
Cultural Studies/Languages/Literature	0	65	220	15	0
Education/Training/Teaching	0	375	90	1,365	1,845
Engineering	0	60	655	4,730	3,000
Environment Protection/Energy/Cleansing/Security	0	0	0	675	50
Health Care/Medicine/Health & Safety	0	*	1,250	2,525	2,725
Humanities	0	0	*	0	0
Information Technology & Information	0	600	1,415	1,540	475
Logistics/Distribution/Transport/Driving	0	0	35	930	60
Manufacturing/Production Work	0	0	60	1,725	675
Media/Communication/Publishing	0	0	11,825	13,290	350
Oil/Mining/Plastics/Chemicals	0	0	0	0	40
Performing Arts	0	0	0	*	20
Sales, Marketing and Retailing	0	15	1,265	4,280	1,775
Sciences & Mathematics	0	0	12,935	12,385	215
Services to Industry & Commerce	0	0	20	165	1,650
Social Sciences	0	0	0	0	10
Sports, Games and Recreation	0	10	490	190	325
Not specified	980	5,290	6,185	11,165	3,760
<b>Total</b>	<b>4,685</b>	<b>22,400</b>	<b>49,760</b>	<b>73,270</b>	<b>26,505</b>

(a) Includes work-based learning (WBL) provision at FE institutions and at other training providers.

(b) Subjects are derived from the first letter of the LearnDirect Classification System (LDCS) codes.

(c) Numbers greater than 0 and less than 5 have been replaced by \*. Other figures are rounded to the nearest 5 and there may be slight discrepancies between the sums of constituent items and the independently rounded totals.

**Table T3.2 (Continued) Work-based learning provision: Numbers of learning activities by subject and credit level 2011/12 (a-c)**

Credit Level			<i>Numbers</i>
HE Level/ NQF Level 4 and above	Not known/ Not Applicable	Total	Subject
10	*	720	Agriculture, Horticulture and Animal Care
0	0	*	Arts and Crafts
1,500	350	12,345	Business/Management/Office Studies
0	4,015	42,375	Care/Personal Development(incl Basic Skills)
0	55	4,725	Catering/Food/Leisure Services/Tourism
5	20	6,600	Construction & Property (Built Environment)
0	5	305	Cultural Studies/Languages/Literature
240	135	4,050	Education/Training/Teaching
85	60	8,590	Engineering
0	80	805	Environment Protection/Energy/Cleansing/Security
175	90	6,765	Health Care/Medicine/Health & Safety
0	35	35	Humanities
*	5	4,035	Information Technology & Information
0	35	1,060	Logistics/Distribution/Transport/Driving
*	310	2,775	Manufacturing/Production Work
0	0	25,470	Media/Communication/Publishing
0	0	40	Oil/Mining/Plastics/Chemicals
0	0	25	Performing Arts
*	70	7,410	Sales, Marketing and Retailing
0	*	25,535	Sciences & Mathematics
0	10	1,850	Services to Industry & Commerce
0	0	10	Social Sciences
0	5	1,020	Sports, Games and Recreation
485	725	28,585	Not specified
2,515	6,005	185,145	Total

Source: LLWR (Lifelong Learning Wales Record) post-16 database

**Table T3.3a Leaver destinations: Number of learning programmes left in academic year 2011/12 by destination and age group (a-e)**

Destination	Age Group					
	Under 16	16	17	18	19	20-24
New programme of learning (not HE)	80	2,425	2,090	660	260	400
Higher education	*	25	30	20	15	45
Entering new employment/changing employment	*	445	835	500	300	680
Continuing current employment	*	15	355	740	870	3,685
Seeking work /unemployed	25	820	1,330	565	335	725
Self employment	0	10	15	10	10	20
Voluntary work	*	30	65	40	35	70
Other	*	170	245	95	45	160
Not known	*	260	255	140	90	295
<b>Total</b>	<b>115</b>	<b>4,200</b>	<b>5,225</b>	<b>2,775</b>	<b>1,955</b>	<b>6,075</b>

- (a) Includes work-based learning (WBL) provision at FE institutions and at other training providers.  
(b) Figures exclude continuing learning programmes (identified through LLWR destination coding and/or absence of end date)  
(c) Destination is recorded immediately after the end of the learning programme.  
(d) Age is as at 31 August 2011.  
(e) Numbers greater than 0 and less than 5 have been replaced by \*. Other figures are rounded to the nearest 5 and there may be slight discrepancies between the sums of constituent items and the independently rounded totals.

**Table T3.3b Leaver destinations: Number of distinct learners leaving (their most recent learning programme) in academic year 2011/12 by destination and age group (a-f)**

Destination	Age Group						
	Under 16	16	17	18	19	20-24	25-39
New programme of learning (not HE)	65	835	740	325	125	230	175
Higher education	*	20	25	20	15	40	20
Entering new employment/changing employment	*	375	690	425	275	630	670
Continuing current employment	*	15	315	630	765	3,365	4,460
Seeking work /unemployed	20	665	1,145	525	325	700	810
Self employment	0	10	15	10	10	20	40
Voluntary work	*	20	55	35	35	70	75
Other	*	145	220	90	40	155	135
Not known	*	215	220	125	85	280	325
<b>Total</b>	<b>100</b>	<b>2,300</b>	<b>3,430</b>	<b>2,185</b>	<b>1,670</b>	<b>5,485</b>	<b>6,705</b>

- (a) Includes work-based learning (WBL) provision at FE institutions and at other training providers.  
(b) Figures comprise the number of distinct learners who have left their most recent learning programme of academic year  
(c) Excludes learners whose latest learning programme is on-going  
(d) Destination is recorded immediately after the end of the learning programme.  
(e) Age is as at 31 August 2011.  
(f) Numbers greater than 0 and less than 5 have been replaced by \*. Other figures are rounded to the nearest 5 and there may be slight discrepancies between the sums of constituent items and the independently rounded totals.

**Table T3.3a (Continued) Leaver destinations: Number of learning programmes left in academic year 2011/12 by destination and age group (a-e)**

*Numbers*

Age Group						Total	Destination
25-39	40-49	50-59	60-64	65 plus	Not Specified		
260	115	45	*	0	0	6,335	New programme of learning (not HE)
20	5	*	0	0	0	170	Higher education
705	315	155	10	0	0	3,950	Entering new employment/changing employment
4,755	2,785	1,270	105	20	0	14,610	Continuing current employment
835	375	195	10	0	0	5,215	Seeking work /unemployed
40	20	5	0	0	0	130	Self employment
75	65	40	*	0	0	420	Voluntary work
140	60	35	5	*	0	955	Other
350	150	100	10	*	0	1,655	Not known
7,185	3,890	1,845	145	25	0	33,435	Total

Source: LLWR (Lifelong Learning Wales Record) post-16 database

**Table T3.3b (Continued) Leaver destinations: Number of distinct learners leaving (their most recent learning programme) in academic year 2011/12 by destination and age group (a-f)**

*Numbers*

Age Group					Total	Destination
40-49	50-59	60-64	65 plus	Not Specified		
75	30	*	0	0	2,600	New programme of learning (not HE)
5	*	0	0	0	150	Higher education
300	150	10	0	0	3,525	Entering new employment/changing employment
2,660	1,235	100	20	0	13,565	Continuing current employment
360	190	10	0	0	4,755	Seeking work /unemployed
20	5	0	0	0	125	Self employment
60	40	*	0	0	385	Voluntary work
55	35	5	*	0	890	Other
145	95	10	*	0	1,500	Not known
3,680	1,775	145	25	0	27,500	Total

Source: LLWR (Lifelong Learning Wales Record) post-16 database

# **APPENDICES**



## **APPENDIX A : DATA SOURCES & DEFINITIONS**

### **A1 DATA SOURCES**

All the data in Sections A, B and C which relate to Further Education institutions, Local Authority Community Learning and Work-based Learning (WBL) provision are sourced from the Lifelong Learning Wales Record (LLWR). The LLWR was introduced in 2003/04 as the new data collection system for Further Education (FE) and Local Authority Community Learning. It replaced the FE Individualised Student Record (ISR) and the LEA Adult Community Learning December census data collection. The scope of the LLWR was extended to become the data collection system for WBL in 2004/05, replacing the National Trainee Database (NTD).

There is some overlap between WBL and FE data because some FE institutions deliver WBL provision. For this reason figures from Section C of this publication should not be aggregated with those from Section A and B. Furthermore, although tables F1.1, F1.3c and F3.1 to F3.3 disaggregate those learners on WBL programmes at FE institutions it should be noted that these learners will not necessarily have been funded through the WBL payment system.

Further Education provision at Higher Education institutions has been included in tables F1.5, F1.7 and F2.1 using the 2011/12 HESA (Higher Education Statistics Agency) Student Record.

All data in this publication are consistent with the 2011/12 data previously published in the National Statistics First Release 'Further Education, Work-based Learning and Community Learning in Wales, 2011/12' (SDR48/2013).

### **A2 ROUNDING**

Absolute figures in this publication have been rounded to the nearest 5 (with the exception of Table T2.1). This convention can lead to some small discrepancies between an independently rounded total and its constituent parts. Where an asterisk (\*) is shown it represents a number which is greater than 0 and less than 5.

### **A3 SECTIONS A, B & C : FURTHER EDUCATION, COMMUNITY LEARNING and WBL**

#### **A3.1 DATA COVERAGE FOR FE and CL**

Section A details the learning delivered by the further education sector in Wales. The further education sector comprises a range of institutions providing part-time and full-time education. In 2011/12, 15 of these institutions were colleges of further education or tertiary colleges providing the greater part of post-16 education for their area. This number excluded Merthyr Tydfil College which merged into the University of Glamorgan in 2006 and (apart from its work-based learning provision delivered as a member of a consortium) is included under the figures for FE at Higher Education institutions and excluded from the figures for Further Education institutions. The sector also included a denominational sixth form college, an adult residential college, two districts of the Workers' Educational Association (WEA), one of which (WEA-North) merged with Coleg Harlech in 2001/02, and adult education provision by the Young Men's Christian Association (YMCA).

Community Learning is a broad term that can encompass a wide range of provision. For instance it could include Adult Basic Education (ABE) and English for Speakers of Other Languages (ESOL) provision or learning delivered at outreach centres of FE institutions. However, Section B details only that Community Learning provision which is delivered by Local Authorities. To make the distinction clear the term Local Authority Community Learning is used throughout this publication. In 2011/12,

sixteen of the twenty-two Local Authorities in Wales delivered Community Learning either directly or in collaboration with FE institutions.

The majority of tables in Sections A and B are based on all learning undertaken within the 2011/12 academic year (1 August 2011 to 31 July 2012). In addition, certain tables (or parts of tables) include counts based on a census date of the week of 1 December 2011.

### A3.2 DATA COVERAGE FOR WBL

Section C details the learning delivered by the work-based learning (WBL) sector in Wales. The time period (2011/12) on which training tables are based runs from 1 August 2011 to 31 July 2012, (as in Sections A and B). In addition, certain tables (or parts of tables) include counts based on a specific date or range of dates: the week of 1 December 2011 and the days 31 March 2012 and 31 July 2012.

The connection with individual trainees is through training providers. In some cases the training provider provides the learning experiences directly. In other cases, the training may be performed mainly by an employer with the learning overseen and assessed by the training provider.

Often a mixture of (FEI and other) training providers may be grouped into a consortium with a (FEI or other) lead provider. In line with SDR 48/2013 (March 2013), this volume includes within WBL at FEI figures the contributions from FE institutions which are members of consortia irrespective of the nature of the lead provider. (This contrasts with the approach of SB 73/2013 (R) which assigns all provision led by (FEI or other) lead consortia to 'other training providers'.)

### A3.3 DATA COUNTS

The LLWR from which the data in all sections have been derived has datasets based on learners, their learning programmes, their constituent learning activities and an award dataset registering achievements.

As noted in SDR 60/2010 (released on 22 April 2010), for 2008/09 LLWR data and subsequent releases, learning activities have been excluded (directly and also in deriving learner counts) if their expected end date is more than two years earlier than the start of the academic year. For the purpose of time series in this volume, the methodology has been applied retrospectively and has had an impact on the years 2006/07 and 2007/08. It has been the standard approach from 2008/09 onwards.

Five different counts are used for FE institutions in the Tables:

- **Unique Learners**, based on the unique learner identifier (ULI) and counting any learner once only regardless of how many learning programmes they were pursuing with different learning providers;
- **Non-Unique Learners ('provider learners')**, based on the learning providers' own learner identifier and so leading to multiple counting of learners between providers; This count is used just for FE and CL.
- **Learning Programmes**, based on the number of learning programmes taken by the learner. This count is primarily used for Work-based learning.
- **Learning Activities**, based on the number of recorded enrolments on learning activities (i.e. learning aims) by learners.
- **Awards**, giving qualification achievements attained.

FE statistics published by ELWa and the National Assembly for learning prior to 2003/04 identified learners according to the learning providers' own learner identifiers (as there was no ULI on the ISR) and are therefore more closely related to provider-learner counts.

Tables T1.1, T1.2, T1.4 and T1.5 are based on the total number of WBL learners receiving training at any time during 2011/12. Tables T1.3 and T3.1 are based on the number of learning programmes taken by learners. Table T3.2 details the number of learning activities by subject in 2011/12. Table T3.3a details the number of leavers of learning programmes and their destination and table T3.3b covers destinations by learner count.

For counts, derived from HESA data, of students and their individual enrolments at HE institutions, two population types are used:

The **standard registration population** counts registrations once for each year of programme of study (deemed to start on the commencement date of the programme with subsequent years starting on, or near, the anniversary of that date). Students who leave within two weeks of their start date (or its anniversary) and are on a course of more than two weeks duration, are not included in the standard population. It also excludes dormant students, incoming visiting and exchange students and students studying for the whole of their programme of study outside of the UK.

The **session population** includes all enrolments active at any point in the academic year except for dormant students, incoming visiting and exchange students and students studying for the whole of their programme of study outside of the UK.

All HE institution learner and enrolment counts in this volume have been based on the standard registration population with the exception of Table F1.7b which gives Welsh for Adult numbers at the HEI-based centres on a session population basis, in contrast with Table F1.7a which gives the equivalent numbers on a standard registration population basis.

### **A3.4 PROVISION TYPE DEFINITIONS (FE and Local Authority CL)**

Learners at FE institutions are recorded as being engaged in FE, HE or WBL provision.

**WBL:** Learners on WBL programmes are who are enrolled on designated programmes, such as apprenticeships. Note that this definition of WBL is different to that used for funding purposes. See A1 for more information about the differences between WBL data reported on in Section A and that reported on in Section C. A distinction is made between WBL programmes and WBL provision, the latter also including Pathways to Apprenticeships which are FE programmes supporting WBL. All learners in WBL provision have their mode of learning defined as being work-based learning (see A3.6). Section C of this volume covers WBL provision.

**HE:** Higher Education (HE) level learners are defined in the tables in two distinct ways. Tables F1.1 and F3.2, provide information on the number of learners undertaking designated HE programmes (e.g. HE degree, Foundation degree). A higher number of HE learners is recorded in Tables F1.2 and F1.3 based on recording a learner as studying at HE level if any one of their learning activities is at HE level, i.e. above NQF (National Qualifications Framework) level 3.

**FE:** Learners on FE programmes (in Tables F1.1 and F3.2) are defined as those learners at FE institutions who are not enrolled on designated WBL or HE programmes.

Learners engaged in local authority community learning can be enrolled (see Table L1.1) under maintained, contracted-out or contracted-in provision:

**Maintained:** Learners in maintained local authority provision are defined as those learners who the local authority delivers learning to and who are enrolled with the local authority.

**Contracted-out:** Learners in contracted-out local authority provision are defined as those learners who receive learning from a third party but who are enrolled with the local authority for that learning.

**Contracted-in:** Learners in contracted-in local authority provision are defined as those learners to whom the local authority delivers learning but who are enrolled with an FE Institution for that learning.

Note that the contracted-in provision is included both in tables in Section B (as it is delivered by a local authority) and in table in Section A (as the enrolment for the learning is with a FE institution).

### **A3.5 PROGRAMME TYPE DEFINITIONS FOR WBL**

Tables T1.1, T1.2, T1.3 and T2.1 give information by programme type. Note that the categories are based on current programmes and certain former programmes continuing into 2011/12 have been re-categorised.

The main programmes available were:

- Foundation Apprenticeship (formerly Foundation Modern Apprenticeships);
- Apprenticeship (Level 3) (formerly Modern Apprenticeships);
- Higher Apprenticeships: (Level 4 and above) introduced in August 2011;
- Modern Skills Diploma: Replaced by Higher Apprenticeships, these appear within in-learning counts for programmes with start dates before August 2011;
- Steps to Employment;
- Traineeships;
- Other programmes: This category includes Pathways to Apprenticeships delivered by FE institutions and all programmes not included above delivered by training providers in general.

### **A3.6 MODE OF LEARNING DEFINITIONS**

The mode of learning for a learner (i.e. full-time learner, part-time learner and work-based learner) has been derived using the guided contact hours. Guided contact hours are the number of teaching/instructional hours delivered by the provider to the learner. A full-time learner is one whose total guided contact hours across all their learning activities amounts to at least 450 hours; a part-time learner is one whose total guided contact hours amounts to less than 450 hours. As work-based learning cannot be classified using guided contact hours, as significant amounts of learning are undertaken at the workplace, a distinct work-based learning mode has been assigned to learners in WBL provision.

### **A3.7 DOMICILE / DEPRIVATION DEFINITIONS**

The country of domicile information presented in Table F3.3 is based on information recorded directly on the LLWR. By contrast, the unitary authority of domicile (in Tables F3.4a and F3.4b) and deprivation areas (in Table F3.8) have been calculated from the home postcode recorded on the LLWR.

Inconsistencies between the recorded country of domicile and home postcode account for slight differences between Table F3.3 relative to the other tables mentioned above.

### **A3.8 SUBJECT AND SECTOR SUBJECT DEFINITIONS**

All subject of study area groupings are based on the LearnDirect Classification System (LDCS) which assigns a subject code to each qualification. The subject of study area groupings in Tables F4.1a/b, F4.3 and F4.4 are derived from the first letter of the LDCS code for the qualification being undertaken. The subject of study area groupings in Table F4.2a/b/c are the 15 first-tier sector subject areas in QCDA's

Sector Subject framework. These sector subject areas are derived from the LDCS code for the qualification being undertaken. Some modification has been made to the QCDA sector subject area boundaries, as reported in Tables F4.2a/b/c, so as to be consistent with designations used in Estyn inspection statistics.

### **A3.9 QUALIFICATION LEVEL / TYPE DEFINITIONS**

The qualification type and level (Tables F4.5 & F4.3 respectively) are allocated to learning activities using information recorded either on the Welsh Learning Aims database or directly on the LLWR. The 'not known / not applicable' credit level category is assigned where there was insufficient information to assign a qualification level to the learning activity. The 'other' qualification type category mainly consists of all qualification types not specifically listed (e.g. City & Guild certificates, ECDL, CLAIT), it may however also include some cases of the listed qualifications where there was insufficient information to assign them to the appropriate category.

### **A3.10 AGE**

Where age groups are identified, the age is that at 31 August 2010. Learners whose date of birth is not recorded in the LLWR are dealt with in one of two ways. In tables with detailed age groupings the learner age is given as 'not specified'; where the table uses less detailed age groupings the learner is assumed to be aged 25 years or over and appropriately categorised.

### **A3.11 WBL SECTOR FRAMEWORKS**

The sector groupings in table T3.1 reflect the type of work and training being undertaken by the learner and are directly related to the qualification being studied for. The most frequently occurring sector codes have been identified separately with the less common codes being identified as 'other'. (Note that Learning Networks Analysis uses broader groupings of these individual sectors.)

### **A3.12 Pre-LLWR VOLUMES**

This volume provides a continuation to certain trend statistics provided in the former publication series *Higher Education, Further Education and Training Statistics in Wales* which was a series of publications produced jointly by the Higher Education Funding Council for Wales (HEFCW) and Education and Learning Wales (ELWa). Following the separation of HEFCW and ELWa the joint publication was no longer issued. In April 2006 ELWa was merged into the Welsh Government.

Previous *Higher Education, Further Education and Training Statistics* publications included not only data regarding learners and the learning they had undertaken but also information on FE staff and FE institution finances. The current series by contrast only focuses on learners and their learning. FE staff and finance data is available separately and further details of these publications can be found in Appendix B.

### **A3.13 Key Quality Information**

Quality information and information on the policy context can be found in the statistical release SDR 48/2013 (issued on 26 March 2013) which was based on the same underlying LLWR data as this volume.

Some background to quality is contained elsewhere in this Appendix and within the general text of the volume. Many of the other tables illustrate the extent to which the data in the LLWR fields used to populate these tables are 'not specified', 'not known' or (Table F3.5) 'Information refused/not known'.

## **APPENDIX B : OTHER USEFUL INFORMATION SOURCES**

### **Welsh Government Statistical First Releases (SFRs), bulletins and publications**

A wide range of educational releases, bulletins and publications produced by the Statistical Directorate can be accessed via the 'Post-16 Education and Training' and 'Schools and Teachers' key publications sections of the Welsh Government's website at [www.wales.gov.uk/statistics](http://www.wales.gov.uk/statistics).

These releases, bulletins and publications include, for example:

- Schools in Wales : General Statistics
- Schools in Wales : Examination Performance
- Pupil Destinations from Schools In Wales
- Students in Higher Education Institutions – Wales
- Initial Teacher Training in Wales
- FE, WBL and Community Learning in Wales SFRs
- Participation in Education and the Labour Market
- Staff at FE Institutions
- Education Maintenance Allowances (EMA) awarded
- Progress towards meeting the Lifelong Learning Targets for Wales
- Analysis of Participation in post-16 Education & Training in Wales
- National Comparators for Further Education and Work-based Learning
- Learning Network Analysis

### **Other Sources**

#### **Higher Education Statistical Agency (HESA) Data**

Full details on the data collected by HESA from Higher Education institutions can be found at [www.hesa.ac.uk](http://www.hesa.ac.uk).

#### **HEFCW Statistical Publications**

Statistical information on the Higher Education sector in Wales can be accessed at [www.hefcw.ac.uk/about\\_he\\_in\\_wales/statistics/statistics.aspx](http://www.hefcw.ac.uk/about_he_in_wales/statistics/statistics.aspx).