



Skills Funding
Agency



Department
for Business
Innovation & Skills

Statistical First Release

Further Education & Skills: Learner Participation, Outcomes and Level of Highest Qualification Held

Publication date:
17th October 2013

Next Updated:
November 2013

Reference: DS/SFR20

Coverage: England

Theme: Children, Education
and Skills

**For further information
contact:**

**Data Service: Service
Desk**
servicedesk@thedata-service.org.uk
0870 267 0001

Or view our web site at:
<http://www.thedata-service.org.uk/statistics>

Lead Statistician:
Jessie Evans
Jessie.Evans@bis.gsi.gov.uk
020 7215 1868

Department for Business,
Innovation and Skills,
Level 2,
1 Victoria Street,
London,
SW1H 0ET

© Data Service 2013

This release presents information on adult (19+) government-funded¹ Further Education (excluding schools and Higher Education) and all age (16+) Apprenticeships in England, between 2007/08 and 2011/12. It also includes provisional data for the full 2012/13 academic year.

This release also presents key statistics on the highest level of qualification held by adults in England from 2006 to 2012, calculated from Labour Force Survey (LFS) data. Figures relating to 2012 are provisional and are subject to revisions.

Key Points

- Provisional data for the full 2012/13 academic year show there were 3,240,900 adult (19+) learners participating on overall further education courses. Although it is not possible to directly compare with previous years, this indicates an increase on 2011/12.
- Provisional data show that overall there were 858,900 funded Apprentices participating in the full 2012/13 academic year, which indicates growth. This increase was only seen at the Advanced and Higher levels and for those aged 19 and over.
- Provisional data for the full 2012/13 academic year show there were 495,100 Apprenticeship starts. The data indicate a decrease overall. This decrease was only seen at the Intermediate Level and for those aged under 19.
- Provisional data show that between February 2012 and July 2013 there were 38,000 Apprenticeship starts for which a payment was made through the Apprenticeship Grant for Employers (AGE 16 to 24) scheme. A further 6,900 were in the pipeline (started but not yet paid).

¹ Covering the Skills Funding Agency and the Education Funding Agency.

CONTENTS

Statistical Commentary

Glossary of Key Terms	3
Further Education Statistics for England, 2011/12	4
Adult Attainment in the Population	4
Adult Learner (19+) Participation and Achievement	4
Apprenticeships	7
Adult (19+) Skills for Life	10
Community Learning	11
Success Rates	11
Provisional Further Education Statistics for England, 2012/13	13
National Statistics	15
Changes in the Next SFR	15

Supporting Data

Scope	16
Data Sources	17
Issues with Using Provisional Data	17
Issues with Comparing Data Across Academic Years	18
Data Definitions	18
Publication Cycle Across the Year	19
Supplementary Tables	20
Related National Statistics Releases	20
Other Related Statistics	21
Further Education Statistics for Other Countries in the UK	21

Table Guide	22
--------------------	----

Table Footnotes	23
------------------------	----

Tables	25
---------------	----

GLOSSARY OF KEY TERMS

Further Education and Skills includes: learners who are studying a course in a FE College, training provider or within their local community; and employees undertaking an Apprenticeship or other qualification in the workplace. For more information, see paragraphs 48 to 50.

Apprenticeships are paid jobs that incorporate on- and off-the-job training leading to nationally recognised qualifications. As an employee, Apprentices earn as they learn and gain practical skills in the workplace. An Apprenticeship framework typically contains the following separately certified elements:

- A knowledge-based element (the theoretical knowledge underpinning a job in a certain occupation and industry, typically certified via a Technical Certificate).
- A competence-based element (the ability to discharge the functions of a certain occupation, typically certified via work-based assessed national vocational qualifications – NVQs).
- Transferable skills (English and maths) – key skills / functional skills.
- A module on employment rights and responsibilities.
- Personal Learning and Thinking Skills (PLTS), namely: independent enquiry, creative thinking, reflective learning, team working, self management and effective participation.

See <http://www.apprenticeships.org.uk/> for further information.

Apprenticeship Grant for Employers (AGE 16 to 24) scheme provides Apprenticeship grants with a value of £1,500 to employers with up to 1,000 employees recruiting 16 to 24 year olds, to encourage employers to take on new Apprentices. Eligible employers must not have taken on an Apprentice in the previous 12 months. Subject to budget availability and the employer's commitment to support the Apprentice to the end of their programme, any one employer can claim support for up to ten apprentices. AGE 16 to 24 was originally made available from 1 February 2012 until March 2013, but has since been extended until December 2014.

See: <http://www.apprenticeships.org.uk/Partners/Policy/AGE-1624.aspx> for further information

On the **Access to Apprenticeships pathway**, participants use the elements of an Apprenticeship framework to brush up skills and workplace experience, with the aim of securing a paid Apprenticeship with an employer as quickly as possible, up to a maximum of six months. Participants are not categorised or counted as an 'Apprentice' until they become employed. This pathway was announced in May 2011.

See: <http://www.apprenticeships.org.uk/Partners/Policy/AccessToApprenticeships.aspx>

Education and Training (previously Learner Responsive and University for Industry) covers further education learning delivered mainly in a classroom, workshop, or through distance or e-learning. For further information on Education and Training, please see:

<http://www.thedataservice.org.uk/datadictionary/businessdefinitions/Learner+Responsive.htm>

Workplace Learning covers a broad range of training including basic skills, Level 2, Level 3 and higher-level skills. This training is mainly delivered through the workplace (but excludes Apprenticeships). Between 2008/09 and 2010/11 this included the Train to Gain programme, Employability Skills Pilot and other programmes such as Programmes for the Unemployed. From 2011/12 this includes all training mainly delivered through the workplace (excluding Apprenticeships).

Skills for Life qualifications are designed to give people the reading, writing, maths and communication skills they need in everyday life, to operate effectively in work and to help them succeed on other training courses. See: <http://skillsfundingagency.bis.gov.uk/providers/programmes/Basic+Skills/>

Community Learning funds a wide range of informal courses, ranging from personal development through to older people's learning, IT courses, employability skills, family learning and activities to promote civic engagement and community development. Courses may be offered by local authorities, colleges, and voluntary and community groups, and include activity specifically targeted at deprived areas and disadvantaged groups. See: <http://skillsfundingagency.bis.gov.uk/providers/programmes/asl/>

Full Level 2 is equivalent to an NVQ at Level 2, or 5 GCSEs. The widths of all of a learner's Level 2 aims are summed to establish whether a learner is taking a full Level 2 programme. **Full Level 3** is equivalent to an NVQ at Level 3, or 2 A-Levels. The widths of all a learner's Level 3 aims are summed to establish whether a learner is taking a full Level 3 programme.

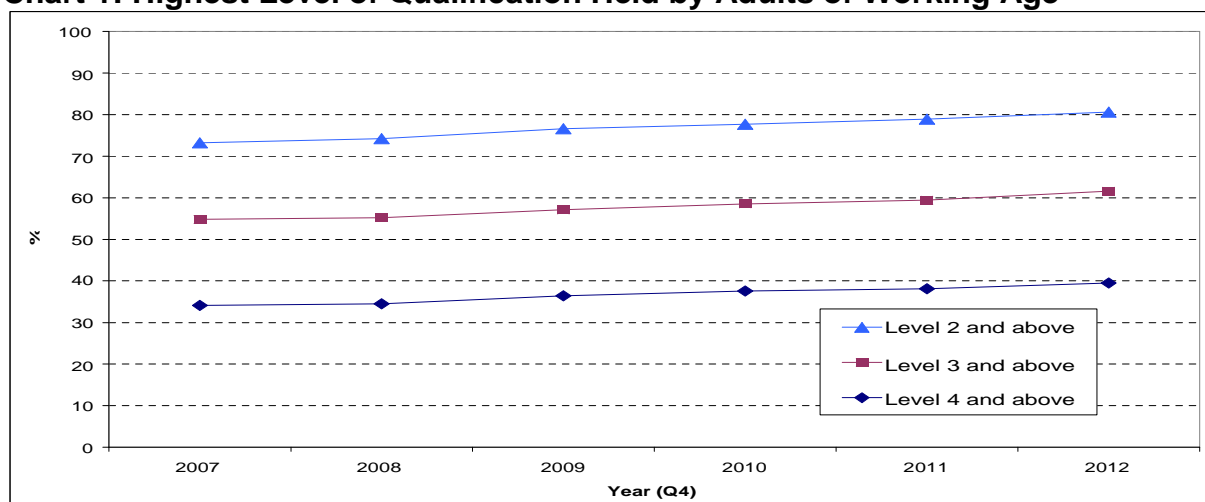
Academic year runs from 1st August to 31st July (except for Ofqual figures in Table 12 which run from 1st October to 30th September).

FURTHER EDUCATION STATISTICS FOR ENGLAND, 2011/12

Adult Attainment in the Population

1. The Labour Force Survey is used to measure the level of adult educational attainment in the population. Provisional data for 2012 show that of men aged 19 to 64 and women aged 19 to 59 [Table 10.1]:
 - 80.6 per cent were qualified to at least Level 2;
 - 61.6 per cent were qualified to at least Level 3;
 - 39.5 per cent were qualified to Level 4 and above.

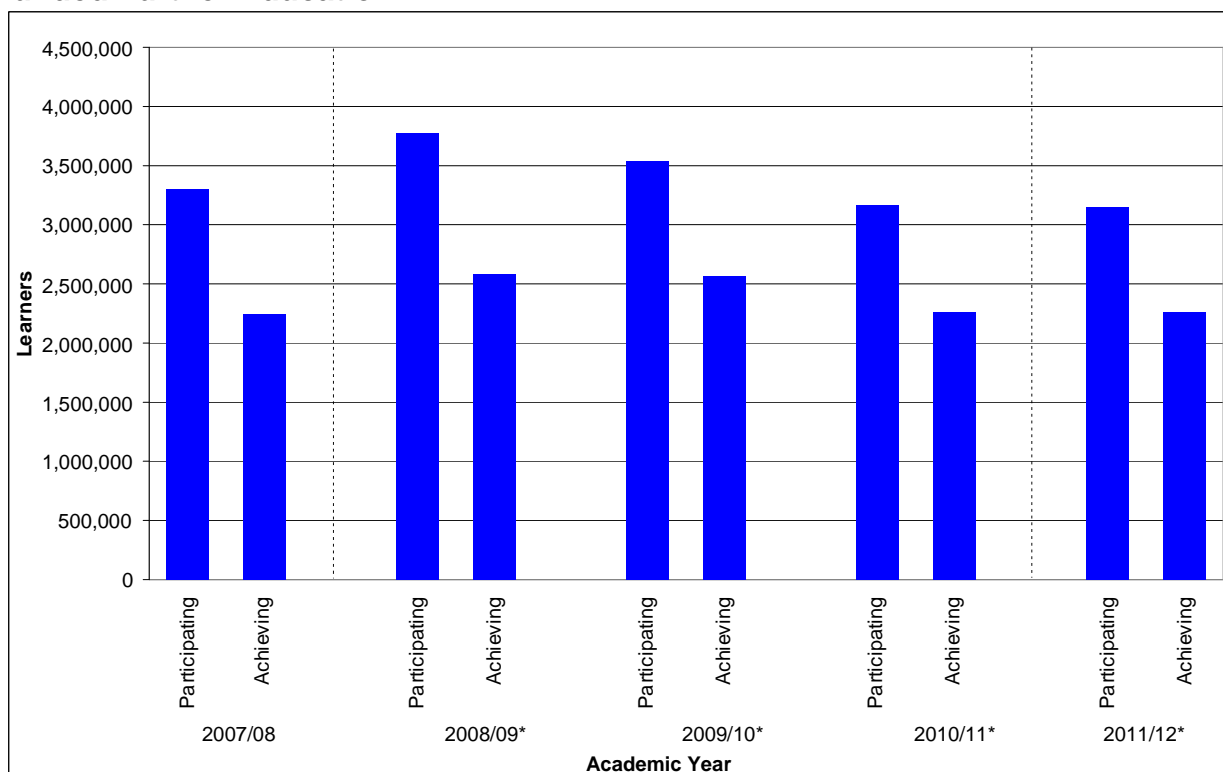
Chart 1: Highest Level of Qualification Held by Adults of Working Age



Adult Learner (19+) Participation and Achievement

2. Chart 2 shows that the total number of adult learners participating in government-funded further education was 3,149,700 in 2011/12, a similar volume to 2010/11 [Table 1.1]. The total number of adult learners achieving a government-funded further education qualification was 2,258,500 in 2011/12, a similar volume to 2010/11 [Table 1.2].

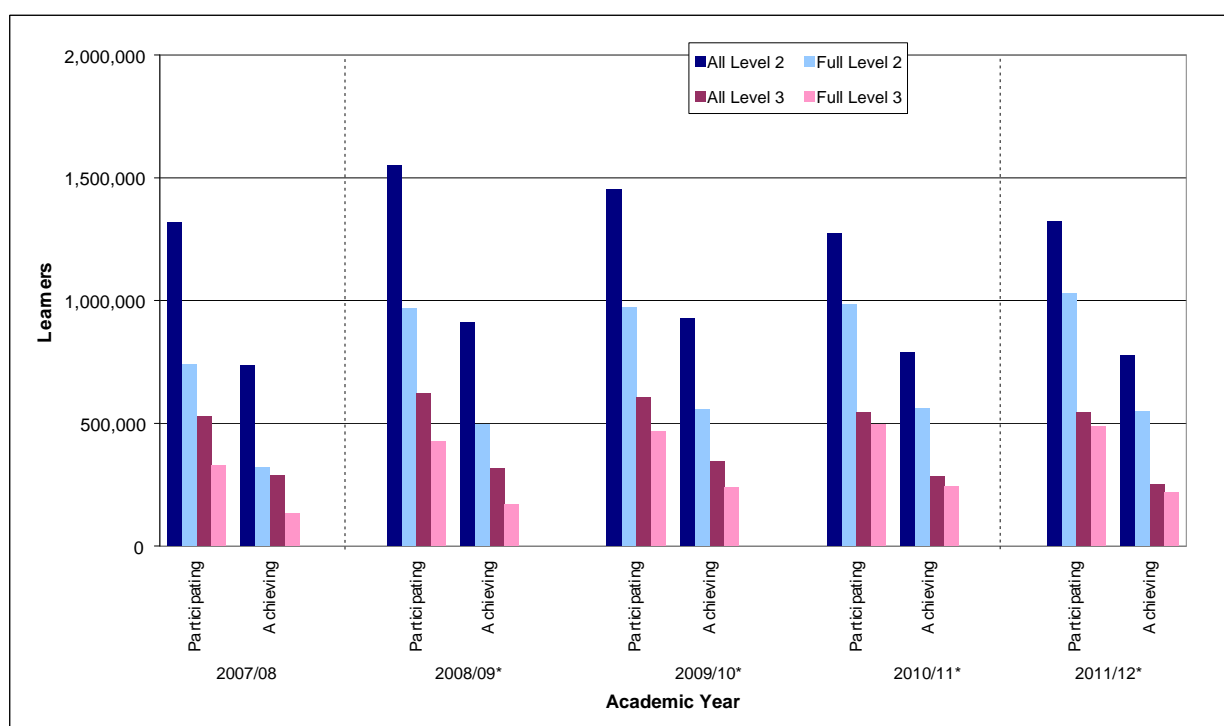
Chart 2: Adult Learner (19+) Participation and Achievement in Government-funded Further Education



***Note: Learner Numbers for 2008/09 to 2010/11 and 2011/12 onwards are not directly comparable with earlier years. See paragraph 59 onwards for more information.**

- Chart 3 shows that the number of adult learners participating in government-funded further education Level 2 courses gradually decreased between 2008/09 and 2010/11 and then increased between 2010/11 and 2011/12. The number participating in full Level 2 courses increased in every year shown. Achievements in Level 2 courses gradually increased between 2007/08 and 2009/10 and then declined over the following two years. The number of learners participating in Level 3 courses decreased in each year between 2008/09 and 2010/11 but remained stable in 2011/12. Participation in full Level 3 courses increased in every year until 2011/12 when there was a small decline. Achievements in Level 3 courses gradually increased up to 2009/10, but then declined over the following two years.

Chart 3: Adult (19+) Learner Participation and Achievement in Government-funded Further Education by Level



***Note: Learner Numbers for 2008/09 to 2010/11 and 2011/12 onwards are not directly comparable with earlier years. See paragraph 59 onwards for more information.**

4. Of all adult learners in 2011/12:

- 1,320,000 participated on a Level 2 course, an increase of 3.7 per cent compared to 2010/11. Of these, 1,028,100 were studying a full Level 2 qualification, an increase of 4.6 per cent [Table 1.1];
- 542,600 participated on a Level 3 course, a similar volume compared to 2010/11. Of these, 486,800 were studying a full Level 3 qualification, a decrease of 1.5 per cent [Table 1.1].

5. Of all adult achievements in 2011/12:

- 775,200 achieved a Level 2 qualification, a decrease of 1.7 per cent compared to 2010/11. Of these, 546,600 achieved a full Level 2 qualification, a decrease of 2.7 per cent [Table 1.2];
- 249,000 achieved a Level 3 qualification, a decrease of 11.9 per cent compared to 2010/11. Of these, 216,200 achieved a full Level 3 qualification, a decrease of 10.9 per cent [Table 1.2].

6. Of the 3,149,700 adult learners participating in further education in 2011/12:

- 56.4 per cent were female, 43.6 per cent were male [Table 2];
- 11.8 per cent declared a learning difficulty and/or disability [Table 2];
- 19.6 per cent were from a Black or Minority Ethnic background (including Mixed, Asian, Black and Other Ethnic Group learners) [Table 2];
- 211,700 benefited from support for the unemployed (those nearest the workforce) [Table 1];

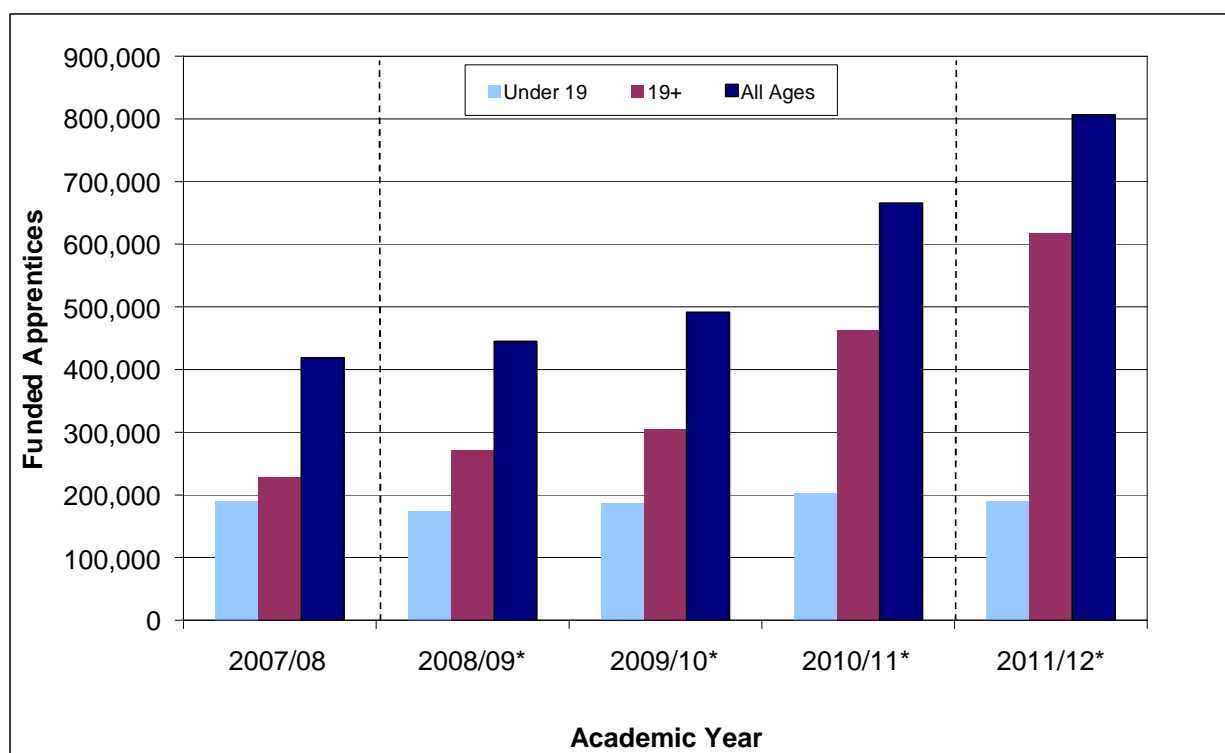
7. In 2011/12 there were 90,100 offenders aged 18 or over in the prison system participating in learning, an increase of 1.4 per cent on 2010/11. 71,900 achieved a learning outcome, an increase of 2.3 per cent. [Table 1]. These offenders were funded via the Offenders' Learning and Skills Service (OLASS) budget.

Apprenticeships

8. Two measures of Apprenticeships are presented to give a transparent view of the changes and trends in Apprenticeships in England:
- Participation refers to the number of people who are undertaking an Apprenticeship in a given time period. This measure is helpful for quantifying the number of people on an Apprenticeship programme throughout the academic year. An Apprentice studying towards more than one Apprenticeship is counted once.
 - Starts refer to the number of programmes that begin in a given time period. This measure is helpful in determining the take-up of programmes. An Apprentice is counted for each Apprenticeship they start.
9. The Apprenticeship programme expanded rapidly since 2009/10 as a result of increased government investment in adult Apprenticeships. More recently Apprenticeship policy has focused on raising standards and improving the quality of Apprenticeships, this may mean some learners find it more difficult or take longer to complete their Apprenticeship.

Participation

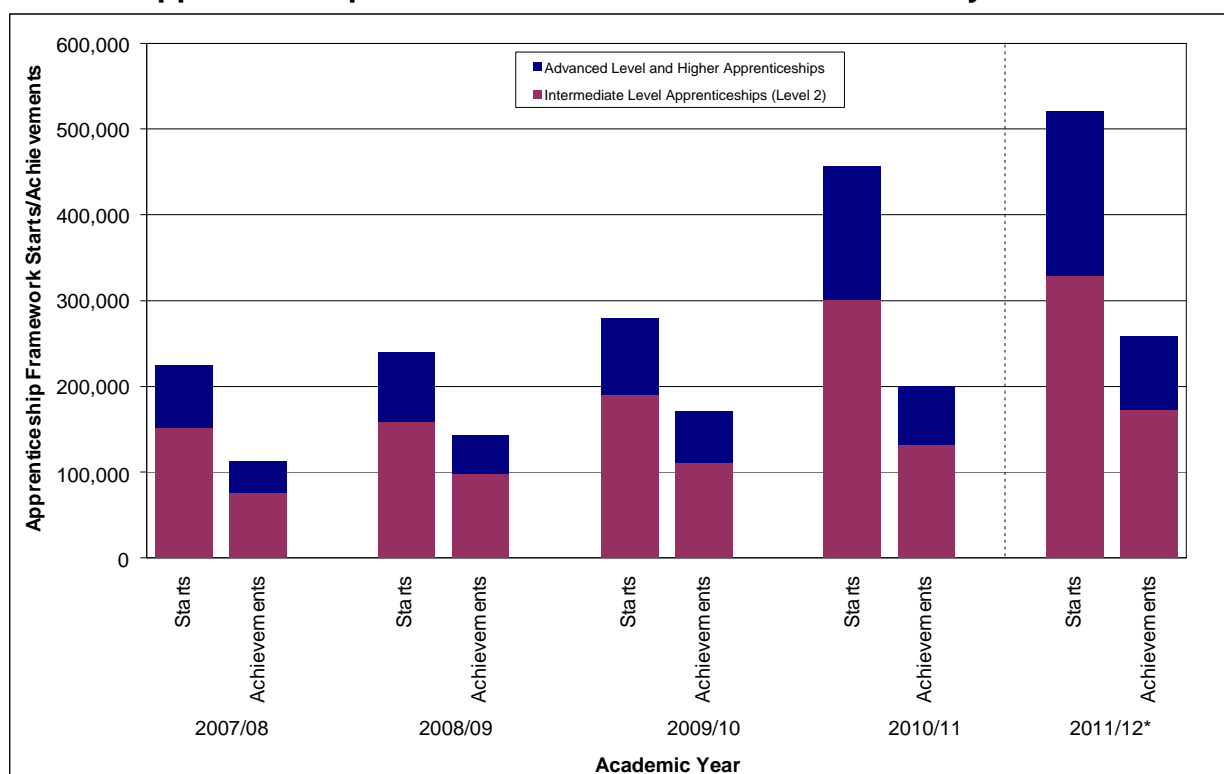
10. Chart 4 shows that overall Apprenticeship participation increased steadily in every year since 2007/08. Adult (19+) Apprenticeship participation has increased rapidly since 2007/08 whilst numbers have fluctuated slightly for those aged under 19. Data for 2008/09 and 2011/12 onwards are not directly comparable to earlier years due to methodological changes in the way learners are counted, leading to a removal of duplicate learners and a reduction in overall learner numbers.

Chart 4: Apprenticeship Participation by Age

***Note:** Learner Numbers for 2008/09 to 2010/11 and 2011/12 onwards are not directly comparable with earlier years. See paragraph 59 onwards for more information.

Starts

11. Chart 5 shows there was a steady increase in Apprenticeship starts between 2007/08 and 2009/10, followed by a large increase between 2009/10 and 2010/11 and a smaller increase between 2010/11 and 2011/12. Apprenticeship framework achievements have increased steadily since 2007/08, for all levels.

Chart 5: Apprenticeship Starts and Framework Achievements by Level

***Note: Starts for 2011/12 onwards are not directly comparable with earlier years. See paragraph 59 onwards for more information.**

12. The length of an Apprenticeship is typically more than a year and an Apprenticeship framework achievement is recorded against the year it was achieved, not the year it was started. Because of this, the number of achievements is below the number of starts in Chart 4, as a large volume of learners that have started an Apprenticeship have not yet completed it. Furthermore, some learners may withdraw or fail to complete.

13. The total volume of Apprenticeship starts in 2011/12 was 520,600 [Table 6.1]. This was an increase of 13.9 per cent compared to 2010/11. Of these there were:

- 329,000 Intermediate Level Apprenticeship starts, a 9.3 per cent increase on 2010/11;
- 187,900 Advanced Level Apprenticeship starts, a 22.1 per cent increase on 2010/11;
- 3,700 Higher Apprenticeship starts, a 67.6 per cent increase on 2010/11.

Under 19

14. In 2011/12 there were 129,900 Apprenticeship starts by those aged under 19 [Table 6.1]. This was a decrease of 1.4 per cent compared to 2010/11. Of these there were:

- 95,400 Intermediate Level Apprenticeship starts, a 2.0 per cent decrease on 2010/11;
- 34,100 Advanced Level Apprenticeship starts, a similar volume compared to 2010/11;
- 300 Higher Apprenticeship starts, up from 200 in 2010/11.

15. In 2011/12 there were 77,900 Apprenticeship framework achievements by those aged under 19 [Table 6.2]. This was a decrease of 6.5 per cent compared to 2010/11. Of these there were:
- 56,500 Intermediate Level Apprenticeship framework achievements, a 4.7 per cent decrease on 2010/11;
 - 21,300 Advanced Level Apprenticeship framework achievements, an 11.0 per cent decrease on 2010/11;
 - 100 Higher Apprenticeship framework achievements, the same volume as 2010/11.

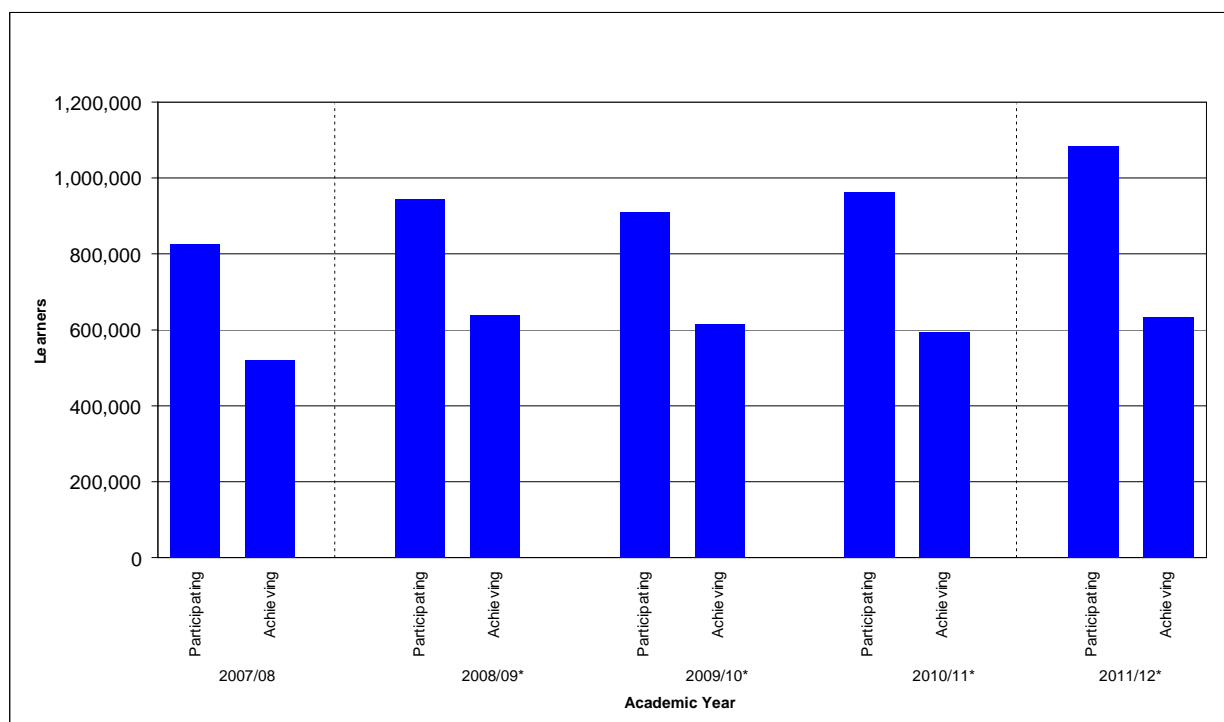
19 and Over

16. In 2011/12 there were 390,700 Apprenticeship starts by those aged 19 and over. [Table 6.1]. This was an increase of 20.0 per cent compared to 2010/11. Of these there were:
- 233,600 Intermediate Level Apprenticeship starts, a 14.6 per cent increase on 2010/11;
 - 153,700 Advanced Level Apprenticeship starts, a 28.5 per cent increase on 2010/11;
 - 3,400 Higher Apprenticeship starts, a 66.0 per cent increase on 2010/11.
17. In 2011/12 there were 180,500 Apprenticeship framework achievements by those aged 19 and over [Table 6.2]. This was an increase of 54.3 per cent compared to 2010/11. Of these there were:
- 115,900 Intermediate Level Apprenticeship framework achievements, a 60.1 per cent increase on 2010/11;
 - 63,400 Advanced Level Apprenticeship framework achievements, a 45.3 per cent increase on 2010/11;
 - 1,200 Higher Apprenticeship framework achievements, a 26.5 per cent increase on 2010/11.
- 85,600 Apprenticeship framework achievements by 19–24 year olds, a 11.2 per cent increase on 2010/11;
 - 94,900 Apprenticeship framework achievements by those aged 25 and over, more than double the volume compared to 2010/11.
18. In 2011/12, 7,200 Apprenticeships started through the Access to Apprenticeship pathway, of which 3,000 converted to paid employment to complete their Apprenticeship in the usual way [Table 17.2].

Adult (19+) Skills for Life

19. Chart 6 shows that adult learner participation on Skills for Life courses fluctuated between 2007/08 and 2009/10, but since 2009/10 participation figures have risen.

Chart 6: Adult Learner (19+) Participation and Achievement on Skills for Life Courses



***Note: Learner Numbers for 2008/09 to 2010/11 and 2011/12 onwards are not directly comparable with earlier years. See paragraph 59 onwards for more information.**

20. In 2011/12, 1,083,000 adult learners participated on a Skills for Life course [Table 3]. This was an increase of 12.6 per cent compared to 2010/11. Of these:

- 782,500 participated on an English course, a 22.5 per cent increase on 2010/11;
- 772,500 participated on a maths course, a 22.5 per cent increase on 2010/11;
- 139,400 participated on an English for Speakers of Other Languages (ESOL) course, a 14.8 per cent decrease compared to 2010/11.

21. In 2011/12, 633,000 adult learners achieved a Skills for Life qualification [Table 3]. This was an increase of 6.3 per cent compared to 2010/11. Of these:

- 387,400 achieved an English qualification, a 17.5 per cent increase on 2010/11;
- 386,400 achieved a maths qualification, a 19.1 per cent increase on 2010/11;
- 110,000 achieved an ESOL qualification, a 10.0 per cent decrease compared to 2010/11.

Note that some learners participate on and achieve more than one type of Skills for Life qualification within an academic year, hence the sum of English, maths and ESOL learners is greater than the total number of learners.

Community Learning

22. In 2011/12, 683,300 learners participated on a Community Learning course [Table 8]. This was a decrease of 2.3 per cent compared to 2010/11. Of these:

- 518,600 took a Personal and Community Development Learning course, a 2.9 per cent decrease compared to 2010/11;
- 55,700 took a Neighbourhood Learning in Deprived Communities course, a 19.8 per cent increase on 2010/11;

- 58,700 took a Family English, Maths and Language course, a 10.4 per cent decrease compared to 2010/11;
- 72,800 took a Wider Family Learning course, a 3.4 per cent decrease compared to 2010/11.

23. In 2011/12, 594,500 learners achieved on a Community Learning course [Table 8]. This was a decrease of 2.3 per cent compared to 2010/11. Of these:

- 445,400 achieved a Personal and Community Development Learning course, a 2.9 per cent decrease compared to 2010/11;
- 50,100 achieved a Neighbourhood Learning in Deprived Communities course, a 21.4 per cent increase on 2010/11;
- 50,900 achieved a Family English, Maths and Language course, a 10.8 per cent decrease compared to 2010/11;
- 67,500 achieved a Wider Family Learning course, a 3.8 per cent decrease compared to 2010/11.

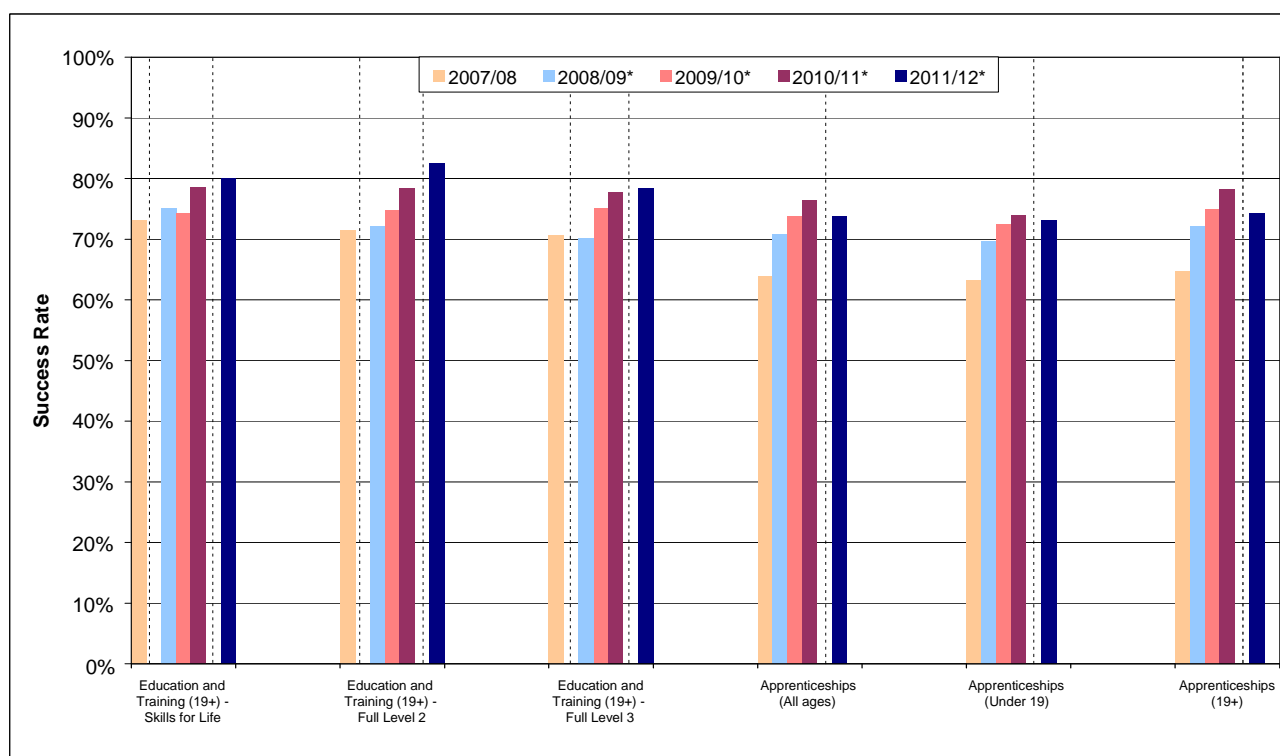
Note that these figures include learners participating on more than one type of Community Learning course.

Success Rates

24. Success rates are calculated for individual qualifications. They show how many learners that started a qualification went on to successfully complete it. Success rates are typically calculated at a qualification level, but can be aggregated across different types of course, or for particular colleges or providers. Education and Training, Apprenticeship and Workplace Learning success rates are calculated on a slightly different basis. For more information please see:

http://www.thedataservice.org.uk/Statistics/success_rates/

25. Chart 7 shows that adult (19+) Education and Training success rates rose steadily between 2009/10 and 2011/12 across all qualification levels. Success rates for Apprenticeships rose dramatically between 2007/08 and 2010/11, but decreased between 2010/11 and 2011/12.

Chart 7: Success Rates

***Note: Success Rates for 2008/09 to 2010/11 and 2011/12 onwards are not directly comparable with earlier years. See paragraph 59 onwards for more information.**

26. In 2011/12, adult (19+) Education and Training success rates [Table 9.1] were:

- 83.9 per cent for all Education and Training, an increase of 2.5 percentage points compared to 2010/11;
- 80.1 per cent for Skills for Life qualifications, an increase of 1.5 percentage points compared to 2010/11;
- 82.7 per cent for Level 2 qualifications, an increase of 2.5 percentage points compared to 2010/11 (82.6 per cent for full Level 2, an increase of 4.1 percentage points);
- 79.4 per cent for Level 3 qualifications, a slight increase of 0.6 percentage points compared to 2010/11 (78.4 per cent for full Level 3, a slight increase of 0.7 percentage points).

27. In 2011/12, Apprenticeship success rates [Table 9.2] were:

- 73.8 per cent for all Apprenticeships, a decrease of 2.6 percentage points compared to 2010/11;
- 72.6 per cent for Intermediate Level Apprenticeships, a decrease of 2.7 percentage points compared to 2010/11;
- 76.5 per cent for Advanced Level Apprenticeships, a decrease of 2.1 percentage points compared to 2010/11;
- 72.6 per cent for Higher Apprenticeships, a decrease of 12.0 percentage points compared 2010/11.
- 74.2 per cent for Apprenticeships by those aged 19 and over, a decrease of 4.0 percentage points compared to 2010/11;
- 73.1 per cent for Apprenticeships by those aged under 19, a slight decrease of 0.9 percentage points compared to 2010/11.

PROVISIONAL FURTHER EDUCATION STATISTICS FOR ENGLAND, 2012/13

28. Data for 2012/13 provide a provisional view of performance for the full academic year (August 2012 to July 2013). Data are provisional because providers may not have reported all their information relating to this period. It is not possible to determine how incomplete the information behind the provisional data is, so the data cannot be directly compared against provisional or final data from earlier academic years. Comparisons can only be made once final returns for the academic year are made by providers (as published in November 2013).

Adult Learner (19+) Participation

29. Provisional data show that in the full 2012/13 academic year (August 2012 to July 2013) there were 3,240,900 learners aged 19 and over participating in government-funded further education [Table 13]. Of these:

- 1,041,500 participated on a Skills for Life course;
 - 1,231,900 participated on a Level 2 course, of which 968,300 were on a full Level 2 course;
 - 586,900 participated on a Level 3 course, of which 490,600 were on a full Level 3 course.
-
- 491,000 benefited from support for the unemployed (those nearest the workforce).

30. Provisional data for the full 2012/13 academic year (August 2012 to July 2013) show there were 89,500 offenders aged 18 or over in the prison system participating in learning [Table 13]. These offenders were funded via the Offenders' Learning and Skills Service (OLASS) budget.

Apprenticeships

31. Provisional data show that there were 858,900 funded Apprentices participating in the full 2012/13 academic year (August 2012 to July 2013) [Table 15]. Of these there were:

- 497,200 Intermediate Level Apprentices;
 - 371,600 Advanced Level Apprentices; and
 - 12,300 Higher Apprentices.
-
- 178,500 Apprentices aged under 19;
 - 291,900 Apprentices aged 19–24; and
 - 388,500 Apprentices aged 25 and over.

32. Note that an Apprentice may participate on an Apprenticeship programme at more than one level within an academic year

33. Provisional data show that there were 495,100 Apprenticeship starts in the full 2012/13 academic year (August 2012 to July 2013) [Table 16.1]. Of these there were:

- 285,600 Intermediate Level Apprenticeship starts;
- 200,500 Advanced Level Apprenticeship starts; and
- 9,000 Higher Apprenticeship starts.

- 111,700 Apprenticeship starts by those aged under 19;
 - 161,200 Apprenticeship starts by 19–24 year olds; and
 - 222,200 Apprenticeship starts by those aged 25 and over.
34. Provisional data show that there were 237,000 Apprenticeship framework achievements in the full 2012/13 academic year (August 2012 to July 2013) [Table 16.2]. Of these there were:
- 146,700 Intermediate Level Apprenticeship framework achievements;
 - 88,900 Advanced Level Apprenticeship framework achievements; and
 - 1,400 Higher Apprenticeship framework achievements.
- 56,000 Apprenticeship framework achievements by those aged under 19;
 - 75,000 Apprenticeship framework achievements by 19–24 year olds;
 - 106,000 Apprenticeship framework achievements by those aged 25 and over.
35. Although it is not possible to directly compare provisional estimates with data for previous years, the participation data indicate overall growth. This increase was only seen at the Advanced and Higher levels and for those aged 19 and over. The data indicate a decrease in overall Apprenticeship starts. This decrease was only seen at the Intermediate Level and for those aged under 19.
36. Provisional data show that between February 2012 and July 2013, there were 38,000 Apprenticeship starts for which a payment was made through the Apprenticeship Grant for Employers (AGE 16 to 24) scheme. A further 6,900 were in the pipeline (started but not yet paid) [Table 17.1].
37. Provisional data show that in the full 2012/13 academic year (August 2012 to July 2013), 5,500 Apprenticeships started through the Access to Apprenticeship pathway, of which 1,400 converted to paid employment to complete their Apprenticeship in the usual way [Table 17.2].

Adult (19+) Skills for Life

38. Provisional data show that 1,041,500 learners aged 19 and over participated on a Skills for Life course in the full 2012/13 academic year (August 2012 to July 2013) [Table 14]. Of these:
- 752,300 participated on an English course;
 - 735,400 participated on a maths course;
 - 146,000 participated on an English for Speakers of Other Languages (ESOL) course.

Community Learning

39. Provisional data show that 665,200 learners participated on a Community Learning course in the full 2012/13 academic year (August 2012 to July 2013) [Table 19]. Of these:
- 500,400 took a Personal and Community Development Learning course;
 - 62,300 took a Neighbourhood Learning in Deprived Communities course;
 - 51,400 took a Family English, Maths and Language course;
 - 71,900 took a Wider Family Learning course.

NATIONAL STATISTICS

40. The United Kingdom Statistics Authority has designated these statistics as National Statistics, in accordance with the Statistics and Registration Service Act 2007 and signifying compliance with the Code of Practice for Official Statistics.

41. Designation can be broadly interpreted to mean that the statistics:

- meet identified user needs;
- are well explained and readily accessible;
- are produced according to sound methods; and
- are managed impartially and objectively in the public interest.

42. Once statistics have been designated as National Statistics it is a statutory requirement that the Code of Practice shall continue to be observed. More information regarding compliance with the Code of Practice is available on our website:

<http://www.thedataservice.org.uk/statistics/statisticalfirstrelease/compliance/>

CHANGES IN THE NEXT SFR

43. The next SFR has been brought forward to November 2013 and will include final data for the full 2012/13 academic year.

44. Ofqual Vocational Qualification data shown in Table 12 of this release, and accompanying supplementary tables, will be updated in November 2013 as part of a formal cascade of this release. These tables will be updated to include data for the fourth quarter of 2012/13 (April 2013 to September 2013) which will allow Ofqual to update their detailed bulletins that include these data.

45. The November 2013 SFR will include data from the Employer Ownership Pilot. Round 1 of the Government scheme offers all employers in England direct access to up to £250 million of public investment over two academic years (2012/13 and 2013/14) to design and deliver their own training solutions. The learners will be allocated to the correct periods throughout the 2012/13 academic year so all quarters will be subject to revisions.

46. Changes to the next release will be pre-announced on the Data Service website at least a month prior to coming into effect, at:

http://www.thedataservice.org.uk/statistics/statisticalfirstrelease/sfr_next/

SUPPORTING DATA

Scope

47. Should we need to make an unplanned revision to the statistics contained in this release, we will follow the procedures outlined in the Revisions Policy for this Statistical First Release. This includes action to understand the impact that any revisions will have, as well as ensuring that they are clearly communicated to the reader. The Revisions Policy can be found at:
<http://www.thedataservice.org.uk/statistics/statisticalfirstrelease/compliance/>
48. Information from the different further education learning options have been drawn together to give a coherent and comprehensive picture of the participation and achievement of young people and adults. These options include:
- Further education organisations
 - Sixth form colleges
 - Local Authorities
 - Independent training organisations.
49. These organisations deliver a wide variety of government programmes, including:
- Education and Training
 - Apprenticeships
 - Workplace Learning
 - Community Learning.
50. This SFR covers adults (19+) and does not contain information regarding:
- **Delivery in School Sixth Forms**, including maintained, independent and academy schools. We are hoping to include this in future, once more work has been done to reconcile the different data sources. Provisional figures taken from the Department for Education (DfE) [Participation in Education, Training and Employment by 16–18 Year Olds in England](#). Statistical Release show there were 528,200 students studying in School Sixth Forms in 2012, based on a snapshot of January 2012 school census data.
 - **Higher Education in Higher Education Institutions**. The publication referenced in paragraph 75 shows that the total number of HE enrolments at English Higher Education Institutions stood at 2,496,645 in 2011/12.
 - **Privately-funded training at FE organisations and independent training organisations**. There is no single coherent source that provides a measure of privately-funded training. BIS will investigate whether it is possible to develop a measure to support this as part of our wider Dissemination Plan. More detail on the Dissemination Plan can be found at:
http://www.thedataservice.org.uk/statistics/dissemination_plan/. There are no sources currently available that fully capture privately-funded academic activity, particularly for older learners. However, in Table 12 of this release we do show the total number of Vocational Qualifications awarded in the UK. This includes both public and privately-funded qualifications and gives some sense of scale of total vocationally-related activity in the sector.

Data Sources

51. The data used to produce this SFR are Individualised Learner Record (ILR) collections that are returned to the Data Service by further education colleges and providers. The Data Service and *the information authority* introduced a Single ILR collection (SILR) in 2011/12 to replace the multiple ILR collection types that were collected in previous years. There are no longer separate collections for different funding streams and providers return all of their learners in a single file. The following ILR collections have been used to populate this release:

Year	Data Source
2011/12	ALL Apprenticeships & Workplace Learning SILR R15 – final
2012/13	ALL Apprenticeships & Workplace Learning SILR R13

52. For 2012/13, R13 is used to provide provisional data on learning in all further education and skills providers for the period 1st August 2012 to 31st July 2013.

53. The data sources for earlier years, including 2011/12, are final collections and include information on provision for the full academic year. More information on these data sources is available in a definitions document, which can be found at: http://www.thedataservice.org.uk/statistics/statisticalfirstrelease/sfr_current/.

54. The Labour Force Survey is the other data source used for the SFR (Tables 10 and 11). The latest LFS data used in this release relate to Quarter 4 (October – December) 2012.

Issues with Using Provisional Data

55. It is important to provide the earliest picture of further education performance once it becomes available so that users may assess the impact of government-funded provision and hold the system to account. However, provisional data are taken from an operational information system which is designed to support the funding of providers and there are some important limitations users should take into consideration.

56. In-year information is subject to data lag, which is when a provider submits information after the period it related to. This information is subsequently attributed to the correct time period. Data remain provisional until final returns for the academic year are made by providers, after the end of the academic year. Final data are published in the following November. The size of revision to individual estimates that arise from data lag can vary greatly. They tend to be around 2 to 3 per cent but have been as much as 15 per cent. Revisions are typically upward though it should be noted that on occasions small downward revisions are possible.

57. Data lag from one year to the next is not predictable, as provider behaviour changes over time and there is no source of information that would enable us to provide a robust estimate of completeness of data that have been returned. Provisional data cannot, therefore, be compared with provisional or final data from earlier academic

years. We generally recommend using the final data for the last complete academic year.

58. We carry out a quality assessment of the volume of providers that have made their returns. If we consider estimates to be particularly weak, due to data lag or any other factor, we may defer publication of those estimates. In recent years we have encouraged more timely reporting of data ahead of the final return. This is set out in our quality statement, which can be found at:

<http://www.thedataservice.org.uk/statistics/statisticalfirstrelease/compliance/>.

Issues with Comparing Data Across Academic Years

59. In January 2007, BIS consulted on a new funding approach for learners. This included three new demand led funding (DLF) models and a new funding formula, all of which were introduced in the 2008/09 academic year. To support this, it was necessary to bring in some technical changes from 2008/09 on how and where some activities are counted.

60. Overall the new funding methodology had a small impact of just over 1 per cent on total learner participation, and minimal effect on overall achievements. However, individual series (excluding Apprenticeship starts and achievements) were more significantly affected, and should not be compared with those in earlier years. The level of provision at which a learner was studying was unaffected. More information on these changes can be found at:

<http://www.thedataservice.org.uk/NR/ronlyres/5DC702AA-5117-40E1-A15E-01F95F2AF32B/0/TheeffectsofDemandLedFundingonthecountof2008v2.doc>

61. In the 2011/12 academic year a Single Individualised Learner Record (ILR) data collection system was introduced. This replaced the multiple separate data collections from previous years and led to small technical changes in the way learners from more than one funding stream are counted.

62. Overall the new collection system led to a removal of duplicate learners and a reduction in total learner participation of approximately 2 per cent. However Apprenticeship participation figures were more significantly affected due to a change in the way learners participating on more than one Apprenticeship programme were counted. This has led to a removal of duplicate learners and a reduction in overall Apprenticeship learners of approximately 5 per cent, therefore figures for 2011/12 onwards are not comparable to earlier years. A paper is available on our website to explain the Single ILR and the small effects it has on the SFR at:

http://www.thedataservice.org.uk/NR/ronlyres/C05DCDD5-67EE-4AD0-88B9-BEBC8F7F3300/0/SILR_Effects_SFR_Learners_June12.pdf. Further information on the Single ILR is available on the Information Authority's website at:
<http://www.theia.org.uk/ilr>

Data Definitions

63. High-level definitions of some of the key terms used in this release can be found in the Glossary on page 3. A more detailed definitions document to accompany this release is available on the Data Service website at:

http://www.thedataservice.org.uk/statistics/statisticalfirstrelease/sfr_current/

64. The 'Level of Highest Qualification Held by Adults' statistics are produced using data on the highest qualification held by individuals from the Labour Force Survey in

each year. The LFS is conducted by the Office for National Statistics and the estimates provided are the best measure of attainment within the population at Quarter 4 (October – December) each calendar year. Further details of how this information is used to calculate the estimates can be found at:

<http://www.thedataservice.org.uk/statistics/statisticalfirstrelease/methodogy/>

Publication Cycle Across the Year

65. Further information on future editions of the SFR can be found on the Data Service statistics website at:

http://www.thedataservice.org.uk/statistics/statisticalfirstrelease/sfr_next/

66. Table A below shows provisional and final data included for each release.

Table A: Publication Cycle

Release	Data Included
October 2013	- Provisional Apprenticeship, Workplace Learning, Community Learning and overall FE and Skills data for the full 2012/13 academic year
November 2013	- Final Apprenticeship, Workplace Learning, Community Learning and overall FE and Skills data for the full 2012/13 academic year
January 2014	- Education and Training; Apprenticeship; and Workplace Learning success rates for 2012/13
	- Provisional Apprenticeship, Workplace Learning, Community Learning and overall FE and Skills data for the first three months of 2013/14
March 2014	- Provisional Apprenticeship, Workplace Learning, Community Learning and overall FE and Skills data for the first six months of 2013/14
	- Final data for 2012 and provisional data for 2013 on the level of highest qualification held for adults in the population
June 2014	- Provisional Apprenticeship, Workplace Learning, Community Learning and overall FE and Skills data for the first nine months of 2013/14

67. The Statistical First Release is an evolving product and we welcome feedback. If you have comments or feedback on the SFR, these can be sent to:

servicedesk@thedataservice.org.uk, or alternatively, you can call 0870 267 0001.

68. If you have a statistical question around the content or presentation of National Statistics in the release, please contact Jessie Evans at:

jessie.evans@bis.gsi.gov.uk

69. If you would like to sign up for Web alerts, so that you are automatically sent an alert when new information is put on the website, please subscribe at:

http://www.thedataservice.org.uk/News/ds_alerts/

Supplementary Tables

70. A full list of supplementary tables relating to this SFR can be found on the Data Service website at: http://www.thedataservice.org.uk/Statistics/fe_data_library/. These tables include breakdowns by age, gender, ethnicity, learners with learning difficulties and/or disabilities, region, local authority, parliamentary constituency, sector subject area and funding stream. For more information on exactly what data will be released, and on which date, please see the supplementary tables list on the website.
71. New Local Authority Reports are published on the Data Service website. Local Authority Districts are shown based on the postcodes of delivery locations and also on the home postcodes of learners. The reports cover 2010/11 and 2011/12: enrolments, participation and provider level. The reports can be found at: http://www.thedataservice.org.uk/Statistics/fe_data_library/further_education_skills/local_authority_tables/

Related National Statistics Releases

72. There are a number of other National Statistics publications available that can be used to provide contextual information to this SFR. Some of those most relevant to this release are discussed below.
73. [*Participation in Education, Training and Employment by 16-18 Year Olds in England*](#) published on 28th June 2012 by the Department for Education. This release was revised on 21st February 2013 to take account of the 2011 Census ONS population estimates. This shows that the proportion of 16–18 year olds in education and training was 83.1 per cent at end 2011 – the highest rate ever recorded and an increase of 0.8 percentage points from 82.3 per cent at end 2010. More recent quarterly data published in the NEET Quarterly Brief on 28th February 2013 showed that participation at ages 16-18 had remained broadly static since the start of the 2011/12 academic year. Figures for the end of 2012 were published on 27th June 2013.
74. [*Level 2 and 3 Attainment by Young People in England Measured Using Matched Administrative Data: Attainment by Age 19 in 2012*](#) published on 27th March 2013 by the Department for Education. This shows that in 2012, 85.1 per cent of people aged 19 were qualified to at least Level 2, and 57.9 per cent were qualified to Level 3. These were increases of 1.6 percentage points and 1.3 percentage points respectively, since 2011.
75. [*Higher Education Student Enrolments and Qualifications Obtained at Higher Education Institutions in the United Kingdom for the Academic Year*](#) published on 10th January 2013 by the Higher Education Statistics Agency. This release shows that the total number of HE enrolments at UK Higher Education Institutions stood at 2,496,645 in 2011/12, showing no percentage difference from 2010/11. In terms of qualifications, in 2011/12 there were 390,985 first degree graduates compared to 369,010 in 2010/11, an increase of 6 per cent.
76. [*Education and Training Statistics for the United Kingdom*](#) published on 7th November 2012 by the Department for Education. This release provides statistics relating to education and training in the UK and includes chapters relating to post-compulsory education & training and qualifications. Information includes participation of learners

in further education by country of study, participation in job-related training and the highest level of qualification held by adults in the population (UK).

Other Related Statistics

77. In January 2012 the Government launched FE Choices. The prime purpose of FE Choices is to provide clear, comparable information to learners and employers so they can make informed choices about post-16 education and training. FE Choices enables users to search and compare provider ratings for four performance indicators: Success Rates; Learner Destinations (including Employment Rate and Learning Rate); Learner Satisfaction; and Employer Satisfaction. These indicators are published on the FE Choices website at:

<http://fechoices.skillsfundingagency.bis.gov.uk/>. Results at National level, by type of provider and by individual provider for each performance indicator can be found at: http://www.thedataservice.org.uk/statistics/statistics_fechoices/

Further Education Statistics for Other Countries in the UK

78. The focus of this SFR is on government-funded further education provision in England. Similar information is available for other countries in the UK, and provides useful contextual background to these statistics.

79. Statistics on Further Education and Work-based learning in **Wales** can be found at: <http://wales.gov.uk/topics/statistics/?lang=en>

80. Statistics on Professional and Technical Enrolments in the **Northern Ireland** Further Education Sector for 2011/12 can be found at: <http://www.delni.gov.uk/index/statsandresearch/further-education-stats/further-education-enrolments-2/prof-and-tech-enrolments-in-ni-fe-sector-2011-12.htm>

81. Statistics on learners in further education in **Scotland** can be found at: http://www.sfc.ac.uk/web/FILES/ReportsandPublications/Facts_and_Figures_2012.pdf. Additionally, user-defined tables on further education learners and courses can be produced at: <https://stats.sfc.ac.uk/infact/>

TABLE GUIDE

82. This section provides a brief summary of what is included in each table of this release. Tables 1 to 9 focus on the 2011/12 academic year; Tables 13 to 19 show provisional data for the full 2012/13 academic year (August 2012 to July 2013).

- **Table 1** shows participation and achievement in further education and skills by level for adults (19+).
- **Table 2** shows a demographic breakdown of participation in further education and skills for adults (19+).
- **Table 3** shows Skills for Life participation and achievement for adults (19+).
- **Table 4** shows a demographic breakdown of Apprenticeship participation by level.
- **Table 5** shows Apprenticeship participation during each academic year by age and level.
- **Table 6** shows Apprenticeship starts and achievements by age and level.
- **Table 7** shows Workplace Learning starts and achievements by level.
- **Table 8** shows Community Learning participation and achievements by provision type.
- **Table 9** shows success rates for Education and Training (19+), Workplace Learning and Apprenticeships.
- **Tables 10 and 11** show level of attainment in the population (working age and economically active respectively) from the Labour Force Survey.
- **Table 12** shows a quarterly time series of information on Vocational Qualifications awarded.
- **Tables 13 to 19** repeat earlier tables; showing provisional data for the full 2012/13 academic year (August 2012 to July 2013).

Table Footnotes

General Footnotes Relevant to All Tables

- 1) Volumes are rounded to the nearest 100; percentages are calculated on pre-rounded data.
- 2) '-' Indicates a base value of less than 50; '**' indicates a percentage of less than 0.5%.
- 3) Tables 1-5, 8-9 13-15 and 19 are based on learners that were funded by the Learning and Skills Council or Young People's Learning Agency and/or are now funded by the Skills Funding Agency or Education Funding Agency.
- 4) For definitions of variables used in the tables please see the data dictionary:
<http://www.thedataservice.org.uk/datadictionary/>
- 5) Except for Tables 6, 7, 16, 17 and 18 (see footnotes 19 and 28), age is reported as at 31 August of the academic year for all provision.
- 6) In tables reporting full-year numbers, except for Tables 6 and 7 (see footnotes 20 and 30), full-year numbers are a count of the number of learners that participated/achieved at any point during the year. Learners undertaking/achieving more than one course will appear only once in the 'total learners' category for each data collection. All learners undertaking/achieving a full Level 2 or full Level 3 qualification will also appear in the Level 2 or Level 3 category, respectively.
- 7) The data source for all tables is the Individualised Learner Record, except where stated.
- 8) Further breakdowns of the data are available at the Data Service website:
http://www.thedataservice.org.uk/Statistics/fe_data_library/
- 9) Tables that show provisional estimates for 2012/13 are not directly comparable with figures for previous years.

Table 9.1 – Education and Training Success Rates

- 10) Education and Training success rates are calculated as the number of learning aims achieved divided by the number of learning aims expected to complete, excluding any learners who transferred on to another learning aim within the same institution.
- 11) Table 1.2 reports on the actual number of achievements within the academic year without reference to those that were expected to complete. Table 9.1 reports on success rates which are based on the reported achievement of individual aims that were expected to complete in the academic year.

Table 2 and 4 – Demographics

- 12) Learners undertaking courses at more than one level will be counted once for each applicable level, but once only in the Total. Learners studying a Level 2 Skills for Life qualification will be counted in both the Level 2 and Skills for Life categories, but only once in the Total.
- 13) Age, gender, learners with learning difficulties and/or disabilities and ethnicity are based upon self-declaration by the learner.

Tables 6, 9.2, 16 and 17 – Apprenticeships

- 14) Apprenticeship starts and achievements include all funded and unfunded learners reported on the ILR.
- 15) Apprenticeship success rates are based on the number of learners who meet all of the requirements of their Apprenticeship framework, divided by the number of learners who have left training or successfully completed their training in the academic year.
- 16) Table 9.2 reports on success rates which are based on the reported achievement of individual aims that were expected to complete in the academic year.
- 17) Apprenticeship success rates are not affected by demand led funding.
- 18) Unlike learner figures in earlier tables, figures for 2008/09 onwards are comparable with earlier years as demand led funding rules are not applied to starts and achievements.
- 19) Age is calculated based on age at start of the programme rather than based on 31 August.
- 20) In Tables 6.1 and 16.1 full-year numbers are a count of the number of starts at any point during the year. Learners starting more than one Apprenticeship will appear more than once.
- 21) In Tables 6.2 and 16.2 full-year numbers are a count of the number of framework achievements at any point during the year. Learners achieving more than one framework will appear more than once.
- 22) Programme-Led Apprenticeships recorded in ILR returns are included in the above figures.
- 23) In order to be counted as a successful achievement, all elements of the framework must have been achieved.
- 24) Quarter 1 is 1 August to 31 October; Quarter 2 is 1 November to 31 January; Quarter 3 is 1 February to 30 April; Quarter 4 is 1 May to 31 July.

Tables 7, 9.3 and 18 – Workplace Learning

- 25) Workplace Learning success rates are based on the number of aims achieved, divided by the number of aims completed in the academic year.
- 26) Table 9.3 reports on success rates which are based on the reported achievement of individual aims that were

expected to complete in the academic year.

27) 2011/12 is the first year that Workplace Learning success rates are available. This is due to a change in the programmes included in Workplace Learning. Between 2007/08 and 2010/11 this included the Train to Gain programme. In 2011/12 this included all training mainly delivered through the workplace (excluding Apprenticeships). Therefore previous years are not comparable. For more information see:

http://www.thedataservice.org.uk/Statistics/success_rates/success_rates_2011-12

28) Age is calculated based on age at start of the programme rather than based on 31 August.

29) Figures for 2008/09 and 2009/10 are not comparable with earlier years as in 2008/09 and 2009/10 NVQs delivered in the workplace changed from being funded by FE to be funded by Train to Gain. There were 181,000 starts and 132,000 achievements in NVQs delivered in the workplace in 2007/08 (Source - FE 2007/08 F05 Final).

30) In Table 7.1 full-year numbers are a count of the number of starts at any point during the year. Learners starting more than one course will appear more than once.

31) In Tables 7.2 full-year numbers are a count of the number of achievements at any point during the year. Learners achieving more than one course will appear more than once.

32) Quarter 1 is 1 August to 31 October; Quarter 2 is 1 November to 31 January; Quarter 3 is 1 February to 30 April; Quarter 4 is 1 May to 31 July.

Tables 8 and 19 – Community Learning

33) Total Learners includes learners participating in Community Learning (previously Adult Safeguarded Learning) provision in the Community Learning and FE funding streams for 2007/08. For 2008/09 to 2010/11, only Community Learning provision recorded in the Community Learning collection is included in totals except for 2009/10 where Community Learning provision recorded in the Education and Training collection for five Specially Designated Colleges is also included. No Formal First Step learners are included except for 2006/07, where Formal First Step provision cannot be accurately separated from other Community Learning provision. These learners are therefore included in Total Learners. This means the Total Learners for 2006/07 are not directly comparable to 2005/06 or 2007/08.

34) There are a number of learners with Community Learning aims that are recorded in the Education and Training funding stream and are not included in the figures in Table 6. In 2008/09 there were 7,900 participating and 6,400 achieving learners; in 2009/10 there were 7,700 participating and 6,300 achieving learners; and in 2010/11 there were 8,300 participating and 6,900 achieving learners. The only Community Learning provision included for Table 6 for 2008/09 and 2010/11 is recorded in the Community Learning funding stream. Community Learning in 2011/12 is recorded in the Single ILR collection only.

Table 12 – Vocational Qualifications

35) This table covers all levels of vocational qualifications reported through Ofqual. Data are supplied by awarding organisations.

36) Academic year is October to September. For example, the 2005/06 academic year is 1 October 2005 to 30 September 2006.

37) Key Skills data was not collected prior to October 2009.

38) 'Other Vocational Qualifications' include Basic Skills, Entry Level, English for Speakers Other Languages, Functional Skills, Free-Standing Mathematics Qualification, Key Skills, National Qualifications Framework and Other General types.

Table 1.1: Adult (19+) FE and Skills Participation by Level (2007/08 to 2011/12) – Learner Volumes

Funded Learners									
		2007/08	2008/09	2009/10	2010/11		2011/12		
				% change 08/09 to 09/10		% change 09/10 to 10/11		% change 10/11 to 11/12	
Level		Full Year	Full Year	Full Year		Full Year	Full Year		
Total Learners		3,304,400	3,771,200	3,540,500	-6.1%	3,163,200	-10.7%	3,149,700	*
Participation	of which...								
	Below Level 2 (excluding Skills for Life)	532,500	496,800	435,300	-12.4%	370,900	-14.8%	574,700	54.9%
	Skills for Life	824,800	945,100	909,100	-3.8%	961,800	5.8%	1,083,000	12.6%
	Full Level 2	740,000	968,600	971,000	*	982,600	1.2%	1,028,100	4.6%
	Full Level 3	328,100	423,900	469,100	10.6%	494,000	5.3%	486,800	-1.5%
	Level 2	1,319,400	1,549,000	1,451,200	-6.3%	1,273,300	-12.3%	1,320,000	3.7%
	Level 3	528,200	619,700	604,800	-2.4%	542,900	-10.2%	542,600	*
	Level 4+	53,200	58,200	49,500	-14.9%	36,600	-26.0%	39,200	7.1%
No Level Assigned	803,600	910,500	951,100	4.5%	888,300	-6.6%	798,900	-10.1%	

Table 1.2: Adult (19+) FE and Skills Achievement by Level (2007/08 to 2011/12) – Learner Volumes

Funded Learners										
		2007/08	2008/09	2009/10	2010/11		2011/12			
				% change 08/09 to 09/10	% change 09/10 to 10/11		% change 10/11 to 11/12			
Level		Full Year	Full Year	Full Year	Full Year	Full Year	Full Year	Full Year		
Total Learners		2,243,600	2,584,000	2,567,700	-0.6%	2,265,100	-11.8%	2,258,500	*	
Achievement	of which...	Below Level 2 (excluding Skills for Life)	406,500	367,000	336,800	-8.2%	298,500	-11.4%	472,300	58.2%
		Skills for Life	520,700	639,100	614,600	-3.8%	595,600	-3.1%	633,000	6.3%
		Full Level 2	320,300	493,900	556,000	12.6%	561,800	1.0%	546,600	-2.7%
		Full Level 3	134,400	170,200	237,800	39.7%	242,700	2.1%	216,200	-10.9%
		Level 2	734,700	910,800	926,000	1.7%	788,900	-14.8%	775,200	-1.7%
		Level 3	285,600	317,000	344,400	8.7%	282,600	-17.9%	249,000	-11.9%
		Level 4+	25,800	27,600	26,900	-2.3%	20,400	-24.4%	21,500	5.7%
		No Level Assigned	682,800	756,400	814,600	7.7%	764,100	-6.2%	685,900	-10.2%

Notes

1) These tables include Apprenticeships, Workplace Learning, Community Learning and Education and Training provision taken at General Further Education Colleges (including Tertiary), Sixth Form Colleges, Special Colleges (Agricultural and Horticultural Colleges and Art and Design Colleges), Specialist Colleges and External Institutions.

2) Figures for 2008/09 onwards are not directly comparable to earlier years as the introduction of demand led funding has changed how data is collected and how funded learners are defined from 2008/09 onwards. Apprenticeship success rates are not affected by demand led funding. More information on demand led funding is available at:

<http://www.thedataservice.org.uk/datadictionary/businessdefinitions/Demand+Led+Funding.htm>

3) Figures for 2011/12 onwards are not directly comparable to earlier years as a Single Individualised Learner Record (ILR) data collection system has been introduced. Small technical changes have been made in the way learners from more than one provision type are counted, leading to a removal of duplicate learners and a reduction in overall learner numbers of approximately 2 per cent. More information on the Single ILR is available at:

http://www.thedataservice.org.uk/NR/rdonlyres/C05DCDD5-67EE-4AD0-88B9-BEBC8F7F3300/0/SILR_Effects_SFR_Learners_June12.pdf

4) Data for earlier years are available in the Further Education and Skills Supplementary Tables:

http://www.thedataservice.org.uk/Statistics/fe_data_library/further_education_skills/

5) Prior to 2009/10 Level 4+ Apprenticeships were included with Level 3 Apprenticeships.

6) Please see the general footnotes and the FE and Skills footnotes sections for further information on these tables.

7) In 2011/12 there were 90,100 offenders aged 18 or over in the prison system participating in learning, 71,900 achieved a learning outcome. These offenders were funded via the Offenders' Learning and Skills Service (OLASS) budget. Those aged 19 and over are included in Tables 1.1 and 1.2.

8) In 2011/12 219,400 learners benefited from support for the unemployed (those nearest the workforce), of which 211,700 were aged 19+. These are defined as those learners reporting that they were in receipt of Employment and Support Allowance - Work Related Activity Group (ESA WRAG) or Jobseeker's Allowance (JSA).

Table 2: Adult (19+) Demographic Summary of FE and Skills Participation (2011/12) – Learner Volumes

Funded Learners							
All FE and Skills Participation							
	Below Level 2 (excluding SfL)	Skills For Life (SfL)	Level 2	Level 3	Level 4+	Total FE and Skills	%
Total Learners	574,700	1,083,000	1,320,000	542,600	39,200	3,149,700	100.0%
Age							
19-24	152,300	318,300	373,400	218,300	8,100	754,600	24.0%
25-49	319,300	648,700	759,400	276,200	25,400	1,763,400	56.0%
50+	102,700	115,500	187,100	48,100	5,700	624,100	19.8%
Unknown	400	600	200	-	-	7,500	*
Gender							
Female	260,500	633,300	650,100	327,200	24,300	1,776,900	56.4%
Male	314,200	449,800	669,900	215,500	14,900	1,372,800	43.6%
Learners with Learning Difficulties and/or Disabilities							
Learning Difficulty/Disability	113,500	128,000	116,400	47,400	2,700	370,700	11.8%
No Learning Difficulty/Disability	431,900	920,200	1,164,200	483,600	35,200	2,631,200	83.5%
Not Known	29,200	34,800	39,400	11,600	1,300	147,800	4.7%
Ethnicity							
Asian/ Asian British	53,300	118,000	102,900	29,400	2,100	267,900	8.5%
Black/ African/ Caribbean/ Black British	55,100	93,400	89,100	32,600	1,800	215,100	6.8%
Mixed/ Multiple Ethnic Group	17,100	26,700	28,800	11,500	700	68,400	2.2%
White	422,100	793,900	1,058,800	456,700	33,700	2,466,000	78.3%
Other Ethnic Group	12,500	34,000	20,900	6,200	400	66,000	2.1%
Not Known/Not Provided	14,600	17,000	19,500	6,300	500	66,300	2.1%

Notes

1) These tables include Apprenticeships, Workplace Learning, Community Learning and Education and Training provision taken at General Further Education Colleges (including Tertiary), Sixth Form Colleges, Special Colleges (Agricultural and Horticultural Colleges and Art and Design Colleges), Specialist Colleges and External Institutions.

2) Please see the general footnotes and the FE and Skills Demographics footnotes sections for further information on these tables.

Table 3: Adult (19+) FE and Skills – Skills for Life Participation and Achievement by Level (2007/08 to 2011/12)

Measure	Level	Funded Learners							
		2007/08	2008/09	2009/10	% change		2010/11	% change	
		Full Year	Full Year	Full Year	08/09 to 09/10		Full Year	09/10 to 10/11	Full Year
Participation	Total Learners	824,800	945,100	909,100	-3.8%		961,800	5.8%	1,083,000
	of which English	485,400	579,500	555,700	-4.1%		639,000	15.0%	782,500
	of which entry level	132,000	136,700	112,400	-17.8%		103,800	-7.7%	107,600
	of which level 1	204,400	248,700	226,700	-8.9%		285,900	26.1%	379,500
	of which level 2	197,100	245,600	252,100	2.7%		286,800	13.8%	335,400
	of which maths	395,600	517,100	525,000	1.5%		630,500	20.1%	772,500
	of which entry level	82,600	108,700	101,400	-6.7%		98,500	-2.9%	102,400
	of which level 1	185,200	241,800	236,800	-2.1%		314,800	32.9%	396,500
	of which level 2	171,600	218,600	228,800	4.6%		265,700	16.2%	323,400
	of which ESOL (English for Speakers of Other Languages)	193,300	188,700	178,600	-5.4%		163,600	-8.4%	139,400
	of which entry level	164,600	161,000	150,100	-6.8%		135,500	-9.7%	118,000
	of which level 1	24,400	24,100	24,100	*		24,200	*	19,000
	of which level 2	9,400	9,300	9,700	3.5%		9,600	-0.6%	7,100
Achievement	Total Learners	520,700	639,100	614,600	-3.8%		595,600	-3.1%	633,000
	of which English	275,000	340,300	336,400	-1.1%		329,700	-2.0%	387,400
	of which entry level	92,800	91,800	79,200	-13.7%		74,400	-6.1%	79,700
	of which level 1	106,900	144,000	130,200	-9.6%		134,100	3.1%	175,600
	of which level 2	97,800	129,000	144,700	12.2%		139,900	-3.3%	152,800
	of which maths	208,900	293,000	311,100	6.2%		324,300	4.2%	386,400
	of which entry level	53,500	68,300	68,400	*		70,900	3.7%	79,700
	of which level 1	94,400	138,900	138,400	*		151,300	9.4%	191,600
	of which level 2	82,300	111,400	126,200	13.2%		128,500	1.8%	142,400
	of which ESOL (English for Speakers of Other Languages)	138,600	135,800	128,200	-5.6%		122,100	-4.7%	110,000
	of which entry level	119,500	116,700	108,100	-7.4%		101,700	-5.9%	93,700
	of which level 1	15,700	15,600	15,900	1.6%		16,400	3.6%	13,200
	of which level 2	6,200	6,100	6,600	8.0%		6,500	-1.7%	5,200

Notes

1) Figures for 2008/09 onwards are not directly comparable to earlier years as the introduction of demand led funding has changed how data is collected and how funded learners are defined from 2008/09 onwards. More information on demand led funding is available at:

<http://www.thedataservice.org.uk/datadictionary/businessdefinitions/Demand+Led+Funding.htm>

2) Figures for 2011/12 onwards are not directly comparable to earlier years as a Single Individualised Learner Record (ILR) data collection system has been introduced. Small technical changes have been made in the way learners from more than one provision type are counted, leading to a removal of duplicate learners and a reduction in overall learner numbers of approximately 2 per cent. More information on the Single ILR is available at:

http://www.thedataservice.org.uk/NR/rdonlyres/C05DCDD5-67EE-4AD0-88B9-BEBC8F7F3300/0/SILR_Effects_SFR_Learners_June12.pdf

3) Data for earlier years are available in the Skills for Life Supplementary Tables:

http://www.thedataservice.org.uk/Statistics/fe_data_library/skills_for_life/

4) Please see the general footnotes section for further information on this table.

Table 4: All Age Demographic Summary of Apprenticeship Participation (2011/12) – Learner Volumes

Funded Apprentices					
Apprenticeships					
	Intermediate Level Apprenticeship	Advanced Level Apprenticeship	Higher Apprenticeship	Total Apprenticeships	%
Total Learners	506,200	317,000	5,700	806,500	100.0%
Age					
Under 19	144,200	53,300	500	189,600	23.5%
19-24	159,100	118,900	2,900	272,100	33.7%
25-49	166,800	127,500	2,100	291,500	36.1%
50+	36,200	17,300	200	53,200	6.6%
Unknown	-	-	-	-	-
Gender					
Female	256,400	172,500	3,400	420,200	52.1%
Male	249,800	144,500	2,300	386,300	47.9%
Learners with Learning Difficulties and/or Disabilities					
Learning Difficulty/Disability	42,200	21,700	200	62,600	7.8%
No Learning Difficulty/Disability	455,600	291,000	5,400	731,300	90.7%
Not Known	8,400	4,300	100	12,600	1.6%
Ethnicity					
Asian/ Asian British	21,300	10,700	200	31,600	3.9%
Black/ African/ Caribbean/ Black British	15,700	10,000	100	25,500	3.2%
Mixed/ Multiple Ethnic Group	9,200	5,300	100	14,300	1.8%
White	452,300	286,200	5,300	722,800	89.6%
Other Ethnic Group	3,600	1,900	-	5,500	0.7%
Not Known/Not Provided	4,000	2,800	-	6,800	0.8%

Notes

1) Please see the general footnotes and the FE and Skills Demographics footnotes sections for further information on these tables.

Table 5: All Age Apprenticeship Participation by Level and Age (2007/08 to 2011/12)

							Funded Apprentices							
Age		2007/08	2008/09	2009/10	2010/11	2011/12	2010/11				2011/12			
		Full Year	Full Year	Full Year	Full Year	Full Year	August to October	August to January	August to April	Full Year August to July	August to October	August to January	August to April	Full Year August to July
Intermediate Level Apprenticeship	Under 19	144,400	129,800	140,400	150,000	144,200	88,300	106,200	125,700	150,000	88,400	106,700	124,800	144,200
	19-24	102,200	101,300	114,600	141,300	159,100	84,000	101,100	120,100	141,300	101,100	119,300	139,400	159,100
	25+	15,900	42,500	49,000	123,900	203,000	38,100	61,600	89,600	123,900	119,200	145,300	173,000	203,000
	Total	262,500	273,600	304,000	415,200	506,200	210,400	268,900	335,500	415,200	308,600	371,400	437,200	506,200
	of which 19+	118,100	143,800	163,600	265,300	362,100	122,100	162,700	209,800	265,300	220,300	264,700	312,400	362,100
Advanced Level Apprenticeship	Under 19	46,200	44,100	45,800	52,900	53,300	32,700	37,800	45,100	52,900	34,400	40,100	45,600	53,300
	19-24	94,100	90,300	94,900	108,100	118,900	77,500	86,500	97,000	108,100	85,100	95,700	106,600	118,900
	25+	16,100	36,500	44,800	86,100	144,800	35,200	47,300	65,100	86,100	80,600	99,300	119,600	144,800
	Total	156,300	170,900	185,500	247,200	317,000	145,400	171,600	207,200	247,200	200,100	235,200	271,700	317,000
	of which 19+	110,100	126,800	139,700	194,300	263,700	112,800	133,800	162,100	194,300	165,700	195,100	226,200	263,700
Higher Apprenticeship	Under 19	-	100	200	300	500	100	200	200	300	200	200	300	500
	19-24	100	200	1,400	2,400	2,900	1,900	2,100	2,300	2,400	2,200	2,400	2,700	2,900
	25+	-	-	100	800	2,300	600	600	700	800	1,200	1,500	1,800	2,300
	Total	100	300	1,700	3,500	5,700	2,600	2,900	3,200	3,500	3,500	4,100	4,900	5,700
	of which 19+	100	200	1,500	3,200	5,200	2,400	2,700	3,000	3,200	3,300	3,800	4,600	5,200
All Apprenticeships	Under 19	190,600	173,900	186,400	203,100	189,600	121,100	144,100	171,000	203,100	121,300	143,800	165,200	189,600
	19-24	196,400	191,800	210,900	251,900	272,100	163,400	189,700	219,400	251,900	186,400	213,800	242,600	272,100
	25+	32,000	79,100	93,900	210,900	344,800	73,900	109,500	155,500	210,900	200,200	244,400	291,400	344,800
	Total	418,900	444,800	491,300	665,900	806,500	358,400	443,300	545,900	665,900	507,900	602,000	699,200	806,500
	of which 19+	228,400	270,900	304,800	462,800	616,900	237,300	299,200	374,800	462,800	386,600	458,200	534,100	616,900

Notes

1) Figures for 2008/09 onwards are not directly comparable to earlier years as the introduction of demand led funding has changed how data is collected and how funded learners are defined from 2008/09 onwards. More information on demand led funding is available at:

<http://www.thedataservice.org.uk/datadictionary/businessdefinitions/Demand+Led+Funding.htm>

2) Figures for 2011/12 onwards are not comparable to earlier years as a Single Individualised Learner Record (ILR) data collection system has been introduced. Technical changes have been made in the way learners participating on more than one Apprenticeship programme are counted. This has led to a removal of duplicate learners and a reduction in overall Apprenticeship learners of approximately 5 per cent.

http://www.thedataservice.org.uk/NR/rdonlyres/C05DCDD5-67EE-4AD0-88B9-BEBC8F7F3300/0/SILR_Effects_SFR_Learners_June12.pdf

3) Prior to 2011/12, full year numbers are a count of Apprenticeship programmes in each year. Learners undertaking more than one Apprenticeship programme will appear more than once in the 'All Apprenticeships' total as well as the totals for each Apprenticeship level they participated in. From 2011/12 onwards 'All Apprenticeships' counts each Apprenticeship learner only once regardless of how many programmes they participated in. Each learner is still counted in the totals for each Apprenticeship level they participated in.

4) Data for earlier years are available in the Apprenticeship Supplementary Tables:

http://www.thedataservice.org.uk/Statistics/fe_data_library/Apprenticeships/

5) Please see the general footnotes and the Apprenticeships footnotes section for further information on this table.

Table 6.1: All Age Apprenticeship Programme Starts by Level and Age (2007/08 to 2011/12)

Age		2007/08	2008/09	2009/10	2010/11	2011/12	2010/11				2011/12			
		Full Year	Full Year	Full Year	Full Year	Full Year	Quarter 1	Quarter 2	Quarter 3	Quarter 4	Quarter 1	Quarter 2	Quarter 3	Quarter 4
Intermediate Level Apprenticeship	Under 19	82,000	74,200	89,400	97,300	95,400	38,100	18,300	18,900	22,000	40,600	19,400	17,600	17,800
	19-24	55,200	52,600	72,800	90,400	101,700	21,000	20,000	23,300	26,100	29,200	21,900	25,300	25,300
	25+	14,600	31,700	28,400	113,400	131,900	16,400	26,800	31,700	38,400	34,700	30,100	32,200	34,900
	Total	151,800	158,500	190,500	301,100	329,000	75,500	65,200	73,900	86,500	104,500	71,300	75,200	78,000
	of which 19+	69,800	84,300	101,100	203,800	233,600	37,400	46,800	55,000	64,500	63,900	51,900	57,500	60,200
Advanced Level Apprenticeship	Under 19	25,500	25,100	27,200	34,200	34,100	17,100	4,700	6,400	6,000	18,100	5,400	4,500	6,100
	19-24	34,800	32,000	39,800	51,600	58,000	16,000	10,100	12,400	13,300	18,400	12,200	12,900	14,600
	25+	12,600	24,200	20,600	68,000	95,700	10,800	13,300	20,200	23,700	21,700	21,200	23,400	29,400
	Total	72,900	81,300	87,700	153,900	187,900	43,800	28,100	39,000	42,900	58,200	38,900	40,800	50,100
	of which 19+	47,400	56,100	60,400	119,700	153,700	26,800	23,400	32,600	36,900	40,100	33,400	36,300	44,000
Higher Apprenticeship	Under 19	-	-	100	200	300	100	-	-	-	100	-	100	100
	19-24	-	100	1,200	1,300	1,700	700	200	200	200	800	200	400	300
	25+	-	-	100	700	1,700	400	100	100	100	500	300	400	500
	Total	100	200	1,500	2,200	3,700	1,200	300	300	400	1,400	600	900	800
	of which 19+	-	100	1,400	2,000	3,400	1,100	300	300	300	1,300	600	800	800
All Apprenticeships	Under 19	107,600	99,400	116,800	131,700	129,900	55,200	23,100	25,400	28,000	58,900	24,900	22,200	24,000
	19-24	90,100	84,700	113,800	143,400	161,400	37,700	30,300	35,900	39,600	48,300	34,300	38,600	40,200
	25+	27,200	55,900	49,100	182,100	229,300	27,600	40,200	52,000	62,200	56,900	51,600	56,000	64,800
	Total	224,800	239,900	279,700	457,200	520,600	120,600	93,600	113,300	129,800	164,100	110,700	116,800	128,900
	of which 19+	117,200	140,600	162,900	325,500	390,700	65,300	70,500	87,900	101,800	105,200	85,900	94,600	104,900

Table 6.2: All Age Apprenticeship Framework Achievements by Level and Age (2007/08 to 2011/12)

Age		2007/08	2008/09	2009/10	2010/11	2011/12	2010/11				2011/12			
		Full Year	Full Year	Full Year	Full Year	Full Year	Quarter 1	Quarter 2	Quarter 3	Quarter 4	Quarter 1	Quarter 2	Quarter 3	Quarter 4
Intermediate Level Apprenticeship	Under 19	47,100	50,200	52,900	59,400	56,500	13,700	11,000	13,000	21,700	13,700	11,800	11,800	19,300
	19-24	28,400	35,500	38,600	48,400	54,100	10,700	10,800	11,400	15,500	12,400	11,700	13,000	17,000
	25+	900	12,500	20,300	23,900	61,800	4,600	4,500	5,600	9,200	10,500	12,500	16,900	21,900
	Total	76,300	98,100	111,900	131,700	172,400	29,000	26,300	30,000	46,400	36,600	36,000	41,700	58,200
	of which 19+	29,300	48,000	59,000	72,400	115,900	15,300	15,300	17,000	24,800	22,900	24,200	29,900	38,900
Advanced Level Apprenticeship	Under 19	16,200	17,500	20,100	23,900	21,300	5,100	3,600	5,800	9,400	5,500	3,700	3,800	8,300
	19-24	19,700	22,400	25,400	27,700	30,600	6,500	5,300	6,100	9,900	7,200	6,300	6,700	10,300
	25+	300	5,400	13,900	15,900	32,800	3,300	2,900	3,900	5,900	5,400	6,500	8,400	12,500
	Total	36,200	45,200	59,400	67,500	84,700	14,900	11,800	15,700	25,100	18,100	16,600	18,900	31,100
	of which 19+	20,000	27,700	39,300	43,600	63,400	9,800	8,200	9,900	15,700	12,700	12,900	15,100	22,800
Higher Apprenticeship	Under 19	-	-	-	100	100	-	-	-	-	-	-	-	-
	19-24	-	-	100	800	800	300	100	200	300	300	100	100	200
	25+	-	-	-	100	300	-	-	-	-	100	100	-	100
	Total	-	-	200	1,000	1,200	400	100	200	300	500	200	200	400
	of which 19+	-	-	200	900	1,200	400	100	200	300	400	200	200	400
All Apprenticeships	Under 19	63,300	67,700	73,100	83,300	77,900	18,800	14,600	18,800	31,100	19,200	15,500	15,600	27,600
	19-24	48,100	57,800	64,200	77,000	85,600	17,500	16,100	17,600	25,700	20,000	18,200	19,900	27,600
	25+	1,200	17,900	34,300	39,900	94,900	7,900	7,400	9,500	15,100	16,000	19,100	25,300	34,500
	Total	112,600	143,400	171,500	200,300	258,400	44,300	38,100	46,000	71,900	55,200	52,700	60,800	89,700
	of which 19+	49,300	75,700	98,400	116,900	180,500	25,400	23,600	27,100	40,800	36,000	37,200	45,200	62,100

Notes

1) Figures for 2011/12 onwards are not directly comparable to earlier years as a Single Individualised Learner Record (ILR) data collection system has been introduced. Small technical changes have been made in the way learners from more than one provision type are counted, leading to a removal of duplicate learners and a reduction in overall learner numbers of approximately 2 per cent. More information on the Single ILR is available at:

http://www.thedataservice.org.uk/NR/rdonlyres/C05DCDD5-67FE-4AD0-88B9-BEBC8F7F3300/0/SILR_Effects_SFR_Learners_June12.pdf

2) Data for earlier years are available in the Apprenticeship Supplementary Tables:

http://www.thedataservice.org.uk/Statistics/fe_data_library/Apprenticeships/

3) Please see the general footnotes and the Apprenticeships footnotes section for further information on these tables.

Table 7.1: Workplace Learning Starts by Level (2007/08 to 2011/12)

Level		2007/08 Full Year	2008/09 Full Year	2009/10 Full Year	2010/11 Full Year	2011/12 Full Year	2010/11				2011/12			
							Quarter 1	Quarter 2	Quarter 3	Quarter 4	Quarter 1	Quarter 2	Quarter 3	Quarter 4
Total Starts		347,300	906,100	774,500	599,300	331,600	179,800	172,500	143,300	103,700	59,500	66,400	88,200	117,600
of which...	Below Level 2	28,700	155,300	147,100	114,300	43,200	37,700	37,700	21,900	17,000	7,900	9,300	11,800	14,200
	Level 2	274,300	579,900	430,500	331,900	252,200	89,600	88,400	85,500	68,400	44,700	49,900	67,500	90,200
	Level 3	43,100	135,800	100,200	81,800	34,200	26,300	21,100	17,300	17,100	6,700	6,900	8,500	12,200
	Level 4+	1,100	11,900	4,300	3,000	2,000	900	800	700	600	200	300	500	1,000
	No Level Assigned	-	23,200	92,400	68,300	-	25,200	24,500	18,000	600	-	-	-	-
	Below Level 2 (excluding Skills for Life)	-	22,100	27,900	11,200	4,200	4,900	3,900	1,700	700	600	900	1,300	1,500
	Skills for Life	39,200	191,700	127,000	108,300	62,200	34,900	36,300	20,800	16,300	11,900	13,900	16,600	19,800
	Full Level 2	263,900	520,100	415,100	315,400	226,300	83,700	82,200	81,800	67,600	39,900	44,200	60,900	81,300
	Full Level 3	43,100	136,100	98,200	80,600	31,700	25,800	20,700	17,000	16,900	6,600	6,700	7,900	10,600

Table 7.2: Workplace Learning Achievements by Level (2007/08 to 2011/12)

Level		2007/08 Full Year	2008/09 Full Year	2009/10 Full Year	2010/11 Full Year	2011/12 Full Year	2010/11				2011/12			
							Quarter 1	Quarter 2	Quarter 3	Quarter 4	Quarter 1	Quarter 2	Quarter 3	Quarter 4
Total Achievements		187,500	583,700	676,000	584,900	290,100	144,600	142,500	155,300	142,400	62,900	64,500	68,300	94,500
of which...	Below Level 2	14,200	88,700	105,900	95,100	34,900	22,200	26,300	28,400	18,200	4,900	6,900	9,300	13,800
	Level 2	158,200	399,300	389,700	332,500	212,100	80,000	76,500	79,600	96,400	46,800	47,400	49,700	68,100
	Level 3	14,200	68,800	95,500	81,100	41,100	17,800	17,300	19,900	26,200	10,700	9,800	8,800	11,800
	Level 4+	800	7,400	7,200	3,600	2,000	1,100	800	900	900	400	400	400	700
	No Level Assigned	100	19,600	77,600	72,600	-	23,700	21,700	26,500	700	-	-	-	-
	Below Level 2 (excluding Skills for Life)	-	9,300	15,900	10,900	2,700	3,700	3,400	3,000	700	300	500	700	1,300
	Skills for Life	19,000	118,900	94,900	88,500	51,700	19,700	24,300	27,000	17,500	7,900	10,900	13,700	19,100
	Full Level 2	153,400	359,000	378,900	318,700	191,700	75,800	72,100	74,900	95,900	43,600	42,800	44,400	60,900
	Full Level 3	14,200	69,100	93,700	80,200	40,200	17,500	17,100	19,600	26,100	10,700	9,700	8,700	11,200

Notes

1) Figures for 2008/09 onwards are not comparable with earlier years as from 2008/09 onwards NVQs delivered in the workplace changed from being funded by FE to be funded by Train to Gain.

2) Figures for 2011/12 onwards are not directly comparable to earlier years as a Single Individualised Learner Record (ILR) data collection system has been introduced. Small technical changes have been made in the way learners from more than one provision type are counted, leading to a removal of duplicate learners and a reduction in overall learner numbers of approximately 2 per cent. More information on the Single ILR is available at:

http://www.thedataservice.org.uk/NR/rdonlyres/C05DCDD5-67EE-4AD0-88B9-BEBC8F7F3300/0/SILR_Effects_SFR_Learners_June12.pdf

3) Workplace Learning includes Train to Gain and other Employer Responsive provision (except Apprenticeships).

4) Data for 2006/07 are available in the Workplace Learning Supplementary Tables:

http://www.thedataservice.org.uk/Statistics/fe_data_library/workplace_learning/

5) Please see the general footnotes and the Workplace Learning footnotes section for further information on these tables.

6) Skills for Life starts and achievements can be at Level 2 or Below Level 2.

7) These tables include some learners aged under 19 who are eligible for funding on certain Workplace Learning programmes (such as Programmes for the Unemployed).

Table 8: Community Learning Participation and Achievement by Type (2007/08 to 2011/12) – Learner Volumes

Measure	Provision Type	Funded Learners						
		2007/08	2008/09	2009/10		2010/11		2011/12
		Full Year	Full Year	Full Year	% change 08/09 to 09/10	Full Year	% change 09/10 to 10/11	Full Year
Participation	Total Learners	709,200	755,000	752,800	*	699,400	-7.1%	683,300
	of which Personal and Community Development Learning	557,900	584,400	579,200	-0.9%	534,100	-7.8%	518,600
	of which Neighbourhood Learning in Deprived Communities	32,200	40,300	43,700	8.4%	46,600	6.5%	55,700
	of which Family English, Maths and Language	67,100	71,000	71,300	*	65,400	-8.3%	58,700
	of which Wider Family Learning	75,300	80,500	79,600	-1.1%	75,400	-5.3%	72,800
Achievement	Total Learners	610,500	638,900	663,000	3.8%	608,200	-8.3%	594,500
	of which Personal and Community Development Learning	477,000	489,000	505,900	3.5%	458,600	-9.3%	445,400
	of which Neighbourhood Learning in Deprived Communities	28,400	34,400	39,800	15.6%	41,300	3.7%	50,100
	of which Family English, Maths and Language	57,200	61,000	62,700	2.7%	57,000	-9.0%	50,900
	of which Wider Family Learning	67,300	71,400	72,600	1.6%	70,100	-3.4%	67,500

Notes

1) Figures for 2008/09 onwards are not directly comparable to earlier years as the introduction of demand led funding has changed how data is collected and how funded learners are defined from 2008/09 onwards. More information on demand led funding is available at:

<http://www.thedataservice.org.uk/datadictionary/businessdefinitions/Demand+Led+Funding.htm>

2) Figures for 2011/12 onwards are not directly comparable to earlier years as a Single Individualised Learner Record (ILR) data collection system has been introduced. Small technical changes have been made in the way learners from more than one provision type are counted, leading to a removal of duplicate learners and a reduction in overall learner numbers of approximately 2 per cent. More information on the Single ILR is available at:

http://www.thedataservice.org.uk/NR/rdonlyres/C05DCDD5-67EE-4AD0-88B9-BEBC8F7F3300/0/SILR_Effects_SFR_Learners_June12.pdf

3) Data for earlier years is available in the Community Learning Supplementary Tables:

http://www.thedataservice.org.uk/Statistics/fe_data_library/community_learning/

4) Please see the general footnotes and the Community Learning footnotes sections for further information on this table.

Table 9.1: Adult (19+) Education and Training Success Rates by Level (2007/08 to 2011/12) – Percentages

		2007/08	2008/09	2009/10	2010/11	2011/12
		Full Year	Full Year	Full Year	Full Year	Full Year
Education and Training Provision		80.5%	80.6%	80.3%	81.4%	83.9%
of which...	Skills for Life	73.1%	75.1%	74.3%	78.6%	80.1%
	Full Level 2	71.4%	72.1%	74.8%	78.5%	82.6%
	Full Level 3	70.6%	70.1%	75.1%	77.7%	78.4%
	Level 2	79.6%	80.5%	80.3%	80.2%	82.7%
	Level 3	77.1%	78.4%	78.7%	78.8%	79.4%

Table 9.2: Apprenticeship Success Rates by Level and Age (2007/08 to 2011/12) – Percentages

		2007/08	2008/09	2009/10	2010/11	2011/12
		Full Year	Full Year	Full Year	Full Year	Full Year
Intermediate Level Apprenticeship	Under 19	64.2%	68.3%	71.1%	72.2%	71.9%
	19-24	64.8%	71.7%	74.6%	76.7%	74.8%
	25+	66.3%	76.6%	77.5%	80.6%	71.4%
	Total	64.4%	70.4%	73.4%	75.3%	72.6%
	of which 19+	64.8%	72.8%	75.6%	78.0%	73.0%
Advanced Level Apprenticeship	Under 19	60.7%	73.6%	76.2%	79.0%	76.5%
	19-24	64.5%	70.8%	75.4%	79.7%	77.8%
	25+	64.7%	73.9%	71.5%	76.2%	75.1%
	Total	62.8%	72.1%	74.8%	78.6%	76.5%
	of which 19+	64.5%	71.2%	74.0%	78.4%	76.4%
Higher Apprenticeship	Under 19				83.2%	64.4%
	19-24				84.8%	74.4%
	25+				84.2%	70.1%
	Total				84.6%	72.6%
	of which 19+				84.8%	73.2%
All Apprenticeships	Under 19	63.3%	69.6%	72.4%	74.0%	73.1%
	19-24	64.7%	71.3%	74.9%	77.8%	75.9%
	25+	65.4%	75.9%	75.1%	78.8%	72.6%
	Total	63.9%	70.9%	73.8%	76.4%	73.8%
	of which 19+	64.7%	72.2%	75.0%	78.2%	74.2%

Table 9.3: Adult (19+) Workplace Learning Success Rates by Level (2011/12) – Percentages

		2011/12
		Full Year
Workplace Learning		90.6%
of which...	Skills for Life	92.5%
	Full Level 2	90.9%
	Full Level 3	86.9%

Notes

1) Education and Training Success Rates for 2008/09 onwards are not directly comparable to earlier years as the introduction of demand led funding has changed how data is collected and how funded learners are defined from 2008/09 onwards. Apprenticeship success rates are not affected by demand led funding. More information on demand led funding is available at:

<http://www.thedataservice.org.uk/datadictionary/businessdefinitions/Demand+Led+Funding.htm>

2) Figures for 2011/12 onwards are not directly comparable to earlier years as a Single Individualised Learner Record (ILR) data collection system has been introduced. Small technical changes have been made in the way learners from more than one provision type are counted, leading to a removal of duplicate learners and a reduction in overall learner numbers of approximately 2 per cent. More information on the Single ILR is available at:

http://www.thedataservice.org.uk/NR/rdonlyres/C05DCDD5-67FE-4AD0-88B9-BEBC8F7E3300/0/SILR_Effects_SFR_Learners_June12.pdf

3) Data for earlier years are available in the FE Data Library:

http://www.thedataservice.org.uk/Statistics/fe_data_library/

4) Workplace Learning Success Rates for 2011/12 onwards are not comparable to earlier years. Please see the Workplace Learning footnotes section for further information on this.

5) Please see the general footnotes, the FE and Skills, Apprenticeship and Workplace Learning footnotes sections for further information on these tables.

Table 10.1: Level of Highest Qualification Held by People aged 19-59/64 in England (Quarter 4)¹ - percentages

	aged 19-59/64 ² (thousands)	Level 4 and above	Level 3 above	Level 3 and above	Level 2 above	Level 2 and above	Below Level 2 (incl no qualifications)
Year							
2006	29,427	33.0	20.2	53.2	18.6	71.8	28.2
2007	29,584	34.1	20.7	54.8	18.4	73.2	26.8
2008	29,737	34.5	20.7	55.2	19.0	74.2	25.8
2009	29,894	36.4	20.7	57.1	19.6	76.6	23.4
2010	30,105	37.6	21.0	58.5	19.2	77.7	22.3
2011	30,279	38.1	21.3	59.4	19.5	78.9	21.1
2012	30,399	39.5 ^P	22.1 ^P	61.6 ^P	19.0 ^P	80.6 ^P	19.4 ^P
2012 95% CI (+/-)		0.4	0.3	0.3	0.3	0.4	0.4

Table 10.2: Level of Highest Qualification Held by People aged 19-59/64 in England (Quarter 4)¹ - volumes (thousands)

	All people aged 19-59/642	Level 4 and above	Level 3 above	Level 3 and above	Level 2 above	Level 2 and above	Below Level 2 (incl no qualifications)
Year							
2006	29,427	9,716	5,943	15,659	5,481	21,140	8,288
2007	29,584	10,093	6,116	16,208	5,456	21,664	7,919
2008	29,737	10,263	6,146	16,409	5,653	22,061	7,675
2009	29,894	10,868	6,189	17,057	5,845	22,902	6,993
2010	30,105	11,305	6,315	17,620	5,786	23,406	6,699
2011	30,279	11,522	6,457	17,979	5,908	23,888	6,391
2012	30,399	12,007 ^P	6,728 ^P	18,735 ^P	5,762 ^P	24,497 ^P	5,903 ^P
2012 95% CI (+/-)		130	95	99	91	121	121

Notes

1) Source: Labour Force Survey

2) Estimates were revised in March 2011 as a result of an improved methodology being adopted - see methodological note for further details.

3) Males aged 19 - 64 and females aged 19 - 59.

P) Provisional estimate - these estimates will be finalised in March 2014.

Table 11.1: Level Of Highest Qualification Held By Economically Active Adults In England (Quarter 4) ¹ - percentages

Year	Economically active adults ² (thousands)	Level 4 and above	Level 3	Level 3 and above	Level 2	Level 2 and above	Below Level 2 (incl no qualifications)
2006	24,238	35.8	20.8	56.6	19.6	76.2	23.8
2007	24,397	36.8	21.1	57.9	19.4	77.3	22.7
2008	24,672	36.9	21.1	58.0	20.0	78.0	22.0
2009	24,670	38.9	21.0	59.9	20.5	80.3	19.7
2010	24,800	40.2	21.2	61.4	20.1	81.5	18.5
2011	24,970	40.5	21.5	62.1	20.4	82.4	17.6
2012	25,382	42.0 ^P	22.1 ^P	64.1 ^P	19.8 ^P	83.9 ^P	16.1 ^P
2012 95% CI (+/-)		0.5	0.4	0.3	0.3	0.4	0.4

Table 11.2: Level Of Highest Qualification Held By Economically Active Adults In England (Quarter 4) ¹ - volumes (thousands)

Year	Economically active adults ²	Level 4 and above	Level 3	Level 3 and above	Level 2	Level 2 and above	Below Level 2 (incl no qualifications)
2006	24,238	8,681	5,046	13,727	4,744	18,471	5,767
2007	24,397	8,975	5,151	14,126	4,731	18,857	5,540
2008	24,672	9,102	5,209	14,310	4,940	19,250	5,422
2009	24,670	9,598	5,173	14,771	5,046	19,818	4,852
2010	24,800	9,965	5,262	15,227	4,976	20,203	4,597
2011	24,970	10,124	5,375	15,500	5,084	20,583	4,386
2012	25,382	10,662 ^P	5,607 ^P	16,270 ^P	5,014 ^P	21,284 ^P	4,099 ^P
2012 95% CI (+/-)		119	89	85	86	108	108

Notes

1) Source: Labour Force Survey

2) Estimates for 2006 onwards were revised in March 2011 as a result of an improved methodology being adopted - see methodological note for further detail

3) Economically active adults are defined as men aged 18 to 64 and women aged 18 to 59 either in employment or International Labour Organisation unemployed.

P) Provisional estimate - these estimates will be finalised in March 2014.

Table 12: Vocational Qualification Achievements in the UK by Qualification Type, 2006 (October) to 2013 (June)

Quarter	National Vocational Qualification	Occupational Qualification	Qualifications and Credit Framework Qualification	Vocationally Related Qualification	Other Vocational Qualifications	Total
October 2006 to December 2006	121,300	7,100	-	411,400	382,600	922,400
January 2007 to March 2007	126,600	5,700	-	406,800	393,800	932,900
April 2007 to June 2007	129,600	6,000	400	507,900	678,200	1,322,100
July 2007 to September 2007	252,900	8,000	500	920,500	1,151,500	2,333,400
Total 2006/07 Academic Year	630,400	26,800	900	2,246,600	2,606,200	5,510,900
October 2007 to December 2007	128,700	4,900	1,300	408,500	423,500	966,900
January 2008 to March 2008	140,700	4,900	4,600	426,000	500,900	1,077,200
April 2008 to June 2008	170,600	6,400	8,600	643,100	755,700	1,584,400
July 2008 to September 2008	287,900	8,300	19,200	983,800	1,416,700	2,715,800
Total 2007/08 Academic Year	727,900	24,500	33,700	2,461,400	3,096,800	6,344,300
October 2008 to December 2008	164,100	5,800	16,400	416,200	474,500	1,077,000
January 2009 to March 2009	169,600	5,300	39,300	409,900	590,400	1,214,500
April 2009 to June 2009	216,400	6,300	62,000	715,900	829,300	1,830,000
July 2009 to September 2009	372,600	9,100	102,600	1,064,800	1,591,600	3,140,800
Total 2008/09 Academic Year	922,900	26,500	220,300	2,606,800	3,485,800	7,262,200
October 2009 to December 2009	212,000	6,000	85,100	414,700	457,500	1,175,300
January 2010 to March 2010	204,000	5,100	135,200	388,000	552,700	1,285,000
April 2010 to June 2010	213,500	5,700	203,000	726,100	831,100	1,979,300
July 2010 to September 2010	349,500	6,400	353,700	1,078,700	1,727,400	3,515,700
Total 2009/10 Academic Year	979,000	23,200	777,000	2,607,500	3,568,600	7,955,300
October 2010 to December 2010	179,600	6,200	274,800	285,700	422,900	1,169,300
January 2011 to March 2011	155,300	4,100	454,400	166,300	486,500	1,266,600
April 2011 to June 2011	128,600	3,600	722,300	385,700	670,900	1,911,100
July 2011 to September 2011	124,300	3,600	1,384,700	561,800	1,473,700	3,548,000
Total 2010/11 Academic Year	587,800	17,500	2,836,200	1,399,600	3,054,000	7,895,100
October 2011 to December 2011	51,000	2,000	807,200	55,800	355,300	1,271,400
January 2012 to March 2012	31,100	1,000	821,500	51,300	479,700	1,384,500
April 2012 to June 2012	22,600	700	1,225,900	195,100	672,300	2,116,500
July 2012 to September 2012	24,200	900	2,428,700	273,700	1,285,700	4,013,200
Total 2011/12 Academic Year	128,800	4,600	5,283,400	575,800	2,793,000	8,785,600
October 2012 to December 2012	11,800	200	1,016,300	21,100	295,900	1,345,300
January 2013 to March 2013	6,700	100	985,400	22,500	406,900	1,421,700
April 2013 to June 2013	5,200	100	1,728,400	142,600	587,500	2,463,800
2012/13 Academic Year to Date	23,700	500	3,730,100	186,300	1,290,300	5,230,800

Notes

1) This table covers all levels of vocational qualifications reported through Ofqual. Data are supplied by awarding organisations.

2) For data relating to Vocational Qualifications, the Academic year runs from October to September. For example, the 2006/07 academic year runs from October 2006 to September 2007.

3) The data in this table has been subjected to revisions.

4) Please see general footnotes and Vocational Qualifications footnotes section for further information on these tables.

Table 13: Adult (19+) FE and Skills Participation by Level (2012/13) – Learner Volumes

			Funded Learners
			2012/13
			Full Year
			(provisional)
Level			
Total Learners			3,240,900
Participation	of which...		
	Below Level 2 (excluding Skills for Life)		752,400
	Skills for Life		1,041,500
	Full Level 2		968,300
	Full Level 3		490,600
	Level 2		1,231,900
	Level 3		586,900
	Level 4+		48,000
	No Level Assigned		798,500

Table 14: Adult (19+) FE and Skills – Skills for Life Participation by Level (2012/13) – Learner Volumes

			Funded Learners
			2012/13
			Full Year
			(provisional)
Level			
Participation	Total Learners		1,041,500
	of which English		752,300
	of which entry level		117,100
	of which level 1		334,700
	of which level 2		321,700
	of which maths		735,400
	of which entry level		93,900
	of which level 1		339,600
	of which level 2		328,000
	of which ESOL (English for Speakers of Other Languages)		146,000
	of which entry level		123,000
	of which level 1		21,500
	of which level 2		7,500

Notes

1) These tables include Apprenticeships, Workplace Learning, Community Learning and Education and Training provision taken at General Further Education Colleges (including Tertiary), Sixth Form Colleges, Special Colleges (Agricultural and Horticultural Colleges and Art and Design Colleges), Specialist Colleges and External Institutions.

2) These tables show full year estimates for 2012/13. Tables 1 and 3 show full year volumes for previous years. It is not possible to directly compare provisional 2012/13 estimates with figures for previous years.

3) Provisional full year data for 2012/13 show 495,700 learners benefited from support for the unemployed (those nearest the workforce), 491,000 of which were aged 19+. These are defined as those learners reporting that they were in receipt of Employment and Support Allowance - Work Related Activity Group (ESA WRAG) or Jobseeker's Allowance (JSA).

4) Provisional full year data for 2012/13 show there were 89,500 offenders aged 18 or over in the prison system participating in learning. These offenders were funded via the Offenders' Learning and Skills Service (OLASS) budget.

5) Please see the general footnotes and FE and Skills footnotes section for further information on these tables.

Table 15: All Age Apprenticeship Participation by Level and Age (2012/13)

		Funded Apprentices			
Age		2012/13			
		August to October (provisional)	August to January (provisional)	August to April (provisional)	Full Year August to July (provisional)
Intermediate Level Apprenticeship	Under 19	83,200	98,600	113,200	130,800
	19-24	110,800	129,300	148,000	165,800
	25+	130,300	151,400	173,300	200,500
	Total	324,200	379,200	434,500	497,200
	of which 19+	241,100	280,700	321,300	366,400
Advanced Level Apprenticeship	Under 19	35,500	41,000	46,400	53,500
	19-24	94,500	105,100	116,800	131,200
	25+	114,300	131,600	150,600	186,900
	Total	244,300	277,700	313,900	371,600
	of which 19+	208,800	236,700	267,400	318,100
Higher Apprenticeship	Under 19	400	500	600	700
	19-24	2,800	3,100	3,600	4,100
	25+	2,400	3,200	4,700	7,400
	Total	5,600	6,900	8,900	12,300
	of which 19+	5,300	6,400	8,300	11,500
All Apprenticeships	Under 19	117,300	136,900	155,500	178,500
	19-24	205,700	233,100	261,800	291,900
	25+	246,000	284,000	324,900	388,500
	Total	569,000	654,100	742,300	858,900
	of which 19+	451,700	517,100	586,800	680,500

Notes

1) This table shows full year estimates for 2012/13. Apprenticeship participation for earlier years are available in Table 5 of this release. It is not possible to directly compare provisional 2012/13 estimates with figures for previous years.

2) 'All Apprenticeships' in 2012/13 counts each Apprenticeship learner only once regardless of how many Apprenticeship programmes they participated in. Each learner is also counted in the totals for each Apprenticeship level they participated in.

3) Please see the general footnotes and the Apprenticeships footnotes section for further information on this table.

Table 16.1: All Age Apprenticeship Programme Starts by Level and Age (2012/13)

Age		2012/13				
		Full Year (provisional)	Quarter 1 (provisional)	Quarter 2 (provisional)	Quarter 3 (provisional)	Quarter 4 (provisional)
Intermediate Level Apprenticeship	Under 19	79,000	35,000	15,300	13,700	15,000
	19-24	96,700	29,900	21,700	23,400	21,700
	25+	109,900	29,800	23,700	25,800	30,600
	Total	285,600	94,600	60,700	62,900	67,300
	of which 19+	206,600	59,600	45,400	49,200	52,300
Advanced Level Apprenticeship	Under 19	32,100	17,300	5,000	4,500	5,300
	19-24	62,200	21,500	11,800	13,500	15,400
	25+	106,200	24,100	19,500	22,100	40,500
	Total	200,500	62,900	36,300	40,100	61,200
	of which 19+	168,400	45,600	31,300	35,600	55,900
Higher Apprenticeship	Under 19	500	300	100	100	100
	19-24	2,300	1,000	300	500	500
	25+	6,100	800	900	1,600	2,900
	Total	9,000	2,000	1,300	2,200	3,500
	of which 19+	8,500	1,700	1,200	2,100	3,400
All Apprenticeships	Under 19	111,700	52,700	20,500	18,200	20,400
	19-24	161,200	52,300	33,900	37,500	37,600
	25+	222,200	54,700	44,000	49,500	74,000
	Total	495,100	159,600	98,400	105,200	132,000
	of which 19+	383,400	106,900	77,900	87,000	111,600

Table 16.2: All Age Apprenticeship Framework Achievements by Level and Age (2012/13)

Age		2012/13				
		Full Year (provisional)	Quarter 1 (provisional)	Quarter 2 (provisional)	Quarter 3 (provisional)	Quarter 4 (provisional)
Intermediate Level Apprenticeship	Under 19	39,200	11,700	8,900	8,100	10,600
	19-24	45,100	12,300	11,400	10,900	10,500
	25+	62,400	16,100	15,000	15,600	15,700
	Total	146,700	40,100	35,300	34,500	36,800
	of which 19+	107,500	28,400	26,400	26,500	26,200
Advanced Level Apprenticeship	Under 19	16,700	5,300	3,600	3,400	4,500
	19-24	29,100	7,700	6,600	6,800	8,100
	25+	43,100	9,400	10,200	10,800	12,700
	Total	88,900	22,400	20,300	21,000	25,300
	of which 19+	72,200	17,100	16,700	17,600	20,800
Higher Apprenticeship	Under 19	100	-	-	-	-
	19-24	800	300	200	100	200
	25+	500	100	100	100	200
	Total	1,400	400	300	300	400
	of which 19+	1,300	400	300	200	400
All Apprenticeships	Under 19	56,000	17,000	12,500	11,500	15,100
	19-24	75,000	20,300	18,200	17,900	18,700
	25+	106,000	25,600	25,300	26,400	28,600
	Total	237,000	62,900	55,900	55,700	62,500
	of which 19+	181,000	45,900	43,500	44,300	47,300

Notes

1) This table shows full year estimates for 2012/13. Apprenticeship starts and achievements figures for earlier years are available in Table 6 of this release.

2) Please see the general footnotes and the Apprenticeships footnotes section for further information on these tables.

Table 17.1: Apprenticeship Grant for Employers Scheme (AGE 16 to 24) – Pipeline Starts and Payments Made (February 2012 to July 2013 provisional estimates)

Age		February 2012 to July 2013	
		Payments Made	Pipeline Starts
Intermediate Level Apprenticeship	Under 19	18,900	3,400
	19-24	9,700	1,900
	Total	28,600	5,300
Advanced Level Apprenticeship	Under 19	5,200	700
	19-24	4,100	800
	Total	9,200	1,600
Higher Apprenticeship	Under 19	-	-
	19-24	100	-
	Total	100	-
All Apprenticeships	Under 19	24,000	4,100
	19-24	13,900	2,800
	Total	38,000	6,900

Notes

1) AGE 16 to 24 was launched in February 2012. Payments were drawn down once the new Apprentice had been in post for 13 weeks, therefore Apprenticeships starting after 1 May 2013 are not included in the Payments Made column because they had not yet triggered a payment.

2) Pipeline Starts show those starting between February 2012 and July 2013 who have not yet qualified for a payment, but the payment would be made once the Apprentice has been in post for 13 weeks.

3) AGE 16 to 24 starts are defined through the Learning Delivery Funding and Monitoring Codes with values of 132 or 133 as per the ILR specification (http://www.theia.org.uk/ilr/ilrdocuments/201112_ilrdetail.htm). These are validated by the Skills Funding Agency.

4) Starts in this table include learners aged 19-24 on application but aged 25 when learning started.

5) Starts in this table will also be counted in the main Apprenticeship tables.

6) Please see the general footnotes and the Apprenticeships footnotes section for further information on these tables.

Table 17.2: Starts on the Access to Apprenticeship Pathway (2011/12 and 2012/13)

Age		Starts on Access to Apprenticeship Pathway in 2011/12	Starts on Access to Apprenticeship Pathway in 2012/13				
			Full Year (provisional)	Quarter 1 (provisional)	Quarter 2 (provisional)	Quarter 3 (provisional)	Quarter 4 (provisional)
All starts on the Access to Apprenticeship pathway		Full Year					
	Under 19	5,700	3,900	1,300	900	700	1,100
	19-24	1,600	1,600	500	500	200	300
	Total	7,200	5,500	1,700	1,400	900	1,400
of which	have converted to paid employment to complete their Apprenticeship in any year	Under 19	2,300	900	500	200	100
		19-24	700	400	200	100	-
	Total	3,000	1,400	600	400	200	100
	have not yet converted to paid employment to complete their Apprenticeship in any year	Under 19	3,300	3,000	800	600	500
		19-24	900	1,200	300	400	200
	Total	4,200	4,100	1,100	1,000	700	1,300

Notes

1) People starting training under the Access to Apprenticeship pathway are not counted as an Apprentice until they secure paid employment to complete their Apprenticeship in the usual way. For more information on the Access pathway, see:

<http://www.apprenticeships.org.uk/Partners/Policy/AccessToApprenticeships.aspx>

2) The year indicates when the learner started on the Access to Apprenticeship pathway. Conversion to paid employment to complete an Apprenticeship does not necessarily occur in the same year as the learner started the Access to Apprenticeship pathway.

3) People shown in this table as having converted to paid employment to complete their Apprenticeship in the same year as they started on the Access to Apprenticeship pathway, will also be counted in the main Apprenticeship tables.

4) This table shows full year estimates for 2012/13. It is not possible to directly compare provisional 2012/13 estimates with figures for previous years.

Table 18.1: Workplace Learning Starts by Level (2012/13)

Level	2012/13				
	Full Year (provisional)	Quarter 1 (provisional)	Quarter 2 (provisional)	Quarter 3 (provisional)	Quarter 4 (provisional)
Total	140,900	30,000	34,200	40,300	36,400
of which Below Level 2	30,000	7,600	9,300	7,900	5,200
Level 2	98,800	19,900	22,300	29,500	27,200
Level 3	8,700	2,300	1,900	2,500	2,000
Level 4+	800	200	200	200	200
No Level Assigned	2,600	-	400	300	1,900
Below Level 2 (excluding Skills for Life)	2,300	400	600	600	600
Skills for Life	38,900	9,800	11,300	10,400	7,400
Full Level 2	83,900	16,700	18,800	25,200	23,200
Full Level 3	5,700	1,600	1,200	1,500	1,400

Table 18.2: Workplace Learning Achievements by Level (2012/13)

Level	2012/13				
	Full Year (provisional)	Quarter 1 (provisional)	Quarter 2 (provisional)	Quarter 3 (provisional)	Quarter 4 (provisional)
Total	184,700	49,000	48,100	42,600	44,900
of which Below Level 2	25,700	5,100	6,200	7,000	7,400
Level 2	137,200	38,100	36,000	30,500	32,700
Level 3	20,300	5,600	5,600	4,700	4,300
Level 4+	1,300	300	300	300	400
No Level Assigned	200	-	-	-	200
Below Level 2 (excluding Skills for Life)	2,500	400	400	900	700
Skills for Life	33,800	7,600	8,300	8,300	9,500
Full Level 2	124,100	34,800	33,000	27,800	28,400
Full Level 3	15,400	4,300	4,200	3,500	3,300

Notes

1) These tables show full year estimates for 2012/13. Figures for earlier years are available in Table 7 of this release. It is not possible to directly compare provisional 2012/13 estimates with figures for previous years.

2) Skills for Life starts and achievements can be at Level 2 or Below Level 2.

3) These tables include some learners aged under 19 who are eligible for funding on certain Workplace Learning programmes.

4) Please see the general footnotes and the Workplace Learning footnotes section for further information on these tables.

Table 19: Community Learning Participation by Type (2012/13) – Learner Volumes

		Funded Learners
Measure	Provision Type	2012/13
		Full Year (provisional)
	Total Learners	665,200
Participation	of which Personal and Community Development Learning	500,400
	of which Neighbourhood Learning in Deprived Communities	62,300
	of which Family English, Maths and Language	51,400
	of which Wider Family Learning	71,900

Notes

1) This table shows full year estimates for 2012/13. Community Learning participation and achievement figures for earlier years are available in Table 8 of this release. It is not possible to directly compare provisional 2012/13 estimates with figures for previous years.

2) Please see the general footnotes and the Community Learning footnotes section for further information on this table.