



Skills Funding  
Agency



Department  
for Business  
Innovation & Skills

## Statistical First Release

### Further Education & Skills: Learner Participation, Outcomes and Level of Highest Qualification Held

**Publication date:**  
28<sup>th</sup> November 2013

**Next Updated:**  
January 2014

**Reference:** DS/SFR21

**Coverage:** England

**Theme:** Children, Education  
and Skills

**For further information  
contact:**

**Data Service: Service  
Desk**  
[servicedesk@thedata-service.org.uk](mailto:servicedesk@thedata-service.org.uk)  
0870 267 0001

**Or view our web site at:**  
<http://www.thedata-service.org.uk/statistics>

**Lead Statistician:**  
Jessie Evans  
[Jessie.Evans@bis.gsi.gov.uk](mailto:Jessie.Evans@bis.gsi.gov.uk)  
020 7215 1868

Department for Business,  
Innovation and Skills,  
Level 2,  
1 Victoria Street,  
London,  
SW1H 0ET

© Data Service 2013

This release presents information on adult (19+) government-funded<sup>1</sup> further education (excluding schools and Higher Education) and all age (16+) Apprenticeships in England, between 2007/08 and 2012/13.

This release also presents key statistics on the highest level of qualification held by adults in England from 2006 to 2012, calculated from Labour Force Survey (LFS) data. Figures relating to 2012 are provisional and are subject to revisions.

#### Key Points

- Final data for the 2012/13 academic year show there were 3,280,600 adult (19+) learners participating on overall further education courses, an increase of 4.2 per cent on 2011/12.
- Final data show that overall 868,700 funded Apprentices participated in the 2012/13 academic year, an increase of 7.7 per cent. An increase was not seen at the Intermediate level or for those aged under 19.
- Final data for the 2012/13 academic year show there were 510,200 Apprenticeship starts, a decrease of 2.0 per cent overall. This decrease was only seen at the Intermediate Level and for those aged under 19.
- Final data show that between February 2012 and July 2013 there were 47,200 Apprenticeship starts for which a payment was made through the Apprenticeship Grant for Employers (AGE 16 to 24) scheme.

<sup>1</sup> Covering the Skills Funding Agency and the Education Funding Agency.

# CONTENTS

## Statistical Commentary

Glossary of Key Terms	3
Further Education Statistics for England, 2012/13	4
Adult Attainment in the Population	4
Adult Learner (19+) Participation and Achievement	4
Apprenticeships	6
Adult (19+) English and Maths	8
Community Learning	9
Employer Ownership Pilot	10
Success Rates, 2011/12	10
National Statistics	12
Changes in the Next SFR	12

## Supporting Data

Scope	13
Data Sources	14
Issues with Comparing Data Across Academic Years	14
Data Definitions	14
Publication Cycle Across the Year	15
Supplementary Tables	16
Related National Statistics Releases	16
Other Related Statistics	17
Further Education Statistics for Other Countries in the UK	17

<b>Table Guide</b>	18
--------------------	----

<b>Table Footnotes</b>	19
------------------------	----

<b>Tables</b>	21
---------------	----

## GLOSSARY OF KEY TERMS

**Further Education and Skills** includes: learners who are studying a course in a FE College, training provider or within their local community; and employees undertaking an Apprenticeship or other qualification in the workplace. For more information, see paragraphs 31 to 33.

**Apprenticeships** are paid jobs that incorporate on- and off-the-job training leading to nationally recognised qualifications. As an employee, Apprentices earn as they learn and gain practical skills in the workplace. An Apprenticeship framework typically contains the following separately certified elements:

- A knowledge-based element (the theoretical knowledge underpinning a job in a certain occupation and industry, typically certified via a Technical Certificate).
- A competence-based element (the ability to discharge the functions of a certain occupation, typically certified via work-based assessed national vocational qualifications – NVQs).
- Transferable skills (English and maths) – key skills / functional skills.
- A module on employment rights and responsibilities.
- Personal Learning and Thinking Skills (PLTS), namely: independent enquiry, creative thinking, reflective learning, team working, self management and effective participation.

See <http://www.apprenticeships.org.uk/> for further information.

**Apprenticeship Grant for Employers (AGE 16 to 24) scheme** provides Apprenticeship grants with a value of £1,500 to employers with up to 1,000 employees to encourage employers to take on new Apprentices aged 16 to 24. Eligible employers must not have taken on an Apprentice in the previous 12 months. Subject to budget availability and the employer's commitment to support the Apprentice to the end of their programme, any one employer can claim support for up to ten apprentices. AGE 16 to 24 has been extended to Dec 2014. See: <http://www.apprenticeships.org.uk/Partners/Policy/AGE-1624.aspx>

On the **Access to Apprenticeships pathway**, participants use the elements of an Apprenticeship framework to brush up skills and workplace experience, with the aim of securing a paid Apprenticeship with an employer as quickly as possible, up to a maximum of six months. Participants are not categorised or counted as an 'Apprentice' until they become employed. This pathway was announced in May 2011.

See: <http://www.apprenticeships.org.uk/Partners/Policy/AccessToApprenticeships.aspx>

**Employer Ownership Pilot** offers all employers in England direct access to up to £340 million of public investment over the period of the pilot (up to 2015/16) to design and deliver their own training solutions.

See: <http://www.ukces.org.uk/employeroownership>

**Education and Training** (previously Learner Responsive and University for Industry) covers further education learning delivered mainly in a classroom, workshop, or through distance or e-learning. See:

<http://www.thedataservice.org.uk/datadictionary/businessdefinitions/Learner+Responsive.htm>

**Workplace Learning** covers a broad range of training including basic skills, Level 2, Level 3 and higher-level skills. This training is mainly delivered through the workplace (but excludes Apprenticeships). Between 2008/09 and 2010/11 this included the Train to Gain programme, Employability Skills Pilot and other programmes such as Programmes for the Unemployed. From 2011/12 this includes all training mainly delivered through the workplace (excluding Apprenticeships).

**English and Maths** qualifications (previously Skills for Life) are designed to give people the reading, writing, maths and communication skills they need in everyday life, to operate effectively in work and to help them succeed on other training courses. See: <http://skillsfundingagency.bis.gov.uk/providers/programmes/Basic+Skills/>

**Community Learning** funds a wide range of informal courses, ranging from personal development through to older people's learning, IT courses, employability skills, family learning and activities to promote civic engagement and community development. Courses may be offered by local authorities, colleges, and voluntary and community groups, and include activity specifically targeted at deprived areas and disadvantaged groups. See:

<http://skillsfundingagency.bis.gov.uk/providers/programmes/asl/>

**Full Level 2** is equivalent to an NVQ at Level 2, or 5 GCSEs. The widths of all of a learner's Level 2 aims are summed to establish whether a learner is taking a full Level 2 programme. **Full Level 3** is equivalent to an NVQ at Level 3, or 2 A-Levels. The widths of all a learner's Level 3 aims are summed to establish whether a learner is taking a full Level 3 programme.

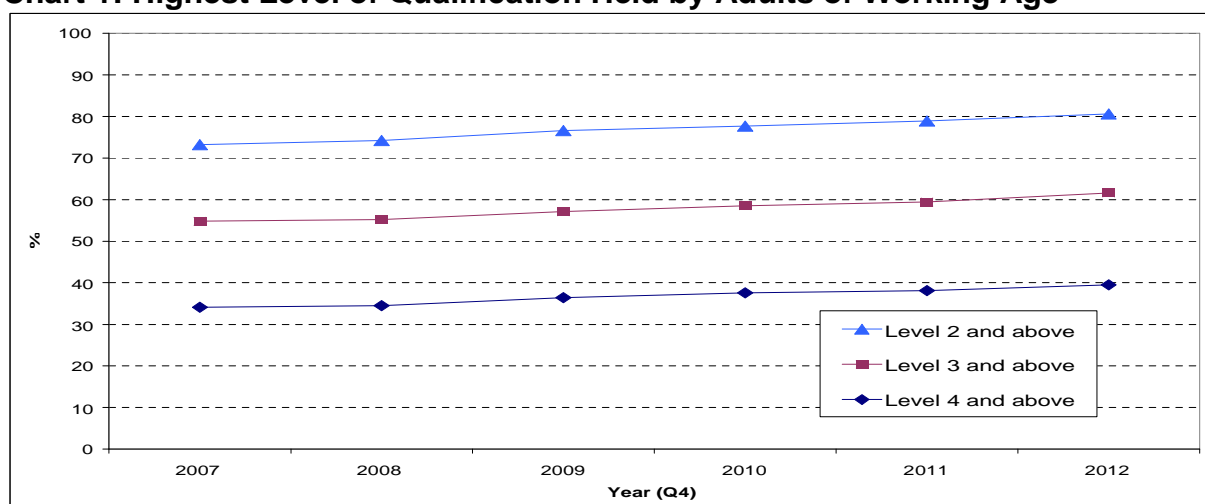
**Academic year** runs from 1<sup>st</sup> August to 31<sup>st</sup> July (except for Ofqual figures in Table 14 which run from 1<sup>st</sup> October to 30<sup>th</sup> September).

# FURTHER EDUCATION STATISTICS FOR ENGLAND, 2012/13

## Adult Attainment in the Population

1. The Labour Force Survey is used to measure the level of adult educational attainment in the population. Provisional data for 2012 show that of men aged 19 to 64 and women aged 19 to 59 [Table 12.1]:
  - 80.6 per cent were qualified to at least Level 2;
  - 61.6 per cent were qualified to at least Level 3;
  - 39.5 per cent were qualified to Level 4 and above.

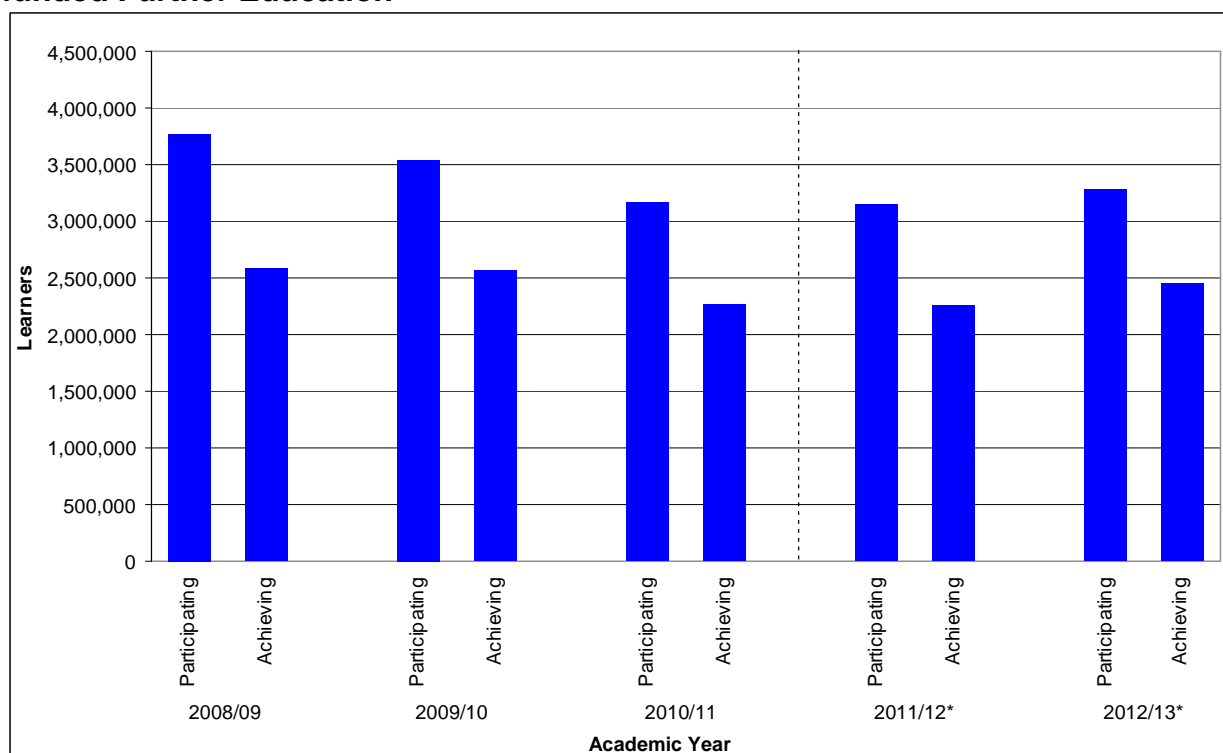
**Chart 1: Highest Level of Qualification Held by Adults of Working Age**



## Adult Learner (19+) Participation and Achievement

2. Chart 2 shows that the total number of adult learners participating in government-funded further education was 3,280,600 in 2012/13, an increase of 4.2 per cent on 2011/12 [Table 1.1]. This was the first increase since the 2008/09 academic year. The total number of adult learners achieving a government-funded further education qualification was 2,453,900 in 2012/13, an increase of 8.7 per cent on 2011/12 [Table 1.2].

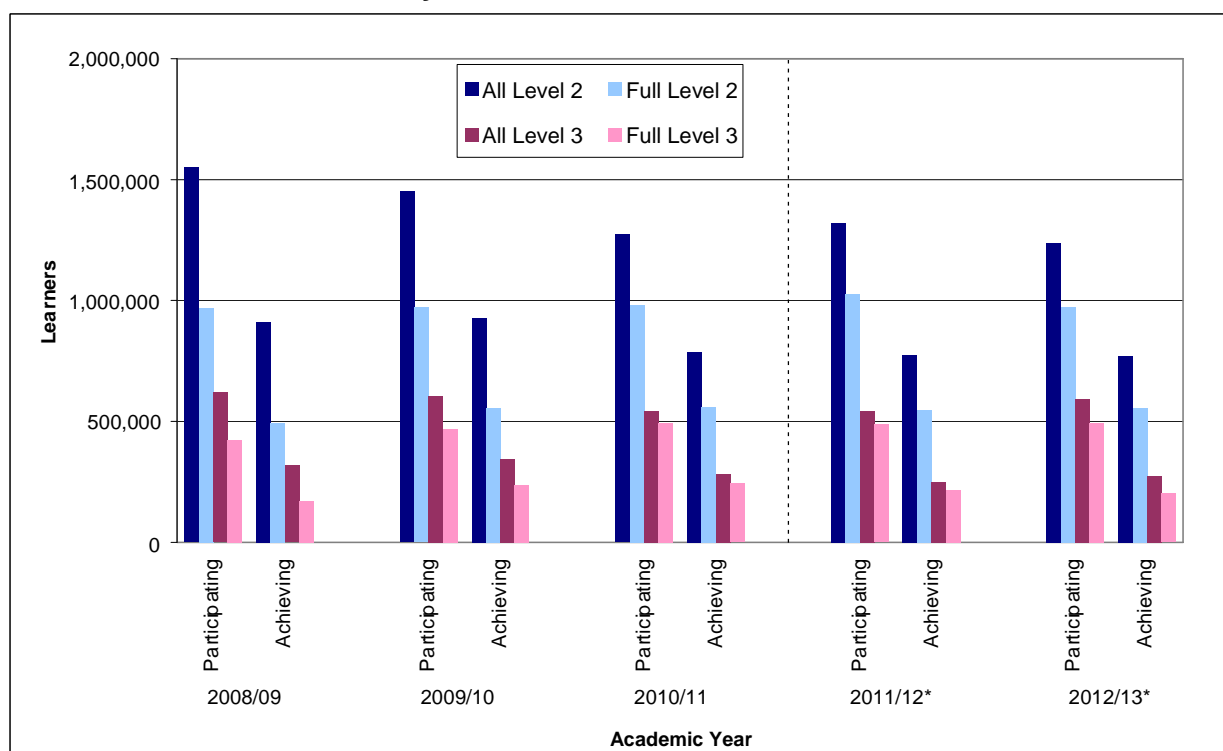
**Chart 2: Adult Learner (19+) Participation and Achievement in Government-funded Further Education**



**\*Note: Learner Numbers for 2011/12 onwards are not directly comparable with earlier years. See paragraph 39 onwards for more information.**

3. Chart 3 shows that the number of adult learners participating on government-funded further education Level 2 courses decreased between 2008/09 and 2012/13 with a 6.1 per cent decrease seen in the most recent year. The number participating in full Level 2 courses fell by 5.4 per cent in 2012/13 to a level similar to 2009/10. Achievements in Level 2 courses declined over the last three years whilst full Level 2 achievements increased in 2012/13. The number of learners participating in Level 3 courses fell between 2008/09 and 2011/12 but increased by 9.5 per cent in 2012/13. Participation in full Level 3 courses increased, now at its highest level. Achievements in Level 3 courses increased in 2012/13 by 9.8 per cent, following a two year decline. Full Level 3 achievements decreased for the second successive year after a period of growth [Tables 1.1 and 1.2].

**Chart 3: Adult (19+) Learner Participation and Achievement in Government-funded Further Education by Level**



**\*Note: Learner Numbers for 2011/12 onwards are not directly comparable with earlier years. See paragraph 39 onwards for more information.**

4. Of the 3,280,600 adult learners participating in further education in 2012/13 [Table 2]:
  - 56.3 per cent were female and 43.7 per cent were male, similar proportions to 2011/12;
  - 13.2 per cent declared a learning difficulty and/or disability, an increase of 1.4 percentage points on 2011/12;
  - 19.2 per cent were from a Black or Minority Ethnic background (including Mixed, Asian, Black and Other Ethnic Group learners), a decrease of 0.4 percentage points on 2011/12;
  - 496,200 benefited from support for the unemployed (those nearest the workforce) [Table 1];
5. In 2012/13 there were 89,900 offenders aged 18 or over in the prison system participating in learning, a similar volume to 2011/12. 68,400 achieved a learning outcome, a decrease of 4.9 per cent [Table 1]. These offenders were funded via the Offenders' Learning and Skills Service (OLASS) budget.

## Apprenticeships

6. Two measures of Apprenticeships are presented to give a transparent view of the changes and trends in Apprenticeships in England:
  - Participation refers to the number of people who are undertaking an Apprenticeship in a given time period. This measure is helpful for quantifying the number of people on an Apprenticeship programme throughout the academic year. An Apprentice studying towards more than one Apprenticeship is counted once.

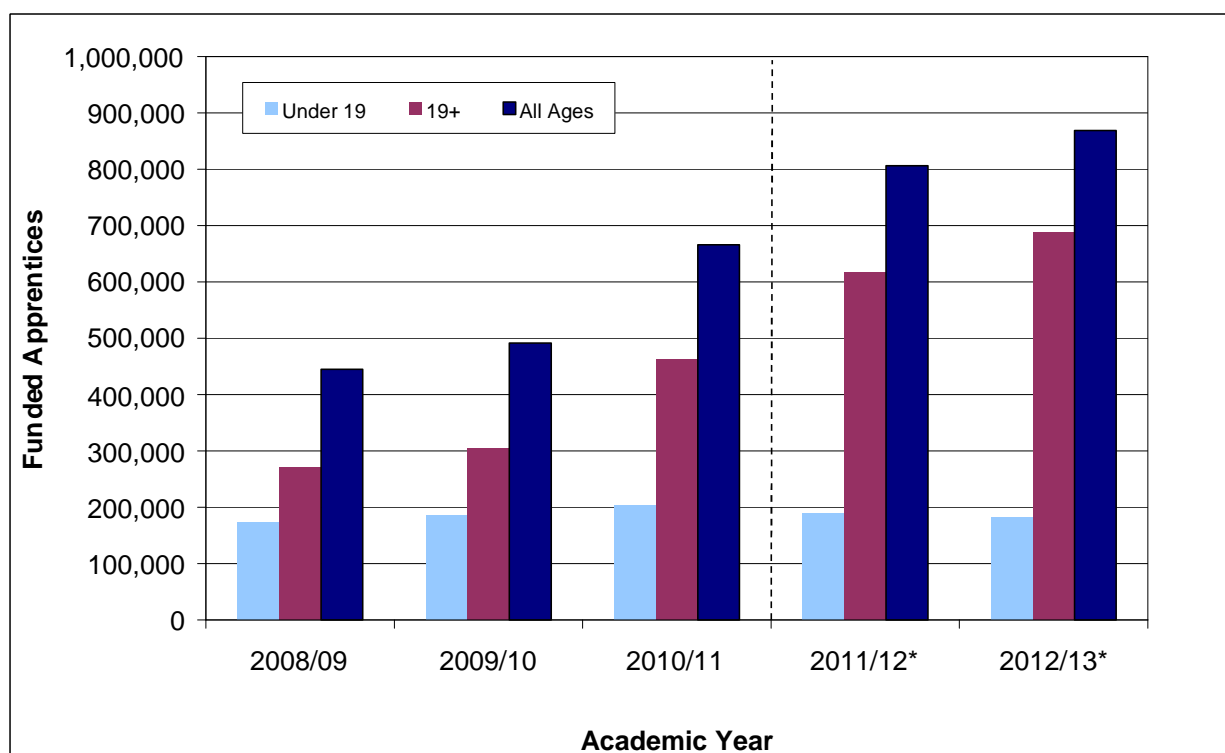
- Starts refer to the number of programmes that begin in a given time period. This measure is helpful in determining the take-up of programmes. An Apprentice is counted for each Apprenticeship they start.

7. The Apprenticeship programme expanded rapidly since 2009/10 as a result of increased government investment in adult Apprenticeships. More recently Apprenticeship policy has focused on raising standards and improving the quality of Apprenticeships, this may mean some learners find it more difficult or take longer to complete their Apprenticeship.

## Participation

8. Chart 4 shows that overall Apprenticeship participation increased in each year since 2008/09, driven by growth in the number of adult (19+) Apprentices. While the number of under 19 Apprenticeships has been relatively flat over the period there has been a small decline after a peak in 2010/11 [Table 5].

**Chart 4: Apprenticeship Participation by Age**



\*Note: Learner Numbers for 2011/12 onwards are not directly comparable with earlier years. See paragraph 39 onwards for more information.

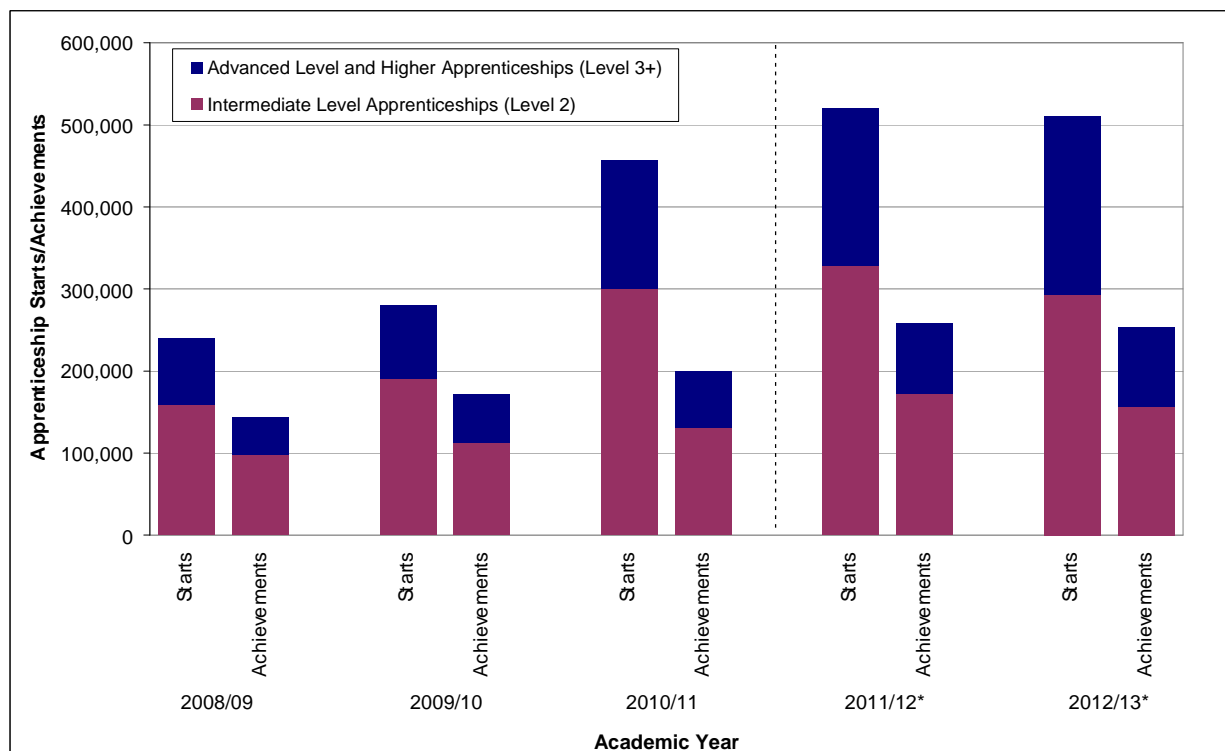
9. Participation on Intermediate Level Apprenticeships increased each year up to 2011/12 but decreased slightly in 2012/13. Advanced Level Apprenticeship participation has increased steadily since 2008/09 while Higher participation has increased rapidly, albeit from a low base [Table 5].

## Starts and Achievements

10. Chart 5 shows there was strong growth in Apprenticeship starts between 2008/09 and 2011/12 followed by a decline in 2012/13 due to a fall at Intermediate Level.

Advanced Level and Higher Apprenticeships continued to grow. Apprenticeship achievements reflect a similar pattern [Table 6].

**Chart 5: Apprenticeship Starts and Framework Achievements by Level**



**\*Note: Starts for 2011/12 onwards are not directly comparable with earlier years. See paragraph 39 onwards for more information.**

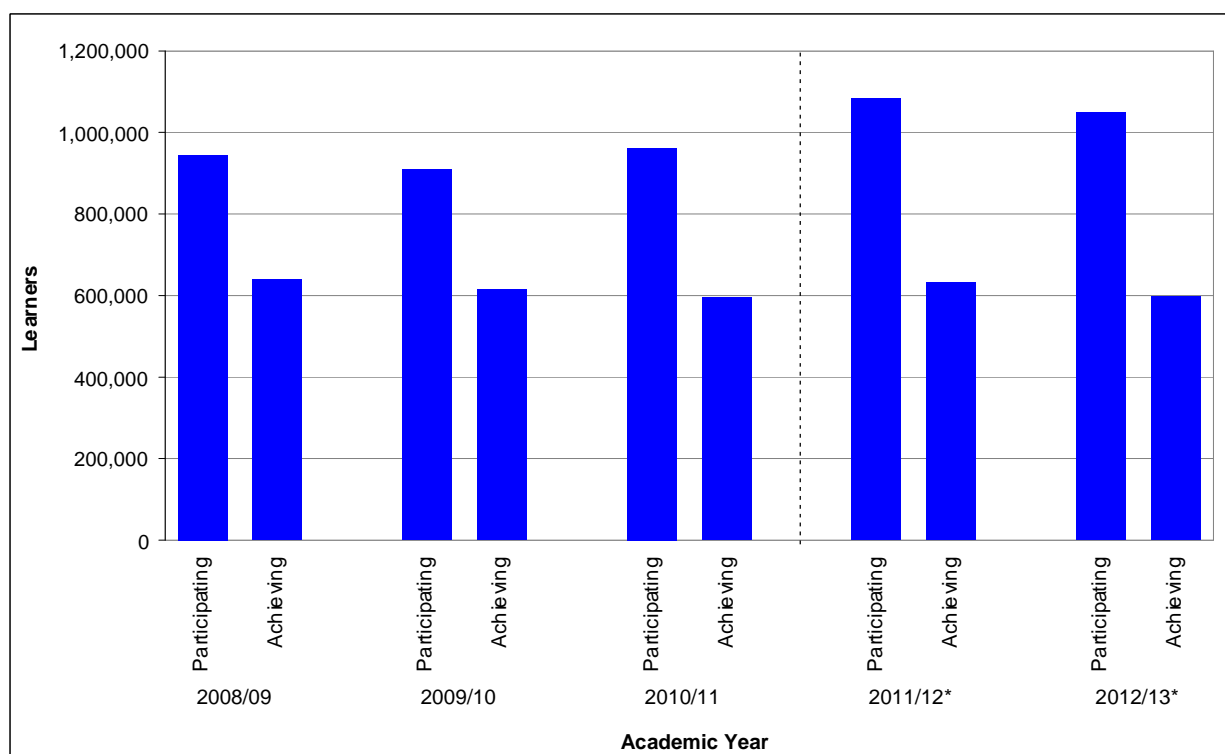
11. The length of an Apprenticeship is typically more than a year and an Apprenticeship framework achievement is recorded against the year it was achieved, not the year it was started. Because of this, the number of achievements is below the number of starts in Chart 4, as a large volume of learners that have started an Apprenticeship have not yet completed it. Furthermore, some learners may withdraw or fail to complete.
12. Under 19 Apprenticeship starts peaked in 2010/11 but have since fallen, while 19 to 24 and 25+ starts have continued to increase. Under 19 and 19 to 24 Apprenticeship achievements declined in 2012/13, while 25+ achievements continued to grow [Table 6].
13. Final data show that between February 2012 and July 2013, there were 47,200 Apprenticeship starts for which a payment was made through the Apprenticeship Grant for Employers (AGE 16 to 24) scheme [Table 7.1].
14. In 2012/13, 5,500 Apprenticeships started through the Access to Apprenticeship pathway, a 23.7 per cent decrease on 2011/12, of which 1,400 converted to paid employment to complete their Apprenticeship in the usual way [Table 7.2].

## Adult (19+) English and Maths

15. Chart 6 shows that after a fall in adult learner participation on English and Maths courses in 2009/10, participation increased for two successive years but then fell by 3.1 per cent in 2012/13. Achievement remained broadly flat over the period [Table 3].



**Chart 6: Adult Learner (19+) Participation and Achievement on English and Maths Courses**

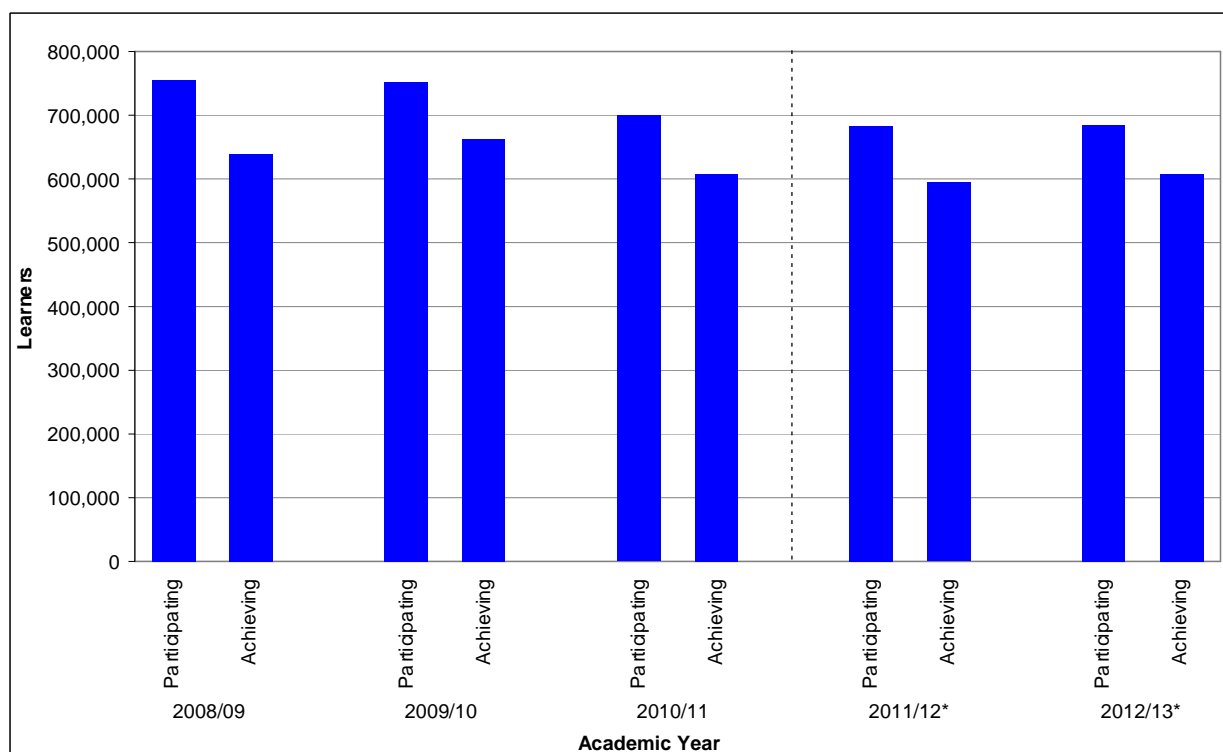


**\*Note: Learner Numbers for 2011/12 onwards are not directly comparable with earlier years. See paragraph 39 onwards for more information.**

16. Participation on English courses and maths courses fell for the first time since a period of growth. Participation on English for Speakers of Other Languages courses increased after a period of decline. This pattern was also reflected in learner achievement [Table 3].

## Community Learning

17. Chart 7 shows that participation on Community Learning courses in 2012/13 remained similar to 2011/12 after falls in the previous academic years. The overall number of Community Learners achieving increased slightly in 2012/13, the first increase in two years. Participation on 'Personal Community Development Learning' programmes, which make up the vast majority of Community Learning provision, decreased slightly in 2012/13. However, this was a smaller decrease than seen in the two previous years. Participation in 'Neighbourhood Learning in Deprived Communities' continued to increase, 'Wider Family Learning' participation increased slightly after three successive falls and 'Family English, Maths and Language' continued to decrease [Table 9].

**Chart 7: Community Learning Participation and Achievement**

**\*Note: Learner Numbers for 2011/12 onwards are not directly comparable with earlier years. See paragraph 39 onwards for more information.**

## Employer Ownership Pilot

18. Between November 2012 and July 2013, there were 7,500 Employer Ownership Pilot starts [Table 10]. Of these there were:

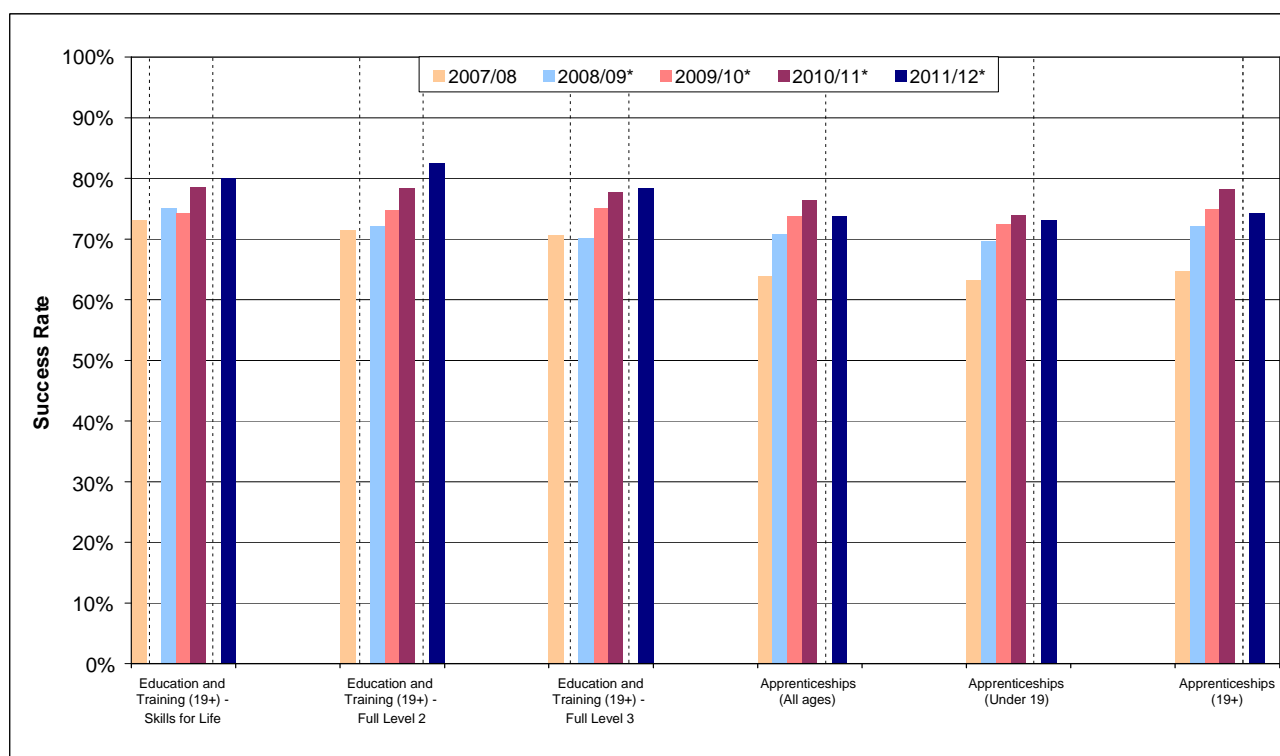
- 500 Employer Ownership Pilot starts by those aged under 19;
- 1,600 Employer Ownership Pilot starts by those aged 19–24;
- 5,400 Employer Ownership Pilot starts by those aged 25 and over;
- 1,200 Apprenticeship starts.

## SUCCESS RATES, 2011/12

19. Success Rates for the 2012/13 academic year will be published in the January 2014 SFR.

20. Success rates are calculated for individual qualifications. They show how many learners that started a qualification went on to successfully complete it. Success rates are typically calculated at a qualification level, but can be aggregated across different types of course, or for particular colleges or providers. Education and Training, Apprenticeship and Workplace Learning success rates are calculated on a slightly different basis. For more information please see:  
[http://www.thedataservice.org.uk/Statistics/success\\_rates/](http://www.thedataservice.org.uk/Statistics/success_rates/)

21. Chart 8 shows that adult (19+) Education and Training success rates rose steadily between 2009/10 and 2011/12 across all qualification levels. Success rates for Apprenticeships rose dramatically between 2007/08 and 2010/11, but decreased between 2010/11 and 2011/12 [Table 11].

**Chart 8: Success Rates**

**\*Note: Success Rates for 2008/09 to 2010/11 and 2011/12 onwards are not directly comparable with earlier years. See paragraph 39 onwards for more information.**

22. In 2011/12, adult (19+) Education and Training success rates [Table 11.1] were:

- 83.9 per cent for all Education and Training, an increase of 2.5 percentage points compared to 2010/11;
- 80.1 per cent for English and Maths qualifications, an increase of 1.5 percentage points compared to 2010/11;
- 82.7 per cent for Level 2 qualifications, an increase of 2.5 percentage points compared to 2010/11 (82.6 per cent for full Level 2, an increase of 4.1 percentage points);
- 79.4 per cent for Level 3 qualifications, a slight increase of 0.6 percentage points compared to 2010/11 (78.4 per cent for full Level 3, a slight increase of 0.7 percentage points).

23. In 2011/12, Apprenticeship success rates [Table 11.2] were:

- 73.8 per cent for all Apprenticeships, a decrease of 2.6 percentage points compared to 2010/11;
- 72.6 per cent for Intermediate Level Apprenticeships, a decrease of 2.7 percentage points compared to 2010/11;
- 76.5 per cent for Advanced Level Apprenticeships, a decrease of 2.1 percentage points compared to 2010/11;
- 72.6 per cent for Higher Apprenticeships, a decrease of 12.0 percentage points compared 2010/11.
- 74.2 per cent for Apprenticeships by those aged 19 and over, a decrease of 4.0 percentage points compared to 2010/11;
- 73.1 per cent for Apprenticeships by those aged under 19, a slight decrease of 0.9 percentage points compared to 2010/11.

## NATIONAL STATISTICS

24. The United Kingdom Statistics Authority has designated these statistics as National Statistics, in accordance with the Statistics and Registration Service Act 2007 and signifying compliance with the Code of Practice for Official Statistics.
25. Designation can be broadly interpreted to mean that the statistics:
- meet identified user needs;
  - are well explained and readily accessible;
  - are produced according to sound methods; and
  - are managed impartially and objectively in the public interest.
26. Once statistics have been designated as National Statistics it is a statutory requirement that the Code of Practice shall continue to be observed. More information regarding compliance with the Code of Practice is available on our website:  
<http://www.thedataservice.org.uk/statistics/statisticalfirstrelease/compliance/>

## CHANGES IN THE NEXT SFR

27. The next SFR will be in January 2014 and will include Success Rate data for the 2012/13 academic year and provisional data for the first three months of the 2013/14 academic year (August 2013 to October 2013). The January SFR will also report Traineeships and 24+ Advanced Learning Loans data for the first time.
28. Ofqual Vocational Qualification data shown in Table 14 of this release, and accompanying supplementary tables, will be updated in December 2013 as part of a formal cascade of this release. These tables will be updated to include data for the first quarter of 2013/14 (October 2013 to December 2013) which will allow Ofqual to update their detailed bulletins that include these data.
29. Changes to the next release will be pre-announced on the Data Service website at least a month prior to coming into effect, at:  
[http://www.thedataservice.org.uk/statistics/statisticalfirstrelease/sfr\\_next/](http://www.thedataservice.org.uk/statistics/statisticalfirstrelease/sfr_next/)

## SUPPORTING DATA

### Scope

30. Should we need to make an unplanned revision to the statistics contained in this release, we will follow the procedures outlined in the Revisions Policy for this Statistical First Release. This includes action to understand the impact that any revisions will have, as well as ensuring that they are clearly communicated to the reader. The Revisions Policy can be found at:  
<http://www.thedataservice.org.uk/statistics/statisticalfirstrelease/compliance/>
31. Information from the different further education learning options have been drawn together to give a coherent and comprehensive picture of the participation and achievement of young people and adults. These options include:
- Further education organisations
  - Sixth form colleges
  - Local Authorities
  - Independent training organisations.
32. These organisations deliver a wide variety of government programmes, including:
- Education and Training
  - Apprenticeships
  - Workplace Learning
  - Community Learning.
33. This SFR covers adults (19+) and does not contain information regarding:
- **Delivery in School Sixth Forms**, including maintained, independent and academy schools. We are hoping to include this in future, once more work has been done to reconcile the different data sources. Provisional figures taken from the Department for Education (DfE) [Participation in Education, Training and Employment by 16–18 Year Olds in England](#), Statistical Release show there were 528,200 students studying in School Sixth Forms in 2012, based on a snapshot of January 2012 school census data.
  - **Higher Education in Higher Education Institutions**. The publication referenced in paragraph 53 shows that the total number of HE enrolments at English Higher Education Institutions stood at 2,496,645 in 2011/12.
  - **Privately-funded training at FE organisations and independent training organisations**. There is no single coherent source that provides a measure of privately-funded training. BIS will investigate whether it is possible to develop a measure to support this as part of our wider Dissemination Plan. More detail on the Dissemination Plan can be found at: [http://www.thedataservice.org.uk/statistics/dissemination\\_plan/](http://www.thedataservice.org.uk/statistics/dissemination_plan/). There are no sources currently available that fully capture privately-funded academic activity, particularly for older learners. However, in Table 14 of this release we do show the total number of Vocational Qualifications awarded in the UK. This includes both public and privately-funded qualifications and gives some sense of scale of total vocationally-related activity in the sector.

## Data Sources

34. The data used to produce this SFR are Individualised Learner Record (ILR) collections that are returned to the Data Service by further education colleges and providers. The Data Service and *the information authority* introduced a Single ILR collection (SILR) in 2011/12 to replace the multiple ILR collection types that were collected in previous years. There are no longer separate collections for different funding streams and providers return all of their learners in a single file. The following ILR collections have been used to update this release:

Year	Data Source
2012/13	ALL Apprenticeships & Workplace Learning, EOP SILR R14

35. For 2012/13, R14 is used to provide final data on learning in all further education and skills providers for the period 1<sup>st</sup> August 2012 to 31<sup>st</sup> July 2013.
36. The data sources for all years, including 2012/13, are final collections and include information on provision for the full academic year. More information on these data sources is available in a definitions document, which can be found at:  
[http://www.thedataservice.org.uk/statistics/statisticalfirstrelease/sfr\\_current/](http://www.thedataservice.org.uk/statistics/statisticalfirstrelease/sfr_current/).
37. Ofqual Vocational Qualification data is used in Table 14 of this release.
38. The Labour Force Survey is the other data source used for the SFR (Tables 12 and 13). The latest LFS data used in this release relate to Quarter 4 (October – December) 2012.

## Issues with Comparing Data Across Academic Years

39. In the 2011/12 academic year a Single Individualised Learner Record (ILR) data collection system was introduced. This replaced the multiple separate data collections from previous years and led to small technical changes in the way learners from more than one funding stream are counted.
40. Overall the new collection system led to a removal of duplicate learners and a reduction in total learner participation of approximately 2 per cent. However Apprenticeship participation figures were more significantly affected due to a change in the way learners participating on more than one Apprenticeship programme were counted. This has led to a removal of duplicate learners and a reduction in overall Apprenticeship learners of approximately 5 per cent, therefore figures for 2011/12 onwards are not comparable to earlier years. A paper is available on our website to explain the Single ILR and the small effects it has on the SFR at:  
[http://www.thedataservice.org.uk/NR/ronlyres/C05DCDD5-67EE-4AD0-88B9-BEBC8F7F3300/0/SILR\\_Effects\\_SFR\\_Learners\\_June12.pdf](http://www.thedataservice.org.uk/NR/ronlyres/C05DCDD5-67EE-4AD0-88B9-BEBC8F7F3300/0/SILR_Effects_SFR_Learners_June12.pdf). Further information on the Single ILR is available on the Information Authority's website at:  
<http://www.theia.org.uk/ilr>

## Data Definitions

41. High-level definitions of some of the key terms used in this release can be found in the Glossary on page 3. A more detailed definitions document to accompany this

release is available on the Data Service website at:

[http://www.thedataservice.org.uk/statistics/statisticalfirstrelease/sfr\\_current/](http://www.thedataservice.org.uk/statistics/statisticalfirstrelease/sfr_current/)

42. The 'Level of Highest Qualification Held by Adults' statistics are produced using data on the highest qualification held by individuals from the Labour Force Survey in each year. The LFS is conducted by the Office for National Statistics and the estimates provided are the best measure of attainment within the population at Quarter 4 (October – December) each calendar year. Further details of how this information is used to calculate the estimates can be found at:

<http://www.thedataservice.org.uk/statistics/statisticalfirstrelease/methodogy/>

## Publication Cycle Across the Year

43. Further information on future editions of the SFR can be found on the Data Service statistics website at:

[http://www.thedataservice.org.uk/statistics/statisticalfirstrelease/sfr\\_next/](http://www.thedataservice.org.uk/statistics/statisticalfirstrelease/sfr_next/)

44. Table A below shows provisional and final data included for each release.

**Table A: Publication Cycle**

Release	Data Included
<b>November 2013</b>	- <b>Final</b> Apprenticeship, Workplace Learning, Community Learning, Employer Ownership Pilot and overall FE and Skills data for the full 2012/13 academic year
<b>January 2014</b>	- Education and Training; Apprenticeship; and Workplace Learning success rates for 2012/13
	- Provisional Apprenticeship, Workplace Learning, Community Learning, 24+ Advanced Learning Loans, Traineeship and overall FE and Skills data for the first three months of 2013/14
<b>March 2014</b>	- Provisional Apprenticeship, Workplace Learning, Community Learning, 24+ Advanced Learning Loans, Traineeship and overall FE and Skills data for the first six months of 2013/14
	- <b>Final</b> data for 2012 and provisional data for 2013 on the level of highest qualification held for adults in the population
<b>June 2014</b>	- Provisional Apprenticeship, Workplace Learning, Community Learning, 24+ Advanced Learning Loans, Traineeship and overall FE and Skills data for the first nine months of 2013/14
<b>October 2014</b>	- Provisional Apprenticeship, Workplace Learning, Community Learning, 24+ Advanced Learning Loans, Traineeship and overall FE and Skills data for the full 2013/14 academic year
<b>November 2014</b>	- <b>Final</b> Apprenticeship, Workplace Learning, Community Learning, Employer Ownership Pilot, 24+ Advanced Learning Loans, Traineeship and overall FE and Skills data for the full 2013/14 academic year

45. The Statistical First Release is an evolving product and we welcome feedback. If you have comments or feedback on the SFR, these can be sent to:

[servicedesk@thedataservice.org.uk](mailto:servicedesk@thedataservice.org.uk), or alternatively, you can call 0870 267 0001.

46. If you have a statistical question around the content or presentation of National Statistics in the release, please contact Jessie Evans at:

[jessie.evans@bis.gsi.gov.uk](mailto:jessie.evans@bis.gsi.gov.uk)

47. If you would like to sign up for Web alerts, so that you are automatically sent an alert when new information is put on the website, please subscribe at:

[http://www.thedataservice.org.uk/News/ds\\_alerts/](http://www.thedataservice.org.uk/News/ds_alerts/)



## Supplementary Tables

48. A full list of supplementary tables relating to this SFR can be found on the Data Service website at: [http://www.thedataservice.org.uk/Statistics/fe\\_data\\_library/](http://www.thedataservice.org.uk/Statistics/fe_data_library/). These tables include breakdowns by age, gender, ethnicity, learners with learning difficulties and/or disabilities, region, local authority, parliamentary constituency, sector subject area and funding stream. For more information on exactly what data will be released, and on which date, please see the supplementary tables list on the website.
49. New Local Authority Reports are published on the Data Service website. Local Authority Districts are shown based on the postcodes of delivery locations and also on the home postcodes of learners. The reports cover 2010/11 and 2011/12: enrolments, participation and provider level. The reports can be found at: [http://www.thedataservice.org.uk/Statistics/fe\\_data\\_library/further\\_education\\_skills/local\\_authority\\_tables/](http://www.thedataservice.org.uk/Statistics/fe_data_library/further_education_skills/local_authority_tables/)

## Related National Statistics Releases

50. There are a number of other National Statistics publications available that can be used to provide contextual information to this SFR. Some of those most relevant to this release are discussed below.
51. [Participation in Education, Training and Employment by 16-18 Year Olds in England](#) published on 27<sup>th</sup> June 2013 by the Department for Education. This shows that the proportion of 16–18 year olds in education and training was 83.3 per cent at end 2011 – the highest rate ever recorded and an increase of 1.0 percentage points from 82.3 per cent at end 2010. More recent quarterly data published in the NEET Quarterly Brief on 28<sup>th</sup> February 2013 showed that participation at ages 16-18 had remained broadly static since the start of the 2011/12 academic year.
52. [Level 2 and 3 Attainment by Young People in England Measured Using Matched Administrative Data: Attainment by Age 19 in 2012](#) published on 27<sup>th</sup> March 2013 by the Department for Education. This shows that in 2012, 85.1 per cent of people aged 19 were qualified to at least Level 2, and 57.9 per cent were qualified to Level 3. These were increases of 1.6 percentage points and 1.3 percentage points respectively, since 2011.
53. [Higher Education Student Enrolments and Qualifications Obtained at Higher Education Institutions in the United Kingdom for the Academic Year](#) published on 10<sup>th</sup> January 2013 by the Higher Education Statistics Agency. This release shows that the total number of HE enrolments at UK Higher Education Institutions stood at 2,496,645 in 2011/12, showing no percentage difference from 2010/11. In terms of qualifications, in 2011/12 there were 390,985 first degree graduates compared to 369,010 in 2010/11, an increase of 6 per cent.
54. [Education and Training Statistics for the United Kingdom](#) published on 7<sup>th</sup> November 2013 by the Department for Education. This release provides statistics relating to education and training in the UK and includes chapters relating to post-compulsory education & training and qualifications. Information includes participation of learners in further education by country of study, participation in job-related training and the highest level of qualification held by adults in the population (UK).



## Other Related Statistics

55. FE Choices provides clear, comparable information to learners and employers so they can make informed choices about post-16 education and training. FE Choices enables users to search and compare provider ratings for four performance indicators: Success Rates; Learner Destinations (including Employment Rate and Learning Rate); Learner Satisfaction; and Employer Satisfaction. These indicators are published on the FE Choices website at: <http://fechoices.skillsfundingagency.bis.gov.uk/>. Results at National level, by type of provider and by individual provider for each performance indicator can be found at: [http://www.thedataservice.org.uk/statistics/statistics\\_fechoices/](http://www.thedataservice.org.uk/statistics/statistics_fechoices/)

## Further Education Statistics for Other Countries in the UK

56. The focus of this SFR is on government-funded further education provision in England. Similar information is available for other countries in the UK, and provides useful contextual background to these statistics.
57. Statistics on Further Education and Work-based learning in **Wales** can be found at: <http://wales.gov.uk/topics/statistics/?lang=en>
58. Statistics on Professional and Technical Enrolments in the **Northern Ireland** Further Education Sector for 2011/12 can be found at: <http://www.delni.gov.uk/index/statsandresearch/further-education-stats/further-education-enrolments-2/prof-and-tech-enrolments-in-ni-fe-sector-2011-12.htm>
59. Statistics on learners in further education in **Scotland** can be found at: [http://www.sfc.ac.uk/web/FILES/ReportsandPublications/Facts\\_and\\_Figures\\_2012.pdf](http://www.sfc.ac.uk/web/FILES/ReportsandPublications/Facts_and_Figures_2012.pdf). Additionally, user-defined tables on further education learners and courses can be produced at: <https://stats.sfc.ac.uk/infact/>

## TABLE GUIDE

60. This section provides a brief summary of what is included in each table of this release. Tables 1 to 9 focus on the 2011/12 academic year; Tables 13 to 19 show provisional data for the 2012/13 academic year (August 2012 to July 2013).

- **Table 1** shows participation and achievements in further education and skills by level for adults (19+).
- **Table 2** shows a demographic breakdown of participation in further education and skills for adults (19+) by level.
- **Table 3** shows English and Maths participation and achievements for adults (19+).
- **Table 4** shows a demographic breakdown of Apprenticeship participation by level.
- **Table 5** shows Apprenticeship participation by age and level.
- **Table 6** shows Apprenticeship starts and achievements by age and level.
- **Table 7** shows payments made through the Apprenticeship Grant for Employers (AGE 16 – 24) scheme and starts on the Access to Apprenticeship Pathway.
- **Table 8** shows Workplace Learning starts and achievements by level.
- **Table 9** shows Community Learning participation and achievements by provision type.
- **Table 10** shows Employer Ownership Pilot starts by type and age.
- **Table 11** shows success rates for Education and Training (19+), Workplace Learning (19+) and Apprenticeships.
- **Tables 12 and 13** show level of attainment in the population (working age and economically active respectively) from the Labour Force Survey.
- **Table 14** shows a quarterly time series of Vocational Qualifications awarded.

## Table Footnotes

### General Footnotes Relevant to All Tables

- 1) Volumes are rounded to the nearest 100; percentages are calculated on pre-rounded data.
- 2) '-' Indicates a base value of less than 50; '\*\*' indicates a percentage of less than 0.5%.
- 3) Tables 1-5 & 9 are based on learners that were funded by the Learning and Skills Council or Young People's Learning Agency and/or are now funded by the Skills Funding Agency or Education Funding Agency.
- 4) For definitions of variables used in the Tables please see the data dictionary:  
<http://www.thedataservice.org.uk/datadictionary/>
- 5) Except for Tables 6-8 & 10 (see footnotes 19 and 28), age is reported as at 31 August of the academic year for all provision.
- 6) In Tables reporting full-year numbers, except for tables 6, 7.2 & 8 (see footnotes 20 and 30), full-year numbers are a count of the number of learners that participated/achieved at any point during the year. Learners undertaking/achieving more than one course will appear only once in the 'total learners' category for each data collection. All learners undertaking/achieving a full Level 2 or full Level 3 qualification will also appear in the Level 2 or Level 3 category, respectively.
- 7) The data source for all tables is the Individualised Learner Record, except where stated.
- 8) Further breakdowns of the data are available at the Data Service website:  
[http://www.thedataservice.org.uk/Statistics/fe\\_data\\_library/](http://www.thedataservice.org.uk/Statistics/fe_data_library/)

### Table 11.1 – Education and Training Success Rates

- 9) Education and Training success rates are calculated as the number of learning aims achieved divided by the number of learning aims expected to complete, excluding any learners who transferred on to another learning aim within the same institution.
- 10) Table 1.2 reports on the actual number of achievements within the academic year without reference to those that were expected to complete. Table 11.1 reports on success rates which are based on the reported achievement of individual aims that were expected to complete in the academic year.

### Tables 2 and 4 – Demographics

- 11) Learners undertaking courses at more than one level will be counted once for each applicable level, but once only in the Total. Learners studying a Level 2 English and Maths qualification will be counted in both the Level 2 and English and Maths categories, but only once in the Total.
- 12) Age, gender, learners with learning difficulties and/or disabilities and ethnicity are based upon self-declaration by the learner.

### Tables 4-7 & 11.2 – Apprenticeships

- 13) Apprenticeship starts and achievements include all funded and unfunded learners reported on the ILR.
- 14) Apprenticeship success rates are based on the number of learners who meet all of the requirements of their Apprenticeship framework, divided by the number of learners who have left training or successfully completed their training in the academic year.
- 15) Table 11.2 reports on success rates which are based on the reported achievement of frameworks that were expected to complete in the academic year.
- 16) Apprenticeship success rates are not affected by demand led funding.
- 17) Unlike learner figures in earlier tables, figures for 2008/09 onwards are comparable with earlier years as demand led funding rules are not applied to starts and achievements.
- 18) Age is calculated based on age at start of the programme rather than based on 31 August.
- 19) In Table 6.1 full-year numbers are a count of the number of starts at any point during the year. Learners starting more than one Apprenticeship will appear more than once.
- 20) In Table 6.2 full-year numbers are a count of the number of framework achievements at any point during the year. Learners achieving more than one framework will appear more than once.
- 21) Programme-Led Apprenticeships recorded in ILR returns are included in the above figures.
- 22) In order to be counted as a successful achievement, all elements of the framework must have been achieved.
- 23) Quarter 1 is 1 August to 31 October; Quarter 2 is 1 November to 31 January; Quarter 3 is 1 February to 30 April; Quarter 4 is 1 May to 31 July.

### Tables 8 & 11.3 – Workplace Learning

- 24) Workplace Learning success rates are based on the number of aims achieved, divided by the number of aims completed in the academic year.
- 25) Table 11.3 reports on success rates which are based on the reported achievement of individual aims that were

expected to complete in the academic year.

**26)** 2011/12 is the first year that Workplace Learning success rates are available. This is due to a change in the programmes included in Workplace Learning. Between 2007/08 and 2010/11 this included the Train to Gain programme. In 2011/12 this included all training mainly delivered through the workplace (excluding Apprenticeships). Therefore previous years are not comparable. For more information see:

[http://www.thedataservice.org.uk/Statistics/success\\_rates/success\\_rates\\_2011-12](http://www.thedataservice.org.uk/Statistics/success_rates/success_rates_2011-12)

**27)** Age is calculated based on age at start of the programme rather than based on 31 August.

**28)** Figures for 2008/09 and 2009/10 are not comparable with earlier years as in 2008/09 and 2009/10 NVQs delivered in the workplace changed from being funded by FE to be funded by Train to Gain. There were 181,000 starts and 132,000 achievements in NVQs delivered in the workplace in 2007/08 (Source - FE 2007/08 F05 Final).

**29)** In Table 8.1 full-year numbers are a count of the number of starts at any point during the year. Learners starting more than one course will appear more than once.

**30)** In Table 8.2 full-year numbers are a count of the number of achievements at any point during the year. Learners achieving more than one course will appear more than once.

**31)** Quarter 1 is 1 August to 31 October; Quarter 2 is 1 November to 31 January; Quarter 3 is 1 February to 30 April; Quarter 4 is 1 May to 31 July.

#### **Table 9 – Community Learning**

**32)** Total Learners includes learners participating in Community Learning (previously Adult Safeguarded Learning) provision in the Community Learning and FE funding streams for 2007/08. For 2008/09 to 2010/11, only Community Learning provision recorded in the Community Learning collection is included in totals except for 2009/10 where Community Learning provision recorded in the Education and Training collection for five Specially Designated Colleges is also included. No Formal First Step learners are included except for 2006/07, where Formal First Step provision cannot be accurately separated from other Community Learning provision. These learners are therefore included in Total Learners. This means the Total Learners for 2006/07 are not directly comparable to 2005/06 or 2007/08.

**33)** There are a number of learners with Community Learning aims that are recorded in the Education and Training funding stream and are not included in the figures in Table 6. In 2008/09 there were 7,900 participating and 6,400 achieving learners; in 2009/10 there were 7,700 participating and 6,300 achieving learners; and in 2010/11 there were 8,300 participating and 6,900 achieving learners. The only Community Learning provision included for table 9 for 2008/09 and 2010/11 is recorded in the Community Learning funding stream. Community Learning in 2011/12 onwards is recorded in the Single ILR collection only.

#### **Table 14 – Vocational Qualifications**

**34)** This table covers all levels of vocational qualifications reported through Ofqual. Data are supplied by awarding organisations.

**35)** Academic year is October to September. For example, the 2005/06 academic year is 1 October 2005 to 30 September 2006.

**36)** Key Skills data was not collected prior to October 2009.

**37)** 'Other Vocational Qualifications' include Basic Skills, Entry Level, English for Speakers Other Languages, Functional Skills, Free-Standing Mathematics Qualification, Key Skills, National Qualifications Framework and Other General types.

Table 1.1: Adult (19+) FE and Skills Participation by Level (2008/09 to 2012/13) – Learner Volumes

			Funded Learners							
			2008/09	2009/10		2010/11		2011/12		2012/13
					% change		% change		% change	
			Full Year	Full Year	08/09 to	Full Year	09/10 to	Full Year	10/11 to	Full Year
					09/10		10/11		11/12	12/13
Level										
Total Learners			3,771,200	3,540,500	-6.1%	3,163,200	-10.7%	3,149,700	*	3,280,600
Participation of which...										
	Below Level 2 (excluding English and Maths)		496,800	435,300	-12.4%	370,900	-14.8%	574,700	54.9%	757,800
	English and Maths		945,100	909,100	-3.8%	961,800	5.8%	1,083,000	12.6%	1,049,600
	Full Level 2		968,600	971,000	*	982,600	1.2%	1,028,100	4.6%	972,500
	Full Level 3		423,900	469,100	10.6%	494,000	5.3%	486,800	-1.5%	495,300
	Level 2		1,549,000	1,451,200	-6.3%	1,273,300	-12.3%	1,320,000	3.7%	1,239,200
	Level 3		619,700	604,800	-2.4%	542,900	-10.2%	542,600	*	594,300
	Level 4+		58,200	49,500	-14.9%	36,600	-26.0%	39,200	7.1%	50,000
	No Level Assigned		910,500	951,100	4.5%	888,300	-6.6%	798,900	-10.1%	818,500

Table 1.2: Adult (19+) FE and Skills Achievement by Level (2008/09 to 2012/13) – Learner Volumes

			Funded Learners							
			2008/09	2009/10		2010/11		2011/12		2012/13
					% change		% change		% change	
			Full Year	Full Year	08/09 to	Full Year	09/10 to	Full Year	10/11 to	Full Year
					09/10		10/11		11/12	12/13
Level										
Total Learners			2,584,000	2,567,700	-0.6%	2,265,100	-11.8%	2,258,500	*	2,453,900
Achievement of which...										
	Below Level 2 (excluding English and Maths)		367,000	336,800	-8.2%	298,500	-11.4%	472,300	58.2%	651,900
	English and Maths		639,100	614,600	-3.8%	595,600	-3.1%	633,000	6.3%	597,300
	Full Level 2		493,900	556,000	12.6%	561,800	1.0%	546,600	-2.7%	557,800
	Full Level 3		170,200	237,800	39.7%	242,700	2.1%	216,200	-10.9%	201,700
	Level 2		910,800	926,000	1.7%	788,900	-14.8%	775,200	-1.7%	769,900
	Level 3		317,000	344,400	8.7%	282,600	-17.9%	249,000	-11.9%	273,300
	Level 4+		27,600	26,900	-2.3%	20,400	-24.4%	21,500	5.7%	24,200
	No Level Assigned		756,400	814,600	7.7%	764,100	-6.2%	685,900	-10.2%	710,100

**Notes**

1) These tables include Apprenticeships, Workplace Learning, Community Learning and Education and Training provision taken at General Further Education Colleges (including Tertiary), Sixth Form Colleges, Special Colleges (Agricultural and Horticultural Colleges and Art and Design Colleges), Specialist Colleges and External Institutions.

2) Figures for 2011/12 onwards are not directly comparable to earlier years as a Single Individualised Learner Record (ILR) data collection system has been introduced. Small technical changes have been made in the way learners from more than one provision type are counted, leading to a removal of duplicate learners and a reduction in overall learner numbers of approximately 2 per cent. More information on the Single ILR is available at:

[http://www.thedataservice.org.uk/NR/rdonlyres/C05DCDD5-67EE-4AD0-88B9-BEBC8F7F3300/0/SILR\\_Effects\\_SFR\\_Learners\\_June12.pdf](http://www.thedataservice.org.uk/NR/rdonlyres/C05DCDD5-67EE-4AD0-88B9-BEBC8F7F3300/0/SILR_Effects_SFR_Learners_June12.pdf)

3) Data for earlier years are available in the Further Education and Skills Supplementary Tables:

[http://www.thedataservice.org.uk/Statistics/fe\\_data\\_library/further\\_education\\_skills/](http://www.thedataservice.org.uk/Statistics/fe_data_library/further_education_skills/)

4) Prior to 2009/10 Level 4+ Apprenticeships were included with Level 3 Apprenticeships.

5) In 2012/13 there were 89,900 offenders aged 18 or over in the prison system participating in learning, 68,400 achieved a learning outcome. These offenders were funded via the Offenders' Learning and Skills Service (OLASS) budget. Those aged 19 and over are included in Tables 1.1 and 1.2.

6) In 2012/13 500,900 learners benefited from support for the unemployed (those nearest the workforce), of which 496,200 were aged 19+. These are defined as those learners reporting that they were in receipt of Employment and Support Allowance - Work Related Activity Group (ESA WRAG) or Jobseeker's Allowance (JSA).

7) Figures for English and Maths (previously Skills for Life) include GCSEs, Functional Skills, Adult Basic Skills Certificates including ESOL Certificates, and Qualifications and Credit Framework Certificates and Awards in English and maths.

8) Please see the general footnotes and the FE and Skills footnotes sections for further information on these tables.

**Table 2: Adult (19+) Demographic Summary of FE and Skills Participation (2012/13) – Learner Volumes**

	Funded Learners						
	All FE and Skills Participation						
	Below Level 2 (excluding SfL)	English and Maths	Level 2	Level 3	Level 4+	Total FE and Skills	%
Total Learners	757,800	1,049,600	1,239,200	594,300	50,000	3,280,600	100.0%
Age							
19-24	197,800	308,100	372,900	232,500	10,600	803,900	24.5%
25-49	416,900	630,600	694,200	307,900	32,600	1,822,200	55.5%
50+	142,900	110,600	172,100	53,900	6,900	649,100	19.8%
Unknown	100	300	-	-	-	5,400	*
Gender							
Female	318,200	623,900	631,500	367,500	30,500	1,847,300	56.3%
Male	439,500	425,700	607,600	226,800	19,500	1,433,300	43.7%
Learners with Learning Difficulties and/or Disabilities							
Learning Difficulty/Disability	158,200	129,900	127,800	54,300	3,600	434,700	13.2%
No Learning Difficulty/Disability	564,600	886,000	1,071,100	524,200	43,700	2,686,200	81.9%
Not Known	35,000	33,700	40,300	15,700	2,800	159,800	4.9%
Ethnicity							
Asian/ Asian British	61,600	110,400	88,300	32,300	2,600	263,300	8.0%
Black/ African/ Caribbean/ Black British	67,800	84,500	83,100	35,300	2,200	221,900	6.8%
Mixed/ Multiple Ethnic Group	22,600	25,800	29,600	13,500	900	76,000	2.3%
White	569,000	775,300	998,400	499,100	42,900	2,568,400	78.3%
Other Ethnic Group	16,100	33,200	19,000	6,600	500	67,600	2.1%
Not Known/Not Provided	20,600	20,400	20,800	7,500	900	83,500	2.5%

**Notes**

1) These tables include Apprenticeships, Workplace Learning, Community Learning and Education and Training provision taken at General Further Education Colleges (including Tertiary), Sixth Form Colleges, Special Colleges (Agricultural and Horticultural Colleges and Art and Design Colleges), Specialist Colleges and External Institutions.

2) Figures for English and Maths (previously Skills for Life) include GCSEs, Functional Skills, Adult Basic Skills Certificates including ESOL Certificates, and Qualifications and Credit Framework Certificates and Awards in English and maths.

3) Please see the general footnotes and the FE and Skills Demographics footnotes sections for further information on these tables.

**Table 3: Adult (19+) FE and Skills – English and Maths Participation and Achievement by Level (2008/09 to 2012/13)**

		Funded Learners								
Measure	Level	2008/09	2009/10		2010/11		2011/12		2012/13	
				% change 08/09 to 09/10		% change 09/10 to 10/11		% change 10/11 to 11/12		% change 11/12 to 12/13
		Full Year	Full Year		Full Year		Full Year		Full Year	
Participation	Total Learners	945,100	909,100	-3.8%	961,800	5.8%	1,083,000	12.6%	1,049,600	-3.1%
	of which English	579,500	555,700	-4.1%	639,000	15.0%	782,500	22.5%	765,800	-2.1%
	of which entry level	136,700	112,400	-17.8%	103,800	-7.7%	107,600	3.6%	120,200	11.7%
	of which level 1	248,700	226,700	-8.9%	285,900	26.1%	379,500	32.7%	340,900	-10.2%
	of which level 2	245,600	252,100	2.7%	286,800	13.8%	335,400	16.9%	327,900	-2.2%
	of which maths	517,100	525,000	1.5%	630,500	20.1%	772,500	22.5%	748,200	-3.1%
	of which entry level	108,700	101,400	-6.7%	98,500	-2.9%	102,400	3.9%	95,500	-6.7%
	of which level 1	241,800	236,800	-2.1%	314,800	32.9%	396,500	26.0%	346,800	-12.5%
	of which level 2	218,600	228,800	4.6%	265,700	16.2%	323,400	21.7%	334,800	3.5%
	of which ESOL (English for Speakers of Other Languages)	188,700	178,600	-5.4%	163,600	-8.4%	139,400	-14.8%	146,200	4.9%
	of which entry level	161,000	150,100	-6.8%	135,500	-9.7%	118,000	-12.9%	123,200	4.4%
	of which level 1	24,100	24,100	*	24,200	*	19,000	-21.4%	21,700	13.8%
	of which level 2	9,300	9,700	3.5%	9,600	-0.6%	7,100	-26.1%	7,500	6.1%
Achievement	Total Learners	639,100	614,600	-3.8%	595,600	-3.1%	633,000	6.3%	597,300	-5.6%
	of which English	340,300	336,400	-1.1%	329,700	-2.0%	387,400	17.5%	351,500	-9.3%
	of which entry level	91,800	79,200	-13.7%	74,400	-6.1%	79,700	7.2%	90,500	13.5%
	of which level 1	144,000	130,200	-9.6%	134,100	3.1%	175,600	30.9%	152,000	-13.4%
	of which level 2	129,000	144,700	12.2%	139,900	-3.3%	152,800	9.2%	116,600	-23.7%
	of which maths	293,000	311,100	6.2%	324,300	4.2%	386,400	19.1%	357,100	-7.6%
	of which entry level	68,300	68,400	*	70,900	3.7%	79,700	12.4%	73,800	-7.5%
	of which level 1	138,900	138,400	*	151,300	9.4%	191,600	26.6%	165,200	-13.8%
	of which level 2	111,400	126,200	13.2%	128,500	1.8%	142,400	10.8%	129,600	-9.0%
	of which ESOL (English for Speakers of Other Languages)	135,800	128,200	-5.6%	122,100	-4.7%	110,000	-10.0%	117,500	6.9%
	of which entry level	116,700	108,100	-7.4%	101,700	-5.9%	93,700	-7.9%	99,100	5.7%
	of which level 1	15,600	15,900	1.6%	16,400	3.6%	13,200	-20.0%	15,700	19.6%
	of which level 2	6,100	6,600	8.0%	6,500	-1.7%	5,200	-19.7%	5,700	9.7%

**Notes**

1) Figures for 2011/12 onwards are not directly comparable to earlier years as a Single Individualised Learner Record (ILR) data collection system has been introduced. Small technical changes have been made in the way learners from more than one provision type are counted, leading to a removal of duplicate learners and a reduction in overall learner numbers of approximately 2 per cent. More information on the Single ILR is available at:

[http://www.thedataservice.org.uk/NR/rdonlyres/C05DCDD5-67EE-4AD0-88B9-BEBC8F7F3300/0/SILR\\_Effects\\_SFR\\_Learners\\_June12.pdf](http://www.thedataservice.org.uk/NR/rdonlyres/C05DCDD5-67EE-4AD0-88B9-BEBC8F7F3300/0/SILR_Effects_SFR_Learners_June12.pdf)

2) Data for earlier years are available in the English and Maths Supplementary Tables:

[http://www.thedataservice.org.uk/Statistics/fe\\_data\\_library/skills\\_for\\_life/](http://www.thedataservice.org.uk/Statistics/fe_data_library/skills_for_life/)

3) Figures for English and Maths (previously Skills for Life) include GCSEs, Functional Skills, Adult Basic Skills Certificates including ESOL Certificates, and Qualifications and Credit Framework Certificates and Awards in English and maths.

4) Please see the general footnotes section for further information on this table.

**Table 4: All Age Demographic Summary of Apprenticeship Participation (2012/13) – Learner Volumes**

Funded Apprentices					
Apprenticeships					
	Intermediate Level Apprenticeship	Advanced Level Apprenticeship	Higher Apprenticeship	Total Apprenticeships	%
Total Learners	501,700	377,000	13,000	868,700	100.0%
Age					
Under 19	132,600	54,800	800	181,300	20.9%
19-24	167,200	132,500	4,200	294,500	33.9%
25-49	167,700	166,000	6,900	334,600	38.5%
50+	34,200	23,700	1,000	58,300	6.7%
Unknown	-	-	-	-	-
Gender					
Female	249,800	210,500	8,300	455,600	52.4%
Male	251,800	166,500	4,700	413,100	47.6%
Learners with Learning Difficulties and/or Disabilities					
Learning Difficulty/Disability	44,600	26,600	600	70,100	8.1%
No Learning Difficulty/Disability	449,500	345,200	12,200	785,800	90.5%
Not Known	7,600	5,200	200	12,800	1.5%
Ethnicity					
Asian/ Asian British	19,900	13,100	500	32,800	3.8%
Black/ African/ Caribbean/ Black British	16,000	12,600	300	28,500	3.3%
Mixed/ Multiple Ethnic Group	9,700	6,600	200	16,200	1.9%
White	447,000	338,800	11,700	776,200	89.4%
Other Ethnic Group	3,900	2,200	-	6,000	0.7%
Not Known/Not Provided	5,200	3,700	200	9,000	1.0%

**Notes**

1) Please see the general footnotes and the Demographics footnotes sections for further information on this table.



Table 5: All Age Apprenticeship Participation by Level and Age (2008/09 to 2012/13)

Funded Apprentices														
Age		2008/09	2009/10	2010/11	2011/12	2012/13	2011/12				2012/13			
		Full Year	Full Year	Full Year	Full Year	Full Year	August to October	August to January	August to April	Full Year August to July	August to October	August to January	August to April	Full Year August to July
Intermediate Level Apprenticeship	Under 19	129,800	140,400	150,000	144,200	132,600	88,400	106,700	124,800	144,200	84,100	99,700	114,500	132,600
	19-24	101,300	114,600	141,300	159,100	167,200	101,100	119,300	139,400	159,100	111,400	130,100	149,100	167,200
	25+	42,500	49,000	123,900	203,000	201,900	119,200	145,300	173,000	203,000	130,500	151,800	173,700	201,900
	Total	273,600	304,000	415,200	506,200	501,700	308,600	371,400	437,200	506,200	326,000	381,600	437,300	501,700
	of which 19+	143,800	163,600	265,300	362,100	369,100	220,300	264,700	312,400	362,100	242,000	281,900	322,800	369,100
Advanced Level Apprenticeship	Under 19	44,100	45,800	52,900	53,300	54,800	34,400	40,100	45,600	53,300	36,000	41,600	47,200	54,800
	19-24	90,300	94,900	108,100	118,900	132,500	85,100	95,700	106,600	118,900	95,000	105,700	117,500	132,500
	25+	36,500	44,800	86,100	144,800	189,700	80,600	99,300	119,600	144,800	114,500	131,800	150,900	189,700
	Total	170,900	185,500	247,200	317,000	377,000	200,100	235,200	271,700	317,000	245,500	279,000	315,500	377,000
	of which 19+	126,800	139,700	194,300	263,700	322,200	165,700	195,100	226,200	263,700	209,500	237,400	268,300	322,200
Higher Apprenticeship	Under 19	100	200	300	500	800	200	200	300	500	400	500	600	800
	19-24	200	1,400	2,400	2,900	4,200	2,200	2,400	2,700	2,900	2,800	3,200	3,600	4,200
	25+	-	100	800	2,300	8,000	1,200	1,500	1,800	2,300	2,500	3,300	4,900	8,000
	Total	300	1,700	3,500	5,700	13,000	3,500	4,100	4,900	5,700	5,700	7,000	9,200	13,000
	of which 19+	200	1,500	3,200	5,200	12,200	3,300	3,800	4,600	5,200	5,300	6,400	8,600	12,200
All Apprenticeships	Under 19	173,900	186,400	203,100	189,600	181,300	121,300	143,800	165,200	189,600	118,700	138,600	157,400	181,300
	19-24	191,800	210,900	251,900	272,100	294,500	186,400	213,800	242,600	272,100	206,800	234,500	263,500	294,500
	25+	79,100	93,900	210,900	344,800	392,900	200,200	244,400	291,400	344,800	246,500	284,600	325,700	392,900
	Total	444,800	491,300	665,900	806,500	868,700	507,900	602,000	699,200	806,500	572,000	657,700	746,700	868,700
	of which 19+	270,900	304,800	462,800	616,900	687,400	386,600	458,200	534,100	616,900	453,300	519,100	589,300	687,400

**Notes**

1) Figures for 2011/12 onwards are not comparable to earlier years as a Single Individualised Learner Record (ILR) data collection system has been introduced. Technical changes have been made in the way learners participating on more than one Apprenticeship programme are counted. This has led to a removal of duplicate learners and a reduction in overall Apprenticeship learners of approximately 5 per cent.

[http://www.thedata.service.org.uk/NR/rdonlyres/C05DCDD5-67FE-4AD0-88B9-BEBC8F7F3300/0/SIL\\_R\\_Effects\\_SFR\\_Learners\\_June12.pdf](http://www.thedata.service.org.uk/NR/rdonlyres/C05DCDD5-67FE-4AD0-88B9-BEBC8F7F3300/0/SIL_R_Effects_SFR_Learners_June12.pdf)

2) Prior to 2011/12, full year numbers are a count of Apprenticeship programmes in each year. Learners undertaking more than one Apprenticeship programme will appear more than once in the 'All Apprenticeships' total as well as the totals for each Apprenticeship level they participated in. From 2011/12 onwards 'All Apprenticeships' counts each Apprenticeship learner only once regardless of how many programmes they participated in. Each learner is still counted in the totals for each Apprenticeship level they participated in.

3) Data for earlier years are available in the Apprenticeship Supplementary Tables:

[http://www.thedata.service.org.uk/Statistics/fe\\_data\\_library/Apprenticeships/](http://www.thedata.service.org.uk/Statistics/fe_data_library/Apprenticeships/)

4) Figures for 2012/13 include Apprenticeships through the Employer Ownership Pilot.

5) Please see the general footnotes and the Apprenticeships footnotes section for further information on this table.

Table 6.1: All Age Apprenticeship Programme Starts by Level and Age (2008/09 to 2012/13)

Age		2008/09	2009/10	2010/11	2011/12	2012/13	2011/12				2012/13			
		Full Year	Full Year	Full Year	Full Year	Full Year	Quarter 1	Quarter 2	Quarter 3	Quarter 4	Quarter 1	Quarter 2	Quarter 3	Quarter 4
Intermediate Level Apprenticeship	Under 19	74,200	89,400	97,300	95,400	80,900	40,600	19,400	17,600	17,800	35,500	15,600	14,000	15,900
	19-24	52,600	72,800	90,400	101,700	99,000	29,200	21,900	25,300	25,300	30,100	22,000	24,000	22,800
	25+	31,700	28,400	113,400	131,900	112,900	34,700	30,100	32,200	34,900	30,000	24,100	26,100	32,600
	<b>Total</b>	<b>158,500</b>	<b>190,500</b>	<b>301,100</b>	<b>329,000</b>	<b>292,800</b>	<b>104,500</b>	<b>71,300</b>	<b>75,200</b>	<b>78,000</b>	<b>95,700</b>	<b>61,600</b>	<b>64,100</b>	<b>71,300</b>
	of which 19+	84,300	101,100	203,800	233,600	211,900	63,900	51,900	57,500	60,200	60,200	46,100	50,200	55,500
Advanced Level Apprenticeship	Under 19	25,100	27,200	34,200	34,100	33,100	18,100	5,400	4,500	6,100	17,600	5,100	4,600	5,800
	19-24	32,000	39,800	51,600	58,000	63,900	18,400	12,600	12,900	14,600	21,700	11,900	13,800	16,500
	25+	24,200	20,600	68,000	95,700	110,600	21,700	21,200	23,400	29,400	24,400	19,600	22,400	44,300
	<b>Total</b>	<b>81,300</b>	<b>87,700</b>	<b>153,900</b>	<b>187,900</b>	<b>207,700</b>	<b>58,200</b>	<b>38,900</b>	<b>40,800</b>	<b>50,100</b>	<b>63,700</b>	<b>36,700</b>	<b>40,800</b>	<b>66,500</b>
	of which 19+	56,100	60,400	119,700	153,700	174,600	40,100	33,400	36,300	44,000	46,000	31,500	36,200	60,800
Higher Apprenticeship	Under 19	-	100	200	300	600	100	-	100	100	300	100	100	100
	19-24	100	1,200	1,300	1,700	2,400	800	200	400	300	1,000	400	500	600
	25+	-	100	700	1,700	6,800	500	300	400	500	800	900	1,800	3,300
	<b>Total</b>	<b>200</b>	<b>1,500</b>	<b>2,200</b>	<b>3,700</b>	<b>9,800</b>	<b>1,400</b>	<b>600</b>	<b>900</b>	<b>800</b>	<b>2,100</b>	<b>1,400</b>	<b>2,400</b>	<b>4,000</b>
	of which 19+	100	1,400	2,000	3,400	9,200	1,300	600	800	800	1,700	1,300	2,300	3,900
All Apprenticeships	Under 19	99,400	116,800	131,700	129,900	114,500	58,900	24,900	22,200	24,000	53,400	20,800	18,600	21,700
	19-24	84,700	113,800	143,400	161,400	165,400	48,300	34,300	38,600	40,200	52,800	34,300	38,300	39,900
	25+	55,900	49,100	182,100	229,300	230,300	56,900	51,600	56,000	64,800	55,200	44,600	50,300	80,200
	<b>Total</b>	<b>239,900</b>	<b>279,700</b>	<b>457,200</b>	<b>520,600</b>	<b>510,200</b>	<b>164,100</b>	<b>110,700</b>	<b>116,800</b>	<b>128,900</b>	<b>161,400</b>	<b>99,700</b>	<b>107,300</b>	<b>141,800</b>
	of which 19+	140,600	162,900	325,500	390,700	395,700	105,200	85,900	94,600	104,900	108,000	78,900	88,700	120,100

Table 6.2: All Age Apprenticeship Framework Achievements by Level and Age (2008/09 to 2012/13)

Age		2008/09	2009/10	2010/11	2011/12	2012/13	2011/12				2012/13			
		Full Year	Full Year	Full Year	Full Year	Full Year	Quarter 1	Quarter 2	Quarter 3	Quarter 4	Quarter 1	Quarter 2	Quarter 3	Quarter 4
Intermediate Level Apprenticeship	Under 19	50,200	52,900	59,400	56,500	42,100	13,700	11,800	11,800	19,300	12,000	9,000	8,400	12,700
	19-24	35,500	38,600	48,400	54,100	47,700	12,400	11,700	13,000	17,000	12,600	11,600	11,200	12,300
	25+	12,500	20,300	23,900	61,800	66,500	10,500	12,500	16,900	21,900	16,600	15,400	16,200	18,300
	<b>Total</b>	<b>98,100</b>	<b>111,900</b>	<b>131,700</b>	<b>172,400</b>	<b>156,300</b>	<b>36,600</b>	<b>36,000</b>	<b>41,700</b>	<b>58,200</b>	<b>41,200</b>	<b>36,000</b>	<b>35,800</b>	<b>43,200</b>
	of which 19+	48,000	59,000	72,400	115,900	114,200	22,900	24,200	29,900	38,900	29,200	27,000	27,400	30,600
Advanced Level Apprenticeship	Under 19	17,500	20,100	23,900	21,300	18,600	5,500	3,700	3,800	8,300	5,400	3,600	3,500	6,000
	19-24	22,400	25,400	27,700	30,600	30,800	7,200	6,300	6,700	10,300	7,800	6,700	7,100	9,300
	25+	5,400	13,900	15,900	32,800	45,700	5,400	6,500	8,400	12,500	9,500	10,400	11,100	14,700
	<b>Total</b>	<b>45,200</b>	<b>59,400</b>	<b>67,500</b>	<b>84,700</b>	<b>95,000</b>	<b>18,100</b>	<b>16,600</b>	<b>18,900</b>	<b>31,100</b>	<b>22,700</b>	<b>20,700</b>	<b>21,700</b>	<b>30,000</b>
	of which 19+	27,700	39,300	43,600	63,400	76,500	12,700	12,900	15,100	22,800	17,300	17,000	18,100	24,000
Higher Apprenticeship	Under 19	-	-	100	100	100	-	-	-	-	-	-	-	-
	19-24	-	100	800	800	800	300	100	100	200	300	200	100	200
	25+	-	-	100	300	600	100	100	-	100	100	100	100	200
	<b>Total</b>	<b>-</b>	<b>200</b>	<b>1,000</b>	<b>1,200</b>	<b>1,600</b>	<b>500</b>	<b>200</b>	<b>200</b>	<b>400</b>	<b>400</b>	<b>400</b>	<b>300</b>	<b>500</b>
	of which 19+	-	200	900	1,200	1,400	400	200	200	400	400	300	200	500
All Apprenticeships	Under 19	67,700	73,100	83,300	77,900	60,800	19,200	15,500	15,600	27,600	17,400	12,700	11,900	18,700
	19-24	57,800	64,200	77,000	85,600	79,300	20,000	18,200	19,900	27,600	20,700	18,400	18,400	21,800
	25+	17,900	34,300	39,900	94,900	112,800	16,000	19,100	25,300	34,500	26,300	25,900	27,400	33,200
	<b>Total</b>	<b>143,400</b>	<b>171,500</b>	<b>200,300</b>	<b>258,400</b>	<b>252,900</b>	<b>55,200</b>	<b>52,700</b>	<b>60,800</b>	<b>89,700</b>	<b>64,400</b>	<b>57,000</b>	<b>57,700</b>	<b>73,700</b>
	of which 19+	75,700	98,400	116,900	180,500	192,100	36,000	37,200	45,200	62,100	47,000	44,400	45,800	55,000

**Notes**

1) Figures for 2011/12 onwards are not directly comparable to earlier years as a Single Individualised Learner Record (ILR) data collection system has been introduced. Small technical changes have been made in the way learners from more than one provision type are counted, leading to a removal of duplicate learners and a reduction in overall learner numbers of approximately 2 per cent. More information on the Single ILR is available at:

[http://www.thedataservice.org.uk/NR/rdonlyres/C05DCDD5-67EE-4AD0-88B9-BEBC8F7F3300/0/SILR\\_Effects\\_SFR\\_Learners\\_June12.pdf](http://www.thedataservice.org.uk/NR/rdonlyres/C05DCDD5-67EE-4AD0-88B9-BEBC8F7F3300/0/SILR_Effects_SFR_Learners_June12.pdf)

2) Data for earlier years are available in the Apprenticeship Supplementary Tables:

[http://www.thedataservice.org.uk/Statistics/fe\\_data\\_library/Apprenticeships/](http://www.thedataservice.org.uk/Statistics/fe_data_library/Apprenticeships/)

3) Figures for 2012/13 include Apprenticeships through the Employer Ownership Pilot.

4) Please see the general footnotes and the Apprenticeships footnotes section for further information on these tables.

**Table 7.1: Apprenticeship Grant for Employers Scheme (AGE 16 to 24) – Payments Made (2011/12 and 2012/13)**

		2011/12	2012/13	
		February 2012 to July 2012	Full Year	February 2012 to July 2013
Age				
Intermediate Level Apprenticeship	Under 19	4,000	19,300	23,300
	19-24	2,100	10,100	12,300
	<b>Total</b>	<b>6,100</b>	<b>29,400</b>	<b>35,500</b>
Advanced Level Apprenticeship	Under 19	800	5,500	6,300
	19-24	700	4,500	5,200
	<b>Total</b>	<b>1,500</b>	<b>9,900</b>	<b>11,500</b>
Higher Apprenticeship	Under 19	-	-	-
	19-24	-	100	100
	<b>Total</b>	<b>-</b>	<b>100</b>	<b>200</b>
All Apprenticeships	Under 19	4,800	24,800	29,600
	19-24	2,800	14,700	17,600
	<b>Total</b>	<b>7,700</b>	<b>39,500</b>	<b>47,200</b>

**Notes**

1) AGE 16 to 24 was launched in February 2012. Payments are drawn down once the new Apprentice has been in post for 13 weeks.

2) AGE 16 to 24 starts are defined through the Learning Delivery Funding and Monitoring Codes with values of 132 or 133 as per the ILR specification ([http://www.theia.org.uk/ilr/ilrdocuments/201112\\_ilrdetail.htm](http://www.theia.org.uk/ilr/ilrdocuments/201112_ilrdetail.htm)). These are validated by the Skills Funding Agency.

3) Starts in this table include learners aged 19-24 on application but aged 25 when learning started.

4) Starts in this table will also be counted in the main Apprenticeship tables.

5) Please see the general footnotes and the Apprenticeships footnotes section for further information on these tables.

**Table 7.2: Starts on the Access to Apprenticeship Pathway (2011/12 and 2012/13)**

		Age	Starts on Access to Apprenticeship Pathway in 2011/12 Full Year	Starts on Access to Apprenticeship Pathway in 2012/13 Full Year
<b>All starts on the Access to Apprenticeship pathway</b>		Under 19	5,700	3,900
		19-24	1,600	1,600
		<b>Total</b>	<b>7,200</b>	<b>5,500</b>
of which	have converted to paid employment to complete their Apprenticeship in any year	Under 19	2,300	1,000
		19-24	700	400
		<b>Total</b>	<b>3,000</b>	<b>1,400</b>
	have not yet converted to paid employment to complete their Apprenticeship in any year	Under 19	3,300	2,900
		19-24	900	1,200
		<b>Total</b>	<b>4,200</b>	<b>4,100</b>

**Notes**

1) People starting training under the Access to Apprenticeship pathway are not counted as an Apprentice until they secure paid employment to complete their Apprenticeship in the usual way. For more information on the Access pathway, see:

<http://www.apprenticeships.org.uk/Partners/Policy/AccessToApprenticeships.aspx>

2) The year indicates when the learner started on the Access to Apprenticeship pathway. Conversion to paid employment to complete an Apprenticeship does not necessarily occur in the same year as the learner started the Access to Apprenticeship pathway.

3) People shown in this table as having converted to paid employment to complete their Apprenticeship in the same year as they started on the Access to Apprenticeship pathway, will also be counted as starts in the main Apprenticeship tables. People who convert to paid employment in subsequent years will be counted as participating Apprenticeship learners.

**Table 8.1: Workplace Learning Starts by Level (2008/09 to 2012/13)**

Level		2008/09	2009/10	2010/11	2011/12	2012/13	2011/12				2012/13			
		Full Year	Full Year	Full Year	Full Year	Full Year	Quarter 1	Quarter 2	Quarter 3	Quarter 4	Quarter 1	Quarter 2	Quarter 3	Quarter 4
<b>Total Starts</b>		<b>906,100</b>	<b>774,500</b>	<b>599,300</b>	<b>331,600</b>	<b>148,800</b>	<b>59,500</b>	<b>66,400</b>	<b>88,200</b>	<b>117,600</b>	<b>30,900</b>	<b>34,800</b>	<b>42,200</b>	<b>40,900</b>
<b>of which...</b>	Below Level 2	155,300	147,100	114,300	43,200	30,900	7,900	9,300	11,800	14,200	7,600	9,300	8,100	5,900
	Level 2	579,900	430,500	331,900	252,200	102,200	44,700	49,900	67,500	90,200	20,400	22,500	29,800	29,600
	Level 3	135,800	100,200	81,800	34,200	11,300	6,700	6,900	8,500	12,200	2,700	2,100	3,200	3,300
	Level 4+	11,900	4,300	3,000	2,000	2,000	200	300	500	1,000	200	400	600	800
	No Level Assigned	23,200	92,400	68,300	-	2,400	-	-	-	-	-	400	600	1,400
	Below Level 2 (excluding English and Maths)	22,100	27,900	11,200	4,200	2,900	600	900	1,300	1,500	400	700	900	900
	English and Maths	191,700	127,000	108,300	62,200	39,400	11,900	13,900	16,600	19,800	9,800	11,300	10,300	8,000
	Full Level 2	520,100	415,100	315,400	226,300	85,200	39,900	44,200	60,900	81,300	16,900	18,800	25,100	24,400
	Full Level 3	136,100	98,200	80,600	31,700	6,100	6,600	6,700	7,900	10,600	1,700	1,200	1,500	1,600

**Table 8.2: Workplace Learning Achievements by Level (2008/09 to 2012/13)**

Level		2008/09	2009/10	2010/11	2011/12	2012/13	2011/12				2012/13			
		Full Year	Full Year	Full Year	Full Year	Full Year	Quarter 1	Quarter 2	Quarter 3	Quarter 4	Quarter 1	Quarter 2	Quarter 3	Quarter 4
<b>Total Achievements</b>		<b>583,700</b>	<b>676,000</b>	<b>584,900</b>	<b>290,100</b>	<b>198,000</b>	<b>62,900</b>	<b>64,500</b>	<b>68,300</b>	<b>94,500</b>	<b>49,600</b>	<b>49,300</b>	<b>44,900</b>	<b>54,300</b>
<b>of which...</b>	Below Level 2	88,700	105,900	95,100	34,900	27,400	4,900	6,900	9,300	13,800	5,200	6,300	7,300	8,600
	Level 2	399,300	389,700	332,500	212,100	145,100	46,800	47,400	49,700	68,100	38,300	36,500	31,600	38,700
	Level 3	68,800	95,500	81,100	41,100	22,900	10,700	9,800	8,800	11,800	5,700	6,000	5,200	6,000
	Level 4+	7,400	7,200	3,600	2,000	2,300	400	400	400	700	300	500	700	800
	No Level Assigned	19,600	77,600	72,600	-	400	-	-	-	-	-	-	100	300
	Below Level 2 (excluding English and Maths)	9,300	15,900	10,900	2,700	2,800	300	500	700	1,300	400	500	1,000	900
	English and Maths	118,900	94,900	88,500	51,700	35,700	7,900	10,900	13,700	19,100	7,800	8,400	8,500	10,900
	Full Level 2	359,000	378,900	318,700	191,700	129,900	43,600	42,800	44,400	60,900	35,100	33,400	28,500	33,000
	Full Level 3	69,100	93,700	80,200	40,200	16,100	10,700	9,700	8,700	11,200	4,400	4,300	3,600	3,800

**Notes**

1) Figures for 2011/12 onwards are not directly comparable to earlier years as a Single Individualised Learner Record (ILR) data collection system has been introduced. Small technical changes have been made in the way learners from more than one provision type are counted, leading to a removal of duplicate learners and a reduction in overall learner numbers of approximately 2 per cent. More information on the Single ILR is available at:

[http://www.thedataservice.org.uk/NR/rdonlyres/C05DCDD5-67FE-4AD0-88B9-BEBC8F7F3300/0/SILR\\_Effects\\_SFR\\_Learners\\_June12.pdf](http://www.thedataservice.org.uk/NR/rdonlyres/C05DCDD5-67FE-4AD0-88B9-BEBC8F7F3300/0/SILR_Effects_SFR_Learners_June12.pdf)

2) Workplace Learning includes Train to Gain and other Employer Responsive provision (except Apprenticeships).

3) Data for earlier years are available in the Workplace Learning Supplementary Tables:

[http://www.thedataservice.org.uk/Statistics/fe\\_data\\_library/workplace\\_learning/](http://www.thedataservice.org.uk/Statistics/fe_data_library/workplace_learning/)

4) These tables include some learners aged under 19 who are eligible for funding on certain Workplace Learning programmes (such as Programmes for the Unemployed).

5) English and maths starts and achievements can be at Level 2 or Below Level 2.

6) Figures for English and Maths (previously Skills for Life) include GCSEs, Functional Skills, Adult Basic Skills Certificates including ESOL Certificates, and Qualifications and Credit Framework Certificates and Awards in English and maths.

7) Please see the general footnotes and the Workplace Learning footnotes section for further information on these tables.

Table 9: Community Learning Participation and Achievement by Type (2008/09 to 2012/13) – Learner Volumes

Funded Learners										
Measure	Provision Type	2008/09	2009/10		2010/11		2011/12		2012/13	
				% change 08/09 to 09/10		% change 09/10 to 10/11		% change 10/11 to 11/12	% change 11/12 to 12/13	
		Full Year	Full Year		Full Year		Full Year		Full Year	
Participation	Total Learners	755,000	752,800	*	699,400	-7.1%	683,300	-2.3%	684,700	*
	of which Personal and Community Development Learning	584,400	579,200	-0.9%	534,100	-7.8%	518,600	-2.9%	513,800	-0.9%
	of which Neighbourhood Learning in Deprived Communities	40,300	43,700	8.4%	46,600	6.5%	55,700	19.8%	65,600	17.7%
	of which Family English, Maths and Language	71,000	71,300	*	65,400	-8.3%	58,700	-10.4%	52,600	-10.4%
	of which Wider Family Learning	80,500	79,600	-1.1%	75,400	-5.3%	72,800	-3.4%	74,400	2.2%
Achievement	Total Learners	638,900	663,000	3.8%	608,200	-8.3%	594,500	-2.3%	608,100	2.3%
	of which Personal and Community Development Learning	489,000	505,900	3.5%	458,600	-9.3%	445,400	-2.9%	450,900	1.2%
	of which Neighbourhood Learning in Deprived Communities	34,400	39,800	15.6%	41,300	3.7%	50,100	21.4%	60,600	21.1%
	of which Family English, Maths and Language	61,000	62,700	2.7%	57,000	-9.0%	50,900	-10.8%	46,000	-9.6%
	of which Wider Family Learning	71,400	72,600	1.6%	70,100	-3.4%	67,500	-3.8%	69,500	2.9%

**Notes**

1) Figures for 2011/12 onwards are not directly comparable to earlier years as a Single Individualised Learner Record (ILR) data collection system has been introduced. Small technical changes have been made in the way learners from more than one provision type are counted, leading to a removal of duplicate learners and a reduction in overall learner numbers of approximately 2 per cent. More information on the Single ILR is available at:

[http://www.thedataservice.org.uk/NR/rdonlyres/C05DCDD5-67EE-4AD0-88B9-BEBC8F7F3300/0/SILR\\_Effects\\_SFR\\_Learners\\_June12.pdf](http://www.thedataservice.org.uk/NR/rdonlyres/C05DCDD5-67EE-4AD0-88B9-BEBC8F7F3300/0/SILR_Effects_SFR_Learners_June12.pdf)

2) Data for earlier years is available in the Community Learning Supplementary Tables:

[http://www.thedataservice.org.uk/Statistics/fe\\_data\\_library/community\\_learning/](http://www.thedataservice.org.uk/Statistics/fe_data_library/community_learning/)

3) Please see the general footnotes and the Community Learning footnotes sections for further information on this table.

**Table 10: Employer Ownership Pilot Starts (2012/13)**

Provision		Age	2012/13 Full Year
<b>Starts</b>	Apprenticeships	SASE Compliant	
		Under 19	200
		19-24	400
		25+	600
		Total	1,200
		Non-SASE Compliant	
		Under 19	-
		19-24	-
		25+	-
		Total	-
	Workplace Learning	QCF Training	
		Under 19	-
		19-24	100
		25+	300
		Total	400
		Non-QCF Training	
		Under 19	200
		19-24	1,100
		25+	4,500
		Total	5,800
<b>All Employer Ownership Pilot Starts</b>		<b>Under 19</b>	<b>500</b>
		<b>19-24</b>	<b>1,600</b>
		<b>25+</b>	<b>5,400</b>
		<b>Total</b>	<b>7,500</b>

**Notes**

1) Starts in this table will also be counted in the main Apprenticeship table and Workplace Learning table, as well as in FE and Skills participation figures.

2) The data source for this table is the Employer Ownership Pilot.

3) Please see the general footnotes for further information on this table.

Table 11.1: Adult (19+) Education and Training Success Rates by Level (2007/08 to 2011/12) – Percentages

		2007/08	2008/09	2009/10	2010/11	2011/12
		Full Year	Full Year	Full Year	Full Year	Full Year
<b>Education and Training Provision</b>		<b>80.5%</b>	<b>80.6%</b>	<b>80.3%</b>	<b>81.4%</b>	<b>83.9%</b>
of which...	English and Maths	73.1%	75.1%	74.3%	78.6%	80.1%
	Full Level 2	71.4%	72.1%	74.8%	78.5%	82.6%
	Full Level 3	70.6%	70.1%	75.1%	77.7%	78.4%
	Level 2	79.6%	80.5%	80.3%	80.2%	82.7%
	Level 3	77.1%	78.4%	78.7%	78.8%	79.4%

Table 11.2: Apprenticeship Success Rates by Level and Age (2007/08 to 2011/12) – Percentages

		2007/08	2008/09	2009/10	2010/11	2011/12
		Full Year	Full Year	Full Year	Full Year	Full Year
Intermediate Level Apprenticeship	Under 19	64.2%	68.3%	71.1%	72.2%	71.9%
	19-24	64.8%	71.7%	74.6%	76.7%	74.8%
	25+	66.3%	76.6%	77.5%	80.6%	71.4%
	<b>Total</b>	<b>64.4%</b>	<b>70.4%</b>	<b>73.4%</b>	<b>75.3%</b>	<b>72.6%</b>
	of which 19+	64.8%	72.8%	75.6%	78.0%	73.0%
Advanced Level Apprenticeship	Under 19	60.7%	73.6%	76.2%	79.0%	76.5%
	19-24	64.5%	70.8%	75.4%	79.7%	77.8%
	25+	64.7%	73.9%	71.5%	76.2%	75.1%
	<b>Total</b>	<b>62.8%</b>	<b>72.1%</b>	<b>74.8%</b>	<b>78.6%</b>	<b>76.5%</b>
	of which 19+	64.5%	71.2%	74.0%	78.4%	76.4%
Higher Apprenticeship	Under 19				83.2%	64.4%
	19-24				84.8%	74.4%
	25+				84.2%	70.1%
	<b>Total</b>				<b>84.6%</b>	<b>72.6%</b>
	of which 19+				84.8%	73.2%
All Apprenticeships	Under 19	63.3%	69.6%	72.4%	74.0%	73.1%
	19-24	64.7%	71.3%	74.9%	77.8%	75.9%
	25+	65.4%	75.9%	75.1%	78.8%	72.6%
	<b>Total</b>	<b>63.9%</b>	<b>70.9%</b>	<b>73.8%</b>	<b>76.4%</b>	<b>73.8%</b>
	of which 19+	64.7%	72.2%	75.0%	78.2%	74.2%

Table 11.3: Adult (19+) Workplace Learning Success Rates by Level (2011/12) – Percentages

		2011/12
		Full Year
<b>Workplace Learning</b>		<b>90.6%</b>
of which...	English and maths	92.5%
	Full Level 2	90.9%
	Full Level 3	86.9%

**Notes**

1) Education and Training Success Rates for 2008/09 onwards are not directly comparable to earlier years as the introduction of demand led funding has changed how data is collected and how funded learners are defined from 2008/09 onwards. Apprenticeship success rates are not affected by demand led funding. More information on demand led funding is available at:

<http://www.thedataservice.org.uk/datadictionary/businessdefinitions/Demand+Led+Funding.htm>

2) Figures for 2011/12 onwards are not directly comparable to earlier years as a Single Individualised Learner Record (ILR) data collection system has been introduced. Small technical changes have been made in the way learners from more than one provision type are counted, leading to a removal of duplicate learners and a reduction in overall learner numbers of approximately 2 per cent. More information on the Single ILR is available at:

[http://www.thedataservice.org.uk/NR/rdonlyres/C05DCDD5-67FE-4AD0-88B9-BEBC8F7F3300/0/SILR\\_Effects\\_SFR\\_Learners\\_June12.pdf](http://www.thedataservice.org.uk/NR/rdonlyres/C05DCDD5-67FE-4AD0-88B9-BEBC8F7F3300/0/SILR_Effects_SFR_Learners_June12.pdf)

3) Data for earlier years are available in the FE Data Library.

[http://www.thedataservice.org.uk/Statistics/fe\\_data\\_library/](http://www.thedataservice.org.uk/Statistics/fe_data_library/)

4) Workplace Learning Success Rates for 2011/12 onwards are not comparable to earlier years. Please see the Workplace Learning footnotes section for further information on this.

5) Figures for English and Maths (previously Skills for Life) include GCSEs, Functional Skills, Adult Basic Skills Certificates including ESOL Certificates, and Qualifications and Credit Framework Certificates and Awards in English and maths.

6) Please see the general footnotes, the FE and Skills, Apprenticeship and Workplace Learning footnotes sections for further information on these tables.

**Table 12.1: Level of Highest Qualification Held by People aged 19-59/64 in England (Quarter 4) <sup>1</sup> - percentages**

Year	aged 19-59/64 <sup>2</sup> (thousands)	Level 4 and above	Level 3	Level 3 and above	Level 2	Level 2 and above	Below Level 2 (incl no qualifications)
2006	29,427	33.0	20.2	53.2	18.6	71.8	28.2
2007	29,584	34.1	20.7	54.8	18.4	73.2	26.8
2008	29,737	34.5	20.7	55.2	19.0	74.2	25.8
2009	29,894	36.4	20.7	57.1	19.6	76.6	23.4
2010	30,105	37.6	21.0	58.5	19.2	77.7	22.3
2011	30,279	38.1	21.3	59.4	19.5	78.9	21.1
2012	30,399	39.5 <sup>P</sup>	22.1 <sup>P</sup>	61.6 <sup>P</sup>	19.0 <sup>P</sup>	80.6 <sup>P</sup>	19.4 <sup>P</sup>
2012 95% CI (+/-)		0.4	0.3	0.3	0.3	0.4	0.4

**Table 12.2: Level of Highest Qualification Held by People aged 19-59/64 in England (Quarter 4) <sup>1</sup> - volumes (thousands)**

Year	All people aged 19-59/64 <sup>2</sup>	Level 4 and above	Level 3	Level 3 and above	Level 2	Level 2 and above	Below Level 2 (incl no qualifications)
2006	29,427	9,716	5,943	15,659	5,481	21,140	8,288
2007	29,584	10,093	6,116	16,208	5,456	21,664	7,919
2008	29,737	10,263	6,146	16,409	5,653	22,061	7,675
2009	29,894	10,868	6,189	17,057	5,845	22,902	6,993
2010	30,105	11,305	6,315	17,620	5,786	23,406	6,699
2011	30,279	11,522	6,457	17,979	5,908	23,888	6,391
2012	30,399	12,007 <sup>P</sup>	6,728 <sup>P</sup>	18,735 <sup>P</sup>	5,762 <sup>P</sup>	24,497 <sup>P</sup>	5,903 <sup>P</sup>
2012 95% CI (+/-)		130	95	99	91	121	121

**Notes**

1) Source: Labour Force Survey

2) Estimates were revised in March 2011 as a result of an improved methodology being adopted - see methodological note for further details.

3) Males aged 19 - 64 and females aged 19 - 59.

P) Provisional estimate - these estimates will be finalised in March 2014.



**Table 13.1: Level Of Highest Qualification Held By Economically Active Adults In England (Quarter 4)<sup>1</sup> - percentages**

Year	Economically active adults <sup>2</sup> (thousands)	Level 4 and above	Level 3	Level 3 and above	Level 2	Level 2 and above	Below Level 2 (incl no qualifications)
2006	24,238	35.8	20.8	56.6	19.6	76.2	23.8
2007	24,397	36.8	21.1	57.9	19.4	77.3	22.7
2008	24,672	36.9	21.1	58.0	20.0	78.0	22.0
2009	24,670	38.9	21.0	59.9	20.5	80.3	19.7
2010	24,800	40.2	21.2	61.4	20.1	81.5	18.5
2011	24,970	40.5	21.5	62.1	20.4	82.4	17.6
2012	25,382	42.0 <sup>P</sup>	22.1 <sup>P</sup>	64.1 <sup>P</sup>	19.8 <sup>P</sup>	83.9 <sup>P</sup>	16.1 <sup>P</sup>
2012 95% CI (+/-)		0.5	0.4	0.3	0.3	0.4	0.4

**Table 13.2: Level Of Highest Qualification Held By Economically Active Adults In England (Quarter 4)<sup>1</sup> - volumes (thousands)**

Year	Economically active adults <sup>2</sup>	Level 4 and above	Level 3	Level 3 and above	Level 2	Level 2 and above	Below Level 2 (incl no qualifications)
2006	24,238	8,681	5,046	13,727	4,744	18,471	5,767
2007	24,397	8,975	5,151	14,126	4,731	18,857	5,540
2008	24,672	9,102	5,209	14,310	4,940	19,250	5,422
2009	24,670	9,598	5,173	14,771	5,046	19,818	4,852
2010	24,800	9,965	5,262	15,227	4,976	20,203	4,597
2011	24,970	10,124	5,375	15,500	5,084	20,583	4,386
2012	25,382	10,662 <sup>P</sup>	5,607 <sup>P</sup>	16,270 <sup>P</sup>	5,014 <sup>P</sup>	21,284 <sup>P</sup>	4,099 <sup>P</sup>
2012 95% CI (+/-)		119	89	85	86	108	108

**Notes**

1) Source: Labour Force Survey

2) Estimates for 2006 onwards were revised in March 2011 as a result of an improved methodology being adopted - see methodological note for further details.

3) Economically active adults are defined as men aged 18 to 64 and women aged 18 to 59 either in employment or International Labour Organisation unemployed.

P) Provisional estimate - these estimates will be finalised in March 2014.

**Table 14: Vocational Qualification Achievements in the UK by Qualification Type, 2006 (October) to 2013 (June)**

Quarter	National Vocational Qualification	Occupational Qualification	Qualifications and Credit Framework Qualification	Vocationally Related Qualification	Other Vocational Qualifications	Total
October 2006 to December 2006	121,300	7,100	-	411,400	382,600	<b>922,400</b>
January 2007 to March 2007	126,600	5,700	-	406,800	393,800	<b>932,900</b>
April 2007 to June 2007	129,600	6,000	400	507,900	678,200	<b>1,322,100</b>
July 2007 to September 2007	252,900	8,000	500	920,500	1,151,500	<b>2,333,400</b>
<b>Total 2006/07 Academic Year</b>	<b>630,400</b>	<b>26,800</b>	<b>900</b>	<b>2,246,600</b>	<b>2,606,200</b>	<b>5,510,900</b>
October 2007 to December 2007	128,700	4,900	1,300	408,500	423,500	<b>966,900</b>
January 2008 to March 2008	140,700	4,900	4,600	426,000	500,900	<b>1,077,200</b>
April 2008 to June 2008	170,600	6,400	8,600	643,100	755,700	<b>1,584,400</b>
July 2008 to September 2008	287,900	8,300	19,200	983,800	1,416,700	<b>2,715,800</b>
<b>Total 2007/08 Academic Year</b>	<b>727,900</b>	<b>24,500</b>	<b>33,700</b>	<b>2,461,400</b>	<b>3,096,800</b>	<b>6,344,300</b>
October 2008 to December 2008	164,100	5,800	16,400	416,200	474,500	<b>1,077,000</b>
January 2009 to March 2009	169,600	5,300	39,300	409,900	590,400	<b>1,214,500</b>
April 2009 to June 2009	216,400	6,300	62,000	715,900	829,300	<b>1,830,000</b>
July 2009 to September 2009	372,600	9,100	102,600	1,064,800	1,591,600	<b>3,140,800</b>
<b>Total 2008/09 Academic Year</b>	<b>922,900</b>	<b>26,500</b>	<b>220,300</b>	<b>2,606,800</b>	<b>3,485,800</b>	<b>7,262,200</b>
October 2009 to December 2009	212,000	6,000	85,100	414,700	457,500	<b>1,175,300</b>
January 2010 to March 2010	204,000	5,100	135,200	388,000	552,700	<b>1,285,000</b>
April 2010 to June 2010	213,500	5,700	203,000	726,100	831,100	<b>1,979,300</b>
July 2010 to September 2010	349,500	6,400	353,700	1,078,700	1,727,400	<b>3,515,700</b>
<b>Total 2009/10 Academic Year</b>	<b>979,000</b>	<b>23,200</b>	<b>777,000</b>	<b>2,607,500</b>	<b>3,568,600</b>	<b>7,955,300</b>
October 2010 to December 2010	179,600	6,200	274,800	285,700	422,900	<b>1,169,300</b>
January 2011 to March 2011	155,300	4,100	454,400	166,300	486,500	<b>1,266,600</b>
April 2011 to June 2011	128,600	3,600	722,300	385,700	670,900	<b>1,911,100</b>
July 2011 to September 2011	124,300	3,600	1,384,700	561,800	1,473,700	<b>3,548,000</b>
<b>Total 2010/11 Academic Year</b>	<b>587,800</b>	<b>17,500</b>	<b>2,836,200</b>	<b>1,399,600</b>	<b>3,054,000</b>	<b>7,895,100</b>
October 2011 to December 2011	51,000	2,000	807,200	55,800	355,300	<b>1,271,400</b>
January 2012 to March 2012	31,100	1,000	821,500	51,300	479,700	<b>1,384,500</b>
April 2012 to June 2012	22,600	700	1,225,900	195,100	672,300	<b>2,116,500</b>
July 2012 to September 2012	24,200	900	2,428,700	273,700	1,285,700	<b>4,013,200</b>
<b>Total 2011/12 Academic Year</b>	<b>128,800</b>	<b>4,600</b>	<b>5,283,400</b>	<b>575,800</b>	<b>2,793,000</b>	<b>8,785,600</b>
October 2012 to December 2012	11,800	200	1,016,300	21,100	295,900	<b>1,345,300</b>
January 2013 to March 2013	6,700	100	985,400	22,500	406,900	<b>1,421,700</b>
April 2013 to June 2013	5,200	100	1,728,400	142,600	587,500	<b>2,463,800</b>
<b>2012/13 Academic Year to Date</b>	<b>23,700</b>	<b>500</b>	<b>3,730,100</b>	<b>186,300</b>	<b>1,290,300</b>	<b>5,230,800</b>

**Notes**

1) This table covers all levels of vocational qualifications reported through Ofqual. Data are supplied by awarding organisations.

2) For data relating to Vocational Qualifications, the Academic year runs from October to September. For example, the 2006/07 academic year runs from October 2006 to September 2007.

3) The data in this table has been subjected to revisions.

4) Please see general footnotes and Vocational Qualifications footnotes section for further information on these tables.