



NEET Statistics - Quarterly Brief – October to December 2013

Introduction

This note sets out the available statistics on young people not in education, employment or training (NEET) and young people not in education or training (NET) from three data sources:

i) Participation Statistical First Release (SFR)

These are the authoritative national estimates of NEET and NET rates. They are published annually in the 'Participation in Education, Training and Employment by 16-18 Year Olds in England' SFR. These data are only available annually and cannot be disaggregated to sub-national levels. These take account of revised 2011 Census data, published by the Office for National Statistics (ONS).

ii) Quarterly Labour Force Survey (LFS)¹

Analysis of the LFS allows in-year estimates to be made of NEET and NET trends as well as estimates for other age groups, including 16-24, 18-24 and 19-24. The quarterly LFS estimates cannot be directly compared with the headline Participation SFR series which is based on more detailed but less timely data. This LFS data has not yet been reweighted to reflect ONS's revised population estimates based on the 2011 Census. ONS are due to complete this work later in 2014.

The most recent LFS based estimates for NEET, for the period October to December 2013, are shown in the following table along with 2011 and 2012 data.

Table: NEET rates for different age cohorts: England 2011 – 2013

| | October-December 2011 | October-December 2012 | October-December 2013 | % point change from October-December 2012 to October-December 2013* |
|-----------|-----------------------|-----------------------|-----------------------|---|
| Age 16 | 5.1% | 3.6% | 3.2% | -0.3ppts |
| Age 17 | 8.1% | 5.2% | 4.9% | -0.4ppts |
| Age 18 | 14.9% | 14.5% | 14.2% | -0.2ppts |
| Age 16-18 | 9.4% | 7.9% | 7.6% | -0.4ppts |
| Age 19-24 | 19.1% | 18.0% | 17.2% | -0.9ppts |
| Age 16-24 | 16.1% | 14.9% | 14.2% | -0.7ppts |

Source: Labour Force Survey, October to December

*None of the changes are statistically significant

iii) Local Authorities' Client Caseload Information System (CCIS).

CCIS is the database that local authorities use to record the activity of young people aged 16-19 resident in their area. Data can be aggregated to provide estimates for local authorities and regions within England.

The data from all three sources cover England, and are based on academic age. Estimates of 16-24 year olds NEET in the UK, based on calendar age, are published by ONS on the same day as this release. Further details and a link to the ONS publication are available in section 2.f.

27th February 2013

Coverage: England

Theme: Children,
Education and skills

SFR 07/2014

Issued by

Department for Education
Sanctuary Buildings
Great Smith Street
London SW1P 3BT

Telephone:

Press Office

0207 783 8300

Public Enquiries

0370 000 2288

Statistician

Dexter Roberts

0207 783 8567

Contact Us

Post16.STATISTICS@education.gsi.gov.uk

Internet

<http://tinyurl.com/DfE-NEET-Statistics>

¹ The methodology used to produce these data was revised in May 2013 to ensure harmonisation with the new ONS UK NEET estimates. Further information about this change and the impact on previously released data can be found in the [Harmonised NEET Methodology paper](#).

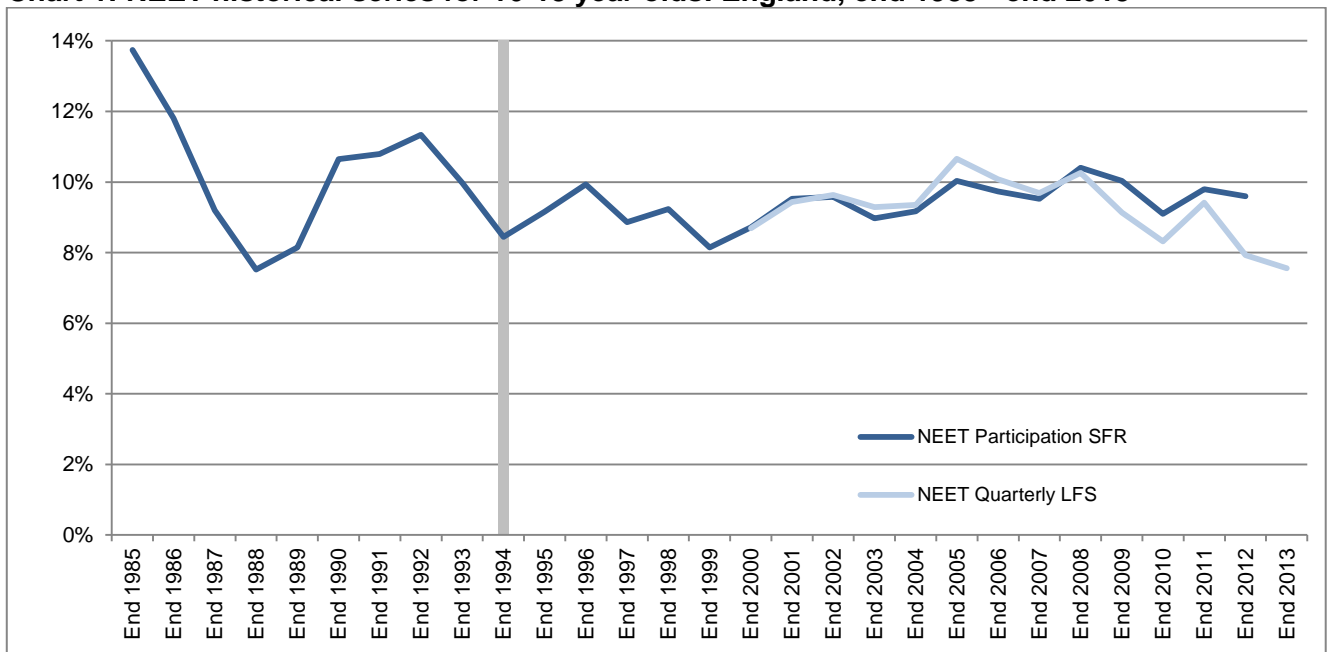
1. Trends

Historical Context

Understanding the historical trends in NEET rates is an important part of placing current performance in perspective. The chart below shows the NEET Participation SFR measure from 1985 along with the LFS NEET measure back to 2000 (the furthest back the LFS methodology can be applied consistently).

Since the fall in the proportion of NEET in the mid-1990s, the 16-18 NEET rate has tended to fluctuate at around 9-10%.

Chart 1: NEET historical series for 16-18 year olds: England, end 1985 - end 2013



Source: Statistical First Release (SFR) 'Participation in Education, Training and Employment by 16-18 Year Olds in England' and analysis of Labour Force Survey (LFS), Oct-Dec Quarter.

Note: There is a break in the SFR time-series in 1994 due to changes in the source of further and higher education data. The pre-1994 data sources produced slightly higher NEET estimates for 16-18 year olds than later sources.

a. NEET Participation SFR series (last updated August 2013)

The Department's Statistical First Release (SFR) ['Participation in Education, Training and Employment by 16-18 Year Olds in England'](#) is the primary source of national data on 16-18 year olds NEET.

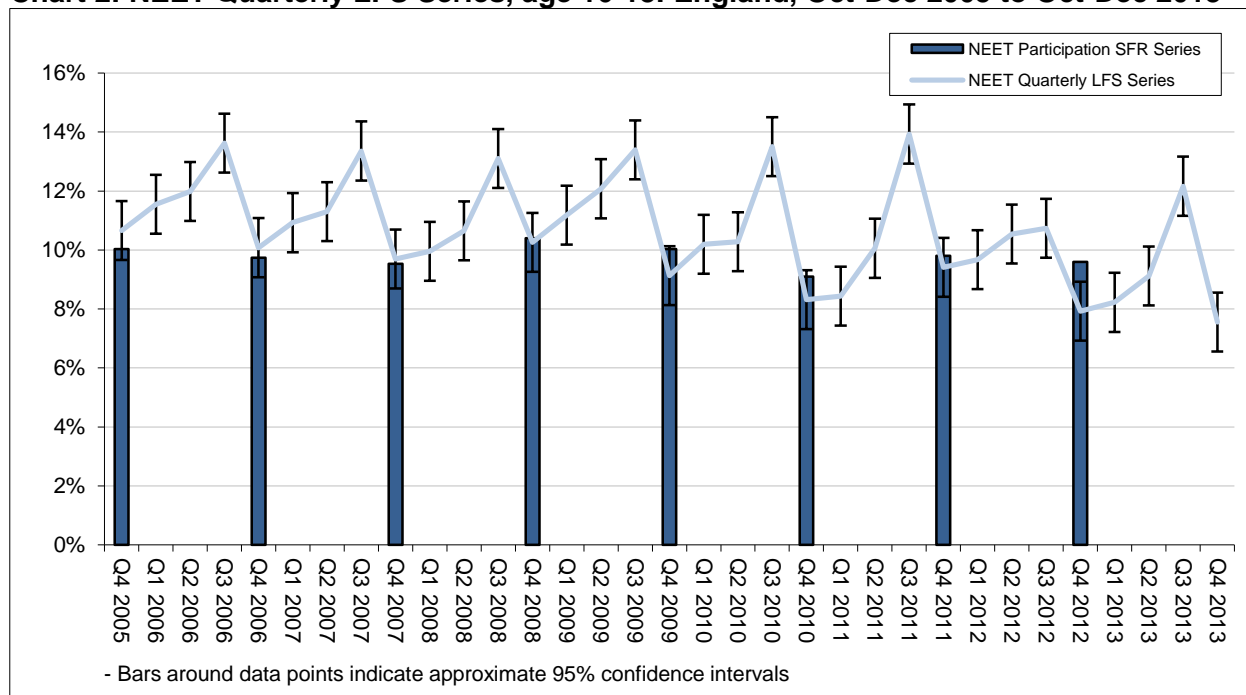
The latest Participation SFR NEET rate for 16-18 year olds, at end 2012, was 9.6%, a fall of 0.2 percentage points from 9.8% at end 2011. This fall was due to a rising NET employment rate; however its impact on the NEET rate was limited due to the first fall in participation in education and training since 2001. The employment rate of 16-18 year olds NET rose from 41.1% at end 2011, to 44.1% at end 2012. Over the same period, participation in education and training decreased from 83.3% to 82.8%.

b. NEET quarterly LFS series (last updated February 2014)

We can monitor trends in NEET rates between the publications of the Participation SFR series using quarterly LFS data.

The trend data for 16-18 year olds shows seasonal patterns that reflect the academic year: lower rates in autumn (October to December) followed by a gradual rise in spring and early summer (January to June) with a peak in late summer (July to September).

Chart 2: NEET Quarterly LFS Series, age 16-18: England, Oct-Dec 2005 to Oct-Dec 2013



Source: Quarterly Labour Force Survey and Participation SFR.

Note: Q1 relates to the months January - March, Q2 relates to April - June, Q3 relates to July - September and Q4 relates to October - December.

The latest data show that the proportion of 16-18 year olds NEET decreased by 0.4 percentage points to 7.6% in October-December 2013, compared to October-December 2012. This change was not statistically significant. This is the lowest comparable figure since consistent data began in 2000 and is 3.1 percentage points lower compared to the high point of 10.7% in 2005.

This fall in the proportion of 16-18 year olds NEET is due to a decrease in the proportion of young people who are NET, combined with an employment rate of the NET group that has remained at the same level as in October-December 2012.

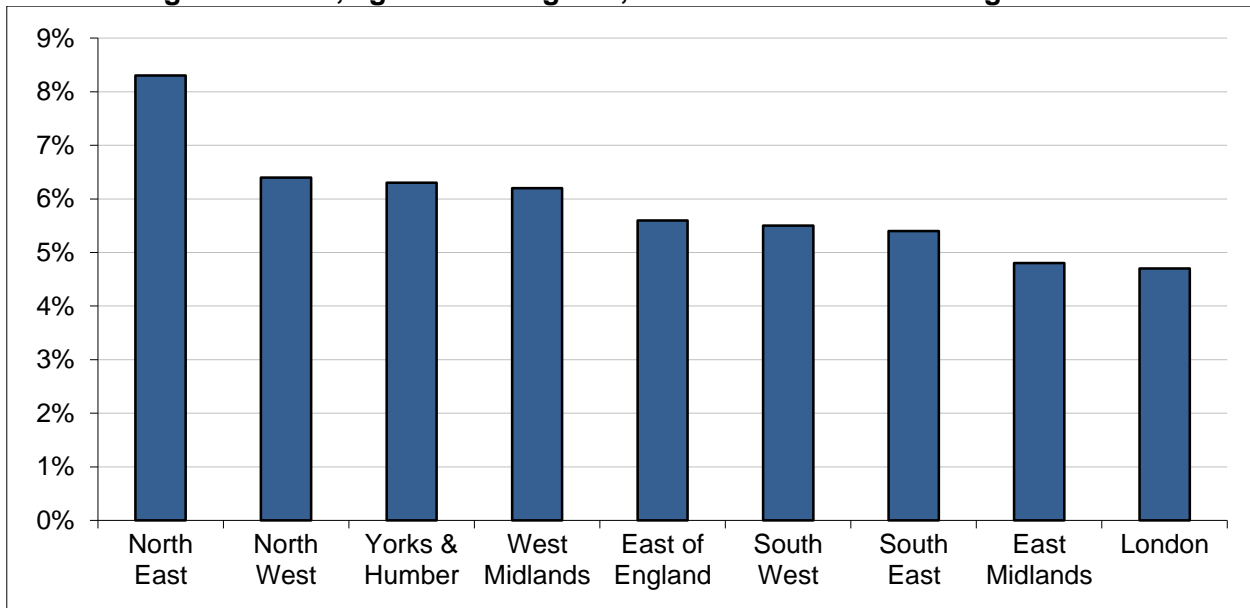
c. Regional NEET (last updated August 2013)

The regional picture on 16-18 NEET is taken from Local Authorities' Client Caseload Information System (CCIS).

CCIS data indicates that the northern English regions have higher NEET rates, i.e. North East, North West and Yorkshire and Humberside. In comparison, London and East Midlands have the lowest NEET rates.

Note that CCIS data tend to show a lower percentage NEET than either the Participation SFR or LFS data sources.

Chart 3: Regional NEET, age 16-18: England, Nov 2012-Jan 2013 average



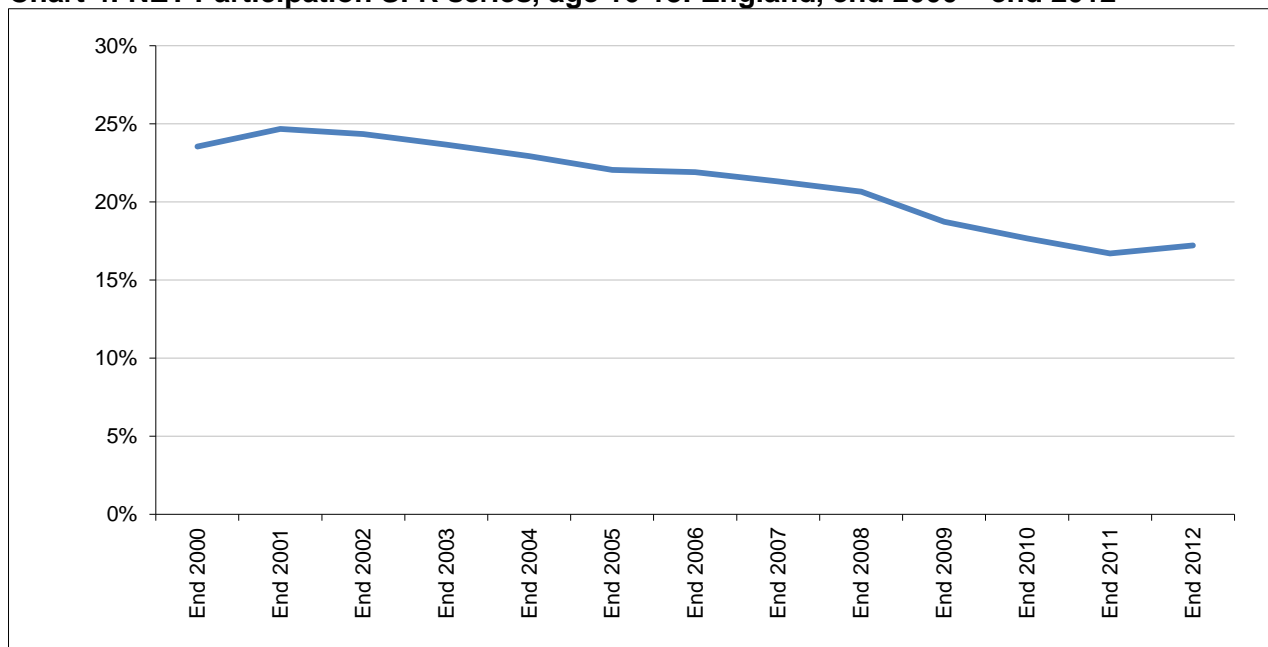
Source: Client Caseload Information System

Note: Local Authority CCIS data are published annually. In addition, regional NEET estimates for 16-24 year olds based on the LFS are now published as supplementary tables alongside this Quarterly Brief. [Both publications](#) appear on the DfE website.

d. NET Participation SFR series (last updated August 2013)

When examining NEET data, it is also important to contextualise it with data on the proportion of young people not in education or training (NET). These data are also taken from the SFR 'Participation in Education, Training and Employment by 16-18 Year Olds in England'.

Chart 4: NET Participation SFR series, age 16-18: England, end 2000 – end 2012



Source: Statistical First Release (SFR) 'Participation in Education, Training and Employment by 16-18 Year Olds in England'

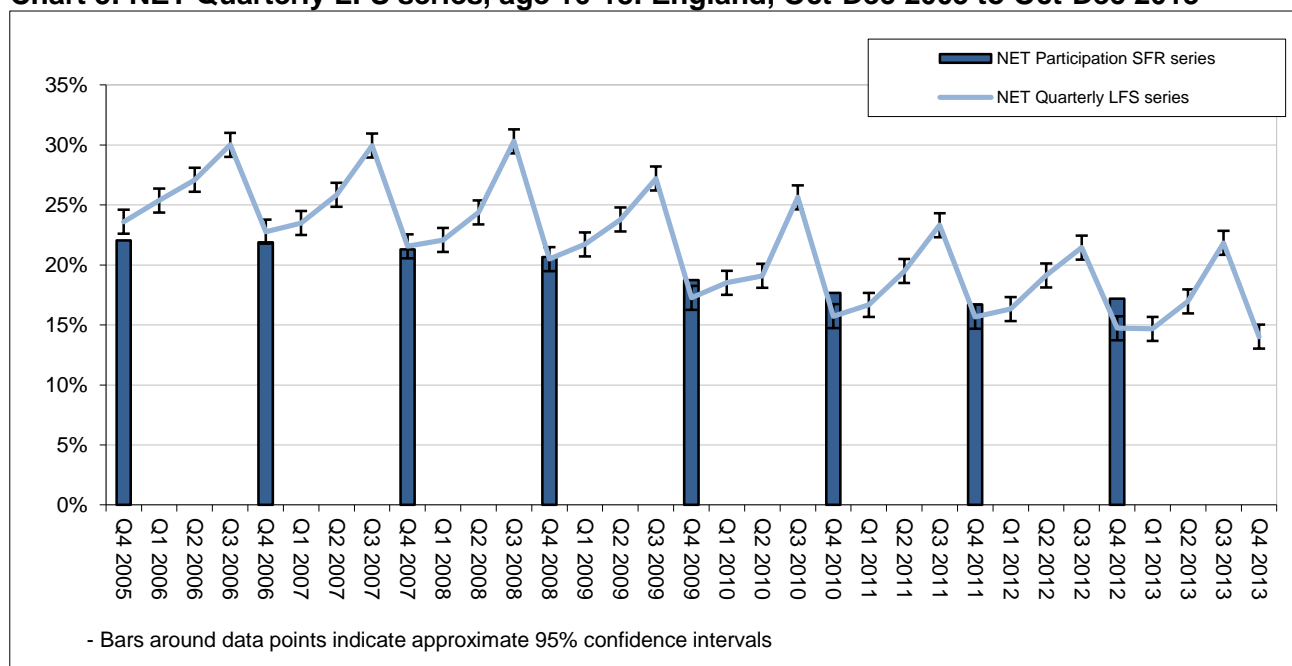
The latest Participation SFR NET rate, for end 2012, was 17.2%, a rise of 0.5 percentage points from end 2011. This was the first rise since end 2001 when 24.7% of 16-18 year olds were NET.

e. NET quarterly LFS series (last updated February 2014)

As with the NEET data, we can look at the in-year NET trend data using the quarterly LFS. The NET series shows the same seasonal pattern as the NEET series.

The proportion of 16-18 year olds NET fell by 0.7 percentage points to 14.0% in October-December 2013, compared to 14.7% in October-December 2012, continuing a trend of falling NET rates in this quarter. The change between 2012 and 2013 is not statistically significant. This is the lowest October-December NET figure since comparable figures began in 2000 and is 11.0 percentage points lower compared to the peak of 25.1% in 2001.

Chart 5: NET Quarterly LFS series, age 16-18: England, Oct-Dec 2005 to Oct-Dec 2013



Source: Quarterly Labour Force Survey and Participation SFR.

Note: Q1 relates to the months January - March, Q2 relates to April - June, Q3 relates to July - September and Q4 relates to October - December.

2. Methodology and Notes

a. NEET and NET Participation SFR series

| | |
|-----------------------|---|
| Description | These data give the definitive measures for 16-18 NEET and NET rates in England. |
| Uses | These series should be used as the national time series for 16-18 year olds NEET and NET in England. The NET series should be used as context for any NEET data. |
| Geographical Coverage | England |
| Age coverage | Academic age 16 to 18 |
| Published source | Statistical First Release (SFR) 'Participation in Education, Training and Employment by 16-18 Year Olds in England' |
| Primary sources | The Schools' Census Pupil Level Annual Schools' Census The Individualised Learner Record (ILR) Higher Education Statistics Agency (HESA). Higher Education Students Early Statistics (HESES) Labour Force Survey Mid-year estimates and projections of population from the Office for National Statistics (ONS) |
| Last period covered | End 2012 |
| Last published | June 2013. Includes revised population estimates based on Census 2011. |
| Next published | June 2014 |

b. NEET and NET quarterly LFS series

| | |
|-----------------------|---|
| Description | These series are quarterly estimates of NEET and NET amongst young people from the LFS. They are not directly comparable with the Participation SFR measure. However, these statistics are produced using the same methodology as the ONS UK NEET estimate. Full details are published in the technical specification . |
| Uses | These series provide more timely data on the recent trends in NEET and NET since the last Participation SFR. Trends should be assessed by comparing the current time period with the same time period in the previous year, to account for seasonal effects. For example, October-December figures should not be compared with January-March figures. The NET series should be used as context for any NEET data. |
| Geographical coverage | England |
| Age coverage | Academic age 16 to 24 |
| Published source | Quarterly Labour Force Survey |
| Primary sources | Quarterly Labour Force Survey |
| Last Period Covered | October-December 2013 |
| Last published | February 2014. Does not include revised population estimates based on Census 2011. |
| Next published | May 2014 |

c. Regional NEET

| | |
|-----------------------|---|
| Description | <p>This series is a 3 month average snapshot estimate of the regional NEET rate taken from the Local Authority Client Caseload Information System (CCIS) data. It is neither directly comparable with the LFS nor the Participation SFR series due to the use of 'currency' rules. The activity status of young people in education or employment is not actively checked every month, but has a shelf life depending on the type of educational course or the nature of the employment.</p> <p>For young people whose currency is lapsed a historical assumption is made on the proportion NEET, taking into account their previously reported activity.</p> <p>The combination of both factors leads to estimates of NEET in the CCIS data that tend to be lower than those estimated from the LFS or those reported in the annual Participation Statistical First Release (SFR).</p> |
| Uses | This series shows the data, aggregated in regions, used by Local Authorities to inform local activity and target setting. |
| Geographical Coverage | England |
| Age coverage | Academic age 16 to 18 |
| Published source | Management information published on the DfE website as policy data: 16- to 18-year-olds NEET |
| Primary sources | Client Caseload Information System (CCIS) |
| Last Period Covered | November 2012 – January 2013 average. |
| Last published | May 2013 |
| Next published | April 2014 |

d. Scheduled revisions to previously published statistics

Labour Force Survey (LFS) datasets are routinely reweighted in line with population estimates. The most recent update introduced a new weighting variable, PWT11, to LFS datasets from July - September 2009 onwards.

The PWT11 weights do not reflect the most recent population estimates for England and Wales, announced by the Office for National Statistics (ONS) on 16th July 2012. ONS plan to release LFS data (from 2001 onwards) reweighted in line with the 2011 Census, later in 2014.

ONS have produced a comparison of the 2011 Census and the LFS labour market indicators which can be found at the following link: <http://www.ons.gov.uk/ons/rel/census/2011-census/key-statistics-for-local-authorities-in-england-and-wales/rpt-labour.html>

In contrast, this Statistical First Release reproduces statistics from the DfE '[Participation in Education, Training and Employment by 16-18 Year Olds in England](#)' SFR which rely on mid-year population estimates which have been revised based on the 2011 Census.

e. National Statistics Publication

The United Kingdom Statistics Authority has designated these statistics as National Statistics, in accordance with the Statistics and Registration Service Act 2007 and signifying compliance with the Code of Practice for Official Statistics.

Designation can be broadly interpreted to mean that the statistics:

- meet identified user needs;
- are well explained and readily accessible;
- are produced according to sound methods, and
- are managed impartially and objectively in the public interest.

Once statistics have been designated as National Statistics it is a statutory requirement that the Code of Practice shall continue to be observed.

f. Equivalent statistics from the Welsh Assembly Government, Scottish Government and the Office for National Statistics (ONS)

| | Welsh Assembly Government (WG) | Scottish Government (SG) | Office for National Statistics (ONS) |
|-----------------------|--|--|--|
| Description | 1. Annual SFR statistics produced in a method analogous to the DfE annual SFR. | 1. Statistics based on the Annual Population Survey (APS). | 1. Monthly Labour Force Survey (LFS) statistics for young people not in full-time education and not in employment -Table 14 from the Labour Market Statistics bulletin. |
| | 2. Quarterly Statistics based on the Annual Population Survey (APS). Definition of NEET corresponds to that used in the DfE NEET Quarterly Brief | 2. Annual school leaver statistics | 2. Quarterly Statistics based on the Labour Force Survey (LFS). Definition of NEET corresponds to that used in the DfE NEET Quarterly Brief. |
| | 3. Pupil destinations based on Careers Wales Survey. | 3. Combination of DWP benefits data and school leaver destinations | |
| Uses | 1. Regarded as the definitive measure of headline NEET estimates in Wales. | 1. National estimates of NEET. | 1. Part of wider labour market statistics; rolling 3-month average both seasonally-adjusted and not seasonally-adjusted; roughly equivalent to NEET but will include some young people in part-time education. |
| | 2. Timely data; regional or single-age estimates based on averaging 3 years of data. | 2. Proportion of young people in 'positive destinations'. The complement is roughly equivalent to NEET, but will include some young people in part-time education. | 2. UK estimate, seasonally adjusted. |
| | 3. Local area estimates of NEET. | 3. Local area estimates of NEET. | |
| Geographical Coverage | Wales | Scotland | United Kingdom (UK) |
| Age coverage | Academic age 16-18, 19-24 (SFR); academic age 16-18, 19-24 (APS); interviews in October following Year 11 (Careers Wales) | Actual age 16-19. | Actual age 16-17 and 18-24. |
| Published source | 1. Welsh Government Participation of Young People in Education and the Labour Market, 2011 and 2012 (provisional) | 1. Local Area Labour Markets in Scotland: Statistics from the Annual Population Survey 2012 | 1. Labour Market Statistics - February 2014 |
| | 2. Young People Not in Education, Employment or Training (NEET), Year to 30 September 2013 | 2. Summary statistics for attainment, leaver destinations and healthy living, No. 3: 2013 Edition | 2. ONS UK NEET, February 2014 |
| | 3. Pupil Destinations from Schools in Wales, 2012 | 3. More Choices More Chances | |

3. Tables

Table 1: Not in Employment, Education, or Training (NEET): England

| | | <i>Numbers</i> | | | | | | |
|--|--------------|---|--------------|-----------------|-----------------|-----------------|-----------------|-----------------|
| a. NEET Participation SFR series | 16 year olds | 17 year olds | 18 year olds | 16-17 year olds | 16-18 year olds | 16-24 year olds | 18-24 year olds | 19-24 year olds |
| End 2000 | 40,700 | 44,200 | 71,300 | 84,800 | 156,100 | | | |
| End 2001 | 46,700 | 55,500 | 73,600 | 102,100 | 175,800 | | | |
| End 2002 | 47,300 | 57,300 | 75,600 | 104,600 | 180,200 | | | |
| End 2003 | 44,600 | 47,200 | 79,700 | 91,800 | 171,500 | | | |
| End 2004 | 45,400 | 53,500 | 78,700 | 98,800 | 177,600 | | | |
| End 2005 | 48,100 | 62,700 | 85,500 | 110,800 | 196,300 | | | |
| End 2006 | 44,700 | 58,200 | 90,400 | 103,000 | 193,300 | | | |
| End 2007 | 41,100 | 58,900 | 91,400 | 100,000 | 191,500 | | | |
| End 2008 | 38,800 | 62,300 | 110,500 | 101,100 | 211,600 | | | |
| End 2009 | 36,000 | 52,500 | 114,800 | 88,500 | 203,200 | | | |
| End 2010 | 33,600 | 54,100 | 95,000 | 87,700 | 182,800 | | | |
| End 2011 | 35,500 | 56,800 | 103,200 | 92,300 | 195,500 | | | |
| End 2012 | 37,900 | 47,900 | 104,300 | 85,800 | 190,100 | | | |
| <i>Source: Labour Force Survey and Admin Data</i> | | <i>Period: End 2000 to End 2012</i> | | | | | | |
| b. NEET Quarterly LFS series* | 16 year olds | 17 year olds | 18 year olds | 16-17 year olds | 16-18 year olds | 16-24 year olds | 18-24 year olds | 19-24 year olds |
| Q4 2008 | 41,000 | 55,000 | 107,000 | 95,000 | 202,000 | 850,000 | 755,000 | 648,000 |
| Q1 2009 | 43,000 | 66,000 | 110,000 | 109,000 | 219,000 | 924,000 | 815,000 | 705,000 |
| Q2 2009 | 53,000 | 76,000 | 108,000 | 129,000 | 237,000 | 950,000 | 821,000 | 713,000 |
| Q3 2009 | 53,000 | 96,000 | 113,000 | 148,000 | 261,000 | 1,064,000 | 916,000 | 803,000 |
| Q4 2009 | 28,000 | 49,000 | 98,000 | 77,000 | 175,000 | 888,000 | 810,000 | 713,000 |
| Q1 2010 | 32,000 | 58,000 | 106,000 | 90,000 | 196,000 | 921,000 | 831,000 | 725,000 |
| Q2 2010 | 32,000 | 67,000 | 100,000 | 99,000 | 199,000 | 868,000 | 769,000 | 669,000 |
| Q3 2010 | 38,000 | 100,000 | 121,000 | 138,000 | 260,000 | 1,023,000 | 885,000 | 763,000 |
| Q4 2010 | 27,000 | 41,000 | 90,000 | 68,000 | 158,000 | 934,000 | 866,000 | 776,000 |
| Q1 2011 | 34,000 | 49,000 | 79,000 | 83,000 | 161,000 | 927,000 | 844,000 | 766,000 |
| Q2 2011 | 42,000 | 56,000 | 92,000 | 98,000 | 190,000 | 991,000 | 893,000 | 801,000 |
| Q3 2011 | 49,000 | 98,000 | 119,000 | 147,000 | 266,000 | 1,181,000 | 1,034,000 | 915,000 |
| Q4 2011 | 31,000 | 50,000 | 93,000 | 81,000 | 174,000 | 969,000 | 887,000 | 794,000 |
| Q1 2012 | 38,000 | 57,000 | 85,000 | 95,000 | 180,000 | 960,000 | 865,000 | 780,000 |
| Q2 2012 | 36,000 | 59,000 | 100,000 | 95,000 | 195,000 | 986,000 | 891,000 | 791,000 |
| Q3 2012 | 25,000 | 80,000 | 92,000 | 105,000 | 197,000 | 1,038,000 | 933,000 | 842,000 |
| Q4 2012 | 21,000 | 32,000 | 93,000 | 53,000 | 146,000 | 890,000 | 837,000 | 744,000 |
| Q1 2013 | 26,000 | 40,000 | 86,000 | 65,000 | 152,000 | 909,000 | 843,000 | 757,000 |
| Q2 2013 | 30,000 | 53,000 | 85,000 | 83,000 | 168,000 | 935,000 | 852,000 | 767,000 |
| Q3 2013 | 31,000 | 89,000 | 101,000 | 120,000 | 221,000 | 1,066,000 | 946,000 | 845,000 |
| Q4 2013 | 20,000 | 28,000 | 90,000 | 49,000 | 138,000 | 844,000 | 796,000 | 706,000 |
| <i>Source: Labour Force Survey</i> | | <i>Period: Q4 2008 to Q4 2013 time series</i> | | | | | | |
| <i>Note: Q1 relates to the months January-March, Q2 to April –June, Q3 to July-September and Q4 to October-December</i> | | | | | | | | |
| <i>*Note: the Labour Force Survey has not been reweighted to reflect the Census 2011 population so the numbers should be used with caution</i> | | | | | | | | |
| c. Regional NEET | 16 year olds | 17 year olds | 18 year olds | 16-17 year olds | 16-18 year olds | 16-24 year olds | 18-24 year olds | 19-24 year olds |
| South East | | | | | | | | |
| London | | | | | | | | |
| East of England | | | | | | | | |
| South West | | | | | | | | |
| West Midlands | | | | | | | | |
| East Midlands | | | | | | | | |
| Yorks & Humber | | | | | | | | |
| North West | | | | | | | | |
| North East | | | | | | | | |
| CCIS data is collected by local authorities and covers only those young people known to them. As a result, the number of young people known to local authorities to be NEET is considerably lower than that estimated by other sources and is excluded from this publication to avoid confusion. | | | | | | | | |

Table 2: Not in Education and Training (NET): England

| | | <i>Numbers</i> | | | | | | |
|--|---------------------|---|---------------------|------------------------|------------------------|------------------------|------------------------|------------------------|
| d. NET Participation SFR series | 16 year olds | 17 year olds | 18 year olds | 16-17 year olds | 16-18 year olds | 16-24 year olds | 18-24 year olds | 19-24 year olds |
| End 2000 | 82,700 | 116,300 | 222,400 | 198,900 | 421,300 | | | |
| End 2001 | 88,300 | 131,500 | 235,200 | 219,800 | 455,100 | | | |
| End 2002 | 80,100 | 135,200 | 242,300 | 215,300 | 457,600 | | | |
| End 2003 | 75,700 | 125,700 | 251,200 | 201,500 | 452,700 | | | |
| End 2004 | 74,500 | 124,200 | 245,500 | 198,700 | 444,100 | | | |
| End 2005 | 68,300 | 122,300 | 241,000 | 190,500 | 431,500 | | | |
| End 2006 | 67,100 | 117,400 | 250,200 | 184,600 | 434,800 | | | |
| End 2007 | 66,700 | 116,000 | 245,600 | 182,700 | 428,300 | | | |
| End 2008 | 52,800 | 114,000 | 253,000 | 166,800 | 419,800 | | | |
| End 2009 | 44,800 | 87,400 | 247,200 | 132,200 | 379,400 | | | |
| End 2010 | 42,900 | 81,600 | 230,300 | 124,500 | 354,700 | | | |
| End 2011 | 42,500 | 81,700 | 207,500 | 124,200 | 331,700 | | | |
| End 2012 | 44,700 | 74,600 | 220,600 | 119,400 | 340,000 | | | |
| <i>Source: Labour Force Survey and Admin Data</i> | | <i>Period: End 2000 to End 2012</i> | | | | | | |
| e. NET Quarterly LFS series* | 16 year olds | 17 year olds | 18 year olds | 16-17 year olds | 16-18 year olds | 16-24 year olds | 18-24 year olds | 19-24 year olds |
| Q4 2008 | 55,000 | 101,000 | 248,000 | 156,000 | 404,000 | 2,794,000 | 2,638,000 | 2,390,000 |
| Q1 2009 | 60,000 | 120,000 | 245,000 | 180,000 | 425,000 | 2,810,000 | 2,630,000 | 2,385,000 |
| Q2 2009 | 73,000 | 137,000 | 257,000 | 210,000 | 467,000 | 2,871,000 | 2,661,000 | 2,404,000 |
| Q3 2009 | 75,000 | 176,000 | 280,000 | 251,000 | 530,000 | 3,100,000 | 2,849,000 | 2,569,000 |
| Q4 2009 | 36,000 | 82,000 | 212,000 | 118,000 | 330,000 | 2,710,000 | 2,592,000 | 2,379,000 |
| Q1 2010 | 40,000 | 98,000 | 219,000 | 138,000 | 356,000 | 2,729,000 | 2,591,000 | 2,373,000 |
| Q2 2010 | 42,000 | 108,000 | 219,000 | 150,000 | 370,000 | 2,744,000 | 2,594,000 | 2,375,000 |
| Q3 2010 | 53,000 | 180,000 | 260,000 | 233,000 | 493,000 | 3,107,000 | 2,874,000 | 2,614,000 |
| Q4 2010 | 35,000 | 62,000 | 202,000 | 97,000 | 299,000 | 2,769,000 | 2,672,000 | 2,471,000 |
| Q1 2011 | 43,000 | 73,000 | 202,000 | 117,000 | 319,000 | 2,772,000 | 2,656,000 | 2,454,000 |
| Q2 2011 | 54,000 | 99,000 | 216,000 | 152,000 | 368,000 | 2,976,000 | 2,824,000 | 2,608,000 |
| Q3 2011 | 67,000 | 151,000 | 227,000 | 218,000 | 445,000 | 3,162,000 | 2,944,000 | 2,717,000 |
| Q4 2011 | 39,000 | 73,000 | 178,000 | 112,000 | 290,000 | 2,736,000 | 2,624,000 | 2,446,000 |
| Q1 2012 | 45,000 | 79,000 | 180,000 | 124,000 | 304,000 | 2,728,000 | 2,604,000 | 2,423,000 |
| Q2 2012 | 51,000 | 95,000 | 209,000 | 146,000 | 355,000 | 2,919,000 | 2,773,000 | 2,564,000 |
| Q3 2012 | 46,000 | 128,000 | 218,000 | 174,000 | 393,000 | 3,067,000 | 2,892,000 | 2,674,000 |
| Q4 2012 | 28,000 | 53,000 | 189,000 | 82,000 | 270,000 | 2,733,000 | 2,651,000 | 2,462,000 |
| Q1 2013 | 29,000 | 58,000 | 184,000 | 86,000 | 271,000 | 2,688,000 | 2,602,000 | 2,417,000 |
| Q2 2013 | 35,000 | 85,000 | 193,000 | 119,000 | 312,000 | 2,812,000 | 2,692,000 | 2,500,000 |
| Q3 2013 | 41,000 | 144,000 | 212,000 | 185,000 | 397,000 | 3,080,000 | 2,895,000 | 2,683,000 |
| Q4 2013 | 23,000 | 47,000 | 187,000 | 70,000 | 257,000 | 2,679,000 | 2,609,000 | 2,422,000 |
| <i>Source: Labour Force Survey</i> | | <i>Period: Q4 2008 to Q4 2013 time series</i> | | | | | | |
| Note: Q1 relates to the months January-March, Q2 to April –June, Q3 to July-September and Q4 to October-December | | | | | | | | |
| *Note: the Labour Force Survey has not been reweighted to reflect the Census 2011 population so the numbers should be used with caution | | | | | | | | |

Table 3: Not in Employment, Education, or Training (NEET): England

| <i>Percentage</i> | | | | | | | | |
|---|---------------------|---------------------|---------------------|------------------------|------------------------|------------------------|------------------------|------------------------|
| a. NEET Participation SFR series | 16 year olds | 17 year olds | 18 year olds | 16-17 year olds | 16-18 year olds | 16-24 year olds | 18-24 year olds | 19-24 year olds |
| End 2000 | 6.7% | 7.4% | 12.2% | 7.0% | 8.7% | | | |
| End 2001 | 7.4% | 9.1% | 12.2% | 8.2% | 9.5% | | | |
| End 2002 | 7.6% | 9.0% | 12.2% | 8.3% | 9.6% | | | |
| End 2003 | 7.0% | 7.5% | 12.4% | 7.2% | 9.0% | | | |
| End 2004 | 6.9% | 8.3% | 12.3% | 7.6% | 9.2% | | | |
| End 2005 | 7.4% | 9.5% | 13.2% | 8.5% | 10.0% | | | |
| End 2006 | 6.7% | 8.9% | 13.5% | 7.8% | 9.7% | | | |
| End 2007 | 6.1% | 8.8% | 13.8% | 7.4% | 9.5% | | | |
| End 2008 | 5.8% | 9.1% | 16.2% | 7.5% | 10.4% | | | |
| End 2009 | 5.5% | 7.8% | 16.5% | 6.7% | 10.0% | | | |
| End 2010 | 5.1% | 8.2% | 13.8% | 6.6% | 9.1% | | | |
| End 2011 | 5.5% | 8.5% | 15.3% | 7.0% | 9.8% | | | |
| End 2012 | 5.8% | 7.3% | 15.5% | 6.6% | 9.6% | | | |
| <i>Source: Labour Force Survey and Admin Data</i> <i>Period: End 2000 to End 2012</i> | | | | | | | | |
| b. NEET Quarterly LFS series* | 16 year olds | 17 year olds | 18 year olds | 16-17 year olds | 16-18 year olds | 16-24 year olds | 18-24 year olds | 19-24 year olds |
| Q4 2008 | 6.3% | 8.3% | 15.9% | 7.3% | 10.3% | 14.2% | 16.0% | 16.1% |
| Q1 2009 | 6.6% | 10.0% | 16.8% | 8.4% | 11.2% | 15.5% | 17.4% | 17.5% |
| Q2 2009 | 8.3% | 11.5% | 16.3% | 9.9% | 12.1% | 15.8% | 17.5% | 17.7% |
| Q3 2009 | 8.2% | 15.0% | 16.8% | 11.6% | 13.4% | 17.8% | 19.5% | 20.0% |
| Q4 2009 | 4.6% | 7.4% | 15.4% | 6.0% | 9.1% | 14.8% | 17.2% | 17.4% |
| Q1 2010 | 5.1% | 8.6% | 16.9% | 7.0% | 10.2% | 15.3% | 17.6% | 17.7% |
| Q2 2010 | 5.2% | 10.1% | 15.2% | 7.7% | 10.3% | 14.4% | 16.2% | 16.4% |
| Q3 2010 | 6.2% | 15.0% | 19.1% | 10.8% | 13.5% | 17.1% | 18.8% | 18.8% |
| Q4 2010 | 4.2% | 6.6% | 14.0% | 5.4% | 8.3% | 15.5% | 18.2% | 18.9% |
| Q1 2011 | 5.2% | 7.9% | 12.2% | 6.5% | 8.4% | 15.4% | 17.7% | 18.6% |
| Q2 2011 | 6.6% | 9.1% | 14.5% | 7.8% | 10.1% | 16.4% | 18.6% | 19.3% |
| Q3 2011 | 7.7% | 15.5% | 18.4% | 11.6% | 13.9% | 19.5% | 21.5% | 22.0% |
| Q4 2011 | 5.1% | 8.1% | 14.9% | 6.6% | 9.4% | 16.1% | 18.5% | 19.1% |
| Q1 2012 | 6.2% | 9.0% | 13.7% | 7.6% | 9.7% | 15.9% | 18.1% | 18.8% |
| Q2 2012 | 5.9% | 9.7% | 15.9% | 7.8% | 10.5% | 16.3% | 18.4% | 18.8% |
| Q3 2012 | 4.2% | 12.8% | 14.9% | 8.6% | 10.7% | 17.2% | 19.4% | 20.1% |
| Q4 2012 | 3.6% | 5.2% | 14.5% | 4.4% | 7.9% | 14.9% | 17.6% | 18.0% |
| Q1 2013 | 4.6% | 6.0% | 13.8% | 5.4% | 8.2% | 15.1% | 17.6% | 18.2% |
| Q2 2013 | 5.0% | 8.0% | 14.4% | 6.6% | 9.1% | 15.5% | 17.8% | 18.3% |
| Q3 2013 | 5.4% | 14.4% | 16.2% | 10.1% | 12.2% | 17.7% | 19.6% | 20.1% |
| Q4 2013 | 3.2% | 4.9% | 14.2% | 4.0% | 7.6% | 14.2% | 16.8% | 17.2% |
| <i>Source: Labour Force Survey</i> <i>Period: Q4 2008 to Q4 2013 time series</i> | | | | | | | | |
| <i>Note: Q1 relates to the months January-March, Q2 to April –June, Q3 to July-September and Q4 to October-December</i> | | | | | | | | |
| <i>*Note: the Labour Force Survey has not been reweighted to reflect the Census 2011 population</i> | | | | | | | | |
| c. Regional NEET | 16 year olds | 17 year olds | 18 year olds | 16-17 year olds | 16-18 year olds | 16-24 year olds | 18-24 year olds | 19-24 year olds |
| South East | 3.1% | 5.2% | 8.1% | 4.2% | 5.4% | | | |
| London | 2.3% | 3.6% | 8.3% | 3.0% | 4.7% | | | |
| East of England | 3.3% | 5.3% | 8.3% | 4.3% | 5.6% | | | |
| South West | 3.0% | 5.3% | 8.2% | 4.2% | 5.5% | | | |
| West Midlands | 3.7% | 6.1% | 8.9% | 4.9% | 6.2% | | | |
| East Midlands | 3.0% | 4.9% | 6.7% | 4.0% | 4.8% | | | |
| Yorks & Humber | 3.7% | 6.3% | 8.8% | 5.1% | 6.3% | | | |
| North West | 3.7% | 6.2% | 9.3% | 4.9% | 6.4% | | | |
| North East | 4.1% | 7.5% | 13.7% | 5.8% | 8.3% | | | |
| <i>Source: Client Caseload Information System</i> <i>Period: Nov 2012 - Jan 2013 average</i> | | | | | | | | |

Table 4: Not in Education and Training (NET): England

| <i>Percentage</i> | | | | | | | | |
|---|---------------------|---------------------|---|------------------------|------------------------|------------------------|------------------------|------------------------|
| d. NET Participation SFR series | 16 year olds | 17 year olds | 18 year olds | 16-17 year olds | 16-18 year olds | 16-24 year olds | 18-24 year olds | 19-24 year olds |
| End 2000 | 13.6% | 19.4% | 38.0% | 16.5% | 23.5% | | | |
| End 2001 | 14.0% | 21.5% | 39.1% | 17.7% | 24.7% | | | |
| End 2002 | 12.8% | 21.3% | 39.2% | 17.1% | 24.3% | | | |
| End 2003 | 11.9% | 19.9% | 39.0% | 15.9% | 23.7% | | | |
| End 2004 | 11.4% | 19.4% | 38.4% | 15.3% | 22.9% | | | |
| End 2005 | 10.5% | 18.5% | 37.1% | 14.6% | 22.0% | | | |
| End 2006 | 10.1% | 17.9% | 37.4% | 14.0% | 21.9% | | | |
| End 2007 | 9.9% | 17.3% | 37.0% | 13.6% | 21.3% | | | |
| End 2008 | 7.9% | 16.7% | 37.2% | 12.3% | 20.6% | | | |
| End 2009 | 6.8% | 12.9% | 35.6% | 9.9% | 18.7% | | | |
| End 2010 | 6.5% | 12.3% | 33.5% | 9.4% | 17.7% | | | |
| End 2011 | 6.6% | 12.3% | 30.9% | 9.5% | 16.7% | | | |
| End 2012 | 6.9% | 11.4% | 32.7% | 9.2% | 17.2% | | | |
| <i>Source: Labour Force Survey and Admin Data</i> | | | <i>Period: End 2000 to End 2012</i> | | | | | |
| e. NET Quarterly LFS series* | 16 year olds | 17 year olds | 18 year olds | 16-17 year olds | 16-18 year olds | 16-24 year olds | 18-24 year olds | 19-24 year olds |
| Q4 2008 | 8.7% | 15.2% | 36.9% | 12.0% | 20.5% | 46.5% | 56.0% | 59.2% |
| Q1 2009 | 9.3% | 18.1% | 37.6% | 13.8% | 21.7% | 47.0% | 56.2% | 59.2% |
| Q2 2009 | 11.4% | 20.8% | 38.8% | 16.1% | 23.8% | 47.8% | 56.6% | 59.5% |
| Q3 2009 | 11.7% | 27.5% | 41.6% | 19.6% | 27.2% | 51.9% | 60.7% | 63.9% |
| Q4 2009 | 5.8% | 12.4% | 33.5% | 9.2% | 17.3% | 45.1% | 54.9% | 58.2% |
| Q1 2010 | 6.5% | 14.5% | 34.8% | 10.6% | 18.5% | 45.3% | 54.8% | 57.8% |
| Q2 2010 | 6.9% | 16.1% | 33.4% | 11.7% | 19.1% | 45.6% | 54.7% | 58.2% |
| Q3 2010 | 8.7% | 26.8% | 40.9% | 18.1% | 25.6% | 51.9% | 61.2% | 64.3% |
| Q4 2010 | 5.5% | 10.1% | 31.2% | 7.7% | 15.7% | 46.1% | 56.2% | 60.1% |
| Q1 2011 | 6.7% | 11.8% | 31.4% | 9.2% | 16.7% | 45.9% | 55.7% | 59.5% |
| Q2 2011 | 8.4% | 16.1% | 33.9% | 12.2% | 19.5% | 49.2% | 58.9% | 62.7% |
| Q3 2011 | 10.7% | 23.9% | 35.1% | 17.3% | 23.3% | 52.1% | 61.2% | 65.3% |
| Q4 2011 | 6.5% | 11.7% | 28.7% | 9.1% | 15.7% | 45.5% | 54.8% | 58.7% |
| Q1 2012 | 7.3% | 12.6% | 29.0% | 10.0% | 16.3% | 45.3% | 54.5% | 58.3% |
| Q2 2012 | 8.3% | 15.5% | 33.1% | 11.9% | 19.1% | 48.2% | 57.3% | 60.9% |
| Q3 2012 | 7.7% | 20.7% | 35.5% | 14.3% | 21.4% | 50.9% | 60.1% | 63.7% |
| Q4 2012 | 4.9% | 8.7% | 29.5% | 6.8% | 14.7% | 45.8% | 55.6% | 59.7% |
| Q1 2013 | 5.1% | 8.7% | 29.4% | 7.1% | 14.7% | 44.8% | 54.3% | 58.1% |
| Q2 2013 | 5.9% | 12.8% | 32.8% | 9.5% | 17.0% | 46.5% | 56.2% | 59.5% |
| Q3 2013 | 7.1% | 23.2% | 34.1% | 15.5% | 21.8% | 51.2% | 60.1% | 63.9% |
| Q4 2013 | 3.7% | 8.1% | 29.6% | 5.8% | 14.0% | 45.0% | 55.0% | 58.9% |
| <i>Source: Labour Force Survey</i> | | | <i>Period: Q4 2008 to Q4 2013 time series</i> | | | | | |
| <i>Note: Q1 relates to the months January-March, Q2 to April –June, Q3 to July-September and Q4 to October-December</i> | | | | | | | | |
| <i>*Note: the Labour Force Survey has not been reweighted to reflect the Census 2011 population</i> | | | | | | | | |

Additional tables are published with this brief – these show a regional breakdown of the quarterly NEET statistics for 16-24, 18-24 and 19-24 year olds, and time-series data from 2001. Please see the [DfE NEET Statistics - Quarterly Brief - October to December 2013](#) webpage.