



Department
for Education

Statistical First Release



SFR 22/2013

27 June 2013

Coverage: England

Theme: Children,
Education and Skills

Issued by
Department for Education
Sanctuary Buildings
Great Smith Street
London SW1P 3BT

Telephone:
Press Office
020 7925 6789
Public Enquiries
0870 000 2288

Statistician
Rob Hartley
020 7340 8306

Email
info@education.gsi.gov.uk

Internet
<http://tinyurl.com/participation-SFR-Jun2013>

PARTICIPATION IN EDUCATION, TRAINING AND EMPLOYMENT BY 16-18 YEAR OLDS IN ENGLAND

INTRODUCTION

This Statistical First Release (SFR) provides provisional end 2012 estimates of participation in education, training and employment and those who are not in education, employment or training (NEET) for 16, 17 and 18 year olds in England. It also updates the end 2011 estimates from SFR 12/2012 published in February 2013.

All estimates relate to a snapshot of activities at the end of the calendar year, and are based on academic age, defined as age at the start of the academic year, 31st August.

Information from the different post-16 learning options (schools, Further Education (FE) colleges, Work Based Learning (WBL), Higher Education, etc) have been drawn together to give a coherent and comprehensive picture of the participation of 16-18 year olds. Key analyses are by age, gender, type of learning, institution, labour market status and highest qualification being studied.

This SFR provides the Department for Education's definitive measures of participation at ages 16-18, and sets recent changes in the context of historical trends. It is used to monitor progress against the Department's objectives of raising participation and reducing the number of young people NEET.

HEADLINES

The revised key statistics based on the final 2011 and provisional 2012 estimates are shown in the summary table below.

	16		17		18		16-18	
	end 2011	end 2012 (prov)	end 2011	end 2012 (prov)	end 2011	end 2012 (prov)	end 2011	end 2012 (prov)
Full-time education	83.2%	82.8%	72.8%	73.5%	50.3%	46.0%	68.6%	67.2%
Part-time education	4.9%	5.2%	5.8%	6.0%	5.7%	6.0%	5.5%	5.8%
Work-based learning	3.6%	3.2%	6.0%	6.0%	7.0%	7.5%	5.5%	5.6%
Education and WBL	91.4%	91.0%	84.3%	85.2%	62.7%	59.1%	79.3%	78.2%
Education and training	93.4%	93.1%	87.7%	88.6%	69.1%	67.3%	83.3%	82.8%
NEET	5.5%	5.8%	8.5%	7.3%	15.3%	15.5%	9.8%	9.6%

The main headlines changes between 2011 and 2012 are:

16-18 year olds

- The proportion of 16-18 year olds in full-time education fell from 68.6% in 2011 to 67.2% in 2012. The proportion in part-time education rose slightly, from 5.5% to 5.8%, over the same period.
- The fall in full-time education amongst 16-18 year olds was driven mainly by a large fall at age 18 (-4.3 percentage points), most of which was due to lower participation in higher education institutions.
- Overall participation in education and work-based learning fell by 1.1

percentage points (ppts), to 78.2%. This is the first time it has fallen since 2001.

- The proportion of 16-18 year olds NEET fell by 0.2 ppts, from 9.8% in 2011 to 9.6% in 2012.

16 year olds¹

- Participation in full-time education fell by 0.3 ppts at age 16 to 82.8%, but there was a rise in part-time education (+0.3 ppts). Work-based learning fell by 0.4 ppts to 3.2%.
- The overall proportion in education and work-based learning fell by 0.4 ppts to 91.0%.
- The proportion of 16 year olds NEET rose from 5.5% to 5.8%.

17 year olds¹

- Participation in full-time education rose by 0.7 ppts (to 73.5%) at age 17, whilst participation in part-time education was 6.0% (+0.2 ppts). Work-based learning stayed at 6.0%.
- Overall the proportion of 17 year olds in education and work-based learning rose by 0.9 ppts to 85.2%.
- The proportion of 17 year olds NEET fell by 1.2 ppts between 2011 and 2012, to 7.3%.

18 year olds¹

- Participation in full-time education fell by 4.3 ppts at age 18, from 50.3% to 46.0%, which is the first fall since 2001.
- Overall participation in education and work-based learning fell by 3.6 ppts to 59.1%.
- The proportion of 18 year olds NEET rose slightly (0.1 ppts) to 15.5% at end 2012. The reason for this slight increase compared to the larger fall in participation is due to an increase in the employment rate for 18 year olds not in education or training (NET).

¹ Participation figures for individual ages are subject to statistical variance due to uncertainties in underlying population estimates from the Office for National Statistics (ONS). ONS have indicated that these uncertainties arise from sampling error and imputation effects in the 2011 Census. See Technical Notes section D for more information.

COMMENTARY

Participation at age 16

The proportion of 16 year olds in full-time education was broadly flat from the early 1990s until 2001 (see Chart 1 below). Full-time education then rose from 71.0% in 2001 to 83.8% in 2009 with only 2007 not experiencing growth. Some of the 12.8 pts increase in full-time education between 2001 and 2009 came from young people moving from other forms of participation (part-time education, work-based learning, employer funded training or other education and training) which fell from 15.0% of all 16 year olds in 2001 to 9.4% in 2009. However, for the most part, the increase in full-time education reflected an overall expansion in participation in education and training – as a result the proportion of 16 year olds not in education and training (NET) fell from 14.0% at end 2001 to 6.8% at end 2009.

Between 2009 and 2010 the proportion of 16 year olds in full-time education rose by 0.6 pts but then fell by 1.2 pts in 2011 and a further 0.3 pts in 2012 to 82.8%. Participation in work-based learning rose slightly in 2011 (+0.1 pts) but fell by 0.4 pts to 3.2% in 2012. However, participation in part-time education rose by 0.9 pts in both 2010 and 2011 and by 0.3 pts in 2012. Overall, this meant that the participation in education and work-based learning has fallen since the 2010 rate of 91.6% with the 2011 and 2012 rates being 91.4% and 91.0% respectively.

Participation measured using the slightly broader definition of education and training was 93.5% in 2010. This fell by 0.1 pts in 2011 and then again by 0.3 pts to the 2012 level of 93.1%.

Chart 1: Trends in participation in education and training at age 16: England, end 1994 – end 2012

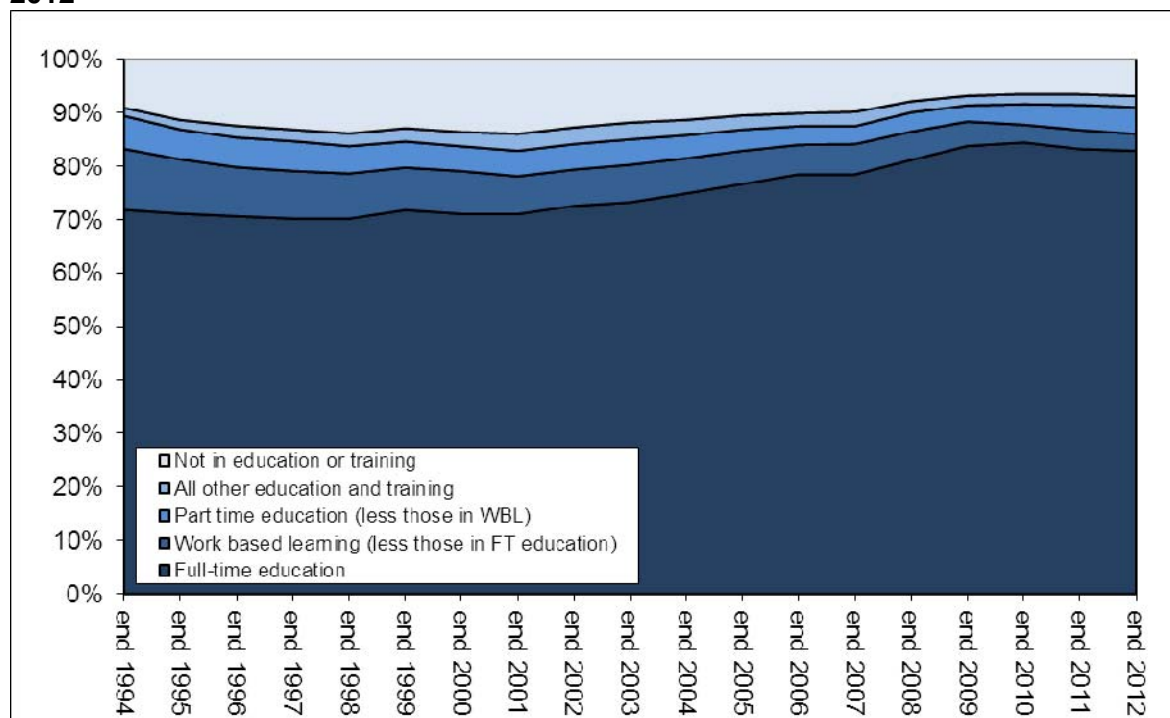


Table A shows the changes in full-time education and part-time education between 2011 and 2012 by institution type. It shows that the fall in participation in full-time education at age 16 was driven by a fall in FE colleges of 0.7pts but full-time education in state-funded schools rose by 0.4 pts. Almost all part-time education is delivered through FE colleges. Between 2011 and 2012 there was a 0.4 pts rise in 16 year old participation in this provision, from 4.6% to 5.0%.

Table A: Participation in full-time and part-time education at age 16 by institution type

Age 16	Full-time education			Part-time education		
	end 2011	end 2012 (prov)	annual change (ppts)	end 2011	end 2012 (prov)	annual change (ppts)
	State-funded schools	34.7%	35.1%	0.4	0.0%	0.0%
Independent schools	6.3%	6.3%	0.0	0.0%	0.0%	0.0
Sixth form colleges	11.5%	11.5%	0.0	0.1%	0.1%	0.0
General FE, tertiary and specialist colleges	30.6%	29.9%	-0.7	4.6%	5.0%	0.4
Higher education institutions	0.2%	0.1%	0.0	0.2%	0.1%	-0.1
Total	83.2%	82.8%	-0.3	4.9%	5.2%	0.3

It should be noted that the ratio of full-time to part-time education can change between the provisional and final figures. See section E of the Technical Notes for details of the changes in full-time and part-time education between provisional and final in 2010 and 2011.

Participation at age 17

Similarly to 16 year olds, the proportion of 17 year olds in full-time education was broadly flat from the early 1990s, but started to increase year-on-year from 2001 (see Chart 2 below). Between 2001 and 2009, participation in full-time education rose by 14.3 ppts from 58.7% to 72.9%, and the overall proportion in education and work-based learning rose by 10.0 ppts in the same period.

The full-time participation rate fell by 1.0 ppts between 2010 and 2011 and then rose by 0.7 ppts in 2012 to 73.5%. Alongside this, the proportion of 17 year olds in part-time education rose by 0.2 ppts between 2011 and 2012 so overall participation in education and work-based learning at age 17 has risen from 84.3% in 2011 to 85.2% in 2012. Participation in any education and training rose from 87.7% in 2011 to 88.6 in 2012.

Chart 2: Trends in participation in education and training at age 17: England, end 1994 – end 2012

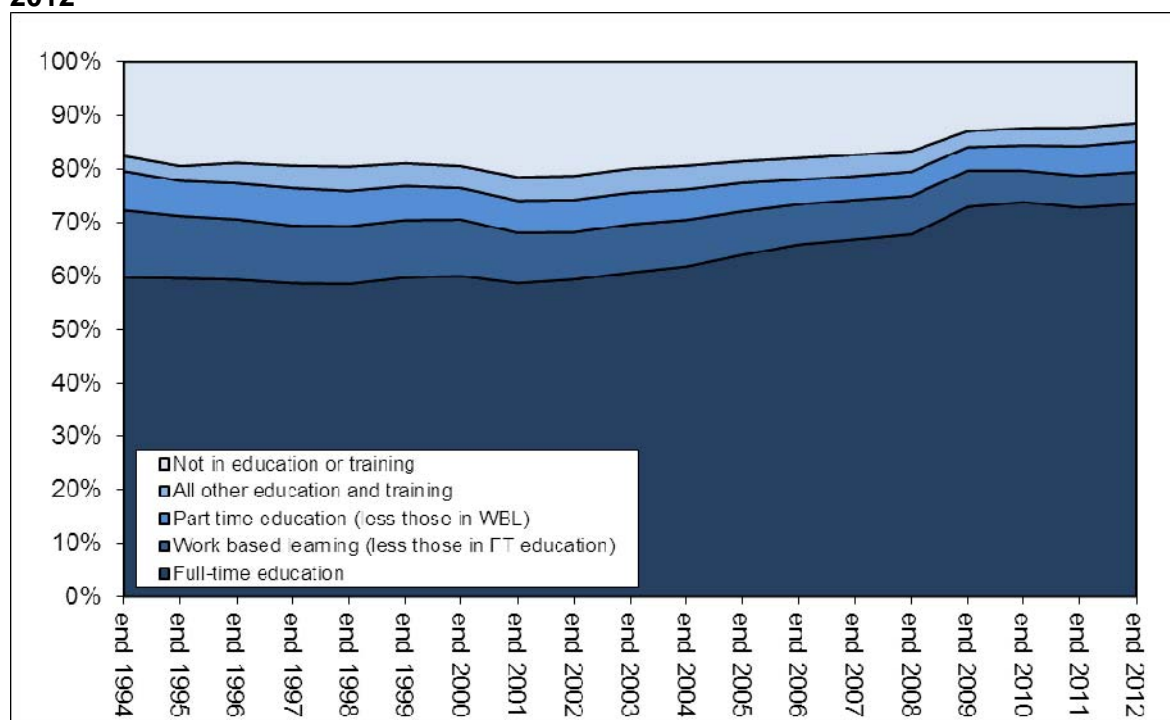


Table B shows the breakdown of full-time and part-time education at age 17 by institution type for 2011 and 2012. At age 17 the increase in full-time education was driven by a rise in participation in state-funded schools, which rose by 0.9 ppts from 27.8% in 2011 to 28.7% in 2012. There was also a rise in sixth form colleges (+0.4 ppts) and independent schools (+0.1 ppts). As with 16 year olds, there

was a decline in full-time participation and a rise in part-time in FE colleges between 2011 and 2012. The proportion of 17 year olds in full-time education in these institutions fell by 0.6 ppts to 28.1% but part-time participation rose from 5.0% in 2011 to 5.5% in 2012.

Table B: Participation in full-time and part-time education at age 17 by institution type

Age 17	Full-time education			Part-time education		
	end 2011	end 2012 (prov)	annual change (ppts)	end 2011	end 2012 (prov)	annual change (ppts)
	State-funded schools	27.8%	28.7%	0.9	0.0%	0.0%
Independent schools	5.9%	6.0%	0.1	0.0%	0.0%	0.0
Sixth form colleges	9.7%	10.1%	0.4	0.4%	0.3%	-0.1
General FE, tertiary and specialist colleges	28.8%	28.1%	-0.6	5.0%	5.5%	0.5
Higher education institutions	0.7%	0.6%	-0.1	0.4%	0.3%	-0.1
Total	72.8%	73.5%	0.7	5.8%	6.0%	0.2

Participation at age 18

The proportion of 18 year olds in full-time education increased each year between 2003 and 2011, but fell by 4.3 ppts between 2011 and 2012. Chart 3 shows full-time education was 38.5% at end 2003, increasing to 50.3% by end 2011. In 2012 the rate fell to 46.0%. Participation in part-time education has risen for the last two years from 5.0% in 2010 to 5.7% in 2011 and 6.0% in 2012. The proportion of 18 year olds in Employer Funded Training and Other Education and Training also increased between 2011 and 2012 (by +1.6 ppts and +0.4 ppts respectively). However, these increases didn't negate the decline in full-time education so the proportion of 18 year olds in education and work-based learning fell by 3.6 ppts between 2011 and 2012 to 59.1%. Participation in the broader definition 'education or training' fell by 1.8 ppts to 67.3%.

Chart 3: Trends in participation in education and training at age 18: England, end 1994 – end 2012

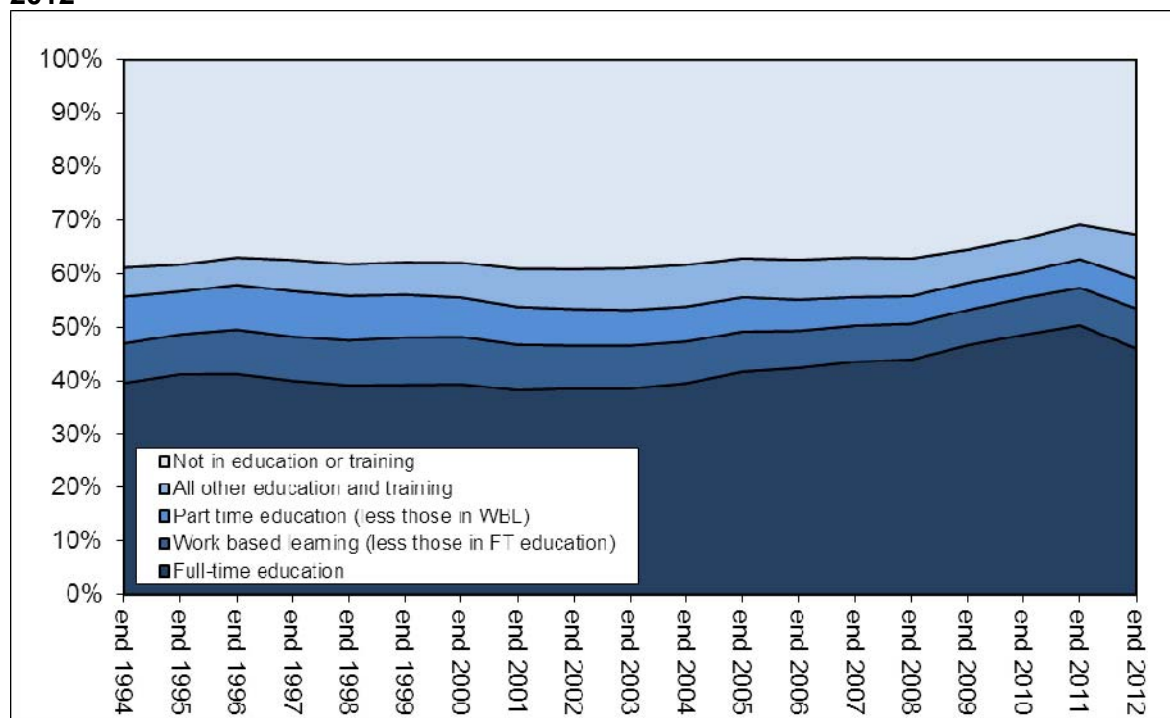


Table C shows the breakdown of full-time and part-time education at age 18 by institution type for 2011 and 2012. As at age 16 and 17, there was a fall in participation in full-time education in FE colleges (-0.8 ppts), but the largest decline was in higher education (-3.9 ppts), leading to the overall decrease in full-time education of 4.3 ppts. This 3.9 ppts decrease was caused by the number of 18 year olds participating in full-time higher education falling by 25,300 (-13.9%) from 182,000 in 2011 to

156,700 in 2012. This is the first data point following the rise in university tuition fees in September 2012.

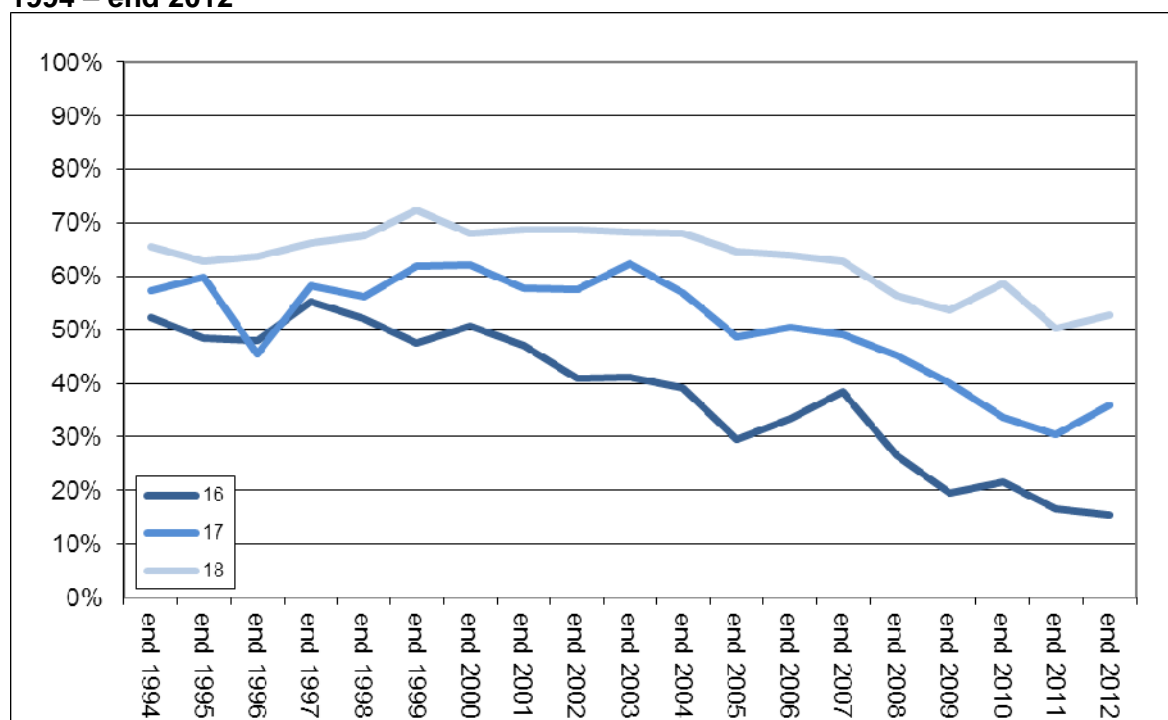
Table C: Participation in full-time and part-time education at age 18 by institution type

Age 18	Full-time education			Part-time education		
	end 2011	end 2012 (prov)	annual change (ppts)	end 2011	end 2012 (prov)	annual change (ppts)
	State-funded schools	3.7%	3.9%	0.2	0.0%	0.0%
Independent schools	1.0%	1.1%	0.0	0.0%	0.1%	0.0
Sixth form colleges	1.6%	1.8%	0.1	0.2%	0.2%	0.0
General FE, tertiary and specialist colleges	16.9%	16.1%	-0.8	5.0%	5.5%	0.4
Higher education institutions	27.1%	23.2%	-3.9	0.4%	0.3%	-0.2
Total	50.3%	46.0%	-4.3	5.7%	6.0%	0.3

Young People not in education, employment or training (NEET)

The proportion of young people who are not in education, employment or training (NEET) is determined by the size of the group not in education or training (NET), and the employment rate of that group. As we have seen above, the size of the NET group had been falling at each of ages 16, 17 and 18 in recent years, but rose for 16 and 18 year olds between 2011 and 2012. As Chart 4 shows, the employment rate for young people NET at each age had been tending to fall over the same period. This fall had been most pronounced for age 16 and 17 year olds.

Chart 4: Employment rate of young people not in education or training by age: England, end 1994 – end 2012



At age 16, the employment rate of the NET group fell from 50.8% in 2000, to just 16.4% in 2011 and again to 15.4% in 2012, whilst at age 17 it fell from 62.0% in 2000 to 30.4% in 2011 but rose by 5.4 ppts in 2012 to 35.8%. At age 18, the employment rate of the NET group was just under 70% between 2000 and 2004 before falling to 50.3% in 2011. The rate rose by 2.4 ppts in 2012 to 52.7%. The increases at ages 17 and 18 could be due at least in part to sampling variation (the rates are taken from the Labour Force Survey) so it remains to be seen whether they represent a sustained change to the long term trend.

Chart 5 shows the proportion of young people NEET at each of ages 16-18, and for the 16-18 group as a whole, between 1994 and 2012.

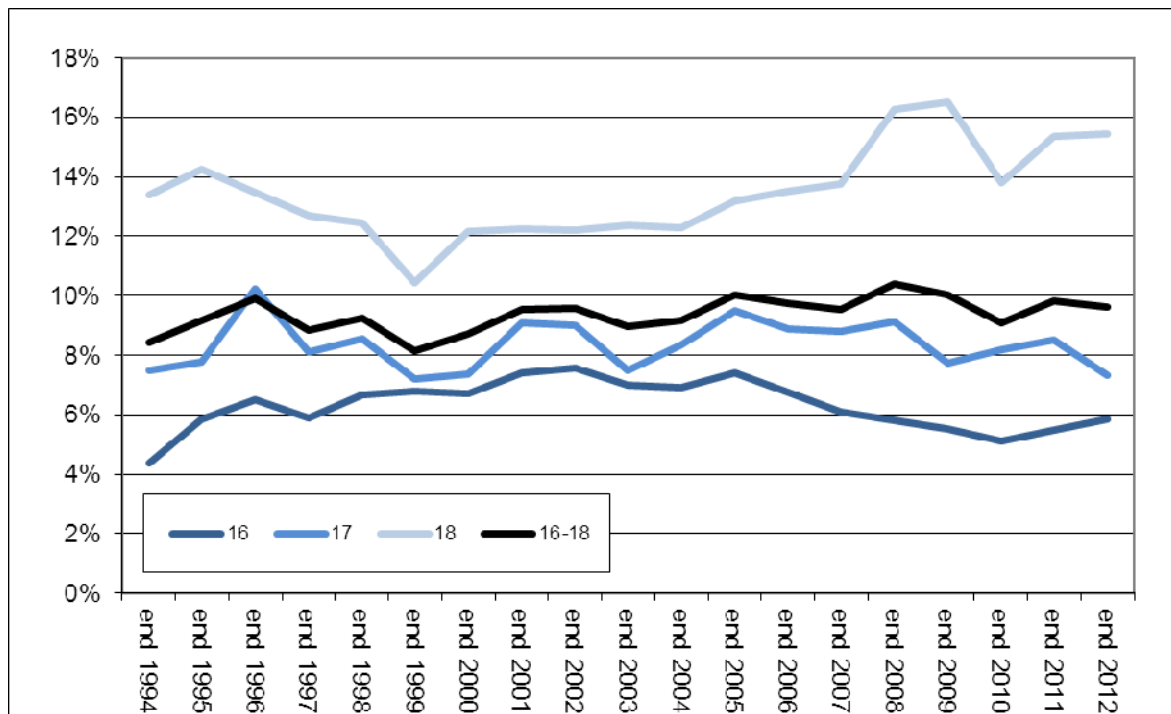
At age 16, the NEET rate had been falling between 2005 and 2010, because the rising participation more than compensated for the falling employment rates of the NET groups. However, between 2010 and 2011 both participation in education and training at age 16 and the employment rate of the NET group fell so the proportion NEET rose from 5.1% to 5.5%. This pattern continued in 2012 and so the NEET rate rose again to 5.8%

At age 17, there was an increase in education and training between 2011 and 2012 (+0.8 pts) and NET employment rate rose (+5.4 pts), so the proportion NEET fell from 8.5% to 7.3%.

At age 18, the employment rate of the NET group has a stronger influence over the NEET rate than at 16 and 17, because a lower proportion of the cohort is participating in education or training. This meant that from end 2004 until end 2009, the NEET rate at 18 rose, despite increases in participation, because the employment rate of the NET group was falling over this period. The spike in the NET employment rate in 2010 led to a large fall in the proportion of 18 year olds NEET, but between 2010 and 2011 the NET employment rate fell sharply again (by 8.5 pts), leading to a large rise in NEET from 13.8% to 15.3%. In 2012 there was a large fall in the proportion of 18 year olds participating but the NET employment rate rose by 2.4 pts which led to the NEET rate rising by just 0.1 pts to 15.5%

Overall the NEET rate for 16-18 year olds fell from 9.8% in 2011 to 9.6% in 2012.

Chart 5: Proportion of 16, 17 and 18 year olds NEET: England, end 1994 - end 2012



NATIONAL STATISTICS PUBLICATION

The United Kingdom Statistics Authority has designated these statistics as National Statistics, in accordance with the Statistics and Registration Service Act 2007 and signifying compliance with the Code of Practice for Official Statistics.

Designation can be broadly interpreted to mean that the statistics:

- meet identified user needs;
- are well explained and readily accessible;
- are produced according to sound methods, and
- are managed impartially and objectively in the public interest.

Once statistics have been designated as National Statistics it is a statutory requirement that the Code of Practice shall continue to be observed.

The Department has a set of statistical policies in line with the *Code of Practice for Official Statistics*, these are published at: www.statisticsauthority.gov.uk/assessment/code-of-practice/index.html

REVISIONS

Section E of the Technical Notes describes the impact of planned revisions to the data through moving from provisional to final data. Section F describes the impact of a methodological change relating to the hierarchy of qualifications.

Any unplanned revisions will be made in accordance with the Departmental statistical policy on revisions which can be found at

www.gov.uk/government/uploads/system/uploads/attachment_data/file/190767/Revisions_Policy_v3.pdf

YOUR FEEDBACK

Please contact Rob Hartley at robert.hartley@education.gsi.gov.uk if you have comments on the content or presentation of this release so that we can take account of your needs in future editions.

RELATED PUBLICATIONS

Related publications and equivalent statistics for other UK countries are listed in sections G and H of the Technical Notes.

INDEX OF TABLES AND FIGURES

SFR Table 1:	Number of 16 to 18 year olds in education and training, England, end 2010, end 2011, and end 2012 (provisional).
SFR Table 1a:	Participation rate of 16 to 18 year olds in education and training, England, end 2010, end 2011, and end 2012 (provisional).
SFR Table 2:	Number of 16 to 18 year olds in education by institution type, England, end 2010, end 2011, and end 2012 (provisional).
SFR Table 2a:	Participation rate of 16 to 18 year olds in education by institution type, England, end 2010, end 2011, and end 2012 (provisional).
SFR Table 3:	Number of 16 to 18 year olds in education and training by labour market status, England, end 2010, end 2011, and end 2012 (provisional)
SFR Table 3a:	Participation rate of 16 to 18 year olds in education and training by labour market status, England, end 2010, end 2011, and end 2012 (provisional)
SFR Table 4:	Number of 16-18 year olds in full-time education by highest qualification aim, and work-based learning, England, end 2010, end 2011, and end 2012 (provisional)
SFR Table 4a:	Participation rate of 16-18 year olds in full-time education by highest qualification aim, and work-based learning, England, end 2010, end 2011, and end 2012 (provisional)
SFR Table 5:	Number of 16-18 year olds in education and training, England, 1994 onwards
SFR Table 5a:	Participation rate of 16-18 year olds in education and training, England, 1994 onwards
SFR Figure 1:	Participation of 16 year olds in education and training, England, end 1994 to end 2012
SFR Figure 2:	Participation of 17 year olds in education and training, England, end 1994 to end 2012
SFR Figure 3:	Participation of 18 year olds in education and training, England, end 1994 to end 2012
SFR Figure 4:	Participation of 16-18 year olds in education and training, England, end 1994 to end 2012

ROUNDING AND SUPPRESSION

Figures in the above tables have been rounded to the nearest hundred and figures less than 3 have been suppressed. This is to ensure confidentiality and avoid a false sense of accuracy.

ADDITIONAL TABLES AND FIGURES

The following additional tables, giving numbers and percentages, are available on the gov.uk website at: [Participation in Education, Training and Employment by 16-18 Year Olds in England, end 2012](#)

National Estimates

Participation of 16-18 year olds in education and training by age and gender, England, 1985 onwards (A1 - A15) – equivalent to SFR Table 1 in this document.

Participation of 16-18 year olds in education by institution type, and by age and gender, England, 1985 onwards (B1 - B15) – equivalent to SFR Table 2 in this document.

Participation of 16-18 year olds in full-time education by highest qualification aim and institution type, and work-based learning, and by age and gender, England, 1985 onwards (C1 - C15) – provides a more detailed institution breakdown than SFR Table 4.

Participation of 16-18 year olds in education and training by labour market status, and by age and gender, England, 1985 onwards (D1 - D15) – provides more detail than SFR Table 3.

Participation of 16-18 year olds in full-time and part-time education by highest qualification aim, and work-based learning, and by age and gender, England, 1985 onwards (E1 - E15) – extends SFR Table 4 to include a breakdown of part-time education by highest qualification aim.

TECHNICAL NOTES

1. The estimates of participation in education, training and employment combine data from a number of sources, with procedures to identify young people in more than one form of provision, to give a view of the cohort as a whole.

A. DEFINITIONS

Academic Age

2. The age of a learner is measured at the beginning of the academic year, 31 August.

Reference Dates

3. Population, schools and work-based learning (WBL) data described as end 2012 relate to January 2013; Further Education Institution (FEI) data relate to November 2012; and Higher Education Institution (HEI) data relate to December 2012. The Labour Force Survey (LFS) relates to an average of Quarter 4 2012 (October to December 2012) and Quarter 1 2013 (January to March 2013). The end 2011 figures for the different data sources refer to the same months.

4. The figures for end 2012 are provisional. The figures for end 2011 have been updated with revised figures from all sources. Sources are presented more fully under section B. The impact of the change from provisional to final data is described in section E.

Education

5. The definition of full-time education varies according to institution type:

- **Schools:** a full-time pupil is someone studying 10 sessions a week, where a session is 1/2 day. Prior to 2002, all pupils were recorded as full-time; in practice, almost all pupils in schools are full-time and the numbers of part-time pupils are too small to register once rounding has been applied to the tables.

- **FEIs:** full-time learners are defined as those enrolled on programmes of at least 450 guided learning hours per year, or for at least 150 guided learning hours in any one tri-annual period, or more than 16 guided learning hours per week for shorter courses.

- **HEIs:** full-time full-year students are defined as those studying 21 hours a week for 24 weeks. Full-time students who are not classified as full-time full-year are classified as 'other full-time'. See www.hesa.ac.uk for more information.

6. Full-time learners in private further and higher education establishments are excluded from full-time education, but included (but not reported separately) in 'other education and training' (OET).

7. Young people studying a FE course in addition to taking part in WBL in the same FEI, are included in both full-time education and WBL, but are also reported separately as the overlap group and are only counted once in the totals. Those just doing WBL in FEIs are in the WBL information only. Others in publicly funded full-time education while in Employer Funded Training (EFT) are included in full-time education but not reported separately; they are not included in the EFT figures.

Government Supported Work-Based Learning for Young People (WBL)

8. WBL for young people comprises Advanced Apprenticeships, Apprenticeships, Entry to Employment (E2E), and other work based related learning. Since April 2012 all WBL has been funded through the Education Funding Agency (EFA). From April 2010 until April 2012 WBL for 16-18 year olds was funded through the Young People's Learning Agency (YPLA), and prior to that the Learning and Skills Council (LSC) from April 2001. From 2010/11 E2E has been closed to new participants. It has been replaced by Foundation Learning which is reported under Further Education in this SFR.

Employer Funded Training (EFT)

9. Figures for EFT cover employees who have received training in the past 4 weeks; these figures are restricted to training other than WBL. They will include non-WBL apprentices and others on long and short term training programmes, but exclude those who have previously received training in their current job, though not in the last 4 weeks. They cover only young people who are in employment.

Other Education and Training (OET)

10. OET covers young people who are studying, but are not included in other categories. The majority of these young people will be studying part-time in a Further Education College or Sixth Form College or other institution types described under the heading 'part-time education' in SFR Table 2. However, some will be attending private colleges or training centres, and this activity is only reported under the OET heading. The relative contribution of private institutions and part-time education to OET can be estimated from the more detailed data in Additional Tables A1-A15, published as 'additional information' to this SFR.

Labour market status

11. The definitions of labour market status used in the Labour Force Survey (LFS), and in this publication, follow the conventions promoted by the International Labour Organisation (ILO):

- **in employment:** an employee, self-employed, on a WBL programme or an unpaid family worker. This includes young people in full-time education who also have part-time jobs.
- **ILO unemployed:** anyone (including full-time learners) who is out of work, available to start work in the next two weeks, and has either looked for work in the last four weeks or is waiting to start a job they have already obtained.
- **economically inactive:** neither in employment nor ILO unemployed i.e. not active in the labour market.

12. The LFS covers all residential households and nursing accommodation. Householders are asked to reply on behalf of students living away in halls of residence. The LFS excludes people outside such accommodation - chiefly hospital residents, people in prison, people in army barracks and the homeless.

13. The LFS is a sample survey so all estimates of labour market participation are subject to sampling error, as are the estimates for the non-college based components of EFT and OET.

Not in education, employment or training (NEET)

14. To produce NEET estimates we first calculate the number of young people not in education or training (NET) by subtracting the number of young people known to be in education and training from the total population. The NEET proportion of the residual NET group is estimated using LFS data.

Courses of study (SFR Table 4)

15. SFR Table 4 includes a breakdown by course of study, which is categorised as shown below. The first list gives the hierarchy of qualification aim used for pupils in independent schools; the second list is used for learners in all other types of institution. Learners in full-time education studying on more than one course are attributed to the course appearing first in the list below. Young people in special schools and Pupil Referral Units (PRUs), for whom there is no qualification breakdown, are included under 'Other courses' in SFR Table 4.

Independent schools:

Course studied in order of selection:

Level 4 and above
International Baccalaureate
GCE A level/Pre-U Principal Subject
GCE 'AS' Level/Pre-U Short Course Subject
Other Level 3 Equivalents
GCSE/IGCSE
Other Level 2 Courses
Level 1 Courses
Other courses

Entered in tables to the row headed:

Higher education (Level 4 and above)
GCE/VCE A/AS levels
GCE/VCE A/AS levels
GCE/VCE A/AS levels
NVQ 3 and equivalents
GCSE/Intermediate GNVQ
NVQ 2 and equivalents
NVQ 1 and equivalents
Other courses

All institutions, except independent schools:

Course studied in order of selection:

Higher education
GCE/VCE A/AS level and International
Baccalaureate²
NVQ 3 and equivalent³
GCSE / Intermediate GNVQ
NVQ 2 and equivalent
Foundation GNVQ
NVQ 1 and equivalent
Other course – level unknown or unspecified

Entered in tables to the row headed:

Higher education (Level 4 and above)
GCE/VCE A/AS levels
NVQ 3 and equivalents
GCSE / Intermediate GNVQ
NVQ 2 and equivalents
Foundation GNVQ
NVQ 1 and equivalents
Other courses

² Including GCE A/AS levels in applied subjects

³ Including GNVQ precursors, BTEC, City and Guilds and RSA courses

B. DATA SOURCES

Box A: Data Sources for National Estimates

Schools	<p>The Schools' Census provides data on school pupils in January of each year. Information for maintained schools, City Technology Colleges (CTCs), Academies, free schools, pupil referral units (PRUs) and special schools are derived from the Pupil Level Annual Schools' Census (PLASC). PLASC collects data at pupil rather than school level and began in first time in January 2002. Data from independent schools are collected at school level. The schools figures are all final.</p>
FE Institutions	<p>The FE Data Service's Individualised Learner Record (ILR) provides data on learners in FE sector colleges. Snapshot data as at 1 November has been used. The data underlying this SFR are the SN06 freeze for 2012/13 and the SN14 freeze for 2011/12. The ILR data for 2012 is provisional and will be revised in the June 2014 publication. Figures for previous years are final.</p>
HE Institutions	<p>Students in institutions of higher education on 1 December are included from data supplied by the Higher Education Statistics Agency (HESA). Figures for end 2011 and earlier years are final.</p> <p>HESA figures for end 2012 are not available until January 2014. Therefore, numbers on higher education courses have been carried over from the previous year. Student numbers on higher education courses in 2011 have been grossed up to produce 2012 estimates using information from the Higher Education Students Early Statistics (HESES) collected by the Higher Education Funding Council for England (HEFCE). All 2012 figures will be updated with final HESA data in the next SFR.</p>
WBL	<p>The FE Data Service's ILR provides monthly data on young people on WBL programmes. Snapshot data as at 1 January has been used, for end 2001 onwards. However, a snapshot of 1 November was used for learners on Entry to Employment (E2E) provision at end 2009 and end 2010.</p> <p>As with the FE data the WBL data underlying this SFR come from the SN06 freeze for 2012/13 and the SN14 freeze for 2011/12.</p>
LFS	<p>Figures on labour market status for end 2012 come from the average of Quarter 4 2012 (October to December 2012) and Quarter 1 2013 (January to March 2013) LFS data. It also supplies the non-college based data for Employer Funded Training (EFT) and for Other Education and Training (OET).</p> <p>The LFS is a quarterly survey of approximately 50,000 households in England. If an individual is not available for interview, another member of the household may respond on their behalf.</p>
Population estimates	<p>The population estimates for academic year ages in January of each year are derived by DfE from mid-year estimates and projections provided by the Office for National Statistics (ONS). See section D of the Technical Notes for more detail.</p> <p>Mid 2011-based single-age population estimates are used in this SFR.</p>

C. LOCAL PARTICIPATION DATA

16. Statistics showing participation in education and work-based learning of 16 and 17 year olds at local level for end 2011 were released in March 2013. Additional tables at regional and Local Authority area and maps of local participation are available as additional information on the website.

17. The data sources for local figures are the same as for the national figures. However in addition individuals are assigned to Local Authorities. Box B overleaf shows how that is achieved.

18. Participation rates in the national and local figures may not coincide exactly. The differences between the two datasets are set out in Box C.

19. Due to the margin of error surrounding local level population estimates (as set out in Box B) and the use of school level data for independent schools, **participation rates at Local Authority level can be over 100 per cent**. The participation rates for the Isles of Scilly are also suppressed because the size of the population is insufficient to produce a robust series.

20. Participation estimates for individual **Inner London Local Authorities** are not given due to the high level of cross-boundary flows of independent school students between the Local Authorities. The introduction of pupil level schools data for maintained schools has not enabled the publication of participation rates for Inner London Local Authorities as independent schools still return school level data.

21. Since the publication of the end 2011 data in March 2013, the ONS have released the revised local authority population estimates needed to produce the end 2001-end 2010 local participation data. Therefore the revised statistics showing participation in education and work-based learning of 16 and 17 year olds at local level for end 2001 to end 2010 have been released alongside this SFR.

Box B: Data Sources for Local Estimates

Schools	<p>The Schools' Census provides data on school pupils in January of each year.</p> <p>For end 2001 onwards, the LA area for pupils in maintained schools, City Technology Colleges (CTCs), Academies, free schools and special schools has been identified using the postcode of the pupils' home addresses. For the pupils whose postcodes are missing, the LA of school has been used instead.</p> <p>Pupils in independent schools are treated as if they live in the LA in which their school is situated. This will lead to inaccuracies in participation rates by residence to some degree, as some pupils attend independent schools outside their LA area.</p> <p>Prior to end 2001, location information for all school pupils was collected by the LA in which their school was situated. Therefore, there is a break in the time series at end 2001.</p> <p>All schools data are final.</p>
FE Institutions	<p>The FE Data Service's Individualised Learner Record (ILR) provides data on learners in FE sector colleges. Snapshot data as at 1 November has been used.</p> <p>In the ILR the LA has been identified using the either the current postcode, or the postcode from which the learner applied to the FEI. For the learners whose postcodes are missing the LA of institution has been used instead.</p>
HE Institutions	<p>Students in institutions of higher education on 1 December are included from data supplied by the Higher Education Statistics Agency (HESA).</p> <p>The LA has been identified using the postcode of the address from which the student applied to the HEI. Where this data is not available, the LA of the institution has been used instead.</p> <p>All HEI data are final.</p>
WBL	<p>For end 2001 onwards, the FE Data Service's ILR provides data on learners on WBL programmes. Snapshot data as at 1 January has been used.</p> <p>In the ILR the LA has been identified using the either the current postcode, or the postcode from which the learner applied. For the learners whose postcodes are missing the LA of the provider has been used instead.</p> <p>Prior to end 2001, WBL information was provided by the Training and Enterprise Council (TEC). Due to incomplete data, WBL figures are not available at LA level before end 1997.</p>
Population estimates	<p>The population estimates for academic year ages in January of each year are derived by DfE from mid-year estimates provided by the Office for National Statistics. At local level, for individual ages, such estimates are subject to some uncertainty. This is particularly the case in small areas, where the margin of error surrounding a population estimate can be disproportionately high. Users should bear this in mind when making comparisons, for example year-on-year within a small area or between one small area and another.</p>

Box C: Differences between National and Local Level Participation Estimates

National	Local
The national figures contain participation estimates for 16-18 year olds.	The local figures do not contain participation estimates for 18 year olds. The information collected by HESA on students in HEIs in the UK does not hold the term-time address of the students, and therefore can not be used accurately for local level analysis of participation by the LA that a young person resides in. As the majority of 18 year olds in education are at an HEI, this means that we can not produce participation estimates for 18 year olds at a local level.
The national figures estimate young people in Employer Funded Training (EFT) and Other Education and Training (OET).	The local figures do not contain estimates for EFT and OET participation. The participation estimates are produced as a snapshot of participation at the end of the calendar year. Information on EFT and OET participation is derived from the Labour Force Survey (LFS). Local LFS data is only available on a whole-year basis.
The national figures contain information on the employment status of young people.	The local figures do not contain labour market information. Labour market data is taken from the LFS, and therefore is not used at a local level for the reasons given above.
The national figures include all young people in FEIs.	The local figures contain those 16 and 17 year olds studying in FEIs, who apply from the UK. It does not include those from overseas.

D. ONS POPULATION DATA

22. ONS mid-year estimates are based on the 2011 Census and are subject to statistical uncertainties arising from sampling error and imputation effects in the 2011 Census, as well as from estimation of the components that age the population forward from the 2011 Census date.

23. There is a particular small discrepancy between the ONS population estimate for 15 year olds in 2011 and other data sources such as the DfE School Census, HMRC Child Benefit data and ONS Births data. Data imputation during Census 2011 may have led to greater statistical uncertainty for cohorts at the start and end of compulsory schooling in 2011. The overall five-year age band data has largely been unaffected as the changes between years counter balance each other but the largest impact on the population at single ages can be an over or under estimate of up to 1 per cent.

24. The ONS population estimate for 15 year olds in 2011, and therefore 16 year olds in this publication, was higher than the other data sources suggested. Therefore, as the population estimates are used to calculate the participation rates, the published participation figures may be slightly underestimated. As mentioned above, the impact was counterbalanced at other ages and therefore the 17 and 18 year old participation rates are thought to be slightly overestimated, but to a smaller extent than the underestimate at age 16.

E. SCHEDULED REVISIONS TO PREVIOUSLY PUBLISHED STATISTICS

25. The numbers participating in Further Education institutions (FE colleges and sixth form colleges) and Higher Education institutions are revised as the source data are finalised. These planned revisions only occur for the latest year for which statistics are published. For example, data described in this SFR “as end 2012 (provisional)” will be finalised as “end 2012” in the June 2014 update to this SFR. Such changes can affect both the numbers studying and the proportion of the age cohort studying.

26. In addition, all numbers published as a proportion of the population cohort will be revised if the population estimates are revised by the Office for National Statistics (ONS). For example, if the population estimate is revised upwards then all things being equal (that is no change in the administrative-based estimate of learner numbers) the statistics for the proportion of the population studying will be revised downwards proportionately. In addition, there will be a more direct impact on the estimate of the numbers of young people not in education and training. This is calculated, for the most part, as a residual from the size of the population and the number of young people recorded as participating on administrative datasets, so an increase in the population will result in an increase in the estimate of young people not in education and training (NET) and correspondingly in the estimate of NEET also. The ONS population statistics are re-based every two years, but revisions are likely to extend further back. If the size of the revision is significant we would retrospectively revise the SFR statistics as happened in February 2013.

27. The revisions to the data on Further Education institutions historically has had an impact on the estimates for full-time education versus part-time education, as the designation of a young person as either full or part-time in colleges could change retrospectively. The table below shows the difference between the provisional and final end 2010 and 2011 estimates for full-time and part-time education in Further Education institutions.

		Provisional		Final		Change (final-provisional)	
		Full-time	Part-time	Full-time	Part-time	Full-time	Part-time
End 2010	Age 16	286,919	26,425	287,476	25,259	557	-1,166
	Age 17	264,173	30,679	264,668	29,667	495	-1,012
	Age 18	132,985	31,587	133,349	30,791	364	-796
End 2011	Age 16	268,638	34,940	272,661	30,450	4,023	-4,490
	Age 17	253,341	39,269	256,266	35,760	2,925	-3,509
	Age 18	122,792	37,205	124,506	34,864	1,714	-2,341

28. The changes in the Higher Education institution data from provisional to final for the last two years are shown below. In principle there should be no systematic difference between the provisional and final estimates, either in direction or magnitude.

		Provisional	Final	Change (final-provisional)
All HE (end 2010)	Age 16	2,388	2,257	-131
	Age 17	7,107	7,757	650
	Age 18	167,667	171,494	3,827
All HE (end 2011)	Age 16	2,139	2,180	41
	Age 17	7,550	7,517	-33
	Age 18	177,012	185,070	8,058

F. REVISION TO THE HIERARCHY OF QUALIFICATIONS

29. In previous SFRs, the International Baccalaureate was included within the 'NVQ3 and equivalents' category in SFR Table 4 and Additional Tables C and E. However, in this SFR they have been included in the 'GCE/VCE A/AS levels' category. This change has been made because users of attainment and participation data tend to treat International Baccalaureates as academic qualifications. There has also been a change to ensure that learners studying both academic and vocational qualifications at the same level are recorded under the academic qualifications. These changes have been back dated to 2008, the first year when significant numbers of International Baccalaureates are observed.

30. The impact of these changes on the end 2008 to end 2011 16-18 year old full-time education Level 3 data are shown in the table below. For Level 1 and 2 the percentage point change is minimal (when rounded the changes are less than 0.0 percentage points).

	2008	2009	2010	2011
GCE/VCE A/AS levels	0.3	0.4	0.4	0.3
State-funded schools	0.1	0.2	0.2	0.1
Maintained schools	0.1	0.1	0.1	0.0
Sponsor Academies and City Technology Colleges	0.0	0.0	0.1	0.0
Converter Academies	0.0	0.0	0.0	0.1
Free Schools	0.0	0.0	0.0	0.0
Independent schools	0.2	0.2	0.2	0.2
Sixth form colleges	0.0	0.0	0.0	0.0
General FE, tertiary and specialist colleges	0.0	0.0	0.0	0.0
Higher education institutions	0.0	0.0	0.0	0.0
NVQ 3 and equivalents	-0.3	-0.4	-0.4	-0.3
State-funded schools	-0.1	-0.2	-0.2	-0.1
Maintained schools	-0.1	-0.1	-0.1	0.0
Sponsor Academies and City Technology Colleges	0.0	0.0	-0.1	0.0
Converter Academies	0.0	0.0	0.0	-0.1
Free Schools	0.0	0.0	0.0	0.0
Independent schools	-0.2	-0.2	-0.2	-0.2
Sixth form colleges	0.0	0.0	0.0	0.0
General FE, tertiary and specialist colleges	0.0	0.0	0.0	0.0
Higher education institutions	0.0	0.0	0.0	0.0

G. RELATED STATISTICS PUBLISHED BY DEPARTMENT FOR EDUCATION

31. The statistics published in this SFR are regarded as the Department for Education's (DfE) most definitive estimates of both post-16 participation in education and young people not in education, employment and training (NEET). DfE also publishes participation and NEET statistics based on the Labour Force Survey (LFS) on a quarterly basis in the [NEET Quarterly Brief](#). These estimates are published with a lag of approximately 7 weeks after the end of the time period they refer to, compared to roughly 6 months for the statistics in this Statistical First Release. The benefits of the statistics published in the NEET Quarterly Brief are timeliness and frequency, coupled with the ability to report statistics for the 18-24 year old age group. The weakness of the estimates is that data is captured for roughly just 1,000 young people in each single-age group in England. The 95% confidence intervals for the quarterly LFS-based single-age statistics are estimated to be around ± 2 ppts. As the annual changes in participation and proportion NEET are typically less than 2 ppts, the quarterly LFS cannot

usually reliably identify changes in participation and NEET, except when the data is aggregated to wider age groups, i.e. 16-18 and 19-24 year olds.

32. Local Authority estimates of the proportion of [16-18 year olds NEET based on Client Caseload Information System \(CCIS\)](#) are published as non-GSS (Government Statistical Service) official statistics. The unique feature of the CCIS-based statistics is that they are the only robust estimates of NEET at Local Authority level. Their relative weakness is that the time-series only extends back to 2004, and that for a proportion of young people their current activity is not known necessitating a degree of estimation, with data not known accounting for an increasing proportion of the data from age 16 to age 18.

33. The [Destination Measures Statistical First Release](#), published on 20th June 2013, shows the percentage of students continuing their education in school, Further Education or sixth form college, or Higher Education institution, and the percentage training through an apprenticeship or work-based learning. It also shows, for the first time in 2013, the percentage of students who went into employment or training and those who were not in education, employment or training (NEET). These data are taken from the National Client Caseload Information System (NCCIS), covering English Local Authorities. Where students have a confirmed, deferred offer of a place at university, and do not have any other destination recorded, the KS5 Measure is also reporting the percentage of students with a UCAS acceptance for deferred entry to Higher Education. The Destination Measures are based on activity in **all of the first two terms (defined as October to March)** of the year after the young person left KS4 or took A level or other level 3 qualifications. Data are published at national, Local Authority and, unlike other similar data, at school/college level

H. EQUIVALENT STATISTICS FROM WELSH ASSEMBLY GOVERNMENT, SCOTTISH GOVERNMENT AND THE OFFICE FOR THE NATIONAL STATISTICS (ONS)

	Welsh Assembly Government (WG)	Scottish Government (SG)	Office for National Statistics (ONS)
Description	1. Annual SFR statistics produced in a method analogous to the DfE annual SFR.	1. Statistics based on the Annual Population Survey (APS).	1. Monthly Labour Force Survey (LFS) statistics for young people not in full-time education and not in employment -Table 14 from the Labour Market Statistics bulletin.
	2. Quarterly Statistics based on the Annual Population Survey (APS). Definition of NEET corresponds to that used in the DfE NEET Quarterly Brief	2. Annual school leaver statistics	2. Quarterly Statistics based on the Labour Force Survey (LFS). Definition of NEET corresponds to that used in the DfE NEET Quarterly Brief.
	3. Pupil destinations based on Careers Wales Survey.	3. Combination of DWP benefits data and school leaver destinations	
Uses	1. Regarded as the definitive measure of headline NEET estimates in Wales.	1. National estimates of NEET.	1. Part of wider labour market statistics; rolling 3-month average both seasonally-adjusted and not seasonally-adjusted; roughly equivalent to NEET but will include some young people in part-time education.
	2. Timely data; regional or single-age estimates based on averaging 3 years of data.	2. Proportion of young people in 'positive destinations'. The complement is roughly equivalent to NEET, but will include some young people in part-time education.	2. UK estimate, seasonally adjusted.
	3. Local area estimates of NEET.	3. Local area estimates of NEET.	
Geographical Coverage	Wales	Scotland	United Kingdom (UK)
Age coverage	Academic age 16-18, 19-24 (SFR); academic age 16-18, 19-24 (APS); interviews in October following Year 11 (Careers Wales)	Actual age 16-19.	Actual age 16-17 and 18-24.
Published source	1. Welsh Government Participation of Young People in Education and the Labour Market, 2010 and 2011 (provisional)	1. Local Area Labour Markets in Scotland: Statistics from the Annual Population Survey 2012	1. Labour Market Statistics - May 2013
	2. Young People Not in Education, Employment or Training (NEET), Year to 31 Dec 2012	2. Summary statistics for attainment, leaver destinations and healthy living, No. 2: 2012 Edition	2. ONS UK NEET, May 2013
	3. Pupil Destinations from Schools in Wales, 2012	3. More Choices More Chances	

Table 1: Number of 16 to 18 year olds in education and training, England, end 2010, end 2011, end 2012 (provisional)

End of calendar year	Males			Females			All		
	end 2010	end 2011	end 2012 prov	end 2010	end 2011	end 2012 prov	end 2010	end 2011	end 2012 prov
	<i>number</i>								
Aged 16									
Full-time education	279,200	269,000	268,200	276,800	269,500	268,100	556,000	538,500	536,300
Work Based Learning (WBL)	14,300	14,600	13,000	8,900	8,400	7,600	23,200	23,100	20,600
Overlap between WBL and full-time ¹	1,000	200	200	300	100	100	1,300	200	200
Employer Funded Training (EFT) ²	5,600	6,000	6,000	4,600	5,000	4,600	10,200	10,900	10,600
Other Education and Training (OET) ^{2,3}	15,900	18,400	20,100	12,000	14,100	15,200	27,900	32,500	35,300
Total Education and training⁴	314,000	307,900	307,200	302,000	296,900	295,400	616,000	604,800	602,600
Not in any education or training - in employment	5,700	4,500	3,600	3,600	2,500	3,300	9,200	7,000	6,900
Not in any education, employment or training (NEET)	18,700	20,000	22,200	14,900	15,500	15,600	33,600	35,500	37,900
Total Not in any Education or Training (NET)	24,400	24,500	25,900	18,500	18,000	18,900	42,900	42,500	44,700
<i>Sub total for information:</i>									
Total Education and WBL⁵	306,600	300,200	299,200	296,800	291,600	289,900	603,300	591,800	589,100
All	338,400	332,300	333,100	320,400	315,000	314,200	658,900	647,300	647,300
Population	338,400	332,300	333,100	320,400	315,000	314,200	658,900	647,300	647,300
Aged 17									
Full-time education	242,000	239,000	236,000	246,700	246,300	244,100	488,800	485,300	480,100
Work Based Learning (WBL)	23,300	24,000	23,400	16,800	15,900	15,600	40,100	39,900	38,900
Overlap between WBL and full-time ¹	1,000	200	200	300	100	100	1,200	300	300
Employer Funded Training (EFT) ²	11,300	11,600	10,400	8,600	9,400	9,700	19,900	21,000	20,100
Other Education and Training (OET) ^{2,3}	17,300	21,600	21,800	15,500	17,300	17,700	32,800	39,000	39,500
Total Education and training⁴	293,000	296,100	291,500	287,400	288,800	287,000	580,400	584,900	578,400
Not in any education or training - in employment	14,900	13,900	16,700	12,600	10,900	10,000	27,500	24,900	26,700
Not in any education, employment or training (NEET)	30,900	32,300	27,000	23,200	24,500	20,900	54,100	56,800	47,900
Total Not in any Education or Training (NET)	45,800	46,300	43,800	35,800	35,400	30,900	81,600	81,700	74,600
<i>Sub total for information:</i>									
Total Education and WBL⁵	281,600	283,400	279,900	277,300	278,500	276,300	558,900	561,800	556,200
All	338,800	342,400	335,200	323,200	324,200	317,800	662,000	666,600	653,000
Population	338,800	342,400	335,200	323,200	324,200	317,800	662,000	666,600	653,000
Aged 18									
Full-time education	163,200	163,600	151,500	171,200	174,900	159,100	334,300	338,500	310,600
Work Based Learning (WBL)	29,100	28,100	29,900	18,900	19,100	21,000	48,100	47,200	50,900
Overlap between WBL and full-time ¹	800	100	100	100	-	-	1,000	200	100
Employer Funded Training (EFT) ²	21,400	20,000	26,600	15,900	17,200	21,400	37,300	37,200	48,000
Other Education and Training (OET) ^{2,3}	21,200	22,600	23,600	18,000	19,800	21,800	39,200	42,400	45,400
Total Education and training⁴	234,200	234,200	231,400	223,800	231,000	223,300	458,000	465,200	454,700
Not in any education or training - in employment	65,200	54,000	58,800	70,000	50,300	57,500	135,200	104,300	116,300
Not in any education, employment or training (NEET)	50,000	55,700	56,400	45,100	47,500	47,900	95,000	103,200	104,300
Total Not in any Education or Training (NET)	115,100	109,700	115,200	115,100	97,800	105,400	230,300	207,500	220,600
<i>Sub total for information:</i>									
Total Education and WBL⁵	209,700	211,500	202,100	204,900	210,100	197,100	414,600	421,600	399,100
All	349,300	343,900	346,600	339,000	328,800	328,700	688,300	672,700	675,300
Population	349,300	343,900	346,600	339,000	328,800	328,700	688,300	672,700	675,300
Aged 16-18									
Full-time education	684,500	671,600	655,800	694,700	690,800	671,200	1,379,100	1,362,400	1,327,000
Work Based Learning (WBL)	66,800	66,800	66,200	44,600	43,400	44,200	111,400	110,200	110,400
Overlap between WBL and full-time ¹	2,800	500	400	700	200	200	3,500	700	600
Employer Funded Training (EFT) ²	38,400	37,600	43,000	29,100	31,600	35,700	67,500	69,100	78,700
Other Education and Training (OET) ^{2,3}	54,400	62,700	65,500	45,500	51,200	54,700	99,900	113,900	120,200
Total Education and training⁴	841,300	838,200	830,100	813,200	816,700	805,600	1,654,400	1,654,900	1,635,700
Not in any education or training - in employment	85,700	72,400	79,100	86,200	63,800	70,700	172,000	136,200	149,900
Not in any education, employment or training (NEET)	99,600	108,000	105,700	83,200	87,500	84,500	182,800	195,500	190,100
Total Not in any Education or Training (NET)	185,300	180,400	184,800	169,400	151,300	155,200	354,700	331,700	340,000
<i>Sub total for information:</i>									
Total Education and WBL⁵	797,900	795,000	781,100	778,900	780,200	763,300	1,576,800	1,575,200	1,544,400
All	1,026,600	1,018,600	1,014,900	982,600	968,000	960,800	2,009,200	1,986,600	1,975,700
Population	1,026,600	1,018,600	1,014,900	982,600	968,000	960,800	2,009,200	1,986,600	1,975,700

1 From 2011/12 a change in source data enabled the overlap between full-time education and WBL to be estimated more directly; the impact is described in 'Technical Notes' paragraph 26 of SFR 12/2012.

2 For the part time split of these categories see Additional Web Tables; 'More detailed participation rates.'

3 Includes part-time education not funded by employers or through WBL; also full- or part-time education in independent FE and HE institutions.

4 Total of all full-time education and WBL (less WBL in full-time education) plus EFT and OET.

5 Total of all full-time and part-time education and WBL (less WBL in full or part-time education), equivalent to local level estimates for education and training.

'x' denotes less than 3

'-' denotes a rounding to zero.

Table 1a: Participation rate of 16 to 18 year olds in education and training, England, end 2010, end 2011, end 2012 (provisional) ⁶

End of calendar year	percentage								
	Males			Females			All		
	end 2010	end 2011	end 2012 prov	end 2010	end 2011	end 2012 prov	end 2010	end 2011	end 2012 prov
Aged 16									
Full-time education	82.5%	80.9%	80.5%	86.4%	85.6%	85.3%	84.4%	83.2%	82.8%
Work Based Learning (WBL)	4.2%	4.4%	3.9%	2.8%	2.7%	2.4%	3.5%	3.6%	3.2%
Overlap between WBL and full-time ¹	0.3%	0.0%	0.0%	0.1%	0.0%	0.0%	0.2%	0.0%	0.0%
Employer Funded Training (EFT) ²	1.7%	1.8%	1.8%	1.4%	1.6%	1.5%	1.6%	1.7%	1.6%
Other Education and Training (OET) ^{2,3}	4.7%	5.5%	6.0%	3.8%	4.5%	4.8%	4.2%	5.0%	5.5%
Total Education and training ⁴	92.8%	92.6%	92.2%	94.2%	94.3%	94.0%	93.5%	93.4%	93.1%
Not in any education or training - in employment	1.7%	1.4%	1.1%	1.1%	0.8%	1.0%	1.4%	1.1%	1.1%
Not in any education, employment or training (NEET)	5.5%	6.0%	6.7%	4.7%	4.9%	5.0%	5.1%	5.5%	5.8%
Total Not in any Education or Training (NET)	7.2%	7.4%	7.8%	5.8%	5.7%	6.0%	6.5%	6.6%	6.9%
<i>Sub total for information:</i>									
Total Education and WBL ⁵	90.6%	90.3%	89.8%	92.6%	92.6%	92.3%	91.6%	91.4%	91.0%
All	100%	100%	100%	100%	100%	100%	100%	100%	100%
Population	338,400	332,300	333,100	320,400	315,000	314,200	658,900	647,300	647,300
Aged 17									
Full-time education	71.4%	69.8%	70.4%	76.3%	76.0%	76.8%	73.8%	72.8%	73.5%
Work Based Learning (WBL)	6.9%	7.0%	7.0%	5.2%	4.9%	4.9%	6.1%	6.0%	6.0%
Overlap between WBL and full-time ¹	0.3%	0.1%	0.1%	0.1%	0.0%	0.0%	0.2%	0.0%	0.0%
Employer Funded Training (EFT) ²	3.3%	3.4%	3.1%	2.7%	2.9%	3.0%	3.0%	3.1%	3.1%
Other Education and Training (OET) ^{2,3}	5.1%	6.3%	6.5%	4.8%	5.4%	5.6%	4.9%	5.9%	6.0%
Total Education and training ⁴	86.5%	86.5%	86.9%	88.9%	89.1%	90.3%	87.7%	87.7%	88.6%
Not in any education or training - in employment	4.4%	4.1%	5.0%	3.9%	3.4%	3.1%	4.2%	3.7%	4.1%
Not in any education, employment or training (NEET)	9.1%	9.4%	8.1%	7.2%	7.6%	6.6%	8.2%	8.5%	7.3%
Total Not in any Education or Training (NET)	13.5%	13.5%	13.1%	11.1%	10.9%	9.7%	12.3%	12.3%	11.4%
<i>Sub total for information:</i>									
Total Education and WBL ⁵	83.1%	82.8%	83.5%	85.8%	85.9%	86.9%	84.4%	84.3%	85.2%
All	100%	100%	100%	100%	100%	100%	100%	100%	100%
Population	338,800	342,400	335,200	323,200	324,200	317,800	662,000	666,600	653,000
Aged 18									
Full-time education	46.7%	47.6%	43.7%	50.5%	53.2%	48.4%	48.6%	50.3%	46.0%
Work Based Learning (WBL)	8.3%	8.2%	8.6%	5.6%	5.8%	6.4%	7.0%	7.0%	7.5%
Overlap between WBL and full-time ¹	0.2%	0.0%	0.0%	0.0%	0.0%	0.0%	0.1%	0.0%	0.0%
Employer Funded Training (EFT) ²	6.1%	5.8%	7.7%	4.7%	5.2%	6.5%	5.4%	5.5%	7.1%
Other Education and Training (OET) ^{2,3}	6.1%	6.6%	6.8%	5.3%	6.0%	6.6%	5.7%	6.3%	6.7%
Total Education and training ⁴	67.0%	68.1%	66.8%	66.0%	70.2%	67.9%	66.5%	69.1%	67.3%
Not in any education or training - in employment	18.7%	15.7%	17.0%	20.7%	15.3%	17.5%	19.6%	15.5%	17.2%
Not in any education, employment or training (NEET)	14.3%	16.2%	16.3%	13.3%	14.5%	14.6%	13.8%	15.3%	15.5%
Total Not in any Education or Training (NET)	33.0%	31.9%	33.2%	34.0%	29.8%	32.1%	33.5%	30.9%	32.7%
<i>Sub total for information:</i>									
Total Education and WBL ⁵	60.0%	61.5%	58.3%	60.4%	63.9%	59.9%	60.2%	62.7%	59.1%
All	100%	100%	100%	100%	100%	100%	100%	100%	100%
Population	349,300	343,900	346,600	339,000	328,800	328,700	688,300	672,700	675,300
Aged 16-18									
Full-time education	66.7%	65.9%	64.6%	70.7%	71.4%	69.9%	68.6%	68.6%	67.2%
Work Based Learning (WBL)	6.5%	6.6%	6.5%	4.5%	4.5%	4.6%	5.5%	5.5%	5.6%
Overlap between WBL and full-time ¹	0.3%	0.0%	0.0%	0.1%	0.0%	0.0%	0.2%	0.0%	0.0%
Employer Funded Training (EFT) ²	3.7%	3.7%	4.2%	3.0%	3.3%	3.7%	3.4%	3.5%	4.0%
Other Education and Training (OET) ^{2,3}	5.3%	6.2%	6.5%	4.6%	5.3%	5.7%	5.0%	5.7%	6.1%
Total Education and training ⁴	81.9%	82.3%	81.8%	82.8%	84.4%	83.9%	82.3%	83.3%	82.8%
Not in any education or training - in employment	8.4%	7.1%	7.8%	8.8%	6.6%	7.4%	8.6%	6.9%	7.6%
Not in any education, employment or training (NEET)	9.7%	10.6%	10.4%	8.5%	9.0%	8.8%	9.1%	9.8%	9.6%
Total Not in any Education or Training (NET)	18.1%	17.7%	18.2%	17.2%	15.6%	16.1%	17.7%	16.7%	17.2%
<i>Sub total for information:</i>									
Total Education and WBL ⁵	77.7%	78.1%	77.0%	79.3%	80.6%	79.4%	78.5%	79.3%	78.2%
All	100%	100%	100%	100%	100%	100%	100%	100%	100%
Population	1,026,600	1,018,600	1,014,900	982,600	968,000	960,800	2,009,200	1,986,600	1,975,700

1 From 2011/12 a change in source data enabled the overlap between full-time education and WBL to be estimated more directly; the impact is described in 'Technical Notes' paragraph 26 of SFR 12/2012.

2 For the part time split of these categories see Additional Web Tables; 'More detailed participation rates.'

3 Includes part-time education not funded by employers or through WBL; also full- or part-time education in independent FE and HE institutions.

4 Total of all full-time education and WBL (less WBL in full-time education) plus EFT and OET.

5 Total of all full-time and part-time education and WBL (less WBL in full or part-time education), equivalent to local level estimates for education and training.

6 End 2012 participation estimates for 16 year olds may be slightly underestimated while estimates for 17 and 18 year olds may be slightly overestimated. See Technical Notes section D for further information.

Table 2: Number of 16 to 18 year olds in education by institution type, England, end 2010, end 2011 and end 2012 (provisional)

End of calendar year	Males			Females			All		
	end 2010	end 2011	end 2012 prov	end 2010	end 2011	end 2012 prov	end 2010	end 2011	end 2012 prov
	<i>number</i>								
Aged 16									
Full-time education									
State-funded schools	110,700	108,800	110,500	116,000	115,600	116,500	226,700	224,300	226,900
<i>LA Maintained schools</i> ¹	96,800	59,600	44,900	101,700	62,100	46,000	198,500	121,700	90,900
<i>Sponsor Academies & City Technology Colleges</i>	14,000	9,700	12,200	14,300	9,800	11,900	28,200	19,500	24,000
<i>Converter Academies</i>		39,300	52,900		43,700	58,400		83,000	111,300
<i>Free Schools</i>	x	100	500	x	-	200	x	100	700
Independent schools ²	21,100	20,800	21,000	19,700	19,700	19,500	40,800	40,600	40,500
Sixth form colleges	34,300	34,300	33,800	40,300	40,400	40,700	74,700	74,600	74,500
General FE, tertiary and specialist colleges	112,700	104,800	102,700	100,100	93,200	90,800	212,800	198,000	193,600
Higher education institutions	300	300	300	600	600	600	1,000	1,000	800
Total	279,200	269,000	268,200	276,800	269,500	268,100	556,000	538,500	536,300
Part-time education ³									
State-funded schools	-	-	-	-	-	-	-	-	100
<i>LA Maintained schools</i> ¹	-	x	-	-	-	-	-	-	-
<i>Sponsor Academies & City Technology Colleges</i>	x	-	-	x	x	-	x	-	-
<i>Converter Academies</i>		x	x		x	x		x	x
<i>Free Schools</i>	x	x	-	x	x	x	x	x	-
Independent schools ²	-	100	100	-	100	100	100	200	200
Sixth form colleges	200	300	400	300	400	400	500	800	800
General FE, tertiary and specialist colleges	14,100	16,800	18,300	10,600	12,900	13,800	24,700	29,700	32,100
Higher education institutions	500	400	300	800	800	500	1,300	1,200	800
Total	14,900	17,700	19,100	11,700	14,200	14,800	26,600	31,900	33,900
Full- and part-time education									
State-funded schools	110,700	108,800	110,500	116,000	115,600	116,500	226,800	224,300	227,000
<i>LA Maintained schools</i> ¹	96,800	59,600	44,900	101,700	62,100	46,000	198,500	121,700	90,900
<i>Sponsor Academies & City Technology Colleges</i>	14,000	9,700	12,200	14,300	9,800	11,900	28,200	19,500	24,100
<i>Converter Academies</i>		39,300	52,900		43,700	58,400		83,000	111,300
<i>Free Schools</i>	x	100	500	x	-	200	x	100	700
Independent schools ²	21,200	20,900	21,100	19,800	19,900	19,600	40,900	40,800	40,600
Sixth form colleges	34,600	34,600	34,200	40,700	40,800	41,100	75,200	75,400	75,300
General FE, tertiary and specialist colleges	126,900	121,600	121,000	110,700	106,100	104,600	237,500	227,700	225,600
Higher education institutions	800	800	600	1,400	1,400	1,100	2,300	2,200	1,600
Total	294,200	286,700	287,400	288,500	283,700	282,800	582,700	570,400	570,200
Number of full-time students	279,200	269,000	268,200	276,800	269,500	268,100	556,000	538,500	536,300
Number of part-time students	14,900	17,700	19,100	11,700	14,200	14,800	26,600	31,900	33,900
Population	338,400	332,300	333,100	320,400	315,000	314,200	658,900	647,300	647,300
Aged 17									
Full-time education									
State-funded schools	86,500	87,900	88,800	94,900	97,200	98,700	181,400	185,000	187,500
<i>LA Maintained schools</i> ¹	75,900	47,700	35,700	83,600	52,300	38,800	159,500	100,000	74,500
<i>Sponsor Academies & City Technology Colleges</i>	10,600	7,000	8,800	11,300	7,200	9,100	21,900	14,200	17,900
<i>Converter Academies</i>		33,000	43,900		37,700	50,700		70,700	94,600
<i>Free Schools</i>	x	100	300	x	-	100	x	100	400
Independent schools ²	19,700	20,200	20,000	18,500	19,100	19,100	38,100	39,300	39,000
Sixth form colleges	28,200	29,500	30,100	33,900	35,100	35,700	62,100	64,600	65,700
General FE, tertiary and specialist colleges	105,900	99,500	95,500	96,700	92,200	88,300	202,600	191,700	183,800
Higher education institutions	1,800	2,000	1,700	2,700	2,800	2,400	4,600	4,800	4,100
Total	242,000	239,000	236,000	246,700	246,300	244,100	488,800	485,300	480,100
Part-time education ³									
State-funded schools	-	-	-	-	-	-	-	-	-
<i>LA Maintained schools</i> ¹	-	-	x	-	-	x	-	-	x
<i>Sponsor Academies & City Technology Colleges</i>	x	-	-	x	x	-	x	-	-
<i>Converter Academies</i>		x	-		x	-		x	-
<i>Free Schools</i>	x	x	-	x	x	x	x	x	-
Independent schools ²	-	100	100	-	100	100	-	100	100
Sixth form colleges	800	1,100	700	900	1,400	1,000	1,800	2,500	1,600
General FE, tertiary and specialist colleges	16,200	19,300	20,400	11,600	14,000	15,400	27,900	33,300	35,800
Higher education institutions	1,400	1,100	800	1,800	1,600	1,100	3,200	2,800	1,800
Total	18,500	21,700	21,900	14,400	17,000	17,500	32,900	38,700	39,400
Full- and part-time education									
State-funded schools	86,500	87,900	88,800	94,900	97,200	98,700	181,400	185,100	187,500
<i>LA Maintained schools</i> ¹	75,900	47,700	35,700	83,600	52,300	38,800	159,500	100,000	74,500
<i>Sponsor Academies & City Technology Colleges</i>	10,600	7,000	8,900	11,300	7,200	9,100	21,900	14,200	17,900
<i>Converter Academies</i>		33,000	43,900		37,700	50,700		70,700	94,600
<i>Free Schools</i>	x	100	300	x	-	100	x	100	400
Independent schools ²	19,700	20,300	20,000	18,500	19,100	19,100	38,200	39,400	39,200
Sixth form colleges	29,000	30,600	30,800	34,900	36,500	36,600	63,900	67,100	67,400
General FE, tertiary and specialist colleges	122,100	118,800	115,900	108,300	106,100	103,700	230,400	224,900	219,600
Higher education institutions	3,200	3,100	2,400	4,600	4,400	3,500	7,800	7,500	5,900
Total	260,500	260,700	258,000	261,200	263,300	261,600	521,700	524,000	519,600
Number of full-time students	242,000	239,000	236,000	246,700	246,300	244,100	488,800	485,300	480,100
Number of part-time students	18,500	21,700	21,900	14,400	17,000	17,500	32,900	38,700	39,400
Population	338,800	342,400	335,200	323,200	324,200	317,800	662,000	666,600	653,000

1 Includes all pupils in maintained schools, maintained and non maintained special schools and pupil referral units.

2 Includes all pupils in independent schools - assumed to live in the same Local Authority as the school

3 Total of those studying part-time education as part of work-based learning (WBL), Employer Funded Training (EFT) and other education and training (OET).

'x' denotes less than 3

'-' denotes a rounding to zero.

Table 2: Number of 16 to 18 year olds in education by institution type, England, end 2010, end 2011 and end 2012 (provisional)
Continued

End of calendar year	Males			Females			All		
	end 2010	end 2011	end 2012 prov	end 2010	end 2011	end 2012 prov	end 2010	end 2011	end 2012 prov
Aged 18									
Full-time education									
State-funded schools	14,300	13,500	14,300	11,700	11,500	12,000	26,000	25,000	26,300
<i>LA Maintained schools</i> ¹	12,700	9,200	7,700	10,300	7,400	6,100	23,000	16,600	13,800
<i>Sponsor Academies & City Technology Colleges</i>	1,600	1,400	1,700	1,400	1,400	1,600	3,000	2,800	3,300
<i>Converter Academies</i>		2,900	4,800		2,700	4,200		5,700	9,100
<i>Free Schools</i>	x	-	100	x	-	-	x	-	100
Independent schools ²	3,700	3,800	4,100	3,200	3,100	3,100	6,900	7,000	7,200
Sixth form colleges	5,700	5,700	6,100	5,100	5,300	5,700	10,800	11,000	11,800
General FE, tertiary and specialist colleges	64,500	59,000	56,700	58,100	54,500	51,800	122,500	113,500	108,500
Higher education institutions	75,100	81,500	70,200	93,000	100,500	86,500	168,100	182,000	156,700
Total	163,200	163,600	151,500	171,200	174,900	159,100	334,300	338,500	310,600
Part-time education ³									
State-funded schools	-	-	-	-	-	-	-	-	-
<i>LA Maintained schools</i> ¹	-	-	-	-	-	-	-	-	-
<i>Sponsor Academies & City Technology Colleges</i>	x	x	-	x	x	x	x	x	-
<i>Converter Academies</i>		-	-		-	-		-	-
<i>Free Schools</i>	x	x	x	x	x	x	x	x	x
Independent schools ²	100	200	200	100	100	200	200	300	400
Sixth form colleges	500	600	500	600	600	600	1,000	1,200	1,200
General FE, tertiary and specialist colleges	17,100	19,200	20,800	12,700	14,600	16,100	29,800	33,700	36,900
Higher education institutions	1,600	1,500	1,000	1,800	1,500	1,000	3,400	3,000	2,000
Total	19,300	21,400	22,500	15,100	16,800	17,900	34,400	38,200	40,400
Full- and part-time education									
State-funded schools	14,300	13,500	14,400	11,700	11,500	12,000	26,000	25,100	26,300
<i>LA Maintained schools</i> ¹	12,700	9,200	7,700	10,300	7,400	6,100	23,000	16,600	13,900
<i>Sponsor Academies & City Technology Colleges</i>	1,600	1,400	1,700	1,400	1,400	1,600	3,000	2,800	3,300
<i>Converter Academies</i>		2,900	4,800		2,700	4,200		5,700	9,100
<i>Free Schools</i>	x	-	100	x	-	-	x	-	100
Independent schools ²	3,800	4,000	4,300	3,300	3,300	3,200	7,100	7,300	7,600
Sixth form colleges	6,100	6,300	6,700	5,700	5,900	6,300	11,800	12,200	13,000
General FE, tertiary and specialist colleges	81,500	78,200	77,500	70,800	69,000	67,900	152,300	147,200	145,400
Higher education institutions	76,700	83,000	71,200	94,800	102,100	87,500	171,500	185,100	158,700
Total	182,500	185,000	174,000	186,300	191,800	177,000	368,800	376,800	351,000
Number of full-time students	163,200	163,600	151,500	171,200	174,900	159,100	334,300	338,500	310,600
Number of part-time students	19,300	21,400	22,500	15,100	16,800	17,900	34,400	38,200	40,400
Population	349,300	343,900	346,600	339,000	328,800	328,700	688,300	672,700	675,300
Aged 16-18									
Full-time education									
State-funded schools	211,500	210,100	213,600	222,600	224,200	227,100	434,100	434,400	440,700
<i>LA Maintained schools</i> ¹	185,400	116,500	88,300	195,600	121,700	91,000	381,000	238,200	179,300
<i>Sponsor Academies & City Technology Colleges</i>	26,100	18,100	22,800	27,000	18,400	22,500	53,100	36,500	45,200
<i>Converter Academies</i>		75,300	101,700		84,100	113,300		159,400	215,000
<i>Free Schools</i>	x	300	900	x	-	300	x	300	1,100
Independent schools ²	44,400	44,900	45,000	41,400	41,900	41,700	85,900	86,800	86,700
Sixth form colleges	68,200	69,500	70,000	79,400	80,800	82,000	147,600	150,300	152,100
General FE, tertiary and specialist colleges	283,100	263,300	254,900	254,800	239,900	231,000	537,900	503,200	485,900
Higher education institutions	77,300	83,800	72,200	96,400	103,900	89,500	173,700	187,800	161,600
Total	684,500	671,600	655,800	694,700	690,800	671,200	1,379,100	1,362,400	1,327,000
Part-time education ³									
State-funded schools	-	100	100	-	-	100	100	100	100
<i>LA Maintained schools</i> ¹	-	-	-	-	-	-	100	-	-
<i>Sponsor Academies & City Technology Colleges</i>	x	-	-	x	x	-	-	-	100
<i>Converter Academies</i>		-	-		-	-		-	-
<i>Free Schools</i>	x	x	-	x	x	x	x	x	-
Independent schools ²	200	300	400	200	300	300	300	600	700
Sixth form colleges	1,500	2,000	1,600	1,800	2,300	2,000	3,400	4,400	3,600
General FE, tertiary and specialist colleges	47,500	55,300	59,500	34,900	41,400	45,200	82,400	96,700	104,700
Higher education institutions	3,500	3,100	2,000	4,400	3,900	2,600	7,800	7,000	4,600
Total	52,700	60,800	63,600	41,300	48,000	50,100	94,000	108,800	113,700
Full- and part-time education									
State-funded schools	211,500	210,200	213,700	222,600	224,300	227,100	434,200	434,500	440,800
<i>LA Maintained schools</i> ¹	185,400	116,500	88,300	195,700	121,800	91,000	381,100	238,300	179,300
<i>Sponsor Academies & City Technology Colleges</i>	26,100	18,100	22,800	27,000	18,400	22,500	53,100	36,500	45,300
<i>Converter Academies</i>		75,300	101,700		84,100	113,300		159,400	215,000
<i>Free Schools</i>	x	300	900	x	-	300	x	300	1,100
Independent schools ²	44,600	45,200	45,400	41,600	42,300	42,000	86,200	87,400	87,400
Sixth form colleges	69,700	71,500	71,600	81,200	83,100	84,000	150,900	154,600	155,600
General FE, tertiary and specialist colleges	330,500	318,600	314,400	289,800	281,300	276,200	620,300	599,900	590,600
Higher education institutions	80,800	86,900	74,200	100,800	107,900	92,100	181,500	194,800	166,300
Total	737,100	732,400	719,400	735,900	738,800	721,400	1,473,100	1,471,200	1,440,700
Number of full-time students	684,500	671,600	655,800	694,700	690,800	671,200	1,379,100	1,362,400	1,327,000
Number of part-time students	52,700	60,800	63,600	41,300	48,000	50,100	94,000	108,800	113,700
Population	1,026,600	1,018,600	1,014,900	982,600	968,000	960,800	2,009,200	1,986,600	1,975,700

1 Includes all pupils in maintained schools, maintained and non maintained special schools and pupil referral units.

2 Includes all pupils in independent schools - assumed to live in the same Local Authority as the school

3 Total of those studying part-time education as part of work-based learning (WBL), Employer Funded Training (EFT) and other education and training (OET).

'x' denotes less than 3

'-' denotes a rounding to zero.

Table 2a: Participation rate of 16 to 18 year olds in education by institution type, England, end 2010, end 2011, end 2012 (provisional) ⁴

End of calendar year	percentage								
	Males			Females			All		
	end 2010	end 2011	end 2012 prov	end 2010	end 2011	end 2012 prov	end 2010	end 2011	end 2012 prov
Aged 16									
Full-time education									
State-funded schools	32.7%	32.7%	33.2%	36.2%	36.7%	37.1%	34.4%	34.7%	35.1%
<i>LA Maintained schools</i> ¹	28.6%	17.9%	13.5%	31.8%	19.7%	14.7%	30.1%	18.8%	14.0%
<i>Sponsor Academies & City Technology Colleges</i>		2.9%	3.7%		3.1%	3.8%		3.0%	3.7%
<i>Converter Academies</i>	4.1%	11.8%	15.9%	4.5%	13.9%	18.6%	4.3%	12.8%	17.2%
<i>Free Schools</i>		0.0%	0.1%		0.0%	0.1%		0.0%	0.1%
Independent schools ²	6.2%	6.3%	6.3%	6.2%	6.3%	6.2%	6.2%	6.3%	6.3%
Sixth form colleges	10.1%	10.3%	10.2%	12.6%	12.8%	12.9%	11.3%	11.5%	11.5%
General FE, tertiary and specialist colleges	33.3%	31.5%	30.8%	31.2%	29.6%	28.9%	32.3%	30.6%	29.9%
Higher education institutions	0.1%	0.1%	0.1%	0.2%	0.2%	0.2%	0.1%	0.2%	0.1%
Total	82.5%	80.9%	80.5%	86.4%	85.6%	85.3%	84.4%	83.2%	82.8%
Part-time education ³									
State-funded schools	0.0%	0.0%	0.0%	0.0%	0.0%	0.0%	0.0%	0.0%	0.0%
<i>LA Maintained schools</i> ¹	0.0%	0.0%	0.0%	0.0%	0.0%	0.0%	0.0%	0.0%	0.0%
<i>Sponsor Academies & City Technology Colleges</i>		0.0%	0.0%		0.0%	0.0%		0.0%	0.0%
<i>Converter Academies</i>	0.0%	0.0%	0.0%	0.0%	0.0%	0.0%	0.0%	0.0%	0.0%
<i>Free Schools</i>		0.0%	0.0%		0.0%	0.0%		0.0%	0.0%
Independent schools ²	0.0%	0.0%	0.0%	0.0%	0.0%	0.0%	0.0%	0.0%	0.0%
Sixth form colleges	0.1%	0.1%	0.1%	0.1%	0.1%	0.1%	0.1%	0.1%	0.1%
General FE, tertiary and specialist colleges	4.2%	5.1%	5.5%	3.3%	4.1%	4.4%	3.8%	4.6%	5.0%
Higher education institutions	0.2%	0.1%	0.1%	0.2%	0.2%	0.2%	0.2%	0.2%	0.1%
Total	4.4%	5.3%	5.7%	3.7%	4.5%	4.7%	4.0%	4.9%	5.2%
Full- and part-time education									
State-funded schools	32.7%	32.7%	33.2%	36.2%	36.7%	37.1%	34.4%	34.7%	35.1%
<i>LA Maintained schools</i> ¹	28.6%	17.9%	13.5%	31.8%	19.7%	14.7%	30.1%	18.8%	14.0%
<i>Sponsor Academies & City Technology Colleges</i>		2.9%	3.7%		3.1%	3.8%		3.0%	3.7%
<i>Converter Academies</i>	4.1%	11.8%	15.9%	4.5%	13.9%	18.6%	4.3%	12.8%	17.2%
<i>Free Schools</i>		0.0%	0.1%		0.0%	0.1%		0.0%	0.1%
Independent schools ²	6.3%	6.3%	6.3%	6.2%	6.3%	6.2%	6.2%	6.3%	6.3%
Sixth form colleges	10.2%	10.4%	10.3%	12.7%	12.9%	13.1%	11.4%	11.6%	11.6%
General FE, tertiary and specialist colleges	37.5%	36.6%	36.3%	34.5%	33.7%	33.3%	36.1%	35.2%	34.9%
Higher education institutions	0.2%	0.2%	0.2%	0.4%	0.4%	0.3%	0.3%	0.3%	0.3%
Total	86.9%	86.3%	86.3%	90.0%	90.1%	90.0%	88.4%	88.1%	88.1%
Number of full-time students	279,200	269,000	268,200	276,800	269,500	268,100	556,000	538,500	536,300
Number of part-time students	14,900	17,700	19,100	11,700	14,200	14,800	26,600	31,900	33,900
Population	338,400	332,300	333,100	320,400	315,000	314,200	658,900	647,300	647,300
Aged 17									
Full-time education									
State-funded schools	25.5%	25.7%	26.5%	29.4%	30.0%	31.0%	27.4%	27.8%	28.7%
<i>LA Maintained schools</i> ¹	22.4%	13.9%	10.7%	25.9%	16.1%	12.2%	24.1%	15.0%	11.4%
<i>Sponsor Academies & City Technology Colleges</i>		2.0%	2.6%		2.2%	2.9%		2.1%	2.7%
<i>Converter Academies</i>	3.1%	9.7%	13.1%	3.5%	11.6%	16.0%	3.3%	10.6%	14.5%
<i>Free Schools</i>		0.0%	0.1%		0.0%	0.0%		0.0%	0.1%
Independent schools ²	5.8%	5.9%	6.0%	5.7%	5.9%	6.0%	5.8%	5.9%	6.0%
Sixth form colleges	8.3%	8.6%	9.0%	10.5%	10.8%	11.2%	9.4%	9.7%	10.1%
General FE, tertiary and specialist colleges	31.2%	29.1%	28.5%	29.9%	28.4%	27.8%	30.6%	28.8%	28.1%
Higher education institutions	0.5%	0.6%	0.5%	0.8%	0.9%	0.8%	0.7%	0.8%	0.6%
Total	71.4%	69.8%	70.4%	76.3%	76.0%	76.8%	73.8%	72.8%	73.5%
Part-time education ³									
State-funded schools	0.0%	0.0%	0.0%	0.0%	0.0%	0.0%	0.0%	0.0%	0.0%
<i>LA Maintained schools</i> ¹	0.0%	0.0%	0.0%	0.0%	0.0%	0.0%	0.0%	0.0%	0.0%
<i>Sponsor Academies & City Technology Colleges</i>		0.0%	0.0%		0.0%	0.0%		0.0%	0.0%
<i>Converter Academies</i>	0.0%	0.0%	0.0%	0.0%	0.0%	0.0%	0.0%	0.0%	0.0%
<i>Free Schools</i>		0.0%	0.0%		0.0%	0.0%		0.0%	0.0%
Independent schools ²	0.0%	0.0%	0.0%	0.0%	0.0%	0.0%	0.0%	0.0%	0.0%
Sixth form colleges	0.2%	0.3%	0.2%	0.3%	0.4%	0.3%	0.3%	0.4%	0.3%
General FE, tertiary and specialist colleges	4.8%	5.6%	6.1%	3.6%	4.3%	4.8%	4.2%	5.0%	5.5%
Higher education institutions	0.4%	0.3%	0.2%	0.6%	0.5%	0.3%	0.5%	0.4%	0.3%
Total	5.5%	6.3%	6.5%	4.5%	5.3%	5.5%	5.0%	5.8%	6.0%
Full- and part-time education									
State-funded schools	25.5%	25.7%	26.5%	29.4%	30.0%	31.0%	27.4%	27.8%	28.7%
<i>LA Maintained schools</i> ¹	22.4%	13.9%	10.7%	25.9%	16.1%	12.2%	24.1%	15.0%	11.4%
<i>Sponsor Academies & City Technology Colleges</i>		2.0%	2.6%		2.2%	2.9%		2.1%	2.7%
<i>Converter Academies</i>	3.1%	9.7%	13.1%	3.5%	11.6%	16.0%	3.3%	10.6%	14.5%
<i>Free Schools</i>		0.0%	0.1%		0.0%	0.0%		0.0%	0.1%
Independent schools ²	5.8%	5.9%	6.0%	5.7%	5.9%	6.0%	5.8%	5.9%	6.0%
Sixth form colleges	8.6%	8.9%	9.2%	10.8%	11.2%	11.5%	9.7%	10.1%	10.3%
General FE, tertiary and specialist colleges	36.0%	34.7%	34.6%	33.5%	32.7%	32.6%	34.8%	33.7%	33.6%
Higher education institutions	0.9%	0.9%	0.7%	1.4%	1.4%	1.1%	1.2%	1.1%	0.9%
Total	76.9%	76.1%	77.0%	80.8%	81.2%	82.3%	78.8%	78.6%	79.6%
Number of full-time students	242,000	239,000	236,000	246,700	246,300	244,100	488,800	485,300	480,100
Number of part-time students	18,500	21,700	21,900	14,400	17,000	17,500	32,900	38,700	39,400
Population	338,800	342,400	335,200	323,200	324,200	317,800	662,000	666,600	653,000

1 Includes all pupils in maintained schools, maintained and non maintained special schools and pupil referral units.

2 Includes all pupils in independent schools - assumed to live in the same LA as the school

3 Total of those studying part-time education as part of work-based learning (WBL), Employer Funded Training (EFT) and other education and training (OET).

4 End 2012 participation estimates for 16 year olds may be slightly underestimated while estimates for 17 and 18 year olds may be slightly overestimated.

See Technical Notes section D for further information.

Table 2a: Participation rate of 16 to 18 year olds in education by institution type, England, end 2010, end 2011, end 2012 (provisional) ⁴
Continued

End of calendar year	percentage								
	Males			Females			All		
	end 2010	end 2011	end 2012 prov	end 2010	end 2011	end 2012 prov	end 2010	end 2011	end 2012 prov
Aged 18									
Full-time education									
State-funded schools	4.1%	3.9%	4.1%	3.5%	3.5%	3.6%	3.8%	3.7%	3.9%
<i>LA Maintained schools</i> ¹	3.6%	2.7%	2.2%	3.0%	2.3%	1.9%	3.3%	2.5%	2.0%
<i>Sponsor Academies & City Technology Colleges</i>									
<i>Converter Academies</i>	0.4%	0.4%	0.5%	0.4%	0.4%	0.5%	0.4%	0.4%	0.5%
<i>Free Schools</i>									
<i>Free Schools</i>	0.4%	0.8%	1.4%	0.4%	0.8%	1.3%	0.4%	0.8%	1.3%
<i>Free Schools</i>		0.0%	0.0%		0.0%	0.0%		0.0%	0.0%
Independent schools ²	1.0%	1.1%	1.2%	1.0%	1.0%	0.9%	1.0%	1.0%	1.1%
Sixth form colleges	1.6%	1.7%	1.8%	1.5%	1.6%	1.7%	1.6%	1.6%	1.8%
General FE, tertiary and specialist colleges	18.4%	17.2%	16.4%	17.1%	16.6%	15.8%	17.8%	16.9%	16.1%
Higher education institutions	21.5%	23.7%	20.3%	27.4%	30.6%	26.3%	24.4%	27.1%	23.2%
Total	46.7%	47.6%	43.7%	50.5%	53.2%	48.4%	48.6%	50.3%	46.0%
Part-time education³									
State-funded schools	0.0%	0.0%	0.0%	0.0%	0.0%	0.0%	0.0%	0.0%	0.0%
<i>LA Maintained schools</i> ¹	0.0%	0.0%	0.0%	0.0%	0.0%	0.0%	0.0%	0.0%	0.0%
<i>Sponsor Academies & City Technology Colleges</i>									
<i>Converter Academies</i>	0.0%	0.0%	0.0%	0.0%	0.0%	0.0%	0.0%	0.0%	0.0%
<i>Free Schools</i>									
<i>Free Schools</i>	0.0%	0.0%	0.0%	0.0%	0.0%	0.0%	0.0%	0.0%	0.0%
Independent schools ²	0.0%	0.0%	0.1%	0.0%	0.0%	0.0%	0.0%	0.0%	0.1%
Sixth form colleges	0.1%	0.2%	0.2%	0.2%	0.2%	0.2%	0.2%	0.2%	0.2%
General FE, tertiary and specialist colleges	4.9%	5.6%	6.0%	3.7%	4.4%	4.9%	4.3%	5.0%	5.5%
Higher education institutions	0.5%	0.4%	0.3%	0.5%	0.5%	0.3%	0.5%	0.4%	0.3%
Total	5.5%	6.2%	6.5%	4.5%	5.1%	5.4%	5.0%	5.7%	6.0%
Full- and part-time education									
State-funded schools	4.1%	3.9%	4.1%	3.5%	3.5%	3.6%	3.8%	3.7%	3.9%
<i>LA Maintained schools</i> ¹	3.6%	2.7%	2.2%	3.0%	2.3%	1.9%	3.3%	2.5%	2.1%
<i>Sponsor Academies & City Technology Colleges</i>									
<i>Converter Academies</i>	0.4%	0.4%	0.5%	0.4%	0.4%	0.5%	0.4%	0.4%	0.5%
<i>Free Schools</i>									
<i>Free Schools</i>	0.4%	0.9%	1.4%	0.4%	0.8%	1.3%	0.4%	0.8%	1.3%
<i>Free Schools</i>		0.0%	0.0%		0.0%	0.0%		0.0%	0.0%
Independent schools ²	1.1%	1.2%	1.3%	1.0%	1.0%	1.0%	1.0%	1.1%	1.1%
Sixth form colleges	1.8%	1.8%	1.9%	1.7%	1.8%	1.9%	1.7%	1.9%	1.9%
General FE, tertiary and specialist colleges	23.3%	22.7%	22.4%	20.9%	21.0%	20.7%	22.1%	21.9%	21.5%
Higher education institutions	22.0%	24.1%	20.5%	28.0%	31.0%	26.6%	24.9%	27.5%	23.5%
Total	52.2%	53.8%	50.2%	55.0%	58.3%	53.8%	53.6%	56.0%	52.0%
Number of full-time students	163,200	163,600	151,500	171,200	174,900	159,100	334,300	338,500	310,600
Number of part-time students	19,300	21,400	22,500	15,100	16,800	17,900	34,400	38,200	40,400
Population	349,300	343,900	346,600	339,000	328,800	328,700	688,300	672,700	675,300
Aged 16-18									
Full-time education									
State-funded schools	20.6%	20.6%	21.0%	22.7%	23.2%	23.6%	21.6%	21.9%	22.3%
<i>LA Maintained schools</i> ¹	18.1%	11.4%	8.7%	19.9%	12.6%	9.5%	19.0%	12.0%	9.1%
<i>Sponsor Academies & City Technology Colleges</i>									
<i>Converter Academies</i>	2.5%	7.4%	10.0%	2.7%	8.7%	11.8%	2.6%	8.0%	10.9%
<i>Free Schools</i>									
<i>Free Schools</i>	0.0%	0.0%	0.1%	0.0%	0.0%	0.0%	0.0%	0.0%	0.1%
Independent schools ²	4.3%	4.4%	4.4%	4.2%	4.3%	4.3%	4.3%	4.4%	4.4%
Sixth form colleges	6.6%	6.8%	6.9%	8.1%	8.3%	8.5%	7.3%	7.6%	7.7%
General FE, tertiary and specialist colleges	27.6%	25.9%	25.1%	25.9%	24.8%	24.0%	26.8%	25.3%	24.6%
Higher education institutions	7.5%	8.2%	7.1%	9.8%	10.7%	9.3%	8.6%	9.5%	8.2%
Total	66.7%	65.9%	64.6%	70.7%	71.4%	69.9%	68.6%	68.6%	67.2%
Part-time education³									
State-funded schools	0.0%	0.0%	0.0%	0.0%	0.0%	0.0%	0.0%	0.0%	0.0%
<i>LA Maintained schools</i> ¹	0.0%	0.0%	0.0%	0.0%	0.0%	0.0%	0.0%	0.0%	0.0%
<i>Sponsor Academies & City Technology Colleges</i>									
<i>Converter Academies</i>	0.0%	0.0%	0.0%	0.0%	0.0%	0.0%	0.0%	0.0%	0.0%
<i>Free Schools</i>									
<i>Free Schools</i>	0.0%	0.0%	0.0%	0.0%	0.0%	0.0%	0.0%	0.0%	0.0%
Independent schools ²	0.0%	0.0%	0.0%	0.0%	0.0%	0.0%	0.0%	0.0%	0.0%
Sixth form colleges	0.1%	0.2%	0.2%	0.2%	0.2%	0.2%	0.2%	0.2%	0.2%
General FE, tertiary and specialist colleges	4.6%	5.4%	5.9%	3.6%	4.3%	4.7%	4.1%	4.9%	5.3%
Higher education institutions	0.3%	0.3%	0.2%	0.4%	0.4%	0.3%	0.4%	0.4%	0.2%
Total	5.1%	6.0%	6.3%	4.2%	5.0%	5.2%	4.7%	5.5%	5.8%
Full- and part-time education									
State-funded schools	20.6%	20.6%	21.1%	22.7%	23.2%	23.6%	21.6%	21.9%	22.3%
<i>LA Maintained schools</i> ¹	18.1%	11.4%	8.7%	19.9%	12.6%	9.5%	19.0%	12.0%	9.1%
<i>Sponsor Academies & City Technology Colleges</i>									
<i>Converter Academies</i>	2.5%	7.4%	10.0%	2.7%	8.7%	11.8%	2.6%	8.0%	10.9%
<i>Free Schools</i>									
<i>Free Schools</i>	0.0%	0.0%	0.1%	0.0%	0.0%	0.0%	0.0%	0.0%	0.1%
Independent schools ²	4.3%	4.4%	4.5%	4.2%	4.4%	4.4%	4.3%	4.4%	4.4%
Sixth form colleges	6.8%	7.0%	7.1%	8.3%	8.6%	8.7%	7.5%	7.8%	7.9%
General FE, tertiary and specialist colleges	32.2%	31.3%	31.0%	29.5%	29.1%	28.7%	30.9%	30.2%	29.9%
Higher education institutions	7.9%	8.5%	7.3%	10.3%	11.1%	9.6%	9.0%	9.8%	8.4%
Total	71.8%	71.9%	70.9%	74.9%	76.3%	75.1%	73.3%	74.1%	72.9%
Number of full-time students	684,500	671,600	655,800	694,700	690,800	671,200	1,379,100	1,362,400	1,327,000
Number of part-time students	52,700	60,800	63,600	41,300	48,000	50,100	94,000	108,800	113,700
Population	1,026,600	1,018,600	1,014,900	982,600	968,000	960,800	2,009,200	1,986,600	1,975,700

1 Includes all pupils in maintained schools, maintained and non maintained special schools and pupil referral units.

2 Includes all pupils in independent schools - assumed to live in the same LA as the school

3 Total of those studying part-time education as part of work-based learning (WBL), Employer Funded Training (EFT) and other education and training (OET).

4 End 2012 participation estimates for 16 year olds may be slightly underestimated while estimates for 17 and 18 year olds may be slightly overestimated.

See Technical Notes section D for further information.

Table 3: Number of 16 to 18 year olds in education and training by labour market status, England, end 2010, end 2011 and end 2012 (provisional)

End of calendar year	In employment			ILO unemployed ¹			Inactive			All			Not in employment (including NEET figure) ²		
	end 2010	end 2011	end 2012 prov	end 2010	end 2011	end 2012 prov	end 2010	end 2011	end 2012 prov	end 2010	end 2011	end 2012 prov	end 2010	end 2011	end 2012 prov
Aged 16															
Education and training															
Full-time education	107,200	110,300	103,700	79,400	74,800	74,700	369,400	353,400	357,900	556,000	538,500	536,300	448,800	428,200	432,600
Work Based Learning (WBL)	23,200	23,100	20,600	x	x	x	x	x	x	23,200	23,100	20,600	x	x	x
Of which WBL in full-time education ³	1,300	200	200	x	x	x	x	x	x	1,300	200	200	x	x	x
Employer Funded Training (EFT)	10,200	10,900	10,600	x	x	x	x	x	x	10,200	10,900	10,600	x	x	x
Other Education and Training (OET) ⁴	4,600	5,000	6,500	7,000	8,600	9,200	16,300	18,800	19,700	27,900	32,500	35,300	23,300	27,500	28,900
Total Education and training⁵	143,800	149,100	141,200	86,400	83,400	83,900	385,800	372,300	377,600	616,000	604,800	602,600	472,200	455,700	461,400
Not in any education or training	9,200	7,000	6,900	16,300	16,700	14,600	17,400	18,800	23,300	42,900	42,500	44,700	33,600	35,500	37,900
All	153,100	156,100	148,000	102,700	100,100	98,400	403,100	391,100	400,900	658,900	647,300	647,300	505,800	491,200	499,300
Aged 17															
Education and training															
Full-time education	168,900	161,100	160,300	50,400	63,600	54,700	269,500	260,600	265,200	488,800	485,300	480,100	319,900	324,200	319,900
Work Based Learning (WBL)	40,100	39,900	38,900	x	x	x	x	x	x	40,100	39,900	38,900	x	x	x
Of which WBL in full-time education ³	1,200	300	300	x	x	x	x	x	x	1,200	300	300	x	x	x
Employer Funded Training (EFT)	19,900	21,000	20,100	x	x	x	x	x	x	19,900	21,000	20,100	x	x	x
Other Education and Training (OET) ⁴	7,900	6,500	6,900	10,600	15,200	13,200	14,300	17,300	19,300	32,800	39,000	39,500	24,900	32,500	32,600
Total Education and training⁵	235,600	228,200	226,000	61,100	78,800	67,900	283,800	277,900	284,500	580,400	584,900	578,400	344,800	356,700	352,400
Not in any education or training	27,500	24,900	26,700	35,500	33,500	30,500	18,600	23,300	17,400	81,600	81,700	74,600	54,100	56,800	47,900
All	263,100	253,100	252,700	96,600	112,300	98,400	302,300	301,200	301,900	662,000	666,600	653,000	398,900	413,500	400,300
Aged 18															
Education and training															
Full-time education	89,100	95,700	78,700	34,600	39,600	39,100	210,600	203,200	192,800	334,300	338,500	310,600	245,200	242,800	231,900
Work Based Learning (WBL)	48,100	47,200	50,900	x	x	x	x	x	x	48,100	47,200	50,900	x	x	x
Of which WBL in full-time education ³	1,000	200	100	x	x	x	x	x	x	1,000	200	100	x	x	x
Employer Funded Training (EFT)	37,300	37,200	48,000	x	x	x	x	x	x	37,300	37,200	48,000	x	x	x
Other Education and Training (OET) ⁴	14,600	15,400	16,100	8,300	10,200	11,600	16,300	16,800	17,700	39,200	42,400	45,400	24,600	26,900	29,300
Total Education and training⁵	188,200	195,400	193,500	42,900	49,800	50,700	227,000	219,900	210,500	458,000	465,200	454,700	269,900	269,700	261,200
Not in any education or training	135,200	104,300	116,300	56,000	67,600	70,800	39,000	35,600	33,600	230,300	207,500	220,600	95,000	103,200	104,300
All	323,400	299,700	309,800	98,900	117,400	121,500	266,000	255,500	244,000	688,300	672,700	675,300	364,900	373,000	365,500
Aged 16-18															
Education and training															
Full-time education	365,200	367,200	342,700	164,500	178,000	168,500	849,500	817,200	815,900	1,379,100	1,362,400	1,327,000	1,014,000	995,200	984,400
Work Based Learning (WBL)	111,400	110,200	110,400	x	x	x	x	x	x	111,400	110,200	110,400	x	x	x
Of which WBL in full-time education ³	3,500	700	600	x	x	x	x	x	x	3,500	700	600	x	x	x
Employer Funded Training (EFT)	67,500	69,100	78,700	x	x	x	x	x	x	67,500	69,100	78,700	x	x	x
Other Education and Training (OET) ⁴	27,000	27,000	29,500	25,900	34,000	34,000	47,000	52,900	56,700	99,900	113,900	120,200	72,900	86,900	90,700
Total Education and training⁵	567,600	572,800	560,700	190,400	212,000	202,400	896,500	870,100	872,600	1,654,400	1,654,900	1,635,700	1,086,900	1,082,100	1,075,100
Not in any education or training	172,000	136,200	149,900	107,800	117,800	115,900	75,000	77,700	74,200	354,700	331,700	340,000	182,800	195,500	190,100
Population	739,500	709,000	710,500	298,200	329,800	318,400	971,500	947,900	946,800	2,009,200	1,986,600	1,975,700	1,269,600	1,277,600	1,265,200

1 Available to start work in the next two weeks and has either looked for work in the last four weeks or is waiting to start a job already obtained

2 The sum of those young people who are ILO unemployed or inactive. Therefore, the figures in this column for young people not in any education or training are the NEET figures

3 From 2011/12 a change in source data enabled the overlap between full-time education and WBL to be estimated more directly; the impact is described in 'Technical Notes' paragraph 26 of SFR 12/2012

4 Includes part-time education not funded by employers or through WBL; also full- or part-time education in independent FE and HE institutions

5 Total of all full-time education and WBL (less WBL in full-time education) plus EFT and OET

'x' denotes less than 3

'.' denotes a rounding to zero.

Table 3a: Participation rate of 16 to 18 year olds in education and training by labour market status, England, end 2010, end 2011, end 2012 (provisional) ⁶

End of calendar year	In employment			ILO unemployed ¹			Inactive			All			Not in employment (including NEET figure) ²		
	end 2010	end 2011	end 2012 prov	end 2010	end 2011	end 2012 prov	end 2010	end 2011	end 2012 prov	end 2010	end 2011	end 2012 prov	end 2010	end 2011	end 2012 prov
	<i>percentage</i>														
Aged 16															
Education and training															
Full-time education	16.3%	17.0%	16.0%	12.1%	11.6%	11.5%	56.1%	54.6%	55.3%	84.4%	83.2%	82.8%	68.1%	66.2%	66.8%
Work Based Learning (WBL)	3.5%	3.6%	3.2%	0.0%	0.0%	0.0%	0.0%	0.0%	0.0%	3.5%	3.6%	3.2%	0.0%	0.0%	0.0%
<i>Of which WBL in full-time education</i> ³	0.2%	0.0%	0.0%	0.0%	0.0%	0.0%	0.0%	0.0%	0.0%	0.2%	0.0%	0.0%	0.0%	0.0%	0.0%
Employer Funded Training (EFT)	1.6%	1.7%	1.6%	0.0%	0.0%	0.0%	0.0%	0.0%	0.0%	1.6%	1.7%	1.6%	0.0%	0.0%	0.0%
Other Education and Training (OET) ⁴	0.7%	0.8%	1.0%	1.1%	1.3%	1.4%	2.5%	2.9%	3.0%	4.2%	5.0%	5.5%	3.5%	4.2%	4.5%
Total Education and training ⁵	21.8%	23.0%	21.8%	13.1%	12.9%	13.0%	58.5%	57.5%	58.3%	93.5%	93.4%	93.1%	71.7%	70.4%	71.3%
Not in any education or training	1.4%	1.1%	1.1%	2.5%	2.6%	2.3%	2.6%	2.9%	3.6%	6.5%	6.6%	6.9%	5.1%	5.5%	5.8%
All - percentage	23.2%	24.1%	22.9%	15.6%	15.5%	15.2%	61.2%	60.4%	61.9%	100.0%	100.0%	100.0%	76.8%	75.9%	77.1%
All - number	153,100	156,100	148,000	102,700	100,100	98,400	403,100	391,100	400,900	658,900	647,300	647,300	505,800	491,200	499,300
Aged 17															
Education and training															
Full-time education	25.5%	24.2%	24.5%	7.6%	9.5%	8.4%	40.7%	39.1%	40.6%	73.8%	72.8%	73.5%	48.3%	48.6%	49.0%
Work Based Learning (WBL)	6.1%	6.0%	6.0%	0.0%	0.0%	0.0%	0.0%	0.0%	0.0%	6.1%	6.0%	6.0%	0.0%	0.0%	0.0%
<i>Of which WBL in full-time education</i> ³	0.2%	0.0%	0.0%	0.0%	0.0%	0.0%	0.0%	0.0%	0.0%	0.2%	0.0%	0.0%	0.0%	0.0%	0.0%
Employer Funded Training (EFT)	3.0%	3.1%	3.1%	0.0%	0.0%	0.0%	0.0%	0.0%	0.0%	3.0%	3.1%	3.1%	0.0%	0.0%	0.0%
Other Education and Training (OET) ⁴	1.2%	1.0%	1.1%	1.6%	2.3%	2.0%	2.2%	2.6%	3.0%	4.9%	5.9%	6.0%	3.8%	4.9%	5.0%
Total Education and training ⁵	35.6%	34.2%	34.6%	9.2%	11.8%	10.4%	42.9%	41.7%	43.6%	87.7%	87.7%	88.6%	52.1%	53.5%	54.0%
Not in any education or training	4.2%	3.7%	4.1%	5.4%	5.0%	4.7%	2.8%	3.5%	2.7%	12.3%	12.3%	11.4%	8.2%	8.5%	7.3%
All - percentage	39.7%	38.0%	38.7%	14.6%	16.8%	15.1%	45.7%	45.2%	46.2%	100.0%	100.0%	100.0%	60.3%	62.0%	61.3%
All - number	263,100	253,100	252,700	96,600	112,300	98,400	302,300	301,200	301,900	662,000	666,600	653,000	398,900	413,500	400,300
Aged 18															
Education and training															
Full-time education	12.9%	14.2%	11.6%	5.0%	5.9%	5.8%	30.6%	30.2%	28.5%	48.6%	50.3%	46.0%	35.6%	36.1%	34.3%
Work Based Learning (WBL)	7.0%	7.0%	7.5%	0.0%	0.0%	0.0%	0.0%	0.0%	0.0%	7.0%	7.0%	7.5%	0.0%	0.0%	0.0%
<i>Of which WBL in full-time education</i> ³	0.1%	0.0%	0.0%	0.0%	0.0%	0.0%	0.0%	0.0%	0.0%	0.1%	0.0%	0.0%	0.0%	0.0%	0.0%
Employer Funded Training (EFT)	5.4%	5.5%	7.1%	0.0%	0.0%	0.0%	0.0%	0.0%	0.0%	5.4%	5.5%	7.1%	0.0%	0.0%	0.0%
Other Education and Training (OET) ⁴	2.1%	2.3%	2.4%	1.2%	1.5%	1.7%	2.4%	2.5%	2.6%	5.7%	6.3%	6.7%	3.6%	4.0%	4.3%
Total Education and training ⁵	27.3%	29.1%	28.7%	6.2%	7.4%	7.5%	33.0%	32.7%	31.2%	66.5%	69.1%	67.3%	39.2%	40.1%	38.7%
Not in any education or training	19.6%	15.5%	17.2%	8.1%	10.1%	10.5%	5.7%	5.3%	5.0%	33.5%	30.9%	32.7%	13.8%	15.3%	15.5%
All - percentage	47.0%	44.6%	45.9%	14.4%	17.5%	18.0%	38.6%	38.0%	36.1%	100.0%	100.0%	100.0%	53.0%	55.4%	54.1%
All - number	323,400	299,700	309,800	98,900	117,400	121,500	266,000	255,500	244,000	688,300	672,700	675,300	364,900	373,000	365,500
Aged 16-18															
Education and training															
Full-time education	18.2%	18.5%	17.3%	8.2%	9.0%	8.5%	42.3%	41.1%	41.3%	68.6%	68.6%	67.2%	50.5%	50.1%	49.8%
Work Based Learning (WBL)	5.5%	5.5%	5.6%	0.0%	0.0%	0.0%	0.0%	0.0%	0.0%	5.5%	5.5%	5.6%	0.0%	0.0%	0.0%
<i>Of which WBL in full-time education</i> ³	0.2%	0.0%	0.0%	0.0%	0.0%	0.0%	0.0%	0.0%	0.0%	0.2%	0.0%	0.0%	0.0%	0.0%	0.0%
Employer Funded Training (EFT)	3.4%	3.5%	4.0%	0.0%	0.0%	0.0%	0.0%	0.0%	0.0%	3.4%	3.5%	4.0%	0.0%	0.0%	0.0%
Other Education and Training (OET) ⁴	1.3%	1.4%	1.5%	1.3%	1.7%	1.7%	2.3%	2.7%	2.9%	5.0%	5.7%	6.1%	3.6%	4.4%	4.6%
Total Education and training ⁵	28.2%	28.8%	28.4%	9.5%	10.7%	10.2%	44.6%	43.8%	44.2%	82.3%	83.3%	82.8%	54.1%	54.5%	54.4%
Not in any education or training	8.6%	6.9%	7.6%	5.4%	5.9%	5.9%	3.7%	3.9%	3.8%	17.7%	16.7%	17.2%	9.1%	9.8%	9.6%
All - percentage	36.8%	35.7%	36.0%	14.8%	16.6%	16.1%	48.4%	47.7%	47.9%	100.0%	100.0%	100.0%	63.2%	64.3%	64.0%
All - number	739,500	709,000	710,500	298,200	329,800	318,400	971,500	947,900	946,800	2,009,200	1,986,600	1,975,700	1,269,600	1,277,600	1,265,200

1 Available to start work in the next two weeks and has either looked for work in the last four weeks or is waiting to start a job already obtained.

2 The sum of those young people who are ILO unemployed or inactive. Therefore, the figures in this column for young people not in any education or training are the NEET figures.

3 From 2011/12 a change in source data enabled the overlap between full-time education and WBL to be estimated more directly; the impact is described in 'Technical Notes' paragraph 26 of SFR 12/2012.

4 Includes part-time education not funded by employers or through WBL; also full- or part-time education in independent FE and HE institutions.

5 Total of all full-time education and WBL (less WBL in full-time education) plus EFT and OET

6 End 2012 participation estimates for 16 year olds may be slightly underestimated while estimates for 17 and 18 year olds may be slightly overestimated. See Technical Notes section D for further information.

Table 4: Number of 16 to 18 year olds in full-time education by highest qualification aim, and work based learning, England, end 2010, end 2011 and end 2012 (provisional)

End of calendar year	Males			Females			All		
	end 2010	end 2011	end 2012	end 2010	end 2011	end 2012	end 2010	end 2011	end 2012
			prov			prov			prov
Aged 16									
Full-time education	279,200	269,000	268,200	276,800	269,500	268,100	556,000	538,500	536,300
Higher Education (Level 4 and above)	300	100	100	200	100	300	500	300	400
Further Education	278,900	268,900	268,100	276,600	269,400	267,800	555,500	538,200	535,900
Level 3	192,000	187,400	189,900	213,900	210,700	212,100	405,900	398,100	401,900
GCE/VCE A/AS levels ¹	152,300	142,100	146,500	173,300	165,900	170,100	325,600	308,000	316,600
NVQ 3 and equivalents	39,700	45,300	43,400	40,600	44,800	41,900	80,300	90,100	85,300
Level 2	40,700	39,100	39,600	39,400	37,700	36,400	80,100	76,800	76,000
GCSE/Intermediate GNVQ	11,500	11,400	12,200	10,100	9,700	10,000	21,600	21,100	22,200
NVQ 2 and equivalents	29,200	27,700	27,400	29,300	28,100	26,400	58,500	55,800	53,800
Level 1	33,600	30,500	27,500	16,500	14,600	13,100	50,100	45,100	40,600
Foundation GNVQ	-	x	x	-	x	x	-	-	x
NVQ 1 and equivalents	33,600	30,500	27,500	16,500	14,600	13,100	50,100	45,100	40,600
Other courses ²	12,600	11,800	11,200	6,800	6,400	6,200	19,400	18,200	17,400
Work Based Learning (WBL)	14,300	14,600	13,000	8,900	8,400	7,600	23,200	23,100	20,600
Apprenticeships Total	13,300	14,600	13,000	8,400	8,400	7,600	21,700	23,100	20,600
of which Advanced Apprenticeships (AAs)	3,700	3,900	3,700	600	600	600	4,300	4,500	4,300
of which Apprenticeships (As)	9,600	10,700	9,200	7,800	7,800	7,000	17,500	18,600	16,200
Entry to Employment (E2E)	900	x	x	500	x	x	1,400	x	x
Other ³	x	x	x	x	-	-	x	-	-
Population aged 16	338,400	332,300	333,100	320,400	315,000	314,200	658,900	647,300	647,300
Aged 17									
Full-time education	242,000	239,000	236,000	246,700	246,300	244,100	488,800	485,300	480,100
Higher Education (Level 4 and above)	1,700	1,800	1,600	2,300	2,300	2,000	4,000	4,100	3,600
Further Education	240,300	237,200	234,500	244,500	244,000	242,100	484,800	481,200	476,600
Level 3	184,900	186,300	186,500	209,200	211,500	211,500	394,100	397,800	398,000
GCE/VCE A/AS levels ¹	129,300	127,700	127,500	150,600	149,900	150,800	280,000	277,600	278,300
NVQ 3 and equivalents	55,600	58,600	59,000	58,500	61,600	60,700	114,100	120,200	119,700
Level 2	31,200	29,200	28,100	22,500	20,700	19,400	53,700	49,900	47,500
GCSE/Intermediate GNVQ	2,600	2,500	2,700	2,300	2,200	2,300	4,900	4,700	5,000
NVQ 2 and equivalents	28,600	26,700	25,400	20,200	18,500	17,100	48,800	45,200	42,500
Level 1	15,400	13,300	12,000	7,600	6,900	6,200	23,000	20,200	18,200
Foundation GNVQ	-	x	x	-	-	x	100	-	x
NVQ 1 and equivalents	15,400	13,300	12,000	7,500	6,900	6,200	22,900	20,200	18,200
Other courses ²	8,800	8,400	7,800	5,200	4,900	5,100	14,100	13,400	12,900
Work Based Learning (WBL)	23,300	24,000	23,400	16,800	15,900	15,600	40,100	39,900	38,900
Apprenticeships Total	22,100	24,000	23,400	16,000	15,900	15,600	38,000	39,900	38,900
of which Advanced Apprenticeships (AAs)	6,700	7,600	7,500	2,500	3,200	3,200	9,200	10,700	10,800
of which Apprenticeships (As)	15,300	16,500	15,800	13,500	12,700	12,300	28,800	29,200	28,200
Entry to Employment (E2E)	1,200	x	x	800	x	x	2,000	x	x
Other ³	-	-	-	-	-	-	100	-	-
Population aged 17	338,800	342,400	335,200	323,200	324,200	317,800	662,000	666,600	653,000

1 Includes GCE A/AS levels in applied subjects.

2 Includes all courses below level 1 and those of unknown or unspecified level (also includes PRUs; and special schools, for which no qualification breakdown is available).

3 Various work related provision including basic skills, individually tailored provision and learning as part of Train to Gain

'x' denotes less than 3

'-' denotes a rounding to zero.

Table 4: Number of 16 to 18 year olds in full-time education by highest qualification aim, and work based learning, England, end 2010, end 2011 and end 2012 (provisional)
Continued

End of calendar year	Males			Females			All		
	end 2010	end 2011	end 2012 prov	end 2010	end 2011	end 2012 prov	end 2010	end 2011	end 2012 prov
	<i>number</i>								
Aged 18									
Full-time education	163,200	163,600	151,500	171,200	174,900	159,100	334,300	338,500	310,600
Higher Education (Level 4 and above)	75,600	82,300	71,000	91,700	100,300	86,500	167,200	182,600	157,500
Further Education	87,600	81,300	80,500	79,500	74,700	72,600	167,100	155,900	153,000
Level 3	59,200	55,500	56,000	60,800	57,400	56,300	120,000	112,900	112,200
GCE/VCE A/AS levels ¹	20,400	18,300	19,200	19,200	17,600	17,600	39,600	35,800	36,700
NVQ 3 and equivalents	38,700	37,200	36,800	41,600	39,800	38,700	80,300	77,100	75,500
Level 2	14,900	13,300	12,700	10,900	9,900	9,500	25,800	23,200	22,100
GCSE/Intermediate GNVQ	1,000	1,000	1,000	900	900	900	1,900	1,900	1,900
NVQ 2 and equivalents	13,900	12,200	11,700	10,100	9,000	8,600	23,900	21,300	20,300
Level 1	7,200	6,500	5,900	3,800	3,700	3,200	11,000	10,100	9,100
Foundation GNVQ	100	-	x	-	x	x	100	-	x
NVQ 1 and equivalents	7,100	6,500	5,900	3,700	3,700	3,200	10,900	10,100	9,100
Other courses ²	6,400	6,000	5,900	4,000	3,700	3,600	10,400	9,800	9,500
Work Based Learning (WBL)	29,100	28,100	29,900	18,900	19,100	21,000	48,100	47,200	50,900
Apprenticeships Total	27,700	28,000	29,700	18,000	18,900	20,800	45,700	46,900	50,500
of which Advanced Apprenticeships (AAs)	12,600	12,300	13,000	6,100	6,600	7,500	18,700	18,900	20,500
of which Apprenticeships (As)	15,100	15,700	16,600	11,900	12,300	13,400	27,000	28,000	30,000
Entry to Employment (E2E)	600	x	x	300	x	x	1,000	x	x
Other ³	800	100	200	600	100	200	1,400	300	400
Population aged 18	349,300	343,900	346,600	339,000	328,800	328,700	688,300	672,700	675,300
Aged 16-18									
Full-time education	684,500	671,600	655,800	694,700	690,800	671,200	1,379,100	1,362,400	1,327,000
Higher Education (Level 4 and above)	77,600	84,300	72,700	94,100	102,700	88,800	171,700	187,000	161,500
Further Education	606,900	587,300	583,000	600,600	588,100	582,500	1,207,500	1,175,400	1,165,500
Level 3	436,000	429,200	432,300	483,900	479,600	479,800	919,900	908,700	912,100
GCE/VCE A/AS levels ¹	302,100	288,100	293,100	343,100	333,300	338,500	645,200	621,400	631,600
NVQ 3 and equivalents	134,000	141,100	139,200	140,700	146,200	141,300	274,700	287,300	280,500
Level 2	86,800	81,600	80,400	72,800	68,300	65,200	159,700	149,900	145,600
GCSE/Intermediate GNVQ	15,200	15,000	15,900	13,200	12,700	13,200	28,400	27,700	29,100
NVQ 2 and equivalents	71,700	66,600	64,500	59,600	55,600	52,000	131,200	122,200	116,500
Level 1	56,200	50,300	45,400	27,900	25,200	22,500	84,100	75,500	67,900
Foundation GNVQ	100	-	x	100	-	x	200	-	x
NVQ 1 and equivalents	56,100	50,300	45,400	27,800	25,200	22,500	83,900	75,500	67,900
Other courses ²	27,800	26,300	24,900	16,000	15,000	14,900	43,800	41,300	39,900
Work Based Learning (WBL)	66,800	66,800	66,200	44,600	43,400	44,200	111,400	110,200	110,400
Apprenticeships Total	63,100	66,700	66,000	42,400	43,200	44,000	105,500	109,900	110,000
of which Advanced Apprenticeships (AAs)	23,100	23,700	24,300	9,200	10,400	11,300	32,200	34,200	35,600
of which Apprenticeships (As)	40,000	42,900	41,700	33,200	32,800	32,700	73,300	75,700	74,400
Entry to Employment (E2E)	2,800	x	x	1,600	x	x	4,400	x	x
Other ³	900	200	200	600	100	200	1,500	300	400
Population aged 16-18	1,026,600	1,018,600	1,014,900	982,600	968,000	960,800	2,009,200	1,986,600	1,975,700

1 Includes GCE A/AS levels in applied subjects.

2 Includes all courses below level 1 and those of unknown or unspecified level (also includes PRUs; and special schools, for which no qualification breakdown is available).

3 Various work related provision including basic skills, individually tailored provision and learning as part of Train to Gain

'x' denotes less than 3

'-' denotes a rounding to zero.

Table 4a: Participation rate of 16 to 18 year olds in full-time education by highest qualification aim, and work based learning, England, end 2010, end 2011, end 2012 (provisional) ⁴

End of calendar year	percentage								
	Males			Females			All		
	end 2010	end 2011	end 2012 prov	end 2010	end 2011	end 2012 prov	end 2010	end 2011	end 2012 prov
Aged 16									
Full-time education	82.5%	80.9%	80.5%	86.4%	85.6%	85.3%	84.4%	83.2%	82.8%
Higher Education (Level 4 and above)	0.1%	0.0%	0.0%	0.1%	0.0%	0.1%	0.1%	0.0%	0.1%
Further Education	82.4%	80.9%	80.5%	86.3%	85.5%	85.2%	84.3%	83.2%	82.8%
Level 3	56.7%	56.4%	57.0%	66.8%	66.9%	67.5%	61.6%	61.5%	62.1%
GCE/VCE A/AS levels ¹	45.0%	42.8%	44.0%	54.1%	52.7%	54.1%	49.4%	47.6%	48.9%
NVQ 3 and equivalents	11.7%	13.6%	13.0%	12.7%	14.2%	13.3%	12.2%	13.9%	13.2%
Level 2	12.0%	11.8%	11.9%	12.3%	12.0%	11.6%	12.2%	11.9%	11.7%
GCSE/Intermediate GNVQ	3.4%	3.4%	3.7%	3.1%	3.1%	3.2%	3.3%	3.3%	3.4%
NVQ 2 and equivalents	8.6%	8.3%	8.2%	9.2%	8.9%	8.4%	8.9%	8.6%	8.3%
Level 1	9.9%	9.2%	8.3%	5.2%	4.6%	4.2%	7.6%	7.0%	6.3%
Foundation GNVQ	0.0%	0.0%	0.0%	0.0%	0.0%	0.0%	0.0%	0.0%	0.0%
NVQ 1 and equivalents	9.9%	9.2%	8.3%	5.2%	4.6%	4.2%	7.6%	7.0%	6.3%
Other courses ²	3.7%	3.6%	3.4%	2.1%	2.0%	2.0%	2.9%	2.8%	2.7%
Work Based Learning (WBL)	4.2%	4.4%	3.9%	2.8%	2.7%	2.4%	3.5%	3.6%	3.2%
Apprenticeships Total	3.9%	4.4%	3.9%	2.6%	2.7%	2.4%	3.3%	3.6%	3.2%
Advanced Apprenticeships (AAs)	1.1%	1.2%	1.1%	0.2%	0.2%	0.2%	0.6%	0.7%	0.7%
Apprenticeships (As)	2.8%	3.2%	2.8%	2.4%	2.5%	2.2%	2.6%	2.9%	2.5%
Entry to Employment (E2E)	0.3%	0.0%	0.0%	0.2%	0.0%	0.0%	0.2%	0.0%	0.0%
Other ³	0.0%	0.0%	0.0%	0.0%	0.0%	0.0%	0.0%	0.0%	0.0%
Population aged 16	338,400	332,300	333,100	320,400	315,000	314,200	658,900	647,300	647,300
Aged 17									
Full-time education	71.4%	69.8%	70.4%	76.3%	76.0%	76.8%	73.8%	72.8%	73.5%
Higher Education (Level 4 and above)	0.5%	0.5%	0.5%	0.7%	0.7%	0.6%	0.6%	0.6%	0.5%
Further Education	70.9%	69.3%	69.9%	75.6%	75.3%	76.2%	73.2%	72.2%	73.0%
Level 3	54.6%	54.4%	55.6%	64.7%	65.2%	66.5%	59.5%	59.7%	60.9%
GCE/VCE A/AS levels ¹	38.2%	37.3%	38.0%	46.6%	46.2%	47.4%	42.3%	41.6%	42.6%
NVQ 3 and equivalents	16.4%	17.1%	17.6%	18.1%	19.0%	19.1%	17.2%	18.0%	18.3%
Level 2	9.2%	8.5%	8.4%	7.0%	6.4%	6.1%	8.1%	7.5%	7.3%
GCSE/Intermediate GNVQ	0.8%	0.7%	0.8%	0.7%	0.7%	0.7%	0.7%	0.7%	0.8%
NVQ 2 and equivalents	8.4%	7.8%	7.6%	6.3%	5.7%	5.4%	7.4%	6.8%	6.5%
Level 1	4.5%	3.9%	3.6%	2.3%	2.1%	1.9%	3.5%	3.0%	2.8%
Foundation GNVQ	0.0%	0.0%	0.0%	0.0%	0.0%	0.0%	0.0%	0.0%	0.0%
NVQ 1 and equivalents	4.5%	3.9%	3.6%	2.3%	2.1%	1.9%	3.5%	3.0%	2.8%
Other courses ²	2.6%	2.5%	2.3%	1.6%	1.5%	1.6%	2.1%	2.0%	2.0%
Work Based Learning (WBL)	6.9%	7.0%	7.0%	5.2%	4.9%	4.9%	6.1%	6.0%	6.0%
Apprenticeships Total	6.5%	7.0%	7.0%	4.9%	4.9%	4.9%	5.7%	6.0%	6.0%
Advanced Apprenticeships (AAs)	2.0%	2.2%	2.3%	0.8%	1.0%	1.0%	1.4%	1.6%	1.6%
Apprenticeships (As)	4.5%	4.8%	4.7%	4.2%	3.9%	3.9%	4.3%	4.4%	4.3%
Entry to Employment (E2E)	0.4%	0.0%	0.0%	0.2%	0.0%	0.0%	0.3%	0.0%	0.0%
Other ³	0.0%	0.0%	0.0%	0.0%	0.0%	0.0%	0.0%	0.0%	0.0%
Population aged 17	338,800	342,400	335,200	323,200	324,200	317,800	662,000	666,600	653,000

1 Includes GCE A/AS levels in applied subjects.

2 Includes all courses below level 1 and those of unknown or unspecified level (also includes PRUs; and special schools, for which no qualification breakdown is available).

3 Various work related provision including basic skills, individually tailored provision and learning as part of Train to Gain

4 End 2012 participation estimates for 16 year olds may be slightly underestimated while estimates for 17 and 18 year olds may be slightly overestimated. See Technical Notes section D for further information.

Table 4a: Participation rate of 16 to 18 year olds in full-time education by highest qualification aim, and work based learning, England, end 2010, end 2011, end 2012 (provisional) ⁴
Continued

End of calendar year	percentage								
	Males			Females			All		
	end 2010	end 2011	end 2012 prov	end 2010	end 2011	end 2012 prov	end 2010	end 2011	end 2012 prov
Aged 18									
Full-time education	46.7%	47.6%	43.7%	50.5%	53.2%	48.4%	48.6%	50.3%	46.0%
Higher Education (Level 4 and above)	21.6%	23.9%	20.5%	27.0%	30.5%	26.3%	24.3%	27.1%	23.3%
Further Education	25.1%	23.6%	23.2%	23.5%	22.7%	22.1%	24.3%	23.2%	22.7%
Level 3	16.9%	16.1%	16.1%	17.9%	17.5%	17.1%	17.4%	16.8%	16.6%
GCE/VCE A/AS levels ¹	5.8%	5.3%	5.5%	5.7%	5.3%	5.3%	5.8%	5.3%	5.4%
NVQ 3 and equivalents	11.1%	10.8%	10.6%	12.3%	12.1%	11.8%	11.7%	11.5%	11.2%
Level 2	4.3%	3.9%	3.7%	3.2%	3.0%	2.9%	3.8%	3.4%	3.3%
GCSE/Intermediate GNVQ	0.3%	0.3%	0.3%	0.3%	0.3%	0.3%	0.3%	0.3%	0.3%
NVQ 2 and equivalents	4.0%	3.6%	3.4%	3.0%	2.8%	2.6%	3.5%	3.2%	3.0%
Level 1	2.1%	1.9%	1.7%	1.1%	1.1%	1.0%	1.6%	1.5%	1.4%
Foundation GNVQ	0.0%	0.0%	0.0%	0.0%	0.0%	0.0%	0.0%	0.0%	0.0%
NVQ 1 and equivalents	2.0%	1.9%	1.7%	1.1%	1.1%	1.0%	1.6%	1.5%	1.4%
Other courses ²	1.8%	1.8%	1.7%	1.2%	1.1%	1.1%	1.5%	1.5%	1.4%
Work Based Learning (WBL)	8.3%	8.2%	8.6%	5.6%	5.8%	6.4%	7.0%	7.0%	7.5%
Apprenticeships Total	7.9%	8.1%	8.6%	5.3%	5.8%	6.3%	6.6%	7.0%	7.5%
Advanced Apprenticeships (AAs)	3.6%	3.6%	3.8%	1.8%	2.0%	2.3%	2.7%	2.8%	3.0%
Apprenticeships (As)	4.3%	4.6%	4.8%	3.5%	3.7%	4.1%	3.9%	4.2%	4.4%
Entry to Employment (E2E)	0.2%	0.0%	0.0%	0.1%	0.0%	0.0%	0.1%	0.0%	0.0%
Other ³	0.2%	0.0%	0.1%	0.2%	0.0%	0.1%	0.2%	0.0%	0.1%
Population aged 18	349,300	343,900	346,600	339,000	328,800	328,700	688,300	672,700	675,300
Aged 16-18									
Full-time education	66.7%	65.9%	64.6%	70.7%	71.4%	69.9%	68.6%	68.6%	67.2%
Higher Education (Level 4 and above)	7.6%	8.3%	7.2%	9.6%	10.6%	9.2%	8.5%	9.4%	8.2%
Further Education	59.1%	57.7%	57.4%	61.1%	60.8%	60.6%	60.1%	59.2%	59.0%
Level 3	42.5%	42.1%	42.6%	49.2%	49.5%	49.9%	45.8%	45.7%	46.2%
GCE/VCE A/AS levels ¹	29.4%	28.3%	28.9%	34.9%	34.4%	35.2%	32.1%	31.3%	32.0%
NVQ 3 and equivalents	13.1%	13.9%	13.7%	14.3%	15.1%	14.7%	13.7%	14.5%	14.2%
Level 2	8.5%	8.0%	7.9%	7.4%	7.1%	6.8%	7.9%	7.5%	7.4%
GCSE/Intermediate GNVQ	1.5%	1.5%	1.6%	1.3%	1.3%	1.4%	1.4%	1.4%	1.5%
NVQ 2 and equivalents	7.0%	6.5%	6.4%	6.1%	5.7%	5.4%	6.5%	6.2%	5.9%
Level 1	5.5%	4.9%	4.5%	2.8%	2.6%	2.3%	4.2%	3.8%	3.4%
Foundation GNVQ	0.0%	0.0%	0.0%	0.0%	0.0%	0.0%	0.0%	0.0%	0.0%
NVQ 1 and equivalents	5.5%	4.9%	4.5%	2.8%	2.6%	2.3%	4.2%	3.8%	3.4%
Other courses ²	2.7%	2.6%	2.5%	1.6%	1.6%	1.6%	2.2%	2.1%	2.0%
Work Based Learning (WBL)	6.5%	6.6%	6.5%	4.5%	4.5%	4.6%	5.5%	5.5%	5.6%
Apprenticeships Total	6.1%	6.5%	6.5%	4.3%	4.5%	4.6%	5.2%	5.5%	5.6%
Advanced Apprenticeships (AAs)	2.2%	2.3%	2.4%	0.9%	1.1%	1.2%	1.6%	1.7%	1.8%
Apprenticeships (As)	3.9%	4.2%	4.1%	3.4%	3.4%	3.4%	3.6%	3.8%	3.8%
Entry to Employment (E2E)	0.3%	0.0%	0.0%	0.2%	0.0%	0.0%	0.2%	0.0%	0.0%
Other ³	0.1%	0.0%	0.0%	0.1%	0.0%	0.0%	0.1%	0.0%	0.0%
Population aged 16-18	1,026,600	1,018,600	1,014,900	982,600	968,000	960,800	2,009,200	1,986,600	1,975,700

1 Includes GCE A/AS levels in applied subjects.

2 Includes all courses below level 1 and those of unknown or unspecified level (also includes PRUs; and special schools, for which no qualification breakdown is available).

3 Various work related provision including basic skills, individually tailored provision and learning as part of Train to Gain

4 End 2012 participation estimates for 16 year olds may be slightly underestimated while estimates for 17 and 18 year olds may be slightly overestimated.

See Technical Notes section D for further information.

Figure 1: Participation of 16 year olds in education and training, England, end 1994 to end 2012 (prov)

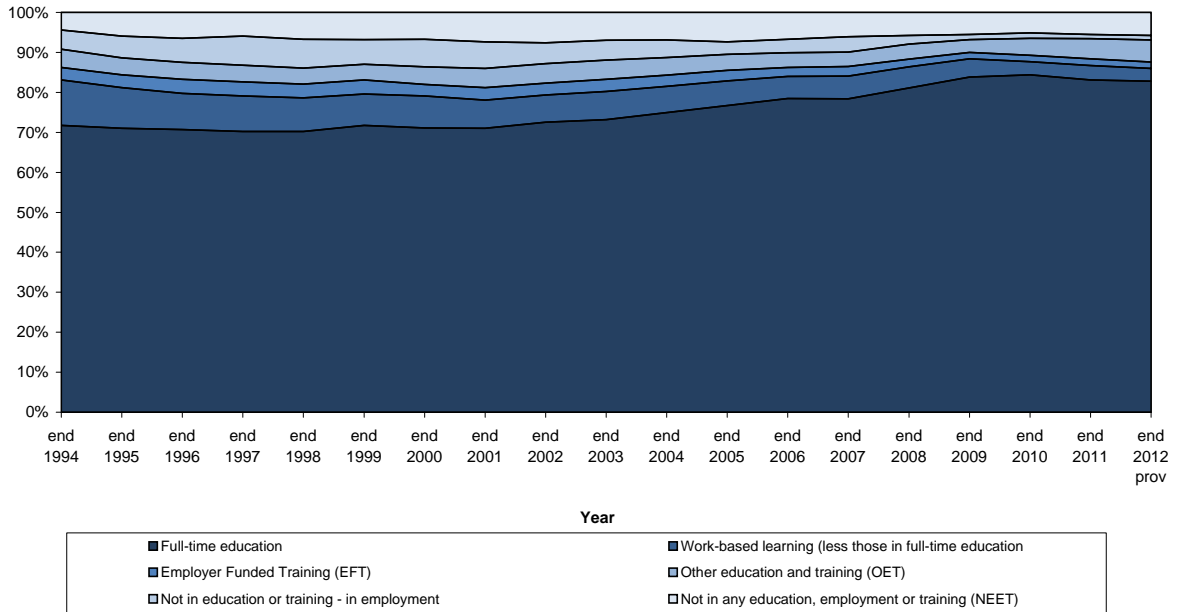


Figure 2: Participation of 17 year olds in education and training, England, end 1994 to end 2012 (prov)

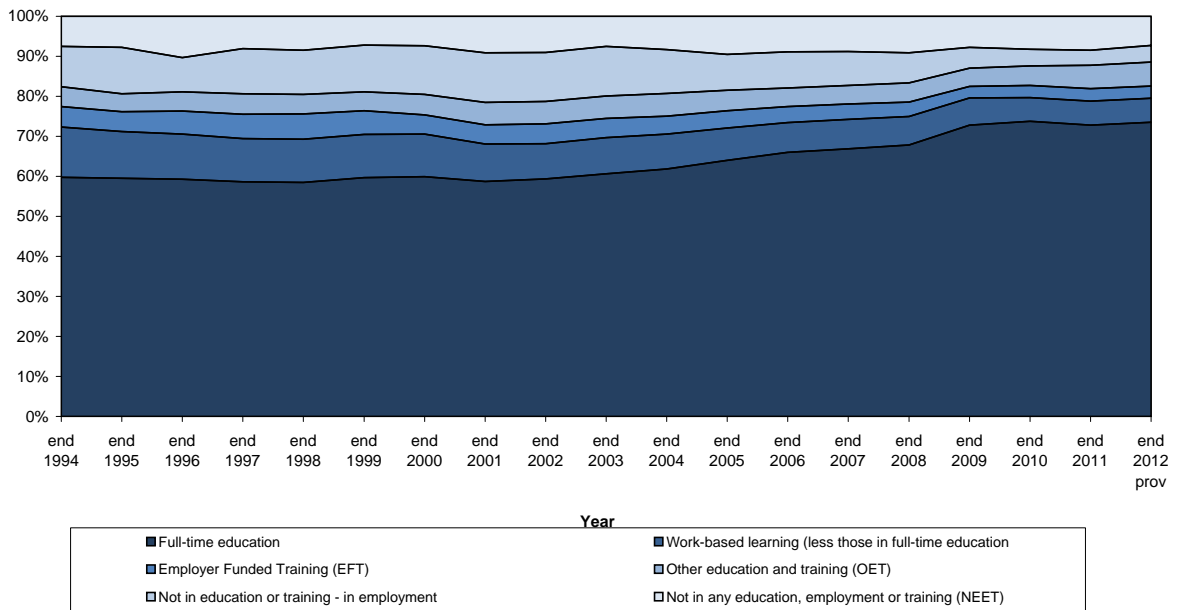


Figure 3: Participation of 18 year olds in education and training, England, end 1994 to end 2012 (prov)

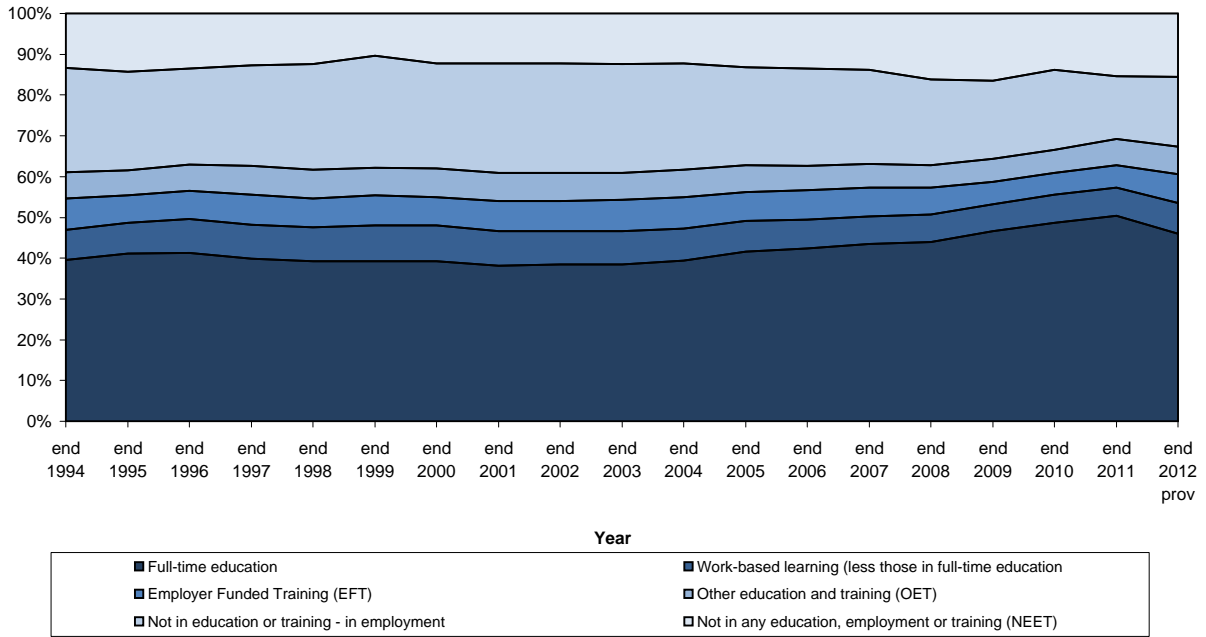


Figure 4: Participation of 16-18 year olds in education and training, England, end 1994 to end 2012 (prov)

