

## Official Statistics Release

Policy area:	Further education and skills inspections and outcomes
Theme:	Education, children's services and skills
Published on:	11 March 2014
Coverage:	England
Period covered:	1 September to 31 December 2013
Status:	Provisional
Issued by:	Office for Standards in Education, Children's Services and Skills (Ofsted) 125 Kingsway London WC2B 6SE
Chief Statistician:	Rob Pike
Statistician:	Jo Parkman
Public enquiries:	<a href="mailto:enquiries@ofsted.gov.uk">enquiries@ofsted.gov.uk</a>
Press enquiries:	<a href="mailto:pressenquiries@ofsted.gov.uk">pressenquiries@ofsted.gov.uk</a>
Link to official statistics release web page:	<a href="http://www.ofsted.gov.uk/resources/official-statistics-further-education-and-skills-inspections-and-outcomes">http://www.ofsted.gov.uk/resources/official-statistics-further-education-and-skills-inspections-and-outcomes</a>
Publication medium:	Ofsted website
Publication frequency:	Quarterly

## Contents

Introduction .....	4
Key findings .....	5
Summary of the inspection year 2013/14 .....	7
Chart 1: Overall effectiveness of further education and skills providers inspected between 1 September 2013 and 31 December 2013, percentage (provisional) .....	7
Chart 2: Proportion of previously grade 3 further education and skills providers that improved, declined or stayed the same at their next inspection at 31 December 2013 percentage (provisional) .....	8
Chart 3: Key inspection judgements of further education and skills providers inspected between 1 September 2013 and 31 December 2013, percentage (provisional) .....	9
Chart 4: Overall effectiveness of all further education and skills providers inspected at 31 December 2013, percentage (provisional) .....	10
Chart 5: Overall effectiveness of colleges inspected between 1 September 2005 and 31 December 2013, by academic year, percentage (provisional) .....	11
Chart 5a: Overall effectiveness of independent learning providers inspected between 1 September 2007 and 31 December 2013, by academic year, percentage (provisional) .....	11
Chart 5b: Overall effectiveness of community learning and skills providers inspected between 1 September 2007 and 31 December 2013, by academic year, percentage (provisional) .....	13
Chart 6: Most recent overall effectiveness of further education and skills providers inspected at 31 December 2013 compared to the most recent overall effectiveness at 31 August 2012, 31 August 2011 and 31 August 2010, percentage (provisional) .....	14
Table 1: Number of further education and skills providers inspected between 1 September 2013 and 31 December 2013, by provider and inspection type (provisional) .....	15
Table 2: Inspection outcomes of further education and skills providers inspected between 1 September 2013 and 31 December 2013 (provisional) .....	16
Table 2a: Inspection outcomes of colleges inspected between 1 September 2013 and 31 December 2013 (provisional) .....	17
Table 2b: Inspection outcomes of general further education colleges/tertiary colleges inspected between 1 September 2013 and 31 December 2013 (provisional) .....	18

Table 2c: Inspection outcomes of sixth form colleges inspected between 1 September 2013 and 31 December 2013 (provisional) .....	19
Table 2d: Inspection outcomes of independent specialist colleges inspected between 1 September 2013 and 31 December 2013 (provisional) .....	20
Table 2e: Inspection outcomes of higher education institutions inspected between 1 September 2013 and 31 December 2013 (provisional) .....	21
Table 2f: Inspection outcomes of National Careers Service contracts inspected between 1 September 2013 and 31 December 2013 (provisional) .....	22
Table 2g: Inspection outcomes of independent learning providers inspected between 1 September 2013 and 31 December 2013 (provisional) .....	23
Table 2h: Inspection outcomes of community learning and skills providers inspected between 1 September 2013 and 31 December 2013 (provisional) .....	24
Table 2i: Inspection outcomes of prison and young offender institutions from reports published between 1 September 2013 and 31 December 2013 (provisional) .....	25
Table 3: Further education and skills providers judged outstanding between 1 September 2013 and 31 December 2013 (provisional) .....	26
Table 4: Further education and skills providers judged inadequate between 1 September 2013 and 31 December 2013 (provisional) .....	27
Impact of revisions on key points of previous publication .....	28
Methodology .....	28
Glossary .....	30

## Introduction

1. On 1 September 2013 learning and skills was renamed further education and skills. This official statistics release reports on inspections of further education and skills providers that occurred between 1 September 2013 and 31 December 2013. Providers were inspected against the *Common inspection framework for further education and skills 2012*. This framework sets out the judgements that inspectors will make during inspection and the principles that apply to further education and skills inspections under the Education and Inspections Act 2006. The inspection framework can be found at [www.ofsted.gov.uk/resources/120062](http://www.ofsted.gov.uk/resources/120062).
2. There are four main areas against which a provider is assessed:
  - a. Overall effectiveness
  - b. Outcomes for learners
  - c. The quality of teaching, learning and assessment
  - d. The effectiveness of leadership and management
3. There are four judgements a provider can receive against these areas: outstanding, good, requires improvement and inadequate. Further information can be found on the Ofsted website: [www.ofsted.gov.uk/resources/120062](http://www.ofsted.gov.uk/resources/120062).
4. The overall aim of inspection is to evaluate how efficiently and effectively the education and training provision meets learners' needs. Inspection arrangements – together with other government initiatives – are intended to speed up improvement in the quality of the further education and skills sector.
5. Data on inspection outcomes as at 31 December 2013 use a snapshot of data to identify providers wholly or partly funded by the Skills Funding Agency (SFA) or the Education Funding Agency (EFA) at that point. This information is provided to Ofsted on a monthly basis by Information Management Services.
6. Additional tables providing more detailed breakdowns are available here: <http://www.ofsted.gov.uk/resources/official-statistics-further-education-and-skills-inspections-and-outcomes>
7. Data and information prior to April 2013 can be found here: <http://www.ofsted.gov.uk/resources/official-statistics-learning-and-skills-inspections-and-outcomes>

## Key findings

- From 1 September 2012 Ofsted has been inspecting against a new common inspection framework. Between 1 September 2013 and 31 December 2013, there have been 124 inspections of further education and skills providers. This consisted of 49 inspections of colleges, 53 inspections of independent learning providers and 22 inspections of community learning and skills providers. Ofsted has also carried out six inspections of National Careers Service contracts and three inspections of further education in higher education institutions. Ofsted also contributed to the inspection of six prison and young offender institutions where the reports were published between 1 September 2013 and 31 December 2013.
- Ofsted continues to select a proportion of providers for inspection based on concerns about their current performance. Between 1 September 2013 and 31 December 2013, 35% of the providers inspected were selected for this reason. This is higher than 28% risk assessed over the same period last year.
- During the period 1 September 2013 and 31 December 2013, eight providers (six per cent) were judged outstanding, consisting of one independent specialist college, one sixth form college, three general further education (GFE) colleges, one community learning and skills provider and two independent learning providers<sup>1</sup>. However, 10 providers (eight per cent) were judged inadequate, and the majority of these (six) were independent learning providers.
- GFE colleges are the largest providers of further education and skills in terms of their learner numbers. Between 1 September 2013 and 31 December 2013 Ofsted inspected 29 such colleges. Of these, ten per cent were outstanding, 59% were judged good. At 69% this is the highest proportion of GFE colleges judged to be good or outstanding during any official statistics reporting period. Of the remaining GFE colleges 21% were judged as requires improvement and ten per cent were inadequate.
- Ofsted's new approach to grading identifies grade 3 providers as 'requires improvement'. These providers are now subject to interventions aimed at supporting them to improve their provision quickly. The proportion of previously grade 3 providers improving at their most recent inspection is now improving compared to 2012/13. Between 1 September 2013 and 31 December 2013, 66% of providers previously judged as satisfactory/requires improvement have improved at their latest inspection.
- Ofsted has increased the focus on the quality of teaching and learning in its new framework. Of the 124 inspections carried out in this reporting period, eight providers were judged outstanding for this aspect of their provision.
- Independent learning providers continue to cause concern as six of the 53 inspected between 1 September 2013 and 31 December 2013 were found to be inadequate.

---

<sup>1</sup> Ofsted also judged the further education provision in one higher education institution to be outstanding.

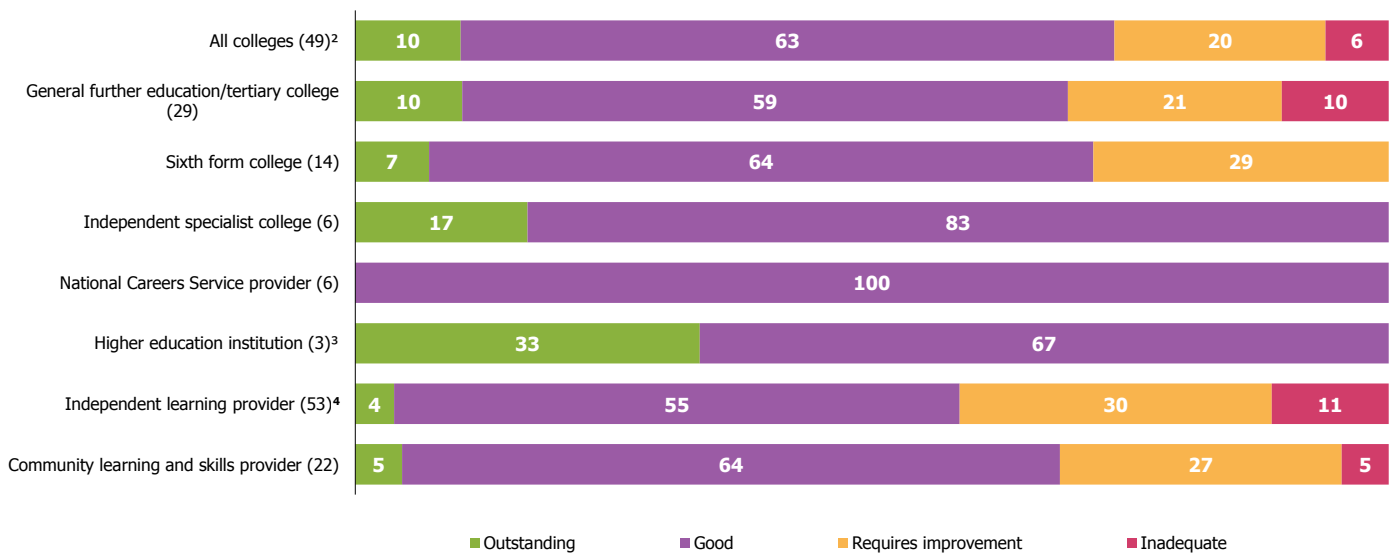
Independent learning providers had the highest proportion of providers judged inadequate or requires improvement, at 41% of those inspected in the period.

- Between 1 September 2013 and 31 December 2013 Ofsted inspected the apprenticeship provision in 78 providers. Of these, eight per cent, were judged outstanding, 47% were good, 35% were judged as requires improvement and ten per cent were inadequate. So although when looking across all providers who offer apprenticeships more of the provision is outstanding, the proportion judged as requires improvement or inadequate is slightly higher than for independent learning providers alone.
- Between 1 September 2013 and 31 December 2013 Ofsted made 455 judgements across 62 sector subject areas. Four sector subject areas had 20 or more judgements, including health and social care, early years and playwork, visual arts and administration. Quality varied across these areas, from only 47% good and outstanding in health and social care to 85% good or outstanding in visual arts.

## Summary of the inspection year 2013/14

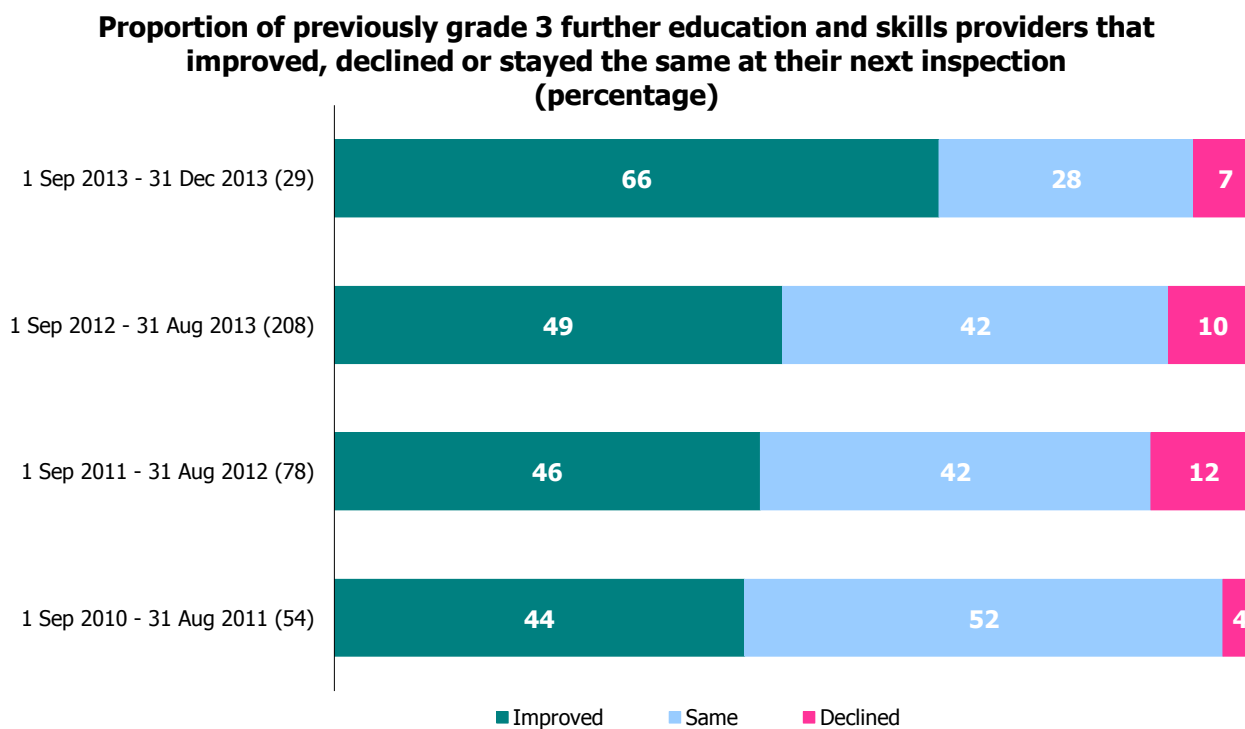
### Chart 1: Overall effectiveness of further education and skills providers inspected between 1 September 2013 and 31 December 2013, percentage (provisional)<sup>1</sup>

Overall effectiveness of further education and skills providers inspected (percentage)



1. Percentages are rounded and may not add to exactly 100. Percentages should be viewed with caution where the number of providers is small.
2. Includes general further education college/tertiary college, sixth form college, specialist further education college and independent specialist college.
3. Overall effectiveness grades relate to further education provision only.
4. Includes employer providers.

**Chart 2: Proportion of previously grade 3 further education and skills providers that improved, declined or stayed the same at their next inspection at 31 December 2013 percentage (provisional) <sup>1 2 3</sup>**

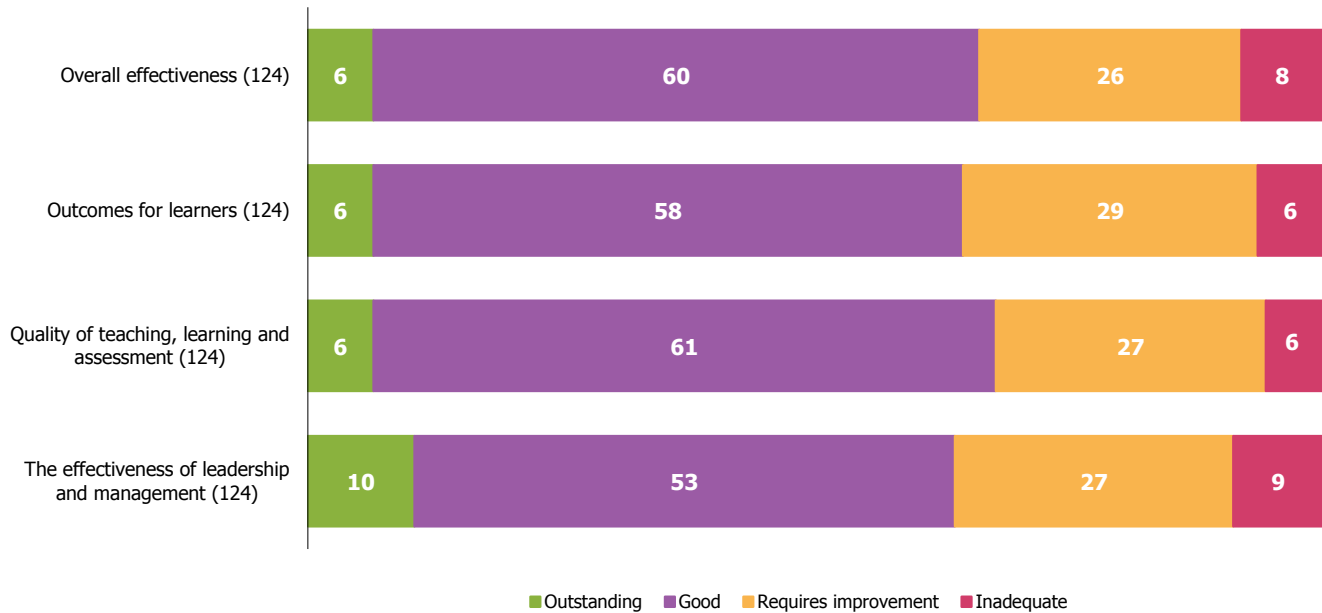


1. Percentages are rounded and may not add to exactly 100. Percentages should be viewed with caution where the number of providers is small.  
 2. As of 1 September 2012, further education and skills providers with the inspection outcome of grade 3 have been judged as requires improvement. Prior to September 2012, further education and skills providers with an inspection outcome of grade 3 were judged as satisfactory.  
 3. Includes general further education/tertiary college (including specialist further education college), sixth form college, independent specialist college, independent learning provider (including employer providers) and community learning and skills providers.



**Chart 3: Key inspection judgements of further education and skills providers inspected between 1 September 2013 and 31 December 2013, percentage (provisional) <sup>1 2</sup>**

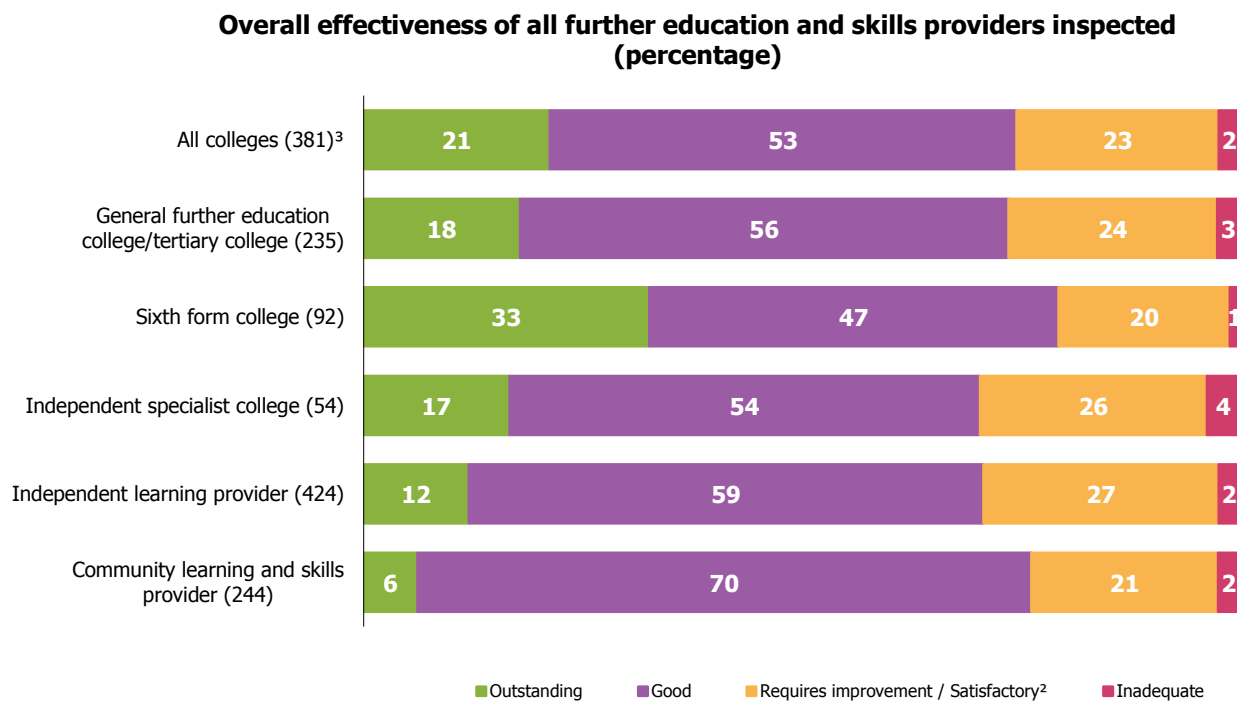
**Key inspection judgements of further education and skills providers inspected (percentage)**



1. Percentages are rounded and may not add to exactly 100. Percentages should be viewed with caution where the number of providers is small.

2. Includes general further education/tertiary college (including specialist further education college), sixth form college, independent specialist college, independent learning provider (including employer provider) and community learning and skills provider.

**Chart 4: Overall effectiveness of all further education and skills providers inspected at 31 December 2013, percentage (provisional) <sup>1 2</sup>**



1. Percentages are rounded and may not add to exactly 100. Percentages should be viewed with caution where the number of providers is small.  
 2. As of 1 September 2012, further education and skills providers with the inspection outcome of grade 3 have been judged as requires improvement. Prior to September 2012, further education and skills providers with an inspection outcome of grade 3 were judged as satisfactory  
 3. Includes general further education college/tertiary college, sixth form college, specialist further education college and independent specialist college.

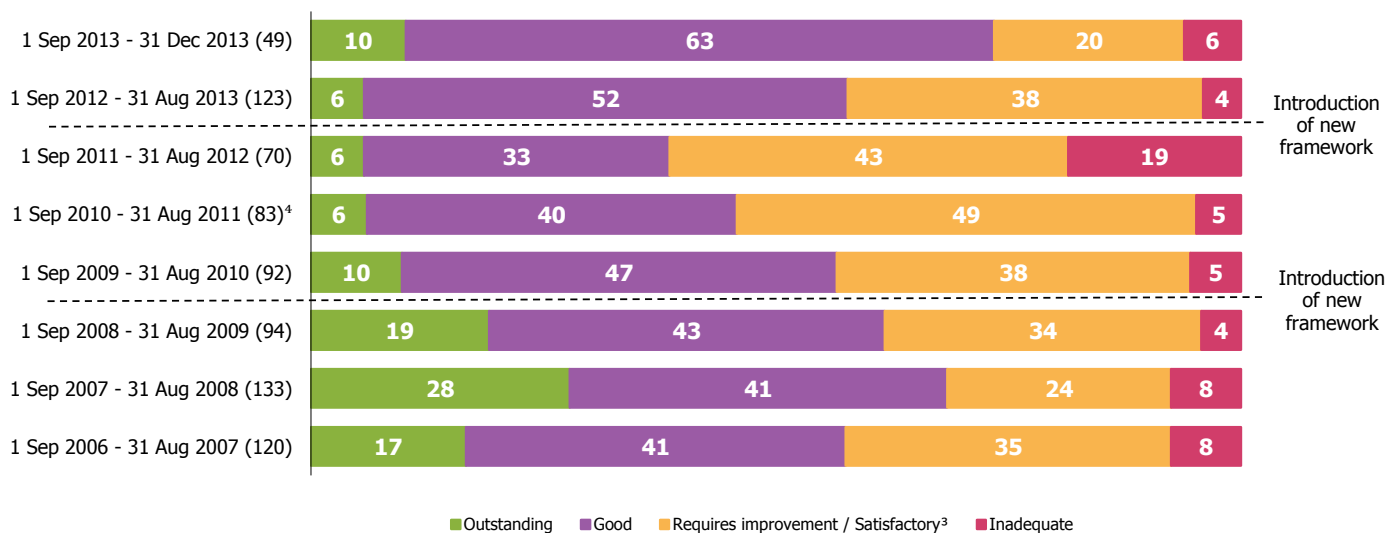
- At 31 December 2013, there were 381 colleges which had received an Ofsted inspection and were in receipt of funding<sup>2</sup>. Variations exist amongst the overall effectiveness for different types of college. Sixth form colleges continue to have the highest proportion of providers currently judged to be outstanding and now also have the lowest proportion of inadequate providers.
- At 31 December 2013, 424 independent learning providers had received an Ofsted inspection and were in receipt of funding. The proportion of good and outstanding provision was 71%. Of the ten inadequate providers, six were inspected between September and December 2013.

<sup>2</sup>The Common Inspection Framework applies to the inspection of provision either wholly or partly funded by the Skills Funding Agency (SFA) or Education Funding Agency (EFA). For colleges this includes general further education/tertiary colleges, specialist further education colleges, sixth form colleges and independent specialist colleges.

- At 31 December 2013, 244 community learning and skills providers had received an Ofsted inspection and were in receipt of funding. Community learning and skills providers continue to have the lowest proportion of outstanding provision at only six per cent although a high proportion, 70%, are good.

**Chart 5: Overall effectiveness of colleges inspected between 1 September 2005 and 31 December 2013, by academic year, percentage (provisional) <sup>1 2</sup>**

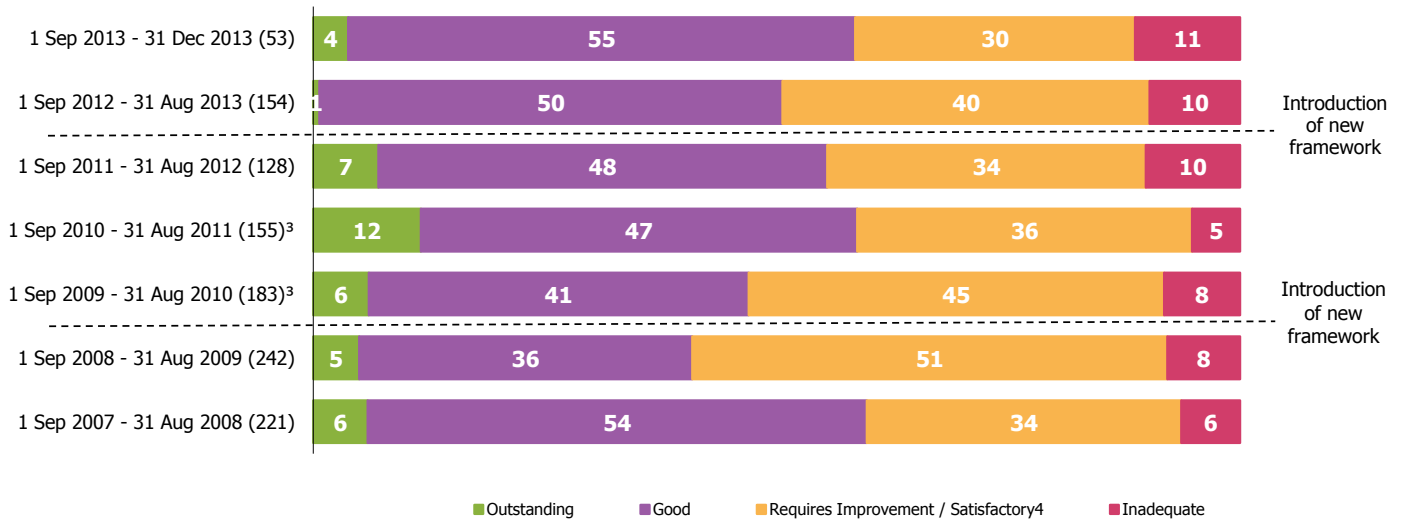
**Overall effectiveness of colleges inspected by academic year (percentage)**



1. Percentages are rounded and may not add to exactly 100. Percentages should be viewed with caution where the number of providers is small.  
 2. Includes general further education/tertiary college (including specialist further education), sixth form college and independent specialist college.  
 3. As of 1 September 2012, further education and skills providers with the inspection outcome of grade 3 have been judged as requires improvement. Prior to September 2012, further education and skills providers with an inspection outcome of grade 3 were judged as satisfactory.  
 4. Data vary slightly to that reported in previous years due to Ofsted's change in provider types.

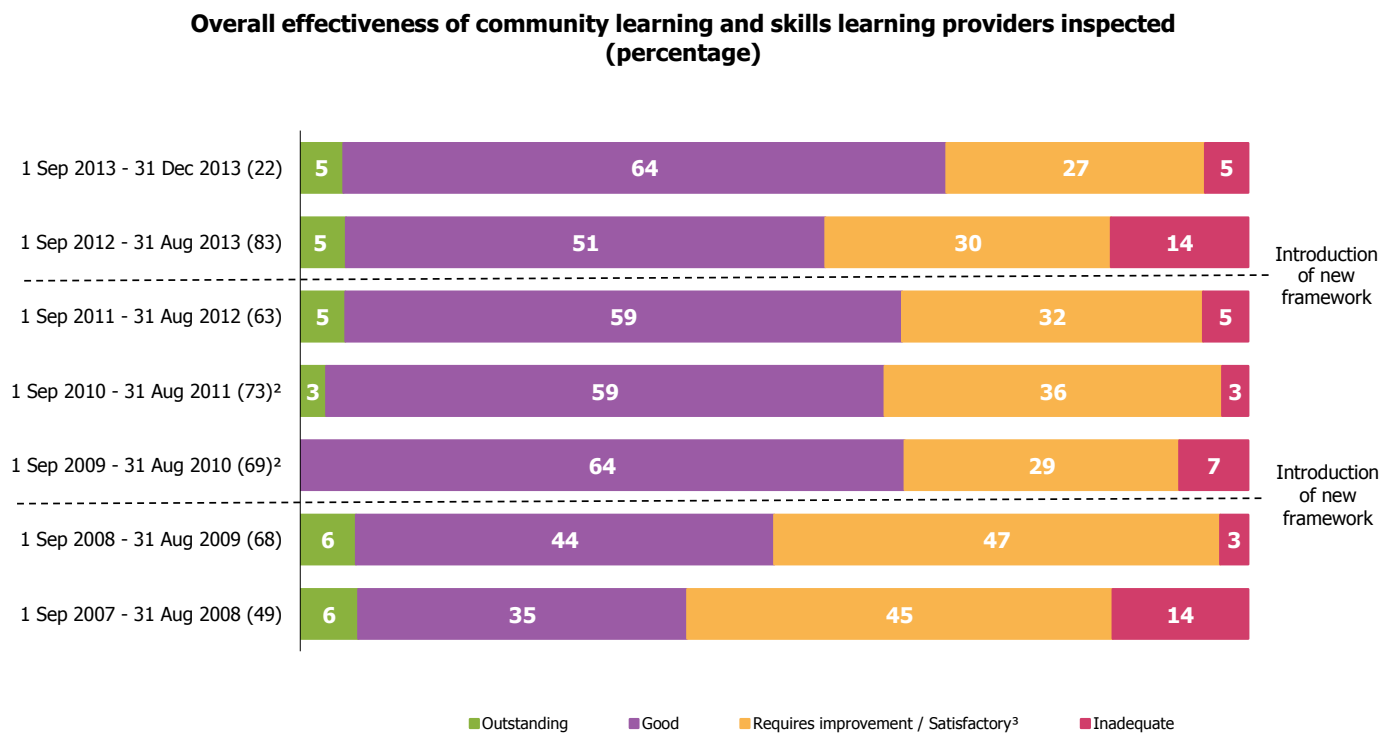
**Chart 5a: Overall effectiveness of independent learning providers inspected between 1 September 2007 and 31 December 2013, by academic year, percentage (provisional) <sup>1 2</sup>**  
 3

**Overall effectiveness of independent learning providers inspected by academic year (percentage)**



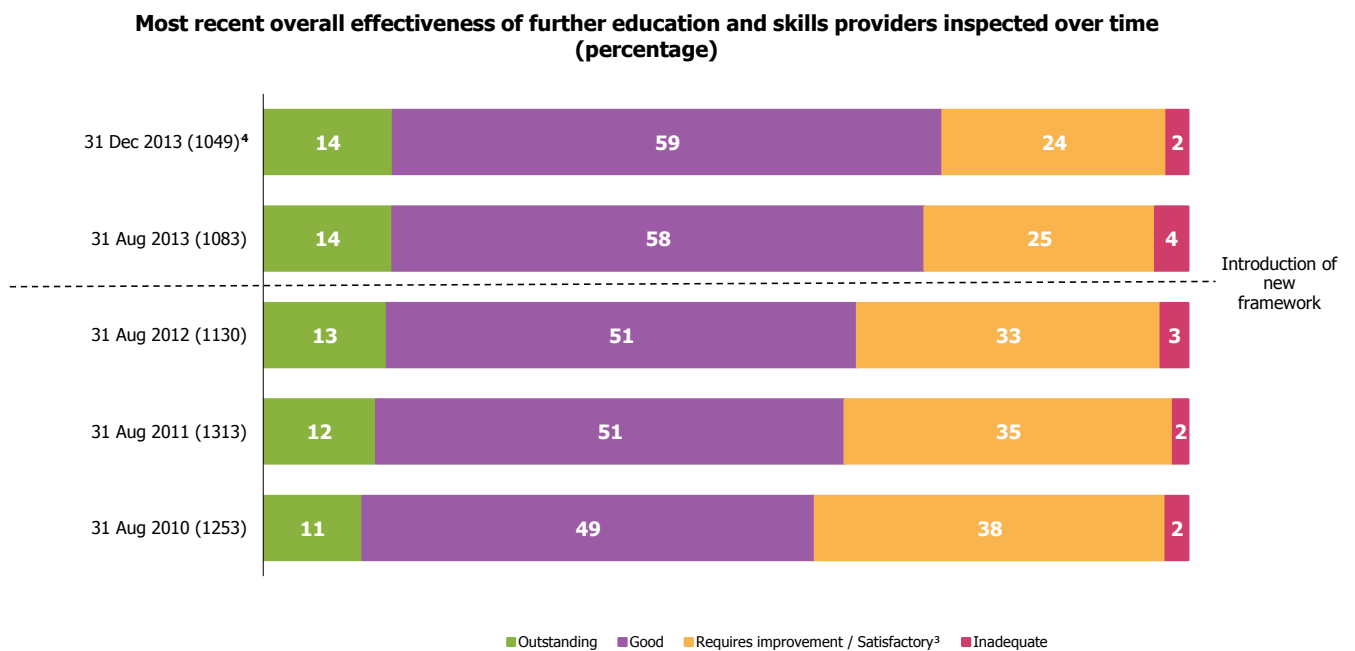
1. Percentages are rounded and may not add to exactly 100. Percentages should be viewed with caution where the number of providers is small.
2. Includes employer providers.
3. Data vary slightly to that reported in previous years due to Ofsted's change in provider types.
4. As of 1 September 2012, further education and skills providers with the inspection outcome of grade 3 have been judged as requires improvement. Prior to September 2012, further education and skills providers with an inspection outcome of grade 3 were judged as satisfactory.

**Chart 5b: Overall effectiveness of community learning and skills providers inspected between 1 September 2007 and 31 December 2013, by academic year, percentage (provisional) <sup>1 2</sup>**



1. Percentages are rounded and may not add to exactly 100. Percentages should be viewed with caution where the number of providers is small.  
 2. Data vary slightly to that reported in previous years due to Ofsted's change in provider types.  
 3. As of 1 September 2012, further education and skills providers with the inspection outcome of grade 3 have been judged as requires improvement. Prior to September 2012, further education providers with an inspection outcome of grade 3 were judged as satisfactory.

**Chart 6: Most recent overall effectiveness of further education and skills providers inspected at 31 December 2013 compared to the most recent overall effectiveness at 31 August 2012, 31 August 2011 and 31 August 2010, percentage** <sup>1 2</sup>



1. Percentages are rounded and may not add to exactly 100. Percentages should be viewed with caution where the number of providers is small.  
 2. Includes general further education/tertiary college (including specialist further education college), sixth form college, independent specialist college, independent learning provider (including employer providers), and community learning and skills providers.  
 3. As of 1 September 2012, further education and skills providers with the inspection outcome of grade 3 have been judged as requires improvement. Prior to September 2012, further education providers with an inspection outcome of grade 3 were judged as satisfactory.  
 4. Based on a snapshot of providers fully or partly funded by the Education Funding Agency or Skills Funding Agency at 31 December 2013.

**Table 1: Number of further education and skills providers inspected between 1 September 2013 and 31 December 2013, by provider and inspection type (provisional)**

Inspection activity	All further education and skills	All colleges <sup>1</sup>	Further education in higher education institutions <sup>2</sup>	National Careers Service	Independent learning provider <sup>3</sup>	Community learning and skills provider	Prisons <sup>4</sup>
Full inspections	135	48	3	6	51	21	6
Re-inspections	4	1	0	0	2	1	0
Monitoring visits	3	2	0	0	1	0	0
Re-inspection monitoring visits	14	5	0	0	7	2	0
<b>Total</b>	<b>156</b>	<b>56</b>	<b>3</b>	<b>6</b>	<b>61</b>	<b>24</b>	<b>6</b>

*Source: Ofsted*

1. Includes general further education college/tertiary college, sixth form college, specialist further education college and independent specialist college.
2. Inspection of further education provision only, not providers as a whole.
3. Includes employer providers.
4. Prison inspections where the report has been published within the reporting period.

**Table 2: Inspection outcomes of further education and skills providers inspected between 1 September 2013 and 31 December 2013 (provisional) <sup>1 2</sup>**

	Total number inspected	Outstanding		Good		Requires Improvement		Inadequate	
		Number	%	Number	%	Number	%	Number	%
<b>Overall effectiveness</b>	<b>124</b>	<b>8</b>	<b>6</b>	<b>74</b>	<b>60</b>	<b>32</b>	<b>26</b>	<b>10</b>	<b>8</b>
<b>Outcomes for learners</b>	<b>124</b>	<b>8</b>	<b>6</b>	<b>72</b>	<b>58</b>	<b>36</b>	<b>29</b>	<b>8</b>	<b>6</b>
<b>The quality of teaching, learning and assessment</b>	<b>124</b>	<b>8</b>	<b>6</b>	<b>76</b>	<b>61</b>	<b>33</b>	<b>27</b>	<b>7</b>	<b>6</b>
<b>The effectiveness of leadership and management</b>	<b>124</b>	<b>13</b>	<b>10</b>	<b>66</b>	<b>53</b>	<b>34</b>	<b>27</b>	<b>11</b>	<b>9</b>

*Source: Ofsted*

1. Percentages are rounded and may not add to 100. Where the number of inspections is small, percentages should be treated with caution.

2. Includes general further education/tertiary college (including specialist further education college), sixth form college, independent specialist college, independent learning provider (including employer provider) and community learning and skills provider.



**Table 2a: Inspection outcomes of colleges inspected between 1 September 2013 and 31 December 2013 (provisional) <sup>1 2</sup>**

	Total number inspected	Outstanding		Good		Requires Improvement		Inadequate	
		Number	%	Number	%	Number	%	Number	%
<b>Overall effectiveness</b>	<b>49</b>	<b>5</b>	<b>10</b>	<b>31</b>	<b>63</b>	<b>10</b>	<b>20</b>	<b>3</b>	<b>6</b>
<b>Outcomes for learners</b>	<b>49</b>	<b>5</b>	<b>10</b>	<b>26</b>	<b>53</b>	<b>16</b>	<b>33</b>	<b>2</b>	<b>4</b>
<b>The quality of teaching, learning and assessment</b>	<b>49</b>	<b>5</b>	<b>10</b>	<b>31</b>	<b>63</b>	<b>10</b>	<b>20</b>	<b>3</b>	<b>6</b>
<b>The effectiveness of leadership and management</b>	<b>49</b>	<b>8</b>	<b>16</b>	<b>27</b>	<b>55</b>	<b>12</b>	<b>24</b>	<b>2</b>	<b>4</b>

*Source: Ofsted*

1. Includes general further education college/tertiary college (including specialist further education colleges), sixth form college and independent specialist college.

2. Percentages are rounded and may not add to 100. Where the number of inspections is small, percentages should be treated with caution.

**Table 2b: Inspection outcomes of general further education colleges/tertiary colleges inspected between 1 September 2013 and 31 December 2013 (provisional) <sup>1 2</sup>**

	Total number inspected	Outstanding		Good		Requires Improvement		Inadequate	
		Number	%	Number	%	Number	%	Number	%
<b>Overall effectiveness</b>	<b>29</b>	<b>3</b>	<b>10</b>	<b>17</b>	<b>59</b>	<b>6</b>	<b>21</b>	<b>3</b>	<b>10</b>
<b>Outcomes for learners</b>	<b>29</b>	<b>4</b>	<b>14</b>	<b>12</b>	<b>41</b>	<b>11</b>	<b>38</b>	<b>2</b>	<b>7</b>
<b>The quality of teaching, learning and assessment</b>	<b>29</b>	<b>3</b>	<b>10</b>	<b>17</b>	<b>59</b>	<b>6</b>	<b>21</b>	<b>3</b>	<b>10</b>
<b>The effectiveness of leadership and management</b>	<b>29</b>	<b>6</b>	<b>21</b>	<b>14</b>	<b>48</b>	<b>7</b>	<b>24</b>	<b>2</b>	<b>7</b>

*Source: Ofsted*

1. Includes specialist further education colleges.

2. Percentages are rounded and may not add to 100. Where the number of inspections is small, percentages should be treated with caution.

**Table 2c: Inspection outcomes of sixth form colleges inspected between 1 September 2013 and 31 December 2013 (provisional) <sup>1</sup>**

	Total number inspected	Outstanding		Good		Requires Improvement		Inadequate	
		Number	%	Number	%	Number	%	Number	%
<b>Overall effectiveness</b>	<b>14</b>	<b>1</b>	<b>7</b>	<b>9</b>	<b>64</b>	<b>4</b>	<b>29</b>	<b>0</b>	<b>0</b>
<b>Outcomes for learners</b>	<b>14</b>	<b>0</b>	<b>0</b>	<b>9</b>	<b>64</b>	<b>5</b>	<b>36</b>	<b>0</b>	<b>0</b>
<b>The quality of teaching, learning and assessment</b>	<b>14</b>	<b>1</b>	<b>7</b>	<b>9</b>	<b>64</b>	<b>4</b>	<b>29</b>	<b>0</b>	<b>0</b>
<b>The effectiveness of leadership and management</b>	<b>14</b>	<b>1</b>	<b>7</b>	<b>8</b>	<b>57</b>	<b>5</b>	<b>36</b>	<b>0</b>	<b>0</b>

*Source: Ofsted*

1. Percentages are rounded and may not add to 100. Where the number of inspections is small, percentages should be treated with caution.

**Table 2d: Inspection outcomes of independent specialist colleges inspected between 1 September 2013 and 31 December 2013 (provisional) <sup>1</sup>**

	Total number inspected	Outstanding		Good		Requires Improvement		Inadequate	
		Number	%	Number	%	Number	%	Number	%
<b>Overall effectiveness</b>	<b>6</b>	<b>1</b>	<b>17</b>	<b>5</b>	<b>83</b>	<b>0</b>	<b>0</b>	<b>0</b>	<b>0</b>
<b>Outcomes for learners</b>	<b>6</b>	<b>1</b>	<b>17</b>	<b>5</b>	<b>83</b>	<b>0</b>	<b>0</b>	<b>0</b>	<b>0</b>
<b>The quality of teaching, learning and assessment</b>	<b>6</b>	<b>1</b>	<b>17</b>	<b>5</b>	<b>83</b>	<b>0</b>	<b>0</b>	<b>0</b>	<b>0</b>
<b>The effectiveness of leadership and management</b>	<b>6</b>	<b>1</b>	<b>17</b>	<b>5</b>	<b>83</b>	<b>0</b>	<b>0</b>	<b>0</b>	<b>0</b>

*Source: Ofsted*

1. Percentages are rounded and may not add to 100. Where the number of inspections is small, percentages should be treated with caution.

**Table 2e: Inspection outcomes of higher education institutions inspected between 1 September 2013 and 31 December 2013 (provisional) <sup>1</sup>**

**Inspection judgements relate to the further education provision only, and not providers as a whole.**

	Total number inspected	Outstanding		Good		Requires Improvement		Inadequate	
		Number	%	Number	%	Number	%	Number	%
<b>Overall effectiveness</b>	<b>3</b>	<b>1</b>	<b>33</b>	<b>2</b>	<b>67</b>	<b>0</b>	<b>0</b>	<b>0</b>	<b>0</b>
<b>Outcomes for learners</b>	<b>3</b>	<b>2</b>	<b>67</b>	<b>1</b>	<b>33</b>	<b>0</b>	<b>0</b>	<b>0</b>	<b>0</b>
<b>The quality of teaching, learning and assessment</b>	<b>3</b>	<b>1</b>	<b>33</b>	<b>2</b>	<b>67</b>	<b>0</b>	<b>0</b>	<b>0</b>	<b>0</b>
<b>The effectiveness of leadership and management</b>	<b>3</b>	<b>1</b>	<b>33</b>	<b>1</b>	<b>33</b>	<b>1</b>	<b>33</b>	<b>0</b>	<b>0</b>

*Source: Ofsted*

1. Percentages are rounded and may not add to 100. Where the number of inspections is small, percentages should be treated with caution.

**Table 2f: Inspection outcomes of National Careers Service contracts inspected between 1 September 2013 and 31 December 2013 (provisional) <sup>1</sup>**

	Total number inspected	Outstanding		Good		Requires Improvement		Inadequate	
		Number	%	Number	%	Number	%	Number	%
<b>Overall effectiveness</b>	<b>6</b>	<b>0</b>	<b>0</b>	<b>6</b>	<b>100</b>	<b>0</b>	<b>0</b>	<b>0</b>	<b>0</b>
<b>Outcomes for learners</b>	<b>6</b>	<b>0</b>	<b>0</b>	<b>5</b>	<b>83</b>	<b>1</b>	<b>17</b>	<b>0</b>	<b>0</b>
<b>The quality of teaching, learning and assessment</b>	<b>6</b>	<b>0</b>	<b>0</b>	<b>6</b>	<b>100</b>	<b>0</b>	<b>0</b>	<b>0</b>	<b>0</b>
<b>The effectiveness of leadership and management</b>	<b>6</b>	<b>1</b>	<b>17</b>	<b>5</b>	<b>83</b>	<b>0</b>	<b>0</b>	<b>0</b>	<b>0</b>

*Source: Ofsted*

1. Percentages are rounded and may not add to 100. Where the number of inspections is small, percentages should be treated with caution.

**Table 2g: Inspection outcomes of independent learning providers inspected between 1 September 2013 and 31 December 2013 (provisional) <sup>1 2</sup>**

	Total number inspected	Outstanding		Good		Requires Improvement		Inadequate	
		Number	%	Number	%	Number	%	Number	%
<b>Overall effectiveness</b>	<b>53</b>	<b>2</b>	<b>4</b>	<b>29</b>	<b>55</b>	<b>16</b>	<b>30</b>	<b>6</b>	<b>11</b>
<b>Outcomes for learners</b>	<b>53</b>	<b>1</b>	<b>2</b>	<b>30</b>	<b>57</b>	<b>17</b>	<b>32</b>	<b>5</b>	<b>9</b>
<b>The quality of teaching, learning and assessment</b>	<b>53</b>	<b>2</b>	<b>4</b>	<b>29</b>	<b>55</b>	<b>18</b>	<b>34</b>	<b>4</b>	<b>8</b>
<b>The effectiveness of leadership and management</b>	<b>53</b>	<b>2</b>	<b>4</b>	<b>27</b>	<b>51</b>	<b>17</b>	<b>32</b>	<b>7</b>	<b>13</b>

*Source: Ofsted*

1. Percentages are rounded and may not add to 100. Where the number of inspections is small, percentages should be treated with caution.

2. Includes employer providers.

**Table 2h: Inspection outcomes of community learning and skills providers inspected between 1 September 2013 and 31 December 2013 (provisional) <sup>1</sup>**

	Total number inspected	Outstanding		Good		Requires Improvement		Inadequate	
		Number	%	Number	%	Number	%	Number	%
<b>Overall effectiveness</b>	<b>22</b>	<b>1</b>	<b>5</b>	<b>14</b>	<b>64</b>	<b>6</b>	<b>27</b>	<b>1</b>	<b>5</b>
<b>Outcomes for learners</b>	<b>22</b>	<b>2</b>	<b>9</b>	<b>16</b>	<b>73</b>	<b>3</b>	<b>14</b>	<b>1</b>	<b>5</b>
<b>The quality of teaching, learning and assessment</b>	<b>22</b>	<b>1</b>	<b>5</b>	<b>16</b>	<b>73</b>	<b>5</b>	<b>23</b>	<b>0</b>	<b>0</b>
<b>The effectiveness of leadership and management</b>	<b>22</b>	<b>3</b>	<b>14</b>	<b>12</b>	<b>55</b>	<b>5</b>	<b>23</b>	<b>2</b>	<b>9</b>

*Source: Ofsted*

1. Percentages are rounded and may not add to 100. Where the number of inspections is small, percentages should be treated with caution.



**Table 2i: Inspection outcomes of prison and young offender institutions from reports published between 1 September 2013 and 31 December 2013 (provisional) <sup>1 2</sup>**

	Total number inspected	Outstanding		Good		Requires Improvement		Inadequate	
		Number	%	Number	%	Number	%	Number	%
<b>Achievements of prisoners engaged in learning and skills and work</b>	<b>6</b>	<b>0</b>	<b>0</b>	<b>3</b>	<b>50</b>	<b>2</b>	<b>33</b>	<b>1</b>	<b>17</b>
<b>Quality of learning and skills and work provision</b>	<b>6</b>	<b>0</b>	<b>0</b>	<b>3</b>	<b>50</b>	<b>2</b>	<b>33</b>	<b>1</b>	<b>17</b>
<b>Leadership and management of learning and skills and work</b>	<b>6</b>	<b>0</b>	<b>0</b>	<b>3</b>	<b>50</b>	<b>2</b>	<b>33</b>	<b>1</b>	<b>17</b>

*Source: Ofsted*

1. Percentages are rounded and may not add to 100. Where the number of inspections is small, percentages should be treated with caution.

**Table 3: Further education and skills providers judged outstanding between 1 September 2013 and 31 December 2013 (provisional)**

URN	Provider name	Type of provider	Date of inspection
130739	Blackpool and the Fylde College	General further education/tertiary college	11/10/2013
52147	Hawk Management (UK) Limited	Independent learning provider	27/09/2013
130434	John Ruskin College	Sixth form college	04/10/2013
52870	Kirklees Council Adult and Community Learning	Community learning and skills provider	27/11/2013
131948	Orchard Hill College of Further Education	Independent specialist college	22/11/2013
54022	QA Limited	Independent learning provider	25/10/2013
133901	University of West London <sup>1</sup>	Higher education institution	13/12/2013
130564	Weston College	General further education/tertiary college	13/12/2013
130594	York College	General further education/tertiary college	13/12/2013

*Source: Ofsted*

1. Judgement relates to the further education provision only, not provider as a whole.

**Table 4: Further education and skills providers judged inadequate between 1 September 2013 and 31 December 2013 (provisional)**

URN	Provider name	Type of provider	Date of inspection
51927	G4S Care & Justice Services (UK) Ltd	Independent learning provider-employer	27/09/2013
59106	Intercontinental Hotels Group Services Company	Independent learning provider-employer	27/09/2013
130727	K College	General further education/tertiary college	08/11/2013
130415	LeSoCo	General further education/tertiary college	29/11/2013
59199	Prospects Services Ltd	Independent learning provider	27/09/2013
130512	Stockport College	General further education/tertiary college	04/10/2013
50241	TBG Learning Ltd	Independent learning provider	04/10/2013
55105	Trinity Training Services Ltd	Community learning and skills provider	25/10/2013
55219	Visage School of Beauty Therapy Limited	Independent learning provider	04/10/2013
58180	West London Training Limited	Independent learning provider	29/11/2013

*Source: Ofsted*

## **Impact of revisions on key points of previous publication**

The data for the state of the nation as at 31 August 2013 include one provider which was not reported on in the provisional statistics. A further 31 providers were removed from the final statistics as they were later identified as not having been funded within the 2012/13 year. The local authority for a further 26 providers in the state of the nation data has been changed to bring it into line with the address of the provider which Ofsted hold.

## **Methodology**

1. The data in this release are from inspections undertaken between 1 September 2013 and 31 December 2013. These inspections were carried out under the *Common Inspection Framework for further education and skills*. Statistics relating to inspections carried out in this period are provisional.
2. The quarterly selection of further education and skills providers for inspection comprises three elements: compulsory inspections, inspections resulting from risk assessment, and a random selection:
  - The compulsory inspections are carried out for providers that have reached the end point of their inspection window (For example a good provider must be inspected every six years). New providers will also be subject to a compulsory inspection after their first year of operation but within three years.
  - The second element of the year's selection comprises providers selected through risk assessment. This risk assessment looks at a number of current performance measures, and also trends in these performance measures.
  - From September 2012, we will normally inspect providers awarded a grade of 'requires improvement' for overall effectiveness again within 12–18 months.
  - Finally, random selection is used to try to maintain a balance in the year's inspection programme, and resulting inspection judgements.

Only providers who consistently perform at a high level tend to reach the end point of their inspection window. Risk assessment enables Ofsted to optimise the use of resources, concentrating inspection activity in areas where it is likely to add most value. The result of using a risk based approach to selection is that inspection judgements for providers, in any given year, can look slightly more pessimistic than we know the national picture to be.

3. In September 2012 Ofsted introduced a new common inspection framework for further education and skills. For more information about the framework and how Ofsted inspects further education and skills providers, please go to the Ofsted website:

<http://www.ofsted.gov.uk/resources/common-inspection-framework-for-further-education-and-skills-2012>

4. Since 1 January 2012, Ofsted has not produced its own summary report for prison inspections. Ofsted continues to report within the HMI Prisons report and in line with the *Common Inspection Framework for further education and skills*. Ofsted statistics will now report on prison inspections which have been published within the reporting period of the official statistics. Further information on how Ofsted inspects prisoner education and training in the further education and skills sector can be found on the Ofsted website:

<http://www.ofsted.gov.uk/resources/handbook-for-inspection-of-learning-and-skills-training-for-young-adults-and-adults-custody>

5. Revisions are published in line with Ofsted's revisions policy for official statistics which can be found on the Ofsted website:

<http://www.ofsted.gov.uk/resources/statistical-notice-ofsted-revisions-policy-for-official-statistics>

## **Glossary**

From September 2011 Ofsted categorises providers in the following ways:

### Community learning and skills provider

Community learning and skills providers include local authorities, charities, voluntary, not-for-profit companies and community organisations, specialist designated institutions, and community interest companies. Their provision is diverse in character and aims to meet the needs and interests of a wide range of communities. Courses include those leading to qualifications; programmes leading to qualifications whilst in employment (such as apprenticeships); provision for informal adult learning; provision for social and personal development.

From 1 September 2012 Ofsted categorised adult and community learning providers as community learning and skills providers.

### General further education college

General further education colleges offer a range of education and training opportunities for learners aged from 14 years upwards, including adults.

### Higher education institution

Where higher education institutions offer further education courses these are subject to inspection by Ofsted.

### Independent learning provider

A company which provides government funded education. The category independent learning provider includes employer providers who only offer government funded training to their own employees.

### Independent specialist college

Independent specialist colleges provide education and training for students with complex learning difficulties and/or disabilities, whose learning needs cannot be met by their local college or provider.

### National Careers Service

The National Careers Service was launched on 5 April 2012. It is available in England and provides information to those over the age of 13. The service is delivered by 11 prime contractors in 12 designated areas and the adult and young person's telephone services. National Careers Service

prime contractors are subject to an Ofsted inspection, including the adult and young people's telephone service.

### Offender learning

Ofsted undertakes judicial service inspections in partnership with HMI Prisons. Ofsted HMI evaluate the quality of learning and skills in prisons, including young offender institutions and secure units for young people and also provision in community settings. Since 1 January 2012, Ofsted no longer publishes reports for prison and young offender institutions. These reports can now be found on the HMIP website:

<http://www.justice.gov.uk/about/hmi-prisons>

Ofsted contributes to a reduced number of judgements in these reports.

### Sector subject areas

Sector subjects are grouped into 15 areas of learning. Each area of learning has a number of tier 2 subject areas. For example area of learning 7 retail and commercial enterprise, includes 7.4 hospitality and catering, 7.2 warehousing and 7.3a hairdressing and beauty therapy. Ofsted inspects teaching and learning in a sample of tier 2 subjects during full inspections and re-inspections.

A full list of sector subject areas can be found on the Ofqual website:

<http://www2.ofqual.gov.uk/standards/142-statistics-articles/429-sector-subject-area-classification-system-ssac>

### Sixth form college

A sixth form college is an educational institution where students aged 16 to 18 typically study for advanced school-level qualifications, such as A-levels, or school-level qualifications such as GCSEs.

© Crown copyright

You may re-use this information (not including logos) free of charge in any format or medium, under the terms of the Open Government Licence. To view this licence, visit <http://www.nationalarchives.gov.uk/doc/open-government-licence/> or write to the Information Policy Team, The National Archives, Kew, London, TW9 4DU or e-mail: [psi@nationalarchives.gsi.gov.uk](mailto:psi@nationalarchives.gsi.gov.uk)