



Department
for Education

Key stage 1 data collection 2014

Technical specification – version 1.0

April 2014

Contents

| | | |
|-------|--|----|
| 1. | Introduction | 4 |
| 1.1 | Audience and Purpose | 4 |
| 1.2 | Scope | 4 |
| 1.3 | Business Rationale | 5 |
| 1.4 | Changes for 2014 | 5 |
| 1.5 | Assumptions | 5 |
| 1.6 | Coverage and Timings | 5 |
| 2. | Structure and Guidance | 6 |
| 2.1 | Outline data content | 6 |
| 2.2 | Process | 6 |
| 2.2.1 | Entry of results and levels into school MIS | 7 |
| 2.2.2 | MIS data entry checks | 8 |
| 2.2.3 | Creation of CTF KS1 file by school/setting for transmission to LA | 8 |
| 2.2.4 | Loading KS1 results into the LA's central management system | 9 |
| 2.2.5 | Creation of individual pupil results XML export file by the LA for transmission to the DfE | 9 |
| 2.3 | Additional LA software facilities | 10 |
| 2.4 | Reports for schools and parents | 11 |
| 3. | Data return formats | 12 |
| 3.1 | Special notes for XML returns | 12 |
| 3.2 | Example file structure for XML returns | 13 |
| 4. | Data Validation Rules | 14 |
| 4.1 | Header Validation | 15 |
| 4.2 | Establishment Level Validation | 15 |

| | | |
|-----|------------------------|----|
| 4.3 | Pupil Level Validation | 16 |
| 5. | Resubmission Guidance | 25 |
| 6. | Valid values | 26 |
| 6.1 | LEA codes | 26 |
| 6.2 | Assessment parameters | 26 |
| 6.3 | P Scale parameters | 26 |

1. Introduction

1.1 Audience and Purpose

This specification describes the key stage 1 data collection 2014. It will enable Local Authorities (LAs), and those such as software suppliers working on their behalf, to prepare the necessary data and processes for compliance so that data on all Key Stage 1 assessments carried out in 2014 can be returned.

The following legislation underpins the provision and publication of this information: the Education Act 1996 s29(3), The Education (School Performance Information)(England) Regulations 2007, Regulations 5 and 8 School Information (England) Regulations 2008.

The specification covers the expected census return to the DfE and the validation rules which will be applied. It should be read in conjunction with the current CBDS definitions which can be found on the Department's website.

1.2 Scope

This data collection covers all local authorities (LAs) in England, who are expected to provide data on all key stage 1 assessments carried out in their authority in 2014. The data consists of pupil-level information.

The following diagram outlines the overall scope of the collection:

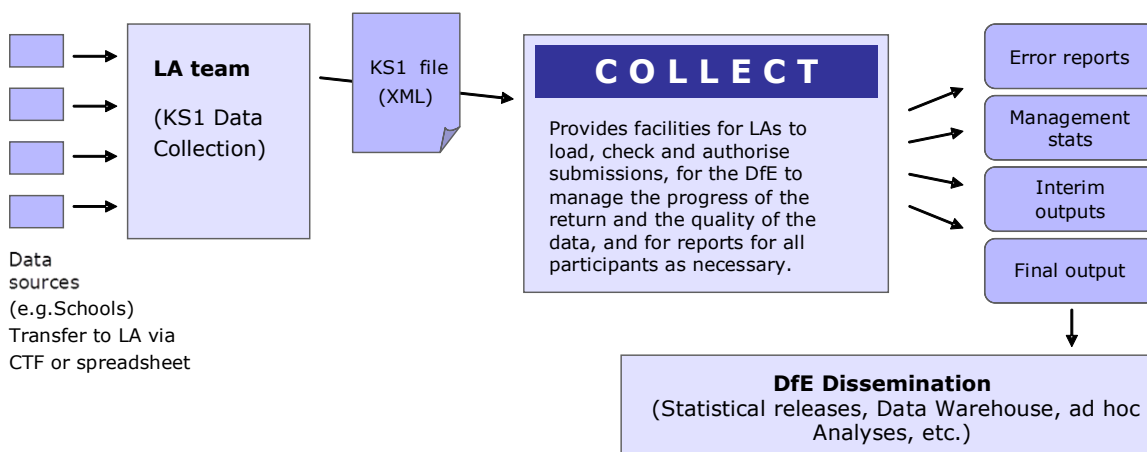


Fig 1: high level data collection process

This requirements specification consists of one document containing a narrative, sample XML messages, and validation. LAs and suppliers should read this specification in conjunction with the [Common Basic Data Set](#).

1.3 Business Rationale

The following factors are the business drivers behind this approach:

- It is consistent with the overall vision behind the Data Sharing Protocol of collecting data once and using it many times;
- It is based on the principle that local authorities and schools are expected to hold/manage data for their own purposes, or have data held on their behalf so that they can access and extract it.

1.4 Changes for 2014

The only changes are roll-over of dates and updating of links.

1.5 Assumptions

Assumptions made in creating this specification:

- A1 Where appropriate the data specification has used e-Gif data standards
- A2 The return will use COLLECT as the data collection mechanism
- A3 DfE will only accept submissions in XML format

1.6 Coverage and Timings

All local authorities will be required to capture the data specified for the key stage 1 assessments 2014. The data will then be collected via DfE's COLLECT system between 16 June and 31 July 2014. LAs will be able to correct errors and re-submit until 31 October.

2. Structure and Guidance

2.1 Outline data content

Each return from a LA will consist of a header and one or more school modules, each of which will contain a pupil module with a number of pupil records. Each pupil record will include identifiers and a series of assessment records, which where appropriate will include P Scale assessments.

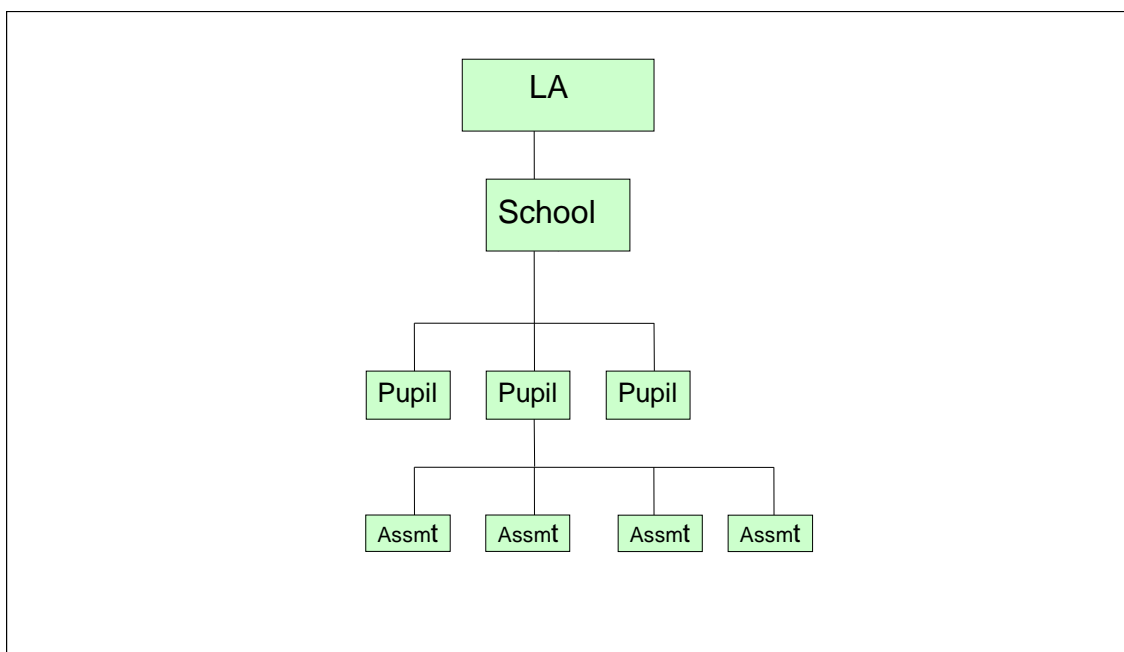


Fig 2: outline structure of data

2.2 Process

At the end of key stage 1, teachers have to summarise their judgements for each eligible child, taking into account the child's progress and performance throughout the key stage. They need to determine:

- a level for reading, writing, and speaking and listening
- a level for each attainment target in mathematics
- a level for each attainment target in science.

Tasks and tests must be administered to all eligible children who are working at level 1 or above in reading, writing and mathematics. The role of the tasks and tests is to help inform the final teacher assessment judgement reported for each child at the end of key stage 1. There is no requirement to report separately the levels obtained from the tasks and tests. Any such task / test results, where available, may also optionally be submitted as part of the return at the school's discretion.

There are essentially four stages to the capture of KS1 pupil assessments once they have been made by teachers:

1. Entry by schools of individual pupils' KS1 results (including P scale results if applicable) into their MIS.
2. Creation of a CTF for submission to the LA by secure means.
3. Loading of results (in all formats) into the LA central database/processing system
4. Creation of school XML export files by LA software for loading into KS1 COLLECT LA

The above process does not include moderation of results. All maintained primary schools have to have their results moderated by their LA at least once every four years. Where independent schools choose to submit a KS1 return they also have to undergo the same level of moderation as maintained schools, ie moderation at least every four years.

2.2.1 Entry of results and levels into school MIS

Assessment results have to be entered into the MIS for each subject or attainment target for each pupil based on teacher assessments of the level each pupil has attained. The following subjects / attainment targets will need to be assessed:

English

- Speaking and Listening (AT1)
- Reading (AT2)
- Writing (AT3)

Mathematics (SUB) – an overall assessment by the teacher but in reaching their judgement, a weighting of 3/5^{ths} should be given to number (including handling data) and a weighting of 1/5th to each of 'shape, space and measures' and 'using and applying mathematics'.

Science

- Scientific enquiry (Sc1) (AT1)
- Life processes and living things (Sc2) (AT2)
- Materials and their properties (Sc3) (AT3)
- Physical processes (Sc4) (AT4)
- Science (SUB) – overall subject level which is a weighted calculation carried out by the MIS using individual assessment components.

P scales

Where appropriate (ie where a pupil is assessed to be at level 'W') then assessments must be made and recorded against the P scale targets for that

component / subject. Assessments should not be made against the P Scale where a pupil is at level W because they have English as an additional language (EAL) unless they also have an identified special educational need.

The full list of valid assessment values for all of the above is as shown in [CBDS A Comp \(2014 version\)](#):

2.2.2 MIS data entry checks

The school MIS software should check that a valid level has been entered for each TA and P Scale subject where appropriate. Any invalid or missing entries should be reported to the school when the data is entered and/or when the CTF is to be created.

The software will need to calculate a pupil's overall science level by aggregating the Teacher Assessment levels using the under mentioned weighted values:

$$\text{Science SUB} = ((3 \times \text{Sc1}) + \text{Sc2} + \text{Sc3} + \text{Sc4}) / 6$$

The outcome must be correct to the nearest whole number, with halves rounded upwards.

The rules governing how the subject level is to be determined when one or more attainment targets cannot be determined because a pupil is disapplied ("D") or where the pupil is absent for long periods and there is insufficient information to make an assessment ("A"), are as follows:-

A subject level can be determined where a single attainment target within the subject has been disapplied or marked absent (with the weighted value of that AT being deducted from the divisor in order to determine the subject level), but cannot be determined where more than one AT within a subject has been disapplied or marked absent - such pupils will have a subject level of "U", i.e. unable to determine because of disapplication/absence. This also applies to the calculation of the Science subject level.

2.2.3 Creation of CTF KS1 file by school/setting for transmission to LA

The name of the CTF created by schools will be:

xxxnnnn_KS1_xxxLLLL_yyy.XML where xxx represents the LA number, nnnn is the school number and yyy is an incremented version number starting at 001.

The Task/Test results should not be included in the CTF unless the school selects an option to include. Ideally, the option should be defaulted not to include.

2.2.4 Loading KS1 results into the LA's central management system

1. For any TA subjects the highest level that should be returned is 4.
2. The software should allow the LA to import into its central database the CTF at para 2.2.3 and validate in accordance with the rules in sections 4.1 to 4.3. Any missing or invalid TA levels and P Scale levels should be reported. The software should also warn if any UPNs are missing, or if any dates of birth are missing or incomplete.
3. In addition, the software should allow the LA to load into its central database a CSV file created by independent schools from a KS1 Excel Independent spreadsheet (to be supplied to LAs by the DfE for distribution if necessary) with the export filename "KS1_yyyxxx_14.CSV", where yyy is the LA no and xxx is the school Estab number (- this number will always start with a 6). A copy of the spreadsheet can be provided when available, if required.
4. Where any pupil identifying or contextual data are already present in the LA central database there should be a prompt to ask if the existing data should be overwritten by the CTF or CSV import.
5. Where a CTF contains any pupil's previous assessment data (e.g. earlier year's FSP results) there should be a prompt to ask if the existing assessment data should be overwritten.
6. The LA should also have facilities:
 - to remove and to add pupils;
 - to amend a pupil's identifying data or result levels that have been loaded, and for the new data to be re-validated in accordance with the rules in sections 4.1 to 4.3.
 - to re-import a corrected CTF with an option for the operator to either replace all existing data or add as new data, and be validated in accordance with the rules in sections 4.1 to 4.3.

2.2.5 Creation of individual pupil results XML export file by the LA for transmission to the DfE

On completion of the actions at 2.2.4, the software should allow the LA to create separate XML files of individual pupil data, for each school (and LA can only load data relating to a whole school, not for individual pupils) as specified in the example XML file at section 3.2, even if still containing errors, for loading into the DfE data collection system (COLLECT). Where no assessment result level is reported for a subject, all assessment components for that subject should be excluded from the XML file. The XML file should be validated in accordance with the rules in sections 4.1 to 4.3. Any data failing the validation checks should be reported using the error codes and messages

specified. In addition to LA and school number, the file will contain the following data items for each pupil:

- UPN
- pupil surname
- pupil forename
- DoB
- Gender
- each KS1 TA result level as recorded
- each P scale result level as recorded

Task/test results are not to be included in the XML file even if these are included in the CTF submitted by the sch

Please note – An approved SoftwareCode will not be issued. COLLECT will use the SoftwareCode tag value specified by suppliers for this purpose.ool to the LA.

The name of the XML file will be xxxLLLL_KS1_xxxDfE_yyy.XML where xxx represents the LA number, and yyy is an incremented version number starting at 001.

The LA should be provided with options to include in the export XML:

- all schools' individual pupil results, even if these contain errors or have previously been exported (- the software should inform the operator if a school is in error or has previously been exported);
- selected schools' individual pupil results, even if these contain errors or have previously been exported (the software should inform the operator if a school is in error or has previously been exported).

N.B. Whichever option above is chosen, **all** individual pupil results within the school are to be exported.

Where a CTF contains any pupil's previous assessment data (eg earlier years FSP results) there should be a prompt to ask if the existing assessment data should be overwritten.

2.3 Additional LA software facilities

The software should provide the following additional facilities:

- to allow the LA to produce a list of schools to check that all expected schools returns have been processed;
- to allow the LA to produce a report for each school or for all schools to show the number of boys and the number of girls and the total number of pupils included in each school's CTF submission;

- to allow the LA to include in the DfE XML file any independent schools from within its own LA area whose results it has agreed to process;
- to allow the LA to create separate DfE XML files for any independent schools from outside its own area whose results it has agreed to process;
- to allow the LA to exclude independent schools from its own LA analysis;
- to allow the LA to transmit results in batches without the need to resubmit results already transmitted.

2.4 Reports for schools and parents

The software should produce 2014 Child's Result and 2014 School Result reports, together with the 2013 National KS1 Results. The templates for these reports will be available on the [STA website](#).

NOTE: where the P Scale entry for a subject is NOTSEN, no P Scale level is to be shown in the child's report for that subject.

3. Data return formats

A submission file from an LA /Agent should be provided in a XML file structure as described in 3.2. Where an optional item is not included then the associated tag should also be omitted. Where a mandatory item is omitted then an error will be generated.

3.1 Special notes for XML returns

The standard XML entity references should be used for the following special characters:

| Character | Entity reference |
|-------------------------------|------------------|
| Ampersand (&) | & |
| Left Angle Bracket (<) | < |
| Right Angle Bracket (>) | > |
| Single Quote / Apostrophe (') | ' |
| Double Quotes ("") | " |

For special characters such as é use a character reference such as é this produces a generic XML file which can be viewed as such in a suitable browser. Details of all such characters are found within the XML standard documentation; see for <http://www.w3.org/TR/REC-xml/>, section 2.2.

3.2 Example file structure for XML returns

| CBDS Ref | XMLFormatLayout | Notes |
|----------|--|--|
| | <?xml version="1.0" encoding="UTF-8"?> | |
| | <KS1file> | |
| | <Header> | |
| 800001 | <Collection>Key Stage 1 Transfer File</Collection> | Fixed value of "Key Stage 1 Transfer File" |
| 800010 | <DateTime>2014-07-23T15:30:47</DateTime> | |
| 100266 | <Year>2014</Year> | Fixed value of '2014' |
| 200001 | <LEA>302</LEA> | Valid values listed in section 6. |
| 800006 | <SoftwareCode>KEYPAS</SoftwareCode> | Suppliers decide on code used by their system |
| | </Header> | |
| | <School> | |
| 200002 | <Estab>3501</Estab> | Valid values listed in section 6. |
| | <Pupils> | |
| | <Pupil> | A repeatable group of 1 or more |
| 100001 | <UPN>A123456789012</UPN> | |
| 100003 | <Surname>Smith</Surname> | |
| 100004 | <Forename>John</Forename> | |
| 100007 | <DOB>2007-02-02</DOB> | |
| 100008 | <Gender>M</Gender> | |
| | <Assessments> | |
| | <Assessment> | |
| 100466 | <Subject>ENG</Subject> | <Assessment> : A repeatable group of 1 or more depending on the combination of <Subject>, <Method>, <Component> and <ResultQualifier> required. See A_Comp 2014. |
| 100273 | <Method>TA</Method> | |
| 100274 | <Component>AT1</Component> | |
| 100275 | <ResultQualifier>NL</ResultQualifier> | |
| 100276 | <Result></Result> | |
| | </Assessment> | |
| | </Assessments> | |
| | </Pupil> | |
| | </Pupils> | |
| | </School> | |
| | </KS1file> | |

4. Data Validation Rules

This section specifies validation rules that are applied to the data by DfE, using COLLECT. They should also be applied, as far as possible, by LAs prior to loading the data onto the COLLECT system and any issues resolved. Those data items included in the specification but not appearing in the validation rules - that is, those not shown in the validation rules as "must be present" - should be supplied where available (e.g. child's UPN). The rules also show which validations are errors and which ones are queries. An error is a failed validation check that must be corrected. A query is one which must be investigated, and potentially corrected, as it identifies data that would usually be invalid.

Syntax:

- Validation checks are expressed as conditions that must be true (errors) or that should be true (queries). The Error Message shows what is displayed if the condition fails
- data items are indicated using the XML tag with the CBDS number in parentheses, for example <UPN> (100001)
- data groups are indicated using the XML tag only, for example <Assessments>
- single dates or date ranges are sometimes defined in relation to <ReferenceDate>, which is from the XML Header.

4.1 Header Validation

| Seq Number | Error/ Query | Validation Check | Error Message |
|------------|--------------|---|--|
| 001 | Error | <Collection> (800001) must be present with a value of "Key Stage 1 Transfer File" | Document Name missing or invalid. The file must be recreated |
| 101 | Error | <SoftwareCode> (800006) must be present | Software Code is missing |
| 110 | Error | <Year> (100266) must be present and = 2014 | Year is missing or invalid |

4.2 Establishment Level Validation

| Seq Number | Error/ Query | Validation Check | Error Message |
|------------|--------------|---|---|
| 301 | Error | <LEA> (200001) must be provided and must be a valid value | Local Authority number missing or invalid |
| 302 | Error | <Estab> (200002) must be present with a valid value | Establishment No is missing |

4.3 Pupil Level Validation

| Seq Number | Error/ Query | Validation Check | Error Message |
|--------------------------|--------------|--|---|
| Pupil Identifiers | | | |
| 1600 | Error | <DOB> (100007) must be present and in a valid format | Pupil's date of birth is missing or in an invalid format. Format should be CCYY – MM - DD |
| 1601Q | Query | <DOB> (100007) should be between 1/9/2006 and 31/8/2007 | Pupil's Date of Birth is outside expected date range |
| 1610 | Error | <Gender> (100008) must be present and a valid value | Pupil Gender missing or invalid |
| 1500 | Error | <u>All schools except Independent schools</u> <UPN> (100001) (Unique Pupil Number) must be present. | UPN is missing |

| Seq Number | Error/ Query | Validation Check | Error Message |
|------------|--------------|---|---|
| 1510 | Error | <p><UPN> (100001) must contain the correct check letter</p> <p>To calculate the check letter:</p> <p>1. Multiply the individual digits by their weights as follows: digit 2 by weight 2; digit 3 by weight 3; digit 4 by weight 4; digit 5 by weight 5; digit 6 by weight 6; digit 7 by weight 7; digit 8 by weight 8; digit 9 by weight 9; digit 10 by weight 10; digit 11 by weight 11; digit 12 by weight 12; digit 13 by weight 13.</p> <p>2. Sum the individual results, divide the total by 23, and take the remainder.</p> <p>3. Calculate the check letter from the result as follows: 0 = A; 1 = B; 2 = C; 3 = D; 4 = E; 5 = F; 6 = G; 7 = H; 8 = J; 9 = K; 10 = L; 11 = M; 12 = N; 13 = P; 14 = Q; 15 = R; 16 = T; 17 = U; 18 = V; 19 = W; 20 = X; 21 = Y; 22 = Z.</p> <p>For calculating the check letter (see above) any alphabetical character at digit 13 is accorded the same numerical value as listed in paragraph 3 above, i.e. A=0, B=1, C=2 etc.</p> | UPN invalid (wrong check letter at character 1) |
| 1520 | Error | Each pupil <UPN> (100001) must be unique across all pupils in the school | More than one pupil record with the same UPN |
| 1530 | Error | If <UPN> (100001) is present Characters 2-4 of <UPN> (100001) must be a valid post April 1999 LA code or a recognised "pseudo LA" code (001-005, 201-213, 301-320, 330-336, 340-344, 350-359, 370-373, 380-384, 390-394, 420, 660-681, 701-708, 800-803, 805-808, 810-813, 815, 816, 820-823, 825, 826, 830, 831, 835-837, 840, 841, 845, 846, 850-852, 855-857, 860, 861, 865-896, 908, 909, 916, 919, 921, 925, 926, 928, 929, 931, 933, 935-38) | UPN invalid (characters 2-4 not a recognised LA code) |
| 1540 | Error | If <UPN> (100001) is present Characters 5-12 of <UPN> (100001) must be numeric | UPN invalid (characters 5-12 not all numeric) |
| 1550 | Error | If <UPN> (100001) is present Characters 13 of <UPN> (100001) must be numeric or A-Z omitting I, O and S | UPN invalid (character 13 not a recognised value) |

| Seq Number | Error/ Query | Validation Check | Error Message |
|------------|--------------|--|--|
| 1580 | Error | <Surname> (100003) must be present | Pupil with last name missing |
| 1590 | Error | <Forename> (100004) must be present | Pupil with forename missing |
| 113 | Error | For each <Pupil> there must be only one <Assessment> for the same combination of <Subject><Component><ResultQualifier> | There are multiple assessments where the Subject, Component, and Result Qualifier combinations are the same. |
| 223 | Error | Where <Subject> = ENG and <Component> = AT1 and <ResultQualifier> = NL there should be a Stage Assessment <Result> | ENG AT1 (Speaking and Listening) result is missing |
| 224 | Error | Where <Subject> = ENG and <Component> = AT2 and <ResultQualifier> = NF there should be a Stage Assessment <Result> | ENG AT2 (Reading) result is missing |
| 225 | Error | Where <Subject> = ENG and <Component> = AT3 and <ResultQualifier> = NF there should be a Stage Assessment <Result> | ENG AT3 (Writing) is missing |
| 226 | Error | Where <Subject> = MAT and <Component> = SUB and <ResultQualifier> = NF there should be a Stage Assessment <Result> | MAT SUB (KS1 Maths) result is missing |
| 227 | Error | Where <Subject> = SCI and <Component> = AT1 and <ResultQualifier> = NL there should be a Stage Assessment <Result> | SCI AT1 (Scientific) result is missing |
| 228 | Error | Where <Subject> = SCI and <Component> = AT2 and <ResultQualifier> = NL there should be a Stage Assessment <Result> | SCI AT2 (Life) result is missing |
| 229 | Error | Where <Subject> = SCI and <Component> = AT3 and <ResultQualifier> = NL there should be a Stage Assessment <Result> | SCI AT3 (Materials) result is missing |
| 230 | Error | Where <Subject> = SCI and <Component> = AT4 and <ResultQualifier> = NL there should be a Stage Assessment <Result> | SCI AT4 (Physical) result is missing |

| Seq Number | Error/ Query | Validation Check | Error Message |
|------------|--------------|--|---|
| 231 | Error | Where <Subject> = SCI and <Component> = SUB and <ResultQualifier> = NL there should be a Stage Assessment <Result> | SCI SUB (Overall Science) result is missing |
| 232 | Error | If <Subject> concatenated with <Component> and <ResultQualifier> equals 'ENGAT1NL', 'SCIAT1NL', 'SCIAT2NL', 'SCIAT3NL' or 'SCIAT4NL' then <Result> must be A, D, W, 1, 2, 3 or 4 | Result is invalid |
| 233 | Error | If <Subject> concatenated with <Component> and <ResultQualifier> equals 'ENGAT2NF', 'ENGAT3NF' or 'MATSUBNF' then <Result> must be A, D, W, 1, 2A, 2B, 2C, 3 or 4 | Result is invalid |
| 234 | Error | If <Subject> concatenated with <Component> and <ResultQualifier> equals 'SCISUBNL' then <Result> must be W, U, 1, 2, 3 or 4 | Result is invalid |
| 235 | Error | <p><u>All schools except Independent schools</u></p> <p>If <Subject> is ENG and <Component> is AT1 and <ResultQualifier> is NL and <Result> is W then there must be at least one Assessment for that pupil where <Subject> is ENG and <Component> is ENG and <ResultQualifier> is NP and <Result> in P1i, P1ii, P2i, P2ii, P3i, P3ii, NOTSEN or <Subject> is ENG and <Component> is SPE or LIS and <ResultQualifier> is NP and <Result> in P4 - P8, NOTSEN</p> | KS1 ENG AT1 is W - P Scale required |

| Seq Number | Error/ Query | Validation Check | Error Message |
|------------|--------------|--|-------------------------------------|
| 236 | Error | <p><u>All schools except Independent schools</u></p> <p>If <Subject> is ENG and <Component> is AT2 and <ResultQualifier> is NF and <Result> is W then there must be one Assessment for that pupil where <Subject> is ENG and <Component> is ENG and <ResultQualifier> is NP and <Result> in P1i, P1ii, P2i, P2ii, P3i, P3ii, NOTSEN or <Subject> is ENG and <Component> is REA and <ResultQualifier> is NP and <Result> in P4 - P8, NOTSEN</p> | KS1 ENG AT2 is W - P Scale required |
| 237 | Error | <p><u>All schools except Independent schools</u></p> <p>If <Subject> is ENG and <Component> is AT3 and <ResultQualifier> is NF and <Result> is W then there must be one Assessment for that pupil where <Subject> is ENG and <Component> is ENG and <ResultQualifier> is NP and <Result> in P1i, P1ii, P2i, P2ii, P3i, P3ii, NOTSEN or <Subject> is ENG and <Component> is WRI and <ResultQualifier> is NP and <Result> in P4 - P8, NOTSEN</p> | KS1 ENG AT3 is W - P Scale required |
| 238 | Error | <p><u>All schools except Independent schools</u></p> <p>If <Subject> is MAT and <Component> is SUB and <ResultQualifier> is NF and <Result> is W then there must be at least one Assessment for that pupil where <Subject> is MAT and <Component> is MAT and <ResultQualifier> is NP and <Result> in P1i, P1ii, P2i, P2ii, P3i, P3ii, NOTSEN or <Subject> is MAT and <Component> is NUM, USE or SSM and <ResultQualifier> is NP and <Result> in P4 - P8, NOTSEN</p> | KS1 MATHS is W - P Scale required |

| Seq Number | Error/ Query | Validation Check | Error Message |
|------------|--------------|--|-------------------------------------|
| 239 | Error | <p><u>All schools except Independent schools</u></p> <p>If <Subject> is SCI and <Component> is SUB and <ResultQualifier> is NL and <Result> is W then there must be one Assessment for that pupil where <Subject> is SCI and <Component> is SCI and <ResultQualifier> is NP and <Result> in P1i, P1ii, P2i, P2ii, P3i, P3ii, P4 - P8, NOTSEN</p> | KS1 SCIENCE is W - P Scale required |
| 240 | Error | <p>If <Subject> concatenated with <Component> and <ResultQualifier> equals 'ENGNGNP' or 'MATMATNP' then</p> <p>a) for all independent schools if <Result> is present, then <Result> must be P1i, P1ii, P2i, P2ii, P3i, P3ii or NOTSEN</p> <p>b) otherwise, for all other schools, <Result> must be present and must be P1i, P1ii, P2i, P2ii, P3i, P3ii or NOTSEN</p> | P scale result is invalid |
| 241 | Error | <p>If <Subject> concatenated with <Component> and <ResultQualifier> equals 'SCISCINP' then</p> <p>a) for all independent schools if <Result> is present, <Result> must be P1i, P1ii, P2i, P2ii, P3i, P3ii, P4, P5, P6, P7, P8 or NOTSEN</p> <p>b) otherwise, for all other schools, <Result> must be present and must be P1i, P1ii, P2i, P2ii, P3i, P3ii, P4, P5, P6, P7, P8 or NOTSEN</p> | P scale result is invalid |
| 242 | Error | <p>If <Subject> concatenated with <Component> and <ResultQualifier> equals 'ENGSPENP', 'ENGLISNP', 'ENGREANP', 'ENGWRINP', 'MATNUMNP', 'MATUSENP' or 'MATSSMNP' then</p> <p>a) for all independent schools if <Result> is present, <Result> must be P4, P5, P6, P7, P8 or NOTSEN</p> <p>b) otherwise, for all other schools, <Result> must be present and must be P4, P5, P6, P7, P8 or NOTSEN</p> | P scale result is invalid |

| Seq Number | Error/ Query | Validation Check | Error Message |
|------------|--------------|--|--|
| 243 | Error | <p><u>All schools except Independent schools</u></p> <p>If <Subject> is ENG and <Component> is ENG and <ResultQualifier> is NP and <Result> in (P1i, P1ii, P2i, P2ii, P3i, P3ii or NOTSEN)</p> <p>Then there must be one or more assessments where</p> <p><Subject> is ENG and <Result> is W and (<Component> is AT1 and <ResultQualifier> is NL or <Component> is AT2 or AT3 and <ResultQualifier> is NF)</p> | P Scale level recorded - Appropriate KS1 level must be W |
| 244 | Error | <p><u>All schools except Independent schools</u></p> <p>If <Subject> is ENG and <Component> is SPE or LIS and <ResultQualifier> is NP and <Result> in (P4 - P8 or NOTSEN)</p> <p>then there must be one assessment where</p> <p><Subject> is ENG and <Component> is AT1 and <Result> is W</p> | P Scale level recorded - KS1 AT1 must be W |
| 245 | Error | <p><u>All schools except Independent schools</u></p> <p>If <Subject> is ENG and <Component> is REA and <ResultQualifier> is NP and <Result> in (P4 - P8 or NOTSEN)</p> <p>then there must be one assessment where</p> <p>Subject> is ENG and <Component> is AT2 and <Result> is W</p> | P Scale level recorded - KS1 AT2 must be W |

| Seq Number | Error/ Query | Validation Check | Error Message |
|------------|--------------|--|--|
| 246 | Error | <p><u>All schools except Independent schools</u></p> <p>If <Subject> is ENG and <Component> is WRI and <ResultQualifier> is NP and <Result> in (P4 - P8 or NOTSEN)</p> <p>then there must be one assessment where</p> <p><Subject> is ENG and <Component> is AT3 and <Result> is W</p> | P Scale level recorded - KS1 AT3 must be W |
| 247 | Error | <p><u>All schools except Independent schools</u></p> <p>If <Subject> is MAT and <Component> is NUM or USE or SSM and <ResultQualifier> is NP and <Result> in (P4-P8 or NOTSEN) or</p> <p><Subject> is MAT and <Component> is MAT and <ResultQualifier> is NP and <Result> in (P1i, P2i, P3i, P1ii, P2ii, P3ii or NOTSEN)</p> <p>then there must be one assessment where</p> <p><Subject> is MAT and <Component> is SUB and <Result> is W</p> | P Scale level recorded - KS1 Maths subject level must be W |
| 248 | Error | <p><u>All schools except Independent schools</u></p> <p>If <Subject> is SCI and <Component> is SCI and <ResultQualifier> is NP and <Result> in (P1i, P1ii, P2i, P2ii, P3i, P3ii, P4 - P8, NOTSEN) then there must be one assessment where</p> <p><Subject> is SCI and <Component> is SUB and <ResultQualifier> is NL and <Result> is W</p> | P Scale level recorded - KS1 overall Science level must be W |

| Seq Number | Error/ Query | Validation Check | Error Message |
|------------|--------------|---|--|
| 249 | Error | <p><u>All schools except Independent schools</u></p> <p><u>If <Subject> is MAT and <Component> is MAT and <ResultQualifier> is NP and <Result> is P1i-P3ii or NOTSEN</u></p> <p><u>then <Subject> must be MAT and <Component> SUB and <ResultQualifier> NF and <Result> W</u></p> | P Scale level recorded – KS1 Maths level must be W |
| 119 | Error | Each of the combinations of parameters at Section 6.2 must be present once and once only and where the assessment is at level W, the appropriate P scale parameter(s) from section 6.3 must be present. No other parameters should be present. | Assessments are either missing or invalid |
| 285 | Query | P scale parameters for an assessment should not be present for both overall subject and subject component. | P Scale assessments are present for both overall subject and for subject component |

Notes:

1. Where NOTSEN is indicated as a valid result for a P scale that signifies a pupil who is not on the SEN register but not yet working at level 1 – pupils with English as a second language are the most common instance of this.
2. There is no P-Scale cross-check for W in the four individual KS1 Science ATs, the check for W is only made against the overall subject level for Science.

5. Resubmission Guidance

When resubmissions are required the Serial No in the Header must be incremented by the provider's software. We have also assumed that the whole file will be resubmitted. Note that a resubmission will delete and replace all the data contained in the previous submission.

6. Valid values

Valid item values must be in the list or range specified in CBDS, the Common Basic Dataset, URL : <http://www.education.gov.uk/researchandstatistics/datatdatam/cbds> subject to the exceptions and restrictions below.

6.1 LEA codes

LEA codes (CBDS number 200001, codeset D00004) for this collection only covers England LAs. Coverage also excludes LEA codes:

001, 003, 167

codes starting with 6 and 7 except 702 (Service Children's Education, which is valid)

XXX, MMM and NA

6.2 Assessment parameters

Assessment parameters - the following combinations of subject, component, assessment method and result type are required:

KS1-2014-ENG-AT1-TA-NL

KS1-2014-ENG-AT2-TA-NF

KS1-2014-ENG-AT3-TA-NF

KS1-2014-MAT-SUB-TA-NF

KS1-2014-SCI-AT1-TA-NL

KS1-2014-SCI-AT2-TA-NL

KS1-2014-SCI-AT3-TA-NL

KS1-2014-SCI-AT4-TA-NL

KS1-2014-SCI-SUB-TA-NL

6.3 P Scale parameters

In addition to the required parameters above, where the Assessment Result is level 'W' then one or more (as appropriate) of the following corresponding P scale combinations are required:

SEN-2014-ENG-ENG-TA-NP

SEN-2014-ENG-REA-TA-NP

SEN-2014-ENG-WRI-TA-NP

SEN-2014-ENG-SPE-TA-NP

SEN-2014-ENG-LIS-TA-NP

SEN-2014-MAT-MAT-TA-NP

SEN-2014-MAT-NUM-TA-NP

SEN-2014-MAT-USE-TA-NP

SEN-2014-MAT-SSM-TA-NP

SEN-2014-SCI-SCI-TA-NP



Department
for Education

© Crown copyright 2014

You may re-use this document/publication (not including logos) free of charge in any format or medium, under the terms of the Open Government Licence v2.0. To view this licence, visit www.nationalarchives.gov.uk/doc/open-government-licence/version/2 or email: psi@nationalarchives.gsi.gov.uk.

Where we have identified any third party copyright information you will need to obtain permission from the copyright holders concerned.

Any enquiries regarding this publication should be sent to the [data collection helpdesk](#).

This document is available to download at www.gov.uk/government/publications.

Reference: DFE-00367-2014



Follow us on Twitter: @educationgovuk



Like us on Facebook: www.facebook.com/educationgovuk